

Title	Controlled motion of Janus particles in periodically phase-separating binary fluids.
Author(s)	Araki, Takeaki; Fukai, Shintaro
Citation	Soft matter (2015), 11(17): 3470-3479
Issue Date	2015-04-07
URL	http://hdl.handle.net/2433/198612
Right	© The Royal Society of Chemistry 2015; 許諾条件により本文ファイルは2016-04-07に公開.
Type	Journal Article
Textversion	author

Controlled motion of Janus particles in periodically phase-separating binary fluids

Takeaki Araki^{*a} and Shintaro Fukai^a

Received Xth XXXXXXXXXXXX 20XX, Accepted Xth XXXXXXXXXXXX 20XX

First published on the web Xth XXXXXXXXXXXX 200X

DOI: 10.1039/b000000x

We numerically investigate the propelled motions of a Janus particle in a periodically phase-separating binary fluid mixture. In this study, the surface of the particle tail prefers one of the binary fluid components and the particle head is neutral in the wettability. During the demixing period, the more wettable phase is selectively adsorbed to the particle tail. Growths of the adsorbed domains induce the hydrodynamic flow in the vicinity of the particle tail, and this asymmetric pumping flow drives the particle toward the particle head. During the mixing period, the particle motion almost ceases because the mixing primarily occurs via diffusion and the resulting hydrodynamic flow is negligibly small. Repeating this cycle unboundedly moves the Janus particle toward the head. The dependencies of the composition and the repeat frequency on the particle motion are discussed.

1 Introduction

Self-propelled motions of micro- and nano-particles have attracted much interest from a wide range of viewpoints. They will provide us with important applications, such as nanomachines and drug delivery^{1–8}. Recent, focus has been on their collective dynamics because they are very fascinating in a growing field of non-equilibrium physics, *i.e.*, active matter^{9–13}. Self-propelled particles use some energy or nutrients to generate the self-propulsion force. For example, biological molecules, such as ATPase and myosin, convert chemical energy to mechanical motion through chemomechanical coupling¹⁴. In non-biological systems, Marangoni effect can induce spontaneous motions of liquid droplets^{15,16}.

Janus particles, which have heterogeneous surface properties, are often employed as artificial self-propelled systems^{17,18}. For example, the self-propelled motions are modelled by asymmetric nanoparticles partially coated with platinum. The catalytic decomposition of hydrogen peroxide, which occurs selectively on the Pt-surface, drives the nanoparticles^{1,2,5,19,20}. Interfacial phoretic effects^{21,22} are another possible mechanism of micro-swimmers¹⁷. Jiang *et al.* demonstrated that a Janus particle can create an asymmetric temperature gradient around it in a defocused laser beam. The induced gradients lead to spontaneous drift motions of the Janus particles⁷. Also, local heating by illumination light induces active motions of Janus particles in a binary mixture of lower critical solution temperature^{23,24}.

Besides the thermo- and diffusio-phoresis motions^{7,23,24}, Janus particles can move in phase-separating binary mixtures

because of the coupling between the wetting and phase separation^{25,26}. The phase separation of binary fluid mixtures has been well studied^{27–29}. During the later stage of the phase separation, the domain patterns grow with time. The particles in the phase-separating mixtures are trapped in one of the phases or at the interfaces. Even when Brownian motions and external forces are absent, the particles move with the resulting coarsening of the domain patterns^{30–33}. Because the Janus particles have asymmetric wettability, we expect that their motions also become asymmetric. The direction of the asymmetric motion will more or less depend on the particle direction. Janus particles with two distinct wettabilities are occasionally used as surfactants to stabilize the phase-separated domains^{34–36}. In the final stage of the phase separation, the particle motions will be frozen.

In this article, we demonstrate a possible mechanism of spontaneous motions of a Janus particle in periodically phase-separating mixtures. By continually varying the temperature or pressure slightly above and below the transition point, one can cause periodic processes of phase separation and mixing^{37–40}. By resetting the binary mixtures to the one-phase state, we expected that we could continuously propel the particle. Here, we examine this expectation by means of numerical simulations. The dependencies of the particle motion on the average composition and the duration of the cycle are discussed.

In Sec. 2, we explain our numerical model, which is based on fluid particle dynamics method^{41,42}. Numerical results are shown and are discussed in Sec. 3. We summarize our study and discuss some remarks in Sec. 4.

^a Department of Physics, Kyoto University, Sakyo-ku, Kyoto 606-8502, Japan. E-mail: araki@scphys.kyoto-u.ac.jp

2 Model and simulation

2.1 Free energy functional

We consider the case, in which a spherical Janus particle is suspended in a binary mixture. The surface of the particle is heterogeneous in wettability. For numerical simulations, dealing with the particle in a continuous manner is convenient. We express it with a smooth shape function as^{41,42},

$$\psi_R(r) = \frac{1}{2} \left\{ \tanh \left(\frac{a - |r - R|}{d} \right) + 1 \right\}. \quad (1)$$

Here, r is the coordinate in a lattice space and R is the position of the particle in an off-lattice space. a is the radius of the particle and d represents the width of the smooth interface. In the limit of $d \rightarrow 0$, ψ is unity and zero in the interior and exterior of the particle, respectively. We also define the surface distribution as $\psi_s = |\nabla \psi_R|$.

The free energy function comprises two parts as^{32,43,44},

$$\mathcal{F} = \mathcal{F}_{\text{mix}} + \mathcal{F}_{\text{sur}}. \quad (2)$$

The first part \mathcal{F}_{mix} is the mixing free energy given by

$$\begin{aligned} & \mathcal{F}_{\text{mix}}\{\phi, R\} \\ &= \frac{T}{v_0} \int dr \left[f_{\text{BW}}(\phi) + \frac{C}{2} |\nabla \phi|^2 + \frac{\chi_p}{2} \psi_R(\phi - \phi_0)^2 \right], \end{aligned} \quad (3)$$

where $\phi(r)$ is the local concentration of the first component of the mixture. T is the temperature and we set the Boltzmann constant to unity. v_0 is the molecular volume. The coefficient of the gradient term C is related to the interface tension and is of the order of $v_0^{2/3}$ ²⁹. $f_{\text{BW}}(\phi)$ is the Bragg–Williams type of the mixing free energy as

$$f_{\text{BW}}(\phi) = \phi \ln \phi + (1 - \phi) \ln(1 - \phi) + \chi \phi(1 - \phi), \quad (4)$$

where χ is the interaction parameter between two fluid components. Under the mean field approximation, $\chi = 2$ and $\phi = 0.5$ give the critical point. The third term in the integrand of Eq. (3) is introduced to prevent the solvent from penetrating into the particle³². χ_p and ϕ_0 are the control parameters.

\mathcal{F}_{sur} is the surface free energy, which is given by

$$\begin{aligned} & \mathcal{F}_{\text{sur}}\{\phi, R, n\} \\ &= \frac{Td}{v_0} \int dr \psi_s(r) \{\phi(r) - \phi_s\} W(r - R, n), \end{aligned} \quad (5)$$

where n is the unit vector toward the orientation of the particle. W represents the heterogeneity of the particle wettability. As illustrated in Fig. 1(a), we use

$$W(r - R, n) = W_0 + W_1 n \cdot \frac{r - R}{|r - R|}, \quad (6)$$

where W_0 and W_1 are the material constants for the wetting. If $W < 0$, the component of larger ϕ tends to wet the surface^{25,26}. In the early stages of phase separation, the surface of $W \neq 0$ largely influences the pattern formation (see below).

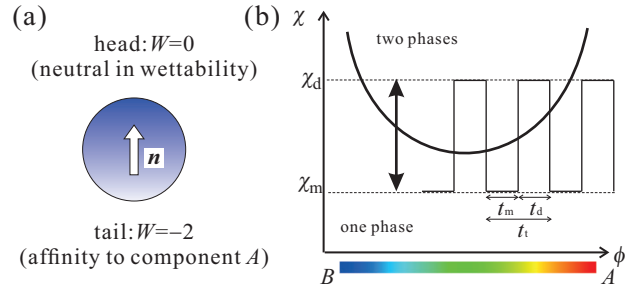


Fig. 1 (a) A sketch of a spherical particle with a heterogeneous surface. The orientation is described by a unit vector n . We set $W_0 = -1$ and $W_1 = 1$ in Eq. (6), so that we have $W = 0$ and $W = -2$ at the two poles. We refer to the pole with $W = 0$ as “head” and the other as “tail”. The particle head is neutral in wettability and the tail prefers component A. (b) A typical phase diagram of a binary fluid mixture. We change the χ parameter by using a square wave function of t . Phase separation occurs during the period with $\chi = \chi_d$. However, when $\chi = \chi_m$, the phase-separated domains are mixed.

2.2 Time development equations

The hydrodynamic equation for the flow field v is given by

$$\begin{aligned} & \rho \left(\frac{\partial}{\partial t} + v \cdot \nabla \right) v \\ &= -\phi \nabla \frac{\delta \mathcal{F}}{\delta \phi} + f + \nabla \times g - \nabla p + \nabla \Sigma. \end{aligned} \quad (7)$$

Here ρ is the material density. In this work, we assume that all the materials have the same density. Σ is the viscous stress tensor, which is given by

$$\Sigma = \eta \{ \nabla v + (\nabla v)^T \}. \quad (8)$$

In the spirit of fluid particle dynamics (FPD), we assume that the viscosity η depends on the particle distribution as^{41,42},

$$\eta(r) = \eta_0 + \Delta \eta \psi_R(r), \quad (9)$$

where η_0 is the viscosity of the binary fluid and $\Delta \eta$ is the viscosity difference between the solvent and the particles. In the limit of $\Delta \eta \rightarrow \infty$, the particles will behave as solid particles⁴². p is a part of pressure, which imposes the incompressibility condition: $\nabla \cdot v = 0$.

f is the force field stemming from the particle interactions and is given by,

$$f = -\frac{\psi_R(r)}{\Omega} \frac{\partial \mathcal{F}}{\partial R}, \quad (10)$$

where Ω is the effective volume defined as $\Omega = \int dr \Psi_R(r)$. It is approximated as $\Omega \approx 4\pi a^3/3$ in three-dimensional systems. g originates from the torque acting on the particle, and is given by

$$g = -\frac{\Psi_R(r)}{\Omega} n \times \frac{\partial \mathcal{F}}{\partial n}. \quad (11)$$

The particle motions are caused by the hydrodynamic flow and their kinetics are described as

$$\frac{d}{dt}R = V, \quad (12)$$

$$V = \frac{1}{\Omega} \int dr \Psi_R(r) v, \quad (13)$$

$$\frac{d}{dt}n = \frac{1}{\Omega} \left(\int dr \Psi_R(r) \nabla \times v \right) \times n. \quad (14)$$

Furthermore, the time development equation of the concentration field is

$$\frac{\partial}{\partial t} \phi = -\nabla \cdot (\phi v) + \nabla \cdot L(\psi) \nabla \frac{\delta \mathcal{F}}{\delta \phi} + \nabla \cdot \zeta, \quad (15)$$

where $L(\psi)$ is the kinetic coefficient, and in which we set $L(\psi) = L_0(1 - \psi)$ to eliminate the flux inside the particles. L_0 is the kinetic coefficient of the bulk mixture. ζ represents the thermal fluctuation satisfying the fluctuation–dissipation relation. In this model, the diffusion flux does not contribute to the particle motion directly. In each state, the total free energy, including the kinetic energy, should decrease with time. Its temporal change is described in Appendix A. Our model can be applied to many-particle systems, where Janus particles behave as surfactants^{34–36}. We hope that we will report our studies on them elsewhere in the near future.

2.3 Numerical simulations

We numerically solve the above equations using the Marker and Cell method with staggered grid⁴⁵. We discretize the space by d and set $v_0 = d^3$ and $C = d^2$. Also, we set the particle radius to $a = 6d$. The simulation box is a three-dimensional system (64^3) with periodic boundary conditions. The time increment is $0.005t_0$, where t_0 is a typical diffusion time defined by $t_0 = d^2T/L_0$. For the wettability, we set $W_0 = -1$ and $W_1 = 1$ in this study. Hence, the head of the particle is neutral in the wettability and the tail prefers the component of large ϕ (see Fig. 1(a)). Hereafter, we describe the more and less wettable components as A and B , respectively. The viscosity parameters in Eq. (8) are $\eta_0 = \rho L_0/T$ and $\Delta\eta = 49\eta_0$. In Eq. (3), we set ϕ_0 to be equal to the average composition, $\langle \phi \rangle$, and $\chi_p = 20$. Because Reynold numbers in colloidal systems are very small, we iterate to integrate Eq. (7) without updating R , n , and ϕ until $|\rho(\partial/\partial t + v \cdot \nabla)v|$ becomes less than

$10^{-3}\eta_0 L_0/(T_0 d^3)$. The intensity of the thermal fluctuation is given by $\langle \zeta_i(r, t) \zeta_j(r', t') \rangle = 0.05TL(\psi)\delta(r - r')\delta(t - t')\delta_{ij}$, where i and j stand for x , y and z .

2.4 Periodic phase separation

To induce periodic phase separation, we change the χ parameter uniformly in space using square wave functions of time (see Fig. 1(b)). t_m and t_d denote the durations for mixing and demixing, respectively. We also define $t_t = t_m + t_d$. For simplicity, because we consider mixtures near the phase-separation point, we assume that the other physical parameters are constant, independent of χ . In durations of $mt_t \leq t < (m+1)t_t$, χ is fixed at χ_m below the critical point. Here, m is an integer. The phase-separated domains will be mixed during these times. In $mt_t + t_m \leq t < (m+1)t_t$, we retain χ at $\chi = \chi_d$, above the critical point, so that phase separation proceeds in the bulk. Throughout the simulations presented in this article, we fix the χ parameters to $\chi_d = 2.7$ and $\chi_m = 1.3$. In the demixing periods with χ_d , the coexistence concentrations of A - and B -rich phases are $\phi \cong 0.893$ and 0.107 , respectively. The correlation length, also referred to as the interface thickness, is $\xi_d = \sqrt{C/(\chi - \chi_c)} \cong 1.20d$. However, during the mixing periods with χ_m , the correlation length is given by $\xi_m = \sqrt{C/\{2(\chi_c - \chi)\}} \cong 0.845d$.

3 Results and discussions

3.1 Domain patterns

Figure 2 shows snapshots of the domain patterns in the case of $t_m = t_d = 100t_0$. The snapshots were obtained at $t = 200t_0$ and $t = 1000t_0$, which correspond to the times when the first and fifth demixing periods have just finished, respectively. The average concentrations, $\langle \phi \rangle$, of component A are (a) 0.3, (b) 0.5, and (c) 0.7. In the demixing periods with χ_d , the volume fractions of the A -rich phase are (a) 24.6%, (b) 50% and (c) 75.4%, respectively. The light blue surfaces represent the iso-surfaces of $\phi = 0.5$ and the dark blue sphere represents the Janus particle. At $t = 0$, the particle is directed toward the z -axis, *i.e.*, $n(t = 0) = (0, 0, 1)$. In each case, we observed that the particle follows the background flows, which are caused by the interface tensions during the phase separations. The mechanisms of the particle motions are discussed below.

3.2 Particle trajectories

Figure 3 shows typical trajectories of the Janus particle from $t = 0$ to $t = 10^4 t_0$ in the binary mixtures of different concentrations. The time intervals are $t_m = t_d = 500t_0$. The trajectories show that the particle tends to move directionally toward

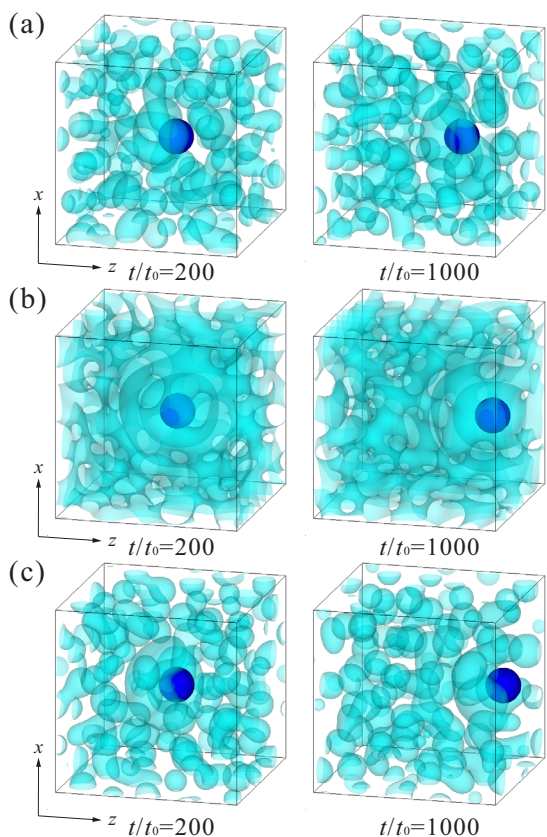


Fig. 2 Snapshots of a Janus particle in periodically phase-separating binary fluids. The average concentrations of the more wettable phase are (a) $\langle\phi\rangle = 0.3$, (b) $\langle\phi\rangle = 0.5$, and (c) $\langle\phi\rangle = 0.7$.

the particle head. Because the particle surface has a heterogeneous affinity to the components, the phase separation proceeds asymmetrically around the particle. This asymmetry of the phase separation dynamics may cause the directional motion of the Janus particle. Interestingly, the particle moves toward its head in all the mixtures. Figure 3 also indicates that the trajectories are not completely straight. The degree of the directionality and the particle speed depend on parameters such as the average concentrations and the time intervals.

Figures 4(a) and (b) show the temporal changes in the trajectory length and velocity toward the head. Since the particle orientation, n , changes with time, the trajectory length d_{\parallel} and the velocity V_{\parallel} toward the particle orientation are calculated as

$$d_{\parallel}(t) = \int_0^t V_{\parallel}(t') dt', \quad (16)$$

$$V_{\parallel}(t) = V(t) \cdot n(t). \quad (17)$$

Positive and negative values of V_{\parallel} represent the forward and backward motions of the particle position, respectively. In Fig. 4, the time intervals are set to $t_m = t_d = 10^3 t_0$. Here,

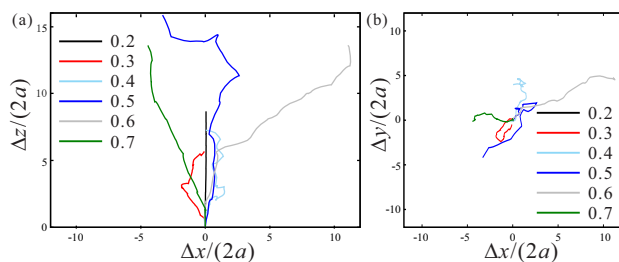


Fig. 3 The trajectories of the Janus particle in the periodically phase-separating mixtures from $t = 0$ to $t = 10^4 t_0$. The trajectories are projected on the (a) x - z and (b) x - y planes. At $t = 0$, the particle is directed toward the z -axis. The time intervals are $t_d = t_m = 500 t_0$.

each curve was obtained from one simulation run. We simulated nine average concentrations from $\langle\phi\rangle = 0.1$ to 0.9 . In the mixtures of $\langle\phi\rangle \leq 0.1$ and $\langle\phi\rangle \geq 0.8$, we did not observe any drastic motion of the particle; hence, their curves have not been included in Fig. 4. Also, we did not plot the curves for the mixtures of $\langle\phi\rangle = 0.4$ and $\langle\phi\rangle = 0.6$ because they essentially demonstrate behaviors similar to those with the symmetric mixture $\langle\phi\rangle = 0.5$.

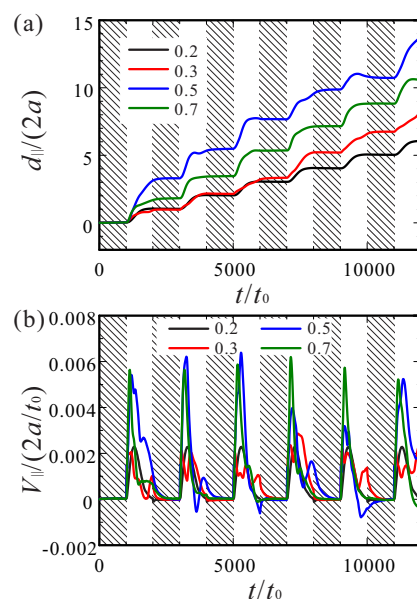


Fig. 4 The time developments of (a) the particle displacements d_{\parallel} and the particle velocity V_{\parallel} toward the particle head. The time intervals are $t_d = t_m = 10^3 t_0$. The average concentrations are $\langle\phi\rangle = 0.2, 0.3, 0.5$ and 0.7 . The hatched regions indicate the mixing periods.

In Fig. 4(a), the trajectory lengths indicate stepwise motions. The particle is almost fixed in the mixing periods. However, during the demixing periods, the particle shows forward displacements. By repeating these cyclic motions, the particle

continuously propels in a periodically phase-separating binary mixture. The displacement in each cycle is of the order of the particle diameter. Although the onsets of the motion in the demixing periods are not clearly seen in Fig. 4, the detailed analyses indicate that the particle does not start moving simultaneously with the quenching into the demixing states. It moves most largely after a certain incubation time t_i , which is discussed later.

The cyclic behaviors are also clearly displayed in the particle velocity. After the initial incubation time in each demixing period, the particle velocity shows large positive values. After this transient deterministic motion, the velocity decreases gradually with some fluctuations. In particular, it can have negative values in more symmetric mixtures, with $\langle\phi\rangle = 0.5$. A similar stepwise motion is observed in a system where a Janus particle with metallic surfaces is trapped at a liquid–air interface²⁰. The particle’s stepwise motion is due to spontaneous cyclic bursts of bubbles. In our system, the stepwise motion is due to the controlled changes of the interaction parameter.

Figures 5(a) and (b) show the temporal changes of the average-concentration differences and the velocity intensities. They are calculated as

$$\langle\Delta\phi^2\rangle = \Omega_t^{-1} \int dr (\phi - \langle\phi\rangle)^2, \quad (18)$$

$$\langle v^2 \rangle = \Omega_t^{-1} \int dr v^2, \quad (19)$$

where Ω_t is the system volume. In the early stages of the demixing periods, the phase separation starts via diffusion of the components. As shown in Fig. 5, the hydrodynamic flow develops simultaneously with the phase separation, and thus, it is small during the early stages^{46,47}. Because the particle is transported by the background flow, the incubation time of the particle motion t_i in Fig. 4 corresponds to the duration of the early stage of the phase separation, t_e . Here, t_e depends on the average concentration. This is because the growth rate of the concentration field depends on the average concentration. Inside the spinodal regime, the phase separation proceeds via spinodal decomposition. As the average concentration approaches the spinodal points ($\langle\phi\rangle = 0.5 \pm 0.255$ for $\chi_d = 2.7$), the growth rate is decreased to zero. However, in the binodal regime, the phase separation occurs via the nucleation of the droplets of the minority phase. The nucleation rate is also decreased to zero as $\langle\phi\rangle$ approaches the equilibrium concentration. In both the processes, more symmetric mixtures are more unstable and the durations of the early stages are shortened. This may suggest that the particle moves faster in the symmetric mixtures because the incubation time, t_i , during which the particle is at rest, is reduced. We define the duration of the early stage t_e as $\langle\Delta\phi^2(mt_t + t_m + t_e)\rangle = \langle\Delta\phi_{\text{eq}}^2\rangle/2$. Here, $\Delta\phi_{\text{eq}}$ is the concentration difference in the equilibrium demix-

ing state. From the simulation results, we obtain $t_e = 34.6t_0$ for $\langle\phi\rangle = 0.5$, $t_e \approx 74.0t_0$ for $\langle\phi\rangle = 0.3$ and 0.7 , and $t_e \approx 292t_0$ for $\langle\phi\rangle = 0.2$. These are indicated by the arrows in Fig. 6(a).

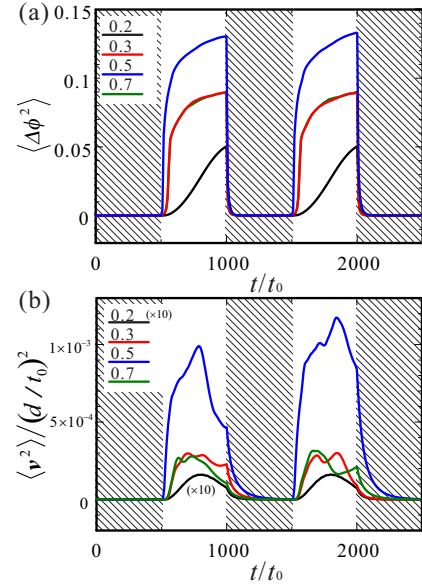


Fig. 5 The time developments of (a) the average-concentration differences $\langle\Delta\phi^2\rangle$ and the velocity intensity $\langle v^2 \rangle$. The time intervals are $t_d = t_m = 500t_0$. In (b), the curve for $\langle\phi\rangle = 0.2$ is magnified tenfold. The average concentrations are $\langle\phi\rangle = 0.2, 0.3, 0.5$ and 0.7 . The hatched regions indicate the mixing periods.

Figs. 6(a) and (b) show plots of the averaged speeds toward the particle head, $\langle V_{\parallel} \rangle$, and perpendicular to it, $\langle V_{\perp} \rangle$, as a function of the time interval. Here, we set $t_m = t_d$ for simplicity. The parallel and perpendicular velocity in the m -th cycle are defined as

$$V_{\parallel m} = \frac{1}{t_t} \int_{mt_t}^{(m+1)t_t} V_{\parallel}(t) dt, \quad (20)$$

$$V_{\perp m} = \frac{1}{t_t} \int_{mt_t}^{(m+1)t_t} |V(t) \times n(t)| dt. \quad (21)$$

From these, the averaged velocities $\langle V_{\parallel} \rangle$ and $\langle V_{\perp} \rangle$ are obtained with averaging $M = 10$ cycles as

$$\langle V_X \rangle = \frac{1}{M} \sum_{m=1}^M V_{Xm}, \quad (22)$$

where X refers to $X = \parallel$ and \perp . The error bars in Figs. 6(a) and (b) represent the standard deviations of $V_{\parallel m}$ and $V_{\perp m}$. The ratio of $\langle V_{\perp} \rangle$ to $\langle V_{\parallel} \rangle$ is plotted in Fig. 6(c).

In Fig. 6(a), each curve of $\langle V_{\parallel} \rangle$ is non-monotonic with maxima. The maxima peaks suggest that we can choose efficient time intervals for propelling the particle. As discussed above, the hydrodynamic flow has not developed yet in the early stage

of the demixing periods. In the cases of small time intervals, the phase-separating times are too short for the hydrodynamic flows to develop sufficiently; hence, the particle is not dragged, implying that we have to maintain the system in the phase-separated state till the conclusion of the early stage t_e . However, for large time intervals, the average speed along the orientation becomes low. In the mixtures of $\langle\phi\rangle = 0.2, 0.3$, and 0.7 , the parallel speed becomes largest at approximately $t_d \cong t_e$. Thus, larger time intervals are not needed for propelling the particle with high speeds. However, in the symmetric mixture ($\langle\phi\rangle = 0.5$), the parallel speed becomes largest around $t_d \approx 200t_0$, which is larger than the duration of an early stage t_e . This is attributed to large background flows emerging from other domains near the particle, as discussed below.

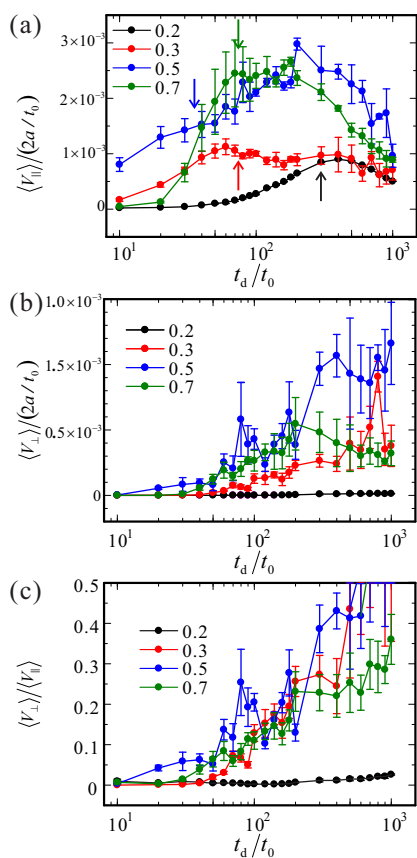


Fig. 6 Plots of the averaged velocity (a) toward the particle head $\langle V_{\parallel} \rangle$ and (b) perpendicular to the orientation $\langle V_{\perp} \rangle$, with respect to the time intervals. The arrows in (a) indicate the durations of the early stage t_e . The average concentrations are $\langle\phi\rangle = 0.2, 0.3, 0.5$ and 0.7 . The error bars represent the standard deviation of the particle motions. (c) The ratio of the perpendicular speed $\langle V_{\perp} \rangle$ to the parallel speed $\langle V_{\parallel} \rangle$.

As has been shown in Fig. 3, we observe the particle fluctuations, which are characterized by the perpendicular motion

$\langle V_{\perp} \rangle$ in Fig. 6(b). The particle changes its orientation and the resulting direction of the particle motion. Thus, similar to the $\langle V_{\perp} \rangle$ changes, the temporal changes of the orientation are also considered as a measure of the particle fluctuation. Fig. 7(a) demonstrates the autocorrelation of the orientation vector. It is calculated as

$$N(t) = \frac{1}{t_{\max}} \int_0^{t_{\max}} dt' n(t') \cdot n(t+t'), \quad (23)$$

where we set $t_{\max} = 5 \times 10^3 t_0$. In Fig. 7(a), we plot the autocorrelation for $\langle\phi\rangle = 0.3$ as a typical example. They decrease with time indicating that the memory of the orientation is gradually lost. Figure 7(a) shows that the decay rate is increased with increasing t_d . The autocorrelations for different $\langle\phi\rangle$ behave in the same way. In Fig. 7(b), we plot the change rate of the orientation $(\langle \dot{n}^2 \rangle)^{1/2}$, which is calculated for $M = 10$ as

$$\langle \dot{n}^2 \rangle = \frac{1}{M} \sum_{m=0}^{M-1} \dot{n}_m^2. \quad (24)$$

$$\dot{n}_m = \frac{1}{t} \{n((m+1)t) - n(mt)\}. \quad (25)$$

As shown in Figs. 6(b) and 7(b), both $\langle V_{\perp} \rangle$ and $(\langle \dot{n}^2 \rangle)^{1/2}$ are large for large values of t_d , in contrast to those for small t_d . In the demixing periods, the phase separation proceeds throughout the bulk. The fluctuations of the particle motions and orientation stem from the hydrodynamic flows accompanied by the spontaneous growth of the domains surrounding the particle. These background flows are independent of the particle; thus, they disturb the particle motion and change its orientation. Therefore, if we use large time intervals, the particle motion is likely to deviate from the straight line along the initial orientation $n(t=0)$. As suggested in Figs. 6 and 7, the ratios $\langle V_{\perp} \rangle / \langle V_{\parallel} \rangle$ and $(\langle \dot{n}^2 \rangle)^{1/2}$ increased slightly with t_d . Also, in this sense, the large time interval is not preferred for the controlled propulsions.

Figure 6(a) shows that the propelling speed is higher in the symmetric mixtures ($\langle\phi\rangle = 0.5$) than in the asymmetric mixtures. However, the fluctuations of the particle motion are also large as shown in Figs. 6(b) and 7(b). Therefore, the symmetric mixtures are not suitable for keeping the straight line motions. The particle moves largely; however, its motion easily loses the directionality with time. Furthermore, in the asymmetric mixtures, the fluctuations of the particle motion and the orientation are relatively small for the preferred t_d ; thus, the asymmetric mixtures are more suitable to control the particle motions. We consider the mechanisms of the propelled motions in the two types of asymmetric mixtures separately.

3.3 The wettable component-rich mixture

Figure 8 shows the patterns of the evolutions of the concentration and flow field in the mixture of $\langle\phi\rangle = 0.7$. As shown

in Fig. 3, the particle moves rather straightforward. In the early stage of the phase separation during the demixing periods, the A-rich phase wets the half-portion of the particle and a wetting layer is formed on it. Because of the directional fluxes of the A-component toward the surface, the A-component is depleted near the outside of this first wetting layer. This accumulated layer structure is similar to the oscillating profiles of the concentration field near a flat wall or a particle with a homogeneous surface^{47,48}. To compensate for the depleted region, non-spherical droplets of the B-rich phase are formed as shown in Fig. 8(b). The droplets grow near the surface via coagulation and coalescence. Because the processes of the coagulation and coalescence occur asymmetrically near the particle tail, the associated hydrodynamic flow likely pushes the particle toward the particle head. This process is shown in Figs. 8(c) and (d). During the phase separation, many small droplets of the B-rich phase are also formed in the bulk. They grow to their typical sizes with time via coalescence and coagulation, or evaporation and condensation processes^{27,29}. Around coalescing droplets, other hydrodynamic flows are induced, which disturb the particle motion. The disturbing flows are relatively weaker; thus, the particle motion remains straightforward, in contrast to that in the symmetric mixtures.

The mixture of $\langle\phi\rangle = 0.8$ should be phase-separated at equilibrium, when $\chi = \chi_d (= 2.7)$. However, because the nucleation rate is very small, the time intervals we employed ($t_d \leq 10^3 t_0$) were not enough to induce the phase separation. Thus, we did not observe any motion of the Janus particle in the mixture of $\langle\phi\rangle \geq 0.8$.

3.4 The wettable component-deficient mixture

The motions in the B-rich mixtures are highly directed toward the particle orientation as shown in Figs. 3 and 6. Figure 9 shows the pattern evolutions of the concentration and flow field in the mixture of $\langle\phi\rangle = 0.3$. In the early stages of the phase separation, a cap-shaped domain of the A-rich phase emerges from the wettable portion of the particle surface. It covers a large amount of the interfacial area, although its volume is not so large. Then, it tends to change its shape to a sphere for reducing the interfacial energy after the early stage of the phase separation. This process induces a pumping hydrodynamic flow around the tail of the Janus particle and the resulting pumping flow pushes the particle toward the head as shown in Figs. 9(c) and (d). The decay time of the localized pumping flow, t_h , is estimated as $t_h \approx \eta a / \sigma$, where σ is the interface tension.

The mixtures of $\langle\phi\rangle = 0.3$ and 0.7 have the same stability for the phase separation in the bulk. Because the tail of the particle prefers component A, this asymmetry leads to the difference in the particle motions between the $\langle\phi\rangle = 0.3$ and

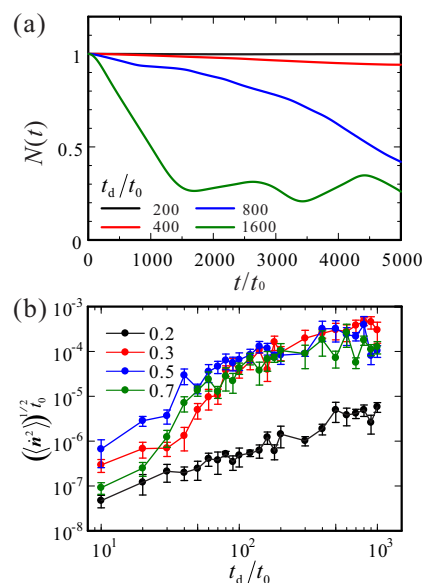


Fig. 7 (a) The autocorrelation function of the orientation $N(t)$. The average concentration was constant at $\langle\phi\rangle = 0.3$, whereas the time intervals changed. (b) The dependence of the change rate of the particle orientation $(\langle n^2 \rangle')^{1/2}$ on the time interval.

the $\langle\phi\rangle = 0.7$ cases. Figure 6(a) shows that the highest parallel speed in the $\langle\phi\rangle = 0.7$ mixture is approximately twice of that in the $\langle\phi\rangle = 0.3$ case. However, Figure 6(c) indicates that the ratio $\langle V_{\perp} \rangle / \langle V_{\parallel} \rangle$ in the $\langle\phi\rangle = 0.7$ case is also approximately twice of that in the $\langle\phi\rangle = 0.3$ case at the maximum parallel speed. Also, Figure 6(a) shows that the standard deviations of $V_{\perp m}$ for the $\langle\phi\rangle = 0.3$ mixture are smaller than those for the $\langle\phi\rangle = 0.7$ case. The particle is suggested to move more steadily and smoothly in the $\langle\phi\rangle = 0.3$ mixture. Thus, we conclude that the B-rich mixtures are more preferred to induce more straight motions.

The stability for the bulk phase-separation in the mixture of $\langle\phi\rangle = 0.2$ is the same as that in the $\langle\phi\rangle = 0.8$ case. However, we have not observed any motions in the $\langle\phi\rangle = 0.8$ mixture, although the particle moves straightforward in the $\langle\phi\rangle = 0.2$ case. This difference suggests that the domain formation in the mixture of $\langle\phi\rangle = 0.2$ is attributed to the heterogeneous nucleation at the particle surface⁴⁹. As the average concentration approaches the binodal line, the thermal nucleation rate in the bulk is strongly decreased²⁹. However, the rate of heterogeneous nucleation on the wetting surface is large enough to induce it during our demixing periods. Because the number of the surrounding droplets is decreased, particle motion becomes more straightforward in more asymmetrically B-rich mixtures (see the case of $\langle\phi\rangle = 0.2$ in Fig. 6).

In both cases, the hydrodynamic flow around the particle tail pushes the particle toward the head. In this sense, our particle motion may be categorized to a pusher in the active

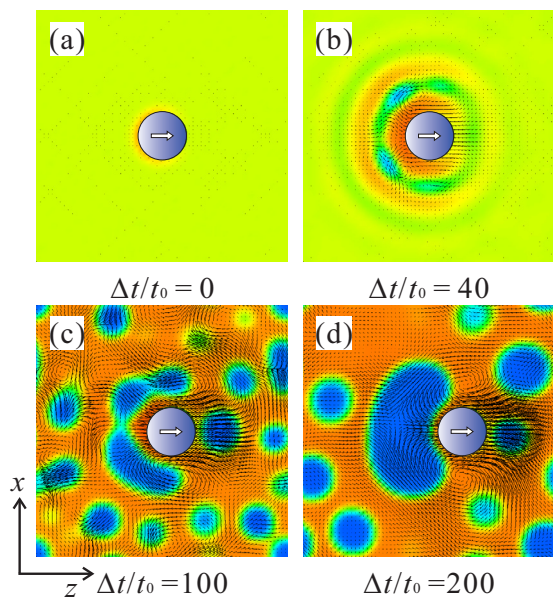


Fig. 8 Snapshots of typical pattern evolution around the particle in the *A*-rich mixtures ($\langle\phi\rangle = 0.7$). The arrows show the flow field. The red and blue domains are the *A*- and *B*-rich phases, respectively. The time intervals are $t_d = t_m = 300t_0$.

matter field¹¹. However, more detailed analyses on the flow pattern are required before this conclusion can be derived.

3.5 Roles of mixing periods

Figures 4(a) and (b) indicate that the particle does not show any large changes of the position and orientation during the mixing periods. This is because diffusion dominates the mixing but it does not contribute to the particle motion. However, here, we should note that the mixing periods are very important for resetting the binary mixtures. As noted above, the hydrodynamic flow caused by the interface tension is large in the demixing periods, whereas it is small in the mixing periods. This difference in the hydrodynamic flows present between the mixing and demixing periods induces the continuous propelled motion of the Janus particle.

In the above simulations, we set $t_m = t_d$ for simplicity. However, considering whether this mixing interval is sufficient to reset the binary mixtures is important. The characteristic length ℓ of the phase-separated domain increases with time algebraically. In the symmetric mixture, a bicontinuous pattern is formed and the domain grows obeying²⁸

$$\ell(t) \approx c\sigma t/\eta. \quad (26)$$

However, in the asymmetric mixtures, the minority phase forms droplets. The droplets grow with time via coalescence

and coagulation as^{27,29}

$$\ell(t) \approx c'(Tt/\eta)^{1/3}. \quad (27)$$

Here, c and c' are non-dimensional numbers, which depend on the volume fractions. Then, the characteristic length at the ends of the demixing periods would be given by $\ell(t_d)$. If the volume fraction is quite small, the droplets grow via nucleation and growth mechanism, and the above scaling relation (Eq. (27)) is replaced by $\ell(t) \propto (L_0\sigma t)^{1/3}$. Because its growth exponent is the same as that of Eq. (27), we consider only cases described by Eq. (27) above.

In the mixing periods, these phase-separated domains should be dissolved into a homogeneous state via diffusion. The diffusion time is estimated as $t_{\text{dif}} \sim \ell(t_d)^2/D_m$, where $D_m = 2L_0(\chi_{\text{sp}} - \chi_m)/T$ is the diffusion constant at $\chi = \chi_m$ and χ_{sp} is the interaction parameter at the spinodal point. When the time interval of the mixing period is longer than the diffusion time, the system can be reset for the next demixing period. However, if $t_{\text{dif}} \ll t_m$, the mixtures show non-steady states³⁷⁻⁴⁰ and the particle would not move directionally. The condition $t_{\text{dif}} \ll t_m$ is rewritten as $t_m \gg (T/\eta)^{2/3}t_d^{2/3}/D_m$ for the droplet patterns and $t_m \gg (\sigma/\eta)^2t_d^2/D_m$ for the bicontinuous patterns. If we set $t_d \gg (T/\eta)^2D_m^{-3}$, we have $t_{\text{dif}} \ll t_d$ in the asymmetric mixtures. Therefore, long annealing times for the mixing are not required. The total time interval $t_t = t_m + t_d$ can be reduced to $t_t \cong t_d$.

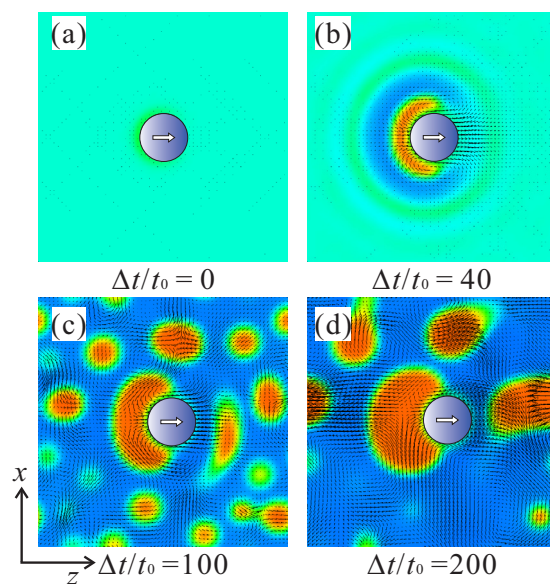


Fig. 9 Snapshots of typical pattern evolutions around the particle in the *B*-rich mixtures ($\langle\phi\rangle = 0.3$). The arrows show the flow field. The red and blue domains are the *A*- and *B*-rich phases, respectively. The time intervals are $t_d = t_m = 300t_0$.

4 Summary and remarks

We proposed a possible mechanism of propelled motions of Janus particles in periodically phase-separating binary mixtures using numerical simulations. Because the particle has an asymmetric surface in wettability, phase separation proceeds heterogeneously around the particle. The resulting asymmetric hydrodynamic flow leads to directional motions of the particle. After a usual one-step quench, the directional motion slows down and will stop eventually. By changing the interaction parameter, the phase-separated system recovers to a one-phase mixing state. Therefore, under periodic changes of the interaction parameter, we can induce a continuous motion along the particle orientation.

We found that the particle propels more directionally in asymmetric binary mixtures. In symmetric mixtures, the hydrodynamic flow emerging from other domains surrounding the particle is so large that it disturbs the directional motions of the Janus particle. We also found that the propelling speed and the directionality depend on the frequency of the change in the interaction parameter. In the cases of short time intervals, the hydrodynamic flow does not develop well and it cannot drive the particle. However, in the cases of long time intervals, the hydrodynamic flows from the surrounding domains disturb the directional motion. We can efficiently move the particle in the intermediate time intervals, which are comparable to the characteristic time of the spinodal decomposition or nucleations in the early stage of the phase separation. The pumping hydrodynamic flow that is localized around the particle decays with the relaxation time τ_h . τ_h is of the order of $\eta a/\sigma$. The interval of the demixing period should be larger than $t_i + \tau_h$. However, the large time interval for the demixing periods leads to the loss of the directionality as discussed above. Thus, the most efficient time interval would be $t_d \approx t_i + \tau_h$. The displacement of the particle in each cycle is of the order of the particle diameter. Then, the maximum particle speed could be increased to $V \sim a/(t_i + \tau_h)$.

Unfortunately, the simulations performed in this study are limited owing to the numerical costs. We need to deepen our understanding of the propelled motions of such a Janus particle, and we hope that we will present a report on them in the near future. We make some critical remarks to improve our study as follows.

(1) In this article, we show only the simulations with the particle diameter $2a = 12d$. Here, d is comparable to the correlation length; hence, our particle is rather small. In actual phase-separating mixtures, such small particles would show drastic Brownian motions and the directional motions we discovered might be smeared out. Our preliminary simulations with larger particles indicated that the displacement of the particle in each cycle is of the order of the particle size. In other words, they suggest that the particle speed can be in-

creased linearly with its size by employing appropriate temporal changes of the interaction parameter.

(2) The wettability of our particle changes smoothly on the surface (see Eq. (6)). However, an actual Janus particle usually has two distinct surfaces and the wettability changes abruptly at the equator. Instead of Eq. (6), we performed some simulations with an alternate surface function given by

$$W(r - R, n) = W_0 + W_1 \tanh\left(\frac{1}{d_h} n \cdot \frac{r - R}{|r - R|}\right). \quad (28)$$

Here, d_h is introduced to avoid the singularity at the equator of the Janus particles. A particle described by Eq. (28) with small d_h would behave more realistically. The preliminary simulations using Eq. (28) with $d_h = 0.05$ demonstrated essentially similar results as those using Eq. (6). This similarity can be derived from the fact that our particle motions are induced by the secondary effect of the phase separation, *i.e.*, the asymmetric growth of the hydrodynamic flow around the particle. Thus, we consider that our findings are robust for the heterogeneous surface pattern. To improve the efficiency of the particle motions, simulations with a variety of the surface structures would be interesting.

We consider that the propelled motions in this article are robust also for the details of the free energy function. We numerically confirmed that the particle moves in the same way in binary mixtures described by the Ginzburg–Landau free energy instead of Eq. (4).

(3) The easiest method to realize our findings in actual systems would be a direct observation of them with an optical microscope equipped with a temperature control hot stage⁴⁰. However, changing the temperature with high frequencies might be experimentally difficult because the thermal diffusion constant is finite. To induce a high speed propulsion, large differences of the temperature from the binodal point are preferred for both the mixing and demixing periods. However, for deep quenches in the demixing periods, the incubation times for the phase separation would be reduced up to microscopic timescales.

The pressure control⁵⁰ is considered to be an alternative method to induce the continuous propulsions. The combination of the temperature control and illumination-induced phase separation would also be able to induce periodic phase separation with high speeds^{23,24}. In this study, we employ only the square waves of the interaction parameter to induce periodic phase separation. We should perform more simulations with other types of wave functions to find more efficient propulsion schemes.

(4) In our model, particle motion is caused by the hydrodynamic flow. However, studying the behaviors of a Janus particle in solid mixtures where $v = 0$ would also be interesting. In such mixtures, the particle motion is caused by the thermodynamic forces ($\propto \nabla \delta \mathcal{F} / \delta \phi$). Because the coarsening behavior

of the phase separation domain pattern depends on the fluidity of the mixtures (see Eqs.(26) and (27)), whether our findings are applicable to the solid mixture is not trivial.

(5) Because the intensity of the hydrodynamic flow is proportional to $1/\eta_0$ (see Eq. (7)), we expected that the particle speed is also proportional to $1/\eta_0$. However, our simulations with different solvent viscosities indicated that V_{\parallel} is approximately proportional to $1/\eta_0$ in symmetric mixtures, whereas it is approximately independent of η_0 in asymmetric mixtures (not shown here). This is because the rate-limiting process of the phase separation in asymmetric mixtures is the nucleation and growth of the minority phase; their rates are dominated by the diffusion constant, not the solvent viscosity. Thus, the results reported in this article are not quantitatively universal. They will depend on the system parameters such as the solvent viscosity and interface tension. Although we consider that the propelled motion in periodic phase separation can be qualitatively realized in actual systems, we have to perform more simulations with wide ranges of the system parameters.

For simplicity, we also assumed a constant viscosity η_0 in the surrounding fluids. However, the solvent viscosity is generally a function of the local composition. As noted above, the particle speed depends on the solvent viscosity in symmetric mixtures; thus, studying the influences of the viscosity difference would also be interesting.

Acknowledgements

The authors thank H. Tanaka for his helpful comments. We started this work following his original ideas on this research topic. This work was supported by KAKENHI (no. 24540433, 23244088 and 25000002) and the JSPS Core-to-Core Program "International research network for non-equilibrium dynamics of soft matter." The computational work was performed using the facilities at the Supercomputer Center, Institute for Solid State Physics, University of Tokyo. This research was also partly supported by CREST, JST.

References

- 1 W. F. Paxton, K. C. Kistler, C. C. Olmeda, A. Sen, S. K. St. Angelo, Y. Cao, T. E. Mallouk, P. E. Lammert and V. H. Crespi, *J. Am. Chem. Soc.*, 2004, **126**, 13424–13431.
- 2 W. F. Paxton, S. Sundararajan, T. E. Mallouk and A. Sen, *Angew. Chem. Int. Ed.*, 2006, **45**, 5420–5429.
- 3 R. Dreyfus, J. Baudry, M. Roper, M. L. Fermigier, H. A. Stone and J. Bette, *Nature*, 2005, **437**, 862–865.
- 4 J. R. Howse, R. A. L. Jones, A. Ryan, T. Gough, R. Vafabakhsh and R. Golestanian, *Phys. Rev. Lett.*, 2007, **99**, 048102.
- 5 R. Laocharoensuk, J. Burdick and J. Wang, *ASC Nano*, 2008, **5**, 1069–1075.
- 6 S. Sundararajan, P. E. Lammert, A. W. Zudans, V. H. Crespi and A. Sen, *NANO Lett.*, 2008, **8**, 1271–1276.
- 7 H.-R. Jiang, N. Yoshinaga and M. Sano, *Phys. Rev. Lett.*, 2010, **105**, 268302.
- 8 R. Kapral, *J. Chem. Phys.*, 2013, **138**, 020901.
- 9 T. Vicsek, A. Czirók, E. Ben-Jacob, I. Cohen and O. Shochet, *Phys. Rev. Lett.*, 1995, **75**, 1226–1229.
- 10 D. Helling, *Rev. Mod. Phys.*, 2001, **73**, 1067–1141.
- 11 M. C. Marchetti, J.-F. Joanny, S. Ramaswamy, T. B. Liverpool, J. Prost, M. Rao and R. Aditi Simha, *Rev. Mod. Phys.*, 2013, **85**, 1143.
- 12 S. Ramaswamy, *Annu. Rev. Condens. Matter Phys.*, 2010, **1**, 323–345.
- 13 M. E. Cates, *Rep. Prog. Phys.*, 2012, **75**, 042601.
- 14 M. Schliwa and G. Woehlke, *Nature*, 2003, **422**, 759–765.
- 15 K. Nagai, Y. Sumino, H. Kitahata and K. Yoshikawa, *Phys. Rev. E*, 2005, **71**, 065301(R).
- 16 S. Yabunaka, N. Yoshinaga and T. Ohta, *J. Chem. Phys.*, 2012, **136**, 074904.
- 17 R. Golestanian, T. B. Liverpool and A. Ajdari, *New J. Phys.*, 2007, **9**, 126.
- 18 S. J. Ebbens and J. R. Howse, *Soft Matter*, 2010, **6**, 726–738.
- 19 R. Golestanian, T. B. Liverpool and A. Ajdari, *Phys. Rev. Lett.*, 2005, **94**, 220801.
- 20 N. K. Reddy and C. Clasen, *Korea-Aust. Rheol. J.*, 2014, **26**, 73–79.
- 21 J. L. Anderson, *Annu. Rev. Fluid Mech.*, 1989, **21**, 61–99.
- 22 S. Gangwal, O. J. Cayre, M. Z. Bazant and O. D. Velev, *Phys. Rev. Lett.*, 2008, **100**, 058302.
- 23 G. Volpe, I. Buttinoni, D. Vogt, Kümmerer and C. Bechinger, *Soft Matter*, 2011, **7**, 8810–8815.
- 24 I. Buttinoni, G. Volpe, F. Kümmel, G. Volpe and C. Bechinger, *J. Phys.: Condens. Matter*, 2012, **24**, 284129.
- 25 J. W. Cahn, *J. Chem. Phys.*, 1977, **66**, 3667–3672.
- 26 P. G. de Gennes, *Rev. Mod. Phys.*, 1985, **57**, 827–863.
- 27 K. Binder and D. Stauffer, *Phys. Rev. Lett.*, 1974, **33**, 1006–1009.
- 28 E. D. Siggia, *Phys. Rev. A*, 1979, **20**, 595–605.
- 29 A. Onuki, *Phase Transition Dynamics*, Cambridge University Press, Cambridge, 2002.
- 30 H. Tanaka, A. J. Lovinger and D. D. Davis, *Phys. Rev. Lett.*, 1994, **72**, 2581–2584.
- 31 V. V. Ginzburg, G. Peng, F. Qiu, D. Jasnow and A. C. Balazs, *Phys. Rev. E*, 1999, **60**, 4352–4359.
- 32 T. Araki and H. Tanaka, *Phys. Rev. E*, 2006, **73**, 061506.
- 33 M. E. Cates and P. S. Clegg, *Soft Matter*, 2008, **4**, 2132–2138.
- 34 B. P. Binks and P. D. I. Fletcher, *Langmuir*, 2001, **17**, 4708–4710.
- 35 N. Glaser, D. J. Adams, A. Böker and G. Krausch, *Langmuir*, 2006, **22**, 5227–5229.
- 36 M. Huang, Z. Li and H. Guo, *Soft Matter*, 2012, **8**, 6834–6845.
- 37 A. Onuki, *Prog. Theor. Phys.*, 1982, **67**, 1740–1755.
- 38 A. Onuki, *Phys. Rev. Lett.*, 1982, **48**, 753–756.
- 39 M. Joshua, W. I. Goldberg and A. Onuki, *Phys. Rev. Lett.*, 1985, **54**, 1175–1177.
- 40 H. Tanaka and T. Sigehuzi, *Phys. Rev. Lett.*, 1995, **75**, 874–877.
- 41 H. Tanaka and T. Araki, *Phys. Rev. Lett.*, 2000, **85**, 1338–1341.
- 42 H. Tanaka and T. Araki, *Chem. Eng. Sci.*, 2006, **61**, 2108–2141.
- 43 T. Araki and H. Tanaka, *J. Phys.: Condens. Matter*, 2008, **20**, 072101.
- 44 A. Furukawa, A. Gambassi, S. Dietrich and H. Tanaka, *Phys. Rev. Lett.*, 2013, **111**, 055701.
- 45 F. H. Harlow and J. D. Welch, *Phys. Fluids.*, 1965, **8**, 2182–2189.
- 46 H. Tanaka and T. Araki, *Phys. Rev. Lett.*, 1998, **81**, 389–392.
- 47 H. Tanaka and T. Araki, *Europhys. Lett.*, 2000, **51**, 154–160.
- 48 A. Karim, J. F. Douglas, G. Nisato, D.-W. Liu and E. J. Amis, *Macromolecules*, 1999, **32**, 5917–5924.
- 49 D. Winter, P. Virnau and K. Binder, *Phys. Rev. Lett.*, 2009, **103**, 225703.
- 50 M. Shibayama, K. Isono, S. Okabe, T. Karino and M. Nagao, *Macromolecules*, 2004, **37**, 2909–2918.

A Time development of total free energy

The total free energy including the kinetic energy is considered. Using Eq. (2), it is given by

$$\mathcal{G}\{\phi, v, R, n\} = \mathcal{F} + \frac{1}{2} \int dr \rho v^2. \quad (29)$$

Its time development is

$$\begin{aligned} \frac{d}{dt} \mathcal{G} &= \int dr \left[\frac{\delta \mathcal{F}}{\delta \phi} \dot{\phi} + \rho \dot{v} \cdot v \right] \\ &+ \left\{ \frac{\partial \mathcal{F}}{\partial R} \cdot \dot{R} + \frac{\partial \mathcal{F}}{\partial n} \cdot \dot{n} \right\}. \end{aligned} \quad (30)$$

After some calculations, we obtain

$$\begin{aligned} \frac{d}{dt} \mathcal{G} &= \int dr \left\{ -L \left(\nabla \frac{\partial \mathcal{F}}{\delta \phi} \right)^2 - \nabla v : \Sigma + f \cdot v \right. \\ &+ g \cdot (\nabla \times v) + \left(p + \frac{1}{2} \rho v^2 \right) \nabla \cdot v \left. \right\} \\ &+ \left\{ \frac{\partial \mathcal{F}}{\partial R} \cdot \dot{R} + \frac{\partial \mathcal{F}}{\partial n} \cdot \dot{n} \right\}, \end{aligned} \quad (31)$$

where we neglect the contribution of the system boundary. For the force f and torque g fields, we obtained the following equations in our scheme.

$$\begin{aligned} \int dr f \cdot v &= -\frac{1}{V} \int dr \psi(r-R) \frac{\partial \mathcal{F}}{\partial R} \cdot v(r) \\ &= -\frac{1}{V} \frac{\partial \mathcal{F}}{\partial R} \cdot \int dr \psi(r-R) v(r) \\ &= -\frac{\partial \mathcal{F}}{\partial R} \cdot \dot{R}, \end{aligned} \quad (32)$$

$$\begin{aligned} &\int dr g \cdot (\nabla \times v) \\ &= -\int dr \frac{\psi(r-R)}{V} \left\{ n \times \frac{\partial \mathcal{F}}{\partial n} \right\} \cdot \{ \nabla \times v(r) \} \\ &= -\frac{\partial \mathcal{F}}{\partial n} \cdot \left[\frac{1}{V} \int dr \psi(r-R) \{ \nabla \times v(r) \} \times n \right] \\ &= -\int dr \frac{\partial \mathcal{F}}{\partial n} \cdot \dot{n} \end{aligned} \quad (33)$$

Then, we finally obtain

$$\frac{d}{dt} \mathcal{G} = -\int dr \left\{ L \left(\nabla \frac{\delta \mathcal{F}}{\delta \phi} \right)^2 + \frac{1}{2} \eta \{ \nabla v + (\nabla v)^T \}^2 \right\}, \quad (34)$$

where we assumed $\nabla \cdot v = 0$. Thus, we confirmed that \mathcal{G} decreases with time only via diffusion and viscous dissipation.