

Title	<Research Report>Farmers' Perceptions of Imperata cylindrica Infestation in a Slash-and-Burn Cultivation Area of Northern Lao PDR
Author(s)	KEOBUALAPHA, Bounthan; SIMARAKS, Suchint; JINTRAWET, Attachai; ONPRAPHAI, Thaworn; POLTHANEE, Anan
Citation	Southeast Asian Studies (2013), 2(3): 583-598
Issue Date	2013-12
URL	http://hdl.handle.net/2433/180020
Right	
Type	Journal Article
Textversion	publisher

RESEARCH REPORT

Farmers' Perceptions of *Imperata cylindrica* Infestation in a Slash-and-Burn Cultivation Area of Northern Lao PDR

Bounthanh Keoboulapha,* Suchint Simaraks,* Attachai Jintrawet,**

Thaworn Onpraphai,** and Anan Polthanee*

This paper discusses farmers' perceptions of *Imperata* infestation and its impact on agricultural land uses in a slash-and-burn area of Nambak District in Luang Prabang Province, northern Laos. Our study showed that slash-and-burn cultivation (SBC), which has been practiced for generations, remains the main agricultural land use system and provides an important source of food and income for farmers. *Imperata*, which first took root one and a half decades ago, is gradually proliferating, affecting the livelihoods of nearly 38% of households in the five target villages of this study. The positive cause-and-effect relationship among such factors as accelerated land clearing, young fallows, declining soil fertility, and land shortages—suggested to be the main cause of the *Imperata* infestation—has reduced not only cultivable land but also its productivity. According to the majority of farmers, the most significant problems caused by *Imperata* infestation are reduced crop yields, increased weeding, and reduced crop growth. To overcome the problems, farmers employ a combination of strategies—the most common being weeding, fallowing the land, applying chemicals, and exchanging labor. However, the implementation of these strategies is encumbered by many constraints, primarily lack of labor and capital, rice insufficiency, and limited land. Given the constraints and the available technologies, it will be very difficult for farmers in the study area to adopt a more permanent, diversified, and productive agricultural system, which is a high priority of government development policy in the uplands. To meet this challenge, the thrust of research and development communities working in the uplands should be on more systematic and integrated interventions that combine technological, social, economic, and political resolutions based on knowledge of the causes of *Imperata* infestation, the problems it creates, management strategies to cope with the infestation, and the specific constraints perceived by farmers.

Keywords: slash-and-burn cultivation, *Imperata* infestation, agricultural land uses

* บุนซัทึม แก้วบัว ละครษา; สุจินต์ สิมารักษ์; อนันต์ พลธานี, System Approaches in Agriculture Program, Faculty of Agriculture, Khon Kaen University, 123 Moo 16 Mittapap Rd., Nai-Muang, Muang District, Khon Kaen 40002, Thailand

Corresponding author (Bounthanh Keoboulapha)'s e-mail: k.bounthanh@gmail.com

** อรรถชัย จินตะเวช; ทาวรอน อ่อนประไพ, Crop Science and Natural Resources Department and Center for Agriculture Resource System Research, Faculty of Agriculture, Chiang Mai University, 239 Huay Kaew Road, Muang District, Chiang Mai 50200, Thailand

I Introduction

Slash-and-burn cultivation (SBC), also called shifting cultivation, is an important food production system widely practiced in the tropical mountainous regions of Southeast Asia (Rasul and Gopal 2003). SBC practices, which involve repeated cycles of slashing and burning of secondary forest or shrub vegetation, temporarily growing crops, and then letting the land revert to secondary forest growth or fallows, are similar throughout the region. In Laos, the SBC system is practiced in about 13% of the land by 39% of the total population (JICA 2001) and is viewed by the government as an unsustainable form of land use. It needs to be replaced with more permanent and productive land use systems.

The SBC system in Laos has been less and less productive in recent decades as a result of the reduction of fallow periods and the introduction of new species of weeds. Average fallow periods reported for the 1950s, 1970s, 1990s, and 2000s were 38, 20, 5, and 2–3 years respectively (Roder *et al.* 1997; Saito *et al.* 2006). Short fallow periods serve to increase weed infestation in upland rice (Roder *et al.* 1995), deteriorate soil fertility (Gourou 1942; Whitaker *et al.* 1972; Brown and Lugo 1990; Fujisaka 1991), and lead to a decline in non-timber forest products (NTFPs) (Foppes and Ketphanh 2005). The increase in population coupled with improper planning and implementation of upland development policies in many SBC areas has resulted in more land shortages and rural poverty (ADB 2001; Jones *et al.* 2005).

Imperata cylindrica is one of the most dominant, competitive, and difficult weeds to control in the humid and sub-humid tropics of Asia, West Africa, and Latin America. It is one of the most stubborn weeds in both SBC as well as intensive agriculture in West Africa (Chikoye *et al.* 1999; 2002). Lao upland farmers in the north perceive *Imperata* to be one of the most important weeds after *Ageratum conyzoides*, *Chromolaena odorata*, *Commelina* spp., *Panicum trichoides*, and *Lygodium flexuosum* and one of the most undesirable fallow species after *Cratogeomys prunifolium* and *Symplocos racemosa* in slash-and-burn rice systems (Roder *et al.* 1995; 1997). *Imperata* is also perceived as a key indicator of poor soil and land degradation (Saito *et al.* 2006; Lestrelin *et al.* 2010).

There may be as much as 57 million hectares of *Imperata* grassland in Asia, about 25 million hectares of which is in Southeast Asia. In Laos, *Imperata* was reported to have the potential to invade 0.8–1 million hectares (World Bank and Australian International Development Assistance Bureau 1989; Garrity *et al.* 1997), a figure that is expected to have increased in recent decades. There are primarily two reasons for this: shortened fallow periods, due to which the suppression of aggressive weeds such as *Imperata cylindrica* is less effective; and/or intensive use of short fallow lands for crop production where *Imperata* is still dominant.

Our study on the spatial distribution of *Imperata* grassland (characterized as a “micro-grassland”) in northern Laos revealed that it was unevenly distributed throughout the study area (Fig. 1). In addition, the study found that increased land use intensification through diversifying SBC areas into more permanent crop production systems was strongly correlated with the spread of *Imperata* grassland (Keoboulapha *et al.* 2013). The purpose of this study was to capture the local perceptions of such infestation and its impacts on agriculture. The more specific objectives of the study were: (1) to characterize the main agricultural land uses and major crops in the most *Imperata*-infested area of Nambak District in Luang Prabang Province, northern Laos; (2) to estimate the extent of and describe *Imperata* infestation at the household level as perceived by affected farmers; and (3) to identify the existing strategies and constraints in dealing with *Imperata* infestation. The findings of this study will highlight the significance of *Imperata* grassland to concerned research and development communities as a crucial issue for sustainable development in the uplands of Laos.

II Materials and Methods

II-1 Study Area

The study area is located in the southeast part of Nambak District, about 100 kilometers northwest of the capital of Luang Prabang Province, occupying a total area of 72,200 hectares or 37% of the district’s territory. This area (Zone 3 in Fig. 1) has been identified as the most *Imperata*-infested zone, with an average *Imperata* infestation level of 4.4%. It is characterized as an area of very intensive land use, a significant amount of shrub forest, and less natural and bush forests as compared to the other zones, i.e., Zones 1 and 2. Five villages in this zone were chosen for the household interviews (Fig. 1). The selection of the villages was based on the recommendation of the district Agriculture and Forestry Office.

II-2 Household Sampling Method

At the outset, an informal meeting was held with the village headmen and their committees to inform the villagers of the objectives of the study. At the meeting, the appropriate authority of each village was asked to differentiate its farmers into sets of those who had and did not have *Imperata* infestation on their farmland. All the lists with the names of farmers from the five villages whose fields were infested by *Imperata* were compiled into a single list comprising 278 households (Table 1); this list was, in turn, used for selecting households/farmers for individual interviews. A total of 100 from the 278

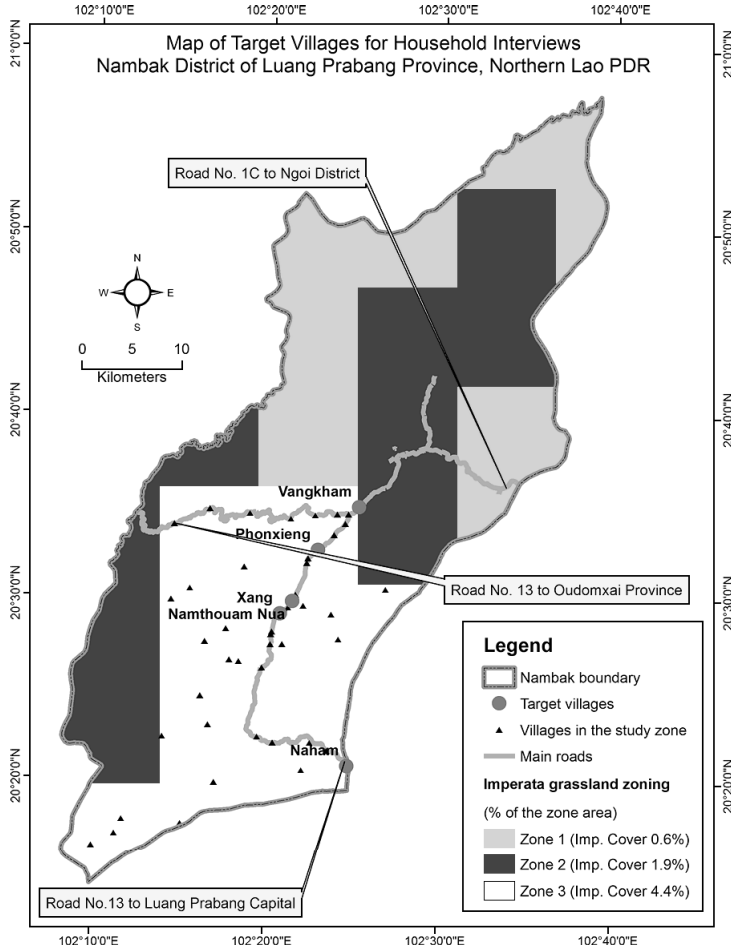


Fig. 1 Location of the Target Villages for Household Interviews

Table 1 Total Households in Target Villages and Total Households with *Imperata*-infested Land

Villages	Total Households	<i>Imperata</i> -infested Households	
		(No.)	(%)
1. Vangkham	86	57	66.3
2. Phonxieng	158	63	39.9
3. Namthouam Nua	362	61	16.9
4. Xang	271	68	25.1
5. Naham	70	29	41.4
Total	947	278	-
Average	189	56	37.9

households pooled were randomly selected with the help of a table of random numbers.

II-3 Data Collection

A structured questionnaire was developed for the individual farmer interviews. All the information that related to socioeconomic data, land uses, and *Imperata* infestation was collected for the wet season of 2011. Questionnaire pretesting exercises were conducted outside the five target villages to further fine-tune the data collection process. The actual interviews of 100 farmers were conducted after the pretesting.

II-4 Data Analysis

Microsoft Excel software was used as a tool for the data processing and statistical analyses. Descriptive statistics, including mean, frequency, and confidence level, were used to describe the important characteristics of the farmers with *Imperata* infestation within the study area. In addition, a semi-quantitative matrix ranking method (Ashby 1990) was used to rank the importance of *Imperata* infestation-related issues as reported by the farmers.

III Results and Discussion

III-1 Socioeconomic Characteristics of Farmers with *Imperata*-Infested Land

The sample statistics indicate that 89% of the farmers interviewed were less than 65 years old, with 80% between the ages of 35 and 64 (Fig. 2a). About 87% of the farmers had been living in their villages for less than 31 years and 13% for more than 30 years to a maximum of 50 years (Fig. 2b). The average family size was 5.7 persons. About 66% of families had between four and seven members (Fig. 2c). They mostly had low educational levels, with an average of 3.4 years in school. About 88% of the farmers had attended school for six years or less—among them, 18% had not been to school at all (Fig. 2d).

Most of the farmers interviewed (94%) had been farming for more than 10 years (Fig. 2e). They commonly had limited manual labor to help with farming activities: only about 89% of them had one or two full-time laborers (Fig. 2f).

About 58% of the farmers reported that they experienced a shortage of rice in 2011. It was common enough to purchase rice for three to four months a year. That year, however, the shortage was so severe that about 19% of the farmers had to buy rice for more than six months (Fig. 2g). It was observed that the farmers rarely relied on a single source of income to support their families but combined various sources. About

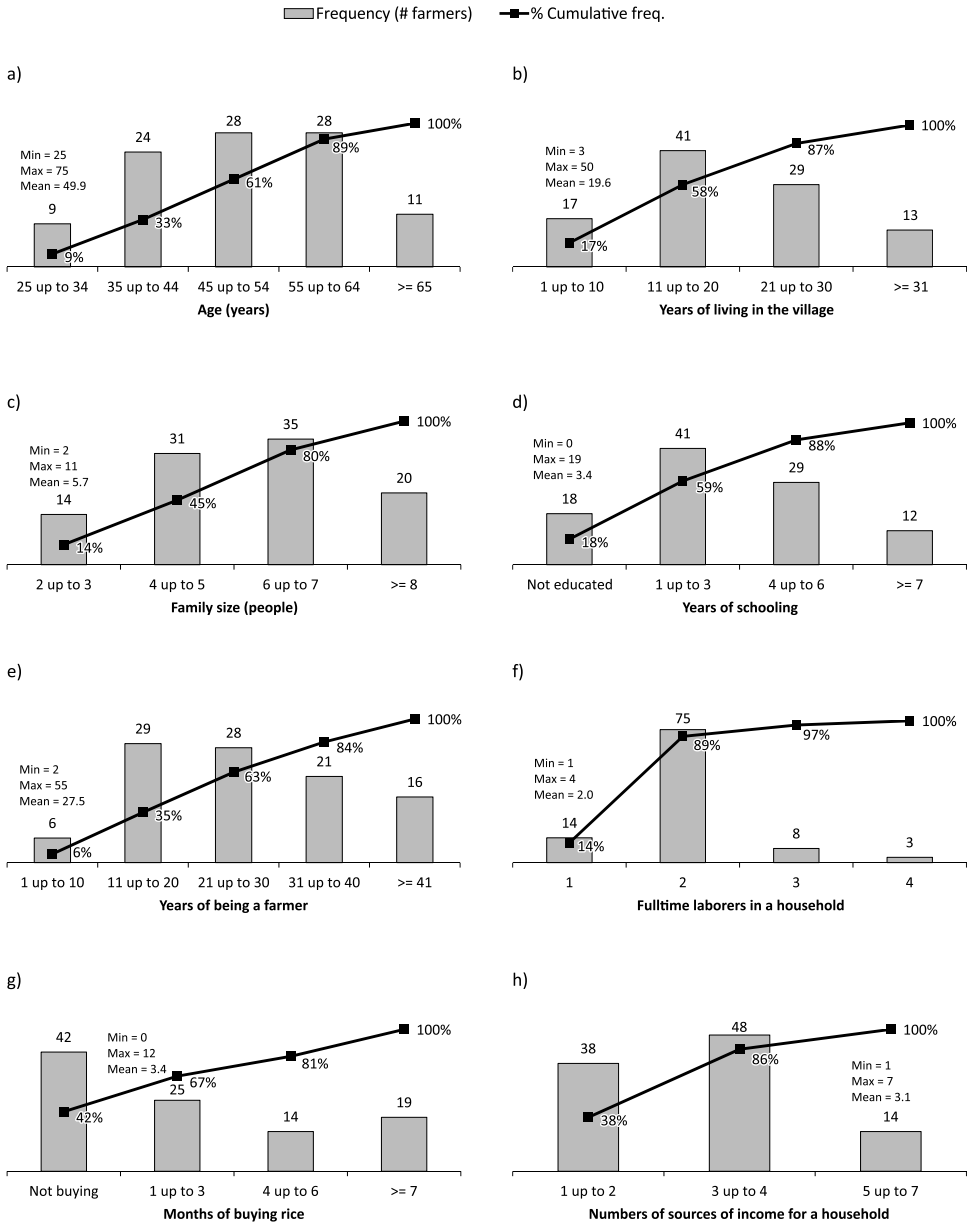


Fig. 2 Some Important Social and Economic Characteristics of the Farmers Interviewed ($n=100$)

Table 2 Main Sources of Income (n=100)

Income Sources	No. of Responses ^a	Rank ^b
Annual crops ^c	81	7.47 (1)
NTFPs ^d	51	6.59 (4)
Livestock ^e	44	7.05 (2)
Off-farm ^f	43	6.33 (5)
Perennial crops ^g	38	6.66 (3)
Loans	24	6.04 (6)
Remittances	22	5.82 (7)
<i>Imperata</i> grass	10	5.50 (8)

Notes: ^a Sum > n = 100 because some farmers reported more than one source of income.

^b Numbers outside the parentheses are the overall weights (relative frequency multiplied by ranking values given by a farmer, i.e., 0.8 is the most important and 0.1 the least important) for the corresponding income sources. Numbers in the parentheses represent overall ranking where the greater the overall weighting value the more important the income source.

^c Mainly Job's tears (*Coix lacryma-jobi* L.), sesame (*Sesamum indicum* L.), upland rice, and maize (*Zea mays* L.)

^d Non-timber forest products, e.g., tiger grass (*kiam*), bamboo shoots, paper mulberry, and medicinal plants

^e Mainly pigs and poultry

^f Wages, handicrafts, trading, weaving, and pensions

^g Mainly teak, fruit trees, tiger grass (*kiam*), and galangal (*kha*)

62% of the farmers interviewed had income from more than two sources (Fig. 2h).

Annual crops were by far the most important source of income for most farmers in the study area, followed by livestock, perennial crops, NTFPs, and off-farm activities. NTFPs, although ranked fourth in the income scale, ranked second for a large number of farmers after upland annual crops. About 10% of the farmers said that *Imperata* grass also provided a source of income, but it was much lower down the scale when compared to other income sources (Table 2).

III-2 Main Agricultural Land Uses and Major Crops

Upland annual crop production, fallows, orchards, tree plantations, and paddy were identified as the main agricultural land uses adopted by farmers. SBC, which involves growing upland annual crops and fallowing the lands, was important not only for farmers who had no paddy but also for farmers who had paddy fields. In 2011, 27 of the 36 farmers who had paddy fields had upland annual crops occupying about 25% of their farmland (Table 3).

The sample statistics indicate that the average farm sizes were not significantly different, ranging from 2.87 to 2.97 hectares hh⁻¹. The average size of farms rated with a confidence level of 95% ranged between 2.48 and 3.26 hectares hh⁻¹ and 2.53 and 3.42 hectares hh⁻¹ for farmers with and without paddy fields, respectively. Upland annual

Table 3 Descriptive Statistics of the Main Agricultural Land Use Types^a

Land Use Types ^b	No. of hh ^c	Average	Confidence Level of 95%		Total Area	
			Lower ^d	Upper ^e	(ha)	(%)
<i>Without paddy (ha hh⁻¹)</i>						
Annual crops	53	1.67	1.38	1.97	88.8	47
Fallows	38	1.41	1.10	1.72	53.6	28
Orchards	37	0.69	0.50	0.88	25.5	13
Tree plantation	21	1.07	0.66	1.48	22.5	12
Farm	64	2.97	2.53	3.42	190.3	100
<i>With paddy (ha hh⁻¹)</i>						
Annual crops	27	0.97	0.77	1.16	26.1	25
Fallows	21	1.08	0.73	1.42	22.6	22
Orchards	13	0.43	0.21	0.65	5.6	5
Tree plantation	25	1.05	0.63	1.47	26.3	25
Paddies	36	0.63	0.51	0.76	22.7	22
Farm	36	2.87	2.48	3.26	103.3	100

Notes: ^a Areas of land uses were estimated by farmers based on the weight of rice seeds planted (60 kg=1 ha) for annual crops, fallows, orchards, and tree plantation.

^b Annual crops: Mainly Job's tears (*Coix lacryma-jobi* L.), upland rice, sesame (*Sesamum indicum* L.), and maize (*Zea mays* L.) grown under slash-and-burn systems; Fallows: A plot of land, after a period of crop cultivation, abandoned for natural growth; Orchards: Permanent cropping systems with fruit trees, galangal (*kha*), tiger grass (*kiam*), vegetables, and other cash crops as the main crops; in many cases, this land is used for annual cropping under SBC; Tree plantation: Mainly teak, rubber, eagle-wood; Farm: Total area consisting of different land uses owned by an individual household; Paddies: Land areas being bunded and used for crop cultivation, mainly lowland rice.

^c Sum > 64 and 36 because households often have more than one land use.

^d Lower limit at confidence level of 95%

^e Upper limit at confidence level of 95%

crops and fallows were the most important land uses practiced by both groups of farmers, and comprised 75% and 47% of the farm area owned by farmers without and with paddy fields, respectively. Land use intensification through perennial crop diversification had reduced the slash-and-burn area by 25% and 30% for farmers without and with paddy fields, respectively. In addition to upland annual crops, farmers with paddy tended to intensify their slash-and-burn areas into tree plantations, while farmers without paddy intensified into both tree plantations and orchards (Table 3).

III-3 *Farmers' Perceptions of Imperata Infestation in Relation to Land Uses:*

Persistence and Areas

The longest period of *Imperata* invasion into farmlands, as recalled by the farmers interviewed, was 21 years. However, about 95% of farmers reported that *Imperata* had invaded their fields for less than 16 years (Fig. 3a). As a result, we believe that *Imperata*

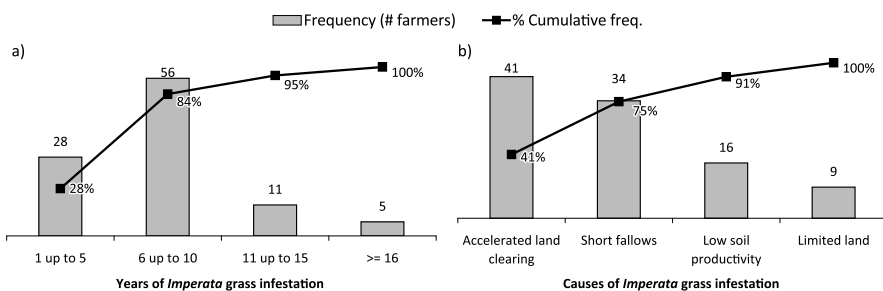


Fig. 3 *Imperata* Infestation: Years of Infestation and Main Causes ($n=100$)

has only recently rooted itself in the study area. Almost all farmers mentioned that the *Imperata*-infested areas had expanded and compacted together in some parts of their farmland.

Asked about their perceptions on the mode of proliferation and persistence of *Imperata* in the area, 91% of the farmers interviewed reported that accelerated clearing of the same piece of land by either slashing or burning practices, short fallow periods (one to two years) or young fallows, and poor soil were the factors essentially responsible for *Imperata* grass infestation (Fig. 3b). The limited areas of land available for SBC compelled the farmers to reduce the length of the fallow periods, which in turn contributed to low soil productivity. Poor soil and dry lands were often repeated problems among the farmer interviewees. On the other hand, because of the reduction in the SBC area, short fallow land had to be cleared more frequently for annual cropping, which again reduced soil productivity and increased the annual weed population.

Due to low biomass, short fallows can result in weak burning. A good burn improves soil productivity through the addition of fertilizer derived from ash and reduced weeds (Saito *et al.* 2006). This study therefore suggests that the positive cause-and-effect relationship between the aforementioned factors is an important cause of *Imperata* infestation in the study area.

Farmers mentioned that *Imperata* grass had invaded fields under different types of land uses. They identified two types of *Imperata* grass infestation: mixed and pure. The former refers to land use or fields where *Imperata* grass grows together with crops or natural vegetation and is known as “mixed *Imperata* stand,” while the latter refers to land use or fields where *Imperata* grass grows with a few, or without any, other plant species and is known as “pure *Imperata* stand.” *Imperata* infestation area (patch or field size), given a confidence level of 95%, was 0.62–1.13 hectares and 0.37–0.76 hectares for mixed and pure infestation, respectively (Table 4).

The farmers claimed to have experienced higher mixed, rather than pure, infesta-

Table 4 *Imperata* Infestation Area^a

LUT ^b	Mixed Stand ^c					Pure Stand ^d					Total Infestation	
	<i>n</i> ^e	Average	Lower ^f	Upper ^g	Total	<i>n</i>	Average	Lower	Upper	Total	ha	%
<i>Without paddy (ha)</i>												
AC	24	0.53	0.40	0.66	12.7	21	0.19	0.13	0.25	4.0	16.6	26
FA	19	0.60	0.45	0.76	11.5	21	0.83	0.70	0.95	17.4	28.8	45
OR	15	0.53	0.35	0.70	7.9	3	0.24	-0.20	0.69	0.7	8.6	13
TP	11	0.72	0.49	0.95	8.0	5	0.42	-0.06	0.90	2.1	10.1	16
AL	50	0.80	0.62	0.98	40.0	42	0.58	0.45	0.70	24.2	64.2	100
<i>With paddy (ha)</i>												
AC	15	0.45	0.31	0.59	6.7	10	0.25	0.18	0.32	2.5	9.2	22
FA	13	0.65	0.47	0.83	8.4	14	0.65	0.45	0.86	9.1	17.5	42
OR	6	0.75	0.36	1.15	4.5	0	-	-	-	-	4.5	11
TP	15	0.70	0.52	0.89	10.6	1	0.20	-	-	0.2	10.8	26
AL	32	0.95	0.76	1.13	30.2	21	0.56	0.37	0.76	11.8	42.0	100

Notes: ^a Areas of *Imperata* infestation and land uses were estimated by farmers based on the weight of rice seeds planted (60 kg=1 ha).

^b AC: Annual crops; FA: Fallows; OR: Orchards; TP: Tree plantation; AL: All land uses

^c Area of *Imperata* grass mixed with crops or natural regrowth

^d A portion of land use heavily infested with *Imperata* grass

^e Number of households

^f Lower limit at confidence level of 95%

^g Upper limit at confidence level of 95%

Table 5 *Imperata* Infestation: Percentages of Total Land Uses on Farm

Land Uses	Mixed	Pure	Total Infestation (%)	Total Farm Area (ha)
<i>Without paddy</i>				
Annual crops	14.3	4.5	18.7	9
Fallows	21.4	32.4	53.7	15
Orchards	31.1	2.8	34.0	5
Tree plantation	35.4	9.4	44.8	5
All land uses	21.0	12.7	-	34
<i>With paddy</i>				
Annual crops	25.8	9.4	35.3	9
Fallows	37.3	40.4	77.7	17
Orchards	81.0	-	81.0	4
Tree plantation	40.2	0.8	40.9	10
All land uses^a	29.3	11.4	-	41
Average	25.1	12.1	-	37

Note: ^a Including paddy fields

tion. The most infested land uses were fallows and tree plantation, consisting of 53.7% and 77.7%, and 40.9% to 44.8% of the total area of the particular land uses, or 15% and 5%, and 17% and 10% of the total farm area owned by farmers without and with paddy (Table 5). In addition, farmers with paddy were found to have more severe *Imperata* infestation than farmers without paddy (41% versus 34%). Therefore, it is important that farmers who own paddy fields should not be ignored by the agencies concerned when developing sustainable *Imperata* management strategies in the uplands.

In general, about 37% of the total farmland covered by our study is infested by *Imperata*: about 12% is unproductive for cropping because it is invaded by the pure variety of *Imperata* infestation explained above, and 25% has been rendered less productive with a high risk of crop failure due to mixed *Imperata* infestation. The remaining 63% of farmland, untouched thus far by *Imperata*, is expected to be more productive and therefore suitable for upland crop production. However, this area can also be at risk from an *Imperata* invasion unless proper control and management practices are implemented.

III-4 Farmers' Perceptions of *Imperata* Infestation in Relation to Crop Production:

Problems, Management Strategies, and Constraints

When farmers were asked to rank the problems they considered offshoots of *Imperata* infestation in ascending order of importance, most of them cited more than one challenge. They believed that reduced crop yields, increased weeding procedures, and reduction in crop growth were the most significant impacts of *Imperata* infestation (Table 6). Repeated clearing of short fallow land for annual cropping, while *Imperata* is still dominant, sig-

Table 6 Main Problems Related to Crop Production Caused by *Imperata* Infestation

Without Paddy (<i>n</i> =64)			With Paddy (<i>n</i> =36)		
Problem	Responses ^a	Rank ^b	Problem	Responses	Rank
Reduced crop yields	64	5.59 (1)	Increased weeding	36	5.22 (1)
Reduced crop growth	63	5.02 (3)	Reduced crop yields	36	5.09 (2)
Reduced crop quality	63	2.35 (7)	Reduced crop quality	36	2.64 (6)
Increased pests ^c	61	4.25 (5)	Reduced crop growth	35	5.03 (3)
Increased weeding	59	5.07 (2)	Reduced farm size	35	4.14 (5)
Reduced farm size ^d	54	4.85 (4)	Increased pests	34	4.94 (4)
Reduced soil fertility	30	2.73 (6)	Reduced soil fertility	8	2.13 (7)

Notes: ^a Number of responses

^b Numbers outside the parentheses are the overall weights (relative frequency multiplied by ranking values given by a farmer, i.e., 0.7 is the most important and 0.1 the least important) for the corresponding problems. Numbers in the parentheses represent overall ranking, where the greater the overall weighting value the more important the problem.

^c Mainly rats and subterranean pests

^d Reduced cultivable land

nificantly increases the need for weeding. As a result, maintaining crop yields by providing adequate weeding can be a great challenge for farmers in the study area. Chikoye *et al.* (2000) estimated crop yield reduction attributable to competition from *Imperata* grass to be 76–80% in cassava, 78% in yam, and 50% in maize. International Institute of Tropical Agriculture (IITA) (1997) reported that weed control operations in *Imperata*-infested fields could be required as often as three to six times per season depending on the type of crop and the level of infestation. Reduced farm size or cultivable land was considered a less significant problem, although farm sizes had reportedly been reduced by 12.7% due to pure *Imperata* infestation. Reduced soil fertility was also considered less important in the study area, although some studies in other areas of northern Laos reported that farmers cited the presence of *Imperata* as a key indicator of poor soil and land degradation (Saito *et al.* 2006; Lestrelin *et al.* 2010).

Table 7 Farmers' Strategies to Overcome *Imperata* Infestation

Strategy	Main Problems Caused by <i>Imperata</i> Infestation							Average
	Reduced Crop Yields	Reduced Crop Quality	Reduced Crop Growth	Increased Weeding	Reduced Farm Size	Increased Pests	Reduced Soil Fertility	
Without paddies (n=64)		<i>Relative frequency (%)</i>						
Weeding ^a	51.7	54.4	72.5	4.2	40.4	20.7	29.4	39.0
Fallowing ^b	19.0	35.1	19.6	70.8	42.1	5.2	54.9	35.2
Applying chemicals ^c	22.4	5.3	3.9	27.6	17.5	12.5	3.9	13.3
Exchanging labor ^d	–	–	–	43.1	–	–	–	6.2
Applying fertilizer	1.7	5.3	3.9	–	–	–	11.8	3.2
Traditional pest control ^e	–	–	–	–	–	12.5	–	1.8
Changing crops ^f or enterprise ^g	5.2	–	–	–	–	–	–	0.7
Hiring labor	–	–	–	3.4	–	–	–	0.5
With paddies (n=36)		<i>Relative frequency (%)</i>						
Weeding	54.3	51.4	65.7	–	40.6	21.2	22.6	36.5
Fallowing	20.0	40.0	14.3	71.4	31.3	6.1	54.8	34.0
Applying chemicals	20.0	2.9	2.9	12.1	15.6	7.1	3.2	9.1
Exchanging labor	–	–	–	48.5	3.1	–	–	7.4
Changing crops or enterprise	2.9	2.9	5.7	3.0	9.4	7.1	3.2	4.9
Applying fertilizer	2.9	2.9	11.4	–	–	–	16.1	4.7
Traditional pest control	–	–	–	–	–	14.3	–	2.0
Hiring labor	–	–	–	9.1	–	–	–	1.3

Notes: ^a In addition to the common hand weeding, other weeding methods such as hoeing, uprooting, slashing, and plowing were also employed.

^b Letting cropped fields lie idle to grow naturally and shade out *Imperata*

^c Mainly herbicides (applied during land preparation just before crop planting) and insecticides

^d Farmers usually organized themselves into a group to exchange or share labor. Working together as a group, farmers can complete a field task (e.g., weeding) in short periods of time and then quickly move on to other farmers' fields. Farm owners do not pay wages for exchange labor.

^e Trapping and digging, especially for rodent species

^f Planting crops that are able to grow and compete with *Imperata* better than upland rice can

^g Raising livestock (mainly pigs and poultry) and engaging in off-farm employment

Table 8 Main Constraints to *Imperata* Control

Without Paddy (<i>n</i> =64)			With Paddy (<i>n</i> =36)		
Constraints	Responses ^a	Rank ^b	Constraints	Responses	Rank
Lack of labor	58	4.83 (1)	Lack of capital	34	4.44 (3)
Land shortage	54	3.85 (4)	Rice shortage	34	3.71 (4)
Rice shortage	56	3.89 (3)	Lack of labor	33	4.67 (1)
Lack of capital	53	4.75 (2)	Land shortage	33	4.58 (2)
Lack of technology and knowledge	39	3.28 (5)	Lack of technology and knowledge	23	3.22 (5)
Uncontrolled fires	15	1.53 (6)	Uncontrolled fires	8	2.00 (6)

Notes: ^a Number of responses

^b Numbers outside the parentheses are the overall weights (relative frequency multiplied by ranking values given by a farmer, i.e., 0.6 is the most important and 0.1 the least important) for the corresponding constraints. Numbers in the parentheses represent overall ranking, where the greater the overall weighting value the more important the constraint.

To cope with the problem of *Imperata* infestation, farmers use a wide range of management strategies. Some measures, such as weeding, fallowing the land, applying chemicals and fertilizers, and pest control, are technological/technical; while exchange labor, changes to new crops or enterprises, and the hiring of laborers are more economic and/or social. Weeding, fallowing the land, applying chemicals, and exchange labor are the chief strategies adopted by farmers both with and without paddy fields to tackle most of the issues that they face (Table 7). The planting of new crops and the setting up of new enterprises such as raising livestock or off-farm activities are important strategies adopted by farmers when the regular crop produces very low yield. Many farmers in the study area have switched from the cultivation of upland rice to the cultivation of Job's tears or maize because the latter crops can compete with *Imperata* and grow better on their farms.

However, there are many constraints to the effective implementation of such strategies. Most of the constraints cited by the interviewees are social and economic rather than technological/technical. Lack of labor and capital, a shortage of rice, and limited cultivable land are considered the chief constraints by farmers (Table 8). The lack of technology and knowledge in dealing with the problems caused by *Imperata* is considered a less important constraint; this indicates that the farmers are satisfied with their current level of knowledge and prevailing technologies. This is probably because the farmers have no idea, nor information, of the improved technologies available for dealing with *Imperata* infestation. With the limited technological options within their command, they continue to pursue their traditional SBC practice although the government strives to discourage it.

IV Conclusion

The study found that *Imperata* infestation, which was established about one and a half decades ago, is gradually spreading in the study area and affecting the livelihoods of nearly 38% of households living in the five target villages. Slash-and-burn cultivation (SBC) remains the main agricultural land use system and provides an important source of food and cash income for farmers. Most of the farmers are concerned about the negative impacts of *Imperata*, although it does yield income in small measure to some farmers. The positive cause-and-effect relationship between the accelerated clearing of the same piece of land, short fallow periods, declining soil productivity, and land shortage is believed to be the primary cause of *Imperata* infestation in the study area.

The study has shown that about 37% of farmland is infested with *Imperata*: 12% is rendered unproductive for cropping due to the pure form of the infestation, while 25% of the land has become less productive, with a high risk of crop failure, due to the mixed form of the infestation. The remaining 63% of farmland, so far free of infestation, is also considered to be at risk unless appropriate preventive management practices are employed.

It is the considered view of most of the farmers interviewed that reduced crop yield, increased weeding, and reduced crop growth are the chief problems caused by *Imperata* infestation. To cope with these issues more effectively, the farmers often implement a combination of strategies and practices, the most common of which are weeding, fallowing the land, applying chemicals, and exchange labor. However, such measures encounter many constraints due to lack of labor and capital, land shortages, rice shortage, and limited land. Given the constraints faced and the prevailing technologies used, increased *Imperata* infestation in fallow lands will make it very difficult for farmers to intensify the SBC system into a more permanent, diversified, and productive agricultural system, which is a high priority of the government development policy in the uplands. To meet this challenge, knowledge about the causes, problems, and management strategies and acknowledgement of the constraints perceived by farmers vis-à-vis *Imperata* infestation must be collated, correlated, and addressed by the research and development communities working in the uplands. This will enable systematic and integrated interventions combining technological, social, economic, and political resolutions.

Acknowledgments

We thank the Agriculture and Forestry Office of Nambak District for providing staff to work with us and the communities; local community leaders for their help organizing villagers; and the farmers for valuable information. This study was financially supported by the Thailand Research Fund under the CLMV-T DSS Graduate Degree Program Research Initiative: 1st Phase (Contract No. RDG5200003-LV01).

References

- ADB. 2001. *Participatory Poverty Assessment*. Vientiane: Asian Development Bank.
- Ashby, J. A. 1990. *Evaluating Technology with Farmers: A Handbook*. Cali, Columbia: International Center for Tropical Agriculture.
- Brown, S.; and Lugo, A. E. 1990. Effects of Forest Clearing and Succession on the Carbon and Nitrogen Content of Soils in Puerto Rico and US Virgin Islands. *Plant and Soil* 124: 53–64.
- Chikoye, D.; Ekeleme, F.; and Ambe, J. T. 1999. Survey of Distribution and Farmer Perceptions of Speargrass (*Imperata cylindrica*) in Cassava-Based Cropping Systems in West Africa. *International Journal of Pest Management* 45: 305–312.
- Chikoye, D.; Manyong, V. M.; and Ekeleme, F. 2000. Characteristics of Speargrass (*Imperata cylindrica*) Dominated Fields in West Africa: Crop, Soil Properties, Farmer Perceptions and Management Strategies. *Crop Protection* 19: 481–487.
- Chikoye, D.; Manyong, V. M.; Carsky, R. J.; Ekeleme, F.; Gbehounou, G.; and Ahanchede, A. 2002. Response of Speargrass (*Imperata cylindrica*) to Cover Crops Integrated with Handweeding and Chemical Control in Maize and Cassava. *Crop Protection* 21: 145–156.
- Foppes, J.; and Ketphanh, S. 2005. Non-timber Forest Products for Poverty Reduction and Shifting Cultivation Stabilization in the Uplands of Lao PDR. In *Poverty Reduction and Shifting Cultivation Stabilization in the Uplands of Lao PDR: Technologies, Approaches and Methods for Improving Upland Livelihoods*, edited by Bounthong Bouahom, Aiden Glendinning, Sophie Nilsson, and Michael Victor, pp. 181–193. Vientiane: NAFRI.
- Fujisaka, S. 1991. A Diagnosis Survey of Shifting Cultivation in Northern Laos: Targeting Research to Improve Sustainability and Productivity. *Agroforestry Systems* 13: 95–109.
- Garrity, D. P.; Soekardi, M.; Van Noordwijk, M.; De la Cruz R.; Pathak, P. S.; Gunasena, H. P. M.; Van So, N.; Huijun, G.; and Majid, N. M. 1997. The *Imperata* Grasslands of Tropical Asia: Area, Distribution and Typology. *Agroforestry Systems* 36: 3–29.
- Gourou, P. 1942. *L'utilisation du sol en Indochina* [Utilization of soils in Indochina]. Center d'études de politique étrangère. Paris: Paul Hartmann.
- IITA. 1997. *Annual Report 1987*. Ibadan: International Institute of Tropical Agriculture.
- JICA. 2001. *Master Plan Study on Integrated Agriculture Development in Lao PDR*, 3 vols. Lao PDR: Japan International Cooperation Agency and Ministry of Agriculture and Forestry.
- Jones, P.; Sysomvang, S.; and Amphaychith, H. 2005. Village Land Use and Livelihood Issues Associated with Shifting Cultivation, Village Relocation and Village Merging Programmes in the Uplands of Phonxay District, Luang Prabang Province. In *Poverty Reduction and Shifting Cultivation Stabilization in the Uplands of Lao PDR: Technologies, Approaches and Methods for Improving Upland Livelihoods*, edited by Bounthong Bouahom, Aiden Glendinning, Sophie Nilsson, and Michael Victor, pp. 149–159. Vientiane: NAFRI.
- Keoboualapha, B; Onpraphai, T; Jintrawet, A; Simaraks, S; and Polthanee, A. 2013. *Imperata* Grassland

- Mapping in Northern Uplands of Lao PDR: Areas, Distribution, Characteristics and Implications for Slash-and-Burn Cultivation. *Southeast Asian Studies* 2(2): 383–399.
- Lestrelin, G.; Pelletreau, A.; and Valentin, C. 2010. *Local Knowledge and Land Degradation: A Participatory Case Study in the Uplands of Laos*. Vientiane: IRD-IWMI-MSEC Project.
- Rasul, G.; and Gopal, G. B. 2003. Shifting Cultivation in the Mountains of South and Southeast Asia: Regional Patterns and Factors Influencing the Change. *Land Degradation and Development* 14: 495–508.
- Roder, W.; Phengchanh, S.; and Keoboualapha, B. 1997. Weeds in Slash-and-Burn Rice Fields in Northern Laos. *Weed Research* 37: 111–119.
- Roder, W.; Phengchanh, S.; Keoboualapha, B.; and Maniphone, S. 1995. *Chromolaena odorata* in Slash-and-Burn Rice Systems of Northern Laos. *Agroforestry Systems* 31: 79–92.
- Saito, K.; Linquist, B.; Keoboualapha, B.; Shiraiwa, T.; and Horie, T. 2006. Farmers' Knowledge of Soils in Relation to Cropping Practices: A Case Study of Farmers in Upland Rice Based Slash-and-Burn Systems of Northern Laos. *Geoderma* 136: 64–74.
- Whitaker, D. P.; Barth, H. A.; Berman, S. M.; Heimann, J. M.; MacDonald, J. E.; Martindale, K. W.; and Shinn, R. S. 1972. *Area Handbook for Laos*. Washington, DC: US Government Printing Office.
- World Bank and Australian International Development Assistance Bureau. 1989. Lao PDR: Preparation Report, Fifth Agricultural Development Project.