

Title	In situ differentiation of CD8 cells from CD4 T cells in peripheral lymphoid tissues.
Author(s)	Nambu, Yukiko; Hayashi, Tatsunari; Jang, Kyoung-Jin; Aoki, Koji; Mano, Hiroto; Nakano, Keiko; Osato, Motomi; Takahashi, Katsu; Itoh, Katsuhiko; Teramukai, Satoshi; Komori, Toshihisa; Fujita, Jun; Ito, Yoshiaki; Shimizu, Akira; Sugai, Manabu
Citation	Scientific reports (2012), 2
Issue Date	2012-09-07
URL	<a href="http://hdl.handle.net/2433/160369">http://hdl.handle.net/2433/160369</a>
Right	This work is licensed under a Creative Commons Attribution-NonCommercial-No Derivative Works 3.0 Unported License. To view a copy of this license, visit <a href="http://creativecommons.org/licenses/by-nc-nd/3.0/">http://creativecommons.org/licenses/by-nc-nd/3.0/</a>
Type	Journal Article
Textversion	publisher



# *In situ* differentiation of CD8 $\alpha\alpha$ T cells from CD4 T cells in peripheral lymphoid tissues

SUBJECT AREAS:  
DEVELOPMENT  
AUTOIMMUNITY  
DIFFERENTIATION  
IMMUNOGENETICS

Yukiko Nambu<sup>1\*</sup>, Tatsunari Hayashi<sup>1</sup>, Kyoung-Jin Jang<sup>1</sup>, Koji Aoki<sup>2</sup>, Hiroto Mano<sup>1</sup>, Keiko Nakano<sup>1</sup>, Motomi Osato<sup>3,4</sup>, Katsu Takahashi<sup>5</sup>, Katsuhiko Itoh<sup>6</sup>, Satoshi Teramukai<sup>7</sup>, Toshihisa Komori<sup>8</sup>, Jun Fujita<sup>6</sup>, Yoshiaki Ito<sup>3,4</sup>, Akira Shimizu<sup>1</sup> & Manabu Sugai<sup>1</sup>

Received  
26 June 2012

Accepted  
23 August 2012

Published  
7 September 2012

Correspondence and requests for materials should be addressed to M.S. (msugai@virus.kyoto-u.ac.jp)

\* Current address: Bioprocessing Technology Institute, A\*STAR 20 Biopolis Way #06-01 Centros Singapore 138668.

<sup>1</sup>Department of Experimental Therapeutics, Translational Research Center, Kyoto University Hospital, 54 Shogoin-Kawahara-cho, Sakyo-ku, Kyoto 606-8507, Japan, <sup>2</sup>Tenure-Track Program for Innovative Research, University of Fukui, 23-3 Matsuokashimoaizuki, Eiheiji-cho, Yoshida-gun, Fukui, Japan. 910-1193, <sup>3</sup>Cancer Science Institute of Singapore, National University of Singapore, 14 Medical Drive, Singapore 117599, Singapore, <sup>4</sup>Institute of Molecular and Cell Biology, 61 Biopolis Drive, Proteos, Singapore 138673, Singapore, <sup>5</sup>Department of Oral and Maxillofacial Surgery, Graduate School of Medicine, Kyoto University, 54 Shogoin-Kawahara-cho, Sakyo-ku, Kyoto 606-8507, Japan, <sup>6</sup>Department of Clinical Molecular Biology, Graduate School of Medicine, Kyoto University, 54 Shogoin-Kawahara-cho, Sakyo-ku, Kyoto 606-8507, Japan, <sup>7</sup>Department of Clinical Trial Design and Management, Translational Research Center, Kyoto University Hospital, 54 Shogoin-Kawahara-cho, Sakyo-ku, Kyoto 606-8507, Japan, <sup>8</sup>Department of Cell Biology, Unit of Basic Medical Sciences, Nagasaki University Graduate School of Biomedical Sciences, Nagasaki 852-8588, Japan.

**Mutually exclusive cell fate determination of CD4 helper or CD8 killer T cells occurs in the thymus. These T-cell subsets are not believed to redirect other lineages. Here we showed that retinoic acid and transforming growth factor- $\beta$ 1 promoted the differentiation of CD8 $\alpha\alpha$  T cells from CD4 T cells in a Runx3-dependent manner. These cells were inferred to belong to immunoregulatory populations because subpopulations of CD8 $\alpha\alpha$ +TCR $\alpha\beta$  T cells are known to suppress activated T cells, and mice with Runx3<sup>-/-</sup> T cells showed defects during recovery from experimental allergic encephalomyelitis. Our results demonstrate that CD4 T cells play fundamental roles in controlling immune reactions through promotion and attenuation. We accordingly anticipate that clarifying the mechanisms underlying this process will provide insights leading to autoimmune and immunodeficiency disease therapies.**

**D**uring T cell maturation, T-cell receptor (TCR)  $\alpha\beta$ -bearing cells express both CD4 and CD8 (double-positive thymocytes) molecules on their surface. Transition from double to single positive (CD4+CD8- or CD4-CD8+) requires the selection of TCR $\alpha\beta$  with intrathymic ligands that are presented by major histocompatibility complexes (MHCs). CD4 and CD8 coreceptors interact with MHC class II and I molecules, respectively, thereby resulting in the interaction of TCR $\alpha\beta$  with ligands/MHC complexes and stabilizing CD4 or CD8 expression on maturing TCR $\alpha\beta$  T cells. Simultaneously, thymocytes diverge into functionally distinct CD4 helper and CD8 killer cells<sup>1</sup>. A correlation between the mechanisms of antigen recognition and functional divergence of T cells suggests that the commitment of these cells is irreversible. The redirection of CD4 T cells to the CD8 lineage and vice versa is not believed to occur in the periphery.

Establishment of central and peripheral tolerance is important for maintaining immunological homeostasis. In addition to naturally occurring CD4+CD25+Foxp3+ regulatory T cells (nTregs), several phenotypically and functionally distinct regulatory T-cell populations have been suggested<sup>2-6</sup>. To date, at least four CD8+ Treg subsets have been identified, and these include CD8+CD28-, CD8+CD25+, CD8+CD122+, and CD8 $\alpha\alpha$  T cells. Among them, two CD8+ T-cell subsets exhibit a special property in suppressing activated, but not naive, T cells<sup>7-9</sup>. CD8 $\alpha\beta$ +CD122+CD44+ inducible costimulator ligand (ICOSL)+ TCR  $\alpha\beta$ + T cells attenuate immune responses by inhibiting follicular T helper cell (T<sub>FH</sub>) via recognition of Qa-1, which is expressed on T<sub>FH</sub> cells in an activation-dependent manner<sup>7</sup>. The CD8 $\alpha\alpha$ +CD122+TCR $\alpha\beta$ + T-cell subset was identified during the screening of Treg cells that inhibit experimental autoimmune encephalomyelitis (EAE) in mice<sup>10,11</sup>. This CD8 $\alpha\alpha$  T-cell subset recognizes the pathogenic TCR-derived peptide that is present on the Qa-1 molecule of pathogenic T cells in an activation-dependent manner and inhibits pathogenic T cells. In addition, an immunoregulatory role of CD8 $\alpha\alpha$ +TCR $\alpha\beta$ + T cells has been shown in two other autoimmune disease models. First, transfer of



CD8 $\alpha$ TCR $\alpha\beta$  T cells inhibits colitis, induced by the adoptive transfer of naïve CD4 T cells into severe combined immunodeficient (SCID) mice<sup>6</sup>. Second, non-obese diabetic (NOD) mice are defective in the generation of CD8 $\alpha$ TCR $\alpha\beta$  T cells, suggesting a regulatory role of these cell populations<sup>12</sup>. In addition, genetic control elements, which are required for clonal deviation to CD8 $\alpha$  T cells, also regulate rescue from clonal deletion of nTregs in the thymus<sup>13</sup>, suggesting that these different subsets of immunoregulatory T cells share a common thymic selection mechanism.

The developmental pathway of CD8 $\alpha$ +TCR $\alpha\beta$ + T cells is controversial because of the following findings. First, the accumulation of autoreactive TCRs was observed in the repertoire of CD8 $\alpha$ +TCR $\alpha\beta$ + T cells<sup>14</sup>. Second, CD8 $\alpha$ +TCR $\alpha\beta$ + T cells comprise only a small portion of T cells in the lymph node and spleen (<1% of T cells) but a large portion (approximately 40% of T cells) in the intraepithelium of the gut. For this reason it was previously believed that CD8 $\alpha$ +TCR $\alpha\beta$ + T cells were of extrathymic origin and differentiated locally in the gut; however, they are now considered to originate in the thymus<sup>15</sup>. In the thymus, CD8 $\alpha$ +TCR $\alpha\beta$ + precursor T cells were selected by high-affinity self-antigens, such as nTregs<sup>12,16,17</sup>. The selected precursor T cells were CD4- and CD8-double-negative cells. The final maturation of these cells, including the expression of CD8 $\alpha$ , occurs in the gut<sup>18</sup>. Transforming growth factor (TGF)- $\beta$ 1 plays a key role in the generation of nTregs and CD8 $\alpha$  T cells during selection in the thymus<sup>19,20</sup>. Thus, the regulatory factors that control development of CD8 $\alpha$ +TCR $\alpha\beta$ + intestinal intraepithelial lymphocytes (IELs) and the molecular pathways of this cell population have been elucidated. However, the origin of CD8 $\alpha$ +TCR $\alpha\beta$ + T cells outside intestines and the factors required for their generation are incompletely understood.

In this study, we showed that immune reactions promote the differentiation of CD8 $\alpha$ +TCR $\alpha\beta$ + T cells from naïve CD4 T cells within peripheral lymphoid tissues. Among the factors induced by inflammation, TGF- $\beta$ 1, all-trans retinoic acid (atRA), and interleukin (IL)-2 are indispensable for the differentiation of CD8 $\alpha$  T cells. Striking similarities were observed between induced Tregs (iTregs) and CD8 $\alpha$  T cells, with the same signals required for the differentiation of iTregs. In addition, Runx3-deficient CD4 T cells have lost their ability to become CD8 $\alpha$  T cells, indicating that Runx3 plays a critical role in this differentiation. Furthermore, mice whose T cells were Runx3-deficient showed defects in recovery from EAE. Thus CD8 $\alpha$  Tregs were confirmed to be generated in the thymus and periphery, like CD4+Foxp3+ Tregs, and the signals required for CD8 $\alpha$  Tregs were the same as those required for CD4+Foxp3+ Tregs. We thus demonstrated that the newly identified Treg subset, namely CD8 $\alpha$  Tregs that are derived from CD4 T cells, plays an immunoregulatory role in EAE.

## Results

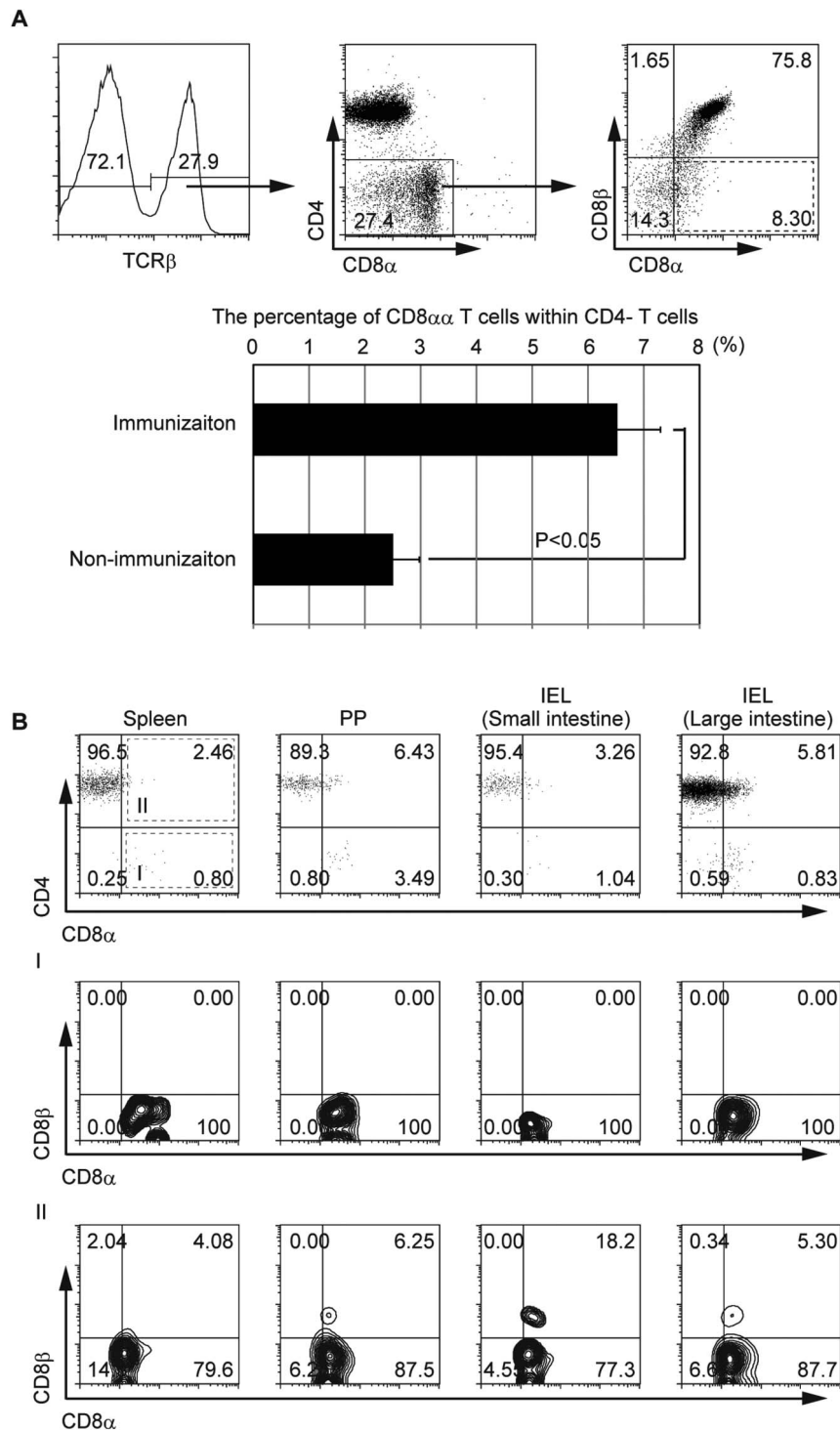
**Generation of CD8 $\alpha$  T cells in the spleen by immunization.** In addition to CD4+CD25+Foxp3+ T cells<sup>21–23</sup>, several populations have been identified as immunoregulatory cells<sup>7,10,24,25</sup>. CD8 Treg subsets negatively regulate activated, but not naïve, T cell functions<sup>7,10,24,25</sup>. Among these cell subsets, CD8 $\alpha$ TCR $\alpha\beta$  T cells have been reported to play important roles in the gut mucosal immunity and prevent autoimmune diseases<sup>5,12,13</sup>. However, the origin of this subset and mechanisms of its development remain unclear. The initial commitment of CD8 $\alpha$  T cells occurs in the thymus following exposure to agonist self-peptides<sup>16–18</sup>, and their generation requires a TGF- $\beta$ 1 signal<sup>19</sup>. When positively selected CD8 $\alpha$  TCR $\alpha\beta$  precursor T cells reach the gut, they express CD8 $\alpha$  molecules in an IL-15-dependent manner<sup>18</sup>. Importantly, the expression of CD8 $\alpha$  is induced on CD8 $\alpha\beta$  T cells by immunization and is required for the generation of memory CD8 $\alpha\beta$  T cells<sup>26,27</sup>. We accordingly examined the effect of immunization on the generation of CD8 $\alpha$  single-positive cells in the spleen. As anticipated,

immunization induced the generation of CD8 $\alpha$  single-positive T cells (6.5% of CD4-CD8 $\alpha\beta$ -CD8 $\alpha$ +TCR $\beta$ + T cells within CD4- T cells in immunized spleen compared with 2.5% in non-immunized spleen; Fig. 1A).

**Generation of CD8 $\alpha$  T cells from CD4TCR $\alpha\beta$  T cells in Rag2<sup>-/-</sup> mice.** With the aim of identifying the subsets that potentially differentiate into CD8 $\alpha$  T cells, their generation was examined at day 20 after naïve CD4 and CD8 $\alpha\beta$  T cells were adoptively transferred into Rag2<sup>-/-</sup> mice. Whereas CD8 $\alpha$  T cells were not found in either case after 20 days, in some Rag2<sup>-/-</sup> mice that received naïve CD4 T cells they were found after approximately 6 months. A few CD8 $\alpha$ -positive cells were found in all tissues examined, with a significantly larger number observed in Peyer's patches (PPs; Fig. 1B). These observations indicate that naïve CD4 T cells can differentiate into CD8 $\alpha$  T cells, at least under these experimental conditions.

**TGF- $\beta$ 1, atRA, and IL-2 promote differentiation of CD8 $\alpha$ TCR $\alpha\beta$  Tregs from naïve CD4 T cells *in vitro*.** To investigate the mechanisms of differentiation from CD4 into CD8 $\alpha$  T cells, we first focused on the factors required for the generation of iTregs or CD4+Foxp3+ cells. We added the factors to a conventional *in vitro* CD4 T-cell differentiation assay. IL-2, TGF- $\beta$ 1, and atRA generated CD8 $\alpha$  T cells from CD4 T cells (Fig. 2A). Although atRA played only a supporting role in the differentiation of iTreg cells, the generation of CD8 $\alpha$  T cells depended on all three factors (Fig. 2A and data not shown). To exclude the possibility that CD8 $\alpha$  T cells were derived from contaminated CD8 $\alpha\beta$  cells, CD8 $\alpha\beta$  T cells were cultured under the same conditions as those used for the differentiation of CD8 $\alpha$  from CD4 T cells, and no CD8 $\alpha$  T cells were observed (Fig. 2B). Moreover, CD8 $\alpha\beta$  T cells have the ability to inhibit CD4-derived CD8 $\alpha$  T cell differentiation, as shown in Fig. 2C. These observations indicate that CD4 T cells and not CD8 $\alpha\beta$  T cells are the major source of peripheral CD8 $\alpha$  T cells. Because ILs play critical roles in the determination of helper T-cell subsets, we further examined the effects of various ILs on the differentiation of CD8 $\alpha$ . Our results showed that IL-2 exerted the strongest effect on the generation of CD8 $\alpha$  T cells (Fig. 2D). Antigen dose has been shown to affect the differentiation of CD8 $\alpha$  T cells. In the thymus, a low concentration of an agonist induces CD8 $\alpha\beta$  T cells, whereas a high concentration induces CD8 $\alpha$  T cells. atRA concentration influences the differentiation of iTreg and Th17 cells<sup>28,29</sup>. Thus, antigen dose and atRA concentration influence various processes in cell fate determination. We accordingly examined the effects of TCR signal strength and atRA concentration on differentiation of CD8 $\alpha$  T cells. A high percentage of CD8 $\alpha$  T cells was found after culture with strong TCR stimulation and high atRA concentration (Fig. 2E).

**Runx3-dependent generation of CD8 $\alpha$ TCR $\alpha\beta$  Tregs *in vitro*.** With the aim of characterizing CD8 $\alpha$  T cells (CD8 $\alpha$  positive fraction in Fig. 3A or CD8 $\alpha$  cells in Fig. 3B) that were generated *in vitro*, their gene expression profile was compared with iTregs (CD8 negative fraction shown in Fig. 3A or iTreg cells in Fig. 3B) derived from the same culture condition (as shown in Fig. 3A) and previously well-characterized CD8 TCR $\alpha\beta$  Tregs<sup>7,9,24,30</sup>. The expression of granzymes A and B increased in the CD8 $\alpha$  population, whereas that of Foxp3 decreased (Fig. 3A, B). The expression of CD122 and ICOSL on the surface was also specifically induced in CD8 $\alpha$  T cells (Fig. 3A). The expression pattern of these genes was similar to that of other CD8 Treg cells<sup>7,9,24,30</sup>. Recent studies have indicated that Runx3 is a major regulator of CD8 $\alpha\beta$  T cells, while ThPOK is a major regulator of CD4 T cells<sup>31–33</sup>. We accordingly examined the possibility that these factors were involved in the differentiation from CD4 to CD8 $\alpha$  T cells. Runx1 and ThPOK were expressed specifically in naïve CD4 T cells (Fig. 3B). After the generation of CD8 $\alpha$

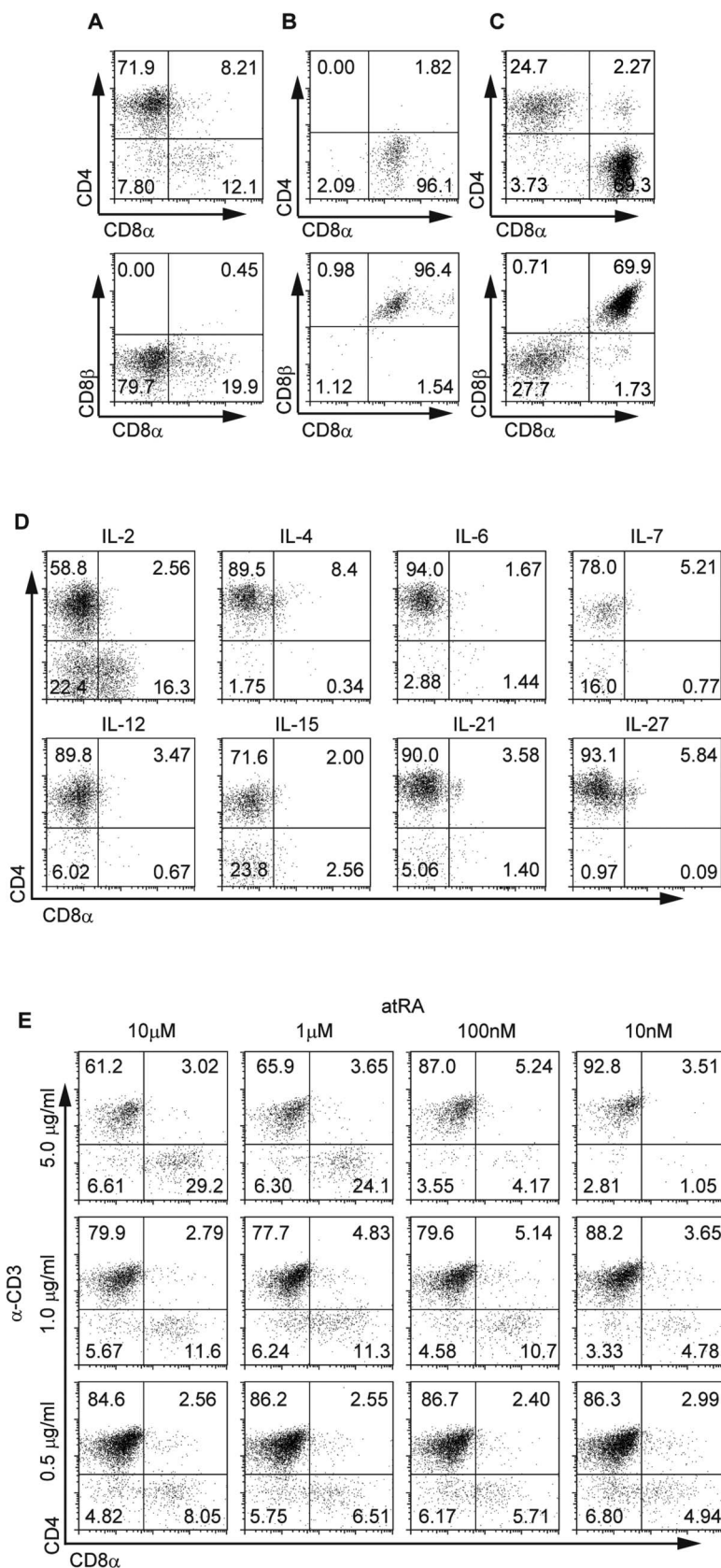


**Figure 1 | Generation of CD8αα T cells in Rag2<sup>-/-</sup> mice.** (A) Fluorescence-activated cell sorting (FACS) analysis of CD8αα+CD8β-CD4-TCRαβ T cells in the spleen after immunization of WT (C57BL/6) mice with NP-CGG/Alum. Horizontal axis indicate percentage of CD8αα T cells within CD4- T cells. \*p < 0.05; n = 3. TCR, T-cell receptor. (B) FACS analysis of lymphocytes from Rag2<sup>-/-</sup> mice (CD45.1) that had received naïve CD4 T cells (CD45.2) 6 months previously. TCRαβ+CD45.2+ cells were examined for CD4 and CD8α expression. CD4-CD8α+ (I) and CD4+CD8α+ (II) T cells were further examined for CD8α and CD8β expression. IELs, intestinal intraepithelial lymphocytes, PP, Peyer's patches. CD8αα T cell differentiations from CD4 T cells in Rag2<sup>-/-</sup> mice were confirmed in two of four mice analyzed, and representative data are shown.

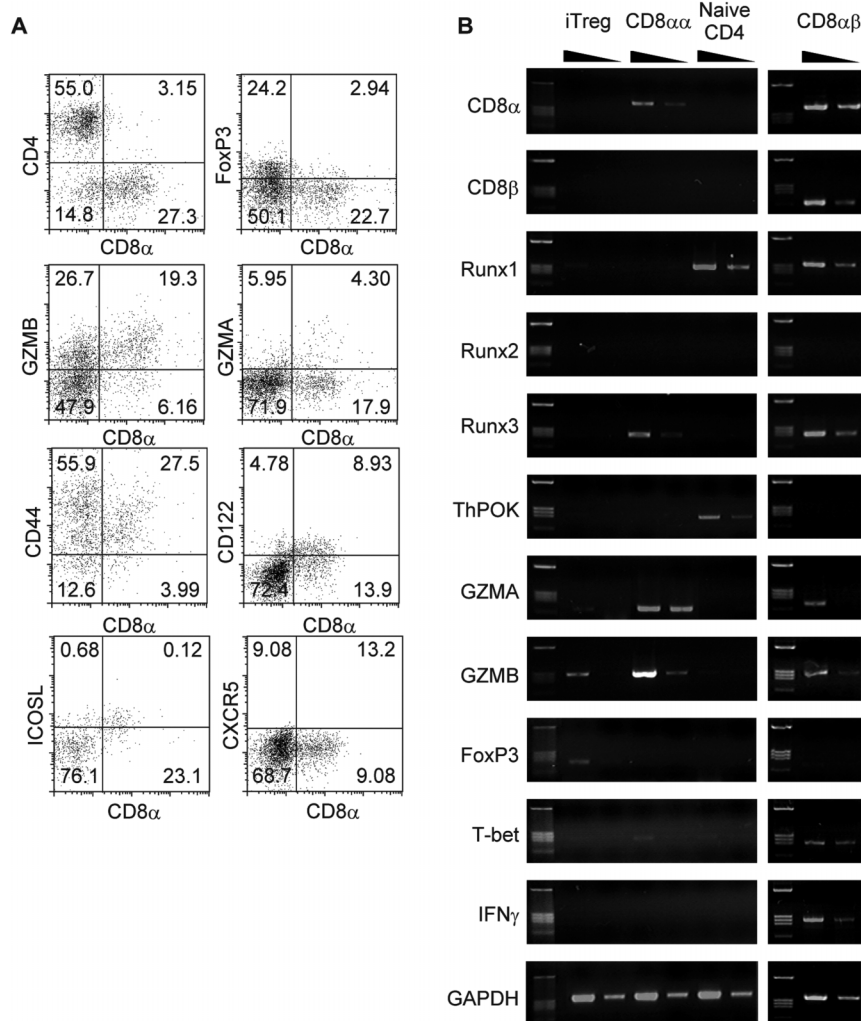
T cells, only Runx3 expression was observed, while this was not found in the iTreg subset (Fig. 3B). Of note, we had previously found that Runx2 and Runx3 are required for TGF-β1 and αTRA signals in IgA class switching in B cells<sup>34,35</sup>. Thus, it was conceivable that Runx3 contributed to the differentiation of CD8αα cells. As anticipated, Runx3<sup>-/-</sup>CD4 T cells were unable to differentiate into CD8αα T cells (Fig. 4). These observations support

the hypothesis that CD4-derived CD8αα T cells function as regulatory cells *in vivo* and that Runx3 is essential for the generation of these lineage cells.

**Generation of CD8αα Tregs from CD4 T cells *in vivo* requires Runx3.** To determine whether CD4 T cells differentiate into CD8αα T cells *in vivo*, naïve CD4 T cells from C57BL/6 (CD45.2)



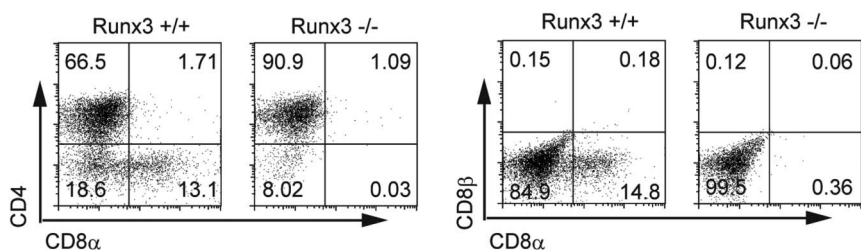
**Figure 2** | TGF- $\beta$ 1, atRA, and IL-2 promote differentiation of CD8 $\alpha$ TCR $\alpha$  $\beta$  regulatory T cell (Treg) from naïve CD4 $^+$  T cells were stimulated with  $\alpha$ -CD28, IL-2, TGF- $\beta$ 1, and atRA on  $\alpha$ -CD3 $\epsilon$ -coated plates. CD8 $\alpha$  $^+$ CD4 $^-$  T cells were analyzed by FACS. (B) CD8 $\alpha$  $\beta$  $^+$  T cells were stimulated under conditions mentioned in A. (C) Total spleen T cells (41% CD8 $\alpha$  $\beta$  $^+$  T cells and 56% CD4 $^+$  T cells) were stimulated under conditions mentioned in A. (D) Naïve CD4 $^+$  T cells were cultured with various ILs and TGF- $\beta$ 1+atRA. (E) Naïve CD4 $^+$  T cells were stimulated with TGF- $\beta$ 1, IL-2, and various atRA concentrations on plates coated with indicated concentrations of  $\alpha$ -CD3 $\epsilon$ . Cell differentiation was analyzed by FACS. All experiments were performed at least thrice; representative data are shown.



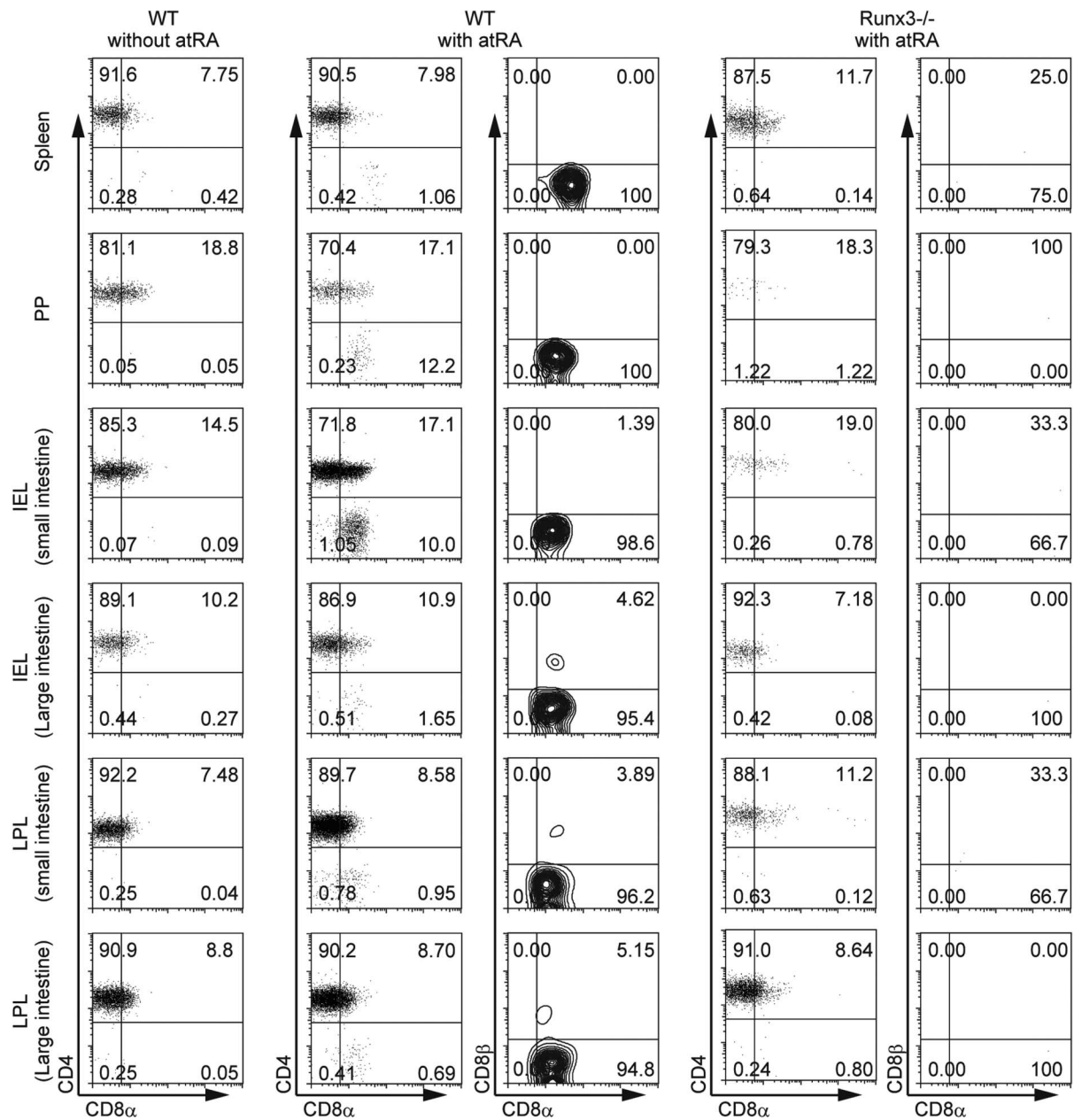
**Figure 3** | Gene expressions of CD8 $\alpha\alpha$ TCR $\alpha\beta$  Tregs differentiated *in vitro*. (A) Naive CD4<sup>+</sup> T cells were stimulated under conditions mentioned in Fig. 2(A). Gene expression was estimated by FACS. (B) Naive CD4<sup>+</sup> T cells were stimulated under conditions mentioned in Fig. 2(A). iTreg (CD4<sup>+</sup>T) and CD8 $\alpha\alpha$  T (CD8<sup>+</sup> T) cells were sorted from the cultured cells (shown in Fig 3A), and gene expression was analyzed by reverse transcription–polymerase chain reaction. Naive CD4 T cells (CD4<sup>+</sup> CD62L<sup>+</sup> T cells), CD8 $\alpha\beta$  T cells were used for control. Naive CD4, CD8 $\alpha\beta$ , iTreg, and CD8 $\alpha\alpha$  indicate RNA source used for cDNA generation. Fivefold serial dilutions of cDNAs were amplified for the transcripts indicated. All experiments were performed at least thrice, and representative data are shown.

mice were adoptively transferred into Rag2<sup>-/-</sup> mice with a C57BL/6 background (CD45.1), and the generation of CD8 $\alpha\alpha$  T cells was examined after atRA administration. Given that the homing location of transferred CD4 T cells cannot be controlled, absolute cell numbers of transferred T cells at PP, IEL, and LPL varied substantially. Accordingly, CD8 $\alpha\alpha$  T cell differentiation was examined by assessing the percentages of CD8 $\alpha\alpha$  cells. CD8 $\alpha\alpha$  T cells appeared in an atRA-dependent manner in all tissues examined (Fig. 5). The

percentage of CD8 $\alpha\alpha$  T cells was significantly higher in PPs and IELs than that in controls (12.2% of CD8 $\alpha\alpha$ +CD4<sup>-</sup>TCR $\alpha\beta$ + T cells in atRA-treated PPs compared with 0.05% in controls; 10.0% in the atRA-treated IEL compared with 0.09% in controls; Fig. 5). These results indicate that the atRA-dependent differentiation of CD4 T cells into CD8 $\alpha\alpha$  T cells occurred *in vivo*. To exclude the possibility that CD8 $\alpha\alpha$  T cells were derived from contaminated CD8 $\alpha\beta$  T cells, we assessed the influence of CD8 $\alpha\beta$  T cells on the generation of



**Figure 4** | Differentiation of CD8 $\alpha\alpha$  Tregs from CD4 T cells requires Runx3. Naive CD4 T cells from wild type (WT) or Runx3<sup>-/-</sup> FL-derived cells were stimulated under the conditions mentioned in Fig. 2(A). CD8 $\alpha\alpha$ +CD4<sup>-</sup> T cells were analyzed by FACS. All experiments were performed thrice; representative data are shown.

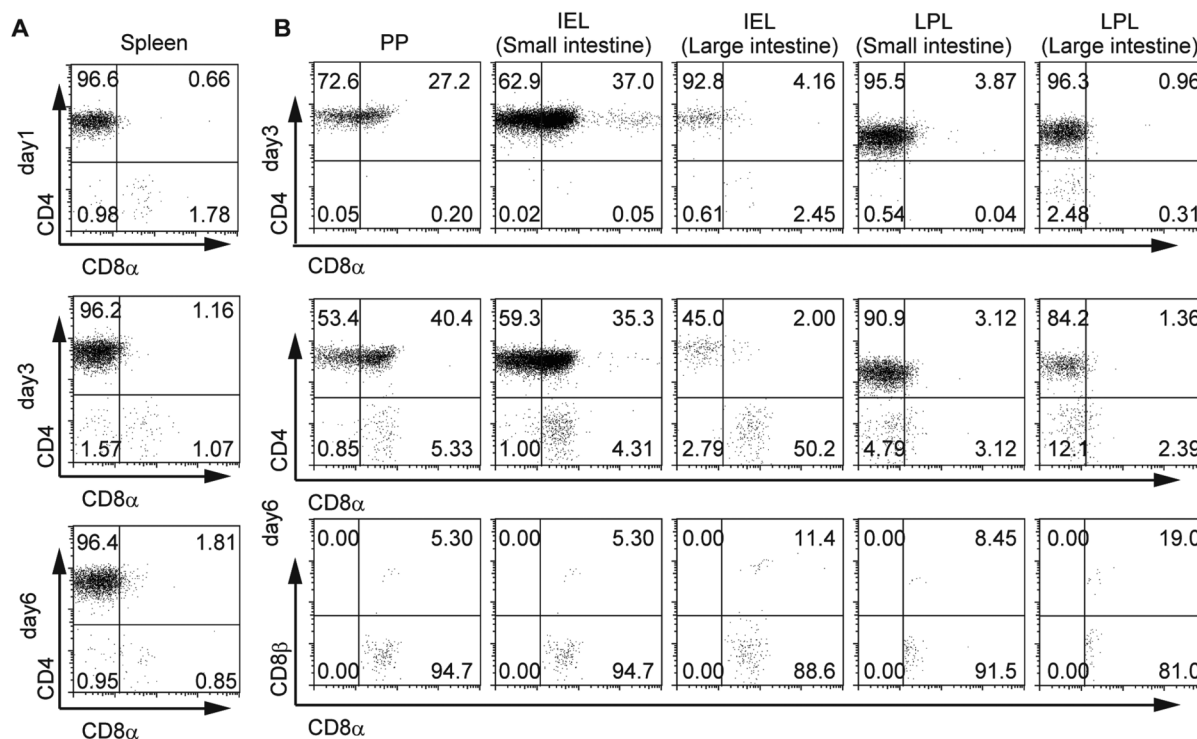


**Figure 5 | Generation of CD8 $\alpha\alpha$  Tregs from CD4 T cells *in vivo* requires Runx3.** FACS analysis of lymphocytes from Rag2<sup>-/-</sup> mice (CD45.1) that received naïve CD4 T cells (CD45.2) from WT or Runx3<sup>-/-</sup> FL-derived cells after atRA administration. TCR $\alpha\beta$ +CD45.2+ cells were examined for CD4 and CD8 $\alpha$  expression (all samples). CD4-CD8 $\alpha$ + T cells were further examined for CD8 $\alpha$  and CD8 $\beta$  expression in case of atRA-administrated samples. All experiments were performed at least thrice; representative data are shown. LPLs, lamina propria lymphocytes.

CD8 $\alpha\alpha$  T cells by modulating the ratio of CD8 $\alpha\beta$  T cells within naïve CD4 T donor cells. Naïve CD4 T cells used for a series of cell transfer experiments contained fewer than 0.02% CD8 $\alpha\beta$  T cells. Purified naïve CD4 T cells were transferred into Rag2<sup>-/-</sup> mice with or without CD8 $\alpha\beta$  T cells, and the generation of CD8 $\alpha\alpha$  T cells *in vivo* was assessed. There was negligible difference in the percentage of CD8 $\alpha\alpha$  T cells between mice carrying CD4 T cell populations containing 0.02% CD8 $\alpha\beta$  T cells and those carrying populations containing 0.12% CD8 $\alpha\beta$  T cells (data not shown). In addition, naïve CD4 T cells, contaminated less than 0.002% by CD8 $\alpha\beta$  T cells, differentiated as efficiently as CD4 T cell populations carrying 0.02% CD8 $\alpha\beta$  T cells in Rag2<sup>-/-</sup> mice. These results indicate that CD8 $\alpha\beta$  T cells are not the major source of CD8 $\alpha\alpha$  T cells differentiated *in vivo*.

The contribution of Runx3 to differentiation of CD4-CD8 $\alpha\alpha$  *in vivo* was further determined using Runx3-deficient naïve CD4 T cells

as donor. No CD8 $\alpha\alpha$  T cells were observed in either atRA-treated or non treated mice (Fig. 5). However, the preferential differentiation of CD8 $\alpha\beta$ + T cells, but not CD8 $\alpha\alpha$ + T cells, was observed following treatment with atRA in high doses (Supplementary Fig. S1). Considering all results, Runx3 plays a special role in the differentiation of CD8 $\alpha\alpha$  T cells from CD4 T cells *in vivo*. In addition, several other signals that were not examined in this study contribute to CD8 T cell generation from CD4 T cells *in vivo*; Runx3<sup>-/-</sup> naïve CD4 T cells cannot differentiate CD8 $\alpha$ + T cells *in vitro*. In view of the functional redundancy of Runx family transcription factors, their contribution to the differentiation of CD4 T cells into CD8 T cells was investigated using Runx2<sup>-/-</sup>Runx3<sup>-/-</sup> CD4 T cells. Administration of high-dose atRA could not rescue the defect in the generation of CD8 T cells (data not shown), indicating that Runx2 and Runx3 play critical roles in the differentiation of CD4 T cells into



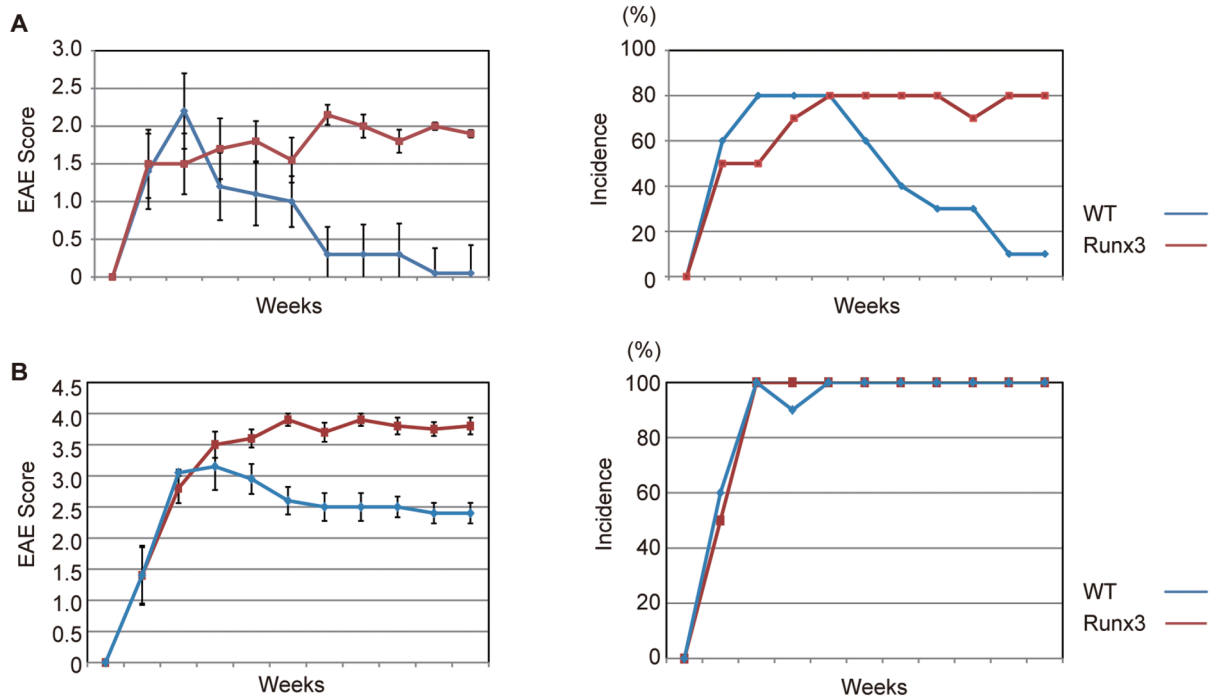
**Figure 6 | CD4 T cells differentiate into CD8 $\alpha\alpha$  Tregs during immune responses.** (A) Naïve CD4<sup>+</sup> T cells (CD45.2) were injected into Rag2<sup>-/-</sup> mice. TCR $\alpha\beta$ +CD45.2+ cells from spleen at 1, 3 and 6 days after immunization were analysed for expression of CD8 $\alpha$  and CD4. (B) FACS analysis of lymphocytes from tissues of mice used for (A). TCR $\alpha\beta$ +CD45.2+ cells were examined for expression of CD4 and CD8 $\alpha$ . CD4-CD8 $\alpha$ + T cells were further examined for expression of CD8 $\alpha$  and CD8 $\beta$ . All experiments were performed at least three times, and representative data are shown.

CD8 T cells. However, the precise roles of each Runx factor in the differentiation into various CD4-derived CD8 T cell subsets remain to be investigated.

**CD4 T cells differentiate into CD8 $\alpha\alpha$  Tregs during immune response and attenuate immune reactions.** Accumulating evidence indicates that the gut is rich in atRA<sup>28,29,36,37</sup>, and RA-dependent events are believed to occur preferentially in the gut. However, the spontaneous differentiation of CD4 T cells into CD8 $\alpha\alpha$  T cells was not observed in the gut in the absence of atRA administration (Fig. 5). The physiological relevance of differentiation of CD4 T cells into CD8 $\alpha\alpha$  T cells in normal immunological reactions is thus debatable. Recent reports have demonstrated that RA is required to promote the effector responses of CD4 T cells and is more abundant in inflamed tissues than in the gut<sup>38,39</sup>. We accordingly investigated whether the differentiation of CD4 T cells into CD8 $\alpha\alpha$  T cells can be induced by immunization. Generation of CD8 $\alpha\alpha$  T cells in Rag2<sup>-/-</sup> mice that received naïve CD4 T cells was assessed after immunization. On days 1, 3, and 6 after immunization, approximately 1% of CD8 $\alpha\alpha$  T cells were observed in the spleen (Fig. 6A). This value was not very different from that observed after usual immunization. Approximately 2%–3% of the cells were CD8 $\alpha\alpha$ + within TCR $\alpha\beta$ +CD8 $\alpha\beta$ - T cells (Figure 1A and data not shown). Significantly larger populations of CD8 $\alpha\alpha$ + T cells were observed in PPs, IELs, and lamina propria lymphocytes on day 6 (Fig. 6B). In contrast, hardly any CD8 $\alpha\alpha$ + T cells were observed in the gut on day 3 (Fig. 6B). Thus, these results suggested that differentiation of CD4 T cells into CD8 $\alpha\alpha$  T cells occurred at the site of immune reactions and that newly generated CD8 $\alpha\alpha$  T cells migrated into the gut through the expression of gut-homing receptors, as previously indicated<sup>26,36</sup>. In a previous study, we found that Runx3<sup>-/-</sup> mice showed defects in recovery from colitis and thereby increased the formation of inflammation-associated tumors<sup>40</sup>. We speculated that differentiated CD8 $\alpha\alpha$  T cells

attenuate immune reactions and decrease the harmful effects of continuous inflammation, given that CD8 $\alpha\alpha$  Tregs are known to suppress activated T cells specifically. For a more detailed assessment of this hypothesis, we used mice with EAE as a model system. In this model, CD8 T cells play a key role in reducing the frequency of relapse after recovery from acute EAE<sup>41,42</sup>. This autoimmune disease is accordingly a suitable model for assessing the regulatory functions of CD8 Tregs. As expected, no differences in onset, clinical scores in the early phase, or EAE incidence were observed between genotypes. However, Runx3<sup>-/-</sup> mice exhibited defects in recovery from EAE, as indicated by the increased clinical scores after 6 weeks ( $P = 0.0010$ ; Fig. 7A). To exclude effects derived from other lineage cells, we performed EAE-induction experiments using Rag2<sup>-/-</sup> mice, having transferred CD4 T cells from Runx3<sup>-/-</sup> and wild-type mice. Again, Rag2<sup>-/-</sup> mice having Runx3<sup>-/-</sup> CD4 T cells showed defects in recovery from EAE ( $P = 0.0048$ ; Fig. 7B). These results indicate that Runx3 functions in CD4 T cells are important for recovery from EAE. Various CD4-derived cells are involved in EAE regulation: Th17, Th1, and CD4<sup>+</sup>Foxp3<sup>+</sup> Treg cells. Th17 and Th1 are important for the induction of EAE disease. However, Runx family transcription factors are positive regulators for Th1 and Th17 differentiation, indicating that Runx3 deficiency will contribute to inhibiting EAE disease. Furthermore, Treg cell differentiation and function are not strongly affected by Runx3 deficiency, as shown previously<sup>40,48</sup>. In sum, the defect in recovery from EAE disease observed in Rag2<sup>-/-</sup> mice having Runx3-deficient CD4 T cells cannot be explained by previously known functions of Runx3 in CD4 T cells. For these reasons, we concluded that CD4-derived CD8 $\alpha\alpha$  T cells function as immune regulatory cells, at least in this EAE model. These observations support the hypothesis that differentiated CD8 $\alpha\alpha$  T cells play an important regulatory role in the establishment of a negative feedback loop that decreases adverse effects during immune reactions.





**Figure 7 | Runx3<sup>-/-</sup> T cells cause defect in recovery from EAE.** Rag2<sup>-/-</sup> mice with (A) WT or Runx3<sup>-/-</sup> lymphocytes and (B) WT or Runx3<sup>-/-</sup> CD4 T cells were followed up for signs of neurological disease after experimental autoimmune encephalomyelitis (EAE) induction. Data shown are mean  $\pm$  standard error of mean of EAE clinical score of 10 mice pooled from two independent experiments and percentage disease incidence.

This study revealed previously unknown CD8 T-cell subsets that were derived from activated peripheral CD4 T cells (Fig. 8) and a unique mechanism for generating activated CD8 T cells without other CD4 T cells. Furthermore, these T-cell subsets can likely inhibit immune reactions. The elucidation of the precise mechanism of these processes and the exact functions of these cell subsets will provide fundamental insights for future autoimmune disease therapies.

## Discussion

CD4 T cells are known to differentiate into various helper and regulatory T-cell lineages, namely Th1, Th2, Th9, Th17, T<sub>FH</sub>, and CD4<sup>+</sup>Foxp3<sup>+</sup> Tregs. In addition to these subsets, we identified a new cell population in this study called CD8 $\alpha$  Tregs, which have a regulatory function. Differentiation of CD8 $\alpha$  Tregs required the same signals as iTregs. However, the differentiation of CD8 $\alpha$  Tregs took more time than that of iTregs, and stronger TCR stimulation and higher atRA concentrations were required for their generation. These data indicate that the determination of the cell fate of one of the two inducible Treg cell subsets was differentially controlled during immune reactions. Therefore, iTregs and CD8 $\alpha$  Tregs may have distinct functions in immune regulation. According to this concept, some CD8 $\alpha$  T-cell subsets have been shown to have the property of inhibiting activated, but not naïve, T cells. Qa-1 in mouse (or HLA-E in human), which is a nonclassical MHC class I molecule, has been believed to play a key role in restricting the activity of CD8 $\alpha$  Tregs only toward activated T cells because these molecules are transiently upregulated on the surface of activated T cells and antigen-presenting cells. The correlation between CD8 Tregs and Qa-1 was suggested on the basis of previous studies as follows. Immunization with Qa-1-expressing activated CD4 T cells induces Qa-1-restricted CD8 Tregs<sup>43,44</sup>; CD8 $\alpha$  Treg clones recognize a TCR-derived peptide presented on Qa-1<sup>11</sup>; Qa-1<sup>-/-</sup> mice show augmentation of CD4 T-cell responses and increased susceptibility to EAE<sup>45</sup>; resistance to the re-induction of EAE was lost in CD8- and Qa-1-deficient mice<sup>41,42,45,46</sup>. In this study, we observed defects in recovery from EAE in Runx3-deficient mice in which CD4 T cells

could not differentiate into CD8 $\alpha$  Tregs. These data indicate that CD8 $\alpha$  Tregs play a special role in the regulation of activated T cells. However, the molecular mechanisms underlying the suppressor functions of CD8 $\alpha$  Tregs are poorly understood. Furthermore, the exact target cells of CD8 $\alpha$  T cells and the relationship between CD8 $\alpha$  Tregs and Qa-1 in various immune reactions remain to be studied<sup>47</sup>.

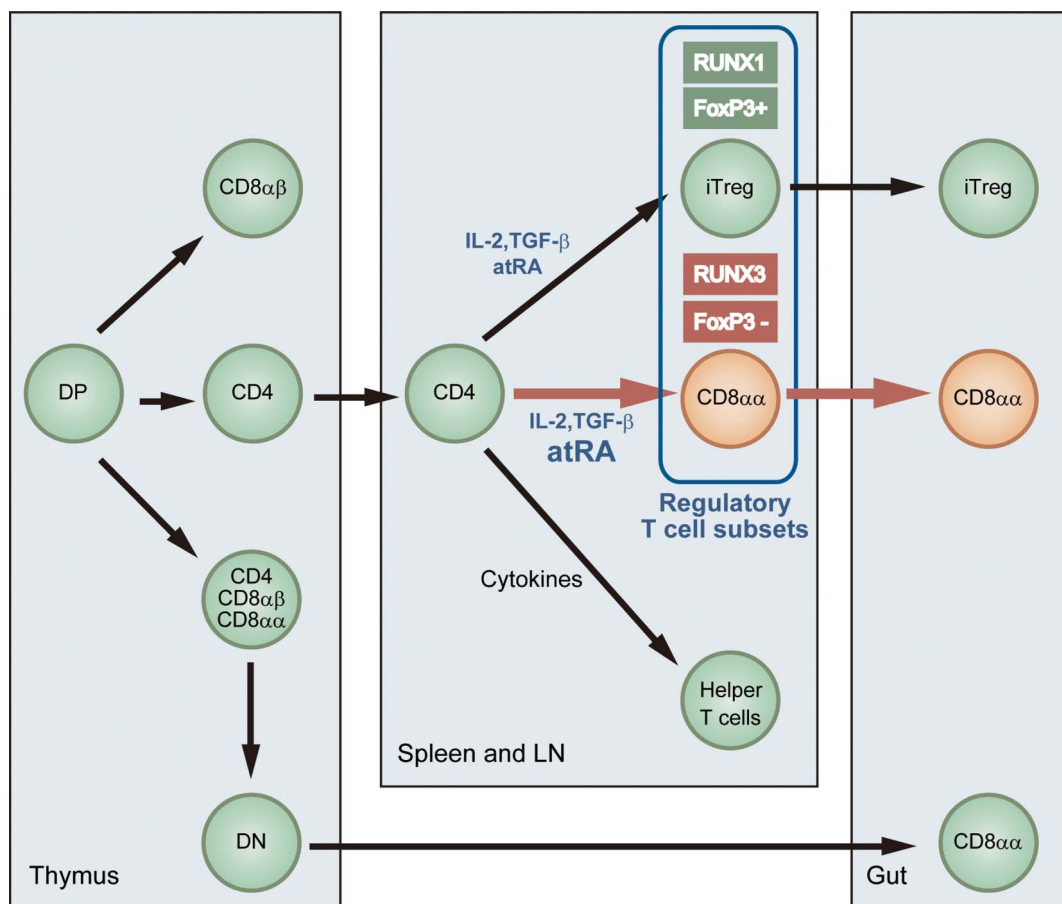
We found striking similarities between signals for CD4 and CD8 $\alpha$  Tregs. In addition, differentiation of these two regulatory T-cell subsets requires Runx protein activities; CD8 $\alpha$  Tregs require Runx3 and CD4 Tregs require Runx1<sup>48</sup>. Whether the different functions of Runx1 and Runx3 or the total amount of Runx proteins influence the determination of cell fate remains to be clarified.

CD8 $\alpha$  T cells are major populations of IELs, and most of them are selected in the thymus. The commitment of CD8 $\alpha$ TCR $\alpha\beta$  T cells occurs from both MHC class I- and class II-restricted T cells<sup>16,17</sup>. Moreover, CD8 $\alpha$  IELs are absent in  $\beta$ 2-microglobulin-deficient mice but not in MHC class Ia-deficient mice<sup>49,50</sup>. From these observations, MHC class Ib molecules, including Qa-1, are believed to be required for the selection of CD8 $\alpha$  T cells. In this study, we showed that CD4 T cells differentiated into CD8 $\alpha$  T cells in the periphery, indicating that MHC class II-dependent primary selection of these cells occurred in the thymus. It is of interest to determine the exact roles of the Qa-1 molecule in the differentiation, maintenance, or expansion of CD4-derived CD8 $\alpha$  T cells.

In summary, we have identified a new subset of inducible Treg cells (Fig. 8). This differentiation system can be affected by various immune dysfunctions, including autoimmune diseases and tumor immunity. We anticipate that further elucidation of the precise mechanisms of this process will provide a basis for development of anti-cancer drugs and a rationale for treatment of autoimmunity.

## Methods

**Mice.** This study received appropriate ethics approval from the Institutional Review Board of Kyoto University (Reference Number: Med Kyo12076). Wild-type (WT), Runx3<sup>+/-</sup>, Runx2<sup>+/-</sup> and Rag2<sup>-/-</sup> mice (CD45.1) in a C57BL/6 genetic background were maintained in a specific pathogen-free mouse facility. Procedures involving



**Figure 8 | Schematic of CD8 $\alpha\alpha$  T cell differentiation pathways.**

animals and their care were in accordance with the guidelines for animal treatment of the Institute of Laboratory Animals, Kyoto University.

**Fetal liver transfer.** Single-cell suspensions of  $2\text{--}4 \times 10^6$  whole fetal liver mononuclear cells harvested from Runx3 $^{-/-}$ , Runx2 $^{-/-}$ Runx3 $^{-/-}$  and WT (CD45.2) embryos at E14.5 were injected intravenously into sublethally irradiated (4 Gy) Rag2 $^{-/-}$  recipient mice (CD45.1). At least 10 weeks after transplantation, mice were used for EAE induction or were killed, and their naive CD4 T cells were analyzed by flow cytometry or used for *in vitro* culture. In some experiments, naive CD4 T cells were purified and adoptively transferred into other Rag2 $^{-/-}$  recipient mice (CD45.1). All Rag2 $^{-/-}$  (CD45.1) mice used for each experimental set were age- and sex-matched.

**Cell preparation.** Naive CD4+TCR $\alpha\beta$ + was prepared by magnetic cell sorting (MACS) using a CD4+ CD62L+ T cell isolation kit (Miltenyi Biotec, Bergisch, Germany) in combination with various antibodies (BD Pharmingen). Briefly, lineage positive cells, but not CD4, were removed according to the manufacturer's instruction using biotin-conjugated lineage-specific antibodies and  $\alpha$ -Biotin microbeads. After negative selection, we made a rough prediction of the final concentration of contaminated CD4-CD62L+ cells after purification of CD4+CD62L+ cells. For this purpose, a part of the negatively selected cells were stained with  $\alpha$ -CD4 and  $\alpha$ -CD62L antibodies. If more than 5% cells were CD4-CD62L+ among CD62L+ cells, we performed negative selection again using the following antibodies and magnetic beads;  $\alpha$ -CD8 $\alpha$ -FITC,  $\alpha$ -CD25-Biotin,  $\alpha$ -CD19-Biotin,  $\alpha$ -B220-Biotin,  $\alpha$ -CD11b-Biotin,  $\alpha$ -CD11c-Biotin,  $\alpha$ -Ia-Biotin,  $\alpha$ -Dx5-Biotin,  $\alpha$ -TCR $\gamma\delta$ -Biotin, Ter119-Biotin (Becton Dickinson, Mountain View, CA),  $\alpha$ -FITC microbeads and streptavidin microbeads (Miltenyi Biotec, Bergisch, Germany). After the second round of negative selection was finished, CD62L+ cells were further selected according to the manufacturer's instructions. Purities were determined by staining with antibodies for CD8 $\alpha$ , CD8 $\beta$ , CD4 and CD62L. Usually, more than 97% cells were CD4+CD62L+ and fewer than 0.02% cells were CD8 $\alpha$ +. CD8 $\alpha\alpha$  cells cannot be detected. If more than 0.02% cells were positive for CD8 $\alpha$  expression or fewer than 97% cells were CD4+CD62L+, we further purified CD4+CD62L+ cells by flow cytometry using FACSAria. All the purified cells using the above method were used for both *in vitro* culture and cell transfer experiments into RAG2 $^{-/-}$  mice. Essentially all the methods of purification were used for *in vitro* culture and cell-transfer experiments.

For purification of CD4 T cells, spleen cells were subjected to negative selection using the following antibodies and magnetic beads;  $\alpha$ -CD8 $\alpha$ -FITC,  $\alpha$ -CD19-Biotin,  $\alpha$ -B220-Biotin,  $\alpha$ -CD11b-Biotin,  $\alpha$ -CD11c-Biotin,  $\alpha$ -Ia-Biotin,  $\alpha$ -Dx5-Biotin,  $\alpha$ -TCR $\gamma\delta$ -Biotin, Ter119-Biotin (Becton Dickinson),  $\alpha$ -FITC microbeads and streptavidin microbeads.

CD8 $\alpha\beta$ +TCR $\alpha\beta$ + T cells were prepared by MACS using a CD8 $\alpha$ + T cell isolation kit (Miltenyi Biotec) in combination with various antibodies (BD Pharmingen). Briefly, lineage positive cells, but not CD8, were removed according to the manufacturer's instruction using biotin-conjugated lineage-specific antibodies and  $\alpha$ -Biotin microbeads. Then we further performed second round of negative selection using the following antibodies and magnetic beads;  $\alpha$ -CD4-Biotin,  $\alpha$ -CD19-Biotin,  $\alpha$ -B220-Biotin,  $\alpha$ -CD11b-Biotin,  $\alpha$ -CD11c-Biotin,  $\alpha$ -Ia-Biotin,  $\alpha$ -Dx5-Biotin,  $\alpha$ -TCR $\gamma\delta$ -Biotin, Ter119-Biotin (Becton Dickinson), and Streptavidin microbeads. After a second round of negative selection, CD8 $\beta$  cells were positively selected by MACS. Usually more than 98% of populations were CD8 $\alpha\beta$ + cells and fewer than 0.5% were CD8 $\alpha\alpha$ + cells. If fewer than 96% cells were CD8 $\alpha\beta$ +, or more than 1.0% were CD8 $\alpha\alpha$ + cells, we further purified CD8 $\alpha\beta$ + cells by flow cytometry using FACSAria. All the purified cells using above method were used for both *in vitro* culture or cell transfer experiments into RAG2 $^{-/-}$  mice.

**Transfer of CD4 T cells or naive CD4 T cells.** Naive CD4 T cells were prepared as described above;  $0.5\text{--}2.5 \times 10^6$  naive CD4 T cells (CD45.2) were transferred into Rag2 $^{-/-}$  (CD45.1) mice. At least 4 weeks after transplantation, the mice were used for various experiments. For EAE experiments,  $2.5 \times 10^6$  CD4 T cells (CD45.2) were transferred into Rag2 $^{-/-}$  (CD45.1) mice. Several days after transplantation, mice were used for EAE induction.

**Cell cultures.** In all experiments, the percentages of CD62L+CD4+ T cells or CD8 $\alpha\beta$ + T cells were above 97. Naive CD4+ T cells ( $1 \times 10^5$  cells/mL) were activated with plate-bound anti-CD3 (5  $\mu$ g/mL; BD Pharmingen), soluble anti-CD28 (1  $\mu$ g/mL; BD Pharmingen), anti-interferon- $\gamma$  (3  $\mu$ g/mL; BD Pharmingen), anti-IL-4 (3  $\mu$ g/mL; BD Pharmingen), TGF- $\beta$ 1 (3 ng/mL; R&D) and IL-2 (20 ng/mL; R&D) in the presence or absence of atRA (10 nM–10  $\mu$ M; Sigma-Aldrich) for 7–9 days.

**RA injection.** atRA (Sigma-Aldrich, Saint Louis, MO) was dissolved in soybean oil at 6 mg/mL and aliquots were stored at  $-80^\circ\text{C}$ . A working solution was prepared by diluting the atRA aliquots in soybean oil and an equal volume of dimethyl sulfoxide



(DMSO). aTRA of 200 µg/100 µL, 600 µg/300 µL or vehicle was delivered by intraperitoneal injection 1, 3, and 6 d before analysis.

**Flow cytometric analysis.** The following antibodies were used for staining: PECy7 anti-CD45.2 (BD Pharmingen); allophycocyanin (APC) anti-mouse TCRαβ (BD Pharmingen); APCCy7 anti-mouse CD8α (BD Pharmingen); fluorescein isothiocyanate (FITC) anti-mouse CD8β (BD Pharmingen); phycoerythrin (PE) anti-mouse CD4 (BD Pharmingen); PE anti-mouse CD8α (BD Pharmingen); APC anti-mouse CD4 (BD Pharmingen); FITC anti-mouse CD8α (BD Pharmingen); FITC anti-mouse CD4 (BD Pharmingen); PE anti-mouse CD44 (BD Pharmingen); Biotin anti-mouse CD122 (BD Pharmingen); APC anti-mouse CXCR5 (BD Pharmingen); Biotin anti-mouse α4β7 (BD Pharmingen); FITC anti-mouse CCR9 (R&D); PE anti-mouse Granzyme A (Santa Cruz CA); Alexa 647 anti-Foxp3 (BD Pharmingen); Alexa 647 anti-Granzyme B (BD Pharmingen); PerCP–streptavidin (Molecular Probes, Eugene, OR); APC–streptavidin (Molecular Probes, Eugene, OR); APCCy7–streptavidin (BD Pharmingen); PECy7–streptavidin (BD Pharmingen); PE–streptavidin (Molecular Probes); FITC–streptavidin (Molecular Probes).

For cytoplasmic staining, BD Cytofix/Cytoperm solution and BD Perm/Wash solutions (BD Pharmingen) were used.

All analyses were performed with FACSCalibur or FACSAria (Becton Dickinson).

**IELs and LPLs preparation.** To prepare IELs and LPLs, the intestines were removed, and PPs and mononuclear lymphocytes were isolated. The intestines were opened longitudinally, washed with phosphate-buffered saline, and cut into 5-mm pieces. To obtain IELs, pieces were shaken in Hank's balanced salt solution (+) containing 5 mM ethylenediaminetetraacetic acid for 20 min at 37°C and passed through a cell strainer twice. The remaining tissue was cut into smaller pieces and digested with RPMI 1640 medium containing 4% fetal calf serum, 1 mg/mL collagenase II, 1 mg/mL Dispase (Gibco), and 40 µg/ml DNase I (TaKaRa) at 37°C and stirred for 20 min. Whole intestinal cell suspensions, which included LPL or IEL, were passed through a cell strainer and loaded on a 40/80% discontinuous Percoll gradient (GE Healthcare), and cells at the interface between 40% and 80% were collected and used as IELs or LPLs.

**Immunization.** 100 µg NP- chicken gamma globulin (CGG) in alum or complete Freund's adjuvant (incomplete Freund's adjuvant with *Mycobacterium tuberculosis* H37RA; Difco) was intraperitoneally injected.

**EAE induction and clinical scoring.** Age- and sex-matched mice were immunized subcutaneously with 100 µg MOG35–55 (Genway, China) in IFA (incomplete Freund's adjuvant) supplemented with 500 µg *Mycobacterium tuberculosis* on day 1. On days 1 and 3, mice were injected with 300 ng pertussis toxin (List Biological Laboratories). Clinical signs were scored on a scale of 1–5: 0, no clinical sign; 0.5, partially limp tail; 1, paralyzed tail; 2, loss of coordinated movement, hind limb paresis; 2.5, one hind limb paralyzed; 3, both hind limbs paralyzed; 3.5, hind limbs paralyzed, weakness in fore limbs; 4, fore limbs paralyzed; and 5, moribund.

**Reverse transcription polymerase chain reaction (RT-PCR).** Total RNAs were extracted from sorted T cells using TRIzol reagent (Gibco-BRL, Gaithersburg, MD). Oligo (dT)-primed cDNAs were prepared by reverse transcription. For semiquantitation, 50 ng cDNA was serially diluted and subjected to PCR. All PCR products were resolved electrophoretically on 2% agarose gels and visualized by ethidium bromide staining.

**Statistical analysis.** Proportions of cells were compared with Student's *t* test (Fig. 1A). To see the effect of Runx3 in EAE recovery, the mean clinical scores were compared between genotypes using repeated measures analysis of variance (ANOVA). Greenhouse–Geisser correction was applied to adjust the degree of freedom for deviation from the sphericity assumption (Fig. 7A). All reported *P* values were two-tailed and *P* values lower than 0.05 were considered to indicate statistical significance.

- Singer, A., Adoro, S. & Park, J. H. Lineage fate and intense debate: myths, models and mechanisms of CD4- versus CD8-lineage choice. *Nat Rev Immunol* **8**, 788–801 (2008).
- Menager-Marcq, I., Pomie, C., Romagnoli, P. & van Meerwijk, J. P. CD8+CD28-regulatory T lymphocytes prevent experimental inflammatory bowel disease in mice. *Gastroenterology* **131**, 1775–1785 (2006).
- Rifa'i, M. *et al.* CD8+CD122+ regulatory T cells recognize activated T cells via conventional MHC class I-αphabetaTCR interaction and become IL-10-producing active regulatory cells. *Int Immunol* **20**, 937–947 (2008).
- Suzuki, H., Shi, Z., Okuno, Y. & Isobe, K. Are CD8+CD122+ cells regulatory T cells or memory T cells? *Hum Immunol* **69**, 751–754 (2008).
- Cosmi, L. *et al.* Th2 cells are less susceptible than Th1 cells to the suppressive activity of CD25+ regulatory thymocytes because of their responsiveness to different cytokines. *Blood* **103**, 3117–3121 (2004).
- Poussier, P., Ning, T., Banerjee, D. & Julius, M. A unique subset of self-specific inraintestinal T cells maintains gut integrity. *J Exp Med* **195**, 1491–1497 (2002).
- Kim, H. J., Verbinen, B., Tang, X., Lu, L. & Cantor, H. Inhibition of follicular T-helper cells by CD8(+) regulatory T cells is essential for self tolerance. *Nature* **467**, 328–332 (2010).
- Jiang, H. & Chess, L. The specific regulation of immune responses by CD8+ T cells restricted by the MHC class Ib molecule, Qa-1. *Annu Rev Immunol* **18**, 185–216 (2000).
- Tang, X. *et al.* Regulation of immunity by a novel population of Qa-1-restricted CD8αααα+TCRαββββ+ T cells. *J Immunol* **177**, 7645–7655 (2006).
- Kumar, V. Homeostatic control of immunity by TCR peptide-specific Tregs. *J Clin Invest* **114**, 1222–1226 (2004).
- Tang, X., Maricic, I. & Kumar, V. Anti-TCR antibody treatment activates a novel population of nonintestinal CD8 αααα+ TCR αββββ+ regulatory T cells and prevents experimental autoimmune encephalomyelitis. *J Immunol* **178**, 6043–6050 (2007).
- Zucchelli, S. *et al.* Defective central tolerance induction in NOD mice: genomics and genetics. *Immunity* **22**, 385–396 (2005).
- Holler, P. D. *et al.* The same genomic region conditions clonal deletion and clonal deviation to the CD8αααα and regulatory T cell lineages in NOD versus C57BL/6 mice. *Proc Natl Acad Sci U S A* **104**, 7187–7192 (2007).
- Rocha, B., Vassalli, P. & Guy-Grand, D. The V beta repertoire of mouse gut homodimeric alpha CD8+ intraepithelial T cell receptor alpha/beta + lymphocytes reveals a major extrathymic pathway of T cell differentiation. *J Exp Med* **173**, 483–486 (1991).
- Eberl, G. & Littman, D. R. Thymic origin of intestinal alphabeta T cells revealed by fate mapping of RORγγγγ+ cells. *Science* **305**, 248–251 (2004).
- Yamagata, T., Mathis, D. & Benoist, C. Self-reactivity in thymic double-positive cells commits cells to a CD8 αααα lineage with characteristics of innate immune cells. *Nat Immunol* **5**, 597–605 (2004).
- Leishman, A. J. *et al.* Precursors of functional MHC class I- or class II-restricted CD8αααα(+) T cells are positively selected in the thymus by agonist self-peptides. *Immunity* **16**, 355–364 (2002).
- Gangadharan, D. *et al.* Identification of pre- and postselection TCRαββββ+ intraepithelial lymphocyte precursors in the thymus. *Immunity* **25**, 631–641 (2006).
- Konkel, J. E. *et al.* Control of the development of CD8αααα+ intestinal intraepithelial lymphocytes by TGF-ββββ. *Nat Immunol* **12**, 312–319 (2011).
- Ouyang, W., Beckett, O., Ma, Q. & Li, M. O. Transforming growth factor-ββββ signaling curbs thymic negative selection promoting regulatory T cell development. *Immunity* **32**, 642–653 (2010).
- Rudensky, A. Y. Regulatory T cells and Foxp3. *Immunol Rev* **241**, 260–268 (2011).
- Sakaguchi, S., Miyara, M., Costantino, C. M. & Hafler, D. A. FOXP3+ regulatory T cells in the human immune system. *Nat Rev Immunol* **10**, 490–500 (2010).
- Littman, D. R. & Rudensky, A. Y. Th17 and regulatory T cells in mediating and restraining inflammation. *Cell* **140**, 845–858 (2010).
- Rifa'i, M., Kawamoto, Y., Nakashima, I. & Suzuki, H. Essential roles of CD8+CD122+ regulatory T cells in the maintenance of T cell homeostasis. *J Exp Med* **200**, 1123–1134 (2004).
- Smith, T. R. & Kumar, V. Revival of CD8+ Treg-mediated suppression. *Trends Immunol* **29**, 337–342 (2008).
- Huang, Y. *et al.* Mucosal memory CD8(+) T cells are selected in the periphery by an MHC class I molecule. *Nat Immunol* (2011).
- Madakamutil, L. T. *et al.* CD8αααα-mediated survival and differentiation of CD8 memory T cell precursors. *Science* **304**, 590–593 (2004).
- Uematsu, S. *et al.* Regulation of humoral and cellular gut immunity by lamina propria dendritic cells expressing Toll-like receptor 5. *Nat Immunol* **9**, 769–776 (2008).
- Mucida, D. *et al.* Reciprocal TH17 and regulatory T cell differentiation mediated by retinoic acid. *Science* **317**, 256–260 (2007).
- Fanchiang, S. S. *et al.* Global expression profiling of peripheral Qa-1-restricted CD8αααα+TCRαββββ+ regulatory T cells reveals innate-like features: Implications for immune-regulatory repertoire. *Hum Immunol* (2011).
- Wang, L. *et al.* The zinc finger transcription factor Zbtb7b represses CD8-lineage gene expression in peripheral CD4+ T cells. *Immunity* **29**, 876–887 (2008).
- Setoguchi, R. *et al.* Repression of the transcription factor Th-POK by Runx complexes in cytotoxic T cell development. *Science* **319**, 822–825 (2008).
- Taniuchi, I. *et al.* Differential requirements for Runx proteins in CD4 repression and epigenetic silencing during T lymphocyte development. *Cell* **111**, 621–633 (2002).
- Sugai, M., Watanabe, K., Nambu, Y., Hayashi, T. & Shimizu, A. Functions of Runx in IgA class switch recombination. *J Cell Biochem* (2010).
- Watanabe, K. *et al.* Requirement for Runx proteins in IgA class switching acting downstream of TGF-ββββ 1 and retinoic acid signaling. *J Immunol* **184**, 2785–2792 (2010).
- Iwata, M. *et al.* Retinoic acid imprints gut-homing specificity on T cells. *Immunity* **21**, 527–538 (2004).
- Tezuka, H. *et al.* Regulation of IgA production by naturally occurring TNF/INOS-producing dendritic cells. *Nature* **448**, 929–933 (2007).
- Hall, J. A. *et al.* Essential role for retinoic acid in the promotion of CD4(+) T cell effector responses via retinoic acid receptor alpha. *Immunity* **34**, 435–447 (2011).
- Pino-Lagos, K. *et al.* A retinoic acid-dependent checkpoint in the development of CD4+ T cell-mediated immunity. *J Exp Med* **208**, 1767–1775 (2010).
- Sugai, M. *et al.* Runx3 is required for full activation of regulatory T cells to prevent colitis-associated tumor formation. *J Immunol* **186**, 6515–6520 (2011).
- Koh, D. R. *et al.* Less mortality but more relapses in experimental allergic encephalomyelitis in CD8-/- mice. *Science* **256**, 1210–1213 (1992).



42. Jiang, H., Zhang, S. I. & Pernis, B. Role of CD8<sup>+</sup> T cells in murine experimental allergic encephalomyelitis. *Science* **256**, 1213–1215 (1992).
43. Panoutsakopoulou, V. *et al.* Suppression of autoimmune disease after vaccination with autoreactive T cells that express Qa-1 peptide complexes. *J Clin Invest* **113**, 1218–1224 (2004).
44. Jiang, H. *et al.* T cell vaccination induces T cell receptor Vbeta-specific Qa-1-restricted regulatory CD8(+) T cells. *Proc Natl Acad Sci U S A* **95**, 4533–4537 (1998).
45. Hu, D. *et al.* Analysis of regulatory CD8 T cells in Qa-1-deficient mice. *Nat Immunol* **5**, 516–523 (2004).
46. Kumar, V. & Sercarz, E. E. The involvement of T cell receptor peptide-specific regulatory CD4<sup>+</sup> T cells in recovery from antigen-induced autoimmune disease. *J Exp Med* **178**, 909–916 (1993).
47. Das, G. & Janeway, C. A., Jr. MHC specificity of iIELs. *Trends Immunol* **24**, 88–93 (2003).
48. Kitoh, A. *et al.* Indispensable role of the Runx1-Cbfbeta transcription complex for in vivo-suppressive function of FoxP3<sup>+</sup> regulatory T cells. *Immunity* **31**, 609–620 (2009).
49. Gapin, L., Cheroutre, H. & Kronenberg, M. Cutting edge: TCR alpha beta<sup>+</sup> CD8 alpha alpha<sup>+</sup> T cells are found in intestinal intraepithelial lymphocytes of mice that lack classical MHC class I molecules. *J Immunol* **163**, 4100–4104 (1999).
50. Das, G. & Janeway, C. A., Jr. Development of CD8alpha/alpha and CD8alpha/beta T cells in major histocompatibility complex class I-deficient mice. *J Exp Med* **190**, 881–884 (1999).

## Acknowledgement

We thank Dr K. Ikuta (Kyoto University, Virus Institute) for discussion of the findings and for CD45.1 mice, Dr F. Alt (Harvard University) for Rag2<sup>-/-</sup> mice and Dr Y. Yokota (Fukui University) for critically reading the manuscript. This work was supported in part by Grants-In-Aid for Science Research on Priority Areas from the Ministry of Education, Culture, Sports, Science and Technology of Japan.

## Author contributions

Y.N. and M.S. performed the experiments; T.H., K.-J.J., K.N., H.M., K.A. and K.T. assisted with experiments; M.S. designed and conceptualized the study; Y.I. and T.K. provided critical materials; S.T. performed statistical analysis; Y.N., K.A., M.O., K.I. and J.F. made comments; A.S., Y.N. and M.S. interpret the data; and M.S. wrote the manuscript.

## Additional information

**Supplementary information** accompanies this paper at <http://www.nature.com/scientificreports>

**Competing financial interests:** The authors declare no competing financial interests.

**License:** This work is licensed under a Creative Commons Attribution-NonCommercial-NoDerivative Works 3.0 Unported License. To view a copy of this license, visit <http://creativecommons.org/licenses/by-nc-nd/3.0/>

**How to cite this article:** Nambu, Y. *et al.* *In situ* differentiation of CD8 $\alpha\alpha$  T cells from CD4 T cells in peripheral lymphoid tissues. *Sci. Rep.* **2**, 642; DOI:10.1038/srep00642 (2012).