

Title	Immobilization of the soluble domain of human complement receptor 1 on agarose-encapsulated islets for the prevention of complement activation.
Author(s)	Luan, Nguyen Minh; Teramura, Yuji; Iwata, Hiroo
Citation	Biomaterials (2010), 31(34): 8847-8853
Issue Date	2010-12
URL	http://hdl.handle.net/2433/130708
Right	© 2010 Elsevier Ltd
Type	Journal Article
Textversion	author

1
2
3
4
5
6
7
8
9
10
11
12
13
14
15
16
17
18
19
20
21
22
23
24
25
26
27
28
29
30
31
32
33
34
35
36
37
38
39
40
41
42
43
44
45
46
47
48
49
50
51
52
53
54
55
56
57
58
59
60
61
62
63
64
65

Immobilization of the soluble domain of human complement receptor 1 (sCR1) on agarose-encapsulated islets for the prevention of complement activation

Nguyen Minh Luan^a, Yuji Teramura^b and Hiroo Iwata^{a*}

^aDepartment of Reparative Materials, Institute for Frontier Medical Sciences, Kyoto University, 53 Kawara-Cho, Shogoin, Sakyo-Ku, Kyoto, 606-8507, Japan, ^bRadioisotope Research Center, Kyoto University, Yoshida-Konoe-Cho, Sakyo-ku, Kyoto, 606-8501, Japan

*Corresponding author.

Tel/Fax: +81 75 751 4119

E-mail address: iwata@frontier.kyoto-u.ac.jp (Hiroo Iwata)

1
2
3
4
5
6
7
8
9
10
11
12
13
14
15
16
17
18
19
20
21
22
23
24
25
26
27
28
29
30
31
32
33
34
35
36
37
38
39
40
41
42
43
44
45
46
47
48
49
50
51
52
53
54
55
56
57
58
59
60
61
62
63
64
65**ABSTRACT**

The transplantation of islets of Langerhans has been successfully applied to the treatment of insulin-dependent diabetes. However, a shortage of human donors is the hardest obstacle to overcome. We aimed to develop a bioartificial pancreas that can realize xeno-islet transplantation. The islets were encapsulated in agarose microbeads carrying the soluble domain of human complement receptor 1 (sCR1), which is an effective inhibitor of the classical and alternative complement activation pathways. When naked rat islets were cultured in rabbit serum, large amounts of insulin leaked from the damaged islets over the course of a few days incubation, but no damaged cells were observed among islets in sCR1-agarose microbeads cultured in rabbit serum for 4 days. Although low levels of insulin were detected in the rabbit serum, the insulin did not leak from damaged β -cells, it was physiological insulin secreted by the β -cells.

Keywords: Islets of Langerhans, Bioartificial pancreas, Agarose, Soluble complement receptor 1 (sCR1), Microencapsulation, Immuno-isolation, Xenotransplantation

1. Introduction

The transplantation of islets of Langerhans has been successfully applied to the treatment of patients with insulin-dependent diabetes mellitus (type 1 diabetes). However, several obstacles still remain, such as a shortage of human donors, low efficacy of islet isolation, and side effects of immunosuppressive drugs, among which the shortage of human donors is the most difficult to overcome. Recently, Hering et al. [1] reported that normoglycemia can be maintained for more than 100 days in STZ-induced diabetic cynomolgus macaques after intraportal transplantation of adult porcine islets. The study suggested opening up the use of pig islet xenograft transplantation to human patients. However, rationalizing the use of a large dose of immuno-suppressive drugs, which are required to control graft rejection in xenotransplantation, is difficult. The side effects of immunosuppressive therapy are expected to exceed the merits of islet transplantation. The transplantation of islets enclosed in a semi-permeable membrane as a bioartificial pancreas has been studied as a method of islet transplantation free from immunosuppressive therapy. Islets can survive and control glucose metabolism for a long period of time in a host without immunosuppressive therapy because islets are isolated from the host immune system by a semi-permeable membrane. Various types of bioartificial pancreas have been proposed and developed, including islets microencapsulated within an alginate/poly(L-lysine) polyion complex membrane [2] or agarose hydrogel [3], or macroencapsulated by porous membranes [4-6] or living cells [7,8]. Our group previously developed a microcapsule-type bioartificial pancreas using agarose hydrogel and demonstrated its efficacy in allotransplantation models [3, 9-11]. However, the agarose hydrogel is not sufficient to protect xenogeneic islets from

1
2
3
4 rejection. A combination of islet microencapsulation and mild immunosuppressive
5
6 therapy could achieve xeno-islet transplantation [12].
7
8

9 In the present study, agarose hydrogel carrying a complement regulatory protein, the
10
11 soluble form of complement-receptor type 1 (sCR1-agarose), was prepared and applied to
12
13 encapsulate rat islets. Complement receptor type 1 (CR1) has been reported to be an
14
15 effective inhibitor of the classical and alternative complement activation pathways [13-
16
17 20]. The protective effect of sCR1-agarose on xeno-islets against antibody-complement-
18
19 dependent destruction was examined by incubating the microencapsulated islets in rabbit
20
21 serum.
22
23
24
25
26
27

28 **2. Material and methods**

29 *2.1. Materials*

30
31
32
33 A Chinese hamster ovary (CHO35.6) cell line expressing sCR1 (CRL-10052TM) [16] was
34
35 obtained from American Type Culture Collection (ATCC; Manassas, VA, USA). Alexa
36
37 488-labeled goat anti-mouse antibody and mouse anti-human sCR1 monoclonal antibody
38
39 (J3D3) were purchased from Invitrogen (Carlsbad, CA, USA) and Beckman Coulter (CA,
40
41 USA), respectively. 2-Iminothiolane hydrochloride (Traut's reagent) was purchased from
42
43 MP Biomedicals (Illkirch, France). The *N*-(*p*-maleimidophenyl) isocyanate (PMPI) was
44
45 purchased from Thermo Fisher Scientific (Rockford, IL., USA). Agarose (Taiyo Agarose,
46
47 AG LT-600) was obtained from Shimizu shokuhin KK (Shimizu, Japan), and paraffin oil
48
49 (107162) was purchased from Merck (NJ, USA). Enzyme-linked immunosorbent assay
50
51 (ELISA) kits for the insulin assay and CH50 autokit were purchased from Shibayagi
52
53
54
55
56
57
58 (Gunma, Japan) and Wako Pure Chemical (Osaka, Japan), respectively. Collagenase was
59
60
61
62
63
64
65

1
2
3
4 purchased from Nitta Gelatin (Osaka, Japan). The sources of other chemicals and culture
5
6 media are listed in the supplemental information.
7
8
9

10 11 2.2. *sCR1 purification* 12 13

14 Human sCR1 was purified from the culture medium of CHO cells expressing sCR1 as
15
16 previously described [21]. Briefly, the cells were first cultured in α -MEM medium
17
18 supplemented with 10% fetal bovine serum (FBS), 100 U/ml penicillin, 100 μ g/ml
19
20 streptomycin, and 500 nM methotrexate (MTX). After the cells reached confluence, they
21
22 were washed three times with phosphate buffered saline (PBS) and cultured in serum-free
23
24 ASF104 medium (Ajinomoto Co. Inc., Tokyo, Japan) supplemented with 500 nM MTX
25
26 for an additional 2 days. The culture medium was collected and centrifuged at 1000 rpm
27
28 for 5 min, the supernatant filtered through a membrane filter (ϕ :0.45 μ m), and stored at
29
30 4°C before purification.
31
32
33

34
35 sCR1 was collected from the CHO culture medium by affinity column chromatography
36
37 using a heparin sepharose 6B column. A 500 ml sample of the medium was loaded onto
38
39 the heparin column and contaminants washed out using a 10 mM NaH₂PO₄ (pH 7.0)
40
41 buffer solution. Bound sCR1 was eluted with an elution buffer composed of 10 mM
42
43 NaH₂PO₄ and 1 M NaCl (pH 7.0). The protein concentration of the eluent was
44
45 determined using a micro BCA protein assay kit. The collected sCR1 was subjected to
46
47 SDS-PAGE analysis with coomassie brilliant blue (CBB) staining. The sCR1 solution
48
49 was diluted with PBS and divided into 100 μ l aliquots in 50 tubes and stored at -20°C
50
51 until assayed. The sCR1 activity in the solution was evaluated with the CH50 assay using
52
53 the CH50 autokit according to the manufacturer's instructions and Yamamoto et al. with
54
55
56
57
58
59
60
61
62
63
64
65

1
2
3
4 slight modifications [22]. Briefly, 250 μ l hapten-liposome solution was added to a
5
6 mixture of 9 μ l of normal human serum (NHS) and 1 μ l sCR1 solution (25 to 300 μ g/ml)
7
8 in PBS. The solution was incubated at 37°C. After 5 min, 125 μ l of an antibody–substrate
9
10 mixture was added to the solution. After incubating at 37°C for 4.6 min, absorbance was
11
12 measured at 340 nm. The complement activation level (CH50 value) of the NHS-sCR1
13
14 mixture was determined from the absorbance using a standard curve. In the case of rabbit
15
16 serum, a serum-sCR1 mixture was prepared by mixing 27 μ l rabbit serum and 3 μ l sCR1
17
18 solution in PBS (25 to 300 μ g/ml). The CH50 assay was conducted as described for NHS.
19
20
21
22
23
24
25

26 *2.3. Chemical modification of sCR1 and agarose*

27
28 sCR1 was immobilized on the agarose hydrogel as shown in Scheme 1. First, sCR1 was
29
30 thiolated using Traut’s reagent by mixing 1 ml of 2 mg/ml sCR1 solution in PBS with 10,
31
32 20, or 50 μ l of 10 mg/ml Traut’s reagent solution in PBS by agitating for 1 h at room
33
34 temperature. Thiolated sCR1 (sCR1-SH) was purified using a sephadex G25 column (GE
35
36 Healthcare, Buckinghamshire, UK). The number of thiol groups introduced to the sCR1
37
38 molecule was determined using Ellman’s assay. The complement inhibition function of
39
40 sCR1 before and after thiolation was determined by the CH50 assay.
41
42
43
44

45
46 The hydroxyl groups of agarose were modified to maleimide groups using PMPI as
47
48 follows. PMPI (2 to 5 mg) was added to an agarose solution in dry DMSO (100 mg
49
50 agarose in 5 ml DMSO) and stirred at room temperature under dark condition overnight.
51
52

53
54 The modified agarose (Mal-agarose) was collected by pouring the reaction mixture into
55
56 acetone. After decanting, the precipitated product was washed with acetone twice and
57
58 dried under reduced pressure.
59
60
61
62
63
64
65

1
2
3
4
5
6
7 *2.4. Protective effect of sCR1 immobilized on agarose hydrogel*
8

9 Hapten-liposomes encapsulated in 2.5% agarose microbeads (LAMs) were utilized to
10 examine the protective effect of sCR1 immobilized on agarose. Mal-agarose (150 mg)
11 was dissolved in 3 ml PBS in a glass centrifugal tube using a microwave oven to prepare
12 a 5% agarose solution. The agarose solution was left at 40°C for 7 min. The hapten-
13 liposome suspension, which was supplied as a component of the CH50 assay kit and kept
14 at 40°C, was added to an equal volume (3 ml) of the 5% agarose solution and mixed well.
15 Pre-warmed liquid paraffin (15 ml, 40°C) was added to the glass tube, and the tube was
16 vigorously agitated on ice for 3 min to induce gelation of the agarose microdroplets. Cold
17 PBS (15 ml) was added to the glass tube and the suspension was centrifuged at 2000 rpm
18 for 5 min at 4°C. The paraffin oil and supernatant were removed and the microbeads
19 washed twice with PBS. The volume of the microbead suspension was adjusted to 500 µl
20 after removing the supernatant. For immobilization of sCR1 on the agarose microbeads,
21 800 µg of sCR1-SH in 1 ml PBS was added to 500 µl of the microencapsulated liposome
22 suspension, and the reaction mixture was incubated at 37°C for 2 h with gentle shaking
23 every 30 min. After 2 hours, the microbeads were suspended in PBS and centrifuged at
24 2000 rpm for 5 min at 4°C. This procedure was repeated 5 times to remove free sCR1-
25 SH. As a control, a cysteine solution (1 mM), instead of the sCR1 solution, was added to
26 agarose solution. The LAMs treated with or without sCR1 were stored in 10 ml PBS
27 overnight to remove unreacted sCR1 and cysteine.
28
29
30
31
32
33
34
35
36
37
38
39
40
41
42
43
44
45
46
47
48
49
50
51
52
53
54

55 The CH50 assay using the CH50 autokit was modified to evaluate the inhibitory effect of
56 sCR1 immobilized on agarose microbeads on complement activation. The sCR1-
57
58
59
60
61
62
63
64
65

1
2
3
4 immobilized LAMs (200 μ l) were mixed with 1 ml of 5-times diluted NHS in veronal
5
6 buffer and was incubated at 37°C for 5 min. Then, 125 μ l of the substrate solution was
7
8 added to the mixture and kept at 37°C. Two hundred microliters of supernatant was
9
10 collected at 25, 45, and 65 min during the incubation and the absorbance at 340 nm
11
12 determined. The percentage of lysis in the LAMs was calculated from the absorbance
13
14 value of completely lysed LAMs, which were incubated for 3 h in serum.
15
16

17
18 The amount of sCR1 immobilized to the agarose microbeads was determined by the
19
20 micro BCA assay using microbeads without encapsulation of the hapten-liposome.
21
22
23
24
25

26 *2.5. Isolation and microencapsulation of islets*

27

28 Islets were isolated from male, 8-week-old ACI/N rats by the ductal injection of a
29
30 collagenase solution [23]. Briefly, a rat was anesthetized by intraperitoneal injection of
31
32 Nembutal (pentobarbital, 75 mg/kg). Approximately 10 ml of collagenase solution (0.5
33
34 mg/ml) was carefully injected through the common bile duct to the pancreas to distend
35
36 the tissue. The pancreas was removed and kept at 37°C for 19 min to digest the
37
38 pancreatic tissue. RPMI-1640 (5 ml) containing 10% FBS was added to the sample and
39
40 the tissue was pipetted vigorously to release islets from the exocrine tissues. The
41
42 disintegrated tissue was washed twice with HBSS and the supernatant removed after
43
44 centrifugation. The tissue was suspended in 5 ml Ficoll/Conray solution (density: 1.1
45
46 g/ml) and transferred to a test tube. Ficoll/Conray solutions with a density of 1.075 g/ml
47
48 and 1.050 g/ml (3 ml and 2 ml, respectively) were sequentially layered on the suspension
49
50 to make a discontinuous density gradient. The test tube was centrifuged at 2500 rpm for 8
51
52 min. Islets were collected at the interface between the 1.075 g/ml and 1.050 g/ml layers.
53
54
55
56
57
58
59
60
61
62
63
64
65

1
2
3
4 After washing the islets, they were transferred to culture medium (RPMI-1640)
5
6 supplemented with 10% FBS, 100 U/ml penicillin, and 100 µg/ml streptomycin and
7
8 cultured for 2 days before encapsulation with agarose microbeads.
9

10
11 Islets were encapsulated in sCR1-agarose microbeads using the same method as hapten-
12
13 liposomes detailed above. Microencapsulated islets were cultured in RPMI1640
14
15 supplemented with 10% FBS, 100 U/ml penicillin, and 100 µg/ml streptomycin at 37°C
16
17 in 5% CO₂. The sCR1 immobilized in microbeads was visualized by immunostaining.
18
19

20
21 After 2 days of culture, microbeads containing islets were kept in culture medium
22
23 containing anti-human sCR1 monoclonal antibody (1 µg/ml, J3D3 mouse antibody) for 6
24
25 h at 37°C. The islets were washed and incubated in antibody-free medium for 1 day to
26
27 complete remove unbound antibodies. The sCR1 in the microbeads was visualized by
28
29 incubation in culture medium containing Alexa 488-labeled anti-mouse antibody (1
30
31 µg/ml, goat) for 6 h at 37°C, and then the Alexa 488-labeled antibody was extensively
32
33 removed by culturing the microencapsulated islets in antibody-free medium for 24 h.
34
35

36
37 The agarose microbeads were observed by confocal laser scanning microscopy
38
39 (Fluoview, FV500, Olympus Optical Co. Ltd., Tokyo, Japan).
40
41

42
43 The ability of the microencapsulated islets to release insulin was examined by the static
44
45 glucose-stimulated test [24]. Briefly, 50 microencapsulated islets were sequentially
46
47 incubated in Krebs-Ringer solutions with glucose concentrations of 0.1 g/dl, 0.3 g/dl, and
48
49 0.1 g/dl for 1 h each at 37°C. At the end of each incubation, supernatants were collected
50
51 and stored at -20°C until ELISA analysis of insulin concentrations.
52
53
54
55
56
57
58
59
60
61
62
63
64
65

1
2
3
4 *2.6. Inhibition of the complement-dependent destruction of islets by sCR1 immobilized on*
5
6 *agarose*

7
8
9 Rabbit serum was used to examine the sCR1 protection of rat islets from complement-
10 dependent destruction. Twenty naked islets and 20 islets encapsulated in agarose
11
12 microbeads with or without sCR1 were cultured in 100% normal rabbit serum at 37°C.
13
14 Serum was collected every 24 h and replaced by fresh serum after three washes with
15
16 HBSS. The insulin contents of the collected sera were determined by ELISA. Islet
17
18 morphology was observed by phase contrast microscopy (IX71, Olympus Optical Co.
19
20 Ltd., Tokyo, Japan).
21
22
23
24
25
26
27

28
29 *2.7. Statistical analysis*

30
31 Comparisons between two groups were performed using the Student's t-test. $P < 0.05$ was
32
33 considered significant. All statistical calculations were performed using the software JMP
34
35 ver.5.1.1.
36
37
38
39
40
41
42
43
44
45
46
47
48
49
50
51
52
53
54
55
56
57
58
59
60
61
62
63
64
65

1
2
3
4 **3. Results**
5

6 *3.1. Isolation and function of CHO sCR1*
7
8

9 The SDS-PAGE of fresh ASF104 medium, conditioned CHO cell medium, and purified
10 sCR1 is shown in Fig. 1A. A band appeared in the conditioned medium at roughly 250
11 kDa was assigned to sCR1 (Mw: 220 kDa). Bands at 80 kDa in the fresh and conditioned
12 medium were assigned to transferrin. After sCR1 was purified using a heparin column,
13
14 most contaminants were removed (Fig. 1A, line c). Approximately 10-20 µg of sCR1 was
15
16 isolated from 1 ml of culture medium.
17
18

19 The inhibitory effect of sCR1 on complement activation was determined with the CH50
20
21 assay. The CH50 value decreased with increasing sCR1 concentrations (Fig. 1B),
22
23 indicating that sCR1 isolated from the conditioned CHO cell medium can effectively
24
25 inhibit complement activation.
26
27

28 In xenotransplantation, complement regulatory proteins, such as decay accelerating
29
30 factors and CD46, are used to impair the assembly of the membrane attack complex. In
31
32 some donor and recipient combinations, however, the inhibitory properties of these
33
34 molecules are not effective due to species restriction [25]. We examined the inhibitory
35
36 effects of human sCR1 on complement activation in rabbit serum. With the addition of
37
38 sCR1 to the serum, the increased absorbance at 340 nm remained low (Fig. 1C). This
39
40 finding indicates that sCR1 can also effectively inhibit complement activation in rabbit
41
42 serum.
43
44
45
46
47
48
49
50
51
52
53

54
55 *3.2. Immobilization of sCR1 on agarose hydrogel*
56
57
58
59
60
61
62
63
64
65

1
2
3
4 The number of thiol groups introduced on sCR1 increased with increasing Traut's reagent
5 concentration (S-Fig. 1). The CH50 value of NHS was 38.9 U/ml. When naïve sCR1 was
6
7 added to NHS at 2 µg/ml, the CH50 value decreased to 24.6 U/ml. When sCR1-SH
8
9 carrying 4.6, 7.6, or 10.8 thiol groups per molecule were added to NHS at 0.26 µg/ml, the
10
11 CH50 value decreased to 26.46, 26.18, and 28.09 U/ml, respectively (Fig. 2). Although
12
13 the inhibitory function of sCR1 tended to decrease with an increasing number of
14
15 introduced thiol groups, it did not exert a deteriorative effect on sCR1 function. The
16
17 CH50 value of sCR1 with 4.6 thiol groups per molecule was almost the same as that of
18
19 naïve sCR1. sCR1 carrying 4.6 thiol groups was used in the following experiments.
20
21 Maleimide groups were introduced to agarose by PMPI and sCR1-SH was covalently
22
23 immobilized on agarose through the thiol-maleimide reaction. Microbeads made of
24
25 agarose modified with PMPI were immersed in a sCR1-SH solution to immobilize sCR1
26
27 to the agarose microbeads. The amount of sCR1 in the sCR1-agarose conjugates was
28
29 determined using the micro BCA method (S-Fig. 2).
30
31
32
33
34
35
36
37
38
39
40

41 *3.3. Inhibitory effect of immobilized sCR1 on agarose*

42
43 Hapten-liposomes were enclosed in 2.5% sCR1-agarose microbeads and then incubated in
44
45 NHS to examine the inhibitory function of immobilized sCR1. When the complement
46
47 system is activated on the hapten-liposome, the enzyme enclosed in the liposome is
48
49 released into the solution and subsequently releases chromophore from the substrate,
50
51 increasing the absorbance of the supernatant at 340 nm. The percentage of damaged
52
53 liposome in NHS was evaluated from the changes in absorbance at 340 nm (Fig. 3).
54
55 Hapten-liposomes enclosed in agarose microbeads without sCR1 were also incubated in
56
57
58
59
60
61
62
63
64
65

1
2
3
4 NHS and NHS supplemented with 50 µg/ml sCR1. Although the absorbance of the
5
6 supernatants increased with time in all three conditions, the absorbance for sCR1-agarose
7
8 microbeads increased much more slowly than those without immobilized sCR1.
9

10
11 Immobilized sCR1 effectively inhibited the complement activation, comparable to sCR1
12
13 in NHS.
14

15 16 17 18 19 *3.4. Islet morphology*

20
21 Islets were encapsulated in microbeads made of agarose modified with PMPI. The
22
23 microencapsulated islets were immersed in a solution of sCR1-SH immobilized to aCR1
24
25 in the agarose microbeads. To examine the immobilization of sCR1 in agarose
26
27 microbeads, the microbeads were immuno-stained using anti-sCR1 antibody. Clear green
28
29 fluorescence was observed on the agarose microbeads (Fig. 4B). However, no
30
31 fluorescence was observed for agarose not activated with PMPI. These results indicate
32
33 that sCR1 was covalently immobilized on the agarose hydrogel through the
34
35 thiol/maleimide reaction.
36
37

38
39 Rat-rabbit is a discordant combination [26], as antibodies that react with rat tissue exist in
40
41 rabbit serum. When naked rat islets are exposed to fresh rabbit serum, the antibodies form
42
43 antigen-antibody complexes on islets and the immune complexes activate the
44
45 complement system through the classic pathway, resulting in the destruction of islet cells.
46
47

48
49 The protective effect of sCR1 immobilized on agarose in regards to the antibody-
50
51 complement dependent destruction of islets was examined by incubating
52
53 microencapsulated islets in rabbit serum. Naked rat islets were rapidly destroyed over a
54
55 few days in rabbit serum, whereas no morphological change was observed in islets
56
57
58
59
60
61
62
63
64
65

1
2
3
4 encapsulated in sCR1-agarose microbeads (Fig. 4A). The sCR1-agarose microbeads
5
6 effectively protected the islets. Figure 5 also includes images of islets encapsulated in 5%
7
8 agarose microbeads without sCR1 immobilization. Although some cells located at the
9
10 periphery were swollen, the islets kept their intact round shape even after 4 days in rabbit
11
12 serum. Agarose microbeads alone have some protective effect against the antibody-
13
14 complement-dependent destruction of islets.
15
16
17
18
19
20

21 *3.5. Insulin release from islets*

22
23 The glucose stimulation test was carried out to determine the effects of
24
25 microencapsulation and sCR1 immobilization on islet function (Fig. 5). The release
26
27 insulin from islets in microbeads with or without sCR1 at high glucose concentrations
28
29 was about 20% less than that of naked islets, with no difference observed between the
30
31 two groups of islets in microbeads. Although the microencapsulation procedure exerted
32
33 some deteriorative effects on islet function, islets in microbeads carrying sCR1 still
34
35 maintained the ability to release insulin and control the amount released in response to
36
37 the glucose concentration.
38
39
40
41

42
43 β -cells in islets contain insulin as granules. When islets are damaged in rabbit serum,
44
45 insulin leaks from the damaged β -cells. The amount of insulin in rabbit serum was
46
47 determined to quantitatively evaluate islet cell death (Fig. 6). From 20 naked islets
48
49 cultured in rabbit serum, 551.1 ng insulin leaked during the first 24 h period and 239.4 ng
50
51 insulin leaked during the second 24 h period. After two days, the amount of insulin
52
53 released drastically decreased because most of the β -cells were destroyed during the
54
55 initial two days. The amount of insulin released from the islets in microbeads was much
56
57
58
59
60
61
62
63
64
65

1
2
3
4 less than that of naked islets over the course of two days in culture. The amount of insulin
5
6 leaked from islets in microbeads carrying sCR1 was half that leaked from islets in
7
8 microbeads without sCR1 during. These observations indicate that the agarose hydrogel
9
10 effectively protects islets from antibody-complement-dependent cell damage and sCR1
11
12 immobilized on agarose exerted an additional protective effect.
13
14

15 16 17 18 19 **4. Discussion**

20
21 Our group has been examining agarose as a material to microencapsulate islets and
22
23 demonstrated that agarose microbeads effectively protect allogeneic islets from the
24
25 immune attack of recipient mice; thus, islet graft survival was realized without
26
27 immunosuppressive therapy for a long period of time [3]. Though hamster islets enclosed
28
29 in agarose microbeads cannot survive so long in recipient mice, we demonstrated that a
30
31 combination of islet microencapsulation and B cell suppression by the administration of
32
33 15-deoxyspergualin can realize long normoglycemia in islet xenotransplantation between
34
35 hamster and mouse [12]. However, the administration of 15-deoxyspergualin is not a
36
37 good choice for diabetic patients when its side effects are taken into consideration.
38
39

40
41 In order to improve xenograft survival, some groups have examined the immobilization
42
43 of bioactive substances to hydrogel macrocapsules [27-30]. An anti-inflammatory peptide
44
45 was immobilized to functionalized hydrogel crosslinked by the thioester/thiol reaction
46
47 [31]. In another study, anti-Fas mAb was conjugated to PEG hydrogel using
48
49 photopolymerization [32]. These approaches have shown promising results for the down-
50
51 regulation of inflammatory reactions and are expected to improve graft survival.
52
53

54
55 However, the chemical reaction employed and necessary UV exposure are expected to
56
57
58
59
60
61
62
63
64
65

1
2
3
4 exert deteriorative effects on cell viability and protein function. In addition, the activation
5
6 of the complement system should be controlled for the success of xenogeneic islet
7
8 transplantation because antibody-complement-dependent cytotoxicity plays a major role
9
10 in xenograft rejection.
11
12

13
14 In this study, islets were enclosed in sCR1-agarose microbeads because sCR1 has the
15
16 ability to bind complement C3b/C4b, controls the dissociation of C3 and C5 convertase,
17
18 and also serves as a co-factor for the proteolytic cleavage of C3b/C4b by factor I. sCR1 is
19
20 also able to inhibit complement activation in both the classical and alternative pathways,
21
22 and it has been reported that sCR1 can prolong the survival of xenografts in a dose-
23
24 dependent manner in several animal models and pre-clinical trials [13-20]. However,
25
26 controlling the sCR1 level in the local microenvironment of the graft is difficult with
27
28 systemic administration of sCR1 [33]. In this study, sCR1 was immobilized on agarose by
29
30 the thiol/maleimide reaction and sCR1-agarose was used to microencapsulate islets. The
31
32 local concentration of sCR1 surrounding the islets increased for the effective regulation
33
34 of antibody-complement-dependent cytotoxicity. The advantage of the thiol/maleimide
35
36 reaction is that agarose is modified with maleimide groups before microencapsulation of
37
38 islets, and proteins carrying thiol groups can be immobilized onto the agarose microbeads
39
40 containing living islets under physiological conditions.
41
42
43
44
45
46

47
48 When naked rat islets were cultured in rabbit serum, large amounts of insulin leaked from
49
50 the damaged islets over the course of a few days incubation (Fig. 6). However, no
51
52 damaged cells were seen on the islets enclosed by sCR1-agarose microbeads (Fig. 4).
53
54

55
56 Low levels of insulin were detected in the rabbit serum, but this was not due to leakage of
57
58 insulin from damaged β -cells, it was physiological insulin secretion by β -cells.
59
60
61
62
63
64
65

1
2
3
4
5
6
7
8
9
10
11
12
13
14
15
16
17
18
19
20
21
22
23
24
25
26
27
28
29
30
31
32
33
34
35
36
37
38
39
40
41
42
43
44
45
46
47
48
49
50
51
52
53
54
55
56
57
58
59
60
61
62
63
64
65

5. Conclusion

Although the protective efficacy of sCR1-agarose in islet xenotransplantation should be carefully examined using *in vivo* models, the results obtained in this study suggest that it is a promising material to prepare a bioartificial pancreas that can be applied to islet xenotransplantation.

ACKNOWLEDGEMENTS

This study was supported by a Grant-in-Aid for Scientific Research (A) (No. 21240051), by a Challenging Exploratory Research grant (No. 21650118) from the Ministry of Education, Culture, Sports, Science, and Technology (MEXT) of Japan, and by the Ministry of Health, Labor, and Welfare of Japan (H20-007). Nguyen Minh Luan was supported by JICA.

References

- 1
2
3
4
5
6
7 [1] Hering BJ, Wijkstrom M, Graham ML, Hårdstedt M, Aasheim TC, Jie T, et al.
8
9 Prolonged diabetes reversal after intraportal xenotransplantation of wild-type porcine
10
11 islets in immunosuppressed nonhuman primates. *Nat Med* 2006;12(3):301-303.
12
13
14 [2] Miura S, Teramura Y, Iwata H. Encapsulation of islets with ultra-thin polyion
15
16 complex membrane through poly(ethylene glycol)-phospholipids anchored to cell
17
18 membrane. *Biomaterials* 2006;27:5828–5835.
19
20
21 [3] Iwata H, Takagi T, Shimizu H, Yamashita K, Kobayashi K, Akutsu T. Agarose for
22
23 bioartificial pancreas. *J Biomed Mater Res* 1992;26:967–977.
24
25
26 [4] Lacy PE, Hegre OD, Gerasimidi-Vazeou A, Gentile FT, Dionne KE. Maintenance of
27
28 normoglycemia in diabetic mice by subcutaneous xenografts of encapsulated islets.
29
30 *Science* 1991;254:1782–1784.
31
32
33 [5] Lanza, RP, Butler DH, Borland KM, Staruk JE, Faustman DL, Solomon BA, et al.
34
35 Xenotransplantation of canine, bovine, and porcine islets in diabetic rats without
36
37 immunosuppression. *Proc Natl Acad Sci USA* 1991;88:11100-11104.
38
39
40 [6] Lanza RP, Sullivan SJ, Chick WL. Treatment of severely diabetic pancreatectomized
41
42 dogs using a diffusion-based hybrid pancreas. *Diabetes* 1992;41:886–889.
43
44
45 [7] Teramura Y, Iwata H. Islet encapsulation with living cells for improvement of
46
47 biocompatibility. *Biomaterials* 2009;30:2270–2275.
48
49
50 [8] Teramura Y, Luan NM, Iwata H. Microencapsulation of islets with living cells using
51
52 PolyDNA-PEG-lipid conjugate. *Bioconjug Chem* 2009;21(4):792–796.
53
54
55
56
57
58
59
60
61
62
63
64
65

- 1
2
3
4 [9] Iwata H, Kobayashi K, Takagi T, Oka T, Yang H, Amemiya H, et al. Feasibility of
5
6 agarose microbeads with xenogeneic islets as a bioartificial pancreas. *J Biomed Mater*
7
8 *Res* 1994;28:1003–1011.
9
- 10
11 [10] Kin T, Iwata H, Aomatsu Y, Ohyama T, Kanehiro H, Hisanaga M, et al.
12
13 Xenotransplantation of pig islets in diabetic dogs with use of a microcapsule composed of
14
15 agarose and polystyrene sulfonic acid mixed gel. *Pancreas* 2002;25:94-100,
16
17
18 [11] Kobayashi T, Aomatsu Y, Iwata H. Indefinite islet protection from autoimmune
19
20 destruction in nonobese diabetic mice by agarose microencapsulation without
21
22 immunosuppression. *Transplantation* 2003;75:619–625.
23
24
25 [12] Aomatsu Y, Nakajima Y, Iwata H, Amemiya H, Kanehiro H, Hisanaga M, et al.
26
27 Significance of low doses of 15-deoxyspergualin in agarose-microencapsulated
28
29 discordant islet xenotransplantation. *Transplant Proc* 1995;27:292-293.
30
31
32 [13] Mulligan MS, Yeh CG, Rudolph AR, Ward PA. Protective effects of soluble CR1 in
33
34 complement- and neutrophil-mediated tissue injury. *J Immunol* 1991;148:1479-1485.
35
36
37 [14] Swift AJ, Collins TS, Bugelski P, Winkelstein JA. Soluble human complement
38
39 receptor type 1 inhibits complement-mediated host defense. *Clin Diagn Lab Immunol*
40
41 1994;1(5):585-589.
42
43
44 [15] Ryan US. Complement inhibitory therapeutics and xenotransplantation. *Nat Med*
45
46 1995;1(9):967-968.
47
48
49 [16] Weisman HF, Bartow T, Leppo MK, Marsh HCJr, Carson GR, Concido MF, et al.
50
51 Soluble human complement receptor type 1: in vivo inhibitor of complement suppressing
52
53 postischemic myocardial inflammation and necrosis. *Science* 1990;249:146-151.
54
55
56
57
58
59
60
61
62
63
64
65

- 1
2
3
4 [17] Pratt JR, Hibbs MJ, Laver AJ, Smith RA, Sacks SH. Effects of complement
5
6 inhibition with soluble complement receptor-1 on vascular injury and inflammation
7
8 during renal allograft rejection in the rat. *Am J Pathol* 1996;149(6):2055-2066.
9
10
11 [18] Pruitt SK, Kirk AD, Bollinger RR, Marsh HC, Collins BH, Levin JL, et al. The
12
13 effect of soluble complement receptor 1 on hyperacute rejection of porcine xenografts.
14
15
16 *Transplantation* 1994;57:363-370.
17
18
19 [19] Bennet W, Sundberg B, Lundgren T, Tibell A, Groth CG, Richards A, et al. Damage
20
21 to porcine islets of Langerhans after exposure to human blood in vitro, or after intraportal
22
23 transplantation to cynomologus monkeys: protective effects of sCR1 and heparin.
24
25
26 *Transplantation* 2000;69:711-719.
27
28
29 [20] Candinas D, Lesnikoski BA, Robson SC, Miyatake T, Scesney SM, Marsh HCJr, et
30
31 al. Effect of repetitive high-dose treatment with soluble complement receptor type 1 and
32
33 cobra venom factor on discordant xenograft survival. *Transplantation* 1996;62:336-342.
34
35
36 [21] Kato H, Inoue T, Ishii N, Murakami Y, Matsumura M, Seya T, et al. Novel simple
37
38 method to purify recombinant soluble human complement receptor type 1 (sCR1) from
39
40 CHO cell culture. *Biotechnol Bioprocess Eng* 2002;7:67-75.
41
42
43 [22] Yamamoto S, Kubotsu K, Kida M, Kondo K, Matsuura S, Uchiyama S, et al.
44
45 Automated homogeneous liposome-based assay system for total complement activity.
46
47
48 *Clin Chem* 1995;41:586-590.
49
50
51 [23] Lacy PE, Kostianovky M. Method for the isolation of intact islets of Langerhans
52
53 from the rat pancreas. *Diabetes* 1967;16:35-39.
54
55
56
57
58
59
60
61
62
63
64
65

1
2
3
4 [24] Bretzel RG, Hering BJ, Federlin KF. Assessment of adult islet preparations. In:
5
6 Ricordi C. , editor. Methods in Cell Transplantation. RG Landes, Austin, TX, 1995. p.
7
8 455-464.
9

10
11 [25] Bach FH, Platt JL, and Cooper DKC. Accommodation – The role of natural antibody
12
13 and complement in discordant xenograft rejection. In: Cooper DKC, Kemp E, Reemtsma
14
15 K, White DJG, editors. Xenotransplantation. The transplantation of organs and tissues
16
17 between species. New York: Springer, 1991. p. 81-99.
18
19

20
21 [26] Zhang Z, Bédard E, Luo Y, Wang H, Deng S, Kelvin D, et al. Animal models in
22
23 xenotransplantation. Expert Opin Investig Drugs 2000;9:2051–2068.
24
25

26 [27] Engberg AE, Sandholm K, Bexborn F, Persson J, Nilsson B, Lindahl G, et al.
27
28 Inhibition of complement activation on a model biomaterial surface by streptococcal M
29
30 protein-derived peptides. Biomaterials 2009;30:2653-2659.
31
32

33 [28] Rydgren T, Bengtsson D, Sandler S. Complete protection against Interleukin-1 β -
34
35 Induced functional suppression and cytokine-mediated cytotoxicity in rat pancreatic islets
36
37 in vitro using an Interleukin-1 cytokine trap. Diabetes 2006;55:14071412.
38
39

40 [29] Kim DH, Smith JT, Chilkoti A, Reichert WM. The effect of covalently immobilized
41
42 rhIL-1ra-ELP fusion protein on the inflammatory profile of LPS-stimulated human
43
44 monocytes. Biomaterials 2007;28(23):3369-3377.
45
46
47

48 [30] Cabric S, Sanchez J, Johansson U, Larsson R, Nilsson B, Korsgren O, et al.
49
50 Anchoring of vascular endothelial growth factor to surface-immobilized heparin on
51
52 pancreatic islets: implications for stimulating islet angiogenesis. Tissue Eng part A
53
54 2010;16(3):961-970.
55
56
57
58
59
60
61
62
63
64
65

1
2
3
4
5
6
7
8
9
10
11
12
13
14
15
16
17
18
19
20
21
22
23
24
25
26
27
28
29
30
31
32
33
34
35
36
37
38
39
40
41
42
43
44
45
46
47
48
49
50
51
52
53
54
55
56
57
58
59
60
61
62
63
64
65

[31] Su J, Hu BH, Lowe WLJr, Kaufman DB, Messersmith PB. Anti-inflammatory peptide-functionalized hydrogels for insulin-secreting cell encapsulation. *Biomaterials* 2010;31(2):308-14.

[32] Cheung CY, Anseth KS. Synthesis of immunoisolation barriers that provide localized immunosuppression for encapsulated pancreatic islets. *Bioconjug Chem* 2006;17:1036-1042.

[33] Lam TT, Hausen B, Hook L, Lau M, Higgins J, Christians, U, et al. The effect of soluble complement receptor type 1 on acute humoral xenograft rejection in hDAF-transgenic pig-to-primate life-supporting kidney xenografts. *Xenotransplantation* 2005;12:20–29.

SCHEME AND FIGURE CAPTIONS

Scheme 1. Schematic illustration of the immobilization of sCR1 on agarose. (a) Thiolation of sCR1 by Traut's reagent. (b) Activation of agarose by PMPi. (c) Conjugation of sCR1-SH with the activated agarose.

Fig. 1. Analysis of sCR1 isolated from CHO35.6 cell culture medium. (A) SDS-PAGE of sCR1 before and after purification using a heparin column. a: ASF104 medium, b: CHO culture supernatant, c: fraction from the culture medium collected through the heparin column. (B) CH50 values of 90% normal human serum supplemented with certain amounts of sCR1. (C) Inhibitory effect of sCR1 in 90% rabbit serum.

Fig. 2. Effect of thiolation on sCR1 activity. CH50 values are shown for 90% normal human serum and 9 μ l serum supplemented with 1 μ l naïve sCR1 or thiolated sCR1 (0.26 μ g/ml) as indicated.

Fig. 3. Inhibitory effect of sCR1 on the complement-dependent lysis of hapten-liposome. Dark circles indicate agarose microbeads, white circles indicate sCR1-agarose microbeads, and squares indicate agarose microbeads suspended in a medium supplemented with sCR1 (50 μ g/ml). The average diameter of the agarose microbeads was 200 μ m.

Fig. 4. Phase contrast microscope images of microencapsulated islets (A) and Immunofluorescence staining of sCR1 using anti-sCR1 antibody (J3D3 primary mAb) and Alexa 488 labeled anti-mouse antibody (B). (A) Protection effect of sCR1-agarose microbeads. Islets were incubated in 100% normal rabbit serum for the indicated time a: Islet sCR1-agarose microbeads, b: islets in agarose microbeads without sCR1, c: naked islets. Scale bars = 200 μ m. (B) a: sCR1-agarose microbead, b: agarose microbead without sCR1. Scale bars = 100 μ m.

Fig. 5. Glucose stimulation tests of naked islets and microencapsulated islets (MIs) with or without sCR1.

Fig. 6. The amount of insulin release was determined to measure β -cell lysis during islet incubation in rabbit serum for 4 days. ■: Naked islets, □: Islets in agarose microbeads without sCR1, ▨: Islets in sCR1-agarose microbeads.

Scheme 1

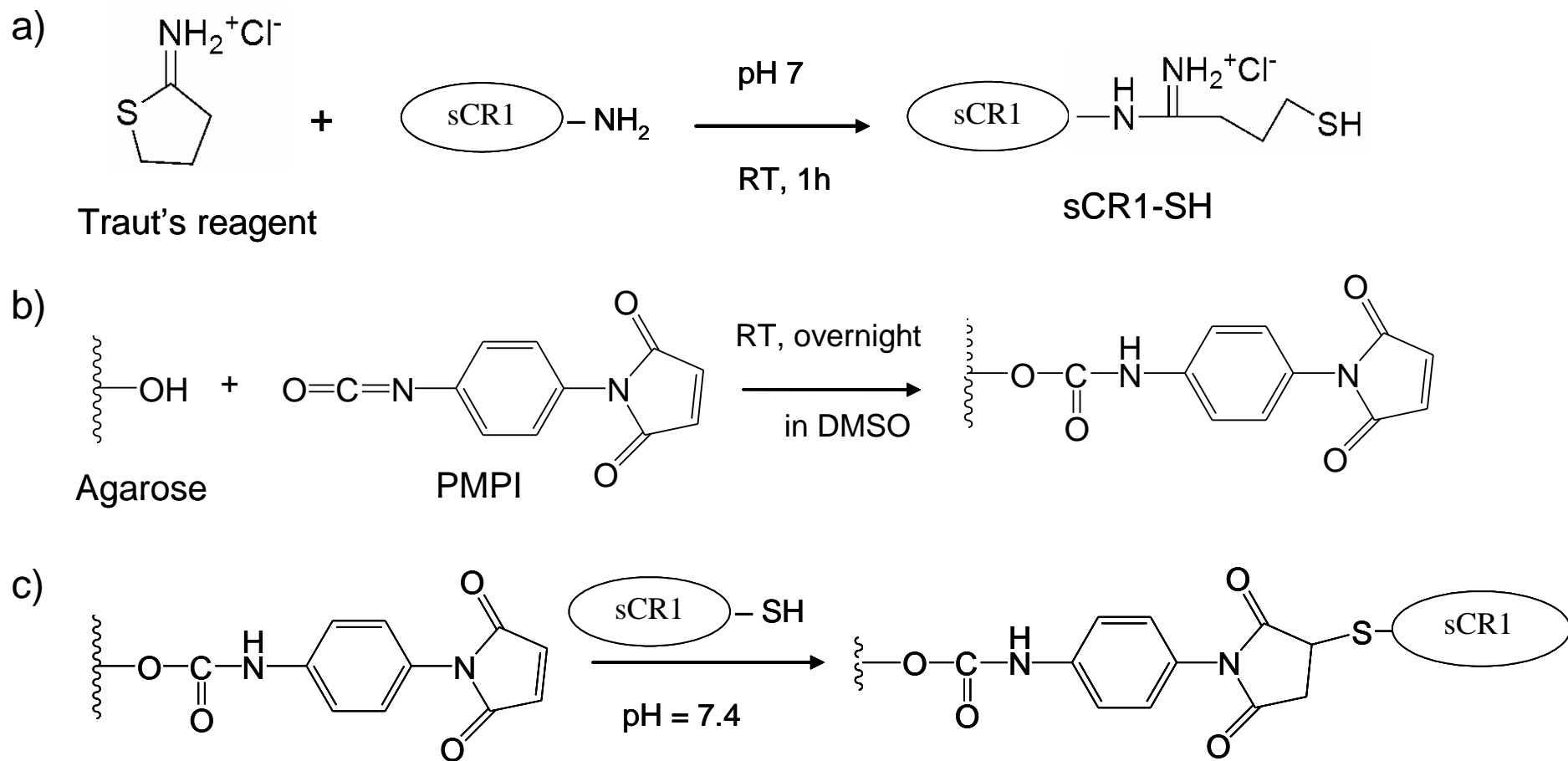


Figure 1
Figure 1 (A)

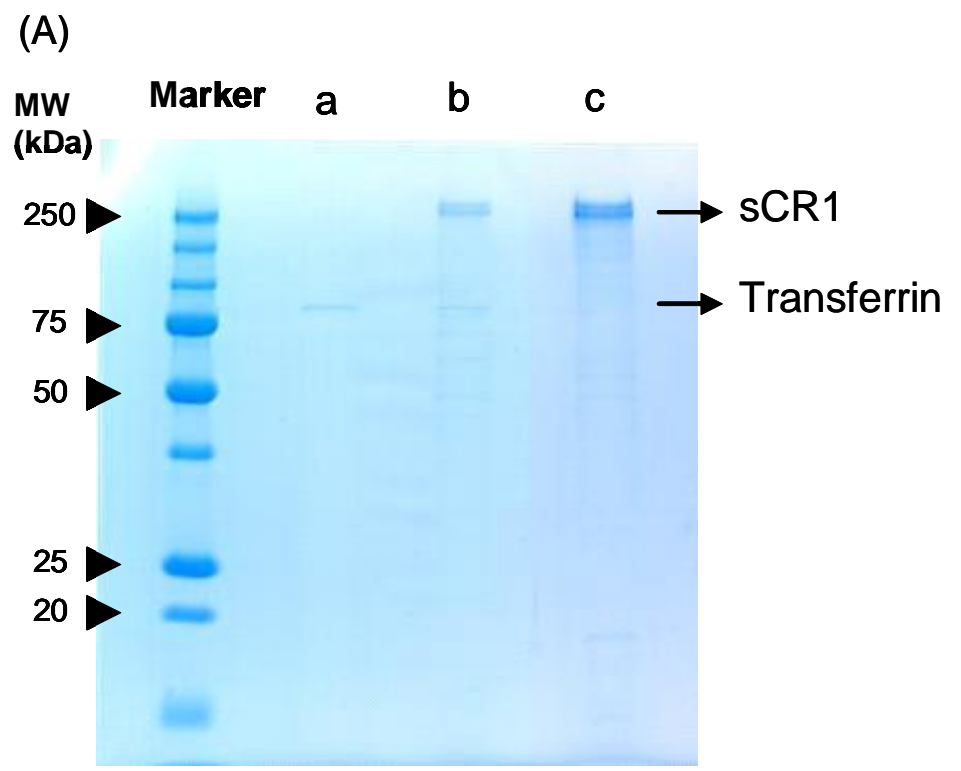


Figure 1 (B)

(B)

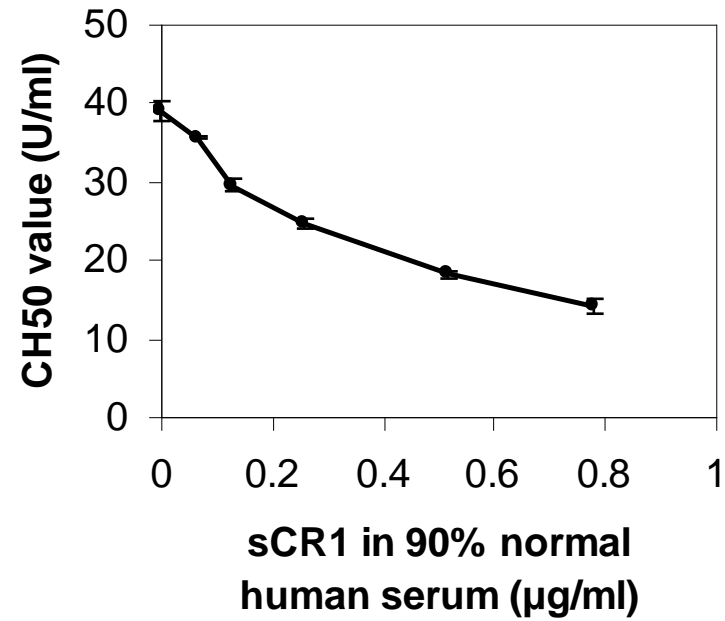


Figure 1 (C)

(C)

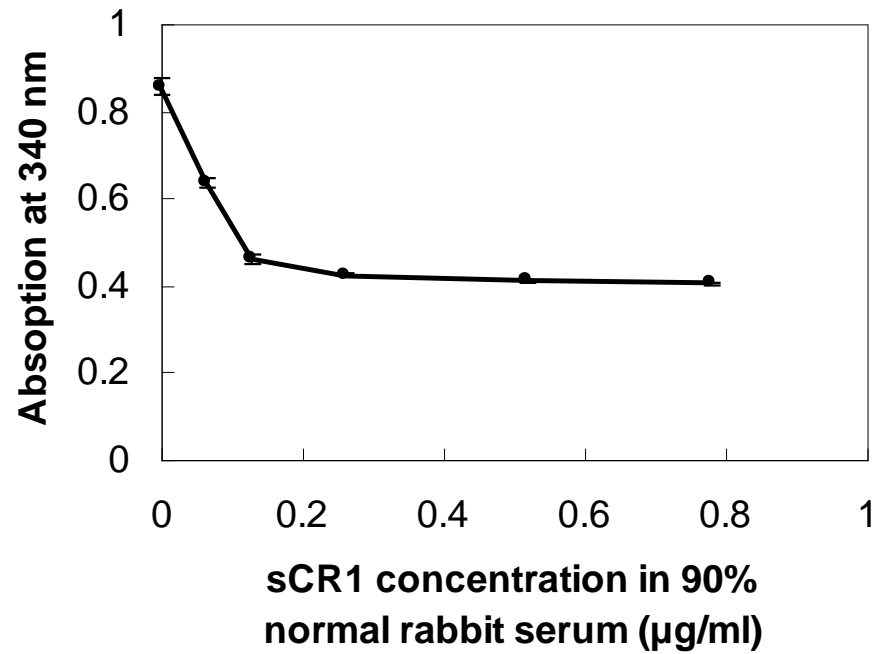


Figure 2
Figure 2.

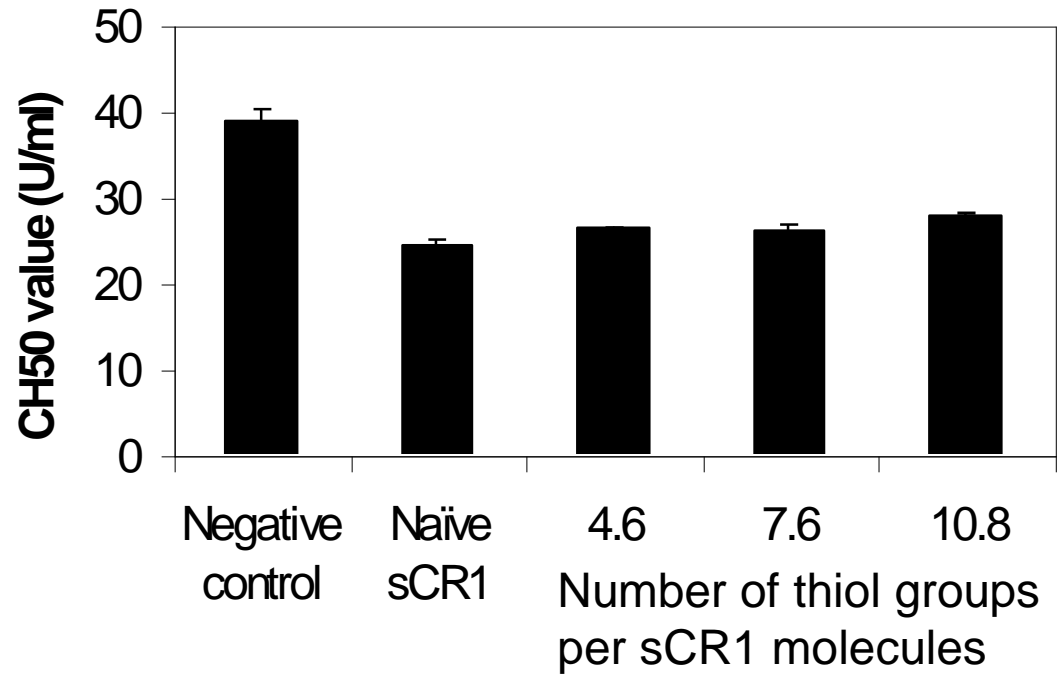


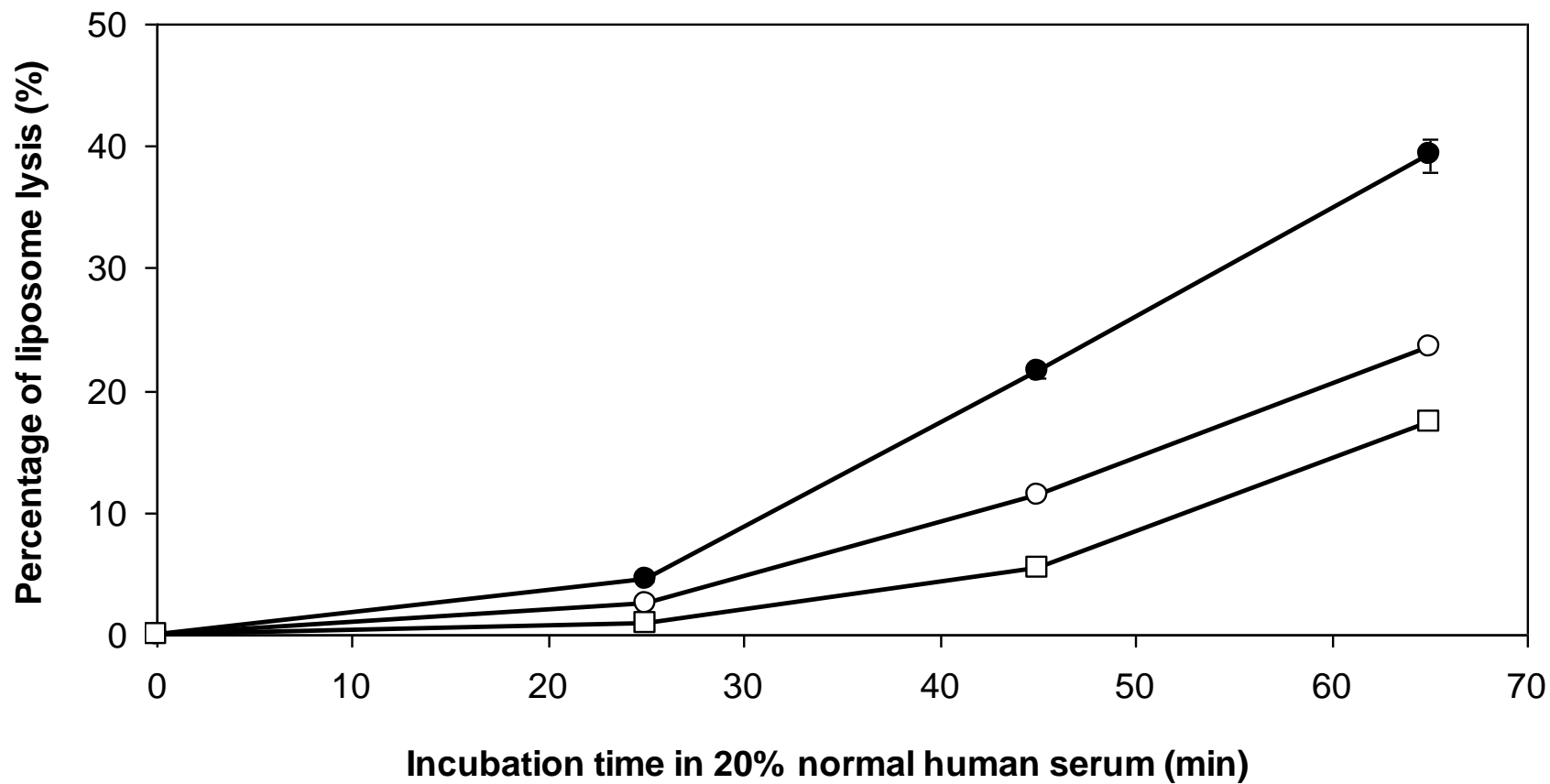
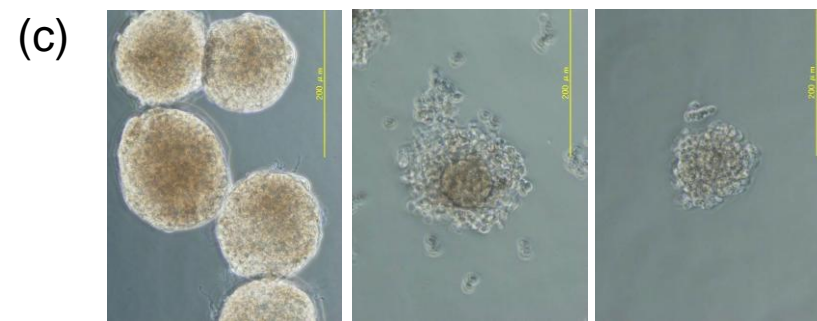
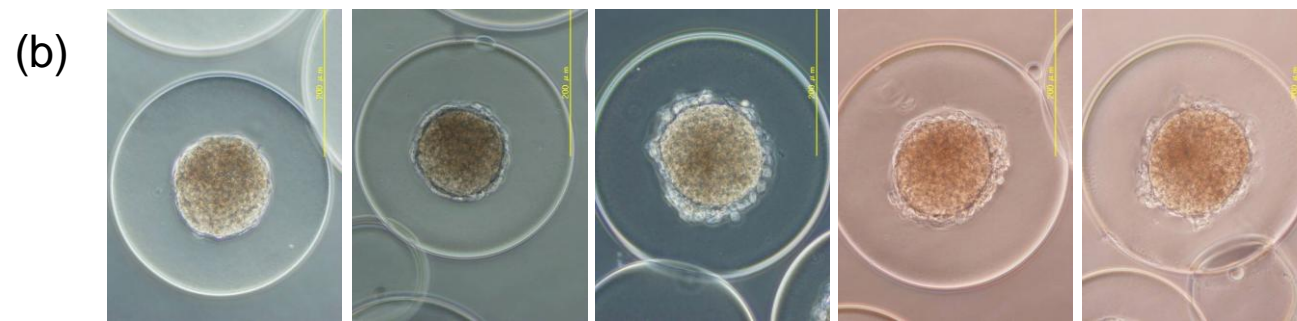
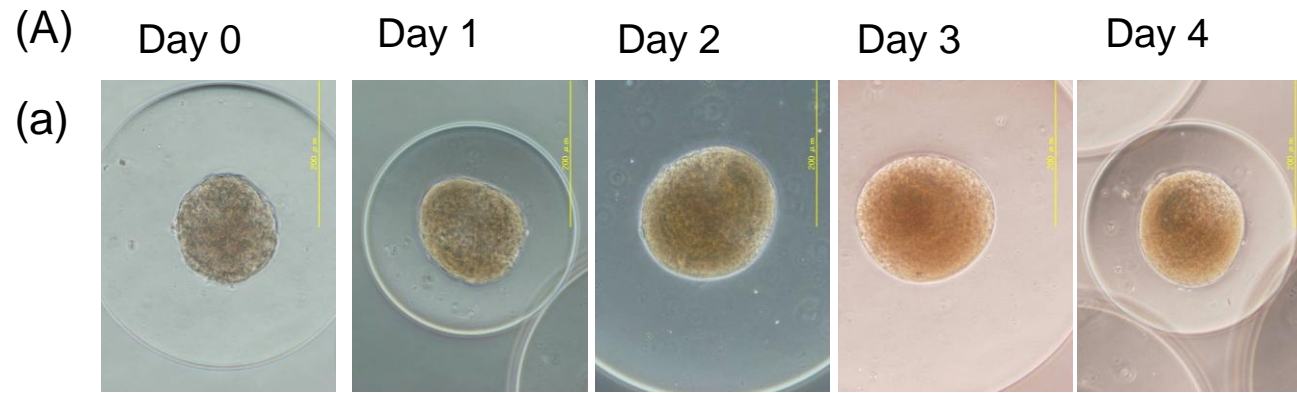
Figure 3

Figure 4



(B)

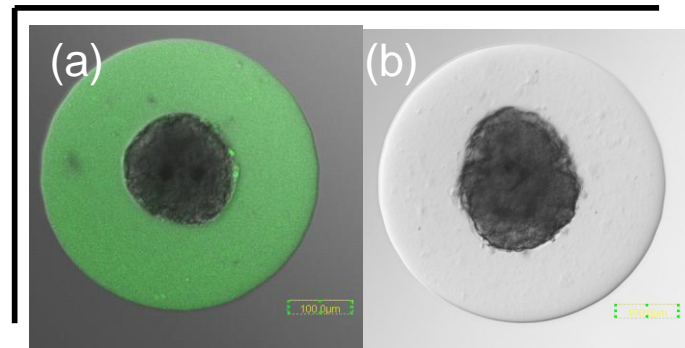


Figure 5

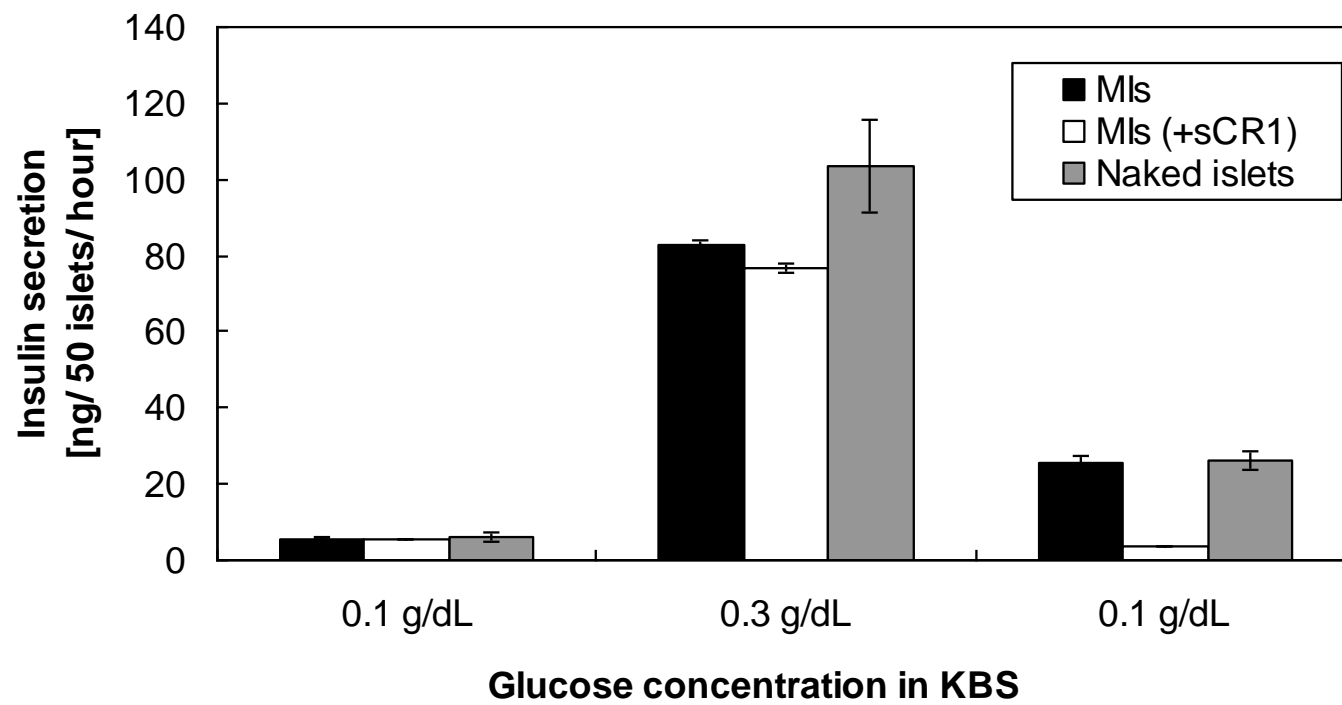
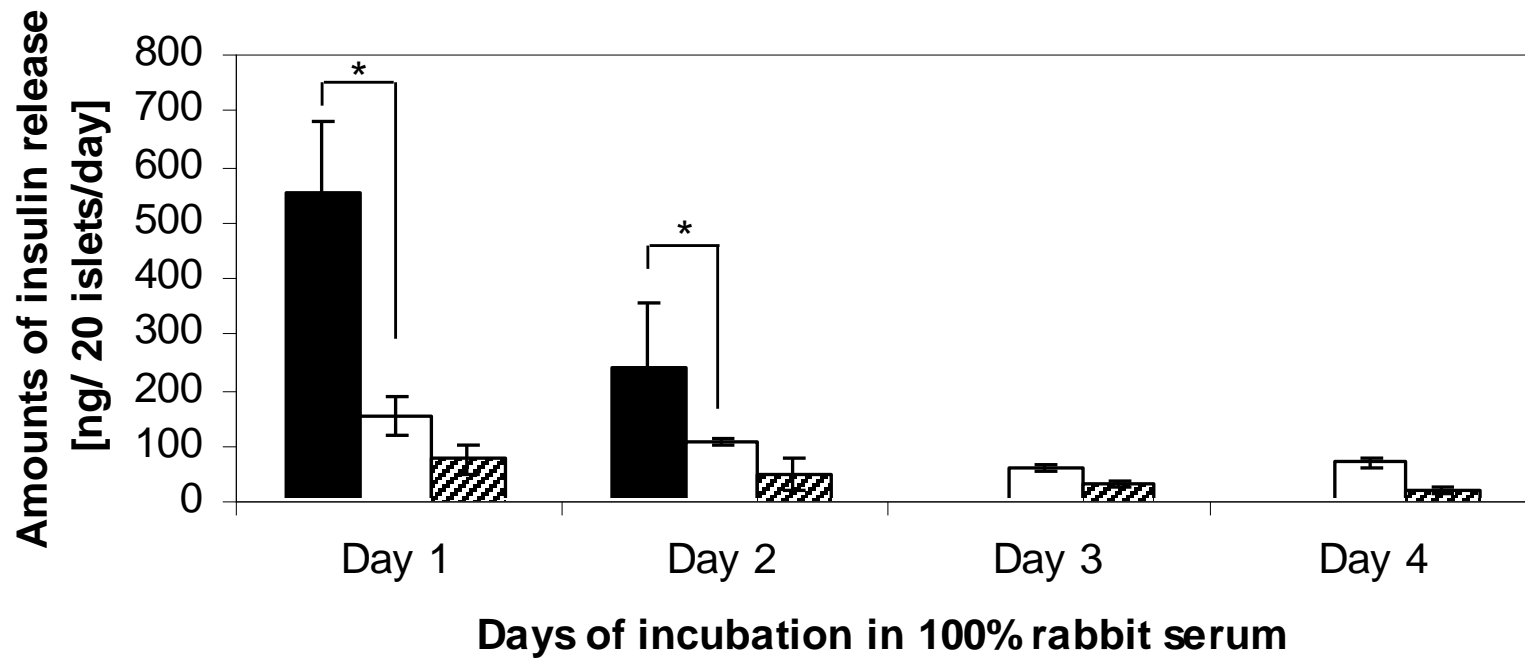


Figure 6



Immobilization of sCR1 on agarose-encapsulated islets for the prevention of complement activation

Nguyen Minh Luan^a, Yuji Teramura^b and Hiroo Iwata^{a*}

Supplemental data

Supplemental information

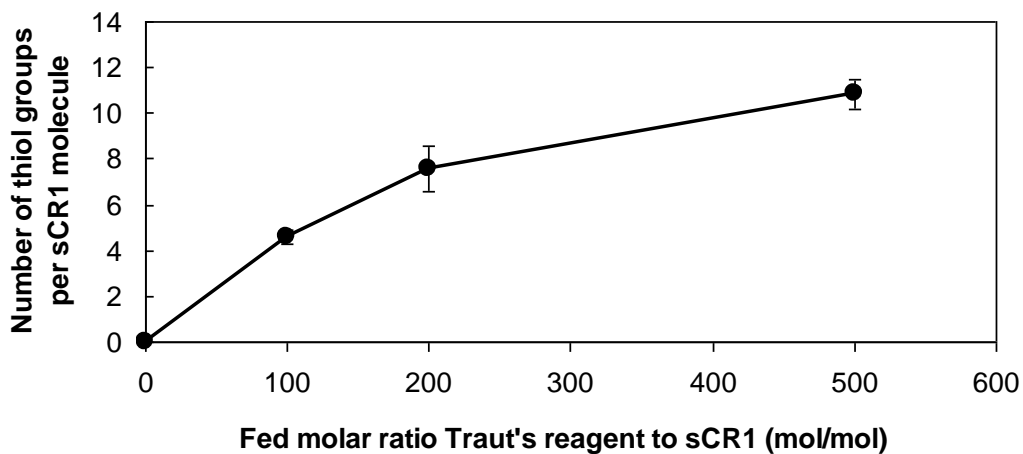
Materials

MEM Alpha (α -MEM) medium, RPMI-1640 medium, Hanks' balanced salt solution (HBSS), penicillin, and streptomycin were purchased from Invitrogen (Carlsbad, CA, USA). Fetal bovine serum (FBS) was purchased from Equitech-Bio (Kerrville, TX, USA), ASF 104 medium from Ajinomoto (Tokyo, Japan), phosphate-buffered saline (PBS) from Nissui Pharmaceutical (Tokyo, Japan), methotrexate from Sigma-Aldrich (St. Louis, MO, USA), and the micro BCA protein concentration kit from Thermo Fisher Scientific (Rockford, IL., USA). 5, 5'-Dithiobis (2-nitrobenzoic acid, Ellman's reagent), DMSO, and acetone were purchased from Nacalai Tesque (Kyoto, Japan). Ficoll was purchased from GE Healthcare Bio-Sciences AB (Uppsala, Sweden), Conray from Daichi Sankyo (Tokyo, Japan), EDTA from Dojindo (Kumamoto, Japan), Nembutal (pentobarbital) from Dainippon Sumitomo (Osaka, Japan), and cysteine from ICN Biomedical (Ohio, USA). Heparin sepharose 6B and sephadex G25 columns were purchased from GE Healthcare (Buckinghamshire, UK). SDS-PAGE materials were purchased from NAG Research Laboratories.

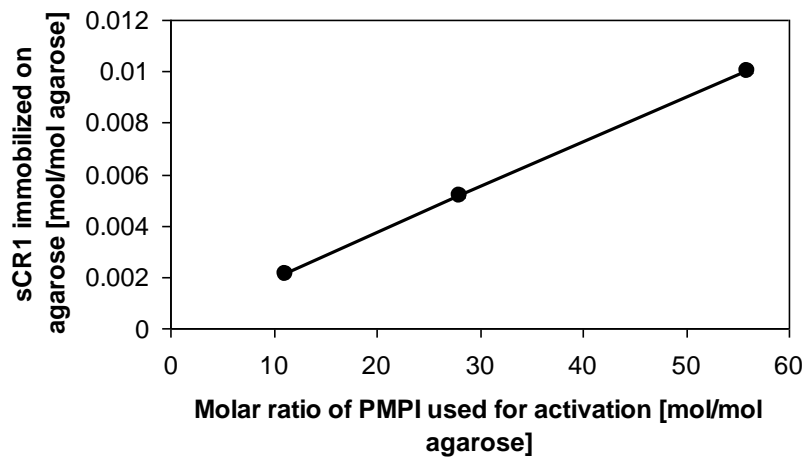
S1. Immobilization of sCR1 on agarose hydrogel

Thiol groups were introduced to sCR1 by converting amino groups with Traut's reagent. Because sCR1 has 74 lysine residues, a number of amino groups are converted to thiol groups. The number of introduced thiol groups was plotted against the molar ratio of Traut's reagent to sCR1 (S-Fig. 1). Although the number of thiol groups introduced on sCR1 increased with increasing Traut's reagent concentration, a few thiol groups were introduced even at higher molar ratios of Traut's reagent to sCR1.

Maleimide groups were introduced to agarose by PMPI. The sCR1-SH carrying 4.6 thiol groups was covalently immobilized on agarose through the thiol-maleimide reaction. The amount of immobilized sCR1 on agarose was plotted against the molar ratio of PMPI to agarose (S-Fig. 2). The amount of immobilized sCR1 increased with an increasing amount of PMPI used to modify the agarose, suggesting that sCR1 was immobilized through thiol/maleimide bonding.



S-Fig. 1. Number of thiol groups introduced per sCR1 molecule compared to the molar ratio of Traut's reagent to sCR1.



S-Fig. 2. Amount of immobilized sCR1 on agarose activated with varying amounts of PMPI. sCR1-SH carrying 4.6 thiol groups/sCR1 was used.