

The University of Maine

DigitalCommons@UMaine

Maine History Documents

Special Collections

1924

The Luther Gulick Camps

Charlotte V. Gulick

Follow this and additional works at: <https://digitalcommons.library.umaine.edu/mainehistory>



Part of the [History Commons](#)

This Monograph is brought to you for free and open access by DigitalCommons@UMaine. It has been accepted for inclusion in Maine History Documents by an authorized administrator of DigitalCommons@UMaine. For more information, please contact um.library.technical.services@maine.edu.

Between 1900 - 23



1924

The Luther Gulick Camps

Mrs. Charlotte V. Gulick*, Director

Sebago-Wohelo for girls 13 to 18

Little-Wohelo for girls 8 to 13

The Luther Gulick Camps are located on Lake Sebago, 25 miles from Portland, Maine

Post Office and Telegraph: South Casco, Maine

Express: Portland, Maine

Telephone: Webb's Mills, Line 24, Ring 3

Important---Send blankets two weeks in advance by express to Portland, Me., or parcel post to South Casco, Me., in care of The Luther Gulick Camps

Winter Address: Mrs. Charlotte V. Gulick, 122 High Street, Portland, Me., Tel. 9023

One Fee--\$400. No Extras

Camp opens Thursday, July 3; closes Thursday, August 28

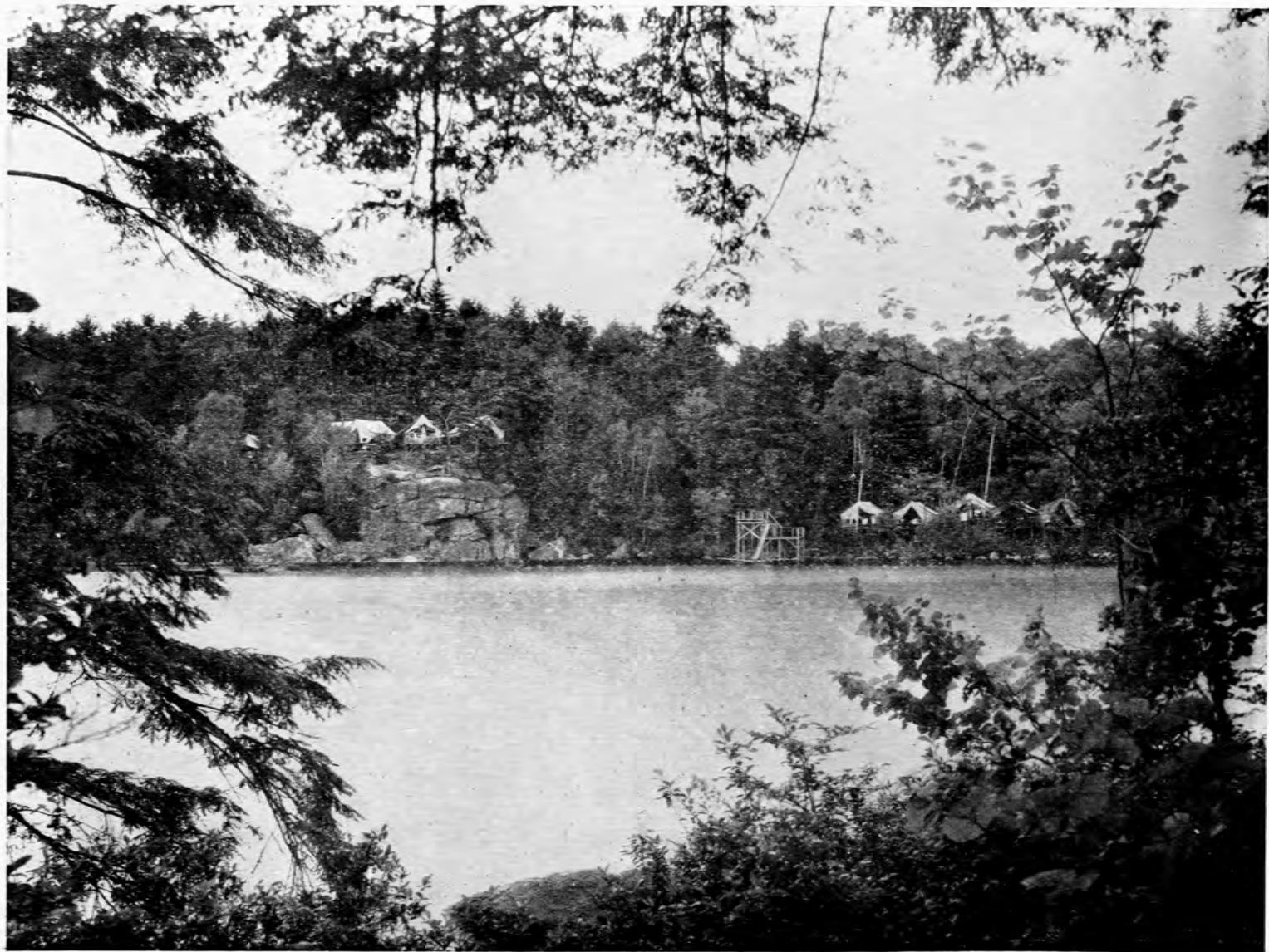
Water Sports Day, Tuesday, August 19

Annual Camp Play, Saturday, August 23

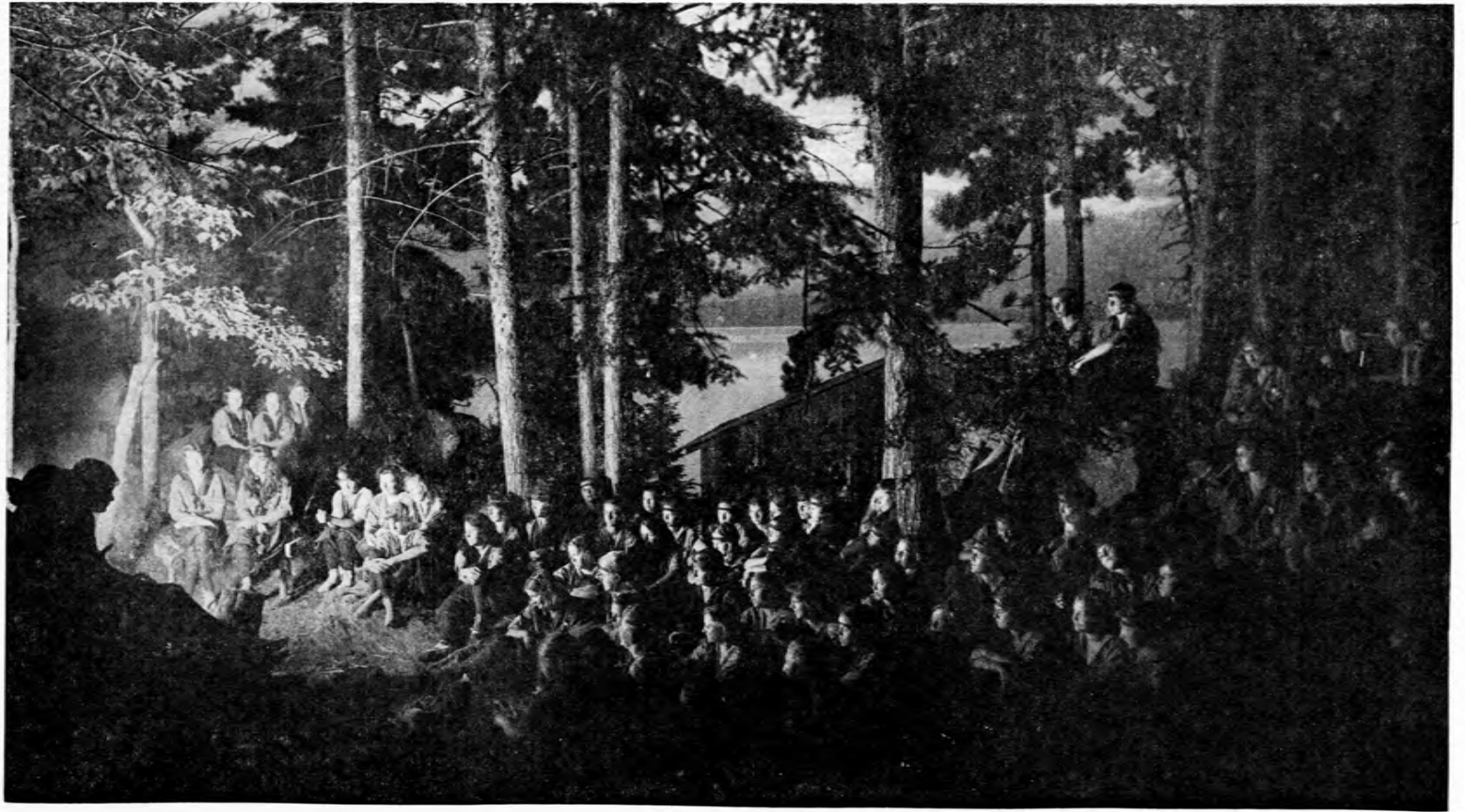
Craft Day Exhibit and Horseback Riding, Monday, August 25

Parents and friends are cordially invited to these closing exercises

**Mrs. Gulick is a member and was First President of the National Association of Directors of Girls' Camps*



One of the views of Sebago-Wohelo
The Luther Gulick Camps



The twilight hour around the camp fire
The Luther Gulick Camp



The five war canoes and their crews
The Luther Gulick Camps



A most beautiful but difficult feat in aquaplaning
The Luther Gulick Camps



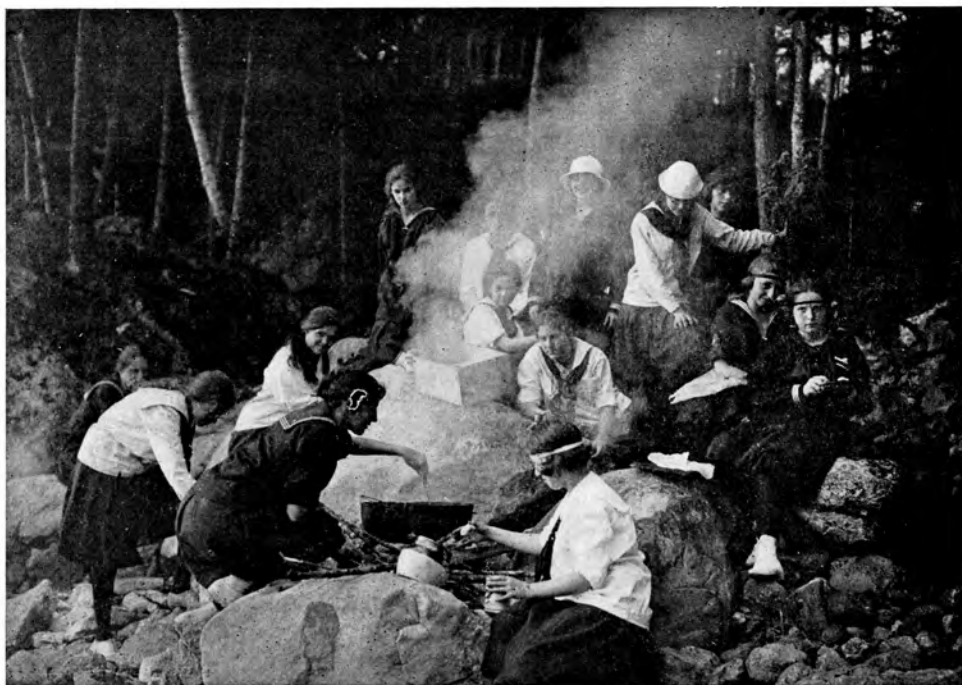
Breakfast hour after a night in the open
The Luther Gulick Camps



Water sports day and the race of the war canoes
The Luther Gulick Camps



Taking the horses for a dip in the lake
The Luther Gulick Camps



Out door cooking and gypsyng
The Luther Gulick Camps

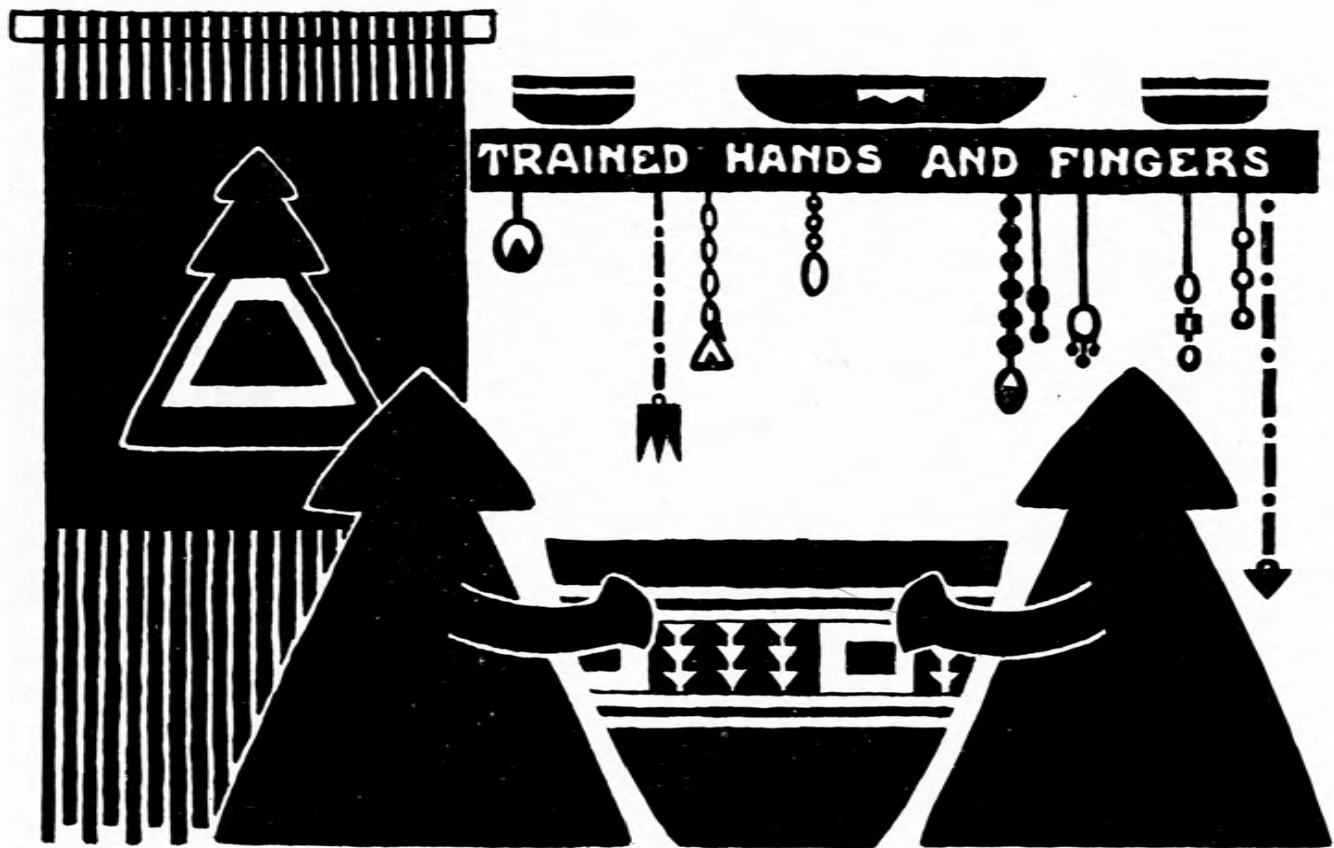


The girls invent new ways of paddling
The Luther Gulick Camps





MOUNTAIN CLIMBING





The Luther Gulick Camps



The approach through the woods to Little Wohelo
The Luther Gulick Camps



The safe, shallow beach at Little Wohelo
The Luther Gulick Camps



Dramatization of Moses in the bulrushes
The Luther Gulick Camps



Before the teens is the time to learn to love a horse
The Luther Gulick Camps



The making of marionettes is a joy to these girls
The Luther Gulick Camps



The girls of both camps arrive and leave by the lake steamer
The Luther Gulick Camps

NECESSARY OUTFIT

Two pairs of dark blue bloomers
Three white middy blouses (unbleached blouses without color trimming)
Four French Peasant blue blouses
One dark blue middy blouse (flannel)
A heavy dark blue sweater
A scarlet bathing suit
A bathing cap
Black middy Tie. Scarlet middy Tie
Six pairs black stockings
Two pairs of tennis shoes
One pair of water-tight shoes
The official riding habit
A Southwester hat
A raincoat. A navy blue tam-o-shanter
Appropriate undergarments and pajamas can be secured from outfitters.
Besides these items of wearing apparel, the girl needs only her traveling suit
One pair of woolen blankets and one army blanket
One very large rubber blanket (60" x 90")
Three pillow cases. One pillow
Three ordinary or flannelette sheets
Four bath towels
Two laundry bags
A jackknife
A flashlight
Steamer trunks or large dress-suit cases only, are allowed in camp
Trunks as well as all garments must have the owner's name
In order to have uniform color and design, all necessary outfit must be secured from our official outfitters, Camp Supplies, Inc., 52 Chauncy Street, Boston, Mass. Send to them for order and measurement blank. Early orders receive better service