

Effectiveness of Transdiagnostic Cognitive-Behavioral Psychotherapy Compared With Management as Usual for Youth With Common Mental Health Problems

A Randomized Clinical Trial

Pia Jeppesen, MD, PhD; Rasmus Trap Wolf, MSc; Sabrina M. Nielsen, MSc; Robin Christensen, MSc, PhD; Kerstin Jessica Plessen, MD, PhD; Niels Bilenberg, MD, PhD; Per Hove Thomsen, MD, DrMed; Mikael Thastum, MSc, PhD; Simon-Peter Neumer, MSc, PhD; Louise Berg Puggaard, MSc, PhD; Mette Maria Agner Pedersen, MSc; Anne Katrine Pagsberg, MD, PhD; Wendy K. Silverman, MSc, PhD; Christoph U. Correll, MD

IMPORTANCE Behavioral therapy and cognitive-behavioral therapy (CBT) programs targeting a single class of problems have not been widely implemented. The population of youths with common mental health problems is markedly undertreated.

OBJECTIVE To determine the effectiveness of a new transdiagnostic CBT program (Mind My Mind [MMM]) compared with management as usual (MAU) in youths with emotional and behavioral problems below the threshold for referral to mental health care.

DESIGN, SETTING, AND PARTICIPANTS This pragmatic, multisite, randomized clinical trial of MMM vs MAU was conducted from September 7, 2017, to August 28, 2019, including 8 weeks of postintervention follow-up, in 4 municipalities in Denmark. Consecutive help-seeking youths were randomized (1:1) to the MMM or the MAU group. Main inclusion criteria were age 6 to 16 years and anxiety, depressive symptoms, and/or behavioral disturbances as a primary problem. Data were analyzed from August 12 to October 25, 2019.

INTERVENTIONS The MMM intervention consisted of 9 to 13 weekly, individually adapted sessions of manualized CBT delivered by local psychologists. The MAU group received 2 care coordination visits to enhance usual care.

MAIN OUTCOMES AND MEASURES The primary outcome was change in mental health problems reported by parents at week 18, using the Strengths and Difficulties Questionnaire (SDQ) Impact scale (range, 0-10 points, with higher scores indicating greater severity of distress and impairment). Primary and secondary outcomes were assessed in the intention-to-treat population at week 18. Maintenance effects were assessed at week 26.

RESULTS A total of 396 youths (mean [SD] age, 10.3 [2.4] years; 206 [52.0%] boys) were randomized to MMM (n = 197) or MAU (n = 199), with primary outcome data available in 177 (89.8%) and 167 (83.9%), respectively, at 18 weeks. The SDQ Impact score decreased by 2.34 points with MMM and 1.23 with MAU, from initial scores of 4.12 and 4.21, respectively (between-group difference, 1.10 [95% CI, 0.75-1.45]; $P < .001$; Cohen $d = 0.60$). Number of responders (≥ 1 -point reduction in SDQ Impact score) was greater with MMM than with MAU (144 of 197 [73.1%] vs 93 of 199 [46.7%]; number needed to treat, 4 [95% CI, 3-6]). Secondary outcomes indicated statistically significant benefits in parent-reported changes of anxiety, depressive symptoms, daily functioning, school attendance, and the principal problem. All benefits were maintained at week 26 except for school attendance.

CONCLUSIONS AND RELEVANCE In this randomized clinical trial, the scalable transdiagnostic cognitive-behavioral intervention MMM outperformed MAU in a community setting on multiple, clinically relevant domains in youth with emotional and behavioral problems.

TRIAL REGISTRATION ClinicalTrials.gov Identifier: [NCT03535805](https://clinicaltrials.gov/ct2/show/study/NCT03535805)

JAMA Psychiatry. doi:10.1001/jamapsychiatry.2020.4045
Published online December 23, 2020.

[+ Author Audio Interview](#)

[+ Supplemental content](#)

Author Affiliations: Author affiliations are listed at the end of this article.

Corresponding Author: Pia Jeppesen, MD, PhD, Child and Adolescent Mental Health Center, Mental Health Services-Capital Region of Denmark, Research Unit, Gentofte Hospitalsvej 3A, First Floor, DK-2900 Hellerup, Denmark (pia.jeppesen@regionh.dk).

Mental health disorders constitute the largest disease burden among children and adolescents (herein referred to as youths), and 50% of mental disorders begin before 14 years of age.^{1,2} Youths with mild to moderate symptoms of anxiety, depression, or behavioral disturbances have an increased risk of adverse adult outcomes.³ Evidence suggests that cognitive-behavioral therapies (CBTs) are effective for the indicated prevention and treatment of childhood anxiety,⁴⁻⁶ depression,⁷⁻⁹ and behavioral difficulties.^{10,11} Nevertheless, access to evidence-based prevention and treatment interventions is limited, because those interventions available are rarely used routinely in clinical practice.^{12,13} This knowledge-practice gap requires bridging by pragmatic trials testing the real-world implementation of scalable interventions for common mental health problems among youths.^{12,14} The transdiagnostic Modular Approach to Therapy for Children (MATCH) targets the most common mental health problems in youth.¹⁵ Two cluster-randomized clinical trials demonstrated the benefits of the MATCH manual (Child STEPs) compared with disorder-specific CBT and/or usual care on symptoms 1 and 2 years after enrollment,^{15,16} with no effects on functioning¹⁶ but reduced auxiliary service use in treatment completers.¹⁷ However, the only individual-level randomized clinical trial (RCT) of the Child STEPs found no superiority compared with usual care.¹⁸ More research is therefore needed to investigate the feasibility and effectiveness of transdiagnostic, modular interventions for large-scale implementation of evidence-based treatments for youth.

We developed a new transdiagnostic CBT program for indicated prevention and early treatment of youth problems below the threshold for psychiatric referral. Our program (Mind My Mind [MMM]) consisted of manualized CBT with modules, worksheets, play materials, case examples, and flowcharts guiding individually adapted treatment; standardized procedures for identifying/monitoring the target problem; and education/supervision of psychologists using video observation-based feedback. A feasibility RCT (152 participants, randomized 3:1) of MMM vs management as usual (MAU) in 4 municipalities in Denmark showed acceptability and feasibility and provided data for sample size estimation.¹⁹ The present definitive RCT evaluated the effectiveness of MMM vs MAU.

We hypothesized that the parent-reported impact of mental health problems would be significantly improved for youth receiving MMM vs MAU after the 17-week intervention. The secondary objectives were comparing the effectiveness of MMM vs MAU on parent-, self-, and teacher-reported outcomes of psychopathology, daily functioning, school attendance, health-related quality of life, and potential harms at weeks 18 (after the 17-week MMM intervention) and 26.

Methods

Study Design

The MMM study was a pragmatic, open-label, analyst-masked, parallel, 2-arm, randomized clinical superiority trial of MMM vs MAU for help-seeking youths with emotional and behavioral problems. The trial was conducted in the Educa-

Key Points

Question Can a transdiagnostic modular cognitive-behavioral therapy (CBT) program outperform management as usual for youth with emotional and behavioral problems?

Findings In this randomized clinical trial of 396 youths aged 6 to 16 years, the parent-reported functional impairment was significantly reduced for youth allocated to transdiagnostic modular CBT compared with management as usual. Key secondary outcomes also indicated a broad range of benefits.

Meaning This pragmatic study adds to the growing evidence that the wide-scale implementation of transdiagnostic modular CBT in nonspecialist care settings provides timely indicated prevention and quality care for help-seeking youth.

tional-Psychological Advisory Services in 4 sociodemographically diverse municipalities in Denmark (Vordingborg, Næstved, Helsingør, and Holstebro). A copy of the trial protocol is available in [Supplement 1](#). The trial conduct was overseen by a steering committee (also acting as the data and safety monitoring board) with representatives from Danish child and adolescent mental health services, municipalities, and the non-governmental organization responsible for the program's implementation ([Supplement 1](#) and [eMethods 1 in Supplement 2](#)). The trial was approved by the scientific ethics committee, and the data management and protection complied with the European Union General Data Protection Regulation. Written informed consent signed by the legal guardians was provided for all the participants. There were no changes to trial methods after the trial commenced, and no data were analyzed before study completion and database lock. This study followed the Consolidated Standards of Reporting Trials ([CONSORT](#)) reporting guideline.

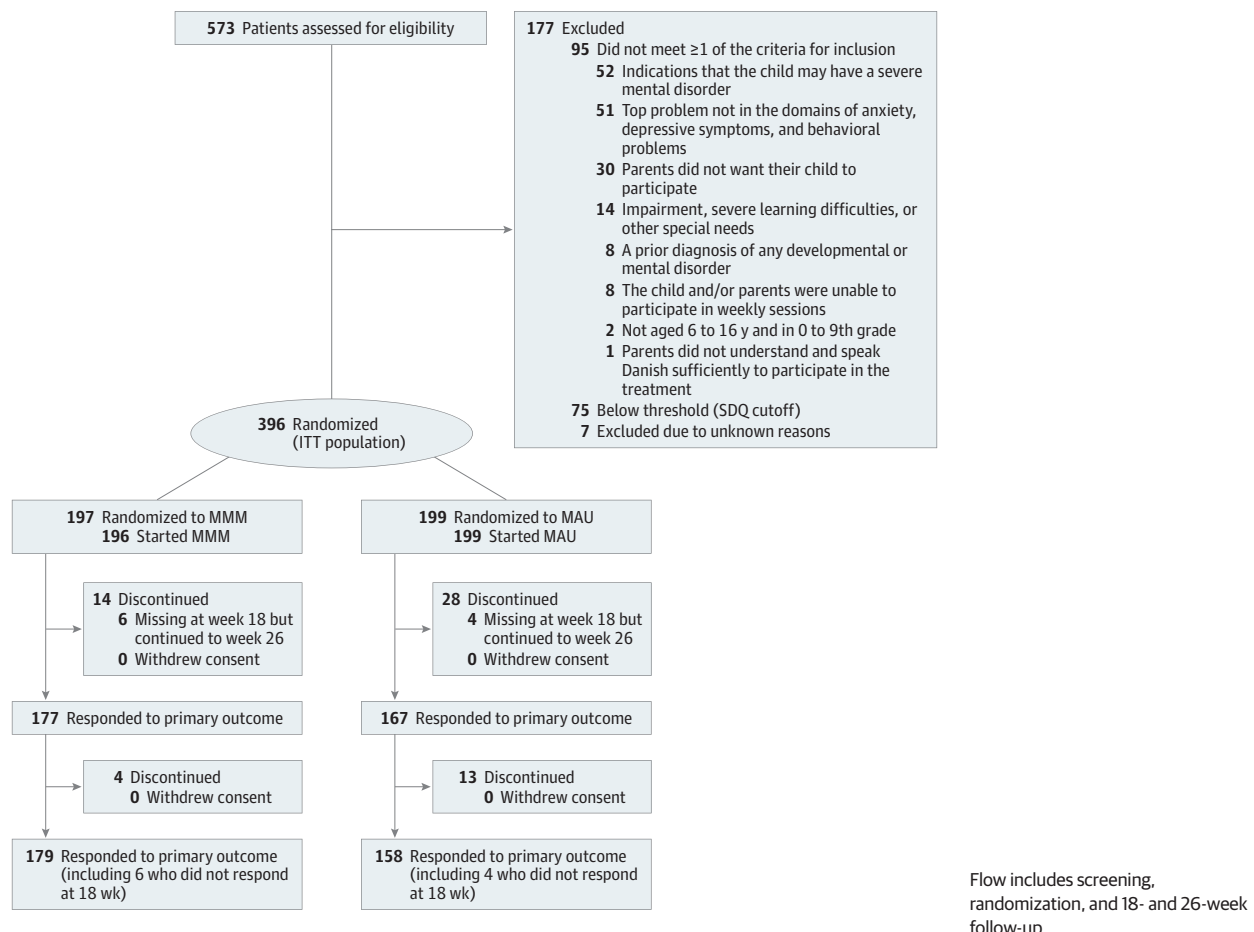
Participants

Participants were recruited with help from local teachers, school health nurses, psychologists, general practitioners, and parents. Information was published online on school intranets and municipality websites and handed to the local professionals. Youth and parents contacted the Educational-Psychological Advisory Service to sign up for assessment of eligibility. No formal referral was required.

A 2-stage standardized screening of help-seeking youths was implemented in the municipalities to identify eligible study participants. The first stage used web-based questionnaires, including the Strengths and Difficulties Questionnaire (SDQ),²⁰ and an algorithm combining parent-reported scores of emotional and behavioral problems and functional impairments to identify youth requiring care (inclusion criteria). In the second stage, youths underwent a semistructured, psychopathological interview to screen for developmental and mental disorders. Finally, the most important problem for which parents and youths wanted help was identified. This top problem was recorded using their own words,²¹ and the problem severity was scored from 1 to 10, with 10 indicating greatest severity.

Inclusion criteria consisted of (1) age of 6 to 16 years and in compulsory school; (2) anxiety symptoms, depressive symptoms, and/or behavioral disturbances as top problem; and (3)

Figure 1. CONSORT Diagram of Participant Flow Through the Trial



parent-reported SDQ Total Difficulties score of at least 14, Emotional Problems score of at least 5, and/or Conduct Problems score of at least 3, combined with an Impact score of at least 1 (ie, cutoff for 90th percentile of mental health problems in the general age-matched population).²² Exclusion criteria consisted of (1) prior clinical diagnosis of any developmental or mental disorder; (2) signs of intellectual disability or severe mental disorder, including autism-spectrum disorder, attention-deficit/hyperactivity disorder, psychotic disorder, eating disorder, obsessive-compulsive disorder, repeated self-harm, or alcohol or psychoactive drug abuse; (3) youth or parents unable to participate in weekly sessions; and (4) participation in the prior feasibility study (Supplement 1). Thus, we included help-seeking youths with emotional and behavioral problems that were above the 90th percentile in the general population of youth and still below the threshold for referral to specialized treatment in the child and adolescent mental health services.

Randomization and Masking

The participants were randomized 1:1 to MMM vs MAU via centralized, computer-generated allocation sequences with permuted block sizes, stratified by geographical region (2 strata), age (6-10 or 11-16 years), and the top problem (anxiety, depres-

sive symptoms, or behavioral problems). The Data and Documentation division in Corporate Quality-Central Denmark Region (Defactum) managed the online randomization and data-entry system and kept the person identification lists separated from the researchers. Defactum had no role in data analyses. Because of the nature of the interventions, only the evaluators and analysts were masked to group allocation.

Interventions

The MMM interventions consisting of 9 to 13 weekly sessions were developed based on a systematic literature search (eMethods 2 and 3 in Supplement 2), from which we distilled 50 CBT methods/techniques from evidence-based programs targeting anxiety, depression, or behavioral disturbances as single disorders. The methods/techniques were organized into 35 problem-specific or generic modules. Flowcharts describe the sequencing and dosing of modules depending on the top problem and possibilities for flexible adaptations to the individual co-occurring problems (eFigures 1-3 in Supplement 2). In case of behavioral problems, the main course was parent management training (ages 6-13 years) or youth training of social, communicative, and adaptive skills. All parents were engaged as coagents of change. The MMM intervention was completed within 17 weeks, followed by a booster session after 4

Table 1. Baseline Characteristics of the Participants in the ITT Population

Characteristic	Study group ^a		
	MMM (n = 197)	MAU (n = 199)	All (N = 396)
Demographic			
Girls	90 (45.7)	100 (50.3)	190 (48.0)
Age, mean (SD), y	10.3 (2.43)	10.3 (2.32)	10.3 (2.37)
Age group, y			
6-10	109 (55.3)	105 (52.8)	214 (54.0)
11-16	88 (44.7)	94 (47.2)	182 (46.0)
Region			
Holstebro-Helsingør	95 (48.2)	96 (48.2)	191 (48.2)
Vordingborg-Næstved	102 (51.8)	103 (51.8)	205 (51.8)
Principal domain of problems			
Anxiety	114 (57.9)	117 (58.8)	231 (58.3)
Depressive symptoms	31 (15.7)	33 (16.6)	64 (16.2)
Behavioral problems	52 (26.4)	49 (24.6)	101 (25.5)
Developmental delays			
Language	30 (15.2)	26 (13.1)	56 (14.1)
Any other ^b	62 (31.5)	48 (24.1)	110 (27.8)
School absenteeism >4 wk last year	33 (16.8)	39 (19.6)	72 (18.2)
No. of DSM-IV/DSM-5 mental disorders based on DAWBA			
Anxiety disorder	102 (51.8)	118 (59.3)	220 (55.6)
Depressive disorder	25 (12.7)	33 (16.6)	58 (14.6)
Behavioral disorder	50 (25.4)	47 (23.6)	97 (24.5)
Neurodevelopmental disorder	25 (12.7)	32 (16.1)	57 (14.4)
Any disorder	153 (77.7)	164 (82.4)	317 (80.1)
Comorbidity, ≥2 disorders	45 (22.8)	57 (28.6)	102 (25.8)
Physical illness (asthma, diabetes, eczema, epilepsy, other)	34 (17.3)	37 (18.6)	71 (17.9)
Living arrangement			
Both parents	126 (64.0)	122 (61.3)	248 (62.6)
Single parent	32 (16.2)	41 (20.6)	73 (18.4)
Other/reconstituted family	39 (19.8)	36 (18.1)	75 (18.9)

(continued)

weeks. The MMM training was provided by 24 psychologists (22 [91.7%] female; mean [SD] age, 39.5 [10.8] years) who were appointed by their local leader. Seventeen psychologists (70.8%) reported prior experience with nonmanualized CBT; 3 (12.5%) had a formal CBT education. The therapists received 1 week of training in the MMM treatment manual followed by weekly online individual (75%) or live group (25%) consultations with a local supervisor. The supervision processes had input from the video recordings of sessions and the online feedback from parents' and youths' top-problem scores. The therapists and their supervisors were offered three 1-day methodology courses and three 2-day booster trainings during the study period.

The youth and parents in the MAU group were offered 2 care visits to help coordinate usual care in the municipality (weeks 2 and 17). The MAU condition varied, because the youths could receive counseling, pedagogical advice, network meetings, educational support, or psychological treat-

ment of various forms, either publicly or privately funded, or no further treatment (eMethods 4 in Supplement 2).

Measures and Outcomes

Baseline assessments were performed using standardized online questionnaires to the youth, the parents, and the primary schoolteacher, including the Development and Well-being Assessment questionnaires and interviews.²³ The Development and Well-being Assessment reports were rated by senior consultants to determine mental disorders according to the DSM-IV and DSM-5.

The primary outcome was the parent-reported change in the impact of mental problems at end of treatment (week 18), using the SDQ Impact scale from the Impact supplement. The 5-item SDQ Impact scale (range, 0-10)²⁰ evaluates the impact of mental health problems on a child's distress and functioning in home life, friendships, classroom learning, and leisure activities. The SDQ Impact scale has demonstrated good

Table 1. Baseline Characteristics of the Participants in the ITT Population (continued)

Characteristic	Study group ^a		
	MMM (n = 197)	MAU (n = 199)	All (N = 396)
Parent registered as informant			
Mother	169 (85.8)	173 (86.9)	342 (86.4)
Father	28 (14.2)	26 (13.1)	54 (13.6)
Mother's highest educational level			
Elementary school (9-10 y)	11 (5.6)	15 (7.5)	26 (6.6)
High school/vocational (11-14 y)	49 (24.9)	63 (31.7)	112 (28.3)
Bachelor and above (15-17 y)	116 (58.9)	100 (50.3)	216 (54.5)
Higher education (≥17 y)	21 (10.7)	21 (10.6)	42 (10.6)
Immigration history of parents ^c			
2 Born in Denmark	182 (92.4)	176 (88.9)	358 (90.6)
1 Not born in Denmark	14 (7.1)	17 (8.6)	31 (7.8)
2 Not born in Denmark	1 (0.5)	5 (2.5)	6 (1.5)
No. of children in the household			
Index child only	23 (11.7)	23 (11.6)	46 (11.6)
2	11 (5.6)	119 (59.8)	230 (58.1)
≥3	63 (32.0)	57 (28.6)	120 (30.3)
Mother's self-reported mental health problems			
Anxiety	10 (5.1)	27 (13.6)	37 (9.3)
Depression	111 (56)	31 (15.6)	42 (10.6)
Other	15 (7.6)	26 (13.1)	41 (10.4)
Both parents had mental health problems	5 (2.5)	11 (5.5)	16 (4.0)
Primary outcome measure, mean (SD)			
SDQ Impact scale score (parent-reported) ^{c,d}	4.12 (2.34)	4.21 (2.43)	4.16 (2.39)
Key secondary outcome measures, mean (SD)			
Anxiety (SCAS score [parent-reported]) ^e	26.69 (15.65)	30.01 (15.35)	28.36 (15.57)
Depressive symptoms (MFQ score [parent-reported]) ^f	16.22 (11.46)	17.34 (11.23)	16.78 (11.34)
Level of daily functioning (WFIRS score [parent-reported]) ^g	31.13 (15.48)	31.19 (13.89)	31.16 (14.69)
School attendance (parent-reported) ^h	0.87 (0.22)	0.86 (0.22)	0.86 (0.22)
Top-problem score (parent-reported)	7.22 (1.78)	7.41 (1.74)	7.32 (1.76)
KIDSCREEN-27 score (self-reported), mean (SD), <i>t</i> value ⁱ			
Physical Well-being scale	45.58 (9.98)	43.22 (10.31)	44.40 (1.20)
Psychological Well-being scale	44.94 (10.64)	42.96 (8.40)	43.95 (9.62)
Behavioral problems (ECBI [parent-reported]), mean (SD)			
Intensity score ^j	107.33 (30.87)	107.70 (29.72)	107.52 (30.26)
Problem score ^k	11.01 (7.46)	10.97 (7.26)	10.99 (7.35)
Emotional and behavioral problems (SDQ Total Difficulties score [parent-reported]) ^l	15.99 (5.25)	16.11 (5.49) ^c	16.06 (5.36)

Abbreviations: DAWBA, Development and Well-being Assessment; ECBI, Eyberg Child Behavior Inventory; ITT, intention-to-treat; MAU, management as usual; MFQ, Mood and Feelings Questionnaire; MMM, Mind My Mind; SCAS, Spence Children's Anxiety Scale; SDQ, Strengths and Difficulties Questionnaire; WFIRS, Weiss Functional Impairment Rating Scale.

^a Unless otherwise indicated, data are expressed as number (percentage) of patients. Percentages have been rounded and may not total 100.

^b Includes motor, social communication, and learning difficulties.

^c One participant in the MAU group had missing data.

^d Scores range from 0 to 10, with higher scores indicating greater severity of distress and impairment.

^e Scores range from 0 to 114, with higher scores indicating greater severity of anxiety.

^f Scores range from 0 to 68, with higher scores indicating greater severity of depressive symptoms.

^g Scores range from 0 to 150, with higher scores indicating more functional impairment.

^h Indicates percentage of school days in the last 4 weeks (range, 0-100).

ⁱ Determined using the health-related quality of life, with 5 dimensions, of which we used the Physical Well-being and Psychological Well-being scales.

^j Scores range from 36 to 252, with higher scores indicating greater intensity of behavioral problems.

^k Scores range from 0 to 36, with higher scores indicating more behavioral problems.

^l Scores range from 0 to 40, with higher scores indicating greater severity of general psychopathology.

psychometric properties for capturing the functional impacts of emotional and behavioral problems in youths^{20,24} and for estimating the risk of concurrent and future disorder,²⁵ service use,²⁴ and impairments.²⁶

The key secondary outcomes at week 18 were changes in (1) anxiety (Spence Children's Anxiety Scale,²⁷ parent-reported), (2) depressive symptoms (Mood and Feelings Questionnaire,²⁸ parent-reported), (3) daily child functioning (Weiss Functional Impairment Rating Scale,²⁹ parent-reported), (4) school attendance (proportion of school days attended within the last 4 weeks, parent-reported), (5) top-problem score (ideographic measure, parent-reported; range, 1-10),²¹ quality of life (KIDSCREEN-27),³⁰ subscales for (6) physical well-being and (7) psychological well-being (child-reported), behavioral problems with the (8) Eyberg Child Behavior Inventory intensity score³¹ (parent-reported)

and (9) Eyberg Child Behavior Inventory problem score³¹ (parent-reported) subscales, (10) total emotional and behavioral problems (SDQ Total Difficulties scale, parent-reported),²⁰ (11) parent-reported response (SDQ Impact score reduction ≥1 point), and (12) parent-reported remission (SDQ algorithm scores below inclusion cutoff). We also explored changes in outcomes from baseline to week 26 (8 weeks after the MMM intervention's cessation) with MMM vs MAU. The exploratory outcomes included the SDQ Impact and SDQ Total Difficulties scales scored by schoolteachers, child-reported outcomes (aged 11-16 years for SDQ, aged 8-16 years for Spence Children's Anxiety Scale and Mood and Feelings Questionnaire), satisfaction, measured with the Experience of Service Questionnaire,³² and parental stress in role functioning, measured with the Parental Stress Scale.³³ All outcomes were assessed at weeks

0, 18, and 26. Moreover, the SDQ Impact scale and top problem scale were scored biweekly until week 18. The parents reported all service use.

Potential Harms

We assessed harms at weeks 18 and 26, defined by 2 binary composite scores (Supplement 1): (1) suicidality and negative cognitions (using 8 self-reported questions from the Mood and Feelings Questionnaire) and (2) poor quality of family relationships, free time, and friendships (using 9 self-reported questions from KIDSCREEN-27). For both composite scores, we applied the following rule: Harm was present if at least 1 question received a high score of 2 without an identical score at baseline. Professionals could report adverse events (without prespecified definitions) to the steering committee. Finally, all the children were followed up in Danish national registries for mortality.

Statistical Analyses

Data were analyzed from August 12 to October 25, 2019. We designed the study with 90% power to detect a minimally relevant group difference of 1.0 point on the parent-reported SDQ Impact scale. With a 2-sided $\alpha = .05$ and an SD of 2.7 (based on the feasibility trial¹⁹), follow-up data on at least 308 youths were required. We included 396 youths to allow for as much as 22% attrition, based on experiences from the feasibility trial. The primary and key secondary continuous outcomes were analyzed according to the intention-to-treat population using repeated-measures linear mixed models (ie, missing data were handled implicitly), including a factor for treatment group (2 levels) and time (9 levels), the interaction between both, and adjustments for baseline value and stratification factors.³⁴ The least-squares means with 95% CIs were estimated and subsequently converted into Cohen effect sizes for interpretation. The responder indices were analyzed using logistic regression models, including a factor for group and adjustment for stratification factors, and conservatively assuming missing data to be from nonresponders. Odds ratios with 95% CIs were estimated and converted into approximate risk ratios, and numbers needed to treat (NNT) were calculated.

To explore the results' robustness for the primary and key secondary outcomes, we performed sensitivity analyses on the per-protocol population (full data set at week 18) and on the population enrolled in the trial before and after the final trial registration was approved (ie, midway), as well as with missing data handled using multiple imputation. To explore whether the secondary outcomes were highly correlated and somewhat redundant with the primary outcome, we calculated the Spearman correlation coefficients for all change scores pairwise, in each intervention group separately.

For the exploratory outcomes, unadjusted differences in mean changes with 95% CIs were estimated for the continuous outcomes, and unadjusted risk ratios with 95% CIs were estimated for the dichotomous outcomes. All the statistical tests were performed 2-sided with $\alpha = .05$. The key secondary outcomes were analyzed in a hierarchical fixed sequence

with reporting of *P* values and claims of statistical significance until 1 of the analyses failed.³⁵ All of the analyses were performed in SAS Studio (SAS Institute, Inc) and R, version 3.6.1 (R Project for Statistical Computing), with the nlme and emmeans packages.

Results

Trial Population

As illustrated in Figure 1, from September 7, 2017, to December 18, 2018, 573 youths were screened for eligibility, and 396 were randomly assigned to MMM ($n = 197$) or MAU ($n = 199$) in the Educational-Psychological Advisory Services of 4 Danish municipalities. The baseline group characteristics were similar (Table 1). The youths' mean (SD) age was 10.3 (2.4) years; 190 (48.0%) were girls and 206 (52.0%) were boys. Anxiety was the most common top problem (231 [58.3%]), followed by behavioral problems (101 [25.5%]) and depression (64 [16.2%]). The mean (SD) parent-reported SDQ Impact score was 4.16 (2.39), corresponding to moderate impact in 4 of 5 domains. Three hundred seventeen youths (80.1%) fulfilled the diagnostic criteria for at least 1 *DSM-IV* or *DSM-5* mental disorder, and 102 (25.8%) had comorbid disorders across domains (eg, anxiety and depression).

Follow-up data for all outcomes were available by August 28, 2019. The 197 youths allocated to MMM received a mean (SD) 11.0 (2.6) therapy sessions (range, 0-13), and 175 (88.8%) received a full dose of 9 to 13 sessions. There were no significant differences in the proportion of youths who received 9 to 13 sessions among the 3 top-problem groups (104 [91.2%] of 114 with anxiety, 27 [87.1%] of 31 with depressive symptoms, and 44 [84.6%] of 52 with behavioral problems; $P = .43$) and among the 4 municipalities (34 [91.9%] of 37 in Helsingør, 50 [86.2%] of 58 in Holstebro, 51 [87.9%] of 58 in Næstved, and 40 [90.9%] of 44 in Vordingborg; $P = .80$). The therapy was provided at school or an office nearby. A post hoc examination of the correlation between the number of sessions and the primary outcome showed a significant correlation (Spearman correlation coefficient, -0.151 ; $P = .045$ [$n = 177$]), suggesting an association between number of sessions and reduction of SDQ Impact scores (eFigure 4 in Supplement 2). The 199 youths allocated to MAU received a mean (SD) of 1.6 (0.6) coordinating visits (range, 0-2; 198 received ≥ 1). By week 18, 35 MAU participants (17.6%) received individual therapy, group therapy, and/or parental training in the municipalities. None of the 396 trial participants withdrew consent; 344 participants (177 [89.8%] in MMM vs 167 [83.9%] in MAU; $P = .08$) completed the primary outcome assessment at week 18.

Outcomes

Primary Outcome

The impact of problems, measured by the parent-reported SDQ Impact scale, improved by -2.34 from 4.12 points for MMM vs -1.23 from 4.21 points for MAU (difference between groups, 1.10; 95% CI, 0.75-1.45; $P < .001$; Cohen $d = 0.60$) (Figure 2 and

Table 2). Exploratory subgroup analyses showed no moderating effects of age or geographical region on the primary outcome (eTable 10 in [Supplement 2](#)).

Secondary Outcomes

The MMM intervention was evidently superior to MAU for anxiety, depressive symptoms, daily functioning, school attendance, and the top-problem score (Table 2). Child-reported physical well-being showed no significant difference between groups (0.52; 95% CI, -1.01 to 2.04; $P = .51$), and owing to the gatekeeping rule (hierarchical testing), the remaining key secondary outcomes are reported without claiming inferential significance. All effects of MMM vs MAU were maintained at week 26 except for school attendance (effect size, 0.22; $P = .05$) (Table 3). The primary and the secondary outcomes covaried weakly or moderately (range, -0.030 to 0.585 in MMM and -0.096 to 0.581 in MAU), except for strong correlations between the 2 measures of behavioral problems (0.719 in MMM and 0.634 in MAU), indicating that the secondary outcomes added value to the primary outcome (eTables 8 and 9 in [Supplement 2](#)). Responder and remitter status were significantly higher for MMM vs MAU, including parent-reported responses (144 of 197 [73.1%] vs 93 of 199 [46.7%]; NNT, 4; 95% CI, 3-6) and parent-reported remissions (98 of 197 [49.7%] vs 56 of 199 [28.1%]; NNT, 5; 95% CI, 3-9).

Sensitivity Analyses

The inferences from all primary and key secondary outcomes of MMM vs MAU were robust, and the estimates were largely unchanged when multiple imputation was used at weeks 18 (eTable 3 in [Supplement 2](#)) and 26, except for child-reported psychological well-being (eTable 4 in [Supplement 2](#)). Likewise, all the results were robust when analyzing only participants with complete data (eTable 5 in [Supplement 2](#)) or when the trial population was split by date of trial registration (eTables 6 and 7 in [Supplement 2](#)).

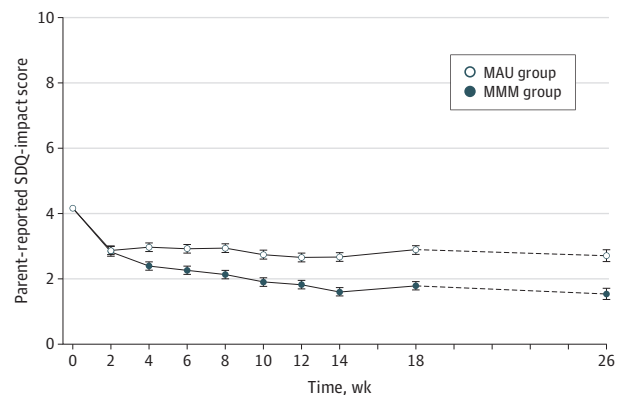
Harms

The proportion of participants with increased suicidal ideations or negative cognitions was similar in the MMM vs MAU groups by week 18 (20 of 151 [13.2%] vs 22 of 121 [18.2%]; $P = .26$) but lower by week 26 (7 of 150 [4.7%] vs 20 of 120 [16.7%]; $P = .003$). A small proportion of youth (20 of 173 [11.6%] vs 12 of 142 [8.5%] at week 18; 17 of 173 [9.8%] vs 14 of 140 [10.0%] at week 26) reported deterioration in the quality of their family relationships, free time, and friendships, apparently without group differences (eTable 1 in [Supplement 2](#)). No clinician reports of adverse effects were received during the trial, and all participants were alive beyond August 31, 2019.

Other Outcomes

The results of the exploratory outcomes supported the primary and secondary analyses, suggesting a broad range of benefits of MMM vs MAU, including reduced impact of problems in school (teacher-reported SDQ, range, 0-6), reduced parental stress in role functioning (Parental Stress Scale), and improved Experience of Service Questionnaire scores (eTable 2 in

Figure 2. Change From Baseline in Impact of Child's Mental Health Problems



Trajectory of least-squares mean scores over time for the impact of the child's mental health problems reported by the parent (Strengths and Difficulties Questionnaire [SDQ] Impact scale score) from baseline to week 18, plus the extended follow-up to week 26. Least-squares mean estimates were calculated from repeated mixed-measure models for data at 0 to 18 weeks and from analysis of covariance models for data at 26 weeks. The analyses were based on data from the intention-to-treat population. For each group, the error bars indicate the standard errors. MAU indicates management as usual; MMM, Mind My Mind intervention.

[Supplement 2](#)). The exploratory, age-restricted self-reported outcomes showed beneficial changes in the same direction as in the parent-reported outcomes, except for quality of family relations, free time, and friendships at week 18 (data overlapping with measures of potential harm), indicating nonsignificant intervention group differences in the opposite direction.

Discussion

Timely and effective interventions are urgently needed to meet the global burden of mental health disorders among youth.^{1,36} Despite existence of effective treatments, most youth with emotional/behavioral problems do not receive them.¹³ Barriers include lack of scalable programs and infrastructures for successful implementation of quality care.³⁷

Transdiagnostic approaches may facilitate the large-scale dissemination of evidence-based treatments for youth mental health problems.³⁸ In our pragmatic RCT, the transdiagnostic, modular MMM was significantly superior to MAU in the primary outcome of parent-reported impact of problems at the end of treatment (week 18), with a clinically meaningful between-group difference²² and a medium Cohen effect size of 0.60. Results were robust and consistent across several prespecified sensitivity analyses. Furthermore, most secondary and exploratory outcomes, including improvement in parent-reported youth anxieties, depressive symptoms, daily and social functioning, school attendance, and top-problem scores, showed similar superiority of MMM, as did teacher-reported impact of problems. Response (NNT, 4) and remission (NNT, 5) were significantly more likely with MMM, and most of the favorable results were sustained until week 26. Finally, levels of harms were low and

Table 2. Change From Baseline in Primary and Key Secondary Outcomes at 18 Weeks (ITT Population)^a

Outcome measure	MMM group		MAU group		Difference	P value	Effect size
	No. of participants	Measure	No. of participants	Measure			
Primary							
SDQ Impact scale score (parent-reported) ^b	197	-2.34 (0.13)	198	-1.23 (0.13)	-1.10 (-1.45 to -0.75)	<.001	-0.60
Key secondary							
Anxiety, SCAS score (parent-reported) ^c	197	-6.24 (0.66)	199	-1.34 (0.67)	-4.90 (-6.68 to -3.12)	<.001	-0.52
Depressive symptoms, MFQ score (parent-reported) ^d	197	-5.82 (0.48)	199	-2.72 (0.49)	-3.10 (-4.40 to -1.81)	<.001	-0.45
Level of daily functioning, WFIRS score (parent-reported) ^e	197	-7.56 (0.62)	199	-2.78 (0.64)	-4.78 (-6.47 to -3.10)	<.001	-0.54
School attendance (parent-reported) ^f	197	0.03 (0.01)	199	0.00 (0.01)	0.03 (0.01 to 0.06)	.009	0.26
Top-problem score (parent-reported)	197	-3.08 (0.14)	199	-1.37 (0.14)	-1.71 (-2.08 to -1.33)	<.001	-0.87
KIDSCREEN-27 score, mean (SD), t value (self-reported) ^g							
Physical Well-being scale	197	3.08 (0.54)	199	2.56 (0.59)	0.52 (-1.01 to 2.04)	.51	0.06
Psychological Well-being scale	197	2.74 (0.49)	199	1.03 (0.54)	1.71 (0.33 to 3.09)	NC	0.24
Behavioral problems, ECBI (parent-reported)							
Intensity score ^h	197	-13.68 (0.97)	199	-6.47 (1.00)	-7.20 (-9.84 to -4.56)	NC	-0.52
Problem score ⁱ	197	-3.62 (0.27)	199	-2.30 (0.28)	-1.32 (-2.05 to -0.59)	NC	-0.34
Emotional and behavioral problems, SDQ Total Difficulties score (parent-reported) ^j	197	-4.07 (0.24)	198	-1.93 (0.25)	-2.14 (-2.79 to -1.48)	NC	-0.62
Responder indices, No. (%) (parent-reported)							
SDQ Impact scale score ≥1-point reduction from baseline	197	144 (73.1)	199	93 (46.7)	3.15 (2.06 to 4.81)	NC	1.58
SDQ scores below inclusion cutoff ^k	197	98 (49.7)	199	56 (28.1)	2.59 (1.70 to 3.95)	NC	1.80

Abbreviations: ECBI, Eyberg Child Behavior Inventory; ITT, intention-to-treat; MAU, management as usual; MFQ, Mood and Feelings Questionnaire; MMM, Mind My Mind; NC, not calculated; SCAS, Spence Children's Anxiety Scale; SDQ, Strengths and Difficulties Questionnaire; WFIRS, Weiss Functional Impairment Rating Scale.

^a Data presented as least-squares means (with standard error) unless otherwise stated. The differences between groups are the difference in least-squares means (95% CI) for the continuous outcomes and odds ratios (95% CI) for the dichotomous outcomes. The effect sizes are standardized mean differences for continuous outcomes and risk ratios for dichotomous outcomes.

^b Scores range from 0 to 10, with higher scores indicating greater severity of distress and impairment.

^c Scores range from 0 to 114, with higher scores indicating greater severity of anxiety.

^d Scores range from 0 to 68, with higher scores indicating greater severity of depressive symptoms.

^e Scores range from 0 to 150, with higher scores indicating more functional impairment.

^f Indicates percentage of school days in the last 4 weeks (range, 0-100).

^g Determined using health-related quality of life with 5 dimensions, of which we used the Physical Well-being and Psychological Well-being scales.

^h Scores range from 36 to 252, with higher scores indicating greater intensity of behavioral problems.

ⁱ Scores range from 0 to 36, with higher scores indicating more behavioral problems.

^j Scores range from 0 to 40, with higher scores indicating greater severity of general psychopathology.

^k Indicates parent-reported SDQ Total Difficulties score of at least 14, Emotional Problems score of at least 5, and/or Conduct Problems score of at least 3, combined with an SDQ Impact score of at least 1.

nondifferential by the end of treatment but were significantly lower with MMM vs MAU by week 26. The lack of effect on self-reported physical health suggests specificity of benefits for psychological mental health.

The NNT of 4 for response compares well with the estimated NNT of 3 for anxiety-specific CBT vs a wait list control condition. The weak or moderate correlations of the primary and secondary outcomes confirmed that these measures mapped into distinct yet partly overlapping outcome domains.

Our results indicate real-life benefits of the implementation of a transdiagnostic and modular CBT in a nonspecialist setting under the hallmark conditions of a pragmatic trial. Of note is an important treatment-development difference between MMM and MATCH, which has shown benefits in the Child STEPs program.^{15,18} The MMM intervention was

developed for use in nonspecialized, school-based care settings and MATCH, for use in community mental health care settings. Moreover, the psychologists in MMM had limited prior experience with CBT and manualized psychotherapy, and yet the help-seeking individuals presented with anxiety, depressive symptoms, and/or behavioral problems above the diagnostic threshold in most of the cases.

The beneficial effects of the transdiagnostic approach in MMM may depend on the implementation model, which involved an infrastructure for managing self-referrals, visitation, monitoring of activities and outcomes, user feedback for personalized treatment, video-recorded sessions, and online supervision. Shared infrastructure has been identified as a key to coordinating community-based youth services.³⁹ Our results contrasted the null effects in a recent pragmatic RCT of

Table 3. Exploratory Outcomes: Change From Baseline at 26 Weeks (ITT Population)^a

Outcome measure	MMM group		MAU group		Difference	Effect size
	No. of participants	Measure	No. of participants	Measure		
Primary						
SDQ Impact scale score (parent-reported) ^b	179	-2.54 (2.31)	157	-1.34 (2.69)	-1.20 (-1.74 to -0.66)	-0.48
Key secondary						
Anxiety, SCAS score (parent-reported) ^c	178	-8.19 (13.43)	157	-1.37 (12.62)	-6.82 (-9.63 to -4.01)	-0.52
Depressive symptoms, MFQ score (parent-reported) ^d	178	-8.01 (10.03)	156	-3.58 (10.67)	-4.43 (-6.66 to -2.20)	-0.43
Level of daily functioning, WFIRS score (parent-reported) ^e	178	-9.12 (13.78)	155	-4.08 (12.56)	-5.04 (-7.90 to -2.18)	-0.38
School attendance (parent-reported) ^f	170	0.06 (0.23)	148	0.01 (0.18)	0.04 (-0.00 to 0.09)	0.22
Top-problem score (parent-reported)	179	-3.30 (2.49)	158	-1.80 (2.39)	-1.50 (-2.03 to -0.98)	-0.62
KIDSCREEN-27 score, mean (SD), t value (self-reported) ^g						
Physical Well-being scale	172	4.45 (10.49)	140	3.52 (10.17)	0.92 (-1.39 to 3.24)	0.09
Psychological Well-being scale	173	4.96 (9.64)	140	2.55 (10.37)	2.41 (0.18 to 4.64)	0.24
Behavioral problems, ECBI (parent-reported)						
Intensity score ^h	178	-18.04 (22.78)	155	-9.37 (19.53)	-8.67 (-13.28 to -4.06)	-0.41
Problem score ⁱ	178	-4.95 (6.11)	155	-2.86 (4.98)	-2.09 (-3.29 to -0.89)	-0.37
Emotional and behavioral problems, SDQ Total Difficulties score (parent-reported) ^j	179	-5.20 (5.23)	157	-2.73 (5.27)	-2.47 (-3.60 to -1.34)	-0.47
Responder indices, No. (%) (parent-reported)						
SDQ Impact scale score ≥1-point reduction from baseline	197	147 (75)	199	97 (49)	1.53 (1.30 to 1.80)	1.53
SDQ scores below inclusion cutoff ^k	197	115 (58)	199	62 (31)	1.87 (1.48 to 2.38)	1.87

Abbreviations: ECBI, Eyberg Child Behavior Inventory; ITT, intention-to-treat; MAU, management as usual; MFQ, Mood and Feelings Questionnaire; MMM, Mind My Mind; SCAS, Spence Children's Anxiety Scale; SDQ, Strengths and Difficulties Questionnaire; WFIRS, Weiss Functional Impairment Rating Scale.

^a Data are presented as mean (SD) unless otherwise stated. Differences between groups are unadjusted differences in mean changes with corresponding 95% CI for continuous outcomes; for dichotomous outcomes, differences are estimated as unadjusted risk ratios with corresponding 95% CI. Missing data are conservatively assumed to be nonresponders. Effect sizes are calculated as Cohen standardized mean difference for continuous outcomes and risk ratios for dichotomous outcomes. The group difference and effect size are identical for dichotomous outcomes (ie, both reported as risk ratios).

^b Scores range from 0 to 10, with higher scores indicating greater severity of distress and impairment.

^c Scores range from 0 to 114, with higher scores indicating greater severity of anxiety.

^d Scores range from 0 to 68, with higher scores indicating greater severity of

depressive symptoms.

^e Scores range from 0 to 150, with higher scores indicating greater functional impairment.

^f Indicates percentage of school days in the last 4 weeks (range, 0-100).

^g Determined using health-related quality of life with 5 dimensions, of which we used the Physical Well-being and Psychological Well-being scales

^h Scores range from 36 to 252, with higher scores indicating greater intensity of behavioral problems.

ⁱ Scores range from 0 to 36, with higher scores indicating more behavioral problems.

^j Scores range from 0 to 40, with higher scores indicating greater severity of general psychopathology.

^k Indicates parent-reported SDQ Total Difficulties score of at least 14, Emotional Problems score of at least 5, and/or Conduct Problems score of at least 3, combined with an Impact scale score of at least 1.

transdiagnostic, modular CBT vs usual care¹⁸ using low-intensity supervision.

Strengths and Limitations

Our study has several strengths, including a large sample size; standardized assessments; low attrition; parent-, teacher-, and child-reported outcomes; blinded evaluators; and intention-to-treat analyses. Limitations include nonvalidated measures of harms, age restrictions for child-reported outcomes, and no blinding of participants and therapists. The parents reported limited treatment activity in the MAU group, reflecting real-world treatment conditions.

Conclusions

This pragmatic RCT demonstrated superiority of MMM vs MAU in the community, supporting the large-scale dissemination of flexible, modular CBT programs in nonspecialist settings for youth with common emotional and/or behavioral problems. Future research should establish medium- and long-term benefits and costs of the MMM model and include clinician observations.

ARTICLE INFORMATION

Accepted for Publication: October 17, 2020.

Published Online: December 23, 2020.
doi:10.1001/jamapsychiatry.2020.4045

Open Access: This is an open access article distributed under the terms of the CC-BY License. © 2020 Jeppesen P et al. *JAMA Psychiatry*.

Author Affiliations: Child and Adolescent Mental Health Centre, Mental Health Services–Capital Region of Denmark, Copenhagen, Denmark (Jeppesen, Wolf, Plessen, Puggaard, Agner Pedersen, Pagsberg); Department of Clinical Medicine, Faculty of Health and Medical Sciences, University of Copenhagen, Copenhagen, Denmark (Jeppesen, Pagsberg); Danish Centre for Health Economics, Department of Public Health, University of Southern Denmark, Odense (Wolf); Musculoskeletal Statistics Unit, Parker Institute, Bispebjerg and Frederiksberg Hospital, University of Copenhagen, Copenhagen, Denmark (Nielsen, Christensen); Research Unit of Rheumatology, Department of Clinical Research, University of Southern Denmark, Odense University Hospital, Odense, Denmark (Nielsen, Christensen); Division of Child and Adolescent Psychiatry, Department of Psychiatry, Lausanne University Hospital, Lausanne, Switzerland (Plessen); Department for Child and Adolescent Psychiatry, Mental Health Services in the Region of Southern Denmark, Odense, Denmark (Bilenberg); Department of Clinical Research, University of Southern Denmark, Odense, Denmark (Bilenberg); Research Center at the Department for Child- and Adolescent Psychiatry, Aarhus University Hospital, Skejby, Denmark (Thomsen); Institute of Clinical Medicine, Aarhus University, Aarhus, Denmark (Thomsen); Centre for the Psychological Treatment of Children and Adolescents, Department of Psychology and Behavioural Sciences, Aarhus School of Business and Social Sciences, Aarhus University, Aarhus, Denmark (Thastum); Centre for Child and Adolescent Mental Health, Oslo, Norway (Neumer); Centre for Child and Youth Mental Health and Child Welfare, The Arctic University of Norway, North Norway (RKB North), Tromsø, Denmark (Neumer); Anxiety and Mood Disorders Program, Yale Child Study Center, Yale University School of Medicine, New Haven, Connecticut (Silverman); Donald and Barbara Zucker School of Medicine at Hofstra/Northwell, Department of Psychiatry and Molecular Medicine, Hempstead, New York (Correll); Department of Psychiatry, The Zucker Hillside Hospital, Glen Oaks, New York (Correll); Center for Psychiatric Neuroscience, Feinstein Institute for Medical Research, Manhasset, New York (Correll); Department of Child and Adolescent Psychiatry, Charité Universitätsmedizin, Berlin, Germany (Correll).

Author Contributions: Dr Jeppesen had full access to all the data in the study and takes responsibility for the integrity of the data and the accuracy of the data analysis.

Concept and design: Jeppesen, Wolf, Plessen, Bilenberg, Thomsen, Thastum, Neumer, Pagsberg, Silverman, Correll.

Acquisition, analysis, or interpretation of data: Jeppesen, Wolf, Nielsen, Christensen, Bilenberg, Thomsen, Thastum, Neumer, Puggaard, Agner Pedersen, Pagsberg, Correll.

Drafting of the manuscript: Jeppesen, Christensen, Neumer.

Critical revision of the manuscript for important intellectual content: Jeppesen, Wolf, Nielsen, Plessen, Bilenberg, Thomsen, Thastum, Neumer, Puggaard, Agner Pedersen, Pagsberg, Silverman, Correll.

Statistical analysis: Jeppesen, Nielsen, Christensen.

Obtained funding: Jeppesen.

Administrative, technical, or material support: Jeppesen, Wolf, Christensen, Plessen, Bilenberg,

Puggaard, Pagsberg.
Supervision: Jeppesen, Bilenberg, Thomsen, Neumer, Correll.

Conflict of Interest Disclosures: Dr Jeppesen reported receiving grants from the TrygFonden and Lundbeckfonden. Dr Christensen reported receiving support from core grant OCAV-18-774-OFIL from the Oak Foundation for the Musculoskeletal Statistics Unit, the Parker Institute, Bispebjerg, and Frederiksberg Hospital. Dr Plessen reported receiving grants from TrygFonden during the conduct of the study. Dr Bilenberg reported receiving grants from Novo Nordisk A/G and TrygFonden other project outside the submitted work. Dr Thomsen reported receiving personal fees from TrygFonden for attending steering committee meetings during the conduct of the study, speakers' fees from Medice and Shire plc, and textbook royalties from FADL's Forlag outside the submitted work. Prof Thastum reported receiving funding from the TrygFonden and honoraria from Dafolo A/S within the last 3 years. Mr Neumer reported receiving personal fees from TrygFonden via Psykiatrifonden outside the submitted work. Dr Pagsberg reported receiving funding from the TrygFonden, Novo Nordisk Foundation, Læge Sofus Carl Emil Friis og hustru Olga Doris Friis' scholarship, and the Capital Region Mental Health Services Research Fund. Dr Correll reported receiving personal fees from Alkermes plc, Allergan plc, Angelini Pharma, Gedeon Richter, Gerson Lehrman Group, Intra-Cellular Therapies, Inc, Janssen Pharmaceutica/Johnson & Johnson, LB Pharma International BV, H Lundbeck A/S, MedAvante-ProPhase, Medscape, Neurocrine Biosciences, Noven Pharmaceuticals, Inc, Otsuka Pharmaceutical Co, Inc, Pfizer, Inc, Recordati, Rovi, Sumitomo Dainippon Pharma, Sunovion Pharmaceuticals, Inc, Supernus Pharmaceuticals, Inc, Takeda Pharmaceutical Company Limited, Teva Pharmaceuticals, Acadia Pharmaceuticals, Inc, Axsome Therapeutics, Inc, Indivior, Merck & Co, Mylan NV, MedInCell, and Karuna Therapeutics and grants from Janssen Pharmaceutica, Takeda Pharmaceutical Company Limited, Berlin Institute of Health, the National Institute of Mental Health, Patient Centered Outcomes Research Institute, and the Thrasher Foundation outside the submitted work; receiving royalties from UpToDate; and holding stock options in LB Pharma. No other disclosures were reported.

Funding/Support: The Mind My Mind project was initiated by Psykiatrifonden and sponsored through unrestricted grants from the Danish TrygFonden and the Lundbeckfonden.

Role of the Funder/Sponsor: The sponsors had no role in the design and conduct of the study; collection, management, analysis, and interpretation of the data; preparation, review, or approval of the manuscript; and decision to submit the manuscript for publication.

Data Sharing Statement: See Supplement 3.

Additional Contributions: Lisbeth Jørgensen, Kristian Bech Arendt, and Christina Magni Kjerholt developed and wrote the transdiagnostic Mind My Mind manual and taught the therapists and supervisors. Birthe Wielandt Houe served as project manager at Psykiatrifonden. We thank all the leaders, psychologists and employees in the Educational-Psychological Advisory Services in Vordingborg, Næstved, Helsingør and Holstebro, and the leaders and psychologists in the Child and

Adolescent Mental Health Centers in Region Zealand, Central Denmark Region, and Capital Region of Denmark. We also thank the many children, adolescents, and parents for their study participation.

Additional Information: The project was performed through close collaboration among the project manager, the principal investigator (Dr Jeppesen), the participating municipalities, and the regional child and adolescent mental health centers. Psykiatrifonden held the legal responsibility as the data controller for the Web-based data collection. The independent research was performed in the Research Unit of the Child and Adolescent Mental Health Centre–Capital Region of Denmark.

REFERENCES

- Patel V, Saxena S, Lund C, et al. The Lancet commission on global mental health and sustainable development. *Lancet*. 2018;392(10157):1553-1598. doi:10.1016/S0140-6736(18)31612-X
- Kessler RC, Berglund P, Demler O, Jin R, Merikangas KR, Walters EE. Lifetime prevalence and age-of-onset distributions of DSM-IV disorders in the National Comorbidity Survey Replication. *Arch Gen Psychiatry*. 2005;62(6):593-602. doi:10.1001/archpsyc.62.6.593
- Copeland WE, Wolke D, Shanahan L, Costello EJ. Adult functional outcomes of common childhood psychiatric problems: a prospective, longitudinal study. *JAMA Psychiatry*. 2015;72(9):892-899. doi:10.1001/jamapsychiatry.2015.0730
- James AC, Reardon T, Soler A, James G, Cresswell C. Cognitive behavioural therapy for anxiety disorders in children and adolescents. *Cochrane Database Syst Rev*. doi:10.1002/14651858.CD013162
- Schwartz C, Barican JL, Yung D, Zheng Y, Waddell C. Six decades of preventing and treating childhood anxiety disorders: a systematic review and meta-analysis to inform policy and practice. *Evid Based Ment Health*. 2019;22(3):103-110. doi:10.1136/ebmental-2019-300096
- Zhou X, Zhang Y, Furukawa TA, et al. Different types and acceptability of psychotherapies for acute anxiety disorders in children and adolescents: a network meta-analysis. *JAMA Psychiatry*. 2019;76(1):41-50. doi:10.1001/jamapsychiatry.2018.3070
- Zhou X, Hetrick SE, Cuijpers P, et al. Comparative efficacy and acceptability of psychotherapies for depression in children and adolescents: a systematic review and network meta-analysis. *World Psychiatry*. 2015;14(2):207-222. doi:10.1002/wps.20217
- Hetrick SE, Cox GR, Witt KG, Bir JJ, Merry SN. Cognitive behavioural therapy (CBT), third-wave CBT and interpersonal therapy (IPT) based interventions for preventing depression in children and adolescents. *Cochrane Database Syst Rev*. 2016;(8):CD003380. doi:10.1002/14651858.CD003380.pub4
- Eckshtain D, Kuppens S, Ugueto A, et al. Meta-analysis: 13-year follow-up of psychotherapy effects on youth depression. *J Am Acad Child Adolesc Psychiatry*. 2020;59(1):45-63. doi:10.1016/j.jaac.2019.04.002
- Waddell C, Schwartz C, Andres C, Barican JL, Yung D. Fifty years of preventing and treating childhood behaviour disorders: a systematic review to inform policy and practice. *Evid Based Ment Health*. 2018;21(2):45-52. doi:10.1136/eb-2017-102862

11. Furlong M, McGilloway S, Bywater T, Hutchings J, Smith SM, Donnelly M. Behavioural and cognitive-behavioural group-based parenting programmes for early-onset conduct problems in children aged 3 to 12 years. *Cochrane Database Syst Rev*. 2012;(2):CD008225. doi:10.1002/14651858.CD008225.pub2
12. Arango C, Diaz-Caneja CM, McGorry PD, et al. Preventive strategies for mental health. *Lancet Psychiatry*. 2018;5(7):591-604. doi:10.1016/S2215-0366(18)30057-9
13. Costello EJ, He JP, Sampson NA, Kessler RC, Merikangas KR. Services for adolescents with psychiatric disorders: 12-month data from the National Comorbidity Survey-Adolescent. *Psychiatr Serv*. 2014;65(3):359-366. doi:10.1176/appi.ps.201100518
14. McGorry PD, Hartmann JA, Spooner R, Nelson B. Beyond the "at risk mental state" concept: transitioning to transdiagnostic psychiatry. *World Psychiatry*. 2018;17(2):133-142. doi:10.1002/wps.20514
15. Weisz JR, Chorpita BF, Palinkas LA, et al; Research Network on Youth Mental Health. Testing standard and modular designs for psychotherapy treating depression, anxiety, and conduct problems in youth: a randomized effectiveness trial. *Arch Gen Psychiatry*. 2012;69(3):274-282. doi:10.1001/archgenpsychiatry.2011.147
16. Chorpita BF, Weisz JR, Daleiden EL, et al; Research Network on Youth Mental Health. Long-term outcomes for the Child STEPs randomized effectiveness trial: a comparison of modular and standard treatment designs with usual care. *J Consult Clin Psychol*. 2013;81(6):999-1009. doi:10.1037/a0034200
17. Chorpita BF, Daleiden EL, Park AL, et al. Child STEPs in California: a cluster randomized effectiveness trial comparing modular treatment with community implemented treatment for youth with anxiety, depression, conduct problems, or traumatic stress. *J Consult Clin Psychol*. 2017;85(1):13-25. doi:10.1037/ccp0000133
18. Weisz JR, Bearman SK, Ugueto AM, et al. Testing robustness of Child STEPs effects with children and adolescents: a randomized controlled effectiveness trial. *J Clin Child Adolesc Psychol*. 2019;00(00):1-14. doi:10.1080/15374416.2019.1655757
19. Clinicaltrials.gov. Randomized Feasibility Trial of Mind My Mind (MindMyMind). NCT03448809. Accessed February 28, 2018. <https://clinicaltrials.gov/ct2/show/NCT03448809>
20. Goodman R. The extended version of the Strengths and Difficulties Questionnaire as a guide to child psychiatric caseness and consequent burden. *J Child Psychol Psychiatry*. 1999;40(5):791-799. doi:10.1111/1469-7610.00494
21. Lloyd CEM, Duncan C, Cooper M. Goal measures for psychotherapy: a systematic review of self-report, idiographic instruments. Published online April 2019. *Clin Psychol Sci Pract*. doi:10.1111/cpsp.12281
22. Wolf RT, Jeppesen P, Gyrd-Hansen D, Oxholm AS; CCC2000 Study Group. Evaluation of a screening algorithm using the Strengths and Difficulties Questionnaire to identify children with mental health problems: a five-year register-based follow-up on school performance and healthcare use. *PLoS One*. 2019;14(10):e0223314. doi:10.1371/journal.pone.0223314
23. Goodman R, Ford T, Richards H, Gatward R, Meltzer H. The Development and Well-being Assessment: description and initial validation of an integrated assessment of child and adolescent psychopathology. *J Child Psychol Psychiatry*. 2000;41(5):645-655. doi:10.1111/j.1469-7610.2000.tb02345.x
24. Stringaris A, Goodman R. The value of measuring impact alongside symptoms in children and adolescents: a longitudinal assessment in a community sample. *J Abnorm Child Psychol*. 2013;41(7):1109-1120. doi:10.1007/s10802-013-9744-x
25. Lehmann S, Heiervang ER, Havik T, Havik OE. Screening foster children for mental disorders: properties of the strengths and difficulties questionnaire. *PLoS One*. 2014;9(7):e102134. doi:10.1371/journal.pone.0102134
26. Aitken M, Martinussen R, Tannock R. Incremental validity of teacher and parent symptom and impairment ratings when screening for mental health difficulties. *J Abnorm Child Psychol*. 2017;45(4):827-837. doi:10.1007/s10802-016-0188-y
27. Arendt K, Hougaard E, Thastum M. Psychometric properties of the child and parent versions of Spence Children's Anxiety Scale in a Danish community and clinical sample. *J Anxiety Disord*. 2014;28(8):947-956. doi:10.1016/j.janxdis.2014.09.021
28. Eg J, Bilenberg N, Costello EJ, Wesselhoeft R. Self- and parent-reported depressive symptoms rated by the Mood and Feelings Questionnaire. *Psychiatry Res*. 2018;268:419-425. doi:10.1016/j.psychres.2018.07.016
29. Dose C, Hautmann C, Doepfner M. Functional impairment in children with externalizing behavior disorders: psychometric properties of the Weiss Functional Impairment Rating Scale-Parent Report in a German clinical sample. *J Atten Disord*. 2016;23(13):1546-1556. doi:10.1177/1087054716661234
30. Ravens-Sieberer U, Auquier P, Erhart M, et al; European KIDSCREEN Group. The KIDSCREEN-27 quality of life measure for children and adolescents: psychometric results from a cross-cultural survey in 13 European countries. *Qual Life Res*. 2007;16(8):1347-1356. doi:10.1007/s11136-007-9240-2
31. Robinson EA, Eyberg SM, Ross AW. The standardization of an inventory of child conduct problem behaviors. *J Clin Child Psychol*. 1980;9(1):22-28. doi:10.1080/15374418009532938
32. Attride-Stirling J, Humphrey C, Tennison B, Cornwell J. Gathering data for health care regulation: learning from experience in England and Wales. *J Health Serv Res Policy*. 2006;11(4):202-210. doi:10.1258/135581906778476607
33. Berry JO, Jones WH. The parental stress scale: initial psychometric evidence. *J Soc Pers Relat*. 1995;12(3):463-472. doi:10.1177/0265407595123009
34. Detry MA, Ma Y. Analyzing repeated measurements using mixed models. *JAMA*. 2016;315(4):407-408. doi:10.1001/jama.2015.19394
35. Harrington D, D'Agostino RB Sr, Gatsonis C, et al. New guidelines for statistical reporting in the journal. *N Engl J Med*. 2019;381(3):285-286. doi:10.1056/NEJMe1906559
36. Iorfino F, Scott EM, Carpenter JS, et al. Clinical stage transitions in persons aged 12 to 25 years presenting to early intervention mental health services with anxiety, mood, and psychotic disorders. *JAMA Psychiatry*. 2019;76(11):1167-1175. doi:10.1001/jamapsychiatry.2019.2360
37. Bearman SK, Weisz JR. Review: comprehensive treatments for youth comorbidity: evidence-guided approaches to a complicated problem. *Child Adolesc Ment Health*. 2015;20(3):131-141. doi:10.1111/camh.12092
38. Weisz J, Bearman SK, Santucci LC, Jensen-Doss A. Initial test of a principle-guided approach to transdiagnostic psychotherapy with children and adolescents. *J Clin Child Adolesc Psychol*. 2017;46(1):44-58. doi:10.1080/15374416.2016.1163708
39. Settapani CA, Hawke LD, Cleverley K, et al. Key attributes of integrated community-based youth service hubs for mental health: a scoping review. *Int J Ment Health Syst*. 2019;13(1):52. doi:10.1186/s13033-019-0306-7