

Title	Relationship between Local and Scientific Names of Fishes in Lake Malawi / Nyasa
Author(s)	AMBALI, Aggrey; KABWAZI, Harvey; MALEKANO, Lawrence; MWALE, George; CHIMWAZA, Davie; INGAINGA, John; MAKIMOTO, Naoki; NAKAYAMA, Setsuko; YUMA, Masahide; KADA, Yukiko
Citation	African Study Monographs (2001), 22(3): 123-154
Issue Date	2001-09
URL	http://dx.doi.org/10.14989/68206
Right	
Type	Departmental Bulletin Paper
Textversion	publisher

RELATIONSHIP BETWEEN LOCAL AND SCIENTIFIC NAMES OF FISHES IN LAKE MALAWI / NYASA

Aggrey AMBALI¹, Harvey KABWAZI¹, Lawrence MALEKANO²,
George MWALE¹, Davie CHIMWAZA¹, John INGAINGA¹, Naoki MAKIMOTO¹,
Setsuko NAKAYAMA³, Masahide YUMA⁴, Yukiko KADA⁵

¹*Biology Department, Chancellor College, University of Malawi*

²*History Department, Chancellor College, University of Malawi*

³*Graduate School of Asian and African Area Studies, Kyoto University*

⁴*Center for Ecological Research, Kyoto University*

⁵*Lake Biwa Museum*

ABSTRACT An interview survey was carried out in 20 Malawian lakeside villages from 1999 to 2000 to clarify the relationship between local and scientific names of the fishes in Lake Malawi/Nyasa. Fishermen in various localities responded with 536 local fish names for photographs shown of 106 fish species and color morphs. Similarity analysis of local name usage produced three groups of localities corresponding with the Tonga, Tumbuka, and Nyanja/Yao languages. A single scientific fish species had 10.2 local fish names, while one local fish name covered 2.0 scientific fish species, and 64.3% of local fish names were used only for one scientific species. A few local fish names were used widely irrespective of language, although 69.5% of local fish names were collected only from one locality. These facts suggest that lakeside residents identify fish at the biological taxonomy level, although the naming was specific to a particular locality. Most fishes with a high variety of local names were shallow-water dwelling species with low local market values, whereas fishes with fewer local names were mainly offshore species of high commercial value.

Key Words: Lake Malawi/Nyasa; Local fish name; Scientific fish name; Specificity; Similarity; Diversity.

INTRODUCTION

Biological and cultural diversities have become important concepts in the conservation discourse (Wilson, 1986; Younes, 1999). Biological diversity (biodiversity) is often represented by the richness of species. Although no suitable indicator has been reported to assess the cultural diversity in a given local area, evaluation is called for of the rich local language vocabulary concerning the flora and/or fauna in question. As an example, Yuma *et al.* (1999) and Kada & Yuma (2000) found that in the Lake Biwa area in Japan, local people used more than 300 local names for about 60 scientific species of local freshwater fish.

Lake Malawi/Nyasa in East Africa is one of the ancient lakes, and harbors a highly diverse fish fauna. Scientifically, there are about 800 species of cichlid fishes in the lake, and some bagrid, cyprinid and other taxonomic groups (Snoeks, 2000;

Turner, 2000). A variety of people, including local lakeshore residents, biologists and aquarium fish traders, have been interested in fishes of this lake. Each party of these people has its own unique criteria for categorizing and naming the fish of the lake. Thus a single fish may have many names, including some or all of the following: local name, scientific name, and international trade name.

A number of anthropologists have discussed differences and similarities between scientific and folk classifications since the 1950's. For example, Berlin *et al.* (1973) tried to apply scientific classification structure to the folk taxonomy. Shigeta (1991) and Matsui (1991) pointed out a cognitive difference in these two classifications: folk classification stresses the usage and meaning in the people's life, while the scientific fish names have duly been described and discussed in the scientific literature with a set of requisite nomenclature rules. International trade names appear regularly in aquarist publications, and their relation to scientific names was shown in Konings (1990).

Local fish names have often been seen in the scientific and aquarist literature, one of the most famous being "mbuna" used by the Tonga to indicate a group of rock-frequenting cichlids (Fryer, 1959). There are many other common local fish names in Malawi: "chambo" for tilapia species, "kampango" for a bagrid (*Bagrus meridionalis*), "mpasa" for *Opsaridium microlepis* (Cyprinidae), "usipa" for *Engraulicypris sardella* (Cyprinidae), etc. These examples of local fish names show that some are for a group of fishes while others are for a single species. On the other hand, "batala" indicates large predatory cichlid fishes (*Rhamphochromis* spp.), while "gelewa" the small ones of the same species group. Although previous researchers pointed out that the local residents along Lake Malawi/Nyasa used a variety of local fish names, few studies have focused on such local fish names, as the contributors have been scientists of foreign background whose main interests were to present checklists of scientific fish species of the lake.

In this paper we focus on the relation between the local and scientific names of the fishes in Lake Malawi/Nyasa. The presentation of our collection of local fish names and its analyses at an operational level should be useful for future reference, although the current method does not allow us to explore in depth the social and cultural values that underlie the local naming systems.

PRELIMINARY SURVEY OF LOCAL FISH NAMES FROM PUBLICATIONS

Yuma *et al.* (1998) reviewed publications for information on both scientific and local fish names. The majority of publications take the form of a fish species list with additional information on local names. For example, Jackson *et al.* (1963) noted 157 local fish names corresponding to 101 species of 12 families (mostly cichlids) living in the Malawian freshwater, i.e., Lake Malawi/Nyasa, Lake Malombe, Lake Chilwa, Shire River, and their tributaries. Reviewing others, such as Bertram *et al.* (1942), Department of Surveys (1978), ICLARM/GTZ (1991), Jackson (1961), Lewis *et al.* (1986), Rashidi (1997), Ratcliffe (1972), Smith (1993), and Tweddle (1996), 384 local fish names were collected, and identified as 178 biological species of 16 families. These local names include the vocabulary from differ-

ent languages spoken in Malawi, such as the Chewa, Tonga, and Tumbuka languages. Previous authors, however, have paid little attention to the difference in language, probably due to the lack of Malawian researchers and insight into the significance of local names. Despite the above shortcomings, it is apparent that the local residents in Malawi classify the fish into a large number of categories according to their indigenous knowledge (Fryer, 1999).

METHODS FOR INTERVIEW SURVEY

From 1999 to 2000, we conducted interview surveys among fishermen for local fish names in 20 Malawian villages along the west coast of Lake Malawi/Nyasa (Table 1, Fig. 1). Of these, 13 villages were of Tonga-speaking people in the Northern and Southern regions, 6 Nyanja-speaking in the Central Region, 4 Tumbuka-speaking in the Southern Region, and 2 Yao-speaking in the Southern Region (Table 1). Three to five of the authors interviewed fishermen (30-50 years old) in the respective village, presenting photographs of 106 fish species living in Lake Malawi/Nyasa (Appendix 1) from literatures by Konings (1990, 1995). Fishes in question were selected based on the preliminary survey mentioned above and the availability of photographs.

Table 1. Surveyed Villages along Lake Malawi and Variables Relating to Local Fish Names Collected.

District	Locality	Language	No. of fishermen interviewed	Among 106 fish species		
				Number of species with local names (A)	Number of local names (B)	Species / local name (A/B)
1 Nkhata Bay Dis.	Chindozwa	Tonga	35	99 (93%)	50	1.98
2 Nkhata Bay Dis.	Chikale	Tonga	16	54 (51%)	39	1.38
3 Nkhata Bay Dis.	Sanga	Tonga	28	89 (84%)	48	1.85
4 Nkhata Bay Dis.	Dindano	Tonga	40	105 (99%)	46	2.28
5 Nkhata Bay Dis.	Chintheche	Tonga	15	61 (58%)	30	2.03
6 Nkhata Bay Dis.	Kande	Tonga	18	63 (59%)	47	1.34
7 Nkhata Bay Dis.	Tukombo	Tonga	25	51 (48%)	35	1.46
8 Nkhotakota Dis.	Ngala	Tonga	31	97 (92%)	55	1.76
9 Nkhotakota Dis.	Liwaladzi	Tonga, Nyanja	36	102 (96%)	52	1.96
10 Mangochi Dis.	Msaka	Tonga, Tumbuka	17	81 (76%)	65	* 1.25 *
11 Mangochi Dis.	Mbvunguti	Tonga, Tumbuka	27	60 (57%)	53	1.13
12 Mangochi Dis.	Chizale	Tonga, Tumbuka	19	70 (66%)	47	1.49
13 Mangochi Dis.	Masasa	Tonga, Tumbuka, Nyanja	32	80 (75%)	46	1.74
14 Mangochi Dis.	Malembo	Nyanja	18	93 (88%)	82	1.13
15 Mangochi Dis.	Mbwazulu	Nyanja	16	98 (92%)	83	1.18
16 Mangochi Dis.	Kasankha	Nyanja	23	96 (91%)	68	1.41
17 Mangochi Dis.	Cape Maclear	Nyanja	27	83 (78%)	60	1.38
18 Mangochi Dis.	Matomondo	Yao	30	101 (95%)	47	* 2.15 *
19 Mangochi Dis.	Makawa	Yao	15	91 (86%)	43	2.12
20 Mangochi Dis.	Chindongo	Yao	19	79 (75%)	53	1.49

* : Mann-Whitney U-test, $p < 0.05$

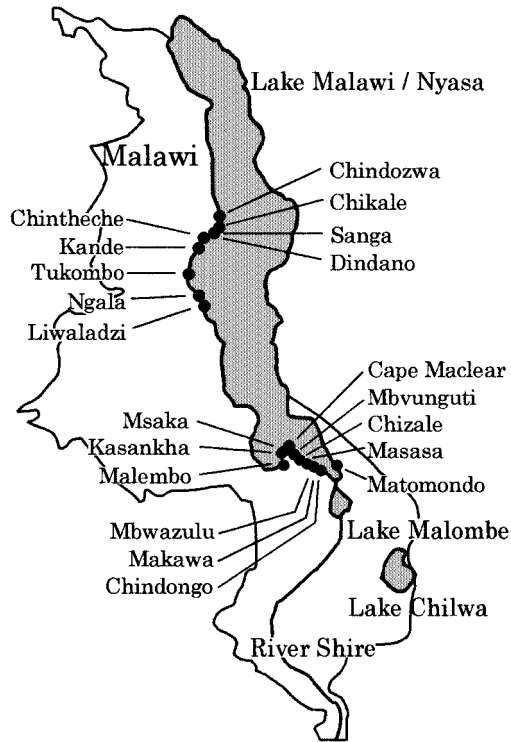


Fig. 1. Survey Sites along Lake Malawi.

The employment of photographs in such interviews has its own shortfalls, as they provide limited information of the fish in question: a visual image taken from only one perspective, and reproduced within the limitation of the printing technique. Lakeshore residents may draw their conclusion based on a variety of factors and information, such as the actual color, size, and the habitat in which the fish was found. The dependence on photographs becomes even more problematic if the informants are unaccustomed to two-dimensional visual images of fish. The use of fresh specimens for interviews, however, would be impractical if one aims to compare the relation between local names and scientific names in different localities in a limited time. In order to achieve some sense of uniformity in data acquisition, the authors believe that the use of photographs has its advantages as well. This survey was based on the focus group discussion comprising 15 to 40 people per village (Table 1). It provided a platform for reaching a consensus on a respective fish photograph that was original in the area. Within the focus group, several arguments were initiated among the respondents as a process of eliminating recent names that might have been introduced into the village from other languages but were not original to the language in question.

The authors carefully checked the spellings for local fish names.

RESULTS AND DISCUSSION

I. Variety of Local Fish Names

In total, 536 local fish names were collected in this survey for 20 villages, although some are of the combination with English (Appendix 1 & 2). Fishermen in a village identified 48-99% of the fishes on the photographs, listing 35-83 local names (Table 1).

Among the fishermen, Nyanja-speaking people enlisted more local fish names (average 73.3 ± 11.2 sd) for 106 fish photographs presented in 4 localities than Tonga-speaking (43.8 ± 8.3 sd, 8 localities) and Yao-speaking people (47.7 ± 5.0 sd, 3 villages) (Table 1, $p < 0.05$ by Mann-Whitney U-test). The local fish names collected were much varied between localities, showing little similarity among them (the maximum similarity in the Jaccard's index was 0.346, between Chintheche and Sanga). However, a cluster analysis revealed that the studied localities were categorized into three groups, based on the similarity in the usage of local fish names (Fig. 2). These groups of localities roughly corresponded with the dominant language spoken in the localities: Tonga, Tumbuka, and Nyanja/Yao.

Some local fish names corresponding to a species group were common only in a particular language. For example, "katungulu" and "chambu" in Tonga indicated *Oreochromis* spp. (Cichlidae), but these were rarely used by the Nyanja- and Yao-speaking people. On the other hand, "chambo" was mostly used to call *Oreochromis* spp. in Nyanja and Yao, but little in Tonga (Table 2). Similarly, "chisawasawa" was commonly used to indicate *Lethrinops* spp. (Cichlidae) in Tonga, while "sawasawa"

Table 2. Comparison of Local Fish Names in Relation to Local Languages. Figures are proportions of occurrence in 9 Tonga villages, and 7 Nyanja and Yao villages.

Local fish name	Probable scientific name	Tonga	Nyanja and Yao
Katungulu	} <i>Oreochromis</i> spp.	0.67	0.00
Chambu		0.78	0.00
Chambo		0.11	0.86
Chisawasawa	} <i>Lethrinops</i> spp.	0.56	0.14
Sawasawa		0.00	0.86
Batala	} <i>Rhamphochromis</i> spp.	0.22	0.00
Sangu		0.44	0.00
Mcheni		0.00	0.86
Tsungwa		0.00	0.86
Chigumbuli	} <i>Fossorochromis rostratus</i>	0.89	0.14
Chimbenje		0.00	0.86
Three batani	females of <i>Otopharynx</i> spp., <i>Copadichromis</i> spp.	0.89	1.00
Mpasa	<i>Opsaridium microlepis</i>	0.67	0.86
Nkholokolo	<i>Synodontis njassae</i>	0.56	1.00

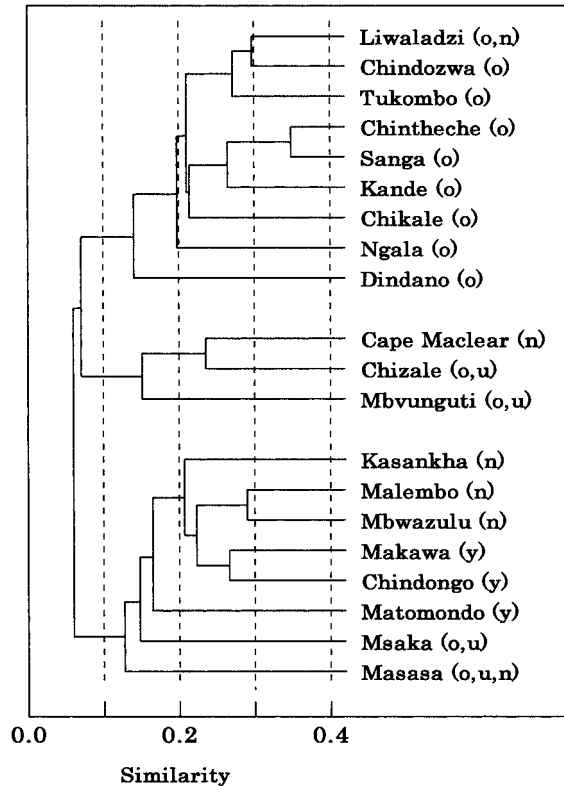


Fig.2. Cluster analysis of local fish names along Lake Malawi by the Mountford method based on the Jaccard's similarity index ($c/(a + b - c)$, where a and b are the number of local fish names in two localities, and c is the number of local fish names being common in two localities). Abbreviations in parentheses, o: Tonga, n: Nyanja, u: Tumbuka, and y: Yao.

in Nyanja and Yao. *Rhamphochromis* spp. (Cichlidae) were called “batala” and “sangu” in Tonga, and “mcheni” and “tsungwa” in Nyanja and Yao.

A few local fish names occurred widely irrespective of language. “Three batani” for females of *Otopharynx* spp. and *Copadichromis* spp. (Cichlidae) were recorded from 17 localities, followed by “mpasa” for *Opsaridium microlepis* (Cyprinidae), “mbuna” for a variety of rock-dwelling cichlids, and “nkhokoloko” for *Synodontis njassae* (Synodontidae) (Table 3, Appendix 1).

Among the collected local fish names, 199 (36.4%) were the combination of two or more words. These were composed of a modifier attached to a common local name: for example, “mbuna” (61 local names, e.g. “mbuna ya m’miyala”), “fisi” (9; “fisi waku deep”), “yela” (7; “yela la kabawi”), and “mbaba” (6; “mbaba ya blue”). The other collected local fish names were single words. This suggests that people have rich local vocabulary for fish, indicating a specific species, morph, and size group.

Table 3. Common Local Fish Names.

Local fish name	Frequency in occurrence among 20 surveyed villages
Three batani	17
Nkholokolo	16
Mbuna	15
Mpasa	14
Mkunguni	13
Ndunduma	13
Phanda	13
Binga	10
Chigumbuli	10
Kampango	10
Sawasawa	10

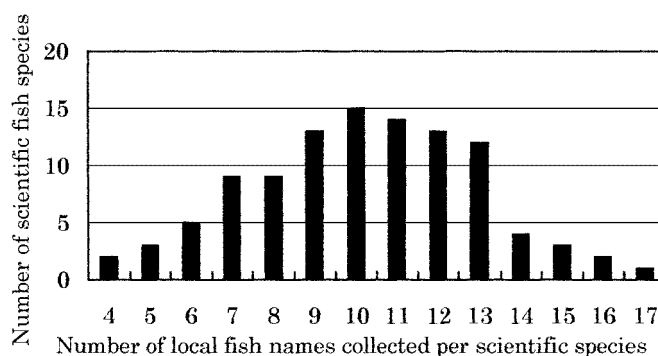
II. Local Fish Names and Their Scientific Attributes

Photograph of a single scientific fish species on average produced in response 10.2 (range 4-17, Fig. 3) local fish names. On the other hand, one local fish name on average covered 2.0 (range 1-38) scientific fish species, and 64.3% of the local fish names were used only for one scientific species (Fig. 4). Furthermore, 69.5% of local fish names were collected only from one locality (Fig. 5). These facts suggest that lakeside residents identify as many lake fishes as can be identified at the biological taxonomy level, although the naming was specific to a particular locality. Such a large variety in local fish names seem to be the result of different local culture (or possibly, village-specific culture) even though there were some limitations in the interview method of using photographs.

As mentioned above, some scientific fish species have many local names while others have few. An index was applied to express the diversity of local fish names (D_{LFN}) for respective scientific species as follows:

$$D_{LFN} = \text{Number of local fish names collected} / \text{Total number of responses.}$$

This index varies from 1.0 when all fish names collected were different, including plural responses from one village, to nearly 0.05 when all 20 villages used a single local name. Actually it varied from 0.25 to 1.0, being most frequent between 0.7 and

**Fig.3.** Frequency Distribution of the Number of Local Names for One Scientific Fish Species.

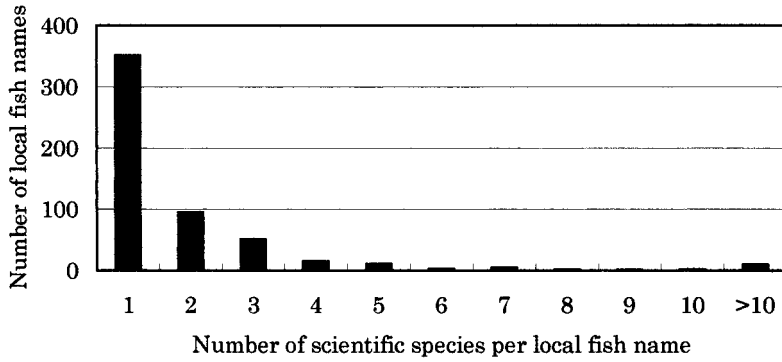


Fig.4. Frequency Distribution of the Number of Scientific Fish Species Covered by One Local Name.

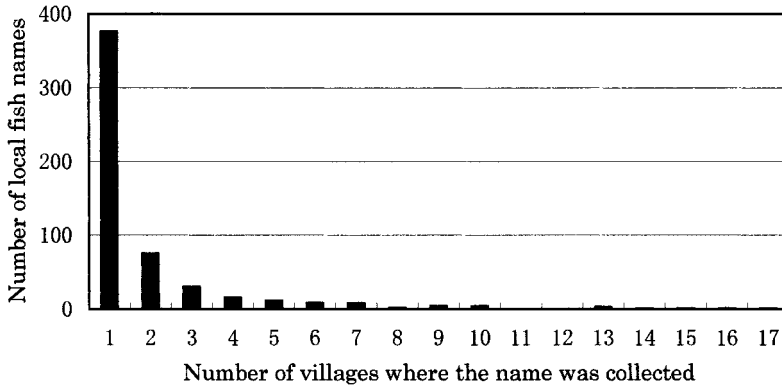


Fig.5. Frequency Distribution of the Number of Villages where One Local Fish Name was Collected.

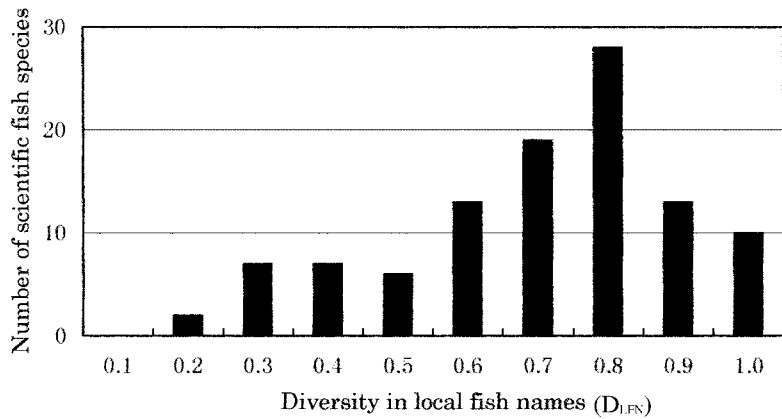


Fig.6. Frequency Distribution of the Diversity in Local Fish Names (D_{LFN}).

0.8 (Fig. 6).

Based on this index, the scientific fish species were categorized into three ranks of naming diversity in relation to the habitat of fish (Table 4). Fish species with a high variety of local names were mostly those found in shallow waters along the lake shore, while fishes with fewer local names were mainly the offshore species. The latter species included many commercially valuable fishes in Malawian markets, such as “utaka” (*Copadichromis* spp.) caught by trawl net and lamp fishing. On the other hand, most of rocky-shore species albeit their importance in the international aquarist trade, rarely appeared in the local market due to the difficulty in commercially catching them, although they were often caught for household consumption. The above results indicate that the offshore fishes, including those commonly traded in markets, have local names that are common to a wide area. In contrast, the fishes living near shore, many of them of low local market value, have local names that are specific to respective village or locality.

Table 4. Diversity of Local Fish Name (D_{LFN}) and Habitat of Fishes in Lake Malawi.

Diversity of local names	Number of scientific species	Habitat		
		Rocky	Sandy/muddy	Offshore
> 0.75	38	55%	26%	16%
> 0.50	46	74%	9%	20%
< = 0.50	22	18%	23%	59%

This study clarified the general pattern in the diverse local names for fishes of Lake Malawi/Nyasa. However, the ethnological taxonomy of fish by local residents was still unclear. Further intensive studies are necessary on how the local fish names are culturally internalized by the lakeshore communities, and if the local fish names are categorized into a folk taxonomy as attempted by Ankei (1989). A comparative study between the local, scientific, and trade naming systems shall provide a basis for communication between people with diverse interests of the lake.

ACKNOWLEDGEMENTS The present study was supported, in part, by the Grant-in-Aids for International Scientific Research (No. 07044194, 1995-1996; No. 10041161, 1998-2000), the Overseas Research financed by Toyota Foundation (1996-1998), the Lake Malawi Ecology Project financed by JICA (1997, 1998-2001), and the Research financed by the Foundation of River & Watershed Environmental Management (1999-2000). We thank the fishermen in 20 Malawian villages for their kind assistance. We also thank the late Mr. K. Mkwamba, Mr. A. Chijere and Mr. A. Margin who helped us by their safe driving. Dr. Harvey Kabwazi, our most excellent colleague, passed away on 7th March 2001. We wish to express deep regret over the loss of our colleague.

REFERENCES

- Ankei, Y. 1989. Folk knowledge of fish among the Songola and the Bwari: Comparative ethnoichthyology of the Lualaba River and Lake Tanganyika fishermen. *African Study Monographs Supplementary Issue*, 9: 1-88.

- Berlin, B., D. Breedlove & P.H. Raven 1973. General principle of classification and nomenclature in folk biology. *American Anthropologist*, 75(1): 214-242.
- Bertram, C.K.R., H.J.H. Borley & E. Trewavas 1942. *Report on the Fish and Fisheries of Lake Nyasa*. Crown Agents, London.
- Department of Surveys Malawi 1978. *The Fishes of Malawi* (Poster pamphlet shown on the wall of Nkhata Bay Fisheries Station). Printed by the Department of Surveys, Blantyre.
- Fryer, G. 1959. The trophic interrelationship and ecology of some littoral communities of Lake Nyasa with special reference to the fishes, and a discussion of the evolution of a group of rock-frequenting Cichlidae. *Proceedings of the Zoological Society of London*, 132(2): 153-281.
- 1999. Local knowledge of the fishes of the ancient lakes of Africa, and an example of comprehensive understanding. In (H. Kawanabe, G. Coulter & C. Roosevelt, eds.) *Ancient Lakes: Their Cultural and Biological Diversities*, pp. 263-270. Kenobi Productions, Ghent.
- ICLARM/GTZ 1991. *The Context of Small-Scale Integrated Agriculture-Aquaculture Systems in Africa: A Case Study of Malawi*. International Center for Living Aquatic Resource Management & Deutsche Gesellschaft für Technische Zusammenarbeit, GmbH, Frankfurt/Main.
- Jackson, P.B.N. 1961. Check-list of the fishes of Nyasaland. *Occasional Papers of the National Museums of Southern Rhodesia*, 25B: 535-621.
- Jackson, P.B.N., T.D. Iles, D. Harding & G. Fryer 1963. *Report on the Survey of Northern Lake Nyasa 1954-55 by the Joint Fisheries Research Organization*. The Government Printer, Zomba, Nyasaland.
- Kada, Y. & M. Yuma 2000. *Ecology of Childhood Play in Nearby Freshwater around Lake Biwa*. (in Japanese) Nousangyoson Bunka Kyokai, Tokyo.
- Konings, A. 1990. *Ad Konings's Book of Cichlids and all Other Fishes of Lake Malawi*. T.F.H. Publications, Neptune, New Jersey.
- 1995. *Malawi Cichlids in Their Natural Habitat. 2nd Ed.* Cichlid Press, Lauenau, Germany.
- Lewis, D., P. Reinthal & J. Trendall 1986. *A Guide to the Fishes of Lake Malawi National Park*. WWF, Gland.
- Matsui, T. 1991. *Theory of Cognitive Anthropology* (In Japanese), Shouwadou, Kyoto.
- Rashidi, B.B.A. (ed.) 1997. *The Fisheries Resource Management and Extension Handbook*. Department of Fisheries, Malawi, Lilongwe, Malawi.
- Ratcliffe, C. 1972. *The Fishery of the Lower Shire Area, Malawi 1972. Fisheries Bulletin, no. 3*, p. 79. Ministry of Agriculture, Zomba, Malawi.
- Shigeta, M. 1991. Species preservation of Ensete in south western Ethiopia. (In Japanese) In (J. Tanaka & M. Kakeya, eds.) *Natural History of Human Beings*, pp. 214-231. Heibonsha, Tokyo.
- Smith, L. 1993. A historical perspective on the fishery of Chembe enclave village in Lake Malawi National Park. *Nyala*, 17(2): 49-60.
- Snoeks, J. 2000. How well known is the ichthyodiversity of the large east African lakes? *Advances in Ecological Research*, 31: 17-38.
- Tweddle, D. 1996. *Fish Survey of Nkhotakota Wildlife Reserve*. Investigational Report No. 53, J.L.B. Smith Institute of Ichthyology, Grahamstown.
- Turner, G.F. 2000. The nature of species in ancient lakes: Perspectives from the fishes of Lake Malawi. *Advances in Ecological Research*, 31: 39-60.
- Wilson, E.O. (ed.) 1986. *Biodiversity*. National Academy Press, Washington D.C.
- Younes, T. 1999. Biological and cultural diversities: Challenges and prospects. In (H. Kawanabe, G. Coulter & C. Roosevelt, eds.) *Ancient Lakes: Their Cultural and*

- Biological Diversities*, pp. 43-58. Kenobi Productions, Ghent.
- Yuma, M., Y. Kada, S. Nakayama, A. Ambali, W. Msosa, H. Kabwazi, T. Sato & S. Kobayashi 1998. *Local Fish Names in Malawi, Second Edition*. Internal Report of JICA Research Cooperation Project "Lake Malawi Ecology Project" (1998-2001).
- Yuma, M., Y. Kada, T. Tanaka, R. Okada & Y. Oonishi 1999. Research on aquatic biodiversity and human culture: Collaborative studies with residents of the Lake Biwa region. In (H. Kawanabe, G. Coulter & C. Roosevelt, eds.) *Ancient Lakes: Their Cultural and Biological Diversities*, pp. 303-315. Kenobi Productions, Ghent.

----- Accepted August 21, 2001

Author's Name and Address: Masahide YUMA, *Center for Ecological Research, Kyoto University, Kamitanakami-Hirano, Otsu 520-2113, JAPAN.*
E-mail: yuhma@ecology.kyoto-u.ac.jp

Appendix 1. List of Local Names for 106 Species of Fishes from Lake Malawi.A: Total number of local names collected, B: Variety of local names, and B/A: Diversity of local fish names (D_{LFN}).

Code No.	Scientific name	Local names			List of local names (frequencies)
		(A)	(B)	(B/A)	
1	<i>Mormyrus longirostris</i>	23	6	0.26	Botomu(2), Chigonthi(2), Gonthi(1), Mbelewele(1), Phanda(13), Samwamowa(4)
2	<i>Petrocephalus catostoma</i>	21	5	0.24	Chimbumbu(3), Mbumbu(1), Mphuta(9), Ntchemba(5), Nthachi(3)
4	<i>Labeo cylindricus</i>	23	5	0.22	Mbuluwulu(2), Mbununu(4), Mphuwa(1), Ningwi(9), Nyingwi(7)
5	<i>Opsaridium microlepis</i>	21	4	0.19	Mpasa(14), Mphasa(1), Nyengeri(3), Sanjika(3)
6	<i>Bagrus meridionalis</i>	21	4	0.19	Kampanga(4), Kampango(10), Kayendiyendi(1), Mbuvu(6)
8	<i>Clarias gariepinus</i>	20	10	0.50	Bombe(4), Bomu(3), Bwituka(1), Chibomu(1), Kabwiri(2), Mlamba(1), Nkhomo(1), Nkhomu(2), Pafi(3), Phwefu(2)
9	<i>Synodontis njassae</i>	22	5	0.23	Chikolokolo(1), Nkholokolo(16), Nkholokolu(3), Nkolokolo(1), Sadyang'ona(1)
10	<i>Oreochromis lidole</i>	21	12	0.57	Chambo(1), Chambo cha blue(1), Chambo chachimuna(1), Chambo(3), Chinkhulo(2), Chinkhulu(3), Galamula(2), Khumba(1), Likumba(1), Mbuna(1), Ngwalu(1), Saka(4)
11	<i>Oreochromis squamipinnis</i>	24	7	0.29	Chambo(5), Chambo(4), Kambuzi(1), Kasawala(5), Katungulu(4), Seya(1), Tetezani(4)
12	<i>Oreochromis</i> sp.	21	6	0.29	Chambo(9), Chambo chachikazi(1), Chambo(3), Katungulu(5), Seya(2), Tetezani(1)
14	<i>Tilapia rendalli</i>	20	11	0.55	Fwili(2), Fwirili(1), Katukusi(1), Nkhututu(1), Nungutchale(1), Nyakaluwa(1), Nyingwisale(1), Nyingwitsale(3), Nyungusale(7), Nyungusali(1), Nyungutsale(1)
15	<i>Aristochromis christyi</i>	17	13	0.77	Chimeza(1), Chimpenipeni(1), Chiwuwu(1), Kadzikambe(3), Lwenda(2), Mgungu(1), Mkusani wambuvu(1), Mphapati(1), Mzomba(2), Ng'ongu(1), Nyamwaha(1), Sapu(1), Tong'o(1)
16	<i>Aulonocara gertrudae</i>	17	10	0.59	Chigong'u(1), Chigong'u wa blue(1), Chisawasawa(1), Chisawasawa chammakolu(1), Mbaba(3), M'dyamphipe(1), Mtaka(1), Sawasawa(5), Yela la blue(1), Yela la kabawi(2)
17	<i>Aulonocara nyassae</i>	12	9	0.75	Chigong'o chandembela(1), Chigong'u(1), Gong'ola(1), Gwenji(1), Mbaba(2), Sawasawa(3), Yela(1), Yela la kabawi(1), Yela la ntcheti(1)
18	<i>Buccochromis lepturus</i>	16	13	0.81	Chidondolo(1), Chigong'o chammatsine(1), Chiwuwu(1), Dimba(1), Kadzikambe(1), Khota(4), Khota la blue(1), Khota la mbuchi(1), Mbowe ya blue(1), Mbuna(1), Mgungwi(1), Tsungwa(1), Veki(1)
20	<i>Buccochromis nototaenia</i>	16	13	0.81	Chigong'u wa ndembera(1), Chimeza(1), Chizima moto(1), Dimba(1), Kale(1), Kamtsine(1), Khota(3), Khota la green(1), Khota la mbuchi(1), Mbowe(1), Msutachamba(1), Sangumbuchi(1), Tong'o(2)
21	<i>Buccochromis atritaeniatus</i>	15	12	0.80	Chabawa(1), Chidyamchenga(1), Gwenje(1), Gwenji(1), Kam'dyamwala(1), Khota(3), Konkhowe(1), Mbaba(1), Mbowe(1), Saguga(2), Thondo wam'muna(1), Yela la gwenji(1)
22	<i>Caprichromis orthognathus</i>	15	12	0.80	Binga(3), Chilumya(1), Chimeza(1), Kamjani(1), Khukwa(1), Liyani(1), Mbaba(1), Mjani(1), Namulepetu(1), Palala(2), Saguga(1), Togo(1)
23	<i>Champsochromis caeruleus</i>	15	11	0.73	Khota la mbuchi(1), Mbaba(1), Mbuchi(4), Mgungu(2), Ndolo(1), Ndowolu(1), Ndowolu ya blue(1), Ntchilingwi(1), Nyamzomba(1), Sapu(1), Sonju(1)
24	<i>Champsochromis spilorhynchus</i>	10	8	0.80	Dzani(1), Fukufuku(1), Gwenji(1), Magwenje(1), Mbuchi(3), Mgungu wam'bango(1), Ndowolu(1), Nyamzomba(1)
26	<i>Copadichromis borleyi</i>	12	10	0.83	Chakhuta(3), Chigong'u wa blue(1), Chofiira(1), Fukufuku(1), Mbuna(1), Mgunya(1), Njakalela(1), Pwifu(1), Viwa(1), Yela la blue(1)
27	<i>Copadichromis chrysonotus</i>	14	11	0.79	Blue fish(2), Chakhuta(2), Chendamwamba wam'muna(1), Chendamwamba wa blue(2), Chibala(1),

28	<i>Copadichromis</i> sp. “kawanga”	11	10	0.91	Chibalala(1), Chinguwi(1), Fukufuku(1), Kampala(1), Mfufuma(1), Yela(1) Chakhuta(1), Chigong’u(1), Dowadowa(1), Fukufuku(1), Gong’ola(1), Kabwiri(1), Mbaluli(2), M’dyamphipe(1), Yela la chigong’u(1), Yela la tofu(1)
29	<i>Copadichromis</i> sp. “mloto likoma”	24	7	0.29	Chendamwamba(2), Gondola(1), Mkazinjeru(1), Sajeti(2), Three banga(2), Three batani(15), Utaka(1)
30	<i>Copadichromis</i> sp. “pleurostigma”	18	16	0.89	Bambata(1), Chakhuta(1), Chendamwamba(1), Chendamwamba wamkazi(1), Chibalala(1), Chibalala(1), Chiwiramchenga(1), Gombati(1), Gondola(1), Kasatsi(1), Mbaba(3), Mkazi njeru(1), M’dyamhipi(1), Three batani(1), Utaka(1), Wala(1)
31	<i>Copadichromis quadrimaculatus</i>	19	12	0.63	Chakhuta(1), Chibalala(1), Chigwambati(1), Gombati(2), Katchasi(1), Mbaba(2), Mbalule(3), Mbaluli(4), Mbaluli ya blue(1), Mgunya(1), Nguwa(1), Three batani(1)
33	<i>Copadichromis</i> sp. “virginalis kajose”	22	16	0.73	Balewa(1), Chezichezi(1), Chinguwi cha blue(1), Criminal(1), Gili(1), Gwambati(1), Kampala(1), Mbalule(2), Mbaluli(3), Mgungu(1), Mkazinjeru(1), Mtaka waphala la blue(1), Nyakaphala(1), Three batani(1), Utaka(4), Yela(1)
34	<i>Copadichromis virginalis</i>	22	15	0.68	Chezichezi(1), Chikhulamchenga(1), Criminal(1), Gondola(1), Kaulu(2), Mbalule(1), Mbaluli(3), Mgungu(1), Mkazinjeru(1), Mtaka wa blue(1), Mtaka waphala(1), Mtaka waphala lituwa(1), Muhana(1), Utaka(3), Utaka wa umuna(3)
36	<i>Corematodus taeniatus</i>	9	9	1.00	Kachimanga(1), Khota(1), Khota la blue(1), Mbuna(1), Mlamamutu(1), Nanzolika(1), Nyamzomba(1), Tong’o(1), Wuwa(1)
37	<i>Ctenopharynx intermedius</i>	9	7	0.78	Binga la blue(3), Chigunda wanthu(1), Gundakumwala(1), Khota(1), Khota la blue(1), Liyani(1), Mbuna(1)
38	<i>Ctenopharynx nitidus</i>	9	9	1.00	Chigong’u(1), Chimberi(1), Dong’o(1), Kambuzi wa gong’o(1), Kapulakamwenye(1), Khota la blue(1), Mbuna(1), Mbuna ya m’miyala(1), Yela la chabawi(1)
40	<i>Cynotilapia afra</i>	19	15	0.79	Blue14(1), Chalunda(1), Chalunda mutuwa(1), Chiheni(1), Chimbuzu(1), Chimbuzu wa black(1), Chindondo chachimuna(1), Chindongo(1), Liwinga(1), Mbuna(3), Mbuna boli(1), Mbuna ya black(2), Mbuna ya boli(1), Mbuna ya m’miyala(2), Mbuna ya yimuna(1)
42	<i>Cyrtocara moorii</i>	20	17	0.85	Bampuhedi(1), Bamusi(1), Chakhuta(1), Double head(3), Gunda Sitima(1), Gunda mwala(2), Gundakumwala(1), Gundamwala(1), Gundaphiri(1), Kabibi(1), Kawereweru(1), Manunda(1), Mbuna(1), Njangwi(1), Nyamulepu(1), Sasamchenga(1), Yela(1)
43	<i>Dimidiochromis compressiceps</i>	21	10	0.48	Chikolombi(1), Kalikolombe(3), Kalikolombi(7), Kampeni-peni(2), Kolowoli(1), Mpeni wa mfumu(3), Mpeni-peni(1), Mzomba(1), Njangwi(1), Palala(1)
44	<i>Cyrtocara kiwingwe</i>	18	9	0.50	Binga(9), Dzani(1), Dzani wamkazi(1), Jani(1), Liyani(1), Mjani(2), Mpeni wa mfumu(1), Namchenga(1), Njangwi(1)
45	<i>Diplotaxodon argenteus</i>	21	12	0.57	Iseki(1), Jamisoni(2), Jamisoni wam’ muna(1), Jemisoni(1), Masuhunju wam’ muna(1), Masuhunju(1), Nduduma(1), Ndunduma(9), Njangwi(1), Palala(1), Thamba(1), Tong’o(1)
46	<i>Diplotaxodon ecclesi</i>	22	11	0.50	Ayana(1), Iseki(1), Jamisoni(2), Jamisoni wamkazi(1), Kelesoni(1), Masuhunju wamkazi(1), Masuhunju(1), Nduduma(2), Ndunduma(10), Tong’o(1), Tumphi(1)
47	<i>Diplotaxodon</i> sp. “macrostoma”	22	7	0.32	Chimbenje(1), Jamisoni(5), Masuhunju(1), Masulunji(1), Nduduma(2), Nduduma(11), Iseki(1)
48	<i>Docimodus johnstonii</i>	9	8	0.89	Dondolo(1), Khota la mumwa(1), Levi(1), Mbowe(1), Ndowolu(2), Nduduma(1), Nkhonkholo(1), Phwefu(1)
50	<i>Docimodus evelynae</i>	10	7	0.70	Chigumbuli(1), Dondolo(1), Kachingoma(1), Kadyankhono(1), Kapichiliko(1), Katukulyiyi(1), Ndowolu(4)

51	<i>Fossorochromis rostratus</i>	20	7	0.35	Chidondolo(1), Chigumbuli(9), Chimbenje(5), Chimbenji(1), Gumbuli(2), Khumbuli(1), Liyani(1)
52	<i>Genyochromis mento</i>	14	9	0.64	Chenyeki(1), Chidondolo chofila(1), Chimbuzu(2), Chindondo chamumchenga(1), Mbuna(4), Mbuna ya m'mchenga(2), Mbuna yotuwa(1), Minyungambewa(1), Samwamowa(1)
53	<i>Genyochromis mento</i>	13	8	0.62	Chamchipeso(1), Chidondolo(1), Chindongo(1), Jesi(1), Kaipa abisala(1), Mbuchi(1), Mbuna(6), Mbuna ya m'miyala(1)
54	<i>Genyochromis mento</i>	18	11	0.61	Chimbuzu(2), Chindongo(1), Liwinga(1), M'dinyambolo(1), Mbuna(6), Mbuna ya black(1), Mbuna ya m'miyala yakuda(1), Mbuna ya nyamwaha(1), mwinimwala(1), Nyamfipa(1), Nyamzomba(2)
55	<i>Genyochromis mento</i>	16	11	0.69	Chidochi(2), Chimbuzu mungoni(1), Chindongo(1), Mbaba(1), Mbuna(5), Mbuna ya kamcheche(1), Mbuna ya mjosi(1), Mbuna ya m'miyala yofira(1), Mbuna ya yellow(1), Mbuna yofira(1), Nyakajesa(1)
56	<i>Genyochromis mento</i>	17	13	0.77	Chalunda(1), Chimbuzu(1), Chindongo(1), Mbaba(1), Mbuna(4), Mbuna ya chikoku(1), Mbuna ya maanga maanga(1), Mbuna ya m'miyala(1), Mbuna ya namakhathi(1), Mbuna ya nkholome(1), Mbuna ya nkholomi(1), Mbuna ya yellow(1), Pundu(2)
57	<i>Hemitaeniochromis</i> sp. "paedophage"	15	11	0.73	Binga(2), Bwillili(1), Chidzem'bango(1), Chilumi(1), Chizgezi(1), Kausanje(1), Kawizu(1), Mjani(2), Ndowolu(1), Sawasawa(1), Togo(3)
58	<i>Hemitalapia oxyrhynchus</i>	11	9	0.82	Binga la blue(2), Fukufuku(1), Gilini(1), Khota(2), Khota la blue(1), Khota la mumwa(1), Mbaba(1), Mbaba ya gilini(1), Mbuna za m'miyala(1)
59	<i>Labeotropheus fuelleborni</i>	14	8	0.57	Chimbuzu(1), Gunyaku(1), Mbuna(6), Mbuna ya blue(1), Mbuna ya buchuka(1), Mbuna ya gilini(2), Mbuna za m'miyala(1), Nyamubulukutu(1)
60	<i>Labeotropheus fuelleborni</i>	19	12	0.63	Chikoku(1), Chimbuzi(1), Chimbuzu(1), Chimbuzu wa pundu(1), Mbuna(4), Mbuna ya chimbwi(1), Mbuna ya fisi(3), Mbuna ya fisi yoyendapansi(1), Mbuna ya nkholomi(1), Namakhathi(2), Pundu(2), Sawasawa(1)
61	<i>Labeotropheus trewavasae</i>	16	9	0.56	Chimbuzu(3), Mbuna(5), Mbuna ya blue(2), Mbuna ya blue yodya ndele(1), Mbuna ya gilini(1), Mbuna ya kabwafu(1), Nyablue wachenyeke(1), Nyamubulukutu(1), Sawasawa(1)
62	<i>Labeotropheus trewavasae</i>	16	6	0.38	Chimbuzu(3), Mbuna(8), Mbuna ya fisi(1), Mbuna ya mawanga(1), Pundu(2), Sawasawa(1)
64	<i>Lethrinops microdon</i>	17	7	0.41	Chisawasawa(5), Chitowawa(1), Kwasakwasa(2), Mchekumutu(1), Sawasawa(5), Tong'o(1), Yela(2)
65	<i>Lethrinops mylodon</i>	20	8	0.40	Chisawasawa(5), Gong'u(1), Khumbo(1), Kwasakwasa(2), Mchekumutu(1), Sawasawa(7), Tong'o(1), Yela(2)
66	<i>Lethrinops stridei</i>	18	7	0.39	Chisawasawa(5), Chitoshi(1), Kwasakwasa(2), Mchekumutu(1), Sawasawa(6), Sawasawa wam'muna(1), Yela(2)
67	<i>Maravichromis mola</i>	10	10	1.00	Chimbuzu(1), Chimeza(1), Gulufisi(1), Kalikolombi(1), Kamango(1), Katukuliyi(1), Khota(1), Konkholo(1), Mbaba yayikazi(1), Yela(1)
68	<i>Maravichromis mollis</i>	13	13	1.00	Chimbuzu(1), Chimeza(1), Chizimwamotu(1), Gula sapu(1), Kachimanga(1), Kamunezi(1), Katukuliyi(1), Khota(1), Konkholo(1), Mbaba yayimuna(1), Mbuna ya pa tchisa(1), Mgungu waumuna(1), Yela(1)
69	<i>Melanochromis labrosus</i>	20	12	0.60	Chimbuzu(1), Chindemdulumuka(1), Chinyini(1), Fwifwifwi(1), Kanyini(1), Mbuna(1), Mbuna ya m'miyala(1), Namulepetu(1), Nyamakuna(2), Nyamlepetu(7), Tambaliyele(2), Tchungwa(1)
70	<i>Melanochromis auratus</i>	18	13	0.72	Chimbuzu(1), Chipesu(1), Jesi(2), Jessie(1), Kachipesu(1), Mbuna(4), Mbuna ya m'bango(1), Mbuna ya miz erimizeri(1), Mbuna ya m'miyala(2), Mbuna ya m'ntchesi(1), Mgungu(1), Mwantchesa(1), Pajamala(1)
71	<i>Melanochromis</i> sp. "auratus dwarf"	15	10	0.67	Chimbuzu(2), Chipesu(1), Cobalt(1), Fisi(1), Galala(1), Jessie(1), Mbuna(5), Mbuna ya blue yam'miyala(1), Mbuna ya m'miyala(1), Nyablue Jesi(1)
72	<i>Melanochromis</i> sp. "auratus elongate"	17	13	0.77	Chimbenje cha blue(1), Chimbuzu(2), Chipesu(1), Fisi(1), Jesi(1), Jessie(1), Mbuna(4), Mbuna ya black(1),

					Mbuna ya m'bango(1), Mbuna ya mizeri pakati(1), Mbuna ya m'miyala(1), Mbuna ya m'ntchesi(1), Nyabluu Jesi(1)
74	<i>Melanochromis joanjohnsonae</i>	13	9	0.69	Bele(1), Chimbenje cha blue(1), Chimbuza(2), Chindongo(1), Jessie(1), Mbuna(4), Mbuna ya m'miyala(1), Mbuna ya san galabwi(1), Mbuna yotuwira(1)
75	<i>Melanochromis johanni</i>	19	14	0.74	Chidochi(1), Chimbuza(2), Fisi(2), Giffi(1), Jessie(1), Kadochi(1), Mbuna(3), Mbuna ya m'miyala(1), Mbuna ya nyakhondowe(1), Mbuna ya yellow(2), Mbuna yofiira(1), Mbuna yofiira yaikazi(1), M'dyamphipe(1), Nyakajesi(1)
76	<i>Nimbochromis fuscotaeniatus</i>	15	11	0.73	Bele wam'muna(1), Chimbuza(1), Chimbwi(1), Fisi(3), Giffi(1), Kam'mawe(1), Khota(1), Mbuna(1), M'dyamphipe(1), Nyamzomba(1), Pundu(3)
77	<i>Nimbochromis linni</i>	12	9	0.75	Bele wa blue(1), Chabluu(1), Chimbwi(1), Fisi(2), Giffi(1), Mbaba(1), Nyamzomba(1), Pundu(3), Thondo(1)
79	<i>Nimbochromis livingstonii</i>	19	10	0.53	Chimbwi(2), Fisi(2), Fisi wa mkazi(1), Fisi wamkazi(1), Fisi wamumchenga(2), Giffi(1), Kadyausanje(1), M'dyamphipe(1), Pundu(7), Three banga(1)
80	<i>Nimbochromis polystigma</i> aff.	17	10	0.59	Chimbwi(1), Fisi(2), Fisi waku deep(2), Fisi wotuwira(1), Giffi(1), Kadyausanje(1), Kampaundi(1), Khota(1), M'dyamphipe(1), Pundu(6)
81	<i>Nimbochromis venustus</i>	16	13	0.81	Chakhuta(1), Chibang'ombi(1), Fisi(2), Fisi waku deep(1), Fisi wakunyanja(1), Fisi wam'matsine(1), Giffi(1), Kadyausanje(1), Khota(1), Mbaba(1), Mbuna(1), Pundu(3), Pundu wamumchenga(1)
82	<i>Nyassachromis breviceps</i>	11	8	0.73	Chakhuta(1), Chigong'u(1), Chinguwi(1), Dong'o(1), Godi wa blue kumutu(1), M'dyamphipe(4), M'dyamphipe wa muna(1), Three batani(1)
83	<i>Nyassachromis microcephalus</i>	12	9	0.75	Chakhuta(1), Chinguwi(1), Godi wa blue(1), Gulufisi(1), Kavuwu(1), Mbuna(1), M'dyamphipe(4), M'dyamphipe wa kazi(1), Mtaka(1)
84	<i>Nyassachromis serenus</i>	11	11	1.00	Chakhuta(1), Chidondolo cha kunyanja(1), Chigong'u(1), Ikilendi(1), Kambuzi(1), Kamtsabango(1), Kasupe(1), Kaweluwuru(1), Mjani(1), Mjani wamumatete(1), Kasupe(1)
86	<i>Otopharynx ovatus</i>	20	12	0.60	Chabwiramchenga(1), Chibala(1), Chibalala(1), Chidondolo cha kunyanja(1), Chiyendam'mwamba(1), Ikilendi wa chilundu(1), Makalanji(1), Mawala(1), Ndepu(1), Thakwa(1), Three banga(2), Three batani(8)
87	<i>Otopharynx speciosus</i>	14	12	0.86	Blue fourteen(1), Chidondolo cha mmiyala(1), Chikhokholo(1), Madimba(1), Mbowe(1), Mbuna(1), M'dyamphipe wa blue(1), Mlamamutu(1), Ndowolu(1), Paundi wam'muna(1), Saguga(2), Three batani(2)
88	<i>Petrotilapia tridentiger</i>	11	8	0.73	Bunya(1), Bunyaku(1), Chimbenji cha kunyanja(1), Chimbuza(1), Mbuna(4), Mbuna ya blue(1), Mbuna ya nyamfokomu(1), Nyamfokomu(1)
89	<i>Petrotilapia</i> sp. "nigra yellow dorsal"	14	9	0.64	Bunya(1), Bunyaku(1), Chigong'u(1), Chimbenji cha kunyanja(1), Chimbuza(1), Kadyankhono(1), Mbuna(6), Nyakatu(1), Nyam'bwichuka(1)
90	<i>Petrotilapia</i> sp. "yellow ventral"	16	11	0.69	Bunya(1), Chimbuza(3), Chitowawa(1), Kadochi(1), Kajose(1), Khumbira dazi(1), M'dyamphipe(1), Mbuna(3), Mbuna ya mwajosi(1), Mbuna ya nyakhondowe(1), Mbuna ya yellow(2)
91	<i>Placidochromis johnstoni</i>	12	10	0.83	Chinyini(1), Chiswabumbu chachikazi(1), Kachimanga(1), Mbuna ya m'miyala(1), Ndowolu(1), Nyakaluwa(1), Nyamakuna(1), Nyamlepetu(3), Tambaliyele(1), Tong'o(1)
92	<i>Placidochromis milomo</i>	19	13	0.68	Chidondolo(1), Chinyini(1), Chiswabumbu cha chimuna(1), Kachimanga(1), Katukusi(1), Lepu(1), Mbaba(1), Mbuna ya m'miyala(1), Nyamakuna(1), Nyamlepetu(6), Nyamulepu(1), Tambaliyele(2), Tambaliyele(1)

93	<i>Placidochromis phenochilus</i>	11	11	1.00	Binga(1), Chablue(1), Fred(1), Gundamwala(1), Kasupa(1), Kaweluwelu(1), Mapilitchona(1), Mbaba(1), M'dyamphipe wa blue(1), M'dyamphipe wa gilini(1), M'dyamphipe wa muna(1)
94	<i>Mylochromis melanonotus</i>	15	15	1.00	Chakhuta(1), Chikonkhola(1), Chimeza(1), Chindongo cha m'phiri(1), Kale(1), Kamthemba(1), Katukuliyi(1), Khota(1), Konkholo(1), Misheki(1), Njokoholi(1), Sasamchenga(1), Thondo(1), Tong'o(1), Yela la ntcheti(1)
95	<i>Protomelas fenestratus</i>	14	10	0.71	Chidondolo(1), Chindongo(1), Chinthu ku be(1), Kachingoma(5), Kaipa abisala(1), Khumba(1), Mbaba(1), Mbendera(1), Mbuna ya m'bango(1), Palala wam'miyala(1)
96	<i>Protomelas kirkii</i>	14	12	0.86	Chidzem'bango(1), Chimwamfumbu(1), Chindongo(2), Gilini(1), Gwenji(1), Kamjani(1), Mbaba(1), Mbaba ya blue(1), Mjani(2), Mjani wamumatete(1), Nyaphati(1), Palala weniweni (wam'bango)(1)
97	<i>Protomelas marginatus</i>	10	9	0.90	Chindongo(2), Kambuzi(1), Kamtsine(1), Khota(1), Mbaba(1), Mfufuma(1), Mjani(1), Palala wa ku deep(1), Yela(1)
98	<i>Protomelas pleurotaenia</i>	13	12	0.92	Binga(1), Cham'matsine(1), Chindongo(1), Kam'dyabango(1), Kamtsabango(1), Mbaba za m'mbango(1), Mbuna ya m'miyala(1), Mfufuma(1), Mjani(2), Mjani wamumatete(1), Mjani wamumchenga(1), Nyaphati(1)
100	<i>Pseudotropheus livingstonii</i>	17	10	0.59	Chiheni(1), Chimbuzu(3), Chindongo(1), Gundamwala(1), Kajekete(1), Mbuna(5), Mbuna boli(1), Mbuna ya chankhono(1), Mbuna ya m'miyala(2), Mbuna ya pa nyanja(1)
101	<i>Pseudotropheus tropeops gracilior</i>	19	13	0.68	Chalunda(1), Chimbuzu(2), Chimbuzu mungoni(1), Chimeza(1), Chindongo(1), Mbuna(6), Mbuna ya kuphiri(1), Mbuna ya mbwiwi(1), Mbuna ya msangalabwi(1), Mbuna ya m'mchenga(1), Mbuna ya pa nyanja(1), Ndipheni(1), Nyakatu(1)
103	<i>Pseudotropheus tropeops</i> "marmalade cat"	18	14	0.78	Abiti Alabi(1), Chidondolo(1), Chimbuzu(3), Mbuna(3), Mbuna fisi ya yellow yam'miyala(1), Mbuna wa fisi(1), Mbuna ya chimbwi(1), Mbuna ya maanga(1), Mbuna ya mawangamawanga(1), Mbuna ya namakhathi ya yellow(1), Mbuna ya ntholomi(1), Mcheni(1), Nyalubwi(1), Pundu(1)
105	<i>Pseudotropheus zebra</i>	19	14	0.74	Blue sekeni(1), Chidondolo(1), Chimbuzu(3), Gunyakumwa(1), Mbuna(4), Mbuna ya galala(1), Mbuna ya mawangamawanga(1), Mbuna ya m'miyala(1), Mbuna ya nyamugalala(1), Mcheni(1), Mgopo(1), Ndipheni wa gilini(1), Nyakatu(1), Nyamtima(1)
106	<i>Pseudotropheus zebra</i>	18	14	0.78	Blue sekeni(1), Blue14(1), Chidondolo(1), Chimbuzu(2), Gunyakumwa(1), Mbuna(4), Mbuna ya galala(1), Mbuna ya milezimilezi(1), Mbuna ya m'mwamba(1), Mbuna ya nyamugalala(1), Mcheni(1), Mgopo(1), Ndipheni wa zebra(1), Nyamtima(1)
107	<i>Pseudotropheus zebra</i>	15	10	0.67	Chidochi(1), Chimbuzu(3), Kadochi(1), Khekhena(1), Mbuna(4), Mbuna ya chikasu(1), Mbuna ya chikasu yapansi(1), Mcheni(1), Ndipheni wa chikasu(1), Tsungwa(1)
108	<i>Pseudotropheus zebra</i>	17	11	0.65	Chimbuzu(3), Khekhena(1), Mbuna(5), Mbuna ya blue(1), Mbuna ya galala(1), Mbuna ya pansi(1), Mcheni(1), Ndipheni wa fisi(1), Nkopo(1), Nyamtima(1), Pundu wa blue(1)
109	<i>Pseudotropheus zebra</i> "marmalade cat"	20	11	0.55	Chimbuzu(3), Gunda anyoku(1), Mbuna(4), Mbuna ya ntochi(2), Mbuna yotuwa(3), Mcheni(1), Mgopo(1), Ndipheni wotuwa(1), Nkopo(1), Nyambatuwa(2), Nyamuvundabweka(1)
111	<i>Rhamphochromis brevis</i>	14	10	0.71	Batala(2), Chinomwi(1), Jelewa(1), Jelewa wammuna(1), Mcheni(2), Sangu(1), Sangu yakabawi(1), Sangumthopa(1), Sangwe(1), Tsungwa(3)
112	<i>Rhamphochromis cf. esox</i>	20	8	0.40	Hazile(1), Kachimanga(1), Khekhena(1), Mcheni(3), Mcheni wa kapula kamwenye(1), Mkunguni(11), Mlothu(1), Sangwe(1)
113	<i>Rhamphochromis leptosoma</i>	20	13	0.65	Chinomwi(1), Kapumphu(2), Khekhena(2), Khekhena wa blue(1), Mcheni(2), Mcheni wa kapula kamwenye(1), Mkunguni(5), Nyole(1), Sangu(1), Sangu nyole(1), Sangwe m'nthopa(1),

114	<i>Rhamphochromis cf. lucius</i>	19	12	0.63	Sangwi(1), Thondo(1) Batala(2), Biti ali(1), Chitowawa(1), Khekhena(2), Mcheni(3), Khekhena wotuwira(1), Nyole(1), Sangu(3), Sangu mbuchi(1), Sangunyoli(2), Sangwi(1), Tong'o(1)
116	<i>Rhamphochromis macrophthalmus</i>	16	7	0.44	Batala(1), Khekhena wamthemba(1), Mcheni(1), Mcheni wa kale(2), Mkunguni(8), Pwifu(1), Sangu(2)
117	<i>Rhamphochromis cf. woodi</i>	16	6	0.38	Jelewa(1), Kapumphu(1), Mcheni(2), Mcheni wa blue(2), Mkunguni(9), Sawasawa(1)
118	<i>Serranochromis robustus</i>	14	8	0.57	Chiwuwi(1), Khukwa(1), Mzomba(3), Ndiimba ndiyani(1), Nyamzomba(2), Sawasawa(1), Tsungwa(4), Wuwa(1)
119	<i>Stigmatochromis</i> sp. "spilostichus type"	8	6	0.75	Birimankhwe(1), Katukuliyi(1), Mkweni(1), Ndowolu(3), Sawasawa(1), Selamani(1)
120	<i>Taeniolethrinops praeorbitalis</i>	15	13	0.87	Chigong'o chandemba(1), Chipyololo(1), Gwenji(1), Mbaba(1), Ndowolu(1), Njokoholi(1), Sawasawa(3), Thondo(1), Thondo la mphongo(1), Thondo wa gilini(1), Tofu(1), Yela(1), Yela la chabawi(1)
121	<i>Taeniochromis holotaenia</i>	14	11	0.79	Chigong'o chandemba cha blue(1), Chigong'u wa ndemba(2), Chigunda wanthu(1), Gong'olo wa gilini(1), Kabawi(1), Mbaba(1), Mbaba ya blue(1), Mgunya(1), Sawasawa(1), Thondo la mphongo(1), Yela(3)
123	<i>Tramitichromis cf. variabilis</i>	14	9	0.64	Chigong'o chandemba(1), Chigong'u wa ndemba(2), Fukufuku(2), Gong'olo wam'miyala(1), Kabawi(1), Mbaba(1), Mgunya(1), Sawasawa(2), Yela(3)
124	<i>Trematocranus placodon</i>	13	10	0.77	Chigong'o chandemba(1), Chigong'u wa ndemba(2), Kadyankhono(1), Mbaba(1), Mbaba ya gong'o(1), M'dyankhono(1), Mgunya(1), Muryankhono(1), Sawasawa(1), Yela(3)
125	<i>Tyrannochromis macrostoma</i>	13	12	0.92	Fisi wam'miyala(1), Kalikolombi(1), Kam'mawele wa kundimba(1), Lwenda(1), Mzomba(1), Nakatunu(1), Ndiimba ndiyani(1), Ng'ongu(1), Nyamwaha(2), Nyamzomba mutuwa(1), Nyapazomba(1), Tsungwa(1)
126	<i>Tyrannochromis nigriventer</i>	10	10	1.00	Fisi wa kundimba(1), Fisi waku deep(1), Kachingoma(1), Mbenji(1), Mzomba(1), Nakatunu(1), Ndiimba ndiyani wafisi(1), Nyamuzomba(1), Nyamwaha(1), Pundu(1)

Appendix 2. Local Fish Names and Their Tongue, Villages and Indicating Scientific Species. Scientific Species are shown by the Species Code Number in Appendix 1.

Local fish name	Frequency	Tongue (village, species code no.)
Abiti alabi	1	Yao (Chindongo: 103)
Ayana	1	Nyanja (Cape Maclear: 46)
Balewa	1	Tonga/Tumbuka/Nyanja (Masasa: 33)
Bambata	1	Yao (Chindongo: 30)
Bampuhedi	1	Tonga (Chindozwa: 42)
Bamusi	1	Nyanja (Cape Maclear: 42)
Batala	5	Tonga (Sanga: 111; Chintheche: 111, 114, 116), Tonga/Tumbuka (Msaka: 114)
Bele	1	Yao (Chindongo: 74)
Bele wa blue	1	Nyanja (Mbwazulu: 77)
Bele wam'muna	1	Nyanja (Mbwazulu: 76)
Binga	16	Tonga (Chindozwa: 44; Chikale: 44, 57; Sanga: 22; Dindano: 44; Chintheche: 44; Kande: 22, 44, 57, 93, 98; Tukombo: 22; Ngala: 44), Tonga/Tumbuka (Mbvunguti: 44; Chizale: 44), Tonga/Tumbuka/Nyanja (Masasa: 44)
Binga la blue	5	Tonga (Chindozwa: 37, 58; Dindano: 37, 58), Tonga/Tumbuka (Mbvunguti: 37)
Birimankhwe	1	Nyanja (Malembo: 119)
Biti ali	1	Tonga/Tumbuka (Chizale: 114)
Blue fish	2	Tonga/Tumbuka (Msaka: 27), Nyanja (Malembo: 27)
Blue sekeni	2	Tonga/Tumbuka (Msaka: 105, 106)
Blue14	3	Tonga (Chikale: 87; Dindano: 40, 106)
Bombe	4	Nyanja (Mbwazulu: 8; Kasankha: 8), Yao (Matomondo: 8; Chindongo: 8)
Bomu	3	Tonga/Tumbuka (Chizale: 8), Tonga/Tumbuka/Nyanja (Masasa: 8), Nyanja (Cape Maclear: 8)
Botomu	2	Nyanja (Kasankha: 1; Cape Maclear: 1)
Bunya	3	Tonga (Chindozwa: 88, 89, 90)
Bunyaku	2	Tonga (Dindano: 88; Chintheche: 89)
Bwilili	1	Tonga/Tumbuka (Msaka: 57)
Bwituka	1	Tonga (Sanga: 8)
Chabawa	1	Tonga (Sanga: 21)
Chablue	2	Tonga (Chintheche: 77, 93)
Chabwiramchenga	1	Tonga/Tumbuka (Mbvunguti: 86)
Chakhuta	14	Tonga (Sanga: 26, 27, 28, 30, 82, 83, 84; Dindano: 26; Kande: 31, 42, 94; Tukombo: 27, 81), Tonga/Tumbuka (Msaka: 26)
Chalunda	3	Tonga (Chindozwa: 101; Kande: 56; Ngala: 40)
Chalunda mutuwa	1	Tonga (Tukombo: 40)
Chambo	15	Tonga/Nyanja (Liwaladzi: 11, 12), Tonga/Tumbuka (Msaka: 12; Mbvunguti: 12; Chizale: 10, 11, 12), Nyanja (Malembo: 12; Mbwazulu: 11; Cape Maclear: 12), Yao (Matomondo: 11, 12; Makawa: 11, 12; Chindongo: 12)
Chambo cha blue	1	Tonga/Tumbuka (Mbvunguti: 10)
Chambo chachikazi	1	Tonga/Tumbuka/Nyanja (Masasa: 12)
Chambo chachimuna	1	Tonga/Tumbuka/Nyanja (Masasa: 10)
Chambu	10	Tonga (Chindozwa: 10; Chikale: 10; Dindano: 10, 11, 12; Chintheche: 11, 12; Kande: 12; Tukombo: 11; Ngala: 11)

Chamchipeso	1	Tonga/Nyanja (Liwaladzi: 53)
Cham' matsine	1	Yao (Makawa: 98)
Chendamwamba wamkazi	1	Nyanja (Cape Maclear: 30)
Chendamwamba wam' muna	1	Nyanja (Cape Maclear: 27)
Chendamwamba	3	Tonga/Tumbuka (Mbvunguti: 30; Chizale: 29), Tonga/Tumbuka/Nyanja (Masasa: 29)
Chendamwamba wa blue	2	Tonga/Tumbuka (Mbvunguti: 27; Chizale: 27)
Chenyeki	1	Tonga (Dindano: 52)
Chezichezi	2	Yao (Chindongo: 33, 34)
Chibala	3	Tonga (Tukombo: 30, 86; Ngala: 27)
Chibalala	4	Tonga (Chindozwa: 86; Chintheche: 27, 30, 31)
Chibang' ombi	1	Tonga (Chintheche: 81)
Chibomu	1	Tonga/Tumbuka (Mbvunguti: 8)
Chidochi	4	Tonga (Chindozwa: 55, 75, 107; Dindano: 55)
Chidondolo	8	Nyanja (Malemba: 92; Mbwazulu: 95), Yao (Matomondo: 18, 51, 53, 103, 105, 106)
Chidondolo cha kunyanja	2	Yao (Matomondo: 84,86)
Chidondolo cha mmiyala	1	Yao (Matomondo: 87)
Chidondolo chofiila	1	Yao (Matomondo: 52)
Chidyamchenga	1	Yao (Matomondo: 21)
Chidzem' bango	2	Nyanja (Cape Maclear: 57, 96)
Chigong' o chammatsine	1	Tonga/Tumbuka (Msaka: 18)
Chigong' o chandembera	4	Tonga/Tumbuka (Msaka: 17, 120, 123, 124)
Chigong' o chandembera cha blue	1	Tonga/Tumbuka (Msaka: 121)
Chigong' u	7	Tonga (Chindozwa: 16, 17, 28, 38; Kande: 82, 84, 89)
Chigong' u wa blue	2	Tonga (Kande: 16, 26)
Chigong' u wa ndembera	7	Tonga (Sanga: 121, 123, 124; Dindano: 20; Tukombo: 121, 123, 124)
Chigonthi	2	Yao (Matomondo: 1; Chindongo: 1)
Chigumbuli	10	Tonga (Chindozwa: 51; Chikale: 51; Sanga: 51; Dindano: 51; Chintheche: 51; Kande: 51; Tukombo: 50; Ngala: 51), Tonga/Nyanja (Liwaladzi: 51), Tonga/Tumbuka (Msaka: 51)
Chigunda wanthu	2	Yao (Matomondo: 37, 121)
Chigwambati	1	Tonga/Tumbuka/Nyanja (Masasa: 31)
Chiheni	2	Tonga (Chindozwa: 40, 100)
Chikhokholo	1	Tonga/Tumbuka (Msaka: 87)
Chikhulamchenga	1	Nyanja (Mbwazulu: 34)
Chikoku	1	Tonga (Chikale: 60)
Chikolokolo	1	Yao (Matomondo: 9)
Chikolombi	1	Tonga/Tumbuka (Chizale: 43)
Chikonkholo	1	Tonga/Tumbuka (Msaka: 94)
Chilumi	1	Tonga (Chintheche: 57)
Chilumya	1	Tonga (Chintheche: 22)

Chimbenje	6	Nyanja (Malembo: 51; Mbwazulu: 51; Kasankha: 51; Cape Maclear: 51), Yao (Matomondo: 47; Makawa: 51)
Chimbenje cha blue	2	Yao (Matomondo: 72, 74)
Chimbenji	1	Tonga/Tumbuka/Nyanja (Masasa: 51)
Chimbenji cha kunyanja	2	Yao (Matomondo: 88, 89)
Chimberi	1	Tonga (Chintheche: 38)
Chimbumbu	3	Tonga (Chikale: 2), Tonga/Tumbuka (Msaka: 2; Chizale: 2)
Chimbuzi	1	Tonga (Chintheche: 60)
Chimbuzu	54	Tonga (Sanga: 70, 71, 72, 74, 75, 88, 89, 90, 100, 101, 103, 105, 106, 107, 108, 109; Chintheche: 40, 52, 54, 56, 59, 61, 62, 90, 100, 103, 105, 106, 107, 108, 109; Kande: 54, 60, 61, 62, 67, 68, 69, 71, 72, 74, 75, 76, 90, 100, 101, 103, 107, 108, 109; Tukombo: 52, 61, 62, 105)
Chimbuzu mungoni	2	Tonga (Chintheche: 55, 101)
Chimbuzu wa black	1	Tonga (Kande: 40)
Chimbuzu wa pundu	1	Tonga (Tukombo: 60)
Chimbwi	5	Tonga/Tumbuka (Mbvunguti: 79; Chizale: 76, 77, 79, 80)
Chimeza	7	Tonga (Chindozwa: 15, 20, 22, 67, 68, 94; Chintheche: 101)
Chimpenipeni	1	Nyanja (Cape Maclear: 15)
Chimwamfumbu	1	Tonga (Tukombo: 96)
Chindemdulumuka	1	Nyanja (Cape Maclear: 69)
Chindondo chachimuna	1	Nyanja (Mbwazulu: 40)
Chindondo chamumchenga	1	Nyanja (Mbwazulu: 52)
Chindongo	14	Nyanja (Mbwazulu: 53, 74), Yao (Matomondo: 96, 97; Chindongo: 40, 54, 55, 56, 95, 96, 97, 98, 100, 101)
Chindongo cha m'phiri	1	Yao (Chindongo: 94)
Chinguwi	3	Tonga (Chindozwa: 27, 82, 83)
Chinguwi cha blue	1	Tonga/Tumbuka (Mbvunguti: 33)
Chinkhulo	2	Tonga/Nyanja (Liwaladzi: 10), Nyanja (Malembo: 10)
Chinkhulo	3	Tonga (Chintheche: 10; Kande: 10; Tukombo: 10)
Chinomwi	2	Tonga (Kande: 113; Ngala: 111)
Chinthu ku be	1	Tonga (Kande: 95)
Chinyini	3	Nyanja (Mbwazulu: 69, 91, 92)
Chipesu	3	Tonga/Nyanja (Liwaladzi: 70, 71, 72)
Chipyololo	1	Yao (Makawa: 120)
Chisawasawa	16	Tonga (Chindozwa: 64, 65, 66; Chikale: 64, 65, 66; Sanga: 64, 65, 66; Dindano: 64, 65, 66), Tonga/Nyanja (Liwaladzi: 16), Yao (Makawa: 64, 65, 66)
Chisawasawa chammakolu	1	Tonga (Sanga: 16)
Chiswabumbu cha chimuna	1	Nyanja (Cape Maclear: 92)
Chiswabumbu chachikazi	1	Nyanja (Cape Maclear: 91)
Chitoshi	1	Yao (Matomondo: 66)
Chitowawa	3	Nyanja (Malembo: 90; Mbwazulu: 64), Yao (Chindongo: 114)
Chiwiramchenga	1	Tonga/Tumbuka/Nyanja (Masasa: 30)

Chiwuwa	2	Tonga (Tukombo: 18; Ngala: 15)
Chiwuwi	1	Tonga (Kande: 118)
Chiyendam'mwamba	1	Nyanja (Kasankha: 86)
Chizgezi	1	Tonga (Dindano: 57)
Chizima moto	1	Tonga/Tumbuka (Msaka: 20)
Chizimwamotu	1	Tonga (Sanga: 68)
Chofiira	1	Nyanja (Cape Maclear: 26)
Cobalt	1	Tonga (Chindozwa: 71)
Criminal	1	Tonga/Tumbuka/Nyanja (Masasa: 34)
Criminal	1	Nyanja (Mbwazulu: 33)
Dimba	2	Tonga (Tukombo: 20), Nyanja (Kasankha: 18)
Dondolo	2	Yao (Matomondo: 48, 50)
Dong'o	2	Yao (Chindongo: 38, 82)
Double head	3	Tonga/Tumbuka (Mbvunguti: 42; Chizale: 42), Tonga/Tumbuka/Nyanja (Masasa: 42)
Dowadowa	1	Yao (Makawa: 28)
Dzani	2	Nyanja (Malembo: 24; Kasankha: 44)
Dzani wamkazi	1	Nyanja (Malembo: 44)
Fisi	15	Tonga/Nyanja (Liwaladzi: 75, 76, 77, 79, 80, 81), Tonga/Tumbuka/Nyanja (Masasa: 80, 81), Nyanja (Cape Maclear: 76, 79), Yao (Matomondo: 75, 76, 77; Chindongo: 71, 72)
Fisi wa kundimba	1	Nyanja (Malembo: 126)
Fisi wa mkazi	1	Tonga/Tumbuka/Nyanja (Masasa: 79)
Fisi waku deep	4	Nyanja (Malembo: 80; Kasankha: 80, 81, 126)
Fisi wakunyanja	1	Nyanja (Mbwazulu: 81)
Fisi wamkazi	1	Nyanja (Mbwazulu: 79)
Fisi wam'matsine	1	Nyanja (Malembo: 81)
Fisi wam'miyala	1	Nyanja (Kasankha: 125)
Fisi wamumchenga	2	Nyanja (Malembo: 79; Kasankha: 79)
Fisi wotuwira	1	Nyanja (Mbwazulu: 80)
Fred	1	Tonga (Chindozwa: 93)
Fukufuku	7	Nyanja (Malembo: 123; Mbwazulu: 123; Kasankha: 58), Yao (Matomondo: 24, 26, 27, 28)
Fwifwifwi	1	Nyanja (Kasankha: 69)
Fwillili	3	Tonga/Tumbuka (Msaka: 14; Chizale: 14), Tonga/Tumbuka/Nyanja (Masasa: 14)
Galala	1	Tonga (Chikale: 71)
Galamula	2	Tonga (Sanga: 10; Dindano: 10)
Giffi	6	Tonga/Nyanja (Liwaladzi: 75, 76, 77, 79, 80, 81)
Gili	1	Tonga/Tumbuka (Chizale: 33)
Gilini	2	Nyanja (Mbwazulu: 58, 96)
Godi wa blue	1	Tonga/Tumbuka (Msaka: 83)
Godi wa blue kumutu	1	Tonga/Tumbuka (Msaka: 82)

Gombati	3	Nyanja (Mbwazulu: 31; Cape Maclear: 31), Yao (Makawa: 30)
Gondola	3	Nyanja (Malembo: 34), Yao (Matomondo: 29, 30)
Gong'ola	2	Nyanja (Malembo: 28; Cape Maclear: 17)
Gong'olo wa gilini	1	Nyanja (Kasankha: 121)
Gong'olo wam'miyala	1	Nyanja (Kasankha: 123)
Gong'u	1	Tonga/Tumbuka (Mbvunguti: 65)
Gonthi	1	Nyanja (Malembo: 1)
Gula sapu	1	Tonga/Tumbuka/Nyanja (Masasa: 68)
Gulufisi	2	Yao (Matomondo: 67, 83)
Gumbuli	2	Tonga/Tumbuka (Chizale: 51), Tonga/Tumbuka/Nyanja (Masasa: 51)
Gunda anyoku	1	Tonga (Dindano: 109)
Gunda mwala	2	Nyanja (Malembo: 42), Yao (Makawa: 42)
Gunda sitima	1	Nyanja (Kasankha: 42)
Gundakumwala	2	Tonga/Tumbuka (Msaka: 37, 42)
Gundamwala	3	Nyanja (Mbwazulu: 42, 100), Yao (Chindongo: 93)
Gundaphiri	1	Yao (Chindongo: 42)
Gunyaku	1	Tonga (Dindano: 59)
Gunyakumwa	2	Tonga (Kande: 105, 106)
Gwambati	1	Nyanja (Malembo: 33)
Gwenje	1	Tonga/Nyanja (Liwaladzi: 21)
Gwenji	5	Tonga (Sanga: 96; Chintheche: 120; Kande: 17; Tukombo: 21, 24)
Hazile	1	Nyanja (Kasankha: 112)
Ikilendi	1	Yao (Chindongo: 84)
Ikilendi wa chilundu	1	Yao (Chindongo: 86)
Iseki	3	Tonga (Dindano: 45, 46, 47)
Jamisoni	9	Tonga/Tumbuka (Msaka: 45, 47; Mbvunguti: 47), Nyanja (Malembo: 46; Mbwazulu: 47; Kasankha: 45, 47; Cape Maclear: 47), Yao (Makawa: 46)
Jamisoni wamkazi	1	Nyanja (Mbwazulu: 46)
Jamisoni wam'muna	1	Nyanja (Mbwazulu: 45)
Jani	1	Nyanja (Mbwazulu: 44)
Jelewa	2	Tonga/Tumbuka (Msaka: 117), Nyanja (Mbwazulu: 111)
Jelewa wammuna	1	Nyanja (Kasankha: 111)
Jemisoni	1	Tonga/Tumbuka/Nyanja (Masasa: 45)
Jesi	4	Tonga (Chindozwa: 53, 70, 72; Dindano: 70)
Jessie	5	Tonga (Chintheche: 70, 71, 72, 74, 75)
Kabawi	2	Tonga (Chintheche: 121, 123)
Kabibi	1	Tonga/Nyanja (Liwaladzi: 42)
Kabwiri	3	Tonga (Chindozwa: 8; Tukombo: 8), Nyanja (Cape Maclear: 28)
Kachimanga	5	Nyanja (Malembo: 68; Mbwazulu: 36; Kasankha: 91, 92), Yao (Chindongo: 112)

Kachingoma	7	Tonga (Chindozwa: 95; Sanga: 50, 95; Dindano: 95; Chintheche: 95, 126; Tukombo: 95)
Kachipesu	1	Tonga (Ngala: 70)
Kadochi	3	Tonga (Dindano: 75, 90, 107)
Kadyankhono	3	Nyanja (Malembo: 89; Mbwazulu: 50, 124)
Kadyausanje	3	Yao (Makawa: 79, 80, 81)
Kadzikambe	4	Nyanja (Malembo: 15; Mbwazulu: 15), Yao (Chindongo: 15, 18)
Kaipa abisala	2	Nyanja (Malembo: 53; Mbwazulu: 95)
Kajekete	1	Nyanja (Kasankha: 100)
Kajose	1	Tonga (Chikale: 90)
Kale	2	Nyanja (Mbwazulu: 20, 94)
Kalikolombe	3	Tonga (Chikale: 43), Tonga/Nyanja (Liwaladzi: 43), Tonga/Tumbuka (Mbvunguti: 43)
Kalikolombi	9	Tonga (Chindozwa: 43; Sanga: 67, 125; Dindano: 43; Chintheche: 43; Kande: 43; Tukombo: 43), Tonga/Tumbuka (Msaka: 43), Tonga/Tumbuka/Nyanja (Masasa: 43)
Kamango	1	Nyanja (Malembo: 67)
Kambuzi	3	Tonga (Kande: 11), Tonga/Nyanja (Liwaladzi: 84), Nyanja (Malembo: 97)
Kambuzi wa gong'o	1	Nyanja (Malembo: 38)
Kam'dyabango	1	Nyanja (Kasankha: 98)
Kam'dyamwala	1	Nyanja (Kasankha: 21)
Kamjani	2	Tonga (Kande: 96; Ngala: 22)
Kam'mawele	1	Nyanja (Malembo: 76)
Kam'mawele wa kundimba	1	Nyanja (Malembo: 125)
Kampala	2	Tonga (Dindano: 27, 33)
Kampanga	4	Tonga (Chikale: 6; Sanga: 6; Chintheche: 6; Ngala: 6)
Kampango	10	Tonga/Tumbuka (Msaka: 6; Chizale: 6), Tonga/Tumbuka/Nyanja (Masasa: 6), Nyanja (Malembo: 6; Mbwazulu: 6; Kasankha: 6; Cape Maclear: 6), Yao (Matomondo: 6; Makawa: 6; Chindongo: 6)
Kampaundi	1	Yao (Chindongo: 80)
Kampeni-peni	2	Nyanja (Mbwazulu: 43; Kasankha: 43)
Kamthemba	1	Nyanja (Kasankha: 94)
Kamtsabango	2	Nyanja (Mbwazulu: 84, 98)
Kamtsine	2	Nyanja (Mbwazulu: 97; Cape Maclear: 20)
Kamunezi	1	Nyanja (Cape Maclear: 68)
Kanyini	1	Yao (Makawa: 69)
Kapichiliko	1	Yao (Chindongo: 50)
Kapulakamwenye	1	Yao (Matomondo: 38)
Kapumphu	3	Nyanja (Kasankha: 113, 117; Cape Maclear: 113)
Kasatsi	1	Nyanja (Malembo: 30)
Kasawala	5	Tonga/Tumbuka (Msaka: 11; Mbvunguti: 11), Tonga/Tumbuka/Nyanja (Masasa: 11), Nyanja (Malembo: 11; Cape Maclear: 11)
Kasupa	1	Tonga (Sanga: 93)
Kasupe	2	Nyanja (Malembo: 84), Yao (Makawa: 84)

Katchasi	1	Yao (Chindongo: 31)
Katukulyi	5	Tonga (Chintheche: 50, 67, 68, 94, 119)
Katukusi	2	Yao (Matomondo: 14, 92)
Katungulu	9	Tonga (Chindozwa: 11, 12; Chikale: 11, 12; Sanga: 11, 12; Kande: 11; Tukombo: 12; Ngala: 12)
Kaulu	2	Tonga/Tumbuka (Mbvunguti: 34; Chizale: 34)
Kausanje	1	Yao (Matomondo: 57)
Kavuwi	1	Tonga (Kande: 83)
Kaweluwelu	2	Tonga (Dindano: 84), Tonga/Tumbuka/Nyanja (Masasa: 93)
Kawereweru	1	Tonga (Dindano: 42)
Kawizu	1	Tonga/Nyanja (Liwaladzi: 57)
Kayendiyendi	1	Tonga (Tukombo: 6)
Kelesoni	1	Nyanja (Kasankha: 46)
Khekhena	7	Tonga (Sanga: 113, 114), Tonga/Tumbuka/Nyanja (Masasa: 112), Nyanja (Kasankha: 113), Yao (Makawa: 114; Chindongo: 107, 108)
Khekhena wa blue	1	Nyanja (Malembo: 113)
Khekhena wamthemba	1	Nyanja (Kasankha: 116)
Khekhena wotuwira	1	Nyanja (Kasankha: 114)
Khota	21	Tonga (Chindozwa: 21, 76; Sanga: 18, 20, 58, 97; Dindano: 18, 21, 36, 67, 68, 80, 81, 94; Chintheche: 18, 20, 21; Kande: 58; Tukombo: 37), Tonga/Nyanja (Liwaladzi: 18, 20)
Khota la blue	5	Tonga (Ngala: 18, 36, 37, 38, 58)
Khota la green	1	Tonga (Ngala: 20)
Khota la mbuchi	3	Tonga (Kande: 18, 20, 23)
Khota la mumwa	2	Tonga (Chintheche: 48, 58)
Khukwa	2	Tonga/Tumbuka (Mbvunguti: 22; Chizale: 118)
Khumba	2	Nyanja (Malembo: 95), Yao (Chindongo: 10)
Khumbira dazi	1	Yao (Chindongo: 90)
Khumbo	1	Yao (Chindongo: 65)
Khumbuli	1	Tonga/Tumbuka (Mbvunguti: 51)
Kolowoli	1	Tonga (Ngala: 43)
Konkholo	3	Tonga/Tumbuka (Chizale: 67, 68, 94)
Konkhowe	1	Tonga/Tumbuka (Chizale: 21)
Kwasakwasa	6	Tonga (Ngala: 64, 65, 66), Tonga/Nyanja (Liwaladzi: 64, 65, 66)
Lepu	1	Tonga (Kande: 92)
Levi	1	Tonga (Sanga: 48)
Likumba	1	Yao (Matomondo: 10)
Liwinga	2	Yao (Matomondo: 40, 54)
Liyani	4	Yao (Makawa: 22, 44; Chindongo: 37, 51)
Lwenda	3	Tonga (Chintheche: 15, 125; Kande: 15)
Madimba	1	Tonga (Chintheche: 87)

Magwenje	1	Tonga/Tumbuka (Msaka: 24)
Makalanji	1	Tonga (Sanga: 86)
Manunda	1	Tonga (Chintheche: 42)
Mapilitchona	1	Nyanja (Malembo: 93)
Masuhunju	3	Tonga/Tumbuka (Chizale: 45, 46, 47)
Masuhunju wamkazi	1	Tonga/Tumbuka (Mbvunguti: 46)
Masuhunju wam'muna	1	Tonga/Tumbuka (Mbvunguti: 45)
Masulunji	1	Tonga (Tukombo: 47)
Mawala	1	Tonga (Chikale: 86)
Mbaba	27	Tonga (Chindozwa: 30), Nyanja (Mbwazulu: 30, 120; Kasankha: 30, 31; Cape Maclear: 16), Yao (Matomondo: 16, 17, 22, 23, 31, 55, 56, 81, 93, 95; Makawa: 16, 17, 21, 58, 96, 97, 121, 123, 124; Chindongo: 77, 92)
Mbaba ya blue	2	Nyanja (Malembo: 96; Mbwazulu: 121)
Mbaba ya gilini	1	Nyanja (Cape Maclear: 58)
Mbaba ya gong'o	1	Nyanja (Malembo: 124)
Mbaba yayikazi	1	Nyanja (Mbwazulu: 67)
Mbaba yayimuna	1	Nyanja (Mbwazulu: 68)
Mbaba za m'mbango	1	Nyanja (Cape Maclear: 98)
Mbalule	6	Tonga/Nyanja (Liwaladzi: 33, 34), Tonga/Tumbuka (Msaka: 31), Nyanja (Malembo: 31; Mbwazulu: 31; Kasankha: 33)
Mbaluli	12	Tonga (Chindozwa: 31, 33; Chikale: 31, 34; Sanga: 31, 33, 34; Dindano: 28, 31; Chintheche: 33, 34; Ngala: 28)
Mbaluli ya blue	1	Tonga (Tukombo: 31)
Mbelewele	1	Nyanja (Cape Maclear: 1)
Mbendera	1	Tonga/Tumbuka (Msaka: 95)
Mbenji	1	Tonga (Sanga: 126)
Mbowe	4	Nyanja (Mbwazulu: 21, 48), Yao (Makawa: 20, 87)
Mbowe ya blue	1	Nyanja (Malembo: 18)
Mbuchi	8	Tonga (Sanga: 23, 24; Chintheche: 23, 24, 53; Ngala: 23, 24), Tonga/Tumbuka (Chizale: 23)
Mbuluwulu	2	Tonga (Sanga: 4; Dindano: 4)
Mbumbu	1	Tonga/Tumbuka (Mbvunguti: 2)
Mbuna	131	Tonga (Chikale: 40, 52, 53, 54, 55, 59, 61, 62, 69, 70, 72, 74, 75, 76, 100, 101, 103, 105, 106, 107, 108, 109; Sanga: 37, 38, 40, 52, 53, 54, 55, 56, 59, 60, 61, 62; Dindano: 100; Kande: 59), Tonga/Tumbuka (Msaka: 10, 59, 60, 61, 62, 108; Mbvunguti: 42, 100; Chizale: 62, 71, 74, 89, 101), Tonga/Tumbuka/Nyanja (Masasa: 40, 52, 53, 54, 55, 56, 59, 60, 61, 62, 70, 71, 72, 74, 75, 88, 89, 90, 100, 101, 103, 105, 106, 107, 108, 109), Nyanja (Malembo: 26, 62, 106, 107; Mbwazulu: 54, 71, 89, 100, 101; Kasankha: 70, 71, 72, 88, 89, 101, 109; Cape Maclear: 53, 54, 55, 56, 60, 62, 87, 88, 89, 90, 105, 108), Yao (Matomondo: 36; Makawa: 18, 52, 53, 54, 55, 56, 59, 61, 62, 70, 71, 72, 74, 75, 88, 89, 90, 101, 103, 105, 106, 107, 108, 109; Chindongo: 53, 81, 83)
Mbuna boli	2	Tonga/Tumbuka (Chizale: 40, 100)
Mbuna fisi ya yellow yam'miyala	1	Nyanja (Kasankha: 103)
Mbuna wa fisi	1	Nyanja (Mbwazulu: 103)
Mbuna ya black	4	Tonga/Tumbuka (Msaka: 40), Nyanja (Malembo: 40, 54; Mbwazulu: 72)
Mbuna ya blue	5	Nyanja (Malembo: 59, 61, 108; Mbwazulu: 61, 88)

Mbuna ya blue yam'miyala	1	Nyanja (Malembo: 71)
Mbuna ya blue yodya ndele	1	Nyanja (Kasankha: 61)
Mbuna ya boli	1	Tonga/Tumbuka (Mbvunguti: 40)
Mbuna ya buchuka	1	Tonga/Tumbuka (Chizale: 59)
Mbuna ya chankhono	1	Nyanja (Cape Maclear: 100)
Mbuna ya chikasu	1	Nyanja (Cape Maclear: 107)
Mbuna ya chikasu yapansi	1	Nyanja (Kasankha: 107)
Mbuna ya chikoku	1	Tonga (Chikale: 56)
Mbuna ya chimbwi	2	Tonga/Tumbuka (Mbvunguti: 60, 103)
Mbuna ya fisi	4	Nyanja (Malembo: 60; Mbwazulu: 60, 62), Yao (Makawa: 60)
Mbuna ya fisi yoyendapansi	1	Nyanja (Kasankha: 60)
Mbuna ya galala	3	Tonga/Tumbuka (Chizale: 105, 106, 108)
Mbuna ya gilini	3	Nyanja (Mbwazulu: 59; Cape Maclear: 59, 61)
Mbuna ya kabwafu	1	Tonga/Tumbuka (Chizale: 61)
Mbuna ya kamcheche	1	Tonga/Tumbuka (Mbvunguti: 55)
Mbuna ya kuphiri	1	Nyanja (Malembo: 101)
Mbuna ya maanga	1	Nyanja (Cape Maclear: 103)
Mbuna ya maangamaanga	1	Nyanja (Mbwazulu: 56)
Mbuna ya mawanga	1	Nyanja (Kasankha: 62)
Mbuna ya mawangamawanga	2	Nyanja (Malembo: 103, 105)
Mbuna ya m'bango	3	Nyanja (Cape Maclear: 70, 72, 95)
Mbuna ya mbwiwi	1	Tonga/Tumbuka (Mbvunguti: 101)
Mbuna ya milezimilezi	1	Nyanja (Cape Maclear: 106)
Mbuna ya mizeri pakati	1	Tonga/Tumbuka (Msaka: 72)
Mbuna ya mizerimizeri	1	Tonga/Tumbuka (Msaka: 70)
Mbuna ya mjosi	1	Tonga/Tumbuka (Chizale: 55)
Mbuna ya m'mchenga	3	Tonga/Tumbuka (Msaka: 101), Nyanja (Kasankha: 52; Cape Maclear: 52)
Mbuna ya m'miyala	18	Tonga/Tumbuka (Msaka: 100), Nyanja (Malembo: 72, 74, 75; Mbwazulu: 70; Kasankha: 40, 53, 56, 105), Yao (Matomondo: 69, 70, 71, 98; Makawa: 38, 40, 91, 92, 100)
Mbuna ya m'miyala yakuda	1	Nyanja (Kasankha: 54)
Mbuna ya m'miyala yofiira	1	Nyanja (Kasankha: 55)
Mbuna ya m'mwamba	1	Nyanja (Kasankha: 106)
Mbuna ya m'ntchesi	2	Tonga/Tumbuka (Chizale: 70, 72)
Mbuna ya msangalabwi	1	Nyanja (Cape Maclear: 101)
Mbuna ya mwajosi	1	Tonga/Tumbuka (Mbvunguti: 90)
Mbuna ya namakhathi	1	Tonga/Tumbuka (Msaka: 56)
Mbuna ya namakhathi ya yellow	1	Tonga/Tumbuka (Msaka: 103)
Mbuna ya nkholome	1	Tonga/Tumbuka (Mbvunguti: 56)
Mbuna ya nkholomi	2	Tonga/Tumbuka (Chizale: 56, 60)

Mbuna ya ntholomi	1	Tonga/Tumbuka (Chizale: 103)
Mbuna ya ntochi	2	Tonga/Tumbuka (Mbvunguti: 109; Chizale: 109)
Mbuna ya nyakhondowe	2	Tonga/Tumbuka (Chizale: 75, 90)
Mbuna ya nyamfokomu	1	Tonga/Tumbuka (Chizale: 88)
Mbuna ya nyamugalala	2	Tonga/Tumbuka (Mbvunguti: 105, 106)
Mbuna ya nyamwaha	1	Tonga/Tumbuka (Chizale: 54)
Mbuna ya pa nyanja	2	Yao (Matomondo: 100, 101)
Mbuna ya pa tchisa	1	Yao (Matomondo: 68)
Mbuna ya pansi	1	Nyanja (Kasankha: 108)
Mbuna ya sangalabwi	1	Nyanja (Cape Maclear: 74)
Mbuna ya yellow	6	Tonga/Tumbuka (Msaka: 55, 75), Nyanja (Malembo: 56; Mbwazulu: 90; Kasankha: 75, 90)
Mbuna ya yimuna	1	Nyanja (Cape Maclear: 40)
Mbuna yofiira	2	Nyanja (Mbwazulu: 55; Cape Maclear: 75)
Mbuna yofiira yaikazi	1	Nyanja (Mbwazulu: 75)
Mbuna yotuwa	4	Tonga/Tumbuka (Msaka: 109), Nyanja (Malembo: 52, 109; Cape Maclear: 109)
Mbuna yotuwira	1	Nyanja (Kasankha: 74)
Mbuna za m'miyala	2	Yao (Matomondo: 58, 59)
Mbununu	4	Tonga (Chintheche: 4; Kande: 4; Tukombo: 4; Ngala: 4)
Mbuvu	6	Tonga (Chindozwa: 6; Dindano: 6; Kande: 6), Tonga/Nyanja (Liwaladzi: 6), Tonga/Tumbuka (Msaka: 6; Mbvunguti: 6)
Mchekumutu	3	Tonga (Kande: 64, 65, 66)
Mcheni	19	Tonga/Tumbuka (Msaka: 111), Nyanja (Malembo: 112, 114; Mbwazulu: 112, 113, 114; Kasankha: 113, 114; Cape Maclear: 111, 117), Yao (Makawa: 112, 116, 117; Chindongo: 103, 105, 106, 107, 108, 109)
Mcheni wa blue	2	Nyanja (Malembo: 117; Mbwazulu: 117)
Mcheni wa kale	2	Nyanja (Malembo: 116; Mbwazulu: 116)
Mcheni wa kapula kamwenye	2	Yao (Matomondo: 112, 113)
M'dinyambolo	1	Tonga/Tumbuka (Mbvunguti: 54)
M'dyamphipe	12	Tonga/Tumbuka (Msaka: 16), Nyanja (Malembo: 82, 83; Mbwazulu: 82, 83; Kasankha: 82, 83), Yao (Makawa: 82, 83; Chindongo: 28, 75, 76)
M'dyamphipe wa blue	2	Tonga/Tumbuka (Msaka: 93; Chindongo: 87)
M'dyamphipe wa gilini	1	Yao (Makawa: 93)
M'dyamphipe wa kazi	1	Nyanja (Cape Maclear: 83)
M'dyamphipe wa muna	2	Nyanja (Mbwazulu: 93; Cape Maclear: 82)
M'dyamhipi	4	Tonga (Dindano: 30), Yao (Matomondo: 79, 80, 90)
M'dyankhono	1	Nyanja (Kasankha: 124)
Mfufuma	3	Nyanja (Malembo: 98; Kasankha: 27; Cape Maclear: 97)
Mgopo	3	Yao (Chindongo: 105, 106, 109)
Mgungu	6	Nyanja (Malembo: 23; Kasankha: 23), Yao (Matomondo: 33, 34; Makawa: 15; Chindongo: 70)
Mgungu wam'bango	1	Nyanja (Kasankha: 24)
Mgungu waumuna	1	Nyanja (Kasankha: 68)

Mgungwi	1	Nyanja (Mbwazulu: 18)
Mgunya	5	Tonga (Ngala: 26, 31, 121, 123, 124)
Minyungambewa	1	Tonga (Chindozwa: 52)
Misheki	1	Tonga (Sanga: 94)
Mjani	11	Tonga (Chindozwa: 84, 96, 97, 98; Sanga: 44, 57, 98; Dindano: 22, 96; Tukombo: 44; Ngala: 57)
Mjani wamumatete	3	Tonga (Chintheche: 84, 96, 98)
Mjani wamumchenga	1	Tonga (Dindano: 98)
Mkazi njeru	1	Tonga/Tumbuka (Msaka: 30)
Mkazinjeru	3	Tonga (Sanga: 29; Kande: 33, 34)
Mkunguni	33	Tonga (Chindozwa: 112, 117; Chikale: 112, 113, 116, 117; Sanga: 112, 116, 117; Dindano: 112, 113, 116, 117; Chintheche: 112, 113, 117; Kande: 112, 116, 117; Tukombo: 112, 113), Tonga/Nyanja (Liwaladzi: 113), Tonga/Tumbuka (Msaka: 112, 116; Mbvunguti: 112, 116, 117; Chizale: 112, 117), Tonga/Tumbuka/Nyanja (Masasa: 116, 117), Nyanja (Cape Maclear: 112, 116)
Mkusani wambuvu	1	Tonga/Tumbuka (Msaka: 15)
Mkweni	1	Tonga/Tumbuka (Msaka: 119)
Mlamamutu	2	Tonga (Sanga: 36, 87)
Mlamba	1	Tonga (Chintheche: 8)
Mlothu	1	Tonga/Nyanja (Liwaladzi: 112)
Mpsa	14	Tonga (Chikale: 5; Sanga: 5; Chintheche: 5; Kande: 5; Ngala: 5), Tonga/Nyanja (Liwaladzi: 5), Tonga/Tumbuka (Msaka: 5; Chizale: 5), Nyanja (Malembo: 5; Mbwazulu: 5; Kasankha: 5; Cape Maclear: 5), Yao (Makawa: 5; Chindongo: 5)
Mpeni wa mfumu	4	Nyanja (Malembo: 43), Yao (Makawa: 43; Chindongo: 43, 44)
Mpeni-peni	1	Nyanja (Malembo: 43)
Mphapati	1	Tonga/Nyanja (Liwaladzi: 15)
Mphasa	1	Tonga/Tumbuka/Nyanja (Masasa: 5)
Mphuta	9	Tonga/Tumbuka (Chizale: 2), Tonga/Tumbuka/Nyanja (Masasa: 2), Nyanja (Malembo: 2; Mbwazulu: 2; Kasankha: 2; Cape Maclear: 2), Yao (Matomondo: 2; Makawa: 2; Chindongo: 2)
Mphuwa	1	Tonga/Tumbuka/Nyanja (Masasa: 4)
Msutachamba	1	Yao (Chindongo: 20)
Mtaka	2	Tonga (Dindano: 16, 83)
Mtaka wa blue	1	Tonga (Ngala: 34)
Mtaka waphala	1	Tonga (Dindano: 34)
Mtaka waphala la blue	1	Tonga (Tukombo: 33)
Mtaka waphala lituwa	1	Tonga (Tukombo: 34)
Muhana	1	Tonga (Chindozwa: 34)
Muryankhono	1	Tonga (Chintheche: 124)
Mwantesha	1	Tonga/Tumbuka (Mbvunguti: 70)
Mwinimwala	1	Nyanja (Mbwazulu: 54)
Mzomba	8	Tonga (Sanga: 15, 43, 118; Dindano: 15, 118, 125, 126; Chintheche: 118)
Nakatunu	2	Yao (Makawa: 125, 126)
Namakhathi	2	Tonga (Ngala: 60), Tonga/Nyanja (Liwaladzi: 60)

Namchenga	1	Tonga/Tumbuka (Msaka: 44)
Namulepetu	2	Tonga/Nyanja (Liwaladzi: 22, 69)
Nanzolika	1	Nyanja (Malembo: 36)
Ndepu	1	Tonga/Tumbuka/Nyanja (Masasa: 86)
Ndiimba ndiyani	2	Nyanja (Malembo: 118; Mbwasulu: 125)
Ndiimba ndiyani wafisi	1	Nyanja (Mbwasulu: 126)
Ndipheni	1	Nyanja (Mbwasulu: 101)
Ndipheni wa chikasu	1	Nyanja (Mbwasulu: 107)
Ndipheni wa fisi	1	Nyanja (Mbwasulu: 108)
Ndipheni wa gilini	1	Nyanja (Mbwasulu: 105)
Ndipheni wa zebra	1	Nyanja (Mbwasulu: 106)
Ndipheni wotuwa	1	Nyanja (Mbwasulu: 109)
Ndolo	1	Tonga/Nyanja (Liwaladzi: 23)
Ndowolu	15	Tonga (Chindozwa: 48, 50, 57, 119; Sanga: 91; Dindano: 23, 24, 48, 50, 87; Kande: 50, 119, 120; Tukombo: 119; Ngala: 50)
Ndowolu ya blue	1	Tonga (Tukombo: 23)
Nduduma	5	Tonga/Tumbuka (Chizale: 45, 46, 47), Tonga/Tumbuka/Nyanja (Masasa: 46, 47)
Ndunduma	31	Tonga (Chindozwa: 45, 46, 47; Chikale: 46, 47; Sanga: 45, 46, 47; Dindano: 45, 46, 47; Chintheche: 45, 46, 47; Kande: 45, 46, 47; Tukombo: 45; Ngala: 45, 46, 47), Tonga/Nyanja (Liwaladzi: 45, 46, 47), Tonga/Tumbuka (Msaka: 46), Nyanja (Malembo: 47), Yao (Makawa: 47; Chindongo: 45, 46, 47, 48)
Ng'ongu	2	Tonga (Kande: 125; Tukombo: 15)
Nguwa	1	Tonga/Nyanja (Liwaladzi: 31)
Ngwalu	1	Tonga (Ngala: 10)
Ningwi	9	Tonga (Chindozwa: 4; Chikale: 4; Chintheche: 4; Kande: 4), Tonga/Nyanja (Liwaladzi: 4), Tonga/Tumbuka (Msaka: 4; Mbvunguti: 4; Chizale: 4), Tonga/Tumbuka/Nyanja (Masasa: 4)
Njakalela	1	Tonga (Chindozwa: 26)
Njangwi	4	Yao (Matomondo: 42, 43, 44; Makawa: 45)
Njokoholi	2	Tonga/Tumbuka (Chizale: 120), Tonga/Tumbuka/Nyanja (Masasa: 94)
Nkholokolo	16	Tonga (Chikale: 9; Kande: 9; Tukombo: 9; Ngala: 9), Tonga/Nyanja (Liwaladzi: 9), Tonga/Tumbuka (Msaka: 9; Mbvunguti: 9; Chizale: 9), Tonga/Tumbuka/Nyanja (Masasa: 9), Nyanja (Malembo: 9; Mbwasulu: 9; Kasankha: 9; Cape Maclear: 9), Yao (Matomondo: 9; Makawa: 9; Chindongo: 9)
Nkholokolu	3	Tonga (Chindozwa: 9; Dindano: 9; Chintheche: 9)
Nkhomo	1	Tonga (Kande: 8)
Nkhomu	2	Tonga (Chikale: 8; Dindano: 8)
Nkhonkholo	1	Tonga/Tumbuka (Mbvunguti: 48)
Nkhututu	1	Tonga/Tumbuka (Msaka: 14)
Nkolokolo	1	Tonga (Sanga: 9)
Nkopo	2	Yao (Matomondo: 108, 109)
Ntchemba	5	Tonga (Chindozwa: 2; Sanga: 2; Dindano: 2; Chintheche: 2; Kande: 2)
Ntchilingwi	1	Yao (Chindongo: 23)

Nthachi	3	Tonga (Tukombo: 2; Ngala: 2), Tonga/Nyanja (Liwaladzi: 2)
Nungutchale	1	Yao (Chindongo: 14)
Nyablue wachenyeke	1	Tonga (Dindano: 61)
Nyablue Jesi	2	Tonga (Dindano: 71, 72)
Nyakajesa	1	Tonga/Nyanja (Liwaladzi: 55)
Nyakajesi	1	Tonga/Tumbuka (Msaka: 75)
Nyakaluwa	2	Tonga/Tumbuka (Mbvunguti: 14), Tonga/Tumbuka/Nyanja (Masasa: 91)
Nyakaphala	1	Tonga (Chikale: 33)
Nyakatu	3	Tonga (Dindano: 89, 101, 105)
Nyalubwi	1	Tonga (Chindozwa: 103)
Nyamakuna	4	Tonga (Chintheche: 69, 91, 92), Tonga/Tumbuka (Msaka: 69)
Nyambatuwa	2	Tonga (Chindozwa: 109; Dindano: 109)
Nyam'bwichuka	1	Tonga/Tumbuka (Mbvunguti: 89)
Nyamfipa	1	Tonga/Nyanja (Liwaladzi: 54)
Nyamfokomu	1	Tonga/Tumbuka (Mbvunguti: 88)
Nyamlepetu	16	Tonga (Chindozwa: 69, 91, 92; Chikale: 92; Sanga: 69, 92; Dindano: 69, 91, 92; Chintheche: 69, 91, 92), Tonga/Tumbuka (Msaka: 69, 92; Mbvunguti: 69), Nyanja (Malembo: 69)
Nyamtima	3	Tonga (Chindozwa: 105, 106, 108)
Nyamubulukutu	2	Tonga (Chindozwa: 59, 61)
Nyamulepu	2	Tonga (Tukombo: 42, 92)
Nyamuvundabweka	1	Tonga (Chindozwa: 109)
Nyamuzomba	1	Tonga (Chindozwa: 126)
Nyamwaha	4	Tonga/Tumbuka (Mbvunguti: 125; Chizale: 15, 125, 126)
Nyamzomba	9	Tonga (Chindozwa: 23, 24, 54, 77; Dindano: 54, 76; Tukombo: 36, 118), Tonga/Tumbuka (Msaka: 118)
Nyamzomba mutuwa	1	Tonga (Chindozwa: 125)
Nyapazomba	1	Tonga/Tumbuka (Msaka: 125)
Nyaphati	2	Tonga/Tumbuka (Mbvunguti: 96, 98)
Nyengeri	3	Tonga (Chindozwa: 5; Sanga: 5; Dindano: 5)
Nyingwi	7	Nyanja (Malembo: 4; Mbwazulu: 4; Kasankha: 4; Cape Maclear: 4), Yao (Matomondo: 4; Makawa: 4; Chindongo: 4)
Nyingwisale	1	Nyanja (Cape Maclear: 14)
Nyingwitsale	3	Nyanja (Malembo: 14; Mbwazulu: 14; Kasankha: 14)
Nyole	2	Tonga/Tumbuka/Nyanja (Masasa: 113, 114)
Nyungusale	7	Tonga (Chindozwa: 14; Sanga: 14; Dindano: 14; Kande: 14; Tukombo: 14; Ngala: 14), Tonga/Nyanja (Liwaladzi: 14)
Nyungusali	1	Tonga (Chintheche: 14)
Nyungutsale	1	Yao (Makawa: 14)
Pafi	3	Tonga/Tumbuka (Msaka: 8), Nyanja (Malembo: 8), Yao (Makawa: 8)
Pajamala	1	Tonga (Kande: 70)
Palala	4	Nyanja (Malembo: 45; Kasankha: 22; Cape Maclear: 22, 43)
Palala wa ku deep	1	Nyanja (Kasankha: 97)

Palala wammiyala	1	Nyanja (Kasankha: 95)
Palala weniweni (wam'bango)	1	Nyanja (Kasankha: 96)
Paundi wammuna	1	Nyanja (Mbwazulu: 87)
Phanda	13	Tonga (Chindozwa: 1; Chikale: 1; Sanga: 1; Dindano: 1; Chintheche: 1; Kande: 1; Tukombo: 1; Ngala: 1), Tonga/Nyanja (Liwaladzi: 1), Tonga/Tumbuka (Msaka: 1; Mbvunguti: 1; Chizale: 1), Tonga/Tumbuka/Nyanja (Masasa: 1)
Phwefu	3	Tonga (Ngala: 8), Tonga/Nyanja (Liwaladzi: 8), Tonga/Tumbuka/Nyanja (Masasa: 48)
Pundu	30	Tonga (Chindozwa: 56, 60, 62, 80, 81; Chikale: 77, 79, 80; Sanga: 76, 77, 79, 80, 81; Dindano: 56, 60, 62, 79, 103; Chintheche: 76, 79, 80; Kande: 80, 81; Tukombo: 79, 126; Ngala: 79), Tonga/Tumbuka (Msaka: 76, 77, 79, 80)
Pundu wa blue	1	Tonga (Dindano: 108)
Pundu wamumchenga	1	Tonga/Tumbuka (Msaka: 81)
Pwifu	2	Yao (Chindongo: 26, 116)
Sadyang'ona	1	Nyanja (Malembo: 9)
Saguga	5	Tonga/Tumbuka (Mbvunguti: 21, 87; Chizale: 87), Tonga/Tumbuka/Nyanja (Masasa: 21), Nyanja (Mbwazulu: 22)
Sajeti	2	Tonga (Chikale: 29; Dindano: 29)
Saka	4	Nyanja (Malembo: 10; Mbwazulu: 10; Kasankha: 10), Yao (Makawa: 10)
Samwamowa	5	Tonga/Tumbuka/Nyanja (Masasa: 1), Nyanja (Malembo: 1; Mbwazulu: 1), Yao (Makawa: 1; Chindongo: 52)
Sangu	7	Tonga (Chindozwa: 111, 113, 114, 116; Chikale: 114; Tukombo: 114; Ngala: 116)
Sangu mbuchi	1	Tonga/Tumbuka (Mbvunguti: 114)
Sangu nyole	1	Tonga/Tumbuka (Mbvunguti: 113)
Sangu yakabawi	1	Tonga (Dindano: 111)
Sangumbuchi	1	Tonga/Tumbuka (Mbvunguti: 20)
Sangumnthopa	1	Tonga (Kande: 111)
Sangunyoli	2	Tonga (Dindano: 114; Kande: 114)
Sangwe	2	Tonga/Tumbuka/Nyanja (Masasa: 111, 112)
Sangwe m'nthopa	1	Tonga/Tumbuka (Msaka: 113)
Sangwi	2	Nyanja (Cape Maclear: 114), Yao (Makawa: 113)
Sanjika	3	Tonga (Tukombo: 5), Tonga/Tumbuka (Mbvunguti: 5), Yao (Matomondo: 5)
Sapu	2	Tonga/Tumbuka (Mbvunguti: 15), Tonga/Tumbuka/Nyanja (Masasa: 23)
Sasamchenga	2	Tonga (Sanga: 42; Kande: 94)
Sawasawa	40	Tonga/Tumbuka (Msaka: 64, 65, 66; Mbvunguti: 16, 120; Chizale: 64, 65, 66), Tonga/Tumbuka/Nyanja (Masasa: 16, 17, 64, 65, 66, 120, 121, 123, 124), Nyanja (Malembo: 16, 17, 65, 66; Mbwazulu: 16, 17, 65; Kasankha: 64, 65, 66; Cape Maclear: 64, 65, 66, 123), Yao (Matomondo: 60, 61, 62, 117, 118, 119, 120; Chindongo: 16, 57)
Sawasawa wam'muna	1	Nyanja (Mbwazulu: 66)
Selamani	1	Tonga (Sanga: 119)
Seya	3	Nyanja (Mbwazulu: 12), Yao (Matomondo: 11, 12)
Sonju	1	Tonga/Tumbuka (Msaka: 23)
Tambaliyele	5	Tonga/Tumbuka (Chizale: 69, 91, 92), Tonga/Tumbuka/Nyanja (Masasa: 69, 92)
Tambaliyeli	1	Tonga/Tumbuka (Mbvunguti: 92)
Tchungwa	1	Yao (Chindongo: 69)

Tetezani	5	Tonga/Tumbuka (Msaka: 11), Nyanja (Malembo: 11; Kasankha: 11, 12), Yao (Chindongo: 11)
Thakwa	1	Tonga/Tumbuka (Chizale: 86)
Thamba	1	Nyanja (Cape Maclear: 45)
Thondo	4	Nyanja (Malembo: 77; Cape Maclear: 94, 120), Yao (Chindongo: 113)
Thondo la mphongo	2	Nyanja (Malembo: 120, 121)
Thondo wa gilini	1	Nyanja (Kasankha: 120)
Thondo wam'muna	1	Nyanja (Malembo: 21)
Three banga	5	Nyanja (Malembo: 29, 86; Mbwazulu: 29), Yao (Makawa: 86; Chindongo: 79)
Three batani	29	Tonga (Chindozwa: 29; Chikale: 29; Dindano: 29, 86; Chintheche: 29, 86; Kande: 29, 86, 87; Tukombo: 29; Ngala: 29, 30, 33), Tonga/Nyanja (Liwaladzi: 29, 86, 87), Tonga/Tumbuka (Msaka: 29, 86; Mbvunguti: 29), Nyanja (Malembo: 29; Mbwazulu: 86; Kasankha: 29, 86; Cape Maclear: 29, 86), Yao (Matomondo: 82; Makawa: 29, 31; Chindongo: 29)
Tofu	1	Tonga (Sanga: 120)
Togo	4	Nyanja (Malembo: 22; Mbwazulu: 57; Kasankha: 57), Yao (Makawa: 57)
Tong'o	11	Nyanja (Malembo: 20), Yao (Matomondo: 15, 20, 45, 46, 64, 65, 91, 94, 114; Makawa: 36)
Tsungwa	10	Tonga/Tumbuka/Nyanja (Masasa: 118, 125), Nyanja (Malembo: 111; Mbwazulu: 118; Cape Maclear: 18, 118), Yao (Matomondo: 107, 111; Makawa: 118; Chindongo: 111)
Tumphu	1	Tonga (Tukombo: 46)
Utaka	9	Tonga/Tumbuka (Msaka: 33, 34), Nyanja (Mbwazulu: 33), Yao (Matomondo: 29, 30; Makawa: 33, 34; Chindongo: 33, 34)
Utaka wa umuna	3	Tonga/Tumbuka/Nyanja (Masasa: 34), Nyanja (Kasankha: 34; Cape Maclear: 34)
Veki	1	Tonga/Tumbuka/Nyanja (Masasa: 18)
Viwa	1	Tonga (Chintheche: 26)
Wala	1	Tonga (Chikale: 30)
Wuwa	2	Tonga (Chindozwa: 36, 118)
Yela	23	Tonga (Chindozwa: 120, 121, 123, 124; Dindano: 97, 121, 123, 124; Chintheche: 17, 64, 65, 66; Kande: 121, 123, 124; Tukombo: 64, 65, 66; Ngala: 67, 68), Tonga/Tumbuka (Msaka: 42; Chizale: 27), Tonga/Tumbuka/Nyanja (Masasa: 33)
Yela la blue	2	Tonga (Tukombo: 26; Ngala: 16)
Yela la chabawi	2	Tonga (Tukombo: 38, 120)
Yela la chigong'u	1	Tonga (Tukombo: 28)
Yela la gwenji	1	Tonga (Ngala: 21)
Yela la kabawi	3	Tonga (Chintheche: 16; Tukombo: 16, 17)
Yela la ntcheti	2	Tonga (Ngala: 17, 94)
Yela la tofu	1	Tonga (Kande: 28)