

Title	Polymer confinement in undulated membrane boxes and tubes
Author(s)	Dotera, T; Suzuki, YY
Citation	PHYSICAL REVIEW E (2000), 62(4): 5318-5323
Issue Date	2000-10
URL	<a href="http://hdl.handle.net/2433/50201">http://hdl.handle.net/2433/50201</a>
Right	Copyright 2000 American Physical Society
Type	Journal Article
Textversion	publisher; none

## Polymer confinement in undulated membrane boxes and tubes

Tomonari Dotera

*Saitama Study Center, the University of the Air, 682-2 Nishiki-cho, Omiya 331-0851, Japan*

Yasuo Y. Suzuki

*NTT Basic Research Laboratories, Atsugi 243-0198, Japan*

(Received 30 May 2000)

We consider quantum particle or Gaussian polymer confinement between two surfaces and in cylinders with sinusoidal undulations. In terms of the variational method, we show that the quantum-mechanical wave equations have lower ground-state energy in these geometries under long wavelength undulations, where bulges are formed and waves are localized in the bulges. It turns out correspondingly that Gaussian polymer chains in undulated boxes or tubes acquire higher entropy than in exactly flat or straight ones. These phenomena are explained by the uncertainty principle for quantum particles, and by a *polymer confinement rule* for Gaussian polymers. If membrane boxes or tubes are flexible, polymer-induced undulation instability is suggested. We find that the wavelength of undulations at the threshold of instability for a membrane box is almost twice the distance between two walls of the box. Surprisingly, we find that the instability for tubes begins with a shorter wavelength compared to the ‘‘Rayleigh’’ area-minimizing instability.

PACS number(s): 61.25.Hq, 87.16.Dg, 47.20.Ma

### I. INTRODUCTION

Recently, much attention has been paid to the structure and dynamics of polymer chains restricted by two surfaces, or restricted in cylindrical pores [1–4]. These conditions are relevant to a broad class of applications and biological functions, such as filtration, gel permeation chromatography, heterogeneous catalysis, and oil recuperation.

When a polymer is confined to a smaller space, the entropy loss of a chain is higher. Here we call this simple rule the *polymer confinement rule*. It has been employed casually in the literature, however, it has a close connection with the uncertainty principle in quantum mechanics. Indeed, on a theoretical side, quantum-mechanical wave equations have been applied to elucidate the behavior of the Gaussian chains when the radius of gyration of a chain is much larger than these structures. Therefore, the solutions of wave equations in some geometries are useful both for mesoscopic quantum physics and polymer physics.

The most prominent recent example is the calculation for curved geometries. Goldstone and Jaffe [5] have shown that the bend of two-dimensional (2D) and three-dimensional tubes with a constant cross section lowers the ground-state energy of a quantum particle constrained in the tubes. Correspondingly, the cylindrical bend of two parallel walls (2D tube) with a constant width reduces the entropy loss [6]. Yaman *et al.* have shown in their series of works that entropic interactions between curved membranes and macromolecules such as flexible chain molecules and rigid rods may change the bare elastic constants of single membranes and bilayers [7].

In this paper, we focus on tubes in two and three dimensions with sinusoidal undulations keeping tube volumes constant. This lowers the ground-state energy of quantum particles, and thus raises the entropy of Gaussian polymer chains. Corrugated walls induce additional kinetic energy along the walls. However, if bulges are formed, the waves

are less confined in the transverse direction and localized in the bulges, which may decrease the total energy because of the uncertainty principle. In the same way, according to the polymer confinement rule, polymer chains may favor the undulations of tubes.

In Sec. II, we first describe the polymer confinement rule, an intuitive argument for why a polymer in a confined space loses entropy. This approach is microscopic, which is different from the well-known scaling argument [2]. Second, we provide the calculation procedure for Gaussian chains using quantum mechanics that is given in Ref. [1]. In Sec. III, we elucidate the effect of undulations using the variational method. We show that the wave equations have lower energy under long wavelength undulations. Correspondingly, long Gaussian chains acquire higher entropy with undulating constraints than with exactly flat or straight ones. For the three-dimensional case, we compare the undulation effect with the Rayleigh area-minimizing instability [7,8]. In the final section, we discuss implications of polymer-mediated entropic force for membrane boxes and tubes.

### II. CORRESPONDENCE TO QUANTUM MECHANICS

#### A. The polymer confinement rule

The entropy reduction of a confined random walk of  $N$  steps between two parallel flat walls (distance  $\Delta x$ ) can be derived intuitively through the following microscopic reasoning. The number of steps that span the distance between the walls is described by  $\Delta x \sim lN^{1/2}$ , and the gyration radius (or the end-to-end distance) in a free space  $R_g (\gg \Delta x)$  is expressed as  $R_g \sim lN^{1/2}$ , where  $l$  is a step length. Here,  $\sim$  implies that the numerical factors have been ignored.

Steps touching the walls should return. This requirement is the source of the entropy reduction [9]. The chain reflects off the walls about  $N/N'$  times. Let  $z$  be the number of nearest positions on a lattice for a step. Then the number  $W$  of total configurations of the confined chain is represented by

$$W \sim z^{N-N/N'} (z/2)^{N/N'} = z^N (1/2)^{N/N'}, \quad (1)$$

where the combination factor has been omitted. Then the entropy loss due to the walls for the Gaussian chain is  $\Delta S = k_B N/N' \ln 2 \sim k_B R_g^2 / (\Delta x)^2$ . We write

$$(\Delta x)^2 \Delta S \sim k_B R_g^2, \quad (2)$$

which corresponds to the uncertainty principle

$$(\Delta x)^2 \Delta E \sim (\Delta x)^2 (\Delta p)^2 / m \sim h^2 / m, \quad (3)$$

where  $E$ ,  $x$ ,  $p$ , and  $m$  are the energy, position, momentum and mass of a quantum particle, and  $h$  is the Planck constant. On this basis, one can say that a polymer tends to escape from narrower spaces into wider or open spaces; in other words, the polymer tends to localize in wider spaces of the confined geometries, the same as with quantum particles.

### B. Analytical theory for Gaussian chains

For a random walk, we consider the total number of paths that connect  $r$  and  $r'$  with  $N$  steps  $z^N G(\mathbf{r}', \mathbf{r}, N)$ , where  $z$  is the number of neighboring sites. The boundary condition is

$$G(\mathbf{r}', \mathbf{r}, 0) = \delta_{\mathbf{r}', \mathbf{r}}. \quad (4)$$

It is easy to show  $G(r', r, N)$  is the solution of the diffusion equation

$$\left( \frac{\partial}{\partial N} - \frac{l^2}{6} \nabla_{\mathbf{r}}^2 \right) G(\mathbf{r}', \mathbf{r}, N) = 0, \quad (5)$$

where  $l$  is the lattice constant, or the step length.

With the eigenfunction expansion

$$G(\mathbf{r}', \mathbf{r}, N) = l^3 \sum_n \Psi_n^*(\mathbf{r}') \Psi_n(\mathbf{r}) \exp\left(-\frac{N l^2 E_n}{6}\right), \quad (6)$$

then, the problem reduces to the wave equation

$$\nabla^2 \Psi_n(\mathbf{r}) + E_n \Psi_n(\mathbf{r}) = 0 \quad (7)$$

with the boundary conditions. As is known, the eigenfunctions satisfy the orthogonality and completeness conditions

$$\int d\mathbf{r} \Psi_m^*(\mathbf{r}) \Psi_n(\mathbf{r}) = \delta_{mn}, \quad (8)$$

$$\sum_n \Psi_n^*(\mathbf{r}') \Psi_n(\mathbf{r}) = \delta(\mathbf{r} - \mathbf{r}'). \quad (9)$$

Since the continuous limit is

$$\lim_{l \rightarrow 0} \delta_{\mathbf{r}', \mathbf{r}} / l^3 = \delta(\mathbf{r} - \mathbf{r}'), \quad (10)$$

Eq. (6) satisfies the boundary condition Eq. (4).

For excited states ( $i > 1$ ), when an equality

$$R_g^2 (E_i - E_1) \gg 1 \quad (11)$$

is satisfied, the situation is called ground-state dominance, which is our interest in this paper. Then we have

$$G(\mathbf{r}, \mathbf{r}', N) \approx \Psi_1^*(\mathbf{r}') \Psi_1(\mathbf{r}) \exp\left(-\frac{N l^2 E_1}{6}\right). \quad (12)$$

The partition function is a sum over all configurations:

$$Z = \frac{1}{V} \int d\mathbf{r} d\mathbf{r}' G(\mathbf{r}, \mathbf{r}', N). \quad (13)$$

Integrating out all uninteresting degrees of freedom, we obtain the main term in the associated entropy change,

$$S = k_B \ln Z \approx -k_B \frac{N l^2 E_1}{6}. \quad (14)$$

For a Gaussian chain between two flat walls, the discrete part of the eigenvalues of Eq. (7) is

$$E_n = \frac{n^2 \pi^2}{(\Delta x)^2}, \quad n = 1, 2, 3, \dots \quad (15)$$

To obtain the main term, we ignore the continuous part of the eigenvalues associated with two directions along walls. Then Eq. (11) is fulfilled. Thus, we have

$$S \approx -k_B \frac{\pi^2}{6} \frac{R_g^2}{(\Delta x)^2}. \quad (16)$$

This is consistent with Eq. (2).

### III. VARIATIONAL PROOFS

Let  $C$  be a tube in two dimensions (box) or in three dimensions. We will consider the wave equation

$$(\nabla^2 + E) \psi(\mathbf{r}) = 0 \quad (17)$$

in  $C$  subjected to the Dirichlet condition on walls:  $\psi(\partial C) = 0$ . The following calculations are applicable to both quantum particles and Gaussian polymers.

We define

$$\sigma[\psi] \equiv \left( \int_C d^D \mathbf{r} \psi \nabla^2 \psi \right) \cdot \left( \int_C d^D \mathbf{r} \psi^2 \right)^{-1}, \quad (18)$$

where  $D$  is the dimension of the system. Our aim is to show

$$\Delta[\psi] \equiv \sigma[\psi] - \sigma_0 > 0, \quad (19)$$

where  $\sigma_0$  corresponds to the ground state for the exactly flat or straight case. Since perturbations are sinusoidal, the integrals can be limited to a single wavelength, that of the perturbations. We compute a critical wavelength, down to which  $\Delta[\psi]$  is positive. Our evaluation gives an upper bound for the critical wavelength, because we employ a trial function for  $\psi$  in Eq. (18).

#### A. In two dimensions

As shown in Fig. 1, a box is defined between two parallel lines described by

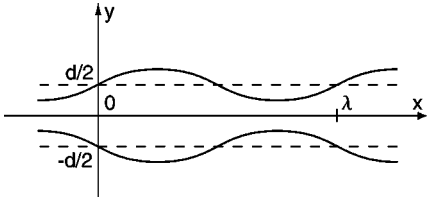


FIG. 1. Undulated box in two dimensions:  $\lambda$  is the period of the undulation, and  $d$  is the mean distance between walls.

$$y_{\pm}(x) = \pm \frac{d}{2} (1 + \epsilon \sin ax), \quad 0 < \epsilon < 1 \quad (20)$$

with a width undulation function  $w(x)$ :

$$w(x) = d(1 + \epsilon \sin ax), \quad (21)$$

where  $a = 2\pi/\lambda$ ,  $\lambda$  is the period of the undulation, and  $d$  is the mean distance. Note that the volume is kept constant.

We will prove, with the variational method, that long-wave undulation lowers the total energy. Choose a candidate function with a variational constant  $\delta$ :

$$\psi(x, y) = \cos\left(\frac{\pi y}{w}\right) (1 + \delta \epsilon \sin ax), \quad 0 \leq \delta \leq 1/\epsilon. \quad (22)$$

$\delta > 0$  implies localization at bulges. The denominator of Eq. (18) is

$$\frac{1}{d} \int_{-\lambda/2}^{\lambda/2} dx \int_{-w/2}^{w/2} dy \psi^2 = \frac{\lambda \gamma}{2}, \quad (23)$$

where

$$\gamma = 1 + \left(\delta + \frac{\delta^2}{2}\right) \epsilon^2 > 0. \quad (24)$$

It is elementary to calculate

$$\frac{\partial^2 \psi}{\partial y^2} = -\left(\frac{\pi}{w}\right)^2 \cos\left(\frac{\pi y}{w}\right) (1 + \delta \epsilon \sin ax), \quad (25)$$

$$\begin{aligned} \frac{\partial^2 \psi}{\partial x^2} = & \left[ \pi \frac{w''}{w^2} y \sin\left(\frac{\pi y}{w}\right) - 2\pi \frac{w'}{w^3} y \sin\left(\frac{\pi y}{w}\right) \right. \\ & \left. - \left(\frac{\pi w'}{w^2}\right)^2 y^2 \cos\left(\frac{\pi y}{w}\right) \right] (1 + \delta \epsilon \sin ax) \\ & + 2\delta \epsilon a \pi \frac{w'}{w^2} y \sin\left(\frac{\pi y}{w}\right) \cos ax \\ & - \delta \epsilon a^2 \cos\left(\frac{\pi y}{w}\right) \sin ax. \end{aligned} \quad (26)$$

Then, a brief calculation yields

$$\frac{1}{d} \int dy \psi \frac{\partial^2 \psi}{\partial y^2} = -\frac{\pi^2}{2d^2} \frac{(1 + \delta \epsilon \sin ax)^2}{1 + \epsilon \sin ax}, \quad (27)$$

$$\begin{aligned} \frac{1}{d} \int dy \psi \frac{\partial^2 \psi}{\partial x^2} = & -\frac{\pi^2 + 6}{24} \frac{\epsilon^2 a^2 \cos^2 ax}{1 + \epsilon \sin ax} (1 + \delta \epsilon \sin ax)^2 \\ & - \left(\frac{\delta^2}{2} + \delta\right) \epsilon^2 a^2 \sin^2 ax + \frac{\delta \epsilon^2 a^2}{2} \cos^2 ax \\ & + \frac{\delta^2 \epsilon^3 a^2}{2} \cos^2 ax \sin ax - \frac{3\delta^2 \epsilon^3 a^2}{4} \sin^3 ax \\ & - \frac{(\epsilon a^2 + 2\delta \epsilon a^2)}{4} \sin ax. \end{aligned} \quad (28)$$

Using formulas given in Appendix A, we obtain

$$\gamma \sigma_y[\psi] = -\frac{\pi^2}{d^2} \left( \frac{1}{\sqrt{1 - \epsilon^2}} - 2\delta A + \delta^2 A \right), \quad (29)$$

$$\gamma \sigma_x[\psi] = -a^2 B D - 2\delta a^2 \left( \frac{\epsilon^2}{4} - C D \right) - \delta^2 a^2 \left( \frac{\epsilon^2}{2} + C D \right), \quad (30)$$

where  $\sigma[\psi] = \sigma_y[\psi] + \sigma_x[\psi]$ , and where

$$A = \frac{1}{\sqrt{1 - \epsilon^2}} - 1 = \frac{\epsilon^2}{2} + \frac{3\epsilon^4}{8} + \frac{5\epsilon^6}{16} + \dots, \quad (31)$$

$$B = 1 - \sqrt{1 - \epsilon^2} = \frac{\epsilon^2}{2} + \frac{\epsilon^4}{8} + \frac{\epsilon^6}{16} + \dots, \quad (32)$$

$$C = B - \frac{\epsilon^2}{2} = \frac{\epsilon^4}{8} + \frac{\epsilon^6}{16} + \dots, \quad (33)$$

$$D = \frac{\pi^2 + 6}{12}. \quad (34)$$

For  $\epsilon > 0$ , we evaluate the deviation  $\Delta[\psi]$  for  $\sigma_0 = -\pi^2/d^2$ . To show  $\Delta[\psi]$  is positive, we write it as

$$\begin{aligned} \gamma \Delta[\psi] = & -\frac{\pi^2}{d^2} A - \frac{\pi^2}{\lambda^2} 4BD \\ & + 2\delta \left[ \frac{\pi^2}{d^2} \left( A + \frac{\epsilon^2}{2} \right) - \frac{\pi^2}{\lambda^2} (-4CD + \epsilon^2) \right] \\ & - \delta^2 \left[ \frac{\pi^2}{d^2} \left( A - \frac{\epsilon^2}{2} \right) + \frac{\pi^2}{\lambda^2} (4CD + 2\epsilon^2) \right]. \end{aligned} \quad (35)$$

From this, it is easy to show that there exists  $\delta$  that makes  $\Delta[\psi]$  positive in the long-wave undulation limit:  $\lambda \rightarrow \infty$ ;  $\delta = 1$  for instance. Therefore, the ground-state energy should be lower than that in the flat plane case. Notice that as is seen in Eq. (29), the decrease in energy  $2\delta A$  appears in the transverse direction.

In order to estimate the critical wavelength  $\lambda_0$ , an approximation up to order  $\epsilon^2$  is

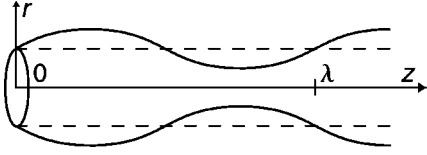


FIG. 2. Undulated tube in three dimensions:  $\lambda$  is the period of the undulation.

$$(\gamma/\epsilon^2)\Delta[\psi] \approx -2\delta^2\left(\frac{\pi^2}{\lambda^2}\right) + 2\delta\left(\frac{\pi^2}{d^2} - \frac{\pi^2}{\lambda^2}\right) - \frac{\pi^2}{2d^2} - 2D\frac{\pi^2}{\lambda^2}. \quad (36)$$

Maximizing  $\Delta[\psi]$  by changing the variational constant  $\delta$ , we compute the critical wavelength from  $\Delta[\psi]=0$ . Thus,

$$\frac{\lambda_0}{d} = \left( \frac{3 + \sqrt{\frac{4\pi^2}{3} + 13}}{2} \right)^{1/2} = 2.014. \quad (37)$$

The critical wavelength is about two times the width of the box, implying that the bulge is at least the size of the width between walls. It is a quite reasonable value, because, in terms of quantum mechanics, if the undulation is shorter than  $\lambda_0$ , then the kinetic energy along walls will be higher than the confinement energy.

### B. In three dimensions

It was shown by Plateau, later pursued by Rayleigh, then known as the Rayleigh instability, that the undulation of a tube with wavelength exceeding its circumferences reduces the surface area. Therefore, it is interesting to compare the polymer-mediated instability and the Rayleigh instability.

Consider a tube of unperturbed radius  $R_0$  and an undulation function (Fig. 2):

$$R(z) = R_c(1 + \epsilon \sin az), \quad 0 < \epsilon < 1, \quad (38)$$

where  $a = 2\pi/\lambda$ , and  $R_c$  is determined by the constant volume condition of the tube. Thus,

$$R_c^2 = R_0^2(1 + \epsilon^2/2)^{-1}. \quad (39)$$

In order to remind readers of the Rayleigh instability, we calculate the surface area of the tube given by

$$A(\epsilon; \lambda) = 2\pi \int_0^\lambda R \sqrt{1 + \left(\frac{dR}{dz}\right)^2} dz. \quad (40)$$

We expand the square root for small perturbations and use Eq. (39). The area is

$$A(\epsilon; \lambda) \approx 2\pi R_0 \lambda \left[ 1 + \frac{\epsilon^2}{4} \left( \frac{(2\pi R_0)^2}{\lambda^2} - 1 \right) \right]. \quad (41)$$

Therefore, if the wavelength is greater than the circumference of the tube, the area is less than that of the unperturbed perfect cylinder.

Now, we will prove that a long-wave undulation lowers the total energy with the variational method. Choose a trial function with a variational constant  $\delta$ :

$$\psi(r, z) = J_0\left(\frac{\alpha r}{R}\right) (1 + \delta \epsilon \sin az), \quad 0 \leq \delta \leq 1/\epsilon, \quad (42)$$

where  $J_0(r)$  is the zeroth Bessel function:

$$\frac{d^2 J_0\left(\frac{\alpha r}{R}\right)}{dr^2} + \frac{1}{r} \frac{dJ_0\left(\frac{\alpha r}{R}\right)}{dr} + \left(\frac{\alpha}{R}\right)^2 J_0\left(\frac{\alpha r}{R}\right) = 0, \quad (43)$$

and where  $\alpha = 2.40483$  is the smallest zero of  $J_0(x)$ . The denominator of Eq. (18) is

$$\int_{-\lambda/2}^{\lambda/2} dz \int_0^R dr 2\pi r \psi^2 = \pi \lambda R_c^2 \beta \gamma, \quad (44)$$

where  $\beta = J_1^2(\alpha)$  and

$$\gamma = 1 + \frac{1}{2}(\delta^2 + 4\delta + 1)\epsilon^2 + \frac{3}{8}\delta^2\epsilon^4. \quad (45)$$

It is elementary to calculate

$$\frac{\partial^2 \psi}{\partial r^2} + \frac{1}{r} \frac{\partial \psi}{\partial r} = -\left(\frac{\alpha}{R}\right)^2 J_0\left(\frac{\alpha r}{R}\right) (1 + \delta \epsilon \sin az), \quad (46)$$

$$\begin{aligned} \frac{\partial^2 \psi}{\partial z^2} = & \left[ -\alpha \frac{R''}{R^2} r J_0'\left(\frac{\alpha r}{R}\right) + \alpha \frac{R'^2}{R^3} r J_0'\left(\frac{\alpha r}{R}\right) \right. \\ & \left. - \left(\alpha \frac{R'}{R^2}\right)^2 r^2 J_0\left(\frac{\alpha r}{R}\right) \right] (1 + \delta \epsilon \sin az) \\ & - 2\alpha \delta \epsilon a \frac{R'}{R^2} r J_0'\left(\frac{\alpha r}{R}\right) \cos az - \delta \epsilon a^2 J_0\left(\frac{\alpha r}{R}\right) \sin az, \end{aligned} \quad (47)$$

where,  $J_0'(x) = dJ_0(x)/dx$ ,  $R' = dR(z)/dz$ , and  $R'' = d^2R(z)/dz^2$ .

Using the calculation in Appendix B, we then obtain

$$\begin{aligned} \gamma \sigma[\psi] = & -\frac{\alpha^2(2 + \delta^2\epsilon^2)}{2R_c^2} \\ & - a^2 \left( \frac{4 + \alpha^2}{6} \epsilon^2 + \delta \epsilon^2 + \frac{\delta^2 \epsilon^2}{2} + \frac{13 + \alpha^2}{24} \delta^2 \epsilon^4 \right). \end{aligned} \quad (48)$$

For  $\epsilon > 0$ , we evaluate  $\Delta[\psi]$  for  $\sigma_0 = -\alpha^2/R_0^2 = -b^2$ .

$$\begin{aligned} \frac{\gamma \Delta[\psi]}{\epsilon^2} = & - \left[ \frac{-b^2 \epsilon^2}{8} + a^2 \left( \frac{1}{2} + \frac{13 + \alpha^2}{24} \epsilon^2 \right) \right] \delta^2 \\ & + (2b^2 - a^2) \delta - a^2 \frac{4 + \alpha^2}{6}. \end{aligned} \quad (49)$$

An approximation up to  $\epsilon^2$  is

$$\frac{\gamma\Delta[\psi]}{\epsilon^2} \approx -\frac{a^2}{2}\delta^2 + (2b^2 - a^2)\delta - a^2\frac{4 + \alpha^2}{6}. \quad (50)$$

Maximizing  $\Delta[\psi]$  by varying  $\delta$ , we calculate the critical wavelength from  $\Delta[\psi]=0$ . Thus, we have

$$4\alpha^4x^4 - 4\alpha^2x^2 - \frac{1 + \alpha^2}{3} = 0, \quad (51)$$

where

$$x \equiv \frac{\lambda}{2\pi R_0} = \frac{b}{\alpha a} \quad (52)$$

is the ratio of the critical wavelength to that of the Rayleigh instability. Then the minimum  $x_0 > 0$  is

$$x_0 = \left( \frac{1 + \sqrt{\frac{4 + \alpha^2}{3}}}{2\alpha^2} \right)^{1/2} = 0.493. \quad (53)$$

The critical wavelength is shorter than that of the Rayleigh instability.

#### IV. DISCUSSION

We have shown that quantum-mechanical particles confined in undulated boxes or tubes have lower energy, when the wavelength is greater than certain values, comparable to the width between walls or the radius of tubes. We have explained that the effect can easily be interpreted by the uncertainty principle. Quantum-mechanical calculations immediately imply that long Gaussian chains in undulated boxes or tubes acquire higher entropy than in exactly flat or straight ones. Furthermore, it can be explained by the polymer confinement rule established in this paper, which is quite analogous to the uncertainty principle.

This polymer-mediated entropic force may play an important role in a number of systems: polymers in cell membranes, vesicles, microemulsions, and polymers confined in lamellar or cylindrical phases of surfactant and homopolymers blending into those of block copolymer systems. For instance, deformable flat membrane boxes with constant width  $d$  containing the Gaussian chains ( $R_g \gg d$ ) are unstable against the undulations. In the same way, cylindrical tubes with radius  $R$  containing the Gaussian chains ( $R_g \gg R$ ) are unstable against the undulations. From Eqs. (36) and (50), it is easy to see that the entropy gain increases with increasing undulation amplitude. Therefore, the undulation amplitude will grow until it is balanced by the elastic restoring force of the membrane, or until the membrane ruptures. In addition, the critical wavelength is shorter than that of the Rayleigh area-minimizing instability; the polymer-mediated interaction may trigger the undulation instability.

When the bare elastic modulus of a membrane is not small, for long wavelength undulations, the effect softens the surface tension of the membrane box. On the other hand, for short wavelength undulations, the effect hardens the surface tension because of the reduction of the entropy of confined

polymers. It is quite remarkable that the discrimination point of softening or hardening (instabilizing or stabilizing) is determined by the distance between membranes.

One should be careful when interpreting our results. First, because of the volume preserving condition, the undulation is not a simple expansion of membrane boxes or tubes by the thermal motion of polymers. Second, the calculation of wave equations does not correspond to the case when the wavelength of undulations is longer than confined polymer sizes in boxes or tubes.

The polymer-mediated entropic force without undulations is proportional to  $d^{-3}$ , where  $d$  is the distance between walls, which decays slower than Van der Waals attractive interactions. This force is something like the excluded volume interactions of multimembranes systems known as the Helfrich repulsive interaction. Finally, the polymer confinement rule for excluded volume chains is modified as  $(\Delta x)^{5/3}\Delta S \sim k_B R_g^{5/3}$ . We expect that the same entropic effect will exist for excluded volume chains.

#### APPENDIX A

To tackle the integration of Eqs. (27) and (28), we define an integral:

$$\langle f(x) \rangle = \frac{a}{2\pi} \int_{-\pi/a}^{\pi/a} \frac{f(x)dx}{1 + \epsilon \sin ax}. \quad (A1)$$

By using a formula

$$\int \frac{dx}{1 + \epsilon \sin x} = \frac{2}{\sqrt{1 - \epsilon^2}} \tan^{-1} \left( \frac{\tan \frac{x}{2} + \epsilon}{\sqrt{1 - \epsilon^2}} \right) \quad (A2)$$

we have

$$\langle 1 \rangle = \frac{1}{\sqrt{1 - \epsilon^2}}. \quad (A3)$$

Hence, it yields

$$\langle \sin ax \rangle = -A/\epsilon, \quad (A4)$$

$$\langle \sin^2 ax \rangle = A/\epsilon^2, \quad (A5)$$

$$\langle \cos^2 ax \rangle = B/\epsilon^2, \quad (A6)$$

$$\langle \cos^2 ax \sin ax \rangle = -C/\epsilon^3, \quad (A7)$$

$$\langle \cos^2 ax \sin^2 ax \rangle = C/\epsilon^4, \quad (A8)$$

where  $A$ ,  $B$ , and  $C$  are defined in Eqs. (31)–(33).

#### APPENDIX B

In this appendix, we provide some integrals of the Bessel functions. By using  $J'_0(x) = -J_1(x)$  and  $[xJ_1(x)]' = xJ_0(x)$ , it is easy to verify the following integrals:

$$\int dr r J_0^2(cr) = \left[ \frac{r^2}{2} [J_0^2(cr) + J_1^2(cr)] \right], \quad (B1)$$

$$\int dr r^2 J_0(cr) J_0'(cr) = \left[ -\frac{r^2}{2c} J_1^2(cr) \right], \quad (\text{B2})$$

$$\int dr r^3 J_0^2(cr) = \frac{1}{6} \left[ r^4 J_0^2(cr) + \left( r^4 - \frac{2}{c^2} r^2 \right) J_1^2(cr) + \frac{2}{c} r^3 J_0(cr) J_1(cr) \right]. \quad (\text{B3})$$

Then, we obtain

$$\int_0^R dr r J_0^2\left(\frac{\alpha r}{R}\right) = \frac{R^2 \beta}{2}, \quad (\text{B4})$$

$$\int_0^R dr r^2 J_0\left(\frac{\alpha r}{R}\right) J_0'\left(\frac{\alpha r}{R}\right) = -\frac{R^3 \beta}{2\alpha}, \quad (\text{B5})$$

$$\int_0^R dr r^3 J_0^2\left(\frac{\alpha r}{R}\right) = \frac{R^4 \beta}{6} \left( 1 - \frac{2}{\alpha^2} \right). \quad (\text{B6})$$

- 
- [1] E.F. Cassasa, J. Polym. Sci. [B] **5**, 773 (1967); See also, P.G. de Gennes, *Scaling Concepts in Polymer Physics* (Cornell University Press, Ithaca, 1979).
- [2] M. Daoud and P.G. de Gennes, J. Phys. (France) **38**, 85 (1977).
- [3] J.T. Brooks and M.E. Cates, J. Chem. Phys. **99**, 5467 (1993).
- [4] J. Lal, S.K. Sinha, and L. Auvray, J. Phys. II **7**, 1597 (1997).
- [5] J. Goldstone and R.L. Jaffe, Phys. Rev. B **45**, 14 100 (1992); see for a review, P. Duclos and P. Exner, Rev. Math. Phys. **7**, 73 (1995).
- [6] K. Yaman, P. Pincus, F. Solis, and T.A. Witten, Macromolecules **30**, 1173 (1997); K. Yaman, P. Pincus, and C.M. Marques, Phys. Rev. Lett. **78**, 4514 (1997); K. Yaman, M. Jeng, P. Pincus, C. Jeppesen, and C.M. Marques, Physica A **247**, 159 (1997).
- [7] S. A. Safran, *Statistical Thermodynamics of Surfaces, Interfaces, and Membranes* (Addison-Wesley, Reading, MA, 1994).
- [8] D. W. Thompson, *On Growth and Form, the Complete Revised Edition* (Dover, New York, 1992).
- [9] P. G. de Gennes, *Simple Views on Condensed Matter: Expanded Edition* (World Scientific, Singapore, 1998), p. 405. Chain reflections on walls are known to cause the surface segregation of chain ends.