

Microstructural control of the transport properties of β -FeSe films grown by sputtering

M. V. Ale Crivillero,^{1, a)} M. L. Amigó,^{1, b)} N. Haberkorn,¹ G. Nieva,¹ and J. Guimpel¹

División Bajas Temperaturas, Centro Atómico Bariloche, CNEA - CONICET - Instituto Balseiro, UNCuyo y CNEA, (8400) Bariloche, Argentina.

(Dated: 21 June 2019)

We have investigated the correlation between structural and transport properties in sputtered β -FeSe films grown onto SrTiO₃ (100). The growth parameters, such as substrate temperature and thickness, have been varied in order to explore different regimes. In the limit of textured thick films, we found promising features like an enhanced $T_c \sim 12$ K, a relatively high H_{c2} and a low anisotropy. By performing magnetoresistance and Hall coefficient measurements, we investigate the influence of the disorder associated with the textured morphology on some features attributed to subtle details of the multi-band electronic structure of β -FeSe. Regarding the superconductor-insulator transition (SIT) induced by reducing the thickness, we found a non-trivial evolution of the structural properties and morphology associated with a strained initial growth and the coalescence of grains. Our results reveal the key effects on the macroscopic electronic behaviour played by the lattice distortion in thin insulating samples and by the grain morphology in thicker superconducting films.

81.15.Cd 74.25.F- 74.70.Xa

Keywords: Thin Films, β -FeSe, Sputtering

I. INTRODUCTION

Among the iron-based superconductors, iron selenide stands out as a rich system for studying new emergent phenomena. Particular interest in this material has been triggered by the strong enhancement of the superconducting critical temperature with pressure (hydrostatic^{1,2} or residual stress^{3,4}) and the reports of the opening of a superconducting gap above 65 K in extremely thin FeSe films grown by MBE^{5,6}. In the last case, interface charging and/or electron-phonon coupling are proposed as the mechanism responsible for raising the critical temperature. From the fundamental point of view, interesting behavior has been reported in this material such as a multi-band electronic structure^{7,8}, tetragonal to orthorhombic⁹ and nematic phase transitions at 90 K^{10,11}.

It is also a promising candidate for applications given its high-field performance and as a candidate for the construction of cryogenic sensors. The potential use of Fe-based superconductors in the electronics sector has been discussed by Haindl et al¹². A particular perspective niche is the use of FeSe in the construction of Microwave Kinetic Inductance Detectors (MKID's)¹³. The relatively high critical temperature of 9 K would allow its use at temperatures in the range of ⁴He instead of milliKelvins, as occurs with the currently used materials. However, the integration in these devices requires the growth of high-quality thin films. Given this, it is important to understand the growth mechanism and how it affects the physical properties and morphology of the resulting material.

Despite the structural simplicity of this compound, high-quality bulk single crystals were obtained only years after

its discovery^{14,15}. The main feature of the temperature dependence of the resistivity is a superconducting transition at 9 K followed by a semimetallic state at higher temperatures. Motivated for the potential technical applications¹², the challenge of growing thin films has been also faced up. Thin films of FeSe have been successfully synthesized by different growth methods such as pulsed laser deposition (PLD)^{3,4,16,17}, molecular beam epitaxy (MBE)^{1,5,18,19} and in a lesser extent by sputtering²⁰⁻²³. Nevertheless, there are discrepancies between different authors with the transport properties of epitaxial films in the limit of small thicknesses, irrespective of the growth method. There are reports of both superconducting and semiconducting/insulating behavior. Since controlling the stoichiometry and/or the crystalline structure is still a challenging issue, a remaining question is whether minor structural or compositional changes are relevant. In the case of films grown by sputtering, this implies a superconductor-insulator transition (SIT) as a function of thickness^{20,24}. This kind of behavior has been discussed within a disordered granular superconductor scenario²⁰ where the disorder associated with smaller thickness induces a superconductor-insulator transition. In this context, fundamental questions concerning the mechanism governing the transition are still open.

In this work, we report on the fabrication of thin films of β -FeSe by dc magnetron sputtering from stoichiometric targets, with the aim to study the influence on the transport properties of the structural characteristics in the atomic and mesoscopic scales. The phase purity and crystal structure of the films were characterized by X-ray diffraction measurement (XRD). The surface morphology was studied using a Scanning Electron Microscope (SEM) and an Atomic Force Microscope (AFM). The local chemical composition was measured by Energy-Dispersive X-ray Spectroscopy (EDX) and Rutherford Backscattering Spectrometry (RBS). The magnetization was measured in a commercial SQUID magnetometer. We carried out electrical transport measurements with magnetic

^{a)}Present Address: Max Planck Institute for Chemical Physics of Solids, Dresden, Germany; Electronic mail: victoria.ale@ib.edu.ar.

^{b)}Present Address : Institute for Solid State Research, IFW Dresden, Germany.

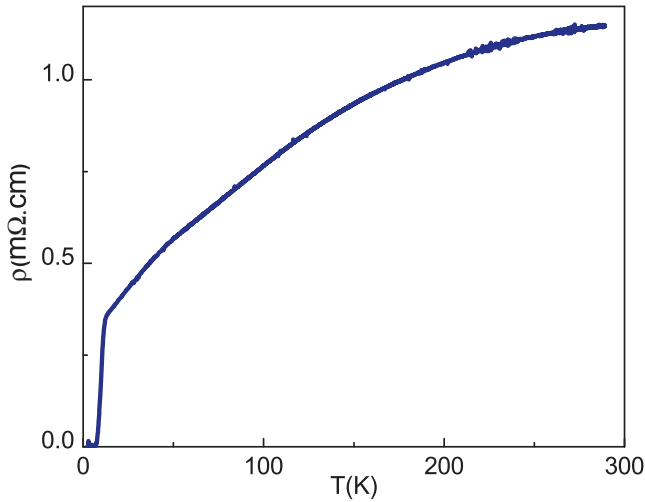


FIG. 1. In plane resistivity, ρ , versus temperature, T , for a superconducting 400 nm thick β -FeSe film grown onto STO.

fields up to 16 T.

II. EXPERIMENTAL DETAILS

Fe_{1-x}Se thin films have been deposited by dc magnetron sputtering. The polycrystalline target was fabricated from Fe (99.95%) and Se (99.999%) grits. Two consecutive cycles of mixing, heating up to 430°C for 48 hours in an evacuated quartz tube, and milling were performed to favor the solid state reaction of the powder. Low heating rates were used while the temperature was close to the melting point of Se. In a final process, the powder was pressed and sintered at 430°C for 4 days. X-ray diffraction and Rietveld refinement were performed at each stage to characterize the powder. The final target material was β -FeSe with approximately 1.5% γ -Fe₇Se₈. A very small amount, <5%, of FeO was also observed.

Films were grown onto SrTiO₃ (100), labelled from now on as STO. The substrates were attached to a resistive heater with Ag paste, which allowed for heating up to a nominal temperature of 680°C²⁵. The substrate temperature, T_s , was measured and controlled with a thermocouple in direct thermal contact with the substrates. The base pressure of the sputtering system was 3×10^{-6} Torr. The growth parameters that were kept constant for all films are sputtering gas, 99.999% pure Ar, and pressure, 45 mTorr, target power, 8 W for a 1.5" diameter target, and target to substrate distance, at 5 cm. In this conditions, the growth rate is approximately 13.5 nm/min. These parameters were found to be optimal in previous, unreported tests.

The chemical composition of the films has been routinely measured by EDX and for some samples also measured by Rutherford Backscattering Spectrometry (RBS). Under the conditions described above, all the samples have a composition close to the expected values, i.e. Fe:Se \approx 1:1, within the

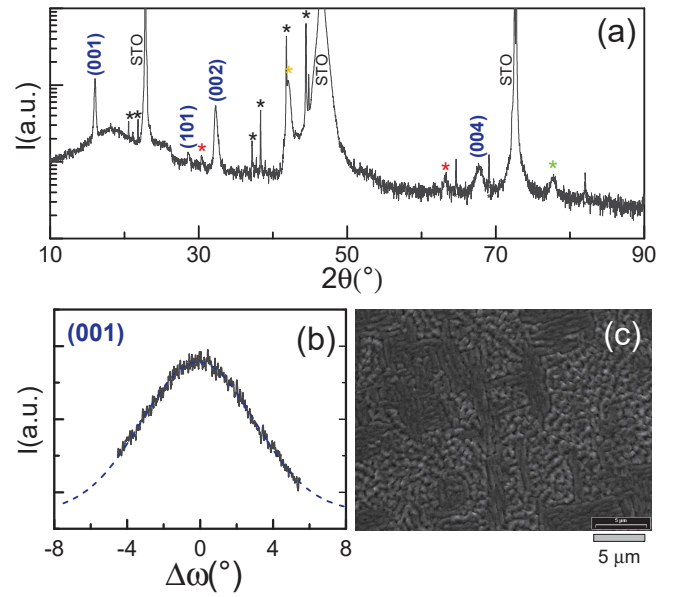


FIG. 2. Structural and morphological characterization of a 400 nm β -FeSe grown onto STO. (a) $\theta - 2\theta$ XRD pattern: The (001) peaks associated to the β -FeSe phase are clearly observed. The red labels correspond to (001) γ -Fe₇Se₈. The yellow label could be either indexed as (102) γ -Fe₇Se₈ or (200) FeO, while the green label might be identify as (203) γ -Fe₇Se₈. The black asterisk signs stand for spurious peaks related to the substrate; i.e. peaks measured in a pristine substrate which are no expected in an ideal single crystal. (b) Rocking curve of the (001) β phase peak. (c) SEM image of the topography of the 400 nm β -FeSe.

error in EDX analysis. The homogeneity of the films was also investigated by performing several spot and area analysis over different regions. No spatial variations were found.

The thickness of the films was measured by contact profilometry in well-defined steps. These steps were generated by first masking part of the substrates with silver epoxy, growing the films, and finally removing the epoxy. For thin films, the thickness was also determined through low angle X-Ray reflectivity, XRR, measuring the periodicity of the Kiessig fringes²⁶. When the later were observed, both methods of thickness determination coincided within 10%.

The diffraction patterns were measured at room temperature with two different diffractometers: a PANalytical Empyrean diffractometer or a Phillips PW 3710 in Bragg-Brentano geometry with Cu K_α radiation. In the former case, the samples were mounted in a 4-circle Eulerian cradle, which allowed for precise alignment. Due to physical limitations of the Eulerian cradle, a monochromator could not be used. Instead, a Ni filter was used to diminish the Cu K_β radiation. For the extremely intense substrate diffraction, the K_β peak and the Ni absorption edge are visible in the data, the later as a step-like discontinuity in the background intensity between the K_α and K_β peaks.

Electrical transport properties were measured in a standard 4 probe geometry, defined by UV photo-lithography and ion milling. For the Hall effect measurements, two probes at both sides of the current carrying line were added. The measure-

ments were performed in an Oxford cryostat equipped with an 18 T superconducting coil and sample rotation capability, in the 1.8 K to 300 K range.

III. RESULTS AND DISCUSSION

Since previous systematic studies showed a complex influence of growth conditions on the structural and physical properties of the films, we choose the growth parameters, such as substrate temperature and thickness, in order to explore different regimes. First, we focus on textured thick films with optimal superconducting properties. Second, regarding the superconductor-insulator transition (SIT) induced by reducing the thickness, we performed a comprehensive study of the evolution of the structural properties and morphology. Finally, we discuss the origin of the insulating behavior on epitaxial stressed films.

A. Superconducting thick films

Since the properties which are sought to optimize for integrating FeSe films in devices are the superconducting ones, first we will focus on what we found to be the “best” superconducting properties. The optimal parameters for growing a superconducting film on STO, i.e. those which produce the highest, $T_c^{\text{onset}} \simeq 12\text{K}$, and sharpest, $\Delta T_c \simeq 4\text{K}$, superconducting transition are $T_s = 530^\circ\text{C}$ and thickness $t \sim 400\text{nm}$. These values of superconducting onset are slightly higher than the previously reported for macroscopic high-quality samples, $\sim 9\text{K}^{15}$, and sputtered films, $\sim 10\text{K}^{20,21,23}$. As a representative example of the temperature dependence of the electrical resistivity, Figure 1 shows $\rho(T)$ in the 2 – 300 K range of one of these films. Besides the superconducting transition at low temperature, a semimetallic like behavior is observed in the normal state with a negative curvature up to room temperature.

Regarding the crystalline structure, Figure 2(a) shows the X-ray diffraction data for the same film. The most intense peaks can be indexed as the (001) β -FeSe family. The rest of the peaks can be identified as substrate related or low intensity (101) β -FeSe and (001) γ -Fe₇Se₈. The (001) peak rocking curve has a full width at half maximum (FWHM) of approximately 5° , indicating textured growth (Figure 2(b)). These results indicate preferred c-axis growth, with coexisting small inclusions of (101) β -FeSe and (001) γ -Fe₇Se₈. The SEM topography, Figure 2(c), shows a tweed grain pattern with a characteristic length around $1\mu\text{m}$. We previously reported a similar increase of T_c for bulk crystals with a nanoscale intergrowth of β -FeSe and γ -Fe₇Se₈²⁷. Since there are also inclusions in the sputtered films, the enhancement could be related to the presence of this type of defect. However, another possibility which cannot be neglected is the existence of local tensile stress due to grain matching.

From the point of view of high-field applications, properties as the critical field and its anisotropy are relevant. The top insets in Figure 3 show the evolution of the superconducting

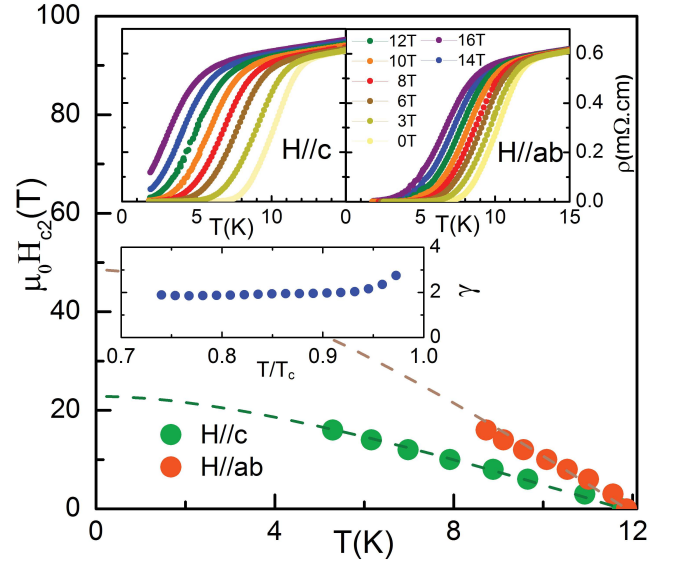


FIG. 3. Superconducting phase diagrams, $\mu_0 H_{c2\perp}(T)$ and $\mu_0 H_{c2\parallel}(T)$, for a 400nm β -FeSe films grown onto STO. A magnetic field up to 16T was applied parallel and perpendicular to the substrate surface. The dotted lines correspond to the dependence predicted by the WHH model. Top insets show the superconducting transitions with H as a parameter, while bottom inset displays the temperature dependence of the anisotropy.

transition with applied field H parallel and perpendicular to the substrate surface, which corresponds mainly to magnetic field along the ab plane and along c axis, respectively. From these curves the transition temperatures are determined and so the perpendicular and parallel critical fields, $\mu_0 H_{c2\perp}(T)$ and $\mu_0 H_{c2\parallel}(T)$, which are shown in the main figure. The dotted lines correspond to the dependence predicted by the Werthamer-Helfand-Hohenberg (WHH) model. Determining the slope of $\mu_0 H_{c2}(T)$ in the vicinity of T_c and using the WHH model²⁸, the values of $\mu_0 H_{c2}(T=0)$ are estimated as $\mu_0 H_{c2\perp}(0) = (22.9 \pm 0.5)\text{T}$ and $\mu_0 H_{c2\parallel}(0) = (48.5 \pm 0.5)\text{T}$, in accordance with the previously reported values^{3,29}. From the Ginzburg Landau relations for 3D superconductor in the clean limit¹², the estimated values for coherence lengths at zero temperature are $\xi_{ab}(0) \sim 3.8\text{nm}$ and $\xi_c(0) \sim 1.8\text{nm}$. Since these values are considerably smaller than the film thickness and the grain size, our use of the 3D Ginzburg Landau equations is justified. Consequently, the difference between $\mu_0 H_{c2\perp}(T)$ and $\mu_0 H_{c2\parallel}(T)$ can be interpreted as due to the intrinsic β -FeSe anisotropy. The anisotropy, defined as $\gamma = H_{c2\parallel}(T)/H_{c2\perp}(T)$, takes a maximum value of 2.4 at 11.6K and decreases for lower temperatures (see bottom inset). These values are probably underestimated due to the presence of misaligned grains, but they are not far from the reported values. Indeed, this anisotropy lies within the reported curves for pure β -FeSe bulk crystals and for crystals with impurity phases³⁰.

Coming back to the transport properties in the normal state, our sample mimics some features reported in the literature.

The data in Figure 1 shows a smooth slope change that begins at 100K and extends to lower temperatures, instead of the usually abrupt slope change at $T \sim 90$ K correlated to the structural transition for β -FeSe⁹. This feature is zoomed in the Figure 4 (a), together with $d\rho/dT$. Data with an applied magnetic field of 16 T perpendicular to the substrate surface is also included. Figure 4 (b) shows the temperature dependence of the transversal magnetoresistance, $\frac{\Delta\rho}{\rho_0} = (\rho(H) - \rho_0)/\rho_0$, with $\mu_0 H = 8$ and 16 T. A positive magnetoresistance is observed below the structural transition, which increases as the temperature decreases. We emphasize that this was only reported for bulk high-quality single crystals^{31,32}.

More information on the electronic structure is obtained from Hall-effect measurements. The Hall coefficient R_H , which has been measured with three different protocols (see caption of Fig. 4 (c)), takes small positive values above the structural transition, and shows a sign reversal to negative values for $T < T^*$, with $T^* \sim 90$ K. This change of sign is reminiscent of the one presented by single crystals close to this transition, which has been associated with the structural distortion and originating in the multiband character of β -FeSe^{8,31}. Nevertheless, there is a striking difference at low temperatures; below T^* our films present a linear Hall resistivity up to 16 T, in contrast to the nonlinear behavior observed in high-quality single crystals⁸. Figure 4 (d) shows the linear dependence of the Hall resistivity, ρ_{xy} , with the magnitude of the applied magnetic field at $T = 15, 150$ and 173 K. It is known that $\rho_{xy}(H)$ depends strongly on the nature of the FeSe samples. For instance, bulk single-crystal exhibit nonlinear behavior revealing a multiband feature, while exfoliated single-crystalline flakes, thin films, and bulk crystal show linear behavior^{33,34}. We emphasize that some features like the sign reversal of the Hall coefficient and a concomitant positive magnetoresistance are robust in our samples against the presence of impurity phases and the disorder associated to the grains texture. Overall, the differences found may shed light on what aspects of bulk single crystals are more sensitive to this kind of imperfections.

In summary, from the point of view of potential applications, the enhanced T_c , the relatively high H_{c2} and the low anisotropy are promising features of the films grown by sputtering at $T_s = 530^\circ\text{C}$ with a thickness around 400 nm. We investigate the influence of the disorder associated with a textured morphology on some transport properties attributed to subtle details of the multi-band electronic structure of β -FeSe. In the normal state, we find that some distinctive characteristics of the nematic phase like changes in the resistivity, a positive transverse magnetoresistance and a sign reversal of the Hall coefficient, are robust against the type and degree of disorder present in the films. Nevertheless, we do not observe other features like a non-linear Hall effect.

B. Superconductor-insulator transition (SIT): Evolution of the crystalline structure and surface morphology

What is the effect of thickness on the physical properties of the films? Figure 5 shows the normalized electrical resis-

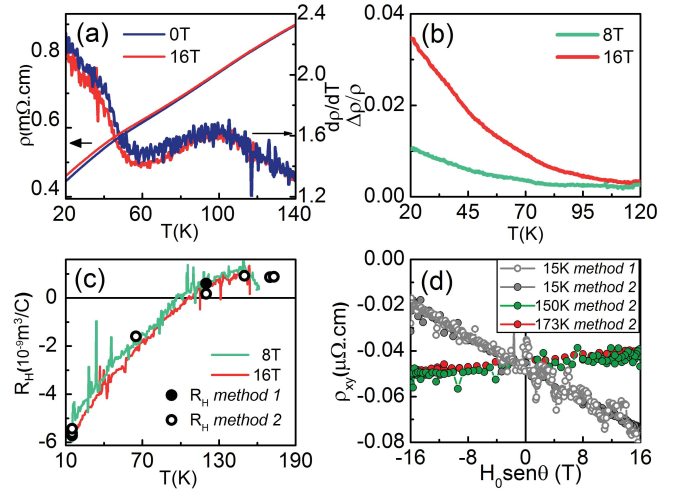


FIG. 4. Transport properties in the normal state of a 400 nm β -FeSe films grown onto STO. (a) Detail of the in plane resistivity, ρ , versus temperature, T , in the structural transition region including the derivative $d\rho/dT$ and data with an applied magnetic field of 16 T perpendicular to the substrate surface. (b) Transversal magnetoresistance, $\frac{\Delta\rho}{\rho_0} = (\rho(H) - \rho_0)/\rho_0$, as a function of temperature with $\mu_0 H = 8$ and 16 T. (c) Temperature dependence of the Hall coefficient, R_H . The data has been obtained with three different protocols: as $\rho_{xy}(T)/H$ at constant H (continuous line), as $d\rho_{xy}/dH$ at constant T (method 1) and as $d\rho_{xy}/dH_\perp$ in an angular dependence experiment at constant H and T (method 2). In all cases, the field is perpendicular to the film surface, except in the case of the angular dependence experiments where H_\perp corresponds to the component of the applied field normal to the film. (d) Field dependence of the Hall resistivity, ρ_{xy} , at $T = 15, 150$ and 173 K. For $T = 15$ K, the data obtained with methods 1 and 2 are presented.

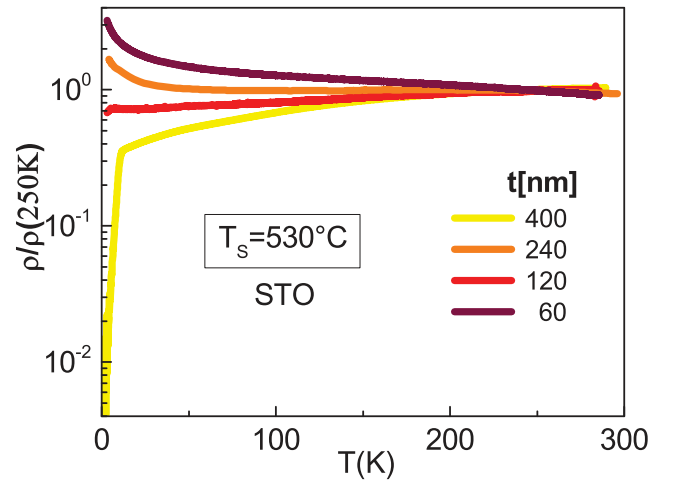


FIG. 5. Normalized resistivity, $\rho(T)/\rho(250\text{K})$, as function of temperature with thickness as a parameter. Films were grown at the same $T_s = 530^\circ\text{C}$, under equivalent conditions on STO substrates. The thicknesses vary from 60 to 400 nm for growth times between 5 and 30 min.

tivity, $\rho(T)/\rho(250\text{K})$, as a function of temperature, T , for films of different thicknesses. Films were grown at the same $T_s = 530^\circ\text{C}$, under equivalent conditions on STO substrates. The thicknesses vary from 60 to 400 nm for deposition times between 5 and 30 min. A change from insulating to superconducting behavior is observed as the film thickness increases, indicating a superconductor-insulator transition (SIT)^{20,24}. It is worth to mention that this phenomenology seems to be a general feature of sputtering grown β -FeSe films. In unreported tests, we observe this crossover in a wide range of T_s ($360^\circ\text{C} \leq T_s \leq 630^\circ\text{C}$), independently of the substrate used (STO or MgO). We found that thin films ($t \leq 60\text{nm}$) present an insulating-like behavior, while the corresponding thicker films ($t \leq 300\text{nm}$) grown under equivalent condition show a metallic-like behavior and a superconductor transition at low temperatures.

In order to correlate this behaviour with the structural evolution of the films we also studied the crystalline structure and morphology as a function of thickness. Figure 6(a) shows a zoomed view of the $\theta - 2\theta$ XRD patterns in the $[15.5 : 17.0]^\circ$ range for the previously mentioned films. The diffraction pattern from an epitaxial thin film ($t = 55\text{nm}$) grown at 360°C , which will be studied in detail in the next section, has been included for comparison. In all the cases, the (001) peak is observed. Only for the case of the epitaxial sample grown at 360°C the c lattice parameter is clearly contracted. On the thick film limit, $t = 400\text{nm}$, the peak has the same position as in the bulk material. The rest of the samples have almost the same lattice parameter with a small but noticeable tendency to be smaller. This implies that for higher thicknesses the tensile stress is relaxed.

The full width at half maximum (FWHM) of the rocking curves (Figure 6(b)) indicates that the out-plane dispersion increase with the nominal thickness. There is also an evolution of the in-plane structure of the films. Figure 6(c) shows the azimuthal ϕ scans for the (101) β -FeSe diffraction peak of the films. Vertical dashed lines show the position of the measured peaks in an equivalent azimuthal scan for the (101) diffraction of the STO substrate. The figure includes data for films grown at $T_s = 530^\circ\text{C}$ with thicknesses $t = 60\text{nm}$ and $t = 400\text{nm}$ and a film grown at $T_s = 360^\circ\text{C}$ with $t = 55\text{nm}$. It is clear that the thinner films present an in-plane alignment with the [100] β -FeSe axis parallel to the [100] STO axis, which is optimal for $T_s = 360^\circ\text{C}$. However, the thicker films show a rotation in the structure with the [110] β -FeSe axis parallel to the [100] STO axis. Different non cubic-on-cubic alignments have been reported previously^{35,36}. The Figure 6(d) is a schematic representation of the in-plane evolution as a function of thickness. Also, the width of the diffraction peaks is greatly increased after the rotation takes place. Our results are compatible with an initially stressed cube-on-cube growth which, after a critical thickness, relaxes through a 45° rotation around the vertical axis. This rotation is characterized by an increment of the in-plane and out-plane dispersion.

Regarding the morphology, in contrast to the tweed grain pattern of the superconducting sample, thinner films present a smoother surface. Notably, in the case of the sample grown at $T_s = 360^\circ\text{C}$ the microstructural study of the surface mor-

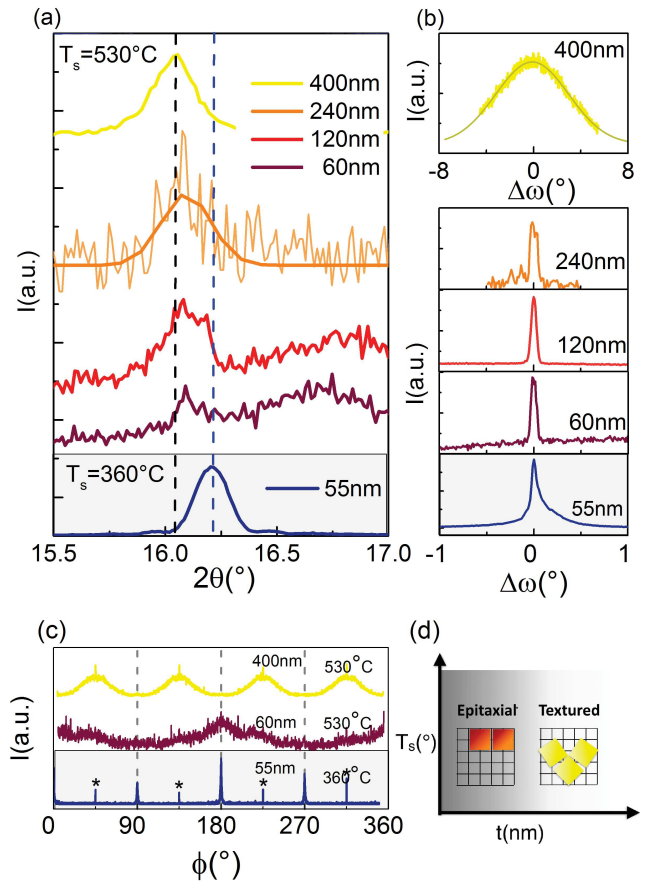


FIG. 6. In-plane and out-plane structural evolution in the superconducting-insulating transition. The data correspond to films growth at $T_s = 530^\circ\text{C}$. Also, the results of an epitaxial thin film ($t = 55\text{nm}$) grown at 360°C has been included for comparison. (a) Detail of the $\theta - 2\theta$ scans in the $[15.5 : 17.0]^\circ$ range, with the nominal thickness as a parameter. The dotted lines indicate the position of the peaks corresponding to the relaxed (black) and a distorted (blue) structure. (b) Rocking curves of the corresponding (001) peaks. (c) Azimuthal ϕ scans for the (101) β -FeSe diffraction peak. The vertical dashed lines show the position for the [100] axis of the STO and the asterisks correspond to spurious peaks associated to the substrate. (d) Schematic representation of the evolution of the in-plane texture as a function of thickness.

phology by SEM and AFM measurements revealed a continuous insulating matrix with small embedded particles ($d \sim 100\text{nm}$).

In conclusion, concomitant to the superconductor to insulator crossover there is a complex structural and morphological evolution. This phenomenology is in contrast to the strong c -axis texture irrespective of the film thickness reported by Schneider et al²⁰. A plausible scenario is a Volmer-Weber island growth mode where the initial layers are characterized by a structural distortion. By increasing the nominal thickness, the tension relaxes and a regime of oriented grains emerge. This implies that percolation is a necessary condition for the macroscopic conduction mechanism to reflect the semimetallic and superconducting nature of β -FeSe. A model to understand this phenomenology must be able to explain which is

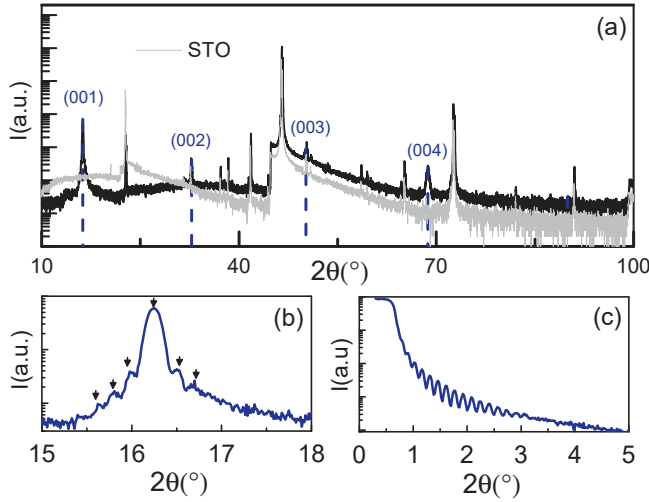


FIG. 7. (a) $\theta - 2\theta$ diffraction pattern of an epitaxial thin film ($t = 55$ nm) grown at 360°C . For comparison, the corresponding result of a pristine STO substrate is also included. (b) Detail of the $\theta - 2\theta$ scan in the range of the (001) peak. The arrows indicate extra peaks associated to the finite size effect. (c) Low-angle X-ray reflectivity for the epitaxial thin film.

the origin of the insulating behavior in the epitaxial thin film grown at $T_s = 360^\circ\text{C}$, despite the lack of islands or cracks and the high-quality structural order.

C. Origin of the insulating behavior

What could be the origin of the insulating behavior of stressed epitaxial films? To analyze this question, we focus on the epitaxial β -FeSe ($t = 55$ nm) films grown at 360°C . The high-quality epitaxy of these films is evidenced by: i) the existence of only (001) peaks in the diffraction curve (Fig. 7a); ii) the sharpness of the out-of-plane rocking curve (Fig. 6b) and iii) the highly oriented sharp peaks in the ϕ -scan (Fig. 6c). Also, a very homogeneous thickness is evidenced by the finite size effect peaks around the (001) peak (Fig. 7b) and the presence of Kiessig fringes in the low angle XRR (Fig. 7c). From these curves the lattice parameters of these single-phase samples are obtained, showing enlarged $a = 3.788 \text{ \AA}$ and contracted $c = 5.463 \text{ \AA}$ lattice parameters. This implies a distortion of $\Delta a/a = +0.64\%$ and $\Delta c/c = -1.03\%$, with reference to a bulk single crystal ($a = 3.771 \text{ \AA}$ and $c = 5.521 \text{ \AA}$)³⁷.

Since the sample structure is tetragonal, we explore the possibility that the origin of the insulating behavior is due to small structural and/or compositional changes. The first hypothesis considers stoichiometric modifications consistent with the observed crystalline order. Recently, semiconducting Fe_{1-x}Se samples with ordered Fe vacancies have been reported. For $x = 0.2$ (Fe_4Se_5), the phase is still tetragonal ($a = 3.76 \text{ \AA}$ and $c = 5.47 \text{ \AA}$) but it is not superconducting. It also presents a long-range magnetic order and has been proposed as the non-superconducting parent of FeSe, instead of the parent being FeTe. Therefore, the first conjecture considered is that there

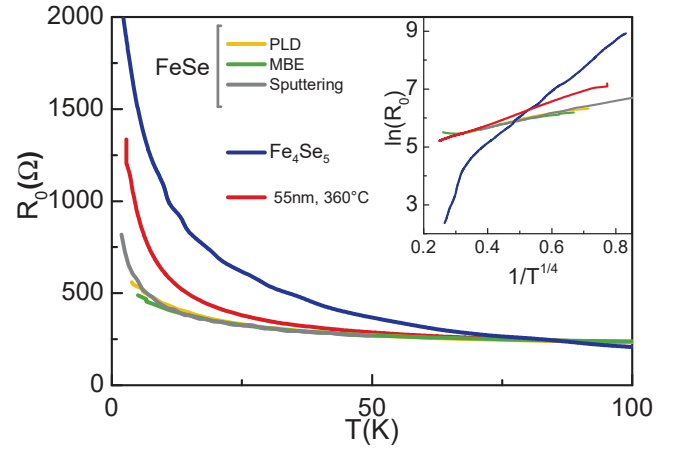


FIG. 8. Comparison of the temperature dependence of the normalized electrical resistance of insulating FeSe samples: R_0 vs T (main figure) and $\ln R_0$ vs $T^{-1/4}$ (inset). Our data are presented together with those reported in the literature for β -FeSe samples obtained with different growth methods. The data, normalized to the value of our film at 85 K, were obtained from the digitization of the curves reported by Schneider et al. (Sputtering,²⁰), Hanzawa et al. (MBE,³⁸), Molatta et al. (PLD,³⁹) and Chen et al. (nanometric samples of Fe_4Se_5 obtained due the extraction of K from $\text{K}_2\text{Fe}_4\text{Se}_5$ single crystal,⁴⁰).

is a significant concentration of Fe vacancies in the epitaxial films. This would imply a lower concentration of Fe with respect to the stoichiometric condition. On the other hand, if the vacancies are ordered, the superstructure should be detected by additional diffraction peaks and/or a magnetic ordering. We couldn't find evidence of concentration being different from 1 : 1, vacancy superstructure in XRD experiments, or a magnetic signal in magnetization measurements. In base to these results we exclude the possibility of having a relevant concentration of ordered Fe vacancies. Nevertheless, the existence of a small concentration of vacancies not detectable within our resolution remains plausible.

To consider the conjecture that the deformation of the lattice leads to a significant change in the band structure, a crucial point is to determine which is the key physical parameter that quantifies the structural distortion. According to a recent report, there is a correlation between the semimetallic band gap and the in-plane strain $\varepsilon = \Delta a/a$ in FeSe films ($-1.5 \leq \varepsilon \leq 1.5$)⁴¹. However, our epitaxial sample with $\varepsilon = +0.64$ does not seem to follow this behaviour and is not semimetallic. Therefore, the in-plane strain by itself cannot explain a distortion of the electronic structure. Alternatively, the Poisson's ratio, $\nu = -\frac{\Delta c/c}{\Delta a/a}$, has been proposed to be the parameter that describes insulator-like FeSe epitaxial thin films⁴². To determine if there is a correlation between the insulator behavior and the structural distortion we compare the reported $\rho(T)$ curves of non-superconducting β -FeSe samples with the resistivity of our film. First, we consider the reported curves from FeSe thin films fabricated with different growth methods (PLD³⁹, MBE³⁸, Sputtering²⁰) (Figure 8). We found these curves to collapse onto a single curve when normalized by the value at 85 K, indicating a universal

behavior. In the case of MBE's curve (Ref³⁸), $\nu \sim +75\%$. In contrast, our sample, shows a stronger semiconducting feature and has a higher Poisson's coefficient of $+162\%$. This positive correlation between the Poisson's coefficient and the semiconducting behavior may be indicative of a strong interplay between the distortion of the lattice and the band structure. Additionally, we included the reported result for Fe_4Se_5 which has an even higher rise in resistance as the temperature decreases. This implies that the existence of vacancies produces an even more intense effect. In this case, with respect to the relaxed structure $\nu \sim -317\%$. This negative coefficient may be indicative of a non-trivial deformation. Therefore, the intermediate insulating behavior in our sample could be either related to structural distortion and/or a relevant vacancies concentration. Since we did not find a relevant concentration of Fe vacancies, the structural distortion may play the key role.

Regarding the conduction mechanism, there is a linear dependence of $\ln R_0$ with $T^{-\frac{1}{4}}$ in a wide range of temperature, being the exception the break at $\sim 60\text{K}$ for Fe_4Se_5 (see the inset in the Figure 8). We emphasize that the $T^{-\frac{1}{4}}$ dependence is more appropriate than other types of exponents. The mathematical relation $\ln R \propto T^{-\frac{1}{4}}$ is widely used to describe the conductivity in strongly disordered systems with localized states (VRH model). Therefore, the dependence found may suggest a localization effect. The key question is which type of disorder originate the localization. Recently, the formation of potential barriers in the conduction band has been suggested as the origin of the insulator-like behavior⁴³. In this scenario, despite a metallic electronic structure observed by ARPES, the carriers cannot move freely due to the influence of the potential barriers.

IV. CONCLUSIONS

In summary, we have shown that the macroscopic electronic behavior of sputtered FeSe thin films is strongly susceptible to microscopic and mesoscopic characteristics as lattice distortion and/or grain morphology. In the limit of textured thick films, we found optimal superconducting properties ($T_c \sim 12\text{K}$) at $T_s = 530^\circ\text{C}$ with a thickness around 400nm . Characteristics as an enhanced T_c , a relatively high H_{C2} and a low anisotropy are promising features. The enhancement of the critical temperature could be related to a nanoscale intergrowth of β -FeSe and γ - Fe_7Se_8 and/or stress associated with the coalescence of grains. These samples allowed us to determine the sensitivity of some relevant physical properties to the presence of disorder. Properties like the coherence length and features like the change in the sign of the Hall coefficient concomitant with a positive magnetoresistance are robust to the amount of disorder present in our samples. Strikingly, the Hall effect is linear up to 16T , in contrast to the nonlinear behavior observed below T^* in high-quality single crystals.

For epitaxial stressed thin films, the characteristic semimetallic behavior disappears giving rise to an insulating one. We found that the structural distortion, described by the Poisson's coefficient, may play the key role instead

of stoichiometric changes like ordered Fe vacancies. On the other hand, for a less distorted lattice restricted to independent grains, there is also a non-SC behavior. When these grains coalesce, due to thickness increase, superconductivity appears with higher T_c than that for bulk samples. This implies that the superconductor-insulator transition (SIT) induced by reducing the thickness can be understood taking in account the non-trivial evolution of the structural properties and morphology, which can be associated to the strained initial growth of the sputtered β -FeSe films.

ACKNOWLEDGMENTS

We thank P. Troyón and M. Corte at CM-GIA-GAATEN-CNEA for SEM/EDX characterization. We also want to thank S. Suarez and P. Pérez for the RBS measurements. Furthermore, we are grateful to M. Sirena and L. Avilés for their help with the AFM characterization. Work partially supported by Conicet PIP 2014-0164, ANPCyT PICT 2014-1265 and Secyp UNCuyo 06/C441 and 06/C504.

- ¹J. P. Sun, K. Matsuura, G. Z. Ye, Y. Mizukami, M. Shimozawa, K. Matsubayashi, M. Yamashita, T. Watashige, S. Kasahara, Y. Matsuda, J. Q. Yan, B. C. Sales, Y. Uwatoko, J. G. Cheng, and T. Shibauchi, *Nature Communications* **7**, 12146 (2016).
- ²S. Medvedev, T. M. McQueen, I. A. Troyan, T. Palasyuk, M. I. Erements, R. J. Cava, S. Naghavi, F. Casper, V. Ksenofontov, G. Wortmann, and C. Felser, *Nature Materials* **8**, 630 (2009).
- ³F. Nabeshima, Y. Imai, M. Hanawa, I. Tsukada, and A. Maeda, *Applied Physics Letters* **103**, 172602 (2013).
- ⁴Y. Imai, Y. Sawada, D. Asami, F. Nabeshima, and A. Maeda, *Physica C: Superconductivity and its Applications* **530**, 24 (2016).
- ⁵D. Liu, W. Zhang, D. Mou, J. He, Y.-B. Ou, Q.-Y. Wang, Z. Li, L. Wang, L. Zhao, S. He, Y. Peng, X. Liu, C. Chen, L. Yu, G. Liu, X. Dong, J. Zhang, C. Chen, Z. Xu, J. Hu, X. Chen, X. Ma, Q. Xue, and X. J. Zhou, *Nature Communications* **3**, 931 (2012).
- ⁶Q.-Y. Wang, Z. Li, W.-H. Zhang, Z.-C. Zhang, J.-S. Zhang, W. Li, H. Ding, Y.-B. Ou, P. Deng, K. Chang, J. Wen, C.-L. Song, K. He, J.-F. Jia, S.-H. Ji, Y.-Y. Wang, L.-L. Wang, X. Chen, X.-C. Ma, and Q.-K. Xue, *Chinese Physics Letters* **29**, 037402 (2012).
- ⁷H. Lei, D. Graf, R. Hu, H. Ryu, E. S. Choi, S. W. Tozer, and C. Petrovic, *Physical Review B* **85**, 094515 (2012).
- ⁸M. D. Watson, T. Yamashita, S. Kasahara, W. Knafo, M. Nardone, J. Béard, F. Hardy, A. McCollam, A. Narayanan, S. F. Blake, T. Wolf, A. A. Haghighirad, C. Meingast, A. J. Schofield, H. v. Löhneysen, Y. Matsuda, A. I. Coldea, and T. Shibauchi, *Physical Review Letters* **115**, 027006 (2015).
- ⁹T. M. McQueen, A. J. Williams, P. W. Stephens, J. Tao, Y. Zhu, V. Ksenofontov, F. Casper, C. Felser, and R. J. Cava, *Physical Review Letters* **103**, 057002 (2009).
- ¹⁰A. E. Böhmer, F. Hardy, F. Eilers, D. Ernst, P. Adelman, P. Schweiss, T. Wolf, and C. Meingast, *Physical Review B* **87**, 180505 (2013).
- ¹¹A. E. Böhmer, T. Arai, F. Hardy, T. Hattori, T. Iye, T. Wolf, H. v. Löhneysen, K. Ishida, and C. Meingast, *Phys. Rev. Lett.* **114**, 027001 (2015).
- ¹²S. Haindl, M. Kitzun, S. Oswald, C. Hess, B. Büchner, S. Kölling, L. Wilde, T. Thersleff, V. V. Yurchenko, M. Jourdan, H. Hiramatsu, and H. Hosono, *Reports on Progress in Physics* **77**, 046502 (2014).
- ¹³B. A. Mazin, "Microwave Kinetic Inductance Detectors: The First Decade," *AIP Conference Proceedings* **1185**, 135 (2009).
- ¹⁴F.-C. Hsu, J.-Y. Luo, K.-W. Yeh, T.-K. Chen, T.-W. Huang, P. M. Wu, Y.-C. Lee, Y.-L. Huang, Y.-Y. Chu, D.-C. Yan, and M.-K. Wu, *Proceedings of the National Academy of Sciences* **105**, 14262 (2008).
- ¹⁵D. Chareev, E. Osadchii, T. Kuzmicheva, J.-Y. Lin, S. Kuzmichev, O. Volkova, and A. Vasiliev, *CrystEngComm* **15**, 1989 (2013).
- ¹⁶Y. F. Nie, E. Brahim, J. I. Budnick, W. A. Hines, M. Jain, and B. O. Wells, *Applied Physics Letters* **94**, 242505 (2009).

- ¹⁷T.-K. Chen, J.-Y. Luo, C.-T. Ke, H.-H. Chang, T.-W. Huang, K.-W. Yeh, C.-C. Chang, P.-C. Hsu, C.-T. Wu, M.-J. Wang, and M.-K. Wu, *Thin Solid Films* **519**, 1540 (2010).
- ¹⁸S. Tan, Y. Zhang, M. Xia, Z. Ye, F. Chen, X. Xie, R. Peng, D. Xu, Q. Fan, H. Xu, J. Jiang, T. Zhang, X. Lai, T. Xiang, J. Hu, B. Xie, and D. Feng, *Nature Materials* **12**, 634 (2013).
- ¹⁹C.-L. Song, Y.-L. Wang, P. Cheng, Y.-P. Jiang, W. Li, T. Zhang, Z. Li, K. He, L. Wang, J.-F. Jia, H.-H. Hung, C. Wu, X. Ma, X. Chen, and Q.-K. Xue, *Science* **332**, 1410 (2011).
- ²⁰R. Schneider, A. G. Zaitsev, D. Fuchs, and H. V. Löhneysen, *Physical Review Letters* **108**, 257003 (2012).
- ²¹R. Schneider, A. G. Zaitsev, D. Fuchs, and R. Fromknecht, *Superconductor Science and Technology* **26**, 055014 (2013).
- ²²S. C. Speller, C. Aksoy, M. Saydam, H. Taylor, G. Burnell, A. T. Boothroyd, and C. R. M. Grovenor, *Superconductor Science and Technology* **24**, 075023 (2011).
- ²³E. Venzmer, A. Kronenberg, and M. Jourdan, *Journal of Superconductivity and Novel Magnetism* **29**, 897 (2016).
- ²⁴Q. Wang, W. Zhang, Z. Zhang, Y. Sun, Y. Xing, Y. Wang, L. Wang, X. Ma, Q.-K. Xue, and J. Wang, *2D Materials* **2**, 44012 (2015).
- ²⁵F. Pardo, G. Burmeister, and J. Guimpel, *Review of Scientific Instruments* **67**, 2370 (1996).
- ²⁶H. Kiessig, *Annalen der Physik* **402**, 769 (1931).
- ²⁷M. L. Amigó, M. V. A. Crivillero, D. G. Franco, A. Badía-Majós, J. Guimpel, J. Campo, F. Damay, F. Porcher, A. M. Condó, and G. Nieva, *Superconductor Science and Technology* **30**, 085010 (2017).
- ²⁸N. R. Werthamer, E. Helfand, and P. C. Hohenberg, *Physical Review* **147**, 295 (1966).
- ²⁹T. Terashima, N. Kikugawa, A. Kiswandhi, E.-S. Choi, J. S. Brooks, S. Kasahara, T. Watashige, H. Ikeda, T. Shibauchi, Y. Matsuda, T. Wolf, A. E. Böhrer, F. Hardy, C. Meingast, H. v. Löhneysen, M.-T. Suzuki, R. Arita, and S. Uji, *Physical Review B* **90**, 144517 (2014).
- ³⁰M. L. Amigó, M. V. Ale Crivillero, D. G. Franco, J. Guimpel, and G. Nieva, *Journal of Low Temperature Physics* **179**, 15 (2015).
- ³¹S. Kasahara, T. Watashige, T. Hanaguri, Y. Kohsaka, T. Yamashita, Y. Shimoyama, Y. Mizukami, R. Endo, H. Ikeda, K. Aoyama, T. Terashima, S. Uji, T. Wolf, H. von Löhneysen, T. Shibauchi, and Y. Matsuda, *Proceedings of the National Academy of Sciences* **111**, 16309 (2014).
- ³²M. L. Amigó, V. Ale Crivillero, D. G. Franco, and G. Nieva, *Journal of Physics: Conference Series* **568**, 022005 (2014).
- ³³B. Lei, J. H. Cui, Z. J. Xiang, C. Shang, N. Z. Wang, G. J. Ye, X. G. Luo, T. Wu, Z. Sun, and X. H. Chen, *Phys. Rev. Lett.* **116**, 077002 (2016).
- ³⁴Z. Feng, J. Yuan, J. Li, X. Wu, W. Hu, B. Shen, M. Qin, L. Zhao, B. Zhu, and V. Stanev, *arXiv e-prints*, arXiv:1807.01273 (2018), arXiv:1807.01273 [cond-mat.supr-con].
- ³⁵M. J. Wang, J. Y. Luo, T. W. Huang, H. H. Chang, T. K. Chen, F. C. Hsu, C. T. Wu, P. M. Wu, A. M. Chang, and M. K. Wu, *Phys. Rev. Lett.* **103**, 117002 (2009).
- ³⁶G. Zhou, D. Zhang, C. Liu, C. Tang, X. Wang, Z. Li, C. Song, S. Ji, K. He, L. Wang, X. Ma, and Q.-K. Xue, *Applied Physics Letters* **108**, 202603 (2016).
- ³⁷M. L. Amigó, N. Haberkorn, P. Pérez, S. Suárez, and G. Nieva, “Vortex dynamics in β -FeSe single crystals: effects of proton irradiation and small inhomogeneous stress,” *Superconductor Science and Technology* **30**, 125017 (2017).
- ³⁸K. Hanzawa, H. Sato, H. Hiramatsu, T. Kamiya, and H. Hosono, “Electric field-induced superconducting transition of insulating FeSe thin film at 35 K,” *Proceedings of the National Academy of Sciences* **113**, 3986 (2016).
- ³⁹S. Molatta, S. Haindl, S. Trommler, M. Schulze, S. Wurmehl, and R. Hühne, “Interface control by homoepitaxial growth in pulsed laser deposited iron chalcogenide thin films,” *Scientific Reports* **5**, 16334 (2015).
- ⁴⁰T.-K. Chen, C.-C. Chang, H.-H. Chang, A.-H. Fang, C.-H. Wang, W.-H. Chao, C.-M. Tseng, Y.-C. Lee, Y.-R. Wu, M.-H. Wen, H.-Y. Tang, F.-R. Chen, M.-J. Wang, M.-K. Wu, and D. Van Dyck, “Fe-vacancy order and superconductivity in tetragonal β -Fe_{1-x}Se.” *Proceedings of the National Academy of Sciences of the United States of America* **111**, 63 (2014).
- ⁴¹G. N. Phan, K. Nakayama, K. Sugawara, T. Sato, T. Urata, Y. Tanabe, K. Tanigaki, F. Nabeshima, Y. Imai, A. Maeda, and T. Takahashi, *Physical Review B* **95**, 224507 (2017).
- ⁴²K. Hanzawa, H. Sato, H. Hiramatsu, T. Kamiya, and H. Hosono, *IEEE Transactions on Applied Superconductivity* **27**, 1 (2017).
- ⁴³K. Hanzawa, Y. Yamaguchi, Y. Obata, S. Matsuishi, H. Hiramatsu, T. Kamiya, and H. Hosono, *Phys. Rev. B* **99**, 035148 (2019).