



Whole Genome Sequence Analysis of *Burkholderia contaminans* FFH2055 Strain Reveals the Presence of Putative β -Lactamases

José J. Degrossi¹ · Cindy Merino² · Adela M. Isasmendi³ · Lorena M. Ibarra⁴ · Chelsea Collins² · Nicolás E. Bo¹ · Mariana Papalia^{2,5} · Jennifer S. Fernandez² · Claudia M. Hernandez³ · Krisztina M. Papp-Wallace^{7,8,9} · Robert A. Bonomo^{7,8,9,10,11} · Miryam S. Vazquez⁴ · Pablo Power^{5,6} · María S. Ramirez²

Received: 5 November 2018 / Accepted: 11 February 2019
© Springer Science+Business Media, LLC, part of Springer Nature 2019

Abstract

Burkholderia contaminans is a member of the *Burkholderia cepacia* complex (Bcc), a pathogen with increasing prevalence among cystic fibrosis (CF) patients and the cause of numerous outbreaks due to the use of contaminated commercial products. The antibiotic resistance determinants, particularly β -lactamases, have been poorly studied in this species. In this work, we explored the whole genome sequence (WGS) of a *B. contaminans* isolate (FFH 2055) and detected four putative β -lactamase-encoding genes. In general, these genes have more than 93% identity with β -lactamase genes found in other Bcc species. Two β -lactamases, a class A (Pen-like, suggested name PenO) and a class D (OXA-like), were further analyzed and characterized. Amino acid sequence comparison showed that Pen-like has 82% and 67% identity with *B. multivorans* PenA and *B. pseudomallei* PenI, respectively, while OXA-like displayed strong homology with class D enzymes within the Bcc, but only 22–44% identity with available structures from the OXA family. PCR reactions designed to study the presence of these two genes revealed a heterogeneous distribution among clinical and industrial *B. contaminans* isolates. Lastly, *bla*_{PenO} gene was cloned and expressed into *E. coli* to investigate the antibiotic resistance profile and confers an extended-spectrum β -lactamase (ESBL) phenotype. These results provide insight into the presence of β -lactamases in *B. contaminans*, suggesting they play a role in antibiotic resistance of these bacteria.

Electronic supplementary material The online version of this article (<https://doi.org/10.1007/s00284-019-01653-4>) contains supplementary material, which is available to authorized users.

✉ María S. Ramirez
msramirez@fullerton.edu

¹ Cátedra de Salud Pública e Higiene Ambiental, Facultad de Farmacia y Bioquímica, Universidad de Buenos Aires, Buenos Aires, Argentina

² Department of Biological Science, California State University Fullerton, 800 N State College Blvd, Fullerton, CA 92831, USA

³ Servicio de Bacteriología, Hospital de Pediatría Juan P. Garrahan, Buenos Aires, Argentina

⁴ Servicio de Bacteriología, Hospital de Niños Ricardo Gutierrez, Buenos Aires, Argentina

⁵ Cátedra de Microbiología, Laboratorio de Resistencia Bacteriana, Facultad de Farmacia y Bioquímica, Universidad de Buenos Aires, Buenos Aires, Argentina

Introduction

Cystic fibrosis (CF) is a genetic disorder that affects approximately 70,000–100,000 people worldwide, imposing a life-limiting condition to patients harboring this disorder [1].

⁶ Consejo Nacional de Investigaciones Científicas y Técnicas (CONICET), Buenos Aires, Argentina

⁷ Research Service, Louis Stokes Cleveland Department of Veterans Affairs, Cleveland, OH 44106, USA

⁸ Department of Medicine, Case Western Reserve University, Cleveland, OH 44106, USA

⁹ Department of Biochemistry, Case Western Reserve University, Cleveland, OH 44106, USA

¹⁰ Departments of Microbiology and Molecular Biology, Case Western Reserve University, Cleveland, OH 44106, USA

¹¹ Department of Pharmacology, Case Western Reserve University, Cleveland, OH 44106, USA

In persons with CF, *Pseudomonas aeruginosa* is one of the most important pathogens that can cause life-threatening infections. Regrettably, many other bacterial genera have also emerged as significant pathogens in persons with CF [2]. Moreover, prolonged antibiotic therapy received by these patients is a propitious scenario for the evolution of antibiotic resistant pathogens [3].

The *Burkholderia cepacia* complex (Bcc) is composed of >20 closely related species that are opportunistic human pathogens that mainly have a significant impact in patients with CF [4]. The Bcc complex is resistant to a wide range of antibiotics, and therefore infections caused by these bacteria are very difficult to eradicate. Strikingly, infections may derive into “cepacia syndrome” with fatal consequences (necrotizing pneumonia, respiratory failure, and sepsis/bacteremia) [5–7]. An additional negative aspect of the Bcc is their ability to contaminate man-made products such as pharmaceuticals, cosmetics, and disinfectants [4, 8, 9]. Nosocomial outbreaks due to the use of Bcc contaminated products are often reported [10].

Since *B. cenocepacia* and *B. multivorans* are the most prevalent Bcc among persons with CF in the United States, Canada, France, United Kingdom, and Belgium, these Bcc species are well studied and characterized [11–13]. However, in recent years, *B. contaminans*, a species defined in 2009, has been widely identified as a nosocomial opportunistic pathogen of rising importance due to outbreaks that took place in different parts of the world [14]. Presently, *B. contaminans* is reported as the most frequent Bcc species isolated in CF patients from Portugal, Spain, and Argentina, and is associated with infections in immunocompromised and hospitalized patients exposed to contaminated products in Germany and United States [15–20]. Due to its recent speciation, few studies are available on *B. contaminans*, and little is known about its virulence factors, susceptibility to antibiotics, prognosis of infected patients, and other issues of clinical relevance [21]. Recently, whole genome sequencing was performed on several *B. contaminans* strains and these sequences are available in the GenBank database [22–24].

As with all Bcc members, *B. contaminans* possesses innate resistance to a wide range of antimicrobials; as a result, the clinical treatment of infections is problematic. The main antibiotic resistance mechanisms described in Bcc include the unique structure of the lipopolysaccharide (LPS) in the outer membrane, the presence of efflux pumps, the degradation of antibiotics by means of enzymes such as β -lactamases, and the ability to form biofilms [25]. Adding to this, Bcc displays the possibility to acquire even more antibiotic resistant determinants through horizontal gene transfer [26, 27].

Among the antibiotic resistance mechanisms mentioned above, β -lactamases are not well characterized in Bcc. Inducible chromosomal class A β -lactamases (PenA and

PenB) were investigated in *B. cenocepacia* and *B. multivorans* and are reported in other Bcc members [28–32]. Most studies focused on studying this single class A β -lactamase, as it appears to be the dominant β -lactam resistance mechanism in Bcc. However, the genomes of Bcc harbor other putative β -lactamase (*bla*) genes. For instance, in the study describing the whole genome of *B. cenocepacia* J2315, at least four *bla* genes encoding potential β -lactamases were found though their activity is not yet established [33]. With regard to *B. contaminans*, studies on β -lactamases have not been conducted. The presence of genes associated with β -lactamases is mentioned in a work describing the genome of *B. contaminans* MS14, an isolate obtained from soil, but the number of genes and the characterization of these enzymes was not pursued [22].

In this work, we explore the genome of the *B. contaminans* strain FFH 2055 that was isolated from the sputum of a person with CF in Argentina [34]. We determined the presence of four putative β -lactamase genes in *B. contaminans* strain FFH 2055 and conducted comparative analyses of the *bla* genes with other Bcc and non-Bcc species. The presence of select *bla* genes was further explored within 46 *B. contaminans* isolates. In addition, molecular models were generated of the class D OXA β -lactamase as well as the class A Pen-like β -lactamase, which based on previous nomenclature in the Bcc field, will be denoted as PenO [35]. As the Pen-like β -lactamases are the dominant β -lactam resistance mechanism in *Burkholderia* spp., the antibiotic resistance profile of PenO was further evaluated by cloning and expressing *bla*_{PenO} in *Escherichia coli*.

Materials and Methods

Bacterial Strain and Genome Sequences

Burkholderia contaminans FFH 2055 was isolated from sputum of a 6-year-old girl with CF in Argentina. The patient was chronically infected with this species until her death at the age of 12. The strain was preserved at $-80\text{ }^{\circ}\text{C}$ in Tryptic Soy Broth (TSB) with 40% glycerol for future studies. The draft genome of FFH 2055 was recently published [34]. Sequences were retrieved from GenBank (accession LASC01000001 to LASC01000008) and analyzed to search for putative *bla* genes using the RAST server [36, 37]. Also, 46 *B. contaminans* isolates obtained from persons with CF ($n=21$), non-CF patient comparators ($n=13$), and industrial contaminated products ($n=12$) were employed to investigate the distribution of *bla*_{PenO} and *bla*_{OXA-like} genes (Table 1).

Table 1 Putative β -lactamases in *B. contaminans* FFH2055 and % identity to non-Bcc and Bcc species

Putative β -lactamase genes in <i>B. contaminans</i> FFH2055 Locus tag (bp length)	Amino acid comparison in GenBank Best match % of identity accession product	Nucleotide comparison in <i>Burkholderia.com</i> % identity Locus tag		
		Best match	Identity with <i>B. cenocepacia</i> J2315	Identity with <i>B. multivorans</i> ATCC 17676
Class A β -lactamase WR30_RS27340 (939)	<i>Jeongeupia</i> sp. USM3 65% WP_070527757.1 Class A β -lactamase	<i>B. cepacia</i> MSMB1339WGS MSMB1339WGS_28 93.31% WK01_RS09215	89.53% BCAM2165	82.44% Bmul_3689
Class B β -lactamase WR30_RS21040 (1014)	<i>Amantichitium ursilacis</i> 55% WP_053936944.1 MBL fold metallo-hydrolase	<i>B. vietnamiensis</i> FL-7-710-S2-D0 79.70% WJ18_RS07505	72.16% BCAS0557	–
Class C β -lactamase WR30_RS20060 (1170)	<i>Vogesella</i> sp. LIG4 63% WP_088965050.1 Class C β -lactamase	<i>B. lata</i> sp. 383 96.83% BCEP18194_RS04915	89.64% BCAS0156	81.89% Bmul_6008
Class D β -lactamase WR30_RS31065 (810)	<i>Klebsiella michiganensis</i> 61% WP_065366333.1 class D β -lactamase	<i>B. cepacia</i> MSMB2211WGS_28 94.69% WL58_RS12165	87.79% BCAM0393	–

Bioinformatics Analysis

The nucleotide and translated amino acid sequences of the putative β -lactamase-encoding genes in *B. contaminans* FFH 2055 were investigated in genome sequences of other *B. contaminans* strains as well as other Bcc species by performing BLAST N searches in GenBank and the *Burkholderia.com* database [38]. A gene encoding a Pen-like class A β -lactamase (WR30_RS27340, named *bla*_{PenO}) was selected for further studies. Translated amino acid sequences were analyzed using NCBI BLAST X 2.7.0+ [39]. Sequence and structural alignments of amino acid sequences were performed using T-Coffee Expresso and ESPript/ENDscript [40, 41].

Protein Structure Prediction and Molecular Modeling of Hypothetical Pen-Like and OXA-Like β -Lactamases

A prediction of the α -helical content of PenO was performed with AGADIR software [42], and theoretical three-dimensional (3D) models for the enzyme were predicted by using the Swiss-Model tool (<http://swissmodel.expasy.org>) and Yasara, using a standard homology modeling protocol [43]. All models were visualized with PyMOL 1.6 [44].

General Molecular Biology Techniques

The *bla*_{PenO} gene was amplified by PCR reaction using primers listed in Table S1 and cloned into the pBC SK(+) vector (CHL^R) (Adgene). *E. coli* TOP10 cells were then transformed with the pBC SK(+) *bla*_{PenO} (*pbla*_{PenO}) and antibiotic susceptibility tests were performed (see below).

In addition, PCR reactions were used to detect the *bla*_{PenO} and *bla*_{OXA-like} genes among a collection of *B. contaminans* isolates. Primers employed in these reactions were designed using Primer 3 software (v 0.4.0) and are listed in Table S1 [45, 46]. *B. contaminans* isolates were suspended in sterile distilled water, boiled for 10 min, and centrifuged at 14000 rpm for 5 min. A 5 μ l bacterial suspension was used to carry out PCR reactions. Cycling conditions were 94 °C for 2 min; 30 cycles of 94 °C for 1 min, annealing temperature for 1 min, and 72 °C for 1 min; and finally, 72 °C for 10 min.

Antimicrobial Susceptibility Testing

Disk diffusion assays with various β -lactam antibiotics (AMP: ampicillin; AMC: amoxicillin-clavulanate; CTX: cefotaxime; CRO: ceftriaxone; CAZ: ceftazidime; CZ: cefazolin; FEP: cefepime; FOX: ceftoxitin; IMP: imipenem; MEM: meropenem) were performed following the Clinical and Laboratory Standards Institute (CLSI) guidelines (Table 2) [47]. The disk diffusion tests served as a screening tool to determine potential substrates for the enzyme. Minimum inhibitory concentrations (MIC) by *E*

Table 2 Origin, source, and distribution of *bla*_{PenO} and *bla*_{OXA-like} genes among *B. contaminans* isolates

Isolates		Distribution of <i>bla</i> _{PenO} and <i>bla</i> _{OXA-like}			
Origin (number of isolates)	Source (number of isolates)	<i>bla</i> _{PenO} ⁺	<i>bla</i> _{PenO} ⁻	<i>bla</i> _{PenO} ⁺	<i>bla</i> _{PenO} ⁻
		<i>bla</i> _{OXA-like} ⁺	<i>bla</i> _{OXA-like} ⁺	<i>bla</i> _{OXA-like} ⁻	<i>bla</i> _{OXA-like} ⁻
CF patients (21)	Children's Hospital Juan P. Garrahan (9)	8	0	0	1
	Children's Hospital Ricardo Gutierrez (12)	10	1	0	1
Non-CF patients (13)	University Hospital José de San Martín (5)	5	0	0	0
	Hospital Ramos Mejía (5)	4	0	1	0
	Children's Hospital Ricardo Gutierrez (3)	3	0	0	0
Industrial (12)	Purified water and facilities (5)	4	0	0	1
	Pharmaceutical products (3)	1	1	0	1
	Ultrasound gel (1)	1	0	0	0
	Disinfectants and housecleaners (3)	1	1	1	0

test for AMP, CAZ, MEM, and IMP were also performed as recommended.

Results

Putative β -Lactamases Present in the *B. contaminans* FFH 2055 Genome

The total number of putative *bla* genes in *B. contaminans* FFH 2055 genome was eighteen. However, non- β -lactamases, such as hydrolases and proteases, possess similar structures/amino acid sequences to β -lactamases; thus, proteins are often annotated as β -lactamases, even though they are not actually β -lactamases. As a result, a secondary analysis for the presence of a signal peptide as well as conserved β -lactamase motifs in translated amino acid sequences was conducted. As β -lactamases are periplasmic enzymes, they must possess a signal peptide (analysis tool: SignalP 4.1 Server). Analysis of the signal peptides in the 18 putative β -lactamases reduced the list to 5 β -lactamases (two class A enzymes, one class B, one class C, and one class D). Each β -lactamase class possesses conserved motifs that can be used to further identify potential β -lactamases. The following motifs should be present within each class: class A: SXXK motif, SDN loop, RXEXXXXXXXXXXXXXD Ω -loop, and KTG motif; class B: HXHxD motif; class C: SXXK motif, YSN motif, and KTG motif; and class D: SXXK motif and KTG motif. Of the two class A β -lactamases, one lacked the SXXK, SDN, and KTG motifs, and thus was removed from the list.

As a result of this analysis, four putative *bla* genes were identified in *B. contaminans* FFH 2055. These genes encode for putative class A Pen-like (WR30_RS27340), class B (WR30_RS21040), class C (WR30_RS20060), and class D OXA (WR30_RS31065) β -lactamases (Table 1). The nucleotide sequences of WR30_RS27340 and WR30_RS20060

were found in all other *B. contaminans* genomes currently deposited in GenBank ($n = 17$) with 95–100% identity. Meanwhile, WR30_RS21040 and WR30_RS31065 were detected in one and 12 genomes (100% and 95–100% identity), respectively.

Comparative Analysis of the Four β -Lactamase Amino Acid and Nucleotide Sequences to Non-Bcc and Bcc

To further investigate these β -lactamases, a comparison to non-Burkholderial as well as Bcc β -lactamases was conducted using the GenBank and *Burkholderia.com* databases. According to GenBank, the four *B. contaminans* FFH 2055 β -lactamases were found to be most similar to bacteria (i.e., *Jeongeupia* sp. USM3, *Amantichitinum ursilacus*, *Vogesella* sp. LIG4, and *Klebsiella michiganensis*) isolated from environmental sources with amino acid sequence identity ranging from 55 to 65% (Table 1). A BLAST search of the *Burkholderia.com* database demonstrated that three of *bla* nucleotide sequences shared more than 93% identity with β -lactamase-encoding genes found in other Bcc species (Table 1). Only the gene coding for a putative metallo- β -lactamase (class B β -lactamase) displayed a lower identity with the closest match to a *B. vietnamiensis* strain (79.7% identity). The highest identity of individual genes was found within *B. cepacia* and *B. lata* strains (Table 1).

Furthermore, a BLAST search at amino acid level using the four putative β -lactamases detected in *B. contaminans* FFH 2055 revealed that two of them (class A and class C β -lactamase) were also found in all the Bcc species available genomes in the GenBank (only *B. arboris* does not have sequenced genomes submitted) with more than 75% and 40% of coverage and identity, respectively. The Pen-like class A β -lactamase is critical for β -lactam resistance in Bcc, while the class C β -lactamase, which was characterized in *B. multivorans*, may not actually be a β -lactamase,

but a low molecular mass penicillin binding protein; further studies are in progress (References: PMID: 30012762 and 29983287). The class B β -lactamase was not detected in *B. multivorans*, *B. dolosa*, *B. latens*, *B. metallica*, *B. seminalis*, *B. lata*, *B. metallica*, *B. pseudomultivorans*, *B. stagnalis*, and *B. puraquae*. With respect to the class D β -lactamases, none were detected in *B. vietnamiensis*, *B. dolosa*, *B. ambifaria*, and *B. latens* (Figure S1). Of the β -lactamases, the class A β -lactamase and class C β -lactamase are most prevalent in Bcc.

As *B. cenocepacia* and *B. multivorans* are the most prevalent species in Europe and North America, the four putative β -lactamase genes were compared to the type strain of these species (*B. cenocepacia* J2315 and *B. multivorans* ATCC 17616). The four *bla* genes found in *B. contaminans* FFH 2055 shared between 70% and 90% identity with genes of *B. cenocepacia*, while the *bla*_{OXA-like} and the class B β -lactamase genes were not found in the *B. multivorans* strain (Table 1). Interestingly, the *B. cenocepacia* genes that shared similarity with *bla*_{PenO} and class B β -lactamase were not annotated as β -lactamases when genome of *B. cenocepacia* J2315 was described [33].

Distribution of *bla*_{PenO} and *bla*_{OXA-like} Genes Among *B. contaminans* Isolates

We decided to focus our studies on two selected *bla* genes, named *bla*_{PenO} and *bla*_{OXA-like}, coding for a class A β -lactamase and a class D β -lactamase, respectively. PenO was selected, because it is the dominant β -lactamase in Bcc. As evidence to date suggests that the class C β -lactamase may not function as a β -lactamase (PMID: 30012762), the OXA-like β -lactamase was also selected for analysis as it is next most often detected β -lactamase in Bcc.

By PCR reactions, *bla*_{PenO} and *bla*_{OXA-like} genes were detected in most of the *B. contaminans* isolates evaluated (84.8% *bla*_{PenO} positive reactions and 87% *bla*_{OXA-like} positive reactions). Slight differences were observed considering the origin of the isolates. Both PCR reactions yielded an amplification product in 37 out of 46 isolates (18 from 21 CF isolates, 12 from 13 clinical non-CF isolates, 7 from 12 industrial isolates), while in two isolates collected from CF patients and two clinical isolates, both PCR reactions resulted in negative results (Table 2). The highest percentage of isolates lacking one of these genes was obtained among industrial isolates (33.3% *bla*_{PenO} and 25% *bla*_{OXA-like}, respectively). On the other hand, the clinical isolates obtained from non-CF patients accounted the highest percentage of positive amplification for *bla*_{PenO} and *bla*_{OXA-like}, with only one isolate displaying a negative amplification result for *bla*_{OXA-like}. We note that sequence heterogeneity within the *bla*_{PenO} and *bla*_{OXA-like} genes may have limited the detection of some of these *bla* genes in the isolates [35].

Genetic Environment of *bla*_{PenO} and *bla*_{OXA-like}

The surrounding of *bla*_{PenO} gene displayed homologous sequences from the environment of *bla*_{PenB} previously described in *B. cenocepacia* (Figure S2) [29]. A gene encoding a putative LysR regulator (PenR) (WR30_RS27345) is located upstream and is transcribed in an opposite orientation of *bla*_{PenO}. The nucleotide sequence of this gene shares more than 94% identity with LysR encoding genes detected in *B. lata*, *B. cepacia*, and *B. cenocepacia* strains among other Bcc species. The 127-bp intergenic sequence between *bla*_{PenO} and *penR* gene also revealed 85% similarity with the intergenic region of *B. cenocepacia* J2315 displaying identical sequences for the two putative -10 and -35 promoter boxes and the two potential ribosome-binding sites described (Fig. S2) [29].

Regarding *bla*_{OXA-like} genetic environment, it is closely related to strains of other Bcc species like *B. cepacia*, *B. cenocepacia*, and *B. multivorans*, flanked by a putative acyltransferase and a putative porin gene (Fig. S3). Although previous described promoters were not detected in the upstream intergenic region, a BLAST comparison of this 327 bp did not reveal any matches with non-*Burkholderia* species, but shares more than 80% identity with sequences of *B. cenocepacia*, *B. cepacia*, and *B. lata* strains among other Bcc species, located upstream of a putative class D β -lactamase gene (Fig. S3). In addition, insertion sequences, transposons, or other mobile elements were not detected around *bla*_{PenO} and *bla*_{OXA-like} (data not shown).

Amino Acid Sequence Analysis and Molecular Modeling of PenO and OXA-Like β -Lactamases

Compared to other class A β -lactamases, *B. contaminans* PenO enzyme possesses all the conserved residues and motifs that model the active site (Fig. 1a): motif 1 containing the active-site serine (S70) residue (STFK); motif 2 (SDN); motif 3 (KTG); and a Ω -loop including the essential glutamic acid residue (E166). According to the amino acid relationship with other class A enzymes (Fig. 1b), *B. contaminans* PenO possesses 82% and 67% amino acid identity with *B. multivorans* PenA and *B. pseudomallei* PenI enzymes, respectively [30], and whose crystallographic structures were also solved (PDB 3W4Q and 3W4O). Regarding other Pen-like β -lactamases described in Bcc members, amino acid identities ranges from 74% (*B. ubonensis* PenH) to 88% (*B. cenocepacia* PenB1). In comparison with non-Bcc *Burkholderia* species, PenO displays identities from 57% (*B. gladioli* PenN) to 63% (*B. thailandensis* PenL). PenO also showed 55–57% amino acid identity with extended-spectrum CTX-M β -lactamases, and shares some common residues with PER enzymes, essential for the active-site coordination (see below).

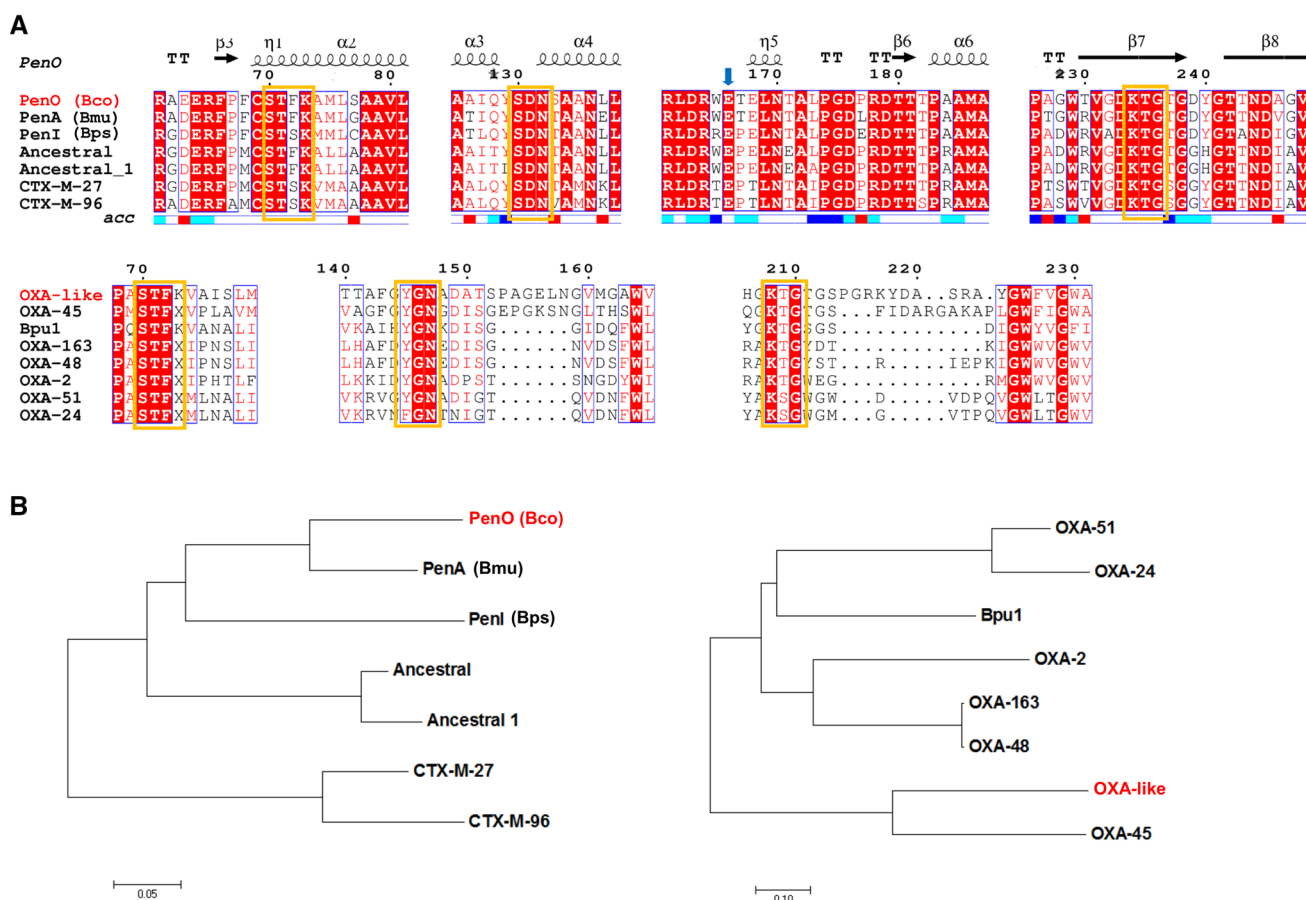


Fig. 1 **a** Multiple sequence alignment of PenO and OXA-like and other related class A and D β -lactamases, respectively, were constructed with ESPript 3.0 (<http://esprict.ibcp.fr/ESPript/ESPript/>) and showed the regions containing the conserved active-site residues. Yellow boxes indicate the putative conserved motifs. Secondary structure is provided only for PenO, which possesses high homology with the reference sequence/model. **b** Neighbor-joining-based

tree showing the amino acid sequence relationship of both enzymes with the closest β -lactamases. Sequences included were selected from the closest enzymes according to the Blast result. For those enzymes which are species-specific, the species name is provided in parenthesis: Bco: *B. contaminans*; Bmu: *B. multivorans*; Bps: *B. pseudomallei*. (Color figure online)

On the other hand, *B. contaminans* OXA-like β -lactamase showed the class D conserved motifs (Fig. 1a): STFK (motif 1) containing the active-site serine (S70); YGN (motif 2); and KTG (motif 3). OXA-like β -lactamase displayed significant homology with class D enzymes within the Bcc, 52–55% amino acid identity with OXA-57 from *B. pseudomallei*, although only 22–44% amino acid identity with available structures from the OXA family, being closely related to OXA-45 and related enzymes (Fig. 1b).

In silico molecular modeling of both PenO and OXA-like showed that these β -lactamases possess the typical overall fold of other class A and D β -lactamases, respectively, being the active-site cavity located between the “all α ” and the “ α/β ” domains (Fig. 2).

In PenO, the active site is composed of conserved residues that are also found in other class A β -lactamases (Fig. 2b). Among the most interesting features, the presence of R220

(also found in Pen β -lactamases) and D240 are highlighted. A conserved arginine is found in most clinically important ESBL, i.e., CTX-M (R276), TEM/SHV (R244), and PER (R220) whose guanidinium lateral chain always points towards the active site [48–50]; as in the case of PER β -lactamases, R220 could also create a hydrogen bond network essential for the activity in Pen β -lactamases [51]. An aspartic acid residue at 240 is commonly found in enzymes like the cefotaxime-hydrolyzing CTX-M, which is replaced by a glycine in those variants having a slight “ceftazidimase” behavior [52, 53]. Interestingly, the putative Ω -loop fold seems to create a broader active-site cavity compared to extended-spectrum CTX-M β -lactamases, which together with the residues mentioned above could contribute to an efficient hydrolysis towards some β -lactams. Noteworthy is the presence of a threonine at 167 (also observed in PenA) replacing the conserved proline in

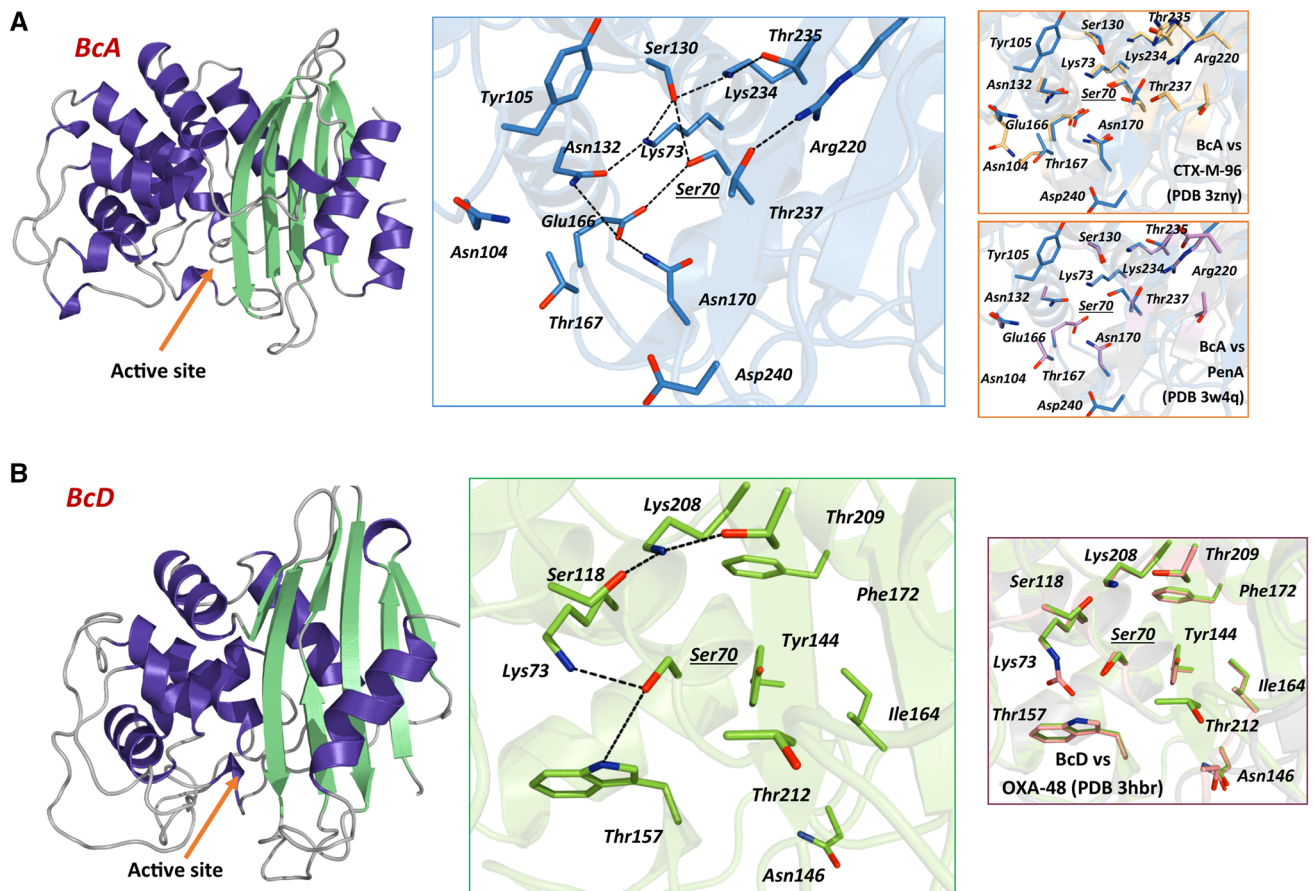


Fig. 2 Left: theoretical molecular model of PenO (up) and OXA-like (down) β -lactamases, indicating the active-site entry (orange arrow); Middle: detail of the active-site coordination, indicating conserved or important residues for the structure and function of class A

β -lactamases; right: comparison of PenO vs CTX-M-96 (PDB 3ZNY) and PenA (PDB 3W4Q), and OXA-like vs OXA-48 (PDB 3HBR). (Color figure online)

most class A β -lactamases, which could influence the folding of the Ω -loop and probably also in the activity.

Remarkably, the OXA-like β -lactamase includes interesting structural features that deserve further analysis. Apart from the conserved residues usually found in class D enzymes (Figs. 1, 2), OXA-like β -lactamase remarkably carries a six-residue insertion after the YGN conserved motif (PAGELN), which is also found in OXA-45 (EPGKSN) [54]. As in other clinically important OXAs, including OXA-48-derived carbapenemases, OXA-like β -lactamase presents several mutations in the β 4– β 5 loop [55]; as in OXA-45, this “hot spot” region is composed of ten residues compared to five in OXA-48, OXA-24, and OXA-51 carbapenemases, while in OXA-2 and OXA-163 there is only one residue (data not shown).

Antimicrobial Phenotypic Profile of PenO β -Lactamase

As the Pen-like β -lactamases are present in all Bcc, the antimicrobial resistance profile of PenO β -lactamase was

determined. Disk diffusion assays using several β -lactam antibiotics against the parent *B. contaminans* FHH 2055 and *E. coli* TOP10 cells containing plasmid, $pbla_{PenO}$, were determined according to CLSI guidelines [47]. CLSI only provides breakpoints for ceftazidime, meropenem, and ticarcillin-clavulanic acid for Bcc. Thus, β -lactam breakpoints for Enterobacteriaceae were used to assist interpretation of the resistance profiles.

The *B. contaminans* strain demonstrated resistance towards ampicillin, amoxicillin-clavulanic acid, ceftazolin, cefoxitin, cefotaxime, and ceftriaxone (Table 3). Compared to *E. coli* TOP10 harboring the empty vector, changes in the inhibition zones were observed for ampicillin, amoxicillin-clavulanic acid, ceftazolin, cefoxitin, cefotaxime, ceftriaxone, and cefepime, when $pbla_{PenO}$ plasmid was introduced (Table 3). Thus, PenO behaves similarly to an extended-spectrum β -lactamase (ESBL). MIC results were also obtained for the *E. coli* strains and *E. coli* with $pbla_{PenO}$ possessed higher MICs towards all the β -lactams tested with the exception of carbapenems (Table 4).

Table 3 Average inhibition zones (in mm) obtained by disk diffusion tests from *E. coli* TOP10 derived recombinant cells producing PenO β -lactamase

	AMP	AMC	CTX	CRO	CAZ	CZ	FEP	FOX	IMP	MEM
<i>B. contaminans</i> FFH 2055	6	6	17	12	26	6	20	6	17	24
<i>E. coli</i> TOP10 pBC SK+	21	22	36	34	34	25	35	25	30	35
<i>E. coli</i> TOP10— <i>pbla</i> _{PenO}	6	12	20	10	26	6	25	21	30	35

Average disk diffusion values were determined from three independent trials

AMP ampicillin, AMC amoxicillin-clavulanate, CTX cefotaxime, CRO ceftriaxone, CAZ ceftazidime, CZ cefazolin, FEP cefepime, FOX ceftioxin, IMP imipenem, MEM meropenem

Table 4 Minimum inhibitory concentration (MIC) values (μ g/ml) for *E. coli* TOP10 derived recombinant cells producing PenO β -lactamase

MIC	AMP	AMC	CTX	CRO	CAZ	CZ	FEP	MEM	IMP
<i>E. coli</i> TOP10 pBCSK+	4	2	0.047	0.047	0.38	3	0.047	0.032	0.5
<i>E. coli</i> TOP10— <i>pbla</i> _{PenO}	>256	16	2	6	2	>256	0.75	0.032	0.5

Conclusion

Although class A β -lactamases of the Pen family were reported in Bcc species and PenA in *B. multivorans* was studied and characterized, the knowledge about other β -lactamases in the Bcc is scarce [31, 55]. Particularly, studies are not available about these enzymes in *B. contaminans*, an emerging opportunistic pathogen that is also frequently recovered from contaminated products. The analysis of *B. contaminans* FFH 2055 revealed the presence of at least four putative genes coding different classes of these enzymes. A comparative analysis with other Bcc genomes demonstrated the presence, although not homogeneously, of a similar number of putative β -lactamases genes in other Bcc species. A deeper study of two of these genes, *bla*_{PenO} and *bla*_{OXA-like}, allowed us to report the relationship with other β -lactamases, the hypothetical structure of its products, and to hypothesize that a heterogeneous distribution of these genes may occur among *B. contaminans* isolates. According to nomenclature of Pen-like family described in the *Burkholderia* genus, the name of PenO is suggested for class A β -lactamase detected in *B. contaminans*. The antibiotic susceptibility testing suggested that PenO is likely an ESBL.

Acknowledgements Research reported in this publication was supported in part by funds and/or facilities provided by the Cleveland Department of Veterans Affairs, the Veterans Affairs Merit Review Program BX002872 (KMP-W) and BX001974 (RAB) from the United States (U.S.) Department of Veterans Affairs Biomedical Laboratory Research and Development Service, and the Geriatric Research Education and Clinical Center VISN 10 to RAB. The contents do not represent the views of the U.S. Department of Veterans Affairs or the United States Government. This study was partially supported by National Institute of Allergy and Infectious Diseases of the National Institutes of Health under Award Numbers R21AI114508, R01AI100560, R01AI063517, and R01AI072219 to RAB. The content is solely the

responsibility of the authors and does not necessarily represent the official views of the National Institutes of Health. We want to thank Dr. Ana P. Meo (Hospital Ramos Mejía) and Dr. Carlos Vay (Hospital de Clínicas General San Martín) for providing the non-CF *B. contaminans* isolates for this study. Special thanks are offered to Dr. German M. Traglia for his technical help in bioinformatics analysis.

Funding This work was funded by grants from Agencia Nacional de Promoción Científica y Tecnológica (PICT 2014-0457 to PP). P. Power is a researcher for the Consejo Nacional de Investigaciones Científicas y Técnicas (CONICET, Argentina). JF has a SOAR-ELEVAR Scholar Fellowship from Latina/o Graduate Students from the U.S. Department of Education.

Compliance with Ethical Standards

Conflict of interest The authors declare that they have no conflict of interest.

References

- Kelly J (2017) Environmental scan of cystic fibrosis research worldwide. *J Cyst Fibros* 16(3):367–370. <https://doi.org/10.1016/j.jcf.2016.11.002>
- Gilligan PH (2014) Infections in patients with cystic fibrosis: diagnostic microbiology update. *Clin Lab Med* 34(2):197–217. <https://doi.org/10.1016/j.cll.2014.02.001>
- Sherrard LJ, Tunney MM, Elborn JS (2014) Antimicrobial resistance in the respiratory microbiota of people with cystic fibrosis. *Lancet* 384(9944):703–713. [https://doi.org/10.1016/S0140-6736\(14\)61137-5](https://doi.org/10.1016/S0140-6736(14)61137-5)
- Mahenthalingam E, Baldwin A, Dowson CG (2008) *Burkholderia cepacia* complex bacteria: opportunistic pathogens with important natural biology. *J Appl Microbiol* 104(6):1539–1551. <https://doi.org/10.1111/j.1365-2672.2007.03706.x>
- De Smet B, Mayo M, Peeters C, Zlosnik JE, Spilker T, Hird TJ, LiPuma JJ, Kidd TJ, Kaestli M, Ginther JL, Wagner DM, Keim P, Bell SC, Jacobs JA, Currie BJ, Vandamme P (2015) *Burkholderia stagnalis* sp. nov. and *Burkholderia territorii* sp. nov., two novel

- Burkholderia cepacia* complex species from environmental and human sources. *Int J Syst Evol Microbiol* 65(7):2265–2271. <https://doi.org/10.1099/ijs.0.000251>
6. Isles A, Maclusky I, Corey M, Gold R, Prober C, Fleming P, Levi-son H (1984) *Pseudomonas cepacia* infection in cystic fibrosis: an emerging problem. *J Pediatr* 104(2):206–210
 7. Zhou J, Chen Y, Tabibi S, Alba L, Garber E, Saiman L (2007) Antimicrobial susceptibility and synergy studies of *Burkholderia cepacia* complex isolated from patients with cystic fibrosis. *Antimicrob Agents Chemother* 51(3):1085–1088. <https://doi.org/10.1128/AAC.00954-06>
 8. Song JE, Kwak YG, Um TH, Cho CR, Kim S, Park IS, Hwang JH, Kim N, Oh GB (2017) Outbreak of *Burkholderia cepacia* pseudobacteraemia caused by intrinsically contaminated commercial 0.5% chlorhexidine solution in neonatal intensive care units. *J Hosp Infect*. <https://doi.org/10.1016/j.jhin.2017.09.012>
 9. Torbeck L, Raccasi D, Guilfoyle DE, Friedman RL, Hussong D (2011) *Burkholderia cepacia*: this decision is overdue. *PDA J Pharm Sci Technol* 65(5):535–543. <https://doi.org/10.5731/pdajpst.2011.00793>
 10. Vonberg RP, Gastmeier P (2007) Hospital-acquired infections related to contaminated substances. *J Hosp Infect* 65(1):15–23. <https://doi.org/10.1016/j.jhin.2006.09.018>
 11. Baldwin A, Mahenthalingam E, Drevinek P, Pope C, Waive DJ, Henry DA, Speert DP, Carter P, Vandamme P, LiPuma JJ, Dowson CG (2008) Elucidating global epidemiology of *Burkholderia multivorans* in cases of cystic fibrosis by multilocus sequence typing. *J Clin Microbiol* 46(1):290–295. <https://doi.org/10.1128/JCM.01818-07>
 12. Lipuma JJ (2010) The changing microbial epidemiology in cystic fibrosis. *Clin Microbiol Rev* 23(2):299–323. <https://doi.org/10.1128/CMR.00068-09>
 13. Zlosnik JE, Zhou G, Brant R, Henry DA, Hird TJ, Mahenthalingam E, Chilvers MA, Wilcox P, Speert DP (2015) *Burkholderia* species infections in patients with cystic fibrosis in British Columbia, Canada. 30 years' experience. *Ann Am Thorac Soc* 12(1):70–78. <https://doi.org/10.1513/AnnalsATS.201408-395OC>
 14. Vanlaere E, Baldwin A, Gevers D, Henry D, De Brandt E, LiPuma JJ, Mahenthalingam E, Speert DP, Dowson C, Vandamme P (2009) Taxon K, a complex within the *Burkholderia cepacia* complex, comprises at least two novel species, *Burkholderia contaminans* sp. nov. and *Burkholderia lata* sp. nov. *Int J Syst Evol Microbiol* 59(Pt 1):102–111. <https://doi.org/10.1099/ijs.0.001123-0>
 15. Coutinho CP, Barreto C, Pereira L, Lito L, Melo Cristino J, Sa-Correia I (2015) Incidence of *Burkholderia contaminans* at a cystic fibrosis centre with an unusually high representation of *Burkholderia cepacia* during 15 years of epidemiological surveillance. *J Med Microbiol* 64(8):927–935. <https://doi.org/10.1099/jmm.0.000094>
 16. Martin M, Christiansen B, Caspari G, Hogardt M, von Thomsen AJ, Ott E, Mattner F (2011) Hospital-wide outbreak of *Burkholderia contaminans* caused by prefabricated moist washcloths. *J Hosp Infect* 77(3):267–270. <https://doi.org/10.1016/j.jhin.2010.10.004>
 17. Martina P, Bettiol M, Vescina C, Montanaro P, Mannino MC, Prieto CI, Vay C, Naumann D, Schmitt J, Yantorno O, Lagares A, Bosch A (2013) Genetic diversity of *Burkholderia contaminans* isolates from cystic fibrosis patients in Argentina. *J Clin Microbiol* 51(1):339–344. <https://doi.org/10.1128/JCM.02500-12>
 18. Medina-Pascual MJ, Valdezate S, Carrasco G, Villalon P, Garrido N, Saez-Nieto JA (2015) Increase in isolation of *Burkholderia contaminans* from Spanish patients with cystic fibrosis. *Clin Microbiol Infect* 21(2):150–156. <https://doi.org/10.1016/j.cmi.2014.07.014>
 19. Moehring RW, Lewis SS, Isaacs PJ, Schell WA, Thomann WR, Althaus MM, Hazen KC, Dicks KV, Lipuma JJ, Chen LF, Sexton DJ (2014) Outbreak of bacteremia due to *Burkholderia contaminans* linked to intravenous fentanyl from an institutional compounding pharmacy. *JAMA Intern Med* 174(4):606–612. <https://doi.org/10.1001/jamainternmed.2013.13768>
 20. Peterson AE, Chitnis AS, Xiang N, Scaletta JM, Geist R, Schwartz J, Dement J, Lawlor E, Lipuma JJ, O'Connell H, Noble-Wang J, Kallen AJ, Hunt DC (2013) Clonally related *Burkholderia contaminans* among ventilated patients without cystic fibrosis. *Am J Infect Control* 41(12):1298–1300. <https://doi.org/10.1016/j.ajic.2013.05.015>
 21. Nunvar J, Kalferstova L, Bloodworth RA, Kolar M, Degrossi J, Lubovich S, Cardona ST, Drevinek P (2016) Understanding the pathogenicity of *Burkholderia contaminans*, an emerging pathogen in cystic fibrosis. *PLoS ONE* 11(8):e0160975. <https://doi.org/10.1371/journal.pone.0160975>
 22. Deng P, Wang X, Baird SM, Showmaker KC, Smith L, Peterson DG, Lu S (2016) Comparative genome-wide analysis reveals that *Burkholderia contaminans* MS14 possesses multiple antimicrobial biosynthesis genes but not major genetic loci required for pathogenesis. *MicrobiologyOpen* 5(3):353–369. <https://doi.org/10.1002/mbo3.333>
 23. Haim MS, Mollerach M, Van Domselaar G, Teves SA, Degrossi J, Cardona ST (2016) Draft genome sequences of *Burkholderia contaminans* FFI-28, a strain isolated from a contaminated pharmaceutical solution. *Genome Announcements*. <https://doi.org/10.1128/genomeA.01177-16>
 24. Jung JY, Ahn Y, Kweon O, LiPuma JJ, Hussong D, Marasa BS, Cerniglia CE (2017) Improved high-quality draft genome sequence and annotation of *Burkholderia contaminans* LMG 23361(T). *Genome Announcements*. <https://doi.org/10.1128/genomeA.00245-17>
 25. Burns J (2006) Antibiotic resistance of *Burkholderia* spp. In: Coenye PVT (ed) *Burkholderia*: molecular microbiology and genomics. Horizon Bioscience, Norfolk, pp 81–91
 26. Drevinek P, Mahenthalingam E (2010) *Burkholderia cenocepacia* in cystic fibrosis: epidemiology and molecular mechanisms of virulence. *Clin Microbiol Infect* 16(7):821–830. <https://doi.org/10.1111/j.1469-0691.2010.03237.x>
 27. Ramirez MS, Vargas LJ, Cagnoni V, Tokumoto M, Centron D (2005) Class 2 integron with a novel cassette array in a *Burkholderia cenocepacia* isolate. *Antimicrob Agents Chemother* 49(10):4418–4420. <https://doi.org/10.1128/AAC.49.10.4418-4420.2005>
 28. Trepanier S, Prince A, Huletsky A (1997) Characterization of the penA and penR genes of *Burkholderia cepacia* 249 which encode the chromosomal class A penicillinase and its LysR-type transcriptional regulator. *Antimicrob Agents Chemother* 41(11):2399–2405
 29. Poirel L, Rodriguez-Martinez JM, Plesiat P, Nordmann P (2009) Naturally occurring Class A ss-lactamases from the *Burkholderia cepacia* complex. *Antimicrob Agents Chemother* 53(3):876–882. <https://doi.org/10.1128/AAC.00946-08>
 30. Papp-Wallace KM, Taracila MA, Gatta JA, Ohuchi N, Bonomo RA, Nukaga M (2013) Insights into beta-lactamases from *Burkholderia* species, two phylogenetically related yet distinct resistance determinants. *J Biol Chem* 288(26):19090–19102. <https://doi.org/10.1074/jbc.M113.458315>
 31. Papp-Wallace KM, Becka SA, Taracila MA, Zeiser ET, Gatta JA, LiPuma JJ, Bonomo RA (2017) Exploring the role of the Omega-loop in the evolution of Ceftazidime resistance in the PenA beta-lactamase from *Burkholderia multivorans*, an important cystic fibrosis pathogen. *Antimicrob Agents Chemother*. <https://doi.org/10.1128/AAC.01941-16>
 32. Everaert A, Coenye T (2016) Effect of beta-Lactamase inhibitors on in vitro activity of beta-Lactam antibiotics against

- Burkholderia cepacia* complex species. Antimicrob Resist Infect Control 5:44. <https://doi.org/10.1186/s13756-016-0142-3>
33. Holden MT, Seth-Smith HM, Crossman LC, Sebaihia M, Bentley SD, Cerdeno-Tarraga AM, Thomson NR, Bason N, Quail MA, Sharp S, Cherevach I, Churcher C, Goodhead I, Hauser H, Holroyd N, Mungall K, Scott P, Walker D, White B, Rose H, Iversen P, Mil-Homens D, Rocha EP, Fialho AM, Baldwin A, Dowson C, Barrell BG, Govan JR, Vandamme P, Hart CA, Mahenthiralingam E, Parkhill J (2009) The genome of *Burkholderia cenocepacia* J2315, an epidemic pathogen of cystic fibrosis patients. J Bacteriol 191(1):261–277. <https://doi.org/10.1128/JB.01230-08>
 34. Bloodworth RA, Selin C, Lopez De Volder MA, Drevinek P, Galanternik L, Degrossi J, Cardona ST (2015) Draft genome sequences of *Burkholderia contaminans*, a *Burkholderia cepacia* complex species that is increasingly recovered from cystic fibrosis patients. Genome Announcements. <https://doi.org/10.1128/genom.eA.00766-15>
 35. Becka SA, Zeiser ET, Marshall SH, Gatta JA, Nguyen K, Singh I, Greco C, Sutton GG, Fouts DE, LiPuma JJ, Papp-Wallace KM (2018) Sequence heterogeneity of the PenA carbapenemase in clinical isolates of *Burkholderia multivorans*. Diagn Microbiol Infect Dis 92(3):253–258. <https://doi.org/10.1016/j.diagmicrobio.2018.06.005>
 36. Aziz RK, Bartels D, Best AA, DeJongh M, Disz T, Edwards RA, Formsma K, Gerdes S, Glass EM, Kubal M, Meyer F, Olsen GJ, Olson R, Osterman AL, Overbeek RA, McNeil LK, Paarmann D, Paczian T, Parrello B, Pusch GD, Reich C, Stevens R, Vassieva O, Vonstein V, Wilke A, Zagnitko O (2008) The RAST server: rapid annotations using subsystems technology. BMC Genomics 9:75. <https://doi.org/10.1186/1471-2164-9-75>
 37. Overbeek R, Olson R, Pusch GD, Olsen GJ, Davis JJ, Disz T, Edwards RA, Gerdes S, Parrello B, Shukla M, Vonstein V, Wattam AR, Xia F, Stevens R (2014) The SEED and the rapid annotation of microbial genomes using subsystems technology (RAST). Nucleic Acids Res 42(Database issue):D206–D214. <https://doi.org/10.1093/nar/gkt1226>
 38. Winsor GL, Khaira B, Van Rossum T, Lo R, Whiteside MD, Brinkman FS (2008) The Burkholderia genome database: facilitating flexible queries and comparative analyses. Bioinformatics 24(23):2803–2804. <https://doi.org/10.1093/bioinformatics/btn524>
 39. Altschul SF, Madden TL, Schaffer AA, Zhang J, Zhang Z, Miller W, Lipman DJ (1997) Gapped BLAST and PSI-BLAST: a new generation of protein database search programs. Nucleic Acids Res 25:3389–3402
 40. Gouet P, Robert X, Courcelle E (2003) ESPript/ENDscript: extracting and rendering sequence and 3D information from atomic structures of proteins. Nucleic Acids Res 31(13):3320–3323
 41. Notredame C, Higgins DG, Heringa J (2000) T-Coffee: a novel method for fast and accurate multiple sequence alignment. J Mol Biol 302(1):205–217. <https://doi.org/10.1006/jmbi.2000.4042>
 42. Muñoz V, Serrano L (1997) Development of the multiple sequence approximation within the AGADIR model of alpha-helix formation: comparison with Zimm-Bragg and Lifson-Roig formalisms. Biopolymers 41(5):495–509
 43. Krieger E, Darden T, Nabuurs SB, Finkelstein A, Vriend G (2004) Making optimal use of empirical energy functions: force-field parameterization in crystal space. Proteins 57(4):678–683. <https://doi.org/10.1002/prot.20251>
 44. Schrödinger L The PyMOL molecular Graphics System., 1.5.0.4 edn.
 45. Koressaar T, Remm M (2007) Enhancements and modifications of primer design program Primer3. Bioinformatics 23(10):1289–1291. <https://doi.org/10.1093/bioinformatics/btm091>
 46. Untergasser A, Cutcutache I, Koressaar T, Ye J, Faircloth BC, Remm M, Rozen SG (2012) Primer3—new capabilities and interfaces. Nucleic Acids Res 40(15):e115. <https://doi.org/10.1093/nar/gks596>
 47. Clinical and Laboratory Standards Institute (2017) Performance standards for antimicrobial susceptibility testing; twenty-sixth informational supplement M100-S27, vol 37. vol 1. Clinical and Laboratory Standards Institute, Wayne
 48. Bret L, Chaibi EB, Chanal-Claris C, Sirot D, Labia R, Sirot J (1997) Inhibitor-resistant TEM (IRT) b-lactamases with different substitutions at position 244. Antimicrob Agents Chemother 41(11):2547–2549
 49. Perez-Llarena FJ, Cartelle M, Mallo S, Beceiro A, Perez A, Villanueva R, Romero A, Bonnet R, Bou G (2008) Structure-function studies of arginine at position 276 in CTX-M b-lactamases. J Antimicrob Chemother 61(4):792–797. <https://doi.org/10.1093/jac/dkn031>
 50. Ruggiero M, Kerff F, Herman R, Sapunaric F, Galleni M, Gutkind G, Charlier P, Sauvage E, Power P (2014) Crystal structure of the extended-spectrum beta-lactamase PER-2 and insights into the role of specific residues in the interaction with beta-lactams and beta-lactamase inhibitors. Antimicrob Agents Chemother. <https://doi.org/10.1128/AAC.00089-14>
 51. Ruggiero M, Curto L, Brunetti F, Sauvage E, Galleni M, Power P, Gutkind G (2017) Impact of mutations at Arg220 and Thr237 in PER-2 beta-lactamase on conformation, activity, and susceptibility to inhibitors. Antimicrob Agents Chemother. <https://doi.org/10.1128/AAC.02193-16>
 52. Chen Y, Delmas J, Sirot J, Shoichet B, Bonnet R (2005) Atomic resolution structures of CTX-M beta-lactamases: extended spectrum activities from increased mobility and decreased stability. J Mol Biol 348(2):349–362. <https://doi.org/10.1016/j.jmb.2005.02.010>
 53. Delmas J, Chen Y, Prati F, Robin F, Shoichet BK, Bonnet R (2008) Structure and dynamics of CTX-M enzymes reveal insights into substrate accommodation by extended-spectrum beta-lactamases. J Mol Biol 375(1):192–201. <https://doi.org/10.1016/j.jmb.2007.10.026>
 54. Toleman MA, Rolston K, Jones RN, Walsh TR (2003) Molecular and biochemical characterization of OXA-45, an extended-spectrum class 2d' beta-lactamase in *Pseudomonas aeruginosa*. Antimicrob Agents Chemother 47(9):2859–2863
 55. Stojanoski V, Chow DC, Fryszczyn B, Hu L, Nordmann P, Poirel L, Sankaran B, Prasad BV, Palzkill T (2015) Structural basis for different substrate profiles of two closely related class d beta-lactamases and their inhibition by halogens. Biochemistry 54(21):3370–3380. <https://doi.org/10.1021/acs.biochem.5b00298>

Publisher's Note Springer Nature remains neutral with regard to jurisdictional claims in published maps and institutional affiliations.