



# THE UNIVERSITY *of* EDINBURGH

## Edinburgh Research Explorer

### Rapid and high throughput molecular identification of diverse mosquito species by igh resolution melting analysis

**Citation for published version:**

Ukamaka, Y, Mararo, E, Omondi, D, Onchuru, T, Muigai, AWT & Masiga, D 2016, 'Rapid and high throughput molecular identification of diverse mosquito species by igh resolution melting analysis', *F1000Research*. <https://doi.org/10.12688/f1000research.9224.1>

**Digital Object Identifier (DOI):**

[10.12688/f1000research.9224.1](https://doi.org/10.12688/f1000research.9224.1)

**Link:**

[Link to publication record in Edinburgh Research Explorer](#)

**Document Version:**

Publisher's PDF, also known as Version of record

**Published In:**

F1000Research

**Publisher Rights Statement:**

Copyright: © 2016 Ajamma YU et al. This is an open access article distributed under the terms of the Creative Commons Attribution License, which permits unrestricted use, distribution, and reproduction in any medium, provided the original work is properly cited. Data associated with the article are available under the terms of the Creative Commons Zero "No rights reserved" data waiver (CC0 1.0 Public domain dedication).

**General rights**

Copyright for the publications made accessible via the Edinburgh Research Explorer is retained by the author(s) and / or other copyright owners and it is a condition of accessing these publications that users recognise and abide by the legal requirements associated with these rights.

**Take down policy**



The University of Edinburgh has made every reasonable effort to ensure that Edinburgh Research Explorer content complies with UK legislation. If you believe that the public display of this file breaches copyright please contact [openaccess@ed.ac.uk](mailto:openaccess@ed.ac.uk) providing details, and we will remove access to the work immediately and investigate your claim.





## METHOD ARTICLE

# Rapid and high throughput molecular identification of diverse mosquito species by high resolution melting analysis [version 1; peer review: 2 approved]

Yvonne Ukamaka Ajamma <sup>1,2</sup>, Enock Mararo<sup>1</sup>, David Omondi<sup>1,3,4</sup>,  
Thomas Onchuru<sup>1,5,6</sup>, Anne W. T. Muigai<sup>2</sup>, Daniel K Masiga <sup>1</sup>, Jandouwe Villinger<sup>1</sup>

<sup>1</sup>Martin Lüscher Emerging Infectious Diseases (ML-EID) Laboratory, International Centre of Insect Physiology and Ecology, Nairobi, Kenya

<sup>2</sup>Department of Botany (Genetics), Jomo Kenyatta University of Agriculture and Technology, Juja, Kenya

<sup>3</sup>Biochemistry and Molecular Biology Department, Egerton University, Egerton, Kenya

<sup>4</sup>Molecular Biology and Virology Laboratory, Department of Medical Biosciences, University of Western Cape, South Africa

<sup>5</sup>Insect Symbiosis Research Group, Max Planck Institute for Chemical Ecology (MPI-CE), Jena, Germany

<sup>6</sup>Department for Evolutionary Ecology, Institute for Zoology, Johannes Gutenberg University, Mainz, Germany

**v1** First published: 11 Aug 2016, 5:1949 (  
<https://doi.org/10.12688/f1000research.9224.1>)



Latest published: 11 Aug 2016, 5:1949 (  
<https://doi.org/10.12688/f1000research.9224.1>)

## Abstract

Mosquitoes are a diverse group of invertebrates, with members that are among the most important vectors of diseases. The correct identification of mosquitoes is paramount to the control of the diseases that they transmit. However, morphological techniques depend on the quality of the specimen and often unavailable taxonomic expertise, which may still not be able to distinguish mosquitoes among species complexes (sibling and cryptic species). High resolution melting (HRM) analyses, a closed-tube, post-polymerase chain reaction (PCR) method used to identify variations in nucleic acid sequences, has been used to differentiate species within the *Anopheles gambiae* and *Culex pipiens* complexes. We validated the use of PCR-HRM analyses to differentiate species within *Anopheles* and within each of six genera of culicine mosquitoes, comparing primers targeting cytochrome b (*cyt b*), NADH dehydrogenase subunit 1 (ND1), intergenic spacer region (IGS) and cytochrome c oxidase subunit 1 (*COI*) gene regions. HRM analyses of amplicons from all the six primer pairs successfully differentiated two or more mosquito species within one or more genera (*Aedes* (*Ae. vittatus* from *Ae. metallicus*), *Culex* (*Cx. tenagius* from *Cx. antennatus*, *Cx. neavei* from *Cx. duttoni*, cryptic *Cx. pipiens* species), *Anopheles* (*An. gambiae* s.s. from *An. arabiensis*) and *Mansonia* (*Ma. africana* from *Ma. uniformis*)) based on their HRM profiles. However, PCR-HRM could not distinguish between species within *Aedeomyia* (*Ad. africana* and *Ad. fufurea*), *Mimomyia* (*Mi. hispida* and *Mi. splendens*) and *Coquillettidia* (*Cq. aurites*, *Cq. chrysosoma*, *Cq. fuscopennata*, *Cq. metallica*, *Cq. microannulatus*, *Cq. pseudoconopas* and *Cq. versicolor*) genera using any of the primers. The IGS and COI barcode region primers gave the best and most definitive separation of mosquito species among

## Open Peer Review

Reviewer Status  

	Invited Reviewers	
	1	2
<b>version 1</b> 11 Aug 2016	 report	 report

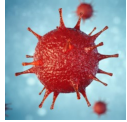
- 1 **Michael Zianni**, Thermo Fisher Scientific, Carlsbad, USA
- 2 **Hwa Chia Chai**, University of Malaya, Kuala Lumpur, Malaysia

Any reports and responses or comments on the article can be found at the end of the article.

anopheline and culicine mosquito genera, respectively, while the other markers may serve to confirm identifications of closely related sub-species. This approach can be employed for rapid identification of mosquitoes.

### Keywords

High resolution melting analysis , molecular identification , mosquitoes , Aedes , Culex , Mansonia , Anopheles



This article is included in the [Disease Outbreaks gateway](#).

**Corresponding author:** Jandouwe Villinger ([jandouwe@icip.e.org](mailto:jandouwe@icip.e.org))

**Competing interests:** No competing interests were disclosed.

**Grant information:** We gratefully acknowledge the financial support for this research by the following organizations and agencies: Swedish International Development Cooperation Agency (SIDA), grant number 75000529 to YUA as an African Regional Postgraduate Programme in Insect Science (ARPPIS) student; Funds from Training Health Researchers into Vocational Excellence (THRiVE) in East Africa (grant number 087540) funded by Wellcome Trust to JV and DM supported part of the field sampling. We also acknowledge funding from UK's Department for International Development (DFID); the Swiss Agency for Development and Cooperation (SDC); and the Kenyan Government. *The funders had no role in study design, data collection and analysis, decision to publish, or preparation of the manuscript.*

**Copyright:** © 2016 Ajamma YU *et al.* This is an open access article distributed under the terms of the [Creative Commons Attribution License](#), which permits unrestricted use, distribution, and reproduction in any medium, provided the original work is properly cited. Data associated with the article are available under the terms of the [Creative Commons Zero "No rights reserved" data waiver](#) (CC0 1.0 Public domain dedication).

**How to cite this article:** Ajamma YU, Mararo E, Omondi D *et al.* **Rapid and high throughput molecular identification of diverse mosquito species by high resolution melting analysis [version 1; peer review: 2 approved]** F1000Research 2016, 5:1949 (<https://doi.org/10.12688/f1000research.9224.1>)

**First published:** 11 Aug 2016, 5:1949 (<https://doi.org/10.12688/f1000research.9224.1>)

## Introduction

Mosquitoes are among the most important disease vectors, known to transmit and maintain the circulation of pathogens that cause both global and neglected tropical diseases in humans and animals<sup>1</sup>. The correct identification of different field-collected mosquito species, endemic to distinct ecologies, with high parasite and arthropod-borne virus (arbovirus) diversities is crucial to the planning of targeted vector control strategies to mitigate disease transmission<sup>2</sup>. The last and most comprehensive Afrotropical mosquito identification keys were published in 1941 for culicines<sup>3</sup> and in 1987 for anophelines<sup>4</sup>. Molecular approaches that efficiently differentiate conspecific mosquitoes such as the barcode region<sup>5</sup> improve identification accuracy considerably<sup>6</sup>, but are time consuming, expensive in terms of post-polymerase chain reaction (post-PCR) processing and depend heavily on DNA sequencing.

Recent approaches have taken advantage of the unique melting profiles generated by homologous PCR products with small sequence differences during high resolution melting (HRM) analysis<sup>7,8</sup>. Indeed, PCR-HRM has been used to differentiate mosquito transmitted arboviruses<sup>9–11</sup> and malaria *Plasmodium*<sup>12,13</sup>, vertebrate blood meals of mosquitoes<sup>10</sup>, between two members of the *Anopheles gambiae* complex<sup>14</sup> and amongst three members of the *Culex pipiens* complex<sup>15</sup>. HRM analysis has proven to offer higher resolution of PCR product based species identification on sequence variants than electrophoretic methods by revealing even single nucleotide polymorphisms (SNPs) in the simple sequence repeats (SSRs) among products of similar sizes<sup>16,17</sup>. Conventional

detection of specific PCR products sequence relies on costly molecular probes and/or product sequencing<sup>18</sup>. For species identification<sup>16</sup>, only representative samples with distinct HRM profiles need to be sequenced, thereby reducing reagent and sample consumption costs<sup>10–11</sup>. Combining HRM analysis of barcode region sequences (Bar-HRM) has been successfully used to rapidly and accurately distinguish between closely related antelope species<sup>19</sup> and medicinal plants<sup>20,21</sup> and to authenticate the source of vegetable oils<sup>22</sup>.

Although HRM has been successfully used to differentiate between specific *Anopheles* and *Culex* mosquitoes, the approach's broader applicability and most suitable markers have not been evaluated. Previously, only the ribosomal DNA was targeted for *An. gambiae sensu lato (s.l.)*<sup>14</sup> and only the acetylcholinesterase gene was used in distinguishing the *Cx. pipiens* complex<sup>15</sup>. This study aimed at validating the use of HRM analysis for high throughput molecular culicine and anopheline mosquito identification and differentiation, comparing the utility of one ribosomal IGS (previously used to differentiate *An. gambiae s.l.*)<sup>14</sup> and three mitochondrial (COI, ND1, *cyt b*) gene markers.

## Methods

### Sample collection and identification

We used 109 mosquitoes (Table 1 and Table 2) that were collected in 2012 during the rainy seasons near Lake Baringo from March 2–4, July 16–24 and October 12–21 and Lake Victoria from April 2–15, May 18–31 and November 12–29 during a mosquito diversity study around the islands and mainland shores of Lake Baringo in

**Table 1. Number (N) of mosquito species (GenBank accessions) used for HRM analyses from Baringo County, Kenya.**

Mosquito species	N	Logumgum 0.455 N, 36.078 E	Sirata 0.462 N, 36.097 E	Kampi ya Samaki 0.620 N, 36.028 E	Nosuguro 0.605 N, 36.126 E
<i>Ad. africana</i>	4	4 (KU186980, KU186981, KU186982, KU186985)			
<i>Ad. furfurea</i>	4		4 (KU186979, KU186983, KU186984, KU186986)		
<i>An. funestus</i>	3		3 (KU187102, KU187103, KU187105)		
<i>An. gambiae s.l.</i>	3		1	2	
<i>Cq. aurites</i>	2		2 (KU187114, KU187117)		
<i>Cq. chrysosoma</i>	1	1 (KU187115)			
<i>Cq. fuscopennata</i>	1				1 (KU187116)
<i>Cq. metallica</i>	2		2 (KU187112, KU187113)		
<i>Cx. antennatus</i>	2	1	1 (KU187050)		
<i>Cx. perexiguus</i>	4			4 (KU380423, KU380348, KU380476, KU380382)	
<i>Cx. tenagius</i>	1		1 (KU187054)		
<i>Ma. africana</i>	4		2 (KU187124, KU187130)		2 (KU187127, KU187128)
<i>Ma. uniformis</i>	3	2 (KU187170, KU187171)			1 (KU187164)
<b>Total</b>	<b>34</b>	<b>8</b>	<b>16</b>	<b>6</b>	<b>4</b>

GenBank accessions are provided only for samples with confirmed identity and from which the *COI* DNA sequences were obtained during a previously published mosquito diversity study<sup>9</sup>.

**Table 2. Number (N) of mosquito species (GenBank accessions) used for HRM analyses from Homa Bay County, Kenya.**

Mosquito species	N	Mbita 0.432 S, 34.210 E	Luanda Nyamasare 0.478 S, 34.287 E	Ngodhe 0.505 S, 34.363 E	Ungoye 0.612 S, 34.098 E	Mfangano Island 0.462 S, 33.999 E	Rusinga Island 0.399 S, 34.193 E	Chamaunga Island 0.431 S, 34.228 E	Takawiri Island 0.472 S, 34.091 E
<i>Ae. metallicus</i>	3	1 (KU187014)			1 (KU187013)				
<i>Ae. vittatus</i>	8					6 (KU187004, KU187006, KU187008-KU187011)			2 (KU187005, KU187007)
<i>An. coustani</i> s.l.	10		3 (KU187098, KU187100, KU187101)	2 (KU187095, KU187096)			2 (KU187097, KU187099)	2	1
<i>An. funestus</i>	2	1 (KU187104)						1	
<i>An. gambiae</i> s.l.	2					2 (KU187108, KU187109)			
<i>Cq. aurites</i>	1	1 (KU187121)							
<i>Cq. microannulatus</i>	2							1 (KU187118)	
<i>Cq. pseudoconopas</i>	1		1						
<i>Cq. versicolor</i>	2			2 (KU187119, KU187120)					
<i>Cx. antennatus</i>	4	4 (KU187037, KU187038, KU187048)							
<i>Cx. duttoni</i>	6	1 (KU187075)				5 (KU187067, KU187068, KU187070-KU187072)	1		
<i>Cx. neavei</i>	3					3 (KU187032, KU187040, KU187046)			
<i>Cx. perexiguus</i>	1					1 (KU380445)			
<i>Cx. pipiens</i>	6					1 (KU187083)	5 (KU187077, KU380366, KU380372, KU380431, KU380444)		
<i>Culex</i> sp. GPA	5	3 (KU380352, KU380455, KU380394)							
<i>Cx. univittatus</i>	3	3 (KU187056, KU187059, KU187060)							
<i>Cx. watti</i>	5	2 (KU187063, KU187064)					2 (KU380377, KU380413)		
<i>Ma. africana</i>	2			1				1 (KU187153)	
<i>Ma. uniformis</i>	3		1 (KU380460)					1 (KU187175)	
<i>Mi. hispida</i>	2								
<i>Mi. splendens</i>	3	3 (KU187093, KU187094)							
<b>Total</b>	<b>75</b>	<b>21</b>	<b>5</b>	<b>5</b>	<b>1</b>	<b>22</b>	<b>12</b>	<b>6</b>	<b>3</b>

GenBank accessions are provided only for samples with confirmed identity and from which the COI DNA sequences were obtained during a previously published mosquito diversity study<sup>6</sup>.

Baringo County (Table 1) and Lake Victoria in Homa Bay County (Table 2) in Kenya<sup>6</sup>. Before sampling, we obtained ethical clearance for the study from the Kenya Medical Research Institute (KEMRI) ethics review committee (Approval Ref: Non-SSC Protocol #310). These mosquitoes were morphologically identified during a previous study<sup>6</sup>. Baringo County is a known hotspot for arbovirus outbreaks<sup>23</sup>, while Homa Bay County is endemic to malaria and is located in a region with a history of arbovirus activity<sup>10</sup>. One sample each of *Anopheles gambiae sensu stricto* (*s.s.*) and *An. arabiensis*, *Aedes aegypti* and *Culex pipiens* from laboratory colonies maintained in the Insectary of the International Centre of Insect Physiology and Ecology (*icipe*), Nairobi, Kenya, were used as controls. Also, specimens with confirmed identity that have been previously sequenced and submitted to GenBank (Table 1 and Table 2) were used as both controls and samples.

### DNA extraction

From each mosquito, we extracted DNA according to the hot sodium hydroxide and Tris (HotSHOT) DNA extraction protocol<sup>24</sup> from a single mosquito leg that was detached from the rest of the body using a pair of forceps and dissecting pin. Without crushing, the mosquito leg was put in a 0.2 ml microcentrifuge tube containing 30 µl of Alkaline Lysis buffer (25 mM NaOH (Thermo Fisher Scientific, Pittsburgh, USA), 0.2 mM disodium EDTA (Thermo Fisher Scientific), pH 8.0) and incubated in a thermocycler at 95°C for 30 minutes and cooled at 4°C for 5 minutes. Then, 30 µl neutralising solution (40 mM Tris-HCl (Thermo Fisher Scientific)) was added. The resulting DNA was stored at -20°C until required as templates for PCR assays.

### Primer design, PCR and HRM analyses

Based on multiple alignments using Geneious software version 8.1.4<sup>25</sup> of mitochondrial genomes of mosquitoes (GenBank accessions NC\_015079, NC\_028616, NC\_028223, KR068634, NC\_010241, NC\_014574, EU352212, NC\_008070, KT358413, KT382816, KU494979, JX040513, AY729979, KU494979), we designed four sets of primers from two mitochondrial gene regions: *COI* (*COI*-AnophF/HCO2108R; Uni-Minibar-JVF/Uni-Minibar-JVR; Mos-CO1-JVF/Mos-CO1-JVR) and *ND1* (*Mos*-ND1F/*Mos*-ND1R) genes (Table 3). The *COI* AnophF primer was initially designed specifically for *Anopheles* mosquitoes to be used with the HCO2108R primer<sup>26</sup>, but tested on other species as well. Using samples of morphologically and molecularly identified *Culex*, *Aedeomyia*, *Mimomyia*, *Coquillettia*, *Mansonia*, *Aedes*, and *Anopheles* mosquito species (Table 1 and Table 2), we amplified different gene regions of their genomes using six pairs of primers (Table 3) in three replicate runs of single-plex PCRs in a Rotor-Gene Q HRM real time PCR thermocycler (QIAGEN, Hannover, Germany). PCR grade water was used as negative control while mosquito species from *Ae. aegypti*, *An. gambiae s.s.*, *An. arabiensis* and *Cx. pipiens quinquefasciatus* colonies maintained in the International Centre of Insect Physiology and Ecology (*icipe*) Insectary Unit were used as positive controls. The PCR mix contained 5 µl of 5X Hot Firepol EvaGreen HRM Mix (Solis BioDyne, Tartu, Estonia), 0.5 µM of each primer, 1 µl of DNA template and distilled water in a final volume of 10 µl. The thermal cycling conditions involved an initial denaturation for 1 minute at 95°C, followed by 35 cycles of denaturation at 95°C for 30 seconds, annealing at 50°C for 20 seconds, and extension at 72°C for 30 seconds, and a

**Table 3. Primers used for the amplification of gene fragments.**

Target gene	Primer name	Primer Sequence (5' to 3')	Reference genome	Primer coordinates	Amplicon size (bp)
Mitochondrial <i>COI</i> (within barcode region)	COI-AnophF	GCAGGAATTTCTTCTATTTTAGG	L20934	1,874–1,896	275
	HCO2198R <sup>26</sup>	TAAACTTCAGGGTGACCAAAAAATCA	L20934	2,148–2,123	
Mitochondrial <i>COI</i>	Uni-Minibar-JVF	ACAAATCATAARGATATTGGAAC	L20934	1,445–1,467	173
	Uni-Minibar-JVR	AAAATTATAATAAWGCATGAGC	L20934	1,617–1,55	
Mitochondrial <i>COI</i>	Mos-Co1-JVF	ATAGTWACCTATYATAATTGG	L20934	1,622–1,644	299
	Mos-Co1-JVR	ACWGTAGTAATAAAATTTACTGC	L20934	1,920–1,898	
Mitochondrial <i>ND1</i>	Mos-ND1F	TATGTCTTGAAAACATAAGAAAG	L20934	11,569–11,591	173
	Mos-ND1R	CGDTATGATAAATTAATGTAATTAG	L20934	11,717–11,741	
Mitochondrial <i>cyt b</i>	CYT BF <sup>35</sup>	GGACAAATATCATTGAGGAGCAACAG	L20934	10,821–10,848	470
	CYT BR <sup>35</sup>	ATTACTCCTCCTAGCTTATTAGGAATTG	L20934	11,290–11,263	
Ribosomal DNA IGS	AgamUni F <sup>2</sup>	GTGAAGCTTGGTGCCTGCT	KT284724	126–174	169
	AgamUni R <sup>2</sup>	GCACGCCGACAAGCTCA	KT284724	319–303	

F is forward primer direction; R is reverse primer direction.

final extension at 72°C for 7 minutes. Without stopping the reaction, the PCR amplicons were denatured at 95°C for 1 minute, held for another minute at 40°C and melted by gradually raising the temperature from 70°C to 95°C by 0.1°C in 2 second steps, waiting for 90 seconds of pre-melt conditioning on first step and 2 seconds in subsequent steps. The outcome was automatically plotted on a connected computer and visually observed and analysed using the Rotor-Gene Q Series software v2.1. Representative samples of differentiated mosquito species that had similar HRM curves were purified with ExoSAP-IT (USB Corporation, Cleveland, OH) and submitted for DNA sequencing at Macrogen (South Korea). To confirm the identity of PCR-HRM differentiated mosquitoes, DNA sequences were edited with Geneious version 8.1.4<sup>25</sup> and queried against the GenBank nr database (<http://www.ncbi.nlm.nih.gov/>) using the Basic Local Alignment Search Tool (BLAST N) version 2.3.0<sup>27</sup>.

## Results

**Dataset 1. Raw Rotor-Gene Q HRM data files (.rex), viewable using Rotor-Gene Q software (Qiagen)**

<http://dx.doi.org/10.52556/f1000research.9224.d130565>

'Contents.csv' contains a description of the files.

We differentiated 12 mosquito species in the *Aedes* (two), *Anopheles* (two), *Culex* (six), and *Mansonia* (two) genera by HRM analyses (Table 4). The *COI* sequences of some of the mosquito samples analyzed and differentiated were obtained during a previously published mosquito diversity study<sup>6</sup> and their respective GenBank Accession numbers are listed in Table 1 and Table 2. Despite the fact that the *COI*-AnophF/HCO2198R primers were

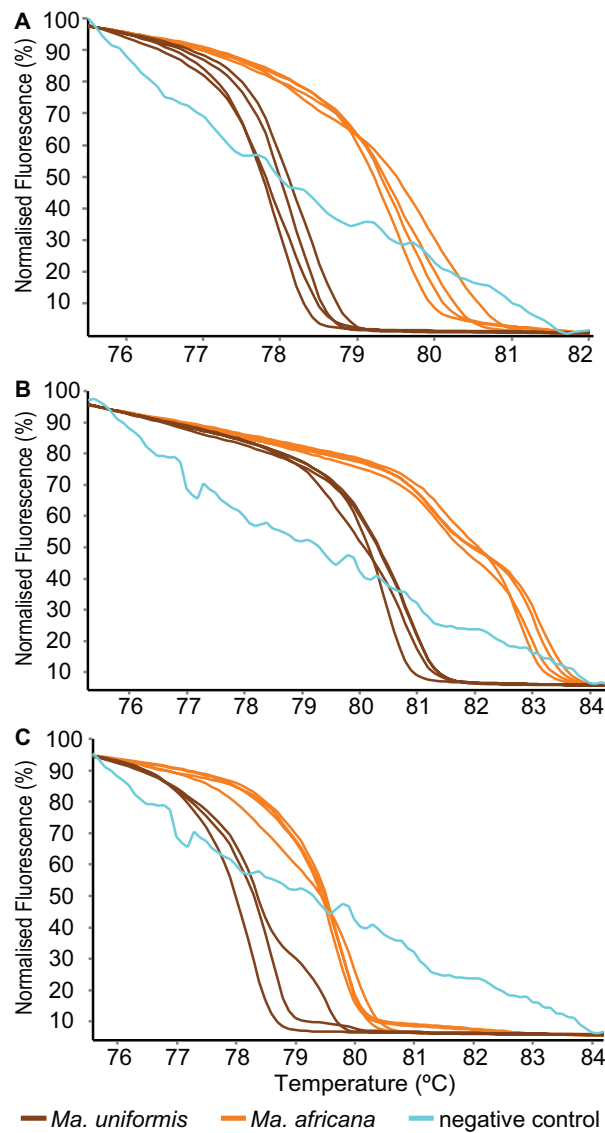
originally designed based on *Anopheles* mitochondria genome alignments, they were most efficient in differentiating among *Mansonia* (*Ma. africana* and *Ma. uniformis* (Figure 1A)), *Culex* (*Cx. neavei* and *Cx. duttoni*, *Cx. tenagius* and *Cx. antennatus*), and two genetic variants of *Cx. pipiens* (Figure 2A)), and *Aedes* (*Ae. vittatus* and *Ae. metallicus* (Figure 3)) mosquitoes (Table 4). Indeed, the DNA sequences flanked by the *COI*-AnophF/HCO2198R primers included multiple polymorphic sites in species within these genera (Figure 4). Although there are SNPs within species DNA that resulted to the slight changes observed in their HRM profiles, the SNPs across species were enough to distinguish between them.

*Mansonia africana* and *Ma. uniformis* could also be differentiated by Mos-COI-JV (Figure 1B) and CYT B (Figure 1C) PCR-HRM analysis. Some *Culex* species were similarly differentiated by HRM based on their CYT B, Uni-Minibar-JV and Mos-ND1 (Figure 2B–D) primer pair PCR products. The morphologically indistinguishable *Cx. tenagius* and *Cx. antennatus* were distinguished only by the *COI*-AnophF/HCO2198R, CYT B and ND1 primers (Figure 2A, B and D). Similarly, HRM analysis of only two of the *COI* (*COI*-AnophF/HCO2198R and Uni-Minibar JV) and the ND1 primer pairs grouped morphologically identical and difficult to differentiate *Cx. pipiens* into two distinct clades: one with *Cx. pipiens* voucher sequences from GenBank (KF919189) and those with a sequence that we identified as *Culex* sp. GPA<sup>6</sup> (GenBank accessions KU380352, KU380455, KU380394) (Figure 2A, C and D; Table 4). However, unlike the *COI* HRM profiles (Figure 2A, B), the ND1 HRM profiles (Figure 2D) of *Cx. pipiens* amplicons showed a melting temperature shift of to the right (higher temperature) compared to the *Culex* sp. GPA amplicons, possibly due to greater GC

**Table 4. Differentiation of mosquito species using the six primer pairs amplifying four loci.**

Mosquito genera	<i>COI</i>			<i>cyt b</i>	ND1	IGS
	COI-AnophF/HCO2198R	Mos-COI-JV	Uni-Minibar-JV	CYT B	Mos-ND1	AgamUni
<i>Anopheles</i>	DNS	DNS	DNS	DNS	DNS	Separated <i>An. gambiae</i> from <i>An. arabiensis</i>
<i>Mansonia</i>	Separated <i>Ma. africana</i> from <i>Ma. uniformis</i>	Separated <i>Ma. africana</i> from <i>Ma. uniformis</i>	DNS	Separated <i>Ma. africana</i> from <i>Ma. uniformis</i>	DNS	DNS
<i>Aedes</i>	Separated <i>Ae. vittatus</i> from <i>Ae. metallicus</i>	DNS	DNS	DNS	DNS	DNS
<i>Culex</i>	Separated <i>Cx. tenagius</i> from <i>Cx. antennatus</i> , Separated <i>Cx. pipiens</i> from <i>Culex</i> sp. GPA, Separated <i>Cx. neavei</i> from <i>Cx. duttoni</i>	DNS	Separated <i>Cx. pipiens</i> from <i>Culex</i> sp. GPA	Separated <i>Cx. tenagius</i> from <i>Cx. antennatus</i>	Separated <i>Cx. tenagius</i> from <i>Cx. antennatus</i> , Separated <i>Cx. pipiens</i> from <i>Culex</i> sp. GPA	DNS
<i>Aedeomyia</i>	DNS	DNS	DNS	DNS	DNS	DNS
<i>Mimomyia</i>	DNS	DNS	DNS	DNS	DNS	DNS
<i>Coquillettidia</i>	DNS	DNS	DNS	DNS	DNS	DNS

DNS means did not separate. *COI* means cytochrome c oxidase subunit 1. *cyt b* means cytochrome B. ND1 means NADH dehydrogenase subunit 1. IGS means intergenic spacer region.



**Figure 1.** HRM profiles of two *Mansonia* species. *Mansonia uniformis* and *Ma. africana* mosquitoes were differentiated by PCR-HRM using the (A) COI-AnophF/HCO2198R, (B) MOS-CO1 and (C) CYT B primer pairs.

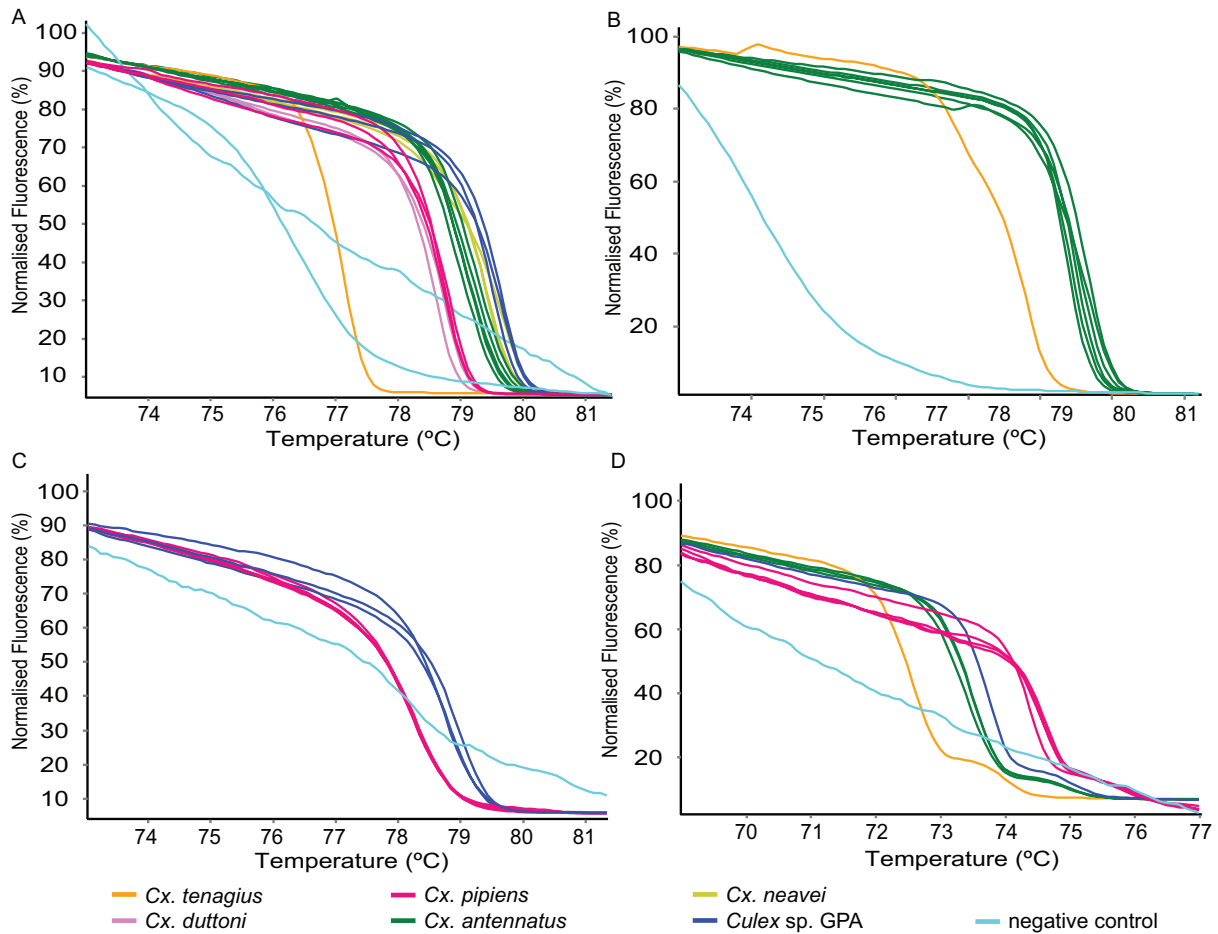
richness of *Cx. pipiens* at this locus<sup>28</sup>. Similarly, the IGS primers (AgamUni) differentiated *Anopheles gambiae* s.s. from *An. arabiensis* (Figure 5). In addition, the COI-AnophF/HCO2198R primers were also used to separate *Cx. neavei* from *Cx. duttoni* (Figure 2A), which belong to the same subgenus of *Culex* mosquitoes.

HRM analysis of all the six primer pairs could not differentiate *Aedeomyia* (*Ad. africana* and *Ad. furfurea*), *Mimomyia* (*Mi. hispida* and *Mi. splendens*) and *Coquillettidia* (*Cq. aurites*, *Cq. chrysosoma*, *Cq. fuscopennata*, *Cq. metallica*, *Cq. microannulatus*, *Cq. pseudoconopas* and *Cq. versicolor*) species (Table 4) or among *An. funestus* and *An. coustani* species complexes.

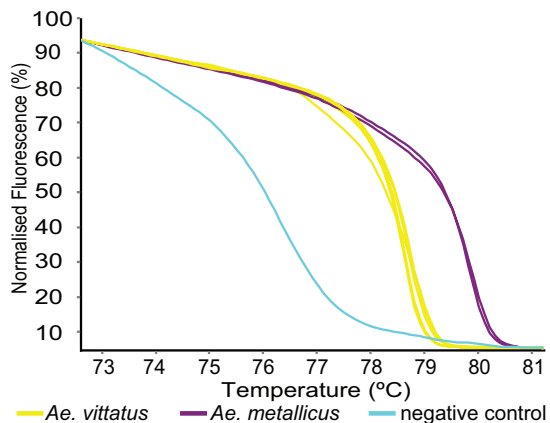
## Discussion

We compared six pairs of primers for their potential to differentiate at least two morphologically similar mosquito species within each of seven mosquito genera by PCR-HRM analysis and identified suitable markers for differentiating species within *Anopheles*, *Aedes*, *Culex* and *Mansonia* mosquitoes. However, none of the markers were suitable for HRM analysis to distinguish among species of *Aedeomyia*, *Mimomyia* or *Coquillettidia* genera mosquitoes. Also, *Cx. watti*, which can be misidentified morphologically as *Cx. duttoni* or *Cx. pipiens*, could not be differentiated by PCR-HRM analyses. Nonetheless, we were able to distinguish *Ma. africana* from *Ma. uniformis*, *An. gambiae* s.s. from *An. arabiensis* (sibling species of *An. gambiae* s.l.), *Ae. vittatus* from *Ae. metallicus*,





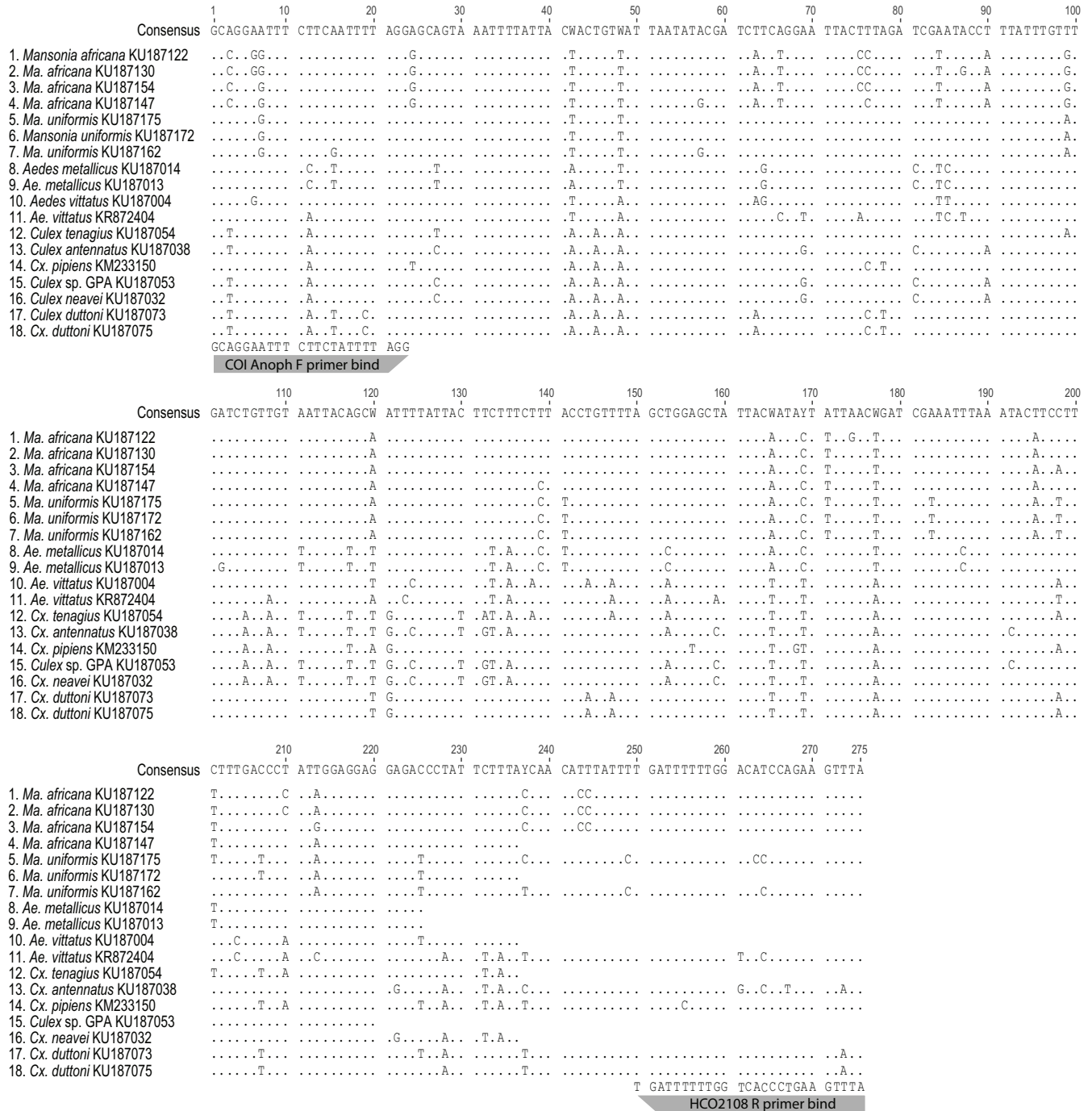
**Figure 2. HRM profiles of *Culex* species.** *Culex* species were differentiated by PCR-HRM using the (A) COI-AnophF/HCO2198R, (B) CYT B, (C) Uni-Minibar-JV, and (D) Mos-ND1 primer pairs.



**Figure 3. HRM profiles of *Aedes* mosquitoes.** *Aedes vittatus* and *Ae. metallicus* were differentiated by PCR-HRM using the COI-AnophF/HCO2198R primer pair.

as well as *Cx. neavei* from *Cx. duttoni*, *Cx. tenagius* from *Cx. antennatus* and two cryptic sympatric species of morphologically identical *Cx. pipiens*. Most notably, the two *Cx. pipiens* species with distinct COI barcode sequences<sup>6</sup> were indeed first identified by HRM analysis of numerous samples<sup>6</sup>. Thus, the relative economy of HRM analysis compared to sequencing facilitates the rapid identification of cryptic species.

Surprisingly, HRM analysis of PCR products from the COI-AnophF/HCO2198R primers, which were designed for *Anopheles*, could not distinguish between these sibling species, yet were most effective in discriminating species within the *Mansonia*, *Aedes* and *Culex* genera, including between the cryptic *Culex pipiens* species. *Anopheles gambiae* and *An. arabiensis* were only distinguished using the IGS gene, which was also designed for *An. gambiae*<sup>2</sup> and is routinely used for distinguishing these sibling species by conventional PCR<sup>29</sup> and HRM analysis<sup>14</sup>. In contrast, species complexes of *An. coustani* and *An. funestus* were not

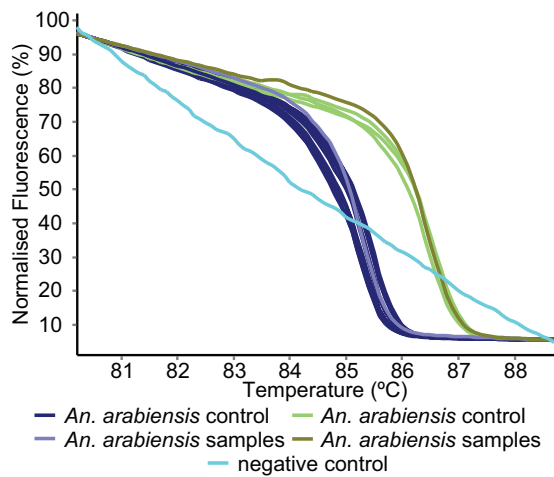


**Figure 4. Single nucleotide polymorphisms (SNP) between mosquito species separated by the COI-AnophF/HCO2108R primer pair amplicons.** Polymorphic sites vary more between than within species.

differentiated with any of the primers. The data suggest that COI<sup>30</sup>, *cyt b* and ND1 loci may be unsuitable for distinguishing among *Anopheles* sibling species. Similarly, the *Aedes* species could only be differentiated by the COI-AnophF/HCO2198R primers. This could be as a result of more recent speciation, insufficient to allow for sibling species resolution at these markers. Such scenarios have been observed for recent or rapidly evolving groups, such as the

Cichlid fishes of eastern Africa, where mitochondrial divergence is not concordant with morphological variations<sup>31</sup>.

In contrast, *Ma. africana* and *Ma. uniformis* were separated by the COI and *cyt b* loci, but not by the ND1 and IGS gene primers and *Culex* species were variably differentiable by all markers, except IGS. For both *Mansonia* and *Culex*, as with *Aedes*, the



**Figure 5. HRM profiles of *Anopheles* mosquitoes.** Two sibling species of *Anopheles gambiae* s.l. were differentiated by PCR-HRM using the AgamUni primer pair.

COI-AnophF/HCO2198R primers were most sensitive in discriminating morphologically indistinct species. This highlights the power of the COI barcode region for identifying diverse cryptic species<sup>32</sup>. The SNPs present in the *COI* genes of the ten mosquito species confirms that the *COI* gene is conserved and polymorphic enough to differentiate these species even in cases of morphological misidentification. The polymorphisms between species were enough to robustly separate them based on their HRM profiles, while sequence polymorphisms within species were too few to significantly alter their HRM profiles.

We, therefore, recommend the initial use of the COI-AnophF/HCO2198R primers Bar-HRM to differentiate *Mansonia*, *Culex* and *Aedes* mosquito species and the IGS primers for anopheline mosquito identification<sup>2,14,33</sup> by HRM. The inability of all the six primer pairs to differentiate many mosquito species among all seven genera tested is an indication that the genetic diversity of many mosquito species is complicated and still poorly understood. Also, the number (sample size) of many of the analyzed mosquito species was small (<3) because these species were scarcely present in the study areas. More samples ( $\geq 3$ ) should be used and more study areas should be sampled in subsequent studies to test genetic differentiation of mosquito species<sup>34</sup>. Additional polymorphic DNA loci should also be identified, tested and used in combination with existing ones for the identification of mosquito species, especially among species complexes and across genera.

## Conclusions

This study shows that specific PCR markers can be used to distinguish closely related species of mosquitoes using HRM analysis. We distinguished two sibling species of *An. gambiae* s.l., two species each of *Mansonia* and *Aedes*, and six species, including cryptic species, of *Culex* using six pairs of primers targeting the mitochondrial and ribosomal genes. HRM is a low cost (<\$1 per reaction), effective tool that enhances culicine and anopheline

mosquito identification and may also reveal population differences in conserved mitochondrial sequences. This approach can improve vector surveillance associated with *Plasmodium* (malaria) or arbovirus transmission and inform targeted vector control strategies.

## Data availability

All sequence data associated with this manuscript are freely available in GenBank. All relevant accession numbers are listed in Table 1 and Table 2.

*F1000Research*: Dataset 1. Raw Rotor-Gene Q HRM data files (.rex), viewable using Rotor-Gene Q software (Qiagen), [10.5256/f1000research.9224.d130565](https://doi.org/10.5256/f1000research.9224.d130565)<sup>36</sup>

## Author contributions

YUA, DM, JV, and AM conceived of, designed and coordinated the study. YUA, DO and TOO did sample collection and identification. YUA and EM carried out the molecular genetic studies. YUA and JV carried out the sequence analyses and drafted the manuscript. DM, JV and YUA contributed materials used for the study. All authors were involved in the revision of the draft manuscript and have agreed to the final content.

## Competing interests

No competing interests were disclosed.

## Grant information

We gratefully acknowledge the financial support for this research by the following organizations and agencies: Swedish International Development Cooperation Agency (SIDA), grant number 75000529 to YUA as an African Regional Postgraduate Programme in Insect Science (ARPPIS) student; Funds from Training Health Researchers into Vocational Excellence (THRiVE) in East Africa (grant number 087540) funded by Wellcome Trust to JV and DM supported part of the field sampling. We also acknowledge funding from UK's Department for International Development (DFID); the Swiss Agency for Development and Cooperation (SDC); and the Kenyan Government.

*The funders had no role in study design, data collection and analysis, decision to publish, or preparation of the manuscript.*

## Acknowledgements

We thank Laban Njoroge of National Museums of Kenya for helping with morphological identifications of mosquitoes. We acknowledge John Tilion of Ruko Conservancy in Baringo County and Phillip Ojunju of Rusinga Island in Homa Bay County, for helping with mosquito sample collection in the two study areas respectively. We acknowledge the support of Milcah Gitau of *icipe*'s Insectary Unit in providing the *Ae. aegypti*, *Cx. pipiens*, *An. gambiae* s.s. and *An. arabiensis* controls. We also thank Esther Waweru of *icipe*'s Molecular Biology and Bioinformatics Unit (MBBU), Gerard Ronoh, Caroline Tigo and Geoffrey Jagero of *icipe*'s ML-EID Laboratory, Lillian Igweta, Lisa Omondi and Margaret Ochanda *icipe*'s of Capacity Building & Institutional Development (CB&ID) Unit for assisting with logistics.

## References

1. Weaver SC, Reisen WK: **Present and future arboviral threats.** *Antiviral Res.* 2010; **85**(2): 328–345.  
[PubMed Abstract](#) | [Publisher Full Text](#) | [Free Full Text](#)
2. Walker ED, Thibault AR, Thelen AP, *et al.*: **Identification of field caught *Anopheles gambiae* s.s. and *Anopheles arabiensis* by TaqMan single nucleotide polymorphism genotyping.** *Malar J.* 2007; **6**: 23.  
[PubMed Abstract](#) | [Publisher Full Text](#) | [Free Full Text](#)
3. Edwards FW: **Mosquitoes of the Ethiopian Region. III.- Culicine adults and pupae.** British Museum (Natural History), London; 1941.  
[Reference Source](#)
4. Gillies MT, Coetzee M: **A Supplement to the Anophelinae of Africa South of the Sahara.** *Publications of the South African Institute for Medical Research.* 1987; (55): 1–143.  
[Reference Source](#)
5. Hebert PD, Cywinska A, Ball SL, *et al.*: **Biological identifications through DNA barcodes.** *Proc Biol Sci.* 2003; **270**(1512): 313–321.  
[PubMed Abstract](#) | [Publisher Full Text](#) | [Free Full Text](#)
6. Ajamma YU, Villinger J, Salifu D, *et al.*: **Abundance and species composition of mosquito vectors of arboviruses in the Lake Victoria and Lake Baringo regions of Kenya.** *J Med Entomol.* 2016. In Press.
7. Ririe KM, Rasmussen RP, Wittwer CT: **Product differentiation by analysis of DNA melting curves during the polymerase chain reaction.** *Anal Biochem.* 1997; **245**(2): 154–160.  
[PubMed Abstract](#) | [Publisher Full Text](#)
8. Vossen RH, Aten E, Roos A, *et al.*: **High-resolution melting analysis (HRMA): more than just sequence variant screening.** *Hum Mutat.* 2009; **30**(6): 860–866.  
[PubMed Abstract](#) | [Publisher Full Text](#)
9. Naze F, Le Roux K, Schuffenecker I, *et al.*: **Simultaneous detection and quantitation of Chikungunya, dengue and West Nile viruses by multiplex RT-PCR assays and dengue virus typing using high resolution melting.** *J Virol Methods.* 2009; **162**(1–2): 1–7.  
[PubMed Abstract](#) | [Publisher Full Text](#)
10. Omondi D, Masiga DK, Ajamma YU, *et al.*: **Unraveling Host-Vector-Arbovirus Interactions by Two-Gene High Resolution Melting Mosquito Bloodmeal Analysis in a Kenyan Wildlife-Livestock Interface.** *PLoS One.* 2015; **10**(7): e0134375.  
[PubMed Abstract](#) | [Publisher Full Text](#) | [Free Full Text](#)
11. Villinger J, Mbaya MK, Ouso DO, *et al.*: **Arbovirus and insect-specific virus discovery in Kenya by novel six genera multiplex high resolution melting analysis.** *Mol Ecol Resour.* 2016. In Press.
12. Kipanga PN, Omondi D, Mireji PO, *et al.*: **High-resolution melting analysis reveals low *Plasmodium* parasitaemia infections among microscopically negative febrile patients in western Kenya.** *Malar J.* 2014; **13**: 429.  
[PubMed Abstract](#) | [Publisher Full Text](#) | [Free Full Text](#)
13. Chua KH, Lim SC, Ng CC, *et al.*: **Development of High Resolution Melting Analysis for the Diagnosis of Human Malaria.** *Sci Rep.* 2015; **5**: 15671.  
[PubMed Abstract](#) | [Publisher Full Text](#) | [Free Full Text](#)
14. Zianni MR, Nikbakhtzadeh MR, Jackson BT, *et al.*: **Rapid discrimination between *Anopheles gambiae* s.s. and *Anopheles arabiensis* by high-resolution melt (HRM) analysis.** *J Biomol Tech.* 2013; **24**(1): 1–7.  
[PubMed Abstract](#) | [Free Full Text](#)
15. Kang D, Sim C: **Identification of *Culex* complex species using SNP markers based on high-resolution melting analysis.** *Mol Ecol Resour.* 2013; **13**(3): 369–376.  
[PubMed Abstract](#) | [Publisher Full Text](#)
16. Winder LC, Phillips C, Richards N, *et al.*: **Evaluation of DNA melting analysis as a tool for species identification.** *Methods Ecol Evol.* 2011; **2**(3): 312–320.  
[Publisher Full Text](#)
17. Distefano G, Caruso M, La Malfa S, *et al.*: **High resolution melting analysis is a more sensitive and effective alternative to gel-based platforms in analysis of SSR—an example in citrus.** *PLoS One.* 2012; **7**(8): e44202.  
[PubMed Abstract](#) | [Publisher Full Text](#) | [Free Full Text](#)
18. Wittwer CT: **High-resolution DNA melting analysis: advancements and limitations.** *Hum Mutat.* 2009; **30**(6): 857–859.  
[PubMed Abstract](#) | [Publisher Full Text](#)
19. Tong Y, Jiang C, Yuan Y, *et al.*: **Molecular identification of antelope horn by melting curve analysis.** *Mitochondrial DNA.* 2014; **26**: 1–7.  
[PubMed Abstract](#) | [Publisher Full Text](#)
20. Osathanunkul M, Suwannapoom C, Osathanunkul K, *et al.*: **Evaluation of DNA barcoding coupled high resolution melting for discrimination of closely related species in phytopharmaceuticals.** *Phytomedicine.* 2016; **23**(2): 156–165.  
[PubMed Abstract](#) | [Publisher Full Text](#)
21. Li J, Song M, Xiong C, *et al.*: **Application of barcode high-resolution melting for rapid authentication of the medicinal plant *Psammosilene tunicoides*.** *Biotechnol Biotechnol Equip.* 2016; **30**(4): 790–796.  
[Publisher Full Text](#)
22. Ganopoulos I, Bazakos C, Madesis P, *et al.*: **Barcode DNA high-resolution melting (Bar-HRM) analysis as a novel close-tubed and accurate tool for olive oil forensic use.** *J Sci Food Agric.* 2013; **93**(9): 2281–2286.  
[PubMed Abstract](#) | [Publisher Full Text](#)
23. Sang R, Kioko E, Lutomiah J, *et al.*: **Rift Valley fever virus epidemic in Kenya, 2006/2007: the entomologic investigations.** *Am J Trop Med Hyg.* 2010; **83**(2 Suppl): 28–37.  
[PubMed Abstract](#) | [Publisher Full Text](#) | [Free Full Text](#)
24. Montero-Pau J, Gómez A, Muñoz J: **Application of an inexpensive and high-throughput genomic DNA extraction method for the molecular ecology of zooplanktonic diapausing eggs.** *Limnol Oceanogr Methods.* 2008; **6**: 218–222.  
[Publisher Full Text](#)
25. Kearsse M, Moir R, Wilson A, *et al.*: **Geneious Basic: an integrated and extendable desktop software platform for the organization and analysis of sequence data.** *Bioinformatics.* 2012; **28**(12): 1647–1649.  
[PubMed Abstract](#) | [Publisher Full Text](#) | [Free Full Text](#)
26. Folmer O, Black M, Hoeh W, *et al.*: **DNA primers for amplification of mitochondrial cytochrome c oxidase subunit I from diverse metazoan invertebrates.** *Mol Mar Biol Biotechnol.* 1994; **3**(5): 294–299.  
[PubMed Abstract](#)
27. Zhang Z, Schwartz S, Wagner L, *et al.*: **A greedy algorithm for aligning DNA sequences.** *J Comput Biol.* 2000; **7**(1–2): 203–214.  
[PubMed Abstract](#) | [Publisher Full Text](#)
28. Garritano S, Gemignani F, Voegelé C, *et al.*: **Determining the effectiveness of High Resolution Melting analysis for SNP genotyping and mutation scanning at the *TP53* locus.** *BMC Genet.* 2009; **10**: 5.  
[PubMed Abstract](#) | [Publisher Full Text](#) | [Free Full Text](#)
29. Scott JA, Brogdon WG, Collins FH: **Identification of single specimens of the *Anopheles gambiae* complex by the polymerase chain reaction.** *Am J Trop Med Hyg.* 1993; **49**(4): 520–529.  
[PubMed Abstract](#)
30. Tahir HM, Mehwish, Kanwal N, *et al.*: **Genetic diversity in cytochrome c oxidase I gene of *Anopheles* mosquitoes.** *Mitochondrial DNA.* 2015; **12**: 1–4.  
[PubMed Abstract](#) | [Publisher Full Text](#)
31. McGee MD, Neches RY, Seehausen O: **Evaluating genomic divergence and parallelism in replicate ecomorphs from young and old cichlid adaptive radiations.** *Mol Ecol.* 2016; **25**(1): 260–268.  
[PubMed Abstract](#) | [Publisher Full Text](#)
32. Hebert PD, Penton EH, Burns JM, *et al.*: **Ten species in one: DNA barcoding reveals cryptic species in the neotropical skipper butterfly *Astraptes fulgerator*.** *Proc Natl Acad Sci U S A.* 2004; **101**(41): 14812–14817.  
[PubMed Abstract](#) | [Publisher Full Text](#) | [Free Full Text](#)
33. Ruiz F, Linton YM, Ponsonby DJ, *et al.*: **Molecular comparison of topotypic specimens confirms *Anopheles (Nyssorhynchus) dunhami* Causey (Diptera: Culicidae) in the Colombian Amazon.** *Mem Inst Oswaldo Cruz.* 2010; **105**(7): 899–903.  
[PubMed Abstract](#) | [Free Full Text](#)
34. Murugan K, Vadivalagan C, Karthika P, *et al.*: **DNA barcoding and molecular evolution of mosquito vectors of medical and veterinary importance.** *Parasitol Res.* 2016; **115**(1): 107–121.  
[PubMed Abstract](#) | [Publisher Full Text](#)
35. Lyman DF, Monteiro FA, Escalante AA, *et al.*: **Mitochondrial DNA sequence variation among triatomine vectors of Chagas' disease.** *Am J Trop Med Hyg.* 1999; **60**(3): 377–386.  
[PubMed Abstract](#)
36. Ajamma YU, Mararo E, Omondi D, *et al.*: **Dataset 1 in: Rapid and high throughput molecular identification of diverse mosquito species by high resolution melting analysis.** *F1000Research.* 2016.  
[Data Source](#)

# Open Peer Review

Current Peer Review Status:  

---

## Version 1

Reviewer Report 19 September 2016

<https://doi.org/10.5256/f1000research.9928.r16385>

© 2016 Chai H. This is an open access peer review report distributed under the terms of the [Creative Commons Attribution License](#), which permits unrestricted use, distribution, and reproduction in any medium, provided the original work is properly cited.



### Hwa Chia Chai

Department of Biomedical Science, Faculty of Medicine, University of Malaya, Kuala Lumpur, Malaysia

Overall, this is a well-written article on the development of HRM for identification of different species of mosquitoes. The authors also mentioned about the limitations of the study. However, the six pairs of primers used in this study did not seem to have clear directions or purpose. Did the authors want to come out with a pair of universal primers to differentiate all the clinically important mosquito species mentioned in the article? Or one specific primer pair for each genus of mosquitoes? Or there is other intention? Although the authors showed the ability of primer pairs to discern some mosquito species, for instance, COI-AnophF/HCO2198R could distinguish *Mansonia* spp., *Aedes* spp. and *Culex* spp., how about the species of the same genera that could not be discriminated? It would be more focused and directional if the primer pairs are genus-specific.

#### Methods:

1. It would be great if the clinical importance of or disease transmitted by each mosquito genus/species is listed in Table 1 and Table 2 so that the readers understand the significance of discriminating the mosquito species.
2. Please mention the  $T_m$  for each primer in Table 3.
3. Please elaborate more on the primer design: on what basis the authors design the primers and for what reason they want to amplify those regions with amplicon sizes mentioned in Table 3.
4. What was the amount of DNA template used for HRM analyses?

#### Results:

1. Please show the limitation of detection for each assay in the detection of each mosquito species.
2. Was auto-calling mode used for clustering? What was the confidence interval? Please mention the mean  $T_m$  for each species with standard deviation.

3. Figure 2A, B, D: There was only one sample of *C. tenagius* included in the analysis. It is difficult to conclude the melting profile of this species if there was only one sample available.
4. In Table 1, COI-AnophF/HCO2198R has been shown to be able to separate *Cx. tenagius* from *Cx. antennatus*, *Cx. pipiens* from *Culex sp. GPA*, and *Cx. neavei* from *Cx. duttoni*. Since I am not an expert in mosquitoes, is there any specific reason the authors wanted to report the separation between two species of *Culex* rather than reporting it as a separation between all species?
5. In Figure 2A, the melt curves of *Cx. antennatus*, *Cx. neavei*, *Culex sp. GPA* and *Cx. pipiens* looks closely apart and hard to differentiate. Was the clustering auto- or manually called? What was the confidence interval if it was auto-called? What is the possibility of all these species being present or analysed at the same time? It would be hard to differentiate them if all of them are present in a same run of HRM analysis.
6. How do the melt curves of the unseparated species appear as compared to those in the same genus which could be differentiated? For instance, *Cx. perexiguus* vs. *Cx. tenagius*, *Cx. antennatus*, *Cx. pipiens*, *Culex sp. GPA*, *Cx. neavei* and *Cx. duttoni*. And also melting curves of *Aedeomyia* (*Ad. africana* and *Ad. fufurea*), *Mimomyia* (*Mi. hispida* and *Mi. splendens*) and *Coquilletidia* (*Cq. aurites*, *Cq. chrysosoma*, *Cq. fuscopennata*, *Cq. metallica*, *Cq. microannulatus*, *Cq. pseudoconopas* and *Cq. versicolor*) species (Table 4) or among *An. funestus* and *An. coustani* species complexes, which could not be differentiated in this study.
7. In Figure 4, intraspecies variation in the target sequence is seen, for instance, in the four strains of *Ma. africana*. Although the authors did mention on Page 6 “Although there are SNPs within species DNA that resulted to the slight changes observed in their HRM profiles, the SNPs across species were enough to distinguish between them”. I am not sure how confident it is to employ these assays in the presence of intraspecies variations, plus the sample size may be too small to validate the assays.
8. Figure 5: please revise the figure legend.

#### Discussion:

1. On page 8, 2<sup>nd</sup> paragraph, the authors mentioned “Surprisingly, HRM analysis of PCR products from the COIAnophF/HCO2198R primers, which were designed for Anopheles, could not distinguish between these sibling species....” Can the authors explain the possible reason for this?
2. Again, since I am not a mosquito expert, are the mosquitoes of the same genus morphologically identical? If the assays are successfully developed, are the mosquitoes going to be morphologically identified prior to subjecting them to HRM analysis? How are the authors going to decide which primer pairs to use later in the mosquito identification?

**Competing Interests:** No competing interests were disclosed.

**I confirm that I have read this submission and believe that I have an appropriate level of expertise to confirm that it is of an acceptable scientific standard.**

Reviewer Report 12 September 2016

<https://doi.org/10.5256/f1000research.9928.r15904>

© 2016 Zianni M. This is an open access peer review report distributed under the terms of the [Creative Commons Attribution License](#), which permits unrestricted use, distribution, and reproduction in any medium, provided the original work is properly cited.



### Michael Zianni

Thermo Fisher Scientific, Carlsbad, CA, USA

Ajamma have an article on the use of the technique high resolution melt analysis towards the identification of morphologically indistinct species of mosquito. The specific goal is to expand the current set of primers in the research literature in order to identify more species from multiple genera of mosquitoes.

The methodology is clear with sufficient details for it to be reproduced by listing all appropriate reagents, DNA primer sequences and real-time PCR instrumentation. I do recommend adding the criteria by which the melt curves were deemed to be sufficiently different to allow identification of the species as compared to the "Did Not Separate" state as reported in Table 4.

Figures 1 - 3 and 5 are clear and support the results summarized in table 4. I appreciate the authors efforts to repeat and report data from the previously published primers ("AgamUni") as a point of comparison. Appropriate controls were used with (1) water as a negative control for amplification and (2) samples from defined colonies and samples previously sequenced as positive controls. The most significant limitation is the number of replicates, and the diversity of sample collection points for each species. The authors clearly acknowledge these limitations in the conclusion and clearly state the need for additional samples to assess the intra-specific variation which is critically important information to make this method highly useful.

In summary, the paper is clearly and concisely written with 1 minor recommendations for additional information on the method. The goals of the research are clearly stated, and the results as well as the conclusions support the goals. The researchers have achieved the goals by identifying and confirming at least one primer pair for each of 4 genera that identify various species that are difficult to identify by morphology alone.

**Competing Interests:** No competing interests were disclosed.

**I confirm that I have read this submission and believe that I have an appropriate level of expertise to confirm that it is of an acceptable scientific standard.**

---

The benefits of publishing with F1000Research:

- Your article is published within days, with no editorial bias
- You can publish traditional articles, null/negative results, case reports, data notes and more
- The peer review process is transparent and collaborative

- Your article is indexed in PubMed after passing peer review
- Dedicated customer support at every stage

For pre-submission enquiries, contact [research@f1000.com](mailto:research@f1000.com)

F1000Research