


Diversity in medullary thymic epithelial cells controls the activity and availability of iNKT cells

Beth Lucas¹, Andrea J. White¹, Emilie J. Cosway¹, Sonia M. Parnell¹, Kieran D. James¹, Nick D. Jones¹, Izumi Ohigashi², Yousuke Takahama³, William E. Jenkinson¹ & Graham Anderson¹  [✉]

The thymus supports multiple $\alpha\beta$ T cell lineages that are functionally distinct, but mechanisms that control this multifaceted development are poorly understood. Here we examine medullary thymic epithelial cell (mTEC) heterogeneity and its influence on CD1d-restricted iNKT cells. We find three distinct mTEC^{low} subsets distinguished by surface, intracellular and secreted molecules, and identify LT β R as a cell-autonomous controller of their development. Importantly, this mTEC heterogeneity enables the thymus to differentially control iNKT sublineages possessing distinct effector properties. mTEC expression of LT β R is essential for the development thymic tuft cells which regulate NKT2 via IL-25, while LT β R controls CD104⁺ CCL21⁺ mTEC^{low} that are capable of IL-15-transpresentation for regulating NKT1 and NKT17. Finally, mTECs regulate both iNKT-mediated activation of thymic dendritic cells, and iNKT availability in extrathymic sites. In conclusion, mTEC specialization controls intrathymic iNKT cell development and function, and determines iNKT pool size in peripheral tissues.

¹Institute for Immunology and Immunotherapy, University of Birmingham, Birmingham B15 2TT, UK. ²Division of Experimental Immunology, Institute of Advanced Medical Sciences, University of Tokushima, Tokushima 770-8503, Japan. ³Experimental Immunology Branch, National Cancer Institute, National Institutes of Health, Bethesda, MD 20892, USA. ✉email: g.anderson@bham.ac.uk

A key feature of the adaptive immune system is the development of $\alpha\beta$ T cells in the thymus. Here, specialised cortical and medullary thymic microenvironments support the step-wise maturation of self-tolerant CD4⁺ and CD8⁺ $\alpha\beta$ T cells that recognise peptide/major histocompatibility complex (MHC) ligands. Studies on thymic epithelial cell (TEC) heterogeneity have yielded several underlying features that determine their ability to control specific events in conventional $\alpha\beta$ T cell development^{1–3}. For example, in medullary TECs (mTECs), expression of Aire together with high levels of CD80/CD86 and MHC explains the functional importance of mTEC^{hi} for tolerance induction^{4–6}. In addition to generating and shaping the conventional $\alpha\beta$ T cell pool, thymic microenvironments also foster other T cell lineages that are classed as ‘unconventional’ as they express antigen receptors that do not recognise MHC. These include CD1d-restricted invariant natural killer T cells (iNKT cells) that via their steady-state production of cytokines, including interleukin-4 (IL-4)^{7–9}, play important roles in the control of immune responses^{10,11}. Thus, the thymus is critical for the generation of multiple $\alpha\beta$ T cell types that play key roles in the functioning of both the innate and adaptive arms of the immune system. Despite this, how the thymus controls diversity in T cell production remains poorly understood.

Here, we show that lymphotoxin β receptor (LT β R) is an essential regulator of multiple mTEC subsets within the CD80^{low}MHCII^{low} mTEC^{low} compartment, including thymic tuft cells and the CCL21⁺ subset. Importantly, we provide evidence that mTEC^{low} heterogeneity is accompanied by functional specialisation. Thus, PLZF^{hi}ROR γ t[–]Tbet[–] NKT2 are regulated by IL-25 production by thymus tuft cells, providing an explanation for the requirement for this newly described mTEC subset in iNKT cell development. Additionally, PLZF^{low}ROR γ t[–]Tbet⁺ NKT1 and PLZF^{low}ROR γ t⁺Tbet[–] NKT17 are influenced by IL-15 transpresentation, with CCL21⁺CD104⁺ mTEC^{low} identified as mTECs with this function. Finally, LT β R-mediated mTEC heterogeneity enables iNKT cells to control intrathymic dendritic cell (DC) activation, and establishment of the peripheral iNKT cell pool. Collectively, our findings identify the regulation of mTEC heterogeneity by LT β R as an intrathymic mechanism that determines the availability and function of iNKT cells in both the thymus and periphery.

Results

Heterogeneity in the adult mTEC^{low} compartment. Traditionally, mTECs in the adult thymus are divided into MHCII^{low}CD80^{low} and MHCII^{hi}CD80^{hi} (mTEC^{low}/mTEC^{hi}) subsets^{6,12}. While mTEC^{hi} control tolerance induction through negative selection of conventional $\alpha\beta$ T cells and the generation of Foxp3⁺ regulatory T cells^{13,14}, the functional importance of the mTEC^{low} compartment remains poorly understood. Indeed, despite reports on mTEC^{low} heterogeneity from RNA-sequencing data^{15,16}, attempts to study their functional specialisation are limited by a current inability to identify, isolate and study individual mTEC^{low} subsets.

To address this, we examined mTEC^{low} in the 8–12-week adult mouse thymus. By screening disaggregated TEC-enriched cell suspensions for reactivity with antibodies to surface, secreted and intracellular factors, we identified two distinct mTEC^{low} subsets distinguished by their differential cell surface expression of the integrin β 4 (CD104) (Fig. 1a), shown previously to be expressed by TECs within the mTEC compartment¹⁶. Importantly, further analysis showed that CD104⁺ mTEC^{low}, but not CD104[–] mTEC^{low}, could also be defined by their intracellular expression of CCL21 (Fig. 1a), a chemokine essential for the recruitment of positively selected thymocytes into the medulla¹⁷. Thus, CD104

expression in mTEC^{low} defines a functionally important CCL21-expressing mTEC^{low} subset that can be readily isolated by cell sorting. Furthermore, we found that thymic tuft cells^{15,16}, defined here by the expression of the tuft cell-specific enzyme DCLK1¹⁸, were detectable specifically within the CD104[–]CCL21[–] mTEC^{low} subset (Fig. 1a). A CD104[–]CCL21[–]DCLK1[–] ‘triple-negative’ mTEC^{low} subset was also detectable (Fig. 1a). Interestingly, flow cytometric analysis showed that thymic tuft cells were markedly absent from the CD104⁺CCL21⁺ mTEC^{low} subset (Fig. 1a). In agreement with this, we detected the expression of the tuft cell signature genes, *Pou2f3*, *Dclk1* and *Trpm5*^{19,20}, in FACS (fluorescence-activated cell sorting)-sorted CD104[–], but not in CD104⁺ mTEC^{low} (Fig. 1b). Furthermore, immunofluorescence confocal analysis of adult thymus tissue sections from CCL21^{tdTOM} reporter mice confirmed the non-overlapping nature of DCLK1⁺ thymic tuft cells and CCL21⁺ TEC subsets, and showed individual tuft cells embedded within a network of CCL21⁺ mTECs (Fig. 1c). Finally, comparison of the ontogenetic appearance and frequency analysis of mTEC^{low} subsets identified CD104⁺CCL21⁺ cells as the dominant mTEC^{low} population from birth onwards, followed by CD104[–]CCL21[–]DCLK1[–] cells, with the frequency of both populations remaining constant in this period (Fig. 1d). In contrast, and in agreement with other studies^{15,16}, we found that thymic tuft cells were barely detectable in the neonatal thymus, but then increased in proportion and number during adulthood (Fig. 1d). Collectively, these data define discrete populations within the mTEC^{low} compartment of adult mice, and offers opportunities for their isolation and examination of their functional properties.

LT β R is a critical regulator of multiple mTEC^{low} subsets. To assess the developmental requirements and functional properties of the mTEC subsets described above, we analysed their expression of LT β R, a known regulator of the mTEC lineage^{21–23}. All mTEC^{low} subsets expressed LT β R, with the highest levels detectable on thymic tuft cells (Supplementary Fig. 1). To examine the potential importance of LT β R expression in the control of mTEC^{low} development, we generated Foxn1^{Cre}LT β R^{fl/fl} ‘LT β R^{TEC}’ mice, where the absence of LT β R in the thymus is selective to the TEC compartment²². In particular, given the ability to use a combination of DCLK1/CD104/CCL21 expression to positively identify both thymic tuft cells and CD104⁺CCL21⁺ mTECs, we focussed our attention on these two mTEC^{low} subsets. Strikingly, in both flow cytometric (Fig. 2a) and confocal analysis (Fig. 2b), we found that thymic tuft cells were absent from the thymus of LT β R^{TEC} mice. In agreement with this importance of LT β R, tuft cells were also absent from the thymus of germline *Ltbr*^{–/–} mice (Supplementary Fig. 2). Consistent with the absence of tuft cells in LT β R^{TEC} thymus, messenger RNA (mRNA) expression of tuft cell genes, *Pou2f3*, *Dclk1* and *Trpm5*, was absent from CD104[–] mTEC^{low} isolated from LT β R^{TEC} mice (Fig. 2c). Collectively, these findings indicate that TEC expression of LT β R is important for thymic tuft cell development. However, as LT β R is expressed by multiple mTEC populations²², including tuft cells (Supplementary Fig. 1a), it is not clear where in the mTEC developmental pathway LT β R is required for tuft cell development. As a first step to further understand how and when LT β R is important for thymus tuft cell generation, we stimulated alymphoid 2-deoxyguanosine (2dGuo)-treated foetal thymic organ culture (FTOC) for 4 days with an agonistic anti-LT β R antibody²⁴. As 2dGuo FTOC lack tuft cells (Fig. 2d) but contain mTEC progenitors²⁵, this approach provided an initial opportunity to see if LT β R stimulation of mTEC progenitors can induce tuft cell development. As an indicator of the efficacy of antibody treatment of these cultures, anti-LT β R stimulation had a positive

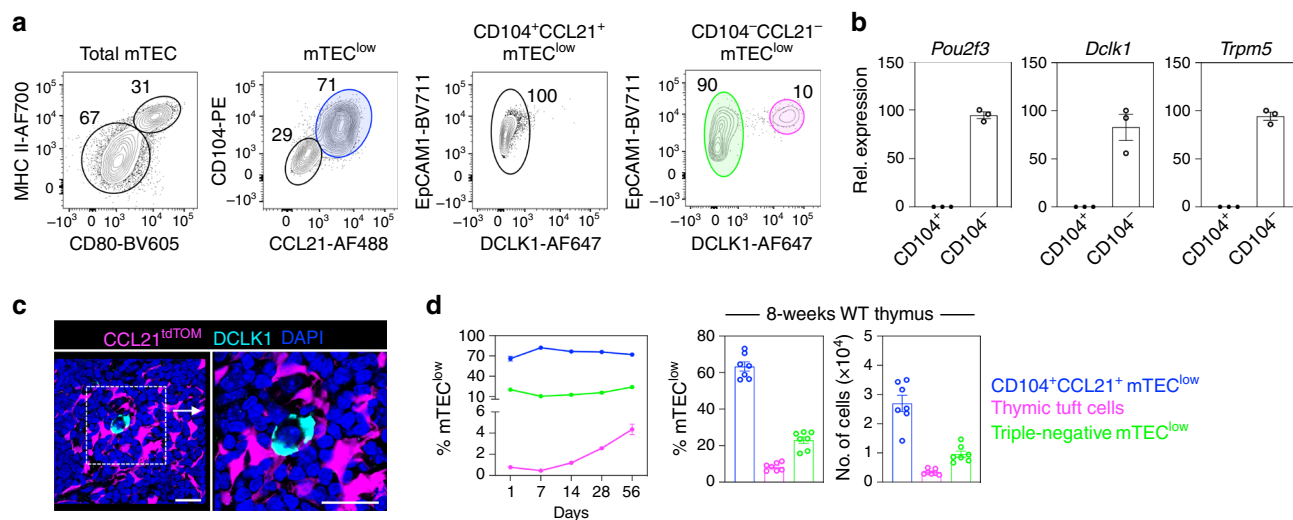


Fig. 1 The adult $mTEC^{low}$ compartment is phenotypically diverse. **a** EpCAM1⁺Ly51⁻UEA1⁺ total mTECs from digested adult C57/BL6 (WT) thymus were subdivided into $mTEC^{low}$ and $mTEC^{hi}$ on the basis of MHCII and CD80 expression. Cell surface (CD104) and intracellular (DCLK1 and CCL21) expression within total $mTEC^{low}$ is shown, which identifies three $mTEC^{low}$ subsets: $CD104^+CCL21^+$ cells (blue), $CD104^-CCL21^-DCLK1^+$ thymic tuft cells (magenta) and $CD104^-CCL21^-DCLK1^-$ 'triple-negative' cells (green). **b** qPCR analysis showing mRNA levels of the tuft cell signature genes *Pou2f3*, *Dclk1* and *Trpm5* in $CD104^+$ and $CD104^-$ $mTEC^{low}$ subsets that were FACS sorted from WT adult thymus, data are representative of three biological sorts. **c** Confocal microscopy of frozen tissue sections of adult $CCL21^{tdTOM}$ thymus stained with antibodies to DCLK1 (cyan), representative of $n = 3$ independent biological samples. Counterstaining with DAPI is in blue, $CCL21^{tdTOM}$ is in magenta and scale bars denote 20 μm . **d** Analysis of the ontogenetic frequency of $mTEC^{low}$ subsets identified in **a**, WT mice of 1 day, 1 week, 2 week, 4 week and 8 week were analysed, $CD104^+CCL21^+$ cells: 1 day $n = 10$, 1 week $n = 10$, 2 week $n = 7$, 4 week $n = 7$, 8 week $n = 6$, tuft cells: 1 day $n = 9$, 1 week $n = 9$, 2 week $n = 6$, 4 week $n = 7$, 8 week $n = 10$, triple-negative cells: 1 day $n = 6$, 1 week $n = 6$, 2 week $n = 6$, 4 week $n = 6$, 8 week $n = 7$, over three independent experiments per age. All data are represented as mean \pm SEM. Source data are provided as a Source Data file.

effect in FTOC, as indicated by strong upregulation of *Ccl21a* mRNA (Fig. 2e). However, we found that anti-LT β R stimulation did not induce the appearance of thymic tuft cells, as indicated by the absence of DCLK1⁺ cells by flow cytometry (Fig. 2d), and the absence of *Pou2f3* and *Dclk1* mRNA by quantitative polymerase chain reaction (qPCR) (Fig. 2e). Collectively, these findings demonstrate that while LT β R is an important regulator of thymic tuft cell development, LT β R stimulation of 2dGuo FTOC that contain mTEC progenitors is not sufficient for their development.

We next examined how LT β R expression might influence the development of other $mTEC^{low}$ subsets. Of particular relevance here, while germline *Ltbr*^{-/-} mice have a reported reduction in $CCL21^+$ $mTEC^{low}$ ²⁶, the absence of LT β R expression from all cell types due to germline deficiency did not allow for discrimination between TEC-intrinsic and TEC-extrinsic roles for LT β R in mTEC regulation. To address this, we examined $CD104^+CCL21^+$ $mTEC^{low}$ in LT β R^{TEC} mice, where in the thymus LT β R is selectively absent from TEC. While the percentage of these cells within the total adult $mTEC^{low}$ compartment was comparable between *Foxn1*^{Cre} controls and LT β R^{TEC} mice, their absolute numbers were reduced in the latter (Fig. 3a). Interestingly, despite this numerical difference, levels of both CCL21 protein (Fig. 3b) and mRNA (Fig. 3c) were comparable in $CD104^+CCL21^+$ $mTEC^{low}$, which were isolated from LT β R^{TEC} mice and *Foxn1*^{Cre} controls. Thus, while LT β R may not be an absolute requirement for the developmental emergence of $CD104^+CCL21^+$ $mTEC^{low}$, including their expression of the chemokine CCL21, it represents an important regulator of the intrathymic availability of these cells. Consistent with this, and the induction of *Ccl21a* mRNA (Fig. 2f), stimulation of 2dGuo FTOC with agonistic anti-LT β R caused a significant increase in the number of $CD104^+CCL21^+$ $mTEC^{low}$ (Fig. 3d). Finally, given that LT β R^{TEC} mice show combined deficiencies in both thymic tuft cells and $CD104^+CCL21^+$ $mTEC^{low}$, we wondered whether the reduction in

$CD104^+CCL21^+$ $mTEC^{low}$ in LT β R^{TEC} mice may be a consequence of the absence of DCLK1⁺ thymic tuft cells. To address this, we examined the $mTEC^{low}$ compartment of *Pou2f3*^{-/-} mice that lack tuft cells²⁷. Interestingly, while thymic tuft cells were absent from these mice as expected, $CD104^+CCL21^+$ $mTEC^{low}$ were present in normal numbers (Supplementary Fig. 3). Collectively, these data identify LT β R as an important regulator of the mTEC lineage through its control of cellular heterogeneity within the $mTEC^{low}$ compartment.

LT β R in thymic epithelium controls intrathymic iNKT cells. In the adult thymus, mTECs play well-defined roles in conventional $\alpha\beta$ T cell development^{4,17}. However, their influence on other functions of the thymus medulla is poorly understood. In particular, it is not clear whether the requirement for mTECs in the development of conventional $\alpha\beta$ T cells is similar to, or distinct from, their importance for non-conventional T cell development²⁸. To study this, we examined how LT β R-mediated control of mTEC diversity might affect the intrathymic development of CD1d-restricted iNKT cells that depend upon medullary micro-environments²⁸. We used flow cytometry and PBS57/CD1d tetramers to specifically identify iNKT cells in thymocyte suspensions from adult LT β R^{TEC} and *Foxn1*^{Cre} control mice. Using this approach, we saw a striking reduction in the percentage and absolute number of iNKT cells in the thymus of LT β R^{TEC} mice (Fig. 4a, b). Next, we subdivided total PBS57/CD1d⁺ iNKT cells into distinct subsets on the basis of expression of the transcription factors PLZF, Tbet and ROR γ t, to identify Tbet⁺ NKT1, PLZF^{hi} NKT2 and ROR γ t⁺ NKT17 sublineages^{7,8,29,30}. Interestingly, we saw that the reduction in total intrathymic iNKT cells was a result of an equivalent (~3–4-fold) reduction in all three iNKT sublineages (Fig. 4b). Importantly, this reduction in iNKT cell numbers in the thymus of LT β R^{TEC} mice was not due to a reduction in the numbers of

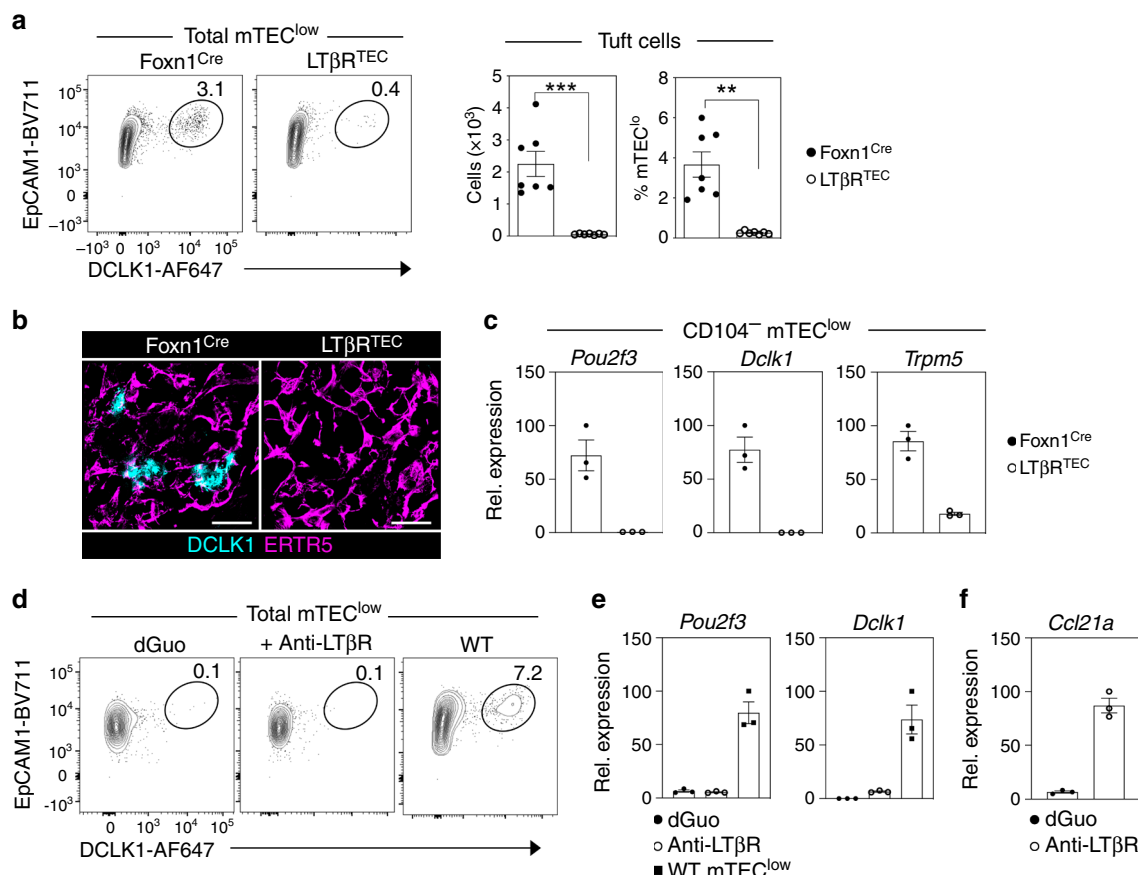


Fig. 2 $\text{LT}\beta\text{R}$ regulates thymic tuft cell development. **a** Intracellular staining of mTEC^{low} from control $\text{Foxn1}^{\text{Cre}}$ and $\text{LT}\beta\text{R}^{\text{TEC}}$ mice for expression of the tuft cell marker DCLK1. Bar graphs indicate absolute cell numbers and percentages within mTEC^{low} in $\text{Foxn1}^{\text{Cre}}$ mice (closed symbols) and $\text{LT}\beta\text{R}^{\text{TEC}}$ mice (open symbols) $n = 7$ biologically independent samples, over three independent experiments. Significant P values using two-tailed unpaired t test as follows: no. of tuft cells $p = 0.0001$, % tuft cells $p = 0.002$. **b** Confocal image of thymus section from $\text{Foxn1}^{\text{Cre}}$ and $\text{LT}\beta\text{R}^{\text{TEC}}$ mice, stained for the mTEC marker ERTR5 (magenta) and DCLK1 (cyan), representative of $n = 3$ independent biological samples. Scale bars denote $20\ \mu\text{m}$. **c** qPCR analysis of $\text{CD104}^- \text{mTEC}^{\text{low}}$ FACS sorted from $\text{Foxn1}^{\text{Cre}}$ (closed symbols) and $\text{LT}\beta\text{R}^{\text{TEC}}$ (open symbols) mice, for expression of the tuft cell markers *Pou2f3*, *Dclk1* and *Trpm5*, data are representative of three biological sorts. **d** Alymphoid 2dGuo-treated FTOC cultured for 4 days in the presence or absence of agonistic anti- $\text{LT}\beta\text{R}$ ($2\ \mu\text{g}/\text{ml}$) were analysed by flow cytometry for intracellular expression of DCLK1 to detect tuft cells. Tuft cells in freshly isolated adult WT mTEC^{low} are shown for comparison, data are representative of three independent experiments. **e** qPCR analysis of control (closed circles) and anti- $\text{LT}\beta\text{R}$ stimulated (open circles) dGuo FTOC for expression of *Pou2f3* and *Dclk1*, with levels of mRNA expression in adult mTEC^{low} (closed squares) for comparison, data are representative of three biological sorts from six FTOC cultured lobes/sort. **f** qPCR analysis of control (closed circles) and anti- $\text{LT}\beta\text{R}$ stimulated (open circles) dGuo FTOC for expression of *Ccl21a*. All data are represented as mean \pm SEM. *** $P < 0.001$ and ** $P < 0.01$. Source data are provided as a Source Data file.

$\text{CD4}^+\text{CD8}^+$ thymocytes that give rise to iNKT cells (Supplementary Fig. 4). Moreover, and in agreement with previous studies demonstrating the predominant medulla localisation of iNKT cells in wild-type (WT) mice⁸, iNKT cells in both $\text{Foxn1}^{\text{Cre}}$ controls and $\text{LT}\beta\text{R}^{\text{TEC}}$ mice were within medullary thymic areas (Supplementary Fig. 4), arguing against the idea that the observed iNKT cell defects are caused by failure to enter the thymus medulla.

To examine how $\text{LT}\beta\text{R}$ -mediated control of mTEC^{low} might impact iNKT cell development, we examined both cell types for their expression of corresponding receptor/ligand pairs that might explain the iNKT cell defect in $\text{LT}\beta\text{R}^{\text{TEC}}$ mice. First, we analysed cytokine receptor expression by NKT1, NKT2 and NKT17 subsets using flow cytometry. We found IL-17RB, a receptor for the cytokine IL-25 that increases splenic iNKT cell numbers in vitro^{31,32}, was expressed by both thymic NKT2 and NKT17, but not NKT1 (Fig. 4c). By contrast, the expression of CD122, a component of the receptor for IL-15 that drives iNKT cell proliferation^{7,33,34}, was expressed by all iNKT sublineages, with the highest expression in NKT1 (Fig. 4d). Next, we analysed

mTEC subsets for expression of corresponding cytokines that interact with the receptors described above. Consistent with the presence of thymic tuft cells in this population, we found $\text{CD104}^- \text{mTEC}^{\text{low}}$ isolated from WT mice expressed the tuft cell-specific cytokine IL-25 (Fig. 4e). Moreover, $\text{CD104}^- \text{mTEC}^{\text{low}}$ isolated from $\text{LT}\beta\text{R}^{\text{TEC}}$ mice did not express *Il25* mRNA (Fig. 4f), a finding in agreement with the lack of thymic tuft cells in these mice (Fig. 2). In contrast, compared to $\text{CD104}^- \text{mTEC}^{\text{low}}$, mRNA levels of *Il15* and *Il15ra* that collectively facilitate IL-15 transpresentation^{29,30} were highest in $\text{CD104}^+ \text{mTEC}^{\text{low}}$ (Fig. 4e). Interestingly, *Il15* and *Il15ra* mRNA levels in $\text{CD104}^+ \text{mTEC}^{\text{low}}$ from $\text{LT}\beta\text{R}^{\text{TEC}}$ mice were comparable to that seen in $\text{Foxn1}^{\text{Cre}}$ controls (Fig. 4f). Thus, within mTEC , IL-25 and IL-15 transpresentation are controlled by $\text{LT}\beta\text{R}$ in different ways. First, IL-25 expression in the thymus is $\text{LT}\beta\text{R}$ dependent as a consequence of its essential role in thymic tuft cell development. Second, $\text{LT}\beta\text{R}$ can influence IL-15 transpresentation in the thymus not by direct control of *Il15/Il15ra* mRNA expression, but by controlling the frequency of $\text{CD104}^+\text{CCL21}^+$ mTEC^{low} that express these genes.

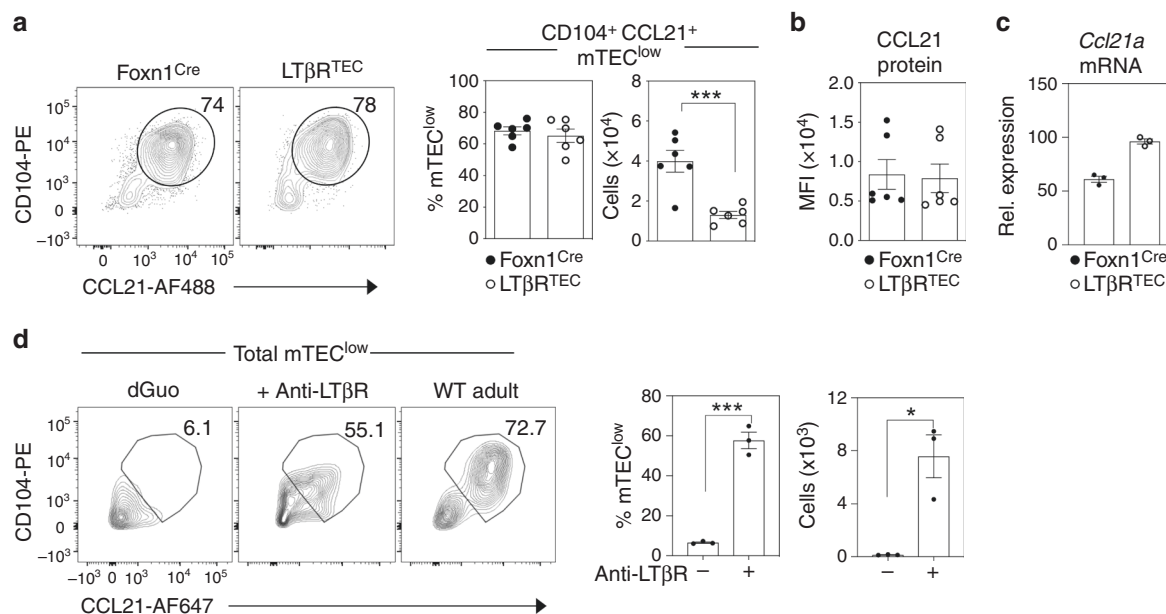


Fig. 3 Impaired production of CD104⁺CCL21⁺ mTEC^{low} in LTβR^{TEC} mice. **a** mTEC^{low} from Foxn1^{Cre} and LTβR^{TEC} mice, analysed for surface expression of CD104 and intracellular expression of CCL21. Bar graphs show cell percentages and absolute cell numbers in Foxn1^{Cre} ($n = 6$ biologically independent samples, closed symbols) and LTβR^{TEC} mice ($n = 6$ biologically independent samples, open symbols), over three independent experiments. Significant P values using two-tailed unpaired t test are as follows: no. of cells $P = 0.0009$. **b** MFI levels of intracellular CCL21 expression in pre-gated CD104⁺CCL21⁺ mTEC^{low} from Foxn1^{Cre} (closed symbols) and LTβR^{TEC} (open symbols) mice, $n = 6$ biologically independent samples, over three independent experiments. **c** Levels of *Ccl21a* mRNA in FACS sorted CD104⁺ mTEC^{low} from Foxn1^{Cre} (closed symbols) and LTβR^{TEC} mice (open symbols), data representative of three biological sorts. **d** Alymphoid 2dGuo-treated FTOC cultured for 4 days in the presence or absence of agonistic anti-LTβR ($2 \mu\text{g/ml}$) were pooled and analysed by flow cytometry for the expression of CCL21 and CD104. Freshly isolated adult WT mTEC^{low} were stained alongside for comparison. Significant P values using two-tailed unpaired t test are as follows: % cells $P = 0.0003$, no. of cells $P = 0.0102$. Six FTOC cultured lobes were pooled per data point, $n = 3$ biologically independent samples, over three independent experiments. All data are represented as mean \pm SEM. * $P < 0.05$ and *** $P < 0.001$. Source data are provided as a Source Data file.

Specialisation of mTEC^{low} influences iNKT cell sublineages.

Next, we investigated the importance of individual mTEC^{low} subsets and their products on the intrathymic development of specific iNKT subsets. First, we analysed NKT1, NKT2 and NKT17 sublineages in the thymuses of adult WT and tuft cell-deficient *Pou2f3*^{-/-} mice. Relevant to this, a previous study¹⁵ showed a reduction in NKT1, NKT2 and NKT17 in the thymus of *Pou2f3*^{-/-} mice. Consistent with this earlier study, we found a reduction in NKT2 (Fig. 5a, b), but in contrast to that reported by Miller et al.¹⁵, we did not find alterations in NKT1 or NKT17 (Fig. 5a, b). Importantly, while both studies demonstrate a role for tuft cells in NKT2 development in the thymus, the mechanism is not known. As tuft cells are the exclusive producers of IL-25 in the thymus^{15,16}, and as both NKT2 and NKT17 express high levels of IL-25 receptor (IL-17RB) (Fig. 4), we wondered whether this requirement for tuft cells could be explained by their IL-25 production, by examining thymic iNKT cell development in *Il25*^{-/-} mice. Here, it is important to note that we used Balb/C WT and *Il25*^{-/-} mice on a Balb/c background, which as reported previously⁷ results in skewing of iNKT cells towards NKT2. Importantly, while NKT1 and NKT17 were unaltered compared to WT controls, we found a significant and selective NKT2 decrease in the thymus of *Il25*^{-/-} mice. This fits well with previous observations demonstrating a selective NKT2 cell reduction in IL-17RB-deficient mice³⁵. Taken together, these findings suggest that at least one of the requirements for tuft cells in thymic NKT2 development can be explained by their provision of IL-25.

Given this reduction in NKT2 in *Il25*^{-/-} mice, we also investigated whether diminished numbers of NKT2 in LTβR^{TEC} mice might be restored through the addition of IL-25. As all iNKT sublineages are reduced in LTβR^{TEC} mice (Fig. 4), they

were chosen as the ‘rescue’ model for these experiments to see whether cytokine administration might restore multiple iNKT subsets in the same thymus, with any effects then being related to the mTEC defects in these mice. Thus, adult LTβR^{TEC} mice were injected with either phosphate-buffered saline (PBS) or a single dose of IL-25, and we analysed intrathymic iNKT cells 4 days later. Treatment with recombinant IL-25 in vivo caused a significant and selective increase in NKT2 numbers in LTβR^{TEC} mice, but did not alter numbers of either NKT1 or NKT17, despite robust expression of the IL-25 receptor by the latter (Fig. 5c, d). Interestingly, in vitro treatment of thymocyte suspensions with IL-25 neither increased nor maintained NKT2 cell numbers. Rather, we saw a progressive decline in all iNKT cell sublineages over a 3-day culture period (Fig. 5e). Thus, provision of IL-25 in vivo is sufficient to rescue the NKT2 deficiency in LTβR^{TEC} mice, but does not promote their rescue in vitro, suggesting that additional intrathymic factors that are not present in suspension also influence NKT2 cells.

While IL-15 transpresentation can increase thymic NKT²⁸, it is not known whether this is as a result of selective effects on NKT1, NKT2 and/or NKT17. To address this, we injected LTβR^{TEC} mice with a single dose of IL-15/IL-15Rα complex (Fig. 6a). After 4 days, we saw a significant increase in both thymic NKT1 and NKT17 (Fig. 6b, c), with NKT2 unchanged (Fig. 6b, c). Thus, in vivo provision of IL-15 transpresentation is sufficient to at least partially restore the thymic defect in NKT1 and NKT17 in LTβR^{TEC} mice. Interestingly, we found that in vitro addition of IL-15/IL-15Rα complexes to thymocyte suspensions from LTβR^{TEC} mice significantly increased NKT1 (Fig. 6d, e). Moreover, NKT1-treated in vitro with IL-15/IL-15Rα showed increased levels of Bcl2 protein (Fig. 6f), together with an increased

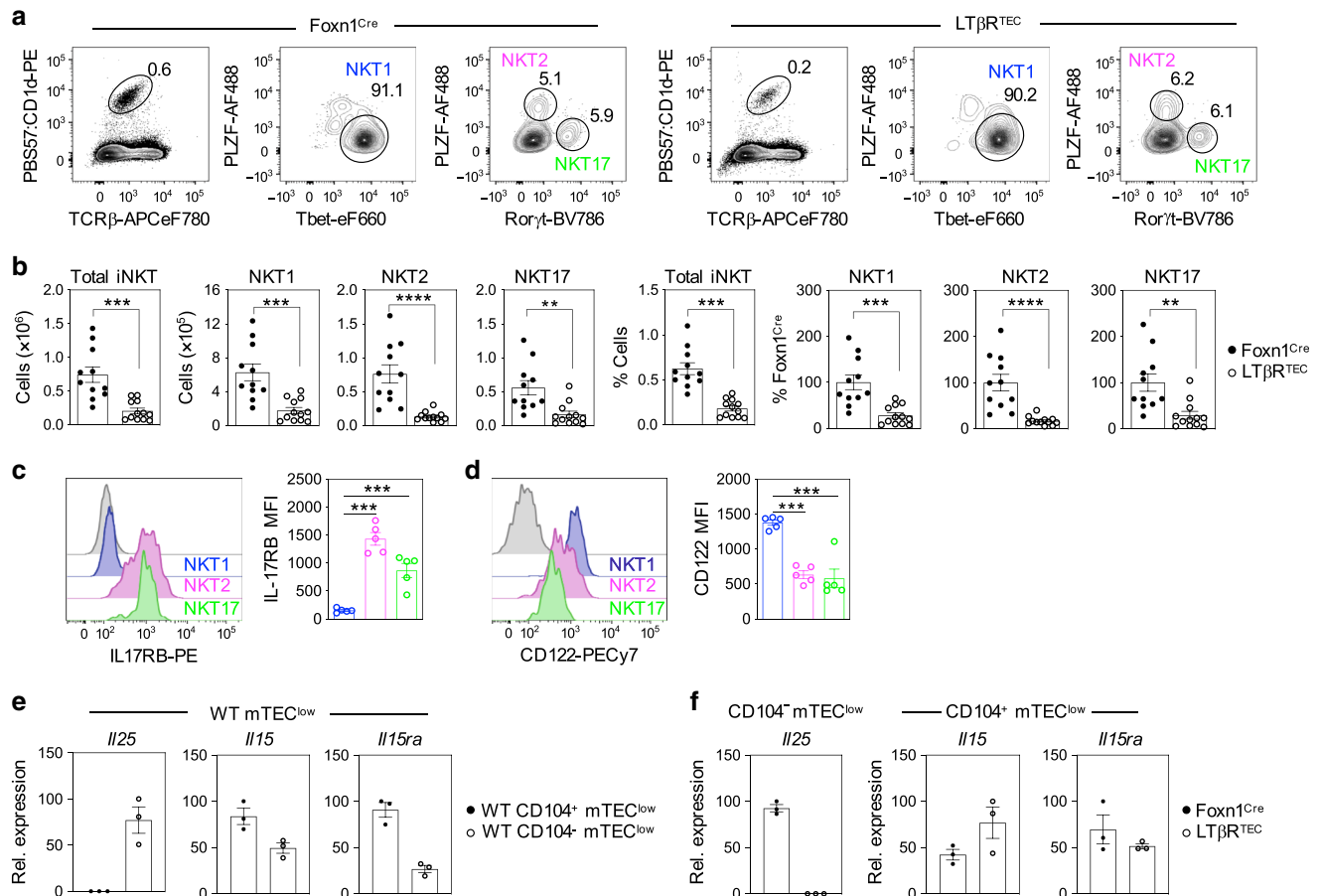
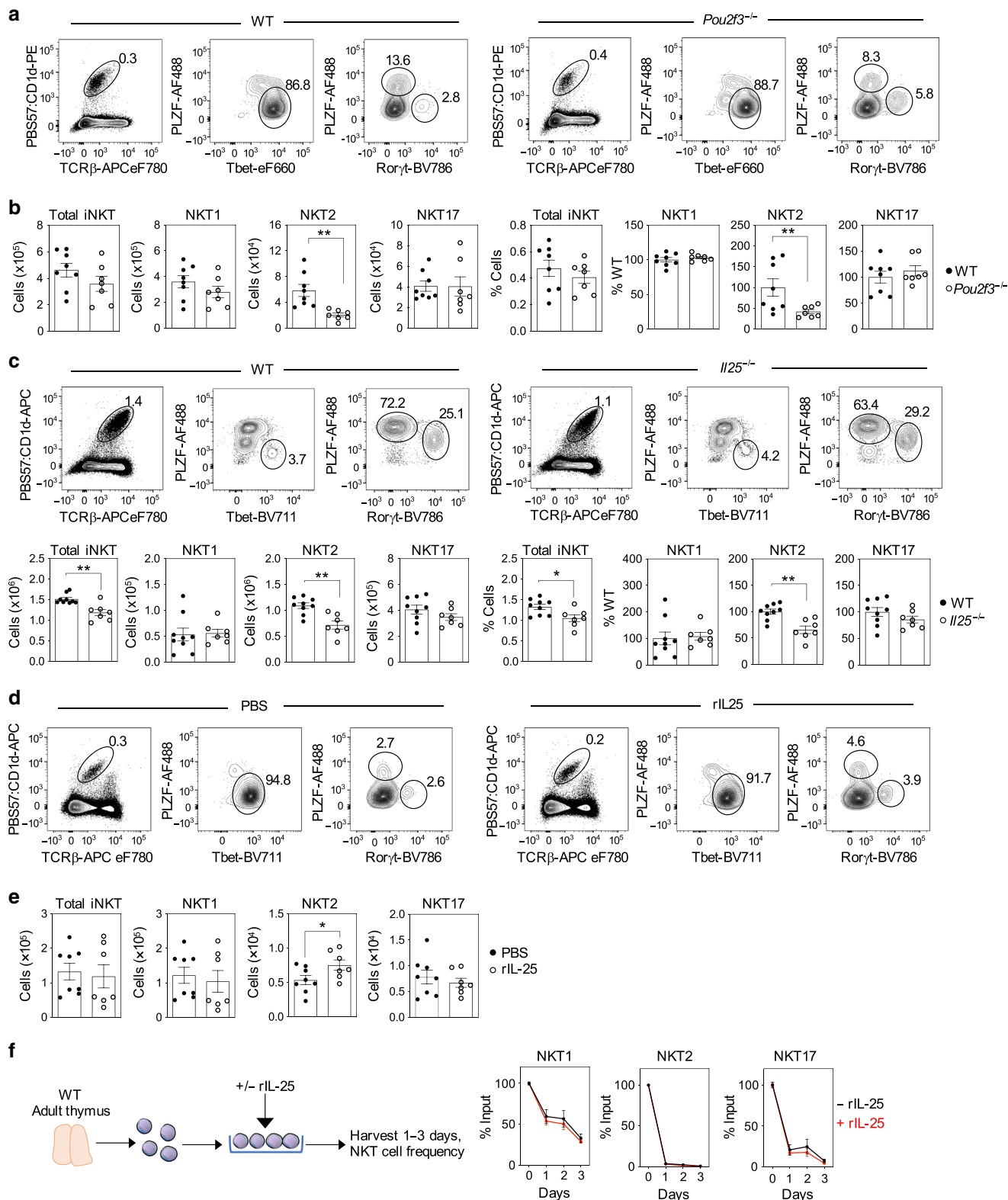


Fig. 4 $LT\beta R$ expression by thymic epithelium controls the intrathymic iNKT cell pool. **a** Thymocytes from $Foxn1^{Cre}$ and $LT\beta R^{TEC}$ mice, analysed for expression of TCR β and reactivity with the PBS57-loaded CD1d tetramer to identify iNKT cells. TCR β^+ PBS57:CD1d $^+$ cells were analysed for intracellular expression of PLZF, Tbet and ROR γt to identify NKT1, NKT2 and NKT17 subsets as indicated. **b** Absolute numbers of iNKT cells and iNKT subsets in $Foxn1^{Cre}$ controls ($n = 11$ biologically independent samples, closed symbols) and $LT\beta R^{TEC}$ mice ($n = 12$ biologically independent samples, open symbols), over three independent experiments. Percentages relative to $Foxn1^{Cre}$ controls are also shown. Significant P values using two-tailed unpaired t test as follows: no. of total iNKT $P = 0.0002$, no. of NKT1 $P = 0.0003$, no. of NKT2 $P \leq 0.0001$, no. of NKT17 $P = 0.0021$, % Total iNKT $P = 0.0001$, % NKT1 $P = 0.0003$, % NKT2 $P \leq 0.0001$, % NKT17 $P = 0.0021$. **c** Levels of expression of IL-17RB (IL-25R) on iNKT subsets; grey histograms represent isotype controls. Bar graphs show MFI of IL-17RB on indicated iNKT subsets, $n = 5$ biologically independent samples, over three independent experiments. Significant P values using two-tailed unpaired t test as follows: NKT1 vs. NKT2 $P \leq 0.0001$, NKT1 vs. NKT17 $P = 0.0005$. **d** Levels of CD122 expression on iNKT cell subsets; grey histograms represent isotype controls. Bar graphs show MFI of CD122 on indicated iNKT subsets, $n = 5$ biologically independent samples, over three independent experiments. Significant P values using two-tailed unpaired t test as follows: NKT1 vs. NKT2 $P \leq 0.0001$, NKT1 vs. NKT17 $P = 0.0004$. **e** qPCR analysis of *Il25*, *Il15* and *Il15ra* mRNA in CD104 $^+$ (closed symbols) and CD104 $^-$ (open symbols) mTEC low isolated from adult WT mice. **f** qPCR analysis of *Il25* in CD104 $^-$ mTEC low , and expression of *Il15* and *Il15ra* in CD104 $^+$ mTEC low from control $Foxn1^{Cre}$ (closed symbols) and $LT\beta R^{TEC}$ mice (open symbols). All data are represented as mean \pm SEM, ** $P < 0.01$, *** $P < 0.001$ and **** $P < 0.0001$. qPCR was performed in replicate, and data shown are representative of three independent biological sorted samples. Source data are provided as a Source Data file.

frequency of Ki67 $^+$ cells (Fig. 6g), suggesting that IL-15 transpresentation regulates NKT1 by controlling their survival and proliferation. Interestingly, and in contrast to in vivo effects, in vitro IL-15/IL-15R treatment did not increase NKT17, suggesting that additional intrathymic factors may also be required alongside IL-15 transpresentation that regulate NKT17 numbers.

mTEC low control iNKT cell function and availability. The data above suggest that iNKT cell availability in the thymus can be controlled by subset specialisation in mTEC low , which in turn is regulated by TEC expression of $LT\beta R$. We speculated that this axis might represent an important mechanism that then controls the functioning of iNKT cells within multiple tissues. To examine this, we looked in both the thymus and peripheral tissues of $LT\beta R^{TEC}$ mice for evidence of alterations in iNKT cell function.

In the thymus, we focussed attention on DCs as IL-4, a cytokine produced constitutively by thymic iNKT cells, is a known regulator of chemokine production by thymic DCs 7 . We performed flow cytometric analysis of digested thymus preparations to identify CD11c $^+$ PDCA1 $^-$ conventional DCs (cDCs) within the intrathymic DC pool, which we then separated into Sirpa $^-$ (cDC1) and Sirpa $^+$ (cDC2) subsets 36,37 . Consistent with our previous study 22 , we found that while total numbers of thymic DCs were not significantly altered in $LT\beta R^{TEC}$ mice, there was a significant increase in the number of cDC2. Interestingly, however, we found that the activation status of both cDC1 and cDC2 was diminished in the thymus of $LT\beta R^{TEC}$ mice, as indicated by a reduction in the frequency of MHCII hi CD86 hi cells (Fig. 7a). To correlate these differences in DC activation to the defects in iNKT cells in $LT\beta R^{TEC}$ mice, we next analysed intrathymic DC in *Cd1d1* $^{-/-}$ mice. Importantly, these mice have been shown to lack



iNKT cells and have been used extensively as a model to study mechanisms that control iNKT cell development in the thymus^{7,28}. In these experiments, to avoid any potential confounding problems caused by genetic haploinsufficiency, we used WT mice as controls rather than *Cd1d1* heterozygotes. When we analysed DC activation in *Cd1d1*^{-/-} mice, we found that it was reduced in a manner comparable to that seen in *LTβR*^{TEC} mice (Fig. 7b). Thus, these findings further emphasise the regulation of

thymic DC by iNKT cells, and suggest that DC deficiencies in *LTβR*^{TEC} mice may be explained by their deficiencies in iNKT cells.

Perhaps, most significantly, we saw that *LTβR*^{TEC} mice had significant deficiencies in iNKT cells in all peripheral tissues examined, including spleen, lung, liver and peripheral blood (Fig. 8a, b). Thus, despite selective targeting of *LTβR* deletion by *Foxn1*^{Cre}, which targets only the thymus and skin³⁸, defects in

Fig. 5 IL-25 production from thymic tuft cells controls intrathymic iNKT2 cells. Flow cytometric detection (a) and quantitation (b) of TCR β^+ PBS57:CD1d tetramer $^+$ iNKT cells and NKT1, 2 and 17 subsets in WT ($n = 8$ biologically independent samples, closed symbols) and tuft cell-deficient *Pou2f3* $^{-/-}$ ($n = 7$ biologically independent samples, open symbols), over three independent experiments. Significant P values using two-tailed unpaired t test as follows: no. of NKT2 $P = 0.0033$ and % NKT2 $P = 0.0253$. Flow cytometric detection and quantitation (c) of total iNKT and iNKT subsets in BALB/c WT ($n = 9$ biologically independent samples, closed symbols) and *IL25* $^{-/-}$ ($n = 7$ biologically independent samples, open symbols) mice, over four independent experiments. Significant P values using two-tailed unpaired t test as follows: no. of total iNKT $P = 0.0013$, no. of NKT2 $P = 0.011$ and % NKT2 $P = 0.0011$. Flow cytometric detection (d) and quantitation (e) of total iNKT and iNKT subsets in LT β R TEC mice, 4 days after injection with either PBS ($n = 8$ biologically independent samples, closed symbols) or recombinant IL-25 ($n = 7$ biologically independent samples, open symbols), over three independent experiments. Significant P values using two-tailed unpaired t test as follows: no. of NKT2 $P = 0.0482$. f WT thymocyte suspensions were cultured in the presence (red line) or absence (black line) of recombinant IL-25 for the indicated period, and iNKT subsets were quantitated by flow cytometry. Data are shown as mean percentage of input (i.e. cells at d0), and error bars indicate SEM of triplicate wells from one experiment, representative of three separate experiments. All data are represented as mean \pm SEM. * $P < 0.05$ and ** $P < 0.01$. Source data are provided as a Source Data file.

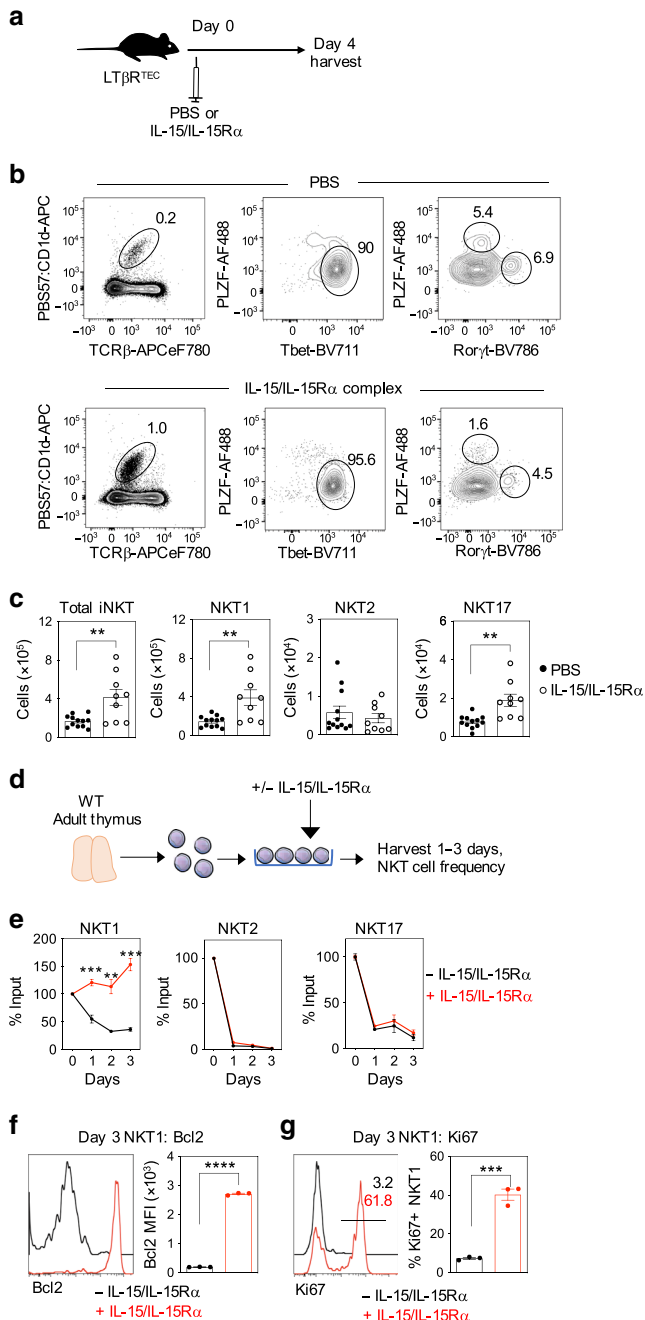


Fig. 6 IL-15 transpresentation stimulates survival and proliferation of intrathymic iNKT1.

a Schematic showing in vivo treatment of LT β R TEC mice with PBS or IL-15/IL-15 α complexes. **b** iNKT populations were analysed by flow cytometry from LT β R TEC mice injected with PBS (top panel) or IL-15/IL-15 α complex (bottom panel) 4 days post injection. **c** Quantitation of total iNKT and iNKT subsets in control ($n = 12$ biologically independent samples, closed symbols) and IL-15/IL-15 α injected mice ($n = 9$ biologically independent samples, open symbols) from five independent experiments. Significant P values using two-tailed unpaired t test as follows: no. of total iNKT $P = 0.0035$, no. of NKT1 $P = 0.0031$, no. of NKT17 $P = 0.0012$. **d** Schematic showing in vitro culture of WT thymocytes in the absence or presence of IL-15/IL-15 α complexes for the indicated period, and iNKT subsets were quantitated by flow cytometry. Data are shown as mean percentage of input (i.e. cells at d0), and error bars indicate SEM of triplicate wells from one experiment, representative of three separate experiments. Significant P values using two-tailed unpaired t test as follows: NKT1 day 1 $P = 0.0008$, NKT1 day 2 $P = 0.0034$, NKT1 day 3 $P = 0.0005$. Analysis of intracellular Bcl2 (f) and Ki67 (g) expression in untreated (black lines) and IL-15/IL-15 α -treated (red lines) NKT1 cells at day 3 of culture. Data shown represent a minimum of three separate experiments. Significant P values using two-tailed unpaired t test as follows: Bcl2 MFI $P \leq 0.0001$, % Ki67 $^+$ $P = 0.0003$. All data are represented as mean \pm SEM. ** $P < 0.01$, *** $P < 0.001$ and **** $P < 0.0001$. Source data are provided as a Source Data file.

iNKT cells in the thymus of LT β R TEC mice are accompanied by long-term iNKT cell defects in extrathymic tissues. Interestingly, splenic iNKT cells in Foxn1 Cre and LT β R TEC mice responded equally well to in vivo α Gal-Cer stimulation in terms of per cell levels of IL-4 and interferon- γ (IFN γ) expression (Fig. 8c, d). In contrast, and in agreement with the reduced iNKT peripheral pool size, fewer IL-4 $^+$ and IFN γ $^+$ cells (Fig. 8e), and lower levels of serum IL-4 and IFN γ (Fig. 8f), were detected in LT β R TEC mice following α Gal-Cer stimulation. Thus, despite their reduced frequency in LT β R TEC mice, iNKT cells are functionally competent in terms of their cytokine production in response to in vivo T cell receptor (TCR) stimulation. Collectively, our data identify an intrathymic mechanism in which LT β R regulates subset specialisation in mTEC, which not only controls iNKT cell development and function in the thymus but also iNKT cell availability in peripheral tissues.

Discussion

In contrast to the known importance of mTEC hi in thymic tolerance^{4,6,12}, functional specialisation in mTEC low is poorly understood. To address this, we examined the adult mTEC low compartment and the molecular mediators that control it. Next,

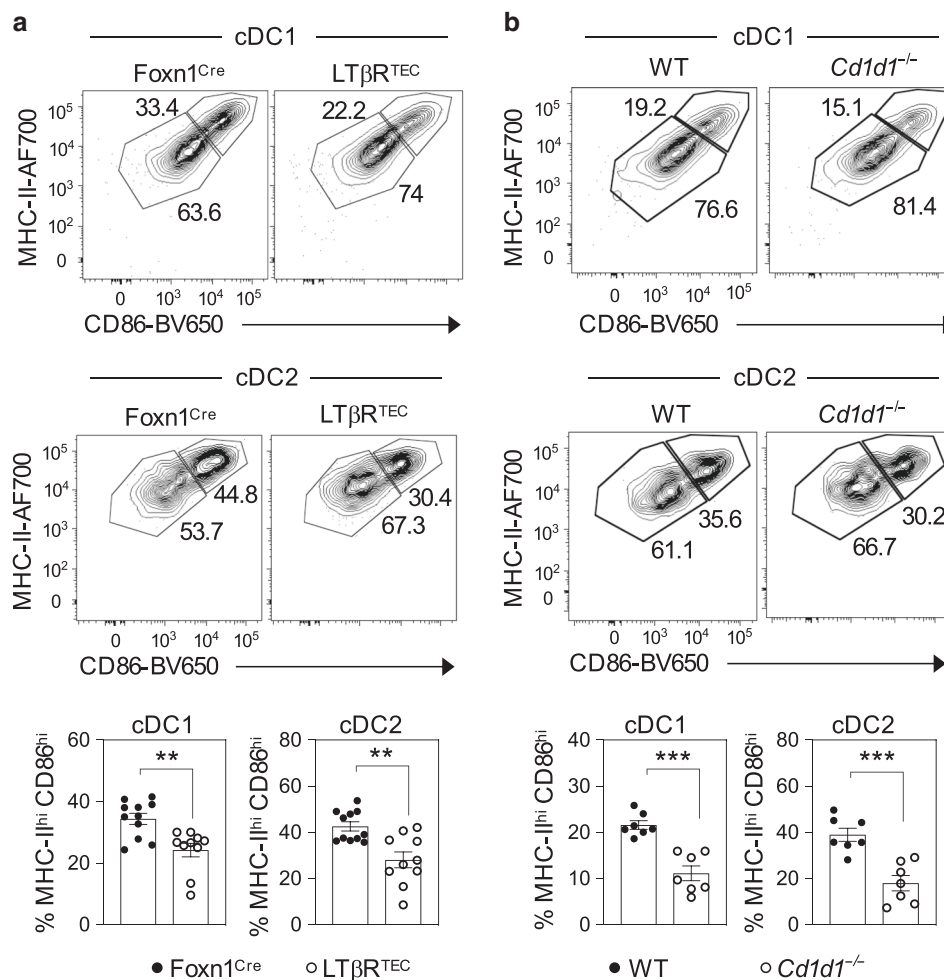


Fig. 7 Impaired dendritic cell activation in LTβR^{TEC} mice. Flow cytometric analysis of CD86 and MHCII expression by Lin⁻CD11c⁺Sirpα⁻ cDC1 and Lin⁻CD11c⁺Sirpα⁺ cDC2 in the thymuses of **a** Foxn1^{Cre} ($n = 10$ biologically independent samples, closed symbols) and LTβR^{TEC} ($n = 11$ biologically independent samples, open symbols), and **b** WT ($n = 7$ biologically independent samples, closed symbols) and Cd1d1^{-/-} ($n = 7$ biologically independent samples, open symbols). In both cases, graphs in lower panels show quantitation of MHCII^{hi}CD86^{hi} cDC1 and cDC2 (gated as in upper panels). All data are from three independent experiments. Significant P values using two-tailed unpaired t test are as follows: **a** cDC1 $P = 0.0018$, cDC2 $P = 0.0014$, **b** cDC1 $P = 0.0001$, cDC2 $P = 0.0004$. All data are represented as mean \pm SEM. *** $P < 0.001$ and ** $P < 0.01$. Source data are provided as a Source Data file.

we analysed the functional significance of mTEC^{low} heterogeneity during intrathymic iNKT cell development, a known but poorly understood function of the medulla.

Within adult mTEC^{low}, we identified CD104⁺ cells uniformly expressing the chemokine CCL21, as well as an additional and distinct DCLK1⁺ subset. The latter was specifically contained within CD104⁻ cells and represents recently described thymic tuft cells^{15,16}. Thus, and in agreement with single-cell RNA-sequencing data^{15,16}, mTEC^{low} are phenotypically heterogeneous. To identify regulators of mTEC^{low} heterogeneity, we created LTβR^{TEC} mice where the mTEC regulator LTβR was selectively absent from TECs. Analysis showed that LTβR is essential for thymic tuft cell differentiation, but is not an absolute requirement for CD104⁺CCL21⁺ mTEC^{low} differentiation. Instead, LTβR influences the frequency of these cells. This reduction in CCL21⁺mTEC^{low} in LTβR^{TEC} mice fits well with a similar observation in germline *Ltbr*^{-/-} mice²⁶. Significantly, as the absence of LTβR expression in the thymus of LTβR^{TEC} mice is selective to TECs, our findings extend these observations by demonstrating that LTβR regulates CCL21⁺ mTEC^{low} via a direct requirement for LTβR expression by TECs. While the mechanism by which LTβR regulates CCL21⁺ mTEC^{low} is unclear, it may reflect the importance of LTβR in controlling their proliferation and/or cell

turnover^{21,26}. Alternatively, a requirement for LTβR by mTEC progenitors³⁹ may also impact the frequency of CD104⁺CCL21⁺ mTECs. Similarly, although our data shows an important requirement for LTβR in thymic tuft cell development, the stage (s) in the mTEC developmental pathway where LTβR is required are not known. For example, tuft cell deficiency may be caused by a requirement for LTβR in the development of immature mTEC^{lo} progenitors that represent progenitors of mTEC^{hi}. Alternatively, as thymic tuft cells can arise from mTEC^{hi}¹⁵, defects in the maturation of mTEC^{hi} towards more mature mTEC^{low} stages may be responsible for the absence of tuft cells. Perhaps, consistent with this, mTEC^{hi} are also reduced in LTβR^{TEC} mice²², and germline *Ltbr*^{-/-} mice that lack LTβR in all tissues also lack terminally differentiated mTECs⁴⁰. Finally, it is also interesting to note that tuft cells themselves express detectable levels of LTβR (Supplementary Fig. 1), so a further possibility is that LTβR directly regulates tuft cells themselves, rather than in upstream stages of the mTEC lineage. Thus, in current models of the mTEC developmental pathway, that is, 'bona fide' mTEC^{low} progenitors > mTEC^{hi} > terminally differentiated mTEC^{low} and tuft cells, it is not currently known where the requirement for LTβR in tuft cell development maps to, and tackling this question will require the generation of new mouse models that enable gene targeting at

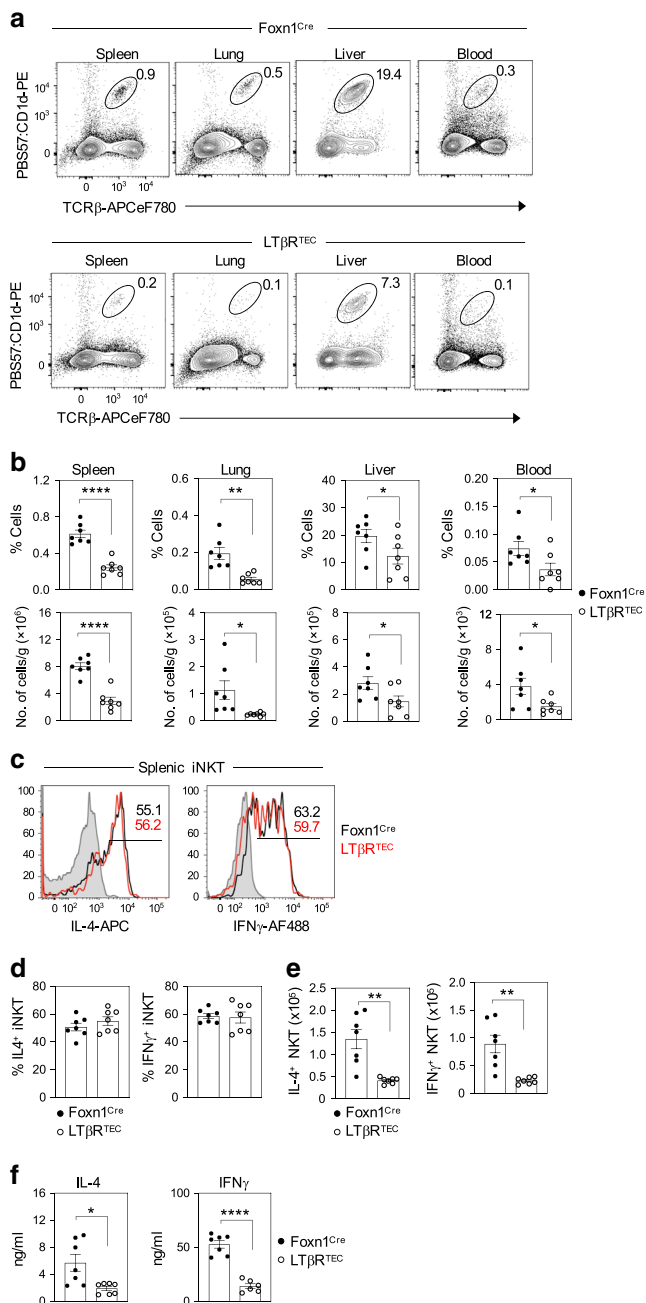


Fig. 8 **LT β R** expression by thymic epithelium determines peripheral iNKT-pool size. **a** indicated that tissues from control Foxn1^{Cre} and LT β R^{TEC} mice were analysed for iNKT cell frequencies by flow cytometry. Graphs in **b** show cell percentages and number of iNKT cells per gram or ml of tissue, as indicated, in Foxn1^{Cre} ($n = 7$ biologically independent samples, closed symbols) and LT β R^{TEC} ($n = 7$ biologically independent samples, open symbols), over three independent experiments. Significant P values using two-tailed unpaired t test are as follows: % spleen $P \leq 0.0001$, % lung $P = 0.0012$, % liver $P = 0.0494$, % blood $P = 0.0383$, no. of cells in the spleen $P \leq 0.0001$, no. of cells in the lung $P = 0.0255$, no. cells in the liver $P = 0.0459$, no. of cells in blood $P = 0.0371$. **c** Flow cytometric analysis of intracellular IL-4 or IFN γ expression in splenic iNKT cells in Foxn1^{Cre} (black lines) and LT β R^{TEC} (red lines) mice, 2 h after i.v. administration of α Gal-Cer. Grey histograms show levels of staining in non-injected mice. Percentages (**d**) and numbers (**e**) of IL-4⁺ and IFN γ ⁺ splenic iNKT after α Gal-Cer stimulation of Foxn1^{Cre} ($n = 7$ biologically independent samples, closed symbols) and LT β R^{TEC} mice ($n = 8$ biologically independent samples, open symbols), over three independent experiments. Significant P values using two-tailed unpaired t test as follows: no. of IL-4⁺ cells $P = 0.0011$, no. of IFN γ ⁺ cells $P = 0.0014$. **f** shows ELISA quantitation of IL-4 (2 h post Gal-Cer injection) Foxn1^{Cre} ($n = 7$ biologically independent samples, closed symbols) and LT β R^{TEC} mice ($n = 6$ biologically independent samples, open symbols), over three independent experiments. Significant P values using two-tailed unpaired t test are as follows: IL-4 $P = 0.0117$, IFN γ $P \leq 0.0001$. All data are represented as mean \pm SEM. * $P < 0.05$, ** $P < 0.01$, and **** $P < 0.0001$. Source data are provided as a Source Data file.

specific stages of the mTEC lineage. Nevertheless, that LT β R is an essential regulator of thymic tuft cells provides important information on a newly described and poorly understood TEC subset. Interestingly, while thymic tuft cells are absent in both LT β R^{TEC} and *Ltbr*^{-/-} germline mice, intestinal tuft cells are still present in *Ltbr*^{-/-} mice (Supplementary Fig. 5). Thus, despite shared similarities of thymic and intestinal tuft cells, including their production of IL-25^{15,41}, they are generated via distinct developmental pathways discriminated by a differential requirement for LT β R. As such, these findings demonstrate a tissue-specific role for LT β R in the control of tuft cells, with LT β R^{TEC} mice providing a model in which tuft cell deficiency is thymus specific.

When we assessed the relevance of the mTEC^{low} heterogeneity described above to $\alpha\beta$ T cell development, we saw a striking effect on iNKT cells in LT β R^{TEC} mice, which was explained by a reduction in all NKT1, NKT2 and NKT17 lineages. This was in contrast to unaltered programmes of conventional and Foxp3⁺

regulatory T cell development in LT β R^{TEC} mice²². Thus, LT β R expression by TECs is a selective and important controller of intrathymic iNKT cell development. An interesting feature of the iNKT cell defect in LT β R^{TEC} mice is that all sublineages show a comparable reduction, suggesting that LT β R does not control lineage specification in iNKT cells. Rather, it may either influence common iNKT cell progenitors⁴² or operate at later stages of development by determining how mTECs regulate downstream mature iNKT sublineages. In support of the latter, we found that within the mTEC^{low} subsets analysed here, CD104⁺CCL21⁺mTEC^{low} expressed the highest levels of both *Il15* and *Il15ra*, genes that are collectively required to enable IL-15 transpresentation. Significantly, in vivo treatment of LT β R^{TEC} mice with IL-15/IL-15R complexes was sufficient to increase both NKT1 and NKT17, indicating the reduction in these cells in LT β R^{TEC} mice is likely caused by limited IL-15 transpresentation. Together, these findings suggest that NKT1 and NKT17 can be regulated by IL-15 transpresentation. Importantly, these findings extend earlier observations demonstrating a link between mTECs and iNKT cells, and IL-15 transpresentation²⁸. For example, this earlier study did not examine the requirements of individual NKT1, NKT2 and NKT17 subsets, nor did it assess the potential functional importance of mTEC^{low} subsets described here. Relevant to this, while our study indicates that CD104⁺CCL21⁺mTEC^{low} are capable of IL-15 transpresentation, it is currently unclear whether IL-15 transpresentation is limited to CD104⁺CCL21⁺mTEC^{low}, or a property shared by other mTEC subsets. Related to this, while analysis of IL-15^{CFP} knock-in mice demonstrated *Il15* expression in mTEC^{hi}, expression of *Il15ra* was not analysed in this study⁴³. Relevant to this, we showed previously²⁸ that mTEC^{hi} express only very low levels of *Il15ra* in comparison to mTEC^{low}. Thus, while *Il15* expression may be a shared feature of multiple mTEC subsets, differential expression of *IL15Ra* within mTEC may mean that IL-15Ra-mediated

transpresentation is more restricted. Direct analysis of this will require the generation of new mouse models that allow selective gene deletion in specific mTEC subsets. Regardless of how widespread IL-15 transpresentation may be within mTEC, the finding that CCL21⁺ mTEC^{low} express genes that regulate IL-15 transpresentation extends our current understanding of the involvement of this mTEC subset during T cell development. For example, as well as controlling the CCL21-mediated entry of conventional thymocytes into the medulla following positive selection¹⁷, their regulation of NKT1 and NKT17 by IL-15 transpresentation highlights an additional functional property of CD104⁺CCL21⁺ mTEC^{low} and suggest that they act as regulators of multiple $\alpha\beta$ T cell lineages in the thymus.

In analysing the intrathymic requirements of NKT2 cells, we found that they expressed high levels of IL-17RB, a receptor for the tuft cell-specific cytokine IL-25. Moreover, IL-25 treatment of LT β R^{TEC} mice increased NKT2 numbers in vivo. This correlated with a selective NKT2 defect in tuft cell-deficient *Pou2f3*^{-/-} mice, where the intrathymic source of IL-25 is absent. That NKT2 cells are reduced in the thymus of tuft cell-deficient *Pou2f3*^{-/-} mice fits well with a previous similar observation¹⁵. Importantly, however, our study differs from this earlier report in several ways. First, it is significant that the earlier study did not address the mechanism by which tuft cells influence NKT2 cells. Here, we show that as with *Pou2f3*^{-/-} mice, iNKT2 are also reduced in the thymus of *Il25*^{-/-} mice. As thymic expression of IL-25 is exclusive to tuft cells^{15,16} our data and that of others collectively provide evidence for a mechanism in which tuft cells control NKT2 cells via their IL-25 production. This scenario fits well with the intrathymic restriction of IL-25 to tuft cells reported by both Miller et al.¹⁵ and Bornstein et al.¹⁶, and is further supported by experiments here showing increased NKT2 cells following in vivo IL-25 administration. Second, and in contrast to Miller et al.¹⁵, we found that NKT1 and NKT17 cells are not significantly reduced in the thymus of *Pou2f3*^{-/-} mice. The reasons for the discrepancy in these findings on NKT1 and NKT17 cells are unknown. However, as NKT1 cells lack IL-25 receptor expression, any influence of tuft cells is unlikely to be explained by a requirement for the tuft cell-specific product IL-25. In support of this, we found that NKT1 cells were not significantly altered in *Il25*^{-/-} mice. Interestingly, while NKT17 cells do express detectable levels of IL-25 receptor, our analysis showing unaltered numbers of NKT17 cells in tuft cell-deficient mice was paralleled by normal numbers of NKT17 cells in IL-25 -efficient mice. Thus, in our hands, and unlike for NKT2 cells, tuft cells and IL-25 do not appear to be essential regulators of either NKT1 or NKT17 cells. Finally, despite our evidence indicating a role for IL-25 in regulating NKT2 cells in vivo, we found that IL-25 did not increase NKT2 cells in vitro. Together, these findings suggest that through the production of IL-25, tuft cells represent an important and selective regulator of NKT2 cells, and that this cytokine operates in synergy with other intrathymic signals to control their numbers. While the nature of these signals is not known, it is interesting that IL-25 stimulates proliferation of splenic iNKT cells in the presence of TCR stimulation³¹. As thymic iNKT cells show evidence of ongoing TCR signalling^{7,9}, and bone marrow-derived thymic antigen-presenting cell express the iNKT cell receptor ligand CD1d⁹, this raises the possibility that tuft cell production of IL-25 operates in conjunction with TCR stimulation in the thymus medulla to regulate NKT2 cells. Perhaps, relevant to this, we found evidence for a functional consequence of reduced iNKT cell development in LT β R^{TEC} mice. Here, activation of intrathymic DCs was diminished, which mirrored DC defects in *Cd1d1*^{-/-} mice. How iNKT cells regulate thymic DC activation is not clear. Indeed, while this study uses *Cd1d1*^{-/-} mice to analyse this requirement for iNKT cells, future analysis of *Ja18*^{-/-} mice⁴⁴

that exclusively lack type 1 iNKT cells may help to address this. Whatever the case, this scenario fits well with the ability of cytokine production by NKT2 cells (i.e. IL-4) to regulate the expression of chemokines (CCL17 and CCL22) by thymic DCs⁷. Alongside this impact of the NKT2-produced cytokine IL-4 on thymic DCs, it may be the case that additional cytokines from other iNKT subsets can also influence thymic DCs. For example, it is tempting to speculate that intrathymic production of IFN γ , a signature cytokine expressed by thymic NKT1 cells⁷ and known regulator of DC activation⁴⁵, may also be an explanation for how iNKT cells regulate thymic DCs.

Finally, a striking finding in LT β R^{TEC} mice was the reduction in iNKT cells in both the thymus and multiple peripheral tissues. These findings differ from previous studies on germline *Ltbr*^{-/-} mice, which showed reduced NKT cells in the liver and spleen, but normal numbers in the thymus^{46,47}. There are several possibilities to explain this discrepancy. First, in germline *Ltbr*^{-/-} mice peripheral lymphoid organ development is profoundly disrupted, including the absence of lymph nodes and loss of splenic organisation⁴⁸, which may alter the survival and/or proliferation of iNKT cells following their exit from the thymus. Second, germline *Ltbr*^{-/-} mice also have defects in thymus emigration, which results in an intrathymic accumulation of mature thymocytes²¹. Thus, a reduction in thymus emigration could also explain the reduction in iNKT numbers in peripheral tissues of germline *Ltbr*^{-/-} mice. Consequently, these earlier studies could not determine whether iNKT abnormalities caused by germline LT β R deletion are a result of altered events in the thymus or the periphery, or both. Importantly, in LT β R^{TEC} mice, selective intrathymic targeting of LT β R deletion to TEC with *Foxn1*^{Cre} directly demonstrates that loss of iNKT cells in these mice is due to defective intrathymic development. Moreover, unaltered thymus emigration in LT β R^{TEC} mice⁴⁹ also argues against an impact on iNKT cells caused by defects in this process. Thus, our data indicate that TEC expression of LT β R influences intrathymic development of NKT cells in the thymus, and that this then causes iNKT cell defects in the periphery.

Importantly, the defect in peripheral iNKT cells in LT β R^{TEC} mice is long lived and not accompanied by a recovery in their numbers in peripheral tissues. In line with diminished peripheral iNKT-pool size, we saw reduced levels of serum cytokine production by peripheral iNKT cells following in vivo stimulation of LT β R^{TEC} mice with α Gal-Cer. However, IL-4 and IFN γ production by iNKT cells on a per cell basis was normal, suggesting that defects in intrathymic maturation do not impair their response to TCR stimulation. Why iNKT cell numbers do not recover in peripheral tissues following defective thymus development is unclear. One possibility is that undefined LT β R-dependent signals are needed by iNKT cells during intrathymic maturation, and their absence impairs long-term iNKT cell fitness in the periphery. Alternatively, possible alterations in conventional or *Foxp3*⁺ T-reg that might be caused by loss of LT β R may place iNKT cells at a competitive disadvantage in peripheral tissues.

In conclusion, our study provides new evidence for the importance of mTEC^{low} heterogeneity in adult mice. Our identification of LT β R as a key regulator of multiple mTEC^{low} subsets, each controlling individual iNKT sublineages, helps redefine our understanding of how the medulla influences non-conventional $\alpha\beta$ T cells. Finally, that iNKT cell availability in multiple organs is controlled through expression of LT β R by TECs demonstrates the importance of the thymus in the regulation of the peripheral immune system.

Methods

Mouse. The following mice were sacrificed via cervical dislocation at 8–12 weeks of age, unless otherwise indicated: WT mice on a C57BL/6 and BALB/c background

were bred at the University of Birmingham, B6 *Pou2f3*^{-/-27} (RIKEN BioResource Research Centre), germline *Ltr*^{-/-48} (provided by Klaus Pfeffer, Heinrich Heine University, Germany), CCL21^{tdTOM}17, B6 *Cd1d1*^{-/-50} (JAX), and BALB/c *Il25*^{-/-51} (provided by Andrew McKenzie, LMB Cambridge). LT β R^{TEC} mice were generated by crossing *Foxn1*^{Cre} mice³⁸ with LT β R^{fl/fl} mice⁵² (provided by Alexei Tumanov, UT Health San Antonio, Texas). *Foxn1*^{Cre} mice were used as controls for LT β R^{TEC} mice. All mice were co-housed in standard barrier conditions at the Biomedical Services Unit at the University of Birmingham, and equal proportions of male and female mice were used in all experiments. All mouse experiments were done with permission from the Birmingham Animal Welfare and Ethical Review Body and the UK Home Office.

Flow cytometry and cell sorting. For iNKT analysis, thymus, spleen and liver samples were mechanically disrupted. Lungs were enzymatically digested using Liberase TM (Roche, 12.5 μ g/ml) and DNase I (100 mg/ml, Roche), and subsequently treated with Red Cell Lysis Buffer (Sigma). Cell suspensions were stained with the following: anti-TCR β (H57-597, eBioscience, cat. no.: 47-5961-82, 1:200), anti-PLZF (Mags.21F7, eBioscience, cat. no.: 53-9320-82, 1:100), anti-ROR γ t (Q31-378, Becton Dickinson, cat. no.: 564723, 1:100), anti-T-bet (4B10, eBioscience, cat. no.: 50-5825-82, 1:100), anti-T-tet (4B10, BioLegend, cat. no.: 644820, 1:100), anti-CD122 (TM-b1, eBioscience, cat. no.: 25-1222-82, 1:100), anti-IL-17RB (MUNC33, eBioscience, cat. no.: 12-7361-82, 1:100) and CD1d tetramers loaded with PBS57 or unloaded CD1d tetramers (obtained from the National Institutes of Health Tetramer Facility). For stromal cell analysis, thymus tissue was digested with collagenase dispase (2.5 mg/ml, Roche) and DNase I (40 mg/ml, Roche) and depleted of CD45⁺ cells using anti-CD45 microbeads and LS columns (Miltenyi Biotec). TECs were analysed using the following antibodies: anti-CD45 (30-F11, eBioscience, cat. no.: 47-0451-82, 1:1000), anti-EpCAM1 (G8.8, eBioscience, cat. no.: 46-5791-82, 1:2000), anti-Ly51 (6C3, eBioscience, cat. no.: 17-5891-82, 1:1000), anti-IA/IE (M5/114.15.2, eBioscience, cat. no.: 56-5321-82, 1:2000), anti-CD80 (16-10A1, BioLegend, cat. no.: 104729, 1:800) and anti-CD104 (346-11A, BioLegend, cat. no.: 123610, 1:1000). Biotinylated UEA-1 (Vector Laboratories, B-1065, 1:10,000) was detected using streptavidin PEcy-7 (eBioscience, cat. no.: 25-4317-82, 1:1500). Intracellular detection of CCL21 and DCLK1 was achieved using anti-CCL21 (Lifespan Biosciences, cat. no.: LS-C104634, 1:100) and anti-DCLK1 (DCAMKL1, Abcam, cat. no.: Ab31704, 1:1000), followed by donkey anti-rabbit Alexa Fluor 488 (Invitrogen, cat. no.: A-21206, 1:1000). Thymic DCs were analysed following digestion using collagenase D (2.5 mg/ml, Roche) and DNase I (40 mg/ml, Roche), and stained with anti-CD11c (N418, eBioscience, cat. no.: 25-0114-82, 1:800), anti-PDCA-1 (129C1, BioLegend, cat. no.: 127018, 1:200), anti-Sirpa (P84, eBioscience, cat. no.: 12-1721-82, 1:200), anti-IA/IE (M5/114.15.2, eBioscience, cat. no.: 56-5321-82, 1:200) and anti-CD86 (GL1, BioLegend, cat. no.: 105035, 1:200). Anti-CD3 (145-2C11, eBioscience, cat. no.: 47-0031-82, 1:200), anti-CD19 (eBio1D3, eBioscience, cat. no.: 47-0193-82, 1:200) and anti-NK1.1 (PK136, eBioscience, cat. no.: 47-5941-82, 1:200) were used to create a lineage dump gate prior to DC detection. All intracellular staining was performed using a Foxp3 staining buffer set (eBioscience). Cultured thymocytes were analysed for expression of Bcl2 and Ki67 using anti-Bcl2 (BCL10C4, BioLegend, cat. no.: 635510, 1:100) and anti-Ki67 (SolA15, eBioscience, cat. no.: 25-5698-82, 1:2000). Cells were analysed on an LSR Fortessa (Becton Dickinson), and data processed using the FlowJo software (v.8 and v.10). The following TEC subsets were sorted using a FACS Aria Fusion I (Becton Dickinson): CD104⁻mTEC^{low} (CD45⁻EpCAM⁺Ly51⁻UEA1⁺MHC-II^{low}CD104⁻), CD104⁺mTEC^{low} (CD45⁻EpCAM⁺Ly51⁻UEA1⁺MHC-II^{low}CD104⁺) and total mTEC^{low} (CD45⁻EpCAM⁺Ly51⁻UEA1⁺MHC-II^{low}CD80^{low}). Gating strategies for flow cytometry and sorting can be found in Supplementary Fig. 6.

Confocal microscopy. Seven micrometre sections were cut from snap-frozen thymus tissue, and then fixed in acetone. Antibodies used were: anti-DCLK1 (DCAMKL1, Abcam, cat. no.: Ab31704, 1:500), anti-CD8 (53-6.7, BioLegend, cat. no.: MCD0821, 1:100), ETR5 (hybridoma supernatant used undiluted)⁵³. Secondary antibodies used were donkey anti-rabbit Alexa Fluor 555 (Invitrogen, cat. no.: A-31572, 1:1000) and goat anti-rat IgM Alexa Fluor 488 (Invitrogen, cat. no.: A-11006, 1:200). Sections were counterstained with DAPI (4',6-diamidino-2-phenylindole) (Sigma), and mounted using Prolong Diamond (Thermo Fisher). For quantitation of iNKT cell positioning in thymus sections, whole thymus tissue was incubated with phycoerythrin-conjugated PBS57-loaded CD1d tetramers overnight, and then subsequently fixed in 2% paraformaldehyde (PFA) (Sigma) overnight before freezing. Sections were incubated with rabbit anti-PE (Invitrogen, cat. no.: 12-4739-81, 1:100), and then further amplified using donkey anti-rabbit Alexa Fluor 555 (Invitrogen, cat. no.: A-31572, 1:1000). For quantitation of iNKT cell positioning, iNKT cells were detected in thymus sections by CD1d tetramer labelling and enumerated in 100 μ m \times 100 μ m areas in the cortex and medulla. At least three medullary and three cortical regions were analysed per section. Four sections were analysed per mouse, obtained from differing depths throughout the thymus, and three mice of each genotype were analysed. Detection of CCL21^{tdTOM} in sections was achieved by fixing whole thymus in 2% PFA/15% sucrose (Sigma) for 4 h prior to freezing. Cryosections were stained without further amplification of

the CCL21^{tdTOM} signal. Images were obtained using a Zeiss Zen 880 microscope, and analysis was performed using the Zeiss Zen Black software.

Foetal thymus organ culture. Freshly isolated embryonic day 15 thymus lobes were isolated from B6 embryos generated by timed matings, with the day of detection of vaginal plug designated as day 0. Lobes were explanted onto the surface of 0.8 μ m Nucleopore filters (Thermo Fisher) and cultured in the presence of 1.35 mM dGuo (Sigma)⁵⁴. After 7 days, lobes were cultured for a further 4 days in the presence or absence of 2 μ g/ml agonistic anti-LT β R²⁴, and then digested with 0.25% trypsin and 0.02% EDTA for either flow cytometric staining or qPCR analysis.

Quantitative polymerase chain reaction. Briefly, high-purity complementary DNA (cDNA) was obtained from mRNA labelled with oligo(dT) microbeads using the μ Mac One-step cDNA Kit, according to the manufacturer's instructions (Miltenyi Biotec). Real-time PCR was performed with SYBR Green with primers specific for *Actb* (β -actin), *Pou2f3*, *Dcl1*, *Trpm5*, *Ccl21a*, *Il25*, *Il15* and *Il15ra* on the Corbett Rotor Gene-3000 PCR machine (Qiagen). PCRs were ran in replicates using SensiMix SYBR No ROX Kit (Bioline) with 200 nM of primers for the genes of interest (Sigma-Merck) and *Actb* primers (Qiagen, QT00095242). After an initial polymerase activation step (95 $^{\circ}$ C for 10 min), cycling was performed for 40 cycles at 95 $^{\circ}$ C for 15 s, 60–62 $^{\circ}$ C for 20 s, and 72 $^{\circ}$ C for 15 s. Amplification specificity was verified by melt-curve analysis. Reaction amplification efficiencies and the Ct values were obtained from the Rotor Gene Real-Time Analysis Software 6.1 using standard curves generated from mouse Universal cDNA Reference-oligo dT primed (BioChain Institute). Fold levels shown in histograms represent the mean (\pm SEM) of replicate reactions and data shown are representative of at least three independently sorted sample sets. Primer sequences used:

Pou2f3: forward 5'-CTGGAACAGTAACGTCATCCTG-3' and reverse 5'-AGTTCATTGCTGCTTTGGAGTT-3';
Dcl1: forward 5'-GTTCCGTGGAAGTGGGGATG-3' and reverse 5'-GCTATTACAGAACTCCTGCTGC-3';
Trpm5: forward 5'-CCAGCATAAGCGACAACATCT-3' and reverse 5'-GAGCATAAGTAGTTGGCCTG-3';
Ccl21a: forward 5'-ATCCCGCAATCCTGTTCTC-3' and reverse 5'-GGGGCTTTGTTCCCTGGG-3';
Il25: forward 5'-TATGAGTTGGACAGGGACTTGA-3' and reverse 5'-TGGTAAAGTGGGACGGAGTTG-3';
Il15: forward 5'-TCTCCCTAAAACAGAGGCCAA-3' and reverse 5'-TGCAACTGGGATGAAAGTCAC-3';
Il15ra: forward 5'-CCCACAGTCCAAAATGACGA-3' and reverse 5'-GCTGCCTTGATTTGATGTACCAG-3'.
Actb (β -actin): QuantiTect Mm *Actb* ISG Primer Assay (Qiagen, QT00095242).

α Gal-Cer stimulation and flow cytometric cytokine detection. Mice were injected intravenously with either 2 μ g α Gal-Cer (Abcam) or PBS, and harvested 2 h later for detection of IL-4 and IFN γ by flow cytometry and serum IL-4. For serum detection of IFN γ , mice were harvested 16 h following α Gal-Cer injection. Anti-IL-4 (11B11, eBioscience, cat. no.: 17-7041-82, 1:100) and anti-IFN γ (XMG1.2, BioLegend, cat. no.: 505813, 1:100) antibodies were used in conjunction with a Cytotifx/Cytoperm Kit (Becton Dickinson).

Serum cytokine detection. Mouse IL-4 and IFN- γ ELISA Deluxe Kits (BioLegend) were used for quantification of cytokines in serum following in vivo α Gal-Cer stimulation. Samples were diluted for optimal detection.

In vitro cytokine stimulation. Enrichment of thymic iNKT cells was achieved using anti-CD8 microbeads and LS columns (Miltenyi Biotec). Cells were cultured in the presence of rIL-25 (BioLegend) or IL-15/IL-15Ra complexes, made by mixing rIL-15 (Peprotech) and rIL-15Ra (R&D Systems) and incubating at 37 $^{\circ}$ C for 30 min. For in vitro assays, the final concentrations were: rIL-25, 10 ng/ml; rIL-15, 50 ng/ml; rIL-15Ra, 120 ng/ml.

In vivo cytokine stimulation. Mice were given a single intraperitoneal injection of either PBS, rIL-25 (2.5 μ g, BioLegend) or IL-15/IL-15Ra complexes (rIL-15: 2.5 μ g, Peprotech), rIL-15Ra: 15 μ g, R&D Systems), and tissues were harvested and analysed 4 days later.

Statistical analysis. The GraphPad Prism software was used for all statistical analysis. Unpaired two-tailed Student's *t* tests were used for all statistical analysis. Only *P* values < 0.05 were noted as significant. Nonsignificant differences were not specified. Error bars in all figures represent SEM.

Reporting summary. Further information on research design is available in the Nature Research Reporting Summary linked to this article.

Data availability

The authors confirm that all data that support the findings of this study are available in the figures and supplementary figures contained in the paper.

Received: 16 January 2020; Accepted: 12 April 2020;

Published online: 04 May 2020

References

- Takahama, Y., Ohigashi, I., Baik, S. & Anderson, G. Generation of diversity in thymic epithelial cells. *Nat. Rev. Immunol.* **17**, 295–305 (2017).
- Abramson, J. & Anderson, G. Thymic epithelial cells. *Annu. Rev. Immunol.* **35**, 85–118 (2017).
- Breed, E. R., Lee, S. T. & Hogquist, K. A. Directing T cell fate: how thymic antigen presenting cells coordinate thymocyte selection. *Semin. Cell Dev. Biol.* **84**, 2–10 (2018).
- Anderson, M. S. et al. Projection of an immunological self shadow within the thymus by the aire protein. *Science* **298**, 1395–1401 (2002).
- Herzig, Y. et al. Transcriptional programs that control expression of the autoimmune regulator gene Aire. *Nat. Immunol.* **18**, 161–172 (2017).
- Gray, D. H. et al. Developmental kinetics, turnover, and stimulatory capacity of thymic epithelial cells. *Blood* **108**, 3777–3785 (2006).
- Lee, Y. J., Holzapfel, K. L., Zhu, J., Jameson, S. C. & Hogquist, K. A. Steady-state production of IL-4 modulates immunity in mouse strains and is determined by lineage diversity of iNKT cells. *Nat. Immunol.* **14**, 1146–1154 (2013).
- Lee, Y. J. et al. Tissue-specific distribution of iNKT cells impacts their cytokine response. *Immunity* **43**, 566–578 (2015).
- Wang, H. et al. Myeloid cells activate iNKT cells to produce IL-4 in the thymic medulla. *Proc. Natl Acad. Sci. USA* **116**, 22262–22268 (2019).
- Chandra, S. et al. Mrp1 is involved in lipid presentation and iNKT cell activation by *Streptococcus pneumoniae*. *Nat. Commun.* **9**, 4279 (2018).
- Brennan, P. J. et al. Invariant natural killer T cells recognize lipid self antigen induced by microbial danger signals. *Nat. Immunol.* **12**, 1202–1211 (2011).
- Gabler, J., Arnold, J. & Kyewski, B. Promiscuous gene expression and the developmental dynamics of medullary thymic epithelial cells. *Eur. J. Immunol.* **37**, 3363–3372 (2007).
- Aschenbrenner, K. et al. Selection of Foxp3+ regulatory T cells specific for self antigen expressed and presented by Aire+ medullary thymic epithelial cells. *Nat. Immunol.* **8**, 351–358 (2007).
- Williams, J. A. et al. Thymic medullary epithelium and thymocyte self-tolerance require cooperation between CD28–CD80/86 and CD40–CD40L costimulatory pathways. *J. Immunol.* **192**, 630–640 (2014).
- Miller, C. N. et al. Thymic tuft cells promote an IL-4-enriched medulla and shape thymocyte development. *Nature* **559**, 627–631 (2018).
- Bornstein, C. et al. Single-cell mapping of the thymic stroma identifies IL-25-producing tuft epithelial cells. *Nature* **559**, 622–626 (2018).
- Kozai, M. et al. Essential role of CCL21 in establishment of central self-tolerance in T cells. *J. Exp. Med.* **214**, 1925–1935 (2017).
- Chandrakesan, P. et al. Dcl1+ small intestinal epithelial tuft cells display the hallmarks of quiescence and self-renewal. *Oncotarget* **6**, 30876–30886 (2015).
- von Moltke, J., Ji, M., Liang, H. E. & Locksley, R. M. Tuft-cell-derived IL-25 regulates an intestinal ILC2-epithelial response circuit. *Nature* **529**, 221–225 (2016).
- O’Leary, C. E., Schneider, C. & Locksley, R. M. Tuft cells—systemically dispersed sensory epithelia integrating immune and neural circuitry. *Annu. Rev. Immunol.* **37**, 47–72 (2019).
- Boehm, T., Scheu, S., Pfeffer, K. & Bleul, C. C. Thymic medullary epithelial cell differentiation, thymocyte emigration, and the control of autoimmunity require lympho-epithelial cross talk via LTbetaR. *J. Exp. Med.* **198**, 757–769 (2003).
- Cosway, E. J. et al. Redefining thymus medulla specialization for central tolerance. *J. Exp. Med.* **214**, 3183–3195 (2017).
- Mouri, Y. et al. Lymphotoxin signal promotes thymic organogenesis by eliciting RANK expression in the embryonic thymic stroma. *J. Immunol.* **186**, 5047–5057 (2011).
- Banks, T. A. et al. A lymphotoxin-IFN-beta axis essential for lymphocyte survival revealed during cytomegalovirus infection. *J. Immunol.* **174**, 7217–7225 (2005).
- Rossi, S. W. et al. RANK signals from CD4(+)3(-) inducer cells regulate development of Aire-expressing epithelial cells in the thymic medulla. *J. Exp. Med.* **204**, 1267–1272 (2007).
- Lkhagvasuren, E., Sakata, M., Ohigashi, I. & Takahama, Y. Lymphotoxin beta receptor regulates the development of CCL21-expressing subset of postnatal medullary thymic epithelial cells. *J. Immunol.* **190**, 5110–5117 (2013).
- Matsumoto, I., Ohmoto, M., Narukawa, M., Yoshihara, Y. & Abe, K. Skn-1a (Pou2f3) specifies taste receptor cell lineage. *Nat. Neurosci.* **14**, 685–687 (2011).
- White, A. J. et al. An essential role for medullary thymic epithelial cells during the intrathymic development of invariant NKT cells. *J. Immunol.* **192**, 2659–2666 (2014).
- Engel, I. et al. Innate-like functions of natural killer T cell subsets result from highly divergent gene programs. *Nat. Immunol.* **17**, 728–739 (2016).
- Georgiev, H., Ravens, I., Benarafa, C., Forster, R. & Bernhardt, G. Distinct gene expression patterns correlate with developmental and functional traits of iNKT subsets. *Nat. Commun.* **7**, 13116 (2016).
- Terashima, A. et al. A novel subset of mouse NKT cells bearing the IL-17 receptor B responds to IL-25 and contributes to airway hyperreactivity. *J. Exp. Med.* **205**, 2727–2733 (2008).
- Stock, P., Lombardi, V., Kohlrantz, V. & Akbari, O. Induction of airway hyperreactivity by IL-25 is dependent on a subset of invariant NKT cells expressing IL-17RB. *J. Immunol.* **182**, 5116–5122 (2009).
- Matsuda, J. L. et al. Homeostasis of V alpha 14i NKT cells. *Nat. Immunol.* **3**, 966–974 (2002).
- Castillo, E. F., Acero, L. F., Stonier, S. W., Zhou, D. & Schluns, K. S. Thymic and peripheral microenvironments differentially mediate development and maturation of iNKT cells by IL-15 transpresentation. *Blood* **116**, 2494–2503 (2010).
- Watarai, H. et al. Development and function of invariant natural killer T cells producing T(h)2- and T(h)17-cytokines. *PLoS Biol.* **10**, e1001255 (2012).
- Cosway, E. J. et al. Formation of the intrathymic dendritic cell pool requires CCL21-mediated recruitment of CCR7(+) progenitors to the thymus. *J. Immunol.* **201**, 516–523 (2018).
- Hu, Z. et al. CCR7 modulates the generation of thymic regulatory T cells by altering the composition of the thymic dendritic cell compartment. *Cell Rep.* **21**, 168–180 (2017).
- Gordon, J. et al. Specific expression of lacZ and cre recombinase in fetal thymic epithelial cells by multiplex gene targeting at the Foxn1 locus. *BMC Dev. Biol.* **7**, 69 (2007).
- Wu, W. et al. Epithelial LTbetaR signaling controls the population size of the progenitors of medullary thymic epithelial cells in neonatal mice. *Sci. Rep.* **7**, 44481 (2017).
- White, A. J. et al. Lymphotoxin signals from positively selected thymocytes regulate the terminal differentiation of medullary thymic epithelial cells. *J. Immunol.* **185**, 4769–4776 (2010).
- Nevo, S., Kadouri, N. & Abramson, J. Tuft cells: from the mucosa to the thymus. *Immunol. Lett.* **210**, 1–9 (2019).
- Wang, H. & Hogquist, K. A. CCR7 defines a precursor for murine iNKT cells in thymus and periphery. *Elife* **7**, pii: e34793 (2018).
- Cui, G. et al. Characterization of the IL-15 niche in primary and secondary lymphoid organs in vivo. *Proc. Natl Acad. Sci. USA* **111**, 1915–1920 (2014).
- Cui, J. et al. Requirement for Valpha14 NKT cells in IL-12-mediated rejection of tumors. *Science* **278**, 1623–1626 (1997).
- Horejs-Hoec, J. et al. Dendritic cells activated by IFN-gamma/STAT1 express IL-31 receptor and release proinflammatory mediators upon IL-31 treatment. *J. Immunol.* **188**, 5319–5326 (2012).
- Franki, A. S. et al. A unique lymphotoxin {alpha}beta-dependent pathway regulates thymic emigration of V{alpha}14 invariant natural killer T cells. *Proc. Natl Acad. Sci. USA* **103**, 9160–9165 (2006).
- Vallabhapurapu, S. et al. Rel/NF-kappaB family member RelA regulates NK1.1- to NK1.1+ transition as well as IL-15-induced expansion of NKT cells. *Eur. J. Immunol.* **38**, 3508–3519 (2008).
- Futterer, A., Mink, K., Luz, A., Kosco-Vilbois, M. H. & Pfeffer, K. The lymphotoxin beta receptor controls organogenesis and affinity maturation in peripheral lymphoid tissues. *Immunity* **9**, 59–70 (1998).
- James, K. D. et al. Endothelial cells act as gatekeepers for LTbetaR-dependent thymocyte emigration. *J. Exp. Med.* **215**, 2984–2993 (2018).
- Mendiratta, S. K. et al. CD1d1 mutant mice are deficient in natural T cells that promptly produce IL-4. *Immunity* **6**, 469–477 (1997).
- Fallon, P. G. et al. Identification of an interleukin (IL)-25-dependent cell population that provides IL-4, IL-5, and IL-13 at the onset of helminth expulsion. *J. Exp. Med.* **203**, 1105–1116 (2006).
- Wang, Y. et al. Lymphotoxin beta receptor signaling in intestinal epithelial cells orchestrates innate immune responses against mucosal bacterial infection. *Immunity* **32**, 403–413 (2010).
- Van Vliet, E., Jenkinson, E. J., Kington, R., Owen, J. J. & Van Ewijk, W. Stromal cell types in the developing thymus of the normal and nude mouse embryo. *Eur. J. Immunol.* **15**, 675–681 (1985).
- Cowan, J. E. et al. The thymic medulla is required for Foxp3+ regulatory but not conventional CD4+ thymocyte development. *J. Exp. Med.* **210**, 675–681 (2013).

Acknowledgements

We thank Dr. Andrea Bacon and the Biomedical Services Unit at The University of Birmingham for expert animal husbandry. We also thank Drs. Alexei Tumanov, Klaus Pfeffer and Andrew McKenzie for mice, Carl Ware for agonistic anti-LT β R, National Institutes of Health Tetramer Facility for CD1d/PBS57 tetramers and Dr. Kristin Hogquist for methods to detect iNKT in tissue sections. We express our gratitude to Dr. Kendle Maslowski for sharing the methods for gut histology, and all lab members for helpful discussion and critical review of the manuscript. This work was supported by an MRC programme grant to G.A.

Author contributions

G.A., W.E.J. and B.L. conceived the study and designed experiments. B.L., A.J.W., S.M.P., E.J.C. and K.D.J. performed experiments and analysed data. N.D.J., I.O. and Y.T. provided important reagents and advice, and interpretation of data. B.L. and G.A. wrote the manuscript with input from all authors.

Competing interests

The authors have no competing interests.

Additional information

Supplementary information is available for this paper at <https://doi.org/10.1038/s41467-020-16041-x>.

Correspondence and requests for materials should be addressed to G.A.

Peer review information *Nature Communications* thanks the anonymous reviewer(s) for their contribution to the peer review of this work. Peer reviewer reports are available.

Reprints and permission information is available at <http://www.nature.com/reprints>

Publisher's note Springer Nature remains neutral with regard to jurisdictional claims in published maps and institutional affiliations.



Open Access This article is licensed under a Creative Commons Attribution 4.0 International License, which permits use, sharing, adaptation, distribution and reproduction in any medium or format, as long as you give appropriate credit to the original author(s) and the source, provide a link to the Creative Commons license, and indicate if changes were made. The images or other third party material in this article are included in the article's Creative Commons license, unless indicated otherwise in a credit line to the material. If material is not included in the article's Creative Commons license and your intended use is not permitted by statutory regulation or exceeds the permitted use, you will need to obtain permission directly from the copyright holder. To view a copy of this license, visit <http://creativecommons.org/licenses/by/4.0/>.

© The Author(s) 2020