



PUBLISHED FOR SISSA BY SPRINGER

RECEIVED: July 6, 2020

REVISED: October 24, 2020

ACCEPTED: October 29, 2020

PUBLISHED: December 10, 2020

Swing surfaces and holographic entanglement beyond AdS/CFT

Luis Apolo,^a Hongliang Jiang,^b Wei Song^{a,c} and Yuan Zhong^a

^aYau Mathematical Sciences Center, Tsinghua University,
Beijing 100084, China

^bAlbert Einstein Center for Fundamental Physics, Institute for Theoretical Physics,
University of Bern, Sidlerstrasse 5, 3012 Bern, Switzerland

^cInstitute for Advanced Study,
1 Einstein Drive, Princeton, NJ 08540, U.S.A.

E-mail: apolo@mail.tsinghua.edu.cn, jiang@itp.unibe.ch,
wsong2014@mail.tsinghua.edu.cn, zhongy17@mails.tsinghua.edu.cn

ABSTRACT: We propose a holographic entanglement entropy prescription for general states and regions in two models of holography beyond AdS/CFT known as flat₃/BMSFT and (W)AdS₃/WCFT. Flat₃/BMSFT is a candidate of holography for asymptotically flat three-dimensional spacetimes, while (W)AdS₃/WCFT is relevant in the study of black holes in the real world. In particular, the boundary theories are examples of quantum field theories that feature an infinite dimensional symmetry group but break Lorentz invariance. Our holographic entanglement entropy proposal is given by the area of a *swing surface* that consists of *ropes*, which are null geodesics emanating from the entangling surface at the boundary, and a *bench*, which is a spacelike geodesic connecting the ropes. The proposal is supported by an extension of the Lewkowycz-Maldacena argument, reproduces previous results based on the Rindler method, and satisfies the first law of entanglement entropy.

KEYWORDS: AdS-CFT Correspondence, Conformal Field Theory, Field Theories in Lower Dimensions, Gauge-gravity correspondence

ARXIV EPRINT: [2006.10740](https://arxiv.org/abs/2006.10740)

Contents

1	Introduction	1
2	A general proposal for holographic entanglement entropy	3
2.1	Modular flow and swing surfaces on the vacuum	4
2.2	Approximate modular flow for general states	7
2.3	The minimal swing surface proposal	9
2.4	Relative entropy for general states	12
2.5	Remarks	14
3	Swing surfaces in flat₃/BMSFT	16
3.1	Approximate modular flow	17
3.2	The Poincaré vacuum	19
3.3	Zero-mode backgrounds	20
3.4	Beyond zero-mode backgrounds	21
3.5	Comments on strong subadditivity	22
3.5.1	Fixed slope	22
3.5.2	Changing the slope	23
4	Swing surfaces in (W)AdS₃/WCFT	24
4.1	Approximate modular flow	26
4.2	Swing surfaces for zero-mode backgrounds	27
4.3	Swing surfaces as RT/HRT surfaces in AdS ₃ /CFT ₂	31
4.4	Warped AdS ₃	31
A	Bulk modular flow and extremal surfaces	33
B	Parametrization of null geodesics	34
C	The approximate modular flow generator in the bulk	34
C.1	Flat ₃ /BMSFT	34
C.2	AdS ₃ /WCFT	35
D	Parametrization of the swing surface in flat₃/BMSFT	36
D.1	Comments on the swing surface for the Poincaré vacuum	36
D.2	The swing surface for zero-mode $M > 0$ backgrounds	37
D.3	The swing surface for zero-mode $M < 0$ backgrounds	40
E	Null geodesics in AdS₃	42

1 Introduction

Understanding the emergence of spacetime is a profound question in the holographic description of quantum gravity. The seminal work of Ryu-Takayanagi (RT) [1] and Hubeny-Rangamani-Takayanagi (HRT) [2] showed that entanglement entropy in conformal field theories is dual to the area of extremal surfaces in asymptotically AdS spacetimes in Einstein gravity. This deep connection between spacetime geometry and quantum entanglement has motivated the idea that entanglement builds geometry [3–5], and has led to fruitful connections between quantum information, condensed matter physics, and black holes.

The RT/HRT proposal has been firmly established [6–8] within the framework of the AdS/CFT correspondence and it is natural to ask whether this connection between entanglement and geometry is more general and can be extended beyond AdS/CFT. Efforts toward this direction include studies on warped AdS₃ [9–17], flat [18–24], Lifshitz [25, 26], and de Sitter spacetimes [27–29], among others. In the literature, there are several approaches to study holographic entanglement entropy in these backgrounds. One approach consists of studying properties of the RT/HRT surfaces with the assumption that the RT/HRT proposal extends directly to non-AdS spacetimes. The main advantage of this approach is having a concrete geometric picture in the bulk, although the minimal area prescription is not a priori guaranteed to reproduce the entanglement entropy of the dual field theory. Alternatively, the approach taken in [10, 12, 21] consists of *deriving* the bulk dual of the boundary entanglement entropy by generalizing the Rindler method [6] to the conjectured holographic description of non-AdS spacetimes.¹ The advantage of this approach is that the bulk computation of entanglement entropy is automatically consistent with the holographic dictionary, while its disadvantage is that the Rindler method is only applicable for special entangling regions and special states. In this paper, we propose a general geometric prescription for entanglement entropy in a class of non-AdS spacetimes and show that it is consistent with the generalized gravitational entropy à la [7, 8].

Let us consider a holographic duality between a d -dimensional quantum field theory and a gravitational theory in $d + 1$ dimensions that reduces to Einstein gravity in the semiclassical limit. We assume that consistent boundary conditions exist such that the symmetries and partition functions of the bulk and boundary theories match. In addition, we assume that the modular Hamiltonian of the vacuum state can be geometrically realized as the generator of a diffeomorphism. We then propose that the entanglement entropy of a co-dimension one subregion \mathcal{A} in the field theory at the boundary can be obtained from the bulk theory of gravity by

$$S_{\mathcal{A}} = \min_{X_{\mathcal{A}} \sim \mathcal{A}} \text{ext} \frac{\text{Area}(X_{\mathcal{A}})}{4G}, \quad X_{\mathcal{A}} = X \cup_{p \in \partial \mathcal{A}} \gamma_{(p)}, \quad (1.1)$$

where $X_{\mathcal{A}}$ is a surface homologous to \mathcal{A} that consists of a spacelike surface X and a collection of null geodesics $\gamma_{(p)}$ (see figure 1). The null geodesic $\gamma_{(p)}$ emanates from a point p at the boundary $\partial \mathcal{A}$ of the entangling surface \mathcal{A} , and its tangent vector reduces to the

¹In this paper, by non-AdS spacetimes we refer to backgrounds that do not satisfy the standard asymptotically AdS (Dirichlet) boundary conditions.

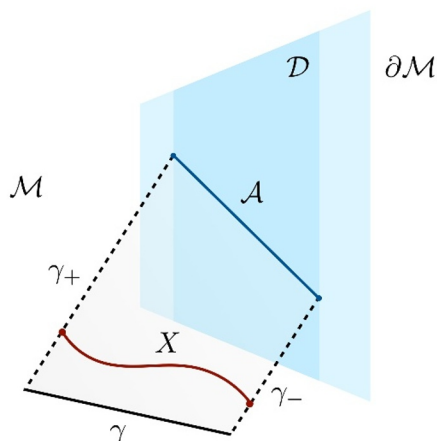


Figure 1. Sketch of two surfaces $X_{\mathcal{A}}$ in the bulk (\mathcal{M}) that are homologous to the interval \mathcal{A} at the boundary ($\partial\mathcal{M}$). These surfaces consist of the union of either X or γ and the collection of null geodesics $\gamma_{b\partial} = \gamma_+ \cup \gamma_-$ connecting the bulk to the boundary. The X and γ surfaces lie between γ_+ and γ_- but only γ is an extremal surface.

approximate modular flow generator near p after an appropriate normalization; while the surface X is an arbitrary co-dimension two spacelike surface connecting the ropes. The entanglement entropy is determined by first extremizing the area of all possible surfaces X and then choosing the minimal area. The resulting configuration is referred to as a *swing surface* which is denoted by $\gamma_{\mathcal{A}} = \gamma \cup_{p \in \partial\mathcal{A}} \gamma_{(p)}$ where γ is a spacelike *bench* connecting the null *ropes* $\gamma_{(p)}$.

The proposal (1.1) is compatible with the RT/HRT prescription in the AdS/CFT correspondence. In this case, the ropes $\gamma_{(p)}$ shrink towards the boundary and the swing surface reduces to the well-known RT/HRT surface. In contrast, in the examples of non-AdS holography considered in this paper, the crucial difference between (1.1) and the RT/HRT proposal is that the spacelike surface X is connected to the boundary interval \mathcal{A} by the null ropes $\gamma_{(p)}$. The ropes are necessary to satisfy the homology constraint and to consistently extend the replica trick from the boundary to the bulk. This extension of the replica trick leads to a generalization of the Lewkowycz-Maldacena argument [7] and it allows us to show that the generalized gravitational entropy localizes on the swing surface, thereby providing a derivation of our proposal. Using the swing surface proposal (1.1), we also extend the concept of relative entropy to non-AdS holography and verify the first law of entanglement entropy.

As explicit examples, we study the proposal (1.1) in two models of non-AdS holography dubbed $\text{flat}_3/\text{BMSFT}$ and $(\text{W})\text{AdS}_3/\text{WCFT}$. In the first model, flat_3 refers to three-dimensional asymptotically flat spacetimes whose asymptotic symmetry group is the three-dimensional version of the Bondi-van der Burg-Metzner-Sachs (BMS) group [30–32]. Hence, the phase space of gravity in these backgrounds is organized by the same symmetry group as that of a two-dimensional BMS-invariant field theory (BMSFT) [33–36]. In the second model, WCFT refers to a warped conformal field theory — a two-dimensional quantum field

theory characterized by a Virasoro-Kac-Moody algebra [37, 38] — whose bulk description is gravity on either asymptotically AdS₃ spacetimes with Dirichlet-Neumann boundary conditions [39] or asymptotically warped AdS₃ backgrounds [40, 41].

It has been noticed in [12, 21] that swing surfaces appear as the geometric description of holographic entanglement entropy in flat₃/BMSFT and (W)AdS₃/WCFT for single intervals on zero-mode backgrounds. In a companion paper [42], we work out the modular Hamiltonian above zero-mode backgrounds from the field theory side and match it to a gravitational charge in the bulk. These studies are based on a generalization of the Rindler method [6, 10] or, equivalently, on the existence of a local modular Hamiltonian. In this paper we propose that swing surfaces work for more general intervals and more general backgrounds, and provide a Lewkowycz-Maldacena type argument in support of this proposal. We will illustrate how to apply the general prescription put forward in section 2.3 to both flat₃/BMSFT and (W)AdS₃/WCFT, without resorting to the Rindler method or the existence of a global modular flow generator. Using this new approach, we reproduce the previous results of [12, 21] on zero mode backgrounds and obtain new results on perturbative states above these backgrounds.

The paper is organized as follows. In section 2 we propose a general prescription for the computation of holographic entanglement entropy in terms of swing surfaces. Therein we extend relative entropy to models of non-AdS holography and check that the first law of entanglement entropy holds. In addition, we comment on the generalization of our results to multiple intervals, the entanglement wedge associated with the swing surface, and deformations of the swing surface. In sections 3 and 4 we test the proposal in two models of non-AdS holography, namely the flat₃/BMSFT and (W)AdS₃/WCFT correspondences. In particular, we reproduce previous results on holographic entanglement entropy for arbitrary zero-mode backgrounds in both of these models. Furthermore, in section 3 we extend these results to linearized perturbations of asymptotically flat three-dimensional spacetimes and discuss strong subadditivity in flat₃/BMSFT. We collect several additional results in appendices A – E. In appendix A we prove that in cases where the bulk modular flow is an exact Killing vector, the bench of the swing surface is an extremal surface; in appendix B we describe general results on the parametrization of null geodesics; in appendix C we extend the approximate modular flow generator into the bulk; in appendix D we give additional details on the swing surface of three-dimensional flat spacetimes; and in appendix E we describe null geodesics in locally AdS₃ spacetimes.

2 A general proposal for holographic entanglement entropy

In this section we propose a geometric prescription for entanglement entropy in models of holography beyond AdS/CFT. These models consist of a $(d + 1)$ -dimensional theory of gravity in the bulk and a d -dimensional field theory at the boundary satisfying the following conditions:

- (1) The bulk theory of gravity admits a semiclassical description in terms of Einstein gravity.

- (2) The field theory is invariant under a symmetry group G and the vacuum state is invariant under a subgroup of G whose generators are denoted by h_i .
- (3) Consistent boundary conditions exist such that the asymptotic symmetry group in the bulk agrees with G at the boundary.
- (4) The bulk theory admits a solution with Killing vectors H_i that correspond to the generators h_i at the boundary. This bulk geometry is identified with the vacuum state in the dual field theory.
- (5) The partition function in the bulk theory of gravity agrees with the partition function of the field theory at the boundary.

In analogy with the AdS/CFT correspondence, we expect that additional conditions are necessary to guarantee a consistent holographic correspondence, see e.g. [43] for a review. In addition, we require that

- (6) A local modular Hamiltonian can be written down for ball-shaped regions (single intervals in $d = 2$) on the vacuum, as discussed in more detail in section 2.1.

All of the properties above are satisfied in the AdS/CFT correspondence, as well as in models of non-AdS holography including flat₃/BMSFT and (W)AdS₃/WCFT. In particular, condition (6) provides a geometric description of entanglement entropy for special regions on the vacuum that corresponds to the RT/HRT surface in AdS/CFT [6], and a swing surface in both flat₃/BMSFT and (W)AdS₃/WCFT [12, 21, 42]. In the following, we will first describe the swing surface on the vacuum state and then extend it to general states and shapes of the entangling surface. We also explore the consequences of our proposal to the relative entropy of general states, the entanglement wedge, and the entanglement entropy of multiple intervals.

2.1 Modular flow and swing surfaces on the vacuum

In this section we review previous results on holographic entanglement entropy on the vacuum in models of holography satisfying the properties listed above [12, 21, 42]. In particular, we will show that the geometric picture of entanglement entropy in the bulk is a swing surface which consists of a co-dimension two spacelike surface that hangs from the subregion \mathcal{A} at the boundary by a collection of null geodesics.

Let us consider a co-dimension one subregion \mathcal{A} on the d -dimensional boundary $\partial\mathcal{M}$ of the bulk $(d + 1)$ -dimensional spacetime \mathcal{M} . The entanglement entropy of subregion \mathcal{A} on a state $|\psi\rangle$ is given by the von Neumann entropy

$$S_{\mathcal{A}} = -\text{tr}(\rho_{\mathcal{A}} \log \rho_{\mathcal{A}}), \tag{2.1}$$

where $\rho_{\mathcal{A}} = \text{tr}_{\bar{\mathcal{A}}} |\psi\rangle\langle\psi|$ is the reduced density matrix of subregion \mathcal{A} obtained by tracing over the degrees of freedom on the complement $\bar{\mathcal{A}}$. The entanglement entropy can be understood as a thermal entropy with respect to the modular Hamiltonian \mathcal{H}_{mod} such that

$$\rho_{\mathcal{A}} = e^{-\mathcal{H}_{\text{mod}}}. \tag{2.2}$$

The modular Hamiltonian generates a modular flow in the causal development of subregion \mathcal{A} and is generically nonlocal. In relativistic QFTs, examples where a local modular Hamiltonian can be written down are related to the Rindler wedge of the vacuum [44, 45], which has led to fruitful results in CFTs [6, 46, 47]. This approach has also been extended to BMSFTs and WCFTs in [12, 21, 42].

In the aforementioned examples, the modular Hamiltonian generates a flow that is geometrically realized and corresponds to a symmetry of the underlying quantum field theory. In particular, the modular flow generator can be written as

$$\zeta = \sum_i a_i h_i \equiv 2\pi \partial_\tau, \tag{2.3}$$

where h_i are the vacuum symmetry generators of the quantum field theory, a_i are parameters that depend on subregion \mathcal{A} , and we have introduced the Rindler time coordinate τ . As shown for two-dimensional CFTs in [48] and both BMSFTs and WCFTs in [42], the coefficients a_i can be uniquely determined by requiring that (i) for any real parameter s , the flow $e^{s\zeta}$ maps any point in the causal domain \mathcal{D} of \mathcal{A} to another point in \mathcal{D} and leaves the boundary $\partial\mathcal{D}$ of the causal domain invariant; and (ii) the flow $e^{i\zeta}$ maps any point in \mathcal{D} back to itself and hence generates the thermal identification

$$\tau \sim \tau + 2\pi i. \tag{2.4}$$

The modular flow generator (2.3) can also be interpreted as generating translations along a local Rindler time coordinate τ . The origin of this interpretation can be traced back to the existence of a symmetry transformation that maps subregion \mathcal{A} in $\partial\mathcal{M}$ to a noncompact generalized Rindler spacetime $\partial\tilde{\mathcal{M}}$, as described in more detail in [10, 12, 21].

According to our assumptions, the vacuum state in the field theory is dual to a spacetime in the bulk that is invariant under the same set of symmetries. In particular, the vacuum symmetry generators h_i at the boundary correspond to the set of Killing vectors H_i in the bulk satisfying $H_i|_{\partial\mathcal{M}} = h_i$, or more explicitly, $H_i^a|_{r=1/\varepsilon} = h_i^a$ where $r = 1/\varepsilon$ is a cutoff surface along the bulk radial coordinate and a labels the coordinates at the boundary. Thus, the modular flow generator at the boundary (2.3) can be expressed as a linear combination of Killing vectors in the bulk such that

$$\xi = \sum_i a_i H_i \equiv 2\pi \partial_\tau, \quad \tau \sim \tau + 2\pi i, \tag{2.5}$$

where the coefficients a_i are the same coefficients featured in (2.3). Note that the Rindler time function τ defined in (2.5) is a natural extension of the boundary Rindler time (2.3) into the bulk, and hence it satisfies the same periodicity condition (2.4). By abuse of notation, we use the same variable τ to denote the Rindler time function in both the boundary and the bulk.

The thermal identification in (2.5) implies that the bulk modular flow generator ξ features a bifurcating Killing horizon with surface gravity 2π . Let us denote the bifurcating surface by γ_ξ and the outward half (towards the boundary) of the future/past Killing

horizon by N_{\pm} . Then, N_{\pm} corresponds to the future/past light-sheet of γ_{ξ} and the modular flow generator (2.5) satisfies

$$\xi|_{\gamma_{\xi}} = 0, \quad \nabla^{\mu}\xi^{\nu}|_{\gamma_{\xi}} = 2\pi n^{\mu\nu}, \quad (2.6)$$

$$\xi^{\nu}\nabla_{\nu}\xi^{\mu}|_{N_{\pm}} = \pm 2\pi\xi^{\mu}, \quad (2.7)$$

where $n^{\mu\nu}$ is the binormal unit vector of γ_{ξ} . From Frobenius' theorem, as well as the fact that ξ is normal to the light-sheets N_{\pm} , it follows that

$$\xi_{[\mu}\nabla_{\nu}\xi_{\lambda]}|_{N_{\pm}} = 0. \quad (2.8)$$

For more details on the bulk modular flow generator in non-AdS holography see [42].

In models of non-AdS holography like flat₃/BMSFT and (W)AdS₃/WCFT, the fixed points of the boundary modular flow generated by ζ are not the fixed points of the bulk modular flow generated by ξ . This means that the bifurcating surface γ_{ξ} is not attached to the interval \mathcal{A} at the boundary. Instead, the homology condition is satisfied by a generalization of the RT surface $\gamma_{\mathcal{A}}$ that is defined by

$$\gamma_{\mathcal{A}} = \gamma \cup \gamma_{b\partial}, \quad \gamma_{b\partial} \equiv \cup_{p \in \partial\mathcal{A}} \gamma_{(p)}, \quad (2.9)$$

where $\partial\mathcal{A}$ is the boundary of the subregion \mathcal{A} , $\gamma_{(p)}$ is the trajectory of each point $p \in \partial\mathcal{A}$ generated by the bulk modular flow, and γ is a subregion of the bifurcating surface γ_{ξ} that is bounded by the intersection of γ_{ξ} with $\gamma_{b\partial}$. Since $\partial\mathcal{A}$ belong to the null surface $N_{+} \cup N_{-}$, the latter of which is invariant under the bulk modular flow, we learn that the entire trajectory $\gamma_{(p)}$ lies on $N_{+} \cup N_{-}$. Furthermore, since the tangent vector of $\gamma_{(p)}$ is parallel to ξ , which is by definition null on N_{\pm} , we conclude that $\gamma_{(p)}$ is a null geodesic.

We refer to surfaces like $\gamma_{\mathcal{A}}$ that consist of a spacelike *bench* γ and a collection of null *ropes* $\gamma_{b\partial}$ as *swing surfaces*. In particular, for single intervals in flat₃/BMSFT and (W)AdS₃/WCFT we have $\gamma_{b\partial} = \gamma_{+} \cup \gamma_{-}$ where $\gamma_{\pm} \subset N_{\pm}$ are null geodesics connecting the endpoints of the interval \mathcal{A} at the boundary to the endpoints of the spacelike surface γ in the bulk. In these examples, the shape of $\gamma_{\mathcal{A}}$ indeed looks like a swing hanging from the boundary at $\partial\mathcal{A}$. As shown in appendix A, the bench γ extremizes the distance between the ropes γ_{+} and γ_{-} . Consequently, the swing surface $\gamma_{\mathcal{A}}$ plays the role of the RT/HRT surface in these models of non-AdS holography. The entanglement entropy of the boundary interval \mathcal{A} is then given by the area of the swing surface in Planck units [12, 21]

$$S_{\mathcal{A}} = \frac{\text{Area}(\gamma_{\mathcal{A}})}{4G}. \quad (2.10)$$

To summarize, for states where the bulk modular flow generator is an exact Killing vector, the ropes of the swing surface are null geodesics generated by the modular flow while the bench of the swing surface is the set of fixed points of the modular flow generator that extremizes the distance between the ropes.

2.2 Approximate modular flow for general states

For general states and/or shapes of the entangling surface, the bulk modular flow is no longer generated by an exact Killing vector of the background geometry. In this section we find the vector field that generates the modular flow near the swing surface by generalizing the approach of [49] to models of non-AdS holography satisfying the conditions described at the beginning of section 2.

The approximate modular flow generator in the boundary. Once we have the global modular flow generator ζ for the vacuum state, we can generalize it into a local version that is valid for more general states and shapes of the entangling surface \mathcal{A} . Note that the boundary $\partial\mathcal{A}$ of \mathcal{A} is a co-dimension two surface in $\partial\mathcal{M}$. At each point $p \in \partial\mathcal{A}$ there is a two-dimensional plane transverse to $\partial\mathcal{A}$ within which it is always possible to find a local Rindler coordinate system in a small neighborhood near p .² In other words, it is always possible to find an approximate modular flow generator

$$\zeta^{(p)} = \sum_i a_i^{(p)} h_i = 2\pi \partial_{\tau_{(p)}}, \quad (2.11)$$

where h_i are the symmetry generators in the transverse plane near p and $\tau_{(p)}$ parametrizes time in the local Rindler coordinates. We assume that all the $\tau_{(p)}$ can be smoothly sewn together close to $\partial\mathcal{A}$ so we will drop the subscript (p) henceforth. When $d = 2$, $\partial\mathcal{A}$ is a set of isolated points. In this case, for each endpoint $p \in \partial\mathcal{A}$, the approximate modular flow generator and the associated Rindler coordinate transformation can be obtained from the corresponding expressions for single intervals on the vacuum by sending the other endpoint to infinity. In higher dimensions, $\partial\mathcal{A}$ is a co-dimension two surface in $\partial\mathcal{M}$. We assume that appropriate gluing conditions exist such that the approximate modular flow generator can be smoothly defined on a small neighborhood of $\partial\mathcal{A}$.

The approximate modular flow generator $\zeta^{(p)}$ and the local Rindler time τ defined near $\partial\mathcal{A}$ can be used to define measures of entanglement using the replica trick. In analogy with the discussion in CFTs, we expect that the replica trick can be performed on the field theory at the boundary by making n copies of $\partial\mathcal{M}$ and gluing them cyclically along \mathcal{A} . The replica symmetry can then be implemented by imposing periodic boundary conditions around each point $p \in \partial\mathcal{A}$ such that

$$\tau \sim \tau + 2\pi i n, \quad \phi_{\partial\mathcal{M}}(\tau + 2\pi i n) = \phi_{\partial\mathcal{M}}(\tau), \quad (2.12)$$

where $\phi_{\partial\mathcal{M}}$ collectively denote the fields in the boundary field theory.³ Consequently, the Rényi and entanglement entropies can be defined in a similar fashion to CFTs, namely,

$$S_n = \frac{1}{1-n} \log Z_n, \quad Z_n \equiv \text{tr} \rho_{\mathcal{A}}^n = \text{tr} e^{-n\mathcal{H}_{\text{mod}}}, \quad (2.13)$$

$$S_{\mathcal{A}} = \lim_{n \rightarrow 1} S_n = \lim_{n \rightarrow 1} n \partial_n (n \log Z_1 - \log Z_n). \quad (2.14)$$

²For $d = 2$ the normal plane refers to the entire manifold at the boundary, namely $\partial\mathcal{M}$.

³This picture is valid for states symmetric under time reversal. For more general states, we need to sew different Rindler wedges together and use the Schwinger-Keldysh formalism, in analogy with the derivation of the HRT proposal [8].

The approximate modular flow generator in the bulk. Let us now extend the approximate modular flow generator $\zeta^{(p)}$ into the bulk. The first step is to extend the d -dimensional vector field $\zeta^{(p)}$ into a $(d+1)$ -dimensional vector field $\xi_\infty^{(p)}$ near the asymptotic boundary. The vector field $\xi_\infty^{(p)}$ is given by

$$\xi_\infty^{(p)} = \sum_i a_i^{(p)} H_i, \tag{2.15}$$

where H_i are the approximate Killing vectors near $p \in \partial\mathcal{A}$ satisfying $H_i|_{\partial\mathcal{M}} = h_i$ and the coefficients $a_i^{(p)}$ are the same coefficients featured in (2.11). It follows that $\xi_\infty^{(p)}|_{\partial\mathcal{M}} = \zeta^{(p)}$.

The next step is to extend the $(d+1)$ -dimensional vector field $\xi_\infty^{(p)}$ defined near the asymptotic boundary into the bulk. As described in the previous section, when the bulk modular flow generator is an exact Killing vector, the modular flow moves each point $p \in \partial\mathcal{A}$ into the bulk along a null geodesic. When the bulk modular flow is no longer generated by a Killing vector, we still expect it to move a point $p \in \partial\mathcal{A}$ along a null geodesic until it reaches a fixed point in the bulk, if the latter exists. A starting point p and a null vector $\xi_\infty^{(p)}$ uniquely determine a null geodesic $\gamma_{(p)}$ towards the bulk. This property enables us to extend $\xi_\infty^{(p)}$ defined near the asymptotic boundary to a null vector field $\xi^{(p)}$ defined along $\gamma_{(p)}$ satisfying

$$\xi^{(p)\mu}\xi_\mu^{(p)} = 0, \quad \xi^{(p)}|_{\partial\mathcal{M}} = \zeta^{(p)}. \tag{2.16}$$

In appendix B, we show that in a Lorentzian manifold it is always possible to parametrize the null geodesic $\gamma_{(p)}$ in terms of coordinates $x^\mu(\lambda)$ and $x^\mu(\tau)$ — where λ is an affine parameter and τ the local Rindler time — such that the tangent vector $\xi^{(p)\mu} = 2\pi dx^\mu/d\tau = 2\pi(d\lambda/d\tau)(dx^\mu/d\lambda)$ satisfies

$$\xi^{(p)\mu}\nabla_\mu\xi^{(p)\nu} = \pm 2\pi\xi^{(p)\nu}, \tag{2.17}$$

where the \pm sign indicates that the vector is outward or inward directed. The parametrization above shows that the parameter τ defined via $2\pi\partial_\tau = \xi^{(p)}$ has identification $\tau \sim \tau + 2\pi i$. Hence, $\xi^{(p)}$ naturally extends the local Rindler time at the boundary into the bulk along the null geodesics. Furthermore, note that the null vector field $\xi^{(p)}$ defined in this way has a fixed point $\partial\gamma_{(p)}$ at a finite affine parameter.

Finally, we can extend the vector field $\xi^{(p)}$ defined on the null geodesics $\gamma_{(p)}$ into a vector field ξ defined on the entire $(d+1)$ -dimensional manifold \mathcal{M} by requiring that

$$\xi|_{\gamma_{(p)}} = \xi^{(p)}, \tag{2.18}$$

$$(\mathcal{L}_\xi g)_{\mu\nu} \sim O(r^{-\alpha_{\mu\nu}}) \quad \text{as } r \rightarrow \infty, \tag{2.19}$$

$$\xi|_{\gamma_\xi} = 0, \tag{2.20}$$

$$\nabla^\mu\xi^\nu|_{\gamma_\xi} = 2\pi n^{\mu\nu}. \tag{2.21}$$

The first condition (2.18) requires ξ to be tangent to the null line $\gamma_{(p)}$ with a normalization that is fixed by (2.17) and the boundary condition (2.16). Since $\gamma_{(p)}$ is null, its tangent

vector is also normal to $\gamma_{(p)}$ and as a result of Frobenius' theorem we have

$$\xi_{[\mu} \nabla_{\nu} \xi_{\lambda]}|_{\gamma_{(p)}} = 0, \tag{2.22}$$

which is the generalization of eq. (2.7). The second condition (2.19) requires ξ to be an asymptotic Killing vector at the boundary ($r \rightarrow \infty$), which must be compatible with the boundary conditions $\delta g_{\mu\nu} \sim O(r^{-\alpha_{\mu\nu}})$ of the gravitational theory where $\alpha_{\mu\nu}$ are constants. The third line (2.20) defines γ_{ξ} as the set of fixed points of ξ , which naturally contains the set of fixed points of $\xi^{(p)}$, namely $\cup_{p \in \partial\mathcal{A}} \partial\gamma_{(p)} \subset \gamma_{\xi}$. Finally, (2.21) implies that ξ is the boost generator in the local Rindler frame near γ_{ξ} such that the parameter τ defined by

$$2\pi\partial_{\tau} = \xi, \tag{2.23}$$

corresponds to a local Rindler time coordinate on the two dimensional plane normal to γ_{ξ} at each point in γ_{ξ} .

A vector field satisfying eqs. (2.18) – (2.21) always exists, although it is not uniquely determined away from \mathcal{A} , γ_{ξ} , and $\gamma_{(p)}$ [49]. The non-uniqueness of ξ away from these surfaces is not a problem, however, since we are only interested on the value of ξ on the swing surface $\gamma_{\mathcal{A}}$ and the boundary subregion \mathcal{A} .

2.3 The minimal swing surface proposal

In this section we extend the replica trick to the bulk and derive the holographic entanglement entropy following the lines of argument of Lewkowycz and Maldacena [7]. In what follows, we assume that the gravitational theory in the bulk is described by Einstein gravity.

In section 2.2 we defined a vector field ξ that is tangent to the set of null geodesics emanating from the boundary $\partial\mathcal{A}$ of subregion \mathcal{A} at the boundary and features a set of fixed points γ_{ξ} in the bulk. A crucial difference between models of non-AdS holography and standard AdS/CFT is that in the former case, the boundary points $p \in \partial\mathcal{A}$ are not fixed points of the bulk modular flow generated by ξ , namely $\partial\mathcal{A} \not\subset \gamma_{\xi}$. This is also reflected in our continuation of the local Rindler time and the replica trick from the boundary to the bulk. In order to see this, let us consider a subset of γ_{ξ} that is bounded by the null geodesics $\gamma_{(p)}$ such that

$$\gamma \subset \gamma_{\xi}, \quad \partial\gamma = \gamma_{\xi} \cap \gamma_{b\partial} = \cup_{p \in \partial\mathcal{A}} \partial\gamma_{(p)}, \tag{2.24}$$

where $\partial\gamma$ is the boundary of γ and $\gamma_{b\partial} = \cup_{p \in \partial\mathcal{A}} \gamma_{(p)}$ is the collection of null geodesics $\gamma_{(p)}$. The local Rindler time τ can be extended from the boundary endpoints $p \in \partial\mathcal{A}$ to $\partial\gamma_{(p)}$ along the null geodesics $\gamma_{(p)}$, which further continues along the bulk surface γ . This construction of the Rindler time function allows us to extend the replica trick into the bulk.

With this preparation, we can use the Lewkowycz-Maldacena and Dong-Lewkowycz-Rangamani arguments [7, 8] to derive the bulk description of entanglement entropy. The derivation follows closely the steps of Lewkowycz and Maldacena [7] for states with time reversal symmetry which admit an Euclidean formulation. For more general states a similar argument along the lines of [8] is expected. In the following we will first determine the

set of fixed points of the replica symmetry from the bulk equations of motion and then calculate the generalized gravitational entropy.

Let us first extend the replica trick to the bulk. We will argue that γ is the set of fixed points of the replica symmetry as $n \rightarrow 1$ and that γ is an extremal surface bounded by $\gamma_{b\partial}$. The metric near the surface γ can be expanded as

$$ds^2 = d\rho^2 + \rho^2 d\tau_E^2 + (h_{ij} + 2x^a K_{aij}) dy^i dy^j + \dots, \quad \tau_E \sim \tau_E + 2\pi, \quad (2.25)$$

where y^i denote the coordinates on the co-dimension two surface γ , ρ denotes the distance from γ , τ_E is the Wick rotation of the local Rindler time τ , and a stands for indices on the plane (ρ, τ_E) orthogonal to γ . The metric on γ can be expanded in terms of ρ , with the linear order term given by the extrinsic curvature tensor K_{aij} of γ . Note that all of the bulk fields including K_{aij} are collectively denoted by ϕ and satisfy the periodic boundary conditions $\phi(\tau_E) = \phi(\tau_E + 2\pi)$.⁴

In analogy with the discussion in [7], we can define the n -th smooth cover \mathcal{M}_n of the bulk manifold \mathcal{M} by changing the period of τ_E in (2.25) to $\tau_E \sim \tau_E + 2\pi n$. Furthermore, we can define the Z_n quotient of \mathcal{M}_n by $\hat{\mathcal{M}}_n = \mathcal{M}_n/Z_n$, the latter of which features conical singularities at the loci of fixed points of Z_n that are denoted by γ_n . In order to calculate the entanglement entropy we must take the $n \rightarrow 1$ limit and our construction indicates that $\gamma_n|_{n \rightarrow 1}$ is just the surface γ .⁵ The metric \hat{g}_n of $\hat{\mathcal{M}}_n$ in the transverse directions can be expanded near γ as

$$ds_{\hat{g}_n}^2 = n^2 d\rho^2 + \rho^2 d\tau_E^2 + \dots, \quad \tau_E \sim \tau_E + 2\pi. \quad (2.26)$$

Note that assuming replica symmetry, the bulk fields on $\hat{\mathcal{M}}_n$ also satisfy the periodic boundary conditions $\phi(\tau_E) = \phi(\tau_E + 2\pi)$. Then the linearized equations of motion around γ determine the shape of γ when $n - 1$ is small. In particular, Einstein's equations require the trace of the extrinsic curvature to vanish and hence γ must be an extremal surface in Einstein gravity [7].

Let us now calculate the generalized gravitational entropy. In order to accomplish this, we use the equivalence of the bulk and boundary partition functions and assume that the dominant saddle has replica symmetry in the bulk. The classical contribution to $\log Z_n$ in eq. (2.14) can be calculated in the bulk by the on-shell action $I[\mathcal{M}]$ on the n -th smooth cover \mathcal{M}_n of the original manifold \mathcal{M} ,

$$\log Z_n = -I[\mathcal{M}_n] = -nI[\hat{\mathcal{M}}_n]. \quad (2.27)$$

The entanglement entropy (2.14) can then be rewritten as

$$S_{\mathcal{A}} = n^2 \partial_n I[\hat{g}_n]|_{n \rightarrow 1} \stackrel{\text{on-shell}}{=} \int_{\partial \hat{\mathcal{M}}_n} \Theta[g, \partial_n \hat{g}_n]|_{n=1}, \quad (2.28)$$

where we have omitted terms proportional to the bulk equations of motion which vanish on-shell and the presymplectic potential $\Theta[g, \partial_n \hat{g}_n]$ comes from total derivative terms in

⁴There might be subtleties in this identification related to the presence of nonlocal boundary conditions, as discussed for example in [11].

⁵Here we have assumed that there are no additional saddles in the $n \rightarrow 1$ limit.

the variation of the action. In eq. (2.28), $\partial\hat{\mathcal{M}}_n$ denotes all the co-dimension one boundaries of the manifold $\hat{\mathcal{M}}_n$, which include the asymptotic boundary as well as the tip at $\rho \rightarrow 0$. By assumption, the boundary conditions guarantee that the asymptotic boundary does not contribute to the on-shell action. As a result, the only boundary contributions to (2.28) come from the boundary at $\rho = 0$.⁶ For Einstein gravity, the entanglement entropy is thus given by

$$S_{\mathcal{A}} = \int_{\gamma \times S^1} \Theta[g, \partial_n \hat{g}_n] \Big|_{n=1} = \int_{\gamma} \xi \cdot \Theta[g, \partial_n \hat{g}_n] \Big|_{n=1} \quad (2.29)$$

$$= \frac{\text{Area}(\gamma)}{4G} = \frac{\text{Area}(\gamma_{\mathcal{A}})}{4G}. \quad (2.30)$$

Combining (2.30) together with the fact that γ is an extremal surface bounded by the $\gamma_{b\partial}$ surfaces, our proposal for holographic entanglement entropy is given by the minimal area of all the surfaces $X_{\mathcal{A}}$ such that

$$S_{\mathcal{A}} = \min_{X_{\mathcal{A}} \sim \mathcal{A}} \text{ext} \frac{\text{Area}(X_{\mathcal{A}})}{4G}, \quad X_{\mathcal{A}} = X \cup \gamma_{b\partial}, \quad (2.31)$$

where X is a spacelike surface that hangs from $\partial\mathcal{A}$ by the collection of null ropes $\gamma_{b\partial}$. All of the surfaces $X_{\mathcal{A}}$ are homologous to \mathcal{A} which we denote by $X_{\mathcal{A}} \sim \mathcal{A}$. The entanglement entropy is then given by the area of the swing surface $\gamma_{\mathcal{A}} = \gamma \cup \gamma_{b\partial}$ where the bench γ minimizes the area of the surfaces X connecting the ropes $\gamma_{b\partial}$.

The crucial difference between (2.31) and the RT/HRT proposal in AdS/CFT is that the surface γ is not directly attached to the boundary at $\partial\mathcal{A}$ but is instead connected to $\partial\mathcal{A}$ by the null ropes $\gamma_{b\partial}$. This guarantees that the swing surface is homologous to the subregion \mathcal{A} at the boundary. Note that in the derivation of (2.31) we have assumed that the bulk theory is described by Einstein gravity. In more general theories of gravity, we expect the area to be replaced by a generalized area which depends on the gravitational theory under consideration [50]. In particular, in higher derivative theories of gravity the generalized area contains the Wald term and terms involving extrinsic curvatures [51].

Note that since the bench is not directly anchored to $\partial\mathcal{A}$, the holographic entanglement entropy could potentially be free of divergences. This implies that the entanglement entropy does not necessarily satisfy the area law at the boundary or, in two dimensions, that it does not have a logarithmic dependence on the length of the subsystem. We will see that in flat₃/BMSFT the entanglement entropy is indeed divergence-free and that it does not have any logarithmic dependence on the size of the subsystem. On the other hand, in (W)AdS₃/WCFT the entanglement entropy depends logarithmically on the size of the subsystem along one direction and it depends linearly on the size of the other direction. In this case such a linear dependence is related to the fact that WCFTs are nonlocal along one direction.

Let us conclude by summarizing our proposal for holographic entanglement entropy in holographic dualities beyond AdS/CFT satisfying the assumptions listed at the beginning

⁶It is possible that there are corner contributions from the boundary $\partial\gamma$ of γ but we do not see such terms in the explicit examples discussed later in this paper.

of section 2. The holographic entanglement entropy of a subregion \mathcal{A} at the boundary is given by (2.31) and can be calculated by following these steps:

- (1) For each $p \in \partial\mathcal{A}$, find the approximate modular flow generator $\zeta^{(p)}$ as described in section 2.2.
- (2) For each $p \in \partial\mathcal{A}$, find the null geodesic $\gamma_{(p)}$ emanating from p whose tangent vector is an asymptotic Killing vector that reduces to $\zeta^{(p)}$ at the asymptotic boundary.
- (3) Find the extremal surface spanning the region bounded by $\gamma_{b\partial} = \cup_{p \in \partial\mathcal{A}} \gamma_{(p)}$.
- (4) If there are multiple extremal surfaces choose the one with the minimal area.

In these steps, one needs to be careful about the cutoff at infinity, as we will see in more detail in the following sections.

2.4 Relative entropy for general states

In this section we derive general expressions for the relative entropy of general states and provide a formal check of our proposal (2.31) in Einstein gravity. Relative entropy is a quantum information measure that quantifies the distinguishability between two states ρ and σ that is defined by

$$S(\rho||\sigma) \equiv \text{tr}(\rho \log \rho) - \text{tr}(\rho \log \sigma) = \Delta\langle \mathcal{H}_{\text{mod}}(\sigma) \rangle - \Delta S_{\mathcal{A}}. \quad (2.32)$$

In (2.32), $\Delta\langle \mathcal{H}_{\text{mod}}(\sigma) \rangle = -\text{tr}(\rho \log \sigma) + \text{tr}(\sigma \log \sigma)$ is the difference in the expectation value of the modular Hamiltonian associated with the state σ while $\Delta S_{\mathcal{A}} = -\text{tr}(\rho \log \rho) + \text{tr}(\sigma \log \sigma)$ is the difference of the entanglement entropy. Relative entropy has several important features including: (i) it is positive definite, namely $S(\rho||\sigma) \geq 0$; and (ii) it monotonically increases with the size of the system such that $S(\rho_{\mathcal{A}}||\sigma_{\mathcal{A}}) \leq S(\rho_{\mathcal{B}}||\sigma_{\mathcal{B}})$ where \mathcal{A} and \mathcal{B} are two subregions satisfying $\mathcal{A} \subset \mathcal{B}$.

Let us now consider the holographic dual of relative entropy between the vacuum state σ and an excited state ρ . For the vacuum state we assume that the exact modular flow generator is known in both the boundary and the bulk, which we respectively denote by ζ_{vac} and ξ_{vac} . On the other hand, for the excited state there is no exact Killing vector generating the modular flow. Nevertheless, as discussed in section 2.2, we can always find a vector field that behaves like the exact modular flow generator in the vacuum state as it approaches $\gamma_{\mathcal{A}}$. This vector field is denoted by ξ and satisfies eqs. (2.19) — (2.21) together with the condition

$$\xi|_{\partial\mathcal{M}} = \zeta_{\text{vac}}. \quad (2.33)$$

The approximate modular flow generator ξ can be used to define the quasilocal energy in the d -dimensional non-timelike region Σ that is bounded by \mathcal{A} at the boundary and the swing surface $\gamma_{\mathcal{A}}$ in the bulk such that $\partial\Sigma = \mathcal{A} \cup \gamma_{\mathcal{A}}$. Using the covariant phase space formalism [52–54], the diffeomorphism associated with ξ is generated by the Hamiltonian $\delta\mathcal{H}_{\xi}[\phi]$

$$\delta\mathcal{H}_{\xi}^{\Sigma}[\phi] = \int_{\Sigma} d\mathcal{X}_{\xi}[\phi, \delta\phi], \quad (2.34)$$

where the d -form $d\chi_\xi[\phi, \delta\phi]$ is determined by the gravitational action, ϕ collectively denotes the bulk fields, and $\delta\phi$ denotes their on-shell variations. If there exists a $(d-1)$ -form $\mathbf{Q}_\xi[\phi]$ and a d -form $\mathbf{K}[\phi]$ such that $\chi_\xi[\phi, \delta\phi] = \delta(\mathbf{Q}_\xi[\phi] - \xi \cdot \mathbf{K}[\phi])$ on $\partial\Sigma$, then the gravitational charge in the region Σ is integrable and can be written as a surface charge on $\partial\Sigma = \mathcal{A} \cup \gamma_{\mathcal{A}}$,

$$\mathcal{H}_\xi^\Sigma[\phi] = \int_{\partial\Sigma} (\mathbf{Q}_\xi[\phi] - \xi \cdot \mathbf{K}[\phi]) \equiv \mathcal{Q}_\xi^{\partial\Sigma} = \mathcal{Q}_\xi^{\mathcal{A}} - \mathcal{Q}_\xi^{\gamma_{\mathcal{A}}}, \quad (2.35)$$

where we split the integral over the asymptotic boundary \mathcal{A} and the swing surface $\gamma_{\mathcal{A}}$.

We now show that the proposed holographic entanglement entropy (2.31) is given by the surface charge $\mathcal{Q}_\xi^{\gamma_{\mathcal{A}}} = \mathcal{Q}_\xi^\gamma + \mathcal{Q}_\xi^{\gamma_{b\partial}}$ evaluated along the swing surface in Einstein gravity, where $\mathbf{Q}_\xi[g]$ is given by

$$\mathbf{Q}_\xi[g] = -\frac{1}{16\pi G(d-1)!} \nabla^\mu \xi^\nu \epsilon_{\mu\nu\mu_3\dots\mu_{d+1}} dx^{\mu_3} \wedge \dots \wedge dx^{\mu_{d+1}}. \quad (2.36)$$

Let us first consider the contribution of the null ropes $\gamma_{b\partial}$ to the surface charge $\mathcal{Q}_\xi^{\gamma_{\mathcal{A}}}$. Since the vector field ξ is orthogonal to $\gamma_{b\partial}$, Frobenius' condition (2.22) implies that $\int_{\gamma_{b\partial}} \mathbf{Q}_\xi[g] \propto \int_{\gamma_{b\partial}} \xi^{[\alpha} \nabla^\mu \xi^{\nu]} d\lambda \wedge \dots = 0$. Furthermore, the fact that ξ is tangent to $\gamma_{b\partial}$ and $\mathbf{K}[\phi]$ is antisymmetric means that $\int_{\gamma_{b\partial}} \xi \cdot \mathbf{K}[\phi] = 0$ as well. Consequently, the charge on the ropes vanishes. Let us now consider the surface charge \mathcal{Q}_ξ^γ evaluated on the bench γ of the swing surface. In this case, the fixed point condition (2.20) implies that $\int_\gamma \xi \cdot \mathbf{K}[g] = 0$ while the normalization (2.21) implies that $\mathbf{Q}_\xi[g]$ is proportional to the area of the bench. As a result, we find that the surface charge along the swing surface is given by the area of the bench in Planck units,

$$\mathcal{Q}_\xi^{\gamma_{\mathcal{A}}} = \frac{\text{Area}(\gamma)}{4G} = \frac{\text{Area}(\gamma_{\mathcal{A}})}{4G} = S_{\mathcal{A}}, \quad (2.37)$$

which is the holographic entanglement entropy according to our proposal (2.31).

On the other hand, as demonstrated in [42], the surface charge evaluated along \mathcal{A} is holographically dual to the expectation value of the modular Hamiltonian \mathcal{H}_{mod} between two states,

$$\Delta \langle \mathcal{H}_{\text{mod}} \rangle = \Delta \mathcal{Q}_\xi^{\mathcal{A}}. \quad (2.38)$$

Using the holographic dictionary (2.37) and (2.38), we can define the holographic dual of relative entropy, in analogy with the discussion in AdS/CFT [49],

$$S(\rho_{\mathcal{A}} || \sigma_{\mathcal{A}}) = \Delta \langle \mathcal{H}_{\text{mod}} \rangle - \Delta S_{\mathcal{A}} = \mathcal{H}_\xi^\Sigma[\phi] - \mathcal{H}_\xi^\Sigma[\phi_{\text{vac}}]. \quad (2.39)$$

In particular, when ρ is an infinitesimal perturbation above the vacuum σ , ξ is an exact Killing vector of the background fields ϕ and $\delta\mathcal{H}_\xi^\Sigma[\phi] = \delta\mathcal{Q}_\xi^{\mathcal{A}}[\phi] - \delta\mathcal{Q}_\xi^{\gamma_{\mathcal{A}}}[\phi] = 0$ implies the first law of entanglement entropy. In contrast, when ρ is a finite perturbation of the vacuum state σ , ξ is no longer an exact Killing vector and the relative entropy can be non-zero. The modular Hamiltonian in explicit models of non-AdS holography is studied in detail in the companion paper [42].

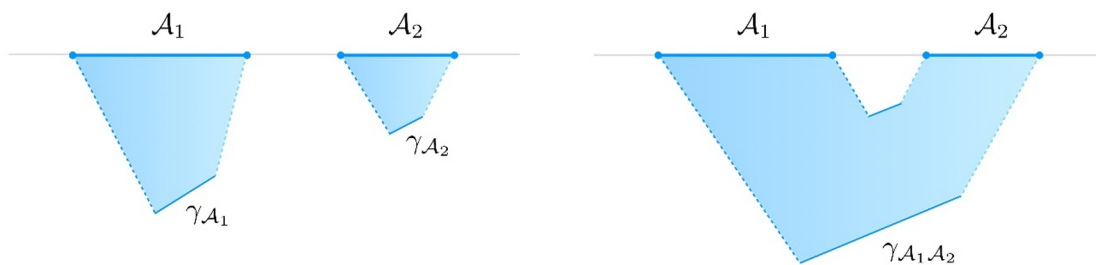


Figure 2. Two-dimensional sketch of two competing swing surfaces $\gamma_{\mathcal{A}_1} \cup \gamma_{\mathcal{A}_2}$ and $\gamma_{\mathcal{A}_1\mathcal{A}_2}$ homologous to the disjoint union of two intervals \mathcal{A}_1 and \mathcal{A}_2 . The dotted lines denote the ropes while the solid lines denote the benches.

2.5 Remarks

In this section we comment on a few consequences of our proposal for holographic entanglement entropy, including the entanglement entropy for multiple intervals, deformations of the swing surface, and the entanglement wedge.

Multiple intervals. For three-dimensional bulk spacetimes, the proposal (2.31) implies that the entanglement entropy for multiple intervals can be obtained by pairing the endpoints and summing over the areas of the swing surfaces associated with each pair. Generically, there are several different ways of pairing points that is consistent with the homology constraint. In this case, as in the RT/HRT prescription in AdS/CFT, we must choose the configuration that yields the minimal area.

As an example, let us consider the disjoint union of two intervals \mathcal{A}_1 and \mathcal{A}_2 . Then, the holographic entanglement entropy is given in terms of the area by

$$S_{\mathcal{A}_1 \cup \mathcal{A}_2} = \frac{1}{4G} \min\left(\text{Area}(\gamma_{\mathcal{A}_1} \cup \gamma_{\mathcal{A}_2}), \text{Area}(\gamma_{\mathcal{A}_1\mathcal{A}_2})\right), \quad (2.40)$$

where $\gamma_{\mathcal{A}_1} \cup \gamma_{\mathcal{A}_2}$ and $\gamma_{\mathcal{A}_1\mathcal{A}_2}$ denote the two possible swing surfaces depicted in figure 2. In particular, for two intervals that are far apart from each other we clearly have

$$S_{\mathcal{A}_1 \cup \mathcal{A}_2} = \frac{\text{Area}(\gamma_{\mathcal{A}_1} \cup \gamma_{\mathcal{A}_2})}{4G}, \quad (2.41)$$

and the mutual information $I = S_{\mathcal{A}_1} + S_{\mathcal{A}_2} - S_{\mathcal{A}_1 \cup \mathcal{A}_2}$ vanishes. A phase transition occurs when the intervals \mathcal{A}_1 and \mathcal{A}_2 are close enough to each other such that $\text{Area}(\gamma_{\mathcal{A}_1} \cup \gamma_{\mathcal{A}_2}) = \text{Area}(\gamma_{\mathcal{A}_1\mathcal{A}_2})$ and the entropy is given by

$$S_{\mathcal{A}_1 \cup \mathcal{A}_2} = \frac{\text{Area}(\gamma_{\mathcal{A}_1\mathcal{A}_2})}{4G}. \quad (2.42)$$

This observation is consistent with the calculation of mutual information of WCFTs in [16]. Mutual and 3-partite information have also been discussed in flat holography in [55].

Towards the entanglement wedge. Let us comment briefly on the entanglement wedge associated with the swing surface. Let y^i with $i = 1, \dots, d - 1$ denote the coordinates parametrizing the co-dimension two surface γ_ξ in the bulk. Starting from any point on γ_ξ there is an outgoing, future-directed null geodesic orthogonal to γ_ξ . We denote the vector tangent to this geodesic by $l^\mu \partial_\mu = \partial_\lambda$ with λ the affine parameter whose value on γ_ξ is chosen to be zero.

The collection of such null geodesics span N_+ , the future directed part of the light-sheet of γ_ξ with non-positive expansion. By requiring that the coordinates y^i remain the same along the null geodesics on N_+ , all points on N_+ can be parametrized by (λ, y^i) . Following the discussion in appendix B, we can then find a vector field ξ satisfying $\xi^\nu \nabla_\nu \xi^\mu|_{N_+} = 2\pi$ by requiring that

$$\xi^\mu = 2\pi(d\lambda/d\tau)l^\mu, \tag{2.43}$$

where $(d^2\tau/d\lambda^2) = -(d\tau/d\lambda)^2$. The solution to this equation is $\tau = \tau_0 + \log|\lambda|$ where τ_0 corresponds to the freedom of rescaling the affine parameter. From this construction, it can be explicitly seen that $\xi|_{\gamma_\xi} = 0$, which tells us that γ_ξ is the set of fixed points of the vector field ξ . Similarly, we can define the past directed part of the light-sheet N_- and define ξ on it as well. By construction, all the null ropes satisfy $\gamma_{(p)} \subset N_+ \cup N_-$. Consistency of the holographic duality also requires $(N_+ \cup N_-) \cap \partial\mathcal{M} = \partial\mathcal{D}$ where $\partial\mathcal{D}$ is the boundary of the causal domain \mathcal{D} of \mathcal{A} . A *pre-entanglement wedge* W_ξ can be defined as the region bounded by $N_+ \cup N_- \cup \mathcal{D}$. We expect the entanglement wedge to be a subset of the pre-entanglement wedge as the former should be associated with $\gamma_{\mathcal{A}}$ instead of γ_ξ . We leave this and related questions for further work.

Deformations of the swing surface. Let us now consider deforming the swing surface $\gamma_{\mathcal{A}}$ along N_+ . For convenience we work with $d = 2$. Consider an infinitesimal deformation along the null geodesics such that the change of the area A is related to the expansion by $\lim_{A \rightarrow 0} \frac{1}{A} \frac{dA}{d\lambda} = \theta$. In the examples where an explicit Rindler transformation is known, ξ corresponds to an exact Killing vector in the bulk and the light-sheets N_\pm are Killing horizons with zero expansion. In these examples, we can deform one of the ropes of the swing surface, for example γ_+ , to a spacelike geodesic $\gamma'_+ \subset N_+$ whose intersection with γ_ξ remains on the original bench γ . In this case, the bench γ' of the deformed swing surface is a subset of γ . Nevertheless, the total length of the deformed swing surface $\gamma'_{\mathcal{A}} = \gamma'_+ \cup \gamma' \cup \gamma_-$ remains the same. We can similarly deform the rope $\gamma_- \rightarrow \gamma'_-$ within N_- . In particular, we can shrink the entire bench to a point such that the deformed swing surface becomes $\gamma_{\mathcal{A}} = \gamma'_+ \cup \gamma'_-$, as illustrated by the red curve in figure 3. This phenomenon has also been observed in the context of flat holography [22]. For more general backgrounds, a deformation of the swing surface within the lightsheets $N_+ \cup N_-$ will generically decrease its length if the expansion θ is negative. This is similar to the property of the HRT surface in the AdS/CFT correspondence [2].

To summarize, we conclude that a deformation of the swing surface within the light-sheets $N_+ \cup N_-$ does not increase the total area. We expect that this property of swing surfaces can be used to prove useful entanglement entropy inequalities, such as strong

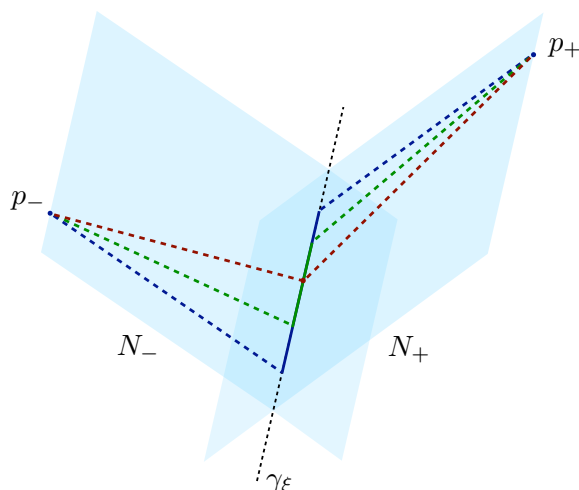


Figure 3. Deformations (green and red) of the swing surface (blue) in $N_+ \cup N_-$. The dashed lines are ropes and the solid lines are benches. The ropes of the original swing surface are null while the deformed ones are spacelike. Note that the bench of the red surface has shrunk to a point. Such deformations preserve the area when the expansion θ on $N_+ \cup N_-$ vanishes and decrease the area when θ is negative.

subadditivity [56]. However, since the swing surface contains null ropes which cannot be included in a spacelike surface, the maximin argument used in [56] can not be directly adopted. In this paper, we perform a few explicit checks of strong subadditivity in both $\text{flat}_3/\text{BMSFT}$ and $\text{AdS}_3/\text{WCFTs}$ on zero mode backgrounds. In these examples, we find that strong subadditivity is satisfied in WCFTs, while it can be violated in BMSFTs. We leave a general discussion of entanglement entropy inequalities for future work. For related discussions on other inequalities of entanglement entropy in BMSFTs and WCFTs see [57, 58].

3 Swing surfaces in $\text{flat}_3/\text{BMSFT}$

In this section we describe how the general proposal for holographic entanglement entropy works for asymptotically flat spacetimes in the $\text{flat}_3/\text{BMSFT}$ correspondence. More concretely, we derive the swing surface for zero-mode backgrounds, compute the variation of the entanglement entropy that results from perturbations of these spacetimes, and discuss strong subadditivity in these models of non-AdS holography.

Einstein gravity in asymptotically flat three-dimensional spacetimes admits consistent boundary conditions at future null infinity that lead to a set of asymptotic symmetries described by the three-dimensional BMS algebra [33]. This observation leads to the conjectured duality between gravity in asymptotically flat spacetimes and BMS-invariant field theories at the boundary, namely to the $\text{flat}_3/\text{BMSFT}$ correspondence [34–36]. In the bulk, the space of solutions of pure Einstein gravity in Bondi gauge is described by

$$ds^2 = \Theta(\phi)du^2 - 2dudr + 2\left[\Xi(\phi) + \frac{1}{2}u\partial_\phi\Theta(\phi)\right]dud\phi + r^2d\phi^2, \quad (3.1)$$

where $\phi \sim \phi + 2\pi$ and $\Theta(\phi)$, $\Xi(\phi)$ are two periodic functions. When $\Theta(\phi) = M$ and $2\Xi(\phi) = J$ are constants, the metric (3.1) describes zero-mode backgrounds with energy $M/8G$ and angular momentum $J/8G$. These solutions include, in particular, the global Minkowski vacuum with $M = -1$ and $J = 0$, conical defect geometries where $-1 < M < 0$, and flat cosmological solutions where $M > 0$.

Entanglement entropy in BMSFTs has been computed for single intervals in the vacuum as well as thermal and more general states in [18–21, 57]. In particular, ref. [21] found that the geometric dual of entanglement entropy in flat spacetimes is not given by the RT/HRT surface, but instead by what we call a swing surface in this paper (see figure 1). The latter motivates our proposal (2.31). The results of [21] are based on the generalized Rindler method. This method exploits the symmetries of BMSFTs and the vacuum state to devise a BMS transformation that maps the causal domain of dependence \mathcal{D} of an interval \mathcal{A} on the original manifold $\partial\mathcal{M}$ to a generalized Rindler spacetime. Since this is a symmetry transformation, the entanglement entropy associated with the interval $\mathcal{A} \in \partial\mathcal{M}$ on the vacuum can be obtained from the thermal entropy in Rindler space. This result can be generalized to thermal states by an additional symmetry transformation.

For zero-mode backgrounds, the generalized Rindler method can be extended into the bulk where it can be used to determine the swing surface whose area reproduces the entanglement entropy of the BMSFT at the boundary. If we parametrize the interval \mathcal{A} along the u and ϕ coordinates at the boundary by l_u and l_ϕ respectively, then the holographic entanglement entropy is given by

$$S_{\mathcal{A}} = \frac{1}{4G} \left[\sqrt{M} \left(l_u + \frac{J l_\phi}{2M} \right) \coth \left(\frac{\sqrt{M} l_\phi}{2} \right) - \frac{J}{M} \right]. \quad (3.2)$$

Using the holographic dictionary, the entropy (3.2) matches the entanglement entropy of BMSFTs on thermal states [18, 21]. In what follows, we will show that the proposal (2.31) reproduces the entanglement entropy of zero-mode backgrounds given in (3.2) without using the Rindler method. We will also consider linearized fluctuations around zero-mode backgrounds and show that the variation of the entanglement entropy matches the variation of the modular Hamiltonian.

3.1 Approximate modular flow

The modular flow generator for the vacuum state in BMSFTs was first written down in [21] and has been studied in more detail in [22–24, 42]. As described in section 2, this modular flow generator plays an important role in the derivation of holographic entanglement entropy for both the vacuum and more general states. In this section we write down the approximate modular flow generator for general states near the endpoints of the interval at the boundary, which we then use to determine the ropes of the swing surface.

Let us consider an interval $\mathcal{A} \in \partial\mathcal{M}$ whose endpoints $\partial\mathcal{A}$ are given in terms of (u, ϕ) coordinates by

$$\partial\mathcal{A} = \{(u_-, \phi_-), (u_+, \phi_+)\}, \quad u_+ - u_- = l_u, \quad \phi_+ - \phi_- = l_\phi, \quad (3.3)$$

where l_u and l_ϕ are assumed to be positive. The approximate modular flow generator for general states can be obtained near the endpoints (3.3) in the following way. Consider first the vacuum state on the plane. The modular flow generator ζ is the symmetry generator (2.3) that leaves the causal domain \mathcal{D} of the interval \mathcal{A} invariant. Its normalization is fixed by requiring that $e^{i\zeta}$ maps points in \mathcal{D} back to themselves. These conditions allow us to determine each of the a_i coefficients featured in (2.3), as has been explicitly done in [42], with the result

$$\frac{\zeta}{2\pi} = \left[\frac{u_+(\phi - \phi_-)^2 - u_-(\phi - \phi_+)^2}{(\phi_- - \phi_+)^2} + \frac{u(2\phi - \phi_- - \phi_+)}{\phi_- - \phi_+} \right] \partial_u + \frac{(\phi - \phi_-)(\phi - \phi_+)}{\phi_- - \phi_+} \partial_\phi. \quad (3.4)$$

The approximate modular flow generator $\zeta^{(p)}$ for general states around the endpoint $p \in \partial\mathcal{A}$ can be obtained from this expression by sending the other endpoint of $\partial\mathcal{A}$ to infinity. We consequently find

$$\zeta^{(\pm)} = \mp 2\pi [(u - u_\pm)\partial_u + (\phi - \phi_\pm)\partial_\phi], \quad (3.5)$$

where $\zeta^{(\pm)}$ denotes the approximate modular flow generator associated with the (u_\pm, ϕ_\pm) endpoint. In particular, note that the endpoints (u_\pm, ϕ_\pm) are fixed points of the approximate modular flow generator, a property inherited from the exact modular flow generator of the vacuum state.

The ropes of the swing surface correspond to null geodesics γ_\pm that emanate from the endpoints (u_\pm, ϕ_\pm) of the boundary interval \mathcal{A} . As described in section 2.3, the tangent vector of these geodesics must reduce to the approximate modular flow generator (3.5) at a cutoff surface near the asymptotic boundary. Since $\zeta^{(\pm)}$ vanishes at the endpoints of \mathcal{A} , the tangent vectors of γ_\pm are parallel to the radial direction ∂_r at the cutoff surface. On the other hand, it is not difficult to verify that any vector that points along the radial direction is null everywhere in spacetimes that are solutions of pure Einstein gravity in the Bondi gauge (3.1). Therefore, the ropes γ_\pm of the swing surface can be described in the region $r \in [0, \infty)$ by $u = u_\pm, \phi = \phi_\pm$. There are subtleties in the parametrization of these geodesics in the Bondi gauge beyond $r = 0$, as discussed in detail in appendix D. For the zero-mode solutions (3.1) with $M > 0$, the range of the radial coordinate r can be extended to negative values, such that the ropes γ_\pm of the swing surface lie along radial null geodesics that are given by

$$\gamma_\pm : u = u_\pm, \phi = \phi_\pm, \quad r \in (-\infty, \infty). \quad (3.6)$$

The parametrization of the ropes for zero-mode backgrounds with $M < 0$ can be found in appendix D.3.

We have shown that the ropes γ_\pm emanating from the endpoints (u_\pm, ϕ_\pm) of the interval at the boundary are given by null geodesics along the radial coordinate of the asymptotically flat spacetimes (3.1). According to our general proposal (2.31), the holographic entanglement entropy is then given by the area of the extremal surface in the bulk that connects the null geodesics γ_+ and γ_- , as described in detail next.

3.2 The Poincaré vacuum

Before considering more general cases, let us briefly illustrate how the proposal (2.31) works for single intervals on the Poincaré vacuum. The Poincaré vacuum describes the vacuum state of the dual BMSFT on the plane and its metric is simply given by

$$ds^2 = -2dudr + r^2 dz^2, \tag{3.7}$$

where $z \in (-\infty, \infty)$. For convenience, we consider a symmetric interval at the boundary whose endpoints $\partial\mathcal{A}$ are parametrized in terms of the (u, z) coordinates by

$$\partial\mathcal{A} = \left\{ \left(-\frac{l_u}{2}, -\frac{l_z}{2} \right), \left(\frac{l_u}{2}, \frac{l_z}{2} \right) \right\}. \tag{3.8}$$

where l_u and l_z are both positive.

As discussed in the previous section, the null geodesics γ_{\pm} emanating from the endpoints (3.8) are tangent to ∂_r and given by

$$\gamma_{\pm} : u = \pm \frac{l_u}{2}, \quad z = \pm \frac{l_z}{2}, \quad r \in (-\infty, \infty). \tag{3.9}$$

The next step in the holographic entropy proposal described in section 2.3 consists of finding the extremal surface X that lies between the null geodesics (3.9). In flat space this surface is just a line — a spacelike geodesic to be more precise — that connects γ_+ to γ_- . The length of the surfaces $X_{\mathcal{A}} = \gamma_- \cup X \cup \gamma_+$ is thus given

$$L(r_+, r_-) = \sqrt{r_- r_+ l_z^2 + 2(r_- - r_+) l_u}, \tag{3.10}$$

where, r_{\pm} denote the points along γ_{\pm} where X is attached. The extremum of (3.10) is found at

$$r_- = -r_+ = \frac{2l_u}{l_z^2}, \tag{3.11}$$

which determines the location of the swing surface $\gamma_{\mathcal{A}} = \gamma_- \cup \gamma \cup \gamma_+$. In particular, the bench γ of the swing surface can be parametrized in terms of the z coordinate by

$$\gamma : u(z) = \frac{l_u l_z}{8z} + \frac{l_u z}{2l_z}, \quad r(z) = -\frac{l_u}{z l_z}, \tag{3.12}$$

where $z \in (-\infty, -l_z/2] \cup [l_z/2, \infty)$.⁷ Finally, the area of the swing surface $\gamma_{\mathcal{A}}$ is given by

$$S_{\mathcal{A}} = \frac{\text{Area}(\gamma_{\mathcal{A}})}{4G} = \frac{l_u}{2G l_z}. \tag{3.13}$$

This expression agrees with the entanglement entropy computed on the field theory side of the flat₃/BMSFT correspondence, which can be seen by taking the $J \rightarrow 0$ and $M \rightarrow 0$ limits in (3.2).

⁷There is a subtlety with the range of z in the parametrization of the bench (3.12), as discussed in detail in appendix D.1.

3.3 Zero-mode backgrounds

Let us now test the holographic entropy proposal (2.31) on the more general zero-mode backgrounds describing flat cosmological solutions with $M > 0$

$$ds^2 = Mdu^2 - 2dudr + Jdud\phi + r^2d\phi^2, \quad \phi \sim \phi + 2\pi. \quad (3.14)$$

These backgrounds can be regarded as the flat limit of the BTZ black hole in AdS₃ [59]. The case $M < 0$, which includes the global Minkowski vacuum, is also interesting and is treated in detail in appendix D.3. For convenience, we consider once again a symmetric interval \mathcal{A} at the boundary that is given by (3.3) with

$$(u_{\pm}, \phi_{\pm}) = \left(\pm \frac{l_u}{2}, \pm \frac{l_{\phi}}{2} \right). \quad (3.15)$$

According to our prescription (2.31), the holographic entanglement entropy is given by the distance of a geodesic connecting two points on the ropes γ_+ and γ_- , which are the radial null geodesics described in (3.6). The distance between these geodesics is given by

$$\begin{aligned} ML(r_+, r_-)^2 &= l_u^2 M^2 + 2l_u M (l_{\phi} \sqrt{M} r_c + r_- - r_+) + r_c^2 (l_{\phi}^2 M + 2) \\ &\quad - 2 \cosh(l_{\phi} \sqrt{M}) (r_c^2 - r_- r_+) + 2l_{\phi} \sqrt{M} r_c (r_- - r_+) \\ &\quad + 2r_c (r_+ - r_-) \sinh(l_{\phi} \sqrt{M}) - 2r_- r_+, \end{aligned} \quad (3.16)$$

where we used $r_c \equiv J/2\sqrt{M}$ while r_+ and r_- denote the radial coordinates of two points along γ_+ and γ_- , respectively. We find that the extremum of (3.16) corresponds to the following choice of r_{\pm}

$$r_- = -r_+ = \frac{l_u M + l_{\phi} \sqrt{M} r_c - r_c \sinh(l_{\phi} \sqrt{M})}{\cosh(l_{\phi} \sqrt{M}) - 1}. \quad (3.17)$$

These values of r_{\pm} determine the points along the ropes γ_{\pm} (3.6) where the bench γ of the swing surface is attached (see appendix D.2 for the parametrization of the bench). The holographic entanglement entropy is then given by the area of the swing surface $\gamma_{\mathcal{A}} = \gamma_- \cup \gamma \cup \gamma_+$, namely

$$S_{\mathcal{A}} = \frac{\text{Area}(\gamma_{\mathcal{A}})}{4G} = \frac{1}{4G} \left| \sqrt{M} \left(l_u + \frac{J l_{\phi}}{2M} \right) \coth \left(\frac{\sqrt{M} l_{\phi}}{2} \right) - \frac{J}{M} \right|. \quad (3.18)$$

The absolute value guarantees that the entanglement entropy, which corresponds to the length of the swing surface, is a positive quantity. When the argument of the absolute value is positive, eq. (3.18) agrees with the entanglement entropy of BMSFTs at finite temperature in (3.2). It would be interesting to understand how the absolute value in the bulk computation of the entanglement entropy emerges in the field theory side of the calculation, a question that we leave for future work.

3.4 Beyond zero-mode backgrounds

In this subsection we apply the general prescription for holographic entanglement entropy to arbitrary linearized fluctuations of the zero-mode background (3.14) and show that the first law of entanglement entropy is satisfied in flat₃/BMSFT.

Let us consider linearized perturbations of the metric compatible with the parametrization of the phase space in (3.1), namely

$$\delta g_{\mu\nu} dx^\mu dx^\nu = \delta\Theta(\phi) du^2 + \left[\delta\Xi(\phi) + \frac{1}{2} u \partial_\phi \delta\Theta(\phi) \right] dud\phi. \quad (3.19)$$

Note that the parametrization of the null geodesics γ_\pm in (3.6) is independent of the parameters of the background and remain null in the perturbed spacetime. Also, since the bench of the swing surface corresponds to an extremal configuration, it remains extremal to linear order in the perturbations of the metric. As a result, the only effect of the linearized perturbation (3.19) is to change the area (length) of the swing surface. The variation of the length of the spacelike bench is thus given by

$$\delta L(r_+, r_-) = \int_\gamma d\phi \delta \sqrt{g_{\mu\nu} \partial_\phi x^\mu \partial_\phi x^\nu}. \quad (3.20)$$

Using the parametrization of the bench given in eqs. (D.13) and (D.14) we find that $\delta L(r_+, r_-)$ can be conveniently written as

$$\delta L(r_+, r_-) = \frac{1}{4\pi} \int_{-l_\phi/2}^{l_\phi/2} d\phi [T(\phi) \delta\Theta(\phi) + 2Y(\phi) \delta\Xi(\phi)], \quad (3.21)$$

where, as discussed in appendix D.2, we have deformed the contour of integration so that $\phi \in [-l_\phi/2, l_\phi/2]$, while the $T(\phi)$ and $Y(\phi)$ functions read

$$T(\phi) = \frac{\pi}{2M \sinh\left(\frac{\sqrt{M}l_\phi}{2}\right)} \left\{ (Jl_\phi + 2l_u M) \left[\coth\left(\frac{\sqrt{M}l_\phi}{2}\right) \cosh(\sqrt{M}\phi) - \operatorname{csch}\left(\frac{\sqrt{M}l_\phi}{2}\right) \right] + \frac{2J}{\sqrt{M}} \left[\cosh(\sqrt{M}\phi) - \cosh\left(\frac{\sqrt{M}l_\phi}{2}\right) \right] - 2J\phi \sinh(\sqrt{M}\phi) \right\}, \quad (3.22)$$

$$Y(\phi) = \frac{2\pi}{\sqrt{M} \sinh\left(\frac{\sqrt{M}l_\phi}{2}\right)} \left[\cosh\left(\frac{\sqrt{M}l_\phi}{2}\right) - \cosh(\sqrt{M}\phi) \right]. \quad (3.23)$$

The variation of the holographic entanglement entropy is thus given by

$$\delta S_{\mathcal{A}} = \frac{\delta L(r_+, r_-)}{4G} = \frac{1}{16\pi G} \int_{-l_\phi/2}^{l_\phi/2} d\phi [T(\phi) \delta\Theta(\phi) + 2Y(\phi) \delta\Xi(\phi)]. \quad (3.24)$$

It is not difficult to verify that for zero-mode fluctuations where $\delta\Theta(\phi) = \delta M$ and $\delta\Xi(\phi) = \delta J/2$, eq. (3.24) can be integrated within the space of solutions, which reproduces the finite expression for the entanglement entropy given in (3.18).

In section 2, we argued that the area of the swing surface agrees with the gravitational charge associated with the modular flow generator evaluated along the swing surface. This

can be explicitly shown for perturbations of zero-mode backgrounds in flat₃/BMSFT. Indeed, it is not difficult to show that the infinitesimal gravitational charge $\delta Q_\xi^{\mathcal{A}}[g]$ on the swing surface receives no contributions from the ropes and that the result agrees with the variation of the area (3.24), namely

$$\delta Q_\xi^{\mathcal{A}}[g] = \delta Q_\xi^{\mathcal{I}}[g] = \delta S_{\mathcal{A}}. \tag{3.25}$$

In addition, we note that (3.24) also matches the infinitesimal charge $\delta Q_\xi^{\mathcal{A}}[g]$ evaluated on the boundary interval \mathcal{A} . This charge corresponds to the variation of the modular Hamiltonian, as shown explicitly in section 3 of [42]. We thus find that the swing surface proposal satisfies the first law of entanglement entropy,

$$\delta S_{\mathcal{A}} = \delta Q_\xi^{\mathcal{A}}[g] = \delta Q_\xi^{\mathcal{I}}[g] = \delta \langle \mathcal{H}_{\text{mod}} \rangle, \tag{3.26}$$

in agreement with the general discussion in section 2.3.

To conclude, we have calculated the holographic entanglement entropy in flat₃/BMSFT using the swing surface proposal (2.31) on zero-mode backgrounds and linearized fluctuations of these spacetimes, and checked explicitly that the first law of entanglement entropy holds. These results provide additional evidence that swing surfaces are the geometric duals of entanglement entropy in BMS-invariant field theories.

3.5 Comments on strong subadditivity

Let us now comment on the implications of entanglement entropy for single intervals to strong subadditivity. For adjacent intervals \mathcal{A} , \mathcal{B} , and \mathcal{C} at the boundary, strong subadditivity is the statement that

$$S_{\mathcal{AB}} + S_{\mathcal{BC}} \geq S_{\mathcal{B}} + S_{\mathcal{ABC}}, \tag{3.27}$$

where $\mathcal{AB} \equiv \mathcal{A} \cup \mathcal{B}$. We consider the following cases.

3.5.1 Fixed slope

For simplicity, let us first consider three intervals with the same slope. In these cases, the entanglement entropy of the interval \mathcal{A} at the boundary is a function of a length scale L , namely $S_{\mathcal{A}} = S(L)$. Thus, in order to test if strong subadditivity is satisfied, we need to test if the entanglement entropy is upper convex (i.e. concave), namely if

$$S''(L) \leq 0. \tag{3.28}$$

In what follows we will test which of the zero mode backgrounds described in this section satisfy strong subadditivity. In particular, we will show that for intervals with the same slope strong subadditivity is satisfied for the Minkowski and Poincaré vacua but that it can fail for backgrounds with conical deficits and for flat cosmological solutions.

Global Minkowski vacuum. For the global Minkowski vacuum given in (3.1) with $\Theta(\phi) = M = -1$ and $2\Xi(\phi) = J = 0$, the entanglement entropy (D.28) satisfies

$$S''(l_\phi) = \frac{l_u}{4Gl_\phi} \left[\frac{l_\phi}{2} \cot\left(\frac{l_\phi}{2}\right) - 1 \right] \csc^2\left(\frac{l_\phi}{2}\right) \leq 0. \quad (3.29)$$

Since $S(l_\phi)$ is upper convex, we find that strong subadditivity is satisfied for adjacent intervals with fixed slope l_u/l_ϕ .

Poincaré vacuum. For the Poincaré vacuum (3.7), the holographic entanglement entropy (3.13) is constant and proportional to the slope l_u/l_z of the interval at the boundary. As a result, the entanglement entropy saturates strong subadditivity, i.e. $S''(l_z) = 0$.

Conical defects. The conical defect geometries are described by (3.1) with $\Theta(\phi) = M$ and $-1 < M < 0$. Their entanglement entropy is derived in (D.27) and its second derivative with respect to l_ϕ is given by

$$S''(l_\phi) = -s \frac{M}{4G} \left(\frac{l_u}{l_\phi} + \frac{J}{2M} \right) \left[\frac{\sqrt{-M}l_\phi}{2} \cot\left(\frac{\sqrt{-M}l_\phi}{2}\right) - 1 \right] \csc^2\left(\frac{\sqrt{-M}l_\phi}{2}\right) \leq 0, \quad (3.30)$$

where $s = \text{sign}\left[\sqrt{-M}\left(l_u + \frac{Jl_\phi}{2M}\right) \cot\left(\frac{\sqrt{-M}l_\phi}{2}\right) - \frac{J}{M}\right]$ takes into account the effect of the absolute value in (D.27). As a result, we find that $S''(l_\phi) \leq 0$ implies

$$\left[\left(\frac{l_u}{l_\phi} + \frac{J}{2M} \right) + \frac{J}{(-M)^{3/2}l_\phi} \tan\left(\frac{\sqrt{-M}l_\phi}{2}\right) \right] \left(\frac{l_u}{l_\phi} + \frac{J}{2M} \right) \geq 0. \quad (3.31)$$

Therefore, strong subadditivity is satisfied on conical defect geometries with positive angular momentum $J > 0$ for intervals with $l_u > 0$, $l_\phi > 0$, and $\frac{l_u}{l_\phi} + \frac{J}{2M} > 0$.

Flat cosmological solutions. For flat cosmological solutions we have $\Theta(\phi) = M > 0$ in eq. (3.1) and the entanglement entropy (3.18) satisfies

$$S''(l_\phi) = s \frac{M}{4G} \left(\frac{l_u}{l_\phi} + \frac{J}{2M} \right) \left[\frac{\sqrt{M}l_\phi}{2} \coth\left(\frac{\sqrt{M}l_\phi}{2}\right) - 1 \right] \text{csch}^2\left(\frac{\sqrt{M}l_\phi}{2}\right), \quad (3.32)$$

where $s = \text{sign}\left[\sqrt{M}\left(l_u + \frac{Jl_\phi}{2M}\right) \coth\left(\frac{\sqrt{M}l_\phi}{2}\right) - \frac{J}{M}\right]$. Since M is positive, requiring $S''(l_\phi) \leq 0$ gives rise to the condition

$$\left[\left(\frac{l_u}{l_\phi} + \frac{J}{2M} \right) - \frac{J}{M^{3/2}l_\phi} \tanh\left(\frac{\sqrt{M}l_\phi}{2}\right) \right] \left(\frac{l_u}{l_\phi} + \frac{J}{2M} \right) \leq 0. \quad (3.33)$$

Hence, strong subadditivity is always violated for intervals with $l_u > 0$ and $l_\phi > 0$ on flat cosmological solutions with positive angular momentum $J > 0$.

3.5.2 Changing the slope

Thus far we have only considered intervals with the same slope and found that strong subadditivity can be violated in flat cosmological solutions. We now show that for more general intervals, strong subadditivity can also be violated in other backgrounds. In order

to illustrate this let us consider the Poincaré vacuum and three adjacent intervals \mathcal{A} , \mathcal{B} , \mathcal{C} parametrized by $(l_u, l_z) = (d_{\mathcal{A}}, l_{\mathcal{A}})$, $(d_{\mathcal{B}}, l_{\mathcal{B}})$, $(d_{\mathcal{C}}, l_{\mathcal{C}})$, all of which are assumed to be positive. This means that the interval \mathcal{AB} is given by $(d_{\mathcal{A}} + d_{\mathcal{B}}, l_{\mathcal{A}} + l_{\mathcal{B}})$ and similarly for the intervals \mathcal{BC} and \mathcal{ABC} . Strong subadditivity (3.27) then implies

$$\frac{d_{\mathcal{A}} + d_{\mathcal{B}}}{l_{\mathcal{A}} + l_{\mathcal{B}}} + \frac{d_{\mathcal{B}} + d_{\mathcal{C}}}{l_{\mathcal{B}} + l_{\mathcal{C}}} \geq \frac{d_{\mathcal{B}}}{l_{\mathcal{B}}} + \frac{d_{\mathcal{A}} + d_{\mathcal{B}} + d_{\mathcal{C}}}{l_{\mathcal{A}} + l_{\mathcal{B}} + l_{\mathcal{C}}}, \quad (3.34)$$

which leads to the condition

$$(d_{\mathcal{A}} + d_{\mathcal{B}}) \left(\frac{d_{\mathcal{B}}}{l_{\mathcal{B}}} - \frac{d_{\mathcal{C}}}{l_{\mathcal{C}}} \right) + (d_{\mathcal{B}} + d_{\mathcal{C}}) \left(\frac{d_{\mathcal{B}}}{l_{\mathcal{B}}} - \frac{d_{\mathcal{A}}}{l_{\mathcal{A}}} \right) \leq 0. \quad (3.35)$$

We thus find that strong subadditivity can be violated in the Poincaré vacuum for some configurations of the intervals. A sufficient but not necessary condition for strong subadditivity to be satisfied is for the slope of the middle interval \mathcal{B} to be smaller or equal than the slopes of the two adjacent intervals \mathcal{A} and \mathcal{C} , namely that $\frac{d_{\mathcal{B}}}{l_{\mathcal{B}}} \leq \frac{d_{\mathcal{A}}}{l_{\mathcal{A}}}, \frac{d_{\mathcal{C}}}{l_{\mathcal{C}}}$.

To summarize, we find that the fate of strong subadditivity of entanglement entropy in BMSFT depends on the background as well as the subregions, in contrast to AdS/CFT where strong subadditivity is universally satisfied. It would be interesting to understand the origin of the violations of strong subadditivity in flat holography which we leave for future work.

4 Swing surfaces in (W)AdS₃/WCFT

In this section we use the holographic entanglement entropy proposal (2.31) to construct the swing surfaces of zero-mode asymptotically AdS₃ backgrounds satisfying Dirichlet-Neumann boundary conditions [39]. These swing surfaces agree with the geometric picture put forward in [12] and reproduce the entanglement entropy of single intervals in WCFTs at the boundary [10, 12]. Note that the backgrounds considered in this section are also compatible with the Brown-Henneaux boundary conditions [60] that lead to a dual CFT at the boundary. We will show that in this case the bench of the swing surface is pushed all the way to the boundary and reduces to the standard RT/HRT surface [1, 2]. Finally, we will consider warped AdS₃ backgrounds and show that our results apply equally well to this class of spacetimes.

Three-dimensional Einstein gravity with a negative cosmological constant admits alternative boundary conditions from those of Brown and Henneaux [60] that lead to different asymptotic symmetries at the boundary [39, 61–64]. In particular, the asymptotic symmetries compatible with the Dirichlet-Neumann CSS boundary conditions are described by a Virasoro-Kac-Moody algebra [39]. These are the same symmetries characterizing a class of nonrelativistic quantum field theories known as warped CFTs [37, 38], a fact that motivates the so-called AdS₃/WCFT correspondence. The space of solutions of Einstein gravity satisfying CSS boundary conditions can be described in Fefferman-Graham gauge by two functions $L(u)$ and $J(u)$, as well as a constant T_v , such that

$$ds^2 = \frac{dr^2}{r^2} + r^2 du [dv + J'(u)du] + L(u)(du)^2 + T_v^2 [dv + J'(u)du]^2 + \frac{1}{r^2} T_v^2 L(u) du [dv + J'(u)du], \quad (4.1)$$

where we have set the radius of AdS_3 to one and the lightcone coordinates (u, v) satisfy $(u, v) \sim (u + 2\pi, v + 2\pi)$. The latter are related to the coordinates (x, y) of the WCFT at the boundary at $r \rightarrow \infty$ by a state-dependent map [38]

$$u = x, \quad v = x + \frac{y}{2\mu T_v}, \quad (4.2)$$

where μ is a parameter characterizing the WCFT.

In analogy with the asymptotically flat spacetimes discussed in section 3, it is helpful to discuss the zero-mode backgrounds described by (4.1). When $L(u) = T_u^2$ and $J(u)$ are constants, the backgrounds (4.1) reduce to zero-mode solutions of three-dimensional gravity that are also compatible with Brown-Henneaux boundary conditions, and whose energy and angular momentum are respectively given by $\mathcal{E} = (T_u^2 + T_v^2)/4G$ and $\mathcal{J} = (T_u^2 - T_v^2)/4G$. The zero-mode backgrounds described by (4.1) include the global AdS_3 vacuum when $\mathcal{E} = -1/8G$ and $\mathcal{J} = 0$, conical defect geometries when $-1/8G < \mathcal{E} < 0$, and BTZ black holes when $\mathcal{E} \geq |\mathcal{J}| \geq 0$.

The generalized Rindler method described briefly in section 3 works in a similar way in the (W)AdS₃/WCFT correspondence [10, 12]. In particular, the holographic entanglement entropy associated with an interval \mathcal{A} at the boundary is reproduced by the area of a swing surface in the bulk. For zero-mode backgrounds, the holographic entanglement entropy is given by [12]

$$S_{\mathcal{A}} = \frac{T_v l_v}{4G} + \frac{1}{4G} \log \left[\frac{\sinh(T_u l_u)}{\varepsilon T_u} \right], \quad (4.3)$$

where l_u and l_v denote the lengths of the interval \mathcal{A} along the u and v coordinates, and ε is the UV cutoff in the WCFT. Note that the gravitational T_u and T_v parameters are related to the thermodynamic potentials of the WCFT at the boundary. Using the holographic dictionary, one finds that (4.3) reproduces the entanglement entropy for single intervals in thermal states in WCFTs. In the following we will show how (4.3) can be obtained from the general prescription for holographic entanglement entropy proposed in section 2.3. In addition, we will discuss the role played by the boundary conditions in the derivation of the swing surface and describe how the swing surface reduces to the RT/HRT surface in AdS/CFT.

Comments on strong subadditivity. It is interesting to note that the entanglement entropy for zero mode backgrounds (4.3) satisfies strong subadditivity for adjacent intervals. Indeed, we note that the first term of (4.3) is linear in l_v and does not contribute to the check of strong subadditivity, while the second term is upper convex in l_u , namely it satisfies

$$S''(l_u) = -\frac{T_u^2}{4G} \text{csch}^2(T_u l_u) \leq 0, \quad (4.4)$$

for both real and imaginary values of T_u . This means that strong subadditivity is satisfied for the global AdS_3 vacuum, the Poincaré vacuum, conical defect geometries, and BTZ black holes. This result is to be expected since the second term in (4.3) is the same as that of a chiral half of a two-dimensional CFT, which is known to satisfy strong subadditivity.

4.1 Approximate modular flow

The first step in our proposal for holographic entanglement entropy is the identification of the approximate modular flow generator near the endpoints $\partial\mathcal{A}$ of the interval \mathcal{A} at the boundary. In this section we will write down the approximate modular flow generator for general states which we will use in the next section to construct the ropes γ_{\pm} of the swing surface.

Let us consider a WCFT on the *canonical cylinder* where the Virasoro and U(1) coordinates, denoted by x and y respectively, satisfy $(x, y) \sim (x + 2\pi, y)$. On the canonical cylinder, the vacuum expectation values of zero-mode charges depend on a parameter μ that is given in holographic WCFTs by $\mu = \sqrt{-c/6k}$, where c is the central charge and k is the U(1) level of the Virasoro-Kac-Moody algebra. In particular, these vacuum expectation values can be removed by a warped conformal transformation that takes the canonical cylinder to the so-called *reference cylinder* where $(x, y) \sim (x + 2\pi, y - i\mu)$ [16]. We consider a general parametrization of the interval \mathcal{A} on the canonical cylinder such that its endpoints are given by

$$\partial\mathcal{A} = \{(x_-, y_-), (x_+, y_+)\}, \quad x_+ - x_- = l_x, \quad y_+ - y_- = l_y. \quad (4.5)$$

The modular flow generator on the vacuum of such a WCFT can be obtained via the Rindler method. It can also be derived by finding the linear combination of the vacuum symmetry generators that leaves the causal domain of dependence of \mathcal{A} invariant. For a general interval, the exact modular flow generator on the vacuum state satisfies [42]

$$\zeta = \frac{i}{e^{2\pi i(x_+ - x_-)} - 1} \left[e^{2\pi i(x - x_-)} + e^{-2\pi i(x - x_+)} - e^{2\pi i(x_+ - x_-)} - 1 \right] \partial_x - 2\pi\mu\partial_y. \quad (4.6)$$

We can obtain the approximate modular flow $\zeta^{(p)}$ for general states near the endpoint $p \in \partial\mathcal{A}$ by sending the other endpoint of \mathcal{A} to infinity. The approximate modular flow generator is thus given by

$$\zeta^{(\pm)} = \mp 2\pi(x - x_{\pm})\partial_x - 2\pi\mu\partial_y, \quad (4.7)$$

where the \pm superscript refers to the (x_{\pm}, y_{\pm}) endpoint.

It is instructive to compare (4.7) to the approximate modular flow of a CFT. The latter can be obtained in a similar way from the exact modular flow generator on the vacuum state found in e.g. [48]. If we denote the two chiral coordinates of the CFT by u and v , the approximate modular flow generator is then given by

$$\zeta_{\text{CFT}}^{(\pm)} = \mp [2\pi(u - u_{\pm})\partial_u - 2\pi(v - v_{\pm})\partial_v], \quad (4.8)$$

which corresponds to the boost generator near each of the endpoints (u_{\pm}, v_{\pm}) . A crucial difference between eqs. (4.7) and (4.8) is the finite $2\pi\mu\partial_y$ term characteristic of holographic WCFTs. This term guarantees that $\zeta^{(\pm)}$ does not vanish at the endpoints of the interval \mathcal{A} , in contrast with the behavior of $\zeta_{\text{CFT}}^{(\pm)}$. Furthermore, we see that up to this term, the approximate modular flow generator (4.7) corresponds to half of that of a CFT, which follows from the fact that WCFTs feature only one copy of the Virasoro algebra.

We note that the endpoints $\partial\mathcal{A}$ of the interval \mathcal{A} are fixed points of the modular flow generator (4.7) despite the presence of the $2\pi\mu\partial_y$ term. As argued in [16], the replica trick in WCFT must be understood as opening up the local reference plane near each of the endpoints and gluing circles satisfying the identification $(z, y) \sim (ze^{2\pi i}, y - i\mu)$. The $2\pi\mu\partial_y$ term guarantees that $\zeta^{(p)}$ is compatible with the replica trick and that it maps the endpoints of \mathcal{A} back to themselves. Furthermore, as shown in appendix C.2, the $2\pi\mu\partial_y$ term is necessary to extend the approximate modular flow generator $\zeta^{(p)}$ into an asymptotic Killing vector in the bulk, the latter of which played an important role in the derivation of the swing surface proposal in section 2.3. Finally, we note that the $2\pi\mu\partial_y$ term is also necessary to match the entanglement entropy in the bulk and boundary sides of the AdS₃/WCFT correspondence [12].

The next step in the holographic entropy proposal is to determine the null geodesics γ_{\pm} extending from the endpoints $\partial\mathcal{A}$ at the boundary into the interior of the spacetime. Note that since the vector tangent to the ropes must reduce to (4.7) at the boundary, the former must have components along $\partial_y = (1/2\mu T_v)\partial_v$ where we used the map (4.2) relating the WCFT and AdS₃ lightcone coordinates. Due to the dependence on T_v , we expect the parametrization of the ropes to depend on the background spacetime, as we explicitly verify in the next section. Once the ropes γ_{\pm} are determined, the swing surface can be obtained by finding the extremal surface connecting γ_+ and γ_- .

4.2 Swing surfaces for zero-mode backgrounds

We now test the holographic entanglement entropy proposal and determine the swing surface of generic zero-mode backgrounds. For convenience, we work in the following gauge

$$ds^2 = \frac{d\rho^2}{4(\rho^2 - 4T_u^2 T_v^2)} + \rho dudv + T_u^2 du^2 + T_v^2 dv^2, \quad (4.9)$$

which is related to the Fefferman-Graham gauge used in (4.1) by the change of coordinates $\rho = r^2 + T_u^2 T_v^2 / r^2$. In these coordinates the endpoints of the interval \mathcal{A} at the boundary are parametrized by

$$\partial\mathcal{A} = \{(u_-, v_-), (u_+, v_+)\}, \quad u_+ - u_- = l_u, \quad v_+ - v_- = l_v, \quad (4.10)$$

and are related to the field theory parametrization used in (4.5) via the map (4.2).

Let us first determine the ropes γ_{\pm} of the swing surface. As described in section 2.3, the ropes γ_{\pm} are null geodesics emanating from the boundary endpoints (4.10) whose tangent vectors reduce to the approximate modular flow generator (4.7) at the boundary. Since the zero-mode backgrounds (4.9) feature two commuting Killing vectors ∂_u and ∂_v , the null geodesics γ_{\pm} satisfy two conservation equations

$$T_u^2 u' + \frac{\rho v'}{2} = p_u, \quad T_v^2 v' + \frac{\rho u'}{2} = -p_v, \quad (4.11)$$

where primes denote derivatives with respect to the affine parameter λ while p_u and $-p_v$ denote the momenta along the u and v coordinates. Furthermore, since the ropes of the

swing surface are required to be null, we also have

$$\frac{\rho'^2}{4(\rho^2 - 4T_u^2 T_v^2)} + T_u^2 u'^2 + T_v^2 v'^2 + \rho u' v' = 0. \tag{4.12}$$

In appendix E we show that the solution to eqs. (4.11) and (4.12) that reaches the boundary as $\lambda \rightarrow \infty$ must necessarily have $p_u p_v \geq 0$ and, furthermore, that null geodesics with $p_u p_v > 0$ do not satisfy the boundary condition (2.16). Instead, the ropes of the swing surface can be obtained from the solutions to eqs. (4.11) and (4.12) with $p_v = 0$, which can be written as⁸

$$\gamma_{\pm} : \begin{cases} \rho = 4|p_u|T_v\lambda + \rho_0, \\ u = \mp \frac{1}{4T_u} \log \left(\frac{\rho + 2T_u T_v}{\rho - 2T_u T_v} \right) + \tilde{u}_{\pm}, \\ v = \mp \frac{1}{4T_v} \log [(\rho^2 - 4T_u^2 T_v^2)/\rho_{\infty}^2] + \tilde{v}_{\pm}, \end{cases} \tag{4.13}$$

where ρ_0 , \tilde{u}_{\pm} , and \tilde{v}_{\pm} are integration constants, λ is the affine parameter, and ρ_{∞} is a radial cutoff in the bulk. We have parametrized the solutions (4.13) such that the γ_{\pm} geodesic carries $\pm|p_u|$ momentum. Nevertheless, note that the value of p_u can be absorbed by a rescaling of the affine parameter λ that does not change the solution. It is also useful to note that at the cutoff surface $\rho = \rho_{\infty}$, the solutions (4.13) reach the point

$$(u, v, \rho) = \left(\tilde{u}_{\pm} \mp \frac{T_v}{\rho_{\infty}} + \mathcal{O}\left(\frac{1}{\rho_{\infty}^2}\right), \tilde{v}_{\pm} \mp \frac{T_u^2 T_v}{\rho_{\infty}^2} + \mathcal{O}\left(\frac{1}{\rho_{\infty}^3}\right), \rho_{\infty} \right). \tag{4.14}$$

We now show that the boundary condition (2.16) is satisfied by the null geodesics (4.13) and determine the values of the integration constants \tilde{u} , \tilde{v} , and ρ_0 . As shown in appendix B, we can always find a parameter $\tau(\lambda)$ such that the vector $\xi^{(\pm)}$ tangent to γ_{\pm} satisfies the normalization condition (2.17). As a result, the tangent vector of (4.13) can be written as

$$\begin{aligned} \xi^{(\pm)} &\equiv 2\pi \frac{d\lambda}{d\tau} \frac{dx^{\mu}}{d\lambda} \partial_{\mu} = \pm 2\pi \lambda (u' \partial_u + v' \partial_v + \rho' \partial_{\rho}) \\ &= \frac{2\pi T_v (\rho - \rho_0)}{\rho^2 - 4T_u^2 T_v^2} \left(\partial_u - \frac{\rho}{2T_v^2} \partial_v \right) \pm 2\pi (\rho - \rho_0) \partial_{\rho}. \end{aligned} \tag{4.15}$$

On the other hand, using the map (4.2), we can rewrite the boundary modular flow generator (4.7) in terms of the bulk coordinates such that

$$\zeta^{(\pm)} = \mp 2\pi (u - u_{\pm}) (\partial_u + \partial_v) - \frac{\pi}{T_v} \partial_v. \tag{4.16}$$

Comparing the u and v components of the tangent vector (4.15) to the components of the approximate modular flow generator (4.16), we find that the boundary condition $\xi^{(\pm)}|_{\partial\mathcal{M}} = \zeta^{(\pm)}$ is satisfied at the cutoff surface $\rho = \rho_{\infty}$ provided that $\rho_0 = 2T_v^2$ and

$$u = u_{\pm} \mp \frac{T_v}{\rho_{\infty}} + \mathcal{O}\left(\frac{1}{\rho_{\infty}^2}\right). \tag{4.17}$$

⁸The solutions with $p_u = 0$ and $p_v \neq 0$ are similar to eq. (4.13) with $u \leftrightarrow v$. These geodesics have nonvanishing $\xi^{(\pm)u}$ components at the boundary and do not satisfy the boundary condition $\xi^{(\pm)}|_{\partial\mathcal{M}} = \zeta^{(\pm)}$.

Furthermore, comparing (4.17) to the point (4.14) reached by the null geodesics γ_{\pm} at the cutoff surface, the later of which is also required to match (4.10) as $\rho_{\infty} \rightarrow \infty$, we obtain

$$\tilde{u}_{\pm} = u_{\pm} + \mathcal{O}\left(\frac{1}{\rho_{\infty}^2}\right), \quad \tilde{v}_{\pm} = v_{\pm} + \mathcal{O}\left(\frac{1}{\rho_{\infty}^2}\right). \quad (4.18)$$

Consequently, the null geodesics with $p_v = 0$ given in (4.13) describe the ropes of the swing surface.

The next step in the holographic entropy proposal (2.31) consists of finding the extremal surface lying between the ropes. The latter can be determined by extremizing the geodesic distance between two points on γ_+ and γ_- . In order to facilitate the discussion on warped AdS₃ backgrounds in section 4.4, we derive the geodesic distance $L(p_1, p_2)$ between two spatially separated points $p_1 = (u_1, v_1, \rho_1)$ and $p_2 = (u_2, v_2, \rho_2)$ by exploiting the symmetries of locally AdS₃ spacetimes. The geodesic distance must be invariant under the simultaneous action of the local isometries of the zero-mode backgrounds (4.9), namely under $\text{SL}(2, R)_L \times \text{SL}(2, R)_R$ transformations.⁹ We first note that there are two independent functions $D_+(p_1, p_2)$ and $D_-(p_1, p_2)$ that are invariant under an $\text{SL}(2, R)_L \times \text{U}(1)_R$ subgroup where $\text{U}(1)_R$ generates translations along v . These functions are given by

$$D_{\pm} = \frac{e^{\pm T_v v_{12}}}{8T_u T_v} \left[e^{\pm T_u u_{12}} \sqrt{(\rho_1 + 2T_u T_v)(\rho_2 + 2T_u T_v)} - e^{\mp T_u u_{12}} \sqrt{(\rho_1 - 2T_u T_v)(\rho_2 - 2T_u T_v)} \right], \quad (4.19)$$

where $x_{12}^{\mu} \equiv x_1^{\mu} - x_2^{\mu}$ for any two coordinates x_1^{μ} and x_2^{μ} . Requiring $L(p_1, p_2)$ to be invariant under the full $\text{SL}(2, R)_R$ group implies that the geodesic distance depends on p_1 and p_2 only through the combination $D(p_1, p_2) = D_+(p_1, p_2) + D_-(p_1, p_2)$. Furthermore, the functional $L(D)$ can be determined from the normalization condition $g^{\mu\nu} \partial_{\mu} L(p_1, p_2) \partial_{\nu} L(p_1, p_2) = 1$ where the derivative is taken with respect to one of the points, say p_2 . As a result, we find that the geodesic distance $L(p_1, p_2)$ between two spatially separated points in the locally AdS₃ backgrounds (4.9) is given by

$$L(p_1, p_2) = \cosh^{-1} [D(p_1, p_2)]. \quad (4.20)$$

The location of the extremal surface lying between the γ_+ and γ_- ropes is determined by extremizing the geodesic distance (4.20) where we take $p_1 \in \gamma_-$ and $p_2 \in \gamma_+$ with

$$\rho_1 = 2T_u T_v \coth[2T_u(u_1 - u_-)], \quad v_1 = v_- - \frac{1}{2T_v} \log \left\{ \frac{\sinh[2T_u(u_1 - u_-)]}{2T_u T_v \rho_{\infty}^{-1}} \right\}, \quad (4.21)$$

$$\rho_2 = 2T_u T_v \coth[2T_u(u_+ - u_2)], \quad v_2 = v_+ + \frac{1}{2T_v} \log \left\{ \frac{\sinh[2T_u(u_+ - u_2)]}{2T_u T_v \rho_{\infty}^{-1}} \right\}. \quad (4.22)$$

⁹The $\text{SL}(2, R)_L$ generators are given by the following Killing vectors

$$L_0 = -\frac{1}{2T_u} \partial_u, \quad L_{\pm 1} = e^{\pm 2T_u u} \left[-\frac{\rho}{T_u \sqrt{\rho^2 - 4T_u^2 T_v^2}} \partial_u + \frac{T_u}{\sqrt{\rho^2 - 4T_u^2 T_v^2}} \partial_v \pm \sqrt{\rho^2 - 4T_u^2 T_v^2} \partial_{\rho} \right],$$

while the $\text{SL}(2, R)_R$ generators can be obtained from the expressions above by letting $u \leftrightarrow v$ and $T_u \leftrightarrow T_v$.

In this parametrization, the $D_+(u_1, u_2)$ and $D_-(u_1, u_2)$ functions are given by

$$D_+(u_1, u_2) = e^{-l_v T_v} \rho_\infty^{-1} T_u T_v \operatorname{csch}(2T_u u_{+1}) \operatorname{csch}(2T_u u_{-1}) \sinh [T_u (l_u + 2u_{21})], \quad (4.23)$$

$$D_-(u_1, u_2) = \frac{e^{l_v T_v} \sinh(l_u T_u)}{4\rho_\infty^{-1} T_u T_v}, \quad (4.24)$$

where we note that $D_-(u_1, u_2)$ is independent of the u_1 and u_2 parameters. Solving the extremality conditions corresponds to solving $\partial_{u_1} D_+ = \partial_{u_2} D_+ = 0$. In this way, we find that the endpoints of the bench are located at

$$u_1 = u_2 = \frac{u_+ + u_-}{2}. \quad (4.25)$$

The spacelike geodesic lying between the null ropes at the points determined by (4.25) is a line with fixed values of u and ρ that extends along the v direction

$$\gamma : u = \frac{u_+ + u_-}{2}, \quad v \in \left[\frac{v_+ + v_- - \Delta v}{2}, \frac{v_+ + v_- + \Delta v}{2} \right], \quad \rho = 2T_u T_v \coth(T_u l_u), \quad (4.26)$$

where Δv is given by

$$\Delta v \equiv l_v + \frac{1}{T_v} \log \left[\frac{\sinh(T_u l_u)}{2T_u T_v \rho_\infty^{-1}} \right]. \quad (4.27)$$

This expression for the bench agrees with the results obtained in [42] where γ was shown to correspond to the set of fixed points of the bulk modular flow generator. We also note that the bench of the swing surface always lies outside of the horizon of the BTZ black hole which is located at $\rho = 2T_u T_v$.

The holographic entanglement entropy obtained from the area of the swing surface $\gamma_{\mathcal{A}} = \gamma_- \cup \gamma \cup \gamma_+$ is then given by

$$S_{\mathcal{A}} = \frac{\text{Area}(\gamma_{\mathcal{A}})}{4G} = \frac{T_v l_v}{4G} + \frac{1}{4G} \log \left[\frac{\sinh(T_u l_u)}{2T_u T_v \rho_\infty^{-1}} \right], \quad (4.28)$$

which matches the entanglement entropy of WCFTs at the boundary (4.3) provided that ρ_∞ is related to the WCFT cutoff ε by

$$\rho_\infty = \frac{2T_v}{\varepsilon}. \quad (4.29)$$

The relationship (4.29) between the radial cutoff in the bulk and the UV cutoff at the boundary can be derived, for example, from the Rindler transformation found in ref. [12].

To conclude, we have explicitly checked that the holographic entropy proposal (2.31) reproduces the entanglement entropy of single intervals in the AdS₃/WCFT correspondence. In particular, the swing surface $\gamma_{\mathcal{A}} = \gamma_- \cup \gamma \cup \gamma_+$ described by the ropes (4.13) and the bench (4.26) reproduces the geometric picture previously obtained from the Rindler method in [12].

4.3 Swing surfaces as RT/HRT surfaces in AdS₃/CFT₂

Let us now comment on swing surfaces in the AdS₃/CFT₂ correspondence. In order to construct a swing surface in AdS₃/CFT₂, we first need to find the set of null geodesics whose tangent vector reduces to the approximate modular flow generator of two-dimensional CFTs at the boundary. It is not difficult to check that null geodesics with $p_v = 0$ have tangent vectors (4.15) that are not compatible with the approximate modular flow generator of CFTs, the latter of which are given in (4.8). Therefore, we must consider null geodesics with $p_u p_v > 0$, whose tangent vectors are given near the asymptotic boundary by (see appendix E)

$$\xi^{(\pm)} = \mp 2\pi[(u - u_{\pm})\partial_u + (v - v_{\pm})\partial_v - 2\rho_{\infty}\partial_{\rho}] + \textit{subleading}. \quad (4.30)$$

The u and v components of the vectors (4.30) and (4.8) differ by a relative sign, unless the null geodesics are pushed strictly to infinity, in which case these terms vanish exactly. Thus, in the AdS₃/CFT₂ correspondence the ropes of the swing surface can be interpreted as null geodesics that have shrunk all the way to the boundary. In particular, the extremal surface lying between the ropes is the RT/HRT surface and the swing surface proposal (2.31) reduces to the standard RT/HRT prescription.

4.4 Warped AdS₃

The proposal for holographic entanglement entropy described in section 2 can be generalized to warped AdS₃ spacetimes that are solutions to some massive gravity theories [65–67] as well as Einstein gravity with additional matter fields [68]. The zero-mode warped AdS₃ backgrounds can be written in the same gauge used in (4.9) such that

$$ds^2 = \frac{(1 + \alpha^2 T_v^2)d\rho^2}{4(\rho^2 - 4T_u^2 T_v^2)} + \rho dudv + \left[T_u^2 - \frac{\alpha^2(\rho^2 - 4T_u^2 T_v^2)}{4} \right] du^2 + T_v^2 dv^2, \quad (4.31)$$

where α denotes the warping parameter. When $\alpha \rightarrow 0$ we recover the locally AdS₃ backgrounds described in eq. (4.9).

Let us consider a single interval \mathcal{A} at the boundary whose endpoints are parametrized by (4.10). In order to determine the holographic entanglement entropy we must first determine the ropes of the swing surface. The latter correspond to null geodesics whose tangent vectors satisfy the boundary condition $\xi^{(\pm)}|_{\partial\mathcal{M}} = \zeta^{(\pm)}$. In this way, we find that the ropes are given by

$$\gamma_{\pm} : \begin{cases} \rho = \frac{4|p_u|T_v\lambda}{1 + \alpha^2 T_v^2} + \rho_0, \\ u = \mp \frac{1}{4T_u} \log \left(\frac{\rho + 2T_u T_v}{\rho - 2T_u T_v} \right) + u_{\pm}, \\ v = \mp \frac{1}{4T_v} \log [(\rho^2 - 4T_u^2 T_v^2)/\rho_{\infty}^2] + v_{\pm}, \end{cases} \quad (4.32)$$

which are the same null geodesics of the locally AdS₃ backgrounds given in (4.13) after a rescaling of the affine parameter $\lambda \rightarrow (1 + \alpha^2 T_v^2)\lambda$. It is not difficult to check that the

vectors $\xi^{(\pm)}$ tangent to the ropes γ_{\pm} are given by (4.15) and that their u and v components match those of the approximate modular flow generator of WCFTs at the boundary (4.16).

We now find the extremal surface lying between the γ_+ and γ_- ropes of the swing surface. In general, finding the geodesic between two arbitrary points in the warped AdS₃ background (4.31), or a general expression for the geodesic distance, is a complicated task. Nevertheless, we find that it is possible to determine the bench without using the explicit expression for the geodesic distance between two points. In warped AdS₃, the geodesic distance must be invariant under the action of its local isometry group, namely $SL(2, R)_L \times U(1)_R$, where the $U(1)_R$ factor corresponds to translations along v while the $SL(2, R)_L$ generators are given in footnote 9. In the previous section, we found that there are two independent functions $D_+(p_1, p_2)$ and $D_-(p_1, p_2)$ that are invariant under $SL(2, R)_L \times U(1)_R$ transformations. As a result, the geodesic distance $L_{\alpha}(p_1, p_2)$ depends on the points p_1 and p_2 only through the functions $D_+(p_1, p_2)$ and $D_-(p_1, p_2)$ given in (4.19) such that

$$L_{\alpha}(p_1, p_2) = L_{\alpha}(D_+, D_-). \tag{4.33}$$

As a special case, for the locally AdS₃ backgrounds obtained by setting $\alpha = 0$, we have $L_0(D_+, D_-) = \cosh^{-1}(D_+ + D_-)$ as described in detail in section 4.2. We also note that the $D_{\pm}(p_1, p_2)$ functions are independent of the warping parameter α .

Let us take $p_1 \in \gamma_-$, $p_2 \in \gamma_+$, and use the parametrization of the null geodesics introduced in eqs. (4.22) and (4.21). It is useful to note that the null geodesics γ_{\pm} satisfy the following equation

$$\partial_{u_1} D_-(u_1, u_2) = \partial_{u_2} D_-(u_1, u_2) = 0, \tag{4.34}$$

for both AdS₃ and warped AdS₃ spacetimes. This follows from the fact that $D_-(p_1, p_2)$ is a constant independent of the u_1 and u_2 parameters, cf. eq. (4.24). We thus find that the extremality conditions reduce to

$$\partial_{u_1} L_{\alpha}(u_1, u_2) = \partial_{D_+} L_{\alpha}(D_+, D_-) \partial_{u_1} D_+(u_1, u_2) = 0, \tag{4.35}$$

$$\partial_{u_2} L_{\alpha}(u_1, u_2) = \partial_{D_+} L_{\alpha}(D_+, D_-) \partial_{u_2} D_+(u_1, u_2) = 0. \tag{4.36}$$

It follows that the solutions to $\partial_{u_1} D_+(u_1, u_2) = \partial_{u_2} D_+(u_1, u_2) = 0$ automatically solve the extremality conditions (4.35) and (4.36). This means that the bench of the swing surface is the same in both AdS₃ as well as warped AdS₃ spacetimes, and is given by eq. (4.26).

The area of the swing surface $\gamma_{\mathcal{A}} = \gamma_- \cup \gamma \cup \gamma_+$ is then given by

$$S_{\mathcal{A}} = \frac{\text{Area}(\gamma_{\mathcal{A}})}{4G} = \frac{T_v l_v}{4G} + \frac{1}{4G} \log \left[\frac{\sinh(T_u l_u)}{2T_u T_v \rho_{\infty}^{-1}} \right], \tag{4.37}$$

which agrees with the AdS₃ result (4.28) and matches the entanglement entropy of single intervals in WCFTs where the bulk and boundary cutoffs are related by (4.29).

In eqs. (4.35) and (4.36) we have assumed that $\partial_{D_-} L_{\alpha}(D_+, D_-)$ does not diverge, which can be explicitly verified to be the case in the $\alpha \rightarrow 0$ limit. In addition, it is possible that other extremal surfaces exist in WAdS₃ satisfying eqs. (4.35) and (4.36) with $\partial_{D_+} L_{\alpha}(D_+, D_-) = 0$. We note that this does not happen in AdS₃ where $\partial_{D_+} L_0(D_+, D_-) = [\sinh L(u_1, u_2)]^{-1} > 0$ for all real values of u_+ and u_- , which means that the extremality condition is equivalent to $\partial_{u_1} D_+(u_1, u_2) = \partial_{u_2} D_+(u_1, u_2) = 0$.

Acknowledgments

We are grateful to Pankaj Chaturvedi, Bartek Czech, Stephane Detournay, Daniel Harlow, Juan Maldacena, Prahar Mitra, Max Riegler, and Herman Verlinde for helpful discussions. LA and WS thank the Kavli Institute of Theoretical Physics for hospitality and for providing a stimulating environment during the program “Gravitational Holography”. LA also thanks the Institute for Advanced Study for their kind hospitality. The work of LA, WS, and YZ was supported by the National Thousand-Young-Talents Program of China, NFSC Grant No. 11735001, and Beijing National Science Foundation No. Z180003. LA and WS were supported in part by the National Science Foundation under Grant No. NSF PHY-1748958. The work of LA was also supported by the International Postdoc Program at Tsinghua University and NFSC Grant No. 11950410499. HJ is supported by the Swiss National Science Foundation.

A Bulk modular flow and extremal surfaces

In this appendix we show that, in three spacetime dimensions, the set of fixed points of a Killing vector ξ extremizes the distance between two null geodesics γ_{\pm} whose tangent vector is parallel to ξ .

As described in section 2.1, the bulk modular flow generator ξ of the vacuum is an exact Killing vector that can be used to determine the swing surface $\gamma_{\mathcal{A}}$ that is homologous to the interval \mathcal{A} at the boundary. In three spacetime dimensions, the swing surface is given by $\gamma_{\mathcal{A}} = \gamma_- \cup \gamma \cup \gamma_+$ where the ropes γ_{\pm} are null geodesics emanating from the endpoints of \mathcal{A} that lie tangent to the modular flow. Let q_{\pm} denote the intersection between these null geodesics and the set of fixed points γ_{ξ} of the bulk modular flow generator. Then, the bench γ of the swing surface is the subset of γ_{ξ} that lies between the points q_+ and q_- .

The modular flow $e^{s\xi}$ maps any point $p \in \mathcal{M}$ to a one-parameter family of points $p(s)$ where $p(0) = p$. Under the modular flow, points on γ_{\pm} remain on γ_{\pm} and the set of fixed points γ_{ξ} are left invariant. In particular, we have

$$q_{\pm}(s) = q_{\pm}, \quad \forall s \in \mathbb{R}. \tag{A.1}$$

Let us now consider the geodesic distance $L(p_1, p_2)$ between two points p_1 and p_2 . Since ξ is an exact Killing vector, the geodesic distance is invariant under the simultaneous action of $e^{s\xi}$ on the points p_1 and p_2 , namely

$$L(p_1(s), p_2(s)) = L(p_1, p_2). \tag{A.2}$$

Consequently, we find that for any point $p_+ \in \gamma_+$ the geodesic distance $L(p_+, q_-)$ is independent of p_+ and is given by the distance between the two fixed points

$$L(p_+, q_-) = L(q_+, q_-), \quad \forall p_+ \in \gamma_+, \tag{A.3}$$

where we have assumed that $L(p_+, q_-)$ is a continuous function of p_+ . Similarly, the distance between the fixed point q_+ and any point $p_- \in \gamma_-$ is independent of p_- . This guarantees that the points q_+ and q_- extremize the distance $L(p_+, p_-)$ between any two points $p_+ \in \gamma_+$ and $p_- \in \gamma_-$. As a result, the bench of the swing surface extremizes the geodesic distance between the ropes γ_+ and γ_- .

B Parametrization of null geodesics

In this appendix we show that it is always possible to parametrize a null geodesic in terms of a parameter τ such that the tangent vector $\xi^\mu = 2\pi dx^\mu(\tau)/d\tau$ satisfies (2.17), namely

$$\xi^\mu \nabla_\mu \xi^\nu = \pm 2\pi \xi^\nu. \quad (\text{B.1})$$

By definition, τ is not an affine parameter; nevertheless, it can be related to an affine parameter λ via the reparametrization $\lambda = f(\tau)$, where $x^\mu(\lambda)$ satisfies the geodesic equation

$$\frac{dx^\mu}{d\lambda} \nabla_\mu \left(\frac{dx^\nu}{d\lambda} \right) = 0. \quad (\text{B.2})$$

In order to accomplish this we need to solve the ODE

$$\left(\frac{d^2\tau}{d\lambda^2} \right) \left(\frac{d\tau}{d\lambda} \right)^{-2} = \mp 1, \quad (\text{B.3})$$

whose solution is given by

$$\tau = \tau_0 \pm \log |\lambda - \lambda_0|. \quad (\text{B.4})$$

The null geodesic reaches the boundary when $\lambda \rightarrow \pm\infty$. For the upper plus sign in (B.4), the boundary corresponds to $\tau \rightarrow +\infty$ and the tangent vector ξ^μ points towards the boundary; while for the lower minus sign, the boundary corresponds to $\tau \rightarrow -\infty$ and the tangent vector ξ^μ points towards the bulk. Using (B.4) we find that

$$\xi^\mu = 2\pi \frac{dx^\mu}{d\tau} = 2\pi \frac{d\lambda}{d\tau} \frac{dx^\mu}{d\lambda} = \pm 2\pi (\lambda - \lambda_0) \frac{dx^\mu}{d\lambda}, \quad (\text{B.5})$$

which shows that $\lambda = \lambda_0$ is a fixed point of ξ provided that $dx^\mu/d\lambda$ does not diverge at λ_0 .

C The approximate modular flow generator in the bulk

In this appendix we show how the approximate bulk modular flow generator $\xi_\infty^{(p)}$ described in section 2.2 can be determined in the models of non-AdS holography considered in this paper.

C.1 Flat₃/BMSFT

The approximate modular flow generator $\zeta^{(\pm)}$ of BMSFTs (3.5) can be extended into the bulk of the asymptotically flat spacetimes (3.1) by finding the linear combination of asymptotic Killing vectors that reduces to $\zeta^{(\pm)}$ near the endpoints of the boundary interval \mathcal{A} . As discussed in section 3, three-dimensional Einstein gravity with a vanishing cosmological constant admits an infinite number of asymptotic symmetries described by the three-dimensional BMS algebra. These symmetries are generated by the action of the asymptotic Killing vectors

$$\eta = [\epsilon(\phi) + u\partial_\phi\sigma(\phi)]\partial_u + \sigma(\phi)\partial_\phi - r\partial_\phi\sigma(\phi)\partial_r + \mathcal{O}(1/r), \quad (\text{C.1})$$

where $\epsilon(\phi)$ and $\sigma(\phi)$ are two arbitrary periodic functions. The approximate modular flow generator in the bulk is denoted by $\xi_\infty^{(\pm)}$ and can be obtained from the asymptotic Killing vectors (C.1) by letting $\epsilon(\phi) = \pm 2\pi u_\pm$ and $\sigma(\phi) = \mp 2\pi(\phi - \phi_\pm)$, whereupon

$$\xi_\infty^{(\pm)} = \mp 2\pi[(u - u_\pm)\partial_u + (\phi - \phi_\pm)\partial_\phi - r\partial_r]. \quad (\text{C.2})$$

By construction, the u and ϕ components of (C.2) reproduce the approximate modular flow generator of BMSFTs at the boundary (3.5). We also note that the asymptotic Killing vectors (C.2) are tangent to the ropes of the swing surface, not only at the boundary, but also in the interior of the asymptotically flat spacetimes (3.1). This follows from the fact that the u and v components of (C.2) vanish along the ropes of the swing surface and that any vector proportional to ∂_r is null everywhere in the class of spacetimes (3.1).

C.2 AdS₃/WCFT

We now consider the approximate modular flow generator in the bulk side of the AdS₃/WCFT correspondence. The asymptotic Killing vectors of AdS₃ gravity compatible with the CSS boundary conditions can be written as [39]

$$\eta = \epsilon(u)(\partial_u + \partial_v) + \frac{\sigma(u)}{2T_v\sqrt{-c/6k}}\partial_v - \frac{r\epsilon'(u)}{2}\partial_r + \mathcal{O}(1/r), \quad (\text{C.3})$$

where $\epsilon(u)$ and $\sigma(u)$ are two arbitrary functions. The approximate bulk modular flow generator $\xi_\infty^{(\pm)}$ can be obtained by finding the combination of $\epsilon(u)$ and $\sigma(u)$ functions for which the u and v components of (C.3) match those of $\zeta^{(\pm)}$ in eq. (4.16). Using $\epsilon(u) = \mp 2\pi(u - u_\pm)$ and $\sigma(u) = -2\pi\sqrt{-c/6k}$, we find that $\xi_\infty^{(\pm)}$ is given by

$$\xi_\infty^{(\pm)} = \mp 2\pi(u - u_\pm)(\partial_u + \partial_v) - \frac{\pi}{T_v}\partial_v \pm \pi r\partial_r + \mathcal{O}(1/r). \quad (\text{C.4})$$

The norm of this asymptotic Killing vector is given by

$$\begin{aligned} \xi_\infty^{(\pm)} \cdot \xi_\infty^{(\pm)} &= \mp 2\pi(u - u_\pm)\omega_\pm r^2 + \pi^2 + T_v^2\omega_\pm^2 + 4\pi^2(u - u_\pm)^2 L(u) \\ &\mp \frac{2\pi(u - u_\pm)\omega_\pm T_v^2 L(u)}{r^2} + \mathcal{O}(1/r^4), \end{aligned} \quad (\text{C.5})$$

where we used the general metric (4.1) and $\omega_\pm \equiv \mp 2\pi(u - u_\pm)[1 + J'(u)] - \pi/T_v$.

From (C.5) we find that the approximate modular flow generator $\xi_\infty^{(\pm)}$ is null, up to terms of $\mathcal{O}(1/r^4)$, on a surface N_\pm that contains the endpoints of the boundary interval \mathcal{A} and is given by

$$N_\pm : u = u_\pm \mp \frac{T_v}{r^2} + \mathcal{O}(1/r^4). \quad (\text{C.6})$$

Given an endpoint (u_\pm, v_\pm) at the boundary and the tangent vector $\xi_\infty^{(\pm)}$, we can solve for the null geodesic equations and find the ropes γ_\pm of the swing surface for the more general backgrounds (4.1). Once the ropes of the swing surface are known, we can extend the approximate modular flow generator $\xi_\infty^{(\pm)}$ into the interior of the spacetime. As a consistency check, we note that the null geodesics for the zero-mode backgrounds (4.9) given in (4.13)

lie on the light-sheet N_{\pm} near the asymptotic boundary, and their tangent vectors (4.15) approach (C.4). Moreover, for these backgrounds, the light-sheets N_{\pm} (C.6) have a closed-form expression, since the bulk modular flow generator is locally an exact Killing vector, and are given in the Fefferman-Graham gauge by [42]

$$N_{\pm} : r^2 = \mp T_u T_v \coth [T_u(u - u_{\pm})]. \tag{C.7}$$

D Parametrization of the swing surface in flat₃/BMSFT

In this appendix we describe in more detail the parametrization of the swing surface in the flat₃/BMSFT correspondence.

D.1 Comments on the swing surface for the Poincaré vacuum

Let us begin by noting that a subtlety arises in the description of the bench of the swing surface for the Poincaré vacuum given in (3.12). Intuitively, one might expect that $z \in [-l_z/2, l_z/2]$ but this range does not accurately parametrize the bench since both the u and r coordinates in (3.12) diverge when $z \rightarrow 0$. In order to determine the actual range of z , it is more convenient to use Cartesian coordinates (t, x, y) satisfying

$$t = (l_z^2 + 4z^2) \frac{r}{4l_z} + \frac{2u}{l_z}, \quad x = zr + \frac{l_u}{l_z}, \quad y = (l_z^2 - 4z^2) \frac{r}{4l_z} - \frac{2u}{l_z}, \tag{D.1}$$

such that $ds^2 = -dt^2 + dx^2 + dy^2$. In these coordinates, the bench γ is just a straight line parametrized by

$$(t, x, y) = \left(0, 0, -\frac{l_u}{2z}\right) \quad \text{where} \quad y_+ \leq y \leq y_-, \quad y_{\pm} = \mp \frac{l_u}{l_z}. \tag{D.2}$$

When y goes from y_- to 0 and then from 0 to y_+ , the z coordinate goes from $-l_z/2$ to $-\infty$ and then continues from $+\infty$ to $l_z/2$. As a result, there seems to be a jump in z from $-\infty$ to $+\infty$ as y passes through zero. We can avoid this discontinuity by regularizing y such that $y = -(l_u/2R)e^{-i\theta}$ where R is large. It then follows that, as we go around the point $y = 0$, z goes around a big circle at infinity $C_R : Re^{i\theta}$ with $\theta \in [0, \pi]$. The bench can then be parametrized by (D.2) with the following range of z

$$z \in [l_z/2, R) \cup C_R \cup (-R, -l_z/2], \tag{D.3}$$

which can be thought of as the complement of $z \in [-l_z/2, l_z/2]$, i.e. the range of the interval \mathcal{A} at the boundary.

We learn two important facts from the discussion above: (i) a smooth bench cannot be parametrized in the range $z \in [-l_z/2, l_z/2]$ in Poincaré coordinates, but instead by the complementary range (D.3); and (ii) integrals along the bench of the form $\int_{\gamma} dz f(z)$, where $f(z)$ is analytic in the upper-half complex plane, can be equivalently integrated over the range $z \in [-l_z/2, l_z/2]$. The second fact is useful in the calculation of the variation of the entanglement entropy.

D.2 The swing surface for zero-mode $M > 0$ backgrounds

In this appendix we describe the parametrization of the swing surface for the zero-mode asymptotically flat spacetimes considered in section 3.3.

The ropes. As discussed in section 3.1, in a region sufficiently close to the boundary, the ropes γ_{\pm} of the swing surface extend from the endpoints $\partial\mathcal{A}$ of \mathcal{A} along null geodesics tangent to ∂_r . However, a subtlety arises when these geodesics extend into the interior of the zero-mode backgrounds (3.14) with $M > 0$ in the Bondi gauge. In order to see this, let us consider the following coordinate transformation between retarded Bondi coordinates (u, ϕ, r) and Cartesian coordinates (t, x, y) such that $ds^2 = -dt^2 + dx^2 + dy^2$,

$$\begin{aligned} t &= \frac{1}{\sqrt{M}} [r \cosh(\sqrt{M}\phi) - r_c \sinh(\sqrt{M}\phi)], \\ x &= \frac{1}{\sqrt{M}} [r \sinh(\sqrt{M}\phi) - r_c \cosh(\sqrt{M}\phi)], \\ y &= \frac{1}{\sqrt{M}} (r - Mu - \sqrt{M}r_c\phi), \end{aligned} \tag{D.4}$$

where $r_c \equiv J/2\sqrt{M}$ is assumed to be non-negative. It is not difficult to see from the first two equations that the region $r^2 > r_c^2$ is mapped to the region $t^2 - x^2 > 0$ in global Minkowski space and vice versa. Furthermore, since ϕ satisfies

$$\phi = -\frac{1}{\sqrt{M}} \log \left[\frac{\sqrt{M}(t-x)}{r+r_c} \right] = \frac{1}{\sqrt{M}} \log \left[\frac{\sqrt{M}(t+x)}{r-r_c} \right], \tag{D.5}$$

requiring ϕ to be real implies that global Minkowski can be divided into four regions (see figure 4):

Region II: $r > r_c$, or equivalently $t - x > 0$ and $t + x > 0$,

Region III: $-r_c < r < r_c$, or equivalently $t - x > 0$ and $t + x < 0$,

Region IV: $r < -r_c$, or equivalently $t - x < 0$ and $t + x < 0$,

Region I: $t - x > 0$ and $t + x < 0$, not covered by (D.4).

Note that when $J = 0$, region III can not be covered with real Bondi coordinates.

In Cartesian coordinates, the null rope γ_+ can be written in region II as

$$\gamma_+ : \begin{cases} t = \frac{1}{\sqrt{M}} \left[\lambda \cosh \left(\frac{\sqrt{M}l_\phi}{2} \right) - r_c \sinh \left(\frac{\sqrt{M}l_\phi}{2} \right) \right], \\ x = \frac{1}{\sqrt{M}} \left[\lambda \sinh \left(\frac{\sqrt{M}l_\phi}{2} \right) - r_c \cosh \left(\frac{\sqrt{M}l_\phi}{2} \right) \right], \\ y = \frac{1}{\sqrt{M}} \left(\lambda - M \frac{l_u}{2} - \sqrt{M}r_c \frac{l_\phi}{2} \right), \end{cases} \tag{D.6}$$

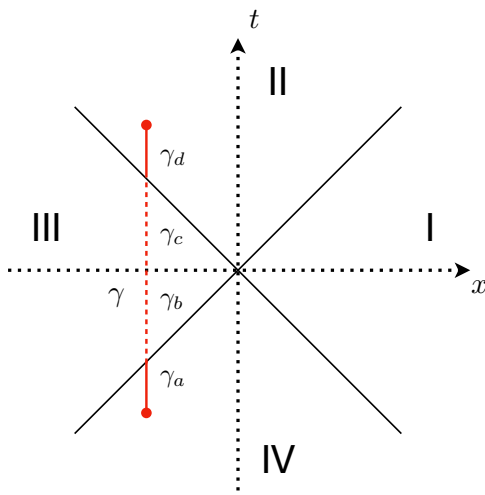


Figure 4. Four regions of a two-dimensional slice of Minkowski space. The Bondi coordinates with $r > 0$ cover only region II and part of region III. When $r \in (-\infty, \infty)$, the Bondi coordinates cover regions II, III, and IV. We also show the image of the bench under the map (D.4). For small J , the bench $\gamma = \gamma_a \cup \gamma_b \cup \gamma_c \cup \gamma_d$ ends in Region II and IV. The segment in the middle is dashed as it corresponds to analytically continued complex coordinates (u, r, ϕ) .

where $\lambda \geq 0$. The rope γ_+ can be extended to regions III and IV by letting λ take negative values. Then, we can use the inverse coordinate transformation to express γ_+ in Bondi gauge. The inverse coordinate transformation is given by

$$\begin{aligned} u &= \frac{1}{M}(r - \sqrt{M}y - \sqrt{M}r_c\phi), \\ \phi &= -\frac{1}{\sqrt{M}} \log \left[\frac{\sqrt{M}(t-x)}{r+r_c} \right] = \frac{1}{\sqrt{M}} \log \left[\frac{\sqrt{M}(t+x)}{r-r_c} \right], \\ r &= \pm \sqrt{M(t^2 - x^2) + r_c^2}, \end{aligned} \tag{D.7}$$

where the minus sign is taken in regions III and IV for negative values of r . A similar analysis holds for the γ_- rope such that the null geodesics γ_{\pm} can be parametrized by

$$\gamma_{\pm} : u = \pm \frac{l_u}{2}, \quad \phi = \pm \frac{l_{\phi}}{2}, \quad r \in (-\infty, \infty). \tag{D.8}$$

The bench. Let us now describe the parametrization of the bench for the zero-mode backgrounds (3.14) with $M > 0$. In Cartesian coordinates, the two endpoints of γ are located at $q_{\pm} = (t_{\pm}, x_{\pm}, y_{\pm})$ where

$$t_{\pm} = \mp \frac{\left[\sqrt{M}(Jl_{\phi} + 2Ml_u) \coth \left(\frac{\sqrt{M}l_{\phi}}{2} \right) - 2J \right]}{4M \sinh \left(\frac{\sqrt{M}l_{\phi}}{2} \right)}, \tag{D.9}$$

$$x_{\pm} = -\frac{(Jl_{\phi} + 2Ml_u)}{4\sqrt{M} \sinh \left(\frac{\sqrt{M}l_{\phi}}{2} \right)}, \tag{D.10}$$

$$y_{\pm} = \mp \frac{1}{4M} \left[\sqrt{M}(Jl_{\phi} + 2Ml_u) \coth^2 \left(\frac{\sqrt{M}l_{\phi}}{2} \right) - 2J \coth \left(\frac{\sqrt{M}l_{\phi}}{2} \right) \right]. \tag{D.11}$$

In Cartesian coordinates, the bench corresponds to a line that can be parametrized by

$$\gamma: \quad x = x_+, \quad y = \frac{y_+}{t_+}t, \quad t \in [t_+, -t_+]. \quad (\text{D.12})$$

In particular, the norm of a vector tangent to the bench is given by $\sinh(\sqrt{M}l_\phi/2)$ and is always positive so that the bench is spacelike.

Using the inverse coordinate transformation (D.7), we find that the bench (D.12) in Bondi coordinates can be parametrized in terms of ϕ by

$$r(\phi) = \left[\frac{2J \cosh(\sqrt{M}\phi) - \sqrt{M}(Jl_\phi + 2l_u M) \operatorname{csch}\left(\frac{\sqrt{M}l_\phi}{2}\right)}{4\sqrt{M} \sinh(\sqrt{M}\phi)} \right], \quad (\text{D.13})$$

$$u(\phi) = \frac{r(\phi)}{M} - \frac{J\phi}{2M} + \frac{\cosh\left(\frac{\sqrt{M}l_\phi}{2}\right)}{4M \sinh(\sqrt{M}\phi)} \left[(Jl_\phi + 2l_u M) \operatorname{csch}\left(\frac{\sqrt{M}l_\phi}{2}\right) \cosh(\sqrt{M}\phi) - \frac{2J}{\sqrt{M}} \right]. \quad (\text{D.14})$$

Another subtlety arises with the range of the ϕ coordinate due to the fact that the bench (D.12) spans different patches of Minkowski space as illustrated in figure 4. For positive values of l_u , l_ϕ , M and J , we always have $t_+ + x_+ < 0$ and $t_- - x_- > 0$. Furthermore, for sufficiently small J , one can see that q_+ is in region IV while q_- is in region II. For large J , both q_+ and q_- can be in region III, in which case γ remains in region III.

For simplicity, let us work out the range of ϕ in detail for the case where $J = 0$. As we move along the bench from q_+ to q_- , t increases from $t_+ < 0$ to zero and then to $t_- = |t_+|$. Using the relations $r^2 = M(t^2 - x^2)$ and $\cosh(\sqrt{M}\phi) = \sqrt{M}t/r$ we find that in Bondi coordinates the bench γ can be divided into four segments denoted by γ_a through γ_d such that (see figure 4):

- in segment γ_a with $t \in [t_+, x_+)$, the coordinate transformation (D.4) is well defined and increasing t corresponds to increasing $r \in [-\sqrt{M}(t_+^2 - x_+^2), 0^-)$ and $\phi \in [l_\phi/2, \infty)$;
- in segment γ_b with $t \in (x_+, 0]$, we have purely imaginary $r : i0^- \rightarrow -i\sqrt{M}|x_+|$ and an imaginary part in $\phi : \infty - \frac{i\pi}{2\sqrt{M}} \rightarrow 0^+ - \frac{i\pi}{2\sqrt{M}}$;
- in segment γ_c with $t \in [0, -x_+)$, we have purely imaginary $r : -i\sqrt{M}|x_+| \rightarrow -i0^+$ and an imaginary part in $\phi : 0^- - \frac{i\pi}{2\sqrt{M}} \rightarrow -\infty - \frac{i\pi}{2\sqrt{M}}$;
- in segment γ_d with $t \in (-x_+, |t_+|]$, the coordinate transformation is real again, with $r \in (0^+, \sqrt{M}(t_-^2 - x_-^2)]$ and $\phi \in (-\infty, -l_\phi/2]$.

Note that we have to be careful when passing through $t = x_+$. When $t \rightarrow x_+ + 0^+$, we have $r \rightarrow 0^+$ and thus $\cosh(\sqrt{M}\phi) = +\infty$. On the other hand, when $t \rightarrow x_+ + 0^-$, we have $r \rightarrow 0^-$ and $\cosh(\sqrt{M}\phi) = -\infty$, so ϕ must have an imaginary part $\pm i\pi/\sqrt{M}$. The change in the imaginary part appears exactly at $r = 0$ where the phase is ambiguous. In order to resolve the discontinuity in ϕ , we can introduce a regularization by setting $r = \varepsilon e^{i\theta}$ for

small enough ε . Then, when r goes from 0^+ to 0^- , θ goes from 0 to π . Consequently, ϕ changes continuously from ∞ to $\infty - \frac{i\pi}{2\sqrt{M}} \rightarrow 0^+ - \frac{i\pi}{2\sqrt{M}}$. We will denote this part by \mathcal{C}_+ . Similarly, there is also a segment \mathcal{C}_- that connects γ_c to γ_d .

Finally, let us consider an integral along the bench $\int_\gamma d\phi f(\phi)$ where $\gamma = \gamma_a \cup \mathcal{C}_+ \cup \gamma_b \cup \gamma_c \cup \mathcal{C}_- \cup \gamma_d$. If the integrand $f(\phi)$ is an analytic function, then we can continuously deform this contour so that $\phi \in [-l_\phi/2, l_\phi/2]$. Consequently, integrals along the bench can be equivalently evaluated along this range, namely

$$\int_\gamma d\phi f(\phi) = \int_{-l_\phi/2}^{l_\phi/2} d\phi f(\phi). \tag{D.15}$$

To summarize, the bench for zero-mode backgrounds with $M > 0$ is described by eqs. (D.13) and (D.14). Furthermore, for integrals on the bench, we can take the range of ϕ to be $[-l_\phi/2, l_\phi/2]$.

D.3 The swing surface for zero-mode $M < 0$ backgrounds

In this appendix we describe the parametrization of the swing surface for asymptotically flat zero-mode $M < 0$ backgrounds including the global Minkowski vacuum.

The ropes. As discussed in section 3.1, the null geodesics γ_\pm of the swing surface originate from the endpoints $\partial\mathcal{A}$ of the interval \mathcal{A} and are proportional to ∂_r near the asymptotic boundary. The description of these null geodesics as they move into the interior of the $M < 0$ backgrounds differs from that of $M > 0$ backgrounds, as they acquire ϕ -dependence in the Bondi gauge. In order to see this it is convenient to introduce Cartesian coordinates satisfying $ds^2 = -dt^2 + dx^2 + dy^2$,

$$\begin{aligned} t &= \frac{1}{\sqrt{-M}}(r - Mu - \sqrt{-M}r_c\phi), \\ x &= \frac{1}{\sqrt{-M}}[r \cos(\sqrt{-M}\phi) - r_c \sin(\sqrt{-M}\phi)], \\ y &= \frac{1}{\sqrt{-M}}[r \sin(\sqrt{-M}\phi) + r_c \cos(\sqrt{-M}\phi)], \end{aligned} \tag{D.16}$$

where $r_c \equiv J/2\sqrt{-M}$ is real. It is not difficult to show that $x^2 + y^2 = (r^2 + r_c^2)/(-M)$. As a result, when the angular momentum is finite, the Bondi coordinates cover only a part of Minkowski space where a circle of radius $r_c/\sqrt{-M}$ is excised from the (x, y) plane in addition to a deficit angle. In Cartesian coordinates the null geodesics γ_\pm correspond to straight lines originating at the asymptotic boundary at (3.15) that are parametrized by the value of the radial coordinate such that

$$\gamma_\pm : \begin{cases} t = \frac{1}{\sqrt{-M}} \left(\lambda \mp M \frac{l_u}{2} \mp \sqrt{-M} r_c \frac{l_\phi}{2} \right), \\ x = \frac{1}{\sqrt{-M}} \left[\lambda \cos \left(\frac{\sqrt{-M} l_\phi}{2} \right) \mp r_c \sin \left(\frac{\sqrt{-M} l_\phi}{2} \right) \right], \\ y = \frac{1}{\sqrt{-M}} \left[\pm \lambda \sin \left(\frac{\sqrt{-M} l_\phi}{2} \right) + r_c \cos \left(\frac{\sqrt{-M} l_\phi}{2} \right) \right]. \end{cases} \tag{D.17}$$

Note that the parameter λ in eq. (D.17) can take both positive and negative values and the asymptotic boundary is reached when $\lambda \rightarrow \infty$.

In Bondi gauge, the null geodesics γ_{\pm} consist of two segments such that $\gamma_{\pm} = \gamma_{\pm}^{(1)} \cup \gamma_{\pm}^{(2)}$. In the first segment the u and ϕ coordinates are fixed and the radial coordinate varies from $r \rightarrow \infty$ to $r = 0$ such that

$$\gamma_{\pm}^{(1)} : u = \pm \frac{l_u}{2}, \quad \phi = \pm \frac{l_{\phi}}{2}, \quad r \in [0, \infty). \quad (\text{D.18})$$

On the other hand, the u and ϕ coordinates vary in the second segment of the ropes and the radial coordinate grows from $r = 0$ to $r \rightarrow \infty$. This segment can be parametrized by¹⁰

$$\gamma_{\pm}^{(2)} : \begin{cases} u = \pm \frac{l_u}{2} - \frac{J}{2M} \left(\phi \mp \frac{l_{\phi}}{2} \right) + \frac{r}{M}, \\ r = \frac{J}{\sqrt{-M}} \tan \left[\frac{\sqrt{-M} \left(\phi \mp \frac{l_{\phi}}{2} \right)}{2} \right], \end{cases} \quad \phi \in \left[\pm \frac{l_{\phi}}{2}, \pm \frac{l_{\phi}}{2} + \frac{\pi}{\sqrt{-M}} \right). \quad (\text{D.19})$$

The two segments of the ropes are joined at the point $(u, \phi, r) = (\pm l_u/2, \pm l_{\phi}/2, 0)$, which corresponds to the lower limit of the ϕ coordinate in (D.19), namely $\phi = \pm l_{\phi}/2$. On the other hand, the upper limit of ϕ on the second segment $\gamma_{\pm}^{(2)}$ of the ropes $\phi \rightarrow \pm l_{\phi}/2 + \pi/\sqrt{-M}$ corresponds to the point $(u, \phi, r) \rightarrow (\infty, \pm l_{\phi}/2 + \pi/\sqrt{-M}, \infty)$.

The bench. According to the holographic entropy proposal described in section 2.3, the bench γ of the swing surface $\gamma_{\mathcal{A}}$ is the spacelike geodesic that extremizes the distance between the γ_+ and γ_- ropes. The bench obtained in this way can be parametrized in terms of the ϕ coordinate by

$$r(\phi) = -\frac{2J \cos(\sqrt{-M}\phi) - \sqrt{-M}(Jl_{\phi} + 2Ml_u) \csc\left(\frac{\sqrt{-M}l_{\phi}}{2}\right)}{4\sqrt{-M} \sin(\sqrt{-M}\phi)}, \quad (\text{D.20})$$

$$u(\phi) = -\frac{J\phi}{2M} + \frac{r(\phi)}{M} - \frac{\cos\left(\frac{\sqrt{-M}l_{\phi}}{2}\right)}{4M \sin(\sqrt{-M}\phi)} \left[(Jl_{\phi} + 2Ml_u) \csc\left(\frac{\sqrt{-M}l_{\phi}}{2}\right) \cos(\sqrt{-M}\phi) - \frac{2J}{\sqrt{-M}} \right], \quad (\text{D.21})$$

which correspond to the analytic continuation of eqs. (D.13) and (D.14). The bench γ intersects the first segment of γ_+ and the second segment of γ_- , or vice versa, depending on the value of the angular momentum with respect to the ‘‘critical’’ value J_c defined by

$$J_c = \frac{2(-M)^{3/2}l_u}{\sqrt{-M}l_{\phi} - \sin(\sqrt{-M}l_{\phi})}. \quad (\text{D.22})$$

When $J > J_c$, the bench ends on the first segment of γ_+ and the second segment of γ_- . Otherwise, when $J < J_c$, the bench ends on the second segment of γ_+ and the first segment

¹⁰When $J = 0$, the second segment is given by $\gamma_{\pm}^{(2)} : u = \pm \frac{l_u}{2} + \frac{r}{M}$, $\phi = \pm \frac{l_{\phi}}{2} + \frac{\pi}{\sqrt{-M}}$, $r \in [0, \infty)$. In this case, the value of the ϕ coordinate jumps discontinuously between the first and second segments. Hence, it is convenient to keep $J \neq 0$ as a regulator as it guarantees a smooth parametrization of the ropes.

of γ_- . Without loss of generality let us consider the $J < J_c$ case which includes the global Minkowski vacuum. In this case, we find that the range of ϕ parametrizing the location of the bench is given by

$$\phi^* < \phi < \frac{2\pi}{\sqrt{-M}} - \frac{l_\phi}{2}, \quad (\text{D.23})$$

where $\phi^* \geq l_\phi/2$ and satisfies

$$\phi^* = \frac{l_\phi}{2} + \frac{2}{\sqrt{-M}} \tan^{-1} \left\{ \frac{\csc\left(\frac{\sqrt{-M}l_\phi}{2}\right)^2 [J \sin(\sqrt{-M}l_\phi) - \sqrt{-M}(Jl_\phi + 2Ml_u)]}{2J} \right\}. \quad (\text{D.24})$$

Let us now consider the length of the swing surface $\gamma_{\mathcal{A}} = \gamma_- \cup \gamma \cup \gamma_+$. Since the ropes γ_{\pm} are null, only the bench γ yields a nonvanishing contribution to the length of the swing surface. When $J < J_c$, the length L of the bench is given by

$$L = \int_{\gamma} \sqrt{g_{\mu\nu} dx^\mu dx^\nu} = \int_{\phi^*}^{2\pi/\sqrt{-M} - l_\phi/2} \sqrt{g_{\mu\nu} \partial_\phi x^\mu \partial_\phi x^\nu} d\phi. \quad (\text{D.25})$$

Despite the complicated value of ϕ^* at which the bench and the rope intersect, we find that in both the $J < J_c$ and $J > J_c$ cases, the length of γ is given by

$$L = \left| \sqrt{-M} \left(l_u + \frac{Jl_\phi}{2M} \right) \cot \left(\frac{\sqrt{-M}l_\phi}{2} \right) - \frac{J}{M} \right|. \quad (\text{D.26})$$

Consequently, the holographic entanglement entropy reads

$$S_{\mathcal{A}} = \frac{\text{Area}(\gamma_{\mathcal{A}})}{4G} = \frac{1}{4G} \left| \sqrt{-M} \left(l_u + \frac{Jl_\phi}{2M} \right) \cot \left(\frac{\sqrt{-M}l_\phi}{2} \right) - \frac{J}{M} \right|, \quad (\text{D.27})$$

which corresponds to the analytic continuation of (3.18) and agrees with the independent derivations of entanglement entropy in refs. [18, 21]. In particular, for the global Minkowski vacuum where $M = -1$ and $J = 0$, the holographic entanglement entropy is given by

$$S_{\mathcal{A}} = \frac{l_u}{4G} \cot \left(\frac{l_\phi}{2} \right). \quad (\text{D.28})$$

E Null geodesics in AdS₃

In this appendix we describe the null geodesics of the zero-mode AdS₃ backgrounds (4.9) whose momenta satisfy $p_u p_v > 0$.

Let us parametrize the null geodesics in terms of (u, v, ρ) coordinates that depend on an affine parameter λ . The geodesics satisfy the conservation equations (4.11) reproduced here for convenience

$$T_u^2 u' + \frac{\rho v'}{2} = p_u, \quad T_v^2 v' + \frac{\rho u'}{2} = -p_v, \quad (\text{E.1})$$

as well as the null constraint (4.12) which is given by

$$\frac{\rho'^2}{4(\rho^2 - 4T_u^2 T_v^2)} + T_u^2 u'^2 + T_v^2 v'^2 + \rho u' v' = 0. \quad (\text{E.2})$$

We assume the momenta p_u and p_v along the u and v coordinates satisfy $p_u p_v > 0$, which guarantees that the geodesics reach the asymptotic boundary at large λ . The solution to eqs. (E.1) and (E.2) is then given by

$$\begin{aligned} \rho &= \frac{p_u^2 p_v^2 (2\lambda + \lambda_0)^2 - p_u^2 T_v^2 - p_v^2 T_u^2}{p_u p_v}, \\ u &= -\frac{1}{4T_u} \log \left\{ \frac{p_v^2 [T_u + p_u(2\lambda + \lambda_0)]^2 - p_u^2 T_v^2}{p_v^2 [T_u - p_u(2\lambda + \lambda_0)]^2 - p_u^2 T_v^2} \right\} + u_0, \\ v &= +\frac{1}{4T_v} \log \left\{ \frac{p_u^2 [T_v + p_v(2\lambda + \lambda_0)]^2 - p_v^2 T_u^2}{p_u^2 [T_v - p_v(2\lambda + \lambda_0)]^2 - p_v^2 T_u^2} \right\} + v_0, \end{aligned} \tag{E.3}$$

where λ_0 , u_0 , and v_0 are integration constants and λ is the affine parameter. In particular, at the cutoff surface $\rho = \rho_\infty$ near the asymptotic boundary $\partial\mathcal{M}$, the null geodesics (E.3) reach the point

$$(u, v, \rho) = \left(u_0 - \sqrt{\frac{p_v}{p_u \rho_\infty}} + \mathcal{O}\left(\frac{1}{\rho_\infty}\right), v_0 + \sqrt{\frac{p_u}{p_v \rho_\infty}} + \mathcal{O}\left(\frac{1}{\rho_\infty}\right), \rho_\infty \right). \tag{E.4}$$

We see that the null geodesics (E.3) emanate from a point (u_0, v_0) at the boundary. Furthermore, we find that at the cutoff surface, the vector $\xi \equiv 2\pi\lambda(dx^\mu/d\lambda)\partial_\mu$ tangent to (E.3) is given by

$$\xi = -2\pi[(u - u_0)\partial_u + (v - v_0)\partial_v - 2\rho_\infty\partial_\rho] + \text{subleading}. \tag{E.5}$$

We now note that null geodesics with $p_u p_v > 0$ cannot describe the ropes γ_\pm of the swing surface in (W)AdS₃/WCFT. This is because the u and v components of ξ in (E.5) vanish at the endpoints, while the approximate modular flow generator of a WCFT is finite, cf. eq. (4.16). Null geodesics with $p_u p_v > 0$ cannot describe ropes in AdS₃/CFT₂ either. In order to show this we first note that the relative sign between the ∂_u and ∂_v terms in (E.5) is independent of the values of the momenta p_u and p_v , or the relative sign in the expansion of the null geodesics along the u and v coordinates in (E.4). This means that for any null geodesic whose momenta satisfy $p_u p_v > 0$, the tangent vector (E.5) reduces to the generator of dilations near the asymptotic boundary. In contrast, the modular flow generator in the AdS₃/CFT₃ correspondence generates boost near the endpoints of the boundary interval.

Open Access. This article is distributed under the terms of the Creative Commons Attribution License ([CC-BY 4.0](https://creativecommons.org/licenses/by/4.0/)), which permits any use, distribution and reproduction in any medium, provided the original author(s) and source are credited.

References

- [1] S. Ryu and T. Takayanagi, *Holographic derivation of entanglement entropy from AdS/CFT*, *Phys. Rev. Lett.* **96** (2006) 181602 [[hep-th/0603001](https://arxiv.org/abs/hep-th/0603001)] [[INSPIRE](https://inspirehep.net/literature/900499)].
- [2] V.E. Hubeny, M. Rangamani and T. Takayanagi, *A covariant holographic entanglement entropy proposal*, *JHEP* **07** (2007) 062 [[arXiv:0705.0016](https://arxiv.org/abs/0705.0016)] [[INSPIRE](https://inspirehep.net/literature/148385)].

- [3] B. Swingle, *Entanglement renormalization and holography*, *Phys. Rev. D* **86** (2012) 065007 [[arXiv:0905.1317](#)] [[INSPIRE](#)].
- [4] M. Van Raamsdonk, *Comments on quantum gravity and entanglement*, [arXiv:0907.2939](#) [[INSPIRE](#)].
- [5] M. Van Raamsdonk, *Building up spacetime with quantum entanglement*, *Gen. Rel. Grav.* **42** (2010) 2323 [*Int. J. Mod. Phys.D* **19** (2010) 2429] [[arXiv:1005.3035](#)] [[INSPIRE](#)].
- [6] H. Casini, M. Huerta and R.C. Myers, *Towards a derivation of holographic entanglement entropy*, *JHEP* **05** (2011) 036 [[arXiv:1102.0440](#)] [[INSPIRE](#)].
- [7] A. Lewkowycz and J. Maldacena, *Generalized gravitational entropy*, *JHEP* **08** (2013) 090 [[arXiv:1304.4926](#)] [[INSPIRE](#)].
- [8] X. Dong, A. Lewkowycz and M. Rangamani, *Deriving covariant holographic entanglement*, *JHEP* **11** (2016) 028 [[arXiv:1607.07506](#)] [[INSPIRE](#)].
- [9] D. Anninos, J. Samani and E. Shaghoulian, *Warped entanglement entropy*, *JHEP* **02** (2014) 118 [[arXiv:1309.2579](#)] [[INSPIRE](#)].
- [10] A. Castro, D.M. Hofman and N. Iqbal, *Entanglement entropy in warped conformal field theories*, *JHEP* **02** (2016) 033 [[arXiv:1511.00707](#)] [[INSPIRE](#)].
- [11] W. Song, Q. Wen and J. Xu, *Generalized gravitational entropy for warped Anti-de Sitter Space*, *Phys. Rev. Lett.* **117** (2016) 011602 [[arXiv:1601.02634](#)] [[INSPIRE](#)].
- [12] W. Song, Q. Wen and J. Xu, *Modifications to holographic entanglement entropy in warped CFT*, *JHEP* **02** (2017) 067 [[arXiv:1610.00727](#)] [[INSPIRE](#)].
- [13] T. Azeyanagi, S. Detournay and M. Riegler, *Warped black holes in lower-spin gravity*, *Phys. Rev. D* **99** (2019) 026013 [[arXiv:1801.07263](#)] [[INSPIRE](#)].
- [14] Q. Wen, *Towards the generalized gravitational entropy for spacetimes with non-Lorentz invariant duals*, *JHEP* **01** (2019) 220 [[arXiv:1810.11756](#)] [[INSPIRE](#)].
- [15] L. Apolo, S. He, W. Song, J. Xu and J. Zheng, *Entanglement and chaos in warped conformal field theories*, *JHEP* **04** (2019) 009 [[arXiv:1812.10456](#)] [[INSPIRE](#)].
- [16] B. Chen, P.-X. Hao and W. Song, *Rényi mutual information in holographic warped CFTs*, *JHEP* **10** (2019) 037 [[arXiv:1904.01876](#)] [[INSPIRE](#)].
- [17] B. Gao and J. Xu, *Holographic entanglement entropy in AdS₃/WCFT*, [arXiv:1912.00562](#) [[INSPIRE](#)].
- [18] A. Bagchi, R. Basu, D. Grumiller and M. Riegler, *Entanglement entropy in Galilean conformal field theories and flat holography*, *Phys. Rev. Lett.* **114** (2015) 111602 [[arXiv:1410.4089](#)] [[INSPIRE](#)].
- [19] R. Basu and M. Riegler, *Wilson lines and holographic entanglement entropy in galilean conformal field theories*, *Phys. Rev. D* **93** (2016) 045003 [[arXiv:1511.08662](#)] [[INSPIRE](#)].
- [20] S.M. Hosseini and A. Véliz-Osorio, *Gravitational anomalies, entanglement entropy, and flat-space holography*, *Phys. Rev. D* **93** (2016) 046005 [[arXiv:1507.06625](#)] [[INSPIRE](#)].
- [21] H. Jiang, W. Song and Q. Wen, *Entanglement entropy in flat holography*, *JHEP* **07** (2017) 142 [[arXiv:1706.07552](#)] [[INSPIRE](#)].
- [22] E. Hijano and C. Rabideau, *Holographic entanglement and Poincaré blocks in three-dimensional flat space*, *JHEP* **05** (2018) 068 [[arXiv:1712.07131](#)] [[INSPIRE](#)].

- [23] V. Godet and C. Marteau, *Gravitation in flat spacetime from entanglement*, *JHEP* **12** (2019) 057 [[arXiv:1908.02044](#)] [[INSPIRE](#)].
- [24] R. Fareghbal and M. Hakami Shalamzari, *First law of entanglement entropy in flat-space holography*, *Phys. Rev. D* **100** (2019) 106006 [[arXiv:1908.02560](#)] [[INSPIRE](#)].
- [25] S.A. Gentle and S. Vandoren, *Lifshitz entanglement entropy from holographic cMERA*, *JHEP* **07** (2018) 013 [[arXiv:1711.11509](#)] [[INSPIRE](#)].
- [26] S.A. Gentle and C. Keeler, *On the reconstruction of Lifshitz spacetimes*, *JHEP* **03** (2016) 195 [[arXiv:1512.04538](#)] [[INSPIRE](#)].
- [27] F. Sanches and S.J. Weinberg, *Holographic entanglement entropy conjecture for general spacetimes*, *Phys. Rev. D* **94** (2016) 084034 [[arXiv:1603.05250](#)] [[INSPIRE](#)].
- [28] X. Dong, E. Silverstein and G. Torroba, *de Sitter holography and entanglement entropy*, *JHEP* **07** (2018) 050 [[arXiv:1804.08623](#)] [[INSPIRE](#)].
- [29] A. Lewkowycz, J. Liu, E. Silverstein and G. Torroba, *$T\bar{T}$ and EE , with implications for $(A)dS$ subregion encodings*, *JHEP* **04** (2020) 152 [[arXiv:1909.13808](#)] [[INSPIRE](#)].
- [30] H. Bondi, M.G.J. van der Burg and A.W.K. Metzner, *Gravitational waves in general relativity. 7. Waves from axisymmetric isolated systems*, *Proc. Roy. Soc. London A* **269** (1962) 21.
- [31] R.K. Sachs, *Gravitational waves in general relativity. 8. Waves in asymptotically flat space-times*, *Proc. Roy. Soc. London A* **270** (1962) 103.
- [32] R. Sachs, *Asymptotic symmetries in gravitational theory*, *Phys. Rev.* **128** (1962) 2851 [[INSPIRE](#)].
- [33] G. Barnich and G. Compere, *Classical central extension for asymptotic symmetries at null infinity in three spacetime dimensions*, *Class. Quant. Grav.* **24** (2007) F15 [[gr-qc/0610130](#)] [[INSPIRE](#)].
- [34] G. Barnich and C. Troessaert, *Aspects of the BMS/CFT correspondence*, *JHEP* **05** (2010) 062 [[arXiv:1001.1541](#)] [[INSPIRE](#)].
- [35] A. Bagchi, *Correspondence between asymptotically flat spacetimes and nonrelativistic conformal field theories*, *Phys. Rev. Lett.* **105** (2010) 171601 [[arXiv:1006.3354](#)] [[INSPIRE](#)].
- [36] A. Bagchi and R. Fareghbal, *BMS/GCA redux: towards flatspace holography from non-relativistic symmetries*, *JHEP* **10** (2012) 092 [[arXiv:1203.5795](#)] [[INSPIRE](#)].
- [37] D.M. Hofman and A. Strominger, *Chiral scale and conformal invariance in 2D quantum field theory*, *Phys. Rev. Lett.* **107** (2011) 161601 [[arXiv:1107.2917](#)] [[INSPIRE](#)].
- [38] S. Detournay, T. Hartman and D.M. Hofman, *Warped conformal field theory*, *Phys. Rev. D* **86** (2012) 124018 [[arXiv:1210.0539](#)] [[INSPIRE](#)].
- [39] G. Compère, W. Song and A. Strominger, *New boundary conditions for AdS_3* , *JHEP* **05** (2013) 152 [[arXiv:1303.2662](#)] [[INSPIRE](#)].
- [40] D. Anninos, W. Li, M. Padi, W. Song and A. Strominger, *Warped AdS_3 black holes*, *JHEP* **03** (2009) 130 [[arXiv:0807.3040](#)] [[INSPIRE](#)].
- [41] G. Compere and S. Detournay, *Boundary conditions for spacelike and timelike warped AdS_3 spaces in topologically massive gravity*, *JHEP* **08** (2009) 092 [[arXiv:0906.1243](#)] [[INSPIRE](#)].

- [42] L. Apolo, H. Jiang, W. Song and Y. Zhong, *Modular Hamiltonians in flat holography and (W)AdS/WCFT*, *JHEP* **09** (2020) 033 [[arXiv:2006.10741](#)] [[INSPIRE](#)].
- [43] S. El-Showk and K. Papadodimas, *Emergent spacetime and holographic CFTs*, *JHEP* **10** (2012) 106 [[arXiv:1101.4163](#)] [[INSPIRE](#)].
- [44] J. Bisognano and E.H. Wichmann, *On the duality condition for a Hermitian scalar field*, *J. Math. Phys.* **16** (1975) 985 [[INSPIRE](#)].
- [45] J. Bisognano and E.H. Wichmann, *On the duality condition for quantum fields*, *J. Math. Phys.* **17** (1976) 303 [[INSPIRE](#)].
- [46] J. Cardy and E. Tonni, *Entanglement Hamiltonians in two-dimensional conformal field theory*, *J. Stat. Mech.* **1612** (2016) 123103 [[arXiv:1608.01283](#)] [[INSPIRE](#)].
- [47] H. Casini, E. Teste and G. Torroba, *Modular Hamiltonians on the null plane and the Markov property of the vacuum state*, *J. Phys. A* **50** (2017) 364001 [[arXiv:1703.10656](#)] [[INSPIRE](#)].
- [48] B. Czech, J. De Boer, D. Ge and L. Lamprou, *A modular sewing kit for entanglement wedges*, *JHEP* **11** (2019) 094 [[arXiv:1903.04493](#)] [[INSPIRE](#)].
- [49] N. Lashkari, J. Lin, H. Ooguri, B. Stoica and M. Van Raamsdonk, *Gravitational positive energy theorems from information inequalities*, *PTEP* **2016** (2016) 12C109 [[arXiv:1605.01075](#)] [[INSPIRE](#)].
- [50] X. Dong and A. Lewkowycz, *Entropy, extremality, Euclidean variations, and the equations of motion*, *JHEP* **01** (2018) 081 [[arXiv:1705.08453](#)] [[INSPIRE](#)].
- [51] X. Dong, *Holographic entanglement entropy for general higher derivative gravity*, *JHEP* **01** (2014) 044 [[arXiv:1310.5713](#)] [[INSPIRE](#)].
- [52] R.M. Wald, *Black hole entropy is the Noether charge*, *Phys. Rev. D* **48** (1993) 3427 [[gr-qc/9307038](#)] [[INSPIRE](#)].
- [53] V. Iyer and R.M. Wald, *Some properties of Noether charge and a proposal for dynamical black hole entropy*, *Phys. Rev. D* **50** (1994) 846 [[gr-qc/9403028](#)] [[INSPIRE](#)].
- [54] G. Barnich and F. Brandt, *Covariant theory of asymptotic symmetries, conservation laws and central charges*, *Nucl. Phys. B* **633** (2002) 3 [[hep-th/0111246](#)] [[INSPIRE](#)].
- [55] M. Asadi and R. Fareghbal, *Holographic calculation of BMSFT mutual and 3-partite information*, *Eur. Phys. J. C* **78** (2018) 620 [[arXiv:1802.06618](#)] [[INSPIRE](#)].
- [56] A.C. Wall, *Maximin surfaces, and the strong subadditivity of the covariant holographic entanglement entropy*, *Class. Quant. Grav.* **31** (2014) 225007 [[arXiv:1211.3494](#)] [[INSPIRE](#)].
- [57] D. Grumiller, P. Parekh and M. Riegler, *Local quantum energy conditions in non-Lorentz-invariant quantum field theories*, *Phys. Rev. Lett.* **123** (2019) 121602 [[arXiv:1907.06650](#)] [[INSPIRE](#)].
- [58] S. Detournay, D. Grumiller, M. Riegler and Q. Vandermiers, *Uniformization of entanglement entropy in holographic warped conformal field theories*, [arXiv:2006.16167](#) [[INSPIRE](#)].
- [59] G. Barnich, A. Gomberoff and H.A. Gonzalez, *The flat limit of three dimensional asymptotically anti-de Sitter spacetimes*, *Phys. Rev. D* **86** (2012) 024020 [[arXiv:1204.3288](#)] [[INSPIRE](#)].
- [60] J. Brown and M. Henneaux, *Central charges in the canonical realization of asymptotic symmetries: an example from three-dimensional gravity*, *Commun. Math. Phys.* **104** (1986) 207 [[INSPIRE](#)].

- [61] G. Compere and D. Marolf, *Setting the boundary free in AdS/CFT*, *Class. Quant. Grav.* **25** (2008) 195014 [[arXiv:0805.1902](#)] [[INSPIRE](#)].
- [62] C. Troessaert, *Enhanced asymptotic symmetry algebra of AdS₃*, *JHEP* **08** (2013) 044 [[arXiv:1303.3296](#)] [[INSPIRE](#)].
- [63] S.G. Avery, R.R. Poojary and N.V. Suryanarayana, *An $sl(2, \mathbb{R})$ current algebra from AdS₃ gravity*, *JHEP* **01** (2014) 144 [[arXiv:1304.4252](#)] [[INSPIRE](#)].
- [64] L. Apolo and M. Porrati, *Free boundary conditions and the AdS₃/CFT₂ correspondence*, *JHEP* **03** (2014) 116 [[arXiv:1401.1197](#)] [[INSPIRE](#)].
- [65] S. Deser, R. Jackiw and S. Templeton, *Topologically massive gauge theories*, *Annals Phys.* **281** (2000) 409 [*Annals Phys.* **140** (1982) 372].
- [66] S. Deser, R. Jackiw and S. Templeton, *Three-dimensional massive gauge theories*, *Phys. Rev. Lett.* **48** (1982) 975 [[INSPIRE](#)].
- [67] E.A. Bergshoeff, O. Hohm and P.K. Townsend, *Massive gravity in three dimensions*, *Phys. Rev. Lett.* **102** (2009) 201301 [[arXiv:0901.1766](#)] [[INSPIRE](#)].
- [68] S. Detournay and M. Guica, *Stringy Schrödinger truncations*, *JHEP* **08** (2013) 121 [[arXiv:1212.6792](#)] [[INSPIRE](#)].