



Contents lists available at ScienceDirect

## Comparative Immunology, Microbiology and Infectious Diseases

journal homepage: [www.elsevier.com/locate/cimid](http://www.elsevier.com/locate/cimid)



# Widespread infection with hemotropic mycoplasmas in bats in Spain, including a hemoplasma closely related to “*Candidatus Mycoplasma hemohominis*”

Javier Millán<sup>a,\*</sup>, Marc López-Roig<sup>b</sup>, Verónica Delicado<sup>c</sup>, Jordi Serra-Cobo<sup>b</sup>,  
Fernando Esperón<sup>c</sup>

<sup>a</sup> Facultad de Ecología y Recursos Naturales, Universidad Andres Bello, Santiago, Chile

<sup>b</sup> IRBIO and Department de Biologia Animal, Facultat de Biologia, Universitat de Barcelona, Barcelona, Spain

<sup>c</sup> Centro de Investigación en Sanidad Animal (CISA-INIA), Valdeolmos, Spain

### ARTICLE INFO

#### Article history:

Received 7 October 2014

Received in revised form 8 January 2015

Accepted 12 January 2015

#### Keywords:

Catalonia

Chiroptera

Hemotropic mycoplasmas

*Mycoplasma* sp

### ABSTRACT

Molecular analyses of blood samples revealed infection with hemoplasmas in 97% of 31 cave bats captured in three caves in North-Eastern Spain. The characterization of 1250 bp of the 16S rRNA gene in 29 of the positive bats identified two different groups of sequences. Twenty-two Schreibers' bats (*Miniopterus schreibersii*) and one long-eared bat (*Myotis capaccinii*) shared one group, composed of seven closely related sequences. These sequences showed an identity of about 97% with “*Candidatus Mycoplasma hemohominis*” and the phylogenetic branch including bat and human sequences showed a 100% bootstrap value, supporting a close phylogenetic relationship between these hemoplasmas. The second group, representing a potentially novel species, was composed of a single sequence shared by six Schreibers' bats that had 91% identity with the recently reported hemoplasma from little brown bats in North America. Large bat aggregations in roosting caves probably benefits intra and inter-species transmission explaining the high observed prevalence.

© 2015 Elsevier Ltd. All rights reserved.

## 1. Introduction

Members of the order Chiroptera are flying mammals with a worldwide distribution. Bats have been identified as the origin or reservoir of a number of zoonoses, especially those caused by viruses [1]. Much less is known about their role in other groups of pathogens of zoonotic or veterinary interest. Hemotropic mycoplasmas or hemoplasmas are distributed worldwide, unculturable, cell wall-less bacteria that reside on the surface of erythrocytes of mammals [2]. Hemoplasma infection has been reported in a wide range of hosts, including humans [3–5], domestic animals [2,6],

and wildlife [7,8]. Hemoplasmas can cause variable degrees of hemolytic anemia in infected hosts [2,4]. In humans, infection with hemoplasma has been associated with coinfection with other pathogens [3]. Nevertheless, a case of hemoplasmosis in a British patient with severe hemolytic anemia was not associated with any other disease agent [4]. This patient was infected with a newly described hemoplasma species that was named “*Candidatus Mycoplasma hemohominis*” [4].

Hemoplasma infection was not reported in bats until recently [9]. In that survey, a potentially novel hemoplasma species was found infecting 47% of little brown bats *Myotis lucifugus* sampled in the USA. The aim of our study was to determine the prevalence of infection with hemotropic mycoplasmas in a sample of cave bats in Europe and to characterize positive cases by molecular methods.

\* Corresponding author: Tel.: +56 227703546; fax: +56 227703000.  
E-mail address: [syngamustrachea@hotmail.com](mailto:syngamustrachea@hotmail.com) (J. Millán).

<http://dx.doi.org/10.1016/j.cimid.2015.01.002>

0147-9571/© 2015 Elsevier Ltd. All rights reserved.

Please cite this article in press as: Millán J, et al. Widespread infection with hemotropic mycoplasmas in bats in Spain, including a hemoplasma closely related to “*Candidatus Mycoplasma hemohominis*”. *Comp Immunol Microbiol Infect Dis* (2015), <http://dx.doi.org/10.1016/j.cimid.2015.01.002>

## 2. Materials and methods

The Schreibers' bat (*Miniopterus schreibersii* Kuhl, 1817) is a member of the Miniopteridae family distributed from the Iberian Peninsula to the Caucasus, with the largest populations found in the warmer Mediterranean regions. It has an estimated population size in the Iberian Peninsula of about 250,000 individuals. It is a colonial species that roosts mostly in caves and mines, where it shows highly gregarious behavior, especially during breeding and hibernation periods. Bats benefit energetically by roosting in direct contact with other species or in close proximity to large aggregations. Schreibers' bats often form mixed colonies with greater mouse-eared bats (*Myotis myotis*, Borkhausen, 1797) and long-fingered bats (*Myotis capaccinii*, Bonaparte, 1837), especially during the summer period [10]. Thirty-one bats (30 Schreibers' bats and one long-fingered bat) were captured with nets between July and August, 2013 at three locations in Catalonia (NE Spain): two caves (41°38'N2°44'E and 42°1'N0°57'E) and one abandoned mine (41°17'N1°47'E). Blood was obtained by venipuncture of the cephalic vein and stored in EDTA tubes. All animals were handled in strict accordance with good animal practices, as defined by current European legislation. Bat capture and blood sampling were authorized by permit from the Spanish Regional Committee for Scientific Capture.

A real-time PCR based on Sybr Green chemistry which targets a 391 bp of the 16S rRNA gene of the *Mycoplasma* spp. [7] was performed. All positive samples were characterized by one heminested and one nested PCRs, amplifying 492 bp and 1003 bp of the 16S rRNA gene, respectively, with an overlapping fragment of 175 bp to allow the sequence assembly. The first round was the same for the two PCRs, using Hemo-F1 and Hemo-R2 primers [8], subsequently amplified by two different reactions using Hemo-F1 and Hemo-R1 primers [8] and Myco 16S-322s and HemMycop16S-1420as [5], respectively. Both PCR fragments were sequenced with primers previously described [4,7,8] (Table 1) and manually assembled. In order to detect the presence of chimeric sequences, the obtained sequences were analyzed by means of the USEARCH software (v7.0.1090), using the UCHIME algorithm (v4.2.40) [11], with the following referenced databases: CS Gold (Broad Microbiome Utilities, v. microbiomeutil-r20110519) and RDP Gold (classifier database v2.10.1).

Once ruled out the presence of chimeras, we conducted a BLAST search to compare sequenced products with sequences described in GenBank for hemoplasmas. After ClustalW alignment, a phylogenetic analysis was performed by the maximum-likelihood algorithm based on the Tamura-Nei model. All sequence analyses was performed with MEGA software, version 6.0. The new *Mycoplasma* 16S rRNA sequences were submitted to the GenBank under accession numbers KM538691–KM538698.

## 3. Results and discussion

Thirteen out of 31 sampled bats were infected with hemoplasmas (observed prevalence=96.8%; 95% Confidence Intervals=85.5–99.6%). Molecular characterization was obtained from 29 of the 30 positive samples, which revealed the presence of two well-differentiated groups of sequences (Table 1, Fig. 1). One group, composed of seven closely related sequences, was shared by 22 Schreibers' bats (A1 to A6; three of the samples belonging to A2, two samples to A3, and 14 samples to A5) and the long-eared bat (A7). These sequences showed an identity of 96.9–97.3% with "*Ca. M. hemohominis*" (Table 1). The second group (B) was composed of a single sequence shared by six Schreibers' bats that had 90.6% identity with the recently reported *Mycoplasma* sp. from little brown bats (Genbank accession number KF713538). Both hemoplasma species identified in the present study were found in all three study areas.

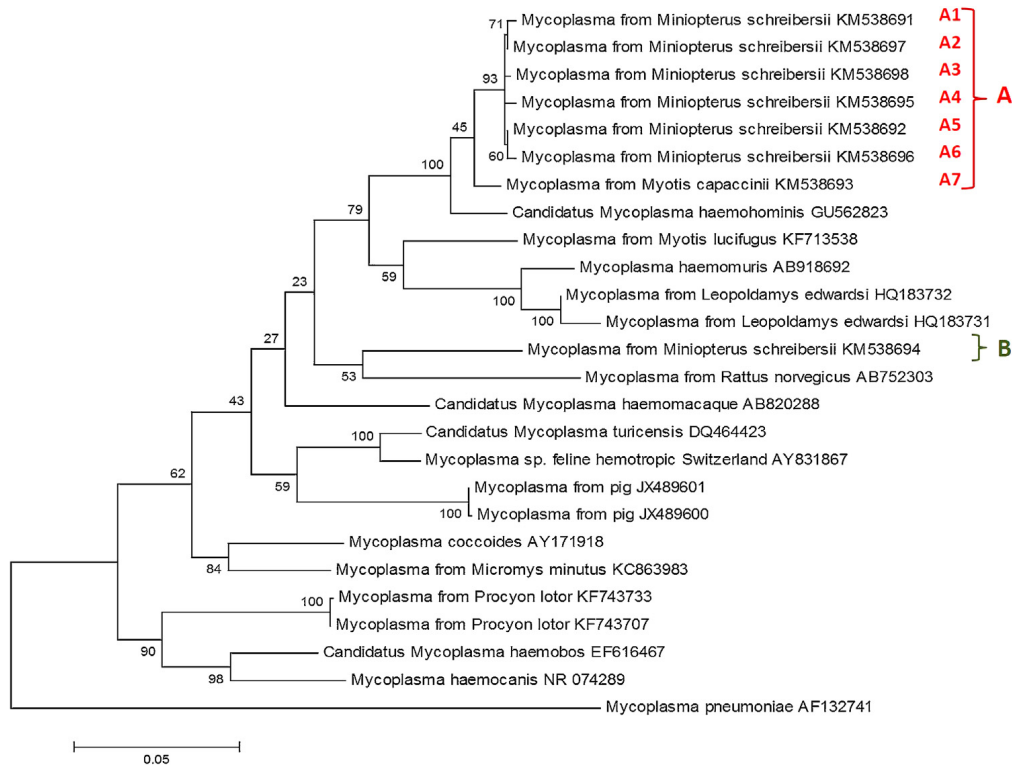
The remarkable high prevalence detected in the present study may be explained by two hypotheses: (i) that bats were sampled during an ongoing outbreak affecting most individuals; or (ii) that hemoplasma infection in bats is common and subclinical. Had the first hypothesis been true, bat mortality would have been observed. However, these caves are periodically visited as a part of ongoing rabies studies [12] and no such mortalities have been observed [MLR, pers. obs.]. The second hypothesis seems more plausible, as relatively high prevalences not associated with clinical signs have been observed in other mammalian species [7,8], including bats [9]. Large bat aggregations in roosting caves probably benefit intra and inter-species transmission. In addition, it has been suggested that bats may have evolved mechanisms to control viral replication more effectively than most other mammals [1], and this could also apply to bacterial infections.

**Table 1**  
Primers used in the present study.

Name	Sequence (5'–3')	Sense	Position*	Role**	Reference
HemoF1	AGAGTTTGATCCTGGCTCAG	+	13–32	PCR/S	[8]
HemMycop16S-41s	GYATGCMATAAYACATGCAAGTCGARCG	+	47–73	S	[4]
HemMycop16S-322s	GCCCATATTCCTACGGGAAGCAGCAGT	+	330–356	PCR/S	[4]
HemoF2	ATATTCCTACGGGAAGCAGC	+	334–353	S	[8]
HemoR1	ACCGCAGCTGCTGGCACATA	–	486–505	PCR/S	[8]
HemMyco16S-938as	CTCCACCACTTGTTTCAGGTCCCGTC	–	892–917	S	[4]
Mycop16S rRNA-F	ATGTTGCTTAATTCGATAATACACGAA	+	919–946	rtPCR/S	[7]
Mycop16S rRNA-R	ACRGGATTACTAGTGATCCAACCTTCAA	–	1276–1303	rtPCR/S	[7]
HemMycop16S-1420as	GTTTGACGGCGGTGTGTACAAGACC	–	1334–1359	PCR/S	[4]
HemoR2	TACCTTGTACGACTTAAC	–	1422–1441	PCR	[8]

\* Nucleotide position with respect of the sequence of *Mycoplasma hemocanis* (Genbank accession number NR074289).

\*\* Role of the primer in the present study: PCR, rtPCR (real time PCR), S (sequencing).



**Fig. 1.** Maximum-Likelihood tree based on the Tamura-Nei model of 25 selected sequences from hemotropic mycoplasmas. The name of the sequence indicates the host species and GenBank accession number. The percentage of trees in which the associated taxa clustered together (bootstrap values) is shown next to the branches. Despite the low bootstrap values, the sequences obtained in this work have been classified into two groups (A and B). The scale bar indicates the *p*-distance of the branches. *Mycoplasma pneumoniae* is included as an outgroup member.

Two different putative hemoplasma species were found during our survey. Finding more than one hemoplasma species infecting a mammalian host is not unusual. Dogs and cats are infected by more than one species [2], and recently, as many as four different sequences were found among 30 Darwin's foxes (*Lycalopex fulvipes*) analyzed in Chile [6]. The most prevalent species among the surveyed bats showed high identity to the human pathogen "*Ca. M. hemohominis*" isolated from a British patient [4]. This patient's symptoms began after she returned home from a vacation in Australia and Singapore. In Australia, she had swum in a freshwater tropical pond and had fed kangaroos with other tourists [4]. Interestingly, the bootstrap value for the clade including this group of sequences from our bats and "*Ca. M. hemohominis*" was 100%, supporting a close phylogenetic relationship between these hemoplasmas.

The group B was closely related to the newly described *Mycoplasma* sp. from the little brown bat in North America [9]; however, identity was only about 91%. Since an original 16S rRNA gene sequence exhibiting <97% identity with its closest relative would constitute the basis for the description of a new bacterial taxon [13], we tentatively named this new species "*Candidatus Mycoplasma hemominipterus*".

Interestingly, both hemoplasma species were found in the three studied caves. These caves are located at a distance of about 80 to 140 km from each other. However, some species of bats are known to migrate regionally.

For example, the Schreibers' bat makes seasonal movements of up to 300 km between different roosts [10], thus easily carrying hemoplasmas from one place to another.

In conclusion, we have reported the existence of a hemoplasma infecting a high proportion of sampled bats with close phylogenetic relationship to a human disease-causing organism. Despite the low bootstrap values in some of the branches of the phylogenetic tree, the results obtained in the present work are in concordance with the previous work in which a hemoplasma of bats was phylogenetically related to "*Ca. M. hemohominis*" and to hemoplasmas of rodents [9]. Thus, the role of bats as a reservoir of zoonotic pathogens may not be restricted to viruses. In addition, a potential novel species, related to bat hemoplasmas in North America, is presented. Taking into account the flying capacity of bats, along with their migratory behavior, should indicate that hemoplasma infection is a common feature in bats both in and outside of the surveyed area.

#### Acknowledgements

This study received partial support by the project CGL2010-17931. We wish to thank V. Nogal and E. Neves for their laboratory assistance. Javier Millán belongs to the "Leyendas Urbanas" group of the Ministry of Education.

## References

- [1] O'Shea TJ, Cryan PM, Cunningham AA, Fooks AR, Hayman DT, Luis AD, et al. Bat flight and zoonotic viruses. *Emerg Infect Dis* 2014;20:741–5.
- [2] Sykes JE, Tasker S. Hemoplasma infections. In: Sykes JE, editor. *Canine and Feline infectious diseases*. Saint Louis: W.B. Saunders; 2014. p. 390–8.
- [3] dos Santos AP, dos Santos RP, Biondo AW, Dora JM, Goldani LZ, de Oliveira ST, et al. Hemoplasma infection in HIV-positive patient, Brazil. *Emerg Infect Dis* 2008;14:1922–4.
- [4] Steer JA, Tasker S, Barker EN, Jensen J, Mitchell J, Stocki T, et al. A novel hemotropic *Mycoplasma* [hemoplasma] in a patient with hemolytic anemia and pyrexia. *Clin Infect Dis* 2011;53:e147–51.
- [5] Maggi RG, Compton SM, Trull CL, Mascarelli PE, Mozayeni BR, Breitschwerdt EB. Infection with hemotropic *Mycoplasma* species in patients with or without extensive arthropod or animal contact. *J Clin Microbiol* 2013;51:3237–41.
- [6] Hoelzle K, Hofmann-Lehmann R, Hoelzle LE. 'Candidatus *Mycoplasma haemobos*', a new bovine haemotrophic *Mycoplasma* species? *Vet Microbiol* 2010;144:525–6.
- [7] Cabello J, Altet L, Napolitano C, Sastre N, Hidalgo E, Dávila JA, et al. Survey of infectious agents in the endangered Darwin's fox (*Lycalopex fulvipes*): high prevalence and diversity of hemotropic mycoplasmas. *Vet Microbiol* 2013;167:448–54.
- [8] Harasawa R, Orusa R, Giangaspero M. Molecular evidence for hemotropic *Mycoplasma* infection in a Japanese badger [*Meles meles anakuma*] and a raccoon dog [*Nyctereutes procyonoides viverrinus*]. *J Wildl Dis* 2014;50:412–5.
- [9] Mascarelli PE, Keel MK, Yabsley M, Last LA, Breitschwerdt EB, Maggi RG. Hemotropic mycoplasmas in little brown bats [*Myotis lucifugus*]. *Parasit Vectors* 2014;7:117.
- [10] Serra-Cobo J, López-Roig M, Bayer X, Amengual-Pieras B, Guasch F. *The bats: science and myth*. Barcelona: Publications and Editions of Barcelona University; 2009. p. 267.
- [11] Edgar RC, Haas BJ, Clemente JC, Quince C, Knight R. UCHIME improves sensitivity and speed of chimera detection. *Bioinformatics* 2011;27:2194–200.
- [12] López-Roig M, Bourhy H, Lavenir R, Serra-Cobo J. Seroprevalence dynamics of European bat lyssavirus type 1 in a multispecies bat colony. *Viruses* 2014;6:3386–99.
- [13] Drancourt M, Raoult D. Sequence-based identification of new bacteria: a proposition for creation of an orphan bacterium repository. *J Clin Microbiol* 2005;43:4311–5.