

University of Vermont

ScholarWorks @ UVM

College of Engineering and Mathematical
Sciences Faculty Publications

College of Engineering and Mathematical
Sciences

12-1-2017

Erratum to: Instagram photos reveal predictive markers of depression (EPJ Data Science, (2017), 6, 1, (15), 10.1140/epjds/s13688-017-0110-z)

Andrew G. Reece
Harvard University

Christopher M. Danforth
University of Vermont

Follow this and additional works at: <https://scholarworks.uvm.edu/cemsfac>



Part of the [Human Ecology Commons](#), and the [Medicine and Health Commons](#)

Recommended Citation

Reece, Andrew G. and Danforth, Christopher M., "Erratum to: Instagram photos reveal predictive markers of depression (EPJ Data Science, (2017), 6, 1, (15), 10.1140/epjds/s13688-017-0110-z)" (2017). *College of Engineering and Mathematical Sciences Faculty Publications*. 23.
<https://scholarworks.uvm.edu/cemsfac/23>

This Article is brought to you for free and open access by the College of Engineering and Mathematical Sciences at ScholarWorks @ UVM. It has been accepted for inclusion in College of Engineering and Mathematical Sciences Faculty Publications by an authorized administrator of ScholarWorks @ UVM. For more information, please contact donna.omalley@uvm.edu.



Erratum to: Instagram photos reveal predictive markers of depression

Andrew G Reece^{1*} and Christopher M Danforth^{2,3,4*}

*Correspondence:

reece@g.harvard.edu;

chris.danforth@uvm.edu

¹Department of Psychology,
Harvard University, 33 Kirkland St,
Cambridge, MA 02138, USA

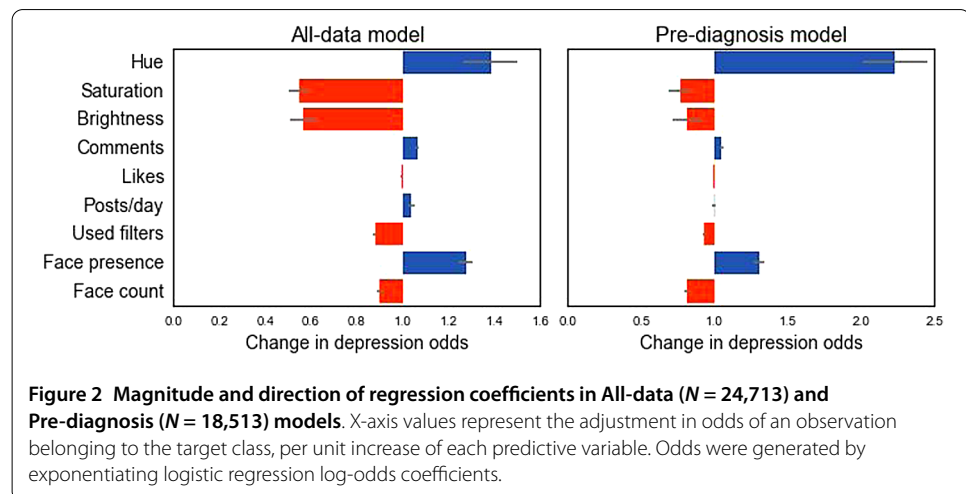
²Computational Story Lab, Vermont
Advanced Computing Core,
University of Vermont,
210 Colchester Ave, Burlington, VT
05405, USA

Full list of author information is
available at the end of the article

1 Erratum

Upon publication of the original article [1], it was noticed that Figure 2 contained an error. The horizontal bars for the 'likes' row were incorrectly shown as blue. The horizontal bars for the 'likes' row should be orange. This has now been acknowledged and corrected in this erratum. The correct Figure 2 is shown below.

In the section Method, subsection Improving data quality, the sentence 'We also excluded participants with CES-D scores of 22 or higher' should read as 'We also excluded participants with CES-D scores of 21 or lower'. This has now been acknowledged and corrected in this erratum.



Author details

¹Department of Psychology, Harvard University, 33 Kirkland St, Cambridge, MA 02138, USA. ²Computational Story Lab, Vermont Advanced Computing Core, University of Vermont, 210 Colchester Ave, Burlington, VT 05405, USA.

³Department of Mathematics and Statistics, University of Vermont, 210 Colchester Ave, Burlington, VT 05405, USA.

⁴Vermont Complex Systems Center, University of Vermont, 210 Colchester Ave, Burlington, VT 05405, USA.

Publisher's Note

Springer Nature remains neutral with regard to jurisdictional claims in published maps and institutional affiliations.

Received: 24 August 2017 Accepted: 24 August 2017 Published online: 05 September 2017

References

1. Reece AG, Danforth CM (2017) Instagram photos reveal predictive markers of depression. *EPJ Data Sci* 6(1):15. doi:10.1140/epjds/s13688-017-0110-z