

1-1-2020

## Orbitofrontal cortex grey matter volume is related to children's depressive symptoms

Matthew R.J. Vandermeer  
*The University of Western Ontario*

Pan Liu  
*The University of Western Ontario*

Ola Mohamed Ali  
*The University of Western Ontario*

Andrew R. Daoust  
*The University of Western Ontario*

Marc F. Joanisse  
*The University of Western Ontario*

*See next page for additional authors*

Follow this and additional works at: <https://ir.lib.uwo.ca/brainpub>



Part of the [Neurosciences Commons](#), and the [Psychology Commons](#)

---

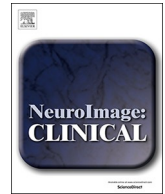
### Citation of this paper:

Vandermeer, Matthew R.J.; Liu, Pan; Mohamed Ali, Ola; Daoust, Andrew R.; Joanisse, Marc F.; Barch, Deanna M.; and Hayden, Elizabeth P., "Orbitofrontal cortex grey matter volume is related to children's depressive symptoms" (2020). *Brain and Mind Institute Researchers' Publications*. 511.  
<https://ir.lib.uwo.ca/brainpub/511>

---

**Authors**

Matthew R.J. Vandermeer, Pan Liu, Ola Mohamed Ali, Andrew R. Daoust, Marc F. Joanisse, Deanna M. Barch, and Elizabeth P. Hayden



## Orbitofrontal cortex grey matter volume is related to children's depressive symptoms

Matthew R.J. Vandermeer<sup>a,\*</sup>, Pan Liu<sup>a</sup>, Ola Mohamed Ali<sup>a</sup>, Andrew R. Daoust<sup>a</sup>, Marc F. Joanisse<sup>a</sup>, Deanna M. Barch<sup>b,c,d</sup>, Elizabeth P. Hayden<sup>a</sup>

<sup>a</sup> Department of Psychology, The Brain and Mind Institute, Western University, Western Interdisciplinary Research Building, Room 3190, 1151 Richmond St., London, ON N6A 3K7, Canada

<sup>b</sup> Department of Psychiatry, Washington University School of Medicine, 4444 Forest Park Avenue, Suite 2100, St. Louis, MO, USA

<sup>c</sup> Department of Psychology, Washington University, St. Louis, MO, USA

<sup>d</sup> Department of Radiology, Washington University School of Medicine, St. Louis, MO, USA

### ARTICLE INFO

#### Keywords:

Voxel-based morphometry  
Depression  
Orbitofrontal cortex  
Children  
Reward

### ABSTRACT

Adults with a history of depression show distinct patterns of grey matter volume (GMV) in frontal cortical (e.g., prefrontal cortex, orbitofrontal cortex) and limbic (e.g., anterior cingulate, amygdala, hippocampus, dorsal striatum) structures, regions relevant to the processing and regulation of reward, which is impaired in the context of depression. However, it is unclear whether these GMV associations with depression precede depressive disorder onset or whether GMV is related to early emerging symptoms or familial depression. To address these questions, we used voxel-based morphometry (VBM) to examine GMV in 85 community-dwelling children ( $M = 11.12$  years,  $SD = 0.63$  years) screened for current and lifetime depression. Associations between children's depressive symptoms (self- and mother-report of children's symptoms), children's maternal depression history, and GMV were examined. Although maternal depression history was unrelated to children's GMV, child GMV in the orbitofrontal cortex (OFC) was negatively related to children's self-reported depressive symptoms, using both *a priori* ROI and whole-brain analyses. Moderated regression analyses indicated that girls' GMV was negatively related to girls' depressive symptoms (as indexed by both self- and mother-report of girls' symptoms), whereas boys' symptoms were positively related to GMV. Our findings suggest that brain morphology in the OFC, a region with functional roles in processes relevant to depressive symptoms (i.e., reward-based learning and reward processing), is associated with early depressive symptoms prior to the development of clinically significant depression.

### 1. Introduction

With a worldwide lifetime and annual prevalence of 14.6% and 5.5% (Bromet et al., 2011), respectively, major depression (Major Depressive Disorder; MDD) is sometimes referred to as the “common cold of mental illness.” However, this analogy belies the profound personal and societal consequences of MDD (Lépine and Briley, 2011). Globally, depression is associated with an array of negative psychosocial outcomes (e.g., academic failure, marital discord and divorce, occupational impairment; Kessler, 2012), and is a leading cause of disability (Vos et al., 2012), suicide (Bostwick and Pankratz, 2000), and increased mortality related to other, co-occurring health conditions (Cuijpers and Smit, 2002). Importantly, it is now clearly established that children can

and do experience depression; for example, epidemiological research has found a 12-month prevalence of 2.7% for children 8 to 15 years of age (Merikangas et al., 2010). This is consistent with a meta-analysis of global epidemiological studies of children and adolescent mental disorder prevalence, which found a pooled prevalence estimate of 2.6% for depressive disorders (Polanczyk et al., 2015). Finally, even in the absence of frank depressive disorder, subthreshold depressive symptoms are associated with significant functional impairment in both children (Wesselhoeft et al., 2013) and adults (Rodríguez et al., 2012), and are an established marker of youth risk for future depressive disorders (Klein, 2008; Shankman et al., 2009).

The pervasive and negative sequelae associated with depression underscore the importance of identifying vulnerabilities early in

\* Corresponding author at: Department of Psychology, The Brain and Mind Institute, Western University, Western Interdisciplinary Research Building, Room 3190, 1151 Richmond St., London, ON N6A 3K7, Canada.

E-mail address: [mvande66@uwo.ca](mailto:mvande66@uwo.ca) (M.R.J. Vandermeer).

<https://doi.org/10.1016/j.nicl.2020.102395>

Received 5 February 2020; Received in revised form 10 July 2020; Accepted 19 August 2020

Available online 25 August 2020

2213-1582/© 2020 The Author(s). Published by Elsevier Inc. This is an open access article under the CC BY license (<http://creativecommons.org/licenses/by/4.0/>).

development and improving our understanding of the mechanisms through which these vulnerabilities lead to disorder. Identification of early vulnerabilities is essential for intervention efforts, which may be especially beneficial during childhood, given that neural plasticity is relatively high (Nelson, 2000) and there is a broader window of opportunity for prevention (Merry et al., 2012; Stice et al., 2009). Research aimed at identifying which children are most vulnerable, and the mechanisms by which depression develops, may hold the key to mitigating its often-devastating impact.

### 1.1. Depression risk and vulnerability

Family history of depression marks significantly higher risk for the disorder (Levinson, 2006); indeed, having a first-degree relative (e.g., a parent) with a lifetime history of MDD is associated with approximately three-fold increase in risk (Weissman et al., 2006). Maternal history of MDD is a particularly strong risk factor for depression in offspring (Connell and Goodman, 2002; Klein et al., 2005). Given the high heterotypic continuity and shared etiology between depression and anxiety (Cummings et al., 2014; Kendler et al., 2003), and the preponderance of familial anxiety among those with depression (and vice-versa; Lawrence et al., 2019; Micco et al., 2009), familial anxiety also marks offspring depression risk. Collecting information regarding family history of depression permits “high-risk” designs whereby vulnerable children are identified in advance of the typical age of onset for depression. High-risk designs, focused on youth with a family history but no personal history of disorder, enhance the ability to distinguish between causal processes versus concomitant features or consequences of the disorder (Talati et al., 2013); however, the mechanisms and processes through which markers of risk (e.g., family history) eventuate in disorder are unclear, complex, diverse, and probabilistic. Historically, investigators have focused on predicting diagnostic outcomes in high-risk youth (i.e., the presence or absence of MDD); however, like all mental disorders, depression is characterized by *equifinality* or *etiological heterogeneity* (Cicchetti and Rogosch, 1996). Thus, high-risk youth who ultimately develop depression likely do so via a heterogeneous array of mechanisms, such as cognitive, biological, and personality vulnerabilities (Gotlib and Hammen, 2009). These processes are often referred to as *endophenotypes* (i.e., etiologically parsimonious mechanisms thought to mediate the relationship between genotype and complex disorder phenotypes; Gottesman and Gould, 2003; Insel et al., 2010); as normally distributed, dimensional phenomena, these hold relatively greater reliability and statistical power than dichotomous diagnoses (Klein, 2008). For these reasons, developmental psychopathologists have focused on quantitative processes that may account for why some high-risk youth ultimately develop clinically significant disorders. With respect to the current study, brain structure may serve as an endophenotype for depression.

Importantly, in order to be useful as an endophenotypic marker of disease risk, measurement of the marker must be reliable. Indices of brain structure (e.g., structural magnetic resonance imaging [MRI]) have very high reliability (Wonderlick et al., 2009), especially in comparison to task-based functional MRI (fMRI; Elliott et al., 2019). Despite largely focusing on adults, the literature examining brain structure in those with a history of depression provides hypotheses for particular regions that merit study in high-risk youth.

### 1.2. Brain structure as an endophenotype for depression

Depression is characterized by dysfunction in cognitive, emotional, and behavioural processes related to emotion processing and regulation (Joormann and Gotlib, 2010), responses to reward (Henriques and Davidson, 2000), stress reactivity (Burke et al., 2005; Lopez-Duran et al., 2009), and executive functioning (Rogers et al., 2004). Thus, development of neurobiologically informed models of depressive etiology focuses on brain regions underlying normative functioning of

these processes (Drevets et al., 2008), including examining structural differences in these regions between patients with depression and healthy, never-depressed controls.

This literature implicates a complex network of cortico-limbic and cortico-striatal structures involved in the regulation and processing of emotions (e.g., amygdala, hippocampus, anterior cingulate cortex [ACC], prefrontal cortex [PFC]; Davidson et al., 2002, 2009) and reward (e.g., orbitofrontal cortex, medial PFC, and striatum; Drevets, 2007; Drevets et al., 2008; Eshel and Roiser, 2010). This is consistent with prominent neurobiological theories of depression, which posit structural and functional aspects of these regions contribute to maladaptive changes throughout cortico-limbic and cortico-striatal networks, eventuating in depression. Specifically, Mayberg and colleagues developed a cortico-limbic model of depression (e.g., Mayberg, 1997; Mayberg et al., 1999; Seminowicz et al., 2004) where reduced neural top-down regulation of emotion (via fronto-cortical dysregulation) and/or increased bottom-up emotion processing (via limbic dysregulation) result in the cardinal symptoms of depression (i.e., persistent depressed mood and anhedonia; Mayberg, 1997; Mayberg et al., 1999; Seminowicz et al., 2004). Drevets and colleagues (e.g., Drevets, 2007; Drevets et al., 2008; Price and Drevets, 2010) describe similar neural features as the source of multiple classes of depressive phenotype (e.g., low mood, anhedonia), incorporating additional brain structures relevant to dysregulation of both cortico-limbic *and* cortico-striatal networks.

With respect to empirical studies, meta-analyses indicate that, relative to never-depressed individuals, adults with a history of depression have lower grey matter volume (GMV), concentration (GMC), and structural volume in frontal cortical regions, including PFC (Arnone et al., 2012; 2016; Bora et al., 2012b; Du et al., 2012; Peng et al., 2016; Sacher et al., 2012) and orbitofrontal cortices (OFC; Arnone et al., 2016; 2012). Additionally, adults with a history of depression show less GMV and lower structural volume in limbic regions such as the ACC (Arnone et al., 2016; Bora et al., 2012ab; Du et al., 2012; Lai, 2013), amygdala (Arnone et al., 2016; Bora et al., 2012b; Sacher et al., 2012), and hippocampus (Arnone et al., 2016; 2012; Bora et al., 2012b; Du et al., 2012), as well as reductions in dorsal striatal (i.e., caudate nucleus and putamen) GMV and structural volumes, relative to never-depressed control subjects (Amico et al., 2011; Arnone et al., 2012). Importantly, these findings are consistent with the aforementioned neurobiological theories of depression (Drevets et al., 2008; Mayberg et al., 1999; Mayberg, 1997; Price and Drevets, 2010; Seminowicz et al., 2004), as do findings that depressive symptoms are negatively associated with GMV in the OFC, PFC, and cingulate (Chen et al., 2007; Vasic et al., 2008).

### 1.3. Brain structure in depression risk

While the structural differences identified in studies of people with depression may be indicative of pre-existing vulnerability, it is also plausible that they are *caused* by the disorder or its treatment (i.e., scar effect). A smaller literature, reviewed below, has explored brain structure in those at risk for the disorder without a personal history of depression.

#### 1.3.1. Familial depression and brain structure

Never-depressed adults with a family history of depression tend to have decreased hippocampal volume (Amico et al., 2011; Baaré et al., 2010; Carballedo et al., 2012; Rao et al., 2010); however, both *increases* (Romanczuk-Seiferth et al., 2014) and *no* differences (Mannie et al., 2014) in hippocampal volume have also been reported. Similarly the amygdala (Munn et al., 2007; Romanczuk-Seiferth et al., 2014; Saleh et al., 2012), dorsolateral PFC (dlPFC; Amico et al., 2011; Carballedo et al., 2012; Romanczuk-Seiferth et al., 2014), and medial PFC (mPFC; Amico et al., 2011; Carballedo et al., 2012; Ozalay et al., 2016) are also inconsistently related to family history in non-depressed adults.

There is a small literature examining brain structure in never-depressed youth with and without a family history of depression. Youth amygdala volume and familial history of depression are inconsistently related, with some studies finding that a family history of MDD is associated with smaller amygdalar volumes (Chai et al., 2015), and others finding no differences (van der Plas et al., 2010). Boys and girls may also differ in brain-risk associations; for example, depressive symptoms predicted boys' ACC volume but not girls' in never-depressed youth with a familial history of depression (Boes et al., 2008). While intriguing, these studies are limited by examining youth who vary widely in age; for example, both Boes et al. (2008) and van der Plas et al. (2010) included seven- to seventeen-year-olds in their studies. Wide age ranges are problematic for studies of youth, as it is unclear whether structural associations reported in the aforementioned studies are reflective of risk prior to the typical age of onset for depression or are largely driven by structural changes in the brain that occur in adolescence (e.g., reductions in grey matter [GM] and increases in white matter [WM]; Sowell et al., 2002; Spear, 2013). Even when age is covaried in analyses, including children who vary widely in age may render results more challenging to interpret than recruiting children who fall within a narrow age range.

### 1.3.2. Maternal depression and brain structure

A maternal history of depression is especially strongly linked to depression risk in children and adults (Connell and Goodman, 2002; Klein et al., 2005); thus, other high-risk studies have focused specifically on the relationship between maternal depression history and brain structure in never-depressed children. In 55 never-depressed 9- to 15-year-old girls, those with a recurrent maternal history of depression had lower hippocampal GMC and structural volume relative to low-risk children (Chen et al., 2010). Using a region-of-interest approach, maternal history of recurrent depression was associated with thinner cortical GM in bilateral fusiform gyri of never-depressed girls ( $N = 14$ ), compared to girls with no maternal history of mental disorder ( $N = 23$ ; Foland-Ross et al., 2016). Ozalay and colleagues (2016) found that never-depressed daughters of mothers with recurrent depression had significant GMV reductions in the right temporoparietal region, bilateral insula, and right dlPFC, relative to never-depressed daughters of never-depressed mothers. Ozalay et al. (2016) also found maternal history of recurrent depression was associated with increased GMV in the left middle temporal cortex. These studies suggest that a maternal history of depression is correlated with daughters' brain structure, even in the absence of offspring disorder; however, it is unclear whether these findings generalize to boys as well.

While promising, findings regarding brain structure in high-risk children and adults are mixed, possibly due to several factors. First, rather than directly interviewing family members, investigators often-times use participants' reports of their family members' psychopathology history, a methodologically limited approach subject to an array of biases (Kendler et al., 1991; Milne et al., 2009). Further, given that recurrent depression is more heritable than single episodes (Fernandez-Pujals et al., 2015), using recurrent depression history as an index of children's risk may be a more powerful marker of vulnerability. Finally, given that the limited studies available on the relationship between children's brain structure and maternal depression history have focused exclusively on girls, work including both boys and girls is needed.

### 1.3.3. Sex differences in depression and brain structure

Depression is approximately twice as prevalent in women compared to men (Nolen-Hoeksema and Hilt, 2009), and being female is a significant prospective predictor of depression (Klein et al., 2013). The reasons for this well-established pattern are complex and heterogeneous, likely involving both biological and psychosocial mechanisms. Sex differences in prevalence suggest the possibility that women and men differ on average in the degree to which vulnerability processes are

present; however, it is also possible that women are more impacted by these vulnerabilities, even in the absence of mean differences (i.e., a sex-by-vulnerability interaction). For example, studies of cognitive risk (e.g., Mezulis et al., 2010) show that the longitudinal relationship between stress and depression is stronger for girls than boys, and work from our group (Daoust et al., 2018; Kryski et al., 2013) indicates that stress reactivity is more strongly associated with internalizing symptoms in girls than boys.

Few studies have examined sex differences in the relationship between brain structure and depression; however, brain structure in regions related to emotion/reward processing may be more strongly related to depression risk in girls. For example, Kong et al. (2013) found that reductions in limbic (e.g., bilateral amygdala and hippocampus) GMC were associated with depression in women, while men with depression had reduced GMC among striatal regions (bilateral caudate, left ventral striatum). Similarly, Vulser and colleagues (2015) reported that decreased medial PFC GMV mediated the relationship between subclinical depressive symptoms at 14-years-old and major depressive episodes at age 16 for girls but not boys. These few studies suggest that the relationship between depression risk and brain structure may differ by sex.

In addition to sex-based differences in depression risk and vulnerability, it is important to acknowledge that neurodevelopment is also characterized by sexual dimorphisms. Specifically, females consistently show smaller GM and WM volumes across the brain and developmental stages (Lenroot et al., 2007); however, after controlling for differences in total brain size, females have *proportionately* greater volumes in some anatomical regions (i.e., greater GMV in frontal lobes and greater corpus callosum area; Lenroot et al., 2007). In addition, while both sexes follow an inverted U curve with respect to development of GMV, girls tend to reach peak frontal GMV approximately 1 to 2 years earlier than boys (Lenroot et al., 2007), suggesting that the rate of some aspects of brain development is sexually dimorphic.

### 1.4. The current study

Overall, decreased volume and GMC in a number of frontal cortical (e.g., dlPFC and OFC), limbic (e.g., ACC, amygdala, hippocampus), and striatal structures (e.g., caudate nuclei and putamen) appear to be related to a history of MDD and, with less consistency, to risk for depression among never-depressed individuals, including youth. Importantly, these are regions consistent with prominent cortico-limbic and cortico-striatal theories of depression (e.g., Drevets et al., 2008; Mayberg, 1997; Mayberg et al., 1999; Price and Drevets, 2010; Seminowicz et al., 2004); however, much of this work comes from adults with a history of MDD. Similarly, the less-developed literature investigating the relationship between brain structure and depression risk in never-depressed individuals is also largely based on adults. While important, this work is limited in terms of what it can tell us about brain structure in risk for depression.

In this study, we addressed the limitations of the extant literature in several ways. First, we tested the relationship between depression risk and brain structure in never-depressed children. Additionally, we operationalized risk relatively stringently by only including children of mothers with recurrent depression. Further, we analyzed the relationship between brain structure and both self- and maternally reported children's depressive symptoms, treating symptoms in the absence of depressive disorder as a marker of risk. A small literature indicates that associations between brain structure and depression differ by sex, although little is known about whether such patterns are related to pre-existing risk versus current depression, and many of the high-risk studies have used all-female samples. We therefore examined whether the relationship between depressive symptoms and brain structure was moderated by sex.

## 2. Material and methods

### 2.1. Participants

Children ( $n = 87$ ) and their mothers were recruited from a larger longitudinal study of children's depression risk ( $N = 409$ ) that began when children were 3-year-olds. At baseline, children with major medical or psychological problems were excluded, and typical cognitive development was verified using the Peabody Picture Vocabulary Test-Fourth Edition (Dunn and Dunn, 2007). For the current study, children were recruited from the larger longitudinal sample based on maternal history of depression (MH+) drawn from data collected at a previous round of data collection for this study (Liu et al., 2019). Children were considered high-risk based on a maternal history of recurrent major depression ( $n = 26$ ), or a maternal lifetime history of a single major depressive episode and a serious anxiety disorder (i.e., any anxiety disorder except a specific phobia;  $n = 3$ )<sup>1</sup>. Low-risk children had no maternal history of major depression or anxiety disorder (see Procedures and Measures for details). From this sample, 237 families were contacted (58 MH+). Children with any contraindications to the MRI scan (e.g., braces, metallic objects implanted in the body, claustrophobic) were deemed ineligible, leaving a pool of 231 families, from which 110 families agreed to participate (36 MH+). Children from these families were screened as described in the following section to ensure the absence of current or lifetime depressive disorder<sup>2</sup>. Eighty-seven children (29 MH+; 49 boys) participated in the MRI session with 85 contributing usable structural MRI scans (29 MH+; 48 boys).<sup>3</sup> See Table 1 for demographic statistics of this final sample of 85 children and mothers. These 85 children did not differ from the 25 children who either did not participate in the MRI session or did not contribute useable structural MRI scans, on age, Children's Depression Inventory, Child Behaviour Checklist-Withdrawn Depressed subscale, Youth Self-Report-Withdrawn Depressed subscale, or Peabody Picture Vocabulary Test (collected at age 3) scores, or frequency distributions of children's sex or maternal risk status (all  $p > .05$ ).

### 2.2. Procedures and measures

Data were collected during four separate assessments of children and their mothers. The first assessment, a phone interview, was conducted with mothers over the telephone and consisted of the parent portion of the Kiddie Schedule for Affective Disorders and Schizophrenia, Present and Lifetime Version (K-SADS-PL; Kaufman et al., 1997) administered by trained graduate students in clinical psychology.

At the second assessment ( $M = 17.86$  days,  $SD = 14.51$  days after the first assessment), conducted in the participants' homes, children were administered the K-SADS-PL and completed self-reported symptom and severity measures, including the Children's Depression Inventory 2nd Edition (CDI<sup>4</sup>; Kovacs, 2011;  $\alpha = 0.83$ ) and the Youth

<sup>1</sup> We excluded specific phobia and social anxiety limited to public speaking given that these are less heritable, less impairing, and potentially weaker markers of children's internalizing risk (Kendler, Neale, Kessler, Heath, & Eaves, 1992)

<sup>2</sup> no child was excluded based on current or lifetime depressive disorder

<sup>3</sup> One child had orthodontic braces installed between the laboratory visit and the MRI scan; another child had low-quality T1 images despite several attempts at scanning.

<sup>4</sup> Despite not meeting criteria for MDD based on the K-SADS-PL, three child participants ( $N_{MH+} = 2$ ) had CDI scores  $> 19$ , which is above the cut-off suggestive of clinically significant symptoms in a community sample (Kovacs, 2011). Excluding these participants from subsequent analyses did not change the pattern of results found using the full sample, although findings were no longer significant after correcting for multiple comparisons and given the reduced sample size.

**Table 1**  
Descriptive statistics.

Variable	<i>M</i>	<i>SD</i>	Frequency
PPVT	112.87	14.16	–
Child Age at MRI Visit	11.12	0.63	–
CBCL Withdrawn/Depressed	1.31	1.79	–
CDI	6.61	5.07	–
YSR Withdrawn/Depressed	3.33	2.71	–
ICV	1616.92	137.46	–
Sex (Male/Female)	–	–	48/37
Risk Group (High/Low)	–	–	56/29

Note. PPVT = standardized scores from age 3 Peabody Picture Vocabulary Test; CBCL = Child Behavior Checklist; CDI = Children's Depression Inventory; YSR = Youth Self-Report; ICV = intracranial volume (cm<sup>3</sup>).

Self-Report (Achenbach and Rescorla, 2001) with the help of trained graduate students in clinical psychology. The K-SADS-PL demonstrated 100% interrater agreement ( $N = 11$ ) for all diagnoses in the current study, including depression<sup>5</sup>. In addition, mothers completed the Child Behavior Checklist (CBCL; Achenbach and Rescorla, 2001); we used the withdrawn-depressed subscale from both the CBCL (CBCL-WD;  $\alpha = 0.72$ ) and the YSR (YSR-WD;  $\alpha = 0.72$ ) as indices of maternally and self-reported child depressive symptoms, respectively (see Supplementary Figs. 1–3 for histograms of symptom distributions).

During the third assessment ( $M = 17.04$  days,  $SD = 20.03$  days after the second assessment), children participated in a laboratory social stressor task; these data are not used in the current analyses. Mothers were also interviewed during this visit by trained graduate students in clinical psychology to assess lifetime history of psychopathology using the Structured Clinical Interview for the DSM-IV-TR Axis I Disorder Non-Patient Edition (SCID; First et al., 2002). As all mothers had completed a SCID several years prior as part of the larger longitudinal study, we focused solely on the interval since participants' last SCID. The SCID demonstrated good inter-rater reliability for specific diagnoses and for lifetime history of any depressive episodes (Kappa = 1.00,  $N = 10$ ). Finally, in keeping with best practices for scanning children (de Bie et al., 2010), children completed a "mock scan" session during this visit in a replica MRI system in order to prepare them for the fourth and final visit (MRI visit). During the mock scan, the upcoming MRI session procedures were explained and children were given the opportunity to ask questions. Finally, structural and functional MRI scans were acquired from children during an MRI visit held approximately one week after the laboratory visit ( $M = 8.78$  days;  $SD = 7.38$  days); only the structural data are reported in the current analyses.

### 2.3. MRI data acquisition

Magnetic resonance images were obtained using a Siemens 3T Tim Trio MRI scanner with a 32-channel head RF coil at Western University's Centre for Functional and Metabolic Mapping. Children's heads were immobilized during scanning using foam padding in the RF coil. All children wore foam ear buds to dampen scanner noise. Structural images were acquired with a  $T_1$ -weighted 3D magnetization prepared rapid gradient echo (MPRAGE) sequence ( $1 \times 1 \times 1$  mm voxel size, repetition time (TR) = 2300 ms, echo time (TE) = 2.98 ms, field of view (FOV) = 256 mm), 192 slices.

<sup>5</sup> For some K-SADS and SCID diagnoses (e.g., K-SADS depression), no participant met criteria for the disorder. While interviewer agreement on the absence of the diagnosis was 100%, given no variability, we could not compute Cohen's Kappa in these cases.

## 2.4. VBM preprocessing

Initially, all raw DICOM scans were reviewed and converted into NIFTI format, using MRICRON software (Rorden et al., 2007). VBM preprocessing was conducted using default settings for Computational Anatomy Toolbox (CAT12, <https://dbm.neuro.uni-jena.de/cat/>), an extension of SPM12 (Wellcome Trust Center for Neuroimaging, London, UK), and MATLAB 9.5 (Mathworks, Inc., Natick, MA).  $T_1$ -weighted images were bias, noise, and global intensity corrected prior to spatial normalization to the MNI152 template using the DARTEL algorithm (Ashburner, 2007). Next, normalized images were segmented into GM, WM, and cerebrospinal fluid (CSF; Ashburner and Friston, 2005) and written as modulated normalized volumes, allowing for interpretation of localized grey matter volume (GMV). Intracranial volumes (ICV) were calculated during segmentation for use as a nuisance variable during statistical analyses. Quality assurance was conducted via visual inspection and an automated quality check protocol embedded in CAT12, leading to the exclusion of one participant. All scans were then spatially smoothed using a 6 mm (FWHM) Gaussian smoothing kernel and resampled into  $1.5 \times 1.5 \times 1.5$  mm voxel size.

## 2.5. Data analyses

SPM12 was used to analyze VBM data. All VBM analyses included age, sex, and intracranial volume (ICV) as covariates. Analysis of covariance (ANCOVA) was conducted to test differences in GMV between high- and low-risk children in both *a priori* regions of interest (ROI) and whole-brain analyses. We also used multiple regression to examine associations between children's depressive symptoms (i.e., CBCL-WD, CDI, and YSR-WD) and GMV in both *a priori* ROI and whole-brain analyses. In addition, we tested statistical interactions between children's depressive symptoms and child sex, given evidence of sex-based differences in structural brain correlates of depression and depression risk (e.g., Carlson et al., 2015; Kong et al., 2013; Vulser et al., 2015). Specifically, we hypothesized that structure-symptoms associations would be stronger among girls than boys. Therefore, interaction terms were created by taking the product of standardized values of children's depressive symptoms (i.e., CBCL-WD, CDI, or YSR-WD) and sex. Moderation analyses included the main effects of sex, depressive symptoms, and MH+/MH- status as covariates in the regression model. Average GMV values were extracted from voxel clusters that were significantly associated with an interaction term using MarsBaR, Version 0.44 (Brett et al., 2002) and plotted using R 3.6.1 (R Core Team, 2019) and the *interactions* (Long, 2019a), *jtools* (Long, 2019b), *ggplot2* (Wickham, 2016), and *emmeans* (Lenth, 2019) packages to interpret the interaction.

*A priori* ROIs, selected based on previous work on the relationship between depression risk and brain structure (e.g., Arnone et al., 2016, 2012; Bora et al., 2012a; Du et al., 2012; Lai, 2013; Sacher et al., 2012) were the anterior cingulate cortex (ACC), bilateral amygdala, bilateral hippocampus, orbitofrontal cortex (OFC), and the dorsal striatum (caudate and putamen). All ROI analyses were conducted using a single ROI mask combining the aforementioned anatomical ROI defined using the Wake Forest University PickAtlas Toolbox, Version 3.0.5 (Maldjian et al., 2004; 2003; Tzourio-Mazoyer et al., 2002). Exploratory whole-brain analyses were also conducted using the same statistical models described above. Both ROI and whole-brain analyses were considered significant at  $p_{FWE} < 0.05$  (random-field theory family-wise error corrected, as implemented in SPM12).

## 3. Results

### 3.1. Associations among major study variables

See Table 2 for bivariate associations between all major study variables. CBCL-WD, CDI, and YSR-WD scores were all positively

correlated with one another and with child risk based on maternal history (dummy coded such that 0 = MH- and 1 = MH+). MH+ children had higher CBCL-WD ( $t(81) = -3.10, p = .003$ ) and CDI ( $t(82) = -2.24, p = .027$ ) scores compared to MH- children; there were no significant differences for YSR-WD scores. Girls tended to have smaller ICV (Table 2) with *t*-tests also showing that boys had significantly larger ICV than girls ( $t(83) = 7.485, p < .001$ ). Neither maternal nor self-reported depressive symptoms were associated with child biological sex.

### 3.2. VBM analyses

#### 3.2.1. Main effects of risk group and depressive symptoms

There were no significant differences in GMV between high- and low-risk children in ROIs ( $p_{FWE} > 0.05$ ) or whole-brain analyses ( $p_{FWE} > 0.05$ ) using ANCOVA. Additionally, maternally reported children's depressive symptoms (i.e., CBCL-WD scores) were not significantly related to GMV in any of the ROI-based or whole-brain analyses.

Based on ROI regression analyses of the OFC (Table 3; Fig. 1), children's self-reported depressive symptoms on the CDI were significantly negatively associated with GMV in a single cluster of voxels in the medial OFC. Similarly, GMV of two independent voxel clusters, the medial and right lateral OFC, was negatively associated with children's self-reported depressive symptoms on the YSR-WD (Table 4; Fig. 2). The medial clusters identified in regressions using both the CDI and YSR-WD largely overlapped with one another. Depressive symptoms were not significantly related to GMV in any of the other ROI analyses. Exploratory whole-brain voxel-wise analyses identified similarly located clusters of voxels in the OFC where higher CDI (Table 3; Fig. 1) and YSR-WD (Table 4; Fig. 2) were both related to lower GMV ( $p_{FWE} < 0.05$ ).

#### 3.2.2. Interactions between child sex and subthreshold depressive symptoms

The relationship between CDI and GMV during *a priori* ROI analysis of the OFC was significantly moderated by the sex of child participants (Table 3; Supplementary Table 1; Fig. 3). A similar effect was found whereby the relationship between CBCL-WD and GMV in the OFC ROI were also moderated by sex (Table 5; Supplementary Table 2; Fig. 4). In both cases, simple slopes analyses using the mean GMV of respective significant voxel clusters indicated a significant relationship between GMV and both boys' and girls' depressive symptoms (indexed via the CDI and CBCL-WD), although the association was negative for girls and positive for boys (Figs. 5 & 6). Sex did not significantly moderate the relationship between YSR-WD and GMV. Additionally, no significant interactions were identified in any of the other ROI analyses.

Exploratory whole-brain analysis identified a cluster in the left inferior frontal gyrus where the relationship between GMV and depressive symptoms (indexed via maternally reported CBCL-WD) was significantly moderated by children's sex (Table 5; Supplementary Table 3). Simple slopes analysis indicated that boys' GMV and maternally reported symptoms (i.e., CBCL-WD) were significantly positively related, while the relationship was non-significant among girls (Fig. 7).

## 4. Discussion

We investigated the relationship between brain structure and an established marker of children's depression risk, namely a maternal history of recurrent depression (or depression and serious anxiety disorder). Contrary to our expectations, children at high- and low-risk for depression, according to maternal history, did not differ in GMV. This was especially surprising given that children's maternal risk was relatively stringently defined relative to other studies, and our comparison group of children was drawn from mothers without any history of depression or anxiety. However, while children of mothers with a history of recurrent depression are at relatively higher risk for developing the

**Table 2**  
Bivariate correlations.

	1.	2.	3.	4.	5.	6.	7.	8.
1. Child Age at MRI Visit	–							
2. CBCL Withdrawn/Depressed	–0.17	–						
3. CDI	–0.18	0.50***	–					
4. YSR Withdrawn/Depressed	–0.20	0.47***	0.65***	–				
5. ICV	–0.11	–0.12	–0.01	–0.01	–			
6. Sex	0.12	0.16	0.06	–0.06	–0.64***	–		
7. Risk Group	–0.14	0.33**	0.24*	0.11	0.04	–0.03	–	
8. PPVT	–0.02	–0.06	–0.12	–0.09	–0.05	–0.06	–0.13	–

Note. \* =  $p < .05$ ; \*\* =  $p < .01$ ; \*\*\* =  $p < .001$ ; CBCL = Child Behavior Checklist; CDI = Children's Depression Inventory; YSR = Youth Self-Report; ICV = Intracranial Volume ( $\text{cm}^3$ ); PPVT = standardized scores from age 3 Peabody Picture Vocabulary Test; Dummy coding was used for sex (0 = male, 1 = female) and Risk Group (0 = Low maternal risk group, 1 = High maternal risk group).

**Table 3**  
Regression analyses of grey matter volume for CDI.

Regressor	Cluster Size ( $\text{mm}^3$ )	MNI Coordinates (peak voxel)			p-value (FWE corrected)	Z (peak voxel)
		x	y	z		
<i>ROI Analyses</i>						
CDI × Sex	25.5	–9	62	–8	0.012	4.67
CDI	90	14	45	–21	0.002	4.97
<i>Whole Brain Analyses</i>						
CDI	22.5	14	45	–21	0.009	4.97

Note. All analyses covaried for the main effects of age, sex, maternal risk group, and total intracranial volume. All  $p$  values were FWE corrected and refer to cluster level significance. All regression analyses were two-tailed. CDI = Children's Depression Inventory.

disorder themselves (Connell and Goodman, 2002; Klein et al., 2005), not all offspring of depressed mothers become depressed, and some develop other forms of psychopathology. Thus, not all children with a maternal history of depression inherit risk, including what may be relatively specific risk marked by brain structure. It is also possible that our high-risk children have risk mechanisms other than those captured by brain structure. Finally, aspects of brain structure that distinguish children with and without a maternal depression history may emerge later in development, a possibility worth exploring in other studies as well as in follow-up assessments of this sample.

In analyses of brain structure-symptom associations, we found that GMV in the medial OFC was significantly negatively associated with children's self-reported subthreshold depressive symptoms (i.e., CDI and YSR-WD) using both *a priori* ROI and exploratory whole-brain analyses. Furthermore, children's self-reported depressive symptoms (i.e., YSR-WD) were also negatively associated with GMV in the right lateral OFC, exclusively at the ROI level of analysis. These associations were found solely with children's self-reported symptoms based on the YSR-WD, and not the CDI nor the CBCL-WD scale (maternal report),

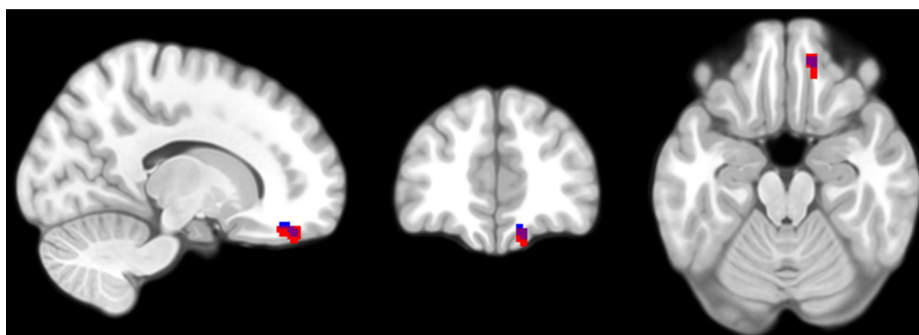
**Table 4**  
Regression analyses of grey matter volume for YSR-WD.

Regressor	Cluster Size ( $\text{mm}^3$ )	MNI Coordinates (peak voxel)			p-value (FWE corrected)	Z (peak voxel)
		x	y	z		
<i>ROI Analyses</i>						
YSR-WD	183	12	48	–21	< 0.001	5.46
	72	38	42	–11	0.002	4.78
<i>Whole Brain Analyses</i>						
YSR-WD	288	11	50	–18	< 0.001	5.63
	1.5	39	42	–11	0.037	4.82

Note. All analyses covaried for the main effects of age, sex, maternal risk group, and total intracranial volume. All  $p$  values were FWE corrected and refer to cluster level significance. All regression analyses were two-tailed. YSR-WD = Youth Self-Report Withdrawn/Depressed subscale.

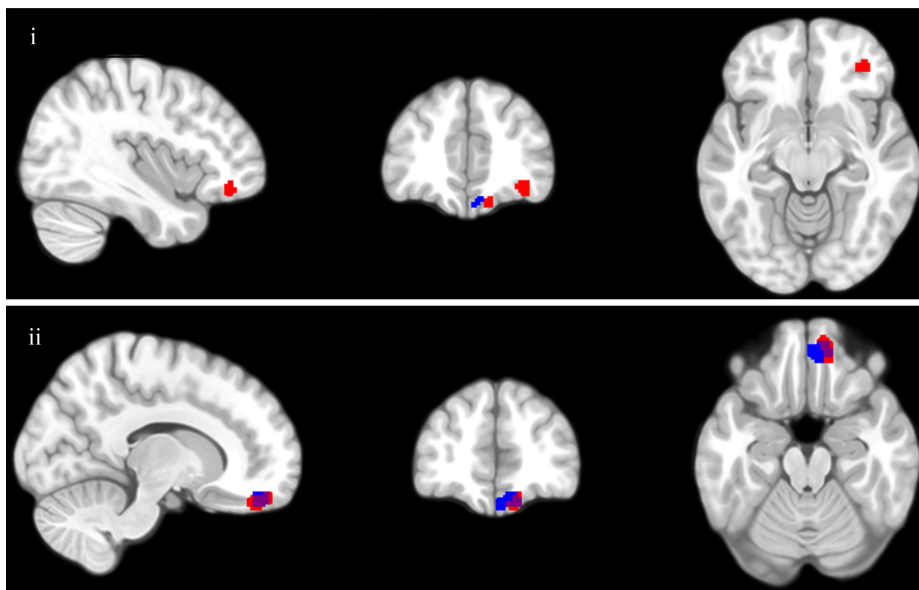
perhaps capturing some aspect specific to social withdrawal being more specifically measured using the self-reported YSR-WD. Given the known homotypic continuity of early depressive symptoms with later depressive disorder (Cuijpers and Smit, 2004; Klein et al., 2013; Shankman et al., 2009), these findings highlight structural brain markers of youth at risk for depression.

Contrary to our expectations, maternal history of depression was unrelated to children's brain structure in the current study, with all associations with brain structure limited to children's depressive symptoms. Early subthreshold depression symptoms portend later clinically significant disorder (Cuijpers and Smit, 2004; Klein et al., 2013; Shankman et al., 2009) and can therefore be conceptualized as an index of children's risk for later disorder; however, we acknowledge that it is more complicated to differentiate between subthreshold symptoms and the disorder itself in terms of understanding causal processes. Having said that, many other indices of putative depression risk (e.g., cognitive styles, Alloy et al., 2000) show conceptual overlap with depression, so this conceptual issue is not limited to the current findings. Given that brain structure and symptoms were related in



**Fig. 1.** Children's subthreshold depressive symptoms (CDI) are negatively associated with GMV during both ROI regression analysis (clusters highlighted in red for voxels where  $p_{FWE} < 0.05$ ) and whole-brain regression analysis (highlighted in blue for voxels where  $p_{FWE} < 0.05$ ) regression analyses. (For interpretation of the references to color in this figure legend, the reader is referred to the web version of this article.)





**Fig. 2.** Children's subthreshold depressive symptoms (YSR-WD) are negatively associated with GMV during both ROI regression analysis (clusters highlighted in red for voxels where  $p_{FWE} < 0.05$ ) and whole-brain regression analysis (clusters highlighted in blue for voxels where  $p_{FWE} < 0.05$ ); i = view of lateral OFC cluster; ii = view of medial OFC cluster. (For interpretation of the references to color in this figure legend, the reader is referred to the web version of this article.)

children rigorously screened for a personal history of depression, our findings speak to brain structure-risk associations that cannot be attributed to a depression history or treatment.

Despite the lack of associations between maternal depression history and children's brain structure, children's self- and mother-reported depressive symptoms were significantly associated with *both* brain structure and maternal history of depression (i.e., MH+ and MH- groups significantly differed in CDI and CBCL-WD scores). While children with a maternal depression history are unquestionably at greater risk than children of mothers without depression, this risk is probabilistic rather than deterministic. More specifically, depression is etiologically complex with multiple contributing factors that interact with each other and with the environment. In our sample, elevated symptoms in youth with a maternal history of depression stem from an array of risks that are somewhat distinct from the risk marked by a maternal depression history. Similarly, even though we anticipated group differences in brain structure related to maternal depression, we did not expect to find strong associations. This is consistent with relatively modest estimates of the heritability of depression (Fernandez-Pujals et al., 2015). Integrating other etiologically relevant variables (e.g., cognitive style, environmental stressors, other biological factors) with brain data is an important future direction in mapping youth risk more comprehensively.

Our finding that OFC GMV was negatively related to depressive symptoms in never-depressed children is consistent with the literature on adults with a lifetime history of depression (Arnone et al., 2016; 2012). The OFC is consistently associated with depression, with meta-analysis showing that a lifetime history of MDD is correlated with a

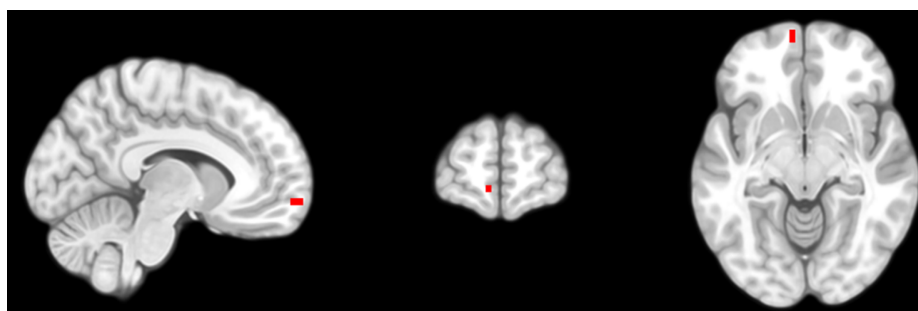
**Table 5**

Regression analyses of grey matter volume for CBCL-WD.

Regressor	Cluster Size (mm <sup>3</sup> )	MNI Coordinates (peak voxel)			p-value (FWE corrected)	Z (peak voxel)
		x	y	z		
<i>ROI Analyses</i>						
CBCL-WD × Sex	6	-3	68	-3	0.029	4.38
<i>Whole Brain Analyses</i>						
CBCL-WD × Sex	27	-41	38	6	0.007	5.34

*Note.* All analyses covaried for the main effects of age, sex, maternal risk group, and total intracranial volume. All *p* values were FWE corrected and refer to cluster level significance. All regression analyses were two-tailed. CBCL-WD = Child Behavior Checklist Withdrawn/Depressed subscale.

significant decrease in both OFC volume and GMV (Arnone et al., 2016; 2012). Additionally, lesions in the OFC are associated with depression in adults (MacFall et al., 2001). That said, the bulk of the aforementioned work has been conducted in adults with either current or lifetime history of MDD. Of studies focusing on children at high risk for depression, Chen and colleagues' (2010) study of brain structure in 12-year-old girls also found no significant risk-GMV association during whole-brain analysis; however, they did report significantly lower GMV in bilateral hippocampi during ROI analyses. That said, Chen et al. (2010) used an uncorrected *p* value during ROI analyses, increasing the chance of false-positive findings. While the current data do not allow for determination of causality, our more stringent analyses indicate



**Fig. 3.** The association between children's subthreshold depressive symptoms (CDI) and OFC GMV is moderated by sex during ROI analysis (clusters highlighted in red for voxels where  $p_{FWE} < 0.05$ ). (For interpretation of the references to color in this figure legend, the reader is referred to the web version of this article.)

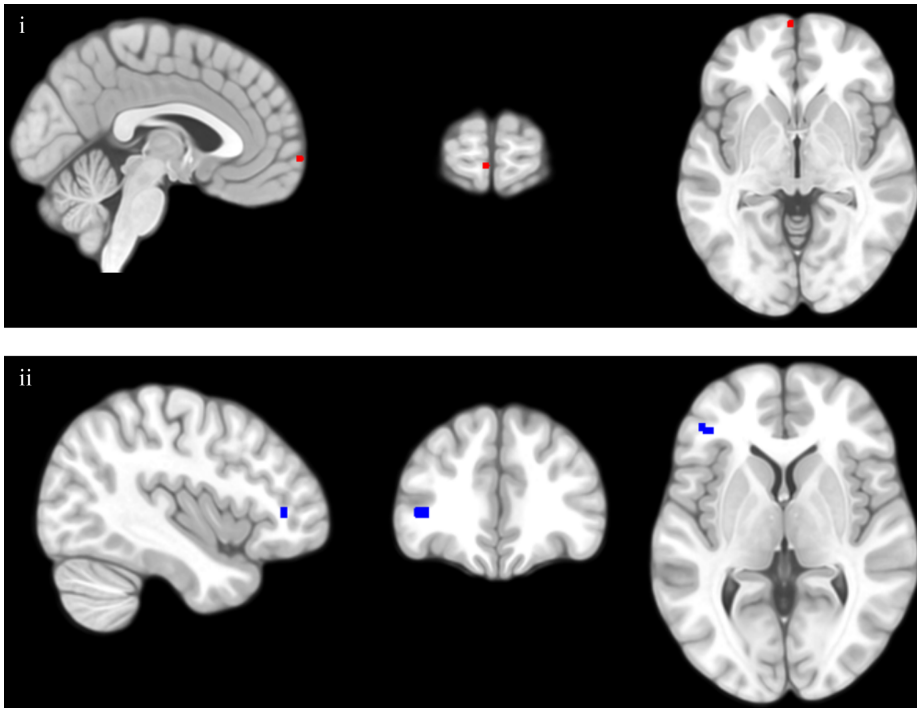


Fig. 4. The association between maternal-report of children's subthreshold depressive symptoms (CBCL-WD) and GMV is moderated by sex both during ROI regression analysis (clusters highlighted in red for voxels where  $p_{FWE} < 0.05$ ) and whole-brain regression analysis (clusters highlighted in blue for voxels where  $p_{FWE} < 0.05$ ); i = view of medial OFC cluster; ii = view of inferior frontal gyrus cluster. (For interpretation of the references to color in this figure legend, the reader is referred to the web version of this article.)

morphological features of the OFC (i.e., lower GMV in youth without a history of depression) are related to early vulnerability to depression.

Many depressive symptoms reflect behavior guided by neurofunctional circuits involving the OFC (Drevets, 2007). Perhaps most importantly, the OFC is, both individually and as part of a larger network of structures, involved in the processing of reward and reward-based learning (Delgado et al., 2005; Fettes et al., 2017; Liu et al., 2011; Rolls, 2017). The OFC is thought to be involved in the cognitive encoding of representations of reward outcomes (Klein-Flügge et al., 2013) and tracking the relative value of rewarding stimuli (O'Doherty, 2004). Relatedly, signal detection theory shows that depressive symptoms, especially anhedonia (i.e., deficits in motivation, anticipatory and consummatory pleasure, and reward learning), are associated with reduced reward learning (Kunisato et al., 2012; Pizzagalli et al., 2008,

2005; Vrieze et al., 2013) that persists even after remission of MDD (Pechtel et al., 2013). Given that anhedonia is a core symptom of depression, characterizing neural structures related to reward processing and reward-based learning in depression risk is an important aspect of understanding the disorder. Our findings that children's depressive symptoms are related to OFC GMV are consistent with findings of reduced functional activity in the OFC of both adults (e.g., Macoveanu et al., 2014; McCabe et al., 2009; Osuch et al., 2009; Redlich et al., 2015) and children (e.g., McCabe et al., 2012) at risk for, or with a history of, depression, during reward-based tasks.

While the OFC in general is thought to be important for reward processing and reward-based learning, medial and lateral OFC are thought to serve slightly different roles regarding these processes (Elliott et al., 2000; Fettes et al., 2017). Regarding reward-based

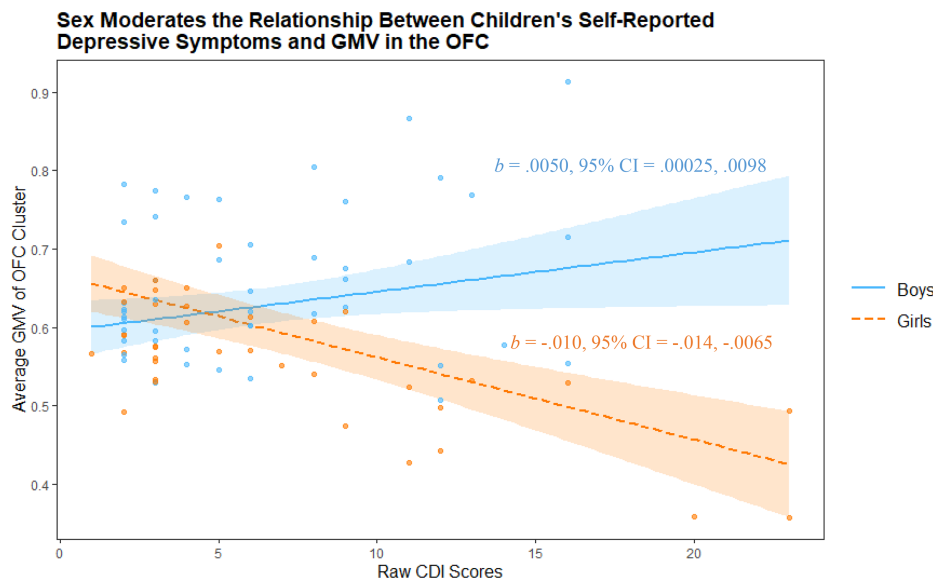
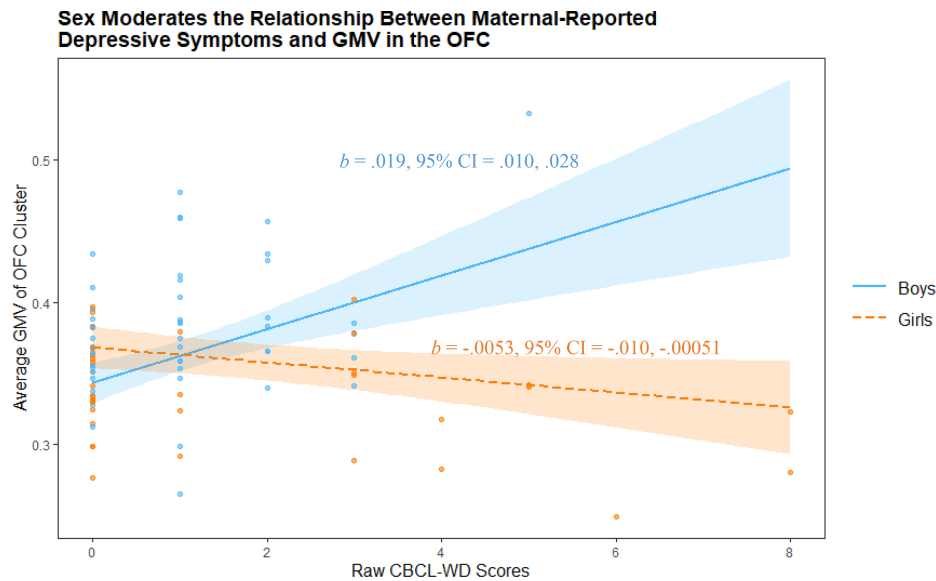


Fig. 5. Children's sex moderates the relationship between self-reported depressive symptoms (according to the CDI) and GMV in an OFC cluster (peak voxel -9, 62, -8), during ROI analysis of the OFC. Highlighted regions indicate 95% confidence intervals.

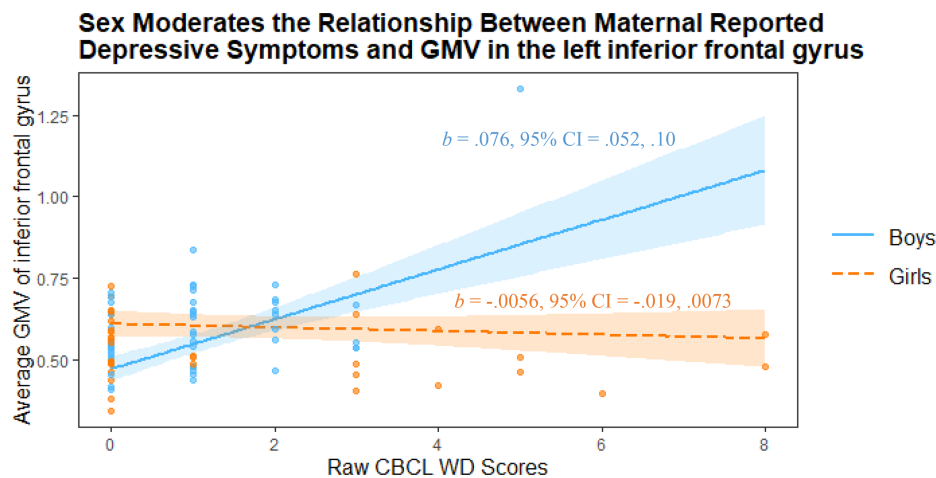


**Fig. 6.** Children's sex moderates the relationship between maternal report of children's depressive symptoms (according to the CBCL-WD) and GMV in an OFC cluster (peak voxel  $-3, 68, -3$ ), during ROI analysis of the OFC. Highlighted regions indicate 95% confidence intervals.

learning, the medial OFC is putatively responsible for encoding the subjective value of rewarding stimuli and for learning based on probability-based behavioural feedback (Fettes et al., 2017; Kringsbach and Rolls, 2004; Kringsbach, 2005), while the lateral OFC is thought to be involved with reversal learning (e.g., suppressing previously rewarded behavior in favor of new behaviors that were previously unrewarded; Clark et al., 2004; Fellows, 2007; Fettes et al., 2017). Thus, our findings of associations between medial and lateral OFC morphology (regions involved with reward processing; Fettes et al., 2017) with depressive symptoms in never-depressed children are consistent with theories of depression that emphasize maladaptive reward responding as an etiological factor in the disorder (Davidson, Pizzagalli, Nitschke, and Putnam, 2002; Treadway and Zald, 2011). However, we did not investigate functional brain activity during reward processing activities in the current study. Although we have identified structural associations with depressive symptoms in anatomical regions of the brain thought to be associated with reward processes, functional brain studies of non-depressed youth in the context of reward processing are necessary to specifically elucidate this relationship.

In addition to the aforementioned main effects relating brain structure and children's symptoms, we also tested whether boys and

girls differed in the relationship between structure and depressive symptoms, in light of evidence that girls may be impacted more strongly than boys by other putative depression vulnerabilities (Hankin and Abramson, 2001; Mackrell et al., 2013). Depressive symptoms and child sex interacted such that depressive symptoms and OFC GMV were significantly positively related in boys, but negatively related in girls. Our sample size was relatively small for testing interactions, and these effects require replication in other samples; however, the fact that sex similarly moderated both maternally and self-reported depressive symptoms and their relationship to OFC GMV, despite the low inter-correlation between the two measures, suggests that this finding may be robust. The negative association between OFC GMV and depressive symptoms among girls is consistent with previous work focusing on adults with a depression history (Arnone et al., 2016; 2012); however, the positive association between depressive symptoms and GMV in boys was unexpected. This positive slope may reflect differences in the way that depression presents across sex. For example, epidemiological study has shown that females are significantly more likely than males to experience anhedonic symptoms during depressive episodes (Romans et al., 2007). Further, the positive relationship between OFC GMV and depressive symptoms among boys may be related to the typical pattern



**Fig. 7.** Children's sex moderates the relationship between maternal report of children's depressive symptoms (according to the CBCL-WD) and GMV in a cluster (peak voxel  $-41, 38, 3$ ) in the left inferior frontal gyrus, during whole brain analysis. Highlighted regions indicate 95% confidence intervals.

of externalizing and reward-focused comorbidities seen among males with depression (i.e., higher rates of comorbid substance use disorders in males, relative to females; [Marcus et al., 2005](#)). Of course, these explanations are largely speculative at this point, and further research is needed to adequately explain this pattern of results. Nevertheless, biological abnormalities in the GMV of structures responsible for reward processing and rewarding learning may contribute to an increased vulnerability for depression among girls, but not boys. Similarly, it is also possible that GMV in OFC regions may have opposite relationships with depression risk (i.e., depressive symptoms) among boys and girls, such that greater GMV is a risk factor for boys, whereas decreased GMV is relevant to girls' risk.

As with other VBM-based studies, the relationship between individual differences in GMV and individual differences in brain function remains unclear. To the best of our knowledge, there is no research available directly relating GMV to brain function. Instead, studies linking anatomical and functional differences in the brain typically focus on relating functional connectivity in the brain with structural connectivity (i.e., using white matter tractography; [de Kwaasteniet et al., 2013](#); [Nixon et al., 2014](#)). While we have characterized statistical relationships between GMV and depression risk (i.e., subthreshold depressive symptoms) in our sample according to the typical functional role of the identified structural regions, it is possible that these associations do not confer differences in brain function. Future studies are needed to explicitly test the relationship between VBM-based study of brain structure and related differences in brain function in structural regions.

#### 4.1. Strengths

Our study has a number of important strengths. We studied children without a personal history of depression, based on rigorous screening procedures, prior to the typical age of onset for depression. This indicates that the structural associations with depressive symptoms that we found are not a consequence of clinically significant depression or its treatment. Our sample was relatively large for neuroimaging studies of high-risk youth. Further, using a community-based sample of mothers and their children, rather than a clinical sample, may increase the generalizability of our findings.

#### 4.2. Limitations & future directions

Despite the strengths of our study, results should be considered alongside a number of limitations. First, although up to 50% of all adults will meet criteria for a mental disorder during their lives ([Kessler et al., 2005, 2007](#)), we used strict selection criteria for our "low-risk" group, only recruiting children whose mothers had no history of *any* disorder to this group. This may have limited low-risk children to offspring of especially resilient or healthy mothers, potentially limiting the generalisability of our results. Second, symptom/diagnostic data collection occurred an average of one month prior to MRI acquisition. Given the high stability of depressive symptoms in children and adolescents ([Tram and Cole, 2006](#)) and brain structure ([Focke et al., 2011](#)) over similar durations, it is unlikely this lag influenced our results. Indeed, treating time between assessments as a covariate did not significantly change our results.

Additionally, although the data used in this study were gathered as part of an ongoing longitudinal study of childhood development, the structural MRI data collected here is the first assessment of brain structure we have for these children. With these cross-sectional data we cannot claim causal relationships between brain structure and depression; however, we plan to continue assessing brain development and psychopathology at subsequent follow-ups, thereby permitting testing of stronger claims about causal mechanisms in the brain-depression relationship. Finally, while we aimed to characterize structural features of the brain as they relate to depression risk *before* onset of depressive

disorder or the typical age of onset, the brains of our participants have already undergone considerable maturation from a neurodevelopmental perspective. Future investigations should consider applying similar methodology to samples of even younger children to better characterize the brain-depression risk relationship across early development.

Another limitation concerns other relevant variables not included in the current study. While age was included as a covariate in all analyses of imaging data, participants' pubertal development was not assessed as part of the current study. Given the age of our sample and the established relationship between pubertal development and the development of depression ([Angold and Costello, 2006](#); [Angold et al., 1998](#)), covarying for pubertal development in future studies is an important next step in better understanding these relationships. Finally, human development (including development of the brain and mental disorders) does not exist in a vacuum; the relationship between brain structure and depression risk is most likely influenced by gene-environment interactions and epigenetic changes ([Meaney, 2010](#)). Future research should collect more data regarding potentially relevant environmental factors (e.g., adverse childhood events, early parenting behaviour, children's chronic life stress, etc.) and investigate both the direct effect of environmental variables, beyond maternal depression, as well as their interaction with biology (i.e., genotype, brain-based endophenotypes, sex, stress reactivity, etc.).

## 5. Conclusion

Our results demonstrate that depressive symptoms are associated with brain structure among never-depressed children, specifically in the medial and right lateral OFC. These regions are largely associated with functional roles involving reward processing and reward learning, both functions which are highly relevant to core symptoms of depression (i.e., anhedonia). Reduced GMV in these regions may reflect a pre-existing biomarker for depression, potentially contributing to risk for developing depressive disorders.

## Funding

This work was supported by the Canadian Institutes of Health Research (Grant No. CIHR MOP86458 [to EPH]); the Ontario Mental Health Foundation; Canada First Research Excellence Fund for BrainsCAN; Brain Canada Foundation; the Canadian Institutes of Health Research Frederick Banting and Charles Best Canada Graduate Scholarship Doctoral Award (to MRJV); and Children's Health Research Institute Quality of Life Initiative.

## Ethics

The study was approved by the Western University Health Science Research Ethics Board. All adult participants signed an informed consent form for themselves and their child prior to participation in this study. Further, all child participants signed an informed assent form for themselves prior to participation in the study.

## CRediT authorship contribution statement

**Matthew R.J. Vandermeer:** Conceptualization, Methodology, Formal analysis, Investigation, Data curation, Writing - original draft, Writing - review & editing, Visualization, Funding acquisition. **Pan Liu:** Data curation, Writing - review & editing. **Ola Mohamed Ali:** Investigation, Data curation, Writing - review & editing. **Andrew R. Daoust:** Investigation, Data curation, Writing - review & editing. **Marc F. Joanisse:** Supervision, Writing - review & editing, Funding acquisition. **Deanna M. Barch:** Supervision, Writing - review & editing, Funding acquisition. **Elizabeth P. Hayden:** Supervision, Conceptualization, Methodology, Writing - review & editing, Funding

acquisition.

## Declaration of Competing Interest

The authors declare that they have no known competing financial interests or personal relationships that could have appeared to influence the work reported in this paper.

## Appendix A. Supplementary data

Supplementary data to this article can be found online at <https://doi.org/10.1016/j.nicl.2020.102395>.

## References

- Achenbach, T.M., Rescorla, L.A., 2001. *Manual for the ASEBA School-Age Forms and Profiles*. University of Vermont, Research Center for Children, Youth, and Families, Burlington, VT.
- Alloy, L.B., Abramson, L.Y., Hogan, M.E., Whitehouse, W.G., Rose, D.T., Robinson, M.S., Lapkin, J.B., 2000. The Temple-Wisconsin Cognitive Vulnerability to Depression Project: lifetime history of Axis I psychopathology in individuals at high and low cognitive risk for depression. *J. Abnormal Psychol.* 109 (3), 403–418. <https://doi.org/10.1037/0021-843X.109.3.403>.
- Amico, F., Meisenzahl, E., Koutsouleris, N., Reiser, M., Möller, H.-J., Frodl, T., 2011. Structural MRI correlates for vulnerability and resilience to major depressive disorder. *J. Psychiatry Neurosci.* JPN 36 (1), 15–22. <https://doi.org/10.1503/jpn.090186>.
- Angold, A., Costello, E.J., 2006. Puberty and depression. *Child Adolescent Psychiatr. Clinics North Am.* 15 (4), 919–937. <https://doi.org/10.1016/j.chc.2006.05.013>.
- Angold, A., Costello, E.J., Worthman, C.M., 1998. Puberty and depression: the roles of age, pubertal status and pubertal timing. *Psychol. Med.* 28 (1), 51–61. <https://www.ncbi.nlm.nih.gov/pubmed/9483683>.
- Arnone, D., Job, D., Selvaraj, S., Abe, O., Amico, F., Cheng, Y., McIntosh, A.M., 2016. Computational meta-analysis of statistical parametric maps in major depression. *Hum. Brain Mapp.* 37 (4), 1393–1404. <https://doi.org/10.1002/hbm.23108>.
- Arnone, D., McIntosh, A.M., Ebmeier, K.P., Munafo, M.R., Anderson, I.M., 2012. Magnetic resonance imaging studies in unipolar depression: systematic review and meta-regression analyses. *Eur. Neuropsychopharmacol.* J. Eur. College Neuropsychopharmacol. 22 (1), 1–16. <https://doi.org/10.1016/j.euroneuro.2011.05.003>.
- Ashburner, J., 2007. A fast diffeomorphic image registration algorithm. *NeuroImage* 38 (1), 95–113. <https://doi.org/10.1016/j.neuroimage.2007.07.007>.
- Ashburner, J., Friston, K.J., 2005. Unified segmentation. *NeuroImage* 26 (3), 839–851. <https://doi.org/10.1016/j.neuroimage.2005.02.018>.
- Baaré, W.F.C., Vinberg, M., Knudsen, G.M., Paulson, O.B., Langkilde, A.R., Jernigan, T.L., Kessing, L.V., 2010. Hippocampal volume changes in healthy subjects at risk of unipolar depression. *J. Psychiatr. Res.* 44 (10), 655–662. <https://doi.org/10.1016/j.jpsychires.2009.12.009>.
- Boes, A.D., McCormick, L.M., Coryell, W.H., Nopoulos, P., 2008. Rostral anterior cingulate cortex volume correlates with depressed mood in normal healthy children. *Biol. Psychiatry* 63 (4), 391–397. <https://doi.org/10.1016/j.biopsych.2007.07.018>.
- Bora, E., Fornito, A., Pantelis, C., Yücel, M., 2012a. Gray matter abnormalities in Major Depressive Disorder: a meta-analysis of voxel based morphometry studies. *J. Affect. Disord.* 138 (1–2), 9–18. <https://doi.org/10.1016/j.jad.2011.03.049>.
- Bora, E., Harrison, B.J., Davey, C.G., Yücel, M., Pantelis, C., 2012b. Meta-analysis of volumetric abnormalities in cortico-striatal-pallidal-thalamic circuits in major depressive disorder. *Psychol. Med.* 42 (4), 671–681. <https://doi.org/10.1017/S0033291711001668>.
- Bostwick, J.M., Pankratz, V.S., 2000. Affective disorders and suicide risk: a reexamination. *Am. J. Psychiatry* 157 (12), 1925–1932. <https://doi.org/10.1176/appi.ajp.157.12.1925>.
- Brett, M., Anton, J.-L., Valabregue, R., Poline, J.-B. (2002). Region of interest analysis using an SPM toolbox. 8th International Conference on Functional Mapping of the Human Brain, 16, 497.
- Bromet, E., Andrade, L.H., Hwang, I., Sampson, N.A., Alonso, J., de Girolamo, G., Kessler, R.C., 2011. Cross-national epidemiology of DSM-IV major depressive episode. *BMC Med.* 9, 90. <https://doi.org/10.1186/1741-7015-9-90>.
- Burke, H.M., Davis, M.C., Otte, C., Mohr, D.C., 2005. Depression and cortisol responses to psychological stress: a meta-analysis. *Psychoneuroendocrinology* 30 (9), 846–856. <https://doi.org/10.1016/j.psyneuen.2005.02.010>.
- Carballedo, A., Lisecka, D., Fagan, A., Saleh, K., Ferguson, Y., Connolly, G., Frodl, T., 2012. Early life adversity is associated with brain changes in subjects at family risk for depression. *World J. Biol. Psychiatry* 13 (8), 569–578. <https://doi.org/10.3109/15622975.2012.661079>.
- Carlson, J.M., Depetro, E., Maxwell, J., Harmon-Jones, E., Hajcak, G., 2015. Gender moderates the association between dorsal medial prefrontal cortex volume and depressive symptoms in a subclinical sample. *Psychiatry Res.* 233 (2), 285–288. <https://doi.org/10.1016/j.psyres.2015.06.005>.
- Chai, X.J., Hirshfeld-Becker, D., Biederman, J., Uchida, M., Doehrmann, O., Leonard, J.A., Gabrieli, J.D.E., 2015. Functional and structural brain correlates of risk for major depression in children with familial depression. *NeuroImage. Clin.* 8, 398–407. <https://doi.org/10.1016/j.nicl.2015.05.004>.
- Chen, M.C., Hamilton, J.P., Gotlib, I.H., 2010. Decreased hippocampal volume in healthy girls at risk of depression. *Arch. Gen. Psychiatry* 67 (3), 270–276. <https://doi.org/10.1001/archgenpsychiatry.2009.202>.
- Chen, C.-H., Ridler, K., Suckling, J., Williams, S., Fu, C.H.Y., Merlo-Pich, E., Bullmore, E., 2007. Brain imaging correlates of depressive symptom severity and predictors of symptom improvement after antidepressant treatment. *Biol. Psychiatry* 62 (5), 407–414. <https://doi.org/10.1016/j.biopsych.2006.09.018>.
- Cicchetti, D., Rogosch, F.A., 1996. Equifinality and multifinality in developmental psychopathology. *Dev. Psychopathol.* 8 (4), 597–600. <https://doi.org/10.1017/S0954579400007318>.
- Clark, L., Cools, R., Robbins, T.W., 2004. The neuropsychology of ventral prefrontal cortex: decision-making and reversal learning. *Brain Cogn.* 55 (1), 41–53. [https://doi.org/10.1016/S0278-2626\(03\)00284-7](https://doi.org/10.1016/S0278-2626(03)00284-7).
- Connell, A.M., Goodman, S.H., 2002. The association between psychopathology in fathers versus mothers and children's internalizing and externalizing behavior problems: a meta-analysis. *Psychol. Bull.* 128 (5), 746–773. <https://doi.org/10.1037/0033-2909.128.5.746>.
- Cuijpers, P., Smit, F., 2002. Excess mortality in depression: a meta-analysis of community studies. *J. Affect. Disord.* 72 (3), 227–236.
- Cuijpers, P., Smit, F., 2004. Subthreshold depression as a risk indicator for major depressive disorder: a systematic review of prospective studies. *Acta Psychiatr. Scand.* 109 (5), 325–331. <https://doi.org/10.1111/j.1600-0447.2004.00301.x>.
- Cummings, C.M., Caporino, N.E., Kendall, P.C., 2014. Comorbidity of anxiety and depression in children and adolescents: 20 years after. *Psychol. Bull.* 140 (3), 816–845. <https://doi.org/10.1037/a0034733>.
- Daoust, A.R., Kotelnikova, Y., Kryski, K.R., Sheikh, H.I., Singh, S.M., Hayden, E.P., 2018. Child sex moderates the relationship between cortisol stress reactivity and symptoms over time. *Compr. Psychiatry* 87, 161–170. <https://doi.org/10.1016/j.comppsy.2018.10.009>.
- Davidson, R.J., Pizzagalli, D.A., Nitschke, J.B., 2009. Representation and regulation of emotion in depression. In: Gotlib, I.H., Hammen, C.L. (Eds.), *Handbook of Depression*. The Guilford Press, New York, NY, pp. 218–248.
- Davidson, R.J., Pizzagalli, D., Nitschke, J.B., Putnam, K., 2002. Depression: perspectives from affective neuroscience. *Annu. Rev. Psychol.* 53, 545–574. <https://doi.org/10.1146/annurev.psych.53.100901.135148>.
- de Bie, H.M.A., Boersma, M., Wattjes, M.P., Adriaanse, S., Vermeulen, R.J., Oostrom, K.J., Delemarre-Van de Waal, H.A., 2010. Preparing children with a mock scanner training protocol results in high quality structural and functional MRI scans. *Eur. J. Pediatr.* 169 (9), 1079–1085. <https://doi.org/10.1007/s00431-010-1181-z>.
- de Kwaasteniët, B., Ruhe, E., Caan, M., Rive, M., Olabarriaga, S., Groefsema, M., Heesink, L., van Wingen, G., Denys, D., 2013. Relation between structural and functional connectivity in major depressive disorder. *Biol. Psychiatry* 74 (1), 40–47. <https://doi.org/10.1016/j.biopsych.2012.12.024>.
- Delgado, M.R., Miller, M.M., Inati, S., Phelps, E.A., 2005. An fMRI study of reward-related probability learning. *NeuroImage* 24 (3), 862–873. <https://doi.org/10.1016/j.neuroimage.2004.10.002>.
- Drevets, W.C., 2007. Orbitofrontal cortex function and structure in depression. *Ann. N. Y. Acad. Sci.* 1121, 499–527. <https://doi.org/10.1196/annals.1401.029>.
- Drevets, W.C., Price, J.L., Furey, M.L., 2008. Brain structural and functional abnormalities in mood disorders: implications for neurocircuitry models of depression. *Brain Struct. Funct.* 213 (1–2), 93–118. <https://doi.org/10.1007/s00429-008-0189-x>.
- Du, M.-Y., Wu, Q.-Z., Yue, Q., Li, J., Liao, Y., Kuang, W.-H., Gong, Q.-Y., 2012. Voxelwise meta-analysis of gray matter reduction in major depressive disorder. *Prog. Neuro-Psychopharmacol. Biol. Psychiatry* 36 (1), 11–16. <https://doi.org/10.1016/j.pnpbp.2011.09.014>.
- Dunn, L.M., Dunn, L.M., 2007. *Peabody Picture Vocabulary Test, fourth ed.* Pearson, Bloomington, IN.
- Elliott, R., Dolan, R.J., Frith, C.D., 2000. Dissociable functions in the medial and lateral orbitofrontal cortex: Evidence from human neuroimaging studies. *Cereb. Cortex* 10 (3), 308–317. <https://doi.org/10.1093/cercor/10.3.308>.
- Elliott, M. L., Knodt, A. R., Ireland, D., Morris, M.L., Poulton, R., Ramrakha, S., Hariri, A. R., 2019. Poor test-retest reliability of task-fMRI: New empirical evidence and a meta-analysis (p. 681700). <https://doi.org/10.1101/681700>.
- Eshel, N., Roiser, J.P., 2010. Reward and punishment processing in depression. *Biol. Psychiatry* 68 (2), 118–124. <https://doi.org/10.1016/j.biopsych.2010.01.027>.
- Fellows, L.K., 2007. The role of orbitofrontal cortex in decision making: a component process account. *Ann. N. Y. Acad. Sci.* 1121, 421–430. <https://doi.org/10.1196/annals.1401.023>.
- Fernandez-Pujals, A.M., Adams, M.J., Thomson, P., McKechnie, A.G., Blackwood, D.H.R., Smith, B.H., McIntosh, A.M., 2015. Epidemiology and heritability of major depressive disorder, stratified by age of onset, sex, and illness course in generation Scotland: Scottish family health study (GS:SFHS). *PLoS ONE* 10 (11), e0142197. <https://doi.org/10.1371/journal.pone.0142197>.
- Fettes, P., Schulze, L., Downar, J., 2017. Cortico-striatal-thalamic loop circuits of the orbitofrontal cortex: promising therapeutic targets in psychiatric illness. *Front. Syst. Neurosci.* 11, 25. <https://doi.org/10.3389/fnsys.2017.00025>.
- First, M.B., Spitzer, R.L., Gibbon, M., Williams, J.B.W., 2002. *Structured Clinical Interview for DSM-IV-TR Axis I Disorders, Research Version, Non-patient Edition*. (SCID-I/NP). New York Psychiatric Institute.
- Focke, N.K., Helms, G., Kaspar, S., Diederich, C., Tóth, V., Dechent, P., Mohr, A., Paulus, W., 2011. Multi-site voxel-based morphometry—not quite there yet. *NeuroImage* 56 (3), 1164–1170. <https://doi.org/10.1016/j.neuroimage.2011.02.029>.
- Foland-Ross, L.C., Behzadian, N., LeMoult, J., Gotlib, I.H., 2016. Concordant patterns of brain structure in mothers with recurrent depression and their never-depressed daughters. *Dev. Neurosci.* 38 (2), 115–123. <https://doi.org/10.1159/000444448>.

- Gotlib, I.H., Hammen, C.L. (Eds.), 2009. *Handbook of Depression*. Guilford Press.
- Gottesman, I.I., Gould, T.D., 2003. Reviews and overviews the endophenotype concept in psychiatry: etymology and strategic intentions. *Am. J. Psychiatry* 160 (April), 636–645. <https://doi.org/10.1176/appi.ajp.160.4.636>.
- Hankin, B.L., Abramson, L.Y., 2001. Development of gender differences in depression: an elaborated cognitive vulnerability–transactional stress theory. *Psychol. Bull.* 127 (6), 773–796. <https://doi.org/10.1037/0033-2909.127.6.773>.
- Henriques, J.B., Davidson, R.J., 2000. Decreased responsiveness to reward in depression. *Cogn. Emot.* 14 (5), 711–724. <https://doi.org/10.1080/02699930050117684>.
- Insel, T., Cuthbert, B., Garvey, M., Heinssen, R., Pine, D.S., Quinn, K., Wang, P., 2010. Research domain criteria (RDoC): toward a new classification framework for research on mental disorders. *Am. J. Psychiatry* 167 (7), 748–751. <https://doi.org/10.1176/appi.ajp.2010.09091379>.
- Joormann, J., Gotlib, I.H., 2010. Emotion regulation in depression: relation to cognitive inhibition. *Cogn. Emot.* 24 (2), 281–298. <https://doi.org/10.1080/02699930903407948>.
- Kaufman, J., Birmaher, B., Brent, D., Rao, U., Flynn, C., Moreci, P., Ryan, N., 1997. Schedule for Affective Disorders and Schizophrenia for School-Age Children-Present and Lifetime Version (K-SADS-PL): Initial reliability and validity data. *J. Am. Acad. Child Adolesc. Psychiatry* 36 (7), 980–988. <https://doi.org/10.1097/00004583-199707000-00021>.
- Kendler, K.S., Prescott, C.A., Myers, J., Neale, M.C., 2003. The structure of genetic and environmental risk factors for common psychiatric and substance use disorders in men and women. *Arch. Gen. Psychiatry* 60 (9), 929–937. <https://doi.org/10.1001/archpsyc.60.9.929>.
- Kendler, K.S., Silberg, J.L., Neale, M.C., Kessler, R.C., Heath, A.C., Eaves, L.J., 1991. The family history method: whose psychiatric history is measured. *Am. J. Psychiatry* 148 (11), 1501–1504.
- Kessler, R.C., 2012. The costs of depression. *Psychiatric Clin. North Am.* 35 (1), 1–14. <https://doi.org/10.1016/j.psc.2011.11.005>.
- Kessler, R.C., Angermeyer, M., Anthony, J.C., De Graaf, R., Demyttenaere, K., Gasquet, I., Ustün, T.B., 2007. Lifetime prevalence and age-of-onset distributions of mental disorders in the World Health Organization's World Mental Health Survey Initiative. *World Psychiatry* 6 (3), 168–176.
- Kessler, R.C., Berglund, P., Demler, O., Jin, R., Merikangas, K.R., Walters, E.E., 2005. Lifetime prevalence and age-of-onset distributions of DSM-IV disorders in the National Comorbidity Survey Replication. *Arch. Gen. Psychiatry* 62 (June), 593–602. <https://doi.org/10.1001/archpsyc.62.6.593>.
- Klein, D.N., 2008. Classification of depressive disorders in the DSM-V: proposal for a two-dimension system. *J. Abnorm. Psychol.* 117 (3), 552–560. <https://doi.org/10.1037/0021-843X.117.3.552>.
- Klein, D.N., Glenn, C.R., Kosty, D.B., Seeley, J.R., Rohde, P., Lewinsohn, P.M., 2013. Predictors of first lifetime onset of major depressive disorder in young adulthood. *J. Abnorm. Psychol.* 122 (1), 1–6. <https://doi.org/10.1037/a0029567>.
- Klein, D.N., Lewinsohn, P.M., Rohde, P., Seeley, J.R., Olino, T.M., 2005. Psychopathology in the adolescent and young adult offspring of a community sample of mothers and fathers with major depression. *Psychol. Med.* 35 (3), 353–365. <https://www.ncbi.nlm.nih.gov/pubmed/15841871>.
- Klein-Flügge, M.C., Barron, H.C., Brodersen, K.H., Dolan, R.J., Behrens, T.E.J., 2013. Segregated encoding of reward-identity and stimulus-reward associations in human orbitofrontal cortex. *J. Neurosci.* 33 (7), 3202–3211. <https://doi.org/10.1523/JNEUROSCI.2532-12.2013>.
- Kong, L., Chen, K., Womer, F., Jiang, W., Luo, X., Driesen, N., Wang, F., 2013. Sex differences of gray matter morphology in cortico-limbic-striatal neural system in major depressive disorder. *J. Psychiatr. Res.* 47 (6), 733–739. <https://doi.org/10.1016/j.jpsychires.2013.02.003>.
- Kovacs, M., 2011. *Children's Depression Inventory (CDI2): Technical Manual*. Multi-health Systems Inc, North Tonawanda, NY.
- Kringelbach, M.L., 2005. The human orbitofrontal cortex: linking reward to hedonic experience. *Nat. Rev. Neurosci.* 6 (9), 691–702. <https://doi.org/10.1038/nrn1747>.
- Kringelbach, M.L., Rolls, E.T., 2004. The functional neuroanatomy of the human orbitofrontal cortex: evidence from neuroimaging and neuropsychology. *Prog. Neurobiol.* 72 (5), 341–372. <https://doi.org/10.1016/j.pneurobio.2004.03.006>.
- Kryski, K.R., Smith, H.J., Sheikh, H.I., Singh, S.M., Hayden, E.P., 2013. HPA axis reactivity in early childhood: associations with symptoms and moderation by sex. *Psychoneuroendocrinology* 38 (10), 2327–2336. <https://doi.org/10.1016/j.psyneuen.2013.05.002>.
- Kunisato, Y., Okamoto, Y., Ueda, K., Onoda, K., Okada, G., Yoshimura, S., Yamawaki, S., 2012. Effects of depression on reward-based decision making and variability of action in probabilistic learning. *J. Behav. Ther. Exp. Psychiatry* 43 (4), 1088–1094. <https://doi.org/10.1016/j.jbtep.2012.05.007>.
- Lai, C.-H., 2013. Gray matter volume in major depressive disorder: a meta-analysis of voxel-based morphometry studies. *Psychiatry Res.* 211 (1), 37–46. <https://doi.org/10.1016/j.psyneuen.2012.06.006>.
- Lawrence, P.J., Murayama, K., Creswell, C., 2019. Systematic review and meta-analysis: Anxiety and depressive disorders in offspring of parents with anxiety disorders. *J. Am. Acad. Child Adolesc. Psychiatry* 58 (1), 46–60. <https://doi.org/10.1016/j.jaac.2018.07.898>.
- Lenth, R. (2019). emmeans: Estimated marginal means, aka least-squares means (R package version 1.4.3.01). Retrieved from <https://CRAN.R-project.org/package=emmeans>.
- Lenroot, R.K., Gogtay, N., Greenstein, D.K., Wells, E.M., Wallace, G.L., Clasen, L.S., Blumenthal, J.D., Lerch, J., Zijdenbos, A.P., Evans, A.C., Thompson, P.M., Giedd, J.N., 2007. Sexual dimorphism of brain developmental trajectories during childhood and adolescence. *NeuroImage* 36 (4), 1065–1073. <https://doi.org/10.1016/j.neuroimage.2007.03.053>.
- Lépine, J.-P., Briley, M., 2011. The increasing burden of depression. *Neuropsychiatr. Dis. Treat.* 7 (Suppl 1), 3–7. <https://doi.org/10.2147/NDT.S19617>.
- Levinson, D.F., 2006. The genetics of depression: a review. *Biol. Psychiatry* 60 (2), 84–92. <https://doi.org/10.1016/j.biopsych.2005.08.024>.
- Liu, P., Kryski, K.R., Smith, H.J., Joannisse, M.F., Hayden, E.P., 2019. Transactional relations between early child temperament, structured parenting, and child outcomes: a three-wave longitudinal study. *Dev. Psychopathol.* 1–11.
- Liu, X., Hairston, J., Schrier, M., Fan, J., 2011. Common and distinct networks underlying reward valence and processing stages: a meta-analysis of functional neuroimaging studies. *Neurosci. Biobehav. Rev.* 35 (5), 1219–1236. <https://doi.org/10.1016/j.neubiorev.2010.12.012>.
- Long, J. A. (2019a). Interactions: Comprehensive, user-friendly toolkit for probing interactions (R package version 1.1.0). Retrieved from <https://cran.r-project.org/package=interactions>.
- Long, J. A. (2019b). jtools: Analysis and presentation of social scientific data (R package version 2.0.1). Retrieved from <https://cran.r-project.org/package=jtools>.
- Lopez-Duran, N.L., Kovacs, M., George, C.J., 2009. Hypothalamic–pituitary–adrenal axis dysregulation in depressed children and adolescents: a meta-analysis. *Psychoneuroendocrinology* 34 (9), 1272–1283. <https://doi.org/10.1016/j.psyneuen.2009.03.016>.
- MacFall, J.R., Payne, M.E., Provenzale, J.E., Krishnan, K.R., 2001. Medial orbital frontal lesions in late-onset depression. *Biol. Psychiatry* 49 (9), 803–806. [https://doi.org/10.1016/s0006-3223\(00\)01113-6](https://doi.org/10.1016/s0006-3223(00)01113-6).
- Mackrell, S.V.M., Johnson, E.M., Dozois, D.J.A., Hayden, E.P., 2013. Negative life events and cognitive vulnerability to depression: informant effects and sex differences in the prediction of depressive symptoms in middle childhood. *Personality Individ. Differ.* 54 (4), 463–468.
- Macoveanu, J., Knorr, U., Skimminge, A., Søndergaard, M.G., Jørgensen, A., Fauerholdt-Jepsen, M., Kessing, L.V., 2014. Altered reward processing in the orbitofrontal cortex and hippocampus in healthy first-degree relatives of patients with depression. *Psychol. Med.* 44 (6), 1183–1195. <https://doi.org/10.1017/S0033291713001815>.
- Maldjian, J.A., Laurienti, P.J., Burdette, J.H., 2004. Precentral gyrus discrepancy in electronic versions of the Talairach atlas. *NeuroImage* 21 (1), 450–455.
- Maldjian, J.A., Laurienti, P.J., Kraft, R.A., Burdette, J.H., 2003. An automated method for neuroanatomic and cytoarchitectonic atlas-based interrogation of fMRI data sets. *NeuroImage* 19 (3), 1233–1239.
- Mannic, Z.N., Filippini, N., Williams, C., Near, J., Mackay, C.E., Cowen, P.J., 2014. Structural and functional imaging of the hippocampus in young people at familial risk of depression. *Psychol. Med.* 44 (14), 2939–2948. <https://doi.org/10.1017/S0033291714000580>.
- Marcus, S.M., Young, E.A., Kerber, K.B., Kornstein, S., Farabaugh, A.H., Mitchell, J., Rush, A.J., 2005. Gender differences in depression: findings from the STAR\*D study. *J. Affect. Disord.* 87 (2–3), 141–150.
- Mayberg, H.S., 1997. Limbic-cortical dysregulation: a proposed model of depression. *J. Neuropsychiatry Clin. Neurosci.* 9 (3), 471–481. <https://doi.org/10.1176/jnp.9.3.471>.
- Mayberg, H.S., Liotti, M., Brannan, S.K., McGinnis, S., Mahurin, R.K., Jerabek, P.A., Fox, P.T., 1999. Reciprocal limbic-cortical function and negative mood: converging PET findings in depression and normal sadness. *Am. J. Psychiatry* 156 (5), 675–682. <https://doi.org/10.1176/ajp.156.5.675>.
- McCabe, C., Cowen, P.J., Harmer, C.J., 2009. Neural representation of reward in recovered depressed patients. *Psychopharmacology* 205 (4), 667–677. <https://doi.org/10.1007/s00213-009-1573-9>.
- McCabe, C., Woffindale, C., Harmer, C.J., Cowen, P.J., 2012. Neural processing of reward and punishment in young people at increased familial risk of depression. *Biol. Psychiatry* 72 (7), 588–594. <https://doi.org/10.1016/j.biopsych.2012.04.034>.
- Meaney, M.J., 2010. Epigenetics and the biological definition of gene × environment interactions. *Child Dev.* 81 (1), 41–79. <https://doi.org/10.1111/j.1467-8624.2009.01381.x>.
- Merikangas, K.R., He, J.-P., Brody, D., Fisher, P.W., Bourdon, K., Koretz, D.S., 2010. Prevalence and treatment of mental disorders among US children in the 2001–2004 NHANES. *Pediatrics* 125 (1), 75–81. <https://doi.org/10.1542/peds.2008-2598>.
- Merry, S.N., Hetrick, S.E., Cox, G.R., Brudevold-Iversen, T., Bir, J.J., McDowell, H., 2012. Cochrane Review: psychological and educational interventions for preventing depression in children and adolescents. *Evid.-Based Child Health: Cochr. Rev. J.* 7 (5), 1409–1685. <https://doi.org/10.1002/ebch.1867>.
- Mezulis, A.H., Funasaki, K.S., Charbonneau, A.M., Hyde, J.S., 2010. Gender differences in the cognitive vulnerability-stress model of depression in the transition to adolescence. *Cognit. Ther. Res.* 34 (6), 501–513. <https://doi.org/10.1007/s10608-009-9281-7>.
- Micco, J.A., Henin, A., Mick, E., Kim, S., Hopkins, C.A., Biederman, J., Hirshfeld-Becker, D.R., 2009. Anxiety and depressive disorders in offspring at high risk for anxiety: a meta-analysis. *J. Anxiety Disord.* 23 (8), 1158–1164. <https://doi.org/10.1016/j.janxdis.2009.07.021>.
- Milne, B.J., Caspi, A., Crump, R., Poulton, R., Rutter, M., Sears, M.R., Moffitt, T.E., 2009. The validity of the family history screen for assessing family history of mental disorders. *Am. J. Med. Genet. Part B* 150B (1), 41–49. <https://doi.org/10.1002/ajmg.b.30764>.
- Munn, M.A., Alexopoulos, J., Nishino, T., Babb, C.M., Flake, L.A., Singer, T., Botteron, K.N., 2007. Amygdala volume analysis in female twins with major depression. *Biol. Psychiatry* 62 (5), 415–422. <https://doi.org/10.1016/j.biopsych.2006.11.031>.
- Nelson, C.A., 2000. *The neurobiological bases of early intervention*. In: Shonkoff, J.P., Meisels, S.J. (Eds.), *Handbook of Early Childhood Intervention*, second ed. Cambridge University Press, Cambridge, MA, pp. 204–227.
- Nixon, N.L., Liddle, P.F., Nixon, E., Worwood, G., Liotti, M., Palaniyappan, L., 2014. Biological vulnerability to depression: linked structural and functional brain network

- findings. *Br. J. Psychiatry: J. Mental Sci.* 204, 283–289. <https://doi.org/10.1192/bjp.bp.113.129965>.
- Nolen-Hoeksema, S., Hilt, L.M., 2009. Gender differences in depression. In: Gotlib, I.H., Hammen, C.L. (Eds.), *Handbook of Depression*. The Guilford Press, New York, NY, pp. 386–404.
- O'Doherty, J.P., 2004. Reward representations and reward-related learning in the human brain: insights from neuroimaging. *Curr. Opin. Neurobiol.* 14 (6), 769–776. <https://doi.org/10.1016/j.conb.2004.10.016>.
- Osuch, E.A., Bluhm, R.L., Williamson, P.C., Théberge, J., Densmore, M., Neufeld, R.W.J., 2009. Brain activation to favorite music in healthy controls and depressed patients. *NeuroReport* 20 (13), 1204–1208. <https://doi.org/10.1097/WNR.0b013e32832f4da3>.
- Ozalay, O., Aksoy, B., Tunay, S., Simsek, F., Chandhoki, S., Kitis, O., Gonul, A.S., 2016. Cortical thickness and VBM in young women at risk for familial depression and their depressed mothers with positive family history. *Psychiatry Res.* 252, 1–9. <https://doi.org/10.1016/j.psychres.2016.04.004>.
- Pechtel, P., Dutra, S.J., Goetz, E.L., Pizzagalli, D.A., 2013. Blunted reward responsiveness in remitted depression. *J. Psychiatr. Res.* 47 (12), 1864–1869. <https://doi.org/10.1016/j.jpsychires.2013.08.011>.
- Peng, W., Chen, Z., Yin, L., Jia, Z., Gong, Q., 2016. Essential brain structural alterations in major depressive disorder: a voxel-wise meta-analysis on first episode, medication-naïve patients. *J. Affect. Disord.* 199, 114–123. <https://doi.org/10.1016/j.jad.2016.04.001>.
- Pizzagalli, D.A., Iosifescu, D., Hallett, L.A., Ratner, K.G., Fava, M., 2008. Reduced hedonic capacity in major depressive disorder: evidence from a probabilistic reward task. *J. Psychiatr. Res.* 43 (1), 76–87. <https://doi.org/10.1016/j.jpsychires.2008.03.001>.
- Pizzagalli, D.A., Jahn, A.L., O'Shea, J.P., 2005. Toward an objective characterization of an anhedonic phenotype: a signal-detection approach. *Biol. Psychiatry* 57 (4), 319–327. <https://doi.org/10.1016/j.biopsych.2004.11.026>.
- Polanczyk, G.V., Salum, G.A., Sugaya, L.S., Caye, A., Rohde, L.A., 2015. Annual research review: a meta-analysis of the worldwide prevalence of mental disorders in children and adolescents. *J. Child Psychol. Psychiatry* 56 (3), 345–365. <https://onlinelibrary.wiley.com/doi/abs/10.1111/jcpp.12381>.
- Price, J.L., Drevets, W.C., 2010. Neurocircuitry of mood disorders. *Neuropsychopharmacology* 35 (1), 192–216. <https://doi.org/10.1038/npp.2009.104>.
- R Core Team (2019). R: A language and environment for statistical computing. R Foundation for Statistical Computing, Vienna, Austria. URL <https://www.R-project.org/>.
- Rao, U., Chen, L.-A., Bidesi, A.S., Shad, M.U., Thomas, M.A., Hammen, C.L., 2010. Hippocampal changes associated with early-life adversity and vulnerability to depression. *Biol. Psychiatry* 67 (4), 357–364. <https://doi.org/10.1016/j.biopsych.2009.10.017>.
- Redlich, R., Dohm, K., Grotegerd, D., Opel, N., Zwitserlood, P., Heindel, W., Dannlowski, U., 2015. Reward processing in unipolar and bipolar depression: a functional MRI study. *Neuropsychopharmacology* 40 (11), 2623–2631. <https://doi.org/10.1038/npp.2015.110>.
- Rodríguez, M.R., Nuevo, R., Chatterji, S., Ayuso-Mateos, J.L., 2012. Definitions and factors associated with subthreshold depressive conditions: a systematic review. *BMC Psychiatry* 12, 181. <https://doi.org/10.1186/1471-244X-12-181>.
- Rogers, M.A., Kasai, K., Koji, M., Fukuda, R., Iwanami, A., Nakagome, K., Kato, N., 2004. Executive and prefrontal dysfunction in unipolar depression: a review of neuropsychological and imaging evidence. *Neurosci. Res.* 50 (1), 1–11. <https://doi.org/10.1016/j.neures.2004.05.003>.
- Rolls, E.T., 2017. The orbitofrontal cortex and emotion in health and disease, including depression. *Neuropsychologia* 128, 14–43. <https://doi.org/10.1016/j.neuropsychologia.2017.09.021>.
- Romanczuk-Seifert, N., Pöhlend, L., Mohnke, S., Garbusow, M., Erk, S., Haddad, L., Heinz, A., 2014. Larger amygdala volume in first-degree relatives of patients with major depression. *NeuroImage: Clinical* 5, 62–68. <https://doi.org/10.1016/j.nicl.2014.05.015>.
- Romans, S.E., Tyas, J., Cohen, M.M., Silverstone, T., 2007. Gender differences in the symptoms of major depressive disorder. *J. Nerv. Ment. Dis.* 195 (11), 905–911. <https://doi.org/10.1097/NMD.0b013e3281594cb7>.
- Rorden, C., Karnath, H.O., Bonilha, L., 2007. Improving lesion-symptom mapping. *J. Cognit. Neurosci.* 19 (7), 1081–1088. <https://doi.org/10.1162/jocn.2007.19.7.1081>.
- Sacher, J., Neumann, J., Fünfstück, T., Soliman, A., Villringer, A., Schroeter, M.L., 2012. Mapping the depressed brain: a meta-analysis of structural and functional alterations in major depressive disorder. *J. Affect. Disord.* 140 (2), 142–148. <https://doi.org/10.1016/j.jad.2011.08.001>.
- Saleh, K., Carballedo, A., Liseicka, D., Fagan, A.J., Connolly, G., Boyle, G., Frodl, T., 2012. Impact of family history and depression on amygdala volume. *Psychiatry Res.* 203 (1), 24–30. <https://doi.org/10.1016/j.psychres.2011.10.004>.
- Seminowicz, D.A., Mayberg, H.S., McIntosh, A.R., Goldapple, K., Kennedy, S., Segal, Z., Rafi-Tari, S., 2004. Limbic-frontal circuitry in major depression: a path modeling metanalysis. *NeuroImage* 22 (1), 409–418.
- Shankman, S.A., Lewinsohn, P.M., Klein, D.N., Small, J.W., Seeley, J.R., Altman, S.E., 2009. Subthreshold conditions as precursors for full syndrome disorders: a 15-year longitudinal study of multiple diagnostic classes. *J. Child Psychol. Psychiatry* 50 (12), 1485–1494.
- Sowell, E.R., Trauner, D.A., Gamst, A., Jernigan, T.L., 2002. Development of cortical and subcortical brain structures in childhood and adolescence: a structural MRI study. *Dev. Med. Child Neurol.* 44 (1), 4–16. <https://doi.org/10.1017/s0012162201001591>.
- Spear, L.P., 2013. Adolescent neurodevelopment. *J. Adolescent Health* 52 (2 Suppl 2), S7–S13. <https://doi.org/10.1016/j.jadohealth.2012.05.006>.
- Stice, E., Shaw, H., Bohon, C., Marti, C.N., Rohde, P., 2009. A meta-analytic review of depression prevention programs for children and adolescents: factors that predict magnitude of intervention effects. *J. Consult. Clin. Psychol.* 77 (3), 486–503. <https://doi.org/10.1037/a0015168>.
- Talati, A., Weissman, M.M., Hamilton, S.P., 2013. Using the high-risk family design to identify biomarkers for major depression. *Philos. Trans. R. Soc. London Series B* 368 (1615), 20120129. <https://doi.org/10.1098/rstb.2012.0129>.
- Tram, J.M., Cole, D.A., 2006. A multimethod examination of the stability of depressive symptoms in childhood and adolescence. *J. Abnorm. Psychol.* 115 (4), 674–686. <https://doi.org/10.1037/0021-843X.115.4.674>.
- Treadway, M.T., Zald, D.H., 2011. Reconsidering anhedonia in depression: lessons from translational neuroscience. *Neurosci. Biobehav. Rev.* 35 (3), 537–555. <https://doi.org/10.1016/j.neubiorev.2010.06.006>.
- Tzourio-Mazoyer, N., Landeau, B., Papathanassiou, D., Crivello, F., Etard, O., Delcroix, N., Joliot, M., 2002. Automated anatomical labeling of activations in SPM using a macroscopic anatomical parcellation of the MNI MRI single-subject brain. *NeuroImage* 15 (1), 273–289. <https://doi.org/10.1006/nimg.2001.0978>.
- van der Plas, E.A.A., Boes, A.D., Wemmie, J.A., Tranel, D., Nopoulos, P., 2010. Amygdala volume correlates positively with fearfulness in normal healthy girls. *Soc. Cognitive Affective Neurosci.* 5 (4), 424–431. <https://doi.org/10.1093/scan/nsq009>.
- Vasic, N., Walter, H., Höse, A., Wolf, R.C., 2008. Gray matter reduction associated with psychopathology and cognitive dysfunction in unipolar depression: a voxel-based morphometry study. *J. Affect. Disord.* 109 (1–2), 107–116. <https://doi.org/10.1016/j.jad.2007.11.011>.
- Vos, T., Flaxman, A.D., Naghavi, M., Lozano, R., Michaud, C., Ezzati, M., Murray, C.J.L., 2012. Years lived with disability (YLDs) for 1160 sequelae of 289 diseases and injuries 1990–2010: a systematic analysis for the Global Burden of Disease Study 2010. *Lancet* 380 (9859), 2163–2196. [https://doi.org/10.1016/S0140-6736\(12\)61729-2](https://doi.org/10.1016/S0140-6736(12)61729-2).
- Vrieze, E., Pizzagalli, D.A., Demyttenaere, K., Hompes, T., Sienaert, P., de Boer, P., Claes, S., 2013. Reduced reward learning predicts outcome in major depressive disorder. *Biol. Psychiatry* 73 (7), 639–645. <https://doi.org/10.1016/j.biopsych.2012.10.014>.
- Vulser, H., Lemaitre, H., Artiges, E., Miranda, R., Penttilä, J., Struve, M., IMAGEN Consortium, 2015. Subthreshold depression and regional brain volumes in young community adolescents. *J. Am. Acad. Child Adolesc. Psychiatry* 54 (10), 832–840. <https://doi.org/10.1016/j.jaac.2015.07.006>.
- Weissman, M.M., Wickramaratne, P., Nomura, Y., Warner, V., Pilowsky, D., Verdelli, H., 2006. Offspring of depressed parents: 20 years later. *Am. J. Psychiatry* 163 (6), 1001–1008. <https://doi.org/10.1176/ajp.2006.163.6.1001>.
- Wesselhoeft, R., Sørensen, M.J., Heiervang, E.R., Bilenberg, N., 2013. Subthreshold depression in children and adolescents—a systematic review. *J. Affect. Disord.* 151 (1), 7–22. <https://www.sciencedirect.com/science/article/pii/S0165032713004874>.
- Wickham, H., 2016. ggplot2: Elegant graphics for data analysis. Retrieved from <https://ggplot2.tidyverse.org>.
- Wonderlick, J.S., Ziegler, D.A., Hosseini-Varnamkhandi, P., Locascio, J.J., Bakkour, A., van der Kouwe, A., Dickerson, B.C., 2009. Reliability of MRI-derived cortical and subcortical morphometric measures: effects of pulse sequence, voxel geometry, and parallel imaging. *NeuroImage* 44 (4), 1324–1333. <https://doi.org/10.1016/j.neuroimage.2008.10.037>.