



Potato Cyst Nematodes: Geographical Distribution, Phylogenetic Relationships and Integrated Pest Management Outcomes in Portugal

OPEN ACCESS

Edited by:

Christina Cowger,
Plant Science Research Unit
(USDA-ARS), United States

Reviewed by:

Aarti Bairwa,
Indian Council of Agricultural
Research (ICAR), India
Zafar Ahmad Handoo,
United States Department of
Agriculture, United States
Julio Carlos Pereira Silva,
Federal University of Santa Maria,
Brazil
Valdir Correia,
Instituto Federal de Educação,
Ciência e Tecnologia do Tocantins
(IFTO), Brazil

*Correspondence:

Maria Lurdes Inácio
lurdes.inacio@iniav.pt

Specialty section:

This article was submitted to
Plant Pathogen Interactions,
a section of the journal
Frontiers in Plant Science

Received: 14 September 2020

Accepted: 16 November 2020

Published: 17 December 2020

Citation:

Camacho MJ, de Andrade E,
Mota M, Nobrega F, Vicente C,
Rusique L and Inácio ML (2020)
Potato Cyst Nematodes:
Geographical Distribution,
Phylogenetic Relationships
and Integrated Pest Management
Outcomes in Portugal.
Front. Plant Sci. 11:606178.
doi: 10.3389/fpls.2020.606178

**Maria João Camacho^{1,2}, Eugénia de Andrade¹, Manuel Mota³, Filomena Nobrega¹,
Claudia Vicente^{1,2}, Leidy Rusique¹ and Maria Lurdes Inácio^{1,4*}**

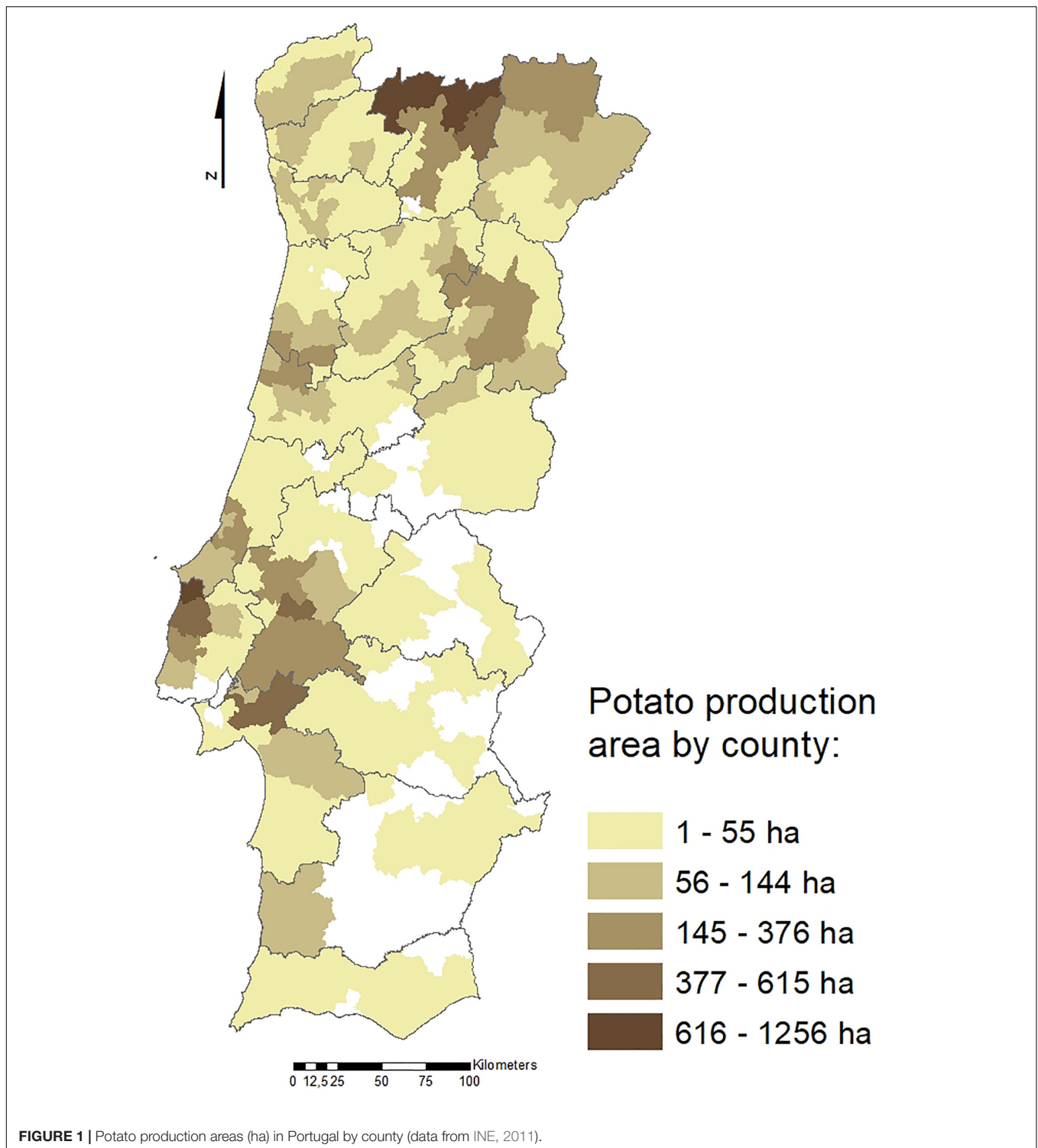
¹ INIAV – National Institute for Agriculture and Veterinary Research, Oeiras, Portugal, ² NemaLab, MED – Mediterranean Institute for Agriculture, Environment and Development, Institute for Advanced Studies and Research, Universidade de Évora, Évora, Portugal, ³ NemaLab, Departamento de Biologia, Escola de Ciências e Tecnologia, MED – Mediterranean Institute for Agriculture, Environment and Development, Universidade de Évora, Évora, Portugal, ⁴ GREEN-IT Bioresources for Sustainability, ITQB NOVA, Oeiras, Portugal

The identification and phylogenetic relationships of potato cyst nematodes (PCN) were studied to assess the potential value of geographical distribution information for integrated pest management of potato production in Portugal. This research focused on PCN species, *Globodera pallida* and *Globodera rostochiensis*. From 2013 until 2019, 748 soil samples from the rhizosphere of different potato cultivars were surveyed in the Portuguese mainland to detect and identify both species and track their location. PCN are widespread invasive species throughout Portugal. In fact, during the survey period an incidence of 22.5% was estimated for the tested samples. The patterns of infestation vary among regions, increasing from south to north, where PCN were first detected. Currently, both species are present in all potato producing regions of the country, with a greater incidence of *G. pallida*. Phytosanitary control measures are influencing to the observed results. The use of potato cultivars resistant to *G. rostochiensis* led to a decrease of this species but had no influence on *G. pallida* detections, which continues its reproduction freely since there are no effective resistant cultivars for this species. The relationship between the presence, infestation rate, spread and geographical distribution of PCN is discussed in terms of behavioral responses of the potato cultivars and the implications for developing new integrated crop protection measures.

Keywords: *Globodera pallida*, *Globodera rostochiensis*, *Solanum tuberosum*, disease, Heteroderidae

INTRODUCTION

Potato crop (*Solanum tuberosum*) has great social and economic importance in Portugal since it is grown throughout the country. The most representative production regions are the North and West Regions (**Figure 1**), with a total potato growing area of approximately 20,000 hectares and a total production of 430,000 tons.



Several nematode species have been reported associated with potato. Among those, the potato cyst nematodes (PCN), *Globodera rostochiensis* (Wollenweber, 1923; Skarbilovich, 1959) and *Globodera pallida* (Stone, 1973), are two of the major species limiting potato yield. These two species are sedentary endoparasites of the potato

root system, deteriorate the quality and commercial value of tubers and contribute to infection of potatoes by other opportunistic plant pathogens, such as fungi (Lavrova et al., 2017).

Yield losses due to the presence of PCN, estimated at €220 million/year in Europe (Viaene, 2016), can vary from

slight losses to crop failure depending on the infestation level (Lima et al., 2018).

Both PCN species are considered harmful quarantine organisms and are subject to stringent regulatory measures when detected singly or in combination (EPPO, 2017).

The golden potato cyst nematode, *G. rostochiensis*, and the pale potato cyst nematode, *G. pallida*, originated from the Andes region in southern Peru and have spread as the result of anthropogenic activity into many regions of the world (Grenier et al., 2010). They are thought to have been introduced to Europe in the 16–17th century by means of potato tubers carrying infested soil and nowadays have worldwide distribution. PCN have been reported throughout Europe, South America and parts of Asia, North America, Oceania and Africa where potatoes are grown (EPPO, 2020). However, new *Globodera* sp. detections continue to be reported (Hafez et al., 2007; Mburu et al., 2018; Niragire et al., 2019; Inácio et al., 2020).

In Portugal, *G. rostochiensis* was first reported in 1956 (Macara, 1963) in a field of seed potatoes near Bragança (Trás-os-Montes district, North of Portugal) and is currently present in all potato producing regions of the country (DGAV, 2015; Camacho et al., 2017), including the Madeira and Azores islands (DGAV, 2015; Inácio et al., 2020). *Globodera pallida* was first identified in 1988 (Santos and Fernandes, 1988), also in Trás-os-Montes, but its current national distribution has not yet been reported.

The knowledge on the geographical distribution, density and spatial dynamics of pest populations is indispensable in integrated pest management (IPM) systems, as it raises considerable interest among plant breeders and plant pathologists for the need to better understand the interaction between pest or pathogen and host and to estimate the risk of crop damage. Therefore, information of PCN distribution and potato cultivars used is essential to understand the *Globodera* spp. regional range of expansion since their first report. As human activity is the most probable means of spreading PCN, there is a specific interest in the evaluation of the implemented control measures and their consequences to adopt more effective management practices.

Controlling PCN is a difficult task due to their high level of adaptation to the environment, the prolonged viability of cysts in the absence of the host plant for more than 20 years, either quiescent or diapause in the form of encysted eggs (Christoforou et al., 2014), and the risk of appearance of aggressive pathotypes in the monoculture of nematode-tolerant potato cultivars. To assess the prevalence and distribution of PCN species across the territory, a country-wide survey was established in 2010, outlining a new framework for phytosanitary protection measures against these harmful organisms to avoid dispersion in national and European Community territories and to ensure potato production of a guaranteed quality for consumers. The main potato growing regions of Portugal have been surveyed for the presence of *G. rostochiensis* and *G. pallida* since 2013.

Before the national survey started, infestations were almost entirely due to *G. rostochiensis* (Santos and Fernandes, 1988; Santos et al., 1995; Martins et al., 1996; Conceição et al., 2003; Cunha et al., 2004, 2006, 2012). The few *G. pallida* populations

found in Portugal may suggest that it was introduced after *G. rostochiensis* or there were only few introductions that were kept confined by their low natural mobility. Recently, the analysis of soils sampled in Portuguese potato fields revealed a spread of *G. pallida* (Camacho et al., 2017). In case of PCN positive detection, growers have to choose one of the following options as a phytosanitary measure: (a) culture with a PCN-resistant potato cultivar for a 3-year quarantine period, (b) culture with non-host species or (c) uncultivated land for a 6-year quarantine period. The use of resistant cultivars must be done carefully, in order to prevent the increase of *G. pallida* populations, which are more difficult to control as there are only a few available resistant cultivars.

Currently, in Portugal, there is a lack of detailed information on the geographical distribution of potato cyst nematodes, the correlation between their pattern, the potato cultivars and the near future implications for potato production. Therefore, this study aims to: (i) gather all PCN detections data in Portugal; (ii) carry out a molecular characterization of Portuguese *Globodera* isolates based on sequences of the ITS-rRNA region; (iii) study the phylogenetic relationships of *Globodera* spp. isolates from Portugal; and (iv) correlate cyst infestations with potato cultivars used.

The research reported herein includes PCN isolates collected from Portuguese potato fields for the national PCN surveys from 2013 to 2019, which made it possible to obtain an accurate assessment of the incidence and phylogenetic relationship of the two PCN species in the territory and their spread in different PCN-resistant cultivars fields.

MATERIALS AND METHODS

Sampling

Soil was collected during the surveys between 2013 and 2019. Sampling was conducted by official inspectors of the National Plant Protection Organization (DGAV, Portugal). According to Annex II of DL 87/2010, sampling consists of a randomized collection of a soil volume with 1500 ml of soil/ha, harvested at least 100 subsamples/ha, preferably in a rectangular mesh, not less than 5 m wide and no more than 20 m long between sampling points, covering the entire field. Soil samples were stored in plastic bags and individually coded by the official services to ensure the anonymity of the samples during the analysis period. Potato field location at the county level and potato cultivars used in these fields were accessed only after analysis results.

The detection, identification and infestation rate of the PCN species were related to their sample location, given by DGAV, and species positive detection maps were made using the ArcMap 10.6 software (ESRI, United States), CAOP2017_PORTUGAL and CAOPP2017_DISTRITOS shapefiles (DGT, 2017).

Globodera spp. Molecular Identification

Cysts were extracted from soil samples using the Fenwick's can method (Fenwick, 1940), according to the EPPO PM7/40 (3) protocol, isolated and counted under a binocular microscope (Leica MZ6, Germany). Cysts (1 to 20 depending on the sample

TABLE 1 | Samples tested for *Globodera rostochiensis* and *Globodera pallida* in Portuguese regions between 2013 and 2019 (absolute values and %).

Region	Positive detections								Negative detections		Total
	<i>G. rostochiensis</i>		<i>G. pallida</i>		Gr + Gp		Total		Value	%	
	Value	%	Value	%	Value	%	Value	%			
North	30	40.5	39	52.7	5	06.8	74	42.5	100	57.5	174
Center	11	18.0	32	52.5	18	29.5	61	25.5	178	74.5	239
South	7	21.2	12	36.4	14	42.4	33	9.9	302	90.1	335
Total	48	28.6	83	49.4	37	22.0	168	22.5	580	77.5	748

infestation) containing eggs and juveniles were used for DNA extraction by means of the DNeasy Blood & Tissue Kit (Qiagen, Valencia, CA, United States) following the manufacturer's instructions. The internal transcribed spacer region (ITS) of the ribosomal DNA repeat unit was amplified by duplex PCR for species identification. PCR reactions were performed in a 25 μ L final volume using the Promega GoTaq Flexi DNA Polymerase Kit (Promega, Madison, United States), containing 1 μ L template DNA, 5 μ L GoTaq Flexi PCR buffer (2x), 1.5 mM MgCl₂, 0.20 mM each dNTPs, 1.25 U GoTaq Flexi DNA Polymerase (Promega, Madison, United States) and 0.4 μ M of each primer in a Biometra TGradient thermocycler (Biometra, Gottingen, Germany). The set of primers was composed of the forward primer ITS5 (5'-GGA AGT AAA AGT CGT AAC AAG G-3') and the reverse PITsR3 (5'-AGC GCA GAC ATG CCG CAA-3') for *G. rostochiensis* and PITsP4 (5'-ACA ACA GCA ATC GTC GAG-3') for *G. pallida* (Bulman and Marshall, 1997). The amplification profile for ITS-rDNA consisted of an initial denaturation of 94°C for 2 min followed by 35 cycles of 94°C for 30 s, 55°C for 30 s, and 72°C for 30 s and a final extension of 72°C for 7 min (EPPO, 2017). The amplified products were loaded onto a 1.5% agarose gel containing 0.5 μ g.mL⁻¹ ethidium bromide and 0.5 \times Tris-borate-EDTA (TBE) running buffer and electrophoresed at 5 V/cm. Amplifications were visualized using the VersaDoc Gel Imaging System (Bio-Rad, United States). The expected length of the PCR products was 265 bp for *G. pallida* and 434 bp for *G. rostochiensis*. Possible contaminations were checked by including negative controls (no template control - NTC) in all amplifications.

Globodera spp. Phylogenetic Analysis

The ITS-rDNA region of 36 samples was amplified and sequenced using the primers 5'-CGT AAC AAG GTA GCT GTA G-3' and 5'-TCC TCC GCT AAA TGA TAT G-3' (Ferris et al., 1993). The expected length of PCR fragments is 1040 bp and corresponds to the 3' end of 18S rDNA-ITS1-5.8S-ITS2-5' of 28S rDNA. The thermal cycling conditions performed consisted of an initial denaturation of 95°C for 5 min followed by 40 cycles of 94°C for 30 s, 55°C for 30 s, and 72°C for 33 s and a final extension of 72°C for 7 min. Nucleotide sequences were edited and analyzed using BioEdit v7.2.0 (Hall, 2007). The resulting ITS-rDNA sequences were used as query at BLAST from NCBI GenBank to retrieve the most similar sequences within *Globodera* species for phylogenetic reconstruction, and they were deposited

in the GenBank database (NCBI). Sequences from *Globodera artemisiae*, *Globodera tabacum*, and *Globodera hypolyasi* were selected as outgroup taxa. All sequences were aligned by CLUSTAW (Thompson et al., 1994) with default parameters, trimmed manually and evaluated by Maximum Likelihood phylogeny using the best AIC (Akaike Information Criteria) nucleotide substitution model determined, namely Hasegawa-Kishino-Yano with Gamma Distribution (HKY + G). A bootstrap analysis with 1000 replications was also conducted to infer robustness of the phylogenetic tree. The CLC Main Workbench software package 8.1¹ was used for phylogenetic analysis.

Statistical Analysis

The differences obtained in the detection of the two PCN species in Portugal were achieved through a Z-test for the equality of two proportions using the software R². Only soil samples with one or more cysts were used. The hypothesis tests were performed with a significance level $\alpha = 0.05$.

¹<https://www.qiagenbioinformatics.com/>

²<https://www.r-project.org/>

TABLE 2 | Potato cultivars grown in Portuguese sampled fields (2013–2019) and their resistance status toward *Globodera rostochiensis* and *Globodera pallida*.

Cultivar	Resistance status		Cultivar	Resistance status	
	<i>G. rostochiensis</i>	<i>G. pallida</i>		<i>G. rostochiensis</i>	<i>G. pallida</i>
Agria	R	S	Jelly	R	S
Alcander	R	R	Kenebeck	S	S
Allison	R	R	Lady rosetta	R	S
Asterix	R	S	Manitou	R	S
Aurea	R	S	Monalisa	S	S
Baraka	R	S	Monte carlo	R	R
Bellarosa	R		Olho de perdiz	R	
Camberra	R		Picasso	R	
Carlita	R		Red Lady	R	
Colomba	R	S	Red scarlet	R	
Daifla	R	S	Romano	S	S
Delila	S	S	Rudolph	S	S
Désirée	S	S	Soleny	S	S
Evolution	R	S	Stemster	R	
Evora	S	S	Taurus	R	S
Hermes	S	S	Yona	R	S

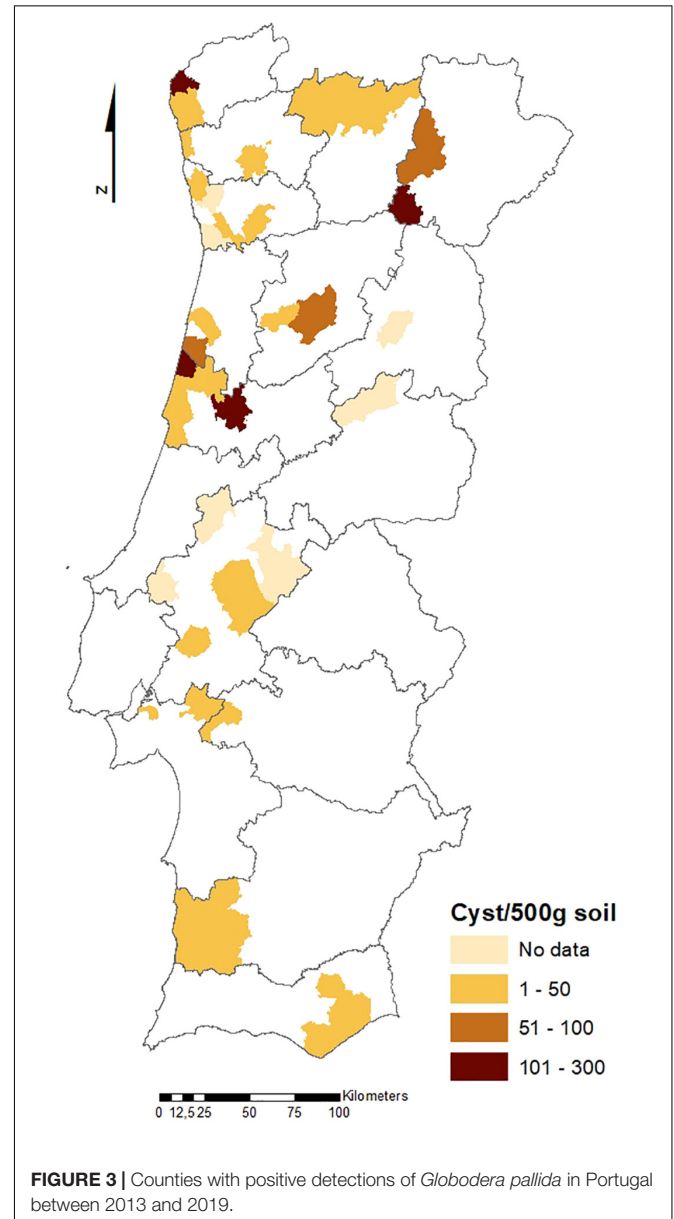
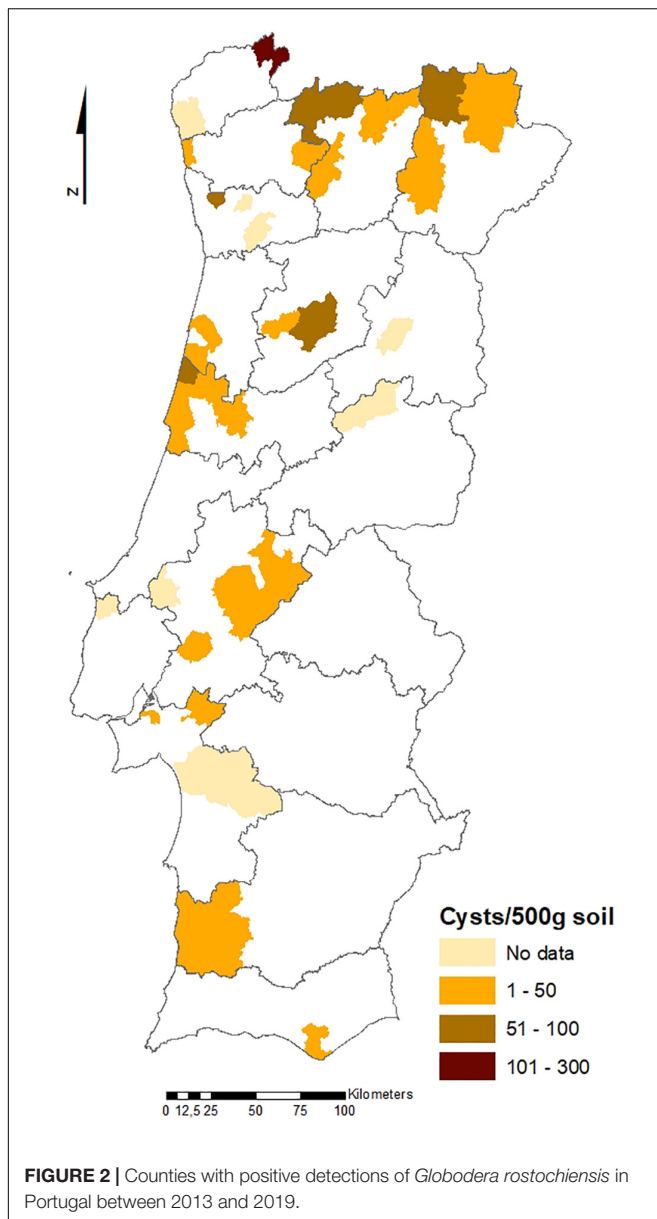
R, resistant; S, susceptible.

Subsequently, the same test was used, with the same level of significance, to infer differences between PCN detections in north, center and south producing regions and between *G. pallida* and *G. rostochiensis* detections in fields with PCN susceptible and *G. rostochiensis* resistant potato cultivars.

RESULTS AND DISCUSSION

During the survey period (2013–2019), 748 soil samples were collected throughout the country by the official services and tested in the plant health national reference laboratory (INIAV). Potato cyst nematodes were identified in 168 samples, representing 22.5% of the tested samples. Forty-eight samples tested positive for *G. rostochiensis* populations alone (28.6%)

and 83 for *G. pallida* populations alone (49.4%). Mixed populations were found in 37 samples (22%) (Table 1). Statistics revealed that two species detections are significantly different (p -value = 0.00014, α = 0.05), *G. pallida* detection being greater than *G. rostochiensis* detection (p -value = 0.999, α = 0.05, which allows us to accept the null hypothesis that *G. pallida* detections are significantly greater to *G. rostochiensis* detections) between 2013 and 2019. These results contrast with those reported by Cunha et al. (2004) in which out of 423 tested populations (samples collected from various districts of continental Portugal), 83% were *G. rostochiensis* populations alone, 8% were *G. pallida* populations alone and 9% consisted of a mixture of the two species. This reverse situation can be explained due to the use of *G. rostochiensis* resistant potato cultivars, which has been considered the most widespread PCN species in Portugal.

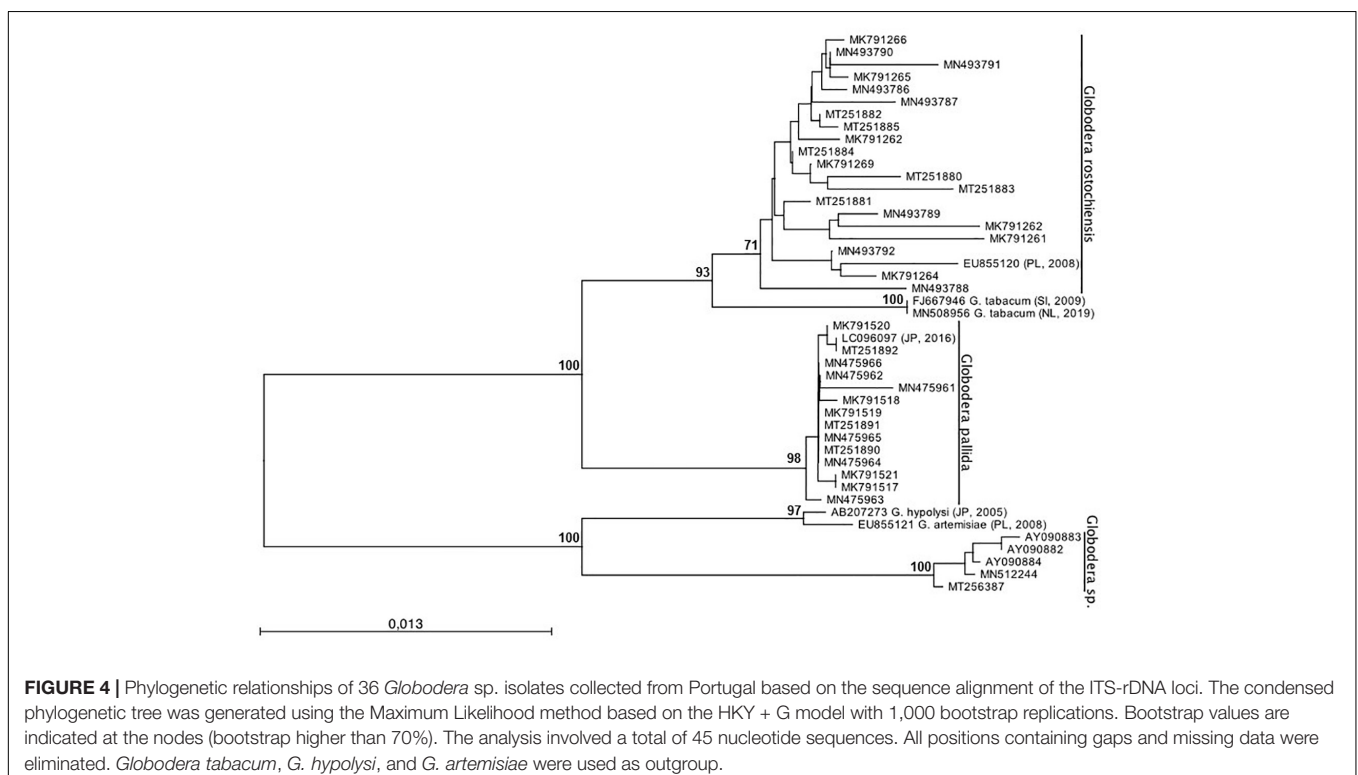


The use of *G. rostochiensis* resistant potato cultivars (Table 2), effective only against certain races of *G. rostochiensis* and with no resistance to *G. pallida*, is leading to the predominance in Portugal of the more difficult species to control, *G. pallida*. The obtained *p*-value (p -value = 0.996, α = 0.05) supported the null hypothesis, confirming that *G. rostochiensis* detection in potato fields with *G. rostochiensis* resistant cultivars is significantly smaller than *G. rostochiensis* detection in potato fields with PCN susceptible cultivars. With this result it is possible to infer that resistant cultivars are more efficient in reducing cyst infestations in potato production fields compared with susceptible cultivars fields. However, *G. pallida* detection in potato fields with *G. rostochiensis* resistant cultivars is not different to *G. pallida* detection (p -value = 0.2048, α = 0.05, which allows us to accept the null hypothesis that *G. pallida* detections in *G. rostochiensis* resistant cultivars are significantly similar to *G. pallida* detections in PCN susceptible cultivars) and *G. rostochiensis* detection in PCN susceptible potato cultivars fields (p -value = 0.5415, α = 0.05, which allows us to accept the null hypothesis that *G. pallida* detections in *G. rostochiensis* resistant cultivars are significantly similar to *G. rostochiensis* detections in PCN susceptible cultivars). With this result it is possible to infer that resistant cultivars used in Portugal allow us to reduce *G. rostochiensis* cysts infestation but has no influence on *G. pallida* cysts infestations in potato production fields. Therefore, the use of *G. rostochiensis* resistant potato cultivars has led to a decrease in *G. rostochiensis* detection but has no influence on *G. pallida* detection. These results agree with the published literature (Minnis et al., 2002; Pickup et al., 2019).

There is no available data to infer about the use of *G. pallida* resistant potato cultivars. This raises the question of whether phytosanitary measures are effective or whether they are contributing to the increase of *G. pallida*, as also reported in the United Kingdom (Minnis et al., 2002). On the other hand, the market has caused potato growers to predominantly use *G. rostochiensis* resistant potato cultivars (i.e., Aurea, Agria, Lady rosetta, Taurus), and this is the main cause of *G. pallida* detections increase.

The geographical distribution of PCN infestations in Portugal is illustrated in Figures 2, 3, which present the infestation rate in counties with positive detections of *G. rostochiensis* and *G. pallida* between 2013 and 2019. This information completes a picture of the PCN situation in Portugal to date.

According to these results, the incidence of PCN in Portugal is quite high, and both species are currently present in all potato producing regions of the country. PCN detections in the different regions are significantly different. Statistics revealed that the Northern PCN detection is greater than the Center PCN detection (p -value = 0.998, α = 0.05, which allows us to accept the null hypothesis that PCN detection in northern fields is significantly greater than PCN detection in central fields) and the Center PCN detection is greater than the Southern (Lisbon and Tagus Valley, Alentejo and Algarve regions) PCN detection (p -value = 1, α = 0.05, which allows us to accept the null hypothesis that PCN detection in central fields is significantly greater than the PCN detection in southern fields), meaning that PCN detection increases from south to north (see Figures 2, 3), where PCN were first detected and nematode reproduction are



happening for a longer period. These results are also in line with previous reports, which state that the cysts are adapted to higher altitudes (Jones et al., 2017) since the altitude grows from south to northern regions in Portugal.

To infer the phylogenetic relationship of *Globodera* isolates, ML analyses were performed (Figure 4). Two major clades,

highly supported, can be observed: clade (I) with sub-clades *G. rostochiensis* and *G. pallida* and clade (II) with the sub-clades *Globodera* sp. recently re-detected. Within the first clade, two sub-clades were formed with *G. rostochiensis* and the related species *G. tabacum* and *G. pallida*. The second clade groups a Portuguese *Globodera* sp., discovered in 1997 (Reis, 1997;

TABLE 3 | *Globodera* spp. isolates sequenced in the present study (*E*-value = 0.0).

<i>Globodera</i> species	GenBank accession number	Locality	Collection code/year	Sequence length (bp)	NCBI BLAST homology (%)	
<i>Globodera rostochiensis</i>	EU855120	Poland	* 2008	4064	100.00	
	MK791260	Coimbra	650P 2014	893	100.00	
	MK791261	Montalegre	5244 2015	888	100.00	
	MK791262	Montalegre	5245 2015	909	100.00	
	MK791263	Viseu	9996 2018	871	98.62	
	MK791264	Mirandela	14598 2018	969	99.79	
	MK791265	Mirandela	14600 2018	871	99.89	
	MK791266	Bragança	14601 2018	909	99.89	
	MN493786	Montalegre	13486 2017	937	99.25	
	MN493787	Chaves	8850 2016	937	98.50	
	MN493788	Viseu	9610 2017	920	98.58	
	MN493789	Viseu	5967 2016	936	98.82	
	MN493790	Viseu	7047 2017	973	100.00	
	MN493791	Odemira	3663 2018	915	99.13	
	MN493792	Aveiro	7913 2018	897	99.78	
	MT251880	Coimbra	1252 2019	929	99.14	
	MT251881	Montalegre	1681-2 2019	909	99.34	
	MT251882	Montalegre	1681-6 2019	924	99.89	
	MT251883	Chaves	1681-7 2019	933	98.71	
	MT251884	Mirandela	1681-10 2019	928	99.35	
	MT251885	Melgaço	1249-1 2019	946	98.94	
	<i>Globodera tabacum</i>	FJ667946	Slovenia	* 2009	923	99.46
		MN508956	Netherlands	NL:c6876 2018	953	99.89
	<i>Globodera pallida</i>	LC096097	Japan	* 2016	964	100.00
MN475961		Viseu	3876 2014	898	99.33	
MN475962		S. Magos	4261 2016	970	99.90	
MN475963		S. Magos	15731 2018	933	99.03	
MN475964		Vagos	9993 2018	977	98.89	
MN475965		Montalegre	14002 2017	914	99.89	
MN475966		Esposende	5087 2016	926	99.56	
MK791517		Penafiel	4694 2015	873	100.00	
MK791518		Viseu	5961 2016	890	99.22	
MK791519		Guimarães	11309 2018	901	99.78	
MK791520		Mirandela	14593 2018	878	100.00	
MK791521		Mirandela	14599 2018	873	100.00	
MT251890		Vagos	1223-7 2019	938	100.00	
MT251891		Aveiro	1223-8 2019	915	99.89	
MT251892		Mira	1086-3 2019	913	99.67	
<i>Globodera</i> sp.		AY090883	Bouro	* 1997	908	99.89
		AY090882	Canha	* 1997	908	99.89
		AY090884	Ladoeiro	* 1997	908	99.78
		MN512244	Montijo	12031 2018	953	99.45
		MT256387	Lagameças	1479-2 2019	913	99.67
<i>Globodera artemisiae</i>	EU855121	Poland	* 2008	4092	100.00	
<i>Globodera hypolysi</i>	AB207273	Japan	* 2005	909	99.45	

*Sequences available from GenBank, NCBI.

Sabo et al., 2002) and not re-detected until recently (data not shown), and their most closely related *Globodera* species, *G. hypolysi* and *G. artemisiae*. As can be clearly seen, no spatial-temporal relation can be redrawn evidencing the co-existence between the two major species of *Globodera* in Portugal. These results are in accordance with those reported by Cunha et al. (2012), who reported that no relationship could be found between the two-dimensional electrophoresis protein patterns or virulence behavior of the isolates and their geographic origin within Portugal.

It is also worth noting that the topology differs between *G. rostochiensis* and *G. pallida* sub-clades. The first is more branched, with 96–100% of similarity, showing more genetic variability due to being present for a longer period in Portugal, while the second is flatter, with 99–100% of similarity, showing more identical sequences (**Supplementary Table 1**).

Concerning the new species *Globodera* sp. (Reis, 1997; Sabo et al., 2002), re-detected recently in Portugal, it is out of the scope of this work, but additional research is being carried out to determine its pathogenicity and impact on potato.

The nucleotide sequences obtained in this study were deposited in the GenBank database (NCBI) under the accession numbers given in **Table 3**.

Phytosanitary measures have been taken to prevent further spread of *Globodera* spp. in recent years. In the case of *G. rostochiensis*, up until now the dominant species, measures include non-host crop rotation (for 6 years), fallow (for 6 years) or growing of resistant potato cultivars (for 3 years). The use of resistant cultivars containing the H1 gene (single dominant resistance gene for *G. rostochiensis*) (Gebhardt et al., 1993), as already shown, is effective against many populations of *G. rostochiensis* and is likely to be an advantageous management tactic to reduce population densities and thereby yield losses. However, the deployment of resistance in such cultivars may have caused the predominance of *G. pallida* in Portugal, as already predicted by Cunha et al. (2004) and statistically verified in this study.

Therefore, it is urgent to follow a new approach for the management of PCN, mainly *G. pallida*. Non-infested areas need to be managed to minimize the opportunities for the introduction of *Globodera* species. On the other hand, and in infested soils, a greater use of integrated control strategies (such as crop rotation, solarization, trap cropping, biofumigation and selected nematicides) (Evans and Haydock, 2000; Alptekin, 2011; Davie et al., 2019), in addition to PCN-resistant potato cultivars, should be a priority. These interactions require careful research into the effects of one or another strategy under a specific set of environmental conditions and a specific nematode infestation level. The efficacy of the integrated program will be determined by the interaction, overlap and complementarity of

the various components. Despite the difficulties associated with *G. pallida* resistance being quantitatively inherited, the breeding of more resistance with different R-genes to avoid PCN capacity to overcome the plant resistance and commercially attractive cultivars is highly important. As *G. pallida* field populations tend to show increased virulence toward a particular partially resistant cultivar each time that it is grown (Trudgill et al., 2003; Pickup et al., 2019), potato growers would need a choice of different cultivars to allow effectiveness to be maintained. Currently, there are insufficient alternatives to partially resistant cultivars for growers to meet the requirements of markets.

DATA AVAILABILITY STATEMENT

The datasets presented in this study can be found in online repositories. The names of the repository/repositories and accession number(s) can be found in the article/**Supplementary Material**.

AUTHOR CONTRIBUTIONS

MC, MI, EA, and MM: conceptualization. MC: investigation and writing – original draft. MC, MI, EA, FN, CV, and LR: methodology. MI, EA, and MM: supervision. MC, MI, EA, MM, and CV: writing – review and editing. All authors contributed to the article and approved the submitted version.

FUNDING

This work was funded by National Funds through FCT – Foundation for Science and Technology under the Ph.D. fellowships BD 138724/2018 and through the R&D Unit, UIDB/04551/2020 (GREEN-IT – Bioresources for Sustainability).

ACKNOWLEDGMENTS

Thanks to DGAV (The National Plant Protection Authority) for the information to support this study.

SUPPLEMENTARY MATERIAL

The Supplementary Material for this article can be found online at: <https://www.frontiersin.org/articles/10.3389/fpls.2020.606178/full#supplementary-material>

Supplementary Table 1 | Sequence percentage of similarity.

Bulman, S., and Marshall, J. (1997). Differentiation of Australasian potato cyst nematode (PCN) populations using the polymerase chain reaction (PCR). *N. Z. J. Crop Hortic. Sci.* 25, 123–129. doi: 10.1080/01140671.1997.9513998

REFERENCES

Alptekin, Y. (2011). Integrated pest management of potatoes. *Agric. Sci.* 2, 297–300. doi: 10.4236/as.2011.23039

- Camacho, M. J., Nóbrega, F., Lima, A., Mota, M., and Inácio, M. L. (2017). Morphological and molecular identification of the potato cyst nematodes (*Globodera rostochiensis* and *G. pallida*) in Portuguese potato fields. *Nematology* 19, 883–889. doi: 10.1163/15685411-00003094
- Christoforou, M., Pantelides, I. S., Kanetis, L., Ioannou, N., and Tsalas, D. (2014). Rapid detection and quantification of viable potato cyst nematodes using qPCR in combination with propidium monoazide. *Plant Pathol.* 63, 1185–1192. doi: 10.1111/ppa.12193
- Conceição, I., Santos, M., Abrantes, I., and Santos, S. (2003). Using RAPD markers to analyse genetic diversity in Portuguese potato cyst nematode populations. *Nematology* 5, 137–143. doi: 10.1163/156854102765216759
- Cunha, M., Conceição, I., Abrantes, I., Evans, K., and Santos, S. (2004). Characterisation of potato cyst nematode populations from Portugal. *Nematology* 6, 55–58. doi: 10.1163/156854104323072928
- Cunha, M., Conceição, I., Abrantes, I., and Santos, S. (2006). Assessment of the use of high-performance capillary gel electrophoresis to differentiate isolates of *Globodera* spp. *Nematology* 8, 139–146. doi: 10.1163/156854106776179980
- Cunha, M., Cunha, M., Conceição, I., Abrantes, I., and Santos, S. (2012). Virulence assessment of Portuguese isolates of potato cyst nematodes (*Globodera* spp.). *Phytopathol. Mediterr.* 51, 51–68. doi: 10.14601/Phytopathol_Mediterr-9517
- Davie, K., Pickup, J., Block, V., Kuhfuss, L., Kettle, H., Ewing, D., et al. (2019). Potato cyst nematodes in Scotland – management challenges and options to overcome these. *Asp. Appl. Biol.* 142, 25–31.
- DGAV (2015). *Organismos de Quarentena. Acções Realizadas. Relatórios de 2014*. Lisbon: Direção-Geral de Alimentação e Veterinária.
- DGT (2017). *Carta Administrativa Oficial de Portugal - CAOP2017*. Direção-Geral do Território. Available online at: <https://www.dgterritorio.gov.pt/cartografia/cartografia-tematica/caop#tab-24b1t-1> (accessed December 2018).
- EPPO (2017). *Globodera rostochiensis* and *Globodera pallida* PM 7/40 (4). European and mediterranean plant protection organization. *EPPO Bull.* 47, 174–197. doi: 10.1111/epp.12391
- EPPO (2020). *EPPO Global Database: Globodera pallida*. European and Mediterranean Plant Protection Organization. Available online at: <https://gd.eppo.int/taxon/HETDPA/distribution> (accessed October 30, 2020).
- Evans, K., and Haydock, P. (2000). Potato cyst nematode management – present and future. *Asp. Appl. Biol.* 59, 91–97.
- Fenwick, D. (1940). Methods for the recovery and counting of cysts of *Heterodera schachtii* from soil. *J. Helminthol.* 18, 155–172. doi: 10.1017/S0022149X00031485
- Ferris, V. R., Ferris, J. M., and Faghihi, J. (1993). Variation in spacer ribosomal DNA in some cyst-forming species of plant parasitic nematodes. *Fundam. Appl. Nematol.* 16, 177–184.
- Gebhardt, C., Mugniery, D., Ritter, E., Salamini, F., and Bonnel, E. (1993). Identification of RFLP markers closely linked to the H1 gene conferring resistance to *Globodera rostochiensis* in potato. *Theor. Appl. Genet.* 85, 541–544. doi: 10.1007/BF00220911
- Grenier, E., Fournet, S., Petit, E., and Anthoine, G. (2010). A cyst nematode 'species factory' called the Andes. *Nematology* 12, 163–169. doi: 10.1163/138855409X12573393054942
- Hafez, S. L., Sundararaj, P., Handoo, Z. A., Skantar, A. M., Carta, L. K., and Chitwood, D. J. (2007). First report of the pale cyst nematode, *Globodera pallida*, in the United States. *Plant Dis.* 91:325. doi: 10.1094/PDIS-91-3-0325B
- Hall, T. (2007). *BioEdit: Biological Sequence Alignment Editor for Win95/98/NT/2K/XP*. Available online at: <http://www.mbio.ncsu.edu/BioEdit/bioedit.html>
- Inácio, M. L., Camacho, M. J., Serra, C., Cordeiro, C., Cordeiro, L., and Andrade, E. (2020). First report of the potato cyst nematode, *Globodera rostochiensis*, on potato in the Azores, Portugal. *Plant Dis.* 104:1874. doi: 10.1094/PDIS-07-19-1429-PDN
- INE (2011). *Superfície das Culturas Temporárias (ha) por Localização Geográfica (NUTS - 2001) e Tipo (Culturas temporárias); Decenal - INE, Recenseamento Agrícola - Séries Históricas*. Instituto Nacional de Estatística. Available online at: https://www.ine.pt/xportal/xmain?xpid=RA2009&xpgid=ine_ra2009_indicador&contexto=ind&tindOcorrCod=0004356&selTab=tab10&xlang=pt (accessed November 3, 2019).
- Jones, L. M., Koehler, A. K., Trnka, M., Balek, J., Challinor, A. J., Atkinson, H. J., et al. (2017). Climate change is predicted to alter the current pest status of *Globodera pallida* and *G. rostochiensis* in the United Kingdom. *Glob. Chang. Biol.* 23, 4497–4507. doi: 10.1111/gcb.13676
- Lavrova, V. V., Matveeva, E. M., and Zinovieva, S. V. (2017). Expression of genes, encoded defense proteins, in potato plants infected with the cyst-forming nematode *Globodera rostochiensis* (Wollenweber, 1923) Behrens, 1975 and modulation of their activity during short-term exposure to low temperatures. *Biol. Bull. Russ. Acad. Sci.* 44, 128–136. doi: 10.1134/S1062359017020108
- Lima, F. S. O., Mattos, V. S., Silva, E. S., Carvalho, M. A. S., Teixeira, R. A., Silva, J. C., et al. (2018). "Nematodes affecting potato and sustainable practices for their management," in *Potato: From Incas to All Over the World*, ed. M. Yildiz (London: IntechOpen), 107. doi: 10.5772/intechopen.73056
- Macara, A. (1963). Aspectos sobre a importância dos nemátodos de interesse agrícola em Portugal e no ultramar português. *Agros* 46, 367–384.
- Martins, F., Santos, S., Abreu, C., Abrantes, I., and Evans, K. (1996). "Potato cyst nematodes – the situation in the north east part of Portugal," in *Proceedings of the Abstracts Book of the 13th Triennial Conference of EAPR*, Veldhoven, 369–370.
- Mburu, H., Cortada, L., Mwangi, G., Gitau, K., Kiriga, A., Kinyua, Z., et al. (2018). First report of potato cyst nematode *Globodera pallida* infecting potato (*Solanum tuberosum*) in Kenya. *Plant Dis.* 12:1671. doi: 10.1094/PDIS-11-17-1777-PDN
- Minnis, S. T., Haydock, P. P., Ibrahim, S. K., and Grove, I. G. (2002). Potato cyst nematodes in England and Wales occurrence and distribution. *Ann. Appl. Biol.* 140, 187–195. doi: 10.1111/j.1744-7348.2002.tb00172.x
- Niragire, I., Couvreur, M., Karssen, G., Uwumukiza, B., and Bert, W. (2019). First report of potato cyst nematode (*Globodera rostochiensis*) infecting potato (*Solanum tuberosum* L.) in Rwanda. *Plant Dis.* 104:293. doi: 10.1094/PDIS-04-19-0891-PDN
- Pickup, J., Davie, K., Block, V., Kuhfuss, L., Kettle, H., Ewing, D., et al. (2019). Potato cyst nematodes in Scotland – where are we now and where are we heading. *Asp. Appl. Biol.* 142, 11–17.
- Reis, L. G. (1997). Some morphological characters of a remarkable *Globodera* species (Nematoda: Heteroderidae) occurring in Portugal. *Parasitol. Port.* 4, 126–127.
- Sabo, A., Reis, L. G., Krall, E., Mundo-Ocampo, M., and Ferris, V. R. (2002). Phylogenetic relationships of a distinct species of *Globodera* from Portugal and two *Punctodera* species. *J. Nematol.* 34, 263–266.
- Santos, S., Evans, K., Abreu, C., Martins, F., and Abrantes, I. (1995). A review of potato cyst nematodes in Portugal. *Nematol. Mediterr.* 23, 35–42.
- Santos, S., and Fernandes, M. (1988). The occurrence of *Globodera rostochiensis* and *G. pallida* in Portugal. *Nematol. Mediterr.* 16:145.
- Skarbilovich, T. S. (1959). On the structure and systematics of the nematode order Tylenchida Thorne, 1949. *Acta Pol.* 7, 117–132.
- Stone, A. (1973). *Heterodera pallida* n.sp. (Nematoda: Heteroderidae), a second species of potato cyst nematode. *Nematologica* 18:591. doi: 10.1163/187529272X00179
- Thompson, J. D., Higgins, D. G., and Gibson, T. J. (1994). CLUSTAL W: improving the sensitivity of progressive multiple sequence alignment through sequence weighting, position-specific gap penalties and weight matrix choice. *Nucleic Acids Res.* 22, 4673–4680. doi: 10.1093/nar/22.22.4673
- Trudgill, D. L., Elliott, M. J., Evans, K., and Phillips, M. S. (2003). The white potato cyst nematode (*Globodera pallida*) – a critical analysis of the threat in Britain. *Ann. Appl. Biol.* 143, 73–80. doi: 10.1111/j.1744-7348.2003.00073.x
- Viaene, N. (2016). "Ring testing of diagnostic methods for the identification of potato cyst nematodes and assessing resistance of potato cultivars," in *Poster at the Report of the Joint EEC-EPPO Workshop on Euphresco*, (Moscow: Eurasian Economic Commission (EEC) and the European and Mediterranean Plant Protection Organisation (EPPO)).
- Wollenweber, H. (1923). *Krankheiten und Beschädigungen der Kartoffel*. Berlin: Arb. Forsch. Inst. Kartoff, 56.

Conflict of Interest: The authors declare that the research was conducted in the absence of any commercial or financial relationships that could be construed as a potential conflict of interest.

Copyright © 2020 Camacho, de Andrade, Mota, Nobrega, Vicente, Rusinque and Inácio. This is an open-access article distributed under the terms of the Creative Commons Attribution License (CC BY). The use, distribution or reproduction in other forums is permitted, provided the original author(s) and the copyright owner(s) are credited and that the original publication in this journal is cited, in accordance with accepted academic practice. No use, distribution or reproduction is permitted which does not comply with these terms.