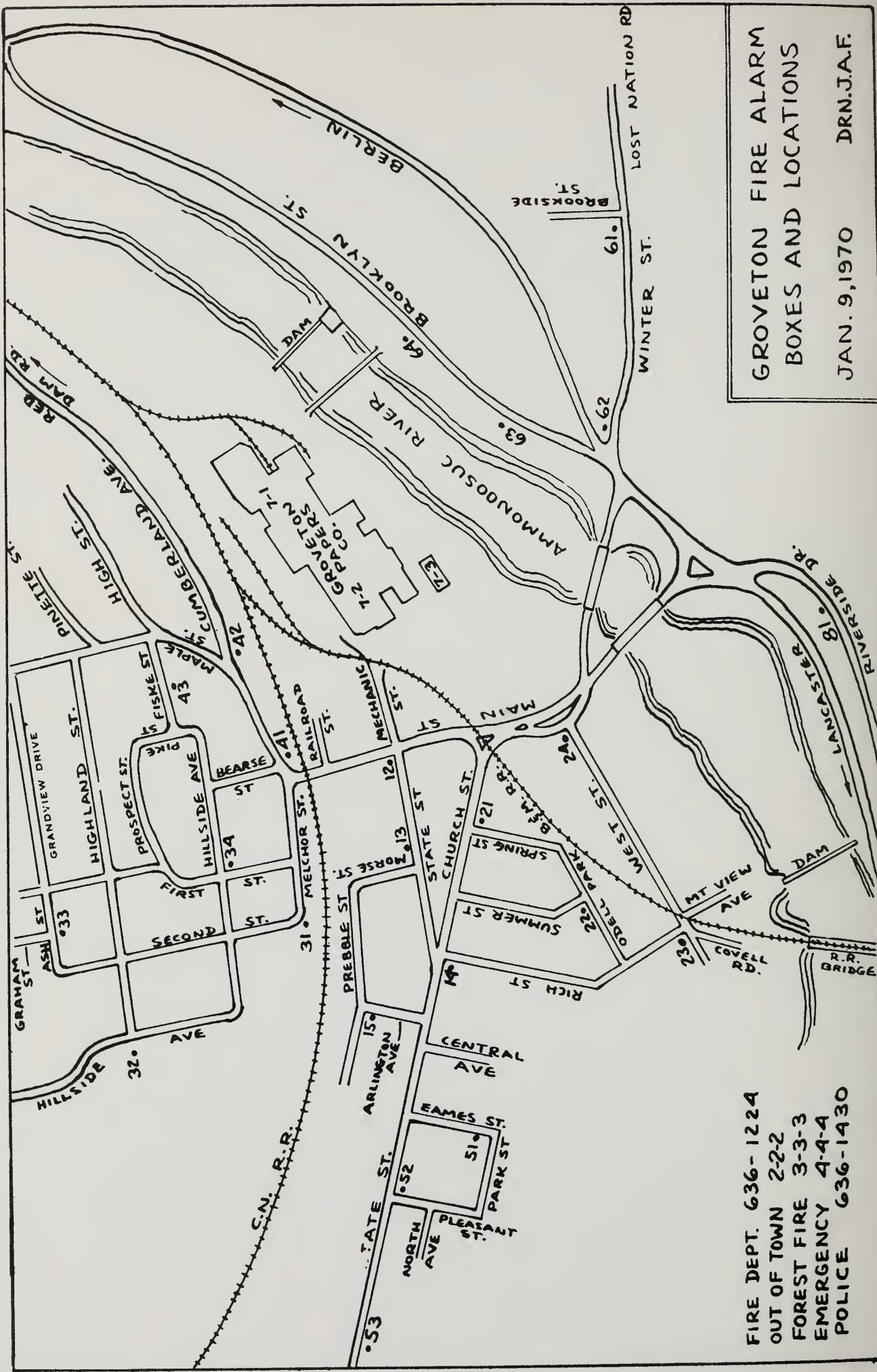


Hamp  
52.07  
878  
980



**1980**  
*Annual Report*  
**Northumberland**  
New Hampshire



GROVETON FIRE ALARM  
 BOXES AND LOCATIONS  
 JAN. 9, 1970 DRN.J.A.F.

FIRE DEPT. 636-1224  
 OUT OF TOWN 2-2-2  
 FOREST FIRE 3-3-3  
 EMERGENCY 4-4-4  
 POLICE 636-1430

# Annual Report

## of the Municipal Officers of the town of

# Northumberland

## New Hampshire

### Index

Directory of Officials .....	2
Selectmen's Report .....	4
Audit Transmittal & Commentary Letter .....	6
Town Warrant .....	9
Report of Payments & Recommendations .....	12
Summary Inventory of Property Valuation .....	14
Statement of Appropriations and Taxes Assessed .....	15
Comparative Statement .....	16
Statement of Assets & Liabilities .....	18
Town Clerk's Report .....	19
Tax Collector's Report .....	20
Summary of Tax Sales Accounts .....	22
Water & Sewer Collector's Report .....	23
Treasurer's Report .....	24
Revenue Sharing Report .....	25
Summary of Receipts .....	26
Summary of Payments .....	27
Public Library Report .....	29
Municipal Court Report .....	31
Village Precinct Report .....	33
Report of Trust Funds .....	36
Youth Center Report .....	37
Ambulance .....	39
Public Health Nursing Service .....	40
Forest Fire Report .....	41
N.H. Municipal Association .....	42
North Country Council .....	43
Northumberland Housing Authority .....	45
Keepers of Dogs .....	46
Property Tax Valuations .....	47
Vital Statistics .....	57
Report of School District .....	61

**For the fiscal year ending December 31, 1980**

The Democrat Printing Co., Lancaster, N.H.

University of New Hampshire  
Library

D I R E C T O R Y O F O F F I C I A L S

Selectmen

GEORGE A. LANGLEY

HAROLD E. MARSHALL, SR.

JAMES C. WEMYSS, JR.

Town Manager

RONALD J. GILBERT

Town Clerk and Tax Collector

THERESA G. BROOKS

Treasurer

FRANCES RICH

Chief of Police

H. LEE RICE

Superintendent of Public Works

FORREST L. MAGUIRE

Civil Defense Director

SHEPARD MAHURIN

Auditors

ROBERT PENNY

LEO RICH

Judge Municipal Court

RALPH ROWDEN

Precinct Commission

C. DEAN SANBORN

WENDALL O. HART

STEPHEN CASS

Fire Chief

James Sanborn

Supervisors of Check List

HOWARD CRAGGY

DAVID GILCHRIST

HELEN ANDERSON

Library Trustees

BOB STYLES

RAY CLEMENT

PAULINE RICE

NH  
352.07  
N 878  
1930

Moderator

LYLE HERSOM

Librarian

PATRICIA TILLOTSON

Trustees of Trust Funds

JOHN BLACKADAR

LILLIAN LANDRY

BILL JOHNSON

Recreation Commission

JAY AYLWARD  
STEWART MARSHALL

SHIRLEY MACDOW  
GEORGE VERVERIS

JOSEPHINE MAYHEW

Planning Board

ALPHONSE ARIETTA  
HAROLD E. MARSHALL

MARY SLOAT  
ULDRIC (JACK) BERNARD

Zoning Board of Adjustment

JAMES DOOLAN  
FRANCES RICH  
MERLE DAMON

MILTON LAKIN  
ELMER TREAMER  
KENNETH HOPPS

Bicentennial Commission

NATALIE M. POTTER  
ARLENE MOSES McFARLAND  
VICTORIA COLE  
RAYMOND CLEMENT  
GEORGE VERVERIS  
WILLIAM PARADIS

CONSTANCE MARTIN  
AVA MARSHALL  
LYNWOOD SHOFF  
ELEANOR LANGLEY  
ROBERT SYTTLES  
DAVID GILCHRIST

LYLE HERSOM

Cemetery Committee

FORREST L. MAGUIRE

KENDALL BRANN

Housing Authority

ROBERT STYLES  
CARL CRAGGY

JAMES BRYAN  
JOHN BLACKADAR

F. LYNWOOD SHOFF

Ambulance

BONNIE KNAPP, DIRECTOR

Secretary to Town Officials

SHARON SAVAGE

## S E L E C T M E N ' S   R E P O R T

After a number of public hearings concerning where to locate the lagoons for the Northumberland sewer system, we seem to be no further ahead as all locations have been rejected because of interference with prime farm land. Presently there are plans to meet with Anderson-Nichols to plan a new approach.

After many years of oversight all town fulltime employees, except the Town Clerk/Tax Collector, have joined the New Hampshire Retirement System as of October 17, 1980. Still pending is what is going to be done to bring our employees up to date from their times of employment until October 17, 1980.

The resignation of Alton A. Potter as sexton of the Northumberland Cemetery and as a member of the Northumberland Cemetery Committee was submitted to the Board. Mr. Potter has served as Sexton and worked in the cemetery for 60 years. His resignation was accepted with thanks for his services. Thomas Covell has taken over Mr. Potter's position.

The Police Department is now using a smaller, diesel-engined cruiser, with great savings in fuel consumption. The Rabbit has not been accepted well by the Police Department mainly due to its small size. It has been decided to stay with it longer to get a better idea of its merits and deficiencies. The Police Department has moved to its new location in the personnel office building. The department has three rooms and pays \$140 rent per month which is negotiable annually.

A new wood furnace has been installed in the new town garage to cut down on the use of fuel oil. As of this writing savings figures have not been calculated, but significant savings are anticipated.

The Municipal Services Division of the State of New Hampshire's Department of Revenue Administration conducted an audit of the town's records and in their opinion, except for the effects of the omission of a statement of general fixed assets, these financial statements present the financial position of the Town of Northumberland at December 31, 1979 and the results of its operations and changes in financial position for the year then ended, in accordance with generally accepted accounting principles applied on a basis consistent with the preceding year. Certain comments were received concerning a purchase order system, special revenue funds, water and sewer departments, property valuation cards, inventory of fixed assets, and municipal court with some recommendations concerning same which have been implemented.

The town tax maps were completed and received by the Town, but were found not to be fully accurate. Attempts have been made to correct the inaccuracies through requesting property owners to contact the town office when they become aware that their records do not agree with the towns. Property owners have cooperated and have assisted a great deal in these corrections.

Mr. Maguire and his crew completed the work on the storm sewers and are to be congratulated on the outstanding job they on this project.

The time capule was dedicated on May 30, 1980, at 9:00 a.m.

A chlorinator building was constructed for the Northumberland reservoir.

A permit was issued for the building of a sawmill by Northeast Hardwoods, Inc. of LaPatrie, Quebec, on land owned by Albert Cloutier.

The official population count according to the Census Takers is 2507 up from 2493 in 1970.

The ambulance corps are to purchase a "Jaws of Life" with money raised by the corps and matched by funds received with a grant.

The Board has been advised by the Department of Revenue Administration that our valuation is at 25%. To prevent a state mandated re-valuation, we may have to do it on our own.

Northeast Community Development Group proposed elderly/family housing and the proposal was accepted after much deliberation.

Natalie M. Potter retired from her position of Town Manager after three years of service to the town. Her resignation was accepted by the Board of Selectmen with appreciation for the fine job she had done for the Town. Ronald J. Gilbert was appointed her successor.

George A. Langley  
James C. Wemyss, Jr.  
Harold E. Marshall, Sr.





State of New Hampshire  
Department of Revenue Administration  
61 South Spring Street PO Box 457  
Concord, 03301

**Cloyd A. Price**  
Commissioner

MUNICIPAL SERVICES DIVISION  
**FREDERICK E. LAPLANTE**  
Director  
**LORRAINE F. RACETTE**  
Assistant Director

April 24, 1980

TRANSMITTAL AND COMMENTARY LETTER

---

Board of Selectmen - Northumberland  
Town Office  
Groveton, New Hampshire 03582

Members of the Board:

We have examined the financial statements of the various funds and account groups of the Town of Northumberland for the year ended December 31, 1979 and have issued our report thereon, dated May 2, 1980. As part of our examination, we reviewed and tested the Town's system of internal accounting control to the extent we considered necessary to evaluate the system as required by generally accepted auditing standards. Under these standards, the purpose of such evaluation is to establish a basis for reliance thereon in determining the nature, timing and extent of other such auditing procedures that are necessary for expressing an opinion on the financial statements. Such study and evaluation disclosed the following conditions that we believe to be material weaknesses.

Purchase Order System

It was noted that the Town does not employ a formal purchase order system. It is recommended that the Town institute a centralized purchase order procedure, receiving system in order that the Town officials be informed at all times as to the status of the unexpended and unobligated funds of each department. Such a system would improve business practices.

Special Revenue Funds

At the present time the special revenue funds are accounted for on check book stubs. It is recommended that a cash receipts and disbursements record be installed and maintained for each of these funds.

Water and Sewer Departments

The water and sewer charges at the present time are computed and collected by the Tax Collector. These charges should be committed by the selectmen in accordance to statute. It is recommended that this practice be instituted immediately by the Town.



### Water and Sewer Departments (Continued)

The Town accounts for the operations of the Water and Sewer departments as special revenue funds in that expenses such as interest and depreciation are not recovered through user fees. We believe that operations such as water and sewer departments should be accounted for as enterprise (proprietary) funds in accordance with guidelines issued by the National Council on Governmental Accounting. Under these guidelines, the funds would account for the substantial town, state and federal investments in property, plant and equipment, as well as recognizing all the costs associated with operations such as payroll taxes, interest and depreciation. In your situation this is particularly desirable as these departments do not serve the entire town. We recommend that the town develop and implement a proper accounting system for enterprise funds as soon as is practical.

### Property Valuation Cards - Blotter Book

The Town is in the process of setting up property valuation cards for all taxable property located within the Town. We urge that the valuation cards be completed as soon as possible in order to insure that all properties are included in the tax rolls.

### Inventory of Fixed Assets

As is the practice with many New Hampshire municipalities the Town has not maintained a record of its fixed assets. In order to adequately maintain control of its existing fixed assets we recommend the Town conduct an inventory of these assets as soon as practical. As part of their long-term policies, Town Officials should initiate fixed asset records. Cost or consideration given is the generally accepted method for valuing fixed assets, and should be recorded on all new acquisitions. Where adequate documentation of cost is unavailable for existing fixed assets, an estimate of original cost is an acceptable standard under accounting principles for governmental entities. The existence of fixed asset records will not only aid Town Officials in their control of these assets, but should be an invaluable tool in long range planning.

### Municipal Court

It was noted during the examination of the municipal court records that cash and checks received for partial payments of fines are kept as cash on hand until the fine is paid in full. We recommend that such monies be deposited in an escrow account to safeguard against loss or theft of such funds. The monies would be transferred to the court general fund upon full payment of the fine.

### Publication Requirement

The provisions of R.S.A. 71-A:21 require that only this letter be published in the next annual Town report.

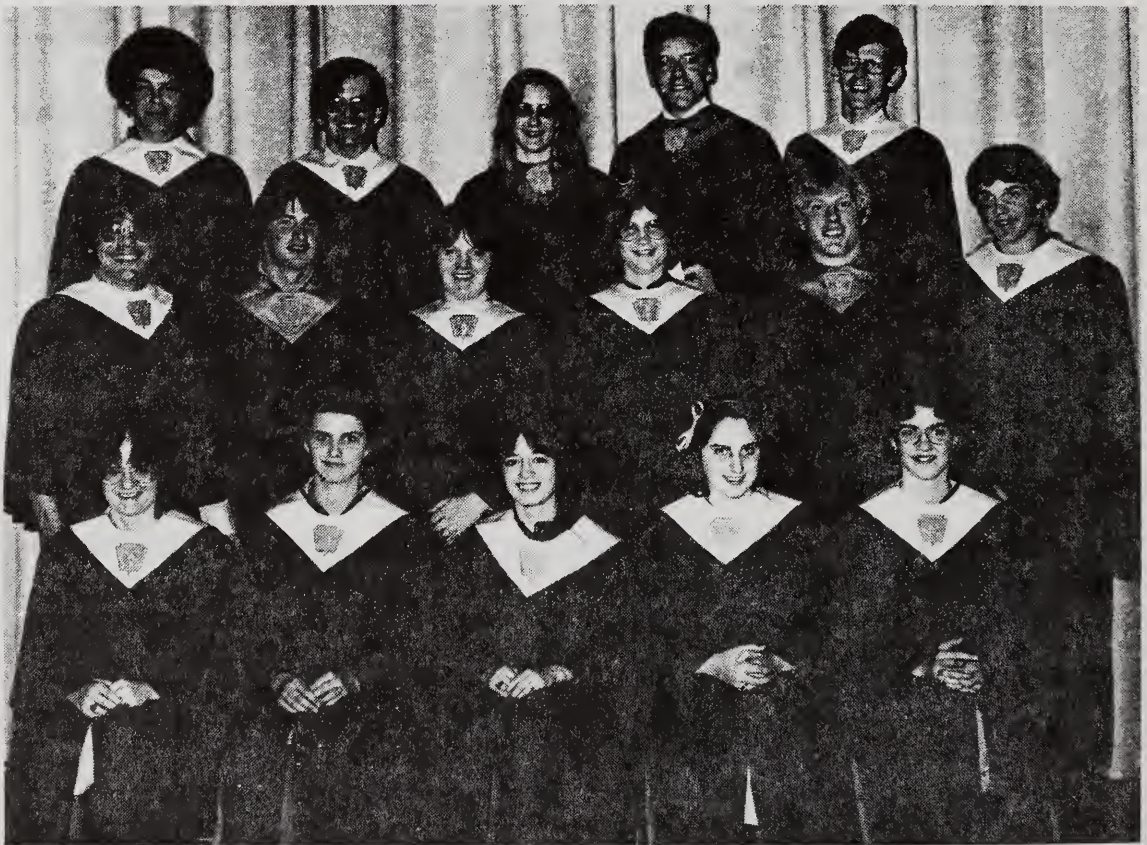
Publication Requirement (Continued)

However, we suggest that you consider the publication of the entire report which includes auditor's opinion, financial statements and notes to financial statements. No portion of either the auditor's opinion, financial statements or notes to financial statements may be published separately.

We extend our thanks to the officials and employees of the Town of Northumberland for their assistance during the course of our audit.

*Municipal Services Division*

MUNICIPAL SERVICES DIVISION  
DEPARTMENT OF REVENUE ADMINISTRATION



TOWN WARRANT

TOWN OF NORTHUMBERLAND  
THE STATE OF NEW HAMPSHIRE

To the inhabitants of the Town of Northumberland qualified to vote in Town affairs:

You are hereby notified to meet at the Groveton High School Auditorium in said Town on the Second Tuesday in March next, March 10, 1981, to act upon the subjects hereinafter mentioned. You are hereby warned that on said date and place the polls will be opened at 10:00 o'clock in the forenoon and will remain open until 6:00 o'clock in the afternoon for the reception of your ballots under the Non-Partisan Ballot System, (Articles 1, 2 & 3). You are also hereby warned that on said date and place at 7:00 o'clock in the evening the matter of appropriations and such other business properly coming before said meeting will be taken up for your consideration and action.

ARTICLE 1. To choose by ballot the following Town Officers for the ensuing two years: one Auditor.

ARTICLE 2. To choose by ballot the following Town Officers for the ensuing three years: one Selectmen, one Library Trustee, one Trustee of Trust Funds, one Town Clerk, and one Town Treasurer.

ARTICLE 3. To vote by ballot to see if the Town will approve the revised zoning ordinance as submitted by the Planning Board.

ARTICLE 4. To see if the Town will vote to appropriate from the Revenue Sharing Fund the sum of \$10,000 to be placed in the Capital Reserve Fund for the purchase of a new town truck and plow.

ARTICLE 5. To see if the Town will vote to appropriate from the Revenue Sharing Fund the sum of \$1,250 to further insulate the fire station.

ARTICLE 6. To see if the Town will vote to petition the Representatives and Senators who represent the Town in the General Court to support in the current session of the General Court, the concurrent resolution to amend the State Constitution to limit the annual increase in property taxes to five percent and to limit the annual increase in spending by the state or any city, town, or other governmental unit of the State to five percent. (Inserted on petition of 13 voters)

ARTICLE 7. To see what action the Town will vote to take on the following article which was presented on petition to be included in this Warrant: That Town Meeting, School Meeting and Precinct Meeting be combined into one meeting. (Signed by 14 voters)

ARTICLE 8. To see what action the Town will vote to take on the following article which was presented on petition to be included in this Warrant: That Town Meeting will start at 9:00 o'clock in the morning instead of 7:00 o'clock in the evening. (Signed by 11 voters)

ARTICLE 9. To see what sums of money the Town will vote to raise and appropriate to defray the following Town charges for the ensuing year: (1) Town Officers' Salaries; (2) Town Officers' Expenses; (3) Election and Registration; (4) Municipal Court; (5) Town Hall & Other Buildings; (6) Police Department; (7) Fire, including Forest Fire; (8) Blister Rust and Care of Trees; (9) Planning & Zoning; (10) Insurance; (11) Civil Defense; (12) Health Department; Hospital, Mental Health, Ambulance & Nursing Services; (13) Dump Maintenance; (14) Town Road Aid; (15) Town Maintenance - Summer; (16) Town Maintenance - Winter; (17) Street Lighting; (18) General Expense Highway Department; (19) Gasoline Purchases/Sales; (20) Street Maintenance; (21) Sidewalk Maintenance; (22) Library; (23) Town Poor; (24) Old Age Assistance; (25) Aid to Permanent and Totally Disabled; (26) Memorial Day; (27) Parks & Playgrounds; (28) Sewer Department (Fees); (29) Water Department (Fees); (30) Cemeteries; (31) Damage & Legal Expenses; (32) Advertising; (33) Retirement & Social Security; (34) Senior Citizens; (35) No. Country Council; (36) Principal on Sewer Bonds; (37) Interest on Sewer Bonds.

ARTICLE 10. To see if the Town will vote to authorize the Board of Selectmen to apply for, accept and expend, without further action by the Town Meeting, money from the State, Federal or other governmental unit or a private source which becomes available during the fiscal year (RSA 31:95-b)

ARTICLE 11. To see if the Town will vote to raise and appropriate the sum of \$11,500 to extend the Lost Nation water line from its present end, a distance of approximately 1200 feet. (Inserted on petition of 15 voters)

ARTICLE 12. To see if the Town will vote to appropriate from the Revenue Sharing Fund the sum of \$8,000 to purchase a thawing machine to be used to thaw frozen water pipes and mains.

ARTICLE 13. To see if the Town will vote to raise and appropriate the sum of \$93,717.84, together with any interest accrued thereon, from the separate water and sewer account (said sum being the remainder of the amount of the new settlement received from EPA on the Town's Sewage Abatement Project plus 1980 Revenue Sharing appropriation) for use by the Selectmen toward the expense of study, planning or construction, or any combination thereof, of the storm drainage and sewer systems for Groveton Village, the sewage disposal system for Northumberland Village and the water system for Northumberland Village, and further, if appropriate, to use said sum as matching funds for any monies obtainable for such purposes from any state or federal source, the Selectmen being hereby authorized to make application for funds for such purposes to any state or federal agency.

ARTICLE 14. To see if the Town will vote to authorize the Board of Selectmen to administer and dispose of any real estate acquired by Tax Collector's Deed at public bid, as the Selectmen, in their sole discretion, deem equitable and just (RSA 80:42 (I and III)).

ARTICLE 15. To see if the Town will vote to raise and appropriate the sum of \$2500 to tear down the old police station building.

ARTICLE 16. To see if the Town will vote to appropriate from the Revenue Sharing Fund the sum of \$15,000 to connect the Groveton and Northumberland water supplies, a distance of approximately 1200 feet.

ARTICLE 17. To see if the Town will vote to establish a scale of discounts for the prepayment of real estate taxes. The scale of discounts to be as follows: 3% if paid on or before June 1, 1981; 2% if paid on or before August 1, 1981; and 1% if paid on or before October 1, 1981. Discount will be allowed on \$100 minimum payment.

ARTICLE 18. To see if the Town will vote to instruct the Selectmen to appoint all other Officers as required by law.

ARTICLE 19. To hear reports of agents, auditors, committees, or other officers heretofore chosen and pass any vote relating thereto.

ARTICLE 20. To transact any other business that may be legally brought before said meeting.

Given under our hands and seal the 9th day of February, 1981.

George A. Langley, Chairman  
Harold E. Marshall, Sr.  
James C. Wemyss, Jr.

\*Articles 1-3 will be on printed ballots.



REPORT OF PAYMENTS FOR 1980 AND RECOMMENDATIONS FOR 1981

GENERAL GOVERNMENT:	APPROPRIATED	EXPENDED	RECOMMENDED
1. Town Officers' Salaries	\$38,500.00	\$38,117.75	\$42,000.00
2. Town Officers' Expenses	4,800.00	4,772.75	5,300.00
3. Election & Registration	4,000.00	4,474.82	4,000.00
4. Municipal Court	3,500.00	4,365.44	5,000.00
5. Town Hall & Other Buildings	12,500.00	12,310.61	13,700.00
PROTECTION OF PERSONS & PROPERTY:			
6. Police Department	69,300.00	69,709.95	78,720.00
7. Fire, Including Forest Fire	500.00	311.35	500.00
8. Blister Rust & Care of Trees	300.00	-0-	300.00
9. Planning & Zoning	300.00	155.61	300.00
10. Insurance	40,000.00	38,503.24	46,000.00
11. Civil Preparedness	700.00	200.00	700.00
HEALTH & SANITATION:			
12. Health Department: Hospital, Mental Health, Ambulance, & Nursing Services	19,500.00	20,157.62	23,021.00
13. Dump Maintenance	11,000.00	10,240.53	11,000.00
HIGHWAYS & BRIDGES:			
14. Town Road Aid	317.84	2,685.78	325.14
15. Town Maintenance - Summer	41,800.00	54,315.45	45,900.00
16. Town Maintenance - Winter	52,000.00	49,768.08	54,000.00
17. Street Lighting	25,500.00	26,355.89	28,000.00
18. General Expense - Highway Department	24,200.00	27,164.38	27,000.00
19. Gasoline Purchases/Sales	8,000.00	14,238.26	16,000.00
20. Street Maintenance	19,500.00	18,944.02	21,400.00
21. Sidewalk Maintenance	6,000.00	54.18	6,000.00
LIBRARIES:			
22. Public Library	14,000.00	14,000.00	16,000.00

PUBLIC WELFARE:			
23. Town Poor	6,000.00	5,007.12	8,000.00
24. Old Age Assistance	4,500.00	3,892.74	4,500.00
25. Aid to Permanently & Totally Disabled	4,000.00	3,811.77	4,000.00
PATRIOTIC PURPOSES:			
26. Memorial Day & Vets Associations	250.00	155.61	250.00
RECREATION:			
27. Parks & Playgrounds	25,000.00	23,996.22	31,768.00
PUBLIC SERVICE ENTERPRISES:			
28. Sewer Department	25,000.00	20,502.82	25,000.00
29. Water Department	29,000.00	23,170.33	29,000.00
30. Cemeteries	11,000.00	7,018.20	11,000.00
UNCLASSIFIED:			
31. Damage & Legal Expenses	3,000.00	3,108.28	3,500.00
32. Advertising	700.00	455.75	700.00
33. Retirement, Social Security, & Unemployment	18,500.00	21,127.86	26,000.00
34. Senior Citizens	6,000.00	4,748.88	6,500.00
35. North Country Council	1,595.00	1,595.00	1,595.00
DEBT SERVICE:			
36. Principal on Sewer Bonds	45,000.00	45,000.00	45,000.00
37. Interest on Sewer Bonds	<u>26,500.00</u>	<u>26,500.00</u>	<u>24,250.00</u>
TOTALS	\$602,262.84	\$600,936.29	\$666,229.14

SUMMARY INVENTORY OF PROPERTY VALUATION 1980

	Town	Precinct
Land	\$ 2,563,970	\$ 2,332,457
Current Use	158,919	69,125
Buildings	4,242,490	3,852,170
Factory Buildings	2,660,450	2,660,450
Public Utilities	1,485,700	1,485,700
Mobile Homes	260,990	250,410
Pools	17,100	15,900
<hr style="width: 50%; margin: 0 auto;"/>		
Total Valuation Before Exemptions Allowed	\$11,389,619	\$10,666,212
Less Exemptions:		
Blind	14,000	14,000
Elderly	293,317	261,967
Net Valuation on which Tax Rate is Computed	\$11,082,302	\$10,390,245

TAX RATES

	1980	1979	1978	1977	1976	1975	1974	1973
Town	\$1.14	\$1.63	\$1.27	\$1.02	\$1.55	\$ .73	\$1.21	\$1.15
School	6.73	5.50	5.09	4.64	4.78	4.69	4.08	3.83
Precinct	.32	.28	.29	.21	.31	.27	.21	.30
County	.51	.62	.25	.51	.35	.21	.21	.32
<hr style="width: 80%; margin: 0 auto;"/>								
Total	\$8.70	\$8.03	\$6.90	\$6.38	\$6.99	\$5.90	\$5.71	\$5.60

A U D I T O R ' S   R E P O R T

JANUARY 1981

This is to certify that we have examined the accounts of the Selectmen, Town Treasurer, Town Clerk, Tax Collector, Water Collector, Library Trustees, Trustees of the Trust Funds, Municipal Court, Youth Center Commission, Senior Citizens Fund, Water Fund, Sewer Fund, and Chief of Police, and found them correct with proper vouchers.

Leo Rich  
Robert Penney



STATEMENT OF APPROPRIATIONS AND TAXES  
ASSESSSED FOR THE YEAR 1980

Total Town Appropriations		\$ 718,807.00
Less Estimated Revenues and Credits		
Resident Taxes	\$ 15,410.00	
National Bank Stock Taxes	825.00	
Yield Taxes	3,500.00	
Interest on Delinquent Taxes	4,600.00	
Resident Tax Penalties	300.00	
Inventory Penalties	540.00	
Rooms & Meals Tax	32,270.00	
Interest & Dividends Tax	35,292.00	
Savings Bank Tax	4,372.00	
Highway Subsidy	18,584.00	
Railroad Tax	1,055.00	
State Aid Water Pollution Projects	36,210.00	
Forest Fire Reimbursement	60.00	
Road Toll Refund	545.00	
Old Age Reimbursement	145.00	
Motor Vehicle Permit Fees	67,000.00	
Dog Licenses	2,029.00	
Business Licenses, Permits & Filing Fees	81.00	
Fines & Forfeits, Municipal Court	4,500.00	
Interest Received on Deposits	10,000.00	
Income from Trust Funds	2,500.00	
Income from Departments	25,000.00	
Income from Sewer Department	25,000.00	
Income from Water Department	29,000.00	
Town Record Fees	2,200.00	
Water & Sewer Fund	81,545.00	
Revenue Sharing Funds	35,000.00	
Surplus	37,000.00	
Total Revenues and Credits		\$ 474,563.00
Net Town Appropriation		244,244.00
Net School Appropriation		1,052,569.00
County Tax Assessment		90,168.00
Total of Town, School and County		\$1,386,981.00
Deduct: Total Businss Profits Tax Reimbursement		489,260.00
Add: War Service Tax Credits		15,300.00
Overlay		15,676.00
Property Taxes to be Raised		928,697.00
Precinct Taxes to be Raised		33,470.00
		\$ 962,167.00
Less War Service Credits		15,300.00
	TOTAL TAXES \$	946,867.00

COMPARATIVE STATEMENT  
 APPROPRIATIONS & EXPENDITURES

YEAR ENDING DECEMBER 31, 1980

Title of Appropriation	Appropriation Amount	Receipts and Reimbursements	Total Amount Available	Expenditures	Unexpended Balances	Overdrafts
Town Officers' Salaries	\$ 38,500.00		\$ 38,500.00	\$ 38,117.75	\$ 382.25	
Town Officers' Expenses	4,800.00	\$ 340.00	5,140.00	4,772.75	367.25	
Elections & Registration **	4,000.00	34.50	4,034.50	4,474.82		440.32
Municipal Court ***	3,500.00		3,500.00	4,365.44		865.44
Town Hall & Other Town Buildings	12,500.00	367.50	12,867.50	12,310.61	556.89	
Police Department	69,300.00	914.95	70,214.95	69,709.95	505.00	
Fire, Including Forest Fire	500.00	75.31	575.31	311.35	263.96	
Bliester Rust & Care of Trees	300.00		300.00		300.00	
Planning & Zoning	300.00	200.00	500.00	195.35	304.65	
Civil Preparedness	700.00		700.00	200.00	500.00	
Insurance	40,000.00	2,225.87	42,225.87	38,503.24	3,722.63	
Health Dept., Hospital, Mental Health & Ambulance	19,500.00	7,175.60	26,675.60	20,157.62	6,517.98	
Dump Maintenance	11,000.00		11,000.00	10,240.53	759.47	
Town Road Aid	317.84	4,637.15	4,954.99	2,685.78	2,269.21	
Town Maintenance - Summer	41,800.00	20,976.95	62,776.95	54,315.45	8,461.50	
Town Maintenance - Winter	52,000.00		52,000.00	49,768.08	2,231.92	
Street Lighting ****	25,500.00		25,500.00	26,355.89		855.89
General Expense of Highway Dept.	24,200.00	7,070.00	31,270.00	27,164.38	4,105.62	
Gasoline Purchase/Sales	8,000.00	10,868.98	18,868.98	14,238.26	4,630.72	
Street Maintenance	19,500.00		19,500.00	18,944.02	555.98	
Sidewalk Maintenance	6,000.00		6,000.00	54.18	5,945.82	
Public Library	14,000.00		14,000.00	14,000.00		
Town Poor	6,000.00	95.00	6,095.00	5,007.12	1,087.88	
Old Age Assistance	4,500.00	145.09	4,645.09	3,892.74	752.35	

Aid to Perm. & Totally Disabled	4,000.00	4,000.00	3,811.77	188.23
Memorial Day & Veterans Assoc.	250.00	250.00	155.61	94.39
Parks & Playground	25,000.00	25,000.00	23,996.22	1,003.78
Sewer Department	25,000.00	25,000.00	20,502.82	4,497.18
Water Department	29,000.00	29,000.00	23,170.33	5,829.67
Cemeteries	11,000.00	11,000.00	7,018.20	3,981.80
Damage & Legal Expenses *****	3,000.00	3,000.00	3,108.28	108.28
Advertising	700.00	700.00	455.75	244.25
Retirement & Social Security	18,500.00	18,500.00	21,127.86	2,627.86
Senior Citizen Services	6,000.00	6,000.00	4,748.88	
North Country Council	1,595.00	1,595.00	1,595.00	1,251.12
Principal on Sewer Bonds	45,000.00	45,000.00	45,000.00	
Interest on Sewer Bonds	26,500.00	26,500.00	26,500.00	

UN TOTALS \$602,262.84 \$ 55,126.90 \$657,389.74 \$600,976.03 \$ 61,311.50 \$ 4,897.79  
 Unexpended Balances less Overdrafts 4,897.79

Total Unexpended Balances 56,413.71  
 Less Estimated Revenue Used in Computing Tax Rate 27,500.00

Net Unexpended Balance \$ 28,913.71

- Overdrafts
- \* Town crew joined late in year
- \*\* Federal Election year underbudgeted
- \*\*\* Hired separate court clerk
- \*\*\*\* Rate increases
- \*\*\*\*\* Expenditures vary

A S S E T S   &   L I A B I L I T I E S

S T A T E M E N T

A S S E T S

Cash on Hand, December 31, 1980		
Checking Account	\$304,519.30	
Savings Acct. (90 Day Sewer Fund)	82,717.84	
Savings Account	52,057.82	
Revenue Sharing	55,298.35	
Water Account	7,497.15	
Sewer Account	9,914.82	
C. D. Certificate - Peoples National Bank	100,000.00	
Trust Funds		
Capitol Reserve	10,704.08	
Cemetery Trust Funds and C. D.	38,038.52	
C. D. - Guildhall Bridge	40,647.96	
Accounts Due Town	18,135.68	
Unredeemed Property Taxes	181,477.29	
Uncollected Resident, Yield, and Land Use Change Taxes	<u>3,113.37</u>	
Total		\$904,122.18

L I A B I L I T I E S

Due School District	\$547,569.00	
Trust Funds & Guildhall Bridge	89,390.56	
Unexpended Balance Sewer Construction Acct.	82,717.84	
Unexpended Revenue Sharing	55,298.35	
Unexpended Water & Sewer Fund	17,411.97	
Unexpended Balance Special Appropriations	<u>27,188.09</u>	
Total		\$819,575.81
Excess of Assets over Liabilities		\$ 84,546.37

SCHEDULE OF INTEREST AND PRINCIPAL - SWERE BONDS

Amount \$875,000   Rate 5%  
Date of Issue - June 17, 1970

Payment Date	Interest Payable	Principal Payable	Payment Due
12/01/81	\$24,250	\$45,000	\$69,250
12/01/82	22,000	45,000	67,000
12/01/83	19,750	45,000	64,750
12/01/84	17,500	50,000	67,500
12/01/85	15,000	50,000	65,000
12/01/86	12,500	50,000	62,500
12/01/87	10,000	50,000	60,000
12/01/88	7,500	50,000	57,500
12/01/89	5,000	50,000	55,000
12/01/90	2,000	50,000	52,000

T O W N C L E R K ' S R E P O R T

REGISTRATION OF AUTOMOBILES

Auto Permits Issued in 1980	\$61,112.50
Total Remitted to Treasurer	\$61,112.50

DOG LICENSES ISSUED

167 Males	\$1,000.00
32 Neutered Males	112.00
56 Females	354.25
119 Spayed Females	416.50
3 Kennel Licenses	58.00
121 Penalties	121.00

---

Total Collected	\$2,061.75
-----------------	------------

Total Remitted to Treasurer	\$2,061.75
-----------------------------	------------

TOWN RECORD FEES

Certified Copies of Vital Statistics  
Automobile Title Applications  
Filing and Terminating of UCC's  
Marriage Intentions  
UCC Searches

Total Collected	\$2,184.00
-----------------	------------

Total Remitted to Treasurer	\$2,184.00
-----------------------------	------------

FILING FEES

Annual Town Election	\$4.00
----------------------	--------

Total Remitted to Treasurer	\$4.00
-----------------------------	--------

BOAT TAX

Collected Locally	\$330.00
Collected from the State of N. H.	70.00

---

Total Collected	\$400.00
-----------------	----------

Total Remitted to Treasurer	\$400.00
-----------------------------	----------

Respectfully submitted,  
Theresa G. Brooks  
Town Clerk

S U M M A R Y   O F   W A R R A N T S

PROPERTY, RESIDENT AND YIELD TAXES

LEVY OF 1980

DR.

Taxes Committed to Collector:		
Property Taxes	\$969,065.02	
Resident Taxes	15,410.00	
National Bank Stock Taxes	827.35	
Land Use Change Taxes	0	
Total Warrants	\$985,302.37	
Yield Taxes:		3,472.81
Added Taxes:		
Property Taxes	6,009.64	
Resident Taxes	360.00	
	6,369.64	
Overpayments During Year:		
Property Taxes	1,438.47	
	1,438.47	
Interest Collected on Yield Tax		1.59
Penalties Collected on Resident Taxes		45.00
		\$996,629.88

Total Debits

CR.

Remittances to Treasurer:		
Property Taxes	\$784,770.15	
Resident Taxes	13,710.00	
National Bank Stock Taxes	827.35	
Yield Taxes	3,454.75	
Penalties on Resident Taxes	45.00	
Interest of Yield Tax	1.59	
	\$802,808.84	
Discounts Allowed:		3,955.51
Abatements Made During Year:		
Property Taxes	6,310.18	
Resident Taxes	130.00	
	6,440.18	
Uncollected Taxes - December 31, 1980		
Property Taxes	181,477.29	
Resident Taxes	1,930.00	
Yield Taxes	18.06	
	183,425.35	
		\$996,629.88

20 Total Credits

LEVY OF 1979

DR.

Uncollected Taxes - As of January 1, 1979:		
Property Taxes	\$144,909.46	
Resident Taxes	2,550.00	
Land Use Change Taxes	2,250.00	
Yield Taxes	688.78	
		\$150,398.24
Added Taxes:		
Resident Taxes	120.00	
		120.00
Interest Collected on Delinquent Property Taxes		4,498.29
Interest Collected on Use Change Tax		121.71
Penalties Collected on Resident Taxes		201.00
		120.00
Total Debits		\$155,339.24

CR.

Remittances to Treasurer During Fiscal Year:		
Ended December 31, 1980		
Property Taxes	\$144,909.46	
Resident Taxes	2,110.00	
Land Use Change Tax	2,250.00	
Interest Collected During Year	4,498.29	
Penalties on Resident Taxes	201.00	
Interest Collected on Use Change Tax	121.71	
		\$154,090.46
Abatements Made During Year:		
Resident Taxes	560.00	
		560.00
Uncollected Taxes - December 31, 1980		
Yield Taxes	688.78	
		688.78
Total Credits		\$155,339.24

LEVY OF 1978

DR.

Uncollected Taxes - As of January 1, 1980		
Yield Tax	\$476.53	
Total Debits		\$476.53

CR.

Uncollected Taxes - As of December 31, 1980		
Yield Tax	\$476.53	
21 Total Credits		\$476.53

S U M M A R Y   O F   T A X   S A L E S   A C C O U N T S

FISCAL YEAR ENDED DECEMBER 31, 1980

DR.

Unredeemed Taxes as of 01/01/80	1979		1978	1977	Previous
			\$10,208.48	\$5,530.54	\$2,392.73
Taxes Sold to Town during 1980	\$32,435.03				
Interest Collected after sale	189.97		549.07	990.39	2,907.45
<b>TOTAL DEBITS</b>	<u>\$32,625.00</u>		<u>\$10,757.55</u>	<u>\$6,520.93</u>	<u>\$5,300.18</u>

CR.

Remittances to Treasurer During Year:

Redemptions	\$13,499.40	\$ 5,288.97	\$4,611.87	\$2,392.64
Interest & Cost after Sale	189.97	549.07	990.39	2,907.45
Abatements During Year			662.76	
Deeded to Town During Year			67.55	
Unredemmed Taxes as of 12/31/80	18,935.63	4,919.51	188.36	.09
<b>TOTAL CREDITS</b>	<u>\$32,625.00</u>	<u>\$10,757.55</u>	<u>\$6,520.93</u>	<u>\$5,300.18</u>

W A T E R   A N D   S E W E R   R E P O R T

Warrant Committed to Collector:

Water	\$31,550.53
Sewer	25,199.67
Uncollected on 1979 warrant:	
Water	4,876.28
Sewer	5,074.25
New Connections:	
Water	170.00
Sewer	170.00

Total Debits                    \$67,040.73

Remittances to Treasurer:

Water	\$29,073.68
Sewer	23,995.80
Abated - service off 6 months or more:	
Water	674.93
Sewer	340.32
Uncollected as of December 31, 1980:	
Water	6,842.70
Sewer	6,107.80
Credit from 1979:	
Water	5.50

Total Credits                    \$67,040.73

Respectfully submitted, Theresa Brooks - Tax Collector



W A T E R   D E P A R T M E N T

Checking Account Balance 01/01/80	\$ 1,571.30	
Received from Fees	28,903.68	
Miscellaneous Receipts	<u>192.50</u>	
Total Receipts		\$30,667.48

EXPENDITURES

Labor	\$12,586.45	
Supplies	4,159.60	
Chemicals	1,123.00	
Laboratory Tests	268.00	
Equipment Rent	3,457.00	
Postage	276.48	
Property Taxes	277.48	
Utilities	978.32	
Miscellaneous	<u>44.00</u>	
Total Payments		\$23,170.33
Checking Account Balance 12/31/80		\$ 7,497.15

S E W E R   D E P A R T M E N T

Checking Account Balance 01/01/80	\$ 6,360.74	
Received from Fees	23,825.80	
Miscellaneous Receipts	<u>231.10</u>	
Total Receipts		\$30,417.64

EXPENDITURES

Labor	\$ 9,713.89	
Supplies	2,449.08	
Chemicals	1,910.00	
Laboratory Tests	697.50	
Equipment Rent	226.00	
Postage	190.80	
Utilities	5,106.61	
Miscellaneous	<u>208.94</u>	
Total Payments		\$20,502.82
Checking Account Balance 12/31/80		\$ 9,914.82

Respectfully submitted,

George A. Langley  
James C. Wemyss, Jr.  
Harold E. Marshall, Sr.

T R E A S U R E R ' S   R E P O R T

Cash on Hand 01/01/80	\$ 331,413.42	
Savings Account (90 days)	81,544.67	
Savings Account	77,009.24	
Revenue Sharing Account	53,099.97	
Savings Certificate	<u>36,000.00</u>	
		\$ 579,067.30

R E C E I P T S

Received from all sources	\$1,910,205.88	
Transferred from Savings Accounts	102,000.00	
Interest transferred from Savings Accounts	3,596.41	
Revenue Sharing	22,618.00	
Revenue Sharing Interest	<u>3,580.38</u>	
		<u>\$2,042,000.67</u>
		\$2,621,067.97

P A Y M E N T S

Total Payments	\$1,819,285.76	
Transferred to Savings Account	50,000.00	
Transferred to Money Market Certificate	100,000.00	
Transferred to Trustee Trust Funds	36,000.00	
Paid from Revenue Sharing Account	<u>20,000.00</u>	
		<u>\$2,025,285.76</u>
Cash on Hand 12/31/80		\$ 595,782.21

Checking Account	\$ 304,519.30	
Savings Account (90 days)	83,906.74	
Savings Account	52,057.82	
Revenue Sharing Account	55,298.35	
Money Market Certificate	<u>100,000.00</u>	

Total Cash On Hand \$ 595,782.21

-----

Cash on hand 12/31/80

Water Account	\$7,497.15
Sewer Account	9,914.82

Respectfully submitted,

Frances S. Rich  
Town Treasurer

REVENUE SHARING FUND

Receipts

Balance on hand December 31, 1979	\$53,099.97	
Received from Federal Revenue Sharing	22,618.00	
Interest on Deposits	<u>3,580.38</u>	
Total		\$79,298.35

Expenditures

Revenue Sharing Funds Audit	4,000.00	
Sewer Systems Study	11,000.00	
Police Equipment & Cruiser	10,000.00	
Insulation and Wood Furnace	<u>10,000.00</u>	
Total		<u>35,000.00</u>
Balance in Account		\$44,298.35

CAPITAL RESERVE ACCOUNT

Receipts

Balance on hand December 31, 1979	\$19,574.49	
Interest on Deposits	<u>1,275.38</u>	
Total		\$20,849.87

Expenditures

Northumberland Chlorinator	<u>10,145.79</u>	
Total		<u>10,145.79</u>
Balance available December 31, 1980		\$10,704.08

Respectfully submitted,

George A. Langley  
 James C. Wemyss, Jr.  
 Harold E. Marshall, Sr.

S E L E C T M E N ' S  
C H E C K I N G   A C C O U N T  
R E P O R T

RECEIPTS

LOCAL TAXES CURRENT YEAR:

Property	\$784,770.15
National Bank Stock	827.35
Yield Tax	3,454.75
Yield Tax Interest	1.59
Resident Tax	13,710.00
Resident Tax Penalties	203.00
Land Use Change Tax	750.00
Land Use Change Tax Interest	42.02

Total \$ 803,758.86

LOCAL TAXES PREVIOUS YEARS:

Property	146,409.46
Interest	4,577.98
Resident Tax	2,110.00
Resident Tax Penalties	43.00
Tax Sales Redeemed	25,792.88
Interest After Sale	4,636.88

Total 183,570.20

LOCAL SOURCES EXCEPT TAXES:

Dog Licenses	2,061.75
Business Licenses, Permits & Filing Fees	81.00
Municipal Court	4,376.02
Registration of Motor Vehicles	61,112.50
Town Record Fees	2,184.00
Dividends to be turned over to Groveton Foundation	968.00
Boat Tax	400.00
Rent of Town Property	250.00

Total 71,433.27

INCOME FROM DEPARTMENTS:

Gasoline Sales	10,868.98
Ambulance Services	6,675.60
Summer	20,976.95
Town Officer's Expenses	340.00
Police	914.95
Planning & Zoning	200.00
Health	500.00
Insurance	2,225.87
Town Poor	95.00
Town Hall & Other Buildings	367.50
Water Reimbursement	16,291.34
Sewer Reimbursement	11,191.05
Election and Registration	34.50
General Maintenance	7,070.00
Forest Fires	75.31

Total 77,827.05

STATE OF NEW HAMPSHIRE:

Interest & Dividends	35,292.45
Highway Subsidy	18,603.65
Railroad Tax	1,054.74
Town Road Aid	4,637.15
Business Profits Tax	489,259.52
Sewer Bond Payment	36,210.00
Bank Tax	4,371.54

Forest Fire Reimbursement	59.62	
Rooms and Meal Tax	32,269.69	
Gas Tax Refund	2,619.40	
Bureau of Outdoor Recreation	19,000.00	
Old Age Assistance	145.09	
Railroad Crossing	1,437.78	
	<u>        </u>	
Total		644,960.63
UNITED STATES GOVERNMENT:		
Northumberland Sewer Study	24,400.00	
	<u>        </u>	
Total		24,400.00
TRANSFERRED FROM CAPITAL RESERVE:		10,145.79
TRANSFERRED FROM REVENUE SHARING:		24,000.00
INCOME FROM TRUST FUNDS:		2,699.43
SHORT TERM LOANS:		225,000.00
PRINCIPAL AND INTEREST FROM SAVINGS:		105,596.41
		<u>        </u>
Total Receipts All Sources		\$2,173,391.64

#### PAYMENTS

GENERAL GOVERNMENT:		
Town Officers' Salaries	\$ 38,117.75	
Town Officers' Expenses	4,772.75	
Election and Registration	4,474.82	
Municipal Court	4,365.44	
Town Hall & Other Buildings	12,310.61	
Retirement & Social Security	21,127.86	
	<u>        </u>	
Total		\$ 85,169.23
PROTECTION OF PERSONS AND PROPERTY:		
Police Department	69,709.95	
Fire, incl. Forest Fire	311.35	
Damages and Legal Expenses	3,108.28	
Planning and Zoning	195.35	
Insurance	38,503.24	
Civil Preparedness	200.00	
	<u>        </u>	
Total		112,028.17
HEALTH & SANITATION:		
Health Dept., Hospital, Mental Health and Ambulance	20,157.62	
Dump Maintenance	10,240.53	
	<u>        </u>	
Total		30,398.15
HIGHWAYS & BRIDGES:		
Town Maintenance - Summer	54,315.45	
Town Maintenance - Winter	49,768.08	
Town Road Aid	2,685.78	
Street Lighting	26,355.89	
General Expense of Highway Dept.	27,164.38	
Gasoline Sales/Purchases	14,238.26	
Street Maintenance	18,944.02	
Sidewalk Maintenance	54.18	
	<u>        </u>	
Total		193,526.04
PUBLIC LIBRARY:		
Appropriation	14,000.00	
	<u>        </u>	
Total		14,000.00
PUBLIC WELFARE:		
Old Age Assistance	3,892.74	
Aid to Permanent & Totally Disabled	3,811.77	
Town Poor	5,007.12	
	<u>        </u>	
Total		12,711.63

PATRIOTIC PURPOSES & RECREATION:

Memorial Day & Vet. Association	155.61	
Parks & Playgrounds	23,996.22	
Senior Citizens	<u>4,748.88</u>	
Total		28,900.71

PUBLIC SERVICE ENTERPRISES:

Advertising & Regional Associations	455.75	
North Country Council	1,595.00	
Cemetery	<u>7,018.20</u>	
Total		9,068.95

UNCLASSIFIED:

Taxes Bought by Town	32,435.03	
Discounts, Refunds & Abatements	1,863.87	
Water	16,291.34	
Sewer	11,191.05	
Transfer to Groveton Foundation	968.00	
Northumberland Sewer Study	30,050.00	
Yield Tax Bond	<u>1,343.00</u>	
Total		94,142.29

CAPITOL OUTLAY:

Revenue Sharing Audit	4,000.00	
Tax Map	1,979.57	
Police Cruiser, Lights & Radio	10,000.00	
Insulation & Furnace	5,508.32	
Northumberland Chlorinator	<u>9,908.77</u>	
Total		31,396.66

DEPT. SERVICE:

Principal - Sewer Bonds	45,000.00	
Interest - Sewer Bonds	26,500.00	
Principal - Short Term Loan	225,000.00	
Interest - Short Term Loan	<u>837.61</u>	
Total		297,337.61

PAYMENTS TO OTHER GOVERNMENT DIVISIONS:

State of New Hampshire	542.32	
County of Coos	90,399.00	
Groveton Village Precinct	32,330.00	
Northumberland School District	<u>993,335.00</u>	
Total		<u>1,116,606.32</u>

Total Payments all Sources \$2,025,285.76

Checking Account Balance 12/31/79	\$ 331,413.42	
Total Receipts	<u>2,173,391.64</u>	\$2,504,805.06
Total Payments	2,025,285.76	
Transferred to Savings Accts & C. D.'s	<u>175,000.00</u>	
		<u>2,200,285.76</u>
Checking Balance 12/31/80		\$ 304,519.30

Respectfully submitted,  
 George A. Langley  
 James C. Wemyss, Jr.  
 Harold E. Marshall, Sr.

L I B R A R Y    A C C O U N T

RECEIPTS

Balance on hand 01/01/80	\$       .37
Received from Town	13,000.00
Received from Town	
Police Dept. Expenses	1,000.00
Fine Money	234.00
Sales of Books	41.90
Donation	40.00
Refund	15.70
Interest from C. D.	544.24
Total	\$14,876.21

PAYMENTS

Librarian	\$ 3,634.51
Assistant Librarian	1,138.59
Janitor	2,497.08
Fuel	1,672.20
Lights	938.98
Phone	284.82
Books & Magazines	3,105.41
Repairs	138.07
Office Supplies	313.48
Janitor Supplies	46.71
Mis.	1,051.96
Total	\$14,821.81

Balance on hand 01/01/81	54.40
--------------------------	-------

\$14,876.21

SAVINGS ACCOUNT

Balance 01/01/80	\$2,331.89
Interest Received	130.39

Balance on hand 01/01/81	\$2,462.28
--------------------------	------------

C/D ( D. Chandler Matthews Estate)	\$7,500.00
------------------------------------	------------

# LIBRARY REPORT

1980 has been another banner year at your library with the circulation of books, magazines and records reaching a total of 20,000. There are no ready figures for reference and information assistance which is increasing steadily as more people realize libraries are also information centers. This is an important aspect of library service but also time consuming.

There are approximately 12,000 volumes in the library including reference books. 652 books were purchased this year and 46 books and records were donated. Magazines are in great demand but until space needs for such are found we cannot increase our present selections.

Library hall which is once again available to the community has been actively used by various organizations and special interests groups.

A summer reading program was held with 24 young people meeting on Friday mornings for six weeks. Due to individual reading speeds and levels, competition was eliminated. Those students completing program requirements were taken to see "Steve Thomas, TV's Master Magician" at the Waumbec.

Trustee, Ray Clement attended the State Library Conference held in North Conway. He accepted on behalf of the library, our Certificate of Recognition, having met qualification and standards for the year under the "Statewide Library Development Program". I believe this is the fifth year we have received this award. The librarian also received a scholarship for the second year, to cover tuition costs for the summer session at the University of New Hampshire.

Other related business included the approval of the trustees to meet on a regular basis. Meetings are held the third Tuesday of every month at 7:00 p.m. at the library. The meeting date is posted as per law and open to interested citizens. Your input is welcome.

The library is growing - with your support it will continue.

Respectfully submitted.

Mrs. Patricia Tillotson  
Librarian

Mrs. Helen Carver  
Assistant Librarian

Trustees:

Mrs. Pauline Rice

Mr. Ray Clement

Mr. Robert Styles



N O R T H U M B E R L A N D M U N I C I P A L C O U R T

Detailed & Itemized Account  
January 1, 1980 - September 30, 1980

Checking Account Balance 12/31/79	\$ .00
1979 Fines & Penalties Assessments	
Collected & Deposited in 1980	
Case #9632	22.00
Case #9675	27.50
Case #9676	55.00
Case #9577	55.00
Case #9489	110.00
Case #9496	550.00
Case #9553	275.00
1980 Fines & Penalties Assessments	
Collected & Deposited 01/01/80 - 09/30/80	8,775.83
Small Claim Entry Fees	
Collected & Deposited 01/01/80 - 09/30/80	195.00
Total	\$10,065.33

Note: Total receipts includes \$55.00 (Complaints #9779 & 9792. Checks #60 & 61 (Department of Safety) for \$12.00 each are listed as Outstanding since 05/29/80. Check book balance of \$48.47 of 09/30/80 added to the \$24.00 totals \$72.47.

Disbursements from 01/01/80 - 09/30/80	
Department of Safety - 1979 Fines	
Complaint #9702 - Check #10	\$ 6.40
Complaint #9489 - Check #25	72.00
Department of Safety - 1980 Fines	3,950.20
Town Treasurer - Court Funds	3,500.00
State of N.H. Treasurer - 1979 Penalty Assessments	
Complaint #9632 & #9496 (Checks #16 & 90)	52.00
State of N.H. Treasurer - 1980 Penalty Assessments	798.90
New England Telephone	176.05
Witness Fees	423.40
United States Post Office	
Small Claim Certified Postage	95.20
United States Post Office	
Postage Stamps	67.00
New Hampshire Judges Association - 1979 Dues Check #18	100.00
National Council, Juvenile Court Judges Association	
Check #20	50.00
American Judges Association - Dues - Check #19	50.00
New Hampshire Judges Association - Dues - Check #42	100.00
District & Municipal Court Clerk's Association - Dues	25.00
George M. Stevens, Inc. - Clerk Bond ( R. Rowden )	28.00
Shawprint Corp - Court Supplies	
Check #59	18.04
Check #70	18.04
Check #99	18.04
Check #106	16.47
Equity Publishing Corp. - Court Supplies - Check #107	42.00
Reynolds & Reynolds Corp. - Court Supplies - Check #123	169.52
Bench Book - Check #130	100.00
Law Weekly Subscription - Check #105	24.00



GROVETON VILLAGE PRECINCT

Trustee of Trust Fund

General Equipment Fund	\$ 3,463.30
New Truck Fund	22,362.22

Commissioners' Report  
For The Year Ending December 31, 1980

Receipts

Cash on hand January 1, 1980	\$ 4,658.32
State: Business Profit Tax	13,966.59
Town of Northumberland	32,330.00
Other Sources	19.00
Total	<u>\$50,973.91</u>

Expenditures

Rubbish Collection and Disposal	\$12,110.40
Care and Repair of Trucks	7,356.76
Electric Power	640.46
Fuel for Station	2,659.55
Telephones	637.24
New Equipment	2,620.34
Repairs to Building	433.05
Repairs to Heating Plant	73.00
Miscellaneous Expenses	260.89
Insurance	703.00
Payroll and Salaries	7,777.00
Officers Salaries	365.00
Training Schools	129.00
Radio Maintenance	1,761.22
Fire Prevention	118.45
Care of Alarm	100.00
Total	<u>\$37,745.36</u>

Cash on hand December 31, 1980	13,228.55
	<u>\$50,973.91</u>

Respectfully submitted,

G. E. Caron  
C. D. Sanborn  
S. Cass

G R O V E T O N   V I L L A G E   P R E C I N C T

List of fires for the period from November 1, 1979 through October 31, 1980.

12 Practice Meetings	\$1,320.00
Nov. 13    Steven's Trailer	65.00
Dec. 14    Fogg Farm Barn	572.00
Dec. 18    Joe Shannon's Chimney	55.00
Dec. 30    William Paradis's Chimney	105.00
Dec. 31    Gordon Kidder Jr.'s House	650.00
Jan. 18    Raymond Lovell's Chimney	95.00
Feb. 3     Sharon Savage's Chimney	100.00
Feb. 5     Roscoe Bicknell's Chimney	100.00
Feb. 20    Chip Dispatcher Groveton Papers Co.	75.00
Feb. 27    Frank Savage's Trailer	340.00
Mar. 1     Stratford Hollow School	210.00
Mar. 3     Dean Barnett's Farm - Chimney	70.00
Mar. 15    Groveton Papers Co.- Recovery	161.00
Mar. 22    Melcher Court	120.00
Mar. 30    Elvin Woodward's Chimney	80.00
Apr. 4     Norman Achilles's Chimney	25.00
Apr. 27    Stand-By Stratford Fire Station	119.00
May 12    Groveton Papers Co. - Conveyor	90.00
June 7     Ames Dept. Store	85.00
June 19    Dean Barnett's Farm - False Alarm	90.00
June 28    Everett Stone's Camp - False Alarm	60.00
June 30    Frique's Car	30.00
July 1     Hazel Bedell's House	60.00
Sept 2     Ronald Ash's House	510.00
Sept 27    Roderick Beland's Car	100.00
Oct. 10    Ray McKenzie's House	570.00
Oct. 18    Ronald Singer's Trailer	110.00
Oct. 21    Peter Reilly's Chimney	90.00
	<hr/>
	\$6,127.00

SALARIES

Chief	\$ 200.00
2 Assistant Chiefs	150.00
2 Captains	150.00
23 Firemen	1,150.00
	<hr/>
Total	\$7,777.00

W A R R A N T

GROVETON VILLAGE PRECINCT

To the inhabitants of Groveton Village Precinct qualified to vote in Precinct affairs:

You are hereby notified to meet in the Groveton High School Ryans Gymnasium in said Precinct on Friday, March 27, 1981, at 7:00 p.m. for the transaction of the following business:

- ARTICLE 1: To choose by ballot, a Moderator to preside over said meeting.
- ARTICLE 2: To choose by ballot, a Precinct Clerk for the ensuing year.
- ARTICLE 3: To choose by ballot, a Precinct Commissioner for a period of three years, and any other officers, agents and auditors for the ensuing year.
- ARTICLE 4: To see what sum of money the Precinct will vote to raise and appropriate for the payment of Precinct Officers' salaries, Firemen's Salaries and Payroll, and such other incidental expenses as may arise within the Precinct.  
(Recommended: \$26,490.00)
- ARTICLE 5: To see what sum of money the Precinct will vote to raise and appropriate for the Collection & Disposal of Rubbish.  
(Recommended: \$17,000.00)
- ARTICLE 6: To see what sum of money the Precinct will vote to raise appropriate for the purchase of new hose and equipment.  
(Recommended: \$5,100.00)
- ARTICLE 7: To see if the Precinct will vote to withdraw from the truck fund, held by the Trustees of Trust Funds, the sum of \$25,000.00 and to raise and appropriate the sum of \$8,000.00 and spend the total of \$33,000.00 to purchase a new tank truck.
- ARTICLE 8: To see what sum of money the Precinct will vote to raise and appropriate to the Capital Reserve Fund, established for the purpose of purchasing a fire truck, said money to be deposited with the Trustee of the Trust Funds until needed for the new equipment.
- ARTICLE 9: To see what sum of money the Precinct will vote to raise and appropriate to the Capital Reserve Fund, established for the purpose of purchasing general type of new equipment, said money to be deposited with the Trustees of the Trust Fund until needed for new equipment.
- ARTICLE 10: To transact any other business which may legally come before said meeting.

GIVEN UNDER OUR HANDS AND IN SEAL THIS SIXTH DAY OF FEBRUARY 1981.

G. E. Caron  
C. D. Sanborn  
35 S. Cass

REPORT OF THE TRUST FUNDS OF THE TOWN OF NORTHUMBERLAND

December 31, 1980

PRINCIPAL

INCOME

How Invested	Balance Beginning Year	Balance End of Year	Balance Beginning Year	Income During Year	Expended During Year	Balance End of Year
Cemetery Funds						
C. D. & Savings Account	\$22,272.38	\$22,372.38	\$15,627.24	\$2,738.30	\$ 2,699.43	\$15,666.14

New Cemetery Funds established in 1980:

Ruby Gardiner, June 27, 1980 in the amount of \$100.00

Name of Fund	Purpose	Balance 01/01/80	Appropriation 1980	Interest	Expended	Balance 12/31/80
Town of Northumberland	Capital Reserve	\$19,574.49		\$1,275.38	\$10,145.79	\$10,704.08
Town of Northumberland	Guildhall Bridge	36,000.00		4,647.96		40,647.96
Groveton Village Precinct	Gen. Equip. Fund	3,320.46		178.29		3,508.75
Groveton Village Precinct	New Truck Fund	21,453.23		1,230.40		22,683.63

Capital Reserve Funds invested in Whitefield Savings Bank  
 All other funds invested in Peoples National Bank of Groveton

Respectfully submitted,

Trustees of the Trust Fund  
 John M. Blackadar  
 Lillian Landry  
 Beverly Johnson

## RECREATION PROGRAM - 1980

The 1980 Recreation Program commenced with an active skating program at our new hockey rink on the State Street Field. This rink, lighted for night skating, is a big improvement over the rink previously built. Work continued on the rink during the summer season, and it is now painted and in good condition.

The swimming and outdoor recreation programs were directed by Mrs. Mary Trask and her staff and included:

- Boys Baseball
- Boys Soccer
- Flag Football
- Boys Basketball
- Arts and Crafts
- Girls Softball
- Girls Basketball
- Tee Baseball
- Ping Pong
- Bike Hikes
- Bus Trips

These activities were held daily according to a weekly schedule posted at the pool and at the Arts and Crafts Building at the beginning of each week.

Several special competitions and programs were worked into the summer program which included: bowling, foul shooting contest, The Little Red Wagon from UNH, and a dog show. Also, the program sponsored intertown participation in baseball, basketball, soccer, softball and tee baseball.

A new backstop and score board were added to the field and were appreciated by the kids.

Over 260 kids participated in swimming lessons at the pool this summer. Adult lessons were offered on Tuesdays and Thursday with 12 adults participating. A toddlers class, with accompanying adults, was also considered a success. Water polo was added to the program on Thursday nights late in the season and will become a full-time activity this year. There was considerable interest and participation.

Again, the pool was vandalized on several occasions which dampened the enthusiasm of the staff. Broken beer bottles on the cement deck and pool required considerable extra work to avoid serious injuries.

The Groveton Recreation Tennis Courts again received considerable play over the spring, summer and fall months. Many times players had to wait for courts and the Committee feels a lighting system may be necessary to expand the hours of operation; this will be investigated. Also, some type of rest room facility is still needed at that location.

A new twist was added to the Halloween Party held at the High School at Ryan Gym. A magician put on an excellent one-hour show for all the kids and presented them with special balloon animals upon conclusion. The Committee feels this type of activity is well worth the additional cost and will attempt to sponsor other such activities in the future.

The town also accepted an application from the area Head Start Program to utilize the Activities Building for their program on a rental basis during the school year. Although some accommodations must be made to limit the vandalism of the equipment they have placed in this building, the Committee is very enthusiastic that this building is being used on a more active basis. The rental funds obtained allow for some additional equipment to be purchased which does not require town appropriation.

#### RECEIPTS

Cash on Hand - 01/01/80	\$ 2,727.08
Town Appropriations	23,993.09
Pool Receipts	1,937.52
Head Start Rent	500.00
Miscellaneous	4.00

---

\$29,161.69

#### EXPENDITURES

Payroll & Taxes	\$15,733.73
Utilities	1,632.48
Pool, Supplies, Maintenance, Arts & Crafts	3,295.54
Skating - Payroll & Snow Removal	595.01
Field Activities & Bus Trips	145.00
Halloween Party	544.15
Equipment	1,385.29
Equipment Rental	90.00
Paving	2,170.00
Advertising & Miscellaneous	64.35

---

\$25,655.55

Balance - Checkbook as of 12/31/80	3,506.14
------------------------------------	----------

---

Balance December 31, 1980

\$29,161.69

Respectfully submitted,

L. J. Aylward  
Shirley MacDow  
George Ververis  
Stewart Marshall  
Josephine Mayhew  
William Everleth  
Russell Partridge



# A M B U L A N C E   C O R P S

The members of the Northumberland Ambulance Corps maintain a 24-hour-seven-day-a-week coverage with 12 full time and 5 part-time crew members. All members have met or surpassed the criteria for licensure mandated by the State of New Hampshire. The ambulances, also subject to state regulations, have met all state inspection standards and maintains equipment above that which is required.

Groveton was fortunate to have an EMT (Emergency Medical Technician) Course available locally in which 6 of our present crew members participated. Corps members must be involved with continuous training which includes annual CPR (Cardio-Pulmonary Resuscitation) certification by written and practical exams. Available to us for CPR practice are the "Rususci-Anni" and "Rususci-Baby" which were purchased with donated funds in 1979.

In 1980, the corps, under the direction of Marsha Harmer (Jan-April) and Bonnie Knapp (May-Dec.) was very active not only providing emergency care for 133 emergency calls and 26 transfer calls but also in fund raising projects for new life saving and supporting equipment. Emergencies handled throughout the year involved both major and minor injuries, including open and closed fractures and wounds, cardi-pulmonary problems, (including cardiac arrest), drug overdoses, and transfer and care for patients with organic problems.

Many pieces of equipment have been acquired through generous donations, memorial gifts and time and effort given by many individuals. Our possession of the "Jaws of Life" an extrication tool costing \$8100 which will be used in conjunction with the fire department, has been made possible by a matching funds grant from the New Hampshire Department of Highway Safety and numerous donations and fund raising activities.

We have purchased a new suction unit and infant "Ambu-Bag" in addition to keeping all other equipment up to date and operatable. Anti-shock trauma trousers (MAST) made available to us through the Emergency Medical System in Hanover are also, now available in our unit.

This coming year we will be working toward purchasing an EKG print-out unit, which will work in conjunction with our "Life-Pak", and toward the purchase of new radios as well as continuously searching for new members.

Anyone interested in attending our meetings is welcome and we extend an invitation to anyone who would like to become a member of our corps. We need your talent and interest. If you desire information about our corps or regarding first-aid and/or CPR classes you may call the Town Office at 636-1450 or contact a crew member.

We wish to thank and express our sincere gratitude to our directors, crew members, fire and police department, all organizations, Dr. Hinkley and all the townspeople for your essential and relentless support.

Respectfully submitted,

Karen Lord - Crew Member

PUBLIC HEALTH NURSING SERVICE, INC.

The Public Health Nursing Service, Inc. of Lancaster is a fully accredited home health agency, governed by a board and providing nursing service, physical therapy, and speech therapy to all residents of Lancaster, Groveton, Whitefield, Dalton, Jefferson and Stark.

The Public Health Nursing Committee is made up of volunteers from each community served. The officers for 1980 were:

Jean Tenney - Chairman  
Bonnie Knapp - Vice-Chairman  
Lyla Blodgett - Secretary  
Charlotte Quay - Treasurer

As 1980 comes to a close the Public Health Nursing Service can look back on a successful year.

Maternal & Child Health Conferences are made possible with a grant from the State Bureau of Maternal & Child Health. Children from ages birth - six years of age who are not enrolled in a regular health care system and reside in one of the six towns served by this agency, are eligible for enrollment in this program.

In conjunction with the State Bureau of Dental Health and the area dentist, we were able to institute a dental screening program for children age three to five years.

The WIC program has been added to our list of services provided to area residents. Monthly blood pressure clinics are still being held in all of the towns served by this agency. The screenings are organized by the Senior Citizens of each community, with Public Health providing the nursing staff.

Pre-school Vision and Hearing screenings is a continuing program. Immunizations clinics are held the third Friday of each month. This clinic is available to all parents who wish to have their children attend.

We wish to extend our appreciation to all state and local agencies for their continued support of our programs; to Dr. Robert Lewis for serving on our Medical Advisory Committee; Dr. Gregory Shields for serving as Maternal and Child Health program physician; and to Father Nolin for the use of All Saints Parish Hall for housing our programs.

A sincere thank you to all those persons who unselfishly volunteered their time to assist us, and thus enable us to continue with all aspects of our public services.

Respectfully submitted,

Marion McCaig, R. N.  
Director Public Health Nursing Ser.

R E P O R T   O F   F O R E S T   F I R E   W A R D E N  
A N D   S T A T E   F O R E S T   F I R E   S E R V I C E

Forest Fire Prevention: Your Business, Our Business, Good Business. Forest fire prevention slogans have been seen in association with Smokey Bear since the late nineteen forties when a national effort to check the spread of forest fires was implemented.

New Hampshire residents recognized that forest fire prevention and suppression was the responsibility of every citizen, a half century before this national campaign, when our legislature established our first forest fire laws in 1903. Since that date, the State has appointed a town/city forest fire warden who is responsible for forest fire law enforcement in his municipality.

All fires kindled out of doors when there is no snow on the ground must be approved in writing by the forest fire warden before being kindled. All forest fires must be suppressed by the warden and his deputies as soon as they are reported. The cost of fire suppression is shared jointly by the town/city and the State of New Hampshire, as are forest fire prevention and forest fire training costs.

This state and local municipality cooperative forest fire program has given New Hampshire one of the best forest fire records in the United States.

F O R E S T   F I R E   S T A T I S T I C S   1 9 8 0

	No. of Fires*	No. of Acres**
State	1,226	693
District	5	1.5
Town	2	.5

Burnham A. Judd - District Fire Chief

C. Dean Sanborn - Forest Fire Warden

\*Includes Short Fire Reports

\*\*Includes woods and grass

## NEW HAMPSHIRE MUNICIPAL ASSOCIATION

"The New Hampshire Municipal Association has existed since 1957. It is a non-partisan, non-profit organization whose 223 member cities and towns share a common interest in better local government.

NHMA provides a wide variety of services to its member communities. Among the services provided are: legal services, technical assistance, group insurance programs, personnel services and representation of municipal interests before federal, state, and administrative bodies.

The ultimate goal of these services is to help elected and appointed officials provide more efficient and effective government at the local level. In its representation of municipal interests before the state legislature, one of the primary goals of the Association is preventing excessive property tax burdens being placed on local governments.

NHMA also conducts many workshops and seminars dealing with local needs and problems. These include programs on such topics as municipal liability, welfare administration, assessing, land use and planning law, budgeting and labor relations. The biggest and most important learning opportunity offered by NHMA is its annual meeting. Held every fall, this meeting provides local officials with valuable program sessions designed to give local officials ideas and information they can put to use in their communities for the people they serve.

N O R T H C O U N T R Y C O U N C I L , I N C .

In Northumberland, the Council has assisted the Town in preparing a Community Development Block Grant proposal to the U.S. Department of Housing & Urban Development and assisted in having the Town designated as eligible for Urban Development Action Grants (UDAG) assistance. The HUD program was for the separation of Stormwater facilities in Town. The council is also assisting the Planning Board in the town's zoning ordinance.

North Country Council is the regional planning commission and economic development district serving the North Country. In 1980, North Country Council targeted its resources and expertise to fit the needs and problems of the towns and region we serve. In the community planning field, the Council has programmed a systematic way of handling requests from communities for assistance with a local community plan. By the end of 1981, the Council will have assisted six communities complete master plans. For its membership fee in the Council, a town can receive any of twenty-two types of assistance identified by NCC. Communities can contract with NCC to undertake special project programs which require a significant amount of time over and above the normal types of services. Sponsorship of the Municipal Law Lecture series and membership on the Environmental Law Clinic affords the Council with the opportunity to secure necessary legal information on behalf of the town. The Council has been active in a number of regional issues such as transportation, economic development, land use, and housing. In transportation, the Council has supported the restoration of rail service to the Mt. Washington Valley area and initiation of commuter air service in Berlin, assistance to the Whitefield Regional Airport, and improved highway and public transportation systems. In land use, the Council has published reports on the Role of Agriculture in the North Country, Managing Wetland, and several brief fact sheets.

The Council has accelerated its economic development program with the addition of a Business Development Director who is making direct contact with businesses to encourage them to locate in North Country communities who have identified new industry as a need. NCC has prepared a regional industrial brochure coupled with local area fact sheets as a tool to encourage planned economic growth. As a result of these efforts, several companies have expressed an interest in locating in the region. Efforts are underway to establish a

Revolving Loan Fund as an incentive for prospective industry.

In rural development, assistance has been provided to a number of communities in areas such as wastewater treatment, solid waste, water supply improvement, and other necessary community projects. A special report on Rural Development is available.

Because of the Council's activity in energy, the Governor's Council on Energy granted NCC some funds which will enable the Council to assist three targeted communities to prepare a local energy plan.

State and federal agencies and statewide groups continue to contact North Country Council for a North Country perspective on such varied issues as growth, forestry, environmental concerns, land use, and manpower training. For example, in June, the Council presented testimony to a special legislative committee on proposed changes needed in the state's planning and zoning legislation. Association with these groups provides NCC with the opportunity to share some of the regional and local concerns expressed by the towns with those state and federal agencies whose decisions will impact on the region. The Council continues to work with other regional councils in New England through the efforts of its President who serves as a Board member of the National Association of Regional Councils.

The efforts and accomplishments of the Council are a collection of the many contributions of local towns, other agencies, our fine staff, the Board of Directors, and the Executive Committee. We express our appreciation to the Town for its support and assistance during the year. North Country Council is an arm of local government in the North Country. Please contact us at 823-8108, if the Council can be of service to your Town.

Respectfully Submitted,

Mary Sloat

Harold Marshall

Robert Mayhew (alt.)

NCC Representatives

## NORTHUMBERLAND HOUSING AUTHORITY REPORT

In 1980, the Authority filed an application for seven units of assisted housing. This application was approved and at this writing the program is operational, i.e., the Authority is making housing assistance payments on behalf of lower income tenants occupying privately-owned rental units located in Northumberland. A brief description of the Authority's Assisted Housing Program is placed in file in the Town Office.

Also during 1980, the Authority continued to monitor the operation of the elderly housing complex known as the Melcher Court Apartments. Lower-income elderly persons interested in obtaining a Melcher Court Apartment should contact the owner's Northumberland representative, Mr. Joseph Paquette.

Respectfully submitted

Robert Styles  
Carl Craggy  
James Bryan  
John Blackadar

### SENIOR MEALS PROGRAM

There were 5,063 meals served in 1980. In January the library offered books to be delivered and R.S.V.P. offered mileage reimbursement for delivery to shut-ins, with no interest.

The Girl Scouts prepared and served meals twice during the year directed by Kathy Hutchinson. The Groveton High School Home Economics Class directed by Yvette Marquis also prepared and served twice during the year. The ladies of the Moose Club prepared and served three times and the ladies of Stark prepared and served eight times during the year.

On April 15, twenty senior citizens visited the Sugar House in Jefferson, N.H., for a sugaring off party. Recognition Day for R.S.V.P. (Retired Senior Volunteer Program) members and spouses was held June 21 at Rogers Campground and it was well attended.

On October 11, sixteen senior citizens went on a bus tour through the Kancamagus Highway. Mrs. Gallen attended our dinner on October 15. We have free blood pressure clinics the third Wednesday of every month. We have 18 active R.S.V.P.'s and can use more.

Respectfully submitted

45 Eva Knowlton, Director

I N F O R M A T I O N   P E R T A I N I N G   T O  
K E E P E R S   O F   D O G S

Every keeper of a dog three months old or over shall annually, on or before April thirtieth license their dog in the office of the Town Clerk. A tag will be furnished which shall be worn by the dog. Before a license is issued, the keeper of the dog shall furnish to the clerk a certification that said dog has been vaccinated against rabies. The fee for a license for a year shall be \$3.50 for a neutered male or spayed female dog. If said dog has been neutered or spayed a certificate from the person performing the operation must be furnished to the clerk. Kennel licenses are also available for keepers of 5 or more dogs, with proportionate fees. There is an additional fee of a dollar for each month's delay in licensing a dog after June 1st. The selectmen of each town annually within ten days of June 1st., issues a warrant to the police department directing them to proceed forthwith either to collect the fees due or cause to be killed all dogs not licensed.

A dog will be deemed a nuisance if it barks for sustained periods of time, or during the night hours as to disturb the peace and quiet of a neighborhood area; if it digs, scratches or excretes or causes waste or garbage to be scattered on the property of other than its owner; if it is permitted to run at large or to be off the premises of the owner; and if in heat it is used for hunting. A dog shall be deemed a menace if it growls, snaps at, runs after or chases any person, bicycle, motor vehicle, motorcycle or other vehicle being driven, pulled or pushed on the streets, highways or public ways. A dog shall be deemed vicious, if, whether alone or in a pack with other dogs, it bites, attacks or preys on game animals, domestic animals, fowl or human beings. The fines for these offenses are: nuisance \$10.00, menace \$15.00 or vicious \$25.00. Notices of offenses are given by the police department, payable at the office of the town clerk within 4 days of the given notice.



PROPERTY TAX VALUATIONS - 1980

List includes assessed valuations before applying Elderly and Blind exemptions.

	LAND	BLDG.		LAND	BLDG.
Achilles, Norman	1850	10000	Bartlett, Sharon	2450	2700
Adair, Kenneth	3240		Barnard, James	2450	7550
Aitken, Hugh	3600	2450	Bean, Alcide	1350	3300
C.U.	830		Bean, Alida	1350	4500
Aitken, Hugh	192		Bean, John C.U.	500	
Akesson, Robert	1850	8000	Bean, Robert	2450	6500
C.U.	93		Bean, Rose	1850	4000
Alexander, Joseph	900	3000	Bean & Chase C.U.	100	
Alexander, Joseph	600	1350	Bean & Chase C.U.	260	
Alexander, Richard	1850	2500	Bean & Chase C.U.	200	
Allin, Glen	2450	5000	Bean & Chase C.U.	1202	
Allin, Marlene	1350	4500	Beaton, Franklin	1350	5800
Allin, Merle	1850	1440	Beaton, Paul	1850	6000
Anderson, John	2450	8000	Beaton, Paul	2450	
Anderson, Wendall	1350	8000	Beaton, Robert C.U.	1080	
Andritz, James	3100	5000	Beaton, Robert C.U.	1017	
Arietta, Alphonse	1350	5000	Beattie, David	2450	11000
Arietta, Alphonse	1350	6700	Beattie, Michael	21000	3000
Arms, Caroline	1850	2000	Beattie, Michael C.U.	271	
C.U.	250		Beattie Norma	1850	8000
Arms, Caroline C.U.	260		Bedard, Elaine	2450	5000
Arms, Caroline C.U.	322		Beesley, Paul		3100
Arsenault, Darrell	2450	5800	Beland, Alphonse	1850	6000
Arsenault, Darrell	900		Beland, Geneva	1350	5000
Arsenault, Donald	1350	7300	Belisle, Bernard	3100	9000
Arsenault, Elizabeth	1850	5000	Beliveau, Dennis	1350	5000
Ash, Ronald	1350	5400	Beliveau, Robert	1350	4000
Astle, Edgar	1350	5500	Bennett, Aaron	3100	2000
Atkinson, Thomas	1350	5000	Bennett, James Jr.	1350	5500
Aubut, Gerard	1850	5550	Bennett, James Sr.	1350	2950
Audit, Alfred	1850	1800	Bennett, James Sr.	900	
Auger, Albert	2450	8000	Bennett, Lance	1850	4000
Auger, Louis	2450	5000	Benoit, Edward	1850	5000
Aylward, Leo	1850	10000	Benoit, Lawrence	1350	6200
Bacon, Earl	1350	4000	Benoit, Raymond	900	4000
Bacon, Wava		2000	Benway, Edmond	1350	5200
Bag Hill Enterprise	3100		Bergeron, Roger	1850	8000
Bag Hill Enterprise	800		Berube, Dwight	2450	6500
Bailey, Everett	3240	10000	Berube, Rene	2450	6000
Bailey, Everett	1850	8500	Berube, Joseph	2450	5000
Baird, Brion	2450	13000	Berube, Robert		800
Baird, Brion	1850	7000	Bernard, Uldric	2450	6000
Baird, Brion C.U.	2862		Bickford, Mannix		3700
Baker, Lyle	2450	2500	Bicknell, Roscoe	2450	5800
Ball, Harriet	1350	5000	Bicknell, Roscoe C.U.	630	
Barnes, Carl	1850	2500	Bicknell, Roscoe C.U.	1877	
Barnes, Carl C.U.	2430		Bicknell, Roscoe	1350	
Barnett, Helen Est.	1850	1200	Bigelow, Ralph	1850	8000
Barnett, Helen Est. CU	1045		Bilodeau, Donald	1350	5000
Barnett, Wilbur		3900	Bilodeau, Yvonne	2450	2400
Barrett, Charles	1850	3000	Blodgett, Arthur	1350	5000
Bartlett, Barbara		3800	Blodgett, Louise	2450	3000
Bartlett, Ernest	1350	5000	Blodgett, Sherwood	1850	6000
Bartlett, Kenneth	1850	5000	Boisselle, Paul	1850	6500

Boissoneault, Henry	2450	3900	Caron, Roland	1350	6000
Boissoneault, Pearl		2700	Carter, Floyd	1850	7000
Borg, Carl	2450	6300	Carver, Helen	1850	4200
Bouchard, Walter	1850	5400	Carver, Ora	1350	6000
Boucher, Carline	1850	5000	Cass, Elmer	1350	3000
Boucher, Nourine	1350	5000	Cass, Stephen	1850	8000
Boudle, Aubrey	1350	3000	Cass, Thomas	1350	
Boudle, Cleo C.U.	1000		Cass, Thomas	1350	4500
Boudle, Lawrence	1350	5700	Cayer, Richard	7300	
Boudrias, Hector	1850	5000	Chadwick, Florence	1350	5500
Boudrias, Hector	1250		Chadwick, Michael	900	2200
Boudrias, Louis	1350	3600	Chamberlin, William	2700	
Boudrias, Urgel	1850	5400	Chapman, Bertha & Mary	2400	7100
Bourassa, Richard	1850	5000	Charbonneau, Charles	1350	5000
Boutin, Joan	1350	4200	Charbonneau, Isaie	1850	6000
Boutin, Rene	1850	5400	Charleston, Norman	2450	8550
Brann, Charles	1850	7000	Charlette, Ruth	1350	5500
Brann, Kendall	1850	7000	Charron, Dennis	1850	7000
Brann, Kendall	900	4200	Charron, Dennis	1620	5000
Brann, Kendall C.U.	150		Charron, Henry	900	5000
Brann, Kendall	300		Chauvette, Roger	3100	6600
Brann, Kendall	1350	5400	Chessman, Frank	2450	7080
Brann, Kendall	1850	5100	Chevron USA, Inc.	19440	12000
Brann, Kendall	900		Chilafae, Abbie	2450	3000
Breault, Arthur	3300	6200	Choquette, Roger	1200	
Breault, Joan	1850	7000	Christopher, George	1850	7000
Breault, Lionel Est.	1850	6000	Christopher, Shirley	3240	6600
Brigham, Rowena	2450	5000	Cilibrasi, Luigi	3100	3000
Brockett, Ronald	1850	5000	Clark, Dean	1350	5800
Bronson, Robert	2450	5500	Clark, Irene	1850	5000
Bronson, Robert	1500		Clark, Richard	1850	5000
Brooks, Philbert	2450	5000	Clement, Raymond	3240	6200
Brooks, Philbert	3100		Cloutier, Albert	5000	
Brown Company C.U.	600		Cloutier, Antonio	1850	6000
Brown, Irving Sr.		3100	Cloutier, Antonio	900	
Brown, Irving Jr.		4000	Cloutier, Emila	900	2500
Brown, Irving Sr.		1500	Cloutier, Eugene	2450	4200
Bronson, Janet		3800	Cloutier, Henry	1850	4200
Bryan, James	1350	5000	Cloutier, Lorenzo	2450	7900
Buckley, Michael	2450	5000	Cloutier, Minnie	1850	5000
Burns, William	1350	4000	Cloutier, Monique		3900
Burns, William	1850	6000	Cloutier, Monique	1850	4200
Burt, Rayfield	1350	5000	Cloutier, Rosario	1350	6000
Bush, Priscilla	1850	3600	Cloutier, William	1850	6000
Bushey, Bernard	3240	6000	Cole, Adelaide	2450	4500
Bushey, Bernard	2450	6000	Cole, Lucy	1850	4000
C.C.T. Investments	1850	4800	Cole, Reta Est.	1850	5000
C.C.T. Investments	2450	2000	Collins, H. M. Heirs	2450	600
Call, John	2450	6900	Collins, Robert	1850	7200
Call, Sandow	1850		Colp, Paul	3500	1000
Call, Selina	1350	1800	Conn. Valley Chipping		
Call, Selina C.U.	212		C.U.	4740	
Canadian National RR	16200		Cook, Reginald	2450	5000
Cantin, Florence	1850	5000	Corrigan, Leo C.U.	900	
Cantin, Reynold	2450	5500	Cote, Andrew	2450	3500
Caouette, Theodore	1350	3900	Cote, Edith		3500
Cardin, Katherine	1350	5000	Cote, S & M	2450	1200
Caron, Ernest	1350	7000	Cotter, Francis	2450	3000
Caron, George	2450	5400	Cotter, Francis C.U.	3488	
Caron, Paul	1350	4000	Cotter, Francis C.U.	258	

Cotter, Francis C.U.	342		Dingman, Ronald	2450	4300
Cotter, Robert	2450		Doherty, Lawrence	1350	3000
Couture, Bertrand	2450	5800	Doherty, Patrick	1850	4200
Covell, Irving	5000	25000	Donnelly, Raymond	1850	6750
Covell, Irving C.U.	2418		Donovan, Elmer	1350	4400
Covell, Irving	5000		Donovan, James	1350	5600
Covell, Irving C.U.	1489		Doolan, James	1850	7000
Covell, Irving C.U.	37		Dorr, Robert	1350	3300
Covell, Thomas	2450	9700	Dowland, Edward		4000
Craggy, Carl	1350	4500	Doyle, Marjorie	2450	7100
Craggy, Harold	1350	5000	Doyle, Matthew	2450	
Craggy, Howard	3100	6500	Dresser, Roland	1850	7500
Craggy, Howard C.U.	700		Drew, Ethel	1350	4400
Crawford, Bradley	1850	5200	Dube, Armand	1350	4500
Crawford, Hollis	1850	6000	Dufour, Medias	3100	9100
Crawford, Otis	1350	4500	Dulyna, John	2450	5500
Crawford, Raymond	2450	4000	Dumas, Wilfred	1350	5800
Crawford, Wilson	300		Dunham, Ervena	1350	5000
Cray Oil Co.	18954	10800	Dunham, Ervena	1350	
Cross, Michael	2450	11000	Dunham, Leslie	1350	4500
C. B. Cummings C.U.	303		Dupont, Raynard	1100	
C. B. Cummings	1620		Dupuis, Albert	1850	6900
C. B. Cummings	3240	7500	Dupuis, Bernard	5670	10200
C. B. Cummings	4860		Dupuis, Bernard	1850	5000
C. B. Cummings C.U.	5030		Dupuis, Bernard	517	
C. B. Cummings	2430		Dupuis, Bernard C.U.	182	
Cummings, H & D	1850	6000	Dupuis, Bernrad	1350	
Cummings, H & V	1350	6000	Dupuis, Bernard	2450	13800
Cunningham, Mary Jane	2450	6000	Dupuis, Cleo	8100	21000
Currier, Richard	1350	5000	Dupuis, Geraldine	1350	5000
Currier, Richard, Jr.		3700	Dupuis, Leon	1350	5600
Currier, Stephen	2450	3200	Dupuis, Norman Est.	1850	5000
Curtis, Ellen	1850	1200	Dustin, Merle	1350	6500
Curtis, Walter		1260	Ellingwood, Ethel	1850	6000
Daigneault, Ronald	3100	10000	Ellingwood, EthelC.U.	1148	
Damon, Merle	450		Ellingwood, Ethel	5000	
Damon, Merle	2450	15600		C.U. 930	
Damon, Merle	4752		Ellingwood, EthelC.U.	922	
Dankers, Martha C.U.	339		Ellingwood, EthelC.U.	123	
Davenport, Jean V.	2450	5500	Ellingwood, EthelC.U.	224	
Davenport, Frank	1350	6000	Ellingwood, EthelC.U.	109	
Deblois, Ola Est.	1350	3000	Ellingwood, EthelC.U.	155	
Deering, Mary	1350	4500	Emerson & Son, Inc	3100	6000
Delean, Ruth	4050	7280	Emerson & Son, Inc.	2700	900
Delisle, Henry C.U.	2220		Emerson & Son, Inc.	1350	3000
DesLauriers, Andre	8500	18000	Emerson & Son, Inc.	8100	30000
DesLauriers, Lorraine	3100	11500	Emerson & Son, Inc.	1350	4500
Deyette, Jean	3500	1000	Emerson, Dorothy	2450	6000
Deyette, Raymond	3200	7600	Emerson, James	3240	8000
Deyette, Raymond C.U.	272		Emerson, James	1350	10000
Deyette, Raymond C.U.	1157		Emerson, James	3240	8000
Deyette, Raymond C.U.	145		Emerson, Leslie	1000	900
Deyette, Tyrone	3500	5500		C.U. 788	
Diamond International	2450	12360	Emery, James	1350	5000
Diamond International			Emery, Pearl	5250	4000
	C.U.	1440	Emery, Stanley	3100	7000
Dibner, Andrew	4786		Estes, Theodore	1850	4200
Dimick, George	1350	5000	Evans, Anna C.U.	520	
Dingman, Katie	3100	1500	Evans, Harvey C.U.	94	
Dingman, Katie	1350	2000	Everleth, William	1850	5500

Turkenstrom, Charles	2450	2500	Gilcris, Pearl	1350	1800
Farrell, Helen	1850	5100	Gilcris, Roland	1350	5000
Farrow, Judy	900	3000	Gilcris, Ronal	2400	8400
Ferland, Philip	1850	5500	Gilcris, Wayne	1350	5000
Fisk, Clyde	1850	4800	Gillis, Hugh	2450	9000
Flight, Gordon	900	5000		C.U.	160
Flight, Gordon	900	5000	Gilman, Douglas	1850	7000
Fluery, Vernard	1850	5000	Gilman, Richard	900	900
Fogg, Dana	2450	1500	Girouard, Armand	1350	6900
Fogg, Donald C.U.	12818		Glidden, William	1850	5500
Fogg, Donald C.U.	4812		Goad, Clayton	2450	1200
Fogg, Elliott	1350	6000	Gonyer, James	2450	5000
Fogg, Pierson	4860	12000	Gonyer, John	1350	5400
Fogg, Pierson	6750		Gonyer, Mildred	1350	4000
Fogg, Pierson	400		Goss, Barbara		1800
Fontaine, Albert	1350	4200	Gould, Jay J.	7000	
Fontaine, Dennis	2450	5000	Gould, Jay J.	27000	
Fontaine, Leonard	4000	5000	Gould, Jay J.	4050	4800
Fontaine, Nelson	2450	5100	Gould, Jay J.	3500	12300
	C.U.	500		C.U.	6302
Fontaine, Nelson	900	300	Gould, Jay J.	3240	1500
Foote, Sheila	2450	4200	Gould, Jay J.	6850	
Ford, Chandler	3240	12000		C.U.	1024
Ford, Chandler	1620		Gould, Jay J.	8100	1800
Ford, Chandler	1620	5000	Gould, Jay J.	5550	
Ford, Chandler	1350	5400	Gould, Jay J.	2450	
Forrest, John	1850	6000	Gould, Jay J.	C.U.	2881
Fournier, Leonard	1850	7600	Gould, Jay J.	1350	
Frechette, Roland	1850	6000	Gould, Jay J.	1350	
Frizzell, Adelene	1350	4000	Goulet, Aime Estate	3970	3600
Frizzell, Bernard	2450	14460	Goulet, David	1350	5000
	C.U.	6100	Goulet, George	1350	4000
Frizzell, Bernard	5250	9800	Goulet, Leo	1850	3900
	C.U.	3925	Goulet, Maurice	1350	2500
Frizzell, Leo	1850	5000	Goulet, Regina	1350	2500
Frost, Frederick	1350	5000	Goulet, Wayne	2450	6000
Fuller, Guy	1350	3600	Grandmaison, Beth	315	
Fysh, Eugene	1350	3600	Gray, Harland	1350	6400
Gadwah, Durwood	1850	4200	Gray, Mark	3575	7000
Gadwah, Vern	3100	3000		C.U.	620
Gagnon, Alan	1350	5000	Greene, William	1620	
Gagnon, Alfred, Jr.	2450	2100		C.U.	2272
Gagnon, Clarence	1850	5700	Greene, William C.U.	2564	
Gagnon, Clarence	1350	5000	Greene, William C.U.	1521	
Gagnon, Clarence	1350	5500	Greene, William C.U.	1215	
Gagnon, Clarence	1850	4800	Greene, William C.U.	1943	
Gagnon, Florent	1350	4000	Gries, Daniel	2450	3100
Gardiner, Irma	1350	5000		C.U.	224
Gardiner, Edna	1350	6000	Griffith, Florence	2450	5000
Garland, Peter	1850	5000	Groleau, Real	1350	5400
Garland, Peter C.U.	1000		Groleau, Real	1350	6000
Gaudette, Armand	1350	5000	Grondin, Paul	4860	15200
Gaudette, Arthur	1350	3300	Grout, Doris	2450	4500
Gemme, Charles	3500	6500	Groveton Fish & Game		
Gerber, Wilhelm C.U.	520			C.U.	1080
Giggey, Leatha	1850	4200	Groveton Papers Co.	1350	
Gilbert, Eugene	1350	6000	Groveton Paper Board	30000	432000
Gilbert, Francis	1850	5400	Groveton Papers Co.	5000	122320
Gilbert, Ronald	2450	6000	Groveton Papers Co.		
Gilchrist, David	1850	6600	50	C.U.	52250

Groveton Papers Co.	555390	1500000	Houle, Joseph	1850	4500
Groveton Papers Co.	4860	9000	Houle, Joseph	2450	5400
Guanga, Joan	1350		Houle, Richard	1350	4000
Guay, Lionel	1850	5100	Houle, Richard	3240	7000
Guildhall, Town of	600		Howe, Alice, Heirs	3300	600
Guile, Larry	2450	6500		C.U. 611	
Gulick, Raymond	1350	4000	Howe, Harry, Heirs	1350	4000
Haas, Jon	1850	6100	Howe, Otis	1350	5400
Hall, Addison	1850		Humphrey, Harold	900	4000
Hall, George	1850	7200	Hunt, Arthur	1850	6200
Hall, Herbert	1850	5100	Hunt, Winston	1350	3000
Hall, Max	2450	6300	Hunter, Gordon	1350	3000
Hand, Gerard	2450	4000	Hunter, Henry	1850	8600
Hand, Kenneth	1850	5700	Hurlbutt, Agnes	1350	3000
Harmer, Marcia	1350	4000	Huntington, David	1850	5000
Hart, Emolleen	2450	2800	Hurlbutt, Ralph	2450	6800
Hart, John	1350	6600	Hurlbutt, Ralph	1850	
Hart, Wendall	1850	6000	Hurlbutt, Ralph	6000	
Hart, Richard W,	2450	3000	Hurlbutt, Raymond	1850	7400
Hart, Richard D.	1350	5500	Hurlbutt, Raymond	900	
Hart, Earl	600		Hurlbutt, Raymond	1850	4000
Hart, Robert	1850	5000	Hutchinson, Richard	1350	5000
Hart, Royden Sr.	2450	5000	Irving, Harry	1350	4500
Hart, Royden Jr.	2450	5000	Irving, Rodney	1850	6000
Hart, Royden Jr.	1850	5000	Irving, Vernard	1350	4500
Hartlen, Blaine	2450	4500	Island Farms, Inc.	2450	9200
Hartlen, Donald	1850	7200	Island Farms, Inc.	5150	31300
Hartlen, Gary		3700	Island Farms, Inc.	1350	3000
Hartshorn, Raymond	C.U. 2350		Island Farms, Inc.	2450	8000
Hartshorn, Raymond	C.U. 150		Island Farms, Inc.	2450	22000
Hawes, Winston	1350	7000	Israel, Samuel	1620	6700
Hawksley, Fay	1350	5000	Jarvis, Fred	2450	2500
Hawksley, Frank	1350	5400	Jarvis, Marguerite	1350	4500
Hawksley, Lee	1350	5400	Jewell, Bradley	2450	8400
Hawksley, Merle	2450	5600	Jewell, Curtis	1850	6000
Hayen, Sally	1640		Jewell, Ernest	1850	6000
Hayen, Sally	3600	3000	Jewell, John	2450	4200
Hayes, Marie Estate	1850	5100	Jewett, Frederick	3240	2000
Hayward, Clyde	3100	8100	Jewett, Frederick	4050	12200
Helms, Evelyn	1350	5100	Johnson Products, Inc.		4500
Henson, Helen	1350	4200	Johnson, Alma	1350	5500
Hersom, Lyle	2450	7100	Johnson, Edwin	1850	600
Hersom, Clara	2450	6000	Johnson, Kenneth	2450	
Hibbard, Cecil	1850	3600	Johnson, Larry		3900
Hickey, James	1350	4000	Johnson, Pauline	1850	5100
Hickey, Randy	1850	5000	Johnson, Raymond	1620	4800
Hiltz, Jack	3100	12000	Johnson, Raymond	5130	10300
Hinkley, Katherine	1850	10500	Johnson, Stanford	1850	6000
Hodge, David	1850	5000	Johnson, William	3100	10200
Hodgkins, Darriel	1350	5700	Jordan, John	1850	5000
Hodgkins, Patricia	1350	4700	Jordan & Dyas	2450	4000
Hodgkins, Nancy	1850	6000		C.U. 970	
Holden, Annie	3100	5000	Jordan & Dyas	C.U. 185	
Holden, Annie	1955		Joy, Leslie	2450	8500
Hopps, Bernard	1350	5000	Joy, Leslie	1350	2000
Hopps, Elias	1850	3000	Joy, Nancy	1350	2700
Hopps, Elias	1350		Joyce, William	C.U. 1100	
Hopps, Kenneth	900	4200	Juvenal, Jacqueline	1350	6200
Hopps, Kevin	1350	5700	Kelly, Edna	1350	3900
Houle, Andrew	1350	600	Kennett, Herbert		4000

Kennett, John		3900	Locke, Walter	1350	5500
Kenney, Thomas	1350	5500	Lord, Stuart	1850	6000
Kimball, Richard	1350	5000	Lovering, Bruce	1350	3500
King, Theodore	1350	6000	Loyal Order of Moose	2430	6030
Kingsley, Gary	2450	1980	Lufkin, Danny	1850	3600
Kingston, Durwood	1350	5400	Lurvey, Bernard	3100	5700
Knapp, Leslie	1850	3000	MacDonald, Walter	3600	10900
Knights, John	1350	5000	MacDow, James	2450	10000
Knowlton, Element	1850		MacKillop, Ronald	1350	4000
Knowlton, Marion Est.	1350		MacKillop, Ronald	1350	2800
Knowlton, Marion Est.	1850	5500	Maguire, Dennis	1850	6600
Koxarakis, Kostantinos	1350	3000	Maguire, Forrest	2450	6600
LaBounty, Gary	2450	4400		C.U. 2602	
LaBounty, Timothy	1350	3300	Maguire, Irene	1350	3000
LaBrecque, Bethany		2400	Mahurin, Flora		2000
LaBrecque, Elwood	2450	5000	Miles, Glen Sr.	1850	5500
LaBrecque, Gerard	2450	6000	Mahurin, Shepard	2450	6400
LaBrecque, Gladys	1850	5000	Main, James	3100	8000
LaCasse, Ronald	2450	7500	Major, Gilbert	1350	5900
LaCombe, Charles	2450	4000	Major, Gilbert	1350	
LaCombe, Charles	1350	4500	Maker, Elaine	2450	3000
LaFlamme, Earl	4050	7620	Malas, Hilda	1850	5100
LaFlamme, Howell	1350	4500	Manning, Elinor	1350	6400
Laiuppa, Julius	6250	1500	Manville, Ronald	3700	
Lakin, Arlene	900	3600	Marino, Joseph		3900
Lakin, William		4000	Marshall, A. J.	5150	5000
Landry, Charles	2450	6000	Marshall, Andrew	1350	4500
Landry, Raymond	1850	5100	Marshall, Andrew	2450	5000
Lang, James	1850	5000	Marshall, Clarence	2450	7000
Langley, Dennis	2450	6400	Marshall, Clarence	1850	3000
Langley, George	2450	16000	Marshall, Clarence		
Langley, Paul	1850	5100		C.U. 1640	
Langlois, Donald	1850	5670	Marshall, Corinne	1350	4500
Langlois, Donald	1850		Marshall, Donald	2450	6800
LaRoche, Dollard	1350	5000	Marshall, Donald	C.U. 746	
LaRoche, Dollard	2450		Marshall, Harold Jr.		2000
LaRoche, Dollard	1350	2500	Marshall, Harold Jr.	1350	6000
LaRoche, Lorea	1850	6500	Marshall, Harold Sr.		4000
LaRoche, Maurice	2450	5200	Marshall, Harold Sr.		
Lavoie, Albert	1850	5700		C.U. 686	
Lavoie, David	1850	3700	Marshall, James R.		4000
LeClaire, Lorne	1350	3000	Marshall, James A.	2450	8550
LeMay, Henry	900	2700	Marshall, Richard L.	2450	6000
LeClaire, Paul	3100	11000	Marshall, Stewart	1350	5000
LeClerc, Odina	2450	5000	Martin, Constance	1350	5000
LeClerc, Odina	900		Martin, Millard	C.U. 570	
LeClere, Arthur	1350	6000	Martin, Millard	C.U. 80	
LeClere, Barbara	1850	6400	Martin, Millard	C.U. 250	
LeClere, Raymond	2450	7500	Martin, Millard	3700	
LeCoq, John	5468		Martineau, Albert	3700	2000
Ledger, Stewart	2450	5000	Mason, Armand		3900
LeDuc, Michel	1350	7200	Mason, Paul	1350	6000
Lewis, Archie, Sr.	1350	3600	Mason, Percy	2450	4000
Lewis, Warren		4000	Matthews, Bessie	1350	5000
Libby, Charles	3100		Matthews, Carroll	1850	5000
Liebeskind, Stephen	2450	5600	Mayberry, Herbert	1850	4000
	C.U. 2380			C.U. 750	
Livingstone, Charles	C.U. 110		Mayberry, Herbert	90	
Lizotte, Benoit Est.	1850	4700	Mayberry, Raymond	1350	5500

Mayberry, Richard	2550	1180	Moffett, Donald	1850	6600
Mayhew, Lewis	2700	3000	Montanye, Howard	1850	5500
Mayhew, Michael C.U.	350		Mooers, H. Brian	1850	6150
Mayhew, Paul	1350		Morehouse, Brandon	2450	6000
Mayhew, Robert	1850	7100		C.U. 100	
Mayhew, Roger	1850	6000	Morey, Kenneth	2400	
Mayhew, Roger C.U.	150		Morey, Peter	1850	6000
McBride, Jessie	1350	4000	Morey, Peter	2450	9100
McCormack, James	1850	5500	Morin Oil Co.	2450	500
McCormack, James	300		Morin Oil Co.	6480	6600
McCormack, James	300		Morrison, Dorothy	1350	5000
McCormick, Marjorie	1850	4000	Moyse, Earl	1850	4200
McCormick, Marjorie	1850	3500	Moyse, Earl	300	
McDade, James		3900	Mueller, Theresa		3900
McDonald, James	1850	4000	Muise, Arthur	3100	8900
McFarland, Alice	1850	6000	Muller, Theodore	1850	6000
McFarland, Beverly	1350	3500	Munson Earth Moving	20020	
McFarland, Phyllis	2450	5000	Nadeau, Francis	1000	180
McGuire, Rilma C.U.	710			C.U. 1800	
McGuire, Rilma	1620		Nelson, Charles	2450	6600
McGuire, Rilma	900	1000		C.U. 594	
McGuire, Rilma C.U.	506		Nelson, Richard C.U.	500	
McKay, William	4900		New England Telephone	6480	31800
McKenzie, Raymond	1350	4000	New England Telephone	1620	
McKenzie, Raymond	1350	4000	New England Telephone	1620	
McKenzie, Raymond	3100	7800	Newton, Anne	2450	3500
McLain, Chesley	2450	6100		C.U. 150	
McLaughlin, Pearl	2450	5000	Newton, Raymond Jr.	1350	4000
McLeod, Norman	1350	5000	Newton, Raymond Jr.	1850	
McMann, Benjamin	1350	5000	Newton, Raymond Sr.	1350	3000
McMann, Charles	3100		Nolette, Homer	3240	9500
McMann, Harriett	2800	9500	Normand, John	1350	6500
McMann, Lucille	2450	4500	Normand Joseph	1350	5700
	C.U.	890	Normandeau, Gary	3100	7500
McMann, Stephen	2450	4000	Normandeau, Roland	1850	5000
Mellet, Edwin	2450	6900	North Country TV	2450	300
Menzies, Douglas	2450	5000	North Country TV	1500	
	C.U.	120	Northern Chipping	C.U. 1534	
Merriam, Gary	3100	8100	Northumberland Associates	Ltd.	
Merrill, John	1350	5000		32400	276000
Merrill, Richard	2450	6000	Noyes, Norma	1850	3300
Merrill, Warren	1850	6000	Nugent, Willard	3240	1800
Merrow, Allan	2450	6800	Nute, Sylvania	1850	5400
Merrow, Charles	3100	5000	O'Neil, Elizabeth	1350	5500
Methot, Lillian	3100	5700	O'Neil, Elizabeth C.U.	109	
Meunier, Helen	1350	5000	Oakes, Philip	2450	6000
Meunier, Leo	2450	4500	Oakes, Philip	1620	
Meunier, Philip	1850	4200	Oliver, Edgar	4860	11000
Marshall, Jean M.		2600	Ordzie, Thomas	2450	7000
Michaud, Maurice	2450	6000	Ouellette, Leo	4600	5400
Micucci, Louis	1350		Ouellette, Maurice		2400
Miles, Carrie	900	3000	Page, Earl	1850	3300
Miles, David	1350	5000	Page, Milton	2450	6300
Miles, Herbert	2450	6300	Palfrey Court	3100	600
Miller, John	1350	2000	Palmer, Mable	2450	6000
Miller, Ruth	1850		Paquette, Alcide	1850	5000
Mills, Margaret	1350	4000	Paquette, Alcide	1850	5000
Mills, Harold	1350	4000	Paquette, Alcide	2450	5500
Mills, Michael	1850	6600		C.U. 2180	

Paquette, Florina	1850	5000	Redmond, Arthur	2450	6000
Paradis, Jeannette	1850	4200	Reed, Clarence	1850	2500
Paradis, Richard	2450	5400	Reilly, Peter	2150	6600
Paradis, Robert	1350	4500	Reynolds, Clarence	3100	3000
Paradis, William	1850	6000	Reynolds, Daniel	1350	5100
Paradis, William	3100	8100	Reynolds, Eugene	2450	3000
Parkinson, Walter C.U.	3495		C.U.	542	
Parks, Arthur	1850	6000	Reynolds, William	3100	10000
Parks, Gregory	1350	5000	Rice, H. Lee	2450	5000
Parks, Robert	900	1560	Rice, James	900	2700
Parks, Robert	1350	3000	Rich, John	2450	5000
Parsons Realty	12150	28500	Rich, Leo	1850	5200
Partridge, Russell	1350	7200	Richard, Leo	1350	5400
Patrick, Philip	1850	6000	Richards, Frank	2450	5100
Paugh, John	1350	7200	Ricker, George	1350	900
Payeur, Bernard		3900	Riendeau, Donald	1850	6600
Pelchat, Robert	1850	3300	Riendeau, George	1850	6150
Pelletier, Armand	1350	4000	Riendeau, Zepher Heirs	4600	8400
Pelletier, Mary Heirs	1850	5000	Rivers, Wilson	1350	4000
Penney, Amelia	1350	5000	Roberge, Roland	1350	3000
Penney, Robert	2450	5000	Robert, Albert	1350	6000
People's National	3240	48900	Robinson, Edmund	1850	6000
Perras, Real	2450	10500	Robinson, Dana	1350	5000
Perras, Real	1850	4500	Robinson, Frederick	4050	9000
Perras, Real	7850	31850	Robinson, Ira	1350	3900
C.U.	1833		Robinson, Maurice	1350	5000
Perras, Real C.U.	1166		Roby, Lillian	1350	1500
Perry, Kenneth C.U.	750		Rosebrook, William	1350	4000
Perry, Louis	1350	1100	Rosebrook, William	3300	6100
Phelps, Frederick	900	600	Routhier, Bernard	2028	
Pike Industries, Inc.	8000		Routhier, Bernard	2450	9600
Pinault, Esther	2450	5000	Routhier, Gerard	2450	3500
Pinette, Eddie	1850	5600	Rowden, Ralph	2450	5000
Pivin, Robert	1350	3200	Roy, Richard	1850	7800
Platt, Clyde	2450	5700	Rushmore Paper C.U.	1000	
Platt, Hadley	2150	6600	Rushmore Paper C.U.	1250	
Platt, James	1350	5800	Russ, Doris	1350	3900
Platt, Mary	1850	5000	Russ, Doris	1850	3900
Platt, Robert	1350	6200	Russ, Doris	3100	5100
Plunkett, Richard	2450	3000	Russ, Doris	1350	
C.U.	2528		Russ, Doris	2700	1200
Pomerleau, Joseph Est.	1350	2500	Russ, Doris	900	600
Potter, Alton	2450	8000	Russ, Doris	900	600
C.U.	1813		Russ, Doris	900	1620
Potter, Alton C.U.	2669		Russ, Doris	900	600
Potter, Alton C.U.	456		Russell, Fletcher	900	
Potter, Alton C.U.	230		Ryan, John	1850	8000
Potter, Clayton C.U.	670		Ryan, John	810	
Potter, Dennis		4000	Ryan, Lena	1350	5000
Potter, Howard	1850	5000	S & W Market	16200	50000
Potter, J. Richard	1850	6500	Salter, Robert	6000	3000
Potter, Clayton	50		Sanborn, C. Dean	2450	9000
Potter, Clayton	25		Savage, Harold		4000
Potter, Leroy	1350	4000	Savage, James	1850	5000
Potter, William		4000	Savage, Jessie C.U.	2205	
Powers, Clifton	1850	5000	Savage, Sharon	1850	4000
Proctor, Mitchel	3400	13000	Schleper, David	8100	27000
Public Service Co.	5700	1480000	Scott, Elbert	1850	5000
Ramsay, Gordon	3100	9100	Scott, Ellsworth Est	1850	6000



Scott, Keene	1350	5000	Styles, Thomas S.	2450	6000
Scruton, Frank	20000	4200	Styles, William Est.	4590	7800
Shannon, Fred	2450	2500	Sullivan, Herbert		2500
Shannon, Otis	1850	5000	Sullivan, John	2450	6000
Shannon, Roland	1350	5000	Sullivan, Mike	1350	5500
Sheltry, Donald	1850	6000	Swift, Millard	1350	6000
Sheltry, Jennie	1350	4000	Swift, Roderick	1350	5400
Sheltry, Kathleen	1850	5500	Taylor, Florence	1850	7000
Sheltry, Richard	2450	6300	Taylor, Walter	1850	7500
Shoff, F. Lynwood	1850	5400	Temple, Franklin	7840	
Shores Heirs	1850	2400	Tetreault, Bradley	1850	3000
	C.U.	1640	Tetreault, David	1850	6500
Shufelt, David	1350	5000	Tetreault, Joseph	1350	7000
Simonds, Arthur A.	2450	10000	Tetreault, Lawrence	2450	4700
Simino, Roger	3100	8900	Tetreault, Raymond	1350	6000
Simino, Roger	600	720	Tetu, Charles	1350	4000
	C.U.	1512	Tetu, Charles	310	13600
Simpson, Jon		3600	Theriault, Arlene	1850	5000
Singer, Edward	900	2430	Thibodeau, Napoleon	1850	5700
Singer, Edward	900	1380	Tilley, Anita	1350	4500
Singer, Ronald		3200	Tillotson, Charles Heirs		
Slaby, John	1850			1850	6000
Sloat, Bruce	2450	6000	Tillotson, Dean	1850	6500
	C.U.	2970	Tilton, Arnold	2450	6000
Sloat, Mary	C.U.	2000	Tilton, Channie	1850	4500
Sloat, Mary	500	2000	Tilton, Florence	3100	3500
Sloat, Mary	2450	5600	Tippitt, Warren	900	5000
	C.U.	1100	Tisdale, Cecil	1850	7000
Smith, Francis	1850	6100	Tisdale, Delford	1350	3000
Smith, F. & T. C.U.	250		Tobin, Robert	1850	6300
Smith, Frank	1850	6000	Trask, Winifred	1850	5000
Smith, Mansel	1350	5000	Treamer, Elmer	1350	4000
Smith, Merle Jr.	500		Trecarten, Warren	1350	5000
Smith, Merle Sr.	1350	5000	Trecarten, Warren	1350	
Smith, Rexford	1350	4000	Tremain, Adams & Bonura		
Smith, Robert	2450	4500		9720	160000
Smith, Theodore		3900	Tremblay, Victor	3100	5000
Snelling, Clifford	2450	2500	Vautier, A. A.	8935	
Spaulding, Raymond	925	4500	Ververis, George	2450	8100
Spaulding, Shirley	900	6000	Ververis, Pauline	1850	5000
Sparrow, Stephen	1350	5000	Viger, Gerard	2450	3500
Sprague, William C.U.	2700			C.U.	400
St. Onge, Michael	2450	3000	Waldruff, Ronald	2450	6300
St. Onge, Norice	1850	4000	Wall, Eleanor	2430	
Stanton, George	2450	4000	Wallace, Lawrence	3500	3000
Steller, Theodore	14885			C.U.	350
Stevens, George M.	3240	3000	Walsh, John		4000
Stevens, Harold	1850	4500	Washburn, Ruben C.U.	3780	
Stevens, Harold C.U.	1460		Watson, Richard	1350	5800
Stevens, Kenneth	1350	5000	Weagle, James	1350	4500
Stevens, Rolland	4860	8800	Welch, John	1850	6300
Stevens, Rolland	1350	6000	Wells, Wilbur	1850	6500
Stevens, Rolland	3240	1800	Wemyss, James C.U.	34	
Stone, Nicholas	1850	5700	Wemyss, James C.U.	6200	
Strawn, Vernal	1350	2100	Wemyss, James C.U.	3414	
Streeter, Dorothy Est.		4000	Wemyss, J & C. C.U.	183	
Styles, Robert	1350	8100	Wemyss, James Sr.	1850	5000
Styles, Thomas M.	3650	7000	Wemyss, J & Z	8100	33600
Styles, Thomas S.	3240	6800		C.U.	4392

Wemyss, J & Z C.U.	868	
Wheeler, Gary		3800
Wheelock, Alan	1850	6100
Wheelock, Lloyd	1850	
Wheelock, Lloyd	1350	6200
White, Douglas	2450	6000
White, Evelynna	1850	6000
White, Gary	1850	5000
White, Mildred	1350	4000
White, Richard	2450	6000
Whiting, Linwood	1850	4000
Wiles, Norman	1850	6000
Wilkinson, Paul	2450	6900
Willard, Burton Est.	1850	5000
Wilson, Bernice	1850	4500
Wilson, Dorcas	1350	3000
Winnepesaukee Lines	5740	
Woodward, David	1850	6900
Woodward, Elvin	2450	9550
Woodward, Elvin	2450	
	C.U.	741
Woodward, Lawrence	1350	4500
Woodward, Lawrence	1850	2000
Woodward, Neil	2450	8000
Woodward, Rose	1850	5000
Wright, Ernest	2450	2500
Wright, Kenneth	2450	1000
Wright, Ralph	8550	
Wright, Stanley	900	3000
Wright, Stanley	3100	4500
Wright, Stanley	2450	
Wright, Stanley	900	
Wylie, Roy	1850	5900
York, Rex	2450	6000
Young, Carl	900	2400
Young, Clifford	1350	5600
Young, Steven	900	4000
Young, Roland	1850	5000
Young, Thomas	1350	7000
Young, Victor	1350	5000
Zanes, William	2450	4200

#### Supplemental

Henry, Treffle		3800
White, Michael		3800
Carter, Elder & Sister		800
Rainville, Rodney		3800
Wemyss, James Jr.	4050	10000
Wemyss, James Jr.	2450	5000
Covell, Irving	92	
Blake, George	2450	5800

MARRIAGES REGISTERED IN THE TOWN OF NORTHUMBERLAND  
FOR THE YEAR ENDING DECEMBER 31, 1980

DATE	GROOM & BRIDE	RESIDENCE
Jan. 26	Roderick I. Swift Debbie L. Shufelt	Groveton, N. H. Groveton, N. H.
Feb. 16	Rodney M. Rainville Melinda A. Marshall	Colebrook, N. H. Groveton, N. H.
Mar. 15	Wayne R. Newton Karen M. Bronson	Nashua, N. H. Groveton, N. H.
Mar. 22	Kenneth P. Hodgdon Pammy L. Hall	Granby, Vt. Groveton, N. H.
Mar. 22	Ronald L. Eastman Darlene F. Bennett	Groveton, N. H. Groveton, N. H.
May 3	Roy R. Charlette Susan A. Greenlaw	Groveton, N. H. Groveton, N. H.
May 3	Daniel Beloin Deborah Littlehale	Colebrook, N. H. Groveton, N. H.
May 31	Roger J. Boivin Rose M. Shedd	Groveton, N. H. Groveton, N. H.
May 31	Frederick J. Donnelly Cheryl D. McLain	Lancaster, N. H. Groveton, N. H.
May 31	John A. Moffett Rhianne G. Ramsay	Groveton, N. H. Groveton, N. H.
June 7	Brian J. Styles Beth E. McCormack	Torrance, Calif. Groveton, N. H.
June 14	Dennis W. McLain Elizabeth R. Meehan	Groveton, N. H. Groveton, N. H.
June 28	Mark F. Keddy Mary J. Little	Stark, N. H. Groveton, N. H.
June 28	Michael J. LaFountain Carolyn A. Ingerson	Groveton, N. H. Groveton, N. H.
June 28	Steven M. Major Trudence E. Hall	Groveton, N. H. Guildhall, Vt.
July 5	Mark S. DiIorio Priscilla J. Eaton	Hanover, N. H. Groveton, N. H.
July 12	Robert B. Stinson Jacqueline A. Woodard	Stratford, N.H. Groveton, N. H.
July 12	Jesse D. Kennett Bethany A. Maguire	No. Stratford, N.H. Groveton, N. H.

July 26	Larry A. Guile Karen L. Peaslee	Groveton, N. H. Guildhall, Vt.
Aug. 2	Edwin L. Mellett Debra L. Parks	Groveton, N. H. Groveton, N. H.
Aug. 16	Robert F. Perras Christine M. McCormack	Groveton, N. H. Groveton, N. H.
Aug. 23	Oliver P. Bernard Debra A. Tetreault	No. Stratford, N.H. Groveton, N. H.
Aug. 30	Armand J. Dube Theresa M. Chenette	Groveton, N. H. Groveton, N. H.
Sept 20	Arthur L. Dunn Rejeanne L. Paquette	Lancaster, N. H. Groveton, N. H.
Sept 27	James M. Gonyer Roxann Russ	Groveton, N. H. Groveton, N. H.
Sept 27	Jon E. Simpson Tina M. Locke	Groveton, N. H. Groveton, N. H.
Oct. 18	G. Douglas McFarlane Arlene E. Moses	Ossipee, N. H. Groveton, N. H.
Nov. 21	Paul E. Wilson Susan L. Pandora	Groveton, N. H. Groveton, N. H.
Nov. 29	Michael J. Gagnon Risa L. Potter	Groveton, N. H. Groveton, N. H.

BIRTHS REGISTERED IN THE TOWN OF NORTHUMBERLAND  
FOR THE YEAR ENDING DECEMBER 31, 1980

DATE	CHILD'S NAME	PARENTS
January		
5	Kevin Curtis Huntington	Roger & Linda Huntington
8	Katrina Lynn Normandeau	Lance & Wendy Normandeau
18	Jonathan Frederick Benway	Frederick & Pamela Benway
30	Brooke Marie Normand	Jeffrey & Laurie Normand
February		
7	Patricia Louise Fox	Michael & Judith Fox
15	Aaryn Marie Bennett	Aaron & Linda Bennett
21	Patrick Larry Platt	Clyde & Dolores Platt
24	Kyle Joseph Hopps	Kevin & Valerie Hopps
March		
2	Michael Gerald Schleper	David & Beth Schleper
6	Jeffrey Thomas Young	Thomas & Bethany Young, 11
22	Brian Justin Mooers	H. Brian & Glennis Mooers

April

7	Jana Elizabeth Bernard	Uldric & Rebecca Bernard
10	Nathan Forrest Ladd	Robert & Lisa Ladd
10	Robert Jason Akesson	Robert & Patricia Akesson
13	Jack Wesley Call	Sandow & Terry Call
22	Noella Marie Kingsley	Gary & Lynn Kingsley
25	Jaycie Lynn Swift	Roderick & Debbie Swift
30	Erin Nicole Fogg	Brian & Amy Fogg

May

13	Alicia Marie Rainville	Rodney & Melinda Rainville
----	------------------------	----------------------------

June

1	Jason Scott Potter	William & Susan Potter
1	Elissa Marie Caron	Daniel & Elaine Caron
13	Wayne Arlo Elliott, Jr.	Wayne & Marcia Elliott
23	Tracey Lynn Gilcris	Tracy & Betty Gilcris

July

18	Trisha Ann Hartlen	Gary & Shirley Hartlen
----	--------------------	------------------------

August

16	Nicole Relyne Marie Gaudette	Bruce & Josie Gaudette
18	Jeremy Stephen Wheeler	Gary & Lisa Wheeler
22	Donald Parker Hamilton	Scott & Nancy Hamilton
26	Royce Christian Brockett	Ronald & Kathleen Brockett
31	Peter Joseph Reilly 11	Peter & Brenda Reilly

September

5	Krista Jeanne LaBounty	Timothy & Donna LaBounty
6	Meredith Catherine Willey	Fred & Colleen Willey, Jr.
15	Lori Jean Gilman	Douglas & Theresa Gilman
26	Amie Margaret Caouette	Theodore & Anna Caouette
26	Jessie Lee Colebank	William & Linda Colebank

October

23	Luke Ivan Shannon	Ivan & Judith Shannon
----	-------------------	-----------------------

November

15	Teri Michelle Rowley	Terry & Joyce Rowley
18	Jean Paul Beland	Alphonse & Theresa Beland
23	Mandy Lynn Gonyer	James & Roxann Gonyer
24	Jennifer Lynn Paquette	Donald & Shelley Paquette
25	Nathan Marcus James Styles	Thomas & Pamela Styles

December

4	Manessa Rae Bacon	Dennis & Rebecca Bacon
---	-------------------	------------------------

December (continued)

8 Alyssa Frances Jewell Bradley & Linda Jewell  
10 Kristy May Currier Richard & Cecile Currier, Jr.

DEATHS REGISTERED IN THE TOWN OF NORTHUMBERLAND  
FOR THE YEAR ENDING DECEMBER 31, 1980

DATE	NAME	PLACE OF DEATH
Jan. 9	Hortense M. Reynolds	Hanover, N. H.
Feb. 6	Benoit R. Lizotte	Lancaster, N. H.
Feb. 6	Mildred E. Chapman	Colebrook, N. H.
Feb. 8	George H. Collins	Lancaster, N. H.
Feb. 13	Lorna W. McNeilly	Lancaster, N. H.
Feb. 21	Alice R. Hodgkins	Berlin, N. H.
Mar. 4	Margaret J. Dube	Groveton, N. H.
Mar. 10	Cecil Ward	St. Johnsbury, Vt.
Mar. 31	Joseph R. Pomerleau	Groveton, N. H.
Apr. 3	Norman O. Dupuis	Berlin, N. H.
Apr. 5	Keith R. Gonyer	Groveton, N. H.
Apr. 8	Clarence H. Bedard	Lancaster, N. H.
Apr. 22	Robert S. Simard	Lancaster, N. H.
Apr. 23	Evelyn G. Goulet	Hanover, N. H.
May 13	Wilbur A. Wells	Lancaster, N. H.
May 29	Carroll E. Leighton	Groveton, N. H.
May 29	Ida I. Hart	Lancaster, N. H.
Sept. 30	Emery M. Strawn	Colebrook, N. H.
Nov. 10	Katie B. Dingman	Lancaster, N. H.
Dec. 18	Joseph J. Normand	Lancaster, N. H.
Dec. 18	Roderick J. Burt	Milan, N. H.
Dec. 22	Carrie C. Miles	Lancaster, N. H.

I hereby certify that the above return is correct  
to the best of my knowledge and belief.

Theresa G. Brooks  
Town Clerk

ANNUAL REPORT  
OF THE  
SCHOOL DISTRICT  
OF THE TOWN OF  
NORTHUMBERLAND  
NEW HAMPSHIRE  
FOR THE FISCAL YEAR ENDING  
JUNE 30, 1980

ANNUAL SCHOOL REPORT  
SCHOOL DISTRICT OF NORTHUMBERLAND

Fiscal Year Ended June 30, 1980

ORGANIZATION ADMINISTRATION  
School Board

SALLY RYAN, Chairwoman

GILBERT MAJOR  
JOSEPHINE MAYHEW

STUART LORD  
ALPHONSE ARIETTA

Superintendent of Schools

ALAN E. RICH - Tel. 636-1437  
FLORENCE G. TILTON, Secretary  
JANET BENNETT, Secretary

Assistant Superintendent of Schools

CHARLES J. MICCICHE - Tel. 636-1437

High School Principal

EDGAR MELANSON - Tel. 636-1619  
MARION ROWDEN, Secretary

Elementary School Principal

THOMAS MONAHAN - Tel. 636-1806  
EDNA CRAWFORD, Secretary

ROBERT I. HINKLEY, School Doctor  
JUNE PARTRIDGE, School Nurse

Treasurer

STANFORD JOHNSON

Clerk

FLORENCE G. TILTON

Moderator

LYLE HERSOM

Auditors

N.H. STATE TAX COMMISSION



T E N T A T I V E    S C H O O L    W A R R A N T  
S T A T E    O F    N E W    H A M P S H I R E

To the Inhabitants of the School District of Northumberland qualified to vote in district affairs:

You are hereby notified to meet in Groveton High School Gymnasium in said district on Saturday, March 21, 1981, at 2:00 o'clock in the afternoon to act upon the subjects hereinafter mentioned. The polls will be open at said place and date from 2:00 o'clock in the afternoon until 5:00 o'clock in the afternoon for the reception of your ballots under the non partisan ballot system; furthermore you are hereby warned that on said date and place, at 2:30 o'clock in the afternoon the matters of appropriations and such other business properly coming before said meeting will be taken up for your consideration and action.

1. To choose by non partisan ballot the following district officers for the ensuing year; a moderator, a district clerk, a district treasurer, two auditors, and one member of the school board for the ensuing three years.
- 2, To hear reports of agents, auditors, committees, or officers heretofore chosen and pass any vote relating thereto.
3. To see if the district will vote to accept the provisions of Title I, Public Law 89-10 (Elementary and Secondary Education Act of 1965) and to appropriate such funds as may be made available to the district under said Federal Act for the particular projects as may be determined by the school board. Further, to see if the district will authorize the school board to make application for such funds and to expend the same for such projects as it may designate.
4. To see if the district will vote to accept the provisions of the Federal and State School Lunch and Special Milk Program, and to appropriate such funds as may be made available to the district under such programs as may be determined by the school board. Further, to see if the district will authorize the school board to make application for such funds and to expend the same for such programs as it may designate.
5. To see if the district will authorize the school board to make application for, to receive and expend in the name of the district such advances, grants-in-aid or other funds for educational purposes as may now or hereafter be forthcoming from the U. S. Government and/or State Agencies.

6. To see if the district will vote to raise and appropriate the sum of \$65,000.00 for the payment of salaries under the terms of a Collective Bargaining Agreement for the year 1981-82. (Included in the proposed 1981-81 budget).
7. To see if the district will vote to raise and appropriate, in addition to the original appropriation for 1980-81, a sum of \$39,000.00 to be made available to the school district prior to July 1, 1981 to meet its obligations caused by a deficit at the close of the fiscal year 1980.
8. To see if the district will vote to raise and appropriate the sum of \$5,000.00 to be placed in a Capital Reserve Fund established for the purpose of replacing or improving its heating equipment and/or systems, or to make major capital improvements, and that the school board be authorized as agents to determine when such funds may be expended.
9. To see if the district will vote to raise and appropriate local funds in the amount of \$8,000.00 to make building improvements for energy conservation under the Energy Conservation Program through the New Hampshire Governor's Council on Energy. (Title III NECPA).
10. To see what sum of money the district will vote to raise and appropriate for the support of schools, for the payment of salaries of school district officials and agents and for the payments of the statutory obligations of the district.
11. To transact any business that may lawfully come before said meeting.

Given under our hands at said Northumberland this 20th day of February, 1981.

SALLY RYAN, CHAIRWOMAN  
JOSEPHINE MAYHEW  
STUART LORD  
GILBERT MAJOR  
ALPHONSE ARIETTA

REPORT OF THE TREASURER

For the Fiscal Year Ended June 30, 1980

SUMMARY

Cash on Hand July 1, 1979		\$ 40.59
Received from Selectmen:		
Current Appropriation	\$ 913,335.00	
Advance on Next Year's Appropriation	50,000.00	
Revenue from State Sources	35,801.41	
Revenue from Federal Sources	80,241.39	
Received from Tuitions	136,421.71	
Received from all Other Sources	18,861.61	
		<u>1,234,661.12</u>
Total Amount Available for Fiscal Year		1,234,701.71
Less School Board Orders Paid		<u>1,185,626.50</u>
Balance on Hand June 30, 1980		\$ 49,075.21

Respectfully submitted,

STANFORD JOHNSON  
District Treasurer

REPORT OF THE TREASURER

(Groveton High School Expansion Project EDA)

For the Fiscal Year Ended June 30, 1980

SUMMARY

Cash on Hand July 1, 1979	\$ 1,974.90
Total Amount Available for Fiscal Year	1,974.90
Less School Board Orders Paid	<u>1,770.87</u>
Balance on Hand June 30, 1980	\$ 204.03

Respectfully submitted,

STANFORD JOHNSON  
District Treasurer

FINANCIAL REPORT

For the Fiscal Year Ended June 30, 1980

RECEIPTS

Taxation and Appropriations Received	
Current Appropriations	\$ 913,335.00
Advance on Next Year's Appropriation	50,000.00
Tuition from Patrons	
Tuition from Patrons, Elementary	1,288.00
Other Revenue from Local Sources	
Rent	1,200.00
Other Revenue from Local Sources	555.00
Revenue from State Sources	
Driver Education Aid	2,650.00
Sweepstakes	12,845.07
Incentive Aid	1,306.34
Foster Children Aid	1,000.00
Other Revenue from State Sources	18,000.00
Revenue from Federal Sources	
Vocational Education	8,147.00
National Forest Reserve	1,111.39
School Lunch and Special Milk Program	54,839.00
Title 1 - ESEA	16,144.00
Amounts Received from Other School Districts in State and Amounts Received from Capital Reserve Funds	
Elementary Tuition	14,393.16
Approved Middle/Jr. High School Tuition	19,413.48
High School Tuition	44,524.64
Amounts Received from School Districts in Another State	
Elementary Tuition	24,540.40
Approved Middle/Jr. High School Tuition	12,026.00
High School Tuition	20,236.03
	<hr/>
	\$ 1,217,554.51
Cash on Hand at Beginning of Year July 1, 1979	
General Fund	40.59
Capital Outlay Fund	<hr/> 1,974.90
	<hr/>
GRAND TOTAL	\$ 1,219,570.00

PAYMENTS - 1979-1980

	TOTAL AMOUNT	ELEM. SCHOOL	JUNIOR HIGH	HIGH SCHOOL	GENERAL EXPENSES
<b>ADMINISTRATION:</b>					
110. Salaries of District Officers	\$ 1,465.00	\$ 703.20	\$ 263.70	\$ 498.10	
135. Contracted Services	5,806.08	2,786.92	1,045.09	1,974.07	
190. Other Expenses	920.12	441.66	165.62	312.84	
<b>INSTRUCTION:</b>					
210.1-210.3 Teachers' Salaries			104,221.39	222,983.30	
210.5 Secretarial & Clerical Assistants	16,148.36	4,829.08	4,206.66	7,112.62	
210.9 Other Salaries	35,162.93	25,749.97	2,053.95	7,359.01	
215. Textbooks	7,362.32	2,177.58	527.73	4,657.01	
220. Libraries & Audiovisual	8,006.98	2,482.27	616.88	4,907.83	
230. Teaching Supplies	36,195.56	18,309.73	3,123.44	14,762.39	
235. Contracted Services	4,195.76	1,972.36	1,048.49	1,174.91	
290. Other Expenses	8,646.45	1,512.20	807.68	6,326.57	
<b>HEALTH SERVICES:</b>					
410. Salaries	9,005.00	4,503.00	1,621.00	2,881.00	
490. Other Expenses	932.66	466.66	168.00	298.00	
<b>PUPIL TRANSPORTATION:</b>					
510. Salaries	15,378.91	7,997.00	2,768.00	4,613.91	
530. Supplies	13,469.21	7,004.00	2,424.21	4,041.00	
535.0 Contracted Services	2,800.98	1,457.00	503.98	840.00	
<b>OPERATION OF PLANT:</b>					
610. Salaries	46,438.77	21,500.00	8,728.77	16,210.00	
630. Supplies	12,095.92	4,838.92	2,419.00	4,838.00	
635. Contracted Services	2,899.41	1,160.00	580.00	1,159.41	
640. Heat for Buildings	26,930.38	7,490.38	6,804.00	12,636.00	
645. Utilities, except Heat	19,985.86	8,193.86	3,997.00	7,795.00	

	TOTAL AMOUNT	ELEM. SCHOOL	JUNIOR HIGH	HIGH SCHOOL	GENERAL EXPENSES
<b>MAINTENANCE OF PLANT:</b>					
710. Salaries	\$ 555.00	\$ 210.00	\$ 111.00	\$ 234.00	\$
725. Replacement of Equipment	1,497.16	569.00	299.00	629.16	
726. Repairs to Equipment	5,571.37	1,393.37	1,504.00	2,674.00	
735. Contracted Services	70.00	-	-	70.00	
766. Repairs to Buildings	14,734.34	4,500.00	3,582.34	6,652.00	
<b>FIXED CHARGES:</b>					
850.1 State Employees' Retirement System	3,210.38	1,316.38	642.00	1,252.00	
850.2 Teachers's Retirement System	17,325.26	7,103.26	3,465.00	6,757.00	
850.3 F. I. C. A.	42,249.05	17,322.05	8,450.00	16,477.00	
855. Insurance	47,940.77	19,656.77	9,588.00	18,696.00	
860. Rental of Buildings	13,451.00	13,451.00			
<b>SCHOOL LUNCH AND SPECIAL MILK PROGRAM:</b>					
975.1 Federal Monies	54,839.00	32,903.00	10,968.00	10,968.00	
975.2 District Monies	13,500.00	8,100.00	2,700.00	2,700.00	
<b>STUDENT - BODY ACTIVITIES:</b>					
1010. Salaries	12,134.00	1,213.00	3,034.00	7,887.00	
1075. Expenditures & Transfers of Monies	11,266.99	1,127.00	2,816.99	7,323.00	
<b>CAPITAL OUTLAY:</b>					
1266. Buildings	877.37				877.37
1267. Equipment	23,848.15				23,848.15

	TOTAL AMOUNT	ELEM. SCHOOL	JUNIOR HIGH	HIGH SCHOOL	GENERAL EXPENSES
\$	\$	\$	\$	\$	\$
3,012.43	-	-	3,012.43		
70,000.00	33,600.00	12,600.00	23,800.00		
5,000.00					5,000.00
653.17	-	228.17	425.00		
4,438.80	-	-	4,438.80		
<u>\$1,170,290.76</u>	<u>\$ 491,105.79</u>	<u>\$ 208,083.09</u>	<u>\$ 441,376.36</u>	<u>\$</u>	<u>\$ 29,725.52</u>

OUTGOING TRANSFER ACCOUNTS:

- 1477.1 Tuition to Other School Districts
- 1477.3 District Share of SAU Expenses
- 1477.5 Payments into Capital Reserve Funds
- 1477.9 Other In-State Expenditures
- 1479.1 Tuition to Private Nonsectarian School

CASH ON HAND AT END OF YEAR

JUNE 30, 1980

- General Fund \$ 49,075.21
- Capital Outlay Fund 204.03

GRAND TOTAL NET EXPENDITURES

\$1,219,570.00



EXPLANATION OF DIFFERENCE BETWEEN NET (ACTUAL) EXPENDITURES AND GROSS TRANSACTIONS

A. RECEIPTS	B. EXPENDITURES
Total Net Receipts Plus Cash on Hand	Total Net Expenditures Plus Cash on
July 1, 1979, (Agrees with "GRAND	Hand June 30, 1980. (Agrees with
TOTAL NET RECEIPTS" above)	"GRAND TOTAL NET EXPENDITURES"
\$1,219,570.00	\$1,219,570.00
Receipts Recorded under Item 60	Expenditures Reduced by Receipts
<u>17,106.61</u>	Recorded in Item 60
TOTAL GROSS RECEIPTS	TOTAL GROSS EXPENDITURES
	<u>17,106.61</u>
	<u>\$1,236,676.61</u>

ANNUAL CAPITAL OUTLAY SUMMARY

Covering Receipts and Expenditures for the Period JULY 1, 1979 to JUNE 30, 1980

RECEIPTS	EXPENDITURES
Cash on Hand July 1, 1979	Other Expenditures
\$ 1,974.90	Furniture and Equipment
	TOTAL EXPENDITURES DURING YEAR
	Cash on Hand June 30, 1980
	GRAND TOTAL EXPENDITURES
	\$ 877.37
	<u>893.50</u>
	\$ 1,770.87
	<u>204.03</u>
	\$ 1,974.90

CAPITAL RESERVE FUNDS SUMMARY

Capital Reserve Funds Held by Trustees as of July 1, 1979	\$ 5,150.07
Minus Amount Withdrawn from Capital Reserve Funds During Year	-0-
Plus Amount Paid into Capital Reserve Funds During Year	5,000.00
Plus Amount of Interest Earned on Capital Reserve Funds During Year	<u>269.00</u>
Capital Reserve Funds Held by Trustees as of June 30, 1980	\$ 10,419.07

BALANCE SHEET - JUNE 30, 1980

ASSETS

Cash on Hand June 30, 1980	
General Fund	\$ 49,075.21
Accounts Due to District	
Project 01095.0 Title I	257.45
Project 01096.0 Title I	546.30
Project 02012.0 Vocational Education	100.00
Stark School District	
Art & Music	1,450.00
Nurse	550.00
N.H. Retirement System (refund)	562.00
Capital Reserves: (Held by Trustees)	<u>10,419.07</u>
TOTAL ASSETS	\$ 62,960.03
Net Debt (Excess of Liabilities Over Assets)	<u>38,209.57</u>
GRAND TOTAL	\$101,169.60

LIABILITIES

Advance on 80-81 Appropriation	\$ 50,000.00
Project 02334.0 Vocational Education	227.93
Project 02123.0 Vocational Education	52.68
Various invoices	39,699.92
Stark School District (refund tuition)	770.00
Capital Reserves (Offsets Similar Asset Account)	<u>\$ 10,419.07</u>
TOTAL LIABILITIES	\$101,169.60
Surplus (Excess of Assets Over Liabilities)	<u>-0-</u>
GRAND TOTAL	\$101,169.60

NORTHUMBERLAND SCHOOL DISTRICT  
PAYMENTS 1979 - 1980

110.1 - SALARIES OF DISTRICT OFFICERS

Lyle Hersom, Moderator	\$ 35.00	\$
Stanford Johnson, School Treasurer	300.00	
Stuart Lord, School Board Salary	200.00	
Gilbert Major, School Board Salary	200.00	
Josephine Mayhew, School Board Salary	200.00	
Sally Ryan, School Board Salary	200.00	
John Sullivan, School Board Salary	200.00	
Florence G. Tilton, School Clerk	<u>130.00</u>	
		\$ 1,465.00

135 - CONTRACTED SERVICES

Carl Craggy, Ballot Clerk	10.00	
Howard Craggy, Supervisor of Checklist	10.00	
Aleta Johnson, Ballot Clerk	10.00	
Anne Ledger, School Census	300.00	
Frank P. Marinace	4,000.00	
Nancy Marshall, Ballot Clerk	10.00	
N.H. State Treasurer/Dept. of Revenue Administration (Audit)	1,446.08	
Frances Rich, Supervisor of Checklist	10.00	
F. Lynwood Shoff, Ballot Clerk	<u>10.00</u>	
		5,806.08

190.1 - OTHER EXPENSES OF DISTRICT OFFICERS

The Caledonian Record	26.75	
Courier Printing Company	21.60	
N.H. School Boards Association	360.00	
North Country Publishing Company	425.90	
Peoples National Bank	45.25	
Union Leader Corporation	<u>40.62</u>	
		920.12

210. - SALARIES OF TEACHERS 554,873.42

210.5 - SALARIES OF SECRETARIAL ASSISTANTS 16,148.36

210.9 - OTHER SALARIES FOR INSTRUCTION 35,162.93

215. - TEXTBOOKS

Abingdon	\$	2.38	\$
Allyn & Bacon Inc.		242.74	
Christ Church Child Center		20.00	
Crestwood House		129.53	
The Council for Exceptional Children		28.25	
Eastern Musical Company		17.20	
Joseph Fitzgerald		13.00	
Follett Publishing Company		112.71	
Ginn & Company		993.33	
Globe Book Company Inc.		94.50	
Hampshire Music Company		33.35	
Harcourt Brace Jovanovich Inc.		918.13	
Harper & Row Publishers		37.75	
Ideal Pictures		21.21	
Jamestown Publishers		10.90	
Janus Book Publishers		101.74	
Laidlaw Brothers		144.36	
Litton Educational Publishing		39.20	
Lyons		79.08	
Mc Graw Hill Book Company		888.04	
Charles E. Merrill Publishing Company		738.03	
Houghton Mifflin Company		993.09	
Milliken Publishing Company		16.80	
J. W. Pepper & Son Inc.		629.45	
Frank Schaffer Publications Inc.		38.50	
Scholastic Book Services		104.00	
Scott Foresman & Company		317.81	
South Western Publishing Company		378.76	
Stanwix House Inc.		37.22	
Steck-Vaughn Company		39.23	
Trend Enterprises Inc.		21.03	
Troll Associates		150.00	

7,391.32

220. - LIBRARY & AUDIO-VISUAL

ABC School Supplies Inc.	54.47
Allyn & Bacon Inc.	30.45
Arista Corporation	6.00
Barron's Educational Series Inc.	54.35
Better Homes & Gardens	8.00
Boy's Life	7.20
Business Week	28.50
Carolina Biological Supply Company	81.75
Center for Applied Research	20.68
Changing Times	12.00
Christopher's Store	86.75
Colebrook Office Supply	10.40
Communication Skill Builders Inc.	109.03
Coos County Democrat	9.50
Consumer Reports	11.00
Consumer Union	11.00
Decorating & Craft Ideas	8.00

## 220. - LIBRARY &amp; AUDIO-VISUAL (CONT.)

Demco Educational Corp.	\$	71.93	\$
Doubleday & Company Inc.		278.30	
Educational Audio Visual Inc.		116.30	
Educational Dimensions Group		42.00	
Educators Progress Service Inc.		32.70	
Family Health Magazine		7.00	
Federal Programs Advisory Service		80.00	
Follett Library Book Company		240.74	
Gale Research Company		314.05	
Grace Hill		44.53	
Groller Year Book Inc.		14.00	
Hammond Inc.		5.19	
Harcourt Brace Jovanovich Inc.		363.91	
Ideal Pictures		34.29	
Informational Research Systems		34.95	
The Institute for Research		27.27	
Janus Book Publishers		4.00	
Larkin Associates Inc.		873.92	
Mc Graw Hill Book Company		1,262.86	
Mainco School Supply		111.42	
Merrimack School District		5.00	
N.H. Law Directory & Daybook		14.00	
N.H. Public Television		10.00	
Nasco		43.89	
National Council of Teachers of Mathematics		17.00	
National Education Association		16.95	
National Geographic Society		15.35	
National Library Service Inc.		210.64	
National Wildlife Federation		24.00	
North Country Education Services		2,336.00	
Parent Bookstore		21.35	
Parents' Magazine Enterprises Inc.		7.95	
Parker Publishing Company Inc.		62.04	
Perma Bound		165.70	
Prentice-Hall Learning Systems Inc.		149.22	
School Arts		12.00	
Social Studies School Service		68.90	
Superintendent of Documents		54.00	
Twymas Films		73.75	
The Wall Street Journal		55.00	
J. Weston Walch Publishing		42.16	
What's New in Home Economics		29.00	
H. W. Wilson Company		44.00	
The World Almanac		8.69	
World Book Encyclopedia Inc.		<u>11.95</u>	

8,006.98

230. - TEACHING SUPPLIES

ABC School Supply Inc.	\$ 42.16
Accountants' Supply House	40.56
Addison-Wesley Publishing Company	94.10
Allyn & Bacon Inc.	23.55
Ann Arbor Publishers Inc.	97.20
Argus Communications	13.09
Artista Corporation	225.75
Art-Tronics of New Hampshire	8.76
Channing L. Bete Company Inc.	28.32
Dick Blick	12.49
Bowmar/Noble Publishers Inc.	433.12
Brodhead-Garrett Company	452.34
Bryant School Supply	18.60
Butterick Fashion Marketing Company	24.00
Calico Industries Inc.	77.13
Calloway House Inc.	14.58
Carolina Biological Supply Company	355.13
Childcraft Education Corporation	283.53
Christ Church Child Center	3.50
The Classroom Materials Center	34.00
Colebrook Office Supply	657.00
Community Playthings	40.75
The Continental Press Inc.	78.92
Courier Printing Company	238.50
Creative Publications	103.08
Creative Teaching Press Inc.	7.54
Curriculum Associates Inc.	114.91
Currier Graphics	3,166.45
David Mountain Art Studio	61.15
Delta Education Inc.	20.56
Developmental Learning Materials	230.81
Doubleday & Company Inc.	19.32
Drake's	42.48
Dupuis Country Store Inc.	43.90
Judith Dvorchik	7.28
E.J.'s Tire Center	91.40
Eastern Musical Supply Company Inc.	21.30
Ebsco Subscription Services	275.63
The Economy Company	532.38
Educational Programmers Inc.	97.70
Educational Studies & Development	11.41
Educators Publishing Service Inc.	228.98
Emerson & Son Inc.	88.38
Fabric Bazaar	11.61
Follett Publishing Company	356.75
G.R. & W. Supply Systems Inc.	192.00
Gerard Gaetzens	9.90
Ginn & Company	463.11
Groveton Elementary School	51.25
Handy Crafts Inc.	30.03
Hartford Office Supply Company	86.40
D.C. Heath & Company	45.26
Highsmith Company Inc.	163.75
Houghton Mifflin Company	38.88
International Business Machines Corporation	319.98
Interstate Printers & Publishers Inc.	103.76

230. - TEACHING SUPPLIES (CONTD.)

Jefferson Printing Company In.	\$	23.70
Laidlaw Brothers		2,516.50
Lakeshore Curriculum Materials Company		41.75
Lambert Company Inc.		95.60
Litton Educational Publishing		57.71
Love Publishing Company		57.65
Lyons		11.37
Mc Call Pattern Company		12.00
Mc Graw Hill Book Company		518.48
Katherine Mc Nally		3.49
Mafex Associates Inc.		109.21
Mainco		7,329.95
Yvette J. Marquis		18.60
James Marshall		17.66
Media for Education		27.39
Media Programs Inc.		48.25
Edgar Melanson (petty cash)		600.00
Gary Merriam		14.00
Charles E. Merrill Publishing Company		205.32
Milton Bradley Company		48.15
Modern Curriculum Press		96.54
Modern Education Corporation		211.12
Thomas Monahan (petty cash)		416.60
Mt. Forest Studio Inc.		43.05
Nasco		351.13
Norcross Office Equipment Company		374.50
Northeast Supply Corporation		250.41
Northumberland IGA		33.69
Office Products of Berlin Inc.		271.25
Opportunities for Learning Inc.		78.10
P & J Sewing Center		58.30
The Perfection Form Company		13.09
Portland Pottery & Supply		37.19
Prentice Hall Learning Systems Inc.		99.00
Pyramid of Urbana		44.34
Pyramid Paper Company Inc.		164.66
Rancourt & Company Inc.		45.84
Rand Mc Nally Company		383.77
Regent Standard Forms Inc.		50.30
Rhythm Band Inc.		13.97
Roberts Motor Sales Inc.		139.60
Rumford Office Supply Inc.		2,440.21
Ryan's Fuel Service		323.36
S & W Market Inc.		664.48
Sargent-Welch Scientific Company		75.61
Scholastic Magazines Inc.		414.75
Schoolmasters		19.13
Science Kit Inc.		599.04
Science Research Associates Inc.		173.06
Scott Foresman & Company		3,253.33
The Scribner Book Company Inc.		198.00
Simplicity Pattern Company Inc.		12.00
Singer Company		32.40
Social Studies School Service		71.53
South-Western Publishing		1,300.00
Stanwix House Inc.		16.24

230. - TEACHING SUPPLIES (CONTD.)

Stratton-Christian Press	\$	17.49	\$
Supreme School Supply Company		207.70	
Teaching Resources		264.38	
Today's Secretary		90.00	
Town House		35.13	
Twin Rivers Sport Shop Inc.		57.30	
The Village Stationer		5.12	
Whitehaven Publishing Company Inc.		43.43	
The Woodworkers' Store		10.70	
Word Games		22.29	
Word Making Productions		73.05	
World Newsmap of the Week		19.50	
Xerox Education Publications		534.20	
NEA Distribtuion Center		<u>3.50</u>	

36,244.58

235. - CONTRACTED SERVICES FOR INSTRUCTION

American Guidance Service Inc.	152.21
Gary Bisson	120.00
Lucille Bryan	170.08
Camp Abnaki	220.00
Central N.H. Community Mental Health Services	198.00
Computer Resources	237.50
Coos County Family Planning	500.00
Judith Dvorchik	29.50
Groveton Elementary School	75.00
David Hartson, PLD	149.75
Grace Hill	125.00
James Marshall	335.49
National Computer Systems Inc.	365.28
PSAT/NMSQT	172.25
Parent Information Center	24.00
Psychological Corporation	561.95
Rehabilitation Center Inc.	90.00
Nancy Robinson	10.50
Upper Connecticut Valley Mental Health Service	160.00
Barbara D. Weeks	440.00
North Country Education Services	<u>59.25</u>

4,195.76

290. - OTHER EXPENSES FOR INSTRUCTION

Association for Supervision & Curriculum	35.00
Frederick Bailey	112.00
Donald L. Campbell	27.20
Canal Street Cleaners	76.00
James V. Carr	5.00
Douglas D. Chamberlin	56.10
Joanne Chase	28.90
Continental Motor Inn - 93	5.98
David Coryell	400.00
Yvonne Crocker	10.20



290. - OTHER EXPENSES FOR INSTRUCTION (CONTD.)

Judith Dvorchik	\$	17.78
Joseph Fitzgerald		171.50
Stanley Flink		32.30
Flowers by Fran		218.00
Joan Frichette		21.60
Faith A. Fritsch		4.76
Carol Frizzell		30.24
Philip Fujawa		22.78
Gerard Gaetjens		12.50
Michael Galuszka		12.00
Groveton American Legion		660.00
Groveton Elementary School		15.00
Groveton Elementary School Cafeteria		46.45
Groveton High School		7.07
The Hermitage Art Company Inc.		40.58
Richard C. Holt		105.15
Mary H. Hutchins		35.70
Josten's		328.29
Lancaster Motel	1,552.43	
Pamela Lewandowski		162.90
Joseph Littlefield		41.31
Claire Mac Ilvane		48.00
Robert B. Mc Carthy		36.04
Mc Laughlin Chevrolet-Buick Inc.		52.48
William J. Mc Lean		59.50
Geraldine Major		35.10
Yvette Marquis		13.80
James Marshall		49.42
Edgar R. Melanson		480.90
Richard F. Monteith		17.85
N.H. Association of School Principals		585.00
N.H. Facilitator Center		38.00
N.H. Mime Company		800.00
N.H. Music Educators Association		30.00
N.H. Personnel-Guidance Association		15.00
N.H. Paraprofessional Conference		17.00
N.H. School Boards Association		25.00
New England Association of Schools & Colleges Inc.		660.00
NHIAA Coaching School		186.00
N.H. IFYE		25.00
North Country Education Services		7.00
Thomas Ordzie		76.80
Alan F. Perrin		21.76
Marvin Pritchard		20.40
Oma Riggs		100.00
John Robak		5.10
Saymore Trophy Company Inc.		28.79
Daniel E. Stockwell		34.00
Jonathan Streeter		40.80
Joe Stucker		40.80
Arlene Theriault		21.60
Robert Tobin		138.00
Town House Restaurant		465.47
Kathryn Treamer		8.84
Wilma S. Washburn		40.66
Westinghouse Data Score Systems		80.00

290. - OTHER EXPENSES FOR INSTRUCTION (CONTD.)

Betty Willard	\$	7.50	\$
Martha L. Williamson		<u>40.12</u>	
			8,646.45

410. - SALARIES - HEALTH

Robert I. Hinkley, MD	1,540.00
June Partridge	7,415.00
Regional Medical Professional Association	<u>50.00</u>
	9,005.00

490. - OTHER - HEALTH

American School Health Association	30.00
Carney Hospital	25.00
George C. Frye Co.	16.15
Marsh Film Interprises Inc.	9.50
Juen Partridge	300.00
School Health Supply Company	270.01
Weeks Memorial Hospital	<u>282.00</u>
	932.66

510. - SALARIES - TRANSPORTATION 15,378.91

530. - SUPPLIES - TRANSPORTATION OF PUPILS

Gary Bisson	30.00
Kelly's Auto Supply Inc.	50.49
Nugent Motor Company	6,675.20
Town of Northumberland	9,019.25
	15,774.94

535. - CONTRACTED SERVICES - TRANSPORTATION

Violet Burt	95.05
Frank Davenport	144.75
Nugent Motor Company	7,694.58
Russell Partridge	189.60
	8,123.98

610. - SALARIES - OPERATION OF PLANT 46,438.77

630. - SUPPLIES - OPERATION OF PLANT

Allston Supply Company Inc.	720.86
-----------------------------	--------

630. - SUPPLIES - OPERATION OF PLANT (CONTD.)

American Standard Wholesale Corporation	\$ 1,827.44	\$
W. E. Aubuchon Company Inc.	29.97	
Joseph G. Blais & Company Inc.	918.45	
Chem-Safe	1,053.61	
Continental Chemical	663.11	
Cray Energy	14.55	
Michael Cross	17.68	
Emerson & Son Inc.	120.90	
Goltra Inc.	41.20	
Highland Chemical Corp.	377.55	
Hillyard Inc.	2,033.25	
W. J. Hodgkins	7.00	
J. I. Holcomb Mfg. Company	504.62	
Independent Food Company	173.60	
Interstate Restaurant Equipment Corporation	42.16	
Lamont Labs Inc.	480.13	
Maine Paper Products	576.60	
Master Lock Company	2.35	
Material Flaw Inc.	74.42	
Now Chemical Corporation	691.40	
Rochester Germicide Company	749.90	
Ryan's Fuel Service Inc.	4.90	
School Health Supply Company	66.50	
Top Quality Chemicals	90.03	
Vanity Fair Paper Sales	609.13	
Youngs Inc.	297.03	
	<hr/>	
		12,188.34

635. - CONTRACTED SERVICES - OPERATION OF PLANT

Normandeau Trucking		2,899.41
---------------------	--	----------

640. - HEAT

Adirondack Bottled Gas Corporation	461.15	
Lewiston Bottled Gas Company	70.34	
Ryan's Fuel Service Inc.	.85	
C. H. Sprague & Son Company	26,398.04	
	<hr/>	
		26,930.38

645. - UTILITIES

Public Service Company of N.H.	15,818.94	
New England Telephone Company	4,178.45	
Northumberland Water & Sewer District	47.50	
	<hr/>	
		20,044.89

<u>710. - SALARIES - MAINTENANCE OF PLANT</u>		555.00
---	--	--------

725. - REPLACEMENT OF EQUIPMENT

Brodhead-Garrett Company	\$	431.67	\$
Carolina Biological Supply Company		34.18	
Eastern Musical Company		58.80	
Graves-Humphreys Inc.		101.44	
Groveton High School		72.83	
Harvard Supply Company		31.52	
Interstate Restaurant Equipment Corporation		72.90	
LTD Commodities Inc.		18.60	
Lyons		100.44	
North Country Education Services		10.20	
Office Products of Berlin		18.00	
Passon's Sports		172.35	
Powermatic Division		187.54	
Rockwell International		7.34	
Rhythm Band Inc.		49.90	
Twin Rivers Sport Shop Inc.		89.70	
United General Products		<u>39.75</u>	
			1,497.16

726. - REPAIRS TO EQUIPMENT

Allston Supply Company Inc.		58.95	
Antec		110.00	
Clean-O-Rama Inc.		44.30	
Colebrook Office Supply		19.72	
Emerson & Son		5.24	
G & C Food Equipment Service Inc.		136.25	
Daniel Hebert		37.60	
IBM		1,749.48	
Kent Agency of Boston Inc.		62.89	
Edward T. Lee Jr.		13.50	
Mainco School Supply		67.48	
Merrimack Farmers' Exchange Inc.		12.60	
Multi-Media Services		183.10	
Norcross Office Equipment Company		285.00	
North Country Education Services		1,211.08	
Office Products of Berlin Inc.		721.06	
P & J Sewing Center		152.85	
Piano Technics		200.00	
Rumford Office Supply Inc.		978.95	
Ryan's Fuel Service Inc.		<u>121.60</u>	
			6,171.65

735. - CONTRACTED SERVICES - MAINTENANCE OF PLANT

Gould's Sales & Services			70.00
--------------------------	--	--	-------

766. - REPAIRS TO BUILDINGS

Allston Supply Company	\$ 786.00	\$
Brookline Shade Company	300.20	
Don H. Call	30.00	
Cardley	59.96	
Door Control Inc.	37.80	
Emerson & Son Inc.	4,643.52	
Groveton Plumbing & Heating	1,363.53	
C. L. Haskell & Son	145.00	
W. J. Hodgkins	38.00	
Inland Divers Inc.	58.20	
Mc Gee Company	652.90	
New England Door Closer Inc.	115.00	
Northeast Glass & Aluminum Inc.	165.81	
Northeast Mechanical Sales Corporation	2,928.76	
Linwood N. Purrington & Son	2,573.30	
Rochester Germicide Company	411.00	
Lawrence Sangravco	102.75	
St. Johnsbury Trucking Company Inc.	39.86	
Rolland Stevens	124.05	
Williams Communications Services	<u>158.70</u>	
		14,734.34

850.1 - STATE RETIREMENT

N.H. Retirement System		3,210.38
------------------------	--	----------

850.2 - TEACHERS' RETIREMENT

N.H. Retirement System		17,332.56
------------------------	--	-----------

850.3 - F.I.C.A.

N.H. State Treasurer	42,127.83	
N.H. State Treasurer, OASI Fund	<u>158.49</u>	
		42,286.32

855. - INSURANCE

Amosheag Bank & Trust Company	6,190.48	
Blue Cross/Blue Shield Insurance	23,444.69	
Liberty Mutual	1,006.00	
N.H. Insurance Company	3,598.00	
George M. Stevens & Son Company	<u>13,701.60</u>	
		47,940.77

860. - RENT

Groveton Methodist Church	7,630.00	
Richard Houle	320.00	

860. - RENT (CONTD.)

St. Francis Xavier Parish	\$ 5,501.00	\$	
			13,451.00

SCHOOL LUNCH & SPECIAL MILK PROGRAM

975.1 Federal Monies			54,839.00
975.2 District Monies			17,500.00

1010. - STUDENT BODY ACTIVITIES - SALARIES 12,134.00

1075. - STUDENT BODY ACTIVITIES - OTHER

James Bailey Company	439.00		
Mrs. Rose Belisle	15.00		
Mrs. Janet Bennett	15.00		
Mark Collins	30.00		
Mrs. Carol Crandall	15.00		
Clyde Fiske	55.00		
Future Business Leaders of America	255.50		
Mrs. Jolene Gray	33.00		
Groveton High School FBLA	150.00		
Groveton High School Activities Fund	5,000.00		
Walter Hopgood	114.00		
Francis Hopps	15.00		
Deborah Lee	33.00		
Bernard Lurvey	2,911.25		
Yvette Marquis	60.00		
N.H. Interscholastic Athletic Association	160.00		
Barry Normandeau	34.50		
Armand Pelletier	1,018.39		
Mrs. Gail Simonds	33.00		
State of N.H. FHA	79.75		
Mrs. Charles Tetreault	33.00		
Twin Rivers Sport Shop Inc.	767.60		
			11,266.99

1267. - CAPITAL OUTLAY - EQUIPMENT

Alfax Manufacturing Corporation	482.65		
Allston Supply Company	500.00		
Brodhead-Garrett Company	779.90		
Colebrook Office Supply	1,080.00		
Cutter Ceramics	232.00		
Eastern Musical Company	286.00		
Emerson & Son	27.75		
Flaghouse Inc.	87.92		
Harvard Supply Company	60.78		
The Highsmith Company Inc.	639.20		
International Business Machine Corporation	4,732.49		
Frederick Johnson Pianos Inc.	1,486.00		

1267. - CAPITAL OUTLAY - EQUIPMENT (CONTD.)

Mainco School Supply Company	\$ 4,176.73	\$
Material Flow Inc.	333.25	
New Hampshire Audio Vue Inc.	168.09	
Northeast Audio-Visual Inc.	820.21	
Northern Supply Company	1,038.95	
Office Products of Berlin Inc.	758.36	
P & J Sewing Center	295.35	
L. N. Purrington & Son Inc.	250.00	
Rhythm Band Inc.	180.77	
Saladmaster	49.95	
Sargent-Welch Scientific Company	357.67	
School Sound Systems Inc.	327.50	
Simplex Time Recorder Company	225.00	
Sunbean Appliance Company	186.70	
Suzuki	117.15	
Treisman's	479.82	
Williams Communications Inc.	<u>2,794.46</u>	
		22,954.65

1477.2 - TUITION

Berlin School Department	3,012.43
--------------------------	----------

1477.3 - SCHOOL ADMINISTRATIVE UNIT EXPENSES

School Administrative No. 58	70,000.00
------------------------------	-----------

1477.5 - CAPITAL RESERVE FUND

Trustees of Trust Fund/Town of Northumberland	5,000.00
---	----------

1477.9 - OTHER IN-STATE EXPENDITURES

Stark School District (Incentive Aid)	653.17
---------------------------------------	--------

1479.1 - TUITION OTHER THAN PUBLIC SCHOOLS

Androscoggin Valley Mental Health Center	182.80
Laconia State School	2,576.00
Rolfe & Rumford Home	<u>1,680.00</u>
	4,438.80

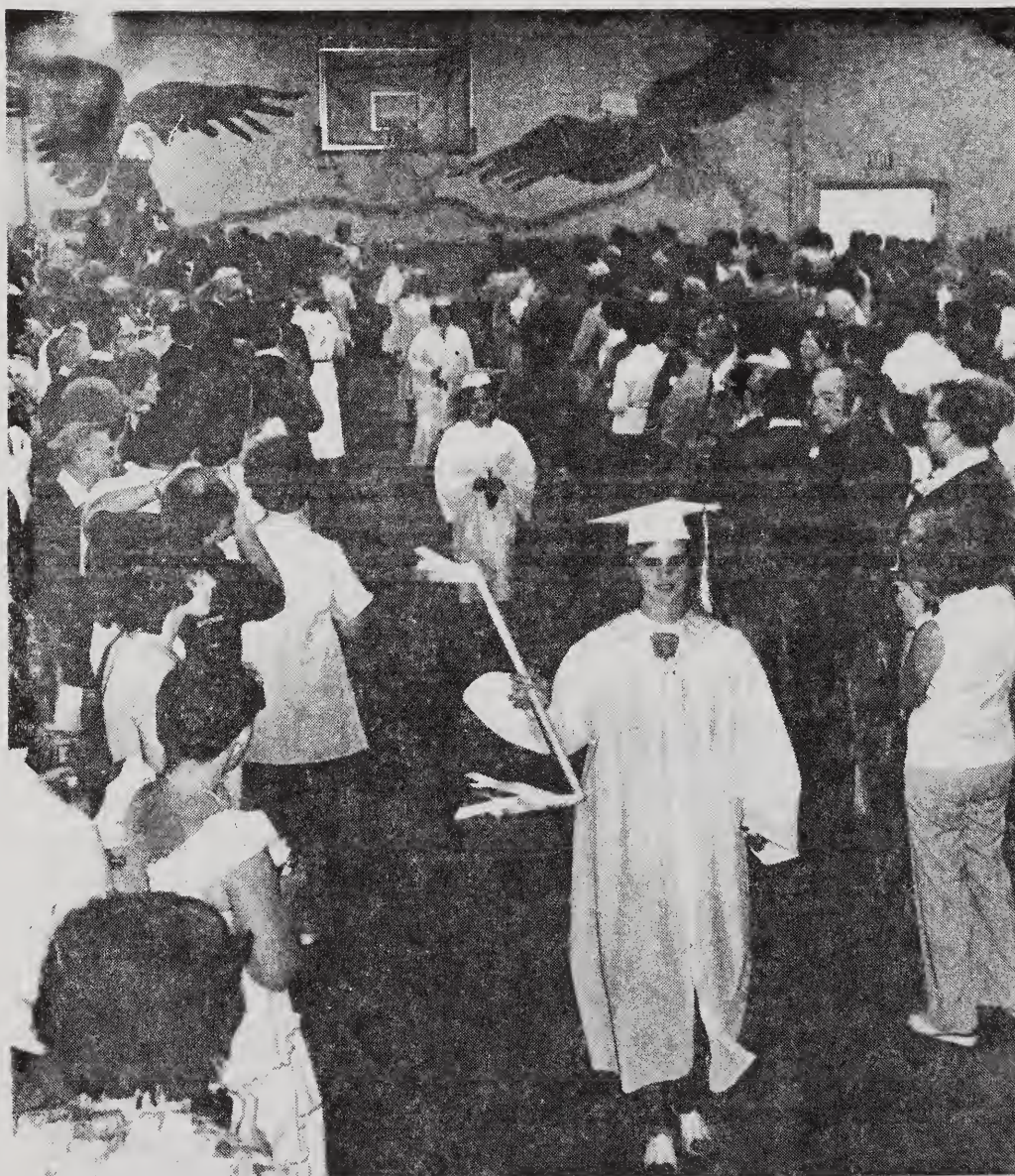
TOTAL PAYMENTS FOR ALL PURPOSES 1979 - 1980 \$ 1,185,626.50

SUPERINTENDENT'S SALARY  
1979-1980

State's Share	\$ 3,000.00
Northumberland School District's Share	15,472.56
Stratford School District's Share	4,991.29
Stark School District's Share	<u>1,313.15</u>
	\$ 24,777.00

ASSISTANT SUPERINTENDENT'S SALARY  
1979-1980

State's Share	\$ 2,390.00
Northumberland School District's Share	12,943.89
Stratford School District's Share	4,175.57
Stark School District's Share	<u>1,098.54</u>
	\$ 20,608.00





NORTHUMBERLAND SCHOOL DISTRICT  
COMPARATIVE BUDGETS

	<u>Budget 1980-81</u>	<u>Budget 1981-82</u>
<u>1000 Instruction</u>	<u>Function</u>	<u>Function</u>
<u>1100 Regular</u>	<u>Totals</u>	<u>Totals</u>
110- Programs	\$599,424	\$640,829
111- Salary - Teachers	\$472,545	\$483,235
120- Salary - Aides	6,615	2,961
210-213 Salary - Subs, Temp., Dept. Heads	5,000	9,000
214-299 Insurance: Health, Life & Disability	18,532	44,000
300-599 Employee Benefits - Fixed Charges	51,727	53,650
610- Purchased Services	17,150	16,500
630- Supplies	15,300	17,700
640- Books	5,565	5,800
740- Periodicals	-	300
750- Equipment	6,290	6,483
800- Furniture & Fixtures	-	-
Special Programs	700	1,200
110- Salaries - Teachers		65,593
111- Salaries - Aides		21,136
120- Salaries - Subs, Temp.		1,000
210-213 Insurance: Health, Life & Disability		11,162
214-299 Employee Benefits (Fixed Charges)		9,925
300-499 Purchased Services		6,700
500-599 Other Purchased Services (Tuition- Expenses)		4,750
610- Supplies		2,800
630- Books		300
740- Equipment		250
750- Furniture & Fixtures		-
800- Other Objects (Dues & Fees)		200
	<u>75,213</u>	<u>127,108</u>

Budget 1980-81

Budget 1981-82

	Function Totals	Function Totals
1300 Vocational services	\$ 58,191	\$ 79,917
110- Salaries - Teachers		43,375
111-120 Salaries - Aides, Subs, Temp.	30,708	4,920
210-213 Insurance: Health, Life & Disability	-	3,110
214-299 Employee Benefits (Fixed Charges)	1,312	5,550
300-499 Purchased Services	3,205	2,500
500-599 Other Purchased Services (Tuition- Expenses)	-	
610- Supplies	5,500	7,850
630- Books	8,000	8,459
640- Periodicals	1,135	1,479
740- Equipment	-	34
750- Furniture & Fixtures	8,331	2,400
1400 Other Instructional Programs	-	240
121- Salaries - Activities	23,764	33,174
214-299 Employee Benefits (Fixed Charges)	12,750	17,600
300-599 Purchased Services	1,014	5,674
610- Supplies	-	4,200
740- Equipment	-	4,600
800- Other Objects (Dues & Fees)	-	700
880- Fund Transfer	10,000	400
2000 Support Services		-
2116 Attendance Services	50	50
120- Salaries	50	
2120 Guidance Services	21,479	26,340
110-115 Salaries - Guidance Sec., Temp.	17,492	19,831
210-213 Insurance: Health, Life & Disability	712	1,462
214-299 Employee Benefits (Fixed Charges)	1,675	2,305
300-599 Purchased Services	1,400	1,652
600- Supplies, Books, Periodicals	200	210

Budget 1981-82

Budget 1980-81

	<u>Function Totals</u>	<u>Function Totals</u>
740- Equipment	-	865
800- Other Objects (Dues & Fees)	-	15
2130 Health Services	\$ 13,245	\$ 14,838
110-120 Salaries - Nurse, Doctor, Temp.	\$ 10,333	11,728
210- Health Insurance	612	-
214-299 Employee Benefits (Fixed Charges)	750	1,285
300-599 Purchased Services	300	900
610- Supplies	700	800
740- Equipment	550	100
800- Other Objects (Dues & Fees)	-	25
2140 Psychological Services	-	1,500
330- Pupil Services	-	1,500
2210 Improvement of Instruction	1,725	1,650
300-599 Purchased Services	1,600	1,500
610- Supplies	125	100
800- Other Objects	-	50
2220 Educational Media	19,443	17,806
110-111 Salaries - Aides, Temp.	7,245	7,575
210- Insurance - Health	612	1,500
214-299 Employee Benefits (Fixed Charges)	820	1,007
300-499 Purchased Services	-	4,685
610- Supplies, Books, Periodicals	7,832	2,425
740-750 Equipment & Furniture	9,934	614
2310 School Board Services	5,772	8,225
210- Salaries (Board, Treasurer, Clerk, Moderator)	1,575	1,575
214-260 Employee Benefits (Fixed Charges)	22	150
300-599 Purchased Services	3,725	5,900
800- Other Objects (Dues & Fees)	450	600
2320 Office of the Superintendent	92,427	104,082
351- School Administrative Unit Services	92,427	104,082

Budget 1980-81

Budget 1981-82

	Function Totals	Function Totals
2400 School Administration Services		
110-120 Salaries - Principals, Vice Principals, Secretary, Temp.	\$ 54,084	\$ 59,636
210-213 Insurance: Health, Life & Disability	2,036	2,924
214-299 Employee Benefits (Fixed Charges)	6,180	6,485
300-599 Purchased Services	5,050	8,300
610- Supplies	1,040	3,300
750- Furniture	-	705
800- Other Objects - Dues & Fees	-	1,500
Operation & Maintenance of Plant		
110-120 Salaries - Custodians, Maintenance, Temp.	148,475	175,533
210- Insurance - Health	55,354	58,284
214-299 Employee Benefits (Fixed Charges)	862	3,204
400- Repairs, Maintenance, Disposal	6,059	8,390
500- Purchased Property Services	16,600	9,205
610- Supplies	9,300	16,300
652- Electricity	10,000	15,000
653- Fuel	18,000	23,000
657- Bottled Gas	30,000	40,000
740- Equipment	700	1,000
750- Furniture & Fixtures	1,600	1,000
800- Other Objects	-	-
Pupil Transportation Services		
110-120 Salaries - Subs., Temp.	72,152	89,545
210- Health Insurance	17,500	21,050
214-299 Employee Benefits (Fixed Charges)	612	1,352
300-399 Purchased Services	1,340	2,443
500- Transportation Services	-	250
610- Supplies	42,700	48,250
656- Gasoline	-	200
	10,000	16,000

Budget 1980-81Budget 1981-82

	<u>Function Totals</u>	<u>Function Totals</u>
2640 Managerial Services		
580- Purchased Services (Expenses- Travel)	\$ 2,000	-
<u>3000 Community Services</u>		
3200 Community Recreation	2,280	\$ 3,650
513- Transportation Services	2,280	\$ 2,280
519- Other Transportation Services	-	1,370
4000 Facilities Acquisition & Construction	14,361	2,000
460- Construction Services - Renovations	14,361	2,000
4200 Site Improvement	3,500	
460- Construction Services	3,500	2,800
<u>5000 Other Outlays</u>		
5220 Capital Reserve	5,000	-
880- Fund Transfer	5,000	-
5240 Food Services	23,600	23,600
880- Federal Transfer	20,100	20,100
880- Local Transfer	3,500	3,500
	<u>\$1,250,491</u>	<u>\$1,435,497</u>
Totals	\$1,250,491	\$1,435,497

NORTHUMBERLAND SCHOOL DISTRICT  
 COMPARATIVE FINANCIAL STATEMENTS & BUDGETS  
 RECEIPTS

	Receipts <u>1979-80</u>	Estimate <u>1980-81</u>	Estimate <u>1981-82</u>
Unreserved Fund Balance	\$ 40.59	-	\$ -
Sweepstakes	12,845.07	13,622.00	13,500.00
Incentive Aid	1,306.34	1,200.00	1,200.00
Foster Children	1,000.00	1,200.00	1,000.00
Area Vocational School Transp.	17,100.00	7,000.00	15,000.00
Driver Education	2,650.00	4,000.00	3,000.00
Handicapped Aid	-	-	-
Vocational Education	8,147.00	3,000.00	3,000.00
National Forest Reserve	1,111.39	600.00	1,000.00
Child Nutrition (Lunch Program)	54,839.00	20,100.00	20,100.00
ESEA - Title I	16,144.00	16,000.00	17,000.00
Title IV	-	-	-
Tuition	136,421.71	130,000.00	160,000.00
Other Revenue	19,761.61	1,200.00	1,200.00
Advance on Next Year's Approp.	50,000.00	-	-
District Assessment	* 913,335.00	* 1,052,569.00	* 1,199,497.00
Totals	\$1,234,701.71	\$1,250,491.00	\$1,435,497.00

\* Reimbursements to Towns for loss of taxes exempted by the 1970 special session of the Legislature. (The reimbursement is deducted from the district assessment before the school tax rate is set.)

1979 - \$302,871  
 1980 - \$306,766  
 1981 - Not Set

REPORT OF THE  
OFFICE OF THE SUPERINTENDENT OF SCHOOLS

The programs begun in the past year have been progressing satisfactorily throughout 1980. The installation of a data processing system which serves all school districts in SAU 58 marks the most significant administrative change. The NCR 8150 computer, with the capacity to handle the new State accounting requirements, has been providing general ledger, purchase orders, accounts payable and budget summary reports for several months. Payroll will be "on line" in the early months of 1981. The significant advantages of handling business accounts with the data processing equipment is rapid recovery of information and the ability to manage efficiently the ever increasing paper burden which school districts are required to deal with. Far from being a replacement for personnel, the computer will aid in preventing the need for additional administrative staff to handle the schools' business affairs. Personnel in the central office are continuing training to update their knowledge and proficiency with the computer and its programs. The ability to perform pupil accounting tasks - attendance, grade reports, class lists, etc. - will be examined in the future, once the business functions are all in place and operating smoothly.

Full implementation of the new State accounting system is in effect this year. Although significantly different compared to the old accounting system, the new format will allow much more detail in the reporting of financial information. The longer account numbers work like postal "zip" codes, identifying the source of funds, the function for which the money was appropriated, and the specific "objects" purchased, such as textbooks, salaries, utilities, insurance, etc. It is anticipated that although some initial confusion may result due to unfamiliarity with the new system, once the procedures are understood, a far greater degree of financial information will be made available to the communities than in the past.

The addition of a part time school psychologist to serve the special education programs became effective in the fall. The psychologist is available in each school in SAU 58 once every two weeks. The position is supported largely by State and Federal funds with local funds, which formerly were spent on contracting private psychological services to meet Federal requirements for the handicapped, making up the balance of costs. Overall, a significant savings in psychological testing costs will be realized since those private agencies' fees were not federally supported to the same degree as is the current staff psychologist.

Through participation in a Federal Energy Grant Program, a number of major improvements in energy efficiency of the heating plants and building envelopes have taken place in the schools. Insulation, storm windows, boiler and fuel tank

maintenance and constant monitoring fuel consumption and thermostat settings should bring about noticeable cost savings in fuel use. The Federal Project paid for fifty percent of approved energy conservation measures in the schools.

At the Groveton Elementary School, the school year opened with an enrollment of 337 children in grades K-6. To accommodate the classes and programs for the youngsters, twelve classrooms are used at the elementary school. In addition, the main building has space and facilities for the school nurse, special education classrooms, library, offices and a kitchen-cafeteria. We continue to rent outside facilities for classrooms and programs. Remedial reading, Title I programs and a second grade classroom are rented at the Methodist Church. We also rent space at St. Francis for the kindergarten and a second grade classroom. This means that eighty-eight children are using outside facilities full time each day and approximately seventy other pupils use the Title I and remedial reading classroom sometime during the school day.

The direction of the elementary school curriculum has continued to stress and place emphasis on the basic language arts and mathematics skills. The curriculum provides a balanced program in Art, Language Arts, Mathematics, Writing Music, Physical Education, Science, Spelling and Social Studies. In addition, our school provides library services, health services, remedial reading, special education and a Title I program.

Each year the staff of the school completes a curriculum study for one or two areas of the school program. The study allows the staff to review, revise and update the curriculum, materials and programs. This past school year a committee of teachers and parents developed plans and recommendations for the education of gifted and talented pupils. Some staff members worked on the requirements for the local accountability plan. Others served on language arts, math and social studies committees. The committees developed essential learning outcomes and goals for fourth graders in the three basic areas. As part of the accountability plan, our fifth graders were selected as part of the sample group for the State educational assessment in language arts, math, writing and listening.

As a follow-up to a Title I in-service program five elementary teachers have implemented a special phonics program, Spalding Phonics, which is based on the fact that children learn by seeing, saying, hearing and writing the basic letter sounds. The initial report from the teachers indicate that our children have been successful with this approach for the teaching of reading through phonics and indications warrant consideration for full adoption of this successful program in all primary grades.

Title I, a federally funded project for thirty to forty children in grades K-6, provides tutoring for children in reading, language arts and mathematics. Children selected for the program receive about a half hour per day of individual or small group tutoring in areas in which improvement of skills is desirable.



Selection is based on teacher recommendation, classroom performance and test results. Parents, teachers and Title I staff are members of an advisory committee which continually monitors the project and provides direction for future program development.

The important topics of staff development and in-service training are provided in the areas of the education of the gifted and talented pupil and the teaching of listening skills. Five members of the staff took part in a workshop in a drug prevention education program for elementary level children.

The school continues to receive valuable services from the North Country Education Service. NCES provides a library of media materials for classroom use such as films, filmstrips, educational programs and materials. In addition NCES provides regional assistance with special education programs, in-service training and repair and maintenance of audio-visual equipment.

The programs at Groveton High School have experienced continued improvement in the past year. The Home Economics program offerings, under Mrs. Yvette Marquis, were changed in order to conform with State of New Hampshire Department of Education requirements. Personal and Family Relations, Child Development, and Consumer Education were course requirements mandated by the State Department. The courses implemented so far have been very successful.

The "Fine Arts Program" for the Junior High School, implemented to meet State requirements, involves all students in grade 7 in Art, Physical Education and Industrial Arts on a trimester basis. Students in grade 8 are enrolled in Physical Education, Industrial Arts, Home Economics and French on a quarterly basis. In order to meet time requirements next year, French, not a required subject, will not be offered. Music, a required course, will be offered in place of French.

The Life Skills Center, which began operating in the high school this past September, is doing very well in its first year in meeting the needs of our handicapped students. The entire student population in the high school is benefiting from this interaction between handicapped and non-handicapped students.

The Physical Education Electives Program offered for the first time has proven to be popular with students; however, changes will have to be made next year in order to ease the difficulties experienced in scheduling. The elective aspect of the program will continue with electives grouped into quarterly programs. The ADAPTS (Alcohol-Drug Abuse Prevention-Teaching Students) was implemented in the Physical Education Program this year. The program is presented to all grade 9 students using a team teaching approach.

The ADAPTS Program and Family Life Education Program offered on an elective basis to students in grades 7, 9 and 11 combine to educate our students in the areas of responsibility for their decisions. The Family Life Education Program is now in its fourth year.

Renovations, repairs and day-to-day maintenance continued very well during this past year. Renovations to the basement floor area were necessary to provide facilities for the Life Skills Center. A small area in the library hallway was partitioned and door inserted to provide both privacy and better heat savings. The heating system in the library was lowered from near the ceiling to permit the lowering of the ceiling, in the future, in order to provide better heat conservation as well as less noise.

The ceilings in the original high school and the 1922 addition were insulated with blown-in insulation this past summer. The ceilings in the girls' and boys' locker rooms of the 1959 addition were insulated and lowered; the ceiling in the music room was also insulated. Half the costs for ceiling insulation were paid with federal funds. The partial wall partitions in rooms 24 and 24A were extended to the ceilings in what used to be the old library. This project has served to provide less heat loss as well as a quieter atmosphere in the classrooms.

More renovations will be made in the areas of heat efficiency. Plans for window and door replacements in the original high school and in the 1922 addition are being formulated. Separate thermostatic controls for room temperature control are also being investigated. Through renovations and heat conservation, fuel will be managed in the most cost effective manner possible.

Respectfully submitted,

ALAN E. RICH  
Superintendent

CHARLES J. MICCICHE  
Assistant Superintendent

REPORT OF SCHOOL NURSE  
1979-1980 SCHOOL YEAR

Screening 703 students screened for height, weight,  
vision and hearing  
205 screened for blood pressure  
Referrals: Vision - 32 students  
Hearing - 4 students  
Blood pressure - 1 student

Physicals Athletic - 94 students  
Grade - 121  
Pre-School - 22  
Staff - 21  
Referrals: Orthopedic - 2 students  
Cardiac - 2 students  
Medical - 1 student

Dental Examinations 150 students examined  
49 students had dental work done

TB Test 104 students  
16 staff

Immunization MMR - 2  
Measles - 145  
Rubella - 1  
Mumps - 1  
OPV - 38  
DT - 55  
  
1 staff member received DT booster

Pre-School Registration 34 students registered

Pre-School Vision and  
Hearing Screening 31 screened  
Referrals: Hearing - 1 student  
Vision - 1 student

Evaluated by the Nurse 768 students  
High School - 254 students Elementary School - 514 students  
First Aid - 78 First Aid - 232  
Other - 176 Other - 282

Programs: Growing Up Series for Boys and Girls - grades  
5 and 6.  
Clinic to reimmunize all students with  
measle vaccine given prior to age 15  
months or before 1968.  
Involvement with Alcohol and Drug Abuse  
Program on Junior High School Level.

Respectfully submitted,

JUNE F. PARTRIDGE, R.N.  
School Nurse

GRADE PLACEMENT CHART - SEPTEMBER 1980

Elementary Building

Thomas Monahan, Principal  
Edna Crawford, Secretary

<u>Grades</u>	Spec.								<u>Totals</u>
	<u>Ed.</u>	<u>K</u>	<u>1</u>	<u>2</u>	<u>3</u>	<u>4</u>	<u>5</u>	<u>6</u>	
Sheila Travers	6								6
Deborah Chadwick		39							39
Patricia Allen			17						17
Joan Kipp			17						17
Judith Merriam			17						17
Vicky Bailey				25					25
Debra Maslauskas				24					24
Andrea Craxton					19				19
Deborah Joyce					17				17
Virginia Davis						25			25
Pearl Emery						25			25
Paul Hawley							27		27
Matthew Treamer							27		27
Cynthia Graham								26	26
Larry Guile								<u>26</u>	<u>26</u>
Totals	<u>6</u>	<u>39</u>	<u>51</u>	<u>49</u>	<u>36</u>	<u>50</u>	<u>54</u>	<u>52</u>	<u>337</u>

Alice Abbott, Remedial Reading  
Ellen Gries, Part Time Art  
Harry Hikel, Part Time Music  
  
Kathryn Treamer, Spec. Ed.-SAU  
Judith Dvorchik, Title I

Ann Atkinson, Spec. Ed. Aide  
Simmone Cotter, Title I Aide  
Shirley Miles, Teacher Aide  
Harriet Mc Mann, Teacher Aide  
Jodi Gray, Spec. Ed. Assistant  
Diane Mayhew, Title I Aide

Michael Cross, Custodian  
Eugene Montgomery, Custodian

High School Building

Edgar Melanson, Principal  
Marion Rowden, Secretary

Frederick Bailey, Vice Principal  
Jon Odell, Guidance Director  
Marion Emery, Guidance Secretary

<u>Grades</u>	Spec.							<u>Total</u>
	<u>Ed.</u>	<u>7</u>	<u>8</u>	<u>9</u>	<u>10</u>	<u>11</u>	<u>12</u>	
		60	62	67	64	54	45	352

Earl La Flamme, Custodian  
James Emery, Custodian

Gary Bisson - Driver Education, Social Studies

Rita Blakeslee - Business Education

Eugene Blank - Building Trades

Helen Boswell - Social Studies

Ronald Brockett - Art

Dencie Donovan - Mathematics

Joseph Fitzgerald, Jr. - English  
Carol Frizzell - English  
Gerard Gaetzens - Foreign Language  
Michael Galuska - Science  
Bradley Harding - Math/Math Department Chairman  
Richard Holt - Business Education/Department Chairman  
Gary Jenness - Physical Education  
William Joyce - Industrial Arts  
Pamela Lewendowski - Special Education  
Yvette Marquis - Home Economics  
James Marshall - Special Education  
Deborah Mc Guinness - Science  
Richard Merrill - Science/Department Chairman  
Thomas J. Ordzie - English  
Patricia Riendeau - English/Department Chairman  
Judith Salley - Mathematics  
Robert Tobin - Music  
Mary A. Trask - Physical Education  
Rebecca Vachon - Business Education  
Thomas Williams - Social Studies  
  
Hildred Hurlbutt - Library Aide  
Betty Ann Willard - Business Ed. Aide (Voc.)  
Claire Mac Illvane - Spec. Education Aide  
Rita Connary - Spec. Education Aide

SCHOOL ADMINISTRATIVE UNIT #58  
SCHOOL CALENDAR  
1981-1982

---

<u>DAYS</u>	<u>S</u>	<u>M</u>	<u>T</u>	<u>W</u>	<u>TH</u>	<u>F</u>	<u>S</u>	<u>DAYS</u>	<u>S</u>	<u>M</u>	<u>T</u>	<u>W</u>	<u>TH</u>	<u>F</u>	<u>S</u>
SEPTEMBER			X	X	X	X	5	FEBRUARY		1	2	3	4	5	6
	6	X	*X	9	10	11	12		7	8	9	10	11	12	13
	13	14	15	16	17	18	19		14	15	16	17	18	19	20
	20	21	22	23	24	25	26		21	X	X	X	X	X	27
	27	28	29	30					28						
OCTOBER					1	2	3	MARCH		1	2	3	4	5	6
	4	5	6	7	8	9	10		7	8	9	10	11	12	13
	11	12	13	14	15	X	17		14	15	16	17	18	19	20
	18	19	20	21	22	23	24		21	22	23	24	25	26	27
	25	26	27	28	29	30	31		28	29	30	31			
NOVEMBER	1	2	3	4	5	6	7	APRIL					1	2	3
	8	9	10	X	12	13	14		4	5	6	7	8	9	10
	15	16	17	18	19	20	21		11	12	13	14	15	16	17
	22	23	24	25	X	X	28		18	X	X	X	X	X	24
	29	30							25	26	27	28	29	30	
DECEMBER			1	2	3	4	5	MAY							1
	6	7	8	9	10	11	12		2	3	4	5	6	7	8
	13	14	15	16	17	18	19		9	10	11	12	13	14	15
	20	21	22	X	X	X	26		16	17	18	19	20	21	22
	27	X	X	X	X				23	24	25	26	27	28	29
									30	X					
JANUARY						X	2	JUNE			1	2	3	4	5
	3	4	5	6	7	8	9		6	7	8	9	10	11	12
	10	11	12	13	14	15	16		13	14	15	16	17	18	19
	17	18	19	20	21	22	23		20	21	22				
	24	25	26	27	28	29	30								
	31														

180 days (6/21-6/22 snow days)  
FEBRUARY THROUGH JUNE - 89 DAYS

SEPTEMBER THROUGH JANUARY -  
91 DAYS

- |   |                            |
|---|----------------------------|
| * Sept. 8 Teacher Orientation Day                 | Feb. 22/ Winter Recess     |
| Sept. 9 First day of school                       | Feb. 26                    |
| Oct. 16 Teachers' Convention-<br>Joint Conference | April 19/                  |
| Nov. 11 Veterans' Day                             | April 23 Spring Recess     |
| Nov. 26   | May 31 Memorial Day        |
| & 27 Thanksgiving Recess                          | June 18 Last day of school |
| Dec. 23/  | June 21 & 22 Snow days     |
| Jan. 1 Christmas Recess                           |                            |

# LOCATION OF NEW FIRE BOXES IN VILLAGE OF GROVETON

## CIVIL DEFENSE AIR RAID WARNING

1-1-1 Four Short Rounds All Clear 1-1-1 One Round

---

### Box No.

- 222 Out-of-Town Calls
  - 333 Forest Fire Calls
  - 444 Emergency Calls
  - 12 Corner of Main and State Streets
  - 13 Corner of State and Morse Streets
  - 14 Corner of Rich and State Streets
  - 15 Corner of Arlington Avenue and Preble Street
  - 16 #4 Finishing Room
  - 21 Fire Station (Church Street)
  - 22 Corner of Summer Street and Odel Park
  - 23 Corner of West and Rich Streets
  - 24 Corner of West and Main Streets
  - 31 Corner of Second and Melcher Streets
  - 32 Corner of Hillside Avenue and Highland Street
  - 33 Intersection of Graham and Cottage Streets
  - 34 Corner of Hillside Avenue and First Street
  - 41 Junction of Main and Melcher and Cumberland Streets
  - 42 Junction of Maple and Cumberland Streets
  - 43 Fiske Street opposite Ivan Jordan Home
  - 51 Corner of Eames and Park Streets
  - 52 Corner of Pleasant and State Streets
  - 53 Upper State Street near Douglas Garage
  - 54 Rt. 3 near George McMann
  - 61 Winter Street beside Alton Forbes Home
  - 62 Junction of Brooklyn Street and Lost Nation Rd.
  - 63 Brooklyn Street opposite Cloutier Store
  - 64 Brooklyn Street near Foot Bridge
  - 71 Groveton Papers Co., Nos. 3 and 4, Machine End
  - 72 Groveton Papers Co., Nos. 1 and 2, Machine End
  - 73 Groveton Papers Co., Woodroom Area
  - 81 Riverside Drive
- 

NO SCHOOL — 3 Blasts at 7:00 A.M.

CURFEW — 2 Blasts at 9:00 P.M.

RECALL (Fire Out) — 1 Blast

---

Learn how to operate a Fire Alarm Box. Learn the location of box nearest you. If you must go to a fire — **Do Not Hinder or Obstruct Fire Trucks or Firemen.**

---

For Map of Streets and Fire Alarm Box Locations see inside Front Cover.

### LAW GOVERNING BOXES

Any person sending in a false alarm of fire, or tampering with fire alarm system, will be fined \$150.00 or serve one year in jail. This law will be strictly enforced.

## TOWN TELEPHONE DIRECTORY

TOWN MANAGER, Natalie M. Potter	636-1450
TOWN CLERK AND TAX COLLECTOR Theresa G. Brooks	636-1450
LANCASTER PUBLIC HEALTH NURSING SERVICE	788-2366
ELEMENTARY SCHOOL	636-1806
HIGH SCHOOL	636-1619
SUPT. OF SCHOOLS OFFICE	636-1437

## EMERGENCY TELEPHONE NUMBERS

Police Department	
Answering Service (Turbine Room)	636-1430
Office	636-1124
Ambulance Service	
Answering Service (Turbine Room)	636-1430
Civil Defense	636-1430
Fire Department	636-1224



UNIVERSITY OF N. H.

DURHAM

NH 03824