



タイトル Title	Secondary CIC-rearranged sarcoma responsive to chemotherapy regimens for Ewing sarcoma: A case report
著者 Author(s)	Kimbara, Shiro / Imamura, Yoshinori / Kiyota, Naomi / Takakura, Hidetomo / Matsumoto, Sakuya / Koyama, Taiji / Fujishima, Yoshimi / Funakoshi, Yohei / Toyoda, Masanori / Hirose, Takanori / Kanzawa, Maki / Kawamoto, Teruya / Hara, Hitomi / Minami, Hironobu
掲載誌・巻号・ページ Citation	Molecular and Clinical Oncology,14(4):68
刊行日 Issue date	2021-04
資源タイプ Resource Type	Journal Article / 学術雑誌論文
版区分 Resource Version	publisher
権利 Rights	© Kimbara et al. This work is licensed under a Creative Commons Attribution-NonCommercial-NoDerivatives 4.0 International (CC BY-NC-ND 4.0) License.
DOI	10.3892/mco.2021.2230
JaLDOI	
URL	<a href="http://www.lib.kobe-u.ac.jp/handle_kernel/90007940">http://www.lib.kobe-u.ac.jp/handle_kernel/90007940</a>

# Secondary *CIC*-rearranged sarcoma responsive to chemotherapy regimens for Ewing sarcoma: A case report

SHIRO KIMBARA<sup>1</sup>, YOSHINORI IMAMURA<sup>1</sup>, NAOMI KIYOTA<sup>1,2</sup>, HIDETOMO TAKAKURA<sup>1</sup>, SAKUYA MATSUMOTO<sup>1</sup>, TAJI KOYAMA<sup>1</sup>, YOSHIMI FUJISHIMA<sup>1</sup>, YOHEI FUNAKOSHI<sup>1</sup>, MASANORI TOYODA<sup>1</sup>, TAKANORI HIROSE<sup>3,4</sup>, MAKI KANZAWA<sup>3</sup>, TERUYA KAWAMOTO<sup>5</sup>, HITOMI HARA<sup>5</sup> and HIRONOBU MINAMI<sup>1,2</sup>

<sup>1</sup>Department of Medical Oncology/Hematology, Kobe University Hospital; <sup>2</sup>Kobe University Hospital Cancer Center; <sup>3</sup>Department of Diagnostic Pathology, Kobe University Hospital; <sup>4</sup>Division of Pathology for Regional Communication, Kobe University School of Medicine; <sup>5</sup>Department of Orthopaedic Surgery, Kobe University Hospital, Kobe, Hyogo 650-0017, Japan

Received July 23, 2020; Accepted January 26, 2021

DOI: 10.3892/mco.2021.2230

**Abstract.** Capicua transcriptional repressor (*CIC*)-rearranged sarcoma is an Ewing-like sarcoma with an aggressive clinical course and poor prognosis. No standard treatment has been established. The present study describes a case of *CIC*-rearranged sarcoma with lung metastases developing in a 24-year-old woman as a therapy-associated malignancy following chemotherapy for anaplastic large cell lymphoma at nine years old. This was treated with palliative regimens used for Ewing sarcoma. The patient achieved disease control for one year. Of note, ifosfamide and etoposide (IE), which were used as a second line treatment lead to a partial response. The case described in the present study indicated that treatment with Ewing regimens is a reasonable option for patients with metastatic *CIC*-rearranged sarcoma, including those with a second malignant case.

## Introduction

Undifferentiated small-cell sarcomas are soft tissue malignancies which are characterized by small, round to ovoid cytomorphology with a high nuclear/cytoplasmic ratio. The most frequent one is Ewing sarcoma, which is characterized by

EWS RNA binding protein 1 (*EWSR1*)-erythroblast transformation-specific (*ETS*) gene fusions, and others without these fusions are called 'Ewing-like sarcomas'. Based on the discovery of novel molecular driving events, recent studies have enabled the identification of two distinct subgroups, these are, capicua transcriptional repressor (*CIC*)-rearranged sarcoma and BCL6 corepressor (*BCOR*)-rearranged sarcoma, within this previously uncharacterized group of Ewing-like sarcomas (1,2). In *CIC*-rearranged sarcoma, *CIC* is fused to double homeobox 4 (*DUX4*) with either t(4;19)(q35;q13.1) or t(10;19)(q26.3;q13) translocation, which are associated with oncogenesis, tumor development, and metastatic capability (1,3,4). On the other hand, *BCOR* is fused to mainly cyclin B3 (*CCNB3*) (5). These entities have different clinicopathological features. Of note, *CIC*-rearranged sarcomas are associated with an aggressive clinical course and poor prognosis compared to Ewing sarcoma (3). Median overall survival of patients with metastatic *CIC*-rearranged sarcoma is only 9-10 months (6,7). The efficacy of chemotherapy has not been prospectively evaluated, and no standard treatment has been established (7,8). Compared to *CIC*-rearranged sarcomas, *BCOR*-rearranged sarcomas have a much better prognosis (5,7), although no standard treatment for these tumors has been established either.

Here, we describe a case of metastatic *CIC*-rearranged sarcoma which developed years after chemotherapy for lymphoma that included alkylating agents and anthracycline, and was palliated with chemotherapy used for Ewing sarcoma.

## Case report

The patient was a 24-year-old Japanese woman who had a past medical history of anaplastic large cell lymphoma at nine years old, treated with chemotherapy based on the ACLC99 protocol (9) and JACLS NHL-98 protocol (10), with subsequent autologous hematopoietic stem cell transplantation. These protocol regimens included cytotoxic drugs such as alkylating agents and anthracyclines. The cumulative dose of doxorubicin (DOX) was 150 mg/m<sup>2</sup>. She had been in long-term complete remission.

---

**Correspondence to:** Dr Yoshinori Imamura, Department of Medical Oncology/Hematology, Kobe University Hospital, 7-5-2 Kusunoki-cho, Chuo-ku, Kobe, Hyogo 650-0017, Japan  
E-mail: yimamura@med.kobe-u.ac.jp

**Abbreviations:** Act-D, actinomycin-D; CPA, cyclophosphamide; DOX, doxorubicin; IE, ifosfamide and etoposide; TRB, trabectedin; VCR, vincristine

**Key words:** *CIC*-rearranged sarcoma, Ewing-like sarcoma, chemotherapy, ifosfamide, etoposide, secondary sarcoma

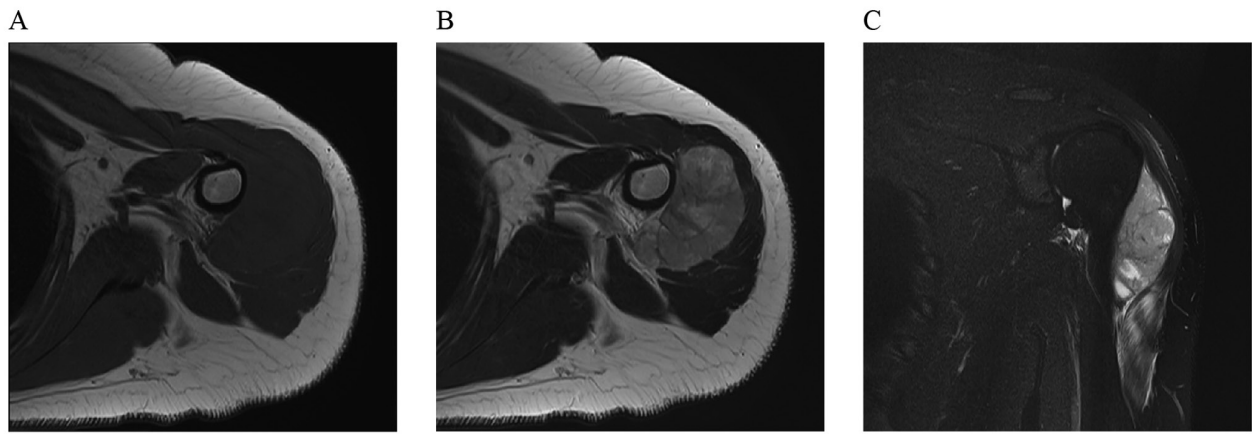


Figure 1. MRI of the tumor at presentation. A 5 cm long mass is isointense on (A) T1-weighted imaging, and (B) hyperintense on T2-weighted imaging and (C) short inversion time inversion recovery imaging.

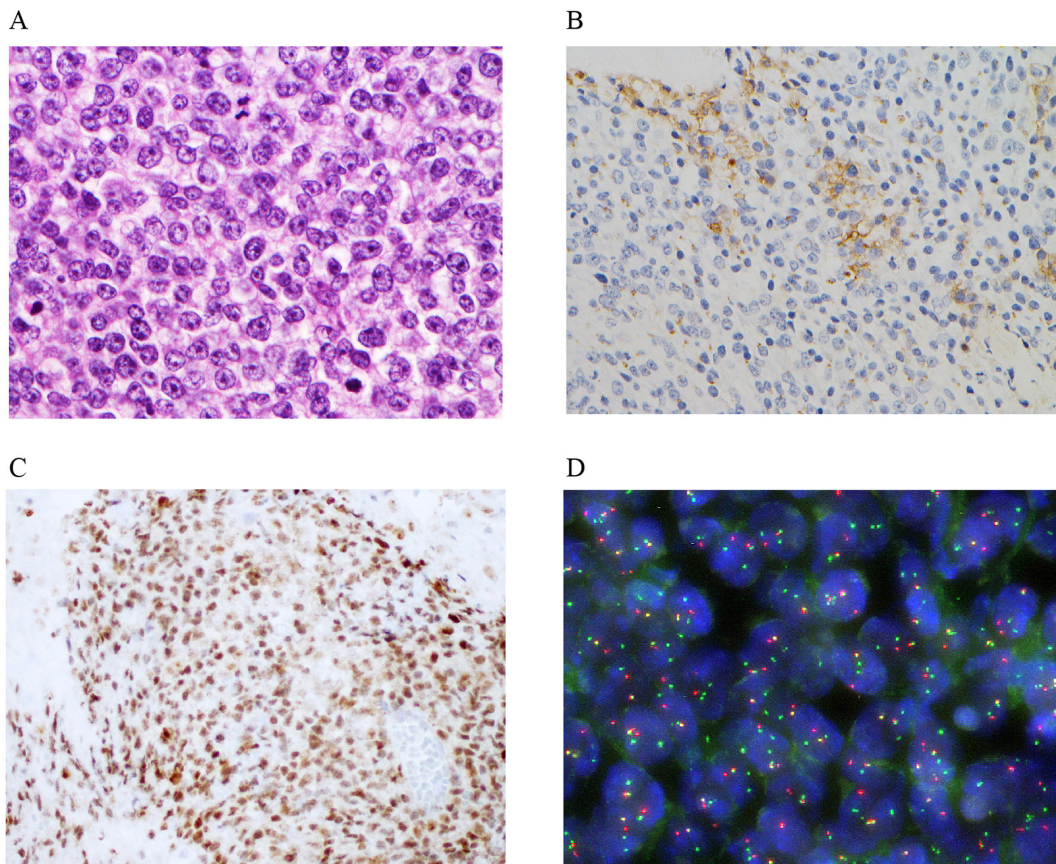


Figure 2. Small round atypical cells with a high nuclear/cytoplasmic ratio grow in sheets. (A) Hematoxylin and eosin stains. Magnification, x100. (B) Tumor cells are focally positive for CD99 and show strong and diffuse positive staining for (C) ETV4. Magnification, x40. (D) Fluorescence *in situ* hybridization shows the rearrangement of *CIC* gene. Split of green (5' part) and orange (3' part) signals. ETV4, ETS variant transcription factor 4.

She was referred to our hospital after presenting with pain and swelling of the left shoulder in May 2018. A magnetic resonance imaging (MRI) scan of the left shoulder revealed a 5 cm soft tissue mass located between the deltoid and humerus (Fig. 1A-C). Open biopsy was performed. Small round atypical cells with a high nuclear/cytoplasmic ratio grew in sheets (Fig. 2A) and formed alveolar structures with necrosis and fibrosis. Immunohistochemically, tumor cells were positive for WT-1, calretinin and ETS variant transcription factor 4 (ETV4),

and focally positive for CD99 (Fig. 2B and C). Fluorescence *in situ* hybridization demonstrated *CIC* rearrangement (Fig. 2D). Based on these findings, the tumor was diagnosed as *CIC*-rearranged sarcoma. Detail of fusion partner did not be studied. CT scan revealed multiple nodules in the lungs, which were consistent with metastases.

The clinical course is summarized in Fig. 3A. First-line palliative chemotherapy with DOX, vincristine (VCR), and cyclophosphamide (CPA) was initiated in June 2018 (Fig. 3B).

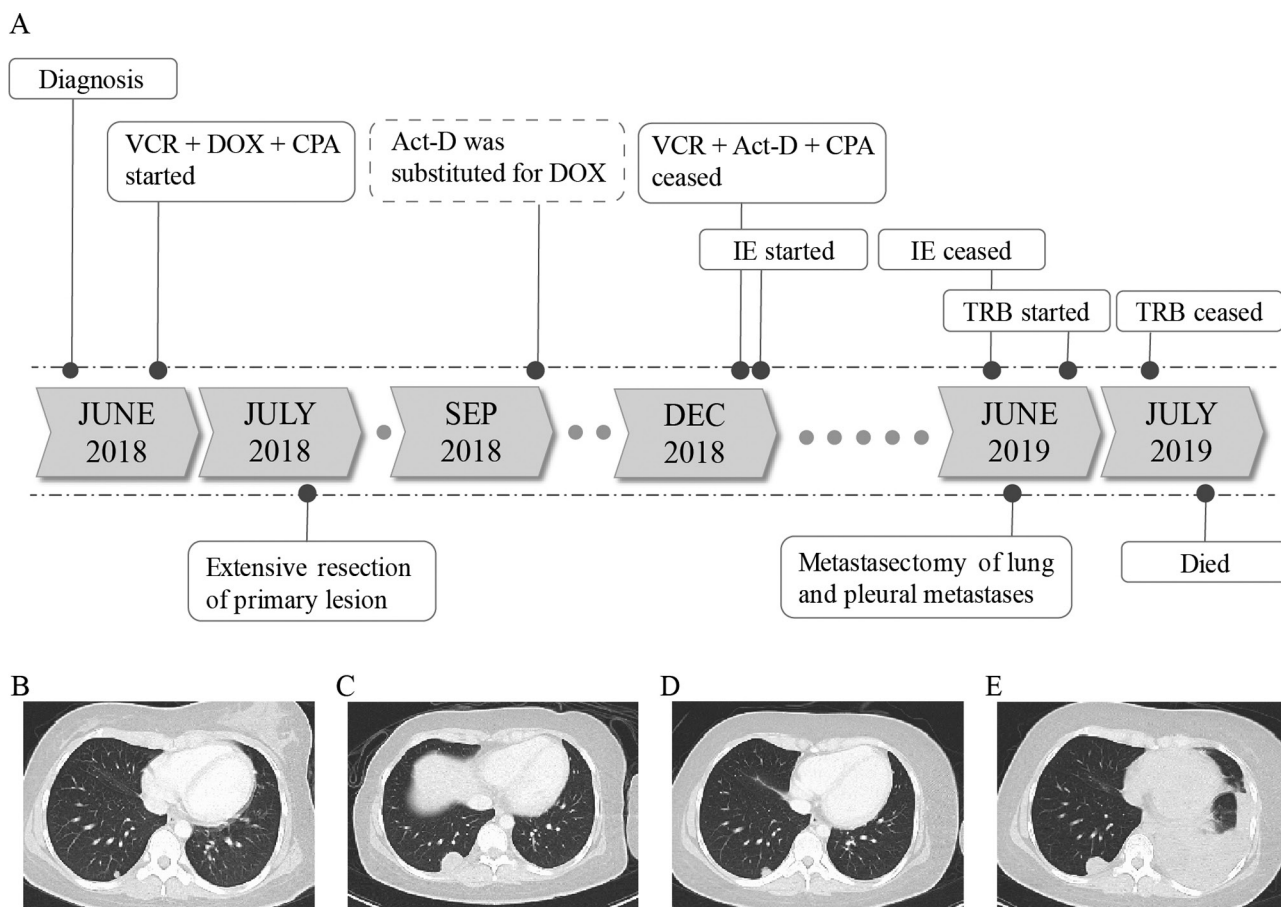


Figure 3. Summary of clinical course. (A) Course of treatment including chemotherapy and surgery. (B) Baseline CT scan in June 2018 shows small bilateral nodules. (C) A period of six months after the initiation of doxorubicin, vincristine and cyclophosphamide, progression of lung metastases is observed. (D) IE achieved a partial response confirmed in April 2019. (E) Disease progression was observed in June 2019. IE, ifosfamide and etoposide; VCR, vincristine; DOX, doxorubicin; CPA, cyclophosphamide; TRB, trabectedin.

After the first cycle, the lung metastases had shrunk, but the primary lesion had not changed. The patient underwent a wide resection of the primary lesion with replacement using artificial humeral head in July 2018 to improve her quality of life. Pathological response to initial chemotherapy was poor. DOX, VCR, and CPA were restarted. At the end of the third cycle, her cumulative lifetime exposure of DOX had reached 350 mg/m<sup>2</sup>. We substituted actinomycin-D (Act-D) for DOX beginning with the fourth cycle to avoid cardiotoxicity (11). The *CIC*-rearranged sarcoma was well-controlled during six cycles, although adverse events occurred, including grade 3 febrile neutropenia and septic arthritis requiring debridement. Six months from the beginning of therapy, progression of the lung metastases developed (Fig. 3C).

We administered ifosfamide and etoposide as second-line treatment. We planned 1,800 mg/m<sup>2</sup> of ifosfamide per day for five days and 100 mg/m<sup>2</sup> of etoposide per day over the same five days every three weeks. Two cycles of IE achieved a good response in the lung metastases as seen on CT scan; this response lasted for 4 months (Fig. 3D). However, persistent grade 2 anorexia due to chemotherapy impaired her quality of life. In addition, some evidences have suggested that pulmonary metastasectomy may be associated with clinical benefit (12,13). As extrapulmonary metastases had not appeared, after careful discussion among the multidisciplinary team and the patient,

we planned a pneumonectomy for pulmonary oligometastases for improvement of prognosis and quality of life with subsequent chemotherapy holiday after 5 cycles of IE. Despite rapid progression of the lung metastases, with a left pleural effusion appearing right before surgery (Fig. 3E), pneumonectomy and maximum debulking of the pleural metastases were performed. However, not all residual disease could be resected.

Following surgery, an aggressive clinical course was maintained. As rapidly progressive malignant pleural effusion developed, pleurodesis was performed. Although we started trabectedin (TRB) as third-line therapy, no clinical benefit was observed. She died one month later. Her overall survival from diagnosis was 13 months.

## Discussion

No molecular-based targeted therapy or cancer immunotherapy for the treatment of *CIC*-rearranged sarcomas has been reported, and chemotherapy with cytotoxic agents is still generally used. The available data on treatment for metastatic *CIC*-rearranged sarcoma come from small retrospective studies. Because of the low incidence and variations in treatment, some cases were formerly diagnosed and treated as other sarcomas without pathognomonic molecular analysis (6,7,14). Palmerini *et al* reported that in first-line settings for metastatic *CIC*-rearranged

sarcoma, response rates to a Ewing regimen and another regimen (DOX and ifosfamide, unknown regimen) were 57% (n=8/14) and 0% (n=0/4), respectively (8). In addition, neoadjuvant chemotherapy with Ewing regimen achieved pathological response in 3 of 10 localized *CIC*-rearranged sarcoma (6). These findings suggest that chemotherapy with the Ewing regimens seems to be effective for patients newly diagnosed with metastatic *CIC*-rearranged sarcoma, albeit that further studies are warranted.

IE is an effective regimen for treatment of recurrent Ewing sarcoma (15). This regimen is not widely used in treatment for advanced soft tissue sarcoma (16,17), although minimum activity has been reported in small phase 2 trial (18). IE is commonly used with DOX, VCR, and CPA (VDC-IE) for treatment of localized Ewing sarcoma based on the results of a randomized phase 3 trial, but the same trial revealed that VDC-IE did not improve the outcome for patients with metastatic disease (19). Thus, we did not use VDC-IE in our first-line palliative treatment but did use it for second-line treatment. To our knowledge, this is the first case with a response to an IE regimen without DOX for refractory *CIC*-rearranged sarcoma. Unfortunately, the patients showed poor prognosis regardless palliative chemotherapy. However, Ewing regimens, especially IE regimen achieved clinically meaningful disease control in this case, considering to highly aggressive clinical course after IE regimen failure.

There is no established treatment for Ewing sarcoma refractory to both DOX, VCR, and CPA and to IE. TRB, a tetrahydroisoquinoline alkaloid, showed anti-tumor activity in *CIC*-rearranged sarcoma in a xenograft model (4). Preclinical and clinical studies have shown that TRB has an anti-tumor effect in several translocation-related sarcomas (20-22). Therefore, we used TRB as third-line palliative therapy based on these findings, but saw no clinical benefit. Interestingly, TRB did not demonstrate sufficient activity against relapsed Ewing sarcoma in a phase 2 trial (23). Of ten evaluable patients, there were no partial responses, one case of stable disease, and nine cases of progressive disease. Based on the above, the clinical response to chemotherapy in our case was concordant with the clinical chemosensitivity of Ewing sarcoma.

Our case is the first report of secondary *CIC*-rearranged sarcoma. Secondary sarcoma associated with prior chemotherapy is well known. Various treatment-related factors are associated with the development of secondary sarcoma, including exposure to alkylating agents and/or anthracyclines and a history of autologous hematopoietic stem cell transplantation (24,25). Most secondary sarcoma belong to the category with non-recurring genetic aberrations, including undifferentiated pleomorphic sarcoma, osteosarcoma, and malignant peripheral nerve sheath tumor (26). Ewing sarcoma accounts for only 5% of secondary sarcomas (24). However, *CIC*-rearranged sarcoma could have been overlooked in cases where pathognomonic molecular analysis was not performed. It is uncertain whether the clinical outcome differs between primary and secondary *CIC*-rearranged sarcoma. In our case, the previous treatment history restricted the use of DOX because of the patient's cumulative exposure.

In conclusion, we describe a case of metastatic *CIC*-rearranged sarcoma treated with palliative chemotherapy, beginning with an Ewing regimen, both VDC and IE. Our case and the best available clinical evidence suggest that treatment

with Ewing regimens is a reasonable option for patients with metastatic *CIC*-rearranged sarcomas, including second malignant case.

### Acknowledgements

The authors would like to thank Dr. Akihiko Yoshida (Department of Diagnostic Pathology, National Cancer Center Hospital) for his important contributions to the pathological diagnosis.

### Funding

No funding was received.

### Availability of data and materials

The datasets used and/or analyzed during the present study are available from the corresponding author on reasonable request.

### Authors' contributions

SK and YI made substantial contributions to the conception and design of the study. SK, YI, NK, HT, SM, TKo TH, MK, TKa, and HH substantial contributions to the acquisition of the data. SK and YI confirmed the authenticity of the raw data and drafted the manuscript. YFuj, YFun, MT and HM made substantial contributions to the analysis and interpretation of the data and were involved in revising the manuscript critically for important intellectual content. TH and MK contributed pathological diagnosis. All authors read and approved the final manuscript.

### Ethics approval and consent to participate

Not applicable.

### Patient consent for publication

Written informed consent was obtained from the patient for publication of the clinical data and images.

### Competing interests

The authors declare that they have no competing interests.

### References

1. Kawamura-Saito M, Yamazaki Y, Kaneko K, Kawaguchi N, Kanda H, Mukai H, Gotoh T, Motoi T, Fukayama M, Aburatani H, *et al*: Fusion between *CIC* and *DUX4* up-regulates *PEA3* family genes in Ewing-like sarcomas with t(4;19)(q35;q13) translocation. *Hum Mol Genet* 15: 2125-2137, 2006.
2. Puls F, Niblett A, Marland G, Gaston CL, Douis H, Mangham DC, Sumathi VP and Kindblom LG: *BCOR-CCNB3* (Ewing-like) sarcoma: A clinicopathologic analysis of 10 cases, in comparison with conventional Ewing sarcoma. *Am J Surg Pathol* 38: 1307-1318, 2014.
3. Haidar A, Arekapudi S, DeMattia F, Abu-Isa E and Kraut M: High-grade undifferentiated small round cell sarcoma with t(4;19)(q35;q13.1) *CIC-DUX4* fusion: Emerging entities of soft tissue tumors with unique histopathologic features-a case report and literature review. *Am J Case Rep* 16: 87-94, 2015.

4. Yoshimoto T, Tanaka M, Homme M, Yamazaki Y, Takazawa Y, Antonescu CR and Nakamura T: CIC-DUX4 induces small round cell sarcomas distinct from ewing sarcoma. *Cancer Res* 77: 2927-2937, 2017.
5. Kao YC, Owosho AA, Sung YS, Zhang L, Fujisawa Y, Lee JC, Wexler L, Argani P, Swanson D, Dickson BC, *et al*: BCOR-CCNB3 fusion positive sarcomas: A clinicopathologic and molecular analysis of 36 cases with comparison to morphologic spectrum and clinical behavior of other round cell sarcomas. *Am J Surg Pathol* 42: 604-615, 2018.
6. Antonescu CR, Owosho AA, Zhang L, Chen S, Deniz K, Huryn JM, Kao YC, Huang SC, Singer S, Tap W, *et al*: Sarcomas with CIC-rearrangements are a distinct pathologic entity with aggressive outcome: A clinicopathologic and molecular study of 115 cases. *Am J Surg Pathol* 41: 941-949, 2017.
7. Endo M, Sugawara M, Yoshida A, Kobayashi E, Shimoi T, Kodaira M, Yunokawa M, Yonemori K, Tamura K, Toki S, *et al*: 1173-CIC-rearranged sarcoma and BCOR-CCNB3 sarcoma: Clinical characteristics and treatment results of the newly-established 'Ewing sarcoma-like' small round cell sarcomas. *Ann Oncol* 27 (Suppl 9): ix163-ix168, 2016.
8. Palmerini E, Gambarotti M, Ratan R, DuBois S, Nathenson MJ, Italiano A, de Alava E, Jones RL, Provenzano S, Grignani G, *et al*: Graceful Project: A global collaboration on CIC-DUX4, BCOR-CCNB3, high grade undifferentiated round cell sarcoma (URCS). In: Proceedings of the CTOS Annual Meeting, Tokyo, Japan, 2019.
9. Brugieres L, Le Deley MC, Rosolen A, Williams D, Horibe K, Wrobel G, Mann G, Zsiros J, Uyttebroeck A, Marky I, *et al*: Impact of the methotrexate administration dose on the need for intrathecal treatment in children and adolescents with anaplastic large-cell lymphoma: Results of a randomized trial of the EICNHL group. *J Clin Oncol* 27: 897-903, 2009.
10. Fujita N, Kobayashi R, Takimoto T, Nakagawa A, Ueda K and Horibe K: Results of the Japan association of childhood leukemia study (JACLS) NHL-98 protocol for the treatment of B-cell non-Hodgkin lymphoma and mature B-cell acute lymphoblastic leukemia in childhood. *Leuk Lymphoma* 52: 223-229, 2011.
11. Bristow MR, Mason JW, Billingham ME and Daniels JR: Doxorubicin cardiomyopathy: Evaluation by phonocardiography, endomyocardial biopsy, and cardiac catheterization. *Ann Intern Med* 88: 168-175, 1978.
12. Predina JD, Puc MM, Bergey MR, Sonnad SS, Kucharczuk JC, Staddon A, Kaiser LR and Shrager JB: Improved survival after pulmonary metastasectomy for soft tissue sarcoma. *J Thorac Oncol* 6: 913-919, 2011.
13. Schur S, Hoetzenecker K, Lamm W, Koestler WJ, Lang G, Amann G, Funovics P, Nemecek E, Noebauer I, Windhager R, *et al*: Pulmonary metastasectomy for soft tissue sarcoma-report from a dual institution experience at the Medical University of Vienna. *Eur J Cancer* 50: 2289-2297, 2014.
14. Yoshida A, Goto K, Kodaira M, Kobayashi E, Kawamoto H, Mori T, Yoshimoto S, Endo O, Kodama N, Kushima R, *et al*: CIC-rearranged sarcomas: A study of 20 cases and comparisons with Ewing sarcomas. *Am J Surg Pathol* 40: 313-323, 2016.
15. Miser JS, Kinsella TJ, Triche TJ, Tsokos M, Jarosinski P, Forquer R, Wesley R and Magrath I: Ifosfamide with mesna uroprotection and etoposide: An effective regimen in the treatment of recurrent sarcomas and other tumors of children and young adults. *J Clin Oncol* 5: 1191-1198, 1987.
16. Minchom A, Jones RL, Fisher C, Al-Muderis O, Ashley S, Scurr M, Karavasilis V and Judson IR: Clinical benefit of second-line palliative chemotherapy in advanced soft-tissue sarcoma. *Sarcoma* 2010: 264360, 2010.
17. Leahy M, Garcia Del Muro X, Reichardt P, Judson I, Staddon A, Verweij J, Baffoe-Bonnie A, Jönsson L, Musayev A, Justo N, *et al*: Chemotherapy treatment patterns and clinical outcomes in patients with metastatic soft tissue sarcoma. The sarcoma treatment and Burden of Illness in North America and Europe (SABINE) study. *Ann Oncol* 23: 2763-2770, 2012.
18. Kawai A, Chuman H, Makimoto A, Ito Y, Yamaguchi U, Morimoto Y and Beppu Y: Ifosfamide-etoposide chemotherapy in patients with advanced adult soft tissue sarcomas. *J Clin Oncol* 22 (Suppl 14): S9062, 2004.
19. Grier HE, Krailo MD, Tarbell NJ, Link MP, Fryer CJ, Pritchard DJ, Gebhardt MC, Dickman PS, Perlman EJ, Meyers PA, *et al*: Addition of ifosfamide and etoposide to standard chemotherapy for Ewing's sarcoma and primitive neuroectodermal tumor of bone. *N Engl J Med* 348: 694-701, 2003.
20. Grohar PJ, Griffin LB, Yeung C, Chen QR, Pommier Y, Khanna C, Khan J and Helman LJ: Ecteinascidin 743 interferes with the activity of EWS-FLI1 in Ewing sarcoma cells. *Neoplasia* 13: 145-153, 2011.
21. Forni C, Minuzzo M, Viridis E, Tamborini E, Simone M, Tavecchio M, Erba E, Grosso F, Gronchi A, Aman P, *et al*: Trabectedin (ET-743) promotes differentiation in myxoid liposarcoma tumors. *Mol Cancer Ther* 8: 449-457, 2009.
22. Kawai A, Araki N, Sugiura H, Ueda T, Yonemoto T, Takahashi M, Morioka H, Hiraga H, Hiruma T, Kunisada T, *et al*: Trabectedin monotherapy after standard chemotherapy versus best supportive care in patients with advanced, translocation-related sarcoma: A randomised, open-label, phase 2 study. *Lancet Oncol* 16: 406-416, 2015.
23. Baruchel S, Pappo A, Krailo M, Baker KS, Wu B, Villaluna D, Lee-Scott M, Adamson PC and Blaney SM: A phase 2 trial of trabectedin in children with recurrent rhabdomyosarcoma, Ewing sarcoma and non-rhabdomyosarcoma soft tissue sarcomas: A report from the children's oncology group. *Eur J Cancer* 48: 579-585, 2012.
24. Henderson TO, Whitton J, Stovall M, Mertens AC, Mitby P, Friedman D, Strong LC, Hammond S, Neglia JP, Meadows AT, *et al*: Secondary sarcomas in childhood cancer survivors: A report from the childhood cancer survivor study. *J Natl Cancer Inst* 99: 300-308, 2007.
25. Ishida Y, Maeda M, Adachi S, Rikiishi T, Sato M, Kawaguchi H, Manabe A, Tokuyama M, Hori H, Okamura J, *et al*: Secondary bone/soft tissue sarcoma in childhood cancer survivors: A nationwide hospital-based case-series study in Japan. *Jpn J Clin Oncol* 48: 806-814, 2018.
26. Wolpert F, Grotzer MA, Niggli F, Zimmermann D, Rushing E and Bode-Lesniewska B: Ewing's sarcoma as a second malignancy in long-term survivors of childhood hematologic malignancies. *Sarcoma* 2016: 5043640, 2016.



This work is licensed under a Creative Commons Attribution-NonCommercial-NoDerivatives 4.0 International (CC BY-NC-ND 4.0) License.