

Online Energy Management of a Hybrid Fuel Cell Vehicle Considering the Performance Variation of the Power Sources

ISSN 1751-8644
doi: 0000000000
www.ietdl.org

Razieh Ghaderi¹, Mohsen Kandidayeni^{2,3}, Mehdi Soleymani^{1,4*}, Loïc Boulon³, Hicham Chaoui⁵

¹ Department of Mechatronics, Arak University, Arak, 38156-8-8349, Iran

² e-TESC Laboratory, Department of Electrical and Computer Engineering, University of Sherbrooke, Sherbrooke, QC, J1K 2R1, Canada

³ Hydrogen Research Institute, Department of Electrical and Computer Engineering, Université du Québec à Trois-Rivières, Quebec, G9A 5H7, Canada

⁴ Centre for Automotive Engineering and Technology School of Aerospace, Transport and Manufacturing (SATM) Cranfield University, Bedfordshire, MK43 0AL Cranfield, UK

⁵ Department of Electronics, Carleton University, 1125 Colonel By Drive, Ottawa, ON K1S 5B6, Canada

* E-mail: m-soleymani@araku.ac.ir

Abstract: This paper investigates the impact of battery and fuel cell (FC) degradation on energy management of a FC hybrid electric vehicle (FCHEV). In this respect, an online energy management strategy (EMS) is proposed considering simultaneous online adaptation of battery and FC models. The EMS is based on quadratic programming (QP) which is integrated into an online battery and proton exchange membrane FC (PEMFC) parameters identification. Considering the battery and PEMFC states of health, three scenarios have been considered for the EMS purpose, and the performance of the proposed EMS has been examined under two driving cycles. Numerous test scenarios using standard driving cycles reveal that the ageing of battery and PEMFC has a considerable impact on the hydrogen consumption. Moreover, the proposed EMS can successfully tackle the model uncertainties owing to the performance drifts of the power sources at the mentioned scenarios.

1 Introduction

Global warming, air pollution owing to toxic fumes of combustion engines, and limitation of fossil fuels have motivated automobile industry to exploit alternative energy sources, such as fuel cell (FC) and electro-chemical battery [1, 2]. Hybrid electric vehicles (HEVs) incorporate more than one energy source to propel the vehicle. FC hybrid electric vehicle (FCHEV) is a kind of HEV that uses the FC as the primary power source and the electric battery as the secondary one [3]. Proton exchange membrane FC (PEMFC) is the most popular technology employed in the FCHEVs because of its low-temperature and low-pressure operating range [4]. Lithium-ion battery, because of its high energy and power density and low self-discharge rate, is also the dominant battery technology in the electric and hybrid electric vehicles [5]. Furthermore, battery provides the capability of storing the recovered energy from the regenerative braking system which in turn can improve the energy efficiency. Although PEMFCs have good energy density, they suffer from slow dynamic response. Therefore, a FC vehicle may encounter power shortage, when the required power is provided only by the FC. Therefore, the combination of PEMFC and lithium-ion battery seems a proper match for FCHEVs. As the PEMFC and Lithium-ion battery have different characteristics in respect of power delivery, the design of an energy management strategy (EMS) is vital to ameliorate the hydrogen economy and lifetime of the powertrain components. The existing EMSs for FCHEVs can be grouped into three kinds of rule-based, optimization-based, and intelligent-based [6–8]. Rule-based strategies are normally developed based on heuristic methods and do not guarantee the optimality though they are sufficient for reaching an immediate goal [9]. Optimization-based strategies propose theoretical near-optimal solutions. They can also be utilized to refine the rule sets of the expert system in the rule-based methods [10]. Optimization-based EMSs are divided into

global and real-time methods. Global strategies determine the optimal policy of a defined cost function over a known driving profile and are not appropriate for real-time applications. Dynamic programming (DP) (as an optimal solution) [11, 12] and metaheuristic algorithms, such as genetic algorithm (GA) [13], (as a near-optimal solution) have been employed several times as off-line global EMSs. Real-time strategies solve an instantaneous cost function at each instant concerning the variables of the vehicle model. These strategies have been developed employing optimal theory techniques, such as quadratic programming (QP) [14–17], Pontryagin's minimum principle (PMP) [18, 19], and equivalent consumption minimization strategy (ECMS) [20, 21]. Intelligent-based strategies are usually formulated by utilizing the navigation data and the history of motion for identifying and predicting the driving condition [22, 23]. Such strategies are normally combined with ruled-based and optimization-based strategies to resolve the issues associated with the variation of driving condition. A considerable number of EMSs, based on the above-explained techniques and their combinations, have been proposed for FCHEVs in the literature. For instance, in [24], a rule-based EMS is proposed for a FC-SC-battery vehicle to enhance the lifespan of the power sources by using them in the recommended operational range. Furthermore, the PEMFC output power is maximized by regulating the oxygen ratio. In [25], a quadratic function for the PEMFC energy consumption is defined in a multi-state ECMS to distribute the power among the sources. This strategy has decreased the energy consumption by 2.5% compared to a rule-based power following strategy. In [26], an EMS based on adaptive control theory and fuzzy logic control (FLC) is proposed. The authors suggest updating the membership function values of the FLC as the PEMFC voltage drops owing to degradation after a while. This reflection shows that apart from the importance of considering driving condition and other related factors, it is vital to take into account the state of health (SOH) of the power sources while developing an

EMS. Lithium-ion batteries and PEMFCs may undergo various performance drifts in terms of efficiency and power delivery due to the alteration of operating conditions and degradation. In this regard, some attempts have been made to enhance the health-awareness of the power sources while developing an EMS. In [27], an EMS based on model predictive control is proposed in which the objective function considers the hydrogen consumption as well as the degradation of both PEMFC and battery. Similarly, in [28–30], a degradation model has been used for each of PEMFC stack and battery pack to prevent the proposed EMSs from mismanagement due to the performance drifts of these power sources. However, the issue with this line of work is that degradation and ageing mechanisms are highly complicated phenomena to be modeled. Moreover, the variation of the operating conditions, such as humidity and ambient temperature, which are not considered in the model of the power sources can change their power delivery capacity leading to the malfunction of the EMS. To avoid these issues, some attempts have been made to combine the extremum seeking methods, which search an optimal operating point by using a periodic perturbation signal, with the EMS design in FCHEV [31, 32]. The shortfall of the extremum seeking methods is that they are not suitable for simultaneous exploration of several points, such as maximum power and efficiency, as a particular search line is needed for each sought characteristic. This problem can be sorted out by online updating of the power sources models using recursive filters and obtaining the required characteristics while the vehicle is under operation. In [33–35], recursive filters, such as Kalman filter (KF) and recursive least square (RLS), are employed to update the parameters of the PEMFC model online. Afterwards, the proposed EMSs are fed with the present-state characteristics of the PEMFC, including maximum power and efficiency points, to perform the power distribution with complete awareness of the PEMFC realistic characteristics. The authors have shown that the classical strategies which utilize fixed maximum power and efficiency points of the PEMFC stack are not very functional when the PEMFC goes under degradation. However, one important factor that has not been considered in these works is the online adaptation of the battery pack model to the real conditions. In this regard, unlike the discussed similar studies, this paper puts forward an EMS based on QP for a FCHEV considering the online updating of both the PEMFC model and battery pack. The online adaptation of the models prevents the EMS from malfunction owing to the performance drifts of the power sources. To show the importance of the online modeling in EMS formulation, the influence of the power sources' performance drifts over the hydrogen consumption of the FCHEV is scrutinized for different cases. The rest of the paper is organized as follows. Section 2 describes the powertrain modeling of the FCHEV. Section 3 deals with the online identification of power sources. Section 4 explains the EMS development. The obtained results from the EMS are discussed in section 5. Finally, a conclusion is given in section 6.

2 Powertrain modeling

The utilized vehicle model in this study is an electrified vehicle equipped with a single ratio gearbox, a differential and two driven-wheels [36]. The powertrain of this vehicle consists of a 15-kW induction motor, a Lithium Iron Phosphate (LiFePO4) battery pack, and a PEMFC stack. The maximum speed of this vehicle is 85 km/h and its main specifications are listed in Table 1. Fig. 1 schematically represents the powertrain configuration modeling of this vehicle for the purpose of this work. The required power at the wheels is estimated based on the longitudinal dynamics, including aerodynamic drag, rolling resistance, and grade forces [37]. The required power is then demanded from the downstream components step by step until it reaches the power bus. Equation (1) calculates the road resistance force where, F_r is the rolling resistance force, F_a is the aerodynamic drag force, F_g is the grade force, v is the vehicle speed, m_v is the vehicle mass, ρ is the air density, A is the frontal area of the vehicle, g is gravitational acceleration, C_x is the aerodynamic drag coefficient, C_r is the rolling resistance coefficient, and α is the grade angle. It should be noted that the simulation in this paper will be done for a

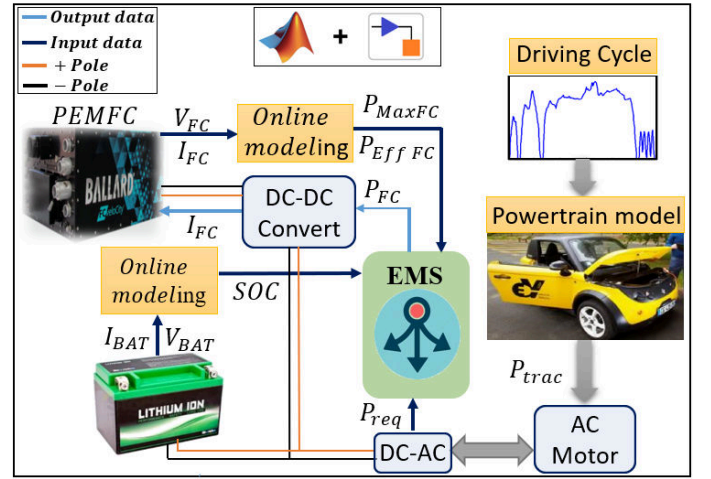


Fig. 1: Structure of the utilized FCHEV

Table 1 FCHEV parameters

Parameters	Specification	Value
Vehicle's parameters	Wheel radius	0.2865 (m)
	Rolling resistance	0.015
	Aerodynamic drag	0.42
	Density of air	1.225 (kg/m ³)
	Gravitational constant	9.81 (m/s ²)
	Mass	872.5680 (kg)
	Gear ratio	5.84
	Transmission efficiency	0.95
Power sources	Battery	80 V, 40 Ah
	Fuel cell	15.4 (kW)
Motor	AC Traction	15 (kW)

flat road.

$$F_t = v(m_v \frac{d}{dt} v(t) + F_a(t) + F_r(t) + F_g(t)) \quad (1)$$

$$\begin{cases} F_a = 0.5\rho AC_x v^2 \\ F_g = m_v g \sin(\alpha) \\ F_r = m_v C_r g \cos(\alpha) \end{cases} \quad (2)$$

The requested power is obtained as:

$$P_{req} = F_t(t)v \quad (3)$$

$$P_{motor} = P_{req}/Eff \quad (4)$$

$$P_{bus} = P_{motor}/\eta_{Converter}\eta_{DC/AC} \quad (5)$$

where P_{req} is the required Power, P_{motor} is the electric motor required power, Eff is the electric motor efficiency, P_{bus} is the power bus power to be provided by the battery and FC according to the control strategy, $\eta_{DC/AC}$ is the converter efficiency.

2.1 Lithium-ion battery model

An electrical circuit network (ECN) named 1RC Thevenin model is employed as the battery cell model [38]. This model is comprised of a voltage source in series with a single resistance which represents the cell internal resistance and a parallel resistance-capacitor which represents the cell polarization effect. The model is shown in Fig. 2 where V_{bat} is the terminal voltage, OCV is the open circuit voltage, I_{bat} is the battery load current, R_s is the internal ohmic

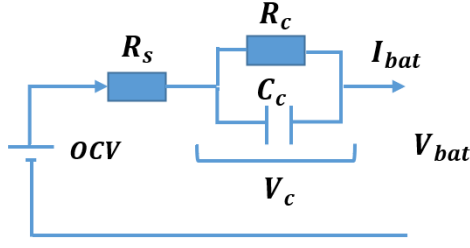


Fig. 2: Thevenin 1RC model [38]

Table 2 Battery specifications

Battery type	LiFePO4 (3.2 V)
Nominal capacity	14 (Ah)
Max. current discharge	6 C
Charging temperature	0-45 °C
Battery weight	340 g

resistance, and R_c and C_c are the equivalent polarization resistance and capacitance respectively.

The governing dynamic equation of the ECN model can be described as:

$$\begin{cases} \dot{V}_c = \frac{I_{bat}}{C_c} - \frac{V_c}{R_c C_c} \\ V_{bat} = OCV - V_c(t) - R_s I_{bat} \end{cases} \quad (6)$$

$$V_{bat} = OCV + (R_s + R_c)I_{bat} - R_c C_c \frac{dv_{bat}}{dt} + R_s R_c C_c \frac{dI_{bat}}{dt} \quad (7)$$

The state of charge (SOC) of battery is also calculated using coulomb counting method [39]:

$$SOC_{bat} = SOC_{init} - \frac{100}{3600Q_{bat}} \int I_{bat} dt, \quad 0 < SOC_{bat} < 1 \quad (8)$$

where SOC_{init} is the initial SOC of the battery, I_{bat} is the battery current, and Q_{bat} is the maximum battery capacity. The battery pack comprises three parallel cell strings. Each string also includes 25 cells connected in series. Table 2 shows the employed lithium-ion cell specifications. For the purpose of this study, two battery models, namely new and degraded, are required to investigate the effect of battery ageing on the EMS performance. In this respect, the model based on the specified characteristics in Table 2 is considered as the new battery model. Regarding the degraded battery, based on which the degraded model is built, 20 percent capacity fade and 100 percent increase in the internal resistance are considered. Therefore, the SOC calculation in these scenarios will be based on the new and degraded battery characteristics. The cell parameters, including the open circuit voltage (OCV), internal resistance (R_s), polarization resistance (R_c), and polarization capacitance (C_c), are identified through an online model identification approach. To do that, the cell is subjected to extensive charge tests during which the cell current and the terminal voltage are measured. Fig. 3 illustrates the laboratory test setup. Fig. 4 also depicts the schematic diagram of the experimental setup. The test setup comprises a climate chamber in which the battery cell's temperature is controlled. To extract the required characteristics of the battery to be used as the reference for validating the online estimation of the 1RC Thevenin model parameters, a pulse charge and discharge test has been done. This test allows characterizing the battery voltage response (cell dynamics) at various SOC levels [40]. To perform these pulse tests, a charged cell has been subjected to twenty-one discharge pulses at 1C rate. Subsequently, after an hour

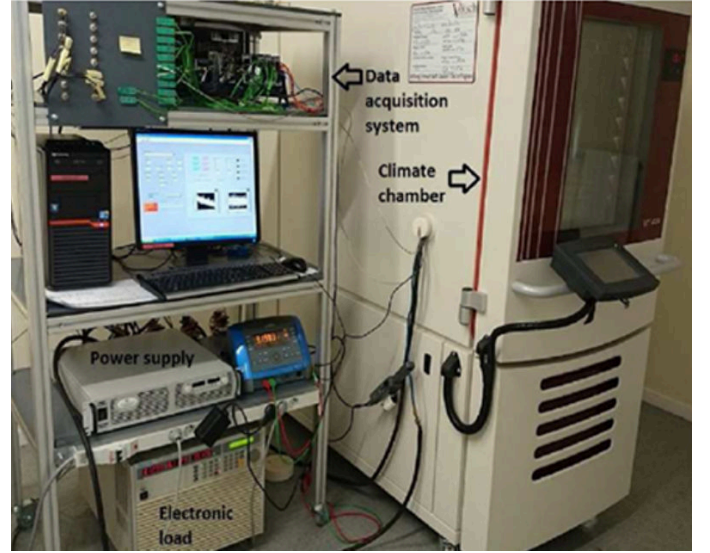


Fig. 3: Battery cell test setup

of rest, the discharged cell has been charged using twenty-one charge pulses at 1C rate. These tests have been conducted at 25°C. Fig. 5 demonstrates the cell current and the terminal voltage measurements during the complete pulse discharge and charge experimental tests. The collected experimental data are used with a sampling time of 1 s to validate the effectiveness of the KF. Moreover, the extracted relationship of the battery SOC with each of open circuit voltage, internal resistance changes in charge and internal resistance changes in discharge is shown in Fig. 5c.

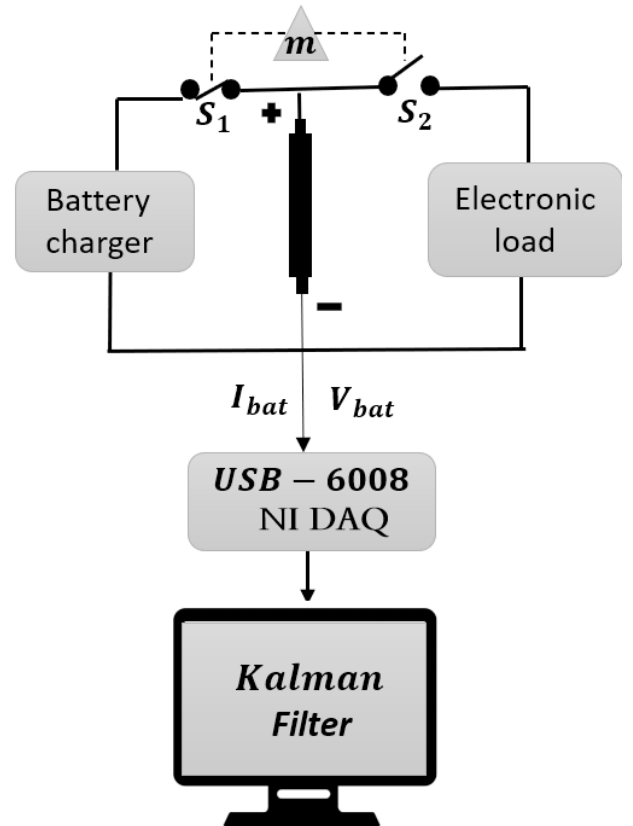


Fig. 4: Illustration of the experimental setup

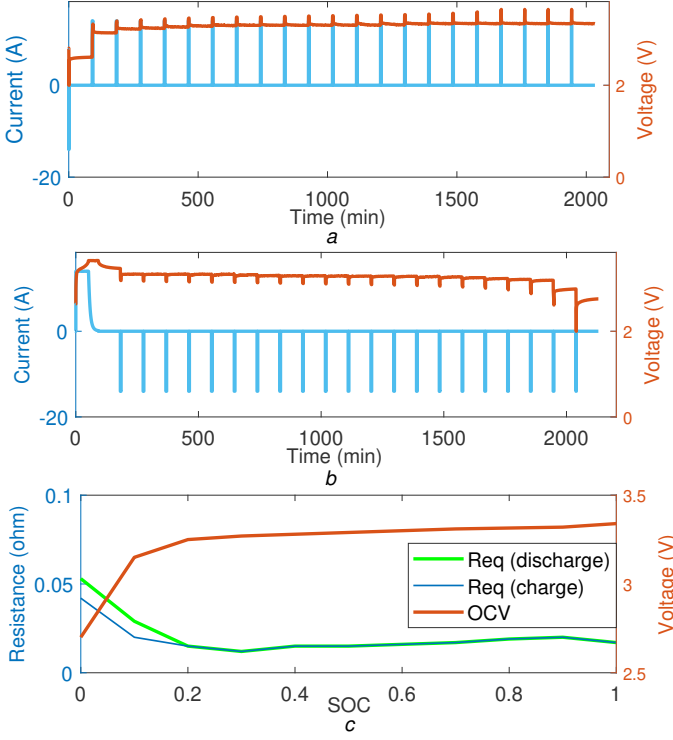


Fig. 5: Battery characteristics
a Current and voltage in charge profile
b Current and voltage in discharge profile
c Open circuit voltage and Equivalent resistors

2.2 PEMFC model

The existing PEMFC models in the literature fall into three categories of black box, grey box, and white box [31–36, 38]. The white box models are based on the system differential equations and can be used when the detailed parameters of the system are available. On the contrary, the black box models are based on input-output experimental data and do not go through the details of physical phenomena interpretations. Fuzzy logic and neural network models fall into this category. The grey box models, also known as semi-empirical models, are based on the polarization behavior of PEMFCs, easy to implement, and effective to be used for designing EMSs [41]. In this paper, a PEMFC semi-empirical model, proposed by Squadrito et al. [42], is utilized to emulate the polarization behavior of a FCvelocity®-9SSL PEMFC stack technology manufactured by Ballard Power Systems for transportation application. This semi-empirical model has been recommended for the EMS design of FCHEV in several papers [43]. The general formulation of this electrochemical PEMFC model is as follows:

$$V_{st} = N[V_o - b \log(J) - R_{internal}J + \alpha J^\sigma \ln(1 - \beta J)] \quad (9)$$

where N is the number of cells, V_{st} is the output voltage of the stack (V), V_o is the reversible cell potential (V), b is the Tafel slope ($V\text{dec}^{-1}$), J is the actual current density (Acm^{-2}), $R_{internal}$ is the cell resistance ($\text{cm}^2\Omega$), α is a semi-empirical parameter related to the diffusion mechanism ($\text{Vcm}^2\text{A}^{-1}$), σ (between 1 and 4) is a dimensionless number which is related to the water flooding phenomena, and β is the inverse of the limiting current density (cm^2A^{-1}). As reported in Table 3, the utilized PEMFC in this paper has a maximum current of 300 A, and its active area is considered to be 285.5 cm^2 [44] which yields the value of $0.951 \text{ cm}^2\text{A}^{-1}$ for β . V_o , b , $R_{internal}$ and α will be estimated by the KF, explained in section 3. The characteristics of the utilized PEMFC are shown in Table 3.

The power of the PEMFC system (P_{fc}) is obtained by considering the losses from the balance of plant as [45, 46]:

$$P_{fc} = (P_{st} - P_{comp} - P_{fan}) \quad (10)$$

$$P_{comp} = \eta_{comp}^{-1} W_{air} c_p T_{amb} ((P_{ca}/P_{amb})^{(\frac{\gamma-1}{\gamma})-1}) \quad (11)$$

$$P_{st} = V_{st} I_{st} \quad (12)$$

$$W_{air} = \lambda W_{o2} / \chi_{o2} \quad (13)$$

$$W_{o2} = M_{o2} N_{fc} i_{fc} / 2F \quad (14)$$

$$P_{o2} = 0.2 P_{ca} \quad (15)$$

$$P_{H2} = 0.99 P_{an} \quad (16)$$

$$P_{ca} = a_1 + a_2 I_{st} + a_3 I_{st}^2 + a_4 I_{st}^3 \quad (17)$$

$$P_{an} = P_{ca} + 20000 \quad (18)$$

where P_{comp} is the consumed power by the compressor (W), P_{ca} is the pressure in the cathode side (bar), P_{fan} is the consumed power by the FC fan (200 W), η_{comp} is considered as the average compressor efficiency (0.70), W_{air} is the rate of used air (gs^{-1}), c_p is the air specific heat capacity (1005 J kg^{-1}), P_{amb} is the ambient pressure (bar), γ is the ratio of specific heats of air (1.4), λ is the oxygen excess ratio which is 2, W_{o2} is the oxygen consumption rate (g s^{-1}), χ_{o2} is the oxygen mass fraction (0.233), M_{o2} is oxygen molar mass (32 gr mol^{-1}), F is the Faraday constant, P_{an} is the pressure in the anode side (bar), I_{st} is the current of the stack (A), P_{st} is the power of the stack (W), and a_i ($i=1 \dots 4$) are the experimentally obtained coefficients, described in [46]. The hydrogen flow (q_{H2}) is calculated based on an experimental formula as below [47].

$$q_{H2} = 0.00696 I_{st} N \quad (19)$$

Based on the described equations, the efficiency of the FC system is calculated considering the power losses of the auxiliaries:

$$\eta_{sys} = (P_{fc} - P_{comp} - P_{fan}) / (q_{H2} HHV) \quad (20)$$

where the generated hydrogen power is the product of hydrogen flow and the high heating value of hydrogen ($HHV = 286 \text{ kJmol}^{-1}$). The converter efficiency is also multiplied by the FC system efficiency to know the efficiency in the DC bus.

Similar to the battery modeling, new and degraded PEMFC models are required for the purpose of this article. In this respect, the new PEMFC model is based on the available characteristics in the datasheet of FCvelocity®-9SSL PEMFC stack [47]. However, the degraded PEMFC model is generated using a degradation model proposed in [48]. This degradation model takes into account the voltage drop of the PEMFC stack under constant current load and frequent start-stop switches as below.

$$V_{fc} = V_{st} \exp(\alpha, t) - \Delta V K \quad (21)$$

Where V_{fc} is the voltage of the degraded PEMFC, V_{st} is the stack voltage of the PEMFC, α is a constant coefficient, K is the number of on/off cycles, t is the operation time, and ΔV is the FC voltage drop owing to one start-stop cycle. According to the performed degradation test in [49], ΔV is assumed as $13.79 \mu\text{V}/\text{cycle}$. The other parameters of the degradation model have been tuned in a way to reach a twenty-percent decline in the maximum power of the

Table 3 FC stack characteristics

Component	Parameter	Variable	Value
FC	Number of cell	N	80
	Max power	$P_{fc,max}$	15.4 kW
	Max current	$I_{st,max}$	300 A
	Power of fan	P_{fan}	200 W
	Stack mass	FC_{mass}	13.1 kg

PEMFC stack. It should be noted that since the main purpose of this paper is to check the influence of a degraded PEMFC and battery over the performance of the vehicle, the adopted models are adequate enough to meet this objective and developing very accurate degradation models are not necessary. As Fig. 6b shows, the relation of PEMFC system efficiency versus its power can be defined by a quadratic function. Hence, a quadratic formula has been fitted to each curve, as illustrated in Fig. 6b.

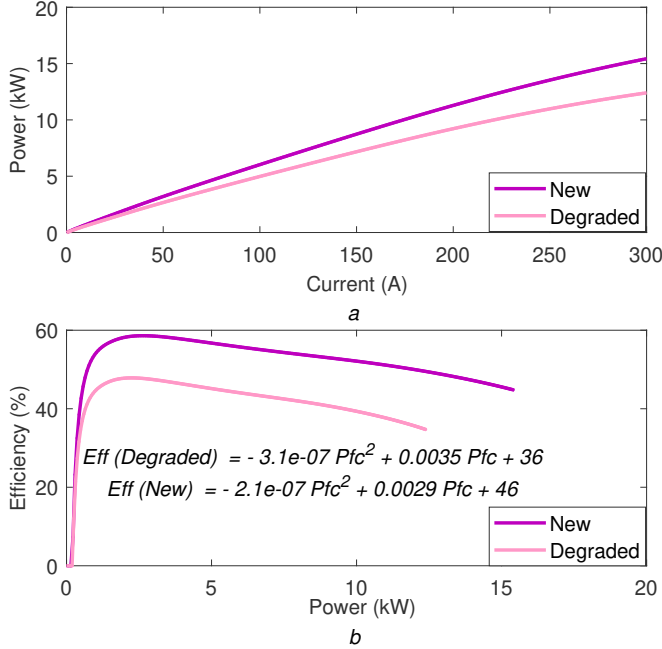


Fig. 6: The old and new PEMFCs' characteristics

a Power versus current

b Efficiency versus power (R^2 for Eff (Degraded) is 0.98 and for Eff (New) is 0.9789)

3 Online model identification

As mentioned earlier, the characteristics of the FCHEV power sources are time-varying since they are influenced by degradation and operating conditions variation. The main purpose of this section is to utilize an identification technique to deal with these uncertainties which can decrease the performance of an EMS in terms of fuel economy. The process of parameter identification can be done offline and online concerning the requirement of the problem. In offline identification, the measured data is first recorded in a data storage, and then they are transferred to a computer for further evaluation by batch processing of data. However, in online identification, which is the main focus of this work, the data is treated as each sample is received by utilizing recursive filters. In this work, Kalman filter (KF) is employed to estimate the parameters of the Battery and PEMFC models online. The online identification of battery model provides the EMS with the battery parameters including internal resistance, polarization resistance, polarization capacity, and OCV which are necessary for calculating the battery response variables and tracking the health state of this power source. Regarding the SOC calculation, the capacity is very important whose identification is not in the scope of this work. However, the battery internal resistance has been employed for the estimation of the battery state of health and its impact on the performance of EMS is studied. The online parameters estimation of the PEMFC model provides the EMS with some significant characteristics, such as maximum efficiency and maximum power points, which have an important role in the performance of the power sharing algorithm. KF has been already suggested for the EMS design of FCHEV due to its robustness [39]. It is perceived as an optimal estimator which concludes

the targeted parameters of interest from inaccurate and uncertain observations. Firstly, it estimates the current state variables and then updates them when the next measurement is received. The structure of KF is as follows.

$$\begin{cases} x(t+1) = F(t+1|x(t))x(t) + w(t) \\ y(t) = H(t)x(t) + v(t) \end{cases} \quad (22)$$

(State space model)

$$\hat{x}^-(t) = F(t|t-1)\hat{x}^-(t-1) \quad (23)$$

(State estimate propagation)

$$P^-(t) = F(t|t-1)P(t-1)F^T(t|t-1) + Q(t-1) \quad (24)$$

(Error covariance propagation)

$$G(t) = P^- H^T(t)[H(t)P^-(t)H^T(t) + R(t)]^{-1} \quad (25)$$

(Kalman gain matrix)

$$\hat{x}(t) = \hat{x}^-(t) + G(t)(y(t) - H(t)\hat{x}^-(t)) \quad (26)$$

(State estimate update)

$$P(t) = (I - G(t)H(t))P^-(t) \quad (27)$$

(Error covariance update)

Where t is the discrete time, $x(t)$ is the state vector, which is unknown and here it is the parameters vector, $\hat{x}(t)$ is the estimate of the state vector, $\hat{x}^-(t)$ denotes priori estimate of the state vector, $F(t+1|t)$ is the transition matrix, which takes the state vector from time t to time $t+1$ and is assumed to be an identity matrix, $w(t)$ is the process noise, $y(t)$ is the output, $H(t)$ is the measurement matrix, $v(t)$ is the measurement noise, $P(t)$ is the error covariance matrix, $Q(t)$ is the process noise covariance matrix, $G(t)$ is the Kalman gain, $R(t)$ is the measurement noise covariance matrix, and I is the identity matrix. Table 4 specifies the state vector and the measurement matrix for each of the battery and PEMFC models in this work.

3.1 Results analysis

The obtained results from the online identification process are discussed in this section. The estimated characteristics of the battery model using KF are presented in Fig.7. To avoid the repetition of the results presentation, only the estimated characteristics for charging the battery are illustrated. From Fig. 7a, it is obvious that the estimated equivalent resistor ($R_s + R_c$) is in the same range as the reference points calculated by the following equation introduced in [50].

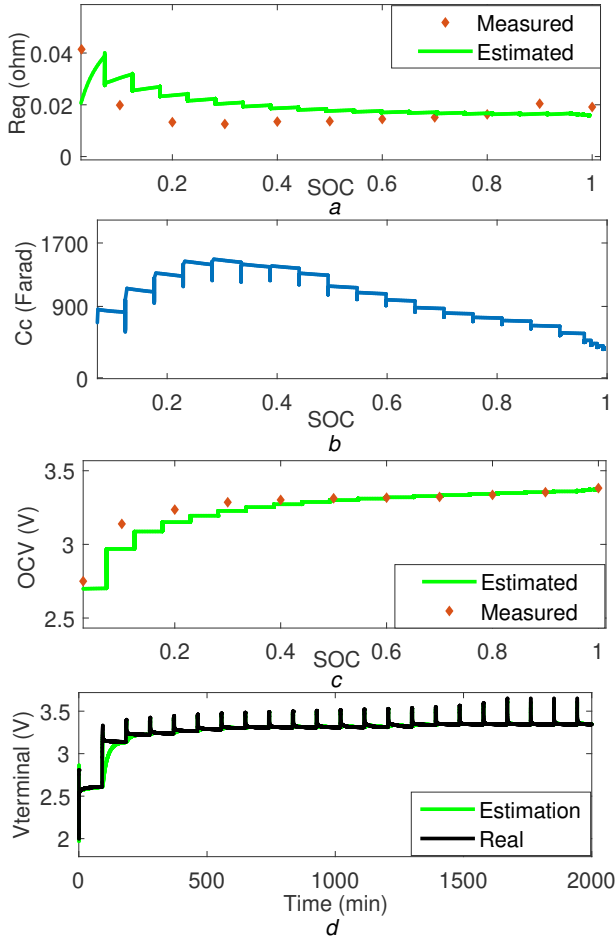
$$R_{bat}(SOC) = \frac{OCV(SOC) - V_{bat}(SOC)}{I_{bat}(SOC)} \quad (28)$$

Although this method for determining the reference equivalent resistance is sensitive to the sensors' noise, it is adequate to provide an estimated range for the battery's resistance to validate the proposed online parameter identification technique. Fig. 7b shows the evolution of the capacitor element (Cc). The comparison of the estimated OCV and its reference value is shown in Fig. 7c. Fig. 7d represents the estimation of the battery terminal voltage, which confirms the accuracy of the performed identification. Regarding the PEMFC stack, Fig. 8a shows the applied current to the PEMFC system. From Fig. 8b, it can be seen that the output voltage estimation of the stack has been done successfully by a very good accuracy. To show the

Table 4 KF customization for the identification problem

Operators	Symbols	PEMFC	Battery
State vector	$x(t)$	$V_0, b, R_{internal}, \alpha$	$R_c C_c, -R_s R_c C_c, R_s + R_c, OCV$
Measurement vector	$H(t)$	$1, -\log j, J^\sigma \ln(1 - \beta I)$	$\dot{V}_{bat}, \dot{I}_{bat}, I_{bat}, 1$
Transition matrix	$F(t+1 t)$	Identity matrix	Identity matrix
Measured output	$y(t)$	Measured V_{FC} from the PEMFC	Measured V_{bat} from the battery

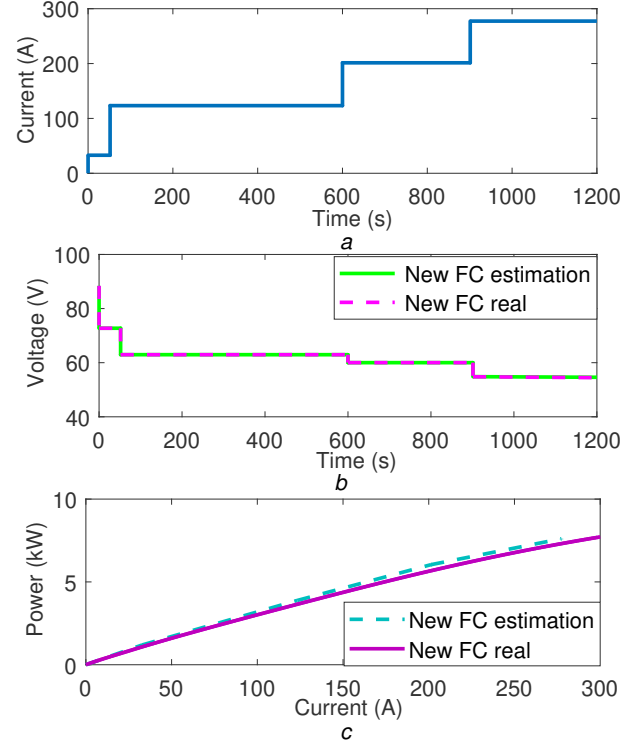
main use of this PEMFC online estimation in EMS design, Fig. 8c presents the estimated power curve of the stack at 200 s. The maximum power point can be easily extracted from this curve and utilized to update the constraints of the EMS. In fact, such characteristics can be extracted from the power sources online, while the vehicle is under operation, to adapt the performance of the EMS to the present SOH of the power sources.

**Fig. 7:** Battery Parameters in charge profile

- a Equivalent resistor
- b Polarization capacity
- c Open circuit voltage
- d The estimated terminal voltage

4 Energy management strategy

Battery and PEMFC system are used to supply the requested power (P_{req}) from the electric motor side. Consequently, the hydrogen economy of an FCHEV depends to a great extent on the distribution of the power between the PEMFC and the battery. In this manuscript, the aim of the EMS is to determine an online optimal power split trajectory which maximizes the PEMFC efficiency while respecting the

**Fig. 8:** PEMFC online update

- a Applied current to the PEMFC
- b Online voltage estimation
- c The estimated power curve at 200 s

limitations of the system.

$$P_{req} = \eta_{DC-DC} P_{fc} + P_{Bat} \quad (29)$$

Where P_{Bat} is the battery power and η_{DC-DC} is the $DC-DC$ converter efficiency. Fig. 9 shows the employed online EMS in this manuscript. According to this figure, the parameters of the PEMFC and battery models are estimated online by KF. Afterwards, the required characteristics are extracted from the updated models of the power sources and sent to the power split strategy where a QP algorithm determines the portion of the power which should be supplied by the PEMFC and the remainder is asked from the battery. The relation of PEMFC system efficiency versus its power can be modeled by a quadratic function as:

$$J = \max\left(\sum_{k=1}^N \alpha_2(k) P_{fc}^2 + \alpha_1(k) P_{fc}(k) + \alpha_0(k)\right) \quad (30)$$

$$n = \frac{t}{\Delta t}, n \in N \quad (31)$$

where t is the driving cycle duration which is discretized to n time points concerning the time interval (Δt). The defined cost function in (30) can be solved by classical QP method as it is convex in the bounded power range shown in Fig. 6b. However, the following limitations are taken into account to keep the operation of the power

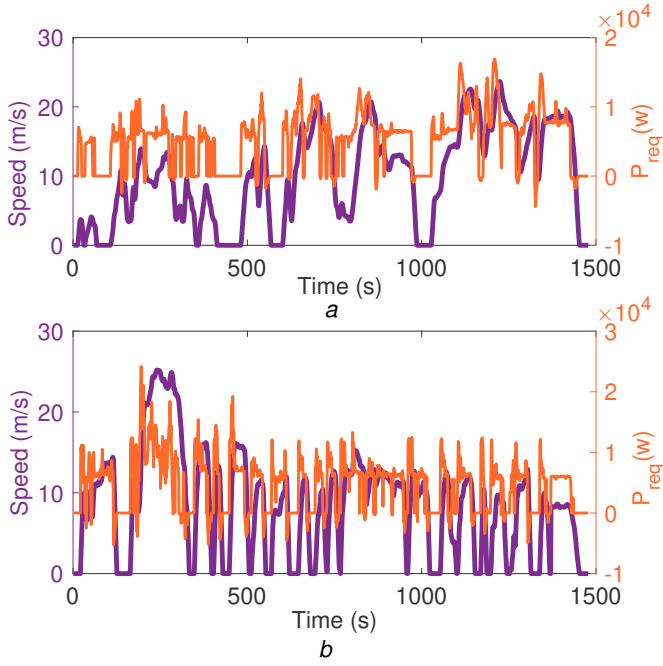


Fig. 10: The utilized driving cycles
a WLTC class2
b UDDS

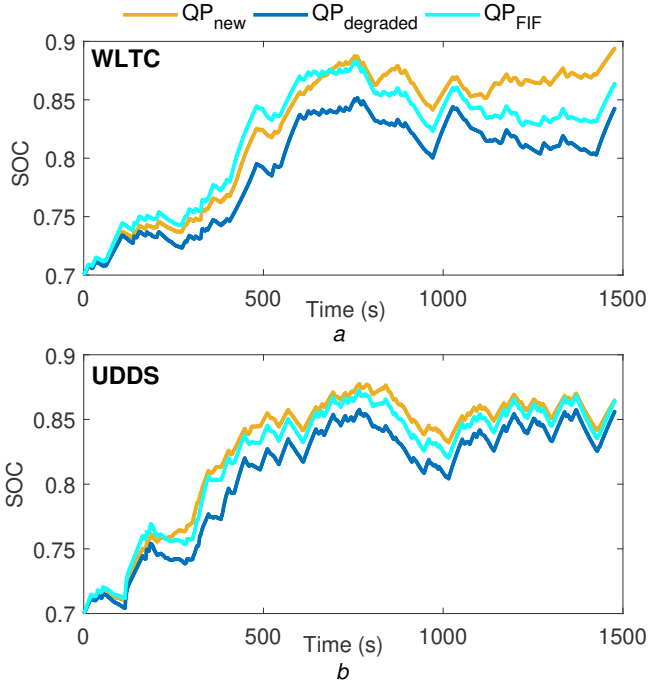


Fig. 11: Battery SOC variation for each driving profile
a WLTC class2
b UDDS

cases in this manuscript. As the proposed EMS is real-time and the final battery SOC, shown in Fig. 11, cannot be the same, the battery in both of QP_{FIF} and $QP_{degraded}$ scenarios have been recharged at the end of each test to reach the same final SOC level as the QP_{new} scenario. To recharge the battery at the end of each cycle, the PEMFC is set at its highest efficiency point to perform this recharging step with the minimum hydrogen consumption. Comparison of QP_{new} and $QP_{degraded}$ scenarios reveals that as the PEMFC has got aged, the hydrogen consumption has increased by almost 3% for

WLTC and 3.2% for UDDS. Moreover, the comparison of QP_{new} and QP_{FIF} scenarios illustrates that when the EMS is not aware of the health state of the power sources, the hydrogen consumption can increase by almost 14% and 17% in WLTC and UDDS respectively.

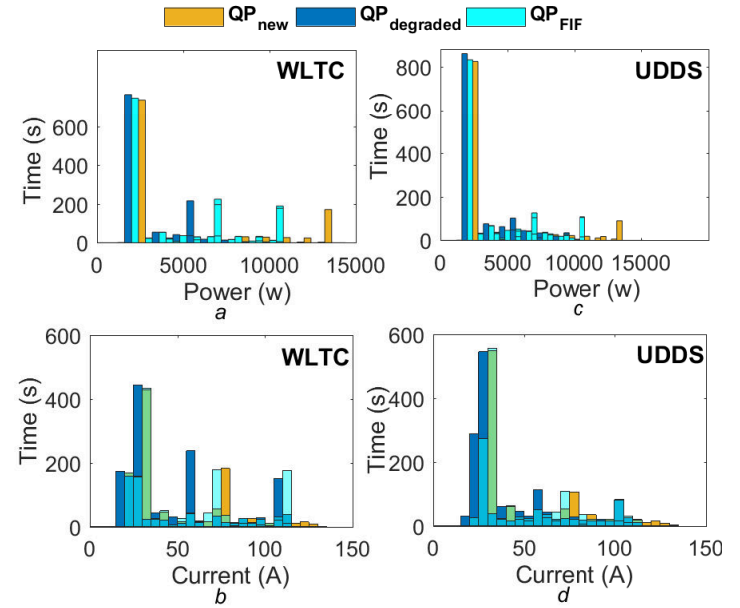


Fig. 12: The distribution of the requested power and its corresponding current from the PEMFC in different scenarios
a PEMFC power distribution for WLTC class2
b PEMFC current distribution for WLTC class2
c PEMFC power distribution for UDDS
d PEMFC current distribution for UDDS

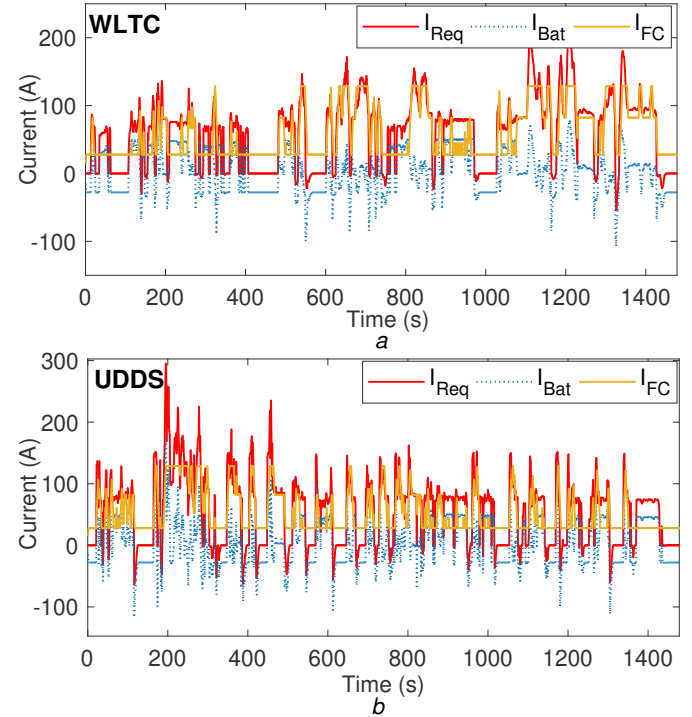


Fig. 13: The allocation of the requested current between the FC and the battery for the QP_{new} scenario.
a Current distribution for WLTC class2
b Current distribution for UDDS

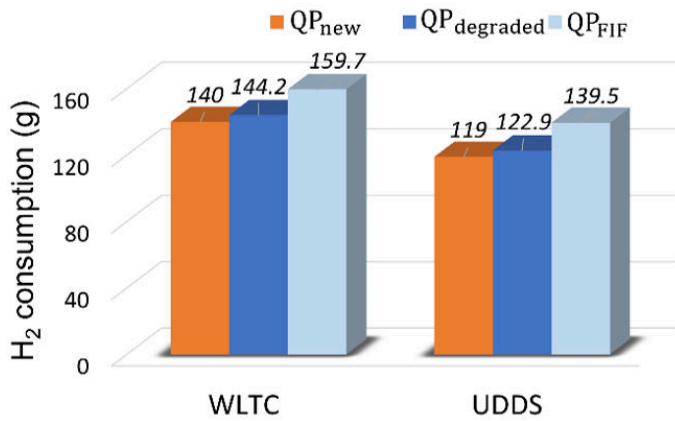


Fig. 14: Hydrogen consumption comparison of different case studies

6 Conclusion

This paper explores the performance variation influence of the PEMFC and battery pack owing to ageing over the hydrogen economy of a FCHEV. In this respect, an online parameters estimation procedure based on KF is developed first to track the performance of both power sources in real-time. The battery online estimation is validated using the experimental data of a developed setup, and the PEMFC characteristics are gathered from the manufacturer's manual (Ballard FCvelocity®-9SSL). In the second step, an online EMS based on QP is developed with the aim of maximizing the PEMFC efficiency while supplying the requested power of the vehicle. The operation of the EMS is evaluated through three scenarios, namely QP_{new} , $QP_{degraded}$, and QP_{FIF} . In the first scenario, an EMS based on QP is developed for the case that both of the power sources are new, and in the second scenario, a QP is formulated for the degraded power sources. The main point here is that the EMS is aware of the health states of the power sources in these two cases and adapts its policy to the current state of the sources by utilizing the developed online parameter identification. However, in the third scenario, the QP is designed for a false input feedback case study where the power sources are degraded while the maximum efficiency curve of the PEMFC as well as the other factors, such as battery SOC calculation and PEMFC maximum power point, are not updated considering the health state of the sources. In fact, the QP is unaware of the power sources' SOH and acts as a health-unconscious strategy in this scenario. The obtained results from the performed analyses reveal that when the power sources become degraded, the hydrogen economy decreases up to 3.2% for the studied vehicle. Furthermore, the performance comparison of QP_{new} and QP_{FIF} highlight that not updating the characteristics of the power sources can lead to a noticeable hydrogen consumption increase (up to 17%). This manuscript has provided a proof of concept for the integration of both battery and PEMFC online characteristics estimation in the design of an EMS for a FCHEV. Looking forward, the use of more complex cost functions considering more aspects, such as degradation of the power sources, could be investigated in further studies since they have an important influence on the hydrogen consumption and lifetime of the system. Moreover, the effect of temperature variation on the performance of the EMS and degradation of the power sources can be considered in future endeavours.

7 References

- Karamanev, D., Pupkevich, V., Penev, K., Glibin, V., Gohil, J., Vajihinejad, V.: 'Biological conversion of hydrogen to electricity for energy storage', *Energy*, 2017, **129**, pp. 237–245
- Zoundi, Z.: 'Co2 emissions, renewable energy and the environmental kuznets curve, a panel cointegration approach', *Renewable and Sustainable Energy Reviews*, 2017, **72**, pp. 1067–1075
- Ehsani, M., Gao, Y., Longo, S., Ebrahimi, K.: 'Modern electric, hybrid electric, and fuel cell vehicles'. (CRC press, 2018)
- Samuelsen, S.: 'The automotive future belongs to fuel cells range, adaptability, and refueling time will ultimately put hydrogen fuel cells ahead of batteries', *IEEE Spectrum*, 2017, **54**, (2), pp. 38–43
- Schipper, F., Aurbach, D.: 'A brief review: Past, present and future of lithium ion batteries', *Russian Journal of Electrochemistry*, 2016, **52**, (12), pp. 1095–1121
- Martinez, C.M., Hu, X., Cao, D., Velenis, E., Gao, B., Wellers, M.: 'Energy management in plug-in hybrid electric vehicles: Recent progress and a connected vehicles perspective', *IEEE Transactions on Vehicular Technology*, 2016, **66**, (6), pp. 4534–4549
- Ali, A.M., Söffker, D.: 'Towards optimal power management of hybrid electric vehicles in real-time: A review on methods, challenges, and state-of-the-art solutions', *Energies*, 2018, **11**, (3), pp. 476
- Sulaiman, N., Hannan, M., Mohamed, A., Ker, P.J., Majlan, E., Daud, W.W.: 'Optimization of energy management system for fuel-cell hybrid electric vehicles: Issues and recommendations', *Applied Energy*, 2018, **228**, pp. 2061–2079
- Li, H., Ravey, A., N'Diaye, A., Djerdir, A.: 'A review of energy management strategy for fuel cell hybrid electric vehicle'. In: 2017 IEEE Vehicle Power and Propulsion Conference (VPPC). (IEEE, 2017). pp. 1–6
- Huang, Y., Wang, H., Khajepour, A., Li, B., Ji, J., Zhao, K., et al.: 'A review of power management strategies and component sizing methods for hybrid vehicles', *Renewable and Sustainable Energy Reviews*, 2018, **96**, pp. 132–144
- Zhou, W., Yang, L., Cai, Y., Ying, T.: 'Dynamic programming for new energy vehicles based on their work modes part ii: Fuel cell electric vehicles', *Journal of Power Sources*, 2018, **407**, pp. 92–104
- Zhou, W., Yang, L., Cai, Y., Ying, T.: 'Dynamic programming for new energy vehicles based on their work modes part i: Electric vehicles and hybrid electric vehicles', *Journal of Power Sources*, 2018, **406**, pp. 151–166
- Zhang, R., Tao, J.: 'Ga-based fuzzy energy management system for fc/sc-powered hev considering h2 consumption and load variation', *IEEE Transactions on Fuzzy Systems*, 2018, **26**, (4), pp. 1833–1843
- Chen, Z., Wu, Y., Guo, N., Shen, J., Xiao, R.: 'Energy management for plug-in hybrid electric vehicles based on quadratic programming with optimized engine on-off sequence'. In: IECON 2017-43rd Annual Conference of the IEEE Industrial Electronics Society. (IEEE, 2017). pp. 7134–7139
- Chen, Z., Mi, C.C., Xiong, R., Xu, J., You, C.: 'Energy management of a power-split plug-in hybrid electric vehicle based on genetic algorithm and quadratic programming', *Journal of Power Sources*, 2014, **248**, pp. 416–426
- Koot, M., Kessels, J.T., DeJager, B., Heemels, W., Van den Bosch, P., Steinbuch, M.: 'Energy management strategies for vehicular electric power systems', *IEEE transactions on vehicular technology*, 2005, **54**, (3), pp. 771–782
- Liu, Y., Li, J., Chen, Z., Qin, D., Zhang, Y.: 'Research on a multi-objective hierarchical prediction energy management strategy for range extended fuel cell vehicles', *Journal of Power Sources*, 2019, **429**, pp. 55–66
- Li, Q., Huang, W., Chen, W., Yan, Y., Shang, W., Li, M.: 'Regenerative braking energy recovery strategy based on pontryagin's minimum principle for fuel cell/supercapacitor hybrid locomotive', *International Journal of Hydrogen Energy*, 2019, **44**, (11), pp. 5454–5461
- Xie, S., Hu, X., Xin, Z., Brighton, J.: 'Pontryagin's minimum principle based model predictive control of energy management for a plug-in hybrid electric bus', *Applied Energy*, 2019, **236**, pp. 893–905
- Li, H., Ravey, A., N'Diaye, A., Djerdir, A.: 'A novel equivalent consumption minimization strategy for hybrid electric vehicle powered by fuel cell, battery and supercapacitor', *Journal of Power Sources*, 2018, **395**, pp. 262–270
- Zhang, W., Li, J., Xu, L., Ouyang, M.: 'Optimization for a fuel cell/battery/capacity tram with equivalent consumption minimization strategy', *Energy Conversion and Management*, 2017, **134**, pp. 59–69
- Kamal, E., Aduane, L.: 'Intelligent energy management strategy based on artificial neural fuzzy for hybrid vehicle', *IEEE Transactions on Intelligent Vehicles*, 2017, **3**, (1), pp. 112–125
- Kazemi, H., Fallah, Y.P., Nix, A., Wayne, S.: 'Predictive acems by utilization of intelligent transportation systems for hybrid electric vehicle powertrain control', *IEEE Transactions on Intelligent Vehicles*, 2017, **2**, (2), pp. 75–84
- Wang, Y., Sun, Z., Chen, Z.: 'Energy management strategy for battery/supercapacitor/fuel cell hybrid source vehicles based on finite state machine', *Applied Energy*, 2019, **254**, pp. 113707
- Yan, Y., Li, Q., Chen, W., Su, B., Liu, J., Ma, L.: 'Optimal energy management and control in multimode equivalent energy consumption of fuel cell/supercapacitor of hybrid electric tram'. *IEEE Transactions on Industrial Electronics*, 2018, **66**, (8), pp. 6065–6076
- Chen, J., Xu, C., Wu, C., Xu, W.: 'Adaptive fuzzy logic control of fuel-cell-battery hybrid systems for electric vehicles', *IEEE Transactions on Industrial Informatics*, 2016, **14**, (1), pp. 292–300
- Li, Z., Khajepour, A., Song, J.: 'A comprehensive review of the key technologies for pure electric vehicles', *Energy*, 2019,
- Li, H., Ravey, A., N'Diaye, A., Djerdir, A.: 'Online adaptive equivalent consumption minimization strategy for fuel cell hybrid electric vehicle considering power sources degradation', *Energy conversion and management*, 2019, **192**, pp. 133–149
- Wang, Y., Moura, S.J., Advani, S.G., Prasad, A.K.: 'Optimization of powerplant component size on board a fuel cell/battery hybrid bus for fuel economy and system durability', *International Journal of Hydrogen Energy*, 2019, **44**, (33), pp. 18283–18292
- Wang, Y., Moura, S.J., Advani, S.G., Prasad, A.K.: 'Power management system for a fuel cell/battery hybrid vehicle incorporating fuel cell and battery degradation', *International Journal of Hydrogen Energy*, 2019, **44**, (16), pp. 8479–8492
- Zhou, D., Al-Durra, A., Matraji, I., Ravey, A., Gao, F.: 'Online energy management strategy of fuel cell hybrid electric vehicles: a fractional-order extremum seeking

- method', *IEEE Transactions on Industrial Electronics*, 2018, **65**, (8), pp. 6787–6799
- 32 Zhou, D., Ravey, A., Al.Durra, A., Gao, F.: 'A comparative study of extremum seeking methods applied to online energy management strategy of fuel cell hybrid electric vehicles', *Energy Conversion and Management*, 2017, **151**, pp. 778–790
- 33 Ettihir, K., Boulon, L., Agbossou, K.: 'Optimization-based energy management strategy for a fuel cell/battery hybrid power system', *Applied Energy*, 2016, **163**, pp. 142–153
- 34 Fernandez, A.O.M., Kandidayeni, M., Boulon, L., Chaoui, H.: 'An adaptive state machine based energy management strategy for a multi-stack fuel cell hybrid electric vehicle', *IEEE Transactions on Vehicular Technology*, 2019,
- 35 Kandidayeni, M., Fernandez, A.O.M., Khalatbarisoltani, A., Boulon, L., Kelouwani, S., Chaoui, H.: 'An online energy management strategy for a fuel cell/battery vehicle considering the driving pattern and performance drift impacts', *IEEE Transactions on Vehicular Technology*, 2019, **68**, (12), pp. 11427–11438
- 36 Ghaderi, R., Kandidayeni, M., Soleymani, M., Boulon, L.: 'Investigation of the battery degradation impact on the energy management of a fuel cell hybrid electric vehicle'. In: 2019 IEEE Vehicle Power and Propulsion Conference (VPPC). (IEEE, 2019. pp. 1–6
- 37 : 'Investigating the impact of ageing and thermal management of a fuel cell system on energy management strategies', *Applied Energy*, 2020, **274**, pp. 115293
- 38 Xia, B., Lao, Z., Zhang, R., Tian, Y., Chen, G., Sun, Z., et al.: 'Online parameter identification and state of charge estimation of lithium-ion batteries based on forgetting factor recursive least squares and nonlinear kalman filter', *Energies*, 2018, **11**, (1), pp. 3
- 39 Yuan, J., Yang, L., Chen, Q.: 'Intelligent energy management strategy based on hierarchical approximate global optimization for plug-in fuel cell hybrid electric vehicles', *International Journal of Hydrogen Energy*, 2018, **43**, (16), pp. 8063–8078
- 40 Huria, C.M.G.J. T., Jackey, R.: 'Simplified extended kalman filter observer for soc estimation of commercial power-oriented lfp lithium battery cells', <https://doi.org/10.4271/2013-01-1544>, 2013,
- 41 Kandidayeni, M., Macias, A., Amamou, A., Boulon, L., Kelouwani, S., Chaoui, H.: 'Overview and benchmark analysis of fuel cell parameters estimation for energy management purposes', *Journal of power sources*, 2018, **380**, pp. 92–104
- 42 Squadruto, G., Maggio, G., Passalacqua, E., Lufrano, F., Patti, A.: 'An empirical equation for polymer electrolyte fuel cell (pefc) behaviour', *Journal of Applied Electrochemistry*, 1999, **29**, (12), pp. 1449–1455
- 43 Ettihir, K., Boulon, L., Becherif, M., Agbossou, K., Ramadan, H.: 'Online identification of semi-empirical model parameters for pemfcs', *International journal of hydrogen energy*, 2014, **39**, (36), pp. 21165–21176
- 44 Liso, N.M.P.K.S.K. V., Mortensen, H.H.: 'Thermal modeling and temperature control of a pem fuel cell system for forklift applications', *International journal of hydrogen energy*, 2014, pp. 8410–8420
- 45 Oruganti, P.S., Ahmed, Q., Jung, D.: 'Effects of thermal and auxiliary dynamics on a fuel cell based range extender'. (SAE Technical Paper, 2018.
- 46 Zhao, X., Li, Y., Liu, Z., Li, Q., Chen, W.: 'Thermal management system modeling of a water-cooled', *International Journal of Hydrogen Energy*, 2015, **40**, (7), pp. 3048–3056
- 47 Ballard: 'FCvelocity-9SSL V4.3'. (, 2017)
- 48 Yue, M., Jemei, S., Zerhouni, N., Gouriveau, R.: 'Towards the energy management of a fuel cell/battery vehicle considering degradation'. In: 2017 IEEE Vehicle Power and Propulsion Conference (VPPC). (IEEE, 2017. pp. 1–6
- 49 Chen, H., Pei, P., Song, M.: 'Lifetime prediction and the economic lifetime of proton exchange membrane fuel cells', *Applied Energy*, 2015, **142**, pp. 154–163
- 50 Chaoui, H., Gualous, H.: 'Online parameter and state estimation of lithium-ion batteries under temperature effects', *Electric Power Systems Research*, 2017, **145**, pp. 73–82
- 51 Carignano, M., Roda, V., Costa.Castelló, R., Valiño, L., Lozano, A., Barreras, F.: 'Assessment of energy management in a fuel cell/battery hybrid vehicle', *IEEE access*, 2019, **7**, pp. 16110–16122