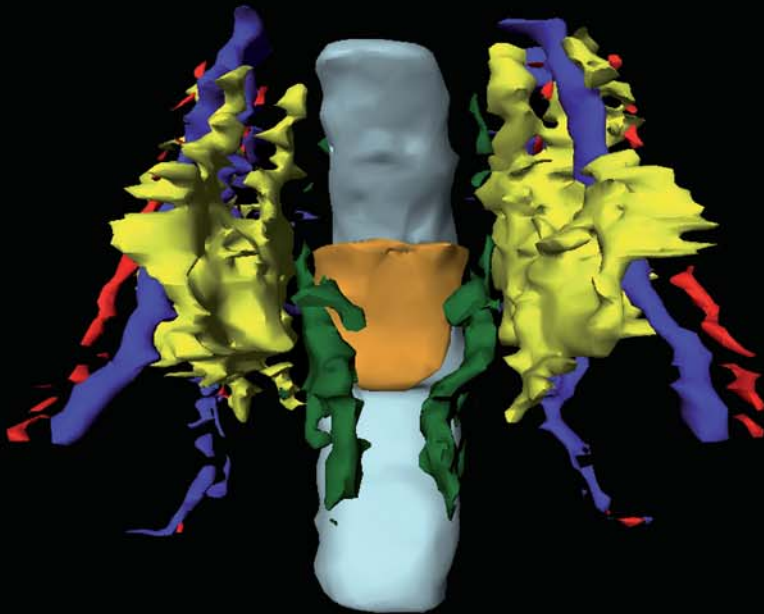


Local recurrence in rectal cancer

mechanisms of development, patterns of relapse and treatment options



Miranda Kusters

The work of this thesis was supported by:

Wetenschappelijk Fonds Maatschap
Chirurgie CZE
Wetenschappelijk Fonds Catharina
Ziekenhuis
Amgen BV
Eurotec BV
Olympus BV
Eusopharma BV
Roche BV
Pfizer BV
Covidien BV

Cover:

Front:

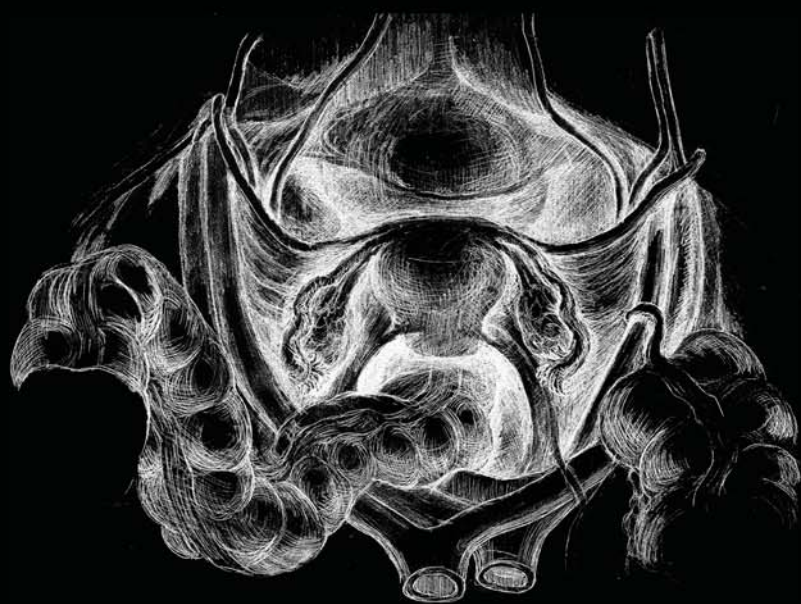
3D reconstruction of the pelvis
prepared by immunohistochemically
stained serial sections of a human
fetus

Structures: rectum covered by
mesorectum (light blue), peritoneal
reflection (orange), iliac arteries
(red), iliac veins (dark blue), lateral
lymph nodes (yellow), autonomic
nerve plexus (green)

With many thanks to C. Wallner and
M.M. Lange

Back:

Drawing of the female pelvis
By K. Moriya



Local recurrence in rectal cancer
*mechanisms of development,
patterns of relapse and treatment
options*

© Miranda Kusters, Eindhoven,
2009

Thesis with summery in Dutch

All rights reserved. No part of this
book may be reproduced in any
form of print, photoprint, microfilm
or other means without permission
of the publisher

ISBN no.: 978-90-76014-22-7

NUR no.: 883

Lay-out: Henk en Hannie Dinnissen

Printed by: Verhagen Grafische
Media, Veldhoven,
The Netherlands