

An imaging spectroscopic survey of the planetary nebula NGC 7009 with MUSE^{★,★★}

J. R. Walsh¹, A. Monreal-Ibero^{2,3}, M. J. Barlow⁴, T. Ueta⁵, R. Wesson⁶, A. A. Zijlstra^{7,8}, S. Kimeswenger^{9,10}, M. L. Leal-Ferreira^{11,12}, and M. Otsuka¹³

¹ European Southern Observatory, Karl-Schwarzschild Strasse 2, D-85748 Garching, Germany
e-mail: jwalsh@eso.org

² Instituto de Astrofísica de Canarias (IAC), E-38025 La Laguna, Tenerife
e-mail: amonreal@iac.es

³ Universidad de La Laguna, Dpto. Astrofísica, E-38206 La Laguna, Tenerife, Spain

⁴ Dept. of Physics and Astronomy, University College London, Gower Street, London WC1E 6BT, United Kingdom
e-mail: mjb@star.ucl.ac.uk

⁵ Department of Physics and Astronomy, University of Denver, 2112 E. Wesley Ave., Denver, CO, 80210, USA
e-mail: Toshiya.Ueta@du.edu

⁶ Dept. of Physics and Astronomy, University College London, Gower Street, London WC1E 6BT, United Kingdom
e-mail: rw@nebulousresearch.org

⁷ Jodrell Bank Centre for Astrophysics, Alan Turing Building, University of Manchester, Manchester M13 9PL, UK

⁸ Laboratory for Space Research, University of Hong Kong, Pokfulam Road, Hong Kong
e-mail: albert.zijlstra@manchester.ac.uk

⁹ Instituto de Astronomía, Universidad Católica del Norte, Av. Angamos 0610, Antofagasta, Chile

¹⁰ Institut für Astro- und Teilchenphysik, Leopold-Franzens Universität Innsbruck, Technikerstrasse 25, 6020 Innsbruck, Austria
e-mail: skimeswenger@ucn.cl

¹¹ Leiden Observatory, University of Leiden, Leiden, the Netherlands

¹² Oberkasseler Straße 130, D-40545 Düsseldorf, Germany
e-mail: mllferreira@gmail.com

¹³ Okayama Observatory, Kyoto University Honjo, Kamogata, Asakuchi, Okayama, 719-0232, Japan
e-mail: otsuka@kusastro.kyoto-u.ac.jp

Received: 17 May 2018; accepted: 14 September 2018

ABSTRACT

Aims. The spatial structure of the emission lines and continuum over the 50'' extent of the nearby, O-rich, PN NGC 7009 (Saturn Nebula) have been observed with the MUSE integral field spectrograph on the ESO Very Large Telescope. This study concentrates on maps of line emission and their interpretation in terms of physical conditions.

Methods. MUSE Science Verification data, in <0.6'' seeing, have been reduced and analysed as maps of emission lines and continuum over the wavelength range 4750 – 9350 Å. The dust extinction, the electron densities and temperatures of various phases of the ionized gas, abundances of species from low to high ionization and some total abundances are determined using standard techniques.

Results. Emission line maps over the bright shells are presented, from neutral to the highest ionization available (He II and [Mn V]). For collisionally excited lines (CELs), maps of electron temperature (T_e from [N II] and [S III]) and density (N_e from [S II] and [Cl III]) are available and for optical recombination lines (ORLs) temperature (from the Paschen jump and ratio of He I lines) and density (from high Paschen lines). These estimates are compared: for the first time, maps of the differences in CEL and ORL T_e 's have been derived, and correspondingly a map of t^2 between a CEL and ORL temperature, showing considerable detail. Total abundances of only He and O were formed, the latter using three ionization correction factors. However the map of He/H is not flat, departing by ~2% from a constant value, with remnants corresponding to ionization structures. An integrated spectrum over an area of 2340 arcsec² was also formed and compared to 1D photoionization models.

Conclusions. The spatial variation of a range of nebular parameters illustrates the complexity of the ionized media in NGC 7009. These MUSE data are very rich with detections of hundreds of lines over areas of hundreds of arcsec² and follow-on studies are outlined.

Key words. (ISM:) planetary nebulae: individual: NGC 7009; Stars: AGB and post-AGB; ISM: abundances; (ISM:) dust, extinction; atomic processes

1. Introduction

Planetary nebulae (PNe) provide self-contained laboratories of a wide range of low density ionization conditions and thus form

the CDS via anonymous ftp to cdsarc.u-strasbg.fr (130.79.128.5) or via <http://cdsweb.u-strasbg.fr/cgi-bin/qcat?J/A+A/>.

* Based on observations collected at the European Organisation for Astronomical Research in the Southern Hemisphere, Chile in Science Verification (SV) observing proposal 60.A-9347(A).

** FITS files corresponding to the images in Figs. 2, 3, 4, 5, 6, 7, 8, 9, 10, 11, 12, 13, 14, 15, 16, 17, 18, 19, 20, 21 and 22 are available at

a corner-stone of studies of the interstellar medium in general, from the diffuse interstellar medium, to H II and He II regions surrounding hot stars of all evolutionary stages to the highest density regions in stellar coronae and active galactic nuclei. However this advantage also proves a challenge, as the range of ionization conditions occur within a single object and all but a few nearby Galactic PNe are compact or slightly extended targets. Observation with a small aperture or slit is bound to sample a range of conditions, framing high and low ionization, low to higher density (typical range $10^1 - 10^6 \text{ cm}^{-3}$), low to moderate electron temperature (range a few $\times 10^3$ to $\sim 25\,000 \text{ K}$), including X-ray emitting gas with temperatures to $\sim 10^6 \text{ K}$ (for example Guerrero et al. (2000) and the results from the Chan-PlaNS consortium: Kastner et al. (2012); Freeman et al. (2014); Montez et al. (2015)). The resulting spectrum contains a summation of these conditions, the exact mixture depending on the nebular morphology, the temperature of the central star and the velocity and mass loss rate of its stellar wind, the age of the PN (younger PN generally being of higher density), the homogeneity of the circumstellar gas, the metal abundance and the content of dust. Spectroscopy with 2D coverage leads to increased understanding of the nebular structure and the role of the local physical conditions on the emitted spectrum, since PNe generally show a gradient in ionization from close to the central star to lower values in the outer regions.

Slit spectroscopy has until recently been the primary tool for PN spectroscopy, where the typical slit can sample the central higher ionization zone to the low ionization or neutral outer regions, depending on whether the nebula is density or ionization bounded. For moderately extended PNe (sizes $10 - 100''$), the selection of the slit is all-important. Often the placement is made based on shape, extension matching the slit, features of interest such as knots, filaments/jets, bipolar axis, etc, which in terms of sampling the widest possible range of conditions may not be representative. A good example is the seminal study of NGC 7009 by X.-H. Liu and X. Fang and co-workers (Liu & Danziger 1993a; Liu et al. 1995b; Fang & Liu 2011, 2013), which has presented the deepest and most comprehensive optical ($3000 - 10\,000 \text{ \AA}$) spectroscopy to date. Their study is primarily based on spectra derived from a single long slit aligned along the major axis and including the horns (ansae) and the outer low ionization knots. To step from this particular spatial sampling of the conditions in the ionized and neutral gas to a comprehensive description of the whole nebula is clearly an extrapolation of unknown magnitude, unless a wider range of conditions are sampled (in this case as next obvious choice a slit along the minor axis). In addition comparison of nebular properties based on single slit spectra between nebulae may not be strictly valid since various differing choices may have been applied in choosing the slit position and orientation.

Studies devoted to imaging of selected emission lines, chosen to sample the range of conditions in typical PNe, have been undertaken, often in co-ordination with slit spectroscopy, the latter targeting regions with particular conditions. Typical examples, which have focussed on NGC 7009, are Bohigas et al. (1994) and Lamé & Pogge (1996). With imaging in bright permitted and forbidden lines from He II to [O I], a wide span of ionization conditions can be sampled and narrow filters tuned to line pairs sensitive to electron density and temperature provide maps of the diagnostics, such as [S II]6716.4 and 6730.8 Å, and [O III]5006.9 and 4363.2 Å. Of course these images have to be corrected for the continuum collected within the filter bandwidth, whose origin is bound-free, free-free from ionized H and

He and the H⁺ and He⁺⁺ two photon emission, as well as direct or scattered starlight from the central star (or any field stars along the line of sight). In the infrared, Persi et al. (1999) used the circular variable filter (CVF) on ISOCAM for wavelength stepped monochromatic imaging of six PNe in the $5 - 16.5 \mu\text{m}$ range.

The HST imaging study of NGC 7009 using WF/PC2 (Rubin et al. 2002), unmatched in photometric fidelity and spatial resolution, was conducted in a search for spatial evidence of temperature variations based on the [O III] T_e sensitive ratio. Clearly such studies must carefully select lines to observe and match them, as closely as possible, to the interference filter parameters in order to avoid significant contamination from adjacent emission lines. Even with very narrow filters, some strong line close pairs, such as H α and the [N II] doublet at 6548.0, 6583.5 Å, fall within the same filter passband and accurate separation can be problematic. Inevitably given the density of lines in PNe spectra, there is often a non-optimal match of the off-line filter for subtraction of the continuum contribution to the passband. The passbands and throughputs of interference filters are also notoriously difficult to calibrate depending on input beam, ambient temperature and age, so the correction for the continuum and adjacent line contribution can be kept generally low, but can rarely be optimal.

Multiple slit observations provide the next step towards full spectroscopic coverage of the surface variations of PNe. These studies are usually limited to high surface brightness PNe, and even then necessitate extensive observing periods for good coverage of moderately extended (e.g., $\gtrsim 20''$) nebulae, with the added risk of changing observing conditions within or across different slit positionings (thus the stability of space-based spectroscopy, such as with STIS on HST, e.g., Dufour et al. (2015), are preferred). The early study (Meaburn & Walsh 1981) of the [S II] electron density across NGC 7009 with multiple slit positions is an example. The above mentioned problems of deriving line ratio diagnostics from emission line maps can be partially overcome by combining them with aperture or long slit spectra in order to check, or refine, the maps by comparison to sampled regions from spectroscopy, as indeed done by Rubin et al. (2002).

Integral field spectroscopy in the optical has been applied to PNe beginning with Fabry-Perot studies using the TAURUS wide field imaging Fabry-Perot interferometer (Taylor & Atherton 1980), such as for studies of NGC 2392 and NGC 5189 (Reay et al. 1983, 1984). Whilst these observations targeted small wavelength ranges at relatively high spectral resolution for radial velocity studies, lower spectral resolution using the Potsdam Multi Aperture Spectrometer (PMAS) has targeted the faint halos of several nebulae, such as NGC 6826 and NGC 7662 (Sandin et al. 2008). The VIMOS IFU on the VLT has also been used for spectroscopy of the faint halos of NGC 3242 and NGC 4361 (Monreal-Ibero et al. 2005); see also (Monreal-Ibero et al. 2006). NGC 3242 was observed with the VIMOS IFU in its wide field mode (field $54'' \times 54''$ mode with $0.67''$ spaxels) covering the bright rings, from which electron densities, temperatures and chemical abundances of various morphological features were measured (Monteiro et al. 2013). Tsamis et al. (2008) obtained IFU spectra with the VLT FLAMES IFU, Argus, of small regions of several PNe, including NGC 7009. The maximum field of view of the FLAMES IFU ($22 \times 12''$) only sampled parts of these nebulae but at excellent spectral resolution (in the sense that the instrument line spread function full width at half maximum (FWHM) matches the typical intrinsic width of the emission lines of $\sim 10 - 20 \text{ km s}^{-1}$).

Most recently a number of southern hemisphere extended PNe have been targeted using the Wide Field Spectrograph (WiFeS) on the 2.3-m ANU telescope at Siding Spring Observatory. This IFU has a field of $25''$ by $38''$ with either 1×1 or 1×0.5 arcsecond spaxels and spectral resolving powers from 3000 – 7000 over the optical ($3400 - 7000 \text{ \AA}$) range. Results of emission line ratio maps, physical conditions and abundances in either the integrated nebulae or for selected regions in Galactic PNe have been published in a series of papers (e.g., Ali et al. (2015, 2016); Ali & Dopita (2017)). Imaging Fourier transform spectrometry continues to be applied to PNe, as exemplified by the SITELE study of NGC 6720 by Martin et al. (2016).

In the near to mid-infrared, IFU techniques have also been applied to a few PNe. Matsuura et al. (2007) mapped the H_2 emission in some of the compact knots of the very extended Helix Nebula (NGC 7293). Herschel also had imaging spectroscopy facilities and the SPIRE FTS has been used for mapping CO and OH^+ in the Helix Nebula (Etxaluze et al. 2014); OH^+ was also detected in three other PNe (NGC 6445, NGC 6720, and NGC 6781) by Aleman et al. (2014). The HerPlans programme has mapped 11 PNe with PACS/SPIRE, and IFU maps of NGC 6781 over the wavelength range $51 - 220 \mu\text{m}$ and aperture maps over $194 - 672 \mu\text{m}$ are featured in Ueta et al. (2014).

The central theme of this paper is that integral field spectroscopy (IFS) provides an ideal approach to the spatial study of line and continuum spectroscopy of extended Galactic PNe. The most advanced optical IFS to date is the Multi-Unit Spectroscopic Explorer (MUSE; Bacon et al. (2010)) mounted on VLT UT4 (Yepun). Its $60 \times 60''$ field in Wide Field Mode, is ideally suited to the dimensions of a broad swathe of extended Galactic PNe, fulfilling the aim of sampling the full range of ionic conditions across the PNe surface. The spaxel size in Wide Field Mode ($0.2''$) advantageously samples the best ground-based seeing. Targets larger than the MUSE field can of course be fully sampled by mosaicing, such as performed for the Orion Nebula by Weilbacher et al. (2015). However the wavelength range of MUSE ($4750 - 9300 \text{ \AA}$) is not suited for following-up the rich near-UV range (from the atmospheric cut-off to $\sim 4500 \text{ \AA}$), extensively studied by ground-based optical spectroscopy. It is shown in this paper that, except for the T_e -sensitive $[\text{O III}] 4363.2 \text{ \AA}$ line and the oxygen M1 multiplet recombination lines (which are to some extent available in the MUSE extended wavelength mode, reaching to below 4650 \AA), many emission lines of interest over the full range of ionization conditions (except molecular species) are observable with MUSE.

NGC 7009 (NGC 037.7-34.5) was chosen for this demonstration of MUSE PN imaging spectroscopy based on several considerations:

- high surface brightness ($2.4 \times 10^{-13} \text{ ergs cm}^{-2} \text{ s}^{-1} \text{ arcsec}^{-2}$ based on a diameter of $30''$ and observed $H\beta$ flux of $1.66 \times 10^{-10} \text{ ergs cm}^{-2} \text{ s}^{-1}$ (Peimbert 1971);
- full extent of about $55''$ excluding the faint extensions of the halo (Moreno-Corral et al. 1998);
- moderate excitation (excitation class 5; Dopita & Meatheringham 1990), thus including He II;
- excellent complementary optical spectra covering wavelengths bluer than the MUSE cut-off and at higher spectral resolution;
- extensive data to shorter wavelengths (UV and X-ray, the latter from ChanPlans) and mid- and far-infrared imaging and spectroscopy, such as Phillips et al. (2010) and HerPlans.

NGC 7009 can be considered as an excellent ‘average’ Galactic PN, sampling the O-rich nebulae since NGC 7009 has C/O =

0.45 (Kingsburgh & Barlow 1994). The results of mapping the extinction across NGC 7009 from MUSE observations were previously presented in Walsh et al. (2016), hereafter Paper I. An overview of observations and results on NGC 7009 is presented in the introduction to Paper I.

Details of the MUSE observations are presented in Sect. 2, followed by an overview of the reduction and analysis of the spectra in Sect. 3. Then flux maps in a range of emission lines are presented in Sect. 4 and the electron temperature and density maps in Sect. 5. The method of Voronoi tessellation is applied to some of the emission line data to examine the properties of the faint outer shell in Sect. 6. Ionization maps are presented in Sect. 7 and abundance maps in Sect. 8. Integrated spectra of the whole nebula and selected long slits are briefly discussed in Sect. 9, where 1D photoionization modelling is presented. Section 10 closes with a discussion of some aspects of the data. Further analyses are being developed and will be presented in future work. A summary of the conclusions is presented in Sect. 11.

2. MUSE observations

During the MUSE Science Verification in June and again in August 2014, NGC 7009 was observed in service mode with the MUSE Wide Field Mode (WFM-N) spatial setting WFM ($0.2''$ spaxels) with the standard (blue filter) wavelength range ($4750 - 9300 \text{ \AA}$, 1.25 \AA per pixel). Table 1 presents a complete log of the observations; CS refers to the pointing centred on the central star. The position angle (PA $\sim 33^\circ$) of the detector was chosen to place the long axis of the nebula, from the east to the west ansae, along the diagonal of the detector in order to ensure coverage of the full extent of the nebula within the one arcminute square MUSE field of view (but excluding the very extended, faint halo). A second PA, rotated by 90° from the first, was included in order to assist in smoothing out the pattern of slicers and channels, as recommended in the MUSE Manual (Richard et al. 2017). For each sequence of observations at a given exposure time, a four-cornered dither around the first exposure at the central pointing, with offsets ($\Delta\alpha = 0.6''$, $\Delta\delta = 0.6''$), was made to improve the spatial sampling.

The Differential Image Motion Monitor (DIMM) seeing (specified at 5000 \AA) during the time of the observations is listed in Tab. 1. The requested maximum seeing was $0.70''$ FWHM. The repeat observations at another instrument position angle (180° displaced from the first sequence at PA 33°) in August 2014 indicated a much worse DIMM seeing value, but the measured FWHM on the images from the reduced cubes was only $\sim 0.75''$. Since the final image quality of the second set was significantly worse than for the June observations, these cubes were neglected for the subsequent analysis.

An offset sky position was only observed once per sequence and was located at ($\Delta\alpha = +90.0''$, $\Delta\delta = +120.5''$) ensuring that the field was well beyond the full extent of the halo of NGC 7009. This field turned out to be ideal with only a few dozen stars, none bright and with no detection of a halo (real or telescope-induced) from NGC 7009.

3. Reduction and analysis of MUSE cubes

3.1. Basic reduction

The MUSE data sets were reduced with the instrument pipeline version 1.0 (Weilbacher et al. 2014). For each night of observation, a bias frame, master flat and wavelength calibration table were produced using the MUSE pipeline tasks from the closest

Table 1. Log of MUSE observations of NGC 7009

Pointing	Date (YYYY-MM-DD)	UT (h:m)	Exposure (s)	PA (°)	Airmass range	DIMM seeing (")
NGC 7009CS	2014-06-22	09:23	10	33.0	1.115 - 1.128	0.64
NGC 7009CS	2014-06-22	09:13	60	33.0	1.093 - 1.110	0.67
NGC 7009CS	2014-06-22	09:35	120	33.0	1.131 - 1.164	0.57
Offset sky	2014-06-22	09:45	120	33.0	1.173	0.53
NGC 7009CS	2014-06-24	07:26	10	123.0	1.029 - 1.028	0.63
NGC 7009CS	2014-06-24	07:15	60	123.0	1.034 - 1.030	0.67
NGC 7009CS	2014-06-24	07:37	120	123.0	1.028 - 1.029	0.60
Offset sky	2014-06-24	07:48	120	123.0	1.029	0.68
NGC 7009CS	2014-08-20	01:54	10	303.0	1.176 - 1.159	1.16
NGC 7009CS	2014-08-20	01:44	60	303.0	1.212 - 1.183	1.07
NGC 7009CS	2014-08-20	02:07	120	303.0	1.155 - 1.124	1.18
Offset sky	2014-08-20	02:17	120	303.0	1.118	0.98
NGC 7009CS	2014-08-20	02:37	10	303.0	1.107 - 1.090	0.93
NGC 7009CS	2014-08-20	02:27	60	303.0	1.212 - 1.183	0.89
NGC 7009CS	2014-08-20	02:49	120	303.0	1.075 - 1.058	1.24
Offset sky	2014-08-20	02:59	120	303.0	1.055	1.27

Notes. The coordinates of the central star (CS) are: $21^h04^m10.^s8$, $-11^\circ21'48.''3$ (J2000).

available bias, flat and arc lamp exposures respectively, generally taken on the same night. The mean spectral resolving power quoted by the fit of the *muse_wavecal* task to the arc lamp exposures was 3025 ± 75 . The line spread function derived on each night (using *muse_lsf*) was employed for extraction of each slice as a function of wavelength. The default (V1.0) pipeline geometry tables, giving the relative location of the slices in the field of view, the flux calibration for the WFM-N mode together with the standard Paranal atmospheric extinction curve were used. Comparison of the datasets from the nights 2014 June 22 and 24 showed excellent agreement in terms of wavelength repeatability and flux stability, in confirmation of the monitoring of the instrument and ambient conditions.

Following the basic reduction of each cube in the dithered sequence at the two PA's of 33 and 123°, all ten cubes were combined with the task *sci_post* to produce the wavelength calibrated, atmospheric extinction and refraction corrected, fluxed combined cube (see Weilbacher et al. 2014). The offset sky exposure was processed (with *muse_create_sky*) to form the sky spectrum. A sky mask was produced to ensure that genuine line-free regions around the nebula in the field of view were used for sky subtraction based on the sky spectrum for the offset sky position. Figure 1 shows the mask for the PA 33° exposures; the only nebular emission line present in the sky region is faint [O III]5006.9 Å. Several stars in this background area were also included in the mask (see Fig. 1). The final sky-subtracted cubes have dimensions 426 (α) by 433 (δ) by 3640 (λ) pixels (4750 – 9300 Å at the default binning of 1.25 Å).

Particular care was taken to ensure the accurate alignment of all the cubes so that line ratios with high spatial fidelity across the wavelength range of each cube and between cubes of different exposure times were preserved. Offsets between each cube, based on the position of the NGC 7009 central star, were measured in the projected images (both in the dithered images and those at the 90° offset PA) averaged over the wavelength range

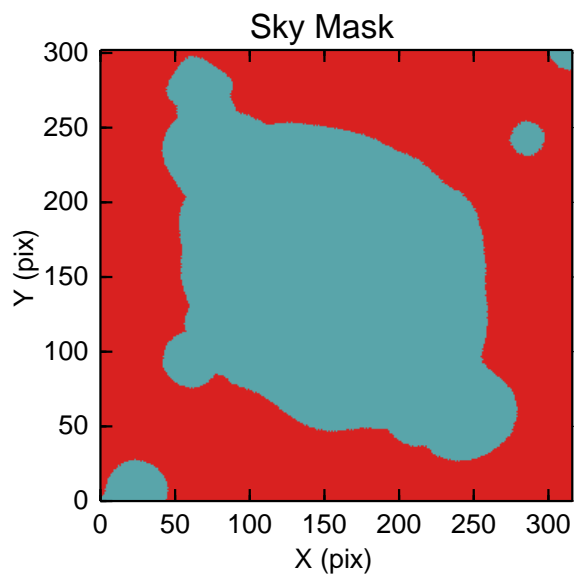


Fig. 1. Sky mask for the PA 33° exposures. The dark areas (green) are masked as non-sky (nebula and stars).

5800–6200 Å. Final registration between the three cubes for each exposure time, to better than 0.10 pixels was achieved. Table 2 lists the derived Gaussian FWHM determined with the IRAF¹ *imexam* task for three wavelengths bands, 4880 – 4920 Å, 6800 –

¹ IRAF is distributed by the National Optical Astronomy Observatories, which are operated by the Association of Universities for Research in Astronomy, Inc., under cooperative agreement with the National Science Foundation.

Table 2. Image quality with wavelength for final combined cubes (June 2014 data only)

Exposure (s)	$\lambda, \Delta\lambda$ (\AA)	DIMM FWHM ($''$)	Image FWHM ($''$)
10	4900, 40	0.59	0.52
10	6820, 40	0.58	0.48
10	9200, 40	0.49	0.42
60	4900, 40	0.61	0.61
60	6820, 40	0.55	0.56
60	9200, 40	0.49	0.48
120	4900, 40	0.57	0.56
120	6820, 40	0.54	0.53
120	9200, 40	0.46	0.45

6840 \AA and 9180 – 9220 \AA , chosen to be free of all but very weak emission lines. The smaller FWHM of star images at redder wavelengths compared to 4900 \AA (c.f., Tab. 2) shows the expected inverse weak dependence of atmospheric seeing on wavelength ($\lambda^{-1/5}$ (Fried 1966), although the FWHM falls off slightly faster than $\lambda^{-1/5}$) for the MUSE data cubes.

At each exposure level (10, 60 and 120s) a single cube was produced combining all the dithers at the two PA's from the data on 22 and 24 June 2014. Thus the total exposure per cube is 10 times the listed single dither exposure (one central position, four offset dithers and two PA's).

3.2. Line emission measurement

The emission lines in each of the three final exposure level cubes were measured by fitting Gaussians to the 1D spectrum in each spaxel, using a line list derived from the tabulation of Fang & Liu (2013), taking account of line blending arising from the lower spectral resolution of MUSE. Not all lines in this extensive list were used: those above about $0.002 \times F(\text{H}\beta)$ were searched and if above a given signal-to-noise (2.5) per spaxel, then they were fitted. Lines within a separation $\leq 10 \text{\AA}$ (8 pixels) were fitted by a double Gaussian, up to a set of eight consecutive close lines. A cubic spline fit to the line-free continuum (of bound-free, free-free and 2-photon origin, and at the position of the central star, stellar continuum) provided the estimate of the continuum under the emission lines. The statistical errors for each voxel ($\Delta\alpha$, $\Delta\delta$, $\Delta\lambda$ element) delivered by the MUSE pipeline were considered to provide errors on the Gaussian fits from the covariance matrix of the χ^2 minimization (the MINUIT code (James & Roos 1975) is employed). The tables of lines fits per spaxel were then processed into emission line maps with corresponding error maps. The mean of the ratio of the value to the propagated error (referred to as signal-to-error) is reported for the various quantities derived from the maps, such as line ratios, electron temperatures and densities, in the caption of the relevant figure.

4. Presentation of emission line maps

Since the velocity extent of the emission line components in NGC 7009 is $\sim 60 \text{ km s}^{-1}$ (Fig. A.1 of Schönberner et al. 2014), then, at the MUSE spectral resolution of $\sim 100 \text{ km s}^{-1}$, there is little velocity information on the kinematic structure: the maps of the emission line flux therefore encapsulate most of the information content. This study is primarily devoted to the emission

line imaging; a following work will present analysis of integrated spectra of various regions. From the emission line fitting of each line (Sect. 3.2), images were constructed for each fitted line (a total of 60 such maps were produced). Figure 2 shows the three observed lines of O: O⁰ (from the [O I]6300.3 \AA line, 120s cube), O⁺ (from the [O II]7330.2 \AA line, 120s cube) and O⁺⁺ (from the [O III]4958.9 \AA line, 10s cube, since the line is saturated in the 120s cube); O⁺⁺⁺ lines are not observed in the MUSE wavelength range. (All quoted wavelengths are as measured in air.) This set of images clearly shows the morphology by ionization, from the highly ionized more central region in [O III] through to the striking knots of ionization bounded emission in [O I]. Figure 3 then shows some H and He line images: H⁺ as sampled by Balmer 4–2 H β 4861.3 \AA from both the 10s and 120s cubes; He⁺ from the triplet (2P 3d – 3D 2s) He I 5875.6 \AA line (120s cube); and He⁺⁺ from the He II 5411.5 \AA 7-4 line (120s cube). The H β image shows the full range of ionized gas structures from the brightest inner shell with its strong rim, the converging extensions of the ansae, the minor axis knots (the northern one stronger) and the halo with its multiple rims – six can be counted (Corradi et al. 2004; see Balick et al. (1994) and Sabbadin et al. (2004) for the nomenclature of the nebula features. The fainter outer extensions found on the deepest ground-based images (Moreno-Corral et al. 1998) are not detectable on these images and this region was treated as part of the sky background.

While the morphology of the He I image is very similar to H β (Fig. 3), the high ionization He II image differs strongly. The He II emission is mostly confined within the bright rim and is strongest along the minor axis. However between the rim and the ansae along the major axis there is patchy extended emission indicating a preferential escape of high ionization photons along the major axis as compared to the minor axis. The ansae (designated Knots 1 and 4 by Gonçalves et al. (2003) and indicated on Fig. 4), while seen in He⁺ and H⁺, are not detected in He⁺⁺ emission. The inner shell is however not entirely optically thick to high ionization photons as there is He⁺⁺ emission in the outer shell, which has a boxy appearance in Fig. 3.

Figure 4 shows a variety of other line emission images used in deriving diagnostics: the [S II]6716.4 \AA line for N_e from the 6716.4/6730.8 \AA ratio; [Cl III]5537.9 \AA for N_e from the 5517.7/5537.9 \AA ratio; [N II]6583.5 \AA for T_e from the 5754.6/6583.5 \AA ratio; and [S III]9068.6 \AA for T_e from the 6312.1/9068.6 \AA ratio.

Figure 5 displays some ratio maps formed by dividing the observed emission line images over a range of ionization to demonstrate the pattern of excitation (of thermal and/or shock origin) and ionization from centre to edge, as well as the distinct lower ionization features. The low extinction (Paper I) has little effect on the morphology displayed in these images and the ratio maps are made with respect to a nearby H line. Figure 5 groups the ratio maps in order of decreasing ionization: from the highest ionization potential for which a good quality map could be derived (i.e., without a large fraction of unfitted spaxels falling below the 2.5 σ cut) [Mn V]6393.5 \AA /H β ; He II 5411.5 \AA /H β ; [O III]4958.9 \AA /H β ; He I 5875.6 \AA /H α ; [O II]7330.2 \AA /H α ; [N II]6583.5 \AA /H α ; [S II]6730.8 \AA /H α and [O I]6300.3 \AA /H α . The mean signal-to-error ratios over these maps are reported in the caption to Fig. 5; the peak values can reach >100 depending on the images composing the line ratio, and the peak value for the [O III]4958.9 \AA /H β image is 207.

The He II/H β image differs most markedly from the other images and shows the loops on the minor axis prominently. The

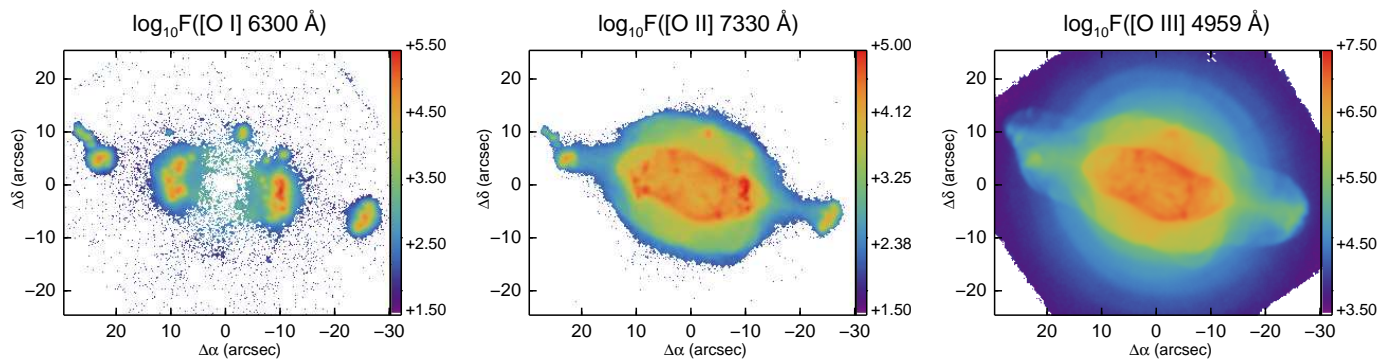


Fig. 2. Images of NGC 7009 in the O emission lines: O⁰ (from the [O I]6300.3 Å line, 120s cube), O⁺ (from the [O II]7330.2 Å line, 120s cube) and O⁺⁺ (from the [O III]4958.9 Å 10s cube).

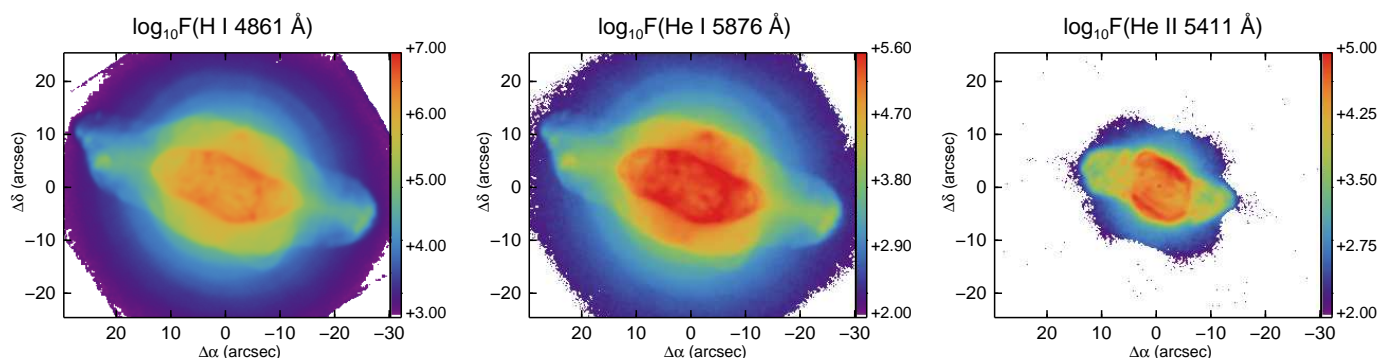


Fig. 3. Images of NGC 7009 in H and He emission line images: H⁺ as sampled by Balmer 4–2 H β 4861.3 Å from both the 10s and 120s cubes; He⁺ from the triplet (2P 3d – 3D 2s) He I 5875.6 Å line (120s cube); and He⁺⁺ from He II 5411.5 Å 7–4 line (120s cube).

He I/H α image forms the complement of the He II/H β one, except that the outer shell is more prominent. [O III]/H β displays a higher ratio over the halo than the central shell regions; the positions of the ansae tips show enhanced [O III]/H β but, coincident with the strongest [N II] emission, show a decrease in [O III]/H β . The [O III]/H β and He I/H α images show general correspondence of features over the inner shell but more structure in the former over the outer shell. The [O II]/H α image is rather similar to the [N II]/H α one except that the inner shell has more [O II] features².

All the low ionization line images – [O II], [N II], [S II] and [O I] show a remarkably similar morphology and a number of well-known compact structures in the vicinity of Knots 2 and 3 (Gonçalves et al. 2003), indicated on Fig. 4 lower left (called ‘caps’ by Balick et al. 1994). In the [N II]/H α image, besides the ansae (K1 and K4 on Fig. 4), knots K2 and K3 are very prominent; the northern minor axis polar knot is also strong and its elongation is aligned along the vector to the central star (on HST images this is resolved into two sub-knots oriented radially). Similar to K1 and K4, knots K2 and K3 show enhanced

² The [O II]7330.7 Å line (from the $^2P_{3/2} - ^2D_{3/2}$ transition) has a much higher collisional de-excitation density ($5.1 \times 10^6 \text{ cm}^{-3}$ at 10 000 K) compared to the [N II]6583.5 Å ($^1D_2 - ^3P_2$) line ($9.0 \times 10^4 \text{ cm}^{-3}$), so the [O II] image may be influenced by the presence of higher density low ionization gas over the inner shell.

[O III]/H β , but the peaks of [N II]/H β emission are slightly displaced (away from the central star) from the [O III]/H β peaks. The [O I]/H α image is similar to [N II]/H α and [S II]/H α , except that the low ionization knots have higher contrast (diffuse [O I] is very weak). The [N I]5197.9, 5200.3 Å doublet is about six times fainter than [O I]6300.3 Å and, while it was detected in the low ionization knots with similar morphology to [O I], the S/N was not sufficient to derive a spaxel map without spatial binning.

Although the spatial resolution of the MUSE images in Fig. 5 is about four times lower than the Hubble Space Telescope (HST) Wide Field Planetary Camera 2 (WF/PC2) narrow band images, comparison of both sets is interesting (see Balick et al. 1998; Rubin et al. 2002). The HST images from Programmes 6117 (PI B. Balick) and 8114 (PI R. Rubin) allow emission line ratio images in [O III]/H β (although from 5006.9 Å and not 4958.9 Å as for MUSE data), [O I]/H α , [N II]/H α and [S II]/H α to be formed for direct comparison with some of the images in Fig. 5. The same knots and features are seen in both sets, but with higher resolution of the individual features in HST images. The outward increase in [O III]/H β into the outer shell is seen in both sets but the outermost shells are more clearly revealed in the MUSE images. Similarly the [N II]/H α images are strikingly similar with a hint that knot K4 has developed a protuberance pointing SW in the more recent MUSE data (HST images from

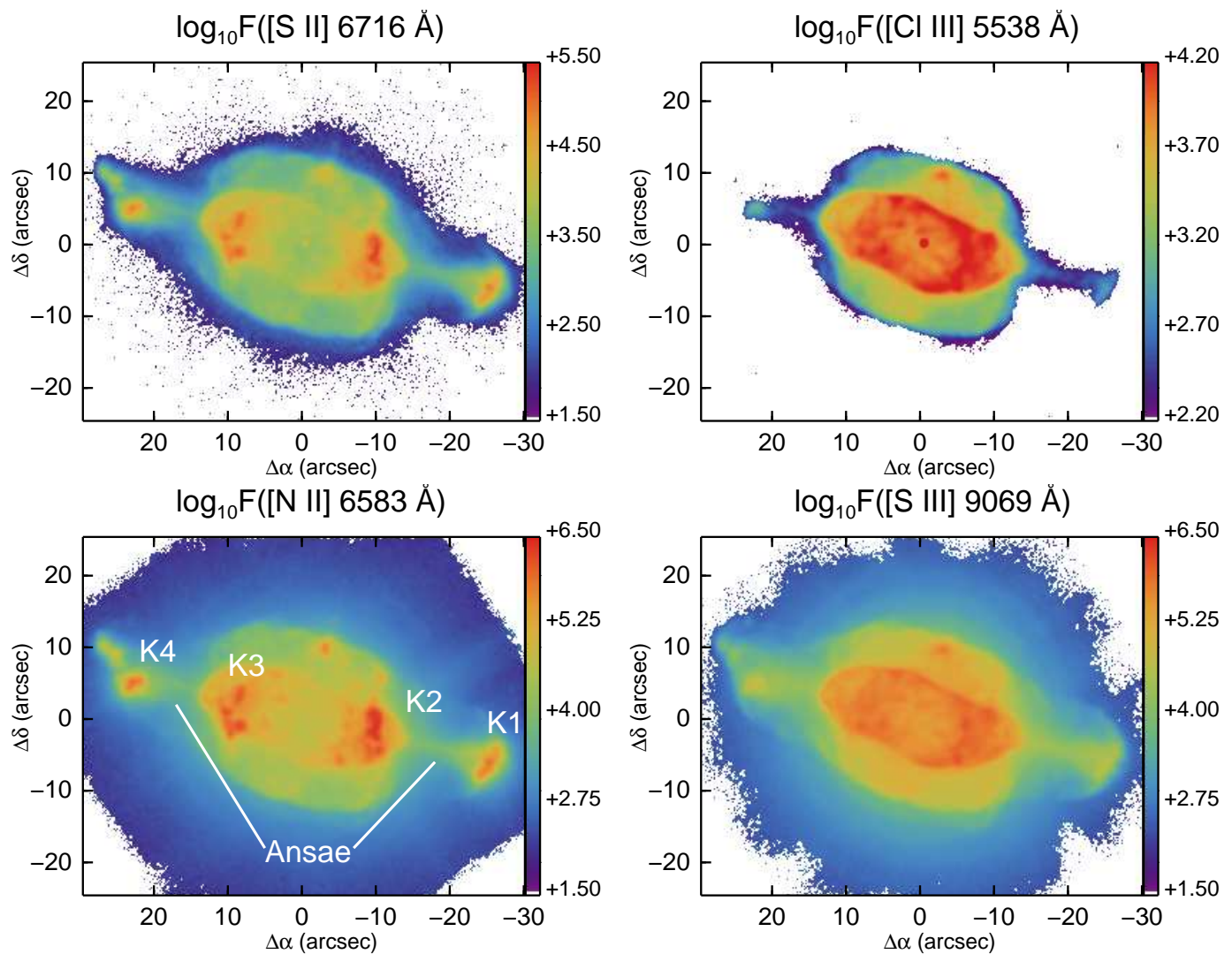


Fig. 4. Images of NGC 7009 in N_e and T_e sensitive emission lines: [S II]6716.4 Å line for N_e ; [Cl III]5537.9 Å for N_e ; [N II]6583.5 Å for T_e ; and [S III]9068.6 Å for T_e . On the [N II] image the ansae are indicated and the designation of the various knots from Gonçalves et al. (2003).

1996). The level of [N II]/ $H\alpha$ over the high ionization centre of the inner shell is ~ 3 times higher in the HST image, presumably on account of the continuum contribution or uncorrected leakage of $H\alpha$ into the [N II] passband (WF/PC2 F658N filter). Comparison of [O I]/ $H\alpha$ images show excellent correspondence but again the HST image shows significant flux over the central core which is undetected in the pure emission line MUSE map.

Despite the absence of the brightest O II ORL's (around 4650 Å) in the MUSE standard range, several of the strongest N II and C II recombination lines are captured. For N II, the multiplet $2s^2 2p 3p^3 D - 2s^2 2p 3s^3 P^o$ (V3) lines at 5666 – 5730 Å are bright enough to be detected on a spaxel-by-spaxel basis in the 120s cube. The (2-1) 5666.6 Å, (1-0) 5676.0 Å, (3-2) 5679.6 Å and (2-2) 5710.8 Å could be detected on many spaxels and were fitted. Figure 6 shows the map of the strongest line (5679.6 Å).

The strongest C II ORL in the spectral range is $3p^2 P - 3s^2 S$ at 6578.1 Å. This line was well detected in many spaxels but over the knots K2 and K3, where the [N II]6583.5 Å is very strong, the fitting was not reliable as the C II line lies in the wing of the [N II]6583.5 Å line which is >100 times stronger. In addition the other C II line from the same multiplet at 6582.9 Å makes for challenging line fitting at the measured spectral resolution of

2.8 Å. The C II $3d^2 D - 3p^2 P$ line at 7231.3 Å is however free from nearby bright lines and an adequate map could be produced, also shown in Fig. 6.

5. Mapping electron temperature and density

5.1. T_e and N_e from collisionally excited species

Within the MUSE wavelength coverage, there are a number of sets of collisionally excited lines (CELs) that can be employed for electron temperature and/or density determination, depending on the sensitivity of the particular lines to T_e and N_e . Among these are: [O I], [N II], [S III], [Ar III] for T_e and [N I], [S II], [Cl III] for N_e . Among this set, the emission line ratios with sufficient signal-to-noise over the bright shells of the nebula, without binning the spaxels, to map T_e and N_e , are presented: T_e from [N II] and [S III] (Fig. 8); N_e from [S II] and [Cl III] (Fig. 7).

Diagnostic CEL maps were produced using the *Python PyNeb* package (Luridiana et al. 2015) using the default set of atomic data (transition probabilities and collision cross sections, in *PyNeb* version 1.1.3). *PyNeb* performs a five, or more, level atom solution of CEL level populations and thus explicitly treats the effect of collisional excitation and de-excitation dependent

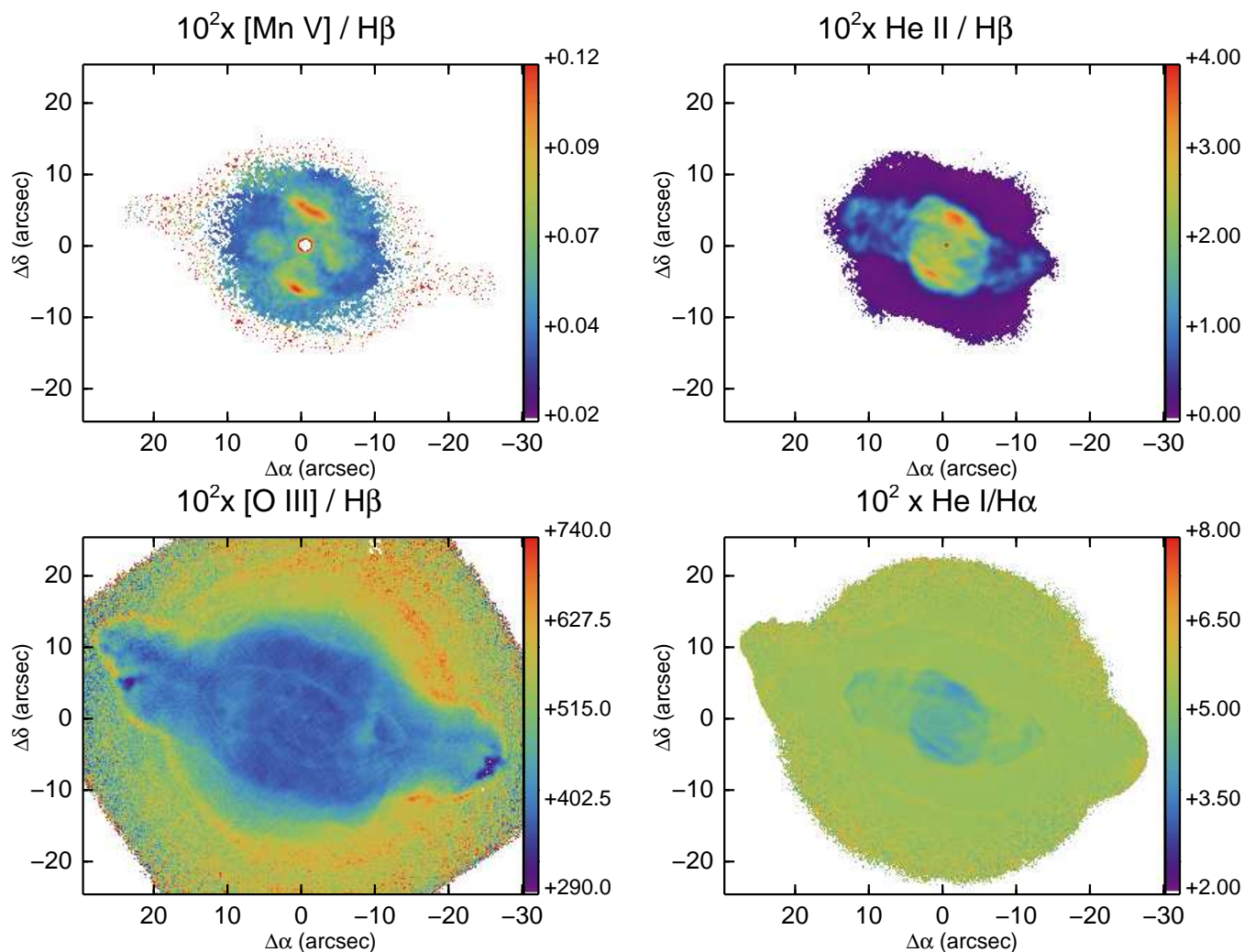


Fig. 5. Simple observed emission line ratio images (linear scale, $\times 100$) with respect to an H line for NGC 7009, ordered by decreasing ionization potential of the nominator image: [Mn v]6393.5 Å/ H β ; He II 5411.5 Å/ H β ; [O III]4958.9 Å/ H β ; He I 5875.6 Å/ H α ; [O III]7330.2 Å/ H α ; [N II]6583.5 Å/ H α ; [S II]6730.8 Å/ H α and [O I]6300.3 Å/ H α . The $3 \times 3\text{-}\sigma$ clipped means on the signal-to-error above $3 \times$ the error on the ratio are: 8, 35, 47, 60, 26, 41, 34 and 29 respectively.

on electron density. The emission line flux maps were extinction corrected using the extinction map determined from the H Balmer and Paschen lines, as described in Paper I and using the Galactic extinction law (Seaton 1979; Howarth 1983) and the ratio of total to selective extinction, R , of 3.1. Line ratio maps were then formed from these extinction corrected images. The dereddened line ratio maps were masked in order that diagnostics were only calculated for spaxels with $S/N > 3.0$ on both lines and the error on the ratio per spaxel was calculated by Gaussian propagation of the errors on the emission line fits. The *diags.getCrossTemDen* task was employed to calculate simultaneously T_e and N_e from [N II]6583.5/5754.6 Å and [S II]6716.4/6730.8 Å for the lower ionization plasma, and [S III]6312.1/9068.6 Å and [Cl III]5517.7/5537.9 Å for the higher ionization. The maximum number of iterations in *diags.getCrossTemDen* for the calculation of T_e and N_e was set to 5, with the maximum error set to 0.1%. Errors on T_e and N_e were also computed using a Monte Carlo approach with 50 trials of *diags.getCrossTemDen* assuming the errors on both sets of line ratios were Gaussian. Figures 7 and 8 show the individual maps of N_e and T_e respectively, and the means on the signal-to-error value over the maps are reported in the captions.

The [N II]5754.6 Å auroral line can be affected by recombination (direct and dielectronic recombination) to the $1S_0$ level of N^+ , leading to apparent enhancement of T_e from estimation by the [N II]6583.5/5754.6 Å ratio (Rubin 1986)³. The [N II]6583.5 Å line is also affected by collisional de-excitation at $N_e \gtrsim 10^4 \text{ cm}^{-3}$, but such high densities are not apparent from the [S III]6312.1/9068.6 Å and [Cl III]5517.7/5537.9 Å ratio maps (Fig. 7). The contribution by recombination can be estimated using the empirical formulae of Liu et al. (2000). In order to employ this correction, N^{++} needs to be estimated (on a spaxel-by-spaxel basis) but no lines of [N III] are available in the optical range. A possible alternative is to use an estimate of N^{++} from a recombination line (N II); however the resulting ionic abundance may not match the CEL N^{++} abundance on account of the well-known abundance discrepancy factor between optical

³ The [S III]6312.1 Å line can also suffer from recombination contribution from S^{+++} in the same way as [N II]. However there are currently no calculations of the recombination contribution to the [S III] $1S_0$ level available. Given that the [S III] T_e appears to be lower than [O III] T_e (Fang & Liu 2011), in contrast to [N II] T_e over the inner shell, suggests that any non-collisional component to [S III]6312.1 Å emission cannot be very large, but obviously this cannot be confirmed

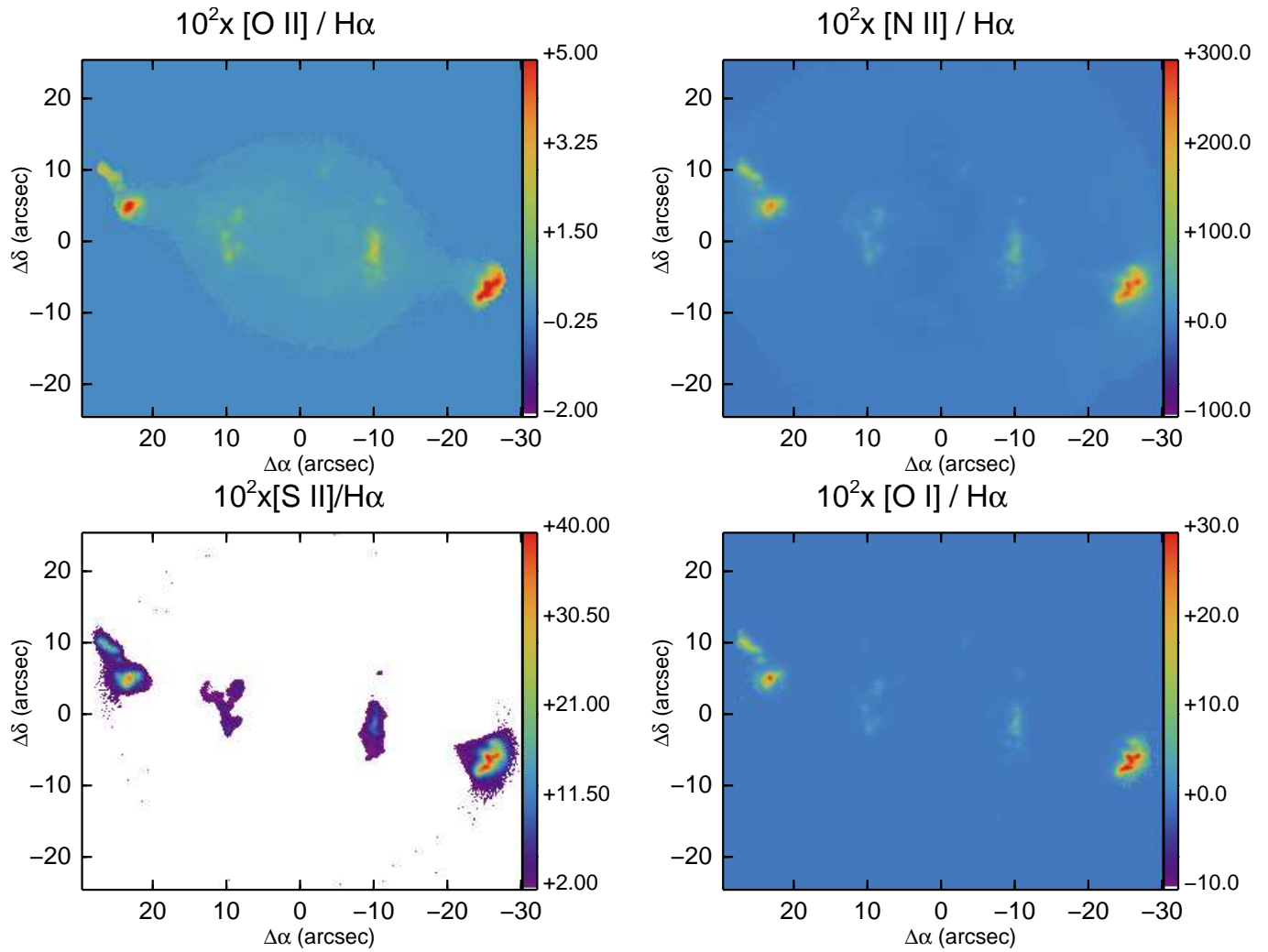


Fig. 5. Continued.

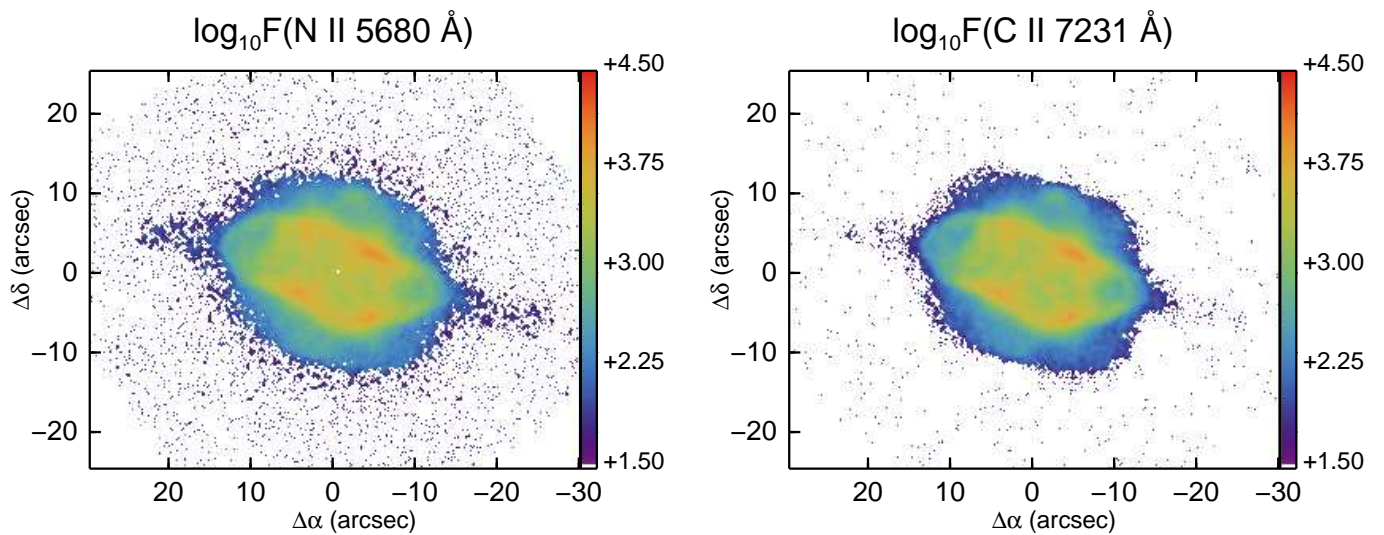


Fig. 6. Maps of two detected optical recombination lines are shown. Left: N II V3 multiplet $3p^3D - 3s^3P$ line at 5679.6 \AA ; Right: C II $3d^2D - 3p^2P$ line at 7231.3 \AA .

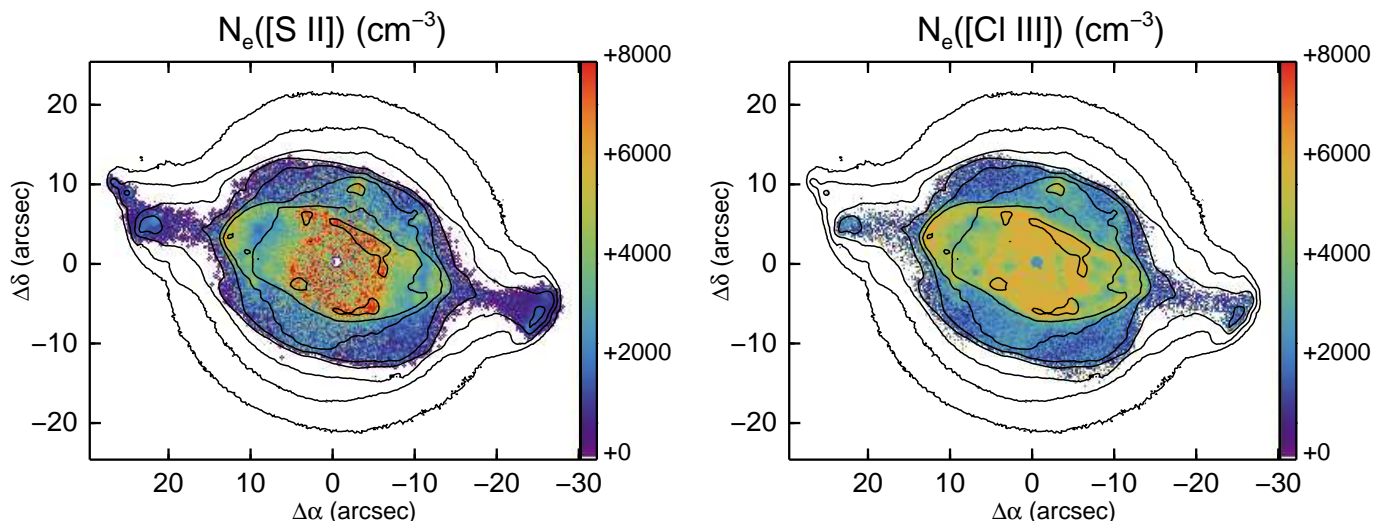


Fig. 7. Maps of N_e determined from [S II] (left) and [Cl III] (right). The contours correspond to the observed $\log F(H\beta)$ image shown in Fig. 3 (left), with contours set at $\log_{10} F(H\beta)$ surface brightness ($\text{ergs cm}^{-2} \text{s}^{-1} \text{arcsec}^{-2}$) from -15.0 to -11.8 in steps of +0.4. The electron densities for collisional de-excitation of the [S II] and [Cl III] $^2D_{3/2}$ levels for these diagnostics are 3.1×10^3 and $2.4 \times 10^4 \text{ cm}^{-3}$ at 10^4K respectively. The simple means on the signal-to-error value over the two N_e maps are 6 and 4, respectively.

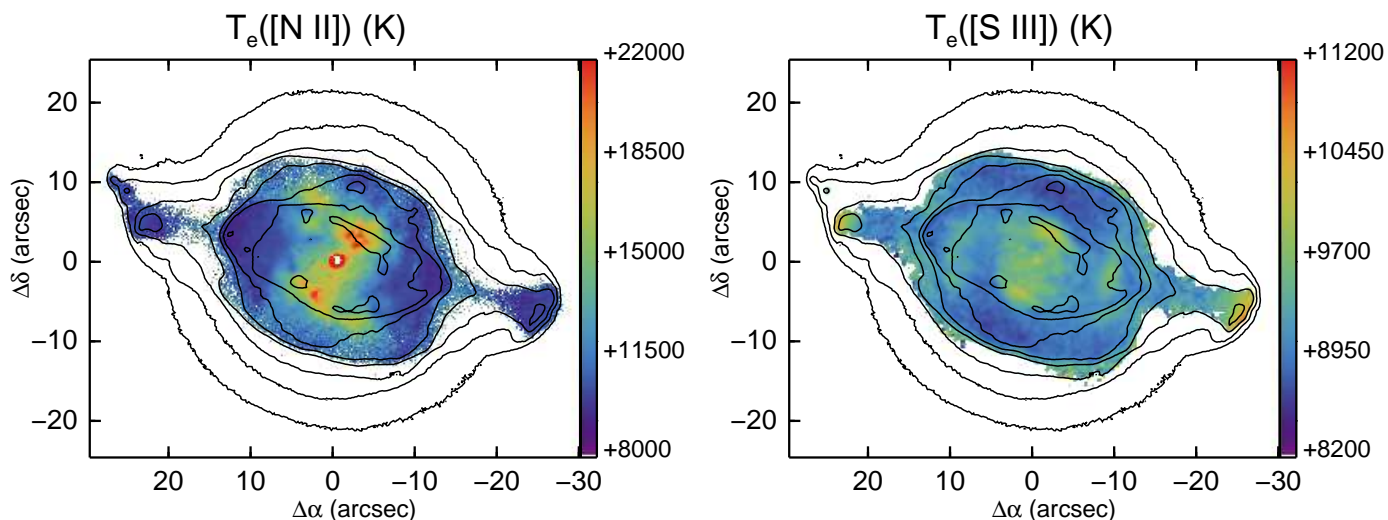


Fig. 8. Maps of T_e determined from [N II] (left) and [S III] (right). The elevated values in the central region for the [N II] T_e are assumed to be caused by the contribution of N^{++} recombination to the [N II]5754.6 Å line; see text for a consideration. The $\log F(H\beta)$ surface brightness contours are as in Fig. 7. The simple means on the signal-to-error value over the two T_e maps are 52 and 21, respectively.

recombination lines (ORLs) and CELs; see Liu et al. (2006) for a detailed discussion of this topic.

One approach tried was to estimate the N^{++} ionic abundance from N^+ and an empirical ionization correction factor for N^{++}

based on the O^{++}/O^+ ratio⁴. Since the derivation of O^+ from [O II]7320.0,7330.2 Å is also affected by recombination of O^{++} , a correction was made; see Sect. 7. Even applying this approach

⁴ This assumption was found to be valid within $\sim 10\%$ by running CLOUDY models matching the central star parameters and nebula abundances (see Sect. 9.1).

the resulting value of T_e over the central region (i.e. a Z-shaped zone inside the main shell) was very large, mean 14 600 K, somewhat lower than without any correction of $\sim 15\,200$ K. Outside this Z-shaped region of elevated [N II] T_e , the electron temperature is well-behaved and matches T_e from [S III] very well. Applying a multiplicative correction to the N^{++} abundance (on the assumption that the empirical correction by O^{++}/O^+ to N^+ is underestimated), can indeed reduce T_e over the central region, but at the expense of depressing the values outside this region. Applying a factor to N^{++} abundance large enough to decrease T_e in the central region to values similar to [S III] T_e , however depresses T_e in the outer regions to values < 5000 K, which cannot be justified (at least in comparison with the [S III] T_e).

5.2. T_e and N_e from recombination species

The abundance discrepancy factor (ADF) for NGC 7009 is 3–5, the value depending on the ion (Liu et al. 1995a; Fang & Liu 2013). Since it is known that the ORL temperature and density indicators differ from the CEL ones for integrated long slit spectra, their spatial differences may prove helpful for better understanding of the ADF problem. Several diagnostic ratios of line and continuum from the recombination lines of H^+ , He^+ and He^{++} in the MUSE wavelength range can be employed for electron density and electron temperature determination. These include the ratio of the high Balmer or Paschen lines as an electron density estimator (c.f., Zhang et al. 2004), the magnitude of the H I Balmer or Paschen continuum jump at 3646 and 8204 Å respectively, the magnitude of the He II continuum jump at 5875 Å and the ratios of He^+ singlets, which are primarily sensitive to T_e . For the MUSE range the higher Paschen lines and the Paschen jump are accessible for H I and the He II and He I diagnostics are useful too. The He II Pfund jump at 5694 Å is however too weak to measure in the MUSE data except in heavily co-added spectra, such as the long slit spectrum studied by Fang & Liu (2011). The signal-to-noise in the maps is also not sufficient to determine T_e and N_e diagnostics from N II and C III recombination lines on a spaxel-by-spaxel basis and the lines of O II are not available in the standard MUSE range.

5.2.1. T_e and N_e from He I

Zhang et al. (2005) showed how the ratio of the He I 7281.4/6678.2 Å lines provides a very suitable diagnostic of the He^+ electron temperature and thus an interesting probe of the ORL temperature. They are both singlet lines, hence little affected by optical depth effects of the $2s\ ^3S$ level, and are relatively close in wavelength (hence the influence of reddening on the ratio is small). The determination of T_e from 7281.4/6678.2 Å was based on the analytic fits of Benjamin et al. (1999), applicable at $5000 < T_e < 20\,000$ K, together with a fit to $T_e < 5000$ K (Zhang et al. 2005). However modern determinations of He I emissivities are based on the work of Porter et al. (2012, 2013), which are only tabulated for $5000 < T_e < 25\,000$ K, thus the $3d\ ^1D - 2p\ ^1P^0$ (6678.2 Å) and $3s\ ^1S - 2p\ ^1P^0$ (7281.4 Å) emissivities were linearly extrapolated in $\log T_e$ to temperatures below 5000 K from the Porter et al. values to 3000 K for the tabulated $\log N_e$ of 1.0 to 7.0.

The observed dereddened He I 7281.4/6678.2 Å ratio was converted to T_e and N_e minimizing the residual with the theoretical ratio. A first guess for the value of T_e was provided by the mean dereddened 7281.4/6678.2 Å ratio for the whole image

of 0.16, corresponding to $T_e \sim 6500$ K for an assumed N_e of 3000 cm^{-3} . The ratio is much more sensitive to T_e than N_e and the initial estimate for the He^+ electron temperature of $0.65 \times$ the [S III] T_e was adopted; N_e was held fixed within narrow constraints during the minimization. Figure 9 shows the resulting He^+ T_e map, which displays a distinct plateau inside the inner shell with mean T_e of 6200 K and, in the outer shell, lower values with mean 5400 K, extending to < 4000 K.

5.2.2. T_e from H I Paschen Jump

The magnitude of the series continuum jump for bound-free ($b-f$) transitions of H I is sensitive to electron temperature. Following Peimbert (1971), Liu & Danziger (1993b) developed the method using the flux difference across the Balmer jump normalized to the flux of a high Balmer line ($H\beta$ in this case) and computed T_e for several PNe. Zhang et al. (2004) also presented the same methodology applied to 48 Galactic PNe and extended the method to the flux across the Paschen jump using the Paschen 20 (8392.4 Å) line to normalize the flux across the jump for four PNe (including NGC 7009). It should be noted that the ratio of continuum fluxes of the blue to the red side of the jump is primarily dependent on T_e (a slight dependence on N_e arising from the two-photon emission, see Appendix A), whilst the normalization by an emission line, with its emissivity dependent on T_e and N_e , introduces a more significant dependence of electron density into the fitting of the jump.

The usual method to derive the flux difference across the jump is to fit the continuum spectrum, with the lines masked, in a dereddened spectrum by the theoretical continuum computed using H I recombination theory (c.f., Zhang et al. 2004). Fang & Liu (2011) applied the method to a deep integrated spectrum of NGC 7009 and provide a fitting formula for T_e as a function of the Paschen jump (defined as $F(8194\text{ Å}) - F(8269\text{ Å})$) normalized by the Paschen 11 flux (8862.8 Å), all dereddened. In order to handle the tens of thousands of spaxels in the MUSE data, a method tuned to the dispersion of the MUSE spectra was developed. The mean continuum in several line-free windows on both sides of the Paschen Jump was measured and a custom conversion of this difference with respect to the flux of the P11 line was applied as a function of T_e and N_e and the fractions of He^+ and He^{++} with respect to H^+ (see Sect. 7.1 and 7.2 respectively). A higher series Paschen line could have been chosen minimizing the uncertainty from reddening correction, but P11 has the advantage of being a strong line well separated from neighbouring lines and also occurring in a relatively clear region of the telluric absorption spectrum (Noll et al. 2012). Appendix A gives details of the selection of the continuum windows and the computation of the conversion from measured jump to T_e , using recent computation of $b-f$ emissivities from Ercolano & Storey (2006a) and new computation of the thermally averaged free-free Gaunt factor from van Hoof et al. (2014).

No correction for the presence of stellar continuum on the Paschen Jump was applied (c.f., Zhang et al. 2004). However since the Paschen Jump T_e is determined per spaxel, then spaxels over the seeing disk of the central star will be affected; the increase of the jump with increasing blue stellar continuum (and also when ratioed by P11) results in very low values of T_e and these can be clearly discerned in the map. No other localized large deviations (positive or negative) of T_e , not correlated with H I emission line morphology, were found, indicating no other significant sources of non-nebular continuum are present. Figure 10 shows the resulting map of PJ T_e . The mean value is

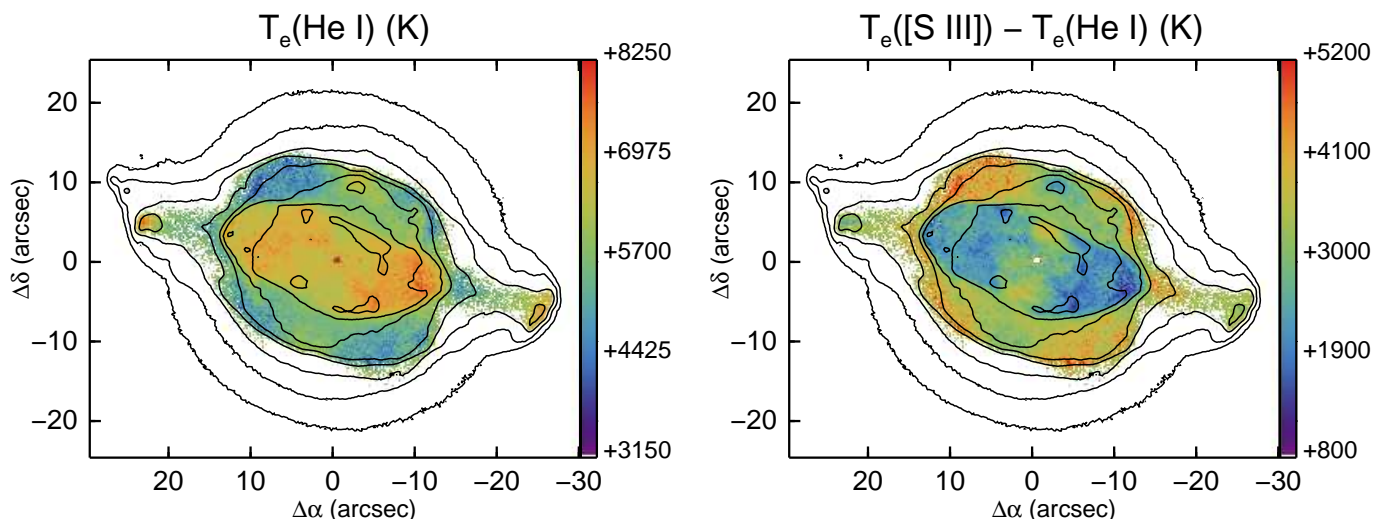


Fig. 9. The map of $\text{He}^+ T_e$ (left) derived from the ratio of the He I singlet lines $7281.4/6678.2 \text{ \AA}$. The mean signal-to-error value is 11. At right is shown the difference map between the [S III] and He I T_e maps. The log $F(\text{H}\beta)$ surface brightness contours are as in Fig. 7.

6610 K with a root mean square (RMS) of 1010 K ($3 \times 3 \sigma$ clipped mean); the mean signal-to-error over the map, based on 100 Monte Carlo trials using the propagated errors on the measured PJ, is 13.

5.2.3. N_e from H I high Paschen lines

Zhang et al. (2004) describe a method for determining T_e and N_e from the decrement of the higher Balmer lines, and a similar method was applied to the high Paschen lines. Fitting reddening corrected images of P15 – P26 (8545.4, 8502.5, 8467.3, 8438.0, 8413.3, 8392.4, 8374.8, 8359.0, 8345.5, 8333.8, 8323.4 and 8314.3 \AA) and minimizing the residuals against the Case B values for initial values of T_e and N_e from [S III] and [Cl III] (Sect. 5.1) enables estimates of the H I recombination density to be estimated. Higher Paschen series lines than P26 begin to be significantly blended at the MUSE resolution of $\sim 3 \text{ \AA}$ and were not used. The set of higher Paschen lines is more sensitive to N_e than T_e (c.f. Fig.1 in Zhang et al. 2004), so a given T_e was adopted per spaxel from [S III] and [Cl III] (Sect. 5.1), although T_e from the Paschen decrement (Sect. 5.2.2) could have been used.

It was noted that P22 (8359.0 \AA) has a much higher strength than predicted by Case B at reasonable values of T_e and N_e ; the same behaviour was found by Fang & Liu (2011) (see their figure 7) from their long slit spectrum of NGC 7009. In their data P22 does not appear to be much above Case B within the errors, but for an integrated spectrum of the bright rim to the NW of the central star, the MUSE data clearly show P22 to be unusually strong (factor 1.8). No obvious He I or He II recombination lines coincide with the wavelength of H I P22, so another species may be contaminating this line (or the apparent strength arises from sky subtraction errors). P22 was therefore removed from the comparison of observed $v.$ predicted Paschen line strengths. The Paschen line strengths were compared to the Case B values at the value of T_e for each spaxel, weighting by the signal-to-noise of each line to determine N_e ; the initial value of N_e from

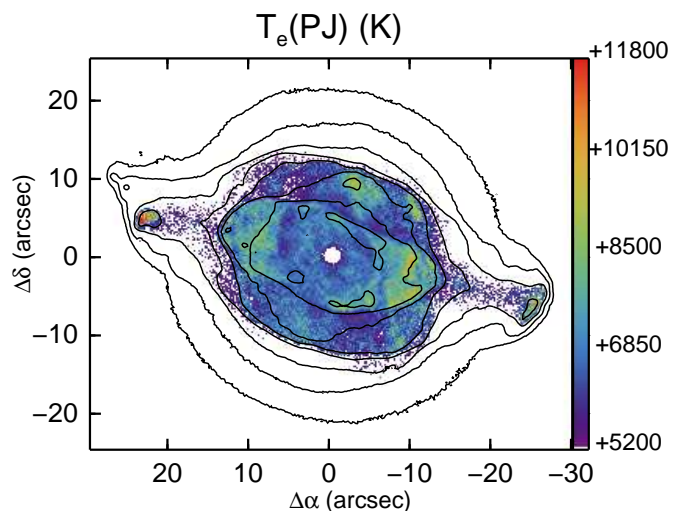


Fig. 10. Map of T_e derived from the magnitude of the Paschen continuum jump at 8250 \AA ratioed by the dereddened H I Paschen 11 (8862.8 \AA) emission line strength. Initial estimates of T_e and N_e from the [S III] and [Cl III] ratio maps (Sect. 5.1) were applied, followed by two iterations with the derived T_e map from the Paschen Jump. See text for details. The low T_e values over the central star are not representative and arise from the strong stellar continuum. The log $F(\text{H}\beta)$ surface brightness contours are as in Fig. 7. The mean signal-to-error is 13.

the [Cl III] ratio was used. The signal-to-noise ratio of the fitted emission lines is only high enough in the highest H I surface brightness regions, so the resulting map has sparse coverage of

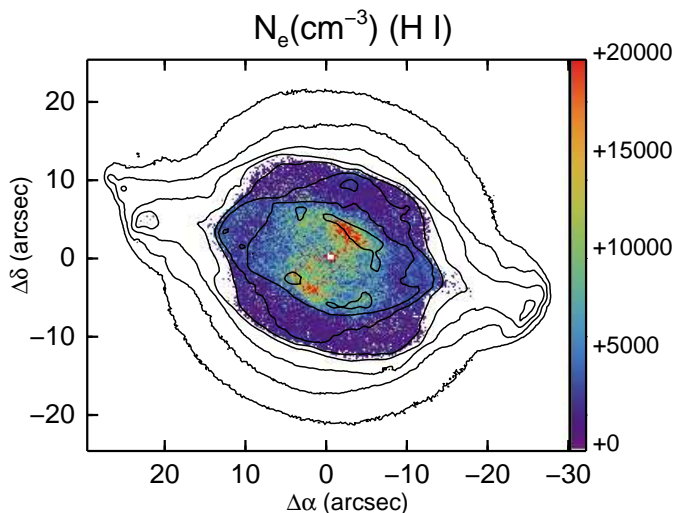


Fig. 11. Map of N_e derived by comparing the strengths of the higher Paschen lines (P15 – P26) with the Case B predictions, adopting T_e values provided by the [S III] ratio. The log $F(H\beta)$ surface brightness contours are as in Fig. 7. The mean signal-to-error is 2.

the outer shell. In a number of spaxels no solution was possible within the errors and the initial value of N_e was adopted. Figure 11 shows the resulting H I N_e map; high values are seen at the positions of the minor axis knots, corresponding to strong He II emission. The mean value of the map is $4250 \pm 3030 \text{ cm}^{-3}$, compared to the mean value for the [Cl III] N_e of $3490 \pm 1930 \text{ cm}^{-3}$ (3σ , 3 clipped iterate means).

5.3. Comparison of T_e and N_e maps

Maps have been presented of T_e from two CEL line ratios ([S III] and [N II], Fig. 8) and two ORL combinations – He I 7281.4/6678.2 Å singlet line ratio (Fig. 9) and H I Paschen Jump (Fig. 10) and maps of N_e from the two CEL ratios ([Cl III] and [S II], Fig. 7) and one ORL diagnostic from the high series H I Paschen lines (Fig. 11). These data provide a unique opportunity to spatially compare the various diagnostics of CEL and ORL origin. No information about the line-of-sight (radial velocity) variation of CEL and ORL diagnostics is however available from these maps given the low spectral resolution of MUSE.

T_e from the [N II] line ratio is strongly affected by recombination to the upper level (auroral) 5754.6 Å line and the resulting T_e 's are too high, particularly in the central region; thus the CEL comparisons can only reliably be made with the [S III] T_e map. Fang & Liu (2011) measured a T_e value from the [S III] ratio of 11500 K, in comparison with 10940 K from the [O III] ratio (their table 4). Lacking measurement of [O III] 4363.2 Å and a map of $T_e(O^{++})$ with MUSE, then T_e from the [S III] ratio is the best CEL T_e surrogate for probing the bulk of the ionized emission.

The CEL [S III] T_e map (Fig. 8) shows the highest values of 10300 K in the inner shell minor axis lobes, which correspond to the strongest He II emission (and, as shown in Sect. 7.2, the highest He⁺⁺/H⁺). Within a circular plateau of radius 4.5'' around the central star, the T_e values are high. Inside the inner shell along

the major axis there are regions of lower T_e by ~ 500 K except for two almost symmetrical stripes perpendicularly across the major axis (offset radii 9.5'') with slightly elevated T_e of ~ 450 K above their surroundings. These elevations in T_e correspond to knots K2 and K3 (Gonçalves et al. 2003), indicated on Fig. 4. The outer shell has a lower and more uniform T_e appearance with a value ~ 8900 K, including the ansae, but there are two regions along the minor axis which have T_e depressed by ~ 100 K. The ansae, however, notably show higher T_e with values around 10600 K, similar for both ansae, with values increasing to the extremities (to 11000 K). All these comparisons show differences larger than the propagated errors on T_e (Sect. 5.1).

Although the central region with higher ionization in the [N II] T_e map is strongly affected by the N⁺⁺ recombination contribution, the outer regions should be less affected (see Fig. 8). The ends of the major axis show T_e values elevated by only about 1000 K with respect to [S III] T_e but the outer shell displays values higher by 1000's of K suggesting that N⁺⁺ recombination also contributes in this region. The extremities of the ansae show [N II] T_e notably lower than from [S III], while the emission extends further along the minor axis than S⁺⁺.

Comparison of the He I singlet line ratio and H I Paschen Jump T_e maps (Figs. 9 and 10, respectively) show many similarities with a lower temperature circular region around the central star and elevations at the ends of the major axis; the contrast between the higher T_e inner shell and the outer shell is greater (by ~ 500 K) for the He I T_e map, and in general the He I map is smoother. The He I T_e map is very different in value and appearance from the [S III] T_e map (Fig. 8). The mean temperature difference in the inner shell is 2500 K whilst in the outer shell it is 3500 K. There is a distinct step in the temperature difference (ΔT_e ([S III] - He I)) ~ 1000 K at the outer edge of the main shell. Both T_e maps show a central circular depression in T_e with elevations towards the ends of the major axis, with some general correspondence to the positions of the K2 and K3 knots. Both T_e maps show elevations up to ~ 1500 K over the minor axis polar knots, well above the errors. Very prominent is the elevation in T_e at the extremities of the ansae, with values increasing from the He I T_e map (~ 7200 K) to the H I PJ map (~ 9200 K), compared to the values of ~ 10500 K in the [S III] T_e image.

The N_e maps from the [Cl III] and [S II] line ratios (Fig. 7) show some similarities, such as the higher density inner circular region around the central star, with $N_e \sim 7000 \text{ cm}^{-3}$, but also some differences. Several notable holes in the higher ionization N_e map with sizes $\lesssim 1''$ are apparent in the inner shell, but not in the lower ionization density map. The edges of the inner shell on the minor axis display prominently elevated N_e (to 8000 cm^{-3}). However the western filament (K2) shows as a depression in [S II] N_e , although not in [Cl III] N_e . Both maps show the northern polar knot over the outer shell with density peaking at above 6000 cm^{-3} . The ansae are undistinguished in both CEL N_e maps with values averaging 2200 cm^{-3} .

The ORL N_e map from the ratio among the high Paschen lines (Fig. 11), although of rather low significance, does show general similarities to the [Cl III] N_e map. The central circular region however has N_e elevated by $\sim 3000 \text{ cm}^{-3}$ with respect to the [Cl III] density map and the features along the minor axis have higher density with a bi-triangular morphology. There are similarities in this morphology with the He II/H β image (Fig. 5) showing that the regions of highest ionization are of high density. An incidental similarity also occurs with the [N II] T_e map (Fig. 8) which probably arises from the large contribution to [N II] 5754.6 Å emission from recombination of N⁺⁺ (Sect. 5.1) in this high ionization region.

It is pertinent that regions distinguished by their emission line surface brightness, in addition to the obvious shell structure, such as the K2 and K3 filaments, the minor axis polar knots and the ansae, also display distinct physical properties, such as elevated, or depressed, T_e and N_e . This suggests a fundamental link between emission line morphology and physical conditions, which might indeed have been expected, but is nevertheless reassuring and lends physical justification to the many decades of emission line morphological studies of PNe.

5.4. A map of the temperature fluctuation parameter t^2

Comparison of the maps of T_e from the CEL line ratio for [S III] and the ORL Paschen Jump provide a method to study the spatial variation of the temperature fluctuation parameter, t^2 , introduced by Peimbert (1967). Given that there may be temperature variations within a nebular volume, Peimbert (1967) showed how the difference between T_e values from the ratio of the Balmer jump to H β , compared to T_e from the [O III]5006.9/4363.2 Å ratio, can be used to derive the mean temperature T_0 and the root mean square temperature fluctuation, t^2 , by series expansion to 2nd order. Zhang et al. (2004) applied the method to several nebulae including NGC 7009, considering also the T_e independence of the far-infrared [O III]88.33/51.80 μm ratio.

The MUSE spectra do not include the Balmer jump at 3646 Å or the [O III]4363.2 Å line, but the problem can be reformulated following Peimbert (1967) using the [S III]9068.6/6312.1 Å ratio and the Paschen Jump to Paschen 11 ratio (see Appendix A). The equivalent dependencies are (c.f., Peimbert (1967), eqns. 18 and 16 respectively):

$$T_e([\text{S III}]) = T_0 \left[1 + \frac{1}{2} \left(\frac{5.537 \times 10^4}{T_0} - 3 \right) t^2 \right] \quad (1)$$

and

$$T_e(\text{PJ/P11}) = T_0 (1 - 2.311 t^2) \quad (2)$$

where the latter relation was determined by fits to the variation of PJ and P11 emissivity with T_e at a density of 3500 cm^{-3} (see Appendix A and Storey & Hummer (1995)).

From the [S III] T_e image (Fig. 8) and the PJ/P11 T_e image (Fig. 10), the average temperature T_0 and the temperature fluctuation parameter t^2 were determined by minimizing the difference of the observed T_e 's against the difference from equations 1 and 2. Figure 12 shows the T_0 and t^2 maps: the (3- σ clipped) mean values are 7900 K and 0.075, respectively. Since the [S III] T_e map always has higher values, it dominates the morphology of the T_0 image, but is reduced on average by $\sim 15\%$ (1200 K). The t^2 map on the other hand more closely resembles the PJ T_e map and is by no means uniform, with a demarcation between the inner (lower t^2) and outer (higher t^2) shells. In particular the central He II zone has elevated t^2 , while the ends of the inner shell major axis and the north minor axis polar knot have lower values (by ~ 0.05); the ansae, particularly the eastern one, also show lower values of t^2 , with mean 0.03. The outer rim of large t^2 values is not necessarily real and is accountable to large errors in [S III] and PJ T_e ; the large values over the central star are also not real on account of stellar continuum contamination of the Paschen Jump (Sect. 5.2.2).

Given such large values of t^2 , it can be argued that the definition of Peimbert (1967) in terms of a Taylor series expansion of T_e to account for differences in temperature along the line of sight breaks down, and so the description of the differences in T_e

between a collisionally excited line indicator and a recombination line/continuum indicator in terms of t^2 is no longer strictly valid. A higher order temperature fluctuation parameter could be sought for a quantitative description of this regime.

6. Extending diagnostics to faint outer regions

On account of the lower surface brightness of the emission from the halo beyond the outer shell, at the resolution of single spaxels the S/N is too low to fit more than a few of the strongest emission lines (e.g., strong H Balmer lines, [O III], etc). In order to explore the physical conditions in the halo, binning of the spaxels is required to achieve an adequate S/N for line fitting (conservatively considered to be $>2.5 \sigma$). The data can be binned either into regular $n \times m$ spaxels bins or an adaptive signal-to-noise based criterion can be used to construct the bins, which need not be rectangular. The adaptive binning technique based on Voronoi tessellations, developed by Cappellari & Copin (2003) specifically for IFS data, provides a natural choice. The high S/N of single spaxels in the bright inner shell is retained, whilst some binning is applied in the outer shell and large and irregular shaped bins are appropriate for the halo.

The IDL `VORONOI_2D_BINNING` code based on Cappellari & Copin (2003) was used to generate the bins based on the 120s H β image and a target S/N of 500 was used: this choice leaves the spaxels in the bright inner shell with low rebinning (typically 2x2 spaxels) and results in very large bins in the outer regions; Fig. 13 shows the binned H β map. The cubes were rebinned with the spectra set by the binning but on the original pixelation. Each spaxel spectrum was then fitted by multiple Gaussians, as described for the unbinned data (Sect. 3.2), and some maps of line flux and flux error were generated, Fig. 13 being an example.

The Voronoi tessellated images were then subjected to a similar analysis to the unbinned images: the extinction was obtained from the ratio of the 10s H α and 120s H β images (since the H Paschen images have much lower S/N, the lines were not detectable in much of the halo so only the Balmer line images were employed for extinction determination); the emission line images were dereddened; line ratio maps were formed with propagated errors and used to determine T_e and N_e from the same diagnostic lines as the unbinned data (Sect. 5). Since T_e and N_e are required to compute c by comparison to the Case B H Balmer line ratio, an iterative procedure was adopted for the outer regions, with initial values of 10^4 K and 1000 cm^{-3} for T_e and N_e respectively. After two iterations of determining c , dereddening and recomputing T_e and N_e , the mean values in the outer regions were found to be $11\,500 \text{ K}$ and 400 cm^{-3} .

The extinction map notably displays negative values in the outer extensions of the halo visible within the MUSE field of view. This finding was independently confirmed by fitting ellipses to the 10s H α and 120s H β and examining the ratio of surface brightnesses as a function of radius. Above a radius of 130 pix (26"), the H α /H β ratio falls below the Case B value of 2.855, appropriate for the nebula plasma conditions in the inner shell. A negative value of c cannot be derived if the appropriate density and temperature in the ionized gas are chosen and the correct optical depth condition in the Lyman continuum (Case A/B). The effect is most probably caused by a component of scattered Balmer light from the bright central nebula ($\lesssim 10^3$ times the surface brightness of the halo) and the presence of a scattering medium, predominantly dust, since Paper I showed the presence of dust within the nebula.

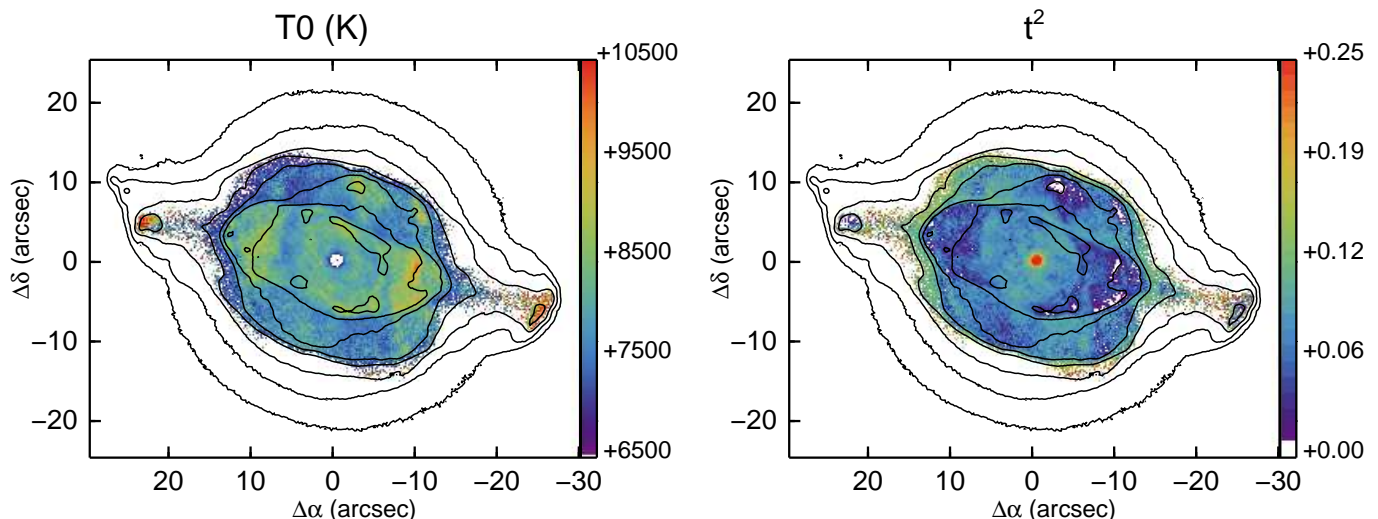


Fig. 12. Maps of the average temperature (T_0 , left) and the temperature fluctuation parameter (t^2 , right) determined from the [S III] and the Paschen Jump T_e maps. The $\log F(H\beta)$ surface brightness contours are as in Fig. 7. The mean signal-to-error over the T_0 map is 45 and for the t^2 map is 15.

Some instrumental component of scattered light from the bright inner shell into the outer shell must occur, although no direct evidence was seen by comparing the longer and shorter exposures and brighter and fainter emission lines between the two instrumental position angles. According to the MUSE instrument manual (Richard et al. 2017), both internal ghosts and straylight are below the 10^{-5} level. Sandin (2014) has carefully considered the role of diffuse scattered light in observations of extended objects and derived surface brightness profiles. There must be some contribution to the halo light from the diffuse scattered profile of the inner shell of NGC 7009, but the presence of several rims in the faint halo (e.g., Moreno-Corral et al. 1998) suggest this cannot be the dominant effect. The scattering problem for $H\alpha$ and $H\beta$ in a PN with a neutral dust shell has been treated by Gray et al. (2012); in the case of NGC 6537 they derived a clumpy distribution of dust in the shell. Linear polarization has also been measured by Leroy et al. (1986) over the outer halo of NGC 7009, so the prediction from these observations is that a higher value of polarization is expected over the faint halo (c.f., Walsh & Clegg (1994) for the halo of NGC 7027).

7. Ionization maps

For those ORL's and CEL's with sufficient signal-to-noise to allow coverage of the main shell and outer shell, maps of the ionic fraction with respect to H^+ were formed using *PyNeb*. The maps of T_e from [S III] and N_e from [Cl III] (Sect. 5) together with the dereddened line and $H\beta$ maps (applying the Seaton (1979) extinction law with $R=3.1$) were employed to generate the ionic abundance at each spaxel. The following ionic maps were made: He^+ and He^{++} ; N^+ ; O^0 , O^+ and O^{++} ; S^+ and S^{++} ; Cl^{++} and Cl^{+++} ; Ar^{++} and Ar^{+++} ; and Kr^{+++} .

7.1. He^+

There are a range of singlet and triplet He^+ lines in the MUSE coverage, some of which are affected by optical depth and by collisional effects from the 2^3S and 2^1S levels, although neither should be severe in NGC 7009. The He^+ abundance was calculated by *PyNeb* using the Case B emissivities of Porter et al. (2012, 2013). The He^+/H^+ abundance can be determined from $He\ I\ 5875.6\ \text{\AA}$ ($3d^3D - 2p^3P^0$, triplet), $6678.2\ \text{\AA}$ ($3d^1D - 2p^1P^0$, singlet), $7065.7\ \text{\AA}$ ($3s^3S - 2p^3P^0$, triplet) and $7281.4\ \text{\AA}$ ($3s^1S - 2p^1P^0$, singlet) lines. The other singlet $He\ I$ lines detected are $4d^1D - 2p^1P\ 4921.9\ \text{\AA}$ and $2s^1S - 3p^1P\ 5015.7\ \text{\AA}$; however the $4921.9\ \text{\AA}$ line is weaker than the red $He\ I$ lines and the $5015.7\ \text{\AA}$ line is very close to the very bright [O III] $5006.9\ \text{\AA}$ line, so is very problematic to obtain a good line flux. It was decided therefore to concentrate on the four red and brighter $He\ I$ lines to provide better spatial coverage of the fainter regions. Of these lines, $He\ I\ 7065.7\ \text{\AA}$ is the one most sensitive to the $He\ I\ \tau(3888.6\ \text{\AA})$ optical depth (Robbins 1968), followed by $5875.6\ \text{\AA}$, while the singlets $6678.2\ \text{\AA}$ and $7281.4\ \text{\AA}$ are entirely insensitive to $\tau(3888.6\ \text{\AA})$.

The He^+ maps based on the $He^+ T_e$ (Sect. 5.2.1) and the singlet $6678.2\ \text{\AA}$ and triplet $5875.6\ \text{\AA}$ images are very similar in appearance and mean value, while the He^+ map from $7065.7\ \text{\AA}$ has a much higher mean value, although similar morphology. The difference arises since the $7065.7\ \text{\AA}$ map shows the effect of higher $He\ I\ 3888.6\ \text{\AA}$ optical depth with a morphology of a ring around the inner shell.

A $\tau(3888.6\ \text{\AA})$ optical depth map can be calculated from the ratio of He^+ maps from the $He\ I\ 7065.7\ \text{\AA}$ and $He\ I\ 6678.2\ \text{\AA}$ lines, following Eqn. 5 of Monreal-Ibero et al. (2013). However in the case of NGC 7009, $\tau(3888.6\ \text{\AA})$ should be calculated appropriate for an expanding nebula (Monreal-Ibero et al. (2013) used a fit to the Robbins (1968) He^+ emissivity appropriate to a static nebula), so a new fit was made for the case when the ratio of radial velocity to thermal velocity ($V(R)/V(TH)$ in Robbins

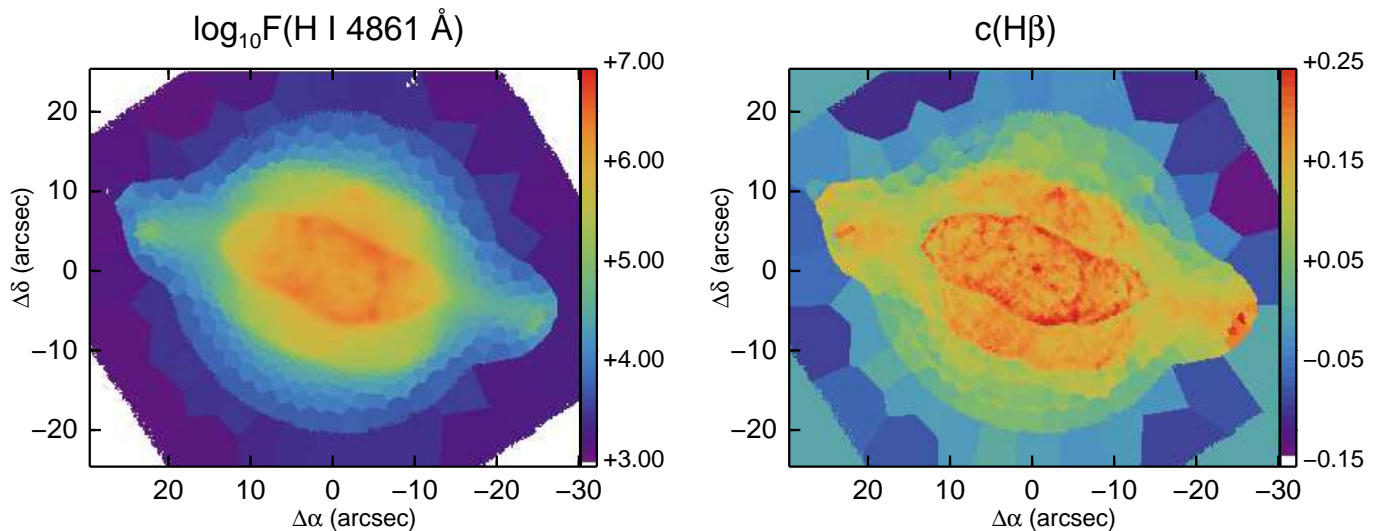


Fig. 13. Left: The Voronoi tessellated version of the 120s $H\beta$ emission line image, in a log display showing the adaptive bins. Right: The extinction map, $c(H\beta)$, for the Voronoi tessellated images based on the ratio of the 120s $H\beta$ image and the 10s $H\alpha$ images.

(1968), table 3) is 5, although the value in NGC 7009 is higher than this, ~ 20 . It should be noted however that the variation of 7065.7 \AA optical depth appropriate for T_e of 10^4 K was used, as Robbins (1968) only tabulates the variation at two values of T_e . The ratio of He^+/H^+ images from 7065.7 \AA and 6678.2 \AA was used to compute $\tau(3888.6 \text{ \AA})$ and the resulting map is shown in Fig. 14. The value of $\tau(3888.6 \text{ \AA})$ is quite high, mean 15.0, with some structure associated with the boundary of the inner rim and outer shell. Notably there is less structure than in the same map produced from the He^+ images with $[\text{S III}] T_e$ where there are prominent holes in the optical depth map on the minor axis, but the mean value of $\tau(3888.6 \text{ \AA})$ is lower (mean 2.0). Interestingly Robbins (1968) deduced a (single) optical depth value for NGC 7009 of 15, based on T_e of 10^4 K . Given the relatively high value of $\tau(3888.6 \text{ \AA})$ derived here, calculating $\text{He}^+ T_e$ from $7281.4/5875.6 \text{ \AA}$ can be expected to deliver a lower value of T_e (c.f., Zhang et al. 2005) since 5875.6 \AA is a triplet line.

The strongest He I singlet line, hence showing no optical depth sensitivity, is 6678.2 \AA , and Fig. 15 shows the ionic fraction He^+/H^+ using the $\text{He I } T_e$, the $[\text{S III}] T_e$ for H^+ and the single $[\text{Cl III}] N_e$ map.

7.2. He^{++}

The He^{++} map produced with the dereddened He II and $H\beta$ images and the $[\text{S III}] T_e$ and $[\text{Cl III}] N_e$ maps (Sec. 5.1) is shown in Fig. 16. It shows the high ionization main shell with the minor axis regions prominent, where He^+ is notably lower. Whilst there is weak He^{++} present in the outer shell, it is more pronounced along the major axis. This suggests an anisotropic escape of highly ionized photons, with much higher optical depth to $h\nu \geq 54.4 \text{ eV}$ photons along the minor axis than the major axis, although in other respects the major axis extensions are fairly unassuming with similar extinction, T_e and N_e to the rest of the outer shell (Sect. 5.1). The extensions of the He^{++} emission

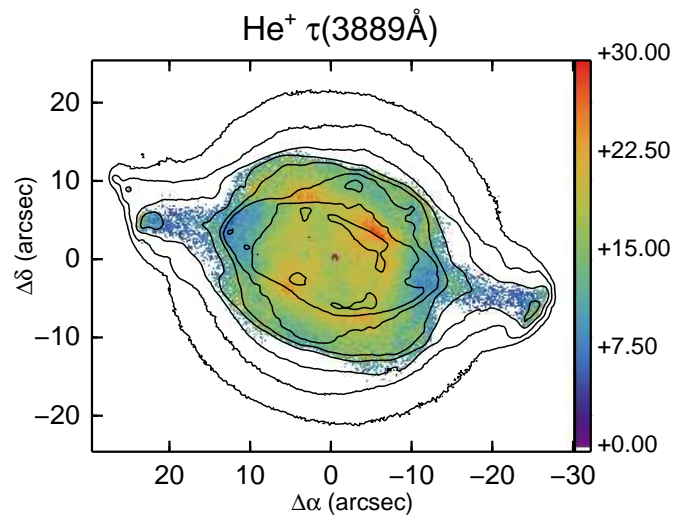


Fig. 14. $\tau(3888.6 \text{ \AA})$ from the ratio of $\text{He I } 7065.7 \text{ \AA}$ and 6678.2 \AA lines, calculated with the $\text{He I } T_e$ map and a ratio of expansion velocity to thermal velocity for the nebula of 5. The log $F(H\beta)$ surface brightness contours are as in Fig. 7.

beyond the inner shell contrast with the Chandra diffuse X-ray appearance (Kastner et al. (2012), their Fig. 4), which displays soft X-ray emission only inside the main shell, and attributed to the interface between the shocked stellar wind and the cooler, denser expanding gas of the optical nebula.

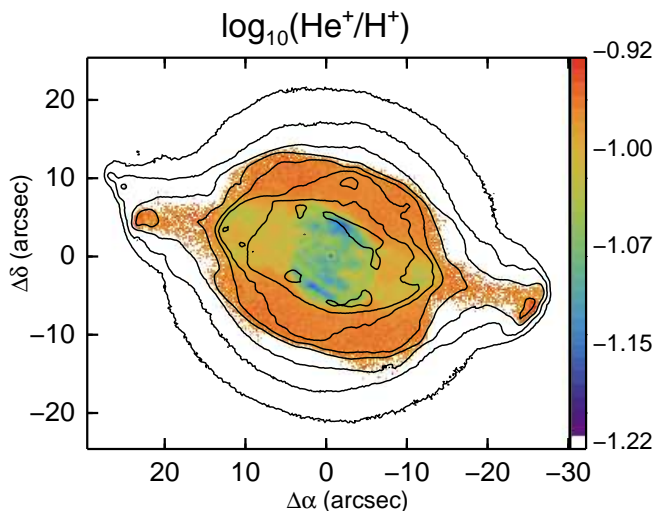


Fig. 15. Map of He^+/H^+ determined from the HeI 6678.2 Å and $\text{H}\beta$ dereddened emission line maps with the $\text{He}^+ T_e$ and $[\text{S III}] T_e$ maps respectively and the single $[\text{Cl III}] N_e$ map. The $\log F(\text{H}\beta)$ surface brightness contours are as in Fig. 7. The mean signal-to-error ratio on He^+/H^+ is ~ 14 .

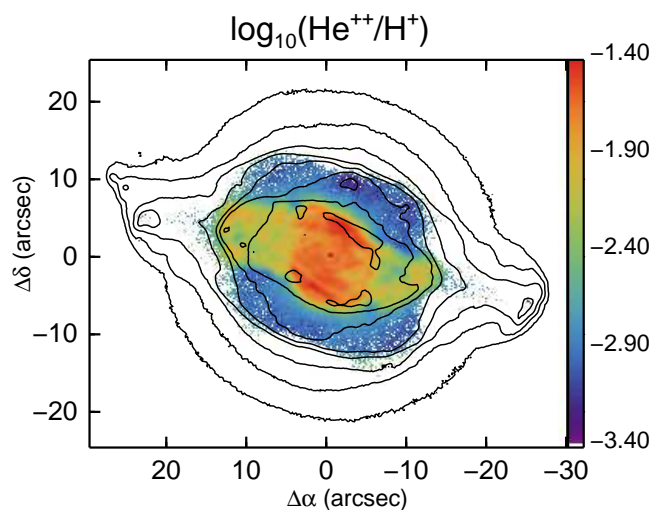


Fig. 16. Map of $\text{He}^{++}/\text{H}^+$ using the $[\text{S III}] T_e$ and the $[\text{Cl III}] N_e$ maps. The $\log F(\text{H}\beta)$ surface brightness contours are as in Fig. 7. The mean value of signal-to-error is 12.

7.3. O^0 , O^+ and O^{++}

Figure 17 shows the O^0 , O^+ and O^{++} maps; the quoted mean signal-to-error values are from Monte Carlo trials. The O^+ abundance was formed by correcting the dereddened $[\text{O II}]7330.2$ Å line flux by the O^{++} recombination contribution. The correction scheme proposed by Liu et al. (2000) was adopted (their eqn. 2,

detailed in their Appendix A) and the O^{++}/H^+ contribution was provided by the O^{++} map based on the $[\text{S III}] T_e$ map. This contribution for O^{++} recombination alters the mean value over the map of O^+/H^+ by 30%.

The O^0 abundance, calculated assuming pure photoionization and T_e and N_e from $[\text{S III}]$ and $[\text{S II}]$ respectively, is only strong in a few knots along the major axis, in the ansae and knots K2 and K3. There may however be some component of fluorescence to $[\text{O I}]$ emission or it may be predominantly produced in photodissociation regions (c.f., Richer et al. 1991; Liu et al. 1995a), so the O^0 cannot naively be added to O^+ and O^{++} to determine the total O abundance (although it only contributes at the level of 0.25% of the total O abundance). The northern minor axis peak is strong in O^0 as are several compact knots in the vicinity of the western major axis knot K2. The map of O^+ bears many similarities to the O^0 but with more extended emission present over the inner and outer shells. The ansae are notably strong in O^+ . The O^{++} map is notably extended to the outer shell and towards the ansae, but depressed at the ansae themselves. The lower O^{++} regions in the inner shell correspond to those with highest He^{++} , consistent with strong O^{+++} presence.

7.4. N ionization maps

Only the N^+ image is available from the CEL $[\text{N II}]$ lines but, as shown in Sect. 5.1, the 5754.6 Å line is affected by recombination and so over-estimates T_e ; to produce the N^+/H^+ map shown in Fig. 18, T_e from $[\text{S III}]$ and N_e from $[\text{S II}]$ were employed. The map resembles closely that of O^0 (Fig. 17) with the low ionization knots prominent. However the N^{++}/H^+ map from the $\text{N II ORL } 2s^2 2p^3 3^3 \text{D}^e - 2s^2 2p^3 s^3 \text{P}^o (3-2) 5679.6$ Å line (recombination of N^{++} to N^+) is markedly different in appearance (Fig. 18). The ORL N^{++}/H^+ map was formed using the $[\text{S III}] T_e$ and $[\text{Cl III}] N_e$ (the latter only 500 cm^{-3} higher in the mean than the $[\text{S II}] N_e$ image) in the event of not having a spaxel-by-spaxel map of $\text{N II ORL } T_e$ (see Sect. 5.2). This ORL N^{++}/H^+ image resembles the Ar^{+++} map (shown in Fig. 19), and the ionization potentials substantially overlap ($29.6 < \text{N}^{++} < 47.4$ eV; $27.6 < \text{Ar}^{+++} < 40.7$ eV).

7.5. S, Cl and Ar ionization maps

The other species for which maps of several ionization states from CEL lines can be formed are S (S^+ , S^{++} from $[\text{S II}] 6730.8$ Å and $[\text{S III}] 9068.6$ Å respectively), Cl (from Cl^{++} and Cl^{+++} from $[\text{Cl III}] 5537.9$ and $[\text{Cl IV}] 8045.6$ Å) and Ar (Ar^{++} and Ar^{+++} from $[\text{Ar III}] 7134.8$ and $[\text{Ar IV}] 7237.4$ Å). Figure 19 shows the S, Cl and Ar ionization maps. The morphology of the lower ionization species (S^+ , Cl^{++} and S^{++} and Ar^{++} , ionization potentials 10.4 to 27.6 eV are quite similar, and to O^+ , but the appearance of the Cl^{+++} and Ar^{+++} (IP's to 39.6 and 40.7 eV respectively) differ strongly, and also from the O^{++} (Fig. 17). Neither Cl^{+++} and Ar^{+++} show the central ionic emission with a depression, as shown by O^{++} ; the Cl^{+++} has a bipolar appearance with the outer shell minor axes enhanced and Ar^{+++} has a curious four-cornered (biretta) shape extending into the outer shell.

8. Abundance maps

8.1. He abundance

The only species for which a total abundance map can be formed without invoking use of an explicit ionization correction factor

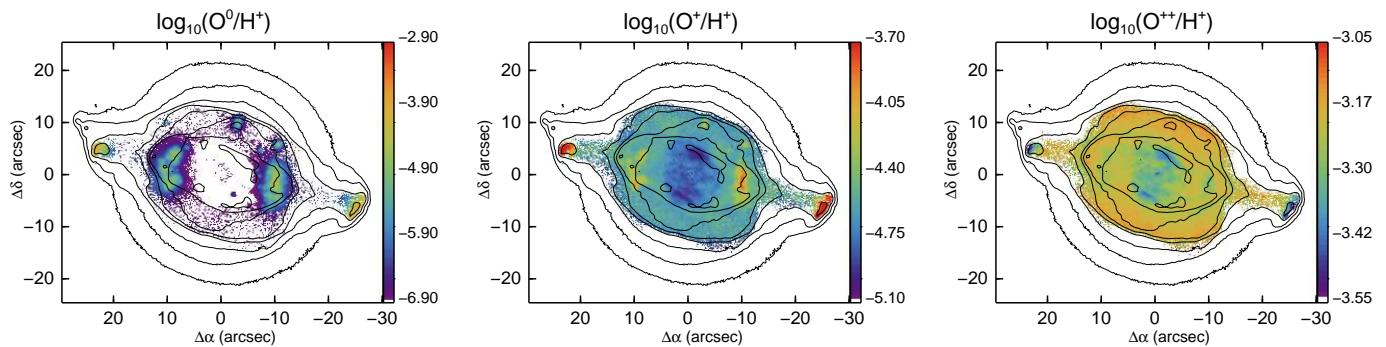


Fig. 17. Maps of O^0 , O^+ and O^{++}/H^+ ionic abundances. The $\log F(H\beta)$ surface brightness contours are as in Fig. 7. The mean signal-to-error values on O^0 , O^+ and O^{++}/H^+ are 12, 21 and 13, respectively.

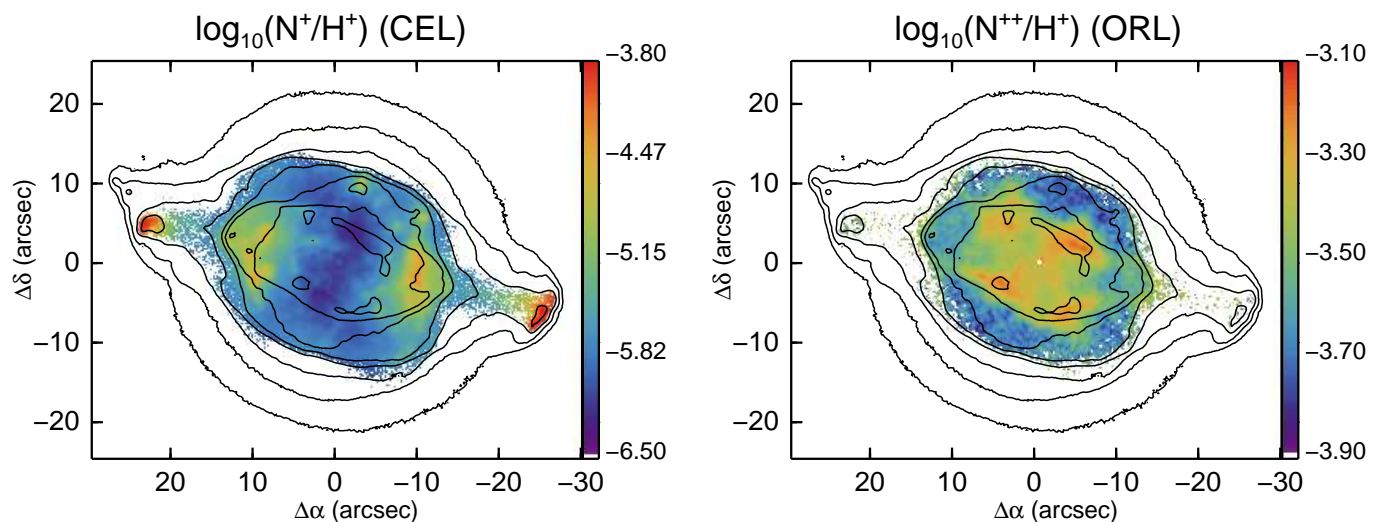


Fig. 18. Map of N^+/H^+ from the CEL $[N\text{ II}]$ lines (left) and for N^{++}/H^+ from the $N\text{ II } 5679.6\text{ \AA}$ ORL line (right). The $\log F(H\beta)$ surface brightness contours are as in Fig. 7. The mean values of signal-to-error are 15 and 5, respectively.

(ICF) map is He. Given that there is no reliable diagnostic for the fraction of He^0 in an ionized nebula, the default assumption is made that it represents a negligible proportion: the sum of He^+ and He^{++} should therefore map the total He abundance. This assumption is reinforced by the 1D photoionization models presented in Sect. 9.1, based on an integrated spectrum, where both show neutral He fractions $<0.15\%$. The simplest assumption, following Occam's razor, is that the He abundance in the nebular shells is uniform. Helium is a general product of Big Bang nucleosynthesis and is supplemented by stellar H-burning phases, which begin on the main sequence and are first brought to the surface by the first dredge-up, and later, principally, during third dredge-up on the asymptotic giant branch. By comparison of L , T_{eff} from Sabbadin et al. (2004) with the Miller Bertolami (2016) solar abundance evolutionary tracks, an initial mass of $1.4M_{\odot}$ and a current mass of $0.58M_{\odot}$ are derived. Thus second

dredge-up is not expected to have occurred in NGC 7009 (c.f., Karakas & Lattanzio 2014).

Figure 20 shows the He/H^+ map formed from the He^+/H^+ map (Fig. 15) and the $\text{He}^{++}/\text{H}^+$ map (Fig. 16), where all (He and H) emissivities were calculated with T_e from $[S\text{ III}]$ and N_e from $[Cl\text{ III}]$ (Sect. 5.1). There does not appear to be evidence that the He/H^+ values are depressed in the knots K1 – K4 (Fig. 4), suggesting no enhanced contribution from He^0 in these low ionization regions.

The flattest map of total He abundance was produced by using the values of T_e from $[S\text{ III}]$ (Sect. 5.1) for both He^{++} and He^+ with respect to H^+ . Adopting T_e from $\text{He I } 7281.4/6678.2\text{ \AA}$ (Sect. 5.2.1) for calculating the emissivity of both He^+ and H^+ , and the $[S\text{ III}]$ T_e map for both He^{++} and H^+ , leads to a map displaying stronger residuals from flatness, corresponding to the inner and outer shells and the region of He^{++} emission (see Fig. 16); the mean and $3\text{-}\sigma$ RMS on this image was $0.1057 \pm$

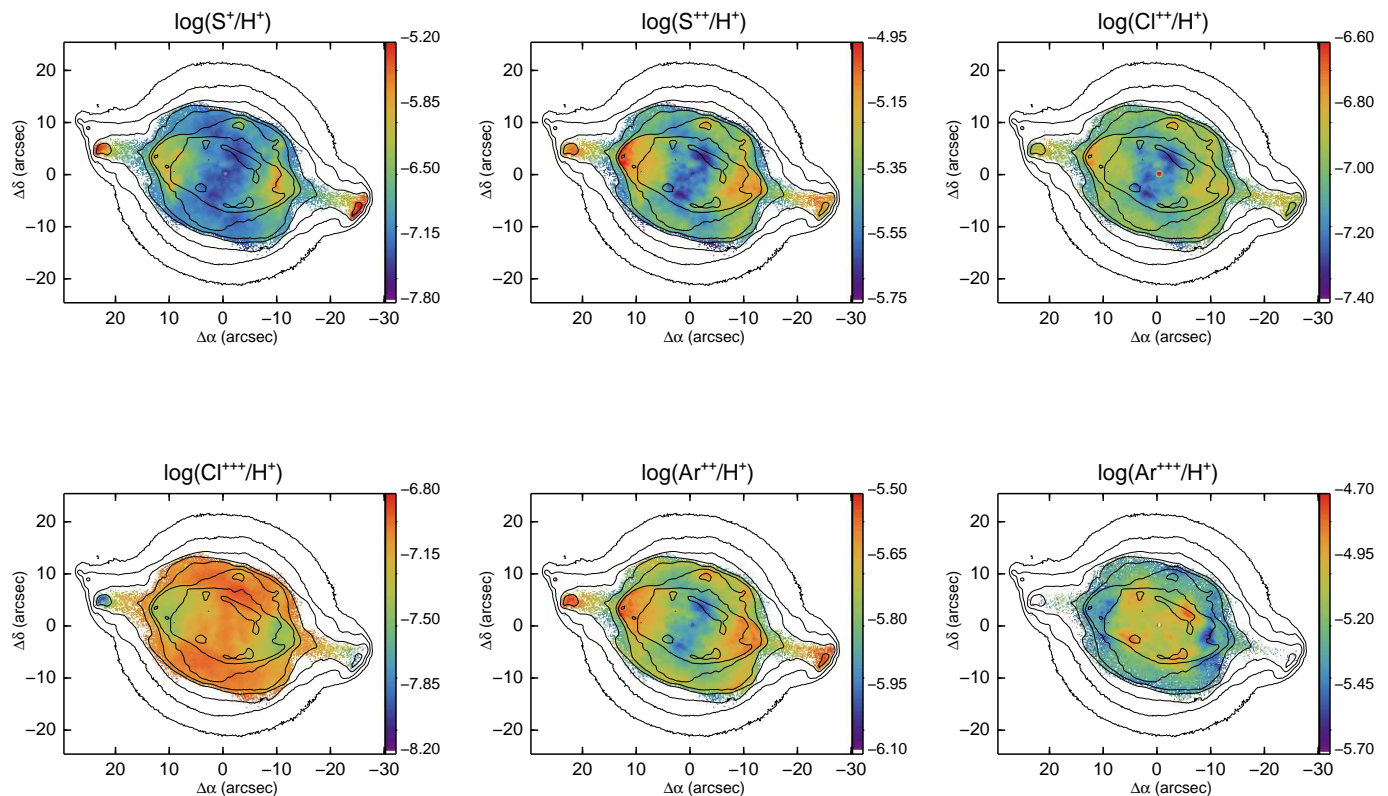


Fig. 19. Maps of S^+ and S^{++} , Cl^{++} and Cl^{+++} and Ar^{++} and Ar^{+++}/H^+ ionic abundances. The $\log F(H\beta)$ surface brightness contours are as in Fig. 7.

0.0061. The map produced solely from $[S\text{ III}] T_e$ resulted in a mean and $3\text{-}\sigma$ RMS of 0.1079 ± 0.0025 . If the Paschen Jump T_e map is used to calculate the He^+ and H^+ emissivities, the map is far from flat, the He^{++} regions are enhanced and the outer shell has values of He/H^+ of around 0.085, worryingly close to the primordial He/H value of 0.0745 (He^4 mass fraction 0.24709 ± 0.00017 , (Pitrou et al. 2018) given the heavy element abundances of NGC 7009 (Fang & Liu 2011)).

8.2. O abundance

Typical ICF schemes employ the He^+ and He^{++} ratios to correct for the presence of O^{+++} , which is not covered by optical ground-based spectroscopy since $[O\text{ IV}]$ lines occur in the ultra-violet and infrared (see Phillips et al. (2010) for the latter). Several ionization correction schemes have been developed, starting with Torres-Peimbert & Peimbert (1977), followed by Kingsburgh & Barlow (1994) and Delgado-Inglada et al. (2014), primarily based on proximity of ionization potentials in various ions and, in the later work, through development with photoionization models. Recently Morisset (2017) suggested that in the era of IFUs and 3D ionization codes, ICFs can be allowed to vary spatially depending on the local ionization conditions, dictated by the model. For the simplest expectation that the abundance of O is uniform across the nebula, then large scale discontinuities coincident with ionization boundaries and physical features, such as ansae, polar knots etc., should not be expected. However this simple assumption should not preclude small-scale abundance differences, such as associated with H-poor knots in born again PNe, for example Abell 78 (Jacoby & Ford 1983).

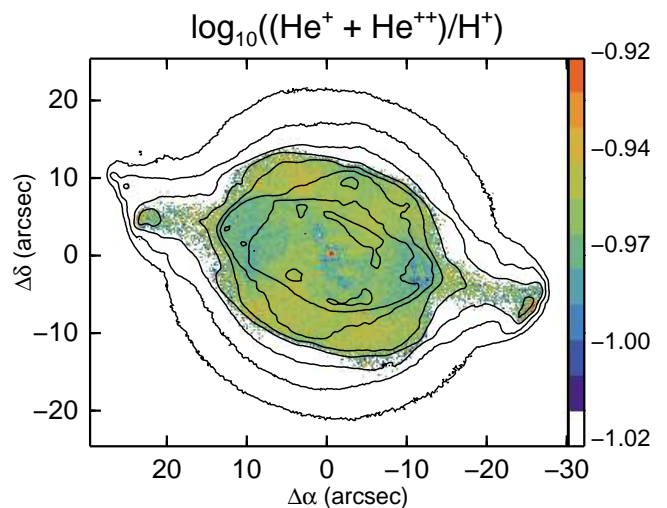


Fig. 20. Sum of He^+/H^+ and He^{++}/H^+ using the $[S\text{ III}] T_e$ and $[Cl\text{ III}] N_e$ maps for He^+/H^+ and He^{++}/H^+ computation. The $\log F(H\beta)$ surface brightness contours are as in Fig. 7.

Figure 21 shows the comparison of the total O abundance from the ICF's of Torres-Peimbert & Peimbert (1977),

Kingsburgh & Barlow (1994) and Delgado-Inglada et al. (2014). It is clear from these maps that the correction is not complete enough as a deficit remains in the central regions where the He^{++} is strong. All three ICF's need a 20-30% correction for the presence of O^{+++} . However there are also traces of the inner rim in the He abundance map, coincident with the peak of the wave in the dust extinction map shown in Paper I. This feature in the region of the ionization front may indicate that the conditions in the He^{++} zone, and possibly also in the He^+ zone, may not be well diagnosed by adopting the $[\text{S III}] T_e$ values.

Based on the detections of lines such as $[\text{K VI}]$, $[\text{Mn VI}]$ and $[\text{Fe VI}]$ by Fang & Liu (2013) (although these lines are very weak), there may be expected to be some ions with energies above 60 eV present in the nebula, so correction for the presence of O^{4+} must be considered. However, in principle, the O ICF schemes should include all ionic stages above O^{++} . A weaker alternative proposition is that the ICF is too low even where He^{++} is not present; increasing the ICF could raise the correction, including in the regions with strong He II emission, such that the discrepancy over the He^{++} region is reduced.

8.3. N/O abundance

The classical method of deriving the N/O abundance ratio is based on the assumption that N^+ and O^+ , on account of the similarity of their ionization energies, are co-located; thus a simple ratio of their ionic emission can be employed to determine the total N/O (Peimbert & Costero 1969; Peimbert & Torres-Peimbert 1971b; Kaler 1979); N/O is an important diagnostic of the dredge-up enrichment of the nebula by the central star. The resulting N/O map is shown in Fig. 22. The simple mean value of N/O is 0.132 but the values are far from constant and range over more than an order of magnitude to > 1 at the extremities of knots K1 and K4, as noted by many works. Although developed on long-slit or nebula integrated spectra, and compared with 1D photoionization models, it clear that, at least in the case of NGC 7009, this scheme for determining total N/O is a gross over-simplification, as demonstrated by Gonçalves et al. (2006).

The ionization energies for O^+ and N^+ are 13.6 – 35.1 and 14.5 – 29.6 eV, respectively; thus the range of N^+ ionization energies is entirely contained within that of O^+ . However the physical conditions in NGC 7009, and perhaps also the central star far-UV energy distribution, disfavour these ions being co-extensive within the nebula volume and this method appears to be ill-suited to a spatially resolved ionization correction scheme. Gonçalves et al. (2006) from 3D photoionization modelling point out that the difference in ionization potentials make the spatially resolved ratio N^+/O^+ very sensitive to the shape of the local radiation field. A relatively large fraction of N must be in the form of N^{++} over a substantial area of the nebula, such that correcting the amount of N^+ by including ionization energies up to 35.1 eV could lead to a flat N/O map, as suggested by the N^{++}/H^+ ORL map (Fig. 18).

9. Integrated spectra

Integral field data provide an ideal basis for constructing summed spectra of regions defined by a variety of geometrical (or other) criteria. These spectra have enhanced signal-to-noise based on the summation of spectra in many pixels and can lead to the detection of lines much fainter than are accessible in the spaxel maps. In the case of NGC 7009, summed (spatially integrated) spectra over its specific morphological features can be formed: in addition to the obvious ones of inner shell, outer shell

and halo, summations over the ansae, high ionization poles on the minor axis (Fig. 16), the cusp in the extinction map (Paper I) or the higher density lobes on the minor axis (Fig. 7) can be analysed, for example.

Specific geometrical regions can be defined, such as slits and apertures that sample those from previous studies, to determine how the derived physical quantities (and abundances) relate to the total (nebula summed) values. A specific example is the long-slit spectrum, $2''$ wide, situated $2 - 3''$ south of the central star oriented along the major axis (PA 79°), in the deep spectroscopic study by Fang & Liu (2011, 2013). This slit was numerically constructed and the total spectrum was formed by all those spaxels within this slit. Figure 23 shows the simulated slit on the $\text{H}\beta$ emission line image. The slit samples 14.2% of the total $\text{H}\beta$ flux (based on the $\text{H}\beta$ image) but since the He II emission is considerably extended along the ansae (Fig. 5), fully 17.2% of the total He II emission is sampled by this slit, presenting a slightly higher ionization view of the entire nebula. Given the diversity of data and instruments used in the Fang & Liu (2011, 2013) study, the MUSE spectrum from this simulated slit serves as a useful fiducial for this very deep (and higher spectral resolution) spectrum.

One of the 'bonuses' of IFU spectroscopy of an entire Galactic planetary nebulae is the total spectrum integrated out to the halo, which can be compared to truly integrated spectra of more distant PNe in the Magellanic Clouds and nearby galaxies, for example. Summing all the spaxels of the 120s $\text{H}\beta$ cube over an area of 2340 square arcseconds (0.704 square arcminutes) results in an $\text{H}\beta$ flux of 1.469×10^{-10} ergs cm^{-2} s^{-1} . This can be compared with a literature photoelectric photometric $\text{H}\beta$ flux (-9.78 ± 0.03 in \log_{10}) of 1.62×10^{-10} ergs cm^{-2} s^{-1} (Peimbert & Torres-Peimbert 1971a).

9.1. 1D photoionization model

Although the maps show the 2D appearance of line ratios, diagnostics and abundances, a simple 1D photoionization model is useful for quantifying how the 2D discrepancies affect conclusions about the structure of the nebula and the central star. Based on the dereddened emission line images (Sect. 5.1), an indicative basic set of line ratios for the integrated nebula was formed taking the $\text{H}\beta$ flux within the contour of 7×10^{-17} ergs cm^{-2} s^{-1} per spaxel (surface brightness 2.8×10^{-18} ergs cm^{-2} s^{-1} arcsec^{-2} , enclosing a total flux of 2.08×10^{-10} ergs cm^{-2} s^{-1}). Table 3 lists the dereddened line fluxes relative to $\text{H}\beta=1.0$; the dereddened fluxes from Fang & Liu (2011) are listed in col. 4 for comparison.

As a starting basis, a spherical CLOUDY (version 17.01, Ferland et al. 2017) model was constructed starting with the set of abundances from Sabbadin et al. (2004) and a black body stellar atmosphere. A satisfactory model matching the line ratios in Table 3 could be found with a black body of 95 000 K, a constant density of 1600 cm^{-3} , and inner and outer nebular radii of 0.0005 and 0.10 pc respectively; dust was not included in the model. Col. 5 of Table 3 lists the output CLOUDY relative fluxes; referred to as Model A. The footnote to the table lists the light element abundances; for elements not listed, abundances were taken from Sabbadin et al. (2004).

The stellar effective temperature is slightly higher than that determined by Sabbadin et al. (2004), and considerably higher than the value of 82 000K found by Mendez et al. (1992) from a NLTE model atmosphere fit to the stellar lines profiles, but such a high value is required to match the $\text{He II} / \text{He I}$ line ratios. The constant H density was lower than the electron

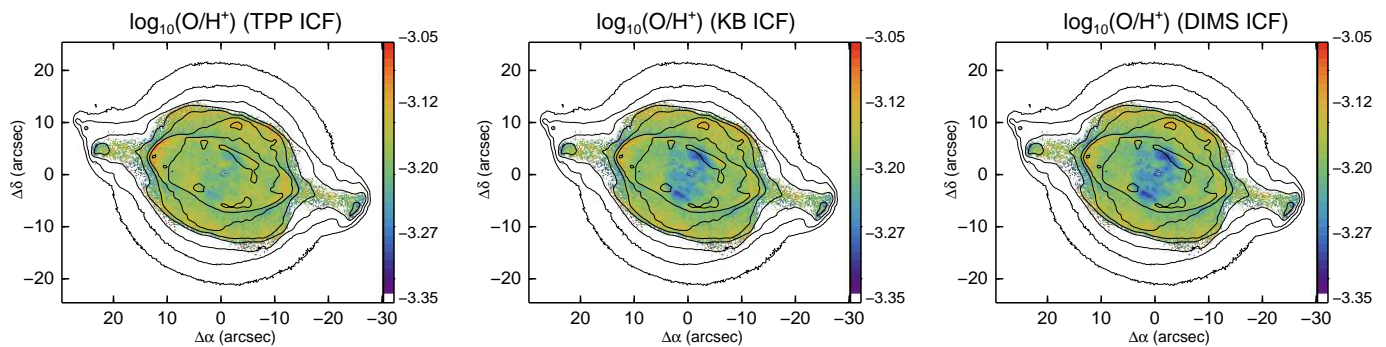


Fig. 21. Maps of total O/H^+ abundance for three ionization correction factors adjusting for the presence of O^{+++} . Left: the 'classical' scheme of Torres-Peimbert & Peimbert (1977); centre: the corrected classical ICF advocated by Kingsburgh & Barlow (1994); right: the model-based approach of Delgado-Inglada et al. (2014). The $\log F(H\beta)$ surface brightness contours are as in Fig. 7.

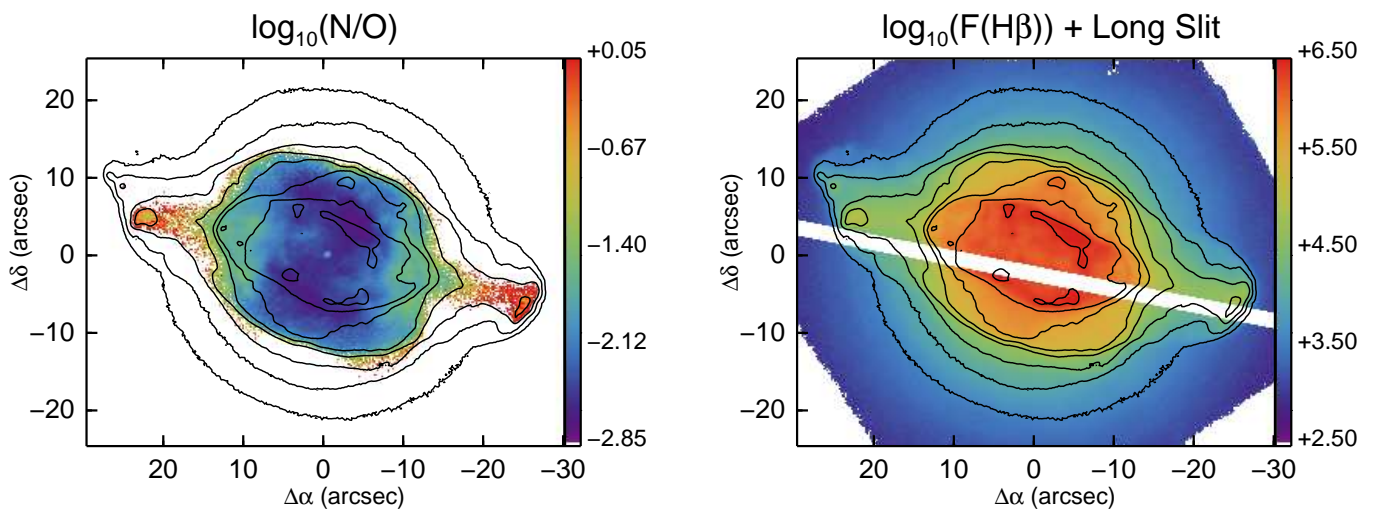


Fig. 22. Map of the N/O abundance based on the N^+/H^+ and O^+/H^+ maps (Figs. 18 and 17, respectively). The $\log F(H\beta)$ surface brightness contours are as in Fig. 7. The mean value of signal-to-error is 13.

Fig. 23. The simulated footprint of the long slit (PA 79°) used by Fang & Liu (2011, 2013) in their deep spectroscopic study of NGC 7009 shown, in white, against the 10s $H\beta$ image. The slit samples 14% of the total $H\beta$ flux. The $\log F(H\beta)$ surface brightness contours are as in Fig. 7.

density values from the integrated $[S\text{II}]$ 6716.4/6730.8 Å and $[Cl\text{III}]$ 5517.7/5537.9 Å ratios of 3900 and 3300 cm^{-3} , respectively, for an $[S\text{II}]$ electron temperature of 9900 K, but no filling factor was included. The outer radius was restricted to ensure a density-bounded nebula to match the low ionization lines in particular.

A more elaborate model was constructed using an NLTE He-Ne model atmosphere from Rauch (2003) (solar metallicity and $\log g=5.0$) and a spherical cylinder geometry with elongation to match the major axis length. The abundances of He, N, O and S were allowed to vary slightly (within 0.2 dex) of the values from Sabbadin et al. (2004) and Fang & Liu (2013). A stellar effective temperature of 98000K was used with a constant H density of 1000 cm^{-3} , inner and outer radii of 0.0008 and 0.136 respectively, and a filling factor of 0.5; the abundances are listed in

the footnote to Tab. 3. The quality of the match to the emitted spectrum (Tab. 3, Model B) is similar to Model A, except that the higher ionization gas is hotter as indicated by the stronger auroral $[O\text{III}]$ 4363.2 Å and $[S\text{III}]$ 6312.1 Å model line strengths. Model B could be used as a starting point for more elaborate 1D models to match the integrated spectrum and as the basis for 3D modelling.

10. Discussion

A few aspects of the rich set of MUSE data presented here are discussed: analysis of the spectra as opposed to the maps; comparisons among the various T_e maps; the problem of abundance maps showing features of the ionization structures and

Table 3. Integrated NGC 7009 dereddened line ratios: observations and photoionization models

Species	$\lambda(\text{\AA})$	F($H\beta=1.0$)		Model	
		MUSE	Fang&Liu (2011)	F($H\beta=1.0$) A	F($H\beta=1.0$) B
O II	3726.0		0.137	0.162	0.151
O III	4363.2		0.073	0.081	0.139
H β	4861.3	1.000	1.000	1.000	1.000
O III	4958.9	3.880	3.879	4.139	4.154
He II	5411.5	0.011	0.012	0.009	0.013
Cl III	5517.7	0.005	0.005	0.007	0.006
Cl III	5537.9	0.006	0.006	0.008	0.006
O I	6300.3	0.004	0.006	<0.001	<0.001
S III	6312.1	0.014	0.014	0.014	0.022
N II	6583.5	0.147	0.156	0.164	0.126
He I	6678.2	0.040	0.037	0.036	0.039
S II	6716.4	0.014	0.014	0.017	0.024
S II	6730.8	0.023	0.023	0.023	0.028
O II	7320.0	0.013	0.012	0.007	0.007
O II	7330.2	0.011	0.011	0.006	0.006
S III	9068.6	0.252	0.231	0.227	0.236
L($H\beta$)		34.69		34.83	34.53

Notes. Model A log abundances: He -0.95; C -3.80; N -3.80; O -3.30; Ne -3.85 S -5.15; Cl -6.70.
Model B log abundances: He -0.90; C -3.79; N -4.00; O -3.55; Ne -3.80; S -5.25; Cl -7.00.

how ICF's might help to correct this; the prospects for photoionization modelling of these data.

10.1. Limited IFU analysis

The presentation and analysis has been restricted to mapping the emission lines and derived physical diagnostics at the native spatial resolution of $0.2'' \times 0.2''$, which samples the measured image quality of $0.5\text{--}0.6''$ well. This analysis clearly misses many diagnostically crucial weaker lines. Increasing the signal-to-noise per spatial element through various approaches, such as simple $m \times n$ binning of spaxels, summation of spaxels across morphological or ionization features or Voronoi tessellated binning to specified S/N (Sect. 6), offer approaches to measure weaker lines. In particular the ORL lines, with typical strengths $\ll 1\%$ of $F(H\beta)$ can be studied for how their properties relate to the CEL lines in identical spatial elements. The MUSE standard wavelength range provides access to the strongest N II, N III, C II and C III ORL lines but not to the strong O II M1 $2p^2\ 3p\ 4D_o - 2p^2\ 3s\ 4P$ lines, which are however detectable with the MUSE extended mode (spectra to $\sim 4650\ \text{\AA}$). Of course, obtaining deeper spectra provides a more direct approach, but given the modest total exposure of 1200s for the set of 120s cubes, this route cannot be feasibly be pushed more than a factor ~ 10 (and NGC 7009 is among the highest average surface brightness PN accessible with MUSE). Not insubstantial are the problems associated with bright emission lines saturated in long exposures, which must be compensated by short unsaturated exposures, and can produce strong line wings around the brightest lines which hamper detection of surrounding faint lines.

Given the depth of the long slit spectrum data (detection of lines to $10^{-4} F(H\beta)$) and detailed analysis of Fang & Liu (2011, 2013), it is paramount to relate the physical conditions in these long slit data to those of the global nebula, in order to derive a truly nebula-integrated PN spectrum for comparison with observations of compact Galactic PNe, unresolved extra-Galactic

PNe and the few nearby PNe with integrated spectra from slit-scanning observations (e.g. NGC 7027, Zhang et al. (2007)). A follow-on paper will present a study of this cube-integrated spectrum and comparison with the results from the long slit study of Fang & Liu (2011, 2013).

10.2. T_e diagnostics

Apart from the strikingly different morphology which is displayed in lines of differing ionization potential (Figs. 5), of most interest are the maps presenting the physical conditions, principally T_e and N_e and extinction (the latter presented in Paper I). Here features show up with distinct properties (Figs. 7,8), such as the hotter inner shell (not unexpected on account of its strong He II emission), the higher density and temperature polar knots and ansae, features associated with the more filamentary knots K2 and K3 and the dust accumulation at the interface of the inner and outer shells. Of particular interest are the maps derived from H I and He I (Figs. 9, 10, 11), which provide different views of the physical conditions prevailing in the bulk of the gas (Sect. 5.3), in comparison with the CEL diagnostics. The CEL and ORL density diagnostics present similar densities, with their mean values only differing by $<1000\ \text{cm}^{-3}$ (with [S II] lowest to the highest values from the fit to the H I Paschen lines). The CEL and ORL temperature diagnostics however differ strongly in value and morphology, with a range of 3000 K in their mean values (in decreasing magnitude – [S III], H I Paschen Jump to He I T_e). It will be important for the abundance discrepancy factor (ADF) problem to compare ORL and CEL ionic abundances spaxel-wise. This comparison can however only be performed with MUSE for O, for which the extended spectral range is required.

Section 5.4 presents, to our knowledge, the first map of the temperature fluctuation parameter, t^2 , calculated however from [S III] T_e in comparison to the 'classical' method using [O III] T_e (Peimbert 1971). The map shows the large scale structures

with the inner shell framed by a rim of higher t^2 with values of ~ 0.10 . The other well-known features – knots K2 and K3 and the minor axis polar knots – notably show lower values, with t^2 approaching zero, particularly over knots K1 and K4, where PJ T_e is comparable to [S III] T_e . Whilst t^2 was formed from the difference of the [S III] and PJ T_e and therefore typifies t^2 for H^+ , it could just as well have been formulated in terms of the He I T_e (Sect. 5.2.1) and another CEL temperature diagnostic, such as [Ar III]7135.8/5191.8 Å (Fang & Liu 2011), giving the H^+ temperature fluctuations.

Rubin et al. (2002) from HST WF/PC2 imaging in narrow band filters covering the [O III]4363.2 Å and [O III]5006.9 Å lines computed the spatial variation of T_e , the mean T_e and fractional mean T_e variation across the nebula (called t_A^2). The resulting value of t_A^2 was very small, ≤ 0.01 ; much smaller than the value of the t^2 temperature fluctuation determined here (Sect. 5.4). From STIS long slit spectroscopy, a mean [O III] T_e of 10140 K and t_A^2 0.0035 were determined (Rubin et al. 2002). Comparing the map of [O III] T_e (Rubin et al. 2002, Fig. 2) with [S III] T_e (Fig. 8) shows similar aspects, such as the elevations on the minor axis, the lower value over the outer shell and even the depressions across the inner shell boundary; the [S III] T_e map did not however extend to the outer halo where [O III] shows elevated values of T_e . Rubin et al. (2002) calculated the mean T_e and t_A^2 over an elliptical area of 560 square arcseconds: over this area the mean [S III] T_e and t^2 values are 9130 K and 0.064 from the maps (Figs. 8 and 12 respectively). t_A^2 from [S III] T_e over the same area yields a comparable value of 0.0011 to that from [O III] T_e .

10.3. Towards a flat He/H

Unless the He abundance is indeed spatially structured, then the causes of the non-uniform He/H⁺ map (Fig. 20) must lie in the physical conditions applied in calculating the He⁺⁺ and He⁺/H⁺ ratios. Both T_e and N_e in the He⁺⁺ are not well constrained and the [S III] and [Cl III] derived values were applied; these ions however sample a lower ionization medium (IP < 55 eV), while He⁺⁺ exists at energies above 54 eV. The [Ar IV]4711.4/4740.2 Å ratio (just outside the MUSE standard wavelength coverage) samples N_e at energies between 40.7 and 59.8 eV and Fang & Liu (2011) determined an integrated N_e of 4890 cm⁻³, only slightly higher than the lower ionization species (see their table 4).

Fang & Liu (2011) determined T_e of 11000 K for the He⁺⁺ zone from the 5694 Å free-bound Pfund series jump. In comparison, the 1D photoionization models of Sect. 9.1 predict area averaged $T_e(\text{He}^{++})$ of 12800 K (Model A) and 15600 K (Model B). Adopting the Fang & Liu (2011) $T_e(\text{He}^{++})$ value to determine He⁺⁺/H⁺ makes an insignificant difference to the values in the map and does not alter the lack of flatness of the resulting total He map. Even increasing T_e to the upper edge of the error bound quoted by Fang & Liu (2011), i.e., 13000 K, does not change this situation since both He⁺⁺ and H⁺ have very similar dependence of emissivity on T_e . The 1D photoionization models (Tab. 3) predict that the contribution of He⁺⁺ to total He/H⁺ is 23% (Model A) and 24% (Model B), so the He⁺⁺/H⁺ contribution is a modest fraction of the total.

Higher ionization CEL T_e diagnostic line ratios, such as [Ar V], or [Fe VI] and [Fe VII], would be required to probe the temperature in the He⁺⁺ region; lines of these species are present in the tabulation of Fang & Liu (2011) but enough well-detected lines to determine T_e are not available. Perhaps a dedicated spectroscopic search covering the regions with strongest He II could

result in useful N_e and T_e diagnostics for He⁺⁺. If very hot gas ($T_e > 15000$ K) is present in the He⁺⁺ region, then CEL cooling through the observed O, N and S emission is not efficient, so CEL T_e (and N_e) diagnostics do not probe such hot gas effectively.

The results on the flatness of the He/H image imply that, in order to accurately determine abundances, it is important to use the value of T_e appropriate to the emissivity for all the ionic species, and H⁺. This sounds obvious, but the enhanced He in the inner shell, which results by applying T_e derived from the ratio of the He I lines to the He⁺/H⁺ map, shows that this He⁺ temperature is not everywhere appropriate to producing a flat He/H result. The CLOUDY models (Sect. 9.1), by comparison, predict electron temperatures in the He⁺ zone of 9800 and 11800 K (Models A and B respectively), much higher than determined in Sect. 5.2.1. One possible approach to explore would be to use the assumption of flatness of the He/H map to determine T_e as a variable in the He⁺⁺ and He⁺ emission spaxels. Crude versions of this approach, such as scaling the [S III] T_e map by a constant factor, were applied, but it did not prove possible to improve the flatness of the resulting He/H map beyond that shown in Fig. 20.

In computing the fraction of He⁺⁺ v. H⁺ in the inner shell, the fraction of H⁺ emitting in this zone also required; the latter is not available from a line-of-sight integrated map. Imaging with high enough velocity resolution offers a first approach to observational determination of the fraction of H⁺ in the He⁺⁺ region, by apportioning the emission on the basis of the radial velocity (or perhaps from the line widths), as explored by Barlow et al. (2006) from slit spectroscopy. MUSE with its low resolution is not suitable for such a study, but FLAMES with higher spectral resolution modes (although a much smaller IFU) offers one approach (c.f., Tsamis et al. 2008) as do high fidelity slit scanning and Fourier transform spectrometry.

10.4. ICFs

The peaks and boundaries in the map of He/H⁺ (Fig. 20) directly imply that the O/H⁺ map will not be flat since the O ICF schemes divide by some ratio of He/He⁺. Whilst flatness can be viewed as an ideal in a real nebula, without prior information that O abundance (usually considered not to be significantly enriched by the dredge-up episodes, c.f. Richer (2007)) is spatially altering, the deviations from flatness at the positions of the boundaries in the ionization structures (inner/outer shell) suggest flaws in determining the physical conditions (extinction, temperature and density) or the ICF, or both. While the three ICF methods for O abundance yield very similar mean values (differing by 2.5%), the flatness of the O maps is highest for the Torres-Peimbert & Peimbert (1977) ICF and lowest for the Delgado-Inglada et al. (2014) one. With comparable MUSE data for other PNe, widely applicable solutions for spatial ICF's can be investigated across a range of ionization conditions.

10.5. Potential for 3D modelling

The emission line and diagnostic maps presented provide observational inputs for 3-D photoionization modelling, where the emission along all lines of sight across the whole nebula defined by the spaxels can be matched with the MUSE observations. As made clear in this presentation and the crudeness of 1D photoionization modelling (Sect. 9.1), IFU data of the depth and spatial coverage provided by MUSE demand the development of 3D models for explaining the interaction between emer-

gent emission lines, diagnostics of extinction, N_e , T_e and the ionic abundances. Codes such as MOCASSIN (Ercolano et al. 2003) and the multi-1D code, CLOUDY_3D (Morisset 2011), offer the desired approach. Gonçalves et al. (2006) already performed MOCASSIN modelling of NGC 7009 to match long slit and selected HST emission line images in a study of the outer knots K1 and K4. Inclusion of ultra-violet, infrared, mm/sub-mm and radio data, both resolved and unresolved, can lead to a comprehensive photoionization model considering the neutral and ionized gas, dust and molecular constituents, as performed by Otsuka et al. (2017) for NGC 6781.

11. Conclusions

The first detailed study of a planetary nebula with the MUSE spectrograph has been presented. The observations demonstrate the huge potential of this instrument for advancing optical spectroscopic studies of extended emission nebulae. Even with very short exposures, the high surface brightness of NGC 7009 allows a wealth of data to be exploited. The excellent image quality during the Science Verification observations enables quantitative spectroscopy at spatial resolution approaching that of HST.

The MUSE data on NGC 7009 have been presented in their reduced state as sets of flux maps, distinguished by sufficient signal-to-noise to be displayed and analysed in their native ($0.2'' \times 0.2''$) spaxel form. A limited amount of analysis of these unbinned maps has been presented, such as observed line ratios (Sect. 4), N_e and T_e maps (Sect. 5), ionic and total abundances (Sects. 7 and 8 respectively). The only exceptions to this approach were the presentation of Voronoi tessellated images in $H\alpha$ and $H\beta$, in order to illustrate the potential for studies of the lower surface brightness halo (Sect. 6), and tabulation of an area-integrated spectrum for comparison to photoionization models (Sect. 9.1). These results by no means saturate the richness of the data cube.

In addition to images in a variety of emission lines from neutral species, such as [O I], to the high ionization potential species at good spatial resolution ([Mn v], $51.2 < \text{ionization energy} < 72.4$ eV), line ratios have been used to derive ORL and CEL diagnostics of reddening, electron temperature and density. For the first time, maps of the differences in CEL and ORL T_e have been derived, and correspondingly a map of t^2 between a CEL and ORL temperature; they show considerable detail not limited to the differing ionization zones.

From the spatial coverage of physical conditions, derived parameters have been mapped, such as ionization fractions of some light elements. For He, the total abundance across the nebula could be determined; within 2.3% the He/H abundance is flat, but there are worrying signatures of the ionization structure still present, with remnants of the strongest He^{++} regions and the demarcation between inner and outer shells remaining. Data of the quality shown have the potential to provide general solutions for accurate abundance determination and derivation of ICF's. But MUSE observations of a broader sample of PNe are required to develop such general conclusions that are applicable to nebulae of a range of ionization level, and abundance.

Acknowledgements. We sincerely thank the whole MUSE Science Verification team for achieving such a high level of data quality during this phase of the instrument testing. Peter Scicluna and Dave Stock are gratefully thanked for their contributions to the SV proposal. We thank Peter Storey for advice on possible recombination contribution to the [S III] 6312.1 Å emission, important for T_e estimation.

AMI acknowledges support from the Spanish MINECO through project AYA2015-68217-P. M.L.L.-F. was supported by CNPq, Conselho Nacional de Desenvolvimento Científico e Tecnológico - Brazil, process number

248503/2013-8.

We are very grateful to the referee for a deep review and for a multitude of suggestions, many of which were included into the revised version.

Appendix A: Custom definition of Paschen Jump and calibration with T_e

The map of electron temperature derived from the Paschen jump described in Section 5.2.2 and shown in Fig. 10 was derived using a custom method to measure the magnitude of the Paschen jump with respect to the P11 line tuned to MUSE spectra. This method was developed with the aim to produce a robust map of Paschen Jump T_e over the many thousands of spaxel spectra where the jump could be reliably measured, without individually fitting the continuum jump as a function of T_e and N_e at all spaxels. Figure A.1 shows a single spaxel spectrum from the 120s MUSE cube over the bright inner shell (offsets $\Delta\alpha = -4.2''$, $\Delta\delta = +2.6''$ from the central star) in the region of the Paschen jump.

Continuum windows were selected based on the line-free sections of this typical spectrum, with the total continuum on the low and high wavelength sides of the jump (referred to simply as 'blue' and 'red') not necessarily single consecutive sections. To the low wavelength side of the jump there is a line-free continuum section around 8050 – 8150 Å and this was selected; this window has the advantage that it contains no strong telluric absorption lines (there is a strong molecular absorption centred at around 8230 Å, extending to ~8180 Å).

At the MUSE (measured) resolution of about 2.8 Å, the higher Paschen lines are strongly blended (Fig. A.1) and so it proves challenging to define line-free continuum windows for estimation of the true nebula continuum to the long wavelength side of the jump. After some trials, three windows were chosen, 8550 – 8562, 8604 – 8640 and 8670 – 8695 Å, totalling 73 Å width; all but the bluest window suffer negligible telluric absorption. Although these windows are some hundreds of Å separated from the Paschen Jump, the theoretical nebular continuum can be calculated in these same windows to derive an expression for the definition of Paschen Jump with T_e .

The continuum in a planetary nebula arises from four processes:

- bound-free (b-f) emission from captures of free electrons by H^+ , He^+ and He^{++} (b-f emission from atoms heavier than He is neglected as it makes a negligible contribution);
- free-free (f-f), or Bremsstrahlung, emission from electrons being scattered by the nuclear charge of H^+ , He^+ and He^{++} ;
- two-photon ($2-\nu$) gaseous continuum by radiative decay from the $2^2S - 1^2S$ levels of H^+ and He^{++} , which is forbidden by direct transition, and, much weaker, two photon decay from the $1s2s^1 - 1s2s^3S$ states to the ground state in He I (Drake 1969);
- scattered continuum of non-gaseous origin, such as starlight scattered by dust (and electrons) and thermal emission of dust within the nebula.

The first three effects can be computed using well-known atomic recombination theory whilst the latter is object and geometry specific and is not amenable to direct computation. Since a map of the Paschen jump is produced, deviations in T_e over the map can indicate non-gaseous scattering processes. A case in point is the central star: the T_e map in Fig. 10 shows very low values (< 100 K) over the image of the central star since no attempt was made to subtract the stellar continuum from the total

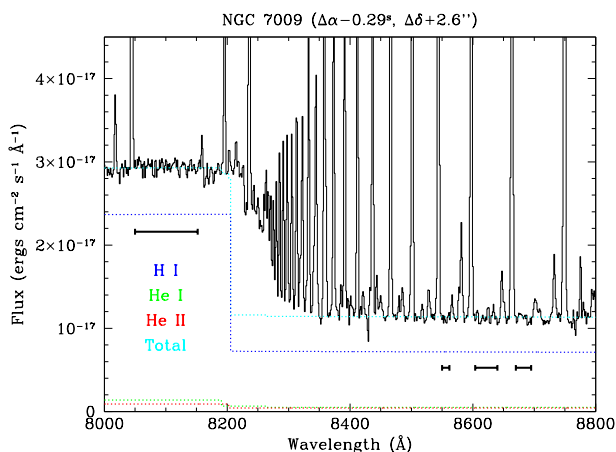


Fig. A.1. The dereddened spectrum of a single spaxel over the inner shell (offsets from position of central star indicated) around the wavelength of the H I Paschen Jump, showing the four continuum sections used to measure the magnitude of the jump. The calculated H I, He I and He II nebular continua are shown by coloured dotted lines. The spaxel has an extinction, c , of 0.186, an He^+/H^+ value of 0.094, an $\text{He}^{++}/\text{H}^+$ of 0.014, $[\text{Cl m}] N_e$ 7520 cm^{-3} and a PJ T_e of 7790 K. A continuum of $3.3 \times 10^{-18} \text{ ergs cm}^{-2} \text{ s}^{-1} \text{ \AA}^{-1}$ had to be added to the summed theoretical continua of H I, He I and He II in order to match the total dereddened continuum flux. Given the displacement from the central star (of $5.0''$), it is unclear if this is scattered continuum from the central star (either instrumental or intrinsic to the nebula), or instrument scattered light or residual sky background; the simplest option of a flat continuum was therefore chosen.

(stellar + nebular) continuum, the jump is thus dominated by the strong blue stellar continuum.

Appendix A.1: Computation of gaseous continuum emission

Schirmer (2016) provides a concise summary for computation of the nebular continuum together with a c routine to calculate the output spectrum (although this routine was not used for the computations described). Given its very minor contribution, the computation of He I $2-\nu$ was neglected.

b-f

The bound free continuum for H^+ , He^+ and He^{++} has been calculated by Ercolano & Storey (2006b) and coefficients are tabulated for an extensive set of transitions and for temperatures $100 \leq T \leq 10^5$ K. The interpolation scheme for T_e and frequency was used to calculate the b-f emission on a fine wavelength scale across the region of the Paschen jump.

f-f

The free-free emissivity of a hydrogenic ion of nuclear charge Z at a temperature T as a function of frequency (ν) is given by Brown & Mathews (1970) as:

$$j_{\text{ff}}(\nu) = \frac{1}{4\pi} N_X N_e \frac{32 Z^2 e^4 h}{3 m_e^2 c^3} \left(\frac{\pi h \nu_0}{3 k_B T} \right)^{1/2} \times \exp(-h\nu/k_B T) g_{\text{ff}}(Z, T, \nu) \quad (\text{A.1})$$

where N_X and N_e are the ionic and electron number densities, $h\nu_0$ is the ionization energy of hydrogen and the other symbols have their usual meaning (e the electron charge, c the speed of light, m_e the mass of the electron, h the Planck constant and k_B the Boltzmann constant). g_{ff} is the thermally

averaged mean free-free Gaunt factor which holds a quantum mechanical correction to the classical electron scattering formula. The non-relativistic mean free-free Gaunt factor has been recently presented by van Hoof et al. (2014) and tabulated as a function of scaled ionic energy and frequency (γ^2 , u). The polynomial interpolation routine *interpolate.F* provided by van Hoof et al. (2014) was employed to calculate the Gaunt factor as a function of frequency and nuclear energy. There are very slight differences in the new computation of the mean free-free Gaunt factor from van Hoof et al. (2014) and the earlier tabulation by Hummer (1988) using the subroutine provided in Storey & Hummer (1991) for interpolation of the analytic approximation to $g_{\text{ff}}(\gamma^2, u)$: the differences amount to up to 0.2% for H I and 0.3% for He II over the wavelength range around the Paschen Jump and the range of T_e encountered in PNe.

2-photon

The two-photon continuum of He I and He II peak at half the Lyman- α frequency (for H I at a wavelength of 1420 \AA in a flux per \AA spectrum; 608 \AA for He II). The emissivity can be written as:

$$\gamma_{2q}(\nu) = \alpha_{2^2\text{S}}^{\text{eff}}(T, N_e) g(\nu) \left(1 + \frac{\sum_X N_X q^X}{A_{2q}} \right)^{-1} \quad (\text{A.2})$$

following Schirmer (2016). Here, $g(\nu)$ is the frequency dependence of the two-photon emission presented and fitted by Nussbaumer & Schmutz (1984) and $\alpha_{2^2\text{S}}^{\text{eff}}$ is the effective recombination coefficient of the upper (2^2S) level. The evaluation of $\alpha_{2^2\text{S}}^{\text{eff}}$ is given by interpolation as a function of T_e and N_e in tables 4 (for H I) and 5 (for He II) of Schirmer (2016) (reproduced from Hummer & Storey 1987). $g(\nu)$ expresses the frequency dependence of the 2-photon spectrum in terms of the transition probability of the two photon transition of $A_{2q} = 8.2249 \text{ s}^{-1}$ given by Nussbaumer & Schmutz (1984). The term in brackets expresses the effect of de-population of the 2^2S level by means of angular momentum changing collisions, which can reduce the $2-\nu$ flux at typical nebular densities; the collisional transition rate coefficient, $q^X(T, N_e)$ has been computed by Pengelly & Seaton (1964), but see Schirmer (2016) for a discussion. These corrections are implemented for H I and He II following Schirmer (2016).

Appendix A.2: Fitting the Paschen Jump ν T_e

The flux of the H I, He I and He II continua were calculated on a fine wavelength grid around the Paschen Jump and the mean flux in the window to the blue of the jump and the three windows to the red computed for a range of T_e and at several N_e values. The emissivity of the H I P11 line for ratioing the Paschen Jump flux by that of an H I line was provided by the tables of Storey & Hummer (1995) for Case B. The variation of the defined jumps (blue - red continuum, employing means weighted by the number of pixels) ratioed by the P11 flux was then plotted for H I, He I and He II ν T_e at several N_e . Even in a log PJ (\AA^{-1}) ν $\log T_e$ plot, PJ can be multi-valued, particularly for the He I jump ν T_e at high T_e (see Fig. A.2), so it was decided to fit the variation in defined T_e ranges by simple fits following the form $T_e \propto \text{PJ}^{-n}$ adopted by Fang & Liu (2011). However differing from Fang & Liu (2011), the fit of jump ν T_e was made independently for H I, He I and He II; the total (observed) jump was then formed as the sum of the three jumps for H I, He I and He II. This is more rigorous of the measurement situation and allows the possibility of different values of T_e for the He^+ and He^{++} emitting plasma to be included.

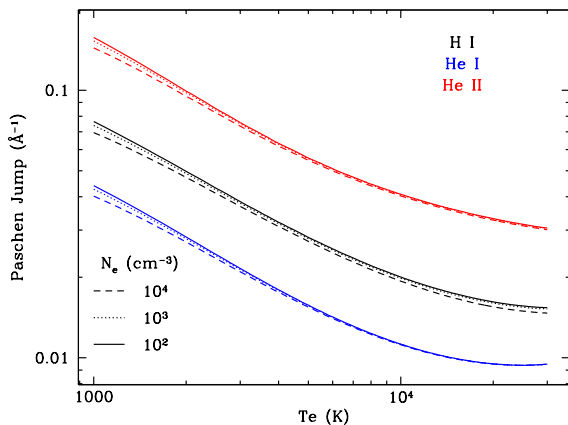


Fig. A.2. The variation of the jump around 8200 Å for H I, He I and He II as defined in the text with T_e for several values of N_e (10^2 , 10^3 and 10^4 cm^{-3}) is shown in a $\log - \log$ plot.

Table A.1 lists the fits over three T_e ranges chosen to retain an error on the fits of $\lesssim 300$ K. These fits were then employed to produce the PJ T_e map in Fig. 10 using the measured [Cl III] electron density to determine the fit of jump νT_e to be applied within narrow ranges. Initially the [S III] T_e was employed to choose the fits range, then the resulting PJ T_e map was used to position the fits; this process was iterated twice until the deviation on the T_e values was $\lesssim 100$ K, typically less than the fit errors. Estimates of errors on the PJ temperature were determined by Monte Carlo propagation of the error on the Paschen jump and the fit errors in K on the PJ νT_e relations (Fig. A.2). Figure A.1 shows an example of the nebular continuum fit to an individual spaxel spectrum over the bright rim.

References

Aleman, I., Ueta, T., Ladjal, D., et al. 2014, *A&A*, 566, A79
 Ali, A., Amer, M. A., Dopita, M. A., Vogt, F. P. A., & Basurah, H. M. 2015, *A&A*, 583, A83
 Ali, A. & Dopita, M. A. 2017, *PASA*, 34, e036
 Ali, A., Dopita, M. A., Basurah, H. M., et al. 2016, *MNRAS*, 462, 1393
 Bacon, R., Accardo, M., Adjali, L., et al. 2010, in *Proc. SPIE*, Vol. 7735, Ground-based and Airborne Instrumentation for Astronomy III, 773508
 Balick, B., Alexander, J., Hajian, A. R., et al. 1998, *AJ*, 116, 360
 Balick, B., Perinotto, M., Maccioni, A., Terzian, Y., & Hajian, A. 1994, *ApJ*, 424, 800
 Barlow, M. J., Hales, A. S., Storey, P. J., et al. 2006, in *IAU Symposium*, Vol. 234, *Planetary Nebulae in our Galaxy and Beyond*, ed. M. J. Barlow & R. H. Méndez, 367–368
 Benjamin, R. A., Skillman, E. D., & Smits, D. P. 1999, *ApJ*, 514, 307
 Bohigas, J., Lopez, J. A., & Aguilar, L. 1994, *A&A*, 291, 595
 Brown, R. L. & Mathews, W. G. 1970, *ApJ*, 160, 939
 Cappellari, M. & Copin, Y. 2003, *MNRAS*, 342, 345
 Corradi, R. L. M., Sánchez-Blázquez, P., Mellema, G., Gianmanco, C., & Schwarz, H. E. 2004, *A&A*, 417, 637
 Delgado-Inglada, G., Morisset, C., & Stasińska, G. 2014, *MNRAS*, 440, 536
 Dopita, M. A. & Meatheringham, S. J. 1990, *ApJ*, 357, 140
 Drake, G. W. F. 1969, *ApJ*, 158, 1199
 Dufour, R. J., Kwitter, K. B., Shaw, R. A., et al. 2015, *ApJ*, 803, 23
 Ercolano, B., Barlow, M. J., Storey, P. J., & Liu, X.-W. 2003, *MNRAS*, 340, 1136
 Ercolano, B. & Storey, P. J. 2006a, *MNRAS*, 372, 1875
 Ercolano, B. & Storey, P. J. 2006b, *MNRAS*, 372, 1875
 Etxaluze, M., Cernicharo, J., Goicoechea, J. R., et al. 2014, *A&A*, 566, A78
 Fang, X. & Liu, X.-W. 2011, *MNRAS*, 415, 181
 Fang, X. & Liu, X.-W. 2013, *MNRAS*, 429, 2791
 Ferland, G. J., Chatzikos, M., Guzmán, F., et al. 2017, *Rev. Mexicana Astron. Astrofis.*, 53, 385

Freeman, M., Montez, Jr., R., Kastner, J. H., et al. 2014, *ApJ*, 794, 99
 Fried, D. L. 1966, *Journal of the Optical Society of America* (1917-1983), 56, 1372
 Gonçalves, D. R., Corradi, R. L. M., Mampaso, A., & Perinotto, M. 2003, *ApJ*, 597, 975
 Gonçalves, D. R., Ercolano, B., Carnero, A., Mampaso, A., & Corradi, R. L. M. 2006, *MNRAS*, 365, 1039
 Gray, M. D., Matsuura, M., & Zijlstra, A. A. 2012, *MNRAS*, 422, 955
 Guerrero, M. A., Chu, Y.-H., & Gruendl, R. A. 2000, *ApJS*, 129, 295
 Howarth, I. D. 1983, *MNRAS*, 203, 301
 Hummer, D. G. 1988, *ApJ*, 327, 477
 Hummer, D. G. & Storey, P. J. 1987, *MNRAS*, 224, 801
 Jacoby, G. H. & Ford, H. C. 1983, *ApJ*, 266, 298
 James, F. & Roos, M. 1975, *Comput. Phys. Commun.*, 10, 343
 Kaler, J. B. 1979, *ApJ*, 228, 163
 Karakas, A. I. & Lattanzio, J. C. 2014, *PASA*, 31, e030
 Kastner, J. H., Montez, Jr., R., Balick, B., et al. 2012, *AJ*, 144, 58
 Kingsburgh, R. L. & Barlow, M. J. 1994, *MNRAS*, 271, 257
 Lame, N. J. & Pogge, R. W. 1996, *AJ*, 111, 2320
 Leroy, J. L., Le Borgne, J. F., & Arnaud, J. 1986, *A&A*, 160, 171
 Liu, X.-W., Barlow, M. J., Danziger, I. J., & Clegg, R. E. S. 1995a, *MNRAS*, 273, 47
 Liu, X.-W., Barlow, M. J., Zhang, Y., Bastin, R. J., & Storey, P. J. 2006, *MNRAS*, 368, 1959
 Liu, X.-W. & Danziger, J. 1993a, *MNRAS*, 263, 256
 Liu, X.-W. & Danziger, J. 1993b, *MNRAS*, 263, 256
 Liu, X.-W., Storey, P. J., Barlow, M. J., & Clegg, R. E. S. 1995b, *MNRAS*, 272, 369
 Liu, X.-W., Storey, P. J., Barlow, M. J., et al. 2000, *MNRAS*, 312, 585
 Luridiana, V., Morisset, C., & Shaw, R. A. 2015, *A&A*, 573, A42
 Martin, T. B., Prunet, S., & Drissen, L. 2016, *MNRAS*, 463, 4223
 Matsuura, M., Speck, A. K., Smith, M. D., et al. 2007, *MNRAS*, 382, 1447
 Meaburn, J. & Walsh, J. R. 1981, *Ap&SS*, 78, 473
 Mendez, R. H., Kudritzki, R. P., & Herrero, A. 1992, *A&A*, 260, 329
 Miller Bertolami, M. M. 2016, *A&A*, 588, A25
 Monreal-Ibero, A., Roth, M. M., Schönberner, D., Steffen, M., & Böhm, P. 2005, *ApJ*, 628, L139
 Monreal-Ibero, A., Roth, M. M., Schönberner, D., Steffen, M., & Böhm, P. 2006, *New A Rev.*, 50, 426
 Monreal-Ibero, A., Walsh, J. R., Westmoquette, M. S., & Vilchez, J. M. 2013, *A&A*, 553, A57
 Monteiro, H., Gonçalves, D. R., Leal-Ferreira, M. L., & Corradi, R. L. M. 2013, *A&A*, 560, A102
 Montez, Jr., R., Kastner, J. H., Balick, B., et al. 2015, *ApJ*, 800, 8
 Moreno-Corral, M., de La Fuente, E., & Gutiérrez, F. 1998, *Rev. Mexicana Astron. Astrofis.*, 34, 117
 Morisset, C. 2011, *Cloudy_3D: Quick Pseudo-3D Photoionization Code*, *Astrophysics Source Code Library*
 Morisset, C. 2017, in *IAU Symposium*, Vol. 323, *Planetary Nebulae: Multi-Wavelength Probes of Stellar and Galactic Evolution*, ed. X. Liu, L. Stanghellini, & A. Karakas, 43–50
 Noll, S., Kausch, W., Barden, M., et al. 2012, *A&A*, 543, A92
 Nussbaumer, H. & Schmutz, W. 1984, *A&A*, 138, 495
 Otsuka, M., Ueta, T., van Hoof, P. A. M., et al. 2017, *ApJS*, 231, 22
 Peimbert, M. 1967, *ApJ*, 150, 825
 Peimbert, M. 1971, *Boletín de los Observatorios Tonantzintla y Tacubaya*, 6, 29
 Peimbert, M. & Costero, R. 1969, *Boletín de los Observatorios Tonantzintla y Tacubaya*, 5, 3
 Peimbert, M. & Torres-Peimbert, S. 1971a, *Boletín de los Observatorios Tonantzintla y Tacubaya*, 6, 21
 Peimbert, M. & Torres-Peimbert, S. 1971b, *ApJ*, 168, 413
 Pengelly, R. M. & Seaton, M. J. 1964, *MNRAS*, 127, 165
 Persi, P., Cesarsky, D., Marenzi, A. R., et al. 1999, *A&A*, 351, 201
 Phillips, J. P., Cuesta, L. C., & Ramos-Larios, G. 2010, *MNRAS*, 409, 881
 Pitrou, C., Coc, A., Uzan, J.-P., & Vangioni, E. 2018, *ArXiv e-prints* [arXiv:1801.08023]
 Porter, R. L., Ferland, G. J., Storey, P. J., & Detisch, M. J. 2012, *MNRAS*, 425, L28
 Porter, R. L., Ferland, G. J., Storey, P. J., & Detisch, M. J. 2013, *MNRAS*, 433, L89
 Rauch, T. 2003, *A&A*, 403, 709
 Reay, N. K., Atherton, P. D., & Taylor, K. 1983, *MNRAS*, 203, 1079
 Reay, N. K., Atherton, P. D., & Taylor, K. 1984, *MNRAS*, 206, 71
 Richard, J., Bacon, R., & Vernet, J. 2017, *MUSE User Manual. Issue 8.1* (ESO)
 Richer, M. G. 2007, *Journal of Korean Astronomical Society*, 40, 183
 Richer, M. G., McCall, M. L., & Martin, P. G. 1991, *ApJ*, 377, 210
 Robbins, R. R. 1968, *ApJ*, 151, 511
 Rubin, R. H. 1986, *ApJ*, 309, 334
 Rubin, R. H., Bhatt, N. J., Dufour, R. J., et al. 2002, *MNRAS*, 334, 777

Table A.1. Fits to $\log_{10}PJ = a - b \times \log_{10}T_e$ for H I, He I and H II

Start T_e (K)	End T_e (K)	H I a, b	He I a,b	He II a,b	RMS (H I, He I, He II) T_e (K)
$N_e = 100 \text{ cm}^{-3}$					
1000	7000	0.73948, 0.61868	0.56095, 0.63906	1.11139, 0.63940	95.4, 108.4, 160.5
7000	15000	-0.08653, 0.40215	-0.48580, 0.36487	0.08158, 0.36703	319.3, 247.6, 185.5
15000	22000	-0.79633, 0.23120	-1.40631, 0.14320	-0.38012, 0.25564	148.6, 299.6, 65.5
$N_e = 1000 \text{ cm}^{-3}$					
1000	7000	0.69099, 0.60674	0.50618, 0.62471	1.05870, 0.62579	76.1, 100.7, 157.5
7000	15000	-0.09157, 0.40200	-0.49917, 0.36175	0.07152, 0.36500	168.4, 239.9, 139.5
15000	22000	-0.73123, 0.24765	-1.32643, 0.16217	-0.35185, 0.26271	243.2, 465.0, 99.3
$N_e = 10000 \text{ cm}^{-3}$					
1000	7000	0.60974, 0.58724	0.40644, 0.59878	0.96336, 0.60137	201.8, 127.6, 198.3
7000	15000	-0.06881, 0.41044	-0.52410, 0.35599	0.06060, 0.36332	160.3, 242.0, 131.3
15000	22000	-0.77695, 0.23999	-1.43933, 0.13568	-0.39114, 0.25441	151.4, 325.9, 70.9

- Sabbadin, F., Turatto, M., Cappellaro, E., Benetti, S., & Ragazzoni, R. 2004, A&A, 416, 955
- Sandin, C. 2014, A&A, 567, A97
- Sandin, C., Schönberner, D., Roth, M. M., et al. 2008, A&A, 486, 545
- Schirmer, M. 2016, PASP, 128, 114001
- Schönberner, D., Jacob, R., Lehmann, H., et al. 2014, Astronomische Nachrichten, 335, 378
- Seaton, M. J. 1979, MNRAS, 187, 73P
- Storey, P. J. & Hummer, D. G. 1991, Comp. Phys. Comm, 66, 129
- Storey, P. J. & Hummer, D. G. 1995, MNRAS, 272, 41
- Taylor, K. & Atherton, P. D. 1980, MNRAS, 191, 675
- Torres-Peimbert, S. & Peimbert, M. 1977, Rev. Mexicana Astron. Astrofis., 2, 181
- Tsamis, Y. G., Walsh, J. R., Péquignot, D., et al. 2008, MNRAS, 386, 22
- Ueta, T., Ladjal, D., Exter, K. M., et al. 2014, A&A, 565, A36
- van Hoof, P. A. M., Williams, R. J. R., Volk, K., et al. 2014, MNRAS, 444, 420
- Walsh, J. R. & Clegg, R. E. S. 1994, MNRAS, 268, L41
- Walsh, J. R., Monreal-Ibero, A., Barlow, M. J., et al. 2016, A&A, 588, A106
- Weilbacher, P. M., Monreal-Ibero, A., Kollatschny, W., et al. 2015, A&A, 582, A114
- Weilbacher, P. M., Streicher, O., Urrutia, T., et al. 2014, in Astronomical Society of the Pacific Conference Series, Vol. 485, Astronomical Data Analysis Software and Systems XXIII, ed. N. Manset & P. Forshay, 451
- Zhang, Y., Liu, X.-W., Liu, Y., & Rubin, R. H. 2005, MNRAS, 358, 457
- Zhang, Y., Liu, X.-W., Luo, S.-G., Péquignot, D., & Barlow, M. J. 2007, A&A, 472, 555
- Zhang, Y., Liu, X.-W., Wesson, R., et al. 2004, MNRAS, 351, 935