

SCIENTIFIC REPORTS

OPEN

Genomic and functional characterisation of IncX3 plasmids encoding *bla*_{SHV-12} in *Escherichia coli* from human and animal origin

Apostolos Liakopoulos^{1,5}, Jeanet van der Goot¹, Alex Bossers², Jonathan Betts³, Michael S. M. Brouwer¹, Arie Kant¹, Hilde Smith², Daniela Ceccarelli¹ & Dik Mevius^{1,4}

The *bla*_{SHV-12} β-lactamase gene is one of the most prevalent genes conferring resistance to extended-spectrum β-lactams in Enterobacteriaceae disseminating within and between reservoirs, mostly via plasmid-mediated horizontal gene transfer. Yet, studies regarding the biology of plasmids encoding *bla*_{SHV-12} are very limited. In this study, we revealed the emergence of IncX3 plasmids alongside IncIα/γ in *bla*_{SHV-12} in animal-related *Escherichia coli* isolates. Four representative *bla*_{SHV-12}-encoding IncX3 plasmids were selected for genome sequencing and further genetic and functional characterization. We report here the first complete sequences of IncX3 plasmids of animal origin and show that IncX3 plasmids exhibit remarkable synteny in their backbone, while the major differences lie in their *bla*_{SHV-12}-flanking region. Our findings indicate that plasmids of this subgroup are conjugative and highly stable, while they exert no fitness cost on their bacterial host. These favourable features might have contributed to the emergence of IncX3 amongst SHV-12-producing *E. coli* in the Netherlands, highlighting the epidemic potential of these plasmids.

The emerging IncX plasmid family consists of narrow host-range, self-transferable, iteron-containing plasmids with class A theta replication and sizes ranging approximately between 30 and 100 kb^{1–3}. IncX plasmids have a highly syntenic backbone; yet based on phylogenetic analysis they can be assigned to six distinct subgroups, namely IncX1 to IncX6^{2,4,5}. Although it has been demonstrated that IncX plasmids occurred only infrequently among commensal and pathogenic *E. coli* isolates⁶, plasmids of this family encoding various resistance genes were recently described in Enterobacteriaceae originating from diverse sources and geographical areas^{2,4,7–11}. Among this plasmid family, the IncX3 subgroup mediates the spread of genes encoding resistance for clinically relevant first-line (fluoroquinolones and extended-spectrum cephalosporins) and last-resort (carbapenems) antibiotics. IncX3 plasmids have been reported to encode *qnrB7*⁹, *qnrS1*^{2,9,12–15}, *bla*_{CTX-M-3}¹¹, *bla*_{SHV-12}^{9,16–19}, *bla*_{KPC-2}^{20,21}, *bla*_{KPC-3}²², *bla*_{NDM-1}^{18,19,23}, *bla*_{NDM-4}²⁴, *bla*_{NDM-5}^{25–28}, *bla*_{NDM-7}^{15,26,29–33}, *bla*_{NDM-13}¹⁶, *bla*_{NDM-17}³⁴ and *bla*_{OXA-181}^{12–14,35,36}. Overall, these reports highlight the importance of this plasmid subgroup for the dissemination of antibiotic resistance genes within Enterobacteriaceae.

The *bla*_{SHV-12} gene ranks amongst the most predominant extended-spectrum β-lactamases within Enterobacteriaceae of diverse origins³⁷. Plasmid-mediated horizontal gene transfer constitutes a key mechanism by which this gene disseminates among bacterial populations, therefore monitoring the spread of plasmids is essential to track the transmission of the *bla*_{SHV-12} gene between different reservoirs³⁷. Several plasmid replicon types have been associated with the worldwide dissemination of *bla*_{SHV-12}, including A/C, colE, F, HI2, I1α/γ, K, L/M, N, P, R, as well as the recently emerging X3³⁷. The few available data on the prevalence of *bla*_{SHV-12}-encoding

¹Department of Bacteriology and Epidemiology, Wageningen Bioveterinary Research, Lelystad, The Netherlands.

²Department of Infection Biology, Wageningen Bioveterinary Research, Lelystad, The Netherlands. ³Department of Bacteriology, School of Veterinary Medicine, Faculty of Health and Medical Sciences, University of Surrey, Guildford, United Kingdom. ⁴Department of Infectious Diseases and Immunology, Faculty of Veterinary Medicine, Utrecht University, Utrecht, The Netherlands. ⁵Present address: Institute of Biology, University of Leiden, Sylviusweg 72, 2333 BE, Leiden, The Netherlands. Correspondence and requests for materials should be addressed to A.L. (email: a.liakopoulos@biology.leidenuniv.nl)

plasmids in the Netherlands, report IncHI2 plasmids in human *Salmonella enterica* isolates, IncN and IncF plasmids in human *Escherichia coli*^{37,38}, as well as IncK plasmids in *E. coli* from poultry³⁷.

To understand *bla*_{SHV-12} diffusion in the Netherlands, also in light of the emerging role of IncX3 plasmids worldwide, we investigated a collection of previously uncharacterized SHV-12-encoding *E. coli* isolates. We report here the plasmid epidemiology of SHV-12-producing *E. coli* from different reservoirs in The Netherlands, the first fully assembled and annotated sequence of three *bla*_{SHV-12} encoding-IncX3 plasmids of animal origin, and the genetic and functional characteristics of IncX3 plasmids from both human and animal origin.

Results

Plasmid epidemiology of *bla*_{SHV-12} and emergence of IncX3. Among the 129 *bla*_{SHV-12} encoding *E. coli* isolates included in this study (Table 1), 49.6% (n = 64) was isolated from food-producing animals, 41.1% (n = 53) from retail meat and 9.3% (n = 12) from humans. Plasmid typing revealed that *bla*_{SHV-12} was encoded by nine different plasmid families: I1 α/γ (n = 86; 66.7%), X3 (n = 21; 16.3%), X1 (n = 6; 4.7%), F (n = 5; 3.9%), B/O (n = 4; 3.1%), K (n = 4; 3.1%), N (n = 1; 0.8%), colE (n = 1; 0.8%) and multi-replicon F-X1 (n = 1; 0.8%). A gradual decrease from 90.0% to 55.6% of IncI1 α/γ in parallel with a significant increase from 0.0% to 24.1% ($p = 0.041$) of IncX3 was documented between 2011 and 2014 among food-producing animals and retail meat (Fig. 1). As a result, IncX3 plasmids were among the predominant rep-types encoding *bla*_{SHV-12} in the Netherlands from 2012 onwards (Fig. 1).

To further study these emerging IncX3 plasmids, four of them (pEC-NRS18, pEC-393, pEC-125 and pEC-243) randomly selected from human-related *E. coli* ST69 and from diverse *E. coli* STs of animal origin (ST117, ST315 and ST410) were fully sequenced and functionally characterized in this study (Table 2).

IncX3 plasmid backbone is highly syntenic and conserved. Comparison between whole sequences of the four IncX3 plasmids from this study and twenty IncX3 plasmids available in GenBank revealed a highly conserved plasmid backbone and their organization into a number of distinct clades (Fig. 2). Plasmids of animal origin pEC-125 and pEC-243 were closely clustered together (MUMi distance 0.018) and grouped with the human-derived plasmid pEC-NRS18 that showed distance from 0.085 (pEC-125) to 0.093 (pEC-243). The animal-derived plasmid pEC-393 (turkey meat) clustered with a *Klebsiella pneumoniae*-encoded pIncX-SHV from human source in Italy (MUMi distance 0.002). IncX3 plasmids recovered in the Netherlands clustered closely with pOXA181 (China) and pKS22 (Switzerland) encoding *bla*_{OXA-181} and *qnrS1*, respectively, with MUMi distances varying from 0.140 (pOXA181 with pEC-125) to 0.179 (pKS22 with pEC-393).

The four plasmids sequenced, assembled and fully annotated in this study had sizes varying from 43,506 (pEC-393) to 48,250 (pEC-NRS18) bp with an average GC content of 46.5% (Table 2). Similar to other IncX3 plasmids, they carried three putative origins of replication (*oriV- α* , *oriV- β* and *oriV- γ*), two origins of transfer (*oriT- α* and *oriT- β*), and approximately 6 iteron sequences. Nucleotide sequence analysis revealed 65 to 74 predicted open reading frames (Fig. 3). Comparative genomics of all four plasmids (Fig. 3) revealed high synteny among them, encoding genes for replication (*pir*: replication initiation protein and *bis*: replication accessory protein), partitioning (*parAB*), entry exclusion (*eex*), maintenance (*topB* and *hns*), transcriptional activation (*actX*), and conjugative transfer [*pilX1-11* (type IV secretion system) and *taxA-C*]. In addition, a mosaic variable region containing resistance genes as well as intact and/or defective insertion sequences (i.e. *IS21*, *ISKpn19*, *Tn3*, and *IS26*) was identified in all four plasmids upstream of the partitioning gene *parA* (Fig. 3).

The variable region of pEC-NRS18 contained *bla*_{TEM-1} embedded in a Tn3 transposon, as well as genes *bla*_{SHV-12} and *qnrS1* associated with the upstream presence of *IS26* in the opposite and same orientation, respectively. Similarly, pEC-125 and pEC-243 contained both *bla*_{SHV-12} and *qnrS1* genes, whereas pEC-393 encoded only *bla*_{SHV-12} associated to *IS26*. The genetic environment surrounding *bla*_{SHV-12} was characterized by two flanking copies of *IS26* distributed in opposite orientation to form a composite *IS26-*IS26** transposon (3,633 bp); this structure was conserved in three of the four IncX3 plasmids (pEC-NRS18, pEC-125 and pEC-243; Fig. 3). BLAST analysis revealed that this composite transposon is 100% identical to previously described transposons located on plasmids of *K. pneumoniae* (IncFIB; GenBank accession no. CP019048.1) and *Aeromonas veronii* (IncA/C2; GenBank accession no. CP014775.1), as well as into the genome of *Pseudomonas aeruginosa* (GenBank accession no. GU592828.1). The flanking region of *bla*_{SHV-12} on pEC-393 showed a partial 2,484-bp overlap with corresponding regions of pEC-NRS18, pEC-125 and pEC-243 (Fig. 3) and encoded genes *deoR*, *ygbJ* and truncated *ygbK* also present on several *K. pneumoniae* chromosomes (GenBank accession no. CP000647, CP002910 and CP008831). This 4,783-bp region exhibits 100% identity to a fragment of a *bla*_{SHV}-harboring IncR plasmid of *K. pneumoniae* (GenBank accession no. KF954150.1).

IncX3 plasmid transfer is temperature-dependent. Conjugation frequencies of the four IncX3 plasmids was determined and results are shown in Fig. 4. Transfer rates differed between solid matings at different temperatures. Geometric mean frequencies ranged below the detection limit ($\leq 1 \times 10^{-9}$, pEC-393) to 3.73×10^{-5} (pEC-NRS18) at 25 °C, from 6.36×10^{-6} (pEC-393) to 7.16×10^{-5} (pEC-243) at 30 °C, and from 1.33×10^{-6} (pEC-393) to 1.46×10^{-4} (pEC-NRS18) at 37 °C. The analysis showed a significant difference between conjugation frequencies at different temperatures ($p = 0.027$), mainly due to lower frequencies at 25 °C compared with frequencies at 30 °C. The difference in conjugation frequencies between different plasmids was nearly significant ($p = 0.054$). Comparisons of single plasmids at 30 °C and 37 °C indicated differences between the plasmids at 37 °C, with lower conjugation frequencies for animal-derived plasmids (pEC-125, pEC-243 and pEC-393), and higher frequencies for the human-derived plasmid pEC-NRS18. Overall, plasmid of animal origins seem to transfer better at 30 °C, conversely to the human-derived plasmid (Fig. 4).

Isolate	Date of isolation	Origin	ESBL gene(s)*	Inc/rep-type of <i>bla</i> _{SHV-12} -encoding plasmid
1954014	2009	Livestock (pig)	<i>bla</i> _{SHV-12}	IncF
35474	2009	Livestock (poultry)	<i>bla</i> _{SHV-12}	IncF
36289	2009	Livestock (poultry)	<i>bla</i> _{SHV-12}	IncI1α/γ
36278	2009	Livestock (poultry)	<i>bla</i> _{SHV-12}	IncI1α/γ
513768	2009	Livestock (poultry)	<i>bla</i> _{SHV-12}	IncI1α/γ
37318	2009	Livestock (poultry)	<i>bla</i> _{SHV-12}	IncI1α/γ
35078	2009	Livestock (poultry)	<i>bla</i> _{SHV-12}	IncI1α/γ
37881	2009	Livestock (poultry)	<i>bla</i> _{CTX-M-1} (IncI1α/γ), <i>bla</i> _{CMY-2} (IncK), <i>bla</i> _{SHV-12}	IncX3
35659	2009	Livestock (poultry)	<i>bla</i> _{CTX-M-1} (IncN), <i>bla</i> _{SHV-12}	IncI1α/γ
36498	2010	Livestock (poultry)	<i>bla</i> _{SHV-12}	IncI1α/γ
36700	2010	Livestock (poultry)	<i>bla</i> _{SHV-12}	IncI1α/γ
36809	2010	Livestock (poultry)	<i>bla</i> _{SHV-12}	IncI1α/γ
66191451	2010	Livestock (poultry)	<i>bla</i> _{SHV-12}	IncI1α/γ
35568	2010	Livestock (poultry)	<i>bla</i> _{SHV-12}	IncI1α/γ
636942	2010	Livestock (poultry)	<i>bla</i> _{SHV-12}	IncI1α/γ
1026302	2010	Livestock (poultry)	<i>bla</i> _{SHV-12}	IncI1α/γ
1025601	2010	Livestock (poultry)	<i>bla</i> _{SHV-12}	IncI1α/γ
55833907	2011	Livestock (pig)	<i>bla</i> _{SHV-12}	IncF
55927588	2011	Livestock (pig)	<i>bla</i> _{SHV-12}	IncI1α/γ
55927758	2011	Livestock (pig)	<i>bla</i> _{SHV-12}	IncI1α/γ
37156	2011	Livestock (poultry)	<i>bla</i> _{SHV-12}	IncI1α/γ
36239	2011	Livestock (poultry)	<i>bla</i> _{SHV-12}	IncI1α/γ
55727422	2011	Livestock (cattle)	<i>bla</i> _{SHV-12}	IncI1α/γ
884	2011	Livestock (poultry)	<i>bla</i> _{SHV-12}	IncI1α/γ
1105	2011	Livestock (poultry)	<i>bla</i> _{SHV-12}	IncI1α/γ
1109	2011	Livestock (poultry)	<i>bla</i> _{SHV-12}	IncI1α/γ
984	2011	Livestock (poultry)	<i>bla</i> _{SHV-12}	IncI1α/γ
65268442	2012	Livestock (pig)	<i>bla</i> _{SHV-12}	IncI1α/γ
36788	2012	Livestock (poultry)	<i>bla</i> _{SHV-12}	IncI1α/γ
29062012-02	2012	Livestock (poultry)	<i>bla</i> _{SHV-12}	IncI1α/γ
55580200139	2012	Livestock (poultry)	<i>bla</i> _{SHV-12} , <i>bla</i> _{TEM-52c}	IncK
65094754	2012	Livestock (cattle)	<i>bla</i> _{SHV-12}	IncI1α/γ
36458	2013	Livestock (poultry)	<i>bla</i> _{SHV-12}	IncI1α/γ
35658	2013	Livestock (poultry)	<i>bla</i> _{SHV-12}	IncI1α/γ
1399001	2013	Livestock (poultry)	<i>bla</i> _{SHV-12}	IncX3
859	2014	Livestock (poultry)	<i>bla</i> _{SHV-12}	IncX3
219	2014	Livestock (poultry)	<i>bla</i> _{SHV-12}	IncX3
1041	2014	Livestock (poultry)	<i>bla</i> _{SHV-12}	IncI1α/γ
900	2014	Livestock (poultry)	<i>bla</i> _{SHV-12}	IncI1α/γ
570	2014	Livestock (poultry)	<i>bla</i> _{SHV-12}	IncX3
500	2014	Livestock (poultry)	<i>bla</i> _{SHV-12}	IncB/O
374	2014	Livestock (poultry)	<i>bla</i> _{SHV-12}	IncI1α/γ
287	2014	Livestock (poultry)	<i>bla</i> _{SHV-12}	IncX3
73 ^f	2014	Livestock (poultry)	<i>bla</i> _{SHV-12}	IncX3
1424	2014	Livestock (poultry)	<i>bla</i> _{SHV-12}	IncX3
71	2014	Livestock (poultry)	<i>bla</i> _{SHV-12}	IncI1α/γ
828	2014	Livestock (poultry)	<i>bla</i> _{SHV-12}	IncX1
1003	2014	Livestock (poultry)	<i>bla</i> _{SHV-12}	IncI1α/γ
11	2014	Livestock (poultry)	<i>bla</i> _{SHV-12}	IncI1α/γ
240	2014	Livestock (poultry)	<i>bla</i> _{SHV-12}	IncF-X1
386 ^f	2014	Livestock (poultry)	<i>bla</i> _{SHV-12}	IncX3
990	2014	Livestock (poultry)	<i>bla</i> _{SHV-12}	IncI1α/γ
1341	2014	Livestock (poultry)	<i>bla</i> _{SHV-12}	IncI1α/γ
1420	2014	Livestock (poultry)	<i>bla</i> _{SHV-12}	IncX3
118	2014	Livestock (poultry)	<i>bla</i> _{SHV-12}	IncI1α/γ
Continued				

Isolate	Date of isolation	Origin	ESBL gene(s)*	Inc/rep-type of <i>bla</i> _{SHV-12} -encoding plasmid
139	2014	Livestock (poultry)	<i>bla</i> _{SHV-12}	IncX3
864	2014	Livestock (poultry)	<i>bla</i> _{SHV-12}	IncX1
1206	2014	Livestock (poultry)	<i>bla</i> _{SHV-12}	Inc11α/γ
876	2014	Livestock (poultry)	<i>bla</i> _{SHV-12}	Inc11α/γ
20	2014	Livestock (poultry)	<i>bla</i> _{SHV-12}	IncX1
229	2014	Livestock (poultry)	<i>bla</i> _{SHV-12}	IncX3
1096	2014	Livestock (poultry)	<i>bla</i> _{SHV-12}	IncF
1433	2014	Livestock (pig)	<i>bla</i> _{SHV-12}	IncX3
1116	2014	Livestock (cattle)	<i>bla</i> _{SHV-12}	Inc11α/γ
69438407	2012	Meat (poultry)	<i>bla</i> _{CTX-M-1} (Inc11α/γ), <i>bla</i> _{SHV-12}	IncX3
69606962	2012	Meat (poultry)	<i>bla</i> _{SHV-12}	IncX3
76495084	2012	Meat (beef)	<i>bla</i> _{SHV-12}	Inc11α/γ
76495084 02	2012	Meat (beef)	<i>bla</i> _{SHV-12}	Inc11α/γ
69843204	2012	Meat (poultry)	<i>bla</i> _{SHV-12}	Inc11α/γ
69210023	2012	Meat (poultry)	<i>bla</i> _{SHV-12}	IncK
69843409	2012	Meat (poultry)	<i>bla</i> _{SHV-12}	Inc11α/γ
69438105	2012	Meat (poultry)	<i>bla</i> _{SHV-12}	IncX3
69585604	2012	Meat (poultry)	<i>bla</i> _{SHV-12}	Inc11α/γ
69064655	2012	Meat (poultry)	<i>bla</i> _{SHV-12}	Inc11α/γ
69770576	2012	Meat (poultry)	<i>bla</i> _{SHV-12} , <i>bla</i> _{TEM-52c}	Inc11α/γ
69477895	2012	Meat (poultry)	<i>bla</i> _{SHV-12} , <i>bla</i> _{TEM-52c}	Inc11α/γ
69927807	2013	Meat (poultry)	<i>bla</i> _{CMY-2} (IncK), <i>bla</i> _{SHV-12}	IncB/O
698975250004	2013	Meat (poultry)	<i>bla</i> _{SHV-12}	colE
699561810004	2013	Meat (poultry)	<i>bla</i> _{SHV-12}	Inc11α/γ
699819760004	2013	Meat (poultry)	<i>bla</i> _{SHV-12}	Inc11α/γ
69986056	2013	Meat (poultry)	<i>bla</i> _{SHV-12}	Inc11α/γ
693784120004	2013	Meat (poultry)	<i>bla</i> _{SHV-12}	Inc11α/γ
693785440004	2013	Meat (poultry)	<i>bla</i> _{SHV-12}	Inc11α/γ
693562060004	2013	Meat (poultry)	<i>bla</i> _{SHV-12}	Inc11α/γ
699898610004	2013	Meat (poultry)	<i>bla</i> _{SHV-12}	Inc11α/γ
699229530004	2013	Meat (poultry)	<i>bla</i> _{SHV-12}	Inc11α/γ
698980410004	2013	Meat (poultry)	<i>bla</i> _{SHV-12}	Inc11α/γ
69960219	2013	Meat (poultry)	<i>bla</i> _{SHV-12}	Inc11α/γ
69960316	2013	Meat (poultry)	<i>bla</i> _{SHV-12}	Inc11α/γ
69960316	2013	Meat (poultry)	<i>bla</i> _{SHV-12}	Inc11α/γ
69345093	2013	Meat (pork)	<i>bla</i> _{SHV-12}	Inc11α/γ
69799639	2013	Meat (beef)	<i>bla</i> _{SHV-12}	Inc11α/γ
699799710004	2013	Meat (beef)	<i>bla</i> _{SHV-12}	Inc11α/γ
694658380004	2013	Meat (poultry)	<i>bla</i> _{SHV-12} , <i>bla</i> _{SHV-2A} , <i>bla</i> _{TEM-52c} (Inc11α/γ)	Inc11α/γ
699813050004	2013	Meat (poultry)	<i>bla</i> _{SHV-12} , <i>bla</i> _{TEM-52c} (Inc11α/γ)	Inc11α/γ
699900020004	2013	Meat (poultry)	<i>bla</i> _{SHV-12}	IncK
693503480004	2013	Meat (poultry)	<i>bla</i> _{SHV-12}	IncX1
699953490004	2013	Meat (poultry)	<i>bla</i> _{SHV-12}	IncX1
699081950004	2013	Meat (poultry)	<i>bla</i> _{SHV-12}	IncX1
699952170004	2013	Meat (poultry)	<i>bla</i> _{SHV-12}	IncX3
69960189[†]	2013	Meat (poultry)	<i>bla</i> _{SHV-12}	IncX3
79158224	2014	Meat (beef)	<i>bla</i> _{SHV-12}	IncF
M14P0112	2014	Meat (poultry)	<i>bla</i> _{SHV-12}	Inc11α/γ
79197637	2014	Meat (poultry)	<i>bla</i> _{SHV-12}	Inc11α/γ
79059943	2014	Meat (poultry)	<i>bla</i> _{SHV-12}	Inc11α/γ
79230383	2014	Meat (poultry)	<i>bla</i> _{SHV-12}	IncB/O
79696536	2014	Meat (poultry)	<i>bla</i> _{SHV-12}	Inc11α/γ
79194778	2014	Meat (pork)	<i>bla</i> _{SHV-12}	Inc11α/γ
79195006	2014	Meat (poultry)	<i>bla</i> _{SHV-12}	Inc11α/γ

Continued

Isolate	Date of isolation	Origin	ESBL gene(s)*	Inc/rep-type of <i>bla</i> _{SHV-12} -encoding plasmid
79156655	2014	Meat (poultry)	<i>bla</i> _{SHV-12}	IncI1α/γ
79207004	2014	Meat (poultry)	<i>bla</i> _{SHV-12}	IncI1α/γ
79626295	2014	Meat (poultry)	<i>bla</i> _{SHV-12}	IncB/O
79207101	2014	Meat (poultry)	<i>bla</i> _{SHV-12}	IncI1α/γ
79352292	2014	Meat (poultry)	<i>bla</i> _{SHV-12}	IncK
79771872	2014	Meat (poultry)	<i>bla</i> _{SHV-12}	IncX3
79445126	2014	Meat (poultry)	<i>bla</i> _{SHV-12}	IncI1α/γ
79042587	2014	Meat (poultry)	<i>bla</i> _{SHV-12}	IncX3
1190900169[†]	2009	Human (urine)	<i>bla</i> _{SHV-12}	IncX3
1190900881	2009	Human (urine)	<i>bla</i> _{SHV-12}	IncI1α/γ
1190900890	2009	Human (urine)	<i>bla</i> _{SHV-12}	IncI1α/γ
306	2014	Human (faeces)	<i>bla</i> _{SHV-12}	IncI1α/γ
1.1	2014	Human (faeces)	<i>bla</i> _{SHV-12}	IncI1α/γ
1.58	2014	Human (faeces)	<i>bla</i> _{SHV-12}	IncI1α/γ
2.12	2014	Human (faeces)	<i>bla</i> _{SHV-12}	IncI1α/γ
2.25	2014	Human (faeces)	<i>bla</i> _{SHV-12}	IncI1α/γ
2.48	2014	Human (faeces)	<i>bla</i> _{SHV-12}	IncI1α/γ
2.49	2014	Human (faeces)	<i>bla</i> _{SHV-12}	IncI1α/γ
2.52	2014	Human (faeces)	<i>bla</i> _{SHV-12}	IncI1α/γ
1.71	2014	Human (faeces)	<i>bla</i> _{SHV-12}	IncN

Table 1. Characteristics of the 129 non-duplicate *bla*_{SHV-12}-encoding *E. coli* isolates included in the study. *When known the inc/rep-type of the plasmid encoding ESBL genes (excluding the *bla*_{SHV-12}) is given in parenthesis. †In bold the 4 plasmids sequenced and functionally characterized.

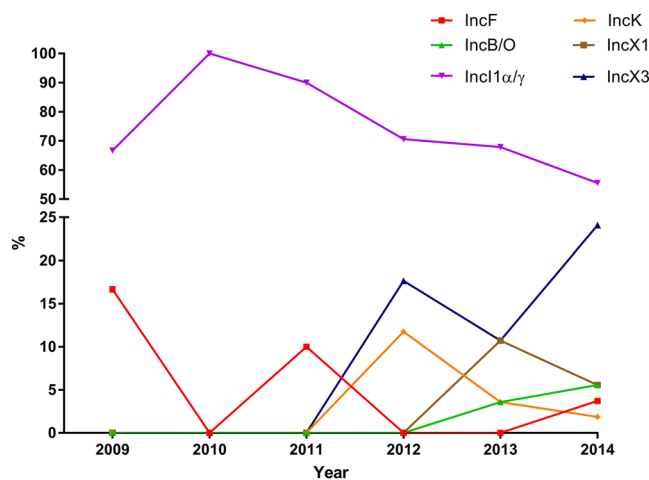


Figure 1. Prevalence of plasmid encoding *bla*_{SHV-12} in *E. coli* isolated between 2009 and 2014 in the Netherlands. Isolates were recovered from food-producing animals, retail meat and humans during national antimicrobial resistance monitoring programmes or national projects. Plasmids belonging to N, colE and F-X1 replicon types were recovered with prevalence of 0.85% and therefore were omitted from the figure.

IncX3 plasmids exert no fitness cost to the bacterial host and are highly stable. The cost of IncX3 plasmid presence on the host cell fitness was assessed in the absence and in the presence of cefotaxime by comparing the exponential growth rate of *E. coli* DH10b with and without plasmid (Fig. 5). The exponential growth rates of *E. coli* DH10b harbouring each of the IncX3 plasmids singularly varied from 0.91 (95% CI 0.84–0.99; DH10b::pEC-125) to 1.22 (95% CI 1.13–1.32; DH10b::pEC-NRS18) in the absence of antibiotic selective pressure, and from 1.48 (95% CI 1.14–1.83; DH10b::pEC-NRS18) to 1.94 (95% CI 1.77–2.12; DH10b::pEC-243) in the presence of cefotaxime. In the absence of cefotaxime, DH10b::pEC-125 showed significantly lower ($p = 0.04$) and DH10b::pEC-NRS18 significantly higher ($p < 0.001$) exponential growth rates compared to *E. coli* DH10b control strain. Pairwise comparison of the relative growth rates for *E. coli* DH10b harbouring each of the IncX3 plasmids in the absence and presence of cefotaxime indicated significantly higher rates in the presence of selective pressure ($p < 0.001$) except for DH10b::pEC-NRS18.

Plasmid ID	Year	Host	Host source	Resistance gene(s)	Size (bp)	GC Content %	Open reading frames
pEC-NRS18	2009	<i>E. coli</i> ST69/CC69	Human UTI*	<i>bla</i> _{SHV-12} , <i>bla</i> _{TEM-1} , <i>qnrS1</i>	48,250	46.4	74
pEC-393	2013	<i>E. coli</i> ST410/CC23	Turkey meat	<i>bla</i> _{SHV-12}	43,506	46.8	65
pEC-125	2014	<i>E. coli</i> ST117	Chicken faeces	<i>bla</i> _{SHV-12} , <i>qnrS1</i>	46,338	46.4	73
pEC-243	2014	<i>E. coli</i> ST315/CC38	Chicken faeces	<i>bla</i> _{SHV-12} , <i>qnrS1</i>	46,338	46.4	73

Table 2. IncX3 plasmids included in this study and their characteristics. *Urinary tract infection.

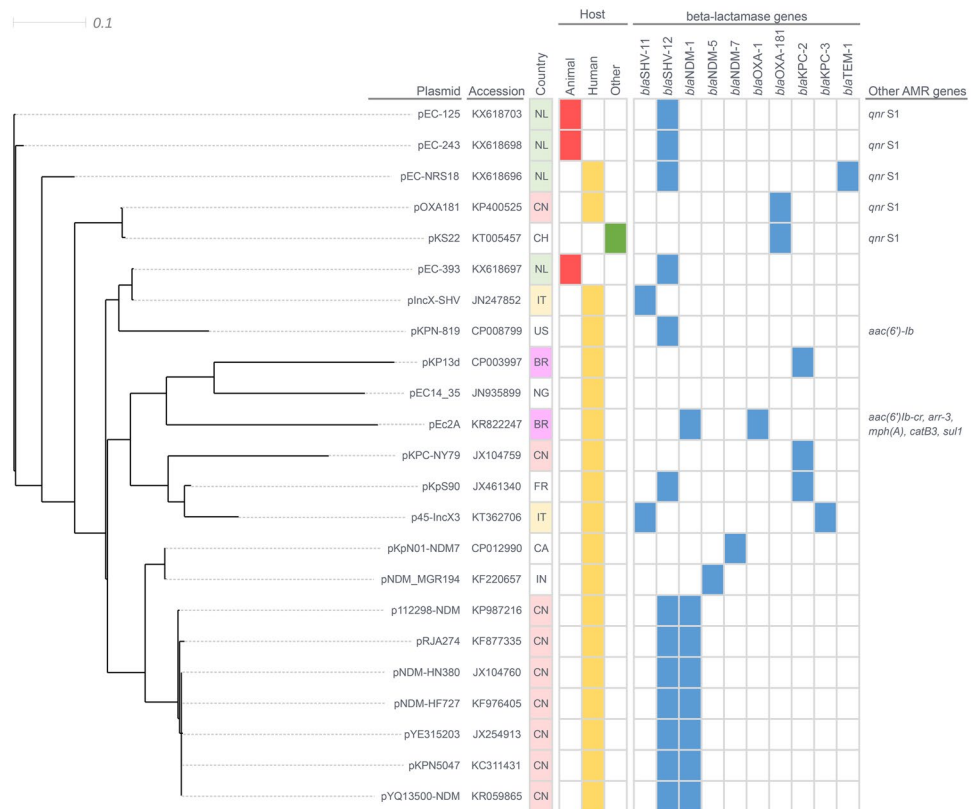


Figure 2. BioNJ MUMi distances phylogram of IncX3 plasmids. Plasmid sequences obtained here and those available in GenBank database were compared pair-wise and maximum unique matches converted to MUMi distances were hierarchically clustered and displayed as a phylogram using the BioNJ algorithm. GenBank accession number, antibiotic resistant gene content, country and source of isolation are indicated. NL: Netherlands, CN: China, CH: Switzerland, IT: Italy, US: United States, BR: Brazil, NG: Nigeria, FR: France, CA: Canada, IN: India and AMR: antimicrobial resistance.

E. coli DH10b transformed strains were also propagated without positive antibiotic selective pressure as a measure of plasmid stability. After approximately 180 generations of growth, the percentage of plasmid-harboring cells in each population (for all four plasmids singularly) was determined. All plasmids were found to be stably maintained in the *E. coli* population, ranging from 99.9% (95% CI 99.98–99.99) (pEC-NRS18) to 100% (95% CI 99.9–100) (pEC-393, pEC-125 and pEC-243) plasmid-harboring cells per generation.

IncX3 plasmids do not contribute to bacterial pathogenicity. Annotation of the four IncX3 plasmids revealed the presence of a Type 4 Secretion System (*pilX1-11*) and several ORFs with unknown function that could potentially act as virulence effectors (Fig. 3). The *Galleria mellonella in vivo* infection model was employed to evaluate the impact of harbouring an IncX3 plasmid on bacterial pathogenicity. The LD₅₀ value after 24 h was determined to be 10⁷ CFU/larvae and survival curves were compared between the isogenic control *E. coli* DH10b strain and DH10b transformed strains harbouring each of the IncX3 plasmids (Fig. 6). All four transformed strains carrying IncX3 plasmids displayed comparable virulence to the plasmid-free control strain (mortality = 40–86%), with no significant difference in the 96 h survival curves (Fig. 6). In both control groups all larvae survived.

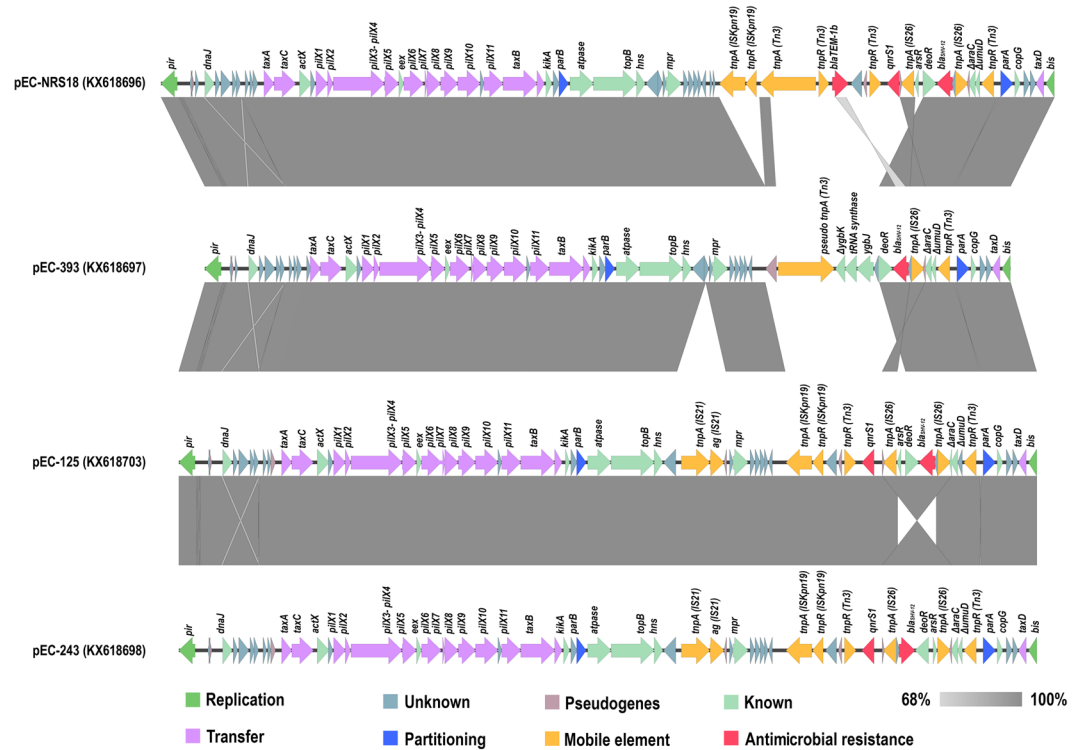


Figure 3. Linear comparison in scale of IncX3 plasmids. The open reading frames identified in each sequence are represented with arrows, with the arrowhead indicating the direction of transcription. Their involvement in replication, partitioning, transfer, or antibiotic resistance, their association to mobile genetic elements, as well as other known or unknown functions and pseudogenes are colour-coded. Areas shaded in grey indicate nucleotide identity.

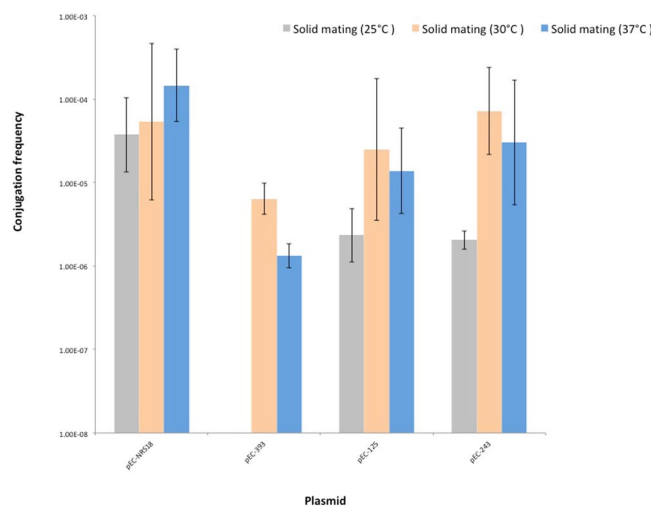


Figure 4. Conjugation frequencies of IncX3 plasmids. The reported values represent the average of three independent solid mating experiments (25 °C, 30 °C and 37 °C) and the error bars the standard deviation.

Discussion

Our results confirmed that IncI1 α/γ plasmids are the major facilitators of the *bla*_{SHV-12} diffusion in *E. coli* of human and animal origin and mirrored the global plasmid repertoire associated with *bla*_{SHV-12}^{37,39}. However, a gradual decrease in the prevalence of IncI1 α/γ and a parallel increase in IncX3 plasmids encoding *bla*_{SHV-12} was documented mostly in animal-related commensal *E. coli*. Previously, the IncX3 plasmid subgroup was only incidentally associated with *bla*_{SHV-12}^{9,16–19} and/or *qnrS1*^{2,9,12–15} among clinically recovered *E. coli* isolates, and very recently it was identified among poultry isolates in Germany⁴⁰. IncX3 plasmids have been documented in other Enterobacteriaceae worldwide in association with multi-resistance, including to carbapenems^{18,20,22,24,26,34,36}.

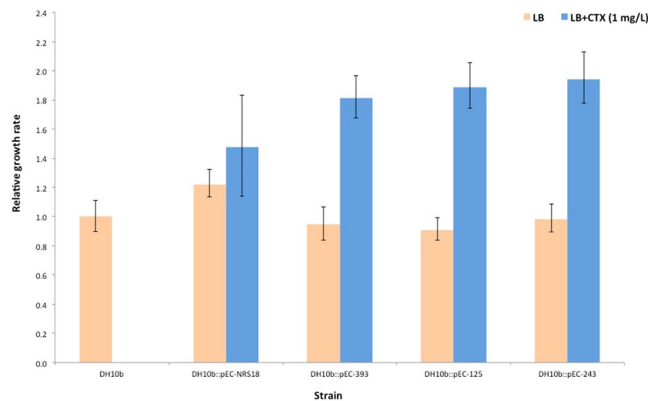


Figure 5. Relative exponential growth rates of IncX3-harboring plasmid *E. coli* DH10b strains. All growth rates are set relative to plasmid-free *E. coli* DH10b. The reported values represent the average of three independent experiments and the error bars represent the 95% confidence interval for the ratio.

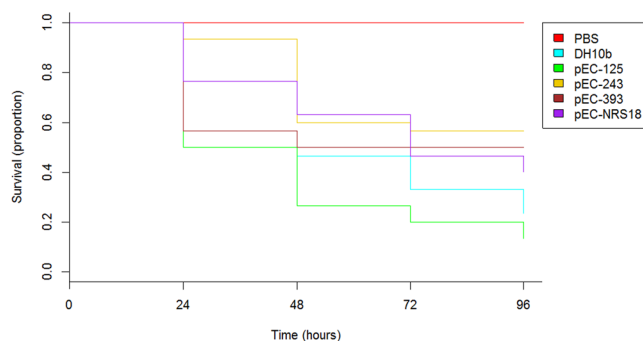


Figure 6. Impact of harbouring an IncX3 plasmid on *E. coli* DH10b strain pathogenicity. Kaplan-Meier plot of *G. mellonella* survival after injection with 10^7 CFU/larva of plasmid-free and IncX3-harboring plasmid (pEC-NRS18, pEC-393, pEC-125 and pEC-243) *E. coli* DH10b strain is shown. Experiments were performed in triplicate and the plot represents the combined (additive) data from all experiments. No larval death was observed in control larvae injected with an equivalent volume of PBS.

Nevertheless, no association between IncX3 plasmids and other resistance genes (apart from bla_{SHV-12} , bla_{TEM-1} and $qnrS1$) in Enterobacteriaceae was found in the Netherlands (data not shown).

The high degree of synteny and conservation in the backbone of IncX3 plasmids among *E. coli* isolates of both human and animal origin reflects the ecological success of this plasmid subgroup². In addition to encoding genes essential for their maintenance and dissemination, IncX3 plasmids contained a variable region encoding resistance to clinically important antimicrobial agents (fluoroquinolones and/or extended spectrum cephalosporins). Our findings confirm the potential of this subgroup for accumulation of resistance genes via IS-mediated transposition, with the likely consequence of limiting effective treatment options for possible human infections^{9,13,15,16,18,21}. As previously described⁴¹, the presence of *IS26* linked to bla_{SHV-12} and other co-linear genes originating from the chromosome of *K. pneumoniae* was documented within the IncX3 variable region, confirming the hypothesis of *IS26*-mediated mobilization of a bla_{SHV} ancestor gene from the chromosome of *K. pneumoniae*⁴². Although we cannot prove how bla_{SHV-12} was integrated into IncX3 plasmids, the documented ability of *IS26* to participate in both replicative transposition and self-targeted transposition creating *IS26*-bounded transposons⁴³ could have facilitated the formation of the composite bla_{SHV-12} -encoding *IS26-IS26* transposon seen in the majority of the IncX3 plasmids studied here. The presence of identical composite transposons, mostly on plasmids of diverse replicon types, indicates its mobilization ability preferentially onto plasmids rather than the chromosome, as previously suggested⁴⁴. In addition to the contribution of *IS26* to the mobilization on conjugative plasmids and the subsequent dissemination of bla_{SHV-12} , it has been shown that *IS26* supplies a promoter -35 box that can be coupled with a -10 box in the adjacent DNA⁴⁵, possibly also contributing to the expression of this resistance gene.

IncX3 plasmids, as well as the archetypal R6K plasmid of the IncX family, have been investigated for their ability to conjugate^{13,15,16,18,19,46}. We documented the temperature-dependent transfer of animal-derived IncX3 plasmids with frequencies higher at 30 °C, suggesting a more efficient transfer in the environment than in the animal gut. Similarly to other conjugative plasmids, IncX3 plasmids hold a gene encoding a H-NS-like protein^{2,47-51}. Several studies demonstrated the inhibitory role of H-NS-like proteins on gene thermoregulation owing to their ability to polymerize along and bridge adjacent DNA regions at 37 °C and to derepress H-NS-regulated genes at lower temperatures^{47,48,52}. The involvement of these proteins in the temperature-dependent conjugative transfer of

IncHI1 plasmids suggests a similar role for IncX3 plasmids that can only be speculated here. The ability of IncX3 plasmids to replicate and be stably maintained in α -, β - and γ -Proteobacteria⁵³, in combination with a higher conjugation frequency at 30 °C, underscore a potential mesophilic Proteobacteria reservoir of this plasmid subgroup.

In contrast with studies describing that plasmids impose fitness cost on their bacterial hosts⁵⁴, growth kinetics obtained over 24 h showed no evidence of fitness cost on the bacterial *E. coli* host. It has been demonstrated that H-NS-like proteins are able to silence newly introduced foreign sequences (including plasmids), based on increased adenine and thymine (AT) content in comparison with the chromosome^{51,55,56}. Taking into consideration the high AT content of the IncX3 plasmids, we hypothesize that the *H-NS* gene present on these plasmids allows them to invade bacterial hosts with a minimal impact on their fitness, ensuring the future competitiveness of the new plasmid-host combination even without the presence of antibiotic selective pressure. The significant IncX3 plasmid-mediated fitness enhancement of *E. coli* under antibiotic selective pressure highlights the ecological advantage and subsequent successful proliferation of these plasmids in antibiotic-rich reservoirs.

All IncX3 plasmids encoded the widespread partitioning system ParAB ensuring the correct inheritance of these plasmids to the daughter cells⁵⁷. The observed high stability of IncX3 plasmids is potentially due to their high conjugation frequency and absence of a fitness burden, as well as to a low rate of segregational loss.

Our data show that IncX3 plasmids encode a type IV secretion system (T4SS, *pilX1-11*), typically used for the exchange of genetic material within bacteria, toxin secretion and the translocation of virulent effector proteins into eukaryotic host cells^{58,59}. Yet, a virulence potential of IncX3-carrying *E. coli* DH10b was not observed, suggesting that T4SS does not play a role in the virulence of *E. coli*, at least in the *G. mellonella* model, conversely from other Gram-negative pathogens⁵⁸.

In conclusion, we report the first genetic characterisation of IncX3 plasmids of animal origin, as well as the first functional analysis of human- and animal-derived plasmids of this subgroup, including their conjugation frequencies, stability, fitness cost and virulence potential. IncX3 plasmids are highly conserved, syntenic, conjugative and highly stable, while they exert no fitness cost on their bacterial host, independent of their origin. Although clonal expansion of *E. coli* strains could also play a role as suggested by our finding in The Netherlands of *E. coli* from the same clonal complex and carrying the same IncX3 plasmid (data not shown), the favourable plasmid functional features potentially contributed to their emergence amongst SHV-12-producing *E. coli* in the Netherlands, highlighting the epidemic potential of this plasmid subgroup.

Materials and Methods

Bacterial strains, transformants and plasmids. A total of 129 non duplicate *bla*_{SHV-12} encoding *E. coli*, consecutively recovered during national antimicrobial resistance monitoring programmes or national projects between 2009 and 2014 were included in the study⁶⁰. Identification of the isolates was performed by MALDI-TOF Mass spectrometry (Bruker, Coventry, UK). Genes conferring an ESC^R phenotype were sought by microarray analysis followed by PCR amplification and sequencing⁶¹. Plasmid location of *bla*_{SHV-12} was determined using a transformation-based approach. Briefly, plasmids encoding *bla*_{SHV-12} were extracted from the parental strain using a miniprep method and transformed into *E. coli* DH10b cells (Invitrogen, Van Allen Way, CA USA) by electroporation under the following conditions: 1.25 kV/cm, 200 Ω , 25 μ Far, as previously described⁶¹. Transformants were selected on Luria-Bertani (LB) agar plates supplemented with cefotaxime (1 mg/L) and confirmed for the presence of *bla*_{SHV-12} gene. The presence of a single plasmid in the transformants was confirmed by S1-PFGE on the transformants, followed by Southern blot hybridization using DIG-labelled probe (DIG DNA Labeling and Detection Kit, Roche, Mannheim, Germany) targeting the *bla*_{SHV-12} gene, as previously described⁶². Plasmid typing was confirmed by PCR-based replicon typing (PBRT KIT, DIATHEVA, Fano, Italy) on the transformants. Host *E. coli* sequence type were assigned by MLST based on the allelic profiles of seven housekeeping genes (*adhC*, *fumC*, *gyrB*, *icd*, *mdh*, *purA* and *recA*)⁶³.

Plasmid sequencing, assembly and analysis. Four genetically and epidemiologically unrelated IncX3 plasmids encoding *bla*_{SHV-12} were randomly selected for further analysis from *E. coli* isolates belonging to the single ST of human origin (ST69) and diverse STs of animal origin, including the predominant animal-related ST (ST117). The relevant characteristics of the selected plasmids are specified in Table 2. Plasmid DNA from transformants was isolated using the QIAfilter Plasmid Midi Kit (QIAGEN, Hilden, Germany) according to the manufacturer's recommendations. Deep sequencing of the plasmid genomes was performed using 300-bp paired-end sequencing libraries (Nextera TAG-mentation sequencing kits [Epicentre]) on an Illumina MiSeq sequencer. High-quality filtered reads were subsequently assembled *de novo* using SPAdes algorithm (SPAdes version 3.7.1) for Illumina-derived reads and then manually curated to close the gaps. Putative open reading frames (ORFs) were identified by RAST version 2.0 and manually curated when necessary⁶⁴. BLASTP analyses of the putative ORFs against the NCBI non-redundant proteins (NR) database, Pfam, and Interpro scan were used to assess their putative functions by identification of structural features and motifs^{65,66}. ResFinder (version 2.1), PlasmidFinder (version 1.3) and ISfinder were used to determine the presence of resistance genes, replicon types and insertion sequences, respectively⁶⁷⁻⁶⁹. Plasmid sequences were hierarchically clustered and displayed as a phenogram using the BioNJ algorithm, where the underlying distance matrix was calculated from the pairwise non-overlapping maximal unique matches (MUMs) using Nucmer version 3.07^{70,71}. Relative pairwise distances were obtained by dividing the pairwise MUMs' sum by the average genome size of the two paired genomes (MUMi genomic distance)⁷². BioNJ trees were generated from the MUMi distance matrix using SplitsTree4⁷³. BLAST analysis was used to assess sequence identity between the *bla*_{SHV-12}-surrounding region and nucleotide sequences deposited to NCBI⁷⁴.

Mating assays. Plasmid conjugation was assessed in solid mating assays at 25 °C, 30 °C and 37 °C conducted in triplicate. Chloramphenicol resistant (chlor^R) *E. coli* MG1655::yfp was used as a recipient strain in 1:1 ratio

with donor *E. coli* DH10b transformed strains carrying the different IncX3 plasmids, as previously described⁷⁵. Overnight cultures of recipient and donor strains in mid-exponential phase were co-incubated (100 µl each) onto sterile nitrocellulose filters of 0.45 µm pore size (Schleicher and Schuell GmbH, Dassel, Germany) for 4 h at 25 °C, 30 °C and 37 °C. Transconjugants were selected on LB agar supplemented with chloramphenicol (32 mg/L) and cefotaxime (1 mg/L). Positive transconjugants were confirmed by PCR amplification for the resistance and *yfp* genes. Conjugation frequency was calculated as the number of transconjugants per donor cell, with the absence of transconjugants suggesting either non-conjugative plasmids or conjugation frequencies below the detection limit ($\leq 1 \times 10^{-9}$). For statistical analysis, conjugation frequencies were transformed to log₁₀ values, the differences between the temperatures and plasmids were tested using a non-parametric Kruskal-Wallis test, and a *p* value < 0.05 was considered to be statistically significant. All analysis was performed using R and RStudio (version 1.0.143)^{76,77}.

Fitness cost assays. Liquid cultures of *E. coli* DH10b transformed strains carrying different IncX3 plasmids were incubated overnight in 3 mL LB medium at 37 °C with 180 rpm shaking. Cultures were then diluted 100-fold into 3 mL of fresh pre-warmed LB medium with and without antibiotic (1 mg/L of cefotaxime) and incubated under the same conditions until mid-exponential phase (OD₆₀₀ of ≈0.5). 200 µL of each culture were loaded in triplicate in wells of a 100-well honeycomb plate and incubated at 37 °C with shaking for 24 h. Growth rates were obtained by measuring optical density at 600 nm every 30 min by using a Bioscreen C Reader (Oy Growth Curves, Helsinki, Finland). Assays were performed in triplicate. Relative growth rates were calculated by dividing the generation time of each DH10b transformed strain by the generation time of the wild-type DH10b strain which was included in each individual assay⁷⁸. Growth rates between strains were compared using the Wilcoxon rank sum test with a Bonferroni adjustment for multiple comparisons. All statistical analysis were performed in R studio (version 1.0.143)⁷⁶.

Stability assays. *E. coli* DH10b transformants carrying different IncX3 plasmids were propagated in antibiotic-free LB medium at 37 °C with 180 rpm shaking for 10 days (~180 generations) to determine their stability in an *E. coli* population. Cultures of each strain were daily diluted 1000-fold into 3 mL of fresh pre-warmed LB medium without antibiotics. On day 10, cultures were plated onto antibiotic-free LB agar and 100 randomly chosen colonies of each evolved line were replica-plated onto antibiotic-free and antibiotic-containing (1 mg/L of cefotaxime) LB agar plates. Plasmid presence was confirmed by colony PCR targeting the *taxC* gene of the IncX3 plasmids³. Colony growth on antibiotic-free but not on antibiotic-containing plates indicated the proportion of bacteria that lost the plasmid. Assays were performed in triplicate. The chance of *E. coli* DH10b keeping the plasmid was estimated for every plasmid using @Risk 6.3.1 (Palisade Corporation, Newfield, NY, USA), and the proportions of plasmid-harboring colonies for each plasmid were compared.

Galleria mellonella survival assays. *G. mellonella* caterpillars in the final-instar larval stage were obtained in bulk from Livefood UK Limited (Rooks Bridge, Somerset, United Kingdom) and stored at 15 °C in the dark on wood shavings prior to use. Ten randomly chosen larvae weighing between 250 mg and 350 mg were employed for each group of an experiment. Strains included in the assay were grown overnight in LB broth and washed twice in sterile phosphate-buffered saline (PBS). The optimal bacterial inoculum was determined by injecting 10 larvae with 10 µl of bacterial suspensions containing 10⁴ to 10⁷ CFU/larva of organism in PBS. Bacterial inoculum concentration was determined by viable bacterial count on LB agar identifying the inoculum which killed 50% of larvae after 24 hours incubation at 37 °C (LD₅₀). The optimal inoculum was then injected into the hemocoels of the caterpillars via a left proleg using 25-µl Hamilton syringes (Cole-Parmer, London, United Kingdom). Following injection, larvae were incubated in petri dishes lined with filter paper at 37 °C for 96 h and scored for survival by 2 independent observers daily. Larvae were considered dead when they displayed no movement in response to touch. Two control groups were used per experiment, including larvae that were inoculated with PBS to control for any lethal effects of the injection process and larvae that received no injection. All *G. mellonella* survival assays were performed in triplicate using different batches of larvae. Survival curves were plotted using the Kaplan-Meier method and differences in survival were calculated by the log-rank test using R studio (version 1.0.143)⁷⁶.

Data availability. All data generated or analysed during this study are included in this published article (and its Supplementary Information files).

Accession codes. The reported plasmid sequences are deposited in GenBank under the following accession numbers: KX618696 (pEC-NRS18), KX618697 (pEC-393), KX618698 (pEC-243) and KX618703 (pEC-125).

References

1. Stalker, D. M. & Helinski, D. R. DNA segments of the IncX plasmid R485 determining replication and incompatibility with plasmid R6K. *Plasmid* **14**, 245–254 (1985).
2. Johnson, T. J. *et al.* Expansion of the IncX plasmid family for improved identification and typing of novel plasmids in drug-resistant Enterobacteriaceae. *Plasmid* **68**, 43–50, <https://doi.org/10.1016/j.plasmid.2012.03.001> (2012).
3. Zhang, Y. *et al.* Decreased Fitness and Virulence in ST10 *Escherichia coli* Harboring bla_{NDM-5} and mcr-1 against a ST4981 Strain with bla_{NDM-5}. *Frontiers in cellular and infection microbiology* **7**, 242, <https://doi.org/10.3389/fcimb.2017.00242> (2017).
4. Chen, L. *et al.* Complete nucleotide sequences of bla_{KPC-4}- and bla_{KPC-5}-harboring IncN and IncX plasmids from *Klebsiella pneumoniae* strains isolated in New Jersey. *Antimicrobial agents and chemotherapy* **57**, 269–276, <https://doi.org/10.1128/AAC.01648-12> (2013).
5. Du, H. *et al.* Genomic Characterization of Enterobacter cloacae Isolates from China That Coproduce KPC-3 and NDM-1 Carbapenemases. *Antimicrobial agents and chemotherapy* **60**, 2519–2523, <https://doi.org/10.1128/AAC.03053-15> (2016).

6. Johnson, T. J. *et al.* Plasmid replicon typing of commensal and pathogenic *Escherichia coli* isolates. *Applied and environmental microbiology* **73**, 1976–1983, <https://doi.org/10.1128/AEM.02171-06> (2007).
7. Kassis-Chikhani, N. *et al.* Complete nucleotide sequence of the first KPC-2- and SHV-12-encoding IncX plasmid, pKpS90, from *Klebsiella pneumoniae*. *Antimicrobial agents and chemotherapy* **57**, 618–620, <https://doi.org/10.1128/AAC.01712-12> (2013).
8. Du, X. X. *et al.* Genetic characteristics of blaNDM-1-positive plasmid in *Citrobacter freundii* isolate separated from a clinical infectious patient. *Journal of medical microbiology* **62**, 1332–1337, <https://doi.org/10.1099/jmm.0.057091-0> (2013).
9. Dobiasova, H. & Dolejska, M. Prevalence and diversity of IncX plasmids carrying fluoroquinolone and beta-lactam resistance genes in *Escherichia coli* originating from diverse sources and geographical areas. *The Journal of antimicrobial chemotherapy* **71**, 2118–2124, <https://doi.org/10.1093/jac/dkw144> (2016).
10. Doumith, M. *et al.* Detection of the plasmid-mediated mcr-1 gene conferring colistin resistance in human and food isolates of *Salmonella enterica* and *Escherichia coli* in England and Wales. *The Journal of antimicrobial chemotherapy* **71**, 2300–2305, <https://doi.org/10.1093/jac/dkw093> (2016).
11. Lo, W. U. *et al.* Highly conjugative IncX4 plasmids carrying blaCTX-M in *Escherichia coli* from humans and food animals. *Journal of medical microbiology* **63**, 835–840, <https://doi.org/10.1099/jmm.0.074021-0> (2014).
12. Skalova, A. *et al.* Molecular Characterization of OXA-48-Like-Producing Enterobacteriaceae in the Czech Republic and Evidence for Horizontal Transfer of pOXA-48-Like Plasmids. *Antimicrobial agents and chemotherapy* **61**, <https://doi.org/10.1128/AAC.01889-16> (2017).
13. Liu, Y. B. *et al.* First Report of OXA-181-Producing *Escherichia coli* in China and Characterization of the Isolate Using Whole-Genome Sequencing. *Antimicrobial agents and chemotherapy* **59**, 5022–5025, <https://doi.org/10.1128/Aac.00442-15> (2015).
14. Ouedraogo, A. S. *et al.* First Description of IncX3 Plasmids Carrying blaOXA-181 in *Escherichia coli* Clinical Isolates in Burkina Faso. *Antimicrobial agents and chemotherapy* **60**, 3240–3242, <https://doi.org/10.1128/AAC.00147-16> (2016).
15. Wang, L. H. *et al.* Clinical isolates of uropathogenic *Escherichia coli* ST131 producing NDM-7 metallo-beta-lactamase in China. *International journal of antimicrobial agents* **48**, 41–45, <https://doi.org/10.1016/j.ijantimicag.2016.03.009> (2016).
16. Lv, J. *et al.* First Report of Complete Sequence of a blaNDM-13-Harboring Plasmid from an *Escherichia coli* ST5138 Clinical Isolate. *Frontiers in cellular and infection microbiology* **6**, 130, <https://doi.org/10.3389/fcimb.2016.00130> (2016).
17. Hargreaves, M. L. *et al.* Clonal Dissemination of Enterobacter cloacae Harboring blaKPC-3 in the Upper Midwestern United States. *Antimicrobial agents and chemotherapy* **59**, 7723–7734, <https://doi.org/10.1128/AAC.01291-15> (2015).
18. Sonnevend, A. *et al.* Emergence and spread of NDM-1 producer Enterobacteriaceae with contribution of IncX3 plasmids in the United Arab Emirates. *Journal of medical microbiology* **62**, 1044–1050, <https://doi.org/10.1099/jmm.0.059014-0> (2013).
19. Feng, Y. *et al.* *Escherichia coli* of sequence type 3835 carrying bla NDM-1, bla CTX-M-15, bla CMY-42 and bla SHV-12. *Scientific reports* **5**, 12275, <https://doi.org/10.1038/srep12275> (2015).
20. Ho, P. L. *et al.* Molecular Characterization of an Atypical IncX3 Plasmid pKPC-NY79 Carrying bla (KPC-2) in a *Klebsiella pneumoniae*. *Current microbiology* **67**, 493–498, <https://doi.org/10.1007/s00284-013-0398-2> (2013).
21. Kim, J. O. *et al.* Outbreak of KPC-2-producing Enterobacteriaceae caused by clonal dissemination of *Klebsiella pneumoniae* ST307 carrying an IncX3-type plasmid harboring a truncated Tn4401a. *Diagnostic microbiology and infectious disease*, <https://doi.org/10.1016/j.diagmicrobio.2016.12.012> (2016).
22. Fortini, D. *et al.* Double Copies of bla(KPC-3)::Tn4401a on an IncX3 Plasmid in *Klebsiella pneumoniae* Successful Clone ST512 from Italy. *Antimicrobial agents and chemotherapy* **60**, 646–649, <https://doi.org/10.1128/Aac.01886-15> (2016).
23. Campos, J. C. *et al.* Characterization of Tn3000, a Transposon Responsible for bla(NDM-1) Dissemination among Enterobacteriaceae in Brazil, Nepal, Morocco, and India. *Antimicrobial agents and chemotherapy* **59**, 7387–7395, <https://doi.org/10.1128/Aac.01458-15> (2015).
24. Espedido, B. A., Dimitrijovski, B., van Hal, S. J. & Jensen, S. O. The use of whole-genome sequencing for molecular epidemiology and antimicrobial surveillance: identifying the role of IncX3 plasmids and the spread of bla(NDM-4)-like genes in the Enterobacteriaceae. *J Clin Pathol* **68**, 835–838, <https://doi.org/10.1136/jclinpath-2015-203044> (2015).
25. Yaici, L. *et al.* blaNDM-5-carrying IncX3 plasmid in *Escherichia coli* ST1284 isolated from raw milk collected in a dairy farm in Algeria. *The Journal of antimicrobial chemotherapy* **71**, 2671–2672, <https://doi.org/10.1093/jac/dkw160> (2016).
26. Wailan, A. M. *et al.* Genomic Characteristics of NDM-Producing Enterobacteriaceae Isolates in Australasia and Their bla(NDM) Genetic Contexts. *Antimicrobial agents and chemotherapy* **60**, 136–141, <https://doi.org/10.1128/Aac.01243-15> (2016).
27. Krishnaraju, M. *et al.* Complete sequencing of an IncX3 plasmid carrying blaNDM-5 allele reveals an early stage in the dissemination of the blaNDM gene. *Indian journal of medical microbiology* **33**, 30–38, <https://doi.org/10.4103/0255-0857.148373> (2015).
28. Huang, Y. *et al.* Widespread Dissemination of Carbapenem-Resistant *Escherichia coli* Sequence Type 167 Strains Harboring blaNDM-5 in Clinical Settings in China. *Antimicrobial agents and chemotherapy* **60**, 4364–4368, <https://doi.org/10.1128/AAC.00859-16> (2016).
29. Lynch, T. *et al.* Molecular Evolution of a *Klebsiella pneumoniae* ST278 Isolate Harboring blaNDM-7 and Involved in Nosocomial Transmission. *The Journal of infectious diseases* **214**, 798–806, <https://doi.org/10.1093/infdis/jiw240> (2016).
30. Moussounda, M. *et al.* Emergence of blaNDM-7-Producing Enterobacteriaceae in Gabon, 2016. *Emerging infectious diseases* **23**, 356–358, <https://doi.org/10.3201/eid2302.161182> (2017).
31. Gottig, S., Hamprecht, A. G., Christ, S., Kempf, V. A. & Wichelhaus, T. A. Detection of NDM-7 in Germany, a new variant of the New Delhi metallo-beta-lactamase with increased carbapenemase activity. *The Journal of antimicrobial chemotherapy* **68**, 1737–1740, <https://doi.org/10.1093/jac/dkt088> (2013).
32. Paul, D. *et al.* Occurrence of blaNDM-7 within IncX3-type plasmid of *Escherichia coli* from India. *Journal of infection and chemotherapy: official journal of the Japan Society of Chemotherapy*, <https://doi.org/10.1016/j.jiac.2016.12.009> (2017).
33. Pal, T. *et al.* Characterization of NDM-7 Carbapenemase-Producing *Escherichia coli* Isolates in the Arabian Peninsula. *Microbial drug resistance*, <https://doi.org/10.1089/mdr.2016.0216> (2017).
34. Liu, Z. *et al.* Plasmid-Mediated Novel blaNDM-17 Gene Encoding a Carbapenemase with Enhanced Activity in a ST48 *Escherichia coli* Strain. *Antimicrobial agents and chemotherapy*, <https://doi.org/10.1128/AAC.02233-16> (2017).
35. Zurluh, K., Poirel, L., Nordmann, P., Klumpp, J. & Stephan, R. First detection of *Klebsiella variicola* producing OXA-181 carbapenemase in fresh vegetable imported from Asia to Switzerland. *Antimicrob Resist In* **4**, ARTN 3810.1186/s13756-015-0080-5 (2015).
36. Kieffer, N., Nordmann, P., Aires-de-Sousa, M. & Poirel, L. High Prevalence of Carbapenemase-Producing Enterobacteriaceae among Hospitalized Children in Luanda, Angola. *Antimicrobial agents and chemotherapy* **60**, 6189–6192, <https://doi.org/10.1128/Aac.01201-16> (2016).
37. Liakopoulos, A., Mevius, D. & Ceccarelli, D. A Review of SHV Extended-Spectrum beta-Lactamases: Neglected Yet Ubiquitous. *Frontiers in microbiology* **7**, 1374, <https://doi.org/10.3389/fmicb.2016.01374> (2016).
38. Dohmen, W. *et al.* ESBL carriage in pig slaughterhouse workers is associated with occupational exposure. *Epidemiology and infection* **145**, 2003–2010, <https://doi.org/10.1017/S0950268817000784> (2017).
39. Accogli, M. *et al.* Inc11 plasmids associated with the spread of CMY-2, CTX-M-1 and SHV-12 in *Escherichia coli* of animal and human origin. *Clinical microbiology and infection: the official publication of the European Society of Clinical Microbiology and Infectious Diseases* **19**, E238–240, <https://doi.org/10.1111/1469-0691.12128> (2013).
40. Alonso, C. A. *et al.* Analysis of blaSHV-12-carrying *Escherichia coli* clones and plasmids from human, animal and food sources. *The Journal of antimicrobial chemotherapy* **72**, 1589–1596, <https://doi.org/10.1093/jac/dkx024> (2017).
41. Haeggman, S., Lofdahl, S. & Burman, L. G. An allelic variant of the chromosomal gene for class A beta-lactamase K2, specific for *Klebsiella pneumoniae*, is the ancestor of SHV-1. *Antimicrobial agents and chemotherapy* **41**, 2705–2709 (1997).

42. Ford, P. J. & Avison, M. B. Evolutionary mapping of the SHV beta-lactamase and evidence for two separate IS26-dependent blaSHV mobilization events from the *Klebsiella pneumoniae* chromosome. *The Journal of antimicrobial chemotherapy* **54**, 69–75, <https://doi.org/10.1093/jac/dkh251> (2004).
43. Harmer, C. J. & Hall, R. M. IS26-Mediated Formation of Transposons Carrying Antibiotic Resistance Genes. *mSphere* **1**, <https://doi.org/10.1128/mSphere.00038-16> (2016).
44. He, S. *et al.* Insertion Sequence IS26 Reorganizes Plasmids in Clinically Isolated Multidrug-Resistant Bacteria by Replicative Transposition. *mBio* **6**, e00762, <https://doi.org/10.1128/mBio.00762-15> (2015).
45. Lee, K. Y., Hopkins, J. D. & Syvanen, M. Direct Involvement of Is26 in an Antibiotic-Resistance Operon. *Journal of bacteriology* **172**, 3229–3236 (1990).
46. Nunez, B., Avila, P. & de la Cruz, F. Genes involved in conjugative DNA processing of plasmid R6K. *Molecular microbiology* **24**, 1157–1168 (1997).
47. Dorman, C. J. H-NS: A universal regulator for a dynamic genome. *Nat Rev Microbiol* **2**, 391–400, <https://doi.org/10.1038/nrmicro883> (2004).
48. Forns, N., Banos, R. C., Balsalobre, C., Juarez, A. & Madrid, C. Temperature-dependent conjugative transfer of R27: Role of chromosome- and plasmid-encoded Hha and H-NS proteins. *Journal of bacteriology* **187**, 3950–3959, <https://doi.org/10.1128/Jb.187.3950-3959.2005> (2005).
49. More, M. I., Pohlman, R. F. & Winans, S. C. Genes encoding the pKM101 conjugal mating pore are negatively regulated by the plasmid-encoded KorA and KorB proteins. *Journal of bacteriology* **178**, 4392–4399 (1996).
50. Tietze, E. & Tschape, H. Temperature-dependent expression of conjugation pili by IncM plasmid-harboring bacteria: identification of plasmid-encoded regulatory functions. *Journal of basic microbiology* **34**, 105–116 (1994).
51. Doyle, M. *et al.* An H-NS-like stealth protein aids horizontal DNA transmission in bacteria. *Science* **315**, 251–252, <https://doi.org/10.1126/science.1137550> (2007).
52. White-Ziegler, C. A. & Davis, T. R. Genome-Wide Identification of H-NS-Controlled, Temperature-Regulated Genes in *Escherichia coli* K-12. *Journal of bacteriology* **191**, 1106–1110, <https://doi.org/10.1128/Jb.00599-08> (2009).
53. Grudniak, A. M., Kraczkiewicz-Dowjat, A., Wolska, K. I. & Wild, J. Conjugal transfer of plasmid R6K gamma ori minireplicon derivatives from *Escherichia coli* to various genera of pathogenic bacteria. *Current microbiology* **55**, 549–553, <https://doi.org/10.1007/s00284-007-9032-5> (2007).
54. Baltrus, D. A. Exploring the costs of horizontal gene transfer. *Trends in ecology & evolution* **28**, 489–495, <https://doi.org/10.1016/j.tree.2013.04.002> (2013).
55. Lucchini, S. *et al.* H-NS mediates the silencing of laterally acquired genes in bacteria. *PLoS pathogens* **2**, e81, <https://doi.org/10.1371/journal.ppat.0020081> (2006).
56. Navarre, W. W. *et al.* Selective silencing of foreign DNA with low GC content by the H-NS protein in *Salmonella*. *Science* **313**, 236–238, <https://doi.org/10.1126/science.1128794> (2006).
57. Volante, A. & Alonso, J. C. Molecular Anatomy of ParA-ParA and ParA-ParB Interactions during Plasmid Partitioning. *The Journal of biological chemistry* **290**, 18782–18795, <https://doi.org/10.1074/jbc.M115.649632> (2015).
58. Cascales, E. & Christie, P. J. The versatile bacterial type IV secretion systems. *Nat Rev Microbiol* **1**, 137–149, <https://doi.org/10.1038/nrmicro753> (2003).
59. Backert, S. & Meyer, T. F. Type IV secretion systems and their effectors in bacterial pathogenesis. *Curr Opin Microbiol* **9**, 207–217, <https://doi.org/10.1016/j.mib.2006.02.008> (2006).
60. Central Veterinary Institute of Wageningen University and Research Centre. Monitoring of Antimicrobial Resistance and Antibiotic Usage in Animals in the Netherlands in 2013 (MARAN 2014). (Central Veterinary Institute of Wageningen University and Research Centre, Lelystad, The Netherlands, 2014).
61. Liakopoulos, A. *et al.* Extended-Spectrum Cephalosporin-Resistant *Salmonella enterica* serovar Heidelberg Strains, the Netherlands. *Emerging infectious diseases* **22**, 1257–1261, <https://doi.org/10.3201/eid2207.151377> (2016).
62. Barton, B. M., Harding, G. P. & Zuccarelli, A. J. A general method for detecting and sizing large plasmids. *Analytical biochemistry* **226**, 235–240, <https://doi.org/10.1006/abio.1995.1220> (1995).
63. Wirth, T. *et al.* Sex and virulence in *Escherichia coli*: an evolutionary perspective. *Molecular microbiology* **60**, 1136–1151, <https://doi.org/10.1111/j.1365-2958.2006.05172.x> (2006).
64. Overbeek, R. *et al.* The SEED and the Rapid Annotation of microbial genomes using Subsystems Technology (RAST). *Nucleic Acids Res* **42**, D206–D214, <https://doi.org/10.1093/nar/gkt1226> (2014).
65. Finn, R. D. *et al.* Pfam: the protein families database. *Nucleic acids research* **42**, D222–230, <https://doi.org/10.1093/nar/gkt1223> (2014).
66. Hunter, S. *et al.* InterPro: the integrative protein signature database. *Nucleic acids research* **37**, D211–215, <https://doi.org/10.1093/nar/gkn785> (2009).
67. Zankari, E. *et al.* Identification of acquired antimicrobial resistance genes. *J Antimicrob Chemoth* **67**, 2640–2644, <https://doi.org/10.1093/jac/dks261> (2012).
68. Carattoli, A. *et al.* *In silico* detection and typing of plasmids using PlasmidFinder and plasmid multilocus sequence typing. *Antimicrobial agents and chemotherapy* **58**, 3895–3903, <https://doi.org/10.1128/AAC.02412-14> (2014).
69. Siguier, P., Perochon, J., Lestrade, L., Mahillon, J. & Chandler, M. ISfinder: the reference centre for bacterial insertion sequences. *Nucleic Acids Res* **34**, D32–36, <https://doi.org/10.1093/nar/gkj014> (2006).
70. Gascuel, O. BIONJ: an improved version of the NJ algorithm based on a simple model of sequence data. *Molecular biology and evolution* **14**, 685–695 (1997).
71. Kurtz, S. *et al.* Versatile and open software for comparing large genomes. *Genome biology* **5**, R12, <https://doi.org/10.1186/gb-2004-5-2-r12> (2004).
72. Deloger, M., El Karoui, M. & Petit, M. A. A Genomic Distance Based on MUM Indicates Discontinuity between Most Bacterial Species and Genera. *Journal of bacteriology* **191**, 91–99, <https://doi.org/10.1128/Jb.01202-08> (2009).
73. Huson, D. H. & Bryant, D. Application of phylogenetic networks in evolutionary studies. *Molecular biology and evolution* **23**, 254–267, <https://doi.org/10.1093/molbev/msj030> (2006).
74. Johnson, M. *et al.* NCBI BLAST: a better web interface. *Nucleic acids research* **36**, W5–9, <https://doi.org/10.1093/nar/gkn201> (2008).
75. Elowitz, M. B., Levine, A. J., Siggia, E. D. & Swain, P. S. Stochastic gene expression in a single cell. *Science* **297**, 1183–1186, <https://doi.org/10.1126/science.1070919> (2002).
76. RStudio: Integrated Development for R (RStudio, Inc, Boston (MA), USA, 2016).
77. R: A language and environment for statistical computing (R Foundation for Statistical Computing, Vienna, Austria, 2008).
78. Knopp, M. & Andersson, D. I. Amelioration of the Fitness Costs of Antibiotic Resistance Due To Reduced Outer Membrane Permeability by Upregulation of Alternative Porins. *Molecular biology and evolution* **32**, 3252–3263, <https://doi.org/10.1093/molbev/msv195> (2015).

Acknowledgements

This work was supported by the Dutch Ministry of Economic Affairs through the 1Health4Food (1H4F) project under the ESBL Attribution (ESBLAT) consortium (project number: TKIAF-12067). We thank Nadine Handel and Benno ter Kuile for donation of the recipient strain *E. coli* MG1655::yfp and Frank Harders for technical assistance in plasmid genome sequencing.

Author Contributions

A.L. and D.M. designed the study. A.L., A.K. and J.B. acquired the data. A.L., J.v.G., A.B and D.C. performed the data analysis. A.L. prepared the first draft of the manuscript. All authors interpreted the data, read, contributed to, and approved the final manuscript.

Additional Information

Competing Interests: The authors declare no competing interests.

Publisher's note: Springer Nature remains neutral with regard to jurisdictional claims in published maps and institutional affiliations.



Open Access This article is licensed under a Creative Commons Attribution 4.0 International License, which permits use, sharing, adaptation, distribution and reproduction in any medium or format, as long as you give appropriate credit to the original author(s) and the source, provide a link to the Creative Commons license, and indicate if changes were made. The images or other third party material in this article are included in the article's Creative Commons license, unless indicated otherwise in a credit line to the material. If material is not included in the article's Creative Commons license and your intended use is not permitted by statutory regulation or exceeds the permitted use, you will need to obtain permission directly from the copyright holder. To view a copy of this license, visit <http://creativecommons.org/licenses/by/4.0/>.

© The Author(s) 2018