

**RMD
Open**Rheumatic &
Musculoskeletal
Diseases

ORIGINAL ARTICLE

Validity of the rheumatoid arthritis MRI score applied to the forefeet using the OMERACT filter: a systematic literature review

Yousra J Dakkak,¹ Désirée M van der Heijde,¹ Monique Reijnen,²
Annette H M van der Helm-van Mil¹

To cite: Dakkak YJ, van der Heijde DM, Reijnen M, et al. Validity of the rheumatoid arthritis MRI score applied to the forefeet using the OMERACT filter: a systematic literature review. *RMD Open* 2018;4:e000796. doi:10.1136/rmdopen-2018-000796

► Prepublication history and additional material for this paper are available online. To view these files, please visit the journal online (<http://dx.doi.org/10.1136/rmdopen-2018-000796>).

Received 6 August 2018
Revised 31 October 2018
Accepted 4 November 2018



© Author(s) (or their employer(s)) 2018. Re-use permitted under CC BY-NC. No commercial re-use. See rights and permissions. Published by BMJ.

¹Department of Rheumatology, Leiden University Medical Centre, Leiden, The Netherlands

²Department of Radiology, Leiden University Medical Centre, Leiden, The Netherlands

Correspondence to

Yousra J Dakkak;
y.j.dakkak@lumc.nl

ABSTRACT

Objective MRI depicts inflammation and structural damage in rheumatoid arthritis (RA). The validity of MRI-scoring of wrist-joints and metacarpophalangeal-joints according to the RA MRI score (RAMRIS) has been demonstrated. The Outcomes in Rheumatology Clinical Trials (OMERACT) RAMRIS Working Group recently called for validation of the RAMRIS of the metatarsophalangeal (MTP)-joints. Therefore, a systematic literature review was performed to test if the RAMRIS applied to the MTP-joints meets the OMERACT Filter of Truth, Discrimination and Feasibility.

Methods Medical literature databases up to January 2018 were systematically reviewed for studies reporting on RAMRIS applied to MRI of the MTP-joints in RA. To be included, an article had to contain at least one MRI-feature (synovitis, bone marrow oedema (BME), tenosynovitis, erosion, joint space narrowing (JSN)) and one item from the OMERACT Filter: Truth (face, content and construct validity), Discrimination (test-retest reliability, ability to discriminate in trials, longitudinal construct validity and thresholds of meaning) and Feasibility.

Results Of the 749 retrieved studies, 13 were included, of which 9 provided data on construct validity, 4 on discrimination (3 on reliability, 2 on longitudinal construct validity and 1 on ability to discriminate in trials) and none on feasibility. Construct validity was suggested for BME and erosions, but lacking for synovitis, tenosynovitis and JSN. Data for discrimination remain to be developed for all outcomes.

Conclusion According to the OMERACT Filter, the validity of the RAMRIS of the forefeet is insufficient in different aspects. A research agenda was determined.

INTRODUCTION

In rheumatoid arthritis (RA), conventional radiographs are traditionally used to assess structural damage as an outcome measure for the efficacy of treatment in trials. However, radiographs do not assess disease activity, and with improving treatment strategies, structural damage has become less common.¹

Key messages**What is already known about this subject?**

- The rheumatoid arthritis (RA) MRI score (RAMRIS) has been developed and validated for scoring MRI of the metacarpophalangeal-joints and wrists for research purposes.
- The validation of the RAMRIS applied to the forefeet is unknown.

What does this study add?

- Current evidence on the RAMRIS applied to the forefeet was insufficient according to the Outcomes in Rheumatology Clinical Trials criteria.

How might this impact on clinical practice?

- A research agenda was determined.

Therefore, in recent years MRI is increasingly used in studies, as it detects damage with greater sensitivity than radiography and in addition provides information about joint inflammation.

As part of The Outcomes in Rheumatology Clinical Trials (OMERACT), an RA MRI Working Group was set up that developed an RA MRI scoring system (RAMRIS) to standardise MRI-scoring for research-purposes.² This working group prioritised the wrist and metacarpophalangeal-(MCP)-joints due to their frequent involvement in RA and the large amount of MRI data on these joints.² However, studies in early RA have revealed MRI findings to be as prevalent in the metatarsophalangeal-(MTP)-joints as in the MCPs and wrists.^{3–5} In addition, radiographic studies have shown that erosive change occurs more commonly in the feet than in the hands and also earlier.^{6–8} The RAMRIS has not been described for the MTPs by the working group. There seems to be a paradox between the notion that the feet are commonly affected in

RA, and the priority given to MRI studies of hands over feet. The MRI in arthritis working group has recognised this, as their recently published updated recommendations call for validation of the existing RAMRIS in other joints than the hands, such as the MTPs.⁹

The OMERACT-group has developed a Filter that provides guidelines for the development and validation of outcome measures for use in clinical trials.^{10–12} This systematic literature review set out to assess whether the existing RAMRIS, when applied to the MTP-joints in patients with RA, meets the OMERACT Filter 2.1 of Truth, Discrimination and Feasibility. More specifically, it was aimed to answer the question if there is currently enough evidence to conclude that applying the RAMRIS to MRI-scoring of the MTP-joints is a valid outcome measure in the assessment of joint inflammation and structural damage in RA, and subsequently to identify a research agenda for OMERACT criteria that still require studying for the MTP-joints.

METHODS

Identification of studies

In cooperation with a medical librarian (JWS), a systematic literature search was performed to obtain all manuscripts reporting on studies that perform MRI of the MTP-joints in patients with RA. Medical literature databases (PubMed, Embase, Web of Science, COCHRANE, Emcare, Academic Search Premier and ScienceDirect) were searched up to January 2018, using all variations of the following key words: ‘foot’, ‘rheumatoid arthritis’ and ‘MRI’ (see online supplementary file 1 for the exact search strings). Animal studies, reviews, abstracts and letters to the editor and in languages other than English were excluded from the search.

Inclusion criteria

All retrieved titles were screened, if deemed relevant abstracts were reviewed and finally full text articles were read by one reviewer (YJD). A random sample of 75 titles (10% of the titles identified by the literature search) was also reviewed by a second reviewer (AHM), resulting in a similar selection of titles. Therefore, further extraction was done by a single reviewer. In case of uncertainties in the reviewing process by the single reviewer, these were discussed and solved by consensus with AHM. Retrieved studies that reported on diseases other than RA, that were not scored according to the RAMRIS applied to the foot or that did not analyse data of the MTP-joints separately were excluded.

Studies reporting on the RAMRIS-measures in the MTP-joints in patients with RA were evaluated and categorised according to the following OMERACT Filter items: Truth (subdivided into face, content and construct), Discrimination (subdivided into test-retest reliability, ability to discriminate in randomised controlled trials (RCTs)/comparative studies, longitudinal construct validity and thresholds of meaning) and Feasibility, of

which a detailed description is provided elsewhere.^{10 11} Face and content validity of the Truth aspect were not part of the systematic literature search, as they are considered subjective measures and in the past have been assessed by consensus.¹¹ Hence, the assumption was made that MRI captures the intended pathophysiological feature for synovitis, bone marrow oedema (BME), erosions and joint space narrowing (JSN). For face and content validity of tenosynovitis on the other hand, anatomic atlases were explored to study whether the tendons have a sheath, and thus whether MRI is able to capture this intended pathophysiological feature. Per OMERACT-item a PICO (participants, interventions, comparisons, outcomes) was made, this resulted in the following inclusion criteria per OMERACT-item:

- ▶ Construct validity was evaluated in studies comparing one or more RAMRIS-features to conventional radiography, ultrasound, CT, histology, physical examination and symptoms. Both cross-sectional and longitudinal studies were included.
- ▶ Test-retest reliability was evaluated in studies comparing one or more RAMRIS-features in the same patients, either by the same performer over time or by different performers at the same time point. Both cross-sectional and longitudinal studies were included.
- ▶ Ability to discriminate in RCTs/comparative studies (sensitivity to change) was evaluated in studies that measured change of one or more RAMRIS-features over time, either in RCTs if available or from non-randomised studies or cohorts.
- ▶ Longitudinal construct validity (responsiveness) was evaluated in studies that measured change in one or more RAMRIS-features compared with change in other instruments like conventional radiography, ultrasound, CT, histology, physical examination and symptoms. This differs from ‘Construct validity’ by the fact that it includes MRI at different time points rather than at one point in time.
- ▶ Thresholds of meaning was evaluated in studies that rate patients with a certain response to therapy (eg, minimum important difference or patient acceptable symptom state) as measured by a change in one or more RAMRIS-features.
- ▶ Feasibility was evaluated in studies describing the cost, patient and responder burden, equipment needs, sensitivity of content and overall ease of use of one or more RAMRIS-features. Both cross-sectional and longitudinal studies were included.

Studies that fulfilled the requirements for at least one of these items were included in this review.

After screening and including, next the articles were weighted by two reviewers (YJD and AHM) according to predefined criteria. First, to select MRI-data with high quality, the MRI had to be performed on ≥ 1.5 Tesla (T) MRI and to use gadolinium contrast-enhancement (CE) for synovitis and tenosynovitis. Second, the results were further weighted by the presence of replication studies.

For the final conclusion, the validity of an OMERACT criterion was considered to be suggested if there were ≥ 2 studies with high-quality MRI-data of which $\geq 2/3$ rd had a uniform conclusion (meaning that the associations found in the studies point in the same direction of either a positive or a negative/absence of any association), this type of validity was categorised as ‘++’ or ‘--’ depending on the directionality of the effect. If only one article was available with regard to the type of validity, then according to the direction of the association, it was categorised as ‘+’ or ‘-’, and the conclusion was drawn that limited data possibly suggested the validity to be present but more studies were needed for a more definite conclusion. If the high-quality MRI-articles were not uniform in their conclusion, or if articles were available but the MRI-data was not deemed to be of high quality, then it was categorised as ‘+/-,’ meaning data were available but insufficient for a conclusion. If there were no articles available at all, then it was categorised as ‘?’, meaning that there were no data available.

The MRI-features studied were synovitis, BME and tenosynovitis as measures of inflammation, and erosions and JSN as measures of structural damage. An updated RAMRIS has recently been published that now besides synovitis, BME and erosions also includes tenosynovitis and JSN.⁹ Considering the short time interval between this systematic literature search and the publication of

this updated RAMRIS definition, the systematic search included the updated RAMRIS and the old RAMRIS-definition for synovitis, BME and erosions, for tenosynovitis the score according to Haavardsholm *et al* and for JSN the score that was proposed by Ostergaard.^{2 13 14}

Statistical analyses

Due to the heterogeneity of the studies and the difference in outcome measures that were used, it was not possible to perform a meta-analysis. Therefore, we chose to perform a descriptive review.

RESULTS

Literature flow

After removing duplicate references, 749 unique references were identified (figure 1). After reviewing 115 abstracts and 41 full-text articles, 13 articles were included in the review. Of the included studies, nine fulfilled the inclusion criteria for evaluation of the construct aspect of Truth,^{15–23} four on Discrimination (of which three on test-retest reliability,^{5 24 25} two on longitudinal construct validity^{5 25} and one on the ability to discriminate²⁶) and none for Feasibility.

Study characteristics

The 13 included studies are depicted in tables 1–3, grouped according to the category of the OMERACT

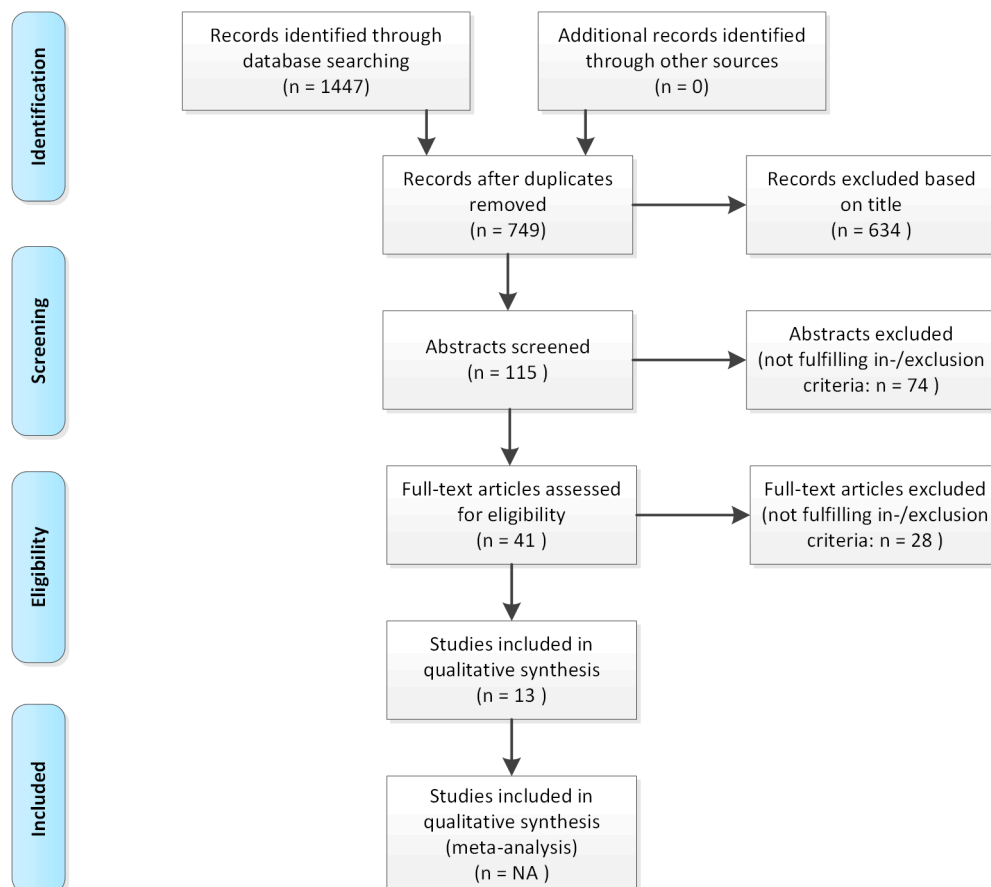


Figure 1 Overview of literature research.

Table 1 Summary of previous studies on 'Truth': construct

Reference	N	Population	MRI-feature					CE	Method	Outcome		
			SYN	BME	TS	ERO	JSN				MRI	
Clinical parameters												
Rondina <i>et al</i> , 2017 ²¹	55	RA	+	+	-	+	-	-	1.5 T	?	To evaluate the correlation between DAS28 and HAQ with MRI of the feet. MRI-protocol is not specified.	There is no correlation between synovitis, BME, erosions and DAS-28 and HAQ. Patients in DAS-28-remission still had inflammation on MRI.
Burgers <i>et al</i> , 2016 ¹⁵	206	Early RA*	+	+	-	+	-	-	1.5 T	-	To compare MRI-detected inflammation with functional disability.	There was no association with walking disability for synovitis (p=0.68), BME (0.83) or erosions (0.59).
Krabben <i>et al</i> , 2013 ¹⁸	66	Early RA*	+	+	-	-	-	-	1.5 T	-	To assess the concordance of inflammation on MRI with physical examination.	Synovitis and BME were associated with clinical swelling (OR 2.0 and 1.4 respectively). Of all swollen MTP-joints 23% had MRI-detected synovitis and 21% BME.
Dubbeldam <i>et al</i> , 2013 ¹⁶	25	RA	+	-	-	+	+	-	1.5 T	+	To explore the relationship between clinical pathology and gait kinematics, in the forefoot MRI was performed of MTP-1.	An increase in erosion-score and synovitis-score of MTP-1 correlated with less MTP-1 dorsiflexion at preswing (95% CI of -0.86 to -0.40 for erosions and -0.82 to -0.30 for synovitis).
Duer-Jensen <i>et al</i> , 2011 ¹⁷	116	UA	-	+	-	+	-	-	0.6 and 1.0 T	-	To determine the prognostic value of baseline MRI in UA patients that progress to RA.	BME is associated with future development of RA, as it is found in 14.8% of patients who developed RA, vs 3.4% who did not. Erosions were present equally in both groups 18.5 vs 18.2%.
Histology												
McQueen <i>et al</i> , 2007 ¹⁹	11	Longstanding RA	+	+	-	+	-	-	1.5 T	+	To histologically examine resected bone samples from patients undergoing orthopaedic surgery. MRI was performed prior to resection.	MRI-detected BME was associated with histological presence and severity of osteitis, pain and CRP. Association of MRI-detected synovitis with histology was not examined.
Other imaging												
Siddle <i>et al</i> , 2012 ²²	24	RA	+	+	-	+	+	-	3 T	+	To examine the relationship between plantar plate pathology on MRI and the RAMRIS of MTP 2-5.	Plantar plate pathology was associated with synovitis, BME and erosions, in MTP 4 and 5 in particular.
Mundwiler, <i>et al</i> 2009 ²⁰	50	Early RA	+	+	-	+	-	-	1.5 T	+	To determine whether MRI BME progresses to MRI erosion, and whether MRI erosion progresses to erosions on radiographs, by MRI at baseline and after 6 months and radiographs at baseline and after 6, 12 and 24 months.	For BME PPV was 0.50 and NPV 0.99 to predict MRI-detected erosions after 1 year, for MRI-detected erosions PPV was 0.10 and NPV 0.995 to predict radiographic erosions after 1 year. Synovitis was not associated with radiographic damage.
Szkudlarek <i>et al</i> , 2004 ²³	40	RA	+	-	-	+	+	-	1.0 T	+	To compare MRI radiography, US and physical examination.	MRI and US are more sensitive than radiography and clinical examination: Erosions were detected by MRI in 20 patients, US in 26 and radiographs in 11. Synovitis by MRI in 31 patients, US in 36 and clinical examination 20.

Continued

Table 1 Continued

Reference	N	Population	MRI-feature					CE	Method	Outcome
			SYN	BME	TS	ERO	JSN			
<p>*Study performed in a cohort of unselected patients with early arthritis, and sensitivity analyses were performed on patients with RA according to the 2010 criteria; results of the sensitivity analyses are shown.</p> <p>BME, bone marrow oedema; CE, contrast-enhancement; CRP, C-Reactive Protein; DAS-28, Disease Activity Score of 28 joints; ERO, erosions; HAQ, Health Assessment Questionnaire; JSN, joint space narrowing; MTP, metatarsophalangeal joint; NPV, Negative Predictive Value; PPV, Positive Predictive Value; RA, rheumatoid arthritis; SYN, synovitis; TS, tenosynovitis; UA, Undifferentiated Arthritis; US, Ultrasound.</p>										

Filter that is addressed: [table 1](#) addresses articles on construct (aspect of Truth), [table 2](#) on test-retest reliability (aspect of Discrimination) and [table 3](#) on longitudinal construct validity and clinical trial discrimination (also aspects of Discrimination). These tables also depict the studies that fulfilled the inclusion criteria but were considered to have lower MRI-quality as described in the methods and thus were not part of the final conclusions drawn. Overall, the studies included a small number of patients, with a median number of 39. There were no RCTs, nine studies were cross-sectional and four longitudinal. MRI was most often performed on a 1.5 T scanner (n=7).

The OMERACT Filter was applied to each MRI-measure separately. These results will be discussed per MRI-feature and are summarised in [table 4](#).

Synovitis

The RAMRIS defines MRI-detected synovitis as an area in the synovial compartment that shows above-normal postgadolinium enhancement of a thickness greater than the width of the normal synovium.² As specified in the methods, face and content validity for MRI-detected synovitis were considered to be evident ('++' in [table 4](#)).

Regarding construct validity, three studies were deemed to have MRI-data of high quality.^{16 20 22} Synovitis was associated with plantar plate pathology, which represents a failure of the ligamentous system and displacement of the plantar plates of the forefoot leading to malformation.²² When patients were followed for up to 24 months, MRI-detected synovitis was not associated with radiographic damage.²⁰ Correlations were found between MRI-detected synovitis in MTP-1 and a decrease in movement of the same joint.¹⁶ Although this is a positive correlation, the outcome of decreased range of motion in MTP-1 is not typical for RA, but is affected in for instance osteoarthritis. Therefore, this study was not considered in the final conclusion. Overall, one out of two studies found a positive association, therefore no uniform conclusion can be drawn on construct validity for MRI-detected synovitis ('+/-' in [table 4](#)).

Test-retest reliability has been confirmed in one study that has shown excellent inter-reader and intrareader reliability for scoring synovitis ('+').²⁴ For longitudinal construct validity and the ability to discriminate in trials, the two studies available did not meet the quality criteria for MRI ('+/-').^{5 26} There were no data regarding thresholds of meaning or feasibility ('?').

Bone marrow oedema

Also referred to as osteitis, BME is defined as a lesion within the trabecular bone, with ill-defined margins and signal characteristics consistent with increased water content.² Again, face and content validity were deemed present ('++').

Construct validity was examined in six studies that met the quality criteria for the MRI-protocol.^{15 18-22} MRI-detected BME was associated with clinical swelling, with pain

Table 2 Summary of previous studies on ‘discrimination’: test-retest reliability

Reference	N	Population	MRI	CE	Reading	Reliability per MRI-feature						Conclusion
						SYN	BME	TS	ERO	JSN	Foot	
Baan <i>et al</i> , 2015 ²⁴	29	RA	1.5 T	+	Inter Intra	0.94 0.85	0.77 0.70	–	0.95 0.89	–	–	Good to excellent interobserver and intraobserver reliability according to the RAMRIS method.
Ejbjerg <i>et al</i> , 2005 ²⁵	35	RA	0.2 T	?	SDD	–	–	–	1.36	–	–	SDD for erosions in MTPs was low at 1.36, for MCPs 1.24 and wrist 2.13.
Sewerin <i>et al</i> , 2014 ⁵	26	Early RA	0.2 T	+	SDD	1.29	0.87	–	0.87	–	1.81	Inter-reader SDDs at baseline were good as presented for the foot for all inflammation summed and for MTP-2 for all subtypes of inflammation separate. In comparison SDD of MCPs and wrist were 2.23 and 4.10, respectively.

BME, bone marrow oedema; CE, gadolinium contrast-enhancement; ERO, erosions; Inter, inter-reader reliability; JSN, joint space narrowing; MCP, metacarpophalangeal joint; MTP, metatarsophalangeal joint; RA, rheumatoid arthritis; SDD, smallest detectable difference; SYN, synovitis; T, Tesla; TS, tenosynovitis; intra, intrareader reliability (assessed by quadratic-weighted κ scores).

and CRP and with plantar plate pathology.^{18 19 22} When MRI-detected BME in MTP-joints was assessed histologically, it was associated with the severity of osteitis.¹⁹ One study found an association for BME with the development of MRI-detected erosions a year later and reported that erosions were unlikely to develop in the absence of BME.²⁰ Two studies did not find an association of BME with Disease Activity Score of 28 joints (DAS-28), Health Assessment Questionnaire (HAQ) or walking disability.^{15 21} Overall, four out of six studies found a positive association, therefore the evidence suggested construct validity to be present (‘++’).

Test-retest reliability has been investigated in one study that proved good inter-reader and intrareader reliability (‘+’).²⁴ For the ability of MRI to discriminate in trials and for longitudinal construct validity, only studies of lower quality were available (‘+/-’).^{5 26} There were no data on thresholds of meaning or feasibility (‘?’).

Tenosynovitis

Tenosynovitis is defined as tendon sheath fluid, sheath thickening and enhancement after intravenous contrast injection seen in two consecutive axial slices.¹³ Thus, for face and content validity, it is essential for the imaged tendon to have a sheath. The anatomy books that were consulted gave contradicting information. Regarding the extensor tendons some portrayed a sheath to be absent, but other anatomic atlases did not portray the extensor tendons at the MTP-region. At the flexor tendons of the MTP-joints some resources portrayed a sheath to be present, some did not or in some cases the region of

interest was not depicted.^{27–30} Thus, it remains unclear whether a sheath is present around the tendons, and if so what its exact localisation is. This is relevant, as it questions the nature of the inflammation observed. Thus, face and content validity of tenosynovitis at the level of MTP-joints was absent (‘?’). In addition, no studies concerning tenosynovitis at the MTP-joints have been performed to date (‘?’ for all OMERACT-elements).

Erosions

MRI-detected bone erosions are defined as a sharply marginated bone lesion, with correct juxta-articular localisation and typical signal characteristics visible in two planes with a cortical break in at least one plane.² Face and content validity for erosions were assumed to be present (‘++’).

Five studies that met the criteria for the MRI-protocol were assessed for construct validity.^{15 16 20–22} MRI-detected erosions were associated with plantar plate pathology and with decreased movement of MTP-1.^{16 22} Also, MRI-detected erosions were associated with the development of radiographic erosions 1 year later, and in the absence of MRI-detected erosions radiographic erosions were unlikely to occur.²⁰ Two studies showed no correlation of MRI-detected erosions with DAS-28, HAQ or with walking disability.^{15 21} Overall, three out of five studies found a positive association, therefore the evidence suggested construct validity to be present (‘++’).

With regard to Discrimination, reliability was excellent in one study showing high inter-reader and intrareader reliability (‘+’).²⁴ For longitudinal construct validity and

Table 3 Summary of previous studies on 'discrimination': longitudinal construct validity and clinical trial discrimination

Reference	N	Population	MRI-feature					MRI	CE	Method	Outcome
			SYN	BME	TS	ERO	JSN				
Longitudinal construct validity											
Ejbjerg <i>et al.</i> , 2005 ²⁵	35	RA	-	-	-	+	-	0.2 T	?	To compare MRI-detected erosions to radiography with respect to sensitivity to change after 1 year.	Progression of erosions was detected by MRI of MTPs in 14 patients, as opposed to nine by radiography of hands and feet. However, when changes greater than SDD were considered this was 4 and 5 patients, respectively.
Sewerin <i>et al.</i> , 2014 ⁵	26	Early RA	+	+	-	+	-	0.2 T	+	To study MRI prior and after 6 months of methotrexate monotherapy.	A decrease in synovitis and BME correlated to a change in DAS28, this correlation was not found for change in erosions.
Clinical trial discrimination											
Buchbender <i>et al.</i> , 2013 ²⁶	39	RA and early RA	+	+	-	+	-	0.2-3 T	+	To assess patterns of inflammation and changes under therapy by MRI at baseline and after 8 months follow-up.	A change in BME was seen in 77% of MTP-joints, synovitis in 59%, erosions in 68%.

BME, bone marrow oedema; CE, gadolinium contrast-enhancement; ERO, erosions; JSN, joint space narrowing; MCP, metatarsophalangeal joint; MTP, metatarsophalangeal joint; RA, rheumatoid arthritis; SDD, smallest detectable difference; SYN, synovitis; T, Tesla; TS, tenosynovitis.

ability to discriminate, the found studies did not meet the criteria on the MRI-protocol ('+/-').^{5 25 26} Thresholds of meaning and feasibility have not been studied ('?').

Joint space narrowing

JSN is defined as reduced joint space width compared with normal, as assessed in a slice perpendicular to the joint surface.¹⁴ There is no reason to believe that face and content validity for JSN in the forefeet are not applicable ('++'). As of yet, there are no studies on JSN in the forefeet in RA, therefore further validation is required ('?').

DISCUSSION

This is the first SLR to assess the status of the development or application of the RAMRIS for the feet. From the limited evidence available, a foot RAMRIS-score would be useful to evaluate the impact of inflammation and damage in the feet on long-term outcomes. Based on the results, as presented in [table 4](#), construct validity is suggested for BME and erosions, but lacking for synovitis, tenosynovitis and JSN. Data for discrimination remain to be developed. A research agenda was formulated for the further evaluation of the validity of MRI of the forefoot, as presented in [box 1](#).

In contrast to previous OMERACT Filters, Filter 2.1 that was applied in this review does not distinguish between construct and criterion validity. Criterion validity assumes that the comparator instrument is a 'gold standard', for example, histology for MRI-detected BME.¹⁰ In addition, previous studies have subdivided criterion validity further into concurrent validity and predictive validity, where concurrent validity assumed that the comparator instrument is a gold standard and predictive validity looked at a later status of, for example, a radiographic or functional outcome.³¹ For the current study, all these different types of measures were taken together as 'construct'. As a result, there were sufficient studies to conclude that construct validity was present BME and erosions. However, when one, for example, looks at only predictive validity, data are actually insufficient to draw conclusions on this aspect, as only one of the nine studies included in construct looked at the predictive value.²⁰ This was taken into consideration when formulating the research agenda. Determining the possible added value of MRI of the MTP-joints to that of MRI of the wrist and MCPs, and assessing the value of MRI of MTP-1 are also subjects for future research.

When studying the predictive accuracy of forefoot MRI in future studies, it might be relevant to include data from healthy controls in the definition of disease-related MRI-features. Previous studies demonstrated that inclusion of information obtained from symptom-free persons from the general population increased the specificity and accuracy of MRI and that this finding also applies to the use of MRI of the MTP-joints.^{32 33}

An updated version of the RAMRIS was recently published that now includes a definition of JSN and

Table 4 Validity of MRI measures of the forefeet in their assessment of inflammation and structural damage in RA**A: Presence of type of validity given for every MRI-measure**

Type of validity	Inflammation			Structural damage	
	SYN	BME	TS	ERO	JSN
Truth					
Face	++	++	?	++	++
Content	++	++	?	++	++
Construct	+/-	++	?	++	?
Discrimination					
Test-retest reliability	+	+	?	+	?
Longitudinal construct validity	+/-	+/-	?	+/-	?
Clinical Trial Discrimination	+/-	+/-	?	+/-	?
Thresholds of meaning	?	?	?	?	?
Feasibility	?	?	?	?	?

B: Criteria handled for the interpretation of data

Category	Definition	Criteria for conclusion
++	Validity suggested for a positive association between MRI-measure and outcome	≥2 studies, ≥2/3rd have a uniform conclusion, and all of the following: <ul style="list-style-type: none"> ▶ MRI ≥1.5 T ▶ CE for SYN and TS
+	Validity possibly suggested for a positive association between MRI-measure and outcome	One study with a positive association, and all of the following: <ul style="list-style-type: none"> ▶ MRI ≥1.5 T ▶ CE for SYN and TS
+/-	Insufficient data for a conclusion	Studies are available, but one of the following: <ul style="list-style-type: none"> ▶ No uniform conclusion ▶ MRI on <1.5 T ▶ No CE for SYN and TS
-	Validity possibly suggested for a negative association between MRI-measure and outcome	one study with a negative association, and all of the following: <ul style="list-style-type: none"> ▶ MRI ≥1.5 T ▶ CE for SYN and TS
--	Validity suggested for a negative association between MRI-measure and outcome	≥2 studies, ≥2/3 rd have a uniform conclusion, and all of the following: <ul style="list-style-type: none"> ▶ MRI ≥1.5T ▶ CE for SYN and TS
?	No data available	No studies available

*Uniform conclusion: studies pointing in the same direction (either positive or negative) with regard to the association for the MRI-measurement with the outcome.

BME, bone marrow oedema; CE, gadolinium contrast-enhancement; ERO, erosions; JSN, joint space narrowing; SYN, synovitis; T, Tesla; TS, tenosynovitis.

tenosynovitis to previous versions in addition to the previous version that only included BME, synovitis and erosions. For tenosynovitis the updated RAMRIS shows subtle differences compared with the score developed by Haavardsholm *et al* that is generally used in MRI of wrist and MCPs.^{9 13} No validity data on the updated RAMRIS are published to date. However, as the definition of synovitis, BME and erosions did not change, it is assumed that the observed results are also valid for the updated RAMRIS. No conclusions on the validity of tenosynovitis and JSN in the forefeet according to the older definitions or according to the updated RAMRIS could be drawn as

there were no data available. Besides adding tenosynovitis and JSN, the updated RAMRIS also included novel recommendations on the scan-protocol, such as a slice thickness of ≤2 mm in high-quality MRI units. However, it also states that the recommendations are not intended to be exclusive, but rather to provide common standards. In this review, the quality of the MRI-protocol was only weighted regarding field strength and CE, more thorough details such as slice thickness and plane of scanning were not included in the evaluation.

The 13 included studies were heterogeneous in various aspects, such as the scan-protocols that were used and

Box 1 Research agenda for the further validation of MRI of the forefeet

- ▶ Evaluate whether MRI of the metatarsophalangeal (MTP)-joints performs better than MRI of the metacarpophalangeals (MCPs) and wrists in predicting radiographic and/or functional outcomes, and if it could be used solely.
- ▶ Study whether MRI of the MTP-joints has additional value to MRI of the MCPs and wrists in predicting radiographic and/or functional outcomes.
- ▶ Assessing the value of MRI of MTP-1.
- ▶ Determine the longitudinal construct validity, clinical trial discrimination and thresholds of meaning for all MRI measures.
- ▶ Evaluate the feasibility for all MRI measures.
- ▶ Assess the anatomy of sheaths of tendons adjacent to MTP-joints for face and content validity.
- ▶ Assess the association with clinical parameters for tenosynovitis and joint space narrowing for construct validity.
- ▶ Assess the predictive value of all MRI features with radiographic and/or functional outcomes.
- ▶ Assess the test-retest reliability of tenosynovitis and joint space narrowing and replicate this for synovitis, bone marrow oedema and erosions.
- ▶ Assessment of validity in early rheumatoid arthritis (RA) versus established RA.

the type of patients with RA that were included (early vs established RA). Most studies mention the use of a coil, varying from dedicated extremity coils¹⁹ to knee or wrist coils.¹⁷ While most studies scanned all MTP-joints, some made a selection.^{16 20 22} Not all studies used CE, potentially decreasing the reliability of synovitis scores.³⁴ Different field strengths were used, with a wide range of 0.2–3 T, of which 1.5 T was most common. Lower field MRI < 1.5 T generates lower imaging quality, which may influence the interpretability of the data. Therefore, for the final conclusions of this study, included studies were weighted depending on the use of CE for synovitis, an MRI field strength of ≥ 1.5 T and the presence of replication studies. The importance of the presence of replication studies is underlined by the small number of patients included in the studies. Although these weighing criteria (summarised in table 4) are arbitrary, they served to give a more critical appraisal of the data and enhance the interpretability of the results. Future studies should focus on ACR core set measures for their outcomes to make comparison of studies more attainable. Finally, studies showing a negative correlation could potentially have remained unpublished leading to a reporting bias that may have affected the results of this review.

In conclusion, although for synovitis, tenosynovitis and JSN data were lacking, for MRI-detected BME and erosions, truth of the RAMRIS of the forefeet was suggested by the data. In contrast, studies on discrimination and on feasibility are needed or require validation. Thus, the validity of applying the RAMRIS to the forefeet still is insufficient on different aspects. Awareness of the gaps in the OMERACT Filter criteria prior to including

MRI of the MTP-joints in the RAMRIS and its implementation in trials is essential for optimal interpretation of results obtained.

Acknowledgements The authors thank JW Schoones (JWS) for performing the systematic literature search.

Contributors All authors made a substantial contribution to the conception and design of the work. YJD and AHMvdHvM drafted the manuscript. DMvdH and MR revised the manuscript critically for important intellectual content. All authors approved the final version of the manuscript.

Funding This work was supported by the European Research Council (ERC) under the European Union's Horizon 2020 research and innovation programme (Starting grant, agreement No. 714312) and by the Dutch Arthritis Foundation.

Disclaimer The funding sources had no role in the design and conduct of the study; collection, management, analysis and interpretation of the data; preparation, review or approval of the manuscript or decision to submit the manuscript for publication.

Competing interests None declared.

Patient consent Not required.

Provenance and peer review Not commissioned; externally peer reviewed.

Data sharing statement No additional data are available.

Open access This is an open access article distributed in accordance with the Creative Commons Attribution Non Commercial (CC BY-NC 4.0) license, which permits others to distribute, remix, adapt, build upon this work non-commercially, and license their derivative works on different terms, provided the original work is properly cited, appropriate credit is given, any changes made indicated, and the use is non-commercial. See: <http://creativecommons.org/licenses/by-nc/4.0>

REFERENCES

1. Colebatch AN, Edwards CJ, Østergaard M, *et al.* EULAR recommendations for the use of imaging of the joints in the clinical management of rheumatoid arthritis. *Ann Rheum Dis* 2013;72:804–14.
2. Østergaard M, Edmonds J, McQueen F, *et al.* An introduction to the EULAR-OMERACT rheumatoid arthritis MRI reference image atlas. *Ann Rheum Dis* 2005;64:i3–7.
3. Boutry N, Lardé A, Lapègue F, *et al.* Magnetic resonance imaging appearance of the hands and feet in patients with early rheumatoid arthritis. *J Rheumatol* 2003;30:671–9.
4. Calisir C, Murat Aynaci AI, Korkmaz C. The accuracy of magnetic resonance imaging of the hands and feet in the diagnosis of early rheumatoid arthritis. *Joint Bone Spine* 2007;74:362–7.
5. Sewerin P, Buchbender C, Vordenbäumen S, *et al.* Advantages of a combined rheumatoid arthritis magnetic resonance imaging score (RAMRIS) for hand and feet: does the RAMRIS of the hand alone underestimate disease activity and progression? *BMC Musculoskelet Disord* 2014;15:104.
6. Brinkmann GH, Norli ES, Bøyesen P, *et al.* Role of erosions typical of rheumatoid arthritis in the 2010 ACR/EULAR rheumatoid arthritis classification criteria: results from a very early arthritis cohort. *Ann Rheum Dis* 2017;76:1911–4.
7. Landewé RB, Strand V, Conaghan PG, *et al.* Damage and progression on radiographs in individual joints: data from pivotal randomized controlled trials. *J Rheumatol* 2011;38:2018–22.
8. van der Heijde DM, van Leeuwen MA, van Riel PL, *et al.* Radiographic progression on radiographs of hands and feet during the first 3 years of rheumatoid arthritis measured according to Sharp's method (van der Heijde modification). *J Rheumatol* 1995;22:1792–6.
9. Østergaard M, Peterfy CG, Bird P. The OMERACT rheumatoid arthritis Magnetic Resonance Imaging (MRI) scoring System: updated Recommendations by the OMERACT MRI in arthritis working Group. *J Rheumatol* 2017;44:1706–12.
10. Boers M, Kirwan J, Tugwell P. *The OMERACT handbook*, 2017: 1–111.
11. Tugwell P, Boers M, D'Agostino MA, *et al.* Updating the OMERACT filter: implications of filter 2.0 to select outcome instruments through assessment of "truth": content, face, and construct validity. *J Rheumatol* 2014;41:1000–4.
12. Wells G, Beaton DE, Tugwell P, *et al.* Updating the OMERACT filter: discrimination and feasibility. *J Rheumatol* 2014;41:1005–10.

13. Haavardsholm EA, Østergaard M, Ejbjerg BJ, *et al.* Introduction of a novel magnetic resonance imaging tenosynovitis score for rheumatoid arthritis: reliability in a multireader longitudinal study. *Ann Rheum Dis* 2007;66:1216–20.
14. Østergaard M, Bøyesen P, Eshed I, *et al.* Development and preliminary validation of a magnetic resonance imaging joint space narrowing score for use in rheumatoid arthritis: potential adjunct to the OMERACT RA MRI scoring system. *J Rheumatol* 2011;38:2045–50.
15. Burgers LE, Nieuwenhuis WP, van Steenberg HW, *et al.* Magnetic resonance imaging-detected inflammation is associated with functional disability in early arthritis—results of a cross-sectional study. *Rheumatology* 2016;55:2167–75.
16. Dubbeldam R, Baan H, Nene AV, *et al.* Foot and ankle kinematics in rheumatoid arthritis: influence of foot and ankle joint and leg tendon pathologies. *Arthritis Care Res* 2013;65:503–11.
17. Duer-Jensen A, Hørslev-Petersen K, Hetland ML, *et al.* Bone edema on magnetic resonance imaging is an independent predictor of rheumatoid arthritis development in patients with early undifferentiated arthritis. *Arthritis Rheum* 2011;63:2192–202.
18. Krabben A, Stomp W, Huizinga TW, *et al.* Concordance between inflammation at physical examination and on MRI in patients with early arthritis. *Ann Rheum Dis* 2015;74:506–12.
19. McQueen FM, Gao A, Østergaard M, *et al.* High-grade MRI bone oedema is common within the surgical field in rheumatoid arthritis patients undergoing joint replacement and is associated with osteitis in subchondral bone. *Ann Rheum Dis* 2007;66:1581–7.
20. Mundwiler ML, Maranian P, Brown DH, *et al.* The utility of MRI in predicting radiographic erosions in the metatarsophalangeal joints of the rheumatoid foot: a prospective longitudinal cohort study. *Arthritis Res Ther* 2009;11:R94.
21. Rondina RG, de Mello RAF, Valim V, *et al.* Discordance between clinical and imaging criteria: assessment by magnetic resonance imaging of the foot of patients with rheumatoid arthritis. *Rheumatol Int* 2017;37:1357–64.
22. Siddle HJ, Hodgson RJ, Redmond AC, *et al.* MRI identifies plantar plate pathology in the forefoot of patients with rheumatoid arthritis. *Clin Rheumatol* 2012;31:621–9.
23. Szkudlarek M, Narvestad E, Klarlund M, *et al.* Ultrasonography of the metatarsophalangeal joints in rheumatoid arthritis: comparison with magnetic resonance imaging, conventional radiography, and clinical examination. *Arthritis Rheum* 2004;50:2103–12.
24. Baan H, Bezooijen R, Avenarius JK, *et al.* Magnetic resonance imaging of the rheumatic foot according to the RAMRIS system is reliable. *J Rheumatol* 2011;38:1003–8.
25. Ejbjerg BJ, Vestergaard A, Jacobsen S, *et al.* The smallest detectable difference and sensitivity to change of magnetic resonance imaging and radiographic scoring of structural joint damage in rheumatoid arthritis finger, wrist, and toe joints: a comparison of the OMERACT rheumatoid arthritis magnetic resonance imaging score applied to different joint combinations and the Sharp/van der Heijde radiographic score. *Arthritis Rheum* 2005;52:2300–6.
26. Buchbender C, Scherer A, Miese F, *et al.* Patterns of magnetic resonance imaging of the foot in rheumatoid arthritis: which joints are most frequently involved? *Rheumatol Int* 2013;33:1731–6.
27. Agur AMR, Dalley AF. *Grant's atlas of anatomy*. 13th edn. Lippincott Williams And Wilkins, 2013.
28. Drake RC, Vogl AW, Mitchell AWM. *Gray's anatomy for students*. 2nd edn. Elsevier, 2010: 615–7.
29. Hansen JT. *Netter's clinical anatomy*. 3rd edn. Elsevier, 2014.
30. Paulsen F, Waschke J. *Sobotta atlas van de menselijke anatomie*. 4th edn. Bohn Stafleu van Loghum, 2011: 318–9.
31. Østergaard M, Wiell C. Ultrasonography in rheumatoid arthritis: a very promising method still needing more validation. *Curr Opin Rheumatol* 2004;16:223–30.
32. Boer AC, Burgers LE, Mangnus L, *et al.* Using a reference when defining an abnormal MRI reduces false-positive MRI results—a longitudinal study in two cohorts at risk for rheumatoid arthritis. *Rheumatology* 2017;56:1700–6.
33. Mangnus L, van Steenberg HW, Reijnierse M, *et al.* Magnetic resonance imaging-detected features of inflammation and erosions in symptom-free persons from the general population. *Arthritis Rheumatol* 2016;68:2593–602.
34. Østergaard M, Conaghan PG, O'Connor P, *et al.* Reducing invasiveness, duration, and cost of magnetic resonance imaging in rheumatoid arthritis by omitting intravenous contrast injection – Does it change the assessment of inflammatory and destructive joint changes by the OMERACT RAMRIS? *J Rheumatol* 2009;36:1806–10.