

A chemical study of carbon fractionation in external galaxies

Serena Viti^{1,2*}, Francesco Fontani^{3,4}, Izaskun Jiménez-Serra^{5,2},

¹ *Leiden Observatory, Leiden University, PO Box 9513, 2300 RA Leiden, The Netherlands*

² *Department of Physics and Astronomy, University College London, Gower Street, London, WC1E 6BT, UK*

³ *Osservatorio Astrofisico di Arcetri, Largo E. Fermi 2, I-50125 Firenze, ITALY*

⁴ *Centre for Astrochemical Studies, Max-Planck-Institute for Extraterrestrial Physics, Giessenbachstrasse 1, 85748 Garching, Germany*

⁵ *Centro de Astrobiología (CSIC/INTA), Ctra de Torrejón a Ajalvir, km 4 28850 Torrejón de Ardoz, Madrid Spain*

Accepted 2020 July 21. Received 2020 July 14; in original form 2019 October 31

ABSTRACT

In the interstellar medium carbon exists in the form of two stable isotopes ^{12}C and ^{13}C and their ratio is a good indicator of nucleosynthesis in galaxies. However, chemical fractionation can potentially significantly alter this ratio and in fact observations of carbon fractionation within the same galaxy has been found to vary from species to species. In this paper we theoretically investigate the carbon fractionation for selected abundant carbon-bearing species in order to determine the conditions that may lead to a spread of the $^{12}\text{C}/^{13}\text{C}$ ratio in external galaxies. We find that carbon fractionation is sensitive to almost all the physical conditions we investigated, it strongly varies with time for all species but CO, and shows pronounced differences across species. Finally we discuss our theoretical results in the context of the few observations of the $^{12}\text{C}/^{13}\text{C}$ in both local and higher redshift galaxies.

Key words: Galaxies: ISM – ISM: abundances – ISM: molecules – ISM: fractionation

1 INTRODUCTION

Knowledge of isotopic abundances is important in galaxy evolution studies because isotopes provide diagnostics for the chemical enrichment in galaxies over time. While ideally measurements of isotopes in large sample of stars are needed to determine the fossil record of the enrichment history, in practice this is hampered by the need of very high resolution, high signal-to-noise spectroscopic data. A complementary, or alternative, method is to measure isotopic ratios from observations of gas-phase interstellar medium (ISM) isotopic abundances (Wilson & Rood 1994).

Carbon is one of the most abundant and important elements in the Universe, and exists in the form of two stable isotopes, ^{12}C and ^{13}C . Its isotopic composition is believed to be a good indicator of nucleosynthesis in Galaxies. ^{12}C is predicted to be synthesised rapidly via Helium burning in both low-mass and massive stars, and it is hence considered a primary element, even though the relative contributions from low- and intermediate-mass stars and from massive stars change with time and position within the Galaxy (e.g. Akerman et al. 2004, Romano et al. 2017). ^{13}C is mainly expected to be synthesised through the CNO cycle in asymptotic giant branch (AGB) stars through slower processes,

and it is a secondary element (e.g. Wilson & Rood 1994, Pagel 1997). After ^{13}C is created in the interior of these stars, processes like convection instabilities and expansion of the outer layers can pull ^{13}C to the stellar surface and there, mixed in the stellar atmosphere, could be ejected into the surrounding ISM. However, other processes unrelated to stellar nucleosynthesis, such as chemical fractionation, could potentially significantly affect the isotopic composition of the ISM. Various chemical mechanisms that may introduce deviations from the carbon isotopic elemental ratio have been investigated. Several works proposed low-temperature ion-neutral exchange reactions (Langer et al. 1984, Smith & Adams 1980, Woods & Willacy 2009, Mladenovic & Roueff 2014) which, owing to their exothermicity, can increase ^{13}C abundance in CO and HCO^+ in very low ($T \approx 10$ K) temperature environments, similarly to the chemical mechanism invoked to explain the high abundances of deuterated species in cold gas (Watson et al. 1976). However, this simple picture has been recently revised because not all these reactions occur even at very low temperatures, due to the existence of energy barriers between the interacting particles (Roueff et al. 2015).

Alternative mechanisms have been explored in regions different from the cold and dense environments required for fractionation dominated by low-temperature ion-neutral reactions. In photo-dissociation regions (PDRs), or diffuse re-

* E-mail: viti@strw.leidenuniv.nl

gions exposed to UV radiation fields (e.g. Liszt 2007, Visser et al. 2009, Röllig & Ossenkopf 2013), isotope-selective photo-dissociation and other mechanisms are claimed to influence, and potentially change significantly, the carbon elemental isotopic ratios. These mechanisms can dominate over others in galaxies characterised by strong radiation fields.

Effects of fractionation have been evaluated in molecular clouds of the Milky Way by measuring $^{12}\text{C}/^{13}\text{C}$ from several molecular species such as CN, CO, HCN and H_2CO and the Galactic gradient in $^{12}\text{C}/^{13}\text{C}$ is found to depend on the species used (e.g. Wilson & Rood 1994, Wilson 1999, Savage et al. 2002, Milam et al. 2005), which indeed suggests additional fractionation effects on top of local isotopic abundances due to Galactic nucleosynthesis.

Recently, Roeuff et al. (2015) developed a chemical model which included a comprehensive ^{13}C network and simulated the gas evolution of standard galactic molecular clouds. They found large variations in the $^{12}\text{C}/^{13}\text{C}$ ratio across time as well as across molecules, a consequence of the many different reaction channels involved in the ^{13}C chemistry. Therefore, it is likely that, as we move away from standard galactic conditions, such ratio will display even larger variations among molecules and type of galaxies.

There have been several observational studies of the $^{12}\text{C}/^{13}\text{C}$ in external galaxies (e.g. Henkel et al. 1998, 2010, 2014; Martín et al. 2005, 2006, 2019; González-Alfonso et al. 2012; Aladro et al. 2013; Wang et al. 2009; Jiang et al. 2011; Tang et al. 2019; see also Table 2). The molecules most used to determine this ratio in external galaxies are: CN (found to be the best tracer by Henkel et al. 2014), CO, H_2CO , HCO^+ , HCN and CS. Such observations confirm the large variations found in our own Galaxy: in fact within active galaxies (starburst or ULIRG) the observed range encompasses a full order of magnitude (Henkel et al. 2014), although the observed sample is rather small. While the observations have concentrated on galaxies where the energetics are different from those of our own Galaxy, a theoretical study exploring the dependence of carbon chemical fractionation on such energetics and various physical characteristics is, so far, missing.

In Viti et al. (2019) [hereafter Paper I], we have investigated the effect of nitrogen fractionation in external galaxies to determine the physical conditions that may lead to significant changes in the $^{14}\text{N}/^{15}\text{N}$ ratio from reference values (e.g. Solar, or Galactic values, both around 400), and found that the main cause of ISM increase of nitrogen fractionation is high gas densities, strengthened by high fluxes of cosmic rays. In this study, we perform, for the first time, a chemical modelling study of carbon fractionation that may be occurring in the gaseous component of external galaxies by updating the model presented in Paper I. We evaluate the effect of carbon fractionation for selected abundant C-bearing species, and also investigate if having neglected these reactions has had significant effects on the nitrogen fractionation. In section 2, we present the chemical model and network used for the ^{12}C and ^{13}C isotopic species; in Section 3 we present our results for the modelling of the carbon fractionation in gas at different H_2 densities and extinction, and affected by energetic phenomena (such as stellar heating, UV radiation and cosmic rays). In Section 4, we briefly report our conclusions.

2 CHEMICAL MODELLING OF CARBON FRACTIONATION

As in Paper I, we used the open source time dependent gas-grain chemical code UCLCHEM¹. UCLCHEM computes the time evolution of the chemical abundances of the gas and of the species on the ices. We note that since the study published in Paper I, updates were made to the UCLCHEM code, including a better treatment of the charge conservation. This only affects models with very high cosmic ray ionization rates, where in any case the chemistry is better modelled by codes where the thermal balance is calculated (see later). We have in fact compared the abundances of the main nitrogen-bearing species, their isotopologues and the fractionation ratios and found that in small cases the behavioural trends remain unchanged.

We ran UCLCHEM in two phases in a very similar manner as in Viti (2017) where theoretical abundances for extragalactic studies were derived. In Phase I, the gas is allowed to collapse from a diffuse atomic state ($\sim 10\text{ cm}^{-3}$) up to a high density (chosen by the user) by means of a free-fall collapse. The temperature during Phase I is always 10 K, and the cosmic ray ionization rate and radiation field are at their standard Galactic values of $\zeta_o = 5 \times 10^{-17}\text{ s}^{-1}$ and 1 Draine, (equivalent to $1.6 \times 10^{-3}\text{ erg/s/cm}^2$; Draine 1978, Draine & Bertoldi 1996), respectively. During Phase I, atoms and molecules freeze onto the dust and react with each other, forming icy mantles. For this grid of models we choose to end Phase I when the final density is reached. Phase II then follows the chemical evolution of this gas for 10^7 years after some energetic event has occurred (simulating either the presence of an AGN and/or a starburst). The initial (solar) elemental abundances considered in our models were taken from Asplund et al. (2009). Our elemental isotopic carbon ratio is 69 (Wilson 1999). Further details of the UCLCHEM code can be found in Holdship et al. (2017) and also in Paper I.

In both phases, the basic gas phase chemical network is the UMIST13 database (McElroy et al. 2013), augmented and updated with the KIDA database (Wakelam et al. 2015). The surface reactions included in the modelling for this study are mainly hydrogenation reactions, allowing chemical saturation when possible. The network contains 4483 reactions and 338 chemical species.

For the ^{13}C network, we duplicated the ^{12}C network changing all ^{12}C by ^{13}C , as we assume that reactions involving isotopic molecules have the same total rate constant as those involving the main isotope (Roeuff et al. 2015). We also added the ^{13}C exchange reactions reported by Roeuff et al. (2015) in their Table 1. However, for this initial study and to limit the size of the network, we only considered the fractionation of one carbon atom in a molecule where multiple C atoms are present. This of course may lead to inaccuracies but only probably in minor species, not routinely observed in extragalactic environments. This is confirmed by our benchmarking test with models from Roeuff et al. (2015): in order to estimate the potential shortcomings of our reduced network we ran a model using the same initial conditions of their Model (b) [see Table 4 in Roeuff et

¹ <https://uclchem.github.io/>

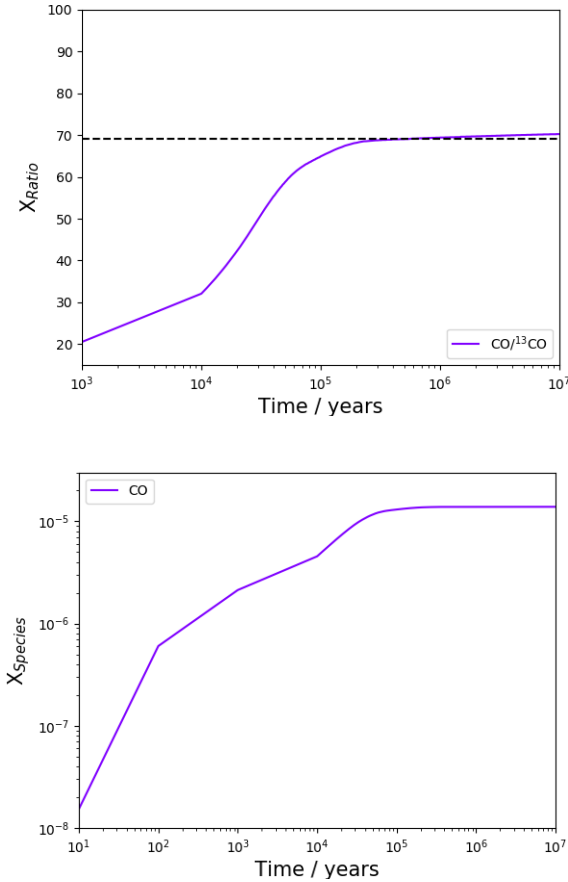


Figure 1. The $^{12}\text{C}/^{13}\text{C}$ ratio (Top) and the CO fractional abundance (Bottom) for our benchmarking model (see text).

al. (2015)]. Note that while we adopted the same elemental abundances as well as the same physical conditions as in their model, our network is different (in terms of species as well as reaction network) and some of our initial conditions may differ (e.g. the initial ionization fraction). Hence we do not expect a perfect match in absolute abundances. However, to illustrate the overall consistency between the two models, in Figure 1 we show the $^{12}\text{C}/^{13}\text{C}$ ratio for CO (to be compared with their Figure 5 top right) and the CO abundance (to be compared with their Figure 5 bottom left, although note that Roueff et al. (2015) abundances are with respect to molecular hydrogen and *not* the total number of hydrogen nuclei as they are here). It can be seen that, although our model has a higher CO abundance and $^{12}\text{C}/^{13}\text{C}$ at earlier times, both our equilibrium $^{12}\text{C}/^{13}\text{C}$ ratio and the CO abundance are in agreement (our equilibrium CO fractional abundance with respect to the total number of hydrogen nuclei is 1.38×10^{-5} , and Roueff et al. (2015)'s equilibrium abundance is 1.39×10^{-5}). As the scope of this paper is to study qualitative trends in large scale gas in extragalactic environment, we do not at present perform any more detailed benchmarking with previous models.

The grid of models we ran is very similar, in terms of parameter space, to the one ran in Paper I, namely we varied: i) gas densities (n_{H}) from 10^4 to 10^6 cm^{-3} ; ii) visual extinctions (A_{V}) from 1 to 100 mags; iii) temperatures (T) of 50

and 100 K; iv) radiation fields (χ) from 1 to 1000 Draine; v) cosmic ray ionization rates (ζ) from 1 to 10^4 the standard galactic one. As explained in detail in Paper I such parameter space is supposed to qualitatively represent the range of conditions found in external galaxies, whereby for example high radiation fields, visual extinctions and temperatures are representative of starburst galaxies, while high cosmic ray ionization rates are typically found in AGN-dominated galaxies. However, we in fact note that, at cosmic rays ionization rates as high as 10,000 times the standard one, the temperature of the gas may be higher than 100 K and hence some of the chemistry may be partially suppressed. The driver of this decline in molecular hydrogen is linked to the decline in molecular hydrogen as discussed in Bayet et al. (2011). In order to briefly test this we ran two test cases using an updated preliminary version of UCLCHEM where thermal balance is included (Holdship et al. in preparation) and found that at densities of 10^5 cm^{-3} , visual extinctions $> 1 \text{ mag}$, and cosmic ray ionization rates 1000 and 10000 times the standard one, the temperatures are respectively 70 and 140 K (J. Holdship, private communication), both close enough to our adopted temperatures to not change the qualitative trends of our results.

3 RESULTS

The main aim of our study is to understand how carbon fractionation varies across a parameter space covering physical characteristics and energetics representing different types of galaxies for different species. We report these findings in Sections 3.1 and 3.2. While we do not attempt at modelling any particular galaxy, we compare our theoretical C fractionation with that found in a handful of galaxies in Section 3.3.

3.1 Dependence of carbon fractionation to variations of the physics and energetics of the galaxies

Many theoretical studies have investigated the sensitivity of chemistry to the range of physical parameters that characterize a galaxy (e.g Bayet et al. 2008, 2009, 2011; Meijerink et al. 2011; Kazandjian et al. 2012, 2015). In this paper we only concentrate on discussing these effects on the $^{12}\text{C}/^{13}\text{C}$ ratio for various species. Nevertheless, for the species and models for which this ratio is discussed, we also plot the fractional abundances of the main isotopologues in order to show that they are indeed detectable (see Figure 7). Note that all the plots are for Phase II of the models. We limit the species to the molecules most likely to be observed in extragalactic conditions. In addition, we also plot the $^{12}\text{C}/^{13}\text{C}$ ratio for C and C^+ as they are often the drivers of changes in the fractionation of the molecules we discuss.

As in Paper I, we ran all our models at two different temperatures, 50 and 100 K. We find, just as for the nitrogen fractionation, that temperature differences do not affect or affect only marginally carbon fractionation (depending on the molecule, in the most 'extreme' cases, by a factor of 2 or so at most). At low cosmic rays ionization rates, there are no significant differences. There are some small differences between the two sets of models, occurring at late times

($\geq 10^6$ years), when the cosmic rays ionization rate is high ($\zeta \geq 1000$), the gas density is low (10^4 or 10^5 cm^{-3}) and the visual extinction is ~ 1 mags, namely mainly a decrease in the $^{12}\text{C}/^{13}\text{C}$ at higher temperatures. Examples of the most ‘extreme’ variations due to temperatures are plotted in Figure 2.

Beside that we note the following:

- the $^{12}\text{CO}/^{13}\text{CO}$ ratio is surprisingly constant with time and across the parameter space we investigated. In terms of actual value, it rarely reaches a minimum of 30 or a maximum of 100, usually remaining constant at ~ 70 . The lowest values are only ever reached for models at low density, with $A_V = 1$ mags, and a high radiation field (or a combination of high radiation fields and high cosmic ray ionization rates). Higher values for ^{13}CO are very rare and only for very early times (< 1000 yrs), low densities and low visual extinctions (see Fig 3).

- For species other than CO, the carbon isotopic fractionation varies with time and among molecules for most models, implying sensitivity to the several physical parameters we varied. This extends the results by Roueff et al. (2015) where they also found, for a typical cold dense core, that the $^{12}\text{C}/^{13}\text{C}$ isotopic ratios are very dependent on the evolution time. This indeed seems to be true even at higher temperatures when gas-grain interactions are no longer important. The isotopic ratio that seems to vary most across the parameters and with time is the one for the CS molecule.

- Under standard galactic dense clouds conditions, the $^{12}\text{C}/^{13}\text{C}$ ratio for CS, HCN and CN increases with time at very low extinctions (e.g. edge of the cloud), while it decreases with time deep into the clouds. The former behaviour is a consequence of photodissociation of the ^{13}C molecular isotopologue into ^{13}C and $^{13}\text{C}^+$ (note that the $^{12}\text{C}/^{13}\text{C}$ ratio for C and C^+ does not vary because ^{13}C and $^{13}\text{C}^+$ quickly react with CO and other species and ‘return’ to their main isotopologue form), while the latter is due to neutral-neutral reactions such as e.g. $^{13}\text{C} + \text{SO}$ and $^{13}\text{C} + \text{CN}$. The behaviour seems to be reversed for HCO^+ and H_2CO (see Fig 4). This result may be important depending on how much gas in a galaxy is in PDRs (low extinction) or e.g. in star forming regions (dense gas).

- The effects of increasing the cosmic ray ionization rate varies across the physical parameters and are not linear with increasing ζ . At low visual extinctions, there is an increase in the $\text{H}_2^{12}\text{CO}/\text{H}_2^{13}\text{CO}$, $^{12}\text{CS}/^{13}\text{CS}$, and $\text{H}^{12}\text{CN}/\text{H}^{13}\text{CN}$ ratio especially at early times and most pronounced for CS. This is mainly due to photodissociation, either via direct photons or by secondary photons. At higher visual extinctions, and early times, an increase in ζ leads to a decrease and an increase in the $^{12}\text{C}/^{13}\text{C}$ for HCO^+ and CS respectively. At high densities steady state is reached very early (in $<$ than 100 years) and, at low A_V , the only effect of increasing ζ seems to be a decrease in the $^{12}\text{C}/^{13}\text{C}$ ratio for H_2CO , while at high A_V , the $^{12}\text{C}/^{13}\text{C}$ ratio for HCN slightly increases while it heavily decreases for HCO^+ at very high cosmic ray ionization rates. We show an example of the effect of increasing cosmic ray ionization rates in Figure 5 which can also be compared with Figure 4.

- An increase in radiation field strength only has effects at low magnitudes. At low densities it leads to a larger variation in time for CS and an increase in $^{12}\text{C}/^{13}\text{C}$ ratio for

both H_2CO and HCO^+ . At high densities, we see a decrease followed by an increase in $^{12}\text{C}/^{13}\text{C}$ ratio for HCO^+ , as well as a large increase for the $^{12}\text{C}/^{13}\text{C}$ ratio of CS. In general a higher radiation field leads to an earlier steady state value for the $^{12}\text{C}/^{13}\text{C}$ ratio. An example can be seen in Figure 6.

- In environments where both radiation field and cosmic ray ionization rates are enhanced, the $^{12}\text{C}/^{13}\text{C}$ ratio, as a function of time and density, differs across molecules very non linearly. As we shall see in Section 3.3, this may be able to explain the large spread found across observations.

A summary of the qualitative trends of the $^{12}\text{C}/^{13}\text{C}$ ratio with time, as a function of the combination of the physical parameters we varied in our models, is given in Table 1.

The complex, highly time and parameter dependent, behaviour of the $^{12}\text{C}/^{13}\text{C}$ ratio is a consequence of the many different reaction channels involved in the ^{13}C chemistry (although we again note that our network only includes singly fractionated molecules).

3.2 Differences in fractionation among C-bearing molecules

Differentiation in fractionation of carbon has been investigated by other authors before, but usually at temperatures of ≤ 50 K (Roueff et al. (2015); Colzi et al. (2020)). For example, Roueff et al. (2015) find that, in a model ran at both 2×10^4 (a) and 2×10^5 cm^{-3} (b) at 10 K, the $^{12}\text{C}/^{13}\text{C}$ is much higher in HCN than in CN at most times during the chemical evolution of the gas. As explained in Section 2, in order to test our network, we ran a model similar to model (b) presented in Roueff et al. (2015) and find indeed the same trend at 10 K.

Within our grid of models, we find that there are always large variations among most of the carbon bearing species we looked at. In order to qualitatively summarise these differences in the context of the environments we modelled, we shall divide our discussion according to different combination of physical and energetic parameters qualitatively mimicking different types of galaxies. As a caveat to this approach, we of course note that assigning particular characteristics to a class of galaxies is by definition an oversimplification. For this Section, we shall only consider models up to densities of 10^5 cm^{-3} as, observationally, in most cases the beam is unlikely to encompass *average* densities higher than that.

Spiral Galaxies: assuming these galaxies are similar to the Milky Way from an energetic point of view (and hence we can model them with a standard cosmic ray ionization rate and radiation field strength), we find that the large scale molecular gas (with gas density of 10^4 cm^{-3} and an $A_V = 1$ mags), has a rather constant $^{12}\text{C}/^{13}\text{C}$ for CO of ~ 69 but we see other species vary within a range going from ≤ 20 (for H_2CO and HCO^+) to 300 or so (for CS). By 10,000 years, steady state is reached and the only species that have a $^{12}\text{C}/^{13}\text{C}$ ratio close to the canonical one of ~ 70 is HCN, with the CN $^{12}\text{C}/^{13}\text{C}$ ratio slightly lower (60). (cf Fig 4 Top). For higher visual extinction, still at densities of 10^4 cm^{-3} , (mimicking possibly the gas in Giant Molecular Clouds, GMCs), by 10^4 years, the $^{12}\text{C}/^{13}\text{C}$ ratio is more constrained and converging to a range between 40 and 70 with the exception of H_2CO whose $^{12}\text{C}/^{13}\text{C}$ ratio is very low until past a million

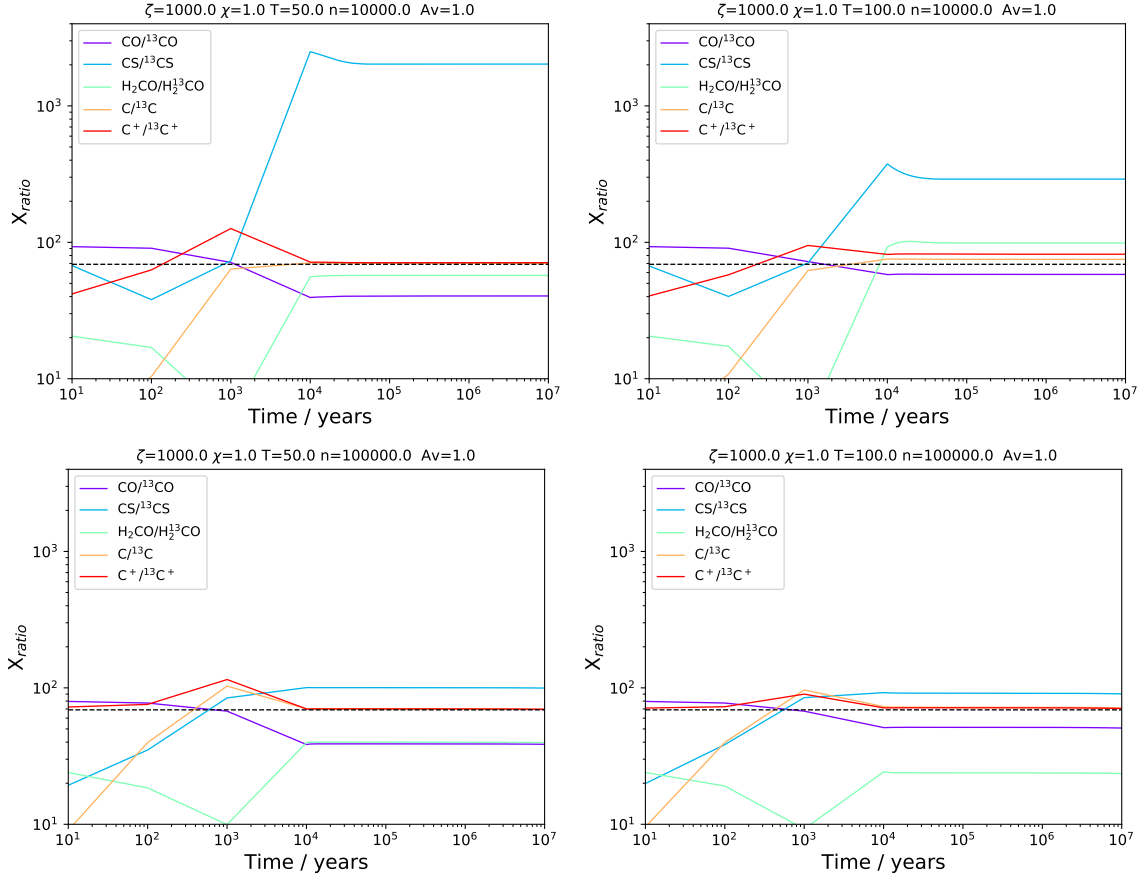


Figure 2. Example of differences in C fractionation due to the increase in gas temperature. In this Figure, as in all the others, the horizontal dashed line indicates the reference value of 69 for the $^{12}\text{C}/^{13}\text{C}$ in the local ISM (Wilson 1999). The units of the parameters in the title for each plot of this Figure and of all the following Figures are: ζ_0 , Draine, K , cm^{-3} and magnitudes.

Table 1. Qualitative trends of the $^{12}\text{C}/^{13}\text{C}$ ratio as a function of different parameters for species other than CO.

Model	$A_V = 1$ mag	$A_V \geq 10$ mag
standard	Increases with time at low density only	Decreases with time at low density only
high ζ	Increase with time at low n_H At high n_H , very early steady state	Decrease/Increase at early times HCO ⁺ /CS (low n_H only)
high χ	Increase for H ₂ CO and HCO ⁺ at low n_H Increase for CS at high n_H .	No sensitivity to χ
high $\zeta + \chi$	Highly variable, especially for CS	Highly variable, especially for CS

years when it then converges towards the canonical value (see Figure 4 Bottom). Similarly, at densities of 10^5 cm^{-3} and high visual extinction (simulating perhaps the densest gas within GMCs), the lowest $^{12}\text{C}/^{13}\text{C}$ (~ 18) is found for H₂CO (at least until 10^6 years), followed by HCN with a constant value of 40 (see Fig. 8). CS on the other hand has a variable and high $^{12}\text{C}/^{13}\text{C}$ until 1 million years when it settles to the canonical value of 70. In general, even for relatively quiescent environments, chemical fractionation can lead to a relatively large range of $^{12}\text{C}/^{13}\text{C}$ across molecules in spirals.

Starburst galaxies: in chemical models it is often accepted that one may reproduce such environments by using an FUV radiation field enhanced as compared to normal spiral galaxies (Israel & Baas 2001; Bayet et al. 2008, 2009).

Taking a $\chi = 1000 \chi_0$ as representative we find that in gas at low visual extinction, FUV dissociation can highly influence fractionation across molecules, including CO. For example, at 10^4 cm^{-3} the $^{12}\text{C}/^{13}\text{C}$ ratio is never higher than 70 for all molecules but CS, where in the latter it reaches values of 500 at steady state. The $^{12}\text{C}/^{13}\text{C}$ ratio for CO is ~ 40 . (see Fig 9).

At higher densities, at low visual extinction, the $^{12}\text{C}/^{13}\text{C}$ ratio is much more constant with time. The differences between CS and the rest of the molecules are also quite large, with most species having a $^{12}\text{C}/^{13}\text{C}$ below 70, and the CS $^{12}\text{C}/^{13}\text{C}$ ratio being as high as 400. The HCN molecule is the only one with a $^{12}\text{C}/^{13}\text{C}$ ratio of 70. This is an interesting result as it implies that dense gas in starbursts should

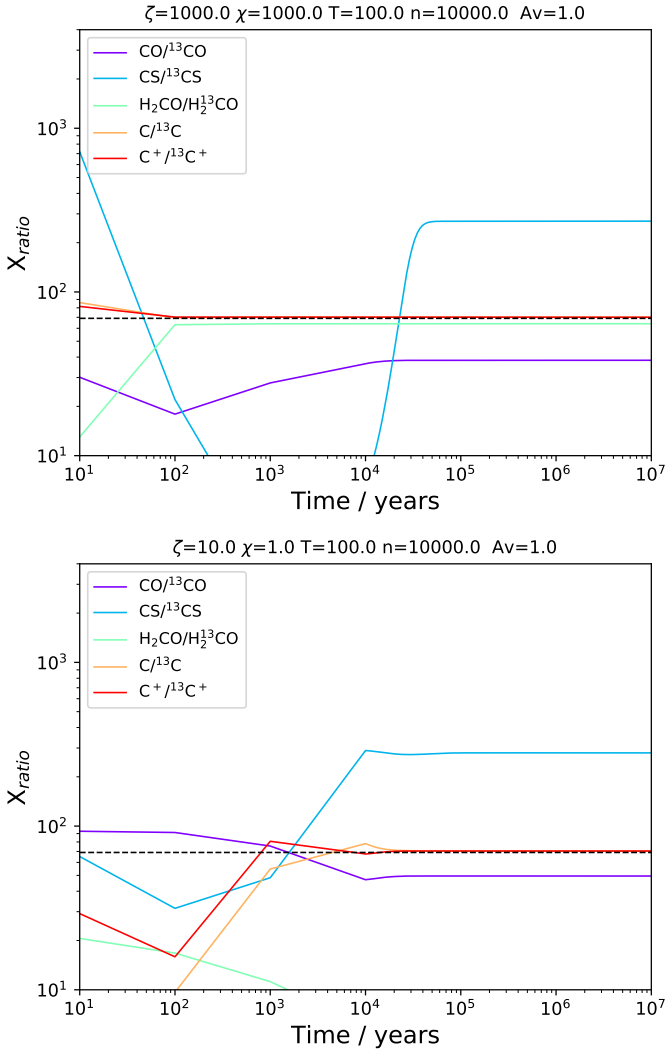


Figure 3. Examples of physical conditions under which $^{12}\text{C}/^{13}\text{C}$ in CO is lowest (Top plot) or higher (Bottom plot) than 68 (and for early times only) .

maintain a relatively constant, lower than solar, $^{12}\text{C}/^{13}\text{C}$, for most species (see Fig 10).

AGN-dominated galaxies: we choose to represent AGN dominated galaxies by models with a cosmic ray ionization rate 1000 times the Galactic one. As in Paper I, we do note that for the purpose of our modelling, the cosmic ray ionization flux parameter is also used to “simulate” an enhancement in X-ray flux. While this approximation has its limitations, the chemistry arising from these two fluxes should be similar (Viti et al. 2014). Examples of such environments are then in Figure 2 at low A_V , and Figure 11 at higher A_V . Interestingly, in these environments the $^{12}\text{C}/^{13}\text{C}$ ratio of CO is in fact always lower than 69. The CS $^{12}\text{C}/^{13}\text{C}$ ratio can instead reach high values at densities of 10^4 cm^{-3} only. We expect the $^{12}\text{C}/^{13}\text{C}$ ratio for HCN and CN to be very similar in AGN-dominated galaxies, while for H_2CO is always lower than for the rest of the species.

Composite Galaxies: These galaxies (where both an AGN and starburst rings are present) may be represented

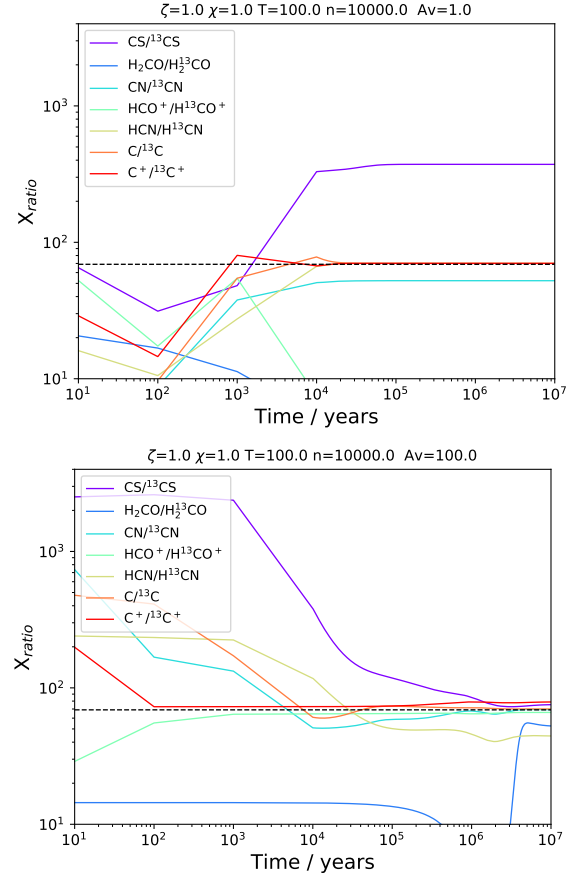


Figure 4. $^{12}\text{C}/^{13}\text{C}$ for selected carbon-bearing species under typical dense cloud conditions at low visual magnitudes (Top) and high visual magnitudes (Bottom)

by models where both the cosmic ray ionization rate and the radiation field are enhanced. Obviously there are too many combinations to discuss here but if we were to take a representative combination of an enhancement of 100 for both ζ and χ then we find that at low visual extinctions the $^{12}\text{C}/^{13}\text{C}$ ratio is again 69 only for HCN, with the CO and CN ones always lying below this value, at ~ 40 -50, and the CS one being as high as 400. (see Fig. 12). At higher visual extinctions, the $^{12}\text{C}/^{13}\text{C}$ for all species stabilizes at ~ 70 for most species as long as the gas density is above 10^4 cm^{-3} , while at lower densities it decreases for some species (H_2CO and HCO^+).

In addition to CO, our models suggest that HCN is the best molecular tracer of the primordial $^{12}\text{C}/^{13}\text{C}$ ratio, possibly instead of CN, as proposed by Henkel et al. (2014). This is because it suffers less from chemical fractionation than the other C-bearing species. While CO probes lower-density gas, HCN is therefore the best tracer to measure the $^{12}\text{C}/^{13}\text{C}$ ratio toward high-density regions as in the nuclei of external galaxies.

3.3 Comparison with observations

The aim of this section is to qualitatively determine whether there is any observational evidence that chemical fractionation can affect the $^{12}\text{C}/^{13}\text{C}$ ratio in the various species in

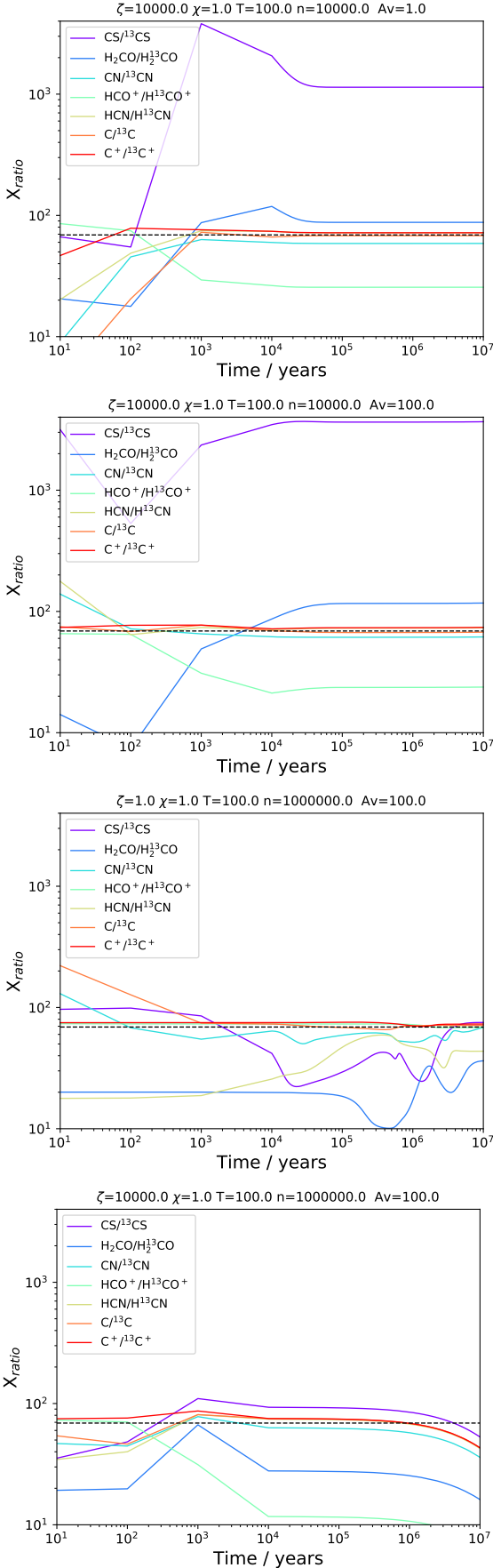


Figure 5. $^{12}\text{C}/^{13}\text{C}$ for selected species and models showing the effects of varying the cosmic ray ionization rate. MNRAS 000, 1–14 (2019)

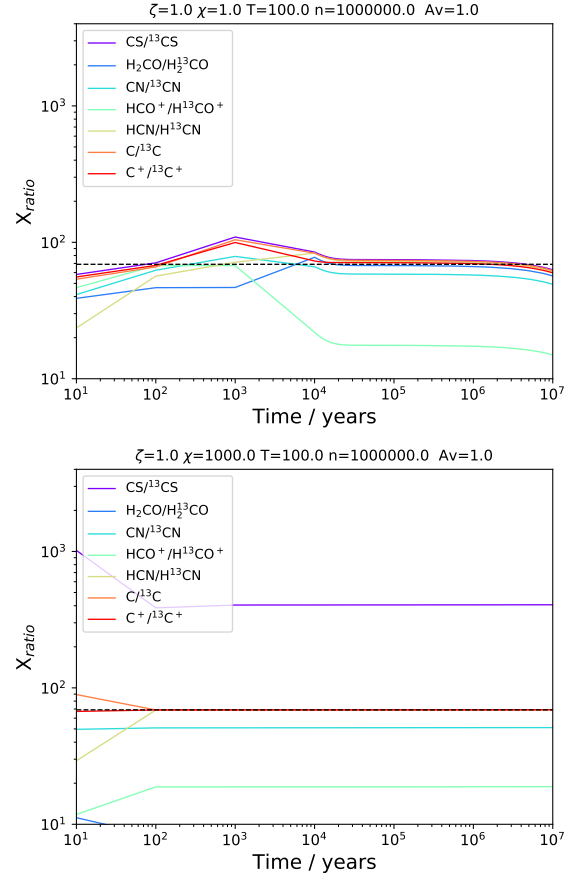


Figure 6. $^{12}\text{C}/^{13}\text{C}$ for selected species and models showing the effects of varying the radiation field strength.

galaxies. Of course we note that the elemental isotope ratio can be very sensitive to IMF variations (Romano et al. 2017, 2019) which would skew it from its canonical value of ~ 70 before any chemistry can take place in the ISM.

In Table 2, we list some of the observational values of $^{12}\text{C}/^{13}\text{C}$ for external galaxies reported in the literature. In addition to this table we also note a study of carbon-bearing species across a large sample of ULIRG and starburst galaxies performed by Israel et al. (2015) who find a very high $^{12}\text{CO}/^{13}\text{CO}$ ratio (200–3000).

In this context, we briefly discuss our findings below, bearing in mind that most of the measurements obtained so far encompass the whole size of the galaxy, hence any chemical fractionation will be the consequence of global and not local effects. Even in the very few studies performed so far at high-angular resolution, e.g. the recent ALMA maps of Martín et al. (2019) and Tang et al. (2019), the spatial scales resolved are of the order of ~ 100 pc, which may include star-forming as well as quiescent gas, and hence caution needs to be taken when drawing conclusions on the origin of the chemical fractionation. Moreover, as a further caveat we note that the elemental isotopic ratio, in starbursts and high redshift galaxies in particular, may significantly differ from the one used here. Our comparison is, on the other hand, always made assuming that the elemental ratio at the beginning of the calculation is not too different from the galactic one.

We further note that while, ideally, every isotopologue

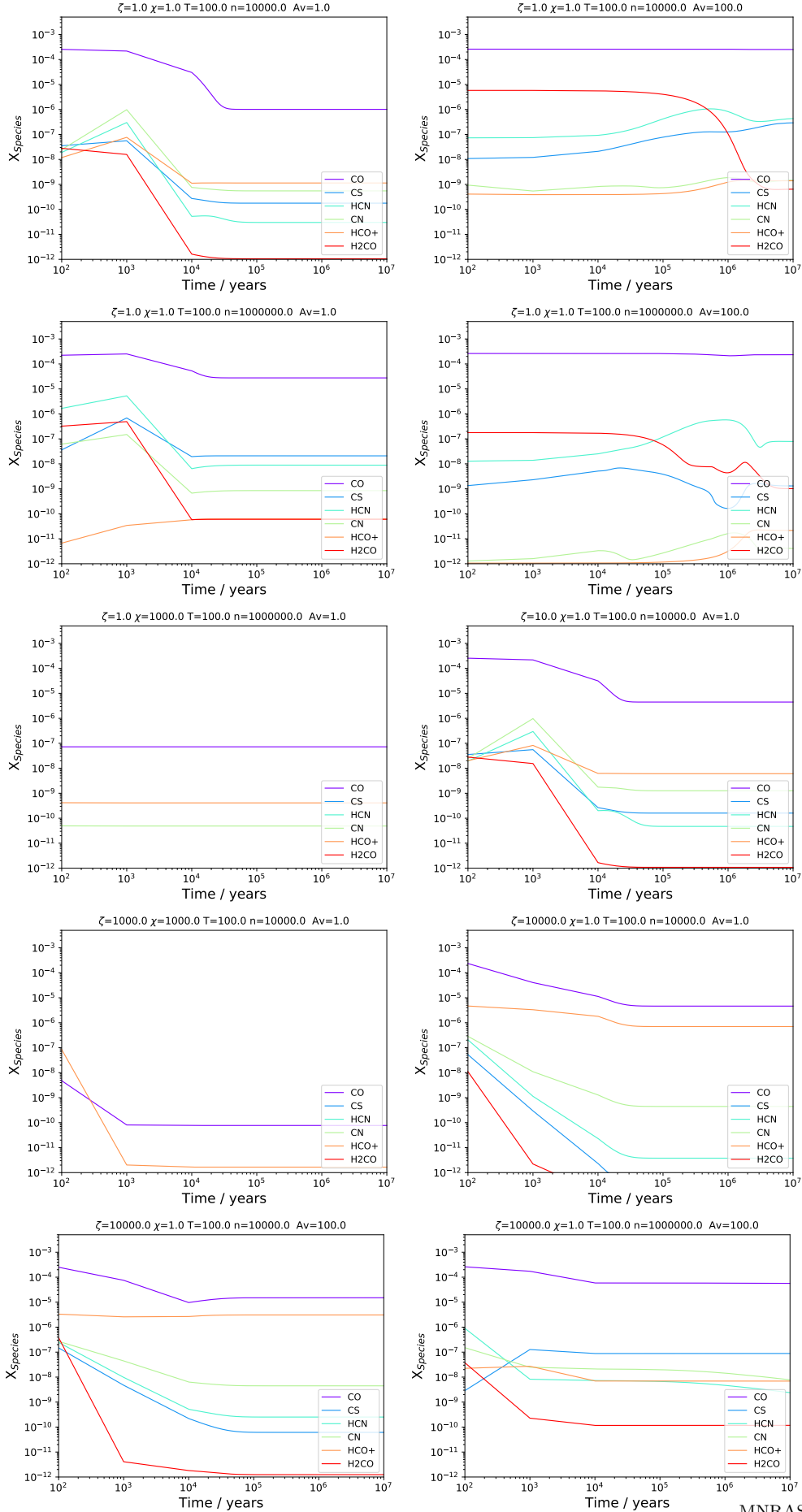


Figure 7. Fractional abundances of the species for which their isotopic ratios are discussed in Section 3.1.

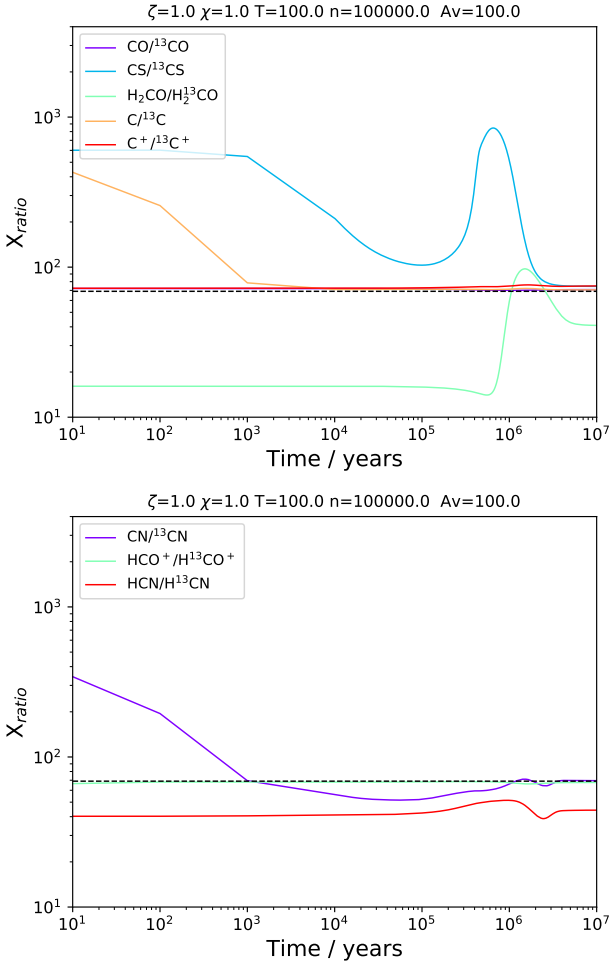


Figure 8. $^{12}\text{C}/^{13}\text{C}$ for selected species in spiral galaxies at high densities.

comparison below should be accompanied with one from the main species, this is seldom possible as the main species is either not reported or often derived from different observations. More importantly, direct comparison of single species between models and observations can not be performed as the beam, even at the highest spatial resolution, will encompass multiple gas components (this is discussed at length in e.g. Viti 2017). Comparisons of the $^{12}\text{C}/^{13}\text{C}$ ratio on the other hand removes the uncertainties of the beam dilution, provided one assumes the two species arise from the same gas. Nevertheless, for transparency, for one of the models discussed below, we plot the abundances of the main species and show that they are indeed reasonable in their range of values, and indeed qualitatively comparable to what one would expect or find for that type of galaxy.

- *Starburst Galaxies:* For this type of galaxies we compare the $^{12}\text{C}/^{13}\text{C}$ for CN and CS with our models. For CN we in fact find that, at steady state, all models predict a $^{12}\text{C}/^{13}\text{C}$ that falls in the range of 30 to 67 and hence this comparison is not informative. The carbon fractionation of CS may be uncertain due, among other things, to the uncertainties in the fractionation of sulfur (Henkel et al. 2104; Chin et al. 1996). Values have been reported ranging from ~ 27 to ~ 70 . We find that this range is satisfied by many

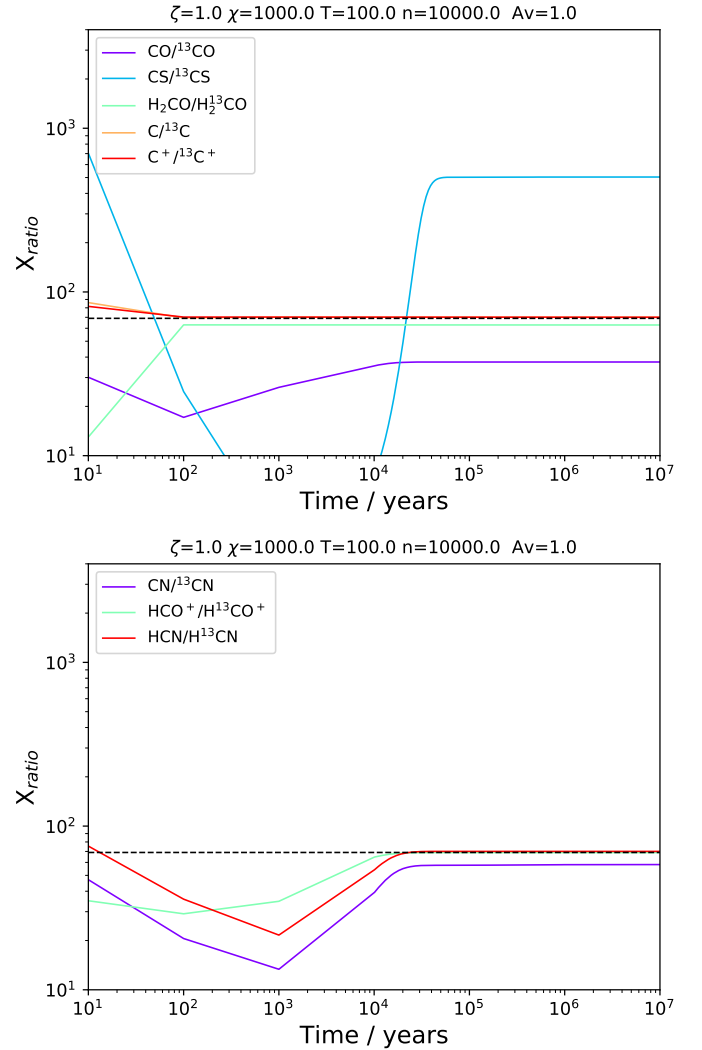


Figure 9. $^{12}\text{C}/^{13}\text{C}$ for selected species in extended gas in starburst galaxies.

models from our grid, and they all have a radiation field larger than 1 Draine. Moreover if we exclude models whose $^{12}\text{C}/^{13}\text{C}$ ratio for CS only falls into the required range after at least 10^4 years, then the remaining models all have a cosmic ray ionization rate higher than Galactic and a gas density of at least 10^5 cm^{-3} . This combination of parameters is consistent with that expected for starburst galaxies and for gas traced by the high density tracers such as CS. We show in Figure 13 the abundance of the main isotopologue of CS, as well as other standard abundant molecular species, for one of the models whose $^{12}\text{C}/^{13}\text{C}$ fit the observations.

- *Local and high redshift LIRG/ULIRG:* for these galaxies, CO is the only species for which we have a $^{12}\text{C}/^{13}\text{C}$, except for Mrk 231 for which the $^{12}\text{C}/^{13}\text{C}$ ratio has been derived also from CN, and it is ~ 100 . In all cases the CO $^{12}\text{C}/^{13}\text{C}$ ratio is measured to be in the range ~ 100 – 230 . This range is never matched although for the first 100 years or so there are some low density and low visual extinction models that approach a $^{12}\text{C}/^{13}\text{C}$ ratio of 100. The CN $^{12}\text{C}/^{13}\text{C}$ ratio is also never matched by our models at steady state, al-

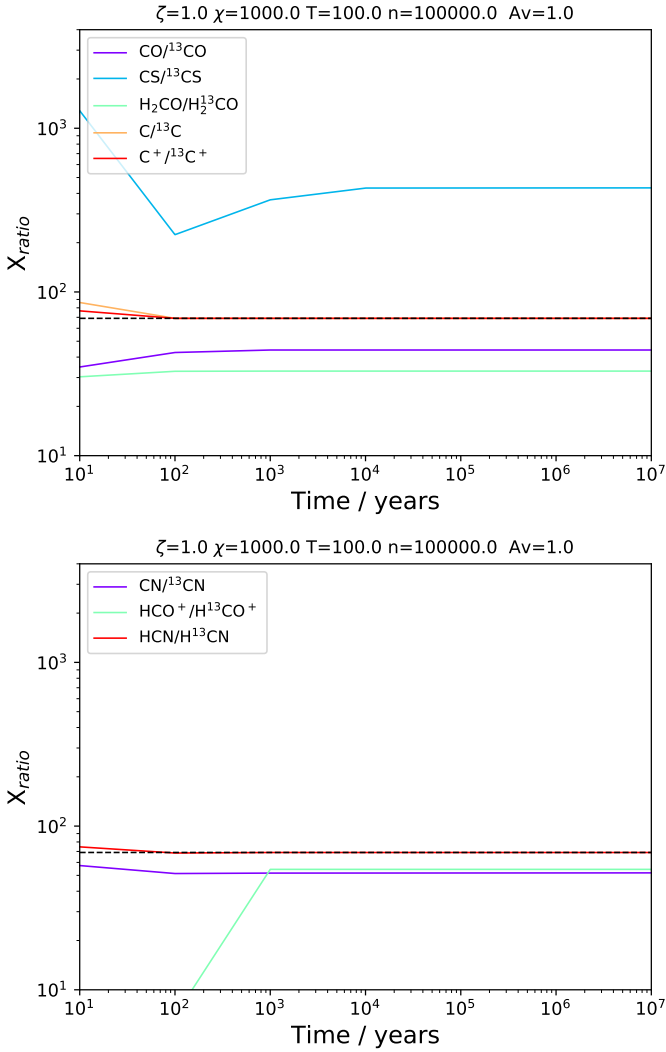


Figure 10. $^{12}\text{C}/^{13}\text{C}$ for selected species in dense gas in starburst galaxies.

though models with a high visual extinction and a high density match this ratio at early times ($< 10,000$ years). We believe that the failure of chemical models to match the high $^{12}\text{C}/^{13}\text{C}$ ratios for CN and CO is a confirmation that the isotopic decrease is *not* a product of ISM chemistry but rather of nucleosynthesis..

- *LMC*: for this low-metallicity galaxy the $^{12}\text{C}/^{13}\text{C}$ is derived from H_2CO and it is ~ 50 . Since the metallicity for this galaxy is believed to be half of the solar one, we have ran a full grid of models at such metallicity. Several models perfectly match this ratio. The common parameters to *all* matching models are a high cosmic ray ionization rate ($> 10 \zeta_\odot$) and a low visual extinction (1 mag). See Fig. 14 for examples of best fit models.

- *AGN/composite galaxies*: for the composite galaxy NGC 1068 our only measure of carbon fractionation comes from CN. A $^{12}\text{C}/^{13}\text{C}$ ratio of ~ 50 can be matched by many models, *all* sharing two common parameters: a visual extinction of 1 mag and a radiation field higher than 1 Draine. This finding is consistent with CN being a tracer of PDR

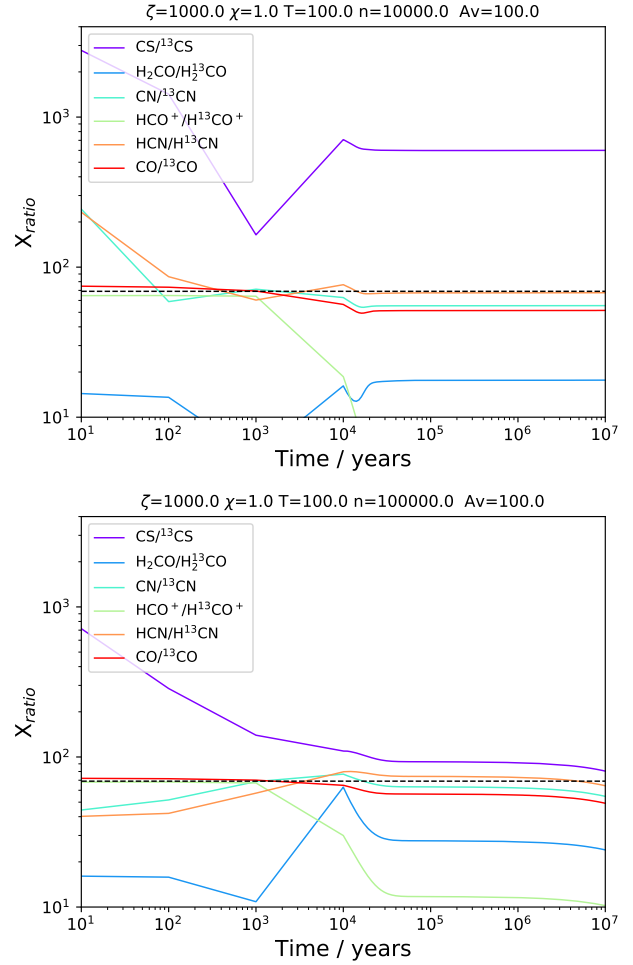


Figure 11. $^{12}\text{C}/^{13}\text{C}$ for selected species in AGN dominated galaxies. See also Figure 2

gas. Aladro et al. (2013) reports values for the column density of the main isotopologue of CN of $5\text{--}6 \times 10^{15} \text{ cm}^{-2}$ which, at a visual extinction of 1, would correspond to a fractional abundance of 3×10^{-6} . It is not possible to reach such a high fractional abundance of CN by a single PDR. It is much more likely that within the beam of the Aladro et al. (2013) observations a number of PDRs were present: of the models that match a $^{12}\text{C}/^{13}\text{C}$ ratio of 50 for CN, several can reach up to 5×10^{-8} – 10^{-7} in the CN fractional abundance which would imply ~ 10 – 50 PDRs within the beam size. For the other three active galaxies from Table 2 all give a $^{12}\text{C}/^{13}\text{C}$ ratio of ~ 40 to ~ 45 for HCO^+ and HCN, but higher by almost a factor of 100 for CO (for at least one galaxy). A ratio of ~ 40 for HCO^+ is hard to match although a model with a very high cosmic ray ionization rate, a density of 10^5 cm^{-3} and again a visual extinction of 1 mag would be the best match. On the other hand a ratio closer to ~ 50 for HCO^+ is reached as long as the visual extinction is again 1 mag, and the radiation field higher than Galactic, consistent with our findings from CN. Figure 15 shows the $^{12}\text{C}/^{13}\text{C}$ ratio for HCO^+ and CN for one of our best fit models. On the other hand, a $^{12}\text{C}/^{13}\text{C}$ ratio of 40 for HCN is only achieved for models with a high density of 10^6 cm^{-3} and a high visual extinction (see Figure 8), which could indicate ^{13}C enrich-

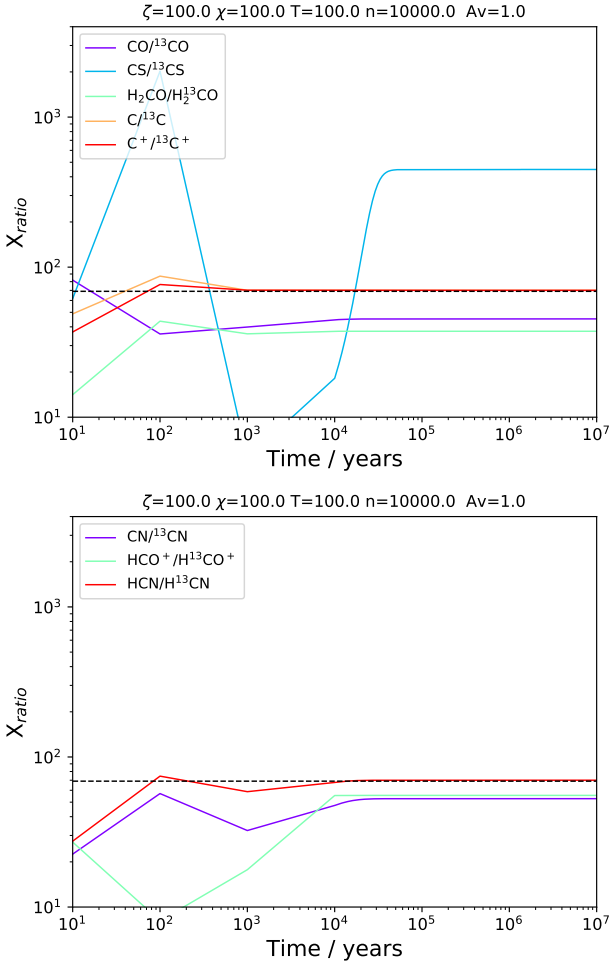


Figure 12. $^{12}\text{C}/^{13}\text{C}$ for selected species in composite galaxies.

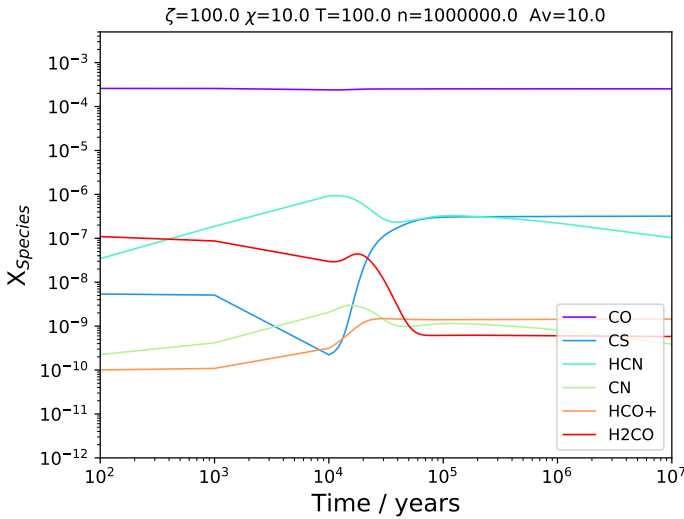


Figure 13. One of the best matching models for the CS fractionation in starburst galaxies.

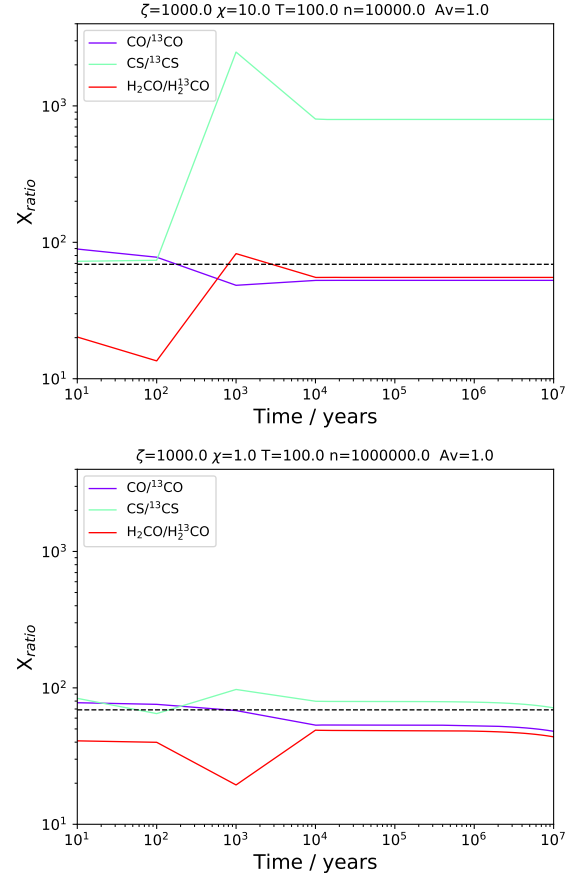


Figure 14. Two models at half the solar metallicity, where the $^{12}\text{C}/^{13}\text{C}$ for H_2CO approaches ~ 50 .

ment due to fractionation in the densest and not illuminated regions. As before, a $^{12}\text{C}/^{13}\text{C}$ ratio of 100 for CO is never reached, excluding ISM chemistry as the cause of such a high ratio. We note in fact that Papadopoulos et al. (2014) finds a $^{12}\text{CO}/^{13}\text{CO}$ ratio which is even higher (200-500) but they attribute this to the possibility that this is due to a top-heavy IMF sustained over long timescales in galaxies which are active (mergers or starburst).

- *Spirals*: for the local spiral galaxy IC 342 we only have lower limits for the $^{12}\text{C}/^{13}\text{C}$ ratio as derived from observations of CN. Our conclusions for NGC 253 are also valid for this case. For the high redshift galaxies MA0.89 and MA0.68 the $^{12}\text{C}/^{13}\text{C}$ was averaged from observations of HCN, HCO^+ and HNC from Muller et al. (2006) and Wallström et al. (2016) to be ~ 27 and ~ 40 , respectively. There are no models that give either value for all of these species at the same time. In fact, especially for HCO^+ , it is either lower than 27 or higher than 40. Without more knowledge of the individual values for each of these species for each galaxy we can not speculate any further, other than saying that the models that produce a similar $^{12}\text{C}/^{13}\text{C}$ for all the three species at ~ 50 all have a cosmic ray ionization rate of $1000 \zeta_0$ and a gas density of 10^6 cm^{-3} . As the Muller et al. (2006) and Wallström et al. (2016) observations are absorption measurements of the intervening gas in spiral galaxies along the line of sight of quasars, it is very unlikely that the detected molecules are tracing such a high density gas.

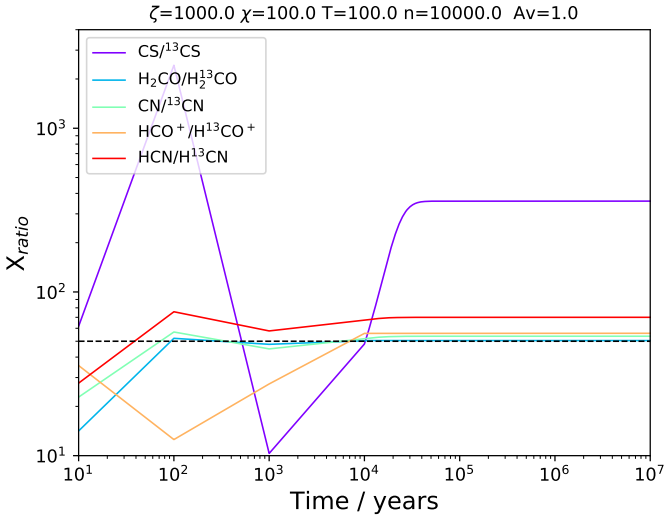


Figure 15. The CN and HCO⁺ fractionation in composite galaxies for one of our best model fits.

4 CONCLUSIONS

In this paper we report the results of a theoretical chemical study of the carbon fractionation in the ISM, where we investigated the effects of chemical fractionation under different physical conditions, resembling the range of conditions found in external galaxies. Our main conclusions are:

(i) As for the case of nitrogen fractionation (see Paper I), a difference of a factor of 2 in gas temperature (from 50 to 100 K) does not seem to affect chemical fractionation much (a factor 2 in the most extreme cases).

(ii) Under the conditions investigated, the ¹²CO/¹³CO ratio is relatively constant, and in most cases it is close to 70.

(iii) For species other than CO, carbon fractionation has a strong dependence on the time evolution of the gas as well as on the physical parameters employed, although HCN seems to be the best tracer to probe the ¹²C/¹³C ratio in the majority of cases. On the other hand we note that H₂CO often exhibits very low fractionation, and may therefore not be a good species for measuring the ¹²C/¹³C ratio.

(iv) A high cosmic ray ionization rate and/or a high radiation field leads to a much more variable fractionation for most species.

(v) As previously found by other authors (e.g. Roueff et al. 2015) there are always large variations in the ¹²C/¹³C among the carbon bearing species investigated.

(vi) Qualitatively, we are able to match most of the observations of the ¹²C/¹³C in external galaxies. We note however that our models do not take into consideration differences in nucleosynthesis products i.e we assume that the elemental isotopic carbon ratio is the so called standard one (Wilson 1999).

(vii) Our model predictions, when compared to observations, strongly support the theory that a high ¹²C/¹³C in CO (> 100) is a product of nucleosynthesis rather than ISM chemistry.

(viii) As all the observations were performed with a beam that encompasses very extended gas, any variation in fractionation is not due to local conditions (e.g star formation

versus quiescent gas) but to the global effects of chemical fractionation.

We stress once more that the few current measurements cannot constrain linear scales smaller than ~ 100 pc, and hence only very high-angular resolution observations will allow us to observe local, instead of global, isotopic ratios and put more stringent constraints on our models.

ACKNOWLEDGEMENTS

SV acknowledges support from the European Research Council (ERC) grant MOPPEX ERC-833460. SV and FF acknowledge the support of STFC (grant number ST/R000476/1) and the Center for Astrochemical Study at MPE for partially supporting this work. I.J.-S. has received partial support from the Spanish FEDER (project number ESP2017-86582-C4-1-R). We thank Prof Roueff for providing us the needed information to perform a benchmarking with her model, and the anonymous referee for their constructive comments which improved the manuscript.

DATA AVAILABILITY

The model outputs underlying this article will be freely shared on request to the corresponding author.

REFERENCES

- Akerman C.J., Carigi L., Nissen P.E., Pettini M., Asplund M. 2004, *A&A*, 414, 931
 Aladro, R., Viti, S., Bayet, E., et al. 2013, *A&A*, 549, A39
 Asplund, M., Grevesse, N., Sauval, A.J., Scott, P. 2009, *ARA&A*, 47, 481
 Bayet, E., Viti, S., Williams, D.A., Rawlings, J.M.C. 2008, *ApJ*, 676, 978
 Bayet, E., Viti, S., Williams, D.A., Rawlings, J.M.C., Bell, T. 2009, *ApJ*, 696, 1466
 Bayet, E., Williams, D. A., Hartquist, T. W., et al. 2011, *MNRAS*, 414, 1583
 Chin, Y.-N., Henkel, C., Whiteoak, J. B., et al. 1996, *A&A*, 305, 960
 Colzi, L., Sipila O., Roueff, E., Caselli, P., Fontani, F., accepted by *MNRAS*
 Danielson, A.L.R., Swinbank, A.M., Smail, I., Bayet, E., van der Werf, P.P., Cox, P., Edge, A.C., et al. 2013, *MNRAS*, 436, 2793
 Draine, B.T., 1978, *ApJS*, 36, 595
 Draine, B.T. & Bertoldi, F. 1996, *ApJ*, 468, 269
 González-Alfonso, E., Fischer, J., Graciá-Carpio, et al. 2012, *A&A*, 541, A4
 Henkel, C., Chin, Y.-N., Mauersberger, R., Whiteoak, J.B. 1998, *A&A*, 329, 443
 Henkel, C., Downes, D., Weiss, A., Riechers, D., & Walter, F. 2010, *A&A*, 516, A111
 Henkel, C., Asiri, H., Ao, Y., Aalto, S. Danielson, A.L.R., Papadopoulos, P.P., García-Burillo, S. et al. 2014, *A&A*, 565, A3
 Holdship, J., Viti, S., Jiménez-Serra, I., Makrymallis, A., Priestley, F. 2017, *AJ*, 154, 38
 Israel, F.P. & Baas, F. 2001, *A&A*, 371, 433

Table 2. $^{12}\text{C}/^{13}\text{C}$ measured in external galaxies

Galaxy	type	$^{12}\text{C}/^{13}\text{C}$	Molecule	Reference
NGC 253	starburst	~ 40 ; 30 – 67	CN	Henkel et al. (2014); Tang et al. 2019
NGC 253	starburst	$\sim 27 - 70$	CS	Martin et al. (2005, 2006); Henkel et al. (2014)
M82	starburst	> 40	CN	Henkel et al. (1998)
NGC 253	starburst nucleus	~ 21	C^{18}O^a	Martín et al. (2019)
NGC 4945	starburst nucleus	6–44	CN	Tang et al. (2019)
	starburst	$\sim 10 - 70$		
VV 114	LIRG	~ 230	CO	Sliwa et al. (2013)
NGC 1614	LIRG	~ 130	CO	Sliwa et al. (2014)
Mrk 231	ULIRG	~ 100	CO, CN	Henkel et al. (2014)
Arp 220	ULIRG	~ 100	CO	González-Alfonso et al. (2012)
Arp 193	ULIRG	~ 150	CO	Papadopoulos et al. (2014)
Cloverleaf	ULIRG $z = 2.5$	100 – 200	CO	Spilker et al. (2014)
Eyelash	ULIRG $z = 2.3$	~ 100	CO	Danielson et al. (2013)
	LIRG/ULIRG	$\sim 100 - 230$		
LMC	0.5 metal	~ 49	H_2CO	Wang et al. (2009)
NGC 1068	AGN+starburst	~ 50 ; 24–62	CN	Aladro et al. (2013); Tang et al. (2019)
NGC 4258	AGN	~ 46	HCO^+	Jiang et al. (2011)
NGC 3690	AGN+starburst	~ 40	HCO^+	Jiang et al. (2011)
NGC 6240	AGN+starburst	~ 41	HCN	Jiang et al. (2011)
NGC 6240	AGN+starburst	300 – 500	CO	Papadopoulos et al. (2014); Pasquali et al. (2004)
	AGN/composite	$\sim 20 - 60$ (except NGC 6240 in CO)		
IC 342	spiral local	> 30	CN	Henkel et al. (1998)
MA0.89	spiral $z = 0.89$	~ 27	HCN, HCO^+ , HNC	Muller et al. (2006)
MA0.68	spiral $z = 0.68$	~ 40	HCN, HCO^+ , HNC	Wallström et al. (2016)
	spiral	$\sim 30 - 40$		

^a In this case the $^{12}\text{C}/^{13}\text{C}$ ratio is extracted from the $^{12}\text{C}^{18}\text{O}/^{13}\text{C}^{18}\text{O}$

Israel, F.P., Rosenberg, M.J.F., van der Werf, P. 2015, *A&A*, 578, 95
 Jiang, X., Wang, J., Gu, Q. 2011, *MNRAS*, 418, 1753
 Kazandjian, M. V., Meijerink, R., Pelupessy, I., et al. 2015, *A&A*, 574, A127
 Kazandjian, M. V., Meijerink, R., Pelupessy, I., et al. 2012, *A&A*, 542, A65
 Langer, W. D., Graedel, T. E., Frerking, M. A., et al. 1984, *ApJ*, 277, 581
 Liszt, H. S. 2007, *A&A*, 476, 291
 Loison, J.-C., Wakelam, V., Gratier, P., Hickson, K.M. 2019, *MNRAS*, 484, 2747
 Martín, S., Muller, S., Henkel, C., Meier, D.S., Aladro, R., Sakamoto, K. van der Werf, P.P. 2019, *A&A*, 624, A125
 Martín, S., Martín-Pintado, J., Mauersberger, R., Henkel, C., García-Burillo, S. 2005, *ApJ*, 620, 210
 Martín, S., Mauersberger, R., Martín-Pintado, J., Henkel, C., García-Burillo, S. 2006, *ApJS*, 164, 450
 McElroy, D., Walsh, C., Markwick, A.J., Cordiner, M.A., Smith, K., Millar, T. J. 2013, *A&A*, 550, 36
 Meijerink, R., Spaans, M., Loenen, A. F., et al. 2011, *ApJ*, 525, A119
 Mladenović, M., & Roueff, E. 2014, *A&A*, 566, A144
 Milam, S.N., Savage, C., Brewster, M.A., Ziurys, L.M. 2005, *ApJ*, 634, 1126
 Muller, S., Guélin, M., Dumke, M., Lucas, R., Combes, F. 2006, *A&A*, 458, 417
 Pagel, B. 1997, *Nucleosynthesis and Chemical Evolution of Galaxies* (Cambridge:Cambridge Univ. Press)

Papadopoulos, P.P., Zhang, Z.-Y., Xilouris, E.M., Weiss, A., van der Werf, P., Israel, F.P., Greve, T.R., Isaak, K.G., Gao, Y. 2014, *ApJ*, 788, 153
 Röllig, M., & Ossenkopf, V. 2013, *A&A*, 550, A56
 Romano, D., Matteucci, F., Zhang, Z.-Y., Papadopoulos, P.P., Ivison, R.J. 2017, *MNRAS*, 470, 401
 Romano, D., Matteucci, F., Zhang, Z.-Y., Ivison, R.J., Ventura, P. 2019, *MNRAS*, in press
 Roueff, E., Loison, J.C., Hickson, K.M. 2015, *A&A*, 576, 99
 Savage, C., Apponi, A.J., Ziurys, L.M., Wyckoff, S. 2002, *ApJ*, 578, 221
 Sliwa, K., Wilson, C.D., Krips, M., Petitpas, G.R., Iono, D., Juvela, M., Matsushita, S., et al. 2013, *ApJ*, 777, 126
 Sliwa, K., Wilson, C.D., Iono, D., Peck, A., Matsushita, S. *ApJL*, 2014, 796, L15
 Smith, D., & Adams, N. G. 1980, *ApJ*, 242, 424
 Tang, X.D., Henkel, C., Menten, K.M., Gong, Y., Martín, S., Mühle, S., Aalto, S., et al. 2019, *A&A*, 629, 6
 Visser, R., van Dishoeck, E. F., & Black, J. H. 2009, *A&A*, 503, 323
 Viti S., Collings M. P., Dever J. W., McCoustra M. R. S., Williams D. A., 2004, *MNRAS*, 354, 1141
 Viti S., García-Burillo, S., Fuente, A., Hunt, L.K., Usero, A., Henkel, C., et al. 2014, *A&A*, 570, A28
 Viti S., 2017, *A&A*, 607, A118
 Viti, S., Fontani, F., Holdship, J., Jiménez-Serra, I. 2019, *MNRAS*, 486, 4805

- Wakelam V., et al., 2015, ApJS, 217, 20
Wallström, S.H.J., Muller, S., Guélin, M. 2016, A&A, 595, A96
Watson, W. D., Anicich, V. G., & Huntress, W. T. 1976, ApJ, 205, L165
Wang, M., Chin, Y.-N., Henkel, C., Whiteoak, J.B., Cunningham, M. 2009, ApJ, 690, 580
Wilson, T.L. 1999, RPPh, 62, 143
Wilson, T.L., & Rood, R. 1994, ARA&A, 32, 191
Woods, P. M., & Willacy, K. 2009, ApJ, 693, 1360

This paper has been typeset from a $\text{\TeX}/\text{\LaTeX}$ file prepared by the author.