

Target-adaptive Graph for Cross-target Stance Detection

Bin Liang*
Harbin Institute of Technology
Shenzhen, China
bin.liang@stu.hit.edu.cn

Yonghao Fu*
Harbin Institute of Technology
Shenzhen, China
yonghaoFu@stu.hit.edu.cn

Lin Gui†
University of Warwick
Coventry, UK
lin.gui@warwick.ac.uk

Min Yang
SIAT, Chinese Academy of Sciences
Shenzhen, China
min.yang@siat.ac.cn

Jiachen Du
Harbin Institute of Technology
Shenzhen, China
Jacobvan199165@163.com

Yulan He
University of Warwick
Coventry, UK
Yulan.He@warwick.ac.uk

Ruifeng Xu†
Harbin Institute of Technology
Peng Cheng Lab
Shenzhen, China
xuruifeng@hit.edu.cn

ABSTRACT

Target plays an essential role in stance detection of an opinionated review/claim, since the stance expressed in the text often depends on the target. In practice, we need to deal with targets unseen in the annotated training data. As such, detecting stance for an unknown or unseen target is an important research problem. This paper presents a novel approach that automatically identifies and adapts the target-dependent and target-independent roles that a word plays with respect to a specific target in stance expressions, so as to achieve cross-target stance detection. More concretely, we explore a novel solution of constructing heterogeneous target-adaptive pragmatics dependency graphs (TPDG) for each sentence towards a given target. An in-target graph is constructed to produce inherent pragmatics dependencies of words for a distinct target. In addition, another cross-target graph is constructed to develop the versatility of words across all targets for boosting the learning of dominant word-level stance expressions available to an unknown target. A novel graph-aware model with interactive Graphical Convolutional Network (GCN) blocks is developed to derive the target-adaptive graph representation of the context for stance detection. The experimental results on a number of benchmark datasets show that our proposed model outperforms state-of-the-art methods in cross-target stance detection.

CCS CONCEPTS

• **Information systems** → *Sentiment analysis; Clustering and classification.*

*The first two authors contribute equally to this work.

†Corresponding Authors.

This paper is published under the Creative Commons Attribution 4.0 International (CC-BY 4.0) license. Authors reserve their rights to disseminate the work on their personal and corporate Web sites with the appropriate attribution.

WWW '21, April 19–23, 2021, Ljubljana, Slovenia

© 2021 IW3C2 (International World Wide Web Conference Committee), published under Creative Commons CC-BY 4.0 License.

ACM ISBN 978-1-4503-8312-7/21/04.

<https://doi.org/10.1145/3442381.3449790>

KEYWORDS

cross-target stance detection, graph networks, opinion mining

ACM Reference Format:

Bin Liang, Yonghao Fu, Lin Gui, Min Yang, Jiachen Du, Yulan He, and Ruifeng Xu. 2021. Target-adaptive Graph for Cross-target Stance Detection. In *Proceedings of the Web Conference 2021 (WWW '21), April 19–23, 2021, Ljubljana, Slovenia*. ACM, New York, NY, USA, 12 pages. <https://doi.org/10.1145/3442381.3449790>

1 INTRODUCTION

Stance detection aims to identify people’s opinionated standpoint or attitude (i.e. *favor*, *against*, or *none* etc.) expressed in text towards a specific target [1, 9, 23, 25, 39]. Thanks in part to the availability of data sufficiently annotated with target-dependent stance labels, previous methods achieved promising performance in target-dependent stance detection when trained and tested on the same dataset of targets [7, 18]. However, in practice, it is not possible to enumerate all possible targets beforehand for training stance detection models. As such, there is an urgent need to learn a cross-target stance classifier for targets with few or no labeled data.

To illustrate the task of cross-target stance detection, we show examples in Figure 1 where the source and destination targets are paired with their corresponding sentences and stance labels. Suppose there is no annotated data for the destination target “*Legalization of Abortion*”, i.e. “*Legalization of Abortion*” is unseen in the training dataset. Cross-target stance detection aims to build stance classifiers trained on features extracted from the context of source targets which might be relevant to the destination targets, so as to alleviate the sparsity or lack of annotated data for the stance detection of destination targets.

Some recent studies have been adopted to address cross-target stance detection [32, 34, 37]. These methods either leverage shared features for stance detection of destination targets by way of modeling the topical information with source targets [32, 34] or incorporate external knowledge between source and destination targets

Example 1
Sentence: We live in a sad world when wanting <i>equality</i> makes you a troll
Source target: Feminist Movement
Stance: <i>Favor</i>
Sentence: How about declaring and protecting <i>equality</i> for the unborn now
Destination target: Legalization of Abortion
Stance: <i>Against</i>
Example 2
Sentence: <i>Men</i> don't <i>have</i> a <i>right</i> to talk <i>over</i> you, you <i>are</i> a goddess and don't deserve <i>to</i> be silenced
Source target: Feminist Movement
Stance: <i>Favor</i>
Sentence: <i>Men are</i> playing political football with women's <i>right to have</i> control <i>over</i> our bodies
Destination target: Legalization of Abortion
Stance: <i>Favor</i>

Figure 1: Examples paired with their targets and stance labels. “Source target” denotes the target labeled in the training set, whereas “Destination target” denotes the target is unseen in the training dataset but occurs in the test dataset.

into model learning [37]. Existing methods largely focused on extracting shared information across different targets. Moreover, they only considered the contextual stance expressions in the annotated target dataset. We argue that words may play different roles when used in stance expressions for different targets. As such, it is desirable to leverage fundamental word-level pragmatics dependencies across all targets in order to improve performance of stance detection of unknown targets.

As shown in Figure 1, in Example 1, noting that the stance expressions relating to the word “*equality*” present the opposite stance for the two targets. That is, directly employing the stance information associated with the source target for the learning of stance representations of the destination target may produce wrong results. The main reason is that the same word or expression may signal different stances when associating with different targets. Therefore, it is important to understand the word-level pragmatics information and adapt it for different targets, which could lead to the improved performance in cross-target stance detection. Here, we regard the words (such as “*equality*”) whose inherent stances are target-dependent as **in-target** words. Additionally, in Example 2, words with colors expressing the same stance regardless of the targets associated with are regarded as target-independent stance expressions. These words can effectively boost the performance of stance detection for unknown targets. Correspondingly, we regard these words as **cross-target** words. We argue that the main challenges in stance detection are to identify these two types of words (**in-target v.s. cross-target**), and model the context features for stance detection of targets based on different words types (**target-adaptive**). Specifically, we develop our methodology based on the following hypotheses:

- For words exclusively occurred in stance expressions for certain targets and always convey the same stance, modeling

and adapting these words for deriving pragmatics information according to their associated targets could improve the learning of stance representations.

- If the occurrence of words evenly distributes across different targets, then the pragmatics dependencies formed by these words should be target-independent and they will be useful for generating stance representations for any targets including unknown targets.

To better address cross-target stance detection, in this paper, we propose a novel framework to leverage the fundamental word-level pragmatics dependencies of stance expressions towards a target by constructing target-adaptive heterogeneous (syntactic dependency and pragmatics information) graphs from the in-target and the cross-target perspectives. Utilizing the interactions between different targets, the proposed framework can capture the stance information more accurately and distill the knowledge under different targets with better interpretability.

Specifically, 1) we first compute the target-specific pragmatics weights at the word-level. Here, to capture the inherent role of a word in stance expressions towards a target, we compute the word’s relative occurrence frequency in the context of the target in comparison with that of other targets. We then make use of the stance information from the annotated training data to derive the stance-related pragmatics weight for the word. We next construct an **in-target graph** in which nodes are contextual words and edges between nodes are determined by the pragmatics information and dependency parsing results. The weight of the edge connecting between contextual words is determined by the target-specific pragmatics weight. 2) corresponding to produce target-specific pragmatics weight for each word, we consider the distribution of each word across different known targets to discern which words are the clues for deriving stance expressions to different targets including the unknown targets. Here, we still adopt the stance information extracted from the annotated training data to compute the pragmatics weight for each word across all the targets, and then each edge of another pragmatics dependency graph is derived along with the dependency tree and the word-level pragmatics weight across the targets (called **cross-target graph**).

To leverage both the in-target and cross-target pragmatics dependencies of higher order neighborhoods in heterogeneous graphs, we propose a graph-aware model with interactive GCN blocks to capture the stance information towards a target and adapt the context representations for the target of interest. That is, for each GCN block, the information from neighbors of each node is aggregated to generate the in-target graph embeddings by modeling the in-target graph, and the cross-target graph is further utilized to enrich graph embeddings learning and modify the target-adaptive contextual stance representations. The main contributions of our work can be summarized as follows:

- We are the first to study cross-target stance detection by leveraging target-adaptive pragmatics dependencies of the context based on both in-target and cross-target heterogeneous graphs. The word-level pragmatics information can be decomposed into target-dependent and target-independent, which can be subsequently adapted for the stance detection of unknown targets.

- A novel graph-aware model with interactive GCN blocks is proposed to learn contextual graph representations, which allows the learning of more accurate stance representations for unknown targets.
- Experimental results on a number of benchmark datasets demonstrate that our proposed method outperforms the state-of-the-art models in cross-target stance detection.

2 RELATED WORK

2.1 Stance Detection

Stance detection aims to detect the attitude of a context (e.g. comment or review) according to the given target [6, 13, 17, 27], which is critical to many scenarios such as argumentation mining [22], fake news detection [12], fact checking [29] et al. In some previous studies, Du et al. [5] incorporated target-specific information into stance classification with an attention-based model. Sun et al. [26] exploited a hierarchical attention network to model the stance expression from both context and target. Recently, with the development of social media, more challenging version of stance detection occur, where targets are not always mentioned and no training data is available for the test targets. Thus cross-target stance classification has attracted increasing attention due to the diversification of social text and the limitation of features learning between different targets. Augenstein et al. [1] modeled the features for unknown target by a bidirectional conditional LSTM encoding. Xu et al. [34] proposed a self-attention based neural model to extract the shared features learned from a source target to a destination target and improved the generalization in certain scenarios. To employ transferable topic knowledge from source targets to destination targets, Wei and Mao [32] learned latent topics with neural variational inference [16, 24] to enhance text representations and adopted adversarial training technique to learn more target-invariant representations. Zhang et al. [37] employed external semantic and emotion knowledge as a bridge to enable knowledge to transfer across different targets and enrich the representation learning of the text and target. These works partially extract transferable stance features from source targets to destination targets, while they always ignore the learning of the most rudimentary word-level pragmatics dependencies information across different targets. Since the word-level pragmatics dependencies can perfect the text representation adapt to the target via generalizing the stand expressions across different targets at the principal pragmatics level.

2.2 Graph Neural Network

Graph neural networks (GNN) have attracted uptrend attention, since the information in GNN can be propagated through a graph structure rather than as a simple feature [33, 42]. Recently, graph neural network-based models have achieved promising performance in many NLP tasks, such as text classification [35, 41], sentiment analysis [30], fake news detection [15], neural machine translation [36], Chinese NER [4, 8] et al. Correspondingly, graph neural network is successfully used in many fine-grained targeted text mining applications. For example, in aspect sentiment analysis, Zhang et al. [38] integrated dependency tree into constructing graphs for sentences and utilized graph convolutional networks (GCN) to model the contextual syntactical information and word

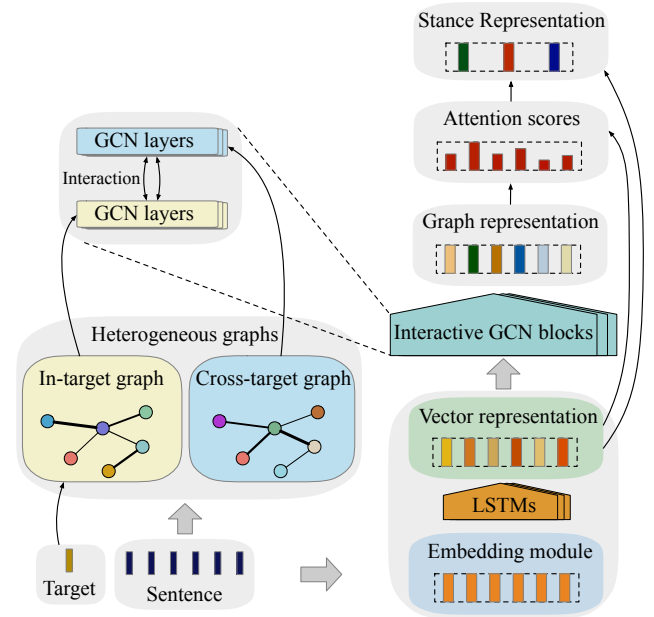


Figure 2: The architecture of the proposed target-adaptive pragmatics dependency graph (TPDG) framework.

dependencies for the specific aspect. Tang et al. [28] proposed a dependency graph enhanced dual-transformer network for aspect sentiment analysis to support mutual reinforcement between the flat representation learning and graph-based representation learning. Zhang et al. [40] proposed an extension of the graph convolutional network which is tailored for relation extraction via encoding the dependency structure over the input sentence based on dependency tree. These studies presented the importance of the decent initial weights of graphs. To leverage the target-adaptive semantic dependencies of the sentence, inspired by the success achieved by previous GCN-based methods [38, 40], we explore a novel solution of constructing semantic dependency graph for each sentence and propose a novel graph-aware model with interactive GCN blocks to model the word-level semantic dependencies for deriving precise stance expression from both in-target and cross-target perspective.

3 METHODOLOGY

In this section, we present our proposed Target-adaptive Pragmatics Dependency Graph (TPDG) framework for cross-target stance detection in details. We first define the task of cross-target stance detection in Section 3.1, and then proceed to describe each of the components of our proposed framework. As demonstrated in Figure 2, the architecture of the proposed TPDG framework contains four main components: 1) *vector representation*, which derives the word representations of the input context with bidirectional LSTM layers (described in Section 3.2), 2) *heterogeneous graphs construction*, which constructs in-target and cross-target graphs and learn target-adaptive pragmatics dependencies of the context from both graphs (described in Section 3.3 and 3.4), 3) *interactive GCN blocks*, which are designed to leverage the target-dependent and target-independent contextual graph representations for a given target

(described in Section 3.5), and 4) *stance representation*, which captures the crucial clues for stance detection and output the final representation (described in Section 3.6).

3.1 Task Description

Given a collection set of annotated instances towards source targets $\mathcal{D}_s = \{(r_s^i, t_s, y_s^i)\}_{i=1}^{N_s}$ and a set of unlabeled instances towards destination targets (there will be one or more destination targets) $\mathcal{D}_d = \{(r_d^i, t_d^i)\}_{i=1}^{N_d}$, where y_s^i is the stance label of an annotated instance of the source target t_s , N_s and N_d are the number of the instances towards the source and destination targets, respectively. The goal of cross-target stance detection is to model the stance features of each sentence r_s^i towards the source target t_s from \mathcal{D}_s and predict the stance label y_d^i of each sentence r_d^i towards the corresponding destination target t_d^i in \mathcal{D}_d .

3.2 Vector Representation

For a sentence consists of n words $r = \{w_i\}_{i=1}^n$, we embed each word in the sentence into an m -dimensional embedding via mapping the embedding $\mathbf{x}_i \in \mathbb{R}^m$ from the lookup table $X \in \mathbb{R}^{m \times |V|}$, V is the full vocabulary, $|V|$ is the vocabulary size. Then we can obtain an embedding matrix for each sentence r , i.e. $\mathbf{x} = [\mathbf{x}_1, \mathbf{x}_2, \dots, \mathbf{x}_n]$. Subsequently, we utilize bidirectional LSTMs to encode the input sentence into vector representations with embedding matrix:

$$\vec{\mathbf{h}}_t = LSTM(\mathbf{x}_t, \vec{\mathbf{h}}_{t-1}) \quad (1)$$

$$\overleftarrow{\mathbf{h}}_t = LSTM(\mathbf{x}_t, \overleftarrow{\mathbf{h}}_{t+1}) \quad (2)$$

$$\mathbf{h}_t = \vec{\mathbf{h}}_t \oplus \overleftarrow{\mathbf{h}}_t \quad (3)$$

where \mathbf{h}_t denotes the hidden vector representation of \mathbf{x}_t in time step t , \oplus represents the concatenation.

3.3 Target-adaptive Pragmatics Weight Computation

To understand and adapt the stance expression of the context with respect to the target, a series of pivotal semantically-important words that point at the target are discerned from the dataset, i.e. these words either play distinct roles for distinct targets or dominate the stance across all targets. Thereupon, we compute the pragmatics weight for each word from two perspectives: 1) From the in-target perspective, we would define the pragmatics weight of the word based on the degree of pragmatics association between the word and the target. That is, the word is assigned with distinctive pragmatics weight for distinct target. 2) From the cross-target perspective, the pragmatics weight of the word is determined by the pragmatics frequency distribution across all targets. Here, a word with a large weight indicates that it is semantically-rich and could be adopted to derive target-adaptive stance expression for different targets.

There are many possible ways to derive pragmatics weights for contextual words. Such as word frequency [35], cosine similarity between words [14], external knowledge [37] et al. But they generally focus on the relations of the contextual words, which is unable to distinguish the distinct role of different contextual words for the target. In our work, we propose a novel approach to automatically capture the weights for the words based on the pragmatics

information of annotated source target and the importance of word occurrence in other unlabeled destination targets.

In-target Pragmatics Weight Computation. Based on the times of each word appearing over the whole corpus, the pragmatics weight for each word w_k in V adapting to the target can be computed as:

$$\rho^I(w_k) = \frac{\#\mathcal{D}_s(w_k)}{\#\mathcal{D}_s(w_k) + \#\mathcal{D}_o(w_k) + 1} \quad (4)$$

$$\omega^I(w_k) = \frac{\rho^I(w_k) - \min(\rho^I)}{\max(\rho^I) - \min(\rho^I)} \times \xi^I(w_k) \quad (5)$$

where $\#\mathcal{D}_s(w_k)$ is the times of w_k occurs in the specific source target dataset \mathcal{D}_s , $\#\mathcal{D}_o(w_k)$ represents the times of w_k occurs in other target datasets \mathcal{D}_o ¹. $\xi^I(w_k)$ represents the stance-related weight of w_k :

$$\delta^I(w_k) = \frac{\#\text{FAVOR}(w_k)}{\#\text{FAVOR}\mathcal{D}_s} - \frac{\#\text{AGAINST}(w_k)}{\#\text{AGAINST}\mathcal{D}_s} \quad (6)$$

$$\xi^I(w_k) = 1 + \frac{|\delta^I(w_k)|}{\max(|\delta^I|)} \quad (7)$$

where $\#\text{FAVOR}(w_k)$ and $\#\text{AGAINST}(w_k)$ represent the times of w_k appearing in “favor” and “against” instances of source target dataset respectively. $\#\text{FAVOR}\mathcal{D}_s$ and $\#\text{AGAINST}\mathcal{D}_s$ denote the number of “favor” and “against” samples in the source target dataset respectively. Here, to capture more semantically-rich information, we only consider “favor” and “against” instances when deriving stance-related weight. Since instances from these two labels contain more definite pragmatics information.

Cross-target Pragmatics Weight Computation. pragmatics information across different targets is significant to detect stance for unknown target. Therefore, based on the in-target pragmatics weight, we leverage the word occurrence information to compute the cross-target pragmatics weight for each word:

$$\rho^C(w_k) = \frac{\sum_{j=1}^{N_T} (\#\mathcal{D}_j(w_k))}{N_T \times (\#\mathcal{D}_{\max}(w_k) - \#\mathcal{D}_{\min}(w_k) + 1)} \quad (8)$$

$$\omega^C(w_k) = \frac{\rho^C(w_k) - \min(\rho^C)}{\max(\rho^C) - \min(\rho^C)} \times \xi^I(w_k) \quad (9)$$

where N_T is the number of targets, $\#\mathcal{D}_{\max}(w_k)$ and $\#\mathcal{D}_{\min}(w_k)$ represent the dataset with the largest and the least number of w_k respectively. Because instances of destination unknown targets are unlabeled, here, we only integrate the stance-related weight of the source target into the computation of the cross-target pragmatics weight.

In this way, we can obtain the pragmatics weight for each word according to degree of contribution in different stance expressions from both in-target and cross-target perspective.

3.4 Pragmatics Dependency Graphs Construction

Based on the target-adaptive pragmatics weight learned above, this section presents how we construct the heterogeneous pragmatics

¹Here \mathcal{D}_o represents all unlabeled data in the datasets, correspondingly it can also be the destination target dataset, i.e. \mathcal{D}_d .

dependency graphs of adjacency matrices for each sentence. Noting that the graph can preserve global structure information of contextual words, our proposed method aims to emphasize the crucial word relations and evade the inconsequential ones. That is, if both words have optimistic pragmatics weights, their edge weight in the graph will be large. Conversely, if one of the words has a very small pragmatics weight, the weight of their edge would be vastly reduced.

To develop the syntactical dependency, before integrating pragmatics information, we first construct the graph for each sentence over the dependency tree to capture the word dependencies of the sentence². Here, the adjacency matrix $D \in \mathbb{R}^{n \times n}$ for each sentence can be derived from the dependency tree of the sentence \mathcal{T} :

$$D_{i,j} = \begin{cases} 1 & \text{if } \mathcal{T}(w_i, w_j) \\ 0 & \text{otherwise} \end{cases} \quad (10)$$

where $\mathcal{T}(w_i, w_j)$ represents that w_i is connected to w_j in the dependency tree of the sentence. Here, inspired by previous GCN-based methods, we simply assume that the dependencies between parents and children nodes in the dependency parsing are symmetrical, which is widely accepted in GCN based methods [28, 38]. Thus we construct the graph with undirected to enrich the dependency information of the adjacency matrix, i.e. $D_{i,j} = D_{j,i}$, and following [11], we also set a self-loop for each word, i.e. $D_{i,i} = 1$.

In-target Graph Construction. Here, we integrate the pragmatics information learned from the in-target perspective into the adjacency matrix derivation. The edge weight of each node pair of the in-target graph adjacency matrix $A^I \in \mathbb{R}^{n \times n}$ for each sentence can be obtained by:

$$A_{i,j}^I = D_{i,j} \times (\omega^I(w_i) + \omega^I(w_j)) \quad (11)$$

In this way, the pragmatics information towards the target could be integrated into the context representation via the in-target pragmatics dependency graph structure.

Cross-target Graph Construction. Additionally, to harmonize and refine the graph structure of each sentence for adapting to different targets, we integrate the cross-target pragmatics information into producing the adjacency matrix $A^C \in \mathbb{R}^{n \times n}$ for cross-target graph:

$$A_{i,j}^C = D_{i,j} \times (\omega^C(w_i) + \omega^C(w_j)) \quad (12)$$

Consequently, each sentence can derive two different graphs (i.e. in-target and cross-target graph) according to the dependency parsing results and the target-adaptive pragmatics information of the context. Here, the in-target graph preserves and adapts the pragmatics dependencies of the contextual words according to the target. That is, even though for the unknown target, we can still obtain a distinctive in-target graph towards the target. Besides, for the cross-target graph, it harmonizes the target-adaptive pragmatics information of words across all the targets. That is, the cross-target graph could act on distinct targets to derive target-adaptive stance expression, including the unknown target with no annotated data. The procedure of generating the adjacency matrices of in-target

Algorithm 1: Deriving adjacency matrices of in-target and cross-target graph for each sentence

Input: $r = \{w_i\}_{i=1}^n; \mathcal{T}; \omega^I; \omega^C$

- 1 **for** $i = 1 \rightarrow n; j = 1 \rightarrow n$ **do**
- 2 \triangleright Producing the dependency graph
- 3 **if** $\mathcal{T}(w_i, w_j)$ **or** $i = j$ **then**
- 4 $D_{i,j} \leftarrow 1$
- 5 **else**
- 6 $D_{i,j} \leftarrow 0$
- 7 \triangleright Deriving the in-target adjacency matrix
- 8 $A_{i,j}^I \leftarrow D_{i,j} \times (\omega^I(w_i) + \omega^I(w_j))$
- 9 \triangleright Deriving the cross-target adjacency matrix
- 10 $A_{i,j}^C \leftarrow D_{i,j} \times (\omega^C(w_i) + \omega^C(w_j))$

and cross-target pragmatics dependency graphs for each sentence is depicted in Algorithm 1.

3.5 Interactive GCN Blocks

Based on the pragmatics dependency graphs learned over dependency tree and target-adaptive pragmatics information, here we discuss how to leverage the target-adaptive stance expressions to the destination targets. For each interactive GCN block, an in-target GCN layer and a cross-target GCN layer are assembled to interactively and adaptively learn and adjust the target-adaptive graph representations for stance detection. Each node in the l -th GCN block is updated according to the hidden representations of its neighborhoods according to the adjacency matrices of in-target and cross-target graph, the process is defined as:

$$f^l = \text{ReLU}(\tilde{A}^I g^{l-1} w_1^l + b_1^l) \quad (13)$$

$$g^l = \text{ReLU}(\tilde{A}^C f^l w_c^l + b_c^l) \quad (14)$$

where g^{l-1} is the hidden representation evolved from the preceding GCN block. \tilde{A} is a normalized symmetric adjacency matrix:

$$\tilde{A}_i = A_i / (E_i + 1) \quad (15)$$

where $E_i = \sum_{j=1}^n A_{i,j}$ is the degree of A_i . Here, the original input nodes of the first GCN block are derived from the vector representations learned by bidirectional LSTM layers in Section 3.2, i.e. $g^0 = [h_1, h_2, \dots, h_n]$.

3.6 Stance Representations

For each instance, inspired by Zhang et al. [38], we adopt a retrieval-based attention mechanism to capture significant stance features based on the final graph representations learned by interactive GCN blocks and the contextual vector representations derived from bidirectional LSTM layers:

$$\alpha_t = \frac{\exp(\beta_t)}{\sum_{i=1}^n \exp(\beta_i)} \quad (16)$$

$$\beta_t = \sum_{i=1}^n h_i^\top g_i^l \quad (17)$$

where \top represents matrix transposition, g^l is the final output of GCN blocks. Then, the final stance representation of the input

²In this work, we use spaCy toolkit for generating dependency tree of the input sentence: <https://spacy.io/>.

instance is formulated as:

$$\mathbf{r} = \sum_{i=1}^n \alpha_i \mathbf{h}_i \quad (18)$$

After that, we adopt a fully-connected layer with softmax normalization to yield a probability distribution of stance representation:

$$\hat{\mathbf{y}} = \text{softmax}(\mathbf{W}_o \mathbf{r} + \mathbf{b}_o) \quad (19)$$

where $\hat{\mathbf{y}} \in \mathbb{R}^{d_p}$ is the predicted stance probability for the input instance towards the target, d_p is the dimensionality of stance labels. $\mathbf{W}_o \in \mathbb{R}^{d_p \times 2d_h}$ and $\mathbf{b}_o \in \mathbb{R}^{d_p}$ are parameters to be learned, and d_h denotes the dimensionality of hidden representation.

3.7 Learning Objective

The objective of training the model is to minimize the cross-entropy loss on the dataset of source target \mathcal{D}_s via the standard gradient descent algorithm, the corresponding function is defined as:

$$\min_{\Theta} \mathcal{L} = - \sum_{i=1}^{N_s} \sum_{j=1}^{d_p} y_i^j \log \hat{y}_i^j + \lambda \|\Theta\|^2 \quad (20)$$

where \mathbf{y}_i is the ground-truth stance label distribution of instance i , $\hat{\mathbf{y}}_i$ is the estimated distribution, Θ denotes all trainable parameters of the model, λ represents the coefficient of L_2 regularization term.

4 EXPERIMENTAL SETUP

4.1 Experimental Data

We conduct experiments on two benchmark datasets from SemEval-2016 Task 6 [17] (SEM16) and a large-scale dataset of targeted stance detection collected from Twitter [2] (WT-WT). The statistics of the experimental data are shown in Table 1.

SEM16. SemEval-2016 Task 6 contains a stance detection dataset of stance-bearing tweets on different targets. Following the previous cross-target stance detection studies [32, 34, 37], we select four targets from the dataset: *Feminist Movement* (FM), *Legalization of Abortion* (LA), *Hillary Clinton* (HC) and *Donald Trump* (DT), which are categorized into two domains: *Women’s Rights* (FM, LA) and *American Politics* (HC, DT). Each instance in SEM16 dataset could be classified as *favor*, *against* or *none*. Following [37], we also extend SEM16 dataset by adding an additional *Trade Policy* (TP) target as the fifth target in *American Politics* domain. Following [32], we split the labeled data of destination target to obtain development and test set with 3:7.

WT-WT. The largest available stance detection dataset so far, which consists of 51,284 tweets in discussing mergers and acquisition operations between companies. WT-WT contains 8 companies: *CVS Health* (CVS), *Aetna* (AET), *Cigna* (CI), *Express Scripts* (ESRX), *Anthem* (ANTM), *Humana* (HUM), *Disney* (DIS), and *21st Century Fox* (FOXA), which are categorized into two domains (industries), i.e. *Healthcare* (CVS, AET, CI, ESRX, ANTM, and HUM) and *Entertainment* (DIS and FOXA). Each sentence refers to an operation of two companies and a stance label from *support* (corresponding to *favor* when computing pragmatics weight), *refute* (corresponding to *against*), *comment* or *unrelated*. Based on this, five targets (operations) are considered in the dataset, four in the *Healthcare* domain

Table 1: Statistics of the experimental data on different targets from SEM16 and WT-WT dataset.

SEM16	FM	LA	HC	DT	TP
favor	268	167	163	148	333
against	511	544	565	299	452
none	170	222	256	260	460
total	949	933	984	707	1245
WT-WT	CVS_AET	CI_ESRX	ANTM_CI	AET_HUM	DIS_FOXA
support	2,469	773	970	1038	1413
refute	518	253	1969	1106	378
comment	5520	947	3098	2804	8495
unrelated	3115	554	5007	2949	7908
total	11622	2527	11622	7897	18194

(CVS_AET, CI_ESRX, ANTM_CI and AET_HUM) and one in the *Entertainment* domain (DIS_FOXA). Here following [2], there is no developmental set in WT-WT dataset.

4.2 Evaluation Metrics

For SEM16 dataset, following [32], we perform mean value of Macro *F1-score* for *favor* and *against* to measure the classification performance of the models: Macro *F1-score*. In addition, following [34], the average score of both the micro-averaged F1 (large classes dominate) and the macro-averaged F1 (small classes dominate) is computed as another evaluation metric to alleviate the imbalance of targets in the dataset: $F1_{avg} = (F1_{micro} + F1_{macro})/2$. For WT-WT dataset, following [2], we utilize Macro *F1-score* for all labels to measure the performance of the models for all targets.

4.3 Training Setup

The word embeddings are initialized with the pre-trained 300-dimensional word vectors from GloVe [19]. The number of GCN blocks is set to 3, which is the optimal depth in pilot experiments. The dimensionality of hidden vector representations is set to 300. The coefficient λ of L_2 regularization is set to 10^{-5} . Adam is utilized as the optimizer with a learning rate of 10^{-3} to train the model, and the mini-batch size is 16. All the \mathbf{W} and \mathbf{b} of network layers are randomly initialized with uniform distribution³.

4.4 Comparison Models

We compare and evaluate our model with several strong related works, summarized as follow:

- **BiLSTM:** Utilizing two bidirectional LSTMs to learn the sentence and the target separately, and the hidden representations from both directions are combined to predict the stance label.
- **textCNN-E:** Extending TextCNN [10] to the cross-target stance detection task, in which the word vector is represented as a 3D tensor by integrating the semantically and emotionally related words.
- **BiCond** [1]: Adopting bidirectional conditional encoding to learn both the sentence and the target representation for detecting stance expression.

³The source code of this work is released at <https://github.com/HLT-HITSZ/TPDG>

Table 2: Macro $F1$ -score results of targeted stance detection on SEM16 and WT-WT dataset. Best scores are in bold.

Model	FM	LA	HC	DT	TP	CVS_AET	CI_ESRX	ANTM_CI	AET_HUM
BiLSTM	51.6	59.1	55.8	57.4	54.2	70.6	71.7	72.8	72.5
BiCond [1]	52.9	61.2	56.1	59.0	55.3	71.1	72.3	72.6	72.0
BERT [3]	59.0	63.1	61.3	57.9	60.7	73.6	73.2	76.6	75.5
CrossNet [34]	55.7	61.3	60.2	60.2	56.4	71.7	71.2	73.8	72.5
ATT-LSTM [31]	55.3	62.6	59.8	55.3	55.9	72.0	71.4	74.3	73.5
ASGCN [38]	58.7	63.2	61.0	58.7	59.5	72.2	72.9	75.1	74.3
TPDG (ours)	67.3	74.7	73.4	63.0	64.7	79.3	77.6	81.5	80.2

- **MLP** [20]: Taking TF-IDF representations and their cosine similarity score of the sentence and target as input into a multi-layer perceptron.
- **ATT-LSTM** [31]: Computing attention scores of a sentence according to the specific target with attention-based LSTM. This model achieves promising performance in aspect sentence analysis.
- **ASGCN**: A variant of [38], which extracts syntactical information and word dependencies toward a specific target by GCN, but without position-aware transformation and target masking. This is a remarkable graph-based model in aspect sentiment analysis.
- **TAN** [5]: Combining bidirectional LSTM and target-specific attention extractor over target-augmented embeddings for stance detection.
- **HAN**: Extending [26] to leverage the target-dependent contextual representation along with linguistic information by hierarchical attention network.
- **CrossNet** [34]: Adopting a self-attention layer to extract important contextual words toward the target in learning target-specific stance features.
- **SiamNet** [21]: A stance detection system which comprises of siamese adaptation of LSTM networks augmented with an attention mechanism to capture the semantic differences.
- **VTN** [32]: Leveraging shared latent topics between source and destination target as transferable knowledge to facilitate model adaptation of cross-target stance detection.
- **SEKT** [37]: A knowledge-based GCN model, which incorporates semantic-emotion knowledge into heterogeneous graph construction to bridge the gap between the source and destination target for cross-target stance detection.
- **BERT** [3]: The vanilla pre-trained uncased BERT-base model, which is a powerful pre-trained model in many NLP tasks and adopts “[CLS] target [SEP] sentence [SEP]” as input for each instance.
- **TPDG**: The complete model of our proposed target-adaptive pragmatics dependency graph network.

5 EXPERIMENTAL RESULTS

This section presents how models perform on stance detection. In Section 5.1, we first approximately demonstrate the comparison results in targeted stance detection (i.e. train and test on the same target). Subsequently, we focus on the stance detection for unknown targets in Section 5.2. Section 5.3 analyzes the generalizability of our proposed model across all the targets. Section 5.4 shows an

ablation study of our proposed model. Afterwards, we analyze the impact of pragmatics words (in Section 5.5), destination target data size (in Section 5.6) and GCN blocks (in Section 5.7) of our proposed model. Finally, Section 5.8 presents a case study.

5.1 Results of Targeted Stance Detection

Table 2 shows the stratified 10-fold cross-validation comparison results in targeted stance detection with several remarkable models, including neural network-based models (BiLSTM and BiCond), pre-trained model (BERT), attention-based models (CrossNet and ATT-LSTM), and graph-based model (ASGCN). We can observe that our proposed model achieves the best performance over all targets on all datasets. Specifically, the best improvements are 12.1% on HC target from SEM16 dataset and 5.7% on CVS_AET target from WT-WT dataset. This demonstrates that our proposed model, which leveraging target-adaptive pragmatics dependencies by fundamentally identifying and adapting the stance expression for the distinct target with a graph-aware model, outstandingly improves the performance of stance detection in a more simple targeted stance detection task.

5.2 Results of Cross-target Stance Detection

Cross-target Stance Detection on SEM16. Table 3 shows the comparison results over 8 cross-target tasks on SEM16 dataset. We can see that, compared with targeted stance detection, all the previous models achieve inferior performance on all cross-target tasks, which demonstrates the challenge of cross-target stance detection. It is observed that our proposed model (TPDG) consistently outperforms all comparison models on all cross-target tasks. Among them, the best improvement of $F1$ -score and $F1_{avg}$ are 19.2% and 17.4% on HC→TP, which explicitly verifies the tremendous superiority of our proposed model in cross-target stance detection. Owing to the limitation of unknown destination target information, BiLSTM, BiCond and TextCNN-E overall perform worst since they neither leverage target-specific contextual information nor learn transferable knowledge for the destination target. Analogously, BERT can leverage rich semantic information, but it still produces a poor performance because of the ignorance of target-adaptive stance expressions for the unknown target. Comparatively, models that considering target information (ATT-LSTM and ASGCN) perform slightly better, since they explicitly incorporate the target information into the sentence representation. Among them, ASGCN evidently performs better than ATT-LSTM, which implies the latent superiority of graph-based model in stance detection. Additionally, appreciable performance is achieved by models that

Table 3: Experimental results of cross-target stance detection on SEM16 dataset. FM→LA represents training on FM (source target) and testing on LA (destination target), etc. The results with † are retrieved from [37].

Model	FM→LA		LA→FM		HC→DT		DT→HC		HC→TP		TP→HC		DT→TP		TP→DT	
	<i>F1</i> -score	<i>F1</i> _{avg}	<i>F1</i> -score	<i>F1</i> _{avg}	<i>F1</i> -score	<i>F1</i> _{avg}	<i>F1</i> -score	<i>F1</i> _{avg}	<i>F1</i> -score	<i>F1</i> _{avg}	<i>F1</i> -score	<i>F1</i> _{avg}	<i>F1</i> -score	<i>F1</i> _{avg}	<i>F1</i> -score	<i>F1</i> _{avg}
BiLSTM†	44.8	40.1	41.2	37.9	29.8	43.3	35.8	40.1	29.1	23.6	39.5	41.8	31.1	20.7	34.1	38.9
BiCond [1]†	45.0	40.3	41.6	39.2	29.7	44.2	35.8	40.8	29.2	23.9	40.2	42.4	31.7	20.7	34.7	39.6
TextCNN-E [10]†	46.9	51.3	45.8	46.6	38.0	36.0	40.4	38.5	30.9	28.3	45.0	47.2	35.6	19.1	39.6	43.3
BERT [3]†	47.9	49.9	33.9	39.5	43.6	41.2	36.5	39.9	26.1	35.3	23.1	29.5	24.1	39.1	45.6	47.8
ATT-LSTM [31]	42.2	43.4	41.3	41.4	31.2	43.7	35.5	40.2	30.6	25.3	42.7	43.8	31.5	23.8	39.8	42.1
ASGCN [38]	46.9	48.7	50.8	47.9	47.2	46.5	43.0	48.2	40.3	41.0	45.6	47.9	46.2	40.7	40.3	42.8
CrossNet [34]†	45.4	44.2	43.3	43.1	43.1	46.1	36.2	41.8	29.8	24.4	41.7	42.5	31.4	21.1	37.4	40.7
VTN [32]†	47.3	-	47.8	-	47.9	-	36.4	-	-	-	-	-	-	-	-	-
SEKT [37]†	53.6	52.3	51.3	51.0	47.7	46.3	42.0	43.2	33.5	30.0	46.0	48.9	44.4	39.1	39.5	43.5
TPDG (ours)	58.3	62.4	54.1	55.9	50.4	51.0	52.9	57.6	59.5	58.4	49.8	54.5	51.2	51.0	48.9	50.4

Table 4: Experimental results of cross-target stance detection on WT-WT dataset. *avgF1* and *avg_wF1* represent the unweighted and weighted (by operations size) average of all targets. *acc.* denotes average accuracy of each label. *avg3* denotes average accuracy of support, refute, comment, *avg4* denotes average accuracy of all four labels. The results with † are retrieved from [2].

Model	CVS_AET	CI_ESRX	ANTM_CI	AET_HUM	<i>avgF1</i>	<i>avg_wF1</i>	<i>sup</i> (acc.)	<i>ref</i> (acc.)	<i>com</i> (acc.)	<i>unr</i> (acc.)	<i>avg3</i> (acc.)	<i>avg4</i> (acc.)
MLP [20]†	46.5	46.6	57.6	59.7	52.6	52.7	55.7	40.3	48.6	68.1	48.2	53.2
TextCNN-E [10]	46.5	39.8	56.3	59.5	50.5	52.4	62.7	37.4	31.3	71.2	43.8	50.7
BiLSTM	50.2	49.7	61.3	60.8	55.5	56.5	61.6	46.8	44.6	79.4	51.0	58.1
BiCond [1]†	56.5	52.5	64.9	63.0	59.2	60.1	61.0	48.7	45.1	79.9	51.6	58.7
BERT [3]	56.0	60.5	67.1	67.3	62.7	62.8	65.4	56.1	58.0	70.1	59.8	62.4
ATT-LSTM [31]	58.2	53.0	64.6	63.0	59.7	61.1	51.1	54.2	57.2	67.1	54.2	57.4
ASGCN [38]	59.2	54.7	66.3	65.3	61.4	62.7	66.3	49.5	51.3	76.8	55.7	61.0
CrossNet [34]†	59.1	54.5	65.1	62.3	60.2	61.1	63.8	48.9	50.5	75.8	54.4	59.8
SiamNet [21]†	58.3	54.4	68.7	67.7	62.2	63.1	67.0	48.0	52.5	78.3	55.8	61.5
TAN [5]†	56.0	55.9	66.2	66.7	61.2	61.3	66.1	49.0	51.7	74.1	55.6	60.2
HAN [26]†	56.4	57.3	66.0	67.3	61.7	61.7	67.6	52.0	55.2	69.1	58.3	61.0
TPDG (ours)	66.8	65.6	74.2	73.1	69.8	70.7	69.7	64.9	69.8	76.9	68.1	70.3

extracting shared stance information for the destination targets (CrossNet, VTN and SEKT). Compared with the previous comparatively promising models (ASGCN and SEKT), our proposed model yields outstandingly better performance. This indicates that simply modeling transferable in-target stance information for destination target is insufficient in stance detection for a target without annotated data, while our **TPDG** model can leverage the significant stance expression for distinct target and improving cross-target stance detection by means of employing word-level target-adaptive pragmatics dependencies of the context.

Cross-target Stance Detection on WT-WT. To demonstrate the robustness of our proposed model in cross-target stance detection, following [2], we test on the unknown destination target while train on the other three targets in Healthcare domain from WT-WT dataset. The results are reported in Table 4. We can observe that except to the average accuracy of the *unrelated* label, our proposed model also achieves tremendously better performance than all the baselines. Among them, compared with previous promising graph-based model (ASGCN), our proposed model improves 8.4% on *avgF1* and 8.0% on *avg_wF1*, which verifies that leveraging target-adaptive pragmatics dependencies in graph model could potentially lead to improved cross-target stance detection results. Compared with

previous noteworthy cross-target model (SiamNet), our proposed model improves 7.6% on both *avgF1* and *avg_wF1*, which further demonstrates the significant role of leveraging target-adaptive pragmatics information from both in-target and cross-target perspective in cross-target stance detection. Additionally, noting that our proposed model achieves superior and more balanced accuracy across all the labels. This implies that our proposed model, which identifies and modifies the target-adaptive pragmatics information with interactive GCN blocks, could potentially lead to the improved identification of different stance labels.

Cross-domain Stance Detection. Intuitively, stance expressions across targets in the same domain could be shared conveniently. However, in some extreme special cases, the unseen targets maybe occur in an unknown domain. Hence in this section, we describe how the proposed model works in cross-domain stance detection, i.e. training in one domain dataset and testing in another domain dataset. The results are shown in Table 5. We can see that, due to the difficulties and challenges of cross-domain stance detection, the performance is inferior in comparison with cross-target experiments. Despite all this, our proposed **TPDG** model still yields promising performance and achieves outstanding improvement compared with all the baselines over all cross-domain

Table 5: Macro $F1$ -score results of cross-domain stance detection. WR represents Women’s Rights, AP represents American Politics, Heal. represents Healthcare, Enter. represents Entertainment. The results with \dagger are retrieved from [2].

Model	SEM16		WT-WT	
	WR→AP	AP→WR	Heal.→Enter.	Enter.→Heal.
BiCond [1]	32.2	34.8	37.8 \dagger	33.6 \dagger
BERT [3]	40.6	42.5	41.8	40.7
ATT-LSTM [31]	32.5	35.5	40.2	31.3
ASGCN [38]	40.3	39.2	41.3	38.9
CrossNet [34]	39.3	40.6	40.8	37.9
SiamNet [21]	39.8	41.7	40.2 \dagger	35.3 \dagger
TPDG (ours)	52.6	49.8	47.4	47.1

Table 6: Macro $F1$ -score results of conventional stance detection. All represents performance across all targets.

Model	SEM16			WT-WT		
	WR	AP	All	Heal.	Enter.	All
BiCond [1]	44.5	43.0	40.6	66.3	44.5	62.7
BERT [3]	60.6	61.7	60.3	79.0	76.3	79.6
ATT-LSTM [31]	46.0	44.1	40.5	68.4	47.1	66.8
ASGCN [38]	54.7	53.8	52.8	71.2	62.3	68.9
CrossNet [34]	47.1	43.6	40.7	66.8	48.2	67.1
SiamNet [21]	49.8	42.7	41.3	67.4	47.5	67.7
TPDG (ours)	65.2	63.2	61.9	81.1	80.9	81.8

tasks. This indicates that our proposed model is effective in the more challenging cross-domain stance detection task with the help of leveraging target-adaptive stance information.

5.3 Generalizability Analysis

In this section, we conduct experiments over all the targets within domain and across domains to analyze the generalizability performance of detecting stance on the whole dataset. The comparison results are demonstrated in Table 6, here for each model, we feed all the data with various targets into the model and report the stratified 10-fold cross-validation results. We can observe that, our proposed model consistently achieves the best performance in all datasets when concurrently learning stance features for various targets. Intuitively, valuable features need to be modeled to predict the stance labels for different targets in this task. Hence, BERT, which can leverage contextual semantic information for distinct targets, yields promising performance among the previous methods. Compared with BERT, our proposed model produces outstanding improvement in all datasets, which implies that deriving target-adaptive pragmatics dependencies according to distinct targets with interactive graph-aware model could learn more precise target-related stance expressions for multifarious targets in stance detection.

5.4 Ablation Study

To analyze the impact of different components of the proposed TPDG model, we conduct experiments over different cross-target tasks on WT-WT dataset and report the results in Table 7. We can

Table 7: Experimental results of ablation study.

Model	CVS_AET	CI_ESRX	ANTM_CI	AET_HUM
TPDG w/o cross-target	62.3	61.6	69.8	68.3
TPDG w/o in-target	62.9	62.4	70.5	69.1
TPDG w/o pragmatics	64.2	63.8	71.9	70.7
TPDG w/o dependency	64.9	64.2	72.7	71.2
TPDG	66.8	65.6	74.2	73.1

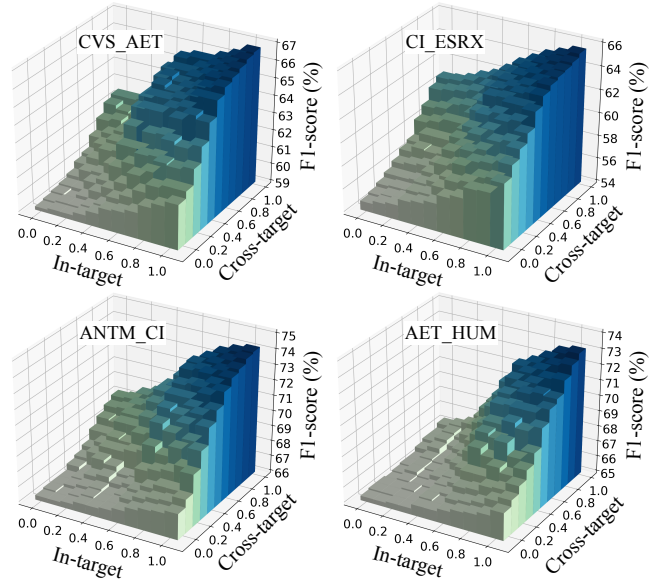


Figure 3: Impact of the proportion of pragmatics words. In-target=proportion of pragmatics words from in-target perspective, Cross-target=proportion of pragmatics words from cross-target perspective.

see that removal of “cross-target” or “in-target” degrades the performance substantially, which indicates that both in-target and cross-target stance expressions are important in detecting stance for an unknown target. Noting that model without “dependency” (dependency tree of the sentence) degrades the performance considerably, and removal of “pragmatics” leads to performance drops evidently. This implies that only adopting either dependency tree or pragmatics information can not adequately learn accurate stance expressions for the target. That is, leveraging target-adaptive pragmatics dependencies with interactive GCN blocks properly improves the performance of cross-target stance detection.

5.5 Impact of Pragmatics Words

To further demonstrate that pragmatics information of the contextual words can enrich the graph representation towards the target, we conduct experiments on WT-WT dataset by employing different proportions of pragmatics words derived in Section 3.3. We first sort the words by pragmatics weight, and vary the proportion from 0 to 1, the results are shown in Figure 3. We can see that removal of pragmatics information (i.e. the proportion is set to 0) performs worst over all cross-target tasks, which implies that inhibited performance

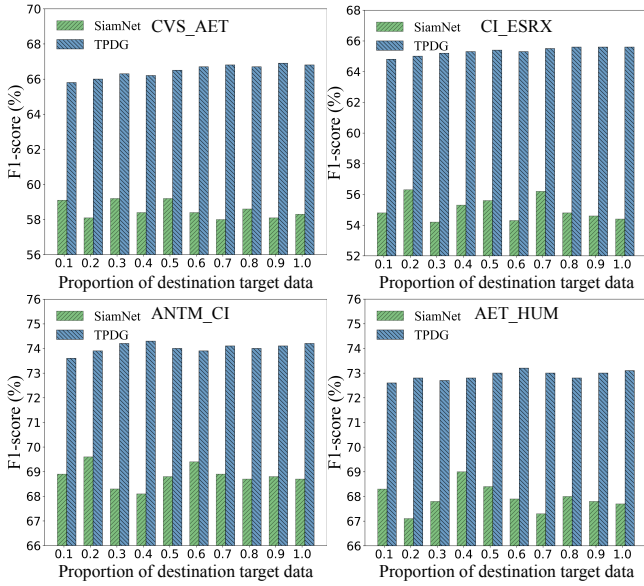


Figure 4: Impact of the dataset size of the destination target.

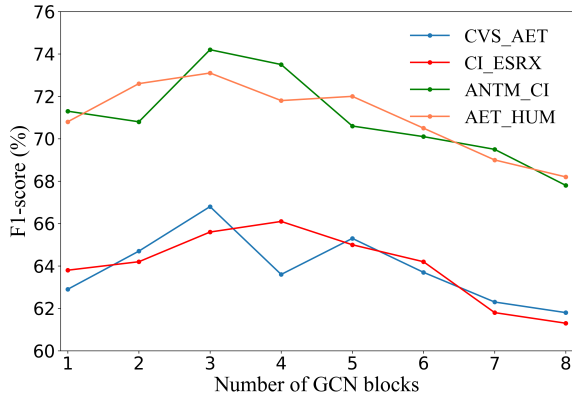


Figure 5: Impact of the number of GCN blocks.

of the model is produced when ignoring pragmatics information in stance detection. Comparatively, no matter with any proportion of pragmatics words the performance of our proposed model is improved, which verifies the significance of target-adaptive pragmatics information in learning stance expressions of the target. Noting that adopting both in-target and cross-target contextual pragmatics information is outstandingly better than only considering one of both. This further implies that leveraging the pragmatics information from both in-target and cross-target perspective could lead to extraordinarily improved stance detection.

5.6 Impact of Destination Target Data Size

As described in Section 3.3, the pragmatics weight might be influenced by the destination target data size. To provide more insights into the role of word-level target-adaptive pragmatics weight, we further study the change of stance detection performance over different cross-target tasks with varying unknown target data size

(the proportion is from 0.1 to 1). The comparison results are shown in Figure 4. Noting that the performance of the baseline (SiamNet) violently fluctuates over different test data sizes. Comparatively, although the performance decreased slightly in a small data size ($< 40\%$), our proposed model (TPDG) achieves outstandingly better and more stable performance in different proportions of the test data size. This verifies that our proposed method of computing word-level target-adaptive pragmatics weight is applicable for different sizes of unknown target dataset and improves the performance of cross-target stance detection.

5.7 Impact of GCN Blocks

To investigate the impact of the interactive GCN block number on the performance of our proposed model. We vary the block number from 1 to 8 and demonstrate the results in Figure 5. Noting that model with 3 GCN blocks performs overall better than other numbers, and thus we set the number of GCN blocks to 3 in our model. Model with one GCN block performs unsatisfactorily over all cross-target tasks, the possible reason maybe inadequate network structure is insufficient to exploit accurate pragmatics dependencies for the target in stance detection. In addition, in the cases of the block number greater than 3, the performance fluctuates with the increasing number of GCN blocks and essentially tends to decline when the number of block is greater than 5. This implies that roughly increasing the number of GCN blocks is vulnerable to slash the learning ability of the model due to the sharp increase of the model parameters.

5.8 Case Study

Our pragmatics weight computation is designed for identifying the roles of words in stance expression for a distinct target from both in-target and cross-target perspective, which allows us to capture different significant words paired with the corresponding weights for the distinct target. Thus we demonstrate some crucial words paired with their corresponding pragmatics weights derived from different targets in Table 8. Here $CROSS_{SEM}$ and $CROSS_{WT}$ present words with cross-target word-level pragmatics weights in SEM16 and WT-WT dataset, and the others are from in-target word-level pragmatics weight computation. We can observe that, for in-target word-level pragmatics weight, whether the words with high-level weight or the with low-level weight is quite distinct in different targets, and the words with large pragmatics weights are fundamentally high-related to the target and dominant in stance expressions. This implies that exclusive pragmatics word sets that are derived for distinct targets from an in-target perspective can effectively help the proposed model to deal with the inherent stance expression of the distinct target. In addition, the words with cross-target word-level pragmatics weights (both $CROSS_{SEM}$ and $CROSS_{WT}$) are almost semantically-rich target-independent opinion words. More concretely, the stance expression of cross-target words is generally invariant to different targets, which can be adopted to derive stance expressions for the unknown target.

To further present how the in-target and cross-target information works interactively in stance detection for an unknown target, we present a case study over a typical instance by visualizing the in-target and cross-target pragmatics weights of the words and the

Table 8: Examples of in-target pragmatics weights of words retrieved from the corresponding targets and cross-target pragmatics weights of words in *Feminist Movement* domain of SEM16 dataset and in *Healthcare* domain of WT-WT dataset. Words paired with their corresponding pragmatics weights are reported.

FM	LA	CROSS _{SEM}	CVS_AET	CI_ESRX	ANTM_CI	AET_HUM	CROSS _{WT}
feminists 1.44	abortion 1.17	people 0.62	cvs/aetna 1.08	cigna-express 1.35	antm 1.02	focused 1.01	calling 0.99
feminist 1.15	unborn 1.13	always 0.41	drugstore 1.07	sizable 1.14	rekindle 1.01	bswift 1.00	leading 0.96
feminism 1.09	babies 1.09	rights 0.37	cvs 1.07	overpaying 0.96	skip 1.00	endangers 0.99	investors 0.87
gender 0.96	baby 1.03	they 0.36	thanksgiving 1.07	scrips 0.95	reflect 0.99	controller 0.98	megamergers 0.83
girls 0.93	pregnancy 0.98	family 0.32	disruption 0.99	solicit 0.94	appeals 0.99	nodding 0.97	contracts 0.66
female 0.93	pregnant 0.98	woman 0.32	trends 0.99	broadening 0.93	damages 0.99	seniors 0.97	benefits 0.64
slut 0.92	kids 0.98	good 0.30	prescriptions 0.99	expr 0.94	hates 0.98	aethum 0.97	support 0.61
sexism 0.92	killing 0.97	who 0.28	loyalty 0.98	middleman 0.93	banks 0.98	bailed 0.97	approve 0.58
.....	agree 0.28	control 0.47
kids 0.08	feminism 0.07	love 0.28	rejected 0.08	merge 0.03	buying 0.06	failed 0.06	limited 0.44
choose 0.08	girls 0.06	believe 0.25	request 0.07	hearing 0.02	approvals 0.06	analytics 0.06	oppose 0.42
murder 0.07	patriarchy 0.06	free 0.25	regulator 0.07	allowed 0.02	aetna 0.05	corporation 0.05	buyout 0.44
killing 0.04	feminist 0.05	well 0.23	value-based 0.04	cvshealth 0.02	express 0.04	drug 0.04	includes 0.41
pregnant 0.03	female 0.04	sex 0.23	hum 0.02	aetna 0.01	doctor 0.04	independent 0.04	helps 0.37
abortion 0.03	gender 0.03	women 0.18	ci 0.02	advantage 0.01	investor 0.04	express 0.01	concern 0.35
baby 0.03	male 0.03	old 0.12	antm 0.12	anthem 0.01	bought 0.03	esrx 0.01	accepting 0.33
babies 0.02	feminists 0.02	anthem 0.01	humana 0.01	esrx 0.01	cvs 0.01

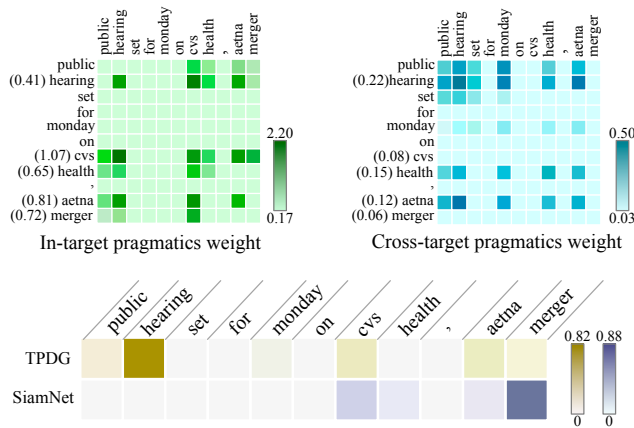


Figure 6: Pragmatics weights and attention visualizations of a typical instance. Values in parentheses are the corresponding pragmatics weights.

attention weights learned by our proposed TPDG model and the comparison model (SiamNet). The results are demonstrated in Figure 6. Here the ground-true label of the instance is *comment*, while a wrong prediction result *support* is obtained by SiamNet since it pays excessive attention to the word “merger” that potentially expressing positive stance. Noting that, for our method, the in-target pragmatics weights of several target-related words are large, and the pragmatics information produced by the word “merger” is still nonnegligible from the in-target perspective. However, the slight influence of “merger” could be ignored in the cross-target pragmatics dependency graph owing to the small value of pragmatics weight. Thus our proposed model focuses on genuinely significant words and captures a correct label. This vividly indicates that interactively leveraging both in-target and cross-target pragmatics information

could modify the crucial stance-related clues of stance expression towards the target, so as to improve the performance of detecting stance for the unknown target.

6 CONCLUSION

In this paper, we present a novel approach that automatically identifies and adapts the target-dependent and target-independent roles of a word towards a target in cross-target stance detection. Specifically, we explore a novel solution of constructing target-adaptive pragmatics dependency graphs for each sentence from both in-target and cross-target perspective to capture the accurate role of contextual words in stance expression. Subsequently, a novel graph-aware model with interactive GCN blocks is proposed to leverage the contextual pragmatics dependencies towards the target. Based on it, valuable target-adaptive stance expressions could be learned for the stance detection of unknown targets even if unseen domains. Experimental results on multiple benchmark datasets and multiple cross-target tasks show that our proposed model can significantly outperform state-of-the-art methods in cross-target stance detection.

ACKNOWLEDGMENTS

This work was partially supported by the National Natural Science Foundation of China (61632011, 61876053, 62006062), the Guangdong Province Covid-19 Pandemic Control Research Funding (2020KZDZX1224), the Shenzhen Foundational Research Funding (JCYJ20180507183527919 and JCYJ20180507183608379), China Postdoctoral Science Foundation (2020M670912), and the EPSRC (grant no. EP/T017112/1, EP/V048597/1). Min Yang work was partially supported by Natural Science Foundation of Guangdong Province of China (No. 2019A1515011705) and Youth Innovation Promotion Association of CAS China. Yulan He is supported by a Turing AI Fellowship funded by the UK Research and Innovation (UKRI) (grant no. EP/V020579/1).

REFERENCES

- [1] Isabelle Augenstein, Tim Rocktäschel, Andreas Vlachos, and Kalina Bontcheva. 2016. Stance Detection with Bidirectional Conditional Encoding. In *Proceedings of the 2016 Conference on Empirical Methods in Natural Language Processing*. 876–885.
- [2] Costanza Conforti, Jakob Berndt, Mohammad Taher Pilehvar, Chryssi Giannitsarou, Flavio Toxvaerd, and Nigel Collier. 2020. Will-They-Won't-They: A Very Large Dataset for Stance Detection on Twitter. In *Proceedings of the 58th Annual Meeting of the Association for Computational Linguistics*. 1715–1724.
- [3] Jacob Devlin, Ming-Wei Chang, Kenton Lee, and Kristina Toutanova. 2019. BERT: Pre-training of Deep Bidirectional Transformers for Language Understanding. In *Proceedings of the 2019 Conference of the North American Chapter of the Association for Computational Linguistics: Human Language Technologies, Volume 1 (Long and Short Papers)*. 4171–4186.
- [4] Ruixue Ding, Pengjun Xie, Xiaoyan Zhang, Wei Lu, Linlin Li, and Luo Si. 2019. A Neural Multi-digraph Model for Chinese NER with Gazetteers. In *Proceedings of the 57th Annual Meeting of the Association for Computational Linguistics*. 1462–1467.
- [5] Jiachen Du, Ruifeng Xu, Yulan He, and Lin Gui. 2017. Stance Classification with Target-specific Neural Attention. In *Proceedings of the Twenty-Sixth International Joint Conference on Artificial Intelligence, IJCAI-17*. 3988–3994.
- [6] Javid Ebrahimi, Dejing Dou, and Daniel Lowd. 2016. Weakly Supervised Tweet Stance Classification by Relational Bootstrapping. In *Proceedings of the 2016 Conference on Empirical Methods in Natural Language Processing*. 1012–1017.
- [7] Eduardo Graells-Garrido, Ricardo Baeza-Yates, and Mounia Lalmas. 2020. Representativeness of Abortion Legislation Debate on Twitter: A Case Study in Argentina and Chile. In *Companion Proceedings of the Web Conference 2020*. 765–774.
- [8] Tao Gui, Yicheng Zou, Qi Zhang, Minlong Peng, Jinlan Fu, Zhongyu Wei, and Xuanjing Huang. 2019. A Lexicon-Based Graph Neural Network for Chinese NER. In *Proceedings of the 2019 Conference on Empirical Methods in Natural Language Processing and the 9th International Joint Conference on Natural Language Processing (EMNLP-IJCNLP)*. 1040–1050.
- [9] Myunggha Jang and James Allan. 2018. Explaining Controversy on Social Media via Stance Summarization. In *The 41st International ACM SIGIR Conference on Research & Development in Information Retrieval*. 1221–1224.
- [10] Yoon Kim. 2014. Convolutional Neural Networks for Sentence Classification. In *Proceedings of the 2014 Conference on Empirical Methods in Natural Language Processing (EMNLP)*. 1746–1751.
- [11] Thomas N Kipf and Max Welling. 2017. Semi-supervised classification with graph convolutional networks. In *Proceedings of the 28th International Conference on Computational Linguistics*.
- [12] Neema Kotonya and Francesca Toni. 2019. Gradual Argumentation Evaluation for Stance Aggregation in Automated Fake News Detection. In *Proceedings of the 6th Workshop on Argument Mining*. 156–166.
- [13] Cheng Li, Xiaoxiao Guo, and Qiaozhu Mei. 2017. Deep memory networks for attitude identification. In *Proceedings of the Tenth ACM International Conference on Web Search and Data Mining*. 671–680.
- [14] Xien Liu, Xinxin You, Xiao Zhang, Ji Wu, and Ping Lv. 2020. Tensor graph convolutional networks for text classification. In *Proceedings of the AAAI Conference on Artificial Intelligence*, Vol. 34. 8409–8416.
- [15] Yi-Ju Lu and Cheng-Te Li. 2020. GCAN: Graph-aware Co-Attention Networks for Explainable Fake News Detection on Social Media. In *Proceedings of the 58th Annual Meeting of the Association for Computational Linguistics*. 505–514.
- [16] Yishu Miao, Edward Grefenstette, and Phil Blunsom. 2017. Discovering discrete latent topics with neural variational inference. In *Proceedings of the 34th International Conference on Machine Learning-Volume 70*. 2410–2419.
- [17] Saif Mohammad, Svetlana Kiritchenko, Parinaz Sobhani, Xiaodan Zhu, and Colin Cherry. 2016. SemEval-2016 Task 6: Detecting Stance in Tweets. In *Proceedings of the 10th International Workshop on Semantic Evaluation (SemEval-2016)*. 31–41.
- [18] Mitra Mohtarami, Ramy Baly, James Glass, Preslav Nakov, Lluís Màrquez, and Alessandro Moschitti. 2018. Automatic Stance Detection Using End-to-End Memory Networks. In *Proceedings of the 2018 Conference of the North American Chapter of the Association for Computational Linguistics: Human Language Technologies, Volume 1 (Long Papers)*. 767–776.
- [19] Jeffrey Pennington, Richard Socher, and Christopher Manning. 2014. Glove: Global Vectors for Word Representation. In *Proceedings of the 2014 Conference on Empirical Methods in Natural Language Processing (EMNLP)*. 1532–1543.
- [20] Benjamin Riedel, Isabelle Augenstein, Georgios P. Spithourakis, and Sebastian Riedel. 2017. A simple but tough-to-beat baseline for the Fake News Challenge stance detection task. *CoRR abs/1707.03264* (2017).
- [21] T. Y.S.S. Santosh, Srijan Bansal, and Avirup Saha. 2019. Can Siamese Networks Help in Stance Detection?. In *Proceedings of the ACM India Joint International Conference on Data Science and Management of Data*. 306–309.
- [22] Joseph Sirrianni, Xiaoqing Liu, and Douglas Adams. 2020. Agreement Prediction of Arguments in Cyber Argumentation for Detecting Stance Polarity and Intensity. In *Proceedings of the 58th Annual Meeting of the Association for Computational Linguistics*. 5746–5758.
- [23] Swapna Somasundaran and Janyce Wiebe. 2010. Recognizing stances in ideological on-line debates. In *Proceedings of the NAACL HLT 2010 workshop on computational approaches to analysis and generation of emotion in text*. 116–124.
- [24] Akash Srivastava and Charles Sutton. 2017. Autoencoding variational inference for topic models. *arXiv preprint arXiv:1703.01488* (2017).
- [25] Peter Stefanov, Kareem Darwish, Atanas Atanasov, and Preslav Nakov. 2020. Predicting the Topical Stance and Political Leaning of Media using Tweets. In *Proceedings of the 58th Annual Meeting of the Association for Computational Linguistics*. 527–537.
- [26] Qingying Sun, Zhongqing Wang, Qiaoming Zhu, and Guodong Zhou. 2018. Stance Detection with Hierarchical Attention Network. In *Proceedings of the 27th International Conference on Computational Linguistics*. 2399–2409.
- [27] Yizhou Sun. 2017. User Stance Prediction via Online Behavior Mining. In *Proceedings of the 26th International Conference on World Wide Web Companion*. 1317.
- [28] Hao Tang, Donghong Ji, Chenliang Li, and Qiji Zhou. 2020. Dependency Graph Enhanced Dual-transformer Structure for Aspect-based Sentiment Classification. In *Proceedings of the 58th Annual Meeting of the Association for Computational Linguistics*. 6578–6588.
- [29] James Thorne, Andreas Vlachos, Christos Christodoulopoulos, and Arpit Mittal. 2018. FEVER: a Large-scale Dataset for Fact Extraction and VERification. In *Proceedings of the 2018 Conference of the North American Chapter of the Association for Computational Linguistics: Human Language Technologies, Volume 1 (Long Papers)*. 809–819.
- [30] Kai Wang, Weizhou Shen, Yunyi Yang, Xiaojun Quan, and Rui Wang. 2020. Relational Graph Attention Network for Aspect-based Sentiment Analysis. In *Proceedings of the 58th Annual Meeting of the Association for Computational Linguistics*. 3229–3238.
- [31] Yequan Wang, Minlie Huang, xiaoyan zhu, and Li Zhao. 2016. Attention-based LSTM for Aspect-level Sentiment Classification. In *Proceedings of the 2016 Conference on Empirical Methods in Natural Language Processing*. 606–615.
- [32] Penghui Wei and Wenji Mao. 2019. Modeling Transferable Topics for Cross-Target Stance Detection. In *Proceedings of the 42nd International ACM SIGIR Conference on Research and Development in Information Retrieval*. 1173–1176.
- [33] Zonghan Wu, Shirui Pan, Fengwen Chen, Guodong Long, Chengqi Zhang, and S Yu Philip. 2020. A comprehensive survey on graph neural networks. *IEEE Transactions on Neural Networks and Learning Systems* (2020), 1–21.
- [34] Chang Xu, Cécile Paris, Surya Nepal, and Ross Sparks. 2018. Cross-Target Stance Classification with Self-Attention Networks. In *Proceedings of the 56th Annual Meeting of the Association for Computational Linguistics (Volume 2: Short Papers)*. 778–783.
- [35] Liang Yao, Chengsheng Mao, and Yuan Luo. 2019. Graph convolutional networks for text classification. In *Proceedings of the AAAI Conference on Artificial Intelligence*, Vol. 33. 7370–7377.
- [36] Yongjing Yin, Fandong Meng, Jinsong Su, Chulun Zhou, Zhengyuan Yang, Jie Zhou, and Jiebo Luo. 2020. A Novel Graph-based Multi-modal Fusion Encoder for Neural Machine Translation. In *Proceedings of the 58th Annual Meeting of the Association for Computational Linguistics*. 3025–3035.
- [37] Bowen Zhang, Min Yang, Xutao Li, Yunming Ye, Xiaofei Xu, and Kuai Dai. 2020. Enhancing Cross-target Stance Detection with Transferable Semantic-Emotion Knowledge. In *Proceedings of the 58th Annual Meeting of the Association for Computational Linguistics*. 3188–3197.
- [38] Chen Zhang, Qiuchi Li, and Dawei Song. 2019. Aspect-based Sentiment Classification with Aspect-specific Graph Convolutional Networks. In *Proceedings of the 2019 Conference on Empirical Methods in Natural Language Processing and the 9th International Joint Conference on Natural Language Processing (EMNLP-IJCNLP)*. 4567–4577.
- [39] Qiang Zhang, Emine Yilmaz, and Shangsong Liang. 2018. Ranking-Based Method for News Stance Detection. In *Companion Proceedings of the The Web Conference 2018*. 41–42.
- [40] Yuhao Zhang, Peng Qi, and Christopher D. Manning. 2018. Graph Convolution over Pruned Dependency Trees Improves Relation Extraction. In *Proceedings of the 2018 Conference on Empirical Methods in Natural Language Processing*. 2205–2215.
- [41] Yufeng Zhang, Xueli Yu, Zeyu Cui, Shu Wu, Zhongzhen Wen, and Liang Wang. 2020. Every Document Owns Its Structure: Inductive Text Classification via Graph Neural Networks. In *Proceedings of the 58th Annual Meeting of the Association for Computational Linguistics*. 334–339.
- [42] Jie Zhou, Ganqu Cui, Zhengyan Zhang, Cheng Yang, Zhiyuan Liu, Lifeng Wang, Changcheng Li, and Maosong Sun. 2018. Graph neural networks: A review of methods and applications. *arXiv preprint arXiv:1812.08434* (2018).