



This is a repository copy of *Elevation is a stronger predictor of morphological trait divergence than competition in a radiation of tropical lizards*.

White Rose Research Online URL for this paper:
<http://eprints.whiterose.ac.uk/170936/>

Version: Published Version

Article:

Slavenko, A. orcid.org/0000-0002-3265-7715, Allison, A. and Meiri, S. (2021) Elevation is a stronger predictor of morphological trait divergence than competition in a radiation of tropical lizards. *Journal of Animal Ecology*. ISSN 0021-8790

<https://doi.org/10.1111/1365-2656.13420>

Reuse

This article is distributed under the terms of the Creative Commons Attribution (CC BY) licence. This licence allows you to distribute, remix, tweak, and build upon the work, even commercially, as long as you credit the authors for the original work. More information and the full terms of the licence here:
<https://creativecommons.org/licenses/>

Takedown

If you consider content in White Rose Research Online to be in breach of UK law, please notify us by emailing eprints@whiterose.ac.uk including the URL of the record and the reason for the withdrawal request.



eprints@whiterose.ac.uk
<https://eprints.whiterose.ac.uk/>

Elevation is a stronger predictor of morphological trait divergence than competition in a radiation of tropical lizards

Alex Slavenko¹  | Allen Allison² | Shai Meiri^{3,4} 

¹Department of Animal and Plant Sciences, University of Sheffield, Sheffield, UK

²Bernice P. Bishop Museum, Honolulu, HI, USA

³School of Zoology, Tel Aviv University, Tel Aviv, Israel

⁴The Steinhardt Museum of Natural History, Tel Aviv, Israel

Correspondence

Alex Slavenko

Email: a.slavenko@sheffield.ac.uk

Funding information

United States-Israel Binational Science Foundation, Grant/Award Number: 00020309000 and 2012143

Handling Editor: Hannah White

Abstract

1. Adaptations for efficient performance are expected to shape animal morphology based on selection for microhabitat use and ecological forces. The presence of competitor species is predicted to cause niches to contract and enhance trait divergence. Therefore, increased species richness is expected to lead to greater trait divergence, and to result in reduced overlap and similarity between morphologies of sympatric species.
2. We examined patterns of morphospace occupancy and partitioning in the skink fauna of New Guinea, the world's largest tropical island. Because skink species richness is largely decoupled from elevation in New Guinea, we could examine the effects of both factors (as proxies for competition and abiotic conditions), on morphospace occupancy and partitioning.
3. We measured 1,860 specimens from 79 species of skinks throughout Papua New Guinea, and examined their morphospace occupancy in a spatial context. We calculated, for each assemblage within equal-area cells, the volume of morphospace occupied by all skinks, the mean volume occupied per species, and the mean distance and overlap between all species pairs. We then examined whether these metrics are related to species richness and elevation.
4. Elevation is a stronger predictor of morphospace occupancy than species richness. As elevation increases, intraspecific variation decreases and morphologies become more similar to each other such that overall morphospace occupancy decreases. Highland skinks are, on average, smaller, thinner and shorter limbed than lowland species.
5. We hypothesise that harsh climates in the New Guinea highland habitats impose strong selection on skinks to occupy specific areas of morphospace that facilitate efficient thermoregulation in suboptimal thermal conditions. We conclude that the effect of competition on trait divergence on a community and assemblage scale is eclipsed by abiotic selection pressures in these harsh environments.

KEYWORDS

character displacement, competitive exclusion, elevational gradient, mountains, niche partitioning, Papua New Guinea, Scincidae, tropical ecology

This is an open access article under the terms of the Creative Commons Attribution License, which permits use, distribution and reproduction in any medium, provided the original work is properly cited.

© 2021 The Authors. *Journal of Animal Ecology* published by John Wiley & Sons Ltd on behalf of British Ecological Society

1 | INTRODUCTION

Niche partitioning is among the most fundamental processes in ecology, and is a major force generating phenotypic diversity. Ecological opportunity promotes diversification and partitioning of the niche space among species (Losos, 2010). Competing species are thought to be unable to co-occur if they are too ecologically similar (Hardin, 1960), with a limiting similarity to coexisting species (MacArthur & Levins, 1967). Competition between taxa occupying similar niches could be reduced via partitioning of microhabitat use, activity times and diet—all of which are thought to manifest in morphological adaptation (Brown & Wilson, 1956; Grant & Grant, 2006; Pianka, 1974; Slatkin, 1980). That said, such community-wide character displacement is not always manifested (Meiri et al., 2011; Simberloff & Boecklen, 1981; Stuart & Losos, 2013), the importance of competition in shaping community structure has long been contested (Connell, 1983), and the degree to which competition-driven processes are more important than abiotic selective pressures is still unclear.

Competition is thought to increase as richness increases (e.g. Soule, 1966; Mesquita et al., 2007; Losos, 2009; cf. Meiri et al., 2014) and the niche space becomes more saturated (Pianka, 1974), in a process termed niche packing (Pigot et al., 2016). The theoretical result of a fully packed niche space is one where distances and overlaps between species are constrained to a degree that still allows coexistence of all co-occurring and ecologically interacting species (Hutchinson, 1957). Theoretically then, as niche space becomes more and more packed, distances and overlap between species will decrease until the niche space reaches full saturation (Pianka, 1974).

Divergence in morphological traits underlies some of the most impressive cases of adaptive radiations, such as trophic morphology evolution in African cichlids (Rüber & Adams, 2001; Rüber et al., 1999), adaptation to benthic or pelagic microhabitats in threespine sticklebacks (Lavin & McPhail, 1986; McGee et al., 2013), bill evolution of Hawaiian honeycreepers (Lerner et al., 2011; Lovette et al., 2002) and Darwin's finches (Abzhanov et al., 2004; Grant & Grant, 2006; Herrel et al., 2005), shape and size differentiation of Greater Antilles anoles (Losos, 2009; Schoener, 1974), limb reduction and loss in Australian skinks (Skinner, 2010; Wiens, 2009), and many more.

We examined morphospace occupancy and partitioning in the skink fauna of Papua New Guinea (PNG). Skinks occur in almost all habitats on the island and vary greatly in morphology (body and head size, limb dimensions, etc.), microhabitat use, diel activity, reproductive biology, and diet (Allison, 1982, 2009; Allison & Greer, 1986). Skink species richness patterns in PNG are largely decoupled from elevational gradients, at least in the lowlands (see below and Supporting Information S1; Figure S1), unlike most other PNG land vertebrate groups (Tallowin et al., 2017). In fact, Tallowin et al. (2017) found that lizard richness (and most lizards in PNG are skinks; Allison, 1982) peaks in the northern versant of the island. Therefore, PNG skinks are an excellent model to examine the effects of interspecific competition and climatic conditions on morphological

trait divergence. We examine these patterns using species richness and elevation as proxies for competition and habitat and climatic conditions, respectively.

We measured 1,860 specimens of PNG skinks (Figure 1a), comprising 79 species out of 100 currently recognised in 'mainland' PNG, to test the following hypotheses:

1. As skink richness increases, niches will become narrower, leading to individual species occupying a smaller area of morphospace (Figure 1b).
2. The overall 'volume' of the occupied morphospace will not vary greatly with richness, but the relative distances and overlap between various species will diminish with increasing richness. That is, the size of the proverbial morphological 'pie' remains the same, but the size of the 'slices' that the 'pie' is partitioned into will change as niche packing occurs (Pigot et al., 2016):
 - a. As skink richness increases, the size of the morphospace will not vary (Figure 1c).
 - b. As skink richness increases, distances between species will decrease as the morphospace becomes more saturated (Figure 1d).
 - c. As skink richness increases, trait overlap between species will decrease due to diffuse competition reducing overlap between closely competing species in species-rich areas (Pianka, 1974; Figure 1e).
3. Competitive exclusion (Hardin, 1960) and limiting similarity (MacArthur & Levins, 1967) will prevent similar species from co-occurring. Therefore, the mean distances between morphology of a focal species and sympatric species will be longer than the distances between its morphology and those of allopatric species (Figure 1f), and species morphology will overlap more with that of allopatric relatives than with sympatric ones (Figure 1g). Alternatively, habitat filtering will result in sympatric species being more similar to each other than to allopatric ones.

2 | MATERIALS AND METHODS

2.1 | Data collection

There are currently 100 species of skinks recognised in 'mainland' PNG (Table S1), not including 19 which are endemic to outlying islands (e.g. the Bismarcks Archipelago) and do not occur on the island of New Guinea. Of these, we measured 1,860 specimens from 79 species, in three natural history collections, during 2016–2017: Bernice P. Bishop Museum (BPBM; Honolulu, Hawaii), Louisiana State University Museum of Zoology (LSUMZ; Baton Rouge, Louisiana) and the Museum of Comparative Zoology (MCZ; Cambridge, Massachusetts). Two additional species (*Lobulia lobulus*, and *L. sabini*) were only recognised after we had concluded sampling (Kraus, 2020). Two species (*Papuascincus buergersi* and *P. phaeodes*) are known only from their vaguely defined type localities

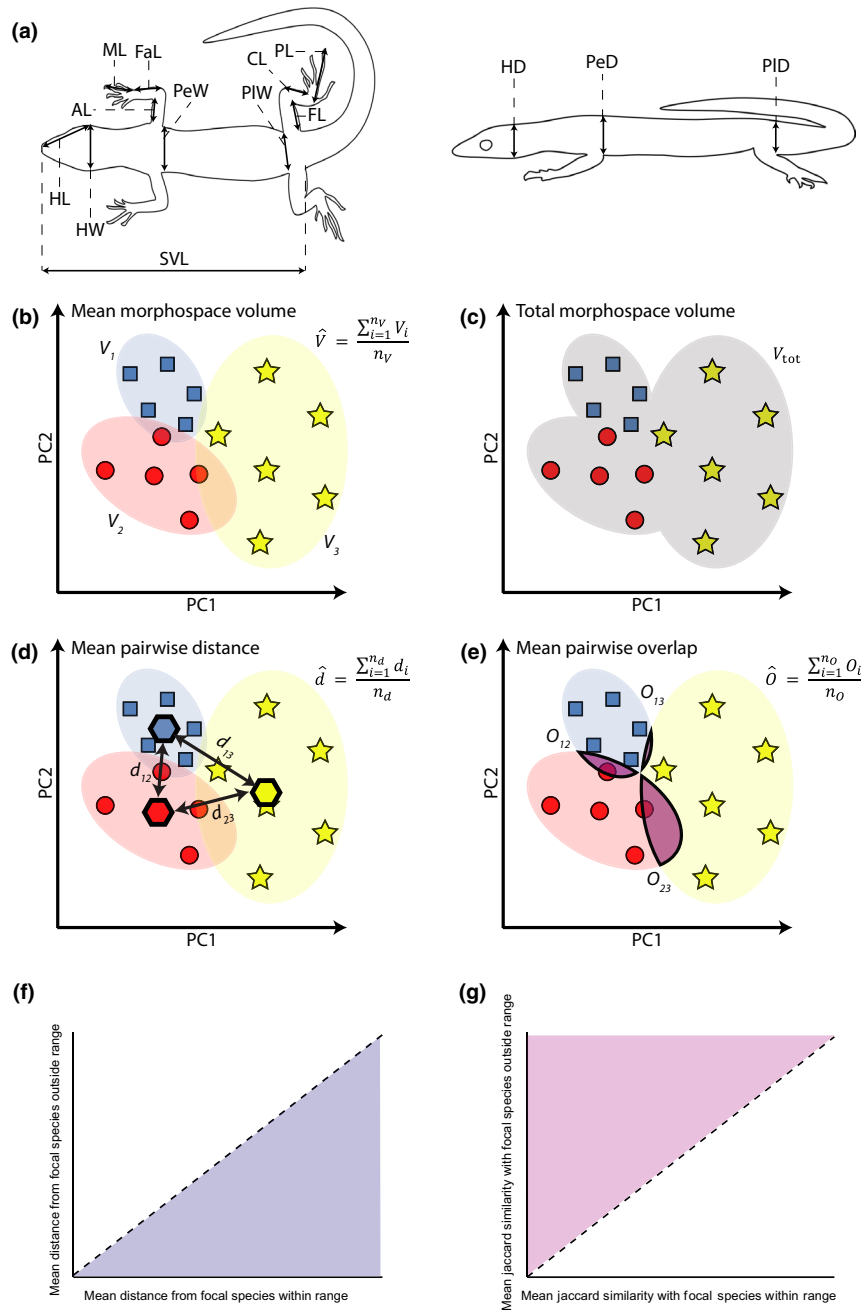


FIGURE 1 (a) A schematic representation of a skink with 14 morphometric measurements marked on it. The measurements are as follows: SVL: snout-vent length; HL: head length (from anterior edge of ear opening to snout); HW: head width (at the widest point); HD: head depth (at the deepest point); PeW: pectoral girdle width; PeD: pectoral girdle depth; PIW: pelvic girdle width; PID: pelvic girdle depth; AL: arm length (shoulder to elbow); FaL: forearm length (elbow to wrist); ML: manus length (wrist to tip of longest digit); FL: femur length (from pelvis to knee); CL: crus length (from knee to heel); PL: pes length (from heel to tip of longest digit). Two additional measurements not displayed here are as follows: FrL: length of front limb (sum of AL, FaL and ML); HiL: length of hind limb (sum of FL, CL and PL). (b–e) Schematic representations of the morphospace of a hypothetical assemblage of three skink species, denoted by blue squares, red circles and yellow stars, each representing a different species. (b) Mean volume is calculated as the mean of all individual species' volumes of morphospace in the assemblage, represented here by coloured ellipses. (c) Total volume is calculated as the volume of morphospace occupied by individuals from all species in the assemblage, represented here by the grey shape. (d) Mean pairwise distance is calculated as the mean of all distances between centroids of all pairs of species in the assemblage, the centroids represented here by hexagons. (e) Mean overlap is calculated as the mean of all overlaps between all pairs of species in the assemblage, represented here as purple shaded polygons with dark outlines. (f–g) Hypotheses tested for the comparison of mean distance from and mean overlap with the focal species within and outside their ranges. The dashed line represents the null regression with an intercept of 0 and a slope of 1. (f) The blue-shaded area represents mean distances from the focal species that are higher within the focal species' range, that is, regression slope shallower than 1. (g) The purple-shaded area represents mean overlaps with the focal species that are lower within the focal species' range, that is, regression slope steeper than 1. Thus, these shaded areas represent the expectations of the ecological competition paradigm

(Slavenko, Tamar, et al., 2020) and were excluded. The remaining 17 species were omitted due to scarcity of samples in the collections. All have narrower distributions, on average, than included species (Supporting Information S1). We note that these 17 species are similar in body size and the proportions of lowland and highlands species to the pool of included species (Supporting Information S1). Therefore, their exclusion from this study is unlikely to cause systematic bias in our results.

The border between PNG and Indonesia is only political and has no biogeographical or biological meaning. However, the Indonesian half of New Guinea is very poorly studied in comparison to PNG, leading to an artificial drop in species richness compared to PNG (see e.g. richness maps in Roll et al., 2017). We therefore limit ourselves to only examining the better-known eastern half of New Guinea, comprising the nation of PNG, without its outlying islands.

From each specimen, we measured 16 traits to quantify variation in body size and shape (Figure 1a). We selected measurements relating to relative limb length, head size and shape, and body length and width. Relative limb length and body width are related to locomotor performance and clinging capability, and therefore to microhabitat use (Garland Jr. & Losos, 1994; Melville & Swain, 2000; Pianka, 1969). Head size is a strong proxy for bite force, and is often indicative of dietary preferences in lizards (Herrel et al., 2001; Van Damme et al., 1995; Verwajen et al., 2002). Competition for microhabitats and food resources could both lead to trait divergence (Grant & Grant, 2006; Losos, 2009).

Limb measurements were all taken from the left side of the body, barring cases where the left limbs were damaged (e.g. missing digits), in which case all measurements for that specimen were taken from the right side of the body (186 specimens, 10% of total). All measurements were taken using a digital caliper to the nearest 0.1 mm.

We obtained distribution maps from Roll et al. (2017) for all the species included in the study. We overlaid the maps onto a 25×25 km equal-area Berhmann projection grid of PNG (sensu Tallwin et al., 2017), comprising 620 cells, excluding cells with <50% land cover to prevent edge effects. For each cell, we tallied the total skink species richness, and recorded which species occur in it.

We obtained elevation data from the Papua New Guinea Resource Information System (3rd ed.; Bryan & Shearman, 2008). We then calculated mean elevation (in m a.s.l.) for each cell and assigned cells to either 'highland' or 'lowland', based on habitat categorisations in Bryan and Shearman (2015), who define lower montane forest from c. 1,000 m and above. This agrees with a breakpoint we uncovered in the relationship between skink richness and mean elevation at ~1,076 m a.s.l. (Supporting Information S1; Figure S1). Therefore, we used 1,076 m as the cut-off point for our categorisation, with cells below 1,076 m defined as 'lowland', and cells above 1,076 m defined as 'highland'. Similarly, we averaged mean elevation per cell (in m a.s.l.) across the distribution of each species and assigned species to either 'highland' or 'lowland' using the same categorisation scheme.

All the analyses were performed in R v4.0.2 (R Core Team, 2020) and the data and code are available in Dryad Digital Repository <https://doi.org/10.5061/dryad.hdr7sqvgs> (Slavenko et al., 2020).

2.2 | Morphometric analyses

We size adjusted all morphometric measurements apart from body length (Snout–Vent Length; SVL) by dividing them by SVL. Therefore, we had one non-transformed measurement, SVL (in mm), and 15 size-adjusted measurements (as proportion from each individual's SVL). We reduced dimensionality in the morphometric data by performing a PCA using the 'prcomp' function from the *stats* package in R, and we used the 'broken stick' method (Jackson, 1993) to select only those PC axes which explained a higher than expected portion of variance for downstream analyses. These PCs were used to define the morphospace of PNG skinks. We used the *HYPERVOLUME* package (Blonder & Harris, 2018) to calculate the volume of morphospace occupied by each species (using the 'hypervolume_gaussian' function), measured as a Gaussian 95% kernel density (a method to estimate the probability density function) estimate around the coordinates of individuals of each species in morphospace.

2.3 | Spatial analyses of morphospace

We calculated four morphospace metrics for each cell (Figure 1b–e): (a) the mean volume of morphospace occupied by species in the cell; (b) the total volume of morphospace occupied by all species in the cell, defined as the Gaussian 95% kernel density estimate around the coordinates of individuals of all species occurring in the cell; (c) the mean pairwise distance between all species pairs in the cell, defined as the Euclidean distance between the centroids of the volumes of each pair of species (using the 'hypervolume_distance' function) averaged across all pairs and (d) the mean pairwise overlap between all species pairs in the cell, defined as the Jaccard similarity index (ranging from 0 to 1) of the volumes of each pair of species (using the 'hypervolume_overlap_statistics' function) averaged across all pairs.

Skink richness in PNG peaks along the northern versant and is largely decoupled from elevational gradients in parts of PNG below ~1,076 m, but is negatively correlated with elevation in parts of PNG above ~1,076 m (Supporting Information S1; Figure S1). We therefore examined the effect of both species richness (as a proxy for competition) and elevation (as a proxy for habitat and climatic conditions) on our four morphospace metrics.

Species richness is thought to reflect interspecific competition, under the assumption that as species richness increases, the number of competitors increases (see above). We therefore use the species richness of skinks as a proxy for the strength of interspecific competition, although we are aware that species identity and abundance may be more important determinants of the strength of competition.

Environmental conditions in PNG change predictably with elevation. Temperatures drop by roughly 0.5–0.6°C for every 100 m gained in altitude (Bourke, 2010). Largely due to the effects of changing temperature, vegetation structure, and therefore available microhabitat for skinks, also changes with elevation. With increasing elevation, coastal mangroves give way to tropical broadleaf forests of diminishing canopy height, then giving way to shrubs, grasslands, and even tundra-like vegetation and bare rock at the top of the highest mountains (Allison, 2009; Bryan & Shearman, 2015). We therefore use elevation as a proxy for environmental conditions.

We ran Generalised Additive Models (GAM) for each metric using the 'gam' function from the `MGCV` package (Wood, 2011), with mean elevation and species richness as linear predictor variables, as well as spatial coordinates (latitude and longitude in decimal degrees) modelled as a thin plate spline to account for spatial autocorrelation (Wood, 2003). We compared models with either all predictors (full model), all different combinations of the predictors (mean elevation, richness, spatial coordinates) or none (the null model) using AICc scores, selecting the model with the lowest AICc score. If the best model included more than a single predictor, we compared relative variable importance by decomposing the contribution to R^2 of each predictor averaged over different orderings (i.e. adding each predictor to the model in different orderings [first, second, last, etc.], measuring the addition to model R^2 in each ordering, and then averaging across all different orderings) as implemented in the 'calc.relimp' function from the `RELAIMPO` package (Grömping, 2006).

As an added sensitivity analysis, we divided our dataset into two subsets, one of only lowland cells (<1,076 m; $n = 408$) and one of only highland cells (>1,076 m; $n = 212$). We repeated the above analyses for each subset of the data.

We calculated the centroids of PC scores for each cell, which we used to quantify the commonest area of morphospace occupied in each cell. We compared highland to lowland cells by performing a PERMANOVA analysis with the 'adonis' function from the `VEGAN` package (Oksanen et al., 2019), to test if there is a shift in PC centroids between lowland and highland cells. We generated histograms of the PC scores on each PC for each cell and examined changes in the distributions of PC scores with elevation by fitting linear regression models of mean elevation against the standard deviation, skewness and kurtosis of PC scores in each cell.

Similar to the previously described analyses, we examined if the overall morphospace occupied per cell shifted between species in the highlands and lowlands. After assigning each species to either 'highland' or 'lowland' (as described in the 'data collection' section), we used a PERMANOVA analysis to compare morphospace occupancy between highland and lowland species.

Finally, we tested for signals of competition between species sharing similar areas of morphospace in their distributions (Figure 1f–g). We did this by tallying which cells are within or outside the range of each species. We then calculated the mean distance and overlap

from the focal species for each cell (i.e. the average of all distances or overlaps between each species in the cell and the focal species), and calculated the mean distances from the focal species across all cells within its range, and outside its range. So if, for example, species *a* occurs in cells *i* and *j*, but not in cells *m* and *n*, then we would calculate the mean distance and overlaps from species *a* for all other species occurring within cells *i* and *j* as the mean distance or overlap within the species' range, and the mean distance and overlaps from species *a* for all other species occurring within cells *m* and *n* as the mean distance or overlap outside the species' range.

We then performed two tests: (a) *t* tests comparing, for each species, the mean distances and overlaps between cells within the focal species' range and outside the focal species' range, and (b) a linear regression through the origin with mean distance/overlap within the focal species' range on the *x*-axis, and mean distance/overlap outside the focal species' range on the *y*-axis. In the linear regression, we tested whether the slope differed significantly from 1 (a slope of 1 meaning no difference in distances or overlaps within and outside focal species' ranges), our null hypothesis with no signal of competitive exclusion or limiting similarity. The alternative hypotheses we examined are a slope shallower than 1 for mean distances (meaning distances between species are higher within focal species' ranges), and a slope steeper than 1 for mean overlap (meaning overlap between species is lower within focal species' ranges), both of which we interpret as indicative of competition driving species to be more dissimilar in sympatry.

2.4 | Randomisation tests

Correlations between our morphospace metrics and species richness may exist due to random community assembly processes, even without the effect of competition. For instance, we might expect the total size of the occupied morphospace to increase with species richness even if species positions in morphospace are random in respect to one another, simply because there is a higher chance to 'sample' a species with an unusual morphology when more species are tallied. To account for this, we generated null expectations of the relationship between morphospace occupancy and species richness based on a randomisation process.

For each value of species richness in our dataset, we generated 100 randomly sampled assemblages of species, in which species are sampled from the PNG pool with a sampling probability weighted by range size. Then, for each such random assemblage, we calculated the four morphospace metrics as described above—to represent morphospaces populated without competition or habitat filtering. We then generated, for each random sample and each of the four morphospace metrics, full GAM models as described above (species richness, mean elevation, latitude and longitude). We extracted the regression coefficients with richness and elevation from each model, and thus generated, for each morphospace metric, a null distribution of the regression coefficients expected under a random process of morphospace occupation. We calculated *p* values for each metric as

the proportion of the distribution as extreme as, or more extreme than the observed coefficient.

3 | RESULTS

The broken stick test determined that only the first two PCs explained a substantial portion of variance (Figure S2). Cumulatively, these PCs explain 78.1% of the variance in morphology (PC1 61%, PC2 17.1%; Figure S3). PC1 mainly captures variation in limb and head lengths (long limbs and heads relative to body length, vs. short limbs and heads; Figure 2), whereas PC2 mainly captures variation in body length (SVL), body depth and head depth, and to a lesser extent width (large and thick-bodied vs. small and thin; Figure 2).

None of the four morphospace metrics (mean volume of morphospace per species per cell, total volume of morphospace per cell, mean pairwise distance between species per cell, and mean pairwise overlap between species per cell) appear to match the spatial pattern in skink richness, which peaks along the northern versant of PNG (Figure 3). All four measures, however, vary systematically with mean cell elevation (Figure 3). Mean pairwise distance and total volume peak at low elevations along the coasts and decrease in the high elevation regions in the Central Cordillera and the Papuan Peninsula (Figure 3a–d). Mean morphospace volume peaks along the southern

versant of PNG and is lower in the Central Cordillera and along the northern versant (Figure 3c). Mean pairwise overlap shows a complex spatial pattern, mostly peaking on the slopes of the Central Cordillera and the Owen Stanley Mts in the Papuan Peninsula, with the lowest values on the northern and southern versants of PNG (Figure 3b).

Both skink richness and mean elevation were retained in the best models for three out of four morphospace metrics—all apart from mean morphospace volume (Table 1). Model R^2 values range between 78% (for mean pairwise overlap) and 96% (for mean morphospace volume). Mean morphospace volume, total morphospace volume and mean pairwise distance decrease with mean elevation. Mean pairwise overlap increases with mean elevation. Mean pairwise overlap decreases with skink richness, whereas total morphospace volume and mean pairwise distance increase with increasing richness. Spatial patterns in morphospace metrics vary in importance—they explain between 11% of the variation (for total morphospace volume) to 78% of the variation (for mean morphospace volume). Mean pairwise distance and mean pairwise overlap vary more with longitude, whereas latitude explains most of the variation in mean morphospace volume. Mean elevation explains between 4.6 and 5.8 times more variation in total morphospace volume and mean pairwise distance than skink richness (Table 1). Only for mean pairwise overlap does species richness

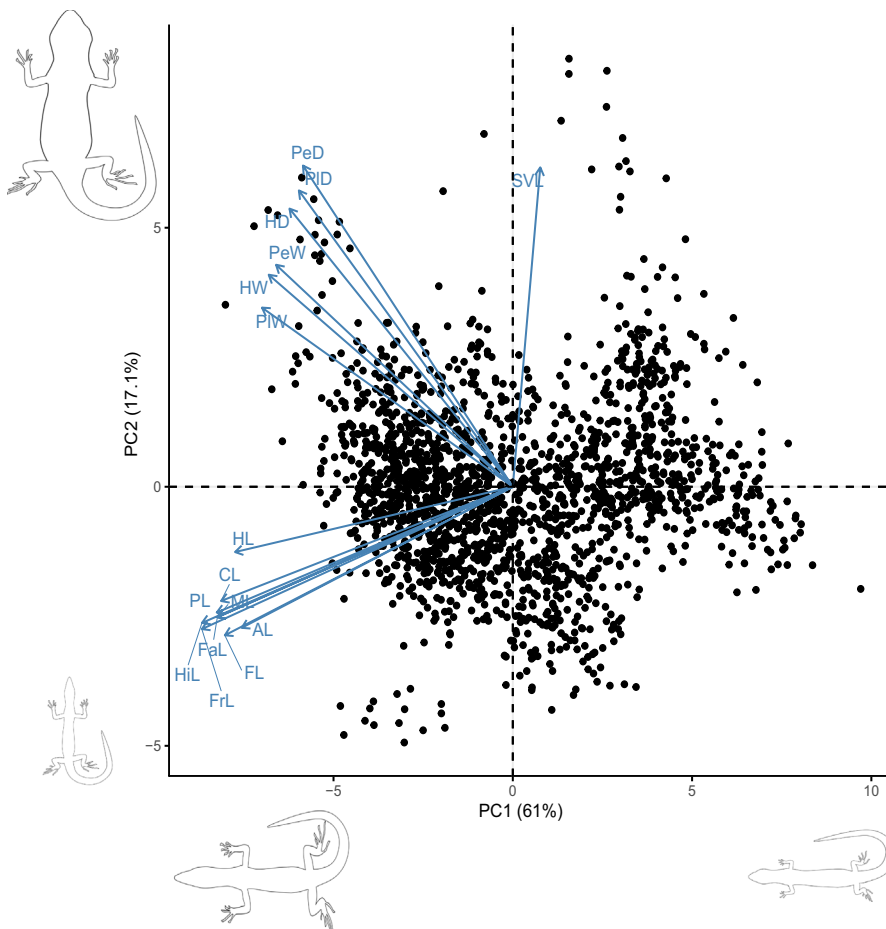


FIGURE 2 Morphospace of Papua New Guinea skinks. The blue arrows show the loadings of the various morphometric measurements on the PC axes. On the edges of each axis are schematic representations of skinks visualising how morphology changes along each axis

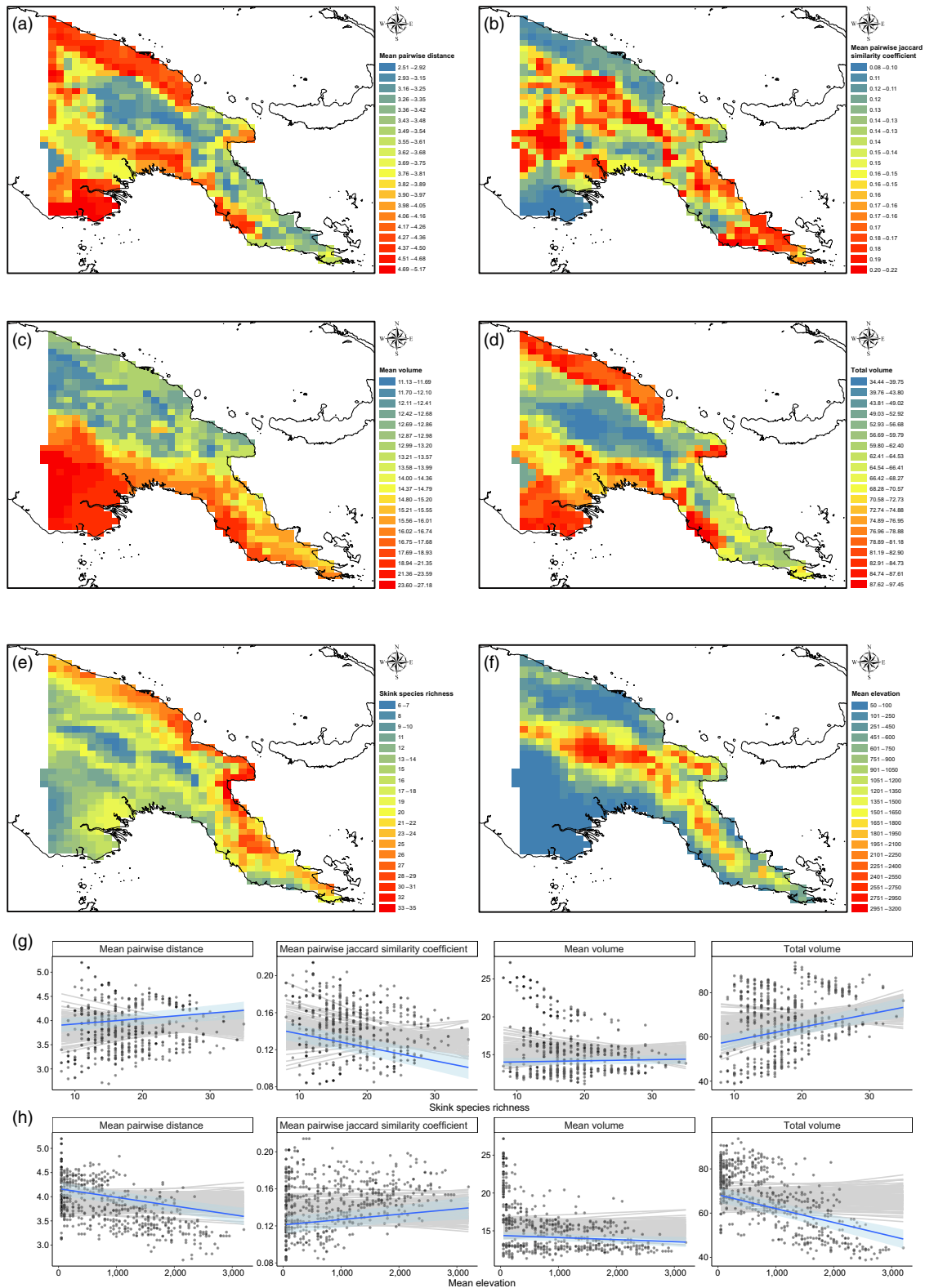


FIGURE 3 (a–f) Maps showing spatial distributions of (a) mean pairwise distance per cell, (b) mean pairwise Jaccard similarity coefficient per cell, (c) mean volume per cell; (d) total volume per cell; (e) skink species richness per cell and (f) mean elevation per cell. Cooler colours represent lower values, whereas warmer colours represent higher values. (g) Scatterplots showing the relationship between each of the four metrics from maps a–d (left to right) and skink species richness. (h) Scatterplots showing the relationship between each of the four metrics from maps a–d (left to right) and mean elevation. In panels g–h, the blue line represents the observed correlation coefficients from GAM models including both mean elevation and species richness as predictors, with spatial coordinates modelled as a thin plate spline. The blue shading around the line represents confidence intervals from the same models. The grey lines represent 100 regression lines from similar GAM models using randomised assemblages as the underlying data. Full summaries for the plotted models are listed in Table 1

TABLE 1 Results of the best models for each morphospace metric. Standardised regression coefficients are written for each predictor (all predictors are significant; $p < 0.001$). In parentheses are the p values for the randomisation tests, calculated as the fraction of correlation coefficients from GAM models run on randomised datasets as extreme as, or more extreme than the observed coefficient. R^2 and deviance explained for each model are listed. The four right-most columns are the relative importance calculated for both predictors in each model, as well as for spatial coordinates (latitude and longitude). Relative importance is calculated by adding each predictor to the model in different orderings (first, second, last, etc.) and averaging the contributions to R^2

Model	Skink richness	Mean elevation	R^2	Deviance explained	Richness relative importance	Elevation relative importance	Latitude relative importance	Longitude relative importance
Mean volume	—	-0.06 (0.54)	0.96	96.8%	—	0.21	0.59	0.19
Total volume	0.24 (0.55)	-0.36 (0)	0.89	90.9%	0.16	0.73	0.05	0.06
Mean pairwise distance	0.13 (0.56)	-0.3 (0)	0.84	86.5%	0.11	0.64	0.03	0.22
Mean pairwise overlap	-0.28 (0.22)	0.16 (0.02)	0.78	81.5%	0.41	0.21	0.08	0.3

explain more variation (nearly twice as much) than mean elevation. These patterns were largely retained in the lowlands-only models, whereas the highlands-only model showed no relationship between morphospace metrics and elevation (Supporting Information S1).

Patterns in all morphospace metrics do not vary greatly from the expectation under a null model of morphospace occupancy (Figure 3g,h; Figure S4; Table 1). The decrease in mean morphospace volume with mean elevation is likely not different from null expectations. However, the decreases in total morphospace volume and mean pairwise distance with mean elevation, and the increase in mean pairwise overlap with mean elevation, all differ significantly from null expectations (all $p \leq 0.02$; Figure 3h; Table 1).

Forty of 79 species (50.6%) are significantly more morphologically distant from species within their ranges than those outside their ranges, whereas 30.4% show the opposite trend of significantly lower distances within their ranges. Only 30 of 79 species (38%) have significantly lower overlap with species within their ranges than outside their ranges (36.7% showing the opposite trend of significantly higher overlap within their ranges). However, only 24 species (30.4%) have both higher distances and lower overlap with species within their ranges than outside their ranges (25.3% showing the opposite trend, of both lower distances and higher overlap within their ranges; Table S2). This suggests that few species significantly differ in morphospace occupancy from sympatric species.

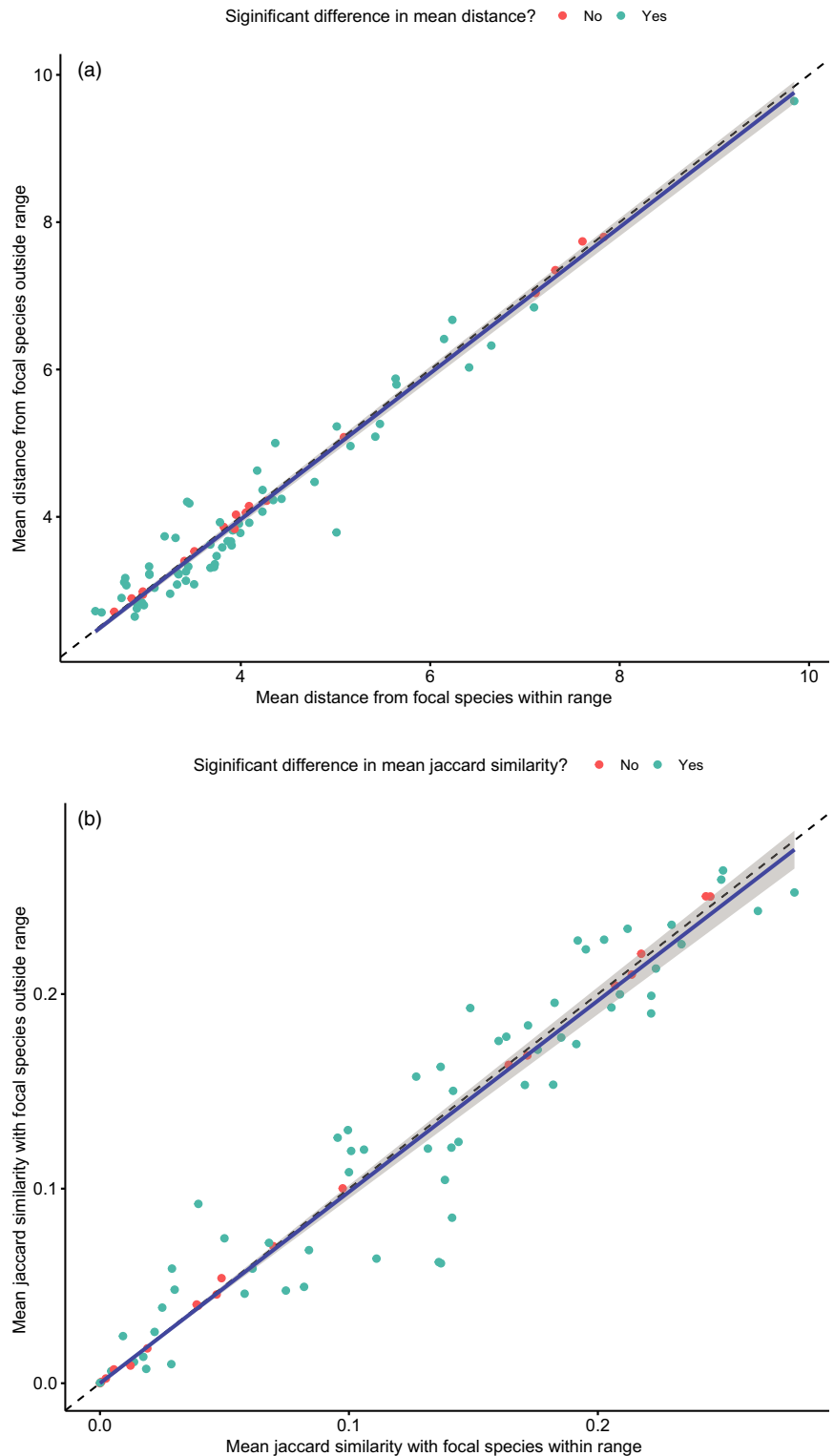
We ran linear regressions through the origin, with mean distance/overlap within the focal species' range on the x-axis, and mean distance/overlap outside the focal species' range on the y axis (Figure 1f–g). The regression slopes for both mean pairwise distance and mean pairwise overlap, when the parameters within the focal species' range are compared against the parameters outside the focal species' range, do not differ significantly from 1 (0.99 ± 0.01 and 0.98 ± 0.02 , respectively; $p_{\text{distance}} = 0.26$, $p_{\text{overlap}} = 0.34$). That is, the mean distances and overlap between each species and other species within their ranges do not differ from those of species outside their ranges (Figure 4), suggesting that on average, species

occupy similar positions in morphospace as either sympatric or allopatric species.

On average, as elevation increases, the average area of morphospace occupied by species (mean volume), the total area of morphospace occupied by assemblages (total volume) and the average distance between species in morphospace (mean pairwise distance) all decrease. The average overlap between species in morphospace increases with elevation (mean pairwise overlap). Total volume changes the most with elevation (highest standardised regression coefficient), whereas mean volume changes the least (lowest standardised regression coefficient; Table 1). Furthermore, the 95% CI ellipsoid encompassing species from lowland cells is roughly twice as large as the 95% CI ellipsoid encompassing species from highland cells (area of ellipsoids: 112.83 for lowland species, 56.8 for highland species). This means that species from the lowlands of PNG occupy a larger area of morphospace than species from the highlands (Figure S5).

Highland cells occupy a significantly different area of morphospace from lowland cells (PERMANOVA based on 999 permutations, $p = 0.001$, $R^2 = 0.17$; Figure 5). Centroids of highland cells have, on average, higher PC1 scores and lower PC2 scores than lowland cells, meaning highland cells have, on average, smaller and thinner skinks with shorter limbs. As elevation increases, the skewness and kurtosis of PC1 and the standard deviation, skewness and kurtosis of PC2 increase. The distributions of centroids in the cells thus become slightly more right-skewed and more centred around the modal values, but the general effect is weak (Figure 5b,c; Figure S6; Table S3). There is also a shift in the modal values, with the centroids of PC1 increasing and the centroids of PC2 decreasing with an increase in elevation (Figure 5b,c; Figure S6; Table S3). This effect is much more pronounced for PC2 centroids, in which mean elevation explains 39% of the variance (Table S3). Similarly, species from lowland and highland cells occupy slightly distinct areas of morphospace (PERMANOVA based on 999 permutations, $p = 0.001$, $R^2 = 0.012$; Figure S4), but the difference is much smaller than the assemblage-level comparison, and the model has very low explanatory power.

FIGURE 4 Comparisons of (a) mean distance from and (b) mean overlap with the focal species within and outside their ranges. The dashed line represents the null regression slope of 1. The blue line represents a linear regression through the origin between observed values within (0.99 ± 0.01 , $p = 0.26$, $R^2 = 0.99$) and outside (0.98 ± 0.02 , $p = 0.34$, $R^2 = 0.98$) focal species' ranges, with confidence intervals represented by the shaded area. p values correspond to the null hypothesis that the slope = 1. Each dot is coloured based on the significance of t tests comparing the metric within and outside the focal species' range—turquoise for significant difference between ranges ($p < 0.05$), and pink for no significant difference between ranges



4 | DISCUSSION

4.1 | Little evidence of competition-driven trait divergence

Classic ecological theory predicts that, as the number of competitors increases, species morphology will adapt to reduce similarity due to

the effects of diffuse competition (Hutchinson, 1957; Pianka, 1974). However, we found only little evidence of competition-driven trait divergence in PNG skins in traits linked to microhabitat use and dietary preferences. The morphospace does appear to be more tightly packed in species-rich areas (Table 1), but the actual size of the morphospace increases with richness, meaning more areas of the morphospace are occupied where there are more species. This

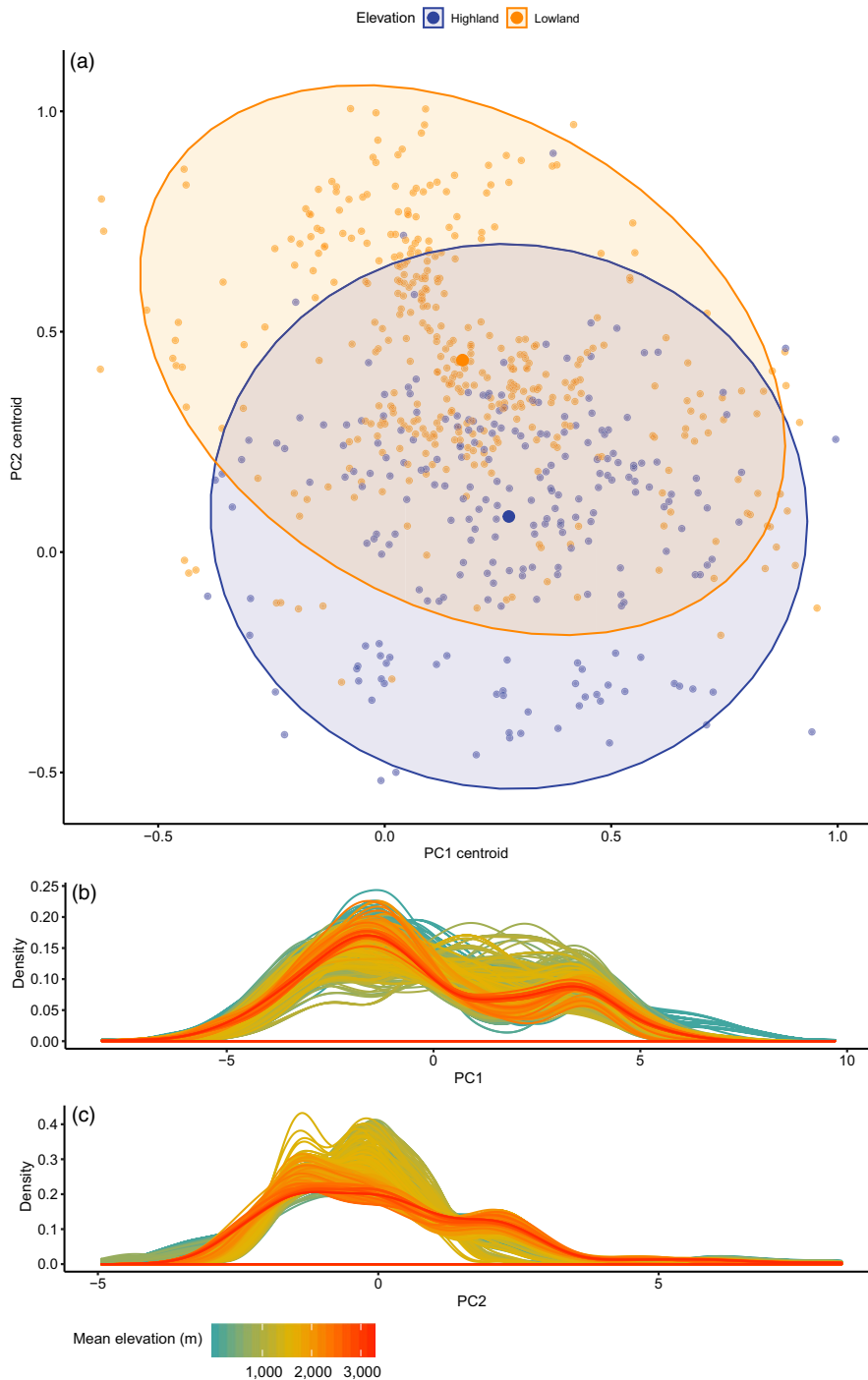


FIGURE 5 (a) Scatterplot showing the coordinates of the centroids of PCs 1 and 2 per cell. Highland cells (elevation > 1,076 m) are coloured blue, and lowland cells (elevation < 1,076 m) are coloured yellow. The ellipses encompass 95% of observations for each group. (b–c) Density histograms showing the distribution of PC scores within each cell (each histogram is the distribution of an individual cell). Colours represent the mean elevation of the cell, with cooler colours representing lower elevations and warmer colours representing higher elevations

result may suggest that some elements of niche packing occur (Pigot et al., 2016), but our randomisation models have uncovered that the patterns of richness-related morphospace occupancy do not differ from null expectations (Figure 3g; Figure S5). Since our null models explicitly fill the morphospace randomly with regard to species morphology, this would suggest that the observed patterns of the morphospace becoming larger, and more tightly packed, in species-rich areas, need not reflect any competition-driven process.

Morphospace occupancy appears to be more strongly influenced by elevation, a proxy for environmental conditions and habitat type, than it is by species richness, a metric for interspecific competition

(Figure 3; Table 1). Furthermore, there is little evidence of competitive exclusion or limiting similarity having driven assemblage structure (Figure 4; Table S2). Therefore, in PNG skinks, similar to what has been described in several other cases (e.g. Meiri et al., 2011; Stuart & Losos, 2013), the effects of competition on shaping trait divergence appear weak. There are several possible explanations for the weak effect of competition:

First, there may be other axes of niche space that are not captured by the morphometric measurements used here, and competition may affect some axes of trait space more strongly than others. For instance, several species of skinks from the genera *Prasinochaema*

and *Lipinia* have developed subdigital lamellae, likely in association with their arboreal habits (Greer, 1974). Traits such as these, which have well-documented impacts on locomotory performance (Irschick et al., 1996; Macrini et al., 2003), are likely important in microhabitat niche partitioning but were not accounted for in our analyses.

Second, the method we employed here assumes that all species that occur within a 25 × 25 km cell are sympatric and syntopic, an assumption that is not here tested due to the resolution of the data used, and very likely is not true for all cells in PNG. For instance, skink species on Mt Kiandī are separated by microhabitat and elevation (Allison, 1982), meaning that despite all co-occurring in the same cell, few of them interact ecologically with one another. Furthermore, microhabitat and temporal partitioning (assuming these do not by themselves influence morphology, which is logical at least for the temporal niche) could allow even syntopic species with a similar morphology to cohabit. Species richness may therefore be an inadequate measure of competition in this system. The extent to which species in the same cell interact with each other across PNG, and therefore experience competition, and whether patterns of co-occurrence change spatially and with elevation, need to be determined.

Third, competition may simply be less important in shaping trait divergence in our examined traits compared to abiotic selective pressures. In fact, if strong selection exists, co-occurring species may be even more similar than expected by chance due to environmental filtering. Our models instead strongly support elevation, a proxy for habitat and climatic differences, as a stronger driver of trait divergence.

4.2 | The size of occupied morphospace changes with elevation

We found that highland species occupy a smaller portion of morphospace than do lowland species (Figure 3d,h; Figure S4). Indeed, many of the most morphologically distinct skinks in PNG, which occupy the margins of the morphospace, are lowland species—these include the semi-aquatic and unusually long-limbed *Fojia bumui*, the extremely large *Tiliqua gigas*, or several species of large-headed *Tribolonotus*, noted for their strongly keeled scales and bony protrusions. However, despite more morphologies being represented there, the morphospace in the lowlands does not appear to be more tightly packed compared to the highlands, as overlap increases with increasing elevation and decreases with species richness (Table 1).

An important caveat is that the species in this study are not phylogenetically independent, and failing to account for phylogeny may impact results of morphological analyses, since both time from divergence and the rate of trait evolution would affect the accumulation of trait differences. If phylogenetic niche conservatism (Blomberg et al., 2003; Wiens & Graham, 2005) occurs in PNG skinks, or if divergences between high elevation species occurred very recently, the low morphospace occupancy in high elevations may simply be explained by the close phylogenetic affinities of many highland species.

Unfortunately, genetic data are not available for most PNG skink species, rendering a phylogenetic correction for these analyses currently impossible—and we urge more studies on the phylogenetics and systematics of PNG skinks to address this critical gap in our knowledge. However, while the extent to which phylogenetic niche conservatism occurs in this radiation of skinks is unknown, we suspect it is not extensive. For instance, *Fojia bumui*, as well as several species of *Lipinia*, and two species of *Prasinohaema* (*P. virens* and *P. semoni*), are all morphologically distinct lowland species nested within a clade of mostly montane skinks (*Lobulia*, *Papuascincus* and highland *Prasinohaema*; Rodriguez et al., 2018; A. Slavenko unpubl. data). Several other highland skink species likely also represent independent colonisations from lowland origins—for instance, highland *Sphenomorphus* and *Emoia* species (Pyron et al., 2013; Skinner et al., 2011). It seems likely therefore that the highlands of New Guinea are an extension of the same radiation of skinks as the lowlands, and their skink communities do not represent distinct radiations in themselves. Both highlands and lowlands have been colonised by, and provided sources for, the skink faunas of the other several times in the past.

4.3 | Lowland and highland species occupy distinct areas of morphospace

As well as occupying a smaller portion of morphospace in general, highland skinks also occupy a somewhat different area of morphospace compared to skinks from lowland cells (Figure 5). Such differences in morphospace could arise from several distinct mechanisms: for instance, environmental differences could lead to different selection regimes driving morphological evolution (Pinto et al., 2008). Similarly, ecological opportunity and the evolution of key innovations might lead to colonisations of novel areas of the adaptive landscape (Losos, 2010). However, highland species in PNG do not so much represent a distinct area of morphospace, but rather a diminished subset of the morphologies found in the lowlands (Figure S4). Therefore, the differences between lowland and highland assemblages are derived from a shift in the distributions and modal values of morphologies in the assemblages (Figure 5b-c), rather than the presence of unique morphologies in highland assemblages.

As elevation increases, the habitat changes drastically, particularly with reduced stratification as canopy height decreases and eventually disappears entirely above the tree line (Bryan & Shearman, 2015). Skinks from highland cells are, on average, smaller, thinner and with shorter limbs compared to skinks from lowland cells (Figures 2 and 5). Relative limb length is related to locomotor performance, and therefore to microhabitat use (Garland Jr. & Losos, 1994). Longer limbs are typically associated with faster sprinting speeds and enhanced jumping capability (Irschick et al., 2005; Melville & Swain, 2000; Pianka, 1969). Therefore, species occupying open habitats tend to have longer limbs (Melville & Swain, 2000; Goodman et al., 2008; cf. Schulte II et al., 2004). Conversely, arboreal and ground-dwelling species in leaf litter and

dense vegetation tend to be smaller and shorter limbed (Melville & Swain, 2000). Many of the highland PNG skinks occur in alpine grasslands, shrublands and tree-fall gaps (Allison & Greer, 1986; Greer et al., 2005), and locomotion in dense grasslands might provide selective pressure for short relative limb length.

Another possible avenue for selection on body size and shape in highland skinks is climate. The lapse rate in PNG is roughly 0.5–0.6°C for every 100 m gained in altitude (Bourke, 2010), meaning that montane regions of New Guinea are typified by extremely cold temperatures with occasional frosts, with mean temperatures dropping as low as 5–6°C (Allison, 2009), and nightly temperatures reaching freezing levels. These harsh climates are far from ideal for ectotherms such as lizards. Many montane species exhibit adaptations for cold climate such as ovoviviparity (Greer et al., 2005). A relationship between body size and climate has long been contended, although evidence for such a relationship in reptiles is weak (Slavenko et al., 2019). The driving mechanism behind this change is purported to be thermoregulation—small body sizes lead to increased surface area-to-volume ratios, which in ectotherms such as lizards may improve heat gain in cold climates (Carothers et al., 1997). Thermoregulation may be extremely difficult in montane habitats (Monasterio et al., 2009), and therefore needs to be especially efficient (Ortega et al., 2016). In high elevations, low ambient temperatures lead to short windows available for activity. Therefore, ectotherms require sunbathing to achieve optimal temperatures, and the more efficient and faster heat gain is, the more effective the use of this window for activity.

We suggest that the harsh climatic conditions of montane habitats in PNG drive morphological evolution. Morphologies that are suboptimal for thermoregulation may be adequate in the mild climates of the lowlands, but lead to reduced performance in harsh highland climates, particularly in intraspecific interactions such as competition for limited food resources or mating opportunities (Irschick et al., 1996; Macrini et al., 2003; Pinto et al., 2008). This hypothesis could be tested by comparing the thermoregulatory efficiency of species with different morphologies, or even using inert models to compare passive rates of heat acquisition and retention.

5 | CONCLUSIONS

Competition is classically considered to be a foremost driver of niche partitioning (Hutchinson, 1957; Pianka, 1974). Ecological theory predicts that competitors cannot coexist in the same niche (Brown & Wilson, 1956; Grant & Grant, 2006; Hardin, 1960; Pianka, 1974; Slatkin, 1980), leading in many cases to morphological trait divergence (Grant & Grant, 2006). However, evidence suggests that competition is not always the strongest driver of niche partitioning or trait divergence (e.g. Connell, 1983; Meiri et al., 2011; Stuart & Losos, 2013). Our results support the latter conclusion, and that abiotic selective pressures in harsh environmental conditions may be more important and overshadow the effects of biotic interactions in determining trait evolution and divergence. In particular, we think that shifting climatic regimes with elevation drive adaptation

to montane habitats in our study system of PNG skinks, and are a strong influencer of morphological divergence. We strongly recommend that competition not be taken to be a strong driver of community assembly and trait divergence a priori, and that its effects should always be quantified and clearly tested and contrasted with the predicted and modelled effects of abiotic pressures.

ACKNOWLEDGEMENTS

We thank Molly Hagemann (Bernice P. Bishop Museum), Chris Austin and Seth Parker (Louisiana State University Museum of Zoology), and José Rosado (Museum of Comparative Zoology) for facilitating accesses to their collections and permitting measurements of the specimens used in this study. This research was funded by BSF grant no. 2012143 to S.M. and A.A., and BSF grant no. 00020309000 to A.S. We thank Angela M. Chira, Emma C. Hughes, Maria Novosolov and three anonymous referees for their useful comments on earlier drafts of this manuscript. Finally, the collections of all specimens used in this study were only accomplished through the gracious collaboration throughout the years of provincial governments, the PNG National Research Institute, the PNG Conservation and Environment Protection Authority, and countless local communities in Papua New Guinea who provided access to their ancestral lands.

AUTHORS' CONTRIBUTIONS

A.S. collected data and designed and performed the statistical analyses; A.A. and S.M. both contributed to supervision of the project and conceptual design; A.S. wrote the first draft of the manuscript, and all authors contributed substantially to revising the writing and study design. All authors gave final approval for publication.

DATA AVAILABILITY STATEMENT

All data used in the study and code to run the analyses are available from Dryad Digital Repository: <https://doi.org/10.5061/dryad.hdr7sqvgs> (Slavenko, Allison, et al., 2020).

ORCID

Alex Slavenko  <https://orcid.org/0000-0002-3265-7715>

Shai Meiri  <https://orcid.org/0000-0003-3839-6330>

REFERENCES

- Abzhanov, A., Protas, M., Grant, B. R., Grant, P. R., & Tabin, C. J. (2004). *Bmp4* and morphological variation of beaks in Darwin's finches. *Science*, 305, 1462–1465. <https://doi.org/10.1126/science.1098095>
- Allison, A. (1982). Distribution and ecology of New Guinea lizards. In J. L. Gressitt (Ed.), *Biogeography and ecology of New Guinea* (pp. 803–813). Springer.
- Allison, A. (2009). New Guinea, biology. In R. G. Gillespie & D. A. Clague (Eds.), *Encyclopedia of islands* (pp. 652–658). University of California Press.
- Allison, A., & Greer, A. E. (1986). Egg shells with pustulate surface structures: Basis for a new genus of New Guinea skinks (Lacertilia: Scincidae). *Journal of Herpetology*, 20, 116–119. <https://doi.org/10.2307/1564142>
- Blomberg, S. P., Garland Jr., T., & Ives, A. R. (2003). Testing for phylogenetic signal in comparative data: Behavioral traits are more labile. *Evolution*, 57, 717–745. <https://doi.org/10.1111/j.0014-3820.2003.tb00285.x>

- Blonder, B., & Harris, D. J. (2018). *hypervolume: High dimensional geometry and set operations using Kernel density estimation, support vector machines, and convex hulls*. Retrieved from <https://CRAN.R-project.org/package=hypervolume>
- Bourke, R. M. (2010). Altitudinal limits of 230 economic crop species in Papua New Guinea. In S. Haberle, J. Stevenson, & M. Prebble (Eds.), *Altered ecologies: Fire, climate and human influence on terrestrial landscapes* (pp. 473–512). ANU Press.
- Brown, W. L., & Wilson, E. O. (1956). Character displacement. *Systematic Zoology*, 5, 49–64. <https://doi.org/10.2307/2411924>
- Bryan, J. E., & Shearman, P. (2008). *Papua New Guinea resource information handbook* (3rd ed.). University of Papua New Guinea.
- Bryan, J. E., & Shearman, P. L. (2015). *The state of the forests of Papua New Guinea 2014: Measuring change over the period 2002–2014*. University of Papua New Guinea.
- Carothers, J. H., Fox, S. F., Marquet, P. A., & Jaksic, F. M. (1997). Thermal characteristics of ten Andean lizards of the genus *Liolaemus* in central Chile. *Revista Chilena de Historia Natural*, 70, 297–309.
- Connell, J. H. (1983). On the prevalence and relative importance of interspecific competition: Evidence from field studies. *The American Naturalist*, 122, 661–696. <https://doi.org/10.1086/284165>
- Garland Jr., T., & Losos, J. B. (1994). Ecological morphology of locomotor performance in squamate reptiles. In P. C. Wainwright & S. M. Reilly (Eds.), *Ecological morphology: Integrative organismal biology* (pp. 240–302). University of Chicago Press.
- Goodman, B. A., Miles, D. B., & Schwarzkopf, L. (2008). Life on the rocks: Habitat use drives morphological and performance evolution in lizards. *Ecology*, 89, 3462–3471. <https://doi.org/10.1890/07-2093.1>
- Grant, P. R., & Grant, B. R. (2006). Evolution of character displacement in Darwin's finches. *Science*, 313, 224–226. <https://doi.org/10.1126/science.1128374>
- Greer, A. E. (1974). The generic relationships of the scincid lizard genus *Leiopisma* and its relatives. *Australian Journal of Zoology Supplementary Series*, 22, 1–67. <https://doi.org/10.1071/AJZS031>
- Greer, A. E., Allison, A., & Cogger, H. G. (2005). Four new species of *Lobulia* (Lacertilia: Scincidae) from high altitude in New Guinea. *Herpetological Monographs*, 19, 153–179. [https://doi.org/10.1655/0733-1347\(2005\)019\[0153:FNSOLL\]2.0.CO;2](https://doi.org/10.1655/0733-1347(2005)019[0153:FNSOLL]2.0.CO;2)
- Grömping, U. (2006). Relative importance for linear regression in R: The package relaimpo. *Journal of Statistical Software*, 17, 1–27. <https://doi.org/10.18637/jss.v017.i01>
- Hardin, G. (1960). The competitive exclusion principle. *Science*, 131, 1292–1297. <https://doi.org/10.1126/science.131.3409.1292>
- Herrel, A., Podos, J., Huber, S. K., & Hendry, A. P. (2005). Evolution of bite force in Darwin's finches: A key role for head width. *Journal of Evolutionary Biology*, 18, 669–675. <https://doi.org/10.1111/j.1420-9101.2004.00857.x>
- Herrel, A., Van Damme, R., Vanhooydonck, B., & De Vree, F. (2001). The implications of bite performance for diet in two species of lacertid lizards. *Canadian Journal of Zoology*, 79, 662–670. <https://doi.org/10.1139/z01-031>
- Hutchinson, G. E. (1957). Homage to Santa Rosalia or why are there so many kinds of animals? *The American Naturalist*, 93, 145–159. <https://doi.org/10.1086/282070>
- Irschick, D. J., Austin, C. C., Petren, K., Fisher, R. N., Losos, J. B., & Ellers, O. (1996). A comparative analysis of clinging ability among pad-bearing lizards. *Biological Journal of the Linnean Society*, 59, 21–35. <https://doi.org/10.1006/bjil.1996.0052>
- Irschick, D. J., Carlisle, E., Elstrott, J., Ramos, M., Buckley, C., Vanhooydonck, B., Meyers, J. A. Y., & Herrel, A. (2005). A comparison of habitat use, morphology, clinging performance and escape behaviour among two divergent green anole lizard (*Anolis carolinensis*) populations. *Biological Journal of the Linnean Society*, 85, 223–234. <https://doi.org/10.1111/j.1095-8312.2005.00487.x>
- Jackson, D. A. (1993). Stopping rules in principal components analysis: A comparison of heuristical and statistical approaches. *Ecology*, 74, 2204–2214. <https://doi.org/10.2307/1939574>
- Kraus, F. (2020). A new species of *Lobulia* (Squamata: Scincidae) from Papua New Guinea. *Zootaxa*, 4779, 201–214. <https://doi.org/10.11646/zootaxa.4779.2.3>
- Lavin, P. A., & McPhail, J. D. (1986). Adaptive divergence of trophic phenotype among freshwater populations of the threespine stickleback (*Gasterosteus aculeatus*). *Canadian Journal of Fisheries and Aquatic Sciences*, 43, 2455–2463. <https://doi.org/10.1139/f86-305>
- Lerner, H. R. L., Meyer, M., James, H. F., Hofreiter, M., & Fleischer, R. C. (2011). Multilocus resolution of phylogeny and timescale in the extant adaptive radiation of Hawaiian honeycreepers. *Current Biology*, 21, 1838–1844. <https://doi.org/10.1016/j.cub.2011.09.039>
- Losos, J. B. (2009). *Lizards in an evolutionary tree: Ecology and adaptive radiation of anoles*. University of California Press.
- Losos, J. B. (2010). Adaptive radiation, ecological opportunity, and evolutionary determinism. *The American Naturalist*, 175, 623–639. <https://doi.org/10.1086/652433>
- Lovette, I. J., Bermingham, E., & Ricklefs, R. E. (2002). Clade-specific morphological diversification and adaptive radiation in Hawaiian songbirds. *Proceedings of the Royal Society of London. Series B: Biological Sciences*, 269(1486), 37–42. <https://doi.org/10.1098/rspb.2001.1789>
- MacArthur, R. H., & Levins, R. (1967). The limiting similarity, convergence, and divergence of coexisting species. *The American Naturalist*, 101, 377–385. <https://doi.org/10.1086/282505>
- Macrini, T. E., Irschick, D. J., & Losos, J. B. (2003). Ecomorphological differences in toepad characteristics between mainland and island anoles. *Journal of Herpetology*, 37, 52–58. [https://doi.org/10.1670/0022-1511\(2003\)037\[0052:EDITCB\]2.0.CO;2](https://doi.org/10.1670/0022-1511(2003)037[0052:EDITCB]2.0.CO;2)
- McGee, M. D., Schluter, D., & Wainwright, P. C. (2013). Functional basis of ecological divergence in sympatric stickleback. *BMC Evolutionary Biology*, 13, 277. <https://doi.org/10.1186/1471-2148-13-277>
- Meiri, S., Kadison, A. E., Novosolov, M., Pafilis, P., Foufopoulos, J., Itescu, Y., Raia, P., & Pincheira-Donoso, D. (2014). The number of competitor species is unlinked to sexual dimorphism. *Journal of Animal Ecology*, 83, 1302–1312. <https://doi.org/10.1111/1365-2656.12248>
- Meiri, S., Simberloff, D., & Dayan, T. (2011). Community-wide character displacement in the presence of clines: A test of Holarctic weasel guilds. *Journal of Animal Ecology*, 80, 824–834. <https://doi.org/10.1111/j.1365-2656.2011.01827.x>
- Melville, J., & Swain, R. O. Y. (2000). Evolutionary relationships between morphology, performance and habitat openness in the lizard genus *Niveoscincus* (Scincidae: Lygosominae). *Biological Journal of the Linnean Society*, 70, 667–683. <https://doi.org/10.1006/bjil.1999.0422>
- Mesquita, D. O., Colli, G. R., & Vitt, L. J. (2007). Ecological release in lizard assemblages of neotropical savannas. *Oecologia*, 153, 185–195. <https://doi.org/10.1007/s00442-007-0725-z>
- Monasterio, C., Salvador, A., Iraeta, P., & Díaz, J. A. (2009). The effects of thermal biology and refuge availability on the restricted distribution of an alpine lizard. *Journal of Biogeography*, 36, 1673–1684. <https://doi.org/10.1111/j.1365-2699.2009.02113.x>
- Oksanen, J., Blanchet, F. G., Friendly, M., Kindt, R., Legendre, P., McGinn, D., Minchin, P. R., O'Hara, R. B., Simpson, G. L., Solymos, P., Stevens, M. H. H., Szoecs, E., & Wagner, H. (2019). *vegan: Community ecology package*. R package version 2.5-6. Retrieved from <https://CRAN.R-project.org/package=vegan>
- Ortega, Z., Mencía, A., & Pérez-Mellado, V. (2016). The peak of thermoregulation effectiveness: Thermal biology of the Pyrenean rock lizard, *Iberolacerta bonnali* (Squamata, Lacertidae). *Journal of Thermal Biology*, 56, 77–83. <https://doi.org/10.1016/j.jtherbio.2016.01.005>
- Pianka, E. R. (1969). Sympatry of desert lizards (*Ctenotus*) in Western Australia. *Ecology*, 50, 1012–1030. <https://doi.org/10.2307/1936893>

- Pianka, E. R. (1974). Niche overlap and diffuse competition. *Proceedings of the National Academy of Sciences of the United States of America*, 71, 2141–2145. <https://doi.org/10.1073/pnas.71.5.2141>
- Pigot, A. L., Trisos, C. H., & Tobias, J. A. (2016). Functional traits reveal the expansion and packing of ecological niche space underlying an elevational diversity gradient in passerine birds. *Proceedings of the Royal Society B: Biological Sciences*, 283, 20152013. <https://doi.org/10.1098/rspb.2015.2013>
- Pinto, G., Mahler, D. L., Harmon, L. J., & Losos, J. B. (2008). Testing the island effect in adaptive radiation: Rates and patterns of morphological diversification in Caribbean and mainland *Anolis* lizards. *Proceedings of the Royal Society B: Biological Sciences*, 275, 2749–2757. <https://doi.org/10.1098/rspb.2008.0686>
- Pyron, R. A., Burbrink, F. T., & Wiens, J. J. (2013). A phylogeny and revised classification of Squamata, including 4161 species of lizards and snakes. *BMC Evolutionary Biology*, 13, 93. <https://doi.org/10.1186/1471-2148-13-93>
- R Core Team. (2020). *R: A language and environment for statistical computing*. R Foundation for Statistical Computing.
- Rodriguez, Z. B., Perkins, S. L., & Austin, C. C. (2018). Multiple origins of green blood in New Guinea lizards. *Science Advances*, 4, eaao5017. <https://doi.org/10.1126/sciadv.aao5017>
- Roll, U., Feldman, A., Novosolov, M., Allison, A., Bauer, A. M., Bernard, R., Böhm, M., Castro-Herrera, F., Chirio, L., Collen, B., Colli, G. R., Dabool, L., Das, I., Doan, T. M., Grismer, L. L., Hoogmoed, M., Itescu, Y., Kraus, F., LeBreton, M., ... Meiri, S. (2017). The global distribution of tetrapods reveals a need for targeted reptile conservation. *Nature Ecology & Evolution*, 1, 1677–1682. <https://doi.org/10.1038/s41559-017-0332-2>
- Rüber, L., & Adams, D. C. (2001). Evolutionary convergence of body shape and trophic morphology in cichlids from Lake Tanganyika. *Journal of Evolutionary Biology*, 14, 325–332. <https://doi.org/10.1046/j.1420-9101.2001.00269.x>
- Rüber, L., Verheyen, E., & Meyer, A. (1999). Replicated evolution of trophic specializations in an endemic cichlid fish lineage from Lake Tanganyika. *Proceedings of the National Academy of Sciences of the United States of America*, 96, 10230–10235. <https://doi.org/10.1073/pnas.96.18.10230>
- Schoener, T. W. (1974). Resource partitioning in ecological communities. *Science*, 185, 27–39. <https://doi.org/10.1126/science.185.4145.27>
- Schulte II, J. A., Losos, J. B., Cruz, F. B., & Nuñez, H. (2004). The relationship between morphology, escape behaviour and microhabitat occupation in the lizard clade *Liolaemus* (Iguanidae: Tropidurinae*: Liolaemini). *Journal of Evolutionary Biology*, 17, 408–420. <https://doi.org/10.1046/j.1420-9101.2003.00659.x>
- Simberloff, D., & Boecklen, W. (1981). Santa Rosalia reconsidered: Size ratios and competition. *Evolution*, 35, 1206–1228. <https://doi.org/10.1111/j.1558-5646.1981.tb04990.x>
- Skinner, A. (2010). Rate heterogeneity, ancestral character state reconstruction, and the evolution of limb morphology in *Lerista* (Scincidae, Squamata). *Systematic Biology*, 59, 723–740. <https://doi.org/10.1093/sysbio/syq055>
- Skinner, A., Hugall, A. F., & Hutchinson, M. N. (2011). Lygosomine phylogeny and the origins of Australian scincid lizards. *Journal of Biogeography*, 38, 1044–1058. <https://doi.org/10.1111/j.1365-2699.2010.02471.x>
- Slatkin, M. (1980). Ecological character displacement. *Ecology*, 61, 163–177. <https://doi.org/10.2307/1937166>
- Slavenko, A., Allison, A., & Meiri, S. (2020). Data from: Elevation is a stronger predictor of morphological trait divergence than competition in a radiation of tropical lizards. *Dryad Digital Repository*, <https://doi.org/10.5061/dryad.hdr7sqvgs>
- Slavenko, A., Feldman, A., Allison, A., Bauer, A. M., Böhm, M., Chirio, L., Colli, G. R., Das, I., Doan, T. M., LeBreton, M., Martins, M., Meirte, D., Nagy, Z. T., Nogueira, C., Pauwels, O. S. A., Pincheira-Donoso, D., Roll, U., Wagner, P., Wang, Y., & Meiri, S. (2019). Global patterns of body size evolution in squamate reptiles are not driven by climate. *Global Ecology and Biogeography*, 28, 471–483. <https://doi.org/10.1111/geb.12868>
- Slavenko, A., Tamar, K., Tallowin, O. J. S., Allison, A., Kraus, F., Carranza, S., & Meiri, S. (2020). Cryptic diversity and non-adaptive radiation of montane New Guinea skinks (*Papuascincus*; Scincidae). *Molecular Phylogenetics and Evolution*, 146, 106749. <https://doi.org/10.1016/j.ympev.2020.106749>
- Soule, M. (1966). Trends in the insular radiation of a lizard. *The American Naturalist*, 100, 47–64. <https://doi.org/10.1086/282399>
- Stuart, Y. E., & Losos, J. B. (2013). Ecological character displacement: Glass half full or half empty? *Trends in Ecology & Evolution*, 28, 402–408. <https://doi.org/10.1016/j.tree.2013.02.014>
- Tallowin, O., Allison, A., Algar, A. C., Kraus, F., & Meiri, S. (2017). Papua New Guinea terrestrial-vertebrate richness: Elevation matters most for all except reptiles. *Journal of Biogeography*, 44, 1734–1744. <https://doi.org/10.1111/jbi.12949>
- Van Damme, R., De Vree, F., & Herrel, A. (1995). Sexual dimorphism of head size in *Podarcis hispanica atrata*: Testing the dietary divergence hypothesis by bite force analysis. *Netherlands Journal of Zoology*, 46, 253–262. <https://doi.org/10.1163/156854295X00203>
- Verwajen, D., Van Damme, R., & Herrel, A. (2002). Relationships between head size, bite force, prey handling efficiency and diet in two sympatric lacertid lizards. *Functional Ecology*, 16, 842–850. <https://doi.org/10.1046/j.1365-2435.2002.00696.x>
- Wiens, J. J. (2009). Estimating rates and patterns of morphological evolution from phylogenies: Lessons in limb lability from Australian *Lerista* lizards. *Journal of Biology*, 8, 19. <https://doi.org/10.1186/jbiol112>
- Wiens, J. J., & Graham, C. H. (2005). Niche conservatism: Integrating evolution, ecology, and conservation biology. *Annual Review of Ecology, Evolution, and Systematics*, 36, 519–539. <https://doi.org/10.1146/annurev.ecolsys.36.102803.095431>
- Wood, S. N. (2003). Thin plate regression splines. *Journal of the Royal Statistical Society: Series B (Statistical Methodology)*, 65, 95–114. <https://doi.org/10.1111/1467-9868.00374>
- Wood, S. N. (2011). Fast stable restricted maximum likelihood and marginal likelihood estimation of semiparametric generalized linear models. *Journal of the Royal Statistical Society: Series B (Statistical Methodology)*, 73, 3–36. <https://doi.org/10.1111/j.1467-9868.2010.00749.x>

SUPPORTING INFORMATION

Additional supporting information may be found online in the Supporting Information section.

How to cite this article: Slavenko A, Allison A, Meiri S. Elevation is a stronger predictor of morphological trait divergence than competition in a radiation of tropical lizards. *J Anim Ecol*. 2021;00:1–14. <https://doi.org/10.1111/1365-2656.13420>