

VU Research Portal

Evaluation of machine learning models in psychiatry

Dinga, R.

2020

document version

Publisher's PDF, also known as Version of record

[Link to publication in VU Research Portal](#)

citation for published version (APA)

Dinga, R. (2020). *Evaluation of machine learning models in psychiatry*.

General rights

Copyright and moral rights for the publications made accessible in the public portal are retained by the authors and/or other copyright owners and it is a condition of accessing publications that users recognise and abide by the legal requirements associated with these rights.

- Users may download and print one copy of any publication from the public portal for the purpose of private study or research.
- You may not further distribute the material or use it for any profit-making activity or commercial gain
- You may freely distribute the URL identifying the publication in the public portal ?

Take down policy

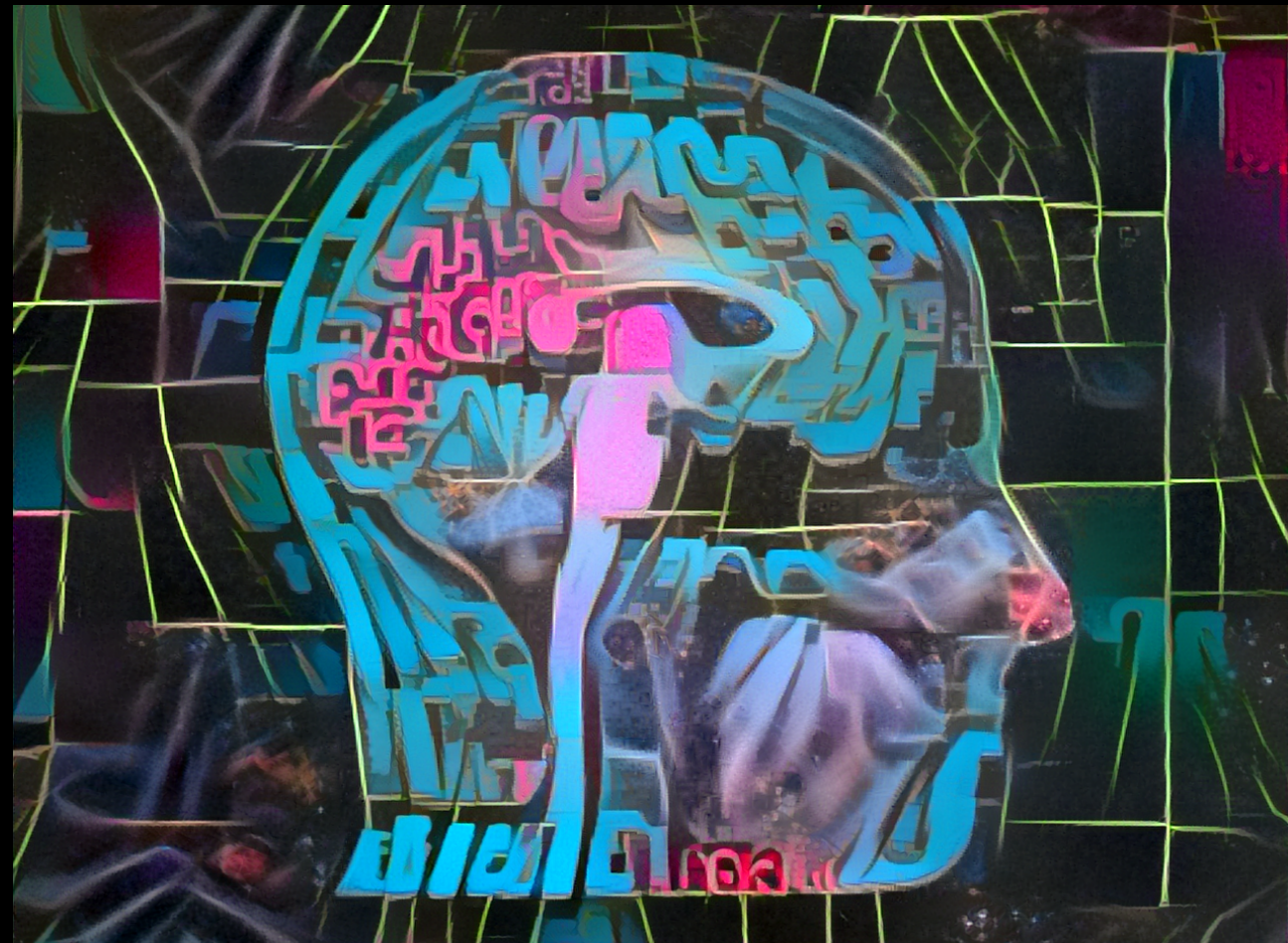
If you believe that this document breaches copyright please contact us providing details, and we will remove access to the work immediately and investigate your claim.

E-mail address:

vuresearchportal.ub@vu.nl

EVALUATION OF MACHINE LEARNING MODELS IN PSYCHIATRY

RICHARD DINGA



EVALUATION OF MACHINE LEARNING MODELS IN PSYCHIATRY

RICHARD DINGA