

Lolium perenne apoplast metabolomics for identification of novel metabolites produced by the symbiotic fungus *Epichloë festucae*

Kimberly A. Green^{1,2*}, Daniel Berry^{1,2*} , Kirstin Feussner^{3,4*}, Carla J. Eaton^{1,2}, Arvina Ram¹, Carl H. Mesarich^{2,5} , Peter Solomon⁶ , Ivo Feussner^{3,4,7}  and Barry Scott^{1,2} 

¹School of Fundamental Sciences, Massey University, Palmerston North 4442, New Zealand; ²Bioprotection Research Centre, Massey University, Palmerston North 4442, New Zealand;

³Department of Plant Biochemistry, Albrecht von Haller Institute for Plant Sciences, University of Goettingen, D-37077, Goettingen, Germany; ⁴Service Unit for Metabolomics and

Lipidomics, Goettingen Center for Molecular Biosciences (GZMB), University of Goettingen, D-37077, Goettingen, Germany; ⁵School of Agriculture and Environment, Massey University,

Palmerston North 4442, New Zealand; ⁶Research School of Biology, Australian National University, Canberra, ACT 0200, Australia; ⁷Department of Plant Biochemistry, Goettingen Center

for Molecular Biosciences (GZMB), University of Goettingen, D-37077, Goettingen, Germany

Summary

Author for correspondence:

Barry Scott

Tel: +64 6 356 9099

Email: d.b.scott@massey.ac.nz

Received: 8 December 2019

Accepted: 28 February 2020

New Phytologist (2020) 227: 559–571

doi: 10.1111/nph.16528

Key words: apoplast, endophyte, *Epichloë*, metabolome, symbiosis.

- *Epichloë festucae* is an endophytic fungus that forms a symbiotic association with *Lolium perenne*. Here we analysed how the metabolome of the ryegrass apoplast changed upon infection of this host with sexual and asexual isolates of *E. festucae*.
- A metabolite fingerprinting approach was used to analyse the metabolite composition of apoplastic wash fluid from uninfected and infected *L. perenne*. Metabolites enriched or depleted in one or both of these treatments were identified using a set of interactive tools. A genetic approach in combination with tandem MS was used to identify a novel product of a secondary metabolite gene cluster.
- Metabolites likely to be present in the apoplast were identified using MARVIS in combination with the BioCyc and KEGG databases, and an in-house *Epichloë* metabolite database. We were able to identify the known endophyte-specific metabolites, peramine and epichloëcyclins, as well as a large number of unknown markers.
- To determine whether these methods can be applied to the identification of novel *Epichloë*-derived metabolites, we deleted a gene encoding a NRPS (*IgsA*) that is highly expressed *in planta*. Comparative MS analysis of apoplastic wash fluid from wild-type- vs mutant-infected plants identified a novel Leu/Ile glycoside metabolite present in the former.

Introduction

The fungal endophyte *Epichloë festucae* forms symbiotic associations with temperate grasses of the *Festuca*, *Lolium* and *Koeleria* genera (Leuchtmann *et al.*, 1994). Hyphae grow in the intercellular (apoplastic) spaces of aerial tissues, systemically colonizing the host leaf sheath, leaf blade, and inflorescences (May *et al.*, 2008; Scott *et al.*, 2012). Hyphae attach to the host cell wall through an adhesive matrix and cease growing in the later stages of host development, though they remain metabolically active (Tan *et al.*, 2001; Christensen & Voissey, 2007). *Epichloë* species growing *in planta* produce a wide variety of secondary metabolites (SMs) that protect the host against herbivores (Malinowski & Belesky, 2000; Clay & Schardl, 2002; Saikkonen *et al.*, 2016). The most well characterized *Epichloë* SMs are the ergot alkaloids, lolines, indole-diterpenes, and pyrrolopyrazines such as peramine

(Young *et al.*, 2005; Schardl *et al.*, 2013; Berry *et al.*, 2015). Ergot alkaloids and indole-diterpenes are anti-mammalian mycotoxins (Florea *et al.*, 2016; Philippe, 2016), while lolines and peramine protect against insect herbivores (Rowan & Gaynor, 1986; Wilkinson *et al.*, 2000; Tanaka *et al.*, 2005; Schardl *et al.*, 2007; Pan *et al.*, 2014).

In addition to these well-known SMs, *Epichloë* endophytes are known to produce ribosomally synthesized and post-translationally modified peptides (RiPPs) derived from the secreted polypeptide GigA (Johnson *et al.*, 2015). Imperfect 27-amino-acid repeats within the GigA sequence are cleaved to release multiple different cyclic RiPPs, which are collectively known as the ‘epichloëcyclins’. The spectrum of epichloëcyclins produced varies between different endophyte strains as a result of differences in encoded GigA sequences; for example, epichloëcyclins A–N have been characterized, but only A–E are present in plants infected with *E. festucae* strain F11 (Johnson *et al.*, 2015). *Epichloë* species are also known to protect the host, to varying

*These authors contributed equally to this work.

degrees, from a range of fungal pathogens (Gwinn & Gavin, 1992; Bonos *et al.*, 2005; Clarke *et al.*, 2006; Steinebrunner *et al.*, 2008; Niones & Takemoto, 2014, 2015; Tian *et al.*, 2017). In addition to protection from these biotic stresses, *Epichloë* endophytes also protect hosts from abiotic stresses such as drought (Arachevaleta *et al.*, 1989; Hahn *et al.*, 2007) although the physiological basis of this phenomenon is not known. Collectively, these and other studies have shown that *Epichloë* endophytes have an important biological role in both natural and agricultural ecosystems (Johnson *et al.*, 2013).

There are many changes in the host transcriptome upon endophyte symbiosis establishment, including differential expression of genes involved in host hormone production, pathogenesis-related gene expression, adaptation to biotic stresses, and host cell wall metabolism (Ambrose & Belanger, 2012; Dupont *et al.*, 2015; Schmid *et al.*, 2016; Dinkins *et al.*, 2017, 2019). Given these major changes in the transcriptome it is likely that endophyte symbiosis results in metabolome reprogramming. While transcriptome studies have given us significant insights into how host and endophyte reprogramming might occur (Eaton *et al.*, 2010, 2015; Chujo *et al.*, 2019), these experiments provide very little insight into the exact metabolite changes that occur within the apoplastic environment where the two organisms interact. While some of the SMs synthesized by *Epichloë* are known to be mobilized throughout the host plant, presumably facilitating systemic host protection (Koulman *et al.*, 2007), little is known about their exact composition in the apoplast. The aim of this study was to compare the composition of metabolites in the apoplast wash fluid of *Epichloë*-infected vs mock-infected plants by a nontargeted liquid chromatography-coupled high-resolution electrospray ionization mass spectroscopy (LC-HR-MS)-based metabolome analysis. In particular, we set out to identify unknown compounds that could be novel symbiosis-induced *E. festucae* or host-synthesized metabolites that contribute to host protection.

Materials and Methods

Endophyte inoculations and growth conditions

Endophyte-free and common-toxic endophyte (CTE)-infected seeds (*Lolium perenne* cv Samson) were germinated on 3% water agar. Endophyte-free seedlings were inoculated with *E. festucae* strains as previously described (Latch & Christensen, 1985). Plants were grown in root trainers in an environmentally controlled growth room at 22°C with a 16 h : 8 h, light : dark photoperiod (*c.* 100 $\mu\text{mol m}^{-2} \text{s}^{-1}$) and at 10 wk post-inoculation, tested for the presence of the endophyte by immunoblotting (Tanaka *et al.*, 2005).

Two-week-old seedlings of *Triticum aestivum* (cv Summit) were infected with *Zymoseptoria tritici* (WAI321) by syringe infiltration into the second leaf with spores at a concentration of $5 \times 10^6 \text{ ml}^{-1}$.

Escherichia coli cultures were grown in lysogeny broth (LB) or on LB agar supplemented with 100 $\mu\text{g ml}^{-1}$ ampicillin (Miller, 1972). *Epichloë festucae* cultures were grown on 2.4% (w/v)

potato-dextrose (PD) agar or in PD broth (Moon *et al.*, 1999, 2000).

Generation of gene deletion and complementation strains

Biological materials and primers can be found in Supporting Information Tables S1 and S2. Plasmid DNA was extracted using the High Pure Plasmid Isolation Kit (Roche). Fungal DNA was extracted as previously described (Byrd *et al.*, 1990). Cloning and screening PCR reactions were performed using Q5 High-Fidelity DNA and One-Taq DNA polymerases (New England Biolabs (NEB), Ipswich, MA, USA) respectively. Products of PCR reactions were purified using the Wizard[®] SV Gel and PCR Clean-Up system (Promega). Sequencing reactions were performed using the BIG-DYE TERMINATOR v.3.1 Ready Reaction Cycle Sequencing Kit (Applied Biosystems, Carlsbad, CA, USA), and separated using an ABI3730 genetic analyser (Applied Biosystems). Sequence data were assembled and analysed using MACVECTOR sequence assembly software, v.12.0.5 (MacVector Inc., Apex, NC, USA).

The *lgsA* deletion and complementation constructs were assembled using Gibson Assembly (Gibson *et al.*, 2009). The *lgsA* (gene model EfM3.056230) (Schardl *et al.*, 2013) replacement construct pKG39 was prepared by recombining a 2.6 kb pAN7-1 vector backbone (amplified using primers pRS426F/pRS426R from a pAN7-1 plasmid DNA template), a 1.4 kb hygromycin resistance cassette (primers hphF/hphR; pSF15.15 plasmid DNA template), and 1 and 2.3 kb sequence fragments that flank the *lgsA* gene in the F11 genome (primers KG167/168 and KG169/170, respectively; *E. festucae* F11 genomic DNA template). The Δ *lgsA* complementation construct pKG40 was prepared using a 5.5 kb pRS426 backbone (primers pRS426F/pRS426R; pRS426 plasmid DNA template) and a 4.2 kb genomic DNA fragment containing *lgsA* (primers KG167KG170; *E. festucae* F11 genomic DNA template). Plasmids were transformed into chemically competent *E. coli* DH5 α cells and transformants selected using ampicillin (100 $\mu\text{g ml}^{-1}$), and screened by restriction enzyme digestion. Candidate clones were verified by insert sequencing.

The *lgsC* (gene model EfM3.062310) deletion construct pCE57 was assembled using yeast recombinational cloning (Colot *et al.*, 2006). For this, 5' and 3' sequences flanking the *lgsC* gene of 1432 and 967 bp respectively, were PCR-amplified with Phusion[®] polymerase from genomic DNA template using primer sets pRS426-cpsA-F/cpsA-hph-R and hph-cpsA-F/cpsA-pRS426-R, which contained sequences that overlap with the yeast vector pRS426 and hph cassette. The *P_{trpC}-hph* cassette was amplified with primers hph-F/hphR. Yeast cells were transformed with the *EcoRI/XhoI*-linearized pRS426 backbone together with the *lgsC* 5' and 3' flanks and the *P_{trpC}-hph* cassette, as previously described (Gietz & Woods, 2002). Transformants were selected on media lacking uracil, and plasmid DNA isolated and transformed into *E. coli* to select for plasmids containing the *in silico*-predicted sequence of pCE57.

Epichloë festucae protoplasts (Young *et al.*, 2005) were prepared and transformed with 2–3 μg of target DNA, as previously

described (Itoh *et al.*, 1994). *Epichloë festucae lgsA* deletion strains were obtained using the Split Marker system (Rahnama *et al.*, 2016). Two PCR fragments (primers KG171/SplitR and SplitF/KG172, pKG39 plasmid DNA template) were transformed into F11 protoplasts and transformants selected using hygromycin ($150 \mu\text{g ml}^{-1}$). *Epichloë festucae lgsC* deletion strains were obtained by transforming a PCR-amplified linear product from pCE57 using primers AR84/AR85. Transformants were subcultured three times onto selection medium and putative *lgsA* 'knockouts' were PCR-screened using primer sets KG173/174 (1.5 kb knockout and 1.1 kb wild-type (WT) products), and KG175/10 and KG11/176 (1.2 and 2.3 kb products for 5' and 3' flanks where correct integration has occurred). *lgsC* putative 'knockouts' were PCR-screened using primer sets cps7/cps8 (4 kb knockout and 3.7 kb WT products), and cps7/TC44 and cps8/TC45 (1.56 kb and 2.04 kb products for 5' and 3' flanks where correct integration has occurred).

Candidate 'knockouts' were confirmed by Southern blot analysis. Genomic DNA restriction enzyme digests (NEB), separated by agarose gel electrophoresis, were transferred to positively charged nylon membranes (Roche) and fixed by UV light cross-linking in a Cex-800 UV light cross-linker (Ultra-Lum, Claremont, CA, USA) at 254 nm for 2 min. Digoxigenin-dUTP (DIG) labelling, and hybridization of the pKG39 DNA probe, and nitroblue tetrazolium chloride and 5-bromo-4-chloro-3-indolyl-phosphate (NBT/BCIP) visualization, were performed using the DIG High Prime DNA Labelling and Detection Starter Kit I (Roche). *HindIII* generates hybridizing fragments of 8, 2.6 and 1.8 kb fragments in WT, and 10.9 and 1.8 kb fragments in 'knockout' strains. Complementation strains were generated by cotransforming pKG40 and pII99 plasmid DNA into $\Delta lgsA$ protoplasts using geneticin ($200 \mu\text{g ml}^{-1}$) selection. Complementation strains were PCR-screened using the primers KG171/172 (4.2 kb complementation product).

Microscopy analyses

Culture morphology was analysed using an Olympus IX71 inverted fluorescence microscope (Olympus Corp., Tokyo, Japan), with the filters set for capturing differential interference contrast. Infected pseudostem tissues for Confocal Laser-Scanning Microscopy (CLSM) were stained as previously described (Becker *et al.*, 2016, 2018). CLSM images were captured using a Leica SP5 DM6000B confocal microscope (488 nm argon and 561 nm DPSS laser, 40 \times oil immersion objective, NA = 1.3; Leica Microsystems, Wetzlar, Germany).

Apoplast extractions for metabolite analysis

To extract apoplastic fluid, *L. perenne* leaf and pseudostem tissues were rinsed and submerged in water, and vacuum-infiltrated at *c.* 60 mbar for 3 \times 10 min cycles. Tissues were lightly blotted dry to remove surface water and placed in 50 ml polypropylene Falcon tubes retrofitted with a plastic sieve wedged above the conical section of the tube. Tubes were centrifuged at 2000 *g* for 10 min to collect apoplastic wash fluid in the bottom of the tube, which

was removed to a separate microtube and centrifuged at 17 000 *g* for 10 min to remove cellular debris, then analysed or stored at -20°C .

Apoplastic wash fluid from infected and uninfected seedlings of *T. aestivum* (cv Summit) were harvested at 2 wk post-infection with *Z. tritici* (WAI321). The leaves were removed from the plant and submerged in sterile distilled water under vacuum for 5 min. The infiltrated leaves were then dried and placed into the barrel of a 30 ml syringe which in turn was inserted inside a sterile 50 ml centrifuge tube. The leaves were centrifuged at 5000 *g* for 5 min at 4°C after which the extracted apoplast wash fluid was quickly transferred to a 1.5 ml Eppendorf tube and frozen in liquid nitrogen before being freeze-dried overnight and stored at -20°C (Solomon & Oliver, 2001).

Metabolite fingerprinting

Two-phase extraction of apoplastic fluids The two-phase extraction method with methyl-*tert*-butyl ether (MTBE), methanol and water (Matyash *et al.*, 2008) was adapted from a previous method (Feussner & Feussner, 2019) and modified for apoplastic wash fluid. Frozen apoplastic wash fluid (-80°C) was thawed on ice, vortexed and 200 μl was added to 150 μl of methanol in a glass vial followed by addition of 500 μl MTBE. The sample was vortexed and shaken for 1 h in the dark and then 120 μl of water was added. Samples were incubated for 10 min for phase separation and centrifuged for 15 min at 800 *g*. The upper (nonpolar) and lower (polar) phases were separately removed, transferred to new glass vials, and dried under a stream of nitrogen. The metabolites of the polar extraction phase were dissolved in 60 μl of methanol : acetonitrile : water (1 : 1 : 12, v/v/v). The metabolites of the nonpolar extraction phase were dissolved in 60 μl of 80% methanol. All samples were shaken for 15 min and centrifuged for 10 min. From each sample, 50 μl was transferred into a glass microvial, covered with argon and used for metabolite fingerprinting analysis.

Data acquisition For metabolite fingerprinting analysis an ultra-performance liquid chromatography system coupled to the photo diode array detector $e\lambda$ (Waters Corp., Milford, MA, USA) and the high-resolution orthogonal time-of-flight MS (HR-MS) LCT Premier (Waters) was used as previously described (Feussner & Feussner, 2019). Samples of the polar and the nonpolar extraction phases were analysed in the positive and in the negative electrospray ionization (ESI) mode, resulting in four datasets.

Data processing and data mining Peak selection and alignment for each dataset was done with the software MARKERLYNX XS for MASSLYNX v.4.1 (Waters). This data deconvolution procedure resulted in four data matrixes of several thousand metabolite features (3258 and 1797 features for the polar extraction phase for positive and negative ESI, respectively; 1750 and 740 features for the nonpolar extraction phase for positive and negative ESI, respectively (Tables S3–S6)). The software suite MARVIS (Kaever *et al.*, 2015; <http://marvis.gobics.de/>) was used for further data processing, such as ranking, filtering, adduct correction, merging

of datasets as well as for data mining such as clustering and automated database search. Subsequently, ANOVA and Benjamini–Hochberg for multiple testing were applied with the tool MARVIS FILTER to rank the metabolite features of each of the four data matrices and filter them for a false discovery rates (FDR) of <0.003 . After adduct correction the data matrices were combined. This resulted in a dataset of 203 metabolite features (Tables S7, S8). Next, the tool MARVIS-CLUSTER was used for clustering and visualizing the intensity profiles of the selected features by means of one-dimensional self-organizing maps (1D-SOMs). Finally, MARVIS-PATHWAY was applied to facilitate the annotation of metabolite features based on accurate mass information. The databases KEGG (<http://www.kegg.jp>; Tanabe & Kanehisa, 2012), BioCyc (<http://biocyc.org>; Caspi *et al.*, 2012) and an in-house database specific for SMs of *Epichloë* (Table S9) were used in combination with a framework for metabolite set enrichment analysis to annotate the metabolite features.

Verification of the chemical structure of marker compounds To confirm or to elucidate the chemical identity of marker metabolites, LC-HR-MS/MS analyses were performed by UHPLC LC 1290 Infinity (Agilent Technologies, Santa Clara, CA, USA) coupled to the 6540 UHD accurate-mass Q-TOF LC-MS instrument with Agilent Dual Jet Stream Technology as ESI source (Agilent Technologies).

Whole-pseudostem extractions for polar metabolite analysis

Pseudostem tissues were snap-frozen in liquid nitrogen, freeze-dried, and 50 mg (DW) of each sample was placed into 2 ml impact-resistant screw-cap microtubes containing 3×3.2 mm diameter stainless steel beads and ground to a powder using a FastPrep[®] FP120 Cell Disrupter System (Thermo Scientific Savant, Waltham, MA, USA). Ground samples were mixed with 1 ml 50% (v/v) methanol and incubated at room temperature in the dark with end-over-end rotation at 40 rpm for 1 h. Cellular debris was removed by centrifugation at 17 000 g for 10 min, and the supernatant transferred to an amber glass high-pressure liquid chromatography (HPLC) vial through a 13-mm-diameter, 0.45- μ m-pore polytetrafluoroethylene syringe filter (Jet BioFil, Guangzhou, China). Extracts were then analysed or stored at -20°C .

Whole pseudostem and apoplastic fluid extracts generated for identification of the putative LgsA product were analysed using a Q Exactive Focus hybrid quadrupole-orbitrap high-resolution mass spectrometer (Thermo Fisher Scientific, Waltham, MA, USA). Each sample (5 μ l injection) was separated on a 2.1×150 mm Zorbax Eclipse Plus C18 column with 1.8 μ m particle size (Agilent Technologies) with a flow rate of 0.2 ml min^{-1} and a linear gradient profile using water with 0.1% formic acid as eluent A and acetonitrile with 0.1% formic acid as eluent B, with time 0 min (T_0) at 5% B, T_1 at 5% B, T_{21} at 95% B, T_{26} at 95% B, T_{27} at 5% B, followed by equilibration to initial conditions over the following 6 min.

Samples (five replicates) were analysed by HPLC-coupled HR positive ESI MS (LC-MS) using a capture window of 133–

2000 m/z , and the resulting mass spectra were compared using Compound Discoverer 2.1 (Thermo Scientific, Waltham, MA, USA) to identify features exhibiting highly differential profiles between sample conditions. Mass spectra from samples of mock-inoculated (uninfected) plants were used as controls for baseline subtraction.

Bioinformatics

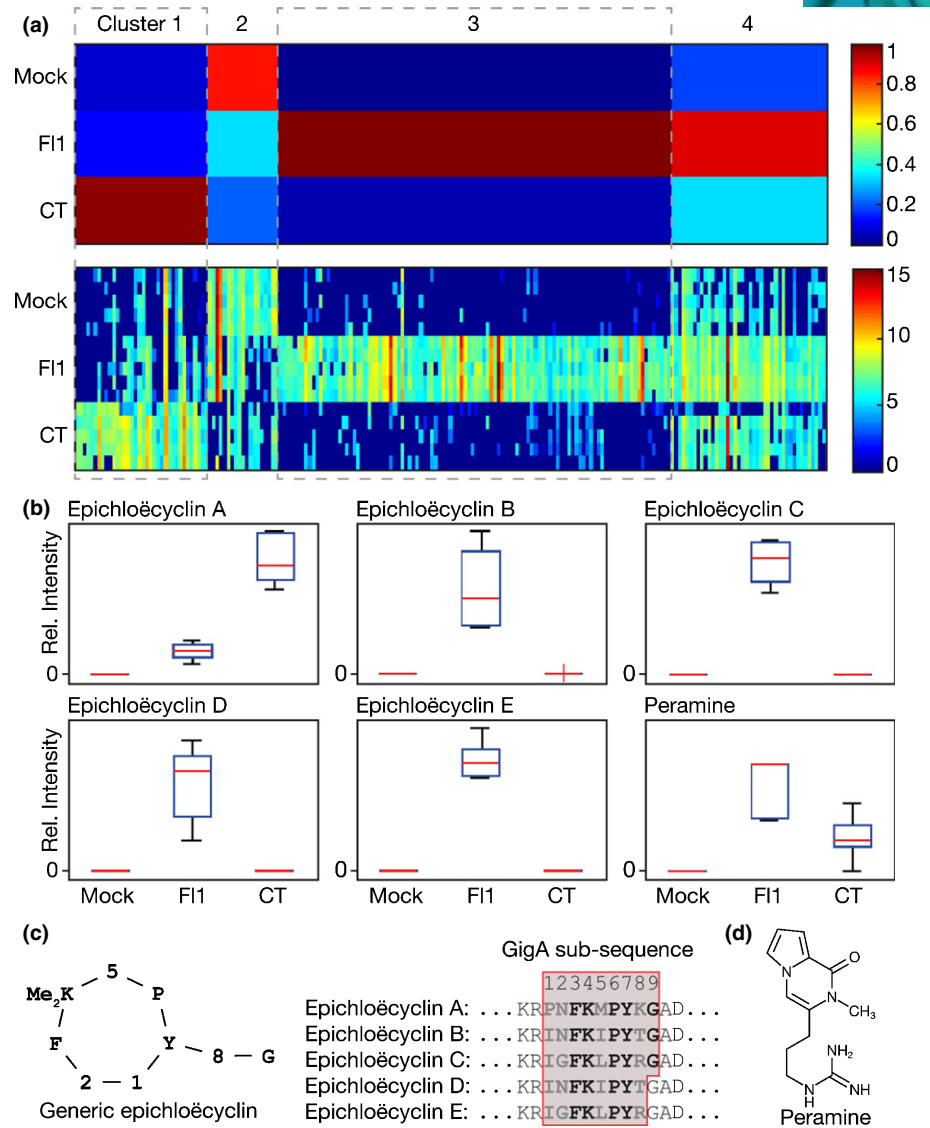
The *E. festucae* WT (F11/E894) genome is available at <http://csbio-l.csr.uky.edu/ef894-2011/> (Schardl *et al.*, 2013). The WT axenic culture and *in planta* transcriptome data used here are available from the Sequence Read Archive (SRA) under Bioproject PPRJNA447872 (Hassing *et al.*, 2019).

Results

Endophyte symbiosis alters the metabolite composition of the host apoplast

In nature, the SM composition of *E. festucae*-infected host tissues varies considerably depending on the *E. festucae* strain used (Schardl *et al.*, 2007, 2013; Young *et al.*, 2009). We therefore included two *E. festucae* strains, F11 and CTE, in our analysis. The former is a commonly used laboratory strain that forms a stable association with *L. perenne* (Leuchtmann *et al.*, 1994; Scott *et al.*, 2012) while the latter is a naturally occurring asexual endophyte of *L. perenne* (Christensen *et al.*, 1993). While a range of SMs are known to be synthesized in each of these associations, our knowledge of the biosynthetic capability of F11 is much more extensive because of the availability of a complete genome sequence and the relative ease with which mutants can be generated (Scott *et al.*, 2012; Schardl *et al.*, 2013; Winter *et al.*, 2018). To determine how F11 and CTE strains affect the host apoplastic metabolome, we extracted apoplastic wash fluid from leaves of mock-inoculated (Mock), F11-infected, and CTE-infected *L. perenne* associations by two-phase extraction and analysed both extraction phases by a metabolite fingerprinting approach using LC-HR-MS in both positive and negative ESI-modes (Feussner & Feussner, 2019). This analysis resulted in several thousand metabolite features (Tables S3–S6). Filtering features of the four datasets by $\text{FDR} < 0.003$ selected 203 metabolite features. As LC-ESI-MS analyses tend to form adducts, these 203 features may represent in total *c.* 60–80 metabolites, which show strong differences in their intensity profiles between treatments. Principal component analysis of this dataset showed a clear separation on principal component 1 (PC1) for the apoplast metabolome of mock-treated and F11-infected ryegrass, while PC2 separates all three treatments (Fig. S1). Next, the intensity profiles of the selected features were clustered and visualized by means of 1D-SOMs and organized into four clusters (Fig. 1a; Table S7). Cluster 1 contains 36 metabolite features that are specifically enriched in CTE-infected samples, cluster 3 contains 106 features that are specifically enriched in F11-infected samples, and cluster 4 contains 42 features that are enriched in both CTE and F11-infected samples. Cluster 2 contains 19 metabolite features that are

Fig. 1 Metabolic fingerprinting of apoplastic wash fluid extracted from *Epichloë festucae*-infected and uninfected *Lolium perenne*. Apoplastic wash fluid obtained from mock-inoculated (M), FI1-infected (F) and common-toxic endophyte (CTE)-infected (C) *L. perenne* associations at 18 wk post-inoculation were analysed by ultraperformance liquid chromatography-electrospray-ionization/quadrupole time-of-flight MS. (a) MARVIS one dimensional-self organizing maps (1D-SOM) intensity-based clustering of the 203 features (false discovery rate < 0.003) detected in apoplastic wash fluid using ESI (blue low, red high). Five samples of M, F and C were analysed. Polar and nonpolar, positive and negative ESI data have been combined. (b) Metabolites confirmed to be in the apoplastic wash fluid samples by ultrahigh performance liquid chromatography-quadrupole time-of-flight-high resolution-MS/MS and their respective intensities. The red mark of the box plot indicate the median. The bottom and top edges of the box represent the 25th and 75th percentiles, while the whiskers show the most extreme data points not considered outliers. (c) Generic representation of epichloëcyclin structure and GigA repeat sequences from which epichloëcyclin A–E are derived. (d) Structure of peramine.



depleted in the apoplastic wash fluid of endophyte-infected plants in comparison to the mock-treated plants.

To assign identities to these features, the accurate mass information was used for a metabolite set enrichment analysis supported by the software tool MARVIS-PATHWAY (Kaever *et al.*, 2015). The databases BioCyc and KEGG, as well as an in-house database, containing 117 SMs previously described for *Epichloë* (Table S9), were used to assign putative metabolite identities for these apoplastic features. The *E. festucae* metabolite peramine was identified in both CTE and FI1-infected samples, with a stronger accumulation in the FI1-infected samples (Fig. 1b,d). The identity of peramine was confirmed unequivocally by LC-HR-MS/MS analysis (Table S8; Fig. S2). A set of epichloëcyclins were detected as double-charged ions ($[M + 2H]^{2+}$) using positive-mode ESI on *Epichloë*-infected samples (Fig. 1b,c; Table S8). Epichloëcyclin A was detected weakly in FI1-infected samples and strongly in CTE-infected samples, whereas epichloëcyclins B–E accumulated exclusively in FI1-infected samples (Figs 1b, S3, S4). Sequencing *gigA* from CTE, which is part of a four-gene

cluster (Eaton *et al.*, 2010; Fig. S5a), revealed that this gene encodes a polypeptide that contains two identical epichloëcyclin A repeats (Fig. S5b). In addition to peramine and the epichloëcyclins, several other features representing so far unknown chemical structures were also present exclusively in the apoplastic wash fluid of endophyte-infected associations (Tables S7, S8) including two putative peptides, which are represented by the CTE-specific cluster 1 (Fig. S6). A putatively annotated Kojibiose-related metabolite (322.0643 Da), a putatively annotated *N*-(hydroxypentyl) acetamide (145.1101 Da) and a compound of 471.1952 Da were found in the FI1-specific cluster 3 (Table S8). Such markers are of considerable interest as they represent potential novel bioactive fungal secondary metabolites.

Identification of a novel amino acid glycoside produced by the NRPS-like protein LgsA

To determine whether we could connect a novel metabolite identified by the nontargeted apoplast metabolome analysis to

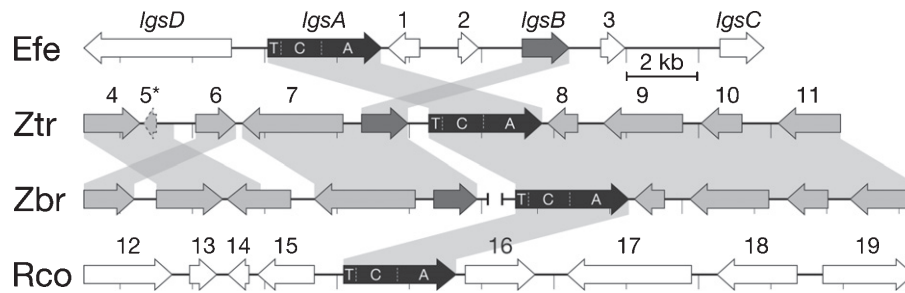


Fig. 2 Microsyntenic comparison of LGS loci between *Epichloë*, *Zymoseptoria* and *Ramularia* spp. The *Epichloë festucae* LGS cluster genes with known or suspected functions are named *lgsA*–*lgsC*, and all other genes assigned numbers. Predicted functions of all labelled genes are listed in Table 1. Syntenic blocks are indicated by grey shading, and darker gene colouring indicates a higher degree of homology between species.

an uncharacterized *E. festucae* gene clusters, we chose to delete a gene (model EfM3.056230) encoding a nonribosomal peptide synthetase (NRPS)-like protein that is part of a putative SM gene cluster (Fig. 2; Eaton *et al.*, 2015). The genes from this cluster are expressed at very low levels in axenic cultures of *E. festucae* F11, but are dramatically upregulated when *E. festucae* is growing *in planta* (Fig. 2; Table S10; Winter *et al.*, 2018; Hassing *et al.*, 2019). These genes were previously shown to be significantly downregulated in three *L. perenne* associations containing symbiotically defective *E. festucae* mutants (Eaton *et al.*, 2015). We have provisionally named this cluster LGS (leucine/isoleucine glycoside synthesis) based on the identification of the product described below. The NRPS-encoding gene (*lgsA*) from this cluster encodes the 1049 amino acid-long protein LgsA which contains an N-terminal thiolation (T) domain, a central condensation (C) domain, and a C-terminal adenylation (A) domain (Fig. S7). The presence of an A-domain in LgsA suggests incorporation of an amino acid substrate into any product, but the domain structure of LgsA (T-C-A) is atypical compared with previously characterized NRPS and NRPS-like proteins. The other genes in the LGS cluster are predicted to encode an ABC transporter (*lgsD*), a haloacid dehydrogenase-like hydrolase (gene 1), a mitochondrial substrate carrier protein (gene 2), a NADP-binding oxidoreductase (*lgsB*), a FAD-dependent oxidoreductase (gene 3), and a glycosyl transferase (*lgsC*) (Table 1). These putative functions suggested a product containing both amino acid and sugar residues that may be exported into the apoplastic space.

To investigate the function of LgsA in *E. festucae*, a replacement construct (pKG39) was prepared and two overlapping PCR-amplified linear fragments of this plasmid were introduced into the genome of *E. festucae* strain F11 by homologous recombination (Fig. S8). PCR screening of *c.* 20 hygromycin-resistant transformants identified two candidates – Δ *lgsA*#2 and Δ *lgsA*#11 – that had PCR product patterns consistent with targeted replacement events. Southern blot analysis of genomic DNA digests from these transformants probed with a PCR fragment derived from pKG39 confirmed that both candidates contained a single-copy integration of the replacement construct at the target *lgsA* gene locus, with no additional ectopic integrations (Fig. S8).

Macroscopic and microscopic analyses revealed that the culture morphologies of both Δ *lgsA* strains were indistinguishable from the WT (Fig. S9). To determine the host interaction phenotype, WT and Δ *lgsA* strains were inoculated into *L. perenne* seedlings and the phenotype of infected plants was examined at 8 wk post-planting (Fig. S10). The whole plant and cellular phenotypes of plants infected with the Δ *lgsA* mutants were indistinguishable from WT-infected plants (Fig. S10). These results were not unexpected given that the likely function of the product of this gene is the synthesis of a bioprotective metabolite, which is typically phenotypically neutral when plants are grown under laboratory conditions in the absence of biotic stress (Tanaka *et al.*, 2005; Young *et al.*, 2005; Saikia *et al.*, 2012).

To examine the chemotype of these associations, whole-pseudostem extracts and apoplastic wash fluid samples were extracted from *L. perenne* plants infected with WT, Δ *lgsA* mutants (both Δ *lgsA*#2 & Δ *lgsA*#11), or mock-inoculated plants. Comparison of the LC-MS data of pseudostem extract samples from F11-infected and Δ *lgsA*-infected plants did not identify any significantly different signal abundances. By contrast, comparison of apoplastic wash fluid samples identified a [M + H]⁺ 472.2022 feature in F11-infected samples that was undetectable in all Δ *lgsA* apoplastic wash fluid samples (Figs 3a,c, S11a). Targeted analysis revealed that this metabolite could also be detected in whole-pseudostem extracts from WT-infected plants, although signal intensity was an order of magnitude lower than from apoplastic wash fluid samples. The functional genetic link between *lgsA* and this metabolite of 471.1949 Da (neutral mass) was confirmed by demonstrating that metabolite production could be restored by reintroduction of a WT *lgsA* sequence into both Δ *lgsA* strains (Fig. 3a). The metabolite of 471.1949 Da was absent from apoplastic wash fluid samples from *L. perenne* infected with *E. festucae* var *lolii* CTE.

Integration and comparison of the ¹³C (*m/z* 473.2056) and ¹⁸O (*m/z* 474.2064) isotopologue peak areas to the *m/z* 472.2022 base peak area established sum formula constraints of C_{18–21} and O_{13–14} for this LGS metabolite (Fig. S12a). Applying the nitrogen rule, the odd nominal mass of this compound (471 Da) suggests that its molecular formula contains an odd number of nitrogen atoms. Furthermore, the absence of a detectable ¹⁵N (*m/z* 473.1992) isotopologue suggests this compound contains only a single nitrogen atom. The metabolite was therefore

Table 1 Putative functions of *LGS* cluster-proximal genes in *Epichloë*, *Zymoseptoria* and *Ramularia* spp.

Gene	Gene model(s) ¹	Putative function
<i>lgsA</i>	EfM3.056230, ZT1E4_G1886, TI39_contig403g00012, RCC_03904	NRPS-like, A-T-C domain structure
<i>lgsB</i>	EfM3.062330, ZT1E4_G1887, TI39_contig42g00014	NADP-binding oxidoreductase
<i>lgsC</i>	EfM3.062310	Glycosyl transferase type 2
<i>lgsD</i>	EfM3.056220	ABC transporter type I
1	EfM3.056240	Haloacid dehydrogenase-like hydrolase
2	EfM3.062340	Mitochondrial substrate carrier
3	EfM3.062320	FAD-binding oxidoreductase
4	ZT1E4_G1891, TI39_contig42g00011	Transcription factor
5	ZT1E4_G1890, TI39_contig42g00012	MFS sugar transporter
6	ZT1E4_G1889, TI39_contig42g00010	Anhydro- <i>N</i> -acetylmuramic acid kinase
7	ZT1E4_G1888, TI39_contig42g00013	DNA repair metallo-beta-lactamase
8	ZT1E4_G1885, TI39_contig403g00011	Integral membrane protein, unknown function
9	ZT1E4_G1884, TI39_contig403g00010	Nitrogen permease regulator 3
10	ZT1E4_G1883, TI39_contig403g00009	Mitochondrial substrate carrier
11	ZT1E4_G1882, TI39_contig403g00008	Integral membrane protein, collagen binding/ endopeptidase activity
12	RCC_03900	Ubiquitin-conjugating enzyme E2
13	RCC_03901	Integral membrane protein, SUR7/Rim9-like
14	RCC_03902	Unknown
15	RCC_03903	Histidine phosphatase superfamily
16	RCC_03905	Glycoside hydrolase family 47
17	RCC_03906	Sodium/calcium exchanger
18	RCC_03907	Amino acid/polyamine transport
19	RCC_03908	Unknown

¹EfM3 gene models for *Epichloë festucae* are from the UKY genome database (<http://www.endophyte.uky.edu>). Gene models for *Zymoseptoria tritici* (ZT1E4), *Zymoseptoria brevis* (TI39), and *R. collo-cygni* (RCC) are from the Ensembl Fungi database (<http://fungi.ensembl.org/index.html>).

assigned the elemental composition of C₁₈H₃₃NO₁₃ (calculated mass, 471.1952 Da; observed mass, 471.1949 Da). LC-HR-MS/MS analysis suggested this LGS metabolite has a structure containing a leucine (Leu) or isoleucine (Ile) moiety shown by the diagnostic fragments of *m/z* 132.1020 (C₆H₁₄NO₂) and *m/z* 86.0962 (C₅H₁₂N) (Fig. 3c; Table S8). Neutral loss of one hexose moiety (162.053 Da (C₆H₁₀O₅) or 180.0636 Da (C₆H₁₂O₆)) from the precursor ion of *m/z* 472.2026 led to fragments of *m/z* 310.1496 (C₁₂H₂₄NO₈) and *m/z* 292.1390 (C₁₂H₂₂NO₇), respectively. A further neutral loss of 178.0476 Da (C₆H₁₀O₆) is then observed, probably resulting from loss of an oxidized hexose derivative, leaving the fragment

of *m/z* 132.1020 (C₆H₁₄NO₂), which represents the Leu/Ile-moiety (Fig. 3c).

Analysis of apoplastic wash fluid from *Zymoseptoria tritici*-infected wheat plants for LGS-like metabolites

To determine whether proteins similar to *LgsA* are encoded by genes in other fungi, a tBLASTn search was performed against the NCBI database using the *E. festucae* *LgsA* protein sequence as query. This analysis identified matches to NRPS-like proteins in *Zymoseptoria brevis* (60% amino acid identity), *Z. tritici* (60%), and *Ramularia collo-cygni* (68%) (Fig. S7) that share the same unusual T-C-A domain structure as *LgsA*. Homologues to other putative *LGS* cluster genes were either absent or located at different loci in these *Zymoseptoria* and *Ramularia* spp., with the exception of the putative NADP-binding oxidoreductase (*lgsB*), which was located immediately adjacent to the *lgsA* homologues of both *Zymoseptoria* species (Fig. 2).

We therefore compared apoplastic wash fluid samples from wheat plants infected with *Z. tritici* to uninfected wheat plants by LC-HR-MS. These analyses showed that *Z. tritici*-infected wheat apoplastic wash fluid samples do not contain the 471 Da metabolite produced by the *E. festucae* *LGS* cluster. Data-dependent LC-HR-MS/MS spectra generated from the *Z. tritici*-infected wheat apoplast samples were therefore filtered to identify metabolites exhibiting a neutral loss of 162.0523 Da (C₆H₁₀O₅/hexose-moiety) or 178.0476 Da (C₆H₁₀O₆/hexuronic acid-moiety), which are characteristic features of the *Epichoë* LGS product. Candidates exhibiting these neutral losses were eliminated if they were also present in the LC-HR-MS spectra of uninfected wheat apoplastic wash fluid samples, exhibited a substantially later retention time compared with the 2.21 min *E. festucae* LGS metabolite, or exhibited elemental compositions or LC-HR-MS/MS spectrum features that were not consistent with the properties expected of an LGS-like product. This left a single [M + H]⁺ 308.1334 feature with a retention time of 2.89 min as the sole remaining candidate for a *Z. tritici* LGS cluster product in this dataset, corresponding to a metabolite with an elemental composition of C₁₂H₂₁NO₈ (calculated mass, 307.1267 Da; observed mass, 307.1261 Da; Figs 3b,d, S12b). Analysis of the LC-HR-MS/MS spectrum for this compound shows that the product ion of *m/z* 146.0811 remaining after the loss of the hexose-moiety as well as the corresponding fragments of *m/z* 128.0707 and 100.0759 could derive from a six-carbon amino acid, although this does not appear to be a Leu/Ile-moiety (Figs 3d, S11b). Given that the substrate-specifying 'A-domain code' (Stachelhaus *et al.*, 1999) of the *Z. tritici* *LgsA* homologue (DGLMYAVILK) has diverged somewhat from that of *E. festucae* *LgsA* (DALLYGIMAK) it is possible that these two proteins bind different amino acid substrates.

LgsC is required for biosynthesis of the *E. festucae* LGS product

Given that the *E. festucae* *LGS* cluster has a gene (*lgsC*; EfM3.062310) encoding a putative glycosyl transferase that is

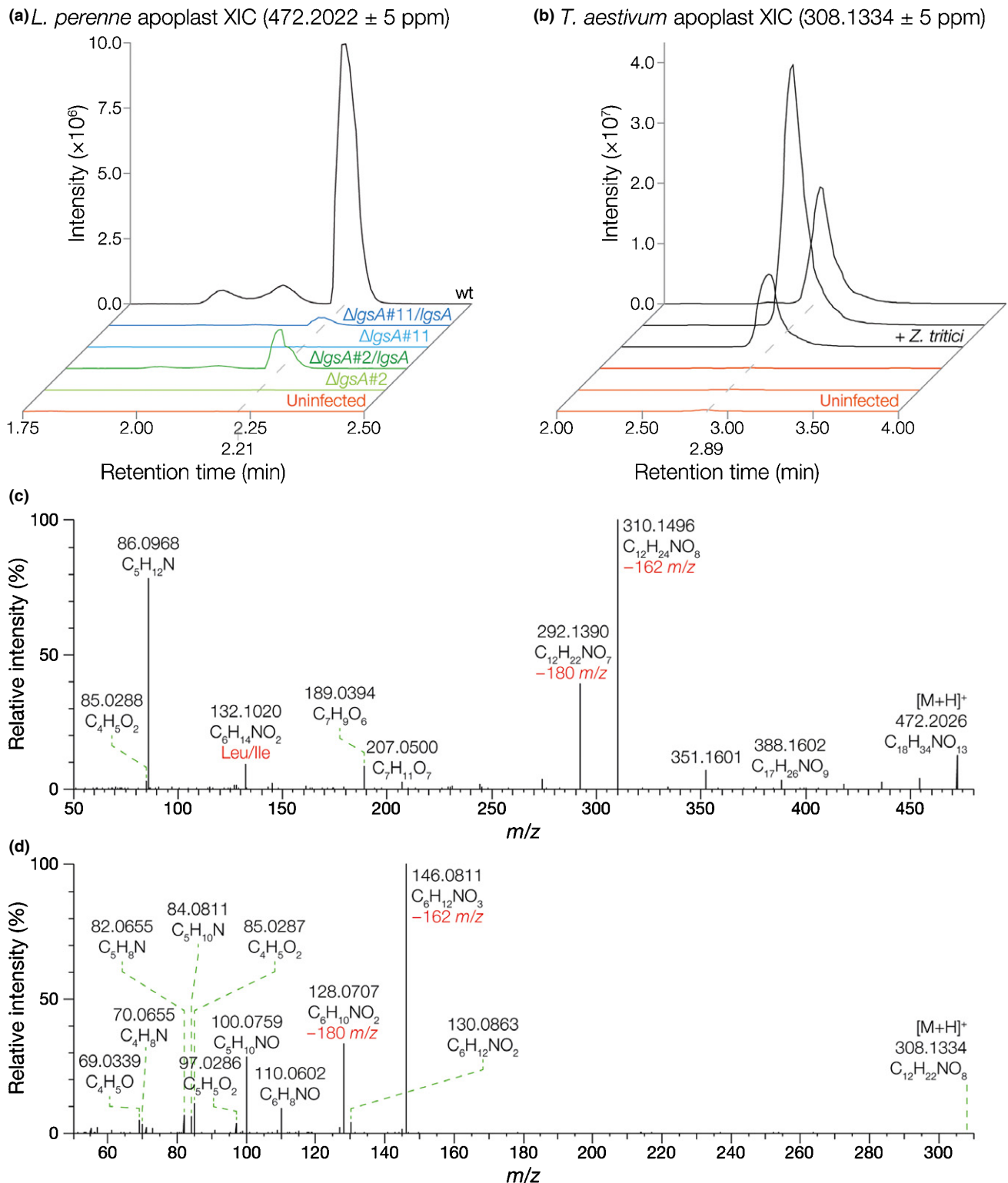


Fig. 3 Identification of metabolites encoded by the *Epichloë festucae* and *Zymoseptoria tritici* LGS gene clusters. (a) Extracted ion chromatograms generated by LC-high resolution-MS (LC-HR-MS) analysis of apoplastic wash fluid samples extracted from uninfected, *E. festucae* $\Delta lgsA$ -infected (two independent mutants), *E. festucae* $\Delta lgsA/lgsA$ -infected ($\Delta lgsA$ strains complemented with *lgsA*), and *E. festucae* wild-type (WT)-infected *Lolium perenne* plants. Three plants were analysed per association, with representative examples shown here. (b) Extracted ion chromatograms generated by LC-HR-MS analysis of apoplastic wash fluid samples extracted from uninfected and *Z. tritici*-infected *Triticum aestivum* plants. Three plants were analysed per association, with results from all samples shown here. (c) High-resolution accurate mass positive electrospray ionization high resolution-MS/MS (ESI-HR-MS/MS) spectrum of the 472 *m/z* *E. festucae* LGS precursor ion fragmented by higher-energy collisional dissociation (HCD) at 20% energy. (d) High-resolution accurate mass positive ESI-HR-MS/MS spectrum of the 308 *m/z* putative *Z. tritici* LGS precursor ion fragmented by HCD at 20% energy.

absent from the *Z. tritici* cluster, we hypothesized that this gene could encode an enzyme catalysing the conjugation of the second monosaccharide present in the 471 Da *E. festucae* LGS product. We therefore prepared a replacement construct (pCE57) for *lgsC*, and transformed the linear product of this construct into protoplasts of *E. festucae*. A PCR screen of hygromycin-resistant transformants identified four transformants ($\Delta lgsC$ #6-6, #7-6, #11-4 and #12-6) in which the *lgsC* gene was deleted, with this result confirmed by Southern blot analysis (Fig. S13). Seedlings of *L. perenne* were infected with *E. festucae* WT, $\Delta lgsC$ #6-6 and $\Delta lgsC$ #12-6 and, as expected, *L. perenne* plants infected with the $\Delta lgsC$ mutant exhibited the same host interaction phenotype as WT-infected plants (Fig. S14). Whole-pseudostem extracts and apoplastic wash fluid samples were harvested from three mature plants of each association and analysed by LC-HR-MS. Apoplastic wash fluid samples from the $\Delta lgsC$ mutants lacked the 471 Da LGS product, demonstrating that LgsC is required for LGS biosynthesis in *E. festucae* (Fig. 4). LC-HR-MS analysis of apoplastic fluid and pseudostem extracts targeting metabolites with the sum formulas $C_{12}H_{23}NO_8$, $C_{12}H_{21}NO_8$, $C_{12}H_{23}NO_7$, and $C_{12}H_{21}NO_7$ revealed that $\Delta lgsC$ -infected material does not appear to accumulate any of these hypothesized monoglycosylated LGS intermediates. However, given that the 471 Da *E. festucae* LGS product itself was barely detectable in pseudostem extracts, it is possible that a monoglycosylated intermediate that is not exported into the apoplast is present at low levels.

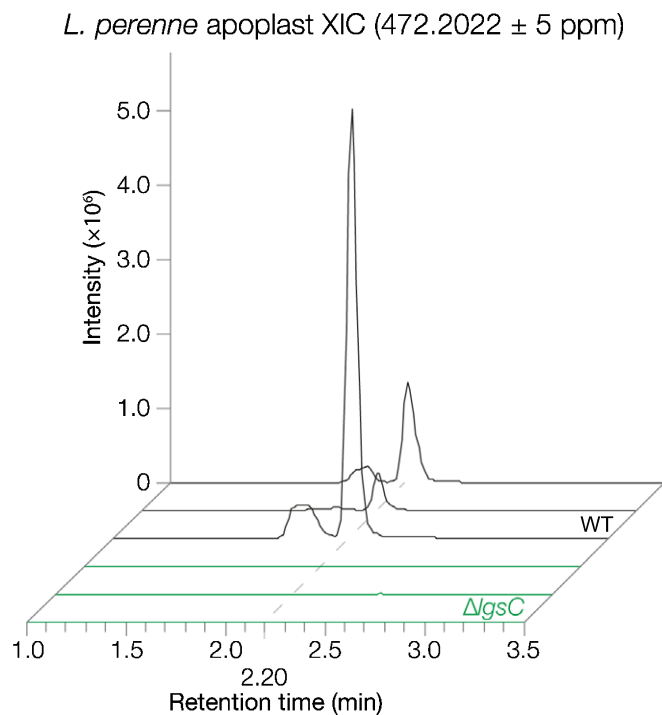


Fig. 4 LgsC is required for synthesis of the *Epichloë festucae* LGS product. Extracted ion chromatograms generated by LC-high resolution-MS analysis of apoplastic wash fluid samples extracted from *Lolium perenne* plants infected with *E. festucae* wild-type (WT) or $\Delta lgsC$ strains (two independent mutants). Three plants were analysed per association, with representative examples shown here.

Discussion

Establishment of a mutualistic symbiotic association between *E. festucae* and *L. perenne* results in a dramatic change to both the host and fungal transcriptome (Dupont *et al.*, 2015; Winter *et al.*, 2018), leading to a reprogramming of plant host and mycosymbiont metabolism. While there are many changes in primary metabolism (Rasmussen *et al.*, 2008; Zhang *et al.*, 2009; Dupont *et al.*, 2015), it is the changes to fungal secondary metabolism that best define these associations as many compounds within this group have known bioprotective roles in natural ecosystems (Schardl *et al.*, 2012). The preferential expression of genes encoding these alkaloid biosynthetic enzymes in the host plant makes it challenging to identify novel endophyte-induced metabolites given the complexity of the leaf extract metabolome. However, by focusing on the apoplast, where the endophyte grows, the metabolite complexity is reduced, thereby enabling the identification of novel products. Here we describe for the first time a nontargeted analysis of the *L. perenne* apoplast metabolome and how it changes upon establishment of a symbiotic interaction with *E. festucae*.

The metabolite differences between the apoplast metabolome of mock-infected vs *E. festucae*-infected ryegrass is surprisingly uncomplex, with just 203 metabolite features identified distinguishing these two physiological states. This is in contrast to more complex metabolome changes reported for the plant fungal pathogen *Verticillium longisporum* (Floerl *et al.*, 2012). Of these features, 184 were shown to be enriched in the endophyte-infected apoplastic fluid wash with the remaining 19 features corresponding to depletions in endophyte-infected apoplastic fluid wash. As expected, fungal metabolites known to be preferentially accumulated in the host are among those enriched upon establishment of endophyte symbiosis, including peramine (Tanaka *et al.*, 2005), and epichloëcyclins (Johnson *et al.*, 2015). No lolines were detected in this analysis, as the two *E. festucae* strains used lack this biosynthetic capability (Schardl *et al.*, 2013).

The epichloëcyclins were among the most abundant metabolites synthesized in response to endophyte symbiosis. These are RiPPs generated through proteolytic cleavage and cyclization of linear peptide repeats that comprise the pro-peptide product of *gigA*. This gene is one of the most highly expressed in the endophyte–grass symbiotic interaction and is part of a four-gene cluster (Eaton *et al.*, 2010). This cluster also includes *kexB*, which encodes a kexin presumably required for cleavage of the repeats from the pro-peptide; a gene encoding a protein with a DUF3328 domain, which is also found in UstYa/UstYb, which are proteins required for cyclization of the ustiloxin precursors in *Aspergillus flavus* (Nagano *et al.*, 2016; Ye *et al.*, 2016); and a gene encoding a hypothetic protein of unknown function. The cyclic nonapeptides epichloëcyclin A, B and C, and the cyclic octapeptides epichloëcyclin B and C (Johnson *et al.*, 2015), were found in the apoplastic wash fluid of ryegrass infected with strain F11, whereas only epichloëcyclin A was found in apoplastic wash fluid from CTE-infected plants. These results are in agreement with the repeat structures of the corresponding GigA-derived peptides from these *E. festucae* strains.

Regarding the alkaloids, both *E. festucae* strains have a functional copy of peramine synthetase, *perA*, and accumulate peramine in the apoplastic space as expected, given the known systemic distribution of this metabolite within the plant (Koulman *et al.*, 2007). While metabolites with masses that match indole-diterpenes known to be synthesized by these strains were detected (Saikia *et al.*, 2012), the low signal intensity precluded their confirmation by LC-HR-MS/MS. The absence of ergot alkaloids, which are known to be synthesized by these strains *in planta* (Chujo & Scott, 2014), is probably a result of their lack of transport into the apoplast.

As anticipated, there were many metabolites of unknown structure, highlighting the utility of this type of analysis to identify novel endophyte-bioprotective metabolites. We therefore employed a combined genetics/metabolomics approach using the well-developed genetic system of *E. festucae* strain F11 (Scott *et al.*, 2012, 2018) to demonstrate the utility of this apoplastic wash fluid method for identification of putative novel fungal metabolites. For this analysis we chose to delete the NRPS-encoding gene *lgsA*, which is a component of a putative seven-gene SM cluster that is downregulated in *L. perenne* associations with three different symbiotically defective *E. festucae* mutants (Eaton *et al.*, 2015). All seven genes were found here to be significantly upregulated in the F11 *in planta* transcriptome compared with axenic culture. As expected for a gene encoding a putative bioprotective metabolite (Tanaka *et al.*, 2005; Young *et al.*, 2005; Saikia *et al.*, 2012), the axenic culture and plant interaction phenotypes of the *E. festucae* $\Delta lgsA$ mutant were indistinguishable from the WT. A 471 Da metabolite that was absent in apoplastic wash fluid samples from plants infected with the $\Delta lgsA$ mutants was identified by LC-HR-MS in extracts of apoplastic wash fluid from *L. perenne* plants infected with WT *E. festucae* F11. The failure to identify this compound in an equivalent comparative analysis of whole-pseudostem extracts of these same plants highlights the power of working with the much less complex apoplastic metabolome. LC-HR-MS/MS analysis suggests this LGS metabolite has a structure containing a Leu/Ile moiety linked to a glycoside constituent. Given the relatively small quantities of apoplastic wash fluid obtained using the method described here, definitive structural determination will probably require development of a high-volume extraction method or an alternative approach such as overexpressing the cluster genes in a heterologous fungal host to obtain sufficient product for NMR analysis (Van de Bittner *et al.*, 2018; van Dolleweerd *et al.*, 2018). The absence of this 471 Da metabolite in the apoplastic fluid of *L. perenne* with CTE suggests that the genes are absent, mutated, or not expressed in this strain. However, the presence of the LGS cluster across several *Epichloë* species suggests this is a widespread SM of this genus (Eaton *et al.*, 2015).

A comparative synteny analysis of the genomes of other filamentous fungi identified homologues to the NRPS-encoding *lgsA* gene in the genomes of the cereal pathogens *R. collo-cygni*, *Z. brevis*, and *Z. tritici*, with conserved homologues to the putative NADP-binding oxidoreductase-encoding gene *lgsB* located immediately adjacent in the *Zymoseptoria* genomes. LC-HR-MS analysis of extracts of apoplastic wash fluid samples from wheat

infected with WT *Z. tritici* compared with apoplastic wash fluid from uninfected wheat plants identified a 307 Da metabolite that appears to have some structural similarities to the 471 Da metabolite, but with only a single glycosyl constituent. This structure is consistent with the absence of a conserved homologue to the putative glycosyl transferase-encoding gene *lgsC* in these species. However, more substantial evidence, such as analysis of a *Z. tritici* $\Delta lgsA$ mutant, will be required to prove the hypothesized link between the *Z. tritici* LGS cluster and this 307 Da metabolite.

While the accessory gene content of a secondary metabolism cluster can vary considerably between fungal species, the genes encoding synthesis of the basic structural motif for a class of secondary metabolites are typically conserved (Schardl *et al.*, 2013). The conservation of *lgsA* and *lgsB* between the LGS clusters of *Zymoseptoria* and *Epichloë* spp. therefore suggests that LgsA and LgsB catalyse the first reactions in LGS biosynthesis. The presence of a Leu/Ile product ion in the LC-HR-MS/MS spectrum of the *E. festucae* LGS product suggests that the A-domain of LgsA binds one of these amino acids as substrate. However, NRPS T-domains typically accept activated amino acyl substrates from an upstream A-domain (Weissman, 2015). Given the unusual T-C-A structure of LgsA, it is unclear if the LgsA T-domain could accept an activated Leu/Ile substrate from the downstream A-domain. An alternative hypothesis would be that the LgsA T-domain is loaded with an oxidized hexose derivative provided by LgsB. The LgsA C-domain would then catalyse condensation between the amino acid and sugar moieties, which would be linked by an ester or amide bond depending on whether the T-domain is loaded with the Leu/Ile or sugar constituent, respectively. LgsC would add the glycosyl group observed in *E. festucae*, either before or after the LgsA-catalysed condensation event. The final LGS pathway product would then be exported into the apoplast by a transporter, presumably the putative ABC transporter encoded by *lgsD* in *E. festucae*. While not specifically analysed here, other co-clustered genes in *Epichloë* and *Zymoseptoria* spp. may also encode proteins that contribute to LGS biosynthesis in their respective species.

While we do not know what the biological functions are for the compounds identified here, we make two observations: first, the gene clusters that encode the enzymes for the synthesis of these novel SMs appear to be limited to filamentous fungi that infect monocots of the subfamily Pooideae, and second, this gene cluster is dispensable for a mutualistic symbiotic interaction between *E. festucae* and *L. perenne*. Whether these products have a role in bioprotection, virulence or some other interaction role remains to be determined. It will be interesting to analyse the host interaction phenotype of a *Z. tritici* $\Delta lgsA$ mutant.

In conclusion, we describe for the first time how the metabolome of *L. perenne* changes upon establishment of symbiosis with either asexual or sexual isolates of *E. festucae*. Interestingly, the changes are not as dramatic as observed for fungal pathogen infection by *V. longisporum*, though the total number of studies in this field are still rather limited. Given the lower complexity of the apoplast metabolome in comparison to the metabolome of green tissues we have demonstrated here the

power of a combined genetics/metabolomics approach to identify new metabolites in host apoplastic wash fluids. It will be of considerable interest to determine the structures of other unknown metabolites in this and other fungal–plant associations, and to identify the biological function of these metabolites in these symbioses.






Acknowledgements

This research was supported by a grant from the Tertiary Education Commission to the Bio-Protection Research Centre and by Massey University. BS was supported by an Alexander von Humboldt Research Award. IF was supported by the Deutsche Forschungsgemeinschaft (ZUK 45/2010). The authors thank Matthew Savoian, Panimalar Vijayan and Niki Minards (Manawatu Microscopy and Imaging Centre) for technical assistance, Nazanin Noorifar (Massey University) for assistance with plant inoculations, David Lun (Massey University) for assistance with MS, Richard Johnson (AgResearch) for provision of *E. festucae* *lgsA* sequences, Benedikt Ni (University of Goettingen) for compiling the *Epichloë* metabolite database and Christopher Schardl (University of Kentucky) for provision of *Clavicipitaceae* genome sequences.

Author contributions

KAG, KF, DB, IF and BS planned and designed the research. KAG, KF, DB, CJE, AR and PS performed the experiments. KAG, KF, DB, CHM, IF and BS analysed the data. KAG, DB and BS wrote the manuscript. KAG, DB and KF contributed equally to this work.

ORCID

Daniel Berry  <https://orcid.org/0000-0001-8822-7733>
Ivo Feussner  <https://orcid.org/0000-0002-9888-7003>
Carl H. Mesarich  <https://orcid.org/0000-0002-5207-4074>
Barry Scott  <https://orcid.org/0000-0002-2224-2946>
Peter Solomon  <https://orcid.org/0000-0002-5130-7307>

References

- Ambrose KV, Belanger FC. 2012. SOLiD-SAGE of endophyte-infected red fescue reveals numerous effects on host transcriptome and an abundance of highly expressed fungal secreted proteins. *PLoS ONE* 7: e53214.
- Arachevalata M, Bacon CW, Hoveland CS, Radcliffe DE. 1989. Effect of the tall fescue endophyte on plant response to environmental stress. *Agronomy Journal* 81: 83–90.
- Becker M, Becker Y, Green K, Scott B. 2016. The endophytic symbiont *Epichloë festucae* establishes an epiphyllous net on the surface of *Lolium perenne* leaves by development of an expressorium, an appressorium-like leaf exit structure. *New Phytologist* 211: 240–254.
- Becker Y, Green K, Scott B, Becker M. 2018. Artificial inoculation of *Epichloë festucae* into *Lolium perenne*, and visualization of endophytic and epiphyllous fungal growth. *Bio-protocol* 8: e2990.
- Berry D, Takach JE, Schardl CL, Charlton ND, Scott B, Young CA. 2015. Disparate independent genetic events disrupt the secondary metabolism gene *perA* in certain symbiotic *Epichloë* species. *Applied and Environmental Microbiology* 81: 2797–2807.
- Bonos SA, Wilson MM, Meyer WA, Funk RC. 2005. Suppression of red thread in fine fescues through endophyte-mediated resistance. *Applied Turfgrass Science* 10: 1094.
- Byrd AD, Schardl CL, Songlin PJ, Mogen KL, Siegel MR. 1990. The β -tubulin gene of *Epichloë typhina* from perennial ryegrass (*Lolium perenne*). *Current Genetics* 18: 347–354.
- Caspi R, Altman T, Dreher K, Fulcher CA, Subhraveti P, Keseler IM, Kothari A, Krummenacker M, Latendresse M, Mueller LA *et al.* 2012. The MetaCyc database of metabolic pathways and enzymes and the BioCyc collection of pathway/genome databases. *Nucleic Acids Research* 40: D742–D753.
- Christensen MJ, Leuchtman A, Rowan DD, Tapper BA. 1993. Taxonomy of *Acremonium* endophytes of tall fescue (*Festuca arundinacea*), meadow fescue (*F. pratensis*) and perennial rye-grass (*Lolium perenne*). *Mycological Research* 97: 1083–1092.
- Christensen MJ, Voissey CR. 2007. The biology of the endophyte/grass partnership. In: Popay AJ, Thom ER, eds. *Proceedings of the 6th International Symposium on Fungal Endophytes of Grasses. Grasslands research and practice series no. 13*. Christchurch, New Zealand: New Zealand Grassland Association, 123–133.
- Chujo T, Lukito Y, Eaton CJ, Dupont PY, Johnson LJ, Winter D, Cox MP, Scott B. 2019. Complex epigenetic regulation of alkaloid biosynthesis and host interaction by heterochromatin protein I in a fungal endophyte–plant symbiosis. *Fungal Genetics and Biology* 125: 71–83.
- Chujo T, Scott B. 2014. Histone H3K9 and H3K27 methylation regulates fungal alkaloid biosynthesis in a fungal endophyte–plant symbiosis. *Molecular Microbiology* 92: 413–434.
- Clarke BB, White JFJ, Hurley RH, Torres MS, Sun S, Huff DR. 2006. Endophyte-mediated suppression of dollar spot disease in fine fescues. *Plant Disease* 90: 994–998.
- Clay K, Schardl C. 2002. Evolutionary origins and ecological consequences of endophyte symbiosis with grasses. *The American Naturalist* 160: S99–S127.
- Colot HV, Park G, Turner GE, Ringelberg C, Crew CM, Litvinkova L, Weiss RL, Borkovich KA, Dunlap JC. 2006. A high-throughput gene knockout procedure for *Neurospora* reveals functions for multiple transcription factors. *Proceedings of the National Academy of Sciences, USA* 103: 10352–10357.
- Dinkins RD, Nagabhyru P, Graham MA, Boykin D, Schardl CL. 2017. Transcriptome response of *Lolium arundinaceum* to its fungal endophyte *Epichloë coenophiala*. *New Phytologist* 213: 324–337.
- Dinkins RD, Nagabhyru P, Young CA, West CP, Schardl CL. 2019. Transcriptome analysis and differential expression in tall fescue harboring different endophyte strains in response to water deficit. *The Plant Genome* 12: 180071.
- van Dolleweerd CJ, Kessans SA, Van de Bittner KC, Bustamante LY, Bundela R, Scott B, Nicholson MJ, Parker EJ. 2018. MIDAS: A modular DNA assembly system for synthetic biology. *ACS Synthetic Biology* 7: 1018–1029.
- Dupont PY, Eaton CJ, Wargent JJ, Fechtner S, Solomon P, Schmid J, Day RC, Scott B, Cox MP. 2015. Fungal endophyte infection of ryegrass reprograms host metabolism and alters development. *New Phytologist* 208: 1227–1240.
- Eaton CJ, Cox MP, Ambrose B, Becker M, Hesse U, Schardl CL, Scott B. 2010. Disruption of signaling in a fungal–grass symbiosis leads to pathogenesis. *Plant Physiology* 153: 1780–1794.
- Eaton CJ, Dupont P-Y, Solomon PS, Clayton W, Scott B, Cox MP. 2015. A core gene set describes the molecular basis of mutualism and antagonism in *Epichloë* species. *Molecular Plant–Microbe Interactions* 28: 218–231.
- Feussner K, Feussner I. 2019. Comprehensive LC-MS-based metabolite fingerprinting approach for plant and fungal-derived samples. In: D'Alessandro A, ed. *High-throughput metabolomics: methods and protocols*. New York, NY, USA: Springer, 167–185.
- Floerl S, Majcherzyk A, Possienke M, Feussner K, Tappe H, Gatz C, Feussner I, Kues U, Polle A. 2012. *Verticillium longisporum* infection affects the leaf apoplastic proteome, metabolome, and cell wall properties in *Arabidopsis thaliana*. *PLoS ONE* 7: e31435.
- Florea S, Phillips TD, Panaccione DG, Farman ML, Schardl CL. 2016. Chromosome-end knockoff strategy to reshape alkaloid profiles of a fungal endophyte. *G3: Genes, Genomes, Genetics* 6: 2601–2610.

- Gibson DG, Young L, Chuang RY, Venter JC, Hutchison CA III, Smith HO. 2009. Enzymatic assembly of DNA molecules up to several hundred kilobases. *Nature Methods* 6: 343–345.
- Gietz RD, Woods RA. 2002. Transformation of yeast by lithium acetate/single-stranded carrier DNA/polyethylene glycol method. *Methods in Enzymology* 350: 87–96.
- Gwinn KD, Gavin AM. 1992. Relationship between endophyte infestation level of tall fescue seed lots and *Rhizoctonia zeae* seedling disease. *Plant Disease* 76: 911–914.
- Hahn H, McManus MT, Warnstorff K, Monahan BJ, Young CA, Davies E, Scott B. 2007. Neotyphodium fungal endophytes confer physiological protection to perennial ryegrass (*Lolium perenne* L.) subjected to water deficit. *Environmental and Experimental Botany* 63: 183–199.
- Hassing B, Winter D, Becker Y, Mesarich CH, Eaton CJ, Scott B. 2019. Analysis of *Epichloë festucae* small secreted proteins in the interaction with *Lolium perenne*. *PLoS ONE* 14: e0209463.
- Itoh Y, Johnson R, Scott B. 1994. Integrative transformation of the mycotoxin-producing fungus, *Penicillium paxilli*. *Current Genetics* 25: 508–513.
- Johnson LJ, De Bonth ACM, Briggs LR, Caradus JR, Finch SC, Fleetwood DJ, Fletcher LR, Hume DE, Johnson RD, Popay AJ *et al.* 2013. The exploitation of epichloae endophytes for agricultural benefit. *Fungal Diversity* 60: 171–188.
- Johnson RD, Lane GA, Koulman A, Cao M, Fraser K, Fleetwood DJ, Voisey CR, Dyer JM, Pratt J, Christensen M *et al.* 2015. A novel family of cyclic oligopeptides derived from ribosomal peptide synthesis of an *in planta*-induced gene, *gigA*, in *Epichloë* endophytes of grasses. *Fungal Genetics and Biology* 85: 14–24.
- Kaever A, Landesfeind M, Feussner K, Mosblech A, Heilmann I, Morgenstern B, Feussner I, Meinicke P. 2015. MarVis-Pathway: integrative and exploratory pathway analysis of non-targeted metabolomics data. *Metabolomics* 11: 764–777.
- Koulman A, Lane GA, Christensen MJ, Fraser K, Tapper BA. 2007. Peramine and other fungal alkaloids are exuded in the guttation fluid of endophyte-infected grasses. *Phytochemistry* 68: 355–360.
- Latch GCM, Christensen MJ. 1985. Artificial infection of grasses with endophytes. *Annals of Applied Biology* 107: 17–24.
- Leuchtmann A, Schardl CL, Siegel MR. 1994. Sexual compatibility and taxonomy of a new species of *Epichloë* symbiotic with fine fescue grasses. *Mycologia* 86: 802–812.
- Malinowski DP, Belesky DP. 2000. Adaptations of endophyte-infected cool-season grasses to environmental stresses: mechanisms of drought and mineral stress tolerance. *Crop Science* 40: 923–940.
- Matyash V, Liebisch G, Kurzchalia TV, Shevchenko A, Schwudke D. 2008. Lipid extraction by methyl-tert-butyl ether for high-throughput lipidomics. *Journal of Lipid Research* 49: 1137–1146.
- May KJ, Bryant MK, Zhang X, Ambrose B, Scott B. 2008. Patterns of expression of a lolitrem biosynthetic gene in the *Epichloë festucae*-perennial ryegrass symbiosis. *Molecular Plant–Microbe Interactions* 21: 188–197.
- Miller JH. 1972. *Experiments in molecular genetics*. New York, NY, USA: Cold Spring Harbor Laboratory Press.
- Moon CD, Scott B, Schardl CL, Christensen MJ. 2000. The evolutionary origins of *Epichloë* endophytes from annual ryegrasses. *Mycologia* 92: 1103–1118.
- Moon CD, Tapper BA, Scott B. 1999. Identification of *Epichloë* endophytes *in planta* by a microsatellite-based PCR fingerprinting assay with automated analysis. *Applied and Environmental Microbiology* 65: 1268–1279.
- Nagano N, Umemura M, Izumikawa M, Kawano J, Ishii T, Kikuchi M, Tomii K, Kumagai T, Yoshimi A, Machida M *et al.* 2016. Class of cyclic ribosomal peptide synthetic genes in filamentous fungi. *Fungal Genetics and Biology* 86: 58–70.
- Niones JT, Takemoto D. 2014. An isolate of *Epichloë festucae*, an endophytic fungus of temperate grasses, has growth inhibitory activity against selected grass pathogens. *Journal of General Plant Pathology* 80: 337–347.
- Niones JT, Takemoto D. 2015. VibA, a homologue of a transcription factor for fungal heterokaryon incompatibility, is involved in antifungal compound production in the plant-symbiotic fungus *Epichloë festucae*. *Eukaryotic Cell* 14: 13–24.
- Pan J, Bhardwaj M, Faulkner JR, Nagabhyru P, Charlton ND, Higashi RM, Miller AF, Young CA, Grossman RB, Schardl CL. 2014. Ether bridge formation in loline alkaloid biosynthesis. *Phytochemistry* 98: 60–68.
- Philippe G. 2016. Lolitrem B and indole diterpene alkaloids produced by endophytic fungi of the genus *Epichloë* and their toxic effects in livestock. *Toxins* 8: 47.
- Rahnama M, Forester N, Ariyawansa KGSU, Voisey CR, Johnson LJ, Johnson RD, Fleetwood DJ. 2016. Efficient targeted mutagenesis in *Epichloë festucae* using a split marker system. *Journal of Microbiological Methods* 134: 62–65.
- Rasmussen S, Parsons AJ, Fraser K, Xue H, Newman JA. 2008. Metabolic profiles of *Lolium perenne* are differentially affected by nitrogen supply, carbohydrate content, and fungal endophyte infection. *Plant Physiology* 146: 1440–1453.
- Rowan DD, Gaynor DL. 1986. Isolation of feeding deterrents against Argentine stem weevil from ryegrass infected with the endophyte *Acremonium loliae*. *Journal of Chemical Ecology* 12: 647–658.
- Saikia S, Takemoto D, Tapper BA, Lane GA, Fraser K, Scott B. 2012. Functional analysis of an indole-diterpene gene cluster for lolitrem B biosynthesis in the grass endosymbiont *Epichloë festucae*. *FEBS Letters* 586: 2563–2569.
- Saikkonen K, Young CA, Helander M, Schardl CL. 2016. Endophytic *Epichloë* species and their grass hosts: from evolution to applications. *Plant Molecular Biology* 90: 665–675.
- Schardl CL, Grossman RB, Nagabhyru P, Faulkner JR, Mallik UP. 2007. Loline alkaloids: Currencies of mutualism. *Phytochemistry* 68: 980–996.
- Schardl CL, Young CA, Faulkner JR, Florea S, Pan J. 2012. Chemotypic diversity of epichloae, fungal symbionts of grasses. *Fungal Ecology* 5: 331–344.
- Schardl CL, Young CA, Hesse U, Amyotte SG, Andreeva K, Calie PJ, Fleetwood DJ, Haws DC, Moore N, Oeser B *et al.* 2013. Plant-symbiotic fungi as chemical engineers: multi-genome analysis of the Clavicipitaceae reveals dynamics of alkaloid loci. *PLoS Genetics* 9: e1003323.
- Schmid J, Day R, Zhang N, Dupont PY, Cox MP, Schardl CL, Minards N, Truglio M, Moore N, Harris DR *et al.* 2016. Host tissue environment directs activities of an *Epichloë* endophyte, while it induces systemic hormone and defense responses in its native perennial ryegrass host. *Molecular Plant–Microbe Interactions* 30: 138–149.
- Scott B, Becker Y, Becker M, Cartwright G. 2012. Morphogenesis, growth and development of the grass symbiont *Epichloë festucae*. In: Martin JP, Di Pietro A, eds. *Morphogenesis and pathogenicity in fungi*. Heidelberg, Germany: Springer-Verlag, 243–264.
- Scott B, Green K, Berry D. 2018. The fine balance between mutualism and antagonism in the *Epichloë festucae*-grass symbiotic interaction. *Current Opinion in Plant Biology* 44: 32–38.
- Solomon PS, Oliver RP. 2001. The nitrogen content of the tomato leaf apoplast increases during infection by *Cladosporium fulvum*. *Planta* 213: 241–249.
- Stachelhaus T, Mootz HD, Marahiel MA. 1999. The specificity-conferring code of adenylation domains in nonribosomal peptide synthetases. *Chemistry & Biology* 6: 493–505.
- Steinebrunner F, Schiestl FP, Leuchtmann A. 2008. Ecological role of volatiles produced by *Epichloë*: differences in antifungal toxicity. *FEMS Microbiology Ecology* 64: 307–316.
- Tan YY, Spiering MJ, Scott V, Lane GA, Christensen MJ, Schmid J. 2001. *In planta* regulation of extension of an endophytic fungus and maintenance of high metabolic rates in its mycelium in the absence of apical extension. *Applied and Environmental Microbiology* 67: 5377–5383.
- Tanabe M, Kanehisa M. 2012. Using the KEGG database resource. *Current Protocols in Bioinformatics* 38: 1.12.1–1.12.43.
- Tanaka A, Tapper BA, Popay A, Parker EJ, Scott B. 2005. A symbiosis expressed non-ribosomal peptide synthetase from a mutualistic fungal endophyte of perennial ryegrass confers protection to the symbiont from insect herbivory. *Molecular Microbiology* 57: 1036–1050.
- Tian Z, Wang R, Ambrose KV, Clarke BB, Belanger FC. 2017. The *Epichloë festucae* antifungal protein has activity against the plant pathogen *Sclerotinia homoeocarpa*, the causal agent of dollar spot disease. *Scientific Reports* 7: 5643.
- Van de Bittner KC, Nicholson MJ, Bustamante LY, Kessans SA, Ram A, van Dolleweerd CJ, Scott B, Parker EJ. 2018. Heterologous biosynthesis of nodulisporic acid F. *Journal of the American Chemical Society* 140: 582–585.

- Weissman KJ. 2015. The structural biology of biosynthetic megaenzymes. *Nature Chemical Biology* 11: 660–670.
- Wilkinson HH, Siegel MR, Blankenship JD, Mallory AC, Bush LP, Schardl CL. 2000. Contribution of fungal loline alkaloids to protection from aphids in a grass-endophyte mutualism. *Molecular Plant–Microbe Interactions* 13: 1027–1033.
- Winter DJ, Ganley ARD, Young CA, Liachko I, Schardl CL, Dupont PY, Berry D, Ram A, Scott B, Cox MP. 2018. Repeat elements organise 3D genome structure and mediate transcription in the filamentous fungus *Epichloë festucae*. *PLoS Genetics* 14: e1007467.
- Ye Y, Minami A, Igarashi Y, Izumikawa M, Umemura M, Nagano N, Machida M, Kawahara T, Shin-Ya K, Gomi K *et al.* 2016. Unveiling the biosynthetic pathway of the ribosomally synthesized and post-translationally modified peptide ustiloxin B in filamentous fungi. *Angewandte Chemie International Edition* 55: 8072–8075.
- Young CA, Bryant MK, Christensen MJ, Tapper BA, Bryan GT, Scott B. 2005. Molecular cloning and genetic analysis of a symbiosis-expressed gene cluster for lolitrem biosynthesis from a mutualistic endophyte of perennial ryegrass. *Molecular Genetics and Genomics* 274: 13–29.
- Young CA, Tapper BA, May K, Moon CD, Schardl CL, Scott B. 2009. Indole-diterpene biosynthetic capability of *Epichloë* endophytes as predicted by *ltm* gene analysis. *Applied and Environmental Microbiology* 75: 2200–2211.
- Zhang DX, Nagabhyru P, Schardl CL. 2009. Regulation of a chemical defense against herbivory produced by symbiotic fungi in grass plants. *Plant Physiology* 150: 1072–1082.

Supporting Information

Additional Supporting Information may be found online in the Supporting Information section at the end of the article.

Fig. S1 Principal component analysis (PCA) of 203 metabolite features.

Fig. S2 Extracted ion chromatogram of peramine.

Fig. S3 Extracted ion chromatogram of epichloëcyclins A–E.

Fig. S4 Confirmation of the identity of epichloëcyclins A–E.

Fig. S5 *gigA* gene cluster organization and sequences.

Fig. S6 Extracted ion chromatogram of a putative peptide.

Fig. S7 LgsA predicted domain structure and multiple sequence alignment.

Fig. S8 *lgsA* deletion and complementation construct design and strain screening.

Fig. S9 Culture morphology of WT and Δ *lgsA* strains.

Fig. S10 Host interaction and cellular phenotypes of *L. perenne* infected with WT and Δ *lgsA* strains.

Fig. S11 ESI-HR-MS/MS fragmentation of 472 *m/z* metabolite in negative mode.

Fig. S12 472 and 308 metabolite isotope analysis.

Fig. S13 Strategy for deletion of *E. festucae lgsC*, Southern blot and PCR analysis.

Fig. S14 Host interaction phenotype of *L. perenne* infected with WT and Δ *lgsC* strains.

Table S1 Biological material.

Table S2 Primers used in this study.

Table S3 Data matrix of raw data obtained by UPLC-ESI-TOF-MS-based metabolite fingerprinting analysis of the polar extraction phase, analysed in positive ESI-mode.

Table S4 Data matrix of raw data obtained by UPLC-ESI-TOF-MS-based metabolite fingerprinting analysis of the polar extraction phase, analysed in negative ESI mode.

Table S5 Data matrix of raw data obtained by UPLC-ESI-TOF-MS-based metabolite fingerprinting analysis of the nonpolar extraction phase, analysed in positive ESI mode.

Table S6 Data matrix of raw data obtained by UPLC-ESI-TOF-MS-based metabolite fingerprinting analysis of the nonpolar extraction phase, analysed in negative ESI mode.

Table S7 Data matrix of 203 high quality metabolite features (false discovery rate < 0.003) obtained by metabolite fingerprinting (UPLC-ESI-TOF-MS analysis) of apoplastic wash fluids from mock-treated, FI1- and CTE-infected *L. perenne*.

Table S8 Infection markers identified by metabolite fingerprinting (UPLC-ESI-TOF-MS analysis) and verified by UHPLC-ESI-QTOF-HR-MS/MS analysis or coelution.

Table S9 *Epichloë* metabolite database.

Table S10 Differences in expression of *lgs* cluster genes *in planta* compared with axenic culture.

Please note: Wiley Blackwell are not responsible for the content or functionality of any Supporting Information supplied by the authors. Any queries (other than missing material) should be directed to the *New Phytologist* Central Office.