

Partners by International and the International Center for Tropical Agriculture (CIAT) are CGIAR Research Centers. CGIAR is a global research partnership for a food-secure future.

Alliance



Busting the Myth that Pilots Never Scale:

Unpacking the USAID Climate Services for Resilient Development Strategy in LAC

Steven D. Prager
Principal Scientist for Integrated Modeling
(+ J. Ramirez, D. Giraldo, C. Navarro, and MANY others)

s.prager@cgiar.org

IITM - Pune, India – 13 Feb, 2020

Many need to be acknowledged!





>30 LTACs in **9** countries

>250 Participating institutions

>330k Producers receiving climate info!

Climate Services for Resilient Development

Contact Us →

- Main
- Who We Are
- How We Work
- Where We Work
- Collaborate

Who We Are

CSRD brings together public and private organizations and agencies committed to realizing the potential to enhance climate resilience and climate-smart policies and practices throughout the world, particularly in developing countries.

Founding Partners

CSRD's founding partners include both public and private institutions from around the world. These partners have committed significant resources and financial and in-kind contributions to the CSRD initiative. The founding partners collectively make up the CSRD Steering Committee and provide the partnership's strategic direction and management oversight. Currently, the steering committee is chaired by US Agency for International Development (USAID), with the American Red Cross serving as vice chair.



Initial activities in Bangladesh, Ethiopia, and Colombia

Contributing Partners

CSRD is strengthened by a growing network of contributing partners. These partners share in the CSRD vision and offer technical and practical expertise, tools, and products for use in CSRD projects and activities. Contributing partners assist CSRD work at the global, regional, or national scale and across diverse sectors and thematic areas. Some organizations have been invited to act as contributing partners for specific CSRD efforts.

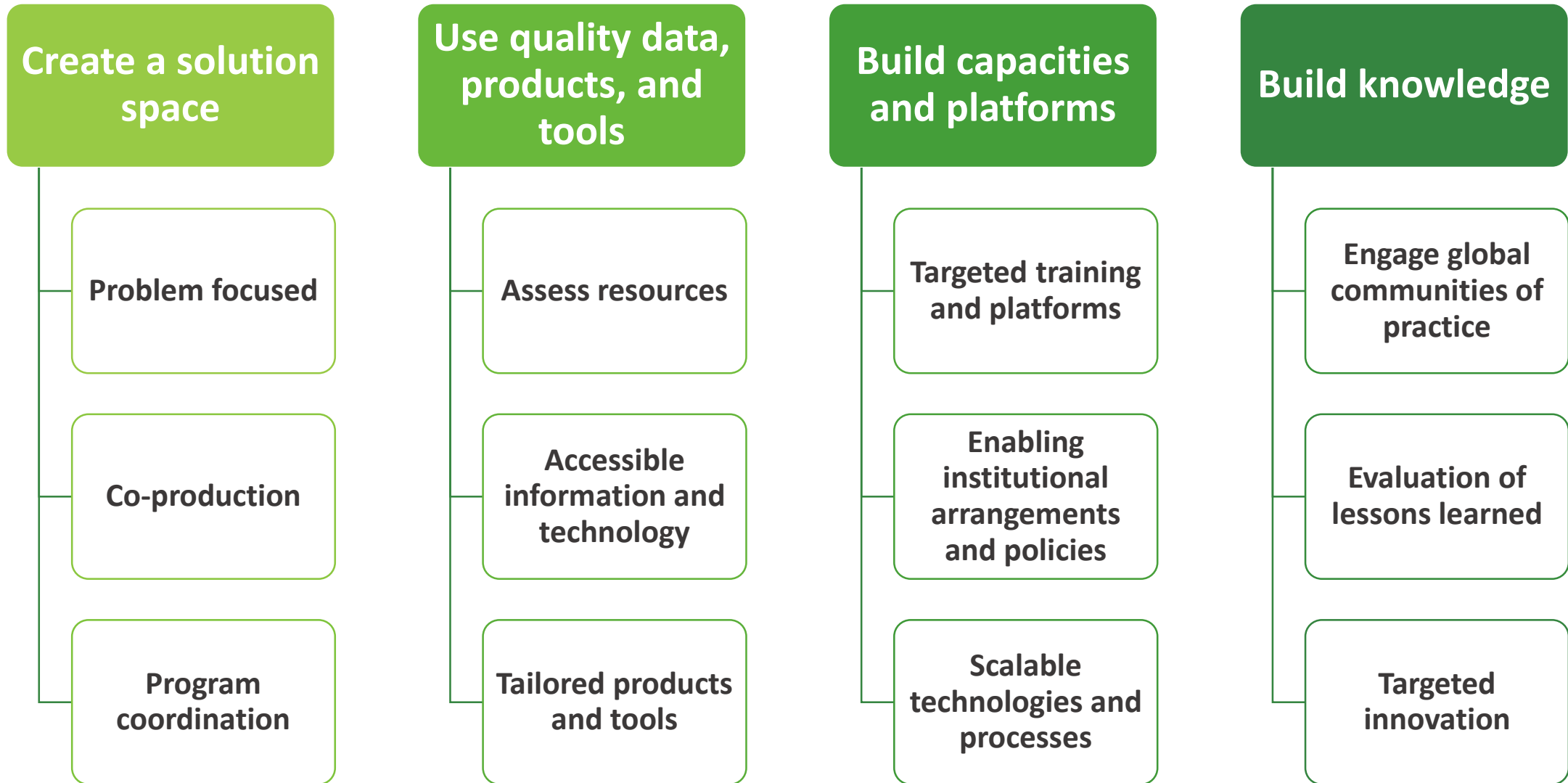
The following organizations have been recognized as contributing partners:



Alliance



The Four Pillars of CSRD



From a local pilot to a regional program...

Colombia



Investment Priorities

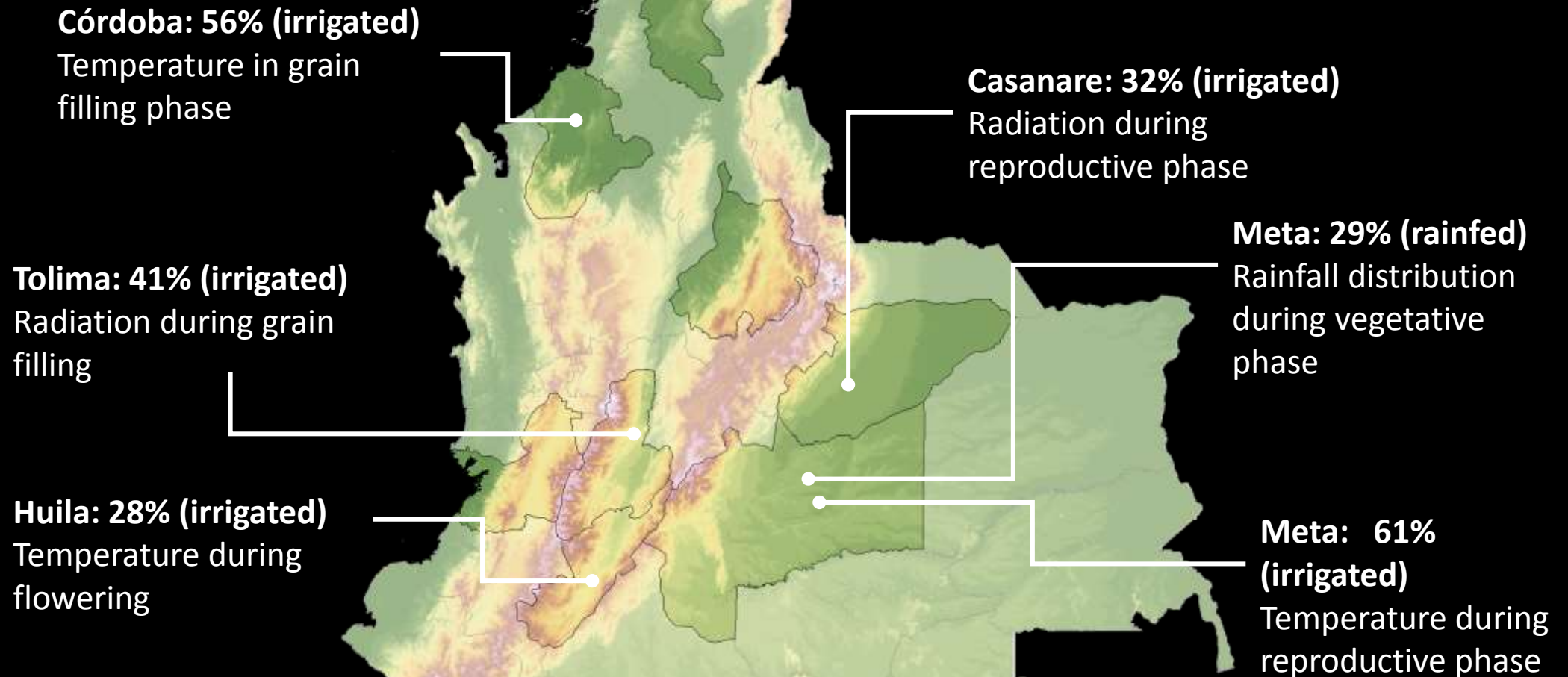
Next user Priorities

The Colombian Lighthouse Projects

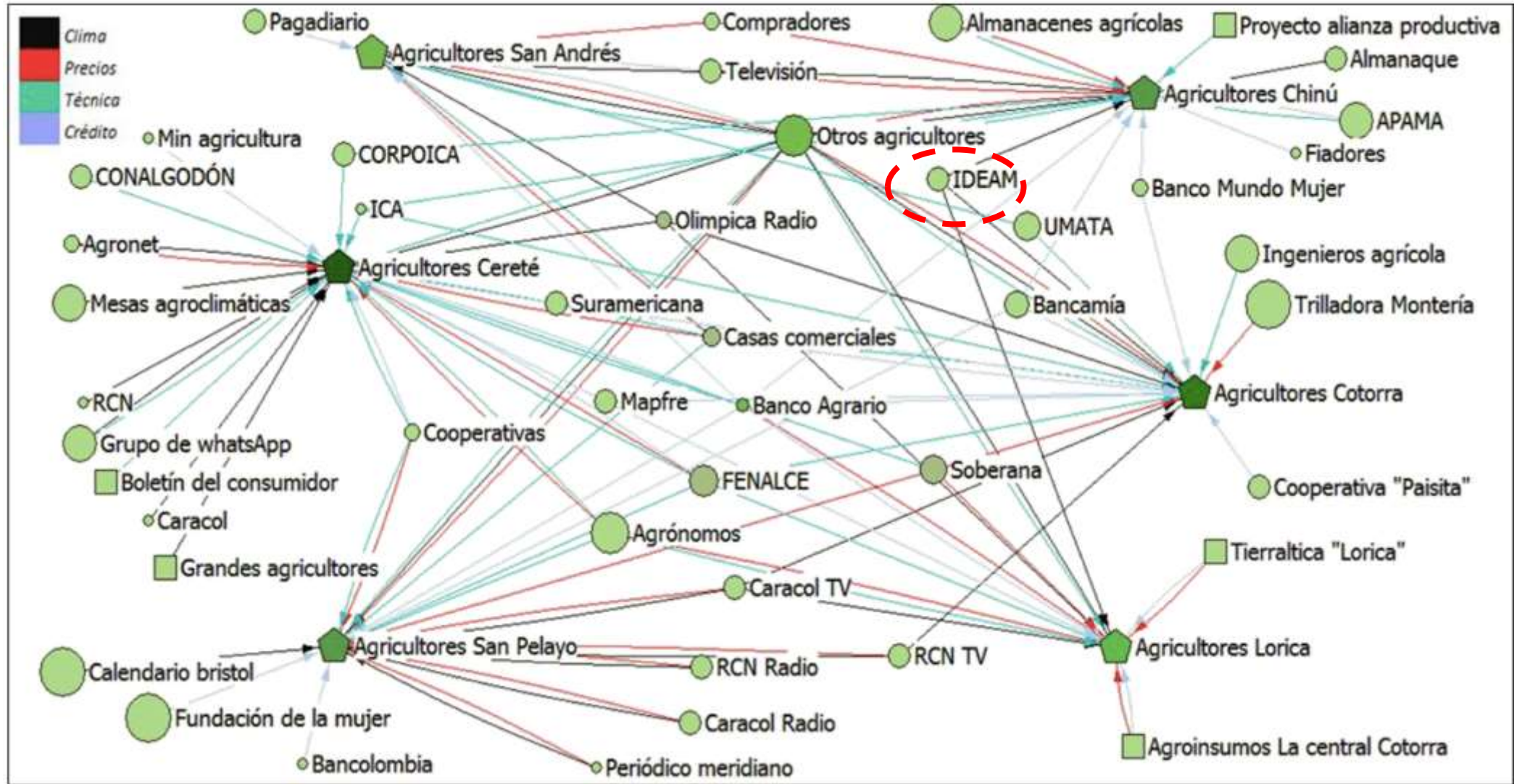
- Seasonal agroclimatic forecasts for rice
- Seasonal agroclimatic forecasts for maize
- Strategic (2030) forecasts for resilient coffee fincas



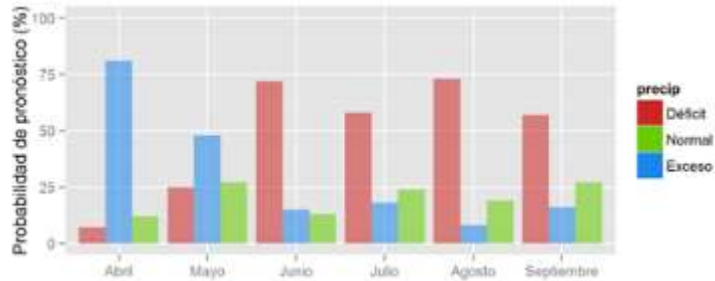
Why is Colombia a good place to start? Climate-related factors explain between 30-60% of variation in yield. Plus, great met service capacity!



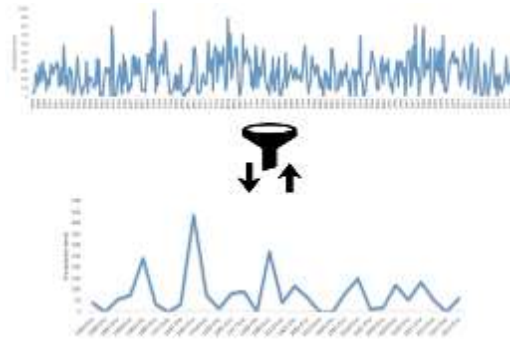
Understanding flow of information (solution space)



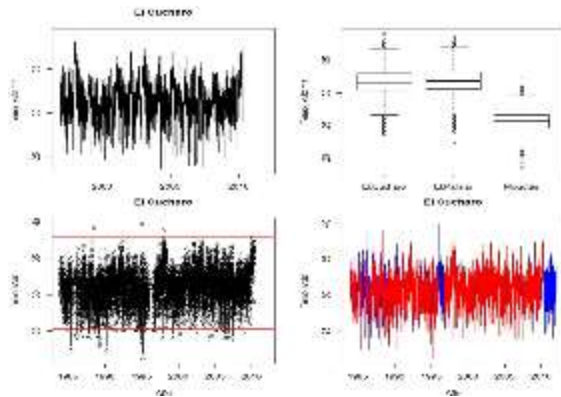
Connecting seasonal forecasts and crop models



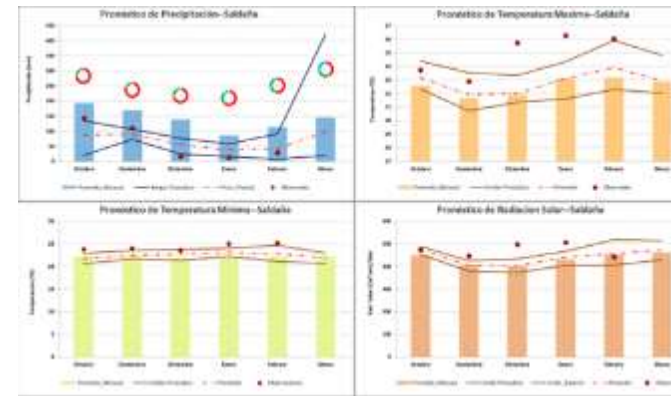
Probabilistic forecast



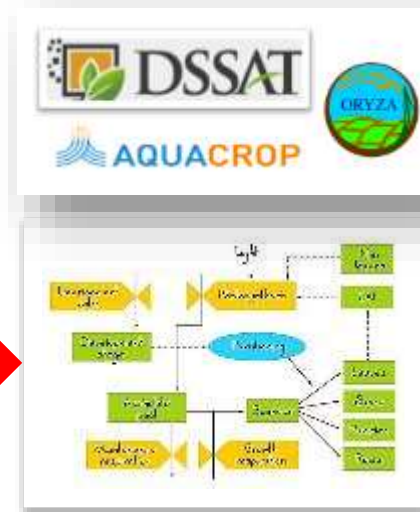
Resampling



Historical data set



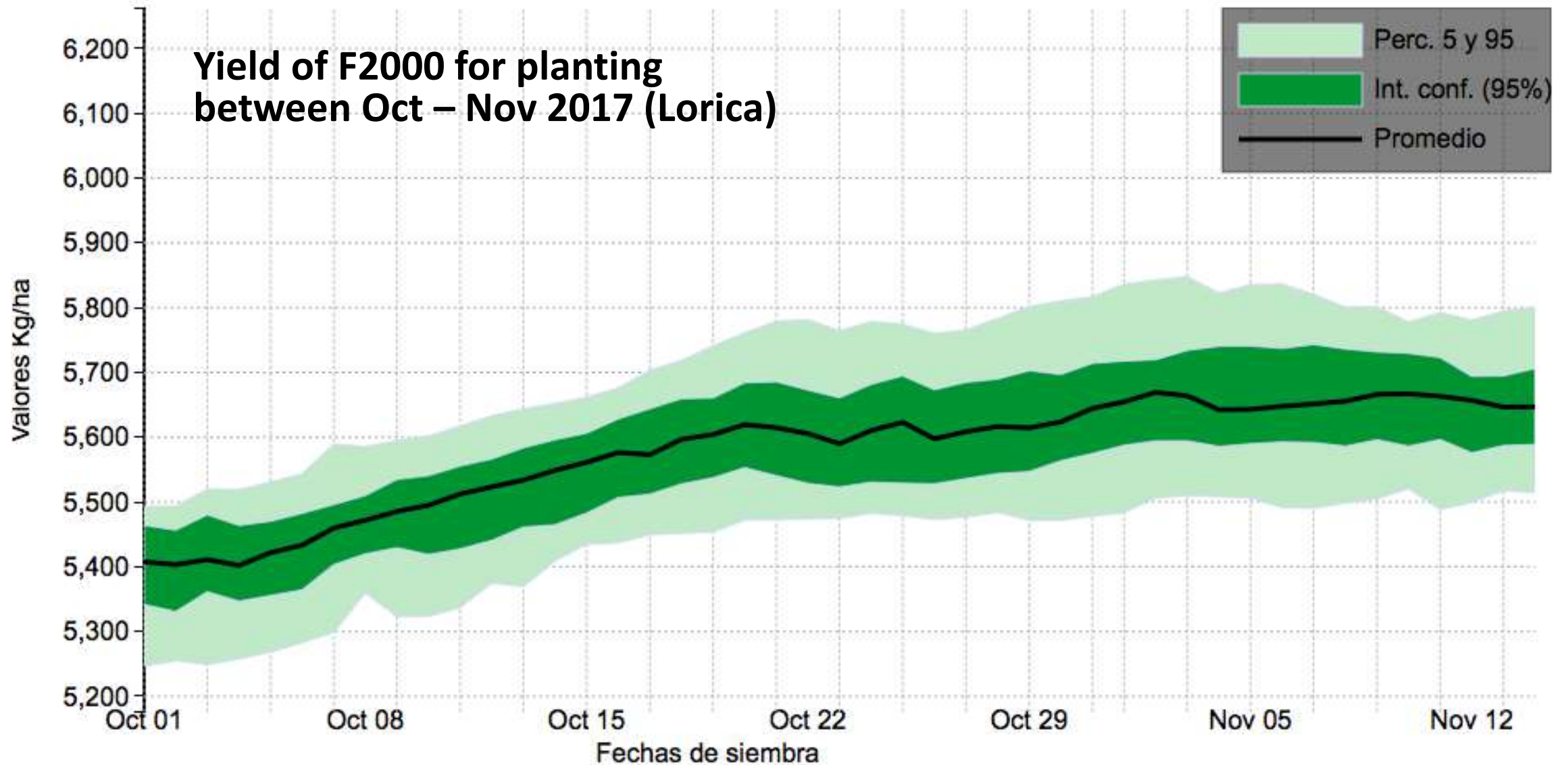
Generating weather scenarios



Calibrated crop model

Linking NHMS data with crop models to translate and contextualize seasonal forecast. Developed with next users (FEDEARROZ, FENALCE).

Automation of seasonal agro-climatic forecasts (platform)





Connecting digital platforms with farmers through participatory processes

Institutions



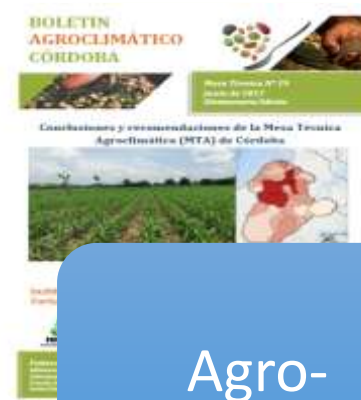
Farmers



Forecast platform



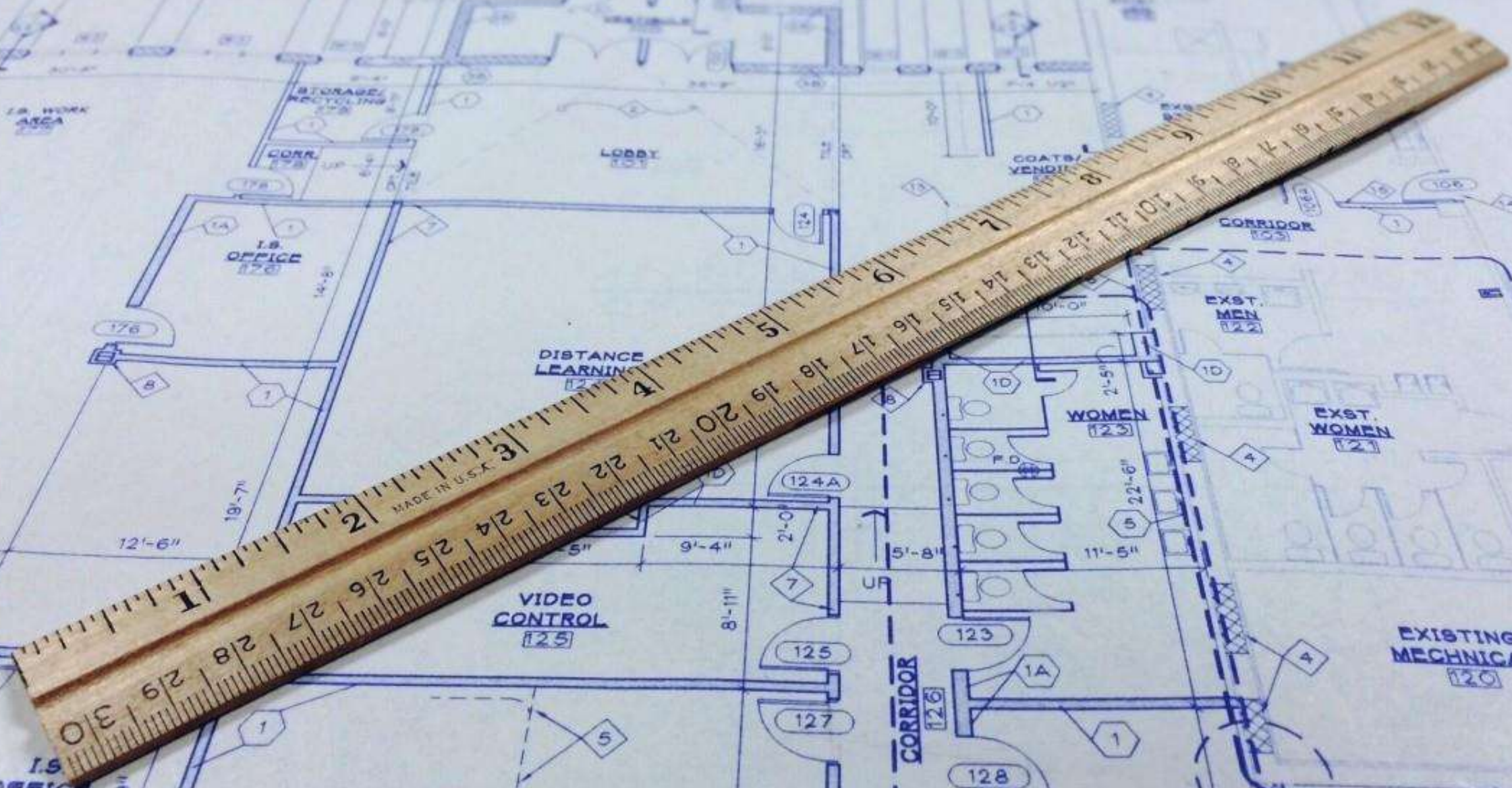
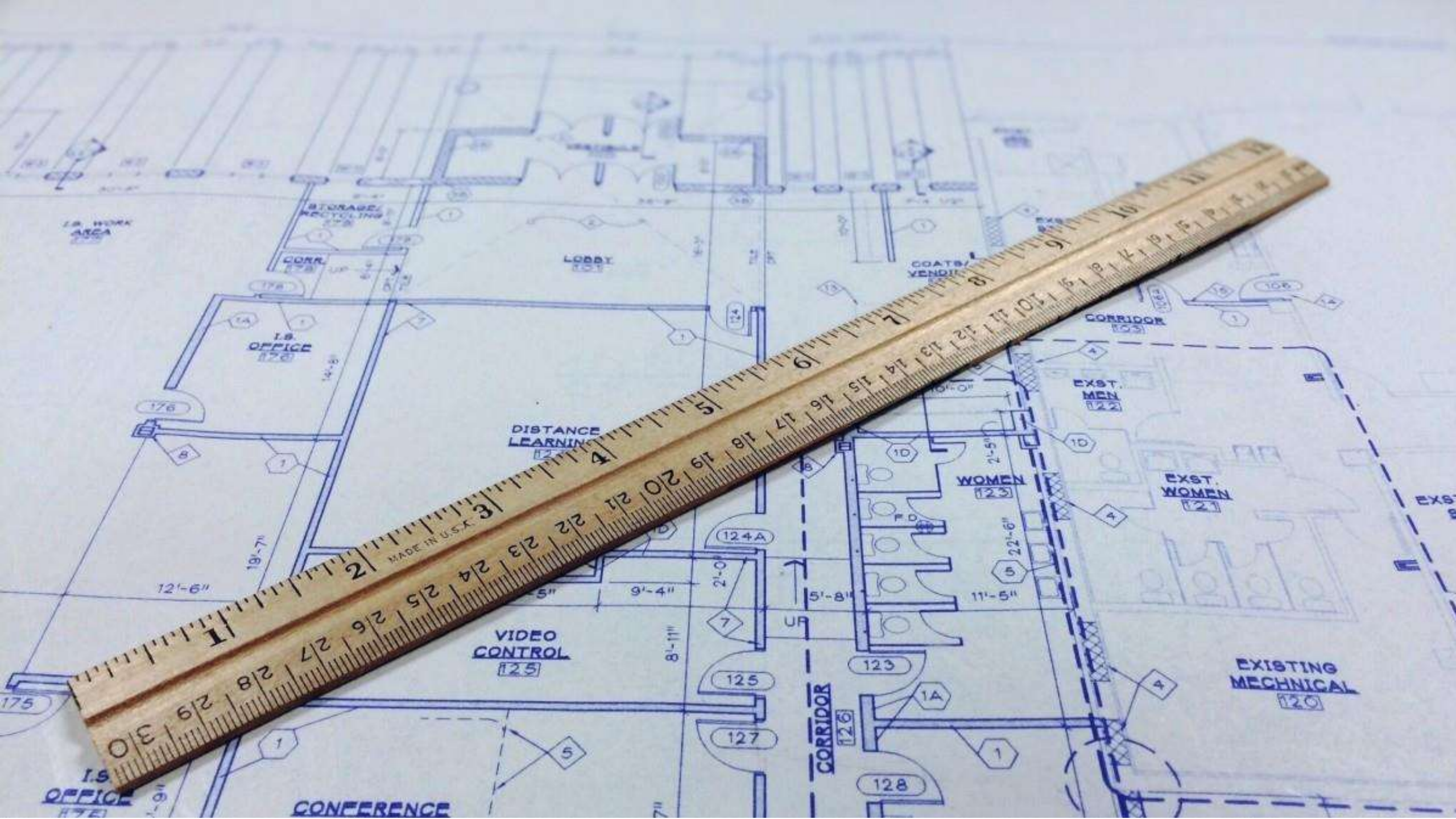
Agro-climatic committees



Agro-climatic bulletins



Participatory climate services (PICSA)



DISTANCE LEARNING
124

VIDEO CONTROL
125

WOMEN
123

EXST. WOMEN
121

EXISTING MECHANICAL
120

I.S. OFFICE
120

CORRIDOR
103

CORRIDOR
126

I.S. OFFICE
127

CONFERENCE

Estos son los departamentos afectados por sequía severa en el país

La sequía se debe a la falta de lluvia en los últimos días, según el MARN.



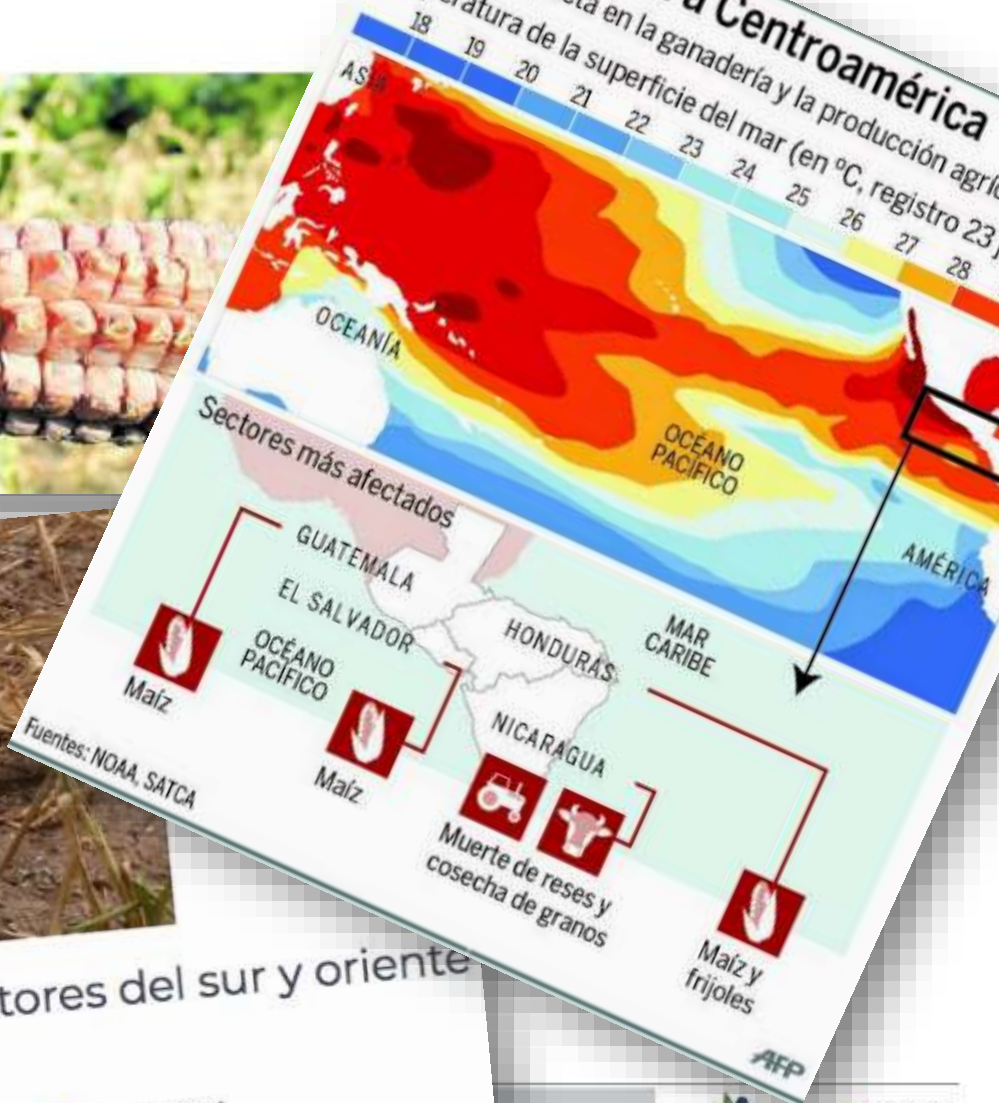
Sequía en Honduras deja pérdidas de más de millón de quintales de granos

04 Aug 2014 / 12:44 AM / Jessica Figueroa
Los efectos del fenómeno de El Niño han dejado damnificadas a 72,000 familias del país.



El Niño golpea a Centroamérica

La sequía impacta en la ganadería y la producción agrícola
Temperatura de la superficie del mar (en °C, registro 23)

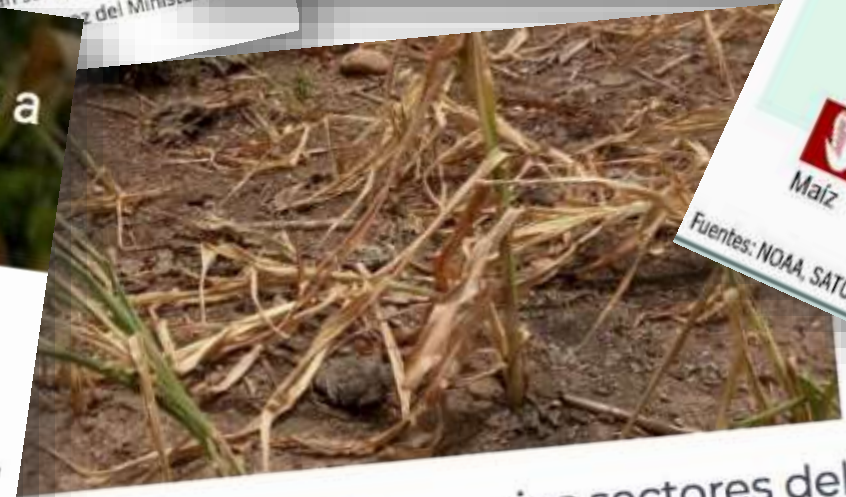


El "Veranillo" mantiene alarmados a productores de granos básicos

Por Redacción HRN | Manzón - 15 Julio, 2018



El presidente de la Asociación de Productores de Granos Básicos (Prograno), Dulio Medina, manifestó a través de HRN, que las consecuencias que trae el veranillo, mantiene alarmados a los productores del país, en especial a los del departamento de Comayagua, quienes serán los más afectados por este fenómeno de la naturaleza.



Grave sequía afecta varios sectores del sur y oriente de Guatemala

16 julio, 2018 Luis Ángel Franco Fenómenos Naturales No Comment

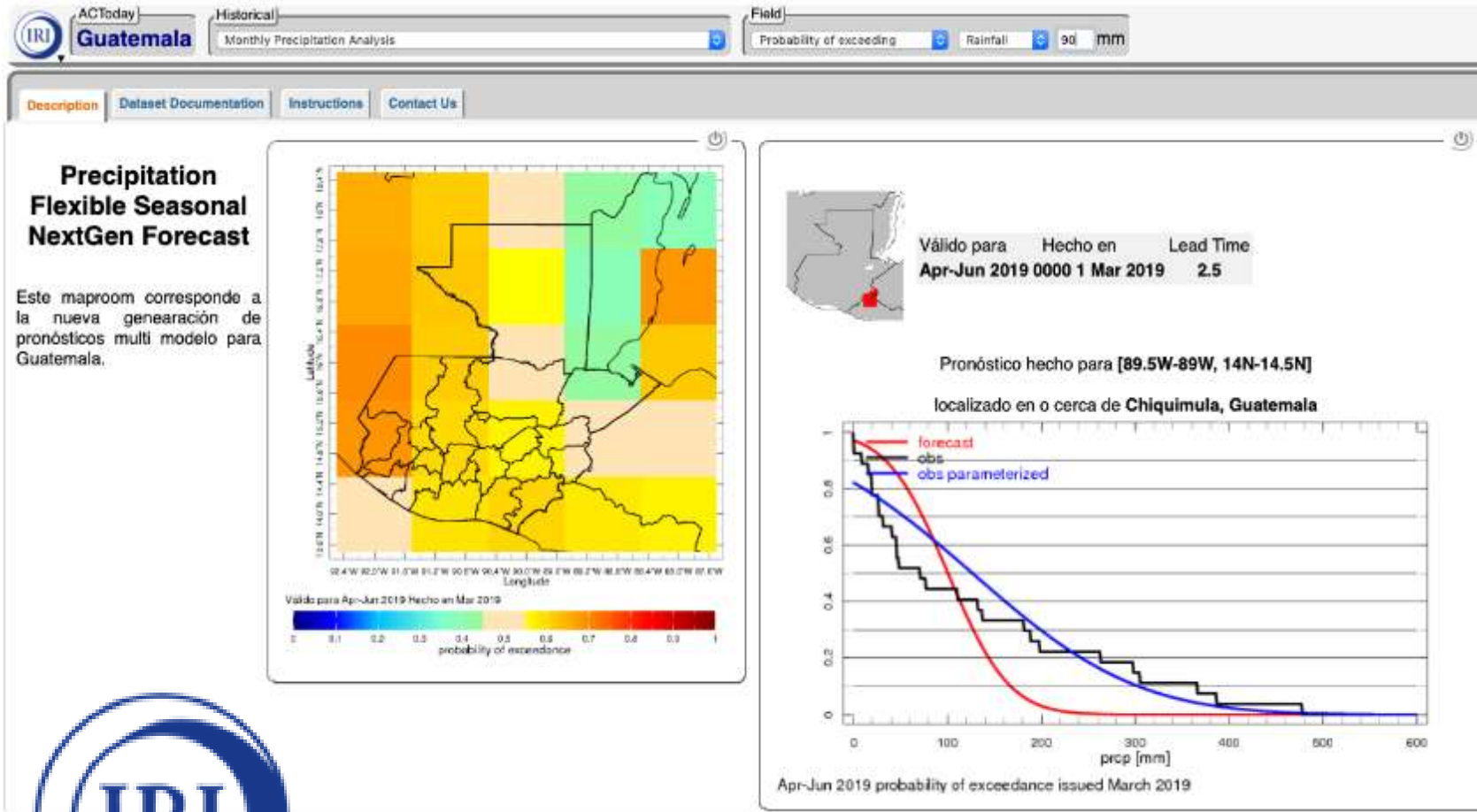
Capacity strengthening and co-design of information products

Towards improving seasonal forecast skill and use at the regional, national, and local level in Colombia, Honduras, Guatemala y Perú



IRI Next Generation seasonal forecasts #NextGen

The system produces maps with deterministic and probabilistic values, and probabilities of exceedance of given thresholds.



What is the probability of:

- meeting water requirements of a particular crop?
- exceed dramatically water required, leading to waterlogging?
- experience a severe water deficiency?

Expected yield reduction or pest/disease incidence?

What management can be applied to reduce risk?

PRACTICE



POLICY

Integration at the regional scale

Integration at the national scale

Integration at local level



Policies to scale-out and implement the Regional CRM system



Policies to integrate climate services into decision making (e.g. scaling LTACs, sustaining and scaling FSDSS)

Institutional changes and local policies to enable establishment of climate services



Cultivating the virtuous circle...



Contents lists available at [ScienceDirect](#)

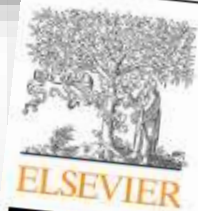
Climate Services

journal homepage: www.elsevier.com/locate/cliser



Original research article
Predictability of seasonal precipitation across major crop growing areas in Colombia

Alejandra Esquivel^a, Lizeth Llanos-Herrera^a, Diego Agudelo^a, Steven D. Prager^a,
Katia Fernandes^{a,b}, Alexander Rojas^c, Jhon Jairo Valencia^{d,e}, Julian Ramirez-Villegas^{a,f,*}



Contents lists available at [ScienceDirect](#)

Climate Risk Management

journal homepage: www.elsevier.com/locate/crm



Bridging the gap between climate science and farmers in Colombia

Ana Maria Loboguerrero^{a,b,*}, Francisco Boshell^{c,a,d,1,2,3}, Gloria León^{c,a,1,2},
Deissy Martinez-Baron^{a,b}, Diana Giraldo^b, Liliana Recaman Mejía^{e,f}, Eliecer Díaz^{c,a,1,2},
James Cock^b



RESEARCH ARTICLE

Assessing Weather-Yield Relationships in Rice at Local Scale Using Data Mining Approaches

Sylvain Delerce^{1,*}, Hugo Dorado¹, Alexandre Grillon², Maria Camila Rebolledo³, Steven D. Prager¹, Victor Hugo Patiño¹, Gabriel Garcés Varón⁴, Daniel Jiménez¹

Several more pending!

Alliance



Alliance



Thank you!

Steven D. Prager

Principal Scientist for Integrated Modeling

s.prager@cgiar.org

