

We are IntechOpen, the world's leading publisher of Open Access books Built by scientists, for scientists

5,300

Open access books available

130,000

International authors and editors

155M

Downloads

Our authors are among the

154

Countries delivered to

TOP 1%

most cited scientists

12.2%

Contributors from top 500 universities



WEB OF SCIENCE™

Selection of our books indexed in the Book Citation Index
in Web of Science™ Core Collection (BKCI)

Interested in publishing with us?
Contact book.department@intechopen.com

Numbers displayed above are based on latest data collected.

For more information visit www.intechopen.com



Virulence Factors of *Salmonella Typhi*

Noor S.K. Al-Khafaji, Ali M.K. Al-Bayati
and Hussein O.M. Al-Dahmoshi

Abstract

S. Typhi is an enteric bacillus which belongs to the genus *Salmonella* in the family Enterobacteriaceae and it is a multi-organs pathogen which inhabits the lymphatic tissues of the small intestine, liver, spleen, and blood stream of infected humans. *S. Typhi* has a mixture of features that make it an efficient pathogen. This species contains an endotoxin that is characteristic of Gram-negative organisms, as well as the virulence-enhancing Vi antigen. Many of the *S. Typhi* virulence factors are clustered in some areas of the chromosome known as *Salmonella* pathogenicity islands (SPI), such as adhesion, invasion, and toxin genes. A protein known as invasins that permits non-phagocytic cells is also produced and excreted by the bacterium, where it is capable of intracellular living. The oxidative burst of leukocytes may also be inhibited, making innate immune reaction ineffective.

Keywords: *S. Typhi*-virulence factors -endotoxin, enterotoxin, cytotoxin

1. Introduction

It was quite a long time before typhoid fever was differentiated from other febrile disorders. Pierre Louis was the first who used the word “ typhoid “ and give the classical picture of typhoid in 1829 and described in detail post-mortem findings, especially the enlargement and ulceration of Peyer’s patches. However, he did not clearly differentiate between typhoid and typhus. In 1837, Gerhard was the first who clearly differentiate typhoid from typhus fever and William Budd described the contagious nature of the disease and incriminated transmission of facially polluted water supplies in 1873 [1].

In 1873, William Budd, a physician in Bristol who was interested in cholera and intestinal fever, showed that typhoid fever could be transmitted by a particular toxin found in the excrement and that this propagation was responsible for the contamination of water by the feces of patients. Each case was linked to another anterior case, according to Budd. A significant number of doctors and scientists have attempted to discover the nature of the disease-causing microorganism and have experienced considerable difficulty in isolating the bacillus. It was Karl Joseph Eberth, Rudolf Virchow’s doctor and pupil, who discovered the bacillus in the abdominal lymph nodes and the spleen in 1879. In 1880 and 1881, he reported his findings. The genus ‘*Salmonella*’ was named after Daniel Elmer Salmon, an American veterinary pathologist, who was the administrator of the USDA (United States Department of Agriculture) research program. His discovery was then tested and confirmed by German and English bacteriologists, including Robert Koch., Thus, despite the fact

that a number of scientists had contributed to the quest [2, 3], the organism was named after him. Salmonella has thus become new scientific knowledge and thus the mechanisms of infection and the presence of healthy carriers have been relatively nascent [4]. Recent reports suggest that there are approximately 20 million cases of typhoid each year, resulting in deaths of 100,000-200,000 [5]. Karl J. Eberth, who isolated the bacterium from spleen parts and lymph nodes from a patient who died of typhoid fever and discovered the typhoid agglutinins and their diagnostic application, first isolated *S. Typhi* in 1880. In 1881, Robert Koch succeeded in cultivating the bacterium. However the isolation of typhoid bacillus from other enteric bacteria was unclear due to the lack of differential characters [6, 7].

Salmonella is a genus of rod shaped (bacillus) gram negative bacteria related to family Enterobacteriaceae. They have two species which are *Salmonella enterica* and *Salmonella bongori*. *S. enterica* is the kind species and is further divided into six subspecies [8]. that contain over 2,600 serotypes [9]. *Salmonella* species are non spore forming, predominantly motile enterobacteria for cell diameters between on 0.7 and 1.5 μm , lengths for 2 to 5 μm , and peritrichous flagella (all concerning the cell body [10]. exceptions *S. Gallinarum* and *S. Pullorum* [11, 12]. The bacterial strain was named after the American pathologist, Dr. Daniel Elmer Salmon, who collaborated with Smith. The Salmonella nomenclature is controversial and still changing. The Centers for Disease Control and Prevention (CDC) is currently using the Salmonella nomenclature system suggested by the World Health Organization (WHO) Collaborating Centre as a nomenclature system.: Species: *Salmonella enterica* serotype Typhi. [13].

2. Virulence factors of *Salmonella Typhi*

Virulence factors in *Salmonella Typhi* are involved in the various stages of infection, namely: the production of toxins (LPS) endotoxin, enterotoxin, cytotoxin), colonization, adhesion and invasion, as well as survival inside the host cells [14] (**Figure 1**).

2.1 Vi antigen

The capsular Vi antigen is a linear homopolymer of alpha 1-4 linked to galactose aminouronic acid which is variably acetylated at the C3 position. This antigen is

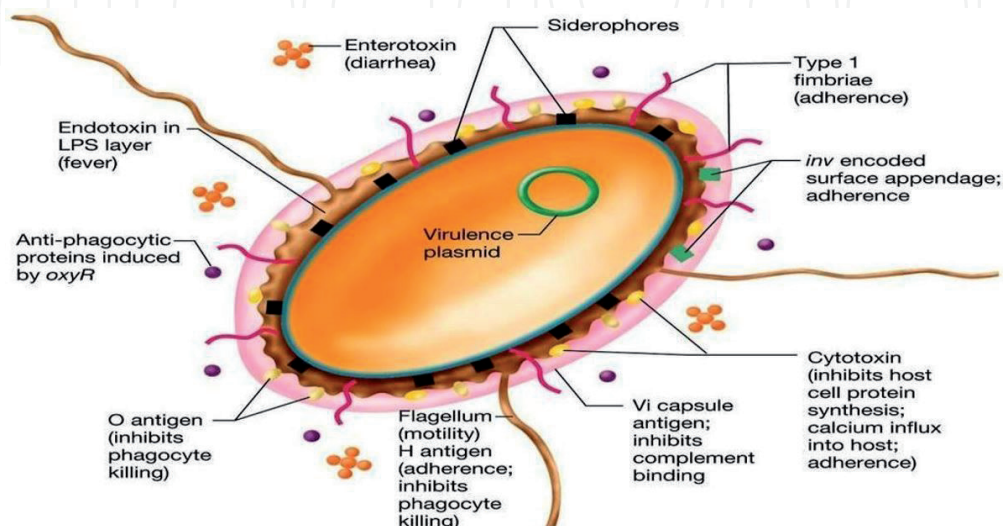


Figure 1.
Salmonella virulence factors [14].

believed to inhibit phagocytosis and complement C3 activation thus inhibiting non-specific opsonization, “[15] One of the main characteristics that distinguishes *S. Typhi* from (non typhoid *Salmonella*) NTS is the production of a polysaccharide capsule named the Vi antigen. The Vi capsule inhibits phagocytosis and confers serum resistance [16, 17], likely by shielding the O-antigen from antibodies [16]. The genes encoding the Vi capsule comprise the *viaB* locus within *Salmonella* pathogenicity island (SPI)-7, which also encodes the type III secretion system (T3SS) effector *SopE* and a type IVB pilus [18].

2.2 The SPI-1, SPI-2 and type III secretion systems

Common to both typhoidal and NTS are two pathogenicity-island encoded type III secretion systems (T3SS): the SPI-1 and SPI-2 T3SS, which are essential for *Salmonella* virulence. In *S. Typhi*, the SPI-1 T3SS is also required for invasion of nonphagocytic cells [19], but the importance of the SPI-2 T3SS is less clear. Disruption of the SPI-2 T3SS did not influence the survival of *S. Typhi* in THP-1 and human monocyte-derived macrophages [20]; however, *S. Typhi* strains with transposon insertions in the SPI-2 components *ssaQ*, *ssaP*, or *ssaN* were negatively selected against during competitive growth in human macrophages [21]. The role of SPI-2 during the intracellular lifestyle of typhoidal serovars therefore warrants further investigation.

2.3 Somatic O antigen (cell wall Ag or LPS)

The outer L-layer underlying the capsular material has the lipopolysaccharide (LPS) called the ‘O’ antigen. This ‘L’ layer also has certain proteins called outer membrane proteins (OMP) which are antigenic. These OMPs include both porin (OMP F and OMP C) and non-porin substances. Porins are pore-forming channels which help in solute uptake and non-porin proteins are structural proteins (**Figure 2**) [22]. These antigens are highly immunogenic and there is a good antibody response to all these antigens in patients with typhoid fever.” [23, 24]. The somatic antigens represent the side chains of repeating sugar unit projecting outwards from the lipopolysaccharide layer and the surface of the bacterial cell wall; they are hydrophilic and heat stable. It is used for serological diagnosis [26].

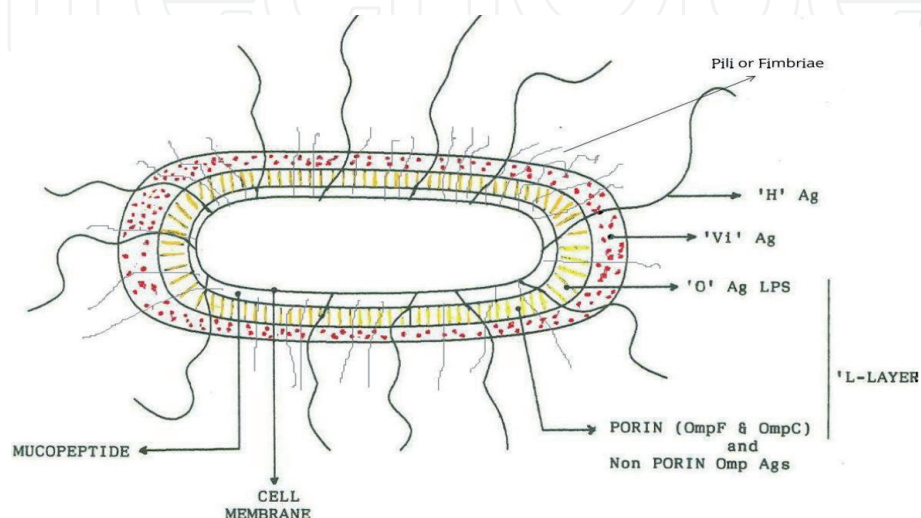


Figure 2.
Antigenic structure of Salmonella Typhi [25].

2.4 Flagella(H antigen)

Flagella, while contributing to virulence, are also important activators of innate immune responses via recognition of monomeric flagellin by TLR5 and NAIP receptors [27, 28], H antigen may occur in either or both of two forms, called phase 1 and phase 2. The organism tends to change from one phase to the other. H antigen also provides a useful epidemiologic tool with which to determine the source of infection and its mode of spread [29]; While most NTS display phase variation through the alternate expression of two genes of flagellin (*fliC* and *fliB*), most *S. Typhi* strains are monophasic, expressing *FliC* of the antigen H: d directly. Interestingly, some Indonesian *S. Typhi* strains transmit H: j, due to an in-frame deletion in *fliC*, a variant of H:d. [30], and/or are biphasic, expressing a plasmid-encoded *FliB* analogue of the H:z66 antigen [31], H:j and H:z66 antigenic variants are thought to have recently emerged during *S. Typhi* evolution [32], driven by immune selection in this high incidence region [31]. This additional variation seems to play a role in *S. Typhi* interactions with host epithelial cells and macrophages and partly in immune evasion [33].

2.5 Fimbriae (adhesion protein) and pili

The significant adhesion factors for *S. Typhi* are fimbriae and pili.. These elements of virulence are employed by *S. Typhi* during infection and host colonization for its various cellular interactions [34]. The Operon Stg, one of the six Operons Fimbriae found in *S. Typhi*, But not *S. Typhimurium* has recently been shown to be involved in cellular invasion and in vitro destruction of epithelial cells [34]. In addition, the STG operon was found to assist *S. Typhi* targets enterocytes more preferentially than M cells, which promotes *S. Typhi* By passing the Peyer patches, eludes the innate immune system [35].

2.6 Virulence plasmid

Certain *Salmonella* carry a large, low copy number plasmid that contains virulence genes. Virulence plasmids are required to trigger systemic disease; their involvement in the enteric stage of the infection is unclear. *Salmonella* virulence plasmids are heterogeneous (50–90) kb in size, but all share a 7.8 kb area, SPV, necessary for reticuloendothelial system bacterial multiplication [36, 37].

2.7 Invasiveness

Unlike most bacteria that rely on endocytosis mediated by receptors in order to invade a target cell, *S. Typhi* uses a complex mechanism known as bacterial mediated endocytosis, in which bacterial proteins enter the host cell and control signaling cascades that regulate the trafficking of cytoskeletal membrane architecture and gene expression, both of which force endocytosis *S. Typhi* into the host [37, 38]. The target cell for *S. Typhi* is the macrophage. The ability of *S. Typhi* to survive in macrophages is due to the development of bacterial proteins that allow the organism to with stand both the oxygen-dependent and the non oxygen-dependent killing mechanisms of these professional phagocytic cells [36, 37].

2.8 Biofilm

Biofilm cells manufacture proteinaceous substances that allows synergic growth and protection from possible harsh environments it may encounter [39, 40]. In the

seventeenth horn, a Dutch scientist Van Leeuwenhoek was the first individual to discover biofilm cells which he described as “animacules” on his dental plaque. The biofilm development process is initiated with single cells attaching to a surface or to each other, this is then followed by the formation of clustered cells or microcolonies. Over time, the microcolonies are surrounded by a protective layer of protein-rich substances referred to as extracellular polymeric substances (EPS) [37]. The development and genetic signaling pathways involved in a *Salmonella* biofilm formation are complex. There are four major components to the structure of the *Salmonella* biofilm: curli, cellulose, capsular polysaccharides and lipopolysaccharides. Curli fibers, referred to as thin very aggregative fibers (Tafi) are one of the main components of the extracellular polymeric substance (EPS) matrix [40, 37].

Enea, et al., 2017 [41] were found biofilm production by *S. Typhi* may represent a key factor for the promotion of a persistent infection in the gallbladder, thus sustaining a chronic local inflammatory response and exposing the epithelium to repeated damage caused by carcinogenic toxins. **Figure 3** demonstrates the potential role of biofilm-producing *S. Typhi*, in the development of gallbladder cancer. (A) Chronic *S. Typhi* infection. *S. Typhi* strains and gallstone presence strongly correlate with the development of gallbladder cancer (GC); The presence of gallstones (B) could provide

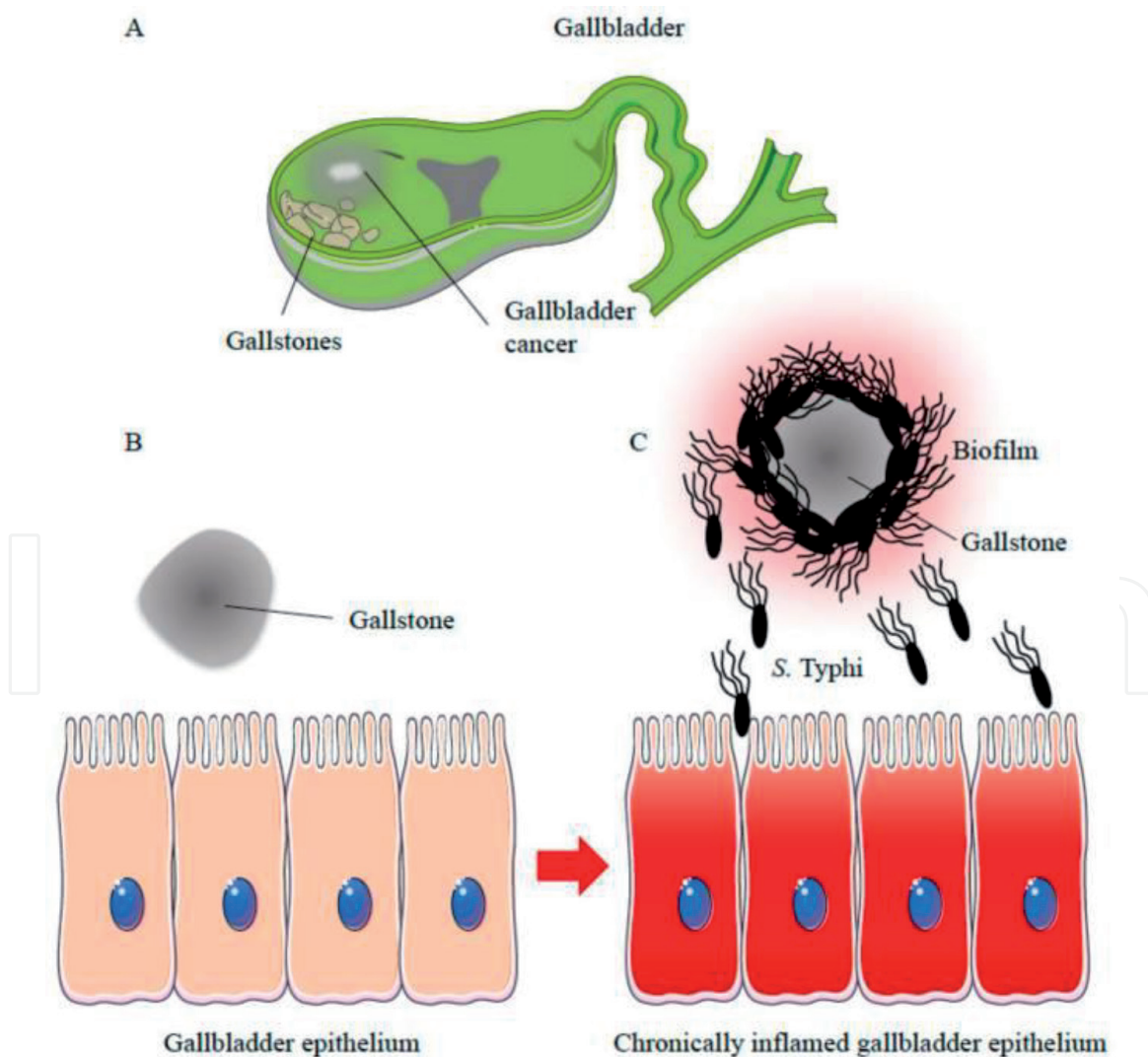


Figure 3. Showing the potential role of biofilm-producing *S. Typhi* in the development of gallbladder cancer. (A) Chronic *S. Typhi* infection. *S. Typhi* strains and gallstone presence strongly correlate with the development of gallbladder cancer (GC); The presence of gallstones (B) could provide *S. Typhi* strains with the ideal substrate. (C) Once the biofilm is established, bacterial cells are separated from the gallstones that release carcinogenic molecules [41].

S. Typhi strains with the ideal substrate. (C) Once the biofilm is established, bacterial cells are separated from the gallstones that release carcinogenic molecules that induce genomic instability and chronic inflammation, which are key prerequisites for the onset of GC. with an increased biofilm forming capacity.

2.9 Endotoxin of *Salmonella* Typhi

Endotoxin is a big part of Gram-negative bacteria's outer membrane (OM). Endotoxins have been found to play an important function in the pathogenicity of Gram-negative bacterial infections. It is a powerful mediator of a wide range of pathophysiological effects in humans, mainly in the gastrointestinal tracts. Therefore, these are also known as enterotoxins. These toxic behaviors, as well as many beneficial ones linked to immunostimulation, include lethal toxicity, pyrogenicity and tissue necrotizing activity [42]. Endotoxins are high-molecular weight complexes, of lipopolysaccharides (LPS) which is the major component of bacterial cell wall [42]. It's a heat stable toxic substance released by gram negative bacteria's after disruption of cell envelopes [43, 44]. The role of endotoxins in bacterial pathogenesis and their chemical characterization as lipopolysaccharide (LPS) have been studied earlier [45, 46]. Chemically, LPS consist of a hydrophilic polysaccharide covalently linked to a hydrophobic lipid portion which is termed as lipid A, which anchors the molecules in the outer membrane (OM) [47]. Endotoxins play a major role in human disease states that created interest to investigate the pathogenicity of the producing bacteria [42]. Lipopolysaccharide found to be an important activator for the activation of immune system that leads to non-specific inflammatory immune response [48].

3. Conclusions

According to above review we put highlights on the role of the *Salmonella* virulence factors. In addition, we mentioned some strategies that could be explored in order to take control of *Salmonella* infections.

Conflict of interest

There is no 'conflict of interest' for this work.

IntechOpen

Author details

Noor S.K. Al-Khafaji^{1*}, Ali M.K. Al-Bayati² and Hussein O.M. Al-Dahmashi¹

1 Biology Department, College of Science, University of Babylon, Hilla, Iraq

2 Al-Noor Hospital for Pediatric, Babylon Health Directorate, Ministry of Health, Iraq

*Address all correspondence to: noorvaccine@gmail.com

IntechOpen

© 2021 The Author(s). Licensee IntechOpen. This chapter is distributed under the terms of the Creative Commons Attribution License (<http://creativecommons.org/licenses/by/3.0>), which permits unrestricted use, distribution, and reproduction in any medium, provided the original work is properly cited. 

References

- [1] Parry, C. M. (2006). Epidemiological And Clinical Aspects Of Human Typhoid Fever. In: Matroeni, P. And Maskell, D. (Eds.). *Salmonella Infections: Clinical, Immunological And Molecular Aspects*, P: 1-18. New York: Cambridge University Press.
- [2] Moorhead, R. (2002). William Budd And Typhoid Fever. *J R Soc Med.*;95:561-564.
- [3] Oldenkamp EP. (2004) Predecessors: Veterinarians From Earlier Times, Daniel Elmer Salmon (1850-1914) *Tijdschr Diergeneeskd.* 129:554-555.
- [4] Marineli, F., Gregory T, Marianna K., and George A. (2013) Mary Mallon (1869-1938) And The History Of Typhoid Fever. *Ann Gastroenterol.* 26(2): 132-134.
- [5] Antillón, M.; & et. al (2017). The Burden Of Typhoid Fever In Lowand Middle-Income Countries: A Meta-Regression Approach. *Plos Neglected Tropical Diseases*, 11(2).
- [6] Shere, K.D.; Goldbreg, M. B.; et.al (1998). *Salmonella Infection*. In: Gorbach, S. L.; Bartlett, J. G.; And Blacklow, N. R. (Eds.). *Infectious Diseases*. 2nd Ed. Part1. Philadelphia, Sannders Company. Pp.:699.
- [7] Abbas H.H. (2012). *Detection Of Salmonella enterica Serovar Typhi In Patients With Acute And Chronic Typhoid By Some Bacteriological , Immunological And PCR Technique* .Msc Thesis Baghdad University.
- [8] Su, L. H., Chiu, et. al (2003). In Vivo Acquisition Of Ceftriaxone Resistance In *Salmonella enterica* Serotype Anatum. *Antimicrobial Agents And Chemotherapy* 7(2), 47-56.
- [9] Gal-Mor, O., Boyle, & et. al (2014). Same Species, Different Diseases: How And Why Typhoidal And Non-Typhoidal *Salmonella enterica* Serovars Differ. *Frontiers In Microbiology.* 2(4), 436-442.
- [10] Fàbrega, A., And Vila, J. (2013). *Salmonella enterica* Serovar Typhimurium Skills To Succeed In The Host: Virulence And Regulation. *Clinical Microbiology Reviews.* 26(2), 308-341.
- [11] Browning, G. (2008). *Clinical Veterinary Microbiology.* Australian Veterinary Journal.
- [12] Abdul Aziz T. A. F. AL Jobouri.,(2019). *Molecular Characterization of Some Virulence Genes of Salmonella enterica in Babylon province* Msc Thesis Baghdad University. (2), 47-56.
- [13] Popoff M.Y., et. al.(2003). Supplement 2001 (No. 45) To The Kauffmann-White Scheme. *Res Microbiol.* 154(3):173-174.
- [14] Madigan M., Martinko J. (2007). *Biologie Des Micro-Organismes.* 11 Ème Èdition. Pearson, Paris. P : 731-735, 790-792, 943, 947-948.
- [15] Robbins 1D, Robbins 18(1984). Reexamination Of The Protective Role Of The Capsular Polysaccharide (Vi Antigen) Of *Salmonella Typhi*. *J Infect Dis;*150:436-49.
- [16] Hart, P. J., O'Shaughnessy, & et. al. (2016). Differential Killing Of *Salmonella enterica* Serovar Typhi By Antibodies Targeting VI And Lipopolysaccharide O:9 Antigen. *Plos One*, 11(1).
- [17] Wilson, R. P., Winter, S. E., et.al. (2011). The Vi Capsular Polysaccharide Prevents Complement Receptor 3-Mediated Clearance Of *Salmonella enterica* Serotype Typhi. *Infection And Immunity*, 79(2), 830-837.

- [18] Pickard, D., Wain, J., Baker, S., Line, A., Chohan, S., Fookes, M., ... Dougan, G. (2003). Composition, Acquisition, And Distribution Of The Vi Exopolysaccharide-Encoding *Salmonella enterica* Pathogenicity Island SPI-7.
- [19] Bishop, A., House, D., Perkins, T., Baker, S., Kingsley, R. A., & Dougan, G. (2008). Interaction Of *Salmonella enterica* Serovar Typhi With Cultured Epithelial Cells: Roles Of Surface Structures In Adhesion And Invasion. *Microbiology*, 154(Pt 7), 1914-1926. <https://doi.org/10.1099/Mic.0.2008/016998-0>.
- [20] Forest, C. G., et. al. (2010). Intracellular Survival Of *Salmonella enterica* Serovar Typhi In Human Macrophages Is Independent Of Salmonella Pathogenicity Island (SPI)-2. *Microbiology*, 156(12), 3689-3698.
- [21] Sabbagh, S. C., et.al. (2012). Selection Of *Salmonella enterica* Serovar Typhi Genes Involved During Interaction With Human Macrophages By Screening Of A Transposon Mutant Library. *Plos One*, 7(5), E36643.
- [22] Benz R. Structure And Function Of Porins From Gram-Negative Bacteria. *Ann Rev Microbiol* 1988;42:359-93.
- [23] Duguid JP. Salmonella I Typhoid And Paratyphoid Fevers. In: Duguid JP, Marimon BP, Swain RHA (Eds). *Medical Microbiology*. Vol I. Microbial Infections London:English Language Book Society, 1978:314-19.
- [24] Calderon I, Lobos SR, Rojas HA, Et Al. Antibodies To Porin Antigens Of Salmonella Typhi Induced During Typhoid Infection In Humans. *Infect Immun* 1986;52:209-12.
- [25] V. BALARAJ, G. SRIDHARAN, M. V. JESUDASON(1992), Immunization Against Typhoid Fever, Mahatma Gandhi Institute Of Medical Sciences, Wardha, Sevagram 442102, Maharashtra, India © The National Medical Journal Of India 1992.
- [26] Al-Ammar, M. H. (2006). Some Aspects Of Specific Immunity For Salmonella Typhi In Typhoid Patients And Rabbits .Phd Thesis , Alkufa University.
- [27] Hayashi, F., Smith, K. D., Ozinsky, A., Hawn, T. R., Yi, E. C., Goodlett, D. R., ... Aderem, A. (2001). The Innate Immune Response To Bacterial Flagellin Is Mediated By Toll- Like Receptor 5. *Nature*, 410(6832), 1099-1103. <https://doi.org/10.1038/35074106> .
- [28] Kortmann, J., Brubaker, S. W., & Monack, D. M. (2015). Cutting Edge: Inflammasome Activation In Primary Human Macrophages Is Dependent On Flagellin. *The Journal Of Immunology*, 195(3), 815-819. <https://doi.org/10.4049/Jimmunol.1403100>.
- [29] Harriet U. And Nandita De.(2014). Mechanisms Of Antibiotic Resistance In Salmonella Typhi. *Int.J.Curr.Microbiol. App.Sci* (2014) 3(12): 461-476.
- [30] Frankel, G., Newton, S. M., Schoolnik, G. K., & Stocker, B. A. (1989). Intragenic Recombination In A Flagellin Gene: Characterization Of The H1-J Gene Of Salmonella Typhi. *The EMBO Journal*, 8(10), 3149-3152.
- [31] Baker, S., Hardy, J., Sanderson, K. E., Quail, M., Goodhead, I., Kingsley, R. A., ... Dougan, G. (2007). A Novel Linear Plasmid Mediates Flagellar Variation In Salmonella Typhi. *Plos Pathogens*, 3(5), 0605-0610. <https://doi.org/10.1371/Journal.Ppat.0030059>.
- [32] Baker, S., Holt, K., Van Den Vosse, E., Roumagnac, P., Whitehead, S., King, E., Dougan, G. (2008). High-Throughput Genotyping Of *Salmonella enterica* Serovar Typhi Allowing Geographical Assignment Of Haplotypes And Pathotypes Within An Urban District Of Jakarta, Indonesia.

Journal Of Clinical Microbiology, 46(5), 1741-1746. <https://doi.org/10.1128/JCM.02249-07>.

[33] Schreiber, F., Kay, S., Frankel, G., Clare, S., Goulding, D., Van De Vosse, E., ...Baker, S. (2015). The Hd, Hj, And Hz66 Flagella Variants Of *Salmonella enterica* Serovar Typhi Modify Host Responses And Cellular Interactions. *Scientific Reports*, 5(1), 7947. <https://doi.org/10.1038/Srep07947>.

[34] Berrocal, L. Et Al. Stg Fimbrial Operon From *S. Typhi* STH2370 Contributes To Association And Cell Disruption Of Epithelial And Macrophage-Like Cells. *Biol. Res.* 48, 1-8 (2015).

[35] Gonzales, A. M., Wilde, S. & Roland, K. L. Insights Into The Roles Of Long Polar Fimbriae And Stg Fimbriae In *Salmonella* Interactions With Enterocytes. *Infect. Immun.* 85, 1-12 (2017).

[36] Safia Sultana, (2012). Comparison Of Different Test Methods Including Polymerase Chain Reaction For Early And Reliable Diagnosis Of Typhoid Fever Department Of Microbiology Mymensingh Medical College Mymensingh, Bangladesh

[37] Zahraa Hameed Oda AL-Quraishi (2018), Bacteriological And Molecular Study On *Salmonella Typhi* Isolated From Gallbladder Chronic Infections In Alnajaf City A Thesis Submitted To The Council Of College Of Science / University Of Kufa.

[38] Ohi, M. E. And Miller, S. I. (2001). *Salmonella*: A Model For Bacterial Pathogenesis. *Ann. Rev. Med.* 52:259-274.

[39] Donlan, R. and Costerton, W. (2002). Biofilms: survival mechanisms of clinically relevant microorganisms. *Clinical Microbiology Reviews.* 15(2): 167-193.

[40] Mary Corcoran, (2013). *Salmonella enterica* - biofilm formation and survival of disinfection treatment on food contact surfaces. A Thesis presented to the National University of Ireland, galway for the degree of Doctor of Philosophy Discipline of Bacteriology, School of Medicine, National University of Ireland Galway.

[41] Enea Gino Di Domenico, ID, Ilaria Cavallo, Martina Pontone, Luigi Toma and Fabrizio Ensoli. (2017). Biofilm Producing *Salmonella Typhi*: Chronic Colonization and Development of Gallbladder Cancer, *International journal*, enea.didomenico@ifo.gov.it; Tel.: +39-06-526-652-45

[42] Mahamuni, P.P, Patil, A.R And Ghosh, J.S (2017). Proteolytic And Lipolytic Properties Of Endotoxins (Enterotoxins) Produced By *Salmonella Typhi* NCIM 5255, *Salmonella Typhimurium* NCIM 2501 And *Shigella Flexneri* NCIM 5265. *International Food Research Journal* 24(6): 2685-2688

[43] Beutler, B. And Rietschel, E.T. (2003). Innate Immune Sensing And Its Roots: The Story Of Endotoxin. *Nature Reviews Immunology* 3: 169-176

[44] Bishop, R.E. (2005). Bacterial endotoxin. In Russell, W and Herwald, H. (Eds). *Fundamentals of endotoxin structure and function*. Basel : Karger medical and Scientific publisher, p.1-27

[45] Raetz C.R.H. And Whitfield C. (2002). Lipopolysaccharide Endotoxins. *Annual Reviews Biochemistry* 71 : 635-700

[46] Raetz, C.R.H., Reynolds, et.al. (2007). Lipid A Modification Systems In Gram Negative Bacteria. *Annual Reviews Biochemistry* 76 : 295-329.

[47] Brandenburg, K. and Wiese, A. (2004). Endotoxins: Relationships between structure, function, and

activity. *Current Topics in Medicinal Chemistry* 4: 1128-1146

[48] Buyse, J.; Swennen, Q.; Niewold, T.A.; Klasing, K.C.; Janssens, G.P.J., Baumgartner, M. And Gooeiris, B.M. (2007). Dietary L-Carnitine Supplementation Enhances The Lipopolysaccharide-Induced Acute Phase Protein Response In Broiler Chickens. *Veterinary Immunology And Immunopathology* 118:154-159.

IntechOpen