

The patient's clinical course was favorable, as there was no recurrence of symptoms and there was gradual reduction of cardiac biomarkers. The ECG evolution indicated infero-lateral biphasic T waves. He was discharged 6 days following admission while on dual antiplatelet therapy, statin, and angiotensin-converting enzyme inhibitor. Thirty months after the incident, the patient is still asymptomatic and in good health, on single Antiplatelet therapy and statins.

Discussion

As regards the earlier reported case, we propose that an anaphylactoid insult was the triggering factor for a type II KS, due to the amino acid histidine found in fresh fish, which is converted in histamine following an infection by gram-negative bacteria, expressing the enzyme histidine decarboxylase (2). Histamine inside the fish is the direct mediator of the syndrome and has various cardiovascular and systemic effects: induces coronary vasoconstriction, activates platelets, induces intimal thickening, and regulates inflammatory cell reactivity (3).

Our results may propose the following pathophysiologic pathway: histamine in spoiled fish induced a coronary vasospasm in RCA (possibly responsible for the initial ST segment elevation), leading to the rupture of a silent plaque already found in the artery and the subsequent formation of a non-occluding thrombus. Following spasm release and RCA blood flow restoration, a distal embolization probably occurred, causing myocardial necrosis.

To the best of our knowledge, this is the first described case of a scombroid syndrome leading to a type II KS, which presented with a distal coronary embolization. The management of this condition is challenging for the physician, because there are no established guidelines and only a few evidences found in literature.

Conclusion

Our case highlights the importance of non-routinely used cardiovascular imaging technologies in the diagnostic workup of particular forms of ACS. A timely CMR can help in the diagnosis of an ACS due to distal embolization, a condition uneasily discovered by other imaging techniques; a small necrotic area at CMR induced an OCT that discovered traces of a residual thrombus in RCA. In this clinical case, the synergy of CMR and OCT had a critical role in the comprehension of the pathophysiology of the disease.

Informed consent: A written informed consent was acquired from the patient.

Video 1. An optical coherence tomography (OCT) was conducted, showing a non-occlusive intraluminal thrombus in mid right coronary artery.

References

1. Kounis NG, Zavras GM. Histamine-induced coronary artery spasm: the concept of allergic angina. *Br J Clin Pract* 1991; 45: 121-8.
2. Kounis NG, Patsouras N, Grapsas N, Hahalis G. Histamine induced coronary artery spasm, fish consumption and Kounis syndrome. *Int J Cardiol* 2015; 193: 39-41.
3. Bristow MR, Ginsburg R, Harrison DC. Histamine and the human heart: the other receptor system. *Am J Cardiol* 1982; 49: 249-51.

Address for Correspondence: Stefano Cornara, MD,
Departments of Molecular Medicine,
and Coronary Care Unit,
Fondazione IRCCS Policlinico San Matteo
and University of Pavia;
Pavia-Italy
Phone: +390382507027
E-mail: stefano.cornara@gmail.com
©Copyright 2021 by Turkish Society of Cardiology - Available online
at www.anatoljcardiol.com
DOI:10.14744/AnatolJCardiol.2020.28934



Failed transcatheter mitral valve-in-ring implantation followed by transapical valve-in-valve within the ring and ad hoc paravalvular leak closure

Beytullah Çakal, **Sinem Çakal**, **Hacı Murat Güneş**,
Mehmet Onur Omaygenç, **Aydın Yıldırım**
Department of Cardiology, Faculty of Medicine, İstanbul Medipol
University; İstanbul-Turkey

Introduction

There is a rapid emergence of transcatheter mitral valve-in-valve (TMVIV) and valve-in-ring (TMVIR) techniques as an alternative to the conventional surgical valve replacement in ineligible patients requiring repeat surgery (1).

The selection of a new transcatheter heart valve (THV) for degenerated surgical valves is relatively simple; however, the selection of valves for mitral rings is more nuanced because the rigid oval or D-shaped rings will not conform to the round shape of the prosthesis, thus posing a high risk of paravalvular leak (PVL).

Although prior reports have described simultaneous TMVIV and percutaneous PVL closure techniques, our case report provides the first description of simultaneous transapical valve-in-valve implantation and the closure of severe PVL after a failed transseptal valve-in-ring procedure (2, 3).

Case Report

A 64-year-old female with a history of insulin-dependent diabetes, chronic kidney disease, and hypertension, as well as a

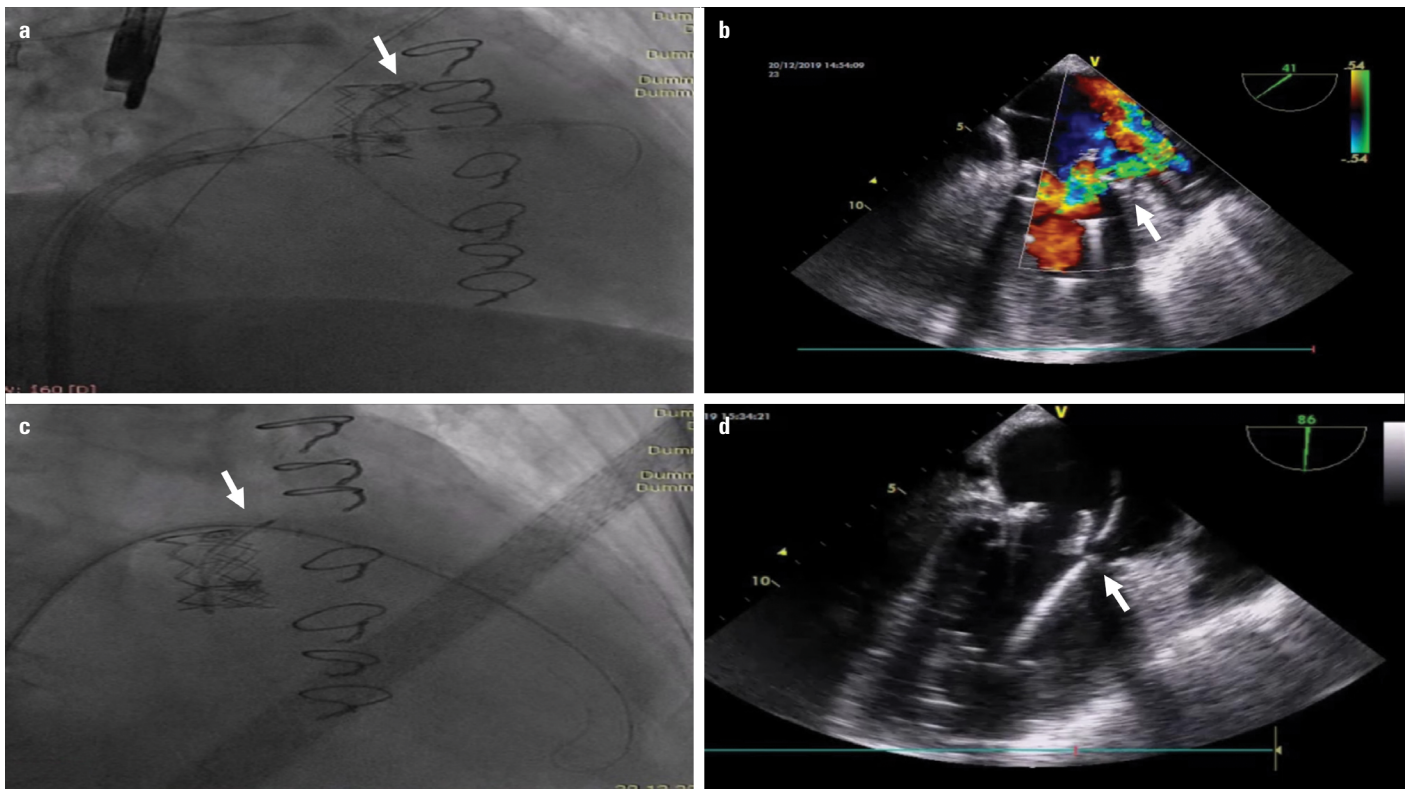


Figure 1. (a) Fluoroscopy of Sapien XT in the mitral bioprosthesis with a suboptimal position. (b) The TEE image showing severe PVL after the deployment of the THV; (c) More dehiscence of the THV after failed PVL closure, (d) Delivery system entrapped in the defect

history of failed mitral ring annuloplasty 15 months ago (30-mm Medtronic 3D mitral ring) was deemed ineligible for the surgery and referred to the cardiology clinic for TMVIR and the treatment of severe mitral regurgitation.

After a transeptal puncture under the guidance of 2D transesophageal echocardiography (TEE) and fluoroscopy, we performed balloon dilatation (12 mm×60 mm) of the septum to facilitate the crossing of the septum. We used an Agilis (Abbott Vascular) steerable sheath of 8.5 F to introduce a 0.035-inch angled hydrophilic wire across the ring with subsequent exchange for stiff wire. Thereafter, we positioned and slowly mounted the center of the 26-mm Sapien XT stent frame (mounted in the opposite direction as performed for transfemoral transcatheter aortic valve implantation) within the ring under rapid pacing. Unfortunately, we were not able to achieve the coaxial deployment of valve in the prior annuloplasty ring (Fig. 1a), thus complicating severe PVL (Fig. 1b) (Video 1). Therefore, we planned paravalvular closure in the same session. However, during this procedure, more dehiscence of the THV from the ring carrying the risk for embolization occurred because of manipulations of catheter (Fig. 1c, 1d) (Video 2), which led to stopping of the procedure without closing the defect.

The patient's hemodynamic status was stable after the first procedure. Transapical TMVIV was scheduled after eight days. We implanted a second 26-mm Sapien XT valve within the previous THV via a coaxial transapical access (Fig. 2a). Nevertheless,

persisting severe PVL was still detected even though kissing balloons (20 mm in diameter) were inflated within the valve. Therefore, we deployed 14-mm-long Vascular Plug II (St. Jude Medical, Minneapolis, Minnesota) (Fig. 2b, 2c) (Video 3) within the defect. TEE revealed a competent bioprosthetic valve without residual mitral regurgitation (Fig. 2d) (Video 4). The patient experienced significant symptomatic relief and functional improvement. She remained free from rehospitalization for six months.

Discussion

Technically, the TMVIR procedure is more challenging than the TMVIV implantation because of the larger diameters and geometric variability of the rings. Unlike the frame of the bioprosthesis, the rings have an oval shape to adapt to the configuration of the implanted valve, thereby having a higher risk of valve embolization and paravalvular regurgitation (4, 5). The risk of obliquity of the THV in the TMVIR procedures is more important than with bioprostheses because of the absence of frame. In our case, once the position of the THV was deemed adequate, we were not able to provide enough coaxiality under rapid ventricular pacing. The native mitral valve leaflets in the failed ring might have also disrupted the anchoring of THV.

The transeptal route also has several advantages, such as less invasiveness and requirement of local anesthesia; however,

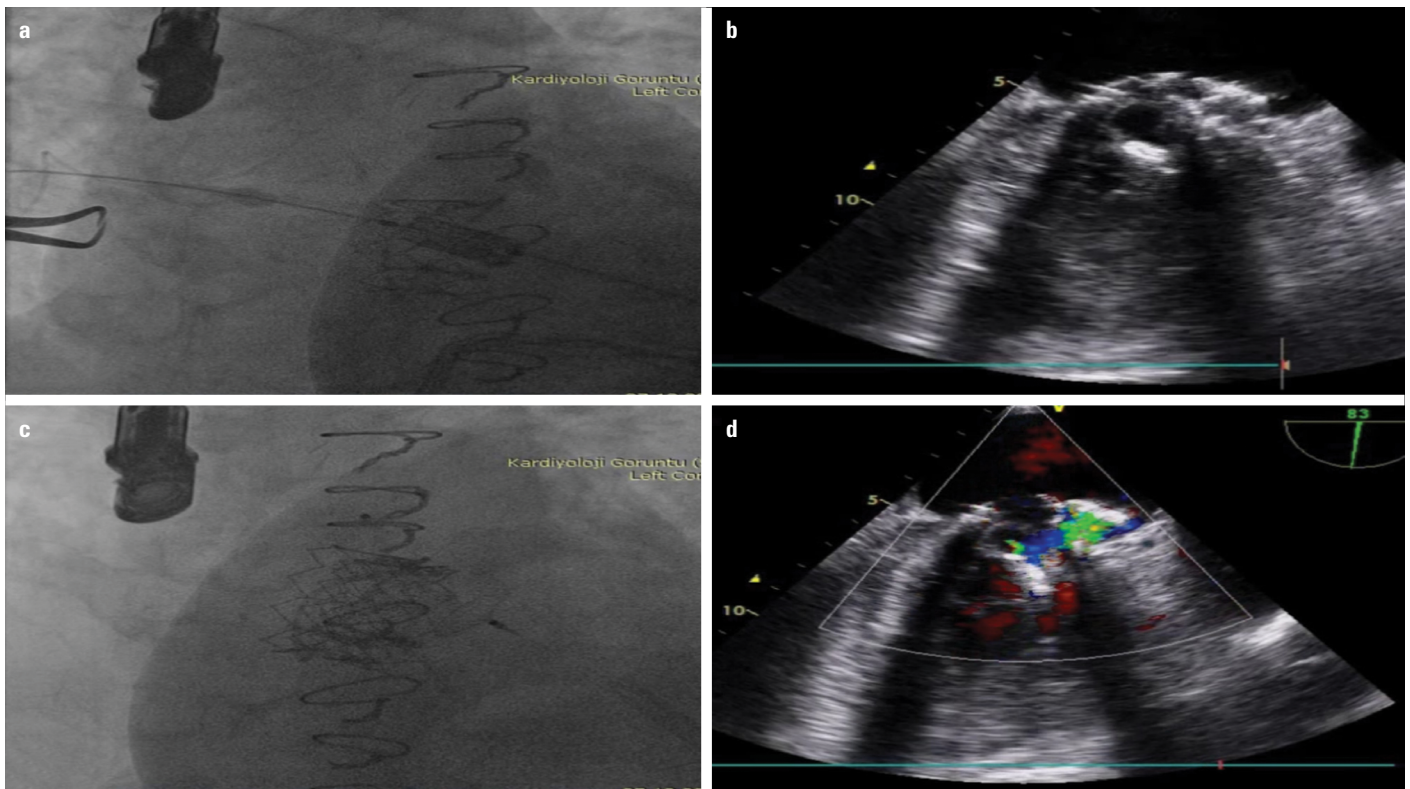


Figure 2. (a) Transapical route to secure the previous bioprosthetic valve. (b, c) Fluoroscopy and TEE images of 14-mm AVP II device deployed in the defect. (d) TEE confirmed no residual PVL after closure

transapical access allows the TMVIV/TMVIR deployment to be performed coaxially while more simply and potentially reducing malpositioning and associated complications as shown in our case.

The current commercially available THVs could be an imperfect match for the oval saddle-shaped geometry of the mitral annulus and rings, thereby leading to inherent PVL. The conversion to a transapical approach might provide a second THV implantation to secure the first one as well as a more feasible closure of the PVL.

Conclusion

Saddle-shaped rings and transseptal approach might preclude the optimal placement of TMVIR. The currently available occluder and delivery systems are suboptimal and dedicated ones; therefore, a steerable system is needed for the prevention of malalignment. Transapical implantation enables a better control over the implant position and facilitates defect closure.

Informed consent: Informed consent was signed and given by the patient's parent.

Video 1. Fluoroscopy of the first procedure indicating crossing, malalignment, and displacement of the transcatheter valve during the attempts for paravalvular leak closure.

Video 2. TEE images of the first procedure, wherein central mitral insufficiency turned to severe paravalvular leak after the failure of coaxial placement of the transcatheter valve.

Video 3. Transapical route with persisting paravalvular leak despite kissing balloon inflations after the implantation of the second valve. The defect was closed with 14-mm AVP II.

Video 4. TEE images of the transapical approach that sealed the defect after the deployment of 14-mm AVP II.

References

1. Vohra HA, Whistance RN, Roubelakis A, Burton A, Barlow CW, Tsang GM, et al. Outcome after redo-mitral valve replacement in adult patients: a 10-year single-centre experience. *Interact Cardiovasc Thorac Surg* 2012; 14: 575-9. [\[CrossRef\]](#)
2. Asami M, Pilgrim T, Windecker S, Praz F. Case report of simultaneous transcatheter mitral valve-in-valve implantation and percutaneous closure of two paravalvular leaks. *Eur Heart J Case Rep* 2019; 3: ytz123. [\[CrossRef\]](#)
3. Murdoch DJ, Sathanathan J, Cheung A, Webb JG. Combined Transapical Valve-in-Valve/Valve-in-Ring Transcatheter Mitral Valve Implantation and Paravalvular Leak Closure for Failed Mitral Valve Surgery. *Can J Cardiol* 2018; 34: 1088.e3-6. [\[CrossRef\]](#)
4. Kondo N, Shuto T, McGarvey JR, Koomalsingh KJ, Takebe M, Gorman RC, et al. Melody valve-in-ring procedure for mitral valve replacement: feasibility in four annuloplasty types. *Ann Thorac Surg* 2012; 93: 783-8. [\[CrossRef\]](#)

5. Wunderlich NC, Kische S, Ince H, Bozdağ-Turan I. Transcatheter valve-in-ring implantation after a failed surgical mitral repair using a transeptal approach and a veno-arterial loop for valve placement. *Catheter Cardiovasc Interv* 2014; 84: 1202-8. [CrossRef]

Address for Correspondence: Dr. Beytullah Çakal,
İstanbul Medipol Üniversitesi Tıp Fakültesi,
Kardiyoloji Anabilim Dalı,
İstanbul-Türkiye
Phone: +90 506 284 55 88
E-mail: bcakal@hotmail.com



©Copyright 2021 by Turkish Society of Cardiology - Available online
at www.anatoljcardiol.com
DOI:10.14744/AnatolJCardiol.2020.59163

A rare cause of mitral regurgitation after aortic valve replacement: Iatrogenic mitral valve perforation 🎧

👤 Begüm Uygur, 👤 Ömer Çelik, 👤 Anıl Şahin, 👤 Ali Rıza Demir,
👤 Mehmet Ertürk

Department of Cardiology, University of Health Sciences, İstanbul Mehmet Akif Ersoy Thoracic and Cardiovascular Surgery Training and Research Hospital; İstanbul-Turkey

Introduction

Mitral leaflet perforation is frequently associated with infective endocarditis (IE). Iatrogenic mitral valve (MV) injury after aortic valve (AV) surgery is a well-known but extremely rare reported complication. Herein, we report the case of a 19-year-old male patient who underwent AV replacement (AVR) and developed severe mitral regurgitation (MR) immediately postoperatively.

Case Report

A 19-year-old male patient was admitted because of shortness of breath and fatigue. He had no past medical history. Electrocardiogram showed sinus rhythm with a heart rate of 98 bpm. On auscultation, grade 5/6 systolic murmur was heard. Transthoracic echocardiography (TTE) revealed that the ejection fraction (EF) was 60%, 76/42 mm Hg gradient on bicuspid AV with AV area of 0.8 cm². Other valves were normal in structure, and mild MR was seen. The patient underwent AVR, but no intraoperative transesophageal echocardiography (TEE) was performed after implantation of the prosthetic valve. During intensive care unit follow-up, new-onset severe MR was detected by TTE. TEE was performed to determine the etiology of MR. Two-dimensional (2D) images showed a 4-mm defect on the base of the anterior mitral leaflet (AML), which caused

severe MR, together with mild central MR (Fig. 1a, 1b, Videos 1, 2). Three-dimensional (3D) TEE, showing MV from the enface view, revealed two different defects on the A2 scallop of the AML, with sizes of 6×3 and 7×4 mm (Fig. 1c, Video 3), and 3D color Doppler drop-out artifacts were ruled out, and true defects were confirmed (Fig. 1d, Video 4). The patient had no history of IE or fever, and all infective markers were within normal limits. Considering that MR developed just after surgery with multiple defects in the AML, iatrogenic perforation of the AML was concluded. Because the patient was asymptomatic with normal EF and ventricular size, conservative follow-up with medical therapy was recommended. However, dyspnea and heart failure symptoms developed after 3 years of follow-up. The patient was referred for MV surgery. Two defects in the AML were seen intraoperatively, as well as in the 3D images. MV replacement was performed because the repair was not successful. Postoperative TTE revealed normal-functioning mechanical prosthetic AV and MV with normal EF. The patient was discharged uneventfully.

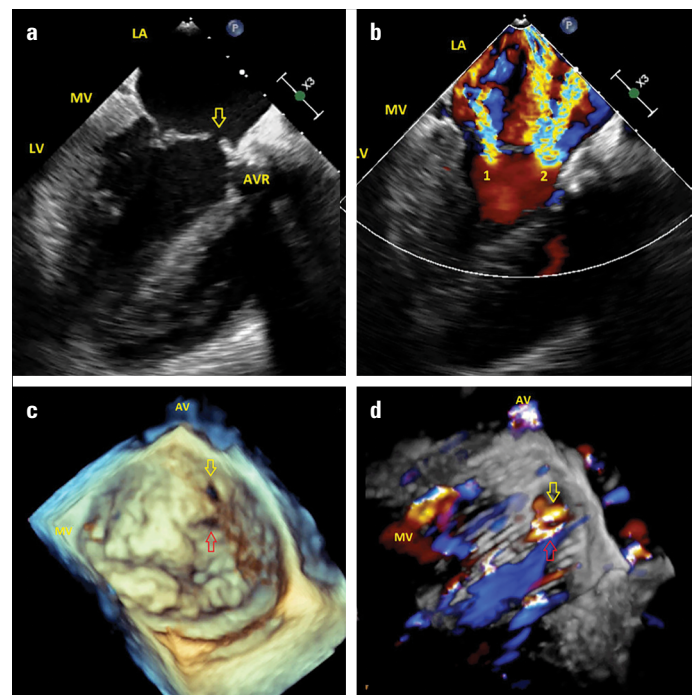


Figure 1. (a) Transesophageal echocardiography, mid-esophageal long-axis view. The yellow arrow indicates the perforation in the anterior mitral leaflet. (b) Transesophageal echocardiography, mid-esophageal long-axis view with color Doppler imaging. 1 shows central mitral regurgitation (MR), 2 shows severe MR from the perforated area in the anterior mitral leaflet. (c) Three-dimensional transesophageal echocardiography image shows MV from surgical view. The yellow and red arrows indicate two different perforations in the anterior mitral leaflet. (d) Three-dimensional transesophageal echocardiography with color Doppler imaging. The yellow and red arrows indicate two different mitral regurgitations from different perforation sites in the anterior mitral leaflet

AVR - aortic valve replacement, LA - left atrium, LV - left ventricle; MV - mitral valve, AV - aortic valve