







A new hypothesis for the origin of Amazonian Dark Earths

Lucas C. R. Silva ^{1,2✉}, Rodrigo Studart Corrêa³, Jamie L. Wright¹, Barbara Bomfim ^{1,4}, Lauren Hendricks ², Daniel G. Gavin², Aleksander Westphal Muniz ⁵, Gilvan Coimbra Martins⁵, Antônio Carlos Vargas Motta⁶, Julierme Zimmer Barbosa ⁷, Vander de Freitas Melo⁶, Scott D. Young⁸, Martin R. Broadley ⁸ & Roberto Ventura Santos⁹

Amazonian Dark Earths (ADEs) are unusually fertile soils characterised by elevated concentrations of microscopic charcoal particles, which confer their distinctive colouration. Frequent occurrences of pre-Columbian artefacts at ADE sites led to their ubiquitous classification as Anthrosols (soils of anthropic origin). However, it remains unclear how indigenous peoples created areas of high fertility in one of the most nutrient-impoor environments on Earth. Here, we report new data from a well-studied ADE site in the Brazilian Amazon, which compel us to reconsider its anthropic origin. The amounts of phosphorus and calcium—two of the least abundant macronutrients in the region—are orders of magnitude higher in ADE profiles than in the surrounding soil. The elevated levels of phosphorus and calcium, which are often interpreted as evidence of human activity at other sites, correlate spatially with trace elements that indicate exogenous mineral sources rather than in situ deposition. Stable isotope ratios of neodymium, strontium, and radiocarbon activity of microcharcoal particles also indicate exogenous inputs from alluvial deposition of carbon and mineral elements to ADE profiles, beginning several thousands of years before the earliest evidence of soil management for plant cultivation in the region. Our data suggest that indigenous peoples harnessed natural processes of landscape formation, which led to the unique properties of ADEs, but were not responsible for their genesis. If corroborated elsewhere, this hypothesis would transform our understanding of human influence in Amazonia, opening new frontiers for the sustainable use of tropical landscapes going forward.

¹Environmental Studies Program, University of Oregon, Eugene, OR, USA. ²Department of Geography, University of Oregon, Eugene, OR, USA.

³Environmental Sciences Program - PPGCA/FUP, University of Brasília, Planaltina, DF, Brazil. ⁴Lawrence Berkeley National Laboratory, Berkeley, CA, USA.

⁵Brazilian Agricultural Research Corporation - CPAA/Embrapa Amazônia Ocidental, Manaus, AM, Brazil. ⁶Department of Soil Science, University of Paraná, Curitiba, PR, Brazil. ⁷Federal Institute of Southeast Minas Gerais, Barbacena, Minas Gerais, Brazil. ⁸School of Biosciences, University of Nottingham, Nottingham, UK. ⁹Institute of Geosciences, University of Brasília, Brasília, DF, Brazil. ✉email: lsilva7@uoregon.edu

Discovered decades ago in central Brazil¹, Amazonian Dark Earths (ADEs) are now regarded as a Pan-Amazonian anthropological phenomenon². The exceptional fertility of ADEs, combined with a high concentration of pyrogenic carbon³, and frequent observations of pre-Columbian artefacts led to their ubiquitous classification as anthropic soils⁴, often referred to as Pretic Anthrosols⁵. The current paradigm of ADE formation postulates that pyrolysis of nutrient-rich biomass created hundreds of high-fertility patches (some as large as 350 hectares)⁴ surrounded by the acidic dystrophic soils⁶ that covers most of the Amazon basin⁷. However, neither the timing nor the magnitude of human occupation needed for ADE formation is well-defined. Among key questions that remain unanswered is how indigenous populations—subsisting from incipient agriculture, aquatic wild-life, and hunting—created persistent areas of high fertility in the notoriously nutrient-impooverished Amazon basin?

Amazonian landscapes are dominated by highly weathered Oxisols and Ultisols, which are characterised by high acidity and low nutrient concentrations. As in other parts of the tropics, native plant species display adaptations, such as nutrient uptake from litter and tolerance to elements that are toxic for crop species^{8–10}, which allow Amazonian soils to maintain some of the most productive ecosystems on Earth while limiting food production even under intensive management¹¹. Recent findings suggest that domestication of native plant species dates back to >10,000 years ago in western Amazonia¹², with the emergence of complex societies that relied on soil management for agriculture occurring <4000 years ago¹³. Some of the earliest evidence of sedentary settlements in Amazonia comes from the Peruvian Andes, where records of deforestation and soil erosion exist for much of the past 6900 years¹⁴. For most of the Amazon basin, however, the earliest evidence of intensive cultivation (inferred from pollen data) falls between 3380 and 700 years ago¹⁵. Notably, ADEs are rare near Andean settlements¹⁶ and the vast majority of ADE sites are found thousands of kilometres away in the central and eastern Brazilian Amazon¹⁷, where evidence of management is even more recent (2500–500 years ago).

The existence of small and scattered ADE patches (<1–2 ha) in central and eastern Amazonia is often attributed to transient communities containing few people over a long time. By contrast, larger ADE patches are thought to have been created by people living in large sedentary villages¹⁸. Informed by anthropological studies, we sought to develop new evidence from well-studied ADE sites, which is thought to have originated from a large settlement <2000 years ago (Fig. 1). The site is home to the Brazilian Agroforestry Research Station (EMBRAPA – CPAA), where the local ADE has been classified as a typical Anthrosol. As in other ADEs, archaeological artefacts are found in charcoal-rich soil layers in which pyrogenic carbon is 5–10% of the total carbon pool, and where vestiges of human faeces are also present¹⁹. It is clear that pre-Columbian land-use occurred in our region, but it remains unclear how ancient (or modern) soil management can create such areas of high fertility. The current view of ADE genesis suggests that the artefacts found in nutrient- and charcoal-rich Pretic horizons result from biomass burning and application to the soil. This view has fuelled an entire industry of charcoal production from biomass (i.e. biochar) in which ADEs are described as a model for sustainable agriculture²⁰. Under experimental application, however, biochar alone (or in combination with fertilisers) has proved inadequate to replicate basic characteristics of indigenous ADEs, such as their long-lasting mineral fertility^{21–23}. This reveals a lack of understanding that warrants further investigation into the genesis of ADEs.

To improve understanding of ADE formation, we used EMBRAPA's reference profiles across a contiguous patch of ~12 ha to select ~4.5 ha for intensive sampling in a paired scheme that

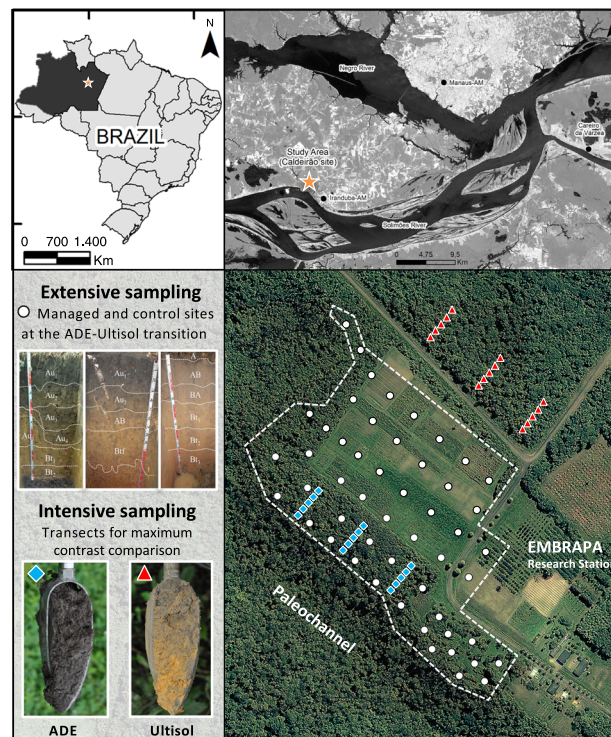


Fig. 1 Experimental station in Iranduba, Amazonas, Brazil. Photos depict typical soil profiles previously described as sandy clay loam ADEs and very clayey Ultisols (left to right: ADE Orthodystic; ADE Lixic, Orthoeutric; and Ultisol Hyperdystic), images adapted from ref. 5. Auger photos depict the difference in colouration caused by differences in pyrogenic carbon content measured here. White circles indicate reference soil profiles used to generate a site-wide spatial analysis of extractable phosphorus (P) and calcium (Ca) using data from EMBRAPA-CPAA archives, shown in Fig. 2. Interpolation maps of extractable P and Ca were used to select replicated transects for maximum contrast comparison of total stocks of P and Ca in ADE (blue diamonds) and Ultisol (red triangles) profiles, shown in Fig. 3, and other mineral elements shown in Supplementary Information.

provides maximum contrast among ADE and adjacent Ultisols. All intensively sampled soils were under dense secondary evergreen rainforest (>12 m canopy height), which had not been managed for at least 40 years since the research station was established. Across the study area, we measured mineral nutrient excess in ADE to estimate the input necessary to explain its origin. As a proxy for the overall amount of mineral nutrient input, we focused on phosphorus (P) and calcium (Ca) excess, which are two of the most limiting elements in tropical landscapes^{24–26}. We then quantified the association of P and Ca excess with the concentration of trace elements, including strontium (Sr) and neodymium (Nd), which serve as proxies for mineral source. Previous research showed a direct relationship between the amount of charcoal and the colour of ADEs at our site, where microscopic charcoal (<500 μm) comprises most of the pyrogenic carbon pool, and pretic horizons are dominated by very small particles (<40 μm)⁵. Building on those findings, we determined the source and timing of microcharcoal deposition using stable carbon isotope ratios and calibrated radiocarbon (¹⁴C) dates of ADE and Ultisol samples. Finally, we analysed carbon and nutrient data in light of the local anthropological context to estimate the chronology of management and the population density needed to attain the observed gain in ADE fertility. Our results show that large sedentary populations would have had to manage soils thousands of years prior to the

emergence of agriculture in the region or, more likely, that indigenous peoples used their knowledge to identify and preferentially settle areas of exceptionally high fertility before the onset of intensive land use in central Amazonia.

Results and discussion

Nutrient budget. A spatial interpolation analysis using nutrient concentrations from reference soil profiles (Fig. 1) was used to determine the sampling effort for the determination of total nutrients and stocks. A map of extractable concentration was used to guide the determination of total P and Ca stocks. Extractable P and Ca concentrations were 1–3 orders of magnitude greater within the ADE patch than in the surrounding Ultisol (Fig. 2). The well-defined spatial pattern of extractable P and Ca from the most fertile ADE profiles (blue) to nutrient-depleted Ultisols (red) guided an in-depth characterisation of elemental and isotopic composition performed along six transects ~100 m apart from one another, each containing 5 soil profiles, ~10 m apart from one another, for a total of 30 intensively sampled profiles (blue diamonds). Those profiles yielded samples for a maximum contrast comparison—that is, highest and lowest soil fertility along the site's southwest–northeast axis—on the basis of total nutrient stocks between ADEs and reference Ultisols (red triangles, Fig. 3).

To estimate total nutrient stocks, bulk density was multiplied by Ca and P concentrations at 10 cm depth increment up to 1 m in each profile. Without exception, all sampled profiles showed much larger nutrient stocks (expressed as megagrams per hectare; Mg ha^{-1}) in the ADE than in the surrounding soil. On average, we found that ADE profiles contain $16.8 \text{ Mg P ha}^{-1}$ and $14.9 \text{ Mg Ca ha}^{-1}$ in excess relative to the surrounding Ultisol (Fig. 3). Outside the ADE patch, the stocks of P and Ca are as low as those typically reported for other Brazilian Oxisols and Ultisols²⁷. Inside the patch, the stocks of P and Ca are similar to those found in other ADEs²⁸ and higher than typical values for agricultural and timber production systems under systematic nutrient addition²⁹. Notably, neither the elemental stoichiometries of freshwater fish (Ca:P ~2.13)³⁰ nor human faeces (Ca:P ~2)³¹ are apparent in ADE profiles and differences in fertility go beyond those two macronutrients. Concentrations of 16 mineral elements were significantly greater in ADE than in Ultisol profiles in paired *t*-tests: Ba, Ca, Cd, Co, Cs, Cu, K, Li, Mg, Mn, Ni, P, Rb, Sr, Tl, and Zn ($p < 0.05$; Supplementary Table 1). Most chemical parameters, including trace elements, were positively correlated with P and/or Ca with a strong clustering within the Ultisols but much variability within ADEs (Principal Component Axis 1 explained ~56% of the variance in elemental composition clustered by soil type; Supplementary Fig. 1). On the other hand, a weak clustering by depth was observed with a similar range of variation for ADEs and Ultisols (Principal Component Axis 2).

Exogenous inputs. We found a small but significant difference in total carbon concentration ($< 5 \text{ g kg}^{-1}$) between ADE and Ultisol profiles near the soil surface (0–30 cm depth), but that difference disappeared at greater depths (80–100 cm; Fig. 4). Nutrient-rich dark-coloured profiles have high pyrogenic carbon concentrations 5- to 10-fold higher than those found in Ultisols. Stable carbon isotope ratios indicate typical forest biomass input to Ultisols, whereas C_4 grasses contributed 5–19% of total carbon to ADE horizons (30–100 cm). The isotopic enrichment of ADE carbon profiles coincides with microcharcoal inputs, beginning $\sim 7630 \pm 80$ years ago (Fig. 5), with a clear offset between forest organic matter (Ultisols) and enriched $\delta^{13}\text{C}$ ratios (ADEs). The earliest input of microcharcoal to ADEs pre-dates the earliest

evidence of land management in the region and falls within a period of expansion for C_4 -dominated grasslands in the Solimões Basin ($\sim 20,000$ –7500 years ago)³². Importantly, our ^{14}C dates represent the most recent of a range of possible ages because inputs from human activity, as well as natural processes, may have contributed additional charcoal into the soil matrix. Although more recalcitrant and significantly older than bulk organic matter, charcoal is degradable and can be transformed from macro to micro particles under continued disturbance²³. This could explain the accumulation of microcharcoal at intermediate depths and implies that the earliest input events identified here are, in fact, significantly older. We posit that the timing of the formation of other ADEs would be pushed back significantly following a detailed analysis of microcharcoal deposition.

Human activity could have influenced the $\delta^{13}\text{C}$ values both indirectly (through the removal of trees) and directly (through the introduction of C_4 crops such as maize). However, previous studies yielded no evidence of grass or Maize phytoliths at our site⁵. The nearest area where fossil Maize pollen is found (~ 600 linear kilometres to the East of our site) sets the earliest evidence of cultivation ~ 4000 years ago¹⁵, which is consistent with the emergence of cultivation in other areas of the Amazon basin^{33–35}. Therefore, we can rule out agriculture as the source of C_4 -derived carbon input at the onset of ADE genesis. In some areas of the western Amazon, charcoal and pollen records suggest human use of fire ~ 6500 years ago³⁶, but in ADE sites of central and eastern Amazon, land management is thought to be much more recent. On the other hand, a synthesis of charcoal and pollen records suggest a shift from well-drained to flooded conditions (signalling the formation of lakes) before the apex pre-Columbian activity in our region³⁷. At our site, markedly different elemental signatures of ADE and Ultisols indicate different flood regimes in the past with elevated concentrations of mineral elements observed near a geomorphic feature that we interpret as a natural levee. The trace elements (e.g. Ni, Rb, Ti, Zn) found at the same depths in which we see enriched P, Ca, and charcoal levels match what might be expected from alluvial deposition and suggest major exogenous inputs to ADE profiles but not to the surrounding Ultisol (Supplementary Table 1). This implies that two critical ingredients needed for ADE formation (microcharcoal, which confers its colour and cation-exchange capacity; and mineral elements, which are in extremely low supply in the surrounding soil) were deposited before soil management and plant cultivation took place.

The timing and magnitude of charcoal and nutrient accumulation at our site match those found in sedimentary deposits that can be traced to open vegetation fires upstream, on the basis of ^{14}C dates and $\delta^{13}\text{C}$ signatures³⁸. Paleoflood archives (soil biogenic silica)³⁹ and records of monsoon intensity (speleothem oxygen and strontium isotope ratios)^{40, 41} indicate a climate-driven shift in river dynamics following a persistent dry period (~ 8000 –4000 years ago)⁴², which is thought to have reduced fire disturbance, causing a regional increase in tree cover, well into the late-Holocene⁴³. The resulting changes in vegetation cover could have caused divergent patterns of carbon and nutrient accumulation in flooded versus non-flooded areas⁴⁴, consistent with ADE and Ultisol differences at our site. Many areas of central Amazonia today are associated with sediment deposits representative of flood regimes that were either deactivated during the Holocene or are presently in the process of deactivation when sedimentary deposits become suitable habitats for grasslands within the rainforest⁴⁵. The abundance of C_4 -derived microcharcoal (19% of the total organic carbon pool) in deep ADE layers and the absence of in situ records of C_4 species—combined

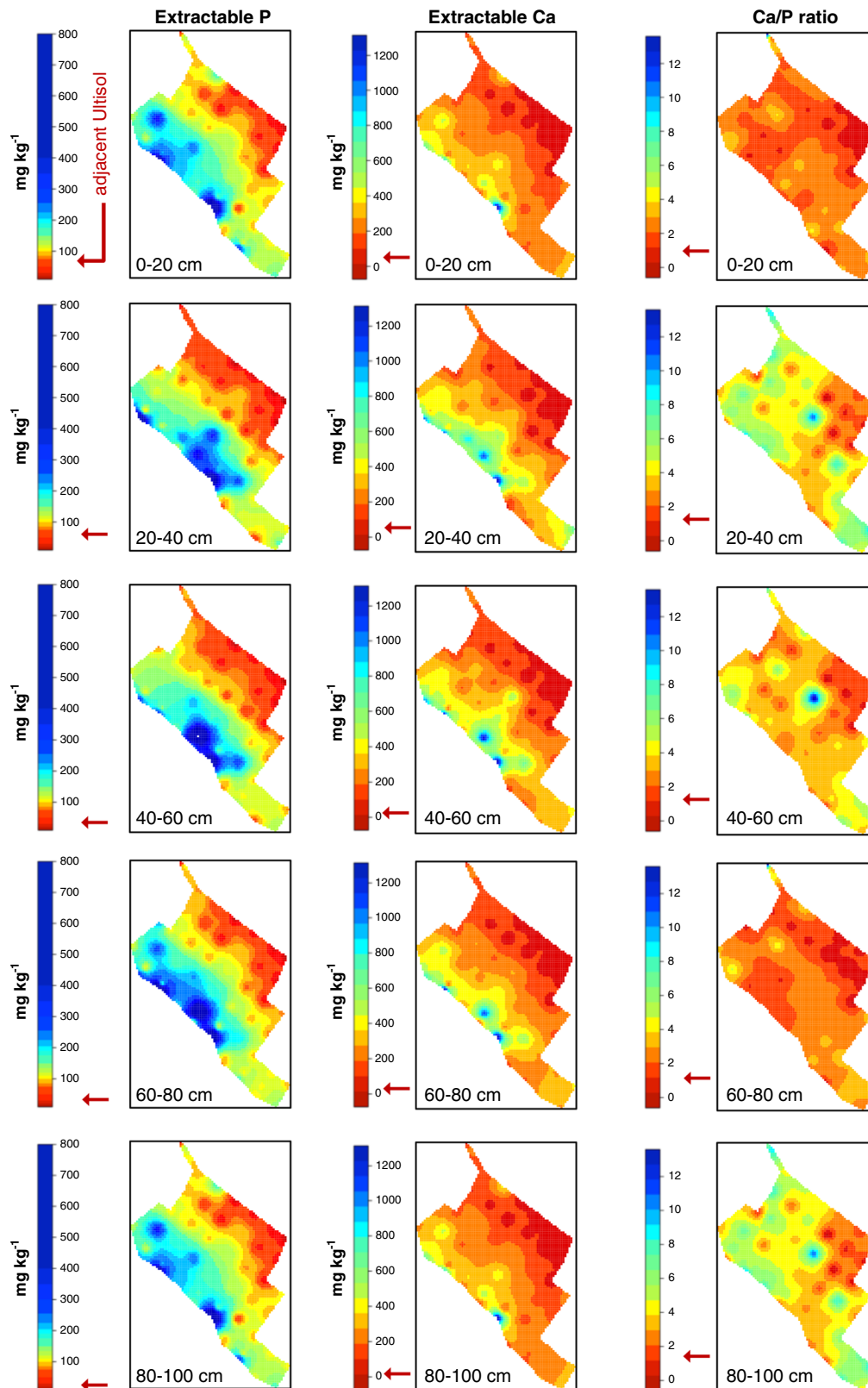


Fig. 2 Concentration of extractable phosphorus (P) and calcium (Ca) and their ratios in ADE and Ultisol profiles. Spatial interpolation maps developed using first-order kriging of reference profiles (white circles; Fig. 1) indicate a depositional gradient from ADEs near the paleochannel levee toward nutrient-poor Ultisols. Red arrows indicate approximate values measured in the adjacent maximum contrast Ultisol profiles under rainforest (red triangles; Fig. 1).

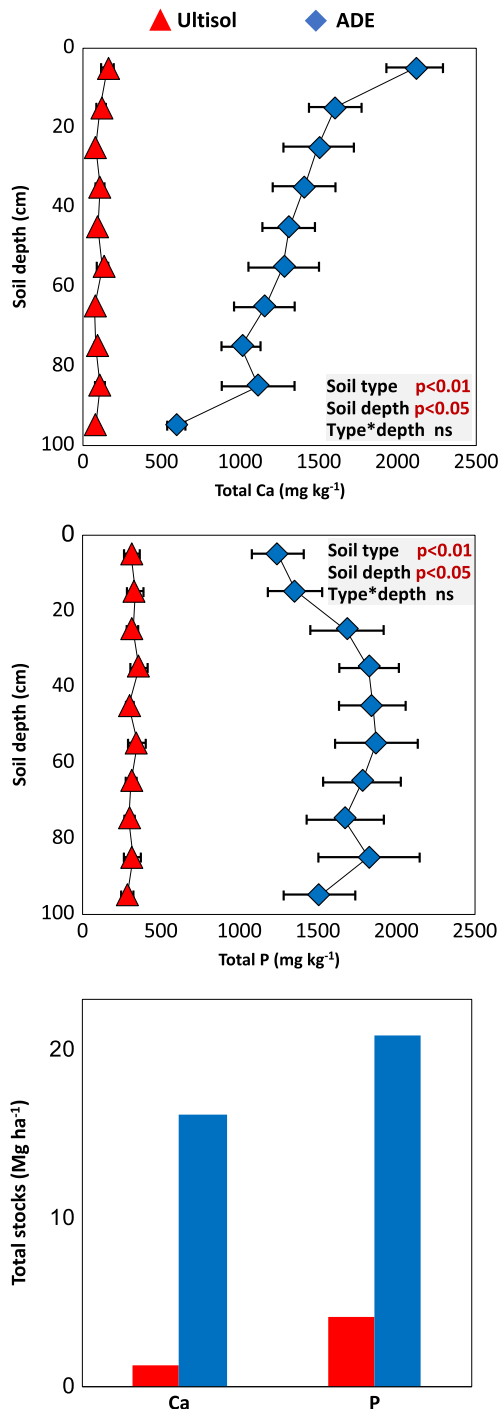


Fig. 3 Concentration of total phosphorus (P) and calcium (Ca) in ADE and Ultisol profiles. Data points show average values and error bars indicate two standard errors of the mean across maximum contrast profiles ($n = 5$ for ADE and $n = 5$ for Ultisol for 10cm depth; Fig. 1). In all cases, a two-way analysis of variance shows significant differences between soil type and soil depth. The bar graph shows the total estimated stock of P and Ca up to 100cm depth calculated as the sum of average elemental concentration multiplied by bulk density at each incremental depth.

with the fact that fire frequency, charcoal production, and nutrient losses are much higher in open savannas than in rainforests^{27, 29, 46}—suggest that pyrogenic carbon and nutrients were transported to our site from C_4 -dominated landscapes upstream. Indeed, the majority of soil properties observed here could be explained by mid- to late-Holocene flood events³⁹,

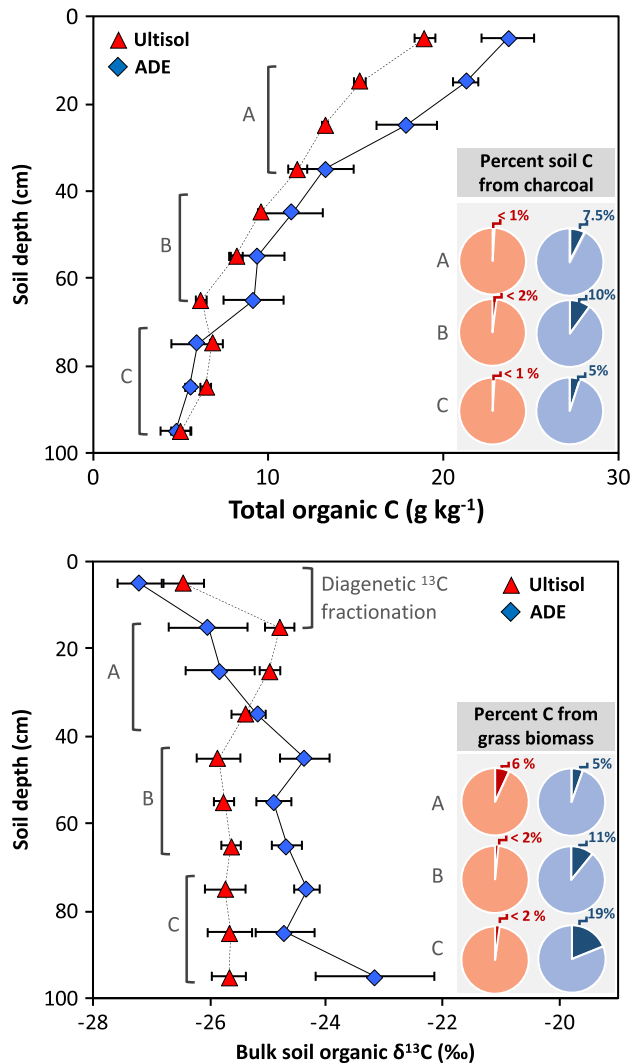


Fig. 4 Concentration of total organic carbon and stable isotope ratios of carbon in bulk organic matter. Stable carbon isotope ratios show an expected enrichment caused by diagenetic fractionation at the topsoil layer for both soil types, followed by a marked shift in isotopic ratios that indicates a significant contribution of grass biomass to carbon pools at deeper layers of ADE profiles, but not for the surrounding Ultisol. Data points show average values and error bars indicate two standard errors of the mean across maximum contrast profiles ($n = 5$ for ADE and $n = 5$ for Ultisol for each 10cm depth; Fig. 1). Inset panels depict the average per cent fraction of pyrogenic charcoal and grass-derived biomass in the total carbon pool (Eqs. 1 and 2) between 10 to 40cm (A), 40 to 70cm (B), and 70 to 100cm (C) depths. Data are shown in Supplementary Fig. 2.

possibly triggered by increased monsoon intensity⁴¹, which are thought to have affected fire regime and vegetation cover throughout the region⁴³. In all likelihood, such natural processes would have also contributed to the formation of other ADEs throughout the region, which could explain why a highly predictable pattern of ADE distribution emerges from maximum entropy models based solely on geomorphological parameters, such as distance from rivers and elevation¹⁷.

Isotope ratios of the mineral soil fraction also indicate fluvial inputs to the ADE soil. We found that ADE horizons are less radiogenic ($p < 0.05$) in Sr and more radiogenic in Nd and $\epsilon N_{d(0)}$ (Fig. 6). Differences with soil depth were significant for Sr isotope ratios reflecting greater solubility⁴⁷ relative to Nd. The ADE Sr isotope signature (0.714) falls between those of the Solimões River

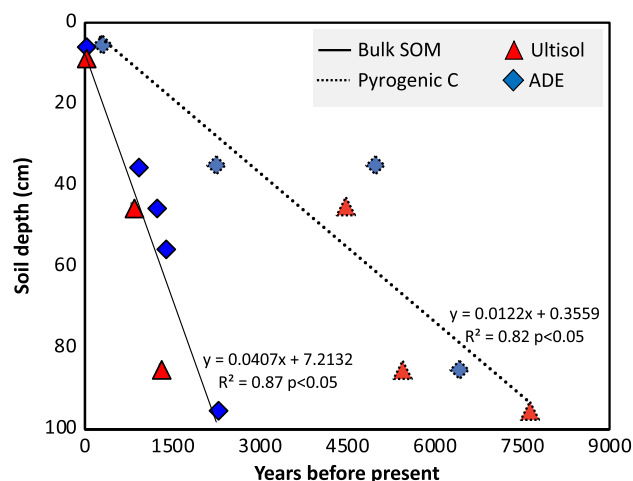


Fig. 5 Age-depth model for bulk soil organic matter (solid line) and pyrogenic carbon (dashed line). Each data point represents one calibrated ^{14}C date expressed in years before present. Propagated analytical uncertainties of the standard errors associated with each individual ^{14}C measurement ranged between 15 and 80 calibrated years and are smaller than symbols.

at a nearby site (0.709, constant through the year) and the Ultisols (0.7152)⁴⁸. Similarly, $\epsilon\text{Nd}(0)$ signature of the ADE falls between the values for Solimões River and its headwaters and the value for the Ultisols. This result is consistent with the geomorphic setting of the site, which indicates an alluvial contribution of nutrients to the site in the past. A continuous bluff, which we interpret as a natural levee (Fig. 1), is visible at the southwestern limits of the ADE patch. At the levee, the best estimate of terrain height is a maximum of 27 m above the modern average river water level (~10 m above the adjacent floodplain; Fig. 7). Although above flood limits today, the site is at an elevation known to have been inundated in the early Holocene and possibly into the middle Holocene⁴⁹. We do not expect a significant contribution from the modern river water or water table because Sr and Nd are mainly found in the mineral phase. The concentration of Sr dissolved in river waters in the Amazon is in the order of parts per billion, whereas the Sr concentration in suspended sediments is on the order of parts per million⁴⁸, and Nd is often below detection limits in river water⁵⁰. Thus, variation in Sr and Nd values were in all likelihood caused by fluvial mineral deposition that led to terrace development, which we interpret as the local manifestation of regional paleo floods identified in several other depositional sites^{51–53}.

Further support for the fluvial influence on the ADE soils is provided by differences in particle size distribution. Specifically, the classification of ADE profiles as sandy clay loam and adjacent Ultisols as very clayey has been tentatively attributed to the fusion of clay and organic matter into sand-sized particles by fire⁵. Our data point to a more parsimonious explanation; that is, alluvial deposition changed nutrient and particle size profiles at the site. As a first approximation, radiogenic signatures indicate that ~24% of Sr mass in ADE profiles originate from either fishbone or river sediment (Eq. 3), as both sources have the same Sr isotopic composition⁵⁴. It is important to note that the Sr/Ca ratio in fishbone (0.004) is much lower than in river suspended sediments (0.02). Assuming a concentration of Sr in the soil of 200 mg kg^{-1} and in fishbone of 400 mg kg^{-1} , the final Ca concentration of the mixture would be about 10 times higher than that of Sr, which is approximately what we see in our results. Similarly, the Nd mixtures indicate riverine inputs with significant differences between ADE and Ultisol, albeit with

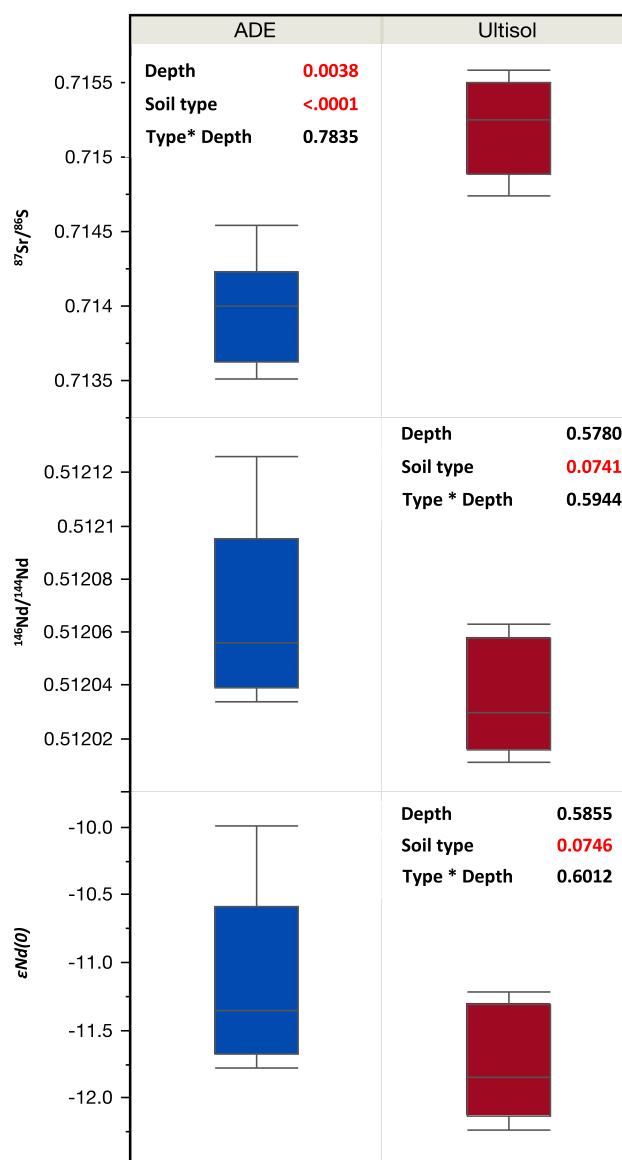


Fig. 6 Isotope ratios of strontium (Sr), neodymium (Nd), and radiogenic epsilon neodymium ($\epsilon\text{Nd}(0)$). The box plots show 25th, 50th, and 75th percentiles and the error bars show the data range ($n = 8$ for ADE and $n = 5$ for Ultisol). In all cases, a two-way analysis of variance shows significant differences between soil types.

larger deviations from the mean (Fig. 6). Clay mineralogy characterisation using X-ray diffraction showed no differences in the type of dominant clays found in ADE and Ultisol profiles (Supplementary Fig. 3), but that can be explained by two factors. First, across the alluvial plain of the Solimões-Amazon River, optically stimulated luminescence and geomorphological data show large fluvial features of weathered sediment deposited at the Pleistocene-Holocene boundary⁵⁵ (long before the deposition of carbon and nutrients described above). Second, no neo-formation of minerals is expected for the highly weathered assemblages (e.g. kaolinite and iron/aluminium oxides, such as goethite) that are abundant in river sediments of this section of the Amazon basin⁵⁶. Thus, it is not surprising that clay mineralogy is the only measured variable to converge between ADE and Ultisol.

Taken together, our findings underscore the need for a broader view of landscape evolution as a path towards understanding ADE formation and redirecting applications for sustainable land

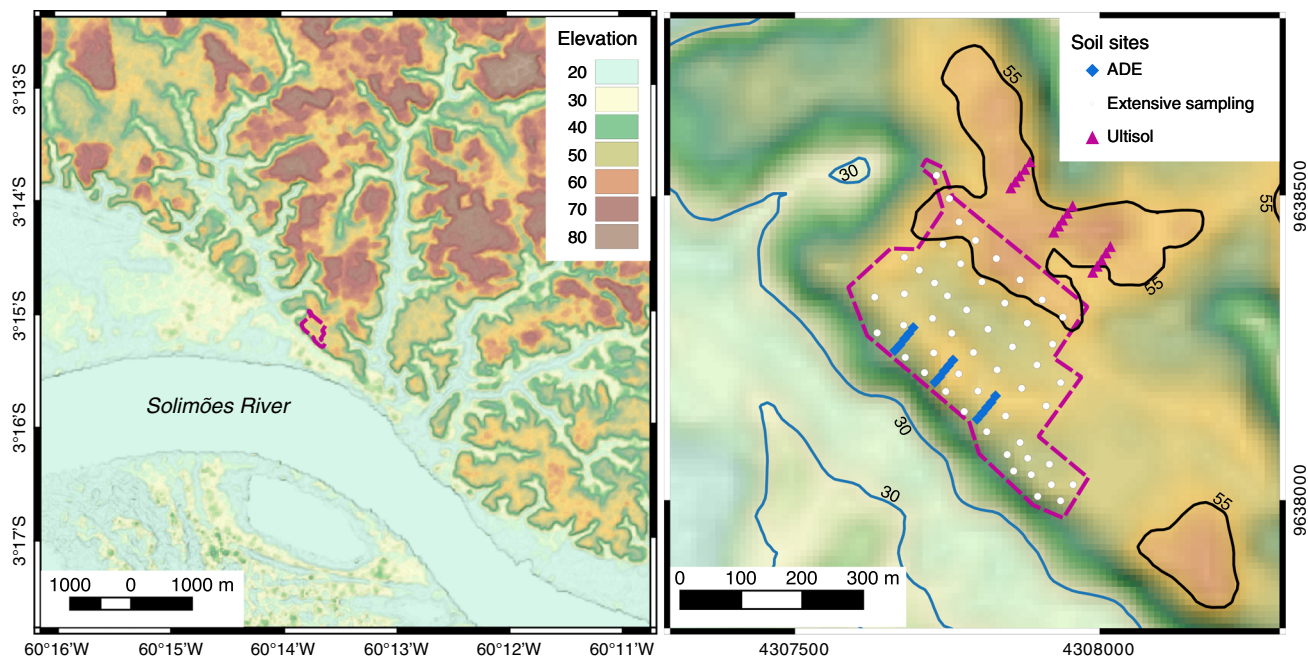


Fig. 7 Topographic position at the study site. Elevation from SRTM data shows the study site occurs on a common terrace (45–55m). The lower contour line occurs near areas of Entisols (Aquepts or Fluvents) within the modern floodplain (below 30m) and the upper contour line occurs in areas of Ultisols (above 55m). The area between the floodplain and Ultisols contains the ADE.

use and conservation, such as those arising from biochar research. Other ADEs should be investigated for a potential alluvial origin, on the basis of physical properties and elemental sources, to improve basic knowledge of the transition from nomadic to sedentary populations in Amazonia and their influence on socioecological trajectories.

Human inputs. In pre-Columbian times, the most likely human-derived nutrient inputs to soil were food waste and faeces. Archaeologists hypothesise that such domestic waste deposits led to the widespread formation of anthropic soils near ancient settlements¹⁸, in a process that some authors have described as non-intentional⁵⁷. Molecular markers of human faeces found in several ADEs, including our site¹⁹, offer support for that hypothesis. However, we still do not know how much waste would have been needed to form a typical ADE patch. Here, we offer a first approximation based on the excess amount of P and Ca, calculated in relation to the surrounding Ultisol at our site ($\sim 32 \text{ Mg ha}^{-1}$; Fig. 3), which implicitly represents the depositional history of many other elements that correlate strongly with those macronutrients (Supplementary Fig. 1).

At the high end of the nutrient-amount-per-waste-mass spectrum, more than 5300 Mg ha^{-1} of fresh fish biomass would be needed to explain ADE's nutrient excess. That is, assuming that fresh fish is $\sim 80\%$ water and that P and Ca combined amount to 6% of the total dry mass of edible freshwater fish¹⁹, of which we speculate no more than half would have been added to the soil. In that scenario, using 20–60 people per hectare and assuming that each adult consumed, on average, a maximum of 219 g and a minimum of 90 g of fresh fish per day⁵⁸ we calculate that an ADE patch of 1 ha would have required ~ 1100 –8000 years of continued occupation (Eq. 4). By the same logic, at the low end of the nutrient-amount-per-waste-mass spectrum, the time necessary for ADE formation if human faeces were the sole source of nutrients would be ~ 3700 –11,000 years. That is, assuming the same 20–60 people per hectare and average values for the faeces eliminated by each adult as 128 g containing $\sim 80\%$

water and 15 mg g^{-1} of P and Ca in the remaining dry mass³¹, of which all could have been added to the soil. These are conservative estimates that disregard losses when, typically, a large portion of nutrients are expected to leave the soil after deposition. This is particularly the case for Ca, which, once mineralised, can be quickly removed from the soil profile by rainfall. The inherently efficient cycling of Ca in the tropical forest could lead to little loss over time, but that would change under management and would be recorded in litter and soil stoichiometry⁵⁹. The addition of charcoal can slow down Ca loss but leaching rates of 50 – $150 \text{ kg Ca ha}^{-1} \text{ year}^{-1}$ have been reported in charcoal-rich ADE profiles⁶⁰. Moreover, P losses are expected to be slower than for Ca, although large amounts of P can be lost in fine particulate form as a result of burning—a practice often attributed to ADE formation⁶¹. If we were to account for those losses, the total amount of waste needed to form the 12-ha ADE patch at our site would be orders of magnitude larger than those presented here.

A synthesis of anthropological studies from riverine areas where ADEs are typically found indicates population densities ranging from 20 to 60 people per hectare in sedentary villages in 1492 AD and suggest that at least five million people inhabited the Amazon region prior to European contact⁵⁸. Those estimates fall within the range of dense pre-Columbian landscapes elsewhere in the Americas. For example, in 1519 AD the Aztec empire was comprised of several million people, living in city-state capitals with a median density of 50 people per hectare⁶². Population estimates can have large margins of error and should not be used to generalise patterns across the region. The Amazon basin has a complex history of occupation and land use and, prior to European contact, indigenous peoples relied on >80 different plant species associated with settlements that possibly covered 0.1% of the region⁶³. A recent analysis of cultural transitions suggests that specialised land-use systems faced major reorganisation during Holocene climate fluctuations discussed above, whereas others that relied on polyculture agroforestry were more resilient and remained largely unaffected⁶⁴. Our analysis of elemental amounts and sources is site-specific and it is not

intended to capture regional socioecological transitions, but the clear picture emerging from our data is that indigenous populations identified and actively used ADEs after their genesis. It is possible that dense populations occupied riverine areas uninterrupted for thousands of years longer than previously recorded, contributing large amounts of fish waste to the soil, as it appears to have been the case for some of the first hunter–fisher–gatherer communities in western Amazonia⁶⁵. It is also possible that those communities were capable of recycling nearly all of their waste into ADEs, with little to no loss through leaching or burning. It is more plausible, however, that human-derived inputs represent a minor fraction of ADE's chemical makeup, a fraction that, we hypothesise, was introduced in the relatively recent past. If our hypothesis holds true, other sites will exhibit similar depositional patterns and biogeochemical signatures as those reported here.

Final considerations. We found direct and indirect evidence that natural processes created a well-studied ADE site in the Brazilian Amazon. Our data reveal external inputs of carbon and mineral elements several thousands of years earlier, and in several orders of magnitude greater amounts, than those expected from human activity. Across the Amazon basin, three main phases of human occupation are thought to have occurred: a pre-cultivation period (>6000 years ago); an early-cultivation period (6000–2500 years ago); and a late-cultivation period (2500–500 years ago)¹⁵—a chronology of occupation that is supported by genomic, linguistic, and archaeological evidence⁶⁶. At our site, the enrichment of microcharcoal and mineral elements (two critical ingredients needed for ADE formation) began at ~7630 years ago, that is, before the earliest evidence of soil management that characterizes the late-cultivation period. To achieve the observed levels of P and Ca enrichment at the site, large human populations would have had to actively manage soils continuously for thousands of years prior to the currently accepted chronology of sedentarisation. A more parsimonious explanation is that indigenous peoples used their knowledge to identify and preferentially settle areas of high fertility before the emergence of plant cultivation. This hypothesis implies that pre-Columbian societies understood and exploited natural processes of landscape formation, which led to the unique properties of ADEs, but were not responsible for their genesis. Our findings do not preclude, however, a more recent human effect on the local environment. The wisdom of native populations, manifested for example in the well-documented recent application of waste materials to the soil, may well have further enriched ADE profiles or, at least, countered their otherwise-inevitable degradation. The extent to which other ADE sites originated from natural depositional processes or were managed for long-lasting fertility remains unclear. New discoveries are to be expected from interdisciplinary research that combines indigenous knowledge with biogeochemical and geographical data to study landscape development as a path toward sustainable land use in the Amazon and other tropical environments.

Methods

Site description and sampling scheme. The EMBRAPA-CPAA site covers 210 hectares of managed and unmanaged land just north of the Solimões River near its confluence with the Negro River, within the sedimentary basin of the Amazon River. Satellite and field measurements show that the terrace is located ~40 m above the modern sea level, at a maximum of ~27 m above the modern river level, or ~10 m above the adjacent floodplain (3° 15' 6.8" S and 60° 13' 46.9" W). The relative topographic positions of ADE and Ultisol at the site matches the classic bluff model of prehistoric riverine settlement (close to the river and with fresh sediment providing enhanced fertility)⁶⁷. A bluff is indeed visible at the southwestern limits of the ADE patch, which is interpreted as a natural levee formed due to Holocene paleo river dynamics (Fig. 1). This interpretation is based on other features of the

Solimões-Amazon fluvial system, between the Negro and Madeira tributaries. Specifically, records of paleo river dynamics in many extensions of the Solimões River indicates that the combined action of neotectonics and rainforest establishment related to the increase of humidity in Amazonia ~6000 years ago allowed for sediment accumulation and asymmetric distribution of fluvial terraces throughout the region⁵³.

Lidar data was not available for the study area, but the comparison of NASA's SRTM and nearby ICESAT-2 satellite data show with no systematic offset, where blue colours below 30 m are within the 100-year flood level (Fig. 7). Across the slight topographic gradient found in the modern terrace at our site, we determined the numbers of transects and soil samples to be collected across using an a priori test of statistical power, which anticipated two main effects: soil type and soil depth, assuming a moderate statistical power of 0.8 for each effect⁶⁸. Thirty maximum contrast profiles were sampled with a Dutch auger every 10 cm up to 1 m depth to a total of 300 samples of ~200 g each. Uncompressed soil cores were obtained continuously at each profile using metal rings to determine the bulk density at each depth. Coarse litter was removed from the topsoil before sampling. Prior to analysis all samples were allowed to air-dry for 2 weeks under the shade, sieved to <2 mm, sterilized, and finely ground in an agate ball mill.

Organic carbon analysis. Total soil organic carbon was determined through combustion and gas chromatography in a standard elemental analyser (Costech, USA). For pyrogenic carbon determination, the fine soil fraction was dried and homogenised. Aliquots from each sample were ground in a ball mill and digested using acid-peroxide⁶⁹. Ground aliquots (1 g) were placed in Erlenmeyer flasks (50 ml) to which 30% H₂O₂ (20 ml) and 1 M HNO₃ (10 ml) were added and swirled by hand at room temperature for 30 minutes. Flasks were heated in a water bath to 90 °C for 16 hours. After digestion, the samples were filtered through pre-weighed Whatman glass filters (1.21 µm), which were dried at 60 °C for over 24 hours and weighed to obtain the mass of residual material after filtration. Aliquots were oven-dried and the mass of the residue (digested sample) was determined by weight difference. Micro-charcoal particles (<150 µm) comprise most of the charcoal pool at our site and very small particles (<40 µm) dominate pre-cultivation ADE horizons⁵. Accordingly, the results obtained here using digestions of the whole fine soil fraction, is considered to be representative of the whole microcharcoal pool. The estimated amount of micro-charcoal can be calculated for each soil type assuming that all non-charcoal organics were fully consumed during peroxide-acid digestion:

$$PyC = \left(\frac{C_1 * M_1}{M_2} \right), \quad (1)$$

where *PyC* is the mass of pyrogenic carbon; *C*₁ is the carbon concentration in the digested sample; *M*₁ is the mass of the digested sample, and *M*₂ is the mass of the original soil sample.

Radiocarbon dating. Soil carbon age-depth models were developed using calibrated radiocarbon (¹⁴C) activity of bulk soil organic matter and pyrogenic carbon from multiple depths in ADE and Ultisol profiles. Radiocarbon dating and calibration of ¹⁴C ages to years before present were performed at the University of California Irvine, through accelerator mass spectrometry. Samples were collected in soil pits dug adjacent to each transect to determine the age of 15 samples (8 bulk soil organic carbon samples and 7 *PyC* samples) collected from ADE and Ultisol horizons, as described above. Bulk carbon samples were analysed after drying and sieving. A modern charcoal standard was created by combusting dry modern wood tissue from plants growing near the study. All pyrogenic carbon samples, including the modern standard and an old charcoal standard with no detectable radiocarbon activity (for contamination control purposes), were cleaned using alternating heated 10% KOH and 10% HCL rinses prior to analysis. Human activity and natural disturbance may have contributed additional charcoal into the soil matrix, and thus the calibrated ¹⁴C dates reported here represent the most recent of a range of possible ages of carbon input.

Elemental analysis. Extractable P and Ca were determined using atomic absorption spectrophotometry. Mehlich 1 (0.025 N H₂SO₄ + 0.05 N HCl) was used for P extractions and KCl (1 N) was used for Ca extractions. For total nutrient concentrations, ~200 mg of finely ground soil was digested in PFA vessels on a Teflon-coated graphite block digester (Model A3, Analysco Ltd, Chipping Norton, UK). Acid digestion was initially with 2 ml of HNO₃ (68% Primar Plus grade) and 1 ml of HClO₄ heated at 80 °C for 8 h and subsequently at 100 °C for 2 h. The following day 2.5 ml of HF (40% AR) was added to the tubes and the temperature raised to 120 °C for 1 h, increased and maintained at 140 °C for 3 h, then 160 °C for 4 h; the vessels were again left overnight at room temperature. On the third day, the block digester was set to 50 °C and 2.5 ml of HNO₃ and 2.5 ml Milli-Q water (18.2 MΩ cm; Fisher Scientific UK Ltd, Loughborough, UK) were added to tubes and left at 50 °C for one hour. After cooling, the digested samples were washed with Milli-Q water into 50 ml plastic flasks and stored in a 5% HNO₃ matrix at room temperature in universal sample bottles pending elemental analysis. The standard reference material (SRM 2711a Montana soil, National Institute of Standards and Technology-NIST, Gaithersburg, MD, USA) and blank digests were included with every batch of 48 samples. Subsequent analysis of Ag, Al, As, Ba, Be, Ca, Cd, Co,

Cu, Cr, Cs, Fe, K, Li, Mg, Mn, Mo, Ni, P, Pb, Rb, Se, Sr, Ti, Tl, U, V and Zn was carried out by inductively coupled plasma mass spectrometry (ICP-MS; Model iCAP-Q™, ThermoScientific, Bremen, Germany). All samples were blank-corrected using the operational digestion blanks⁶.

Isotopic analysis. Samples from the surface and deep soil layers were used to determine stable isotope ratios of carbon, strontium, and neodymium. For carbon isotope ratios ($\delta^{13}\text{C}$), bulk organic carbon was determined by dry combustion gas chromatography coupled with continuous-flow isotopic-ratio mass spectrometry (GC-IRMS; Europa, Crewe, UK) at the University of California, Davis. To calculate the contribution of forest and savannas at different points in time, the ^{14}C age-depth model was combined with typical $\delta^{13}\text{C}$ signatures of C_3 trees ($-25.9\% \pm 0.4$) and C_4 grasses ($-11.2\% \pm 0.2$) in the study region⁴³ in a two-end member mixing model⁷⁰.

$$C_4 = C_t(\delta_t - \delta_3)/(\delta_4 - \delta_3), \quad (2)$$

where C_t is the total mass of organic carbon in the soil coming from C_3 and C_4 sources; C_3 is the mass of carbon derived from trees and herbaceous plants that assimilate carbon through the C_3 metabolic pathway; C_4 is the amount of carbon derived from grasses which assimilate carbon through the C_4 metabolic pathway; δ_t is the $\delta^{13}\text{C}$ ratio of C_t ; δ_3 is the $\delta^{13}\text{C}$ ratio of C_3 -derived organic carbon, and δ_4 is the $\delta^{13}\text{C}$ ratio of grass-derived organic carbon expressed as the relative (percentage) of grass input to the total organic carbon pool.

The isotopic ratios of soil carbon incorporate changes in atmospheric CO_2 due to the emission of fossil fuels over the past century. However, changes in $\delta^{13}\text{C}$ ratios of CO_2 have been small for most of the Holocene ($<1.5\%$ over the past 10,000 years⁷¹) and affected both tree and grass signatures. We can therefore rule out this effect as an explanation for long-term changes in carbon source observed here. After organic matter deposition, diagenetic fractionation occurs primarily in the topsoil as a function of decomposition, typically leading to a $<2\%$ fractionation⁷², a result that can be observed here within the top 20 cm of ADE and Ultisol profiles (Fig. 4). Other sources of variation, such as changes in plant water-use efficiency in response to atmospheric CO_2 , are not relevant at the scale studied here because this effect would be smaller than differences between δ_3 and δ_4 . We can also rule out any confounding effect of inorganic carbon, which were absent from our samples, as expected due to moderate acidity (pH 5.11–5.73) of ADEs and extreme acidity of Ultisols at our site (pH 4.12)⁵.

For the analysis of Sr and Nd isotopes, soil samples were digested in two stages using concentrated HF/HNO_3 and 6N HCl in Teflon Savillex beakers placed on a hot plate. In order to determine the $^{87}\text{Sr}/^{86}\text{Sr}$ ratio, another aliquot of the initial solution was submitted to chromatography over SR-B50-A resin (Eichrom, Lisle, IL, USA; particle size 100e150 m) using 2.9 M HNO_3 as eluent. The determination of $^{87}\text{Sr}/^{86}\text{Sr}$ ratios was performed using a ThermoFisher Triton, involving 30 cycles in one block. During the course of sample measurements, repeated determination of Sr isotopes in a 100 ppm solution of NIST SRM 987 strontium carbonate ($^{87}\text{Sr}/^{86}\text{Sr} = 0.71036 \pm 0.00026$), yielded an average value of 0.71025 ± 0.00008 , $n = 12$. An aliquot of this solution was used for mineral extractions adapted specifically for Amazonian Oxisols, in which trace elements were separated as a group using cation-exchange columns⁷³. Following this procedure, a reversed-phase chromatography was applied for Samarium–neodymium (Sm–Nd) radiometric dating using columns loaded with HDEHP (di-2-ethylhexyl phosphoric acid) supported on Teflon powder. A mixed ^{149}Sm – ^{150}Nd spike was used with re-evaporation filaments of a double filament assembly. The isotopic analyses were performed using a ThermoFisher Triton multi-collector mass spectrometer in static mode. Uncertainties for Sm/Nd and $^{143}\text{Nd}/^{144}\text{Nd}$ ratios were $\pm 0.1\%$ (2σ) and 0.005% (2σ), respectively, based on repeated analyses of international rock standards BCR-1 and BHVO-1, normalised to a $^{146}\text{Nd}/^{144}\text{Nd}$ ratio of 0.7129 using blanks smaller than 100 pg. Considering that ADE is a mixture of weathered minerals found in typical Ultisols with exogenous inputs (Supplementary Fig. 3), the contribution of river sediment to the total pool found in the ADE was calculated using the mass of Sr and its stable isotope ratios ($^{87}\text{Sr}/^{86}\text{Sr}$) measured in the surrounding Ultisol and river water as follows:

$$\text{Sr}_{\text{ADE}} = \text{Sr}_{\text{Ultisol}} \left(^{87}\text{Sr}/^{86}\text{Sr} \right)_{\text{Ultisol}} + \text{Sr}_{\text{river}} \left(^{87}\text{Sr}/^{86}\text{Sr} \right)_{\text{river}}. \quad (3)$$

Population density estimates. The first step we used to estimate the size of human populations and the amount of inputs needed to create the studied ADE was to calculate how much additional mass of human inputs would be needed to explain excess Ca and P in the ADE relative to the stocks in the surrounding Ultisol (for a total soil depth of 1 m; Fig. 3). By focusing on Ca and P stocks we implicitly represent the depositional history of 16 other mineral elements which correlate significantly with P and Ca at the site (Supplementary Fig. 1). The second step to calculate human inputs was to consider the possible anthropic sources of Ca and P under the assumption that population densities are directly related to the amount of waste deposited onto soils. To minimise uncertainties related to type of biomass deposited we considered three sources that are often attributed to ADE genesis: human faeces, plant biomass, and fish biomass. Fish waste is the richest of those sources, and thus, it yields the most conservative population densities. The third step was to consider the time needed to generate the observed excess fertility in the

ADE via the consumption of fish by a certain number of people:

$$Q = D_t 0.2M_t/TP, \quad (4)$$

where Q is protein available from fish per capita per day in grams; D_t is the number of person-days fishing for period T in days; M_t is the dressed weight in grams of the average day's catch of one for the period, and P is the average population subsisting on the protein obtained over T . The constant (0.2) is a rough value indicating the protein yield from any given quantity of fresh, dressed meat or fish obtained by inspecting the values for protein in 100 g edible portions of several kinds of meat and fish in indigenous communities of Latin America⁵⁸.

Reporting summary. Further information on research design is available in the Nature Research Reporting Summary linked to this article.

Data availability

The data used to produce all figures and supplementary materials present here are available at <https://doi.org/10.7264/9qdm-en61>

Received: 30 March 2020; Accepted: 29 October 2020;

Published online: 04 January 2021

References

- Sombroek, W. G. *Amazon Soils. A Reconnaissance of the Soils of the Brazilian Amazon Region 292* (Wageningen, Netherlands, 1966).
- Palace, M. W. et al. Ancient Amazonian populations left lasting impacts on forest structure. *Ecosphere* **8**, e02035 (2017).
- Lehmann, J. *Amazonian Dark Earths: Origin Properties Management* (Kluwer Academic Publishers, Netherlands, 2003).
- Glaser, B. & Birk, J. J. State of the scientific knowledge on properties and genesis of Anthropogenic Dark Earths in Central Amazonia (terra preta de Índio). *Geochim. Cosmochim. Acta* **82**, 39–51 (2012).
- Macedo, R. S., Teixeira, W. G., Corrêa, M. M., Martins, G. C. & Vidal-Torrado, P. Pedogenetic processes in anthrosols with pretic horizon (Amazonian Dark Earth) in Central Amazon, Brazil. *PLoS ONE* **12**, e0178038 (2017).
- Barbosa, J. Z. et al. Elemental signatures of an Amazonian Dark Earth as result of its formation process. *Geoderma* **361**, 114085 (2020).
- Quesada, C. A. et al. Variations in soil chemical and physical properties explain basin-wide Amazon forest soil carbon concentrations. *Soil* **6**, 53–88 (2020).
- Grau, O. et al. Nutrient-cycling mechanisms other than the direct absorption from soil may control forest structure and dynamics in poor Amazonian soils. *Sci. Rep.* **7**, 45017 (2017).
- Silva, L. C. R. & Lambers, H. Soil-plant-atmosphere interactions: structure, function, and predictive scaling for climate change mitigation. *Plant Soil* **1–23** <https://doi.org/10.1007/s11104-020-04427-1> (2020).
- Haridasan, M. Nutritional adaptations of native plants of the cerrado biome in acid soils. *Braz. J. Plant Physiol.* **20**, 183–195 (2008).
- Morello, T. F. et al. Fertilizer adoption by smallholders in the Brazilian Amazon: Farm-level evidence. *Ecol. Econ.* **144**, 278–291 (2018).
- Lombardo, U. et al. Early Holocene crop cultivation and landscape modification in Amazonia. *Nature* **581**, 190–193 (2020).
- Capriles, J. M. et al. Persistent early to middle Holocene tropical foraging in southwestern Amazonia. *Sci. Adv.* **5**, eaav5449 (2019).
- Bush, M. B. et al. A 6900-year history of landscape modification by humans in lowland Amazonia. *Quat. Sci. Rev.* **141**, 52–64 (2016).
- Maezumi, S. Y. et al. The legacy of 4,500 years of polyculture agroforestry in the eastern Amazon. *Nat. Plants* **4**, 540–547 (2018).
- Kern, D. C. et al. *Terras pretas*: approaches to formation processes in a new paradigm. *Geoarchaeology* **32**, 694–706 (2017).
- McMichael, C. H. et al. Predicting pre-Columbian anthropogenic soils in Amazonia. *Proc. R. Soc. B Biol. Sci.* **281**, 20132475 (2014).
- Schmidt, M. J. et al. Dark earths and the human built landscape in Amazonia: a widespread pattern of anthrosol formation. *J. Archaeol. Sci.* **42**, 152–165 (2014).
- Birk, J. J., Teixeira, W. G., Neves, E. G. & Glaser, B. Faeces deposition on Amazonian Anthrosols as assessed from 5 β -stanols. *J. Archaeol. Sci.* **38**, 1209–1220 (2011).
- Glaser, B. Prehistorically modified soils of central Amazonia: a model for sustainable agriculture in the twenty-first century. *Philos. Trans. R. Soc. Lond. B Biol. Sci.* **362**, 187–196 (2007).
- El-Naggar, A. et al. Biochar application to low fertility soils: a review of current status, and future prospects. *Geoderma* **337**, 536–554 (2019).
- Cunha, T. J. F. et al. Soil organic matter and fertility of anthropogenic dark earths (Terra Preta de Índio) in the Brazilian Amazon basin. *Rev. Bras. Cienc. do Solo* **33**, 85–93 (2009).

23. Lutfalla, S. et al. Pyrogenic carbon lacks long-term persistence in temperate arable soils. *Front. Earth Sci.* **5**, 96 (2017).
24. Chadwick, K. D. & Asner, G. P. Landscape evolution and nutrient rejuvenation reflected in Amazon forest canopy chemistry. *Ecol. Lett.* **21**, 978–988 (2018).
25. Chadwick, O. A., Derry, L. A., Vitousek, P. M., Huebert, B. J. & Hedin, L. O. Changing sources of nutrients during four million years of ecosystem development. *Nature* **397**, 491–497 (1999).
26. Vitousek, P. M. *Nutrient Cycling and Limitation: Hawai'i as a Model System*. *Ecology* Vol. 30 (Princeton University Press, 2004).
27. Silva, L. C. R. et al. Can savannas become forests? A coupled analysis of nutrient stocks and fire thresholds in central Brazil. *Plant Soil* **373**, 829–842 (2013).
28. Alho, C. F. B. V. et al. Spatial variation of carbon and nutrients stocks in Amazonian Dark Earth. *Geoderma* **337**, 322–332 (2019).
29. Bomfim, B., Silva, L. C. R., Doane, T. A. & Horwath, W. R. Interactive effects of land-use change and topography on symbiotic nitrogen fixation in the Brazilian Atlantic Forest. *Biogeochemistry* **142**, 137–153 (2019).
30. Hendrixson, H. A., Sterner, R. W. & Kay, A. D. Elemental stoichiometry of freshwater fishes in relation to phylogeny, allometry and ecology. *J. Fish. Biol.* **70**, 121–140 (2007).
31. Nishimuta, M. et al. Moisture and mineral content of human feces—high fecal moisture is associated with increased sodium and decreased potassium content. *J. Nutr. Sci. Vitaminol.* **52**, 121–126 (2006).
32. Rossetti, D. F. et al. Unfolding long-term late Pleistocene-Holocene disturbances of forest communities in the southwestern Amazonian lowlands. *Ecosphere* **9**, e02457 (2018).
33. Carson, J. F. et al. Pre-Columbian land use in the ring-ditch region of the Bolivian Amazon. *Holocene* **25**, 1285–1300 (2015).
34. Shepard, G. H. et al. in *Oxford Research Encyclopedia of Environmental Science* (Hazzlitt, R. ed.) (Oxford, 2020).
35. Arroyo-Kalin, M. Slash-burn-and-churn: Landscape history and crop cultivation in pre-Columbian Amazonia. *Quat. Int.* **249**, 4–18 (2012).
36. Brugger, S. O. et al. Long-term man-environment interactions in the Bolivian Amazon: 8000 years of vegetation dynamics. *Quat. Sci. Rev.* **132**, 114–128 (2016).
37. Maezumi, S. Y. et al. New insights from pre-Columbian land use and fire management in Amazonian dark earth forests. *Front. Ecol. Evol.* **6**, 111 (2018).
38. Zani, H., Rossetti, D. F., Cohen, M. L. C., Pessenda, L. C. R. & Cremon, E. H. Influence of landscape evolution on the distribution of floristic patterns in northern Amazonia revealed by $\delta^{13}\text{C}$ data. *J. Quat. Sci.* **27**, 854–864 (2012).
39. Lombardo, U. et al. Holocene land cover change in south-western Amazonia inferred from paleoflood archives. *Glob. Planet. Change* **174**, 105–114 (2019).
40. Ward, B. M. et al. Reconstruction of Holocene coupling between the South America Monsoon System and local moisture variability from speleothem $\delta^{18}\text{O}$ and $87\text{Sr}/86\text{Sr}$ records. *Quat. Sci. Rev.* **210**, 51–63 (2019).
41. Wortham, B. E. et al. Assessing response of local moisture conditions in central Brazil to variability in regional monsoon intensity using speleothem $^{87}\text{Sr}/^{86}\text{Sr}$ values. *Earth Planet. Sci. Lett.* **463**, 310–322 (2017).
42. Silva, L. C. R. Importance of climate-driven forest-savanna biome shifts in anthropological and ecological research. *Proc. Natl Acad. Sci. USA* **111**, E3831–E3832 (2014).
43. Wright, J. et al. Sixteen hundred years of increasing tree cover prior to modern deforestation in Southern Amazon and Central Brazilian savannas. *Glob. Chang. Biol.* <https://doi.org/10.1111/gcb.15382> (2020).
44. Bomfim, B. et al. Fire affects symbiotic nitrogen fixation in Southern Amazon Forests. *J. Geophys. Res. Biogeosci.* **125**, (2020).
45. Rossetti, D. F., Bertani, T. C., Zani, H., Cremon, E. H. & Hayakawa, E. H. Late Quaternary sedimentary dynamics in Western Amazonia: Implications for the origin of open vegetation/forest contrasts. *Geomorphology* **177–178**, 74–92 (2012).
46. Hoffmann, W. A. et al. Ecological thresholds at the savanna-forest boundary: How plant traits, resources and fire govern the distribution of tropical biomes. *Ecol. Lett.* **15**, 759–768 (2012).
47. Roddaz, M. et al. Evidence for the control of the geochemistry of Amazonian floodplain sediments by stratification of suspended sediments in the Amazon. *Chem. Geol.* **387**, 101–110 (2014).
48. Santos, R. V. et al. Source area and seasonal $^{87}\text{Sr}/^{86}\text{Sr}$ variations in rivers of the Amazon basin. *Hydrol. Process.* **29**, 187–197 (2015).
49. Passos, M. S. et al. Pleistocene-Holocene sedimentary deposits of the Solimões-Amazonas fluvial system, Western Amazonia. *J. South Am. Earth Sci.* **98**, 102455 (2020).
50. Bayon, G. et al. Rare earth elements and neodymium isotopes in world river sediments revisited. *Geochim. Cosmochim. Acta* **170**, 17–38 (2015).
51. Quintana-Cobo, I. et al. Dynamics of floodplain lakes in the Upper Amazon Basin during the late Holocene. *Comptes Rendus Geosci.* **350**, 55–64 (2018).
52. Hayakawa, E. H., Rossetti, D. F., Hayakawa, E. H. & Rossetti, D. F. Late quaternary dynamics in the Madeira river basin, southern Amazonia (Brazil), as revealed by paleomorphological analysis. *Acad. Bras. Cienc.* **87**, 29–49 (2015).
53. Gonçalves, E. S., Soares, E. A. A., Tatum, S. H., Yee, M. & Mittani, J. C. R. Pleistocene-Holocene sedimentation of Solimões-Amazon fluvial system between the tributaries Negro and Madeira, Central Amazon. *Braz. J. Geol.* **46**, 167–180 (2016).
54. Viers, J. et al. Seasonal and provenance controls on Nd-Sr isotopic compositions of Amazon rivers suspended sediments and implications for Nd and Sr fluxes exported to the Atlantic Ocean. *Earth Planet. Sci. Lett.* **274**, 511–523 (2008).
55. Sant'Anna, L. G. et al. Age of depositional and weathering events in Central Amazonia. *Quat. Sci. Rev.* **170**, 82–97 (2017).
56. Guyot, J. L. et al. Clay mineral composition of river sediments in the Amazon Basin. *CATENA* **71**, 340–356 (2007).
57. Macedo, R. S. et al. Amazonian dark earths in the fertile floodplains of the Amazon River, Brazil: An example of non-intentional formation of anthropic soils in the Central Amazon region. *Bol. do Mus. Para. Emilio Goeldi Cienc. Humanas* **14**, 207–227 (2019).
58. Gross, D. R. Protein capture and cultural development in the Amazon basin. *Am. Anthropol.* **77**, 526–549 (1975).
59. Bomfim, B. et al. Litter and soil biogeochemical parameters as indicators of sustainable logging in Central Amazonia. *Sci. Total Environ.* **714**, 136780 (2020).
60. Lehmann, J. et al. Nutrient availability and leaching in an archaeological Anthrosol and a Ferralsol of the Central Amazon basin: fertilizer, manure and charcoal amendments. *Plant Soil* **249**, 343–357 (2003).
61. Gay-des-Combes, J. M. et al. Tropical soils degraded by slash-and-burn cultivation can be recultivated when amended with ashes and compost. *Ecol. Evol.* **7**, 5378–5388 (2017).
62. Isendahl, C. & Smith, M. E. Sustainable agrarian urbanism: The low-density cities of the Mayas and Aztecs. *Cities* **31**, 132–143 (2013).
63. Clement, C. R. et al. The domestication of Amazonia before European conquest. *Proc. R. Soc. B Biol. Sci.* **282**, 20150813 (2015).
64. de Souza, J. G. et al. Climate change and cultural resilience in late pre-Columbian Amazonia. *Nat. Ecol. Evol.* **3**, 1007–1017 (2019).
65. Mongeló, G. Early and Middle Holocene human occupations in Southwest Amazon. *Bol. Mus. Para. Emilio Goeldi. Cienc. Hum.* <https://doi.org/10.1590/2178-2547-bgoeldi-2019-0079> (2020).
66. Kistler, L. et al. Multiproxy evidence highlights a complex evolutionary legacy of maize in South America. *Science* **362**, 1309–1313 (2018).
67. Denevan, W. M. A Bluff model of riverine settlement in prehistoric Amazonia. *Ann. Assoc. Am. Geogr.* **86**, 654–681 (1996).
68. Silva, L. C. R., Corrêa, R. S., Doane, T. A., Pereira, E. I. P. & Horwath, W. R. Unprecedented carbon accumulation in mined soils: the synergistic effect of resource input and plant species invasion. *Ecol. Appl.* **23**, 1345–1356 (2000).
69. Kurth, V. J., MacKenzie, M. D. & DeLuca, T. H. Estimating charcoal content in forest mineral soils. *Geoderma* **137**, 135–139 (2006).
70. Silva, L. C. R. et al. Iron-mediated stabilization of soil carbon amplifies the benefits of ecological restoration in degraded lands. *Ecol. Appl.* **25**, 1226–1234 (2015).
71. Hare, V. J., Loftus, E., Jeffrey, A. & Ramsey, C. B. Atmospheric CO₂ effect on stable carbon isotope composition of terrestrial fossil archives. *Nat. Commun.* **9**, 252 (2018).
72. Krull, E. S., Bestland, E. A. & Gates, W. P. Soil organic matter decomposition and turnover in a tropical Ultisol: evidence from $\delta^{13}\text{C}$, $\delta^{15}\text{N}$ and geochemistry. *Radiocarbon* **44**, 93–112 (2002).
73. Gioia, S. M. C. L. & Pimentel, M. M. The Sm-Nd isotopic method in the Geochronology Laboratory of the University of Brasília. *Acad. Bras. Cienc.* **72**, 218–245 (2000).

Acknowledgements

We thank the National Science Foundation (AGS#1602958; Convergence Accelerator #1939511), the Brazilian Council for Scientific and Technological Development – CNPq, and the 2019 Resilience Initiative Interdisciplinary Award at the University of Oregon for research funding. All samples were collected, processed, and analysed in coordination with the local authorities and following Brazilian laws and regulations. We thank Dr William Horwath for logistical support in the USA and Dr Wenceslau Gerales Teixeira for providing logistical support in Brazil and for hosting international training events including field courses at EMBRAPA CPAA, which catalysed this collaboration. The publication fees for this article were supported by the University of Oregon Libraries Open Access Article Processing Charge Fund.

Author contributions

L.C.R.S.: Designed the study, generated and analysed data, made figures and wrote the manuscript. R.S.C.: Designed the study, collected samples, interpreted elemental data, and revised manuscript. J.L.W.: Integrated data sets and performed spatial analysis. B.B.: Analysed charcoal samples and interpret biogeochemical data. L.H.: Digested samples and quantified pyrogenic carbon. D.G.: Generated elevation maps, oversaw pyrogenic carbon analysis, and revised manuscript. A.W.M.: Collected soil samples, provided

resources, and preliminary data. G.C.M.: Collected soil samples and generated preliminary data. A.C.V.M.: Performed laboratory work and helped with data analysis. J.Z.M.: Organised data and helped interpret elemental inputs. V.d.F.M.: Helped with the analysis and interpretation of elemental data. S.D.Y.: Provided resources and oversaw chemical analysis. M.R.B.: Provided resources, helped with multi-proxy data interpretation, and revised manuscript. R.V.S.: Generated isotopic data, interpreted geological sources, and revised manuscript.

Competing interests

The authors declare no competing interests.

Additional information

Supplementary information is available for this paper at <https://doi.org/10.1038/s41467-020-20184-2>.

Correspondence and requests for materials should be addressed to L.C.R.S.

Peer review information *Nature Communications* thanks Oliver Chadwick and other, anonymous, reviewers for their contributions to the peer review of this work. Peer review reports are available.

Reprints and permission information is available at <http://www.nature.com/reprints>

Publisher's note Springer Nature remains neutral with regard to jurisdictional claims in published maps and institutional affiliations.



Open Access This article is licensed under a Creative Commons Attribution 4.0 International License, which permits use, sharing, adaptation, distribution and reproduction in any medium or format, as long as you give appropriate credit to the original author(s) and the source, provide a link to the Creative Commons license, and indicate if changes were made. The images or other third party material in this article are included in the article's Creative Commons license, unless indicated otherwise in a credit line to the material. If material is not included in the article's Creative Commons license and your intended use is not permitted by statutory regulation or exceeds the permitted use, you will need to obtain permission directly from the copyright holder. To view a copy of this license, visit <http://creativecommons.org/licenses/by/4.0/>.

© The Author(s) 2021