

University of Texas Rio Grande Valley
ScholarWorks @ UTRGV

School of Medicine Publications and
Presentations

School of Medicine

3-2021

Starting Antihypertensive Drug Treatment With Combination Therapy

Zhen-Yu Zhang

Yu-Ling Yu

Kei Asayama

Tine W. Hansen

Gladys E. Maestre

The University of Texas Rio Grande Valley, gladys.maestre@utrgv.edu

See next page for additional authors

Follow this and additional works at: https://scholarworks.utrgv.edu/som_pub



Part of the [Chemicals and Drugs Commons](#), and the [Diseases Commons](#)

Recommended Citation

Zhang Zhen-Yu, Yu Yu-Ling, Asayama Kei, Hansen Tine W., Maestre Gladys E., & Staessen Jan A. (2021). Starting Antihypertensive Drug Treatment With Combination Therapy. *Hypertension*, 77(3), 788–798. <https://doi.org/10.1161/HYPERTENSIONAHA.120.12858>

This Article is brought to you for free and open access by the School of Medicine at ScholarWorks @ UTRGV. It has been accepted for inclusion in School of Medicine Publications and Presentations by an authorized administrator of ScholarWorks @ UTRGV. For more information, please contact justin.white@utrgv.edu, william.flores01@utrgv.edu.

Authors

Zhen-Yu Zhang, Yu-Ling Yu, Kei Asayama, Tine W. Hansen, Gladys E. Maestre, and Jan A. Staessen



Starting Antihypertensive Drug Treatment With Combination Therapy

Controversies in Hypertension - Con Side of the Argument

Zhen-Yu Zhang , Yu-Ling Yu , Kei Asayama , Tine W. Hansen , Gladys E. Maestre , Jan A. Staessen

Key Words: angiotensin-converting enzyme inhibitors ■ angiotensin-receptor blockers ■ blood pressure ■ calcium-channel blockers ■ diuretics ■ hypertension ■ renin

The 2018 European Society of Cardiology/European Society of Hypertension¹ and the 2020 International Society of Hypertension² guidelines for the management of hypertension proposed that initial combination therapy with 2 antihypertensive agents in a single-pill combination (SPC) is preferred in most patients in need of blood pressure (BP) lowering treatment and should replace the long-standing concept of starting treatment with a single agent, rotating through antihypertensive drug classes, and next moving towards combining drug classes. By moving SPCs forward as the initial BP-lowering strategy, the European¹ and International² Societies of Hypertension Guideline Committees overlooked several principles in hypertension management: (1) understanding the pathophysiology of hypertension; (2) prioritizing evidence from randomized clinical trials above observational studies and expert opinion; and (3) giving consideration to the cost-effectiveness of antihypertensive drug treatment and the sustainability of health care. This article addresses these points. Sources of information included (1) guidelines issued by European,^{1,3,4} American,⁵⁻⁷ International,^{2,8,9} and British¹⁰⁻¹² Expert Committees, published between 1999⁸ and 2020,² summarized

in Table S1 in the [Data Supplement](#); (2) a PubMed search ran on May 5, 2020, without limitations with as search terms in the abstract or title “hypertension” combined with “fixed combination” OR “hypertension” combined with “single” and “costs”; (3) the placebo-controlled trials of antihypertensive drug treatment, as identified from the reference lists of 5 systematic literature reviews,¹³⁻¹⁷ of which 2 were published by the Blood Pressure Lowering Trialists' Collaboration^{14,16}; (4) 3 randomized controlled trials of usual versus intensive BP control¹⁸⁻²⁰; and (5) the retail costs of antihypertensive drugs on the Belgian market (<https://www.bcfi.be>).

TAILORING ANTIHYPERTENSIVE TREATMENT

In the early 1970s, Laragh's group coined the terms low-renin, normal-renin, and high-renin hypertension by relating plasma renin activity to the daily sodium excretion.²¹ Under normal conditions, plasma renin activity increases with sodium restriction but decreases with higher BP.²¹ Although an imperfect generalization, low-renin hypertension is characterized by volume expansion

The opinions expressed in this article are not necessarily those of the editors or of the American Heart Association.

This article was sent to Morris J. Brown, Guest Editor, for review by expert referees, editorial decision, and final disposition.

Correspondence to: Jan A. Staessen, Non-Profit Research Institute, Alliance for the Promotion of Preventive Medicine, Leopoldstraat 59, BE-2800 Mechelen, Belgium. Email jan.staessen@appremed.org

The Data Supplement is available with this article at <https://www.ahajournals.org/doi/suppl/10.1161/HYPERTENSIONAHA.120.12858>.

For Sources of Funding and Disclosures, see page 796.

© 2021 The Authors. *Hypertension* is published on behalf of the American Heart Association, Inc., by Wolters Kluwer Health, Inc. This is an open access article under the terms of the [Creative Commons Attribution Non-Commercial-NoDerivs](#) License, which permits use, distribution, and reproduction in any medium, provided that the original work is properly cited, the use is noncommercial, and no modifications or adaptations are made.

Hypertension is available at www.ahajournals.org/journal/hyp

and its high-renin counterpart by increased peripheral resistance,^{22,23} and are indications to start BP-lowering treatment with a diuretic as opposed to an inhibitor of the renin-angiotensin system or vasodilator.²⁴ The activity of the renin system decreases with advancing age²² and is lower in Blacks compared with Whites.^{25–27} These pathophysiological principles explain why guidelines, with the exception of the 2018 European¹ and the 2020 International² guidelines recommend to start antihypertensive drug treatment with ACE (angiotensin-converting enzyme) inhibitors or ARBs below age 55 and with thiazide diuretics (TDs) or dihydropyridine CCBs (calcium-channel blockers) in older patients and in Blacks across the adult age range. Isolated systolic hypertension, which in its initial course is not associated with increased peripheral resistance, but is caused by stiffening of the large arteries²⁸ is an indication for TDs²⁹ or CCBs.^{30,31} The 2020 International Society of Hypertension guideline² supported the use of thiazide-like diuretics, that is, indapamide and chlorthalidone, rather than regular TDs (chlorothiazide and hydrochlorothiazide), based on a systematic review of 19 randomized clinical trials involving 112 113 patients.³² The observed benefits were mainly confined to thiazide-like diuretics rather than TDs with reductions in the risk of cardiac events (odds ratio, 0.78; $P < 0.001$), heart failure (odds ratio, 0.57; $P < 0.001$), and stroke (odds ratio, 0.82; $P = 0.016$).³²

ACE inhibitors not only inhibit the generation of active angiotensin II, but also the inactivation of the vasodilator bradykinin, explaining their higher potency compared with ARBs and direct renin inhibitors and the recommendation to prescribe ARBs only in ACE inhibitor-intolerant patients.^{33,34} The involvement of sympathetic drive and the renin-angiotensin system in the cardiovascular and renal complications of hypertension and its comorbidities clarifies why guidelines^{1–12} unanimously recommend the use ACE inhibitors and ARBs in patients with diabetes or chronic kidney disease, and β Bs (beta-blockers),^{35,36} ACE inhibitors, and ARBs in secondary prevention.

CONTROL RATES ON MONOTHERAPY VERSUS COMBINATION THERAPY

With as objective to estimate the proportion of patients with hypertension who can be controlled on monotherapy, we reviewed the placebo-controlled randomized clinical trials listed in systematic reviews of BP-lowering therapies^{13–17} as well as the trials of intensive versus usual BP control.^{18–20} We extracted control rates on monotherapy from the trial reports.

Placebo-Controlled Trials

Table 1 lists the placebo-controlled trials from which the proportion of patients remaining on monotherapy could

be extracted. These trials were published from 1985³⁷ until 2008.³⁸ The first Medical Research Council Trial (age range, 35–64 years)³⁷ and the Perindopril Protection Against Recurrent Stroke Study (age range, not reported)³⁹ enrolled adults, but all other recruited older patients,^{30,31,38,40–43} including exclusively³⁸ or a substantial proportion of octogenarians.^{41,42} Considering the patients randomized to active treatment, at 2 years, from 25.8%³⁸ to 90.0%^{41,42} remained on a single drug and at 4 years from 48.0%⁴⁰ to 87.0%.^{41,42} In the Hypertension in the Very Elderly Trial³⁸ and in the Systolic Hypertension in Europe Trial,³⁰ the study coordinating office emailed or faxed recommendations for intensification of treatment to the local investigators, whenever at a visit a patient was not at goal BP, resulting in a substantially smaller proportion of patients remaining on monotherapy in the placebo compared with the active treatment group (Table 1). In the first Medical Research Council Trial,³⁷ at 4 years of follow-up, 70.0% of patients had attained the target BP, defined as a diastolic BP of < 90 mmHg. Thus, a substantial proportion of patients remained on monotherapy or reached goal BP on a single drug in the placebo-controlled trials listed in Table 1.

Intensive Versus Usual BP Control

Of the 3 trials^{18–20} comparing intensive with usual BP control, 2^{19,20} reported on treatment status by randomization group. In the ACCORD Trial (Action to Control Cardiovascular Risk in Diabetes)¹⁹ and in SPRINT (Systolic Blood Pressure Intervention Trial),²⁰ patients with a systolic BP of 130 mmHg or higher and an increased cardiovascular risk were randomly assigned to a systolic BP target of < 120 mmHg (intensive treatment) or a systolic target of < 140 mmHg (usual treatment). In the type-2 diabetic patients randomized to intensive (N=2174) and usual (N=2208) BP control in ACCORD,¹⁹ after 1 year, the achieved systolic BP averaged 119.3 mmHg on intensive treatment and 133.5 mmHg in the control group; in SPRINT,²⁰ these levels were 121.4 mmHg (N=4683) and 136.2 mmHg (N=4683), respectively. In ACCORD (median follow-up, 4.7 years),¹⁹ at 1 year, 174 (8.0%) and 265 (28.0%) of patients randomized to intensive and standard treatment were on monotherapy and at the last visit 184 (8.0%) and 553 (24.0%); in SPRINT (median follow-up, 3.3 years),²⁰ these numbers at last follow-up were 493 (10.5%) and 1455 (31.1%), respectively.

EVIDENCE SUPPORTING SPCS

The literature on SPCs focuses on efficiency, adherence (also known as compliance),⁴⁴ persistence, and safety. Over time, these notions permeated to several,^{1–9} but not all,^{10–12} guidelines. What is the evidence?

Table 1. Patients Remaining on First-Line Drug Treatment in Placebo-Controlled Randomized Clinical Trials

Trial, publication year	Ref	Age, y	Blood pressure, mm Hg		Y	Drugs	N	Follow-up, number of patients (%)			
			Entry	Goal				Year 1	Year 2	Year 3	Year ≥4
HYVET, 2008	38	83.6, ≥80	173.0/90.8 (≥160/<100)	<150/<80	1.8	PLAC	1912		100 (14.2)		
						IND	1933		196 (25.8)		
MRC1, 1985	37	52.0, 35–64	161.3/98.2 (<200/90–109)	NA/<90	4.9	PLAC	8654	... (...) [†]	... (...)	... (...)	... (...)
								... (≈39.9)	... (≈41.9)	... (≈43.9)	... (≈45.9)
						BDF	4927	... (≈81.9)	... (≈77.4)	... (≈74.3)	... (≈72.3)
								... (≈63.1)	... (≈67.1)	... (≈68.1)	... (≈70.1)
			↓13.5/6.5*			PROP	4403	... (≈89.9)	... (84.9)	... (≈82.4)	... (≈79.9)
			↓9.5/5.5*					... (≈61.9)	... (66.4)	... (≈67.8)	... (70.4)
MRC2, 1992	40	65.7, 65–74	184.7/90.7 (160–209/<115)	150–160/ NA†§	5.8	PLAC	2213				... (...)
											... (...)
						HCTZ/AM	1081				... (62.0)
											... (...)
			↓13.6/7.0*			AT	1102				... (48.0)
			↓13.6/7.0*								... (...)
PROGRESS, 2001	39	65.0, NA	144.0/84.0 (NA)	↓4.9/2.8	3.9	PLAC	1280				... (≈87.0)
						PER	1281				... (≈86.0)
SCOPE, 2004	41,42	76.4, 70–89	164.7/90.4 (160–179/90–99)	>160/>85	3.6	PLAC	845		≈634 (88.0)		≈150 (80.0)
						PER	1235		≈998 (90.0)		≈271 (87.0)
STONE, 1996	43	66.4, 60–79	168.5/97.7 (160–219/96–124)	<160/<90	2.5	PLAC	815		... (...)		
						NIF	817		≈531 (65.0)		
Syst-China, 1998	31	66.4, ≥60	170.5/86.0 (160–219/<95)	>150/NA	3.0	PLAC	1141	578 (60.4)	348 (42.9)	203 (30.9)	58 (36.0)
						NIT	1253	832 (72.3)	584 (62.7)	374 (51.5)	110 (53.7)
Syst-Eur, 1997	30	70.3, ≥60	173.8/85.5 (160–219/<95)	>150/NA	2.0	PLAC	2297	693 (41.2)	343 (27.8)	178 (19.2)	95 (13.9)
						NIT	2398	1037 (59.0)	597 (46.5)	385 (39.3)	216 (30.6)

Age: average age at randomization (age eligibility criterion). Blood pressure: the blood pressure data given are the average systolic/diastolic blood pressure at randomization (blood pressure eligibility criteria) and the goal blood pressure (required decrease in blood pressure). In MRC1, nurses doing screening did 2 sets of BP measurements on separate occasions, but to ensure their diagnostic categorization, the third entry BP was done by a physician. As a result, it took nearly 9 months for the entry BP to reach its lowest approximately stable level. Mean diastolic BP in women randomized to placebo continued to fall for 5 years. As reported in reference 37, only a third (N=2285) had no measurements of diastolic BP below 90 mm Hg at any follow-up visit. Follow-up: Data are the number of patients (percentage) remaining on first-line monotherapy. AT indicates atenolol (50–100 mg/d); BDF, bendrofluzide (10 mg/d); CAND, candesartan (8–16 mg/d); HCTZ/AM, hydrochlorothiazide/amloride (25/2.5 mg/d); HYVET, Hypertension in the Very Elderly Trial; IND, indapamide (1.5 mg/d); MRC1, Medical Research Council Trial in Young Adults; MRC2, Medical Research Council Trial in Older Adults; N, number of patients randomized; NA, not applicable; NIF, nifedipine (20–60 mg/d); NIT, nitrendipine (10–40 mg/d); PER, perindopril (4 mg/d); PLAC, matching placebo; PROGRESS, Perindopril Protection Against Recurrent Stroke Study; PROP, propranolol (up to 240 mg/d); SCOPE, Study on Cognition and Prognosis in the Elderly; STONE, Shanghai Trial of Nifedipine in the Elderly; Syst-China, Systolic Hypertension in China Trial; Syst-Eur, Systolic Hypertension in Europe Trial; and Y, median or average follow-up on randomized treatment.

*The average placebo-corrected decrease in blood pressure on active treatment.

†An ellipsis indicates that the data could not be extracted from the trial report.

§Number of patients (percentage) reaching goal blood pressure

#Number of patients (percentage) remaining on monotherapy.

Randomized Clinical Trials

Our extensive literature review revealed only one randomized clinical trial comparing the efficacy and safety of a SPC with its components.^{45,46} The COACH Study (Combination of Olmesartan Medoxomil and Amlodipine Besylate in Controlling High Blood Pressure) was a double-blind trial, conducted at 172 clinical sites in the United States.^{45,46} Patients aged 18 years or older with a diastolic BP ranging from 95 to 120 mm Hg were randomized in equal proportions to combination therapy with olmesartan/amlodipine (daily doses, 10/5, 20/5,

40/5, 10/10, 20/10, or 40/10 mg) or monotherapy with olmesartan (10, 20, or 40 mg) or amlodipine (5 or 10 mg). Of 4234 patients, who entered the 2-week washout phase, 1940 (45.8%) were randomized (women, 45.7%; mean age, 54.0 years; mean entry BP, 164/102 mm Hg) and 1689 (87.1%) completed the 8-week trial. Predictably, each treatment modality, compared with placebo, produced dose-dependent decreases in systolic and diastolic BP and at each dose, combination therapy reduced BP more and achieved BP control more frequently (<140/<90 and <130/<90 mm Hg in diabetic patients)

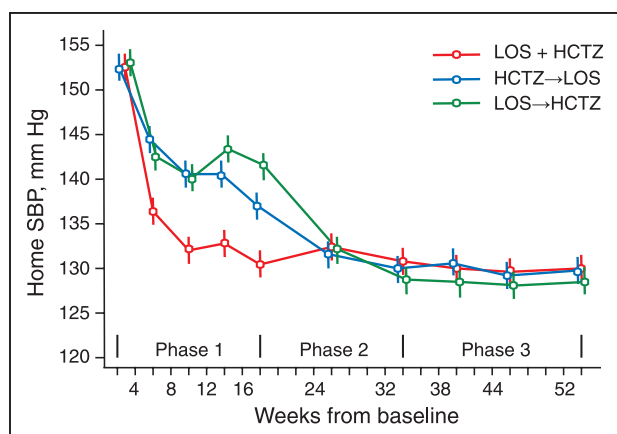


Figure 1. Systolic home blood pressure (BP) by randomization group and follow-up duration.

Data points are means. Vertical bars indicate 95% CI. Patients were randomized to initial monotherapy with losartan (LOS) 50–100 mg (N=151) or hydrochlorothiazide (HCTZ) 12.5–25 mg (N=150), crossing over at 8 weeks (switching to the alternative monotherapy), or initial combination treatment with losartan 50–100 mg plus hydrochlorothiazide 12.5–25 mg (N=304). In phase 2 (weeks 17–32), all patients received losartan 100 mg and hydrochlorothiazide 12.5 to 25 mg. In phase 3 (weeks 33–52), amlodipine with or without doxazosin could be added to achieve target BP. SBP indicates systolic BP. Reproduced from MacDonald et al²⁴ with permission. Copyright ©2017, Wiley.

than the equivalent dose of the single-component drug. Limitations of the COACH trial were selection of patients (45.8% of those screened were randomized), the short washout (2 weeks) and follow-up (8 weeks), the highly predictable BP results,⁴⁷ and the post hoc analysis of patients with isolated systolic hypertension.⁴⁶

The Simplified Treatment Intervention to Control Hypertension Study was a cluster-randomized trial, involving 45 family practices in Ontario, Canada and compared control rates of hypertension as achieved by a simplified treatment algorithm (experimental group) or following the Canadian Hypertension Program guideline (control group).⁴⁸ The systolic/diastolic target BP was <140/<90 mm Hg and <130/<90 mmHg in diabetic patients. The simplified treatment algorithm consisted of the following: (1) initial therapy with a low-dose ACE inhibitor/TD or ARB/TD SPC; (2) uptitration of the combination therapy to the highest dose; (3) addition and subsequent uptitration of a CCB; and (4) addition of a β B, α -blocker, or spironolactone. The proportion of patients achieving target BP at 6 months was higher in the experimental (N=802) than the control (N=1246) group (64.7% versus 52.7%; $P=0.026$). At 6 months, 82.8% of patients in the experimental group were on SPCs and 16.4% in the control group. However, no information on BP control beyond 6 months was provided.⁴⁸

A third randomized double-blind study evaluated the efficacy and safety of triple therapy with amlodipine/valsartan/hydrochlorothiazide for moderate or severe hypertension (systolic/diastolic BP, 145/100 mmHg or higher).⁴⁹ After a 1-week single-blind placebo run-in, patients were

randomly assigned to valsartan/amlodipine/hydrochlorothiazide 320/10/25 mg, valsartan/hydrochlorothiazide 320/25 mg, valsartan/amlodipine 320/10 mg, or amlodipine/hydrochlorothiazide 10/25 mg with uptitration of these once daily SPCs from week 1 to week 3. Of the 4285 patients screened, 2271 (53.0%) were randomized (women, 44.7%; mean age, 53.2 years; mean entry BP, 169.9/106.5 mmHg) and 2060 (90.7%) completed the 8-week trial. Triple therapy was significantly superior to all of the dual therapies in reducing BP ($P<0.0001$).⁴⁹ Results were similar across sex, age, and ethnicity strata. The limitations of this study were like those of the COACH trial.^{45,46}

In the double-blind PATHWAY-1 study (Prevention and Treatment of Hypertension With Algorithm-Based Therapy Trial),²⁴ of 796 screened patients, 605 (76.0%) were randomized and 432 (71.4%) completed the 1-year follow-up period. Eligible patients were untreated, aged 18 to 79 years, and had a self-measured home systolic/diastolic BP of $\geq 150/\geq 95$ mmHg. They were randomized to initial monotherapy with losartan 50 to 100 mg/d (N=151) or hydrochlorothiazide 12.5 to 25 mg/d (N=150), crossing over at 8 weeks (switching to the alternative monotherapy), or initial combination treatment with losartan 50 to 100 mg/d plus hydrochlorothiazide 12.5 to 25 mg/d (N=304). In phase 2 (weeks 17–32), all patients received losartan 100 mg and hydrochlorothiazide 12.5 to 25 mg. In phase 3 (weeks 33–52), amlodipine with or without doxazosin could be added to achieve target BP. The primary end point was the change in the systolic home BP (target systolic/diastolic home BP $>140/>90$ mm Hg). The original protocol prespecified the time of the primary end point at the end of phase 2, namely, 32 weeks after randomization, at which time all patients were receiving the same therapy. The statistical analysis plan, published before the data lock and unblinding, introduced 2 hierarchical co-primary end points.⁵⁰ The first was the reduction in the systolic home BP averaged over phases 1 and 2, testing for the superiority of initial combination therapy over monotherapy. The co-primary end point, to be tested only if the first hypothesis was confirmed, was the reduction in systolic home BP at week 32, a time point, when all participants were receiving the same treatment. Comparing initial monotherapy with initial combination therapy (Figure 1), the systolic/diastolic reductions in the home BP were 13.3/6.5 versus 21.9/12.1 mmHg (end of phase 1), 20.1/10.7 versus 19.5/10.6 mmHg at week 24 (midpoint of phase 2), 23.6/12.7 versus 22.0/11.9 mmHg at week 32 (end of phase 2), and 24.5/13.9 versus 23.6/13.4 mmHg at week 52 (end of study). By the end of phase 3, over 75% of participants in the initial monotherapy and combination therapy groups had attained the target home BP with no difference between groups at the end of either phase 2 or 3.²⁴ Based on the redefinition of the primary end points,⁵⁰ the PATHWAY-1 researchers reported the average BP results combining phases 2 and 3 and all

study periods.²⁴ They concluded that initial combination therapy achieved target BP in twice as many participants as initial monotherapy,²⁴ whereas in fact starting from week 24 (Figure 1), home BP was similar irrespective of whether antihypertensive treatment was started with SPC or free SD combination therapy. In the context of the current debate, a relevant finding of the PATHWAY-1 trial was that the BP reductions induced by losartan and hydrochlorothiazide were greatest in the top and bottom plasma renin activity tertiles, respectively,²⁴ an argument supporting an insightful rather than a simplistic initiation of antihypertensive drug therapy.

Observational Studies

A common denominator of all observational studies was that they had a retrospective design. A meta-analysis published in 2011⁵¹ summarized 12 studies published from 2000⁵² until 2010.⁵³ It compared health care costs, adherence, and persistence between groups of patients taking antihypertensive agents as SPCs versus free-equivalent SDs. The mean difference in the annual all-cause and hypertension-related health care costs was \$1357 (CI, \$778–\$1935) lower in favor of SPCs than free SD combinations. Adherence, measured as the mean difference in medication possession ratio, was 8% higher in patients naive to prior antihypertensive drugs and 14% higher in non-naive SPC patients compared with their counterparts on free SD combinations. Persistence in the SPC groups was twice as likely as in the free SD combination groups (pooled risk ratio, 2.1 [CI, 1.1–4.1]). The authors hypothesized that improved adherence and persistence likely contributed to the lower health care costs in the SPCs groups via improved clinical outcomes. Of the 12 studies included in the meta-analysis,^{52–63} 2 did not include a conflict of interest statement,^{54,56} 10 were directly funded by the pharmaceutical industry,^{52,53,55,57–63} and 7^{52,56–59,61,63} had one or more co-authors employed by drug companies having a commercial interest in SPCs.

The early literature was almost unanimous in stating that SPCs, in comparison with SDs or free combinations of SDs, were more efficacious in lowering BP, increasing adherence and persistence, and lowering health care costs. In view of this exceptional consistency, we searched PubMed for publications with discordant results. We identified 10 studies,^{51,64–72} published between 2010⁶⁴ until 2020,⁷³ of which the principal outcome measures, data sources consulted, the methods applied, and principal limitations are summarized in Table S2. Of the 10 studies,^{51,64–72} 7^{51,64–67,69,70} were directly supported by SPCs producers, 5^{51,64–67} involved a subcontractor to these manufacturers, and 5^{51,64,65,67,69} were co-authored by one or more industry employees. The study by Hong et al⁶⁸ stands out, because it was a publication not supported by industry, in which none of the authors reported a conflict of interest. In this article, free SD combinations

had average monthly drug costs similar to the respective SPCs, when SPCs were not generically available.⁶⁸ However, free SD combinations were more expensive compared with generic SPCs.⁶⁸

A study published in 2020 without industry support,⁷² applied the 2014 to 2015 Medical Expenditure Panel Survey data, to assess the uses and expenses of antihypertensive drugs among American men and nonpregnant women, aged 18 or older, who had a diagnosis of hypertension. Multiple medication users were patients who used 2 or more antihypertensive medications each year, including SPCs or multiple free SD combinations, or who switched BP-lowering agents within or between classes. Among 10971 hypertensive adults, 4759 (44.1%) were SD users and 6212 (55.9%) were multiple medication users. The average annual total cost for antihypertensive medications was \$336 per person: \$199 for SD users and \$436 for multiple medication users. The average annual costs for each medication class were estimated at \$438 for ARBs and \$49 for TDs. Thus, users of multiple medications, including SPCs, incurred more than twice the expense than single medication users.⁷² When comparing classes of medications, the costs for ARBs were highest, whereas those for TDs were lowest (Figure 2), a trend still visible in the 2020 retail prizes of antihypertensive drugs on the Belgian market (Table S3).⁷²

Several studies addressed the health-economic aspects of the use of SPCs versus SDs or free combinations of SDs,^{65–67,70,73} or triple versus dual SPCs.⁶⁹ Data from the MarketScan Database 2006 to 2008 in the United States showed that SPC patients (N=382 476) fared better over a 6-month period than their counterparts on free SD combinations (N=197 375).⁷³ The analyses were adjusted for the baseline characteristics of the selected patients, a reason why this article⁷³ was excluded from the 2011 meta-analysis.⁵¹ SPC patients had higher medication possession rates (+11.6%), fewer all-cause hospitalizations (–23.0%), and emergency room visits (–13.0%). SPC patients showed greater reductions in post-therapy initiation in all-cause medical costs (\$208 [CI, –\$302 to –\$114]), but larger increases in hypertension-related prescription costs (+\$53 [CI, +\$51 to +\$55]).⁷³ Similarly, in a study conducted in UK general-practice, hospitalization costs validated up to 2011 were lower in SPC patients compared with free SD users (N=9929 versus 18 665; £62 versus £112; $P<0.001$), whereas drug costs were higher (£126 versus £78; $P<0.001$), resulting in similar mean annual management costs in the 2 groups (£192 versus £192).⁶⁶

All observational reviewed above (Table S2) had a retrospective design and were, therefore, vulnerable to overt and hidden sources of bias, for which analyses did not account. Particularly, most studies had no information on the severity of hypertension at the time of initiation or adjustment of BP-lowering treatment, higher BP being an indication for SPCs or multiple

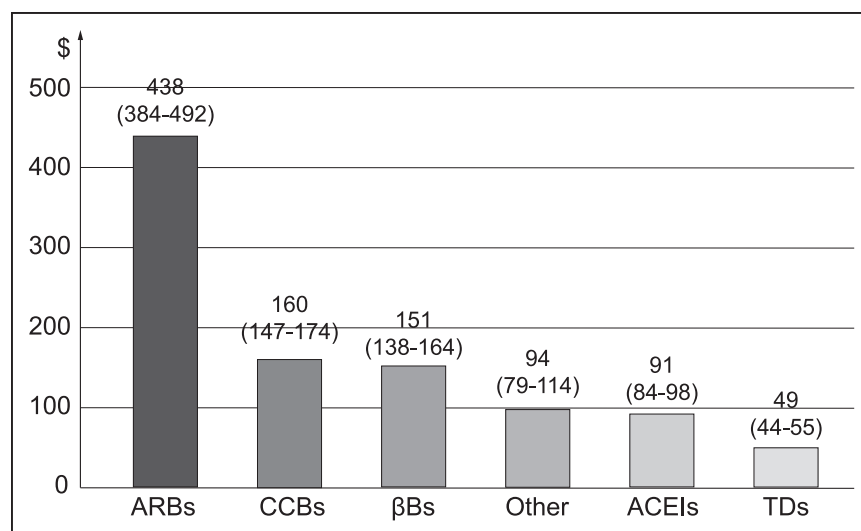


Figure 2. Estimated average annual per capita expenses of each medication class (95% CI), expressed in US dollars based on the 2014–2015 Medical Expenditure Panel Survey

Notes. ACEI indicates angiotensin-converting enzyme inhibitor; ARB, angiotensin receptor blocker; CCB, calcium-channel blocker; and TD, thiazide diuretics. Reproduced from Park et al⁷² with permission. Copyright ©2020, Elsevier.

drugs, or on the patients' health insurance status as determinant of the out-of-pocket costs and adherence (Table S2). Data on health behaviors, patients' lifestyle, and use of over-the-counter drugs were unavailable. In several analyses, there was a remarkable imbalance between SPC and free SD combination users,^{65–67,73} indicating selection bias in the patients being prescribed SPCs versus free SD combinations or in data extraction from the claims databases by researchers. Medication possession rate, although an objective measure, but only in settings with a closed pharmacy system,⁴⁴ is an ambiguous concept. Although there is moderate association between claims for filled prescriptions and measured drug levels⁴⁴ or prevention of adverse health outcomes,⁷⁴ claims databases do not ensure that the medication was taken as prescribed. Moreover, information from claims databases disfavors free SD drug combinations, because in their publications investigators selected the SD with the worse adherence,⁷³ or when 2 or more SDs were prescribed, probabilities of nonadherence were multiplicative, not additive. Furthermore, the claims data used for the health-economic analyses were collected for payment purposes rather than for research. A diagnostic code on a medical claim is no proof for the presence of disease, because diagnoses might be incorrectly coded or included as a rule-out criterion rather than as an actual disease. All reviewed health-economic studies only accounted for direct health care costs, disregarding patient values,⁷⁵ and out-of-pocket costs.⁷¹ A follow-up duration ranging from 6 months⁶⁴ to 5 years⁶⁶ is not representative of the life course of hypertension. No study measured adverse health outcomes in a prospective manner (Table S2). Transitions between health states applied in Markov modeling were not directly measured, but extrapolated,^{69,70} introducing arbitrariness in selecting data sources best fitting the hypothesis to be proven.

Narrative Reviews

Of 7 reviews on the use of SPCs,^{76–82} published from 2009⁷⁶ until 2019,⁸² 6 were written with direct financial support from SPC manufacturers,^{77–82} 3 included co-authors employed by these manufacturers,^{77,79,82} 2 involved a for-profit company running the literature search⁷⁷ or providing assistance in writing the text,⁷⁸ and 1 article's co-author received research support from a company marketing SPCs.⁷⁶

TAKE HOME MESSAGES

Table 2 lists the major limitations of the recommended policy to initiate antihypertensive treatment using SPCs in most patients.^{1,2}

Weaknesses of Current Guidelines

Lengthy guidelines comprehensible only by hypertension specialists, lead to therapeutic inertia in primary care and fall short of their very reason of existence. The 98-page 2018 European recommendations¹ go as far as stating that initial combination therapy is invariably more effective in lowering BP than monotherapy and is, therefore, indicated in most patients. The reference cited to substantiate this claim was a meta-analysis, not of SPCs versus SD free combinations, but comparing treatment strategies consisting of increasing the dose of the first-line antihypertensive agent or adding a second drug class.⁴⁷ Two of its authors held patents for a combination pill (polypill) for the prevention of cardiovascular disease.⁴⁷ To permeate clinical practice, recommendations must excel in simplicity, allowing summarizing key issues in a simple mnemonic rule, such as the AB/CD algorithm in the 2006 British guideline (Figure 3).¹⁰ Admittedly, the position of βBs as first-line treatment remains a matter of debate, albeit not in the last author's interpretation of the literature.^{36,83} One might argue that SPCs combining

Table 2. Take Home Messages

Issue	Summary of the literature
RCTs	Lack of RCTs comparing the long-term efficiency, adverse effects, and cost-effectiveness of initiating antihypertensive drug treatment with SPCs as compared with free combinations of SDs. The scarce RCT evidence currently available shows that 3 months after initiation of treatment BP is not better controlled by SPCs than free combinations of SDs. The literature does not support the notion that early BP control leads to long-term benefit in the prevention of cardiovascular end points.
Observational studies	Short-term observational studies, most with retrospective design and short duration (<6 months), are the main source of information supporting European and International recommendations to start antihypertensive treatment with SPCs. In retrospective observational studies of SPCs, adverse effects cannot be associated with a drug class, but are vaguer and more difficult to pick up, such as fatigue or hypotension, are under-reported.
Sponsors	Manufacturers of SPCs sponsored almost all studies, explaining bias in choosing data sources informing health-economic analyses, definitions of nonadherence to SDs, and the complete absence of dissonant results in the literature.
Health care costs	Use of SPCs increase drug costs, mainly due to the high retail price of sartans; SPCs do not reduce overall health care costs.
Components of SPCs	The diuretic in SPCs is overwhelmingly the short-acting hydrochlorothiazide, whereas preference should be given to the long-acting chlorthalidone. SPCs combining a β B and an ACEI are not guideline-endorsed.
Ease of use	SPCs lack flexibility in combining and dosing individual drug classes and in spreading dosing of drugs over the day. Patients with chronic disease value minimizing side-effects and long-term toxicities over frequency of dosing and other administration characteristics.

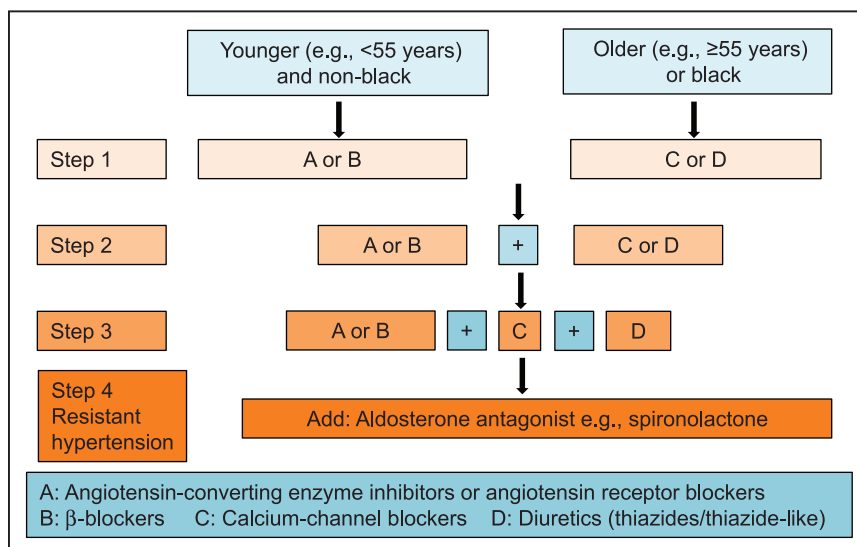
β B indicates β -blockers; ACEI, angiotensin-converting enzyme inhibitors; BP, blood pressure; RCT, randomized clinical trial; SDs, single drugs; and SPCs, single-pill combinations.

a β B and an ACE inhibitor, as for instance marketed in Belgium (www.bcfi.be) might allow initiating treatment in high-renin hypertensive patients in line with pathophysiologic insights, but in line with the older literature⁸⁴ no guideline¹⁻¹² supports this combination for BP lowering.

Nevertheless, guidelines do support such combination in secondary prevention.

The pharmaceutical industry is an important motor in creating therapeutic innovation. To remain profitable, there is nothing wrong in SPC manufacturers highlighting the potential benefits of their products. However, a problem arises when retrospective observational studies⁵²⁻⁷² (Table S2) or systematic⁵¹ or narrative⁷⁶⁻⁸² reviews of such studies become the source of information in evidence-based recommendations. Guidelines should be incremental over time, meaning that evidence published between successive versions should lead to removing or adjusting previous recommendation or introducing new ones. The British guidelines¹⁰⁻¹² are exemplary in this respect, giving great weight to new evidence as justification for any change in treatment advice (Table S1). The 2019 National Institute for Health and Care Excellence recommendation¹¹ stated that there was some limited evidence from a single study⁸⁵ that initial dual therapy, compared with placebo, might reduce cardiovascular complications in people with hypertension and type-2 diabetes, but the Committee Members were disappointed that more comprehensive data were unavailable.¹¹ The Committee discussed the benefits of optimizing treatment for hypertension early and agreed that this could substantially improve quality of life. However, they found that there was not enough evidence to determine confidently the benefits or harms of starting antihypertensive treatment with dual therapy.¹¹

The 2018 European guideline¹ went on proposing that the combination of medications targeting multiple mechanisms, such as blocking the renin-angiotensin system and inducing vasodilatation and diuresis, reduces the heterogeneity of the BP responses to initial treatment and provides a steeper dose response than is observed with escalating doses of monotherapy.¹ Whereas this might be true during first 6 months after starting BP-lowering treatment,^{50,86} this certainly does not apply to the long-term life course treatment of hypertension (Figure 1). A post hoc analysis of the

**Figure 3. Recommendation for combining blood pressure-lowering drugs.**

First-line drugs with different modes of action should be combined according to the AB/CD rule. Reproduced from British Cardiac Society, British Hypertension Society, Diabetes UK, HEART UK, Primary Care Cardiovascular Society, The Stroke Association¹⁰ with permission. Copyright ©2020, BMJ Publishing Group Ltd.

Valsartan Antihypertensive Long-Term Use Evaluation Trial did not confirm the widely promoted notion in SPC publications that earlier short-term differences in BP lowering over the long run would reduce cardiovascular end points.⁸⁷ Furthermore, the European¹ and International² Societies of Hypertension instructions ignored that the association of multiple drugs in a single pharmaceutical formulation may have effects on the pharmacokinetic and pharmacodynamic properties of each and every individual component and may lead to undesired interactions between components.^{88,89} The trials^{45,46,48–50} and observational studies^{51–72} reviewed in this debate article were generally not powered or had a duration not long enough to highlight serious adverse effects. As demonstrated by an observational study of patients aged 50 years or more and reflecting a real-world setting, use of SPCs was associated with a greater risk of hypotension than titrated SD free combinations.⁹⁰ Moreover, abstraction made of commonly attributable adverse effects, for example, leg edema or cough respectively on treatment with CCBs or ACE inhibitors, many drug-induced complaints are vaguer and more difficult to be picked up, such as for instance fatigue or dizziness and in theory require rechallenge with the SD components of an SPC to identify the culprit drug. Fewer pills to be taken daily is a central concept in the promotion of SPCs,⁹¹ but a literature review with as search terms “preference” AND “patient” AND “pills” or “SPC”, ran on October 20, 2020, with no limitations, did not yield any article among the 46 hits that directly translated patient convenience into preference for SPCs in primary or secondary cardiovascular prevention. As a corollary, treatment-experienced persons living with HIV valued minimizing side-effects and long-term toxicities over dosing and administration characteristics.⁹² Preferences varied widely,⁹² highlighting the need to elicit individual patient preferences, when decisions about dosing schemes of medications are made, certainly in the light of the potential adverse events of SPCs as mentioned before. Finally, the advice to initiate antihypertensive drug therapy with SPCs also goes against pathophysiological principles supporting the use of TDs in low-renin hypertension, Blacks and older patients and the use vasodilators (ACE inhibitors, ARBs, or CCBs) in high-renin patients or younger individuals (Figure 3).

In an era of epidemiological transition,⁹³ payers, doctors, and patients should join forces to keep health care sustainable in aging populations. In the placebo-controlled outcome trials (Table 1),^{30,31,37–43} a substantial proportion of hypertensive patients could be controlled on a single drug. Arguably, the entry and target BPs in these trials were higher than those currently proposed. However, *mutatis mutandis*, lower BP levels, at which antihypertensive drug treatment should be initiated,⁷ would increase the control rates on monotherapy. BP lowering to <140/90 mmHg was achieved by monotherapy in about one-third of patients randomized to standard treatment in ACCORD¹⁹ and SPRINT.²⁰ In needy patients, out-of-pocket costs are a major hurdle in long-term adherence.⁷¹ In a Canadian

cluster-randomized trial involving 76 primary care practices,⁷¹ 3592 patients with uncomplicated hypertension were followed up for 5 years. Physicians were randomized to an out-of-pocket expenditure software module that provided alerts for out-of-reimbursement costs and recommended TDs as first-line therapy and control. In the intervention group, there was a significant increase in the prescription of TDs in newly treated patients (26.6% versus 19.8%). For patients already treated, older patients were less likely to be switched to a TD. Translating these findings to the Belgian context (Table S3), starting a patient on monotherapy with low-dose treatment with chlorthalidone, bisoprolol, amlodipine, perindopril, valsartan, or olmesartan entails an annual cost of €19, €38, €44, €72, €87, and €107, respectively, if the drug with the lowest retail prize would be prescribed; the corresponding annual expense for the lowest-cost SPC with valsartan/hydrochlorothiazide, olmesartan/hydrochlorothiazide, valsartan/amlodipine, and olmesartan/amlodipine amounts to €85, €107, €128, and €141. Giving that one-third of the patients started on antihypertensive therapy can be controlled by a SD, the potential savings for the Belgian health insurance are huge, if patients would no longer be started on dual SPCs.

Rational Use of SPCs

We proposed that starting antihypertensive therapy in treatment-naïve hypertensive patients might be based on a few simple principles. First, use antihypertensive drugs with different modes of action in line with the AB/CD algorithm (Figure 3). Second, use antihypertensive agents with a long duration of action based on their molecular structure, so-called forgiving drugs, rather than extended-release dosage formulations.^{94,95} Third, titrate each drug to the highest dose that does not produce adverse effects. Fourth, include a thiazide in the drug combination. Finally, once the right combination has been found by rotating through and combining drug classes as well as the timing of dosing, stimulate adherence by reducing the pill load by prescribing SPCs including 2 or 3 antihypertensive agents in adjustable doses. Initiating antihypertensive drug treatment with SDs overcomes the inflexibility of SPCs in titrating the doses of the SD components and the timing of their administration, for instance to prevent nocturnal diuresis or hypotension. In line with the above proposal, in Japan, only one triple-drug SPC is being marketed (telmisartan/amlodipine/hydrochlorothiazide 80/5/12.5 mg). It can only be prescribed after 8 weeks of successful treatment with its components given as dual SPCs plus one SD or as free 3-drug SD combinations

None of the trials of SPCs had a cardiovascular end point. In line with the 2019 National Institute for Health and Care Excellence guideline,¹¹ an important research issue is to mount outcome-driven randomized clinical trials to delineate particular subgroups of hypertensive patients who might benefit from starting dual therapy. Furthermore, compared

with hydrochlorothiazide, chlorthalidone is 1.5 to 2.0 × more potent, has a substantially longer duration of action (plasma half-life, 8 versus >24 hours), and is not metabolized but excreted unchanged in urine, thereby preventing drug-drug interactions.^{32,95} Unfortunately, the diuretic in SPCs currently marketed is overwhelmingly hydrochlorothiazide, an issue to be addressed by manufacturers (Table 2). Finally, payers should better inform physicians and patients on the costs of antihypertensive drugs to reduce health care costs, decrease out-of-pocket costs as a factor limiting adherence,⁷¹ and to support the sustainability of health care by lower drug costs and better prevention of the cardiovascular-renal hypertension-associated complications.

ARTICLE INFORMATION

Affiliations

From the Research Unit Hypertension and Cardiovascular Epidemiology, KU Leuven Department of Cardiovascular Sciences, University of Leuven, Belgium (Z.-Y.Z., Y.-L.Y., K.A.); Department of Hygiene and Public Health, Teikyo University School of Medicine, Tokyo, Japan (K.A.); Tohoku Institute for Management of Blood Pressure, Sendai, Japan (K.A.); Research Institute Alliance for the Promotion of Preventive Medicine (APPREMED), Mechelen, Belgium (K.A., G.E.M., T.W.H., J.A.S.); Biomedical Sciences Group, Faculty of Medicine, University of Leuven, Belgium (J.A.S.); Steno Diabetes Center Copenhagen, Capital Region of Denmark, Denmark (T.W.H.); Department of Neurosciences and Department of Human Genetics, University of Texas Rio Grande Valley School of Medicine, Brownsville, TX (G.E.M.); and Alzheimer's Disease Resource Center for Minority Aging Research, University of Texas Rio Grande Valley, Brownsville, TX (G.E.M.).

Acknowledgment

We acknowledge the clerical assistance of Vera De Leebeek and Renilde Wolfs, Research Unit Hypertension and Cardiovascular Epidemiology, Department of Cardiovascular Sciences, University of Leuven, Leuven, Belgium.

Source of Funding

The Research Institute Alliance for the Promotion of Preventive Medicine received a nonbinding grant from OMRON Healthcare Co Ltd, Kyoto, Japan.

Disclosures

None.

REFERENCES

- Williams B, Mancia G, Spiering W, Agabiti Rosei E, Azizi M, Burnier M, Clement DL, Coca A, de Simone G, Dominiczak A, et al; ESC Scientific Document Group. 2018 ESC/ESH Guidelines for the management of arterial hypertension. *Eur Heart J*. 2018;39:3021–3104. doi: 10.1093/eurheartj/ehy339
- Unger T, Borghi C, Charchar F, Khan NA, Poulter NR, Prabhakaran D, Ramirez A, Schlaich M, Stergiou GS, Tomaszewski M, et al. 2020 International Society of hypertension global hypertension practice guidelines. *Hypertension*. 2020;75:1334–1357. doi: 10.1161/HYPERTENSIONAHA.120.15026
- Mancia G, De Backer G, Dominiczak A, Cifkova R, Fagard R, Germano G, Grassi G, Heagerty AM, Kjeldsen SE, Laurent S, et al. 2007 Guidelines for the management of arterial hypertension: the task force for the management of arterial hypertension of the European Society of Hypertension (ESH) and of the European Society of Cardiology (ESC). *Eur Heart J*. 2007;28:1462–1536. doi: 10.1093/eurheartj/ehm236
- Mancia G, Fagard R, Narkiewicz K, Redon J, Zanchetti A, Böhm M, Christiaens T, Cifkova R, De Backer G, Dominiczak A, et al. 2013 ESH/ESC guidelines for the management of arterial hypertension: the task force for the management of arterial hypertension of the European Society of Hypertension (ESH) and of the European Society of Cardiology (ESC). *Eur Heart J*. 2013;34:2159–2219. doi: 10.1093/eurheartj/ehf151
- Chobanian AV, Bakris GL, Black HR, Cushman WC, Green LA, Izzo JL Jr, Jones DW, Materson BJ, Oparil S, Wright JT Jr, et al; Joint National Committee on Prevention, Detection, Evaluation, and Treatment of High Blood Pressure. National Heart, Lung, and Blood Institute; National High Blood Pressure Education Program Coordinating Committee. Seventh report of the Joint National Committee on prevention, detection, evaluation, and treatment of high blood pressure. *Hypertension*. 2003;42:1206–1252. doi: 10.1161/01.HYP.0000107251.49515.c2
- James PA, Oparil S, Carter BL, Cushman WC, Dennison-Himmelfarb C, Handler J, Lackland DT, LeFevre ML, MacKenzie TD, Ogedegbe O, et al. 2014 evidence-based guideline for the management of high blood pressure in adults: report from the panel members appointed to the Eighth Joint National Committee (JNC 8). *J Am Med Assoc*. 2014;311:507–520. doi: 10.1001/jama.2013.284427
- Whelton PK, Carey RM, Aronow WS, Casey DE Jr, Collins KJ, Dennison Himmelfarb C, DePalma SM, Gidding S, Jamerson KA, Jones DW, et al. 2017 ACC/AHA/AAPA/ABC/ACPM/AGS/APhA/ASH/ASPC/NMA/PCNA guideline for the prevention, detection, evaluation, and management of high blood pressure in adults: a report of the American College of Cardiology/American Heart Association Task Force on Clinical Practice Guidelines. *J Am Coll Cardiol*. 2018;71:e127–e248. doi: 10.1016/j.jacc.2017.11.006
- Guidelines Subcommittee. 1999 World Health Organization-International Society of Hypertension guidelines for the management of hypertension. *J Hypertens*. 1999;17:151–183.
- Whitworth JA; World Health Organization, International Society of Hypertension Writing Group. 2003 World Health Organization (WHO)/International Society of Hypertension (ISH) statement on management of hypertension. *J Hypertens*. 2003;21:1983–1992. doi: 10.1097/00004872-200311000-00002
- British Cardiac Society, British Hypertension Society, Diabetes UK, HEART UK, Primary Care Cardiovascular Society, The Stroke Association. JBS 2: Joint British Societies' guidelines on prevention of cardiovascular diseases in clinical practice. *Heart*. 2005 (Suppl 5):v1-52. doi: 10.1136/hrt.2005.079988.
- National Institute for Health and Clinical Excellence (NICE). *Hypertension in Adults: Diagnosis and Management. NICE Guideline [NG136]*. 2019. <https://www.nice.org.uk/guidance/ng136>. Accessed January 23, 2021.
- National Institute for Health and Clinical Excellence (NICE). *The Clinical Management of Primary Hypertension in Adults. Clinical Guideline 127. Methods, Evidence and Recommendations*. 2011. <http://www.nice.org.uk/guidance/CG127>. Accessed January 23, 2021.
- Staessen JA, Wang JG, Thijs L. Cardiovascular protection and blood pressure reduction: a meta-analysis. *Lancet*. 2001;358:1305–1315. doi: 10.1016/S0140-6736(01)06411-X
- Blood Pressure Lowering Treatment Trialists' Collaboration. Effects of different blood-pressure-lowering regimens on major cardiovascular events: results of prospectively-designed overviews of randomised trials. *Lancet*. 2003;362:1527–1535. doi: 10.1097/HJH.0b013e3280bad9b4
- Verdecchia P, Reboldi G, Angeli F, Gattobigio R, Bentivoglio M, Thijs L, Staessen JA, Porcellati C. Angiotensin-converting enzyme inhibitors and calcium channel blockers for coronary heart disease and stroke prevention. *Hypertension*. 2005;46:386–392. doi: 10.1161/01.HYP.0000174591.42889.a2
- Blood Pressure Lowering Treatment Trialists' Collaboration. Blood pressure dependent and independent effects of agents that inhibit the renin-angiotensin system. *J Hypertens*. 2007;25:951–958. doi: 10.1097/HJH.0b013e3280bad9b4
- Verdecchia P, Angeli F, Cavallini C, Gattobigio R, Gentile G, Staessen JA, Reboldi G. Blood pressure reduction and renin-angiotensin system inhibition for prevention of congestive heart failure: a meta-analysis. *Eur Heart J*. 2009;30:679–688. doi: 10.1093/eurheartj/ehn575
- Verdecchia P, Staessen JA, Angeli F, de Simone G, Achilli A, Ganau A, Mureddu G, Pede S, Maggioni AP, Lucci D, et al; Cardio-Sis investigators. Usual versus tight control of systolic blood pressure in non-diabetic patients with hypertension (Cardio-Sis): an open-label randomised trial. *Lancet*. 2009;374:525–533. doi: 10.1016/S0140-6736(09)61340-4
- The ACCORD Study Group. Effects of intensive blood-pressure control in type 2 diabetes mellitus. *N Engl J Med*. 2010;362:1575–1585. doi: 10.1056/NEJMoa1001286.
- Wright JT Jr, Williamson JD, Whelton PK, Snyder JK, Sink KM, Rocco MV, Reboussin DM, Rahman M, Oparil S, Lewis CE, et al; The SPRINT Research Group. A randomized trial of intensive versus standard blood pressure control. *N Engl J Med*. 2015;373:2103–2116. doi: 10.1056/NEJMoa1511939
- Brunner HR, Laragh JH, Baer L, Newton MA, Goodwin FT, Krakoff LR, Bard RH, Bühler FR. Essential hypertension: renin and aldosterone, heart attack and stroke. *N Engl J Med*. 1972;286:441–449. doi: 10.1056/NEJM197203022860901
- Dunn MJ, Tannen RL. Low-renin hypertension. *Kidney Int*. 1974;5:317–325. doi: 10.1038/ki.1974.47

23. Julius S. Interaction between renin and the autonomic nervous system in hypertension. *Am Heart J*. 1988;116(2 pt 2):611–616. doi: 10.1016/0002-8703(88)90559-5
24. MacDonald TM, Williams B, Webb DJ, Morant S, Caulfield M, Cruickshank JK, Ford I, Sever P, Mackenzie IS, Padmanabhan S, et al; British Hypertension Society Programme of Prevention and Treatment of Hypertension with Algorithm-based Therapy (PATHWAY). Combination therapy is superior to sequential monotherapy for the initial treatment of hypertension: a double-blind randomized controlled trial. *J Am Heart Assoc*. 2017;6:e006986. doi: 10.1161/JAHA.117.006986
25. Helmer OM, Judson WE. Metabolic studies on hypertensive patients with suppressed plasma renin activity not due to hyperaldosteronism. *Circulation*. 1968;38:965–976. doi: 10.1161/01.cir.38.5.965
26. Channick BJ, Adlin EV, Marks AD. Suppressed plasma renin activity in hypertension. *Arch Intern Med*. 1969;123:131–140. doi:10.1001/archinte.1969.00300120019003
27. Mroczek WJ, Finnerty FA, Catt KJ. Lack of association between plasma-renin and history of heart-attack or stroke in patients with essential hypertension. *Lancet*. 1973;2:464–468. doi: 10.1016/s0140-6736(73)92069-2
28. Staessen J, Amery A, Fagard R. Editorial review. Isolated systolic hypertension. *J Hypertens*. 1990;8:393–405.
29. SHEP Cooperative Research Group. Prevention of stroke by anti-hypertensive drug treatment in older persons with isolated systolic hypertension. Final results of the Systolic Hypertension in the Elderly Program (SHEP). *J Am Med Ass*. 1991;265:3255–3264. doi:10.1001/jama.1991.03460240051027
30. Staessen JA, Fagard R, Thijs L, Celis H, Arabidze GG, Birkenhäger WH, Bulpitt CJ, de Leeuw PW, Dollyer CT, Fletcher AE, et al. Randomised double-blind comparison of placebo and active treatment for older patients with isolated systolic hypertension. The Systolic Hypertension in Europe (Syst-Eur) Trial Investigators. *Lancet*. 1997;350:757–764. doi: 10.1016/s0140-6736(97)05381-6
31. Liu L, Wang JG, Gong L, Liu G, Staessen JA. Comparison of active treatment and placebo in older Chinese patients with isolated systolic hypertension. Systolic Hypertension in China (Syst-China) Collaborative Group. *J Hypertens*. 1998;16(12 pt 1):1823–1829. doi: 10.1097/00004872-199816120-00016
32. Chen P, Chaugai S, Zhao F, Wang DW. Cardioprotective effect of thiazide-like diuretics: a meta-analysis. *Am J Hypertens*. 2015;28:1453–1463. doi: 10.1093/ajh/hpv050
33. Staessen JA, Wang J, Bianchi G, Birkenhäger WH. Essential hypertension. *Lancet*. 2003;361:1629–1641. doi: 10.1016/S0140-6736(03)13302-8
34. Staessen JA, Li Y, Richard T. Oral renin inhibitors. *Lancet*. 2006;368:1449–1456. doi: 10.1016/S0140-6736(06)69442-7
35. Staessen J, Bulpitt C, Cattarot A, Fagard R, Vanhees L, Amery A. Secondary prevention with beta-adrenoceptor blockers in post-myocardial infarction patients. *Am Heart J*. 1982;104:1395–1399. doi: 10.1016/0002-8703(82)90184-3
36. Staessen JA, Wang JG, Birkenhäger WH, Fagard R. Treatment with beta-blockers for the primary prevention of the cardiovascular complications of hypertension. *Eur Heart J*. 1999;20:11–24. doi: 10.1053/euhj.1998.1121
37. Medical Research Council Working Party. MRC trial of treatment of mild hypertension: principal results. *Br Med J*. 1985;291: 97–104. doi: 10.1136/bmj.291.6488.97
38. Beckett NS, Peters R, Fletcher AE, Staessen JA, Liu L, Dumitrascu D, Stoyanovsky V, Antikainen RL, Nikitin Y, Anderson C, et al; HYVET Study Group. Treatment of hypertension in patients 80 years of age or older. *N Engl J Med*. 2008;358:1887–1898. doi: 10.1056/NEJMoa0801369
39. PROGRESS Collaborative Group. Randomised trial of a perindopril-based blood pressure lowering regimen among 6105 individuals with prior stroke or transient ischaemic attack. *Lancet*. 2001;358:1033–1041. doi: 10.1016/S0140-6736(01)06178-5
40. MRC Working Party. Medical research council trial of treatment of hypertension in older adults: principal results. *Br Med J*. 1992;304:405–412. doi: 10.1136/bmj.304.6824.405
41. Lithell H, Hansson L, Skoog I, Elmfeldt D, Hofman A, Olofsson B, Trenkwalder P, Zanchetti A; SCOPE Study Group. The Study on Cognition and Prognosis in the Elderly (SCOPE): principal results of a randomized double-blind intervention trial. *J Hypertens*. 2003;21:875–886. doi: 10.1097/00004872-200305000-00011
42. Lithell H, Hansson L, Skoog I, Elmfeldt D, Hofman A, Olofsson B, Trenkwalder P, Zanchetti A; SCOPE Study Group. The Study on Cognition and Prognosis in the Elderly (SCOPE): outcomes in patients not receiving add-on therapy after randomization. *J Hypertens*. 2004;22:1605–1612. doi: 10.1097/01.hjh.0000133730.47372.4c
43. Gong L, Zhang W, Zhu Y, Zhu J, Kong D, Pagé V, Ghadirian P, LeLorier J, Hamet P. Shanghai trial of nifedipine in the elderly (STONE). *J Hypertens*. 1996;14:1237–1245. doi: 10.1097/00004872-199610000-00013
44. Osterberg L, Blaschke T. Adherence to medication. *N Engl J Med*. 2005;353:487–497. doi: 10.1056/NEJMra050100
45. Chrysant SG, Melino M, Karki S, Lee J, Heyrman R. The combination of olmesartan medoxomil and amlodipine besylate in controlling high blood pressure: COACH, a randomized, double-blind, placebo-controlled, 8-week factorial efficacy and safety study. *Clin Ther*. 2008;30:587–604. doi: 10.1016/j.clinthera.2008.04.002
46. Mourad JJ, LeJeune S. Effective systolic blood pressure reduction with olmesartan medoxomil/amlodipine combination therapy. Post hoc analysis of data from a randomized, double-blind, parallel-group, multicentre study. *Clin Drug Invest*. 2009;29:419–425. doi: 10.2165/00044011-200929060-00005
47. Wald DS, Law M, Morris JK, Bestwick JP, Wald NJ. Combination therapy versus monotherapy in reducing blood pressure: meta-analysis on 11,000 participants from 42 trials. *Am J Med*. 2009;122:290–300. doi: 10.1016/j.amjmed.2008.09.038
48. Dasgupta K, Quinn RR, Zarnke KB, Rabi DM, Ravani P, Daskalopoulou SS, Rabkin SW, Trudeau L, Feldman RD, Cloutier L, et al; Canadian Hypertension Education Program. The 2014 Canadian Hypertension Education Program recommendations for blood pressure measurement, diagnosis, assessment of risk, prevention, and treatment of hypertension. *Can J Cardiol*. 2014;30:485–501. doi: 10.1016/j.cjca.2014.02.002
49. Calhoun DA, Lacourcière Y, Chiang YT, Glazer RD. Triple antihypertensive therapy with amlodipine, valsartan, and hydrochlorothiazide: a randomized clinical trial. *Hypertension*. 2009;54:32–39. doi: 10.1161/HYPERTENSIONAHA.109.131300
50. MacDonald TM, Williams B, Caulfield M, Cruickshank JK, McInnes G, Sever P, Webb DJ, Mackenzie IS, Salsbury J, Morant S, et al. Monotherapy versus dual therapy for the initial treatment of hypertension (PATHWAY-1): a randomised double-blind controlled trial. *BMJ Open*. 2015;5:e007645. doi: 10.1136/bmjopen-2015-007645
51. Sherrill B, Halpern M, Khan S, Zhang J, Panjabi S. Single-pill vs free-equivalent combination therapies for hypertension: a meta-analysis of health care costs and adherence. *J Clin Hypertens (Greenwich)*. 2011;13:898–909. doi: 10.1111/j.1751-7176.2011.00550.x
52. Dezii CM. A retrospective study of persistence with single-pill combination therapy vs. concurrent two-pill therapy in patients with hypertension. *Manag Care*. 2000;10:6–10.
53. Malesker MA, Hilleman DE. Comparison of amlodipine/valsartan fixed-dose combination therapy and conventional therapy. *Manag Care*. 2010;19:36–42.
54. Taylor AA, Shoheiber O. Adherence to antihypertensive therapy with fixed-dose amlodipine besylate/benazepril HCl versus comparable component-based therapy. *Congest Heart Fail*. 2003;9:324–332. doi: 10.1111/j.1527-5299.2003.03269.x
55. Gerbino PP, Shoheiber O. Adherence patterns among patients treated with fixed-dose combination versus separate antihypertensive agents. *Am J Health Syst Pharm*. 2007;64:1279–1283. doi: 10.2146/ajhp060434
56. Hasford J, Schröder-Bernhardi D, Rottenkolber M, Kostev K, Dietlein G. Persistence with antihypertensive treatments: results of a 3-year follow-up cohort study. *Eur J Clin Pharmacol*. 2007;63:1055–1061. doi: 10.1007/s00228-007-0340-2
57. Schweizer J, Hilsman U, Neumann G, Handrock R, Klebs S. Efficacy and safety of valsartan 160/HCTZ 25 mg in fixed combination in hypertensive patients not controlled by candesartan 32 mg plus HCTZ 25 mg in free combination. *Curr Med Res Opin*. 2007;23:2877–2885. doi: 10.1185/030079907x242539
58. Barron JJ, Daniel G, Makin C, Preblich R. Treatment modifications and resource use for fixed-dose vs separate-agent antihypertensive regimens. *Drug Benefit Trends*. 2008;20:226–247.
59. Brixner DL, Jackson KC 2nd, Sheng X, Nelson RE, Keskinaslan A. Assessment of adherence, persistence, and costs among valsartan and hydrochlorothiazide retrospective cohorts in free- and fixed-dose combinations. *Curr Med Res Opin*. 2008;24:2597–2607. doi: 10.1185/03007990802319364
60. Dickson M, Plauschinat CA. Compliance with antihypertensive therapy in the elderly: a comparison of fixed-dose combination amlodipine/benazepril versus component-based free-combination therapy. *Am J Cardiovasc Drugs*. 2008;8:45–50. doi: 10.2165/00129784-200808010-00006
61. Hess G, Hill J, Lau H, Dastani H, Chaudhari P. Medication utilization patterns and hypertension-related expenditures among patients who were switched from fixed-dose to free-combination antihypertensive therapy. *P T*. 2008;33:652–666.

62. Jackson KC 2nd, Sheng X, Nelson RE, Keskinaslan A, Brixner DI. Adherence with multiple-combination antihypertensive pharmacotherapies in a US managed care database. *Clin Ther*. 2008;30:1558–1563. doi: 10.1016/j.clinthera.2008.08.010
63. Shaya FT, Du D, Gbarayor CM, Frech-Tamas F, Lau H, Weir MR. Predictors of compliance with antihypertensive therapy in a high-risk medicaid population. *J Natl Med Assoc*. 2009;101:34–39. doi: 10.1016/s0027-9684(15)30808-7
64. Yang W, Kahler KH, Fellers T, Orloff J, Chang J, Bensimon AG, Wu EQ, Fan CP, Yu AP. Copayment level, treatment persistence, and healthcare utilization in hypertension patients treated with single-pill combination therapy. *J Med Econ*. 2011;14:267–278. doi: 10.3111/13696998.2011.570401
65. Baser O, Andrews LM, Wang L, Xie L. Comparison of real-world adherence, healthcare resource utilization and costs for newly initiated valsartan/amlodipine single-pill combination versus angiotensin receptor blocker/calcium channel blocker free-combination therapy. *J Med Econ*. 2011;14:576–583. doi: 10.3111/13696998.2011.596873
66. Belsey JD. Optimizing adherence in hypertension: a comparison of outcomes and costs using single tablet regimens vs individual component regimens. *J Med Econ*. 2012;15:897–905. doi: 10.3111/13696998.2012.689792
67. Breitscheidel L, Ehlken B, Kostev K, Oberdiek MS, Sandberg A, Schmieder RE. Real-life treatment patterns, compliance, persistence, and medication costs in patients with hypertension in Germany. *J Med Econ*. 2012;15:155–165. doi: 10.3111/13696998.2011.635229
68. Hong SH, Wang J, Tang J. Dynamic view on affordability of fixed-dose combination antihypertensive drug therapy. *Am J Hypertens*. 2013;26:879–887. doi: 10.1093/ajh/hpt035
69. Stafylas P, Kourlaba G, Hatzikou M, Georgiopoulos D, Sarafidis P, Maniadakis N. Economic evaluation of a single-pill triple antihypertensive therapy with valsartan, amlodipine, and hydrochlorothiazide against its dual components. *Cost Eff Resour Alloc*. 2015;13:10. doi: 10.1186/s12962-015-0036-x
70. Ren M, Xuan D, Lu Y, Fu Y, Xuan J. Economic evaluation of olmesartan/amlodipine fixed-dose combination for hypertension treatment in China. *J Med Econ*. 2020;23:394–400. doi: 10.1080/13696998.2019.1699799
71. Tamblin R, Winslade N, Qian CJ, Moraga T, Huang A. What is in your wallet? A cluster randomized trial of the effects of showing comparative patient out-of-pocket costs on primary care prescribing for uncomplicated hypertension. *Implement Sci*. 2018;13:7. doi: 10.1186/s13012-017-0701-x
72. Park C, Wang G, Ng BP, Fang J, Durthaler JM, Ayala C. The uses and expenses of antihypertensive medications among hypertensive adults. *Res Social Adm Pharm*. 2020;16:183–189. doi: 10.1016/j.sapharm.2019.05.002
73. Yang W, Chang J, Kahler KH, Fellers T, Orloff J, Wu EQ, Bensimon AG. Evaluation of compliance and health care utilization in patients treated with single pill vs. free combination antihypertensives. *Curr Med Res Opin*. 2010;26:2065–2076. doi: 10.1185/03007995.2010.494462
74. Rasmussen JN, Chong A, Alter DA. Relationship between adherence and evidence-based pharmacotherapy and long-term mortality after acute myocardial infarction. *J Am Med Assoc*. 2007;297:177–186.
75. Marzorati C, Pravettoni G. Value as the key concept in the health care system: how it has influenced medical practice and clinical decision-making processes. *J Multidiscip Healthc*. 2017;10:101–106. doi: 10.2147/JMDH.S122383
76. Cowart JB, Taylor AA. Should two-drug initial therapy for hypertension be recommended for all patients? *Curr Hypertens Rep*. 2012;14:324–332. doi: 10.1007/s11906-012-0280-9
77. Burnier M, Brown RE, Ong SH, Keskinaslan A, Khan ZM. Issues in blood pressure control and the potential role of single-pill combination therapies. *Int J Clin Pract*. 2009;63:790–798. doi: 10.1111/j.1742-1241.2009.01999.x
78. Ram CV. Fixed-dose triple-combination treatments in the management of hypertension. *Manag Care*. 2013;22:45–55.
79. Schäfer HH, Scheunert U. Costs of current antihypertensive therapy in Switzerland: an economic evaluation of 3,489 patients in primary care. *Swiss Med Wkly*. 2013;143:w13854. doi: 10.4414/smw.2013.13854
80. Hilleman DE. Adherence and health care costs with single-pill fixed-dose combinations in hypertension management. *J Manag Care Pharm*. 2014;20:93–100. doi: 10.18553/jmcp.2014.20.1.93
81. Costa FV. Improving adherence to treatment and reducing economic costs of hypertension: the role of olmesartan-based treatment. *High Blood Press Cardiovasc Prev*. 2017;24:265–274. doi: 10.1007/s40292-017-0221-4
82. Poulter NR, Borghi C, Parati G, Pathak A, Toli D, Williams B, Schmieder RE. Medication adherence in hypertension. *J Hypertens*. 2020;38:579–587. doi: 10.1097/HJH.0000000000002294
83. Wei FF, Zhang ZY, Huang QF, Staessen JA. Diagnosis and management of resistant hypertension: state of the art. *Nat Rev Nephrol*. 2018;14:428–441. doi: 10.1038/s41581-018-0006-6
84. Staessen J, Fagard R, Lijnen P, Verschueren LJ, Amery A. Double-blind comparison between propranolol and bendroflumethiazide in captopril-treated resistant hypertensive patients. *Am Heart J*. 1983;106:321–328. doi: 10.1016/0002-8703(83)90199-0
85. ADVANCE Collaborative Group. Effects of a fixed combination of perindopril and indapamide on macrovascular and microvascular outcomes in patients with type 2 diabetes mellitus (the ADVANCE trial): a randomised controlled trial. *Lancet*. 2007;370:829–840. doi: 10.1016/S0140-6736(07)61303-8
86. Feldman RD, Zou GY, Vandervoort MK, Wong CJ, Nelson SA, Feagan BG. A simplified approach to the treatment of uncomplicated hypertension: a cluster randomized, controlled trial. *Hypertension*. 2009;53:646–653. doi: 10.1161/HYPERTENSIONAHA.108.123455
87. Julius S, Weber MA, Kjeldsen SE, McInnes GT, Zanchetti A, Brunner HR, Laragh J, Schork MA, Hua TA, Amerena J, et al. The Valsartan Antihypertensive Long-Term Use Evaluation (VALUE) trial: outcomes in patients receiving monotherapy. *Hypertension*. 2006;48:385–391. doi: 10.1161/01.HYP.0000023611.996301.f2
88. García-Donaire JA, Ruilope LM. Multiple action fixed combination. Present or future? *Fund Clin Pharmacol*. 2010;24:37–42. doi: 10.1111/j.1472-8206.2009.00799.x
89. Guglietta A, Guerrero M. Issues to consider in the pharmaceutical development of a cardiovascular poly-pill. *Nat Clin Pract Cardiovasc Med*. 2009;6:112–119. doi: 10.1038/ncpcardio.1424
90. Nowak E, Happe A, Bouget J, Paillard F, Vigneau C, Scarabin PY, Oger E. Safety of fixed dose of antihypertensive drug combinations compared to (single pill) free-combinations: a nested matched case-control analysis. *Medicine (Baltimore)*. 2015;94:e2229. doi: 10.1097/MD.0000000000002229
91. Aslam F, Haque A, Lee V, Foody J. Patient adherence and preference considerations in managing cardiovascular risk: focus on single pill and amlodipine/atorvastatin fixed combination. *Patient Prefer Adherence*. 2009;3:61–66. doi: 10.2147/ppa.s4201
92. Ostermann J, Mühlbacher A, Brown DS, Regier DA, Hobbie A, Weinhold A, Alshareef N, Derrick C, Thielman NM. Heterogeneous patient preferences for modern antiretroviral therapy: results of a discrete choice experiment. *Value Health*. 2020;23:851–861. doi: 10.1016/j.jval.2020.03.007
93. Murray CJ, Lopez AD. Measuring the global burden of disease. *N Engl J Med*. 2013;369:448–457. doi: 10.1056/NEJMr1201534
94. Hernández-Hernández R, Armas de Hernández MJ, Armas-Padilla MC, Carvajal AR, Guerrero-Pajuelo J. The effects of missing a dose of enalapril versus amlodipine on ambulatory blood pressure. *Blood Press Monit*. 1996;1:121–126.
95. Carter BL, Ernst ME, Cohen JD. Hydrochlorothiazide versus chlorthalidone: evidence supporting their interchangeability. *Hypertension*. 2004;43:4–9. doi: 10.1161/01.HYP.0000103632.19915.0E

Response to Starting Antihypertensive Drug Treatment With Combination Therapy: Controversies in Hypertension - Con Side of the Argument

Alexandre Persu , Marilucy Lopez-Sublet, Engi Abd El-Hady Algharably, Reinhold Kreutz 

Jan Staessen is an internationally recognized expert known for his independent and integer positions. He and his coauthors have produced a highly informative, original document against the extensive use of first-line single-pill combinations.

Still, we feel that it does not detract from our plea in favor of the use of combination therapy as first-line treatment in most patients with hypertension. Although studies supporting the benefit of this compared to other strategies have limitations, this is also the case for other treatment strategies used in daily practice. For example, the arguments in favor of the National Institute for Health and Care Excellence algorithm supported by Staessen and colleagues rest more on clinical expertise and general principles of pharmacology than on rigorously designed randomized controlled trials.

The recommendation to use dual antihypertensive therapy in most patients with hypertension is more a public health than a trialist's perspective.

As indicated by Prof. Staessen, two-thirds of patients with hypertension eventually need ≥ 2 antihypertensive drugs to achieve blood pressure control.

We simply think that using single-pill combinations as first-line therapy in those patients is the most effective way to overcome poor drug adherence and inertia, currently the main barriers to improve blood pressure control worldwide.

Admittedly, this recommendation may benefit the pharma industry. However, it is the responsibility of public health authorities to negotiate properly the price of single-pill combinations while supporting less expensive, generic alternatives.

Finally, the gap between Prof. Staessen's and our conception is less wide than it may appear.

While he focuses on cases in which monotherapy is the preferred approach—basically the same as us, patients with mild hypertension, particularly older patients with isolated systolic hypertension—we emphasize the big picture in favor of first-line dual antihypertensive therapy in most patients with hypertension, while mentioning the exceptions.