



2-15-2021

Physical Mapping of the *Anopheles (Nyssorhynchus) darlingi* Genomic Scaffolds

Míriam Silva Rafael

Instituto Nacional de Pesquisas da Amazônia, Brazil

Leticia Cegatti Bridi

Instituto Nacional de Pesquisas da Amazônia, Brazil

Igor V. Sharakhov

Virginia Polytechnic Institute and State University

Osvaldo Marinotti

MTEKPrime

Maria V. Sharakhova

Virginia Polytechnic Institute and State University

See next page for additional authors

Follow this and additional works at: https://uknowledge.uky.edu/biology_facpub



Part of the [Biology Commons](#), [Entomology Commons](#), and the [Genetics and Genomics Commons](#)

[Right click to open a feedback form in a new tab to let us know how this document benefits you.](#)

Repository Citation

Rafael, Míriam Silva; Bridi, Leticia Cegatti; Sharakhov, Igor V.; Marinotti, Osvaldo; Sharakhova, Maria V.; Timoshevskiy, Vladimir A.; Guimarães-Marques, Giselle Moura; Santos, Valéria Silva; Nunes da Silva, Carlos Gustavo; Astolfi-Filho, Spartaco; and Tadei, Wanderli Pedro, "Physical Mapping of the *Anopheles (Nyssorhynchus) darlingi* Genomic Scaffolds" (2021). *Biology Faculty Publications*. 205.
https://uknowledge.uky.edu/biology_facpub/205

This Article is brought to you for free and open access by the Biology at UKnowledge. It has been accepted for inclusion in Biology Faculty Publications by an authorized administrator of UKnowledge. For more information, please contact UKnowledge@lsv.uky.edu.

Physical Mapping of the *Anopheles (Nyssorhynchus) darlingi* Genomic Scaffolds

Digital Object Identifier (DOI)

<https://doi.org/10.3390/insects12020164>

Notes/Citation Information

Published in *Insects*, v. 12, issue 2, 164.

© 2021 by the authors. Licensee MDPI, Basel, Switzerland.








This article is an open access article distributed under the terms and conditions of the Creative Commons Attribution (CC BY) license (<https://creativecommons.org/licenses/by/4.0/>).

Authors

Míriam Silva Rafael, Leticia Cegatti Bridi, Igor V. Sharakhov, Osvaldo Marinotti, Maria V. Sharakhova, Vladimir A. Timoshevskiy, Giselle Moura Guimarães-Marques, Valéria Silva Santos, Carlos Gustavo Nunes da Silva, Spartaco Astolfi-Filho, and Wanderli Pedro Tadei

Article

Physical Mapping of the *Anopheles (Nyssorhynchus) darlingi* Genomic Scaffolds

Míriam Silva Rafael ^{1,2,*}, Leticia Cegatti Bridi ², Igor V. Sharakhov ^{3,4,5}, Osvaldo Marinotti ⁶,
Maria V. Sharakhova ^{3,4}, Vladimir Timoshevskiy ^{3,7}, Giselle Moura Guimarães-Marques ²,
Valéria Silva Santos ², Carlos Gustavo Nunes da Silva ⁸, Spartaco Astolfi-Filho ⁹ and Wanderli Pedro Tadei ^{1,2}

- ¹ Coordenação de Sociedade Ambiente e Saúde, Laboratório de Vetores de Malária e Dengue, Instituto Nacional de Pesquisas da Amazônia, Av. André Araújo, 2936, Manaus, AM 69060-001, Brazil; wptadei@gmail.com
- ² Programa de Pós-Graduação em Genética, Conservação e Biologia Evolutiva, Instituto Nacional de Pesquisas da Amazônia, Manaus, AM 69060-001, Brazil; lcbridi@gmail.com (L.C.B.); moura.giselle@gmail.com (G.M.G.-M.); santos.val.silva@gmail.com (V.S.S.)
- ³ Department of Entomology and Fralin Life Science Institute, Virginia Polytechnic Institute and State University, Blacksburg, VA 24061, USA; igor@vt.edu (I.V.S.); msharakh@vt.edu (M.V.S.); v.a.timoshevsky@gmail.com (V.T.)
- ⁴ Laboratory of Evolutionary Genomics of Insects, the Federal Research Center Institute of Cytology and Genetics, Siberian Branch of the Russian Academy of Sciences, Novosibirsk 630090, Russia
- ⁵ Department of Genetics and Cell Biology, Tomsk State University, Tomsk 634050, Russia
- ⁶ MTEKPrime, Aliso Viejo, CA 92656, USA; omarinotti@gmail.com
- ⁷ Department of Biology, University of Kentucky, Lexington, KY 40506, USA
- ⁸ Programa de Pós-Graduação em Biotecnologia, Universidade Federal do Amazonas, Av. Rodrigo Otávio, 6.200. Coroado I, Manaus, AM 69080-900, Brazil; cgmanaus@gmail.com
- ⁹ Laboratório de Tecnologias de DNA, Divisão de Biotecnologia, Centro de Apoio Multidisciplinar, Universidade Federal do Amazonas, Av. Rodrigo Otávio, 6.200. Coroado I, Manaus, AM 69080-900, Brazil; spartaco.biotec@gmail.com
- * Correspondence: msrafael@inpa.gov.br; Tel.: +55-092-3643-3066



Citation: Rafael, M.S.; Bridi, L.C.; Sharakhov, I.V.; Marinotti, O.; Sharakhova, M.V.; Timoshevskiy, V.; Guimarães-Marques, G.M.; Santos, V.S.; da Silva, C.G.N.; Astolfi-Filho, S.; et al. Physical Mapping of the *Anopheles (Nyssorhynchus) darlingi* Genomic Scaffolds. *Insects* **2021**, *12*, 164. <https://doi.org/10.3390/insects12020164>

Academic Editor: Peter Armbruster
Received: 16 December 2020
Accepted: 11 February 2021
Published: 15 February 2021

Publisher's Note: MDPI stays neutral with regard to jurisdictional claims in published maps and institutional affiliations.



Copyright: © 2021 by the authors. Licensee MDPI, Basel, Switzerland. This article is an open access article distributed under the terms and conditions of the Creative Commons Attribution (CC BY) license (<https://creativecommons.org/licenses/by/4.0/>).

Simple Summary: *Anopheles darlingi* mosquitoes are the main vectors of malaria in the Brazilian Amazon. To assign genomic DNA sequences to chromosomes of this species, we performed fluorescence in situ hybridization of DNA probes with salivary glands polytene chromosomes. We compared the physical locations of the *An. darlingi* probes with homologous sequences in other *Anopheles* species, namely *Anopheles albimanus* and *Anopheles gambiae*. The results demonstrated that substantial genome rearrangements occurred throughout the evolutionary history of these mosquitoes. The physical mapping data can be useful for improving the structural accuracy of the *An. darlingi* genome assembly and for understanding the chromosomal evolution of these mosquitoes.

Abstract: The genome assembly of *Anopheles darlingi* consists of 2221 scaffolds (N50 = 115,072 bp) and has a size spanning 136.94 Mbp. This assembly represents one of the smallest genomes among *Anopheles* species. *Anopheles darlingi* genomic DNA fragments of ~37 Kb were cloned, end-sequenced, and used as probes for fluorescence in situ hybridization (FISH) with salivary gland polytene chromosomes. In total, we mapped nine DNA probes to scaffolds and autosomal arms. Comparative analysis of the *An. darlingi* scaffolds with homologous sequences of the *Anopheles albimanus* and *Anopheles gambiae* genomes identified chromosomal rearrangements among these species. Our results confirmed that physical mapping is a useful tool for anchoring genome assemblies to mosquito chromosomes.

Keywords: in situ hybridization; genomics and cytogenetics; synteny; polytene chromosome

1. Introduction

The *Anopheles* genus includes vector species of great importance to public health, such as those transmitting malaria parasites [1–3]. This genus contains seven subgenera, of

which two are the focus of the present study: *Nyssorhynchus* Blanchard, which includes 39 species, among them the neotropical malaria vectors *An. darlingi* and *Anopheles albimanus*, and *Cellia* Theobald with 224 species, including *An. gambiae* [4].

Anopheles darlingi, the subject of this study, is the major contributor to malarial transmission in the Amazonian region of South America [5–8]. The distribution of the species reaches from Southern Mexico to Northern Argentina and from East of the Andean Mountains to the coast of the Atlantic Ocean [1,9,10]. The importance of *An. darlingi* as a malaria vector spurred effort for genome sequencing, assembling and annotation [11].

While the size of the *An. darlingi* haploid genome was determined by cytometric analysis to be ~201 Mb (2C = 0.41 pg), sequencing and assembling resulted in an *An. darlingi* fragmented, draft genome that spans only 173.9 Mb. The difference between the cytometrically determined genome size and the sum of all the contigs and scaffolds is most likely the result of unassembled centromeres, telomeres and other portions of the genome that are rich in repetitive DNA sequences. In fact, 18.66% of the reads were not included in the final assembly [11]. Presently, the only draft *An. darlingi* genome accessible in VectorBase is composed of 2221 scaffolds. While long-read sequencing technologies are currently available, efforts for chromosome-level reference genome assembly are still lacking for this medically important mosquito species.

Chromosomal physical maps and genomic sequencing both contribute to accurate genome assembling [12]. The FISH method is a useful tool for the development of chromosome-anchored assemblies and correcting scaffold arrangements [13]. By using the FISH technique, several DNA sequences have been mapped in the *An. darlingi* chromosomes. Positions of gene-specific sequences for rDNA [14], heat shock protein (Hsp) 70 [15], actin [16], myosin [17], glutathione S transferase (GST) [8], and Gram-negative bacteria binding protein (GNBP) [18] have been placed onto the *An. darlingi* photomap [19]. In this study, we expanded the number of probes hybridized to *An. darlingi* chromosomes, mapping nine additional DNA sequences, originating from fosmid clones. The physical map we are building will support an improved, more complete and more ordered genome assembly for *An. darlingi*.

2. Material and Methods

2.1. Mosquitoes

Gravid *An. darlingi* females were captured at Bairro do Puraquequara (3°5.19'5'' S and 59°8.92'62'' W), Manaus, Amazonas State, Brazil. They were captured from 6:30 to 9:00 p.m. when resting on stable walls or by human landing catches (HLC), by trained technicians using personal protective equipment. The collection of specimens was authorized by the Chico Mendes Institute for Biodiversity Conservation–ICMBio and Biodiversity Information and Authorization System–SISBIO, Brazil, through permanent license number 32941 (21 May 2012), for the collection of zoological material, issued to Dr. Míriam Silva Rafael.

Morphological identification of specimens was carried out according to taxonomic keys [20,21]. Captured *An. darlingi* gravid females were confined individually in plastic cups for egg laying. Offspring were fed with powdered fish food (Tetramin fish food (Tetramin) was purchased from local shop (Tetramin Tropical Flakes-Spectrum Brands, Inc.)) and reared to the fourth instar larvae.

2.2. Chromosome Preparation

Salivary glands of fourth instar *An. darlingi* larvae were dissected in Carnoy's solution (100% ethanol: glacial-acetic-acid, 3:1) and then fixed with Fixative I (Carnoy's solution: water, 1:5) for 3 to 5 min, Fixative II (Carnoy's solution: water, 1:1) for 3 min and Fixative III (95% lactic acid: water, 1:1) for 5 to 8 min [15,22,23]. The samples were then placed on a slide and crushed with a coverslip. After removing the coverslip, the slides were flash frozen in liquid nitrogen and immediately placed in cold 50% ethanol. After that, preparations were dehydrated in an ethanol series (70%, 90%, and 100%) for 3 min each, air-dried and stored at 20 °C.

2.3. Probes Preparation and Fluorescence in Situ Hybridization (FISH)

A fosmid library with inserts containing 30–40 kb of *An. darlingi* DNA was prepared according to the Copy Control fosmid Library Production (EPICENTRE) Kit protocol. The fosmid library was constructed as part of the *An. darlingi* genome project [11], using genomic DNA extracted from mosquitoes captured in Coari, Amazonas State, Brazil.

Fosmid clones were randomly selected, and DNA was isolated by standard laboratory methods [24] and then labeled with 5-Amino-propargyl-2'-deoxyuridine 5'-triphosphate coupled to Cy³ fluorescent dye (Cy³-AP³-dUTP), or 5-Amino-propargyl-2'-deoxyuridine 5'-triphosphate coupled to Cy⁵ fluorescent dye (Cy⁵-AP³-dUTP), (GE Healthcare U.K. Ltd., Chalfont St Giles, UK) by nick translation following the manufacturer's instruction (Thermo Fisher Scientific, Inc. Waltham, MA, USA).

Slides were fixed in ethanol battery and 4% paraformaldehyde in 1 × phosphate-buffered saline (PBS) following denaturation of the target and probe DNA at 90 °C. The labeled probes were hybridized to the chromosomes at 37 °C overnight and then slides were washed with 0.2× saline sodium citrate (SSC) buffer. We detected fluorescent signals using YOYO-1 Invitrogen 895247 (Invitrogen Corporation, Carlsbad, CA, USA).

2.4. Physical Mapping and Probe Location Analysis

Preparations of carefully selected photos of different chromosomes of salivary glands from *An. darlingi* were considered representative of the banding pattern on 10 slides. All slides were photographed at 100× objective and 10×/25 objective (Carl Zeiss MicroImaging, Inc., Thornwood, NY, USA) with an AxioCam MRC charge-coupled device camera (Zeiss) using the Axiovision program (version 3.1). The probe localization was determined within a subdivision, using a standard cytogenetic map for *An. darlingi* [19,25]. The microphotographs were edited with Adobe Photoshop CS4 (Adobe Systems Incorporated, San Jose, CA, USA) and, also an Olympus CX41 phase-contrast microscope (Olympus America Inc., Melville, NY, USA). We also performed the comparison of synteny of sequences mapped in *An. darlingi* by in silico against *An. gambiae* and *An. albimanus*, since their genomes have already been sequenced and their scaffolds analyzed.

2.5. DNA Sequencing and Bioinformatics Analyses

The 3' and 5' end sequences (400–700 bp) of the inserts contained in each fosmid clone were determined using Sanger sequencing (ABI 3730XL sequencer) and vector-based primers (Copy Control fosmid Library Production EPICENTRE). Vector sequences were removed, and the remaining sequences were analyzed by the BLASTN tool against the *An. darlingi* genome assembly AdarC3 (www.vectorbase.org/blast) available at VectorBase [26]. Syntenic regions in the genomes of *An. albimanus* and *An. gambiae* were identified by the Comparative Genomics tool available at VectorBase. Genes contained in probes were assumed to be those located between each of the end sequences when they were in the same scaffold of the assembly AdarC3. When the end sequences of a probe were assigned to different scaffold, we took a conservative approach, considering only those genes located within 5 kb of the BLAST hits.

3. Results

3.1. Probes and Corresponding Sequences in the Genome Assembly

In this work, we used fosmid clones as DNA probes for physical chromosome mapping. The fosmid DNA library was constructed previously as part of the *An. darlingi* genome project [11]. The main advantage of using fosmid clones for FISH is that the large size of labeled probes allowed us to obtain strong and specific fluorescent signals on polytene chromosomes. In most of the *An. darlingi* polytene chromosome preparations assayed by FISH, strong fluorescent signals were observed for the probes used in this study. The genomic scaffolds associated with each fosmid probe were determined by BLASTN using the insert's end DNA sequences as query against the *An. darlingi* genome assembly AdarC3 (Document S1, Tables S1–S3). In general BLAST analyses resulted in

a single hit within the *An. darlingi* genome. The probe Pb2r retrieved three hits with similar e-values, scores, and percentage identity. The Pb2r sequence resulting in multiple hits corresponds to the ADAC001061, ADAC003002 and ADAC001064, three ~6 kb long genes, annotated as vitellogenins and sharing extremely high nucleotide identity. Pb2r and Pb20b had one of their end sequences retrieving no hits, indicative of regions that were not assembled during the AdarC3 genome assembling efforts. The end sequences of Pb17r and Pb18b resulted in BLAST hits located in different scaffolds, (Pb17r-DGSJ01A09C.g00 = scaffold_1409 and DGSJ01A09C.b02 = scaffold_1350) (Pb18b- DGSJ02B03C.b00 = scaffold_683 and DGSJ02B03C.g00 = scaffold_1062).

3.2. Chromosome X

Of the nine DNA probes, none of them mapped to the chromosome X of *An. darlingi*.

3.3. Chromosomes 2 and 3

Some of the probes produced multiple signals in Chromosomes 2 and 3. Pb2r mapped in regions 8A, 10A and 10E, of 2R (Figure 1). Pb5r-Cy³, mapped in 15B inside 2nd inversion close to 2Rc inversion in the pericentromeric 2R, and in the 31A region of 3R, in a paracentric 3Ra inversion, which belongs to a complex of inversions (3Rb, 3Rb, 3Rc) (Figure 2). The Pb7b-Cy⁵ mapped in the band 6A of 2R in *An. darlingi* (Figure 3), a location that is homologous with 2R chromosome tip in *An. gambiae*. Pb17r-Cy³ hybridized in situ on 2R (9A) and 2L (25C), and Pb18b-Cy⁵ mapped in 2L (region 16B) (Figure 4). Pb19r-Cy³ and Pb20b-Cy⁵ were probed in the same slide. Pb19r-Cy³ hybridized to 25C of 2L, near the telomeric region, while Pb20b-Cy⁵ hybridized in 2L (25B and 21D) and 3R (27B) (Figure 5). Pb22b-Cy⁵ mapped in the 43C region of 3L, into the inversion 3La. This inversion belongs to a complex set of 3La, 3Lb, 3Lc inversions in the chromosome arm 3L (Figure 6). Pb23r-Cy³ mapped in 2L band 22C, in the 2La inversion, which belongs to a complex of 2La, 2Lb inversions in the paracentromeric 2L (Figure 7).

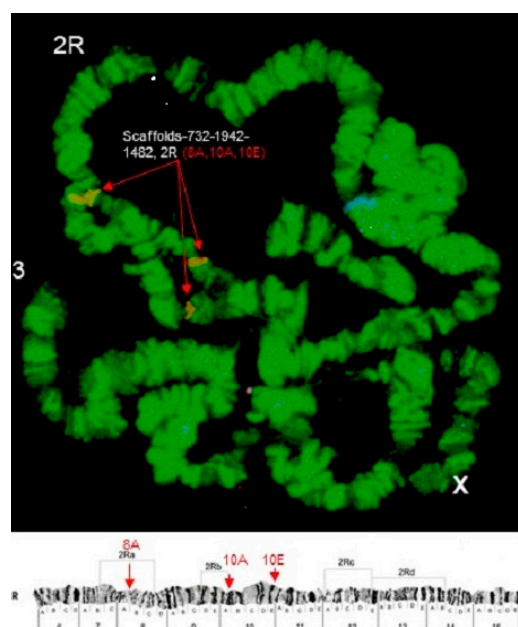


Figure 1. Pb2r-Cy³ probe, mapped in 2R (8A,10A, and 10E) indicated by arrows. 2Ra, 2Rb, 2Rc and 2Rd show inversions in 2R [19]. Chromosomal bands with positive hybridization are identified with text in red, and the corresponding scaffolds in *An. darlingi* genome assembly AdarC3 are indicated in white text.

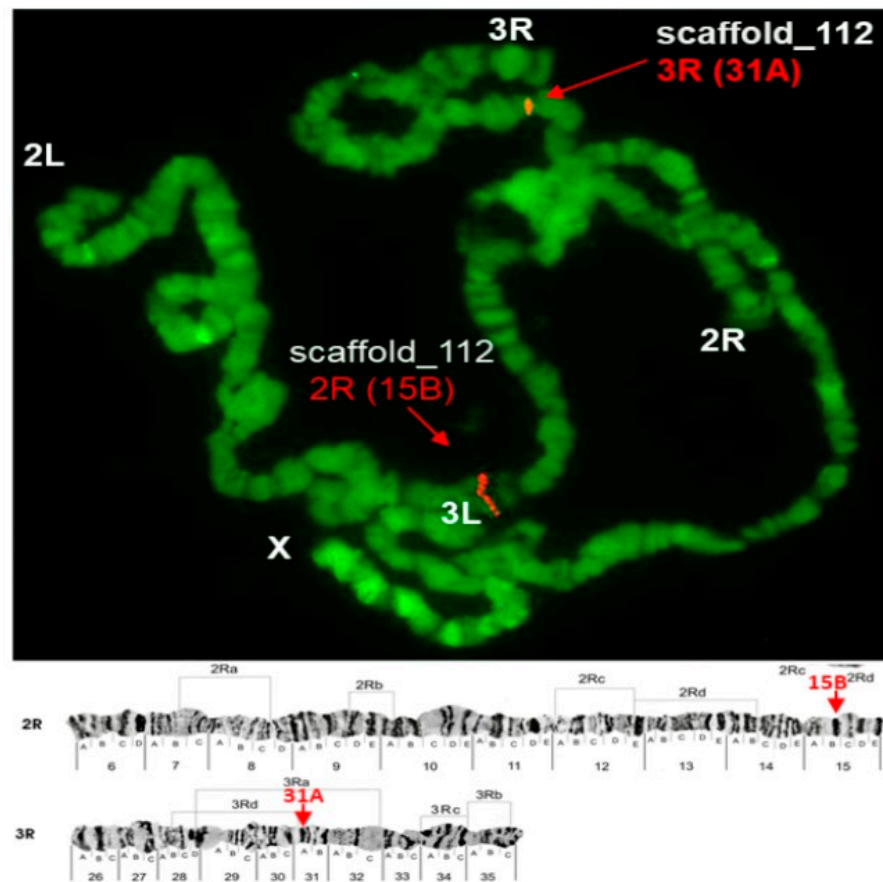


Figure 2. Pb5r-Cy3 mapped in 2R (15B) and 3R (31A), as shown by arrows. Chromosomal bands with positive hybridization are identified with text in red, and the corresponding scaffolds in *An. darlingi* genome assembly AdarC3 are indicated in white text.

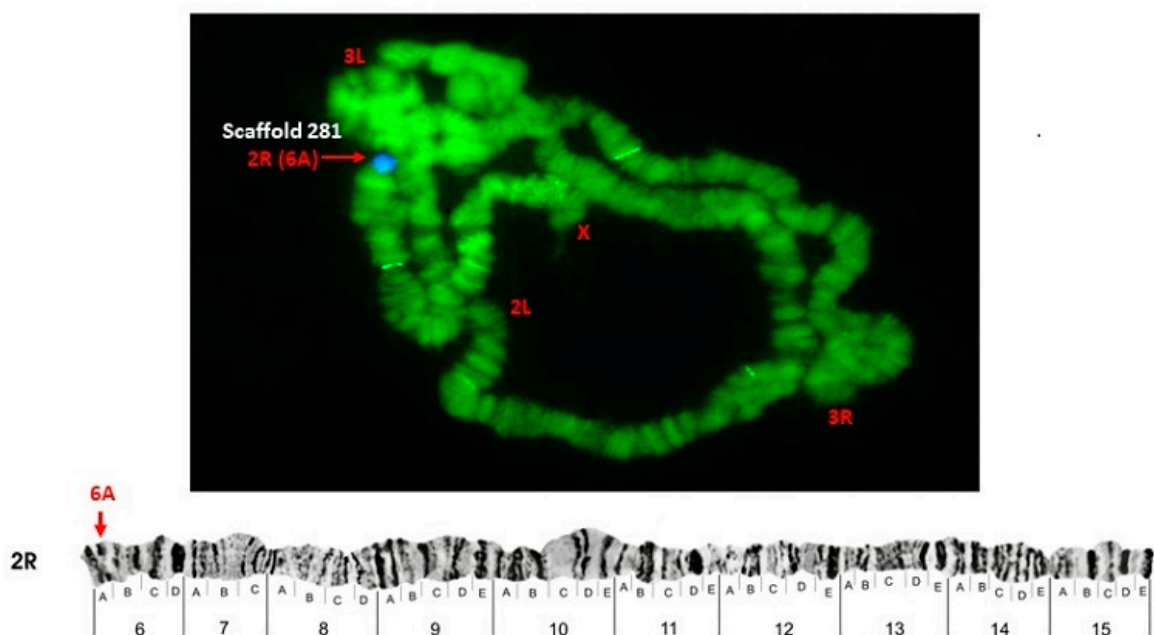


Figure 3. Pb7b-Cy⁵ probe, mapped in the 6A band in 2R of *A. darlingi*, as shown by arrows. Chromosomal bands with positive hybridization are identified with text in red, and the corresponding scaffolds in *An. darlingi* genome assembly AdarC3 are indicated in white text.

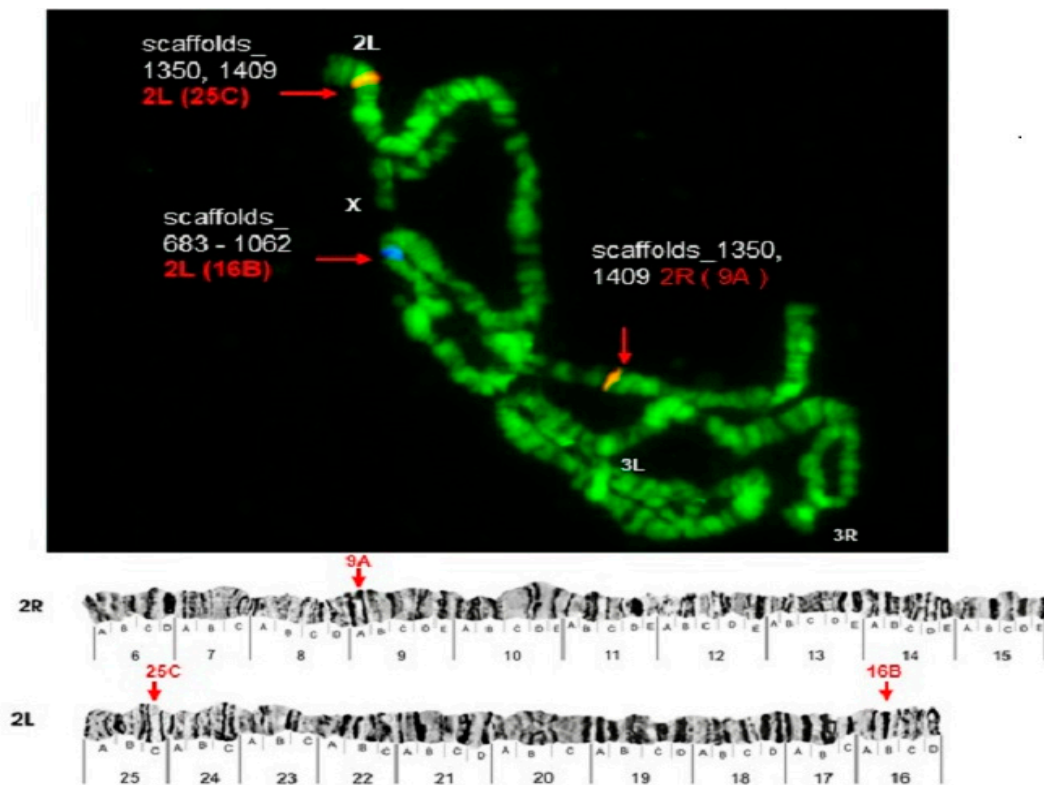


Figure 4. Pb17r-Cy³ hybridized in situ on 2R (9A) and 2L (25C), and Pb18b-Cy⁵ probe, mapped in 2L (region 16B). Chromosomal bands with positive hybridization are identified with text in red, and the corresponding scaffolds in *An. darlingi* genome assembly AdarC3 are indicated in white text.

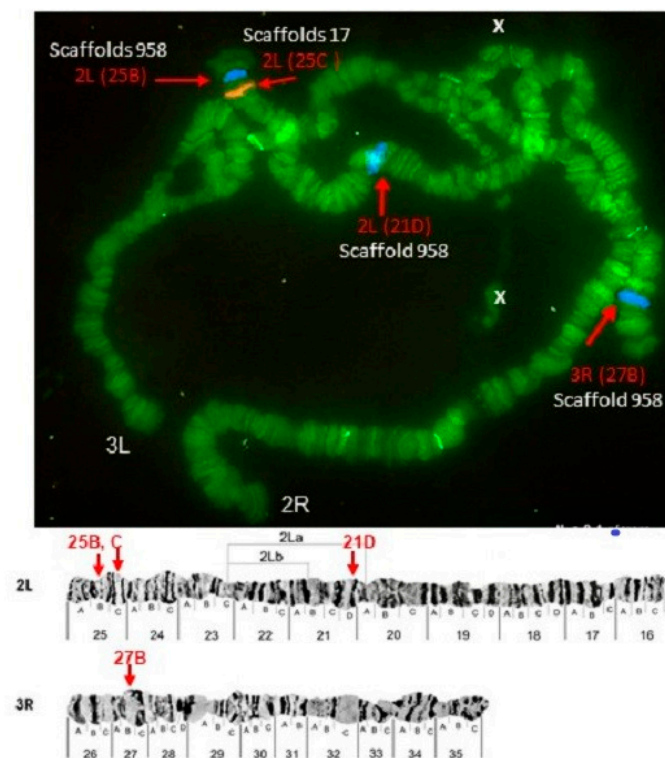


Figure 5. Pb19r-Cy³ probe, mapped in 2L (25C) and Pb20b-Cy⁵ probe mapped in 2L (21D and 25B) and 3R (27B). Chromosomal bands with positive hybridization are identified with text in red, and the corresponding scaffolds in *An. darlingi* genome assembly AdarC3 are indicated in white text.

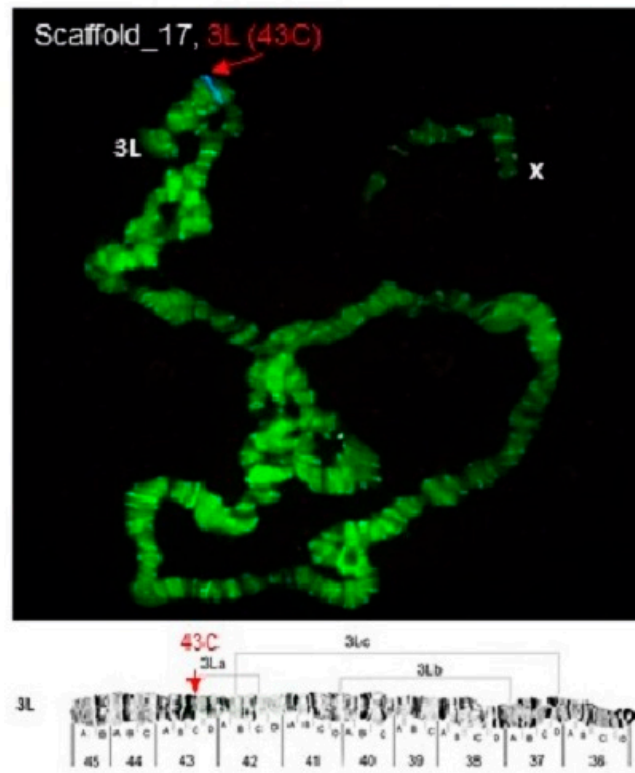


Figure 6. Pb22b-Cy⁵ probe, mapped in 3L (43C), a region involving the chromosomal inversion 3La in *An. darlingi*, as shown by arrows [19]. Chromosomal bands with positive hybridization are identified with text in red, and the corresponding scaffolds in *An. darlingi* genome assembly AdarC3 are indicated in white text.

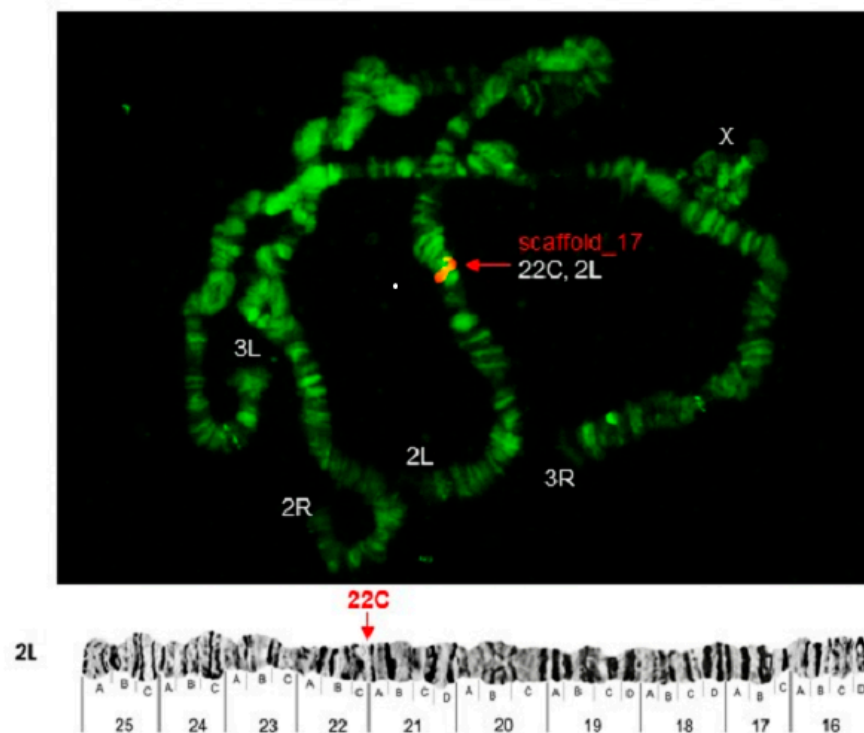


Figure 7. Pb23r-Cy³ probe mapped in 2L (22C). Chromosomal bands with positive hybridization are identified with text in red, and the corresponding scaffolds in *An. darlingi* genome assembly AdarC3 are indicated in white text.

3.4. Comparative Mapping

The majority of the mapped probes showed conserved chromosomal location in the species *An. darlingi*, *An. albimanus*, and *An. gambiae* (*An. darlingi*=*An. albimanus*=*An. gambiae*, X=X=X, 2R=2R=2R, 2L=2L=3L, 2L=2L=3R, and 3L=3L=2L (Table 1). The probes with correspondences 2R=2R=2R were Pb2r-Cy3 (scaffolds_732, 1942 and 1482), Pb5r-Cy3 (scaffold_112:91297-130051), and Pb7b-Cy5 (scaffold_281:57476-88809). The *An. darlingi* probes with correspondence 2L=3L=2L were Pb19r-Cy3 (scaffold_17:336283-371424) and Pb23r-Cy3 (scaffold_17:435950-474554). The Pb17r-Cy3 (scaffolds 1409 and 1350) and Pb18b-Cy⁵ (scaffolds 683 and 1062) probes' equivalence was 2L=2L=3R. Finally, Pb22b-Cy⁵ (scaffold_17:435950-474554) results showed equivalence 3L=3L=2L.

Table 1. In situ localization of probes in *An. darlingi* chromosomes and in silico identification of equivalent sequences in *An. albimanus* and *An. gambiae* chromosomes. Details of BLAST hits locations within *An. darlingi* scaffolds and probes FASTA files are available in Supplementary Files.

Probe.	BLAST Hits	In Situ Chromosome Mapping <i>Anopheles darlingi</i>	In Silico chromosome Mapping <i>Anopheles albimanus</i>	In Silico Chromosome Mapping <i>Anopheles gambiae</i>
Pb2r	scaffold_732 scaffold_1942 scaffold_1482	2R (8A, 10A, 10E)	2R (10A)	2R (18B)
Pb5r	scaffold_112	2R (15 B), 3R (31A)	2R (12C)	2R (12C)
Pb7b	scaffold_281	2R (6A)	2R (10B)	2R (13B)
Pb17r	scaffold_1409 scaffold_1350	2L (25C), 2R(9A)	2L (24A)	3R (32D)
Pb18b	scaffold_683 scaffold_1062	2L (16B)	2L (17A)	3R (29A)
Pb19r	scaffold_17	2L (25C)	3L (45A)	2L (21D)
Pb20b	scaffold_958	2L (21D,25B), 3R (27B)	X (1A)	X (5B)
Pb22b	scaffold_17	3L (43 C)	3L (45A)	2L (28C)
Pb23r	scaffold_17	2L (22C)	3L (45A)	2L (23D)

4. Discussion

Anopheles darlingi, the subject of this study, is the major malaria vector in the Amazonian region of South America [5–8]. Its importance as a vector spurred studies of *An. darlingi* biology, cytogenetics, behavior, physiology, biochemistry, genetics, and insecticide resistance [7,11,14,15,19,27–36]. Here we expanded the knowledge of the physical chromosomal map of this species and compared the results in silico with homologous sequences in two other anopheline species, *An. albimanus* and *An. gambiae*. *Anopheles albimanus*, belonging to the same subgenus as *An. darlingi*, *Nyssorhynchus*, is distributed in the Neotropical region stretching from the southern United States to northern Peru and the Caribbean islands. This species is the major contributor to malaria transmission in the coastal areas of these regions [13]. The evolutionary divergence between *An. darlingi* and *An. albimanus* was estimated at ~40 million years [37]. *Anopheles gambiae* belongs to another subgenus, *Celia*, and is the major vector of *Plasmodium falciparum* in Africa [38]. The evolutionary relationship and divergence time of *An. darlingi* in comparison with *An. gambiae* was estimated at ~100 million years [39].

The first records related to the chromosomal maps and inversions polymorphisms in *An. darlingi* were obtained in the 1950s [40–42]. Later, a more extensive study described nine independent inversions and a complex arrangement [43]. They analyzed two Brazil-

ian populations, one from the Amazon region and another from the south of the country, finding that the population from the north is highly polymorphic when compared to the population from the south. In populations of *An. darlingi* from Manaus, about 90% of the analyzed polytene nuclei showed one or more heterozygous inversions [43]. Furthermore, an inversion on chromosome 2 (2Rd), one on chromosome 3 (3Rc), and one on X chromosome (Xb) from populations of *An. darlingi* captured during the rainy season around the BR-174, Manaus-Boa highway Vista, State of Amazonas, were described [44]. In addition, breakpoints of paracentric inversions and additional inversions (3Lc), totaling 18 inversions in the chromosome arms of *An. darlingi* with one on chromosome X, seven on chromosome 2, and 11 on chromosome 3 were previously described [25]. Because of the highly polymorphic *An. darlingi* chromosomes, cytogenetic photomaps are essential tools for standardized conclusions. A photomap of *An. darlingi* chromosomes was developed for a population of Guajará-Mirim, State of Rondônia, Brazil [19]. The *An. darlingi* cytogenetic photomap included sections and subsections of chromosomes and their description. These features of the photomap allowed us to place genomic sequences to specific chromosomal positions.

Five of the nine probes used in this study hybridized to a single location in the *An. darlingi* chromosomes, producing an unequivocal position assignment. Among them is Pb18b, for which end sequences aligned with two different scaffolds. This result supports the conclusion that scaffolds 683 and 1062 are closely located.

The remaining four probes hybridized to two or three distinct locations. These results may indicate that these probes contain repetitive DNA sequences and/or genes recently duplicated with high similarity among them. Pb2r, for example contains sequences of the Vitellogenin genes. Multiple Vitellogenin genes have been identified in several mosquito species. Duplication, concerted evolution, and purifying selection have been identified as major evolutionary forces driving Vitellogenin genes' evolution and conserved sequences [45]. Pb17r had end sequences aligned with two different scaffolds, supporting the conclusion that scaffolds 1350 and 1409 are closely located. 17r and 18b end sequences blast hits are positioned close to the ends of the scaffolds, further supporting the conclusion of their adjacent locations within the genome.

Three probes—Pb19r, Pb22b and Pb23r—were assigned to the scaffold 17, however, Pb19r and Pb23r hybridized to 2L, while Pb 22b hybridized to 3L. Scaffold 17 is a long scaffold, and these results suggest it is the result of misassembled sequences. Pb19r and Pb23r are located at least 300,000 kb apart from Pb22b, which is located between coordinates 39978 and 73280. Alternatively, a translocation event between the populations of Coari, which originated the assembled genome, and the population from Manaus, used in this study, may be the cause of the result. Polymorphisms of inversions, fusions, and translocations in chromosomal arms are among the determining factors of the local adaptation of mosquitoes under heterogeneous conditions [46–48].

A previous synteny evaluation between *An. darlingi* and *An. gambiae* identified 1027 synteny clusters, comprising 6312 syntenic genes or ~60% of all *An. darlingi* protein-coding genes [11]. However, the synteny clusters were not assigned to chromosome arms, and it was recommended that mapping of genes or clones on chromosomes, together with the described synteny clusters, would support a more complete and precise assembly of the *An. darlingi* genome.

Our results demonstrate a complex picture in which probes Pb2r, Pb5r and Pb7b indicate a conservation of the 2R arm among *An. darlingi*, *An. albimanus* and *An. gambiae*. Probes hybridizing to *An. darlingi* 2L, however, have syntenic regions scattered among 2L, 3R, and X in *An. albimanus* and *An. gambiae*.

5. Conclusions

We mapped nine DNA probes to *An. darlingi* polytene chromosomes and compared them by in silico analysis with *An. albimanus* and *An. gambiae* genomes. Our results highlighted the necessity of additional efforts to improve and achieve a more complete, chromosome-level *An. darlingi* genome assembly. Malaria remains a major healthcare risk

in South America, and a chromosome-level reference genome of *An. darlingi* will help in developing successful vector management approaches and the understanding of vector evolution using comparative genomics.

Supplementary Materials: The following are available online at <https://www.mdpi.com/2075-4450/12/2/164/s1>, Document S1: FASTA files of sequenced probes ends; Table S1: Blast results with size and length, and localization sites of scaffolds sequences of *Anopheles darlingi*, and synteny analysis with *Anopheles albimanus* and *Anopheles gambiae*; Table S2: List of genes located in the probes; Table S3: Genes IDs and functional annotation.

Author Contributions: Conceptualization, M.S.R.; methodology, M.S.R., M.V.S., G.M.G.-M., V.S.S. and V.T.; formal analysis, M.S.R., O.M., M.V.S. and V.T.; resources, L.C.B., I.V.S., V.S.S. and G.M.G.-M.; writing—original draft preparation, M.S.R.; writing—review and editing, M.S.R., L.C.B., O.M., I.V.S. and M.V.S.; visualization, I.V.S. and O.M.; supervision, project administration, and funding acquisition, C.G.N.d.S.; methodology, and formal analysis, S.A.-F.; methodology, formal analysis, and resources, W.P.T.; supervision, project administration, and funding acquisition. All authors have read and agreed to the published version of the manuscript.

Funding: This research was funded by Pronex/Rede Malaria from CNPq (Conselho Nacional de Desenvolvimento Científico e Tecnológico)/FAPEAM; CNPq/FAPEAM/INCT-ADAPTA II/INPA, Process number 465540/2014-7; Coordenação de Aperfeiçoamento de Pessoal de Nível Superior (CAPES), Brazil, Financial Code 001; POSGRAD/FAPEAM 2017, Project # 002/2016 and PAPAC/FAPEAM 2019 (to J.S.B.); and the Russian State Budget Project #0324-2019-0042 (to M.V.S.).

Institutional Review Board Statement: Not applicable.

Data Availability Statement: Data is contained within the article or Supplementary Material.

Acknowledgments: The authors thank Jacqueline da Silva Batista from Laboratório Temático de Biologia Molecular/INPA, Adalberto Luis Val from Laboratório de Ecofisiologia e Evolução Molecular/INPA, and the American manuscript editors for professional language editing services.

Conflicts of Interest: The authors declare no conflict of interest.

References

- Rachou, R.G. Anofelinos do Brasil. Comportamento das espécies vetoras de malária. *Rev. Bras. Malariol. Doenças Trop.* **1958**, *10*, 145–181.
- Consoli, R.A.G.B.; Lourenço-de-Oliveira, R. *Principais Mosquitos de Importância Sanitária no Brasil*, 1st ed.; Editora FIOCRUZ: Rio de Janeiro, Brasil, 1994; pp. 60–92.
- World Health Organization (WHO). *World Malaria Report 2019*, 3rd ed.; Global Malaria Programme-WHO: Geneva, Switzerland, 2019; p. 232.
- Harbach, R.E.; Kitching, I.J. The phylogeny of Anophelinae revisited: Inferences about the origin and classification of *Anopheles* (Diptera: Culicidae). *Zool. Scr.* **2016**, *45*, 34–47. [[CrossRef](#)]
- Deane, L.M. Malaria vectors in Brazil. *Mem. Inst. Oswaldo Cruz* **1986**, *81*, 5–14. [[CrossRef](#)]
- De Arruda, M.; Carvalho, M.B.; Nussenzweig, R.S.; Maracic, M.; Ferreira, A.W.; Cochrane, A.H. Potential vectors of malaria and their different susceptibility to *Plasmodium falciparum* and *Plasmodium vivax* in Northern Brazil identified by immunoassay. *Am. J. Trop. Med. Hyg.* **1986**, *5*, 873–881. [[CrossRef](#)] [[PubMed](#)]
- Tadei, W.P.; Thatcher, B.D.; Santos, J.M.; Scarpassa, V.M.; Rodrigues, I.B.; Rafael, M.S. Ecologic observations on anopheline vectors of malaria in the Brazilian Amazon. *Am. J. Trop. Med. Hyg.* **1998**, *59*, 325–335. [[CrossRef](#)] [[PubMed](#)]
- Tadei, W.P.; Rodrigues, I.B.; Rafael, M.S.; Sampaio, R.T.M.; Mesquita, H.G.; Pinheiro, V.C.S.; Zequi, J.A.C.; Roque, R.A.; Santos, J.M.M. Adaptive processes, control measures, genetic background, and resilience of malaria vectors and environmental changes in the Amazon region. *Hydrobiologia* **2017**, *789*, 179–196. [[CrossRef](#)]
- Forattini, O.P. Compartimento exófilo de *Anopheles darlingi* Root, em região meridional do Brasil. Exophilic Behavior of *Anopheles darlingi* Root in a southern region of Brazil. *Rev. Saude Publ.* **1987**, *21*, 291–304. [[CrossRef](#)] [[PubMed](#)]
- Komp, W.H.W. The occurrence of *Anopheles darlingi* Root in Central America. *Am. J. Trop. Med. Hyg.* **1941**, *21*, 659–670. [[CrossRef](#)]
- Marinotti, O.; Cerqueira, G.C.; de Almeida, L.G.P.; Ferro, M.I.T.; Loreto, E.L.S.; Zaha, A.; Teixeira, S.M. The genome of *Anopheles darlingi*, the main neotropical malaria vector. *Nucleic Acids Res.* **2013**, *15*, 7387–7400. [[CrossRef](#)]
- Malone, G.; Zimmer, P.D.; Meneghello, G.E.; Binneck, E.; Peske, S.T. Prospecção de genes em bibliotecas de cDNA. *R. Bras. Agrobiologia* **2006**, *12*, 7–13.

13. Artemov, G.N.; Peery, A.N.; Jiang, X.; Tu, Z.; Stegnyy, V.N.; Sharakhova, M.V.; Sharakhov, I.V. The physical genome mapping of *Anopheles albimanus* corrected scaffold misassemblies and identified interarm rearrangements in genus *Anopheles*. *G3 (Bethesda)* **2017**, *7*, 155–164. [[CrossRef](#)]
14. Rafael, M.S.; Tadei, W.P.; Recco-Pimentel, S.M. Location of ribosomal genes in the chromosomes of *Anopheles darlingi* and *Anopheles nuneztovari* (Diptera, Culicidae) from the Brazilian Amazon. *Mem. Inst. Oswaldo Cruz* **2003**, *98*, 629–635. [[CrossRef](#)]
15. Rafael, M.S.; Tadei, W.P.; Hunter, F.F. The physical gene Hsp70 map on polytene chromosomes of *Anopheles darlingi* from the Brazilian Amazon. *Genetica* **2004**, *12*, 89–94. [[CrossRef](#)]
16. Bridi, L.C.; Sharakhova, M.V.; Sharakhov, I.V.; Cordeiro, J.; Azevedo Junior, G.M.; Tadei, W.P.; Rafael, M.S. Chromosomal localization of actin genes in the malaria mosquito *Anopheles darlingi*. *Med. Vet. Entomol.* **2013**, *27*, 118–121. [[CrossRef](#)]
17. Granjeiro, W.G.; (National Institute of Amazon Research/INPA, Scientific Initiation Program/PIBIC, Manaus, Brazil). Personal communication, 2013.
18. Bridi, L.C.; Rafael, M.S. GGBP domain of *Anopheles darlingi*: Are polymorphic inversions and gene variation related to adaptive evolution? *Genetica* **2016**, *144*, 99–106. [[CrossRef](#)]
19. Rafael, M.S.; Rohde, C.; Bridi, L.C.; Valente, V.G.L.; Tadei, W.P. Salivary polytene chromosome map of *Anopheles darlingi*, the main vector of neotropical malaria. *Am. J. Trop. Med. Hyg.* **2010**, *83*, 241–249. [[CrossRef](#)]
20. Forattini, O.P. *Entomologia Médica*, 1st ed.; Editora da Universidade de São Paulo: São Paulo, Brazil, 1962; pp. 321–380.
21. Faran, M.E.; Linthicum, K.J. A handbook of the Amazonian species of *Anopheles* (*Nyssorhynchus*) (Diptera: Culicidae). *Mosq. Syst.* **1981**, *13*, 1–91.
22. French, W.L.; Baker, R.H.; Kitzmiller, J.B. Preparation of mosquito chromosomes. *Mosq. News* **1962**, *22*, 377–383.
23. Kumar, V.; Collins, F.H. A technique for nucleic acid in situ hybridization to polytene chromosome of mosquitoes in the *Anopheles gambiae* complex. *Insect Mol. Biol.* **1994**, *3*, 41–47. [[CrossRef](#)]
24. Sambrook, J.; Fritsch, E.R.; Maniatis, T. *Molecular Cloning: A Laboratory Manual*, 2nd ed.; Cold Spring Harbor Laboratory Press: New York, NY, USA, 1989; p. 1546.
25. Cornel, A.J.; Brisco, K.K.; Tadei, W.P.; Secundino, N.F.; Rafael, M.S.; Galardo, A.K.; Medeiros, J.F.; Pessoa, F.A.; Ríos-Velásquez, C.M.; Lee, Y.; et al. *Anopheles darlingi* polytene chromosomes: Revised maps including newly described inversions and evidence for population structure in Manaus. *Mem. Inst. Oswaldo Cruz* **2016**, *111*, 335–346. [[CrossRef](#)] [[PubMed](#)]
26. Giraldo-Calderon, G.I.; Emrich, S.J.; MacCallum, R.M.; Maslen, G.; Dialynas, E.; Topalis, P.; Ho, N.; Gesing, S.; the VectorBase Consortium; Madey, G.; et al. VectorBase: An updated bioinformatics resource for invertebrate vectors and other organisms related with human diseases. *Nucleic Acids Res.* **2015**, *43*, D707–D713. [[CrossRef](#)] [[PubMed](#)]
27. Bridi, L.C. Mapeamento Físico de Genes Expressos de Resposta Imune e Sensorial de *Anopheles* (*Nyssorhynchus*) *Darlingi*, Vetor da Malária Neotropical. Ph.D. Thesis, National Institute of Amazon Research/INPA, Manaus, Brazil, 2016.
28. Charlwood, J.D. Biological variation in *Anopheles darlingi* Root. *Mem. Inst. Oswaldo Cruz* **1996**, *91*, 391–398. [[CrossRef](#)]
29. Vittor, A.Y.; Gilman, R.H.; Tielsch, J.; Glass, G.; Shields, T.; Lozano, W.S.; Pinedo-Cancino, V.; Patz, J.A. The effect of deforestation on the human-biting rate of *Anopheles darlingi*, the primary vector of *falciparum* malaria in the Peruvian Amazon. *Am. J. Trop. Med. Hyg.* **2006**, *74*, 3–11. [[CrossRef](#)] [[PubMed](#)]
30. Hiwat, H.; Bretas, G. Ecology of *Anopheles darlingi* Root with respect to vector importance: A review. *Parasit. Vectors* **2011**, *4*, 1–13. [[CrossRef](#)] [[PubMed](#)]
31. Marrelli, M.T.; Honório, N.A.; Flores-Mendoza, C.; Lourenço-de-Oliveira, R.; Marinotti, O.; Kloetzel, J.K. Comparative susceptibility of two members of the *Anopheles oswaldoi* complex, *An. oswaldoi* and *An. konderi*, to infection by *Plasmodium vivax*. *Trans. R. Soc. Trop. Med. Hyg.* **1999**, *93*, 381–384. [[CrossRef](#)]
32. Okuda, K.; Caroci, A.; Ribolla, P.; Marinotti, O.; de Bianchi, A.G.; Bijovsky, A.T. Morphological and enzymatic analysis of the midgut of *Anopheles darlingi* during blood digestion. *J. Insect Physiol.* **2005**, *51*, 769–776. [[CrossRef](#)]
33. Scarpassa, V.M.; Conn, J.E. Population genetic structure of the major malaria vector *Anopheles darlingi* (Diptera: Culicidae) from the Brazilian Amazon, using microsatellite markers. *Mem. Inst. Oswaldo Cruz* **2007**, *102*, 319–328. [[CrossRef](#)] [[PubMed](#)]
34. Mirabello, L.; Vineis, J.H.; Yanoviak, S.P.; Scarpassa, V.M.; Póvoa, M.M.; Padilla, N.; Achee, N.L.; Conn, J.E. Microsatellite data suggest significant population structure and differentiation within the malaria vector *Anopheles darlingi* in Central and South America. *BMC Ecol.* **2008**, *8*, 3. [[CrossRef](#)]
35. Perea, E.Z.; León, R.B.; Salcedo, M.P.; Brogdon, W.G.; Devine, G.J. Adaptation and evaluation of the bottle assay for monitoring insecticide resistance in disease vector mosquitoes in the Peruvian Amazon. *Malar. J.* **2009**, *8*, 1–11. [[CrossRef](#)]
36. Kobylinski, K.C.; Escobedo-Vargas, K.S.; López-Sifuentes, V.M.; Durand, S.; Smith, E.S.; Baldeviano, G.C.; Gerbasi, R.V.; Ballard, S.B.; Stoops, C.A.; Vásquez, G.M. Ivermectin susceptibility, sporontocidal effect, and inhibition of time to re-feed in the Amazonian malaria vector *Anopheles darlingi*. *Malar. J.* **2017**, *16*, 474. [[CrossRef](#)]
37. Da Silva, A.F.; Machado, L.C.; de Paula, M.B.; Vieira, C.J.D.S.P.; de Moraes Bronzoni, R.V.; de Melo Santos, M.A.V.; Wallau, G.L. Culicidae evolutionary history focusing on the Culicinae subfamily based on mitochondrial phylogenomics. *Sci. Rep.* **2020**, *10*, 18823. [[CrossRef](#)] [[PubMed](#)]
38. Holt, R.A.; Subramanian, G.M.; Halpern, A.; Sutton, G.G.; Charlab, R.; Nusskern, D.R.; Wincker, P.; Clark, A.G.; Ribeiro, J.M.; Wides, R.; et al. The genome sequence of the malaria mosquito *Anopheles gambiae*. *Science* **2002**, *298*, 129–149. [[CrossRef](#)] [[PubMed](#)]
39. Moreno, M.; Marinotti, O.; Krzywinski, J.; Tadei, W.P.; James, A.A.; Achee, L.N.; Conn, E.J. Complete mtDNA genomes of *Anopheles darlingi* and an approach to anopheline divergence time. *Malaria J.* **2010**, *9*, 127. [[CrossRef](#)]

40. Guedes, A.S.; Amorim, E.M.; Schreiber, G. Análise dos cromossomos salivares em anofelinos brasileiros. *Ver. Bras. Malar. D. Trop.* **1957**, *9*, 247–250.
41. Schreiber, G.; Guedes, A.S. Estudo comparativo do cromosoma X em algumas espécies de Anopheles do sub-gen. Nyssorhynchus (Dipt. Culic.). *Ciê. Cult.* **1959**, *11*, 128–129.
42. Schreiber, G.; Guedes, A.S. Perspectivas citológicas na sistemática dos anofelinos (S.G Nyssorhynchus). *Rev. Bras. Mal. D. Trop.* **1960**, *12*, 355–358.
43. Kreuzer, R.D.; Kitzmiller, J.B.; Ferreira, E. Inversion polymorphism in the salivary gland chromosomes of *Anopheles darlingi* Root. *Mosq. News* **1972**, *32*, 555–565.
44. Tadei, W.P.; Santos, J.M.; Rabbani, M.G. Biologia de anofelinos amazônicos. V. Polimorfismo cromossômico de *Anopheles darlingi* Root (Diptera, Culicidae). *Acta Amaz.* **1982**, *12*, 353–369. [[CrossRef](#)]
45. Chen, S.; Armistead, J.S.; Provost-Javier, K.N.; Sakamoto, J.M.; Rasgon, J.L. Duplication, concerted evolution and purifying selection drive the evolution of mosquito vitellogenin genes. *BMC Evol. Biol.* **2010**, *10*, 1–14. [[CrossRef](#)]
46. Coluzzi, M.; Sabatini, A.; Petrarca, V.; Dideco, M.A. Chromosomal differentiation and adaptation to human environments in the *Anopheles gambiae* complex. *Trans. R. Soc. Trop. Med. Hyg.* **1979**, *73*, 483–497. [[CrossRef](#)]
47. Dobzhansky, T. *Chromosomal Races in Drosophila Pseudoobscura and Drosophila Persimilis*; Carnegie Institution of Washington: Washington, DC, USA, 1944; Volume 554, pp. 47–144.
48. Hoffmann, A.A.; Sgrò, C.M.; Weeks, A.R. Chromosomal inversion polymorphisms and adaptation. *Trends Ecol. Evol.* **2004**, *19*, 482–488. [[CrossRef](#)] [[PubMed](#)]