

Supplement of Biogeosciences, 18, 285–302, 2021
<https://doi.org/10.5194/bg-18-285-2021-supplement>
© Author(s) 2021. This work is distributed under
the Creative Commons Attribution 4.0 License.



Supplement of

Estimating immediate post-fire carbon fluxes using the eddy-covariance technique

Bruna R. F. Oliveira et al.

Correspondence to: Thomas Foken (thomas.foken@uni-bayreuth.de) and Bruna R. F. Oliveira (bruna.oliveira@ua.pt)

The copyright of individual parts of the supplement might differ from the CC BY 4.0 License.

Table S1. Summary of published eddy-covariance studies in woodland areas affected by wildfires

Reference	Location	Climate Köppen–Geiger system	Dominant tree species before fire/disturbance	Stand observations	Measuring period	NEE [g C m ⁻² y ⁻¹]*
Present study	Central Portugal	Csb	<i>Pinus pinaster</i>	Stand replacing fire in Aug2017	Oct 2017- Oct2018	-290
Sun et al. (2016)	South Australia	Bsk	<i>Eucalyptus dumosa</i> , <i>E incrassata</i> , <i>E oleosa</i> , <i>E socialis</i>	1-y after fire May2014-Jul2015	May14	<u>19</u> g C m ⁻² month ⁻¹
					Jun14	<u>16</u> g C m ⁻² month ⁻¹
					Jul14	<u>11</u> g C m ⁻² month ⁻¹
					May15	-18 g C m ⁻² month ⁻¹
					Jun15	-13 g C m ⁻² month ⁻¹
					Jul15	-12 g C m ⁻² month ⁻¹
Dadi et al. (2015)	Cuenca, Spain	Csb	<i>Pinus nigra</i>	High severity, stand-replacing fire in July 2009	Jun2011- Feb2013	<u>180</u>
Serrano-Ortiz et al. (2011)	SE Spain	Dsc	<i>Pinus sylvestris</i>	Burnt Sept 2005; Salvage logging (SL) vs no intervention (NI)	Jun-Dec 2009	BUR-SL <u>40</u> g C m ⁻² per 7-months
						BUR-NI -90 g C m ⁻² per 7-months
Mkhabela et al. (2009)	Saskatchewan, Canada	Dfb	<i>Pinus banksiana</i>	BUR 1998	2004 and 2005	<u>20</u>
				BUR 1989		-84

				BUR 1977		+58
				BUR 1929		-20
Dore et al. (2008)	Arizona, USA	Csa	<i>Pinus ponderosa</i>	High severity, stand-replacing fire 1996 vs Unburnt	Sep 2005 to Dec 2006	<u>109±6</u>
Amiro (2001)	NW Canada	Dfc	<i>Pinus banksiana</i>	Severely burnt in July 1997; Adjacent UNB with 80 years	7-15 Jul 1998	BUR <u>0.8</u> g C m ⁻² d ⁻¹
				Burnt 1989 and aeriaily seeded in 1990; Adjacent UNB with 50 years	10-26 Aug1999	BUR = UNB -1.3 g C m ⁻² d ⁻¹

*unless other units indicated

Table S2. Summary of the floristic composition on 10 September 2018 as determined by vegetation releves at the 5 points along the transect in the targeted footprint area

Higher plant species	Projected ground cover ((minimum) median (maximum)%)
<i>Cistus psilosepalus</i>	(0) 0 (40)
<i>Agrostis truncatula</i>	(0) 0 (15)
<i>Cistus ladanifer</i>	(1) 15 (30)
<i>Eucalyptus globulus</i>	(0) 0 (10)
<i>Halimium ocymoides</i>	(0) 9 (15)
<i>Calluna vulgaris</i>	(0) 1 (15)
<i>Pterospartum tridentatum</i>	(0) 5 (10)
<i>Erica spec.</i>	(0) 0 (5)
<i>Arbutus unedo</i>	(0) 0 (5)
<i>Phyllirea angustifolia</i>	(0) 1 (10)
<i>Pinus pinaster</i>	(1) 2 (5)
<i>Lavandula pedunculata</i>	(0) 0 (2)
<i>Genista triachantos</i>	(0) 1 (2)
<i>Conyza bonariensis</i>	(0) 0 (2)
<i>Anarrhinum bellidifolium</i>	(0) 0 (1)
<i>Pteridium aquilinum</i>	(0) 0 (1)
<i>Jasione montana</i>	(0) 0 (1)
<i>Hakea sericea</i>	(0) 0 (1)
<i>Ornithopus spec.</i>	(0) 1 (1)

Table S2. Summary of published eddy-covariance studies in unburnt *Pinus pinaster Ait.* woodlands

Reference	Location	Climate	Dominant tree species	Soil	Stand establishment	Tree age [y]	NEP [g C m ⁻² y ⁻¹]*
Berbigier et al. (2001)	Bordeaux, France	Cfb	<i>Pinus pinaster Ait</i>	sandy hydromorphic podzol	Planted in 1970	28	575
Kowalski et al. (2003)	Les Landes, France	Cfb	<i>Pinus pinaster Ait.</i>	sandy podzol	Clear-felled 50 y old plantation	1	-290
Jarosz et al. (2008)	Bordeaux, France	Cfb	<i>Pinus pinaster Ait.</i>	Sandy hydromorphic podzol	Planted in 1970	32	79 total
							-59 understory
							138 tree layer
Moreaux et al. (2011)	Bordeaux, France	Cfb	<i>Pinus pinaster Ait.</i>	Sandy podzol	Clear cut 1999; ploughed and fertilized 2001; seeded 2004. A: without intervention B: removal of weed and thinning of trees in 2008/2009	A: 4	243
						B: 5	65
Matteucci et al. (2015)	Tuscany, Italy	Csa (study year was atypically dry)	<i>Pinus pinaster Ait.</i>	93% sand, 3% silt; 4% clay. 43.8% SOM	Natural regeneration following a wildfire in 1944	64	(May'01-March'02) 21

*unless other units indicate

2. Supplementary Figures S1 to S13

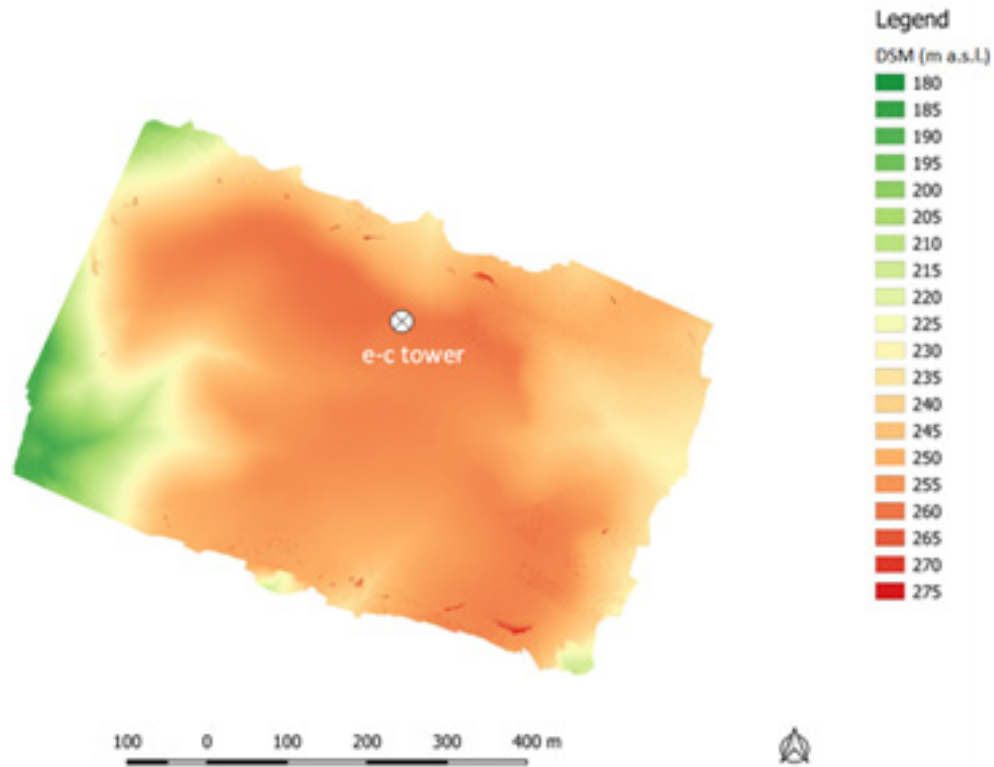


Figure S1a. Digital surface model derived from aerial photography of the burnt area surrounding the flux tower (marked with a circle with a cross). The imagery was acquired on 18 July 2018, using the standard RGB camera mounted on a DJI Phantom 3 drone.

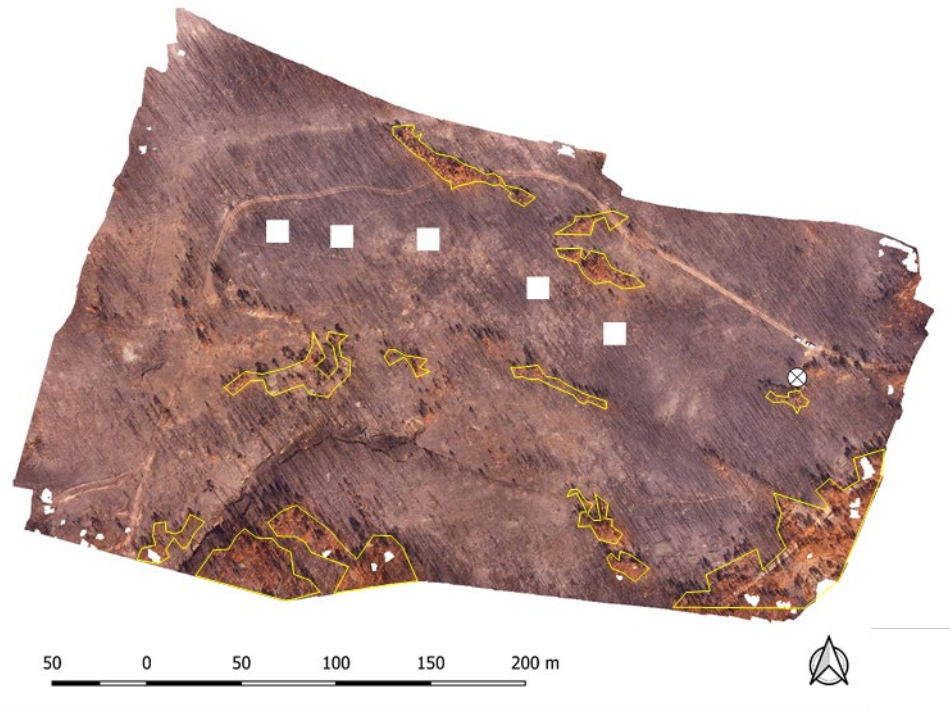


Figure S1b. Ortho-photomap of the study area showing the patches of pine trees whose crowns were only scorched by the wildfire (yellow-bounded polygons), and the 5 points (white squares) along the transect laid out the west of slim tower (cycle with cross), The imagery was acquired roughly 6 weeks after the wildfire, on 22 September 2017, using a standard RGB camera mounted on a DJI Phantom 3 drone

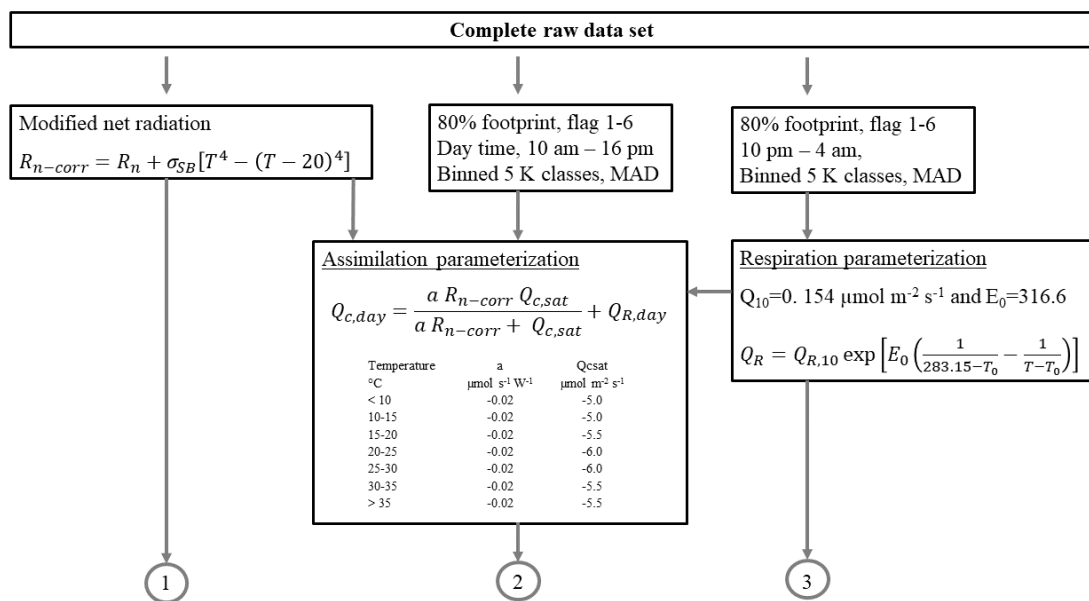


Figure S2. Flow chart of the calculation of the parameters for gap filling of 30-min assimilation and respiration fluxes.

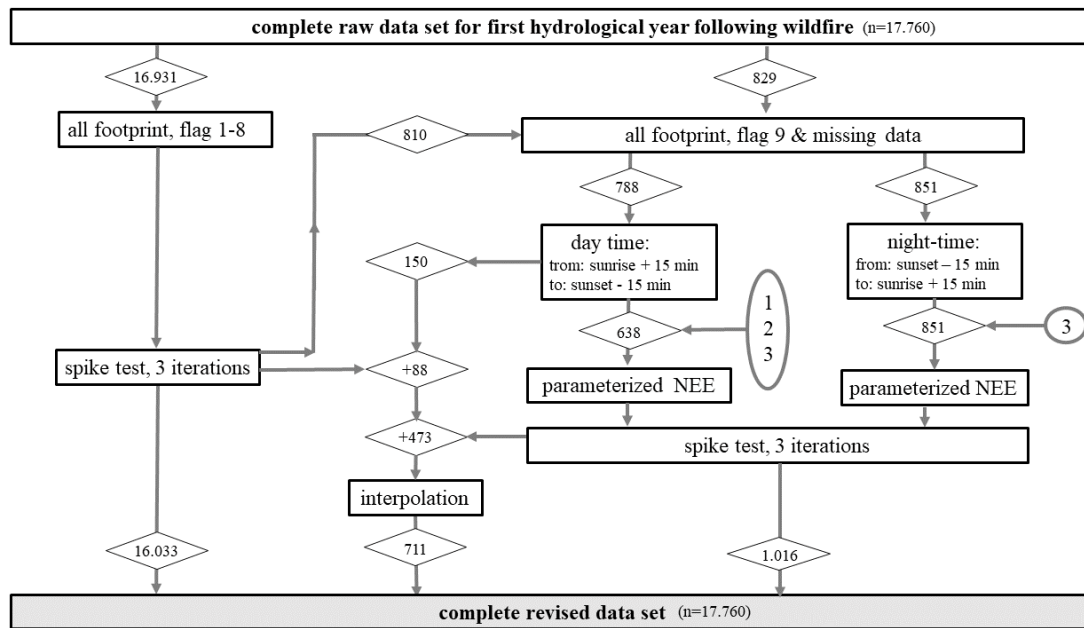


Figure S3. Flow chart of the revision of the raw 30-min data.

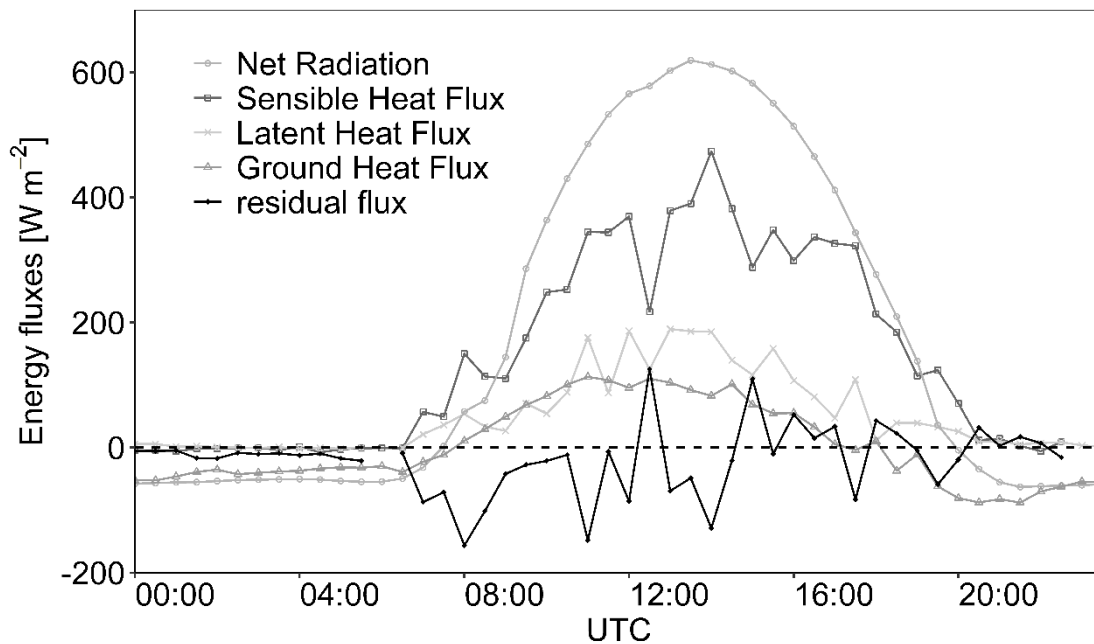


Figure S4. Daily cycle of energy fluxes and their residual on 24 June 2018, when the sky was predominantly clear, except for some high clouds around the local noon at 12:38 UTC. From 08:00 to 19:30 UTC, the footprint consisted for more than 80% of the Maritime pine woodland.

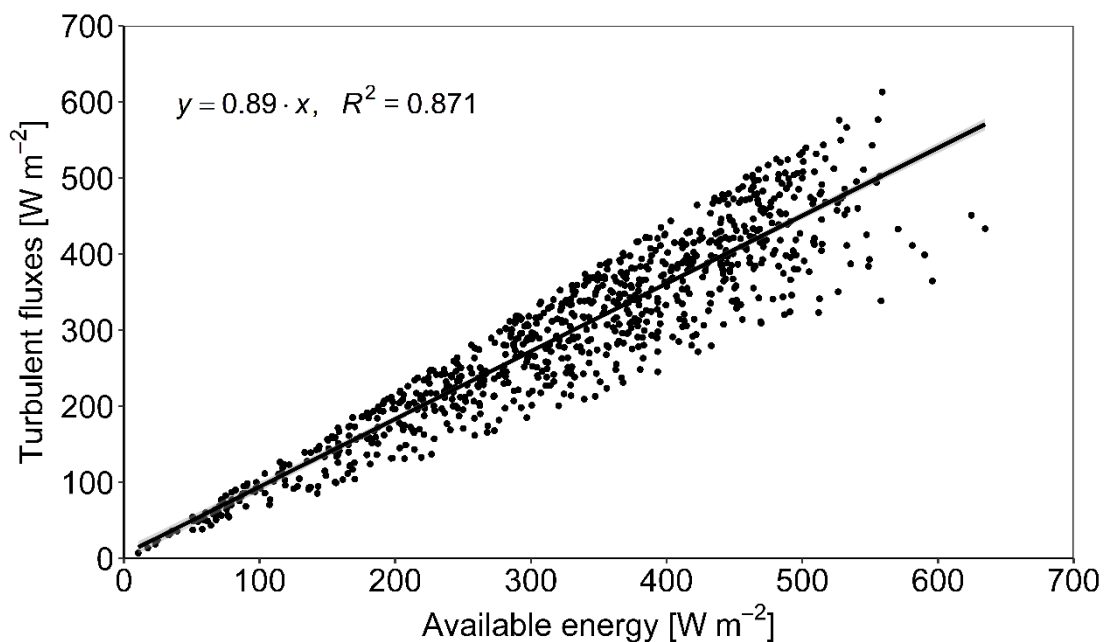


Figure S5. Relationship of turbulent fluxes with available energy for all 30-minute data records that met four conditions: (i) >80% of the footprint area corresponded to the burnt pine woodland; (ii) the quality flags for the turbulent fluxes ranged from 1 to 6; (iii) sensible and latent heat fluxes were larger than the detection limit of 10 W m⁻²; the ration of latent to sensible heat fluxes passed a MAD-test with q=0.5.

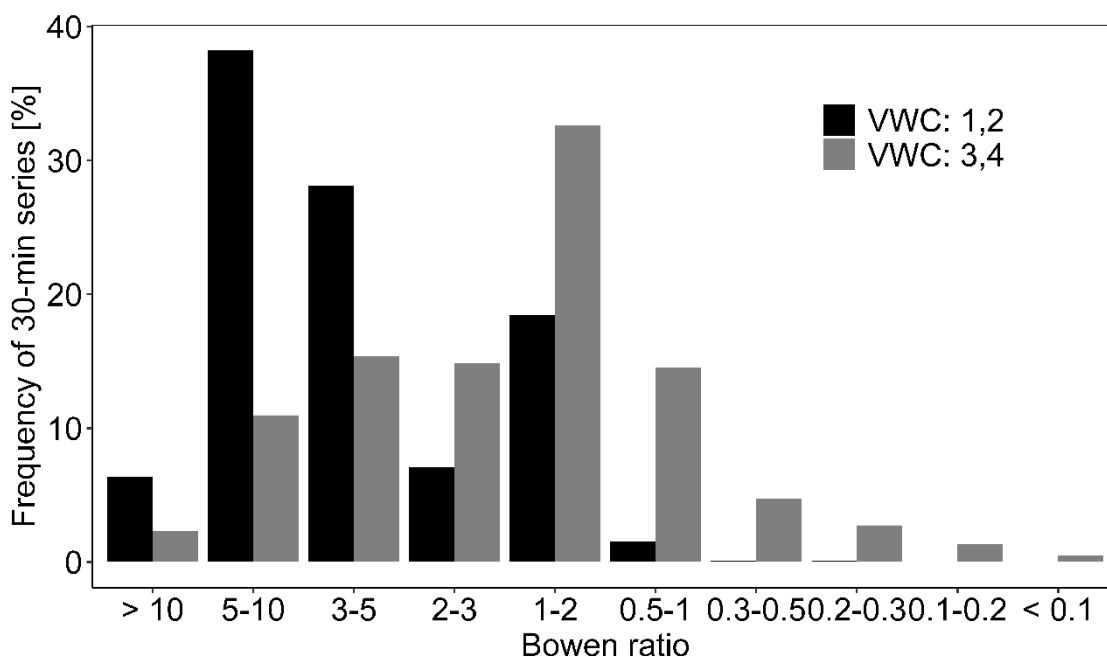


Figure S6. Frequency distribution of the ratio of sensible and latent heat fluxes (Bowen ratio) for two contrasting soil moisture conditions (Volumetric Water Content classes 1 and 2 vs. 3 and 4). The same 30-minute data records as used for Figure S5.

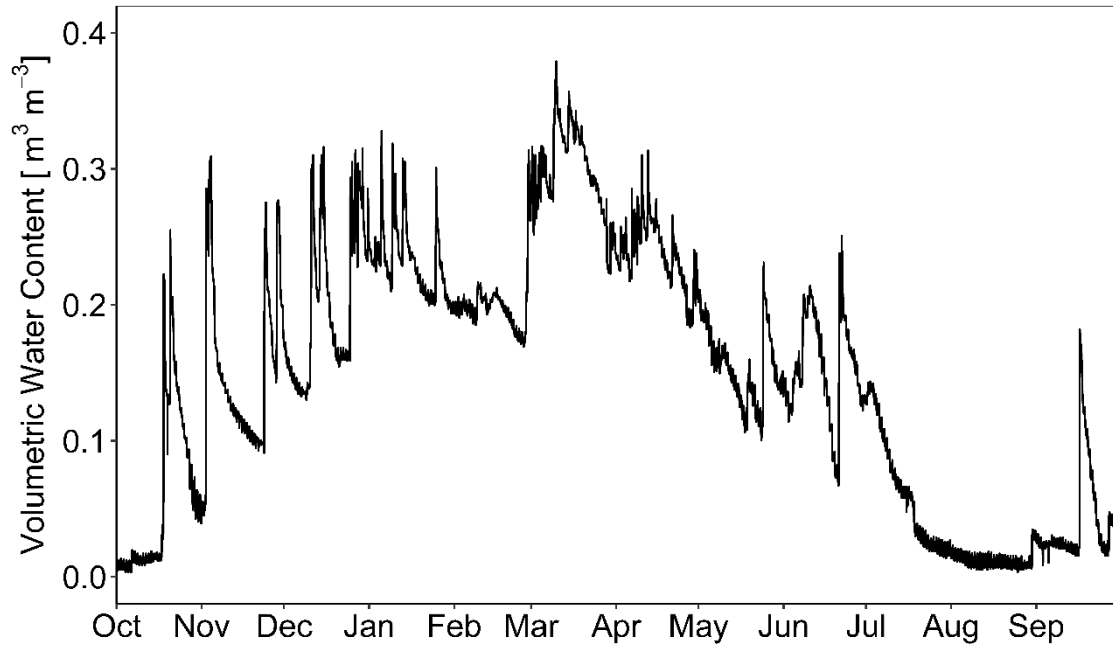


Figure S7. Median 30- minute volumetric soil water content during the 2017/18 hydrological year at 2.5 cm depth at five inter-patches along a transect laid out to the west of the flux tower in the Maritime pine footprint area.

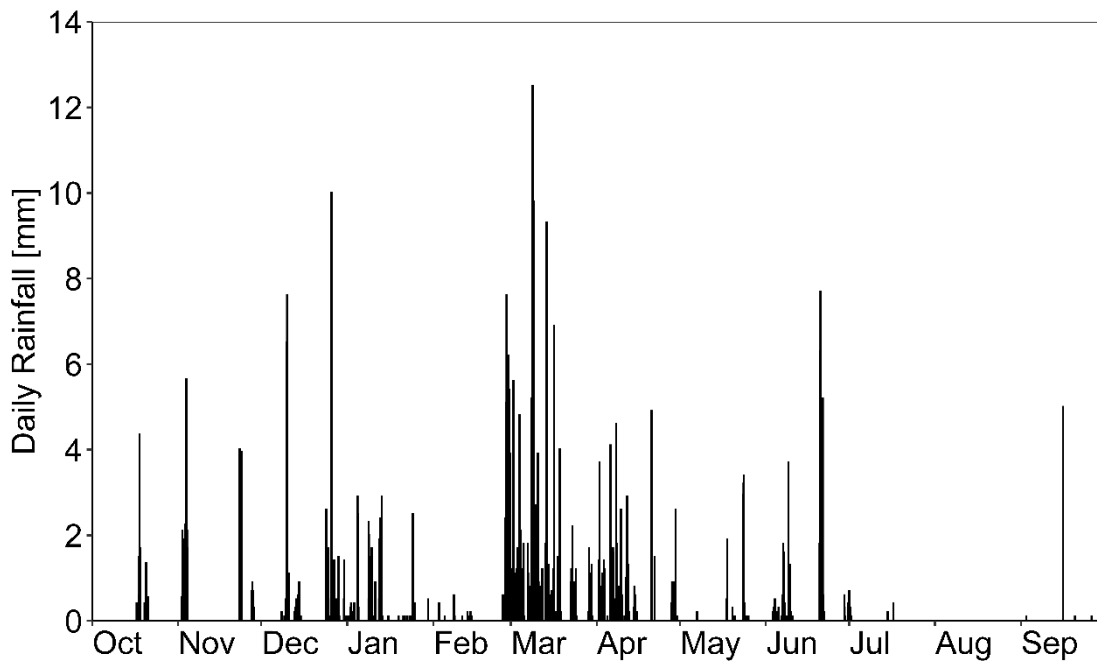


Figure S8: Daily rainfall during the 2017/18 hydrological year as recorded by the automatic gauges installed in the study area.

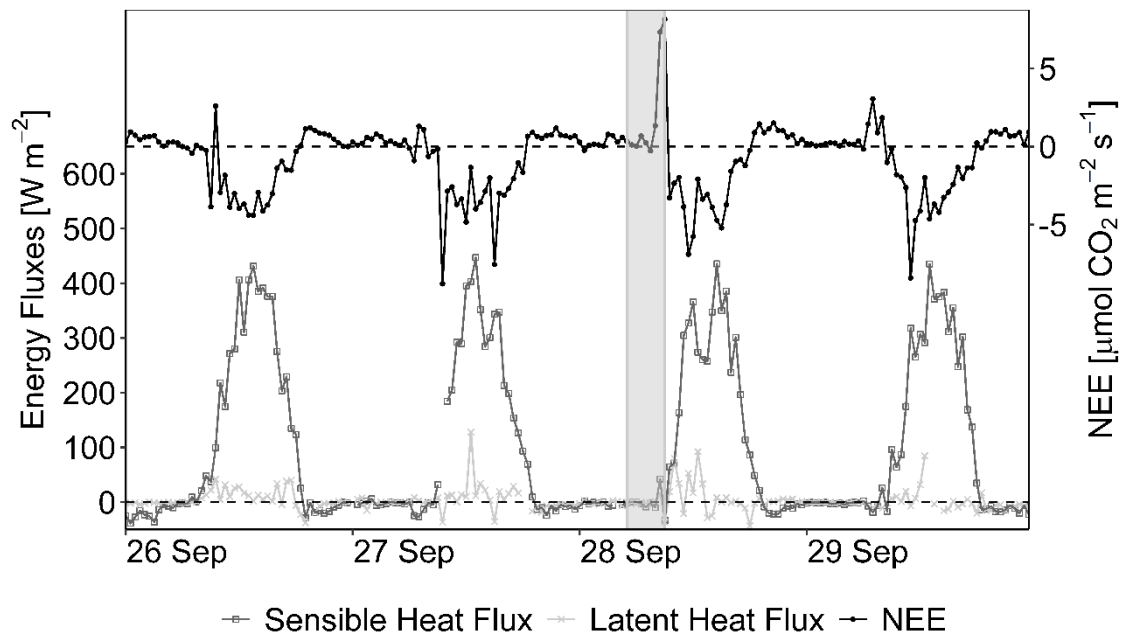


Figure S9. Daily cycles of 30-min sensible and latent heat fluxes and NEE fluxes for the immediate post-fire period from 26 to 29 September 2017. Figure S10 shows the daily cycles of relative humidity together with those of the NEE fluxes. The shadow band shows the time interval of Figure 9.

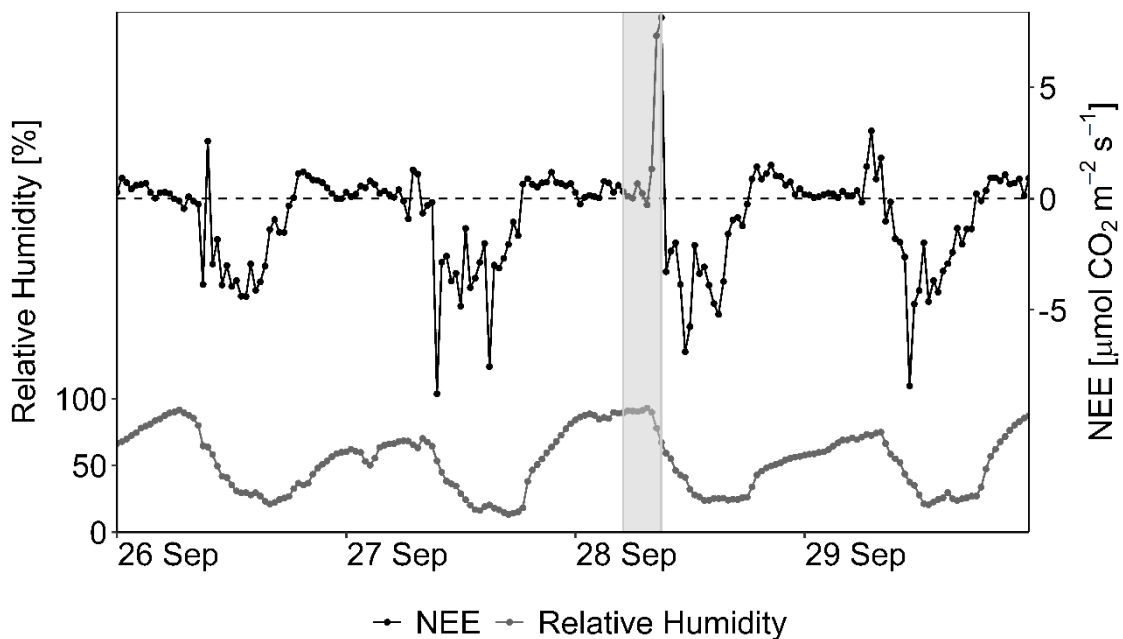


Figure S10. Daily cycles of 30-min relative humidity and NEE fluxes for the immediate post-fire period from 26 to 29 September 2017. The shadow band shows the time interval of Figure 9.

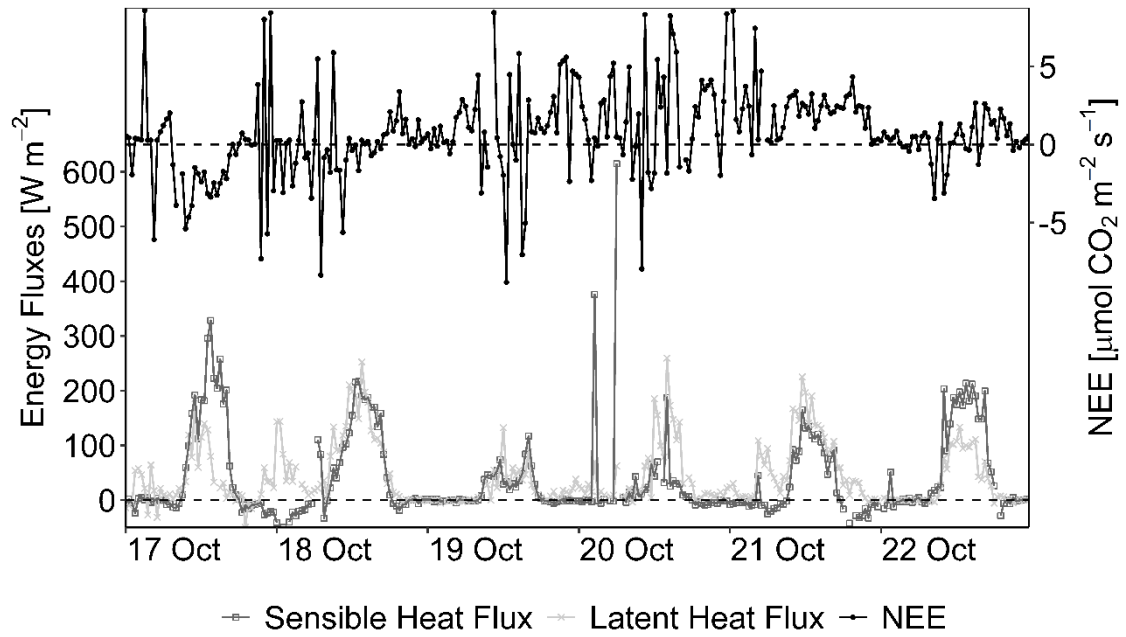


Figure S11. Daily cycles of 30-min sensible and latent heat fluxes and NEE fluxes following the first two significant post-fire rainfall events during the night from 17 to 18 October 2017 and around noon on 20 October 2017.

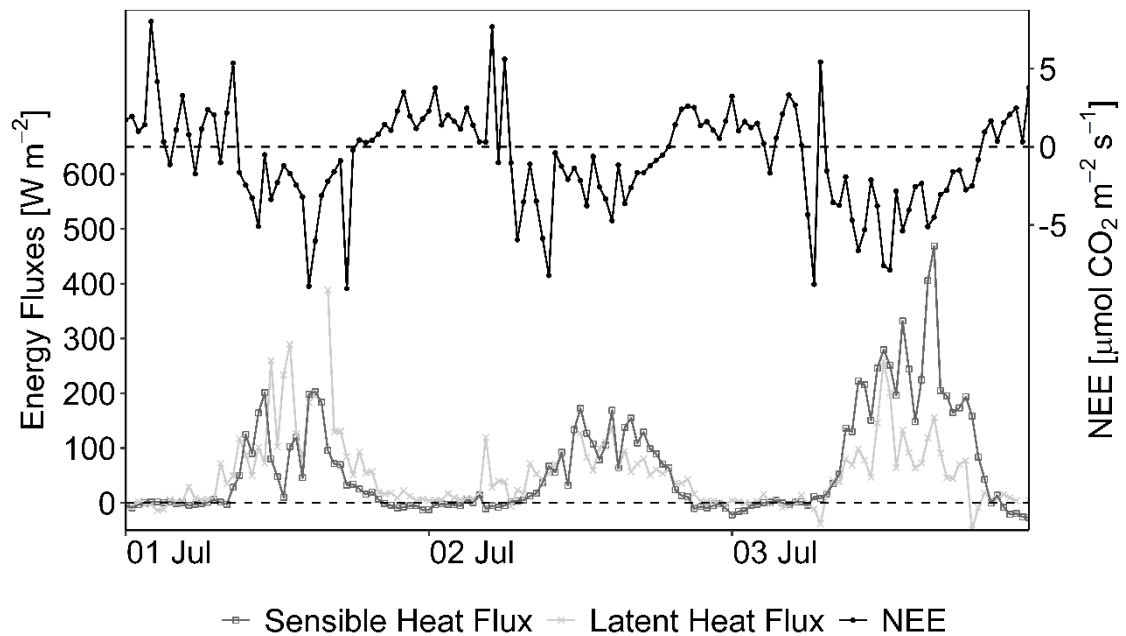


Figure S12. Daily cycles of 30-min sensible and latent heat fluxes and NEE fluxes during early summer 2018, from 1 to 3 July, when these fluxes originated from the Maritime pine woodlands.

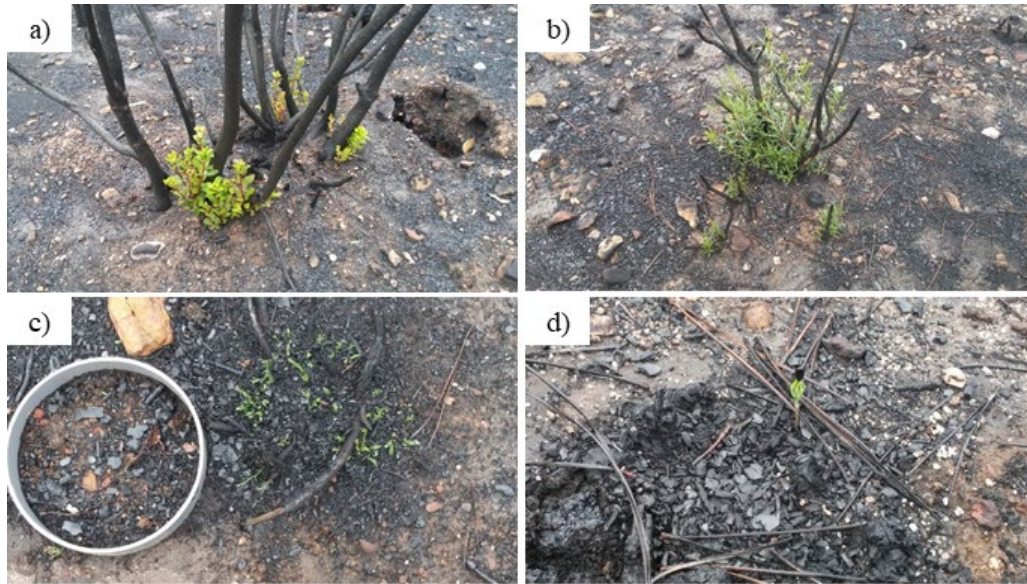


Figure S13. Illustration of post-fire vegetation recovery by 3 January 2018, showing three resprouter shrub species of the understory (a) *Arbutus unedo*; b) *Phillyrea angustifolia*; c) *Pterospartum tridentatum*; and d) Maritime pine seedling. (Pictures by J. Jacob Keizer)

References

- Amiro, B. D.: Paired-tower measurements of carbon and energy fluxes following disturbance in the boreal forest, *Glob. Chang. Biol.*, 7(3), 253–268, doi:10.1046/j.1365-2486.2001.00398.x, 2001.
- Berbigier, P., Bonnefond, J.-M. M. and Mellmann, P.: CO₂ and water vapour fluxes for 2 years above Euroflux forest site, *Agric. For. Meteorol.*, 108(3), 183–197, doi:10.1016/S0168-1923(01)00240-4, 2001.
- Chan, F. C. C., Altaf Arain, M., Khomik, M., Brodeur, J. J., Peichl, M., Restrepo-Coupe, N., Thorne, R., Beamesderfer, E., McKenzie, S., Xu, B., Croft, H., Pejam, M., Trant, J., Kula, M. and Skubel, R.: Carbon, water and energy exchange dynamics of a young pine plantation forest during the initial fourteen years of growth, *For. Ecol. Manage.*, 410, 12–26, doi:10.1016/J.FORECO.2017.12.024, 2018.
- Dadi, T., Rubio, E., Martínez-García, E., López-Serrano, F. R., Andrés-Abellán, M., García-Morote, F. A. and De las Heras, J.: Post-wildfire effects on carbon and water vapour dynamics in a Spanish black pine forest., *Environ. Sci. Pollut. Res. Int.*, 22(7), 4851–62, doi:10.1007/s11356-014-3744-4, 2015.
- Dore, S., Kolb, T. E., Montes-Helu, M., Sullivan, B. W., Winslow, W. D., Hart, S. C., Kaye, J. P., Koch, G. W. and Hungate, B. A.: Long-term impact of a stand-replacing fire on ecosystem CO₂ exchange of a ponderosa pine forest, *Glob. Chang. Biol.*, 14(8), 1801–1820, doi:10.1111/j.1365-2486.2008.01613.x, 2008.

van Gorsel, E., Berni, J. A. J., Briggs, P., Cabello-Leblic, A., Chasmer, L., Cleugh, H. A., Hacker, J., Hantson, S., Haverd, V., Hughes, D., Hopkinson, C., Keith, H., Kljun, N., Leuning, R., Yebra, M. and Zegelin, S.: Primary and secondary effects of climate variability on net ecosystem carbon exchange in an evergreen Eucalyptus forest, *Agric. For. Meteorol.*, 182–183, 248–256, doi:10.1016/J.AGRFORMET.2013.04.027, 2013.

Jarosz, N., Brunet, Y., Lamaud, E., Irvine, M., Bonnefond, J.-M. and Loustau, D.: Carbon dioxide and energy flux partitioning between the understorey and the overstorey of a maritime pine forest during a year with reduced soil water availability, *Agric. For. Meteorol.*, 148(10), 1508–1523, doi:10.1016/J.AGRFORMET.2008.05.001, 2008.

Kowalski, S., Sartore, M., Burlett, R., Berbigier, P. and Loustau, D.: The annual carbon budget of a French pine forest (*Pinus pinaster*) following harvest, *Glob. Chang. Biol.*, 9(7), 1051–1065, doi:10.1046/j.1365-2486.2003.00627.x, 2003.

Kulmala, L., Pumpanen, J., Kolari, P., Dengel, S., Berninger, F., Köster, K., Matkala, L., Vanhatalo, A., Vesala, T. and Bäck, J.: Inter- and intra-annual dynamics of photosynthesis differ between forest floor vegetation and tree canopy in a subarctic Scots pine stand, *Agric. For. Meteorol.*, 271, 1–11, doi:10.1016/J.AGRFORMET.2019.02.029, 2019.

Matteucci, M., Gruening, C., Godec Ballarin, I., Seufert, G. and Cescatti, A.: Components, drivers and temporal dynamics of ecosystem respiration in a Mediterranean pine forest, *Soil Biol. Biochem.*, 88, 224–235, doi:10.1016/j.soilbio.2015.05.017, 2015.

Mkhabela, M. S., Amiro, B. D., Barr, A. G., Black, T. A., Hawthorne, I., Kidston, J., McCaughey, J. H., Orchansky, A. L., Nesic, Z., Sass, A., Shashkov, A. and Zha, T.: Comparison of carbon dynamics and water use efficiency following fire and harvesting in Canadian boreal forests, *Agric. For. Meteorol.*, 149(5), 783–794, doi:10.1016/j.agrformet.2008.10.025, 2009.

Moreaux, V., Lamaud, É., Bosc, A., Bonnefond, J. M., Medlyn, B. E. and Loustau, D.: Paired comparison of water, energy and carbon exchanges over two young maritime pine stands (*Pinus pinaster* Ait.): Effects of thinning and weeding in the early stage of tree growth, *Tree Physiol.*, 31(9), 903–921, doi:10.1093/treephys/tpr048, 2011.

Peichl, M., Brodeur, J. J., Khomik, M. and Arain, M. A.: Biometric and eddy-covariance based estimates of carbon fluxes in an age-sequence of temperate pine forests, *Agric. For. Meteorol.*, 150(7–8), 952–965, doi:10.1016/J.AGRFORMET.2010.03.002, 2010.

Rodrigues, A., Pita, G., Mateus, J., Kurz-Besson, C., Casquilho, M., Cerasoli, S., Gomes, A. and Pereira, J.: Eight years of continuous carbon fluxes measurements in a Portuguese eucalypt stand under two main events: Drought and felling, *Agric. For. Meteorol.*, 151(4), 493–507,

doi:10.1016/J.AGRFORMET.2010.12.007, 2011.

Serrano-Ortiz, P., Marañón-Jiménez, S., Reverter, B. R., Sánchez-Cañete, E. P., Castro, J., Zamora, R. and Kowalski, A. S.: Post-fire salvage logging reduces carbon sequestration in Mediterranean coniferous forest, *For. Ecol. Manage.*, 262(12), 2287–2296, doi:10.1016/j.foreco.2011.08.023, 2011.

Sun, Q., Meyer, W. S., Koerber, G. R. and Marschner, P.: A wildfire event influences ecosystem carbon fluxes but not soil respiration in a semi-arid woodland, *Agric. For. Meteorol.*, 226–227, 57–66, doi:10.1016/j.agrformet.2016.05.019, 2016.