

2020

## Sublethal effects of salinity and temperature on non-native blue catfish: Implications for establishment in Atlantic slope drainages

Vaskar Nepal  
*Virginia Institute of Marine Science*

Mary C. Fabrizio  
*Virginia Institute of Marine Science*

Follow this and additional works at: <https://scholarworks.wm.edu/vimsarticles>



Part of the [Aquaculture and Fisheries Commons](#)

---



### Recommended Citation

Nepal, Vaskar and Fabrizio, Mary C., Sublethal effects of salinity and temperature on non-native blue catfish: Implications for establishment in Atlantic slope drainages (2020). *PLoS One*, 15(12), e0244392.  
doi : 10.1371/journal.pone.0244392

This Article is brought to you for free and open access by the Virginia Institute of Marine Science at W&M ScholarWorks. It has been accepted for inclusion in VIMS Articles by an authorized administrator of W&M ScholarWorks. For more information, please contact [scholarworks@wm.edu](mailto:scholarworks@wm.edu).

## RESEARCH ARTICLE

# Sublethal effects of salinity and temperature on non-native blue catfish: Implications for establishment in Atlantic slope drainages

Vaskar Nepal <sup>\*</sup>, Mary C. Fabrizio <sup>1B</sup>

Virginia Institute of Marine Science, William &amp; Mary, Gloucester Point, Virginia, United States of America

<sup>\*</sup> [vnepalkc@vims.edu](mailto:vnepalkc@vims.edu) OPEN ACCESS

**Citation:** Nepal V, Fabrizio MC (2020) Sublethal effects of salinity and temperature on non-native blue catfish: Implications for establishment in Atlantic slope drainages. PLoS ONE 15(12): e0244392. <https://doi.org/10.1371/journal.pone.0244392>

**Editor:** Peter Eklöv, Uppsala Universitet, SWEDEN

**Received:** August 19, 2020

**Accepted:** December 9, 2020

**Published:** December 29, 2020

**Copyright:** © 2020 Nepal, Fabrizio. This is an open access article distributed under the terms of the [Creative Commons Attribution License](https://creativecommons.org/licenses/by/4.0/), which permits unrestricted use, distribution, and reproduction in any medium, provided the original author and source are credited.

**Data Availability Statement:** All relevant data are within the manuscript and its [Supporting information](#) files.

**Funding:** Financial assistance was provided by a Virginia Institute of Marine Science (VIMS) student research grant and Virginia Sea Grant graduate fellowship to VN, and by the Virginia Marine Resources Commission and the U.S. Fish and Wildlife Service to MF. The funder provided support in the form of salaries for authors [VN; MCF], but did not have any additional role in the study design, data collection and analysis, decision

## Abstract

The distribution and further range expansion of non-native blue catfish *Ictalurus furcatus* in coastal waters throughout the United States Atlantic slope depend, in part, on the salinity tolerance of the fish. However, temperature-mediated sublethal effects of increased salinities on blue catfish biology are not yet known. We assessed the effects of salinity and temperature on growth, body condition, body composition and food consumption of juvenile blue catfish in a controlled laboratory experiment. Temperature and salinity had an interactive effect on blue catfish biology, although most fish survived 112 days in salinities up to 10 psu. At salinities  $\leq 7$  psu, mean growth rate, body condition and consumption rates were higher at 22°C than at 12°C. Mean consumption rates declined significantly with increasing salinities, yet, salinities  $\leq 7$  psu were conducive to rapid growth and high body condition, with highest growth and body condition at 4 psu. Fish at 10 psu exhibited low consumption rates, slow growth, low body condition and lower proportions of lipids. Habitats with hyperosmotic salinities ( $>9$  psu) likely will not support the full lifecycle of blue catfish, but the fish may use salinities up to 10 psu for foraging, dispersal and even growth. Many oligohaline and mesohaline habitats in U.S. Atlantic slope drainages may thus be vulnerable to establishment of invasive blue catfish, particularly given the increasing temperatures as a result of climate warming.

## Introduction

Biological invasions can cause major conservation, economic and human health issues in recipient ecosystems [1]. A classic example is Nile perch *Lates niloticus*, which contributed to the extinction of over 200 species of endemic cichlid fishes from Lake Victoria, after it was introduced into the lake to create a novel fishery [2]. Unsurprisingly, prevention of such catastrophic impacts due to invasive species is a priority for governments throughout the world, prompting policies to prevent the introduction of non-native species, to manage existing invasive species, and to minimize overall negative impacts of invasive species. An invasive species of increasing concern in Atlantic slope rivers of the United States is the blue catfish *Ictalurus furcatus* [3]. This freshwater fish, native to large Midwestern rivers, was introduced in tidal freshwater portions of the James, York and Rappahannock rivers in the Chesapeake Bay region

to publish, or preparation of the manuscript. The specific roles of these authors are articulated in the 'author contributions' section.

**Competing interests:** The authors have declared that no competing interests exist.

during the 1970s and 1980s to create a recreational fishery [4]. Since then, the fish has expanded in range both within the tidal rivers where they were introduced and into most other tidal rivers throughout the Chesapeake Bay [4, 5]. Similar introductions have resulted in the establishment of non-native blue catfish populations in many tidal rivers along the Atlantic coast between Georgia and Delaware and in the Gulf of Mexico drainage in Florida [6]. In some of these systems, blue catfish densities are high, and this species may be numerically dominant in the catch of fisheries-independent surveys [7]. In addition, the generalist, opportunistic feeding behavior of blue catfish is likely impacting native species negatively via competition and predation [4, 8]. As such, resource managers in the Chesapeake Bay region are interested in managing blue catfish populations to limit further range expansion of the species and to decrease its negative impacts on native ecosystems [3].

The potential distribution of a species is determined by the species' physiological constraints, which define its fundamental niche [9]. For blue catfish in the coastal rivers of the eastern U.S., salinity tolerance may limit its range expansion. Most freshwater fishes are unable to penetrate oligohaline (0–5 psu [practical salinity units] salinity) and mesohaline (5–18 psu salinity) environments in estuaries due to low physiological tolerance to elevated salinities or to biotic interactions such as competition with or predation from marine species [10]. In particular, hyperosmotic salinities (i.e., >9 psu) are expected to be uninhabitable by freshwater fishes due to the inability of fish to rearrange their osmoregulatory processes. Yet, blue catfish maintain native populations in oligohaline and mesohaline regions of coastal rivers in the southern United States, with fish captured most frequently at salinities <3.7 psu, but also at salinities up to 11.4 psu [11]. The species occurs in Atlantic slope rivers, where it is considered non-native; here, blue catfish are captured at salinities as high as 21.8 psu [12]. The ability to establish populations in high salinity environments could potentially increase the overall population size, connectivity and ultimately, the negative impacts of this species on estuarine organisms. Other non-native freshwater species such as pike *Esox lucius* and rainbow trout *Oncorhynchus mykiss* use brackish waters for reproduction and foraging, as migration corridors to new habitats or to avoid stressful abiotic conditions [13, 14]. The ability of blue catfish to establish populations in high salinity habitats is a concern among resource managers.

Juvenile blue catfish have a relatively high tolerance to acute, short-term increases in salinity, potentially allowing this invasive fish to exploit mesohaline environments for dispersal and range expansion throughout the Chesapeake Bay and into the Delaware Bay watershed [5]. The long-term effects of increased salinity on blue catfish biology, however, are not clear. Abass et al. [15] reported maximum survival and growth of hatchery-spawned larval blue catfish at sodium chloride concentrations of 3 ppt (parts per thousand), but 100% mortalities at salinities  $\geq 6$  ppt. These results, though useful as a general indication of the salinity tolerance of blue catfish, may not be readily applicable to wild fish [16]. Accurate projections of estuarine habitat use by blue catfish, therefore, require knowledge of sublethal impacts of salinity conditions on vital rates of fish.

Effects of salinity on physiological processes and vital rates of a fish depend on water temperature [17]. This is particularly important for fishes in temperate estuaries such as Chesapeake Bay where salinity and temperature vary annually and seasonally. Optimal habitats for a fish are, therefore, likely to change seasonally and annually in such environments. The quality of specific salinity and temperature conditions to a fish can be inferred by studying growth rates, body condition and energy reserves at those conditions: in suboptimal environments, fishes grow slowly and have low body condition and energy reserves, which together signify poor health [18]. Controlled experiments assessing these traits at various biologically relevant salinity and temperature conditions can inform predictions about the general health, well-being and invasion potential of blue catfish in Chesapeake Bay and other non-native estuarine

habitats. Inferences could also be drawn regarding the potential effects of climate change on both the invasion ecology of the species and on the potential impacts of this species on the structure and function of invaded ecosystems.

We studied the sublethal effects of increased salinity at two temperatures to better understand the predicted niche of non-native blue catfish in coastal rivers of the eastern U.S. Specifically, we assessed differences in growth rates, body condition, consumption rates and proximate body composition—the relative proportions of water, lipids, protein and ash—of juvenile blue catfish exposed to one of four salinity treatments (1, 4, 7 or 10 psu) at either 12 or 22°C for 16 weeks. We hypothesized that fish growth, body condition and consumption rates would be maximized at intermediate salinities (4 or 7 psu) and 22°C. A salinity of 10 psu, however, was hypothesized to adversely impact blue catfish because individuals will need to adjust their osmoregulatory strategies in such hyperosmotic conditions [19].

## Methods

All animal capture, handling and experimental procedures were approved by the William & Mary Institutional Animal Care and Use Committee (protocols: IACUC-2016-08-19-11376-mcfabr and IACUC-2017-05-22-12111-tdtuck) and followed all applicable U.S. guidelines. Animal care was provided by the first author under the supervision of the second author. Both authors have 5+ years of experience handling fish in experimental and wild settings.

## Fish collections

Blue catfish (168–234 mm fork length [FL]) were captured from the tidal James River (coordinates 37° 14'N 76° 52'W) using a 9.14-m otter trawl following protocols of the Virginia Institute of Marine Science (VIMS) Juvenile Fish Trawl Survey; Tuckey and Fabrizio [7] provide details of the sampling design and protocols of this survey. Fish were collected from oligohaline reaches where salinity was <2 psu. This salinity threshold was chosen because few blue catfish of the desired size (<225 mm) are encountered at higher salinities; this observation is consistent with the reported relationship between fish size and salinity tolerance of blue catfish [5]. Blue catfish were brought to the VIMS Seawater Research Laboratory and treated prophylactically for potential parasites with a formalin bath and a saltwater dip using standard protocols [20]. To allow identification of individual fish, each fish was subsequently tagged with a unique 12.5 mm Passive Integrated Transponder (PIT) tag. After a three-day recovery period, blue catfish were randomly assigned to either the 12 or 22°C treatment group, and were acclimated for 3 weeks. During acclimation, salinity was 2 psu because preliminary trials showed high mortality of blue catfish at salinity  $\leq 1$  psu due to freshwater ich—a parasitic infection common to freshwater catfish species; ich infestations are impeded by chronic exposure to salinity >1 psu [20].

## Experimental setup

To study the combined effects of salinity and temperature, we used a 4×2 factorial design with four levels of salinity (1, 4, 7 and 10 psu) and two levels of temperature (12°C and 22°C); two replicate aquaria were maintained for each salinity-temperature treatment combination. For each temperature treatment level, we constructed two water baths, inside of which were randomly placed four identical 270-L cylindrical aquaria, corresponding to the four salinity levels. The experimental aquaria and the water bath exchanged heat but not water. The temperature of the water bath was controlled with an automated heater or chiller. We supplied each experimental aquarium with mechanical and biological filters and an aerator to maintain adequate dissolved oxygen concentrations (>6 mg O<sub>2</sub>/L at 22°C and > 8.5 mg O<sub>2</sub>/L at 12°C). To obtain

the desired salinity levels, we diluted filtered York River water (mean salinity: 12.1 psu; range: 10.4–16.3 psu) with deionized water. Fish were fed commercial fish food (3 mm slow-sinking Finfish Silver; Zeigler Bros, Inc.) every other day *ad libitum* during the acclimation period and throughout the experiment; excess food and wastes were removed the next day. We monitored water quality (dO<sub>2</sub>, salinity, pH, NH<sub>3</sub>, NO<sub>3</sub><sup>-</sup>, and NO<sub>2</sub><sup>-</sup>) twice per week, and performed water changes as necessary to maintain water quality. The light schedule in the laboratory was computer-controlled to simulate natural photoperiod regimes, and all aquaria were partially covered to provide darkened areas for refuge.

We chose the salinity and temperature levels for the experiment based on a review of the literature. As the lowest salinity to be used for the experiment, we chose 1 psu to prevent ich infestations, as stated earlier. We chose 10 psu as the highest salinity treatment level because we assumed that long-term exposure to salinities greater than 9 psu (isosmotic salinity) would be energetically and osmotically too costly for fish and may lead to mortality [21]. We suspected that a salinity of 10 psu may lead to some osmotic stress but not mortality [5]. Blue catfish growth is maximized at 24°C [22], and suppressed at temperatures below 9°C [23]. We therefore chose 12 and 22°C as temperatures typical of areas of the Chesapeake Bay region occupied by blue catfish during the winter and spring (V. Nepal, *pers. obs.*).

The experiment was performed by exposing fish to 1 psu and subsequently increasing the salinity of the experimental aquaria at a fixed rate of 3 psu per day until target salinities were reached ( $n = 10$  fish per aquarium). This rate of salinity increase is within the 1–5 psu per day range commonly used in similar studies [e.g., 24–28]. We held multiple fish in each aquarium because feeding declined considerably when only one individual was present (V. Nepal, *pers. obs.*). Fish were held in the aquaria for 16 weeks and checked once or twice a day for mortality. If a fish was unable to maintain equilibrium and exhibited reduced swimming ability or mouth gaping, the fish was considered moribund. Such fish were immediately removed from the trial and euthanized by immersion in an ice slurry and frozen for later analysis. All surviving fish were euthanized and frozen at the end of the experiment. Wet weights of all fish were recorded before freezing. At a later date, all frozen fish were processed to determine sex and obtain samples for subsequent analysis of proximate composition.

On day 71, all fish from two aquaria (salinity 10 psu, temperature 22°C, replicate 1,  $n = 10$  fish; and salinity 1 psu, temperature 22°C, replicate 2,  $n = 10$  fish) died of unknown causes. Water quality analyses and gross inspection of the dead fish revealed no abnormalities. These 20 fish were not included in mortality rate calculations, and were replaced with wild fish that had been maintained at 2 psu and 22°C and used for the remaining duration of the experiment. Fish were abruptly transferred to 1 psu, but salinity of the experimental aquarium at 10 psu was increased at the rate of 3 psu per day, as described above for other fish in this treatment group.

### Body size and condition

We recorded fork length (mm) and weight (0.1 g) of each fish at the beginning of the experiment and once every four weeks. Fish were not fed for 48 hours before length and weight measurements were recorded. We calculated relative condition factor ( $K_n$ ) as an index of body condition [29].  $K_n > 1$  implies higher condition than the average fish in the experiment, and  $K_n < 1$  implies lower condition than the average fish in the experiment [29]. Sex of each blue catfish (male or female) was assessed at the end of the experiment by macroscopic examination of the gonads.

Changes in FL and  $K_n$  were analyzed using separate repeated measures analysis of variance models in the linear mixed-effects modeling framework. The models took the form:

$$Y_{ijklmn} = \mu + T_j + S_k + P_l + M_m + \beta B + a_n + f_{i(n)} + \varepsilon_{ijklmn} \quad (1)$$

where  $Y_{ijklmn}$  is the response variable (either FL or  $K_n$ ) for fish  $i$  (i.e., PIT tag  $i$ ) from aquarium  $n$  in the temperature treatment  $j$  (12°C or 22°C), salinity treatment  $k$  (1, 4, 7 or 10 psu), measurement period  $l$  (4, 8, 12 or 16 weeks) and sex  $m$ ;  $\mu$  is the overall mean of the response  $Y$ ;  $T_j$ ,  $S_k$ ,  $P_l$  and  $M_m$  are the fixed effects of temperature, salinity, measurement period and sex respectively;  $\beta$  is the regression coefficient for the effect of the baseline value of the response  $B$  (i.e., FL or  $K_n$  at the start of the experiment);  $\varepsilon_{ijklmn}$  is the unexplained random error assumed to have a normal distribution. The term  $a_n$  denotes the random effect of aquarium  $n$ , accounting for the potential pseudoreplication among observations from multiple individuals from a single aquarium. Similarly,  $f_{i(n)}$  denotes the random effect of fish  $i$  nested in aquarium  $n$ , accounting for the repeated measurements on each fish. We also included two- and three-way interactions among temperature, salinity and period. Our primary interest was in the interaction terms, which, if significant, would indicate significant diversions over time in FL or  $K_n$  at different temperatures ( $T \times P$ ), salinities ( $S \times P$ ) or both ( $T \times S \times P$ ). The FL model included a two-way interaction between sex and time ( $M \times P$ ) to examine growth differences between males and females, because blue catfish show sexual dimorphism in growth patterns [30]. Other interaction terms were not considered because preliminary graphical analysis indicated lack of strong interactions. We used a first-order autoregressive (ar1) variance-covariance structure to account for the temporal autocorrelation in the response for each fish. Specifically, we used the heterogeneous ar1 structure because the variance increased over the measurement period. The Kenward-Roger method was used to calculate the degrees of freedom for the approximate  $F$ -tests.

Because change in FL over time (i.e., growth rate) was linear (see [results](#) below), we refit [eq 1](#) for FL with period as a continuous predictor, and calculated  $Q_{10}$  for each salinity level to compare growth rates of blue catfish at different temperatures. We subsequently compared growth rates between temperatures and among salinities using bootstrap hypothesis tests [31]. Statistical analyses were conducted in SAS version 9.4 (SAS Institute, Cary, NC) following procedures in Stroup et al. [32].

## Body composition

We homogenized all blue catfish in an electric blender at the end of the experiment to assess differences in composition at different temperature-salinity combinations. Samples were dried at 60°C in a drying oven for several weeks. Once the sample had dried to constant weight, the tissue was homogenized further in a mortar and pestle and subsequently dried for another 48 hours. We calculated water content in each fish by subtracting the dry weight from the wet weight. Dry tissue samples were analyzed at the Aquaculture Laboratory in Southern Illinois University, Carbondale, Illinois, for proximate body composition. Fish dry tissues were separated into three components, namely lipids, protein and ash; carbohydrates were ignored because they form a minor constituent of fish tissues [17]. We report proximate body composition as fractional composition data where the four components (water, lipids, protein and ash) add up to 1. We were primarily interested in the relative ratios of components (e.g., lipid to ash ratio).

The components of compositional data such as ours must add to a constant, a condition called the constant-sum constraint, making traditional univariate or multivariate tests inappropriate [33]. We therefore analyzed the body composition data using Aitchison's log-ratio



approach [33]. Specifically, we transformed the four-part proximate body composition data into three transformed variables using the isometric log-ratio (ilr) transformation, which allows analysis of the transformed variables using classical statistical techniques [34]. The three transformed variables  $z_{water}$ ,  $z_{protein}$  and  $z_{lipids}$ , called balances, were calculated as

$$z_{water} = \sqrt{\frac{3}{4}} \times \log \frac{water}{\sqrt[3]{protein \times lipids \times ash}} \tag{2}$$

$$z_{protein} = \sqrt{\frac{2}{3}} \times \log \frac{protein}{\sqrt{lipids \times ash}} \tag{3}$$

$$z_{lipids} = \sqrt{\frac{1}{2}} \times \log \frac{lipids}{ash} \tag{4}$$

These ilr balances correspond to the ratio of water to all other components ( $z_{water}$ ), protein to the remaining components ( $z_{protein}$ ), and lipids to ash ( $z_{lipids}$ ), and can be back-transformed to proximate compositions to allow easy interpretation [34]. We modeled the ilr balances jointly using a multivariate linear mixed-effects model (LMM) of the form:

$$z_{cijkmn} = \mu + T_j + S_k + T_j \times S_k + M_m + \beta \log(W) + a_n + \epsilon_{ijkmn} \tag{5}$$

where  $z_{cijkmn}$  is the  $c^{th}$  ilr balance for fish  $i$  from aquarium  $n$  in temperature treatment  $j$ , salinity treatment  $k$  and sex  $m$ ;  $\beta$  is the regression coefficient for the effect of natural log of fish weight  $\log(W)$ , and all other symbols are as described previously. We used  $\log(W)$  instead of  $W$  because the former resulted in a better fit.

To ease interpretation, we obtained estimated marginal means for each balance at each salinity-temperature treatment combination, and back-transformed the marginal means to the four components (percent water, lipids, protein, and ash). We tested hypotheses of pairwise differences in mean proportions of each component among the salinity and temperature treatments using bootstrap techniques [31]. Specifically, we obtained 1,000 bootstrap resample datasets of ilr balances, with size of each bootstrap resample equal to the original sample size. We then fitted multivariate LMMs on each resample dataset and obtained the marginal means for each salinity-temperature treatment. Finally, we calculated bootstrap-based two-tailed  $P$ -values to compare statistically the estimated marginal means at different temperatures and salinities [31].

Treatment-specific differences in proximate body composition of blue catfish at the end of the experiment may result from differences that were present at the start of the experiment. To check for this potential confounding effect, we examined differences in proximate body composition of fish and wet weight of fish at the start of the experiment and between temperature treatments (12 or 22°C). To do this, we euthanized 30 randomly selected fish ( $n = 15$  for each temperature level) before the start of experimental trials and obtained proximate body composition of these fish as stated above. We subsequently tested for the effects of fish weight and water temperature on mean body composition of these blue catfish using multivariate LMM of the form:

$$z_{cijm} = \mu + T_j + M_m + \beta \log(W) + \epsilon_{ijm} \tag{6}$$

where  $z_{cijm}$  is the  $c^{th}$  ilr balance for fish  $i$  of sex  $m$  held at temperature  $j$ ; all other variables are as described above. A total of 210 fish were used in the experiment. Of these, 187 were

euthanized, and 23 fish died before meeting the criteria for euthanasia (i.e., they died during the intervals between the routine checks).

We used the package `robCompositions` version 1.3.3 [35] in R version 3.6.1 (R Core Team, Vienna) for `ilr` transformation and back-transformation, and `proc mixed` in SAS to fit the multivariate LMM [36]. Assumptions of homogeneity of variance and normality of residuals were assessed using diagnostic plots.

### Consumption rate

In each experimental aquarium, we conducted feeding trials to determine the consumption rate of blue catfish at different salinities and temperatures. Due to logistical difficulties, we could not measure consumption rates of individual blue catfish; instead we measured the cumulative consumption rate for all (up to 10) blue catfish in each experimental aquarium. Fish were not fed for 48 hours before the consumption trials. A measured quantity of commercial fish feed was introduced to each experimental aquarium at 1700 hours, before the lights turned off. The fish were left undisturbed to allow feeding for the next 3 hours. We chose a relatively short period of 3 hours to minimize the accumulation of waste from egestion, while ensuring that blue catfish had enough time to consume the food. At 2000 hours, we transferred the uneaten food into pre-weighed aluminum pans, which were dried until constant weight at 60°C. The amount consumed ( $C_F$ , g of food) was calculated by subtracting the dry weight of uneaten food from the weight of the food introduced in the corresponding aquarium. Consumption rate trials were conducted twice for each aquarium.

To adjust for effect of food disintegration on observed consumption rates, we conducted food disintegration trials in the experimental aquaria after the termination of the experiment when blue catfish were removed from the aquaria. We calculated the weight of food lost to disintegration ( $C_0$ ) after 3 h in each aquarium by subtracting the dry weight of remaining food from the weight of the food introduced in the aquarium. These amounts were calculated for each aquarium in the experiment and represented as  $C_{0i}$ , or the amount of food lost to disintegration in aquarium  $i$ . The mass-specific consumption rates ( $CR$ , mg food per g fish) for each aquarium were subsequently calculated as:

$$CR_{ij} = \frac{C_{Fij} - C_{0i}}{\Sigma W_i} \quad (7)$$

where  $CR_{ij}$  is the mass-specific consumption rate for all blue catfish in aquarium  $i$  during event  $j$ ,  $C_{Fij}$  is the amount of food consumed by blue catfish in aquarium  $i$  during event  $j$ , and  $\Sigma W_i$  is the total wet weight of blue catfish in aquarium  $i$ .

Effect of water temperature and salinity on the consumption rate of blue catfish was assessed using a generalized LMM of the form:

$$\log(\lambda_{jkn}) = \mu + T_j + S_k + a_n + \varepsilon_{jkn} \quad (8)$$

where  $\log(\lambda_{jkn})$  is the natural log of mean CR ( $\lambda$ ) of all fish in aquarium  $n$  at temperature  $j$  and salinity  $k$ . Other variables are as before. Here, we used a gamma distribution with a log link, and fit the model using `proc glimmix` in SAS [32]. Some predictor variables were scaled to aid model fitting, and the intercept ( $\mu$ ) was suppressed to aid model interpretation. We report 95% confidence intervals (CI) for all predicted means and model parameters. Assumptions of homogeneity of variance and normality of residuals were assessed using diagnostic plots.



## Results

### Water quality

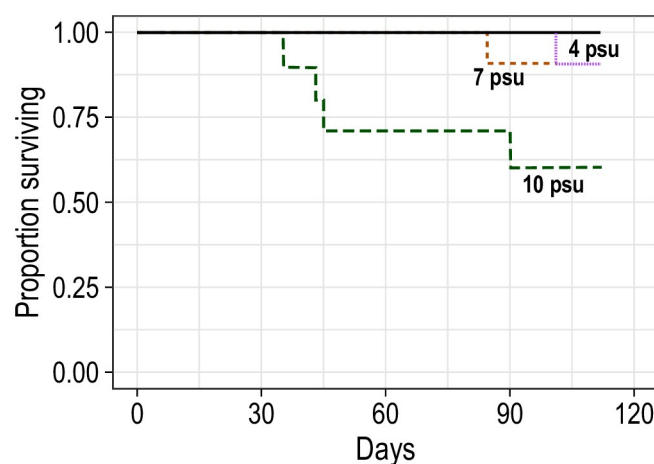
Water temperature and salinity were fairly stable during the experiment. Mean ammonia concentrations were higher during the first few weeks of the experiment, but decreased to acceptable low levels thereafter (S1 Table). Dissolved oxygen concentrations remained consistently high ( $> 5.0 \text{ mgL}^{-1}$ ) in all aquaria, though values were lower for aquaria at  $22^\circ\text{C}$  (mean  $7.4 \text{ mgL}^{-1}$ ) than at  $12^\circ\text{C}$  (mean  $10.8 \text{ mgL}^{-1}$ ) due in part to reductions in oxygen solubility at higher temperatures. Mean pH of all aquaria was 7.4 with little fluctuation (S1 Table).

### Survival, body size and condition

Of the 160 experimental fish, 154 (96.25%) survived to the end of the experiment. Six fish that died during the experiment were in the  $22^\circ\text{C}$  treatments: four fish died at 10 psu (20% mortality rate), and one fish died in each of the 7 and 4 psu treatments (5% mortality rate; Fig 1).

Temperature had a positive effect on growth rate of juvenile blue catfish: growth rates were faster at  $22^\circ\text{C}$  than at  $12^\circ\text{C}$  ( $P < 0.05$ ; Table 1; Fig 2). There was, however, an interactive effect of time with temperature and salinity ( $F_{3,198} = 11.1$ ;  $P < 0.001$ ) reflecting differences in growth patterns among the treatment groups. Pairwise comparisons revealed that growth rates at  $12^\circ\text{C}$  were similar across salinity levels ( $P > 0.999$ ), but at  $22^\circ\text{C}$ , considerable differences existed such that fish grew fastest at 4 psu and slowest at 10 psu (Fig 2, Table 2). Variance in FL measurements increased over time, and proximal FL measurements on the same fish were more correlated than measurements further apart in time (Table 3).  $Q_{10}$ 's at 1, 4, 7 and 10 psu were 6.8, 6.0, 5.1 and 3.2, respectively, implying that increased temperature had the greatest positive impact on blue catfish at 1 psu and smallest positive impact on fish at 10 psu (Fig 2). Unsurprisingly, initial size of the fish was highly predictive of subsequent FL measurements ( $F_{1,144} = 26663.6$ ,  $P < 0.001$ ), indicating that through time, larger fish continued to be larger than their smaller counterparts. Furthermore, we found no evidence for sexual dimorphism in growth rates of blue catfish ( $F_{1,186} = 0.09$ ;  $P = 0.763$ ).

Mean body condition exhibited a significant interaction among time, temperature and salinity ( $F_{9,308} = 7.25$ ;  $P < 0.001$ ), however, at salinities of 7 or less, temperature had a largely



**Fig 1. Survival of blue catfish over time in various salinity treatments at 12 and  $22^\circ\text{C}$  for 112 days.** Each line represents one aquarium with 10 blue catfish; black solid line includes multiple overlapping lines. All mortalities occurred in  $22^\circ\text{C}$  treatments.

<https://doi.org/10.1371/journal.pone.0244392.g001>

**Table 1. Bootstrap-based  $P$ -values comparing growth rate (change in FL/day), proportions of water, protein, lipids and ash, and consumption rates of juvenile blue catfish at 12 versus 22°C at 1, 4, 7 or 10 psu.**

Salinity (psu)	Growth rate	Prop. water	Prop. protein	Prop. lipids	Prop. ash	Consumption rate
1 psu	<0.001	<b>0.008</b>	0.730	<b>0.048</b>	0.922	0.074
4 psu	<0.001	<0.001	0.188	0.172	<b>0.004</b>	0.121
7 psu	<0.001	<b>0.014</b>	0.738	0.110	0.364	<b>0.022</b>
10 psu	<b>0.050</b>	0.652	0.362	0.326	0.610	<b>0.046</b>

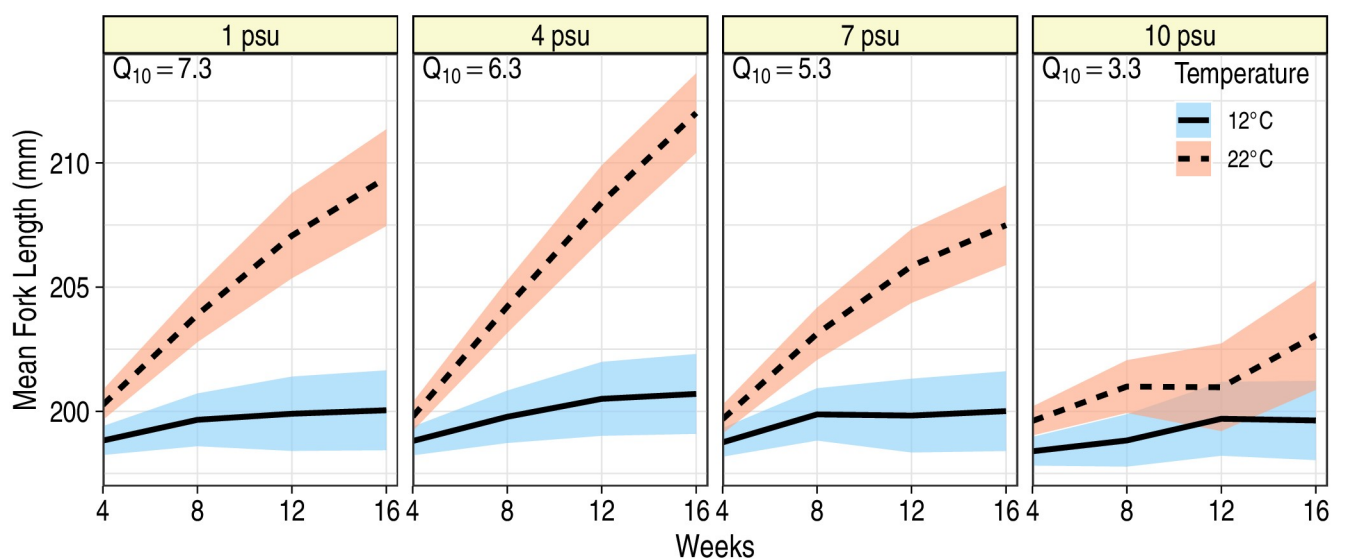
$P$ -values < 0.05 are shown in bold.

<https://doi.org/10.1371/journal.pone.0244392.t001>

positive effect on mean body condition with significantly higher  $K_n$  at 22°C than at 12°C (Fig 3). At 12°C, mean  $K_n$  at 1, 4 or 7 psu was fairly stable through time, fluctuating around the mean of 1.0; at 22°C, mean  $K_n$  increased through time for fish in the 1, 4 and 7 psu treatment levels. These patterns were different for fish held at 10 psu: mean body condition declined for fish at both 12 and 22°C, with the most severe declines observed at 22°C (Fig 3). Repeated measurements of the same fish revealed that fish at 10 psu, and in particular those at the 10 psu-22°C treatment, were also less able to heal skin abrasions. Similar to FL, variance in  $K_n$  measurements increased over time, and proximal  $K_n$  measurements on the same fish were more correlated than the measurements taken further apart in time (Table 3). In general, fish with high mean initial  $K_n$  continued to exhibit high mean  $K_n$  throughout the experiment ( $F_{1,138} = 430.3$ ;  $P < 0.001$ ); sex did not affect  $K_n$  ( $F_{1,138} = 0.82$ ;  $P = 0.37$ ).

### Body composition

On average, water, protein, lipids and ash comprised 74.5%, 14.8%, 7.2% and 3.6% of the wet weight. However, mean relative proportions of these components differed considerably among treatment levels and between the initial and post-experimental period. Blue catfish at



**Fig 2. Mean fork length of juvenile blue catfish during a 16 week period at two temperatures and four salinities.** Ribbons represent 95% confidence bands around the predicted mean fork lengths. Predictions are for a fish that was 198 mm at the start of the experiment (i.e., at week 0). For each salinity,  $Q_{10}$  estimates, assuming linear growth, are provided at the top left corner of each panel.

<https://doi.org/10.1371/journal.pone.0244392.g002>

**Table 2. Bootstrap-based *P*-values comparing pairwise differences in growth rate (change in FL/day), proportions of water, protein, lipids and ash, and consumption rates of juvenile blue catfish at 1, 4, 7 or 10 psu at 12 or 22°C.**

Temperature	Comparison	Growth rate	Prop. water	Prop. protein	Prop. lipids	Prop. ash	Consumption rate
12°C	1 psu v 4 psu	>0.999	0.716	0.546	0.494	0.56	>0.999
	1 psu v 7 psu	>0.999	0.444	0.338	0.294	0.842	0.680
	1 psu v 10 psu	>0.999	0.682	<b>0.038</b>	0.144	0.532	0.064
	4 psu v 7 psu	>0.999	0.636	0.592	0.592	0.448	>0.999
	4 psu v 10 psu	>0.999	0.470	<b>0.002</b>	0.054	0.870	0.479
	7 psu v 10 psu	>0.999	0.268	<b>0.006</b>	<b>0.014</b>	0.436	>0.999
	22°C	1 psu v 4 psu	0.121	0.110	0.618	0.720	<b>0.014</b>
1 psu v 7 psu	< <b>0.001</b>	0.396	0.290	0.268	0.252	>0.999	
1 psu v 10 psu	< <b>0.001</b>	< <b>0.001</b>	<b>0.040</b>	< <b>0.001</b>	0.280	0.091	
4 psu v 7 psu	< <b>0.001</b>	0.424	0.186	0.654	0.110	>0.999	
4 psu v 10 psu	< <b>0.001</b>	< <b>0.001</b>	0.232	< <b>0.001</b>	< <b>0.001</b>	>0.999	
7 psu v 10 psu	< <b>0.001</b>	< <b>0.001</b>	<b>0.002</b>	< <b>0.001</b>	0.052	0.777	

*P*-values < 0.05 are shown in bold.

<https://doi.org/10.1371/journal.pone.0244392.t002>

12°C that were sacrificed before the start of the experiment had significantly different mean body compositions than fish at 22°C ( $F_{3,30} = 6.3$ ;  $P = 0.002$ ). Specifically, compared with the fish at 12°C, fish at 22°C had a significantly greater mean proportion of protein (bootstrap  $P < 0.001$ ), but a significantly lower mean proportion of lipids (bootstrap  $P = 0.036$ ); mean proportions of water and ash did not differ significantly between fish from the two temperatures (Fig 4). Mean body compositions were not significantly affected by initial wet weight ( $F_{3,30} = 2.15$ ;  $P = 0.115$ ) or sex ( $F_{3,30} = 1.19$ ;  $P = 0.331$ ).

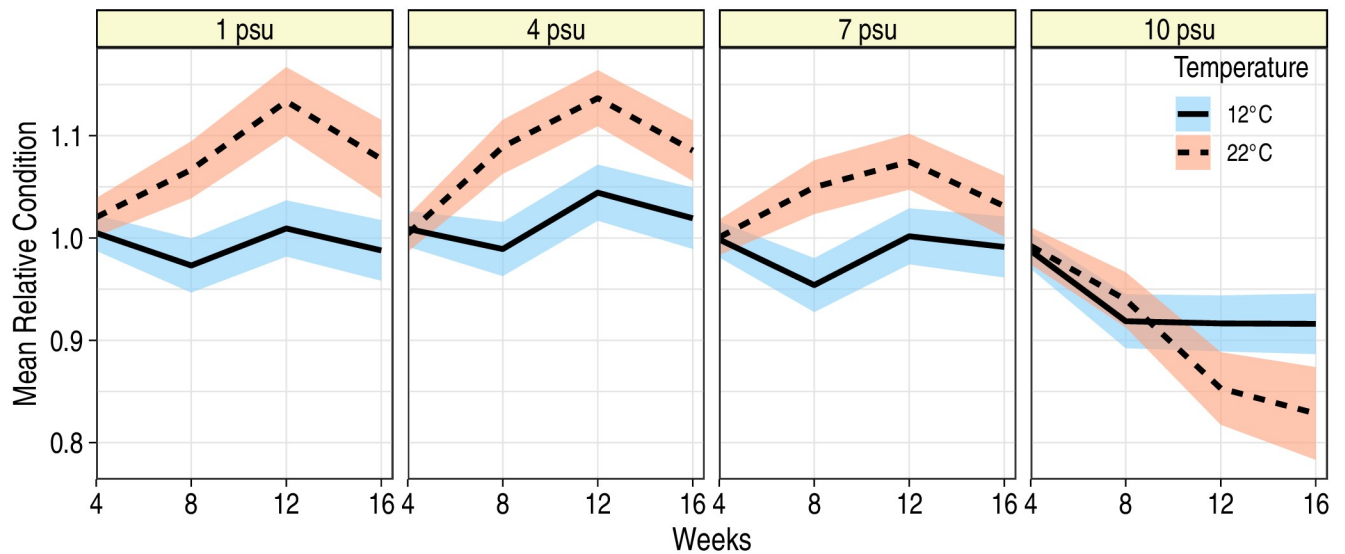
Mean body composition of fish differed significantly with temperature ( $F_{3,424} = 7.5$ ;  $P < 0.001$ ) and salinity ( $F_{9,424} = 3.4$ ;  $P < 0.001$ ), and the interaction between temperature and salinity was not significant ( $F_{9,424} = 1.45$ ;  $P = 0.163$ ). Bootstrap analysis revealed that the mean proportion of water was significantly higher for fish at 12°C than at 22°C at 1 ( $P = 0.008$ ), 4 ( $P < 0.001$ ) and 7 psu ( $P = 0.014$ ; Table 1; Fig 4). Within the 12°C treatment, mean proportion of protein was significantly lower for blue catfish held at 10 psu compared with fish in lower salinities ( $P < 0.05$ ; Table 2; Fig 4). Most other components did not differ significantly among the salinity treatment levels. Similarly, at 22°C, the primary differences were observed between fish at 10 psu and those in lower salinities: fish at 10 psu had significantly higher mean proportions of water and lower mean proportions of lipids than those at 1, 4 or 7 psu ( $P < 0.05$ ;

**Table 3. Random effects parameter estimates for mixed effects models fitted on fork length (FL) or body condition ( $K_n$ ) of blue catfish exposed to increased salinity at 12 or 22°C.**

Parameter	Estimate for FL	Estimate for $K_n$
$\sigma^2_{\text{week 4}}$	1.48	0.0013
$\sigma^2_{\text{week 8}}$	4.97	0.0031
$\sigma^2_{\text{week 12}}$	9.85	0.0033
$\sigma^2_{\text{week 16}}$	11.3	0.0038
$\rho$	0.84	0.6993

$\sigma^2$  = variance;  $\rho$  = correlation

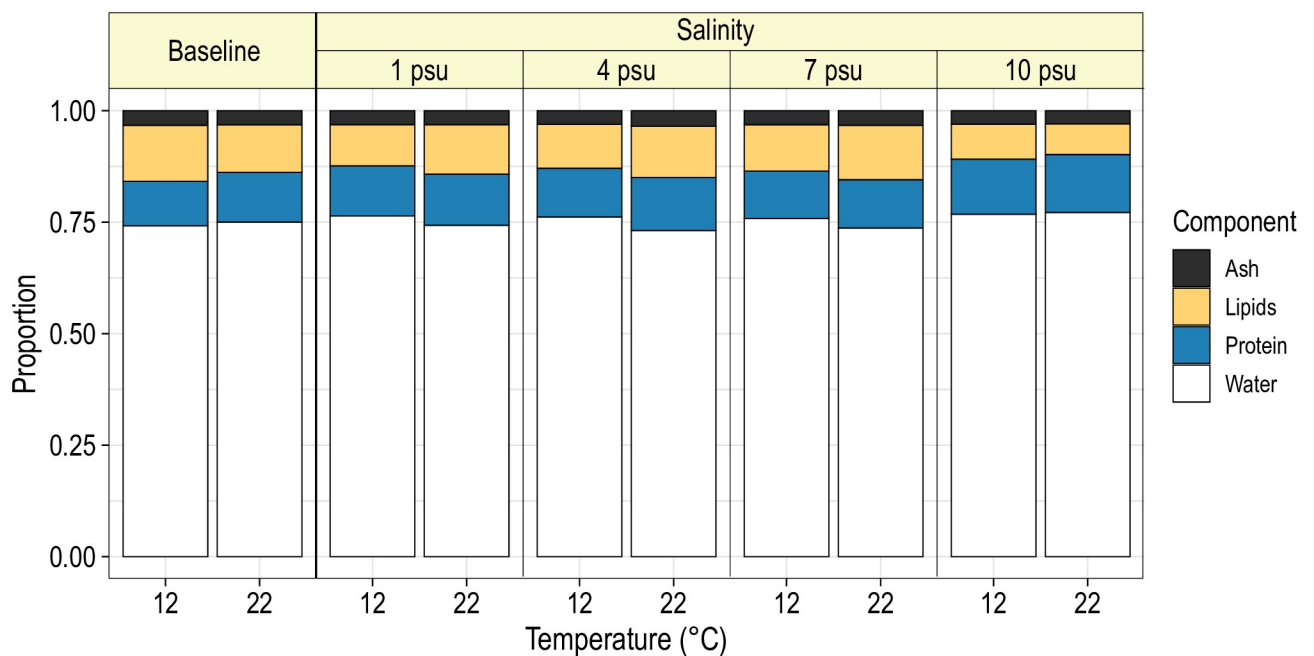
<https://doi.org/10.1371/journal.pone.0244392.t003>



**Fig 3. Mean relative condition factor ( $K_n$ ) of juvenile blue catfish during a 16 week period at two temperatures and four salinities.** Ribbons correspond to 95% confidence bands around the predicted mean condition factors. Predictions are for a fish that had a  $K_n$  of 1.02 at the start of the experiment (i.e., at week 0).

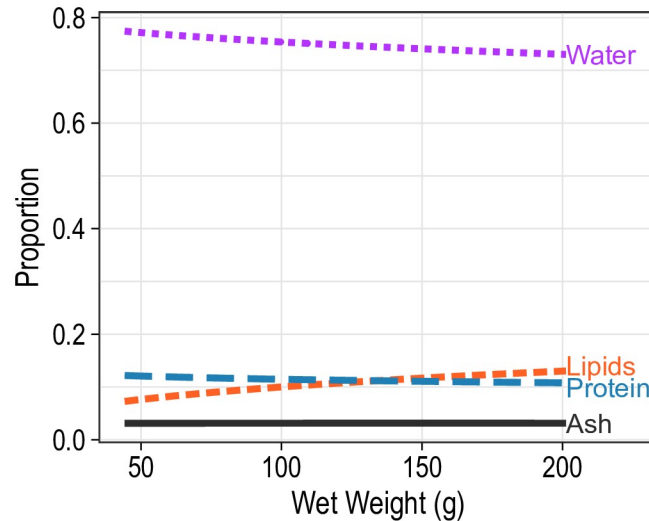
<https://doi.org/10.1371/journal.pone.0244392.g003>

Table 2; Fig 4). Mean body compositions were similar for males and females ( $F_{3,424} = 1.4$ ;  $P = 0.242$ ) but differed significantly with fish weight ( $F_{3,424} = 7.5$ ;  $P < 0.001$ ). As fish increased in length, the mean proportion of water decreased and the mean proportion of lipids increased, but the mean proportions of protein and ash remained stable (Fig 5).



**Fig 4. Mean body composition of juvenile blue catfish subjected to one of four salinities at 12 or 22°C for 16 weeks.** Baseline refers to mean body composition of blue catfish prior to exposure to salinity treatments. Predictions are for a fish with wet weight of 96.5 g (average weight of fish in the analysis).

<https://doi.org/10.1371/journal.pone.0244392.g004>

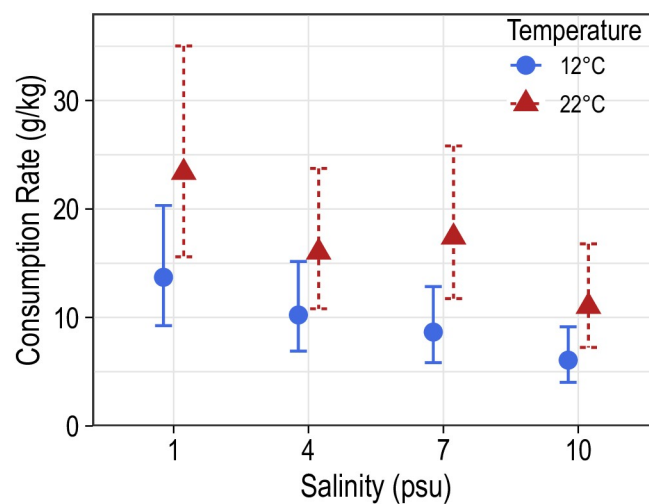


**Fig 5. Mean body composition of juvenile blue catfish as a function of wet weight of the fish.**

<https://doi.org/10.1371/journal.pone.0244392.g005>

### Consumption rate

Consumption rates of blue catfish ranged between 3.5 and 35.0 g/kg of fish body weight and varied considerably within aquaria (intraclass correlation = 0.12). Mean consumption rates were highest at 1 psu and 22°C (23.4 g/kg of the fish body weight) and lowest at 10 psu and 12°C (6.1 g/kg of the fish body weight). Temperature had a significant positive effect on consumption rates ( $F_{1,16} = 17.2$ ;  $P < 0.001$ ; Fig 6), though these differences were significant only at 7 ( $t_{16} = 2.6$ ;  $P = 0.022$ ) and 10 psu ( $t_{16} = 2.2$ ;  $P = 0.046$ ; Table 1). Increased salinity negatively influenced mean consumption rates ( $F_{3,16} = 5.2$ ;  $P = 0.011$ ; Fig 6), however, pairwise comparisons did not reveal significant differences in mean consumption rates among salinities within a temperature (Table 2).



**Fig 6. Mean consumption rates (g/kg) of juvenile blue catfish at two temperatures and four salinities. Error bars correspond to 95% confidence bands around the predicted consumption rates.**

<https://doi.org/10.1371/journal.pone.0244392.g006>

## Discussion

Most juvenile blue catfish in the Chesapeake Bay region can survive in salinities up to 10 psu for 112 days. Salinities up to 7 psu seemed to have little negative impact on growth, body condition and compositions. Together with previous research that demonstrated high short-term tolerance of blue catfish to acute changes in salinity [5], these findings suggest that U.S. Atlantic coast habitats with salinities  $\leq 7$  psu are vulnerable to establishment of blue catfish populations. In these habitats, blue catfish may negatively impact local estuarine animals via competition and predation. Blue catfish may also use brackish-water environments to alleviate density-dependent intraspecific competition experienced by conspecifics in freshwater environments and to disperse to previously uninvaded rivers. Further, higher temperatures had positive effects on blue catfish at salinities  $\leq 7$  psu. As such, increases in winter and spring water temperatures due to global warming may foster establishment in these brackish water habitats.

Salinity and temperature had an interactive effect on blue catfish biology, in agreement with reports for other species (e.g., grass carp *Ctenopharyngodon idella* [24, 37]; Atlantic cod *Gadus morhua* [38]; Nile tilapia *Oreochromis niloticus* [39]). In general, blue catfish had higher consumption rates, faster growth, better body condition, and a greater proportion of lipids at 22°C than at 12°C. Higher consumption and growth rates of animals at higher temperatures is a well-known tenet in physiology (e.g., [17]). Further, the greater proportion of lipids and lower proportion of water and ash in fish held at high temperatures likely indicate faster short-term growth [40].

While positive effects were observed with increases in temperature at salinities  $\leq 7$  psu, this was not the case at 10 psu, where mean growth rates and body conditions declined significantly at the higher temperature. In particular, fish at the 10 psu-22°C treatment were emaciated (i.e., low  $K_n$ ), less able to heal abrasions and had lower mean proportions of lipids compared with fish from other treatments. These results conform to expectations from osmoregulatory physiology, emphasizing that the physiological mechanisms in freshwater fish are unable to maintain homeostasis in hyperosmotic environments (i.e.,  $>9$  psu; [21, 41]). As such, these fish allocated less energy to growth (both in terms of length and mass) and had low lipid reserves. Many other studies reported similar results where growth rates and body condition of freshwater fishes decline starkly at salinities greater than  $\sim 9$  psu (e.g., channel catfish *Ictalurus punctatus* [42], goldfish *Carassius auratus* [28]; feral catfish *Heterobranchus bidorsalis* [43]; Asian swamp eel *Monopterus albus* [26]).

The optimal salinity for juvenile blue catfish appears to be around 4 psu as indicated by fastest growth and good body condition despite relatively low mean consumption rates. These results support a previous study on larval blue catfish which reported the highest survival and growth at 3 psu [15] and other studies of freshwater species (e.g., freshwater snakehead *Channa punctata* 5 psu [44], and Asian swamp eel 3 psu [26]). This may be because the osmotic gradient is lower at these salinities, and hence smaller amounts of energy are spent on osmoregulation, leaving a larger fraction of energy for growth [21, 41]. Others have found contrasting results for freshwater fish with fastest growth in freshwater (e.g., [25, 28]), or similar growth rates up to the isosmotic salinity (e.g., [42, 43]). Consumption rates of freshwater fishes can also increase with salinity (e.g., [45]), decrease with salinity (e.g., [46]) or maximize at intermediate salinities (e.g., [27]). Taken together, the effects of salinity on freshwater fishes appear to be species-specific.

Salinities at the sampling locations and during the acclimation period could have affected our results. Salinity at the sampling location fluctuates daily and seasonally between 0 and  $\sim 4$  psu. Because exposure to low or moderate salinity levels often upregulates hyperosmotic



abilities in fish [47], the osmotic ability of our experimental fish was likely already upregulated before the experiment. Therefore, we are confident that our results are relevant to most wild blue catfish in brackish water habitats in the eastern U.S. Yet, our results may not hold for larger fish—which have greater acute salinity tolerance [5], or for fish that have never been exposed to brackish waters—e.g., blue catfish in their native freshwater habitats in midwestern rivers.

The observed effects of salinity and temperature may result from any of several proximate physiological modes of action, including changes in consumption rate (i.e., food detection ability or appetite), assimilation rate, or the partition of assimilated energy to various life processes such as maintenance of homeostasis, activity, and somatic or gonadal growth [48]. In particular, decreases in consumption rates in brackish waters may be a result of reduced prey detection ability due to the diminished electroreceptive ability of blue catfish in brackish waters. Catfishes of the order siluriformes are electroreceptive, and can use electroreception for prey detection [49]. Electroreceptive organs in freshwater fishes, however, are anatomically different from those in saltwater species, and thus, do not function in brackish and marine waters [49]. It seems likely, therefore, that blue catfish may not be able to detect prey as well in brackish waters, leading to lower consumption rates. We cannot, however, rule out other potential modes of action, particularly because multiple modes of action likely act concurrently. For example, compared with fish at 1 psu, fish at 4 psu may feed less, and have a lower assimilation rate, but still maintain high growth by allocating a smaller fraction of energy to maintenance of osmoregulatory homeostasis. The specific combinations of these modes of action that lead to specific response of fishes to changing salinity are likely to depend on the evolutionary history and life-history adaptations of the species. This is evidenced by the observation that even though most freshwater fishes are relatively uncommon in estuaries, some groups of freshwater fishes, such as members of the family Cichlidae, have unusually high salinity tolerance and occupy a wide range of estuarine and marine environments [10].

Future research should attempt to identify the combination of modes of action that lead to the observed results, though bioenergetics modeling may also reveal likely processes [48]. Towards this end, our results provide important inputs for the parameterization of a bioenergetics model that accounts for the effect of salinity and temperature on vital rates of blue catfish in coastal rivers. The inferences from our study and their use in bioenergetics modeling would have benefitted from measurements of consumption rates, egestion rates and energy assimilation rates at the level of individual fish. Measurement of these rates at finer resolutions of temperature, and especially salinity, could also help obtain a better understanding of the effects of temperature and salinity on blue catfish.

Despite the suggestion from our results that brackish water habitats with salinities  $\sim 4$  psu provide the most energetically optimal environments for blue catfish,  $>45\%$  of blue catfish captured from the tidal James and York rivers in the Chesapeake Bay by a fishery-independent trawl survey (VIMS trawl survey) occurred at salinities  $\leq 1$  psu [5]. Given the general observation that estuarine and marine environments have higher food levels [10], this discrepancy suggests that salinities  $> 1$  psu may have negative impacts on other aspects of blue catfish biology not studied here. For example, Perry [50] suggested that reproduction of blue catfish may be curtailed at salinity  $> 2$  psu, though it is not clear whether this is caused by hinderance in development of oocytes or mortality of eggs and larvae. Maternal effects (e.g., increased salinity tolerance of the offspring from mothers pre-exposed to increased salinities [51]) and behavioral effects (e.g., decreased parental care of eggs from fathers under high salinity conditions [52]) may also play important roles, but have not been studied. Research is needed to estimate sublethal effects on the reproductive biology of blue catfish. We note that the reproductive biology of blue catfish has been described in two invasive populations [53], and that because

these systems are tidally influenced, an individual fish can potentially use salinities  $>2$  psu for foraging and dispersal or to offload parasitic infestations yet return to freshwater habitats for spawning.

Relatively high tolerance to acute [5] and chronic exposures to increased salinities suggest that blue catfish are able to establish in many brackish-water habitats throughout the Eastern U.S. High salinity tolerance has been suggested as an important trait allowing invasion of and range expansion via estuarine and coastal habitats by many freshwater species including several catfishes (e.g., suckermouth armored catfish *Pterygoplichthys* spp. [54], flathead catfish *Pylodictis olivaris* [16], channel catfish [55]) and European catfish *Siluris glanis* [56]). As a novel, generalist omnivore in estuarine habitats, blue catfish may negatively impact the native estuarine organisms indirectly through habitat modification as well as directly through predation and competition. For example, Schmitt et al. [57] reported an increase in predation on native blue crabs *Callinectes sapidus* by blue catfish at higher salinities. Focused studies assessing the diet of blue catfish in high salinity habitats are needed to understand impacts on other estuarine animals of economic or cultural value. We predict that the overall negative impacts of individual blue catfish on local fauna at salinities  $>2$  psu may not be high because of relatively lower consumption rates in brackish environments compared with freshwater environments. Yet, the total impacts may be high if the population size of the fish at these salinities is high. Even though such areas are not likely to support reproduction, they are likely to support foraging and dispersal, potentially allowing blue catfish to form metapopulations.

Our study provides an indication of the fundamental niche of blue catfish in relation to the salinity and temperature axes (*sensu* [9]) and provides crucial information towards development of a mechanistic species distribution model [58] for blue catfish throughout tidal rivers and estuaries of the U.S. Atlantic slope. These findings also emphasize the need to consider multiple biological end-points (e.g., growth, body condition, body composition) and to consider important environmental variables together when studying their effects on fish biology as experiments that incorporate factorial designs are likely to yield more realistic predictions than more simplistic experiments that focus on a single variable. Overall, our results indicate that estuarine habitats throughout the Eastern U.S. with salinities  $\leq 7$  psu are vulnerable to blue catfish establishment, and thus critical habitats at these salinities (e.g., areas that provide nursery habitats for species of conservation concern) could be prioritized for protection by state and regional management agencies. Down-estuary shift of salinity gradients during wet years or increased water temperatures due to global warming are likely to increase the chances of dispersal, range expansion [5], and establishment of blue catfish, and hence the severity of its impacts in brackish-water habitats. On the other hand, salinity intrusion with sea level rise, as predicted to occur in coastal and estuarine waters, may serve to limit dispersal pathways and lead to formation of discrete subpopulations of blue catfish that are intermittently connected during periods of high flow.

## Supporting information

### S1 Checklist.

(DOCX)

### S1 Data.

(XLSX)

**S1 Table. Water quality variables measured in the experimental aquaria where blue catfish were exposed to one of four salinities at either 12 or 22°C for a period of 16 weeks. Values**

of the water quality represent the mean  $\pm$  SEM. psu = practical salinity units; dO<sub>2</sub> = Dissolved Oxygen.  
(DOCX)

## Acknowledgments

We thank the members of VIMS juvenile trawl survey for help with collection of fish for the experiment, and Jaap van der Meer, Richard Brill, Wolfgang Vogelbein, Donna Bilkovic, Roger Mann and Manisha Pant for assistance and suggestions throughout the various aspects of the study. We also thank Jack Buchanan, Grace Breitenbeck, Matthew Oliver, Brian Gallagher and Shannon Smith for help conducting the experiment and processing the fish samples. The manuscript was improved by comments from two anonymous reviewers. This is Contribution 3979 of the Virginia Institute of Marine Science, William & Mary.

## Author Contributions

**Conceptualization:** Vaskar Nepal, Mary C. Fabrizio.

**Data curation:** Vaskar Nepal.

**Formal analysis:** Vaskar Nepal.

**Funding acquisition:** Vaskar Nepal, Mary C. Fabrizio.

**Investigation:** Vaskar Nepal.

**Methodology:** Vaskar Nepal, Mary C. Fabrizio.

**Project administration:** Vaskar Nepal.

**Resources:** Mary C. Fabrizio.

**Software:** Vaskar Nepal.

**Supervision:** Mary C. Fabrizio.

**Visualization:** Vaskar Nepal.

**Writing – original draft:** Vaskar Nepal.

**Writing – review & editing:** Vaskar Nepal, Mary C. Fabrizio.

## References

1. Lockwood JL, Hoopes MF, Marchetti MP. *Invasion ecology*. 2nd ed. West Sussex, UK: John Wiley & Sons; 2013.
2. Goudswaard PC, Witte F, Katunzi EFB. The tilapiine fish stock of Lake Victoria before and after the Nile perch upsurge. *J Fish Biol.* 2002; 60: 838–856. <https://doi.org/10.1111/j.1095-8649.2002.tb02413.x>
3. Fabrizio MC, Nepal V, Tuckey TD. Invasive blue catfish in the Chesapeake Bay region: a case study of competing management objectives. *N Am J Fish Manag.* In Press.
4. Schloesser RW, Fabrizio MC, Latour RJ, Garman GC, Greenlee RS, Groves M, et al. Ecological role of blue catfish in Chesapeake Bay communities and implications for management. In: Michaletz PH, Travnichek VH, editors. *Conservation, ecology, and management of catfish: the second international symposium*, American Fisheries Society, Symposium 77. Bethesda, Maryland; 2011. pp. 369–382.
5. Nepal V, Fabrizio MC. High salinity tolerance of invasive blue catfish suggests potential for further range expansion in the Chesapeake Bay region. *PLOS ONE.* 2019; 14: e0224770. <https://doi.org/10.1371/journal.pone.0224770> PMID: 31689331
6. Fuller PL, Neilson M. *Ictalurus furcatus* (Valenciennes in Cuvier and Valenciennes, 1840). In: U.S. Geological Survey, *Nonindigenous Aquatic Species Database*, Gainesville, FL [Internet]. 2020 [cited 26 Mar 2020]. <https://nas.er.usgs.gov/queries/FactSheet.aspx?SpeciesID=740>

7. Tuckey TD, Fabrizio MC. 2019 annual report estimating relative juvenile abundance of ecologically important finfish in the Virginia portion of Chesapeake Bay (1 July 2018–30 June 2019). Gloucester Point: Virginia Institute of Marine Science, William & Mary; 2019 p. 149. Report No.: F-104-R-23. <https://doi.org/10.25773/8znm-db81>
8. Schmitt JD, Peoples BK, Castello L, Orth DJ. Feeding ecology of generalist consumers: a case study of invasive blue catfish *Ictalurus furcatus* in Chesapeake Bay, Virginia, USA. *Environ Biol Fishes*. 2019; 102: 443–465. <https://doi.org/10.1007/s10641-018-0783-6>
9. Hutchinson GE. Concluding remarks. *Cold Spring Harb Symp Quant Biol*. 1957; 22: 415–427. <https://doi.org/10.1101/SQB.1957.022.01.039>
10. Whitfield AK. Why are there so few freshwater fish species in most estuaries? *J Fish Biol*. 2015; 86: 1227–1250. <https://doi.org/10.1111/jfb.12641> PMID: 25739335
11. Perry WG. Distribution and relative abundance of blue catfish, *Ictalurus furcatus*, and channel catfish, *Ictalurus punctatus*, with relation to salinity. *Proc Southeast Assoc Game Fish Comm*. 1968; 21: 436–444.
12. Fabrizio MC, Tuckey TD, Latour RJ, White GC, Norris AJ. Tidal habitats support large numbers of invasive blue catfish in a Chesapeake Bay subestuary. *Estuaries Coasts*. 2018; 41: 827–840. <https://doi.org/10.1007/s12237-017-0307-1>
13. Roloson SD, Landsman SJ, Tana R, Hicks BJ, Carr JW, Whoriskey F, et al. Otolith microchemistry and acoustic telemetry reveal anadromy in non-native rainbow trout (*Oncorhynchus mykiss*) in Prince Edward Island, Canada. *Can J Fish Aquat Sci*. 2020; 77: 1117–1130. <https://doi.org/10.1139/cjfas-2019-0229>
14. Möller S, Winkler HM, Klügel A, Richter S. Using otolith microchemical analysis to investigate the importance of brackish bays for pike (*Esox lucius* Linnaeus, 1758) reproduction in the southern Baltic Sea. *Ecol Freshw Fish*. 2019; 28: 602–610. <https://doi.org/10.1111/eff.12478>
15. Abass NY, Alsaqufi AS, Makubu N, Elasad AH, Ye Z, Su B, et al. Genotype-environment interactions for growth and survival of channel catfish (*Ictalurus punctatus*), blue catfish (*Ictalurus furcatus*), and channel catfish, *I. punctatus*, ♀×blue catfish, *I. furcatus*, ♂ hybrid fry at varying levels of sodium chloride. *Aquaculture*. 2017; 471: 28–36. <https://doi.org/10.1016/j.aquaculture.2016.12.029>
16. Bringolf RB, Kwak TJ, Cope WG, Larimore MS. Salinity tolerance of flathead catfish: implications for dispersal of introduced populations. *Trans Am Fish Soc*. 2005; 134: 927–936. <https://doi.org/10.1577/T04-195.1>
17. Hill RW, Wyse GA, Anderson M. *Animal physiology*. Second edition. Massachusetts, USA: Sinauer Associates Inc. Publishers; 2008.
18. Lloret J, Shulman G, Love RM. *Condition and health indicators of exploited marine fishes*. John Wiley & Sons; 2013.
19. Marshall WS, Grosell M. Ion transport, osmoregulation, and acid-base balance. In: Evans DH, Claiborne JB, editors. *The physiology of fishes*. Boca Raton, FL: CRC; 2006. pp. 177–230.
20. Noga EJ. *Fish disease: diagnosis and treatment*. 2nd edition. Iowa, USA: John Wiley & Sons; 2011.
21. Kültz D. Physiological mechanisms used by fish to cope with salinity stress. *J Exp Biol*. 2015; 218: 1907–1914. <https://doi.org/10.1242/jeb.118695> PMID: 26085667
22. Collins C. Blue catfish: a report on its potential in commercial fish production. *Aquaculture Magazine*. 1988: 81–83.
23. Nepal V, Fabrizio MC. Density-dependence mediates the effects of temperature on growth of juvenile blue catfish in non-native habitats. *Trans Am Fish Soc*. 2020; 149: 108–120. <https://doi.org/10.1002/tafs.10217>
24. Watanabe WO, Ernst DH, Chasar MP, Wicklund RI, Olla BL. The effects of temperature and salinity on growth and feed utilization of juvenile, sex-reversed male Florida red tilapia cultured in a recirculating system. *Aquaculture*. 1993; 112: 309–320. [https://doi.org/10.1016/0044-8486\(93\)90392-C](https://doi.org/10.1016/0044-8486(93)90392-C)
25. Wang J-Q, Lui H, Po H, Fan L. Influence of salinity on food consumption, growth and energy conversion efficiency of common carp (*Cyprinus carpio*) fingerlings. *Aquaculture*. 1997; 148: 115–124. [https://doi.org/10.1016/S0044-8486\(96\)01334-8](https://doi.org/10.1016/S0044-8486(96)01334-8)
26. Pedersen PBM, Hansen K, Houng DTT, Bayley M, Wang T. Effects of salinity on osmoregulation, growth and survival in Asian swamp eel (*Monopterus albus*) (Zuiew 1793). *Aquac Res*. 2014; 45: 427–438. <https://doi.org/10.1111/j.1365-2109.2012.03244.x>
27. Herath SS, Haga Y, Satoh S. Interactive effects of salinity and complete fishmeal replacement on growth, food consumption, and gene expression of hepatic IGF-I, IGF-II and growth hormone receptors in Nile tilapia, *Oreochromis niloticus* (L.). *Aquac Res*. 2018; 49: 2128–2139. <https://doi.org/10.1111/are.13667>

28. Altinok I, Grizzle JM. Effects of brackish water on growth, feed conversion and energy absorption efficiency by juvenile euryhaline and freshwater stenohaline fishes. *J Fish Biol.* 2001; 59: 1142–1152. <https://doi.org/10.1111/j.1095-8649.2001.tb00181.x>
29. Le Cren ED. The length-weight relationship and seasonal cycle in gonad weight and condition in the perch (*Perca fluviatilis*). *J Anim Ecol.* 1951; 20: 201–219.
30. Nepal V, Fabrizio MC, Connelly WJ. Phenotypic plasticity in life-history characteristics of invasive blue catfish, *Ictalurus furcatus*. *Fish Res.* 2020; 230: 105650. <https://doi.org/10.1016/j.fishres.2020.105650>
31. Efron B, Tibshirani RJ. An introduction to the bootstrap. New York: Chapman and Hall/CRC; 1993.
32. Stroup WW, Milliken GA, Claassen EA, Wolfinger RD. SAS for mixed models: introduction and basic applications. Cary, N.C.: SAS Institute; 2018.
33. Aitchison J. The statistical analysis of compositional data. New York: Chapman Hall; 1986.
34. Egozcue JJ, Pawlowsky-Glahn V, Mateu-Figueras G, Barcelo-Vidal C. Isometric logratio transformations for compositional data analysis. *Math Geol.* 2003; 35: 279–300.
35. Templ M, Hron K, Filzmoser P. robCompositions: an R-package for robust statistical analysis of compositional data. In: Pawlowsky-Glahn V, Buccianti A, editors. Compositional data analysis: theory and applications. Chichester, UK: John Wiley & Sons, Ltd; 2011. pp. 341–355.
36. Gao F, Xiong C, Thompson P, Miller JP. Analyzing multivariate longitudinal data using SAS®. San Francisco; 2006. pp. 1–9.
37. Kilambi RV, Zdinak A. The effects of acclimation on the salinity tolerance of grass carp, *Ctenopharyngodon idella* (Cuv. and Val.). *J Fish Biol.* 1980; 16: 171–175. <https://doi.org/10.1111/j.1095-8649.1980.tb03696.x>
38. Lambert Y, Dutil J-D, Munro J. Effects of intermediate and low salinity conditions on growth rate and food conversion of Atlantic cod (*Gadus morhua*). *Can J Fish Aquat Sci.* 1994; 51: 1569–1576. <https://doi.org/10.1139/f94-155>
39. Schofield PJ, Peterson MS, Lowe MR, Brown-Peterson NJ, Slack WT. Survival, growth and reproduction of non-indigenous Nile tilapia, *Oreochromis niloticus* (Linnaeus 1758). I. Physiological capabilities in various temperatures and salinities. *Mar Freshw Res.* 2011; 62: 439–449. <https://doi.org/10.1071/MF10207>
40. Holdway DA, Beamish FWH. Specific growth rate and proximate body composition of Atlantic cod (*Gadus morhua* L.). *J Exp Mar Biol Ecol.* 1984; 81: 147–170. [https://doi.org/10.1016/0022-0981\(84\)90003-0](https://doi.org/10.1016/0022-0981(84)90003-0)
41. Bœuf G, Payan P. How should salinity influence fish growth? *Comp Biochem Physiol Part C Toxicol Pharmacol.* 2001; 130: 411–423. [https://doi.org/10.1016/s1532-0456\(01\)00268-x](https://doi.org/10.1016/s1532-0456(01)00268-x) PMID: 11738629
42. Allen KO, Avault JW. Effects of salinity on growth and survival of channel catfish, *Ictalurus punctatus*. *Proc Annu Conf Southeast Assoc Fish Wildl Agencies.* 1969; 23: 319–331.
43. Fagbenro OA, Adedire CO, Owoseeni EA, Ayotunde EO. Studies on the biology and aquaculture potential of feral catfish *Heterobranchus bidorsalis* (Geoffroy St. Hilaire 1809) (Clariidae). *Trop Zool.* 1993; 6: 67–79. <https://doi.org/10.1080/03946975.1993.10539209>
44. Dubey SK, Trivedi RK, Chand BK, Mandal B, Rout SK. The effect of salinity on survival and growth of the freshwater stenohaline fish spotted snakehead *Channa punctata* (Bloch, 1793). *Zool Ecol.* 2016; 26: 282–291. <https://doi.org/10.1080/21658005.2016.1225867>
45. Arunachalam S, Reddy SR. Food intake, growth, food conversion, and body composition of catfish exposed to different salinities. *Aquaculture.* 1979; 16: 163–171. [https://doi.org/10.1016/0044-8486\(79\)90147-9](https://doi.org/10.1016/0044-8486(79)90147-9)
46. Sahoo SK, Giri SS, Maharathi C, Sahu AK. Effect of salinity on survival, feed intake and growth of *Clarias batrachus* (Linn.) fingerlings. *Indian J Fish.* 2003; 50: 119–123.
47. McEnroe M, Cech JJ. Osmoregulation in juvenile and adult white sturgeon, *Acipenser transmontanus*. *Environ Biol Fishes.* 1985; 14: 23–30.
48. Kooijman S. Dynamic Energy Budget theory for metabolic organisation. Third edition. UK: Cambridge University Press; 2010.
49. New JG. The sixth sense of catfish: anatomy, physiology, and behavioral role of electroreception. In: Irwin ER, Hubert WA, Rabeni CF, Schramm Jr HL, Coon T, editors. Catfish 2000: Proceedings of the international ictalurid symposium. Bethesda, Maryland; 1999. pp. 125–139.
50. Perry WG. Notes on spawning of blue and channel catfish in brackish water ponds. *Progress Fish-Cult.* 1973; 35: 164–166. [https://doi.org/10.1577/1548-8659\(1973\)35\[164:NOTSOBJ2.0.CO;2](https://doi.org/10.1577/1548-8659(1973)35[164:NOTSOBJ2.0.CO;2)
51. Shikano T, Fujio Y. Effects of the mother's environmental salinity on seawater tolerance of newborn guppy *Poecilia reticulata*. *Fish Sci.* 1998; 64: 10–13.

52. St Mary CM, Noureddine CG, Lindström K. Environmental effects on male reproductive success and parental care in the Florida flagfish *Jordanella floridae*. *Ethology*. 2001; 107: 1035–1052.
53. Nepal V. A mechanistic understanding of range expansion of invasive blue catfish in the Chesapeake Bay region. Ph. D. dissertation, William & Mary—Virginia Institute of Marine Science. 2020.
54. Capps KA, Nico LG, Mendoza-Carranza M, Arévalo-Frías W, Ropicki AJ, Heilpern SA, et al. Salinity tolerance of non-native suckermouth armoured catfish (Loricariidae: Pterygoplichthys) in south-eastern Mexico: implications for invasion and dispersal. *Aquat Conserv Mar Freshw Ecosyst*. 2011; 21: 528–540.
55. Gutierre SMM, Vitule JRS, Freire CA, Prodocimo V. Physiological tools to predict invasiveness and spread via estuarine bridges: tolerance of Brazilian native and worldwide introduced freshwater fishes to increased salinity. *Mar Freshw Res*. 2014; 65: 425. <https://doi.org/10.1071/MF13161>
56. Copp GH, Robert Britton J, Cucherousset J, García-Berthou E, Kirk R, Peeler E, et al. Voracious invader or benign feline? A review of the environmental biology of European catfish *Silurus glanis* in its native and introduced ranges. *Fish Fish*. 2009; 10: 252–282. <https://doi.org/10.1111/j.1467-2979.2008.00321.x>
57. Schmitt JD, Peoples BK, Bunch AJ, Castello L, Orth DJ. Modeling the predation dynamics of invasive blue catfish (*Ictalurus furcatus*) in Chesapeake Bay. *Fish Bull*. 2019; 117: 277–290. <https://doi.org/10.7755/FB.117.4.1>
58. Kearney M, Porter W. Mechanistic niche modelling: combining physiological and spatial data to predict species' ranges. *Ecol Lett*. 2009; 12: 334–350. <https://doi.org/10.1111/j.1461-0248.2008.01277.x>  
PMID: [19292794](https://pubmed.ncbi.nlm.nih.gov/19292794/)