

DTPA complexation of bismuth in human blood serum

G. Montavon^{a*}, A. Le Du^a, J. Champion^a, T. Rabung^b, A. Morgenstern^c

Supplementary Information

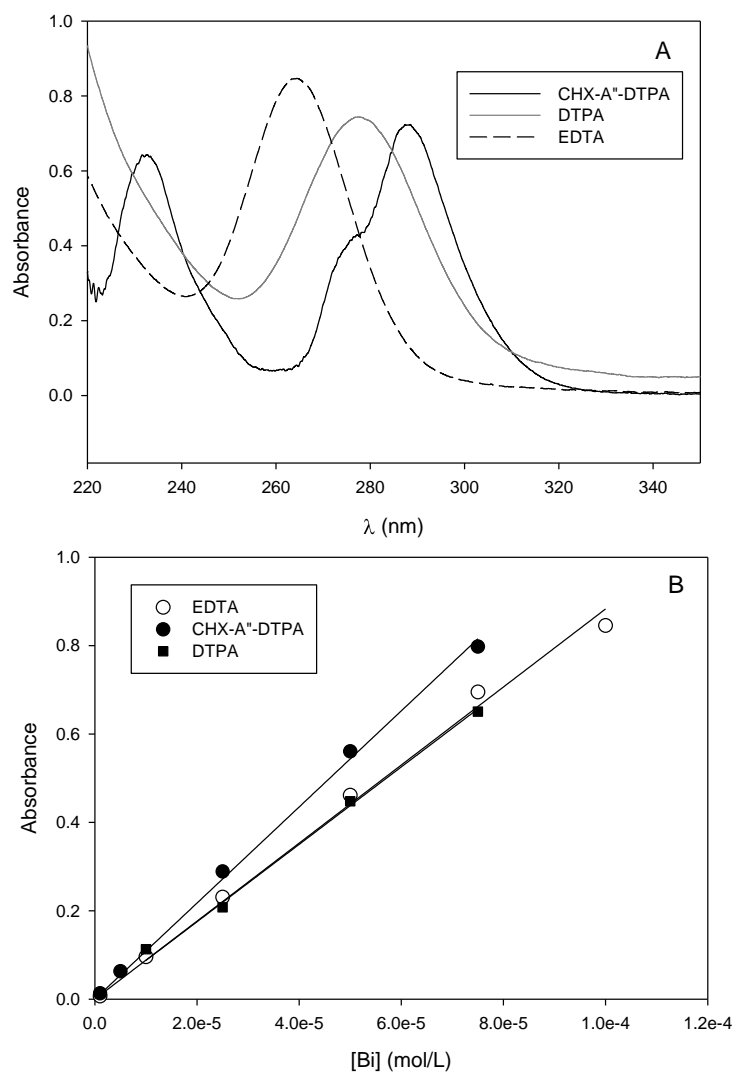


Figure SI 1. (A) UV spectra of Bi(III) complexed with the different chelating agents studied. $[Bi]=10^{-4}$ M, $pH=5$, $[EDTA]=1.3 \cdot 10^{-4}$ M, $[CHX-A''-DTPA]=[DTPA]=10^{-4}$ M, 0.1 M $NaClO_4$. (B) Absorbance measured at 264, 288.8 and 277.1 nm as a function of concentration of Bi(III) complexed with EDTA, CHX-A''-DTPA and DTPA, respectively. $[EDTA]=1.3 \cdot 10^{-4}$ M, and $[CHX-A''-DTPA]=[DTPA]=10^{-4}$ M. The lines are fitted curves with ϵ^{264} (Bi-EDTA) $= (8.83 \pm 0.16) \cdot 10^3$ L.mol⁻¹.cm⁻¹, $\epsilon^{288.8}$ (Bi-CHX-A''-DTPA) $= (1.09 \pm 0.02) \cdot 10^4$ L.mol⁻¹.cm⁻¹ and $\epsilon^{277.1}$ (Bi-DTPA) $= (8.76 \pm 0.19) \cdot 10^3$ L.mol⁻¹.cm⁻¹.