


---

JRC Scientific and Technical Reports

---



**Scientific, Technical and Economic  
Committee for Fisheries (STECF)  
Evaluation of Revised National Programs  
for 2010 under the Data Collection  
Framework and a Roadmap for the Review  
of Surveys.**

**Report of the Subgroup on Research  
Needs (SGECA/SGRN 09-04)**

**Joint Subgroup on Economic Affairs  
(SGECA) and on Research Needs (SGRN)  
of the Scientific, Technical and Economic  
Committee for Fisheries (STECF)**

07-11 DECEMBER 2009, HAMBURG

Edited by Paul Connolly, Tiit Raid & Hendrik Doerner

The mission of the Institute for the Protection and Security of the Citizen (IPSC) is to provide research results and to support EU policy-makers in their effort towards global security and towards protection of European citizens from accidents, deliberate attacks, fraud and illegal actions against EU policies

The Scientific, Technical and Economic Committee for Fisheries (STECF) has been established by the European Commission. The STECF is being consulted at regular intervals on matters pertaining to the conservation and management of living aquatic resources, including biological, economic, environmental, social and technical considerations.

European Commission  
Joint Research Centre  
Institute for the Protection and Security of the Citizen

**Contact information**

Address: TP 051, 21027 Ispra (VA), Italy  
E-mail: [stecf-secretariat@jrc.ec.europa.eu](mailto:stecf-secretariat@jrc.ec.europa.eu)  
Tel.: 0039 0332 789343  
Fax: 0039 0332 789658

<https://stecf.jrc.ec.europa.eu/home>  
<http://ipsc.jrc.ec.europa.eu/>  
<http://www.jrc.ec.europa.eu/>

**Legal Notice**

Neither the European Commission nor any person acting on behalf of the Commission is responsible for the use which might be made of this publication.

This report does not necessarily reflect the view of the European Commission and in no way anticipates the Commission's future policy in this area.

***Europe Direct is a service to help you find answers  
to your questions about the European Union***

**Freephone number (\*):  
00 800 6 7 8 9 10 11**

(\* ) Certain mobile telephone operators do not allow access to 00 800 numbers or these calls may be billed.

A great deal of additional information on the European Union is available on the Internet. It can be accessed through the Europa server <http://europa.eu/>

JRC58997

EUR 24422 EN  
ISBN 978-92-79-16053-0  
ISSN 1018-5593  
doi:10.2788/252

Luxembourg: Publications Office of the European Union

© European Union, 2010

Reproduction is authorised provided the source is acknowledged

*Printed in Italy*

## TABLE OF CONTENTS

1.	Introduction .....	4
2.	Terms of reference .....	4
3.	STECF Comments and Conclusions.....	6
4.	ANNEX I – Report of SGECA/SGRN-09-04.....	9

**COMMISSION STAFF WORKING DOCUMENT**

**Evaluation of Revised National Programs for 2010 under the Data Collection Framework and Review of Surveys (SGECA/SGRN-09-04)**

**JOINT SUBGROUP ON ECONOMIC AFFAIRS (SGECA) AND ON RESEARCH NEEDS (SGRN) OF THE SCIENTIFIC, TECHNICAL AND ECONOMIC COMMITTEE FOR FISHERIES (STECF)**

**STECF OPINION EXPRESSED DURING THE PLENARY MEETING (PLEN-10-01)**

**26-30 April 2010, Norwich**

**1. INTRODUCTION**

STECF is requested to review the report of the **SGRN/ECA-09-04** Working Group of December 07 - 11, 2009 (Hamburg) meeting, evaluate the findings and make any appropriate comments and recommendations.

**2. TERMS OF REFERENCE**

**TOR 1: Revised 2010 National Programmes**

To check the revised 2010 NP's submitted by Member States following the 2009 RCMs. SGRN participants will be asked to review the concerned programmes before the meeting.

**TOR 2: Regional Co-ordination**

To review the recommendations of the Liaison meeting and ensure that these recommendations are addressed in the TOR's of various fora during 2010.

**TOR 3: Regional Databases**

To review progress on the establishment of regional databases.

**TOR 4: Availability of data**

To identify possible bottlenecks, gaps and quality problems compromising links in the data flow from national sampling to stock assessment input. A presentation of two case studies from the Mediterranean and the Baltic Sea will illustrate the discussion.

Under this ToR, the economists will be invited to discuss on whether the currently agreed date for submission of data for the Annual Economic Report is adequate and, if necessary, propose an alternative schedule.

**TOR 5 Review of Surveys (only biologists)** To develop TOR's and a roadmap for the 2010 review of the list of surveys in Annex IX of the DCF.

**ToR 6. Methods to allocate economic data (earnings, operative costs, labour costs, capital costs) at the level of metiers. (only economists).** SGECA/SGRN could also consider the case of vessels that may be active in more than one fishing area during the same year and it will propose suitable methods to evaluate the cost structure within each area and suggest a methodology to split, if necessary, economic variables among different areas.

**TOR 7: Comments of STECF from their November Plenary Meeting**

To review comments from STECF, of relevance to SGRN, with particular focus on comments to the Report from the SGRN Guidelines and Procedures Group (GPG).

**TOR 8; Planning for 2010**

To develop a list of priority tasks and issues to be addressed by SGRN in 2010. A provisional list of all relevant meetings and dates will be mapped out for 2010. This includes the drafting of TORs for a SGECA meeting in the field of the DCF (to be held in the second semester of 2010)

**TOR 9: Transversal variables:**

- Review of NP in order to verify that MSs had a common interpretation of variables listed in appendix VIII (List of transversal variables with sampling specification) of DCF
- How to assure a link among estimations at the level of metiers and estimations at the level of fleet segment
- How to define the quality of estimates

### **3. STECF COMMENTS AND CONCLUSIONS**

#### **STECF observations**

STECF endorses the findings of SG-RN/ECA 09-04 and welcomes the strategic work programme outlined for 2010. STECF would like to stress that the availability and quality of data collected under the DCF is of utmost importance for the work of STECF working groups and other regular data users in RFMOs. Furthermore, STECF notes that the collection of data under the Marine Strategy Framework Directive needs to be addressed in future SGRN WG meetings.

STECF did not deal with the report section on ToR 1 (Revised DCF National Programmes 2010), as this part had already been sent to the Commission and was adopted by STECF written procedure in March 2010.

#### **STECF comments and conclusions**

Regarding the review of surveys to be undertaken in 2010, STECF recommends that the chair for the survey review group (SGRN-10-03) should be selected soon in order to arrange a timely preparation of the meeting including the collation and review of the relevant documentation. Among the relevant documents, the report of the ICES 'Working Group on Integrating Surveys for the Ecosystem Approach' (WGISUR), should be considered by the survey review group. STECF notes that SGRN 09-04 considers that surveys should be subject to frequent evaluation of their 'quality and usefulness'. STECF agrees and considers that this is an essential aspect of any on-going survey programmes. STECF also notes that to fully undertake such work requires rigorous analyses of within and between survey data time-series and their utility.

In relation to Regional Databases (RDB), STECF notes that the RDB meeting proposed by SGRN/ECA 09-04 already took place (Brussels, 22-24 Feb 2010) and its report will be reviewed by the DCF Regional Co-ordination Meetings (RCMs) in May.

The availability and high quality of data collected under the DCF is of vital importance to STECF working groups (effort, Annual Economic Report etc.) and STECF would thus like to highlight existing problems with data deficiencies:

Following implementation of the DCR and the subsequent DCF, it is to be expected that total catch figures should be consistent and reliable in international databases dealing with the list of species included in the DCF (Appendix VII of Commission Decisions 2008/949/EC and 2010/93/EU). However, on numerous occasions, STECF has noted unexplained discrepancies in basic fisheries-related data submitted by Member States to different organisations. A serious case was highlighted in the STECF-SGMED 09-03 WG report.

STECF notes that in principle there should be no discrepancies in data and stresses the need for appropriate quality checks on all fisheries data used in support of fisheries management advice. Such discrepancies not only impact on the quality of assessments and advice but also affect the distribution of sampling effort declared and carried out under the DCF. To this end STECF proposes:

1. to include the following request in Terms of Reference for all of its Working Group meetings:  
“Examine all data for consistency and quality. Any discrepancies should be brought to the attention of the relevant responsible authority, Member State and the Commission.”
2. that the issue of data consistency and quality is addressed under the DCF. To do so, STECF recommends that at the forthcoming SGRN WG meetings, a template and procedure for reporting data deficiencies by data user groups should be developed.

Provision of data that is funded under the DCF is proving a problem for STECF. This is particularly the case for both economic (SG-ECA-10-02) and effort data (SG-MOS 09-05). Several Member States have either failed to provide any data at all for a data call or provided data in such a poor state that the STECF working groups found it completely unusable.

The principles of management under the UN straddling stocks agreement are that there is a supply of ‘complete and accurate data’ in ‘a timely manner’. Under the UN agreement, such information should come from national and international research programs such as those defined under the DCF.

STECF considers that the failure to provide data collected under the DCR/DCF is a serious problem that is directly affecting the completion of STECF work, particularly in preparation of the Annual Economic Report and the effort reports.

STECF would like to draw this matter to the attention of the Commission. As the matter is so significant, STECF considers that this matter needs to be addressed at a high level and in order to deal with this matter in the long term, STECF suggests that it may be appropriate to consider it in the context of the 2012 CFP reform.

The Commission already received information on data deficiencies from JRC on the data submitted by MS under the DCF. In line with point 2. above, STECF also intends to provide the Commission with a checklist of data discrepancies in Member States submissions under the DCF through its WG activities.

In response to the SGRN/ECA-09-04 recommendation to determine a core group of economists dealing with economic data collection under the DCF and to ensure continuity on economic issues within DCF-related STECF-SGRN WGs, STECF dealt with these issues in July 2009, (STECF-09-02).



**4. ANNEX I – REPORT OF SGECA/SGRN-09-04**

SGECA/SGRN-09-04: Evaluation of Revised National Programs for 2010 under the Data Collection Framework and Review of Surveys

**Hamburg, 07-11 December 2009**

*This report does not necessarily reflect the view of the European Commission and in no way anticipates the Commission's future policy in this area*

*In Memory of*  
*Olle Hagstrom (1946 to 2009)*  
*who helped establish the*  
*Data Collection Framework*

# CONTENT

	<b>PAGE</b>
<b>Summary</b>	<b>15</b>
<b>Introduction</b>	<b>17</b>
<b>Section 1</b>	
<b>Checking of Revised National Programmes (TOR 1)</b>	<b>21</b>
DENMARK	
NETHERLANDS	
UK	
FRANCE	
IRELAND	
SPAIN	
PORTUGAL	
SWEDEN	

ITALY

CYPRUS

<b>Section 2</b>	<b>55</b>
<b>Regional Co-ordination (TOR 2)</b>	
SGRN Issues from the Liaison Meeting	
<b>Section 3</b>	<b>62</b>
<b>Regional Databases (TOR 3)</b>	
Reports from the Liaison Meeting	
<b>Section 4</b>	<b>66</b>
<b>Availability of Data (TOR 4)</b>	
<b>Section 5</b>	<b>68</b>
<b>Review of Surveys – Roadmap for 2010 (TOR 5)</b>	

<b>Section 6</b>	<b>91</b>
<b>Methods to allocate Economic Data at the Metier Level (TOR 6)</b>	
<b>Section 7</b>	<b>93</b>
<b>Comments from STECF November Plenary of relevance to SGRN (TOR 7)</b>	
<b>Section 8</b>	<b>98</b>
<b>SGRN Planning for 2010 (TOR 8)</b>	
<b>Section 9</b>	<b>101</b>
<b>Transversal Variables (TOR 9)</b>	
Report from Economists on SGECA Issues referred to SGRN	
<b>Section 10</b>	<b>103</b>
<b>SGRN 09-04 Main Recommendations</b>	

<b>Section 11</b>	<b>107</b>
<b>References</b>	
<b>ANNEX</b>	
<b>ANNEX 1 - SGRN 09-04 TOR's</b>	<b>109</b>
<b>ANNEX 2 - SGRN 09-04 Agenda</b>	<b>117</b>
<b>ANNEX 3 - List of Participants</b>	<b>120</b>
<b>ANNEX 4 - Presentation on Data Compilation – Baltic Sea Example</b>	<b>123</b>
<b>ANNEX 5 - ICES Tables on Surveys</b>	<b>134</b>

## SUMMARY

---

SGRN 09-04 met at the Johann Heinrich von Thünen Institute, Hamburg, Germany from 7<sup>th</sup> to 11<sup>th</sup> December 2009. The main recommendations from the meeting are given in Section 10 of this report.

SGRN checked the revised 2010 National Programmes submitted by 10 Member States. This element of the report (Section 1) will be submitted to the Commission in mid January 2010 and will be reviewed by STECF through written procedure.

The issue of running the LM in parallel to the main SGRN meeting was not satisfactory and that such a practice should not happen again. There was insufficient time for SGRN to give a consider opinion on the outputs from the LM. SGRN support the continuation of the SGECA Working Group as an STECF sub-group, meeting at least annually, and that further work be undertaken to formalise the role of economists within the RCM in order to maximise their contribution to the DCF. SGRN highlighted issues that should be incorporated into the terms of reference of the 2010 RCM meetings. In particular, the RCM's should compile information provided by MS according to templates agreed by SGRN-09-04 (See Section 5 of this report with associated Tables and Annex).

SGRN proposed a Workshop on Regional Data Management Strategies be held in early 2010. This workshop is to be given a high priority status and must be convened before the 2010 RCMs. In order to ensure the efficiency of the workshop, LM recommended to the four RCM chairs to appoint four participants from their region, trying to achieve a balance between IT experts, economists, biologists and data managers. The proposed date and venue for the workshop are late February in Brussels. The workshop will be co-chaired by ICES and the JRC.

SGRN discussed the issues around economic data and the Annual Economic Report (AER). There was a strong recommendation that MS submit the requested economic data according to the specified time schedule in order to enable SGECA to prepare a AER of high quality.

The issue of methods on allocating economic data at different disaggregation levels (e.g. metiers) was discussed and SGRN strongly recommended a workshop/study to address the

issue. This workshop/study should also consider the case of vessels active in more than one fishing area or, more generally, being active in more than one metier. This could also serve to address other more specific issues such as cooperation with other countries, e.g. candidate or third countries.

SGRN developed a plan to review the list of eligible surveys in Annex IX of the DCF. This review is to be carried out at a meeting of experts in September 2010. The report will be considered at the STECF plenary in November 2010. SGRN has defined terms of reference, review criteria and the composition of the group. SGRN highlighted the importance of this review and the obligation on member states to supply the relevant data to the review group in good time. ICES and PGMED will work closely to ensure the survey table information required for the review is available for checking by the RCM's in April/May.

In discussions on the review of surveys, it was noted that issues raised in some survey planning groups are sometimes missed by the RCM. SGRN advises the RCM to consider survey planning issues raised in data end user reports.

SGRN strongly recommends a workshop/study on identifying adequate methods on allocating economic data at different disaggregation levels (e.g. metiers). As a starting point for development of guidelines and methods for allocating economic data, SGRN recommends that the following points should be included in the TOR of SGECA 10-03: Identifying needs of exemplary applications (e.g. Long Term Management Plan; Regional Analysis for funding purposes); Identifying methods to allocate costs and earnings as well as other economic variables. This could/will include the identification of cost drivers. Transversal variables could serve for this purpose; Assess data quality requirements of allocation methods with regard to particular characteristics of DCF data sources at each MS (e.g. logbooks); Specify TOR for the recommended workshop/study

SGRN took note of the comments of STECF regarding the new guidelines for National Programmes and Technical Reports. It was stressed that the revised guidelines which will be circulated to National Correspondents must be used by Member States in their 2011-2013 National Programme Submissions. Futhermore, SGRN stresses that Member States must fill in new forms in the submission of their 2009-2010 Technical Reports, transposing the informational contained in their 2009-2010 National Programmes from the old forms.



The priority issues to be addressed by SGRN in 2010 were identified as (1) Implementation of the new Guidelines and Procedures; (2) Review of National Programmes 2011-2013; (3) Review of Technical Reports 2009-2010; (4) Review of Surveys; (5) Regional Data Base Workshop ; (6) Quality Issues from 2007 (From LM). A proposed schedule of meetings and venues was drafted.

SGRN noted that the review of the updated NPs did not bring up any issues regarding the interpretation of economic transversal variables. In terms of how to define the quality of the estimate, SGRN recommends the SGECA 09-02 report on data quality issues as a reference.

In further discussions on the economic data issues, the need for a core group of economists who will bring a continuity and a focal point for DCF issues was highlighted. The fact that the economic participants are always changing was highlighted. SGRN recommended that SGECA should consider a permanent DCF chair.

## **INTRODUCTION**

---

SGRN 09-04 met at the Johann Heinrich von Thünen Institute, Hamburg, Germany from 7<sup>th</sup> to 11<sup>th</sup> December 2009.

The terms of reference and the agenda for the meeting are given in Annex 1 and Annex 2.

The main business of the meeting was to check the revised 2010 National Programmes submitted by 10 Member States. This element of the report (section 1) will be submitted to the Commission in January 2010 and will be reviewed by STECF through written procedure.

SGRN also developed terms of reference, evaluation criteria and a roadmap for the review of eligible surveys funded under the DCF. These will be considered by the STECF plenary in April 2010.

The Liaison Meeting (LM) was conducted in parallel to the SGRN 09-04 meeting during 7<sup>th</sup> and 8<sup>th</sup> December. This was most unsatisfactory as it gave insufficient time for SGRN to give a consider opinion on the issues that arose in the draft Liaison meeting report.

THE MAIN RECOMMENDATIONS ENDORSED BY SGRN 09-04 ARE GIVEN IN SECTION 10 OF THIS REPORT.

### **SGRN 09-04 - Participants**

THE PARTICIPANTS WERE;

Paul Connolly (Chair)

Philip Kunzlik

Jörg Berkenhagen

Angeles Armesto

Ingeborg de Boois

Ari Leskela

Romas Statkus

Michael Ebeling

Max Cardinale

Helen Mc Cormick

Aaron Hatcher

Alberto Murta

Iñaki Quincoces

Manos Koutrakis

Henrik Degel

Antonio Di Natale

Dario Pinello

Christoph Stransky

Els Torreale

Paolo Carpentieri

Mark Dimech

Jukka Pönni

Jarno Virtanen

Sieto Verver

Christian Dintheer

Joël Vigneau

Leyre Goti

Cristina Morgado (ICES)

Antonio Cervantes (EU Commission)

Herwig Ranner (EU Commission)

Angel Calvo (EU Commission)

Tiit Raid (JRC)

The contact details for the participants are given in Annex 3.

## SECTION 1

### Checking of Revised 2010 National Programmes

Revised National Programmes were received by the Commission from 10 Member States (Denmark, Netherlands, UK, France, Ireland, Spain, Portugal, Sweden, Italy and Cyprus). SGRN checked these National Programmes in relation to the “track changes” in the reports and have provided comments on these changes. The exercise was not an exhaustive review of the revised National Programmes.

SGRN noted some inconsistencies in the checking procedure. The checking only focused on the track changes in the revised National Programmes and not on the specific RCM recommendations. SGRN did not cross check that RCM recommendations were addressed in the track changes. Some derogation issue arose during the checking procedures and relevant comments have been made by SGRN.

This section of the Report will be submitted to the Commission in Mid January 2010 and approval will be sought from STECF through written procedures. The remainder of the report will be reviewed by the next plenary of STECF in April 2010.

#### **COUNTRY: Denmark**

#### **GENERAL COMMENTS:**

The revised Danish proposal as provided to SGRN, did not contain any tracked changes. In Section III.C.4 (Regional coordination) it is stated ‘RCM North Sea 2009 - No final report is available - Therefore, Denmark has not yet considered any actions to be taken’. A similar comment appears in Section III.D.3 (Regional coordination). There was no comment or tracked changes relevant to RCM Baltic 2009 so SGRN was unable to comment further. It was suggested that a revised proposal had been submitted with tracked changes but, if so, it was not available to SGRN. SGRN will ask the Commission to follow up this issue.

Section	Type of change	Stated in RCM ?	Change programme ?	COMMENTS
<b>*** No revised NP available to SGRN</b>				

--	--	--	--	--

**COUNTRY: Netherlands**

**GENERAL COMMENTS:**

Tracked changes were available for this proposal. Although not relevant to the programme of activities, it is noted that the convention used for labelling métiers is inconsistent between the document text and the tables, but neither was fully in accord with the RCM conventions.

Section	Type of change	Stated in RCM ?	Change programme ?	COMMENTS
II.B (International coordination)	Update (a revised list of meetings to be attended)	NO	NO	SGRN was unable to check this updated list against a Commission-approved list of meetings
III.B.1 (Data acquisition)	Addition (a comment on beam trawlers being decommissioned)	NO	NO	SGRN considers this change relates more to data quality than a change in the programme
	Methodological (distinguishing between full time and part time employment)	NO	NO	SGRN considers this to be a clarification rather than a programme change
	Addition (development of model to calculate costs and	NO	?	It is not clear to SGRN

	revenues)			whether this change requires additional resources and consequently comprises a change to the programme
III.C.2 (Data acquisition North Sea)	Update (staff exchange NL-GER)	YES	NO	This is additional information, not a change to the programme
	Update (reduction of number of observer trips for shrimp beam trawling)	YES (see RCM NSEA 20099 discussion section 9.2)	YES	No change to the financial bid, but a reduction in the activity to the minimum required.
	Update (closure of eel fishery in Q4 2010)	NO	YES	Reduction in absolute activity, caused by national eel management proposals.
III.C.4 (Regional coordination – North Atlantic & North Sea)	Update (North Atlantic & North Sea)	NO	NO	Additional comments made in response to RCM NSEA 2008 recommendations
III.C.2 (Data	Update	NO	NO	Update of the

acquisition Pacific)				text
III.C.4 (Regional coordination – other regions)	Update	NO	NO	Update of the text
III.C.5 (Derogations and non-conformities – other regions)	Update	NO	NO	Revised text
III.D.1 (Data acquisition – North Sea)	Addition (on recreational fisheries including eel)	YES	NO	Clarification
III.E.4 (Regional coordination – North Sea)	Update (North Sea)	NO	NO	Additional comments made in response to RCM NSEA 2008 recommendations
III.G.1.9 (surveys MEGS)	Update (there may be an adjustment due to the international planning)	NO	NO	Only change in time schedule
IV.A.1 (Aquaculture)	Update	NO	NO	
IV.A.2 (Data acquisition)	Addition (on oysters)	NO	?	It is not clear to SGRN whether this change requires additional resources and consequently comprises a



				change to the programme, or if it is simply clarification of the existing proposal
IV.B.1 (Data acquisition)	Update	NO	NO	Revised text
X	Update (financial basis of staff costs)	NO	NO	Staff rates changed in line with the financial regulation requirement of 210 productive days per year
	Update (financial forms)	NO	NO	Clarification
Annex 2 (bilateral agreement)	Addition	NO	NO	Additional text
Annex 5 (minutes of the bilateral meeting)	Addition	NO	NO	Additional text comprising the minute of a meeting that occurred between the first and revised version of the NP

**COUNTRY: United Kingdom**

**GENERAL COMMENTS:**

No updates on the tables were available, only the revised text of the proposal.

Section	Type of change	Stated in RCM ?	Change programme ?	COMMENTS
III.B.1 (Data acquisition)	Update (non-sampling of inactive vessels)	NO	NO	SGRN considers this to be a clarification of the original programme
III.C.2 (Data acquisition-general methodology)	Update (England and Wales market sampling procedures)	NO	NO	Reflects the change of responsibilities for market sampling from MFA to Cefas.
III.D.1 (Data acquisition)	Update (recreational fisheries sampling)	NO	?	SGRN considers this to be more like a response to a clarification for the EU rather than to a recommendation from RCM NSEA 2009.  The text on the Welsh recreational sampling programme is confusing and it is not clear if this leads to a change in the programme.
III.G.1 (Surveys)	Addition (for one of the three MEGS)	? (see comment)	YES	Historically, the RCMs called on the UK to reinstate its third

	surveys)			<p>component of the survey having withdrawn from it in 2007.</p> <p>RCM NSEA 2009 commented on the requirement for additional fecundity sampling but stated this was a topic for WGMEGS to address.</p> <p>Both RCM NSEA 2009 and RCM N ATLANTIC 2009 commented on the necessary requirement for additional egg sampling coverage and referred the adaptation of surveys for discussion by SGRN 09-04.</p>
IV.B.1 (Data acquisition)	Addition (SEAFISH contracted in 2010 to survey the processing industry)	NO	? (see comment)	It is not clear to SGRN whether this is related to a request for clarification or it is an addition to the 2010 programme.

The UK survey planning process was not completed until after the original NP submission date. Because it was uncertain that a third UK survey would be agreed within the UK planning process, the UK could not commit to this in its original NP submission. The addition of a third component to the UK part of the 2010 mackerel egg survey is in response to comments in various ICES reports:

**COUNTRY: France**

**GENERAL COMMENTS:**

Track changes should be used instead of yellow highlighting to facilitate the revision. Numbering of sections and sub-sections should follow a clear and logical order. Modifications regarding regional meetings should coincide with those in the NP of the MS also taking part in it.

RCMs recommend that methodological and data quality issues be handled in a SGECA subgroup, and do not consider additional studies by MS.

RCMs state that the clustering of segments should be agreed at regional level in order to ensure comparability of data per segment. Therefore, new segmentation in the long distance fisheries would benefit from the regional coordination on these fisheries.

**Commission to check the inclusion of sampling in Corsica 2010**

Section	Type of change	Stated in RCM ?	Change programme ?	COMMENTS
II - 1.1	Include IRD in the sampling programme.	No	Yes	OK-Discussed in Bi Laterals with Commission
II - 1.1	Include FranceAgriMer in the sampling programme.	No	Yes	OK-Discussed in Bi Laterals with Commission
II - 1.2	Ask for funding to attend PGMed.	No	No	Not in the remit of SGRN
II - 1.2	Ask for funding for trips for 3 people to attend the long-distance fisheries RCM	No	No	Not in the remit of SGRN

II - 1.2	Ask for funding for 5 people to attend 4 ICCAT WGs and for 7 people to attend 4 CTOI WGs.	No	No	Not in the remit of SGRN
II - 1.2	Ask for funding for meetings between IRD, IEO and AZTI for researchers on tuna fisheries.	No	No	Not in the remit of SGRN
III - 1.3	Recommendations of autumn 2009 RCM meetings for changes in the metiers to be sampled.	Yes	Yes	OK-Discussed in Bi Laterals with Commission
III - North Sea 1.3.2	New sampling of OTB_DEF_100-119 (>18m) onboard freezing trawlers.	Yes	Yes	OK-Discussed in Bi Laterals with Commission
III - North Sea 1.3.2	Bilateral agreement between France and Netherlands for sampling of freezer trawlers of OTM_SPF_32-54 (>18m) in North Sea.	Yes	Yes	OK-Discussed in Bi Laterals with Commission
III - North Atlantic 1.3.7	The same as previous one, but for North Atlantic.	Yes	Yes	OK-Discussed in Bi Laterals with Commission
III - North Atlantic 1.3.7	As recommended by RCM North-East Atlantic and Mediterranean onboard observers will start sampling by-catch in the bluefin tuna fishery	Yes	Yes	MS is asked to clarify the funding for this programme as ICATT also funds observer cover
III - North Atlantic 1.3.9	As recommended by the NEA RCM, the metier DRB_MOL will be sampled in 2010: 4 trips during the 2 quarters in which the fishery is open.	Yes	Yes	OK

III Mediterranean 1.3.4	- As recommended by RCM Med and PGMed, France will sample bluefin tuna in the Gulf of Lion and in the Bay of Biscay.	Yes	Yes	SGRN points out that sampling is mandatory for this species in this area.
III 1.3.5	- WECAF Ask for funding for a pilot study on the sampling of swordfish and small tunids in Martinique using fish-aggregating devices.	No	Yes	MS is to clarify to the commission on the use of fish aggregating devices for swordfish.
III - IOTC 1.3.2	Re-distribution of sampling effort in the Indian Ocean due to changes in the area of activity of the fleets, caused by the activity of pirates.	No	Yes	OK-Discussed in Bi Laterals with Commission
III - IOTC 1.3.2	To carry out a study in 2010 in order to check if one metier of long liners in Reunion Island should be divided in two different metiers.	No	Yes	OK-Discussed in Bi Laterals with Commission
III - IOTC 1.3.2	To reinforce the onboard sampling of discards aboard long liners from reunion Island.	No	Yes	OK-Discussed in Bi Laterals with Commission
III - IOTC 1.3.3	Include in the programme a coordinator for the sampling and data processing in the Seychelles.	No	No	OK-Discussed in Bi Laterals with Commission
III - IOTC 1.3.3	Initiate the sampling of 3 new seiners that will start activity off Mauritius.	No	Yes	OK-Discussed in Bi Laterals with Commission
III - IOTC 1.3.3	To hire a biostatistician during 2 years to assist with	No	No	Not in the remit

	the revision of the sampling plans for the tropical tunids.			of SGRN
III - IOTC 1.3.4	Ask for funding for 2 researchers to participate in the RCM of long-distance fisheries: 1 for seiners and 1 for long-liners.	No	No	Not in the remit of SGRN
III - IOTC 1.3.4	Ask for funding for meetings between French and Spanish researchers for planning the joint sampling of tuna.	No	No	Not in the remit of SGRN
III - ICCAT 1.3.7	Changes in sampling effort due to changes in the spatial activity of the handliners and seiners in the Indian and Atlantic oceans.	No	Yes	OK-Discussed in Bi Laterals with Commission
III - ICCAT 1.3.8	Ask for funding a technician to be based in Ivory Coast.	No	No	Not in the remit of SGRN
III - Recreational Fisheries 1.4.3	Follow the NEA and North Sea and East Arctic RCMs, of not sampling the recreational catches of eel in the North Sea, East English Channel and Atlantic.	Yes	Yes	OK
III - Recreational Fisheries 1.4.3	Proposal (Pilot Study) to evaluate the cost-efficiency of continuing to sample the recreational fishery of codfish.	No	No	OK (previous agreement in SGRN)
III - Recreational Fisheries 1.4.4	To cease the sampling of eel in the rivers of the handline recreational fisheries.	No	Yes	OK-Discussed in Bi Laterals with Commission
III - Recreational Fisheries 1.4.4	Sampling of recreational fisheries of salmon in rivers has been done in 2009 in a pilot-study.	No	Yes	OK-Discussed in Bi Laterals with Commission
	To continue and improve the international protocol	Yes	Yes	OK

III - Biological Variables 1.5.4	for the sampling of sole in area VIId, and to carry out a case study for cod in area IIIa, as recommended by RCM NS&EA.			
III - Biological Variables - IOTC 1.5.2	To hire a technician for three months to help with age reading of tuna.	No	No	Not in the remit of SGRN
III - Surveys Mediterranean 1.7.4 ?	Ask for funding for the Channel Ground Fish Survey.	No	Yes	Not on the list of surveys .To be discussed with commission.
III - Surveys Mediterranean 1.7.4	Ask for funding for the development of a database/GIS tool for survey data, to be coupled to the existing one for fisheries statistics.	No	No	Not in the remit of SGRN
III - Surveys 1.7.4	Ask for funding for the development of tools for user-friendly queries to the survey database.	No	No	Not in the remit of SGRN
V - Ecosystems	Ask for funding for a monitoring project on tropical tuna to be developed by IRD.	No	Yes	Not in the remit of SGRN
V - Ecosystems	Ask for funding to hire a fisheries scientist or IT engineer for 6 months to develop a database and the procedures to calculate discard rates for tropical tuna.	No	No	Not in the remit of SGRN
V - Ecosystems	The environmental indicator "Fuel efficiency of fish capture" will not be calculated for tropical tuna.	No	Yes	MS asked to clarify
VI - Data Management	Ask for funding for a project to develop a data dictionary, organise the	No	No	Not in the remit of SGRN



1.1.2	metadata and set up queries for the IRD data bases.			
VI - Data Management 1.1.5	The enquiries for data collection for recreational fisheries have been removed from the programme.	No	Yes	OK-Discussed in Bi Laterals with Commission
Annexes	Inclusion of annexes with methodology on sampling of tropical pelagic fisheries, biological parameters of tropical tuna and database development for tropical fisheries.	No	Yes	OK-Discussed in Bi Laterals with Commission

***Economic comments***

For the processing industry, reference year, sample size and category of firm are changed at the same time, and therefore data comparability is worsened and economic analysis may not be meaningful. Information on stratification would be helpful in this case.

Section	Type of change	Stated in RCM ?	Change programme ?	COMMENTS
IV 1.2.1	Improved data quality: ref. to Eurostat for type of firms to be sampled	Yes	Yes	
VI 1.1.3	Comment on firms with processing as secondary activity	No	Yes	Not clear in relation to sample size in tables

IOTC 1.3.3	Improved data quality : reference to coverage rate, precision etc	Yes	No	
Table IV.B.1 and IV.B.2	Change in the reference year for the processing sector	No	Yes	
Table IV B.1	Change in the sample size	No	Yes	Possible change in stratification needs to be clarified

**COUNTRY: Ireland**

**GENERAL COMMENTS:**

Tables and text were updated. Recommendations from RCM-NA and SGRN-09-01 were taken into account.

Section	Type of change	Stated in RCM ?	Change programme ?	COMMENTS
<b>III.A General description of the fishing sector</b>	Deepwater fishery and Eel Fishery no longer exists.	No	Yes. Removed	OK-Discussed in Bi Laterals with Commission
<b>III.C.2 Data acquisition Table III.C.3</b>	Based on gear/area/target similarities and <i>a priori</i> knowledge of the fisheries, metiers have been merged into existing metiers currently being sampled or collapsed to form a new metier for sampling purposes.  Four new metiers have been included in Table III.C.3 which will be sampled for Discards only	No	Yes	OK-Discussed in Bi Laterals with Commission
<b>III.C.2 Data acquisition Table III.C.2</b>	The self sampling programme initiated for Metiers OTB-DEF 6a and 6b will be expanded to cover 3 other metiers in the	No	Yes	OK-Discussed in Bi Laterals with Commission

	SW of the country. Statistical analysis will be carried out in order to ensure quality of data, only 2 sets of data received so far			
<b>III.C.2 Data acquisition</b>	Less use of Contracted assistance for the collection of stock based data. Data collected by MI personnel	No	No	OK-Discussed in Bi Laterals with Commission
<b>III.C.2 Data acquisition</b> Sampling of foreign Landings	Additional Bi lateral to be set up with Denmark	No	In 2011-2013 programme	OK-Discussed in Bi Laterals with Commission
<b>III.C.5 Derogations and non-conformities</b>	Derogations on sampling seed mussels  Following further analysis of the 2008 logbook data Ireland seeks derogations to sample discards fisheries based on the fact that the effort in these fisheries is below 20 days	No	No	OK-Discussed in Bi Laterals with Commission
<b>III.E.2 Data acquisition</b>	Collection of maturity data changed from survey to onboard observers	No	Yes	OK-Discussed in Bi Laterals with Commission
<b>III.E.3 Data quality</b>	Use of COST tool inserted	Yes	Yes	OK-Discussed in Bi Laterals with Commission
<b>III.G.2.4 Modifications in the surveys</b>	Change in Vessel use, survey split between two vessels	No	Yes	OK

<b>V. Module of evaluation of the effects of the fishing sector on the marine ecosystem</b>	Omitted text inserted <i>Indicator 8: Discarding rates of commercially exploited species</i>  <i>Indicator 9: Fuel efficiency of fish capture</i>	No	No. Work was already being carried out	The ammendmet comes from a request in SGRN/ECA 0902 report  OK-Discussed in Bi Laterals with Commission
<b>Table II.B.1</b>	Updated list of meetings	No	Yes	OK-Discussed in Bi Laterals with Commission
<b>Table III.E.3</b>	Updated sampling numbers	No	Yes	OK-Discussed in Bi Laterals with Commission

***Economic comments***

Economic data items obtained from different sources (logbooks and sales notes etc.) should take into account the recommendation by RCM NA to use common methods to ensure consistency and comparability of all economic variables when derived from different sources.

**COUNTRY: Spain**

**GENERAL COMMENTS:**

Section	Type of change	Stated in RCM ?	Change programme ?	COMMENTS
III. G.2 Survey modifications	Add of 5 more days to IBTS 4Q in order to cover a wider depth range 30-800 instead of 70-500)	No	Yes.	SGRN agrees with the scientific justification for extending the survey but the Commission will check all of the other IBTS surveys submissions and see if there are any days remaining for funding.

***Economic comments***

Economic data items (including cost and employment variables) obtained from different sources should take into account the recommendation by RCM NA to use common methods to ensure consistency and comparability of all economic variables when derived from different sources.

**COUNTRY: Portugal**

**GENERAL COMMENTS:**

There are no specific requests for Portugal from the RCM NA

No updated tables were supplied so unable to check if new metier was included.

No reference in the NP to SGRN 09-01 recommendations.

- No sampling in the Indian Ocean, awaiting outcome of the long distance RCM? Fishery since 2007
- No mention of the use of the COST tool

Section	Type of change	Stated in RCM ?	Change programme ?	COMMENTS
III.C. 1 Selection of metiers to sample	New métier to sample based on updated logbook analysis – Set Gillnets (GNS), targeting either demersal and small pelagic fishes.	No	Yes	OK- Discussed in Bi Laterals with Commission

***Economic comments***

Economic data items obtained from different sources (logbooks, sales notes and surveys) should take into account the recommendation by RCM NA to use common methods to ensure consistency and comparability of all economic variables when derived from different sources.

**COUNTRY: SWEDEN**

**GENERAL COMMENTS:**

On the whole, the Swedish National Plan 2009-2010 (revised 2009-10-06) was clear and revised sections were easy to detect.

In addition to changes in the table below, the revision of the Swedish NP included some clarifications on e.g how to obtain by-catch estimates for eel trapnet fishery. Those did not affect the programme but made the NP more clear for people not familiar with Swedish circumstances.

Section	Type of change	Stated in RCM ?	Change programme ?	COMMENTS
III D 2	Pilot study targeting recreational fishery of cod	YES	YES	Acceptable on the basis of chapters II B (1) and III B 3 3 of the 2008/949, and Baltic RCM recommendations
III E 2 (salmon) III E 5 (salmon)	Changes in river monitoring. Counting adults in Sävarån postponed to 2011.	NO	YES	Justification of time-table and budget of parts of river monitoring. Acceptable since river monitoring is a new element in DCF and new monitoring devices have to be constructed.



III E 5 (salmon)	Sampling salmon long-line fishery	YES	NO	NP should be prepared to act as agreed in RCM and WGBAST.
III C 2 III E 2	Change in herring length classification	NO	NO	OK
III C 2	Change in flounder sampling from harbour to concurrent	NO	NO	OK
III C 2 III E 2	Eel samples to include all size classes, SD 27 sampled as well	NO	NO	OK
III C 2	PTB FWS –métier: four randomized samples instead of 2	NO	NO	OK
III C 2	Anadromous trap net fishery: part of sampling in harbours, extra journals	NO	NO	OK

**Detailed comments:**

Page 42, paragraph on Pilot study in ICES division 23 targeting recreational fishery of cod.

There should be a reference not only to chapter II B (1) but also to chapter III B 3 3 a-b of the 2008/949. Those paragraphs obligate MS's to estimate quarterly weight of the recreational

catches and, where relevant, to carry out pilot surveys to estimate the importance of recreational fisheries targeting the species listed in Appendix IV.

The proposed pilot study is also in accordance with Baltic RCM recommendations. However, as this is a pilot study, it should not be restricted to the first months of the year as stated by the revised NP, but continued through the whole fishing season.

Page 49, Salmon index rivers

Monitoring of returning adult numbers in Sävarån is postponed one year from what was originally planned. The construction of monitoring devices in Mörrumsån and improving and operating smolt traps in Umeå/Vindelälven has turned out to be more expensive than originally planned. These changes in NP are well based and acceptable.

Page 51, Paragraph on Salmon

Chapter III B B1 2 of 2008/949 states that additional biological sampling of the unsorted landings should be carried out in order to estimate the share of the various stocks in the landings for salmon in the Baltic Sea. This is usually done through microsatellite-DNA analysis. In the Baltic RCM report, salmon samples from the main Basin are considered suitable for international co-operation. Several countries are taking part in the fishery. Both WGBAST and Baltic RCM recommend to “improve (salmon) data collection under the EU Data Collection regulation, particularly for the Main Basin. This includes revision of the scheme of biological sampling from catches established by WGBAST in 2005”. RCM plans that formal agreements on task sharing in genetic samples from the main basin are prepared before end of March 2010. Sweden should be prepared to act as agreed in RCM and WGBAST.

Some minor comments on the NP revisions.

Page 17: The latin names of the species should be *Clupea harengus membras*.

Page 19, 33 and 55: The plan refers repeatedly to long time series of by-catch composition in eel trap nets. It would be useful to give some details on such time series, e.g. when did they start and if they are they still continuing.

Page 20, paragraph on Trap net fisheries targeting anadromous species (FPO ANA 0 0 0)

It is not clear from the revised version of the NP if the information included in the extra journals is still collected. The revised version of the NP gives the impression that the extra journals will be removed from NP but the fishermen are still filling those. Also in table III C 3, a footnote should be added if information from extra journals is collected only in 2009 and not in 2010.

In the fifth line of page 20, from the end of the paragraph, the word “event” should be “even”. Also, in the last sentence of the same paragraph, the fishermen is probably bringing in the entire catch **from** the trap (not **in** the trap).

**COUNTRY: ITALY**

**GENERAL COMMENTS:**

Section	Type of change	Stated in RCM ?	Change programme ?	COMMENTS
<b>III.C. Biological - metier-related variables:</b>	According the outputs of the RCMed&BS (Venice, 13-16 October 2009), MS proposes that the CV for length of demersal and small pelagic species to be calculated annually by all metier aggregated and per GSA and that CV for ages of all species to be calculated annually by all metier aggregated and at national level. Finally CV for length of large pelagic species to be calculated on a Regional basis (III C.3).	Yes		<b>SGRN comment:</b> SGRN agrees with RCM outputs
<b>III.C. Biological - metier-related variables:</b>  Large pelagics	For the large pelagic species, included both in group 1 and in group 2 list, the sampling intensity needed to achieve precision levels will be evaluated on a Mediterranean-wide basis, following both the RCMed&BS (Sète, 24-28 November 2008; Venice, 13-16 October 2009) and PGMed (Montpellier, 3-6 March 2009) recommendations. To follow this issue, in 2010, a minimum number of large pelagic fish to sample will be set at Regional level and a sampling	Yes		<b>SGRN comment:</b> SGRN notes that sampling levels for large pelagics were established by RCMed&BS (Venice, 13-16 October 2009). These sampling levels should be adopted by the MS for 2010 and eventually revised in the first part of the year according to any further RCM meeting decision.

	intensity needed to achieve precision levels on a Mediterranean-wide basis will be proposed (Commission Decision 949/2008).			
<b>III.E Biological - stock-related variables.</b>	<p>CV for age, sex and maturity of demersal and small pelagic species will be calculated annually at national level and by all metier aggregated.</p> <p>CV for age, sex and maturity of large pelagic species will be calculated on a Regional basis following the output of the RCMMed&amp;BS (Venice, 13-16 October 2009).</p>	Yes		<b>SGRN comment:</b> SGRN agrees with RCM outputs.
<p><b>III.E Biological - stock-related variables.</b></p> <p><b>III.E.5. Derogations and non-conformities</b></p>	<p>Italy requests derogation for biological sampling for some of the G2 species, due to missing landing data at Mediterranean level, due to inaccurate species identification for these species and thus due to the impossibility to calculate the sharing in the EU landing. It is also mentioned that there is the support of RCM-Med&amp;BS, but the Commission rejected the Italian request (letter of 29th October 2009, ref. 12390).</p> <p>The derogation is asked for the following species of Group 2: <i>Lophius budegassa</i>, <i>Lophius piscatorius</i>, <i>Eledone cirrhosa</i>, <i>Eledone moscata</i>, <i>Trachurus trachurus</i>, <i>Trachurus mediterraneus</i></p>		YES	<b>SGRN comment:</b> SGRN has in the February 2009 report requested Italy to provide information on the share in EU landings for the G2 species in order to evaluate the need for sampling of landings. The share in EU landings for the species for which derogation is asked is still not given and therefore it is not possible for SGRN to decide on if the derogation can be accepted. Moreover, the reason for Italy for not being able to give the share in EU landings is that the rest of the countries don't give the landings for each species

				<p>individually. However in PGMED 2009 there is a template as a reference for the selection of species to be included in the biological sampling and all these species are &gt;10% (even if most countries give mixed landings).</p> <p>SGRN recommends that RCM insists that all MS to deliver the landings by individual species.</p>
--	--	--	--	-----------------------------------------------------------------------------------------------------------------------------------------------------------------------------------------------------------------------------------------------------------------------------------------------------------------------------------------

## ITALY

### 1. III.C. Biological - metier-related variables:

According to the outputs of the RCM Med&BS (Venice, 13-16 October 2009), MS proposes that the CV for length of demersal and small pelagic species to be calculated annually by all metier aggregated and per GSA and that CV for ages of all species to be calculated annually by all metier aggregated and at national level. Finally CV for length of large pelagic species to be calculated on a Regional basis (III C.3).

**SGRN comment:** SGRN agrees with RCM outputs.

For the large pelagic species, included both in group 1 and in group 2 list, the sampling intensity needed to achieve precision levels will be evaluated on a Mediterranean-wide basis, following both the RCM Med&BS (Sète, 24-28 November 2008; Venice, 13-16 October 2009) and PGMed (Montpellier, 3-6 March 2009) recommendations. To follow this issue, in 2010, a minimum number of large pelagic fish to sample will be set at Regional level and a sampling intensity needed to achieve precision levels on a Mediterranean-wide basis will be proposed (Commission Decision 949/2008).

**SGRN comment:** SGRN notes that sampling levels for large pelagics were established by RCM Med&BS (Venice, 13-16 October 2009). These sampling levels should be adopted by the MS for 2010 and eventually revised in the first part of the year according to any further RCM meeting decision.

## 2. III.E Biological - stock-related variables.

CV for age, sex and maturity of demersal and small pelagic species will be calculated annually at national level and by all metier aggregated.

CV for age, sex and maturity of large pelagic species will be calculated on a Regional basis following the output of the RCMMed&BS (Venice, 13-16 October 2009).

**SGRN comment:** SGRN agrees with RCM outputs.

### III.E.5. Derogations and non-conformities

Italy requests derogation for biological sampling for some of the G2 species, due to missing landing data at Mediterranean level, due to inaccurate species identification for these species and thus due to the impossibility to calculate the sharing in the EU landing. It is also mentioned that there is the support of RCM-Med&BS, but the Commission rejected the Italian request (letter of 29th October 2009, ref. 12390)

The derogation is asked for the following species of Group 2: *Lophius budegassa*, *Lophius piscatorius*, *Eledone cirrhosa*, *Eledone moscata*, *Trachurus trachurus*, *Trachurus mediterraneus*.

**SGRN comment:** SGRN has in the February 2009 report requested Italy to provide information on the share in EU landings for the G2 species in order to evaluate the need for sampling of landings. The share in EU landings for the species for which derogation is asked is still not given and therefore it is not possible for SGRN to decide on if the derogation can be accepted. Moreover, the reason for Italy for not being able to give the share in EU landings is that the rest of the countries don't give the landings for each species individually. However in PGMED 2009 there is a template as a reference for the selection of species to be included in the biological sampling and all these species are >10% (even if most countries give mixed landings).

SGRN recommends that RCM insists that all MS to deliver the landings by individual species.

## ITALY

## 3. III.C. Biological - metier-related variables:

According to the outputs of the RCMMed&BS (Venice, 13-16 October 2009), MS proposes that the CV for length of demersal and small pelagic species to be calculated annually by all métiers aggregated and per GSA and that CV for ages of all species to be calculated annually by all métiers aggregated and at national level. Finally CV for length of large pelagic species to be calculated on a Regional basis (III C.3).

**SGRN comment:** SGRN agrees with RCM outputs.

For the large pelagic species, included both in group 1 and in group 2 list, the sampling intensity needed to achieve precision levels will be evaluated on a Mediterranean-wide basis, following both the RCMed&BS (Sète, 24-28 November 2008; Venice, 13-16 October 2009) and PGMed (Montpellier, 3-6 March 2009) recommendations. To follow this issue, in 2010, a minimum number of large pelagic fish to sample will be set at Regional level and a sampling intensity needed to achieve precision levels on a Mediterranean-wide basis will be proposed (Commission Decision 949/2008).

**SGRN comment:** SGRN notes that sampling levels for large pelagics were established by RCMed&BS (Venice, 13-16 October 2009). These sampling levels should be adopted by the MS for 2010 and eventually revised in the first part of the year according to any further RCM meeting decision.

#### **4. III.E Biological - stock-related variables.**

CV for age, sex and maturity of demersal and small pelagic species will be calculated annually at national level and by all métiers aggregated.

CV for age, sex and maturity of large pelagic species will be calculated on a Regional basis following the output of the RCMMed&BS (Venice, 13-16 October 2009).

**SGRN comment:** SGRN agrees with RCM outputs.

#### **III.E.5. Derogations and non-conformities**

Italy requests derogation for biological sampling for some of the G2 species, due to missing landing data at Mediterranean level, due to inaccurate species identification for these species and thus due to the impossibility to calculate the sharing in the EU landing. It is also mentioned that there is the support of RCM-Med&BS, but the Commission rejected the Italian request (letter of 29th October 2009, ref. 12390)



The derogation is asked for the following species of Group 2: *Lophius budegassa*, *Lophius piscatorius*, *Eledone cirrhosa*, *Eledone moscata*, *Trachurus trachurus*, *Trachurus mediterraneus*.

**SGRN comment:** SGRN has in the February 2009 report requested Italy to provide information on the share in EU landings for the G2 species in order to evaluate the need for sampling of landings. The share in EU landings for the species for which derogation is asked is still not given and therefore it is not possible for SGRN to decide on if the derogation can be accepted. Moreover, the reason for Italy for not being able to give the share in EU landings is that the rest of the countries don't give the landings for each species individually. However in PGMED 2009 there is a template as a reference for the selection of species to be included in the biological sampling and all these species are >10% (even if most countries give mixed landings).

SGRN recommends that RCM insists that all MS to deliver the landings by individual species.

**COUNTRY: CYPRUS**

**GENERAL COMMENTS:**

Section	Type of change	State d in RCM ?	Chan ge progr amm e ?	COMMENTS
<p><b>III.C.Biological–metier–related variables</b></p> <p><b>III.C.5.Derogations and non-conformities</b></p>	<p>Cyprus has asked for derogation for a modified sampling scheme 1.</p>	?	?	<p>This modified sampling was also included in the previous text (January 2009), but it was not explained in detail in the word file. The 2008 XL file has the same species as the XL and word files now.</p> <p><b>SGRN comment:</b> It is not clear what this modification of sampling scheme 1 consists of and it is therefore difficult to judge on its justification.</p>
<p><b>III.C.Biological–metier–related variables</b></p> <p><b>III.C.5.Derogations and non-conformities</b></p>	<p>Derogations for discard sampling from the drifting longlines on a triennial basis, instead of each year.</p>	NO		<p>The results of a pilot study on the evaluation of discards of the Cyprus fishery (November 2007), indicate that discards from the large pelagic longline fishery are not significant and involve non-commercial species. However, since onboard sampling is required on a triennial basis, for collecting of biological (maturity) data for swordfish that is never landed as whole, Cyprus intends to collect discards data during onboard sampling, which is done on a triennial basis.</p>

				<b>SGRN comment:</b> SGRN agree with the MS proposal only to obtain discard estimates on triennial basis as the pilot study shows insignificant discard in longline fishery for large pelagic species.
<b>III.C.Biological–metier–related variables</b>	Derogations for discard sampling from the bottom longlines, trammel nets and gillnets (small scale fishery).	YES		Derogation for not performing discard sampling from the small scale fishery was also requested in the 2006 NP, and was recommended by SGRN (SEC(2007)470 STECF-SGRN Report), since discards from these gears are very low.  <b>SGRN comment:</b> SGRN agree with the MS proposal.
<b>III.C.5. Derogations and non-conformities</b>				
<b>Annex III. F2.Effort</b> <b>III. F3.Landings</b>	A methodological report on catch fisheries landings is added. It is a detailed description on the data collection methodology of the catches and landing of the Cyprus Fishery, the compilation of fishery statistics, details on the sampling techniques and an evaluation of the quality of the resulting estimates. and it is also			<b>SGRN comment:</b> The report is useful and gives a nice overview.

	mentioned in the text			
<b>III. F2.Effort</b>  <b>III. F3.Landings</b>	<p>In these two chapters it is also noted that the method for the estimation of catch and effort data of the artisanal fisheries is under examination and that Cyprus is evaluating a report submitted by an external consultant in relation to a proposed modification of the methodology used. However a decision on the possible modifications is to be reached before the end of 2009.</p>			<b>SGRN comment:</b> The initiative is appreciated but the as long as no results and conclusions are presented, this information is not relevant for the present NP.

## **CYPRUS**

### **III.C.Biological–metier– related variables**

#### **III.C.5.Derogations and non-conformities**

1. Cyprus has asked for derogation for a modified sampling scheme 1. However this sampling scheme was also included in the previous text (January 2009), but it was not explained in detail in the word file. The 2008 XL file has the same species as the XL and word files now.

**SGRN comment:** It is not clear what this modification of sampling scheme 1 consists of and it is therefore difficult to judge on its justification.

2. Derogations for discard sampling:

- From the drifting longlines on a triennial basis, instead of each year. The results of a pilot study on the evaluation of discards of the Cyprus fishery (November 2007), indicate that discards from the large pelagic longline fishery are not significant and involve non-commercial species. However, since onboard sampling is required on a triennial basis, for collecting of biological (maturity) data for swordfish that is never landed as whole, Cyprus intends to collect discards data during onboard sampling, which is done on a triennial basis.

**SGRN comment:** SGRN agrees with the MS proposal only to obtain discard estimates on triennial basis as the pilot study shows insignificant discard in longline fishery for large pelagic species.

- From the bottom longlines, trammel nets and gillnets (small scale fishery). Derogation for not performing discard sampling from the small scale fishery was also requested in the 2006 NP, and was recommended by SGRN (SEC(2007)470 STECF-SGRN Report), since discards from these gears are very low.

**SGRN comment:** SGRN agrees with the member state

### **III. F2.Effort**

### **III. F3.Landings**

#### **Annex**

3. A methodological report on catch fisheries landings is added at the end of the NP (a detailed description on the data collection methodology of the catches and landing of the Cyprus Fishery, the compilation of fishery statistics, details on the sampling techniques and an evaluation of the quality of the resulting estimates) and it is also mentioned in the text on\_effort\_(III. F2) and on landings (III. F3). **SGRN comment:** The report is useful and gives a nice overview.
4. In the previous two chapters it is also noted that the method for the estimation of catch and effort data of the artisanal fisheries is under examination and that Cyprus is evaluating a report submitted by an external consultant in relation to a proposed

modification of the methodology used. However a decision on the possible modifications is to be reached before the end of 2009.

**SGRN comment:** The initiative is appreciated but the as long as no results and conclusions are presented, this information is not relevant for the present NP.

## **Section 2**

### **Regional Co-ordination**

---

The Liaison Meeting (LM) took place at the Johann Heinrich von Thünen Institute, Hamburg, Germany from 7<sup>th</sup> and 8<sup>th</sup> December 2009, in parallel session to the SGRN 09-04 meeting.

The issue of having the LM run in parallel to the SGRN meeting was discussed. There was clearly no time to prepare the LM report and SGRN had no time to give a detailed consideration of the issues raised by the LM.

The issues that were identified at the LM for SGRN consideration are presented below together with the initial SGRN comments.

**REVIEW OF RCM REPORTS**  
**ISSUES FOR CONSIDERATION BY SGRN**

<b>Economic variables: General role of SGECA and the role of economists within the RCM framework</b>	
<b>RCM NS&amp;EA</b> <b>2009</b> <b>Recommendation</b>	The RCM NS&EA recommends the continuation of the SGECA Working Group as an STECF sub-group, meeting at least annually, and that further work be undertaken to formalise the role of economists within the RCM in order to maximise their contribution to the DCF.
<b>Follow-up actions</b> <b>needed</b>	Recommend way forward to formalise the role of economists including, for example, consideration of appointing Chairperson for RCM Economist Sub-groups and establishing ToR for those Sub-groups; and establishing effective links between the various groups dealing with economic variables.
<b>Responsible persons</b> <b>for follow-up actions</b>	RCM Liaison Meeting
<b>Time frame</b> <b>(Deadline)</b>	December 2009
<b>LM comment</b>	SGECA working groups should continue in 2010; 3 SGECA meetings are already scheduled for 2010, and a 4 <sup>th</sup> meeting on DCF issues will be included and should be held annually. The RCM economists sub-groups (for North Atlantic-Baltic-North Sea&Eastern Arctic and Med&BS supra-regions) should appoint a chair each.
<b>SGRN</b> <b>Comments</b>	<b>09-04</b> SGRN took note and support

<b>Economic variables: Transversal variables – common understanding of effort definitions</b>	
<b>RCM</b> <b>NS&amp;EA/Med&amp;BS</b> <b>2009</b> <b>Recommendation</b>	RCM NS&EA recommends that consideration be given to making submission of the following Transversal Variables <i>optional</i> : <ul style="list-style-type: none"> <li>• number of trips / hours fished for RCM Med&amp;BS</li> <li>• number of rigs</li> <li>• number of fishing operations</li> <li>• number of nets/length</li> </ul>



	<ul style="list-style-type: none"> <li>• number of hooks/number of lines</li> <li>• number of pots, traps</li> <li>• soaking time</li> </ul>
<b>Follow-up actions needed</b>	RCM Liaison Meeting to consider the proposal to make submission of the Transversal Variables listed above optional
<b>Responsible persons for follow-up actions</b>	RCM Liaison Meeting
<b>Time frame (Deadline)</b>	December 2009
<b>LM comment</b>	To be addressed by SGRN/SGECA
<b>SGRN Comment</b> <b>09-04</b>	MS are encouraged to collect these variables for all their fleet activities. For metiers that are selected in the metier ranking system (Decision 2008/949/EC), these should be considered mandatory for ranked metiers and should only be considered optional in non-ranked metiers.

<b>Métier variables: Sampling of metiers that only catch G3 species</b>	
<b>RCM NS&amp;EA 2009 Recommendation</b>	RCM NS&EA recommends that SGRN clarifies if metiers only catching G3 species (e.g. UK dredging for cockles and mussels) need to be sampled. Even when relevant research on discards and landings exists.
<b>Follow-up actions needed</b>	SGRN to clarify
<b>Responsible persons for follow-up actions</b>	STECF-SGRN
<b>Time frame (Deadline)</b>	December 2009
<b>LM comment</b>	These metiers need to be sampled as they are ranked in. Forwarded to SGRN for a final recommendation on this issue.
<b>SGRN Comment</b> <b>09-04</b>	SGRN endorses this comment

<b>Biological variables: Sampling of recreational eel fishery in fresh water</b>	
<b>RCM NS&amp;EA 2009 Recommendation</b>	The RCM NS&EA is presently not in the position to give advice on the sampling of recreational eel catches in fresh water systems. However, the RCM identified a discrepancy in the sampling of eel between fresh waters and marine waters. The sampling in marine waters is covered under the DCF, but as the majority of the recreational fisheries takes place in inland waters, coordination should also be done with the sampling of the inland waters, therefore RCM NS&EA recommends MS to provide an overview of their inland sampling of the recreational fishery on eel.
<b>Follow-up actions needed</b>	Provide overview of inland sampling (temporal, spatial distribution, sampling intensities, involved institutes) to RCM NS&EA 2010
<b>Responsible persons for follow-up actions</b>	MS
<b>Time frame (Deadline)</b>	Prior to RCM 2010
<b>LM comment</b>	Refer to SGRN to re-consider sampling of eels in the light of the poor stock status; COM supports a study on monitoring (MARE/2008/11 Lot 2: Pilot projects to estimate potential and actual escapement of silver eel); COM have made clear that no additional funding for obligations under Reg. 1100/2007 will be available.
<b>SGRN 09-04 Comment</b>	In order to harmonise sampling of eels between freshwater and marine waters, SGRN recommends waiting for outcome of EU Study expected in 2011.  The RCMs 2010 should provide an overview on all sampling activities on eel, based on the model developed at the RCM NS&EA 2009.

SGRN discussed the terms of reference for the RCM Meetings in 2010 and proposed that the following issues should be addressed;

#### **PROPOSED TERMS OF REFERENCE FOR RCMS IN 2010**

The Liaison Meeting defined the following terms of reference to be addressed by next 2010 RCMs, except for RCM LDF (see LM ToR 4) :

**Article 4 of Commission Regulation (EC) No 665/2008 stipulates that "The Regional Coordination Meetings referred to in Article 5(1) of Regulation (EC) No 199/2008 shall evaluate**

**the regional co-ordination aspects of the national programmes and where necessary shall make recommendations for the better integration of national programmes and for task-sharing among Member States".**

To achieve this goal, the RCMs in spring 2010 are requested to:

- I. Review progress in regional co-ordination since the 2009 RCM (follow-up of recommendations) and 6th Liaison Meeting report.
- II. Review feedback from data end users and benchmarks meetings.
- III. Harmonise and coordinate the regional aspects in the NP proposals 2011 following the DCF framework, with particular emphasis on the following:

3.a Economic variables

Fishing fleet (homogeneous clustering methodology at the level of supra region; homogeneous understanding of the definitions and protocols to achieve the goals; quality issues) in terms of:

- Follow up of recommendations of Liaison Meeting,
- Methodological report: experiences and applicability,
- Consistency and comparison of economic variables,
- Comparison of estimation methods for quality indicators,
- Propose ToRs for the workshop on clustering.

3.b Metier-related variables

- 3.b.1. Ranking system following regional harmonisation of the metiers at level 6, update of the 2009 regional view on fishing activities; creation of a regional ranking system to assess the Member States obligations and demands for derogation.
- 3.b.2. Landings - sampling agreement for landings abroad; discussion/agreement on concurrent sampling; agreement on merging of metiers for sampling; sampling intensities and data quality.
- 3.b.3. Discards - creation of a regional view of the discard sampling programmes, identification of gaps and discrepancies for optimising the spatial, time and metiers coverage. Complete the list of métiers important to sample and provide scientific justification for not sampling certain metiers for discards.
- 3.b.4. Recreational fisheries - review of the actions proposed in the NP proposals, identify proposals for regionally co-ordinated actions.

### 3.c Biological stock-related variables

Sampling intensities and data quality; identification of stocks suitable for international age-length keys and task sharing for ageing; possibilities for extension to regional collection of data for maturity, sex-ratio and mean weights.

Ensure that exemptions for biological sampling do not exceed 25% of quota/landings for stock.

Establish proposals for a list of Group 3 species.

3.d Transversal variables - common understanding of effort definitions, relation between biologists and economists in relation to data collection methodologies.

- IV. Propose actions and where possible conclude regional agreements on the collection of data outlined under ToR **3**.
- V. Quality issues
  - 5.a Review progress on quality control, validation etc. in NP proposals.
  - 5.b Regional databases: agreement of a roadmap based on the proposed by WS on strategies for Regional databases.
  - 5.c Review the outcomes of the COST hands-on workshop and recommend on the best practises for quality evaluation of the collected data
- VI.
- VII. Reviewing the DCF list of surveys (revision of Appendix IX of Decision 2008/949/EC) – Compile information provided by MS according to templates agreed by SGRN-09-04.
- VIII. (See Section 5 with associated tables and Annex).
- IX.

In addition the Liaison meeting :

- suggests about point 2.a RCM Chairs to consult economists of their region and the chairperson of SGECA when drafting the ToRs to adapt them to the most relevant regional issues.
- stresses RCM Med&BS to address some strong relevant ToRs on large pelagics, and more particularly on Bluefin tuna:
  - to strengthen its responsibility concerning BFT issues under DCF framework,

and to encourage ad'hoc national experts to participate in the RCM and to contribute to find the best ways for regional coordination on LPF data collection

SGRN considers that running the LM in parallel to the main SGRN meeting is not a satisfactory and that such a practice should not happen again.

SGRN supports the continuation of the SGECA Working Group as an STECF sub-group, meeting at least annually, and that further work be undertaken to formalise the role of economists within the RCM in order to maximise their contribution to the DCF.

SGRN endorsed that métiers only catching G3 species (e.g. UK dredging for cockles and mussels) need to be sampled, even when relevant research on discards and landings exists.

In order to harmonise sampling of eels between freshwater and marine waters, SGRN recommends waiting for outcome of EU Study expected in 2011. The RCMs 2010 should provide an overview on all sampling activities on eel, based on the model developed at the RCM NS&EA 2009.

SGRN proposed some items to be included in the terms of reference for the RCM in 2010. In particular, the RCM's should compile information provided by MS according to templates agreed by SGRN-09-04 (See Section 5 of this report with associated Tables and Annex).

## Section 3

### Regional Databases

---

**TOR 3: Regional Databases**

To review progress on the establishment of regional databases.

SGRN discussed the issue of regional databases. SGRN recommended, in its July 2009 report, that lead MS are identified to progress the issue of regional databases in partnership with other MS. For SGRN, this would ensure a shared ownership of the regional database. SGRN also recommended that RCMs agree a FISHFRAME compatible database for the regional databases and that the work programme for developing the regional database should be included in the NP for 2011-2013 under the database development of financial forms.

SGRN 09-03 made a strong recommendation that RCM consider a data compatible FISHFRAME regional database and that this could be developed in the NP 2011 to 2013.

The RCM's considered the issue of Regional Databases following the SGRN 09-03 recommendation. The development of regional database was included in the agenda of the four RCM, where different situations were exposed and different solutions were suggested:

- in the RCM Baltic, FishFrame is up and running. All countries are accustomed with the way of doing, and progress on the development of the tool is discussed but no further widening of the scope of the RDB, i.e. integrating more fishing activities (e.g. pelagic fisheries) and more fishing areas.

- in the RCM NS&EA, Fishframe is considered as the best candidate for the RDB, and in order to manage the further development, it is required that an international steering group is formed. The steering group members should represent all regions and most groups of users and be responsible for prioritizing the requests for new developments from the users. The running costs for such steering group should be eligible for funding through the DCF.
  
- In the RCM NA, two proposals were made for developing a RDB. Ireland proposed to lead the process of constituting a RDB based on FishFrame. The proposal detailed the process for data flow and data management that would help Member States stepping in the RDB. France proposed another approach consisting of convening a workshop together with IT experts, data managers and biologists to define exactly what would be the needs, the control and validation rules and the implementation roadmap. The RCM NA saw these two proposals as a positive sign on the willingness to develop such RDB, and building upon the two proposals, suggested the setting up of a workshop with the following Terms of references.
  - Definition of the objectives and scope of the regional database. It may be the case that a simple way forward would be to let a few Member States develop a regional database only on some DCF variables. This way of doing would prepare the ground to an expansion to all Member States and more variables, in further stages.
  - Harmonisation of methods and data definitions (based on RCM work) and complementarity with COST tools
  - Evaluation of the project by international experts in data management and Information Technologies, in order to set up the frame and good practises for a regional database. The evaluation should also consider the benefits expected for each Member States.
  - Redaction of a specification document, budget evaluation and distribution of tasks
  
- The RCM Med&BS agreed to check as a first step that the utility of a regional database should be assessed and that the further steps to be undertaken in the future have to be clearly identified. So RCM M&BS proposed:
  - a specific workshop on the utility of regional databases as already recommended by Atlantic RCMs should be set up by LM on the specification of a regional database. Outcomes shall be presented

in the RCM Med&BS 2010.

- end users such as RFMOs (i.e. GFCM) will be invited to attend the workshop for expressing their needs and priorities about data collection.
- RCM Med&BS 2010 will decide if the regional database shall be implemented.

### **Ongoing development on data management by ICES, GFCM and EC**

The ICES representative made a presentation on the regional databases requirement as a major data end user. The flow of data received by ICES for stock assessment purpose may be divided into three fields:

- (1) landings and effort statistics;
- (2) research surveys raw data (tool = DATRAS);
- (3) the data based on commercial sampling of commercial fisheries.

A regional database is mainly focused on the later. Each data item submitted to ICES must come from a source that is identifiable and can be made responsible. ICES member countries have the responsibility to submit data to ICES. The ICES InterCatch database includes catch-at-length and catch-at-age aggregated data at a stock level and it is the documentary system of aggregations made at stock level. The data is populated by stock coordinators prior to stock assessment Expert Groups. Stock aggregated data should be made at an end-user level (InterCatch in ICES case) in order to allow the maintenance of documentary database.

The GFCM coordinator of the sub-committee on Statistics and information presented the ongoing development on data management in the Mediterranean and Black Sea. The data collection is organised following the GFCM Task 1 (Resolution GFCM/31/2007/1) requiring all countries to submit to the GFCM secretariat and on an annual basis, fisheries related data by operational units. The concept of operational unit as been defined as 'a group of fishing vessels which are engaged in the same type of fishing operation within the same Geographical Sub-Area, targeting the same species or group of species and belonging to the same economic segment' (GFCM glossary). The DCF requirements are fully in line with the Task 1, and the most recent GFCM recommendation (GFCM/33/2009/7) renders mandatory the submission of fishing statistics (capacity, effort and landings by species an operational units) by February 2010 and the economic and basic biological variables by January 2011. The Mediterranean and Black Sea Member countries have the responsibility ot submit data to the GFCM secretariat. There is no ongoing development on more disaggregated information or addition or new variables such as catch-at-length or catch-at-age structures, since they are available from assessment working groups in the 'stock assessment form'.



EC/DG MARE informed the LM that the JRC is currently developing a database for storing the information originated from economic data calls for the purpose of quality checking of economic data and the production of the Annual Economic Report. The DB design should be available for the next data call (early 2010). The second step could be the development of a similar DB for storing data originated from biological data calls (such as SGMED). The biological data calls will be based, in the future, on the COST/FishFrame data exchange format, and thus the JRC will explore the possibility to use the FishFrame software facilities. DG MARE and the JRC are currently negotiating terms of references for the JRC work programme for 2010.

### **Conclusions and recommendation**

The discussion whether a RDB should contain aggregated or detailed data does not reach agreement among the scientists. This issue has to be sorted out as a first step. To that aim, the needs for a RDB and the benefits expected from both systems have to be clearly defined, in order to help the scientific community to make a clear choice. The IT considerations, difficulty of implementation and related data management and data governance should also be considered for both options (aggregated or detailed RDB) to complete the view.

SGRN recommends that A Workshop on Regional Data Management Strategies is held in 2010. The terms of reference suggested are:

- a. review the situation regarding RDB in the different regions and their implications in data management
- b. Define the needs, objectives, scope, and benefits expected for a RDB
- c. provide options for the different regions of the implications of developing no RDB, an aggregated data RDB, a detailed data RDB)
- d. provide a brief roadmap attached to the different options.

This workshop is to be given a high priority status and must be convened before the 2010 RCMs. In order to ensure the efficiency of the Workshop. The LM recommended to the four RCM chairs to appoint four participants from their region, trying to achieve a balance between IT experts, economists, biologists and data managers.

If accepted for DCF financial support, the NC should immediately anticipate the travel of one person for 4 days in Brussels in their revised NP proposal and finform for 2010.

The proposed date and venue for the workshop are late February in Brussels. The workshop will be co-chaired by ICES and the JRC.

## Section 4

### Availability of Data

---

**TOR 4: Availability of data**

To identify possible bottlenecks, gaps and quality problems compromising links in the data flow from national sampling to stock assessment input. A presentation of two case studies from the Mediterranean and the Baltic Sea will illustrate the discussion.

Under this ToR, the economists will be invited to discuss on whether the currently agreed date for submission of data for the Annual Economic Report (AER) is adequate and, if necessary, propose an alternative schedule.

### Availability of Data

SGRN 09-02 discussed the issue of data availability. In order to address the availability of data collected under the DCF as well as its relevance to end users, the group agreed to examine one example from the Baltic region and one example from the Mediterranean region. The intention was to examine the chain of data flow from national sampling to stock assessment input and to identify possible bottlenecks and quality compromising links in the data flow particularly in respect to issues related to the DCF. Two presentations were planned one a case study from the Mediterranean region and the other from the Baltic region. Only the Baltic case study was presented to SGRN.

The presentation focused on data handling problems from national sampling results to assessment input data in the case of Baltic Sea cod. The presentation focused on problem areas during the compilation process and explored possible reasons. Data problems associated with insufficient logbook information, poor logbook data, too much data extrapolation and no standard rules for data extrapolation were all highlighted.

SGRN discussed the issues raised and agreed this was a useful eagle eye view of some data compilation issues Baltic sea cod. However, the group felt that data compilation issues were probably very area and stock specific. There were no specific SGRN recommendations on the issue of data availability other than it was an interesting exercise and one we should keep on the agenda.

### **Annual Economic Report**

Under TOR 4, the economists were invited to discuss whether the currently agreed date for submission of data for the Annual Economic Report is adequate and, if necessary, propose an alternative schedule.

SGRN agrees with the proposed schedule as being reasonable. SGRN strongly recommends MS to submit the requested data according to this time schedule to enable SGECA to prepare a AER of high quality. This means complete and up-to-date data of necessary quality are necessary. In the light of experience with the next year's data call some adjustment might be necessary.

Concerning the Annual Economic Report, SGRN discussed the possibility of presenting early available data such as on landings and capacity in the AER and update it in the next year with corresponding later available data such as on costs.

SGRN strongly recommends MS to submit the requested economic data according to the specified time schedule in order to enable SGECA to prepare a AER of high quality.

## **Section 5**

### **Review of Surveys**

---

#### **TOR 5: Review of Surveys**

To develop TOR's and a roadmap for the 2010 review of the list of surveys in Annex IX of the DCF.

The review of surveys is a critical part of the SGRN work programme in 2010. In this section, three broad areas are addressed.

- (1) In order to set the context for this review, the introduction to this section draws from the SGRN 07-01 report (last review of surveys).
- (2) ICES compiled and presented relevant information on current surveys used in fish stock assessments. This informed the SGRN discussions on the type of information that should be made available to the review group.
- (3) SGRN has proposed criteria, terms of reference, composition of the review group, information to be made available for the review and a roadmap for the review of Surveys in 2010.

#### **INTRODUCTION**

Surveys play an important role in the advisory process, as tuning indices in assessments, or directly in survey based assessments, as recruitment estimators in catch prognoses or as

independent sources of information (abundance distribution, age structures, maturity and growth etc.) as bases for advice.

Surveys also provide invaluable information on other issues such as ecosystem, biodiversity, non target species, habitats etc. which cannot be obtained otherwise. This is particularly important in the context of the demands placed on Member States by the new Marine Strategy Framework Directive (MSFD-Directive 2008/56/EC).

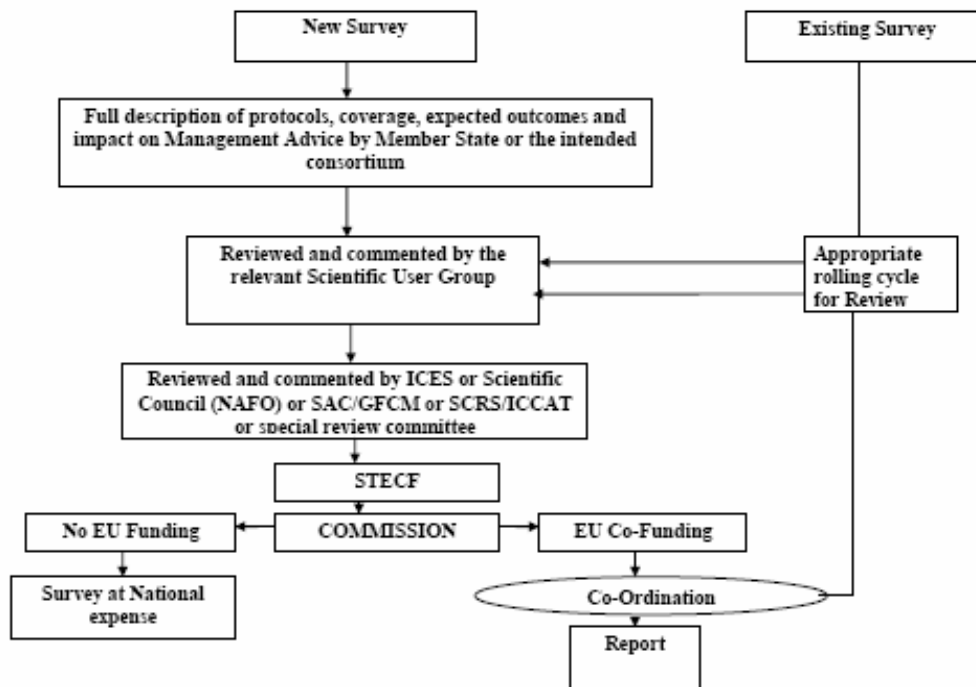
The last review of DCF surveys was carried out in 2007 (SGRN 07-01). Surveys are very expensive and resources to finance them are limited. This justifies the frequent evaluation of the quality and the usefulness of surveys in relation to achieving their objectives – particularly in the context of providing information for management decisions. Furthermore, where two (or more) surveys provide estimates for one stock, the need for both should be evaluated. Where both surveys have shown the same signal over a prolonged period, there may be scope to rationalise survey effort. However, where the surveys provide contradictory signals the evaluation will have to consider why and what action should be taken.

SGRN-07-01 established a procedure which ensures that the surveys, carried out within the DCR, are providing the required information with sufficient quality and are useful for providing advice. Such a procedure would ensure that all surveys would be considered at least once every 5 years based on an evaluation on their performance. It is important that these reviews should cover all uses of the survey, and not be restricted to use in fish stock assessments.

It is clear that different groups would play a role in parts of the procedure. Potential contributors are end-users (for example; STECF, ICES, GFCM, ICCAT, NAFO etc.), stock assessment working groups, and survey planning and coordination groups.

For new or pilot surveys the same criteria would generally apply. Pilot surveys are considered as those which have not yet been proven to deliver useful information with respect to the DCR. But it is also important to have a process to evaluate the potential use of new surveys, particularly the ability to provide information that can be used in advice. Clear guidelines on these and other criteria should be made available prior to any evaluation of the surveys.

SGRN 07-01 presented a flow chart on how this review process could be structured and it is presented below.



### Identification of data gaps and research needs

It is recognised that the surveys considered by SGRN-07-01 for inclusion in the DCR cover only part of the stocks or issues for which STECF provides advice. For a number of stocks the available information is of poor quality (e.g. unreliable data from the commercial fisheries or simply scarce data) or the data are not representative of the stock. For those cases, survey information is of prime importance for science-based advice. SGRN-07-01 promotes a more proactive approach in defining research needs rather than only evaluating what is available, or what is proposed for DCR funding. In order to obtain a comprehensive overview of the research needs and in particular the gaps in the information needed to provide advice, SGRN-07-01 proposes to list all issues (for example fish stocks) for which advice is required, together with an inventory of the available sources of information for providing advice and a listing of the sources of information which have or can be used. The overview will identify

data rich and data poor situations. The list will be particularly useful to identify data needs and provide an additional criterion for evaluation of data collection proposals including surveys. One possible start point for this process could be the lists of stocks provided by ICES to this meeting of SGRN and/or the stock list considered by STECF.

In discussions on the review of surveys, it was noted that issues raised in some survey planning groups are sometimes missed by the RCM. SGRN recommends the RCM to consider survey planning issues raised in data end user reports.

## **ICES and Surveys**

At the SGRN meeting, ICES presented an overview of the current surveys of relevance for stock assessment; the reliance of the WG on these survey as a tuning fleets; the countries involved in the surveys and the start of the time-series. There are 154 surveys used at ICES for stock assessment and 43 under the DCF. There are a number of additional surveys in the North Atlantic area seeking funding under the DCF (e.g. deep sea surveys).

The information presented by ICES was available during the 2007 evaluation for the surveys in the ICES area. SGMED will use the ICES format for the overview in the Mediterranean & Black Sea. Currently, there are 4 surveys under the DCF in the Mediterranean & Black Sea. There is one survey that is seeking DCF funded in the Mediterranean & Black Sea region.

## **Regional Abundance Surveys that input to the ICES Fisheries advice**

### **Survey Compilation**

A compilation of all surveys used for stock assessment was carried out by ICES. The analysis is presented for each *Ecoregion*, ICES assessment working group (*WG*) and *Stock*.

The ecoregions are those used in the current ICES Advisory Report and are presented in Figure 5.1.

The survey compilation consists of an overview by stock of the available surveys. All surveys listed on the compilation were referenced in the relevant assessment working group report. A brief description of the survey is available on the assessment working group report and in stock annex (ANNEX 5 - attached to this report). Table 5.1 gives the categories of abundance surveys. Table 5.2 gives the major internationally coordinated surveys in the EU waters of the North east Atlantic and the relevant ICES Planning Group. Table 5.3 presents the URL link of each assessment working group. Discontinued surveys were not include on this compilation.

In relation to Annex 5, both surveys that are used as tuning fleets (*Tuning fleet: Y*) and other surveys that are not (*Tuning fleet: N*) were considered.

a) *Tuning fleet: Y*: Whenever a survey is used as tuning fleet for a given stock the total number of tuning fleets used on 2009 assessment is mentioned (*Total no. of tuning fleets*). Under total number tuning fleets all tuning fleets are considered (i.e. dependent and independent fisheries data). When a survey is used as a combined tuning fleet together with another surveys, both surveys are listed but only accounting as a single no. for the total number of tuning fleets. Total number of tuning fleets may include discontinued surveys and fisheries dependent fleets.

b) *Tuning fleet: N*: Under this option are surveys that are not used as tuning fleets. In the column *Comments* is often explain the reason for not using a given surveys. A detailed explanation is available on the working group report. If a given stock has no analytical assessment, although the survey is not a tuning fleets it might be used as basis for the advice (advice based on survey trends). This information is usually available under *Comments*.

Surveys were classified under *Category* as: bottom trawl, acoustic, beam trawl, DPEM (daily production egg method), longline, electrofishing (for salmon and trout), UWTV (under water TV survey – for Nephrops), etc.



Country responsible for each survey was also analysed. Whenever a survey is coordinated at international level (e.g. bottom trawl survey in the North Sea) the option “International” was considered. Annex 2 presents a list of surveys under each ICES survey coordination expert group.

For most of the surveys also information on the *Number of days*, *Number of hauls* (or stations), and *Tuning age range* (in case the surveys is a tuning fleets) is also provided. However there are some surveys which it was not possible to collect this information at the moment.

To assess the range of the time series, the *First year of the time series* is presented. If the survey is not used as tuning fleet (*Tuning fleet: N*) the first true year of the time series were considered. If the survey is used as tuning fleet (*Tuning fleet: Y*), then the *First year of the time series* is the first year as tuning fleet.

Information concerning the submission of bottom trawl survey under ICES DATRAS database (*Survey data under DATRAS*) is also available (Yes / No). This database is only for bottom trawl surveys. This field is not applicable for other surveys categories. There are a few ICES member countries data have recently submitted data under DATRAS. In these cases the information on the compilation file refers that survey data is under DATRAS (“Yes”) although this can’t be verified at DATRAS website (<http://datras.ices.dk/Home/Default.aspx>).

Under *Comments* is often provided important information about the surveys (e.g. why it is not used, survey coordinated ICES expert group). When evaluating a survey it is recommend to consider this extra information.

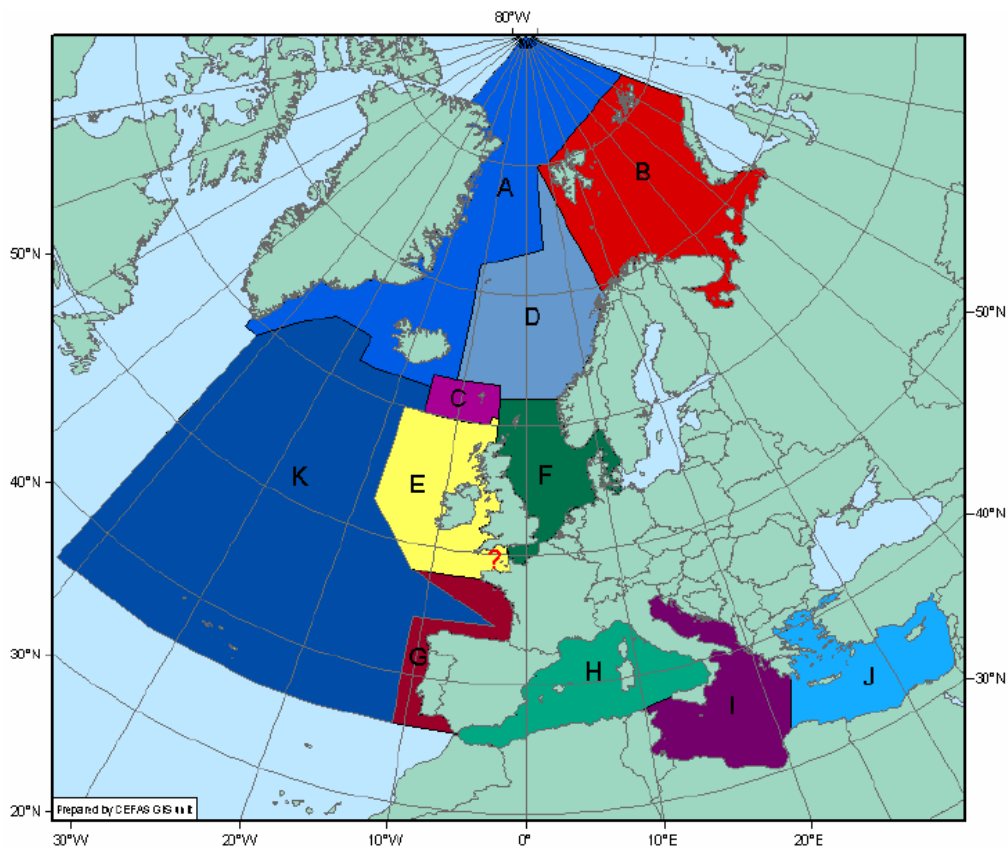


Figure 5.1. Proposed ecoregions for the implementation of the ecosystem approach in European waters. The ecoregions are Greenland and Iceland Seas (A), Barents Sea (B), Faroes (C), Norwegian Sea (D), Celtic Seas (E), North Sea (F), South European Atlantic Shelf (G), Western Mediterranean Sea (H), Adriatic-Ionian Seas (I), Aegean-Levantine Seas (J) and Oceanic northeast Atlantic (K). The question mark denotes the western Channel (ICES Area VIIe), which could be placed in either the Celtic Sea or North Sea ecoregion. Equidistant azimuthal projection.

**Table 5.1 Categories of Abundance surveys**

TECHNOLOGICAL APPROACH	INFORMATION	EXAMPLE	COMMENT
Bottom otter trawl	Quantitative abundance indices for demersals	IBTS, BITS	Can be used to provide general overviews of a component of the fish occurring in the area
Beam trawl and dredges	Quantitative abundance indices for flatfish	BTS	Specialized for flatfish and sedentary species (e.g. mussels)
Acoustic combined with trawling	Quantitative abundance indices (or absolute estimates) for pelagics	North Sea Herring in the North Sea and in the Nornic Seas	
Under water TV survey	Quantitative Bottom dwelling species (e.g. <i>Nephrops</i> )	TV surveys for <i>Nephrops</i> around the British Isles	
Egg-larvae	Spawning Stock biomass for both demersal and pelagics	DEPM	
Electrofishing	Quantitative abundance indices for salmon and trout		

**Table 5.2 Major international coordinated surveys in EU waters of the Northeast Atlantic**

The planning and survey data analysis is done through the following ICES WG/PG:

Acronym	EG name	URL	Survey Type
IBTSWG	International Bottom Trawl Survey Working Group	<a href="http://www.ices.dk/workinggroups/ViewWorkingGroup.aspx?ID=74">http://www.ices.dk/workinggroups/ViewWorkingGroup.aspx?ID=74</a>	Bottom trawl Surveys (North Sea, Western waters)
WGBITS	Baltic International Fish Survey Working Group	<a href="http://www.ices.dk/workinggroups/ViewWorkingGroup.aspx?ID=52">http://www.ices.dk/workinggroups/ViewWorkingGroup.aspx?ID=52</a>	Bottom trawl Surveys (Baltic Sea)
WGBEAM	Working Group on Beam Trawl Surveys	<a href="http://www.ices.dk/workinggroups/ViewWorkingGroup.aspx?ID=176">http://www.ices.dk/workinggroups/ViewWorkingGroup.aspx?ID=176</a>	Flatfish in the Southern North Sea and in the Channel
WGMEGS	Working Group on Mackerel and Horse Mackerel Egg Surveys	<a href="http://www.ices.dk/workinggroups/ViewWorkingGroup.aspx?ID=180">http://www.ices.dk/workinggroups/ViewWorkingGroup.aspx?ID=180</a>	Egg and Larvae Surveys

<b>Acronym</b>	<b>EG name</b>	<b>URL</b>	<b>Survey Type</b>
WGACEGG	Working Group on Acoustic and Egg Surveys of Sardine and Anchovy in ICES Areas VIII and IX	<a href="http://www.ices.dk/workinggroups/ViewWorkingGroup.aspx?ID=175">http://www.ices.dk/workinggroups/ViewWorkingGroup.aspx?ID=175</a>	Egg and Larvae Surveys
WGEGGS	Planning Group on North Sea Cod and Plaice Egg Surveys in the North Sea	<a href="http://www.ices.dk/workinggroups/ViewWorkingGroup.aspx?ID=79">http://www.ices.dk/workinggroups/ViewWorkingGroup.aspx?ID=79</a>	Egg and Larvae Surveys
WGNAPES	Planning Group on Northeast Atlantic Pelagic Ecosystem Surveys	<a href="http://www.ices.dk/workinggroups/ViewWorkingGroup.aspx?ID=80">http://www.ices.dk/workinggroups/ViewWorkingGroup.aspx?ID=80</a>	Acoustic Surveys - Norwegian Spring Spawning Herring and blue whiting
WGHERS	Planning Group for Herring Surveys	<a href="http://www.ices.dk/workinggroups/ViewWorkingGroup.aspx?ID=378">http://www.ices.dk/workinggroups/ViewWorkingGroup.aspx?ID=378</a>	Acoustic Surveys
WGNEPS	Study Group on Nephrops Surveys	<a href="http://www.ices.dk/workinggroups/ViewWorkingGroup.aspx?ID=338">http://www.ices.dk/workinggroups/ViewWorkingGroup.aspx?ID=338</a>	Nephrops – under water TV survey
WGRS	Planning Group on Redfish Surveys	<a href="http://www.ices.dk/workinggroups/ViewWorkingGroup.aspx?ID=156">http://www.ices.dk/workinggroups/ViewWorkingGroup.aspx?ID=156</a>	Acoustic-Trawl Surveys
WGNEACS	Planning Group on the North-east Atlantic continental slope survey	<a href="http://www.ices.dk/workinggroups/ViewWorkingGroup.aspx?ID=258">http://www.ices.dk/workinggroups/ViewWorkingGroup.aspx?ID=258</a>	Bottom Trawl Surveys (Deepwater)

**Table 5.3 ICES fish stock assessment expert groups (EG)**

<b>EG Acronym</b>	<b>EG name</b>	<b>URL</b>
AFWG	Arctic Fisheries Working Group	<a href="http://www.ices.dk/workinggroups/ViewWorkingGroup.aspx?ID=28">http://www.ices.dk/workinggroups/ViewWorkingGroup.aspx?ID=28</a>
HAWG	Herring Assessment Working Group for the Area South of 62° N	<a href="http://www.ices.dk/workinggroups/ViewWorkingGroup.aspx?ID=25">http://www.ices.dk/workinggroups/ViewWorkingGroup.aspx?ID=25</a>
NIPAG	Pandalus Assessment Working Group	<a href="http://www.ices.dk/workinggroups/ViewWorkingGroup.aspx?ID=76">http://www.ices.dk/workinggroups/ViewWorkingGroup.aspx?ID=76</a>
NWWG	North-Western Working Group	<a href="http://www.ices.dk/workinggroups/ViewWorkingGroup.aspx?ID=30">http://www.ices.dk/workinggroups/ViewWorkingGroup.aspx?ID=30</a>
WGANSA	Working Group on Anchovy and Sardine	<a href="http://www.ices.dk/workinggroups/ViewWorkingGroup.aspx?ID=272">http://www.ices.dk/workinggroups/ViewWorkingGroup.aspx?ID=272</a>
WGBAST	Working Group on Baltic Salmon and Trout	<a href="http://www.ices.dk/workinggroups/ViewWorkingGroup.aspx?ID=272">http://www.ices.dk/workinggroups/ViewWorkingGroup.aspx?ID=272</a>

<b>EG Acronym</b>	<b>EG name</b>	<b>URL</b>
WGBFAS	Baltic Fisheries Assessment Working Group	D=41 <a href="http://www.ices.dk/workinggroups/ViewWorkingGroup.aspx?ID=42">http://www.ices.dk/workinggroups/ViewWorkingGroup.aspx?ID=42</a>
WGCSE	Working Group for the Celtic Seas Ecoregion	<a href="http://www.ices.dk/workinggroups/ViewWorkingGroup.aspx?ID=357">http://www.ices.dk/workinggroups/ViewWorkingGroup.aspx?ID=357</a>
WGDEEP	Working Group on the Biology and Assessment of Deep Sea Fisheries Resources	<a href="http://www.ices.dk/workinggroups/ViewWorkingGroup.aspx?ID=127">http://www.ices.dk/workinggroups/ViewWorkingGroup.aspx?ID=127</a>
WGEEL	Joint EIFAC/ICES Working Group on Eels	<a href="http://www.ices.dk/workinggroups/ViewWorkingGroup.aspx?ID=75">http://www.ices.dk/workinggroups/ViewWorkingGroup.aspx?ID=75</a>
WGEF	Working Group on Elasmobranch Fishes	<a href="http://www.ices.dk/workinggroups/ViewWorkingGroup.aspx?ID=123">http://www.ices.dk/workinggroups/ViewWorkingGroup.aspx?ID=123</a>
WGHMM	Working Group on the Assessment of Southern Shelf	<a href="http://www.ices.dk/workinggroups/ViewWorkingGroup.aspx?ID=123">http://www.ices.dk/workinggroups/ViewWorkingGroup.aspx?ID=123</a>

<b>EG Acronym</b>	<b>EG name</b>	<b>URL</b>
WGNAS	Stocks of Hake, Monk and Megrin Working Group on North Atlantic Salmon	D=126 <a href="http://www.ices.dk/workinggroups/ViewWorkingGroup.aspx?ID=35">http://www.ices.dk/workinggroups/ViewWorkingGroup.aspx?ID=35</a>
WGNEW	Working Group on Assessment of New MoU Species	<a href="http://www.ices.dk/workinggroups/ViewWorkingGroup.aspx?ID=122">http://www.ices.dk/workinggroups/ViewWorkingGroup.aspx?ID=122</a>
WGNSSK	Working Group on the Assessment of Demersal Stocks in the North Sea and Skagerrak	<a href="http://www.ices.dk/workinggroups/ViewWorkingGroup.aspx?ID=31">http://www.ices.dk/workinggroups/ViewWorkingGroup.aspx?ID=31</a>
WGWIDE	Working Group on Widely Distributed Stocks	<a href="http://www.ices.dk/workinggroups/ViewWorkingGroup.aspx?ID=273">http://www.ices.dk/workinggroups/ViewWorkingGroup.aspx?ID=273</a>

**Table 5.4 Country involved on International Coordinated Surveys.**

Surveys coordinated under International Bottom Trawl Survey Working Group [IBTSWG]

(information from 2009 report):

Survey	Area	Country
IBTS – North Sea:		
IBTS-North Sea – 1Q	IIIa, IV and VIIId	SE, DK, NO, UK (Scotland), FR, NL, GE
IBTS-North Sea – 3Q	IIIa, IV and VIIId	SE, DK, NO, UK (Scotland), UK (England and Wales), GE
IBTS- Eastern Atlantic:		
UK-Scotland Western Coast Bottom Trawl Survey-4Q	VIa, VIIb, IVa	UK (Scotland)
UK-Scotland West of Scotland Deepwater Survey	VIIb	UK (Scotland)
UK-Scotland Western Coast Bottom Trawl Survey-1Q	VIa	UK (Scotland)
UK-Northern Ireland Groundfish Survey-4Q (NIGFS)	VIIa	UK (Northern Ireland)
UK-Northern Ireland Groundfish Survey-1Q (NIGFS)	VIIa	UK (Northern Ireland)
Irish Groundfish survey -4Q	VIa, VIIb,c, VIIg, VIIj	Ireland
UK (England) Western Groundfish Survey - 4Q	VIIa, VIIe-h,	UK (England)
EVHOE Groundfish Survey-4Q	VII, VIII	France
Channel Groundfish Survey (CGFS)	VIIId,IVc	France
Spanish Porcupine Groundfish Survey-3Q	VIIb-k	Spain
Spanish Groundfish Survey (North Coast)	VIIIc, IXa	Spain
Spanish Gulf of Cadiz Bottom Trawl Survey-1Q	IXa	Spain
Spanish Gulf of Cadiz Bottom Trawl Survey-4Q	IXa	Spain
Portuguese autumn Groundfish Survey	IXa	Portugal
Portuguese Winter Groundfish Survey	IXa	Portugal



Surveys coordinated under the Working Group on Baltic Trawl Surveys [WGBIFS]

(information from 2009 report).

Survey	Area	Country
International Baltic Trawl Survey	Baltic Sea	Sweden; Germany; Lithuania; Russia; Denmark; Poland; Finland; Estonia;

Surveys coordinated under the Working Group on Beam Trawl Surveys [WGBEAM]

(information from 2009 report).

Survey	Area	Country
Offshore North Sea Beam Trawl Survey (IBTS)	VIb,c	BE
Eastern English Channel and Southern North Sea – Q3	VIIId, IVc	UK (England and Wales)
Irish Sea and Bristol Channel Survey-Q3	VIIa,f	UK (England and Wales)
Western English Channel Beam Trawl Survey	VIIe	UK (England and Wales)
German –BTS	IVb	Germany
ORHAGO	VIIab	France
North Sea Beam Trawl Survey (Tridens)	IVb,c	The Netherlands
North Sea Beam Trawl Survey (Isis)	IVb,c	The Netherlands
Inshore Demersal Young Fish and Brown shrimp survey )	IVc	Belgium
Demersal Young Fish Survey (DYFS)	IVb	Germany
Demersal Fish survey (DFS) - “Schollebaar”	IVc	The Netherlands
Demersal Fish survey (DFS) - “Stern”	IVc	The Netherlands
Demersal Fish survey (DFS) - “Isis”	IVc	The Netherlands
UK (Young Fish Survey – YFS) - Thames	IVc	UK (England and Wales)
Sole Net Survey (SNS)	IVc	The Netherlands
UK (Young Fish Survey – YFS) - Humber	IVc	UK (England and Wales)

Surveys coordinated under the Working Group on Northeast Atlantic Pelagic Ecosystem Surveys [wGNAPES] (information from 2009 report).

Survey	Area	Country
International Blue Within Spawning Stock Survey	~VIIC, VIaA, VIb	NL, IR, RU, FO, NO,
International Ecosystem Survey in the Nordic Seas	I, II, III	DK, NO, IS, FO, RU

Surveys coordinated under the Working Group on the North Sea Cod and Plaice Egg Surveys in the North Sea [WGEGGS] (information from 2009 report).

Survey	Area	Country
PGEGGS	Central and Northern North Sea	UK (Scotland)
International Herring Larvae Survey (additional sampling)	North Sea and English Channel	The Netherlands
International Herring Larvae Survey (additional sampling)	North Sea	Germany
International Bottom Trawl Survey-1Q (additional sampling)	Southern and Central North Sea and English Channel	France
International Bottom Trawl Survey-1Q (additional sampling)	Central North Sea	Denmark
International Bottom Trawl Survey-1Q (additional sampling)	Central and Northern North Sea	Norway
Investigations on malformations rates	Southern North Sea	Germany

Surveys coordinated under the Working Group for Herring Surveys [WGHERS] (information from 2009 report).

Survey	Area	Country
ICES Coordinated Herring Acoustic Survey for the North Sea and Adjacent Waters	North Sea and adjacent waters	UK (Scotland); Denmark; Norway; The Netherlands; Germany; Ireland
International Herring Larvae Survey in the North Sea	North Sea	Germany; The Netherlands
Herring Larvae Survey in the Northern Irish Sea	VIIa(N)	UK (Northern Ireland)

Surveys coordinated under the Working Group on Acoustic and Egg survey for Sardine and Anchovy in ICES areas VIII and IX [WGACEGG] (information from 2009 report).

Survey	Area	Country
Portuguese Spring Acoustic Survey (PELAGO)	IXa Central and South	Portugal
Spanish Spring Acoustic Survey (PELAGUS)	IXa North and VIIIc	Spain
French Spring Acoustic Survey (PELGAS)	VIIIa, VIIIb, VIIIc (East)	France
DEPM – BIOMAN	VIIIa, VIIIb, VIIIc (East)	Spain
DEPM – SAREVA	IXa North, VIIIc, VIIIb	Spain
Autumn Acoustic Survey in Subarea VIII: PELACUS	VIII	Spain
Autumn Acoustic Survey in Subarea VIII: JUVENA	VIII	France
Portuguese DEPM	IXa Central and South	Portugal
DEPM - BOCADEVA	IXa South	Spain
Portuguese Autumn Acoustic Survey (SARNOV)	IXa Central and South	Portugal
Spanish Autumn Acoustic Survey (PACAS)	IXa South	Spain

Surveys coordinated under the Working Group on Mackerel and Horse Mackerel Egg Surveys [WGMEGS] (information from 2009 report).

Survey	Country
Mackerel and Horse Mackerel Egg in the Western and Southern Areas	Portugal; Spain; Germany; The Netherlands; Norway; Ireland; Scotland; Faroe Islands

Surveys coordinated under the Working Group on Redfish Surveys [WGRS] (information from 2009 reports).

Survey	Country
International trawl-acoustic survey on pelagic redfish in the Irminger Sea and adjacent waters	Germany, Iceland, Russia
International survey on pelagic redfish in the Norwegian Sea and adjacent waters	Norway, Russia, Faroes, Iceland, EU

Surveys coordinated under the Working Group on the North-east Atlantic Continental Slope Survey [WGNEACS] (information from 2009 report).

Survey	Country
North-east Atlantic Continental Slope Survey	Ireland, France, UK-Scotland, Norway, Iceland, Greenland, Faroes, Spain, Portugal

### **A Roadmap for the review of surveys in 2010**

This proposed roadmap for the review of surveys will be presented to the STECF plenary in April 2001 and following their comments, implementation will begin in May 2010.

To give the review group enough time to evaluate the surveys and come up with a list of candidate surveys to be financed under the DCF, the background information on the surveys must be available beforehand. This means that a number of actions have to be carried out before the first meeting of the review group.

Summary information that has to be provided to the review group (to be extended)

- Title
- Area covered
- No of days
- Countries involved
- Funded under DCF (yes/no)
- Use in stock assessment, and for how long
- Use for MSFD purposes?
- Which MS has to be involved in the survey
- History of the survey: time-series, changes in the survey
- Costs
- Ecosystem variables collected

SGRN would also point out that there is a need for information on quality of survey data that are used in the assessment. It is difficult to give a value for this information. The bench mark assessment groups might give some insight for a few stock-survey combinations.

<b>Action</b>	<b>Responsible</b>	<b>Before</b>
Finalise background information, based on the template as presented by ICES at SGRN 09-04	ICES	Final report SGRN 09-04
Gather background information on the surveys in the same format as ICES presented	SGMED	Final report SGRN 09-04
Addition of potential columns for ecosystem parameters as defined Com DEC 949 / 2008	SGRN 09-04 members	Final report SGRN 09-04
Send final table to MS and ask for update	EC	2010-03-01
Fill out the table for missing surveys and extra (ecosystem) information and send to RCM's	MS	2010-04-01
Agree on criteria, ToR's and Roadmap for the survey review	STECF	May 2010
Compile the list of surveys of ICES, SGMED and MS*	RCM's	2010-07-01
Compile RCM lists	Liaison meeting	2010-07-15
Send the final list of surveys to Review group	EC	2010-08-01
Review group meeting**		Oct 2010
Report survey review to STECF	Review group	Nov 2010

\* compilation of the lists by RCM's means only collating the data that is available, so NO review, NO assessment of the list. N.B. It is the responsibility of the MS to deliver the

right information in time. If a member state wants to get a survey funded under the DCF, it has to be on the RCM list.

SGRN seeks guidance from STECF on the cut-off point for the overview of surveys to review and on how to deal with the tuna tagging programme and perhaps tagging surveys in general.

\*\* SGRN recommends that the review group consist of 12 people, including the chair.

#### ***Review group composition***

International neutral chair (non-EU, non-DCF related).

Participants (Some Potential Names are Listed) :

- STECF members (2 participants)
- Chairs of ACOM, SAC (2 participants)
- Chair of the ICES SGEEST (Bill Karp) and 2 members of SGEEST (3 participants)
- Mediterranean & Black Sea: coordinator of the stock assessment (GFCM, Name to be confirmed) (1 participant)
- NAFO scientific committee (Ricardo Alpoim) (1 participant)
- External participants 20% (non-EU) with a background in surveys, planning, management, assessment, ecosystem indicators. NOAA might supply candidates. (2 participants)

#### **Criteria for surveys under DCF in the 2010 review, as discussed by SGRN 09-04**

- (1) Internationally coordinated and harmonised surveys.**

Internationally coordinated: the survey complies with the international co-ordination group, and does not apply to the number of countries involved in the survey.

Harmonised surveys: the survey had as standardized survey protocol.

(2) **Surveys designed to inform management decisions**

Management decisions: (a) fisheries management (stock assessment), (b) ecosystem management needs.

Variables taken into account will at least be: number of species assessed, additional (ecosystem) information collected.

Monitoring of ecosystem variables:

A key question to be considered relates to “are only DCF ecosystem variables taken into account ?”

(3) **Access of data to scientific community**

Under the DCF it is mandatory to make data available. It is, however, important to review if data are actually available. The INSPIRE directive might be incorporated.

(4) **Examine survey coverage**

In relation to area/season of the resource.

Season, Areas, No ecosystems, No species

Information, Contained in NP

(5) **Ensure there is no duplication between surveys**

Duplication means overlap of area, target species, season, parameters collected by different surveys (e.g. international IBTS is one survey).

- (6) Examine history of the survey data.

Length of the survey, historic use of the survey in management decision. Temporal, spatial coverage in the time-series.

SPECIAL NOTE

If these criteria are endorsed by STECF, SGRN should ensure that the ICES table has all the relevant information that allows these criteria to be used.

**Proposed Terms of reference for the review group on surveys as discussed by SGRN 09-04**

- (1) To set up a list of candidate surveys at sea to be supported by the DCF with their priorities, based on the list of criteria as proposed by SGRN 09-04. Priorities can be 1 (good candidate), 2, 3 (no candidate). In case of priority 2, the review group might give options how the survey can be moved into priority 1.
- (2) To provide feedback on the lessons learned during the survey review and ways to improve the selection system of surveys funded under the DCF. (See also SGRN 06-03).
- (3) To identify data gaps and research needs for the ecosystem approach to fisheries management, based on the review of the DCF surveys.



Compared to the TOR's used in the 2007 review, the following has been changed:

- Term of reference 1 was changed to focus mainly on the list of surveys since the list of criteria is already identified by SGRN 09-04.
- Original ToR 2 is deleted since the collection of background information has to be finalised before the review group meets, since this information will be input for the group.
- Original ToR 3 is deleted since SGRN 09-04 felt a redundancy with ToR (1).
- Two ToR's were added to the list.

SGRN recommends that a meeting to review the list of eligible surveys in Annex IX of the DCF be carried out at a meeting of experts in September 2010. The report from this review will be considered at the STECF plenary in November 2010. SGRN has defined terms of Reference, review criteria and terms of reference for the group.

SGRN stresses the importance of this review and the obligation on member states to supply the relevant data to the review group in good time. ICES and PGMED will work closely to ensure the survey table information required for the review is available for checking by the RCM's in April/May. The Commission will then circulate the Tables to member states who must ensure the information is complete.

The Terms of Reference for the Group are;

(1) To set up a list of candidate surveys at sea to be supported by the DCF with their priorities, based on the list of criteria as proposed by SGRN 09-04. Priorities can be 1 (good candidate), 2, 3 (no candidate). In case of priority 2, the review group might give options how the survey can be moved into priority 1.

(2) To identify data gaps and research needs for the ecosystem approach to fisheries management, based on the review of the DCF surveys. (See also SGRN 06-03 data gaps).

(3) To provide feedback on the lessons learned during the survey review and ways to improve the selection system of surveys funded under the DCF.

The SGRN recommendations for the review of surveys will be considered by the STECF plenary in April 2010.

## Section 6

### Methods to Allocate Economic Data at the level of Metier

---

#### **ToR 6. Methods to Allocate Economic Data**

Methods to allocate economic data (earnings, operative costs, labour costs, capital costs) at the level of metiers. (only economists). SGECA/SGRN could also consider the case of vessels that may be active in more than one fishing area during the same year and it will propose suitable methods to evaluate the cost structure within each area and suggest a methodology to split, if necessary, economic variables among different areas.

SGRN strongly recommends a workshop/study on identifying adequate methods on allocating economic data at different disaggregation levels (e.g. metiers). This should also consider the case of vessels active in more than one fishing area or, more generally, being active in more than one metier. This could also serve to address other more specific issues such as cooperation with other countries, e.g. candidate or third countries.

As a starting point for development of guidelines and methods for allocating economic data, SGRN recommends that the following points should be included in the TOR of SGECA 10-03:

- Identifying needs of exemplary applications, like:
  - Long Term Management Plan
  - Regional Analysis for funding purposes
- Identifying methods to allocate costs and earnings as well as other economic variables. This could/will include the identification of cost drivers. Transversal variables could serve for this purpose
- Assess data quality requirements of allocation methods with regard to particular characteristics of DCF data sources at each MS (e.g. logbooks).
- Specify TOR for the recommended workshop/study

SGRN recommends the invitation of experts to the SGECA 10-03 meeting.

SGRN highlights the usefulness of transversal variables to serve as cost drivers. A presentation showed the possible allocation of fuel consumption to metiers using the transversal variable “days at sea”.

SGRN highlights the need to address variable and fixed costs differently.

SGRN discussed that metier is not the only disaggregation level to be addressed.

SGRN strongly recommends a workshop/study on identifying adequate methods on allocating economic data at different disaggregation levels (e.g. metiers).

As a starting point for development of guidelines and methods for allocating economic data, SGRN recommends that the following points should be included in the TOR of SGECA 10-03: Identifying needs of exemplary applications (e.g. Long Term Management Plan; Regional Analysis for funding purposes); Identifying methods to allocate costs and earnings as well as other economic variables. This could/will include the identification of cost drivers. Transversal variables could serve for this purpose; Assess data quality requirements of allocation methods with regard to particular characteristics of DCF data sources at each MS (e.g. logbooks); Specify TOR for the recommended workshop/study

## Section 7

### **Comments from STECF on the New Guidelines and Procedures**

---

#### **TOR 7: Comments of STECF**

To review comments from STECF, from their November Plenary Meeting, with particular focus on comments to the Report from the Guidelines and Procedures group (SGRN 09-03).

STECF reviewed the new Guidelines and Procedures (SGRN 09-03). STECF proposed some modifications. Revised guidelines will be available shortly and will be sent to National Correspondents for use in NP 2011-2013 Submissions.

There are a new set of Standard Tables and the guidelines for NP proposals and TRs have been entirely reviewed. The final guidelines have been developed from three successive phases:

The work done during SGRN-09-02

- Transcription of STECF-SGECA 09-02 recommendations in term of quality of reporting for economic, aquaculture and fish processing modules;
- Extension of the economic quality reporting structure for all modules of the DCF;
- Agreement on the structure for the TR, matching the guidelines for NP proposals structure. SGRN-08-02 agreed that the TR will serve only as an update where deviations from the plan will be reported, and actions taken to remedy shortfall;
- Adoption of a unique set of Standard Tables for both the use of NP proposal and TR.
- Drafting of a first version of the guidelines for NP proposal, the structure of the TR and a set of Standard Tables to be reviewed by the RCMs.

#### The RCMs review of the Standard Tables

- Comments were made on all tables of the Standard Tables, except tables for economic, aquaculture and fish processing modules;
- Demand for merging table II.B.1 and table VI.B.1.

#### The finalisation by SGRN-ECA-09-03

- Addition of a table II.C.4 for specifying the sampling frame for metier-based variables;
- Modification of the table III.C.2 in order to incorporate the former text table on splitting metier level 6 into more precise strata;
- Finalisation of the set of Standard Tables taking into account all RCMs comments;
- Finalisation of the guidelines for NP proposal (Annex 1);
- Drafting of the guidelines for TR (Annex 2);
- Suggestion to use the set of Standard Tables as soon as the sampling year 2009, meaning that MS will have to fill all planned information from Standard Tables version 2008 into Standard Tables version 2009.

Two minor points could not be finalised: (i) the text table of the guidelines for NP proposal on MS participating in RCMs pending the remit of the last RCM on long distance fishery, and (ii) the exact Latin names of the species in aquaculture (table IV.A.1).

SGRN acknowledged the work done in October by the guidelines subgroup (SGRN-09-03) that was endorsed by the November STECF plenary (STECF-09-03) with some editorial comments. The 2009 version of the guidelines will now be modified following STECF's comments and will be available before the end of the year.

SGRN took note of the latest modifications and suggestions made by SGRN-09-03; they can be summarised as:

- X. Addition of a table, Table II.C.4, for specifying the sampling frame for metier-based variables (see discussion, below);
- XI.

- XII. Modification of Table III.C.2 to include information that was previously held in a text table on dividing metiers at level 6 into more specific strata;
- XIII.
- XIV. The requirement to use the new set of Standard Tables for the sampling year 2009. This means that MS will have to transfer existing information from the 2008 version of the Standard Tables into the 2009 version. Details on how to proceed are given in the guidelines for TR document.

The notion of **sampling frame** developed by the ICES WKPRECISE (ICES, 2009), has been seen as an important progress in relation to biological sampling plan. By definition a sampling frame is *the actual set of units from which a sample [can be] drawn: in the case of a simple random sample, all units from the sampling frame have an equal chance to be drawn and to occur in the sample. In the ideal case, the sampling frame should coincide with the population of interest* (Statistical glossary<sup>1</sup>). SGRN-09-03 has elaborated a specific table (III.C.4) to include the exact sampling frame used by each Member States. More important is the change of perspective where information provided in Table III.C.3 (Metier sampling) becomes the expectation and the sampling frame (from Table III.C.4) becomes the plan on which SGRN will have to assess (i) the scientific relevance of the sampling frame for sampling metiers and (ii) the sampling achieved.

SGRN discussed the need for a consistent interpretation of the DCF requirements when assessing and reviewing the National Proposals and Technical Reports.

- Attention is drawn to the precision requirements. For landings and discard data from commercial fisheries, sections B1(3)(1)(d) and B1(3)(2)(c) of Commission Decision 2008/949/EC state that:

*‘Precision values and ranking system are referenced at the same level as the sampling programmes, i.e. at the national metier level for data that are collected through national programmes and at regional metier level for data that are collected through regionally coordinated sampling programmes’.*

For landings, section B1(4)(1)(a) states that:

---

<sup>1</sup> <http://www.statistics.com/resources/glossary/s/smplframe.php>

*‘The precision level 2 shall be targeted at the stock level for both Group 1 and Group 2 species’.*

And for discards, section B1(4)(2)(a) states:

*‘Data related to quarterly estimates of discards length and age composition for Group 1 and Group 2 species must lead to a precision of level 1’.*

SGRN’s interpretation of these statements is that the required precision levels need to be targeted at the stock level and not the individual metier level.

- The revised guidelines for the completion of National Proposals includes new entries in some tables. With respect to Table C\_III\_3 an additional column identifies the code for the sampling frame. Several metiers can be referenced by the same sampling frame. It was queried whether this shared any equivalence with the concept of ‘merging’ metiers as illustrated in Table II\_C\_1 of the guidelines and discussed in Commission Decision 2008/949/EC (Section B1(2)(1)). The statutory conditions under which metiers may be merged requires that *‘statistical evidence shall be brought regarding the homogeneity of the combined metiers’* and that *‘Regional agreement on mergers shall be sought at the relevant regional coordination meeting and endorsed by STECF’* whereas neither condition applies to the allocation of metiers to a sampling frame. SGRN was unable to comment on the degree of equivalence between these two concepts, but noted that the forthcoming ICES WKMERGE meeting had received modified terms of reference to account for the introduction of sampling frames under the DCF.

SGRN stress that for the review of 2009 and 2010 TR, MS must fill in new forms based on their 2009 and 2010 NP. This will greatly assist SGRN in the review of TR in June 2010.



SGRN stress that the revised guidelines which will be circulated to National Correspondents must be used by Member States in their 2011-2013 National Programme Submissions.

Futhermore, SGRN stresses that Member States must fill in new forms in the submission of their 2009-2010 Technical Reports, transposing the informational contained in their 2009-2010 National Programmes from the old forms.

The latest version of the guidelines contains the standard tables that must be used for reporting the achievements from the TRs 2009-2010. During the period 2009 – 2010, MS should transpose the information already accepted from the NP 2009-2010 tables to the new set of tables, before filling the TR additional (grey) columns. The other columns and worksheets that are not applicable to the 2009 and 2010 National Programmes can be left blank. Information on which columns and worksheets are not applicable should be given in the relevant sections.

## Section 8

### Planning for 2010

#### TOR 8: Planning for 2010

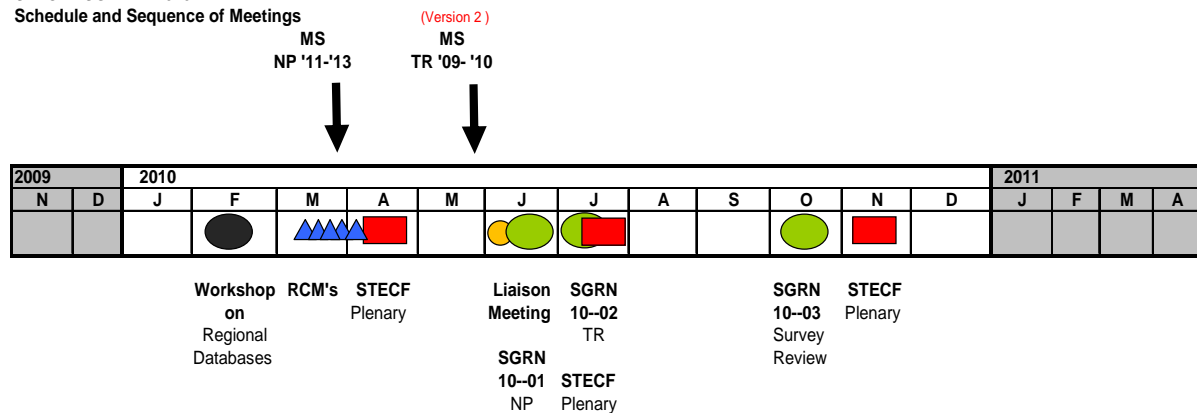
To develop a list of priority tasks and issues to be addressed by SGRN in 2010. A provisional list of all relevant meetings and dates will be mapped out for 2010.

This includes the drafting of TOR's for the SGECA meeting in the field of the DCF (to be held in the second semester of 2010). (This TOR has been addressed in Section 6 of this Report)

SGRN discussed the issues that should be addressed in 2010 and reviewed the work programme for 2010. A provisional schedule of meetings with dates and venues was agreed. The schematic diagram below gives the sequencing of meetings during 2010.

#### STECF - SGRN in 2010

##### Schedule and Sequence of Meetings



[NOTE : At time of SGRN meeting (December 2009) RCMs were due to take place in April – May.

The priority issues to be addressed by SGRN in 2010 were identified as follows;

- (1) Implementation of the new Guidelines and Procedures

- (2) Review of National Programmes 2011-3013
- (3) Review of Technical Reports 2009-2010
- (4) Review of Surveys
- (5) Regional Data Base Workshop
- (6) Quality Issues from 2007 (From LM)

<b>Meeting/Item</b>	<b>Date</b>	<b>Venue</b>	<b>Comments</b>
Guidelines	December 2009	N/A	MS will receive updated guidelines, MS must use new tables for TR
SGRN 09-04 Report Section 1 Comments on Revised National Programmes	Mid January 2010		For Consideration by STECF through written procedure
Workshop on regional database	22-24 Feb 2010	Brussels	
Submission of National Programmes	31 <sup>st</sup> March 2010	N/A	N/A
RCMs	April/May 2010	Various	Five RCMs with the inclusion of the Long Distance RCM (March)
STECF 10-01 Plenary	April 2010	Norwich, UK	Consider SGRN 09-04 Report
Submission of Technical Report	31 <sup>st</sup> May 2010	N/A	N/A

SGRN 10-01	14 <sup>th</sup> -18 <sup>th</sup> June 2010	Barza, Ipra	Review of the NP 2010-2013
LM	3 <sup>rd</sup> -4 <sup>th</sup> June 2010	Brussels	
SGRN 10-02	5 <sup>th</sup> -9 <sup>th</sup> July 2010	Hamburg	Technical Report
STECF 10-02 Plenary	12 <sup>th</sup> 16 <sup>th</sup> July 2010	Copenhagen	Consider the report from SGRN 10-01 review of National Programmes
SGRN 10-03	4 <sup>th</sup> -9 <sup>th</sup> October 2010	Brussels/ISPRA	Review of Surveys
STECF 10-03 Plenary	8 <sup>th</sup> -12 <sup>th</sup> November 2010	Brussels	Consider Reports from SGRN 10-02 and SGRN 10-03

## Section 9

### Transversal Variables

---

#### **TOR 9: Transversal Variables**

Review of NP in order to verify that MS had a common interpretation of variables listed in Appendix VII (List of transversal variables with sampling specification) of DCF.

How to assure a link among estimations at the level of meters and estimations at the level of fleet segment

How to define the quality of the estimate.

#### **Review of National Programmes**

SGRN recognises that the review of the updated NPs did not bring up any issues regarding the interpretation of transversal variables. SGRN recommends that the review of NPs concerning the consistency of variable definitions should be the TOR of an Evaluation Meeting.

SGRN was concerned that this issue was brought up at this meeting without any adequate provision of documents.

#### **Link among estimators**

In order to allocate the value of the economic variables to several cells, the identification of drivers (e.g. for costs and revenues) seems to be necessary. Transversal variables have shown their usefulness already in several specific cases. SGRN refers to the recommended study/workshop (TOR 6) addressing this point in the future. If specific transversal variables are identified as drivers (e.g. for costs and revenues) the respective quality has to be determined. SGRN expects this issue to be addressed at the recommended workshop.

#### **Quality of the Estimate**

In terms of how to define the quality of the estimate, SGRN recommends the SGECA 09-02 report on data quality issues as a reference.

SGRN notes that the review of the updated NPs did not bring up any issues regarding the interpretation of transversal variables. In terms of how to define the quality of the estimate, SGRN recommends the SGECA 09-02 report on data quality issues as a reference.

## Section 10

### Main SGRN Recommendations

---

#### Summary of Main Recommendations from each Section of the Report

##### **RECOMMENDATION 1 – Concerning the Liaison Meeting**

SGRN considers that running the LM in parallel to the main SGRN meeting is not a satisfactory and that such a practice should not happen again.

SGRN recommends the continuation of the SGECA Working Group as an STECF sub-group, meeting at least annually, and that further work be undertaken to formalise the role of economists within the RCM in order to maximise their contribution to the DCF.

SGRN recommends waiting for outcome of EU Study expected in 2011. The RCMs 2010 should provide an overview on all sampling activities on eel, based on the model developed at the RCM NS&EA 2009.

SGRN proposed some items to be included in the terms of reference for the RCM in 2010. In particular, the RCM's should compile information provided by MS according to templates agreed by SGRN-09-04 (See Section 5 of this report with associated Tables and Annex).

##### **RECOMMENDATION 2 – Concerning Regional Databases**

SGRN recommends that a Workshop on Regional Data Management Strategies is held in 2010.

The terms of reference suggested are:

- a) review the situation regarding RDB in the different regions and their implications in data management
- b) Define the needs, objectives, scope, and benefits expected for a RDB
- c) provide options for the different regions of the implications of developing no RDB, an aggregated data RDB, a detailed data RDB)
- d) provide a brief roadmap attached to the different options.

This workshop is to be given a high priority status and must be convened before the 2010 RCMs. In order to ensure the efficiency of the workshop, LM recommended to the four RCM chairs to appoint four participants from their region, trying to achieve a balance between IT experts, economists, biologists and data managers.

If accepted for DCF financial support, the NC should immediately anticipate the travel of one person for 4 days in Brussels in their revised NP proposal and finform for 2010.

The proposed date and venue for the workshop are late February in Brussels. The workshop will be co-chaired by ICES and the JRC.

### **RECOMMENDATION 3 – Concerning Economic Methodology**

SGRN strongly recommends a Workshop and/or followed up by a Study on identifying adequate methods on allocating economic data at different disaggregation levels (e.g. métiers). This should also consider the case of vessels active in more than one fishing area or, more generally, being active in more than one métier. This could also serve to address other more specific issues such as cooperation with other countries, e.g. candidate or third countries.

### **RECOMMENDATION 4 – Concerning SGECA**

As a starting point for development of guidelines and methods for allocating economic data, SGRN recommends that the following points should be included in the TOR of SGECA 10-03:

- Identifying needs of exemplary applications, like:
  - Long Term Management Plan
  - Regional Analysis for funding purposes
- Identifying methods to allocate costs and earnings as well as other economic variables. This could/will include the identification of cost drivers. Transversal variables could serve for this purpose
- Assess data quality requirements of allocation methods with regard to particular characteristics of DCF data sources at each MS (e.g. logbooks).
- Specify TOR for the recommended Workshop/Study

SGRN recommends the invitation of experts to the SGECA 10-03 meeting.

### **RECOMMENDATION 5 – Concerning the AER**

SGRN agrees with the proposed schedule for the submission of economic data in relation to the AER as being reasonable. SGRN strongly recommends MS to submit the requested data according to this time schedule (Call end jan 2010) to enable SGECA to prepare a AER of



high quality. This means complete and up-to-date data of necessary quality are necessary. In the light of experience with the next year's data call some adjustment might be necessary.

### **RECOMMENDATION 6 – Concerning Review of Surveys**

SGRN recommends that a meeting to review the list of eligible surveys in Annex IX of the DCF be carried out at a meeting of experts in September 2010. The report from this review will be considered at the STECF plenary in November 2010. SGRN has defined terms of Reference, review criteria and terms of reference for the group.

SGRN stresses the importance of this review and the obligation on member states to supply the relevant data to the review group in good time. ICES and PGMED will work closely to ensure the survey table information required for the review is available for checking by the RCM's in April/May. The Commission will then circulate the Tables to member states who must ensure the information is complete.

The Terms of Reference for the Group are;

- (1) To set up a list of candidate surveys at sea to be supported by the DCF with their priorities, based on the list of criteria as proposed by SGRN 09-04. Priorities can be 1 (good candidate), 2, 3 (no candidate). In case of priority 2, the review group might give options how the survey can be moved into priority 1.
  
- (2) To identify data gaps and research needs for the ecosystem approach to fisheries management, based on the review of the DCF surveys. (See also SGRN 06-03 data gaps).
  
- (3) To provide feedback on the lessons learned during the survey review and ways to improve the selection system of surveys funded under the DCF

In discussions on the review of surveys, it was noted that issues raised in some survey planning groups are sometimes missed by the RCM. SGRN recommends the RCM to consider survey planning issues raised in data end user reports.

### **RECOMMENDATION 7 – Concerning the New Guidelines and Procedures**

SGRN stress that the revised guidelines which will be circulated to National Correspondents must be used by Member States in their 2011-2013 National Programme Submissions. Furthermore, SGRN stresses that Member States must fill in new forms in the submission of their 2009-2010 Technical Reports, transposing the information contained in their 2009-2010 National Programmes from the old forms.

### **RECOMMENDATION 8 - Concerning an Economic Chair for DCF issues**

SGRN recommends the need for a core group of economists who will bring a continuity and a focal point for DCF economic issues. SGRN recommended that SGECA should consider a permanent DCF chair.

### **RECOMMENDATION 9 – Concerning Transverse Variables**

SGRN notes that the review of the updated NPs did not bring up any issues regarding the interpretation of transversal variables. In terms of how to define the quality of the estimate, SGRN recommends the SGECA 09-02 report on data quality issues as a reference.

## Section 11

### REFERENCES

---

#### Legal documents

- [Council Regulation \(EC\) No 199/2008 of 25 February 2008 concerning the establishment of a Community framework for the collection, management and use of data in the fisheries sector and support for scientific advice regarding the Common Fisheries Policy](#)
- [Commission Regulation \(EC\) No 665/2008 of 14 July 2008 laying down detailed rules for the application of Council Regulation \(EC\) No 199/2008 concerning the establishment of a Community framework for the collection, management and use of data in the fisheries sector and support for scientific advice regarding the Common Fisheries Policy](#)
- [2008/949/EC Commission Decision of 6 November 2008 adopting a multiannual Community programme pursuant to Council Regulation \(EC\) No 199/2008 establishing a Community framework for the collection, management and use of data in the fisheries sector and support for scientific advice regarding the common fisheries policy](#)

#### **Reports of Sub-groups (references and complete titles to be inserted)**

- Commission Staff Working Paper SGRN 07-01 Review of the list of surveys at sea (Appendix XIV of EU Commission Regulation N° 1581/2004), Brussels 12-16 February 2007, 32 pp.
- Scientific, Technical and Economic Committee for Fisheries (STECF) - Report of the SGCEA/SGRN 09-01 - Evaluation of Data Collection Programmes of Member States for 2009 and 2010. (eds. Connolly P. & Raid T.). 2009. Office for Official Publications of the European Communities, Luxembourg, ISBN 978-92-79-12612-3, JRC52236, 166 pp.
- Scientific, Technical and Economic Committee for Fisheries (STECF) - Report of the SGCEA-09-02 - Working Group on the quality aspects of the collection of economic data - methods of calculation of the indicators and sampling strategies. (eds. Sabatella, E., Nord, J. & Guillen, J.). 2010. Office for Official Publications of the European Communities, Luxembourg, ISBN 978-92-79-15356-3/JRC57575, 56 pp.
- Scientific, Technical and Economic Committee for Fisheries (STECF) - Report of the SGCEA/SGRN 09-03 - Review of Guidelines for the National Programs and Technical Reports under the Data Collection Framework. (eds. Vigneau J. & Raid T.). 2009. Office for Official Publications of the European Communities, Luxembourg, ISBN 978-92-79-14362-5, JRC55709, 138 pp.
- Scientific, Technical and Economic Committee for Fisheries (STECF) - 32nd Plenary Meeting Report. (eds. Doerner H. & Casey J.). 2009. Office for Official Publications of the European Communities, Luxembourg, ISBN 978-92-79-14352-6, JRC55699, 209 pp.

### **Other documents**

- Report of the 5<sup>th</sup> Liaison Meeting
- Reports of the 4 RCMs held in 2009

# ANNEX 1

## STECF SGRN 09-04 Meeting

*Johann Heinrich von Thünen Institute, Palmaille 9, 22767 Hamburg, Germany*

**Monday 7th to Friday 11th December 2009**

### **Draft Agenda (Version 4)**

#### **Monday 7th December (Day 1)**

09.00-13.00      Liaison Meeting

13.00-14.00      LUNCH

14.00-14.30      SGRN Plenary

Addressing our TOR's

Organisation of the Meeting

Adoption of Agenda

#### **Parallel Sessions**

14.30-18.00	Liaison Meeting Continues
14.30-18.00	SGRN Checking of 2010 National Programmes (TOR 1)
18.00	Close of Day 1

## **Tuesday 8th December (Day 2)**

### **Parallel Sessions**

09.00-13.00	Liaison Meeting Continues
09.00-13.00	SGRN checking of 2010 NP's continues (TOR 1)
13.00-14.00	LUNCH

### **Parallel Sessions**

14.00-16.00	Liaison Meeting Continues
14.00-16.00	SGRN checking of 2010 NP's Continues (TOR 1)

### **Parallel Sessions**

16.30-18.00	Liaison Meeting Liaison Meeting Report Drafting
16.30-16.45	Short SGRN Plenary – Update

17.00 SGRN Finish

18.00 Close of Day 2

### **Wednesday 9th December (Day 3)**

09.00 -09.30 SGRN Plenary  
Review of New Agenda  
Review Day 1 and 2  
Plan for Day 3  
Structure of the SGRN 09-04 Report  
Appointment of Rapporteurs

09.30 – 11.00 SGRN Plenary  
Presentation of issues from checking of new 2010 NP's (TOR 1)  
Baltic  
North Sea  
Mediterranean  
Atlantic  
Discussion and Recommendations

11.15 -11.30 COFFEE

11.30 – 13.00	<p>SGRN Plenary</p> <p>Regional Co-ordination (TOR 2)</p> <p>Review of the Recommendations of the Liaison Meeting</p> <p>Identify Fora to Action Recommendations</p>
13.00-14.00	LUNCH
14.00 – 15.00	<p>SGRN Plenary</p> <p>Recommendations of the Liaison Meeting (Continued)</p> <p>Regional Databases - Review Progress (TOR 3)</p> <p>Discussion and Recommendations</p>
15.30-16.00	COFFEE
16.00-18.00	<p>SGRN Plenary</p> <p>Availability of Data (TOR 4)</p> <p>Presentation - Baltic Sea Case Study</p> <p>Presentation- Mediterranean Case Study</p> <p>Discussion and Recommendations</p>



18.00 Close of Day 3

**Thursday 10th December (Day 4)**

09.00-09.15 SGRN Plenary  
Review of Day 3  
Plan for Day 4

**Parallel Sessions**

09.15-12.00 Group A - Review of Surveys – A Roadmap for 2010 (TOR 5)

09.15-12.00 Group B - Allocating economic data at the métier level (TOR 6)

11.00-11.15 COFFEE

12.00-13.00 SGRN Plenary  
Report from Group A – Recommendations  
Report from Group B – Recommendations

13.00-14.00 LUNCH

14.00-15.30 SGRN Plenary  
Comments of STECF of Relevance to SGRN (TOR 7)

Presentation by the Guidelines and Procedures Group  
(For Information Only)  
Discussion and Recommendations

15.30-15.45 COFFEE

15.45 -16.45 SGRN Plenary  
Transverse Variables (TOR 9)  
Discussion and Recommendations

16.45-18.00 Rapporteurs write sections of report allocated to them

18.00 Close Day 4

## Friday 11<sup>th</sup> December (Day 5)

09.00 – 09.30	SGRN Plenary Recap Day 4 Plan for Day 5
09.30-11.00	SGRN Plenary SGRN Planning for 2010 (TOR 8) Identify priority tasks and issues to be addressed by SGRN SGRN meeting schedule for 2010 Draft TOR's for SGECA
11.00 – 11.15	COFFEE
11.15-12.30	SGRN Plenary Draft SGRN 09-04 Report – A Brief Review Main SGRN 09-04 Recommendations Review and Discussion
12.30-13.0	SGRN Plenary Meeting Summary – Key Points

Production of the Report

13.00

Close of Meeting

<b>TOR</b>	<b>AGENDA</b>
1 National Programmes	Day 1, and 2
2 Regional Co-Ordination	Day 1, 2 and 3
3 Regional Databases	Day 3
4 Availability of Data	Day 3
5 Review of Surveys	Day 4
6 Economic Data	Day 4
7 STECF Comments	Day 4
8 SGRN Planning 2010	Day 5
9 Transversal Variables	Day 4

## **ANNEX 2**

### **STECF SGRN 09 - 04 Meeting**

**7<sup>th</sup> to 11<sup>th</sup> December 2009**

**Hamburg, Germany**

#### **Terms of Reference**

##### **TOR 1: Revised 2010 National Programmes**

To check the revised 2010 NP's submitted by Member States following the 2009 RCM's and following bilateral consultations with the Commission. This checking of 2010 NP's will consider the measures taken by MS's to deal with the comments. SGRN participants will be asked to review selected country's before the meeting.

##### **TOR 2: Regional Co-ordination**

To review the recommendations of the Liaison meeting and ensure that these recommendations are addressed in the TOR's of various fora during 2010.

##### **TOR 3: Regional Databases**

To review progress on the establishment of regional databases.

#### **TOR 4: Availability of data**

To identify possible bottlenecks, gaps and quality compromising links in the data flow from national sampling to stock assessment input in respect of issues related to the DCF. The discussions will be primed through the presentation of two case studies from the Mediterranean and the Baltic Sea.

Under this TOR, the economists will be invited to discuss whether the currently agreed date for submission of data for the Annual Economic Report is adequate and if necessary, propose an alternative schedule.

#### **TOR 5: Review of Surveys**

To develop TOR's and a roadmap for the 2010 review of the list of surveys in Annex IX of the DCF.

#### **TOR 6: Methods to Allocate economic data (earnings, operative costs, labour costs, capital costs) at the level of metiers.**

SGECA-SGRN could also consider the case of vessels that may be active in more than one fishing area during the same year and it will propose suitable methods to evaluate the cost structure within each area and suggest a methodology to split, if necessary, economic variables among different areas.

#### **TOR 7: Comments of STECF**

To review comments from STECF, from their November Plenary Meeting, with particular focus on comments to the Report from the Guidelines and Procedures group (SGRN 09-03).

### **TOR 8: Planning for 2010**

To develop a list of priority tasks and issues to be addressed by SGRN in 2010. A provisional list of all relevant meetings and dates will be mapped out for 2010. This includes the drafting of TOR's for the SGECA meeting in the field of the DCF (to be held in the second semester of 2010).

### **TOR 9: Transversal Variables**

Review of NP in order to verify that MS had a common interpretation of variables listed in Appendix VII (List of transversal variables with sampling specification) of DCF.

How to assure a link among estimations at the level of metiers and estimations at the level of fleet segment

How to define the quality of the estimate

## ANNEX 3

### Participants Details

Name	Address	Telephone no.	email
<b>STECF members</b>			
Di Natale, Antonio	AQUASTUDIO Research Institute , Via Trapani, 98121 Messina, Italy	+ 0039 090 346408	<a href="mailto:adinatale@acquariodigenova.it">adinatale@acquariodigenova.it</a>
Cardinale, Massimiliano	Fiskeriverket, Föreningsgatan 45330 Lysekil, Sweden	+46 523 18750	<a href="mailto:massimiliano.cardinale@fiskeriverket.se">massimiliano.cardinale@fiskeriverket.se</a>
Stransky, Christoph	Federal Research Centre for Fisheries Palmaille 9 22767 Hamburg, Germany	+49 40 38905-228	<a href="mailto:christoph.stransky@ish.bfa-fisch.de">christoph.stransky@ish.bfa-fisch.de</a>
Virtanen, Jarno Juhani	Finnish Game and Fisheries Research Institute, Viikinkaari 4 Helsinki FI-00791, Finland	+358 205751302	<a href="mailto:jarno.virtanen@rktl.fi">jarno.virtanen@rktl.fi</a>
<b>External Experts</b>			
Paul Connolly (chair)	Irish Marine Institute, Rinville, Oranmore, Galway, Ireland	+353 91 387 200	<a href="mailto:Paul.Connolly@marine.ie">Paul.Connolly@marine.ie</a>
Armesto, Angeles	Instituto Español de Oceanografía Cabo Estay-Canido 36200 Vigo Spain	+34 986492111	<a href="mailto:angeles.armesto@vi.ieo.es">angeles.armesto@vi.ieo.es</a>
Berkenhagen, Jörg	Federal Research Centre for Fisheries Palmaille 9 22767 Hamburg, Germany	+49 040 38905-206	<a href="mailto:joerg.berkenhagen@vti.bund.de">joerg.berkenhagen@vti.bund.de</a>
Carpentieri, Paolo	MIPAF, Viale dell'Università 32, Rome, Italy	+39 003288731537	<a href="mailto:paolo.carpentieri@uniroma1.it">paolo.carpentieri@uniroma1.it</a>
De Boois, Ingeborg	IMARES, P.O. Box 68, 1970 AB IJmuiden Netherlands	+31 317 487070	<a href="mailto:ingeborg.deboois@wur.nl">ingeborg.deboois@wur.nl</a>
Degel, Henrik	Danish Fisheries Research Institute Charlottenlund Slot, 2920 Charlottenlund, Denmark	+ 4524824198	<a href="mailto:hd@difres.dk">hd@difres.dk</a>
Dimech, Mark	Malta Centre for Fisheries Sciences, Fort San Luċjan BBG 06 Marsaxlokk, Malta	+ 00356 99203550	<a href="mailto:mark.dimech@gov.mt">mark.dimech@gov.mt</a>
Dintheer, Christian	IFREMER Rue de l'Île d'Yeu BP 21105 Nantes 44311 France	+33 02 40 37 40 00	<a href="mailto:christian.dintheer@ifremer.fr">christian.dintheer@ifremer.fr</a>



Name	Address	Telephone no.	email
Ebeling, Michael	Federal Research Centre for Fisheries Palmaille 9 22767 Hamburg, Germany	+ 040-38905212	<a href="mailto:Michael.Ebeling@ish.bfa-fisch.de">Michael.Ebeling@ish.bfa-fisch.de</a>
Goti, Leyre	General Concha 44, 4ºcentro izda 48012 Bilbao Basque Country, Spain	+34 946 029 400 (ext. 426)	<a href="mailto:lgotit@azti.es">lgotit@azti.es</a>
Koutrakis, Emmanuil	NAGREF Fisheries Research Institute, Nea Peramos, 64007 Kavala, Greece	+302594029037	<a href="mailto:manosk@inale.gr">manosk@inale.gr</a>
Kunzlik, Philip	FRS Marine Laboratory, PO Box 101 Victoria Road AB11 9DB Aberdeen, United Kingdom	+44 1224 295511	<a href="mailto:p.kunzlik@marlab.ac.uk">p.kunzlik@marlab.ac.uk</a>
Leskelä, Ari	Finnish Game and Fisheries Research Institute, Yliopistokatu 6 Joensuu 80100, Finland	+358 205751404	<a href="mailto:ari.leskela@rktl.fi">ari.leskela@rktl.fi</a>
McCormick, Helen	Irish Marine Institute, Rinville, Oranmore, Galway, Ireland	+353 91387200	
Murta, Alberto	IPIMAR, Avenida de Brasilia 1449-006 Lisboa Portugal	+335 1213027000	<a href="mailto:amurta@ipimar.pt">amurta@ipimar.pt</a>
Pinello, Dario	IEPA, Via San Leonardo, Trav Migliaro, Salerno 84100 Italy	+39 089330919	<a href="mailto:pinello@irepa.org">pinello@irepa.org</a>
Pönni, Jukka	Finnish Game and Fisheries Research Institute, Sapokankatu 2 48100 Kotka, Finland	+358 205 751 894	<a href="mailto:jukka.ponni@rktl.fi">jukka.ponni@rktl.fi</a>
Quincoces Abad, Inaki	AZTI Foundation, Txatxarramendi ugarteia z/g 48395 Sukarreta Spain	+34 602 94 00	<a href="mailto:iquincoces@suk.azti.es">iquincoces@suk.azti.es</a>
Statkus, Romas	Fishery Research Laboratory P. O. Box 108 91001 Klaipeda Lithuania	+370 46391122	<a href="mailto:statrom@gmail.com">statrom@gmail.com</a>
Verver, Sieto	IMARES, P.O. Box 68, 1970 AB IJmuiden Netherlands	+31 6 10670095	<a href="mailto:sieto.verver@wur.nl">sieto.verver@wur.nl</a>
Vigneau, Joel	IFREMER, Avenue du General de Gaulle 14520 Port-en-Bessin France	+33 2 31 51 56 00	<a href="mailto:Joel.Vigneau@ifremer.fr">Joel.Vigneau@ifremer.fr</a>
<b>JRC expert</b>			
Raid, Tiit	Joint Research Centre JRC	+39 0332783597	<a href="mailto:tiit.raid@jrc.ec.europa.eu">tiit.raid@jrc.ec.europa.eu</a>
<b>European Commission</b>			
Cervantes, Antonio Bolanos	DG FISHERIES AND MARITIME AFFAIRS	+32 229 87086	<a href="mailto:Antonio.CERVANTES@ec.europa.eu">Antonio.CERVANTES@ec.europa.eu</a>
Ranner, Harwig	DG FISHERIES AND MARITIME AFFAIRS	+32 2 2999805	<a href="mailto:Harwig.ranner@ec.europa.eu">Harwig.ranner@ec.europa.eu</a>
Tritten Christian	DG FISHERIES AND MARITIME AFFAIRS	+(32) 2 2999509	<a href="mailto:Christian.tritten@ec.europa.eu">Christian.tritten@ec.europa.eu</a>

<b>Name</b>	<b>Address</b>	<b>Telephone no.</b>	<b><u>email</u></b>
Zanzi, Antonella	Joint Research Centre JRC	+39 03327835	<a href="mailto:Antonella.Zanzi@jrc.ec.europa.eu">Antonella.Zanzi@jrc.ec.europa.eu</a>
<b>Invited representative</b>			
Morgado, Cristina	ICES, H. C. Andersens Boulevard 44-46 DK-1553 Copenhagen V Denmark	+45 3338 6721	<a href="mailto:cristina@ices.dk">cristina@ices.dk</a>

## ANNEX 4

Presentation on Data Compilation Issues – Baltic Sea Example



From the Galway report:

“The examples will exemplify the chain of data flow from national sampling to stock assessment input and to identify possible bottlenecks, gaps and quality compromising links in the data flow particularly in respect to issues related to the DCF.”

- Only the data handling in the compilation process will be considered.  
No considerations to
  - the statistical evidence of the methods used and
  - the logistic problems in connection with the sampling process itself
- Compilation of ecosystem data and VMS data will not be considered.

## **Baltic Sea, the cod and the cod assessment. Brief overview.**

- Relatively few species (5-6) are commercial important in the area
- Highly variable oceanographic conditions of oxygen contents and salinity are influencing the recruitment and distribution of species
- The cod in the Baltic Sea consists of two stocks (western and eastern stock)
- The stocks are exploited by 9 countries
- The cod stocks are every year assessed by the use of the single species VPA.
- Discard data are fully integrated in the assessment

## **Baltic Sea, the cod and the cod assessment (Cont.).**



- The input data for the VPA consists of the following data:
  - Catch in tons (landing + discard)
  - Catch at age in numbers (landing + discard)
  - Mean weight at age (landing + discard)
  - Proportion of the mature stock
  - Information about the quantity of unallocated landings
  - Tuning data from both commercial fleets and scientific surveys
  - Recruitment data
- Ecosystem information are to some extent used for support of the assessment and the forecast.
- The sampling is in most cases carried out using true concurrent sampling principles

National sampling of biological information of discard in resent year-1

Official national landing statistic for resent year-1

National sampling of biological information of landings in resent year-1



National sampling of biological information of discard in resent year-1

Official national landing statistic for resent year-1

National sampling of biological information of landings in resent year-1

**Stratification**

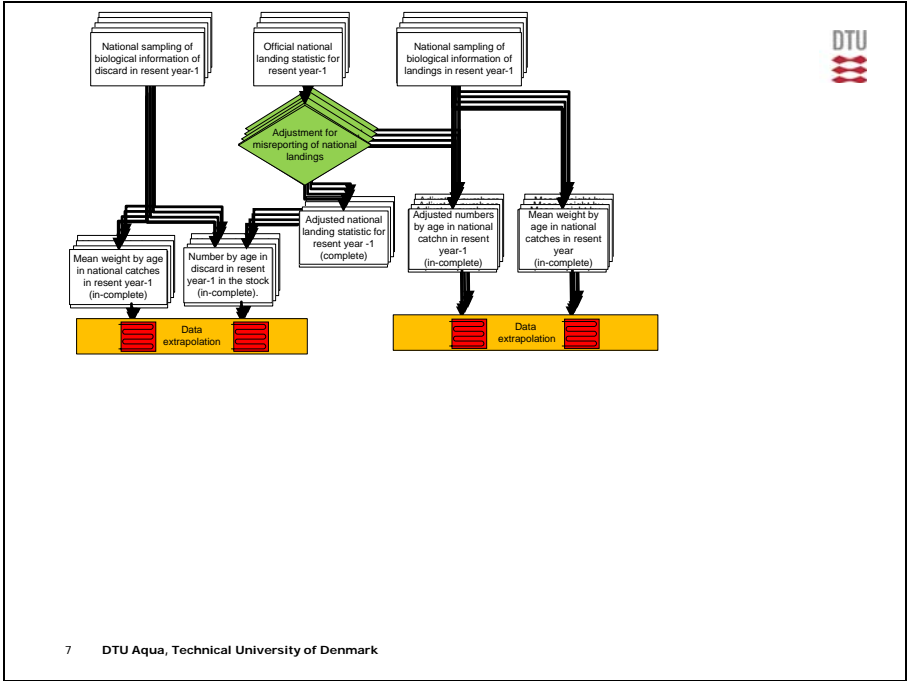
- Quarter
- Sub-division
- **Métiers (lvl. 6)**

Area	Gear type	Mesh size	Landings/trips	kg	Value(kr)	Target species	Assigned metiers
Kattegat	FPN	18	8	1,630	93,180	Silver eel	FPN_CAT_>0_0_0
Kattegat	FPN	20	1	10	300	Silver eel	FPN_CAT_>0_0_0
Kattegat	FPN	32	7	352	21,900	Silver eel	FPN_CAT_>0_0_0
Kattegat	FPN	30	8	620	20,580	Silver eel	FPN_CAT_>0_0_0
Kattegat	FPN	10	1	154	7,700	Yellow eel	FPN_CAT_>0_0_0
Kattegat	FPN	30	6	1,184	58,086	Yellow eel	FPN_CAT_>0_0_0
Kattegat	FPN	20	25	4,232	218,382	Yellow eel	FPN_CAT_>0_0_0
Kattegat	FPN	10	2	216	11,840	Yellow eel	FPN_CAT_>0_0_0
Kattegat	FPN	32	3	66	3,560	Yellow eel	FPN_CAT_>0_0_0
Kattegat	FPN	18	4	2,537	13,556	Garfish	No_Matrix6
Kattegat	FPN	20	35	25,568	164,960	Garfish	No_Matrix6
Kattegat	FPN	20	20	14,433	125,478	Makerel	No_Matrix6
Kattegat	FPN	18	33	66,327	286,901	Makerel	No_Matrix6

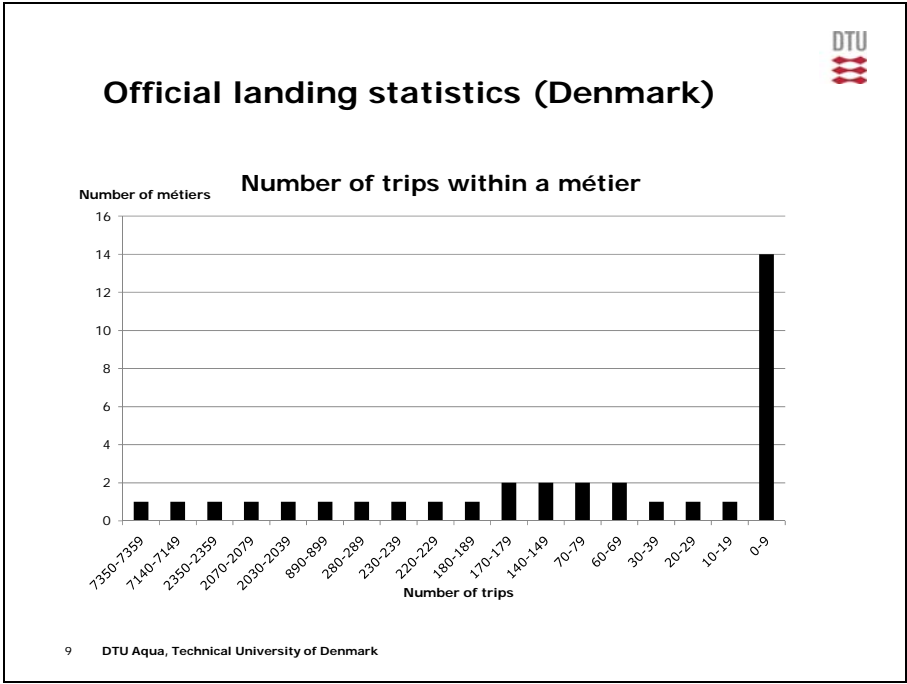
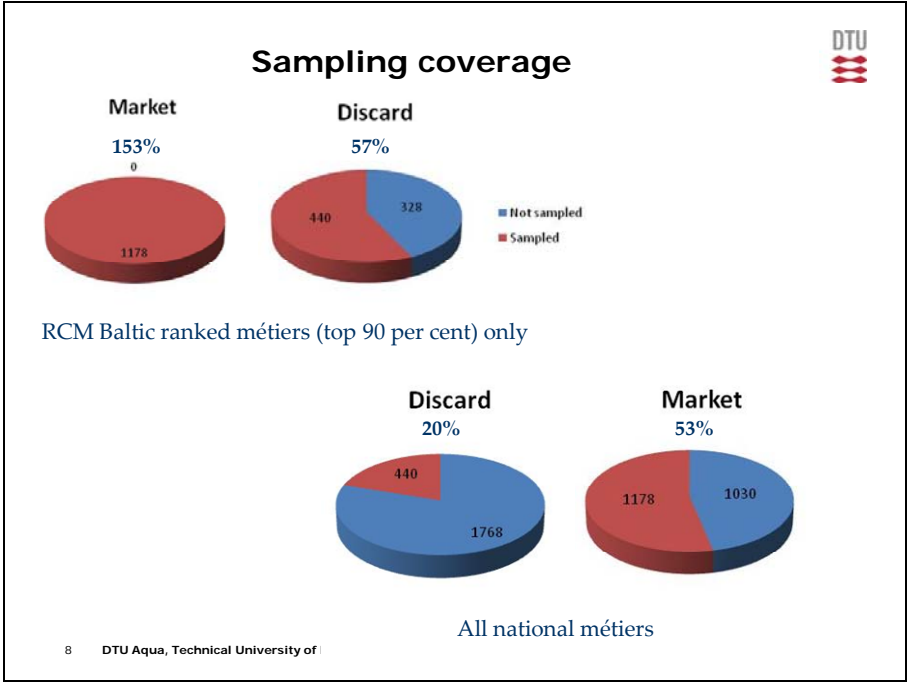
- What to do with vessels < 8 m and vessels with area declaration, which are not obliged to keep logbooks?

	Percentage categorised as "No logbook"
Trips	16.56
landings	0.44

- No information about the use of selection devise in the gear.







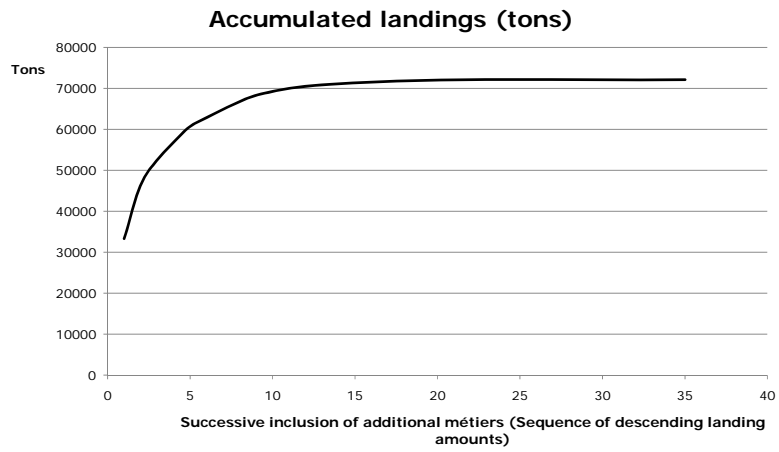
**Possible reasons for the existents of exotic metiers or increased number of trips in the metier “No matrix”**

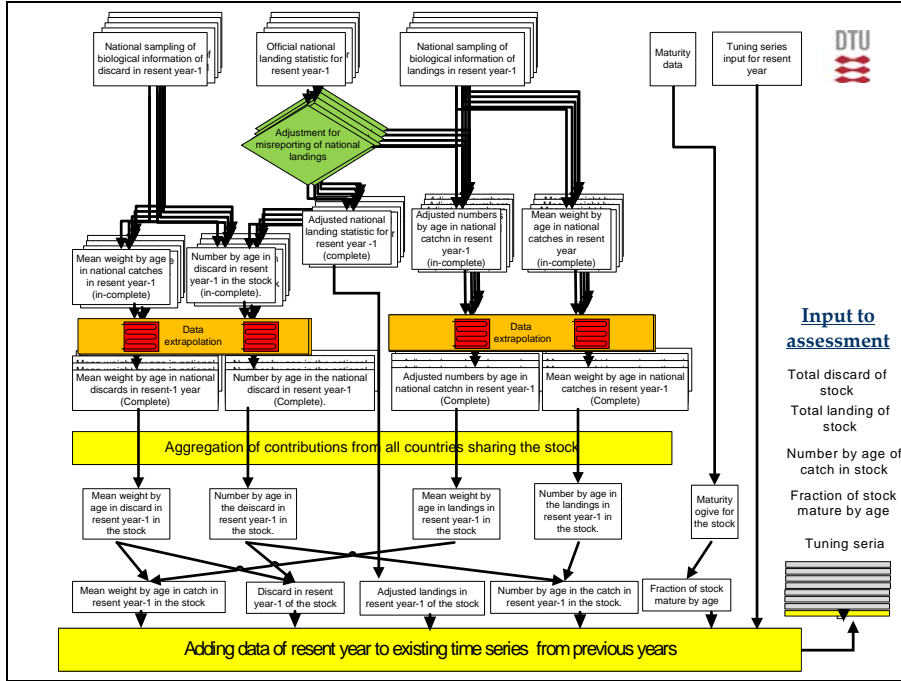


- Unconventional fishermen
- Wrong identification of target species assemblage
- Faulty information in logbook due to sloppiness or mistakes

Sloppiness/errors in the logbooks leads to mismatch between sampling data and landing data

## Official landing statistics (Denmark)





## Resuming the data handling problems anticipated in the process of data compilation of cod stocks in the Baltic.



- Insufficient information in logbooks
  - Allocation of métiers to landing statistics.
    - Only post allocation is possible at present
    - No information about selection devices in active gears
    - No direct way to handle vessels < 8 m and vessels with area declaration (⇒ no obligation to keep logbook)
- Landing statistics
  - Logbooks are often worked out sloppy by the fishermen and not corrected by the authorities
  - No documented way to estimate the proportion of unallocated catches
- Data extrapolation
  - Poor coverage leads to extended need for data extrapolation
  - Little possibility to quality assure the selection of source data for extrapolation.
  - Little possibility to assure that the rules for extrapolation are applied consistent between years, countries, metiers, areas and seasons.

## **ANNEX 5**

### **ICES – List of Surveys for Stock Assessment**

## **ANNEX DECLARATIONS OF EXPERTS**

Declarations of invited experts are published on the STECF web site on <https://stecf.jrc.ec.europa.eu/home> together with the final report.

European Commission

**EUR 24422 EN – Joint Research Centre – Institute for the Protection and Security of the Citizen**

Title: Evaluation of Revised National Programs for 2010 under the Data Collection Framework and Review of Surveys (SGECA/SGRN 09-04).

Author(s): Connolly, P., Armesto, A., Berkenhagen, J., Cardinale, M., Carpentieri, P. de Boois, I., Degel, H., Di Natale, A., Dimech, M., Dintheer, C., Ebeling, M., Goti, L., Koutrakis, E., Kunzlik, P., Leskelä, A., McCormick, H., Murta, A., Pinello, D., Pönni, J., Quincoces Abad, I., Raid, T., Statkus, R., Stransky, C., Verver, S., Vigneau, J., Virtanen, J.

Luxembourg: Publications Office of the European Union

2010 – 138 pp. – 21 x 29.7 cm

EUR – Scientific and Technical Research series – ISSN 1018-5593

ISBN 978-92-79-16053-0

doi:10.2788/252

**Abstract**

Articles 6(1) and 7(2) of Council Regulation (EC) No 199/2008 state that the evaluation of both NP proposals and TRs should be carried out by STECF. The main objectives of the meeting were to check the revised 2010 National Programmes submitted by 10 Member States. SGRN also developed Terms of reference, evaluation criteria and a roadmap for the review of eligible surveys funded under the DCF. STECF reviewed the report during its plenary meeting on 26-30 April 2010 in Norwich.



**How to obtain EU publications**

Our priced publications are available from EU Bookshop (<http://bookshop.europa.eu>), where you can place an order with the sales agent of your choice.

The Publications Office has a worldwide network of sales agents. You can obtain their contact details by sending a fax to (352) 29 29-42758.

The mission of the JRC is to provide customer-driven scientific and technical support for the conception, development, implementation and monitoring of EU policies. As a service of the European Commission, the JRC functions as a reference centre of science and technology for the Union. Close to the policy-making process, it serves the common interest of the Member States, while being independent of special interests, whether private or national.



The Scientific, Technical and Economic Committee for Fisheries (STECF) has been established by the European Commission. The STECF is being consulted at regular intervals on matters pertaining to the conservation and management of living aquatic resources, including biological, economic, environmental, social and technical considerations.

