

Georgia Southern University

Digital Commons@Georgia Southern

Armstrong Women's Volleyball Team Archives

Armstrong Women's Volleyball Archives

2013

2013 AASU Volleyball Guide

Armstrong State University

Follow this and additional works at: <https://digitalcommons.georgiasouthern.edu/armstrong-volley-wmn-team>

This media guide is brought to you for free and open access by the Armstrong Women's Volleyball Archives at Digital Commons@Georgia Southern. It has been accepted for inclusion in Armstrong Women's Volleyball Team Archives by an authorized administrator of Digital Commons@Georgia Southern. For more information, please contact digitalcommons@georgiasouthern.edu.



ARMSTRONG ATLANTIC STATE UNIVERSITY 2013 VOLLEYBALL MEDIA GUIDE



2013 ARMSTRONG ROSTER



2013 Armstrong Volleyball Squad: Standing (l-r): Carina Marinho, Taylor Permenter, Kristen Holmes, Rachel Thompson, Emily Wylie, Paige Gocke, Kim Brody, Stephanie Sfara, Anna Jones. Kneeling (l-r): Jessica Santaniello, Katie Broderick, Megan Pando, Kayla Berns, Christina Chow, Caitlynn King, Brittany Hereth, Morgan Hill.

2012 ARMSTRONG ATLANTIC STATE UNIVERSITY PIRATE VOLLEYBALL ROSTER

#	NAME	YR	CL	POS.	HOMETOWN/SCHOOL
1	Rachel Thompson	6-3	Fr.	MH	St. Mary's, Ga. / Camden County HS
2	Kim Brody	6-0	Fr.	OH	Dacula, Ga. / Mill Creek HS
3	Megan Pando	5-8	Sr.	S	Oviedo, Fla. / Oviedo HS
4	Katie Broderick	5-6	Jr.	Lib	Savannah, Ga. / St. Vincent's Academy
5	Jessica Santaniello	5-9	Sr.	OH	Boca Raton, Fla. / West Boca HS
6	Anna Jones	5-10	Soph.	OH	Marietta, Ga. / Kell HS
7	Taylor Permenter	6-0	Jr.	MH	Jacksonville, Fla. / Pennsylvania
8	Stephanie Sfara	5-9	Jr.	OH	Boardman, Ohio / Boardman HS
11	Morgan Hill	5-7	Jr.	Lib	West Palm Beach, Fla. / Pasco Hernando CC
12	Emily Wylie	6-4	Fr.	OH	Gillsville, Ga. / Mill Creek HS
13	Caitlynn King	5-9	Fr.	S	Fairfax, Va. / W.T. Woodson HS
14	Kayla Berns	5-4	Fr.	S	Augusta, Ga. / Greenbrier HS
16	Christina Chow	5-4	Sr.	Lib	Brunswick, Ga. / Glynn Academy
17	Paige Gocke	6-2	Fr.	OH	Fayetteville, Ark. / Fayetteville HS
18	Brittany Hereth	5-11	Fr.	OH/Lib	Alpharetta, Ga. / King's Academy
19	Kristen Holmes	6-2	Sr.	MH	Flowery Branch, Ga. / Oglethorpe
21	Carina Marinho	6-0	Jr.	OH/RS	Belo Horizonte, Brazil / Universidade FUMEC

HEAD COACH: Will Condon (Clemson, '96)

ASSISTANT COACH: Alli Arbogast (South Florida, '10)

TABLE OF CONTENTS



CONTENTS

Armstrong Atlantic State University.....	2
Armstrong Administration	3
Armstrong Athletic Staff.....	4
Armstrong Athletic Training	5
Head Coach Will Condon	6
Assistant Coach Alli Arbogast	7
2013 Season Preview	8
2013 Player Profiles	9-20
Pirate Volleyball Tradition	21
2012 Season Review	22
2012 Season Results / Statistics	23
2012 Peach Belt Conference In Review	24
2013 Opponents	25-26
Armstrong Records	27-30
Armstrong Honors	31-32
All-Time Results	33-36
This Is Savannah	37
2013 Schedule	IBC

QUICK FACTS

Location	Savannah, Ga. 31419
Founded.....	1935
Enrollment.....	7,500
Nickname	Pirates
Colors	Maroon and Gold
Athletics Webpage	www.armstrongpirates.com
Affiliation	NCAA Division II
Conference	Peach Belt
Home Gym.....	Aquatics & Recreation Center
Capacity	1,000
President.....	Dr. Linda M. Bleicken
Athletic Director	Lisa Sweany
Volleyball Head Coach.....	Will Condon
Record at Armstrong (Years)	146-40 (4)
Overall Coaching Record (Years)	307-140 (11)
2012 Overall Volleyball Record.....	33-6
2012 PBC Record (Finish).....	13-1 (1st)
Assistant Coach.....	Alli Arbogast

ON THE COVER

Armstrong defeated Flagler, 3-2, for the 2012 Peach Belt Conference tournament championship, marking the second time that the Pirates have won both the league's regular season and tournament titles in the same year. Armstrong also hosted the NCAA Southeast Regional for the first time in program history.

CREDITS

The 2013 Armstrong Atlantic State University volleyball media guide was published by the Armstrong Office of Sports Communications, Chad Jackson, director. Armstrong head coach Will Condon also contributed to this publication. For more information regarding the Armstrong volleyball program, please contact:

Chad Jackson
Director of Sports Communications
 Phone: 912-344-3114
 Fax: 912-344-3422
 E-mail: Chad.Jackson@armstrong.edu

Will Condon
Head Volleyball Coach
 Phone: 912-344-3239
 Fax: 912-344-3422
 E-mail: William.Condon@armstrong.edu



ARMSTRONG ATHLETIC DEPARTMENT PHONE DIRECTORY

Main Numbers

Athletic Department 912-344-2813
Athletics FAX 912-344-3422

Administration

Lisa Sweany Athletic Director 912-344-2730
 Jennifer Rushton, Assoc. AD/Compliance 912-344-3368
 Chad Jackson, Sports Communications 912-344-3114
 Michael Smoose, Assistant AD / Marketing 912-344-3236
 Adam Tom, Assistant AD / Facilities 912-713-7397
 Dr. Donald Anderson, Student Services 912-344-2726
 Ken Tessier, Head Athletic Trainer 912-344-2866
 Caroline Brif, Asst. Athletic Trainer 912-344-2866
 Derek Smith, Graduate Assistant 912-344-2813

Coaching Staff

Calvain Culberson, Baseball 912-344-3147
 Evans Davis, Interim Men's Basketball 912-344-2690
 Brandon Chappell, Asst. Men's Basketball 912-344-2992
 Zach Corliss, Asst. Men's Basketball 912-344-2598
 Fala Bullock, Women's Basketball 912-344-3110
 C.J. Pace, Asst. Wm. Basketball 912-344-2674
 Shanae Vaifanua, Asst. Wm. Basketball 912-344-3117
 Michael Sergi, Men's Cross Country 912-344-2371
 Michael Butler, Men's & Women's Golf 912-344-2752
 Simon Earnshaw, Tennis 912-344-3195
 Iuliia Sherrod, Asst. Tennis 912-344-3195
 Eric Faulconer, Women's Soccer 912-344-3095
 Ted Evans, Softball 912-344-2727
 Will Condon, Volleyball 912-344-3239
 Alli Arbogast, Asst. Volleyball 912-344-3206

Other Numbers

Press Table (Basketball) 912-344-3200
 912-344-2729
 Armstrong Training Room 912-344-2866

THE PIRATES CAPTURED THEIR FIRST REGULAR SEASON PBC TITLE IN 2005





Since its founding in 1935 - more than 75 years ago - Armstrong Atlantic State University has continued to develop to meet the Savannah community's educational needs. From its first location in Armstrong House in downtown Savannah to its current home on a scenic 268-acre lot off of Abercorn, the university has become one of the finest educational institutions in the Southeastern United States. Last year, Armstrong celebrated its 75th anniversary as a premier institution of higher education in the Coastal Empire.

Armstrong Junior College was established by the Mayor of Savannah and other public officials in 1935. Housed in the beautiful and historic Armstrong House, a gift to the city from the family of George F. Armstrong, Armstrong Junior College grew over the years to occupy eight additional buildings in the Forsyth Park and Monterey Square areas.

In 1959, as Armstrong College of Savannah, it became a two-year unit of the University System. The Board of Regents conferred four-year status on Armstrong in 1964 and the college moved to a 250-acre location, a gift from Donald Livingston and the Mills B. Lane Foundation, in December of 1965. Additional buildings joined the eight original structures as Armstrong added professional and graduate programs and tripled in size.

In July of 1996, the Board of Regents voted to rename the college to Armstrong Atlantic State University to reflect its mission and identity. The university's reputation of excellence is still evident in its dedication to students, with a supportive environment.

Armstrong Atlantic State University was fully accredited as a senior institution by the Southern Association of Colleges and Schools in December, 1968, with accreditation retroactive to January 1, 1968, and was last reaccredited in December, 2002.

The university offers more than seventy-five academic programs and majors in the College of Arts and Sciences, College of Health Professions, College of Education and School of Comput-



ing. The academic community includes approximately 7,650 students and more than 400 faculty members. Enrollment has more than doubled in the last 20 years, from 3,700 students in 1990 to its current number.

Across campus, evidence of the university's growth can be found in its facilities. Recently completed projects include the \$31 million Windward Commons, a 567-bed, freshman-dedicated residence hall completed over the summer, which brings the number of students living on campus to more than 1,400, and the new \$16 million, 60,180 square-foot Armstrong Student Union that was built entirely through student fees and opened in fall of 2010. A new Learning Commons was completed in spring 2013 bringing advanced learning technology to the campus.

The athletic department of Armstrong Atlantic State University is housed in the Armstrong Sports Center, completed in 1995. The Sports Center includes offices for the physical education department, training room and weight room areas, basketball courts, indoor track and offices for coaches and athletic department personnel. The building played host to the Peach Belt Conference's basketball tournament in 1998 and 1999 and hosts several in-season tournaments each year. A women's fieldhouse for soccer and softball was completed in the spring of 2007 and renovation of the Sports Center weight room was completed in 2013.

Armstrong sponsors 11 intercollegiate sports and is a charter member of the Peach Belt Conference, formed in 1991. Women's soccer and women's golf debuted in 2005 and men's cross country was reinstated in 2009, joining men's and women's basketball, volleyball, baseball, men's and women's tennis, men's golf and softball as sports that Armstrong sponsors. In 2012-13, Armstrong women's tennis teams captured its eighth NCAA Division II National Championship, the most among Division II institutions.

Continuing a mission begun in 1935, Armstrong Atlantic State University today serves a rich gamut of traditional and non-traditional students. Forty-three percent of Armstrong's student body are from the Savannah-Chatham area, while others come from around the state, nation and world. All have come to Savannah to experience and thrive on the campus of one of the fastest developing higher learning institutions in the nation - to be a part of Armstrong Atlantic State University.





DR. LINDA M. BLEICKEN UNIVERSITY PRESIDENT

Dr. Linda M. Bleicken joined Armstrong in 2009 after serving at Georgia Southern for 19 years. She is the seventh Armstrong president and the first woman to lead the institution since the establishment of Armstrong Junior College in 1935.

A woman with deep roots in Iowa farm country, Bleicken began her career at Georgia Southern as an assistant professor of management in 1990. Over the following years she would serve as acting chair of the department of management, associate dean of the College of Business Administration, vice president for student affairs, acting provost and vice president for academic affairs and lastly provost, a position she held since 2005.

A marketing major from Georgia State University who graduated magna cum laude, Bleicken's experiences in the business arena include a foray into real estate in Atlanta as owner and manager of residential properties and serving as a sales representative for Innerface International. She also spent two years in marketing research for BellSouth and Brittain Associates, both in Atlanta.

It was her experiences in marketing research that led her back to higher education. In 1987, she chose to continue her education in a university campus, this time as a teaching instructor at her alma mater, Georgia State University. Three years later she earned her academic credentials, a master's and Ph.D. in management, once again from Georgia State.

A long-time resident of Savannah—she commuted to Georgia Southern all those years—Bleicken knows and cares deeply about Savannah and the Coastal Georgia region. She has served on the Ossabaw Island Foundation Board since 2007 and been involved with the Savannah Downtown Neighborhood Association.



LISA SWEANY ATHLETIC DIRECTOR

Lisa M. Sweany begins her third season as Director of Athletics at Armstrong Atlantic State University for the 2013-14 academic year.

The Pirates had another outstanding athletic year in 2012-13, capturing a second consecutive PBC Commissioner's Cup while also claiming the school's third PBC Presidential Academic Award. Armstrong sent 8 of 11 teams to the NCAA postseason, capturing the school's 11th NCAA National Championship with women's tennis and also achieving its best-ever finish in the Learfield Sports Director's Cup standings.

Sweany joined Armstrong in July of 2011, coming from fellow NCAA Division II school Grand Valley State, where she served as assistant AD and then senior associate AD for ten years. With the Lakers, Sweany was responsible for budget, personnel and facilities management. Her other duties included direct supervision of seven coaches, overseeing game and event operations, as well as management of all athletics personnel. In addition, Sweany coordinated all aspects of compliance and eligibility for more than 500 student athletes.

Prior to joining GVSU, she served at Tri-State University in Angola, Indiana, starting in 1995 as athletics facilities director. During her five-year stint at Tri-State, she served in various capacities of increasing responsibility, including assistant basketball coach, head coach of softball and associate athletics director, a position she was named to in March 1995.

Sweany is a member of the National Association of Collegiate Women Athletics Administrators and the National Association of Collegiate Directors of Athletics, as well as the immediate past president of the CEFMA (Collegiate Event and Facility Management Association). She is also a member of the NCAA Division II Championships Committee.

She holds a master's degree in physical education with a concentration in sports management from Ball State University in Muncie, Indiana and a bachelor's degree with honors in business administration with a concentration in accounting from Tri-State University in Angola, Indiana.





ARMSTRONG ATHLETIC STAFF



**JENNIFER
RUSHTON**
ASSOCIATE AD FOR
COMPLIANCE & STUDENT SERVICES



**CHAD
JACKSON**
DIRECTOR OF SPORTS
COMMUNICATIONS



**MICHAEL
SMOOSE**
ASSISTANT AD FOR
BUSINESS & MARKETING



**ADAM
TOM**
ASSISTANT AD FOR FACILITIES
AND GAME OPERATIONS



**DR. DONALD
ANDERSON**
COMPLIANCE & STUDENT
SERVICES CONSULTANT



**DR. WILL
LYNCH**
FACULTY ATHLETIC
REPRESENTATIVE



**CAIVAIN
CULBERSON**
INTERIM HEAD BASEBALL
COACH



**MICHAEL
SERGI**
HEAD MEN'S CROSS
COUNTRY COACH



**EVANS
DAVIS**
INTERIM HEAD MEN'S
BASKETBALL COACH



**FALA
BULLOCK**
HEAD WOMEN'S
BASKETBALL COACH



**MICHAEL
BUTLER**
HEAD MEN'S AND
WOMEN'S GOLF COACH



**TED
EVANS**
HEAD SOFTBALL
COACH



**ERIC
FAULCONER**
HEAD WOMEN'S
SOCCER COACH



**SIMON
EARNSHAW**
HEAD MEN'S & WOMEN'S
TENNIS COACH



**WILL
CONDON**
HEAD VOLLEYBALL
COACH



**ALLI
ARBOGAST**
ASSISTANT VOLLEYBALL
COACH



ARMSTRONG SENT EIGHT TEAMS TO THE NCAA CHAMPIONSHIPS IN 2012-13



Armstrong athletic teams benefit from the fine athletic training staff, headed by medical director Dr. John George and head athletic trainer Ken Tessier.

Armstrong's training room, part of the Armstrong Sports Center, sits adjacent to the fitness center and across the hall from the Pirate locker rooms. The room offers the most modern and advanced equipment to help players deal with injuries and rehabilitation.

ARMSTRONG ATHLETIC TRAINING CENTER ADMINISTRATION



DR. JOHN GEORGE
TEAM PHYSICIAN

Dr. John George begins his second year in the role of team physician for the Pirates. A 1983 graduate of the Medical College of Georgia, Dr. George is board certified by the America Board of Orthopedic Surgery and is a member of the AMA, the National Board of Medical Examiners, the Georgia Medical Society, the Medical Association of Georgia, the American Academy of Orthopedic Surgeons and the Georgia Orthopedic Society.



KEN TESSIER
HEAD ATHLETIC TRAINER

Ken Tessier begins his third year as the head athletic trainer at Armstrong for the 2013-14 athletic year. Tessier joined the Pirates from Savannah State University, where he was the head athletic trainer for four years. Prior to that he was the athletic trainer at St. Andrew's school in Savannah. He was also employed by the University of South Carolina Aiken, where he was the assistant athletic trainer. Tessier has also held various internship positions which included the Providence Bruins of the American Hockey League and with the Curry College football and hockey teams.

A native of North Smithfield, R.I., Tessier earned his bachelor's of science degree in physical education with a concentration in sports medicine from Endicott College in 2002. He has been nationally board certified since June 2003 by the NATABOC and is licensed to practice athletic training in the state of Georgia. He is also CPR/AED certified and a member of the NATA, SEATA and GATA organizations.



CAROLINE BRIF
ASSISTANT
ATHLETIC TRAINER



DOUG HARGER
GRADUATE ASSISTANT
ATHLETIC TRAINER



KELSEY CURIEN
GRADUATE ASSISTANT
ATHLETIC TRAINER



ALLYSON RILEY
GRADUATE ASSISTANT
ATHLETIC TRAINER





WILL CONDON HEAD VOLLEYBALL COACH



Head volleyball coach Will Condon begins his sixth season at the helm of the Armstrong Atlantic State University program in 2013 after leading the Pirates to five consecutive NCAA Championships berths.

Armstrong volleyball broke new ground in 2012, earning the No. 1 seed in the NCAA Southeast Region and hosting the regional for the first time in program history. The Pirates went 33-6 overall and 13-1 in the Peach Belt, capturing not only the PBC regular season title but the league tournament title as well. Led by third-team AVCA All-American and PBC Player and Setter of the Year, Ashley Seal, the Pirates featured three other honorable mention AVCA All-Americans in Brittany Wolf, Amanda Jones and Jessica Santaniello.

The 2011 season was a historic one for the Pirates as they began the year with a school- and Peach Belt Conference-record 31 match win streak. Armstrong went 36-3 overall, tying a school record for wins in a season, while capturing the Peach Belt Conference regular season title and making an appearance in the NCAA Southeast Region. PBC Player of the Year Brittany Wolf became Armstrong's first volleyball player named to an AVCA All-American team while four other players - Brendyce Budd, Jessica Santaniello, Leia Pittman and Ashley Seal - earned All-PBC and All-Region honors.

In his debut season with the Pirates in 2008, Armstrong went 28-7, capturing the Peach Belt regular season and tournament titles to earn a berth in the NCAA Championships for the first time since 2004. The Pirates defeated Lander, Lincoln Memorial and Catawba to capture the Southeast Region title and advance to the NCAA DII Elite Eight.

Condon joined the Pirates from fellow Peach Belt Conference school USC Aiken, where he served as the Pacers' head volleyball coach for the past eight seasons, compiling a 161-100 record as the winningest coach in that school's history.

The Peach Belt Conference's Coach of the Year in 2006, the Pacers under Condon collected back-to-back Peach Belt regular season and tournament titles in 2006 and 2007. The titles were the first for the Pacer program since 1995. USC Aiken also made its first-ever appearances in the NCAA Championships in both seasons, advancing to the NCAA South Regional.

Condon became USC Aiken's ninth head coach in 2000 and immediately enjoyed success as he took a squad that had finished 11-18 in the previous season and directed them to a 24-10 overall record and a 9-5 conference mark, finishing third in the PBC.

While at USC Aiken, Condon coached one Capital One/CoSIDA All-American and PBC Player of the Year (Mandy Gerolstein), one PBC Freshman of the Year (Amy Long), 13 All-PBC performers and 20 PBC Player of the Week honorees.

Prior to taking over the USC Aiken program, Condon served as an assistant coach at Emporia State (Kan.) for four seasons. While at Emporia State, his teams finished among the top 12 in the nation in hitting percentage in three of the four years he was there.

Condon is a 1996 graduate of Clemson, earning his bachelor's of science degree in management. He also competed on the Clemson men's club volleyball squad. He received his master's degree in business administration from Emporia State in 1999.

An active member of the American Volleyball Coaches Association (AVCA), Condon is married to Lesley Michelle and the couple have one child, Ella.

THE WILL CONDON LEDGER

YEAR	TEAM	OVERALL	CONFERENCE	HIGHLIGHTS
2000	USC Aiken	24-10	9-5 / t3rd PBC	Tied school mark for most PBC wins in a single season
2001	USC Aiken	19-12	7-7 / 4th PBC	
2002	USC Aiken	14-18	6-8 / 4th PBC	
2003	USC Aiken	13-21	5-9 / t5th PBC	
2004	USC Aiken	21-13	8-6 / 4th PBC	
2005	USC Aiken	16-14	7-5 / 4th PBC	Becomes all-time winningest coach at USC Aiken
2006	USC Aiken	28-7	10-2 / t1st PBC	PBC Regular Season & Tmt Champions / NCAA Region
2007	USC Aiken	26-5	10-0 / 1st PBC	PBC Regular Season & Tmt Champions / NCAA Region
2008	Armstrong	27-8	8-2 / 1st PBC	PBC Champions / NCAA Southeast Region Champions
2009	Armstrong	27-10	11-3 / 2nd PBC	NCAA Southeast Region Participants
2010	Armstrong	22-14	8-6 / 3rd PBC	NCAA Southeast Region Participants
2011	Armstrong	36-3	13-1 / t1st PBC	31-match win streak / PBC Champions / NCAA Region
2012	Armstrong	33-6	13-1 / 1st PBC	PBC Regular Season & Tmt Champions / NCAA Region Hosts
TOTAL	12 Years	306-141	115-55	



WILL CONDON WAS THE AVCA SOUTHEAST REGION COACH OF THE YEAR IN 2012



ALLI ARBOGAST ASSISTANT VOLLEYBALL COACH

Alli Arbogast begins her third season with Pirate volleyball coaching staff as an assistant for the 2013 season.

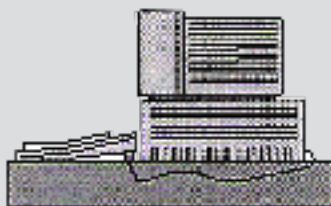
Arbogast joined the Pirates in 2011 from the University of South Florida, where she was a four-year standout for the Bulls from 2006-2009. A first-team All-Big East Conference middle hitter and AVCA All-Northeast Region performer as a senior, Arbogast finished her four-year career at USF as the school's fourth all-time leading blocker with 430 total blocks and second all-time leader in block assists with 380. She hit .326 as a senior and led the Big East in blocking, averaging 1.49 blocks per set and ranking among the Top 10 nationally.

After her time with the Bulls, Arbogast played professionally in Italy for one season before returning to the states.

A native of St. Louis, Mo., Arbogast graduated from USF with her bachelor's of arts degree in communication in 2010. She is currently pursuing her master's degree in sports medicine from Armstrong.



ARMSTRONG VOLLEYBALL LIVE ON THE WEB !



The Armstrong Atlantic State athletic department will continue to bring home all of the exciting volleyball action in 2013 right to your computer as the Pirates stream live audio and video of 12 home matches over the internet.

Fans will be able to catch all of the action from the official Website of Armstrong Athletics, armstrongpirates.com, or at ustream.tv/ArmstrongPirates, with the league's new webcasting partner, UStream.

Armstrong debuted its Internet broadcasting system in 2001 with incredible success as every home men's and women's basketball game, volleyball match, the majority of the Pirates' baseball, softball and women's soccer games were available last season.

For more information about the Armstrong Web broadcast, visit the Armstrong Athletics Web Site or contact Director of Sports Communications Chad Jackson at Chad.Jackson@armstrong.edu





ARMSTRONG VOLLEYBALL LOOKS TO CONTINUE ITS OUTSTANDING RECENT RUN OF SUCCESS IN 2013

The Armstrong Atlantic State University volleyball squad went 33-6 in 2012, capturing not only the Peach Belt Conference's regular season and tournament titles but also hosting the NCAA Southeast Regional for the first time in program history.

Despite the bevy of recent accomplishments, head coach Will Condon and the Pirates still have more to prove as they head into the 2013 season.

The Pirates will have to replace a talented group of seniors that graduated last year - including 2011 PBC Player of the Year Brittany Wolf and 2012 PBC Player and Setter of the Year Ashley Seal - but with 13 returners and a group of four talented newcomers, coach Condon believes that he has the right mix to have Armstrong in postseason contention yet again in 2013.

Preseason all-conference outside hitter Jessica Santaniello will be a key component to the Pirates this season as the three-time All-PBC player heads into 2013 with her eye on not only the Armstrong all-time kill record (needs 280) but the all-time dig record as well (needs 421). She'll be joined on the outside by junior Stephanie Sfara, another preseason all-conference honoree this year albeit at libero, as well as freshmen Paige Gocke and Emily Wylie. Redshirts Anna Jones and Kim Brody could see time outside as well, along with freshman Brittany Hereth and returning junior Carina Marinho.

Marinho played in all 39 matches for the Pirates in 2012, racking up 301 kills, and will begin the season as the starter on the right side. Gocke, a lefty from Fayetteville, Ark., and Wylie could also see time on the right side.

Senior Kristen Holmes, who hit .269 with 110 blocks last season - ranking fifth in the Peach Belt Conference in blocks per set - returns at one middle hitter spot, while the other middle hitter spot will likely be manned by Penn transfer Taylor Permenter, who saw action in a handful of matches last year. Redshirt freshman Rachel Thompson should see action as well in 2013.

Setter Megan Pando has seen her career come full circle as the senior heads into the year as the Pirates' projected starter after starting her entire freshman season in 2010, then working alongside departed setter Ashley Seal the last two years. The Oveido, Fla., native has 1,791 career assists and last year ranked fourth in the Peach Belt in service aces per set. Freshman Caitlynn King and redshirt freshman Kayla Berns give the Pirates good depth at the position.

Defensively, the Pirates have plenty of options, starting with Sfara as the league's preseason All-Conference libero. If Sfara moves to the outside, the Pirates have senior Christina Chow, redshirt junior Morgan Hill and junior Katie Broderick ready to step in, as well as Hereth.

Armstrong has been picked to finish first in 2013 in a preseason poll of the league's coaches. The Pirates received seven first-place votes and 79 votes total, just ahead of Flagler. The Peach Belt adds two teams this season to bring the total number of volleyball schools to 10 - Columbus State and Georgia College each will be sponsoring intercollegiate squads.

The Pirates will open up the season by hosting the 2013 Pirate Volleyball Classic, presented by Optim Orthopedics. The field includes NCAA region participants Flagler and Lincoln Memorial, along with 20-match winner Shorter, Gulf South Conference foe North Alabama, Conference Carolinas foe Erskine and fellow PBC school GRU Augusta (formerly Augusta State). Armstrong will then travel to Mount Olive for the Mount Olive Volleyball Classic before opening up Peach Belt play on September 18th against GRU Augusta. the rest of the non-conference slate contains stiff tests at Newberry, against nationally-ranked Palm Beach Atlantic and perennial Sunshine State Conference foe Florida Southern, who is receiving votes in the preseason AVCA Top 25 poll.

2013 AVCA DIVISION II PRESEASON COACHES POLL

SCHOOL	POINTS
1. Concordia - St. Paul (43)	1188
2. Tampa (1)	1133
3. Nebraska - Kearney	1101
4. Minnesota Duluth (2)	1057
5. BYU-Hawai'i (2)	986
6. Southwest Minnesota State	935
7. Washburn	867
8. Central Missouri	830
9. Indianapolis	746
10. West Texas A&M	709
11. Colorado School of Mines	678
12. Fresno Pacific	637
13. Regis	580
14. Cal State San Bernardino	526
15. Angelo State	502
16. Truman	454
17. Western Washington	403
18. Wheeling Jesuit	376
19. West Florida	319
20. Wayne State (Neb.)	287
21. Wingate	243
22. UC San Diego	197
23. Adams State	138
24. Central Washington	113
25. Palm Beach Atlantic	85
Also receiving votes: Northwood (Mich.) 58, Eckerd 47, Metro State 39, Ferris State 37, Minnesota State Mankato 24, Sonoma State 24, Lewis 23, Cal Baptist 22, Grand Valley State 22, Hillsdale 22, Flagler 20, Arkansas-Ft. Smith 19, Harding 17, Fla. Southern 16, Winona State 12, Rockhurst 11, Cedarville 10, New Haven 8, Cal (Pa.) 7, Wisconsin-Parkside 6	

2013 PEACH BELT PRESEASON POLL

(Coaches could not vote for own team)

School	Total
1. Armstrong	79 (7)
2. Flagler	75 (2)
3. Montevallo	53
4. GRU Augusta	51
5. USC Aiken	49
6. Lander	41
7. Francis Marion	39
8. Columbus State	27
9. UNC Pembroke	21
10. Georgia College	15





JESSICA SANTANIELLO

SENIOR OUTSIDE HITTER

5-9 • BOCA RATON, FLA.

9



SANTANIELLO'S MATCH HIGHS

KILLS

19 vs. Lynn, 9/29/11

DIGS

24 at Augusta State, 9/25/2010
vs. Montevallo, 10/15/2010

2011

Played in 39 matches and 145 sets for the Pirates as a junior ... Earned honorable mention AVCA All-America honors as well as AVCA All-Southeast Region honors ... Earned first-team All-Peach Belt, Daktronics/CoSIDA All-Southeast Region as well as All-PBC Tournament Team honors ... PBC Player of the Week (Sept. 10) ... Hit .257 with a team-leading 420 kills and 434 digs ... Ranked sixth in the PBC in kills per set (2.90) ... Notched 10+ kills in 23 matches and 10+ digs in 26 matches ... Notched a career-high 19 kills in the Pirates' 3-1 win over Lynn on Sept. 29 ... Collected 18 kills in a 3-1 win over Eckerd on Sept. 15 ... Hit .560 with 16 kills and two errors in 25 attacks against Lees-McRae on Sept. 8 ... Tallied a season-high 23 digs against Florida Southern on Sept. 15 ... Member of the PBC Presidential Honor Roll.

2011

Played in 39 matches and a team-high 137 sets as a sophomore for the Pirates ... Hit .210 with 366 kills (2.67/set) and a team-high 451 digs (3.29/set) ... Earned second-team All-PBC honors as well as AVCA All-Southeast Region and Daktronics/CoSIDA Second Team All-Southeast Region honors ... Ranked 10th in the PBC in kills per set and digs per set ... Notched 20 matches with 10 or more kills ... Recorded 25 matches with 10 or more digs ... Collected a season-high 17 kills vs. Catawba on Sept. 3 ... Tallied a season-high 21 digs against Anderson (SC) on Sept. 10..



2010

Played in 36 matches and 129 sets for the Pirates as a sophomore ... Earned second-team All-Peach Belt Conference honors ... Led the Pirates in kills with 343 (2.56/set) and digs with 376 (2.81/set) ... Ranked 10th in the PBC in kills per set and 13th in digs per set ... Notched 16 matches with double digit kills and 17 matches with double digit digs ... Member of the PBC Presidential Honor Roll.

HIGH SCHOOL

Played for four years for West Boca High School ... Named team MVP and Player of the Year by the Sun-Sentinel as a senior for the Bulls ... Earned All-Area honors as a senior from the Palm Beach Post ... Played club ball for Ocean Breeze.

PERSONAL

Born Jessica Ann Santaniello on July 31, 1992, in Boca Raton, Fla., her hometown ... Daughter of Joyce and Stanley Santaniello ... Majoring in rehabilitation sciences ... Enjoys fishing, jet skiing and going to the beach ... Lists Carrie Underwood-Fisher as a favorite personality.

JESSICA SANTANIELLO'S CAREER STATISTICS

Year	MP/GP	Kills	Errors	Attacks	Pct.	Assists	SA	SE	Digs	BS	BA	BE	BHE
2010	36/134	343	140	1116	.182	18	13	24	376	0	35	5	4
2011	39/137	366	119	1177	.210	25	28	8	451	2	38	1	2
2012	39/145	420	129	1131	.257	11	26	19	434	0	24	5	0
3 Years	114/416	1129	388	3424	.216	54	67	51	1261	2	97	11	6

SANTANIELLO IS A THREE-TIME ALL-PBC HONOREE





MEGAN PANDO
SENIOR SETTER
5-8 • OVIEDO, FLA.

13



2012

Played in 32 matches and 108 sets for the Pirates as a junior ... Tallied 550 assists and 48 service aces ... Had six service aces against USC Aiken on Oct. 13 ... Notched a season-high 27 assists in the Pirates' 3-2 win over Belmont Abbey in the NCAA Southeast Regional on Nov. 29 ... Notched 20 or more assists in 12 matches ... Notched a season-high 13 digs at Lander on Nov. 9.

2011

Played in eight matches and 12 sets as a sophomore for the Pirates ... Notched 81 assists (6.75/set) and five service aces.

2010

Played in 36 matches and 127 sets for the Pirates as a freshman ... Tallied a team-high 1,160 assists (9.13/set) and 60 service aces (0.47/set) ... Ranked third in the PBC in assists per set and second in the league in service aces per set ... PBC Specialist of the Week (Sept. 7) ... Notched a season-high 61 assists in the Pirates' 3-2 win at Francis Marion on Nov. 5 ... Notched 12 matches with 40+ assists ... Served a season-high five aces against Francis Marion on Oct. 1 ... Notched 242 digs on the season, with a season-high 18 at Lander on Oct. 29 ... Member of the PBC Presidential Honor Roll.

PANDO'S MATCH HIGHS

ASSISTS

61 at Francis Marion, 11/5/2010

SERVICE ACES

6 vs. USC Aiken, 10/13/12



HIGH SCHOOL

Played for four years at Oviedo HS ... Earned honorable mention All-Conference honors as a senior ... Was the top sophomore for the Lions in 2007 ... Played club for The Volleyball Academy in Winter Springs, Fla.

PERSONAL

Born Megan Pando on September 20, 1991, in Hialeah, Fla. ... Hometown is Oviedo, Fla. ... Daughter of Mary and Frank Pando ... Majoring in economics ... Sister, Ryan, played soccer at Flagler from 2007-09 ... Enjoys playing tennis, volleyball and cooking ... Lists Rafael Nadal, Pete Sampras and Kerri Walsh as favorite sports personalities.

MEGAN PANDO'S CAREER STATISTICS

Year	MP/GP	Kills	Errors	Attacks	Pct.	Assists	SA	SE	Digs	BS	BA	BE	BHE
2010	36/127	41	16	136	.184	1160	60	76	242	1	18	3	31
2011	8/12	2	2	5	.000	81	5	5	14	0	2	0	1
2012	32/108	1	8	16	-.438	550	48	52	143	0	3	1	9
3 Years	76/247	44	26	157	.115	1791	113	133	399	1	23	4	41



PANDO RANKED FOURTH IN THE PBC IN SERVICE ACES PER SET IN 2012

SENIOR KRISTEN HOLMES



KRISTEN HOLMES

SENIOR MIDDLE HITTER
6-2 • FLOWERY BRANCH, GA.



2012

Played in 38 matches and 141 sets as a junior for the Pirates ... Hit .269 with 190 kills and 110 blocks ... Notched a career-high 12 kills against Puerto Rico Rio Piedras on Sept. 16 ... Also had 10 kills and hit .429 vs. Rollins on Sept. 14 ... Notched a career-high seven blocks against Lincoln Memorial on Sept. 7 ... Hit .500 with seven kills and no errors in 14 attacks against UNC Pembroke on Oct. 5 ... Named Capital One/CoSIDA Academic All-District III ... Member of the PBC Presidential Honor Roll.

2011

Saw action in three matches and seven sets for the Pirates as a sophomore ... Registered 13 kills with five errors in 21 attacks for a .381 hitting percentage ... Also notched three blocks and one dig ... Member of the PBC Presidential Honor Roll.

PREVIOUS SCHOOL

Played for one season at Oglethorpe University ... Played in 33 matches and 112 sets as a freshman for the Stormy Petrels ... Hit .153 with 196 kills and a team-high 85 blocks.

HIGH SCHOOL

Played for two seasons at West Hall HS ... Earned first-team All-Region honors for the Spartans ... Graduated with honors ... Played club volleyball for A5.

HOLMES' MATCH HIGHS

KILLS

12 vs. P.R.-Rio Piedras, 9/16/12

BLOCKS:

7 vs. Lincoln Memorial, 9/7/12



PERSONAL

Born Kristen Nicole Holmes on March 25, 1992, in Atlanta, Ga. ... Hometown is Flowery Branch, Ga. ... Daughter of Paul and April Holmes ... Majoring in nursing ... Enjoys rock climbing, shooting, art, music and playing sand volleyball ... Lists Sasha DiGiulian, Tim Lincecum, Brian Wilson and Holly McPeak as favorite sports personalities.

KRISTEN HOLMES' CAREER ARMSTRONG STATISTICS

Year	MP/GP	Kills	Errors	Attacks	Pct.	Assists	SA	SE	Digs	BS	BA	BE	BHE
2011	3/7	13	5	21	.381	0	0	0	1	0	3	1	0
2012	38/141	190	72	439	.269	6	1	0	21	25	85	10	0
2 Years	41/148	203	77	460	.274	6	1	0	22	25	88	11	0

HOLMES WAS A CAPITAL ONE/COSIDA ACADEMIC ALL-DISTRICT III HONOREE



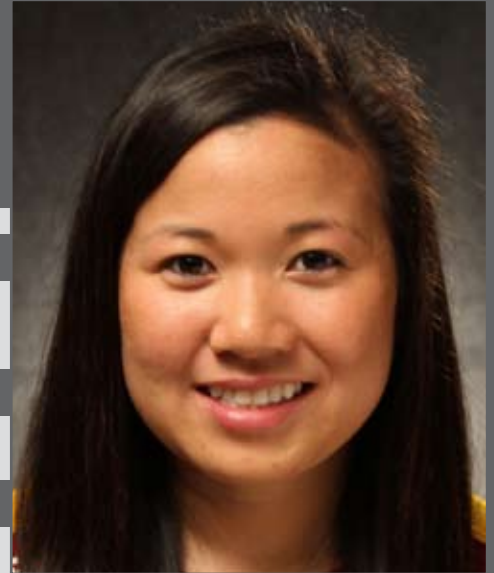


CHRISTINA CHOW

SENIOR LIBERO

5-4 • BRUNSWICK, GA.

16



2012

Played in 10 matches and 36 sets for the Pirates as a junior ... Notched 19 digs and five service aces ... Had five digs and an ace against King (Tenn.) on Sept. 7.

2011

Did not see action during the 2011 season.

2010

Played in nine matches and 14 sets for the Pirates as a freshman ... Recorded 24 digs (1.71/set) ... Notched a season-high 10 digs vs. Fayetteville State on Oct. 22 ... Member of the PBC Presidential Honor Roll.

HIGH SCHOOL

Played for two years at Glynn Academy in Brunswick, Ga. ... Also played for Brunswick Christian Academy and Heritage Christian Academy ... Wendy's High School Heisman finalist ... Played club for Golden Isles Blue Angels.

CHOW'S MATCH HIGHS

Digs

10 vs. Fayetteville State, 10/22/10



PERSONAL

Born Christina Mae Chow on February 20, 1992, in Brunswick, Ga., her hometown ... Daughter of Gene and Rosalynn Chow ... Majoring in radiologic sciences ... Enjoys cooking and traveling ... Lists Misty May-Treanor and Kerri Walsh as her favorite sports personalities. Walsh as a favorite sports personality.

CHRISTINA CHOW'S CAREER STATISTICS

Year	MP/GP	Kills	Errors	Attacks	Pct.	Assists	SA	SE	Digs	BS	BA	BE	BHE
2010	9/14	0	0	0	.000	0	1	3	24	0	0	0	0
2011	Did Not Play												
2012	10/36	1	1	4	.000	3	5	11	19	0	0	0	0
3 Years	19/50	1	1	4	.000	3	6	14	43	0	0	0	0



CHOW IS PRESIDENT OF ARMSTRONG'S STUDENT-ATHLETE ADVISORY COUNCIL FOR 2013-14



CARINA MARINHO
 JUNIOR RIGHTSIDE/OUTSIDE HITTER
 6-0 • BELO HORIZONTE, BRAZIL

19



2012

Played in all 39 matches and 146 sets for the Pirates as a sophomore ... Hit .202 with 301 kills and 71 blocks ... PBC Player of the Week (Sept. 24) ... Had 10 or more kills in seven matches ... Notched a career-high 16 kills three times in 2012, at Carson-Newman (Sept. 8), vs. Fayetteville State (Sept. 21) and at Catawba (Sept. 22) ... Hit .571 with nine kills and one error in 14 attacks at Johnson C. Smith on Sept. 21 ... Notched a season-high six blocks against Belmont Abbey in the NCAA Southeast Regional on Nov. 29..

2011

Played in 13 matches and 20 sets for the Pirates as a freshman ... Hit .323 with 41 kills and nine errors in 99 attacks ... Also recorded 12 blocks and 18 digs ... Hit .688 with 11 kills and no errors in 16 attacks in the Pirates' 3-2 win over Newberry on Sept. 9.

IN BRAZIL

Attended Universidade FUMEC in Belo Horizonte before coming to Armstrong ... Graduated from Colegio Batista Minieiro.

MARINHO'S MATCH HIGHS

KILLS

16, 3 times. Last at Catawba, 9/22/12

HITTING %:

.688 (11-0/16) vs. Newberry, 9/9/11

PERSONAL

Born Carina Izabela Dos Santos Marinho on June 22, 1992, in Belo Horizonte, Brazil, her hometown ... Daughter of Solange Dos Santos ... Majoring in biology and would like to become a doctor.



CARINA MARINHO'S CAREER ARMSTRONG STATISTICS

Year	MP/GP	Kills	Errors	Attacks	Pct.	Assists	SA	SE	Digs	BS	BA	BE	BHE
2011	13/20	41	9	99	.323	0	1	7	18	1	11	0	0
2012	39/146	301	140	797	.202	12	44	53	117	5	66	12	3
2 Years	52/166	342	149	896	.215	12	45	60	135	6	77	12	3

MARINHO WAS THE PBC'S P LAYER OF THE WEEK ON SEPT. 24, 2012



STEPHANIE SFARA

JUNIOR OUTSIDE HITTER

5-9 • BOARDMAN, OHIO

8



2012

Played in 39 matches and 145 sets for the Pirates as a sophomore ... Hit .084 with 22 kills ... Notched 343 digs ... Earned PBC All-Academic Team honors ... Reached a season-high 15 digs four times during the season and had 15 matches with 10+ digs ... Member of the PBC Presidential Honor Roll.

2011

Played in nine matches and 16 sets as a freshman for the Pirates ... Hit .026 with 10 kills and nine errors in 38 attacks ... Also collected 12 digs ... Member of the PBC Presidential Honor Roll.

HIGH SCHOOL

Played for four years at Boardman HS ... Earned Division 1 Player of the Year honors ... Also earned first-team Fed. League honors for the Spartans ... Selected to play in the Ohio All-Star Tournament as well as the inaugural Terrific 21 All-Star Match between Pennsylvania and Ohio ... Played club volleyball for Infinity.

PERSONAL

Born Stephanie Ann Sfara on February 27, 1993, in Boardman, Ohio, her hometown ... Daughter of Karen and Mark Sfara ... Mother, Karen, ran track at Michigan State University ... Sister, Ali, played volleyball at USC Aiken ... Enjoys swimming and all outside activities ... Lists Misty May and Kerri Walsh as favorite sports personalities.

SFARA'S MATCH HIGHS

DIGS

15, 4 times. Last vs. Lynn, 9/29/12

SERVICE ACES

4, vs. Lynn, 9/29/13 & at ASU, 11/3/12



STEPHANIE SFARA'S CAREER STATISTICS

Year	MP/GP	Kills	Errors	Attacks	Pct.	Assists	SA	SE	Digs	BS	BA	BE	BHE
2011	9/16	10	9	38	.026	0	1	4	12	1	2	0	1
2012	39/145	22	13	107	.084	8	39	35	343	0	0	0	0
2 Years	48/161	32	22	145	.069	8	40	39	355	1	2	0	1



SFARA WAS A PBC ALL-ACADEMIC TEAM HONOREE IN 2012



KATIE BRODERICK

JUNIOR LIBERO

5-6 • SAVANNAH, GA.

4



2011 & 2012

Did not see action for the Pirates as a freshman or sophomore.

HIGH SCHOOL

Played for three years at St. Vincent's Academy ... Named SVA Best Defensive Player as a senior ... Also competed in basketball and tennis for the Saints ... Played club volleyball for Club Savannah.

PERSONAL

Born Frances Katie Broderick on June 21, 1993, in Savannah, Ga., her hometown ... Daughter of Kevin and Virginia Broderick ... Majoring in education ... Enjoys fishing, swimming, boating and playing all sports ... Lists Roger Federer and Abby Wambach as favorite sports personalities.

MORGAN HILL

JUNIOR LIBERO

5-7 • ROYAL PALM BEACH, FLA.

11



2012

Redshirted the 2012 season for the Pirates.

JUNIOR COLLEGE

Played for two seasons at Pasco Hernando CC ... Two-time FJCAA Defensive Player of the Week ... Pasco Hernando CC captured the 2010 NJCAA Division II National Championship.

HIGH SCHOOL

Played for three seasons at Royal Palm Beach HS ... Earned All-County and All-Conference honors for the Wildcats ... Royal Palm Beach HS was the FHSAA 6A Runner-Up ... Was the Valedictorian in her high school class.

PERSONAL

Born Morgan Victoria Hill on July 16, 1991, in Royal Palm Beach, Fla., her hometown ... Daughter of Robert and Donna Hill ... Brother, Robby, plays baseball at Daytona State College ... Majoring in psychology ... Enjoys doodling, painting, writing, reading, swimming and cooking ... Lists Pudge Rodriguez as a favorite sports personality.



JUNIOR TAYLOR PERMENTER AND SOPHOMORE ANNA JONES

TAYLOR PERMENTER

JUNIOR MIDDLE HITTER

6-0 • JACKSONVILLE, FLA.



2012

Played in seven matches and 13 sets for the Pirates as a sophomore ... Hit .571 with five kills and five blocks in the Pirates' 3-0 win over St. Augustine's on Sept. 21 ... Member of the PBC Presidential Honor Roll..

PREVIOUS SCHOOL

Played in two sets as a freshman in 2010 at the University of Pennsylvania and did not see action in 2011.

HIGH SCHOOL

Played for three seasons at Nease HS ... Member of the FHSAA State Champion squad in 2008 ... Named most improved in 2007 and earned the coach's award in 2008 for the Panthers.

PERSONAL

Born Taylor Permenter on December 21, 1991, in West Palm Beach, Fla. ... Hometown is Jacksonville, Fla. ... Daughter of Jay and Lisa Permenter ... Majoring in rehabilitation sciences ... Enjoys traveling, animals and watching "The Big Bang Theory" ... Lists Tim Tebow and Misty May-Treanor as her favorite sports personalities.

ANNA JONES

SOPHOMORE OUTSIDE HITTER

5-10 • MARIETTA, GA.

6



2012

Redshirted the 2012 season for the Pirates.

2011

Played in three matches and three sets as a freshman for the Pirates ... Hit .263 with nine kills and four errors in 13 attacks.

HIGH SCHOOL

Played for three years at Kell HS ... HS Offensive Player of the Year in 2010, leading the school in both kills and blocks during her senior season ... Kell advanced to the Georgia 5A Elite Eight and Final Four in 2010 ... Also lettered in track and field for the Longhorns ... Played club volleyball for Cobb Atlanta Juniors.

PERSONAL

Born Anna Jones on January 12, 1993, in Statesboro, Ga. ... Hometown is Marietta, Ga. ... Daughter of Michelle and George Jones ... Father, George, played football at Georgia Southern University ... Older sister, Amanda, played on the Armstrong volleyball squad from 2009-12 ... Majoring in rehabilitation sciences ... Lists Peyton Manning and Chipper Jones as favorite sports personalities.



PERMENTER HIT .571 WITH FIVE BLOCKS IN A 3-0 WIN OVER ST. AUGUSTINE'S ON 9/21

FRESHMEN KAYLA BERNs AND KIM BRODY

KAYLA BERNs

FRESHMAN SETTER

5-4 • AUGUSTA, GA.

14



2012

Redshirted the 2012 season for the Pirates.

HIGH SCHOOL

Played for two years at Greenbrier HS in Evans, Ga. ... Named All-Region as a senior ... Greenbrier HS captured the Region title during her senior season.

PERSONAL

Born Kayla Cheyenne Burns on June 6, 1994, in Honolulu, Hawaii ... Hometown is Augusta, Ga. ... Daughter of Thomas and Nikol Berns ... Father, Thomas, played football at St. Ambrose College ... Undecided in major ... Enjoys listening to music and playing all sports ... LeBron James is a favorite sports personality.

KIM BRODY

FRESHMAN OUTSIDE HITTER

6-0 • DACULA, GA.

2



2012

Redshirted the 2012 season for the Pirates.

HIGH SCHOOL

Played for three seasons at Mill Creek HS ... Gwinnett County "Super Six" selection as well as first-team All-Area and All-County as a senior ... Collected 784 kills combined as a junior and senior for the Hawks.

PERSONAL

Born Kimberly Nicole Brody on July 6, 1994, in Dacula, Ga., her hometown ... Daughter of Joel and Kathy Brody ... Brother, Greg, plays baseball at Belmont ... Majoring in education ... Enjoys hanging out with friends ... Lists Misty-May Treanor, Tim Tebow and Maya Moore as favorite sports personalities.

BERNS AND BRODY EACH REDSHIRTED THE 2012 SEASON FOR THE PIRATES





FRESHMEN PAIGE GOCKE AND BRITTANY HERETH

PAIGE GOCKE
FRESHMAN OUTSIDE HITTER
6-2 • FAYETTEVILLE, ARK.

17



HIGH SCHOOL

Played for three seasons at Fayetteville HS ... Earned All-Conference, All-State and All-Tournament honors for the Bulldogs.

PERSONAL

Born Samantha Paige Gocke on June 27, 1995, in Cincinnati, Ohio ... Hometown is Fayetteville, Ark. ... Daughter of Matt and Polly Gocke ... Majoring in biology ... Enjoys painting, reading, swimming and baking ... Lists Kerri Walsh as a favorite sports personality.

BRITTANY HERETH
FRESHMAN OUTSIDE HITTER/LIBERO
5-11 • ALPHARETTA, GA.

18



HIGH SCHOOL

Played for four years for the King's Academy in Woodstock, Ga. ... Three-time team MVP and team captain for the Knights ... Two-time All-Tournament honoree as well.

PERSONAL

Born Brittany Elizabeth Hereth on March 18, 1995, in Alpharetta, Ga. ... Hometown is Woodstock, Ga. ... Daughter of Jack and Dawn Hereth ... Brother, Brett, played basketball at Bryan College ... Majoring in biology ... Enjoys cooking, baking, playing tennis and hiking ... Lists Rafael Nadal and Andre Agassi as favorite sports personalities.



GOCKE WAS AN ALL-STATE PERFORMER AT FAYETTEVILLE HS AS A SENIOR



CAITLYNN KING

FRESHMAN SETTER

5-9 • FAIRFAX, VA.

13



HIGH SCHOOL

Played for four years at W.T. Woodson HS ... Team captain and MVP as a senior for the Cavaliers, who finished first in the Patriot district ... District tournament MVP as a junior and team MVP as a sophomore.

PERSONAL

Born Caitlynn Ashley King on April 3, 1995, at Andrews Air Force Base in Maryland ... Hometown is Fairfax, Va. ... Daughter of Robynn and Trevor King ... Enjoys reading, swimming and watching old movies ... Lists Misty May-Treanor and Karolyn Kirby among her favorite sports personalities.

RACHEL THOMPSON

FRESHMAN MIDDLE HITTER

6-3 • ST. MARY'S, GA.

1



2012

Redshirted the 2012 season for the Pirates.

HIGH SCHOOL

Played for two years at Camden County HS ... Led the state of Georgia in blocks in 2010 and 2011 ... Two-time All-Area honoree for the Wildcats and 5A Area MVP in 2011.

PERSONAL

Born Rachel Lynn Thompson on February 14, 1994, in Birmingham, Ala. ... Hometown is St. Mary's, Ga. ... Daughter of Keith and Mary Thompson ... Majoring in pre-medicine ... Enjoys drawing, painting and pottery ... Lists Misty May-Treanor and Kerri Walsh as favorite sports personalities.



EMILY WYLIE
FRESHMAN OUTSIDE HITTER
6-4 • GILLSVILLE, GA.

12



HIGH SCHOOL

Played for four seasons at Mill Creek HS ... Named first-team All-State, All-County and All-Area as a senior for the Hawks ... Also named to the state senior All-Star team.

PERSONAL

Born Emily Rebecca Wylie on November 15, 1994, in Lawrenceville, Ga. ... Hometown is Gillsville, Ga. ... Daughter of Clyde Wylie ... Majoring in rehabilitation sciences ... Enjoys baking and four-wheeling ... Lists Misty May, Kerri Walsh and Larry Bird as favorite sports personalities.

PIRATE VOLLEYBALL TRADITION



THE 1999 TEAM UNDER FIRST-YEAR HEAD COACH ALAN SEGAL WON 29 CONSECUTIVE MATCHES TO OPEN UP THE SEASON, THEN A PEACH BEIT CONFERENCE RECORD. ARMSTRONG FINISHED 36-5, SETTING A NEW SCHOOL RECORD FOR WINS IN A SEASON.



THE 2002 SQUAD BECAME THE FIRST TO CAPTURE A PEACH BEIT CONFERENCE CHAMPIONSHIP, BEATING NORTH FLORIDA, 3-0, FOR THE 2002 PBC TOURNAMENT CHAMPIONSHIP.



THE 2005 SQUAD WAS THE FIRST TO WIN THE PEACH BEIT REGULAR SEASON TITLE, GOING 11-1 IN LEAGUE PLAY AND 22-12 OVERALL AS THE PIRATES WON BY ONE GAME OVER FRANCIS MARION.



THE 2008 TEAM, UNDER FIRST-YEAR HEAD COACH WILL CONDON, CAPTURED THE PEACH BEIT REGULAR SEASON AND TOURNAMENT TITLES WHILE ALSO ADVANCING TO THE NCAA DII ELITE EIGHT FOR THE FIRST TIME, WINNING THE SOUTHEAST REGION



THE 2011 TEAM BEGAN THE YEAR BY WINNING ITS FIRST 31 MATCHES IN A ROW, BETTERING ITS OWN PEACH BEIT RECORD, AND ACHIEVED THE HIGHEST NATIONAL RANKING FOR ARMSTRONG VOLLEYBALL AT No. 15. ARMSTRONG CAPTURED THE PEACH BEIT REGULAR SEASON TITLE WITH A 13-1 RECORD AND WENT 36-3 OVERALL.

ARMSTRONG VOLLEYBALL HAS AVERAGED 29 WINS OVER THE LAST FIVE SEASONS





PIRATES WIN PBC REGULAR SEASON & TOURNAMENT TITLES HOST NCAA SOUTHEAST REGIONAL AS NO. 1 SEED

The Armstrong Atlantic State University volleyball squad captured the Peach Belt Conference's regular season and tournament titles in 2012, while hosting its first NCAA Southeast Regional in another highly successful season for the Pirates.

Armstrong finished the year 33-6 overall while going 13-1 in PBC play, earning the program's fifth PBC regular season title. The Pirates outlasted host Flagler, 3-2, in the PBC Tournament match to claim the automatic berth into the NCAAs while also claiming the program's third PBC Tournament title.

Other key wins during the year included a 3-1 win over region participant Eckerd during the South/Southeast Region Challenge as well as key early season region wins over Lincoln Memorial and Tusculum, each of whom advanced to the Southeast Regional.

Regionally ranked most of the season, Armstrong was named the host of the 2012 NCAA Southeast Region for the first time in program history, earning the top seed as well for the first time.

Senior setter Ashley Seal became the first volleyball player in Peach Belt history to claim Setter and Player of the Year honors in the same season. The senior led the Peach Belt in service aces per set, ranking third nationally, and she was just the second player in Armstrong volleyball history to earn a spot on an AVCA All-American squad as she was named to the third team.

Senior middle hitter Brittany Wolf led the Peach Belt in hitting for a second straight season, earning All-PBC, All-Southeast Region and honorable mention AVCA All-America honors. She hit .399, ranking seventh in NCAA Division II, and finished her career third all-time in Armstrong history in hitting percentage and fourth in total blocks. Senior outside hitter Amanda Jones notched her 1,000th career kill during a campaign in which she earned All-PBC, All-Southeast Region and honorable mention AVCA All-America honors, all for the first time in her career. Senior Kelsey Piepergerdes wrapped up her career by earning PBC All-Academic honors.

As a team, the Pirates led the PBC in hitting percentage, setting a school record in the process by hitting .273. Armstrong also led the league in assists per set (12.48), service aces per set (1.92) and blocks per set (1.87).

The Pirates return 13 players for the 2013 season, including honorable mention AVCA All-American outside hitter Jessica Santaniello.



SENIOR ASHLEY SEAL (ABOVE) BECAME THE FIRST PLAYER IN PEACH BELT CONFERENCE VOLLEYBALL HISTORY TO BE NAMED BOTH THE PBC'S SETTER AND PLAYER OF THE YEAR IN 2012. SHE ALSO EARNED AVCA THIRD TEAM ALL-AMERICA HONORS FOR THE PIRATES AND RANKED THIRD IN THE NATION IN SERVICE ACES, SETTING A SCHOOL RECORD IN THE PROCESS WITH 97.

ARMSTRONG CAPTURED THE 2012 PEACH BELT CONFERENCE REGULAR SEASON AND TOURNAMENT TITLES WHILE ALSO EARNING THE RIGHT TO HOST THE NCAA SOUTHEAST REGIONAL FOR THE FIRST TIME IN PROGRAM HISTORY. THE PIRATES OUTLASTED FLAGLER, 3-2, IN THE PBC CHAMPIONSHIP MATCH. BRITTANY WOLF WAS NAMED THE PBC TOURNAMENT MVP.





2012 ARMSTRONG ATLANTIC STATE VOLLEYBALL RESULTS

OVERALL: 33-6 • HOME: 13-4 • AWAY: 11-2 • NEUTRAL: 9-0

DATE	OPPONENT	RESULT	KILLS	ASSISTS	DIGS	BLOCKS
8/31	Lincoln Memorial @	W 3-2 (25-15, 22-25, 23-25, 25-18, 15-10)	Am. Jones (18)	Seal (43)	Santaniello (15)	Holmes (6)
9/1	Tusculum @	W 3-1 (25-13, 20-25, 25-15, 25-12)	Am. Jones (18)	Seal (51)	Sfara (15)	Holmes (4)
	Catwaba @	W 3-0 (25-18, 25-22, 25-11)	Am. Jones (13)	Seal (38)	Seal (10)	Holmes (4)
9/7	vs. Lincoln Memorial %	W 3-1 (25-15, 18-25, 25-19, 25-17)	Am. Jones (15)	Seal (50)	Two with 15	Four with 3
	vs. King (Tenn.) %	W 3-0 (25-19, 25-20, 25-16)	Two with 9	Pando (21)	Sfara (15)	Two with 3
9/8	at Carson-Newman %	W 3-2 (25-16, 24-26, 25-10, 12-25, 15-7)	Marinho (16)	Seal (44)	Winsor (20)	Holmes (4)
	vs. Lees-McRae %	W 3-0 (25-17, 25-13, 25-14)	Santaniello (16)	Seal (36)	Winsor (9)	Holmes (5)
9/14	Rollins ^	L 3-2 (20-25, 25-19, 18-25, 25-22, 10-15)	Am. Jones (19)	Seal (34)	Winsor (23)	Wolf (5)
9/15	Eckerd ^	W 3-1 (25-18, 25-21, 21-25, 25-14)	Santaniello (18)	Seal (46)	Santaniello (14)	Holmes (6)
	Florida Southern ^	L 3-2 (25-11, 20-25, 22-25, 25-21, 11-15)	Santaniello (17)	Seal (37)	Santaniello (23)	Two with 5
9/16	P.R.-Rio Piedras	L 3-2 (25-18, 25-27, 23-25, 25-22, 8-15)	Two with 15	Seal (49)	Santaniello (13)	Holmes (5)
9/21	at Johnson C. Smith #	W 3-0 (25-9, 25-12, 25-15)	Marinho (9)	Seal (22)	Two with 4	Two with 2
	vs. Fayetteville State #	W 3-1 (25-13, 20-25, 25-11, 25-16)	Marinho (16)	Seal (33)	Santaniello (11)	Holmes (2)
	vs. St. Augustine's #	W 3-0 (25-8, 25-15, 25-10)	Seal (7)	Pando (16)	Seal (5)	Permenter (5)
9/22	at Catawba	W 3-2 (21-25, 25-15, 20-25, 25-20, 15-12)	Santaniello (18)	Seal (31)	Santaniello (19)	Two with 3
9/28	Montevallo *	W 3-0 (25-12, 25-22, 25-19)	Wolf (10)	Seal (23)	Winsor (14)	Two with 3
9/29	Augusta State *	W 3-1 (20-25, 25-9, 25-18, 25-18)	Seal (13)	Two with 26	Santaniello (14)	Wolf (4)
	Lynn	W 3-1 (25-17, 21-25, 25-15, 25-13)	Santaniello (19)	Seal (26)	Winsor (19)	Seal (4)
10/5	at UNC Pembroke *	W 3-0 (25-12, 25-20, 25-7)	Two with 8	Seal (25)	Santaniello (17)	Piepergerdes (2)
10/6	at Francis Marion *	W 3-0 (25-23, 25-14, 25-11)	Am. Jones (11)	Seal (22)	Winsor (13)	Holmes (3)
10/10	at Flagler *	L 3-2 (18-25, 16-25, 25-23, 25-18, 11-15)	Two with 11	Seal (21)	Winsor (13)	Wolf (5)
10/12	Lander *	W 3-0 (25-21, 25-11, 25-9)	Wolf (11)	Seal (21)	Winsor (11)	Wolf (4)
10/13	USC Aiken *	W 3-0 (25-21, 25-11, 25-18)	Santaniello (13)	Pando (22)	Two with 10	Am. Jones (2)
10/19	vs. Pfeiffer !	W 3-0 (25-12, 25-17, 25-8)	Two with 10	Seal (30)	Two with 9	Two with 4
10/20	at Mount Olive !	W 3-0 (25-17, 25-14, 25-23)	Wolf (13)	Seal (22)	Pando (10)	Three with 3
	vs. Fayetteville State !	W 3-0 (25-13, 25-19, 25-13)	Santaniello (12)	Seal (21)	Winsor (14)	Wolf (4)
10/23	at Rollins	L 3-0 (15-25, 24-26, 19-25)	Two with 9	Seal (21)	Winsor (17)	Three with 2
10/26	UNC Pembroke *	W 3-0 (25-14, 25-14, 25-19)	Am. Jones (10)	Seal (21)	Two with 10	Holmes (5)
10/27	Francis Marion *	W 3-0 (25-18, 25-15, 25-18)	Am. Jones (14)	Seal (28)	Santaniello (11)	Wolf (3)
11/2	at Montevallo *	W 3-2 (21-25, 25-18, 25-16, 13-25, 15-10)	Santaniello (14)	Seal (34)	Santaniello (10)	Wolf (6)
11/3	at Augusta State *	W 3-2 (22-25, 25-22, 25-18, 20-25, 15-13)	Santaniello (18)	Seal (40)	Winsor (18)	Wolf (4)
11/7	Flagler *	W 3-0 (25-21, 25-21, 25-22)	Seal (14)	Pando (17)	Winsor (15)	Four with 2
11/9	at Lander *	W 3-1 (24-26, 25-16, 25-8, 25-19)	Am. Jones (16)	Seal (32)	Santaniello (16)	Wolf (6)
11/10	at USC Aiken *	W 3-0 (25-17, 25-13, 25-12)	Am. Jones (11)	Seal (21)	Santaniello (13)	Holmes (3)
11/16	vs. UNC Pembroke &	W 3-0 (25-13, 25-20, 25-16)	Santaniello (13)	Seal (29)	Winsor (14)	Am. Jones (3)
11/17	vs. Augusta State &	W 3-0 (25-18, 28-26, 25-14)	Wolf (11)	Seal (26)	Winsor (13)	Wolf (5)
11/18	at Flagler &	W 3-2 (15-25, 25-18, 25-19, 21-25, 15-12)	Seal (16)	Seal (36)	Winsor (15)	Wolf (6)
11/29	Belmont Abbey \$	W 3-2 (18-25, 25-18, 22-25, 25-8, 15-11)	Wolf (16)	Seal (34)	Santaniello (16)	Wolf (8)
11/19	Tusculum \$	L 3-1 (26-24, 23-25, 27-29, 20-25)	Santaniello (13)	Seal (33)	Santaniello (17)	Two with 4

@ 2012 Armstrong Volleyball Classic ^ 2012 South/Southeast Region Challenge ! 2012 Mount Olive College Volleyball Classic
 % 2012 Carson-Newman Invitational # 2012 Johnson C. Smith Invitational
 & 2012 Peach Belt Conference Championships (St. Augustine, Fla.) \$ 2012 NCAA DII Southeast Regional

2012 PIRATE SEASON STATISTICS

PLAYER	MP/SP	KILLS	ERRORS	ATTACKS	PCT.	ASSISTS	SA	SE	DIGS	BS	BA	BE	BHE
Taylor Permenter	7/13	17	3	32	.438	0	0	0	3	4	9	0	0
Brittany Wolf	37/131	297	69	571	.399	3	0	1	28	35	82	15	1
Kelsey Piepergerdes	22/64	22	5	47	.362	9	8	8	104	0	9	1	0
Amanda Jones	39/147	404	117	967	.297	5	0	1	88	15	42	11	2
Ashley Seal	39/145	282	99	636	.288	1166	97	100	241	5	52	7	18
Kristen Holmes	38/141	190	72	439	.269	6	1	0	21	25	85	10	0
Jessica Santaniello	39/145	420	129	1131	.257	11	26	19	434	0	24	5	0
Carina Marinho	39/146	301	140	797	.202	12	44	53	117	5	66	12	3
Stephanie Sfara	39/145	22	13	107	.084	8	39	35	0	0	0	0	0
Megan Turpin	3/12	0	0	0	.000	2	0	5	5	0	0	0	0
Christina Chow	10/36	1	1	4	.000	3	5	11	19	0	0	0	0
Abby Winsor	39/147	0	4	11	-.364	60	14	23	459	0	0	0	0
Megan Pando	32/108	1	8	16	-.438	550	48	52	143	0	3	1	9
TOTALS	39/147	1957	660	4758	.273	1835	282	308	2005	89	372	63	33
Opponents	39/147	1443	791	4570	.143	1321	132	224	1767	67	350	69	43

2012 SEASON RESULTS & STATISTICS



2012 PEACH BELT CONFERENCE STANDINGS

SCHOOL	PBC GAMES	ALL GAMES	HOME	AWAY	NEU
Armstrong	13-1 .929	33-6 .846	13-4	11-2	9-0
Flagler	12-2 .857	22-11 .667	9-3	7-3	6-5
USC Aiken	7-7 .500	18-13 .500	8-4	3-5	7-4
Augusta State	6-8 .429	19-15 .559	8-4	5-6	6-5
Francis Marion	6-8 .429	18-12 .600	10-4	4-6	4-2
Lander	6-8 .429	15-17 .469	5-6	7-8	3-3
Montevallo	6-8 .429	15-17 .469	5-5	4-9	6-3
UNC Pembroke	0-14 .000	5-26 .161	2-8	0-12	3-6

2012 PBC STATISTICAL LEADERS

HITTING PERCENTAGE

PLAYER/SCHOOL	SP	K-E-ATT.	PCT.
Brittany Wolf, Armstrong	131	297-69/571	.399 (7th NCAA)
Manyi Ati, Montevallo	113	284-82/634	.319
Megan Mooney, FMU	112	235-69-540	.307
Rachel Stacy, Flagler	122	220-57-533	.306
Amanda Jones, Armstrong	147	404-117-967	.297

KILLS PER SET

PLAYER/SCHOOL	SP	K	K/SET
Dianna Craine, Flagler	124	425	3.43
Emilee Taylor, Flagler	125	413	3.30
Tarryn Angermeier, Lander	122	396	3.25
Liz Drewry, Francis Marion	112	355	3.17
Michelle Walker, Montevallo	111	350	3.15

ASSISTS PER SET

PLAYER/SCHOOL	SP	AST	AST/SET
Amelia Morgan, Flagler	124	1341	10.81 (23rd NCAA)
Jessica Register, Lander	122	1136	9.31
Ashley Seal, Armstrong	145	1166	8.04
Krystin Wahlig, Augusta State	125	1004	8.03
Briana Marquez, Montevallo	75	578	7.71

BLOCKS PER SET

PLAYER/SCHOOL	SP	BS-BA-TB	BLK/SET
Tarryn Angermeier, Lander	122	17-100-117	0.96
Brittany Wolf, Armstrong	131	35-82-117	0.89
Megan Mooney, FMU	112	10-88-98	0.88
Abby Meyers, Flagler	93	18-59-77	0.83
Kristen Holmes, Armstrong	141	25-85-110	0.78

DIGS PER SET

PLAYER/SCHOOL	SP	DIG	DIG/SET
Casey Gnann, Flagler	126	730	5.79 (12th NCAA)
Samantha Lukralle, USC Aiken	91	517	5.68 (14th NCAA)
Kaleigh Harvey, Montevallo	117	605	5.17 (26th NCAA)
Madison Kubal, Lander	116	540	4.66
Amanda Tagarelli, Augusta St.	111	434	3.91

SERVICE ACES PER SET

PLAYER/SCHOOL	SP	ACES	ACES/SET
Ashley Seal, Armstrong	145	97	0.67 (3rd NCAA)
Ashtin Truesdale, UNC Pembroke	100	47	0.47 (45th NCAA)
Ashley Diedrich, USC Aiken	113	53	0.47 (46th NCAA)
Megan Pando, Armstrong	108	48	0.44
Sawyer Gray, UNC Pembroke	100	42	0.42

2012 ALL-PEACH BELT TEAM

FIRST TEAM

Manyi Ati, Montevallo
 Dianna Craine, Flagler
 Casey Gnann, Flagler
Jessica Santaniello, Armstrong
Ashley Seal, Armstrong
 Emilee Taylor, Flagler
Brittany Wolf, Armstrong

SECOND TEAM

Tarryn Angermeier, Lander
 Shannon Byers, USC Aiken
Amanda Jones, Armstrong
 Jenna Keeler, Augusta State
 Samantha Lukralle, USC Aiken
 Rachel Stacy, Flagler
 Michelle Walker, Montevallo

CO-FRESHMAN OF THE YEAR: Tarryn Angermeier, Lander

& Ashley Diedrich, Augusta State

PLAYER & SETTER OF THE YEAR: Ashley Seal, Armstrong

COACH OF THE YEAR: Ashley Stathas, Lander

LIBERO/DS OF THE YEAR: Casey Gnann, Flagler

2012 PBC TOURNAMENT TEAM

Tarryn Angermeier, Lander
 Jenna Keeler, Augusta State
 Dianna Craine, Flagler
 Sophie Meyer, Flagler
Jessica Santaniello, Armstrong

MOST VALUABLE PLAYER: Brittany Wolf, Armstrong

2012 PBC WEEKLY HONORS

DATE	PLAYER OF THE WEEK	SPECIALIST OF THE WEEK
9/4	Dianna Craine, Flagler	Casey Gnann, Flagler
9/10	Jessica Santaniello, Armstrong	Casey Gnann, Flagler
9/17	Ashley Diedrich, USC Aiken	Amelia Morgan, Flagler
9/24	Carina Marinho, Armstrong	Kailey Smith, Francis Marion
10/1	Shannon Byers, USC Aiken	Amelia Morgan, Flagler
10/8	Shannon Byers, USC Aiken	Ashley Seal, Armstrong
10/15	Dianna Craine, Flagler	Samantha Lukralle, USC Aiken
10/22	Tarryn Angermeier, Lander	Madison Kubal, Lander
10/29	Michelle Walker, Montevallo	Amelia Morgan, Flagler
11/5	Emilee Taylor, Flagler	Ashley Seal, Armstrong
11/12	Manyi Ati, Montevallo	Ashley Seal, Armstrong

ARMSTRONG IN PBC/NCAA STATISTICS

Hitting Percentage: .273, 1st (6th NCAA) Digs per Set: 13.64, 8th
 Assists per Set: 12.48, 1st (33rd NCAA) Winning %: .846 (16th NCAA)
 Blocks per Set: 1.87, 1st Aces per set: 1.92, 1st
 Kills per Set: 13.31, 2nd (39th NCAA) (31st NCAA)

2012 PBC OPPONENTS



COLUMBUS STATE

@Fri., Sept. 27 7:00 p.m.
Sat., Nov. 2 2:00 p.m.

Location: Columbus, GA
Enrollment: 8,300
Nickname: Cougars
Colors: Red, White and Blue
First Season Of Volleyball

Head Coach: Casey Cornett
Phone: (706) 565-4343
SID: Cara Lynn Teague
Phone: (706) 569-3434
Fax: (706) 569-3435
Web: www.csucougars.com

FLAGLER

Wed., Oct. 2 7:00 p.m.
@Wed., Nov. 8 7:00 p.m.

Location: St. Augustine, FL
Enrollment: 2,678
Nickname: Saints
Colors: Maroon and Gold
2012 Record: 22-11
Peach Belt: 12-2 / 2nd
Series: Armstrong leads 15-13

Head Coach: Brian Heffernan
Phone: (904) 819-6376
SID: John Jordan
Phone: (904) 819-6465
Fax: (904) 810-2369
Web: www.flaglerathletics.com

FRANCIS MARION

Sat., Oct. 19 2:00 p.m.
@Tues., Nov. 12 7:00 p.m.

Location: Florence, SC
Enrollment: 4,187
Nickname: Patriots
Colors: Red, White and Blue
2012 Record: 18-12
Peach Belt: 6-8 / t4th
Series: Armstrong leads 31-22

Head Coach: Paul MacDonald
Phone: (843) 661-1246
SID: Michael Hawkins
Phone: (843) 661-1222
Fax: (843) 661-4645
Web: www.fmupatriots.com

GEORGIA COLLEGE

Sat., Sept. 21 2:00 p.m.
@Fri., Oct. 25 7:00 p.m.

Location: Milledgeville, GA
Enrollment: 9,557
Nickname: Bobcats
Colors: Hunter Green and Navy Blue
First Season Of Volleyball

Head Coach: Gretchen Krumdieck
Phone: (478) 445-6142
SID: Al Weston
Phone: (478) 445-179
Fax: (478) 445-1790
Web: www.gcbobcats.com

GRU AUGUSTA

Wed., Sept. 18 7:00 p.m.
@Sat., Oct. 26 2:00 p.m.

Location: Augusta, GA
Enrollment: 9,557
Nickname: Jaguars
Colors: Blue and White
2012 Record: 19-15
Peach Belt: 6-8 / 4th
Series: Armstrong leads 46-16

Head Coach: Sharon Bonaventure
Phone: (706) 667-4766
SID: Joey Warren
Phone: (706) 731-7925
Fax: (706) 737-1782
Web: www.jaguarsroar.com

LANDER

@Sat., Oct. 12 2:00 p.m.
Fri., Nov. 15 7:00 p.m.

Location: Greenwood, SC
Enrollment: 3,000
Nickname: Bearcats
Colors: Royal Blue & Gold
2011 Record: 13-19
Peach Belt: 3-1 / 8th
Series: Armstrong leads 34-1

Head Coach: Ashley Stathas
Phone: (864) 388-8963
SID: Bob Stoner
Phone: (864) 388-8962
Fax: (864) 388-8889
Web: www.landerbearcats.com

MONTEVALLO

@Fri., Sept. 28 2:00 p.m.
Fri., Nov. 1 7:00 p.m.

Location: Montevallo, AL
Enrollment: 3,200
Nickname: Falcons
Colors: Purple and Gold
2012 Record: 15-17
Peach Belt: 6-8 / t4th
Series: Armstrong leads 10-1

Head Coach: Katie O'Brien
Phone: (205) 665-6598
SID: Wesley Hallman
Phone: (205) 665-6606
Fax: (205) 665-6587
Web: www.montevallofalcons.com

UNC PEMBROKE

@Tues., Oct. 8 6:00 p.m.
Fri., Oct. 18 7:00 p.m.

Location: Pembroke, NC
Enrollment: 6,269
Nickname: Braves
Colors: Black and Gold
2012 Record: 5-26
Peach Belt: 0-14 / 8th
Series: Armstrong leads 38-9

Head Coach: Angie Byrd
Phone: (910) 775-4117
VB SID: Caryn Savitz
Phone: (910) 775-4118
Fax: (910) 521-6540
Web: www.uncpbraves.com

USC AIKEN

@Fri., Oct. 11 7:00 p.m.
Sat., Nov. 16 2:00 p.m.

Location: Aiken, SC
Enrollment: 3,303
Nickname: Pacers
Colors: Cardinal, Navy & White
2012 Record: 18-13
Peach Belt: 7-7 / 3rd
Series: Armstrong leads 30-23

Head Coach: Glenn Cox
Phone: (803) 641-3373
SID: Brent Hager
Phone: (803) 641-3252
Fax: (803) 641-3759
Web: www.pacersports.com

FLORIDA SOUTHERN

Sat., Nov. 9 11:00 a.m.
@St. Augustine, Fla.

Location: Lakeland, FL
Enrollment: 2,185
Nickname: Moccasins
Colors: Red and Blue
2012 Record: 22-12
Sunshine State: 11-5 / 3rd
Series: FSC leads 16-5

Head Coach: Jill Stephens
Phone: (863) 680-4474
SID: Ben Greenberg
Phone: (863) 680-4256
Fax: (863) 680-3953
Web: www.fscmocs.com

NEWBERRY

@Sat., Oct. 5 1:00 p.m.

Location: Newberry, SC
Enrollment: 1,025
Nickname: Wolves
Colors: Scarlet and Gray
2012 Record: 19-15
South Atlantic: 10-8 / 5th
Series: Armstrong leads 6-0

Head Coach: Todd Hay
Phone: (803) 321-5237
SID: Josh Manck
Phone: (803) 321-5667
Fax: (803) 680-5169
Web: www.newberrywolves.com

PALM BEACH ATLANTIC

Sat., Nov. 9 5:00 p.m.
@St. Augustine, Fla.

Location: West Palm Bch, FL
Enrollment: 3,171
Nickname: Sailfish
Colors: Navy Blue and White
2012 Record: 35-4
Series: Armstrong leads 2-1

Head Coach: Bob White
Phone: (561) 803-2528
SID: Michael Brown
Phone: (561) 803-2529
Fax: (561) 835-4329
Web: www.pbasailfish.com

THE PIRATES PLAY 13 HOME MATCHES IN 2013





2013 PIRATE VOLLEYBALL CLASSIC PRESENTED BY OPTIM ORTHOPEDICS

Friday, September 16 - Saturday, September 7
Savannah, Ga.

FRIDAY, SEPTEMBER 6

- 1:00 p.m. Armstrong vs. Erskine (Court 1)
Lincoln Memorial vs. Shorter (Court 2)
- 4:00 p.m. Flagler vs. North Alabama (Court 1)
GRU Augusta vs. Erskine (Court 2)
- 7:00 p.m. Armstrong vs. Lincoln Memorial (Court 1)
GRU Augusta vs. North Alabama (Court 2)
Flagler vs. Shorter (Court 3)

SATURDAY, SEPTEMBER 7

- 10:00 a.m. Armstrong vs. North Alabama (Court 1)
Flagler vs. Lincoln Memorial (Court 2)
GRU Augusta vs. Shorter (Court 3)
- 1:00 p.m. North Alabama vs. Erskine (Court 1)
Lincoln Memorial vs. GRU Augusta (Court 2)
- 4:00 p.m. Armstrong vs. Shorter (Court 1)
Flagler vs. Erskine (Court 2)

ERSKINE

Location: Due West, SC
Nickname: Flying Fleet
Affiliation: NCAA II
2012 Record: 16-13
Conference Carolinas: 13-3 / 3rd

LINCOLN MEMORIAL

Location: Harrogate, TN
Nickname: Railsplitters
Affiliation: NCAA II
2012 Record: 21-14
South Atlantic: 12-6 / 3rd

NORTH ALABAMA

Location: Florence, AL
Nickname: Lions
Affiliation: NCAA II
2012 Record: 12-18
Gulf South: 7-9 / 5th

SHORTER

Location: Rome, Ga.
Nickname: Hawks
Affiliation: NCAA II (Transition)
2012 Record: 27-7
First Year In Gulf South

2012 MOUNT OLIVE INVITATIONAL

Friday, September 13 - Saturday, September 14
Mount Olive, N.C.

MARY

Location: Bismarck, ND
Nickname: Marauders
Affiliation: NCAA II
2012 Record: 3-24
Northern Sun: 3-17 / 14th

MOUNT OLIVE

Location: Mount Olive, NC
Nickname: Trojans
Affiliation: NCAA II
2012 Record: 9-19
Conference Carolinas: 5-11 / t5th South

PFEIFFER

Location: Misenheimer, NC
Nickname: Falcons
Affiliation: NCAA II
2012 Record: 8-19
Conference Carolinas: 5-11 / t5th South

PEACH BELT YEAR-BY-YEAR CHAMPIONS

COMPOSITE PEACH BELT W-L RECORDS

1991..... USC Aiken	Flagler	51-5	.911
1992..... USC Aiken	Armstrong.....	172-82	.677
1993..... USC Spartanburg	USC Aiken	146-106	.579
1994..... USC Spartanburg	Montevallo	29-27	.518
1995..... USC Aiken	Francis Marion ...	128-124	.508
1996..... Francis Marion	Augusta State	70-184	.276
1997..... North Florida	Lander	52-147	.261
1998..... FMU & UNF	UNC Pembroke ...	62-188	.248
1999..... North Florida	Columbus State ...	First Season	
2000..... North Florida	Georgia College ..	First Season	
2001..... North Florida			
2002..... North Florida			
2003..... North Florida			
2004..... North Florida			
2005..... Armstrong Atlantic			
2006..... Armstrong, USC Aiken and Francis Marion			
2007..... USC Aiken			
2008..... Armstrong Atlantic			
2009..... Flagler			
2010..... Flagler			
2011..... Armstrong, Flagler			
2012..... Armstrong			

ARMSTRONG INDIVIDUAL RECORDS - CAREER



SETS PLAYED

1. Sarah Haynes, 1999-2002	496
2. Casey Howett, 2008-11	494
3. Traci Knuth, 2003-06	493
4. Erin Melius, 1999-2002	485
5. Sofie Hakansson, 1999-2002	483
6. Christina Flores, 2003-06	452
7. Tracy Fowler, 1994-97	429
Amanda Jones, 2009-12	419
9. Candice Modlinski, 2001-04	421
10. Rindy Vidovich, 2004-08	418

ASSISTS

1. Erin Melius, 1999-2002	5582
2. Ashley Seal, 2011-2012	2600
3. Amanda Shelton, 1995-97	2582
4. Margaret Thornton, 2004-06	2400
5. Hannah Segebart, 2007-08	2088
6. Megan Pando, 2010-	1791
7. Christine Ladewski, 1997-98	1715
8. Hui Gibbs, 1992, 1994	1653
9. Kristin Standhardinger, 2009	1363
10. Stacy Yates, 2005-06	1271

SERVICE ACES

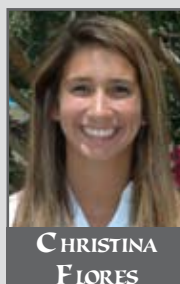
1. Sofie Hakansson, 1999-2002	244
2. Erin Melius, 1999-2002	201
3. Tracy Fowler, 1994-97	177
4. Candice Modlinski, 2001-04	175
5. Ashley Seal, 2011-12	162
6. Margaret Thornton, 2004-06	143
7. Koreena Kaminski, 1991-92	136
8. Sarah Haynes, 1999-2002	131
Christina Flores, 2003-06	131
10. Traci Knuth, 2003-06	130

KILLS

1. Traci Knuth, 2003-06	1409
2. Sarah Haynes, 1999-2002	1383
3. Sofie Hakansson, 1999-2002	1265
4. Jessica Santaniello, 2010-	1129
5. Amanda Jones, 2009-12	1123
6. Tracy Fowler, 1994-97	1087
7. Candice Modlinski, 2001-04	1063
8. Rindy Vidovich, 2004-08	1024
9. Sherrene Benedict, 1992-93	939
Gwen Clarke, 2006-10	939



ERIN
MELIUS



CHRISTINA
FLORES

TOTAL BLOCKS

1. Traci Knuth, 2003-06	536
2. Candice Modlinski, 2001-04	425
3. Sarah Haynes, 1999-2002	420
4. Brittany Wolf, 2009-12	412
5. Christy Johansen, 1991-92	403
6. Darcey Krug, 2001-04	371
7. Rindy Vidovich, 2004-08	288
8. Leah Schmiedge, 2005-06	284
9. Christy Spires, 1997-98	258
10. Lauren Good, 2003-06	252

KILLS PER SET (MIN. 150 SP)

1. Nicole Smith, 1993-94	4.47
2. Sherrene Benedict, 1992-93	3.68
3. Koreena Kaminski, 1991-92	3.51
4. Lindsay Ehlers, 1999-2000	3.32
5. Traci Knuth, 2003-2006	2.86
6. Sarah Haynes, 1999-2002	2.78
7. Micah Roman, 1999-2000	2.72
8. Jessica Santaniello, 2010-	2.71
9. Amanda Jones, 2009-12	2.68
10. Sofie Hakansson, 1999-2002	2.62

DIGS

1. Casey Howett, 2008-2011	1682
2. Christina Flores, 2003-06	1541
3. Tracy Fowler, 1994-97	1360
4. Sofie Hakansson, 1999-2002	1301
5. Jessica Santaniello, 2010-	1261
6. Traci Knuth, 2003-06	1169
7. Torrie Bevolo, 2008-10	1122
8. Nicole Yates, 2006-09	1059
9. Erin Melius, 1999-2002	1054
10. Sarah Haynes, 1999-2002	985

BLOCKS PER SET (MIN. 150 SP)

1. Christy Johansen, 1991-92	1.77
2. Leah Schmiedge, 2005-06	1.17
3. Christy Spires, 1997-98	1.15
4. Nicole Smith, 1993-94	1.09
Traci Knuth, 2003-06	1.09
6. Leia Pittman, 2009-11	1.04
7. Candice Modlinski, 2001-04	1.01
8. Brittany Wolf, 2009-12	1.00
9. Darcey Krug, 2001-04	0.95
10. Kris Bringewatt, 1999-2000	0.90

HITTING % (MIN. 500 KILLS)

1. Michele Remlinger, 2008-09	.354
2. Nicole Smith, 1993-94	.347
3. Brittany Wolf, 2009-12	.342
4. Kris Bringewatt, 1999-2000	.319
5. Sarah Haynes, 1999-2002	.300
6. Sherrene Benedict, 1992-93	.281
7. Traci Knuth, 2003-06	.278
8. Sofie Hakansson, 1999-2002	.274
9. Lindsay Ehlers, 1999-2000	.271
Candice Modlinski, 2001-04	.271

DIGS PER SET (MIN. 150 SP)

1. Casey Howett, 2008-11	3.41
Christina Flores, 2003-06	3.41
3. Adriana Miller, 2005-06	3.37
4. Tracy Fowler, 1994-97	3.17
5. Sherrene Benedict, 1992-93	3.10
Micah Roman, 1999-2000	3.10
7. Jessica Santaniello, 2010-	3.03
8. Torrie Bevolo, 2008-10	2.91
9. Koreena Kaminski, 1991-92	2.84
10. Lindsay Ehlers, 1999-2000	2.78
Stacey Davis, 2010-11	2.78

ALL-TIME ARMSTRONG COACHING RECORDS

Coach	Years	W-L	Pct.
Roger Hansen	1986-88	10-41	.196
William Buckley	1989-90	6-27	.182
Carol Wilson	1991-92	42-25	.627
Alvin Jones	1993	17-19	.472
Carol Meegan	1994-98	69-69	.500
B.J. Ford	1998	7-22	.241
Alan Segal	1999-2007	233-104	.691
Will Condon	2008-	146-40	.785
OVERALL	28 Years	530-347	.604

MOST WINS, SINGLE SEASON: 36, Alan Segal (1999) & Will Condon (2011)

BEST WINNING PERCENTAGE, SINGLE SEASON: 36-3, .923, Will Condon (2011)

MOST LOSSES, SINGLE SEASON: 27, Carol Meegan (1995)

LOWEST WINNING PERCENTAGE, SINGLE SEASON: 2-22, .083, Roger Hansen (1986)



NICOLE SMITH

BRITTANY WOLF FINISHED HER CAREER RANKED 3RD IN HITTING PERCENTAGE AND 4TH IN BLOCKS





ARMSTRONG INDIVIDUAL RECORDS - SEASON

SETS PLAYED

1. Amanda Jones, 2012	147
Abby Winsor, 2012	147
3. Carina Marinho, 2012	146
4. Ashley Seal, 2012	145
Jessica Santaniello, 2012.....	145
Stephanie Sfara, 2012	145
7. Kristen Holmes, 2012.....	141
8. Allyson Ray, 2007	139
Nicole Yates, 2007	139
10. Jessica Santaniello, 2011	137

ASSISTS

1. Erin Melius, 2002.....	1708
2. Ashley Seal, 2011	1434
3. Erin Melius, 2000	1417
4. Erin Melius, 2001	1397
5. Kristin Standhardinger, 2009	1363
6. Hannah Segebart, 2008	1227
7. Ashley Seal, 2012	1166
8. Megan Pando, 2010	1160
9. Amanda Shelton, 1996.....	1107
10. Erin Melius, 1999.....	1060

TOTAL BLOCKS

1. Christy Johansen, 1992	226
2. Christy Johansen, 1991	177
3. Monika Beldzinska, 1998	154
4. Candice Modlinski, 2003	152
Leia Pittman, 2011	152
6. Brittany Wolf, 2010.....	151
7. Andrea Jany, 1996.....	148
8. Traci Knuth, 2005	145
9. Traci Knuth, 2003	144
Leah Schmiedge, 2006.....	144

KILLS

1. Nicole Smith, 1994	620
2. Sherrene Benedict, 1992	494
3. Andrea Jany, 1996.....	483
4. Koreena Kaminski, 1992	452
5. Sherrene Benedict, 1993	445
6. Sofie Hakansson, 2002	440
7. Meike Behrensen, 1997	430
8. Jessica Santaniello, 2012.....	420
9. Sofie Hakansson, 2001	415
10. Sarah Haynes, 2001	406

DIGS

1. Nicole Yates, 2007	572
2. Casey Howett, 2009	526
3. Casey Howett, 2008	492
4. Abby Winsor, 2012	459
5. Jessica Santaniello, 2011	451
6. Christina Flores, 2004	440
7. Jessica Santaniello, 2012.....	434
8. Sofie Hakansson, 2001	428
9. Koreena Kaminski, 1992	422
10. Torrie Bevol, 2008	419



AMANDA
SHELTON



CANDICE
MODLINSKI

KILLS PER SET

1. Nicole Smith, 1994	5.49
2. Andrea Jany, 1996.....	4.51
3. Sherrene Benedict, 1992	3.86
4. Meike Behrensen, 1997	3.77
5. Lindsay Ehlers, 1999	3.58
6. Koreena Kaminski, 1991	3.52
7. Koreena Kaminski, 1992	3.50
Sherrene Benedict, 1993	3.50
9. Betsy Richardson, 1996	3.46
10. Sofie Hakansson, 2002	3.44

DIGS PER SET

1. Nicole Yates, 2007	4.12
2. Casey Howett, 2009	3.95
3. Casey Howett, 2008	3.87
4. Christina Flores, 2006.....	3.82
5. Adriana Miller, 2006.....	3.70
6. Andrea Jany, 1996.....	3.63
7. Brendyce Budd, 2007.....	3.62
8. Christina Flores, 2004	3.61
Casey Howett, 2010	3.61
10. Stacey Davis, 2011.....	3.47

TOTAL BLOCKS PER SET

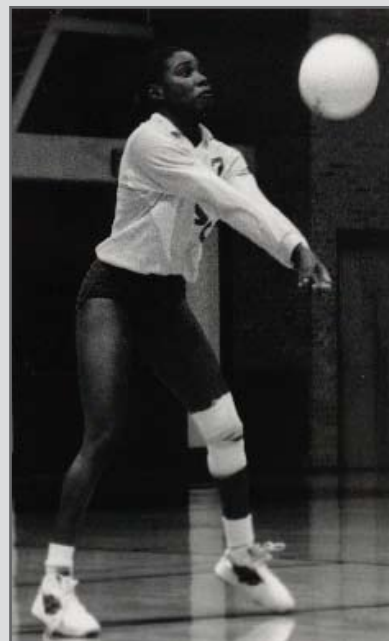
1. Christy Johansen, 1991	1.86
2. Christy Johansen, 1992	1.70
3. Kate Schuchardt, 1991	1.42
4. Andrea Jany, 1996.....	1.38
5. Monika Beldzinska, 1998	1.36
6. Nicole Smith, 1993	1.34
7. Candice Modlinski, 2004	1.27
8. Candice Modlinski, 2003	1.26
9. Leah Schmiedge, 2005.....	1.19
10. Christy Spires, 1997.....	1.16
Traci Knuth, 2003	1.16
Traci Knuth, 2005	1.16

HITTING PERCENTAGE

1. Andrea Jany, 1996.....	.444
2. Brittany Wolf, 2011406
3. Brittany Wolf, 2012.....	.399
4. Kathrin Standhardinger, 2009390
5. Nicole Smith, 1994381
6. Michele Remlinger, 2009.....	.357
7. Michele Remlinger, 2008.....	.352
8. Kris Bringewatt, 1999337
9. Candice Modlinski, 2004335
10. Sarah Haynes, 2000333

SERVICE ACES

1. Ashley Seal, 2012	97
2. Sofie Hakansson, 2001	84
3. Koreena Kaminski, 1992	83
4. Erin Melius, 2002.....	79
5. Sofie Hakansson, 2002	67
Amanda Shelton, 1995.....	67
7. Ashley Seal, 2011	65
8. Megan Pando, 2010.....	60
9. Tracy Fowler, 1996	59
10. Micah Roman, 2000	58



SHERRENE BENEDICT

ARMSTRONG TEAM SINGLE-SEASON RECORDS

KILLS

2,101, 2002

TOTAL ATTACKS

5,192, 2004

ATTACK PERCENTAGE

.273, 2012

SERVICE ACES

355, 1992

TOTAL BLOCKS

542, 1992

ASSISTS

2,051, 2008

DIGS

2,549, 2007

VICTORIES

36, 1999 & 2011

ARMSTRONG INDIVIDUAL MATCH RECORDS



MOST KILLS - 3 SET MATCH

41, Andrea Jany at SCAD, 9/17/96
27, Nicole Smith at West Georgia, 10/9/94
22, Koreena Kaminski at Augusta State, 10/5/91
22, Nicole Smith vs. Mars Hill, 10/8/94
21, Nicole Smith vs. Augusta State, 10/1/94
21, Lindsay Ehlers vs. Mars Hill, 9/10/99
21, Nicole Smith vs. Columbia, 10/30/94
20, Koreena Kaminski at Augusta State, 11/8/91
20, Micah Roman vs. Saginaw Valley St., 9/1/00
20, Andrea Jany vs. USC Aiken, 10/15/96

BEST HITTING % - MIN. 10 ATT.

.909 (10-0/11) Brittany Wolf vs. Pfeiffer, 10/19/12
.818 (9-0/11) Cindy Pound at Voorhees, 9/14/92
.786 (11-0/14) Brittany Wolf vs. Lander, 10/12/12
.778 (14-0/18) Michele Remlinger at CAU, 9/16/08
.769 (10-0/13) Sarah Haynes vs. Rollins, 10/14/00
.769 (10-0/13) Sarah Haynes vs. USCA, 11/10/00
.765 (14-1/17) Michele Remlinger vs. SAPC, 10/24/09
.750 (9-0/12) Sherrene Benedict at Voorhees, 9/14/92
.737 (16-2/19) Nicole Smith vs. FVSU, 10/21/94
.733 (12-1/15) Darcey Krug at Coker, 9/18/04
.722 (14-1/18) Kris Bringewatt vs. FMU, 11/12/99

SERVICE ACES - 3 SET MATCH

9, Margaret Thornton vs. Converse, 9/18/04
8, Erin Melius vs. Pfeiffer, 8/30/02
8, Erin Melius vs. Georgia Southwestern, 9/4/02
8, Allyson Ray vs. North Greenville, 9/22/07
7, Candice Modlinski vs. Augusta State, 10/30/04
7, Angie Michel vs. Augusta State, 9/25/93
7, Stacy Yates vs. Western State, 8/26/05
7, Ashley Seal at Johnson C. Smith, 9/21/12

ASSISTS - 3 SET MATCH

60, Kelly Asbury vs. Colorado Christian, 9/6/03
59, Erin Melius vs. Mars Hill, 9/10/99
58, Erin Melius vs. Harding, 9/20/02
56, Erin Melius vs. Saginaw Valley St., 9/1/00
48, Colleen Fitzsimons vs. SCAD, 9/28/99
48, Erin Melius at North Florida, 11/10/99
48, Erin Melius vs. USC Upstate, 9/28/01
47, Kelly Asbury vs. Catawba, 9/13/03
46, Erin Melius vs. Presbyterian, 9/5/99
46, Colleen Fitzsimons at Augusta St., 10/13/99

DIGS - 3 SET MATCH

29, Micah Roman vs. Mars Hill, 9/10/99
26, Nicole Yates vs. UNC Pembroke, 10/19/07
25, Andrea Jany at North Florida, 9/11/96
25, Nicole Yates vs. St. Andrews, 10/27/07
23, Hui Gibbs vs. Francis Marion, 11/14/92
23, Nicole Yates at Lander, 11/2/07
22, Kara Jerden vs. Catawba, 9/7/07
21, Angie Michel at Charleston Sthrn., 10/5/93
21, Tracy Fowler vs. Saint Leo, 9/15/95
21, Micah Roman vs. Saint Leo, 9/10/99
21, Sofie Hakansson vs. Harding, 9/20/02
21, Rindy Vidovich vs. Francis Marion, 5/12/05
21, Casey Howett vs. Lincoln Memorial, 11/20/09
21, Jessica Santaniello vs. Anderson (SC), 9/10/11

MOST KILLS - 4 SET MATCH

35, Nicole Smith vs. Francis Marion, 9/30/94
33, Nicole Smith vs. UNC Pembroke, 10/1/94
31, Betsy Richardson vs. Elon, 9/28/96
30, Nicole Smith vs. High Point, 9/24/94
29, Sherrene Benedict vs. Augusta State, 11/14/92
28, Nicole Smith at USC Aiken, 10/11/94
28, Koreena Kaminski vs. Bentley, 9/26/92
28, Tracy Fowler vs. Elon, 9/28/96
27, Nicole Smith vs. USC Aiken, 9/30/94
26, Nicole Smith vs. Francis Marion, 11/12/94

BEST HITTING % - MIN. 20 ATT.

.727 (16-0/22) Sarah Haynes vs. W. Georgia, 9/9/00
.708 (17-0/24) Sarah Haynes vs. ASU, 10/21/00
.700 (16-2/20) Sherrene Benedict vs. ASU, 9/25/93
.679 (21-2/28) Nicole Smith vs. Columbia, 10/30/94
.679 (19-0/28) Nicole Smith vs. West Ga., 9/25/94
.636 (14-0/22) Gwen Clarke at Catawba, 9/4/10
.636 (16-2/22) Brittany Wolf at FMU, 10/18/11
.621 (18-0/29) Michele Remlinger at Flagler, 10/15/08
.607 (18-1/28) Sofie Hakansson vs. Lander, 9/28/02
.600 (14-2/20) Traci Knuth vs. Christian Bros., 9/5/03
.577 (18-3/26) Koreena Kaminski vs. Lee, 10/3/92

SERVICE ACES - 4 SET MATCH

9, Koreena Kaminski vs. Troy State, 9/26/92
8, Koreena Kaminski vs. SCAD, 9/23/92
8, Erin Melius vs. North Florida, 11/13/99
7, Michelle Cope vs. Francis Marion, 11/12/94
7, Amanda Shelton vs. Flagler, 10/3/95
6, Koreena Kaminski vs. LaGrange, 10/25/91
6, Sara Stroud at Albany State, 9/28/93
6, Tracy Fowler vs. Wofford, 9/24/94
6, Kelly Wertz at Fort Valley State, 9/25/95
6, Sarah Haynes at West Georgia, 8/25/01
6, Candice Modlinski at Catawba, 10/19/01
6, Sofie Hakansson at Catawba, 10/19/01

ASSISTS - 4 SET MATCH

76, Amanda Shelton vs. SCUP, 9/14/96
70, Erin Melius at Catawba, 10/19/01
69, Christine Ladewski at SCUP, 9/13/97
67, Christine Ladewski vs. Augusta St., 10/28/97
67, Erin Melius vs. USC Upstate, 11/16/00
65, Shannon Tracey at USC Upstate, 11/14/03
64, Hui Gibbs vs. Francis Marion, 9/30/94
64, Erin Melius vs. Augusta State, 11/15/02
63, Erin Melius at USC Upstate, 10/26/02
62, Erin Melius vs. Florida Tech, 10/15/01
59, Erin Melius vs. West Georgia, 9/18/99
59, Erin Melius vs. Catawba, 9/14/02

DIGS - 4 SET MATCH

31, Micah Roman vs. Barry, 9/1/00
30, Tracy Fowler vs. USC Upstate, 9/14/96
30, Christina Flores at Lander, 10/6/06
29, Andrea Jany vs. USC Upstate, 9/14/96
28, Kinsey Ross vs. Florida Tech, 10/15/01
27, Tracy Fowler vs. Elon, 9/29/96
27, Casey Howett at Lander, 10/7/08
26, Sherrene Benedict vs. North Florida, 10/9/92
26, Colleen Fitzsimons vs. North Fla., 11/13/99
26, Adriana Miller vs. Francis Marion, 10/27/06

MOST KILLS - 5 SET MATCH

33, Sherrene Benedict at FMU, 11/14/92
29, Sherrene Benedict vs. USC Aiken, 11/6/93
28, Tracy Fowler vs. Francis Marion, 9/29/95
28, Nicole Smith vs. UNC Pembroke, 9/24/94
27, Lindsay Ehlers vs. Western State, 8/25/00
26, Koreena Kaminski vs. Paine, 9/23/91
26, Sherrene Benedict vs. Tusculum, 10/29/93
26, Betsy Richardson at Augusta St., 9/26/96
26, Gwen Clarke vs. Augusta St., 11/10/07
25, Andrea Jany at Augusta St., 9/26/96
25, Rindy Vidovich at USC Aiken, 9/27/08
25, Brendyce Budd vs. Saint Leo, 9/12/008

BEST HITTING % - MIN. 30 ATT.

.645 (20-0/31) Sofie Hakansson vs. FT, 10/15/01
.545 (28-4/44) K. Kaminski vs. Bentley, 9/26/92
.545 (19-1/33) Michele Remlinger vs. LU, 11/21/08
.543 (21-2/35) Lindsay Ehlers vs. MHC, 9/10/99
.512 (25-4/41) Brendyce Budd vs. Lynn, 9/10/11
.500 (23-2/42) Nicole Smith vs. SAPC, 9/10/94
.500 (18-2/32) Lindsay Ehlers at ASU, 10/13/99
.500 (19-3/32) Rindy Vidovich vs. WGA, 10/18/08
.489 (27-5/45) Nicole Smith vs. USCA, 9/30/94
.474 (19-1/38) Shelley Weekes vs. FSC, 9/13/02
.474 (19-1/38) Gwen Clarke vs. Lander, 9/21/07

SERVICE ACES - 5 SET MATCH

6, Koreena Kaminski vs. PBAC, 10/16/92
6, Koreena Kaminski vs. FMU, 11/14/92
6, Nicole Smith vs. PBAC, 9/16/93
6, Kara Jerden at Alabama-Huntsville, 9/15/07
5, Nicole Smith vs. Alabama State, 10/1/93
5, Keila Nelson vs. North Alabama, 9/22/95
5, Sarah Haynes vs. Western State, 8/25/00
5, Micah Roman vs. North Florida, 10/25/00
5, Micah Roman at USC Upstate, 10/28/00
5, Kara Jerden at Christian Brothers, 8/24/07
4, several times

ASSISTS - 5 SET MATCH

73, Amanda Shelton vs. UNCP, 9/30/95
71, Hannah Segebart vs. LMU, 11/22/09
70, Hannah Segebart vs. Lander, 11/21/09
67, Erin Melius vs. Western State, 8/25/00
64, Hannah Segebart vs. Flagler, 10/10/07
63, Amanda Shelton vs. FMU, 9/29/95
63, Kelly Asbury vs. Fla. Southern, 9/12/03
61, Erin Melius vs. Florida Tech, 9/18/99
61, Megan Pando at Francis Marion, 11/5/10
60, Hannah Segebart at USC Aiken, 9/27/08
59, Amanda Shelton at Augusta State, 9/26/96
59, Kristin Standhardinger vs. Catawba, 9/5/09

DIGS - 5 SET MATCH

39, Koreena Kaminski at FMU, 9/25/91
34, Nicole Yates at Anderson, 9/23/07
33, Sara Stroud vs. Tusculum, 10/29/93
33, Sara Stroud vs. Tusculum, 10/29/93
32, Melanie Methe vs. Tusculum, 10/29/93
30, Christina Flores at Francis Marion, 11/2/04
29, Melanie Methe vs. USC Aiken, 10/30/93
29, Sara Stroud vs. USC Aiken, 10/30/93
29, Casey Howett at USC Aiken, 9/27/08
28, Melanie Methe vs. USC Aiken, 11/6/93
28, Christina Flores vs. Winona State, 4/1/05

ANDREA JANY'S 41 KILLS ARE AN NCAA DII THREE-SET MATCH RECORD



ARMSTRONG TEAM MATCH RECORDS

MOST KILLS - 3 SET MATCH

68 vs. Colorado Christian, 9/6/03
 64 vs. Harding, 9/20/02
 63 vs. Mars Hill, 9/10/99
 61 vs. Saginaw Valley State, 9/1/00
 60 vs. USC Upstate, 10/17/99
 59 vs. SCAD, 9/28/99
 58 vs. Tusculum, 10/20/01
 57 vs. Belhaven, 9/25/07
 56, four times. Last: vs. USC Upstate, 10/8/04

MOST KILLS - 4 SET MATCH

81 at Catawba, 10/19/01
 79 vs. Augusta State, 11/14/92
 77 vs. Francis Marion, 9/30/94
 77 at USC Upstate, 11/14/03
 76 vs. USC Upstate, 11/16/00
 74 vs. High Point 9/24/94
 73 vs. Catawba, 9/14/02
 73 vs. Augusta State, 11/15/02
 72 vs. Lander, 9/28/02
 71 vs. Augusta State, 10/21/06

MOST KILLS - 5 SET MATCH

89 vs. UNC Pembroke, 9/30/95
 78 vs. Francis Marion, 9/29/95
 78 vs. Augusta State, 10/10/07
 77 at Francis Marion, 9/28/07
 77 vs. Lander, 11/21/08
 76 vs. USC Aiken, 11/6/93
 76 vs. Lincoln Memorial, 11/22/08
 75 vs. SCAD, 11/3/93
 75 at Francis Marion, 11/14/92
 74 vs. Tusculum, 10/29/93
 74 vs. Florida Southern, 9/12/03

BEST HITTING % - 3 SET MATCH

.581 (20-2/31) at Voorhees, 10/14/91
 .508 (37-6/61) at Voorhees, 9/14/92
 .508 (38-7/61) vs. St. Augustine's, 9/21/12
 .505 (50-2/95) at UNC Pembroke, 10/22/05
 .492 (41-10/63) vs. Augusta State, 9/25/93
 .489 (50-5/92) vs. UNC Pembroke, 9/24/05
 .486 (23-5/37) vs. Millsaps, 10/3/92
 .485 (40-8/66) at Johnson C. Smith, 9/21/12
 .464 (55-10/97) at Coker, 9/18/04
 .456 (41-5/79) at Clark Atlanta, 9/16/08

BEST HITTING % - 4 SET MATCH

.448 (52-9/96) at Paine, 10/1/93
 .419 (70-13/136) vs. Bentley, 9/26/92
 .389 (58-14/113) vs. Cal State Chico, 8/26/00
 .363 (79-21/160) vs. Augusta State, 11/14/92
 .352 (56-13/122) vs. USC Aiken, 10/31/09
 .333 (51-13/114) vs. USC Aiken, 11/5/11
 .331 (67-16/154) vs. USC Upstate, 11/4/05
 .321 (74-24/156) vs. High Point, 9/24/94
 .321 (49-15/106) vs. Francis Marion, 10/1/11
 .320 (56-15/128) vs. Bridgeport, 9/5/08

BEST HITTING % - 5 SET MATCH

.344 (62-40/128) vs. PBAC, 10/16/92
 .309 (44-14/97) vs. SCAD, 9/21/94
 .289 (75-25/173) vs. SCAD, 11/3/93
 .288 (68-22/160) vs. Georgia Southern, 10/6/92
 .279 (77-20/204) vs. Lander, 11/21/08
 .268 (65-25/149) at Flagler, 11/18/12
 .258 (70-23/182) at Augusta State, 11/3/12
 .255 (60-21/153) vs. P.R.-Rio Piedras, 9/16/12
 .254 (60-17/169) vs. Florida Southern, 9/15/12
 .253 (69-28/162) vs. New York Tech, 9/4/04
 .250 (76-26/200) vs. Catawba, 11/22/08

SERVICE ACES - 3 SET MATCH

20 at Savannah State, 9/23/91
 20 vs. Savannah State, 9/4/99
 18 vs. NC Central, 8/31/02
 17 at Florida Tech, 10/14/06
 16, eight times

SERVICE ACES - 4 SET MATCH

21 vs. LaGrange, 10/25/91
 17 vs. SCAD, 9/23/92
 17 vs. Troy State, 9/26/92
 17 vs. Francis Marion, 10/5/01
 16 vs. Valdosta State, 8/24/01
 15 vs. Albany State, 10/1/93
 15 at Paine, 10/1/93
 15 vs. Augusta State, 11/12/94
 15 vs. Saint Leo, 9/8/01
 15 vs. Saginaw Valley State, 9/2/05

SERVICE ACES - 5 SET MATCH

18 vs. Paine, 9/23/91
 17 vs. SCAD, 10/9/91
 16 vs. Presbyterian, 9/12/03
 15 vs. North Alabama, 9/22/95
 15 vs. USC Upstate, 9/30/95
 15 vs. Angelo State, 9/1/01
 14 vs. Palm Beach Atlantic, 10/16/92
 14 vs. Palm Beach Atlantic, 9/16/93
 14 at Christian Brothers, 8/24/07
 13 at Augusta State, 10/27/07
 13 vs. Catawba, 9/5/09

ASSISTS - 3 SET MATCH

65 vs. Colorado Christian, 9/6/03
 62 vs. Mars Hill, 9/10/99
 59 vs. Saginaw Valley State, 9/1/00
 58 vs. Harding, 9/20/02
 55 vs. Belhaven, 8/25/07
 54 at North Florida, 11/10/99
 54 vs. Fort Valley State, 8/24/01
 54 vs. USC Upstate, 10/8/04
 53 vs. USC Upstate, 10/17/99
 53 vs. Catawba, 9/13/03
 53 at Coker, 9/18/04
 53 vs. Harding, 8/26/05
 53 vs. West Georgia, 9/18/05

ASSISTS - 4 SET MATCH

76 vs. USC Upstate, 9/14/96
 75 vs. Francis Marion, 9/30/94
 74 at Catawba, 10/19/01
 69 at USC Upstate, 9/13/97
 69 vs. Lander, 9/28/02
 69 vs. Augusta State, 11/15/02
 69 at USC Upstate, 11/14/03
 68 vs. USC Upstate, 11/16/00
 67 vs. Augusta State, 10/28/97
 67 vs. Florida Tech, 10/15/01
 67 vs. Catawba, 9/14/02

ASSISTS - 5 SET MATCH

81 vs. UNC Pembroke, 9/30/95
 77 vs. Augusta State, 10/10/07
 76 vs. Lander, 11/21/08
 73 vs. Lincoln Memorial, 11/22/08
 71 vs. Western State, 8/25/00
 71 at Francis Marion, 9/28/07
 69 vs. Florida Southern, 9/12/03
 68 vs. Francis Marion, 9/29/95
 68 vs. USC Upstate, 10/25/03
 68 vs. Francis Marion, 9/23/05
 68 vs. Flagler, 10/10/07

DIGS - 3 SET MATCH

91 vs. Colorado Christian, 9/6/03
 87 vs. UNC Pembroke, 10/19/07
 86 vs. St. Andrews, 10/27/07
 83 vs. Francis Marion, 11/14/92
 82 vs. Catawba, 9/7/07
 81 vs. Harding, 9/20/02
 81 at Lander, 9/26/03
 81 at Lander, 11/5/04
 80 at Lander, 11/2/07
 78 at Augusta State, 10/27/93
 78 vs. Barton, 9/22/07

DIGS - 4 SET MATCH

123 vs. North Florida, 11/13/99
 122 at Lander, 10/6/06
 110 vs. North Alabama, 10/30/93
 107 vs. Florida Tech, 10/15/01
 104 vs. Augusta State, 11/14/92
 103 vs. Southeastern Oklahoma, 8/26/06
 102 vs. USC Upstate, 10/27/01
 99 vs. Barry, 9/8/00
 98 at Lander, 10/7/08
 96 vs. Lander, 9/21/07

DIGS - 5 SET MATCH

163 vs. Tusculum, 10/29/93
 136 vs. USC Aiken, 10/30/93
 119 at Anderson, 9/23/07
 116 at Francis Marion, 9/25/91
 114 vs. Winona State, 9/1/05
 108 vs. UNC Pembroke, 9/30/95
 106 at Francis Marion, 11/14/92
 106 vs. USC Aiken, 11/6/93
 106 vs. Western State, 8/25/00
 106 vs. Angelo State, 9/1/01



ARMSTRONG HAD FOUR OF ITS TOP 10 FIVE-SET HITTING PERFORMANCES IN 2012

HONOR ROLL



ALL-PEACH BELT CONFERENCE

1991	Koreena Kaminski
1992	Koreena Kaminski Sherrene Benedict
1993	Sherrene Benedict
1994	Nicole Smith
1996	Andrea Jany
1997	Meike Behrensen Sandra Gluchy
1999	Kris Bringewatt Lindsay Ehlers Colleen Fitzsimons Micah Roman
2000	Lindsay Ehlers Sarah Haynes Micah Roman
2001	Sofie Hakansson Sarah Haynes Erin Melius
2002	Sofie Hakansson Sarah Haynes Erin Melius
2003	Traci Knuth Darcey Krug Candice Modlinski
2004	Ashley Lavender Traci Knuth Darcey Krug Lauren Good
2005	Traci Knuth
2006	Traci Knuth Rindy Vidovich
2007	Gwendolyn Clarke
2008	Hannah Segebart Rindy Vidovich
2009	Casey Howett Michele Remlinger Kathrin Standhardinger Kristin Standhardinger
2010	Gwen Clarke Jessica Santaniello
2011	Brendyce Budd Leia Pittman Jessica Santaniello Ashley Seal Brittany Wolf
2012	Amanda Jones Jessica Santaniello Ashley Seal Brittany Wolf

PBC COACH OF THE YEAR

1997	Carol Meegan
1999	Alan Segal
2000	Alan Segal (Co-Winner)
2008	Will Condon (Co-Winner)
2011	Will Condon (Co-Winner)

PBC FRESHMAN OF THE YEAR

1996	Andrea Jany (Co-Winner)
1999	Lindsay Ehlers
2009	Kathrin Standhardinger

PBC SETTER OF THE YEAR

2009	Kristin Standhardinger
2012	Ashley Seal



SARAH HAYNES
2000



TRACI KNUTH
2005, 2006



KRIS BRINGEWATT
1999

PEACH BELT CONFERENCE PLAYERS OF THE YEAR



RINDY VIDOVICH
2008



ASHLEY SEAL
2012



BRITTANY WOLF
2011

ALL-PBC TOURNAMENT TEAM

1992	Sherrene Benedict
1996	Andrea Jany
1999	Lindsay Ehlers Erin Melius
2000	Sarah Haynes Micah Roman
2001	Sofie Hakansson Erin Melius
2002	Alexia Piche-Hatch (MVP) Sofie Hakansson
2003	Shannon Tracey
2004	Christina Flores Candice Modlinski
2005	Traci Knuth
2006	Adriana Miller Rindy Vidovich
2008	Torrie Bevollo (MVP) Gwen Clarke Rindy Vidovich
2009	Kathrin Standhardinger Kristin Standhardinger
2010	Gwen Clarke Brittany Wolf
2011	Amanda Jones Brittany Wolf
2012	Jessica Santaniello Brittany Wolf (MVP)

PBC PLAYERS OF THE WEEK

1991	Koreena Kaminski (9/29)
	Ellen Sipes (10/13)
	Koreena Kaminski (10/20)
	Christy Johansen (10/27)
1992	Koreena Kaminski (9/21)
	Sherrene Benedict (10/5)
1993	Sherrene Benedict (10/3,10/31)
1994	Nicole Smith (9/7, 10/11)
1996	Andrea Jany (9/17, 10/1)
1997	Sandra Gluchy (10/14)
1999	Lindsay Ehlers (10/19)
2000	Sarah Haynes (10/24)
2001	Sofie Hakansson (10/16)
2002	Candice Modlinski (10/29)
	Sarah Haynes (9/10)
2003	Darcey Krug (9/16)
	Christina Flores (11/11)
2004	Traci Knuth (9/20, 10/4, 11/8)
	*Christina Flores (9/7)
2005	Traci Knuth (9/9, 10/31, 11/7)
	2006 Traci Knuth (10/2, 10/23)
	2008 Michele Remlinger (9/22)
	Rindy Vidovich (10/13, 11/10)
	*Hannah Segebart (9/2, 9/29, 10/20)
	*Casey Howett (10/13)
2009	Kathrin Standhardinger (10/5)
	Michele Remlinger (11/2)
	*Kristin Standhardinger (8/31, 9/8, 10/19)
2010	*Megan Pando (9/7)
2011	Brendyce Budd (9/12)
	Leia Pittman (10/10)
	Brittany Wolf (10/24)
	*Ashley Seal (9/6, 10/31)
2012	Carina Marinho (9/24)
	Jessica Santaniello (9/10)
	*Ashley Seal (10/8, 11/5, 11/12)

* denotes Specialist of the Week

ASHLEY SEAL WAS THE FIRST PLAYER TO EARN PBC PLAYER AND SETTER OF THE YEAR HONORS





ACADEMIC HONORS

CAPITAL ONE/CoSIDA ACADEMIC ALL-AMERICA HONORS



TRACI KNUTH
2006 - 3RD TEAM

NATIONAL AWARDS



TRACI KNUTH
2003 SOUTH REGION
FRESHMAN OF THE YEAR



KATHRIN STANDHARDINGER
2009 SOUTHEAST REGION
FRESHMAN OF THE YEAR



HANNAH SEGBART
AVCA DII NATIONAL
POTW (Nov. 25, 2008)



BRITTANY WOLF
2011 3RD TEAM
ALL-AMERICAN



ASHLEY SEAL
2012 3RD TEAM
ALL-AMERICAN

HONORABLE MENTION ALL-AMERICANS: 2008 Hannah Segebart 2012 Amanda Jones, Brittany Wolf, Jessica Santaniello

REGION HONORS

ALL-DISTRICT III HONORS



LINDSAY EHLERS
2000



SHELLEY WEEKES
2001, 2002



TRACI KNUTH
2005, 2006



ASHLEY SEAL
2012



KRISTEN HOLMES
2012



SARAH HAYNES
2000, 2001, 2002



SOFIE HAKANSSON
2001, 2002



ERIN MELLUS
2001, 2002



CANDICE MODLINSKI
2004



TORRIE BEVOLO
2008



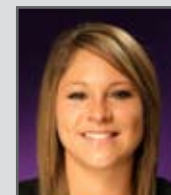
CASEY HOWETT
2008



HANNAH SEGBART
2008



KATHRIN STANDHARDINGER
2009



MICHELE REMLINGER
2009



GWEN CLARKE
2010



BRENDYCE BUDD
2011



JESSICA SANTANIELLO
2011, 2012



BRITTANY WOLF
2011, 2012



LEIA PITTMAN
2011



ASHLEY SEAL
2011, 2012



AMANDA JONES
2012

PBC ALL-ACADEMIC TEAM

2009	Torrie Bevolo Amy Birkemeier Casey Howett	2011	Brendyce Budd Casey Howett Jessica Santaniello
2010	Torrie Bevolo Gwen Clarke Casey Howett	2012	Kelsey Piepergerdes Ashley Seal Stephanie Sfara



TRACI KNUTH WAS ARMSTRONG'S FIRST FEMALE CoSIDA ACADEMIC ALL-AMERICAN

ALL-TIME RESULTS



1986 (2-22)

9/19	UNC Asheville	L 3-0
9/20	Radford	L 3-0
10/4	at Campbell	L 2-0
	North Carolina A&T	L 2-0
10/7	Paine	L 2-0
10/10	* at UNC Asheville	L 2-0
	* vs. Baptist	L 2-0
10/11	* vs. UNC Charlotte	L 2-0
	* vs. UNC Wilmington	L 2-0
10/13	Savannah State	W 3-0
10/15	at Paine	L 2-0
	Augusta	L 3-0
10/17	Campbell	L 3-1
10/18	Jacksonville	L 2-0
10/20	Savannah State	W 3-0
10/22	at Savannah State	L
10/24	Savannah State	L 2-1
10/28	Georgia Southern	L 3-0
10/31	% at Jacksonville	L 3-0
	% vs. Mississippi State	L 3-0
11/1	% vs. Long Island	L 3-0
	% vs. Fla. International	L 3-0
11/4	at Georgia Southern	L 3-0
11/7	\$ Baptist	L 3-0
* - UNC Asheville Tournament		
% - Jacksonville Tournament		
\$ - Big South Conference Tournament		

1987 (4-10)

9/26	Winthrop	L 3-0
	at Augusta	L 3-1
9/29	Augusta	L 3-0
9/30	at Georgia Southern	L 3-0
	at Paine	L 3-1
10/6	Jacksonville	L 3-0
	Georgia Southern	L 3-0
10/8	at Savannah State	W 3-0
10/13	Savannah State	W 2-0
	at Paine	L 2-0
10/15	Savannah State	W 2-1
10/20	at Savannah State	L 2-1
10/24	Benedict	L 2-1
	Savannah State	W 2-0

1988 (4-9)

9/27	at Augusta	L 3-0
	USC Aiken	L 2-0
9/29	Jacksonville	L 3-0
	Savannah State	W 3-0
10/4	at Georgia Southern	L 3-1
	Paine	L 3-0
10/7	Coker	L
	at Benedict	L
10/10	Savannah State	W 3-0
	Augusta	L 3-0
10/12	at Savannah State	W
	Paine	L
10/14	Savannah State	W 3-1

1989 (2-13)

9/26	Georgia Southern	L 2-0
9/30	Mercer	L 2-0
10/2	at Augusta	L 2-0
	Anderson	L 2-0
10/4	Paine	L 2-0
	at Savannah State	W 2-1
10/5	Augusta	L 2-0
	Jacksonville	L 2-0
10/10	Emory	L 2-0
	at Georgia Southern	L 3-0
10/11	at Baptist	L 3-0
10/13	Coker	L 2-0
	Savannah State	W 2-0
10/20	Alabama-Huntsville	L 2-0
	Georgia Southern	L 3-0

1990 (4-14)

9/21	at Georgia Southern	L 3-0
9/22	USC Spartanburg	L 3-0
9/25	Coker	W 3-0
	Savannah State	W 3-0
9/26	at Augusta	L 3-0
9/29	Augusta	L 3-0

10/1	SCAD	W 3-0
	Jacksonville	L 3-0
	Georgia Southern	L 3-1
10/2	at USC Aiken	L 3-0
10/3	at Coker	L 2-0
	North Greenville	L 2-0
10/4	SCAD	L 3-1
	Savannah State	L 2-0
10/8	at Savannah State	W 2-0
	Paine	L 2-1
10/9	USC Aiken	L 3-0
10/10	Florida CC	L 3-0

1991 (15-13, 1-3 PBC)

9/19	Charleston Southern	L 3-0
9/20	SCAD	W 3-1
	Wesleyan	W 3-0
9/23	Paine	W 3-2
	at Savannah State	W 3-0
9/25	at Francis Marion	L 3-2
9/28	at Wesleyan	W 3-0
9/30	Jacksonville	L 3-0
	Georgia Southern	L 3-2
10/1	Savannah State	W 3-0
	Voorhees	W 3-0
10/4	USC Spartanburg	L 3-1
	at USC Aiken	L 3-0
10/5	at Augusta	W 3-0
10/7	at Emory	L 3-0
10/9	Florida CC	L 3-1
	SCAD	W 3-2
10/14	at Voorhees	W 3-0
10/15	at Georgia Southern	L 3-2
10/17	Augusta	W 3-1
	Wesleyan	W 3-0
10/25	at SCAD	W 3-0
	LaGrange	W 3-1
10/28	at Coker	L 3-1
10/30	Coker	L 3-0
11/8	\$ at Augusta	W 3-0
11/9	\$ vs. USC Aiken	L 3-0
	\$ vs. USC Spartanburg	L 3-0
\$ - PBC Tournament (Augusta, Ga.)		

1992 (27-12, 2-3 PBC)

9/14	at Voorhees	W 3-0
	Barber Scotia	W 3-0
9/16	at Georgia Southern	L 3-1
9/17	Columbia	W 3-0
	at SCAD	W 3-0
9/23	Converse	L 3-1
	SCAD	W 3-1
9/25	* vs. Saint Leo	W 3-0
	* vs. Ala.-Huntsville	L 3-0
9/26	* vs. Troy State	W 3-1
	* vs. Bethune-Cookman	W 3-0
	* vs. Bentley	W 3-1
10/2	at Wesleyan	W 3-0
10/3	Lee	W 3-0
	at LaGrange	W 3-0
	Millsaps	W 3-0
10/6	Georgia Southern	L 3-2
10/7	Augusta	W 3-0
10/9	USC Aiken	L 3-2
	North Florida	L 3-1
10/12	at Savannah State	W 3-0
10/14	Francis Marion	L 3-2
10/16	Palm Beach Atlantic	W 3-0
	Palm Beach Atlantic	W 3-2
10/20	at Florida CC	W 3-0
10/23	Savannah State	W 3-0
	Flagler	W 3-0
10/24	Voorhees	W 3-0
10/27	at Emory	W 3-1
10/30	Augusta	W 3-1
	LaGrange	W 2-0
10/31	USC Spartanburg	W 3-1
11/3	Florida CC	W 3-1
11/7	at Charleston Southern	L 3-0
	East Carolina	L 3-1
11/10	UNC Pembroke	L 3-2
11/14	\$ at Francis Marion	L 3-0
	\$ vs. Augusta	W 3-1
	\$ at Francis Marion	L 3-2
* - Eckerd Invitational		
\$ - PBC Tournament (Florence, S.C.)		

1993 (17-19, 1-4 PBC)

9/14	Flagler	W 3-0
	at North Florida	L 3-0
9/16	Palm Beach Atlantic	L 3-2
9/18	at Emory	W 3-2
9/23	West Georgia	W 3-0
	Georgia Southern	L 3-0
9/25	Augusta	W 3-0
9/28	at Albany State	W 3-0
9/30	at USC Aiken	L 3-0
10/1	* vs. Albany State	W 3-1
	* at Paine	W 3-1
	* vs. Alabama State	W 3-2
	* vs. Benedict	W 3-0
10/2	* vs. Alabama State	W 3-1
10/5	at Charleston Southern	L 3-0
10/7	Savannah State	W 3-0
10/12	at Mercer	L 3-0
	Florida A&M	L 3-1
10/15	at Converse	L 3-1
10/16	at USC Spartanburg	L 3-0
10/19	Charleston Southern	L 3-0
10/22	at Francis Marion	L 3-1
10/23	at UNC Pembroke	L 3-0
10/27	at Augusta	W 3-0
10/29	% vs. Miss. Univ. Wmn	L 3-1
	% at West Georgia	W 3-1
	% vs. Tusculum	L 3-2
10/30	% vs. USC Aiken	W 3-2
	% vs. Jacksonville State	L 3-1
	% vs. North Alabama	L 3-1
11/2	at Georgia Southern	L 3-0
11/3	SCAD	W 3-2
11/5	\$ vs. Francis Marion	L 3-1
11/6	\$ vs. USC Aiken	L 3-2
* - Paine Invitational		
% - West Georgia Invitational		
\$ - PBC Tournament (Pembroke, N.C.)		

1994 (18-14, 4-6 PBC)

9/10	* vs. Presbyterian	L 3-0
	* vs. St. Andrews	L 3-1
	* vs. USC Spartanburg	L 3-0
9/14	at Flagler	W 3-0
9/20	Georgia Southern	L 3-0
9/21	SCAD	W 3-2
9/24	% vs. Wofford	W 3-1
	% at Francis Marion	W 3-0
	% vs. High Point	W 3-1
	% vs. UNC Pembroke	L 3-2
9/25	West Georgia	W 3-0
9/27	at Georgia Southern	L 3-1
9/30	& vs. USC Aiken	W 3-1
	& vs. Francis Marion	L 3-1
10/1	& vs. UNC Pembroke	W 3-0
	& at USC Spartanburg	L 3-0
10/8	Mars Hill	W 3-0
	at West Georgia	W 3-0
10/11	at USC Aiken	W 3-1
10/15	USC Spartanburg	L 3-0
10/18	at Francis Marion	L 3-1
10/21	Fort Valley State	W 3-0
10/26	Augusta	W 3-1
10/28	UNC Pembroke	L 3-0
10/30	Columbia	W 3-0
	at SCAD	W 3-0
11/2	at Newberry	W 3-0
11/12	\$ vs. Francis Marion	W 3-1
	\$ vs. USC Spartanburg	L 3-1
	\$ vs. Augusta	W 3-1
	\$ vs. UNC Pembroke	L 3-0
* - Catawba Classic		
% - Francis Marion Invitational		
& - PBC Round Robin (Spartanburg)		
\$ - PBC Tournament (Aiken, S.C.)		

1995 (12-27, 3-7 PBC)

9/8	# vs. North Alabama	L 3-1
	# vs. Carson-Newman	W 3-0
9/9	# vs. Anderson	W 3-0
	# vs. Lenoir-Rhyne	W 3-2
9/11	at North Florida	L 3-0
9/15	% vs. Valdosta State	L 3-0
	% vs. Saint Leo	L 3-0
9/16	% vs. West Georgia	L 3-0

9/19	% at Florida Tech	L 3-0
	SCAD	L 3-1
9/22	! vs. North Alabama	L 3-2
	! vs. Erskine	W 3-1
9/23	! at USC Aiken	L 3-0
	! vs. Erskine	W 3-1
9/25	at Fort Valley State	L 3-1
9/29	* Augusta	W 3-0
	* Francis Marion	W 3-2
9/30	* USC Aiken	L 1-3
	* USC Spartanburg	L 2-3
	* UNC Pembroke	L 2-3
10/3	Flagler	W 3-1
10/7	USC Aiken	L 3-0
10/10	Francis Marion	L 3-1
10/12	Florida Tech	L 3-0
10/13	@ Savannah State	W 3-0
	@ NC Central	W 3-0
10/14	@ Eckerd	L 3-0
	@ Valdosta State	L 3-1
10/16	at Augusta	L 3-0
10/19	at UNC Pembroke	W 3-1
10/21	at USC Spartanburg	L 3-0
10/28	at SCAD	L 3-0
	vs. Oglethorpe	W 3-0
11/3	at Flagler	L 3-0
11/4	^ vs. Tampa	L 3-0
	^ vs. Rollins	L 3-0
11/5	^ at North Florida	L 3-0
11/11	\$ vs. UNC Pembroke	L 3-1
# - Lady Patriot Invitational (Florence)		
% - Florida Tech Invitational		
! - USCA Invitational		
* - PBC Round Robin (Savannah)		
@ - Armstrong Invitational		
^ - South Region Classic (Jacksonville)		
\$ - PBC Tournament (Spartanburg)		

1996 (15-16, 4-6 PBC)

9/7	% vs. Oglethorpe	W 3-0
9/8	% vs. Ga. Southwestern	W 3-0
	% at Valdosta State	W 3-1
9/11	at North Florida	L 3-0
9/13	UNC Pembroke	W 3-0
9/14	USC Spartanburg	W 3-1
9/17	at SCAD	L 3-0
9/18	at USC Aiken	L 3-0
9/26	at Augusta State	L 3-2
9/28	! Rollins	W 3-0
	! Elon	L 3-1
9/29	! Presbyterian	L 3-0
10/1	Flagler	W 3-0
10/4	at UNC Pembroke	W 3-0
10/5	at Francis Marion	L 3-2
10/8	at Fort Valley State	W 3-0
10/12	Albany State	W 3-0
10/15	USC Aiken	L 3-0
10/19	& Coker	W 3-0
10/20	& USC Spartanburg	L 3-0
	& Valdosta State	W 3-0
10/22	SCAD	L 3-1
10/23	Francis Marion	L 3-2
10/26	USC Spartanburg	L 3-0
10/29	Augusta State	W 3-1
11/1	at Flagler	W 3-2
11/9	* vs. Barry	L 3-0
	* vs. Florida Southern	L 3-0
11/10	* at North Florida	L 3-0
11/16	\$ Augusta State	W 3-0
	\$ Francis Marion	L 3-1
% - All-Georgia Invitational (Valdosta)		
! - Tri-Conf. Invitational (Savannah)		
& - Lady Pirate Invitational (Savannah)		
* - South Region Classic (Jacksonville)		
\$ - PBC Tournament (Savannah, Ga.)		

1997 (22-10, 5-7 PBC)

9/3	at Savannah State	W 3-0
9/6	* vs. Ga. Southwestern	W 3-0
	* vs. Brenau	W 3-0
	* at Valdosta State	W 3-1
9/10	at Flagler	W 3-2
9/13	at USC Spartanburg	W 3-1
9/16	at USC Aiken	L 3-0
9/19	Florida Tech	L 3-1
9/20	^ Rollins	W 3-1
	^ Lenoir-Rhyne	W 3-1

ARMSTRONG'S FIRST WINNING SEASON CAME IN 1991, ITS FIRST IN THE PBC





9/26	at Francis Marion	L 3-0
9/27	at UNC Pembroke	W 3-1
9/30	at SCAD	W 3-2
10/1	Flagler	W 3-0
10/5	Valdosta State	W 3-1
	Savannah State	W 3-0
10/6	at Augusta State	W 3-0
10/10	Francis Marion	L 3-0
10/11	UNC Pembroke	W 3-0
10/15	North Florida	L 3-0
10/17	% vs. Paine	W 3-0
	% vs. Gardner-Webb	L 3-1
10/18	% vs. NC Central	W 3-0
10/24	USC Aiken	L 3-2
10/25	USC Spartanburg	L 3-0
10/28	Augusta State	W 3-1
10/31	! vs. Gardner-Webb	W 3-2
	! at Presbyterian	W 3-1
11/1	! vs. Augusta State	W 3-0
11/4	SCAD	W 3-0
11/5	at North Florida	L 3-0
11/14	\$ vs. USC Spartanburg	L 3-1
* - Georgia Challenge (Valdosta, Ga.)		
^ - Kaleigh Challenge (Savannah, Ga.)		
% - USC Aiken Invitational		
! - Presbyterian Invitational		
\$ - PBC Tournament (Augusta, Ga.)		

1998 (9-24, 4-10 PBC)

9/4	% vs. Albany State	W 3-1
9/5	% vs. Piedmont	W 3-0
	% at Valdosta State	L 3-0
9/8	at Augusta State	L 3-0
9/12	* vs. Central Oklahoma	L 3-0
	* at Rollins	L 3-1
9/13	* vs. Valdosta State	L 3-0
9/16	North Florida	L 3-0
9/18	! Florida Tech	L 3-2
9/19	! Catawba	L 3-0
	! Newberry	W 3-0
9/25	at Francis Marion	L 3-1
9/26	at UNC Pembroke	W 3-0
10/2	at Lander	W 3-1
10/3	at USC Spartanburg	L 3-0
10/7	at North Florida	L 3-0
10/9	= vs. King College	L 3-0
10/10	= vs. Newberry	W 3-1
	= at Wingate	L 3-0
	= vs. Bluefield	L 3-0
10/13	Augusta State	L 3-2
10/17	at USC Aiken	L 3-0
10/18	Francis Marion	L 3-0
10/23	# vs. Fayetteville State	L 3-0
10/24	# vs. Catawba	L 3-2
	# vs. Gardner-Webb	L 3-0
10/25	Lander	W 3-0
10/28	SCAD	L 3-0
11/3	USC Aiken	L 3-1
11/6	USC Spartanburg	L 3-1
11/8	UNC Pembroke	W 3-0
11/10	at Newberry	W 3-1
11/12	!! vs. USC Spartanburg	L 3-0
% - Georgia Challenge (Valdosta, Ga.)		
* - Rollins Invitational (Winter Park, FL)		
! - Kaleigh Klassic (Savannah, Ga.)		
= - Wingate Invitational (Wingate, N.C.)		
# - USC Aiken Halloween Invitational		
!! - PBC Tournament (Florence, S.C.)		

1999 (36-5, 11-3 PBC)

8/27	* vs. Seton Hill	W 3-0
	* vs. Mercyhurst	W 3-0
8/28	* vs. Shippensburg	W 3-0
	* at California (Pa.)	W 3-1
9/3	\$ Fayetteville State	W 3-0
	\$ Wingate	W 3-0
9/4	\$ Savannah State	W 3-0
	\$ Presbyterian	W 3-0
9/10	% vs. Mars Hill	W 3-0
	% vs. Saint Leo	W 3-0
9/11	% vs. Lenoir-Rhyne	W 3-0
	% vs. Carson-Newman	W 3-0
9/17	^ vs. West Alabama	W 3-1
	^ vs. Montevallo	W 3-0
9/18	^ vs. Florida Tech	W 3-2
	^ vs. West Georgia	W 3-1
9/24	at USC Aiken	W 3-0

9/25	Fort Valley State	W 3-0
9/28	SCAD	W 3-0
10/1	at Lander	W 3-0
10/2	at USC Spartanburg	W 3-1
10/8	& vs. NC Central	W 3-0
	& vs. Mount Olive	W 3-0
10/9	& vs. St. Augustine's	W 3-0
	& vs. Benedict	W 3-0
	& vs. Barton	W 3-0
10/13	at Augusta State	W 3-0
10/16	USC Aiken	W 3-0
10/17	USC Spartanburg	W 3-0
10/22	at Francis Marion	L 3-1
10/23	at UNC Pembroke	W 3-0
10/26	at SCAD	L 3-0
10/27	North Florida	L 3-0
10/30	Augusta State	W 3-1
10/31	Lander	W 3-0
11/5	UNC Pembroke	W 3-0
11/6	Francis Marion	W 3-0
11/10	at North Florida	L 3-0
11/12	! vs. USC Aiken	W 3-0
	! vs. Francis Marion	W 3-1
11/13	! vs. North Florida	L 3-1
* California (Pa.) Tournament		
\$ Armstrong Pirate Invitational (Savannah)		
% Lady Pacer Invitational (Aiken, S.C.)		
^ VSU Days Invitational (Valdosta)		
& Fayetteville State Invitational		
! PBC Tournament (Greenwood, S.C.)		

2000 (29-10, 12-2 PBC)

8/25	* vs. Western State	W 3-2
	* vs. UC Davis	W 3-0
8/26	* at Mesa State	W 3-1
	* vs. CS Chico	W 3-1
9/1	% vs. Saginaw Valley St.	W 3-0
	% at Grand Valley St.	L 3-0
9/2	% vs. MS Mankato	W 3-0
	% vs. Lake Superior St.	W 3-0
9/8	\$ Barry	W 3-1
9/9	\$ West Georgia	W 3-0
	\$ Tampa	L 3-0
9/10	\$ Florida Southern	W 3-1
9/15	at North Alabama	L 3-0
9/16	vs. Lincoln Memorial	W 3-1
9/22	at Augusta State	W 3-1
9/23	at USC Aiken	W 3-0
9/27	at North Florida	L 3-1
9/29	USC Spartanburg	W 3-0
9/30	Lander	W 3-0
10/2	Florida Tech	W 3-0
10/6	at Francis Marion	W 3-0
10/7	at UNC Pembroke	W 3-0
10/12	at Tampa	W 3-2
10/13	^ at Florida Southern	L 3-0
10/14	^ vs. Rollins	W 3-0
	^ vs. AU Rio Piedras	L 3-1
10/20	USC Aiken	W 3-0
10/21	Augusta State	W 3-0
10/25	North Florida	W 3-2
10/27	at Lander	W 3-0
10/28	at USC Spartanburg	L 3-2
11/3	UNC Pembroke	W 3-0
11/4	Francis Marion	W 3-1
11/6	at Barry	L 3-0
11/10	! at UNC Pembroke	W 3-0
	! vs. USC Aiken	W 3-0
11/11	! vs. North Florida	L 3-1
11/16	& vs. USC Spartanburg	W 3-1
11/17	& vs. North Florida	L 3-0
* Mesa State (Colo.) Invitational		
% Grand Valley St. (Mich.) Invitational		
\$ Armstrong Pirate Classic		
^ Fla. Southern Invitational (Lakeland)		
! PBC Tournament (Pembroke, N.C.)		
& NCAA South Regional (Tampa, Fla.)		

2001 (29-10, 11-3 PBC)

8/24	* vs. Fort Valley State	W 3-0
	* vs. Valdosta State	W 3-1
8/25	* at West Georgia	L 3-1
	* vs. Converse	W 3-0
8/29	Georgia Southwestern	W 3-0
8/31	% at Texas Woman's	W 3-2
	% vs. Central Oklahoma	L 3-0
9/1	% vs. SE Okla. State	W 3-0

9/7	% vs. Angelo State	W 3-2
	\$ Florida Southern	L 3-0
9/8	\$ Saint Leo	W 3-1
	\$ North Alabama	L 3-0
	Augusta State	W 3-0
9/22	USC Aiken	W 3-0
9/26	North Florida	L 3-0
9/28	at USC Spartanburg	L 3-0
9/29	at Lander	W 3-0
10/3	Valdosta State	W 3-0
10/5	Francis Marion	W 3-1
10/6	UNC Pembroke	W 3-0
10/11	at Tampa	L 3-0
10/15	^ vs. Florida Tech	W 3-1
	^ at Florida Southern	W 3-2
10/17	at USC Aiken	W 3-0
10/19	@ at Catawba	W 3-1
	@ vs. Slippery Rock	W 3-0
10/20	@ vs. Converse	W 3-0
	@ vs. Tusculum	W 3-0
10/24	at North Florida	L 3-0
10/26	Lander	W 3-0
10/27	USC Spartanburg	W 3-1
10/30	at Augusta State	W 3-0
11/2	at UNC Pembroke	W 3-1
11/3	at Francis Marion	W 3-0
11/9	! vs. Lander	W 3-0
	! vs. USC Spartanburg	W 3-0
11/10	! at North Florida	L 3-0
11/15	& vs. USC Spartanburg	W 3-0
11/16	& at Tampa	L 3-0
* West Georgia Invitational (Carrollton)		
* Texas Woman's Invitational (Denton)		
\$ Armstrong Invitational		
^ Fla. Southern Invitational (Lakeland)		
@ Catawba adidas Inv. (Salisbury, N.C.)		
! PBC Tournament (Jacksonville, Fla.)		
& NCAA South Regional (Tampa, Fla.)		

2002 (30-10, 12-2 PBC)

8/30	* vs. Milligan	W 3-0
	* vs. Pfeiffer	W 3-0
8/25	* vs. NC Central	W 3-0
	* vs. Converse	W 3-0
9/4	Georgia Southwestern	W 3-0
9/6	% vs. East Stroudsburg	W 3-0
	% vs. New York Tech	W 3-0
9/7	% vs. Bentley	W 3-0
	% at Bryant	W 3-2
9/13	\$ Tusculum	W 3-0
	\$ Florida Southern	W 3-1
9/14	\$ Catawba	W 3-1
	\$ Lewis	L 3-0
9/20	@ vs. West Georgia	W 3-0
	@ vs. Harding	W 3-0
9/21	@ vs. Incarnate Word	L 3-1
	@ at St. Edward's	L 3-0
9/25	at USC Aiken	W 3-0
9/27	USC Spartanburg	W 3-0
9/28	Lander	W 3-1
10/2	North Florida	L 3-0
10/4	at Francis Marion	W 3-0
10/5	at UNC Pembroke	W 3-0
10/10	at Tampa	L 3-0
10/12	^ vs. Nova Southeastern	W 3-0
	^ at Florida Southern	L 3-0
10/16	at Augusta State	W 3-1
10/19	Tampa	L 3-1
10/20	Barry	L 3-0
10/25	at Lander	W 3-0
10/26	at USC Spartanburg	W 3-1
11/1	UNC Pembroke	W 3-0
11/2	Francis Marion	W 3-0
11/6	at North Florida	L 3-1
11/8	USC Aiken	W 3-0
11/9	Augusta State	W 3-0
11/15	! vs. Augusta State	W 3-1
	! vs. USC Spartanburg	W 3-1
11/16	! vs. North Florida	W 3-0
11/22	& vs. Florida Southern	L 3-0
* Catawba Invitational (Salisbury, N.C.)		
% Bryant Invitational (Bryant, R.I.)		
\$ Armstrong Invitational		
@ St. Edward's Classic (Austin, Texas)		
^ Fla. Southern Invitational (Lakeland)		
! PBC Tournament (Jacksonville, Fla.)		
& NCAA South Regional (Tampa, Fla.)		

2003 (22-14, 11-3 PBC)

8/29	* at Lewis	L 3-0
	* vs. Wheeling Jesuit	L 3-0
8/30	* vs. Wisc.-Parksides	L 3-1
	* vs. Hillsdale	L 3-1
9/5	% vs. Arkansas Tech	W 3-1
	% vs. Emporia State	L 3-0
9/6	% vs. Christian Bros.	W 3-0
	% vs. Colo. Christian	W 3-1
9/12	\$ Presbyterian	W 3-2
	\$ Florida Southern	W 3-2
9/13	\$ Catawba	W 3-0
	\$ Tampa	L 3-0
9/19	at Barry	L 3-0
9/20	at Nova Southeastern	W 3-1
9/26	at Lander	W 3-0
9/27	at USC Spartanburg	L 3-1
10/3	UNC Pembroke	W 3-0
10/4	Francis Marion	W 3-1
10/7	at North Florida	L 3-0
10/10	Augusta State	W 3-0
10/11	USC Aiken	W 3-0
10/16	at Saint Leo	W 3-0
10/17	at Florida Southern	L 3-0
10/19	at Tampa	L 3-0
10/24	Lander	W 3-0
10/25	USC Spartanburg	W 3-2
10/29	North Florida	L 3-0
10/31	at UNC Pembroke	W 3-1
11/1	at Francis Marion	W 3-1
11/6	at North Florida	L 3-1
11/7	USC Aiken	W 3-0
11/8	Augusta State	W 3-0
11/14	! vs. USC Aiken	W 3-1
	! at USC Spartanburg	W 3-1
11/15	! vs. North Florida	L 3-0
11/20	& vs. Florida Southern	L 3-1
* Lewis Flyer Festival (Romeoville, Ill.)		
% UNO Classic (Omaha, Nebraska)		
\$ Armstrong Invitational		
! PBC Tournament (Spartanburg, S.C.)		
& NCAA South Regional (Miami, Fla.)		

2004 (29-8, 12-2 PBC)

8/27	! vs. Saginaw Valley St.	W 3-0
	! vs. Arkansas Tech	W 3-0
8/28	! vs. Missouri-St. Louis	W 3-0
	! at Quincy	W 3-0
8/30	at Flagler	W 3-0
9/5	# vs. Queens (NY)	W 3-1
	# vs. New York Tech	W 3-2
9/6	# vs. Bentley	W 3-0
	# vs. LIU-C.W. Post	W 3-0
9/10	\$ Saint Leo	W 3-0
	\$ Florida Southern	L 3-1
9/11	\$ Florida Gulf Coast	W 3-1
	\$ Barry	L 3-1
9/18	vs. Converse	W 3-0
	at Coker	W 3-0
9/29	North Florida	L 3-1
10/1	at Augusta State	W 3-1
10/2	at USC Aiken	W 3-1
10/5	at UNC Pembroke	W 3-1
10/8	USC Upstate	W 3-0
10/9	Lander	W 3-0
10/15	at Saint Leo	W 3-1
10/16	at Tampa	L 3-1
10/18	at Eckerd	W 3-0
10/22	UNC Pembroke	W 3-0
10/23	Francis Marion	W 3-1
10/24	at Florida Southern	L 3-0
10/27	at North Florida	L 3-2
10/29	USC Aiken	W 3-0
10/30	Augusta State	W 3-0
11/2	at Francis Marion	W 3-2
11/5	at Lander	W 3-0
11/6	at USC Upstate	W 3-2
11/12	@ UNC Pembroke	W 3-0
	@ Francis Marion	W 3-0
11/13	@ North Florida	L 3-1
11/18	\$ vs. Florida Southern	L 3-0
! Quincy Invitational (Quincy, Ill.)		
# C.W. Post Invitational (Brookville, NY)		
\$ Armstrong Invitational		
@ PBC Tournament		
\$ NCAA South Regional (Miami, Fla.)		

ALL-TIME RESULTS



2005 (22-12, 11-1 PBC)

8/26	@ vs. Western State	W 3-0
	@ vs. Harding	W 3-0
8/27	@ vs. Ashland	L 3-1
	@ at St. Mary's (Tex.)	L 3-2
8/30	Flagler	W 3-0
9/1	# vs. Winona State	L 3-2
9/2	# vs. Saginaw Valley St.	W 3-1
	# vs. Wisc.-Parkside	W 3-0
9/3	# at Lewis	W 3-0
9/9	% Catawba	L 3-2
	% Florida Southern	L 0-3
9/10	% Lenoir-Rhyne	W 3-0
	% P.R.-Rio Piedras	W 3-2
9/13	at Valdosta State	L 3-0
9/17	Tampa	L 3-0
9/18	West Georgia	W 3-0
9/23	Francis Marion	W 3-2
9/24	UNC Pembroke	W 3-0
9/30	USC Aiken	W 3-1
10/1	Augusta State	W 3-0
10/7	at Lander	W 3-1
10/8	at USC Upstate	W 3-2
10/14	at Barry	L 3-0
10/15	vs. Florida Tech	W 3-0
10/17	at Tampa	L 3-1
10/21	at Francis Marion	L 3-2
10/22	at UNC Pembroke	W 3-0
10/25	at Florida Southern	L 3-1
10/28	at Augusta State	W 3-0
10/29	at USC Aiken	W 3-2
11/4	USC Upstate	W 3-1
11/5	Lander	W 3-0
11/11	\$ vs. USC Aiken	W 3-0
11/12	\$ vs. Francis Marion	L 3-0
	@ St. Mary's Invitational (San Antonio)	
	# Lewis Flyer Festival (Romeoville, Ill.)	
	% Armstrong Invitational	
	\$ PBC Tournament (Augusta, Ga.)	

2006 (20-15, 10-2 PBC)

8/24	@ vs. Fort Lewis	L 3-1
8/25	@ vs. Georgian Court	W 3-0
	@ at Colo.-Colo Springs	W 3-1
8/26	@ vs. Mont. St. Billings	W 3-1
	@ vs. SE Oklahoma	L 3-1
8/28	at CS Monterey Bay	W 3-0
8/29	at CS Dominguez Hills	L 3-2
9/1	# vs. West. Washington	L 3-1
	# at Grand Canyon	L 3-0
9/2	# vs. Colo.-Colo Springs	L 3-2
	# vs. NW Nazarene	L 3-2
9/8	% Presbyterian	W 3-0
	% Florida Southern	L 3-0
9/9	% Lenoir-Rhyne	W 3-1
	% Tampa	L 3-0
9/15	at Augusta State	W 3-0
9/16	at USC Aiken	L 3-0
9/22	USC Upstate	W 3-0
9/23	Lander	W 3-1
9/24	at Florida Southern	L 3-1
9/29	at UNC Pembroke	W 3-0
9/30	at Francis Marion	W 3-2
10/6	at Lander	W 3-1
10/7	at USC Upstate	W 3-1
10/14	at Flagler	W 3-0
	at Florida Tech	W 3-0
	at Tampa	L 3-0
10/15	USC Aiken	W 3-1
10/21	Augusta State	W 3-1
10/27	Francis Marion	L 3-1
10/28	UNC Pembroke	W 3-1
10/29	Barry	L 3-1
11/3	\$ vs. Lander	W 3-0
11/3	\$ at Francis Marion	W 3-0
11/4	\$ vs. USC Aiken	L 3-0
	@ Mountain Lion Inv. (Colorado Springs, Colo.)	
	# Grand Canyon Classic (Phoenix, Ariz.)	
	% Armstrong Invitational	
	\$ PBC Tournament (Florence, S.C.)	

2007 (16-20, 5-5 PBC)

8/24	@ at Christian Brothers	L 3-2
	@ vs. Harding	L 3-0
8/25	@ vs. Belhaven	W 3-0
	@ vs. Ouachita Baptist	W 3-0
8/29	at Alaska - Fairbanks	L 3-2
8/31	at Alaska - Anchorage	L 3-2
9/1	at Alaska - Anchorage	L 3-2
9/7	% Coker	W 3-1
	% Catawba	L 3-0
9/8	% Florida Tech	L 3-0
	% Northwood (Mich.)	L 3-0
9/11	West Georgia	L 3-1
9/14	# vs. Arkansas Tech	L 3-1
	# vs. West Florida	L 3-0
9/15	# vs. Valdosta State	W 3-2
	# at Ala.-Huntsville	L 3-2
9/19	Augusta State	L 3-0
9/21	Lander	W 3-1
9/22	^ vs. Barton	W 3-0
	^ vs. North Greenville	W 3-0
9/23	^ at Anderson	L 3-2
9/28	at Francis Marion	W 3-2
9/29	at UNC Pembroke	W 3-0
10/6	USC Aiken	L 3-0
10/10	Flagler	W 3-2
10/12	& vs. Fort Valley State	W 3-0
	& vs. Clark Atlanta	W 3-0
10/13	& vs. West Alabama	L 3-0
	& at Montevallo	W 3-2
10/17	Francis Marion	L 3-2
10/19	UNC Pembroke	W 3-0
10/27	at Augusta State	W 3-2
	vs. St. Andrews	W 3-0
11/2	at Lander	L 3-0
11/3	at USC Aiken	L 3-1
11/10	\$ vs. Augusta State	L 3-2
	@ Christian Bros. Invitational (Memphis)	
	% Armstrong Invitational	
	^ UAH Invitational (Huntsville, Ala.)	
	^ Anderson Crossover (Anderson, S.C.)	
	& Montevallo Coca-Cola Classic (Montevallo, Ala.)	
	\$ PBC Tournament (Greenwood, S.C.)	

2008 (28-7, 8-2 PBC)

8/29	@ vs. Newberry	W 3-0
	@ vs. North Greenville	W 3-0
8/30	@ at Anderson (S.C.)	W 3-1
	@ vs. Benedict	W 3-0
9/5	% vs. Bridgeport	W 3-1
	% at Bentley	W 3-0
9/6	% vs. Georgian Court	W 3-0
	% vs. New Haven	L 3-1
9/12	# Saint Leo	L 3-2
	# Rollins	L 3-0
9/13	# Carson-Newman	L 3-1
	# Mount Olive	W 3-1
9/16	at Clark Atlanta	W 3-0
9/20	Fort Valley State	W 3-1
9/23	at West Georgia	W 3-2
9/27	at USC Aiken	L 3-2
10/1	Augusta State	W 3-0
10/3	! vs. Fayetteville State	W 3-0
10/7	at Lander	W 3-1
10/10	Francis Marion	W 3-0
10/11	UNC Pembroke	W 3-0
10/15	at Flagler	W 3-1
10/18	West Georgia	W 3-1
10/24	at UNC Pembroke	W 3-0
10/25	at Francis Marion	L 3-0
10/31	at Valdosta State	W 3-0
11/5	at Augusta State	W 3-1
11/7	Lander	W 3-1
11/8	USC Aiken	W 3-1
11/15	^ vs. USC Aiken	W 3-0
11/16	^ vs. Francis Marion	W 3-0
11/21	^ vs. Lander	W 3-2
11/22	\$ vs. Lincoln Memorial	W 3-2
11/23	\$ vs. Catawba	W 3-0
12/4	+ vs. Grand Valley State	L 3-0
	@ Anderson (S.C.) Invitational	
	% Bentley Invitational (Waltham, Mass.)	
	# Armstrong Invitational	
	! UNC Pembroke Invitational	
	^ PBC Tournament (Pembroke, N.C.)	
	\$ NCAA Southeast Regional (Wingate, N.C.)	
	+ NCAA DII Elite Eight (St. Paul, Minn.)	

2009 (27-10, 11-3 PBC)

8/28	@ vs. Erskine	W 3-1
	@ vs. S. Wesleyan	W 3-0
8/29	@ vs. West Alabama	W 3-2
	@ vs. North Greenville	W 3-0
9/4	% vs. Florida Tech	L 3-1
9/5	% vs. St. Andrews	W 3-0
	% vs. Catawba	W 3-2
9/11	# Wingate	L 3-0
9/12	# Barry	L 3-2
	# Lynn	W 3-1
9/18	at Lander	W 3-1
9/19	at USC Aiken	L 3-1
9/25	Montevallo	W 3-2
9/26	Augusta State	W 3-0
	West Georgia	W 3-0
9/30	Flagler	L 3-1
10/2	at Francis Marion	W 3-1
10/3	at UNC Pembroke	W 3-0
10/9	at Emory	L 3-2
10/10	at North Alabama	L 3-2
	vs. Alabama-Huntsville	W 3-0
10/13	at Augusta State	W 3-0
10/16	at Montevallo	W 3-2
10/23	! Pfeiffer	W 3-0
10/24	! St. Andrews	W 3-0
	! King (Tenn.)	W 3-0
10/27	at West Georgia	W 3-0
10/30	Lander	W 3-0
10/31	USC Aiken	W 3-1
11/4	at Flagler	L 3-1
11/6	Francis Marion	W 3-0
11/7	UNC Pembroke	W 3-0
11/13	^ vs. Francis Marion	W 3-0
11/14	^ vs. Lander	W 3-0
11/15	^ vs. Flagler	L 3-0
11/20	\$ vs. Lincoln Memorial	W 3-0
11/21	\$ vs. Flagler	L 3-1
	@ Anderson (S.C.) Invitational	
	% USC Aiken Invitational	
	# Armstrong Invitational	
	! PBC/Conference Carolinas Crossover	
	^ PBC Tournament (Aiken, S.C.)	
	\$ NCAA Southeast Regional (Wingate, N.C.)	

2010 (22-14, 8-6 PBC)

9/3	@ vs. Lenoir-Rhyne	L 3-1
	@ vs. Shippensburg	W 3-1
9/4	@ vs. Pfeiffer	W 3-0
	@ at Catawba	W 3-0
9/7	at Savannah State	W 3-0
9/10	# Rollins	L 3-0
	# Alabama-Huntsville	W 3-0
9/11	# West Georgia	W 3-0
	# Florida Southern	L 3-1
9/14	at Valdosta State	L 3-2
9/17	Lander	W 3-0
9/18	USC Aiken	L 3-1
9/24	at Montevallo	L 3-0
9/25	at Augusta State	L 3-2
9/29	at Flagler	L 3-0
10/1	Francis Marion	W 3-0
10/2	UNC Pembroke	L 3-2
10/5	at West Georgia	L 3-2
10/10	% vs. Florida Tech	W 3-2
	% vs. Merrimack	L 3-1
10/13	Valdosta State	L 3-0
10/15	Montevallo	W 3-1
10/16	Augusta State	W 3-0
10/22	! vs. Fayetteville State	W 3-0
10/23	! vs. St. Augustine's	W 3-0
	! at Mount Olive	W 3-0
10/29	at Lander	W 3-2
10/30	at USC Aiken	W 3-2
11/3	Flagler	L 3-0
11/5	at Francis Marion	W 3-2
11/6	at UNC Pembroke	W 3-0
11/9	Savannah State	W 3-0
11/12	^ UNC Pembroke	W 3-2
11/13	^ Montevallo	W 3-2
11/14	^ Flagler	L 3-0
11/19	\$ vs. Flagler	L 3-1
	@ Catawba Invitational	
	# Armstrong Invitational	
	% Rollins Invite (Winter Park, Fla.)	
	! Mount Olive College Classic	
	^ PBC Tournament	
	\$ NCAA Southeast Regional (Wingate, N.C.)	

2011 (36-3, 13-1 PBC)

9/2	@ Lincoln Memorial	W 3-0
	@ Lenoir-Rhyne	W 3-2
9/3	@ Limestone	W 3-0
	@ Catawba	W 3-1
9/9	% vs. Newberry	W 3-2
	% vs. Florida Tech	W 3-0
9/10	% vs. Anderson (SC)	W 3-0
	% vs. Lynn	W 3-1
9/13	at Queens (NC)	W 3-1
9/16	# North Alabama	W 3-1
9/17	# Valdosta State	W 3-0
	# Rollins	W 3-0
9/23	at Montevallo	W 3-1
9/24	at Augusta State	W 3-0
9/30	UNC Pembroke	W 3-0
10/1	Francis Marion	W 3-1
10/5	Flagler	W 3-1
10/7	at Lander	W 3-0
10/8	at USC Aiken	W 3-2
	vs. Bentley	W 3-0
10/10	at Florida Southern	W 3-1
10/15	Tusculum	W 3-0
10/18	at Francis Marion	W 3-0
10/19	at UNC Pembroke	W 3-0
10/21	! vs. Erskine	W 3-0
	! vs. Lees-McRae	W 3-1
10/22	! vs. Coastal Georgia	W 3-1
	! vs. St. Andrews	W 3-0
	! at Valdosta State	W 3-2
10/25	Montevallo	W 3-0
10/28	Augusta State	W 3-0
10/29	at Flagler	L 3-1
11/4	Lander	W 3-1
11/5	USC Aiken	W 3-1
11/11	^ vs. Lander	W 3-0
11/12	^ at Augusta State	W 3-0
11/13	^ vs. Flagler	L 3-1
11/18	\$ vs. Tusculum	W 3-0
11/19	\$ vs. Flagler	L 3-0
	@ Armstrong Volleyball Classic	
	% USC Aiken Invitational	
	# South/Southeast Region Challenge	
	! Lander Bearcat Invitational	
	^ PBC Tournament (Augusta, Ga.)	
	\$ NCAA Southeast Regional (Wingate, N.C.)	

2012 (33-6, 13-1 PBC)

8/31	@ Lenoir-Rhyne	W 3-2
9/1	@ Tusculum	W 3-1
	@ Catawba	W 3-0
9/7	% vs. Lincoln Memorial	W 3-1
	% vs. King (Tenn.)	W 3-0
9/8	% at Carson-Newman	W 3-2
	% vs. Lees-McRae	W 3-0
9/14	# Rollins	L 3-2
9/15	# Eckerd	W 3-1
	# Florida Southern	L 3-2
9/16	P.R.-Rio Piedras	L 3-2
9/21	! at Johnson C. Smith	W 3-0
	! vs. Fayetteville State	W 3-1
	! vs. St. Augustine's	W 3-0
9/22	at Catawba	W 3-2
9/28	Montevallo	W 3-0
9/29	Augusta State	W 3-1
	Lynn	W 3-1
10/5	at UNC Pembroke	W 3-0
10/6	at Francis Marion	W 3-0
10/10	at Flagler	L 3-2
10/12	Lander	W 3-0
10/13	USC Aiken	W 3-0
10/19	(vs. Pfeiffer	W 3-0
10/20	(at Mount Olive	W 3-0
	(vs. Fayetteville State	W 3-0
10/23	at Rollins	L 3-0
10/26	UNC Pembroke	W 3-0
10/27	Francis Marion	W 3-0
11/2	at Montevallo	W 3-2
11/3	at Augusta State	W 3-2
11/7	Flagler	W 3-0
11/9	at Lander	W 3-1
11/10	at USC Aiken	W 3-0
11/16	^ vs. UNC Pembroke	W 3-0
11/17	^ vs. Augusta State	W 3-0
11/18	^ at Flagler	W 3-2
11/29	\$ Belmont Abbey	W 3-2
11/30	\$ Tusculum	L 3-1
	@ Armstrong Volleyball Classic	
	% Carson-Newman Classic	
	# South/Southeast Region Challenge	
	! Johnson C. Smith Invitational	
	^ PBC Tournament (Flagler, Ga.)	
	\$ NCAA Southeast Regional	

ARMSTRONG HAS ADVANCED TO THE NCAA CHAMPIONSHIPS EACH OF THE LAST FIVE SEASONS





ARMSTRONG ALL-TIME RECORDS VS. OPPONENTS

ARMSTRONG ALL-TIME RECORDS VS. OPPONENTS

Alabama-Huntsville	2-3	Fort Valley State	6-1	Northwood (Mich.)	0-1
Alabama State	2-0	Francis Marion	31-22	Nova Southeastern	2-0
Alaska Anchorage	0-2	Gardner-Webb	1-2	Ouachita Baptist	1-0
Alaska Fairbanks	0-1	Georgia College	0-0	Oglethorpe	2-0
Albany State	5-0	GRU Augusta	46-16	Paine	3-8
Anderson (SC)	3-2	Georgia Southern	0-18	Palm Beach Atlantic	2-1
Angelo State	1-0	Georgia Southwestern	4-0	Pfeiffer	4-0
Arkansas Tech	2-1	Georgian Court	2-0	Piedmont	1-0
Ashland	0-1	Grand Canyon	0-1	Presbyterian	4-2
Baptist	0-3	Grand Valley State	0-2	Puerto Rico-Rio Piedras	1-2
Barber Scotia	1-0	Greenville CC	0-1	Queens (NC)	1-0
Barry	1-8	Harding	2-1	Queens (NY)	1-0
Barton	2-0	Hillsdale	0-1	Quincy	1-0
Belhaven	1-0	High Point	1-0	Radford	0-1
Belmont Abbey	1-0	Incarnate Word	0-1	Rollins	4-6
Benedict	3-2	Jacksonville	0-7	Saginaw Valley State	3-0
Bentley	5-0	Jacksonville State	0-1	St. Andrews	4-1
Bethune-Cookman	1-0	Johnson C. Smith	1-0	St. Augustine's	3-0
Bluefield	0-1	King (Tenn.)	2-1	St. Edward's	0-1
Brenau	1-0	LaGrange	3-0	St. Mary's (Texas)	0-1
Bridgeport	1-0	Lake Superior State	1-0	Saint Leo	6-2
California (Pa.)	1-0	Lander	34-1	Savannah College of Art & Design	12-7
Cal State Chico	1-0	Lee	1-0	Savannah State	26-4
Cal State Dominguez Hills	0-1	Lees-McRae	2-0	Seton Hill	1-0
Cal State Monterey Bay	1-0	Lenoir-Rhyne	7-1	Shippensburg	2-0
Campbell	0-2	Lewis	1-2	Shorter	0-0
Carson-Newman	3-1	Limestone	1-0	Slippery Rock	1-0
Catawba	9-4	Lincoln Memorial	5-0	Southeastern Oklahoma State	1-1
Central Oklahoma	0-2	LIU - Brooklyn	0-1	Southern Wesleyan	1-0
Charleston Southern	0-4	LIU - C.W. Post	1-0	Tampa	1-12
Christian Brothers	1-1	Lynn	3-0	Texas Woman's	1-0
Clark Atlanta	2-0	Mars Hill	2-0	Troy State	1-0
Coastal Georgia	1-0	Mary	0-0	Tusculum	4-2
Coker	4-5	Mercer	0-2	UC Davis	1-0
Colorado Christian	1-0	Mercyhurst	1-0	UNC Asheville	0-2
Colorado - Colorado Springs	1-1	Merrimack	1-0	UNC Charlotte	0-1
Columbia	2-0	Mesa State	1-0	UNC Pembroke	38-9
Columbus State	0-0	Milligan	1-0	UNC Wilmington	0-1
Converse	4-2	Millsaps	1-0	USC Aiken	30-23
East Carolina	0-1	Minnesota State Mankato	1-0	USC Upstate	21-20
East Stroudsburg	1-0	Mississippi College	0-1	Valdosta State	10-7
Eckerd	3-1	Mississippi Univ. for Women	0-1	Voorhees	4-0
Elon	0-1	Missouri - St. Louis	1-0	Wesleyan	4-0
Emory	2-3	Montana State - Billings	1-0	West Alabama	2-1
Emporia State	0-1	Montevallo	10-1	West Florida	0-1
Ersine	4-0	Mount Olive	4-0	West Georgia	13-4
Fayetteville State	6-1	Newberry	6-0	Western State	2-0
Flagler	15-13	New Haven	0-1	Western Washington	0-1
Florida CC	2-2	New York Tech	2-0	Wheeling Jesuit	0-1
Florida A&M	0-1	North Alabama	1-6	Wingate	1-2
Florida Gulf Coast	1-0	North Carolina A&T	0-1	Winona State	0-1
Florida International	0-1	North Carolina Central	4-0	Winthrop	0-1
Florida Southern	5-16	North Greenville	3-0	Wisconsin-Parkside	1-1
Florida Tech	7-6	North Florida	2-27	Wofford	1-0
Fort Lewis	0-1	Northwest Nazarene	0-1		

Bold - 2013 Opponent

THIS IS SAVANNAH



Historic Savannah, Georgia, is located on the Atlantic Coast, at the confluence of the Savannah River and the Atlantic Ocean. Throughout its history, there has been one adjective consistently used to describe Savannah: beautiful.

The reason? There's something about the unique beauty of Savannah that cannot be forgotten. Streets with canopies of moss-laden trees are honored venues for scores of historic homes. The town squares that Savannah's founding father, James Oglethorpe, laid out as public meeting places are now treasured "pocket parks" located throughout the downtown area.

A renovated waterfront area serves as the hub for shopping and entertainment. Nearby sandy beaches draw streams of visitors with persistent cool breezes and the endless lure of the rolling sea. Finally, there's an indescribable - but readily discernible - feeling in the air that pervades Savannah, a kind of "laid back" approach to the world, a "rootedness" that makes living or working in Savannah an experience second to none.

By way of affirmation, *Le Monde*, the leading French newspaper, called Savannah "the most beautiful city in North America."

Savannah has recently captured the imagination of a nation through its history and its appearance in several feature films, including "Glory," "Forrest Gump," "Something to Talk About," "Midnight In The Garden of Good and Evil," "The Legend of Bagger Vance," and the 2009 hit "The Last Song," starring Miley



Cyrus. Savannah also hosted the yachting events of the 1996 Summer Olympics and most recently served as the media home for the G-8 Summit. As a result, tourism has become one of the leading industries in the area.

Savannah hosts over six million tourists each year. Tourism impacts the Savannah area by more than \$634 million. The city boasts over 7,000 rooms and more than 100 restaurants as folks have learned that Savannah is more than just a convenient rest stop on the interstate to Florida.

The climate of Savannah features warm, and sometimes hot, weather for most of the year. There are seven months in which the average temperature is 70 degrees or higher. The lowest average high is in January at 60.3 degrees.

The population in Savannah is roughly 130,000 and Chatham County is the fifth most populous county in Georgia.

Savannah also sits centrally located to some of the South-east's finest beaches. Tybee Island, located less than 30 minutes from Armstrong Atlantic State's campus, offers six miles of unspoiled sands, tempting seafood and gracious accommodations. Resort areas such as Hilton Head, South Carolina, are less than one hour away and provide even more relaxing getaway options.

Whether it's the lure of historic settings, the friendliness of a Southern community or the beautiful climate of southeast Georgia, Savannah is the place for you.

THE ARMSTRONG ATHLETIC DEPARTMENT WISHES TO THANK THE FOLLOWING FOR THEIR SUPPORT OF PIRATE ATHLETICS !



THE PIRATES ATTAINED THEIR FIRST-EVER NATIONAL RANKING IN 2000





2013 ARMSTRONG VOLLEYBALL SCHEDULE

DATE	DAY	OPPONENT	TIME
Sept. 6-7	Fri.-Sat.	2013 Pirate Volleyball Classic presented by Optim Orthopedics	
Sept. 6	Fri.	Erskine	1:00 p.m.
		Lincoln Memorial	7:00 p.m.
Sept. 7	Sat.	North Alabama	10:00 a.m.
		Shorter	4:00 p.m.
Sept. 13-14	Fri.-Sat.	<i>at 2013 Mount Olive College Invitational</i>	
Sept. 13	Fri.	<i>vs. Mary</i>	<i>6:00 p.m.</i>
Sept. 14	Sat.	<i>vs. Alabama-Huntsville</i>	<i>10:00 a.m.</i>
		<i>at Mount Olive</i>	<i>2:00 p.m.</i>
Sept. 18	Wed.	GRU Augusta *	7:00 p.m.
Sept. 21	Sat.	Georgia College *	2:00 p.m.
Sept. 27	Fri.	at Columbus State *	7:00 p.m.
Sept. 28	Sat.	at Montevallo *	2:00 p.m.
Oct. 2	Wed.	Flagler *	7:00 p.m.
Oct. 5	Sat.	at Newberry	1:00 p.m.
Oct. 8	Tues.	at UNC Pembroke *	6:00 p.m.
Oct. 11	Fri.	at USC Aiken *	7:00 p.m.
Oct. 12	Sat.	at Lander *	2:00 p.m.
Oct. 18	Fri.	UNC Pembroke *	7:00 p.m.
Oct. 19	Sat.	Francis Marion *	2:00 p.m.
Oct. 25	Fri.	at Georgia College *	7:00 p.m.
Oct. 26	Sat.	at GRU Augusta *	2:00 p.m.
Nov. 1	Fri.	Montevallo *	7:00 p.m.
Nov. 2	Sat.	Columbus State *	2:00 p.m.
Nov. 8	Fri.	at Flagler *	7:00 p.m.
Nov. 9	Sat.	vs. Florida Southern (@ St. Augustine)	11:00 a.m.
		vs. Palm Beach Atlantic (@ St. Augustine)	5:00 p.m.
Nov. 12	Tues.	at Francis Marion *	7:00 p.m.
Nov. 15	Fri.	Lander *	7:00 p.m.
Nov. 16	Sat.	USC Aiken *	2:00 p.m.
Nov. 22-24	Fri.-Sun.	<i>2013 Peach Belt Conference Championships (Florence, S.C.)</i>	
Dec. 5-8	Thurs.-Sun.	<i>at NCAA Division II South Regional (Site TBA)</i>	
Dec. 12-14	Fri.-Sun.	<i>at NCAA DII Elite Eight (Cedar Rapids, Iowa)</i>	

* denotes Peach Belt Conference match

Bold denotes home match