

Papers published in *Hydrology and Earth System Sciences Discussions* are under open-access review for the journal *Hydrology and Earth System Sciences*

Assessment of conceptual model uncertainty for the regional aquifer Pampa del Tamarugal – North Chile

R. Rojas^{1,*}, O. Batelaan^{1,2}, L. Feyen³, and A. Dassargues^{1,4}

¹Applied geology and mineralogy, Department of Earth and Environmental Sciences, Katholieke Universiteit Leuven, Celestijnenlaan 200E, 3001 Heverlee, Belgium

²Department of Hydrology and Hydraulic Engineering, Vrije Universiteit Brussel, Pleinlaan 2, 1050 Brussels, Belgium

³Land management and natural hazards unit, Institute for Environment and Sustainability (IES), DG-Joint Research Centre (JRC), European Commission, Via E. Fermi 2749, TP261, 21027 Ispra (Va), Italy

⁴Hydrogeology and Environmental Geology, Department of Architecture, Geology, Environment, and Constructions (ArGEnCo), Université de Liège, B.52/3 Sart-Tilman, 4000 Liège, Belgium

HESSD

6, 5881–5935, 2009

Assessment of conceptual model uncertainty for Pampa del Tamarugal

R. Rojas et al.

Title Page

Abstract

Introduction

Conclusions

References

Tables

Figures

⏪

⏩

◀

▶

Back

Close

Full Screen / Esc

Printer-friendly Version

Interactive Discussion

* now at: Land management and natural hazards unit, Institute for Environment and Sustainability (IES), DG-Joint Research Centre (JRC), European Commission (EC), Via E. Fermi 2749, TP261, 21027 Ispra (Va), Italy

Received: 24 August 2009 – Accepted: 1 September 2009 – Published: 17 September 2009

Correspondence to: R. Rojas (rodrigo.rojas@jrc.ec.europa.eu)

Published by Copernicus Publications on behalf of the European Geosciences Union.

HESSD

6, 5881–5935, 2009

**Assessment of
conceptual model
uncertainty for
Pampa del Tamarugal**

R. Rojas et al.

Title Page

Abstract

Introduction

Conclusions

References

Tables

Figures



Back

Close

Full Screen / Esc

Printer-friendly Version

Interactive Discussion

Abstract

In this work we assess the uncertainty in modelling the groundwater flow for the Pampa del Tamarugal Aquifer (PTA) – North Chile using a novel and fully integrated multi-model approach aimed at explicitly accounting for uncertainties arising from the definition of alternative conceptual models. The approach integrates the Generalized Likelihood Uncertainty Estimation (GLUE) and Bayesian Model Averaging (BMA) methods. For each member of an ensemble M of potential conceptualizations, model weights used in BMA for multi-model aggregation are obtained from GLUE-based likelihood values. These model weights are based on model performance, thus, reflecting how well a conceptualization reproduces an observed dataset D . GLUE-based cumulative predictive distributions for each member of M are then aggregated obtaining predictive distributions accounting for conceptual model uncertainties. For the PTA we propose an ensemble of eight alternative conceptualizations covering all major features of groundwater flow models independently developed in past studies and including two recharge mechanisms which have been source of debate for several years. Results showed that accounting for heterogeneities in the hydraulic conductivity field (a) reduced the uncertainty in the estimations of parameters and state variables, and (b) increased the corresponding model weights used for multi-model aggregation. This was more noticeable when the hydraulic conductivity field was conditioned on available hydraulic conductivity measurements. Contribution of conceptual model uncertainty to the predictive uncertainty varied between 6% and 64% for ground water head estimations and between 16% and 79% for ground water flow estimations. These results clearly illustrate the relevance of conceptual model uncertainty.

1 Introduction and scope

Due to a lack of precipitations and high evaporation rates, groundwaters in northern Chile are a strategic source of freshwater. One of the most important groundwater

HSSD

6, 5881–5935, 2009

Assessment of conceptual model uncertainty for Pampa del Tamarugal

R. Rojas et al.

Title Page

Abstract

Introduction

Conclusions

References

Tables

Figures

⏪

⏩

◀

▶

Back

Close

Full Screen / Esc

Printer-friendly Version

Interactive Discussion

Assessment of conceptual model uncertainty for Pampa del Tamarugal

R. Rojas et al.

Title Page

Abstract

Introduction

Conclusions

References

Tables

Figures

⏪

⏩

◀

▶

Back

Close

Full Screen / Esc

Printer-friendly Version

Interactive Discussion



reserves in this region is the regional aquifer contained in the recent deposits of the Pampa del Tamarugal basin (Fig. 1). In this basin, annual precipitation is nil at altitudes below 2000 m a.s.l. but reaches values of about 200 mm yr⁻¹ at altitudes above 3500 m a.s.l. This spatial pattern of the precipitation together with high evaporation rates controls the hydrology of the region. Groundwater and surface water originating in the Andes Mountains are the main water sources for human activities (Aravena, 1995).

In this region, many local towns as well as the capital city of the province (Iquique), most of the mining industry, and a large part of the agricultural sector, entirely depend on groundwater sources. As a result, groundwater abstraction rates from the Pampa del Tamarugal Aquifer (PTA) have gradually increased since the early 1960s resulting in a steady decrease in the groundwater heads recorded in the monitoring network controlled by the Dirección General de Aguas de Chile (DGA) (e.g. Rojas and Dassargues, 2007).

The study of the PTA has been a concern since the early 1960s and many local institutions, international aid agencies, and private companies have attempted to describe the functioning of this regional aquifer and its interactions with the scarce surface water (see e.g. Fritz et al., 1981; Suzuki and Aravena, 1985; DGA, 1988, 1996; Magaritz et al., 1990; DICTUC, 1995, 2005, 2007, 2008; JICA-DGA-PCI, 1995; Aravena, 1995; Salazar et al., 1999; DSM, 2002; Houston, 2002; Risacher et al., 2003; Rojas and Dassargues, 2007). These studies have been motivated by an increasing need to secure groundwater resources for drinking water supply, agricultural activities and, to a greater extent, by the growing pressure to provide fresh groundwater for the development of mining activities. As a result of these studies, several groundwater flow models (based on different conceptual models), ranging from simple approximations to more elaborated models, have been developed to simulate the behaviour of the PTA under different stress conditions.

DGA (1988) reported one of the first efforts to model the groundwater flow in the PTA. A one-layer model assuming steady-state conditions for the year 1960 and a transient-

state model for the period 1960–1986 were developed, both using a zonation approach to describe the hydraulic conductivity field. These models satisfactorily reproduced the general flow pattern of the aquifer. Groundwater recharge coming from the most northern sub-basin (Aroma) (Fig. 1a), however, was neglected because the simulated values did not satisfactorily reproduce the observed groundwater heads in the northern part of the modelled domain. A second model (two-layer) was developed by JICA-DGA-PCI (1995) assuming steady-state conditions for year 1993 and using constant values for hydraulic conductivities for each layer. This model satisfactorily reproduced the flow patterns of the aquifer and the global water balance. Calibration of this model, however, assumed an additional recharge mechanism where a significant amount of groundwater recharge originated from a system of faults and deep fissures connected with Altiplano aquifers. This recharge mechanism was based on results that demonstrated the presence of fresh and recent groundwater at shallow levels in the centre part of the PTA (Magaritz et al., 1990). Recent studies, however, suggest that recharge is taking place as a result of infiltrating runoff in the apex of the alluvial fans originating from the eastern sub-basins due to flash flood events (Houston, 2002). The latter could also potentially explain the presence of fresh and recent groundwater in the centre part of the PTA, hence, contradicting the recharge mechanism assumed by JICA-DGA-PCI (1995). In addition, steady-state conditions used in the model of JICA-DGA-PCI (1995) are rather questionable as suggested by present-day data (see e.g. Rojas and Dassargues, 2007). A third model (two-layer) was developed by DSM (2002). Similarly to the model of JICA-DGA-PCI (1995), this model included the groundwater recharge originating from deep fissures connected with Altiplano aquifers, however, steady-state conditions were assumed for year 1960 and a zonation approach for each layer was used to describe the hydraulic conductivity field. This model satisfactorily reproduced the overall flow field and water balance of the aquifer. Rojas and Dassargues (2007) developed a fourth model (one-layer) aimed at updating the knowledge of the system, extending the transient calibration to more recent data (1960–2004), and acting as a middle-point between models previously created. This model assumed steady-state

**Assessment of
conceptual model
uncertainty for
Pampa del Tamarugal**R. Rojas et al.

[Title Page](#)[Abstract](#)[Introduction](#)[Conclusions](#)[References](#)[Tables](#)[Figures](#)[⏪](#)[⏩](#)[◀](#)[▶](#)[Back](#)[Close](#)[Full Screen / Esc](#)[Printer-friendly Version](#)[Interactive Discussion](#)

conditions for year 1960 and *did not include* the additional groundwater recharge from deep fissures in the development of the conceptual model. As models previously developed, the model of Rojas and Dassargues (2007) acceptably reproduced the global water balance and the flow patterns of the PTA. Finally, two additional groundwater flow models for the PTA have been developed by DICTUC (2005, 2008). These models were successfully calibrated and correctly reproduced the water balance and the general flow patterns of the PTA, although the assumed steady-state conditions (for years 1960 and 1987) and the approach to model the spatial distribution of the hydraulic conductivity (zonation versus a Random Space Function-RSF approach) were rather different.

It is important to note, with the exception of the work of Rojas and Dassargues (2007), that groundwater flow models previously described lack a consistent uncertainty analysis and the corresponding authors assumed an accurate and unique description of the input (forcing) data, parameters, and conceptual model, hence, neglecting uncertainty in these terms.

To what extent any of these models can satisfactorily be used to manage the groundwater resources of the PTA and to predict its responses to future stress conditions is clearly debatable. These models were successfully calibrated using a unique set of observed groundwater heads and values for the global water balance of the aquifer; hence, they are all valid representations of the groundwater system. They consider, however, different recharge mechanisms, geological interpretations, modelling of the observed heterogeneities in the hydraulic conductivity field, definition of the boundary conditions, surface extensions, temporal scales (time-steps), spatial scales (grid-sizes), steady-state initial conditions, and numerical approaches to discretise the model domain. Due to the differences in model conceptualization individual model predictions are prone to bias and possibly inconsistent and conflicting when the results of the alternative conceptual models are compared. Additionally, predictive uncertainty estimations based on a single member of the ensemble of models previously described are likely to be under-dispersive due to omitting (potentially feasible) alternative conceptual

Assessment of conceptual model uncertainty for Pampa del Tamarugal

R. Rojas et al.

Title Page

Abstract

Introduction

Conclusions

References

Tables

Figures



Back

Close

Full Screen / Esc

Printer-friendly Version

Interactive Discussion

alizations from the analysis. These points are critical for the sustainable management of the PTA where human pressure for newly developed freshwater resources is considerably high and the uncertainty due to climate conditions is relatively important.

It has been recently suggested that uncertainties in groundwater model predictions are largely dominated by this type of uncertainty (conceptual model uncertainty) and that accounting for parametric uncertainty solely does not allow compensating for conceptual model uncertainty in model predictions (Bredehoeft, 2003; Neuman and Wierenga, 2003; Neuman, 2003; Ye et al., 2004; Højberg and Refsgaard, 2005; Poeter and Anderson, 2005; Bredehoeft, 2005; Refsgaard et al., 2006, 2007; Meyer et al., 2007; Seifert et al., 2008; Rojas et al., 2008a). This is especially important for the case when predicted variables are not included in the data used for calibration (Højberg and Refsgaard, 2005; Trolborg et al., 2007). The latter is certainly the case for PTA where a scarce set of groundwater heads has been regularly used to calibrate the groundwater flow models whereas predictions are made for flow components and groundwater fluxes.

Rather than relying on a single conceptual model of a given groundwater system, it seems more appropriate to consider a range of plausible system representations and analyse the combined multi-model output to assess the predictive uncertainty (e.g. Harrar et al., 2003; Højberg and Refsgaard, 2005; Poeter and Anderson, 2005; Meyer et al., 2007; Rojas et al., 2008a; Ijiri et al., 2009). Whereas predictions based on a single conceptualization are more likely to be biased and under-dispersive, estimates based on an ensemble of models are less (artificially) conservative and are more likely to capture the unknown true predicted value (Neuman, 2003; Rojas et al., 2008a).

One approach to deal with this type of uncertainty has been recently proposed by Rojas et al. (2008a, 2009b). The proposed methodology accounts for predictive uncertainty arising from inputs (forcing data), parameters, alternative conceptual models, and (potentially) the definition of alternative scenarios by combining Generalized Likelihood Uncertainty Estimation (GLUE) (Beven and Binley, 1992) and Bayesian Model Averaging (BMA) (Draper, 1995; Kass and Raftery, 1995; Hoeting et al., 1999). The

Assessment of conceptual model uncertainty for Pampa del Tamarugal

R. Rojas et al.

Title Page

Abstract

Introduction

Conclusions

References

Tables

Figures



Back

Close

Full Screen / Esc

Printer-friendly Version

Interactive Discussion

key idea behind this approach is the concept of equifinality, that is, many combinations of model structures and parameter sets may provide (equally) good reproductions of the observed system response (Beven, 2006). Using a hypothetical setup, Rojas et al. (2008a) explored the global likelihood response surface of all possible combinations of plausible model structures, forcing data and parameter values in order to select those simulators that perform well. For each model structure, the posterior model probability (model weights to aggregate multi-model predictions) was obtained by integrating the likelihood measures over the retained simulators for that model structure. The posterior model probabilities were subsequently used in BMA to weight the predictions of the competing models when assessing the joint predictive uncertainty. Important aspects of this method are that (1) it does not rely on a unique optimal parameter set for each conceptual model to assess the joint predictive uncertainty, thus, avoiding compensation of conceptual model errors due to biased parameter estimates; (2) weights for combining model predictions are obtained considering the full sampled space; (3) there is no implicit assumption about the conditional pdf's obtained for each alternative conceptualization; and (4) allows for the inclusion of prior information about conceptual models, inputs and parameters, and state variables to perform conditional simulations. A complete description of the methodology and potential advantages are discussed in Rojas et al. (2008a, 2009b).

In this work we assess the uncertainty in groundwater flow modelling of PTA in a fully integrated GLUE-BMA approach accounting for uncertainties in inputs (forcing) data, parameters, and conceptual models. We propose an ensemble M of eight alternative conceptualizations covering all major features of the groundwater flow models (independently) developed until present. Proposed conceptualizations range from simple one- and two-layer approximations to more complex models where the spatial distribution of the hydraulic conductivity field follows the theory of Random Space Functions (RSF). We consider two mechanisms to describe the recharge process: one considering only recharge due to groundwater flows originating from the eastern sub-basins (Fig. 1b), and the other (complementary to the previous one) due to a system of faults

Assessment of conceptual model uncertainty for Pampa del Tamarugal

R. Rojas et al.

Title Page

Abstract

Introduction

Conclusions

References

Tables

Figures

⏪

⏩

◀

▶

Back

Close

Full Screen / Esc

Printer-friendly Version

Interactive Discussion

Assessment of conceptual model uncertainty for Pampa del Tamarugal

R. Rojas et al.

Title Page

Abstract

Introduction

Conclusions

References

Tables

Figures

⏪

⏩

◀

▶

Back

Close

Full Screen / Esc

Printer-friendly Version

Interactive Discussion



and deep fissures connecting the PTA with Altiplano aquifers (see Table 1). Based on the results of Rojas et al. (2009a), we consider spatial conditioning of the hydraulic conductivity field to a set of available hydraulic conductivity measurements. Finally, we analyse the full predictive uncertainty on groundwater heads, groundwater balance components and groundwater fluxes following the approach described in Rojas et al. (2008a).

The remainder of this paper is organized as follows. In Sect. 2, we provide a condensed overview of GLUE and BMA followed by a description of the procedure to integrate these methods. Section 3 details the study area where the integrated uncertainty assessment methodology is applied. Implementation details such as the different conceptualizations, sampling of parameters and the summary of the modelling procedure are described in Sect. 4. Results are discussed in Sect. 5 and a summary of conclusions is presented in Sect. 6.

2 Integrated uncertainty assessment methodology

Sections 2.1 and 2.2 summarize the basis of GLUE and BMA methodologies, respectively, for more details the reader is referred to Rojas et al. (2008a, 2009b). Section 2.3 presents the description on how to integrate these methodologies.

2.1 Generalized likelihood uncertainty estimation (GLUE) methodology

Being a Monte Carlo simulation technique relying on the concept of equifinality (Beven and Freer, 2001), GLUE rejects the idea of a single correct representation of a system in favour of many acceptable system representations (Beven, 2006). For each potential system simulator, sampled from a prior set of possible system representations, a likelihood measure (e.g. Gaussian, trapezoidal, model efficiency, inverse error variance) is calculated, which reflects its ability to simulate the system responses, given the available observed dataset *D*. Simulators that perform below a subjectively defined

rejection criterion are discarded from further analysis and likelihood measures of retained simulators are rescaled so as to render the cumulative likelihood equal to one. Ensemble predictions are based on the predictions of the retained set of simulators, weighted by their respective rescaled likelihood.

5 Following the notation of Rojas et al. (2008a), let us consider a set of plausible model structures contained in the ensemble \mathbf{M} , a set of parameter vectors $\boldsymbol{\theta}$ and a set of input variable vectors \mathbf{Y} , and denote the observed and simulated system variable vectors as \mathbf{D} and \mathbf{D}^* , respectively.

10 Following the notation of Rojas et al. (2008a), let us consider a set of plausible model structures contained in the ensemble $\mathbf{M} = \{M_1, M_2, \dots, M_k, \dots, M_K | K < \infty\}$, a set of parameter vectors $\boldsymbol{\Theta} = (\boldsymbol{\theta}_1, \boldsymbol{\theta}_2, \dots, \boldsymbol{\theta}_l, \dots, \boldsymbol{\theta}_L)$ and a set of input variable vectors $\mathbf{Y} = (\mathbf{Y}_1, \mathbf{Y}_2, \dots, \mathbf{Y}_m, \dots, \mathbf{Y}_M)$, and denote the observed and simulated system variable vectors as $\mathbf{D} = (D_1, D_2, \dots, D_n, \dots, D_N)$ and $\mathbf{D}^* = (D_1^*, D_2^*, \dots, D_n^*, \dots, D_N^*)$, respectively.

15 Then, $L(M_k, \boldsymbol{\theta}_l, \mathbf{Y}_m | \mathbf{D})$ represents the likelihood of the k -th model structure (M_k) parametrized with l -th parameter vector ($\boldsymbol{\theta}_l$) and forced by m -th input data vector (\mathbf{Y}_m) to represent the true system, given the observations in \mathbf{D} . Rojas et al. (2008a) observed no significant differences in the estimation of posterior model probabilities, predictive capacity, and conceptual model uncertainty when a Gaussian, a model efficiency based, or a Fuzzy-type likelihood function was used. The analysis in this work
20 is therefore confined to a Gaussian likelihood function.

2.2 Bayesian model averaging (BMA)

25 BMA is a statistical procedure that provides a coherent framework for combining predictions from multiple competing conceptual models to attain a more realistic and reliable description of the predictive uncertainty. BMA infers average predictions by weighing individual (conceptual) model predictions based on their relative skill, with predictions from better performing models receiving higher weights than those of worse performing models. Thus, BMA avoids having to choose a model over the others, instead,

Assessment of conceptual model uncertainty for Pampa del Tamarugal

R. Rojas et al.

Title Page

Abstract

Introduction

Conclusions

References

Tables

Figures

⏪

⏩

◀

▶

Back

Close

Full Screen / Esc

Printer-friendly Version

Interactive Discussion

competing models are assigned different weights based on the observed dataset D (Wasserman, 2000).

Following the notation of Hoeting et al. (1999), if Δ is a quantity to be predicted, the full BMA predictive distribution of Δ for a set of alternative conceptual models defined by $\mathbf{M}=(M_1, M_2, \dots, M_k)$, is given by (Draper, 1995; Rojas et al., 2008a).

$$\rho(\Delta|D) = \sum_{k=1}^K \rho(\Delta|D, M_k)\rho(M_k|D). \quad (1)$$

Equation (1) is an average of the predictive distributions of Δ under each alternative conceptual model, $\rho(\Delta|D, M_k)$, weighted by their posterior model probability, $\rho(M_k|D)$. The posterior model probabilities reflect how well model M_k fits the observed data D and can be computed using Bayes' rule (see e.g. Rojas et al., 2008a)

$$\rho(M_k|D) = \frac{\rho(D|M_k)\rho(M_k)}{\sum_{l=1}^K \rho(D|M_l)\rho(M_l)} \quad (2)$$

where $\rho(M_k)$ is the prior probability of model M_k , and $\rho(D|M_k)$ is the integrated likelihood of model M_k .

The leading moments of the full BMA prediction of Δ are given by (Draper, 1995; Rojas et al., 2008a)

$$E[\Delta|D] = E_M[E(\Delta|D, M)] = \sum_{k=1}^K E[\Delta|D, M_k]\rho(M_k|D) \quad (3)$$

$$\begin{aligned} \text{Var}[\Delta|D] &= E_M[\text{Var}(\Delta|D, M)] + \text{Var}_M[E(\Delta|D, M)] \\ &= \sum_{k=1}^K \text{Var}[\Delta|D, M_k]\rho(M_k|D) + \sum_{k=1}^K (E[\Delta|D, M_k] - E[\Delta|D])^2\rho(M_k|D). \end{aligned} \quad (4)$$

Assessment of conceptual model uncertainty for Pampa del Tamarugal

R. Rojas et al.

Title Page

Abstract

Introduction

Conclusions

References

Tables

Figures

⏪

⏩

◀

▶

Back

Close

Full Screen / Esc

Printer-friendly Version

Interactive Discussion

From Eq. (4) the variance of Δ consists of two terms: the first representing the within-models variance, and the second representing the between-models variance (Rojas et al., 2008a).

2.3 Multi-model approach to account for conceptual model and scenario uncertainties

Combining GLUE and BMA to account for conceptual model uncertainties involves the following sequence of steps

1. A suite of alternative conceptualizations is proposed and prior model probabilities are assigned. This can be done on the basis of prior and expert knowledge about the site (see e.g. Meyer et al., 2007; Ye et al., 2008; Rojas et al., 2009b).
2. Prior ranges are defined for the input and parameter vectors under each plausible model structure. Multi-uniform prior distributions are assumed to perform the sampling of input and parameter vectors.
3. A likelihood measure to assess model performance and a rejection criterion are defined. The latter can be based on exploratory runs (e.g. Rojas et al., 2008a,a), subjectively chosen threshold limits (e.g. Feyen et al., 2001) or set as a minimum level of performance (e.g. Binley and Beven, 2003).
4. For the suite of alternative conceptual models, input and parameter values are sampled using the Metropolis-Hastings (M-H) algorithm (Metropolis et al., 1953; Hastings, 1970; Chib and Greenberg, 1995; Gilks et al., 1995) to generate simulators of the system.
5. A value for the likelihood measure $p(D|M_k, \theta_j) \approx L(M_k, \theta_j, Y_m|D)$ is calculated for each simulator and, based on the rejection criteria, it is added to the subset A_k of retained simulators for model M_k or it is discarded by setting its likelihood to zero.

Assessment of conceptual model uncertainty for Pampa del Tamarugal

R. Rojas et al.

Title Page

Abstract

Introduction

Conclusions

References

Tables

Figures

⏪

⏩

◀

▶

Back

Close

Full Screen / Esc

Printer-friendly Version

Interactive Discussion

Assessment of conceptual model uncertainty for Pampa del Tamarugal

R. Rojas et al.

[Title Page](#)

[Abstract](#)

[Introduction](#)

[Conclusions](#)

[References](#)

[Tables](#)

[Figures](#)

[⏪](#)

[⏩](#)

[◀](#)

[▶](#)

[Back](#)

[Close](#)

[Full Screen / Esc](#)

[Printer-friendly Version](#)

[Interactive Discussion](#)

6. Steps 4–5 are repeated until the hyperspace of possible simulators is adequately sampled, i.e. when for each model M_k the first two moments of the conditional distributions of predicted state variables based on the retained likelihood weighted simulators converge to stable values, and the R-score (Gelman et al., 2004) for parameters and variables of interest converges to values close to one. The R-score expresses the ratio of within- to between-chains variability and, thus, approximate convergence of the M-H algorithm is diagnosed when the variability between chains is not larger than that within chains (Sorensen and Gianola, 2002).
7. The integrated likelihood of each model M_k is approximated by summing the likelihood weights of the retained simulators in the subset A_k , that is, $\rho(D|M_k) \approx \sum_{l,m \in A_k} L(M_k, \theta_l, Y_m|D)$ (Rojas et al., 2008a).
8. By normalizing the integrated model likelihoods over the whole ensemble \mathbf{M} such that they sum up to one (using Eq. 2), the posterior model probabilities are obtained.
9. After normalization of the likelihood weighted predictions under each individual model (such that the cumulative likelihood under each model equals one), an approximation to is obtained, and a multi-model prediction is obtained with Eq. (1). The leading moments of this distribution (considering the whole ensemble \mathbf{M}) are then obtained using Eqs. (3) and (4).

In addition, posterior model probabilities obtained in step (8) could potentially be used in the prediction stage of the alternative conceptual models under alternative scenarios (e.g. Rojas et al., 2008a).

3 Study area

3.1 General description

The PTA is limited in the west by the coastal range and in the east by the Chilean pre-cordillera. It covers an area of ca. 5000 km² with dimensions of almost 160 km long, width between 20–60 km, and an average elevation of 1000 m a.s.l. (Fig. 1).

Recharge through direct precipitation on the PTA is not taking place as rainfall is negligible in the area. The eastern sub-basins (Fig. 1a), on the other hand, receive recharge from precipitation coming from high altitudes in the east. These sub-basins lie in a well-developed rain-shadow, and as a result there is a rapid decrease in rainfall as air masses move west and descend (Aravena et al., 1989, 1999; Houston, 2002, 2006). For an average hydrologic year surface watercourses disappear before reaching most of the alluvial fans located in the PTA suggesting that the aquifer is being recharged by part of this water through infiltration and lateral groundwater flows (Aravena, 1995). Extreme rainfall events, on the other hand, play an important role on the recharge mechanisms making the (overused) assumption of “average” recharge conditions rather questionable (Houston, 2006). In this regard, evidence of recent groundwater recharge due to flash flood events has been reported for the Chacarilla sub-basin (VI in Fig. 1a) by Houston (2002).

The PTA is located in the Atacama Desert and thus arid conditions are extreme with potential evaporation rates ranging between 2000 mm yr⁻¹ and 2500 mm yr⁻¹ (Rojas and Dassargues, 2007). As a consequence, the presence of natural vegetation is limited to few places in the study area. These places correspond to natural or reforested areas located in Dolores, Salar de Pintados and Salar de Bellavista (Fig. 1b) (Rojas and Dassargues, 2007). These zones are composed of trees highly adapted to arid and saline conditions and, thus, they can sustain themselves by directly extracting groundwater with massive and well-developed root systems (FAO, 1989). Therefore, vegetative transpiration from these zones is an important component of the global water balance for the PTA.

Assessment of conceptual model uncertainty for Pampa del Tamarugal

R. Rojas et al.

Title Page

Abstract

Introduction

Conclusions

References

Tables

Figures

⏪

⏩

◀

▶

Back

Close

Full Screen / Esc

Printer-friendly Version

Interactive Discussion

3.2 Geology

The geology of the study area has been described in previous studies (e.g. Dingman and Galli, 1965; DGA, 1988; JICA-DGA-PCI, 1995; Digert et al., 2003; DICTUC, 2007). As described in Houston (2002), the basin is a complex asymmetric graben bounded in the west and in the east by N-S regional fault zones which started to form in the early Oligocene. Coarse conglomerates and gravels of the Sical and Altos de Pica Formations, eroded from the adjacent uplifted Coastal Range and Pre-Cordillera, comprise the lowermost sediments. Coarse clastic sediments continued to be deposited over wide areas throughout the Miocene. Some events of volcanic activity, from the eruptive centres located on the east, took place producing andesitic tuffs and ignimbrites. Towards the end of the Miocene a series of large alluvial fans began to develop. Since the Pliocene only minor alluvial and evaporitic sediments have been deposited in the basin.

Figure 2 shows a longitudinal geological profile (XX') of the study area and a plan view of the aquifer boundaries. In Fig. 2a upliftings of the basement rocks (Longacho Formation) are observed in the north and south limits. Also in the west (Coastal Range) and in the east, outcroppings of this formation are observed (Fig. 2b). Overlying the Longacho Formation is the Altos de Pica Formation, which is differentiated into lower and upper layers. In the uppermost strata, recent sediments mainly composed of saline alluvial deposits, gravel, sand and clay have been deposited (JICA-DGA-PCI, 1995).

3.3 Hydrogeology

The main aquifer system of the PTA is contained in units Q4 and Q3 (Fig. 2a) (DGA, 1988; JICA-DGA-PCI, 1995). Unit Q3 is composed of sand and gravel and is underlain by a thick clayey layer (Q2). Unit Q4 consists of sand and gravel with mud, and/or intercalated with mud layers and is overlain by unit Q3 from Huara to Salar de Bellavista area (Rojas and Dassargues, 2007). A relatively good qualitative data base is available for the description of these units. Hard data (hydraulic conductivity measurements,

Assessment of conceptual model uncertainty for Pampa del Tamarugal

R. Rojas et al.

Title Page

Abstract

Introduction

Conclusions

References

Tables

Figures

⏪

⏩

◀

▶

Back

Close

Full Screen / Esc

Printer-friendly Version

Interactive Discussion

transmissivity, storativity), however, are scarce given the dimensions of the PTA and they are in the limit to perform a meaningful geostatistical analysis. A summary of the aquifer parameters for the PTA is presented in Table 2.

Figure 1b shows the groundwater elevation map for the year 1960 which is obtained from nearly 60 measurement points. The main groundwater flow direction is from north to south with an east-west component in the area of Pica. A groundwater divide is observed in the north area with part of the groundwater flowing towards the forested area in Dolores (Rojas and Dassargues, 2007). Hydraulic gradients are considerably steeper near Huara which is explained by the lower hydraulic conductivity of the deposits of Aroma and Tarapaca sub-basins (see Fig. 1a) (DGA, 1988). In the centre area of PTA, groundwater flows from east to west towards the forested Tamarugo areas and the Salar de Pintados. Both correspond to the main natural discharge areas of the aquifer for the year 1960. In the southern area (Oficina Victoria-Cerro Gordo) groundwater flow is mainly directed to the south-west (Rojas and Dassargues, 2007).

There is a general consensus that recharge to the PTA occurs mainly by groundwater flows from the eastern sub-basins, with estimations ranging between $76\,032\text{ m}^3\text{ d}^{-1}$ and $89\,510\text{ m}^3\text{ d}^{-1}$ (DGA, 1988; JICA-DGA-PCI, 1995; Aravena, 1995; Houston, 2002; Rojas and Dassargues, 2007; DICTUC, 2008). As discussed earlier, a mechanism where a substantial amount of groundwater recharge originating from a system of faults and deep fissures connected with Altiplano aquifers is also assumed by some authors (e.g. Magaritz et al., 1990; JICA-DGA-PCI, 1995; DSM, 2002). The magnitude of this recharge ranges between $11\,834\text{ m}^3\text{ d}^{-1}$ (DGA, 1996) and $24\,970\text{ m}^3\text{ d}^{-1}$ (JICA-DGA-PCI, 1995) and, until today, the validity and quantification of this recharge mechanism is an important source of uncertainty to develop a coherent conceptual model for the PTA.

Estimations of transpiration rates from forested areas (Fig. 1b) for the year 1960 range between ca. $1728\text{ m}^3\text{ d}^{-1}$ (DICTUC, 2008) and $18\,144\text{ m}^3\text{ d}^{-1}$ (DGA, 1988). Direct evaporation of groundwater from salares constitutes other important component of the water balance. In the study area, an active salar system exists comprising the

Assessment of conceptual model uncertainty for Pampa del Tamarugal

R. Rojas et al.

Title Page

Abstract

Introduction

Conclusions

References

Tables

Figures

⏪

⏩

◀

▶

Back

Close

Full Screen / Esc

Printer-friendly Version

Interactive Discussion

Salar de Pintados and Salar de Bellavista (Fig. 1b) (see e.g. Risacher et al., 2003). An estimated evaporation of $46\,829\text{ m}^3\text{ d}^{-1}$ is obtained from DGA (1988) for the year 1960, whereas Rojas and Dassargues (2007) estimated a range between $35\,424\text{ m}^3\text{ d}^{-1}$ and $52\,013\text{ m}^3\text{ d}^{-1}$ following the calibration of a steady-state model for the same year.

5 Groundwater outflows from the PTA are estimated in the order of ca. $1728\text{ m}^3\text{ d}^{-1}$ in the north boundary, and ca. $8640\text{ m}^3\text{ d}^{-1}$ in the geological section defined between the outcrops located in Cerro Gordo and the east limit of the model (Fig. 1b) (DICTUC, 2008).

10 Recently, a hydrogeologic connection with a local aquifer termed La Noria has been suggested by DICTUC (2008) (Fig. 1b). It is proposed that the PTA is recharging this local aquifer through a local system of faults and the estimated groundwater recharge flows for the present situation vary between $1555\text{ m}^3\text{ d}^{-1}$ and $4320\text{ m}^3\text{ d}^{-1}$.

4 Implementing the multi-model approach

4.1 Alternative conceptual models

15 An ensemble M including eight alternative conceptualizations was considered to describe the PTA. These conceptual models aimed at covering the main features of all models previously developed (Fig. 3). All members of M comprised six common elements: boundary conditions expressed as constant heads at the north and south limits, hydrogeological connection with La Noria aquifer, a transpiration zone located in Pintados, an evaporation zone accounting for Salar de Pintados and Salar de Bellavista, and assumed steady-state conditions for year 1960. The distinctive elements among models were the number of layers, the representation of the hydraulic conductivity field and the recharge mechanisms (see Table 1). Model M1 (Fig. 3a) considered a two-layer system explicitly accounting for units Q3 and Q4 (see Fig. 2a), whereas models M2 (Fig. 3b), M3 (Fig. 3c) and M4 (Fig. 3d) considered a one-layer system. Model M1 considered constant values of hydraulic conductivity for each layer, model M2 included

Assessment of conceptual model uncertainty for Pampa del Tamarugal

R. Rojas et al.

Title Page

Abstract

Introduction

Conclusions

References

Tables

Figures

⏪

⏩

◀

▶

Back

Close

Full Screen / Esc

Printer-friendly Version

Interactive Discussion

Assessment of conceptual model uncertainty for Pampa del Tamarugal

R. Rojas et al.

Title Page

Abstract

Introduction

Conclusions

References

Tables

Figures

⏪

⏩

◀

▶

Back

Close

Full Screen / Esc

Printer-friendly Version

Interactive Discussion

a spatial zonation approach obtained from Rojas and Dassargues (2007), and models M3 and M4 used the theory of Random Space Functions (RSF) to describe the hydraulic conductivity field, with model M4 conditioning the hydraulic conductivity realizations on available hydraulic conductivity measurements. To obtain the conditional realizations of the K-fields, we employed “conditioning by kriging” (Chilès and Delfiner, 1999). Figure 4 shows the histogram for $\ln K$ and the modelled variogram used to simulate the hydraulic conductivity fields in the frame of models M3 and M4. The fitted model corresponded to a nested structure including a nugget effect of 0.6 and an exponential variogram with a practical range of 10.2 km and a sill (contribution) of 1.6. For the recharge inflows originating from the eastern sub-basins, model M1 considered areal recharge rates distributed over small areas of the alluvial fans (Fig. 3a), model M2 included point recharge fluxes in the apex of the alluvial fans (Fig. 3b), and models M3 and M4 considered recharge fluxes distributed over long sections of the eastern boundary (Fig. 3c and d).

In addition, each of the four models depicted in Fig. 3 considered an alternative “b” version where the recharge mechanism that assumes a connection with Altiplano aquifers was included, hence, adding to the groundwater recharge flows from the eastern sub-basins. These recharge inflows were distributed over the whole modelled domain. In summary, eight alternative conceptualizations were defined to analyse the combined uncertainty arising from inputs, parameters, and conceptual models.

4.2 Prior distributions

The common elements to the alternative conceptualizations defined a common group of eight parameters, namely, the elevations of the constant head cells at the north (CH_N) and south (CH_S) limits, recharge inflows from the eastern sub-basins (RECH), recharge inflows from faults and deep fissures (RECH_BAS) (only for “b” version models), transpiration outflows (TRANSP), evaporation rates from salares (EVTR), extinction depth of the evaporation process (EXTD), and outflows to La Noria aquifer (NORIA). In addition, for models M1 and M2, two and twenty-two additional parameters

representing the hydraulic conductivity values for each layer or zones were included, respectively.

We assigned equal prior model probabilities (1/8) to the eight alternative conceptualizations and adopt uniform prior distributions for the unknown inputs and parameters.

- 5 Using these priors, we expect that the information contained in the data, expressed by the likelihood function, should dominate the form of the resulting posterior distributions. The ranges that describe the prior uniform distributions of the unknown variables are presented in Table 3.

4.3 Simulation procedure

- 10 Simulation of steady-state flow for the year 1960 employed MODFLOW-2000 (Harbaugh et al., 2000). The modelled domain covered an area of ca. 4300 km² with a length of 160 km and between 18 km and 40 km wide. Uniform cell size of 600 m × 600 m was used to discretise the modelled domain resulting in 242 rows and 118 columns. The evaporation and the recharge packages of MODFLOW-2000 were used to represent the evaporation from salares and the transpiration from the forested areas, respectively. As discussed in Rojas and Dassargues (2007), surface extension of forested areas as well as forest species are well documented in previous studies and, thus, the estimation of past and present transpiration rates are relatively accurate. As a consequence, we opted for a head-independent boundary condition to represent the transpiration using the recharge package with negative recharge rates. Fixed inflow or outflow fluxes were represented with the well package.

- 25 A Gaussian likelihood measure was implemented to assess the model performance, i.e. to assess the ability of a simulator (conceptual model+set of parameters) to reproduce the observed dataset D , which consisted of 42 observed heads (Fig. 1b). For convenience, we employed updated information about the observation wells obtained from DICTUC (2008) which is reported as the most accurate information until present. From exploratory runs and considering the dimensions of the modelled domain, a departure of $\pm 3\sigma_h$ m from the observed head in each observation well is defined as rejection cri-

Assessment of conceptual model uncertainty for Pampa del Tamarugal

R. Rojas et al.

Title Page

Abstract

Introduction

Conclusions

References

Tables

Figures

⏪

⏩

◀

▶

Back

Close

Full Screen / Esc

Printer-friendly Version

Interactive Discussion

terion, where the standard deviation of observed heads (σ_h) was assumed as 10 m. That is, if $h_{\text{obs}} - 30 \text{ m} < h_{\text{sim}} < h_{\text{obs}} + 30 \text{ m}$ a Gaussian likelihood measure is calculated, otherwise the likelihood is zero.

Sampling of parameters from the prior ranges presented in Table 3 was performed using the Metropolis-Hastings (M-H) algorithm (Metropolis et al., 1953; Hastings, 1970; Chib and Greenberg, 1995; Gilks et al., 1995). From exploratory runs, 50 parallel Markov chains starting from randomly selected points defined in the prior parameter ranges (Table 3) were implemented to proceed with the M-H algorithm for models M1 and M2. For models M3 and M4, sampled parameters were combined with hydraulic conductivity realizations generated using the spatial correlation structure defined in Fig. 4. Based on the results of Rojas et al. (2009a), an ensemble of 100 hydraulic conductivity realizations was defined as minimum number to initiate the Markov chains. That is, when a random set of parameters combined with a hydraulic conductivity realization agreed with the rejection criterion, the hydraulic conductivity field was set as fixed and the Markov chain proceeded for the set of parameters solely. Alternatively, one could generate a large set of hydraulic conductivity realizations and develop a chain for each individual realization. However, given the high number of hydraulic conductivity realizations required to properly represent spatial variability, such approach is computationally still intractable.

Multivariate normal distributions centred on the previous parameter values were selected as proposal distribution, i.e. $q(\theta^* | \theta_{i-1}) \sim N(\theta_{i-1} | \Sigma_\theta)$, for models M1, M2, M3 and M4. Individual variance terms of Σ_θ were modified by trial-and-error until an acceptance rate in the order of 20–40% was achieved for successive steps of all Markov chains. For each proposed set of parameters a new Gaussian likelihood value was calculated in function of the agreement between observed and simulated groundwater heads at the 42 observation wells depicted in Fig. 1b. The mixing of the chains and the convergence of the posterior probability distributions was monitored using the R-score (Gelman et al., 2004) and the length of the *burn-in* samples was defined from visual inspection of the plotting series of exploratory runs for parameters and variables

Assessment of conceptual model uncertainty for Pampa del Tamarugal

R. Rojas et al.

Title Page

Abstract

Introduction

Conclusions

References

Tables

Figures

⏪

⏩

◀

▶

Back

Close

Full Screen / Esc

Printer-friendly Version

Interactive Discussion

of concern.

To avoid negative effects of autocorrelation within successive steps of a chain (see e.g. Sorensen and Gianola, 2002), final chains were thinned before calculating summary statistics. Thinning an MCMC chain means that not all (chain) samples are recorded, instead samples are stored after k -th iterations. A thinned chain contains most of the information but it takes up less space in memory (Gilks et al., 1995). The resulting total parameter sample (after discarding the *burn-in* samples and after thinning the original sample) can be considered as a sample from the posterior distribution given the observed dataset D for each alternative conceptual model. Using these discrete samples from the M-H algorithm, the integrated likelihood of each conceptual model, $p(D|M_k)$ in Eq. (2), is approximated by summing over all the retained likelihood values for model M_k . The posterior model probabilities are then obtained by normalizing over the whole ensemble M . For each series of predicted variables of concern, a cumulative predictive distribution, $p(\Delta|D, M_k)$, is approximated by normalizing the retained likelihood values for each conceptual model such that they sum up to one. The leading moments of the full BMA predictive distribution accounting for input, parameter and conceptual model uncertainties are then obtained using Eqs. (3) and (4).

5 Results and discussion

5.1 Validation of the M-H algorithm results

Several aspects of the implementation of the M-H algorithm, such as the acceptance rate, the length of the *burn-in* samples and the proper mixing of the chains were checked to validate the results. Acceptance rates across all models ranged between 21% and 48%, values considered acceptable (see e.g. Gilks et al., 1995; Makowski et al., 2002). Based on the visual inspection of the plotting series for all parameters and variables of concern (e.g. recharge inflows, transpiration outflows, evaporation outflows, groundwater fluxes) and the values for the R-score of Gelman et al. (2004), the

Assessment of conceptual model uncertainty for Pampa del Tamarugal

R. Rojas et al.

Title Page

Abstract

Introduction

Conclusions

References

Tables

Figures

⏪

⏩

◀

▶

Back

Close

Full Screen / Esc

Printer-friendly Version

Interactive Discussion

length of the *burn-in* samples was defined at $0.2 N$ (with N being the total chain length). After discarding the *burn-in* samples, this resulted in chains of 20 000 elements. Across all models, the variation for the R-score for parameters of interest ranged between 1.003 and 1.107 for parameters CH_N and RECH_BAS, respectively. For variables of interest (groundwater flux at southern section) the variation for the R-score ranged between 1.001 and 1.110. For the problem at hand, and given the dimensions of the modeled domain and the complex interactions between parameters and variables of concern, we accepted proper mixing of the chains for values of the R-score close to 1.1, which is the value recommended for most problems by Gelman et al. (2004, p.297). As an example, Fig. 5 shows the results for model M2a for the key parameter recharge inflows. Figure 5a shows the development of fifty independent chains of 20 000 elements after discarding the initial *burn-in* samples. A good overlap of the chains is observed indicating proper mixing and convergence. Additionally, in order to get statistically independent results and given the autocorrelation induced by successive steps of the Markov chains, the original sample was thinned. Figure 5b shows the effect of thinning the original sample of 1,000,000 elements after every 25 iterations. For the original sample the autocorrelation factor is highly persistent even for lags of 1000 whereas for the thinned sample autocorrelation is below ~ 0.3 for lags in the order of 150–200. Figure 5c and d show a satisfactory convergence of the first two moments for the predictive distribution obtained with the thinned sample. Similar results were obtained for the other parameters and variables of interest. Therefore, the thinned parameter samples of 40 000 elements for each conceptual model were considered to be an independent sample from the target posterior distributions. These independent samples were combined in a final sample containing 320 000 ($40\,000 \times 8$ models) elements which was used to calculate summary statistics of the posterior GLUE-BMA predictions.

**Assessment of
conceptual model
uncertainty for
Pampa del Tamarugal**R. Rojas et al.

[Title Page](#)[Abstract](#)[Introduction](#)[Conclusions](#)[References](#)[Tables](#)[Figures](#)[⏪](#)[⏩](#)[◀](#)[▶](#)[Back](#)[Close](#)[Full Screen / Esc](#)[Printer-friendly Version](#)[Interactive Discussion](#)

5.2 Likelihood response surfaces

Figure 6 shows scatter plots of likelihood values for models M1a, M2a, M3a, and M4a for three key groundwater flow components, namely, recharge inflows, evaporation outflows, and groundwater fluxes passing through a section defined by the outcrop at Cerro Gordo and the east boundary of the modelled domain (see Fig. 1b). The latter has been estimated in previous studies, hence, is included here for comparison.

In general, the global likelihood response surfaces for models M3a and M4a are better defined and less disperse compared to models M1a and M2a, indicating the relevance of describing the hydraulic conductivity field in more detail and the importance of conditioning the field to hydraulic conductivity measurements. This result is in full agreement with the findings of Rojas et al. (2009a). For recharge inflows (Fig. 6a–d), a clear region of attraction is identified, which contains the range of estimations made in previous studies. Conditioning the hydraulic conductivity field shows a clear effect on the peakedness of the likelihood surface, which is consistent with the range of previous estimations. The latter indicates the relevance of properly honouring the measured values of hydraulic conductivity. Evaporation outflows (Fig. 6e–h) show a similar pattern as the one for recharge inflows, however, the peak of the likelihood surfaces defined by models M3a and M4a is somewhat biased compared to the range of previous estimations. An attraction zone for the likelihood response surface is observed, with the range of the previous estimations defining an upper limit for the evaporation outflows. Likewise recharge inflows, describing the hydraulic conductivity field in more detail decreases the spread of the likelihood surfaces, hence, decreasing uncertainty. For evaporation outflows under model M1a (Fig. 6e), and also groundwater outflows under model M2a (Fig. 6j), however, the range defined by previous estimations is located rather at the tail of the likelihood response surfaces, indicating that either these models fail to properly estimate these two flow components or previous estimations are rather conservative. For the groundwater outflows (Fig. 6i–l), increasing the complexity of the model considerably improves the accuracy of the estimation, suggesting

Assessment of conceptual model uncertainty for Pampa del Tamarugal

R. Rojas et al.

Title Page

Abstract

Introduction

Conclusions

References

Tables

Figures



Back

Close

Full Screen / Esc

Printer-friendly Version

Interactive Discussion

that conditioning to hydraulic conductivity measurements plays an important role in the estimations of groundwater fluxes calculated at the Cerro Gordo section (Fig. 1b). Figures 6k and 6l show that the likelihood response surfaces obtained with models M3a and M4a are consistent with previous estimations. When the hydraulic conductivity field is conditional on hydraulic conductivity measurements, however, previous estimations for the groundwater outflows at the southern section correspond to a local maximum in the likelihood response surface. From Fig. 6l, however, another highly likely value can be identified for these groundwater outflows in the range between 3310–4433 m³ d⁻¹. This new range indicates an average reduction of the groundwater fluxes through the southern section of ca. 55% compared to previous estimations. This may play an important role in the management of the groundwater resources in the study area since groundwater fluxes through the section defined at Cerro Gordo are considered recharge inflows to the local aquifer system of Salar Viejo located south of PTA (DICTUC, 2008).

5.3 Posterior model probabilities

Table 4 shows the results for the integrated model likelihoods and the posterior model probabilities for all eight conceptualizations. It is seen from this table that increasing the detail on the description of the PTA increases the posterior model probabilities of the corresponding models. In this way, conceptual models using conditional realizations of the hydraulic conductivity field show higher posterior model probabilities. In addition, when the alternative recharge mechanism is considered (models M1b, M2b, M3b and M4b), posterior model probabilities also increase for detailed descriptions of the PTA.

There seems to be no clear relationship between posterior model probabilities obtained for models including only recharge from the eastern sub-basins (a-version models) or models including both the recharge from the eastern sub-basins and the recharge due to deep fissures (b-version models). For example, models M1a and M3a show higher posterior weight compared to models M1b and M3b, respectively, whereas

Assessment of conceptual model uncertainty for Pampa del Tamarugal

R. Rojas et al.

Title Page

Abstract

Introduction

Conclusions

References

Tables

Figures

⏪

⏩

◀

▶

Back

Close

Full Screen / Esc

Printer-friendly Version

Interactive Discussion

the opposite is observed for models M2a and M2b, and models M4a and M4b. This indicates that the information content of the dataset D (42 observed heads) used to assess the alternative conceptual models does not allow a consistent discrimination between both recharge mechanisms. Therefore, other sources of information or conditioning data apart from head and hydraulic conductivity measurements should be considered.

5.4 Groundwater model predictions accounting for conceptual model uncertainties

5.4.1 Groundwater heads

Figure 7 shows a set of representative observation wells and the corresponding predictive distributions obtained for the alternative conceptualizations and the full BMA predictive distribution obtained from the GLUE-BMA methodology. Despite the fact heads at the observation wells were used as conditioning data, predictive distributions for the simulated groundwater heads varied significantly in spread, shape and central moment. The BMA predictive distribution accounts for these differences and, hence, represents a good compromise among all predictions obtained from the alternative conceptualizations. There is a slight tendency to larger spreads of the predictive distributions for models M3b and M3a. The latter may be explained by the fact that model M3 describes the hydraulic conductivity fields using unconditional realizations following the spatial correlation structure shown in Fig. 4 solely. Thus, the level of spatial uncertainty is relatively high compared to the conditional case (model M4) or simpler models (M1 and M2).

Figure 7 also includes the location of 15 synthetic piezometers used to assess the impact of conceptual model uncertainty at points *not included* in the dataset D . Although not shown here, predictive distributions for these synthetic piezometers varied substantially in shape, central moment and spread due to the definition of the alternative conceptualizations. For these synthetic piezometers the contribution of conceptual

Title Page

Abstract

Introduction

Conclusions

References

Tables

Figures

⏪

⏩

◀

▶

Back

Close

Full Screen / Esc

Printer-friendly Version

Interactive Discussion



model uncertainty was relatively important as individual model predictions at these locations varied substantially from the average prediction (see e.g. Fig. 9b and Tables 5 and 6). The latter indicates that conceptual model uncertainty is more significant for spatial points not included as conditioning data.

5.4.2 Groundwater flow components

In general, predictive distributions for the groundwater flow components differed significantly among models indicating an important contribution of conceptual model uncertainty to the predictive uncertainty (Fig. 8). Models M3 and M4 showed a better predictive coverage of the ranges estimated in previous studies compared to models M1 and M2. For transpiration outflows, however, the lower limit of the range defined by previous estimations was defined rather at the tail of all individual and the BMA predictions. This suggests that it is likely that higher transpiration outflows were observed for year 1960 compared to the lower values estimated by DICTUC (2008) for this flow component.

For the groundwater outflows to La Noria aquifer (Fig. 8e), all conceptualizations showed a similar (in spread and central moment) predictive distribution. In addition, the most reliable estimation available for these outflows ($1555 \text{ m}^3 \text{ d}^{-1}$) (DICTUC, 2008) was located at the lower tail of the predictive distributions, indicating that it is likely that the outflows from PTA to La Noria aquifer might be higher than the current estimation. It is important to note that the estimation made by DICTUC (2008) corresponds to present situation where the groundwater elevations for the PTA are relatively deeper compared to the situation in 1960. Thus, it is likely that for year 1960 the groundwater outflows from PTA to La Noria were somewhat higher due to possibly steeper hydraulic gradients in the section defining the hydrogeological connection between PTA and La Noria aquifers.

Assessment of conceptual model uncertainty for Pampa del Tamarugal

R. Rojas et al.

Title Page

Abstract

Introduction

Conclusions

References

Tables

Figures

⏪

⏩

◀

▶

Back

Close

Full Screen / Esc

Printer-friendly Version

Interactive Discussion

5.5 Contribution to predictive variance

The predictive variance for groundwater heads at observation points, for the synthetic piezometers, and for the groundwater flow components are shown in Tables 5, 6, and 7, respectively. Estimations of groundwater heads at the north area of the modelled domain showed to be the most uncertain, presenting the highest variances for observation wells C-30 and A-13 and piezometers P1, P2 and P3 (see Fig. 9). This is due to the effects of groundwater recharge inflows from two major eastern sub-basins located in that area (Aroma and Tarapaca), which on average accounts for more than 60% of the total recharge to the PTA. Groundwater recharge inflows derived from these sub-basins considerably affect the uncertainty in the estimation of the groundwater heads in the northern area. The latter is in full agreement with the results obtained by Rojas and Dassargues (2007). Also at the southern area of the modeled domain relatively high variances were observed for observation well 294 and piezometers P13, P14 and P15, indicating high uncertainty in the estimation of the heads in this area. This may partially be explained by the presence of the recharge front originated from the Chacarilla sub-basin (see Fig. 1), which on average accounts for 20% of the total recharge to the PTA, and also due to the proximity of the south boundary condition.

For observation wells the contribution of variance derived from conceptual model uncertainty to the predictive variance varied between 10% and 45%, whereas for piezometers ranged between 6% and 64% (Fig. 9). In the north area, the definition of alternative conceptual models showed a significant impact on the uncertainty estimations (see observation wells C-30 and A-13 in Fig. 9a). It is worth noticing, however, that for observation wells 162 and 315 conceptual model uncertainty also significantly contributed to the predictive variance of head estimations. Observation well 315 is located in the distal part of the alluvial fan formed in the Chacarilla sector, hence, it is influenced by the groundwater recharge inflows originating from this sub-basin. Therefore, different ways to represent these recharge inflows will have an impact on the uncertainty estimation for the head at this well. Observation well 162, on the contrary,

Assessment of conceptual model uncertainty for Pampa del Tamarugal

R. Rojas et al.

Title Page

Abstract

Introduction

Conclusions

References

Tables

Figures



Back

Close

Full Screen / Esc

Printer-friendly Version

Interactive Discussion

Assessment of conceptual model uncertainty for Pampa del Tamarugal

R. Rojas et al.

Title Page

Abstract

Introduction

Conclusions

References

Tables

Figures



Back

Close

Full Screen / Esc

Printer-friendly Version

Interactive Discussion



is located at the western side of the modeled domain in the Salar de Pintados area, near the discharge points connecting PTA and La Noria aquifers (see Figs. 1 and 7). This proximity to these discharge points could only explain the contribution of within-models variance to the predictive variance in the estimation of the head at this well, since by definition these discharging points are a common element for all eight alternative conceptualizations. In addition, if recharge inflows originating from the Chacarilla sub-basin were influencing the estimation of conceptual model uncertainty in well 162, a similar influence should also be noticed for the wells located in between wells 315 and 162. However, this is not observed. Therefore, the only probable explanation for this large contribution of conceptual model uncertainty to the predictive uncertainty in well 162 is the differences in the representation of the hydraulic conductivity field among all eight alternative conceptualizations. This suggests that for areas not directly affected by recharge fronts, the representation of the hydraulic conductivity field dominates the contribution of conceptual model uncertainty to predictive variance in the estimation of groundwater heads.

Results from Fig. 9 can be thought of as a split-sample test using multiple conceptual models, where forty-two data values are used for obtaining the model weights (posterior model probabilities) for multi-model aggregation and fifteen data values are used as a pseudo-validation sample (see Fig. 7). Results show that for the pseudo-validation sample (synthetic piezometers) the predictive variances are significantly higher compared to predictive variances obtained using the forty-two observation wells. This indicates the relevance of conceptual model uncertainty for spatial data not included as conditioning points (pseudo-validation sample).

Figure 10 shows the percentage contribution of conceptual model uncertainty to the predictive variance for the groundwater flow components of interest. In general, uncertainty arising from the alternative conceptualizations was significantly more important for the recharge inflows accounting for 76% and 79% of the predictive variance for the estimation of recharge originating from the Chacarilla sub-basin and for the effective recharge inflows from all sub-basins, respectively. For the recharge inflows, the most

uncertain (individual) estimations were linked to simpler models M1 and M2, whereas the most accurate estimations were associated to models M3 and M4 (see Fig. 8). This shows the relevance of describing the hydraulic conductivity field following a RSF to obtain more confident recharge estimations. If simpler models are used, it is likely that recharge estimations will be highly uncertain, therefore, more effort should be invested in describing the recharge mechanisms when working with simpler conceptualizations to approximate the PTA.

Estimation of groundwater outflows defined at the southern section of Cerro Gordo also showed a large contribution of conceptual model uncertainty (55%). For this flow component, the largest individual variances are associated to models M2 and M1, respectively. Neglecting this contribution of between-models variances to the predictive uncertainty may have serious implications on groundwater management of the study area since these groundwater fluxes are considered the main recharge inflows to the southern aquifer of Salar Viejo.

The contribution of conceptual model uncertainty to the predictive variance for the transpiration outflows resulted in the order of 30% with the largest individual variance obtained for model M2. For evaporation outflows and discharges to La Noria aquifer, contributions of between-models variance were 19% and 16%, respectively. It is worth noticing that even for the case of the outflows to La Noria, where predictive distributions were rather similar between the alternative conceptualizations, a moderate contribution of conceptual model uncertainty was observed.

Figure 10 illustrates the importance of conceptual model uncertainty when making extrapolations beyond the dataset used for calibration. The main dataset used for estimation of posterior model probabilities were groundwater heads whereas model predictions were obtained for flow components. These results show the relevance of considering alternative conceptual models for predictions of variables not used as calibration targets and are in full agreement with Harrar et al. (2003); Trolborg et al. (2007); Seifert et al. (2008).

Assessment of conceptual model uncertainty for Pampa del Tamarugal

R. Rojas et al.

[Title Page](#)

[Abstract](#)

[Introduction](#)

[Conclusions](#)

[References](#)

[Tables](#)

[Figures](#)



[Back](#)

[Close](#)

[Full Screen / Esc](#)

[Printer-friendly Version](#)

[Interactive Discussion](#)

6 Summary and conclusions

In this work we assessed the uncertainty in groundwater flow modelling of the regional aquifer Pampa del Tamarugal located in northern Chile using a multi-model methodology aimed at explicitly accounting for conceptual model uncertainty. We proposed an ensemble (M) of eight alternative conceptualizations covering all major features of groundwater flow models previously developed, ranging from a simple two-layer representation to models fully accounting for the spatial heterogeneity of the hydraulic conductivity field. We further developed models representing the heterogeneity of K -field by conditioning the realizations to available hydraulic conductivity measurements. We included two recharge mechanisms, which have been source of debate for several years to account for uncertainties in the recharge inflows to the groundwater system. For each member of the ensemble M , integrated model likelihoods and posterior model probabilities were derived, which were then used to obtain multi-model predictions that explicitly account for conceptual model uncertainty.

By definition, results of the GLUE-BMA methodology are conditional on the proposed ensemble M of alternative conceptual models, hence, the “quality” of the GLUE-BMA predictions is linked to the “comprehensiveness” of the ensemble M . That is, if the members of M cover a suitable range of potential conceptualizations while ensuring that they are different enough to consider them mutually exclusive, the quality of the GLUE-BMA approach will be improved. On the contrary, if models are rather similar (under-sampling) or tend to reflect fairly similar processes or features (biased), the “quality” of the uncertainty assessment using the GLUE-BMA method will be weakened.

We acknowledge that other model structures could be included in the analysis, for example, other spatial distributions (zonations) to describe the hydraulic conductivity field, a full two-layer description for the aquifer system or even a larger modelled domain to explicitly connect the PTA with aquifer systems located to the south or west (e.g. Salar Viejo, Salar de Llamara and La Noria). First, any spatial distribution (zona-

Assessment of conceptual model uncertainty for Pampa del Tamarugal

R. Rojas et al.

Title Page

Abstract

Introduction

Conclusions

References

Tables

Figures

⏪

⏩

◀

▶

Back

Close

Full Screen / Esc

Printer-friendly Version

Interactive Discussion

tion) of the hydraulic conductivity field obtained through a scientifically sound method (e.g. model calibration) is considered a valid representation of the K -field. Hence, alternative zonations are equally likely and valid in the frame of this uncertainty assessment. For pragmatic reasons, a spatial zonation available from Rojas and Dassargues (2007) was selected. Second, a two-layer description of the groundwater system would be suitable if the dataset used to characterize separately both units (Q3 and Q4) of the PTA was comprehensive. Given the dimensions of the aquifer system, the current level of information is scarce and the number of available hard data on key parameters is at its limit to perform a meaningful geostatistical analysis. Thus, it seems more conservative to combine both units (Q3 and Q4) in one hydrostratigraphic unit and model PTA as a regional two-dimensional system. If more hard data on key parameters were (independently) collected for both units, a two-layer conceptualization fully accounting for the heterogeneities on both units would be worth exploring. Third, including a larger model domain would imply to increase the dataset D to assess the model performance as more information would be available from southern or western aquifer systems. To correctly assess the conceptual model uncertainty, however, a common dataset D to all conceptualizations should be used since models including more data to assess the model performance would be implicitly accounting for the worth of the additional data, hence, masking the actual weight of the conceptualization.

The main findings of this work can be summarized as follows:

1. Considering a more detailed description of the heterogeneity of the hydraulic conductivity fields reduced the spread of the likelihood response surfaces, hence, decreasing the uncertainty in the estimations of parameters and state variables of concern for the PTA.
2. The GLUE-BMA predictive distributions encompassed estimations made in previous studies, thus, showing consistence with previous knowledge about the groundwater system.
3. Models M1 and M2 failed to adequately characterize the range of estimations

Assessment of conceptual model uncertainty for Pampa del Tamarugal

R. Rojas et al.

Title Page

Abstract

Introduction

Conclusions

References

Tables

Figures



Back

Close

Full Screen / Esc

Printer-friendly Version

Interactive Discussion



Assessment of conceptual model uncertainty for Pampa del Tamarugal

R. Rojas et al.

Title Page

Abstract

Introduction

Conclusions

References

Tables

Figures



Back

Close

Full Screen / Esc

Printer-friendly Version

Interactive Discussion



from previous studies for transpiration outflows, groundwater recharge from deep fissures and the outflows from PTA to La Noria aquifer.

4. Fully accounting for the heterogeneity of the hydraulic conductivity field and conditioning the field on hydraulic conductivity measurements increased the posterior model probabilities.
5. A set of 42 head observations did not allow a clear discrimination between the two recharge mechanisms considered in this study. To further differentiate about the validity of both recharge mechanisms other sources of information or conditioning data should be considered. A better characterization of both Q3 and Q4 units to independently condition the K -fields will likely result in a better discrimination between the recharge mechanisms.
6. There seems to be an apparent spatial relationship between the level of uncertainty in the estimations of groundwater heads and areas directly affected by recharge fronts.
7. For areas not affected by the recharge fronts, conceptual model uncertainty seems to be driven by the alternative representations of the hydraulic conductivity field among models.
8. The relevance of conceptual model uncertainty is more significant for spatial data not included as (spatial) conditioning points and for prediction of variables not used as calibration targets, i.e. extrapolations beyond the dataset used for calibration. These results are in full agreement with Harrar et al. (2003); Troldborg et al. (2007); Seifert et al. (2008).
9. Contribution of conceptual model uncertainty varied between 16% and 79% of the predictive variance for the groundwater flow components whereas for the estimations of heads at the observation wells and at the synthetic piezometers varied between 7% and 64% of the predictive variance.

Acknowledgements. The first author thanks the Katholieke Universiteit Leuven (K.U. Leuven) for providing financial support in the framework of PhD IRO-scholarships. We also wish to thank A. M. Gangas of the Dirección General de Aguas (DGA) Chile, for helpful comments and insightful discussions about current studies carried out on the Pampa del Tamarugal Aquifer.

This research was conducted utilizing high performance computational resources provided by K.U.Leuven through the VIC Cluster, <http://ludit.kuleuven.be/hpc>.

References

Aravena, R.: Isotope hydrology and geochemistry of northern chile groundwaters, Bull. IFEA, 24, 495–503, 1995. 5884, 5894, 5896

Aravena, R., Peña, H., Grilli, A., Suzuki, O., and Mordeckai, M.: Evolución isotópica de las lluvias y origen de las masas de aire en el altiplano chileno, in: Isotope Hydrology Investigations In Latin America, IAEA, Vienna, Austria, 1989. 5894

Aravena, R., Suzuki, O., Peña, H., Pollastri, A., Fuenzalida, H., and Grilli, A.: Isotopic composition and origin of the precipitation in northern Chile, Appl. Geochem., 14, 411–422, doi:10.1016/S0883-2927(98)00067-5, 1999. 5894

Beven, K.: A manifesto for the equifinality thesis, J. Hydrol., 320, 18–36, doi:10.1016/j.jhydrol.2005.07.007, 2006. 5888, 5889

Beven, K. and Binley, A.: The future of distributed models: Model calibration and uncertainty prediction, Hydrol. Process., 6, 279–283, doi:10.1002/hyp.3360060305, 1992. 5887

Beven, K. and Freer, J.: Equifinality, data assimilation, and uncertainty estimation in mechanistic modelling of complex environmental systems using the GLUE methodology, J. Hydrol., 249, 11–29, doi:10.1016/S0022-1694(01)00421-8, 2001. 5889

Binley, A. and Beven, K.: Vadose zone flow model uncertainty as conditioned on geophysical data, Ground Water, 41, 119–127, doi:10.1111/j.1745-6584.2003.tb02576.x, 2003. 5892

Bredehoeft, J.: From models to performance assessment: The conceptualization problem, Ground Water, 41, 571–577, doi:10.1111/j.1745-6584.2003.tb02395.x, 2003. 5887

Bredehoeft, J.: The conceptualization model problem–surprise, Hydrogeol. J., 13, 37–46, doi:10.1007/s10040-004-0430-5, 2005. 5887

Chib, S. and Greenberg, E.: Understanding the Metropolis–Hastings algorithm, Am. Stat., 49, 327–335, <http://www.jstor.org/stable/2684568>, 1995. 5892, 5900

Assessment of conceptual model uncertainty for Pampa del Tamarugal

R. Rojas et al.

Title Page

Abstract

Introduction

Conclusions

References

Tables

Figures

⏪

⏩

◀

▶

Back

Close

Full Screen / Esc

Printer-friendly Version

Interactive Discussion

- Chilès, J. and Delfiner, P.: Geostatistics: Modeling Spatial Uncertainty, 1st edn., John Wiley and Sons, New York, USA, 720 pp., 1999. 5898
- DGA: Modelo de simulación hidrogeológico de la Pampa del Tamarugal, 98 pp., Dirección General de Aguas, Santiago, Chile, 1988. 5884, 5895, 5896, 5897
- 5 DGA: Determinación de la disponibilidad de recursos hídricos para constituir nuevos derechos de aprovechamiento de aguas subterráneas en el sector del acuífero de la Pampa del Tamarugal, S.D.T. Nr. 68, 27 pp., Dirección General de Aguas, Santiago, Chile, 1996. 5884, 5896
- DICTUC: Evaluación del impacto del proyecto de extracción de aguas subterráneas en la zona sur de la Pampa del Tamarugal, Tech. rep., Dirección de Investigaciones Científicas y Tecnológicas Universidad Católica de Chile, Santiago, Chile, 1995. 5884
- 10 DICTUC: Análisis técnico de solicitud de derechos de aprovechamiento de ACF Minera. Acuífero Pampa del Tamarugal, 107 pp., Dirección de Investigaciones Científicas y Tecnológicas Universidad Católica de Chile, Santiago, Chile, 2005. 5884, 5886
- 15 DICTUC: EIA Proyecto Pampa Hermosa. Anexo IX.1 Geología del acuífero de la Pampa del Tamarugal, 99 pp., Dirección de Investigaciones Científicas y Tecnológicas Universidad Católica de Chile, Santiago, Chile, <https://www.e-seia.cl/expediente/expedientes.php?modo=ficha&id.expediente=3083858&idExpediente=3083858>, 2007. 5884, 5895
- DICTUC: EIA Proyecto Pampa Hermosa. Anexo VIII.2 Hidrogeología, 169 pp., Dirección de Investigaciones Científicas y Tecnológicas Universidad Católica de Chile, Santiago, Chile, <https://www.e-seia.cl/expediente/expedientes.php?modo=ficha&id.expediente=3083858&idExpediente=3083858>, 2008. 5884, 5886, 5896, 5897, 5899, 5904, 5906, 5920
- 20 Digert, F., Hoke, G., Jordan, T., and Isaaks, B.: Subsurface stratigraphy of the neogene Pampa del Tamarugal basin, northern Chile, in: X Congreso Geológico Chileno, Concepción, Chile, 2003. 5895
- 25 Dingman, R. and Galli, C.: Geology and groundwater resources of the Pica area, Tarapaca Province, Chile, Tech. rep., US Geological Survey, Virginia, USA, 1965. 5895
- Draper, D.: Assessment and propagation of model uncertainty, J. Roy. Stat. Soc. B, 57, 45–97, <http://www.jstor.org/stable/2346087>, 1995. 5887, 5891
- 30 DSM: Estación Cerro Gordo. Modelo de flujo numérico de aguas subterráneas, 70 pp., DSM Minera S.A., Santiago, Chile, 2002. 5884, 5885, 5896
- FAO: Role of forestry in combating desertification: Proceedings of the FAO Expert Consultation on the Role of Forestry in Combating Desertification held in Saltillo, Mexico, 24–28

**Assessment of
conceptual model
uncertainty for
Pampa del Tamarugal**R. Rojas et al.

Title Page

Abstract

Introduction

Conclusions

References

Tables

Figures

⏪

⏩

◀

▶

Back

Close

Full Screen / Esc

Printer-friendly Version

Interactive Discussion



June 1985, Tech. rep., FAO, Rome, Italy, <http://www.fao.org/docrep/T0115E/T0115E00.htm#Contents>, 1989. 5894

Feyen, L., Beven, K., De Smedt, F., and Freer, J.: Stochastic capture zone delineation within the GLUE–methodology: Conditioning on head observations, *Water Resour. Res.*, 37, 625–638, <http://www.agu.org/pubs/crossref/2001/2000WR900351.shtml>, 2001. 5892

Fritz, P., Suzuki, O., Silva, C., and Salati, E.: Isotope hydrology of groundwaters in the Pampa del Tamarugal, Chile, *J. Hydrol.*, 53, 161–184, doi:10.1016/0022-1694(81)90043-3, 1981. 5884

Gelman, A., Carlin, J., Stern, H., and Rubin, D.: *Bayesian Data Analysis*, second edn., Chapman and Hall/CRC, New York, 2004. 5893, 5900, 5901, 5902

Gilks, W., Richardson, S., and Spiegelhalter, D.: *Markov Chain Monte Carlo in Practice*, first edn., Chapman and Hall/CRC, Boca Raton, Florida, USA, 1995. 5892, 5900, 5901

Harbaugh, A., Banta, E., Hill, M., and McDonald, M.: *MODFLOW–2000 US Geological Survey modular ground–water model–user guide to modularization concepts and the ground–water flow process*, Open file rep., 00–92, United States Geological Survey, Reston, Virginia, USA, 2000. 5899

Harrar, W., Sonnenberg, T., and Henriksen, H.: Capture zone, travel time, and solute transport predictions using inverse modelling and different geological models, *Hydrogeol. J.*, 11, 536–548, doi:10.1007/s10040-003-0276-2, 2003. 5887, 5909, 5912

Hastings, W.: Monte Carlo sampling methods using Markov chains and their applications, *Biometrika*, 57, 97–109, doi:10.1093/biomet/57.1.97, 1970. 5892, 5900

Hoeting, J., Madigan, D., Raftery, A., and Volinsky, C.: Bayesian model averaging: A tutorial, *Stat. Sci.*, 14, 382–401, <http://www.jstor.org/stable/2676803>, 1999. 5887, 5891

Højberg, A. and Refsgaard, J.: Model uncertainty–parameter uncertainty versus conceptual models, *Water Sci. Technol.*, 52, 177–186, <http://www.iwaponline.com/wst/05206/wst052060177.htm>, 2005. 5887

Houston, J.: Groundwater recharge through an alluvial fan in the Atacama Desert, northern Chile: mechanisms, magnitudes and causes, *Hydrol. Process.*, 16, 3019–3035, doi:10.1002/hyp.1086, 2002. 5884, 5885, 5894, 5895, 5896

Houston, J.: The great Atacama flood of 2001 and its implications for Andean hydrology, *Hydrol. Process.*, 20, 591–610, doi:10.1002/hyp.5926, 2006. 5894

Ijiri, Y., Saegusa, H., Sawada, A., Ono, M., Watanabe, K., Karasaki, K., Doughty, C., Shimo, M., and Fumimura, K.: Evaluation of uncertainties originating from the different modeling ap-

HESSD

6, 5881–5935, 2009

Assessment of conceptual model uncertainty for Pampa del Tamarugal

R. Rojas et al.

Title Page

Abstract

Introduction

Conclusions

References

Tables

Figures

◀

▶

◀

▶

Back

Close

Full Screen / Esc

Printer-friendly Version

Interactive Discussion

- proaches applied to analyze regional groundwater flow in the Tono area of Japan, *J. Contam. Hydrol.*, 103, 168–181, doi:10.1016/j.jconhyd.2008.10.010, 2009. 5887
- JICA-DGA-PCI: The study on the development of water resources in northern Chile, Supporting report B: Geology and groundwater, 216 pp., Japanese International Cooperation Agency, Dirección General de Aguas, and Pacific Consultants International, Santiago, Chile, 1995. 5884, 5885, 5895, 5896, 5920
- Kass, R. and Raftery, A.: Bayes factors, *J. Am. Stat. Assoc.*, 90, 773–795, <http://www.jstor.org/stable/2291091>, 1995. 5887
- Magaritz, M., Aravena, R., Peña, H., Suzuki, O., and Grilli, A.: Source of groundwaters in the deserts of northern Chile: Evidence for deep circulation of groundwaters from the Andes, *Ground Water*, 28, 513–517, doi:10.1111/j.1745-6584.1990.tb01706.x, 1990. 5884, 5885, 5896
- Makowski, D., Wallach, D., and Tremblay, M.: Using a Bayesian approach to parameter estimation; comparison of the GLUE and MCMC methods, *Agronomie*, 22, 191–203, doi:10.1051/agro:2002007, 2002. 5901
- Metropolis, N., Rosenbluth, A., Rosenbluth, M., Teller, A., and Teller, E.: Equation of state calculations by fast computing machines, *J. Chem. Phys.*, 21, 1087–1092, doi:10.1063/1.1699114, 1953. 5892, 5900
- Meyer, P., Ye, M., Rockhold, M., Neuman, S., and Cantrell, K.: Combined estimation of hydrogeologic conceptual model parameter and scenario uncertainty with application to uranium transport at the Hanford Site 300 area, Report nureg/cr-6940 pnnl-16396, US Nuclear Regulatory Commission, Washington, US, 2007. 5887, 5892
- Neuman, S.: Maximum likelihood Bayesian averaging of uncertain model predictions, *Stoch. Env. Res. Risk A*, 17, 291–305, doi:10.1007/s00477-003-0151-7, 2003. 5887
- Neuman, S. and Wierenga, P.: A comprehensive strategy of hydrogeologic modelling and uncertainty analysis for nuclear facilities and sites, Report nureg/cr-6805, US Nuclear Regulatory Commission, Washington, USA, 2003. 5887
- Poeter, E. and Anderson, D.: Multimodel ranking and inference in ground water modelling, *Ground Water*, 43, 597–605, doi:10.1111/j.1745-6584.2005.0061.x, 2005. 5887
- Refsgaard, J., Van der Sluijs, J., Brown, J., and Van der Keur, P.: A framework for dealing with uncertainty due to model structure error, *Adv. Water Resour.*, 29, 1586–1597, doi:10.1016/j.advwatres.2005.11.013, 2006. 5887
- Refsgaard, J., Van der Sluijs, J., Højberg, A., and Vanrolleghem, P.: Uncertainty in the environ-

HESSD

6, 5881–5935, 2009

Assessment of conceptual model uncertainty for Pampa del Tamarugal

R. Rojas et al.

Title Page

Abstract

Introduction

Conclusions

References

Tables

Figures

◀

▶

◀

▶

Back

Close

Full Screen / Esc

Printer-friendly Version

Interactive Discussion

- mental modelling process—A framework and guidance, *Environ. Modell. Softw.*, 22, 1543–1556, doi:10.1016/j.envsoft.2007.02.004, 2007. 5887
- Risacher, F., Alonso, H., and Salazar, C.: The origin of brines and salts in Chilean salar: A hydrochemical review, *Earth Sci. Rev.*, 63, 249–293, doi:10.1016/S0012-8252(03)00037-0, 2003. 5884, 5897
- Rojas, R. and Dassargues, A.: Groundwater flow modelling of the regional aquifer of the Pampa del Tamarugal, northern Chile, *Hydrogeol. J.*, 15, 537–551, doi:10.1007/s10040-006-0084-6, 2007. 5884, 5885, 5886, 5894, 5895, 5896, 5897, 5898, 5899, 5907, 5911, 5926, 5927
- Rojas, R., Feyen, L., and Dassargues, A.: Conceptual model uncertainty in groundwater modelling: Combining generalized likelihood uncertainty estimation and Bayesian model averaging, *Water Resour. Res.*, 44, W12418, doi:10.1029/2008WR006908, 2008a. 5887, 5888, 5889, 5890, 5891, 5892, 5893
- Rojas, R., Kahunde, S., Peeters, L., Batelaan, O., and Dassargues, A.: Application of a multi-model approach to account for conceptual model and scenario uncertainties in groundwater modelling, *J. Hydrol.*, submitted, 2008b. 5892, 5893
- Rojas, R., Feyen, L., Batelaan, O., and Dassargues, A.: On the value of conditioning data to reduce conceptual model uncertainty in groundwater modelling, *Water Resour. Res.*, submitted, 2009a. 5900, 5903
- Rojas, R., Feyen, L., and Dassargues, A.: Sensitivity analysis of prior model probabilities and the value of prior knowledge in the assessment of conceptual model uncertainty in groundwater modelling, *Hydrol. Process.*, 23, 1131–1146, doi:10.1002/hyp.7231, 2009b. 5887, 5889, 5892
- Salazar, C., Rojas, L., and Pollastri, A.: Evaluación de recursos hídricos en el sector de Pica hoyo de la Pampa del Tamarugal I Región-Chile, in: VI Jornadas del CONAPHI Chile, Santiago, Chile, 1999. 5884
- Seifert, D., Sonnenberg, T., Scharling, P., and Hinsby, K.: Use of alternative conceptual models to assess the impact of a buried valley on groundwater vulnerability, *Hydrogeol. J.*, 16, 659–674, doi:10.1007/s10040-007-0252-3, 2008. 5887, 5909, 5912
- Sorensen, D. and Gianola, D.: Likelihood, Bayesian, and MCMC methods in quantitative genetics, vol. I, 1st edn., Springer-Verlag, New York, 760 pp., 2002. 5893, 5901
- Suzuki, O. and Aravena, R.: Hidrología isotópica y el recurso agua del sector Esmeralda-Pica-Matilla, *Nucleotécnica*, 4, 41–51, 1985. 5884
- Troldborg, L., Refsgaard, J., Jensen, K., and Engesgaard, P.: The importance of alternative

**Assessment of
conceptual model
uncertainty for
Pampa del Tamarugal**R. Rojas et al.

[Title Page](#)[Abstract](#)[Introduction](#)[Conclusions](#)[References](#)[Tables](#)[Figures](#)[⏪](#)[⏩](#)[◀](#)[▶](#)[Back](#)[Close](#)[Full Screen / Esc](#)[Printer-friendly Version](#)[Interactive Discussion](#)

- conceptual models for simulation of concentrations in a multi-aquifer system, *Hydrogeol. J.*, 15, 843–860, doi:10.1007/s10040-007-0192-y, 2007. 5887, 5909, 5912
- Wasserman, L.: Bayesian model selection and model averaging, *J. Math. Psychol.*, 44, 92–107, doi:10.1006/jmps.1999.1278, 2000. 5891
- 5 Ye, M., Neuman, S., and Meyer, P.: Maximum likelihood Bayesian averaging of spatial variability models in unsaturated fractured tuff, *Water Resour. Res.*, 40, doi:10.1029/2003WR002557, 2004. 5887
- Ye, M., Pohlmann, K., and Chapman, J.: Expert elicitation of recharge model probabilities for the Death Valley regional flow system, *J. Hydrol.*, 354, 102–115, doi:10.1016/j.jhydrol.2008.03.001, 2008. 5892
- 10

HESSD

6, 5881–5935, 2009

**Assessment of
conceptual model
uncertainty for
Pampa del Tamarugal**

R. Rojas et al.

Title Page

Abstract

Introduction

Conclusions

References

Tables

Figures

⏪

⏩

◀

▶

Back

Close

Full Screen / Esc

Printer-friendly Version

Interactive Discussion

Assessment of conceptual model uncertainty for Pampa del Tamarugal

R. Rojas et al.

Table 1. Summary of alternative conceptual models.

Geological setup and spatial distribution of K	Recharge mechanism	
	Eastern sub-basins	Eastern sub-basins+ deep fissures in basement rocks
Two-layer and constant value of K for each layer	M1a	M1b
One-layer and zonation of K (22 zones)	M2a	M2b
One-layer and (unconditional) RSF representing K	M3a	M3b
One-layer and (conditional) RSF representing K	M4a	M4b

Title Page

Abstract

Introduction

Conclusions

References

Tables

Figures

⏪

⏩

◀

▶

Back

Close

Full Screen / Esc

Printer-friendly Version

Interactive Discussion

Assessment of conceptual model uncertainty for Pampa del Tamarugal

R. Rojas et al.

Table 2. Summary of aquifer parameters of the Pampa del Tamarugal Aquifer (PTA) obtained from 62 measurement points. Adapted from JICA-DGA-PCI (1995) and DICTUC (2008).

Zone	Transmissivity ($\text{m}^2 \text{d}^{-1}$)	Hydraulic conductivity (m d^{-1})	Storativity (–)
Dolores	7–905	1.1–35.9	3.0×10^{-4} –0.30
Huara	8–935	0.1–29.1	5.7×10^{-7} –0.08
Pozo Almonte – Pintados	21–2097	0.3–42.4	2.0×10^{-6} –0.20
Oficina Victoria – Cerro Gordo	29–1500	0.8–150	3.0×10^{-7} –0.33

Title Page

Abstract

Introduction

Conclusions

References

Tables

Figures

⏪

⏩

◀

▶

Back

Close

Full Screen / Esc

Printer-friendly Version

Interactive Discussion

Assessment of conceptual model uncertainty for Pampa del Tamarugal

R. Rojas et al.

Table 3. Range of prior uniform distributions for unknown parameters.

Parameter			Range	
			Minimum	Maximum
Recharge	(RECH)	(m ³ d ⁻¹)	0	345600
Recharge from deep fissures in basement rocks	(RECH_BAS)	(m ³ d ⁻¹)	0	172800
Transpiration forested areas	(TRANSP)	(m ³ d ⁻¹)	0	172800
Discharge to La Noria aquifer	(NORIA)	(m ³ d ⁻¹)	0	86400
Evaporation rate	(EVAP)	(m d ⁻¹)	0	0.01
Extinction depth	(EXTD)	(m)	0	20
Elevation constant head north	(CH_N)	(m)	1075	1120
Elevation constant head south	(CH_S)	(m)	875	920
Hydraulic conductivity ^a	(K)	(m d ⁻¹)	0	100

^a Included only for models M1 and M2.

Title Page

Abstract

Introduction

Conclusions

References

Tables

Figures

⏪

⏩

◀

▶

Back

Close

Full Screen / Esc

Printer-friendly Version

Interactive Discussion

Assessment of conceptual model uncertainty for Pampa del Tamarugal

R. Rojas et al.

Table 4. Integrated model likelihoods ($p(\mathbf{D}|M_k)$), prior model probabilities ($p(M_k)$), and posterior model probabilities ($p(M_k|\mathbf{D})$) for the alternative conceptual models.

	Conceptual models								Total
	M1a	M1b	M2a	M2b	M3a	M3b	M4a	M4b	
$p(\mathbf{D} M_k)$	597.3	590.9	620.4	656.5	741.6	726.5	759.3	797.4	5498.84
$p(M_k)$	(1/8)	(1/8)	(1/8)	(1/8)	(1/8)	(1/8)	(1/8)	(1/8)	1.0
$p(M_k \mathbf{D})$	0.1088	0.1076	0.1130	0.1196	0.1351	0.1323	0.1382	0.1452	1.0

Title Page

Abstract

Introduction

Conclusions

References

Tables

Figures

⏪

⏩

◀

▶

Back

Close

Full Screen / Esc

Printer-friendly Version

Interactive Discussion

Assessment of conceptual model uncertainty for Pampa del Tamarugal

R. Rojas et al.

Table 5. Summary of predictive variances for estimations of groundwater heads at observation wells (see Fig. 1b). Values expressed in m^2 .

	Observation well nr.												
	162	237	263	276	281	286	290	294	C-30	315	D-60	A-13	133
Predictive variance	41.8	23.6	30.0	31.9	36.5	36.2	26.5	62.8	134.8	60.3	89.6	211.7	41.2

Title Page

Abstract

Introduction

Conclusions

References

Tables

Figures

◀

▶

◀

▶

Back

Close

Full Screen / Esc

Printer-friendly Version

Interactive Discussion

Assessment of conceptual model uncertainty for Pampa del Tamarugal

R. Rojas et al.

Table 6. Summary of predictive variances for estimations of groundwater heads at synthetic piezometers (see Fig. 1b). Values expressed in m^2 .

	Synthetic piezometers										
	P1	P2	P3	P4	P7	P10	P11	P12	P13	P14	P15
Predictive variance	191.0	345.9	299.7	209.7	54.6	30.7	60.9	76.5	88.6	102.0	146.9

Title Page

Abstract

Introduction

Conclusions

References

Tables

Figures

◀

▶

◀

▶

Back

Close

Full Screen / Esc

Printer-friendly Version

Interactive Discussion

Assessment of conceptual model uncertainty for Pampa del Tamarugal

R. Rojas et al.

Table 7. Summary of predictive variances for estimations of groundwater flow components. Values expressed in $(\text{m}^3 \text{d}^{-1})^2$.

GW flow component	Predictive variance
Recharge inflows	1.93×10^{10}
Evaporation outflows	4.39×10^{11}
Transpiration outflows	2.80×10^9
Recharge Chacarilla sub-basin	3.26×10^8
Discharge to La Noria aquifer	5.41×10^8
Recharge from deep fissures	7.47×10^9
GW outflows at Cerro Gordo	4.23×10^9

Title Page

Abstract

Introduction

Conclusions

References

Tables

Figures

⏪

⏩

◀

▶

Back

Close

Full Screen / Esc

Printer-friendly Version

Interactive Discussion

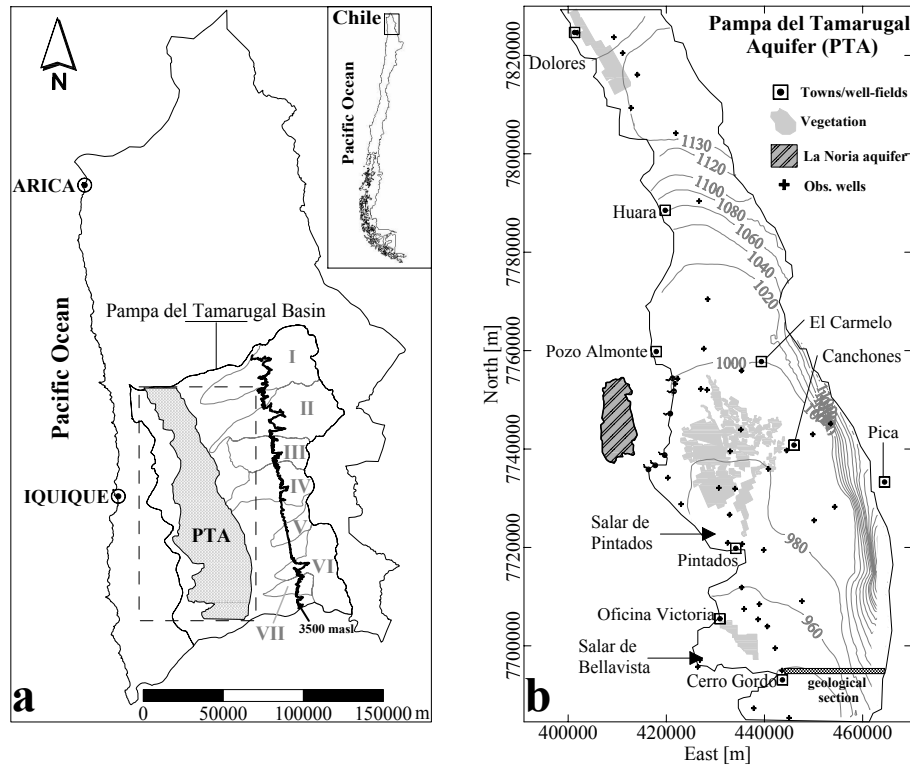


Fig. 1. (a) Location of study area, Pampa del Tamarugal Aquifer (PTA), eastern sub-basins (I: Aroma, II: Tarapaca, III: Quipisca, IV: Sagasca, V: Quisma, VI: Chacarilla, VII: Ramada) and topographic line 3500 m a.s.l. for the occurrence of precipitation (solid line), (b) groundwater elevation map (m a.s.l.) for the PTA for year 1960 (assumed steady-state conditions) (adapted from Rojas and Dassargues, 2007).

Assessment of conceptual model uncertainty for Pampa del Tamarugal

R. Rojas et al.

Title Page

Abstract

Introduction

Conclusions

References

Tables

Figures

⏪

⏩

◀

▶

Back

Close

Full Screen / Esc

Printer-friendly Version

Interactive Discussion

Assessment of conceptual model uncertainty for Pampa del Tamarugal

R. Rojas et al.

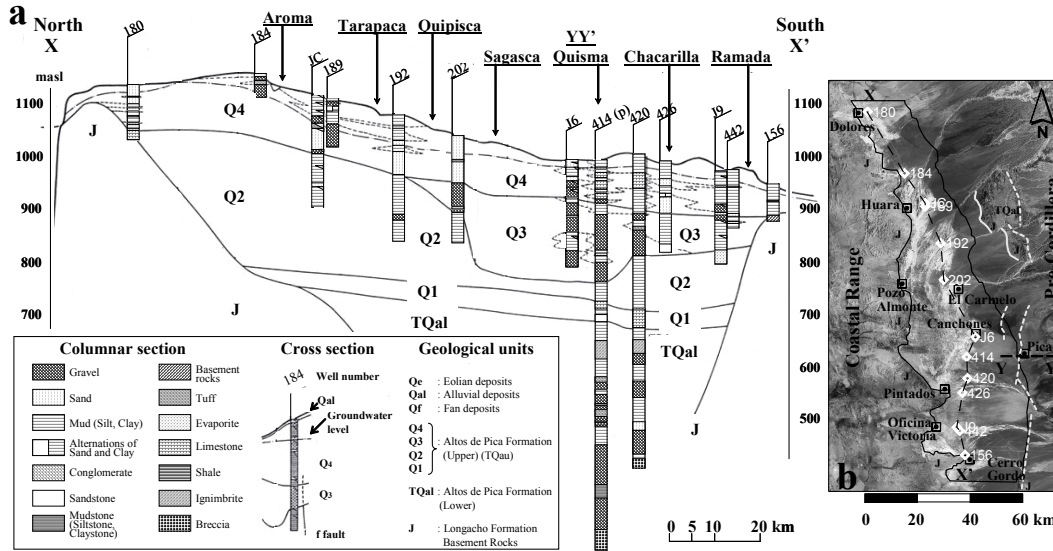


Fig. 2. (a) Geological longitudinal profile (XX') of PTA and (b) planar delimitation of the aquifer boundaries and basement rocks outcroppings (after Rojas and Dassargues, 2007).

Title Page

Abstract Introduction

Conclusions References

Tables Figures

Navigation icons: back, forward, search, etc.

Back Close

Full Screen / Esc

Printer-friendly Version

Interactive Discussion

Assessment of conceptual model uncertainty for Pampa del Tamarugal

R. Rojas et al.

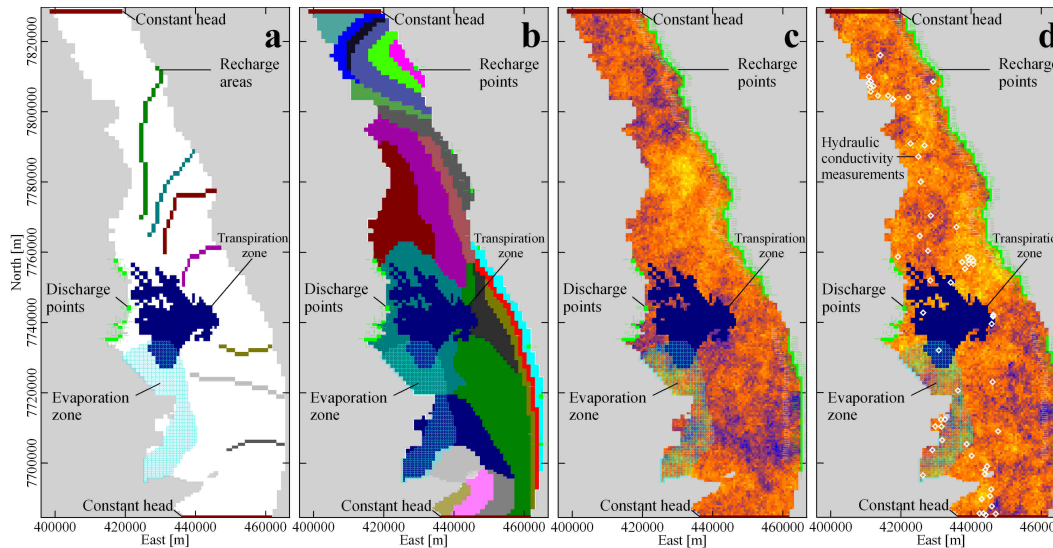


Fig. 3. Model setup for four alternative conceptual models: **(a)** M1 (two-layer model with constant values of K in each layer), **(b)** M2 (one-layer model with zonation of K), **(c)** M3 (one-layer model, unconditional RSF), and **(d)** M4 (one-layer model, conditional RSF).

Title Page

Abstract

Introduction

Conclusions

References

Tables

Figures

⏪

⏩

◀

▶

Back

Close

Full Screen / Esc

Printer-friendly Version

Interactive Discussion

Assessment of conceptual model uncertainty for Pampa del Tamarugal

R. Rojas et al.

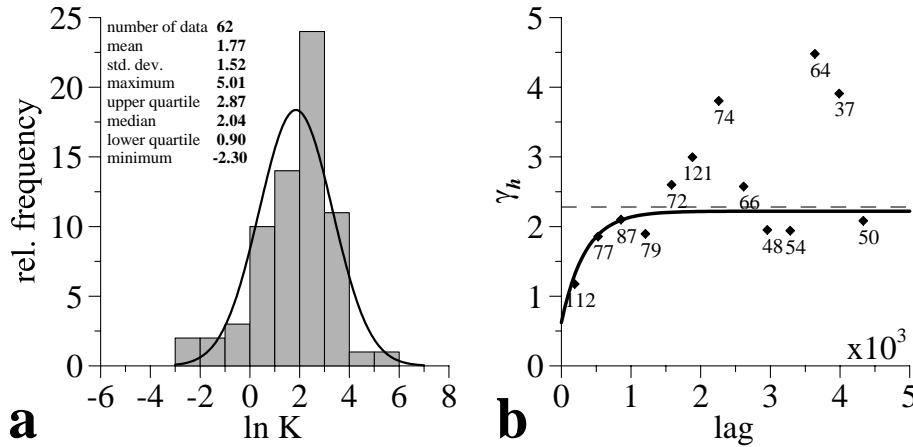


Fig. 4. (a) Histogram for hydraulic conductivity measurements and (b) modelled variogram to describe the spatial correlation structure of $\ln K$ for the PTA. Horizontal dashed line represents the variance of measurements.

Title Page	
Abstract	Introduction
Conclusions	References
Tables	Figures
◀	▶
◀	▶
Back	Close
Full Screen / Esc	
Printer-friendly Version	
Interactive Discussion	

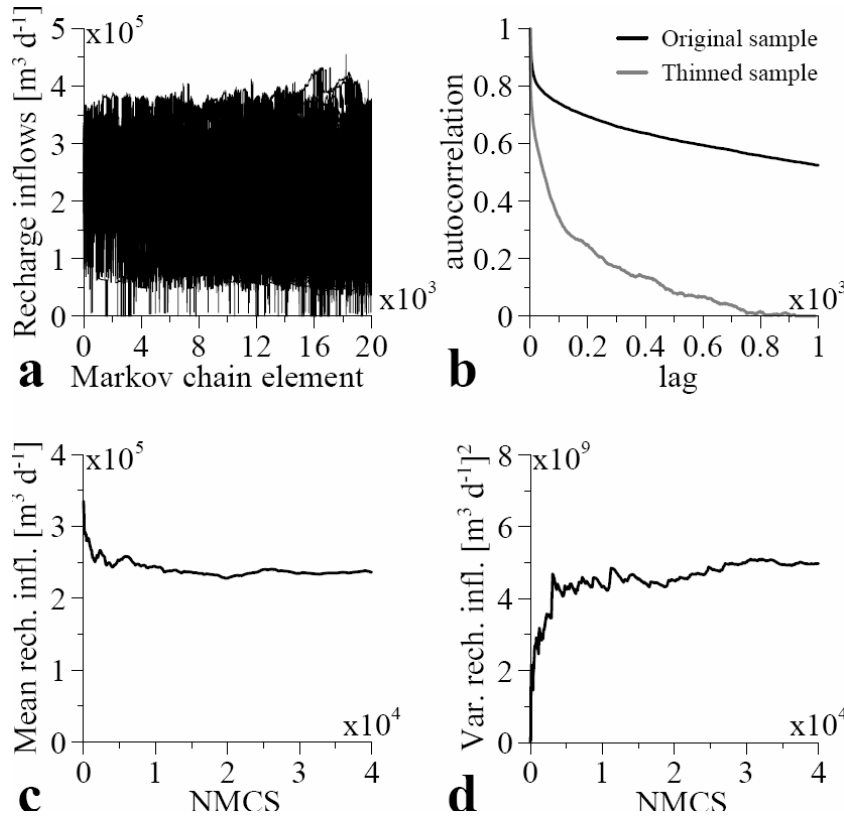


Fig. 5. Results from the M-H algorithm for recharge inflows from the eastern sub-basins for model M2a: **(a)** 50 independent Markov chains, **(b)** autocorrelation function for the original sample and thinned sample, **(c)** convergence of the mean for the predictive distribution of recharge inflows (thinned sample), and **(d)** convergence of the variance for the predictive distribution of recharge inflows (thinned sample).

Title Page	
Abstract	Introduction
Conclusions	References
Tables	Figures
◀	▶
◀	▶
Back	Close
Full Screen / Esc	
Printer-friendly Version	
Interactive Discussion	

Assessment of conceptual model uncertainty for Pampa del Tamarugal

R. Rojas et al.

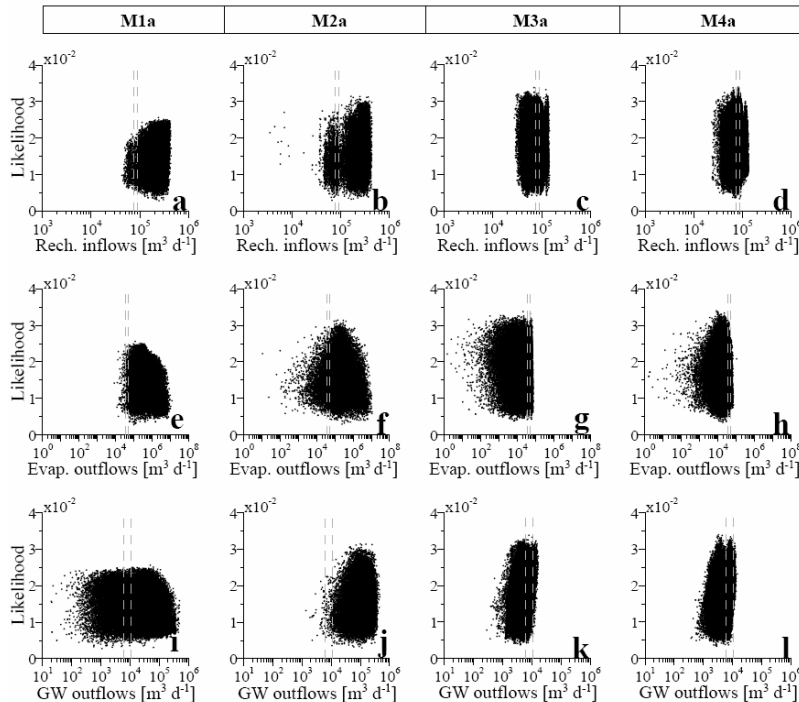


Fig. 6. Scatter plots of likelihood values for recharge inflows (a–d), evaporation outflows (e–h), and groundwater fluxes at the section defined between Cerro Gordo and the east boundary of the model (i–l) for models M1a, M2a, M3a, and M4a. Vertical dashed lines represent the range of estimated values from previous studies.

Title Page

Abstract

Introduction

Conclusions

References

Tables

Figures

◀

▶

◀

▶

Back

Close

Full Screen / Esc

Printer-friendly Version

Interactive Discussion

Assessment of conceptual model uncertainty for Pampa del Tamarugal

R. Rojas et al.

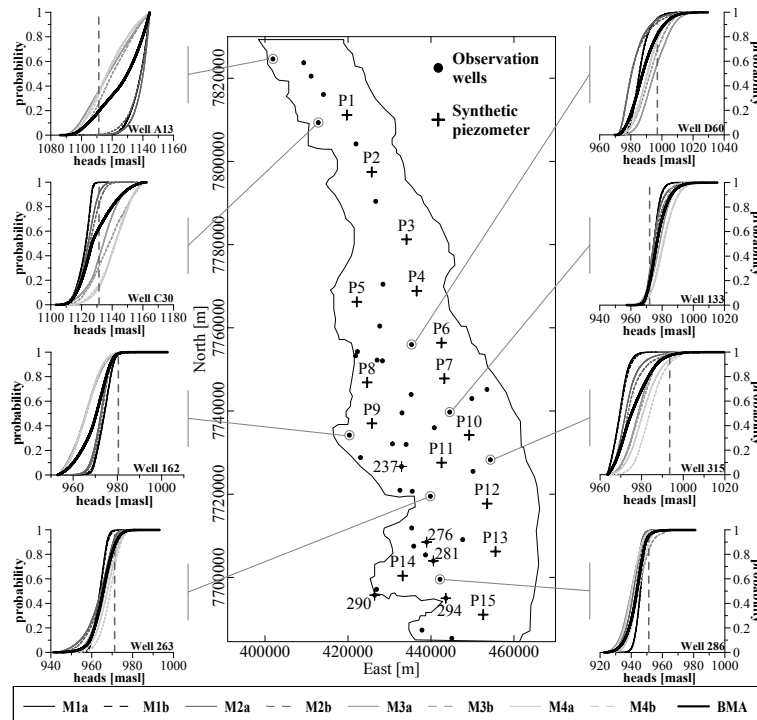


Fig. 7. Predictive distributions for a set of observation wells for the alternative conceptual models and the corresponding BMA predictive distribution. Vertical dashed lines represent observed head. Crosses represent synthetic locations where uncertainty was estimated.

Title Page

Abstract

Introduction

Conclusions

References

Tables

Figures

⏪

⏩

◀

▶

Back

Close

Full Screen / Esc

Printer-friendly Version

Interactive Discussion

Assessment of conceptual model uncertainty for Pampa del Tamarugal

R. Rojas et al.

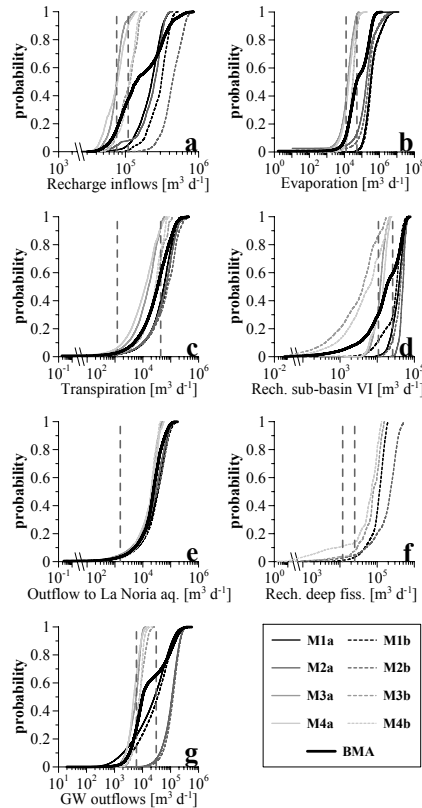


Fig. 8. Predictive cumulative distributions for groundwater flow components: (a) recharge inflows, (b) evaporation outflows, (c) transpiration outflows, (d) recharge Chacarilla sub-basin, (e) discharge to La Noria aquifer, (f) recharge due to faults and deep fissures, and (g) groundwater outflows in the eastern section of Cerro Gordo. Vertical dashed lines represent the range of estimated values from previous studies.

Title Page

Abstract

Introduction

Conclusions

References

Tables

Figures

◀

▶

◀

▶

Back

Close

Full Screen / Esc

Printer-friendly Version

Interactive Discussion

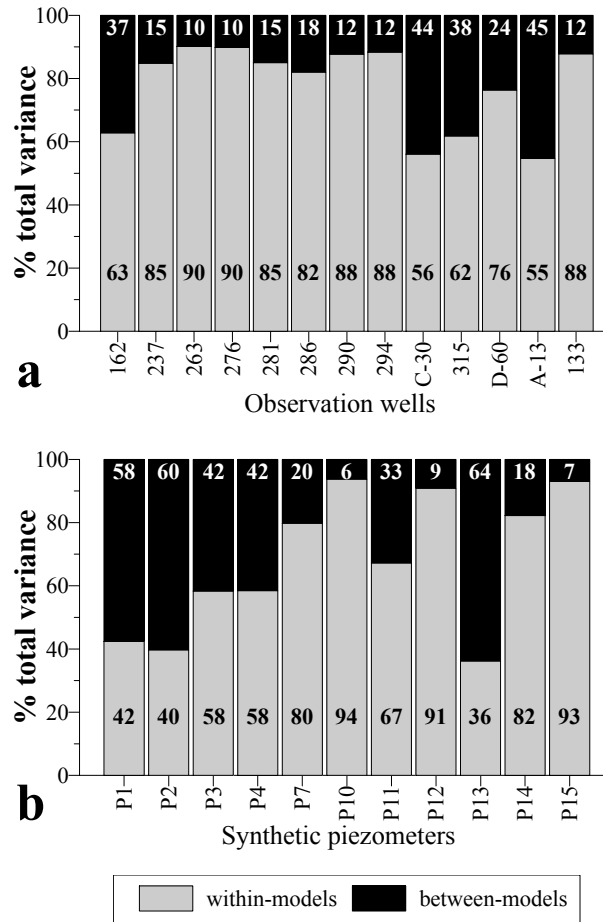


Fig. 9. Predictive variance obtained using Eq. (4) expressed as a percentage contribution from within-models and between models components for: **(a)** observation wells and **(b)** synthetic piezometers depicted in Fig. 1b.

Title Page

Abstract

Introduction

Conclusions

References

Tables

Figures

⏪

⏩

◀

▶

Back

Close

Full Screen / Esc

Printer-friendly Version

Interactive Discussion

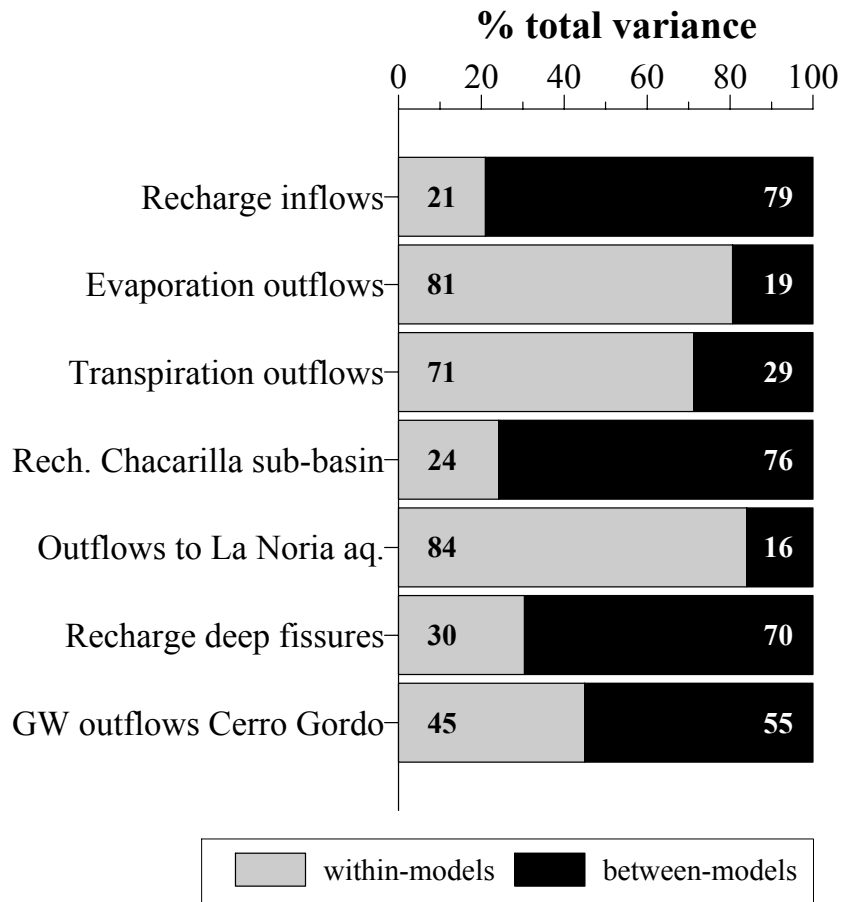


Fig. 10. Contribution of within-models and between-models variances (expressed as a percentage of the predictive variance) for main groundwater flow components of the PTA.

Title Page

Abstract

Introduction

Conclusions

References

Tables

Figures

⏪

⏩

◀

▶

Back

Close

Full Screen / Esc

Printer-friendly Version

Interactive Discussion