

Article

A Novel Method to Optimize Autologous Adipose Tissue Recovery with Extracellular Matrix Preservation

Ilaria Roato ¹, Federico Mussano ¹, Simone Reano ², Filippo Boriani ³, Andrea Margara ⁴, Riccardo Ferracini ⁵, Ezio Adriani ⁶, Omar Sabry ^{7,*}, Mauro Fiorini ⁷ and Paolo Fattori ⁷

¹ CeRMS, A.O. Città della Salute e della Scienza, 10126 Torino, Italy; roato78@libero.it (I.R.); federico.mussano@unito.it (F.M.)

² Department of Biochemistry, Muscle Regeneration Laboratory, University of Piemonte Orientale, 28100 Novara, Italy; simone.reano@med.uniupo.it

³ Department of Plastic Surgery, Sanremo Hospital, 18038 Sanremo, Italy; borianifilippo@gmail.com

⁴ Department of Plastic Surgery, Humanitas Cellini, 10126 Torino, Italy; andreamargara@me.com

⁵ Dipartimento di Scienze Chirurgiche, and Koelliker Hospital, Università di Genova, 10126 Torino, Italy; riccardoferraciniweb@gmail.com

⁶ Unità Operativa Traumatologia dello Sport e Chirurgia del Ginocchio, Fondazione Universitaria Policlinico Gemelli IRCCS, 00168 Roma, Italy; ezioadriani@gmail.com

⁷ Tiss'You, 47895 Domagnano, San Marino; m.fiorini@tissy.com (M.F.); p.fattori@tissy.com (P.F.)

* Correspondence: o.sabry@tissy.com

Received: 6 December 2019; Accepted: 28 December 2019; Published: 9 January 2020



Abstract: This work aims to characterize a new method to recover low-manipulated human adipose tissue, enriched with adipose tissue-derived mesenchymal stem cells (ATD-MSCs) for autologous use in regenerative medicine applications. Lipoaspirated fat collected from patients was processed through Lipocell, a Class II-a medical device for dialysis of adipose tissue, by varying filter sizes and washing solutions. ATD-MSC yield was measured with flow cytometry after stromal vascular fraction (SVF) isolation in fresh and cultured samples. Purification from oil and blood was measured after centrifugation with spectrophotometer analysis. Extracellular matrix preservation was assessed through hematoxylin and eosin (H&E) staining and biochemical assay for total collagen, type-2 collagen, and glycosaminoglycans (GAGs) quantification. Flow cytometry showed a two-fold increase of ATD-MSC yield in treated samples in comparison with untreated lipoaspirate; no differences were reported when varying filter size. The association of dialysis and washing thoroughly removed blood and oil from samples. Tissue architecture and extracellular matrix integrity were unaltered after Lipocell processing. Dialysis procedure associated with Ringer's lactate preserves the proliferation ability of ATD-MSCs in cell culture. The characterization of the product showed that Lipocell is an efficient method for purifying the tissue from undesired byproducts and preserving ATD-MSC vitality and extracellular matrix (ECM) integrity, resulting in a promising tool for regenerative medicine applications.

Keywords: adipose tissue; mesenchymal stem cells; regenerative medicine; Lipocell; extracellular matrix preservation; Ringer's lactate; liposuction

1. Introduction

Adipose tissue and its derivatives are being increasingly used as autografts. Bioactive fractions or transformed products of fat include microfat, nanofat, stromal vascular fraction (SVF), and adipose-derived stem cells (ATD-MSC). Indications for the use of these autologous tissue derivatives are several and enlarging [1], i.e., cosmetic surgery for creating, increasing, or reconstructing volumes,

reconstructive surgery for revitalizing mortified areas [2], and orthopedic surgery for anti-inflammatory effects in degenerating joints, ligaments, and tendons [3–5]. The European Union and American regulations impose some specific requirements when processing harvested fat. As with any other tissue for immediate autografting, users must respect minimal manipulation requirements. Indeed, the enzymatic digestion of adipose tissue, which disrupts the extracellular matrix (ECM) with the release of SVF, is considered high manipulation and must be performed into cell factories. Notably, the FDA also considers that significant physical processing is more than minimal manipulation when the structural integrity of the tissue is altered.

An increasing number of systems have been developed to process or isolate adipose tissue elements overcoming donor variations, risk of infections, and unpredictability of the final product. The most common method is cell isolation based on enzymatic digestion to obtain SVF, but it has high costs with an impact on safety and efficacy [6]. To date, many techniques, fully compliant with the minimal manipulation EU and US requirements, have been developed to extract these fractions. Non-enzymatic isolation methods use mechanical forces to separate the cells or cell aggregates from adipose tissue, with a sound efficacy even with a lower cell-yield compared to enzymatic-dependent techniques [7,8]. Indeed, the success of the treatment seems independent of ATD-MSc quantity and differentiation ability, but likely more dependent on MSCs' ability to release growth factors and cytokines in an adaptive paracrine fashion [9]. Our research group has developed a novel technique based on a semipermeable membrane commonly used for dialysis purposes. This method, while being completely adherent to the minimal manipulation concept, would appear to be delicate as well as extremely effective and efficient in isolating extracellular matrix components and discarding lipoaspiration byproducts with no recognized bioactive effects. In this study, we cytologically and histologically characterized the final product of the Lipocell filtration-based method and determined its efficiency in the clearance of residues.

2. Materials and Methods

2.1. Sample Collection and Processing

Lipoaspirate samples were collected from surplus aesthetic liposuction material obtained from patients, who signed written informed consent. Patients underwent liposuction after Klein solution infiltration (lidocaine 2% and adrenaline 1 mg/mL in 500 mL NaCl 0.9% solution). Klein solution infiltration and liposuction were performed with fenestrated blunt cannulae. The lipoaspirates were processed with Lipocell (Tiss'You, Domagnano, Republic of San Marino) according to instructions. Briefly, the lipoaspirate was inserted into the device where it was dialyzed with a filter (15 μ m, 20 μ m, or 50 μ m) and washed with 300–500 mL of washing solution (NaCl 0.9%, phosphate buffered saline (PBS), or Ringer's lactate (RL)). Gentle brushing was done on the outside of the bag to facilitate the washing. The whole procedure lasted for an average of 5 min. At the end, the lipoaspirate appeared clear from blood, and the flowing washing solution was transparent; the purified lipoaspirate could be recovered with a 10 mL syringe from the output connection. The volume of the final product was dependent on the liposuction technique. Averagely, 50% up to 70% of harvested material could be recovered after the processing.

2.2. Isolation of SVF from Adipose Tissue

SVFs were isolated from fresh and Lipocell-processed adipose tissue by enzymatic digestion with Collagenase NB4 (Serva Electrophoresis, Heidelberg, Germany) 0.15 U/mL using a tube rotator for 40 min at 37 °C. The activity of the enzyme was neutralized by the addition of Dulbecco's modified Eagle's medium (DMEM) low glucose \pm 10% FBS, and then the samples were centrifuged at 1700 rpm for 10 min. The pellet was resuspended in medium, then passed through 100 μ m and 70 μ m cell strainers, washed by saline solution, collected, and counted. The phenotype of ATD-MSCs contained in the SVF was evaluated at T0, soon after SVF isolation. The SVF cells were seeded in T25 flasks and cultured in DMEM with 10% FBS, 2 mM glutamine, and 1% antibiotics (Thermo Fisher Scientific, Waltham, MA,

USA), and the medium was replaced to eliminate nonadherent cells after 24 h. After 7 days of culture, the growth rate was calculated by counting the number of cells grown for mL of adipose tissue. Then, MSCs were cultured for two passages, then detached, and their phenotype was analyzed.

2.3. Phenotype of ATD-MSCs

Cell surface markers of ATD-MSCs were analyzed by flow cytometry on fresh SVF derived from adipose tissue. ATD-MSCs were identified as CD105+/CD73+/CD90+/CD271+/CD45– cells, pericytes were CD146+/CD31–/CD34– cells, endothelial cells were CD31+/CD34–/CD146– cells, stromal cells were CD34+/CD31–/CD146–/CD45– cells, monocytes were CD14± cells, and lymphocytes were CD3+ cells. Standard labelling protocol was performed with the following fluorochrome-conjugated antibodies and isotypic controls: human CD105 PE (Invitrogen, Carlsbad, CA, USA), CD73 FITC (kindly provided by Professor Malavasi, University of Turin, Turin, Italy), CD90 PerCP (Biolegend, San Diego, CA, USA) CD45 PerCP, CD3 PerCP, CD271 APC, IgG1 PE, IgG1 APC, and IgG2a PerCP (Miltenyi Biotec, Bergisch Gladbach, Germany), and IgG1 FITC-conjugated (Immunostep, Salamanca, Spain). About 10^5 events/sample were used for capture with CellQuest software. ATD-MSC percentages were previously normalized on the absolute number of viable cells. All data were analyzed with FlowLogic software (Miltenyi Biotec, Bergisch Gladbach, Germany).

2.4. Washing Efficiency Assay

250 mL of lipoaspirate from a unique donor was collected and split into three homogenous 50 mL syringes. Each sample was put in a different Lipocell device (15 μ m, 20 μ m, or 50 μ m) and washed homogeneously for 5 min. The procedures were carried out synchronously to assess the washing efficiency of the devices. Purified adipose tissues were then recovered in tubes and centrifuged at $300\times g$ for 10 min using untreated lipoaspirate as a control sample. Water phases were transferred in plastic cuvettes (optical path = 1 cm) and measured with a UV-Vis Spectrophotometer (Lambda 365, PerkinElmer, Waltham, MA, USA). Hemoglobin (Hb) concentrations were calculated accordingly to references [10].

2.5. Histology and Staining

Adipose tissue purified with the Lipocell procedure and controls were fixed in 4% paraformaldehyde (PFA) then washed in PBS-1X and embedded in 1% agar. After the dehydration process (50% ethanol 30 min, 70% ethanol 30 min, 90% ethanol 45 min, 95% ethanol 30 min, 100% ethanol 90 min \times 2, and xylene 60 min \times 2) the adipose tissue was embedded in paraffin. The slices, obtained by the microtome cut, were rehydrated (xylene 5 min \times 2, 100% ethanol 5 min \times 2, 95% ethanol 3 min, 90% ethanol 3 min, and 70% ethanol 3 min), then stained in hematoxylin for 4 min and dehydrated for eosin staining (6 min). Finally, the sections were mounted with EUKITT mounting media (O. Kindler GmbH & CO, Freiburg im Breisgau, Germany).

2.6. ECM Extraction and Collagen Type II

ECM extraction procedure was performed at 40 °C to prevent freezing of the oil components of lipoaspirate samples. Then, 3 mL of each sample was diluted in distilled water (1:1) and homogenized for 5 min using a Polytron PT2500 with pulsation. The tissue suspension was then centrifuged at $1800\times g$ for 5 min, and the upper layer of oil components was discarded; this process was repeated several times until the complete removal of oil components. The tissue was minced and covered with HNTG Lysis buffer (50 mM HEPES, 150 mM NaCl, 10% Glycerol, and 1% Triton X-100), homogenized 20 times and rotated at 4 °C for 30 min. The lysate was centrifuged at $18,000\times g$ at 4 °C for 20 min. Type II collagen was quantified with COL 2 Elisa Kit (Cloud-Clone, Corp., Houston, TX, USA) according to the manufacturer's instructions.

2.7. Glycosaminoglycans Quantification

GAG content was quantified with the Dimethylmethylene Blue Assay (DMMB) assay. Samples were freeze-dried to a constant weight, and 10 mg of samples were digested in papain buffer (125 mg/mL papain, 5 mM cysteine-, 50 HCl, and 5 mM disodium EDTA in PBS) at 60 °C for 24 h. Then, 50 µL of each sample was mixed with 250 µL of 1.9-dimethyl-methylene blue (Sigma-Aldrich, St. Louis, MO, USA) in a 96-well microtiter plate, and the absorbance was measured at 530 nm. The amount of GAG content was calculated by reference to a standard curve prepared using different concentrations of chondroitin sulfate sodium salt from shark cartilage (Sigma-Aldrich, St. Louis, MO, USA).

2.8. Collagen Quantification

10 µL of extracted ECM was mixed thoroughly with 100 µL of 37% hydrochloric acid. The homogenate was incubated at 120 °C for 3 h to ensure complete hydrolysis. After hydrolysis, 10 µL from each sample was transferred to a 96-well microplate (Greiner Cellstar 96 well flat bottom, Sigma-Aldrich, St. Louis, MO, USA) and left overnight at 60 °C. After evaporation, the hydroxyproline content was determined using a Hydroxyproline Assay Kit (Sigma-Aldrich, St. Louis, MO, USA). The absorbance at 560 nm was determined using a microplate reader (Infinite 2000Pro, Tecan, Männedorf, Switzerland) and converted to hydroxyproline content using a standard curve; total collagen concentration was obtained by multiplying by 8 the hydroxyproline content [11].

3. Results

3.1. Lipocell Procedure Retains Viable ATD-MSCs

Cellular phenotyping was performed after enzymatic SVF isolation on both untreated lipoaspirated adipose tissue and Lipocell-processed products. The combination of dialysis and brushing of the Lipocell procedure retains the cellular contents of the adipose tissue without significant loss; indeed, the quantification of viable cells normalized for the adipose tissue weight showed no differences (Figure 1a) among the three filters (15 µm, 20 µm, and 50 µm). The relative percentage of ATD-MSCs expressing CD73, CD90, and CD105, was significantly higher in samples treated with Lipocell in comparison to untreated lipoaspirate (Figure 1b). The yield of ATD-MSCs did not change when comparing the filters (Figure 1c). Further cellular characterization of SVF showed that Lipocell products contain monocytes, lymphocytes, pericytes, and endothelial cells comparable to the untreated lipoaspirate (Table 1).

Table 1. Percentages of ATD-MSCs, pericytes, and other stromal vascular fraction (SVF) subpopulation in Lipocell-treated and untreated lipoaspirates.

	MSC%	Pericytes%	Endothelial Cells%	Stromal Cells%	Monocytes%	Lymphocytes%
Lipoaspirate (control)	5.2 ± 3.7	4.1 ± 2.8	4.2 ± 4.8	17.6 ± 9.5	4 ± 2.3	1.6 ± 0.3
Lipocell (total)	8.4 ± 5.2	7.3 ± 3.3	9 ± 11.8	7.5 ± 4.2	3.1 ± 1.6	1.3 ± 0.4
Lipocell (15 µm)	8.3 ± 5.2	8.4 ± 3.8	8.8 ± 11.9	6.8 ± 4.4	2.8 ± 1.5	1.3 ± 0.4
Lipocell (20 µm)	8.9 ± 6.1	6.7 ± 3.2	9.1 ± 12.7	8.3 ± 4.7	3.3 ± 1.5	1.3 ± 0.6
Lipocell (50 µm)	8.2 ± 5	6.2 ± 3.2	9 ± 12.2	7.4 ± 4.2	3.2 ± 1.9	1.2 ± 0.3

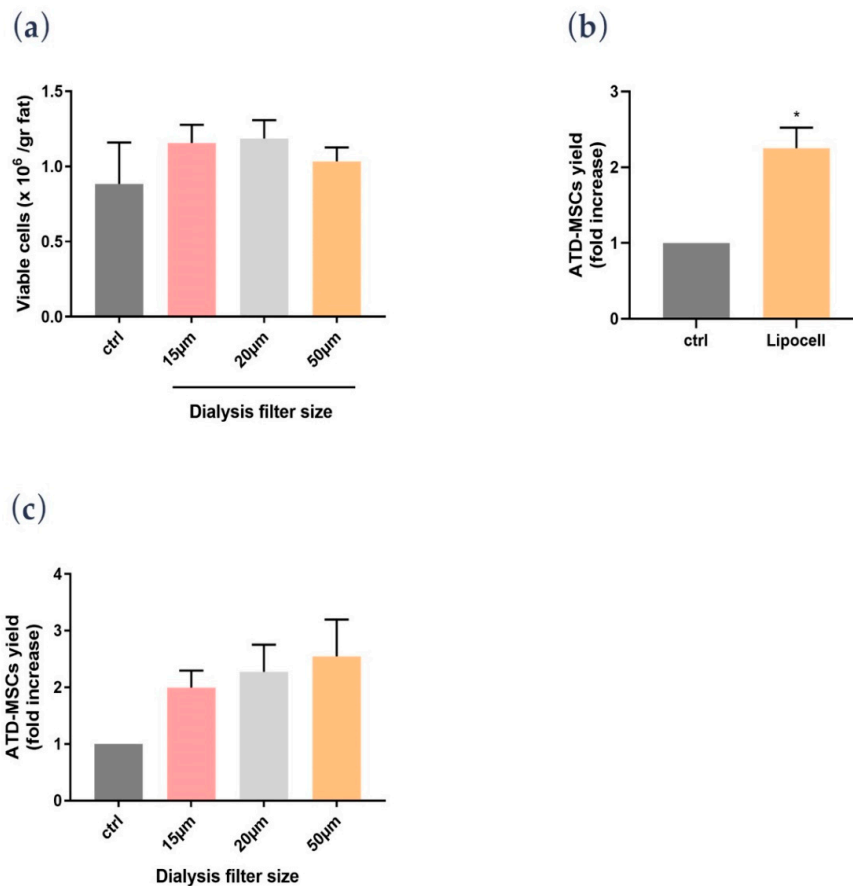


Figure 1. (a) The number of viable cells on the adipose tissue weight (samples, $n = 9$) was comparable among the different filters and control. (b) Adipose tissue-derived mesenchymal stem cell (ATD-MSC) percentage from Lipocell-processed adipose tissue (Lipocell, $n = 27$) increased compared to the relative untreated control from the same donor, * $p < 0.01$. (c) ATD-MSC yield of samples from different filter sizes ($n = 9$).

3.2. Semipermeable Membrane Efficiently Removes Blood and Oil from Lipoaspirate

No differences in ATD-MSC yield were detected when testing pore size membranes (50 µm, 20 µm, or 15 µm). Oil and blood removal efficiency was tested. Lipocell products showed an excellent clearance from oil and blood in comparison with the control (Figure 2a). Spectrophotometric quantification of Hb showed a barely detectable Hb concentration in Lipocell-treated samples compared to untreated lipoaspirate (0.05 ± 0.01 g/dL versus 6.8 g/dL). When observing the floating oil, the 50 µm-sized membrane showed a better clearance from residual oil (Figure 2b).

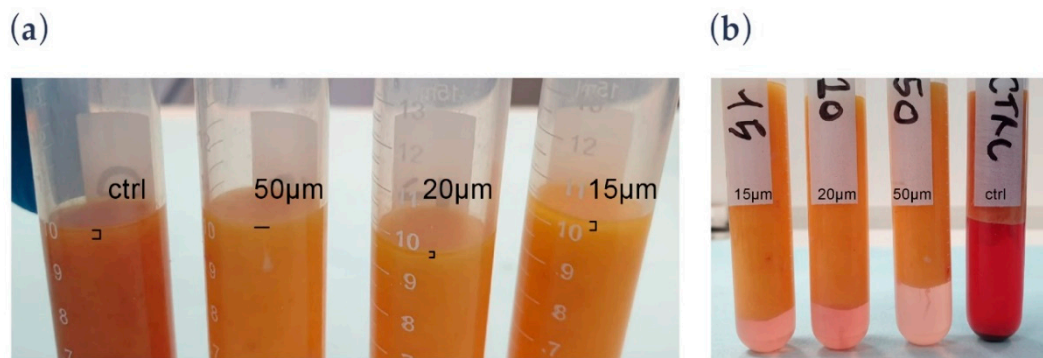


Figure 2. (a) Qualitative picture showing centrifuged samples with a focus on the heavier phase. (b) Qualitative picture showing of centrifuged samples with a focus on the lighter phase.

3.3. Dialysis and Brushing Procedure Preserves Tissue Architecture and Retains ECM Undisrupted Components

Tissue architecture and ECM component integrity were assessed with H&E staining and biochemical characterization. Macroscopic evaluation of adipose clusters showed no differences among untreated, Lipocell-processed, and centrifuged lipoaspirates (Figure 3a). After sample processing, H&E staining showed that the tissue architecture of the Lipocell-processed product was comparable to untreated lipoaspirate, while centrifuged adipose tissue appeared disarranged and disrupted (Figure 3b). Biochemical analysis showed that adipose tissue derived from the Lipocell procedure retained type II collagen and GAGs. Values of total collagen, type II collagen, and GAGs are reported in Table 2.

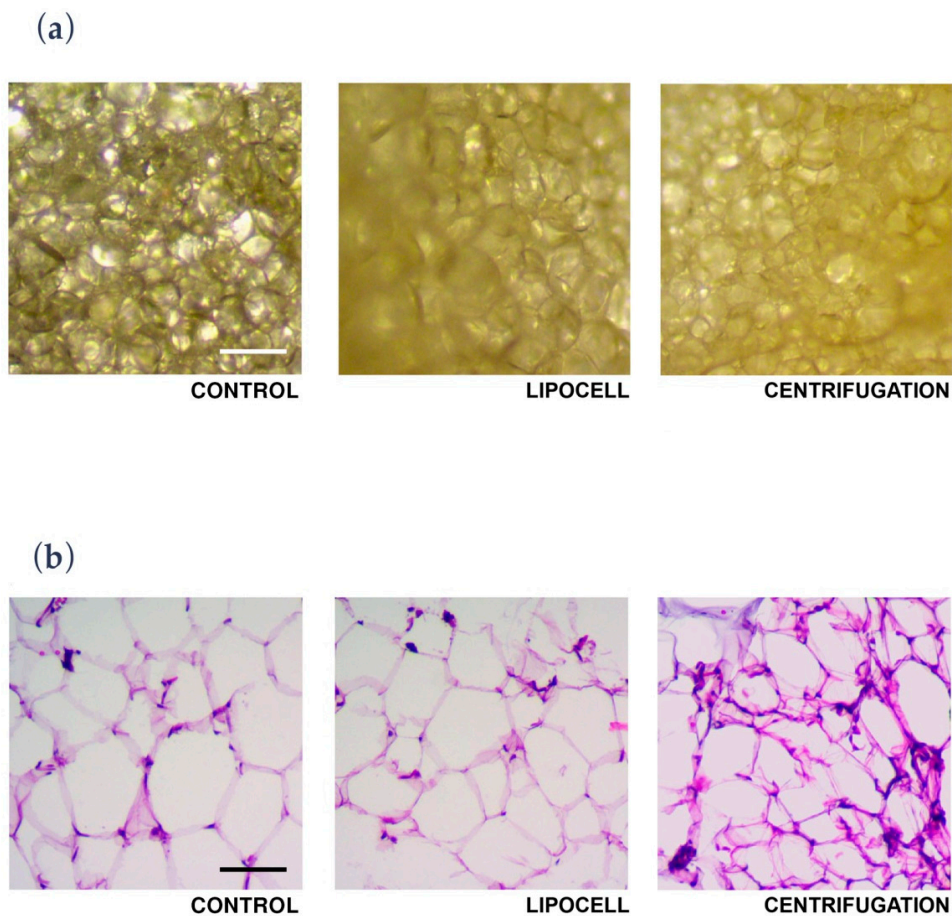


Figure 3. (a) Representative images of adipose tissue clusters. Bar = 200 μ m. (b) Representative images of H&E staining of dehydrated adipose tissue sample sections. Bar = 100 μ m.

Table 2. Quantifications of total collagen, type II collagen, and glycosaminoglycans (GAGs).

	Sample 1	Sample 2	Sample 3	Sample 4	Sample 5	Mean
Total collagen (g/100 g of wet tissue)	5.2 ± 3.7	5.7 ± 2.8	4.1 ± 2.8	4.2 ± 4.8	17.6 ± 9.5	4 ± 2.3
Type II Collagen (percentage/mL)	8.4 ± 5.2	4.2 ± 2.4	7.3 ± 3.3	9 ± 11.8	7.5 ± 4.2	3.1 ± 1.6
GAGs (µg/mg)	8.3 ± 5.2	3.9 ± 1.9	8.4 ± 3.8	8.8 ± 11.9	6.8 ± 4.4	2.8 ± 1.5

3.4. Lipocell Dialysis Associated with Ringer's Lactate Washing Preserves the Proliferative Potential of ATD-MSCs

ATD-MSC phenotyping was performed again after Lipocell dialysis, changing the washing solution (saline, PBS, or RL) to evaluate potential differences in the cell yield. ATD-MSC yield, measured after the processing, did not show any differences according to the different washing solutions (Figure 4a). On the other hand, analysis of the cell proliferative potential showed that ATD-MSCs derived from the Lipocell procedure associated with Ringer's lactate showed a proliferative potential comparable to untreated adipose tissue-derived ATD-MSCs (which increased the number of cells of 11.4 ± 3-fold after two passages). Unexpectedly, saline and PBS showed a detrimental effect on ATD-MSC proliferation, as none or few cells were detectable after cell culture (Figure 4b).

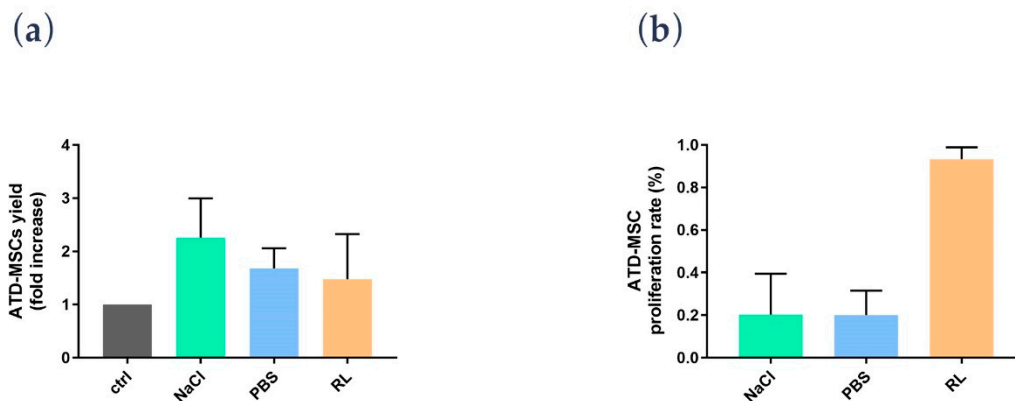


Figure 4. (a) The percentage of CD105/CD73/CD90[±] ATD-MSCs after the processing did not significantly differ among the different washing solutions (control = untreated lipoaspirates). (b) In vitro ATD-MSC proliferation was high with Ringer's lactate (RL), while saline and phosphate buffered saline (PBS) inhibited it. Proliferation rates have been displayed as the percentage of untreated samples' proliferative capacity.

4. Discussion

In the present study, we showed that Lipocell is an efficient method to purify adipose tissue from undesired byproducts, such as blood and oil, and it preserves ATD-MSC viability and ECM integrity. The whole procedure was done in a closed-loop system, and it is performable intra-operatively in a sterile environment, being compliant to EU and US regulations about minimal manipulation of cell and tissue therapies. Lipocell processing lasts for an average of 5 min; standard centrifugation usually requires up to 15 min. With this novel technique, the whole treatment (lipoaspiration, processing, and in-situ injection) can be done within 30 min. Even without cell isolation or purification, the procedure provided a considerable cell yield: over two times more ATD-MSCs than basal levels, likely due to purification from blood cells and other elements. This cell yield was not dependent on filter size, which only influenced oil and blood purification. Unlike traditional methods such as centrifugation or enzymatic treatment, ECM was not disrupted by the procedure, as demonstrated by H&E staining and biochemical assay. The maintenance of ECM integrity is crucial to preserve tissue volume, to provide temporary mechanical functions, and to guide the complex multicellular processes of tissue regeneration [12,13].

A novel finding was the effect of RL on ATD-MSCs; indeed, while cell counts were not different among saline, PBS, and RL after the procedure, the proliferation assay showed a better ATD-MSC

proliferative potential with RL than saline and PBS. To explain this RL-mediated effect on proliferation, we hypothesized that cells are deprived of blood supply after the liposuction, and the sudden lack of oxygen can trigger anaerobic respiration; providing lactate ions can drive the cell respiration back to the aerobic pathway thus ameliorating cell survival [14,15]. Based on these preliminary data, RL may be considered as a standard for processing and washing adipose tissue to preserve ATD-MSC proliferation ability.

Subcutaneous adipose tissue is an abundant source of ATD-MSCs, thus it is a promising tool for several therapeutic applications in plastic and regenerative medicine. An increasing number of systems have been developed to process or isolate adipose tissue elements according to the low manipulation rules laid down by the EU and US. Non-enzymatic isolation methods use mechanical forces, such as centrifugation, to separate the cells or cell aggregates from adipose tissue, but ECM can be disrupted by centrifugal forces, and the procedure is usually performed away from the sterile field, increasing the risk of infections. Indeed, tissue regeneration is regulated by specific environmental stimuli, providing trophic signals and immune modulation, also dependent on the maintenance of micro-environment and ECM architecture [9]. The gentle mechanical force applied by Lipocell preserves ECM and structural integrity, according to our analysis. Lipocell is distinguished from other devices by its simplicity, speed, and operator-independency. Moreover, the dialysis mechanism of Lipocell avoids the risk of fat obstruction that can occur with other systems that exploit cutting filters to cluster fat (i.e., Lipogems). Considering Lipocell vs. Lipogems, the Lipocell final product displays a more preserved structural integrity in compliance with FDA requirements, avoiding excessive clustering that can alter the mechanical properties of fat. Moreover, Lipocell mechanical forces are less dependent on the strength of the operator, unlike Lipogems beads shaking [16].

A limitation of this first study on the Lipocell device is the lack of ATD-MSC multi-lineage differentiation assays, but the focus of this work was to test ATD-MSC viability and ECM integrity. Further investigations will be performed to explore the activity of Lipocell-derived ATD-MSCs, even though it is known that the therapeutic effect of purified adipose tissue depends on a multitude of elements and not only on their ability to differentiate into different tissues [1,9].

In conclusion, Lipocell is a promising tool in the booming field of regenerative medicine. It is effective in optimizing adipose tissue recovery for subsequent autologous injection (i.e., subcutaneous, intra-articular, or intra-epithelial), according to the low manipulation requirements.

5. Patents

Lipocell is a patented medical device for extracting and separating lipoaspirated material: IT201700077603A1

Author Contributions: Conceptualization, O.S. and I.R.; methodology, I.R. and S.R.; software, F.M.; validation, I.R. and R.F.; investigation, E.A. and M.F.; resources, F.B. and A.M.; data curation, F.M. and I.R.; writing—original draft preparation, O.S.; writing—review and editing, I.R.; visualization, O.S.; supervision, M.F.; project administration, P.F. All authors have read and agreed to the published version of the manuscript.

Funding: This research received no external funding.

Acknowledgments: This research benefited from the collaboration of the AGING PROJECT-Department of Excellence, University of Piemonte Orientale.

Conflicts of Interest: The authors Omar Sabry, Mauro Fiorini, and Paolo Fattori declare affiliation with Tiss'You, the company that produces the device under investigation in this manuscript. Their contribution has followed all the ethical rules that apply. All the other authors declare no conflict of interest.

References

1. Murphy, M.B.; Moncivais, K.; Caplan, A.I. Mesenchymal stem cells: Environmentally responsive therapeutics for regenerative medicine. *Exp. Mol. Med.* **2013**, *45*, e54. [[CrossRef](#)] [[PubMed](#)]
2. Sterodimas, A.; De Faria, J.; Nicaretta, B.; Boriani, F. Autologous fat transplantation versus adipose-derived stem cell-enriched lipografts: A study. *Aesthet. Surg. J.* **2011**, *31*, 682–693. [[CrossRef](#)] [[PubMed](#)]

3. Perdisa, F.; Gostyńska, N.; Roffi, A.; Filardo, G.; Marcacci, M.; Kon, E. Adipose-derived mesenchymal stem cells for the treatment of articular cartilage: A systematic review on preclinical and clinical evidence. *Stem Cells Int.* **2015**, 1–13. [[CrossRef](#)] [[PubMed](#)]
4. Roato, I.; Belisario, D.C.; Compagno, M.; Lena, A.; Bistolfi, A.; Maccari, L.; Mussano, F.; Genova, T.; Godio, L.; Perale, G.; et al. Concentrated adipose tissue infusion for the treatment of knee osteoarthritis: Clinical and histological observations. *Int. Orthop.* **2019**, *43*, 15–23. [[CrossRef](#)] [[PubMed](#)]
5. Adriani, E.; Moio, M.; Di Paola, B.; Salustri, W.; Alfieri, A.; Parisi, P.; Ruggiero, M.; Borab, Z.; Carlesimo, B. Percutaneous fat transfer to treat knee osteoarthritis symptoms: Preliminary results. *Joints* **2017**, *5*, 89–92. [[CrossRef](#)] [[PubMed](#)]
6. Oberbauer, E.; Steffenhagen, C.; Wurzer, C.; Gabriel, C.; Redl, H.; Wolbank, S. Enzymatic and non-enzymatic isolation systems for adipose tissue-derived cells: Current state of the art. *Cell Regen.* **2015**, *4*. [[CrossRef](#)] [[PubMed](#)]
7. Caplan, A. Mesenchymal stem cells: Time to change the name! *Stem Cells Transl. Med.* **2017**, *6*, 1445–1451. [[CrossRef](#)] [[PubMed](#)]
8. Yates, C.C.; Rodrigues, M.; Nuschke, A.; Johnson, Z.I.; Whaley, D.; Stolz, D.; Newsome, J.; Wells, A. Multipotent stromal cells/mesenchymal stem cells and fibroblasts combine to minimize skin hypertrophic scarring. *Stem Cell Res. Ther.* **2017**, 1–13. [[CrossRef](#)] [[PubMed](#)]
9. Kusuma, G.; Carthew, J.; Jim, R.; Frith, J. Effect of the microenvironment on mesenchymal stem cells paracrine signalling: Opportunities to engineer the therapeutic effect. *Stem Cells Dev.* **2016**, *26*, 1–42.
10. Noe, D.A.; Weedn, V.; Bell, W.R. Direct spectrophotometry of serum hemoglobin: An allen correction compared with a three-wavelength polychromatic analysis. *Clin. Chem.* **1984**, *30*, 627–630. [[PubMed](#)]
11. Kolar, K. Colorimetric determination of hydroxyproline as measure of collagen content in meat and meat products: NMKL collaborative study. *J. Assoc. Off. Anal. Chem.* **1990**, *73*, 54–57.
12. Hagman, D.; Kuzma, J.; Larson, I.; Foster-Schubert, K.; Kuan, L.; Cignarella, A.; Geamanu, E.; Makar, K.; Gottlieb, J. Characterizing and quantifying leukocyte populations in human adipose tissue: Impact of enzymatic tissue processing. *J. Immunol. Methods* **2012**, *386*, 50–59. [[CrossRef](#)]
13. Choi, J.S.; Yang, H.; Kim, B.S.; Kim, J.D.; Lee, S.H.; Lee, E.K.; Park, K.; Cho, Y.W.; Lee, H.Y. Fabrication of porous extracellular matrix scaffolds from human adipose tissue. *Tissue Eng. Part C Methods* **2010**, *16*. [[CrossRef](#)]
14. Rawat, D.; Chhonker, S.K.; Naik, R.A.; Mehrotra, A.; Kumar, S. Lactate as a signaling molecule: Journey from dead end product of glycolysis to tumor survival 4. *Front. Biosci.* **2019**, *24*, 366–381.
15. Magistretti, P.; Allaman, I. Lactate in the brain: From metabolic end-product to signalling molecule. *Nat. Rev. Neurosci.* **2018**, *19*, 235–249. [[CrossRef](#)] [[PubMed](#)]
16. Bianchi, F.; Maioli, M.; Leonardi, E.; Olivi, E.; Pasquinelli, G.; Valente, S.; Mendez, A.J.; Ricordi, C.; Raffaini, M.; Tremolada, C.; et al. New nonenzymatic method and device to obtain a fat tissue derivative highly enriched in pericyte-like elements by mild mechanical forces from human lipoaspirates. *Cell Transpl.* **2013**, *22*, 2063–2077. [[CrossRef](#)] [[PubMed](#)]

