



THE UNIVERSITY *of* EDINBURGH

Edinburgh Research Explorer

IDENTIFICATION OF OCCULT CEREBRAL MICROBLEEDS IN ADULTS WITH IMMUNE THROMBOCYTOPENIA

Citation for published version:

Cooper, N, Morrison, MA, Vladescu, C, Hart, AC, Paul, D, Malik, A, Young, T, Luqmani, A, Atta, M, Sharp, DJ, Bussel, JB & Waldman, AD 2020, 'IDENTIFICATION OF OCCULT CEREBRAL MICROBLEEDS IN ADULTS WITH IMMUNE THROMBOCYTOPENIA', *Blood*. <https://doi.org/10.1182/blood.2020004858>

Digital Object Identifier (DOI):

[10.1182/blood.2020004858](https://doi.org/10.1182/blood.2020004858)

Link:

[Link to publication record in Edinburgh Research Explorer](#)

Document Version:

Peer reviewed version

Published In:

Blood

General rights

Copyright for the publications made accessible via the Edinburgh Research Explorer is retained by the author(s) and / or other copyright owners and it is a condition of accessing these publications that users recognise and abide by the legal requirements associated with these rights.



Take down policy

The University of Edinburgh has made every reasonable effort to ensure that Edinburgh Research Explorer content complies with UK legislation. If you believe that the public display of this file breaches copyright please contact openaccess@ed.ac.uk providing details, and we will remove access to the work immediately and investigate your claim.



Identification of occult cerebral microbleeds in adults with immune thrombocytopenia

 The corrections made in this section will be reviewed and approved by a journal production editor.

Nichola Cooper^{1,2,*}, Melanie A. Morrison¹, ^{2,3,*}, Camelia Vladescu¹, Alice C. J. Hart^{1,2}, Deena Paul¹, Amna Malik², Thomas Young¹, Asad Luqmani¹, Maria Atta¹, David J. Sharp³, James B. Busse⁴ and Adam D. Waldman^{3,5}, 

¹Department of Haematology, Hammersmith Hospital, London, United Kingdom;

²Department of Medicine and

³Department of Brain Sciences, Imperial College, London, United Kingdom;

⁴Weil-Cornell Medical Centre, New York Presbyterian Hospital, New York, NY; and

⁵Centre for Clinical Brain Sciences, University of Edinburgh, Edinburgh, United Kingdom

~~Correspondence: Nichola Cooper, 4S10C Commonwealth Bldg, Imperial College London Hammersmith Campus, White City, London Q12 0NN, UK; e-mail: n.cooper@imperial.ac.uk.~~

Correspondence: Nichola Cooper, 4S10C Commonwealth Bldg, Imperial College London Hammersmith Campus, White City, London Q12 0NN, UK; e-mail: n.cooper@imperial.ac.uk.

*N.C. and M.A.M. contributed equally to this study.

Key Points

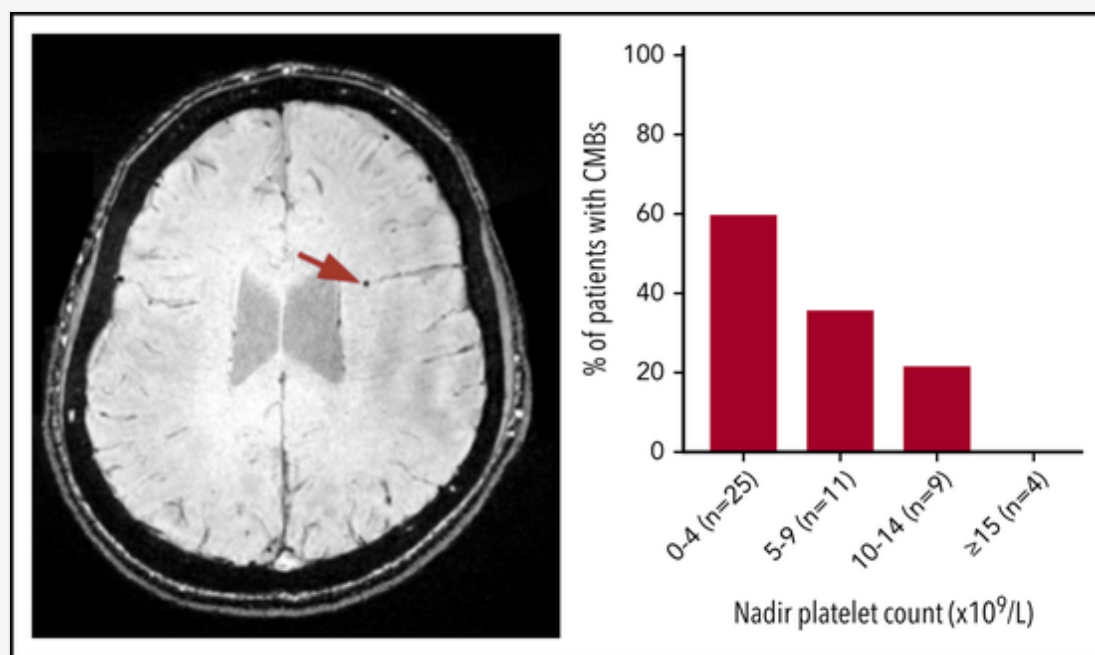
- Brain SWI demonstrates occult cerebral microbleeds in almost 50% of patients with ITP and platelet counts less than $30 \times 10^9/L$.
- CMBs are associated with longer disease duration and lower nadir platelet count and may be a useful noninvasive marker of hemorrhagic risk.

Abstract

Management of symptoms and prevention of life-threatening hemorrhage in immune thrombocytopenia (ITP) must be balanced against adverse effects of **available** therapies. Because current treatment guidelines based on platelet count are confounded by variable bleeding phenotypes, there is a need to identify new objective markers of disease severity for **improved** treatment stratification. In this cross-sectional prospective study of 49 patients

with ITP and lowest recorded (nadir) platelet counts below $30 \times 10^9/\text{L}$ and 18 aged-matched healthy controls, we used susceptibility-weighted magnetic resonance imaging to detect cerebral microbleeds (CMBs) as a marker of occult hemorrhage. CMBs were detected using a semiautomated method and correlated with clinical metadata using multivariate Poisson-regression analysis. No CMBs were detected in health controls HC. In contrast, lobar CMBs were identified in 43% (21 of 49) of patients with ITP; prevalence increased with decreasing nadir platelet count (0/4, $\geq 15 \times 10^9/\text{L}$; 2/9, $10\text{--}14 \times 10^9/\text{L}$; 4/11, $5\text{--}9 \times 10^9/\text{L}$; 15/25 of 25, $<5 \times 10^9/\text{L}$; 4 of 11, $5\text{--}9 \times 10^9/\text{L}$; 2 of 9, $10\text{--}14 \times 10^9/\text{L}$; 0 of 4, $\geq 15 \times 10^9/\text{L}$) and was associated with longer disease duration ($P = 7 \times 10^{-6}$), lower nadir platelet count ($P = .005$), lower platelet count at time of magnetic resonance imaging neuroimaging ($P = .029$), and higher organ bleeding scores ($P = .028$). Mucosal and skin bleeding scores, number of previous treatments, age, and sex were not associated with CMBs. Occult cerebral microhemorrhage is common in patients with moderate to severe ITP. Strong associations with ITP duration may reflect CMB accrual over time or more refractory disease. Although associated, neither low platelet count nor bleeding scores predict CMBs. Further longitudinal studies in children and adults will allow greater understanding of the natural history and clinical and prognostic significance of CMBs.

Visual Abstract



Keywords: PLATELETS, autoimmune and alloimmune platelet disorders; cerebral microbleeds; immune thrombocytopenia; intracranial hemorrhage; magnetic resonance imaging; susceptibility-weighted imaging

Introduction

Immune thrombocytopenia (ITP) is an uncommon autoimmune disorder in which an aberrant immune response results in thrombocytopenia, variable bleeding symptoms, fatigue, and impaired health-related quality of life.¹ A number of treatments are effective at increasing the platelet count, including steroids, other immunosuppressants, rituximab, splenectomy, and targeted thrombopoietin receptor agonists. Unfortunately, few are curative, and adults with ITP have a remission rate with medical therapy of only 30%.

Management strategies are therefore either symptom-directed or aimed to prevent more serious bleeding. However, as identified in the recent American Society of Hematology guidelines for ITP, there are limited data to guide management decisions.² Intracranial hemorrhage (ICH) is the most serious bleeding complication in patients with ITP and is associated with substantial morbidity and mortality,³ yet existing methods to identify those patients at risk of serious bleeding have limited value. Although hematuria has been associated with development of ICH,³ skin and mucosal bleeding scores do not have predictive value.⁴⁻⁶ Consequently, the platelet count is frequently used to inform decisions to treat. Current guidelines recommend that adults with a platelet count < 20 to $30 \times 10^9/L$ receive treatment, irrespective of bleeding symptoms.^{1,2,7} Patients with the same platelet count, however, commonly exhibit very different degrees of bleeding symptoms. In contrast, children are currently treated according to bleeding symptoms, regardless of platelet count; this approach is partly informed by the low likelihood of severe bleeding and high spontaneous remission rate (80%-90%) in children.⁷ The incidence of occult or subclinical hemorrhage as a consequence of ongoing thrombocytopenia in ITP has not been systematically explored. Detection of such occult bleeding could identify hemorrhagic tendency in individual patients and better inform treatment strategies.

Cerebral microbleeds (CMBs) or microhemorrhages are tiny hemosiderin deposits, which can be detected in the brain noninvasively using susceptibility-sensitive magnetic resonance imaging (MRI) techniques.⁸ In older populations, the presence of CMBs is associated with increased rates of dementia and vascular events.^{9,10} CMBs are also characteristically identified and associated with cognitive impairment in specific disease conditions; for example, cerebral amyloid angiopathy¹¹ and traumatic diffuse axonal brain injury¹² and as a long-term effect of cranial radiotherapy.^{13,14} Only 1 previous published study has explored CMBs in ITP, where a CMB was identified on gradient echo T2* MRI in 1 of 27 children with short duration of ITP.¹⁵ The overall frequency of CMBs, their relationship with severity and duration of ITP, and clinical bleeding scores are, however, unknown.

Although CMBs are detectable using widely used gradient echo T2* MRI sequences, sensitivity to the presence of blood products is further improved in more recently available susceptibility-weighted imaging (SWI), which exploits phase information from the MRI signal to generate additional tissue contrast.¹⁶ We hypothesized that imaging the brain for CMBs with SWI could provide a sensitive noninvasive biomarker of occult hemorrhage in ITP; this will identify patients with more hemorrhagic phenotypes and may as a result improve future stratification of treatment. This prospective study was designed to explore the incidence of CMBs in patients with ITP using SWI of the brain and understand the relationship between CMBs and platelet count, bleeding scores, disease duration, and treatment history.

Methods

This study was approved by London-Surrey Borders Health Research Authority Ethics Committee and was conducted in accordance with the Declaration of Helsinki. Fifty patients attending the Hammersmith Hospital's ITP center (London, UK) were prospectively recruited between 2014 and 2018. Recruitment criteria included a diagnosis of ITP defined according to the International Working Party⁷ as a platelet count $< 100 \times 10^9/L$ with exclusion of other causes of thrombocytopenia. Patients had at least 1 count less than $30 \times 10^9/L$ during the course of their disease and no contraindications to MRI (eg, severe claustrophobia, metallic implants, shunts).

A dedicated imaging protocol including SWI (**repetition time**TR/**echo time**TE = 28 ms/20 ms, **flip angle**FA = 15, 0.5- × 0.5-mm in-plane resolution, 1-mm slice thickness, 35- × 45-cm FOV) was acquired on a 3-T clinical MRI system (VB19; Siemens Verio, Erlangen, Germany) for patients and 18 age-matched healthy controls. Although


the same imaging protocol was used for both cohorts, the healthy controls were recruited separate under a different ethics approval. CMBs were detected with a user-guided, semiautomated intensity-based detection algorithm^{17,18} and verified by an experienced neuroradiologist blinded to clinical details. Skin mucosal organ (SMOG) bleeding scores were graded from 0 (best) to 5 (worst).⁶ In addition to imaging data and bleeding score, clinical data including patient age, sex, current and lowest recorded platelet count (nadir), duration of disease, and treatment history were collected.

A series of univariate Poisson regressions were performed to explore potential relationships between the total number of CMBs on SWI and clinical data. SMOG bleeding scores were factored into 2 groups: a bleeding score of 0 or 1 or a bleeding score of 2 or greater. Variables significantly associated with presence of CMBs in univariate analysis were included in a multivariate model. Patient age and sex were modeled as covariates.


Results

Patient demographics are summarized in [Table 1](#). One outlier with more than 50 CMBs had previously received total body irradiation for a stem cell transplantation and was therefore excluded from further analysis. SMOG bleeding scores were available for 42 of the remaining 49 patients. The healthy control group included 18 subjects (6 female) ranging from 21 to 64 years (mean, 45.4 years).

Table 1.

 The table layout displayed in this section is not how it will appear in the final version. The representation below is solely purposed for providing corrections to the table. To preview the actual presentation of the table, please view the Proof.

Patient demographics

Clinical/demographic characteristics	Patients without CMBs (N = 28)				Patients with CMBs (N = 21)			
Female, no. of patients (%)	15 (54)				14 (67)			
Age at time of MRI (y), mean (range)	42 (20-84)				40 (18-69)			
Age at time of diagnosis (y), mean (range)	37 (15-83)				29 (3-63)			
Disease duration (mo), mean (range)	63 (1-232)				124 (4-486)			
Platelet count day of MRI, mean (range)	109 (11-393)				73 (4-327)			
Lowest platelet count, mean (range) 	8 (0-25)				4 (1-13)			
Number of prior treatments, mean (range)	4 (1-8)				6 (1-17)			
Bleeding score†	0-1	2	3	4-5	0-1	2	3	4-5
Skin, no. of patients	6	7	11	0	6	4	7	0
Visible mucosae, no. of patients	14	8	2	0	8	5	4	0
Organs, no. of patients	15	6	3	0	10	1	5	1
Diabetes, no. of patients	0				0			
Hypertension, no. of patients	1				1			

Heart disease, no. of patients	1	2
Antiplatelet/anticoagulant agents, no. of patients	2	2

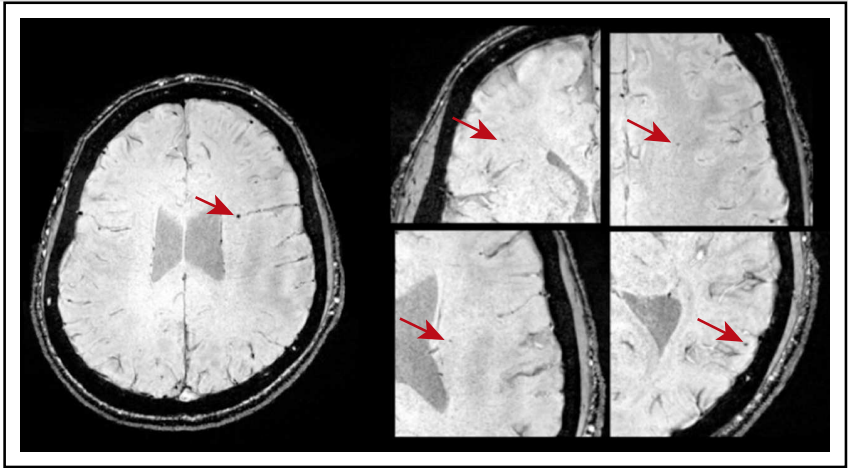
Table Footnotes

*~~Nadir platelet count, measured as the lowest recorded platelet count.~~

Presence of CMBs

CMBs were identified in 21 of 49 patients with ITP (43%). Most CMBs were between 1 and 5 mm in diameter and variably distributed throughout the brain (Figure 1). Six patients (12%) had 1 CMB; 11 (22%) had between 2 and 4 CMBs; and 5 patients (9.8%) exhibited 5 or more CMBs. Fourteen of 33 patients younger than 45 years had CMBs: 5 had 1 CMB and 9 patients had >1 CMB. Three of 8 patients in the age range of 45 to 60 years had CMBs; 1 had 1 CMB and 2 had >1 CMB. Four of 8 patients older than 60 years had >1 CMB. No CMBs were identified in any of the 18 healthy control subjects.

Figure 1.

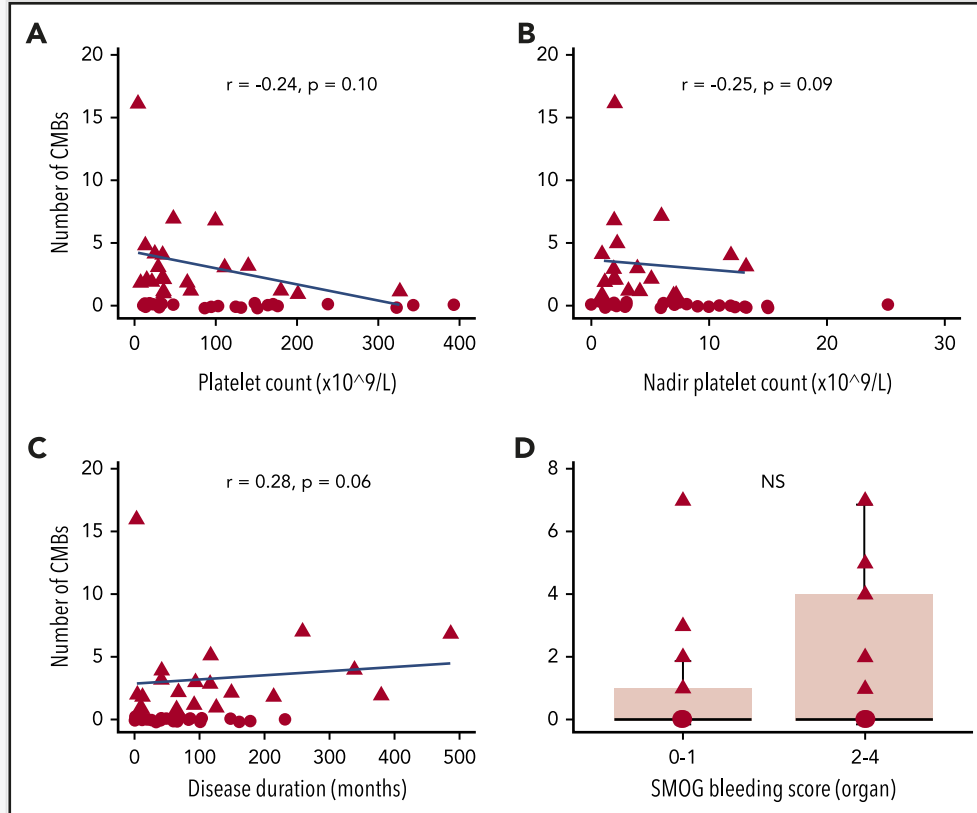


Axial SWI showing CMBs (indicated by the red arrows) in a patient who was diagnosed with ITP at age 10. This patient was 20 years old at the time of MRI and had a disease duration of 118 months and 5 CMBs dispersed throughout the brain.

Factors associated with CMBs

Multivariate analysis revealed that CMBs were more likely in patients with lower platelet counts, both nadir ($P = .005$, $\alpha = .01$) and at time of MRI ($P = .029$, $\alpha = .05$), with increasing disease duration ($P = 7.11 \times 10^{-6}$, $\alpha = .001$) and higher SMOG organ bleeding scores ($P = .028$, $\alpha = .05$) when adjusted for age and biological sex (Figure 2). Skin SMOG score were not associated with CMBs, and mucosal SMOG scores showed association only in the univariate analysis. P values and incidence rate ratios for the univariate and multivariate analyses are listed in Table 2.

Figure 2.



Visual representation of the relationship between number of CMBs and significant risk factors. (A) Platelet count at time of MRI. (B) Nadir platelet count (lowest recorded). (C) Disease duration. (D) Organ bleeding score. Each data point corresponds to a different patient with ITP. For better visualization, patients without CMBs were labeled with a different shape, the outlier patient with 56 bleeds was excluded, and the range of panel D was set to a maximum of 8 (not all patients shown in panels A-C had organ bleeding scores).

Table 2.

i The table layout displayed in this section is not how it will appear in the final version. The representation below is solely purposed for providing corrections to the table. To preview the actual presentation of the table, please view the Proof.

Multivariate analysis of CMB presence and clinical characteristics of patients with ITP

Characteristic	Univariate Poisson analysis		Multivariate Poisson analysis	
	Incidence rate ratio	<i>P</i>	Incidence rate ratio	<i>P</i>
Disease duration, each additional month	1.00 (1.00, 1.01)	2.06×10^{-5} ***	1.01 (1.00, 1.01)	7.11×10^{-6} ***
Platelet count, at time of MRI	0.992 (0.988, 0.996)	2.71×10^{-4} ***	0.994 (0.989, 1.00)	.029*
Platelet count, low point	0.879 (0.824, 0.939)	1.28×10^{-4} ***	0.867 (0.786, 0.957)	.005**

Number of treatments, each additional treatment	1.10 (1.03, 1.16)	.003**	0.928 (0.831, 1.04)	.187
SMOG (≥ 2), organ [†]	3.27 (1.86, 5.76)	4.10×10^{-5} ***	2.32 (1.10, 4.90)	.028*
SMOG (≥ 2), mucosal [†]	2.40 (1.29, 4.48)	.006**	1.09 (0.444, 2.65)	.857
SMOG (≥ 2), skin [†]	0.837 (0.469, 1.49)	.547	Not included	—
Age, each additional year	0.995 (0.980, 1.01)	.534	1.01 (0.990, 1.03)	.350
Sex, male	1.63 (1.02, 2.60)	.042*	0.786 (0.382, 1.62)	.513

Table Footnotes

*** Significant at an α level of .001;

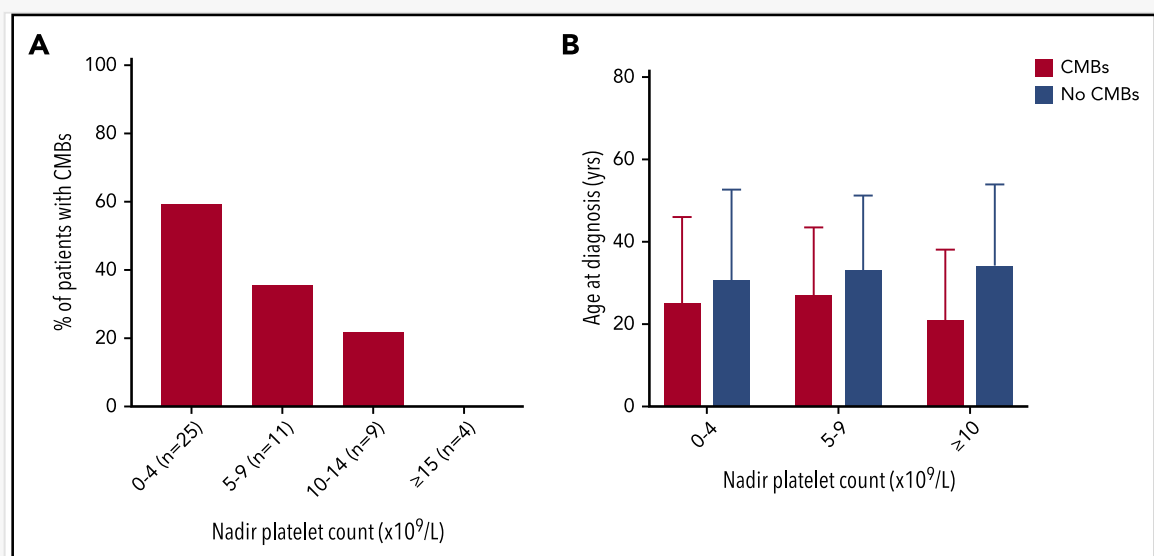
** significant at an α level of .01;

* significant at an α level of .05.

[†] Bleeding score were factored into 2 groups: a score of 0 or 1 or a score of 2 or greater. Scores were not available for 8 patients.

The proportion of patients with CMBs increased with lower nadir platelet count (Figure 3). CMBs were identified in 15 of 25 (60%) patients with nadir counts less than $5 \times 10^9/L$, 4 of 11 (36%) patients with nadir counts between 5 and $9 \times 10^9/L$, and 2 of 9 (22%) patients with counts between 10 and $14 \times 10^9/L$, whereas patients with lowest counts above $15 \times 10^9/L$ did not have CMBs ($n = 4$). This observation was not influenced by age at presentation or duration of ITP.

Figure 3.



Increased cerebral microbleeds seen with lower nadir platelet counts. [Comment: **Action:** Delete **Note:** This edit could not be executed, so it is carried out as an instruction for production team to act on. No further action is required from your side on this. **Edit:** j](A) With decreasing nadir platelet count, there was a greater percentage of patients w[Comment: **Action:** Delete **Note:** This edit could not be executed, so it is carried out as an instruction for production team to act on. No further action is required from your side on this. **Edit:** d][Comment: **Action:** Insert **Note:** This edit could not be executed, so it is carried out as an instruction for production team to act on. No further action is required from your side on this. **Edit:** d]ith CMBs. There were

no differences in age at diagnosis and only subtle differences in disease duration between these groups. (B) For patients in a given nadir platelet count range, age at diagnosis did not significantly affect CMB incidence.

Nine patients with a median nadir platelet counts of 2 (range, 1-12) had been diagnosed with ITP in childhood (median age, 14 years; range, 3-17 years), with a median disease duration of 118 months (range, 41-338 months) at the time of the MRI. Six of these 9 patients had CMBs, 3 of whom had been managed with observation and received only rescue treatment of severe bleeding events over a period of more than 10 years. Patients with more than 5 CMBs included 3 patients refractory to multiple lines of treatment: 1 who had also suffered a minor nonconcussive head injury when the platelet count was $1 \times 10^9/\text{L}$ and 1 patient with a long duration of thrombocytopenia with no treatment (diagnosed in childhood, platelet count between 5 and $15 \times 10^9/\text{L}$ for >10 years).

Discussion

Using SWI, we showed for the first time that nearly half of patients with nadir platelet count less than $15 \times 10^9/\text{L}$ have CMBs in varying lobar regions of the brain. CMBs were not identified in any of the healthy control subjects in this study. This is consistent with historical data where CMBs are not observed in healthy young individuals,^{10,19} and their detection in patients younger than 45 years can therefore be attributed confidently to ITP. Detection of CMBs is known to increase with age in healthy individuals, although the rate of 44% (7 of 16) in patients 45 years or older in our cohort is still much higher than the prevalence of 6.5% at age 45 to 50 years, rising to 16.8% at age 60 to 69 years reported by the largest population-based study of CMBs in healthy aging individuals.²⁰ The substantially higher CMB incidence in our study compared with the only previously published work in children with ITP is likely to reflect longer disease duration, differing adult and pediatric disease phenotypes, and greater sensitivity of SWI compared with gradient echo T2* sequences.

Our results demonstrate a clear link between severe thrombocytopenia and occult brain microhemorrhage, evidenced by increasing incidence of CMBs with lower platelet counts, both at nadir and at the time of MRI. More than 50% of patients with nadir platelet counts less than $15 \times 10^9/\text{L}$, however, did not have detectable CMBs, despite similar average age and disease duration. Platelet count alone is therefore an important but incomplete predictor of occult hemorrhage in patients with ITP. This variation in presence of CMBs at the same platelet count, and the lack of association with skin and mucosal bleeding scores suggests that SWI provides a specific noninvasive biomarker of central nervous system hemorrhagic tendency that could enable further stratification of disease phenotypes.

The strong association observed with disease duration could indicate that CMBs accumulate over time but may also reflect a group of patients with more refractory disease. This agrees with other data showing poorer clinical outcome in patients with long durations of thrombocytopenia.²¹

Although the study was not designed to predict ICH risk, a significant association was noted between CMB and high organ bleeding scores, and the 1 patient in our study who had previously had ICH also had one of the highest CMB counts. These observations are in keeping with the hypothesis that CMBs reflect risk of more significant bleeding.

Existing cohort studies have shown a correlation between platelet count less than $20 \times 10^9/\text{L}$ and bleeding,²² and current clinical guidelines recommend a platelet threshold of 20 to $30 \times 10^9/\text{L}$ for treatment in adults.⁷ No CMBs were detected in patients with nadir platelet counts above 15×10^9 , although the very small number in this group limits the conclusions that can be drawn about their absence in those with higher counts.

A number of patients in this cohort were diagnosed with ITP in childhood and some were not treated for long periods of time, in accordance with current pediatric guidelines. The high incidence of CMBs, including multiple lesions, in this subgroup and the lack of correlation between CMB and skin or mucosal bleeding scores suggests that current approaches to treatment based on clinical symptomatology alone may not appropriately protect patients from occult CNS bleeds.

The cross-sectional nature of the imaging data limits insights into the natural history of microbleeds in ITP and, in particular, separating the effects of disease duration alone from refractory phenotypes. Furthermore, the absence of correlative data with cognition or fatigue also precludes evaluation of any associative or mechanistic links with CMBs; the clinical relevance of CMBs in ITP with regard to short- and long-term neurologic function is therefore not yet clear. CMBs are strongly associated with neurologic sequelae in a number of neurodegenerative conditions,⁸ after external beam radiotherapy¹³ and traumatic brain injury,¹² and further, weaker associations with cognitive impairment are seen more widely in elderly populations.⁹ The pathophysiology underlying microhemorrhage in those circumstances is primarily of damage to brain microvasculature, whereas the mechanism by which CMBs develop in ITP is not yet clear.

Many patients with ITP have no symptoms, and deciding whether to treat can be difficult. Conversely, some patients are refractory to multiple treatments, and balancing the adverse effects of higher-intensity treatment against the potential risk of bleeding is challenging. Our findings indicate that applying a treatment threshold based on platelet count alone could result in some patients being overtreated and others undertreated.

Further longitudinal study of CMB in wider populations of children and adults with ITP and correlation with neurocognitive and fatigue features will allow greater understanding of their natural history and clinical and prognostic significance. Future SWI examination of patients who have had ICH will also help to establish whether CMB burden is indeed a risk factor for ICH.

In summary, brain SWI demonstrates that occult microhemorrhage is common in moderate to severe ITP and provides a noninvasive biomarker of bleeding tendency. Although the clinical and prognostic implications of these findings are not yet clear and we would therefore not recommend using brain SWI to inform current patient management, it may provide a useful future adjunct to existing criteria for clinical decision making in adults and children with this challenging disease.

Acknowledgments

This study was funded in part by the Imperial College [NIHR National Institute for Health Research](#) Bioresources Cancer Theme and Imaging Theme and the UK ITP Patient Support Organization.

Authorship

Contribution: N.C. and A.D.W. designed the study, analyzed the results, and wrote the paper. M.A.M. analyzed the MRI data and wrote the paper. J.B.B. analyzed the results and metadata and wrote the paper. C.V., A.C.J.H., T.Y., D.P., A.M., M.A., ~~and~~ A.L., [and D.J.S.](#) collected clinical metadata, consented patients, arranged MRI examinations, contributed to data analysis, and wrote the paper.

Conflict-of-interest disclosure: The authors declare no competing financial interests.

REFERENCES

1. Cooper N, Ghanima W. Immune thrombocytopenia. *N Engl J Med*. 2019;381(10):945-955.
2. Neunert C, Terrell DR, Arnold DM, et al. American Society of Hematology 2019 guidelines for immune thrombocytopenia [published correction appears in *Blood Adv*. 2020;4(2):252]. *Blood Adv*. 2019;3(23):3829-3866.
3. Psaila B, Petrovic A, Page LK, Menell J, Schonholz M, Bussel JB. Intracranial hemorrhage (ICH) in children with immune thrombocytopenia (ITP): study of 40 cases. *Blood*. 2009;114(23):4777-4783.
4. Khellaf M, Michel M, Schaeffer A, Bierling P, Godeau B. Assessment of a therapeutic strategy for adults with severe autoimmune thrombocytopenic purpura based on a bleeding score rather than platelet count. *Haematologica*. 2005;90(6):829-832.
5. Page LK, Psaila B, Provan D, et al. The immune thrombocytopenic purpura (ITP) bleeding score: assessment of bleeding in patients with ITP. *Br J Haematol*. 2007;138(2):245-248.
6. Rodeghiero F, Michel M, Gernsheimer T, et al. Standardization of bleeding assessment in immune thrombocytopenia: report from the International Working Group. *Blood*. 2013;121(14):2596-2606.
7. Provan D, Arnold DM, Bussel JB, et al. Updated international consensus report on the investigation and management of primary immune thrombocytopenia. *Blood Adv*. 2019;3(22):3780-3817.
8. Haller S, Vernooij MW, Kuijper JPA, Larsson EM, Jäger HR, Barkhof F. Cerebral Microbleeds: Imaging and Clinical Significance. *Radiology*. 2018;287(1):11-28.
9. Akoudad S, Wolters FJ, Viswanathan A, et al. Cerebral microbleeds are associated with cognitive decline and dementia: the Rotterdam Study. *JAMA Neurol*. 2016;73(8):934-943.
10. Akoudad S, Portegies ML, Koudstaal PJ, et al. Cerebral microbleeds are associated with an increased risk of stroke: The Rotterdam Study. *Circulation*. 2015;132(6):509-516.
11. Pasi M, Pongpitakmetha T, Charidimou A, et al. Cerebellar microbleed distribution patterns and cerebral amyloid angiopathy. *Stroke*. 2019;50(7):1727-1733.
12. Huang YL, Kuo YS, Tseng YC, Chen DY, Chiu WT, Chen CJ. Susceptibility-weighted MRI in mild traumatic brain injury. *Neurology*. 2015;84(6):580-585.
13. Morrison MA, Hess CP, Clarke JL, et al. Risk factors of radiotherapy-induced cerebral microbleeds and serial analysis of their size compared with white matter changes: A 7T MRI study in 113 adult patients with brain tumors. *J Magn Reson Imaging*. 2019;50(3):868-877.
14. Roddy E, Sear K, Felton E, et al. Presence of cerebral microbleeds is associated with worse executive function in pediatric brain tumor survivors. *Neuro-oncol*. 2016;18(11):1548-1558.
- 15.

16. Haacke EM, Mittal S, Wu Z, Neelavalli J, Cheng YCN. Susceptibility-weighted imaging: technical aspects and clinical applications, part 1. *AJNR Am J Neuroradiol*. 2009;30(1):19-30.
17. Bian W, Hess CP, Chang SM, Nelson SJ, Lupo JM. Computer-aided detection of radiation-induced cerebral microbleeds on susceptibility-weighted MR images. *Neuroimage Clin*. 2013;2:282-290.
18. Morrison MA, Payabvash S, Chen Y, et al. A user-guided tool for semi-automated cerebral microbleed detection and volume segmentation: Evaluating vascular injury and data labelling for machine learning. *Neuroimage Clin*. 2018;20:498-505.
19. Husseinzadeh H, Chiasakul T, Gimotty PA, et al. Prevalence of and risk factors for cerebral microbleeds among adult patients with haemophilia A or B. *Haemophilia*. 2018;24(2):271-277.
20. Poels MM, Vernooij MW, Ikram MA, et al. Prevalence and risk factors of cerebral microbleeds: an update of the Rotterdam scan study. *Stroke*. 2010;41(10 Suppl):S103-S106.
21. Cohen YC, Djulbegovic B, Shama-Lubovitz O, Mozes B. The bleeding risk and natural history of idiopathic thrombocytopenic purpura in patients with persistent low platelet counts. *Arch Intern Med*. 2000;160(11):1630-1638.
22. Piel-Julian ML, Mahévas M, Germain J, et al; CARMEN Investigators Group. Risk factors for bleeding, including platelet count threshold, in newly diagnosed immune thrombocytopenia adults. *J Thromb Haemost*. 2018;16(9):1830-1842.

Footnotes

Text Footnotes

~~Data sharing:~~ [Data sharing: For original data, please contact n.cooper@imperial.ac.uk.](mailto:n.cooper@imperial.ac.uk)

The publication costs of this article were defrayed in part by page charge payment. Therefore, and solely to indicate this fact, this article is hereby marked “advertisement” in accordance with 18 USC section 1734.

Queries and Answers

Query: If you or your coauthors have an ORCID ID that you did not provide at submission, but you would like to include it in this publication, please provide it in the Author Details. If any ORCID IDs were provided at submission, they have been placed in the author line in this article. Please confirm that they are correct. If you do not have an ORCID ID and would like one, you can register for your unique digital identifier at <https://orcid.org/register>.

Answer: Thank you, we have added ORCID IDs for the authors that wish to provide them.

Query: To ensure correct PubMed indexing and searchability for all authors, the surname has been highlighted for each author in the author line. Please confirm the surnames are correctly highlighted and, if any changes are needed, edit the given name and surname in the Author Details. If the surname includes multiple parts, ensure that all parts are highlighted.

Answer: The surnames are correct. Thank you.

Query: Please verify the accuracy of all author names and affiliations.

Answer: Author names and affiliations are correct.

Query: Your figures may have been altered to conform to *Blood* style, which includes, but is not limited to, standard colors and fonts. Please check your figures and legends carefully to make sure the labeling and data are correct, including references to color and/or shading in the legend, and mark any necessary alterations in your proofs. Use the color names in the *Blood* color palette that can be accessed at the link provided in the email notification that accompanied this proof.

Answer: The figures and legends are correct. Thank you.

Query: Please review all of your figures carefully to verify that their presentation is acceptable.

Answer: Their presentation is acceptable. Thank you.

Query: Please shorten abstract by 28 words. Please note that all abbreviations must be defined at first use.

Answer: We have shortened our abstract. Thank you.

Query: Please spell out HC at only mention.

Answer: Corrected. Thank you.

Query: If your article has a required visual abstract or you have chosen optionally to provide a visual abstract (limited to specific article types), then please check the visual abstract carefully and confirm whether it meets with your approval, or if changes are needed.

Answer: We approved of the visual abstract. Thank you.

Query: Reference 7 was cited out of order in text; therefore, references were renumbered and reordered. Please verify.

Answer: Thank you for correcting this.

Query: Please spell out TR/TE, FA, and FOV at only mentions in text.

Answer: Done. Thank you.

Query: In Table 1, please provide explanation of dagger footnote symbol.

Answer: This footnote has been removed as the Table no longer reads nadir platelet now.

Query: For Figure 3, please provide an overall figure title.

Answer: We have provided an overall figure title. Thank you.

Query: Please spell out NIHR in the Acknowledgments.

Answer: Done. Thank you.

Query: Please provide contributions for author D.J.S.

Answer: Done. Thank you.

Query: Please provide data sharing statement.

Answer: We have provided a data sharing statement.