



Integrated vector management targeting *Anopheles darlingi* populations decreases malaria incidence in an unstable transmission area, in the rural Brazilian Amazon

Martins-Campos *et al.*

RESEARCH

Open Access

Integrated vector management targeting *Anopheles darlingi* populations decreases malaria incidence in an unstable transmission area, in the rural Brazilian Amazon

Keillen M Martins-Campos^{1,2}, Waléria D Pinheiro², Sheila Vítor-Silva^{1,3}, André M Siqueira^{1,3}, Gisely C Melo^{1,3}, Íria C Rodrigues¹, Nelson F Fé¹, Maria das Graças V Barbosa^{1,3,5}, Wanderli P Tadei³, Caterina Guinovart⁵, Quique Bassat⁶, Pedro L Alonso⁶, Marcus VG Lacerda^{1,3,5} and Wuelton M Monteiro^{1,3,4*}

Abstract

Background: Studies on vector behaviour should be conducted in order to evaluate the effectiveness of vector control measures on malaria protection in endemic areas of Latin America, where *P. vivax* predominates. This work aims to investigate the fauna of anopheline mosquitoes and verify the impact of integrated vector management in two colonization projects in the Careiro Municipality, Western Brazilian Amazon.

Methods: Four mosquitoes' captures were carried out from August 2008 to March 2010, with an interval of six months between each collection. Since September 2009 a large programme to reduce the burden of malaria has started in the two communities by distribution of insecticide-treated bed nets (ITN) and intensification of indoor residual spraying (IRS). Human biting rates (HBRs), entomological inoculation rates (EIRs), malaria incidence rate (MIR) and *Plasmodium* carrier's prevalence were used as outcomes to estimate the impact of the control measures.

Results: A total of 3,189 anophelines were collected, belonging to 13 species. *Anopheles darlingi* was the predominant species in the period (42.6%), followed by *Anopheles albitarsis* (38.4%). *An. darlingi* HBRs showed a notable decreasing trend from the start to the end of the study. Conversely, *An. albitarsis* increased its contribution to overall HBRs throughout the study. For *An. darlingi* there was a significant positive correlation between HBRs and MIR ($p = 0.002$). *Anopheles albitarsis* HBRs showed a significant negative correlation with the corresponding MIR ($p = 0.045$). EIR from total anophelines and from *An. darlingi* and *An. albitarsis* presented decreasing patterns in the successive collections. Four species of anophelines (*An. darlingi*, *An. albitarsis*, *Anopheles braziliensis* and *Anopheles nuneztovari*) were naturally infected with *Plasmodium*, albeit at very low infection rates. There were a decrease in the MIR for both vivax and falciparum malaria and in the prevalence of *Plasmodium vivax* and *Plasmodium falciparum* carriers during the period of study.

Conclusions: There is strong evidence of association between the density of *An. darlingi* and the incidence of malaria in the studies sites, further highlighting the importance of this vector in malaria transmission in this region. *An. darlingi* susceptibility to control using ITN and IRS is likely to be high in the rural settlements studied.

Keywords: Malaria, *Anopheles darlingi*, Impregnated bed nets, Indoor residual spraying, Amazon

* Correspondence: wueltonmm@ibest.com.br

¹Fundação de Medicina Tropical Dr. Heitor Vieira Dourado, Av. Pedro Teixeira, 25, Dom Pedro, Manaus, AM 69040-000, Brazil

³Universidade do Estado do Amazonas, Av. Pedro Teixeira, 25, Dom Pedro, Manaus, AM 69040-000, Brazil

Full list of author information is available at the end of the article

Background

Malaria remains one of the most important public health problems worldwide, with about 3.3 billion people at risk of contracting the disease and 655,000 deaths estimated annually, mainly in children under five years [1]. In Latin America (LA), approximately 170 million people live at risk of *Plasmodium vivax* and *Plasmodium falciparum* transmission distributed in 21 countries [2]. Approximately 60% of the malaria cases in the Americas are reported from Brazil, where 99.8% of the cases are reported in the Amazon Region [3].

Anopheles darlingi is the major vector of malaria in Brazil [4-7], being highly susceptible to *Plasmodium* sp. infection, with highly anthropophilic and endophagic behaviour [7-9]. This species is described in tropical and subtropical regions in Central and South Americas especially in areas of low altitude, preferring large bodies of water in forested areas [10]. The larvae are adapted to the water margins, preferably deep, clean, slightly cloudy, sunny or partially shaded ones, hiding among the vegetation or debris. During rainy seasons they change their behaviour with a preference for breeding at smaller size and depth water bodies [11,12]. Although *An. darlingi* predominates in Brazilian endemic areas, other species of anophelines have also been implicated as malaria vectors in distinct Amazonian settings, namely *Anopheles albitarsis s.l.*, *Anopheles nuneztovari*, *Anopheles triannulatus* and *Anopheles intermedius* [8,13-15]. In some regions of Brazil, these secondary vectors, mainly *An. albitarsis* may invade houses and feed in humans. However, in most of its territory, including the dry north-east and the central areas, this anopheline is exophilic and zoophilic, preferring to attack the cattle [16].

The Malaria Control Brazilian Programme focuses their strategies on the early diagnosis and treatment of infected individuals. However, many efforts in order to control the vectors' population have been put into practice, such as the use of impregnated bed nets, indoor residual spraying and environmental cleaning [17]. It is important to point out that the effectiveness of such tools has not yet been evaluated in an integrated manner, in part due to the lack of baseline information on the natural behaviour of *An. darlingi* and secondary vectors related to malaria transmission in the Amazon Basin. As malaria vectors are able to adapt to different environmental conditions (more and more frequent in recent occupied settlements in LA), descriptive entomological studies should become a routine practice, supporting vectorial control measures.

In the Southern Amazon Basin, malaria is often concentrated in agricultural settlements and areas of mining activity [18]. Recent occupation of landscape results in higher anopheline population densities [19] which, in

association with the arrival of non-immune newcomers, tend to sustain the disease transmission [18,20,21].

Therefore, the aims of this study were to describe the dynamics of the anopheline population in a rural area of recent colonization in the Western Brazilian Amazon, and secondarily to correlate the mosquitoes' density variation with the incidence of clinical malaria in this area after implementation of integrated control measures focusing on the vector.

Methods

Study sites

The Municipality of Careiro is located in the central region of the Amazonas State (Western Brazilian Amazon) (03°06' S; 60°01' W), 112 km from the capital of the state, Manaus (Figure 1). The estimated population in 2010 was 32,734 people, mainly living in rural areas (71.2%). The main economical activity is related to agriculture (cassava, fruits, vegetables, rice, and sugar cane), cattle breeding, fish-farming, and forestry. These activities have resulted in a decrease in vegetation cover and habitat fragmentation. The remaining vegetal cover is primarily composed of dense macrothermic ombrophilous forest. The climate according to Köppen classification is Af (super-humid equatorial), with the rainy season occurring from November to April, mean pluviometric precipitations above 2,000 mm *per annum*, average temperatures ranging from 26°C to 30°C, and relative humidity between 85 and 90%. The relief of the municipality can be considered plane, at an altitude never exceeding 100 meters above the sea level [22].

Two areas of recent occupation devoted to agriculture were chosen (Panelão and Céu Azul Communities) (Figure 1), with a total population of 736 persons (census performed immediately before the beginning of the study). Water for drinking comes from rainwater reservoirs or creeks. Garbage collection and sanitation are absent. Two health agents in each community are responsible for health care. Both those two agricultural settlements were established by the National Institute for Colonization and Agrarian Reform (INCRA), which primarily aims to rescue the productive potential of the family agriculture.

Anopheline sampling

Four mosquitoes' captures were carried out from August 2008 to March 2010, with a 6-month-interval, comprising two collections in the dry season (August) and two in the rainy (March) seasons. The collections were performed in 10 households, randomly selected having in consideration the spatial distribution of the areas, being one in each of the six ancillary roads in the community of Panelão, a more densely populated and more fragmented area, and four in the community of Céu Azul, in

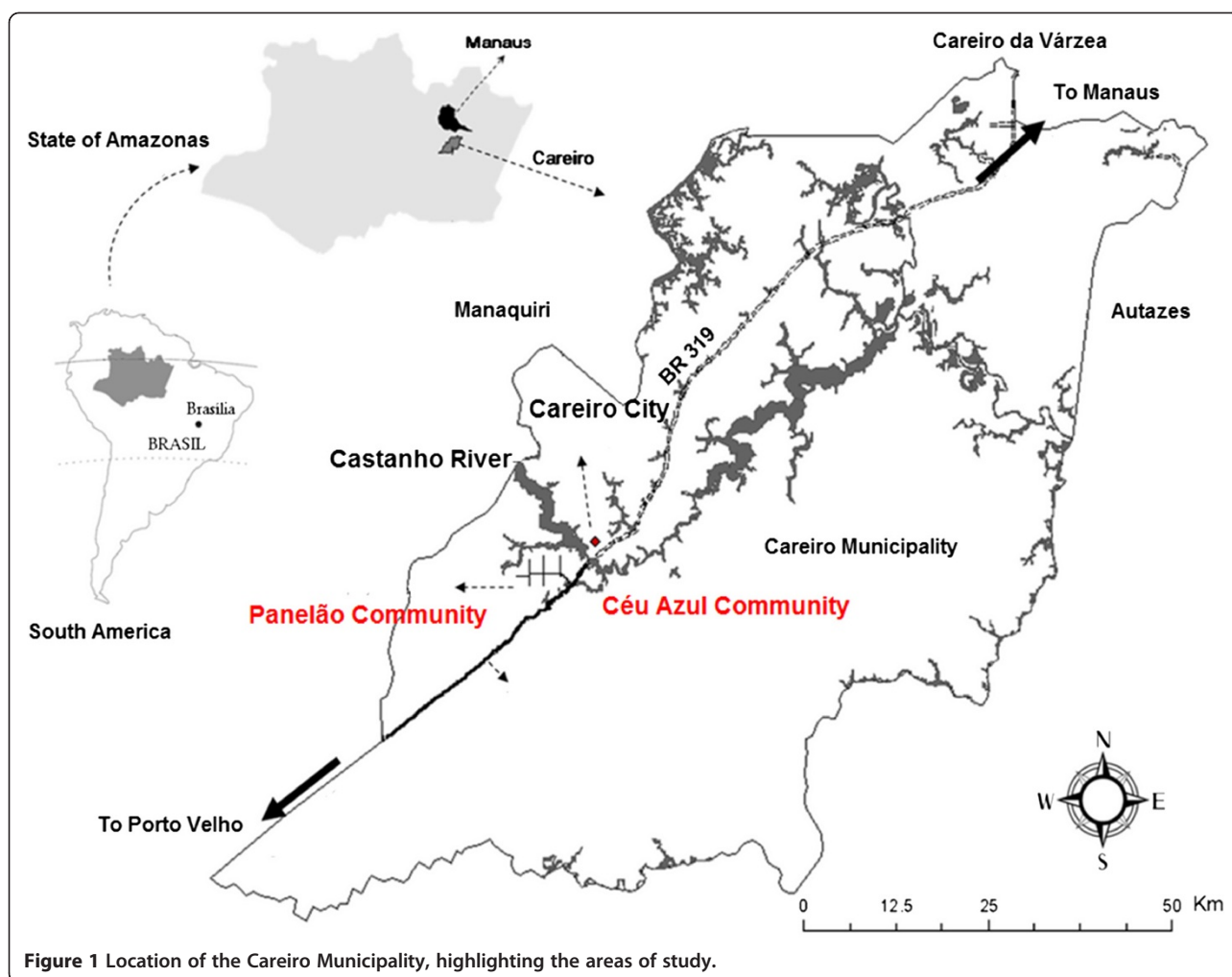


Figure 1 Location of the Careiro Municipality, highlighting the areas of study.

which the household are located in both sides of a main road that connects Manaus with Porto Velho. Simultaneous 4-hour captures were performed indoors and outdoors from 6 to 10 pm by harmonized and trained technicians, due to previous 12-h collections studies in several localities of the Brazilian Amazon demonstrating the mosquitoes' peaks of host-seeking activity [6,23]. Outdoor collection sites were at 20 metres distances from the households. Six technicians worked in each group, divided in pairs, one person capturing mosquitoes indoors and the other outdoors. Each capturer worked for 1 hr and then rested for the next hour. Mosquitoes that landed on the capturers' legs were captured with Castro aspirators. Immediately the insects were placed in appropriate containers identified with date, time, location and collector. The light conditions and closing of doors and windows followed the same as of the normal behavior of the residents. The same households were visited in each of the four six-monthly collections. In both studied communities, captures were performed predominantly in the same house over the entire study

period. Temperature and rainfall data were obtained from satellite imaging from the National Institute of Meteorology.

The identification of anophelines was performed using Consoli and Lourenço-de-Oliveira [24] and Faran and Linthicum [25] keys. The morphological differences of the members of the nuneztovari and oswaldoi complexes, with exception of *Anopheles deaneorum* were not defined. Therefore, *An. nuneztovari*, *Anopheles oswaldoi* and *An. albitarsis* in this work refer to the species *sensu lato*. Margalef's diversity index [26] was used for determining species diversity in the different capturing periods. This index was calculated as $D = (S - 1) / \ln N$, where S = number of species and N = number of individuals.

After identification, mosquitoes were stored in 2 mL Eppendorf tubes with silica gel. In each tube, up to 10 mosquitoes from the same species collected at the same time, environment, and collector were stored. The tubes were kept in a room protected from high temperatures and humidity until the PCR technique for *Plasmodium*

sp. detection was made, after the conclusion the last cross-sectional time point.

Natural infection of mosquitoes by *Plasmodium* sp

For total DNA extraction from a pool of head and thorax of 10 mosquitoes, 300 μ L of 5% w/v Chelex 100 in water were added to each tube. The insects were smashed with a pestle and placed at 100°C for 10 min and spinned at 14,000 g for 15 min. Two hundred microlitres of supernatant were transferred into a new tube and incubated to -20°C. We used 0.5 μ L as template in a 10 μ L PCR reaction. DNA was amplified in an Applied Biosystems 7500 Fast System[®] using primers [27] and TaqMan fluorescence labeled probes for real-time PCR [28] as previously described.

Vector control measures

In September 2009, the local Malaria Control Programme improved vector control actions, such as the free distribution of insecticide-treated bed nets, window screening and intensification of indoor residual spraying (cypermethrin).

Epidemiological study

Malaria incidence rates (MIR) were obtained from a longitudinal study carried out in the two communities in the period. Passive case detection based on microscopic examination of Giemsa stained thick blood smears (TBSs) was performed for every episode of fever among the members of the cohort.

Concurrently to the entomological investigation, four cross-sectional surveys of the cohorts under study were conducted in order to determine the prevalence of malaria through active case detection. The laboratory diagnosis of malarial infection was based on nested PCR amplification of a species-specific segment of the 18 S rRNA gene of human malaria parasites in blood samples collected in filter paper. The extraction of total DNA from filter paper was performed using the QIAamp[®] DNA Blood Mini Kit (Qiagen[®], USA), according to the manufacturer's protocol. DNA was amplified in an Applied Biosystems 7500 Fast System[®] using primers [27] and TaqMan fluorescence labeled probes for real-time PCR [28] as previously described.

Data analysis

The malaria transmission potential of mosquitoes was determined by estimating the human biting rates (HBR) and entomological inoculation rates (EIR) for each collection in each location. HBR was scored as the average hourly number of mosquitoes captured per person. The EIR was estimated by multiplying the HBR and infection rates (IR). The IR is the proportion of positive pools in which *Plasmodium* sp. was detected by PCR.

Malaria prevalence calculations were based on the number of cases diagnosed by PCR and the number of

people found during the four cross-sectional surveys. Incidence of malaria obtained from the longitudinal study was used to calculate the incidence rates (cases/1,000 persons/year) taking into account the cases communicated from each site of anopheline collection and the population follow-up time. Malarial incidence rates (MIRs) were determined for each anopheline collection site using the population of the site and the number of cases of malaria registered one month and a half before and after the collection's date.

Pearson's test performed in SPSS 16.0 software was used to verify the correlation between HBRs (for total anophelines and for *An. darlingi* and *An. albitarsis* separately) and the malarial incidence rates (cases/1,000 persons/year).

HBR, EIR, MIR and malaria prevalence were used as outcomes to estimate the impact of the control measures established in the middle of the period of study.

Ethics procedures

Human surveys and entomological investigation were approved by the National Ethics Review Committee (protocol number 15197). Mosquitoes' collection using the above mentioned capture methodology was preceded by ethical clearance. All malaria cases detected in the longitudinal or cross-sectional studies were treated according to the Brazilian Ministry of Health's National guidelines.

Results

Rainfall and temperature were homogeneous throughout the period of the study, showing the expected typical seasonality, with increased rainfall during the first six months of the year, followed by increased mean temperatures in the second semester of the years (Figure 2).

A total of 3,189 anophelines were collected from the households under entomological surveillance at the 4 different timepoints. Anopheline mosquitoes belonged to 13 different species (Table 1). *Anopheles darlingi* was the predominant species in the period, representing 42.6% of the total of anophelines collected, followed nearly by *An. albitarsis*, with 38.4%. In all the collections there was a predominance of mosquitoes in the peridomiciliary environment (77.1%). *Anopheles darlingi* and *An. albitarsis*, the two major species, predominated outdoors, where 83.3% and 65.5% were collected, respectively. All the other species also prevailed in this environment (Additional file 1). Margalef's index ranged from 0.59 to 1.54, with values slightly higher in collections carried out in the peridomiciliary area. This index showed a decreasing trend in the diversity of anopheline species along the period of study (Additional file 1).

The HBRs calculated for all anophelines and for *An. darlingi* and *An. albitarsis* by collection and specific

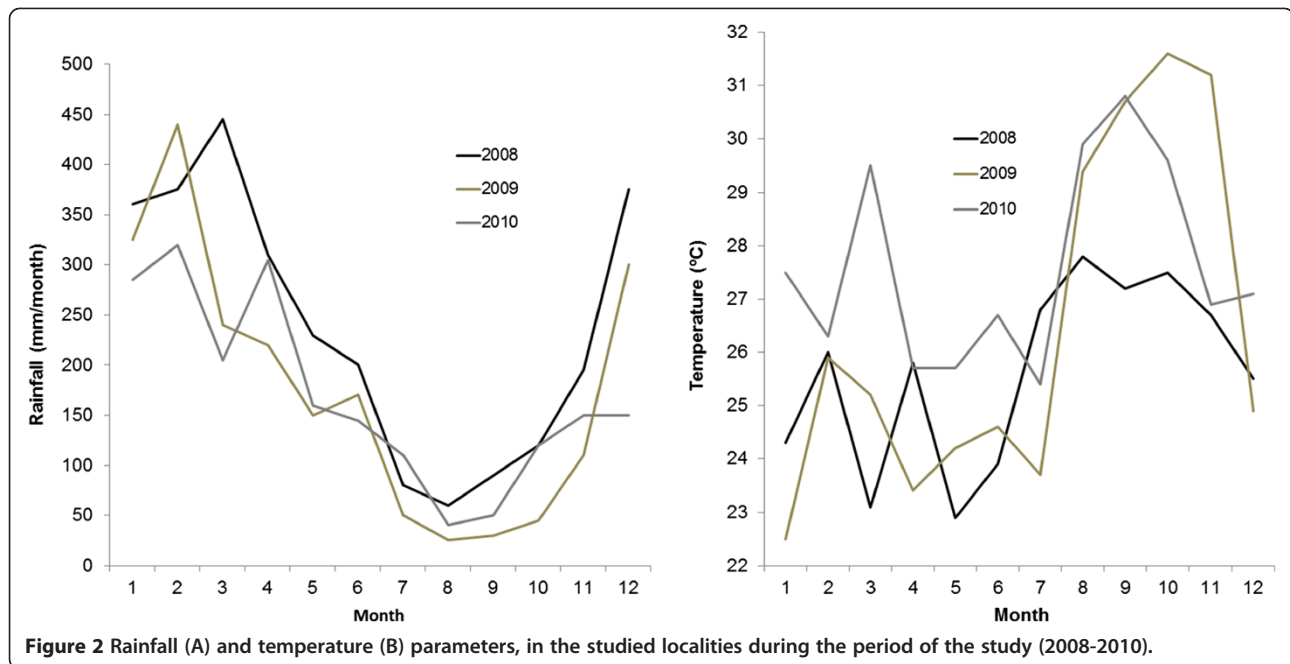


Figure 2 Rainfall (A) and temperature (B) parameters, in the studied localities during the period of the study (2008-2010).

locality are shown in Additional file 2. Overall HBRs did not show an important variation in the different localities of collection along the period. The first collection showed HBRs ranging from 3.1 to 16.3, the second collection 0.4 to 3.6, the third collection 0.3 to 14.3 and the last collection 0.8 to 21.0. HBRs calculated for *An. darlingi* showed a notable decreasing trend from the start to the end of the study. The first collection showed

Table 1 Anopheline species collected in the Panelão and Castanho Sítio Communities during the four cross-sectional studies

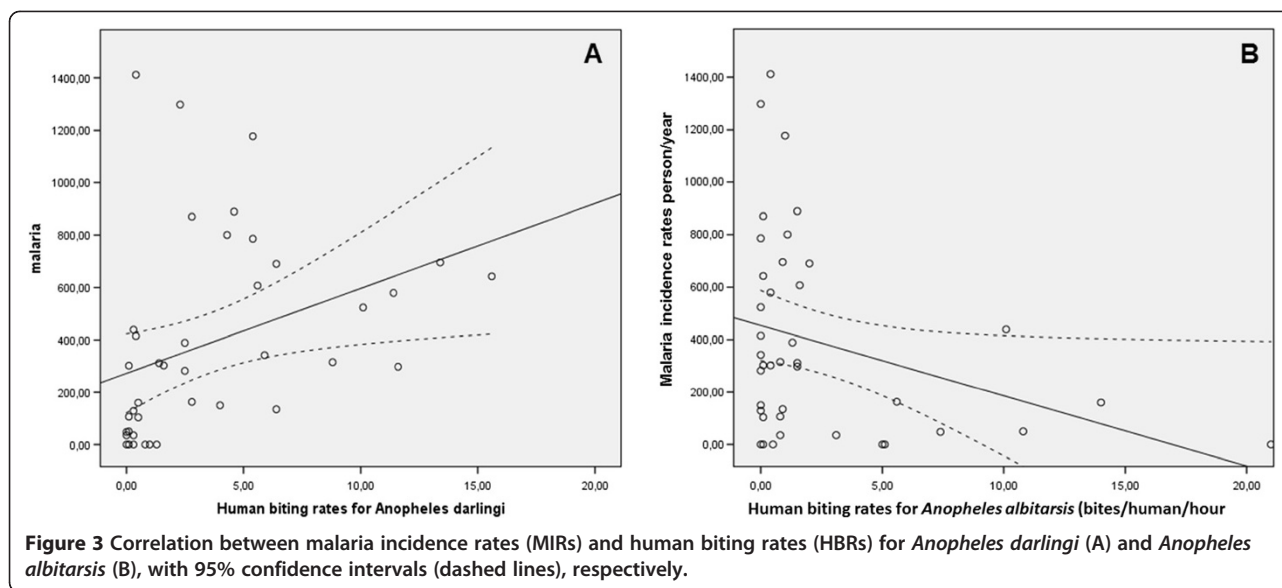
Anopheline species	Number (%)
Subgenus Nyssorhynchus (Blanchard, 1902)	
<i>Anopheles albitarsis</i> (Lynch-Arribálzaga, 1878)	1224 (38.4)
<i>Anopheles argyritarsis</i> (Robineau-Desvoidy, 1827)	105 (3.3)
<i>Anopheles braziliensis</i> (Chagas, 1907)	371 (11.6)
<i>Anopheles darlingi</i> (Root, 1926)	1357 (42.6)
<i>Anopheles deaneorum</i> (Rosa-Freitas, 1989)	27 (0.8)
<i>Anopheles evansae</i> (Brèthes, 1926)	2 (0.06)
<i>Anopheles nuneztovari</i> (Gabaldón, 1940)	63 (2.0)
<i>Anopheles oswaldoi</i> (Peryassú, 1922)	7 (0.2)
<i>Anopheles triannulatus</i> (Neiva & Pinto, 1922)	23 (0.7)
Subgenus Anopheles (Meigen, 1902)	
<i>Anopheles mediopunctatus</i> (Theobald, 1903)	4 (0.1)
<i>Anopheles mattogrossensis</i> (Lutz & Neiva, 1911)	3 (0.1)
<i>Anopheles peryassui</i> (Dyar & Knab, 1908)	1 (0.03)
<i>Anopheles punctimacula</i> (Dyar & Knab, 1906)	2 (0.06)
Total	3189 (100)

An. darlingi maximum HBRs of 15.6, falling to 2.8 and 4.0 in the last collections. On the other hand, *An. albitarsis* increased its contribution to overall HBRs along the time. The first collection showed *An. albitarsis* maximum HBRs of 2.0, subsequently peaking at 21.0 during the fourth collection. In the end of the study, in some localities the overall HBRs were almost exclusively due to *An. albitarsis*. The increase in the HBRs for this species was most notable in the localities of the Céu Azul Community. The other species showed very low HBRs and great fluctuations along the collections.

Figure 3 summarizes the correlation between the two major vector specific HBRs and MIRs in the corresponding period and locality. For *An. darlingi* there seemed to be a significant positive correlation between HBRs and MIR ($p = 0.002$). This positive correlation was maintained for *An. darlingi* HBRs obtained outdoors ($p = 0.001$), but the correlation was lost indoors ($p = 0.107$). Conversely, overall *An. albitarsis* HBRs showed a significant negative correlation with the corresponding MIR ($p = 0.045$) (Figure 3).

HBRs for all the mosquitoes ranged from 9.2 in the first collection to 7.5 in the fourth. Figure 4 shows that *An. darlingi* HBRs showed a decreasing pattern, especially after the second collection, when control measures were intensified. *An. albitarsis* HBRs behaved in a contrary manner, with an increasing trend along the period. This trends were confirmed when we analysed the HBRs calculated for indoor and outdoor environments separately, for both species.

EIR from total anophelines and for *An. darlingi* and *An. albitarsis* presented decreasing patterns in the



successive collections. This decrease was particularly notable for the two major collected anophelines, which demonstrated near to zero EIRs after the beginning of control measures intensification.

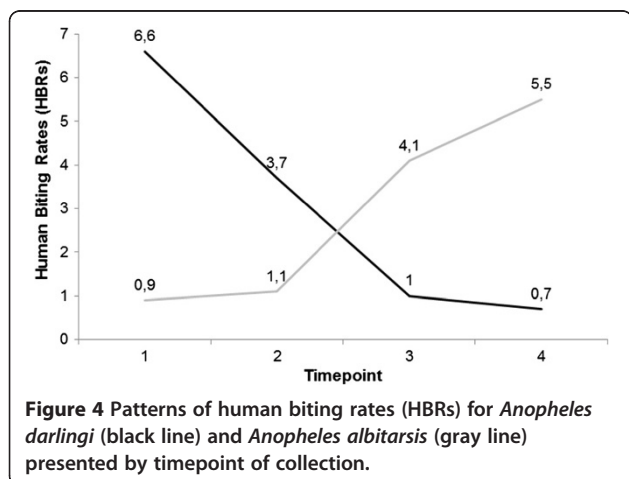
Four species of anophelines were found naturally infected with *Plasmodium* sp. In the first collection one pool of *An. albitalarsis* was positive for *Plasmodium vivax*. The second collection showed two pools of *An. darlingi* and one pool of *An. albitalarsis* positive for *P. vivax*. In the third collection, one pool of *An. braziliensis* was positive for *P. vivax* and one pool of *An. nuneztovari* was positive for *P. vivax/Plasmodium falciparum* mixed infection. One pool of *An. braziliensis* of the fourth collection was positive for *P. vivax/P. falciparum* mixed infection. Four infected pools came from outdoor and three from indoor captures (in this case only for *An. darlingi* and *An. albitalarsis*).

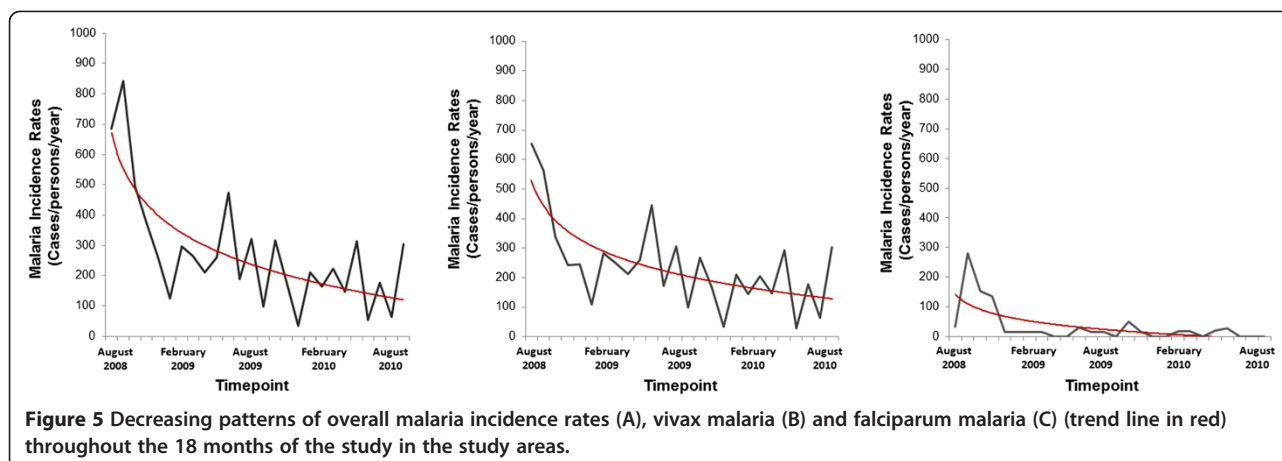
Figures 5 and 6 show a clear decrease in the MIR for both vivax and falciparum malaria and in the prevalence of *P. vivax* and *P. falciparum* carriers, respectively, during the period of study.

Discussion

Insecticide-treated nets, indoor residual spray, and the use of biolarvicides are the major vector control tools used in the fight against malaria. When integrated vector management (IVM) strategies have been consistently implemented in African countries, they have successfully controlled malaria transmission [29]. However, IVM has been slowly introduced for malaria control in LA and it has not been sufficiently evaluated in this region [30]. Considering the long-term challenge of malaria eradication, it is essential to increase knowledge on the ecology and behavior of malaria vectors [31,32]. In LA, current methods for vector control are based primarily on the use of long-lasting insecticide treated nets and indoor residual spraying, but there is no available information on the impact that these measures have on suppressing anopheline populations and reducing levels of malaria parasite transmission in recent agrarian reform projects in the Amazon.

Studies focusing on mosquito bionomics may provide solid baseline information to direct malaria control strategies. All the anopheline species collected in this study have been previously reported in the Amazon Region [4,6]. Margalef's index observed in the period was low, irrespective of the collection environment. *Anopheles darlingi* was the predominant species in the period, followed by *An. albitalarsis*. Eleven species showed infrequent human biting habits. *Anopheles darlingi* is considered as the primary malaria vector in Brazil based



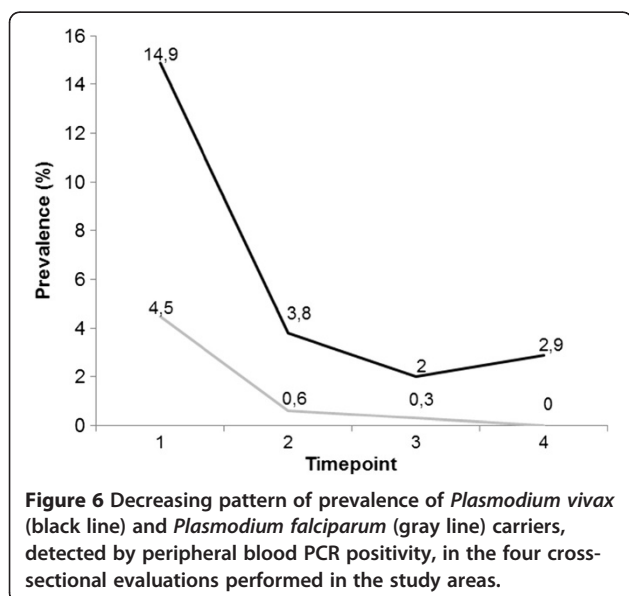


on its high susceptibility to *Plasmodium* sp., and its anthropophilic and endophagic behaviour [7-9]. In a previous report, 87.8% out of 27,428 *An. darlingi* specimens collected in the Amazon were collected within households, confirming its strong anthropophilic habits [33]. In this study, however, in all collections there was a predominance of mosquitoes in the peri-domiciliary environment, in agreement with collections performed during the construction of the Manaus-Boa Vista Highway [6]. It is not possible to conclude that peri-domiciliary transmission in the two communities occurs more frequently than indoor transmission, but there was evidence of strong association between malaria incidence and *An. darlingi* outdoor HBRs.

In the state of Roraima, Northern Brazilian Amazon, the decrease in distribution and density of anophelines corresponded to a malaria decrease in surrounding areas [34]. In Manaus, a relationship between *An. darlingi*

density increases and the number of malaria cases 30 days later was observed [6]. However, few studies have demonstrated a correlation between longitudinal data on malarial incidence with abundance and HBRs for this species, confirming its effective contribution to transmission, as strongly suggested by the present data. In the State of Amapá, Brazil [35], and in French Guiana [36], significant correlations were detected between malaria cases and suspected vector species abundance. As shown in this study, and despite the low diversity of the anopheline fauna, malaria remains in endemic levels at these sites possibly because of the abundance and vectorial competence of the major anophelines. In fact, results from entomological investigations carried out in recent rural Amazon settlements suggest that an intensification of anthropic environmental changes increases the abundance of *An. darlingi* [19], contributing to maintain several malarial foci with high incidence rates in recent colonization places [18-20].

Anopheles darlingi showed to be the vector responsible for the transmission of malaria in the communities, as demonstrated by the strong correlation between its HBRs and MIRs. The decrease in malaria incidence during the period of study is likely to be linked to the vector control measures. The other species of anophelines, especially *An. albitarsis*, were not sensible to the control strategies. On the other hand, the latter species increases in abundance along the investigation, correlating negatively with malaria incidence and showing that their densities does not have major importance in the transmission of malaria in the communities. Although the abundance and infection by *Plasmodium* sp. in entomological investigations carried out in the Brazilian Amazon [6-9,15,16,37], the present data pointed that the role of *An. albitarsis* as a malaria vector is unclear and needs to be further investigated in this region. In some regions of Brazil, *An. albitarsis* may invade houses and feed in humans. However, in most of its territory, including the



dry northeast and the central areas, this anopheline is exophilic and zoophilic, preferring to attack the cattle [16]. It can be speculated that the substitution of *An. darlingi* by *An. albitarsis* was due to the increase in the bovine cattle breeding that occurred in the communities in the recent years, particularly in the Céu Azul Community, diminishing the breeding sites for *An. darlingi*, and intensifying attraction of *An. albitarsis* in neighbouring houses.

Four outcomes were used to evaluate the impact of the vector control measures (HBRs, EIRs, MIR and prevalence of *P. vivax* and *P. falciparum* carriers). All these indicators suggested an effectiveness of the use of impregnated bed nets and residual spraying in two rural communities. Although very low infection rates were seen, EIRs decreased throughout the study. HBRs seem to decrease in parallel to the prevalence of *P. vivax* and *P. falciparum* carriers, and with MIR, reinforcing the potential of these vector control approaches in the rural Amazonian areas. A clear limitation of this study that needs to be highlighted is the descriptive methodology employed in this study, without any controlled strategy, which would be considered unethical. Moreover, the use of bed nets was not appropriately evaluated. Unfortunately, there is no systematic information concerning acceptability of these methods in the two communities. In Southern Brazilian Amazon, impregnated mosquito nets were not effective in controlling malaria [38]. In Guatemala and Nicaragua, malaria incidence was significantly lower in populations using insecticide-impregnated bed nets [39,40]. A high proportion of *P. falciparum* was listed between the most important factors for the success of the bed net programme in Ecuador, Colombia and Peru [41]. In the Colombian Amazon, promotion of mosquito net use and impregnation had a benefit as evidenced by a case-control study [42].

Conclusions

Data presented here represent an important contribution to the knowledge of the epidemiology of malaria transmission and vector control in agricultural settlements in the Amazon, indicating that *An. darlingi* is the vector responsible by the transmission in these sites, and that integrated measures using impregnated bed nets and residual spraying may reduce substantially the man-vector contact and malaria incidence. Fortunately *An. darlingi* susceptibility to control is likely to be high in the rural settlements studied, but a major long-term threat for malaria vector control is the development of insecticide resistance, which stresses the necessity to develop local and systematic evaluation. In malaria endemic areas of Latin America, where *P. vivax* is predominant, studies on vector behaviour should be conducted in order to predict the impact of vector control measures on malaria transmission.

Additional files

Additional file 1: Abundance and diversity of the anopheline fauna presented by collection.

Additional file 2: Human biting rates for the total of anophelines, *Anopheles darlingi* and *Anopheles albitarsis* presented by collection and localities.

Competing interests

The authors declare that they have no competing interests.

Authors' contributions

KMMC, WDP, IR, GCM and NFF participated in data collection and laboratory procedures. SVS participated in field-works. MVGL and AMS participated in overall study conception and design, data collection, analysis, interpretation and manuscript preparation. WMM, MGVB, WPT, CG, QB e PLA were involved in data interpretation and manuscript preparation. All authors read and approved the final manuscript.

Acknowledgements

We acknowledge the collaboration of the local microscopists Juscelino Torres dos Santos, Eliana Lima and Iralton dos Santos. This study was supported by *Conselho Nacional de Desenvolvimento Científico e Tecnológico* (CNPq) (grant number 575788/2008-9) and by *Fundació Cellex* (*P. vivax* Consortium).

Author details

¹Fundação de Medicina Tropical Dr. Heitor Vieira Dourado, Av. Pedro Teixeira, 25, Dom Pedro, Manaus, AM 69040-000, Brazil. ²Instituto Nacional de Pesquisas da Amazônia, Av. André Araújo, 2936, Aleixo, Manaus, AM 69060-001, Brazil. ³Universidade do Estado do Amazonas, Av. Pedro Teixeira, 25, Dom Pedro, Manaus, AM 69040-000, Brazil. ⁴Universidade Federal do Amazonas, Rua Afonso Pena, 1053, Praça 14, Manaus, AM 69020-170, Brazil. ⁵Universidade Nilton Lins, Av. Prof. Nilton Lins, 3259, Parque das Laranjeiras, Manaus, AM 69058-030, Brazil. ⁶Barcelona Centre for International Health Research (CRESIB, Hospital Clínic-Universitat de Barcelona), Rosselló 132, 4^a, Barcelona 08036, Spain.

Received: 4 August 2012 Accepted: 19 October 2012

Published: 23 October 2012

References

1. World Health Organization: *WHO Malaria Report*. Geneva: World Health Organization; 2011.
2. Guerra CA, Howes RE, Patil AP, Gething PW, Van Boeckel TP, Temperley WH, Kabaria CW, Tatem AJ, Manh BH, Elyazar IR, Baird JK, Snow RW, Hay SI: **The international limits and population at risk of *Plasmodium vivax* transmission in 2009.** *PLoS Negl Trop Dis* 2010, **4**:e774.
3. Oliveira-Ferreira J, Lacerda MV, Brasil P, Ladislau JL, Taulil PL, Daniel-Ribeiro CT: **Malaria in Brazil: an overview.** *Malar J* 2010, **9**:115.
4. Deane LM CO, Deane MP: **Malaria vectors in Brazil.** *Mem Inst Oswaldo Cruz* 1986, **81**:5-14.
5. Rubio-Palis Y, Zimmerman RH: **Ecoregional classification of malaria vectors in the neotropics.** *J Med Entomol* 1997, **34**:499-510.
6. Tadei WP, Thatcher BD, Santos JM, Scarpassa VM, Rodrigues IB, Rafael MS: **Ecologic observations on anopheline vectors of malaria in the Brazilian Amazon.** *Am J Trop Med Hyg* 1998, **59**:325-335.
7. Tadei WP, dos Santos JM, Costa WL, Scarpassa VM: **Biology of Amazonian *Anopheles*. XII. Occurrence of *Anopheles* species, transmission dynamics and malaria control in the urban area of Ariquemes (Rondonia)]**[in Portuguese. *Rev Inst Med Trop Sao Paulo* 1988, **30**:221-251.
8. de Arruda M, Carvalho MB, Nussenzweig RS, Maracic M, Ferreira AW, Cochrane AH: **Potential vectors of malaria and their different susceptibility to *Plasmodium falciparum* and *Plasmodium vivax* in northern Brazil identified by immunoassay.** *Am J Trop Med Hyg* 1986, **35**:873-881.
9. Lourenço-de-Oliveira R, Guimaraes AE, Arle M, da Silva TF, Castro MG, Motta MA, Deane LM: **Anopheline species, some of their habits and relation to malaria in endemic areas of Rondonia State, Amazon region of Brazil.** *Mem Inst Oswaldo Cruz* 1989, **84**:501-514.

10. Foratini OP: *Culicidologia Médica*, Volume 2. São Paulo: Editora USP; 2002.
11. Manguin S, Roberts DR, Andre RG, Rejmankova E, Hakre S: **Characterization of *Anopheles darlingi* (Diptera: Culicidae) larval habitats in Belize, Central America.** *J Med Entomol* 1996, **33**:205–211.
12. Rejmankova E, Rubio-Palis Y, Villegas L: **Larval habitats of anopheline mosquitoes in the Upper Orinoco, Venezuela.** *J Vector Ecol* 1999, **24**:130–137.
13. Povoá MM, de Souza RT, Lacerda RN, Rosa ES, Galiza D, de Souza JR, Wirtz RA, Schlichting CD, Conn JE: **The importance of *Anopheles albitarsis* and *An. darlingi* in human malaria transmission in Boa Vista, state of Roraima, Brazil.** *Mem Inst Oswaldo Cruz* 2006, **101**:163–168.
14. Galardo AK, Arruda M, D'Almeida Couto AA, Wirtz R, Lounibos LP, Zimmerman RH: **Malaria vector incrimination in three rural riverine villages in the Brazilian Amazon.** *Am J Trop Med Hyg* 2007, **76**:461–469.
15. Povoá M, Wirtz R, Lacerda R, Miles M, Warhurst D: **Malaria vectors in the municipality of Serra do Navio, State of Amapá, Amazon Region, Brazil.** *Mem Inst Oswaldo Cruz* 2001, **96**:179–184.
16. Deane LMCO, Deane MP: **Notes on the distribution and biology of anophelines in the Northeastern and Northern regions of Brazil [in Portuguese].** *Rev Ser Esp Saúde Públ* 1948, **1**:827–965.
17. Barata RC: **Malaria in Brazil: trends in the last ten years [in Portuguese].** *Cad Saude Publica* 1995, **11**:128–136.
18. de Oliveira EC, dos Santos ES, Zeilhofer P, Souza-Santos R, Atanaka-Santos M: **Spatial patterns of malaria in a land reform colonization project, Jurueña municipality, Mato Grosso, Brazil.** *Malar J* 2011, **10**:177.
19. Moutinho PR, Gil LH, Cruz RB, Ribolla PE: **Population dynamics, structure and behavior of *Anopheles darlingi* in a rural settlement in the Amazon rainforest of Acre, Brazil.** *Malar J* 2011, **10**:174.
20. da Silva-Nunes M, Codeco CT, Malafronte RS, da Silva NS, Juncansen C, Muniz PT, Ferreira MU: **Malaria on the Amazonian frontier: transmission dynamics, risk factors, spatial distribution, and prospects for control.** *Am J Trop Med Hyg* 2008, **79**:624–635.
21. da Silva NS, da Silva-Nunes M, Malafronte RS, Menezes MJ, D'Arcadia RR, Komatsu NT, Scopel KK, Braga EM, Cavasini CE, Cordeiro JA, Ferreira MU: **Epidemiology and control of frontier malaria in Brazil: lessons from community-based studies in rural Amazonia.** *Trans R Soc Trop Med Hyg* 2010, **104**:343–350.
22. Instituto Brasileiro de Geografia e Estatística: *Censo Demográfico 2010*. Brasília: Instituto Brasileiro de Geografia e Estatística; 2010.
23. de Barros FS, Honorio NA: **Man biting rate seasonal variation of malaria vectors in Roraima, Brazil.** *Mem Inst Oswaldo Cruz* 2007, **102**:299–302.
24. Consoli R, Lourenço-de-Oliveira R: *Principais mosquitos de importância sanitária no Brasil*. Rio de Janeiro: Fiocruz; 1994.
25. Faran ME LK: **A handbook of the Amazonian species of *Anopheles Nyssorhynchus* (Diptera: Culicidae).** *Mosq Syst* 1981, **13**:1–81.
26. Margalef D: **La teoría de la información en ecología [in Spanish].** *Mem R Acad Cienc Artes* 1957, **32**:373–379.
27. Snounou G, Viriyakosol S, Zhu XP, Jarra W, Pinheiro L, do Rosario VE, Thaithong S, Brown KN: **High sensitivity of detection of human malaria parasites by the use of nested polymerase chain reaction.** *Mol Biochem Parasitol* 1993, **61**:315–320.
28. Perandin F, Manca N, Calderaro A, Piccolo G, Galati L, Ricci L, Medici MC, Arcangeletti MC, Snounou G, Dettori G, Chezzi C: **Development of a real-time PCR assay for detection of *Plasmodium falciparum*, *Plasmodium vivax*, and *Plasmodium ovale* for routine clinical diagnosis.** *J Clin Microbiol* 2004, **42**:1214–1219.
29. Beier JC, Keating J, Githure JI, Macdonald MB, Impoinvil DE, Novak RJ: **Integrated vector management for malaria control.** *Malar J* 2008, **7**(Suppl 1):S4.
30. Arevalo-Herrera M, Quinones ML, Guerra C, Cespedes N, Giron S, Ahumada M, Pineros JG, Padilla N, Terrientes Z, Rosas A, Padilla JC, Escalante AA, Beier JC, Herrera S: **Malaria in selected non-Amazonian countries of Latin America.** *Acta Trop* 2012, **121**:303–314.
31. Ferguson HM, Dornhaus A, Beeche A, Borgemeister C, Gottlieb M, Mulla MS, Gimnig JE, Fish D, Killeen GF: **Ecology: a prerequisite for malaria elimination and eradication.** *PLoS Med* 2010, **7**:e1000303.
32. MalERA: **A research agenda for malaria eradication: vector control.** *PLoS Med* 2010, **8**:e1000401.
33. Deane L: **Observations on malaria in the Brazilian Amazon in [Portuguese].** *Rev Serv Saúde Públ* 1947, **1**:3–60.
34. de Barros FS, Honorio NA, Arruda ME: **Survivorship of *Anopheles darlingi* (Diptera: Culicidae) in relation with malaria incidence in the Brazilian Amazon.** *PLoS One* 2011, **6**:e22388.
35. Galardo AK, Zimmerman RH, Lounibos LP, Young LJ, Galardo CD, Arruda M, D'Almeida Couto AA: **Seasonal abundance of anopheline mosquitoes and their association with rainfall and malaria along the Matapi River, Amapá, [corrected] Brazil.** *Med Vet Entomol* 2009, **23**:335–349.
36. Fouque F, Gaborit P, Carinci R, Issaly J, Girod R: **Annual variations in the number of malaria cases related to two different patterns of *Anopheles darlingi* transmission potential in the Maroni area of French Guiana.** *Malar J* 2010, **9**:80.
37. Deane LM CO, Deane MP: **An illustrated key by adult female characteristics for identification of thirty-five species of Anophelini from Northeast and Amazon regions of Brazil, with note on the malaria vectors (Diptera: Culicidae).** *Am J Trop Med Hyg* 1946, **18**:1–18.
38. Santos JB, dos Santos F, Marsden P, Tosta CE, Andrade AL, Macedo V: **Effect of bed nets impregnated with deltamethrin on malaria morbidity in an area of the Brazilian Amazon [in Portuguese].** *Rev Soc Bras Med Trop* 1998, **31**:1–9.
39. Richards FO Jr, Flores RZ, Sexton JD, Beach RF, Mount DL, Cordon-Rosales C, Gatica M, Klein RE: **Effects of permethrin-impregnated bed nets on malaria vectors of northern Guatemala.** *Bull Pan Am Health Organ* 1994, **28**:112–121.
40. Kroeger A, Gonzalez M, Ordóñez-Gonzalez J: **Insecticide-treated materials for malaria control in Latin America: to use or not to use?** *Trans R Soc Trop Med Hyg* 1999, **93**:565–570.
41. Kroeger A, Mancheno M, Alarcon J, Pesse K: **Insecticide-impregnated bed nets for malaria control: varying experiences from Ecuador, Colombia, and Peru concerning acceptability and effectiveness.** *Am J Trop Med Hyg* 1995, **53**:313–323.
42. Alexander N, Rodriguez M, Perez L, Caicedo JC, Cruz J, Prieto G, Arroyo JA, Cotacio MC, Suarez M, de la Hoz F, Hall AJ: **Case-control study of mosquito nets against malaria in the Amazon region of Colombia.** *Am J Trop Med Hyg* 2005, **73**:140–148.

doi:10.1186/1475-2875-11-351

Cite this article as: Martins-Campos et al: Integrated vector management targeting *Anopheles darlingi* populations decreases malaria incidence in an unstable transmission area, in the rural Brazilian Amazon. *Malaria Journal* 2012 **11**:351.

Submit your next manuscript to BioMed Central and take full advantage of:

- Convenient online submission
- Thorough peer review
- No space constraints or color figure charges
- Immediate publication on acceptance
- Inclusion in PubMed, CAS, Scopus and Google Scholar
- Research which is freely available for redistribution

Submit your manuscript at
www.biomedcentral.com/submit

