

The expanding role of SGLT2 inhibitors beyond glucose-lowering to cardiorenal protection

Emily Brown , John PH Wilding , Uazman Alam , Thomas M Barber , Janaka Karalliedde & Daniel J Cuthbertson

To cite this article: Emily Brown , John PH Wilding , Uazman Alam , Thomas M Barber , Janaka Karalliedde & Daniel J Cuthbertson (2020): The expanding role of SGLT2 inhibitors beyond glucose-lowering to cardiorenal protection, Annals of Medicine, DOI: [10.1080/07853890.2020.1841281](https://doi.org/10.1080/07853890.2020.1841281)

To link to this article: <https://doi.org/10.1080/07853890.2020.1841281>



© 2020 The Author(s). Published by Informa UK Limited, trading as Taylor & Francis Group



Accepted author version posted online: 27 Oct 2020.



Submit your article to this journal [↗](#)



Article views: 1150



View related articles [↗](#)



View Crossmark data [↗](#)

The expanding role of SGLT2 inhibitors beyond glucose-lowering to cardiorenal protection

Emily Brown^{1,2}, John PH Wilding^{1,2}, Uazman Alam^{1,2,3}, Thomas M Barber^{4,5}, Janaka Karalliedde⁶, Daniel J Cuthbertson^{1,2}

¹Department of Metabolic and Cardiovascular Medicine, Institute of Life Course and Medical Sciences, University of Liverpool, Liverpool, United Kingdom

²Liverpool University Hospitals NHS Foundation Trust, Longmoor Lane, Liverpool L9 7AL

³Division of Diabetes, Endocrinology and Gastroenterology, Institute of Human Development, University of Manchester, UK.

⁴Human Metabolism Research Unit, University of Warwick

⁵University Hospital Coventry and Warwickshire NHS Trust

⁶School of Cardiovascular Medicine & Sciences, King's College London, London

Corresponding author & address for reprints:

Professor Daniel Cuthbertson

3rd floor Clinical Sciences Centre,

²Liverpool University Hospitals NHS Foundation Trust,

Longmoor Lane,

Liverpool, L9 7AL

E-mail: dan.cuthbertson@liv.ac.uk

Abstract

The kidney plays a major physiological role in glucose homeostasis but also contributes to the pathophysiology of type 2 diabetes (T2D), mediated by renal sodium glucose cotransporters (SGLTs). This recognition led to development of SGLT2 inhibitors that inhibit proximal renal tubular renal glucose and sodium reabsorption. The glucretic and natriuretic effect of SGLT2 inhibitors is associated with reductions in HbA_{1c} levels, body weight, systolic blood pressure and triglycerides.

Major vascular complications of T2D include cardiovascular disease and chronic kidney disease (CKD). Results from several cardiovascular outcome trials (CVOTs) with these drugs have highlighted benefits in reducing major adverse cardiovascular events by 11%, reducing the risk of cardiovascular death or hospitalisation for heart failure (HF) by 23% and reducing risk of progression of renal disease by 45%. Their cardiorenal benefits are apparent across a range of eGFRs (within CKD1-3 groups) and the presence or absence of ischaemic heart disease, HF or T2D. In patients with HF with reduced ejection fraction (HFrEF), similar risk reductions in cardiovascular death and HF events are also seen; results from studies in patients with HF with preserved ejection fraction (HFpEF) are awaited. Cardiorenal benefits have been recently reported in patients with CKD, regardless of the presence or absence of T2D.

Indications for use of SGLT2 inhibitors has extended beyond glucose-lowering to a central role in cardiorenal protection. This review will first explore the mechanisms by which glycaemic control, weight loss and cardiovascular risk factors are modulated therapeutically with SGLT2 inhibitors. Subsequently we outline putative mechanisms underpinning the cardiorenal benefits seen, including in HF and CKD, in the context of completed and ongoing clinical studies. Treatment strategies with SGLT2 inhibitors in individuals with CKD or HF, with and/or without T2D are increasingly appealing. Combination therapy with complementary therapeutic agents is also explored.

Introduction

A. The role of the kidney in glucose homeostasis and renal glucose transport

Glucose homeostasis the various roles of the kidney include excretion of metabolic waste products, maintenance of intravascular volume and serum osmolality, regulation of blood pressure, acid-base and electrolyte balance through filtration, secretion and selective reabsorption of key ions. The kidney also has a major physiological role in regulating glucose homeostasis constantly supplying glucose to the brain despite diurnal changes in nutrient availability. The involvement of the kidney in gluconeogenesis was first described in 1938 in rabbits, where the amount of glucose required to maintain euglycemia was considerably higher after hepatectomy plus nephrectomy vs. hepatectomy only [1].

Maintenance of whole-body glucose homeostasis involves several complementary inter-organ physiological processes, including glucose absorption (gastrointestinal tract), glycogenolysis (liver), gluconeogenesis (liver and kidneys), glucose reabsorption and excretion (kidneys). Renal glucose utilisation, occurring predominantly in the renal medulla, constitutes ~10% of whole-body glucose uptake to satisfy the kidneys' energy requirements, while renal glucose release into the systemic circulation, via glycogenolysis and gluconeogenesis, is limited to the renal cortex. The kidney contributes up to 20% of glucose released into the systemic circulation under post-absorptive conditions, increasing up to 60% post-prandially[2]. These distinct metabolic roles reflect differences in the anatomical distribution of various enzymes along the nephron. Evidence suggests that in patients with T2D, renal gluconeogenesis is increased (vs. healthy controls) in both the post-prandial and post-absorptive states [3].

Glucose filtration and reabsorption The kidneys also contribute to glucose homeostasis by filtering and reabsorbing glucose. The total amount of glucose stored in the body is ~450 g, with ~170g of glucose produced daily (via gluconeogenesis and glycogenolysis). With glomerular filtration of 180 litres/day, the kidney filters 162 g of glucose (180l x 90 mg/dl; 90mg/dl~5.0 mmol/l) daily. The amount of glucose filtered increases linearly with increasing plasma glucose concentration; glucose is almost entirely reabsorbed in the proximal renal tubules. The renal threshold for reabsorption is a plasma glucose concentration ~8.3 mmol/l, above which glucose starts to appear in the urine. Once plasma glucose concentration is >13.3 mmol/l, the maximum capacity for glucose reabsorption is exceeded (tubular maximum for glucose, TmG), and thus beyond this threshold, the degree of glucosuria increases in a linear fashion with increasing plasma glucose concentrations (Figure 1).

Glucose transport Glucose transport across cell membranes is dependent on two specialised carrier protein families: the GLUTs (facilitated glucose transporters) and the SGLTs (sodium coupled glucose cotransporters). GLUTs are responsible for passive transport across cell membranes to equilibrate the transmembrane concentration while SGLTs are involved in active glucose transport across a concentration gradient. There are two predominant isoforms of SGLTs: SGLT1 and SGLT2. SGLT1 is located in the small intestine (in the luminal brush border of the enterocyte) and in segment 3 of the proximal tubule, with specificity for glucose and galactose as a high affinity ($K_m=0.4\text{mM}$), low capacity glucose carrier. SGLT2 is found in the renal proximal tubules (segments 1 and 2), with specificity for glucose as a low affinity ($K_m=2\text{mM}$), high capacity glucose carrier. Thus, under normoglycaemic conditions, SGLT2, expressed in the early proximal tubule, accounts for ~90% of glucose reabsorption with the remainder by SGLT1 in segment 3 of the proximal tubule (Figure 2).

Renal glucose transport in T2D Evidence from studies conducted in human renal tubular cells suggest SGLT2 and GLUT2 expression are upregulated in T2D, leading to an increased maximal capacity for glucose reabsorption (T_mG) and a higher threshold for glycosuria and consequently increased glucose reabsorption [4]. Increased renal glucose reabsorption is a well-recognised pathophysiological defect of T2D [5].

B. SGLT2 inhibitors

SGLT1/2 receptor specificity The appreciation of the role of the kidney in regulating glucose homeostasis led to the development of new types of glucose-lowering drugs targeting this metabolic pathway. The original observations that augmenting renal glucose excretion could lead to improved glycaemic control came from animal studies using phlorizin, a naturally occurring molecule, that inhibits both SGLT1 and SGLT2 and subsequently several SGLT2 and later dual SGLT1/2 inhibitors were developed. SGLT2 inhibitors in clinical use in Europe are dapagliflozin, canagliflozin, empagliflozin and ertugliflozin while sotagliflozin, the only dual SGLT1/2 inhibitor, is approved only for type 1 diabetes (T1D).

The differing SGLT2 inhibitors have a range of relative specificities to the different SGLT receptors which may contribute to subtle differences in their clinical profiles. Highest selectivity for SGLT2 receptors is observed with empagliflozin (SGLT2:SGLT1 specificity~2,500), with other agents intermediate in SGLT2 receptor specificity (dapagliflozin,1200; canagliflozin, 200) with sotagliflozin the least selective (~20).

Despite our understanding that SGLT2 usually contributes to ~90% of glucose reabsorption in a healthy adult, pharmacological inhibition with an SGLT2 inhibitor only results in about

60-80 grams of urinary glucose excretion (~50-60% of filtered glucose load). With increased glucose load to the late proximal tubule, SGLT2 inhibition causes a compensatory increase in SGLT1-mediated glucose reabsorption to limit glucosuria and potential hypoglycaemia.[6] Additionally, inhibition of intestinal SGLT1-mediated glucose uptake may have further therapeutic benefit. This premise is supported by findings from studies in individuals who carry a haplotype of functionally damaging missense mutations in SGLT1, which due to reduced intestinal glucose uptake, have improved glucose tolerance and lower odds of impaired glucose tolerance [7]. The estimated 25-year effect of this reduction in glucose tolerance was concomitant reductions in prevalent obesity, incident diabetes, heart failure (HF) and death [7].

Metabolic effects Sodium–glucose co-transporter 2 (SGLT2) inhibitors were introduced as a treatment for T2D but by virtue of the associated urinary excretion of glucose (and thus caloric loss), and urinary excretion of sodium, their use is associated with reductions in HbA_{1c} levels, body weight and systolic blood pressure.

Glycaemic effects All SGLT2 inhibitors show similar reductions in HbA_{1c} when studied as monotherapy in drug-naïve patients[8, 9], in combination with other oral agents[10-13] or insulin[14]. Although the short-term reduction in HbA_{1c} with SGLT2 inhibitors is comparable to that achieved with sulphonylureas and DPP-IV inhibitors (0.7-1%), the durability of the glycaemic benefit appears to be better with SGLT2 inhibitors compared to these other drug classes [15, 16]

Factors predicting glycaemic response A meta-analysis of randomised controlled studies, confirms that the magnitude of HbA_{1c} reduction correlates with the baseline HbA_{1c}, irrespective of the class or mode of action of glucose-lowering therapy, such that patients with higher HbA_{1c} achieve greater reductions in than individuals with lower HbA_{1c} [17]. However, this finding is particularly pertinent considering the efficacy of SGLT2 inhibitors, where with progressively higher baseline HbA_{1c}, their glucose lowering effect not only increases but indeed exceeds that of other glucose-lowering therapies. Mechanistically, this is explained by significantly higher amounts of glucose filtered whose reabsorption can then be targeted by SGLT2 inhibitor therapy as the plasma glucose concentration and HbA_{1c} progressively increases. Considering that their primary effect is mediated by inhibiting renal glucose absorption, provided that renal function (and thus glomerular filtration) is relatively preserved, these agents effect similar improvements in glycaemic control in newly diagnosed or longer duration T2D, irrespective of their degree of insulin sensitivity or residual insulin

secretion [18]. Renal impairment, (and thus impairment in glucose filtration), is associated with reduced efficacy of SGLT2 inhibitors in glycaemic reduction.

Mechanisms of glucose lowering There are two mechanisms by which SGLT2 inhibitors improve glycaemic control. First, by their significant effects on modulating renal glucose excretion: reducing the maximal capacity for glucose reabsorption (T_mG) and the threshold for glycosuria, promoting glycosuria of 60-80 grams/day[19]. Secondly, by amelioration of glucotoxicity (achieved through the reduction in plasma glucose concentration secondary to glycosuria) leading to greater insulin sensitivity in peripheral tissues (adipose tissue and skeletal muscle) [20] and enhancement of beta cell function, with improvements in the first and second phase of insulin secretion [21, 22]. These favourable metabolic changes are partially offset by an increase in endogenous glucose production, possibly the result of an increase in plasma glucagon concentrations. As their mechanism of action is independent of insulin secretion their use is associated with a low incidence of hypoglycaemia and therefore, they may be added to any background glucose-lowering treatment regimen. They may cause hypoglycaemia when used in combination with a sulphonyurea or insulin therapy.

Weight loss The weight loss associated with SGLT inhibitors is typically around 2-3 kg after 6 months' treatment, the magnitude of which has been the subject of several meta-analyses [23]. Arguably, the weight loss associated with 300 mg canagliflozin is marginally greater than that of most other SGLT2 inhibitors[24]. The changes in body composition associated with this weight loss have been quantified and there is a reduction in total fat mass, visceral and subcutaneous adipose tissue [25]. The anticipated weight loss from SGLT2 inhibitor therapy has been calculated based on the known urinary glucose excretion of ~60–80g per day, which amounts to a caloric loss of 240–320 calories per day (glucose~4 kcal/g). Considering 3,500 calories is equivalent to 1lb of fat (0.45kg) the observed magnitude of weight loss is significantly less than anticipated if one looks at the longer-term weight loss (e.g. after 6 months). Based on results of studies in animals and humans treated with SGLT2 inhibitors, it has been suggested that compensatory hyperphagia explains the attenuation of weight loss [26] and Hall *et al*, has modelled this to determine that for every kilogram of weight loss results in a proportional increase in appetite resulting in eating above baseline by approximately 100 kcal/day [27]. This concept of compensatory hyperphagia with SGLT2 inhibitor therapy provides the rationale for the co-administration of an SGLT2 inhibitor with a GLP-1 receptor agonist to attenuate the central hyperphagic drive and ideally achieve additive, even synergistic, weight loss. Mechanistic explanations for weight loss associated

with SGLT2 inhibitors, with or without GLP1 receptor agonists have been discussed narratively [28].

Mechanisms of weight loss The mechanisms for weight loss is predominantly through urinary glucose (and associated caloric loss), natriuresis and aquaresis but there are other additional mechanisms. Reproducible changes in substrate utilisation such that fuel use switches from glucose oxidation to increased lipolysis, fat oxidation and formation of ketone bodies. Furthermore, in patients treated with SGLT2 inhibitors and sulphonylureas and/or insulin, the reduction in their dosage may also contribute to favourable weight change.

Blood pressure reduction There are consistent sustained reductions in systolic (~5mmHg) and diastolic (~2mmHg) blood pressure with SGLT2 inhibitors, similar across all members of the class. With coupling of glucose and sodium reabsorption in the proximal tubule, SGLT2 inhibition leads to an osmotic diuresis and mild natriuresis and a corresponding contraction in extracellular fluid and plasma volume [29]. These blood pressure lowering effects may extend to individuals without T2D[30].

Almost certainly it is a multi-factorial combination of mechanisms that contribute to the pathophysiology of CVD and CKD in T2D including the metabolic and haemodynamic abnormalities described above, together with other mechanisms such as lipotoxicity and oxidative stress; it is likely that their improvement/reversal explains the clinical benefits of SGLT2 inhibitors.

C. Effects of SGLT2 inhibitors on the cardiovascular system

T2D is a major cardiovascular risk factor, conferring a two-to three-fold excess risk of coronary artery disease including angina, myocardial infarction, stroke and HF, in patients with and without established cardiovascular disease [31, 32]. There has been much focus on understanding atherosclerotic complications (atherosclerotic CVD, ASCVD), with the relationship between T2D and HF less well understood.

Effects on cardiovascular outcomes

These initial studies described below, mandated by the FDA, aimed to demonstrate that SGLT2 inhibitors could be used in patients with T2D without causing an increase in major adverse cardiovascular events (MACE). The subsequent results of several of these key CVOTs have consistently reassured the medical community about the safety of SGLT2 inhibitors and the associated reduction in cardiovascular events in patients with established CVD or at high risk of CV events. The discovery of their beneficial role in HF was somewhat

serendipitous [33]. Recent guidelines, updated to reflect these overwhelmingly positive results, recommend these drugs in patients *either* with T2D and CVD *or* at very high/high CV risk to reduce CV events *and* to reduce the risk of death [34].

EMPA-REG cardiovascular outcome study The EMPA-REG cardiovascular outcome trial (CVOT) assessed the effect of empagliflozin (10 mg or 25 mg once daily), compared with placebo, both added to standard of care comprising glucose-lowering agents and cardiovascular (CV) drugs (including anti-hypertensive and lipid-lowering agents) in 7,020 patients over a median of 3.1 years. The clinical population was a high-risk clinical group with almost all having pre-existing CVD (~99%). The composite primary endpoint was a 3-point MACE (defined as time to first occurrence of CV death, non-fatal heart attack or non-fatal stroke). Empagliflozin significantly reduced the occurrence of the 3-point MACE by 14 percent *versus* placebo. Risk of CV and all-cause mortality was reduced by 38 and 32 percent respectively, with no significant difference in the risk of non-fatal heart attack or non-fatal stroke. The benefits were observed with almost immediate effect following the initiation of empagliflozin treatment [35]. Subsequent trials with other SGLT2 inhibitors confirmed these observations across a broader range of patients with and without established vascular disease.

CANVAS cardiovascular outcome study The Canagliflozin Cardiovascular Assessment Study (CANVAS) CVOT assessed the effect of canagliflozin (100mg or 300mg), compared with placebo, both added to standard of care in 10,142 patients with T2D and high cardiovascular risk (65.6% had a history of cardiovascular disease) [36]. Patients were followed for a mean of 188.2 weeks. The composite primary endpoint was a 3-point MACE and canagliflozin significantly reduced the risk of the composite measure by 14 percent *versus* placebo. However, as in EMPA-REG the individual effects on CV death, non-fatal MI or non-fatal stroke did not reach statistical significance. Canagliflozin also caused a 33% reduction for HF. Adverse reactions included an increased risk of amputations, primarily at the level of the toe or metatarsal.

DECLARE-TIMI The Dapagliflozin to assess Cardiovascular Events trial was the largest study to assess the effect of an SGLT2 inhibitor, namely dapagliflozin, in 17,160 patients with established CVD (40.6%) or with multiple risk factors for atherosclerotic CVD (59.4%) (i.e. primary and secondary prevention) for a median of 4.2 years[37]. Dapagliflozin demonstrated non-inferiority for MACE (hazard ratio, HR 0.93; 95% CI 0.84,1.03) but resulted in a lower rate of a composite of CV death or hospitalisation for HF (HR 0.83; 95% CI 0.73,0.95), due to a lower rate hospitalisation for HF, regardless of previous ASCVD or

HF (HR 0.73; 95% CI 0.61, 0.88). These studies have led to approval of SGLT2 inhibitors for the indication of a reduction in risk of CV events and death in patients with T2D.

Meta-analyses of SGLT2 CVOTs Several meta-analyses have recently been published on SGLT2 inhibitors for primary and secondary prevention of cardiovascular outcomes in T2D with an attempt to reconcile what patient characteristics (e.g. presence/absence of atherosclerotic cardiovascular disease (ASCVD), history of HF or baseline renal function) will derive cardiorenal protection [38, 39]. Incorporating data from 34,322 patients in EMPA-REG OUTCOME, CANVAS and DECLARE-TIMI 58, the clinical benefits of SGLT2 inhibitors are in reducing the risk of a 3-point MACE (MI, stroke or cardiovascular death) only in those with established CVD (HR 0.86; 95% CI 0.80,0.93) and not in those with multiple risk factors (HR 1.00; 95% CI 0.87, 1.16) (Figure 3).

Cardiovascular safety of the dual SGLT1/SGLT2 inhibitor sotagliflozin is being tested in the SCORED trial in patients with T2D, moderate renal impairment and high cardiovascular risk (NCT 03315143).

Effects on HF

HF is a major public health issue affecting up to 63 million people worldwide [40], with 1 in 5 people expected to develop HF during their lifetime [41]. T2D is a common co-morbidity in HF patients: not only is T2D a major risk factor for the development of HF but it also represents a major adverse prognostic factor in those with established HF [42, 43]. Chronic HF is the leading cause of hospitalisation in patients over 65 years old [44], with those hospitalised having a 10%, 30-day and 50%, 1-year mortality.

Patients with T2D may develop two distinct phenotypes of HF according to their ejection fraction.

HFrEF Many develop HF with a reduced ejection fraction (EF<40%, HFrEF), typically characterised by a loss and stretch of cardiac myocytes, left ventricular enlargement and increased serum natriuretic peptides; these patients respond to treatment with neurohormonal antagonists (inhibitors of the renin-angiotensin system including ACE-inhibitors, angiotensin receptor blockers, angiotensin receptor neprilysin inhibitors, beta-blockers and mineralocorticoid receptor antagonists, MRA).

HFpEF Others will develop HF with preserved ejection fraction (EF>50%; HFpEF) characterised by systemic and adipose tissue inflammation, microvascular dysfunction and myocardial fibrosis. In contrast, such patients do not have significantly increased LV size or concentrations of serum natriuretic peptides and show little/no response to neurohormonal

antagonists [45]. There is an additional intermediate phenotype with midrange EF 40-50%. Observational studies highlight a shifting pattern of the epidemic with the prevalence of HFpEF increasing relative to HFrEF[46], likely to constitute ~65% of the total HF burden. This is consistent with the increasing prevalence of comorbidities such as T2D, obesity, hypertension *etc.* that drive disease progression in HFpEF. Considering this rising prevalence there is a need for recognition of individuals at risk and identifying the presence of preclinical cardiac structural/functional HF may help to prevent progression and improve clinical outcomes.

Effects of glucose-lowering therapies Metformin has been associated with positive effects in HF, certain DPP-4 inhibitors (saxagliptin) and thiazolidinediones are not recommended and the evidence for GLP-1 agonists is inconclusive while results from four large-scale clinical trials of >36,000 patients with T2D suggest that SGLT2 inhibitors have a role in the prevention of HF [39]. The three main SGLT2 inhibitors (empagliflozin, canagliflozin and dapagliflozin) lowered the risk of hospitalisation for HF by ~25-35%, with the benefits almost immediately apparent on initiation of treatment and persisted throughout the follow up period of 2-5 years. Only 10-15% of these trial patients had documented HF around the time of randomisation. Significantly a similar benefit was observed in patients with and without atherosclerotic cardiovascular disease and with and without a history of HF[39]. From meta-analyses of SGLT2 inhibitors and HF from the various CVOTs, the risk reduction in hospitalisation for HF was evident regardless of presence of ASCVD or HF at baseline [39] (Figure 3). Significantly, analysis of data from DECLARE and CANVAS suggested the risk of hospitalisation for HF was reduced in patients with and without HFrEF suggesting potential benefit in patients with HFpEF in whom no treatment has been shown to be of benefit[47, 48].

DAPA-HF Recently a large randomised, controlled study (DAPA-HF) of dapagliflozin 10mg once daily was undertaken in 4,744 patients, mean age 66 years, with symptomatic HF and reduced ejection fraction (HFrEF); mean baseline EF was ~31%. The patients were already receiving excellent background HF therapy with neurohormonal antagonists (>90% renin-angiotensin system inhibitors, >70% MRAs). Over a median follow up of 18.2 months dapagliflozin reduced the risk of the primary composite end-point of cardiovascular death and HF events (hospitalisation or an ambulatory visit for intravenous diuretic therapy) by 26% [49]. CV death was significantly reduced by 18% and all-cause mortality by 17%. Significantly only 42% had T2D and >40% did not have underlying ischaemic heart disease. The magnitude of clinical benefit on the primary outcome was observed irrespective of age

and was similar in patients with or without T2D and with or without ischaemic heart disease. The number needed to treat (over 18 months) was only 21, supporting a large absolute risk reduction.

EMPA-RESPONSE-AHF To test the hypothesis that SGLT2 inhibitors may be effective in patients with acute decompensated HF, a pilot study with empagliflozin was performed. In this randomised, placebo-controlled, double-blind, parallel group, multicentre study, 80 acute HF patients, with and without diabetes, were randomised to receive either empagliflozin 10 mg/day or placebo for 30 days. Although empagliflozin had no effect on change in VAS dyspnoea, diuretic response, serum NT-proBNP and length of hospital stay it was deemed to be safe, increased urinary output and reduced a combined endpoint of in-hospital worsening HF, rehospitalization for HF or death at 60 days compared with placebo [4 (10%) vs. 13 (33%); P=0.014] [50].

The implications of the findings of these studies are that SGLT2 inhibitors appear to reduce the risk of hospitalisation for HF in patients both without a pre-existing diagnosis of HF and in those with established HF; applicable for non-diabetic patients and those with T2D. In May 2020, dapagliflozin was the first SGLT2 inhibitor to be approved for the use of HF with reduced ejection fraction by the Federal Drug Administration (FDA).

Current HF studies There are several ongoing studies of SGLT2 inhibition in patient cohorts with different phenotypes of HF (Figure 4). The EMPEROR-Reduced trial is examining the effect of empagliflozin in patients, with and without T2D, with more advanced HF (lower LV ejection fraction and higher serum concentrations of natriuretic peptides). EMPEROR-Preserved with empagliflozin and DELIVER with dapagliflozin will evaluate the effects of SGLT2 inhibition in patients with an established diagnosis of HFpEF. If these studies highlight a beneficial impact on HF events in HFpEF this will substantially broaden the clinical indications of these drugs.

Effects on atrial fibrillation In a recent analysis of DECLARE, dapagliflozin was shown to decrease the incidence of reported episodes of atrial fibrillation/atrial flutter (AF/AFL) adverse events in high-risk patients with T2D. This effect was consistent regardless of the patients' prior history of AF, ASCVD, or HF[51].

Observational data of cardiovascular effects of SGLT2 inhibitors

Several observational, population-based, retrospective cohort studies have examined the effects of SGLT2 inhibitors on rates of death and/or hospitalisation for HF in patients with

T2D [52, 53]. In the THIN database from the UK, patients with T2D who were exposed to dapagliflozin had a lower risk of death from any cause (i.e. a lower all-cause mortality) irrespective of baseline CVD status [53]. Similarly, in the CVD-REAL study, data was collected from medical claims, primary care/hospital records and national registries from the US, Norway, Denmark, Sweden, Germany and the UK. Treatment with any SGLT2 inhibitor (canagliflozin, dapagliflozin and empagliflozin) *versus* other oral glucose-lowering drug treatments was associated with lower rates of hospitalisation for HF and death [52]. These findings have now been replicated in a further study from the Nordic registers [54]. A subsequent study, the CVD REAL 2 study, found that use of SGLT2 inhibitors (*versus* other glucose lowering drugs) in patients with T2D from Asia, Middle East and North America was associated with a lower risk of all cause death, hospitalisation for HF, MI and stroke[55].

Potential mechanisms of cardiovascular benefit of SGLT2 inhibitors

The mechanism by SGLT2 inhibitors mediates this reduction in CV death and HF remains unknown, although many theories have been proposed[56]. The findings, both in their nature and speed of onset, clearly implicate non-glycaemic mechanisms of benefit. Although T2D is a major risk factor for CVD, there is no evidence from this study, or indeed from any CV outcome study that the glucose lowering action mediates the beneficial effect in reducing CVD, HF or deaths. This is particularly reinforced by the findings of DAPA-HF where similar benefits were observed in those with or without T2D. For similar reasons the effects do not appear to be mediated by *anti-atherogenic effects*. Proposed cardiac mechanisms include cardiac remodelling, improved contractility and a shift in myocardial and renal substrate utilisation from fat and glucose oxidation toward an energy-efficient ‘super fuel’ like ketone bodies, which improve myocardial/renal work efficiency and function [57, 58]. Preservation of renal function may also help but a diuretic or natriuretic effect appears unlikely as intensification of diuretic therapy in HF is associated with an increased risk of CV and sudden death and in DAPA-HF, dapagliflozin, only produced a 10-15% decline in NT-proBNP levels. Sustained volume contraction, by reducing myocardial stretch, may attenuate susceptibility to arrhythmias.

The collective CV data and clinical trials context are summarised in Figures 3 and 4.

D. Effects of SGLT2 inhibitors on chronic kidney disease

CKD, as defined by the presence of kidney damage or glomerular filtration rate (GFR<60 ml/min per 1.73 m²) for 3 months, is classified into stages based on the level of GFR [59].

CKD affects 700 million individuals worldwide and contributes to 1 in 20 deaths annually [60]. As well as HF, T2D is frequently complicated by CKD (~40% of people with T2D) and T2D is now the leading cause of end-stage kidney disease (ESKD) globally. Indeed, these three entities (T2D, HF and CKD) are interconnected frequently co-existing such that 50% of individuals with HF have moderate-severe CKD. The co-existence of CKD and HF reflects many common aetiologies including advancing age, hypertension, coronary artery disease, and T2D [61]. The presence of any one of these conditions worsens the other two conditions [62]; hospitalisations due to HF are associated with a >11-fold increased risk of end-stage renal disease compared with patients who did not have CVD [63]. Furthermore, the presence of CKD in HF is associated with increased morbidity and mortality with a higher risk of all cause death, CV death and hospitalisation for HF [64]. Significantly, the risk of death in HF is more strongly associated with decline in eGFR than in ejection fraction [65].

In recent decades despite attempts to achieve optimal glycaemic and blood pressure control, and widespread use of ACEs/ARBs, there remains a high residual risk for patients with CKD to progress to end stage kidney disease (ESKD) which highlights the need for additional renoprotective therapies to preserve eGFR and prevent ESKD. The renoprotective effects of SGLT2 inhibitors were first demonstrated in EMPA-REG, DECLARE and CANVAS [35, 37, 66] although all renal outcomes reported were secondary outcome measures. In a meta-analysis of these three CVOTs, SGLT2 inhibitors reduced the composite of worsening renal function, end-stage renal disease or renal death by 45% (HR 0.55; 95% CI 0.48,0.64) with a similar effect whether studied in patients with atherosclerotic CVD or those with multiple risk factors [39] (Figure 5). Renoprotection was evident across all baseline GFR levels but with a progressively attenuated effect as eGFR declined. Importantly, these studies enrolled only a small fraction of patients with CKD at baseline (the lowest mean baseline eGFR was 74 ml/min/1.73 m² in EMPA-REG, 76.5 ml/min/1.73 m² in CANVAS and 85 ml/min/1.73 m² in DECLARE). Furthermore, fewer than 1/6 of participants has eGFR<60 ml/min/1.73 m² with only a small proportion with baseline eGFR <45 ml/min/1.73 m². Recognising the need to study the participants with the highest risk of adverse renal outcomes (*i.e.* those with the lowest eGFR), and thus the group who would derive the most benefit, studies of SGLT2 inhibitors have been conducted or are underway. Currently, SGLT2 inhibitors are not approved for use in patients with eGFR<45 ml/min/1.73 m² based on the diminished glycaemic efficacy with impaired renal function.

The only currently published RCT designed to evaluate the renoprotective effects of an SGLT2 inhibitor in 4,401 people with T2D, CKD and macroalbuminuria, compared with a

placebo, is the CREDENCE study (Evaluation of the Effects of Canagliflozin on Renal and Cardiovascular Outcomes in participants with Diabetic Nephropathy) [67]. This study was designed specifically to examine the effects of SGLT2 inhibition on renal outcomes in patients with T2D at high risk of renal disease progression. Inclusion criteria was eGFR >30 and <90 ml/min/1.73 m² with UACR >300-5000mg/g with all patients receiving renin-angiotensin system blockade with stable doses of ACEs/ARBs. Mean eGFR was 56.2 ml/min/1.73 m² with 60% had an eGFR of 30-60 ml/min/1.73 m². The primary outcome measure was a composite of ESKD (dialysis, transplantation or a sustained eGFR of <15 ml/min/1.73 m²), a doubling of serum creatinine or death from renal or cardiovascular causes. Secondary outcomes included cardiovascular outcomes. This study was terminated early after reaching the pre-specified efficacy criteria. The relative risk of the primary outcome was reduced by 30% in the canagliflozin group relative to placebo with a 20-30% lower relative risk of deleterious cardiovascular outcomes. It also provided reassurance about the risk of amputation/fracture with similar rates between the two groups. This study demonstrated benefit for patients of all eGFR groups including those with a low baseline eGFR (eGFR 30-45 ml/min/1.73 m² in whom SGLT2 inhibitors would not currently be recommended).

A further systematic review and meta-analysis which pooled data from the 3 CVOTs and CREDENCE, including a total of 38,723 participants, demonstrated consistent reductions in all the major kidney outcomes including acute kidney injury [68] (Figure 5). Significantly, there was clear separate evidence of benefit across all groups, irrespective of baseline eGFR, albuminuria or use of RAS blockade. The evidence from CREDENCE and this meta-analysis highlight a renoprotective role for patients with T2D and eGFR of 30-45 ml/min/1.73 m².

Studies of SGLT2 inhibition and CKD without T2D

The results of the DAPA-CKD trial have extended these findings to the broader population of patients with CKD (including participants with an eGFR 25-75 ml/min/1.73 m²), consisting approximately two thirds of the population with and one third without T2D, and demonstrated that the SGLT2 inhibitor, dapagliflozin, conferred kidney protection in patients with CKD. The occurrence of the composite primary outcome measure of a sustained decline in eGFR of at least 50%, end-stage kidney disease or death from renal/cardiovascular causes was reduced by 44%. Similarly, the risk of a composite of death from cardiovascular causes or hospitalisation for heart failure was reduced by 29%.[69].

A short-term (6 week) randomised double-blind, placebo-controlled, cross-over study (the DIAMOND study) has examined the effects of dapagliflozin on proteinuria in non-diabetic

patients with CKD and on stable RAS blockade. Although this did not show a difference in mean proteinuria change from baseline between dapagliflozin and placebo, this may reflect the short study duration and the outcomes of longer-term clinical trials are awaited [70].

Current renal outcome studies

EMPA-KIDNEY evaluating empagliflozin in patients with CKD, with or without T2D, is currently underway. Results from this study, with the results from DAPA-CKD, will likely pave the way for their application in patients with CKD, irrespective of a background of T2D.

Observational studies

In clinical practice there is a more heterogeneous population of patients that receive SGLT2 inhibitors than those randomised in placebo controlled clinical trials and thus real-life studies assess whether clinical trial data extends to patients treated in routine clinical practice. CVD-REAL 3 was a multi-national, observational cohort study examining new users of SGLT2 inhibitors with other glucose lowering drugs with measurements of eGFR before and 180 days after initiation [71]. During follow up, SGLT2 inhibitor initiation was associated with reduced eGFR decline and a lower risk of major kidney events compared with initiation of other glucose-lowering drugs.

In another such study, using nationwide data from routine clinical practice in Scandinavia (Sweden, Denmark and Norway) Pasternak *et al.*, demonstrated that initiation of SGLT2 inhibitors, compared with dipeptidyl peptidase-4 inhibitors using propensity matching, was associated with a significantly reduced risk of renal events reflecting a composite including renal replacement therapy, death from renal causes and hospital admission for renal events (3.6 fewer events per 1,000 patient years; hazard ratio 0.42, 95% CI 0.34, 0.53) [72]. These results suggest results in routine clinical practice are broadly similar to those observed in clinical trials.

Potential mechanisms of renal benefits of SGLT2 inhibitors

Our understanding of the underlying mechanisms through which SGLT2 inhibitors achieve renal protection is evolving [73]. Good glycaemic control is critical to preventing diabetic kidney disease and so metabolic effects with glucose lowering, improved insulin sensitivity, and lesser glucose toxicity all contribute beneficially but there are multiple important non-glycaemic mechanisms of action. Some of these reflect direct effects of SGLT2 inhibition on the kidney mediated by the natriuretic effects including normalisation of glomerular

haemodynamics through restoration of tubuloglomerular feedback (TGF), anti-inflammatory and anti-fibrotic actions and improving renal energy efficiency. Others relate to indirect effects including reductions in blood pressure and in body weight.

The collective renal data and clinical trials context is summarised in Figures 5 and 6.

E. Placement of SGLT2 inhibitors in the T2D treatment pathway

Recently, a consensus report by the American Diabetes Association (ADA) and the European Association for the Study of Diabetes (EASD) provided updated recommendations on the management of hyperglycaemia [74]. Incorporating the recently amassed clinical trial evidence-base of SGLT2 inhibitors on CV and renal outcomes, the treatment algorithm proposes an initial distinction of glucose-lowering medication based on clinical characteristics and the presence or absence of co-morbidities such as atherosclerotic CVD, HF or CKD. For patients with clinical CVD, an SGLT2 inhibitor or a GLP-1 receptor agonist with proven cardiovascular benefit is recommended while for those patients with CKD or HF and atherosclerotic cardiovascular disease, an SGLT2 inhibitor with proven benefit is recommended. They also recommend consideration of an SGLT2 inhibitor or GLP1-RA where there is a compelling need to minimise weight gain or promote weight loss or to minimise hypoglycaemia. This stratification of high-risk individuals to receive SGLT2 inhibitors (or GLP1-RA) is an important departure from previous guidelines.

F. Development of dual SGLT inhibition

Given the increased transport capacity of SGLT1 for glucose following SGLT2 inhibition, and the significant role of SGLT1 in intestinal glucose uptake, optimising dual SGLT inhibition is an appealing strategy. As well as being identified in the human kidney and intestine, SGLT1 is expressed in the liver, heart, skeletal muscle, lung, and possibly brain, indicative of several extra-renal functions of this transporter [75]. Mechanistic studies are needed to determine the functional role of SGLT1 at these locations.

The therapeutic potential of phlorizin was limited, due to poor oral availability, and effects on gut glucose absorption that resulted in diarrhoea. Sotagliflozin is the first dual SGLT inhibitor licensed for the treatment of T1D, in combination with insulin, in Europe. Compared to selective SGLT2 inhibitors, sotagliflozin has similar efficacy in terms of glycaemic control and weight loss and despite its increased selectivity for SGLT1 is well tolerated without severe gastrointestinal side effects, most likely due to incomplete SGLT1 inhibition [76].

In a small, proof of concept, randomised controlled trial, lucagliflozin, a selective and potent dual SGLT1/SGLT2 inhibitor, demonstrated significant weight loss (5.7% vs placebo ($P < 0.001$)) in patients with obesity, and favourable increases in incretin hormones and urinary glucose excretion (~100g) in patients with T2D [77]. A higher incidence of diarrhoea was reported at higher doses of lucagliflozin, possibly explained by greater SGLT1 inhibition. Evaluation of the long-term efficacy and safety of existing or developing SGLT1 and dual SGLT inhibitors is required, in particular risk of diabetic ketoacidosis and cardiovascular outcomes.

G. Combination therapy

GLP-1 receptor agonist The glucose lowering effects of SGLT2 inhibitors are attenuated due to increased endogenous (hepatic) glucose production, partially explained by hyperglucagonaemia. Combined with the concept of compensatory hyperphagia with SGLT2 inhibitor therapy, a clear rationale for the co-administration of an SGLT2 inhibitor with a GLP-1 receptor agonist is provided. The aim of combination treatment would be to offset the compensatory metabolic changes and attenuate the central hyperphagic drive and ideally achieve additive, even synergistic, weight loss and metabolic changes. Two clinical trials have examined the glucose lowering efficacy and weight change when a SGLT2 inhibitor is combined with a GLP-1 receptor agonist in T2D [78, 79]. Mechanistic explanations for weight loss associated with SGLT2 inhibitors, with or without GLP1 receptor agonists have been discussed narratively [28].

Combination of SGLT2 and GLP-1 receptor agonist on CVD In the EXSCEL study, open-label SGLT2 inhibitor use, in parallel with, or shortly after once weekly exenatide, occurred in 8.7% of participants. Those on combination therapy were propensity-matched to those on placebo only and those on once weekly exenatide only. The risk for MACE and all-cause mortality was numerically lower, and the estimated eGFR slope improved, with combination therapy compared with placebo or once weekly exenatide only alone supporting the hypothesis that combinatorial therapy may provide benefit on cardiovascular outcomes and mortality [80].

DPP-4 inhibitor DPP-4 inhibitors are less potent than GLP-1 receptor agonists with an average HbA1c reduction of -0.74% [81] and they are considered to be weight neutral. Very small mechanistic studies with dual SGLT1/2 inhibitors have demonstrated increased circulating levels of GLP-1, presumably due to delayed SGLT1-mediated intestinal glucose absorption [77, 82]. Developed to inhibit the degradation of endogenous GLP-1 and other

glucoregulatory peptides, the glycaemic improvement seen with combination of a SGLT2 inhibitor with a DPP-4 inhibitor is modest and sub-additive [83]. Although clinically relevant improvements in HbA1c are seen, it seems that DPP4-inhibitors are unable to offset the (mal)adaptive changes in hepatic glucose production and hyperglucagonaemia seen with SGLT2 inhibitors.

Combination of SGLT2 and DPP4-inhibitor on kidney disease The DELIGHT study examined

the albuminuria-lowering effect of dapagliflozin, with and without saxagliptin, in patients with T2D and moderate-to-severe CKD [84]. Dapagliflozin alone or in combination with saxagliptin, versus placebo, reduced the urinary albumin-creatinine ratio (by 21 and 38% respectively).

H. Adverse effects

Data is continually emerging around the adverse effects and risks associated with SGLT2 inhibitors from a variety of sources including extensive clinical experience, case series, post-marketing surveillance and regulatory websites [85]. The most common adverse effect is genital mycotic infections although there also be a slightly increased risk of urinary tract infections and there have been concerns about Fournier's gangrene, a necrotizing fasciitis of the scrotum [86]. Other signals include diabetic ketoacidosis, foot and leg amputation and bone fracture briefly discussed below.

Diabetic ketoacidosis (DKA) (Figure 7)

DKA, the triad of hyperglycaemia (blood glucose >11 mmol/l), acidosis (venous bicarbonate <15 mmol/l) and ketonuria/ketonaemia, represents the most common and serious hyperglycaemic emergency in patients with diabetes. Most commonly it occurs in autoimmune T1D but can also occur in poorly controlled, insulin-deficient patients with T2D [87]. In 2015, regulatory authorities (the Federal Drug Administration and the European Medicines Agency) first advised clinicians that the use of SGLT2 inhibitors was associated with an increased risk of diabetic ketoacidosis (DKA). In one analysis from the US FDA Adverse Event Reporting Systems (FAERS), 71% presented with normal or only mildly elevated plasma glucose concentrations, euglycaemic ketoacidosis (EuDKA) [88], with relative normoglycaemia presumably maintained by augmented renal glycosuria. This is an important practical issue as the minimal hyperglycaemia may result in a delay in the diagnosis in >50% of individuals with lesser degrees of dehydration given the lack of

hyperglycaemia. A further analysis from FAERS subsequently reported >2500 cases of DKA in which SGLT2 inhibitors were listed as suspect or concomitant drugs [89]. Case series have helped identify common themes, and in particular precipitating events including intercurrent illness e.g. vomiting/diarrhoea, dehydration, discontinuation or reduction of insulin dosage related to glycaemic improvement, surgery, fasting or ketogenic/low carbohydrate diet and excessive alcohol [90]. A recent meta-analysis of 39 RCTs, involving >60,000 patients with T2D, confirmed SGLT2 inhibitors were statistically associated with an increased risk of DKA versus control (odds ratio 2.13, 95% CI 1.38, 3.27) [91]. However, it is generally considered to be a rare event. In contrast, DKA, in the context of T1D is more common, with or without the use of SGLT2 inhibitors, but off-label use of SGLT2 inhibitors, especially among young females was a risk factor [92]. The rates of DKA and ketosis with SGLT2 inhibitors in T1D may be between 5-10% based on clinical trial data in T1D [93].

There are multiple biologically plausible mechanisms by which SGLT2 inhibitors cause ketosis or DKA in T1D or T2D (illustrated in Figure 7). The lowering of plasma glucose will lead to lower insulin levels, coupled with an increased glucagon secretion associated with SGLT2 inhibitors, with a consequently increased glucagon: insulin ratio. This raised glucagon: insulin concentration drives lipolysis, fatty acid oxidation and ketone production by the liver. Simultaneously, increased ketone body reabsorption may occur through the kidney secondary to renal glucose loss. All of this may be compounded by a reduction in insulin dosage or even a discontinuation of insulin in patients with T1D, or in patients with T2D who are insulin deficient.

Patients with T2D and particularly those with T1D being initiated on SGLT2 inhibitors need to be carefully counselled about this potential risk, the associated symptoms and educated about ketone monitoring. Recently international consensus guidelines have been compiled to mitigate the risk the associated DKA risk in patients with T1D being treated with SGLT2 inhibitors [94]. Any patient with T1D or T2D who experience nausea, vomiting, is generally unwell or develops a metabolic acidosis in the setting of SGLT2 inhibitor therapy, should undergo prompt evaluation of ketonuria/ketonaemia.

Lower limb amputation

In CANVAS there was an increased risk of lower limb amputation observed with canagliflozin, primarily at the level of the toe or metatarsal, although this has not been reproduced in other studies with other SGLT2 inhibitors, nor was any concern noted regarding canagliflozin use in CREDENCE [66, 67]. It is unclear to what extent canagliflozin

increases the amputation risk, if at all, but caution is advised in patients with risk factors for lower limb amputation. Risk factors for amputation with SGLT2 inhibitors include those with a previous history of amputation or foot ulcers, peripheral vascular disease and neuropathy and those with baseline CVD.

Bone health

The association between SGLT2 inhibitors and risk of fractures is based on findings from CANVAS, which found a significant increased risk of fractures compared with placebo (hazard ratio, 1.26; 95% CI 1.04,1.52)[66]. Biologically plausible mechanisms would underlie this including elevated serum phosphate levels or reduced bone mineral density. These findings were not reproduced in CREDENCE where there was a similar fracture risk in both groups[67]. In a subsequent population-based cohort study in the UK, the use of SGLT2 inhibitors was not associated with an increased risk of fractures compared with use of DPP-4 inhibitors[95].

I. Summary

SGLT2 inhibitors have become an indispensable part of the therapeutic armamentarium in T2D with useful metabolic effects in all patients with little or no risk of hypoglycaemia. Their role in T1D is emerging with a need for careful patient selection and a need for ongoing pharmacovigilance. In T2D, they have a very clear role emerging in high-risk patients with atherosclerotic CVD, HF and CKD and their use is expanding to other patient groups who do not have diabetes, particularly those with HF or chronic kidney disease. Results of further ongoing randomised controlled trials will, no doubt, expand the clinical indications for these drugs in diverse patient populations and we can continue on this exciting journey of discovery.

Figure legends

Figure 1 Renal glucose handling

Figure 2 Glucose transport mechanisms in segments S1 and S2 of the renal tubules and in the enterocyte of the small intestine

Figure 3 **A)** Effect on MACE stratified by the presence of established atherosclerotic CVD or multiple risk factors, **B)** Effect on hospitalisation for HF and CV death stratified according to history of atherosclerotic CVD or multiple risk factors, **C)** Effect on hospitalisation for HF and CV death stratified according to history of HF [39]

Figure 4 Summary of the main cardiovascular outcome trials

Figure 5 Summary of the effects of the SGLT2 inhibitors on the major kidney outcomes **A)** and **B)** from EMPA-REG, CANVAS and DECLARE, **C)** also incorporating CREDENCE data [39, 68]

Figure 6 Summary of the main studies with SGLT2 inhibitors and renal outcomes

Figure 7 Mechanisms of diabetic ketoacidosis with SGLT2 inhibitors

References

- [1] Bergman H DD. The relationship of kidney function to the glucose utilization of the extra abdominal tissues. *Am J Physiol* 1938;124:279-84.
- [2] Mather A, Pollock C. Glucose handling by the kidney. *Kidney International* 2011;79:S1-S6.
- [3] Meyer C, Stumvoll M, Nadkarni V, Dostou J, Mitrakou A, Gerich J. Abnormal renal and hepatic glucose metabolism in type 2 diabetes mellitus. *J Clin Invest* 1998;102:619-24.
- [4] Rahmoune H, Thompson PW, Ward JM, Smith CD, Hong G, Brown J. Glucose transporters in human renal proximal tubular cells isolated from the urine of patients with non-insulin-dependent diabetes. *Diabetes* 2005;54:3427-34.
- [5] Schwartz SS, Epstein S, Corkey BE, Grant SF, Gavin JR, 3rd, Aguilar RB. The Time Is Right for a New Classification System for Diabetes: Rationale and Implications of the beta-Cell-Centric Classification Schema. *Diabetes Care* 2016;39:179-86.
- [6] Rieg T, Masuda T, Gerasimova M, et al. Increase in SGLT1-mediated transport explains renal glucose reabsorption during genetic and pharmacological SGLT2 inhibition in euglycemia. *Am J Physiol Renal Physiol* 2014;306:F188-93.
- [7] Seidemann SB, Feofanova E, Yu B, et al. Genetic Variants in SGLT1, Glucose Tolerance, and Cardiometabolic Risk. *J Am Coll Cardiol* 2018;72:1763-73.
- [8] Ferrannini E, Ramos SJ, Salsali A, Tang W, List JF. Dapagliflozin monotherapy in type 2 diabetic patients with inadequate glycemic control by diet and exercise: a randomized, double-blind, placebo-controlled, phase 3 trial. *Diabetes Care* 2010;33:2217-24.

- [9] Stenlöf K, Cefalu WT, Kim KA, et al. Efficacy and safety of canagliflozin monotherapy in subjects with type 2 diabetes mellitus inadequately controlled with diet and exercise. *Diabetes Obes Metab* 2013;15:372-82.
- [10] Bailey CJ, Gross JL, Hennicken D, Iqbal N, Mansfield TA, List JF. Dapagliflozin add-on to metformin in type 2 diabetes inadequately controlled with metformin: a randomized, double-blind, placebo-controlled 102-week trial. *BMC Med* 2013;11:43.
- [11] Haring HU, Merker L, Seewaldt-Becker E, et al. Empagliflozin as add-on to metformin in patients with type 2 diabetes: a 24-week, randomized, double-blind, placebo-controlled trial. *Diabetes Care* 2014;37:1650-9.
- [12] Matthaai S, Bowering K, Rohwedder K, Grohl A, Parikh S. Dapagliflozin improves glycemic control and reduces body weight as add-on therapy to metformin plus sulfonylurea: a 24-week randomized, double-blind clinical trial. *Diabetes Care* 2015;38:365-72.
- [13] Jabbour SA, Hardy E, Sugg J, Parikh S. Dapagliflozin is effective as add-on therapy to sitagliptin with or without metformin: a 24-week, multicenter, randomized, double-blind, placebo-controlled study. *Diabetes Care* 2014;37:740-50.
- [14] Wilding JP, Woo V, Soler NG, et al. Long-term efficacy of dapagliflozin in patients with type 2 diabetes mellitus receiving high doses of insulin: a randomized trial. *Ann Intern Med* 2012;156:405-15.
- [15] Monami M, Liistro F, Scatena A, Nreu B, Mannucci E. Short and medium-term efficacy of sodium glucose co-transporter-2 (SGLT-2) inhibitors: A meta-analysis of randomized clinical trials. *Diabetes Obes Metab* 2018;20:1213-22.
- [16] Del Prato S, Nauck M, Durán-García S, et al. Long-term glycaemic response and tolerability of dapagliflozin versus a sulphonylurea as add-on therapy to metformin in patients with type 2 diabetes: 4-year data. *Diabetes Obes Metab* 2015;17:581-90.
- [17] DeFronzo RA, Stonehouse AH, Han J, Wintle ME. Relationship of baseline HbA1c and efficacy of current glucose-lowering therapies: a meta-analysis of randomized clinical trials. *Diabet Med* 2010;27:309-17.
- [18] Zhang L, Feng Y, List J, Kasichayanula S, Pfister M. Dapagliflozin treatment in patients with different stages of type 2 diabetes mellitus: effects on glycaemic control and body weight. *Diabetes Obes Metab* 2010;12:510-6.
- [19] DeFronzo RA, Norton L, Abdul-Ghani M. Renal, metabolic and cardiovascular considerations of SGLT2 inhibition. *Nat Rev Nephrol* 2017;13:11-26.
- [20] Kahn BB, Shulman GI, DeFronzo RA, Cushman SW, Rossetti L. Normalization of blood glucose in diabetic rats with phlorizin treatment reverses insulin-resistant glucose transport in adipose cells without restoring glucose transporter gene expression. *J Clin Invest* 1991;87:561-70.
- [21] Merovci A, Mari A, Solis C, et al. Dapagliflozin Lowers Plasma Glucose Concentration and Improves beta-Cell Function. *J Clin Endocrinol Metab* 2015;100:1927-32.
- [22] Ferrannini E, Muscelli E, Frascerra S, et al. Metabolic response to sodium-glucose cotransporter 2 inhibition in type 2 diabetic patients. *J Clin Invest* 2014;124:499-508.
- [23] Lee PC, Ganguly S, Goh SY. Weight loss associated with sodium-glucose cotransporter-2 inhibition: a review of evidence and underlying mechanisms. *Obes Rev* 2018;19:1630-41.
- [24] Wang H, Yang J, Chen X, Qiu F, Li J. Effects of Sodium-glucose Cotransporter 2 Inhibitor Monotherapy on Weight Changes in Patients With Type 2 Diabetes Mellitus: a Bayesian Network Meta-analysis. *Clin Ther* 2019;41:322-34.e11.
- [25] Bolinder J, Ljunggren O, Kullberg J, et al. Effects of dapagliflozin on body weight, total fat mass, and regional adipose tissue distribution in patients with type 2 diabetes mellitus with inadequate glycemic control on metformin. *J Clin Endocrinol Metab* 2012;97:1020-31.

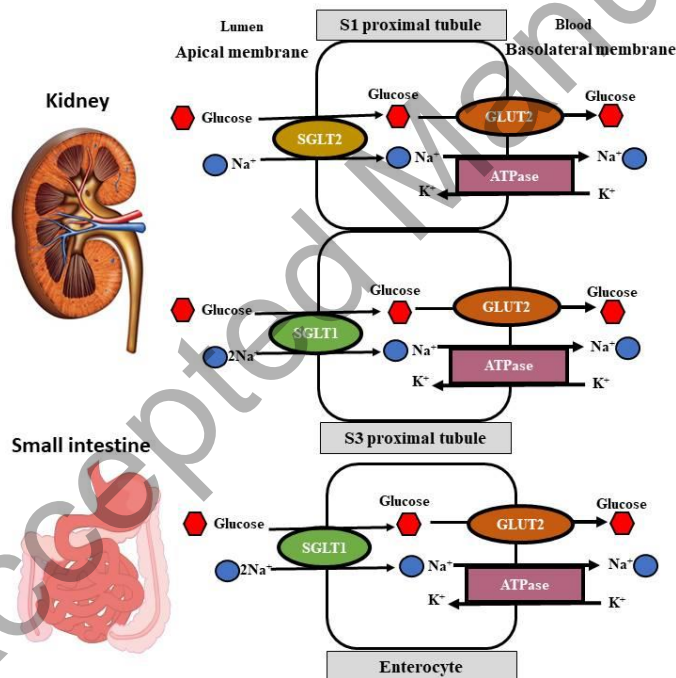
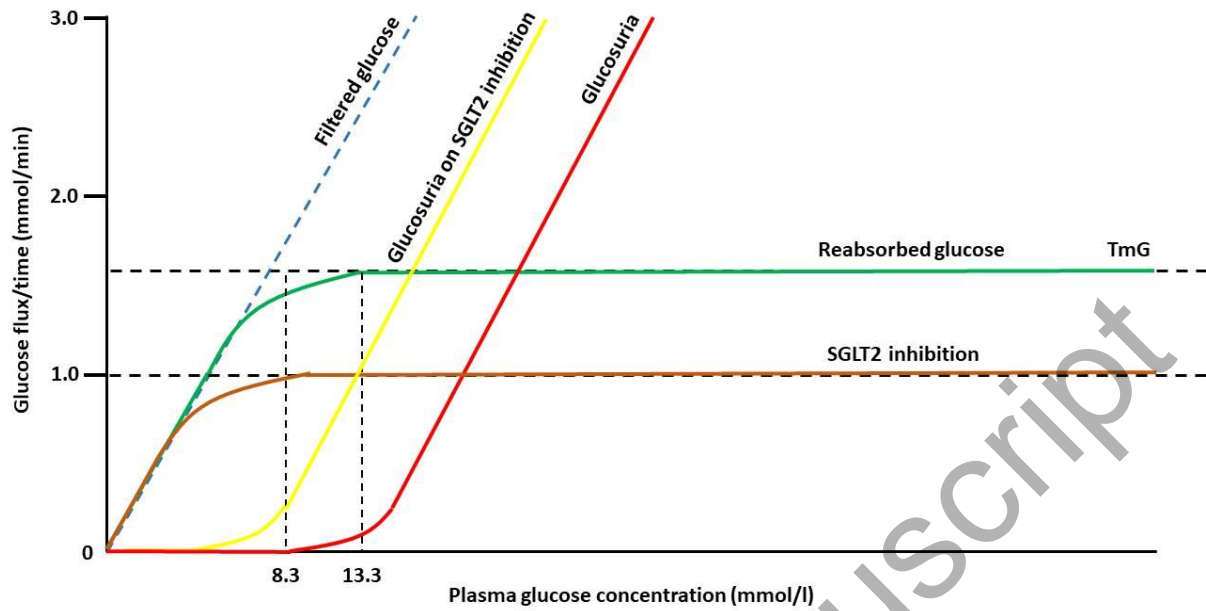
- [26] Ferrannini G, Hach T, Crowe S, Sanghvi A, Hall KD, Ferrannini E. Energy Balance After Sodium Glucose Cotransporter 2 (SGLT2) Inhibition. *Diabetes Care* 2015.
- [27] Polidori D, Sanghvi A, Seeley RJ, Hall KD. How Strongly Does Appetite Counter Weight Loss? Quantification of the Feedback Control of Human Energy Intake. *Obesity (Silver Spring)* 2016;24:2289-95.
- [28] Brown E, Wilding JPH, Barber TM, Alam U, Cuthbertson DJ. Weight loss variability with SGLT2 inhibitors and GLP-1 receptor agonists in type 2 diabetes mellitus and obesity: Mechanistic possibilities. *Obes Rev* 2019;20:816-28.
- [29] Heerspink HJL, Perkins BA, Fitchett DH, Husain M, Cherney DZI. Sodium Glucose Cotransporter 2 Inhibitors in the Treatment of Diabetes: Cardiovascular and Kidney Effects, Potential Mechanisms and Clinical Applications. *Circulation* 2016.
- [30] Bays HE, Weinstein R, Law G, Canovatchel W. Canagliflozin: effects in overweight and obese subjects without diabetes mellitus. *Obesity (Silver Spring)* 2014;22:1042-9.
- [31] Shah AD, Langenberg C, Rapsomaniki E, et al. Type 2 diabetes and incidence of cardiovascular diseases: a cohort study in 1.9 million people. *Lancet Diabetes Endocrinol* 2015;3:105-13.
- [32] Tancredi M, Rosengren A, Svensson AM, et al. Excess Mortality among Persons with Type 2 Diabetes. *N Engl J Med* 2015;373:1720-32.
- [33] Verma S, McMurray J. The Serendipitous Story of SGLT2 Inhibitors in Heart Failure: New Insights from DECLARE-TIMI 58. *Circulation* 2019;139.
- [34] Cosentino F, Grant PJ, Aboyans V, et al. 2019 ESC Guidelines on diabetes, pre-diabetes, and cardiovascular diseases developed in collaboration with the EASD. *Eur Heart J* 2020;41:255-323.
- [35] Zinman B, Wanner C, Lachin JM, et al. Empagliflozin, Cardiovascular Outcomes, and Mortality in Type 2 Diabetes. *N Engl J Med* 2015;373:2117-28.
- [36] Neal B, Perkovic V, Mahaffey KW, et al. Canagliflozin and Cardiovascular and Renal Events in Type 2 Diabetes. *New England Journal of Medicine*;0:null.
- [37] Wiviott SD, Raz I, Bonaca MP, et al. Dapagliflozin and Cardiovascular Outcomes in Type 2 Diabetes. *N Engl J Med* 2019;380:347-57.
- [38] Zelniker TA, Wiviott SD, Raz I, et al. Comparison of the Effects of Glucagon-Like Peptide Receptor Agonists and Sodium-Glucose Co-Transporter 2 Inhibitors for Prevention of Major Adverse Cardiovascular and Renal Outcomes in Type 2 Diabetes Mellitus: A Systematic Review and Meta-Analysis of Cardiovascular Outcomes Trials. *LID - 10.1161/CIRCULATIONAHA.118.038868 [doi]*. *Circulation* 2019;139:2022-31.
- [39] Zelniker TA, Wiviott SD, Raz I, et al. SGLT2 inhibitors for primary and secondary prevention of cardiovascular and renal outcomes in type 2 diabetes: a systematic review and meta-analysis of cardiovascular outcome trials. *Lancet* 2019;393:31-9.
- [40] Global, regional, and national incidence, prevalence, and years lived with disability for 328 diseases and injuries for 195 countries, 1990-2016: a systematic analysis for the Global Burden of Disease Study 2016. *Lancet* 2017;390:1211-59.
- [41] Lam CSP, Chandramouli C, Ahooja V, Verma S. SGLT-2 Inhibitors in Heart Failure: Current Management, Unmet Needs, and Therapeutic Prospects. *Journal of the American Heart Association* 2019;8:e013389.
- [42] Dauriz M, Targher G, Laroche C, et al. Association Between Diabetes and 1-Year Adverse Clinical Outcomes in a Multinational Cohort of Ambulatory Patients With Chronic Heart Failure: Results From the ESC-HFA Heart Failure Long-Term Registry. *Diabetes Care* 2017;40:671-8.
- [43] McAllister DA, Read SH, Kerssens J, et al. Incidence of Hospitalization for Heart Failure and Case-Fatality Among 3.25 Million People With and Without Diabetes Mellitus. *Circulation* 2018;138:2774-86.

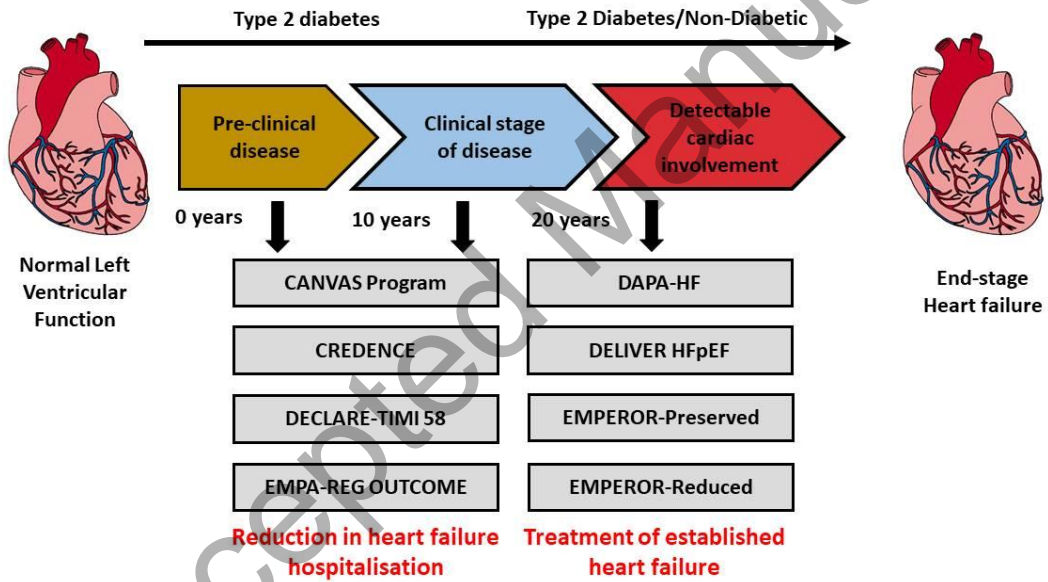
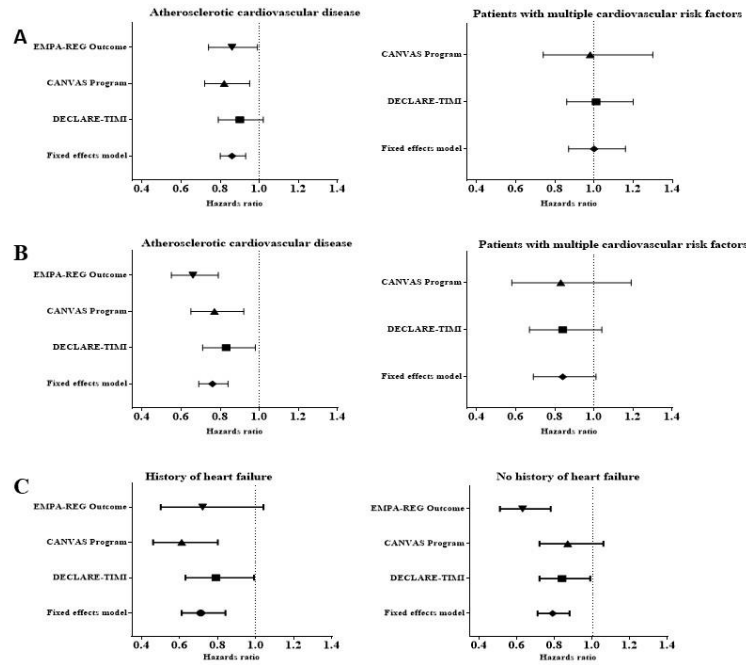
- [44] Braunwald E. The war against heart failure: the Lancet lecture. *The Lancet* 2015;385:812-24.
- [45] Ponikowski P, Voors AA, Anker SD, et al. 2016 ESC Guidelines for the diagnosis and treatment of acute and chronic heart failure: The Task Force for the diagnosis and treatment of acute and chronic heart failure of the European Society of Cardiology (ESC) Developed with the special contribution of the Heart Failure Association (HFA) of the ESC. *Eur Heart J* 2016;37:2129-200.
- [46] Tsao CW, Lyass A, Enserro D, et al. Temporal Trends in the Incidence of and Mortality Associated With Heart Failure With Preserved and Reduced Ejection Fraction. *JACC Heart Fail* 2018;6:678-85.
- [47] Figtree GA, Rådholm K, Barrett TD, et al. Effects of Canagliflozin on Heart Failure Outcomes Associated With Preserved and Reduced Ejection Fraction in Type 2 Diabetes Mellitus. *Circulation* 2019;139:2591-3.
- [48] Kato ET, Silverman MG, Mosenzon O, et al. Effect of Dapagliflozin on Heart Failure and Mortality in Type 2 Diabetes Mellitus. *Circulation* 2019;139:2528-36.
- [49] McMurray JJV, Solomon SD, Inzucchi SE, et al. Dapagliflozin in Patients with Heart Failure and Reduced Ejection Fraction. *New England Journal of Medicine* 2019;381:1995-2008.
- [50] Damman K, Beusekamp JC, Boorsma EM, et al. Randomized, double-blind, placebo-controlled, multicentre pilot study on the effects of empagliflozin on clinical outcomes in patients with acute decompensated heart failure (EMPA-RESPONSE-AHF). *Eur J Heart Fail* 2020;22:713-22.
- [51] Zelniker TA, Bonaca MP, Furtado R, et al. Effect of Dapagliflozin on Atrial Fibrillation in Patients with Type 2 Diabetes Mellitus: Insights from the DECLARE-TIMI 58 Trial. *Circulation* 2020;10.1161/CIRCULATIONAHA.119.044183.
- [52] Kosiborod M, Cavender MA, Fu AZ, et al. Lower Risk of Heart Failure and Death in Patients Initiated on SGLT-2 Inhibitors Versus Other Glucose-Lowering Drugs: The CVD-REAL Study. *Circulation* 2017.
- [53] Toulis KA, Institute of Applied Health Research UoB, UK, 424 General Military Hospital T, Greece, et al. All-cause mortality in patients with diabetes under treatment with dapagliflozin: a population-based, open-cohort study in THIN database. *The Journal of Clinical Endocrinology & Metabolism* 2017.
- [54] Birkeland KI, Jorgensen ME, Carstensen B, et al. Cardiovascular mortality and morbidity in patients with type 2 diabetes following initiation of sodium-glucose co-transporter-2 inhibitors versus other glucose-lowering drugs (CVD-REAL Nordic): a multinational observational analysis. *Lancet Diabetes Endocrinol* 2017.
- [55] Kosiborod M, Lam CSP, Kohsaka S, et al. Cardiovascular Events Associated With SGLT-2 Inhibitors Versus Other Glucose-Lowering Drugs: The CVD-REAL 2 Study. *Journal of the American College of Cardiology* 2018;71:2628-39.
- [56] Zelniker TA, Braunwald E. Mechanisms of Cardiorenal Effects of Sodium-Glucose Cotransporter 2 Inhibitors. *JACC State-of-the-Art Review* 2020;75:422-34.
- [57] Mudaliar S, Alloju S, Henry RR. Can a Shift in Fuel Energetics Explain the Beneficial Cardiorenal Outcomes in the EMPA-REG OUTCOME Study? A Unifying Hypothesis. *Diabetes Care* 2016.
- [58] Ferrannini E, Mark M, Mayoux E. CV Protection in the EMPA-REG OUTCOME Trial: A "Thrifty Substrate" Hypothesis. *Diabetes Care* 2016.
- [59] Levey AS, de Jong PE, Coresh J, et al. The definition, classification, and prognosis of chronic kidney disease: a KDIGO Controversies Conference report. *Kidney Int.* 80. United States 2011. p. 17-28.

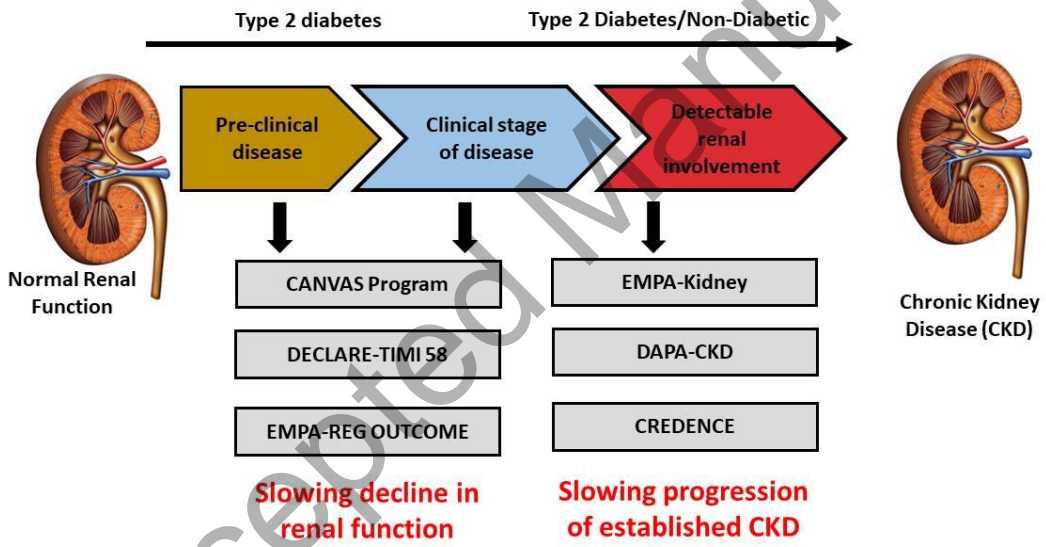
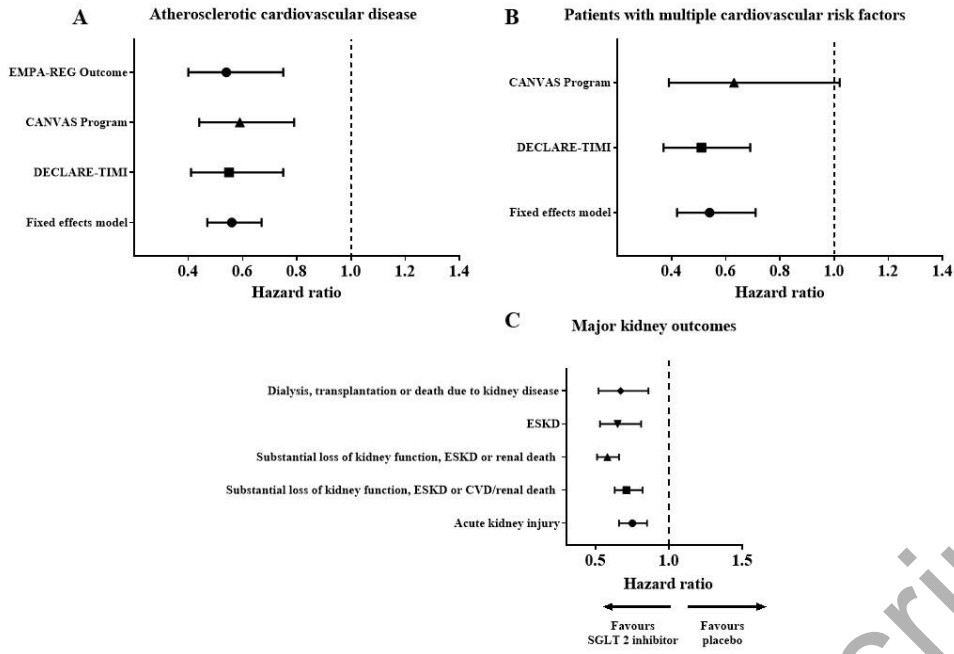
- [60] Global, regional, and national burden of chronic kidney disease, 1990-2017: a systematic analysis for the Global Burden of Disease Study 2017. *Lancet* 2020;395:709-33.
- [61] Yancy CW, Lopatin M, Stevenson LW, et al. Clinical presentation, management, and in-hospital outcomes of patients admitted with acute decompensated heart failure with preserved systolic function: a report from the Acute Decompensated Heart Failure National Registry (ADHERE) Database. *Journal of the American College of Cardiology* 2006;47:76-84.
- [62] Braunwald E. Diabetes, heart failure, and renal dysfunction: The vicious circles. *Prog Cardiovasc Dis* 2019;62:298-302.
- [63] Ishigami J, Cowan LT, Demmer RT, et al. Incident Hospitalization with Major Cardiovascular Diseases and Subsequent Risk of ESKD: Implications for Cardiorenal Syndrome. *Journal of the American Society of Nephrology* 2020;31:405-14.
- [64] Hillege HL, Nitsch D, Pfeffer MA, et al. Renal function as a predictor of outcome in a broad spectrum of patients with heart failure. *Circulation* 2006;113:671-8.
- [65] Hillege HL, Girbes AR, de Kam PJ, et al. Renal function, neurohormonal activation, and survival in patients with chronic heart failure. *Circulation* 2000;102:203-10.
- [66] Neal B, Perkovic V, Mahaffey KW, et al. Canagliflozin and Cardiovascular and Renal Events in Type 2 Diabetes. *N Engl J Med* 2017;377:644-57.
- [67] Perkovic V, Jardine MJ, Neal B, et al. Canagliflozin and Renal Outcomes in Type 2 Diabetes and Nephropathy. *N Engl J Med* 2019.
- [68] Neuen BL, Young T, Heerspink HJL, et al. SGLT2 inhibitors for the prevention of kidney failure in patients with type 2 diabetes: a systematic review and meta-analysis. *The Lancet Diabetes & Endocrinology* 2019;7:845-54.
- [69] Heerspink HJL, Stefánsson BV, Correa-Rotter R, et al. Dapagliflozin in Patients with Chronic Kidney Disease. *New England Journal of Medicine* 2020.
- [70] Cherney DZI, Dekkers CCJ, Barbour SJ, et al. Effects of the SGLT2 inhibitor dapagliflozin on proteinuria in non-diabetic patients with chronic kidney disease (DIAMOND): a randomised, double-blind, crossover trial. *The Lancet Diabetes & Endocrinology* 2020;8:582-93.
- [71] Heerspink HJL, Karasik A, Thuresson M, et al. Kidney outcomes associated with use of SGLT2 inhibitors in real-world clinical practice (CVD-REAL 3): a multinational observational cohort study. *Lancet Diabetes Endocrinol* 2020;8:27-35.
- [72] Pasternak B, Wintzell V, Melbye M, et al. Use of sodium-glucose co-transporter 2 inhibitors and risk of serious renal events: Scandinavian cohort study. *Bmj* 2020;369:m1186.
- [73] Alicic RZ, Neumiller JJ, Johnson EJ, Dieter B, Tuttle KR. Sodium-Glucose Cotransporter 2 Inhibition and Diabetic Kidney Disease. *Diabetes* 2019;68:248-57.
- [74] Davies MJ, D'Alessio DA, Fradkin J, et al. Management of Hyperglycemia in Type 2 Diabetes, 2018. A Consensus Report by the American Diabetes Association (ADA) and the European Association for the Study of Diabetes (EASD). *Diabetes care* 2018;41:2669-701.
- [75] Song P, Onishi A, Koepsell H, Vallon V. Sodium glucose cotransporter SGLT1 as a therapeutic target in diabetes mellitus. *Expert Opin Ther Targets* 2016;20:1109-25.
- [76] Garg SK, Henry RR, Banks P, et al. Effects of Sotagliflozin Added to Insulin in Patients with Type 1 Diabetes. *New England Journal of Medicine* 2017;377:2337-48.
- [77] He YL, Haynes W, Meyers CD, et al. The effects of licogliflozin, a dual SGLT1/2 inhibitor, on body weight in obese patients with or without diabetes. *Diabetes Obes Metab* 2019;21:1311-21.
- [78] Frias JP, Guja C, Hardy E, et al. Exenatide once weekly plus dapagliflozin once daily versus exenatide or dapagliflozin alone in patients with type 2 diabetes inadequately controlled with metformin monotherapy (DURATION-8): a 28 week, multicentre, double-blind, phase 3, randomised controlled trial. *Lancet Diabetes Endocrinol* 2016;4:1004-16.

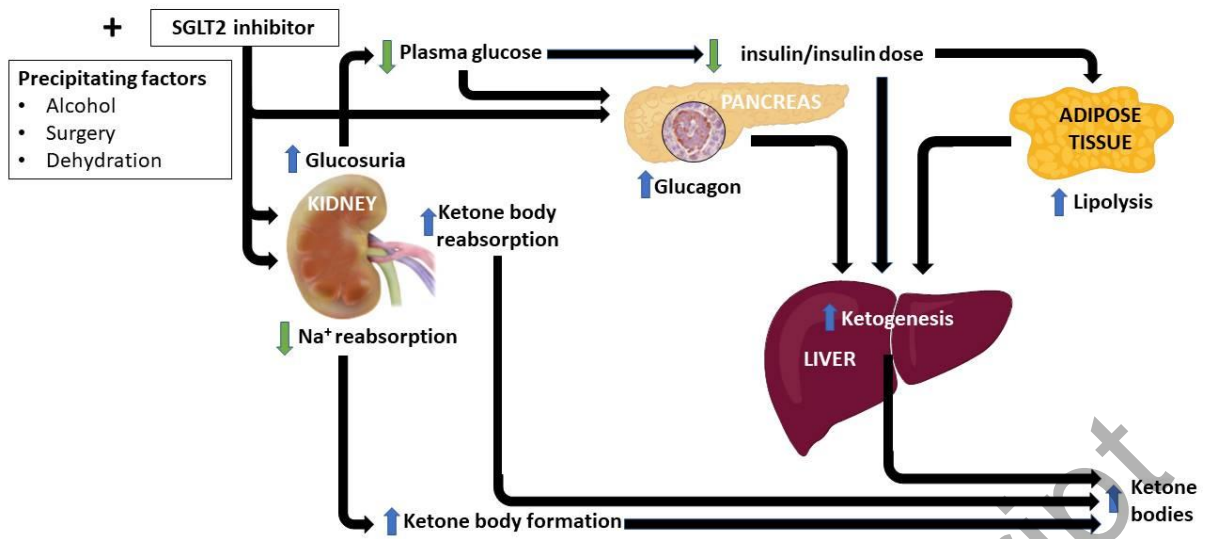
- [79] Ludvik B, Frias JP, Tinahones FJ, et al. Dulaglutide as add-on therapy to SGLT2 inhibitors in patients with inadequately controlled type 2 diabetes (AWARD-10): a 24-week, randomised, double-blind, placebo-controlled trial. *Lancet Diabetes Endocrinol* 2018;6:370-81.
- [80] Clegg LE, Penland RC, Bachina S, et al. Effects of exenatide and open-label SGLT2 inhibitor treatment, given in parallel or sequentially, on mortality and cardiovascular and renal outcomes in type 2 diabetes: insights from the EXSCEL trial. *Cardiovasc Diabetol* 2019;18:138.
- [81] Amori RE, Lau J, Pittas AG. Efficacy and safety of incretin therapy in type 2 diabetes: systematic review and meta-analysis. *Jama* 2007;298:194-206.
- [82] Zambrowicz B, Freiman J, Brown PM, et al. LX4211, a dual SGLT1/SGLT2 inhibitor, improved glycemic control in patients with type 2 diabetes in a randomized, placebo-controlled trial. *Clin Pharmacol Ther* 2012;92:158-69.
- [83] Cho YK, Kang YM, Lee SE, et al. Efficacy and safety of combination therapy with SGLT2 and DPP4 inhibitors in the treatment of type 2 diabetes: A systematic review and meta-analysis. *Diabetes Metab* 2018;44:393-401.
- [84] Pollock C, Stefánsson B, Reyner D, et al. Albuminuria-lowering effect of dapagliflozin alone and in combination with saxagliptin and effect of dapagliflozin and saxagliptin on glycaemic control in patients with type 2 diabetes and chronic kidney disease (DELIGHT): a randomised, double-blind, placebo-controlled trial. *Lancet Diabetes Endocrinol* 2019;7:429-41.
- [85] Singh M, Kumar A. Risks Associated with SGLT2 Inhibitors: An Overview. *Curr Drug Saf* 2018;13:84-91.
- [86] Bersoff-Matcha SJ, Chamberlain C, Cao C, Kortepeter C, Chong WH. Fournier Gangrene Associated With Sodium-Glucose Cotransporter-2 Inhibitors: A Review of Spontaneous Postmarketing Cases. *Annals of Internal Medicine* 2019;170:764-9.
- [87] Umpierrez GE. Diabetes: SGLT2 inhibitors and diabetic ketoacidosis - a growing concern. *Nature reviews Endocrinology* 2017;13:441-2.
- [88] Blau JE, Tella SH, Taylor SI, Rother KI. Ketoacidosis associated with SGLT2 inhibitor treatment: Analysis of FAERS data. *Diabetes Metab Res Rev* 2017;33.
- [89] Fadini GP, Bonora BM, Avogaro A. SGLT2 inhibitors and diabetic ketoacidosis: data from the FDA Adverse Event Reporting System. *Diabetologia* 2017;60:1385-9.
- [90] Peters AL, Buschur EO, Buse JB, Cohan P, Diner JC, Hirsch IB. Euglycemic Diabetic Ketoacidosis: A Potential Complication of Treatment With Sodium-Glucose Cotransporter 2 Inhibition. *Diabetes Care* 2015.
- [91] Liu J, Li L, Li S, et al. SGLT2 inhibitors and risk of diabetic ketoacidosis in patients with type 2 diabetes: systematic review and meta-analysis of randomized controlled trials. *Diabetes Obes Metab* 2020.
- [92] Hampp C, Swain RS, Horgan C, et al. Use of Sodium-Glucose Cotransporter 2 Inhibitors in Patients With Type 1 Diabetes and Rates of Diabetic Ketoacidosis. *Diabetes Care* 2020;43:90-7.
- [93] Henry RR, Thakkar P, Tong C, Polidori D, Alba M. Efficacy and Safety of Canagliflozin, a Sodium-Glucose Cotransporter 2 Inhibitor, as Add-on to Insulin in Patients With Type 1 Diabetes. *Diabetes Care* 2015;38:2258-65.
- [94] Danne T, Garg S, Peters AL, et al. International Consensus on Risk Management of Diabetic Ketoacidosis in Patients with Type 1 Diabetes Treated with Sodium-Glucose Cotransporter (SGLT) Inhibitors. *Diabetes Care* 2019;dc182316.

[95] Abrahami D, Douros A, Yin H, Yu OHY, Azoulay L. Sodium-Glucose Cotransporter 2 Inhibitors and the Risk of Fractures Among Patients With Type 2 Diabetes. *Diabetes Care*. 42. United States 2019. p. e150-e2.









Accepted Manuscript

References	Population	Intervention (Drug/duration)	Comparator	Outcome (Baseline/20 weeks for drug vs control)		
				ALT	Liver fat (%)	Liver fibrosis (FIB-4)
Johansson <i>et al</i> (2020) (82)	Type 2 diabetes	Metformin + Dapagliflozin 10mg od + Saxagliptin 5mg od (D+S) (n=35)	Metformin + Glimepiride (G) (1-6mg) od (n=24)	Δ ALT -5.3 (D+S) vs 2.1 (G)	Baseline 14.3 (6.4) (D+S) 13.7 (8.3) (G) Week 52 9.9 (7.1) (D+S) 12.9 (8.6) (G) (MRI-PDFF) (D+S vs G, p<0.05)	Not measured
Sattar <i>et al</i> (2018) (58)	EMPA-REG Outcome ® trial	Empagliflozin 10/25mg (n=4,611) 164 weeks	Placebo (P) (n=2,313)	Δ ALT -2.96 (E) vs -0.73 (P) (E vs P, p<0.05)	Not measured	Not measured
Eriksson <i>et al</i> (2018) (60)	Type 2 diabetes + NAFLD	Dapagliflozin 10mg (n=21), Dapagliflozin + OM3-CA (DO) (n=22) 12 weeks	Placebo (P) (n=21)	67/53 (D) vs 57/54 (P) (D vs P, p<0.05)	17.3/15.1 (D) vs 22.2/19.1 (DO) vs 15.1/14.5 (P) (MRI-PDFF) (D vs P, p=ns, DO vs P, p<0.05)	Not measured
Shibuya <i>et al</i> (2018) (83)	Type 2 diabetes + NAFLD	Luseogliflozin 2.5 mg (L) (n=16) 26 weeks	Metformin 1500 mg (M) (n=16)	49.5/31 (p=ns) (L) vs 39/39 (p=ns) (M) (L vs M, p=ns)	0.9097/1.033 (p=0.0008) (L) 0.991/0.851 (p=0.017) (M) (CT liver/spleen ratio) (L vs M, p<0.05)	Not measured
Kuchay <i>et al</i> (2018) (59)	Type 2 diabetes + NAFLD	Empagliflozin (E) 10 mg od (n=22) 20 weeks	Control (standard type 2 diabetes)	64(20)/50(26) (p<0.05) (E) vs 65(40)/62(3)	16.2/11.3 (E) (p<0.05) vs 16.4/15.5	Not measured

			treatment) (C) (n=20)	8) (p=ns) (C) (E vs C, p<0.05)	% (p=ns) (C) (MRI- PDFF) (E vs C, p<0.05)	
Cusi <i>et al</i> (2018) (84)	Type 2 diabetes(HbA1c = 7.7% ± 0.7%)	Canagliflozin (Cf) 300mg (n=26) 24 weeks	Placebo (P) (n=30)	23/20 (Cf) vs 35/34 (P) (Cf vs P, p=ns)	IHTG: -4.6% (Cf) (p<0.05) vs -2.4% (P) (p<0.05) (¹ H-MRS) (Cf vs P, p=ns) IHTG for NAFLD patients only (n=37): -6.9% (Cf) vs -3.8% (P) (Cf vs P, p=0.05)	Not measured
Ito <i>et al</i> (2017) (85)	Type 2 diabetes + NAFLD	Ipragliflozin (I) 50mg (n=30) 24 weeks	Pioglitazone (P) 15-30mg (n=31)	57.4/38.2 (p<0.05) (I) v. 53.1/46.8 (p<0.05) (P) (I vs P, p=ns)	0.78/0.98 (p<0.05) (I) 0.72/0.94 (p<0.05) (P) (CT liver/spleen ratio) (I vs P, p=ns)	2.12/1.61 (p<0.05) (I) 2.06/1.70 (p<0.05) (P) (I vs P, p=ns)
Bolinder <i>et al</i> (2012) (15)	Type 2 diabetes	Dapagliflozin (D) 10 mg od + metformin (n=89) 24 weeks	Placebo (P) + metformin (n=91)	Not reported in sub-study	Change in intrahepatic lipid was -2.35% (D) vs -1.53% (P) (¹ H-MRS) (D vs P, p=ns)	Not measured

ALT, alanine aminotransferase; FIB-4; fibrosis-4 score; NAFLD, non-alcoholic fatty liver disease; OM3-CA, omega-3 carboxylic acids; MRI-PDFF, magnetic resonance imaging proton density fat fraction; ¹H-MRS, proton magnetic resonance spectroscopy; CT, computed tomography; IHTG intrahepatic triglyceride