

. . . , . . . 2 ( ( - . . . - ), . . . );  
« . . . » , . . .

**FEATURES OF PROLACTIN'S EXPRESSION IN MAMMARY GLANDS IN WOMEN OF REPRODUCTIVE AGE WITH HYPERPROLACTINEMIA OF DIFFERENT GENESIS**

**A.A. Trushkevich, T.G. F Ionenko**

**SUMMARY**

The analysis of indexes of receptor's level expression to PRL depending on their redistribution in the pathological structures of the operated sector of mammary gland allowed to expose certain conformities of changes of receptor status. In relation to control indexes the level of receptors to prolactin is increased. In the groups of women with functional hyperprolactinemia these indexes are considered as moderate with predominance expressions are in the epithelium of the cyst-extended channels. Strengthening of proliferative activity of epithelium in the group of women with organic GPRL is accompanied by the increase of level of expression to the receptors of PRL, that explains clinical manifestation of disease as galactorrhea and is a diagnostic criteria for using of an adequate pathogenic therapy.

. . . , . . .

: , , - ,  
.  
- .  
( ),  
-  
, 4- -  
30 [1,5,6,7]. -  
( ), 43-58% ;  
61,6% [2,8]. , -  
, , , - , ( )  
, - ) [2,3,8].  
, - :  
( ) [2,3]. - -

« » - 5 , («Menzel-Glaser», ) ,  
[3,11]. « » DAKO « ».

SPM108 Termo REF90-83 RO LOT90-83-R1103A) ( -  
EnVision™ FLEX+. -

10  
200

[11,12,13,14].

Software DP-SOFT

H-score [9] - S=1a+2b+3c,  
- %  
b - %  
- %

0-10 - , 11-100 -  
, 101-200 -  
201-300 -

( ) , 24

” 24

8-9

[4].

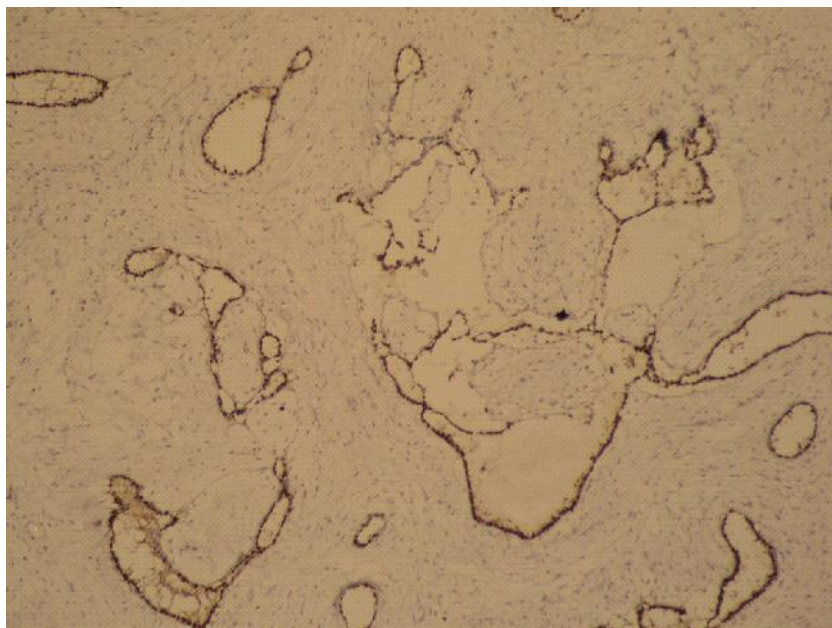
( )

[10]

IA	n=6	112,8±12,2
I	n=6	163,4±8,4*
II	n=6	205,5±7,7*
III	n=6	99,2±3,5

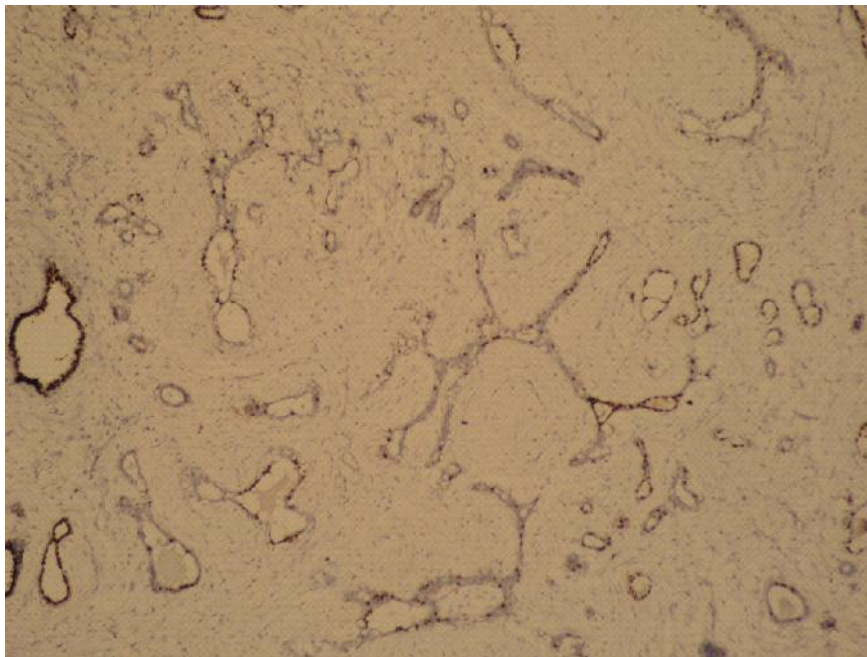
: ( <0,05)

(I )  
(112,8±12,2 ), ( .1). ( .1) ( .2).



.1. IA. -

( ).  
EnVision™ FLEX+ .10 .



.2. IA.

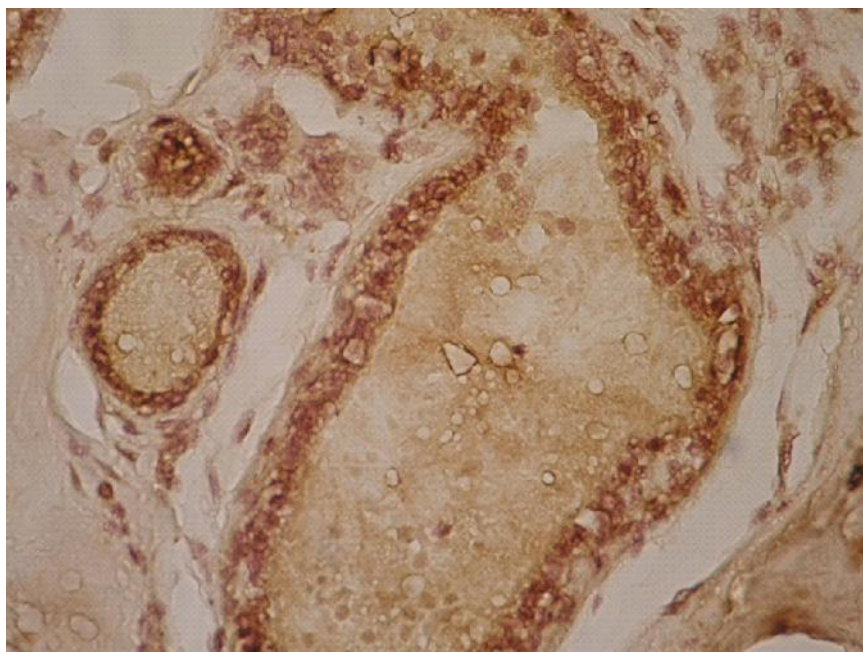
( ).  
EnVision™ FLEX+ .10 .

(I )  
- )

( - , 3-4

[11].

( ),



.3.

I .

( ).

FLEX+ .40 .

EnVision™

163,±8,4

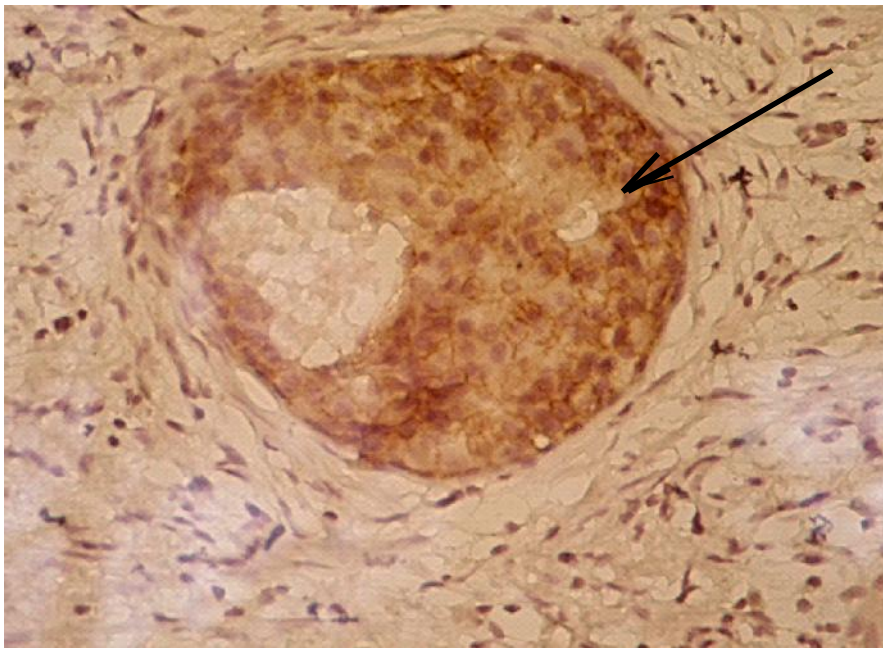
(.1).

(.3).

205,5±7,7

(<0,05)

(.1, .4).



.4. II.  
(.).

EnVision™ FLEX+ .40

»)

(«

1. 4. . . . . / . . . . , 2000. – 476 .

5. . . . . // . . . . – 2002. – 144–148.

6. . . . . // . . . . – 2003. – 7, 3. – 141–148.

7. . . . . / . . . . « . . . . », 2005. – 200 .

8. . . . . // . . . . – 2003. – 300 .

9. A multicentre study into the reliability of steroid receptor immunocytochemical assay quantification / McClelland R.A., Wilson D., Leake R. et al. // Eur. J. Cancer. – 1991. – V. 27. – P. 711–715.

10. Dabbs D. J. Diagnostic immunohistochemistry / Dabbs D. J. – London: Churchill Livingstone, 2006. – 828 p.

11. Mori I., Yang Q., Kakudo K. Predictive and prognostic markers for invasive breast cancer / I. Mori, Q. Yang, K. Kakudo // Pathol. Int. 2002. – Vol. 52, N. 3. – P. 186–189.

12. Nouhi Z. Defining the role of prolactin as an invasion suppressor hormone in breast cancer cells / Z. Nouhi, N. Chughtai, S. Hartley et al. // Cancer Res. 2006, N. 66. – P. 1824–1832.

13. Tworoger S.S. Prolactin and breast cancer etiology: An epidemiologic perspective / S.S. Tworoger, S.E. Hankinson // J. Mammary Gland Biol. Neoplasia. – 2008. N. 13. – P. 41–53.

14. Oakes S.R. Loss of mammary epithelial prolactin receptor delays tumor formation by reducing cell proliferation in low-grade preinvasive lesions / S.R. Oakes, F.G. Robertson, J.G. Kench et al. // Oncogene. – 2007. – N. 26. P. 543–553.

(112,8±12,2 163,4±8,4\* )

3. (205,5±7,7\* )

1. / . . . . , . . . . // . . . . – 2002. – 6. – 7–9.

2. / . . . . , . . . . // . . . . – 2009 – 15, 1. – 100–103.

3. / . . . . // . . . . – 2001. – 3, 11. – 54–57.