

Breast Cancer Res Treat (2014) 144:133–142
DOI 10.1007/s10549-014-2842-9

CLINICAL TRIAL

Long-term prognosis of early-onset breast cancer in a population-based cohort with a known *BRCA1/2* mutation status

Martin P. Nilsson · Linda Hartman ·
Ingrid Idvall · Ulf Kristoffersson · Oskar T. Johannsson ·
Niklas Loman

Received: 13 January 2014 / Accepted: 15 January 2014 / Published online: 30 January 2014
© The Author(s) 2014. This article is published with open access at Springerlink.com

Abstract All women in the South Sweden Health Care Region with breast cancer diagnosed aged less than 41 during the period between 1990 and 1995 were contacted in 1996 and offered germline mutation analysis of the *BRCA1* and *BRCA2* genes. Mutation carriers ($n = 20$) were compared with noncarriers ($n = 201$) for overall survival (OS) and risk of contralateral breast cancer (CBC). Mutation carriers were younger at diagnosis and more likely to have ER-negative, PgR-negative and grade III tumors. Median follow-up was 19 years. The 5-, 10-, 15-, and 20-year OS were 60, 45, 39, and 39 % for mutation carriers and 82, 70, 59, and 53 % for noncarriers, respectively (5-year log-rank $P = 0.013$; 10-year $P = 0.008$; 15-year $P = 0.020$; and 20-year $P = 0.046$). In univariable analysis, there was a trend for an inferior OS for mutation carriers (HR 1.8; 95 % CI 1.0–3.3). When stratified for use of (neo)adjuvant chemotherapy, an inferior OS was significant only for the subgroup of patients who did not

receive chemotherapy (HR 3.0; 95 % CI 1.2–7.7). In multivariable analysis, *BRCA1/2* mutation status was a significant predictor of OS when adjusting for tumor stage, age, and use of chemotherapy, but not when ER status was also included in the model. The 15-year cumulative risk of CBC was 53 % for mutation carriers and 10 % for noncarriers (HR 5.9; 95 % CI 1.9–18.6); among the noncarriers the risks were 5, 22, and 30 % for patients without close relatives having breast cancer, with second-degree relatives having breast cancer, and with first-degree relatives with breast cancer, respectively. In conclusion, the poor prognosis of young *BRCA1/2* mutation carriers with breast cancer is mainly explained by the prevalent occurrence of negative prognostic factors rather than mutation status per se, and can to at least some extent be abrogated by the use of chemotherapy.

Keywords BRCA1 · BRCA2 · Early-onset breast cancer · Population-based · Prognosis · Contralateral breast cancer

M. P. Nilsson (✉) · L. Hartman · N. Loman
Department of Oncology, Skåne University Hospital, Clinical Sciences, Lund University, S-221 85 Lund, Sweden
e-mail: martin.nilsson@med.lu.se

L. Hartman
Regional Cancer Centre, Clinical Sciences, Division of Oncology, Lund University, Lund, Sweden

I. Idvall
Department of Pathology, Lund University, Lund, Sweden

U. Kristoffersson
Department of Clinical Genetics, Laboratory Medicine Region Skåne and Lund University, Lund, Sweden

O. T. Johannsson
Department of Oncology, Landspítali University Hospital, Reykjavik, Iceland

Introduction

Breast cancer is a major cause of morbidity and death for women all over the world. Approximately 5–10 % of breast cancers are caused by the presence of constitutional mutations in highly penetrant genes with autosomal dominant inheritance. About half of these cases can be attributed to mutations in the tumor suppressor genes *BRCA1* or *BRCA2* [1], the proportion varies depending on genetic population, age of onset and family history. As opposed to the relatively modest impact of hormonal and lifestyle risk factors, a mutation in one of these two genes confers a four- to eightfold increase in the lifetime risk of breast

cancer [2, 3]. It also substantially increases the risk for other cancers, in particular the ovarian cancer [4, 5]. Several studies have found evidence for allelic risk heterogeneity, genetic modifiers, and hormonal and lifestyle factors affecting penetrance [6–9]. This means that the setting in which the mutation was detected, i.e., a clinical setting within a family with several cancer cases or a population-based setting, is important for cancer risks in the family and possibly even for the prognosis of the cancers. Once a mutation is found in a family, presymptomatic testing, surveillance, and prophylactic surgery decrease the cancer-specific mortality so that life expectancy approaches what it is expected to be in the general population [10]. However, surveillance, and in particular prophylactic surgery, may have a negative impact on various aspects of life and health [11, 12]. In the end, it is up to the woman herself to decide on what kind of measures she wants to take in order to decrease her future risks of cancer. For that decision, it is important to know whether the prognosis of a BRCA-associated cancer is worse than, the same as, or better than that for a sporadic cancer. Furthermore, for the oncologist, it is important to know whether *BRCA1/2* mutation status is an independent prognostic factor, or even a predictive factor, which should be taken into consideration when decisions about treatment are taken.

It is now generally accepted that BRCA-associated ovarian cancer is more sensitive to standard platinum-based chemotherapy and has a superior, or rather less adverse, prognosis (at least short term) than sporadic ovarian cancer [13, 14]. For BRCA-associated breast cancer, the prognosis remains a matter of debate, despite many studies published over the last 15 years [15]. Such studies should ideally report long-term follow-up, primarily because breast cancer is a disease where late recurrences are not unusual [16–18]. We conducted a population-based study among young women with breast cancer and a known *BRCA1/2* mutation status. Our aims were to assess overall survival and risk of contralateral breast cancer.

Materials and methods

As previously reported [19], all women in the Southern Health Care Region in Sweden with an invasive breast cancer diagnosed with age less than 41 years during the period between 1990 and 1995 ($n = 262$) were contacted in 1996 and offered mutation analysis of the *BRCA1* and *BRCA2* genes; 225 were then alive and 37 were dead. Women who had died could be included if samples of their blood or tissue were available in the tissue bank. Mutation analysis was performed on 234 (89 %) of the patients, including 33 of the patients that were not alive; the others

were excluded from further study. Mutation screening was originally performed using protein truncation test, single-strand conformation polymorphism, and denaturing high performance liquid chromatography. Mutations were verified by sequencing. Some initially BRCA-negative families with a strong family history of BRCA-associated cancer have been reanalyzed at a later point of time. In two of these families, pathogenic mutations were found, which were not detectable with the above mentioned mutation-screening protocol. They are now considered BRCA-positive.

Twenty-three pathogenic mutations were found: 18 in *BRCA1* and 5 in *BRCA2*. Out of the 234 patients tested, 4 have declined further study follow-up or could not be verified as having had an invasive breast cancer when pathological reports were again reviewed, only carcinoma in situ; these were therefore excluded. Six patients had metastatic breast cancer at the time of diagnosis (one of them being a *BRCA2* mutation carrier) and were excluded. Three patients were excluded since they had already had another first primary breast cancer before 1990 (two of them *BRCA1* mutation carriers), leaving 221 for the present analyses. Due to small numbers, *BRCA1* ($n = 16$) and *BRCA2* ($n = 4$) mutation carriers were grouped together for analyses. Current analyses were based on follow-up information through January 31, 2012.

For the analysis of family history of breast cancer, information about family history at the time of study inclusion was collected from questionnaires and supplemented from medical records. This information was then confirmed independently in the National Swedish Cancer Register. Therefore, the results concerning family history are to be considered a minimum of the true figure in the families. Clinical data were abstracted from medical records and pathology reports. TNM stage was reclassified according to American Joint Committee on Cancer 7th edition. Vital status was controlled in the Swedish Census Register.

Study endpoints were overall survival (OS) and incidence of contralateral breast cancer (CBC) for the pre-specified subgroups of mutation carriers and of noncarriers. Breast cancer specific survival (BCSS) was also analyzed. For CBC, patients were regarded as censored at the time of prophylactic mastectomy, death, distant spread of cancer, or date of last follow-up. For CBC, both invasive breast cancer and DCIS were included in the analyses. Age at diagnosis was stratified into three age groups to account for nonlinear associations. Selection of variables for exploratory subgroup analyses and for multivariable analyses was based on results from previous research. Tumor grade was not selected because of many missing values, especially among mutation carriers. ER, but not PgR, was considered for inclusion in the model.

Differences in tumor, patient, and treatment characteristics between mutation carriers and noncarriers were

Table 1 Patient, tumor, and treatment characteristics

Variable	<i>BRCA1/2</i> mutation carriers (<i>n</i> = 20)	Noncarriers (<i>n</i> = 201)	<i>P</i> ^a
Median follow-up ^b , years	17.8	19.1	
Age, years			0.004
Median	34.5 (range 23–39)	37.0 (range 24–40)	
≤ 30	6 (30 %)	15 (7 %)	
31–35	6 (30 %)	47 (23 %)	
36–40	8 (40 %)	139 (69 %)	
TNM stage			1
I	7 (35 %)	71 (35 %)	
II	9 (45 %)	88 (44 %)	
III	4 (20 %)	42 (21 %)	
Tumor grade			0.021
I	1 (8 %)	40 (25 %)	
II	1 (8 %)	57 (35 %)	
III	10 (83 %)	65 (40 %)	
Missing	8	39	
ER status			0.003
Negative	13 (87 %)	79 (46 %)	
Positive	2 (13 %)	93 (54 %)	
Missing	5	29	
PgR status			0.002
Negative	12 (80 %)	66 (38 %)	
Positive	3 (20 %)	106 (62 %)	
Missing	5	29	
(Neo)adjuvant chemotherapy ^c			0.100
No	7 (35 %)	112 (56 %)	
Yes	13 (65 %)	89 (44 %)	
Adjuvant endocrine therapy			0.049
No	20 (100 %)	165 (83 %)	
Yes	0 (0 %)	34 (17 %)	
Family history of breast cancer			0.032
None	12 (63 %)	146 (74 %)	
Second-degree relative	1 (5 %)	29 (15 %)	
First-degree relative	6 (32 %)	21 (11 %)	
Missing	1	5	
Contralateral breast cancer	4 (all invasive)	13 (11 invasive)	
Prophylactic contralateral mastectomy	5	6	
Prophylactic or adjuvant oophorectomy	6	8	

^a Fisher's exact test for all

^b For patients alive at end of follow-up

^c (*Neo*)adjuvant neoadjuvant or adjuvant. 2 carriers and 8 noncarriers received neoadjuvant chemotherapy

tested using Fisher's exact test for all covariates except for age, where the difference in median age was tested using the Wilcoxon rank sum test. For univariable analysis, OS and CBC were estimated using the Kaplan–Meier method and compared using the log-rank test. For the calculation of hazard ratios and for multivariable analysis, the impact of different prognostic factors on OS and CBC were assessed by the Cox proportional hazards model. All tests were two-tailed. All analyses were conducted using the *R* statistical package. For the discussion part, *P* values below 0.05 were considered statistically significant.

Results

Study population

Patient, tumor, and treatment characteristics are listed in Table 1. Compared with noncarriers, mutation carriers were younger at diagnosis (median 34.5 vs. 37.0 years; *P* = 0.002) and more likely to have ER-negative (87 % vs. 46 %; *P* = 0.003), PgR-negative (80 % vs. 38 %; *P* = 0.002) and grade III (83 % vs. 40 %; *P* = 0.005) tumors. No difference was seen between the groups for TNM

Table 2 Univariable analysis for associations of variables with overall survival

Variable	<i>n</i> patients	<i>n</i> events	HR	95 % CI	<i>P</i> *
<i>BRCA1/2</i> mutation status					0.053
Negative	201	94	1.0		
Positive	20	12	1.8	1.0–3.3	
Age, years					0.11
36–40	147	65	1.0		
≤ 30	21	13	1.8	1.0–3.2	
31–35	53	28	1.4	0.9–2.1	
TNM stage					<0.001
I	78	22	1.0		
II	97	50	2.1	1.3–3.5	
III	46	34	5.2	3.0–8.9	
Tumor grade					0.24
I or II	99	43	1.0		
III	75	36	1.3	0.8–2.0	
ER status					0.21
Negative	92	47	1.0		
Positive	95	46	0.8	0.5–1.2	
PgR status					0.045
Negative	78	42	1.0		
Positive	109	51	0.7	0.4–1.0	
(Neo)adjuvant chemotherapy					<0.001
No	119	46	1.0		
Yes	102	60	2.1	1.4–3.1	
Adjuvant endocrine therapy					0.96
No	185	89	1.0		
Yes	34	16	1.0	0.6–1.7	
Family history of breast cancer					0.62
None	158	76	1.0		
Second-degree relative	30	17	1.1	0.7–1.9	
First-degree relative	27	10	0.8	0.4–1.5	

^a Assessed by the Cox proportional hazards model

stage ($P = 1$). Among mutation carriers, 13/20 (65 %) received adjuvant or neoadjuvant chemotherapy, and none received adjuvant endocrine treatment. Among noncarriers, 89/201 (44 %) received chemotherapy and 34/201 (17 %) received endocrine treatment. Chemotherapy regimens used were CMF-like (79 %), anthracycline-based (20 %) and unknown type (1 %).

Overall survival

Median follow-up for OS was 19.0 years for women alive at the end of follow-up. In univariable analysis, as seen in Table 2, characteristics associated with an inferior OS in the entire cohort were higher TNM stage ($P < 0.001$), having received (neo)adjuvant chemotherapy ($P < 0.001$), and having a PgR-negative tumor ($P = 0.045$). There was a trend for a poorer prognosis for patients with ER-negative tumors ($P = 0.21$). In the subgroup of noncarriers, also younger age at diagnosis was associated with an inferior OS

(31–35 vs. 36–40 years HR 1.4; ≤30 vs. 36–40 years HR 2.5; $P = 0.02$). In the smaller subgroup of mutation carriers, no markers were associated with a difference in OS (all $P > 0.3$ except for TNM stage where $P = 0.08$).

At the end of follow-up, 12/20 (60 %) mutation carriers had died, all from breast cancer, whereas 94/201 (47 %) of the noncarriers had died. There was a trend for worse survival among mutation carriers compared with noncarriers (HR 1.8; 95 % CI 1.0–3.3) (Fig. 1). The 5-, 10-, 15-, and 20-year OS was 60, 45, 39, and 39 % for mutation carriers and 82, 70, 59, and 53 % for noncarriers, respectively (5-year log-rank $P = 0.013$; 10-year $P = 0.008$; 15-year $P = 0.020$; and 20-year $P = 0.046$). As seen in Fig. 2, for the subgroup of patients with ER-negative tumors no difference in OS was observed between mutation carriers and noncarriers (HR 1.3; CI 0.6–2.8).

Out of the 12 mutation carriers who died, 11 died of their first breast cancer and one had a distant recurrence of breast cancer after having had a CBC; she probably died of

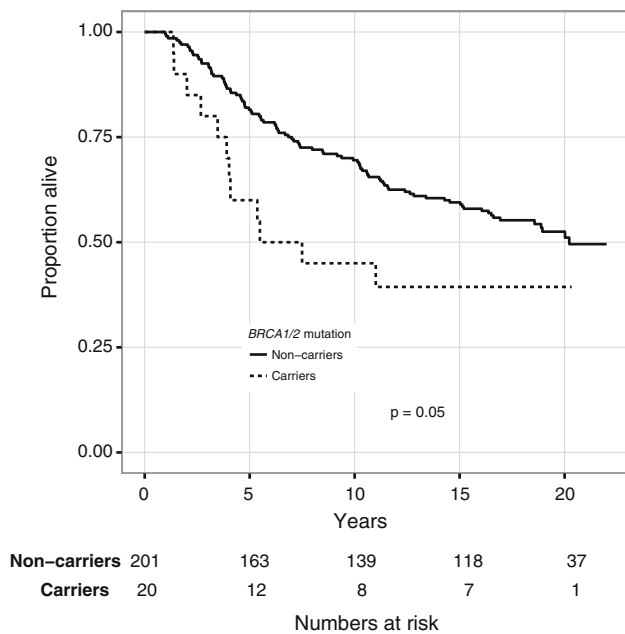


Fig. 1 Overall survival for all patients

the CBC. Out of the 94 noncarriers who died, 82 died of their first breast cancer, 4 had a distant recurrence of breast cancer after having had a CBC, one died of a myocardial infarction, 2 died of unknown causes (possibly breast cancer), and 5 died of other malignancies (radiation-induced pericardial mesothelioma, radiation-induced sarcoma, colon carcinoma, cholangiocarcinoma, and anaplastic astrocytoma, respectively). Analysis of BCSS and OS thus showed similar results (data not shown). None of the 8 mutation carriers who was alive at the end of follow-up had been diagnosed with ovarian cancer. Six of them had a subsequent prophylactic oophorectomy at a median of 9 years (range 1–18 years) after breast cancer diagnosis.

Among patients who received chemotherapy, mutation carriers had a prognosis comparable to noncarriers (HR 1.1; CI 0.5–2.5). Among patients who did not receive chemotherapy, mutation carriers had a worse prognosis compared with noncarriers (HR 3.0; CI 1.2–7.7) (Figs. 3, 4). In this subgroup no multivariable analysis or further stratification was possible due to small numbers. Instead, factors with known prognostic importance are listed in Table 3. As was observed in the entire cohort, BRCA-associated tumors were more likely to be grade III and ER-negative also in the subgroup of patients that did not receive chemotherapy.

Multivariable analysis for OS was performed and included mutation status, age, TNM stage and use of chemotherapy (Table 4). In this model, mutation status and TNM stage were associated with OS.

When ER status was also included in the model, only TNM stage remained associated with OS at $P < 0.05$ (data not shown).

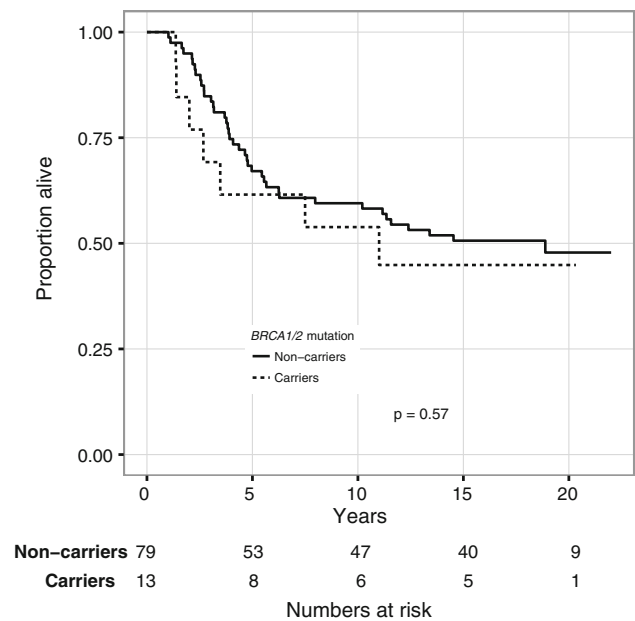


Fig. 2 Overall survival for patients with ER-negative tumors

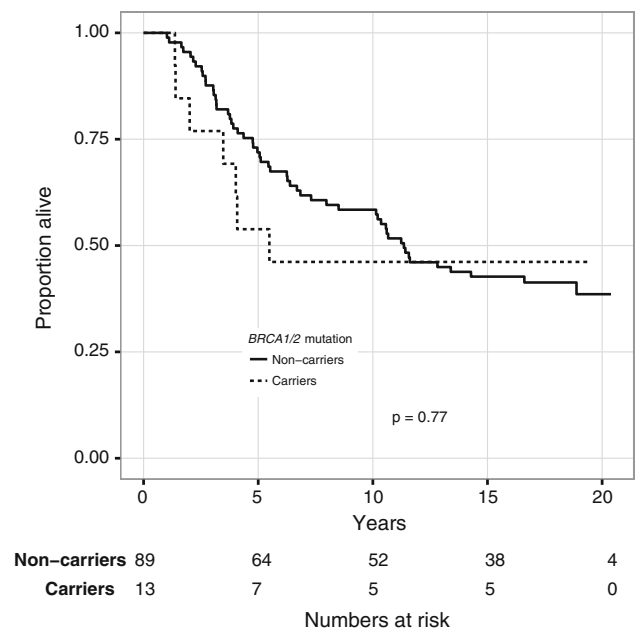


Fig. 3 Overall survival for patients treated with (neo)adjuvant chemotherapy

Contralateral breast cancer

The 15-year cumulative risk of CBC was 53 % for mutation carriers and 10 % for noncarriers (HR 5.9; CI 1.9–18.6). Among noncarriers, the 15-year cumulative risk of CBC was 5, 22, and 30 % for patients without close relatives with breast cancer, for patients with second-

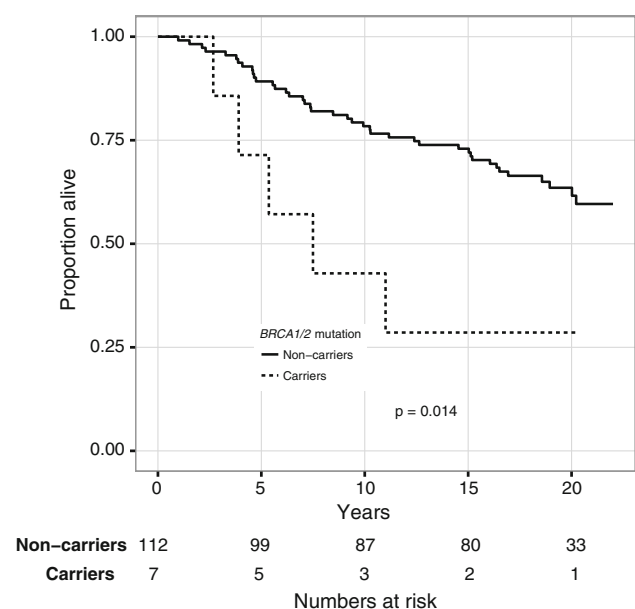


Fig. 4 Overall survival for patients not treated with (neo)adjuvant chemotherapy

Table 3 Important characteristics for patients that did not receive (neo)adjuvant chemotherapy

Variable	BRCA1/2 mutation carriers (<i>n</i> = 7)	Noncarriers (<i>n</i> = 112)
TNM stage		
I	5 (71 %)	67 (60 %)
II	2 (29 %)	39 (35 %)
III	0 (0 %)	6 (5 %)
Tumor grade		
I	0 (0 %)	31 (35 %)
II	1 (17 %)	33 (37 %)
III	5 (83 %)	25 (28 %)
Missing	1	23
ER status		
Negative	4 (100 %)	30 (32 %)
Positive	0 (0 %)	63 (68 %)
Missing	3	19

degree relatives with breast cancer, and for patients with first-degree relatives with breast cancer, respectively (second-degree relative HR 4.7; CI 1.3–17.8, first degree relative HR 6.4; CI 1.7–23.9).

Discussion

In the present study, we compared the OS and the risk of CBC between *BRCA1/2* mutation carriers and noncarriers in a population-based cohort of young women with early breast cancer. In univariable analysis, a trend for an inferior OS was

Table 4 Multivariable analysis for overall survival

Variable	HR	95 % CI	<i>P</i> ^a
<i>BRCA1/2</i> mutation status			
Negative	1.0		0.041
Positive	1.9	1.0–3.7	
Age, years			
36–40	1.0		0.16
≤ 30	1.2	0.6–2.2	
31–35	1.6	1.0–2.5	
TNM stage			
I	1.0		<0.001
II	2.2	1.3–3.9	
III	6.1	3.1–12.1	
(Neo)adjuvant chemotherapy			
No	1.0		0.71
Yes	0.9	0.5–1.5	

^a Assessed by the Cox proportional hazards model adjusted for all variables in Table 3

seen for mutation carriers, and we could conclude that this was not due to second primary tumors, e.g. ovarian cancers or other competing deaths. When stratified for use of chemotherapy, the inferior OS was only significant for the subgroup of patients who did not receive (neo)adjuvant chemotherapy. It should be noted that both among patients who did and among patients who did not receive (neo)adjuvant chemotherapy, *BRCA*-associated tumors were more often grade III and ER-negative than non-*BRCA*-associated tumors. In multivariable analysis, the inferior OS for mutation carriers remained significant when adjusting for tumor stage, age and chemotherapy. When ER status was included in the Cox proportional hazards model, mutation status was no longer significantly associated with OS, possibly due to the decreased power with ER-status missing in 5/20 of the mutation carriers. In this model, ER status was also not associated with OS. We acknowledge that results from multivariable analyses should be interpreted with caution in small samples, and that the impact of ER status in particular is difficult to assess due to missing values, few ER positive tumors in the subgroup of mutation carriers, and inadequate endocrine treatment.

The prognosis of *BRCA*-associated breast cancer has been comprehensively summarized by Bordeleau et al. [15] in 2010. The authors concluded that most of the more recent studies have failed to demonstrate a significant difference in OS between mutation carriers and noncarriers. It is, however, still a matter of debate whether the unadjusted or adjusted prognosis is worse, the same, or better for mutation carriers with breast cancer compared with sporadic cases. Multiple studies, including our own, have found evidence for an increased benefit of chemotherapy for mutation carriers

compared with noncarriers. Two of these studies used a retrospective anonymized design with analysis of Ashkenazi founder mutations in archived paraffin-embedded tumor blocks, avoiding survival bias and inclusion bias, but raising questions about the generalizability to other populations. Robson et al. [20] found that *BRCA1* mutations were an independent predictor of breast cancer mortality in univariable analysis. When stratified for chemotherapy, this inferior prognosis was only seen in the subgroup that did not receive chemotherapy, similar to the findings in our study. Rennert et al. [21] found no difference in unadjusted or adjusted hazard ratios for breast cancer mortality between mutation carriers and noncarriers. For overall survival, they found an interaction between *BRCA1* mutation status and chemotherapy.

In 2012 and 2013, two studies have been published on the issue of prognosis, which are superior to previous studies in terms of adjustment for known prognostic factors and how modern the given treatment was [22, 23]. In a prospective cohort study, Goodwin et al. compared *BRCA1/2* mutation carriers with breast cancer to women with sporadic breast cancer. The majority of the mutation carriers received adjuvant chemotherapy. In univariable analysis, distant recurrence and OS were inferior for *BRCA2* mutation carriers, but not for *BRCA1* mutation carriers. After adjustment for age, tumor stage and grade, nodal status, hormone receptors, and year of diagnosis, the difference in distant recurrence and OS between *BRCA2* mutation carriers and women with sporadic disease was no longer observed. The authors concluded that the adverse prognosis for *BRCA2* mutation carriers seems to depend on the presence of more adverse tumor characteristics at diagnosis rather than mutation status per se [22]. Huzarski et al. estimated a 10-year OS for breast cancer patients with a known *BRCA1* Polish founder mutation status, and found no significant difference in univariable analysis. In multivariable analysis, which included most of the clinically important prognostic factors apart from tumor grade, *BRCA1* mutation carriers had a poorer 10-year OS. They also found a significant interaction between *BRCA1* mutation status and effect of chemotherapy, meaning that the benefit of chemotherapy was greater for mutation carriers than noncarriers [23].

We believe that the inferior prognosis for mutation carriers seen in our study is mainly caused by the more prevalent occurrence of negative prognostic factors, such as ER-negativity and high tumor grade in the highly proliferative BRCA-associated tumors [24]. Since ER-negativity is rather closely associated with high grade and high proliferation, a simple way of visualizing this is to stratify the cohort for ER status; the Kaplan–Meier curves for ER-negative mutation carriers and ER-negative noncarriers are similar (Fig. 2). Furthermore, this inferior prognosis for mutation carriers can probably be abrogated by the use of (neo)adjuvant chemotherapy, mainly because tumors with

BRCA-associated features such as high proliferation and ER-negativity in general derive more absolute benefit from chemotherapy [25, 26], but possibly also because *BRCA1/2* deficiency per se is a predictive factor for sensitivity to some types of chemotherapy [27, 28]. In the study by Huzarski et al. [23], more than 90 % of the mutation carriers received chemotherapy, which is likely the reason why no difference in OS was observed in univariable analysis in their study.

Our study confirmed a high risk of CBC in *BRCA1/2* mutation carriers with early-onset breast cancer; the 15-year risk was 53 %. Furthermore, among noncarriers with a first- or second-degree relative with breast cancer an increased risk of CBC was observed. This group of patients is likely to include not only some women with mutations in other highly penetrant or moderately penetrant breast cancer genes, as well as some with an increased risk of breast cancer in the family caused by multifactorial/poly-genetic factors, but also a few women with a *BRCA1/2* mutation that had evaded detection [29–32]. Rhiem et al. [33] recently reported data on risk of CBC in a large cohort of German breast cancer patients from high risk families with a known *BRCA1/2* mutation status. They found that the 25-year cumulative risk of CBC was higher for non-carriers with a first breast cancer before the age of 40 years (28 %) than for mutation carriers with a first breast cancer at the age of 50 years or later (*BRCA1*: 22 %; *BRCA2*: 16 %). For *BRCA1*-carriers with a first breast cancer before the age of 40 years, the 25-year cumulative risk of CBC was 55 %; for *BRCA2*-carriers it was 38 %. These results are in line with the findings in our study, and has implications for the use of contralateral prophylactic mastectomies in young breast cancer patients with *BRCA1/2* mutations or a positive family history.

The strengths of our study are the population-based design, its very high inclusion rate minimizing survival bias and inclusion bias, the known *BRCA1/2* mutation status for all included patients, long follow-up time, information on tumor and patient characteristics, treatment, relapses and death. There are a number of limitations: First and most notable a small number of patients. Second, no separate analyses of *BRCA1* and *BRCA2* mutation carriers could be done. Third, the adjuvant treatment that was given is now outdated. As an example, adjuvant endocrine treatment was only given to a third of the patients with ER-positive breast cancer; if all of them would have received it, as is done today, the difference in OS between mutation carriers and noncarriers would most likely have been even more pronounced. On the other hand, it is likely that modern chemotherapy regimens and indications [25, 26], which are based on tumor biology rather than tumor stage as was the case in the nineties, would diminish the difference in OS between the groups.

Recent studies have reported promising results for mutation carriers treated with Cisplatin [28, 34] and PARP inhibitors [35]. In future, these and other drugs might render a better prognosis for at least some mutation carriers compared with noncarriers.

However, despite the availability of modern treatment regimens and more extensive use of chemotherapy, endocrine, and targeted therapy, the prognosis for young women with breast cancer still remains unsatisfactorily poor. In the case of *BRCA1/2*-associated breast and ovarian cancer, identification of a mutation in the family makes presymptomatic testing, surveillance, and prophylactic surgery possible; these measures have a positive effect on the life expectancy that is superior to the improvement in breast and ovarian cancer prognosis that we have seen over the last decades [10]. It is therefore very important to identify mutation carriers.

In conclusion, early-onset breast cancer diagnosed in the early nineties was associated with a poor prognosis. With the limitation of a small study sample, our study suggests that a positive *BRCA1/2* mutation status is associated with a pronounced severity of the prognosis, which may, however, be abrogated by the administration of (neo)adjuvant chemotherapy. *BRCA1/2* mutation carriers as well as noncarriers with a positive family history indeed have an increased risk of contralateral breast cancer compared with patients with sporadic disease.

Acknowledgements The authors thank Professor Åke Borg and Professor Håkan Olsson. The study was approved by the ethical committee of Lund University Hospital, and complies with the current laws of Sweden. The research was funded by grants from Skåne County Council's Research and Development Foundation, The Swedish Breast Cancer Association (BRO), and BioCARE.

Conflict of interest The authors declare that they have no conflict of interest.

Open Access This article is distributed under the terms of the Creative Commons Attribution Noncommercial License which permits any noncommercial use, distribution, and reproduction in any medium, provided the original author(s) and the source are credited.

References

- Hirshfield KM, Rebbeck TR, Levine AJ (2010) Germline mutations and polymorphisms in the origins of cancers in women. *J Oncol* 2010:297671. doi:10.1155/2010/297671
- Antoniou A, Pharoah PD, Narod S, Risch HA, Eyfjord JE, Hopper JL, Loman N, Olsson H, Johannsson O, Borg A, Pasini B, Radice P, Manoukian S, Eccles DM, Tang N, Olah E, Anton-Culver H, Warner E, Lubinski J, Gronwald J, Gorski B, Tulinius H, Thorlacius S, Eerola H, Nevanlinna H, Syrjäkoski K, Kallioniemi OP, Thompson D, Evans C, Peto J, Lalloo F, Evans DG, Easton DF (2003) Average risks of breast and ovarian cancer associated with *BRCA1* or *BRCA2* mutations detected in case series unselected for

- family history: a combined analysis of 22 studies. *Am J Hum Genet* 72(5):1117–1130. doi:10.1086/375033
- Chen S, Parmigiani G (2007) Meta-analysis of *BRCA1* and *BRCA2* penetrance. *J Clin Oncol* 25(11):1329–1333. doi:10.1200/JCO.2006.09.1066
 - Moran A, O'Hara C, Khan S, Shack L, Woodward E, Maher ER, Lalloo F, Evans DG (2012) Risk of cancer other than breast or ovarian in individuals with *BRCA1* and *BRCA2* mutations. *Fam Cancer* 11(2):235–242. doi:10.1007/s10689-011-9506-2
 - Zhang S, Royer R, Li S, McLaughlin JR, Rosen B, Risch HA, Fan I, Bradley L, Shaw PA, Narod SA (2011) Frequencies of *BRCA1* and *BRCA2* mutations among 1,342 unselected patients with invasive ovarian cancer. *Gynecol Oncol* 121(2):353–357. doi:10.1016/j.ygyno.2011.01.020
 - Barnes DR, Antoniou AC (2012) Unravelling modifiers of breast and ovarian cancer risk for *BRCA1* and *BRCA2* mutation carriers: update on genetic modifiers. *J Intern Med* 271(4):331–343. doi:10.1111/j.1365-2796.2011.02502.x
 - Kotsopoulos J, Lubinski J, Salmena L, Lynch HT, Kim-Sing C, Foulkes WD, Ghadirian P, Neuhausen SL, Demsky R, Tung N, Ainsworth P, Senter L, Eisen A, Eng C, Singer C, Ginsburg O, Blum J, Huzarski T, Poll A, Sun P, Narod SA (2012) Breast-feeding and the risk of breast cancer in *BRCA1* and *BRCA2* mutation carriers. *Breast Cancer Res* 14(2):R42. doi:10.1186/bcr3138
 - Lubinski J, Huzarski T, Byrski T, Lynch HT, Cybulski C, Ghadirian P, Stawicka M, Foulkes WD, Kilar E, Kim-Sing C, Neuhausen SL, Arnel S, Gilchrist D, Sweet K, Gronwald J, Eisen A, Gorski B, Sun P, Narod SA, Hereditary Breast Cancer Clinical Study Group (2012) The risk of breast cancer in women with a *BRCA1* mutation from North America and Poland. *Int J Cancer* 131(1):229–234. doi:10.1002/ijc.26369
 - Spurdle AB, Whiley PJ, Thompson B, Feng B, Healey S, Brown MA, Pettigrew C, Van Asperen CJ, Ausems MG, Kattentidt-Mouravieva AA, van den Ouweland AM, Lindblom A, Pigg MH, Schmutzler RK, Engel C, Meindl A, Caputo S, Sinilnikova OM, Lidereau R, Couch FJ, Guidugli L, Hansen T, Thomassen M, Eccles DM, Tucker K, Benitez J, Domchek SM, Toland AE, Van Rensburg EJ, Wappenschmidt B, Borg A, Vreeswijk MP, Goldgar DE (2012) *BRCA1* R1699Q variant displaying ambiguous functional abrogation confers intermediate breast and ovarian cancer risk. *J Med Genet* 49(8):525–532. doi:10.1136/jmedgenet-2012-101037
 - Kurian AW, Sigal BM, Plevritis SK (2010) Survival analysis of cancer risk reduction strategies for *BRCA1/2* mutation carriers. *J Oncol* 28(2):222–231. doi:10.1200/JCO.2009.22.7991
 - Brandberg Y, Sandelin K, Erikson S, Jurell G, Liljegren A, Lindblom A, Linden A, von Wachenfeldt A, Wickman M, Arver B (2008) Psychological reactions, quality of life, and body image after bilateral prophylactic mastectomy in women at high risk for breast cancer: a prospective 1-year follow-up study. *J Clin Oncol* 26(24):3943–3949. doi:10.1200/jco.2007.13.9568
 - Finch A, Evans G, Narod SA (2012) *BRCA* carriers, prophylactic salpingo-oophorectomy and menopause: clinical management considerations and recommendations. *Women's Health (Lond.)* 8(5):543–555. doi:10.2217/wh.12.41
 - Alsop K, Fereday S, Meldrum C, deFazio A, Emmanuel C, George J, Dobrovic A, Birrer MJ, Webb PM, Stewart C, Friedlander M, Fox S, Bowtell D, Mitchell G (2012) *BRCA* mutation frequency and patterns of treatment response in *BRCA* mutation-positive women with ovarian cancer: a report from the Australian Ovarian Cancer Study Group. *J Clin Oncol* 30(21):2654–2663. doi:10.1200/jco.2011.39.8545
 - McLaughlin JR, Rosen B, Moody J, Pal T, Fan I, Shaw PA, Risch HA, Sellers TA, Sun P, Narod SA (2013) Long-term ovarian

- cancer survival associated with mutation in BRCA1 or BRCA2. *J Natl Cancer Inst* 105(2):141–148. doi:10.1093/jnci/djs494
15. Bordeleau L, Panchal S, Goodwin P (2010) Prognosis of BRCA-associated breast cancer: a summary of evidence. *Breast Cancer Res Treat* 119(1):13–24. doi:10.1007/s10549-009-0566-z
 16. Darby S, McGale P, Correa C, Taylor C, Arriagada R, Clarke M, Cutter D, Davies C, Ewertz M, Godwin J, Gray R, Pierce L, Whelan T, Wang Y, Peto R (2011) Effect of radiotherapy after breast-conserving surgery on 10-year recurrence and 15-year breast cancer death: meta-analysis of individual patient data for 10,801 women in 17 randomised trials. *Lancet* 378(9804):1707–1716. doi:10.1016/s0140-6736(11)61629-2
 17. Davies C, Godwin J, Gray R, Clarke M, Cutter D, Darby S, McGale P, Pan HC, Taylor C, Wang YC, Dowsett M, Ingle J, Peto R (2011) Relevance of breast cancer hormone receptors and other factors to the efficacy of adjuvant tamoxifen: patient-level meta-analysis of randomised trials. *Lancet* 378(9793):771–784. doi:10.1016/s0140-6736(11)60993-8
 18. Peto R, Davies C, Godwin J, Gray R, Pan HC, Clarke M, Cutter D, Darby S, McGale P, Taylor C, Wang YC, Bergh J, Di Leo A, Albain K, Swain S, Piccart M, Pritchard K (2012) Comparisons between different polychemotherapy regimens for early breast cancer: meta-analyses of long-term outcome among 100,000 women in 123 randomised trials. *Lancet* 379(9814):432–444. doi:10.1016/s0140-6736(11)61625-5
 19. Loman N, Johannsson O, Kristoffersson U, Olsson H, Borg A (2001) Family history of breast and ovarian cancers and BRCA1 and BRCA2 mutations in a population-based series of early-onset breast cancer. *J Natl Cancer Inst* 93(16):1215–1223
 20. Robson ME, Chappuis PO, Satagopan J, Wong N, Boyd J, Goffin JR, Hudis C, Roberge D, Norton L, Begin LR, Offit K, Foulkes WD (2004) A combined analysis of outcome following breast cancer: differences in survival based on BRCA1/BRCA2 mutation status and administration of adjuvant treatment. *Breast Cancer Res* 6(1):R8–R17. doi:10.1186/bcr658
 21. Rennert G, Bisland-Naggan S, Barnett-Griness O, Bar-Joseph N, Zhang S, Rennert HS, Narod SA (2007) Clinical outcomes of breast cancer in carriers of BRCA1 and BRCA2 mutations. *New Engl J Med* 357(2):115–123. doi:10.1056/NEJMoa070608
 22. Goodwin PJ, Phillips KA, West DW, Ennis M, Hopper JL, John EM, O'Malley FP, Milne RL, Andrulis IL, Friedlander ML, Southey MC, Apicella C, Giles GG, Longacre TA (2012) Breast cancer prognosis in BRCA1 and BRCA2 mutation carriers: an international prospective breast cancer family registry population-based cohort study. *J Clin Oncol* 30(1):19–26. doi:10.1200/jco.2010.33.0068
 23. Huzarski T, Byrski T, Gronwald J, Gorski B, Domagala P, Cybulski C, Oszurek O, Swiez M, Gugala K, Stawicka M, Morawiec Z, Mierzwa T, Janiszewska H, Kilar E, Marczyk E, Kozak-Klonowska B, Siolek M, Surdyka D, Wisniewski R, Posmyk M, Sun P, Lubinski J, Narod SA (2013) Ten-year survival in patients With BRCA1-negative and BRCA1-positive breast cancer. *J Clin Oncol* 31(26):3191–3196. doi:10.1200/jco.2012.45.3571
 24. Mavaddat N, Barrowdale D, Andrulis IL, Domchek SM, Eccles D, Nevanlinna H, Ramus SJ, Spurdle A, Robson M, Sherman M, Mulligan AM, Couch FJ, Engel C, McGuffog L, Healey S, Sinilnikova OM, Southey MC, Terry MB, Goldgar D, O'Malley F, John EM, Janavicius R, Tihomirova L, Hansen TV, Nielsen FC, Osorio A, Stavropoulou A, Benitez J, Manoukian S, Peissel B, Barile M, Volorio S, Pasini B, Dolcetti R, Putignano AL, Ottini L, Radice P, Hamann U, Rashid MU, Hogervorst FB, Kriege M, van der Luijt RB, Peock S, Frost D, Evans DG, Brewer C, Walker L, Rogers MT, Side LE, Houghton C, Weaver J, Godwin AK, Schmutzler RK, Wappenschmidt B, Meindl A, Kast K, Arnold N, Niederacher D, Sutter C, Deissler H, Gadzicki D, Preisler-Adams S, Varon-Mateeva R, Schonbuchner I, Gevensleben H, Stoppa-
 25. Lyonnet D, Belotti M, Barjhoux L, Isaacs C, Peshkin BN, Caldes T, de la Hoya M, Canadas C, Heikkinen T, Heikkila P, Aittomaki K, Blanco I, Lazaro C, Brunet J, Agranarsson BA, Arason A, Barkardottir RB, Dumont M, Simard J, Montagna M, Agata S, D'Andrea E, Yan M, Fox S, Rebbeck TR, Rubinstein W, Tung N, Garber JE, Wang X, Fredericksen Z, Pankratz VS, Lindor NM, Szabo C, Offit K, Sakr R, Gaudet MM, Singer CF, Tea MK, Rappaport C, Mai PL, Greene MH, Sokolenko A, Imyanitov E, Toland AE, Senter L, Sweet K, Thomassen M, Gerdes AM, Kruse T, Caligo M, Aretini P, Rantala J, von Wachenfeld A, Henriksson K, Steele L, Neuhausen SL, Nussbaum R, Beattie M, Odunsi K, Sucheston L, Gayther SA, Nathanson K, Gross J, Walsh C, Karlan B, Chenevix-Trench G, Easton DF, Antoniou AC (2012) Pathology of breast and ovarian cancers among BRCA1 and BRCA2 mutation carriers: results from the Consortium of Investigators of Modifiers of BRCA1/2 (CIMBA). *Cancer Epidemiol Biomark Prev* 21(1):134–147. doi:10.1158/1055-9965.epi-11-0775
 26. Gnant M, Harbeck N, Thomssen C (2011) St. Gallen 2011: summary of the consensus discussion. *Breast Care (Basel)* 6(2):136–141. doi:10.1159/000328054
 27. Harbeck N, Thomssen C, Gnant M (2013) St. Gallen 2013: brief preliminary summary of the consensus discussion. *Breast Care (Basel)* 8(2):102–109. doi:10.1159/000351193
 28. Arun B, Bayraktar S, Liu DD, Gutierrez Barrera AM, Atchley D, Pusztai L, Litton JK, Valero V, Meric-Bernstam F, Hortobagyi GN, Albarracin C (2011) Response to neoadjuvant systemic therapy for breast cancer in BRCA mutation carriers and non-carriers: a single-institution experience. *J Clin Oncol* 29(28):3739–3746. doi:10.1200/jco.2011.35.2682
 29. Byrski T, Gronwald J, Huzarski T, Grzybowska E, Budryk M, Stawicka M, Mierzwa T, Swiez M, Wisniewski R, Siolek M, Dent R, Lubinski J, Narod S (2010) Pathologic complete response rates in young women with BRCA1-positive breast cancers after neoadjuvant chemotherapy. *J Clin Oncol* 28(3):375–379. doi:10.1200/JCO.2008.20.7019
 30. Cybulski C, Wokolorczyk D, Jakubowska A, Huzarski T, Byrski T, Gronwald J, Masojc B, Deebniak T, Gorski B, Blecharz P, Narod SA, Lubinski J (2011) Risk of breast cancer in women with a CHEK2 mutation with and without a family history of breast cancer. *J Clin Oncol* 29(28):3747–3752. doi:10.1200/jco.2010.34.0778
 31. McCuaig JM, Armel SR, Novokmet A, Ginsburg OM, Demsky R, Narod SA, Malkin D (2012) Routine TP53 testing for breast cancer under age 30: ready for prime time? *Fam Cancer* 11(4):607–613. doi:10.1007/s10689-012-9557-z
 32. Sawyer S, Mitchell G, McKinley J, Chenevix-Trench G, Beesley J, Chen XQ, Bowtell D, Trainer AH, Harris M, Lindeman GJ, James PA (2012) A role for common genomic variants in the assessment of familial breast cancer. *J Clin Oncol* 30(35):4330–4336. doi:10.1200/jco.2012.41.7469
 33. Stratton MR, Rahman N (2008) The emerging landscape of breast cancer susceptibility. *Nat Genet* 40(1):17–22. doi:10.1038/ng.2007.53
 34. Rhiem K, Engel C, Graeser M, Zachariae S, Kast K, Kiechle M, Ditsch N, Janni W, Mundhenke C, Golatta M, Varga D, Preisler-Adams S, Heinrich T, Bick U, Gadzicki D, Briest S, Meindl A, Schmutzler RK (2012) The risk of contralateral breast cancer in patients from BRCA1/2 negative high risk families as compared to patients from BRCA1 or BRCA2 positive families: a retrospective cohort study. *Breast Cancer Res* 14(6):R156. doi:10.1186/bcr3369
 35. Byrski T, Dent R, Blecharz P, Foszczynska-Kloda M, Gronwald J, Huzarski T, Cybulski C, Marczyk E, Chrzan R, Eisen A, Lubinski J, Narod SA (2012) Results of a phase II open-label, non-randomized trial of cisplatin chemotherapy in patients with BRCA1-positive metastatic breast cancer. *Breast Cancer Res* 14(4):R110. doi:10.1186/bcr3231

35. Tutt A, Robson M, Garber JE, Domchek SM, Audeh MW, Weitzel JN, Friedlander M, Arun B, Loman N, Schmutzler RK, Wardley A, Mitchell G, Earl H, Wickens M, Carmichael J (2010) Oral poly(ADP-ribose) polymerase inhibitor olaparib in patients with BRCA1 or BRCA2 mutations and advanced breast cancer: a proof-of-concept trial. *Lancet* 376(9737):235–244. doi:[10.1016/S0140-6736\(10\)60892-6](https://doi.org/10.1016/S0140-6736(10)60892-6)