



Cite this: *Analyst*, 2020, **145**, 7320

Paper-based analytical devices for colorimetric detection of *S. aureus* and *E. coli* and their antibiotic resistant strains in milk†

Muhammad Asif, ^{a,b,c} Fazli Rabbi Awan, ^{a,b} Qaiser Mahmood Khan,^{*a,b} Bongkot Ngamsom ^c and Nicole Pamme ^{*c}

Animal derived milk which is an important part of human diet due to its high nutritional value not only supports humans but also presents a growth environment for pathogenic bacteria. Milk may become contaminated with bacteria through udder infections or through contact within the dairy farm environment. Infections are treated with antibiotics, with β -lactams most commonly used in veterinary medicine. However, their frequent use leads to the emergence of β -lactam resistant bacterial strains, which causes difficulties in the treatment of infections in both humans and animals. Detection of pathogens as well as their antibiotic sensitivity is a pre-requisite for successful treatment and this is generally achieved with laboratory-based techniques such as growth inhibition assays, enzyme-linked immunosorbent assays (ELISA) or polymerase chain reactions (PCRs), which are unavailable in resource-limited settings. Here, we investigated paper-based analytical devices (μ PADs) for the presumptive detection of *Staphylococcus aureus* (*S. aureus*) and *Escherichia coli* (*E. coli*) and their antibiotic resistant bacterial strains in milk samples. The μ PADs were fabricated on filter paper using wax printing, and then impregnated with chromogenic substrates, which reacted with bacterial enzymes to form coloured products. Limits of detection of *S. aureus* and *E. coli* and their antibiotic resistant strains in milk samples were found to be 10^6 cfu mL⁻¹. Enrichment of milk samples in a selective medium for 12 h enabled detection as low as 10 cfu mL⁻¹. The paper devices tested on a set of 640 milk samples collected from dairy animals in Pakistan demonstrated more than 90% sensitivity and 100% selectivity compared to PCR, showing promise to provide inexpensive and portable diagnostic solutions for the detection of pathogenic bacteria in resource-limited settings.

Received 28th May 2020,
Accepted 9th August 2020

DOI: 10.1039/d0an01075h

rsc.li/analyst

Introduction

Milk is an essential component of the human diet and forms part of the official nutritional recommendations in many countries. It provides nutrients such as amino acids, vitamins and minerals that are difficult to obtain from dairy-free diets.¹ In addition to being nutritious for humans and animals, milk is also a favourable growth medium for a range of bacteria. Dairy animals can harbour pathogenic bacteria and continuously excrete them in their secretions. Milk can thus become contaminated with pathogenic bacteria either through udder

infections, *i.e.* mastitis,² or *via* direct contact with contaminated materials.³ This contaminated milk is a potential source of transmission of foodborne pathogenic bacteria and its nutrient-rich environment allows bacteria to proliferate rapidly and produce toxins, thus making it an extremely vulnerable commodity for human health.⁴ In spite of strict quality controls, pasteurization of milk and improved health and well-being of dairy animals in developed countries, outbreaks of milk-borne illness have been reported.^{5–7} According to the Centers for Disease Control and Prevention (CDC): contaminated milk, and milk products, accounted for the most hospitalizations relating to food-borne illnesses.⁸ The European Union legislation (Regulation 853/2004) stipulates that only milk from healthy animals can be used for human consumption with a specific limit of <500 cfu mL⁻¹ for *S. aureus* and <100 cfu mL⁻¹ for *E. coli* (coliforms) in raw milk for drinking (Council Directive 92/46/EEC).⁹ The US Food and Drug Administration suggests lower levels of 10–100 organisms of *S. aureus* and *E. coli* in milk to be of public health concern.¹⁰ Compliance with such legislations can be achieved by constant

^aNational Institute for Biotechnology and Genetic Engineering (NIBGE), Jhang Road, Faisalabad, Punjab 44000, Pakistan

^bPakistan Institute of Engineering and Applied Sciences (PIEAS), Islamabad, Pakistan. E-mail: qk_5@yahoo.com

^cDepartment of Chemistry and Biochemistry, Faculty of Science and Engineering, University of Hull, Hull, HU6 7RX, UK. E-mail: n.pamme@hull.ac.uk

†Electronic supplementary information (ESI) available. See DOI: 10.1039/d0an01075h



vigilance over udder health and the quality of milk until it reaches the consumers. This is particularly challenging in resource-limited countries, where preventive measures are not always followed,⁸ and where reliable and affordable point-of-care diagnostic methods are lacking.

Escherichia coli and *Staphylococcus aureus* are major milk-borne pathogenic bacteria that cause a wide range of diseases including mastitis, food poisoning and gastroenteritis in both humans and animals. Mastitis, the most costly and common disease in dairy animals, is mainly treated with beta-lactam antibiotics such as penicillin and cephalosporin, typically for more than 3 days.^{11,12} Frequent and prolonged use of antibiotics in feedstock animals is one of the major reasons for the emergence of antibiotic resistant bacterial strains. Beta-lactam resistant strains of both *E. coli* and *S. aureus* have been reported, posing a growing threat for the effective treatment of infections related to these pathogens in both humans and animals.^{13,14}

Identification of pathogens and their antibiotic sensitivity is a pre-requisite to tailoring effective prevention and treatment plans. This is usually achieved by cell-culture based methods and growth inhibition assays which are cumbersome, expensive and time-consuming.^{15,16} Alternatively, PCR¹⁶ and ELISA¹⁷ techniques have been used for the detection of these pathogens in milk, but they require the availability of a dedicated laboratory facility, highly trained personnel, stable reagents, and multistep sample handling. Management of the logistical considerations associated with sample collection and transport to central laboratories is also required. Due to the lack of basic infrastructure, these techniques are of limited use in resource-poor settings.¹⁸ According to the World Health Organization (WHO), diagnostic tests for resource-limited environments should be affordable, sensitive, specific, user-friendly, rapid and robust, equipment-free, and deliverable to end-users (ASSURED).¹⁹ More recently, Land *et al.* proposed REASSURED with the addition of R (real-time connectivity) and E (ease of specimen collection and environmental friendliness) to the existing ASSURED, for the design of future diagnostic tests to address important priorities such as global health emergencies and antimicrobial resistance (AMR).²⁰

Microfluidic paper-based analytical devices (μ PADs) are a relatively new diagnostic platform that may satisfy the ASSURED and REASSURED criteria.^{20,21} Being inexpensive, and simple to manufacture and operate, μ PADs have attracted significant interest as emerging alternatives to conventional tests, showing promise for scalable, low-cost monitoring, and user-operating analytical devices. The paper matrix, most commonly hydrophilic cellulose fibres, allows passive liquid transport through capillary forces.^{22,23} Hydrophobic barriers embedded into the fibre allow liquid flow to be confined.²³ A range of methods has been reported for the fabrication of paper-based devices including inkjet printing,²⁴ photolithography,²¹ cutting,²⁵ stamping,²⁶ screen printing²⁷ and wax printing.²⁸ Wax printing is probably the simplest and most rapid of these fabrication techniques, requiring only a commercially available office 'wax' printer, which operates like an ordinary

office printer, but instead of ink, deposits wax on the paper. The printed paper is then heated to allow the wax to penetrate through the paper thickness, thus generating a hydrophobic barrier in the paper to enable control over fluid flow during an assay.

Recently, there have been reports on μ PADs for bacterial diagnostics. Henry's group developed μ PADs with colorimetric reactions between bacterial enzymes and chromogenic substrates, *i.e.* chlorophenol red- β -D-galactopyranoside (CPRG) to detect *E. coli* O157:H7, 5-bromo-6-chloro-3-indolyl caprylate for *Salmonella typhimurium*, and 5-bromo-4-chloro-3-indolyl-myoinositol phosphate for *Listeria monocytogenes* from ready-to-eat meat^{29,30} and from agricultural water samples.³¹ Exploiting the same motif, μ PADs were further developed for the detection of β -lactam resistance in *E. coli* in water samples by measuring the colour developed from the reaction between nitrocefin substrates and the bacterial secreted β -lactamase.³⁰ A similar concept was also reported on μ PADs for *E. coli* BL21 detection from water samples.³²

Globally, Pakistan is the fourth largest milk producing country,³³ and *S. aureus* and *E. coli* as well as their antibiotic resistant strains can cause heavy losses to its dairy industry. Early and rapid screening systems can help minimise such losses and also help reduce the development of antibiotic resistance for mastitis treatment. The emerging Extended Spectrum Beta Lactamases (ESBLs) are not only able to inactivate narrow-spectrum antibiotics such as penicillins, and 1st- and 2nd-generation cephalosporins, but also hydrolyse 3rd, 4th and 5th-generation β -lactam antibiotics such as ceftazidime (CAZ) and cefotaxime (CTX).^{34,35} Infections caused by ESBL-producing bacteria are very difficult to cure, have limited treatment options, and often result in treatment failure.^{36,37} Knowledge of antimicrobial susceptibility patterns of local bacterial population will significantly help clinicians with rapid identification of antibiotic resistant bacterial species and prescription of appropriate antibiotics in a timely manner.

In this study, μ PADs were explored for presumptive diagnosis of *E. coli* and *S. aureus* and their antibiotic-resistant strains in milk samples employing a range of chromogenic substrates (Table 1). For the first time, 5-bromo-6-chloro-3-indolyl phosphate *p*-toluidine salt (BCIP, magenta phosphate) and HMRZ-86 were employed on paper-based devices for the detection of *S. aureus* and ESBL-positive bacteria, respectively. The developed μ PADs were tested with 640 milk samples collected from healthy animals from dairy farms in Pakistan. By combining the various colorimetric assays on the μ PADs, a simultaneous indication of the presence of particular bacteria and their antibacterial resistance with readout can be achieved by the unaided eye or photographing *via* a smartphone.

Experimental

Materials

Bacterial strains of *E. coli* (NCTC 12241, 11560, 13351) and *S. aureus* (NCTC 12981, 12973) were obtained from Pro-Lab



Table 1 Colour changing reactions employed herein to study the presence and antibiotic resistance of *E. coli* and *S. aureus*

Substrate	Enzyme	Colour change	Indicative	Ref.
CPRG	β -Galactosidase	Yellow to red-violet	The presence of <i>E. coli</i>	29 and 31
BCIP, magenta phosphate	Alkaline phosphatase	Colourless to purple-mauve	The presence of <i>S. aureus</i>	38
Nitrocefin	β -Lactamase	Yellow to red	Antimicrobial resistance to traditional β -lactams	30, 39 and 40
HMRZ-86	ESBL	Yellow to red	Antimicrobial resistance to extended β -lactams	34, 35, and 41–43

Diagnostics (UK). Nitrocefin was obtained from Merck Millipore (UK). Chlorophenol red- β -D-galactopyranoside (CPRG), 5-bromo-6-chloro-3-indolyl phosphate *p*-toluidine salt (BCIP, magenta phosphate) or magenta phosphate, β -galactosidase, β -lactamase and rAPid alkaline phosphatase were all acquired from Sigma-Aldrich (UK). HMRZ-86 was purchased from Bio-Rad Laboratories (UK). Filter paper (Whatman grade 4) was bought from GE Healthcare Life Sciences (UK). Mueller-Hinton broth and Buffered Peptone Water broth were purchased from Oxoid Ltd, UK. Pasteurised cow's milk was purchased from local stores (Hull, UK).

Preparation of bacterial culture

Pure β -lactamase negative (NCTC 12241), β -lactamase positive (NCTC 11560) and ESBL positive (NCTC 13351) *E. coli* strains were cultured overnight in buffered peptone water (BPW) supplemented with vancomycin hydrochloride (8 mg L⁻¹). Similarly, pure β -lactamase negative (NCTC 12981) and β -lactamase positive (NCTC 12973) *S. aureus* strains were grown overnight in Mueller-Hinton (MH) broth supplemented with 5% sodium hydroxide (NaCl). Supplementation of the BPW medium with vancomycin hydrochloride renders the medium selective for *E. coli*, while addition of 5% NaCl in MH broth makes the medium selective for *S. aureus*.^{31,44}

Fabrication of μ PADs

Designs of the desired wax features were drawn in AutoCAD software (Student Version 2018). An array of 7 mm diameter circles with a 0.5 mm line thickness was printed on the Whatman paper using a wax printer (Xerox ColorQube). The paper was then wrapped in a single layer of aluminium foil and placed on a hot plate at 200 °C for 2–3 min. The heat melted the wax and allowed it to pass through the paper to create a hydrophobic wax barrier. One side of the paper was sealed with masking tape to prevent leaking of reagents during an experiment.

Preparation and deposition of chromogenic substrates in μ PADs

Solutions of the chromogenic substrates were prepared in HEPES buffer (0.1 M HEPES, 0.1% BSA, pH 7.5). CPRG for the detection of *E. coli* was made up as a 3 mM solution according to Bisha *et al.*, 2014.³¹ BCIP for the detection of *S. aureus* was prepared at 5.7 mM (the maximum concentration at which the reagent can be dissolved in PBS without precipitation). For the detection of β -lactam resistant strains of *E. coli* and *S. aureus*, a solution of nitrocefin (1 mM) was prepared as described by Boehle *et al.* 2017.³⁰ HMRZ-86 was available in the soluble

form in a β -LACTA test kit (Bio-Rad Laboratories) and was used for the detection of ESBL. For a point-of-care device to be used under field conditions, it is desired to have minimal user intervention. To this end, the chromogenic substrates were pre-deposited and dried onto the paper prior to use, in contrast to previous reports where they were added in liquid form.^{29,31} Prior to substrate deposition, the bottom of the printed paper was sealed with masking tape. Then, each chromogenic substrate solution (6 μ L) was deposited on the μ PADs and allowed to dry at room temperature for 5–10 min (visually inspected). The μ PADs were placed in a Petri dish covered with aluminium foil to prevent light exposure, and stored at 4 °C for 1–2 days prior to use.

Optimisation of paper-based assays

The colorimetric reactions for paper-based assays were optimised using enzyme solutions prepared in PBS; alkaline phosphatase (0–80 mU mL⁻¹), β -lactamase (0–0.8 mU mL⁻¹), and β -galactosidase (0–80 mU mL⁻¹). The enzyme solutions were freshly prepared at the start of each experiment.

Assays for bacterial culture, spiked milk and real milk samples

Bacterial culture. Ten-fold serial dilutions of *E. coli* and *S. aureus* and their antibiotic resistant strains were prepared in their respective selective enrichment media. Lysis of *E. coli* was performed prior to testing using a probe sonicator (Diagenode Bioruptor/Sonicator UCD-200) at 22 kHz for 30 s to liberate β -galactosidase according to the protocol described by Bisha *et al.*³¹ Alkaline phosphatase and β -lactamase are not endogenous enzymes and therefore, bacterial lysis was not conducted. To perform an assay on a μ PAD, 35 μ L of pathogen suspension from each serial dilution was added to the pre-prepared μ PAD and incubated at 37 °C for 3–4 h.

Spiked milk samples. Overnight cultures of *E. coli* and *S. aureus* and their antibiotic resistant strains were used to prepare ten-fold serial dilutions in pasteurized cow's milk (local market, UK). A hundred microlitres of bacterial cell culture suspension was mixed with 900 μ L of milk sample. The solution was then further diluted (ten-fold) in milk. For quantification of colony forming units (cfu) per mL, 100 μ L from each serial dilution was plated in nutrient agar. Each dilution (35 μ L) was tested on the μ PAD for colorimetric reactions. Previous studies reported that low volume enrichment (<1 mL) resulted in pathogen cell proliferation and an increase in their associated enzymes and therefore a more intense colour change and lower limit of detection were achievable.²⁹ For this purpose, 900 μ L of selective enrichment broth was



inoculated with 100 μL of each serially diluted spiked milk sample. These enriched spiked milk samples were incubated at 37 $^{\circ}\text{C}$ for variable periods of time, *i.e.* 0, 4, 8 or 12 h. After incubation, 35 μL from each enriched sample was tested on the μPAD with colorimetric reactions.

Raw milk samples. Following ethical clearance by the Institutional Ethical Committee (IEC) in the National Institute for Biotechnology and Genetic Engineering (NIBGE), Faisalabad (Pakistan), raw milk samples were collected from 640 dairy animals having apparently healthy udders (228 buffaloes and 412 cows in different dairy farms in rural areas of Faisalabad, Pakistan). Before sampling, initial few drops of milk were discarded, and teat ends were disinfected with cotton swabs soaked in 70% ethanol and allowed to dry. Each milk sample (5–10 mL) was collected directly in a sterile screw cap bottle from all quarters. The samples were kept on ice and transported to the laboratory for analysis. For enrichment of bacteria, 1 mL of the milk sample was diluted with 9 mL of BPW containing specific supplements and incubated at 37 $^{\circ}\text{C}$ for 12 h (Table S1, ESI \dagger). Specific supplement encourages growth of selective bacteria only. After incubation, the samples were tested using μPADs for the detection of *S. aureus* and *E. coli* and their β -lactam resistant strains as discussed above.

Visual detection and data analysis

Colorimetric results were analysed through visual inspection of the μPAD at 3–4 h after sample deposition. The presence of *E. coli* in the samples was determined by a change in the colour of CPRG embedded in the μPADs from yellow to red-violet.^{29,31} Similarly, *S. aureus* was detected by a change in the colour of BCIP embedded in the μPADs from colourless to mauve/purple.³⁸ A change in the colour of nitrocefin²⁴ and HMRZ-86^{35,41–43,45} embedded in the μPADs from yellow to red are the indicatives of β -lactamase and ESBL positive bacteria, respectively.

Semi-quantitative analysis of the colorimetric end results was performed according to the previously reported protocol by Boehle *et al.*³⁰ Briefly, following the assay, Petri dishes containing the μPADs were placed inside a light box (16 cm \times 16 cm \times 16 cm) to avoid light interference during image capture. The camera part of the smart phone (Vodafone 890N, operated with flash) was placed between the slit of the light box (2 cm \times 5 cm) to obtain images. The images were analysed using ImageJ freeware (National Institute of Health, USA), following the protocol previously described.²⁴ Initially, the images were processed through a Red Green Blue (RGB) stack and the Green channel was selected as it is the complementary colour of red, which is the end point colour of all reactions except the *S. aureus* experiment which was mauve/purple. Although the complementary colour of mauve/purple is yellow, it gave a relatively high sensitivity with the green image amongst the RGB stack. Therefore, it was also analysed through the green channel. Next, the image was inverted. Circles were drawn to outline the measurement areas within the reaction zones. Utilising the “Measure” tab under

“Analyze”, the average colour intensity within the defined areas was obtained and further analysed with Microsoft Excel. The colour intensity of μPADs containing water was also analysed as a blank: the colour intensity of μPADs containing samples was normalized by subtracting the colour intensity of μPADs containing water. Normalised data were processed in Microsoft Excel to obtain mean and standard deviations from three separate repeats ($n = 3$).

UV-vis spectrophotometric detection of colorimetric reactions

UV-vis spectrophotometric analysis of colorimetric reactions employed for μPADs was performed on the same reactions using microtitre plates and a UV-vis plate reader (NanoDropTM Lite Spectrophotometer, Thermofisher Scientific). For this purpose, 100 μL of ten-fold serial dilutions of *S. aureus* and *E. coli* and their β -lactam resistant bacterial strains were reacted with 100 μL of their respective chromogenic substrates whose concentrations were similar to those used on μPADs . The microtiter plate was then incubated at 37 $^{\circ}\text{C}$ for 2 h. Following this, absorbance at various wavelengths was measured; 595 nm for the CPRG reaction, 405 nm for the BCIP reaction, and 490 nm for the nitrocefin and HMRZ-86 reaction.

Polymerase chain reactions (PCR)

DNA was extracted from enrichment broth using a GeneJET Genomic DNA Purification Kit according to the manufacturer's instructions. A Nano-drop system (ND-2000C, Thermofisher Scientific) was employed to quantify the concentration and purity of the extracted DNA. The primers used during PCR are summarised in Table S2, ESI \dagger . All the reactions were carried out to a final volume of 50 μL under the following conditions. Initial denaturation at 94 $^{\circ}\text{C}$ for 2 min, followed by 35 cycles of denaturation at 94 $^{\circ}\text{C}$ for 1 min, annealing (at the temperature summarised in Table S2, ESI \dagger) for 1 min, and extension at 72 $^{\circ}\text{C}$ for 2 min. Final extension was performed at 72 $^{\circ}\text{C}$ for 10 min to complete the reaction. Amplified PCR products were detected by electrophoresis on 1.5% agarose gel and visualised using a gel documentation system (Gel DocTM EZ Imager, Bio-RAD) and photographed. A GeneRuler 1kb DNA ladder (Thermo Scientific) was included in each run.

Results and discussion

Paper-based assays employing colorimetric reactions between bacterial enzymes and their corresponding chromogenic substrates

The development of the paper-based assays initially involved the use of enzyme solutions, rather than enzymes derived from the bacteria, to confirm the feasibility of enzyme-substrate reactions on the paper matrix. For optimisation of the reaction conditions, different dilutions of pure bacterial enzymes were freshly prepared at the start of each experiment. The lowest β -galactosidase concentration to produce a distinguishable colour change from yellow to red-violet was 0.02



U mL⁻¹ (Fig. 1S(a), ESI†), comparable to 0.03 U mL⁻¹ reported for β-galactosidase.⁴⁶ The lowest enzyme concentration to show a distinctive colour change for β-lactamase assay was 0.1 mU mL⁻¹ (Fig. 1S(b), ESI†). The discrepancy with the value of 10 mU mL⁻¹ reported by Boehle *et al.*³⁰ may plausibly be due to different sources of beta-lactamase employed for the reaction.

For *S. aureus* detection, the reaction between solutions of BCIP and alkaline phosphatase solution was first attempted on paper. Utilising 3 mM BCIP, a characteristic colour change from colourless to mauve/purple was successfully observed at ≥0.006 U mL⁻¹ of alkaline phosphatase (Fig. 1S(c), ESI†). This demonstrates a novel paper-based assay for *S. aureus* detection *via* bacterial alkaline phosphatase and its corresponding chromogenic substrate BCIP (magenta phosphate).

Testing of the developed μPADs with bacterial culture

Having successfully developed μPADs for the detection of bacterial enzymes from enzyme solutions, the devices were next tested with live bacteria populations obtained from cell cultures in their respective growth media. Ten-fold serial dilutions of different strains of *E. coli* and *S. aureus* were prepared in their respective selective broths and reacted with their relevant chromogenic substrate on the μPADs.

In order to determine the presence of β-galactosidase, *E. coli* was lysed prior to testing on the developed paper device as β-galactosidase is produced inside *E. coli* cells and is not secreted into the surrounding medium. A distinctive colour change from yellow to red-violet when reacting with CPRG was observed at an *E. coli* concentration of ≥3.6 × 10⁶ cfu mL⁻¹ (Fig. S2(a), ESI†), in good agreement with the 3.8 × 10⁶ cfu mL⁻¹ value detected on μPADs developed by Boehle *et al.*³⁰

In contrast to β-galactosidase, alkaline phosphatase is excreted from *S. aureus* cells into the surrounding medium. The reaction between *S. aureus* secreted alkaline phosphatase and BCIP was therefore carried out without cell lysis (Fig. S2(b), ESI†) employing the same device shown in Fig. S1(c), ESI†. A distinguishable colour change from colourless to mauve/purple was observed at a concentration exceeding 3.6 × 10⁶ cfu mL⁻¹. To the best of our knowledge, this is the first time the detection of *S. aureus* was demonstrated on a paper device based on the reaction between bacteria secreted enzyme alkaline phosphatase and 5-bromo-6-chloro-3-indolyl phosphate *p*-toluidine salt.

Next, the efficiency of the developed μPADs on detecting the β-lactam resistant strain of *E. coli* was examined using the colorimetric reaction between nitrocefin and beta-lactamase to produce a characteristic colour change from yellow to red. No cell lysis was performed prior to the reaction, even though a marginal 5% increase in colour intensity on μPADs tested with lysed *E. coli* was observed when compared to that of intact cells.³⁰ As expected, no colour change occurred for the β-lactam susceptible strain of *E. coli*, where no β-lactamase was produced by the bacterial enzyme (Fig. S3(a), ESI†). For the β-lactam resistant strains, a colour change occurred at concentrations ≥10⁶ cfu mL⁻¹, in good agreement with ≥3.8 × 10⁶

cfu mL⁻¹ bacteria reported from μPADs tested with different β-lactam resistant bacteria in wastewater and sewage.²⁴ The same device tested with a β-lactam resistant strain of *S. aureus* detected the colour change at ≥1.3 × 10⁶ cfu mL⁻¹ (Fig. S3(b), ESI†).

The experiments confirmed the feasibility of μPADs for *E. coli* and the β-lactam resistant strain of *E. coli*, as well as feasibility for the detection of *S. aureus* employing the reaction between their secreted alkaline phosphatase and the chromogenic BCIP substrate. In addition, a β-lactam resistant strain of *S. aureus* was effectively detected using the nitrocefin-embedded μPAD. Distinctive colour changes were observed in all cases at bacterial levels of ≥10⁶ cfu mL⁻¹.

Cross reactivity study of μPADs for *S. aureus* and *E. coli*

The colorimetric assays employed for the developed paper devices utilised enzymes which could also be produced by other bacteria, and hence a compromised specificity might be expected when performed under field conditions. In laboratory settings, specific supplements can be added into the enrichment media in order to promote the growth of target bacteria, whilst simultaneously inhibiting the growth of other competing bacteria. Herein, vancomycin hydrochloride was utilised to support the growth of *E. coli*, and to suppress the growth of *S. aureus*. Similarly, the high salt content present in MH broth only permits *S. aureus* to grow. A cross-reactivity study between the two assays was carried out after incubating the bacteria in selective enrichment broths. The colour change was only observed when the correct pair of bacterial enzyme and specific substrate was present, with no false positive results found from the two bacterial species (Fig. 1). Although cross reactivity can be eliminated in laboratory analysis using a growth inhibitor to suppress competing bacteria, this can be problematic in field tests and false positive results are inevitable. Nevertheless, the method can still be suitable as an initial screening test providing impetus for further testing and confirmation to be conducted. Further investigations will include protocols to minimise other related contaminating bacteria in the sample using selective enrichment media.

μPADs for the differentiation of β-lactam resistant and ESBL resistant bacteria

Next, we aimed to develop paper-based assays for the detection of ESBL bacteria which not only show resistance to penicillins, such as cephalosporins and aztreonam, but also to other classes of antibiotics, such as aminoglycosides, cotrimoxazole, tetracycline and fluoroquinolones.

Nitrocefin was reported as a suitable substrate for the detection of ESBL bacteria. A colour change from yellow to red could be observed on the developed μPAD when pathogen concentrations exceeded 10⁶ cfu mL⁻¹ for both β-lactam resistant *E. coli* and ESBL resistant *E. coli* (Fig. S4(a), ESI†) as nitrocefin cannot differentiate between these two groups.³⁶ As such, a specific chromogenic cephalosporin, HMRZ-86, was herein exploited as a selective chromogenic substrate embedded on the μPAD to detect ESBL-resistant bacteria. A carboxypropyl-



Analyst

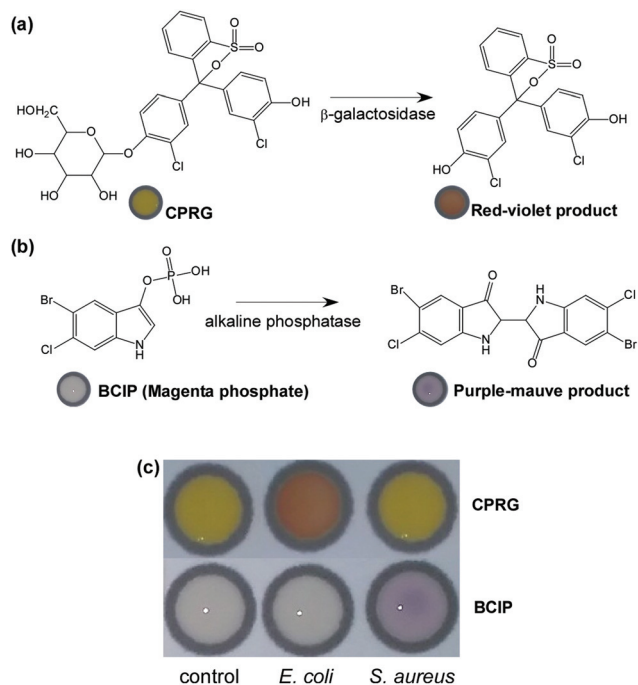


Fig. 1 Cross reactivity study for assessing the selectivity of each enzyme-substrate pair. (a) A reaction between the CPRG substrate and the enzyme β -galactosidase from *E. coli* yields a colour change from yellow to red-violet. (b) A purple-mauve colour product is afforded from the reaction between the BCIP substrate and the enzyme alkaline phosphatase from *S. aureus*. (c) μ PADs embedded with CPRG (top row) and BCIP (bottom row) tested with control (left-hand column), *E. coli* (middle column) and *S. aureus* (right-hand column). Colour change was observed only when a specific substrate-enzyme pair was present. Level of bacteria = 10^6 cfu mL⁻¹.

oxymino group that binds to the side chain at position 7 in compound protects the β -lactam ring from a range of β -lactamases, but not from extended-spectrum β -lactamases (ESBLs).⁴⁵ In contrast to nitrocefin embedded μ PADs, a colour change from yellow to red only occurred from the presence of ESBL-resistant *E. coli* at concentrations exceeding 10^6 cfu mL⁻¹ (Fig. S4(b), ESI[†]). This development can be applied to real samples where differentiation of antibiotic resistant *E. coli* strains can prove to be crucial.

The sensitivity of the paper-based reactions performed on the developed μ PADs was validated against the UV-visible spectrophotometry results obtained from the same liquid-phase reactions conducted in conventional microtitre plates. A comparable level of 10^6 cfu mL⁻¹ bacteria detection observed from the absorbance values of the spectrophotometric assay confirming the viability of the developed μ PADs (Fig. S5-S7, ESI[†]), and demonstrating a cost-effective approach of μ PADs coupled with a smart phone for the detection of bacteria in samples without the need for sophisticated laboratory equipment and trained staff.

μ PADs for the analysis of bacterial spiked-milk samples

Having demonstrated the viability of the paper devices for the detection of *E. coli* and *S. aureus* and their antibiotic resistant

strains from bacterial culture media, the μ PADs were next tested with milk samples spiked with bacteria in a range of ten-fold serial dilutions.

First, the μ PAD embedded with BCIP was investigated with milk samples spiked with *S. aureus*. A colour change from the reaction between *S. aureus* secreted alkaline phosphatase and BCIP was visually detectable at a concentration exceeding 4.5×10^6 cfu mL⁻¹ (Fig. 2a), similar to the result previously obtained from *S. aureus* in culture media. The nitrocefin reaction also worked well distinguishing between β -lactam susceptible and β -lactam resistant strains of *S. aureus* spiked into milk samples (Fig. 2b). The resistant strain of *S. aureus* revealed a red colour at concentrations exceeding 4.5×10^6 cfu mL⁻¹. These results showed the successful paper-based detection of *S. aureus* and its β -lactam resistant strain from spiked milk samples, which can potentially be utilised for detecting such pathogenic bacteria from real milk samples and other complex matrices.

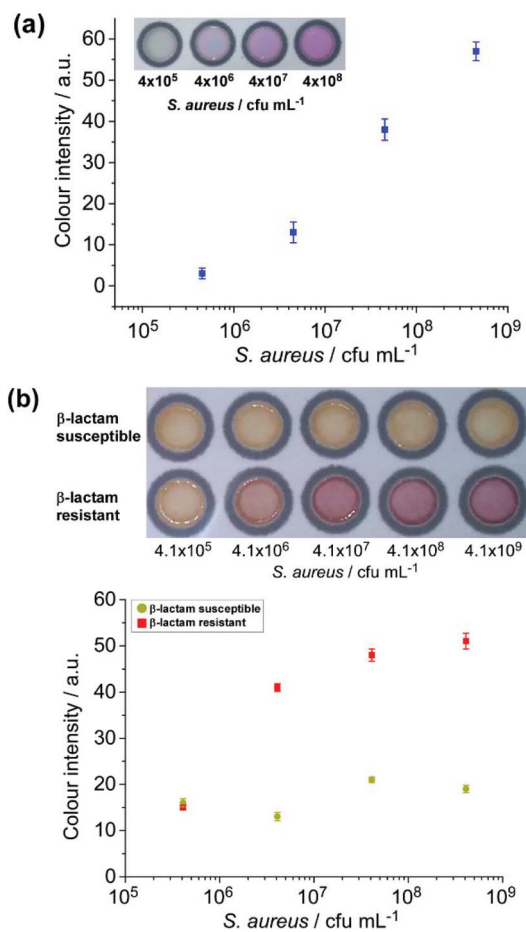


Fig. 2 (a) Reaction on the μ PAD between the BCIP substrate (5.7 mM) and alkaline phosphatase excreted from *S. aureus* spiked into milk. A colour change was detectable at 4.5×10^6 cfu mL⁻¹, and no colour change was observed at 4.5×10^5 cfu mL⁻¹. (b) Reaction on μ PAD between the nitrocefin substrate and live bacteria of β -lactam resistant and β -lactam susceptible strains of *S. aureus*. Only the resistant strain yields a colour change when concentrations exceed 10^6 cfu mL⁻¹ ($n = 3$).



The nitrocefin-embedded μ PAD tested with *E. coli* spiked into milk samples showed a colour change to red for the resistant strain at a concentration $\geq 2.4 \times 10^6$ cfu mL⁻¹ (Fig. 3), similar to the observation from the culture broth. Boehle *et al.* also detected a colour change in their nitrocefin embedded μ PADs tested with wastewater and sewage with $\geq 3.8 \times 10^6$ cfu mL⁻¹ bacteria, but not with lower concentrations.³⁰ This shows the versatility of the paper-based β -lactamase-nitrocefin assays for the detection of β -lactam resistant *E. coli* at ca. 10^6 cfu mL⁻¹, regardless of the complexity of the matrices.

The assessment of the HMRZ-86 impregnated μ PAD with spiked milk samples also demonstrated the specificity to the EMBL-resistant strain of *E. coli* at a similar visual detection level of 2.7×10^6 cfu mL⁻¹ as found in pure culture samples (Fig. 4).

However, the reaction between CPRG and β -galactosidase from lysed *E. coli* was not successfully tested with spiked milk samples (Fig. S8, ESI†). It is postulated that β -galactosidase released by the bacteria might have hydrolysed a large amount of lactose contained in the milk samples, and therefore only a small quantity of β -galactosidase was available to react with embedded CPRG.

Following on, pre-enrichment of spiked milk samples was attempted in order to supply nutrients and to encourage bacteria growth over a period of a few hours prior to testing. The supplements contained within the enrichment media selectively promote the growth of target bacteria, whilst simultaneously inhibiting the growth of other competing bacteria. Thus, the desired bacteria can be brought to a concentration level that is detectable through the colorimetric reaction on the μ PADs.

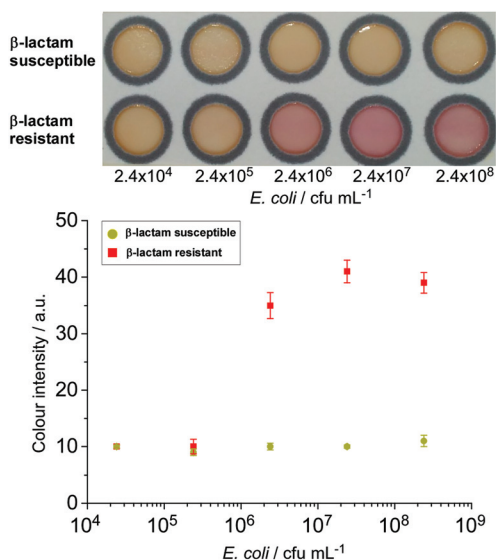


Fig. 3 Reaction on the μ PAD between the nitrocefin substrate and live bacteria of β -lactam resistant and β -lactam susceptible strains of *E. coli*. Only the resistant strain yielded a colour change when concentrations exceeded 10^6 cfu mL⁻¹ ($n = 3$).

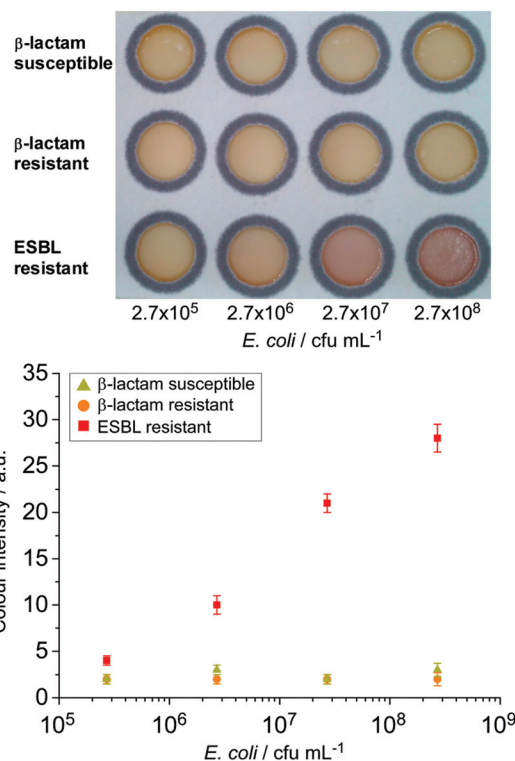


Fig. 4 Detection of ESBL *E. coli* from spiked milk samples employing the HMRZ-86 impregnated μ PAD. A distinctive colour change from yellow to red was observed from the ESBL resistant strain of *E. coli* at 2.7×10^6 cfu mL⁻¹ ($n = 3$).

Fig. 5 depicts the colorimetric results obtained from milk samples spiked with *E. coli* and *S. aureus* and their antibiotic resistant strains after pre-enrichment. Levels of bacteria as low as 10 cfu per 1 mL of the spiked milk sample could be detected following 12 or 16 h of pre-enrichment in their respective selective broths. This suggests that the sensitivity of the paper-based assays can be vastly improved by including a bacterial pre-enrichment step. Pre-enrichment amplifies the analyte target, and when combined with selective growth media, it reduces the growth of unwanted bacteria in samples that could contribute to false positive results as also reported previously.^{24,31} This step only required an incubator, which is commonly used in microbiology laboratories. With further investigations, a suitable pre-concentration step can be included in the platform for field tests. The final detection performed on μ PADs can offer a simple, cost-effective, and easy-to-interpret solution for the screening of major milk borne pathogens. The entire process, overnight pre-enrichment and colorimetric detection, can be performed within one day, and it allows the detection of bacterial contamination as low as 10 cfu mL⁻¹ from the initial sample.

μ PADs for the analysis of bacteria in raw milk samples

The ultimate goal of this present study was to develop a simple, cost-effective and user-friendly device for the detection



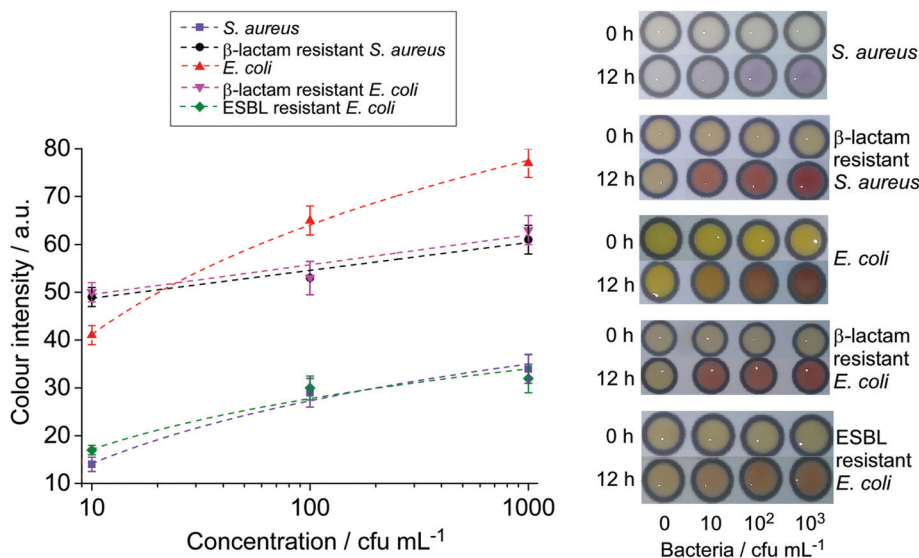


Fig. 5 Photographs and colour intensity analysis of milk samples spiked with various bacteria after 12 h enrichment ($n = 3$).

of pathogenic bacteria causing mastitis suitable for resource-poor areas in the developing countries. The viability of the developed paper devices was therefore examined for the detection of *S. aureus* and *E. coli* with raw milk collected from a group of cattle and buffaloes in Pakistan. The samples were collected from healthy animals from the field. Due to very low level of bacteria from the samples, pre-enrichment with selective media was required to increase the number of bacteria to meet with the detectable level of the paper devices ($ca. 10^6$ cfu mL⁻¹) previously observed from bacterial spiked milk samples. In order to achieve this, a milk sample (10 v%) was mixed with selective media (90 v%) and incubated at 37 °C for 12 h. This step not only increased the bacterial level, but also diluted the

lactose concentration in the samples, thereby diminishing the consequent competing lactose hydrolysis which was problematic in the β -galactosidase-CPRG reaction previously observed in *E. coli* spiked milk samples. Subsequently, the pre-enriched samples were analysed on μ PADs and PCR gene analysis was conducted for result confirmation (Fig. 6a and b).

Out of 640 milk samples, μ PADs detected 77 samples with *E. coli* positive (84 samples confirmed by PCR), and 129 samples with *S. aureus* positive (143 confirmed by PCR) as summarised in Table 2. These results suggested that the sensitivity of our developed μ PADs was higher than 90%. The positive results obtained on μ PADs also showed positive from PCR, indicating that the μ PADs were also 100% specific.

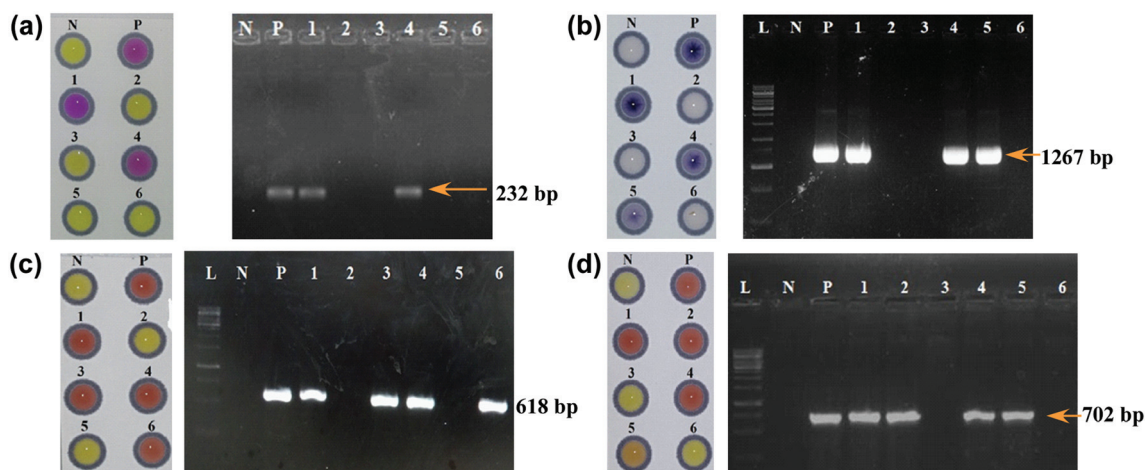


Fig. 6 Left: Detection of pathogenic bacteria employing μ PADs; (a) *E. coli*. (b) *S. aureus*. (c) Beta-lactam resistant *E. coli*. (d) Beta-lactam resistant *S. aureus*. N = negative control that contains enrichment broth without any sample/bacteria; P = positive control that contains enrichment broth with pathogenic bacteria or their β -lactam resistant strains; 1–6 = samples collected from field. Right: gel electrophoresis of various PCR products; N = negative control that contains no DNA template; P = positive control that contains DNA of pathogenic bacteria or their β -lactam resistant strains; Lanes 1–6 = samples collected from the field.



Table 2 Comparison of the results from μ PADs and PCR for the detection of *E. coli* and *S. aureus* from raw milk ($n = 640$)

Bacteria	Positive samples	
	μ PAD	PCR
<i>E. coli</i>	77 (12%)	84 (13.1%)
<i>S. aureus</i>	129 (20.2%)	143 (22.3%)

Table 3 Comparison of the results from μ PADs and PCR for the detection of *E. coli* and *S. aureus* from raw milk ($n = 640$)

Bacteria	Positive samples	
	μ PAD	PCR
β -Lactam resistant <i>E. coli</i>	52/77 (67.5%)	52/77 (67.5%)
β -Lactam resistant <i>S. aureus</i>	81/129 (62.7%)	81/129 (62.7%)

Beta-lactam is the most widely used class of antibiotics in veterinary medicine. As a result, β -lactam resistant pathogens are very common in livestock. For the detection of β -lactam resistance in the *E. coli*- and *S. aureus*-positive milk samples, enrichment cultures were sub-cultured in BPW supplemented with cefotaxime ($2 \mu\text{g mL}^{-1}$) and tested on nitrocefin embedded μ PADs. Beta-lactam resistance in the same samples was also confirmed by PCR through amplification of the blaTEM gene (Fig. 6(c and d)). The μ PAD detected β -lactam resistant pathogens in 67% and 62.7% of *E. coli* and *S. aureus* isolates, respectively, without false positive results confirmed by PCR (Table 3). Therefore, the μ PAD accurately detected β -lactam resistant isolates.

We have shown a successful implementation of paper-based colorimetric assays for the detection of *E. coli* and *S. aureus* and β -lactam resistant strains in milk samples that could be achieved within a day. The present setup required no sophisticated equipment, and yet yielded similar sensitivity and selectivity to the molecular diagnostic technique of PCR for results obtained from 640 raw milk samples. In developing countries like Pakistan, dairy farms are located in remote and resource limited areas and local veterinary diagnostic laboratories are not equipped with sophisticated equipment like micro-plate readers, thermal cyclers, etc., and they tend to have only bacterial culture facilities such as incubators and simple microscopes.^{1,47} In these laboratories, routine identification of bacteria and their antibiotic sensitivity is usually carried out by their culture characteristics (less specific) and growth inhibition assays (i.e. analysis of bacterial growth in the presence of antimicrobial agents), which give results in 2–4 days.

Conclusions

In the present study, paper-based assays have been devised for the detection of *S. aureus* and *E. coli* and their antibiotic resist-

ant strains in milk samples, with similar sensitivity to the sophisticated laboratory-based technique, UV-vis spectrophotometry. Employing specific chromogenic substrates, colour-change reactions on μ PADs have successfully distinguished specific bacteria without cross-reactivity between their β -lactam susceptible and β -lactam resistant strains. They also showed, for the first time, a successful differentiation between ESBL resistant and β -lactam resistant strains. The paper devices showed $\geq 90\%$ sensitivity and 100% selectivity, compared to the advanced and sophisticated PCR method, demonstrating a cost-effective platform for the presumptive diagnosis of bacteria in milk, especially in resource limited areas.

Conflicts of interest

There are no conflicts to declare.

Acknowledgements

The authors would like to thank the Commonwealth Scholarship Commission, United Kingdom, for providing funding to this project. Dr Fazli Rabbi Awan acknowledges funding (Project No. CRP/PAK14-02; Contract No. CRP/14/012) from the International Centre for Genetic Engineering and Biotechnology (ICGEB), Italy for partial support for research in this study.

References

- 1 L. Parsons, A. Somoskovi, C. Gutierrez, E. Lee, C. Paramasivan, A. Abimiku, S. Spector, G. Roscigno and J. Nkengasong, *Clin. Microbiol. Rev.*, 2011, **24**, 314–350.
- 2 S. Oliver, B. Jayarao and R. Almeida, *Foodborne Pathog. Dis.*, 2005, **2**, 115–129.
- 3 M. Pal, S. Mulu, M. Tekle, S. V. Pintoo and J. Prajapati, *Beverage Food World*, 2016, **43**, 1–3.
- 4 E. Fox, Y. Jiang and K. Gobius, *Int. Dairy J.*, 2018, **84**, 28–35.
- 5 D. Morgan, C. Newman, D. Hutchinson, A. Walker, B. Rowe and F. Majid, *Epidemiol. Infect.*, 1993, **111**, 181–187.
- 6 M. De Buyser, B. Dufour, M. Maire and V. Lafarge, *Int. J. Food Microbiol.*, 2001, **67**, 1–17.
- 7 D. Schmid, R. Fretz, P. Winter, M. Mann, G. Hoger, A. Stoger, W. Ruppitsch, J. Ladstätter, N. Mayer, A. de Martin and F. Allerberger, *Wien. Klin. Wochenschr.*, 2009, **121**, 125–131.
- 8 J. Painter, R. Hoekstra, T. Ayers, R. Tauxe, C. Braden, F. Angulo and P. Griffin, *Emerging Infect. Dis.*, 2013, **19**, 407–415.
- 9 J. E. Hillerton and E. A. Berry, *NMC Annual Meeting Proceedings*, 2004.
- 10 US Food and Drug Administration, Compliance Policy Guide Sec. 527.300, 2012.
- 11 N. Fejzic, M. Begagic, S. Serie-Haracic and M. Smajlovic, *Bosnian J. Basic Med. Sci.*, 2014, **14**, 155–159.
- 12 S. Pyorala, *Ir. Vet. J.*, 2009, **62**, 40–44.



- 13 T. Ali, S. Rahman, L. Zhang, M. Shahid, S. Zhang, G. Liu, J. Gao and B. Han, *Front. Microbiol.*, 2016, **7**, 1931.
- 14 B. Robles, D. Nobrega, F. Guimaraes, G. Wanderley and H. Langoni, *Pesqui. Vet. Brasil*, 2014, **34**, 325–328.
- 15 J. Jorgensen and M. Ferraro, *Clin. Infect. Dis.*, 2009, **49**, 1749–1755.
- 16 A. Ashraf, M. Imran, T. Yaqub, M. Tayyab, W. Shehzad and P. Thomson, *Mol. Cell. Probes*, 2017, **33**, 57–64.
- 17 R. Bu, J. Wang, C. DeRoy, J. Wu, L. Xi, Y. Liu and Z. Shen, *Iran J. Vet. Res.*, 2015, **16**, 283–287.
- 18 C. Rodrigues, N. Desai and H. Fernandes, *Clin. Microbiol. Newsl.*, 2016, **38**, 51–56.
- 19 G. Wu and M. Zaman, *Bull. W. H. O.*, 2012, **90**, 914–920.
- 20 K. Land, D. Boeras, X. Chen, A. Ramsay and R. Peeling, *Nat. Microbiol.*, 2019, **4**, 46–54.
- 21 A. Martinez, S. Phillips, G. Whitesides and E. Carrilho, *Anal. Chem.*, 2010, **82**, 3–10.
- 22 D. Liana, B. Raguse, J. Gooding and E. Chow, *Sensors*, 2012, **12**, 11505–11526.
- 23 T. Satarpai, J. Shiwatana and A. Siripinyanond, *Talanta*, 2016, **154**, 504–510.
- 24 K. Abe, K. Suzuki and D. Citterio, *Anal. Chem.*, 2008, **80**, 6928–6934.
- 25 E. Fenton, M. Mascarenas, G. Lopez and S. Sibbett, *ACS Appl. Mater. Interfaces*, 2009, **1**, 124–129.
- 26 C. Cheng, A. Mazzeo, J. Gong, A. Martinez, S. Phillips, N. Jain and G. Whitesides, *Lab Chip*, 2010, **10**, 3201–3205.
- 27 Z. Nie, C. Nijhuis, J. Gong, X. Chen, A. Kumachev, A. Martinez, M. Narovlyansky and G. Whitesides, *Lab Chip*, 2010, **10**, 477–483.
- 28 Y. Lu, W. Shi, L. Jiang, J. Qin and B. Lin, *Electrophoresis*, 2009, **30**, 1497–1500.
- 29 J. Jokerst, J. Adkins, B. Bisha, M. Mentele, L. Goodridge and C. Henry, *Anal. Chem.*, 2012, **84**, 2900–2907.
- 30 K. Boehle, J. Gilliland, C. Wheeldon, A. Holder, J. Adkins, B. Geiss, E. Ryan and C. Henry, *Angew. Chem., Int. Ed.*, 2017, **56**, 6886–6890.
- 31 B. Bisha, J. Adkins, J. Jokerst, J. Chandler, A. Perez-Mendez, S. Coleman, A. Sbodio, T. Suslow, M. Danyluk, C. Henry and L. Goodridge, *J. Vis. Exp.*, 2014, 51414.
- 32 D. Lin, B. Li, J. Qi, X. Ji, S. Yang, W. Wang and L. Chen, *Sens. Actuators, B*, 2020, **303**, e51414.
- 33 M. M. Ajmal, C. X. Li and W. Aslam, *J. Econ. Sustain. Dev.*, 2015, **6**, 19–28.
- 34 H. Hanaki, Y. Koide, H. Yamazaki, R. Kubo, T. Nakano, K. Atsuda and K. Sunakawa, *J. Infect. Chemother.*, 2007, **13**, 390–395.
- 35 M. El-Jade, M. Parcina, R. Schmithausen, C. Stein, A. Meilaender, A. Hoerauf, E. Molitor and I. Bekerredjian-Ding, *PLoS One*, 2016, **11**, 127213.
- 36 D. Rawat and D. Nair, *J. Global Infect. Dis.*, 2010, **2**, 263–274.
- 37 R. Colodner, *Am. J. Infect. Control*, 2005, **33**, 104–107.
- 38 A. Rambach, *US Patent*, 6548268B1, 2003.
- 39 S. Bidya and R. S. Suman, *Open J. Clin. Diagn.*, 2014, **4**, 47–52.
- 40 S. Sharma, P. Ramnani and J. Viridi, *J. Antimicrob. Chemother*, 2004, **54**, 401–405.
- 41 H. Hanaki, R. Kubo, T. Nakano, M. Kurihara and K. Sunagawa, *J. Antimicrob. Chemother*, 2004, **53**, 888–889.
- 42 S. Jain, J. Andrews, A. Fraise and N. Brenwald, *J. Antimicrob. Chemother*, 2007, **60**, 652–654.
- 43 D. Livermore, M. Warner and S. Mushtaq, *J. Antimicrob. Chemother*, 2007, **60**, 1375–1379.
- 44 M. Bruins, P. Juffer, M. Wolfhagen and G. Ruijs, *J. Clin. Microbiol.*, 2007, **45**, 682–683.
- 45 H. Hanaki, Y. Koide, H. Yamazaki, R. Kubo, T. Nakano, K. Atsuda and K. Sunakawa, *J. Antimicrob. Chemother*, 2007, **13**, 390–395.
- 46 A. Lokur, *J. Pharm. Innov.*, 2018, **7**, 103–106.
- 47 J. Jacobs, L. Hardy, M. Semret, O. Lunguya, T. Phe, D. Affolabi, C. Yansouni and O. Vandenberg, *Front. Med.*, 2019, **6**, 205.

