



Title	Genotypic analysis of <i>Klebsiella pneumoniae</i> isolates in a Beijing hospital reveals high genetic diversity and clonal population structure of drug-resistant isolates.
Author(s)	Wang, Q; Li, B; Tsang, KL; Yi, Y; Woo, PCY; Liu, CH
Citation	PLoS One, 2013, v. 8, p. e57091
Issued Date	2013
URL	http://hdl.handle.net/10722/184598
Rights	Creative Commons: Attribution 3.0 Hong Kong License

Genotypic Analysis of *Klebsiella pneumoniae* Isolates in a Beijing Hospital Reveals High Genetic Diversity and Clonal Population Structure of Drug-Resistant Isolates

Qi Wang¹*, Bin Li¹*, Alan K. L. Tsang²*, Yong Yi³, Patrick C. Y. Woo^{2*}, Cui Hua Liu^{1*}

1 CAS Key Laboratory of Pathogenic Microbiology and Immunology, Institute of Microbiology, Chinese Academy of Sciences, Beijing, China, **2** State Key Laboratory of Emerging Infectious Diseases, Department of Microbiology, The University of Hong Kong, Hong Kong Special Administrative Region, China, **3** The 306 Hospital, Beijing, China

Abstract

Background: The genetic diversity and the clinical relevance of the drug-resistant *Klebsiella pneumoniae* isolates from hospital settings are largely unknown. We thus conducted this prospective study to analyze the molecular epidemiology of *K. pneumoniae* isolates from patients being treated in the 306 Hospital in Beijing, China for the period of November 1, 2010–October 31, 2011.

Methodology/Principal Findings: Antibiotic susceptibility testing, PCR amplification and sequencing of the drug resistance-associated genes, and multilocus sequence typing (MLST) were conducted. A total of 163 isolates were analyzed. The percentage of MDR, XDR and PDR isolates were 63.8% (104), 20.9 (34), and 1.8% (3), respectively. MLST results showed that 60 sequence types (STs) were identified, which were further separated by eBURST into 13 clonal complexes and 18 singletons. The most dominant ST was ST15 (10.4%). Seven new alleles and 24 new STs were first identified in this study. Multiple logistic regression analysis revealed that certain clinical characteristics were associated with those prevalent STs such as: from ICU, from medical ward, from community acquired infection, from patients without heart disease, from patients with treatment success, susceptible to extended spectrum cephalosporin, susceptible to cephamycins, susceptible to fluoroquinolones, and with MDR.

Conclusions/Significance: Our data indicate that certain drug-resistant *K. pneumoniae* clones are highly prevalent and are associated with certain clinical characteristics in hospital settings. Our study provides evidence demonstrating that intensive nosocomial infection control measures are urgently needed.

Citation: Wang Q, Li B, Tsang AKL, Yi Y, Woo PCY, et al. (2013) Genotypic Analysis of *Klebsiella pneumoniae* Isolates in a Beijing Hospital Reveals High Genetic Diversity and Clonal Population Structure of Drug-Resistant Isolates. PLoS ONE 8(2): e57091. doi:10.1371/journal.pone.0057091

Editor: Riccardo Manganelli, University of Padova, Medical School, Italy

Received: October 30, 2012; **Accepted:** January 17, 2013; **Published:** February 21, 2013

Copyright: © 2013 Wang et al. This is an open-access article distributed under the terms of the Creative Commons Attribution License, which permits unrestricted use, distribution, and reproduction in any medium, provided the original author and source are credited.

Funding: This study was supported by a grant from the National Basic Research Program of China (grant number 2012CB518700); a grant from National Natural Science Foundation of China (NSFC) (grant No. 30700975); a grant from the Knowledge Innovation Program of the Chinese Academy of Sciences (KSCX2-EW-J-6); and the Merieux Research Grant program. The funders had no role in study design, data collection and analysis, decision to publish, or preparation of the manuscript.

Competing Interests: This study was largely supported by research grants from National Natural Science Foundation of China and Chinese Academy of Sciences, while the Merieux Research Grant acknowledged in this manuscript only partially contributed to this study. In addition, no competing interests and any other relevant declarations relating to employment, consultancy, patents, products in development or marketed products etc. are associated with this manuscript. This does not alter the authors' adherence to all the PLOS ONE policies on sharing data and materials.

* E-mail: liucuihua@im.ac.cn (CHL)7semi; pcywoo@hkucc.hku.hk (PCYW)

† These authors contributed equally to this work.

Introduction

Klebsiella pneumoniae is an important bacterial pathogen associated with community acquired (CA) and hospital acquired (HA) infections and has the potential to cause severe morbidity and mortality, particularly in immunocompromised patients [1–3]. Infections caused by drug-resistant *K. pneumoniae* isolates, especially those produce extended-spectrum beta-lactamases (ESBLs) and which are multidrug-resistant (MDR), extensively drug-resistant (XDR) or pandrug-resistant (PDR), are more difficult and expensive to treat with worse treatment outcome [4–8]. More recently, carbapenem-resistant *K. pneumoniae* have been reported worldwide as a consequence of acquisition of carbapenemase

genes, and a large variety of carbapenemases have been identified in *K. pneumoniae* [9–14].

Rapid and discriminative genotyping methods are useful for determining the clonality of the isolates in nosocomial or household outbreaks [15,16]. Multilocus sequencing typing (MLST) is a nucleotide sequence-based approach for characterizing bacterial isolates (<http://www.mlst.net/>), with the advantage over traditional pulsed-field gel electrophoresis (PFGE) of ease of manipulation and convenient comparison [17,18]. In our previous study, we observed alarmingly high rates of MDR, XDR and PDR strains among *K. pneumoniae* isolates from a tertiary care hospital in Beijing, China [19]. In addition, data from that study indicate that many of the drug resistance genes were transmissible [19]. Since

the genetic diversity, transmission patterns and the clinical relevance of the drug-resistant *K. pneumoniae* isolates from hospital settings are largely unknown, we thus further conducted this MLST genotyping analysis for *K. pneumoniae* isolates from the 306 Hospital, a tertiary care hospital in Beijing, China for the period of November 1, 2010–October 31, 2011 with an aim to assess the molecular epidemiology as well as clinical characteristics associated with prevalent *K. pneumoniae* clones.

Methods

Ethics statement

All of the investigation protocols in this study were approved by the institutional ethics committee of the 306 Hospital, Beijing, China. Written informed consent for *K. pneumoniae* isolates to be collected as well as for their information to be stored in the hospital database for research purposes was provided by participants. Written informed consent was obtained from the next of kin, caretakers, or guardians on the behalf of the minors/children participants involved in this study. Permission for using the information in the medical records of the patients for research purposes was obtained from the 306 Hospital. The Institute ethics committee of the 306 Hospital reviewed that relevant ethical issues in this study were considered.

Study population, bacterial isolate identification, and drug susceptibility testing

The 306 Hospital in Beijing, China is a tertiary care hospital, with 1,100 beds and approximately 25,000 hospital admissions per year. Consecutive non-repetitive *K. pneumoniae* isolates were collected from patients being treated in the 306 Hospital for the period of November 1, 2010–October 31, 2011. Isolates with ambiguous sequence data for one or more alleles were excluded from the analysis. All isolates were cultured in Luria-Bertani (LB) medium. A total of 175 isolates were confirmed as *K. pneumoniae* by 16S rDNA sequencing. Drug susceptibility testing (DST) for the *K. pneumoniae* isolates was performed using the bioMérieux VITEK2 system following manufacturer's instructions. The following 18 drugs were tested: ampicillin (AMP), piperacillin/tazobactam (TZP), ampicillin/sulbactam (SAM), cefazolin (CFZ), ceftriaxone (CRO), ceftazidime (CAZ), cefepime (FEP), cefotetan (CTT), ertapenem (ETP), imipenem (IM), aztreonam (ATM), ciprofloxacin (CIP), levofloxacin (LVX), gentamicin (GM), tobramycin (TOB), amikacin (AMK), trimethoprim-sulfamethoxazole (SXT), and nitrofurantoin (FD). The ESBLs were detected by the bioMérieux VITEK-2 AST-GN13 test. In some cases, the ESBL positivity was further confirmed by the double disk diffusion method according to standard protocols by the Clinical Laboratory Standard Institute (CLSI) [20]. *Escherichia coli* strains ATCC 25922 and ATCC 35218, *Klebsiella pneumoniae* strain ATCC 700603 and *Pseudomonas aeruginosa* strain ATCC 27853 were used as quality control strains for the DST. Clinical records of patients from whom the *K. pneumoniae* isolates were obtained were reviewed retrospectively.

PCR amplification and sequencing for drug resistance genes

Drug resistance-associated genes were detected by PCR and sequencing using 37 pairs of primers as described previously [19]. The drug resistance-associated genes examined include: *bla*_{CTX-M-1}, *bla*_{CTX-M-2}, *bla*_{CTX-M-3}, *bla*_{CTX-M-8}, *bla*_{CTX-M-9}, *bla*_{CTX-M-10}, *bla*_{CTX-M-14}, *bla*_{CTX-M-25}, *bla*_{SHV-group}, *bla*_{TEM}, *bla*_{KPC}, *bla*_{NDM}, *bla*_{IMP}, *bla*_{VIM}, *bla*_{OXA-48}, *bla*_{CMY}, *bla*_{DHA}, *bla*_{FOX}, *dhfr*, *qnrA*, *qnrB*, *qnrC*, *qnrD*, *qnrS*, *aac(6')-Ib-cr*, *qepA*, *gyrA*, *parC*, *aacA4*, *aacC1*, *aacC2*,

aadA1, *aadB*, *aphA6*, *armA*, *mntB*, and *Integron I*. DNA sequences were annotated using the BLAST program at <http://www.ncbi.nlm.nih.gov>.

Genotyping of *K. pneumoniae* isolates by MLST analysis

Genotyping was determined by MLST analysis. MLST with seven genes (*gapA*, *infB*, *mdh*, *pgi*, *phoE*, *rpoB* and *tonB*) was performed on isolates according to the protocol described on the *K. pneumoniae* MLST website (www.pasteur.fr/mlst) [18]. Alleles and sequence types (STs) were assigned by using the MLST database (www.pasteur.fr/mlst/Kpneumoniae.html). Alleles and STs that had not been previously described were submitted to the curator of the database and were assigned new designations.

Assignment to clonal complexes

The program eBURST v 3.0 was used to identify the different clonal complexes [21]. Clonal complexes were defined as groups of two or more independent isolates that shared identical alleles at six or more loci; each complex was named after the putative founder ST. Data from additional 1,380 isolates of *K. pneumoniae* were obtained from the MLST isolate database deposited at the Pasteur Institute (http://www.pasteur.fr/cgi-bin/genopole/PF8/mlstdbnet.pl?file=klebs_isolates.xml) [18].

Sequence analysis

The proportions of nucleotide alterations that led to a change in the amino acid sequence (non-synonymous substitution, *dn*) and the proportions of nucleotide alterations that did not lead to a change in the amino acid sequence (synonymous substitution, *ds*) were calculated with START2 [22]. Phylogenetic analysis was performed using ClonalFrame algorithm with the software package ClonalFrame version 1.1 [23], using 50,000 burn-in cycles and 100,000 further iterations. Maximum likelihood tree was constructed using PhyML 3.0 under a GTR+I+G model based on the alignment of concatenated sequence from the seven MLST gene loci with 1000 bootstrap replicates [24].

Measurement of clonality

The standardized index of association (I_A^S) for the seven loci was calculated using START2 software and 1,000 iterations [22]. I_A^S was also estimated using 764 unique STs including the new STs in this study and existing STs in the entire MLST isolate database as a whole.

Definitions

Every patient was counted only once during his hospital stay regardless of the number of positive cultures. Each case was differentiated between CA infection and HA infection based on a temporal definition. A CA case was defined as a case with known carriage of *K. pneumoniae* on admission or with the first culture positive for these bacteria within 48 h of admission [6,25]. A HA case was defined by the first culture positive obtained more than 48 h after admission. MDR was defined as acquired non-susceptibility to at least one agent in three or more antimicrobial categories, XDR was defined as non-susceptibility to at least one agent in all but two or fewer antimicrobial categories (i.e. bacterial isolates remain susceptible to only one or two categories) and PDR was defined as non-susceptibility to all agents in all antimicrobial categories [7].

Statistical analyses

Data were entered and analysed using the statistical package SPSS for windows (version 15). Two people were independently

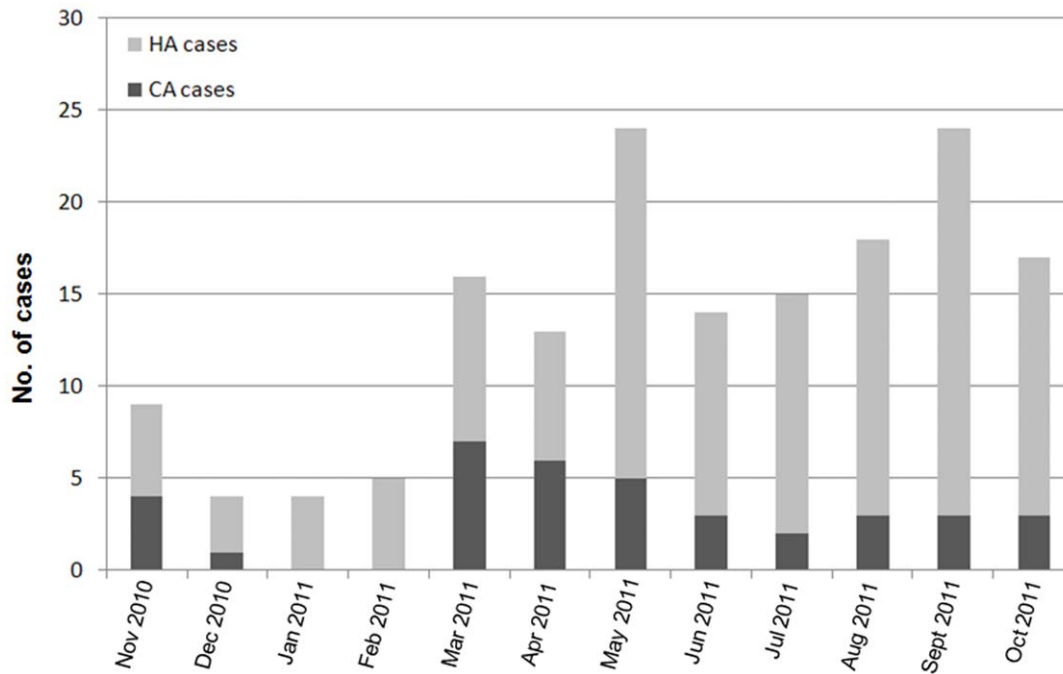


Figure 1. Epidemiology of hospitalized patients that were colonized or infected with *K. pneumoniae* isolates in the 306 Hospital during November 1, 2010–October 31, 2011. Note: HA: hospital acquired; CA: community acquired.
doi:10.1371/journal.pone.0057091.g001

cross-checked each entry to ensure the quality of data entered into the computer. For categorical data, different groups were compared using the Chi-square test. Univariate and multivariate analyses were used to determine the factors associated with prevalent *K. pneumoniae* clones. The factors examined were shown in Table S5. All Potentially associated factors were included in a logistic regression model for multivariate analysis, and they were eliminated using a backward stepwise selection method using a *P* value threshold of 0.1 for the variables to be remained in the model. Mantel-Haenszel odds ratios (ORs), 95% confidence intervals (CIs) and corresponding *P* values were reported. *P* value of <0.05 was considered to be statistically significant.

Results

Demographic and clinical characteristics of the patients

From November 1, 2010 to October 31, 2011, a total of 175 non-repetitive hospitalized patients who had *K. pneumoniae* isolates available were subjected to DST at the 306 Hospital. Twelve (6.9%) patients were excluded from the study as a result of low-quality sequencing results for one or more of the 7 house-keeping genes of their isolates. Among the remaining 163 patients, 126 (77.3%) were HA cases and 37 (22.7%) were CA cases. Eighty (49.1%) isolates were ESBL positive and 83 (50.9%) isolates were ESBL negative. The proportion of the male and female patients were 73.6% (120/163) and 26.4% (43/163), respectively. Fifty-four (33.1%) of the patients were Beijing residents and the rest were from other provinces of China (non-Beijing residents). The median (\pm SD) age of the patients was 74.50 ± 19.16 years (range 1–98 years). The majority of the patients were from medical ward (75/163, 46.0%) and intensive care unit (ICU) (49/163, 30.1%). The main source of the specimens was sputum (121/163, 74.2%). The proportion of MDR, XDR, PDR, and other types of *K. pneumoniae* isolates were 63.8% (104/163), 20.9% (34/163), 1.8% (3/163) and 13.5% (22/163) respectively. Notably, the rates of

resistance to most drugs were much higher among ESBL positive isolates than ESBL negative isolates. The epidemiology of CA and HA cases based on the admission date is shown in Fig. 1. More detailed information on relevant demographic and clinical characteristics of the study population is summarized in Table 1.

MLST analysis of the *K. pneumoniae* isolates and identification of clonal complexes

MLST was conducted to determine the extent of genotypic diversity among the *K. pneumoniae* isolates. Sixty different STs were identified by MLST. Thirty-seven of the STs contained single isolates, while 23 STs included between 2 and 17 isolates. 24 (40%) of the 60 STs had not been previously identified, 16 of these differed from recognized STs at only a single locus, 5 of these (ST877, ST882, ST883, ST890 and ST891) differed from recognized STs at two loci, and 3 of these (ST886, ST893 and ST894) differed from recognized STs at three loci (Table S1). The 60 STs generated in this data set were separated by eBURST into 13 clonal complexes and 18 singletons with the default stringent definition of the groups by sharing alleles at 6 of 7 loci (Fig. 2 and 3, Table 2, and Table S1). The most dominant ST was ST15 (10.4%, 17/163), followed by ST562 (8.6%, 14/163), ST23 (7.4%, 12/163), ST716 (6.1%, 10/163), ST11 (5.5%, 9/163), ST147 (4.9%, 8/163). Those 6 STs accounted for 42.9% (70/163) of the total isolates, and those 70 isolates were thus designated prevalent clones in this study. Two of the three PDR isolates in this study belonged to ST15.

Measurement of clonality and selection pressure

Analysis of the data set of 163 isolates from patients yielded an I_A^S value of 0.1251. This was decreased to 0.0841 when only one representative of each sequence type was included. Significant linkage disequilibrium was detected in both analyses. It remained significant when only one representative isolate for each ST in the

Table 1. Demographic and clinical characteristics of the patients.

Characteristics	Total n = 163 (%)	ESBL positive cases n = 80 (%)	ESBL negative cases n = 83 (%)	P value
Gender				0.166
Male	120 (73.6)	55 (68.8)	65 (78.3)	
Female	43 (26.4)	25 (31.3)	18 (21.7)	
Age group, years				
<15	6 (3.7)	3 (3.8)	3 (3.6)	0.963
15–60	31 (19.0)	14 (17.5)	17 (20.5)	0.628
>60	126 (77.3)	63 (78.8)	63 (75.9)	0.665
Residence situation				0.406
Beijing resident	54 (33.1)	29 (36.3)	25 (30.1)	
Non-Beijing resident	109 (66.9)	51 (63.8)	58 (69.9)	
Hospital location				
Emergency room	8 (4.9)	3 (3.8)	5 (6.0)	0.502
Intensive care unit	49 (30.1)	27 (33.8)	22 (26.5)	0.313
Medical ward	75 (46.0)	37 (46.3)	38 (45.8)	0.952
Surgical ward	31 (19.0)	13 (16.3)	18 (21.7)	0.377
Sources of specimens				
Sputum	121 (74.2)	60 (75.0)	61 (73.5)	0.826
Urine	12 (7.4)	9 (11.3)	3 (3.6)	0.062
Throat or nose swabs	13 (8.0)	3 (3.8)	10 (12.0)	0.051
Blood	8 (4.9)	5 (6.3)	3 (3.6)	0.436
Others	9 (5.5)	3 (3.8)	6 (7.2)	0.331
Underlying diseases				
Pneumonia	14 (8.6)	6 (7.5)	8 (9.6)	0.610
Diabetes mellitus	40 (24.5)	19 (23.8)	21 (25.3)	0.786
Chronic bronchitis	11 (6.7)	6 (7.5)	5 (6.0)	0.721
Chronic obstructive pulmonary disease	14 (8.6)	7 (8.8)	7 (8.4)	0.959
Abnormal liver function	36 (22.1)	13 (16.3)	23 (27.7)	0.070
Renal dysfunction	35 (21.5)	21 (26.3)	14 (16.9)	0.152
Hypertension	84 (51.5)	39 (48.8)	45 (54.2)	0.427
Heart disease	55 (33.7)	30 (37.5)	25 (30.1)	0.337
Cerebral infarction	41 (25.2)	22 (27.5)	19 (22.9)	0.520
Pulmonary infection	81 (49.7)	42 (52.5)	39 (47.0)	0.513
Urinary tract infection	11 (6.7)	4 (5.0)	7 (8.4)	0.383
Infection acquired model				0.665
Community acquired	37 (22.7)	17 (21.3)	20 (24.1)	
Hospital acquired	126 (77.3)	63 (78.8)	63 (75.9)	
Drug resistance profiles				
Penicillins	162 (99.4)	80 (100.0)	82 (98.8)	0.325
1st and 2nd generation cephalosporins	86 (52.8)	78 (97.5)	8 (9.6)	<0.001
3rd and 4th generation cephalosporins	86 (52.8)	77 (96.3)	9 (10.8)	<0.001
Cephamecins	108 (66.3)	37 (46.3)	71 (85.5)	<0.001
Carbapenems	12 (7.4)	8 (10.0)	4 (4.8)	0.205
Monobactams	83 (50.9)	77 (96.3)	6 (7.2)	<0.001
Fluoroquinolones	72 (44.2)	53 (66.3)	19 (22.9)	<0.001
Aminoglycosides	90 (55.2)	71 (88.8)	19 (22.9)	<0.001
Folate pathway inhibitors	94 (57.7)	76 (95.0)	18 (21.7)	<0.001
Nitrofurantoin	145 (89.0)	77 (96.3)	68 (81.9)	0.004
Drug resistance types				
MDR-KP	104 (63.8)	49 (61.3)	55 (66.3)	0.505

Table 1. Cont.

Characteristics	Total n = 163 (%)	ESBL positive cases n = 80 (%)	ESBL negative cases n = 83 (%)	P value
XDR-KP	34 (20.9)	22 (27.5)	12 (14.5)	0.040
PDR-KP	3 (1.8)	3 (3.8)	0	0.075
Other types of KP	22 (13.5)	6 (7.5)	16 (19.3)	0.028
Treatment outcome				0.751
Treatment success	138 (84.7)	67 (83.8)	71 (85.5)	
Died	25 (15.3)	13 (16.3)	12 (14.5)	

doi:10.1371/journal.pone.0057091.t001

entire isolate database were considered ($I_A^S = 0.1133$), thus the observed linkage disequilibrium is not due to sampling bias. The values of I_A^S in these analyses were low suggesting the weakly clonal population. The dn/ds ratios for all loci were significantly less than 1 (Table S2), indicating there was no strong positive selective pressure on the genes.

Phylogenetic analysis

The maximum likelihood tree show a phylogenetically distinct cluster of related STs (ST877, ST886, ST894, ST856 and ST526) is formed with strong bootstrap support. Four of them (ST877, ST886, ST894 and ST856) are new STs in this study, and 2 of these (ST886 and ST894) differed from recognized STs at three loci (Fig. 4). The drug resistance profiles and epidemiological information of those clones belonging to phylogenetically distinct cluster of related STs are shown in Table S3.

Drug resistance profiles of *K. pneumoniae* isolates grouped by CCs and STs

The detailed information on drug resistance profiles of *K. pneumoniae* isolates grouped by CCs is shown in Table 3. All CCs showed high proportion of resistance to penicillin. We did not observe significant differences between ESBL blaCTX-M and blaTEM/SHV groups (Table 2 and Table 3). We also compared the drug resistance profiles, the corresponding drug resistance-associated genes, as well as the clinical characteristics of the prevalent *K. pneumoniae* clones (Table S4). We observed that some isolates with the same STs were from patients who were hospitalized in the same period and who shared the same wards, especially in the first ward of the department of respiration, neuro-intensive care unit (NICU), and ICU. In addition, we detected a large variety of ESBL genes (such as bla_{SHV} and bla_{CTX-M}, and bla_{TEM}), as well as genes associated with resistance to fluoroquinolones (such as qnrA, qnrB, qnrC, qnrD, qnrS, aac(6')-Ib-cr, and qepA) and aminoglycosides (such as aacC2, addA1, and aacA4) in the

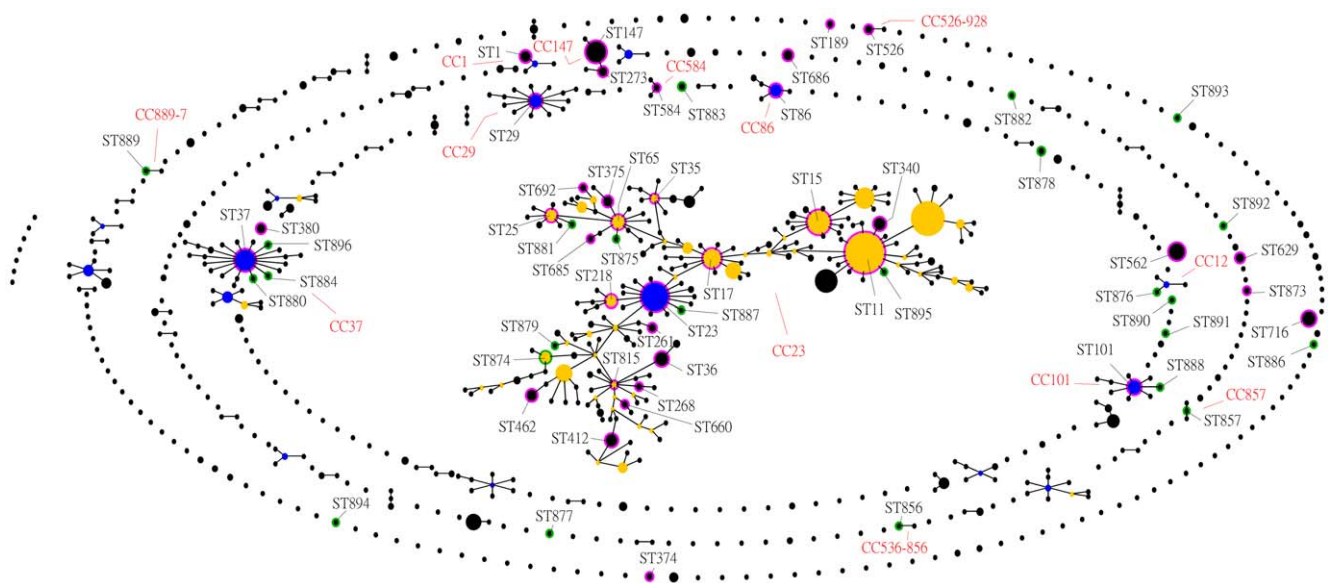
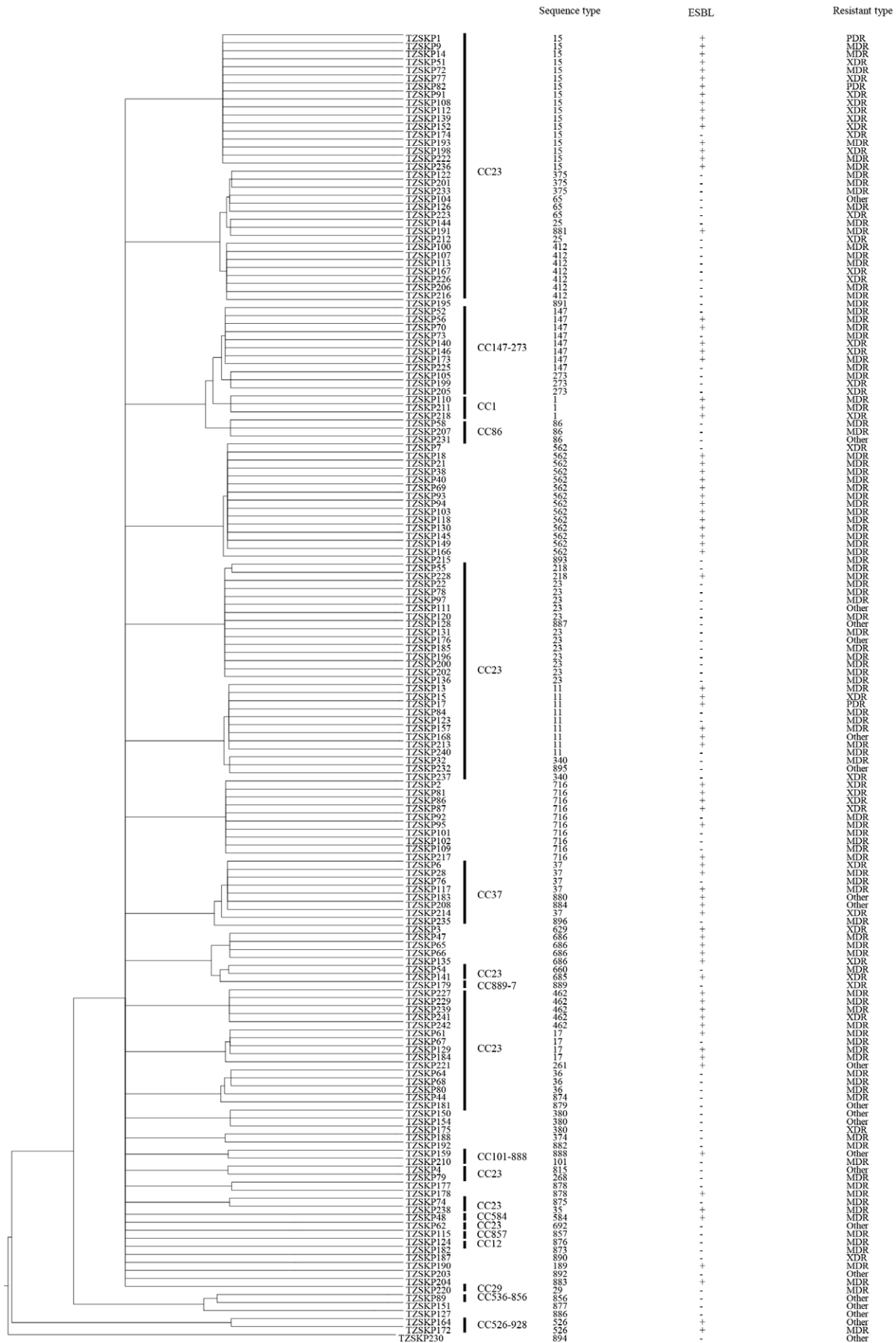


Figure 2. Comparative eBURST analysis showing the clonal assignment of the STs present in this study compared to that of the STs in the entire *K. pneumoniae* MLST isolate database. Only STs in this study are given, and lines connect single locus variants. The names of the CCs are based on the ST assigned as the founder genotype of the complex shown in blue. Subgroup founders are shown in yellow. The relative size of the circles indicates their prevalence. New STs identified in this study are highlighted by a green halo; STs present in the database and this study are highlighted by a pink halo.

doi:10.1371/journal.pone.0057091.g002



03

Figure 3. 50% majority-rule consensus phylogenetic tree derived from *ClonalFrame* for the 7 housekeeping loci in *K. pneumoniae*, displaying the clonal relationship between the STs and drug resistance of the *K. pneumoniae* population.
doi:10.1371/journal.pone.0057091.g003

prevalent clones. We detected the *bla*_{OXA-48} gene in one of the PDR *K. pneumoniae* isolate (TZSKP-82).

Factors associated with prevalent *K. pneumoniae* clones

Factors associated with prevalent STs compared with non-prevalent STs upon univariate and multivariate analysis are shown in Table S5 and Table 4, respectively. Multiple logistic regression analysis revealed that isolates from ICU (OR, 13.802), from medical ward (OR, 5.154), from community acquired infection (OR, 3.106), from patients without heart disease (OR, 3.446), from patients with treatment success (OR, 6.691), susceptible to extended spectrum cephalosporins (OR, 8.633), susceptible to cephamycins (OR, 3.430), susceptible to fluoroquinolones (OR, 6.247), with MDR (OR, 3.111) were significantly associated with the prevalent STs.

Discussion

The present study describes the genetic diversity of drug-resistant *K. pneumoniae* isolates in a tertiary hospital in Beijing. Twenty-four new STs were detected, demonstrating that the MLST database is still novel and continuously growing. The isolates originated from both CA and HA infections. It is noteworthy that in contrast to the observations from a study from Germany [1], the levels of resistance were equally high among both HA and CA *K. pneumoniae* isolates in our study, indicating a very large reservoir of resistance in the community around Beijing. We further analyzed the drug resistance profiles, the corresponding drug resistance-associated genes, as well as the clinical characteristics of those isolates with the same STs. We observed that the rates of resistance to most drugs were much higher among ESBL positive isolates than ESBL negative isolates. But we did not observe significant differences between ESBL *bla*_{CTX-M} and *bla*_{TEM}/*bla*_{SHV} groups in their distribution of STs or CCs. We noticed that some prevalent isolates with the same STs were from patients who were hospitalized in the same period and who shared the same wards, especially in the first ward of the department of respiration, NICU, and ICU, this observation suggests that those clonal isolates were transmitted in the hospital, causing infections among immunocompromised patients in those wards. In addition, many patients with this ST shared the same wards such as the first ward of the department of respiration and cardiac care unit, suggesting there is currently an ongoing transmission of isolates of this ST in those wards of the hospital.

Notably, among the three isolates of PDR *K. pneumoniae*, two isolates belonged to ST15, which is the most prevalent ST in this study. The clinical and molecular epidemiological data suggest that the majority of those ST15 isolates were from patients with severe underlying diseases such as pulmonary infection, renal dysfunction, heart failure, and chronic obstructive pulmonary disease, etc. A study from Spain reported that VIM-1 producing *K. pneumoniae* ST15 clone has a high capacity to spread among ICU patients with severe underlying conditions [2]. ST15 is also widespread in other countries such as Denmark, Hungary, Korea, Malaysia, Singapore and Taiwan [26–28]. Interestingly, one of the PDR *K. pneumoniae* isolate (TZSKP-82) possesses the *bla*_{OXA-48} gene. OXA-48 carbapenemases were first isolated from *K. pneumoniae* in Turkey in 2008 [10,29]. To the best of our knowledge, this is the first documented case of OXA-48-producing *K. pneumoniae* in China.

ST23 was another prevalent ST in this study. ST23 was the primary founder of CC23, and isolates sharing this ST were found in other countries. Previous studies showed that ST23 isolates were closely related to liver abscess [30,31]. However, the ST23 isolates in this study were diagnosed with different kinds of illnesses including cerebral infarction, renal dysfunction, and liver abscess, etc.

Another frequently identified ST is ST11, which is a single locus variant of ST258. ST258 is a well known lineage of *K. pneumoniae* which plays an important role in the global spread of carbapenemases. ST258 was not found in our study. There are only a few nucleotide differences between ST11 and ST258 in their *tonB* alleles. ST258 was proposed to be probably arisen from ST11 by acquisition of the *tonB*-79 allele, followed by acquisition of carbapenem-resistance genes on mobile elements [32]. A recent study was conducted to analyze carbapenem-resistant *K. pneumoniae* isolates from 13 hospitals in nine cities covering five provinces in China, and they found that ST11 was the most dominant clone among the 95 carbapenem-resistant *K. pneumoniae* isolates in China [33]. Although ST11 is not the most dominant one in our study, it is among one of the prevalent clones and all those ST11 isolates harbored ESBL genes. In addition, the genetic relatedness of ST11 with ST258 is of great concern.

From the maximum likelihood tree, a phylogenetically distinct cluster of related STs (ST877, ST886, ST894, ST856 and ST526) is formed. Four of them (ST877, ST886, ST894 and ST856) are new STs in this study, and 2 of these (ST886 and ST894) differed from recognized STs at three loci. These results suggest a recent clone is emerging locally. Further identification of the drug resistance profiles and epidemiological information of the 4 isolates with new STs imply that they are relatively susceptible (with resistance to only a few drugs and no resistance genes detected).

One of the challenges for infection control is to discern the prevalent clones as well as their clinical relevance, especially the treatment outcome, of those isolates, so as to provide information for better management measures. We thus further examined the association between certain prevalent *K. pneumoniae* isolates (based on the frequency of the STs) and the demographic and clinical features as well as mortality of the patients from whom the isolates were obtained. We noticed that some results (For example, the results for the association with the intensive care unit) from univariate and multivariate analysis differ greatly. We think that the results from the multivariate analysis should be more reliable and those variables with significant *P* values in the multivariate analysis were identified to be independently associated with prevalent *K. pneumoniae* clones after excluding some less significant variables and taking into consideration of the confounding factors during the multivariate analysis. Data from multiple logistic regression analysis revealed that isolates from ICU, from medical ward, from community acquired infection, and with MDR were significantly associated with those prevalent clones. In addition, we noticed that those prevalent clones were more frequently associated with patients without heart disease, who were susceptible to extended spectrum cephalosporins, cephamycins and fluoroquinolones, and who had better treatment outcome. A recent study from Taiwan reported that the ESBL positive *E. coli* ST131, which has emerged in bloodstream infections in Taiwan, is not related to more health-care-associated risk factors, and the *E. coli* bacteremia caused by this clone did not exhibit a higher mortality rate [34]. Thus the prevalent clones are not always the

Table 2. Distribution of sequence types in *K. pneumoniae* clonal complexes.

Clonal complex	Sequence type	Allelic profile	No. of isolates		No. of isolates		
			ESBL+		ESBL -	HA	CA
			<i>bla</i> _{CTX-M}	<i>bla</i> _{TEM} / <i>bla</i> _{SHV}			
CC23	23	2-1-1-1-9-4-12	0	0	12	7	5
	11	3-3-1-1-1-1-4	5	4	3	5	4
	15	1-1-1-1-1-1-1	14	11	1	10	7
	17	2-1-1-1-4-4-4	3	2	1	3	1
	65	2-1-2-1-10-4-13	0	0	3	3	0
	340	3-3-1-1-1-1-18	0	0	2	2	0
	895	3-3-1-1-1-1-42	0	0	1	1	0
	815	2-1-2-1-7-1-12	0	0	1	1	0
	35	2-1-2-1-10-1-19	1	1	0	1	0
	268	2-1-2-1-7-1-81	0	0	1	0	1
	875	2-1-2-1-10-4-19	0	0	1	0	1
	25	2-1-1-1-10-4-13	0	0	2	1	1
	36	2-1-2-1-7-1-7	0	0	3	3	0
	218	2-3-1-1-9-4-12	1	0	1	1	1
	375	43-1-2-1-10-4-13	0	0	3	3	0
	412	2-1-2-1-9-1-112	0	0	7	6	1
	660	2-1-2-1-4-1-25	0	0	1	0	1
	685	2-1-2-1-3-4-25	1	1	0	1	0
	874	4-1-1-1-7-1-22	1	0	1	1	0
	887	2-1-1-1-21-4-12	0	0	1	1	0
	692	2-1-2-1-1-4-42	0	0	1	0	1
	879	2-1-1-1-145-1-9	0	0	1	1	0
	261	2-1-1-1-4-27-12	0	0	0	1	0
	462	2-1-1-6-1-4-12	4	2	0	3	2
	881	2-68-1-1-10-4-13	1	1	0	1	0
CC37	37	2-9-2-1-13-1-16	3	4	1	3	2
	896	2-9-2-1-13-1-38	0	0	1	1	0
	884	77-9-2-1-13-1-16	1	1	0	1	0
	880	2-9-2-1-1-1-16	1	1	0	1	0
CC29	29	2-3-2-2-6-4-4	0	0	1	1	0
CC101	101	2-6-1-5-4-1-6	0	0	1	1	0
	888	2-6-1-5-4-1-4	1	1	0	1	0
CC86	86	9-4-2-1-1-1-27	0	0	3	3	0
CC1	1	4-4-1-1-7-4-10	3	2	0	2	1
CC12	876	6-3-1-1-12-1-110	0	0	1	1	0
CC147	147	3-4-6-1-7-4-38	5	3	3	5	3
	273	3-4-6-1-7-4-4	0	0	3	2	1
CC857	857	2-35-2-35-56-24-19	0	0	1	1	0
CC584	584	4-1-2-1-1-7-4	1	1	0	1	0
CC526-928	526	38-19-53-58-73-21-130	2	2	0	2	0
CC536-856	856	16-18-21-27-39-22-105	0	0	1	1	0
CC889-7	889	3-1-1-4-3-1-19	0	0	1	0	1
Singleton	894	18-15-18-61-93-37-99	0	0	1	1	0
Singleton	893	25-1-101-1-10-1-100	0	0	1	1	0
Singleton	892	2-1-65-2-5-4-36	0	0	1	1	0
Singleton	891	3-1-2-1-9-1-184	0	0	1	1	0
Singleton	890	2-1-1-8-10-4-61	0	0	1	1	0

Table 2. Cont.

Clonal complex	Sequence type	Allelic profile	No. of isolates		No. of isolates		
			ESBL+		ESBL -	HA	CA
			<i>bla</i> _{CTX-M}	<i>bla</i> _{TEM} / <i>bla</i> _{SHV}			
Singleton	886	16-1-21-27-29-17-183	0	0	1	1	0
Singleton	883	2-5-1-1-9-4-9	1	1	0	0	1
Singleton	882	2-1-1-37-1-27-19	0	0	1	1	0
Singleton	878	2-5-1-1-144-1-4	1	1	1	2	0
Singleton	877	59-24-21-78-54-22-67	0	0	1	0	1
Singleton	189	2-3-41-1-17-4-46	1	0	0	1	0
Singleton	374	2-3-58-37-10-27-9	0	0	1	1	0
Singleton	380	2-1-1-1-4-19	0	0	3	3	0
Singleton	562	2-5-1-1-10-1-139	9	8	1	13	1
Singleton	629	2-3-87-1-12-1-26	1	1	0	1	0
Singleton	686	4-1-1-3-3-5-54	4	3	0	4	0
Singleton	716	71-1-1-2-16-4-164	5	5	4	10	0
Singleton	873	14-1-2-1-7-4-182	0	0	1	1	0

doi:10.1371/journal.pone.0057091.t002

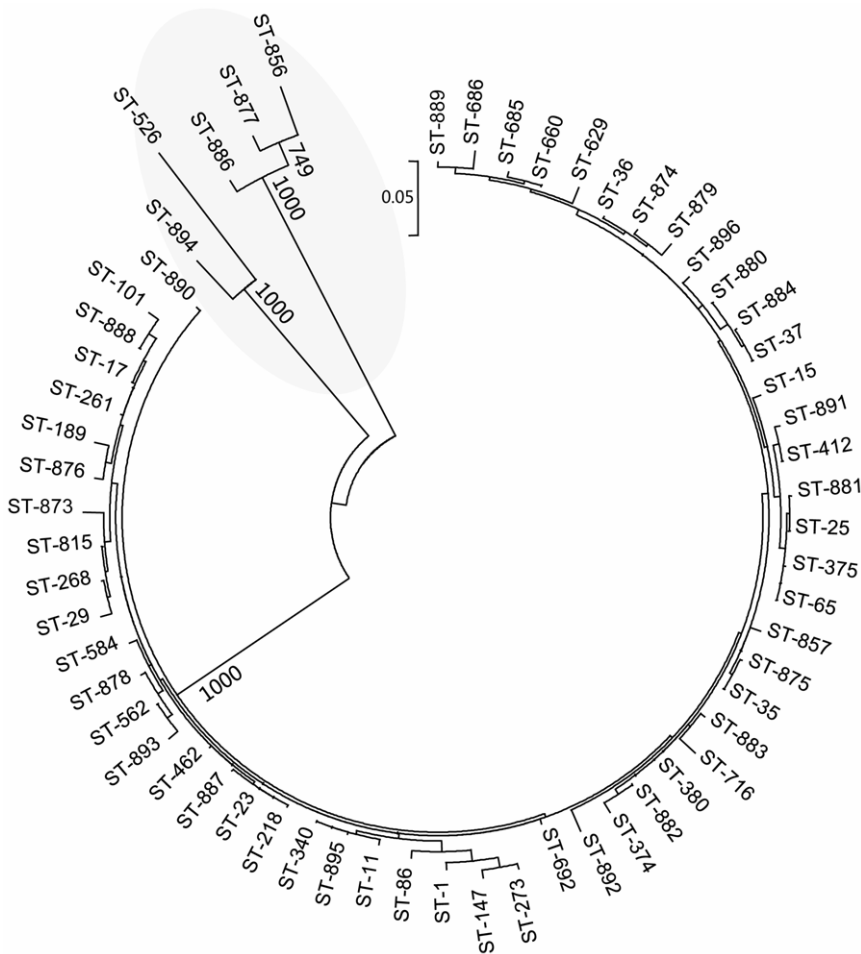


Figure 4. Phylogenetic tree of *K. pneumoniae* isolates with one representative in each ST as derived from concatenated sequences of the 7 gene loci used in MLST. The tree was constructed using the maximum likelihood method. The phylogenetically distinct cluster is shaded. doi:10.1371/journal.pone.0057091.g004

Table 3. Drug resistance profiles of *K. pneumoniae* isolates grouped by clonal complex.

Clonal complex (No. of isolates)	Drug resistance types, No. (%) of isolates												
	MDR	XDR	PDR	Penicillin	Non-extended spectrum cephalosporins	Extended spectrum cephalosporins (<i>bla_{CTX-M}</i>)	Extended spectrum cephalosporins (<i>bla_{TEM}/bla_{SHV}</i>)	Carbapenems	Monobactams	Fluoroquinolones	Aminoglycosides	Folate pathway inhibitors	Nitrofurantoin
CC1 (3)	2(66.7)	1(33.3)	0	3 (100.0)	3 (100.0)	3(100.0)	2 (66.7)	1(33.3)	3(100.0)	3(100.0)	2 (66.7)	2 (66.7)	3(100.0)
CC12 (1)	1(100.0)	0	0	1(100.0)	0	0	0	0	0	0	0	0	1(100.0)
CC23 (82)	52(63.4)	17(20.7)	3(3.7)	82 (100.0)	39 (47.6)	33 (40.2)	26 (31.7)	6(7.3)	39(47.6)	34(41.5)	41(50.0)	42(51.2)	73(89.0)
CC29 (1)	1(100.0)	0	0	1(100.0)	0	0	0	0	0	0	0	0	1(100.0)
CC37 (8)	4 (50.0)	2 (25.0)	0	8(100.0)	6 (75.0)	5 (62.5)	6 (75.0)	0	6(75.0)	3(37.5)	5(62.5)	4(50.0)	7(87.5)
CC86 (3)	2(66.7)	0	0	3(100.0)	0	0	0	0	0	0	0	0	1(33.3)
CC101 (2)	1(50.0)	0	0	2(100.0)	1(50.0)	1(50.0)	1(50.0)	0	1(50.0)	0	1(50.0)	1(50.0)	2(100.0)
CC147 (11)	7 (63.6)	4 (36.4)	0	11(100.0)	8 (72.7)	4 (36.4)	5 (45.5)	1(9.1)	5 (45.5)	11(100.0)	10(90.9)	11(100.0)	11(100.0)
CC526-928 (2)	1 (50.0)	0	0	2(100.0)	2(100.0)	2(100.0)	2(100.0)	0	2(100.0)	2(100.0)	2(100.0)	2(100.0)	2(100.0)
CC536-856 (1)	0	0	0	1(100.0)	0	0	0	0	0	0	0	0	0
CC584 (1)	1(100.0)	0	0	1(100.0)	1(100.0)	1(100.0)	1(100.0)	0	1(100.0)	0	1(100.0)	1(100.0)	1(100.0)
CC857 (1)	1(100.0)	0	0	1(100.0)	0	0	0	0	0	0	0	0	1(100.0)
CC889-7 (1)	0	1(100.0)	0	1(100.0)	0	0	0	0	0	0	0	0	1(100.0)
Singletons(46)	31(67.4)	9(19.6)	0	45(97.8)	26 (56.5)	21(45.7)	19(41.3)	3(6.5)	26(56.5)	19(41.3)	28(60.9)	31(67.4)	41(89.1)
Total(163)	104(63.8)	34(20.9)	3(1.8)	162(99.4)	86(52.8)	70(42.9)	62(38.0)	11(6.7)	83(50.9)	72(44.2)	90(55.2)	94(57.7)	145(89.0)

doi:10.1371/journal.pone.0057091.t003

Table 4. Multivariate logistic regression analysis for factors independently associated with prevalent *K. pneumoniae* clones^a.

Variables ^b	Univariate analysis		Multivariate analysis	
	Odds Ratio (95% CI)	P value	Odds Ratio (95% CI)	P value
From intensive care unit	1.597 (0.814–3.135)	0.174	13.802 (3.180–59.891)	<0.001
From medical ward	1.198 (0.643–2.232)	0.570	5.154 (1.452–18.296)	0.011
Community acquired infection	1.788 (0.854–3.742)	0.123	3.106 (1.005–9.602)	0.049
With diabetes mellitus	1.244 (0.603–2.565)	0.554	2.776 (0.981–7.854)	0.054
With abnormal liver function	1.630 (0.770–3.452)	0.202	2.551 (0.924–7.042)	0.071
With cerebral infarction	1.529 (0.746–3.136)	0.246	2.528 (0.926–6.900)	0.070
Without heart disease	1.250 (0.640–2.440)	0.513	3.446 (1.298–9.150)	0.013
Treatment success	1.408 (0.582–3.406)	0.447	6.691 (1.884–23.770)	0.003
Susceptible to 3rd and 4th generation cephalosporins	4.448 (2.268–8.722)	<0.001	8.633 (2.515–29.640)	0.001
Susceptible to cephamycins	1.072 (0.556–2.068)	0.836	3.430 (1.078–10.921)	0.037
Susceptible to fluoroquinolones	5.558 (2.823–10.943)	<0.001	6.247 (2.117–18.439)	0.001
MDR	1.291 (0.674–2.473)	0.442	3.111 (1.113–8.693)	0.030

^aPrevalent clones include a total of 70 isolates with the following STs: ST15 (17), ST562 (14), ST23 (12), ST716 (10), ST11 (9), ST147 (8).

^bAll variables included in the univariate analysis (shown in Table S5) were included in the logistic regression model for multivariate analysis, and they were eliminated using a backward stepwise selection method using a *P* value threshold of 0.1 for the variables to remain in the model. *P* values <0.05 were considered to be statistically significant.

doi:10.1371/journal.pone.0057091.t004

most virulent ones or those associated with more severe clinical features or outcome.

Since the prevalent clones have a great potential of transmission among patients, the observation that those clones were significantly associated with MDR, HA infection, as well as nosocomial infections in the crowded ICU, together with the identification of a large variety of drug resistance-associated genes, particularly those ESBL genes, as well as genes associated with resistance to fluoroquinolones and aminoglycosides [35–41], in those prevalent clones suggest that although those isolates are associated with less severe clinical features and outcome, they could be a dangerous reservoir for transmission of drug resistance genes, thus warrant a high degree of awareness and monitoring of those drug resistance determinants in clinical isolates. In addition, these isolates from China had different ESBL genotypes, implying multiple acquisition events and the presence of multiple circulating variants of the clone.

In conclusion, the diversity of the genotypes and the complexity of the resistance phenotypes and determinants found, as well as the potential for widespread dissemination of those prevalent isolates detected in our study suggest that certain possibly less virulent (based on the clinical manifestations of the patients) but highly transmissible drug-resistant clones of *K. pneumoniae* isolates are currently prevalent among patients in hospital settings in Beijing, emphasizing the continuous hospital-wide surveillance of phenotypic and genotypic drug resistance data, as well clinical characteristics and treatment outcome for the prevalent *K. pneumoniae* clones is necessary to understand the spread of those successful clones, so as to make better infection control measure against nosocomial infection caused by *K. pneumoniae* and *Enterobacteriaceae*, which are closely related to *K. pneumoniae* and interchange resistance determinants frequently with them. Further in-depth investigation of other important population genetic forces, such as gene flow, natural selection, etc., with more extensive sampling, would validate the interesting observation of an inverse relationship between prevalence and virulence in a

statistically robust fashion, as well as to provide more insights into the spatial and temporal population dynamics of drug-resistant *K. pneumoniae* isolates.

Supporting Information

Table S1 ST and CC for all *K. pneumoniae* isolates in this study.

(DOC)

Table S2 Variation in loci used in the present *K. pneumoniae* MLST scheme.

(DOC)

Table S3 Drug resistance profiles and epidemiological information of the *K. pneumoniae* clones belong to phylogenetically distinct cluster of related STs.

(DOC)

Table S4 Drug resistance profiles and epidemiological information of the prevalent *K. pneumoniae* clones.

(DOC)

Table S5 Univariate logistic regression analysis for factors associated with prevalent *K. pneumoniae* clones.

(DOC)

Acknowledgments

We thank platform Genotyping of Pathogens and Public Health (Institut Pasteur, Paris, France) for coding MLST alleles and profiles available at www.pasteur.fr/mlst.

Author Contributions

Conceived and designed the experiments: CHL PCYW. Performed the experiments: QW BL YY CHL. Analyzed the data: QW BL AKLT PCYW CHL. Contributed reagents/materials/analysis tools: YY PCYW CHL. Wrote the paper: CHL.

References

- Kohlenberg A, Schwab F, Rüdén H (2012) Wide dissemination of extended-spectrum beta-lactamase (ESBL)-producing *Escherichia coli* and *Klebsiella spp.* in acute care and rehabilitation hospitals. *Epidemiol Infect* 140: 528–534.
- Sánchez-Romero I, Asensio A, Oteo J, Muñoz-Algarra M, Isidoro B, et al. (2012) Nosocomial Outbreak of VIM-1-producing *Klebsiella pneumoniae* of multilocus sequence type 15: Molecular basis, clinical risk factors, and outcome. *Antimicrob Agents Chemother* 56: 420–427.
- Zhang R, Wang XD, Cai JC, Zhou HW, Lv HX, et al. (2011) Outbreak of *Klebsiella pneumoniae* carbapenemase 2-producing *K. pneumoniae* with high qnr prevalence in a Chinese hospital. *J Med Microbiol* 60: 977–982.
- Ben-David D, Kordevani R, Keller N, Tal I, Marzel A, et al. (2012) Outcome of carbapenem resistant *Klebsiella pneumoniae* bloodstream infections. *Clin Microbiol Infect* 18: 54–60.
- Daikos GL, Petrikos P, Psychogiou M, Kosmidis C, Vryonis E, et al. (2009) Prospective observational study of the impact of VIM-1 metallo-beta-lactamase on the outcome of patients with *Klebsiella pneumoniae* bloodstream infections. *Antimicrob Agents Chemother* 53: 1868–1873.
- Lautenbach E, Patel JB, Bilker WB, Edelstein PH, Fishman NO (2001) Extended-spectrum beta-lactamase-producing *Escherichia coli* and *Klebsiella pneumoniae*: risk factors for infection and impact of resistance on outcomes. *Clin Infect Dis* 32: 1162–1171.
- Magiorakos AP, Srinivasan A, Carey RB, Carmeli Y, Falagas ME, et al. (2012) Multidrug-resistant, extensively drug-resistant and pandrug-resistant bacteria: an international expert proposal for interim standard definitions for acquired resistance. *Clin Microbiol Infect* 18: 268–281.
- Schlesinger J, Navon-Venezia S, Chmelnitsky I, Hammer-Münz O, Leavitt A, et al. (2005) Extended-spectrum beta-lactamases among *Enterobacter* isolates obtained in Tel Aviv, Israel. *Antimicrob Agents Chemother* 49: 1150–1156.
- Chudácková E, Bergerová T, Fajfrlík K, Cervená D, Urbásková P, et al. (2010) Carbapenem-nonsusceptible strains of *Klebsiella pneumoniae* producing SHV-5 and/or DHA-1 beta-lactamases in a Czech hospital. *FEMS Microbiol Lett* 309: 62–70.
- Cuzon G, Ouanich J, Gondret R, Naas T, Nordmann P (2011) Outbreak of OXA-48-positive carbapenem-resistant *Klebsiella pneumoniae* isolates in France. *Antimicrob Agents Chemother* 55: 2420–2423.
- Hammerum AM, Toleman MA, Hansen F, Kristensen B, Lester CH, et al. (2010) Global spread of New Delhi metallo-beta-lactamase 1. *Lancet Infect Dis* 10: 829–830.
- Nordmann P, Naas T, Poirel L (2011) Global Spread of Carbapenemase-producing *Enterobacteriaceae*. *Emerg Infect Dis* 17: 1791–1798.
- Nordmann P, Poirel L, Carrère A, Toleman MA, Walsh TR (2010) How To Detect NDM-1 Producers. *J Clin Microbiol* 49: 718–721.
- Thomson KS (2010) Extended-Spectrum-beta-Lactamase, AmpC, and Carbapenemase issues. *J Clin Microbiol* 48: 1019–1025.
- Nagano N, Nagano Y, Toyama M, Kimura K, Tamura T, et al. (2012) Nosocomial spread of multidrug-resistant group B streptococci with reduced penicillin susceptibility belonging to clonal complex 1. *J Antimicrob Chemother* 67: 849–856.
- Rotariu O, Smith-Palmer A, Cowden J, Bessell PR, Innocent GT, et al. (2010) Putative household outbreaks of campylobacteriosis typically comprise single MLST genotypes. *Epidemiol Infect* 138: 1744–1747.
- Aanensen DM, Spratt BG (2005) The multilocus sequence typing network: mlst.net. *Nucleic Acids Res* 33: W728–733.
- Laure D, Virginie P, Jan V, Grimont PA, Brisse S (2005) Multilocus Sequence Typing of *Klebsiella pneumoniae* Nosocomial Isolates. *J Clin Microbiol* 43: 4178–4182.
- Li B, Yi Y, Wang Q, Woo PCY, Tan L, et al. (2012) Analysis of drug resistance determinants in *Klebsiella pneumoniae* isolates from a tertiary-care hospital in Beijing, China. *PLoS One* 7: e42280.
- Performance Standards for antimicrobial Susceptibility Testing; Twenty-first Informational Supplement. Clinical and Laboratory Standards Institute (CLSI); 2011.
- Feil EJ, Li BC, Aanensen DM, Hanage WP, Spratt BG (2004) eBURST: inferring patterns of evolutionary descent among clusters of related bacterial genotypes from multilocus sequence typing data. *J Bacteriol* 186: 1518–1530.
- Jolley KA, Feil EJ, Chan MS, Maiden MC (2001) Sequence type analysis and recombinational tests (START). *Bioinformatics* 17: 1230–1231.
- Didelot X, Falush D (2006) Inference of bacterial microevolution using multilocus sequence data. *Genetics* 175: 1251–1266.
- Guindon S, Lethiec F, Duroux P, Gascuel O (2005) PHYML Online—a web server for fast maximum likelihood-based phylogenetic inference. *Nucleic Acids Res* 33: W557–559.
- Orsi GB, Scorzolini L, Franchi C, Mondillo V, Rosa G, et al. (2006) Hospital-acquired infection surveillance in a neurosurgical intensive care unit. *J Hospital Infect* 64: 23–29.
- Damjanova I, Tóth A, Pászti J, Hajbel-Vékony G, Jakab M, et al. (2008) Expansion and countrywide dissemination of ST11, ST15 and ST147 ciprofloxacin-resistant CTX-M-15-type beta-lactamase-producing *Klebsiella pneumoniae* epidemic clones in Hungary in 2005—the new ‘MRSAs’? *J Antimicrob Chemother* 62: 978–985.
- Lee MY, Ko KS, Kang CI, Chung DR, Peck KR, et al. (2011) High prevalence of CTX-M-15-producing *Klebsiella pneumoniae* isolates in Asian countries: diverse clones and clonal dissemination. *Int J Antimicrob Agents* 38: 160–163.
- Nielsen JB, Skov MN, Jørgensen RL, Heltberg O, Hansen DS, et al. (2011) Identification of CTX-M15-, SHV-28-producing *Klebsiella pneumoniae* ST15 as an epidemic clone in the Copenhagen area using a semi-automated Rep-PCR typing assay. *Eur J Clin Microbiol Infect Dis* 30: 773–778.
- Carrère A, Poirel L, Eraksoy H, Gagatay AA, Badur S, et al. (2008) Spread of OXA-48-Positive Carbapenem-Resistant *Klebsiella pneumoniae* Isolates in Istanbul, Turkey. *Antimicrob Agents Chemother* 52: 2950–2954.
- Chung DR, Lee H, Park MH, Jung SI, Chang HH, et al. (2012) Fecal carriage of serotype K1 *Klebsiella pneumoniae* ST23 strains closely related to liver abscess isolates in Koreans living in Korea. *Eur J Clin Microbiol Infect Dis* 31: 481–486.
- Siu LK, Fung CP, Chang FY, Lee N, Yeh KM, et al. (2011) Molecular typing and virulence analysis of serotype K1 *Klebsiella pneumoniae* strains isolated from liver abscess patients and stool samples from noninfectious subjects in Hong Kong, Singapore, and Taiwan. *J Clin Microbiol* 49: 3761–3765.
- Breurec S, Guessennd N, Timinouni M, Le TA, Cao V, et al. (2012) *Klebsiella pneumoniae* resistant to third-generation cephalosporins in five African and two Vietnamese major towns: multiclonal population structure with two major international clonal groups, CG15 and CG258. *Clin Microbiol Infect* doi: 10.1111/j.1469-0691.2012.03805.x.
- Qi Y, Wei Z, Ji S, Du X, Shen P, et al. (2011) ST11, the dominant clone of KPC-producing *Klebsiella pneumoniae* in China. *J Antimicrob Chemother* 66: 307–312.
- Chung HC, Lai CH, Lin JN, Huang CK, Liang SH, et al. (2012) Bacteremia caused by extended-spectrum-beta-lactamase-producing *Escherichia coli* sequence type ST131 and non-ST131 clones: comparison of demographic data, clinical features, and mortality. *Antimicrob Agents Chemother* 56: 618–622.
- Chmelnitsky I, Hermesh O, Navon-Venezia S, Strahilevitz J, Carmeli Y (2009) Detection of *aac(6′)-Ib-cr* in KPC-producing *Klebsiella pneumoniae* isolates from Tel Aviv, Israel. *J Antimicrob Chemother* 64: 718–722.
- Hujer KM, Hujer AM, Hulten EA, Bajaksouzian S, Adams JM, et al. (2006) Analysis of antibiotic resistance genes in multidrug-resistant *Acinetobacter* sp. isolates from military and civilian patients treated at the Walter Reed Army Medical Center. *Antimicrob Agents Chemother* 50: 4114–4123.
- Jemima SA, Verghese S (2008) Molecular characterization of nosocomial CTX-M type beta-lactamase producing *Enterobacteriaceae* from a tertiary care hospital in south India. *Indian J Med Microbiol* 26: 365–368.
- Kaczmarek FM, Dib-Hajj F, Shang W, Gootz TD (2006) High-Level Carbapenem Resistance in a *Klebsiella pneumoniae* Clinical Isolate Is Due to the Combination of bla ACT-1 beta-Lactamase Production, Porin OmpK35/36 Insertional Inactivation, and Down-Regulation of the Phosphate Transport Porin PhoE. *Antimicrob Agents Chemother* 50: 3396–3406.
- Ramirez MS, Tolmashy ME (2010) Aminoglycoside modifying enzymes. *Drug Resist Update* 13: 151–171.
- Yamane K, Wachino J, Suzuki S, Kimura K, Shibata N, et al. (2007) New plasmid-mediated fluoroquinolone efflux pump, QepA, found in an *Escherichia coli* clinical isolate. *Antimicrob Agents Chemother* 51: 3354–3360.
- Zimhony O, Chmelnitsky I, Bardenstein R, Goland S, Hammer Muntz O, et al. (2006) Endocarditis caused by extended-spectrum-beta-lactamase-producing *Klebsiella pneumoniae*: emergence of resistance to ciprofloxacin and piperacillin-tazobactam during treatment despite initial susceptibility. *Antimicrob Agents Chemother* 50: 3179–3182.