



<b>Title</b>	<b>GENETICALLY MODIFIED PLANTS EXPRESSING PROTEINASE INHIBITORS, SAPINA2A OR SAPIN2B, AND METHODS OF USE THEREOF FOR THE INHIBITION OF TRYPSIN-AND CHYMOTRYPSIN-LIKE ACTIVITIES</b>
<b>Inventor(s)</b>	<b>Chye, ML; Xu, Zengfu; Sin, Sukfong</b>
<b>Citation</b>	<b>WO Published patent application WO 2004050873. World Intellectual Property Organization (WIPO), PatentScope, 2004</b>
<b>Issued Date</b>	<b>2004</b>
<b>URL</b>	<b><a href="http://hdl.handle.net/10722/177077">http://hdl.handle.net/10722/177077</a></b>
<b>Rights</b>	<b>Creative Commons: Attribution 3.0 Hong Kong License For Public Patent Documents</b>

(19) World Intellectual Property Organization  
International Bureau



(43) International Publication Date  
17 June 2004 (17.06.2004)

PCT

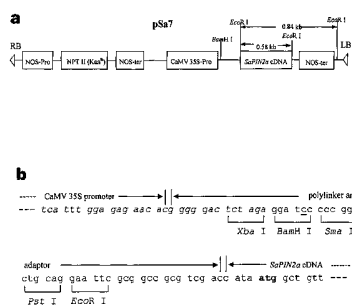
(10) International Publication Number  
WO 2004/050873 A1

- (51) International Patent Classification<sup>7</sup>: C12N 15/11, 15/29, 15/63, 15/82
- (74) Agent: CHINA PATENT AGENT (H.K.) LTD.; 22/F, Great Eagle Centre, 23 Harbour Road, Wanchai, Hong Kong (CN).
- (21) International Application Number: PCT/CN2003/001020
- (81) Designated States (*national*): AE, AG, AL, AM, AT, AU, AZ, BA, BB, BG, BR, BY, BZ, CA, CH, CN, CO, CR, CU, CZ, DE, DK, DM, DZ, EC, EE, EG, ES, FI, GB, GD, GE, GH, GM, HR, HU, ID, IL, IN, IS, JP, KE, KG, KP, KR, KZ, LC, LK, LR, LS, LT, LU, LV, MA, MD, MG, MK, MN, MW, MX, MZ, NO, NZ, OM, PH, PL, PT, RO, RU, SD, SE, SG, SK, SL, TJ, TM, TN, TR, TT, TZ, UA, UG, UZ, VN, YU, ZA, ZM, ZW.
- (22) International Filing Date: 1 December 2003 (01.12.2003)
- (25) Filing Language: English
- (26) Publication Language: English
- (30) Priority Data: 60/429,992 29 November 2002 (29.11.2002) US
- (84) Designated States (*regional*): ARIPO patent (BW, GH, GM, KE, LS, MW, MZ, SD, SL, SZ, TZ, UG, ZM, ZW), Eurasian patent (AM, AZ, BY, KG, KZ, MD, RU, TJ, TM), European patent (AT, BE, BG, CH, CY, CZ, DE, DK, EE, ES, FI, FR, GB, GR, HU, IE, IT, LU, MC, NL, PT, RO, SE, SI, SK, TR), OAPI patent (BF, BJ, CF, CG, CI, CM, GA, GN, GQ, GW, ML, MR, NE, SN, TD, TG).
- (71) Applicant: THE UNIVERSITY OF HONG KONG [CN/CN]; G18, Eliot Hall, Pokfulam Road, Hong Kong (CN).
- (72) Inventors: CHYE, Meelen; A2, Block 1, Tam Towers, 25 Sha Wan Drive, Pokfulam, Hong Kong (CN). XU, Zengfu; Room 1402, Building No. 719-2, West Campus, Zhongshan (Sun Yat-sen) University, 135 Xin Gang West Road., Guangzhou, GD 510275 (CN). SIN, Sukfong; Room 2225, Hing Ping House, Tai Hing Estate, Tuen Mun, Hong Kong (CN).

Published:  
— with international search report

For two-letter codes and other abbreviations, refer to the "Guidance Notes on Codes and Abbreviations" appearing at the beginning of each regular issue of the PCT Gazette.

(54) Title: GENETICALLY MODIFIED PLANTS EXPRESSING PROTEINASE INHIBITORS, SAPINA2A OR SAPIN2B, AND METHODS OF USE THEREOF FOR THE INHIBITION OF TRYPSIN-AND CHYMOTRYPSIN-LIKE ACTIVITIES



(57) Abstract: The present invention relates to proteinase inhibitor II genes, *SaPIN2a* and *SaPIN2b*, their production in transformed plants, and isolation of *SaPIN2a* and *SaPIN2b* proteins from transformed plants of the invention. The invention further relates to use in inhibiting endogenous protease activities in transformed plants. In specific embodiments, the protease activities are trypsin-like and chymotrypsin-like activities. The invention relates to a method for protection of heterologous protein production in transformed plants by the co-expression of a proteinase inhibitor gene, e.g. *SaPIN2a* or *SaPIN2b*, which encodes a proteinase inhibitor protein, or a biologically active fragment, analog, and variant thereof, that inhibits protease activities. Specifically, the present invention also provides methods of inhibiting programmed cell death, including senescence, in plants. The invention further relates to methods to enhance resistance of plants to pests or pathogens, including insects. The present invention also relates to genetically modified plants, and in particular genetically modified lettuce. The genetically modified plants have inhibited endogenous trypsin-like and chymotrypsin-like activities following transformation of the plant with a vector comprising one or more proteinase inhibitor II gene, such as *SaPIN2a* and/or *SaPIN2b*. The invention further relates to transformed plants having enhanced resistance to insects. The invention further relates to transformed plants in which PCD or senescence is inhibited by transformation of plants using vectors of the present invention.

WO 2004/050873 A1

**GENETICALLY MODIFIED PLANTS EXPRESSING  
PROTEINASE INHIBITORS, SAPIN2A OR SAPIN2B, AND METHODS OF USE THEREOF  
FOR THE INHIBITION OF TRYPSIN-AND  
CHYMOTRYPSIN-LIKE ACTIVITIES**

5           This application claims the benefit of United States Provisional Application No. 60/429,992, filed November 29, 2002, which is incorporated by reference herein in its entirety.

**1. FIELD OF INVENTION**

10           The present invention relates to proteinase inhibitor II genes, *SaPIN2a* and *SaPIN2b*, and their use in inhibiting endogenous protease activities in transformed plants and in inhibiting exogenous protease activities in the preparation of plant-derived biopharmaceuticals. In specific embodiments, genetically modified plants comprising proteinase inhibitor II genes have inhibited endogenous protease activities. In specific  
15           embodiments, the protease activities are trypsin-like and chymotrypsin-like activities. The invention relates to a method for protection of heterologous protein production in transformed plants by the co-expression of a proteinase inhibitor gene, *e.g.*, *SaPIN2a* or *SaPIN2b*, which encodes a proteinase inhibitor protein, or a biologically active fragment, analog, and variant thereof, that inhibits protease activities. The invention further relates  
20           to a method of inhibiting endogenous trypsin-like and chymotrypsin-like activities in a plant by expressing one or more proteinase inhibitor II genes. Specifically, the present invention also provides methods of inhibiting programmed cell death, including senescence, in plants and methods to enhance resistance of plants to pests or pathogens, including insects. The present invention also relates to genetically modified plants, and in particular  
25           genetically modified lettuce. The genetically modified plants have inhibited endogenous trypsin-like and chymotrypsin-like activities following transformation of the plant with a vector comprising one or more proteinase inhibitor II gene, such as *SaPIN2a* and/or *SaPIN2b*. In certain embodiments, genetically modified plants with high expression of a proteinase inhibitor II gene can be used to isolate proteinase inhibitor II protein. In a specific embodiment, the vector is introduced to a plant using *Agrobacterium*-mediated  
30           transformation or biolistics. The vector comprises a proteinase inhibitor II gene, *SaPIN2a* and/or *SaPIN2b* which encodes a proteinase inhibitor protein or a biologically active fragment, analog, or variant thereof. In a specific embodiment, the expression of the proteinase inhibitor II is driven by the CaMV 35S promoter in nuclear transformation or the *psbA* promoter in plastid transformation. The invention further relates to transformed  
35           plants having enhanced resistance to insects. In specific embodiments, the transformed

plants have enhanced resistance to cabbage looper (*Trichoplusia ni*). The invention further relates to transformed plants in which programmed cell death (PCD) or senescence is inhibited by transformation of plants using vectors of the present invention.

## 2. BACKGROUND

5 Proteinase inhibitor II (PIN2) is a serine proteinase inhibitor protein with two reactive sites, one inhibiting chymotrypsin and the other, trypsin (Bryant *et al.*, 1976, *Biochemistry* 15: 3418-3424). PIN2 proteins are found in many *Solanaceae* plants including tomato (Gustafson and Ryan, 1976, *J. Biol. Chem.* 251: 7004-7010), potato (Bryant *et al.*, 1976, *Biochemistry* 15: 3418-3424) and tobacco (Pearce *et al.*, 1993, *Plant Physiol.* 102: 639-  
10 644). PIN2 proteins are present in leaves, flowers (Atkinson *et al.*, 1993, *Plant Cell* 5: 203-213; Pena-Cortes *et al.*, 1991, *Plant Cell* 3: 963-972; Brandstater *et al.*, 1996, *Mol. Gen. Genet.* 252: 146-154), fruits (Pearce *et al.*, 1988, *Planta* 175: 527-531), stems (Xu *et al.*, 2001, *Plant Mol. Biol.* 47: 727-738) and tubers (Bryant *et al.*, 1976, *Biochemistry* 15: 3418-3424).

15 Previously, plant proteinase inhibitors (PIs) were not known to inhibit endogenous plant proteases but were thought to have specificities for animal or microbial enzymes (Ryan, 1981, In *The Biochemistry of Plants* Vol.6 (Marcus, A., ed.). New York: Academic Press, pp. 351-370). The role of plant proteinase inhibitor proteins in defense is supported by studies of artificial insect diets and *in vitro* inhibition assays on insect gut proteases  
20 using purified proteinase inhibitor proteins from various plants (Hilder *et al.*, 1993, Transgenic plants conferring insect tolerance: proteinase inhibitor approach. In: S. Kung and R. Wu (Eds.), *Transgenic Plants*, Volume 1, Academic Press, New York, pp. 317-338; Felton and Gatehouse, 1996, Antinutritive plant defence mechanisms. In: M.J. Lehane and P.F. Billingsley (Eds.), *Biology Of The Insect Midgut*, Chapman and Hall, London, pp.  
25 373-416; Reeck *et al.*, 1997, Proteinase inhibitors and resistance of transgenic plants to insects. In: N. Carozzi and M. Koziel (Eds.), *Advances In Insect Control: The Role of Transgenic Plants*, Taylor and Francis, London, pp. 157-183; Gatehouse, 1999, Biotechnological applications of plant genes in the production of insect-resistant crops. In: S.L. Clement and S.S. Quisenberry (Eds.), *Global Plant Genetic Resources For Insect-resistant Crops*, CRC Press, Boca Raton, pp. 263-280). Hence, the function of plant  
30 proteinase inhibitors was thought to be in the prevention of invasion through inhibition of foreign proteolytic enzymes of pests or pathogens (Ryan, 1989, *BioEssays*, 10: 20-24; Brzin and Kidric, 1995, *Biotechnol. Genet. Eng. Rev.* 13: 420-467).

There have been reports on the developmental regulation and tissue-specific accumulation of plant PIs (Rosahl *et al.*, 1986, *Mol. Gen. Genet.* 202: 368-373; Sanchez-Serrano *et al.*, 1986, *Mol. Gen. Genet.* 203: 15-20; Margossian *et al.*, 1988, *Proc Natl Acad Sci U S A* 85(21):8012-8016; Hendriks *et al.*, 1991, *Plant Mol. Biol.* 17: 385-394; 5 Pena-Cortes *et al.*, 1991, *Plant Cell*, 3, 963-972; Lorberth *et al.*, 1992, *Plant J.* 2: 477-486; Xu *et al.*, 2001, *Plant Mol. Biol.* 47: 727-738). Proteinase inhibitor II from *Solanum americanum* (SaPIN2a) is highly expressed in the phloem and has possible involvement in regulating proteolysis in the sieve elements (Xu *et al.*, 2001, *Plant Mol. Biol.* 47: 727-738). The localization of *SaPIN2a* mRNA and protein to the companion cells and sieve elements 10 suggests regulation of proteolysis in phloem development/function.

What is needed are methods and compositions for expressing proteinase inhibitor proteins SaPIN2a and SaPIN2b by heterologous expression in transformed plants (i) to inhibit activities of endogenous proteases, particularly trypsin- and chymotrypsin-like activities; (ii) to delay the onset of senescence and/or programmed cell death, and/or 15 increase their resistance to pests; and (3) for high level expression of proteinase inhibitor proteins for their isolation.

### 3. SUMMARY

The present invention relates to proteinase inhibitor II genes, *SaPIN2a* and *SaPIN2b*, and is based, in part, on the isolation of cDNAs encoding SaPIN2a (SEQ ID NO:1) and 20 SaPIN2b (SEQ ID NO:3) from a *Solanum americanum* cDNA library using a tomato proteinase inhibitor II (PIN2) cDNA as hybridization probe (Xu *et al.*, 2001, *Plant Mol. Biol.* 47:727-738, which is incorporated by reference in its entirety) and the isolation of a complete-length *SaPIN2b* cDNA (SEQ ID NO:3) using *SaPIN2b*-specific primers to amplify total RNA from *S. americanum* by the present inventors. Accordingly, the present 25 invention relates to nucleic acid molecules comprising nucleotide sequences of SEQ ID NO:1 and SEQ ID NO:3 and nucleic acid molecules comprising nucleotide sequences that encode SaPIN2a protein having an amino acid sequence of SEQ ID NO:2 or SaPIN2b protein having an amino acid sequence of SEQ ID NO:4. In another embodiment, the present invention relates to a nucleic acid molecule comprising a nucleotide sequence that 30 hybridizes under stringent conditions to the complement of a nucleotide sequence of SEQ ID NO:1 or SEQ ID NO:3. By way of example and not limitation, high stringency hybridization conditions can be defined as follows: The filter-bound DNA were hybridized in a solution containing 50% deionized formamide, 6xSSC, 5x Denhardt's, 1% SDS, 100 µg/ml denatured salmon sperm DNA at 42°C overnight (about 4-16 hours), and

washing in 0.1xSSC, 0.1% SDS at 65°C (Ausubel F.M. *et al.*, eds., 1989, Current Protocols in Molecular Biology, Vol. I, Green Publishing Associates, Inc., and John Wiley & sons, Inc., New York). In specific embodiments, the nucleic acid molecule is a vector. In another embodiment, the present invention relates to fragments of proteinase inhibitor II  
5 nucleic acids which encode a proteinase inhibitor II protein, or a biologically active fragment, analog, or variant thereof, that specifically binds to and inhibits trypsin and/or chymotrypsin in plants. In a specific embodiment, the nucleic acid molecule comprises a minimal active fragment of proteinase inhibitor II.

The present invention further provides an isolated SaPIN2a polypeptide (SEQ ID  
10 NO:2), an isolated SaPIN2b polypeptide (SEQ ID NO:4), or a fragment, analog, or variant thereof, that has trypsin-like and chymotrypsin-like inhibitor activities. In another embodiment, the present invention provides isolated polypeptides having trypsin-like and chymotrypsin-like inhibitor activities that are encoded by a nucleic acid molecule comprising a nucleotide sequence of SEQ ID NO:1 or SEQ ID NO:3, or a fragment, analog,  
15 or variant thereof, or a nucleotide sequence that hybridizes under stringent conditions to the complement of a nucleotide sequence of SEQ ID NO:1 or SEQ ID NO:3, or a fragment, analog, or variant thereof.

The present invention further relates to the use of *SaPIN2a* and *SaPIN2b* genes in inhibiting proteinase activities in transformed plants and is based, in part, on the  
20 observation of the present inventors that SaPIN2a and SaPIN2b regulate senescence and programmed cell death (PCD) through inhibited endogenous proteinase activities in plants. In specific embodiments, the proteinase activities are trypsin-like and chymotrypsin-like activities. Expression of these genes late in floral development is useful in preventing senescence and PCD, thereby prolonging the shelf-life of commercially important plants  
25 and plant parts, *e.g.*, flowers and fruits.

In a specific embodiment, the present invention further provides a method of protecting heterologous protein production in transformed plants by the co-expression of a proteinase inhibitor gene, *e.g.*, *SaPIN2a* or *SaPIN2b*, which encodes a proteinase inhibitor protein, or a biologically active fragment, analog or variant thereof, that inhibits proteinase  
30 activity. In a specific embodiment, the plant is a transformed plant that expresses a heterologous protein. The method comprises the steps of introducing into the plant nuclear or plastid genome a nucleic acid sequence encoding a proteinase inhibitor II and a heterologous gene and generating a plant having an altered genome. The heterologous gene may be expressed from a separate vector from the vector encoding the proteinase

inhibitor. In a specific embodiment, the proteinase inhibitor II gene is from *Solanum americanum*. In another specific embodiment, the proteinase inhibitor II gene is *SaPIN2a* or *SaPIN2b*, under the direction of a suitable promoter and a suitable terminator.

5 In a specific embodiment, the present invention further provides a method of inhibiting endogenous proteinase activity in plant. The method comprises the steps of introducing into the plant nuclear or plastid genome a nucleic acid sequence encoding a proteinase inhibitor II and generating a plant having an altered genome. In a specific embodiment, the proteinase inhibitor II gene is from *Solanum americanum*. In another specific embodiment, the proteinase inhibitor II gene is *SaPIN2a* or *SaPIN2b*, under the  
10 direction of a suitable promoter and a suitable terminator.

In a specific embodiment, the present invention further provides a method of inhibiting endogenous trypsin-like activity in plant. The method comprises the steps of introducing into the plant nuclear or plastid genome a nucleic acid sequence encoding a proteinase inhibitor II and generating a plant having an altered genome. In a specific  
15 embodiment, the proteinase inhibitor II gene is from *Solanum americanum*. In another specific embodiment, the proteinase inhibitor II gene is *SaPIN2a* or *SaPIN2b*, under the direction of a suitable promoter and a suitable terminator.

In a specific embodiment, the present invention further provides a method of inhibiting endogenous chymotrypsin-like activity in plant. The method comprises the  
20 steps of introducing into the plant nuclear or plastid genome a nucleic acid sequence encoding a proteinase inhibitor II and generating a plant having an altered genome. In a specific embodiment, the proteinase inhibitor II gene is from *Solanum americanum*. In another specific embodiment, the proteinase inhibitor II gene is *SaPIN2a* or *SaPIN2b*, under the direction of a suitable promoter and a suitable terminator.

25 In a specific embodiment, the present invention further provides a method of preventing programmed cell death or senescence in plants. The method comprises the steps of introducing into the plant nuclear or plastid genome a nucleic acid sequence encoding a proteinase inhibitor II and generating a plant having an altered genome. In a specific embodiment, the proteinase inhibitor II gene is from *Solanum americanum*. In  
30 another specific embodiment, the proteinase inhibitor II gene is *SaPIN2a* or *SaPIN2b*, under the direction of a suitable promoter and a suitable terminator. In a preferred embodiment, the promoter expresses the proteinase inhibitor II late in floral development. Assays useful for detecting PCD include the TUNEL assay.

In a specific embodiment, the present invention further provides a method of enhancing the resistance of plant to pests or pathogens. The method comprises the steps of introducing into the plant nuclear or plastid genome a nucleic acid sequence encoding a proteinase inhibitor II and generating a plant having an altered genome. In a specific  
5 embodiment, the proteinase inhibitor II gene is from *Solanum americanum*. In another specific embodiment, the proteinase inhibitor II gene is *SaPIN2a* or *SaPIN2b*, under the direction of a suitable promoter and a suitable terminator. In specific embodiment, the pest is cabbage looper. In another specific embodiment, the cabbage looper is *Trichoplusia ni*.

10 In a specific embodiment, the present invention further provides methods for the isolation of proteinase inhibitor II proteins from transformed plant cells. These proteins when expressed in transformed plants, particularly in transplastomic plants as tagged proteins (e.g., His-tagged proteins by using a plasmid such as pMLVHisP), can easily be extracted and purified for exogenous applications to protect proteins from degradation.

15 The present invention is further based on the observation of the present inventors that when *SaPIN2a* is expressed in transgenic lettuce, it results in the inhibition of plant endogenous protease activity. Lettuce was chosen for expression of *SaPIN2a* because it neither possesses detectable trypsin inhibitory activity in its leaves nor responds to any treatments by accumulating inhibitors (Walker-Simmons and Ryan, 1977, *Plant Physiol.* 59:  
20 437-439). Further, lettuce is an economically important vegetable crop, grown globally (Ryder, 1999, *Lettuce, endive and chicory*. New York: CABI Publishing) and its transformation methods are available (Michelmore *et al.*, 1987, *Plant Cell Rep.* 6: 439-442; Curtis *et al.*, 1994, *J. Exp. Bot.* 45: 1441-1449). The methods of the present invention are equally applicable to plants other than lettuce such as tomatoes, ginger, scallions, water  
25 chestnuts, pepper and eggplant; leafy plants, including lettuce and spinach; *Brassicaceae*, including broccoli, brussels sprouts, calabrese, kale, cauliflower, red cabbage and white cabbage; cucurbits, including cucumber, melon, watermelon, zucchini and squash; large seeded plants, including peas, beans and sweetcorn; rooted plants, including carrots and onions; vegetatively propagated plants, including berries, grapes, banana, pineapple and  
30 rosaceous fruit and nut crops; and tropical crops, including tobacco, mango and papaya.

The invention seeks to provide inhibition of endogenous protease activity in plants by transforming plants, such as crops, and specifically lettuce, with proteinase inhibitor II using nuclear or plastid transformation. In a specific embodiment, the invention provides transgenic lettuce with enhanced inhibition of endogenous trypsin-like activity by the



expression of proteinase inhibitor II from *Solanum americanum* (SaPIN2a or SaPIN2b). In a specific embodiment, the inhibition is complete, *i.e.*, more than about 90% and less than or equal to 100%. In a specific embodiment, the inhibition is moderate, *i.e.*, more than about 50% and less than about 90%. In a specific embodiment, the inhibition is low, *i.e.*, more than 5% and less than about 50%. In specific embodiments, the inhibition is at least 5%, 10%, 15%, 20%, 25%, 30%, 40%, 45%, 50%, 55%, 60%, 65%, 70%, 75%, 80%, 85%, 90% or 95%. The percentage inhibition may be determined by any assays well known to one skilled in the art. Inhibition of endogenous protease activity is compared to the endogenous protease activity without the exogenous proteinase inhibitor as the baseline.

10 The invention seeks to provide inhibition of endogenous trypsin-like activity in plants by transforming plants, such as crops, and specifically lettuce, with proteinase inhibitor II. In a specific embodiment, the invention provides transgenic lettuce with enhanced inhibition of endogenous trypsin-like activity by the expression of proteinase inhibitor II from *Solanum americanum* (SaPIN2a and/or SaPIN2b).

15 The invention seeks to provide inhibition of endogenous chymotrypsin-like activity in plants by transforming plants, such as crops, and specifically lettuce, with proteinase inhibitor II. In a specific embodiment, the invention provides transgenic lettuce with enhanced inhibition of endogenous chymotrypsin-like activity by the expression of proteinase inhibitor II from *Solanum americanum* (SaPIN2a and/or SaPIN2b).

20 The invention seeks to provide pests and pathogen protection in plants by transforming plants, such as crops, and specifically lettuce, with proteinase inhibitor II. In a specific embodiment, the invention provides transgenic lettuce with enhanced protection against cabbage looper by the expression of proteinase inhibitor II from *Solanum americanum* (SaPIN2a and/or SaPIN2b).

25 The present invention provides transformed plants having therein a gene comprising a promoter, operably associated with a coding sequence for SaPIN2a and/or SaPIN2b and a terminator. Plant cells containing a gene comprising a nucleic acid sequence encoding proteinase inhibitor II are also an aspect of this invention, as are other plant parts, such as for example, seeds of the transformed plant containing a gene according to the invention.

30 In a specific embodiment, the present invention provides transgenic lettuce having therein a gene comprising a promoter, operably associated with a coding sequence for *SaPIN2a* and/or *SaPIN2b*, and a terminator. Lettuce plant cells containing a gene comprising a nucleic acid sequence encoding *SaPIN2a* or *SaPIN2b* are also an aspect of this

invention, as are other plant parts, such as for example, seeds of the transformed plant containing a gene according to the invention.

In a specific embodiment, the genetically modified plants have inhibited endogenous protease activity following the introduction, by recombinant DNA techniques, of vectors comprising coding sequences for proteinase inhibitor II, SaPIN2a or SaPIN2b, or a biologically active fragment, analog, or variant thereof. In a specific embodiment, lettuce is transformed via *Agrobacterium*-mediated transformation. In a specific embodiment, the expression of the proteinase inhibitor II is driven by the CaMV 35S promoter.

In a specific embodiment, the genetically modified plants have inhibited trypsin-like activity following the introduction, by recombinant DNA techniques, of coding sequences for proteinase inhibitor II. In a specific embodiment, lettuce is transformed via *Agrobacterium*-mediated transformation.

In a specific embodiment, the genetically modified plants have inhibited chymotrypsin-like activity following the introduction, by recombinant DNA techniques, of coding sequences for proteinase inhibitor II. In a specific embodiment, lettuce is transformed via *Agrobacterium*-mediated transformation.

In a specific embodiment, the genetically modified plants have enhanced resistance to cabbage looper, *Trichoplusia ni* following the introduction, by recombinant DNA techniques, of coding sequences for proteinase inhibitor II. In a specific embodiment, lettuce is transformed via *Agrobacterium*-mediated transformation.

In a specific embodiment, the invention relates to genetically modified plants in which programmed cell death or senescence is inhibited.

In another embodiment, additional gene sequences coding for proteinase inhibitors may be introduced into the plant in addition to the coding protein for proteinase inhibitor II. Such proteins includes, but are not limited to, genes encoding ribosome-inactivating proteins, lectins, agglutinins, and other pathogenesis-related proteins. In a specific embodiment, additional serine proteinase inhibitors other than SaPIN2a and SaPIN2b may be used.

### 3.1 **Definitions**

As used herein, a "proteinase inhibitor II gene" is a nucleic acid molecule comprising a nucleic acid sequence of *SaPIN2a* or *SaPIN2b* or fragments thereof. The fragments may be 25, 50, 100, 200, 300, 400, 500 or 600 nucleotides in length, or multiples thereof, which hybridize to nucleic acid sequences of SEQ ID NO:1 or SEQ ID NO:3 and have trypsin-like and chymotrypsin-like inhibitory activities.

As used herein, a "proteinase inhibitor II protein" is a polypeptide encoded by a proteinase inhibitor II gene. The protein may be a biologically active fragment, analog, or variant thereof of SaPIN2a or SaPIN2b. Generally, a proteinase inhibitor II protein has two or more inhibitory domains, each of which corresponds to a specific protease inhibitor activity. For example, SaPIN2a and SaPIN2b each contain an inhibitory domain 1 and an inhibitory domain 2 which correspond to a trypsin-inhibitor domain and a chymotrypsin-inhibitory domain, respectively. Thus, a biologically active fragment of a proteinase inhibitor protein includes fragments corresponding to an inhibitory domain and biologically active portions thereof. The inhibitory domain may be a trypsin inhibitory domain or a chymotrypsin inhibitory domain. A minimal active fragment of SaPIN2a or SaPIN2b corresponds to 54 amino acids. The trypsin inhibitory domain and chymotrypsin inhibitory domain of SaPIN2a corresponds to amino acids 30-83 and 87-140, respectively, while the trypsin inhibitory domain and chymotrypsin inhibitory domain of SaPIN2b corresponds to amino acids 34-87 and 91-144, respectively. The sequences of these amino acids are provided in SEQ ID NO:2 (SaPIN2a) and SEQ ID NO:4 (SaPIN2b).

As used herein, the term "variant" in the context of proteinaceous agent (*e.g.*, proteins, polypeptides, peptides, and antibodies) refers to a proteinaceous agent that comprises an amino acid sequence which has been altered by the introduction of amino acid residue substitutions, deletions, and/or additions. The term "variant" as used herein also refers to a proteinaceous agent which has been modified, *i.e.*, by the covalent attachment of any type of molecule to the proteinaceous agent. For example, but not by way of limitation, a protein may be modified, *e.g.*, by glycosylation, acetylation, pegylation, phosphorylation, amidation, derivatization by known protecting/blocking groups, proteolytic cleavage, linkage to a cellular ligand or other protein, etc. A variant of a proteinaceous agent may be produced by chemical modifications using techniques known to those of skill in the art, including, but not limited to specific chemical cleavage, acetylation, formylation, metabolic synthesis of tunicamycin, etc. Further, a variant of a proteinaceous agent may contain one or more non-classical amino acids. A variant of a proteinaceous agent possesses a similar or identical function as the proteinaceous agent from which it was derived. Variants also encompasses precursor proteins from which a protein sequence is derived. Variants also encompasses fragments of full-length proteins that are, for example, 5, 10, 15, 20, 25, 30, 35, 40, 45, 50, 55, 60, 65, 70, 75, 80, 85, 90, 95, 100, or multiples thereof, or more contiguous amino acids of the full-length protein.

As used herein, the term "analog" in the context of a proteinaceous agent (*e.g.*, proteins, polypeptides, peptides, and antibodies) refers to a proteinaceous agent that possesses a similar or identical function as a second proteinaceous agent but does not necessarily comprise a similar or identical amino acid sequence of the second proteinaceous agent, or possess a similar or identical structure of the second proteinaceous agent. A proteinaceous agent that has a similar amino acid sequence refers to a second proteinaceous agent that satisfies at least one of the following: (a) a proteinaceous agent having an amino acid sequence that is at least 30%, at least 35%, at least 40%, at least 45%, at least 50%, at least 55%, at least 60%, at least 65%, at least 70%, at least 75%, at least 80%, at least 85%, at least 90%, at least 95% or at least 99% identical to the amino acid sequence of a second proteinaceous agent; (b) a proteinaceous agent encoded by a nucleotide sequence that hybridizes under stringent conditions to a nucleotide sequence encoding a second proteinaceous agent of at least 5 contiguous amino acid residues, at least 10 contiguous amino acid residues, at least 15 contiguous amino acid residues, at least 20 contiguous amino acid residues, at least 25 contiguous amino acid residues, at least 40 contiguous amino acid residues, at least 50 contiguous amino acid residues, at least 60 contiguous amino acid residues, at least 70 contiguous amino acid residues, at least 80 contiguous amino acid residues, at least 90 contiguous amino acid residues, at least 100 contiguous amino acid residues, at least 125 contiguous amino acid residues, or at least 150 contiguous amino acid residues; and (c) a proteinaceous agent encoded by a nucleotide sequence that is at least 30%, at least 35%, at least 40%, at least 45%, at least 50%, at least 55%, at least 60%, at least 65%, at least 70%, at least 75%, at least 80%, at least 85%, at least 90%, at least 95% or at least 99% identical to the nucleotide sequence encoding a second proteinaceous agent. A proteinaceous agent with similar structure to a second proteinaceous agent refers to a proteinaceous agent that has a similar secondary, tertiary or quaternary structure to the second proteinaceous agent. The structure of a proteinaceous agent can be determined by methods known to those skilled in the art, including but not limited to, peptide sequencing, X-ray crystallography, nuclear magnetic resonance, circular dichroism, and crystallographic electron microscopy.

To determine the percent identity of two amino acid sequences or of two nucleic acid sequences, the sequences are aligned for optimal comparison purposes (*e.g.*, gaps can be introduced in the sequence of a first amino acid or nucleic acid sequence for optimal alignment with a second amino acid or nucleic acid sequence). The amino acid residues or nucleotides at corresponding amino acid positions or nucleotide positions are then

compared. When a position in the first sequence is occupied by the same amino acid residue or nucleotide as the corresponding position in the second sequence, then the molecules are identical at that position. The percent identity between the two sequences is a function of the number of identical positions shared by the sequences (*i.e.*, % identity = number of identical overlapping positions/total number of positions x 100%). In one embodiment, the two sequences are the same length.

The determination of percent identity between two sequences can also be accomplished using a mathematical algorithm. A preferred, non-limiting example of a mathematical algorithm utilized for the comparison of two sequences is the algorithm of Karlin and Altschul, 1990, *Proc. Natl. Acad. Sci. USA* 87:2264-2268, modified as in Karlin and Altschul, 1993, *Proc. Natl. Acad. Sci. USA* 90:5873-5877. Such an algorithm is incorporated into the NBLAST and XBLAST programs of Altschul *et al.*, 1990, *J. Mol. Biol.* 215:403. BLAST nucleotide searches can be performed with the NBLAST nucleotide program parameters set, *e.g.*, for score=100, wordlength=12 to obtain nucleotide sequences homologous to a nucleic acid molecules of the present invention. BLAST protein searches can be performed with the XBLAST program parameters set, *e.g.*, to score=50, wordlength=3 to obtain amino acid sequences homologous to a protein molecule of the present invention. To obtain gapped alignments for comparison purposes, Gapped BLAST can be utilized as described in Altschul *et al.*, 1997, *Nucl. Acids. Res.* 25:3389-3402. Alternatively, PSI-BLAST can be used to perform an iterated search which detects distant relationships between molecules (*Id.*). When utilizing BLAST, Gapped BLAST, and PSI-Blast programs, the default parameters of the respective programs (*e.g.*, of XBLAST and NBLAST) can be used (see, *e.g.*, the NCBI website). Another preferred, non-limiting example of a mathematical algorithm utilized for the comparison of sequences is the algorithm of Myers and Miller, 1988, *Comput. Appl. Biosci.* 4:11-17. Such an algorithm is incorporated in the ALIGN program (version 2.0) which is part of the GCG sequence alignment software package. When utilizing the ALIGN program for comparing amino acid sequences, a PAM120 weight residue table, a gap length penalty of 12, and a gap penalty of 4 can be used. The percent identity between two sequences can be determined using techniques similar to those described above, with or without allowing gaps. In calculating percent identity, typically only exact matches are counted.

As used herein, "trypsin-like activity" and "chymotrypsin-like activity" refers to an endogenous proteinase activity as measured in the assays described in the Examples,

Section 6.1 under the section entitled "Trypsin and chymotrypsin inhibitory activity and endogenous trypsin- and chymotrypsin-like activity assays".

As used herein, "inhibited endogenous proteinase activity" or "inhibited protease activity" refers to a 0.2-, 0.5-, 2-, 5-, 10-, 20-, or 50-fold reduction in endogenous proteinase activity as compared to a plant without exogenous proteinase inhibitor II.

As used herein, "inhibited programmed cell death" or "inhibited senescence" refers to the inhibition of biochemical markers associated with PCD such as DNA fragmentation or the expression of genes and/or proteins associated with PCD. Examples of biochemical markers of PCD in plants include, but are not limited to, cysteine proteases and cysteine protease inhibitor (cystatin) (Solomon *et al.*, 1999, *Plant Cell* 11: 431-443), S1-type nuclease, *Zinnia* endonuclease 1 (ZEN1) (Ito and Fukuda, 2002, *Plant Cell* 14: 3201-11), plant proteases including cysteine proteases, aspartic proteases, serine proteases (reviewed in Beers *et al.*, 2000, *Plant Mol. Biol.* 44: 399-415), and SAG (senescence-associated genes) (Hensel *et al.*, 1993., *Plant Cell* 5: 553-564; Lohman *et al.*, 1994, *Plant Physiol.* 92: 322-328). The terms can also refer to morphological changes associated with inhibiting PCD or senescence, such as, but not limited to, increased biomass, increased shelf-life, improved color retention, and reduced cellular deterioration of plant organs, *e.g.* rigidity in fruit, etc. Inhibition can be measured by any method known to one of skill in the art to measure a biochemical or morphological change. Inhibition can be at least 5%, at least 10%, at least 20%, at least 30%, at least 40%, at least 50%, at least 60%, at least 70%, at least 80%, at least 90% or more compared to a plant or plant part without added proteinase inhibitor II. The terms refer to both the whole plant and plant parts once detached from the whole plant.

As used herein, "heterologous protein" refers to any protein which is desired to be expressed in a particular plant species which is not normally expressed in that plant species. In a preferred embodiment, the heterologous protein is not a PIN2 protein. Examples of heterologous proteins include plant-expressed heterologous proteins/enzymes (*e.g.*, those involved in improving amino acid biosynthesis/protein content, phytoremediation, biosynthesis of biopolymers), plant-expressed biopharmaceuticals (*e.g.* recombinant subunit vaccines, monoclonals, recombinant antibodies, human/animal proteins expressed in plants) and plant-expressed proteins for improvement of traits (*e.g.* herbicide-resistance, insect-resistance, pathogen-resistance, drought- or salt-tolerance and cold-tolerance) (Daniell *et al.*, 2002, *Trends in Plant Sci.* 7: 84-91; Ma *et al.*, 2003, *Nat. Rev. Genet.* 4:794-805).

As used herein, "part" of a plant refers to parts of a plant that may be detached from the whole plant, such as flowers, seeds, fruits, leaves, stems, roots, etc.

As used herein, “transformed plant” or “modified plants” refers to plants comprising plant cells that express the exogenous PIN2 protein of the present invention. The term includes, but is not limited to, plants produced by nuclear transformation, *i.e.*, where the transformed gene is expressed from the nuclear genome (transgenic plants), and plants  
5 produced by plastid transformation, *i.e.*, where the transformed gene is expressed from the plastid genome (transplastomic plants). Transformed plants include plant seedlings and plant progeny that are produced via sexual or asexual reproduction.

As used herein, “biolistics” refers to a method for injecting DNA into cells by mixing the DNA with small metal particles and then firing the particles into the host cell at very  
10 high speeds.

#### 4. DESCRIPTION OF THE FIGURES

The application contains drawings executed in color, particularly Figs. 5a-n, 6a-u, 7a-l, 8a-n, and 20a-20d. Copies of this patent application publication with color drawings will be provided by the United States Patent and Trademark Office upon request and payment of  
15 the necessary fee.

**Figures 1a & b.** (a) Nucleotide sequence (SEQ ID NO:1) and (b) amino acid sequence (SEQ ID NO:2) of *SaPIN2a*.

**Figures 2a & b.** (a) Nucleotide sequence (SEQ ID NO:3) and (b) amino acid sequence (SEQ ID NO:4) of *SaPIN2b*.

**Figure 3.** Northern blot analysis of *SaPIN2a* and *SaPIN2b* mRNA at different stages of *S. americanum* flower development. The blot was probed with a <sup>32</sup>P-labeled *SaPIN2a* cDNA, reprobed with <sup>32</sup>P-labeled *SaPIN2b* cDNA followed by <sup>32</sup>P-labeled 18S ribosomal DNA. Each lane contains 20 μg of total RNA extracted from young floral buds 72 h before opening (lane 1), mature buds 24 h before opening (lane 2), open flowers (lane 3), old  
25 flowers 24 h after opening (lane 4) and senescent flowers 84 h after flower opening (lane 5). Bar = 0.5 cm.

**Figure 4.** Western blot analysis of SaPIN2a and SaPIN2b expression in *S. americanum* floral buds and open flowers. Total protein (20 μg) extracted from *S. americanum* floral buds or open flowers was separated by SDS-PAGE, transferred onto Hybond-C membrane  
30 and cross-reacted with antibodies specific to SaPIN2a (lanes 1-2) or SaPIN2b (lanes 3-4). Arrow indicates an SaPIN2a cross-reacting band of apparent molecular mass 16.7 kDa detected in floral buds (lane 1) and open flowers (lane 2) and an SaPIN2b cross-reacting

band of apparent molecular mass 16.7 kDa detected in floral buds (lane 3) and open flowers (lane 4).

**Figures 5a-n.** *In situ* hybridization analysis of *SaPIN2a* mRNA (a-f) and immunolocalization of SaPIN2a (g-n) in floral buds and open flowers. Tissue sections were hybridized with either digoxigenin-labeled antisense *SaPIN2a* RNA probe (b, f) or sense *SaPIN2a* RNA probe (a, d) as control. Tissue sections were stained with either affinity-purified SaPIN2a-specific antibodies (h, j, k, m) or preimmune serum (g, i, l). Longitudinal sections of young floral bud (a, b). Magnification of panel b at the stigma (c). Longitudinal sections of open flowers (d, f). Magnification of panel f at the stigma (e). Longitudinal sections of young floral bud (g, h). Longitudinal sections of mature bud (i, j). Transverse section of ovary in an open flower (k). Longitudinal sections of open flower (l, m). Longitudinal section of stigma and style from an open flower (n). Bar = 100  $\mu$ m. O, nucellar cells in ovule; P, placenta; Po, pollen; S, stigma; T, tapetum; Tt, stylar transmitting tissue; Vb, vascular bundle.

**Figures 6a-u.** *In situ* hybridization analysis of *SaPIN2b* mRNA (a-j) and immunolocalization of SaPIN2b (k-u) in floral buds and open flowers. Tissue sections were hybridized with either digoxigenin-labeled antisense *SaPIN2b* RNA probe (b, c, e-i) or sense *SaPIN2b* RNA probe (a, d and j) as control. Tissue sections were stained with either affinity-purified SaPIN2b-specific antibodies (l-q, s-u) or preimmune serum (k, r). Longitudinal sections of young floral bud (a, b). Magnification of panel b at the anther (c). Longitudinal sections of mature buds (d, e, f). Magnifications of the stigmas from panels e and i, respectively (g, h). Longitudinal sections of open flowers (i, j). Longitudinal sections of mature buds (k, l). Longitudinal sections of young floral bud (m). Magnification of panel m at the anther (n). Transverse section of mature bud (o). Longitudinal section of stigma and style in young bud (p). Longitudinal section of stigma and style in open flower (q). Longitudinal sections of open flower (r, s). Transverse section of ovary in open flower (t). Transverse section of anther and style in open flower (u). Bar = 100  $\mu$ m. O, nucellar cells in ovule; P, placenta; Po, pollen; S, stigma; T, tapetum; Tt, stylar transmitting tissue; Vb, vascular bundle.

**Figures 7a-l.** *In situ* hybridization analysis of *SaPIN2a* mRNA (a-c) and *SaPIN2b* mRNA (d-e) and immunolocalization of SaPIN2a (g-i) and SaPIN2b (j-l) in senescent flowers. Tissue sections were hybridized with either digoxigenin-labeled antisense *SaPIN2a* RNA



probe (b-c) or sense *SaPIN2a* RNA probe (a) as control, and with either digoxigenin-labeled antisense *SaPIN2b* RNA probe (e-f) or sense *SaPIN2b* RNA probe (d) as control. In immunolocalization of SaPIN2a and SaPIN2b, tissue sections were stained with either affinity-purified SaPIN2a-specific antibodies (h-i) or preimmune serum (g), and with either  
5 affinity-purified SaPIN2b-specific antibodies (k-l) or preimmune serum (j). Bar = 100  $\mu$ m. O, nucellar cells in ovule; P, placenta; Vb, vascular bundle. Yellow arrowheads indicate the inner cell layer of the embryo sac; red arrowheads indicate the subsequent cell layer. Longitudinal sections of ovary in senescent flower (a, b, d, e, g, h, j and k). Magnification of panel b at the ovule (c). Magnification of panel e at the ovule (f). Magnification of  
10 panel h at the ovule (i). Magnification of panel k at the ovule (l).

**Figures 8a-n.** Localization of nuclear DNA fragmentation by the TUNEL assay in flower sections. Sections of young floral buds (a-d), mature flowers (e-i) and senescent flowers (j-n) were subjected to the TUNEL assay. Positive control sections at each developmental stage were treated with DNase I prior to labelling; two such sections are shown (e and n).  
15 Negative control sections (a, c, f and j) in which TdT was omitted. Longitudinal sections of young floral bud (a, b). Transverse sections of ovary in young floral bud (c, d). Longitudinal sections of mature flowers (e, f, g). Magnification of panel f at the ovary (h). Magnification of panel g at the ovary (i). Longitudinal sections of ovary in senescent flowers (j, k). Magnifications of panel k at ovules (l, m). Longitudinal section of  
20 senescent ovule in TUNEL-positive control (n). Arrowheads indicate the inner cell layer of the embryo sac. Bar = 20  $\mu$ m (h, i, l, m, n), 50  $\mu$ m (c, d), 100  $\mu$ m (a, e, f, g, j, k) and 200  $\mu$ m (b). O, nucellar cells in ovule; P, placenta; Po, pollen; S, stigma; Tt, stilar transmitting tissue; Vb, vascular bundle.

**Figures 9a-m.** Immunogold localization of SaPIN2a and SaPIN2b in the nucellar cells of  
25 the ovules of *S. americanum* floral bud using TEM. Transverse sections were stained with affinity-purified SaPIN2a-specific antibodies (a-c), SaPIN2b-specific antibodies (d-i), preimmune serum (j-k) or blocking solution (l-m). Transverse section of ovule stained with affinity-purified SaPIN2a-specific antibodies, Bar = 1  $\mu$ m (a). Magnification of the boxed areas in panel a showing localization of SaPIN2a to the vacuole, Bar = 0.3  $\mu$ m (b, c).  
30 Transverse section of ovule stained with affinity-purified SaPIN2b-specific antibodies, Bar = 1  $\mu$ m (d). Magnification of the boxed areas in panel d showing localization of SaPIN2b to the vacuole, Bars = 0.3  $\mu$ m (e, g), 0.1  $\mu$ m (f). Magnification of the box in panel g, Bar = 0.1  $\mu$ m (h). Magnification of the nucleus boxed in panel d, Bar = 0.1  $\mu$ m (i). Control for

panel d, replacing anti-SaPIN2b antibodies with preimmune serum, Bar = 2  $\mu\text{m}$  (j). Magnification of the box in panel j, Bar = 0.2  $\mu\text{m}$  (k). Control for panels a and d, omission of anti-SaPIN2a and anti-SaPIN2b antibodies, blocking solution only, Bar = 1  $\mu\text{m}$  (l). Magnification of the box in panel l, Bar = 0.2  $\mu\text{m}$  (m). Arrowheads indicate gold particles.

**Figures 10a & b.** (a) Structure of T-DNA region of pSa7. RB, right border of the transferred DNA (T-DNA); NOS-Pro, nopaline synthase (*NOS*) promoter; NPT II, neomycin phosphotransferase II gene encoding resistance to kanamycin ( $\text{Kan}^{\text{R}}$ ); NOS-ter, *NOS* terminator; CaMV 35S-Pro, promoter of cauliflower mosaic virus (CaMV) 35S RNA; *SaPIN2a*, *Solanum americanum* proteinase inhibitor IIa; LB, left border of the T-DNA. (b) DNA sequence of junction of CaMV 35S promoter and *SaPIN2a* cDNA in pSa7. The sequence in italics is from parent binary vector pBI121 and the remaining sequence is from the plasmid pSa2, a pBluescript II SK-derivative containing the full-length *SaPIN2a* cDNA (Xu *et al.*, 2001, *Plant Mol. Biol.* 47: 727-738). The transcription start site (Jefferson *et al.*, 1987, *EMBO J.* 6, 3901-3907) is underlined. The start codon (atg) of *SaPIN2a* is in bold.

**Figures 11a & b.** Southern blot analysis of DNA from  $R_0$  transgenic lettuce plants. Twenty  $\mu\text{g}$  of genomic DNA was digested with *EcoRI* (a) or *BamHI* (b) and fractionated on a 0.8% agarose gel. A  $^{32}\text{P}$ -labeled probe prepared by random-primed labeling of the *SaPIN2a* cDNA was used. The identification number of the individual transgenic lettuce line is indicated on the top of each lane. WT, wild-type control plant. The DNA molecular size markers are shown on the sides. Arrows indicate the 0.58-kb hybridization band corresponding to the *SaPIN2a* cDNA.

**Figures 12a & b.** Northern blot analysis of RNA from  $R_0$  transgenic lettuce plants. Total RNA (20  $\mu\text{g}$ ) was isolated from leaves of wild-type (WT) or transgenic lettuce (TL) and from stems of *S. americanum* (ST), as positive control. The blots were probed with a  $^{32}\text{P}$ -labeled *SaPIN2a* cDNA. The 25S rRNA bands stained with methylene blue are at the bottom panel. The hybridization band corresponding to the transcript of *SaPIN2a* cDNA is indicated by an arrowhead (in *S. americanum* stems) or an arrow (in transgenic lettuce leaves). The 25S rRNA bands stained with methylene blue are at the bottom panel. Blot shown in (b) is a repeat of RNA samples from TL10, 11 and 34 that were degraded in (a) together with TL52 as an internal control.

**Figures 13a, b, c & d.** Northern blot and western blot analyses of  $R_1$  transgenic lettuce

plants. Total RNA (20 µg) and total protein (20 µg) were isolated from identical leaves and stems of 38-day R<sub>1</sub> transgenic (TL1, 11 & 33) and wild-type (WT) lettuce plants. Total RNA (20 µg) and total protein (14 µg) isolated from *S. americanum* (Sa) stems were included as a positive control. (a): Northern blot analysis with a <sup>32</sup>P-labeled *SaPIN2a* cDNA probe. The hybridization band corresponding to the transcript of *SaPIN2a* cDNA is indicated by an arrowhead (0.67-kb mRNA in *S. americanum* stems) or an arrow (0.93-kb mRNA in transgenic lettuce leaves). (b): The 25S rRNA bands stained with ethidium bromide are shown to demonstrate amounts of total RNA loaded in (a). (c): western blot analysis with SaPIN2a-specific antibodies. Cross-reacting bands in lettuce leaves (18.1-kDa) and *S. americanum* stems (16.7-kDa) are indicated. (d): Coomassie blue staining of total protein from transgenic and wild-type plants separated on a 4-20% gradient SDS-PAGE to demonstrate amounts of total protein loaded in (c).

**Figures 14a & b.** Proteinase inhibitory activity assay of transgenic lettuce leaf extracts. Leaf extracts were prepared from 54-day old wild-type (WT) or transgenic (TL1, 11 & 33) R<sub>1</sub> plants. Each value represents the mean ± SE of three replicates. (a) trypsin inhibitory activity assay. One µg of bovine trypsin (Calbiochem) was incubated with 150 µl of assay buffer (standard) or leaf extracts and the residual trypsin activity was determined by measuring the increase of absorbance at 247 nm during the hydrolysis of substrate. (b) chymotrypsin inhibitory activity assay. Two µg of bovine α-chymotrypsin (Calbiochem) was incubated with 50 µl of assay buffer (standard) or leaf extract and the residual chymotrypsin activity was determined by measuring the increase of absorbance at 256 nm during the hydrolysis of substrate.

**Figures 15a & b.** Trypsin- and chymotrypsin-like activity assay of transgenic lettuce leaf extracts. Leaf extracts were prepared from 54-day old wild-type (WT) or transgenic (TL1, 11 & 33) R<sub>1</sub> plants. Each value represents the mean ± SE of three replicates. (a) trypsin-like activity assay. Leaf extract (150 µl) was directly incubated with substrate in the absence of bovine trypsin and the trypsin-like activity was determined by measuring the increase in absorbance at 247 nm during the hydrolysis of substrate. (b) chymotrypsin-like activity assay. Leaf extract (50 µl) was directly incubated with substrate in the absence of bovine α-chymotrypsin and the chymotrypsin-like activity was determined by measuring the increase in absorbance at 256 nm during the hydrolysis of substrate.

**Figures 16a, b, c & d.** Growth of cabbage loopers (*T. ni*) fed on leaves of R<sub>0</sub> transgenic and wild-type lettuce. Newly hatched first-instar larvae were fed with daily fresh leaves

from R<sub>0</sub> transgenic plants TL1(a), TL7(b), TL11(c) and TL15(d), each with leaves from wild-type control plants (WT). The points shown represent the total weight of ten larvae.

**Figures 17a, b, c & d.** Cabbage loopers (*T. ni*) fed on leaves of transgenic (TL1) and wild-type lettuce. (a) *T. ni* larvae fed 8 days on leaves of transgenic lettuce (TL1); (b) *T. ni* larvae fed 8 days on leaves of wild-type lettuce; (c) resultant leaves of TL1 R<sub>0</sub> plants on day 8 of feeding trials; (d) resultant leaves of wild-type lettuce on day 8 of feeding trials.

**Figure 18.** pMLVHisA plastid transformation vector. The flanking regions *rbcL* and *accD*, derived from the tobacco plastid genome, are used in homologous recombination during plastid transformation. P<sub>*psbA*</sub> represents the promoter regulating expression of the inserted gene and T<sub>*psbA*</sub>, the terminator. P<sub>*rrn*</sub> represents the promoter driving expression of the spectinomycin-resistance marker *aadA* and T<sub>*rbcL*</sub>, the *rbcL* terminator. Met represents the start codon for the expressed recombinant (His)<sub>5</sub>-tagged protein.

**Figure 19.** The pMLVHisP plastid transformation vector containing the *SaPIN2a* cDNA. To generate pMLVHisP, a 0.5-kb *NotI* fragment of *S. americanum* cDNA encoding proteinase inhibitor II protein (SaPIN2a) was cloned in the *NotI* site of pMLVHisA. The (His)<sub>5</sub>-tag and SaPIN2a is fused in-frame. Primers ML330P, ML399, ML400 and ML422 were used in PCR analysis for detection of the recombinant DNA insert in the plastid transformants. The expected PCR-amplified fragments of 0.63-kb and 1.1-kb are indicated.

**Figures 20a, b, c and d.** Analysis of plantlets generated from transformation using plastid transformation vector pMLVHisP. (a) Green shoots developed from bombarded tobacco leaves after plastid transformation with pMLVHisP. (b) A tobacco plant used in PCR analysis. (c) Ethidium bromide stained gel showing a 0.63-kb PCR-amplified fragment using primers ML330P and ML400 from a transplastomic line (lane 8). This band is absent in other putative lines (lane 2-7, lane 9) and wild-type tobacco (lane 1). DNA markers (lane 10). (d) Southern blot analysis on the above gel with <sup>32</sup>P-labeled *SaPIN2a* probe show a corresponding 0.63-kb SaPIN2a hybridizing band (denoted by arrow) in the transplastomic line (lane 8).

## 5. DETAILED DESCRIPTION OF THE INVENTION

### 5.1 SaPIN2a and SaPIN2b

#### 5.1.1 cDNA cloning

The cloning of *SaPIN2a* cDNA and the cloning of a portion of *SaPIN2b* cDNA are disclosed in Xu *et al.* (2001, *supra*), which is incorporated by reference in its entirety. The entire sequence of *SaPIN2b* has been determined using PCR amplification of total RNA using a *SaPIN2b* specific primer as described in the Examples. Other proteinase inhibitor II DNA related to *SaPIN2a* DNA may be isolated and characterized using techniques known in the art. A cDNA or genomic DNA specific for proteinase inhibitor II protein or nucleic acid may be cloned and sequenced in a variety of ways, *e.g.*, dideoxy chain termination sequencing, *see, e.g.*, Sambrook *et al.*, 1989, *Molecular Cloning: A Laboratory Manual*, Cold Spring Harbor Laboratory Press, Cold Spring Harbor, N.Y.

The polynucleotides that may be used in the present invention include polynucleotides having the DNA sequences presented herein, and additionally include any nucleotide sequence encoding a contiguous and functional proteinase inhibitor II encoding open reading frame (ORF) that hybridizes to a complement of the DNA sequences presented herein under highly stringent conditions. The polynucleotide may be 30, 100, 200, 300, 400, 500 or 600 nucleotides in length and encode a functionally active fragment. By way of example and not limitation, high stringency hybridization conditions can be defined as follows: The filter-bound DNA were hybridized in a solution containing 50% deionized formamide, 6xSSC, 5x Denhardt's, 1% SDS, 100 µg/ml denatured salmon sperm DNA at 42°C overnight (about 4-16 hours), and washing in 0.1xSSC, 0.1% SDS at 65°C (Ausubel F.M. *et al.*, eds., 1989, *Current Protocols in Molecular Biology*, Vol. I, Green Publishing Associates, Inc., and John Wiley & sons, Inc., New York).

For oligonucleotide probes, by way of example and not limitation, highly stringent conditions may refer, *e.g.*, to washing in 6XSSC/0.05% sodium pyrophosphate at 37°C (for 14-base oligos), 48°C (for 17-base oligos), 55°C (for 20-base oligos), and 60°C (for 23-base oligos).

Additionally contemplated polynucleotides that may be used in the present invention include any nucleotide sequences that hybridize under moderately stringent conditions to the complement of the DNA sequences that encodes a proteinase inhibitor II. The polynucleotide may be 30, 100, 200, 300, 400, 500 or 600 nucleotides in length and encode a functionally active fragment, analog or variant of a proteinase inhibitor II protein. By way of example but not limitation, such moderately stringent conditions may include, *e.g.*, washing in 0.2XSSC/0.1% SDS at 42°C (Ausubel *et al.*, 1989, *supra*).

Additionally contemplated polynucleotides that may be used in the present invention include any nucleotide sequences that hybridize under low stringency conditions to the

complement of the DNA sequences that encode a proteinase inhibitor II. By way of example and not limitation, procedures using such conditions of low stringency are described in Shilo and Weinberg, 1981, *Proc. Natl. Acad. Sci. USA* 78:6789-6792.

Moreover, a variant of proteinase inhibitor II can also be used in the present invention.

5 A variant may comprise one or more changes in the amino acid sequence of the proteinase inhibitor, *e.g.*, by way of addition, substitution, or deletion of one or more amino acids, compared with the wild type proteinase inhibitor. Any change should not abolish the biological activities of the proteinase inhibitor, though it may increase or decrease the biological activities depending on the nature of the changes. Preferably, the amino acid

10 changes are conservative. A "conservative amino acid substitution" is one in which the amino acid residue is replaced with an amino acid residue having a side chain with a similar charge. Families of amino acid residues having side chains with similar charges have been defined in the art. Genetically encoded amino acids can be divided into four families: (1) acidic = aspartate, glutamate; (2) basic = lysine, arginine, histidine; (3) nonpolar =

15 alanine, valine, leucine, isoleucine, proline, phenylalanine, methionine, tryptophan; and (4) uncharged polar = glycine, asparagine, glutamine, cysteine, serine, threonine, tyrosine. In similar fashion, the amino acid repertoire can be grouped as (1) acidic = aspartate, glutamate; (2) basic = lysine, arginine histidine, (3) aliphatic = glycine, alanine, valine, leucine, isoleucine, serine, threonine, with serine and threonine optionally be grouped

20 separately as aliphatic-hydroxyl; (4) aromatic = phenylalanine, tyrosine, tryptophan; (5) amide = asparagine, glutamine; and (6) sulfur -containing = cysteine and methionine. (*See*, for example, *Biochemistry*, 4th ed., Ed. by L. Stryer, WH Freeman and Co. 1995).

In various embodiments, the proteinase inhibitor II, fragment, variant, analog, or derivative may be expressed as a fusion, or chimeric protein product (comprising the

25 proteinase inhibitor, fragment, analog, or derivative joined via a peptide bond to a heterologous protein sequence (of a different protein)). The size of these fragments may be 20, 30, 40, 50, 60, 70, 80, 90 or 100 amino acids of the proteinase inhibitor II protein. Such a chimeric gene product can be made by ligating the appropriate nucleic acid sequences encoding the desired amino acid sequences to each other by methods known in

30 the art, in the proper coding frame, and expressing the chimeric product by methods commonly known in the art. Alternatively, such a chimeric product may be made by protein synthetic techniques, *e.g.*, by use of a peptide synthesizer. Preferably, the fragment, analog, and derivative of the proteinase inhibitor in the fusion protein retains the ability to perform its function. Alternatively, DNA for the expression of the heterologous

desired protein (*e.g.*, edible vaccines, antibodies, *etc.*) intended for protection against endogenous plant proteases could be introduced on a separate plasmid, using a different selectable marker, into transformed lettuce (or any plant species) that is already expressing SaPIN2a or SaPIN2b. The resultant transformed plant will co-express the heterologous protein and SaPIN2a or SaPIN2b and thus the heterologous protein would gain protection against endogenous plant proteases.

A cDNA or genomic DNA specific for a plant may be cloned through screening a cDNA or genomic DNA library. Such a library may be prepared, for example, from messenger RNA or genomic DNA from the plant. For general background on molecular biology techniques and on how to prepare a cDNA library and a genomic library, *see, e.g.*, Ausubel F.M. *et al.*, *supra*; Sambrook *et al.*, 1989, *supra*; and U.S. Patent No. 5,650,148.

The library may be screened with a nucleotide fragment specific for a part of the proteinase inhibitor II. For example, the protein sequence of a proteinase inhibitor II may be determined using techniques well known to those of skill in the art, such as via the Edman degradation technique. (*See, e.g.*, Creighton, 1983, "Proteins: Structures and Molecular Principles", W.H. Freeman & Co., New York, pp. 34-49). The amino acid sequence obtained may be used as a guide for the generation of oligonucleotide mixtures that can be used to screen a cDNA library for the cDNA sequence encoding the proteinase inhibitor II.

Or, for example, two stretches of protein sequences specific for the proteinase inhibitor II may be determined. A set of degenerate oligonucleotides specific for each stretch is prepared and the oligonucleotides are used in a polymerase chain reaction ("PCR") amplification. Oligonucleotides are at least about 6 nucleotides long, more preferably at least about 10, more preferably at least about 15, more preferably at least about 20, more preferably at least about 30, more preferably at least about 40 nucleotides. The template in the PCR reaction would be, for example, a mixture of cDNA or genomic DNA that is known to contain or suspected to contain a DNA polynucleotide specific for the proteinase inhibitor II of interest. A cDNA template may be obtained in a variety of ways, for example, by isolating a mixture of different cDNA species from a cDNA library or, for example, by reverse transcribing total mRNA from a cell or organism known to (or suspected to) express the proteinase inhibitor II. For background on PCR, *see, e.g.*, Ausubel, *supra*, and PCR Protocols: A Guide to Methods and Applications, 1990, Innis, M. *et al.*, eds. Academic Press, Inc., New York.

In order to clone a full-length cDNA, fragments, analogs, and derivatives thereof, or genomic DNA sequence from any species or to clone variant or heterologous forms of the proteinase inhibitor II, labeled DNA probes made from nucleic acid fragments corresponding to any of the polynucleotides discussed herein or made using the methods of the invention may be used to screen a cDNA library or a genomic DNA library (for example, a phage library) as described in, *e.g.*, Ausubel F.M. *et al.*, *supra*; Sambrook *et al.*, 1989, *supra*.

### 5.1.2 Protein sequences

SaPIN2a and SaPIN2b are characterized by the presence of two inhibitor domains, Inhibitory domain 1 and Inhibitory domain 2 (Xu *et al.*, 2001, *Plant Mol Biol* 47:727-738). Each inhibitory domain is characterized by the presence of eight cysteine residues. Inhibitory domain 1 contains a putative trypsin-reactive site, R<sup>32</sup>-E<sup>33</sup> in SaPIN2a. Inhibitory domain 2 contains a putative chymotrypsin-reactive site, F<sup>89</sup>-E<sup>90</sup> in SaPIN2a.

In certain embodiments of the present invention, the nucleic acid molecules or polypeptides useful for the present invention comprise a minimal active fragment containing a trypsin-reactive site or a chymotrypsin reactive site.

## 5.2 PRODUCTION OF ANTIBODIES

For the production of antibodies, various host animals may be immunized by injection with the proteinase inhibitor II (*e.g.*, one corresponding to functional domain of the proteinase inhibitor II), truncated proteinase inhibitor II (a proteinase inhibitor II in which one or more domains have been deleted), functional equivalents of the proteinase inhibitor II, mutants of the proteinase inhibitor II, or short peptides (or fragments that are 5, 10, 20, 30, 35, 40, 50, 60, 70, 80, 90 or 100 amino acids in length, or multiples thereof) of proteinase inhibitor II. Epitopes of proteinase inhibitor II which illicit an immune response or provide antigenicity. Such host animals may include but are not limited to rabbits, mice, goats, and rats, to name but a few. Various adjuvants may be used to increase the immunological response, depending on the host species, including but not limited to Freund's (complete and incomplete), mineral gels such as aluminum hydroxide, surface active substances such as lysolecithin, pluronic polyols, polyanions, peptides, oil emulsions, keyhole limpet hemocyanin, dinitrophenol, and potentially useful human adjuvants such as BCG (bacille Calmette-Guerin) and *Corynebacterium parvum*. Polyclonal antibodies are heterologous populations of antibody molecules derived from the sera of the immunized animals.



Antibodies useful for the present invention include monoclonal antibodies (*see, e.g.*, Kohler *et al.*, 1975, *Nature* 256:495-497; and U.S. Patent No. 4,376,110), chimeric antibodies (*see, e.g.*, Morrison *et al.*, 1984, *Proc. Natl. Acad. Sci. USA*, 81:6851-6855; Neuberger *et al.*, 1984, *Nature*, 312:604-608; Takeda *et al.*, 1985, *Nature*, 314:452-454),  
5 single chain antibodies (*see, e.g.*, U.S. Patent 4,946,778; Bird, 1988, *Science* 242:423-426; Huston *et al.*, 1988, *Proc. Natl. Acad. Sci. USA* 85:5879-5883; and Ward *et al.*, 1989, *Nature* 334:544-546), antibody fragments (*see, e.g.*, Huse *et al.*, 1989, *Science*, 246:1275-1281), anti-idiotypic antibodies or Fab fragments of such anti-idiotypes (*see, e.g.*, Greenspan & Bona, 1993, *FASEB J* 7(5):437-444; and Nissinoff, 1991, *J. Immunol.*  
10 147(8):2429-2438).

### 5.3 EXPRESSION OF PROTEINASE INHIBITOR II USING RECOMBINANT DNA TECHNOLOGY

Proteinase inhibitor II, fragments thereof or fusion proteins thereof, are advantageously produced by recombinant DNA technology using techniques well known in  
15 the art. Such methods can be used to construct chimeric gene or expression vectors containing a proteinase inhibitor II nucleotide sequence and appropriate transcriptional and translational control signals. These methods include, for example, *in vitro* recombinant DNA techniques, synthetic techniques, and *in vivo* genetic recombination. *See*, for example, the techniques described in Sambrook *et al.*, 1989, *supra*, and Ausubel *et al.*, 1989,  
20 *supra*. As used herein, the term chimeric gene refers to a combination of nucleic acid sequences for each part of the chimeric gene, which sequences have been engineered into relationship by recombinant DNA techniques, which sequences may also be in their separate parts endogenous or exogenous to the plant into which the chimeric gene is to be introduced.

25 Alternatively, RNA corresponding to all or a portion of a transcript encoded by a proteinase inhibitor II nucleotide sequence may be chemically synthesized using, for example, synthesizers. *See*, for example, the techniques described in "Oligonucleotide Synthesis", 1984, Gait, M.J. ed., IRL Press, Oxford, which is incorporated by reference herein in its entirety.

30 Any of host-expression vector system known in the art of biotechnology may be utilized to express the proteinase inhibitor II nucleotide sequence including, but not limited to, expression in bacteria, yeast, insect cells, mammalian cells, eukaryotic cells and plant cells. In these expression systems, any selection system may be used. Such selection

may comprise growth on a selective medium (*e.g.*, antibiotics, minimal media, etc.) or the use of an indicator (*e.g.*, a dye, a fluorescent reagent, etc.).

In cases where plant expression vectors are used, the expression of the proteinase inhibitor II coding sequence may be driven by any of a number of regulatory elements. For example, viral promoters such as the 35S RNA and 19S RNA promoters of CaMV (Brisson *et al.*, 1984, *Nature* 310:511-514), or the coat protein promoter of TMV (Takamatsu *et al.*, 1987, *EMBO J.* 6:307-311) may be used; alternatively, plant promoters such as the small subunit of RUBISCO (Coruzzi *et al.*, 1984, *EMBO J.* 3:1671-1680; Broglie *et al.*, 1984, *Science* 224:838-843); or heat shock promoters, *e.g.*, soybean hsp17.5-E or hsp17.3-B (Gurley *et al.*, 1986, *Mol. Cell. Biol.* 6:559-565) may be used. These constructs can be introduced into plant cells using Ti plasmids, Ri plasmids, plant virus vectors, direct DNA transformation, biolistics/particle bombardment, microinjection, electroporation, *etc.* For reviews of such techniques see, for example, Weissbach & Weissbach, 1988, *Methods for Plant Molecular Biology*, Academic Press, New York, Section VIII, pp. 421-463; and Grierson & Corey, 1988, *Plant Molecular Biology*, 2d Ed., Blackie, London, Ch. 7-9. As used herein, regulatory elements include but are not limited to inducible and non-inducible promoters, enhancers, operators and other elements known to those skilled in the art that drive and regulate expression.

Preferably the promoter is capable of directing expression in a particular tissue of the plant and/or at particular stages of development of the plant. The promoter may be heterologous or homologous to the plant. Preferably the promoter directs expression to the fruit or leaves (as in the case of lettuce) for easy delivery of edible plant vaccines. Fruits or leaves eaten raw would be ideal for this purpose (*e.g.*, tomatoes, lettuce, apples, bananas). Preferably the promoter directs expression to the endosperm of the plant seed or to the roots or tuber of the plant. A preferred promoter is the high molecular weight glutenin (HMWG) gene of wheat. Other suitable promoters will be known to the skilled in the art, such as the promoters of gliadin, branching enzyme, ADPG pyrophosphorylase, starch synthase and actin, for example.

#### **5.4 TRANSFORMED PLANTS EXPRESSING PROTEINASE INHIBITOR II**

A transformed plant with the ability to express a plant proteinase inhibitor II polypeptide may be engineered by transforming a plant cell with a gene construct comprising a sequence encoding a plant proteinase inhibitor II protein or polypeptide. In

one embodiment, a plant promoter is operably associated with a sequence encoding the desired plant proteinase inhibitor II protein or polypeptide. As used herein, the term “operably associated” or “operably linked” refers to an association in which the regulatory regions (*e.g.*, promoter, enhancer) and the nucleic acid sequence to be expressed are covalently joined and positioned in such a way as to permit transcription, and under the appropriate condition, translation. In a preferred embodiment of the present invention, the associated promoter is a strong and non tissue- or developmental-specific plant promoter (*e.g.*, a promoter that strongly expresses in many or all plant tissue types). Examples of such strong, “constitutive” promoters include, but are not limited to, the CaMV 35S promoter (Odell *et al.*, 1985, *Nature* 313:810-812), the T-DNA mannopine synthetase promoter, and their various derivatives. In another preferred embodiment, an inducible or repressible promoter is used to express the proteinase inhibitor II of interest in a plant, for example, a tet operator promoter as described in Weinmann *et al.*, 1994, *Plant J.* 5:559-569; or a glucocorticoid-inducible promoter as described in McNellis *et al.*, 1998, *Plant J.* 14:247-257; or an ethanol inducible promoter as described in Caddick *et al.*, 1998, *Nature Biotechnology* 16:177-180. *See, also*, Gatz, 1995, *Methods In Cell Biology* 50:411-424, which describes inducible and repressible gene expression systems for plants. In another preferred embodiment, in plastid transformation, the promoter is a strong plastid promoter *e.g.*, the promoter ( $P_{psbA}$ ) of *psbA*, the plastid gene encoding the photosystem II 32 kD protein.

In one embodiment of the invention, a proteinase inhibitor II is expressed in a plant so that the proteinase inhibitor II polypeptide will be localized in the apoplastic space. The proteinase inhibitor II may be directed to the apoplastic space, when expressed in a plant, by expressing the proteinase inhibitor II polypeptide as a fusion protein together with a peptide that acts as a signal or transporter so that proteinase inhibitor II is localized in the apoplastic space of the transformed plant. A variety of signal or transporter peptides can be used, for example, the PR1b signal sequence as described in Lund *et al.*, 1992, *Plant Mol. Biol.* 18:47-53; or the PR-1a, b and c signal sequences as described in Pfitzner *et al.*, 1987, *Nucl. Acids Res.* 15:4449-4465. A fusion protein comprising a signal or transporter peptide and a proteinase inhibitor II polypeptide may be constructed by linking polynucleotides specific for each component to each other (*e.g.*, the polynucleotides are linked in frame) so that the desired fusion protein is made when the fusion polynucleotide is expressed in a transformed plant. A skilled artisan would know how to construct a

polynucleotide useful for expressing a proteinase inhibitor II in the apoplastic space of a transformed plant.

In another embodiment of the present invention, it may be advantageous to engineer a plant with a gene construct comprising a sequence encoding a plant proteinase inhibitor II protein or polypeptide operably associated with a tissue- or developmental-specific promoter, such as, but not limited to, the CHS promoter, the PATATIN promoter, etc. Such an embodiment is especially desirable to prevent flower senescence by expressing proteinase inhibitor II proteins or polypeptides during late floral development.

In yet another embodiment of the present invention, methods are provided for inhibiting programmed cell death or senescence in a plant or plant part by expressing proteinase inhibitor II in the plant or plant part. In a specific embodiment, the plant part is a flower, melon, vegetable or fruit.

In yet another embodiment, methods of prolonging the shelf life of vegetables, fruits, and flowers are also part of the present invention.

In yet another embodiment of the present invention, it may be advantageous to transform a plant with a gene construct comprising a sequence encoding a plant proteinase inhibitor II protein or polypeptide operably linked to a modified or artificial promoter. Typically, such promoters, constructed by recombining structural elements of different promoters, have unique expression patterns and/or levels not found in natural promoters. See, e.g., Salina *et al.*, 1992, *Plant Cell* 4:1485-1493, for examples of artificial promoters constructed from combining *cis*-regulatory elements with a promoter core.

In yet an additional embodiment of the present invention, the expression of a proteinase inhibitor II polynucleotide may be engineered by increasing the copy number of the gene encoding the desired protein or polypeptide using techniques known in the art.

In yet another embodiment, it may be desirable to generate transformed plants expressing more than one proteinase inhibitor II gene, e.g. *SaPIN2a* and *SaPIN2b*. The genes may be located on two separate recombinant vectors or on a single recombinant vector.

For the production of high levels of PIN2 for extraction from the transformed plants of the invention, it is preferable to use plastid transformation. It is believed that plastid transformation will result in much higher levels of protein expression than that achieved in nuclear transformation. PIN2s can be used in applications for the *in vitro* inhibition of trypsin-like and chymotrypsin-like activities, especially during the preparation, extraction and purification of high-value proteins from plants. During these steps, in the absence of

any proteinase inhibitors, the high-value proteins would be subject to degradation by endogenous proteinases. Thus, purified PIN2s can be added to plant extracts during the preparation and purification of high-value products including recombinant biopharmaceuticals. Representative, plant-derived recombinant biopharmaceuticals for which PIN2 would be useful are described in Ma *et al.* (2003, *Nature Reviews* 4: 794-805).

To optimize yield of PIN2s, it is preferred that PIN2s are derived from plastid-transformed plants rather than from nuclear-transformed plants. In general, the yield of heterologous protein is higher from plastid transformation, due to the many more copies of the plastid genome than the nuclear genome (Staub *et al.*, 2000, *Plant Journal* 6: 547-553; Daniell *et al.*, 2001, *J. Mol. Biol.* 311: 1001-1009; Daniell *et al.*, 2002, *Trends in Plant Sci.* 7: 84-91; Fernandez-San Millan *et al.*, 2003, *Plant Biotech.* 1: 71-79).

To enable easy purification of PIN2s, the PIN2 protein can be tagged with a His-tag, as described in the Examples. Another affinity tag is the FLAG epitope (Ma *et al.*, 2003, *Nature Reviews* 4: 794-805). Other methods and strategies available for the purification of heterologous proteins that can be applied for PIN2s are described elsewhere (Daniell *et al.*, 2001, *Trends in Plant Sci* 6: 219-226; Ma *et al.*, 2003, *Nature Reviews* 4: 794-805).

Isolation of proteins can be accomplished by gel filtration chromatography, affinity chromatography including the use of affinity tags, recombinant protein A expanded bed adsorption chromatography (Valdes R. *et al.*, 2003, *Biochem. Biophys. Res. Comm.* 308: 94-100); single-step purification without chromatography, *e.g.* use of oleosin-fusions (Boothe *et al.*, 1997, *Drugs Dev. Res.* 42:172-181), and the use of protein-based polymer GVGVP encoded by synthetic genes (Daniell *et al.*, 2001, *Trends in Plant Science* 6: 219-226). His-tagged proteins can be purified by immobilized-metal affinity chromatography, using an affinity column of Nickel-Nitrilotriacetic acid (Ni-NTA) Agarose (Qiagen) according to the manufacturer's instructions. See also Janknecht *et al.*, 1991, *Proc. Natl. Acad. Sci.* 88: 8972-8976). The His-tag binds Ni-NTA. This His-tag can be fused at either the N-terminal or the C-terminal end of the desired peptide.

The present invention also encompasses the production of a heterologous protein in a transformed plant using the methods of the invention (see, generally, Outchkourov *et al.*, 2003, *Plant Physiol.* 133:379-390). In these methods, a transformed plant expressing a heterologous protein can be generated before or after transformation with a proteinase inhibitor gene. Isolation of proteins can be accomplished as described for PIN2 proteins.

The present invention encompasses a transformed plant cell, transformed plants, and progeny thereof, that are produced by sexual or asexual reproduction.

## 5.5 TRANSFORMATION OF PLANTS AND PLANT CELLS

Plants and plant cells may be transformed using any method known in the art. In an embodiment of the present invention, *Agrobacterium* is employed to introduce the gene construct into plants. Such transformation preferably uses binary *Agrobacterium* T-DNA vectors (Bevan, 1984, Nuc. Acid Res. 12:8711-8721), and the co-cultivation procedure (Horsch *et al.*, 1985, Science 227:1229-1231). Generally, the *Agrobacterium* transformation system is used to engineer dicotyledonous plants (Bevan *et al.*, 1982, Ann. Rev. Genet 16:357-384; Rogers *et al.*, 1986, Methods Enzymol. 118:627-641). The *Agrobacterium* transformation system may also be used to transform, as well as transfer, DNA to monocotyledonous plants and plant cells. (see Hernalsteen *et al.*, 1984, EMBO J 3:3039-3041 ; Hooykaas-Van Slogteren *et al.*, 1984, Nature 311:763-764; Grimsley *et al.*, 1987, Nature 325:1677-179; Boulton *et al.*, 1989, Plant Mol. Biol. 12:31-40.; and Gould *et al.*, 1991, Plant Physiol. 95:426-434).

In other embodiments, various alternative methods for introducing recombinant nucleic acid constructs into plants and plant cells may also be utilized. These other methods are particularly useful where the target is a monocotyledonous plant or plant cell. Alternative gene transfer and transformation methods include, but are not limited to, particle gun bombardment (biolistics), protoplast transformation through calcium-, polyethylene glycol (PEG)- or electroporation-mediated uptake of naked DNA (see Paszkowski *et al.*, 1984, EMBO J 3:2717-2722, Potrykus *et al.*, 1985, Molec. Gen. Genet. 199:169-177; Fromm *et al.*, 1985, Proc. Nat. Acad. Sci. USA 82:5824-5828; and Shimamoto, 1989, Nature 338:274-276) and electroporation of plant tissues (D'Halluin *et al.*, 1992, Plant Cell 4:1495-1505). Additional methods for plant cell transformation include microinjection, silicon carbide mediated DNA uptake (Kaepler *et al.*, 1990, Plant Cell Reporter 9:415-418), and microprojectile bombardment (see Klein *et al.*, 1988, Proc. Nat. Acad. Sci. USA 85:4305-4309; and Gordon-Kamm *et al.*, 1990, Plant Cell 2:603-618). In any methods, selectable markers may be used, at least initially, in order to determine whether transformation has actually occurred. Useful selectable markers include enzymes which confer resistance to an antibiotic, such as gentamycin, hygromycin, kanamycin and the like. Alternatively, markers which provide a compound identifiable by a color change, such as GUS, or luminescence, such as luciferase, may be used. For plastid transformation, biolistics according to the method of Svab and Maliga (Svab *et al.*, 1993, Proc. Natl. Acad. Sci. USA 90: 913-917) is preferred.

A chimeric gene comprising proteinase inhibitor II sequences may further comprise a gene switch mechanism which determines under what conditions or when the coding sequence is to be expressed. The gene switch may be a chemically induced promoter, a temperature controlled promoter, or developmentally regulated promoter, for example.

5 According to the present invention, a wide variety of plants and plant cell systems may be engineered for the desired physiological and agronomic characteristics described herein using the nucleic acid constructs of the present invention and the various transformation methods mentioned above. In preferred embodiments, target plants and plant cells for engineering include, but are not limited to, those monocotyledonous and  
10 dicotyledonous plants, such as crops including grain crops (*e.g.*, wheat, maize, rice, millet, barley), fruit crops (*e.g.*, tomato, apple, pear, strawberry, orange), forage crops (*e.g.*, alfalfa), root vegetable crops (*e.g.*, carrot, potato, sugar beets, yam), leafy vegetable crops (*e.g.*, lettuce, spinach); flowering plants (*e.g.*, petunia, rose, chrysanthamum), conifers and pine trees (*e.g.*, pine fir, spruce); plants used in phytoremediation (*e.g.*, heavy metal  
15 accumulating plants); oil crops (*e.g.*, sunflower, rape seed) and plants used for experimental purposes (*e.g.*, *Arabidopsis*, tobacco).

#### **5.6 SCREENING OF TRANSFORMED PLANTS AND PLANT CELLS**

According to the present invention, desired plants may be obtained by engineering one  
20 or more of the gene constructs expressing a proteinase inhibitor II as described herein into a variety of plant cell types, including but not limited to, protoplasts, tissue culture cells, tissue and organ explants, pollens, embryos, as well as whole plants. In an embodiment of the present invention, the engineered plant material is selected or screened for transformants (those that have incorporated or integrated the introduced gene construct(s)) following the  
25 approaches and methods described below. An isolated transformant may then be regenerated into a plant. Alternatively, the engineered plant material may be regenerated into a plant before subjecting the derived plant to selection or screening for the marker gene traits. Procedures for regenerating plants from plant cells, tissues or organs, either before or after selecting or screening for marker gene(s), are well known to those skilled in the art.

30 A transformed plant cell, callus, tissue or plant may be identified and isolated by selecting or screening the engineered plant material for traits encoded by the marker genes present on the transforming DNA. For instance, selection may be performed by growing the engineered plant material on media containing inhibitory amount of the antibiotic or

herbicide to which the transforming gene construct confers resistance. Further, transformed plants and plant cells may also be identified by screening for the activities of any visible marker genes (*e.g.*, the  $\beta$ -glucuronidase, luciferase, B or C1 genes) that may be present on the recombinant nucleic acid constructs of the present invention. Such selection and screening methodologies are well known to those skilled in the art.

Physical and biochemical methods may also be used to identify plant or plant cell transformants containing the gene constructs of the present invention. These methods include but are not limited to: 1) Southern analysis or PCR amplification for detecting and determining the structure of the recombinant DNA insert; 2) Northern blot, S1 RNase protection, primer-extension or reverse transcriptase-PCR amplification for detecting and examining RNA transcripts of the gene constructs; 3) enzymatic assays for detecting enzyme activity, where such gene products are encoded by the gene construct; 4) protein gel electrophoresis (PAGE), Western blot techniques, immunoprecipitation, or enzyme-linked immunoassays, where the gene construct products are proteins. Additional techniques, such as *in situ* hybridization, enzyme staining, and immunostaining, also may be used to detect the presence or expression of the recombinant construct in specific plant organs and tissues. The methods for doing all these assays are well known to those skilled in the art.

#### **5.7 TRANSFORMED PLANTS EXPRESSING AN ENGINEERED PROTEINASE INHIBITOR II POLYNUCLEOTIDE**

Transformed plants are generated that express an engineered proteinase inhibitor II gene. A transformed plant expressing a proteinase inhibitor II has inhibited endogenous protease activity. In particular, a transformed plant expressing a proteinase inhibitor II has inhibited endogenous trypsin-like activity or inhibited endogenous chymotrypsin-like activity. A transformed plant expressing a proteinase inhibitor II is less susceptible to the pathogenic effects of the pathogen of interest. Transformed plants may be made using any of the techniques known in the art as described for plant proteinase inhibitor II expressing transformed plants.

The present invention also encompasses the production of a heterologous protein in a transformed plant using the methods of the invention. Such heterologous protein has a longer half-life and/or is not degraded by the endogenous proteinase due to the co-expression of a PIN2 gene.

Transformed plants expressing one or more proteinase inhibitor II gene polynucleotides capable of rendering said plants more resistant to a pathogen of interest may be from any plant species, plant genus, plant family, plant order, plant class, plant division of the kingdom of plants. *See, e.g.*, U.S. Patent Nos. 5,889,189; 5,869,720; 5,850,015; 5,824,842; PP10,742; PP10,704; PP10,682, which recite plant species, genres,



families, orders, classes and divisions in which the proteinase inhibitor II genes may be used.

Examples of plants are monocots, dicots, crop plants (*i.e.*, any plant species grown for purposes of agriculture, food production for animals including humans, plants that are typically grown in groups of more than about 10 plants in order to harvest for any reason the entire plant or a part of the plant, *e.g.*, a fruit, a leaf, a tuber, a stem, a root, a flower, etc., or a crop, *e.g.*, grain, that the plants bear, etc.), trees (*i.e.*, fruit trees, trees grown for wood production, trees grown for decoration, etc.), flowers of any kind (*i.e.*, plants grown for purposes of decoration, for example, following their harvest), cactuses, etc.

Further examples of plants in which the proteinase inhibitor II genes may be expressed include *Viridiplantae*, *Streptophyta*, *Embryophyta*, *Tracheophyta*, *Euphyllophytes*, *Spermatophyta*, *Magnoliophyta*, *Liliopsida*, *Commelinidae*, *Poales*, *Poaceae*, *Oryza*, *Oryza sativa*, *Zea*, *Zea mays*, *Hordeum*, *Hordeum vulgare*, *Triticum*, *Triticum aestivum*, *Eudicotyledons*, *Core eudicots*, *Asteridae*, *Euasterids*, *Rosidae*, *Eurosids II*, *Brassicales*, *Brassicaceae*, *Arabidopsis*, *Magnoliopsida*, *Solananae*, *Solanales*, *Solanaceae*, *Solanum*, *Nicotiana*.

Also included are, for example, crops of particular interest including Solanaceae, including processing and fresh market tomatoes, ginger, scallions, water chestnuts, pepper and eggplant; leafy plants, including lettuce and spinach; *Brassicas*, including broccoli, brussels sprouts, calabrese, kale, cauliflower, red cabbage and white cabbage; cucurbits, including cucumber, melon, watermelon, zucchini and squash; large seeded plants, including peas, beans and sweetcorn; rooted plants, including carrots and onions; vegetatively propagated plants, including berries, grapes, banana, pineapple and rosaceous fruit and nut crops; and tropical crops, including tobacco, mango and papaya.

Thus, the invention has use over a broad range of plants including, but not limited to, species from the genera *Anacardium*, *Arachis*, *Asparagus*, *Atropa*, *Avena*, *Brassica*, *Citrus*, *Citrullus*, *Capsicum*, *Carthamus*, *Cocos*, *Coffea*, *Cucumis*, *Cucurbita*, *Daucus*, *Elaeis*, *Fragaria*, *Glycine*, *Gossypium*, *Helianthus*, *Heterocallis*, *Hordeum*, *Hyoscyamus*, *Lactuca*, *Linum*, *Lolium*, *Lupinus*, *Lycopersicon*, *Malus*, *Manihot*, *Majorana*, *Medicago*, *Nicotiana*, *Olea*, *Oryza*, *Panicum*, *Pannaserum*, *Persea*, *Phaseolus*, *Pistachia*, *Pisum*, *Pyrus*, *Prunus*, *Raphanus*, *Ricinus*, *Secale*, *Senecio*, *Sinapis*, *Solanum*, *Sorghum*, *Theobromus*, *Trigonella*, *Triticum*, tobacco, *Vicia*, *Vitis*, *Vigna*, and *Zea*.

### **5.8 POLYNUCLEOTIDE CONSTRUCTS FOR EXPRESSION OF ENGINEERED GENE IN TRANSFORMED PLANTS**

A polynucleotide construct capable of directing the expression of an engineered proteinase inhibitor II gene product in a transformed plant of interest is constructed using  
5 general recombinant DNA and cloning techniques known in the art of biotechnology, *see, e.g., Sambrook et al., supra; Ausubel et al., supra.* Such a polynucleotide construct typically comprises a polynucleotide sequence that encodes an engineered proteinase inhibitor II gene product and one or more regulatory polynucleotide sequence. Regulatory sequences useful for the polynucleotide construct of the invention include, but are not  
10 limited to, a promoter, an enhancer, an intron, a splice donor, a splice acceptor, a polyadenylation sequence, a RNA stability regulating sequence, or an element of any one of the above (*e.g., promoter elements including, but not limited to, a TATA box*).

The polynucleotide construct comprises one or more regulatory elements capable of directing the expression of the engineered proteinase inhibitor II gene product of the  
15 invention. In a preferred aspect, the regulatory elements are capable of directing expression in a plant species in which expression of the engineered proteinase inhibitor II gene product is desired. In another preferred aspect, the regulatory elements are capable of directing expression in a cell type in which expression of the engineered proteinase inhibitor II gene product is desired in the plant species of interest.

Regulatory elements useful for the polynucleotide construct of the present invention  
20 are known to those of skill in the art, for example, promoter and enhancer elements of genes known to be expressed in the cell type and plant species of interest. A promoter useful for expression of the engineered proteinase inhibitor II gene product in a cell type of a plant species of interest may also be isolated using routine experimentation, for example, by  
25 isolating a promoter region of a gene known to be expressed in the desired fashion. For example, one may screen a genomic library with a cDNA probe specific for the 5' end of a messenger RNA known to be expressed in the cell type of interest of the plant species of interest. Such a 5' end cDNA probe should preferably be only about 100 base pairs to about 300 base pairs so that the clones identified in the genomic library are likely to include  
30 the 5' end of the gene possibly including the promoter region of the gene for which the probe is specific. The promoter region typically includes about 1,000 to about 2,000 base pairs upstream of the transcription initiation site. Thus, a promoter useful for the expression of the engineered proteinase inhibitor II genes of the present invention is a polynucleotide from about 2,000 base pairs upstream to about 50 base pairs downstream of

the transcription initiation site of a gene known to be expressed in the cell type of interest in the plant species of interest, or is a portion of the polynucleotide.

In order to facilitate the proper processing of the engineered proteinase inhibitor II gene product, it may be necessary to include a nucleotide stretch that encodes a peptide sequence necessary for such processing. For example, a peptide sequence which is recognized by and functional in the transformed host plant, for example, to facilitate the entry of the proteinase inhibitor II gene product into the endoplasmic reticulum may be necessary, *i.e.*, signal sequence.

## 5.9 PROGRAMMED CELL DEATH

Programmed cell death (PCD) describes any process by which cell death occurs during development or in response to the environment (*see, e.g.*, Greenberg, 1996, *Proc Natl Acad Sci USA* 93:12094-7 for a review). In plants, cell death mechanistically resembles apoptosis in animal cells. Examples of PCD in plants include senescence and pathogenesis.

### 5.9.1 Senescence

Senescence is a phase of development during which cells undergo distinct metabolic and structural changes prior to cell death (Nooden, *Senescence and Aging in Plants*, (L. D. Nooden and A. C. Leopold, Ed.), pp. 391-439, Academic Press, San Diego, Calif., 1988). Senescence is the terminal phase of biological development in the life of a plant. It presages death and occurs at various levels of biological organization including the whole plant, organs, flowers and fruit, tissues and individual cells.

Senescence is not a passive process, but, rather, is an actively regulated process that involves coordinated expression of specific genes. Molecular studies using mRNA from senescing leaves and green leaves for *in vitro* translation experiments show a changed pattern of leaf protein products in senescing leaves (Thomas *et al.*, 1992, *J. Plant Physiol.*, 139: 403-12). With the use of differential screening and subtractive hybridization techniques, many cDNA clones representing senescence-induced genes have been identified from a range of different plants, including both monocots and dicots, such as Arabidopsis, maize, cucumber, asparagus, tomato, rice and potato.

Plants with inhibited senescence will vegetatively grow longer, producing more flower, seed or fruit, than a corresponding non-transformed plant. Using the methods of the invention, transformed plants are generated and monitored for growth, development and either delayed senescence. Plants or detached parts of plants (*e.g.*, cuttings, flowers,

vegetables, fruits, seeds or leaves) exhibiting prolonged life or shelf life, (*e.g.*, extended life of flowers, reduced fruit or vegetable spoilage, enhanced biomass, increased seed yield, reduced seed aging and/or reduced yellowing of leaves) due to inhibition of senescence. Plant lines generated using methods of the present invention that express an engineered proteinase inhibitor II gene product will exhibit prolonged life or shelf life when compared to a plant line of the same species that does not express the engineered proteinase inhibitor II gene product (*i.e.*, a wild-type plant).

### 5.9.2 Pathogenesis

Pathogenesis refers to a defense mechanism whereby plants recognize certain pathogens and limit the growth of the pathogen to the site of infection. The infected cells undergo a localized cell death response limiting the ability of the pathogen to spread.

Pathogen resistance is an important property in plants and a useful tool for the protection of plants, especially crop plants. The term "plant", as used herein, includes whole plants, plant parts, individual plant cells, groups of plants cells (*e.g.*, cultured plant cells) and progeny thereof. The term "enhance" when used to describe an increase of resistance of a plant to a pathogen, as used herein, includes the increase of the resistance of a plant that may have no resistance, or some resistance or substantial resistance to the pathogen to effecting the increase in resistance.

Plant pathogens include, but are not limited to, bacteria, viruses, fungi, nematodes and insects. A pathogen may infect a plant and cause severe damage to that plant, including death. Upon infection, a plant may initiate a protective reaction to the pathogen, *e.g.*, a hypersensitive response, depending on whether the plant can recognize the pathogen.

Pathogens of the various classes may change, for example, through mutagenesis. Also, new pathogens may arise that were not previously encountered by a plant species. For example, when a plant (*e.g.*, a crop, a fruit, a vegetable, etc.) is introduced into a continent (for example, through importation), a plant species is likely exposed to pathogens it has not encountered before.

It may be desirable to inhibit pathogens which may act by synthesizing proteinases. It may also be desirable to inhibit pathogenesis when the plant is treated with an agent which kills the pathogen to prevent further damage to the plant by PCD.

Plant lines generated using methods of the present invention that express an engineered proteinase inhibitor II gene product are more resistant to the pathogenic effects of a pathogen of interest when compared to a plant line of the same species that does not express the engineered proteinase inhibitor II gene product (*i.e.*, a wild-type plant).

### 5.9.3 Assays for Programmed Cell Death

Inhibition of PCD in a plant or plant part generated using methods of the invention may be assayed for by any technique known to the skilled artisan. For example, methods used for detecting apoptosis can be used, such as those detecting DNA fragmentation, e.g. TUNEL assay. Additionally, nucleic acid based assays can be used to detect genes that have increased expression during PCD. Protein assays and antibody-based assays can be used to detect increased expression of proteins during PCD.

Plant or plant parts comprising the proteinase inhibitor II gene of the present invention will generally exhibit at least 2.5%, at least 5%, at least 10%, at least 15%, at least 20%, at least 25%, at least 30%, at least 35%, at least 40%, at least 45%, at least 50%, at least 55%, at least 60%, at least 65%, at least 70%, at least 75%, at least 80%, at least 85%, at least 90%, at least 95% or more reduction in the expression of a gene or protein expressed during PCD as compared to a plant or plant part not transformed with a PIN2 gene.

Furthermore, the plants or plant parts can be examined for signs of inhibited senescence, e.g., extended life of flowers, reduced fruit or vegetable spoilage, enhanced biomass, increased seed yield, reduced seed aging and/or reduced yellowing of leaves.

Plant or plant parts transformed with a proteinase inhibitor II gene will generally exhibit at least 2.5%, at least 5%, at least 10%, at least 15%, at least 20%, at least 25%, at least 30%, at least 35%, at least 40%, at least 45%, at least 50%, at least 55%, at least 60%, at least 65%, at least 70%, at least 75%, at least 80%, at least 85%, at least 90%, at least 95% or greater increase in the shelf life, size, or any other marker of inhibited senescence as compared to a plant or plant part not transformed with a PIN2 gene.

The increased resistance to a pathogen of a plant line generated using methods of the invention may be assayed for by any technique known to the skilled artisan. For example, one may infect a plant of the generated plant line and a plant of a wild-type plant line with a pathogen of interest. After such infection, the plant of the generated plant line will have at least an approximately 20% higher probability of surviving infection than the wild-type plant, more preferably at least about 40%, more preferably at least about 60% and most preferably at least about 80%.

Another way of testing a transformed plant made using the methods of the invention is by testing for necrosis inducing activity, for example, as described in Mahe *et al.*, 1998, *J. Peptide Res.* 52:482-494. Thus, one can express an engineered proteinase inhibitor II gene in a transformed plant and infect the transformed plant with the pathogen of interest. For example, when applying a pathogen to the transformed plant expressing the engineered

proteinase inhibitor II gene, one would observe clear necrosis or severe spreading necrosis in the wild-type plant but not in a transformed plant of the plant line from which the transformed plant was derived. Necrotic cell death can also be observed using histochemical staining reactions in addition to visual inspection.

5

The following examples are provided to further illustrate the current invention but are not provided to in any way limit the scope of the current invention.

## 6. EXAMPLES

### 6.1 MATERIALS AND METHODS

#### 10 *Plant material and growth conditions*

American black nightshade (*S. americanum*) plants were planted in the greenhouse under natural light. Flowers at different stages of development were collected from the mature plant, immediately frozen in liquid nitrogen and stored at -80°C for extraction of RNA and protein.

15 Seeds of lettuce (*Lactuca sativa* L. var. Great Lakes No.118) were obtained from Northrup King Co., Mpls., MN 55440, USA. Plant tissue cultures were maintained and propagated *in vitro* in a growth chamber at 22-24°C under a 12 h light/12 h dark regime. Plants in soil were grown under natural conditions in a greenhouse.

#### *Cloning and DNA sequence analysis of the 5'-end of the SaPIN2b cDNA*

20 Total RNA was extracted (Nagy *et al.*, 1988, in: S.B. Gelvin, RA and DPS Verma (Eds.), Plant Molecular Biology Manual, Kluwer Academic Publishers, Dordrecht, Netherlands, pp. B4:1-29) from *S. americanum* flowers for PCR using a *SaPIN2b*-specific primer (5'-CTCCATCACAAAATAAGGGGCAAGTA-3'; SEQ ID NO: 5) corresponding to nucleotides 139-164 within the coding region of *SaPIN2b* cDNA (GenBank accession  
25 number AF209709) and the universal primer mix in the SMART RACE cDNA Amplification Kit (Clontech). DNA fragments containing the sequences of interest were cloned into pGEM-T vector (Promega) and sequenced using the DNA Sequencing Kit with Sequenase Version 2.0 (Amersham). The DNA sequence data were analyzed using the GCG sequence analysis software package (Genetics Computer Group Inc.).

#### 30 *Northern blot analysis*

Twenty µg of total RNA extracted (Nagy *et al.*, 1988, in: S.B. Gelvin, RA and DPS Verma (Eds.), Plant Molecular Biology Manual, Kluwer Academic Publishers, Dordrecht, Netherlands, pp. B4:1-29) from flowers at five different developmental stages (young floral

buds, mature buds, open flowers, old flowers and senescent flowers) were denatured at 50°C in the presence of glyoxal, separated by electrophoresis in 1.5% agarose gel and blotted onto Hybond-N membranes (Amersham). Blots were prehybridized in 50% deionized formamide, 1x Denhardt's solution, 6x SSPE, 0.1% SDS, 100 µg/ml denatured, 5 sonicated salmon sperm DNA and 10% dextran sulfate at 42°C for 4 h. Either the random-primed <sup>32</sup>P-labeled *SaPIN2a*-specific probe or the *SaPIN2b*-specific probe was added to the blot for hybridization at 42°C overnight. The *SaPIN2a*-specific probe was generated from a *SaPIN2a* cDNA derivative consisting of nucleotides 422-529 (GenBank accession number AF174381) and the *SaPIN2b*-specific probe was generated from a 10 *SaPIN2b* cDNA derivative consisting of nucleotides 293-418 (GenBank accession number AF209709). The blot was washed at 65°C in 0.1x SSC, 0.1% SDS. The hot SDS procedure (Amersham) was adopted for stripping blots, *i.e.*, the blot was washed in boiling solution of 0.1% SDS for 15 min, allowed to cool to room temperature, and subsequently rinsed briefly in 2x SSC. The RNA blots were rehybridized with an 18S rDNA probe to 15 demonstrate equal loading of RNA in wells. The <sup>32</sup>P-labeled 18S rDNA probe was generated from *S. americanum* cDNA prepared from floral buds using forward (5'-GCTCGAAGACGATCAGATAACC-3'; SEQ ID NO:6) and reverse (5'-AGAAAGAGCTCTCAGTCTGTC-3'; SEQ ID NO:7) primers designed from the *Arabidopsis thaliana* 18S rRNA gene sequence (GenBank accession number X16077) 20 corresponding to nucleotides 1075-1095 and 1321-1341, respectively.

#### *Western blot analysis*

Synthetic peptides (GESDPRNPKDC; SEQ ID NO:8) and (CEGESDEPNVISNQ; SEQ ID NO:9) corresponding to amino acids 77-87 of SaPIN2a (Xu, *et al.*, 2001, Plant Mol. Biol. 47: 727-738.) and amino acids 139-152 of SaPIN2b, respectively, were used for 25 raising polyclonal antibodies in rabbit. Of the eleven residues on the SaPIN2a peptide, only seven occur in SaPIN2b and of the fourteen residues on the SaPIN2b peptide, only seven are in SaPIN2a. Total plant protein was extracted according to Kush *et al.* (1990, *Proc. Natl. Acad. Sci. USA* 87: 1787-1790). Protein concentration was determined by the method of Bradford (1976, *Anal. Biochem.* 72: 248-254.). Twenty µg of total protein was 30 separated by SDS-PAGE (Laemmli, 1970, *Nature* 227: 680-685) using 15% w/v acrylamide gels and blotted onto Hybond-C membrane (Amersham) for western blot analysis (Sambrook *et al.*, 1989, *Molecular Cloning, A Laboratory Manual*, 2<sup>nd</sup> ed. Cold Spring Harbor Laboratory Press, Plainview, NY) with affinity-purified antibodies against SaPIN2a

or SaPIN2b. The amplified alkaline phosphatase goat anti-rabbit immunoblot assay kit (Bio-Rad) was used to detect cross-reacting bands.

#### *In situ hybridization analysis*

*In situ* hybridization studies were carried out following Cox and Goldberg (1988, Analysis of plant gene expression. In: C.H. Shaw (Ed.), Plant Molecular Biology: A Practical Approach, IRL Press, Oxford, pp. 1-35.) and Drews and Okamuro (1996, *In situ* hybridization with nonradioactive probes. In: Cold Spring Harbor Arabidopsis Molecular Genetics Manual). A 0.1-kb PCR-derived *SaPIN2a* cDNA sequence corresponding to nucleotides 422-522 (GenBank accession number AF174381) and a 0.12-kb PCR-derived *SaPIN2b* cDNA sequence corresponding to nucleotides 293-418 (GenBank accession number AF209709) were each cloned in pGEM-T vector (Promega). Plasmid pGEM-T derivatives were cleaved with either *SpeI* or *NcoI* to generate antisense and sense RNA probes, synthesized *in vitro* with T7 or SP6 RNA polymerase, respectively. The antisense and sense RNA probes were hybridized to 10- $\mu$ m floral sections at 42°C overnight. Sections were washed and digoxigenin-labeled RNA probes were detected by an alkaline phosphatase-linked immunoassay (Boehringer Mannheim). This assay uses a color reaction with the substrates 5-bromo-4-chloro-3-indolyl phosphate and nitroblue tetrazolium salt which produces a purple precipitate. Slides were mounted with GelTol (Immunon) aqueous mounting medium and were examined under a light microscope.

#### *Immunohistochemical localization using light microscopy*

Immunohistochemical localization was carried out following Chye *et al.* (1999, *Plant J.* 18: 205-214). Floral buds and flowers were fixed with formaldehyde in 50% ethanol for 16 h. The fixed tissues were dehydrated through a series of ethanol solutions (50%, 70%, 80%, 90%, 100%, 100%) for 30 min each, infiltrated with a xylene/Paraplast (Oxford) mixture and then embedded in Paraplast. Ten- $\mu$ m thick sections were cut on a Leica microtome (Jung RM 2035) and mounted on slides. Slides were dried overnight at 42°C and incubated in xylene to remove the Paraplast from the sections. The sections were rehydrated by a series of ethanol solutions (100%, 100%, 90%, 80%, 70%, 50%, 30%) and washed twice with water. Sections were incubated for 1.5 h at room temperature in blocking solution [0.1% saponin, 1% bovine serum albumin (BSA), 2% goat serum, 0.3mM phenylmethylsulfonyl fluoride (PMSF) in phosphate buffered saline (130mM NaCl, 3mM NaH<sub>2</sub>PO<sub>4</sub>, 7 mM Na<sub>2</sub>HPO<sub>4</sub>)] and subsequently overnight at 4°C with anti-peptide polyclonal antibodies raised in rabbit against either SaPIN2a or SaPIN2b, diluted 1:100 (v/v) in blocking solution. The peptides were purchased from Chiron, Clayton, Vic., Australia and



the antibodies against SaPIN2a were raised in rabbit according to Sambrook *et al.* (1989. Molecular Cloning: A laboratory manual. 2<sup>nd</sup> Edition, Cold Spring Harbor Press) while the antibodies against SaPIN2b were purchased from Chiron, Clayton, Vic., Australia. Slides were washed with TTBS (20mM Tris, 500mM sodium chloride, 0.05% Tween 20, pH 7.5) and then incubated for 2 h at room temperature with the secondary antibody, biotinylated alkaline phosphatase-conjugated goat anti-rabbit antibody (BioRad) diluted 1:1,500 (v/v) in TTBS. The alkaline phosphatase reaction was carried out as instructed by the supplier (BioRad). The slides were mounted with GelTol (Immunon) aqueous mounting medium and examined under a microscope. Controls included the replacement of rabbit anti-SaPIN2a antibodies or anti-SaPIN2b antibodies with preimmune rabbit serum.

#### *TUNEL assay*

*In situ* detection of DNA fragmentation was identified using the *In situ* Cell Death Detection Kit, Fluorescein (Roche). Sections of young buds, mature flowers and senescent flowers were obtained from the Paraplast Plus-embedded material described above. Once hydrated with a decreasing ethanol series, sections were treated with proteinase K (20µg/ml) in phosphate-buffered saline (PBS; 10mM sodium phosphate, 130 mM NaCl, pH 7.5) for 30 min at 37°C and rinsed twice in PBS. Fluorescein-labelled nucleotides were attached to the free 3'-OH termini at nicks in fragmented DNA by incubation for 1 h at 37°C in the presence of terminal deoxynucleotidyl transferase (TdT) according to the manufacturer's instructions. In the positive controls, sections were treated with DNase I (30 U/ml in 50 mM Tris-HCl, pH 7.5, 10 mM MgCl<sub>2</sub>, 1 g/ml BSA) for 10 min at RT to induce DNA strand breaks, prior to labelling. In negative controls, TdT was omitted. Sections were viewed using a Zeiss LSM 510 inverted laser-scanning microscope.

#### *Immunoelectron microscopy*

*S. americanum* buds were fixed in a solution of 4% paraformaldehyde and 0.5% glutaraldehyde in 0.1 M phosphate buffer (pH 7.2) for 3 h at room temperature. The specimens were then dehydrated in a graded ethanol series, infiltrated in stepwise increments of LR white resin (London Resin Co. Ltd.) and polymerized at 45°C for 24 h. Materials for immunogold labelling were prepared according to the procedure of Varagona and Raikhel (1994, Immunocytochemistry for light and electron microscopy. In: M. Freeling and V. Walbot (Eds.) The Maize Handbook, Springer-Verlag, New York, pp. 149-157), with modifications as described. Specimens (90 nm) were sectioned using a Leica Reichert Ultracut S microtome and mounted on Formvar-coated slotted grids. Grids were

incubated in a blocking solution of TTBS containing 1% fish skin gelatin and 1% BSA for 30 min. Anti-SaPIN2a antibodies diluted 1:20 in blocking solution or anti-SaPIN2b antibodies diluted 1:10 in blocking solution were added and incubated overnight at 4°C. Grids were then rinsed three times, each for 5 min, in TTBS. They were incubated for 40 min with 10 nm gold-conjugated goat anti-rabbit IgG secondary antibody (Sigma), diluted 1:20 with blocking solution. Grids were rinsed three times, each for 5 min in TTBS, followed by three 5 min-rinses in distilled water. After staining in 2% uranyl acetate for 15 min followed by 2% lead citrate for 10 min, the sections were visualized and photographed using a Philips EM208 S electron microscope operating at 80 kV. Control sections consist of replacement of the primary antibody with preimmune rabbit serum or blocking solution.

#### *Generation of transgenic lettuce plants expressing SaPIN2a*

The *Agrobacterium tumefaciens*-mediated transformation vector pSa7 containing the *SaPIN2a* cDNA (Figure 1a; SEQ ID NO:1) was constructed by replacing the GUS gene (Jefferson *et al.* 1987, *EMBO J.* 6: 3901-3907) in pBI121 (Clontech) with the *SaPIN2a* cDNA fragment (Xu *et al.*, 2001, *Plant Mol. Biol.* 47: 727-738). The junction region of the CaMV 35S promoter and the *SaPIN2a* cDNA in pSa7 was sequenced with a primer 5'-CAA TCC CAC TAT CCT TCG CAA GAC C-3' (SEQ ID NO:10) (corresponding to 7372-7396 of CaMV genome; Franck *et al.*, 1980, *Cell* 21: 285-294) to confirm for the absence of any spurious ATG codon between transcription start site (Jefferson *et al.*, 1987, *EMBO J.* 6: 3901-3907) and the *SaPIN2a* initiator codon. The binary vector pSa7 was then transferred into *A. tumefaciens* LBA4404 by direct transformation (Holsters *et al.* 1978, *Mol. Gen. Genet.* 163: 181-187). Lettuce transformation was performed as described by Curtis *et al.* (1994), with modifications, in that petunia nurse cell cultures were omitted in callus-inducing medium and 100 µg/ml of kanamycin sulphate was added to the media for callus induction, shoot regeneration and rooting.

#### *Segregation analysis of the progeny (R<sub>1</sub>) plants of transgenic lettuce*

The segregation ratios of kanamycin-resistant (Km<sup>R</sup>) to kanamycin-sensitive (Km<sup>S</sup>) plants in the progeny (R<sub>1</sub>) of the self-fertilization of primary (R<sub>0</sub>) transgenic lettuce plants were determined by germinating surface-sterilized seeds from each of R<sub>0</sub> plants on Murashige and Skoog medium (MS, Murashige and Skoog, 1962, *Physiol Plant* 15: 473-497) containing 100 µg/ml of kanamycin sulphate. After incubation for 2 to 3 weeks in a tissue culture chamber (22-24°C, 12 h light/12 h dark), the seedlings were scored for the kanamycin resistance. The segregation ratios were assessed by Chi-square analysis.

*Southern blot analysis*

Twenty  $\mu\text{g}$  DNA, isolated (Dellaporta *et al.*, 1983, *Plant Mol. Biol. Rep.* 1:19-21) from lettuce leaves, were digested with restriction endonucleases, separated by electrophoresis in 0.8% agarose gel and blotted onto Hybond-N membrane (Amersham) according to Sambrook *et al.* (1989, *Molecular Cloning: A Laboratory Manual*, Ed. 2. Cold Spring Harbor Laboratory Press, Cold Spring Harbor, NY). The blot was pre-hybridized in 30% deionized formamide, 6 X SSC, 5 X Denhardt's, 1% SDS, 50  $\mu\text{g}/\text{ml}$  denatured, sonicated salmon sperm DNA at 42°C for 4 h. The random-primed  $^{32}\text{P}$ -labeled *SaPIN2a* cDNA probe was added and hybridized at 42°C overnight. The blot was washed in 0.1 X SSC, 0.1% SDS at room temperature.

*Northern blot analysis*

Total RNA was extracted from nightshade plants, wild-type lettuce or transgenic lettuce (Nagy *et al.*, 1988, In: S.B. Gelvin and R.A. Schilperoort (Eds), *Plant Molecular Biology Manual*, Kluwer Academic Publishers, Dordrecht, pp. B4: 1-29) and analyzed in northern blot analysis as previously described by Xu *et al.* (2001, *Plant Mol. Biol.* 47: 727-738).

*Western blot analysis*

Total plant protein was extracted according to the procedure of Wu *et al.* (1997, *Mol. Breeding* 3:371-380). Protein concentration was determined following Bradford (1976, *Anal. Biochem.* 72: 248-254). Total protein was separated by 4-20% gradient SDS-PAGE (Gallagher, 1995, In *Current protocols in protein science*, Vol. 1 (Coligan, J.E., Dunn, B.M., Ploegh, H.L., Speicher, D.W. and Wingfield, P.T., eds.) New York: John Wiley & Sons, Inc., pp. 10.1.17-10.1.23) for western blot analysis (Sambrook *et al.*, 1989, *supra*) using polyclonal antibodies raised in rabbit against a synthetic peptide (GESDPRNPKDC) (SEQ ID NO:8) corresponding to amino acids 77 to 87 of SaPIN2a (Figure 1b; SEQ ID NO:2) (Xu *et al.*, 2001, *Plant Mol. Biol.* 47: 727-738). The Amplified Alkaline Phosphatase Immun-Blot Assay Kit (Bio-Rad) was used to detect cross-reacting bands.

*Trypsin and chymotrypsin inhibitory activity and endogenous trypsin- and chymotrypsin-like activity assays*

Total plant proteins extracted with 50 mM Tris, pH 8.1, 20 mM  $\text{CaCl}_2$  were used for spectrophotometric assays of trypsin or chymotrypsin inhibitor activity as described by Kollipara and Hymowitz (1992, *J. Agric. Food Chem.* 40, 2356-2363).

For the trypsin inhibitor activity assay, 150  $\mu\text{l}$  of leaf extract was pre-incubated for 3 min at room temperature (RT) in a quartz cuvette (10-mm path length, 3.5-ml capacity)

with 100  $\mu$ l of bovine trypsin (10  $\mu$ g/ml in 1 mM HCl, Calbiochem Cat. No. 6502) and assay buffer (46 mM Tris-HCl, pH 8.1, 11.5 mM CaCl<sub>2</sub>), to give a final volume of 1.5 ml. The reaction was initiated by the addition of 1.5 ml of substrate [2 mM *p*-toluenesulfonyl-L-arginine methyl ester (TAME, Sigma Cat. No. T4626) in assay buffer] to the pre-incubation mixture. The recording of absorbance at 247 nm ( $A_{247}$ ) was immediately initiated. The spectrophotometer was set to auto-zero just before the start of recording and the absorbance was measured at 30-sec intervals for 3 min. In the standard reaction, 100  $\mu$ l of bovine trypsin (10  $\mu$ g/ml in 1 mM HCl) was pre-incubated with 1.4 ml of assay buffer without inhibitor. For the chymotrypsin inhibitor activity assay, 50  $\mu$ l of leaf extract was pre-incubated for 3 min at RT with 100  $\mu$ l of bovine  $\alpha$ -chymotrypsin (20  $\mu$ g/ml in 1 mM HCl, Calbiochem Cat. No. 230832) and assay buffer (0.1 M Tris-HCl, pH 7.8, 0.1 M CaCl<sub>2</sub>), to give a final volume of 1.5 ml. To start the reaction, 1.5 ml of substrate [1 mM N-benzoyl-L-tyrosine ethyl ester (BTEE, Sigma Cat. No. B6125) in 50% (w/w) methanol] were added and mixed with the pre-incubation mixture. The absorbance at 256 nm ( $A_{256}$ ) was monitored like that of trypsin described above. In the standard reaction, 100  $\mu$ l of chymotrypsin (20  $\mu$ g/ml in 1 mM HCl) was pre-incubated with 1.4 ml of assay buffer without inhibitor.

Endogenous trypsin- and chymotrypsin-like activities in leaves of wild-type and transgenic R<sub>1</sub> lettuce plants were determined using the same procedures as in proteinase inhibitory activity assays, with the omission of bovine trypsin or chymotrypsin from the reaction.

#### *Insect feeding experiments*

Insect feeding trials were carried out as described by Johnson *et al.* (1989, *Proc. Natl. Acad. Sci. USA* 86, 9871-9875). The larvae of cabbage looper (*Trichoplusia ni*) were reared on lettuce grown in growth chamber (16 h light, 20 $\pm$ 2 $^{\circ}$ C) until pupation. Their pupae were collected and put into a box with a net to give rise to adults. The moths were fed with 5% honey obtained from the local market. The eggs were collected and hatched in Petri dishes. The first and second instar larvae were used for the experiments. Detached lettuce leaves from wild-type and transgenic plants were placed on top of 3 sheets of Whatman No.1 papers (125 mm diameter) wetted with 6 ml of distilled water in sterile Petri dishes (145 mm diameter). Ten first or second instar larvae of *T. ni* were put into each dish and incubated in plant growth chamber (20 $\pm$ 2 $^{\circ}$ C). Each day, the larvae were weighed and transferred with a brush to new dishes containing fresh leaves.

#### *Plasmid construction for plastid transformation*

Plasmid pMLVHisP utilizes the tobacco plastid genome sequences spanning *rbcL-accD* to target *SaPIN2a* into the chloroplast genome by homologous recombination. The promoter ( $P_{psbA}$ ) and terminator ( $T_{psbA}$ ) for *SaPIN2a* are derived from the rice plastid gene *psbA* (Reddy *et al.*, 2002, *Mol Breeding* 9: 259-269); the *psbA* gene encoding the photosystem II 32 kD protein. The selectable marker gene *aadA*, which specifies spectinomycin-resistance, is driven from the rice plastid 16S rRNA operon (*rrn*) promoter ( $P_{rrn}$ ) and terminated by the *rbcL* terminator ( $T_{rbcL}$ ).

The SaPIN2a plastid expression vector pMLVHisP was generated from plasmid vector pMLVHisA (Figure 18). A 0.5-kb *NotI* fragment of *S. americanum* cDNA encoding proteinase inhibitor II protein SaPIN2a was cloned in the *NotI* of pMLVHisA, with (His)<sub>5</sub> and SaPIN2a fused in-frame, to produce plasmid pMLVHisP (Figure 19).

#### *Plastid transformation of Nicotiana tabacum cv. Xanthi*

Plastid transformation was carried out following Svab and Maliga (Svab *et al.*, 1993, *Proc. Natl. Acad. Sci. USA* 90: 913-917) by bombardment of leaves with tungsten particles coated with the desired DNA (pMLVHisP). Aseptic seeds were germinated on Murashige and Skoog (MS) medium (Murashige and Skoog, 1962, *Physiol. Plant.* 15: 473-497), supplemented with agar (5 g/liter) and sucrose (30 g/liter). For bombardment, leaves were placed abaxial side facing up on RMOP medium containing MS salts, 6-benzylaminopurine (1 mg/liter),  $\alpha$ -naphthalene acetic acid (0.1 mg/liter), thiamine (1 mg/liter), myo-inositol (100 mg/liter), agar (5 g/liter) at pH 5.7 and sucrose (30 g/liter). Bombardment was carried out using the particle delivery system, PDS 1000-He (Bio-Rad) and its accessories. Tungsten particles (M17) were coated with pMLVHisP DNA and leaves bombarded. After bombardment, leaves were cut into small pieces and placed on RMOP selection medium containing spectinomycin dihydrochloride (500 mg/liter). Transformants were passaged for five more cycles in the selection medium to obtain homoplastomic plastid-containing plants.

#### *Screening of the plastid-transformed tobacco for integration of SaPIN2a cDNA*

A primary PCR screen was performed with total DNA extracted from individual lines of the green spectinomycin-resistant shoots rooting on spectinomycin-containing RMOP medium. Oligonucleotide primers (ML330P: 5'GTCTATATTATACTGTAAATAACAAGCC3' (SEQ ID NO:11), ML399: 5'GAGAATCCACCATGGCTCATCATCATCATATGGCTGTTCAAAAGTTAGC3' (SEQ ID NO:12), ML400: 5' GAGCGGCCGCTTAGAAATAAGCAGTGG3' (SEQ ID NO:13) and ML422: 5'CGATACTTCGGCGATAACCGC3' SEQ ID NO:14))

were used in PCR amplification. Each PCR reaction (25 $\mu$ l) consisted of 25 ng DNA, 10 pmol of each primer, 1 U *Taq* polymerase (Perkin Elmer), 2.5 $\mu$ l of 25 mM MgCl<sub>2</sub> and 0.25 $\mu$ l each of 10 mM dNTPs. PCR amplification was initiated with denaturation at 95°C for 3 min, followed by 36 cycles of 94°C for 30 sec, 57°C for 30 sec and 68°C for 2 min, and extension at 72°C for 10 min. The PCR products were separated by electrophoresis on a 0.8% agarose gel and DNA was transferred to a nylon membrane (Hybond-N, Amersham) according to Sambrook *et al.* (1989. Molecular Cloning: A Laboratory Manual. Cold Spring Harbor Laboratory Press, Cold Spring Harbor). The blot was prehybridized in 30% deionized formamide, 6x SSC, 5x Denhardt's solution, 1% SDS, 500  $\mu$ g/ml denatured salmon sperm DNA at 42°C for 6 h and hybridized overnight at 42°C to a random-primed <sup>32</sup>P-labeled *SaPIN2a* probe. The blot was washed in 0.1x SSC, 0.1% SDS at 65°C for 15 min.

## 6.2 RESULTS

### Isolation of a complete-length *S. americanum* cDNA encoding SaPIN2b

The 532-bp *SaPIN2b* cDNA (GenBank accession number AF209709) we previously identified (Xu *et al.*, 2001, *Plant Mol. Biol.* 47: 727-738) consists of 328-bp coding region and 204-bp 3'-untranslated region. To obtain the remaining 5'-end of the *SaPIN2b* cDNA, the SMART RACE cDNA Amplification Kit was used with the universal primer mix and a *SaPIN2b*-specific primer located within the coding region of the *SaPIN2b* cDNA sequence. The resultant 0.35-kb fragment was PCR-amplified and cloned into plasmid pGEM-T for DNA sequence analysis. The full-length *SaPIN2b* cDNA (SEQ ID NO: 3) consists of 32-bp 5'-untranslated region, 456-bp coding region and 204-bp 3'-untranslated region (GenBank AF209709). *SaPIN2a* and *SaPIN2b* cDNAs share 78.5% nucleotide identity and 74.3% deduced amino acid sequence identity. The DNA sequences and amino acid sequences were analyzed using the Wisconsin Package Version 10.0 of the Genetics Computer Group (1999).

### Expression patterns of SaPIN2a and SaPIN2b

#### *Northern blot analysis of SaPIN2a and SaPIN2b expression during floral development*

Northern blot analysis of total RNA from young buds, mature buds, open flowers, old flowers and senescent flowers using *SaPIN2a*- or *SaPIN2b*-specific probes, that share 63.36% identity, were carried out to investigate the expression pattern of *SaPIN2a* and *SaPIN2b* mRNAs during floral development (Figure 3). Results show that expression of *SaPIN2a* and *SaPIN2b* mRNAs decreases as the flower matures and senescence begins (Figure 3, lanes 1-5). In both cases, lower expression occurred in old and senescent

flowers (Figure 3, lanes 4-5). With *SaPIN2b*, decreased expression was observed earlier, following bud maturation.

#### *Western blot analysis of SaPIN2a and SaPIN2b in S. americanum flowers*

5 Western blot analysis using SaPIN2a- or SaPIN2b-specific polyclonal antibodies detected SaPIN2a (Figure 4, lanes 1-2) and SaPIN2b (Figure 4, lanes 3-4) cross-reacting bands of apparent molecular mass of 16.7 kDa in *S. americanum* floral buds (lanes 1, 3) and open flowers (lanes 2, 4). The apparent molecular mass of SaPIN2a is consistent with our previous estimation (Xu *et al.*, 2001, *Plant Mol. Biol.* 47: 727-738). In both cases,  
10 consistent with results from northern blot analysis (Figure 3), the cross-reacting bands were stronger in floral buds (Figure 4, lanes 1, 3) than in mature open flowers (Figure 4, lanes 2, 4).

#### *Localization of SaPIN2a and SaPIN2b mRNA in flowers*

To further investigate the expression of *SaPIN2a* and *SaPIN2b* in floral buds, open  
15 flowers and senescent flowers, *in situ* hybridization studies were carried out using antisense *SaPIN2a*- and *SaPIN2b*-specific RNA probes (Figures 5, 6 and 7). These probes share only 63.36% nucleotide sequence identity. Using the sense RNA probe as control (Figure 5a, d), *SaPIN2a* mRNA accumulated in the stigma, stylar transmitting tissue, vascular bundles, pollen, tapetum, nucellar cells of the ovule and the outermost cell layer of the  
20 placenta (Figure 5b, c) in the young floral bud (-72 h stage, Figure 3). In the open flower (0 h stage, Figure 5), *SaPIN2a* mRNA was expressed in the stigma, stylar transmitting tissue, vascular bundles, nucellar cells of the ovule and the outermost cell layer of the placenta (Figure 5e, f) but expression in the tapetum was lacking.

Using the sense RNA probe as control (Figure 6a, d, j), in young (Figure 6b, c) and  
25 mature buds (Figure 6e-g), *SaPIN2b* mRNA was detected in the stylar transmitting tissue, vascular bundles, nucellar cells of the ovule and the outermost cell layer of the placenta. In the young bud, *SaPIN2b* mRNA was also expressed in pollen and tapetum, but not in stigma (Figure 6b, c), unlike in mature bud where expression in stigma was clearly visible (Figure 6e-g). In the open flower (Figure 6h, i), *SaPIN2b* mRNA expression was similar  
30 to that in mature buds (Figure 6e, f) and that of *SaPIN2a* mRNA expression in open flowers (Figure 5e, f). In senescent flowers, using sense RNA probes as controls (Figure 7a and d), we localized *SaPIN2a* (Figure 7b, c) and *SaPIN2b* (Figure 7e, f) mRNAs in the inner cell layers of the embryo sac. While *SaPIN2a* (Figure 7b, c) mRNA was confined to the

innermost layer, *SaPIN2b* (Figure 7e, f) expression was detected just beneath the innermost cell layer of the embryo sac.

#### **Localization of SaPIN2a and SaPIN2b proteins in flowers**

Immunolocalization of SaPIN2a and SaPIN2b in flowers was carried out using  
5 affinity-purified SaPIN2a- and SaPIN2b-specific antibodies (Figures 5, 6 and 7). In floral buds, SaPIN2a (Figure 5h, j) and SaPIN2b (Figure 6l-p) were detected in the stylar transmitting tissue, vascular bundles, nucellar cells of the ovule and the outermost cell layer of the placenta. SaPIN2a (Figure 5h) and SaPIN2b (Figure 6n) were also detected in the tapetum of young floral buds but were absent in the tapetum of mature buds (Figure 5j, 6o).  
10 In open flowers, SaPIN2a accumulated in the stigma, stylar transmitting tissue, vascular bundles, nucellar cells of the ovule and the outermost cell layer of the placenta but not in pollen or tapetum (Figure 5m, n). In the mature bud and open flower, SaPIN2b was detected only in the stylar transmitting tissue, vascular bundles and the outermost cell layer of the placenta (Figure 6l, o, s-u). Unlike SaPIN2a, SaPIN2b expression was not detected  
15 in stigmas and developing ovules of young bud (Figure 6p), mature bud (Figure 6l) or open flower (Figure 6q). Nonetheless, SaPIN2b was detected in the tapetum of the young bud (Figure 6n) and in the vascular bundles of the young bud (Figure 6m), mature bud (Figure 6o) and open flower (Figure 6s, u). In senescent flowers, using preimmune sera in control sections (Figure 7g and j), SaPIN2a (Figure 7h, i) and SaPIN2b (Figure 7k, l) were  
20 immunolocalized to the innermost cell layer of the embryo sac and the layer beneath this, respectively, corresponding to the localization in tissues as their mRNA.

#### **Detection of *in situ* nuclear DNA fragmentation during PCD**

Localization of PCD, as indicated by DNA fragmentation in nuclei, on floral sections of young buds, mature flowers and senescent flowers was verified using the TUNEL assay.  
25 TUNEL signals, *i.e.*, green fluorescence, were absent in the negative controls (Figure 8a, c, f, h, j) in which TdT was omitted. A similar pattern in the absence of green fluorescence was seen in young floral buds (Figure 8b,d) and mature flowers (Figure 8g, i). In contrast, green fluorescence was observed in the DNase I-treated positive control sections (Figure 8e, n). In the ovaries of senescent flowers, green fluorescence was detected in the vascular  
30 bundle, ovules and the outermost layer of the placenta (Figure 8k). At higher magnification of the ovule, TUNEL positive nuclei were visible in cells at the outermost layer of the placenta and nucellar cells, with the exception of the innermost cell layer in the embryo sac (Figure 8l, m). This layer of cells in the DNase I-treated positive control shows green fluorescence (Figure 8n). In young floral buds (Figure 8d) and mature



flowers (Figure 8i), the nuclei of cells in the ovules and at the outermost layer of the placenta were TUNEL negative.

#### **Immunogold labelling of SaPIN2a and SaPIN2b in *S. americanum* ovule**

To determine the subcellular localization of SaPIN2a and SaPIN2b in the ovule, immunoelectron microscopy was carried out using floral buds of *S. americanum*. Results obtained on the transverse sections of the ovule showed that SaPIN2a (Figure 9a–c) and SaPIN2b (Figure 9d–i) were immunolocalized to the vacuoles in the nucellar cells. Immunogold particles were lacking in the nucleus (Figure 9i). In comparison, immunogold labelling was absent in the controls in which preimmune serum for SaPIN2a (data not shown) or SaPIN2b (Figure 9j–k) was used or when the primary antibody was replaced with blocking solution (Figure 9l–m).

#### **Transformation of lettuce with pSa7 containing SaPIN2a cDNA**

Figure 10a shows the binary vector pSa7 used in lettuce transformation. The expression of *SaPIN2a* cDNA is driven by the Cauliflower Mosaic Virus (CaMV) 35S promoter. DNA sequence analysis at the junction of the CaMV 35S promoter and the *SaPIN2a* cDNA in pSa7 confirmed the absence of any spurious ATG codon between the transcription start site (Jefferson *et al.*, 1987, *EMBO J.* 6: 3901-3907) and the *SaPIN2a* initiator codon (Figure 10b). *A. tumefaciens* LBA4404 harboring pSa7 was used to transform lettuce and transformants were selected on kanamycin-containing media.

#### **Southern blot analysis of transgenic lettuce**

To confirm the integration of the *SaPIN2a* cDNA into the lettuce genome and to estimate the copy number of the transgene in different transgenic lines, Southern blot analyses were performed with a <sup>32</sup>P-labeled *SaPIN2a* cDNA probe.

Results of Southern blot analysis with *EcoRI*-digested DNA extracted from putative transgenic and regenerated (R<sub>0</sub>) lettuce plants is shown in Figure 11a. The presence of an expected 0.58-kb *EcoRI* fragment (indicated by arrow in Figure 11a) in all transgenic lines (Figure 11a, TL1, 7, 11, 15 and 33) suggests integration of the *SaPIN2a* cDNA. This band was lacking in wild-type (Figure 11a, lane WT). Additional strong hybridization bands in TL7 and 33 suggest incomplete *EcoRI* digestion of genomic DNA or the presence of rearranged copies of the *SaPIN2a* cDNA in the genome of these transgenic lettuce lines. Rearrangements of the transgene have been observed previously in many other transgenic plants (Jorgensen *et al.*, 1987, *Mol. Gen. Genet.* 207:471-477; Derolles and Gardner, 1988, *Plant Mol. Biol.* 11, 365-377; Radke *et al.*, 1988, *Theor. Appl. Genet.* 75: 685-694; Lee *et al.*, 1999, *Molecular Breeding* 5: 1-9).

Since only one *Bam*HI site is present between the 35S promoter and the *SaPIN2a* cDNA within the T-DNA region of pSa7 (Figure 10a), the number of bands observed in the Southern blot of *Bam*HI-digested genomic DNA probed with a <sup>32</sup>P-labeled *SaPIN2a* cDNA fragment should give a good estimation of the transgene copies integrated into lettuce genomic DNA. The different hybridization patterns of *Bam*HI-digested DNA shown in Figure 11b suggest these transgenic plants resulted from independent transformation events, and also revealed that the number of strong bands which hybridized to *SaPIN2a* cDNA probe ranged from one (TL1, 2, 10, 11, 12, 14, 20, 43) to four (TL34 and 52) corresponding to single or multiple copies of the transgene in these lines. Single copies of the transgene in TL1 and 11 and multiple copies of the transgene in TL33 were further confirmed by segregation analysis of their progenies (Table 1).

**Table 1** Segregation of NPT-II gene (kanamycin resistance) in the progeny of transgenic lettuce plants.

Parent transgenic line (R <sub>0</sub> )	Progeny (R <sub>1</sub> ) plants <sup>a</sup>		Expected ratio <sup>b</sup>		
	Kan <sup>R</sup>	Kan <sup>S</sup>	(Kan <sup>R</sup> : Kan <sup>S</sup> )	Chi-square	Probability
TL1	67	21	3:1	0.061	1.000
TL11	30	10	3:1	0.000	1.000
TL33	176	3	255:1	7.587	0.667
			63:1	0.015	1.000

<sup>a</sup> Kan<sup>R</sup> = kanamycin-resistant; Kan<sup>S</sup> = kanamycin-sensitive; <sup>b</sup> Ratio 3:1 is for a single function locus, 255:1 for four functional loci and 63:1 for three functional loci.

#### Expression of *SaPIN2a* mRNA in transgenic lettuce

The transcription of *SaPIN2a* in transgenic lettuce plants was examined by northern blot analysis. Total RNA, isolated from leaves of R<sub>0</sub> transgenic lettuce identified in Southern blot analysis (Figure 11) and from wild-type plants, was hybridized to the *SaPIN2a* cDNA probe. As shown in Figure 12, *SaPIN2a* mRNA was detected in most transgenic lines, with the exception of TL14, and no signal was present in the RNA from leaves of wild-type plants. The size of most *SaPIN2a* transcripts in transgenic lettuce (0.93 kb, indicated by an arrow in Figure 12) is slightly larger than that of endogenous transcript of 0.67 kb in *S. americanum* (indicated by an arrowhead in Figure 12 lane Sa) due to about 0.26 kb from the *NOS*-terminator (Figure 10a). A more complex mRNA expression pattern was observed in the R<sub>1</sub> transgenic lines, with the presence of a shorter transcript below the expected 0.93-kb band (Figure 13a). It is worth noting that the shorter

transcript found in leaves of some R<sub>0</sub> plants (Figure 12) became more prominent in leaves of R<sub>1</sub> plants (Figure 13a).

#### Non-detection of SaPIN2a protein in transgenic lettuce by western blot analysis

Total leaf proteins were extracted from leaves of R<sub>0</sub> transgenic plants that showed 5 *SaPIN2a* mRNA accumulation in northern blot analysis (Figure 12) and wild-type plants for western blot analysis with affinity purified SaPIN2a-specific antibodies. No SaPIN2a protein could be detected in the leaves of these R<sub>0</sub> transgenic plants in western blot analysis despite detection of *SaPIN2a* mRNA in northern blot analyses. Western blot analysis was also carried out with total proteins extracted from the progeny (R<sub>1</sub>) plants of three 10 self-pollinated R<sub>0</sub> transgenic plants (TL1, 11 and 33) as well as the progeny of self-pollinated regenerated wild-type plants. Figure 13 shows the results of western blot analysis of total proteins prepared from R<sub>1</sub> transgenic plants, together with the corresponding results of northern blot analysis of total RNA prepared from identical tissue samples. Although very high levels of *SaPIN2a* mRNA accumulated in the leaves of these 15 transgenic plants (Figure 13a), again no protein band corresponding to SaPIN2a in *S. americanum* stem was detected in transgenic lettuce leaves (Figure 13c). Some non-specific cross-reacting bands were found and one of them (18.1 kDa), present in lettuce leaves but not stems, is very close to the size of native SaPIN2a (16.7 kDa) (Figure 13c). Since native SaPIN2a in *S. americanum* accumulates in stem (Xu *et al.*, 2001, *Plant Mol.* 20 *Biol.* 47: 727-738), the cellular transport of SaPIN2a might account for its apparent absence in transgenic lettuce leaves. To investigate this possibility, northern blot and western bolt analyses were carried out with samples from stems of transgenic lettuce plants. Although *SaPIN2a* mRNA was detected in their stems (Figure 13a) at lesser amounts than leaves, SaPIN2a protein remained undetected in both, on western blot with SaPIN2a-specific 25 antibodies (Figure 13c).

#### Trypsin and chymotrypsin inhibitory activities and endogenous trypsin- and chymotrypsin-like activity assays

Although the SaPIN2a coding sequence in pSa7 was confirmed by DNA sequencing (Figure 10b), the integration of *SaPIN2a* cDNA in transgenic lines, by Southern blot 30 analysis (Figure 11) and *SaPIN2a* mRNA by northern blot analysis (Figures 12-13), the SaPIN2a protein was undetectable upon western blot analysis. The relatively low sensitivity of western blot analysis may have resulted in the failure to detect SaPIN2a protein in transgenic lettuce. Based on the quantitative assays of *Bacillus thuringiensis* (*B.t.*) protein expressed in transgenic plants using three assay methods (bioassay, ELISA

and western blot analysis), it has been shown that the western blot analysis is the least sensitive assay, although it is the most frequently used (Fuchs *et al.*, 1990, In *ACS Symposium Series No.432, Analytical Chemistry of Bacillus thuringiensis*. pp 105-113). Hence we further examined the presence of SaPIN2a in transgenic lettuce by using  
5 proteinase inhibitory activity assays, which may be more sensitive than western blot analysis.

Crude leaf extracts prepared from leaves of R<sub>1</sub> transgenic and wild-type plants were tested for inhibitory activity against bovine trypsin and chymotrypsin. Results of trypsin inhibitory activity assays (Figure 14a) showed no significant inhibitory activity against  
10 bovine trypsin in transgenic lettuce. Leaf extracts from all three transgenic lines analyzed (TL1, 11 & 33) showed trypsin activity similar to the standard reaction. Surprisingly, leaf extracts of wild-type plants had much higher trypsin activity than the standard reaction containing bovine trypsin (Figure 14a). In the case of chymotrypsin inhibitory activity assays (Figure 14b), all reactions containing leaf extracts from both transgenic and  
15 wild-type plants showed higher chymotrypsin activity than the standard, while the transgenic plants had slightly decreased activity compared with wild-type plants. These results of the inhibitory activity assays suggest that lettuce leaves might possess considerable endogenous trypsin- and chymotrypsin- like activities.

Accordingly, the endogenous trypsin- and chymotrypsin-like activity in leaves of  
20 wild-type and transgenic R<sub>1</sub> lettuce plants were determined using the same procedures for above proteinase inhibitory activity assay except that no bovine trypsin or chymotrypsin was added to the reaction. The results of these experiments are shown in Figure 15. As expected, both endogenous trypsin- and chymotrypsin-like activities were detected in leaf extracts from wild-type lettuce plants. The results of assays on leaves from transgenic  
25 plants, however, are unexpected and interesting. The endogenous trypsin-like activity in all three transgenic plants was almost completely inhibited (Figure 15a), while the endogenous chymotrypsin-like activities in these transgenic plants moderately decreased (Figure 15b). The inhibition of endogenous trypsin- and chymotrypsin-like activities in transgenic lettuce leaves suggests that SaPIN2a protein accumulates in transgenic lettuce at  
30 amounts that are undetectable by western blot analysis but that could inhibit the endogenous trypsin- and chymotrypsin-like activities.

#### **Preliminary insect feeding assay with primary transgenic lettuce plants**

Since transgenic plants expressing potato or tomato PIN2 show the enhanced resistance to herbivorous insects (Johnson *et al.*, 1989, *Proc. Natl. Acad. Sci. USA* 86:

9871-9875; Duan *et al.*, 1996, *Nat. Biotech.*, 14:494-498; Klopfenstein *et al.*, 1997, *Biomass and Bioenergy* 12:299-311), transgenic lettuce plants expressing SaPIN2a were tested for their protection against the cabbage looper (*Trichoplusia ni*), a very destructive lettuce pest (Barbour, 1999, *Vegetable crops: search for arthropod resistance in genetic resources*. In *Global plant genetic resources for insect-resistant crops* (Clement, S. L. and Quisenberry, S.S., eds.). Boca Raton: CRC Press, pp. 171-189).

Due to limited availability of the larvae at the same developmental stage, all of the feeding trials could not be carried out concurrently. The experiments shown in Figure 16 were performed separately, each trial with its own set of control. Larvae fed on leaves from TL1 and TL11 plants (Figures 16a & c) grew significantly slower than those fed on control leaves, with a 49.8% and 37.7% reduction in larval weight respectively after feeding for 8 days. A moderate reduction (25.5% on day 9) in larval growth was observed with TL15 (Figure 16d), while growth was not retarded when larvae were fed on TL7 leaves (Figure 8b). Figure 17 shows the growth of larvae fed on leaves of TL1 was arrested and the larvae consumed much less leaf tissue compared to the larvae fed on leaves of wildtype lettuce. There is considerable variability of the growth of larvae fed even on leaves from wild-type plants was observed in four independent trials presented in Figure 9.

#### **Plastid transformation of tobacco with plasmid pMLVHisP**

Plastid transformation of tobacco with plasmid pMLVHisP (Figure 19), a derivative of vector pMLVHisA (Figure 18), yielded several green shoots on selective medium (Figure 20a). From these regenerated tobacco plantlets, total DNA was extracted for PCR analysis using primers ML330P and ML400 (Figure 20b). The results of PCR analysis showed the presence of an expected 0.63-kb band on agarose gel electrophoresis (Figure 20c). Subsequently, Southern blot analysis using a <sup>32</sup>P-labeled S1 probe confirmed the presence of one transplastomic line (Figure 20d).

### **6.3 Discussion**

Although PCD occurs in various tissues within the plant reproductive organs (Wu and Cheung, 2000, *Plant Mol Biol* 44: 267-281), little is known of the identities and roles of participating proteinases and their corresponding proteinase inhibitors. Cysteine proteinases and their inhibitors have been shown to modulate PCD induced by oxidative stress and pathogen attack (Solomon *et al.*, 1999, *Plant Cell* 11: 431-443). The expression of cysteine proteinase in brinjal (*S. melongena*) coincides with developmental events associated with PCD (Xu and Chye, 1999, *Plant J.* 17: 321-327). Others have observed cysteine proteinase expression has also been observed during petal senescence in carnation

(Jones *et al.*, 1995, *Plant Mol. Biol.* 28: 505-512) and day-lily (Guerrero *et al.*, 1998, *Plant Mol. Biol.* 36: 565-571). In contrast, evidence is lacking for the role of serine proteinases other than the subtilisins (reviewed in Beers *et al.*, 2000, *Plant Mol. Biol.* 44: 399-415), or their inhibitors in PCD. Hence, to better understand the role of serine proteinase inhibitors  
5 SaPIN2a and SaPIN2b in regulating developmental PCD in flowers, the localization of their mRNAs and corresponding proteins were investigated. The occurrence of developmental PCD in floral sections at various stages in development was verified by TUNEL assays that detect *in situ* nuclear DNA fragmentation, a hallmark of PCD.

A correlation was observed between results of northern blot and western blot analyses.  
10 Both *SaPIN2a* and *SaPIN2b* mRNAs and proteins showed the highest expression during early floral development. *In situ* mRNA hybridization and immunolocalization located their expression to floral tissues destined to undergo developmental PCD, suggesting that these serine proteinase inhibitors could have an endogenous role in impeding PCD during flower development. The ectopic expression of SaPIN2a from the Cauliflower Mosaic  
15 Virus promoter results in the inhibition of endogenous trypsin- and chymotrypsin-like activities in transgenic lettuce, suggesting of an endogenous role in the regulation of serine proteinases.

*PIN2* mRNA expression has been detected in potato floral buds and tomato flowers (Pena-Cortes *et al.*, 1991, *Plant Cell* 3: 963-972) and *PIN2*-like mRNAs, in tomato floral  
20 buds (Brandstater *et al.*, 1996, *Mol. Gen. Genet.* 252: 146-154) and tobacco stigmas (Atkinson *et al.*, 1993, *Plant Cell* 5: 203-213). The expression of *SaPIN2a* and *SaPIN2b* parallels that of *PIN2* in potato and tomato flowers on northern blot analysis (Pena-Cortes *et al.*, 1991, *Plant Cell* 3: 963-972). While *PIN2* expression in potato flowers was developmentally confined to floral buds, tomato *PIN2* mRNA accumulated in all organs of  
25 the mature flower (Pena-Cortes *et al.*, 1991, *Plant Cell* 3: 963-972). Further analysis of potato *PIN2* expression in floral buds using a *PIN2* promoter- $\beta$ -glucuronidase fusion in transgenic potato revealed that highest expression occurred in the developing ovules and in the adjacent outermost cell layer of the placenta in young floral buds (Pena-Cortes *et al.*,  
1991, *Plant Cell* 3: 963-972). Interestingly, this expression pattern in the ovules and  
30 adjacent placenta cell layer, is mimicked by *SaPIN2a* and *SaPIN2b* mRNAs in *S. americanum* floral buds and open flowers. Correspondingly, SaPIN2a protein was immunolocalized to the same tissues as its mRNA. However, SaPIN2b was not detected in ovules despite its accumulation in the outermost cell layer of the placenta, possibly due to its lower steady-state levels in ovules. The differential accumulation of SaPIN2a and

SaPIN2b in developing ovules implicates that their roles in PCD are overlapping but not necessarily identical, and that the anti-peptide antibodies used were specific for each protein.

The development and expansion of the female gametophyte in the ovule is accompanied by the degeneration of nucellar cells (Wu and Cheung, 2000, *Plant Mol. Biol.* 44: 267-281). *SaPIN2a* and *SaPIN2b* may play a role in controlling the degeneration of these cells surrounding the gametophyte, and could effectively block the immature degeneration of the two synergid cells surrounding the egg cell and the three antipodal cells before pollination. Depending on the plant species, synergid degeneration occurs during pollen tube elongation or upon the arrival of the pollen tube to the embryo sac (reviewed in Wu and Cheung, 2000, *Plant Mol. Biol.* 44: 267-281). In tobacco, of the same genus *Solanum* as *S. americanum*, degeneration occurs upon presentation of the pollen tubes (Huang *et al.*, 1993, *Planta* 191: 256-264; Huang and Russell, 1994, *Planta* 194: 200-214). Hence, the timely expression of *SaPIN2a* and *SaPIN2b* in the ovule before pollination is consistent with this anticipated role.

In young buds and in mature flowers, the presence of SaPIN2a and SaPIN2b in the nucellar cells and the outermost cell layer of the placenta would ensure that protein reserves destined for the nourishment of the embryo is free from proteolysis by serine proteinases. Correspondingly, these tissues in young buds and in mature flowers were TUNEL-negative. In the ovules of senescent flowers, the innermost cell layer of the embryo sac and those beneath it, show expression of SaPIN2a and SaPIN2b, respectively. In these ovules, DNA fragmentation was observed in the nucellar cells, however, reduced TUNEL signals were observed in the innermost cell layers, suggesting that SaPIN2a and SaPIN2b could be protecting the embryo from the PCD-associated proteases within the surrounding nucellar cells. High expression of brinjal cysteine proteinase in nucellar cells has been previously observed (Xu and Chye, 1999, *Plant J.* 17: 321-327) and the expression of barley aspartic protease (Chen and Foolad, 1997, *Plant Mol. Biol.* 35: 821-831) and wheat thiolprotease and carboxypeptidase in the degenerating nucellus has been reported (Dominguez and Cejudo, 1998, *Plant J.* 15: 569-574). Thus, the function of the nucellar cells in releasing protein reserves to the embryo is likely dependent on the activities of these proteinases and their inhibitors. That the expression of these proteinase inhibitors precedes the expression of the corresponding proteinases is to be expected. These observations of high *PIN2* mRNA in nucellar cells prior to pollination and fertilization suggests a role in protecting the protein reserves from proteolysis for subsequent utilization by the embryo.

Results from *in situ* hybridization studies also demonstrated that other than the ovules, *SaPIN2a* and *SaPIN2b* mRNAs are highly expressed in the transmitting tissue of the style during development from young floral buds to open flowers. In the case of *SaPIN2a*, but not *SaPIN2b*, mRNA was also detected in the stigma in the young floral bud, while both

5 mRNAs were located in the stigmas of mature buds and open flowers. This differential expression of *SaPIN2a* and *SaPIN2b* in stigmas of young buds again supports their overlapping and complementary roles in floral development. The ability to detect their differential expression also ascertained that the RNA probes used were indeed gene-specific. It has been suggested that the significance in the stigma-specific expression of a *PIN2*-like

10 mRNA in *Nicotiana glauca* immature and mature pistils is associated with a protective role against pests and pathogens (Atkinson *et al.*, 1993, *Plant Cell* 5: 203-213). In contrast, the expression of *SaPIN2a* and *SaPIN2b* was not limited to the stigma and their corresponding detection in other tissues that would undergo PCD suggests that they could also function modulating PCD. Northern blot and western blot analyses of their higher expression in early

15 floral development suggest that they act before pollination and fertilization. The detection of *SaPIN2a* and *SaPIN2b* mRNAs in the stigma indicates that they could regulate serine proteinases effectively promoting pollen germination at the stigma and tube elongation in the style of compatible species, while inhibiting those of incompatible ones. Also, the presence of these *PIN2* proteins in the style would ensure that PCD is withheld prior to

20 pollination because severe cell degeneration in the transmitting tissue occurs only upon pollen tube elongation (reviewed in Wu and Cheung, 2000, *Plant Mol. Biol.* 44: 267-281). PCD in the transmitting tissue creates space for the elongating pollen tubes which occupy a significant volume and probably provides nutrients to these tubes (Wu and Cheung, 2000, *Plant Mol. Biol.* 44: 267-281). In contrast to *SaPIN2a*, *SaPIN2b* was not detected in

25 stigmas of buds and open flowers, like in ovules, despite high mRNA expression in these tissues. Its low steady-state levels in stigmas and ovules could be accountable for this. In comparison, the clear detection of *SaPIN2b* in the transmitting tissue, the vascular bundles and outermost layer of the placenta of young floral buds, mature bud and open flowers suggests that *SaPIN2b* possesses differing protein turnover rates in various tissues

30 within the flower.

Expression of *SaPIN2a* and *SaPIN2b* mRNA and their corresponding proteins in the tapetum was restricted to the earliest stage in floral development, in the young bud. PCD in the tapetum is essential for pollen grain development and likely occurs in mature buds lacking *SaPIN2a* and *SaPIN2b* in their tapetal cells. The tapetum must complete its task in



preparing the pollen before its demise, culminated by the absence of protein inhibitors. Expression in pollen of buds indicates a putative role in preventing protein degradation during early pollen development. Expression of SaPIN2a and SaPIN2b in the vascular bundles is likely associated with developmental PCD in these tissues. Indications that SaPIN2a and SaPIN2b could function as modulators in developmentally regulated PCD in *S. americanum* flowers correlate well with our previous findings of an endogenous role for SaPIN2a in regulating proteolysis in the sieve elements (Xu *et al.*, 2001, *Plant Mol. Biol.* 47: 727-738).

Results of immunoelectron microscopy demonstrated that both SaPIN2a and SaPIN2b are subcellularly located within vacuoles in ovule sections. Presumably, in the sieve elements, SaPIN2a is deposited to the parietal cytoplasm following rupture of the tonoplast. The vacuolar targeting of SaPIN2a and SaPIN2b is consistent with computer analysis using the SignalP V1.1 program (described in Nielsen *et al.*, 1999, *Protein Engineering* 12:3-9; Nielsen *et al.*, 1997, *Int J Neural Sys* 8:581-599), which deduced that SaPIN2a and SaPIN2b have cleavable N-terminal signal sequences with cleavage sites after amino acid 27 in SaPIN2a and amino acid 25 in SaPIN2b. Using the PSORT program (described in Nakai *et al.*, 1999, *Trends Biochem Sci.* 24:34-6), both these signal peptides were predicted vacuole-targeting signals.

The instant invention demonstrates the successful production of transgenic lettuce expressing SaPIN2a from the CaMV 35S promoter. Stable integration and inheritance of the *SaPIN2a* cDNA in the genome of transgenic lettuce were demonstrated by Southern blot analysis and segregation analysis of the R<sub>1</sub> progeny. Although *SaPIN2a* mRNA was detected in both the R<sub>0</sub> and R<sub>1</sub> transformants by northern blot analysis, western blot analysis using anti-peptide antibodies against SaPIN2a failed to detect the presence of SaPIN2a protein. Despite an absence of significant inhibitory activity against bovine trypsin and chymotrypsin in extracts from transgenic lettuce, the endogenous trypsin-like activity in all transgenic lines analyzed was almost completely inhibited, and the endogenous chymotrypsin-like activity, moderately inhibited. Preliminary insect bioassays with R<sub>0</sub> transgenic plants showed that some of them acquired enhanced resistance to cabbage looper (*Trichoplusia ni*).

Hence, the heterologous expression of a plant PI, SaPIN2a, not only confers insect-resistance in transgenic lettuce but also inhibits the endogenous trypsin- and chymotrypsin-like activities. Since it has been recently shown that the yield and quality of antibodies produced in transgenic plants are significantly affected by endogenous

proteolytic degradation (Stevens *et al.*, 2000, *Plant Physiol* 124(1):173-82), heterologous expression of PIs could be exploited in the protection of heterologous protein production in transgenic plants.

The significant inhibition of trypsin-like activity and the moderate inhibition of chymotrypsin-like activity in transgenic lettuce, resulting from the expression of SaPIN2a, could not be due to a mutation caused by the T-DNA insertion because all three independent lines (TL1, 11 and 33) tested show similar inhibition. This finding suggests that other than a possible role in plant defense, SaPIN2a has an endogenous role in regulating the activity of endogenous proteases in the phloem (Xu *et al.*, 2001, *Plant Mol. Biol.* 47: 727-738). The observations on lack of accumulation of transgene protein despite over-expression of corresponding mRNA have also been reported in transgenic petunia (Jones *et al.*, 1985), tobacco (Jones *et al.*, 1985, *EMBO. J.* 4:2411-2418; Florack *et al.*, 1994, *Plant Mol. Biol.* 24:83-96), tomato (Seymour *et al.*, 1993, *Plant Mol. Biol.* 23:1-9), cauliflower (Passelegue *et al.*, 1996, *Plant Sci.* 113:79-89) and potato (Gatehouse *et al.*, 1997, *Molecular Breeding* 3:49-63). Results of shorter transcripts other than that expected of the *SaPIN2a* mRNA using the *NOS*-terminator in transgenic lettuce suggests that the mRNA may not have undergone proper processing and could have been further degraded. Inadvertently, this may be a contributing factor to the failure in the detection of SaPIN2a protein in transgenic lettuce on western blot analysis, despite high accumulation of the *SaPIN2a* mRNA.

Whether SaPIN2a and SaPIN2b possess the putative inhibitory activity towards bovine trypsin and chymotrypsin, based on its sequence homology to known PIN2s, is still unclear. One possibility is that the amount of SaPIN2a protein accumulated in leaves of transgenic lettuce is not sufficient, as indicated by western blot analysis, for *in vitro* inhibitory activity assay using bovine trypsin or chymotrypsin, although this amount of SaPIN2a protein is sufficient for inhibiting endogenous trypsin-like activity in lettuce leaves. An alternative explanation is that SaPIN2a is specific to certain plant endogenous proteases and/or the midgut proteases from cabbage looper larvae, but not to bovine trypsin and chymotrypsin. It was found that the *Tribolium*-protease inhibitors from soybean (Birk *et al.*, 1963, *Biochim. Biophys. Acta.* 67:326-328) and wheat (Applebaum and Konijn, 1966, *J. Insect Physiol.* 12:665-669) could markedly inhibit larval gut proteolysis of *Tribolium castaneum* but were inactive towards either mammalian trypsin or chymotrypsin. The maize proteinase inhibitor (MPI), belonging to the potato proteinase inhibitor I (PIN1) family based on its sequence homology to known PIN1s (Cordero *et al.*, 1994, *Plant J.*

6:141-150), has been shown to effectively inhibit midgut chymotrypsin from *S. littoralis* larvae, but it only weakly inhibits bovine chymotrypsin, unlike most members of PIN1 family which are potent inhibitors of mammalian chymotrypsin (Tamayo *et al.*, 2000, *Planta* 211:62-71).

5

The present invention is not to be limited in scope by the specific embodiments described which are intended as single illustrations of individual aspects of the invention, and functionally equivalent methods and components are within the scope of the invention. Indeed, various modifications of the invention, in addition to those shown and described  
10 herein will become apparent to those skilled in the art from the foregoing description and accompanying drawings. Such modifications are intended to fall within the scope of the appended claims.

Various references are cited herein, the disclosure of which are incorporated by reference in their entirety.

**WHAT IS CLAIMED IS:**

1. An isolated proteinase inhibitor II nucleic acid molecule having a nucleotide sequence of SEQ ID NO:1, or a nucleotide sequence that encodes SaPIN2a having an amino acid sequence of SEQ ID NO:2.
- 5 2. An isolated proteinase inhibitor II nucleic acid molecule having a nucleotide sequence of SEQ ID NO:3, or a nucleotide sequence that encodes SaPIN2b having an amino acid sequence of SEQ ID NO:4.
3. An isolated nucleic acid molecule having a nucleotide sequence that hybridizes under stringent conditions to the complement of a proteinase inhibitor II nucleotide  
10 sequence of SEQ ID NO:1, wherein the stringent conditions comprise hybridization in 50% deionized formamide, 6xSSC, 5x Denhardt's, 1% SDS, 100 µg/ml denatured salmon sperm DNA at 42°C, and washing in 0.1xSSC, 0.1% SDS at 65°C, and wherein the nucleotide sequence encodes a protein having proteinase inhibitor activity.
4. An isolated nucleic acid molecule having a nucleotide sequence that hybridizes  
15 under stringent conditions to the complement of a proteinase inhibitor II nucleotide sequence of SEQ ID NO:3, wherein the stringent conditions comprise hybridization in 50% deionized formamide, 6xSSC, 5x Denhardt's, 1% SDS, 100 µg/ml denatured salmon sperm DNA at 42°C, and washing in 0.1xSSC, 0.1% SDS at 65°C, and wherein the nucleotide sequence encodes a protein having proteinase inhibitor activity.
- 20 5. An isolated polypeptide having the amino acid sequence of SEQ ID NO:2, or a fragment thereof having proteinase inhibitor activity.
6. An isolated polypeptide having the amino acid sequence of SEQ ID NO:4, or a fragment thereof having proteinase inhibitor activity.
7. An isolated polypeptide encoded by the nucleic acid molecule of claim 3 or 4, or a  
25 fragment thereof having proteinase inhibitor activity.
8. A method for producing a transformed plant comprising: (i) transforming a plant with (a) a polynucleotide that comprises the nucleotide sequence of SEQ ID NO:1 or encodes the amino acid sequence of SEQ ID NO:2; or (b) a polynucleotide that comprises the nucleotide sequence of SEQ ID NO:3 or encodes the amino acid sequence of SEQ ID  
30 NO:4; and (ii) selecting a transformed plant in which said nucleotide sequence is expressed.

9. The method of claim 8 wherein said transforming is by nuclear transformation.

10. The method of claim 8 wherein said transforming is by plastid transformation.

11. A method for producing a transformed plant comprising: (i) transforming a plant with a polynucleotide that comprises a nucleotide sequence that hybridizes under stringent conditions to the complement of the nucleotide sequence of SEQ ID NO:1 or SEQ ID NO:3, wherein the stringent conditions comprise hybridization in 50% deionized formamide, 6xSSC, 5x Denhardt's, 1% SDS, 100 µg/ml denatured salmon sperm DNA at 42°C, and washing in 0.1xSSC, 0.1% SDS at 65°C, and wherein the nucleotide sequence encodes a protein having proteinase inhibitor activity; and (ii) selecting a transformed plant in which said nucleotide sequence is expressed.

12. The method of claim 11 wherein said transforming is by nuclear transformation.

13. The method of claim 11 wherein said transforming is by plastid transformation.

14. The method of any of claims 8 or 11 wherein an endogenous proteinase activity of the transformed plant is inhibited.

15. The method of claim 14 wherein the endogenous protease activity is a trypsin-like activity or chymotrypsin-like activity.

16. A method for inhibiting programmed cell death and senescence in a transformed plant or plant part comprising: (i) transforming a plant with (a) a polynucleotide that comprises the nucleotide sequence of SEQ ID NO:1 or encodes the amino acid sequence of SEQ ID NO:2; or (b) a polynucleotide that comprises the nucleotide sequence of SEQ ID NO:3, or encodes the amino acid sequence of SEQ ID NO:4; and (ii) selecting a transformed plant in which said polynucleotide is expressed.

17. The method of claim 16 wherein said transforming is by nuclear transformation.

18. The method of claim 16 wherein said transforming is by plastid transformation.

19. A method for inhibiting programmed cell death and senescence in a transformed plant or plant part comprising: (i) transforming a plant with a recombinant vector comprising a polynucleotide that comprises a nucleotide sequence that hybridizes under stringent conditions to the complement of the nucleotide sequence of SEQ ID NO:1 or SEQ

ID NO:3, wherein the stringent conditions comprise hybridization in 50% deionized formamide, 6xSSC, 5x Denhardt's, 1% SDS, 100 µg/ml denatured salmon sperm DNA at 42°C, and washing in 0.1xSSC, 0.1% SDS at 65°C, and wherein the nucleotide sequence encodes a protein having proteinase inhibitor activity; and (ii) selecting a transformed plant  
5 in which said polynucleotide is expressed.

20. The method of claim 19 wherein said transforming is by nuclear transformation.

21. The method of claim 19 wherein said transforming is by plastid transformation.

22. The method of any of claims 16 or 17 wherein an endogenous proteinase activity of the transformed plant is inhibited.

10 23. The method of claim 20 wherein the endogenous proteinase activity is a trypsin-like activity or chymotrypsin-like activity.

24. A method for producing a heterologous protein in a plant comprising: (i) transforming a plant with (a) a first polynucleotide that comprises the nucleotide sequence of SEQ ID NO:1, or encodes the amino acid sequence of SEQ ID NO:2; or (b) a first  
15 polynucleotide that comprises the nucleotide sequence of SEQ ID NO:3, or encodes the amino acid sequence of SEQ ID NO:4; (ii) transforming the plant with a second polynucleotide that encodes a heterologous protein; and (iii) isolating said heterologous protein.

25. The method of claim 24 wherein said transforming is by nuclear transformation.

20 26. The method of claim 24 wherein said transforming is by plastid transformation.

27. A method for producing a heterologous protein in a plant comprising: (i) transforming a plant with a recombinant vector comprising a polynucleotide that comprises a nucleotide sequence that hybridizes under stringent conditions to the complement of the nucleotide sequence of SEQ ID NO:1 or SEQ ID NO:3, wherein the stringent conditions  
25 comprise hybridization in 50% deionized formamide, 6xSSC, 5x Denhardt's, 1% SDS, 100 µg/ml denatured salmon sperm DNA at 42°C, and washing in 0.1xSSC, 0.1% SDS at 65°C, and wherein the nucleotide sequence encodes a protein having proteinase inhibitor activity; (ii) transforming the plant with a second polynucleotide that encodes a heterologous protein; and (iii) isolating said heterologous protein.

28. The method of claim 27 wherein said transforming is by nuclear transformation.

29. The method of claim 27 wherein said transforming is by plastid transformation.

30. A transformed plant produced by the steps of: (i) transforming a plant with a recombinant vector comprising (a) a polynucleotide that comprises the nucleotide sequence of SEQ ID NO:1 or encodes the amino acid sequence of SEQ ID NO:2; or (b) a polynucleotide that comprises the nucleotide sequence of SEQ ID NO:3 or encodes the amino acid sequence of SEQ ID NO:4; and (ii) selecting a transformed plant in which said polynucleotide is expressed.

31. The transformed plant of claim 30 which is a transgenic plant.

10 32. The transformed plant of claim 30 which is a transplastomic plant.

33. A transformed plant produced by the steps of: (i) transforming a plant with a recombinant vector comprising a polynucleotide that comprises a nucleotide sequence that hybridizes under stringent conditions to the complement of the nucleotide sequence of SEQ ID NO:1 or SEQ ID NO:3, wherein the stringent conditions comprise hybridization in 50% deionized formamide, 6xSSC, 5x Denhardt's, 1% SDS, 100 µg/ml denatured salmon sperm DNA at 42°C, and washing in 0.1xSSC, 0.1% SDS at 65°C, and wherein the nucleotide sequence encodes a protein having proteinase inhibitor activity; and (ii) selecting a transformed plant in which said polynucleotide is expressed.

34. The transformed plant of claim 33 which is a transgenic plant.

20 35. The transformed plant of claim 33 which is a transplastomic plant.

36. A transformed plant comprising (a) a polynucleotide that comprises the nucleotide sequence of SEQ ID NO:1 or encodes the amino acid sequence of SEQ ID NO:2; or (b) a polynucleotide that comprises the nucleotide sequence of SEQ ID NO:3 or encodes the amino acid sequence of SEQ ID NO:4.

25 37. The transformed plant of claim 36 which is a transgenic plant.

38. The transformed plant of claim 36 which is a transplastomic plant.

39. A transformed plant comprising a polynucleotide that comprises a nucleotide sequence that hybridizes under stringent conditions to the complement of the nucleotide

sequence of SEQ ID NO:1 or SEQ ID NO:3, wherein the stringent conditions comprise hybridization in 50% deionized formamide, 6xSSC, 5x Denhardt's, 1% SDS, 100 µg/ml denatured salmon sperm DNA at 42°C, and washing in 0.1xSSC, 0.1% SDS at 65°C, and wherein the nucleotide sequence encodes a protein having proteinase inhibitor activity.

5           40. The transformed plant of claim 39 which is a transgenic plant.

          41. The transformed plant of claim 39 which is a transplastomic plant.

          42. The transformed plant of any of claims 28 to 39 wherein the plant is a leafy vegetable crop.

          43. The transformed plant of claim 42 wherein the crop is lettuce

10           44. The transformed plant of claim 43 wherein an endogenous proteinase activity of the transformed lettuce is inhibited.

          45. The transformed plant of claim 44 wherein the endogenous proteinase activity is a trypsin-like activity or chymotrypsin-like activity.

          46. A transgenic lettuce comprising cells that comprise pSa7.

15           47. A transplastomic tobacco comprising cells that comprise pMLVHisP.

          48. A monoclonal antibody that binds to a polypeptide having an amino acid sequence of SEQ ID NO:2 or SEQ ID NO:4.

          49. A recombinant vector comprising: (a) a polynucleotide that comprises the nucleotide sequence of SEQ ID NO:1 or encodes the amino acid sequence of SEQ ID NO:2; or (b) a polynucleotide that comprises the nucleotide sequence of SEQ ID NO:3 or encodes the amino acid sequence of SEQ ID NO:4.

20           50. A recombinant vector comprising a polynucleotide that comprises a nucleotide sequence that hybridizes under stringent conditions to the complement of the nucleotide sequence of SEQ ID NO:1 or SEQ ID NO:3, wherein the stringent conditions comprise hybridization in 50% deionized formamide, 6xSSC, 5x Denhardt's, 1% SDS, 100 µg/ml denatured salmon sperm DNA at 42°C, and washing in 0.1xSSC, 0.1% SDS at 65°C, and wherein the nucleotide sequence encodes a protein having proteinase inhibitor activity.



51. The recombinant vector of claim 49 or 50 further comprising one or more regulatory elements operatively linked to said polynucleotide.

52. The recombinant vector of claim 51 wherein the regulatory element is 35S promoter of cauliflower mosaic virus (CaMV 35S).

5 53. A recombinant vector which is pSa7.

54. A recombinant vector which is pMLVHisP.

55. A recombinant cell comprising the recombinant vector of claim 50.

56. The recombinant cell of claim 55 wherein the cell is a plant cell.

57. The recombinant cell of claim 56 wherein the plant cell is from a plant selected  
10 from the group consisting of tomatoes, ginger, scallions, water chestnuts, pepper, eggplant, lettuce, spinach, broccoli, brussels sprouts, calabrese, kale, cauliflower, red cabbage, white cabbage, cucumber, melon, watermelon, zucchini, squash, peas, beans, sweetcorn, carrots, onions, berries, grapes, banana, pineapple, rosaceous fruit and nut crops, tobacco, mango and papaya.

15 58. The recombinant cell of claim 56 wherein the plant cell is from a plant selected from the group consisting of *Anacardium*, *Arachis*, *Asparagus*, *Atropa*, *Avena*, *Brassica*, *Citrus*, *Citrullus*, *Capsicum*, *Carthamus*, *Cocos*, *Coffea*, *Cucumis*, *Cucurbita*, *Daucus*, *Elaeis*, *Fragaria*, *Glycine*, *Gossypium*, *Helianthus*, *Heterocallis*, *Hordeum*, *Hyoscyamus*,  
20 *Lactuca*, *Linum*, *Lolium*, *Lupinus*, *Lycopersicon*, *Malus*, *Manihot*, *Majorana*, *Medicago*, *Nicotiana*, *Olea*, *Oryza*, *Panicum*, *Pannaserum*, *Persea*, *Phaseolus*, *Pistachia*, *Pisum*, *Pyrus*, *Prunus*, *Raphanus*, *Ricinus*, *Secale*, *Senecio*, *Sinapis*, *Solanum*, *Sorghum*, *Theobromus*, *Trigonella*, *Triticum*, *Vicia*, *Vitis*, *Vigna*, and *Zea*.

1 CATAATGGCT GTTCACAAAG TTAGCTTCTT TGCTTGCCTA CTGTGTTCTTG GATGGATGTT  
 61 TCTACTTGG AAACATGTTG ATGCCAAGGC TTGTACTAGA GAATGTGGTC ATTTTAGCTA  
 121 TGGCATAATGC CCACGTTTCAG AAGGAAGTCC CCAAAAACCT ATATGCACCA ATTTGTTGCTC  
 181 AGGCTATAAG GGTTCCAACT ATTACAGTGC TAAAGGAGAT TTGATTTGTG AAGGAGAATC  
 241 TGACCCCTAGA AACCCAAAG ATTGTACTTT CGAATGTGAT ACACAGATTG CTTATTTCAAA  
 301 ATGTCCTCGT TCAGAAGGAA AGATGATAAT TAAACCCACT GGATGCACCA CTTGTTGCAC  
 361 GGGCTATCAG GGTTCCTACT ATTTGATCA AGATGGTAT TTTGTCGTG AAGGAGAGAG  
 421 TCCTGAACCC AAGACCACTG CTTATTTCTA ATCAATCATA TGTGTTTATC TATCAAAAAA  
 481 AAATATGTAT GCATGATATA TGCTGGTTAC TGTAATGTGG ACITTTATTG

FIG. 1a

1 MAVHKVSLA CLLVLGWMFL LAKHVDKAC TRECGHFSYG ICPRSEGSPO  
 51 KPICTNCCSG YKGCNYYSK GDVICEGESD PRNPKDCTFE CDTQIAYSKC  
 101 PRSEGKMIK PTGCTTCCCTG YQGCYFFDQD GDFVCEGESP EPKTTAYF

FIG. 1b

**A SaPIN2b nucleotide sequence**

1 GAAGATAATT AATCACGATC GAGAAAGAAT AAATGGCTGT TCACAAAGAA  
51 GTTAGTCCCTT TTGCTTACCT ACTTGTTCTT GGATTAATGT TTCTACATGT  
101 AAGCGCGGTA AAACATGTTG ATGCCAAGCC ATGTACAAGA GAATGTGGTA  
151 ATCTTGGGTA TGGAATATGC CCGCGTTCAG AAGGAAGTCC GGAAAATCCC  
201 ATATGCACGA ATTGTTGCTC AGGCTATAAA GGTGCAACT ATTATAGTGC  
251 TAATGGGACT TTTATTTGCG AAGGAAGTTC TGACCCTAAA AACCCAAATA  
301 CTTGCCCTT ATTTTGTGAT GGAGATATTG CCTATTCAA ATGTCCCCGT  
351 TCAGAAGGAG AGACTATAAT ATATCCCACG GGATGCACCA CCTGTTGCAC  
401 GGGGTACAAG GGTGCTACT ATTTAGTAA AGAAGGTGAG TTTGTGTGTG  
451 AAGGAGAGAG TGATGAACCC AACGTTATTT CTAATCAATG AAATGCGTTG  
501 TAGTTTTTAA TATAATGTAT GAAATAAAAG TATGCAGTAC GGCAATATAT  
551 GATAATCACT ATAGTGTGGG CATCACAGTT GTGCTTTATA TGTAATTACT  
601 AATTATCTGA ATAAGAGAAA AAGATCATCC ATGAGGACTT GGCTCCTCTC  
651 CAGTAGTGGT GATCTCCTTC CTAATAAAAAA AAAAAAAAAA AA

**B SaPIN2b amino acid sequence**

1 MAVHKEVSSL AYLLVLGLMF LHVSAVKHVD AKPCTRECGN LYGICPRSE  
51 GSPENPICTN CCSGYKGCNY YSANGTFICE GSSDPKPNPT CPLFCDGDIA  
101 YSKCPRSEGE TIIYPTGCTT CCTGYKGCYY FSKEGEFVCE GESDEPNVIS  
151 NQ

FIG. 2

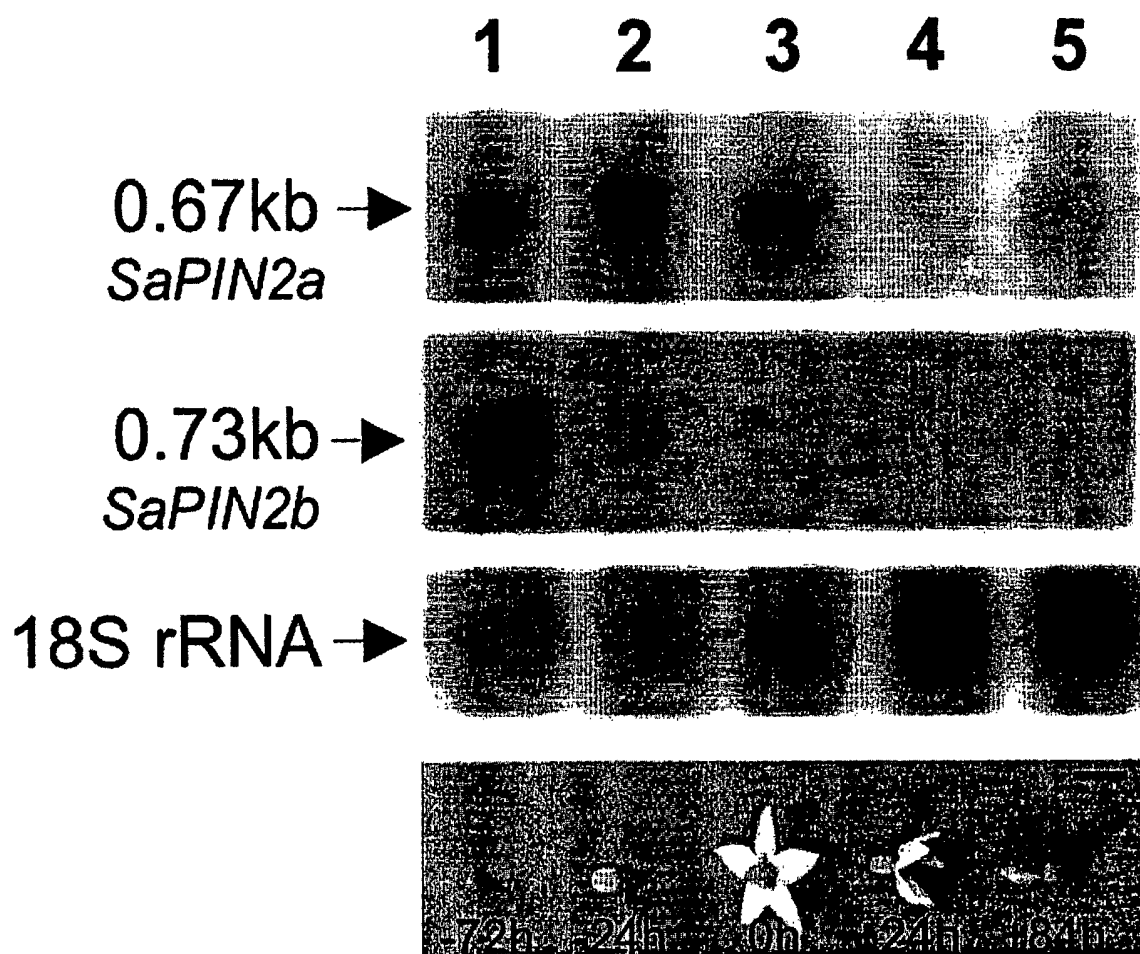


FIG. 3

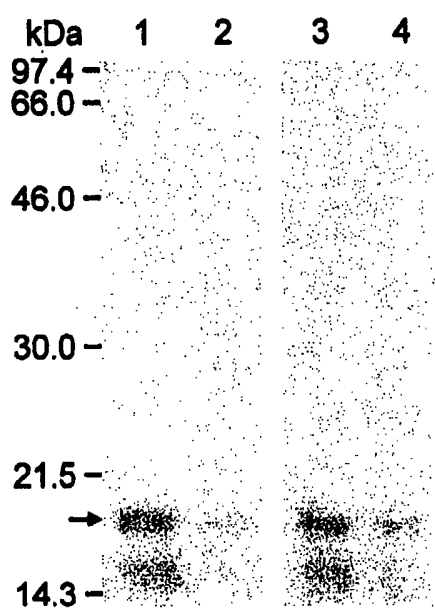


FIG. 4

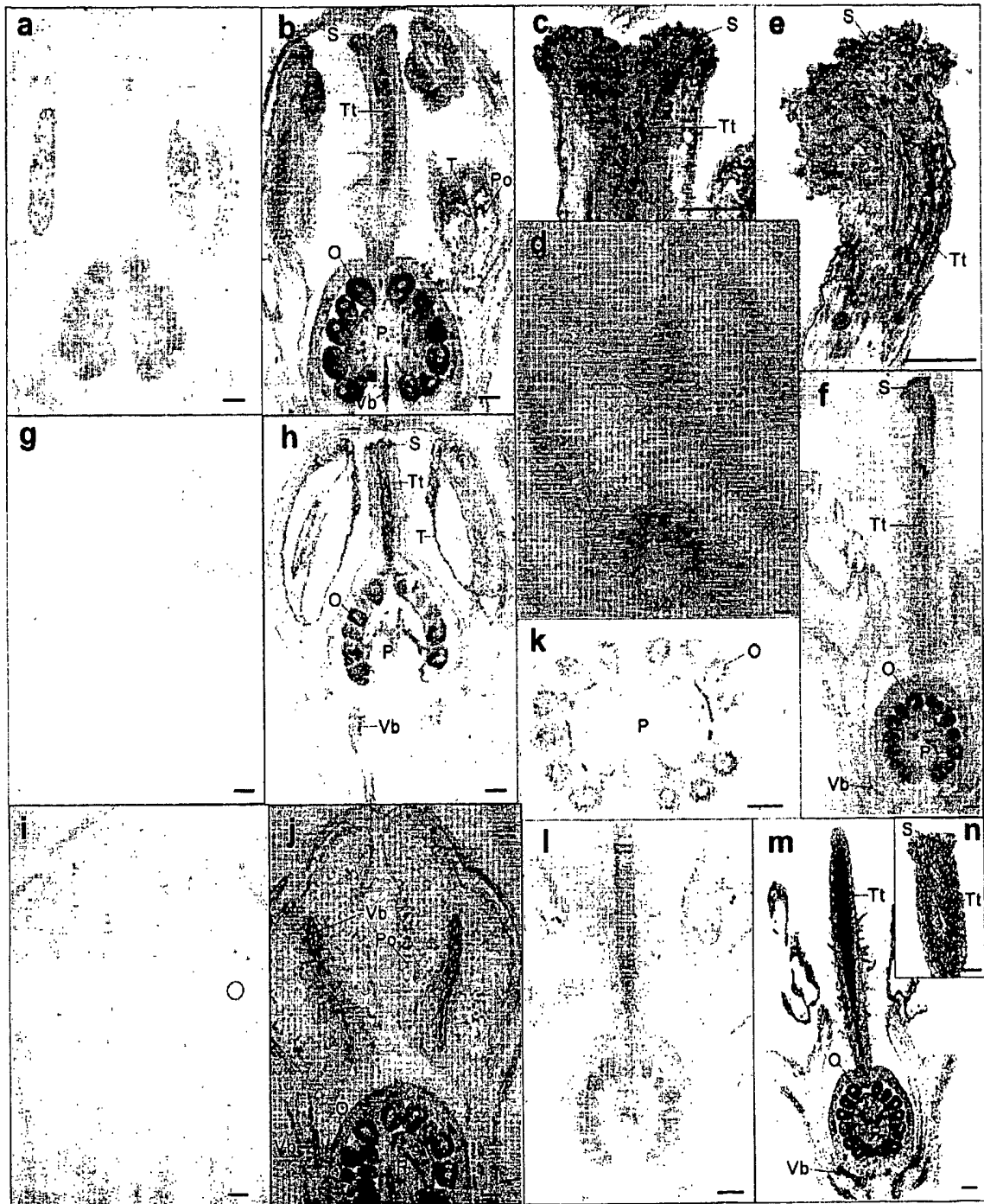


FIG. 5

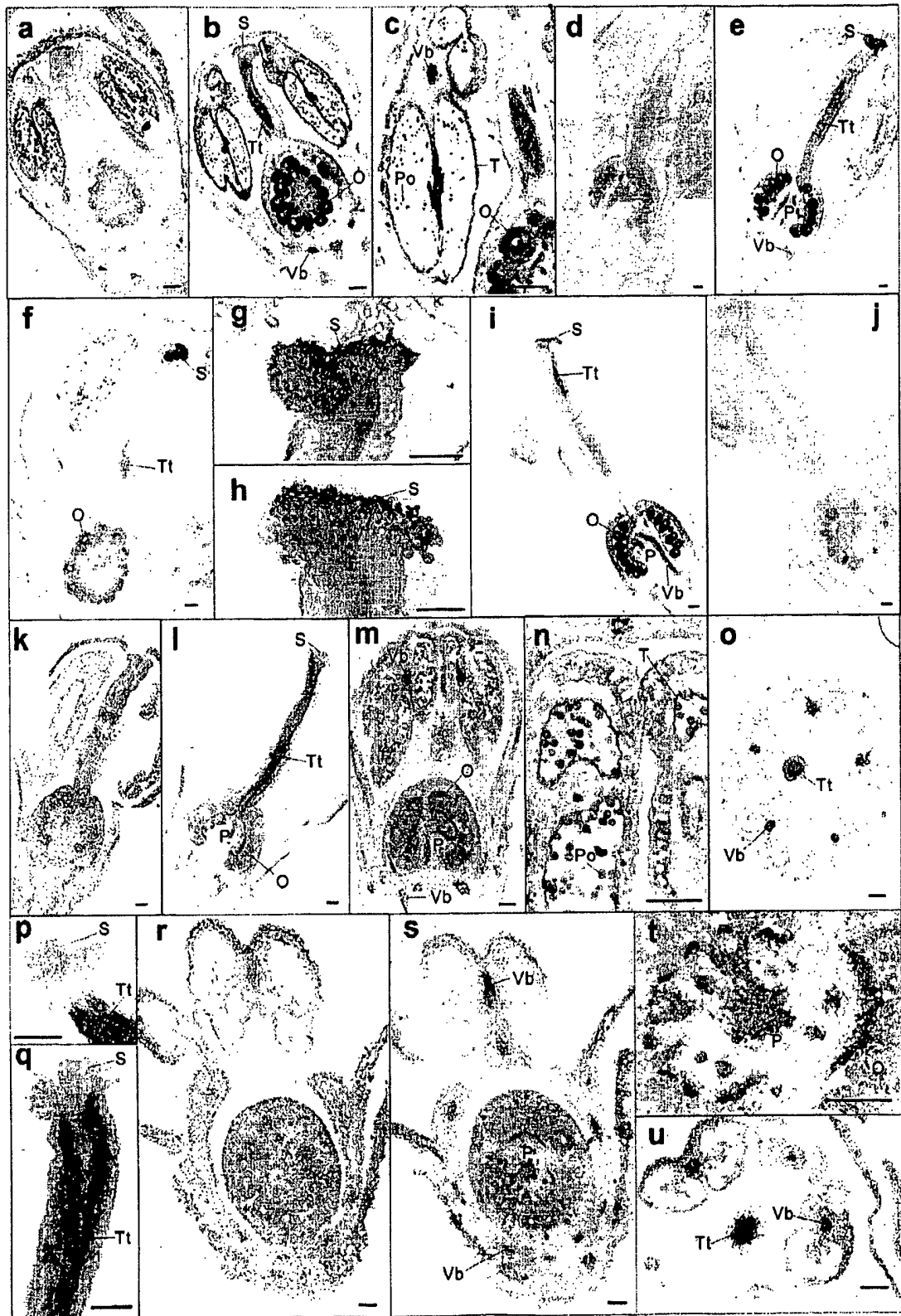


FIG. 6



FIG. 7



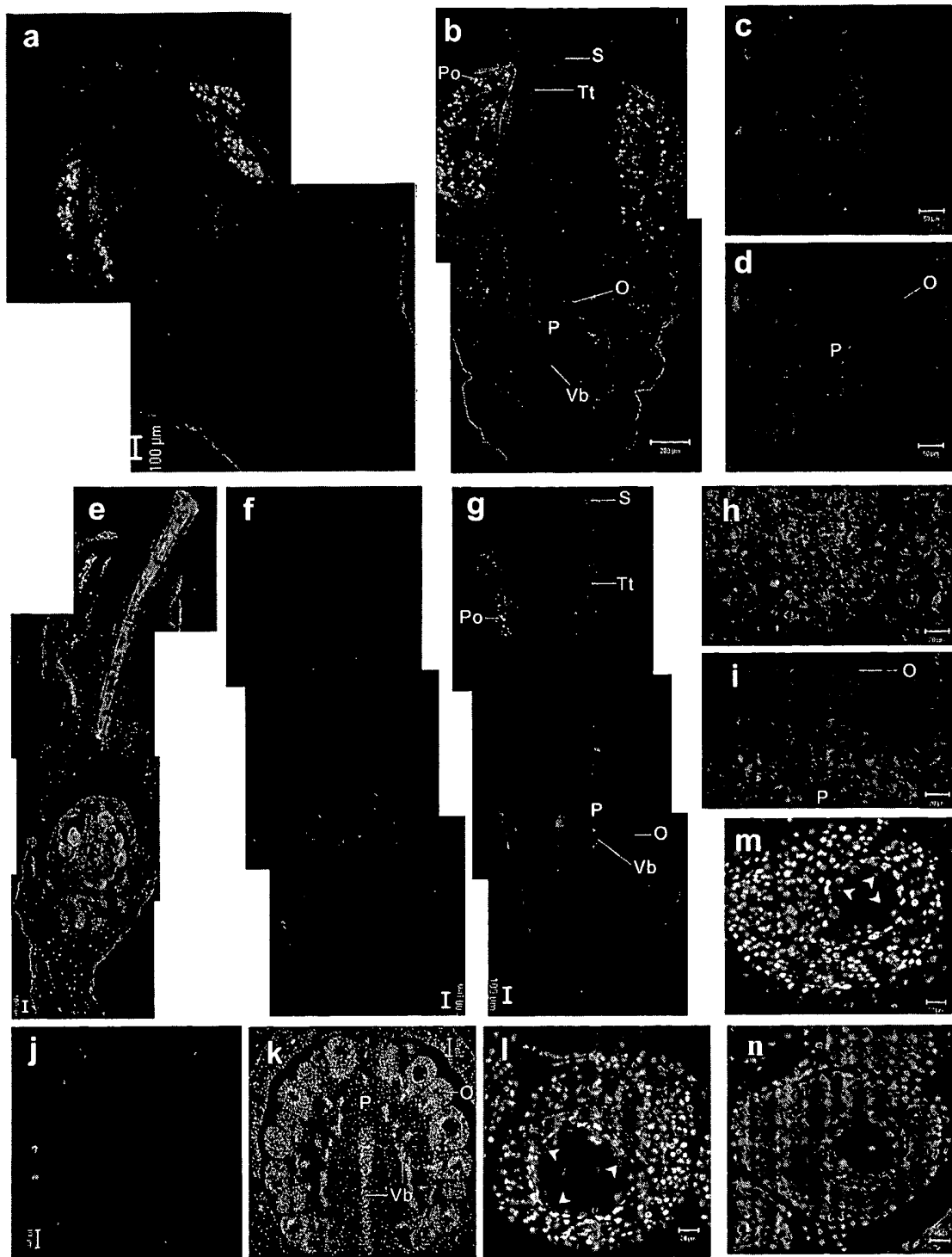


FIG. 8



FIG. 9

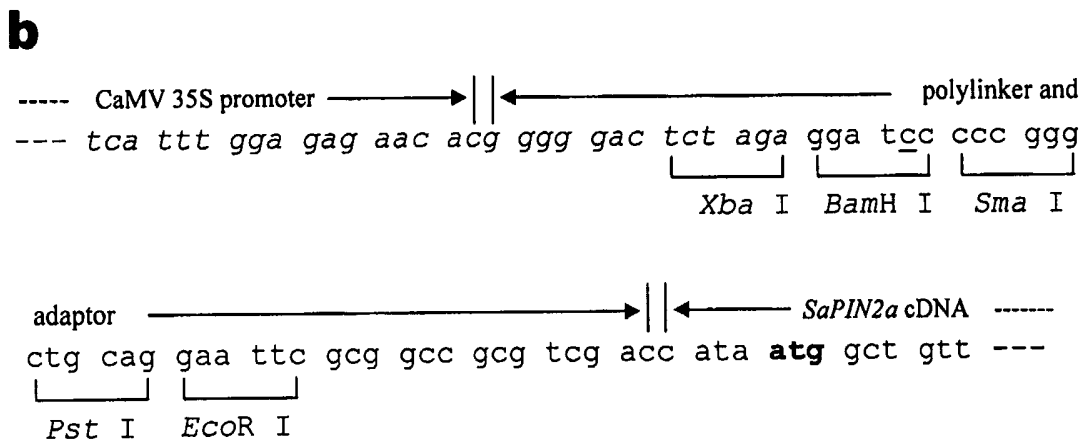
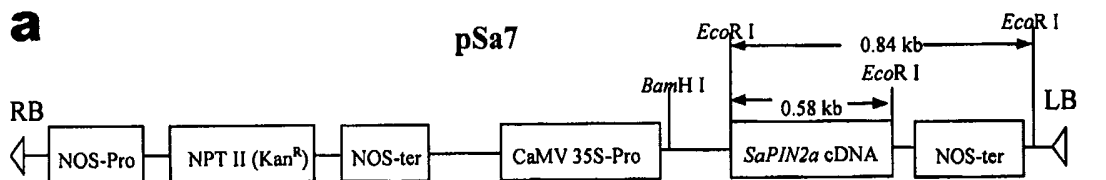


FIG. 10

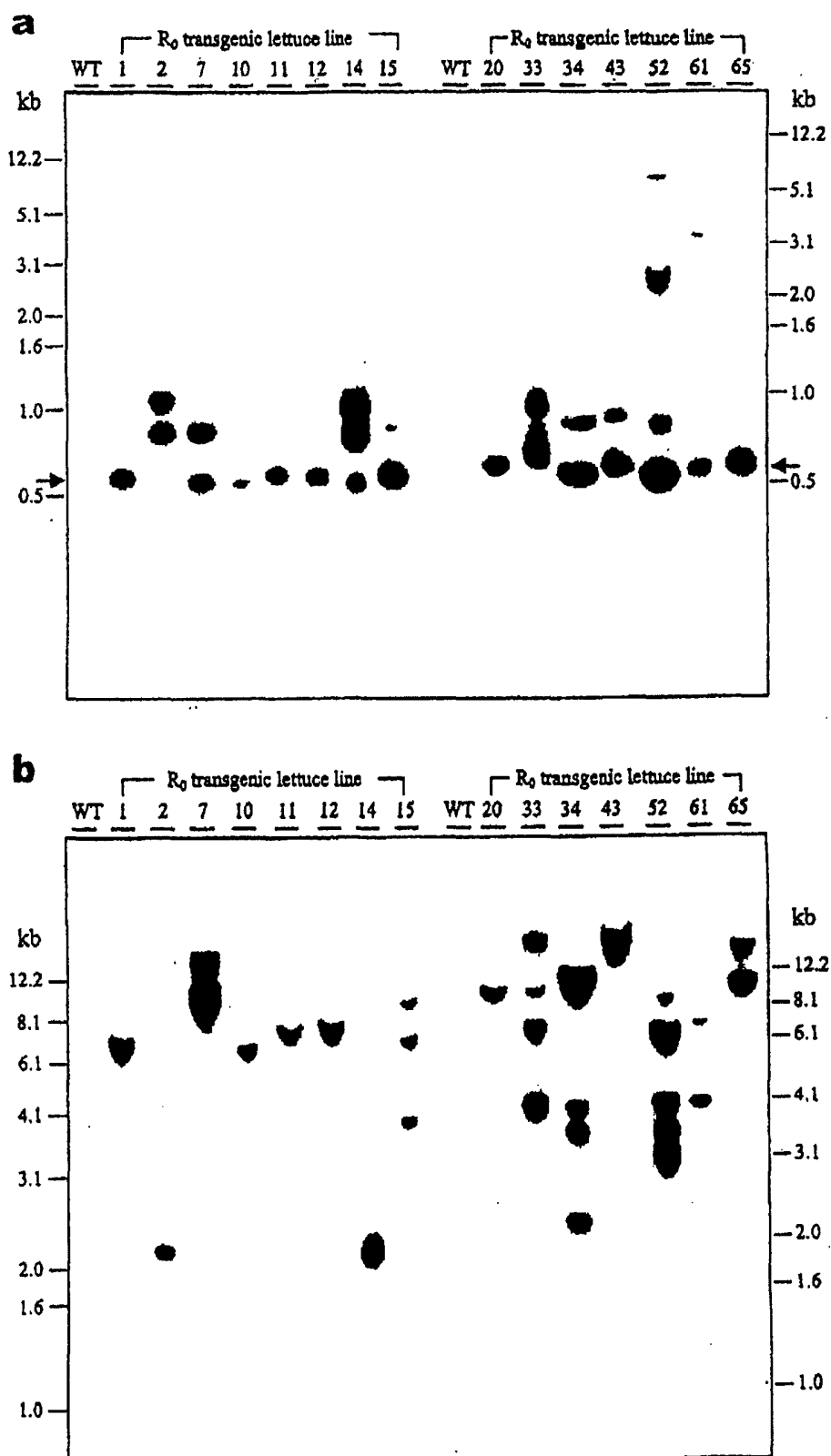


FIG. 11

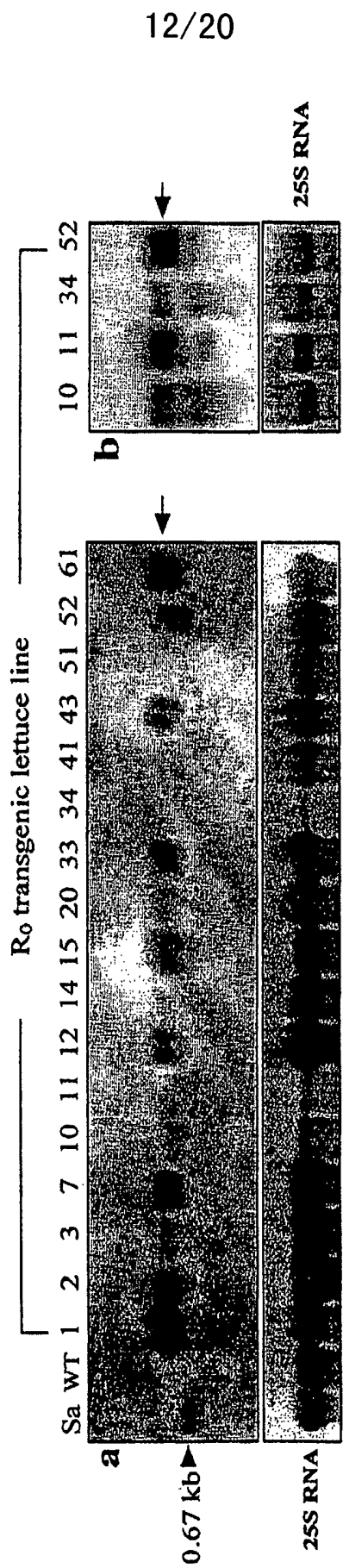


FIG. 12

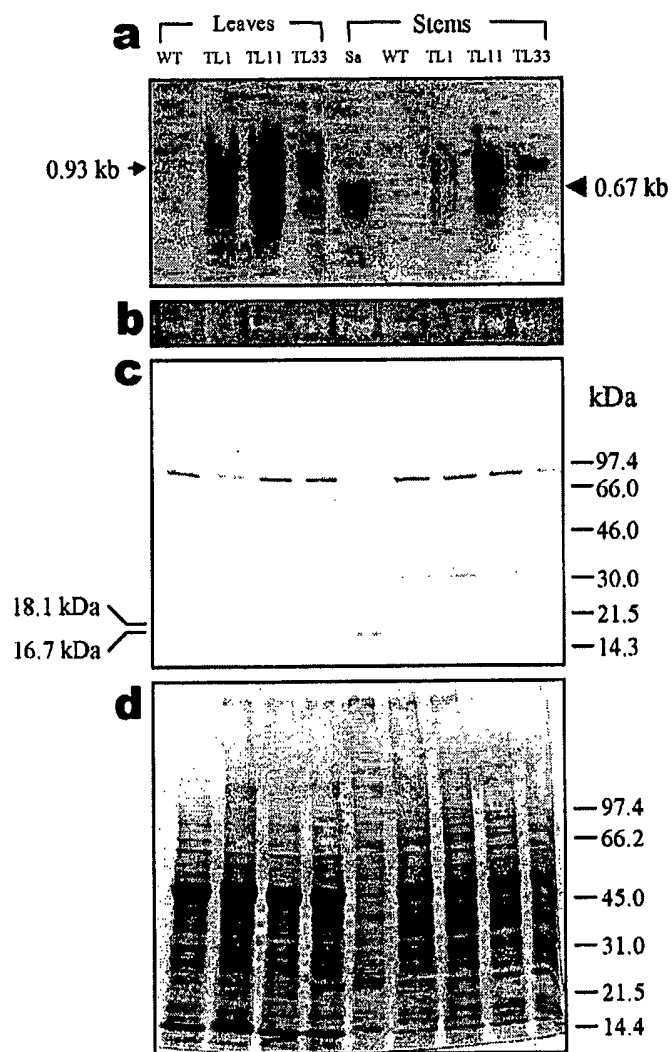


FIG. 13

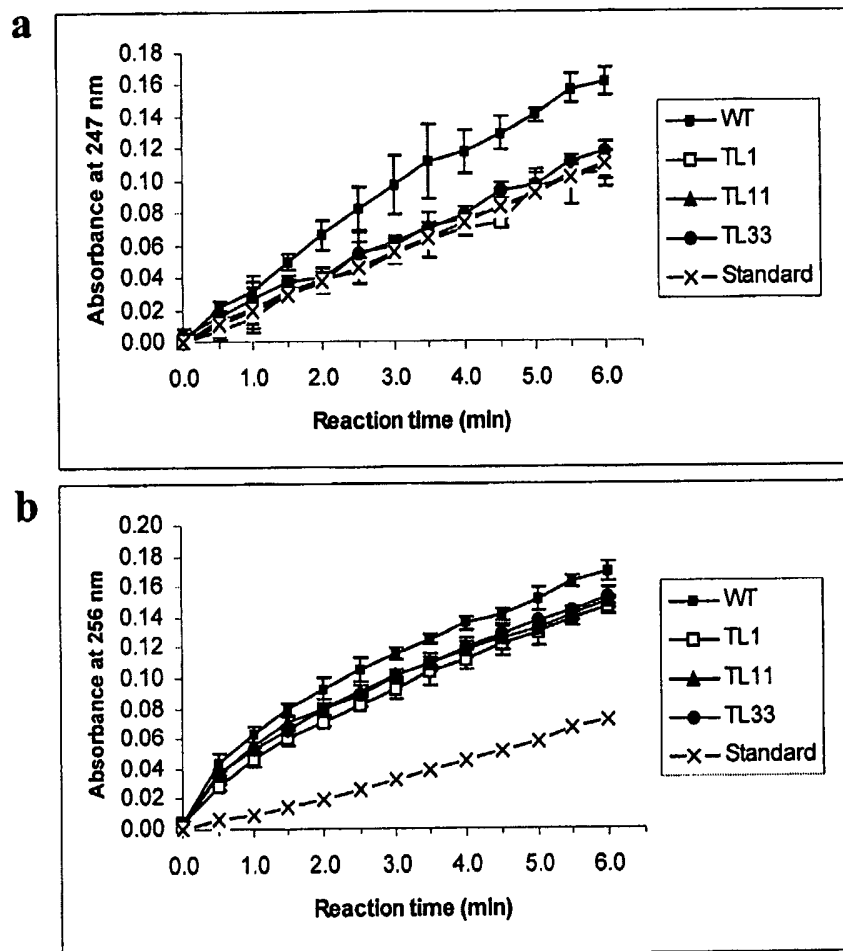


FIG. 14

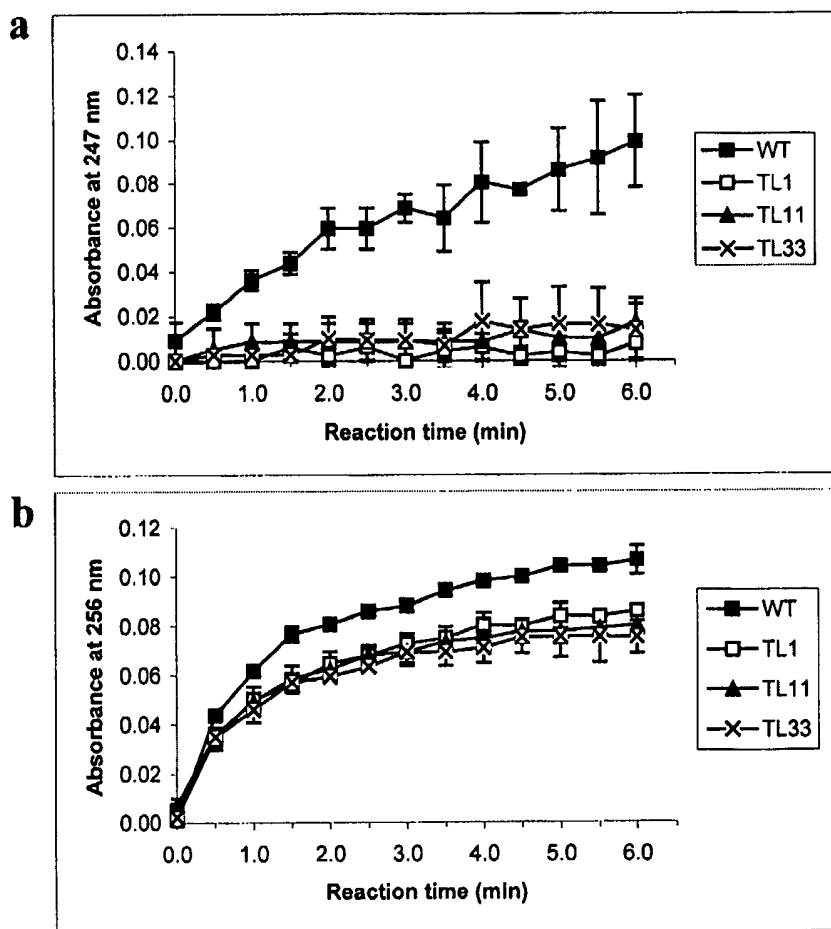


FIG. 15



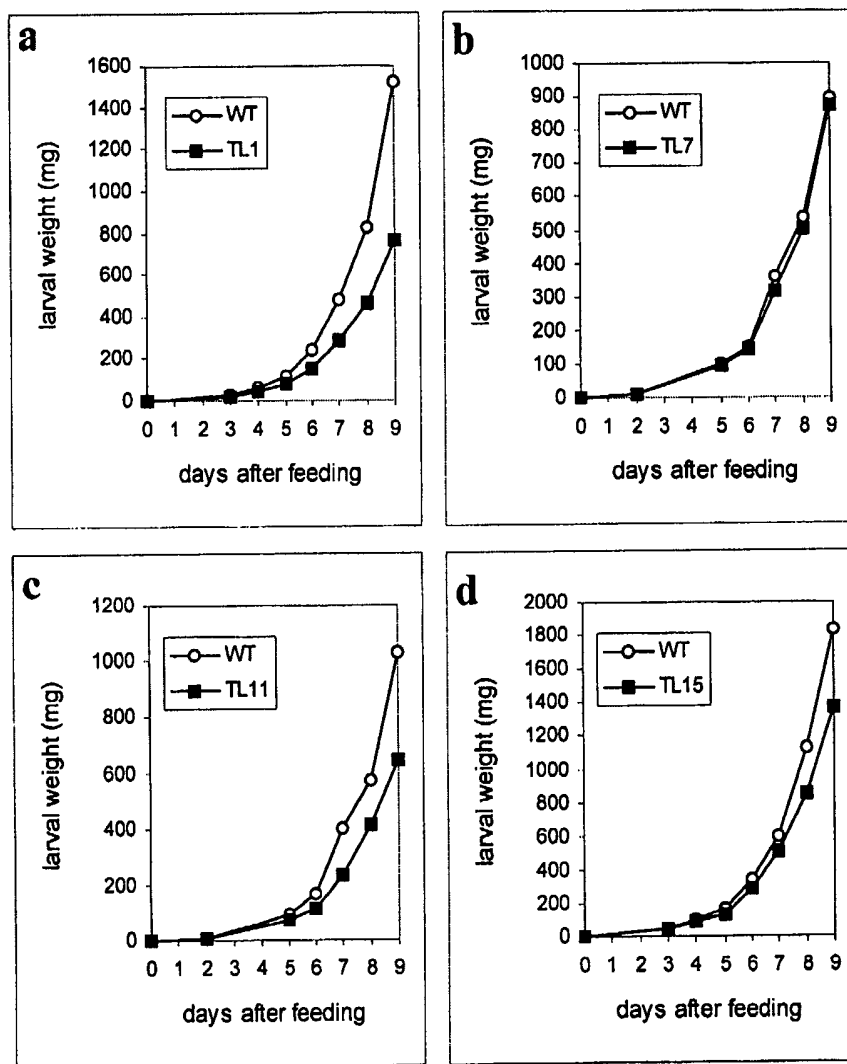


FIG. 16

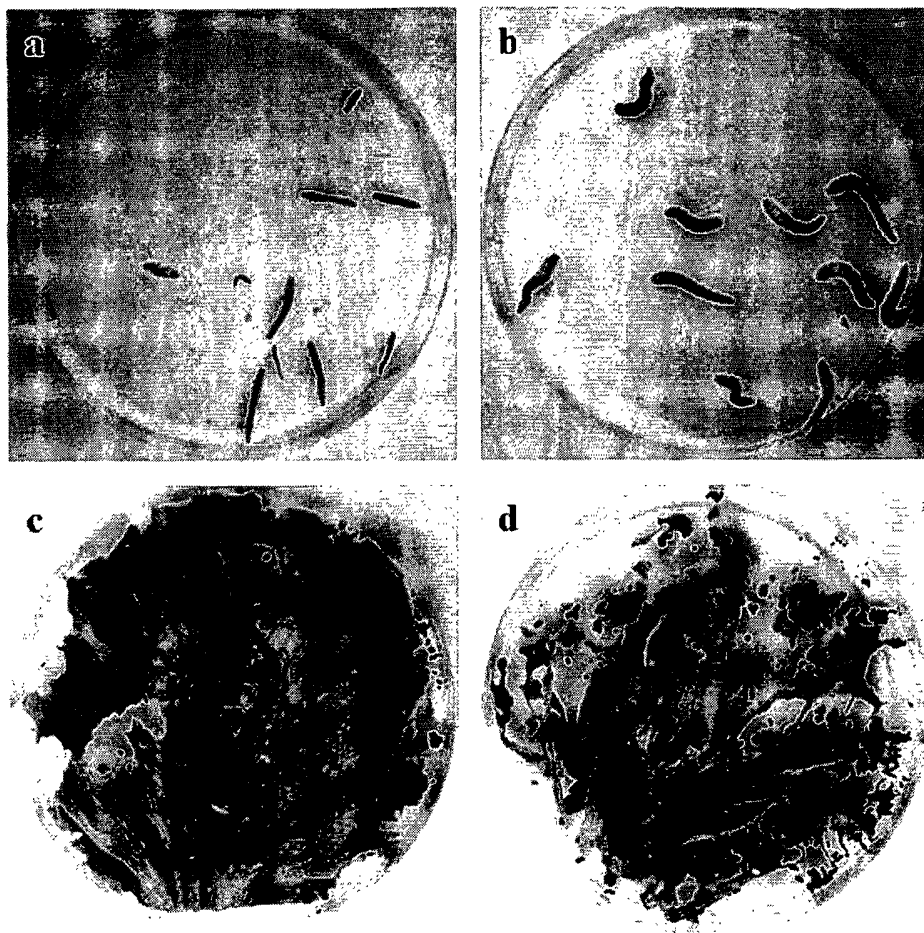


FIG. 17

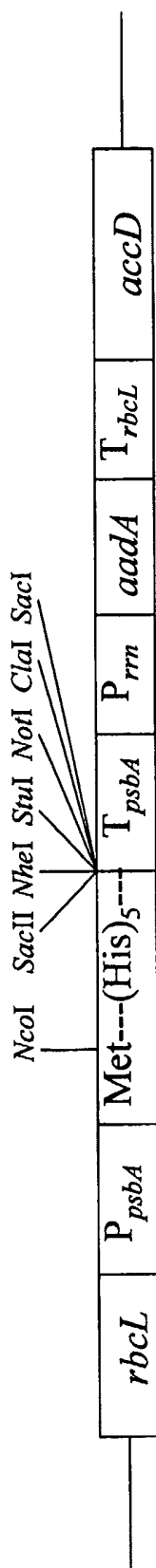


FIG. 18

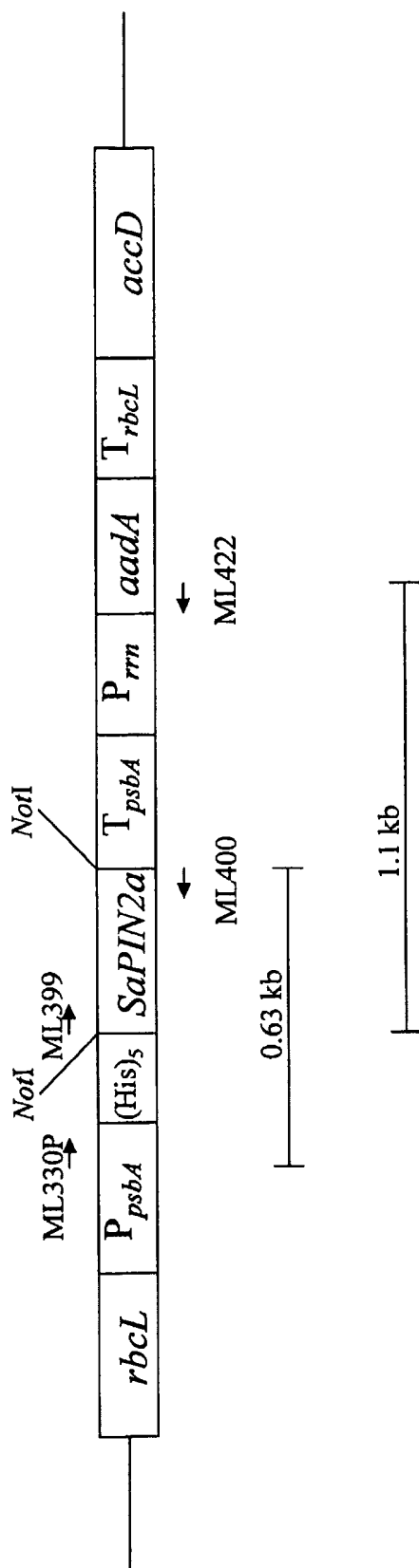
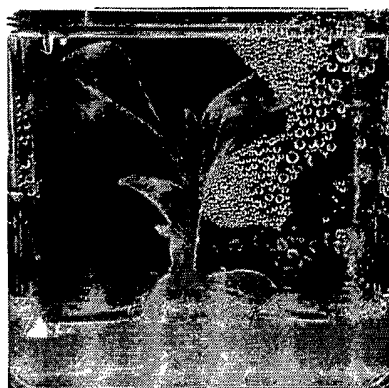


FIG. 19

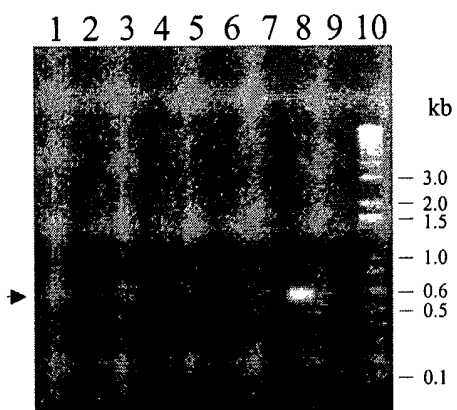
**a**



**b**



**c**



**d**

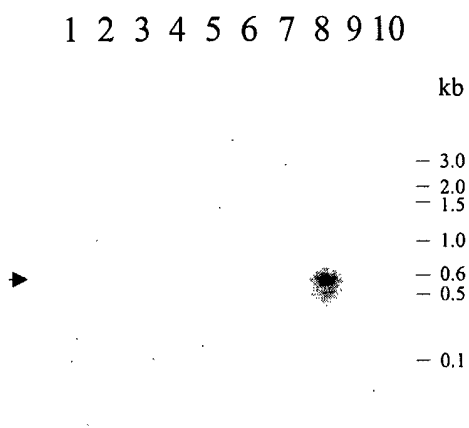


Figure. 20

## SEQUENCE LISTING

- <110> Chye, Mee Len  
 Xu, Zeng-Fu  
 Sin, Suk Fong
- <120> Genetically Modified Plants with Heterogenous Proteinase Inhibitor  
 SaPIN2A or SaPIN2B and Methods of Use Thereof for the Inhibition  
 of Trypsin- and Chymotrypsin-Like Activities
- <130> 9661-043-999
- <140>  
 <141>
- <150> 60/429,992  
 <151> 2002-11-29
- <160> 14
- <170> PatentIn version 3.2
- <210> 1  
 <211> 529  
 <212> DNA  
 <213> Solanum americanum
- <400> 1  
 cataatgget gttcacaag ttagcttccet tgettgccta cttgttcttg gatggatggt 60  
 tctacttgge aaacatggtg atgccaagge ttgtactaga gaatgtggtc attttagcta 120  
 tggcatatgc ccacgttcag aaggaagtec ccaaaaacct atatgcacca attgttgctc 180  
 aggctataag gtttgcaact attacagtgc taaaggagat ttgatttggtg aaggagaatc 240  
 tgaccctaga aaccctaaaag attgtacctt cgaatgtgat acacagattg cttattcaaa 300  
 atgtctctgt tcagaaggaa agatgataat taaaccctact ggatgcacca cttgttgcac 360  
 gggctatcag gtttgctact atttcgatca agatgggtgat tttgtctgtg aaggagagag 420  
 tcctgaacce aagaccactg cttatttcta atcaatcata tgttggttatc tatcaaaaaa 480  
 aaatatgtat gcatgatata tgctggttac tgtaatgtgg actttattg 529
- <210> 2  
 <211> 148  
 <212> PRT  
 <213> Solanum americanum
- <400> 2  
 Met Ala Val His Lys Val Ser Phe Leu Ala Cys Leu Leu Val Leu Gly  
 1 5 10 15

Trp Met Phe Leu Leu Ala Lys His Val Asp Ala Lys Ala Cys Thr Arg  
 20 25 30

Glu Cys Gly His Phe Ser Tyr Gly Ile Cys Pro Arg Ser Glu Gly Ser  
 35 40 45

Pro Gln Lys Pro Ile Cys Thr Asn Cys Cys Ser Gly Tyr Lys Gly Cys  
 50 55 60

Asn Tyr Tyr Ser Ala Lys Gly Asp Leu Ile Cys Glu Gly Glu Ser Asp  
 65 70 75 80

Pro Arg Asn Pro Lys Asp Cys Thr Phe Glu Cys Asp Thr Gln Ile Ala  
 85 90 95

Tyr Ser Lys Cys Pro Arg Ser Glu Gly Lys Met Ile Ile Lys Pro Thr  
 100 105 110

Gly Cys Thr Thr Cys Cys Thr Gly Tyr Gln Gly Cys Tyr Tyr Phe Asp  
 115 120 125

Gln Asp Gly Asp Phe Val Cys Glu Gly Glu Ser Pro Glu Pro Lys Thr  
 130 135 140

Thr Ala Tyr Phe  
 145

- <210> 3
- <211> 692
- <212> DNA
- <213> Solanum americanum

<400> 3  
 gaagataatt aatcacgatac gagaaagaat aaatggctgt tcacaaagaa gttagttccc 60  
 ttgcttacct actgtttctt ggattaatgt ttctacatgt aagcgcggta aaacatgttg 120  
 atgccaagcc atgtacaaga gaatgtggta atcttgggta tggaatatgc ccgcgttcag 180  
 aaggaagtcc gaaaaatccc atatgcacga attgttgetc aggcataaaa gggtgcaact 240  
 attatagtgc taatgggact tttatttgcg aaggaagttc tgaccctaaa aacccaata 300  
 cttgcccctt attttggat ggagatattg cctattcaaa atgtcccctg tcagaaggag 360  
 agactataat atatcccacg ggatgcacca cctgttgcac ggggtacaag gggtgctact 420  
 attttagtaa agaaggtgag tttgtgtgtg aaggagagag tgatgaacce aacgttattt 480

ctaatacaatg aaatgcgttg tagtttttaa tataatgtat gaaataaaag tatgcagtac 540  
 ggcaatata gataatcact atagtgtggg catcacagtt gtgctttata tgtaattact 600  
 aattatctga ataagagaaa aagatcatcc atgaggactt ggctcctctc cagtagtggt 660  
 gatctccttc ctaaaaaaaa aaaaaaaaaa aa 692

<210> 4  
 <211> 152  
 <212> PRT  
 <213> Solanum americanum

<400> 4

Met Ala Val His Lys Glu Val Ser Ser Leu Ala Tyr Leu Leu Val Leu  
 1 5 10 15

Gly Leu Met Phe Leu His Val Ser Ala Val Lys His Val Asp Ala Lys  
 20 25 30

Pro Cys Thr Arg Glu Cys Gly Asn Leu Gly Tyr Gly Ile Cys Pro Arg  
 35 40 45

Ser Glu Gly Ser Pro Glu Asn Pro Ile Cys Thr Asn Cys Cys Ser Gly  
 50 55 60

Tyr Lys Gly Cys Asn Tyr Tyr Ser Ala Asn Gly Thr Phe Ile Cys Glu  
 65 70 75 80

Gly Ser Ser Asp Pro Lys Asn Pro Asn Thr Cys Pro Leu Phe Cys Asp  
 85 90 95

Gly Asp Ile Ala Tyr Ser Lys Cys Pro Arg Ser Glu Gly Glu Thr Ile  
 100 105 110

Ile Tyr Pro Thr Gly Cys Thr Thr Cys Cys Thr Gly Tyr Lys Gly Cys  
 115 120 125

Tyr Tyr Phe Ser Lys Glu Gly Glu Phe Val Cys Glu Gly Glu Ser Asp  
 130 135 140

Glu Pro Asn Val Ile Ser Asn Gln  
 145 150

<210> 5  
 <211> 26



<212> DNA  
 <213> Solanum americanum

<400> 5  
 ctccatcaca aaataagggg caagta 26

<210> 6  
 <211> 21  
 <212> DNA  
 <213> artificial

<220>  
 <223> Description of artificial sequence: primer  
 <400> 6  
 gctcgaagac gatcagatac c 21

<210> 7  
 <211> 21  
 <212> DNA  
 <213> artificial

<220>  
 <223> Description of artificial sequence: primer  
 <400> 7  
 agaaagagct ctcagtctgt c 21

<210> 8  
 <211> 11  
 <212> PRT  
 <213> artificial

<220>  
 <223> Description of artificial sequence: Amino Acids 77-87 of SaPIN2a  
 <400> 8

Gly Glu Ser Asp Pro Arg Asn Pro Lys Asp Cys  
 1                    5                    10

<210> 9  
 <211> 14  
 <212> PRT  
 <213> artificial

<220>  
 <223> Description of artificial sequence: Amino Acids 139-152 of SaPIN2a  
 <400> 9

Cys Glu Gly Glu Ser Asp Glu Pro Asn Val Ile Ser Asn Gln  
 1                    5                    10

<210> 10  
 <211> 25  
 <212> DNA

<213> artificial

<220>

<223> Description of artificial sequence: primer

<400> 10

caatcccact atccttcgca agacc

25

<210> 11

<211> 29

<212> DNA

<213> artificial

<220>

<223> Description of artificial sequence: primer

<400> 11

gtctatatta tactgttaaa taacaagcc

29

<210> 12

<211> 56

<212> DNA

<213> artificial

<220>

<223> Description of artificial sequence: primer

<400> 12

gagaatccac catggetcat catcatcatc atcatatggc tggtcacaaa gttagc

56

<210> 13

<211> 27

<212> DNA

<213> artificial

<220>

<223> Description of artificial sequence: primer

<400> 13

gagcggccgc ttagaaataa gcagtgg

27

<210> 14

<211> 21

<212> DNA

<213> artificial

<220>

<223> Description of artificial sequence: primer

<400> 14

cgatacttcg gcgataaccg c

21

# INTERNATIONAL SEARCH REPORT

International application No.  
PCT/CN03/01020

<b>A. CLASSIFICATION OF SUBJECT MATTER</b>  <p style="text-align: center;">IPC<sup>7</sup> C12N 15/11, 15/29, 15/63, 15/82</p> <p style="text-align: center;">According to International Patent Classification (IPC) or to both national classification and IPC</p>				
<b>B. FIELDS SEARCHED</b>  <p style="text-align: center;">Minimum documentation searched (classification system followed by classification symbols)</p> <p style="text-align: center;">IPC<sup>7</sup> C12N</p> <p style="text-align: center;">Documentation searched other than minimum documentation to the extent that such documents are included in the fields searched</p> <p style="text-align: center;">Electronic data base consulted during the international search (name of data base and, where practicable, search terms used)</p> <p style="text-align: center;">WPI, EPODOC, GENBANK, CA, CNPAT, CNNK</p>				
<b>C. DOCUMENTS CONSIDERED TO BE RELEVANT</b>				
Category*  X	Citation of document, with indication, where appropriate, of the relevant passages  Plant Molecular Biology,47(6),727-738,2001  Xu,Zeng-Fu;Qi,Wen-Qing;Ouyang,Xue-Zhi;Yeung,Edward;Chye,Mee-Len  "A proteinase nihibitor II of Solanum americanum is expressed in phloem."  See the whole document  Genbank accession number is AF174381 and AF209709	Relevant to claim No.  1-58		
<input type="checkbox"/> Further documents are listed in the continuation of Box C. <input type="checkbox"/> See patent family annex.				
<table style="width: 100%; border: none;"> <tr> <td style="width: 50%; border: none; vertical-align: top;">                     * Special categories of cited documents:                      "A" document defining the general state of the art which is not considered to be of particular relevance                      "E" earlier application or patent but published on or after the international filing date                      "L" document which may throw doubts on priority claim (S) or which is cited to establish the publication date of another citation or other special reason (as specified)                      "O" document referring to an oral disclosure, use, exhibition or other means                      "P" document published prior to the international filing date but later than the priority date claimed                 </td> <td style="width: 50%; border: none; vertical-align: top;">                     "T" later document published after the international filing date or priority date and not in conflict with the application but cited to understand the principle or theory underlying the invention                      "X" document of particular relevance; the claimed invention cannot be considered novel or cannot be considered to involve an inventive step when the document is taken alone                      "Y" document of particular relevance; the claimed invention cannot be considered to involve an inventive step when the document is combined with one or more other such documents, such combination being obvious to a person skilled in the art                      "&amp;" document member of the same patent family                 </td> </tr> </table>			* Special categories of cited documents: "A" document defining the general state of the art which is not considered to be of particular relevance "E" earlier application or patent but published on or after the international filing date "L" document which may throw doubts on priority claim (S) or which is cited to establish the publication date of another citation or other special reason (as specified) "O" document referring to an oral disclosure, use, exhibition or other means "P" document published prior to the international filing date but later than the priority date claimed	"T" later document published after the international filing date or priority date and not in conflict with the application but cited to understand the principle or theory underlying the invention "X" document of particular relevance; the claimed invention cannot be considered novel or cannot be considered to involve an inventive step when the document is taken alone "Y" document of particular relevance; the claimed invention cannot be considered to involve an inventive step when the document is combined with one or more other such documents, such combination being obvious to a person skilled in the art "&" document member of the same patent family
* Special categories of cited documents: "A" document defining the general state of the art which is not considered to be of particular relevance "E" earlier application or patent but published on or after the international filing date "L" document which may throw doubts on priority claim (S) or which is cited to establish the publication date of another citation or other special reason (as specified) "O" document referring to an oral disclosure, use, exhibition or other means "P" document published prior to the international filing date but later than the priority date claimed	"T" later document published after the international filing date or priority date and not in conflict with the application but cited to understand the principle or theory underlying the invention "X" document of particular relevance; the claimed invention cannot be considered novel or cannot be considered to involve an inventive step when the document is taken alone "Y" document of particular relevance; the claimed invention cannot be considered to involve an inventive step when the document is combined with one or more other such documents, such combination being obvious to a person skilled in the art "&" document member of the same patent family			
Date of the actual completion of the international search <p style="text-align: center;">26.Feb.2004(26.02.2004)</p>		Date of mailing of the international search report <p style="text-align: center; font-size: 1.2em;">18 · MAR 2004 (18 · 03 · 2004)</p>		
Name and mailing address of the ISA/CN 6 Xitucheng Rd., Jimen Bridge, Haidian District, 100088 Beijing, China Facsimile No. 86-10-62019451		Authorized officer <p style="text-align: right;">TANG ,hui</p> Telephone No. 86-10-62085074		

